

HANSFORD COUNTY'S LEADING NEWSPAPER



# The Hansford Plainsman



VOLUME VII., NUMBER 62

SPEARMAN, HANSFORD COUNTY, TEXAS 79081

THURSDAY, MAY 26, 1966

Time goes so fast that sometimes it seems hardly worth the effort to keep up. The rapid flight of time was graphically brought home this week.

Carl Nickles, one of our former and future employees is home making plans to start to school and work after he is discharged from the Navy this fall.

We were talking about different students who are graduating this year and kept getting no response from Carl. Finally he said, "I don't know many of this year's graduates. They were in grade school when I was in high school."

Then we realized that almost four full years have rolled by since Carl left for the Navy. We recalled, also, thinking when he left that it would be late in 1966 when he would get out.

We always hate to see graduation time come around every three or four months. Well, it seems that it happens that often.

Every year we think this is the last year we are going to get so involved in school activities and the "kids" taking part. It seems that we lose part of ourselves when they graduate and "take off" to make their places in the world.

But, then, we re-read all the nice thank you notes we receive and remember all the thrills and fun we have enjoyed with them each year. After a few moments of remembering, we decide it is well worth the few little things we do for them and just hope there will be some more we can "adopt" when school begins again.

To the parents of all of "our kids" this year, we thank you for raising such a grand bunch of young men and women and we want you to know that we truly appreciate your sharing them with us during their high

(Con't. on page 2.)



HOSPITAL EQUIPMENT---Mrs. Bobby Nollner, right, and Mrs. John Henry, of Rho Chapter of Beta Sigma Phi Sorority present Hansford Hospital Manager Andy Anderson with a check to pay for a Coleman Jr. Spectrophotometer for blood chemistry test in the hospital. Anderson said it was critically needed equipment.

Plainsman Photo

## Jaycees Finishing Preparations For Celebration June 1 - 4

Activities for the annual Hansford County Celebration will begin at 7:30 p.m. Wednesday night June 1, and continue each night until Saturday.

Wednesday night Dr. Jordan Grooms of the Polk Street Methodist Church will speak at a city-wide religious service in the First Baptist Church of Spearman.

Thursday night the square dancers will swing at the Community building with a big square dance. Clubs from all over the area are being invited.

Friday night a new Miss Hansford County will be selected in the annual contest. A successor to Miss Jane Hoy will be selected. The winner will compete in the Miss Wheatheart of the Nation contest.

After the contest there will be a dance in the community building for teen-agers with music by the Echoes.

Friday afternoon the FFA will sponsor a high school rodeo at the local arena. It is open to all high school students.

Saturday will be the big day with a parade at 10:30 a.m. and after the parade a barbecue will be served. Tickets are \$1 and \$1.50.

Saturday afternoon the FFA will have an amateur rodeo at

(Con't. on page 2.)

## Commencement Set Friday for 74 Seniors

Commencement exercises for 74 members of the 1966 Graduating Class of Spearman High School will be held at 8 p.m. Friday evening, May 27 in the high school auditorium. Valedictorian Frances Whitson and Salutatorian James Ownbey will make the traditional addresses.

Dr. Bill Reeves, Superintendent, will introduce the special guests, the Boys Quartet will present a special number. High School Principal Jim Cherry will present the special awards.

School Board President Lloyd Buzzard will present the diplomas to the graduates.

T.J. Pittman will present the invocation and the Rev. Wesley Daniel, the Benediction. Mrs. Marvin Jones and Mrs. Rue Sanders will play the traditional music for the exercises.

Junior escorts for the seniors will be Gary Cates and Carla Archer. The Junior ushers will be Ronald Gray, David McClellan, Randy Moore and Doug Lackey. Hostesses will be Janie Beck, Connie Fowler, Stephanie Patton and Linda Spoonemore.

Honor students of the class are: Frances Whitson, James Ownbey, Gwen Hannen, Kate Kilgore, Kathi Pattison, Bethany Donnell, Susan Hutchison, Ceedell Anderson, Karen Gibson, Linda Smith, Lloyd McWhirter, Genie Warren and Mart Brillhart. Geir Overland of Norway is a guest honor student.

Other students are: Darrell Adkison, Harrel Adkison, Nelda Archer, Larry Babbs, Michael Babbs, Linda Sue Benge, Rennie Berry, Bette Brown, Eddie Butler, Larry Butt, Lynn Buzzard, Dave Clement, Miles Cline, Carole Close, Clayton Cochran, Deborah Craig, Qua Crum, Wayne Cummings, Phyllis Davis, Kenneth Faries, Tom Gibner, Donna Gilley, Gary Gray, Lynda Hall, Clydus Harper, Cynthia Henderson, Linda Hollar, Larry Nolan Holt, Susan Holt, Clifford Ray Hornsby, Ricky Howerter, Terry Hudson, Delores Jackson, Terry Jones, Janie Kirkland, Donna Love, Jimmy McLeod, Larry McMiller, Toni Morgan, Robbie Ownbey, Lynn Pattison, Glynn Pattison, Richard Pipkin, Merry Ellen Pittman, Nicki Rahmel, Andy Lee Rhodes, Ike Richeson, Larry Roberts, James William (Skipper) Robinson, Ginger Schneider, Kenneth Shufeldt, Paula Stout, Sue Stubblefield, Phillip Stumpf, Arbeta Tackett, Ernie Vanderburg, Cecilia Wilson, Bill Womble and Gaylene Yancey.

## 8th Grade Graduation Is Tonight

Eighth Grade Commencement for Spearman Junior High will be held tonight (Thursday) at 8 p.m. in the High School Auditorium.

Speakers for the program will be the Valedictorian Bill Randall Weston and Salutatorian David Gene Holland.

Principal James Pendergraft will recognize the honor students and Dr. Bill Reeves, Superintendent, will present the diplomas.

The Rev. Luther Berry will give the invocation and Benediction. Eddie Martin will play the Processional and Re-

(Con't. on page 2.)

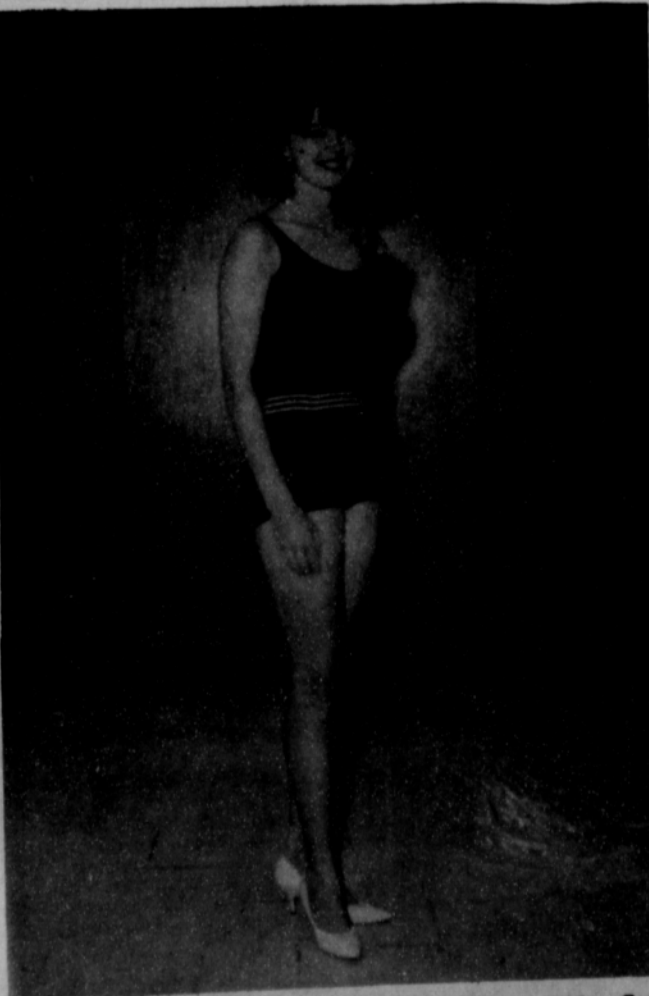
## LL Officials And Jaycees To Play Ball

From out of the past come the thundering athletic feats of yesteryear as the old athletes play again for money for the Senior Little League.

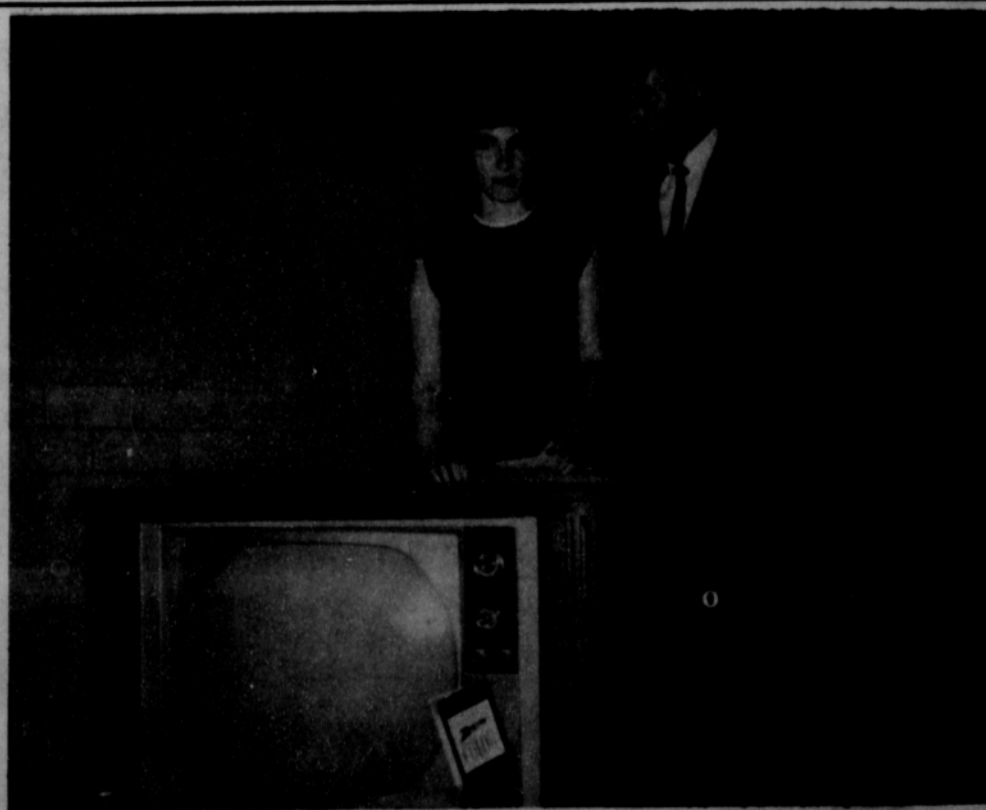
Saturday night the Jaycees will meet the Little League coaches and officials in a softball and soft muscle game at 7:30 p.m. at the Little League field.

All the money raised at the game will go into the fund for the Senior Little League. The players for both teams have to provide their own rubbing alcohol.

Plainsman Photo



BEAUTY-Miss Kathy Reynolds, daughter of Mr. and Mrs. Cecil Reynolds, will represent Community Public Service in the Miss Hansford County Contest June 3 in the high school auditorium. Other celebration events will be rodeos, a religious service, a parade, barbecue and dances.



IN APPRECIATION---Band Director Sam Watson and Mrs. Watson received this color television set at a banquet honoring the band last week. Parents of band students of all ages and others contributed to the gift fund for the director and his family.

Plainsman Photo

# Buy, Sell, Trade Hire, Rent, Find THROUGH THE WANT ADS

## Bowling Beat

SCRATCH LEAGUE  
5-17-66

TEAM	WON	LOST
#7	12	4
#1	10	6
#8	9	7
#3	8	8
#6	8	8
#2	7	9
#4	6 1/2	9 1/2
#5	3 1/2	12 1/2

HIGH INDIVIDUAL GAME

Tubby Hays	187
Tubby Hays	179
Tubby Hays	172

HIGH INDIVIDUAL SERIES

Tubby Hays	538
Lou Harvey	458
Mary Cornelius	448

### FOR SALE

FOR SALE-3 bedroom on corner lot, low equity, low payments. 112 Warda Drive, Phone 659-3308.

FOR SALE-2 bedroom home, fenced backyard or corner lot. Call 659-2650 or come by 402 E. Kenneth.

FOR SALE-3 bedroom house. Call 659-2687.

FOR SALE-3 bedroom, 1 1/2 bath home, south part of town. Collard Real Estate. Phone 2501.

FOR SALE-3 bedroom house, redwood fenced backyard. 1010 S. Haney. Call 659-3103 or 659-2754.

FOR SALE-Two bedroom home with 100 ft. frontage. South part of town. Contact Collard Real Estate, 659-2501.

FOR SALE-3 bedroom house, Blodgett Linn addition, one bath. Phone 659-2441, after 6 p.m. 659-2408.

FOR SALE-Three bedroom brick, carpet, drapes and fence. 1006 S. Barkley, phone 2261.

FOR SALE-1963 American Westwood 2 bedroom mobile home. Excellent condition. 119 N. Brandt. Phone 659-2454 after 6 p.m.

FOR SALE-Industrial lots on Gruver Highway. Cecil Crawford, 659-2409.

FOR SALE by owner, 3 jointing lots including 1 corner lot. Paved front and sides, lot 4-5-6, Block 54, Corner 2nd & Brandt, \$2,250.00. Call 659-2668 after 5:30. 40-tfc

FOR SALE-Approximately 1213 acres farmland in good water district. Write Box 366 or phone F17-2417, Gruver, Tex. 62-8p

Plainsman  
Want Ads Pay Off

FOR SALE-Siamese Kitten. Phone 659-2511. 60-4c

FOR SALE-Extra clean 1957 Chevrolet, 4 Door Hardtop, \$395. One used Tappan gas range, \$10. One used vinyl 2 pc. sectional couch, \$5. One platform rocker, needs recovering \$5. 522 S. Bernice. Phone 659-3454. 62-tfc

FOR SALE-Stratolounger with vibrator \$30, Console 21 in. TV \$30, Double oven electric range \$20, divan and chair \$30. Servel free for moving out. Phone 3059. 62-1p

SPARE TIME INCOME-Refilling and collecting money from NEW TYPE high quality coin operated dispensers in this area. No selling. To qualify you must have car, references, \$600 to \$1900 cash. Seven to twelve hours weekly can net excellent monthly income. More full time. For personal interview write P.O. Box 10573, DALLAS, TEXAS 75207. Include phone number. 62-1p

RUMMAGE SALE, 1117 Townsend, Size 9 dresses. 62-1c

FOR SALE-Best Briley Blacksmith and welding shop. 42-3c

### SERVICES

Amario Daily News & Globe Times home delivery. Call 2685. 14-tfc

Irrigationg meter repair and testing. Monthly billing service for irrigation customers on co-op line. Phone 659-2297. 1004 S. Haney, J.A. Morris. 52-tfc

ROSS CATERING SERVICE- Suppers, luncheons, teas, children's parties. Phone 659-3227. 55-tfc

Learn to make feather flowers and items. For lessons call Mrs. Harold Groves, Phone 659-3027, 912 S. Bernice. 62-tfc

Experienced Piano Teacher. Classes for beginner and advanced students. All classes include theory, 30 minute lessons, \$1.00. Call 659-2393. 62-8c

LOSE WEIGHT safely with Dex-A-Diet Tablets. Only 98¢ at Spearman Drug. 62-6c

WANTED-Receptionist and secretaries. Linn & Helms, Call 2566. 62-tfc

WANTED-Tree and Hedge trimming. Bill Hand, Phone 659-2967. 62-4p

WANTED-Lawns to mow. Joey Woolley, Phone 659-2104. 60-4c

Need babysitter 3 days a week in my home. Call 659-2913. 62-tfc

Need reliable service station attendant. Contact Nelson's Texaco Station, Elmwood, Okla. 62-tfc

If Dr. says ulcers, get new Ph5 tablets. Fast as liquids. Only 98¢ at Spearman Drug. 62-10c

Graduation cards at Plainsman Office Supply.

SERVICE-Ditches from 3-12 inches, any desired depth. S. D. Jones 659-2809. Harold Shaver 659-3474. 17-tfc

### MOONLIGHT TV

Specializing in Minor TV Repair.

EVENINGS & SATURDAY  
Sorry-No Sunday Calls  
Phone 659-2792 or 659-3321

Service Calls - \$2.50

Want To Build a New Home, Remodel or Repair Your Home?

CALL  
R. L. UPTERGROVE

659-2677 Spearman  
Out of Town, Call Collect

For Sale:

3 Bedroom House-Several Lots-2 Commercial Buildings

### Homemaking Notes

by Linda Webb  
We hear a lot about food packaging (and sometimes even say a lot ourselves.) Many shoppers criticize packages from time to time. They find packages that won't open, are chipped or damaged, or whose shape won't fit on the storage shelf.

For every dollar spent for food, eight to ten cents goes for its packaging.

There are several benefits derived from good packages. One is the convenience a good package gives to its user. For example, most milk cartons are equipped with handy pouring spouts. Certain packages are as serving dishes, to be eaten out of, or as a cooking container for the food. Some packages are even reusable.

Another benefit is that of safety. Modern packaging has improved so much that we can now store meats, fruits, vegetables, and many other foods for months without refrigeration or special care-and then eat them with perfect confidence.

Still another benefit is that of education. Most packages are equipped with labels that give important information such as: ingredients, style, serving suggestions, number of servings and quantity of product.

On the negative side of food packaging, it can be deceiving. Certain colors may look larger, and the construction of certain packages make them look larger, too.

Some packages, especially those containing dry foods such as crackers or cereals may not always be full. Generally, however, this is because the

HD Agent food has "settled" in handling. The wise shopper should look for net contents on the packages.

Price increases sometimes are misleading by use of a smaller package for the same price. The color or shape of the package may make a new package look as large as the original.

You, the consumer, can stop package deception. Anytime you find misrepresentation, or any attempt to deceive, discuss it with the store manager. If enough people call this to his attention, the manufacturer will hear about it. THE LAST NOTE-To the fellow who says, "Nothing is impossible!" Did you ever try getting off a mailing list?

Mrs. Dennis Jones underwent surgery in Shattuck Monday morning.

Want Ads Pay

Part of all you earn should be yours to keep.



ED DEAR.



703 Carter Drive  
Spearman, Texas

Office: 659-2516  
Home: 659-3073

### Cummings

Refrigeration

HEATING

AIR CONDITIONING

SALES & SERVICE

SPECIALISTS

659-2721

SPEARMAN

For Quick Courteous Service

Chevron Gasolines

Atlas Tires & Accessories

Washing-Greasing

QUICK,  
COURTEOUS  
SERVICE

Loren Simmons

SIMMONS  
CHEVRON  
SERVICE

Phone 659-9985

ains Shopping Center

### City Directory

CLEANERS

CLEANING  
PRESSING  
CARPET  
CLEANING SERVICE

COIN OPERATED  
DRY CLEANING

\* /FREE  
PICK UP & DELIVERY

PHONE 659 2511

Wardrobe Cleaners

Oscar Donnell

302 MAIN ST  
SPEARMAN, TEXAS

DENTISTS

F. J. Daily D.D.S.

16 SW COURT STREET

SPEARMAN

ELECTRICIAN

Anthony Electric

Industrial, Commercial  
and House Wiring

Heating and  
Air Conditioning

Contracting  
and Repairs

Fully Insured

PLAINS  
SHOPPING CENTER

PHONE 659 244

BOX 727

SPEARMAN, TEXAS

### LEGAL NOTICE

NOTICE TO BIDDERS

Sealed bids will be received at the office of the City of Spearman, Texas until 8:00 p.m. June 6, 1966 for the purchase of a Police Cruiser with the following specifications:

Eight Cylinder, 1966 Model, 4 door sedan, Color-White  
Minimum Horsepower 230-use regular grade gasoline  
Cubic inch displacement--Minimum 300, Maximum 300  
Radiator--Heavy duty  
Battery--Heavy duty, 70 Amp., 66 plate  
45 Amp. Alternator  
Oil Filter--Sufficient for size of engine  
Transmission--3 speed Automatic, heavy duty  
Heavy duty springs--Front & Rear  
Heavy duty shocks--Front & Rear  
Stabilizer Bar  
Heavy duty Axel--Front & Rear  
Heavy duty Brakes  
Wheels--15 inch wheels, 6:70 x 15, 4 ply, black tubeless tires  
Speedometer--Factory calibrated to 2 per cent accuracy  
Front seat--Heavy duty springs, cushion, extra foam pad  
Rear Seat--Heavy duty  
Seat Upholstery--Vinyl  
Windshield--Tinted glass  
Floor Mats--Heavy duty, front & rear  
Seat Belts--2 for front seat, retractable type  
Instrument panel--padded  
Heater--fresh air heater and defroster  
Sun Visors--2  
Spotlights--2, left side with clear lens, right side with red lens, mounted  
Mirrors--1 inside mounted, 1 outside on left side mounted  
Lights--Back up lights  
Radio noise suppression kit  
Windshieldwipers--2 speed electric with washer  
Factory Air Conditioner

Unit must not be a "compact" or small size vehicle

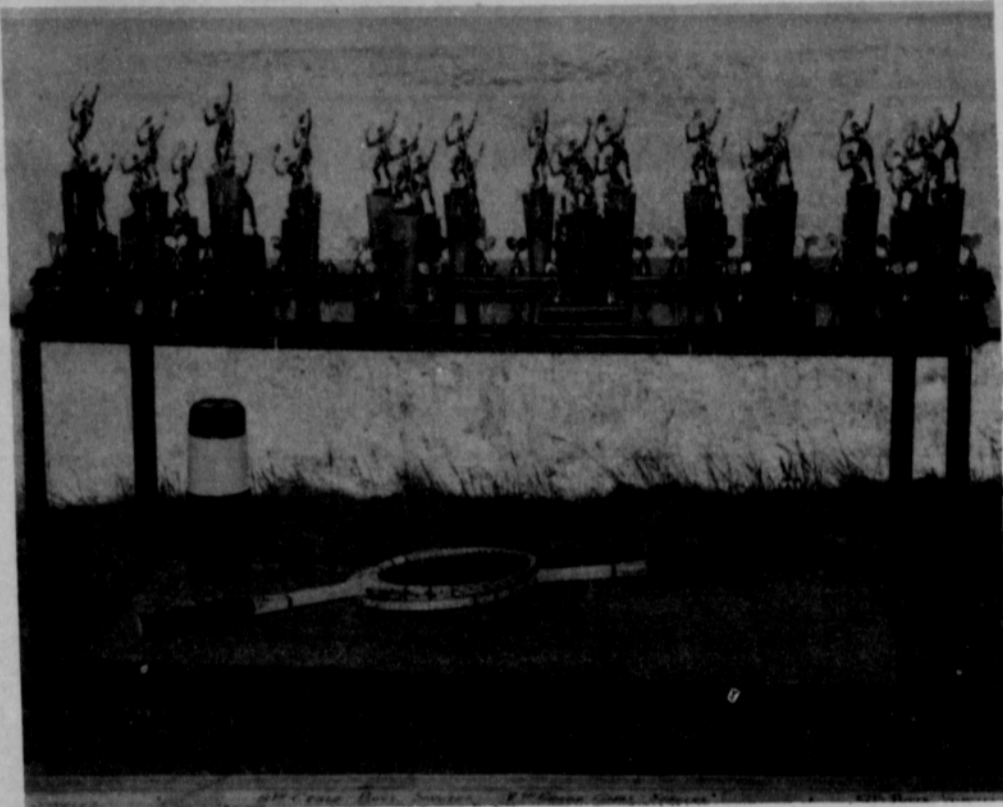
The factory price sticker designating the special equipment on this car shall remain with car, and the City shall have the right to inspect this car before being accepted, and reject same if not in compliance with specifications.

The City reserves the right to accept or reject any and all bids or Waive any informality in the bid or accept any bid regardless.

By order of the Mayor and City Council of the City of Spearman, Texas this 23rd day of May, 1966.

s/ R.E. Vaughn,  
Mayor

ATTEST:  
s/ Darce Foshee, City Secretary  
62-64-2c



TROPHIES--This table full of trophies were presented to the first and second place winners in the Junior High School Tennis Tournament held here Saturday. Spearman collected a majority of the prizes. Local businesses and individuals purchased the trophies.

Plainsman Photo

### Blaze Destroys Large Barn On Inez Bennett Farm

A fire Tuesday afternoon at the Inez Bennett farm a mile south of Spearman destroyed a barn and a large quantity of tires. The fire was reported short-

ly after 5 p.m. and city firemen battled the blaze, but were unable to save the barn. A large number of tires in the barn produced a hot blaze with black smoke.

Jack Hanks of Odessa, who was enroute from Canadian to Spearman, discovered the fire.

### 8th . . .

(Con't. from page 1.)

cessional marches. Honor students besides Weston and Holland are: Sandra Kaye Shufeldt, highest ranking girl; Karen Ann Baggerly, Philip Michael Cox, Sandra Fowler, Danny Ray Hendricks, Donald A. Jordan, Lynna Jean Mackie, Rebecca Sue McClellan, Glynn Holt Sanders and Steve Spoonemore.

### Jaycees. . .

(Con't. from page 1.)

the local arena. Saturday night a western dance will be held at the community building.

Sunday afternoon the second performance of the rodeo will be held.

The celebration is being staged by the Spearman Junior Chamber of Commerce and all profits from the celebration will go toward getting lights on the Senior Little League baseball park and annual Jaycee Scholarship.

### Tall Texan . . .

(Con't. from page 1.)

school career.

June 4 is another election day and all there will be for this county is the state-wide run-off between Crawford Martin and Franklin Spears for Attorney General.

Martin is carrying the conservative and Connally label and Spears is tagged as the liberal by the state press.

We hope that Hansford County will do a little better in the voting job this time. The county had less than 50 percent turn-out for the primaries.

We either have lots of people who do not care who is running their lives from Austin and Washington, or a whole lot of Republicans.

Across the state the rural areas carried the voting load with 63.2 percent of the eligible voters going to the polls. There were 569,277 persons who voted in the rural counties.

In the 23 so-called metropolitan counties only 23.2 percent of the more than 2 million eligible voters went to the polls. These counties had 576,723 votes cast.

These figures were provided us by the Crawford Martin campaign headquarters.

### Duck Durable Fabric

Duck is a durable, closely woven cotton fabric.

He said he had seen the smoke for several miles before reaching the Bennett farm.

Hanks went into the barn and saved a mother cat and some kittens. A little girl told him they were in the barn.

When frying eggs, shake a little flour into the hot fat. The eggs will brown nicely and the fat will not pop!

Upland cotton, grown in United States, forms bulk of world's crop.

Jim O. Davis  
Burl G. McClellan



County-wide independent newspaper published every Thursday and Sunday at 209 Main St., Box 668, Spearman, Texas 79081. Second Class postage paid in Spearman, Texas 79081. Editor . . . Burl McClellan

### Feminine Logic



A special assistant is a nice word meaning "the man with the brains."

LET'S COMPLETE THE VICTORY ON JUNE 4TH!

## CRAWFORD MARTIN

FOR ATTORNEY GENERAL  
pd. pol. adv.

# T.G.&Y.

5¢ TO 1¢ STORES

# Memorial Day Specials

Prices Good Through Saturday



## Beautiful WREATHS & SPRAYS

Exceptionally well-made wreaths and sprays of carefully selected materials. Expertly decorated with water resistant paints. Attractive bow trims. Some with convenient easels—many boxed—ready for mailing.

Wreaths 12" To 19" — Sprays 20" To 34"

\$1.00 TO \$4.99 EACH

## FOAM ICE CHEST



16" x 12" x 13 1/4"

Supertherm Chest Molded of Vacucl. Molded Divider. Keeps Foods cold up to 4 Days.

\$1.99

— STORE HOURS —  
Monday - Friday  
8:30 A.M. to 6:00 P.M.  
Saturday  
8:30 A.M. to 8:00 P.M.

200-Count  
**WHITE PAPER NAPKINS**  
13" x 13" Luncheon Size

SAVE NOW! **27¢** PKG.

**Foam Ice Chest**  
30 Qt. Capacity

Discount Price **99¢**

**LONG-LASTING PLASTIC FLOWERS**  
Create your own original floral arrangements. Large selection of lovely colors and varieties.

5¢ TO 98¢ Stem

**18" PORTABLE PICNIC GRILL**

Latest In Design . . .  
Lowest In Price!

**\$2.88**

New, Removable Steel Legs Snap On Or Off. Bowl Without Use Of Nuts, Screws Or Bolts. Has Deep, Heavy Gauge Steel Bowl Reinforced By Beaded Rim, Also Chrome Plated Grid with Handles.

**COLD DRINK CUPS**  
100 Count—7-Oz. Size

Compare & Save! **67¢** PKG.

**ATTRACTIVE ORIGINAL STYROFOAM® PIECES**

Lovely plastic flowers and greenery combined with superb workmanship to make this wide assortment of floral arrangements excellent in every detail.

Assortment Varies By Stores

**BIG SELECTION AT T.G.&Y.'s LOW PRICES . . .**

**\$1.29 TO \$4.99**

**5 QUART Hand Operated Ice Cream Freezers**

Wooden Bucket **\$9.99**

Discount Price

**JELLY CANDY FAVORITES**

- JELLS
- SPICED JELLY DROPS
- JELLY RINGS
- PINEAPPLE SLICES
- ASSORTED FRUIT

**2 LBS. FOR 43¢**

**INSTANT COLD . . . 2 DOOR**

17 cu. foot No-Frost Refrigerator Freezer with Power Saver & New Automatic Ice Maker



**PHILCO**  
FAMOUS FOR QUALITY  
THE WORLD OVER

Philco . . . Famous for Quality the World Over!  
**BURTON'S TV**

**Golfers Invited To Participate At Shamrock**

A 72-hole golf tournament will be held Friday, Saturday and Sunday, June 3-4-5, in Shamrock at the Shamrock Country Club.

The entry fee will be \$10 which will include a Dutch lunch at 7:30 p.m. Friday, June 3.

Qualifying and practice rounds are scheduled Friday, June 3, with 36 holes of match play following on Saturday and again on Sunday.

Winners will be presented gift certificates for merchandise of their choice. Trophies will be awarded the medalist and winners unable to accept merchandise awards.

Players unable to qualify Friday, may submit their average scores or established handicaps.

Additional information may be obtained by contacting Harry Frye, P.O. Box 310, Shamrock, or phone him at BL6-1104.

Mr. and Mrs. Carl Nickles and son, Marty Dale of Irving are visiting this week with his parents, Mr. and Mrs. C.A. Nickles. They are all spending the weekend in Shidler with their daughter and sister, Mr. and Mrs. Boyd Morgan.

**County Agent's Report**

By Robert A. Marion

**FIELD DAY**

Plans have been set for an agricultural field day open to the public at the North Plains Research Field near Etter in Moore County.

The field day will be at 1:30 p.m. June 3 and it will feature tours and discussions on weed control in Panhandle crops, studies on wheat and other small grains, fertilizer tests and preliminary reports on limited tillage trials.

All farmers in the area can benefit from the information to be presented at the event.

The North Plains Research Field, located one-mile east and a half-mile north of Etter, is the only one of its kind located north of the Canadian River.

It was established in 1964 to study farm production problems related to this part of the Panhandle. The research there is conducted primarily by Texas A&M University scientists from the Southwestern Great Plains Research Center near Bushland.

**DRYLOT COWS PRODUCE LONGER THAN PASTURE COWS**

Cows living in the confinement of a drylot are staying productive longer than their pastured cousins in a scientific study at the Rolling Plains

Livestock Research Station here in Spur.

Only 26 head of the original 36 head turned to pasture remain in the herd, says Station Superintendent Paul Marion, while 32 head of the original 36 put in drylot are still productive.

Part of the difference between the two groups may be a result of pure chance, according to the Texas A&M University researcher.

Both herds are part of 80 Hereford heifers purchased from the Waggoner Ranch at Vernon. They went into the drylot-versus-pasture experiment in May 1959.

Since then, five of the pasture cows have died, three have been sold because of cancer eye and two were sold because they were barren, Marion said.

Only one of the drylot cows has died, Marion said three have been sold--one with cancer eye, one with a hip injury and one which was barren.

"Apparently more things happen to cows in pasture," Marion said. "For instance, eye irritation is greater on pasture and this may have caused two cows to get cancer eye there while only one got it in the lot."

The pioneering drylot-pasture comparison first started as a project to learn more about the nutritional requirements of beef cows.

Limited range forced the scientist to put one of the herds in drylot and the comparison between the two management systems has gotten more attention than the findings on beef-cow nutrition.

Without considering longevity of production, the pasture cows have made a higher profit per head than the drylot cows, under the experimental conditions at the Texas A&M station, Marion said.

But he believes modifications in the drylot system would make it highly competitive with traditional beef production systems.

**Lutheran VBS Begins May 31**

Vacation Bible School begins at Faith Lutheran Church Tuesday, May 31 at 9 a.m. It will be held for two weeks with only morning sessions.

"I Learn About Jesus" is the title of the course. Handcraft work will go along with the lessons.

There will be no charge for the course but an offering will be received each Friday of the school.

Classes will be for ages 4 years through Grade 8. Anyone will be welcomed to Faith Lutheran Bible School. The church is located at 11th & Bernice.

**Faith Circle Has Meeting**

Faith Lutheran Ladies Circle met at the church Fellowship Hall, Wed. May 18 at 7:30 for their regular meeting. Jan Montgomery opened the meeting with devotionals. The Bible study "The God Who Acts" and the offering meditation was given by Betsy Ward.

Selma Reneau, hostess, served refreshments to Colleen Schaefer, Helen Langenheim, Dorothy Tackitt, Nellie Payne, Ardyth Crow, Fern Welch, Elma Ward, Jan Montgomery, Pit Oakes, Nancy Meyer, Betsy Ward, and Eunice Cooksey.

**WARNING! LIBERALS SEEK UPSET ON JUNE 4TH!**



Most Knowledgeable Man in State Government  
—Governor John Connally

Crawford Martin was the overwhelming choice of Texans by more than 100,000 votes in the first primary. But the job isn't done yet. Liberal forces, hoping for a light vote in the runoff, are redoubling efforts to capture this important office. Your help is urgently needed; make SURE you vote on June 4th to keep good government in Texas!

**CRAWFORD MARTIN HAS A 20-YEAR RECORD OF PUBLIC SERVICE**

- Served as mayor of Hillsboro
- 14 years a key leader in the State Senate . . . three times unopposed for re-election.
- Twice selected as his Secretary of State by Governor John Connally.

**CRAWFORD MARTIN HAS WORKED FOR ALL TEXANS.**

- Helped write or pass most of our important laws enacted the past decade.
- A proven friend of senior citizens. Helped obtain first medical aid for elderly.
- Fought to pass the first laws controlling loan sharks.
- Was a key leader in passing insurance reform legislation.
- A leader in passing Gilmer-Aikin laws for better education in Texas.

**LET'S COMPLETE THE VICTORY ON JUNE 4TH!**

**CRAWFORD MARTIN**

**FOR ATTORNEY GENERAL**

Political ad paid for by Martin Campaign Committee. George Cowden, Chairman

**IN WHEATLAND OR ROW CROP COUNTRY... THE NEW BIG MM**

**G 1000**

...built for those who farm big!



MINNEAPOLIS-MOLINE **MM** World's Finest Tractors

**CRAWFORD IMPLEMENT CO.**

HIGHWAY 15

SPEARMAN

**County P-TA Council Meets**

The Hansford County Council of the Parents-Teacher Association met May 11 at 1:30 p.m. in Spearman at the all purpose room in the elementary building.

Mrs. Jack Gillispie presided at the business session. Mrs. Clifford Stedje was nominated to fill the unexpired term of Mrs. Don McLain as Secretary-Treasurer.

Mrs. L.O. Mayo, State Parliamentarian, gave a school of instruction for new officers of the local units.

Ten members attended. They were Bob Marshall, Borgger, 19th District President, Mmes. Clifford Stedje and Jack Gillispie of Gruver, Mrs. M. W. McCloy of Morse; Mmes. Ed Dear, J.W. Pipkin, Wallace Berner, E.J. Callaway, Jr., Preston Smith and Mr. Allen Alford of Spearman.

Mmes. Callaway and Smith served refreshments.

**Sue Bradford On Choir Tour**

Sue Bradford, daughter of Mr. and Mrs. R.E. Bradford of Spearman, is a member of the traveling International Choir at Wayland Baptist College.

The choir left May 24 on tour which will include concerts in Oklahoma, Missouri, Illinois, Michigan and Ontario, Canada. The choir will return to Plainview June 1.

Mr. and Mrs. Bradford went to Plainview last Saturday and spent the weekend with Sue before she left on the tour.



MRS. BESSE HENDERSON—Morse HD Clubwoman of the Month.

## HD Club Recognizes Mrs. Henderson As HD Club Woman Of The Month

A lady who donates one afternoon of her time each week to serve as librarian for the community library has been named "HD Club Woman of the Month" for the Morse HD Club.

Mrs. Besse Henderson, a clubwoman since 1930, has acted as librarian since the library was organized three years ago.

Through the community improvement program such a library was organized. It is located in the community building and has around 500 books for loan. The Morse 4-H clubs sponsored the community improvement program and an adult committee composed of Mmes. M.W. McCloy, Vera James and Jack Johnson, Jr., along with several 4-H members, worked to secure this library.

Mrs. Henderson states she is glad to give her time to such a worthy cause. She is most gratified to see the children reading so many books. She holds library hours each Monday afternoon.

Mrs. Henderson, born in Tilden, Ill., came to the Texas Panhandle in February of 1906. She and her family traveled to Guymon by train and then came to the Lieb community by covered wagon, where they, like so many pioneer families, lived in a half dugout for some time.

She was an early day school teacher and taught from 1913-1918 in small country schools. At one time her pupils were from only one family and school was held in a room of the family home.

In 1918 she married Alva Henderson and they lived on a farm west of Morse. In 1927 they built their home on the section where her son, Earl, now resides.

In 1930 Mrs. Henderson joined her first HD club at Pringle in Hutchinson County. She states this was a learning experience for farm women and she learned many things of value.

"At that time," says Mrs. Henderson, "learning to can beef with a pressure cooker was most valuable, both nutritionally and economically. This made it possible to have meat the year round as we had no refrigerators or ice on the farms. For refrigerators we used what we called a "cooler". It was a metal frame over which a dampened cloth was placed. This certainly did not keep meat in edible condition for very long."

In 1936 we got a wind charger which provided electricity for lights and radio. To this day I'm careful about leaving lights turned on unnecessarily. We were so glad to get away from using those kerosene lamps and we learned to conserve our wind-charger electricity.

"The washing machine, powered by a gasoline motor put out in the mid 20's was one of the nicest things to happen for the farm woman."

In the early 50's Mrs. Henderson joined the Morse HD Club and she states she has learned many new tricks about sewing and cooking which helped her to rear her family of two boys and one girl. Mr.

Henderson passed away in 1945.

Mrs. Henderson has served in nearly every office of her local club and has been a member of the HD County Council several times.

She states "I think HD work is more valuable for the young homemaker while she is raising her family, but older members enjoy the association with the young and also still learn new things."

In addition to her club work she has been and still is active in church and PTA work. Her hobbies include raising house plants, working in her yard, knitting and piecing and quilting quilts. In the past ten years she has pieced and quilted 30 quilts. She has eleven grandchildren and states she has two quilts for each of them.

"Grandma Besse," as she is called by both her grandchild-

## HOSPITAL News

Patients in the hospital are J.H. Davis, Oscar Dahl, Brent Thurman, Venita Martin, Clyce Hughes, Jenna V. Ownbey, Helen Langenheim, Carl Galbreath, Marion Brillhart, Billie Martin, Dick Smith and Dorothy La Fever.

Dismissed since May 20—Rennie Berry, Tim Dawson, Janet Reed, Geraldine Brack, Ernest Butler, Dwayne Baker, Horton Prater, David Wilson, Kay Doyle and baby, Debra Bryant, Virginia Roberts and baby, Harry Moreau and Mary Hutton.

For walls and fixtures, handsome, durable Canadian Birch plywood is the choice of many companies redecorating their offices.

ren and many youngsters in the community, is a lady who has remained young in spirit through her years.

An upright vacuum cleaner will probably last longer than the tank variety, according to the U.S. Department of Agriculture. The average "life expectancy" of an upright is 18 years, while that of a tank is only 15 years.

### Future Readers

Mr. and Mrs. Dick Doyle are the parents of a boy born May 21 in Hansford Hospital. He weighed 6 lbs. 12 oz.

Mr. and Mrs. Stanley Ray Roberts of Perryton are the parents of a girl, born May 21 in Hansford Hospital. She weighed 6 lbs. 5 oz.

-Something New -  
FEATHER  
FLOWERS

For Centerpieces,  
Corsages, Poodles  
& Swans

I will mail them anywhere  
in the U.S.

MRS. HAROLD GROVES  
Phone 659-3027  
912 S. Bernice

**TOMMY GOOCH**  
**AGENCY**  
**FARM BUREAU**  
**INSURANCE**  
Spearman, Texas

## Calendar of Events

Thursday, May 26	Rho Rho-Delores Guthrie
	Eighth Grade Graduation-8 p.m. High School Auditorium
Friday, May 27	Arts & Craft Guild—Mrs. Kiff White
	Commencement Exercises-8 p.m. High School Auditorium
Saturday, May 28	Do Si Do Club
Tuesday, May 31	Lions Club
	Jonquil Flower Club to work on plot
Thursday, June 2	Jonquil Flower Club
	B&PW Luncheon—HD Clubroom

## This year plant

Quality Proven



® BRAND

### hybrid-sorghums

PROVEN QUALITY . . . . . PERFORMANCE THRU RESEARCH

### We have these varieties

- Excel 404** Medium early maturing, short stalk, dryland & irrigation adapted.
- Excel 505** Medium early maturing, stands well, good yields, heads dry well
- Excel 707** medium maturity, excellent yields, stands good
- Excel B-52** full season hybrid for maximum yield areas under heavy irrigation.
- Excel Chowmaker** Sorghum—Sudangrass cross for grazing and greencrop

### Excel Texas Varieties Texas 660 - RS 608

All Excel Hybrids Have Good Standability  
And Are Resistant To All Known Head Smut

Buy your seed today

**R.L. McClellan Grain Co., Inc.**



Pontiac Motor Division

We've just had  
our best sales month in 40 years.  
Somebody somewhere  
must be buying a lot of Pontiacs.

See your authorized Pontiac dealer.

He's trying to make May even better than April!

**NORTH PLAINS TRUCK & IMPLEMENT INC.** Highway 15  
Spearman, Texas

**Gift Box Memo :**

For those last minute graduation gifts and gifts for the many wedding showers come see us. We specialize in having just what you want for gifts.

In the new items department we have the new pedestal coffee mugs that so many of you have been wanting. Now that we have them, don't forget that you wanted some.

Pretty new kitchen accessories now come in RSVP Spanish items. These are pretty and will make wonderful gifts for the new brides.

Another new gift item for the traveling man is the compact razor and toothbrush sets. These come in neat little cases that will slip in just any corner of the suitcase.

A new book we have is "Elegance", a complete guide for every woman who wants to be properly dressed for all occasions.

Drop in and browse around, we try to have new ideas and items every week.

Don't forget we have guaranteed watch repair service, also.

**The GIFT BOX**

**Youngsters Voice Thanks To Cafeteria Personnel**

The cafeteria workers who prepare the meals for the grade school students received 23 letters of commendation the last day of classes from the students in Mrs. Bob Vaughn's second grade section.

When the children marched through the lunch line Tuesday, they all lined up, sang the women a song of appreciation for the good lunches, then presented them with a letter written by each student.

According to the students, the food is good and most of them said they appreciated the fast service.

Dennis DeArmond thought the service was better than at home for he wrote, "You serve faster than my mother."

Bobby Snider liked the food and the aroma, he wrote, "You make the air smell good with the food."

Bethany Day liked eating in the cafeteria so well that she would be glad when summer is over.

Terrell Evans had fun in the cafeteria, "It's fun to pick up the trays. And it's fun to pick up the straws and the milk."

Scotty Pipkin wrote, "The food you serve is very good. It is nice and warm for lunch. Next year it will be even better."

"The meal tickets that you sell are nice printed in black ink."

"The steak you served was good."

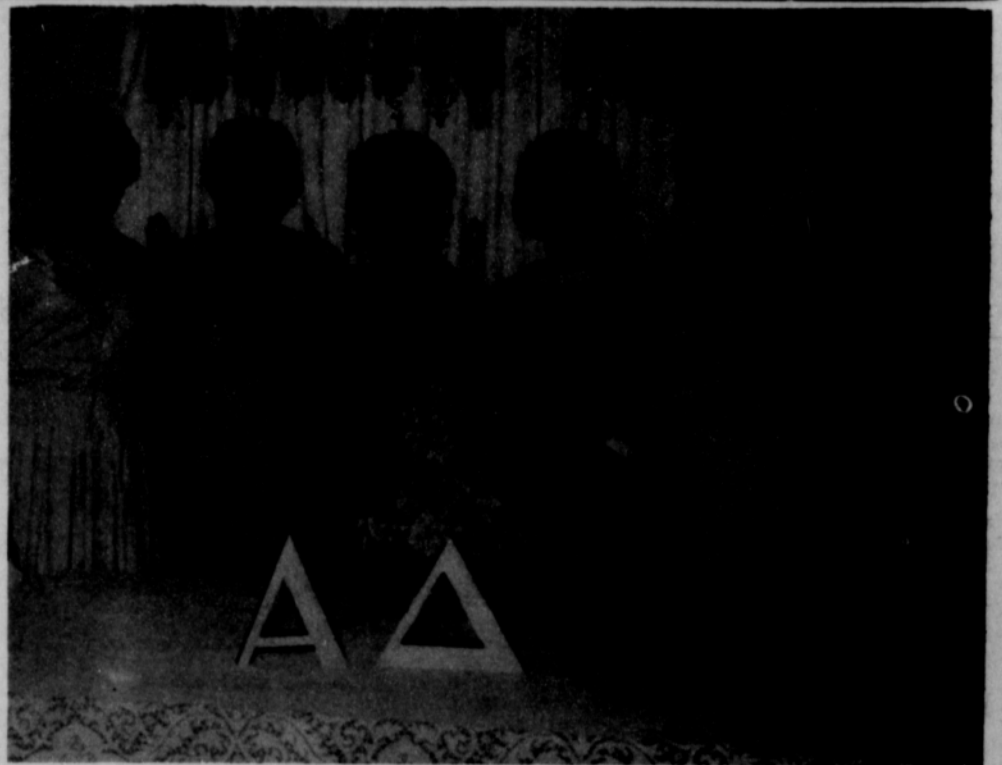
Dori Healer liked the food and she thanked the women for getting up in the morning and fixing the lunches.

Marla Baxter also appreciated the women getting up. She wrote, "I like your kind of food, I know that you have to get up early in the morning."

Gina Hutchison wrote, "Thank you for the food. And you can cook good. Mis Higgins thank you for punching my lunch tickets."

Mrs. J.B. Higgins, cafeteria supervisor, said the women were certainly surprised and truly appreciated all the nice things the children had to say about the food, service and cafeteria.

Mr. and Mrs. N.C. Sikes and children of Portales, N.M., are expected guests in the home of Mr. and Mrs. H.M. Shedeck this weekend. They will be here for the graduation of their nephew, Lloyd McWhirter. Cynthia and David Floyd of Stillwater, Okla. will be guests in the home of her parents, Mr. and Mrs. Jack McWhirter.



OFFICER INSTALLATION----New officers of Alpha Delta Kappa are shown at the installation meeting held recently. They are (left) Mrs. W.W. Smith, Mrs. Mathilde Entrekin, Mrs. A.F. West, Mrs. R.H. Theis, Mrs. Jack Whitson and Mrs. Bill Sheets. Plainsman Photo

**B&PW Holds Workshop Here**

The Business and Professional Women's Club met Thursday, May 19 in the Chamber of Commerce rooms for a workshop. The group worked on material for the State convention.

Present were Rhoda Overton, Belle Crawford, Mabel Jameson, Ludie Mae Lovett, Dorothy Roden, Dorothy Quinn, Mary Lou Wysong and Mildred Roles.

The next meeting on June 9 will be a luncheon at the HD clubroom and the election of officers for the coming year will be held.

Mr. and Mrs. Frank Davis returned home Tuesday after spending several days visiting their daughter at Breckrenridge and Denver.

**Garden Clubs Visit Here To See Yards**

A group of garden club members from clubs in Phillips, Berger, Fritch, Sanford and Stinnett brought their picnic lunch and ate dinner at the Frank Davis farm Tuesday of last week.

The group, 32 women and several children, toured the iris garden of the Davis's before coming to Spearman to see the gardens of Mmes. P.A. Lyon, Virgil Hull, W.A. Ellsworth and T.D. Sansing. In the Holt Community they visited gardens of Mrs. Raymond Kirk and Mrs. Ben Jenkins.

**NONPARTISAN**  
Qatar has no legislature or political parties.

**Mrs. Kendrick At Meeting For Martin**

Lynanne Kendrick of Jett Mason's office, along with several representatives from the surrounding area flew to Austin Saturday, May 21 to attend a Crawford Martin campaign meeting.

The group left Amarillo at 10 a.m. for Austin, where they attended a luncheon at the Crystal Ballroom of the Driskill Hotel with approximately 150 in attendance.

A business meeting followed the luncheon with the group arriving back in Amarillo at 6:30 Saturday evening.

Mrs. J.H. Richards of Arlington is a guest in the home of her daughter and husband, Mr. and Mrs. J.B. Cooke. Mrs. Richards will be remembered as a former resident of Spearman when her husband, the late J.H. Richards, was pastor of the First Baptist Church.

Mr. and Mrs. Cecil Crawford were in Canyon Sunday attending the graduation exercises at West Texas. Among those graduating from this area were Wayne Board of Morse receiving a BA degree and Mrs. Jeanette Hawkins of Perryton with a ME degree. Also attending were the Lex Boards of Morse, Mrs. Hawkins husband, Bill Jeff Hawkins and her parents, Mr. and Mrs. Buck Richardson of Berger.

Humidity can cause as much personal discomfort as heat. Thus a room air conditioner should have adequate moisture - removal capacity.

**FREE**  
**KNITTING LESSONS**  
Will Be Given  
at the  
**NEEDLEWORK NOOK**  
In Waka  
starting on  
**TUESDAY, JUNE 7**  
Deadline for signing up will be Mon., June 6  
Phone 435-3560  
or write  
Box 66, Waka

**NOTICE**  
**You May Already Be A Winner of**  
**A Full Tank of Gas - - -**

All you must do is come by our station and check your license number with the one in our window. Offer good until Saturday Night!

**- TRACTOR TIRE SERVICE -**

**WE HAVE IT !**

**TWO RIGS READY TO GO AT ANY TIME**

**Service Is What We Offer**

**LESS DOWN TIME**

**with Firestone Tires &**

**Snider - Pearson SERVICE !**

**WE ALSO HANDLE**  
**Firestone Tractor Tires**  
**"The Best Going"**

**Snider - Pearson Texaco**

701 Collard

659-9972

**DO YOU SEE WHAT I SEE ?!!**

**REXALL'S HAIRSPRAY & HOME PERMANENTS AT SPECIAL LOW PRICES !**

**SPECIAL LOW PRICE!**  
**Rexall**  
**BRITE SET Hair Spray**  
14-oz. Aerosol  
**2 for 89¢**

**No Pre-Shampooing Necessary**  
**Rexall FAST PERMANENTS**  
Pink Creme Waving Lotion lets you skip-a-step, because the shampoo is contained in the neutralizer-conditioner. Choose Gentle, Regular, Super, Little Girls' or Silver.  
**\$1.50 each**

Sets hair right, keeps it bright! Choose Casual, Regular, or Hard-to-Hold.

Phone 659-2226  
Two Registered Pharmacists  
**Spearman Rexall Drug**  
**PHONE FOR FREE DELIVERY**

# Time for Pessimism?

The American businessman has to be an optimist. A pessimist, one that tries to draw his substance closer and closer to him, will usually wind up saving so much money that he goes broke.

The business man is the optimist who invests in a new plant, a new store front, new fixtures, expands his line of merchandise, all in the confidence that his customers will be attracted to him by the improvement of his ability to serve their needs.

And you would expect Henry Ford II, head of one of the biggest businesses in the world, to remain an optimist. But a speech he made the other day contains a lot of doubts about the future, and coming from a confirmed optimist, it might be interesting to see what he said.

Henry Ford II has some deep misgivings about the future. He lists the familiar evils of the growth of violence, riots, urban crime, juvenile vandalism, resistance to laws guaranteeing the civil rights of all citizens, the irresponsibility of unions that engage in senseless strikes against the public and the inflation which not only is eroding the dollar, but seems to be leading toward some type of government control.

He is concerned about the increase in the ranks of those of the far left and the far right in politics.

Not only that, but he has a feeling that these evils exist in a time of unprecedented prosperity, and are getting worse.

In other words, that contrary to the American dream, the future cannot automatically be viewed with confidence and we may be in fact living in a degenerating society.

If so, it means that even if we live in a time when material prosperity is booming, we don't have much of a society to leave to our children.

If the current trend toward tying the hands of the law enforcement officers and the disrespect for law and order continues, then we must admit that the future is going to be tougher than the past.

People are not powerless to overcome evil, although it sometimes takes a dramatic event to stimulate them.

Probably what lies behind our mess of today is that we have misplaced our sense of values, placing our utter dependence upon how much money we can make rather than what we do with it.

Somehow the values have to be rediscovered or replaced, or all that we can do is unlikely to halt the rot.

Our entertainment world is saturated with sick themes and sordid plots, pornographic publications have made the news for the past several years; there are signs around us that the old values of honesty, moral uprightness, patriotism and religious thinking are being hooted at by a growing throng of beatniks and nuts.

It may be that our generation is too smart, in a scientific sort of way. Maybe it is no coincidence that the era of scientific explosions has also seen the rise of the God-is-dead doctrine which is merely another way of saying that some people can't believe that an Almighty God can do anything for them these days.

There seems to be a rather vigorous campaign against such values as individual responsibility, self-respect, and regard for the rights of others.

The preaching that a person should obey only the laws he agrees with can lead us only to anarchy, even if this preaching has been made by the National Council of Churches.

We would have to agree with Mr. Ford, that certainly it is time to look around and see where we are and where we are headed. Maybe the time is not ripe for pessimism. But maybe it calls for a sort of tempered optimism.

---The Sunday Herald

## Union VBS Begins Monday

The Union Church announces their Vacation Bible School will begin Monday, May 30 at 8:30 a.m. Children from the ages of four years are urged to be present for the picnic and parade Saturday, May 28 at 10:30. The children are to bring a sack lunch and drinks will be furnished by the church.

The theme for the year is

"High Adventure With Christ" emphasizing the greatest adventure a youth can experience is to live victoriously with Christ.

Supt. Mrs. George Bollinger states that a fine group of teachers and associates are on the staff this year.

Commencement will be Friday, June 10 at 7:45. All children and youth are invited to the school.



**Get High Net Profits with PIONEER Sorghums**

*Proved yield champions in farmers' fields and Texas A & M tests!*

**B & B GRAIN**

## White Appointed To Board of Cemetery Ass'n.

The Board of the Hansford Cemetery Association announces the appointment of Kiff White as Trustee and member of the Board which fills a vacancy that has existed some time.

The members of the Association were pleased by this announcement, knowing that White will give the duties of the office the same time and effort that he has always given in any civic capacity.

White joins Jimmy Linn and Floyd Hull who have served on the Board for a number of years.

At this time the Association is having water piped to the west part of the cemetery.

Freeman Barkley is the Plat Recorder; Helen Fisher the Secretary-Treasurer, and Carl Tucker is caretaker of the cemetery.

Donations or memorial offerings can be mailed to Helen Fisher, Box 101, Spearman, or to Freeman Barkley at the First State Bank.

## Card of Thanks

We wish to express our sincere thanks and gratitude to all who have helped in any way in our time of sorrow.

The family of Marvin Shapley

## The Way I See It

Robert Cordes, Pastor Oslo & Faith Lutheran

"JESUS ONLY"

Jesus only--The only begotten Son of the Father.

Jesus only--Son of God and Son of Man.

Jesus only--The beloved Son in whom God is well pleased.

Jesus only--The Lamb of God, who takes away the sin of the world.

Jesus only--Came to seek and to save that which was lost.

Jesus only--Friend of sinners.

Jesus only--Through whom we come to the Father.

Jesus only--For there is no other name under heaven given to men, by which we can be saved.

Jesus only--In whose name our prayers are heard.

Jesus only--Gave Himself a ransom for all.

Jesus only--Gave Himself for us, that He might redeem us from all iniquity and purify to Himself a peculiar people, zealous of good works.

Jesus only--Loved the Church and gave Himself for her; that He might cleanse it with the washing of water by the Word, that He might present it to Himself a glorious Church, not having spot, or wrinkle, or any such thing; but that it should be holy and without blemish.

Jesus only--Has authority to say "Go, make disciples of all nations by baptizing them into the Name of the Father and of the Son and of the Holy Spirit."

## Livestock Survey Cards Being Mailed

Postmaster Elmon Jacobs reminds rural patrons of the Spearman Post Office to be on the lookout for June Livestock Survey cards. Mail carriers will leave survey cards in a sample of boxes along their routes.

"USDA bases livestock and poultry estimates on replies to this survey," Mr. Jacobs explains. It is important to everyone who gets a card to fill it out and return it to the carrier. This way, USDA gets a representative sample of the area's livestock and poultry holdings.

Survey cards will be forwarded to Cary D. Palmer, State Agricultural Statistician in Austin. After adding and analyzing these cards, USDA statisticians are able to estimate the State's milk production, calf and pig crops, lamb and wool crops, and the number of hens and pullets.

## Report Card Schedule Announced

A new schedule for issuing report cards for students has been announced by Spearman school officials.

Students will receive report cards Friday from 8:35 until 9:15 a.m.

Buses will make their regular routes Friday morning at the regular time, then will leave school at 9:15 a.m. to return the children home.

## PO Will Be Closed Monday

The Spearman Post Office will be closed Monday, May 30, 1966 in observance of Memorial Day.

There will be no deliveries by city or rural carriers.

# WANTED:

## 2-INCH RAIN

to improve Crops, grass, dispositions and the sale of fine

## John Deere Farm Equipment

however, we know it will rain again and you can't stop farming to wait for rain

SEE US FOR THE

- Best Equipment
  - Best Deals
  - Best John Deere Credit Plan
- ALSO GET DETAILS ON PHYSICAL DAMAGE INSURANCE

When you buy equipment through the John Deere Credit Plan, you're covered by insurance. In fact, you're doubly protected! First: against physical loss or damage to the machine. Second: by life insurance (unless you've reached age 66). This coverage is yours throughout the contract period. Buy with greater peace of mind—use your credit. See us now for full details!



# HANSFORD IMPLT.

# The Plainswoman

THURSDAY, MAY 26, 1966

## Miller-Jones Vows Read In Johnnie Lee Home

Miss Kathy Dee Miller, daughter of Mr. and Mrs. Cecil Miller of Keyes, Okla., and David S. Jones, son of Mrs. Bill Lee of Gruver and Paul Jones of Viet Nam, were married Thursday afternoon, May 19 at the country home of Judge Johnnie Lee, with Judge Lee, uncle of the groom, officiant.

The bride wore a semi-formal dress of white Chantilly lace, with white accessories. She wore a corsage of red carnations.

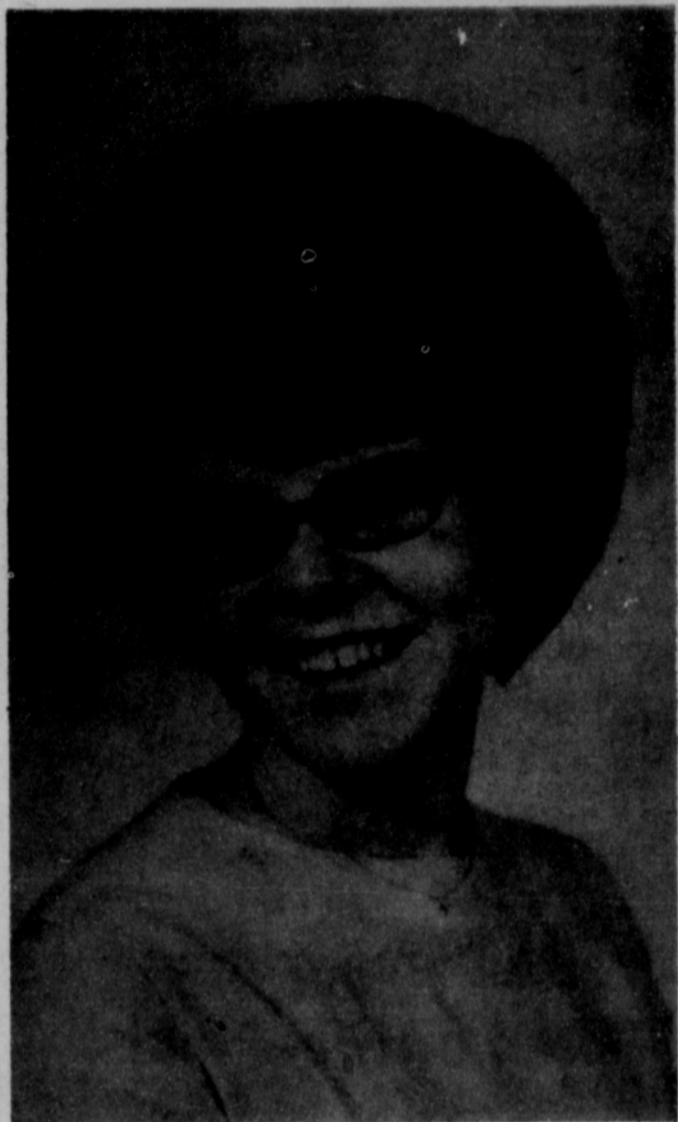
Miss Ginger Lou Wacker of Guymon played the pre-nuptial and processional music. The bride was attended by Miss Paula Kay Jones, sister of the groom. She was attired in pastel pink with white accessories. The best man was Neal

Cook of Goodwell.

A reception was held at the conclusion of the ceremony. The serving table was centered with an arrangement of white mock orange blossoms and pink roses, flanked by pink candles. Refreshments of spiced tea and wedding cake were served.

Out of town guests attending were Harry B. Cook and Neal Cook of Goodwell, Miss Ginger Lou Wacker of Guymon, and Mrs. Ruth Lee of Gruver.

The bride is a 1966 graduate of Keyes, Okla. high school. The groom is a graduate of Gruver High School and is attending PAMC College at Goodwell. They will be at home in Hobbs, N.M., where they plan to further their education.



## To Be Married —

Mr. and Mrs. Roscoe L. Nelson announce the engagement and approaching marriage of their daughter, Donna Vee to Jack Collins Vanderburg, son of Mr. and Mrs. Everett E. Vanderburg. Wedding vows will be solemnized at 1 p.m. Saturday, May 28 in the First Baptist Church of Spearman. Friends of the couple are cordially invited to attend the ceremony and reception following in fellowship hall.

## Pre-Nuptial Courtesy

### Honors Miss Patterson

Miss Phyllis Patterson was honored at a pre-nuptial shower Friday evening, May 20 in the Wesley Garnett home. Miss Patterson will become the bride of Jimmy Kirkland in a ceremony June 10.

The honoree was presented a corsage of white carnations by the hostesses as were her mother, Mrs. Sam Patterson, her sister, Miss Sheila Patterson, the mother of the prospective bridegroom, Mrs. W. E. Kirkland and his sisters, Misses Jo Ellen and Janie Kirkland and Mrs. Larry Hays.

A pink and white color scheme was carried out in the Garnett home. An arrangement of pink peonies was placed on a table in the entranceway where Miss Sheila Patterson registered guests.

The serving table was laid with a white appliqued organza cloth with pastel touches, over pale pink, and was centered with a pyramid arrangement of pink roses. Pink napkins with the silver inscription "Phyllis and Jimmy" were used and crystal and silver appointments completed the setting. Misses Lynne Garnett and Gweneth Hanners presided at the table serving white cake squares topped with pink rosebuds, pink and white mints, nuts, pink punch and coffee.

Guests called between the hours of 7 and 8:30 p.m. and were greeted by Mrs. Stanley Garnett. Other hostesses helped the honoree with her gifts and assisted guests in the rooms where gifts were on display.

Hostesses for the courtesy were Mmes. C.W. Ainsworth, Pope Gibner, B.J. Garnett, Perry Coursey, Rob Hanners, Roy Collins, Stanley Garnett, Everett Vanderburg, A.R. Witches, J.R. Keim, T.C. Kitchens, L.S. McLain and Wesley Garnett.

### Mrs. Parris Is Bridge Hostess

Mrs. Bob Parris entertained her bridge club Thursday, May 19 in the home of her mother, Mrs. Hall Jones.

Toni Archer had high score and Sheryl Meek had low. Traveling prize was won by Glenda Guthrie.

Attending were Toni Archer, Sheryl Meek, Karen Countiss, Charlene Jackson, Glenda Guthrie, Delores Guthrie, Martha Coursey, Linda Davis, Jackie Mathews, Gala Mathews, Gertrude Jones and the hostess.

### Blue Monday Club Meets

Mrs. Sam Graves was hostess for the Blue Monday Bridge Club held Tuesday, May 24.

Mrs. F.J. Daily held high score. Snacks were served throughout the afternoon to members, Mmes. Pope Gibner, Deta Blodgett, E.D. Clement, L.S. McLain, J.E. Womble, Gwenfred Lackey, Bill Gandy, Daily by the hostess.

### Mrs. Archer Hosts Luncheon

Mrs. Bobby Archer was hostess Monday afternoon to a buffet luncheon and bridge party in her home.

Mrs. Dick Countiss had high score and prizes were also won by Mrs. George Jackson and Mrs. Del Cluck.

Attending were Mmes. Bob Cluck and Del Cluck of Gruver, and Mmes. Bill Strawn, Steve Mathews, Kent Guthrie, Jim Davis, Bill Wilmeth, Jimmy Linn, George Jackson, Dick Countiss, Tommy White and the hostess, Mrs. Archer.



## Day by Day

by Day McClellan

Was that sigh of relief we heard Tuesday about 3 p.m. an expression of students... or their teachers?

Probably both, I would guess, as another school year came to an end about then.

To students who have one or more years left in public schools, the end of the spring semester is a joyous occasion. For seniors it's usually joyous all right, but also just a tiny bit nostalgic, especially I think for those who went through all 12 years together.

Some of this year's seniors won't have time to look back and reminisce because they'll be leaving for college just hours, or in some cases days after graduation.

I understand Robbie Ownbey will leave right away for Texas Tech. Terry Jones will hurry off to the University of Houston and Bethany Donnell is just breathless at the thought of rushing off to be a freshman at the University of Texas.

We point with pride so often to our school and the record its organizations and individuals have set in subject-matter areas as well as extra-curricular activities. Another area in which local students seem to be batting above average is in the number who go off for at least some college education.

I'm not sure exactly how many of our 74 graduates are planning on a higher education but from all I hear, the percentage will be high.

We printed a high school special senior edition for a school in Kansas a few weeks back. I noticed as I put it together that most of the graduates were planning on beginning their careers immediately after graduation, some as wives, some in the service, a few as secretaries, and what have you.

I'm a firm believer in college attendance for as many young people as have any interest at all in gaining some more knowledge. Even for the student who is not cut out for college attendance, the exposure to that element for even a semester is better than none at all.

Someone who likes to come up with depressing little diet tips says one extra piece of buttered toast a day, which is 100 calories, multiplied by 365 days, would be 36,500 extra calories a year, or about 10 extra pounds, over and above what else you usually ate.

Procrastination being my middle name and chocolate my biggest enemy, who has time to worry over buttered toast!

This same little diet-gem says to find how many calories you should consume daily, multiply your ideal weight by 18. Just thought I'd mention that before you went on a "buttered toast kick" over this long Memorial Day weekend.

Notice where the National Association of Homebuilders has built some experimental houses that are supposed to make flying saucers look as passe as log cabins. They are supposedly priced as down to earth as the cement foundation on a contemporary ranch house since they utilize newly fabricated materials.

They say the temperature will be controlled by solar radiation; hard elmwood interior walls will let you change colors like a chameleon to fit any color scheme; vinyl flooring with a soft walking surface will make you feel like an astronaut walking in space; indoor-outdoor carpet will resist the rays of the sun and can actually be hosed clean; and all steel bathrooms will be so easy to clean that the bathtub ring will be forever eliminated.

They didn't say when all these little extras would be ready, but at least they're not in the realm of science-fiction anymore.

If you're going to eat that buttered toast this weekend, you might as well sample this cake too.

### BUTTER-CINNA MON-NUT CAKE

Mix 1 cup powdered sugar and 3 tps. cinnamon. In a heavily greased (not oiled) tube pan, sprinkle 1/3 of this mixture, carefully removing excess. Then sprinkle 1/8 cup of chopped pecans on the bottom of the pan.

Add 1 package instant vanilla pudding mix to 1 package yellow cake mix. Pour in 3/4 cup hot water, 1/4 cup oil and 4 beaten eggs. Then add 1 cup sour cream and 1 tsp. butter flavoring extract. Beat 5 minutes on medium speed of electric mixer. Pour 1/3 of batter into prepared pan, sprinkle with 1/2 remaining sugar-cinnamon mixture and 1/8 to 1/4 cup chopped pecans. Then pour another 1/3 of batter over this and repeat the sugar-cinnamon-nut mixture. Finish with remaining batter. Bake 1 hour and 10 minutes at 350 degrees. Cool 30 minutes before removing from pan. Sprinkle with powdered sugar.

## Engaged —

Mr. and Mrs. R.L. Driscoll announce the engagement and approaching marriage of their daughter, Bonnie, to Mike Shrode, son of Mr. and Mrs. E.H. Shrode of Crowell.

Nuptials will be exchanged at 7:30 p.m. Saturday, May 28 in the First Methodist Church of Spearman.

Miss Driscoll and Mr. Shrode are students at West Texas University.

## Shower Given To Honor Miss Love, Bride-Elect

Miss Donna Love, bride elect of Eugene Yarbrough, was honored with a shower Saturday afternoon in the home of Mrs. A.F. Loftin.

The honoree was presented

a corsage of pink carnations, highlighted with a miniature bride, and her mother, Mrs. Aaron Love and the prospective groom's mother, Mrs. Aubrey Yarbrough, were each presented a pink carnation corsage.

A color scheme of pink and white was carried out in the table decorations and refreshments. The table was laid in white with an arrangement of white iris and pink wegalia in a white bowl. Crystal and silver completed the setting. Susan Holt presided at the serving table.

Guests were registered by Linda Hall, Shirley Love and Patty Gray, who also assisted the honoree in opening her gifts.

Hostesses for the courtesy were Mmes. A.F. Loftin, Dick Kilgore, Fred Holt, R.E. Bradford, Bill Russell, Everett Vanderburg and Wesley Garnett.

## Mrs. Bulls Has Program

Mrs. Charlene Bulls gave an interesting program on interior decorating at the Jonquil Flower Club meeting held Friday, May 20 in the home of Verna Gail Keim.

During the business session it was decided by the group to work on the plot Tuesday, May 24 and May 31.

Jo McLaughlin won first with her arrangement of pink peonies and candytuft and Virginia Trindle with her specimen of pink peony.

Attending were Rosa Lee Butts, Alta Fisher, Kate Massie, Jo McLaughlin, Dolly McWhirter, Kathleen Sutton, Virginia Head, Peggy Archer, Virginia Trindle, Eloise Renner, the guest speaker and the hostess.

## Friends Invited To Nuptials

Friends are invited to attend the wedding of Miss Marlene Dietrich and Garrett Briggs which will take place at 5 p.m., June 4 in the First Presbyterian Church of Tulia, and to the reception which will follow immediately in the fellowship hall of the church.

Mr. and Mrs. Bruce Sheets returned this week from a visit with their daughter and husband, Mr. and Mrs. Jeff Noel at Dallas.

## Coffee Honors Mrs. Richards

Mrs. W.L. Russell honored Mrs. J.H. Richards of Arlington with a coffee Tuesday morning in her home.

Mrs. Richards, mother of Mrs. J.B. Cooke is here visiting in her daughter's home.

Attending the courtesy were Mmes. Walter Wilmeth, C.A. Gibner, Pope Gibner, Rex Sanders, Guy Fuller, J.W. Jenkins, John Berry, Fred Hoskins, the honoree and her daughter, Mrs. J.B. Cooke.

Mr. and Mrs. Mike Garnett and Jon Slade of Lubbock are visiting here between semesters with Mr. and Mrs. Wesley Garnett and Lynne.

Mr. and Mrs. Sam Graves returned Sunday after spending the weekend with their daughter and family, Mr. and Mrs. Narrel Wilson of Lubbock.



### Front View Is Starting Point For Landscaping

What does your home look like to your neighbors? In a recent survey of areas where homes are well landscaped, most residents felt that even one neglected home could spoil a whole neighborhood.

It is not difficult to landscape the entrance to a home, providing the homeowner will continuously look at it from the curb and see what needs to be planted, in accordance with his own creative in-

stincts, or what other neighbors have done in the area.

In some areas, a homeowner will have a lawn facing the street, perhaps a low hedge along the sidewalk and a driveway to the garage.

#### Planting Trees

In such an "average planting," one should stand on the sidewalk in the exact middle of the property and face his house.

All large trees should be planted outside of imaginary lines to the corners of the house. This prevents the house from being dwarfed or obscured by large trees.

Smaller trees such as dog-



"Hey, look, it's the Batman!"

wood or crape myrtle may be planted inside such lines, close to the house.

Shrubs usually are planted in curved beds close to the house, with taller shrubs at house corners. Flowering and evergreen shrubs should be intermingled to provide contrast.

Follages likewise should provide contrast. Taxus, or yew, is the deepest green of all coniferous evergreen shrubs; junipers may have a bluish cast; while arbor vitae may be lighter green or golden.

#### Annuals Used

Some excellent flowering

evergreens for entrance plantings include the rhododendrons and azaleas, although there are many more such as the hollies and pyracanthias and coloneasters.

The southern climates abound in lovely camellias, hibiscus and oleanders.

Beds of annual plants often are used near entrances. These include the pelargoniums, or geraniums, petunias, dwarf snapdragon, marigolds, and numerous other plants.

As with all landscaping, good taste is required. It is recommended by the American Association of Nurserymen that a plan be prepared to make the home entrance most attractive.

Nurserymen, neighbors, landscape architects and others may be consulted if need be. One should strive for color, both in warm weather and winter as well, and low maintenance.

#### Unions Clean Blades

Have a few rusty knives lying around? Stick the blades into an onion and leave for at least a half hour. Then, wash and polish. The rust will come right off.

## Local Tennis Players Dominate Tourney

Spearman tennis players dominated the Junior High tennis tournament held here over the weekend under the direction of tennis coach Perry Coursey.

Players were here from Amarillo, Dumas, Perryton, Liberal, Kan., and Spearman.

The results of the final matches were:

Seventh girls' singles, Sheila Patterson defeated Thompson of Dumas 6-0, 6-0.

Seventh boys' doubles, James Lyon and Terry Butt defeated Ernest Wilmet and Tony Harper by default.

Eighth Boys' singles, Frank Wilmet defeated Novak of Amarillo 6-2, 6-0.

Eighth girl's singles, Pinion of Amarillo defeated Thompson of Dumas 6-2, 6-0.

Eighth boys' doubles, Wilmet and Phil Windom defeated Novak and Howard of Amarillo, 10-8, 6-4.

Eighth girls' doubles, Jyniece Callaway and Sheila Patterson defeated Allan and

Thompson of Dumas 6-4, 2-6, 7-5.

Ninth boys' singles, Touchon of Amarillo defeated P.A. Lyon 6-4, 6-2.

Ninth girls' singles, Ralson of Amarillo defeated Stockton of Perryton 6-4, 6-1.

Ninth boys' doubles, P.A. Lyon and Richard Booth defeated Fronk and Hall of Liberal 7-5, 7-5.

Ninth girls' doubles, Pinion and Ralson of Amarillo defeated Guess and Spears of Amarillo 6-2, 6-1.

Coursey said he wished to thank the individuals and businesses that purchased the trophies for the tournament. Businesses were: Rexall Drug, P. A. Lyon Insurance, Russell's Dry Goods, Massads, Cates Men and Boys Wear, B&B Sales, B&B Grain Co., Community Public Service, Cattlemen's Cafe, Lynx Den, C&B Studio, Western Auto, Hansford Plainsman, Spearman Barber Shop, Ann's Beauty Shop, White House Lumber Co., Hays Barber Shop, Gordon's Drug, Joe Traylor Ford, Jim Neely's Cut Rate Grocery and Beedy Furniture.

## Council Has Routine Meet

It was a routine meeting for the Spearman City Council Monday night.

J.L. Brock requested and received a year's extension from the city for the Masonic lodge to tear down the old city hall building. When the city sold the building the lodge, it was stipulated the organization should dismantle the building.

The council also authorized the advertising for bids for a new police car. One police car was heavily damaged in an accident last week.

Sam Watson and the city agreed on a contract for him to operate the swimming pool again this summer. Watson said the pool would be opened around June 1, or as soon as it can be cleaned and made ready for use.

By BEN WICKS



"Hi, Harry, long time no see! Can I borrow your mower?"

You are cordially invited to Hear Evangelist **Dick Burkholder** May 29 - June 4 NIGHTLY AT 7:30

FELLOWSHIP BAPTIST CHURCH

ELEVENTH AND ARCHER

ROY MEKSCHE, PASTOR



Make it Special... it's for **DAD**

Give Dad a La-Z-Boy Chair for Father's Day. He'll Love You For It!

20% Off ON ALL LA-Z-BOY CHAIRS IN STOCK.



**LA-Z-BOY** Chairs with a flair for people who care

KINGLY GIFT for a prince of a fellow!



OUR HERO... JUNE 19, Father's Day!



You'll want to see this Magical All-In-One chair... come in today for a comfort demonstration.

**Boody FURNITURE CO.**

PLAINS SHOPPING CENTER 659-3044 Spearman, Texas

Work in Comfort

Work Clothes from Cates' are more comfortable because they're the better brands... they wear longer and feel better because they're made to fit and to wear well under working strain.



Cates Men & Boys Wear

### Mrs. Ayers Is HD Hostess

The Home Demonstration Club Room was the meeting place for the Hansford HD Club Monday afternoon with Mrs. Flavel Ayers, hostess.

Robert Adamson, county agent, was guest speaker and spoke on "Safe Uses of Pesticides and Insecticides in the Homes."

Mrs. Herb Howe, president, conducted the business at which time Tot Rosenbaum gave a report of the district meeting held in Dalhart. The devotion was given by Jean

### Art Guild Meets

Mrs. J. E. Womble was hostess for the Arts and Crafts Guild Friday, May 20.

Enjoying an afternoon of china painting were Mmes. F. J. Daily, W. L. Russell, Kiff White, Garrett Allen, P. A. Lyon, Ned Turner and the hostess.

Refreshments were served by the hostess to members, Mmes. Howe, Marguerite Nelson, Rosenbaum, Sheets, Helen Simmons, Charlotte Vanderburg, Stella White, Norma Jean Mackie and the guest speaker, Robert Adamson.

### Barkley Is Appointed Easter Seal Representative

Freeman Barkley of Spearman, has agreed to serve as the Easter Seal Representative for Hansford County. As the Texas Easter Seal Society for Crippled Children and Adults' Representative, Barkley is the person to contact to request assistance or services from the Texas Easter Seal Society.

Barkley's appointment was announced by Robert W. Milam, M.D., of McAllen, Chairman of the Case Service Committee.

### Rites Held Sunday for Jimmy Womble

This year the Society aided 14,395 Texans in the form of treatments, services, equipment loans and related aids. The Society is carrying out a program to reach every disabled person in the state who needs assistance. This program is to insure that every disabled child and adult has an equal opportunity at a normal way of life.

Barkley urged that any person needing assistance from the Easter Seal Society contact him at the First State Bank, Spearman. There is no charge for these services, he added.

Disabled Texans are aided by the Texas Easter Seal Society for Crippled Children and Adults regardless of age, race, cause of disability or financial status. Mr. Barkley said that to secure services that a disabled person or their family should contact him.

The Texas Easter Seal Society for Crippled Children and Adults is the oldest organization providing direct care and treatment for the crippled children and adults of Texas.

Mr. and Mrs. Guy Remy, Lynanne Kendrick and girls were Sunday guests of his sister and family, Mr. and Mrs. Don Roberts of Fritch.

A father was examining his son's report card. "One thing is definitely in your favor," he announced. "With this report card, you couldn't possibly be cheating."

This year's New York City Summer Festival Queen is lovely Pamela Werner, who will welcome tourists to New York from June to September.

### Holt News

Mr. and Mrs. Johnny Close spent a week visiting their daughter, Mr. and Mrs. Gerald Harris and family at Olathe, Colo.

Mr. and Mrs. Russell Berker of Cheyenne Wells, Colo. have moved to Spearman for the summer.

Mr. and Mrs. James Beck of Enid, Mr. and Mrs. Owen Pendergraft spent the weekend relaxing and fishing at Canton, Okla.

Mmes. Herbert Kirk, Nancy Bancroft and Kandy transacted business and visited relatives the past weekend in Lubbock.

Mrs. Nolan Holt and Larry were Tuesday night guests of Mr. and Mrs. Britt Jarvis in Dallas. The Jarvis's will be moving back to the farm for the summer soon.

Mr. and Mrs. Paul Lambert of Fritch were Saturday luncheon guests of Mrs. B. C. Holt.

Mr. and Mrs. Phil Jenkins and Kathy honored Kathy's teachers and families of Stinnett with a dinner Saturday evening, May 21.

Mr. and Mrs. J. C. Galloway of Kress were Saturday night and Sunday guests of their daughter, Mr. and Mrs. Doyle Jackson and family.

Mmes. Effie Witcher and Charlie Davis of Portersville, Calif. have returned home and are visiting relatives and friends.

Mr. and Mrs. J. W. Bradford of Chicago, Ill. spent Sunday night in the home of his brother, Mr. and Mrs. R. E. Bradford. They were enroute to Arizona, California and Canada to visit relatives before retiring in Florida.



## PAG 665 IS YIELD PROVEN!



It is a proven fact. According to the High Plains Research Foundation at Halfway, the five year average for PAG 665 for 1960-64 was 7,256 pounds per acre. It is uniform in height, medium height, sturdy stalk with large semi-compact heads with bright red, quality grain. Very resistant to head smut and milo disease.

PLANT PAG 665 FOR EXTRA PROFITS

### Strawn Farm & Ranch Supply

## Presenting the 1966 Spearman High School Seniors

### Equity

- Grain Storage
- Feeds
- Fertilizers
- Insecticides

Compliments Of

### Horizon Oil & Gas

### First State Bank

Member F.D.I.C.



CLAYTON LEE COCHRAN JR. Football 1,2,3,4; honorable mention all district 3,4; captain 4; basketball 1,2,3; track 1,2,3; FTA 3,4; district IX parliamentarian 3; FFA 1,2,3; sentinel 3; volleyball 1,2,3,4; band 1; Boys Glee Club 2,3.



TERRY NATHAN JONES Debate 2; One-Act play 3; Extemporaneous 2,3; 2nd Boys division biological science 4; tennis 4; Speech play 3; annual photographer 4.



EDWARD JAMES BUTLER Football Mgr 1,2,3,4; Basketball Mgr 1,2; Track Mgr 1,2; Men's Glee Club 1,2; Choir 2,3,4; Band 1; FFA 2,4; Tennis 1,2.



LINDA JEANETTE SMITH Band 1,2,3,4; Pep Squad 1; FTA 2,3,4; Vice President 4; FNA 1,2; Basketball 1,2,3; Volleyball 1,2,3; Tennis 4; Nat'l Honor Society 3,4; Science 2,3.



MICHAEL CURTISS BABBS Football 2,3,4; Honorable Mention district 4; FTA 4; Track 3; Volleyball 4, Sr. Class Favorite.



MILES PAT CLINE Voc Ag 1,2,3,4; FFA Quiz 1; FFA land judging team; Debate 4; Basketball 1.



RALPH GLYNN PATTISON FFA 1,2,3,4; Choir 2,3.

LARRY MILLER  
CLIFFORD HORNSBY  
CLYDUS HARPER  
(Pictures Not Available)

"Trust Your Car To The Man Who Wears the Star"

### Snider-Pearson Texaco

### North Plains Truck & Implt Co.

Your Buick, Pontiac & International Dealer

Compliments Of

### Stanley Garnett

## Dahlia Club Hosts Party

The Time For Fun Club was sponsored by the Dahlia Flower Club Monday evening, May 23 at the H.D. Club-room.

Various table games were played. Punch, coffee and cookies were served throughout the evening.

Two birthdays were observed. The birthday cake, a beautiful white decorated layer cake, was baked by Mrs. H.M. Shedeck and was shared by Mmes. B.J. Garnett and Abbye Ownbey.

Guests attending were Mmes. Stella White, Claude Sheets, Gertrude Neilson, M.E. Jaggers, John Ward, Ben Maize, Frances Sims, Kate Gray, Rube Birdwell, Myrtle Russell, Lilly Hacker, Dana Hazelwood, Abbye Ownbey, Grace Jenkins, Hattie Mackie, Bob Archer, B.J. Garnett, A.W. Mobley and Mr. and Mrs. H.L. Boyd. Hostesses and husbands were



MORSE SENIORS--are shown on their trip to Galveston. They are (left-right) Gary Reiswig, Mickey Cook, Patricia Henderson, L.L. Cook, Elaine Behrens, Don Cator, Jerald Scribner and David Johnson.

Photo courtesy Galveston Convention & Tourist Bureau

## Dan Moody Buried In State Cemetery

AUSTIN — Former Gov. Dan Moody was buried in the state cemetery Tuesday after funeral services attended by Gov. and Mrs. John Connally.

Moody died Sunday after a long illness. He was 72.

The former governor, who became Texas' youngest chief executive in 1927 and served two terms, lay in a casket covered by a Texas flag.

LIBERALS SEEK UPSET; VOTE AGAIN JUNE 4th

**CRAWFORD MARTIN**

FOR ATTORNEY GENERAL

Political ad paid

## Thinking About

# Carpeting



Then let us show you our large selection of quality carpeting in nylons and Acrylic Fabric. We can give you quick and dependable service. Free Estimates.

## White House Lumber Company

- Lumber - Paint - Hardware -

## Now every day! (Even on weekends) Family fares on Santa Fe.



### Start your trip any day of the week. Use Pullman or chair car on any Santa Fe train.

Take, for example, the family of five pictured here: Baby travels free. The older children (under 12 years) go round trip for half the cost of a 1-way ticket. Mom goes round trip on a 1-way fare. Only Dad pays a full fare.

Real savings at mealtime, too! Bargain meal books—only \$12 for adults, \$6 for children—cover five complete Fred Harvey meals between Chicago and California. Generous baggage allowance.

Take your family on an exciting Santa Fe adventure to the Southwest Sun Country or to California. Go now. Pay later. See your local Santa Fe Agent for information or reservations.



## Matt Lair and Terry Butt Honored on Birthdays

Matthew Lair and Terry Butt were honored Saturday night, May 21 with a party in

the Lair home on the occasion of their thirteenth birthdays.

Birthday cake was served and after a gift exchange games and dancing were enjoyed.

### LITTLE LEAGUE STANDINGS

May 20	
Dodgers	7-1
Indians	5-2
Yankees	5-3
Jets	1-6
Astros	1-7

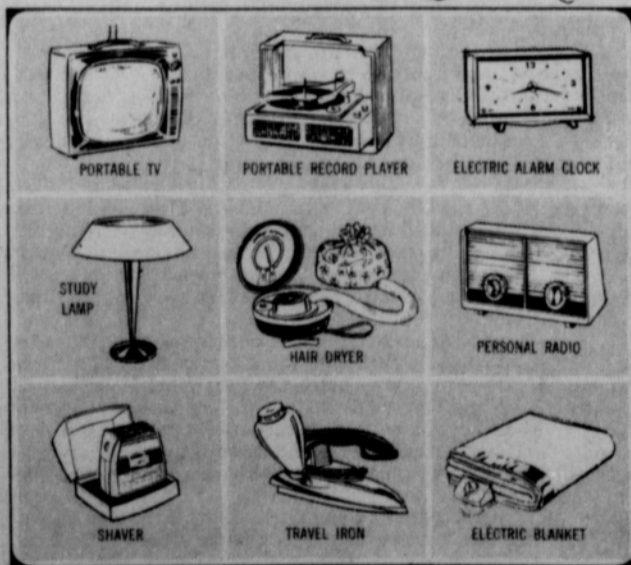
### Results of last week's games:

Indians 13	Astros 6
Indians 23	Jets 9
Dodgers 7	Yankees 3
Dodgers 18	Jets 7
Yankees 24	Astros 2

Messrs. and Mmes. Olin Sheets, Carl Hutchison, J.E. Womble, H.H. Crooks, James Walker, Frank Davis, Mmes. Deta Blodgett, Earl Riley, H. M. Shedeck, Irvin Delk and Harold Shaver.

Those attending were Patty Buzzard, Karen Waggoner, Phil Windom, Cindy Dear, Robert Archer, Kandy Vaughn, Sheryl Curry, Larry Laws, Freddie Shieldknight, Edgar Womble, Joe Dyer, Kathy Mauldin, Diane Gregg, Richard Tracy, Joe Jennings, David Desimone, Jane Ownbey, Rodney Sims, Linda Schaefer, Bonnie Seymour, James Day, Kathy White, Ronald Conner, Rodney Schroder, Rhonda Linn, Anita Smith, Louis Conner, Sally Schollenbarger, Terry Butt, Matthew Lair and the hostesses, Mrs. James Lair and Mrs. Herb Butt.

## CLASS FAVORITES electric gifts FOR GRADUATION



This year, congratulate your favorite graduates with gifts that are sure to please. Choose lastingly useful electric gifts, such as an electric hair dryer, shaver, personal radio or electric alarm clock. For the college-bound, select a study lamp, travel iron or electric blanket. Or give a portable TV or record-player that will provide hours of entertainment. Class favorites all — electric gifts bring year-round pleasure and convenience, constant reminders of your thoughtfulness. See them soon at your appliance dealer's and give better . . . electrically.

### COMMUNITY PUBLIC SERVICE

Your Electric Light & Power Company



## Put Some

# ZING

In Your Life

## Hear The Best Music...

- \* easy listening
- \* top 40
- \* country-western

on

kbmf-fm

98.3 on your dial.





JUNIOR HIGH BAND---was a recent sweepstakes winner at Stinnett. A picture of the Fifth Grade Band was run by mistake last week as the Junior High Band.

C & B PHOTO

re is a tip for short ladies  
nt for the person who  
wash their own cars.

Next time, try getting the top  
of your car with the string  
mop. You will effortlessly be

able to reach the center of the  
top and the mop will not  
scratch your car.

### Lackeys Host Bridge Party

Mr. and Mrs. Joel Lackey  
entertained their bridge club  
Saturday evening, May 21.

Honors went to Mr. and  
Mrs. Willis Sheets and Virgin-  
ia White.

Attending were guests,  
Messrs. and Mmes. Don Mc-  
Lain of Gruver, Ray Robertson  
and Sid Evans and members,  
Johnnie White, Willis Sheets  
and the hosts.

Kitchen and laundry will  
use more air conditioning than  
other rooms in the house due  
to heat-making appliances.  
Even a waffle iron gives off  
heat at a rate of 1,100 BTUs  
per hour.

### Thieves Take Varied Loot

A series of minor thefts have  
been reported during the  
week.

A purse was stolen from a  
parked car Wednesday morning  
on Main Street and two more  
tachometers have been taken  
from cars.

Chief of Police Wayne  
Pierce urged women and oth-  
ers not to leave items of value  
in unlocked cars when they are  
shopping.

The tachometers were taken  
from cars owned by Charles  
West and Fred Cullen. This  
brings to four the number of

### County Tax Board Too Meet Tuesday

The County Commissioners  
Court will sit as a County Tax  
Board of Equalization next  
week. The session will begin  
at 10 a.m. Tuesday.

### Permanent Press

Cotton fabrics were the first  
to feature permanent press.

tachometers stolen recently.

Three hogs have been taken  
from the vocational agricul-  
ture farm west of the city.  
Sheriff's officers are investigat-  
ing this theft.



DANCERS---These students of Miss Deanna Tekell of  
rger presented a dance recital at the Home Demonstration  
Room Friday night. They are: (left) Kathy Brown,  
amed most progressive dancer, Nancy Lair, DeAnn  
eed, Marla Baxter, Linda Reed named best behaved, Ra-  
n Martin and Loria Healer.

Plainsman Photo

### 12 Boys Register for Senior Little League

ty-two boys, 13 through  
ars old have signed up to  
in the Senior Little  
e baseball program this  
er, according to league  
resident Oscar Donnell.  
-outs will be held Thurs-  
Sunday and Monday af-  
ons. Tryouts Thursday and  
ay afternoons will be at  
and Sunday at 2 p.m.  
nell said more men are  
ed to help coach teams  
mpire the games.  
nell said the games will  
to be played in the af-  
ons after 5 p.m. and be-

fore dark.  
It is expected that the  
league will begin this year  
with three teams.

### Missing Girl Found Safe

The missing teen-age girl  
has been located living with  
her sister in Stratford.

Evelina Rojas, 14, who has  
been missing for about six  
weeks was located this week  
when her parents learned she  
was in Stratford with her sister  
and husband.

### Open Sweeper

carpet sweeper will do  
a er job of picking up lint  
and strings if you dampen the  
brush slightly before using.

### Specks, Be Gone!

Did you know that plain rub-  
bing alcohol will easily and ef-  
fectively remove fly specks  
from your windows when ap-  
plied with a facial tissue?

### Cotton Ancient Fiber

Cotton is one of the oldest  
fibers known to man.



FIRST AND SECONDS--These members of the Spearman High School award winning band were recognized Friday  
night at the annual Lynx Band Banquet. All of these students earned either a first or second division rating in solo  
or ensemble contests held in the various contests entered by the band this year. They were presented medals by di-  
rector Sam Watson.

Plainsman Photo

# Take your problems to Church this week — millions leave them there!

## the Word

"Thy word is a lamp unto my feet; and a light unto my path" — Psalm 119:105



If you are a Christian, you are blessed with a great heritage. It is a heritage of truth and has nothing to do with imagination or myths. It is a truth that remains unchanged, no matter how many times someone attempts to rewrite or offers a "studied" translation. This truth is the word of God. It is found in the Holy Bible. It is found in Ten Commandments, which form a guidepost for Christian living. Accept this truth; it is useless to argue against it. Conscience and common sense will not permit you to be unaware. You fool no one, not even yourself, if you pretend to ignore or disbelieve.

Read your BIBLE daily  
and  
GO TO CHURCH  
SUNDAY

Sponsored By

**R. L. McCLELLAN  
GRAIN CO., INC.**

**FIRST STATE BANK**  
Member F.D.I.C.

**B & B GRAIN CO., INC.**

The Hansford Plainsman

### Wheat Prospects Are Predicted Average-Good

Crop prospects on irrigated wheat in the Northeast quarter of the Panhandle are predicted average to good, according to the Wheat Harvest Control office of the Texas Employment Commission.

In the labor bulletin issued Monday, the agency reported that late rains in some areas have helped the wheat, but here in the North end of the Panhandle dry-land wheat is badly needing moisture.

The Northwest quarter of the Panhandle did not report in the latest bulletin, but a week ago it was reported that 80 to 85 percent of the dryland wheat had been plowed.

From Panhandle to Dimmitt and west to Farwell and back north to Vega there will be no more than 10 to 20 percent of the dryland wheat harvested. Irrigated wheat is in average condition.

On the South Plains the irrigated wheat is good, but much of the dryland has been abandoned.

On the low rolling plains from Clarendon to Wellington and south to Guthrie the recent rains helped the wheat and harvest is expected to begin about June 5.

On to the east the crops are reported as average to good with harvest beginning this week.

The TEC says plenty of men and machines are standing by in all areas to handle the harvesting of the crop.

Wheat production for the state, based on May 1 prospects, has been set at 83,910,000 bushels, according to the Texas Crop and Livestock Reporting Service.

If this prediction is correct, the crop will be some 12 percent below the 1965 production of 72,630,000 bushels.

## Attend The Church Of Your Choice Sunday



—Weekly Opportunities For Worship—



"Do not be afraid; for I know that you seek Jesus who was crucified. He is not here; for He is risen as He said..."  
Matthew 28:5-6

### C-C Merchants Meeting Today

A general meeting of the Spearman Chamber of Commerce Retail Merchants' Committee will be held at 9:30 a.m., today (Thursday) in the Chamber of Commerce office.

Chairman Brad Beedy said the meeting was for planning any special promotions for the summer and fall. Also, to see if the merchants want another Crazy Days and when they will want to have it. A Christmas program will also be discussed.

Beedy said that all merchants are urged to attend. He said that merchants attending the meeting will assume that any decisions reached will meet with the approval of those not attending.

### Waka P-TA Closes Year

The Waka Parent-Teacher Association held its last meeting May 16 in the school cafeteria.

Bob Mosier, president, conducted the business session.

The program was given by the music department under the direction of Glen Truax, music director. The band played several numbers, and the choir sang several patriotic songs and two novelty numbers.

The meeting adjourned to the gym where Harvey Wilson, physical education director, directed tumbling exhibitions by the various PE classes.

Refreshments were served by the social committee composed of Messrs. and Mmes. Pete Martinez, and Carl Carter.

#### Apostolic Faith Church V. E. (Nap) Blythe, Pastor

9th & Dressen  
Sunday School 10:00 a.m.  
Morning Worship 11:00 a.m.  
Young People 6:30 p.m.  
Children's Church 7:00 p.m.  
Evening Worship 7:30 p.m.  
Thurs.:  
Ladies Bible Study 2:00 p.m.  
Prayer Meeting 7:30 p.m.

#### Assembly of God Church Rev. T. J. Taylor, Jr.

403 N. Bernice  
Sunday School 9:45 a.m.  
Morning Worship 11:00 a.m.  
Sunday C.A.'s 6:30 p.m.  
Evening Worship 7:30 p.m.  
Wed. Bible Study 7:30 p.m.

#### Church of Christ Charles Milner, Minister

121 S. Haney  
Bible Class 10:00 a.m.  
Worship 10:50 a.m.  
Teen Age Class 6:00 p.m.  
Worship 7:00 p.m.  
Wed. Ladies  
Bible Class 9:30 a.m.  
Wed. Bible Study 7:30 p.m.  
Daily Television on Channel 3,  
Mon. thru Fri. 10:15 a.m.

#### Our Lady of Guadalupe Mission Sunday Mass

Gruver 4:00 p.m.

#### First Christian Church

29 S. Bernice  
Sunday School 9:45 a.m.  
Morning Worship 11:00 a.m.  
Youth Meetings 5:30 p.m.  
Evening Worship 7:30 p.m.  
Wed. Choir Practice 7:30 p.m.

#### Fellowship Baptist Church

Rev. Roy Meksch

11th & Archer  
Sunday School 10:00 a.m.  
Preaching Service 11:00 a.m.  
Sunday Evening Service 7:30 p.m.  
Wed. Evening Service 7:30 p.m.

#### Union Full Gospel Church Rev. George R. Bollinger, Pastor

1st & Endicott  
Sunday School 10:00 a.m.  
Morning Worship 11:00 a.m.  
Bible Classes Sunday 6:45 a.m.  
Evening Worship 7:30 p.m.  
Wed. Bible Study 7:30 p.m.

#### Pentecostal Church

Sunday School 9:45 a.m.  
Morning Worship 11:00 a.m.  
Evening Worship 7:30 p.m.

#### First Methodist Church Rev. Wesley Daniel, Pastor

407 S. Haney  
Sunday School 9:45 a.m.  
Morning Worship 11:00 a.m.  
M.Y.F. 6:30 p.m.  
Evening Worship 7:00 p.m.  
Women's Society of Christian Service Wed. 3:00 p.m. and 9 a.m.  
Choir Rehearsal 7:30 p.m.

#### Waka

#### Church of the Brethren Lawrence Lehman, Pastor

Sunday School 10:00 a.m.  
Morning Worship 11:00 a.m.  
Evening Service 7:00 p.m.  
Choir Practice Wed. 7:30 p.m.

#### Oslo Lutheran Church Robert L. Cordes, Pastor

18 mi. N.W. of Gruver  
Sunday School 9:45 a.m. (includes adults)  
Worship Services 11:00 a.m.

#### Faith Lutheran Church Robert L. Cordes, Pastor

11th & Bernice  
Worship Services 9:00 a.m.  
Sunday School 10:00 a.m.

#### Sacred Heart Catholic Church Rev. James C. Gurzynski

901 S. Roland  
Sunday Mass 9:00 a.m.  
Wednesday & Friday 8:00 p.m.  
Saturday Mass 8:00 a.m.  
Other Days Mass 7:30 p.m.

#### First Baptist Church Rev. Luther M. Berry, Pastor

123 S. Bernice  
Sunday School 9:45 a.m.  
Morning Worship 10:55 a.m.  
Training Union 5:30 p.m. (Oct. 1-Apr. 30)  
Training Union 6:00 p.m. (May 1-Sept. 30)  
Evening Worship (Oct. 1-Apr. 30) 6:30 p.m.  
Evening Worship (May 1-Sept. 30) 7:00 p.m.  
Wed. Evening Prayer Hour 8:00 p.m.

#### First United Presbyterian Church

1021 Cotter Drive.  
Sunday Church School 9:45 a.m.  
Morning Worship 11:00 a.m.  
Evening Study Group 7:30 p.m.  
Wed. Choir Practice 7:30 p.m.

"WE WILL BE CLOSED MONDAY MAY 30 for MEMORIAL DAY"

**Make it a Real Holiday..**



Shurfine Creamy Rich Quart  
**Salad Dressing** 29¢  
 "with purchase of \$2.50 and over  
 Otherwise . . . 39¢"

All Flavors 5¢  
**KOOL AID**  
 5 for 19¢

Nabisco Assorted  
**PARTY CRACKERS** 37¢

Schillings  
**BLACK** 4 oz. Can  
**PEPPER** 38¢

Mortons 4 lb. box  
**ICE CREAM SALT** 19¢

Reynolds 25 ft. x 12 in.  
**ALUMINUM FOIL** 29¢

Everybody loves a picnic--and everybody loves delicious Picnic Treats from CUT RATE. Start planning now for a care-free cook-free Holiday with these SUPER BUYS in quick-fix fun foods for outdoor feasting. We've everything you need for perfect picnics and back yard banquets---all at low, LOW PRICES to give you savings as big as all outdoors.

"Week-end Values for Friday & Saturday May 27th & 28th"

Tendercrust  
**Hamburger Buns** Pkg. of 6 15¢

Sara Lee  
**Cake** each 59¢

Lanes "Mary Lanes Old Fashioned"  
 "Fresh Peach" and other flavors  
**Ice Cream** 68¢  
 Half Gallon



farm-fresh PRODUCE

TEXAS FRESH TENDER EARS  
**CORN**  
 6 EARS 29¢

FRESH FIRM LETTUCE CRISP HEADS 13¢/lb.

LARGE SWEET JUICY . . . lb. 19¢

**CANTALOUPE** 19¢  
 CALIFORNIA LARGE RED SWEET  
**ONIONS** lb. 19¢  
 -FRESHEST PRODUCE IN TOWN-

Shurfine All Flavors  
**Canned Pop**  
 10 oz. Can  
 5 for 39¢

**FREE Charcoal**  
 1-5 lb. Bag Energy Briquets  
 with each Half Gallon  
**WIZARD CHARCOAL LIGHTER FLUID**

Shurfresh 2 lb. Box  
**Cheese Spread** 78¢

Soft in 200 Count  
**PAPER NAPKINS** 27¢

Giant Size  
**RINSO BLUE** 69¢

**Imperial Pure Cane Sugar**  
 10 lb. bag \$1.00

Van Camps Tall Can  
**Pork & Beans** 10¢

Morton's Economy Pak  
**POTATO CHIPS** Reg. 59¢ Bag 49¢

Libby's Barbecued Beef  
**SLOPPY JOES** 303 Size Can 59¢

Shurfine Fancy  
**SPINACH** 303 size can 2 for 25¢

Hunts Cling  
**PEACHES** no. 2 1/2 can 27¢

Libbys  
**FRUIT** 303 size can  
**COCKTAIL** 25¢

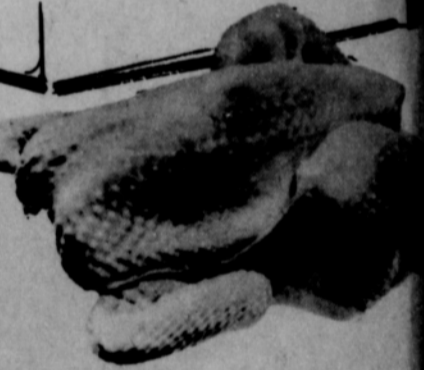
Shurfine Creamed Curd 2 lb. Box  
**Cottage Cheese** 39¢

Shurfine Chunk-Style Flat Can  
**Tuna Fish** 4 for \$1.

Shurfine Frozen 6 oz. Can  
**Lemonade** 10¢

Hi-C 46 oz. Can  
**Orange Drink** 3 for 89¢

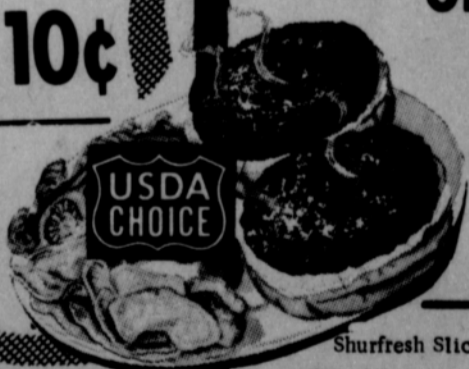
USDA Grade A  
**FRYERS** 33¢ LB.



**Ground Beef** 2 lb. pkg. 79¢

**CUT-UP FRYERS** 39¢ lb.

"Extra Lean" lb.  
**GROUND BEEF** 49¢



Shurfresh Sliced  
**Bacon** 1 lb. pkg. 79¢

A.F. Brand  
**Franks** lb. pkg. 59¢

French's 6 oz. jar  
**MUSTARD**

Fishers  
**MIXED NUTS** 13 1/2 oz. 6

Wrigleys All Flavors  
 Carton of 20's  
**GUM** 6

**ICE TEA** Instant MIX 4 oz. Jar 5

Frenchs "Cattlemens" **BARBECUE SAUCE** Mild or Smokey Hot 19 oz. 39¢

**BE WISE SHOP**

**Cut Rate SUPERMARKET**