

HANSFORD LIBRARY  
120 MAIN ST.  
SPEARMAN, TX.

# THE Hansford PLAINSMAN

24 hr. prayer  
service 659-2911

Volume 17, Number 7, Section A

The Hansford Plainsman, Spearman, Texas 79061

Sunday, December 22, 1985

## Hansfordites say "NIMBY" to ANR Pipeline Co!

It was a record meeting for Hansford Co. citizens, when they met at the courtroom in Spearman Friday morning, and the crowd was so big the meeting had to be moved to the school house. And, the entire meeting can be summed up in one word! "NIMBY!" which means, Not In My Back Yard! A roused group of citizens from the area, especially from Oslo, Gruver and near the Michigan Wisconsin plant were on hand to verbally fight the PCB proposed for Hansford County.

Citizens asked every conceivable question about the PCB plant, and for the most part the meeting was to let the pipeline officials know that the people of Hansford County do not want the dump. In fact, it was learned that we have had the dump all of these years, here in our own back yard. But, the company proposes to dump another 800 truck loads of waste material in the Hansford yard, in the next 4 years. This is a total of 200 trucks per year. The PCB material will be hauled in by trucks, which are lined and used only for hauling PCB material.

Some of the people who live near the plant in the Northern part of the county were so very upset, they could hardly talk about the "very idea of dumping waste from 16 sites in Hansford County!"

PCB is used in electrical transformers in the U. S. It is an oily substance, also is very waxy in substance. The PCB solution being dumped at the Hansford Plant is drained from the Compressors at the plant when they are slowed down. The drains are located under the compressors, and piped to the 40 acre dump site. Southwest of Northern Hansford plant.

The proposed dump site for the 800 loads of PCB will be in a 2 1/2 acre clay line pit with plastic (2 layers) and perforated pipe in the bottom of the pit to catch any of the PCB that might leak through the plastic, if ever it does.

There were so many questions asked at the meeting, it was almost impossible to get them all. But, here are a few: David Long, of Guymon, stated that the original land was sold to the Pipeline Company to be used as a water disposal system.

Mr. Stedje of the Oslo Community wanted to know who issued the permit in 1951? The permit was not registered with the Rail Road Commission according to Mr. Stedje. The permit is Numbered P002101, according to Stedje.

Also, Stedje wanted to know what had been buried in the N.W. corner of the present 40 acre dump site. Officials stated that this was a part of the test section, where they had dug a trench to test the soil for the site.

Other questions asked officials was will ANR be the only user of the site? And they stated that they would.

Why not put pits at each location of the 16 sites along the pipeline that have PCB?

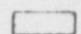
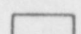
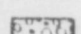
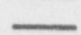
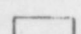
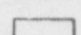
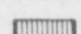
And, the company replied that it was because of economics that they wanted to put the one pit in Hansford County where they could maintain it. Many at the meeting asked if the animals in the area could be contaminated by the PCB's? And the pipeline officials stated that they were 99.9999 sure that nothing like this could happen.

Mrs. Johnson of Oslo asked what would happen to the PCB in a 70 mile per hour wind, if one of trucks turned over and the toxic material was lost on the highway?

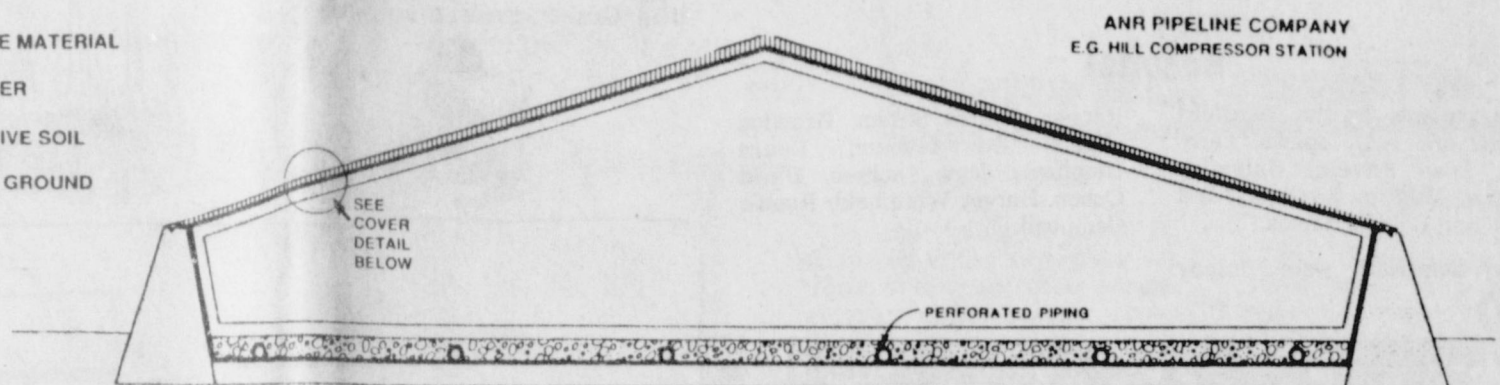
What would an earth quake do to the pit? What effect would this PCB pit have on the land values in the area? Does the PCB in this area cause cancer?

This was the biggest town-hall meeting in the history of Hansford County, and possibly by far the most important. Officials and the public will have much more to say about this important subject in the near future. But, the meeting can - "NIMBY!"

LEGEND:

-  CLAY
-  WASTE
-  DRAINAGE MATERIAL
-  HDPE LINER
-  PROTECTIVE SOIL
-  EXISTING GROUND
-  COVER

MONOFILL CROSS SECTIONS

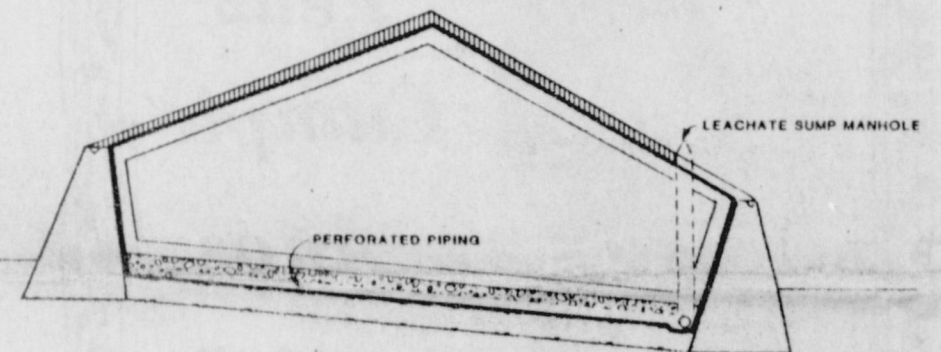


ANR PIPELINE COMPANY  
E.G. HILL COMPRESSOR STATION

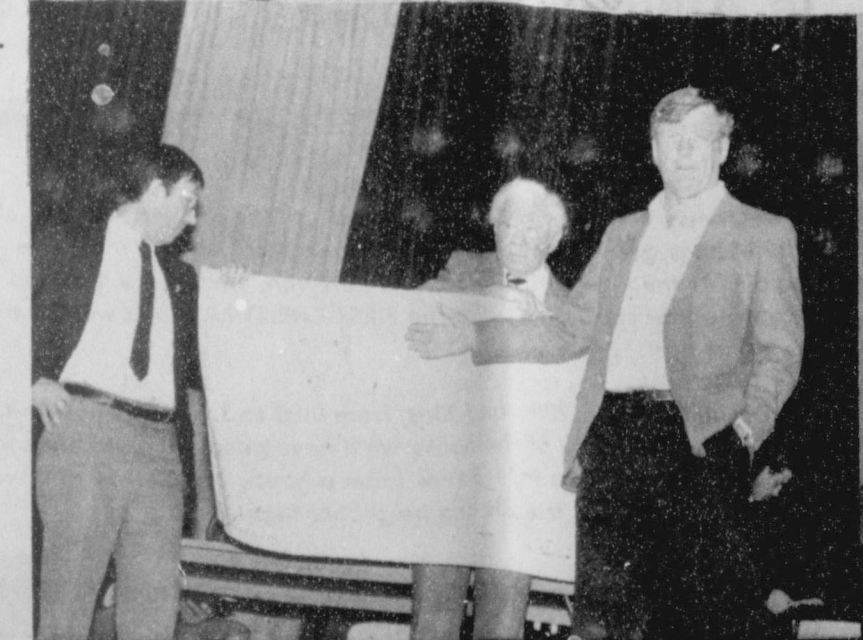
LANDFILL SECTION A-A



COVER DETAIL



LANDFILL SECTION B-B



# Ronald Bullard, aviation structural mechanic



Airman Ronald Bullard, the 21-year-old son of Mr. and Mrs. Ronnie Bullard of Spearman, is a Navy aviation structural mechanic. The 1982 Spearman High School graduate maintains and repairs the safety equipment for the F-14 Tomcats of Fighter Squadron 41, based at Osoana Naval Air Station, Virginia Beach, Va. The

squadron regularly deploys with aircraft carriers and recently returned from a 6-month Mediterranean cruise with the aircraft carrier USS Nimitz. The 20-ton Tomcat is capable of speeds twice the speed of sound and lands on a carrier's deck traveling 170 mph. (Photo by Navy Photographer Thomas E. Butt).

## Hospital

The patients in the Hansford Hospital are: A.D. Sparks, Larry Ross, Jose Favela, Salvador Luciano, Philip Jenkins, Ina Ferrell and Bill Henderson.

Renner, Sharon Sutton, Brandon Close, Ed Gamer, Laura Umphress, June Jackson, David Ochon, Harvey Whitefield, Ronnie Campbell.

The dismissals were: Randy

# Varsity Lynx loose heartbreaker

The Spearman Varsity Lynx played Perryton here Tuesday, Dec. 12.

First quarter score was Spearman 10, Perryton 16. By half-time the Lynx trailed with a score of Spearman 21, Perryton 28. During the third quarter of play, the Lynx scored fourteen points, but the Rangers scored eighteen for a third quarter score of Spearman 35, Perryton 46. The final quarter, the Lynx outscored the Rangers with fifteen points to Perryton's

twelve points, but lost the game with a final score of Spearman 50, Perryton 59.

Individual scoring for the Lynx included (F.G., F.T., F., T.P.): Carl Urban (5-3-2-13); Tim Willis (3-3-1-9); Kevin Nelson (2-5-2-9); Brent Davis (3-0-2-6); Thad Reid (2-1-3-5); Tim Woolley (1-2-5-4); Trevor Pool (1-0-0-2); Monte Beck (0-0-1-0); Dusty Hill (0-0-2-0); Mark Garnett (0-0-0-0); Jeff Vandlingham (0-0-0-0). Allen Mires was out for the game.



## A special fund for Debbie Soapes

A special Hospital Expenses Fund has been established at the Gruver State Bank for Debbie Soapes. Debbie Soapes a long-time Gruver resident is under-

going treatment in an Amarillo hospital. All donation would be greatly appreciated.



## Holiday Houseplants

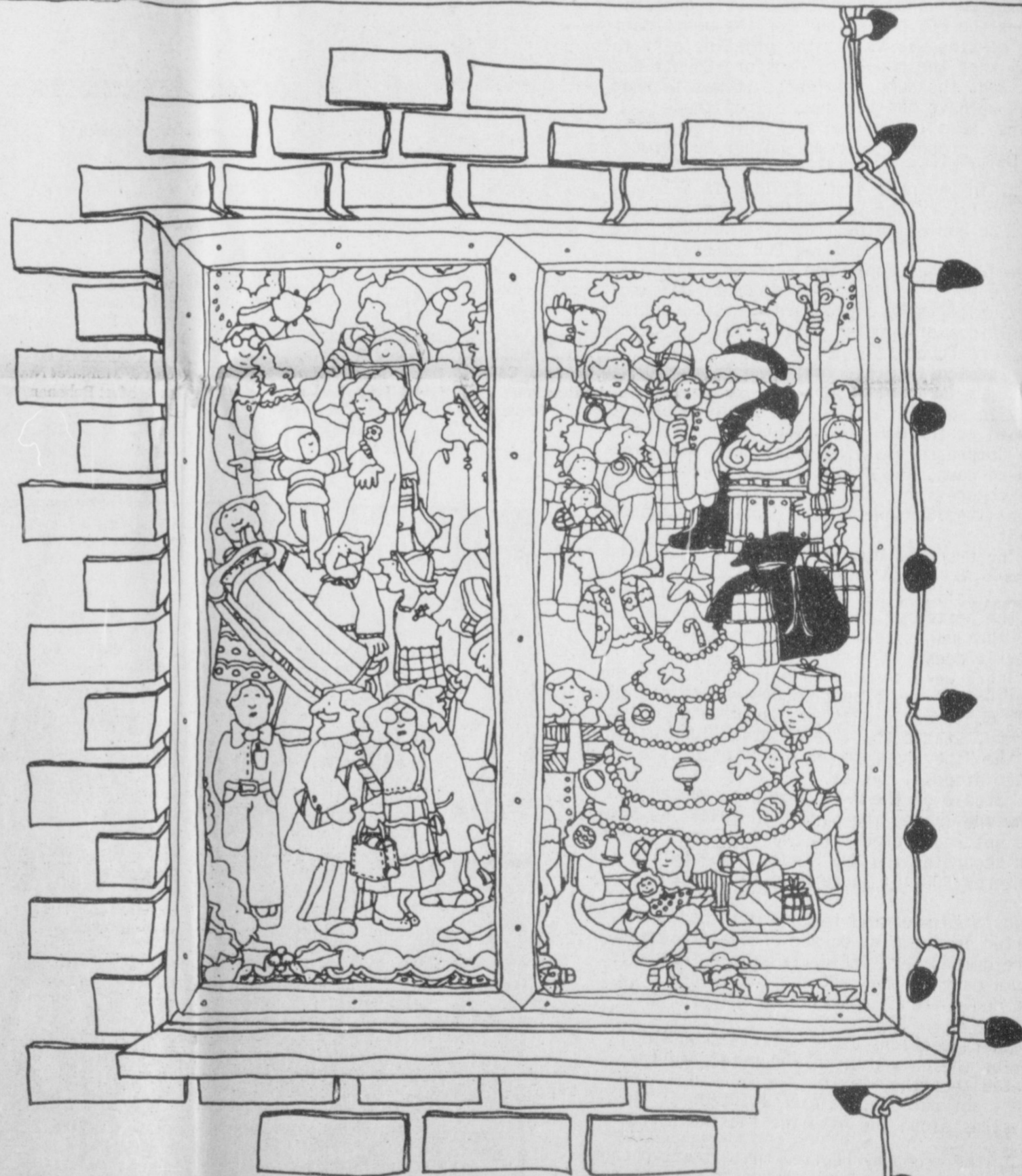
Add a little sparkle to your regular houseplants to make beautiful Christ-

mas centerpieces. Wrap pretty pink foil around your purple African violet pots. Tie a 1" wide ribbon around

the pots, ending in bows. Arrange the violets in a circle. Space three 10"

pink candles and two 12" purple candles in low glass holders among the violets. Pile high with silver baubles. Sprinkle purple bows around the edges of the centerpiece.

*Feliz Cumple Años "34" Daddy!!*



## The First Christmas Is Always an Old-Fashioned Christmas.

There comes a time of year when the air gets crisper, friends get closer, and feelings get warmer. It's the Christmas spirit, and you can feel it in the air. At the First National Bank of Perryton, we have a tradition to celebrate that spirit. We call it the FIRST CHRISTMAS, and we want you to be a part of it.

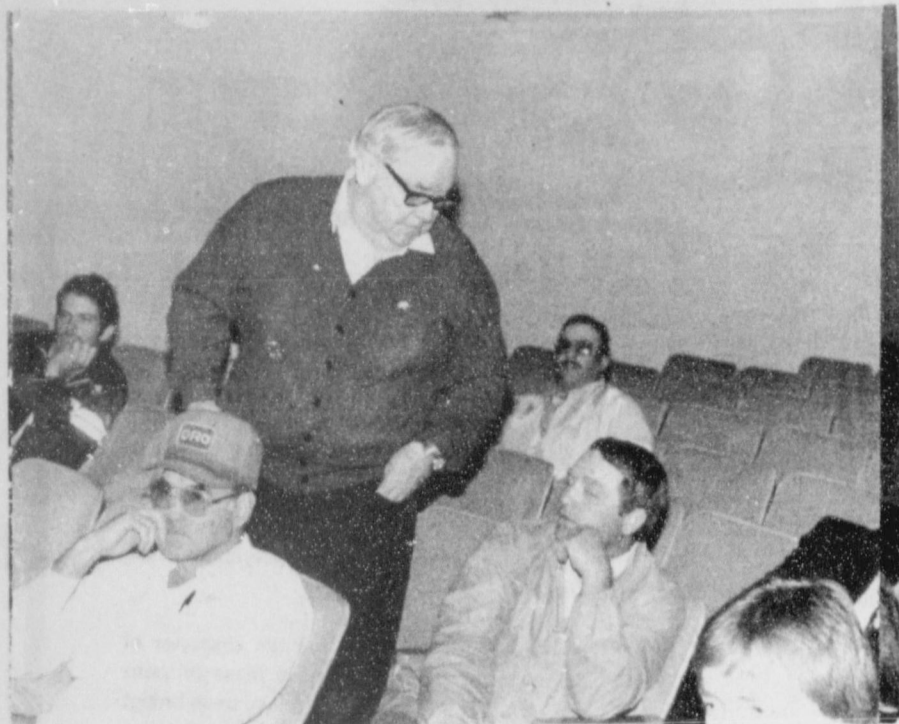
On December 19th, 20th, and 23rd, from 9:00 to 3:00 p.m., you're invited to come by the lobby of the bank. We'll have good things to eat and beverages of the season. It's sure to be a happy celebration of a warm tradition that brings friends and neighbors together.

The officers and directors and staff of the First National Bank, in Spearman, invite you to come by the Bank for coffee, snacks, and to enjoy some Christmas Hospitality the week of December 16th-20th and the 23rd and 24th. Santa Claus will arrive at the Bank on Friday December 20th, and will be there Monday the 23rd. Complimentary polaroid pictures will be taken of the children with Santa. Bring your children and enjoy the festivities!

\*\*\*\*\*







CARL ARCHER ASKS QUESTIONS ABOUT PCB!

**WHAT ARE PCBs?**

- They range from light oils to heavy waxy substances.
- They were discovered over 100 years ago.
- They were produced from 1929 to 1977.
- They were used primarily because of their fire-retardant properties.
- They have been used in the manufacture of common products such as plastics, adhesives, newsprint, caulking compounds and paint.
- The electrical industry still uses an estimated 750 million pounds in this country.

Contact: Mike Brogan  
 ANR Pipeline Company  
 (313) 496-3756 (Work)  
 (313) 258-9831 (Home)

ANR Pipeline Company  
 PCB Monofill  
 E.G. Hill Compressor Station  
 Hansford County, Texas

ANR Pipeline Company has proposed to the Dallas regional office of the U.S. Environmental Protection Agency (EPA) that the Company be allowed to build a solid waste disposal facility at the E.G. Hill natural gas compressor station in Hansford County, Texas.

The facility will serve as a permanent above-ground vault for PCB contaminated soil and sediment found at some of its facilities in midwestern and southern states, including the E.G. Hill site.

Even though PCB's are not classified as hazardous material by the EPA, the Company—as part of a voluntary clean-up program—has been excavating the contaminated soil and sending that material to licensed, commercial landfills for disposal. However, this voluntary effort has been severely hampered by periodic shut-downs of the these landfills by regulatory agencies. These shutdowns, plus the high cost of using these facilities and concern for future environmental liability, has prompted ANR Pipeline to seek an alternative means of disposal.

Based on extensive studies by Dames & Moore, a nationally known environmental consulting firm retained by ANR Pipeline, conditions at E.G. Hill are very favorable for construction of such a facility. These conditions include: low population density, dry climate, low soil permeability, lack of soil moisture, extreme depth (225 feet) of the water table and the non-migration tendency of PCBs found at the site, i.e., PCB deposits at E.G. Hill have migrated only a few inches—if at all—in the past 25 years, according to Dames & Moore testing.

ANR Pipeline proposes to design, build and operate the facility in accordance with all applicable state and federal regulations. The proposed design calls for an average sidewall thickness of 23 feet and a total area of up to 2.5 acres. The vault's base would consist of a synthetic liner placed over an impermeable compacted clay base. Average above-ground height of the vault would be 11 feet.

Active operation (filling) of the vault will be completed in three-four years and only solid, dry materials will be deposited. An environmental monitoring program will be instituted to ensure the vault's effectiveness, nevertheless.

Source of the PCBs has been traced to Pydraul AC, a fire retardant lubricant. Pydraul was last used by the Company in 1973 in air compressor equipment separate from the natural gas compressors at E.G. Hill and other stations.

Q: Where will this monofill be located?  
 A: It will be located in the central portion of an existing 40-acre evaporation pond at the E.G. Hill Compressor Station. This location places it well within the ANR property boundaries in Hansford County.

Q: Is it safe?  
 A: Yes. In its filing with the Environmental Protection Agency, ANR has pointed out that the monofill will be entirely enclosed. It will be constructed with a one-foot thick, highly impermeable clay base covered with an 80-mil-thick (about one sixteenth of an inch) high density polyethylene liner, which provides an impervious barrier.

The walls of the vault will also be lined with the polyethylene sheet. When the vault is filled with the PCB-bearing material, the top will be covered with the liner and topsoil will be spread over it. The soil will then be seeded. ANR personnel employed at the compressor station will constantly monitor the vault.

Expert consultants hired by ANR have made a thorough study of the subsoil and location of underground aquifers and have determined that there is no likelihood the PCBs will ever migrate downward 225 feet to the water supplies.

Q: Does ANR have any plans to turn this into a commercial toxic waste disposal site?  
 A: Absolutely not. This monofill will be used strictly by ANR for storage of PCB-bearing soil.

Q: Will your monofill be insured?  
 A: Yes. We anticipate no problems obtaining sufficient insurance coverage and, of course, will post any bonds required by local, state or federal agencies.

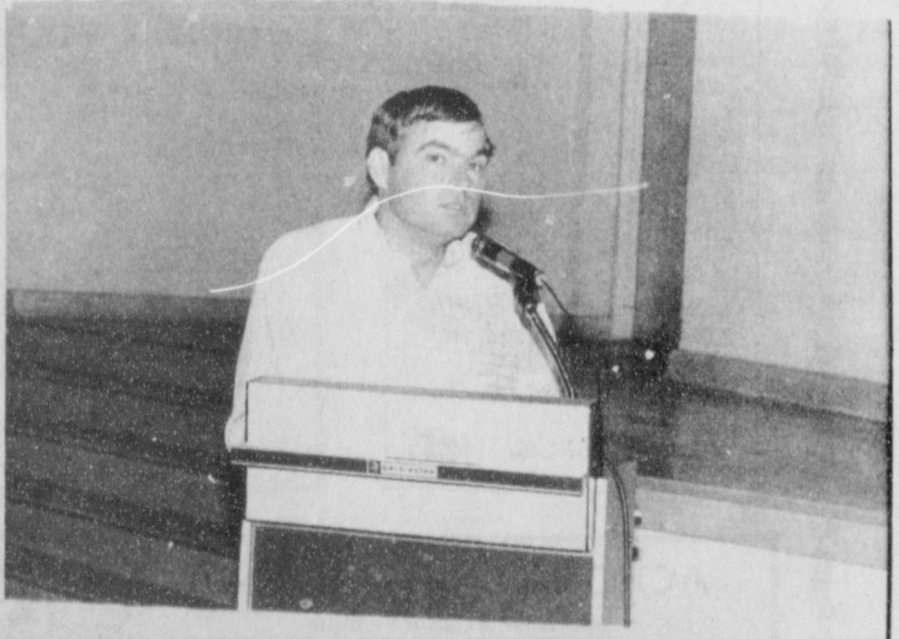
Q: How will the material be delivered to the monofill?  
 A: By truck. The beds of the trucks will be lined with polyethylene and covered. Trucks will be arriving at the site infrequently and over a lengthy period of time so that there will be no noticeable increase in traffic on county roads.



MRS. RASOR ASKS WHY?



Mr. Dave Long from Guymon--Why?



Hansford Citizens asked why us...Put your PCB dumps where the PCB's are!

ANR PIPELINE COMPANY  
 SUMMARY SHEET  
 PROPOSED PCB MONOFILL  
 HANSFORD COUNTY, TEXAS

**BACKGROUND**

ANR Pipeline Company transports natural gas from Texas/Oklahoma and Louisiana/Gulf of Mexico through two pipelines to the upper Midwest. During the 1960's and early 1970's, small quantities of a lubricant called Pydraul AC were used at about 30 compressor stations along the two lines. Pydraul AC contained about 57% polychlorinated biphenyls (PCBs). Purchase records indicate that about 2 1/2 to 5 gallons per year were used at each station until about 1973 when inventories were depleted.

Investigations undertaken by ANR at its stations have shown that small quantities of Pydraul AC have bypassed equipment seals and entered drainlines. The lubricant made its way through the drainlines to onsite lagoons, where it was deposited in the bottom sediments.

ANR has voluntarily tested its stations to determine the extent and concentrations of PCBs in the environment at each station. Although not legally required to do so, ANR has embarked on a program to clean up the PCBs at the affected stations. To date, 14 of the 30 stations have had the PCB-bearing sediment excavated and disposed of at commercial landfills. Generally, these 14 stations had relatively small volumes of sediment; the amount excavated thus far is but 15% of the projected total amount.

**Among The Neighbors**

Funeral services were held in Panhandle Thursday for Lois Morton Lemons, 76. She is survived by a sister, Betty Rutledge, of Oregon. She is the only survivor of the family of Hazel and Bob Morton—a family who was prominent in Hansford County for many years.

Mrs. J.H. (Chip) Martin is reported to be recovering from surgery and expected to return home the latter part of the week. She underwent neuro-surgery on Tuesday at St. Anthony's Hospital in Amarillo. Chip has been staying with relatives in Amarillo during her stay in the hospital.

Mrs. Dorothy Chevalier is back at her employment at Thriftway after suffering a broken arm on the ice last week. Stepping ever so carefully in front of the post office did not prevent her fall.

The Spearman members of the Hutchison family enjoyed an early Christmas gathering in the home of John and Jo Linda Hutchison Saturday night. Visiting, reminiscences, and food were enjoyed by the families of Craig Hutchison, Joe Hutchisons and Dwight Hutchison.

Enjoying pre-Christmas guests from Monday thru Thursday were Dale and Mae Wofford, - Their son, Alan, of Portales, his friends-Terry Mahoney, El Paso, and Gary Miller of Clovis. However the spotlight of their visit was on Alan's daughter, two year old Cali, who kept them all entertained. The Woffords left Saturday for a week-end visit with his mother, Mrs. Wofford, in Portales.

Mrs. Charlene Folmer returned to Spearman Thursday after a three weeks stay in her home in Kilgore, Texas. Mrs. Folmer has been in Spearman quite some time staying with her sister, Mrs.

Louene Hutchison.

Neighbors puzzled by Delbert Allen's driving around in low gear learned that he had a highway patrolman as a guest. Larry Sawyer, patrolman, accompanied a friend, Brett Banister, grandson of Mrs. Allen, both of Brady for the week-end. They were both pleased to bag the limit of pheasants.

To report locals, call 659-3468.



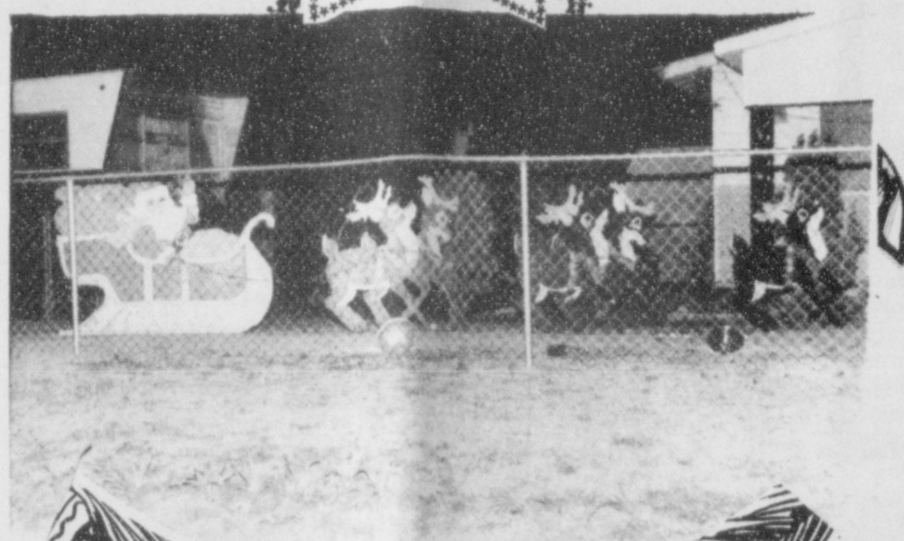
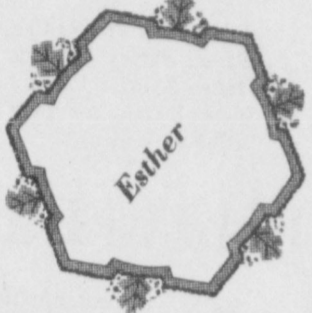
**TO ALL THE CITIZENS OF  
 HANSFORD COUNTY;**

Dr. & Mrs. Romeo B. Sangalang and family, wish to thank all of you for the support and encouragement in starting his practice of Medicine and Surgery. My family is looking forward to move to Spearman early

We would like to take this opportunity to wish all of you A Very Merry Christmas and A Prosperous New Year.

R.B. Sangalang, M.D.

*Season's Greetings*



**Deck**



**the**





**Halls**



**From The Staff**

# Happy 11th Birthday

## Tanya

Number # 1 Kid



The Celebrate sing at the First State Bank.



Christmas Scenes at the First National Bank in Spearman.

Defensive Driving Course: Dec 17th and Dec. 19th 6:00 p. m. each night. Above the Library!

Open House-First State Bank Dec 17th-18th-Celebrate & Choral-Refreshments-See advertisement P 7 \*\*\*\*\*

## You can survive that party

No need to declare a diet moratorium just because you're going to lots of holiday parties. Here are some smart strategies for facing food without over eating from Weight Watchers Area Director Joyce Aron Nimetz.

- Don't go to a party reavenously hungry. Fortify yourself with a half cup of low-fat yogurt or a fruit snack before you leave home.
- Appraise the entire buffet table to decide what you're going to eat in advance of your attack.
- Pass up hors d'oeuvres that are buttered, breaded, fried or covered with sauces. Concentrate on crudites, fruit, shrimp and a small piece of hard cheese.
- If you want to be sure of your nibbles, bring along a hostess gift of low-calorie dip for the crudites.
- Take up a position away from the hors d'oeuvres trays and loaded coffee table.
- At family feasts, try to fill your own plate, so you can control

kinds of foods—foods that are readily available at your grocery store. For the meeting nearest you, call toll free 1-800-692-4329.

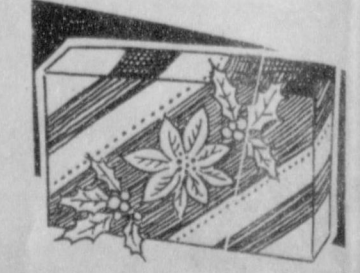
portion size. If someone else does the serving, praise everything lavishly, but eat only what you estimate is a normal portion and leave the rest.

- When you're finished eating, hold your coffee cup in both hands to keep from picking up your fork.
- Develop an allergy to help you say no ("Thank you so much. It looks perfectly delicious, but I'm allergic to chocolate!")
- Bring fresh, out-of-season fruit (a ripe pineapple, perhaps) to family gatherings—a welcome contribution and something to eat besides heavy holiday fare.
- Don't skip meals—even on party days. You'll just make yourself nervous, edgy and hungry and feel like stuffing when you finally get to the food. Eat three well-balanced meals every day. Plan low-calorie snacks to take the edge off hunger and give you

energy when you're exhausted.

- Stay away from alcohol! Ask for a Virgin Mary (spiced-up tomato juice minus the vodka) or a fruit spritzer (fruit juice in a glass of club soda).
- Before and after a meal, keep yourself occupied with a glass of calorie-free soda with a slice of lime.
- Get through parties one at a time. If you binge, treat it as a small, unimportant error and go right back to your diet.

If you would like additional weight loss tips or want to get started on a sensible weight loss program contact your local Weight Watchers Center. Weight Watchers is an organization dedicated to helping people learn how to control their weight by eating and enjoying the right



## Extension Homemakers met for Christmas luncheon

Town and Country Extension Homemakers met December 17 in the country home of Delinda McLaughlin for the Christmas luncheon. Favorite foods prepared by each member provided a tasty as well as enjoyable luncheon. The short business meeting was led by President Delinda McLaughlin. A report was given on the special family with whom the club shared Christmas this year.

Members and guests enjoyed the gift exchange as secret sisters were revealed for 1985.

Installation of officers for 1986 was led by Karen Babitzke relating to the home each member represents. The new officers include:

President - Delinda McLaughlin  
Vice President - Pam Cobb  
Secretary - Becky Bairley  
Treasurer - Paul Foster

Two new members Rhonda Bynum and Carma Dorton were present as were guests Karen Babitzke and Norma Jean Mackie. Fifteen members plus Kris Cudd and Reid Rogers were also present.

## Baker & Taylor hold Christmas Party

Baker & Taylor Drilling Company employees enjoyed their Christmas Party at Cattleman's Supper Club on the evening of Friday December 13 at 7:30 p.m. Steak dinners and homemade candies were enjoyed by all. After the meal a Christmas story was told. 'Twas the night before Christmas' as the story started out and everybody had a turn of adding a few verses of their version of the story. Needless to say Santa and Rudolph had many different stops and adventures before they wished "and to all a good night." Next New Year resolutions were made by each person to their spouse or friend. We will have to wait until later in 1986 to see if these really go into effect! Guests Jim Myers and Wife Becky entertained by guitar and singing Christmas songs.

Later some very funny gag gifts were exchanged. Before the evening ended everyone joined in singing Deck the Halls, Jingle Bells, and We Wish You A Merry Christmas. And from everyone at Baker & Taylor Drilling Company we do Wish you and Yours a Very Merry Christmas!

Present were: Billy Close and guest Wanda Homer of Amarillo; Cheryl Gibson; Eddie Martin; Frank Salgado; Roy & Charlene Bulls; Charlie and Claudine Laxton; Ed & Sarah Garner; Jack and Pat Hamilton; P. Terry & Sherry Moore; Robbin & Lisa Keetch; Max & Carolyn Taylor; James & Jo Brown; Chester & Susie Slaten; Harvey & LaRue Whitefield; Harold & Joyce Frost; Joe & Elodia Bravo; Kenney & Francis Loftin; Stan & Ronda Witten.



## Benefit to be held in Pampa

Pampa Police Association - Mark King President, will be holding a benefit on January 25th at M.K. Brown Auditorium in Pampa. The show will be featuring "Jana Jae". Tickets will be available at the door at a cost of

\$9.00. In conjunction with the show the Police Association will be distributing a Business director. Inquires can be made by calling 669-1844.

## Beware of Holiday Food Poisoning

Holiday meals are leisurely affairs, with family and friends sitting around eating, visiting and enjoying themselves. At the same time, the food is "sitting" around with them -- left on the table or even put in the oven to "stay warm for supper." That's one reason why food poisoning is common during the holiday season, says Texas A&M

University Agricultural Extension Service specialist Dr. Dymple Cooksey. "Food left out at room temperature is an ideal breeding ground for harmful bacteria." Many of the virus or flu-like symptoms people experience during the holiday season are actually from food-borne illness, she says.

## Markets

### Holiday Tee-Hee

Ever notice that a man never gets too old to be in the holiday mood and pack a snowball and throw it at a garage wall, a mailbox post, etc.? But, after a certain age, have you noticed he starts looking around to make sure no one is looking!

WHEAT	\$2.94
MILO	\$4.05
CORN	\$2.70

# SEARS HOME APPLIANCE INVENTORY REDUCTION SALE

CELEBRATING SEARS NEW CENTURY



**OUR LOWEST PRICE EVER**  
**539.<sup>99</sup>**  
White  
SAVE \$110.00

BW65841

**Kenmore® 18.0 cubic ft. refrigerator-freezer**  
18.0 cu. ft. total capacity frostless refrigerator. Features Nice 'n Fresh pan, crisper, and meat pan.



**OUR LOWEST PRICE EVER**  
**345.<sup>00</sup>**  
White  
SAVE \$94.00

BW23701

**Kenmore® extra-capacity laundry pair**  
Washer. 2 speeds, 5 cycles. 3 water levels. Electric dryer. 2 temperatures. Wrinkle Guard® 1.



**OUR LOWEST PRICE EVER**  
**275.<sup>00</sup>**  
White  
SAVE \$104.00

BW65811

<p><b>1/2 PRICE</b></p>  <p>WNT7841</p> <p><b>Kenmore 14-stitch free arm sew head</b> Reg. 399.99 <b>199.<sup>99</sup></b></p>	<p><b>1/2 PRICE</b></p>  <p>BW35951</p> <p><b>Kenmore 2-speed upright vacuum</b> Reg. 249.00 <b>124.<sup>99</sup></b></p>	<p><b>SAVE 150.<sup>00</sup></b></p>  <p>DR24390</p> <p><b>Kenmore 3.9 Peak HP canister vacuum</b> Reg. 349.99 <b>199.<sup>99</sup></b> 105-HP VCMA</p>	<p><b>SAVE 140.<sup>00</sup></b></p>  <p>DR7032</p> <p><b>Kenmore built-in 24-in. dishwasher</b> Reg. 439.99 <b>299.<sup>99</sup></b></p>
<p><b>OUR LOWEST PRICE EVER</b></p>  <p>FA4142</p> <p><b>Quartz tuned cable compatible color TV</b> Reg. 269.99 <b>269.<sup>99</sup></b> 19-in. dia. meas. picture</p>	<p><b>SAVE 90.<sup>00</sup></b></p>  <p>DR53286</p> <p><b>VHS VCR with wireless remote</b> Reg. 389.99 <b>299.<sup>99</sup></b></p>	<p><b>SAVE 100.<sup>00</sup></b></p>  <p>BW67361</p> <p><b>Dual cassette compact rack</b> Reg. 289.99 <b>189.<sup>99</sup></b></p>	<p><b>SAVE 65.<sup>00</sup></b></p>  <p>BW67361</p> <p><b>0.5 cu. ft. microwave with delay start</b> Reg. 249.99 <b>184.<sup>99</sup></b></p>

Kenmore dryers require connectors not included in prices shown • Many Kenmore models come in colors at additional cost • Simulated TV reception on sets shown. Prices are catalog prices now available in our "BW", "DR", "FA", "NV", and "EE" sale catalogs • Shipping, installation extra • Ask about Sears credit plans.

Phone 659-2573  
Most merchandise available for pick-up within a few days

517S.  
Hwy. 207  
Spearman

Mon.-Sat.  
9 a.m.-5 p.m.  
Plains Shopping Center

Satisfaction guaranteed or your money back  
©Sears, Roebuck and Co., 1985

There's more for your life at  
**SEARS**

**Christmas Bells**



Bells have announced the glad tidings of Christ's birth for hundreds of years. A bell was considered a perceptive, living thing in Medieval times. In fact, the bell received a special dedication in a ceremony much like a baptism and if not properly dedicated it was felt it lost the power to call believers to prayer or the power to drive away storms. Folding bells of red and green tissue paper for decorating the house became popular around the turn of the century.

**New Christmas Acquaintances**

The house can have the most beautiful decorations ever and Christmas dinner can be the most delicious ever, but the true magic of Christmas comes from sharing it with loved ones. Even though you may have many friends and family members to share Christmas with, the season can become even

more special by making a welcome for a newcomer to your home. Yes, it will take extra time and effort -- maybe even some inconveniences but in exchange you can expect good feelings and happy memories. Welcoming someone new to your family's Christmas needs the endorsement of everyone in your home. If it's too hectic of a time at your house, you might like to try it at other times during the year.

The family members can have a "thinking session" to think of persons who might be lonely this Christmas. There may be "forgotten" friends and relatives, or you may wish to ask a nursing home if there are residents there with no one to share Christmas. Or you might like to contact your local churches who will probably be very happy to put you in touch with some known lonely ones.

State and county social services can often supply you with names. Foreign students may be visiting colleges and universities near you. You never know -- your Christmas new acquaintance may become your very best year-round friend. Happiness at Christmastime means sharing!

**Year-Round Christmas Tree**

Need to add an evergreen tree to your landscape? Have your nurseryman save a balled-and-burlapped evergreen to be delivered near Christmas. After the tree arrives, let the ball soak up some water in a tub; later re-

move the burlap and let the access water drain. Then wrap the ball in a sheet of plastic and tie securely. The foliage can be sprayed with an anti-desiccant which you can buy at garden centers. This solution will also be good for cut trees. It dries in a thin, transparent film allowing carbon dioxide and oxygen passage to continue yet it helps prevent the drying of needles.

The tree may be placed indoors a couple of days before Christmas but it's advised not to keep it inside more than a week. After the holidays plant it in a hole you've previously dug and mulch it to keep it from freezing.

**Varsity Lynxettes win 53-38**

The Varsity Lynxettes played the Perryton Rangerettes Tuesday, December 12 in Spearman.

The Lynxettes led 11 to 7 at the end of the first quarter. At half time, the Lynxettes were ahead 24 to 18. The Lynxettes scored ten points the third quarter to Perryton's six for a third quarter score of Spearman 34, Perryton 24. During the final quarter of play, the Lynxettes scored seven field goals and five of eight free throws to win the game 53 to 38.

Individual scoring for the Lynxettes included (F.G., F.T., F., T.P.): Shannon Jenkins (7-3-5-17); Carrie Guthrie (5-2-3-12); Jill McLain (4-2-3-10); Cayla Eaton (3-0-2-6); Mary Lou Baker (1-3-1-5); Donda Pool (1-0-0-2); Jennifer Yarbrough (0-1-1-1); Amy Runyan (0-0-1-0); Heather Murrell (0-0-1-0) and Julie Jones (0-0-2-0).

**JV Lynxettes**

The Junior Varsity Lynxettes played Perryton here Tuesday, Dec. 12.

The first quarter, the Lynxettes scored 5 points to Perryton's 7 points. The second quarter, the Lynxettes trailed by three points with a half-time score of Spearman 13, Perryton 16. During the third quarter, the Lynxettes scored eight points, while Perryton scored ten points. Third quarter score was Spearman 21, Perryton 26. The final quarter, the Lynxettes scored only seven points, while Perryton put seventeen points in the basket. Final score was Spearman 28, Perryton 43.

Individual scoring for the Lynxettes included (F.G., F.T., F., T.P.): Kim Jenkins (3-4-4-10);

Lisa Cazarez (2-3-3-7); Stacy Nitschke (1-2-4-4); Sandy Hill (2-0-5-4); Denise Rojas (0-3-1-3); Cindy Womble (0-0-3-0); Jennifer Turner (0-0-5-0) and Tami Lewis (0-0-2-0).

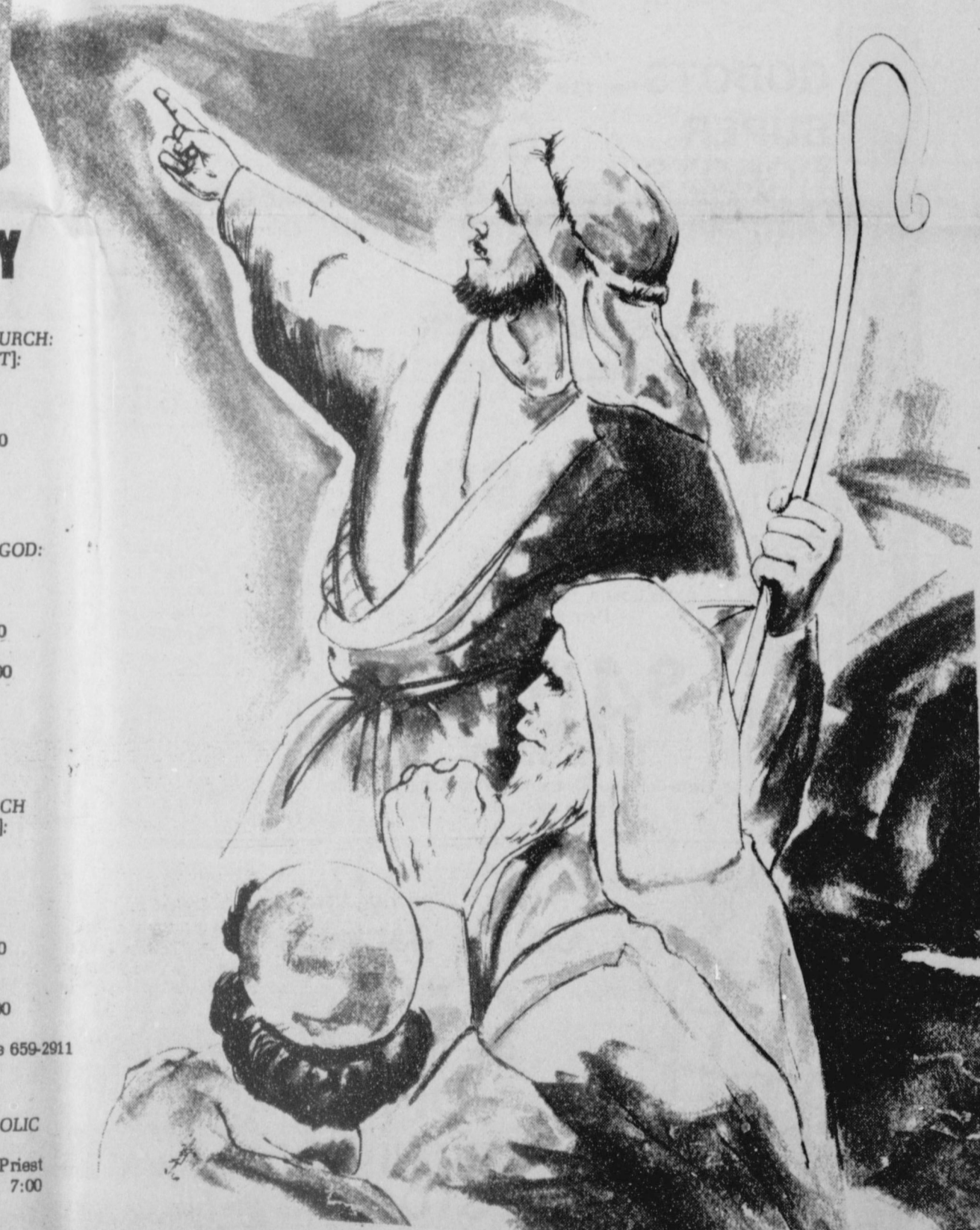
**Trimmed Tree Cake**

Bake one 13" x 9" cake; cool. Cut and arrange the cake as shown. Mark the sloping sides into 4 equal parts; cut in about 1" at each mark and out diagonally to meet the second mark for the tree branches. Use these pieces for the trunk, as shown. Spread icing between these pieces to hold them together.

One special frosting is made from 4 cups of a non-dairy whipped topping to which you've added green food coloring and 1/2 teaspoon peppermint extract. Swirl the icing on. Trim the tree cake with colorful candies.

**Rejoice**

**A Child is born unto you and his name is Emmanuel.**



**SPEARMAN CHURCH DIRECTORY**

**APOSTOLIC FAITH CHURCH:**  
Leland Grimmer, Pastor  
824 South Drossen  
Sunday School: 10:00  
Morning Worship: 11:00  
Evening Worship: 7:00  
Wednesday Service: 7:30  
659-2870

**CHURCH OF THE BRETHREN:**  
Milton Robinson, Pastor  
Waka, Texas  
Sunday School: 10:00  
Morning Worship: 11:00  
No Evening Services  
435-4598

**CHURCH OF CHRIST:**  
Gaylord Cook & David Fultz,  
Co-ministers  
121 South Haney  
Sunday School: 9:45  
Morning Worship: 10:35  
Evening Worship: 6:00  
Wednesday Service: 7:30  
659-3244

**FAITH LUTHERAN CHURCH:**  
William Schardin, Pastor  
1101 South Bernice  
Sunday School: 9:45  
Morning Worship: 10:45  
No Evening Worship  
659-2252

**FIRST UNITED PRESBYTERIAN CHURCH:**  
Lelan McCullough, Pastor  
1021 Cotter

Sunday School: 9:45  
Morning Worship: 11:00  
No Evening Services  
659-2033

**FELLOWSHIP BAPTIST CHURCH**  
Jim Jones, Pastor  
1102 South Archer  
Sunday School: 10:00  
Morning Worship: 11:00  
Evening Worship: 7:00  
Wednesday Service: 7:30  
659-2782

**FIRST UNITED METHODIST CHURCH:**  
Lane Boyd, Pastor  
407 South Haney  
Sunday School: 9:45  
Morning Worship: 11:00  
Evening Worship: 7:00  
659-5303.

**SPEARMAN UNION CHURCH**  
(Inter-Denominational):  
Steve Rogers, Pastor  
31 South Endicott  
Sunday School: 9:45  
Morning Worship: 10:45  
Evening Service: 6:30  
Wednesday Service: 7:30  
659-2644

**SPEARMAN-GRUBER SPANISH BAPTIST MISSION:**  
Romeo Reyes, Pastor  
502 E. 7th  
Sunday School: 9:45  
Morning Worship: 11:00  
Church Training: 6:00  
Evening Worship: 7:00  
Wednesday Service: 7:00  
659-3948

**FIRST CHRISTIAN CHURCH:**  
[DISCIPLES OF CHRIST]:  
Martin Foster, Pastor  
29 South Bernice  
Sunday School: 9:30  
Morning Worship: 10:50  
Evening Worship: 6:30  
659-2036

**FIRST ASSEMBLY OF GOD:**  
David Nuckels, Pastor  
401 North Bernice  
Sunday School: 9:45  
Morning Worship: 11:00  
Evening Worship: 7:00  
Wednesday Service: 7:00  
659-2295

**FIRST BAPTIST CHURCH**  
[SOUTHERN BAPTIST]:  
Russ Gibbs, Pastor  
Jerry Don Davis,  
Minister of Youth  
123 South Bernice  
Sunday School: 9:45  
Morning Worship: 11:00  
Church Training: 6:00  
Evening Worship: 7:00  
Wednesday Service: 7:00  
659-5557  
Intercessory Prayer Line 659-2911

**SAC D HEART CATHOLIC CHURCH:**  
Father Brendan Sherry, Priest  
Saturday Evening Mass: 7:00  
Friday Mass: 8:30 AM  
Sunday Mass: 8:00 AM  
Thursday Mass: 6:30 PM  
659-2166

**Church page compliments of:**

**THE SPEARMAN REPORTER**

**1st NATIONAL BANK**

201 S. Main Perryton 435-3676

**BOXWELL BROTHERS**

**THE HANSFORD PLAINSMAN**

**BAKER & TAYLOR**

519 Evans Spearman 659-2212

Gruber Hwy. Spearman 659-2503

501 N. Dumas 935-7403

# GEBO'S

... the kind of store you remember.  
OPEN ALL DAY SATURDAY  
UNTIL CHRISTMAS!

SAVE OVER 25%

## Wrangler Casual Cords

Good-looking guys' cords from Wrangler. Try them on for casual comfort and style.

### Kids Corduroy Jeans

Sizes 4-7 Reg. to \$10.99

**\$6.88**

### Boys Corduroy Jeans

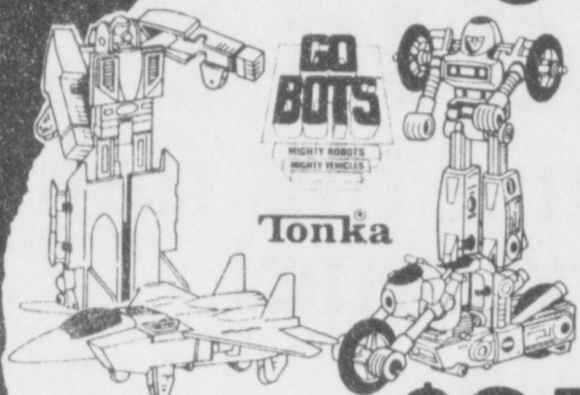
Sizes 8-16 Reg. to \$13.49

**\$9.88**

### Students Corduroy Jeans

Waist 26-30 Reg. to \$16.49

**\$11.88**



**GOBOTS** Reg. \$3.88  
**SUPER GOBOTS** Reg. \$8.88

**\$2.55**  
**\$6.66**



Mens  
**Riverside Flannel Shirts**  
80/20 cotton/polyester sport model.  
Assorted plaids. #736

**\$6.88**  
Reg. \$7.49  
Talls Reg. \$8.49 **\$7.88**

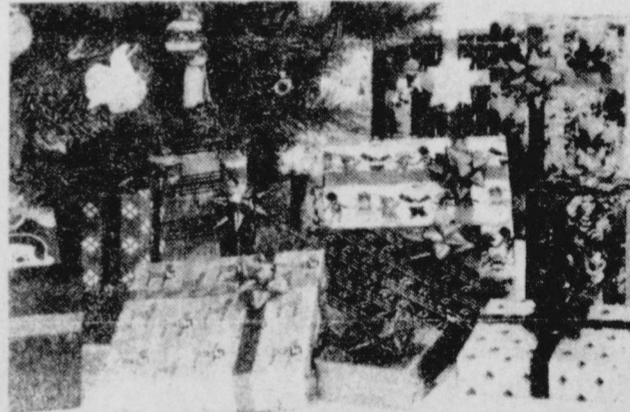


**25% OFF**  
**ERTL & Tonka Toys**

Entire Stock

**Papercraft Wrapping Paper and Accessories**

**25% OFF**



**Wallo**  
**BLIZZARD-PROOF**  
**Insulated Coveralls**  
50/50 Black, Olive #2486  
Reg. \$41.99

**\$36.99**  
SAVE \$5.00

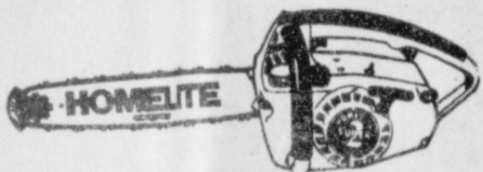
100% Cotton, Brown Duck #2465  
Reg. \$53.99

**\$46.99**  
SAVE \$7.00

Extra Tall and XX Large Sizes Available  
At Slightly Higher Prices



## Homelite The Chain Saw King.



### 14" Bar - Super 2

- Automatic chain oiling
- Displacement 19 cu. in. (31.1cc)
- Weight 8 lbs. 14 oz.
- Chromed chain
- Exclusive Twin Trigger\*
- Thermo-Plastic handlebar

460-010 Reg. \$229.45

**\$189.95**

Wallo, California, Wrangler & Sweet  
**Coats, Jackets & Vests**

**25% OFF**  
**ENTIRE STOCK**



Morgan Knitting Mens  
**Thermal Underwear**  
Heavy 50/50 Circular Knit  
Your choice  
Tops or Bottoms  
Reg. \$5.49

**\$4.49**  
Talls \$4.99

Entire Stock  
Long Sleeve Dress Western  
**Shirts**  
**\$5.00 OFF**

Mens, Womens & Boys  
**Moon Boots**  
**\$15.99**



Prices good through December 24, 1985.

XXXIII





## The Celebrates sing Christmas Carols at Rotary Club

THE

# Hansford PLAINSMAN

24 hr. prayer  
service 659-2911

Volume 17, Number 7

The Hansford Plainsman, Spearman, Texas 75661

Sunday, December 22, 1985

# Hospital bond issue carries 328-120

Hansford County voters said yes to a bond issue to improve the Hansford Hospital and add some 45 beds to the Manor. The bond issue carried almost 3 to 1, with every precinct in the county voting for the big issue.

In Spearman voters voted 230 For and 85 against;

In Guver voters voted 65 for, and 24 against;

Morse voted 22 for and only 2 against;

Oslo voted 11 for and 9 against!

It was an overwhelming vote of confidence in the Manor, the Hospital and actually a vote of confidence for the entire Hospital and Manor operation. The two and one-half million dollar bond issue went without a hitch.

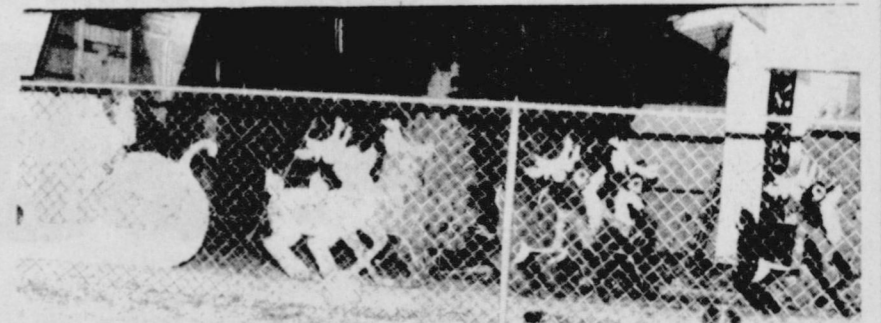
Voters approved the 45 bed addition to the Manor; a new laundry facility will be constructed, as the hospital is now spending some \$36,000 per year hiring this done; a new dining room facility will be constructed; 8 new suites will be built at the Manor; 16 private beds and 16 semi-private beds will be added to the Hansford Manor. There will be many other fine improvements at the Hospital and

Manor, and the entire Panhandle area is proud of Hansford County voting for this important part of our county! Congratulations to everyone that voted in this election.

\*\*\*\*\*



A picture of the ladies holding the election at the county barn for the hospital here in Spearman, on Tuesday.



The sled picture at the top was a scene at the Raymond Gilley home in Spearman----- The bottom picture was made in the Jack Oakes addition--



## Scenes from the Tuesday night Lions Club Pancake Supper



Guess who ate with the Lions Club Tuesday nite?



Lion Biggers, Lion Jones, and Lion Robertson...



Lion Don Townsen and his "den" of Lions!



# DOUBLE EVERYDAY

THESE PRICES ARE GOOD DEC. 22 THRU DEC. 24

**UNITED OR PLAINS WHIPPING CREAM**

**2.88** FOR 1/2 PINT

THIS PRICE GOOD IN AMARILLO, PERRYTON, DALHART, BORGER AND DUMAS STORES ONLY

**PLAINS EGG NOG**

**79** C

THIS PRICE GOOD IN AMARILLO, PERRYTON, DALHART, BORGER AND DUMAS STORES ONLY

**FRESH PRODUCE**

**GOLDEN RIPE BANANAS**

**4.1** \$1

4 LBS.

**GOLD MEDAL FLOUR**

**89** C

5 LB. BAG

SAVE 70¢ WITH VALUABLE COMPUTER

**JELLO ASSORTED FLAVORS**

**3** FOR **1** \$1

3 OZ.

**CRISCO REGULAR OR BUTTER FLAVOR**

**1.99**

3 LB. CAN

**MEDIUM YELLOW ONIONS**

**10**

10 LBS.

**LIBBY'S PUMPKIN**

**38** C

16 OZ.

**KRAFT MAYONNAISE**

**1.59**

REGULAR OR LITE 32 OZ.

**LUCKY LEAF CHERRY PIE FILLING**

**99** C

REGULAR 21 OZ.

**ALL PURPOSE POTATOES**

**88** C

10 LB. BAG

**UNITED GRADE "A" EGGS**

**69** C

EXTRA LARGE - DOZEN

**OCEAN SPRAY CRANBERRY SAUCE**

**38** C

JELLIED OR WHOLE BERRY 16 OZ.

**PLAINS SOUR CREAM OR DIP**

**2.88** FOR 8 OZ.

THIS PRICE GOOD IN AMARILLO, PERRYTON, DALHART, BORGER AND DUMAS STORES ONLY

**SUNKIST NAVEL ORANGES**

**49** C

10 LBS.

**COKE**

**2.18**

6 PK 32 OZ. PLUS DEPOSIT

THIS PRICE GOOD IN PERRYTON STORE ONLY

**FINE FARE SWEET POTATOES**

**49** C

16 OZ.

**UNITED BROWN & SERVE ROLLS**

**4.1** FOR 12 CT. PKG.

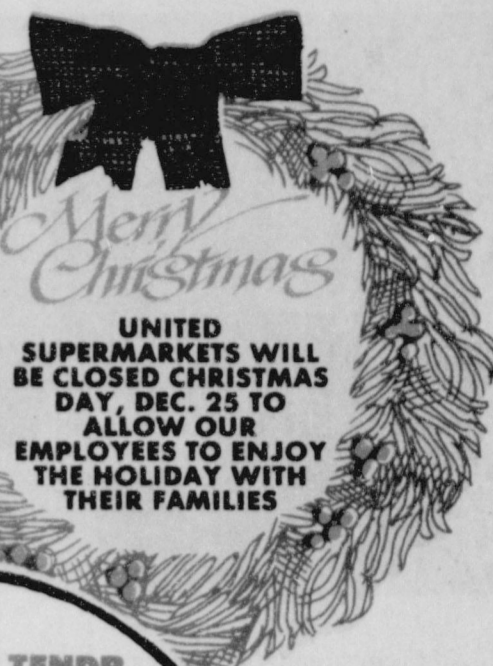
THIS PRICE GOOD IN AMARILLO, PERRYTON, DALHART, BORGER AND DUMAS STORES ONLY

**BETTY CROCKER STUFFING MIX**

**69** C

6 OZ.

# STAMPS



## UNTIL CHRISTMAS!

WITH \$2.50 PURCHASE OR MORE EXCLUDING CIGARETTES

### FRESH PRODUCE

**RIPE PASCAL CELERY**  
\$1.41  
STALKS

**CALIFORNIA PASCAL CELERY**  
\$1.41  
STALKS

**NEW CROP WALNUTS**  
79c  
LB.

**EXTRA FANCY RED DELICIOUS APPLES**  
59c  
LB.

**RED EMPEROR GRAPES**  
69c  
LB.

**PLAINSMAN BONELESS WHOLE HAM**  
\$148  
LB.

BONELESS HALF HAM  
LB. \$1.68

**UNITED TRU TENDR SMALL END PRIME RIB ROAST**  
\$248  
LB.

LARGE END PRIME RIB ROAST  
LB. \$1.78

**UNITED TRU TENDR OR USDA CHOICE BONELESS SHOULDER ROAST**  
\$148  
LB.

**OWEN'S PORK SAUSAGE REGULAR OR HOT**  
\$335  
2 LB.

REG. HOT - MILD - SAGE  
1 LB. \$1.69

**FINE FARE CREAM CHEESE**  
68c  
8 OZ.

**ARMOUR GRADE "A" BONELESS TURKEY**  
\$158  
LB.

**TYSON CORNISH GAME HEN**  
\$158  
22 OZ.

**HORMEL BLACK LABEL BACON**  
\$158  
1 LB. PKG.

**UNITED PREMIUM QUALITY 93% FAT FREE BONELESS WHOLE HAM**  
\$178  
LB.

BONELESS HALF HAM  
LB. \$1.98

BUFFET STYLE

**SHEDD'S SPREAD COUNTRY CROCK**  
\$159  
3 LB.

**COOL WHIP REGULAR OR EXTRA CREAMY**  
79c  
8 OZ.

**KRAFT MARSHMALLOW CREAM**  
\$1.59  
7 OZ.

**MRS. SMITH'S PUMPKIN OR APPLE PIE**  
\$149  
26 OZ.

MRS. SMITH'S PUMPKIN PIE  
46 OZ. \$1.99

**PLAINS ICE CREAM RED OR GOLD RING**  
\$148  
1/2 GAL.

THIS PRICE GOOD IN AMARILLO, PERRYTON, DALHART, BORGER AND DUMAS STORES ONLY



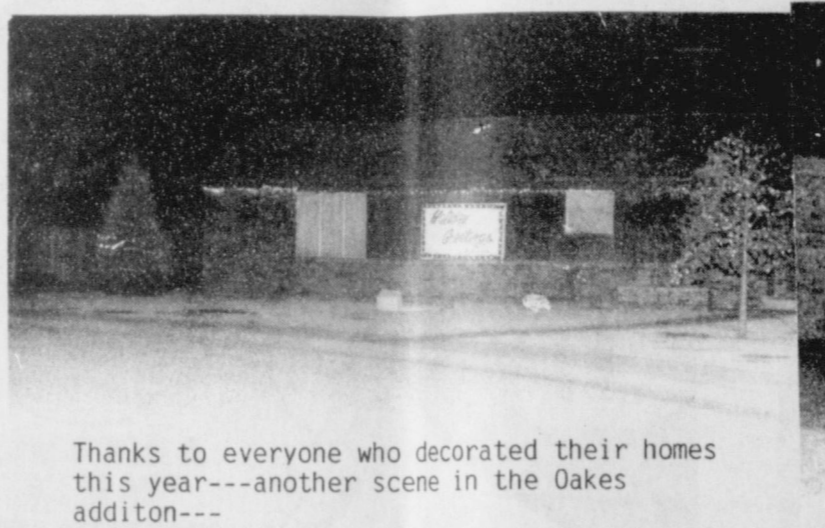
Officers and Directors of the Spearman Lions Club wish each and everyone of you a Merry, Merry Christmas.



It was free flapjacks and ham. At Consumers Sales Co. in Spearman Tuesday morning. Gene and Carolyn and their assistants are pictured above and below at the pancake supper.



Judge Albert Graves and the Celebrates were featured at the Rotary Club last week.



Thanks to everyone who decorated their homes this year---another scene in the Oakes additon---

### Ownbey pageant finalist

Miss Liz Ownbey, age 15, daughter of Mr. and Mrs. Jimmie Ownbey, Vinita, has been selected to be a finalist in the 1986 Miss Oklahoma National Teen-Ager Pageant to be held at Oklahoma City University, May 23, 24, 25, 1986. The Oklahoma National Teen-Ager Pageant is the Official State Finals to the Miss National Teen-Ager Pageant to be held in August, 1986.



Liz Ownbey

There will be contestants from all over the state competing for the title of Miss Oklahoma National Teen-Ager. Aimee Everett of Oklahoma City, the reigning 1985 Oklahoma National Teen-Ager, will crown the Oklahoma Queen. Aimee represented Oklahoma when she competed with 51 other state queens at the National Pageant, which was syndicated for television.

The 1986 winner of the Oklahoma National Teen-Ager Pageant will receive a \$1,000 cash scholarship, a full-four year tuition scholarship to Oklahoma City University, worth over \$15,000, a full-tuition modeling scholarship to Barbizon of Oklahoma City, other prizes, and an all-expense paid trip to compete in the nationally syndicated Miss National Teen-Ager Pageant. At the National Pageant, she will be competing for over \$75,000 in cash, scholarships, and prizes.

Oklahoma City University will also be awarding over \$40,000 in full tuition scholarships to the following pageant award winners: Winner, First and Second Runners-Up, Congeniality, Hospitality, Citizenship, Essay, and Talent Winners.

Each contestant accepted will be requested to participate in the Volunteer Community Service Program of the National Teen-Ager Pageant. This program teaches teenagers to share and to participate in school and civic activities.

Contestants will be judged on scholastic achievement-leadership, poise-personality and appearance. There is no swim suit competition. Talent may be presented at the option of the participant or an oral essay on the subject of "What's Right About America".

Miss Ownbey's hobbies include, basketball, cheerleading, swimming and tennis.

Her grandparents are Jenna V. Ownbey, Bodil Stackhouse and Craig Hutchison, Spearman and great grandmother, Ora Lee Blackburn, also of Spearman.



Old Santa is in Spearman this week----



# MERRY Christmas

Directors, Officers, and employees of the First State Bank extend

Best wishes for a joyous holiday season. It's folks like you who make being in business a pleasure.

Bank Lobby will close Tuesday at 1:00 p.m. December 24th

Drive-in window will close Tuesday 3:00 p.m. December 24th

We will also be closed Christmas Day December 25th

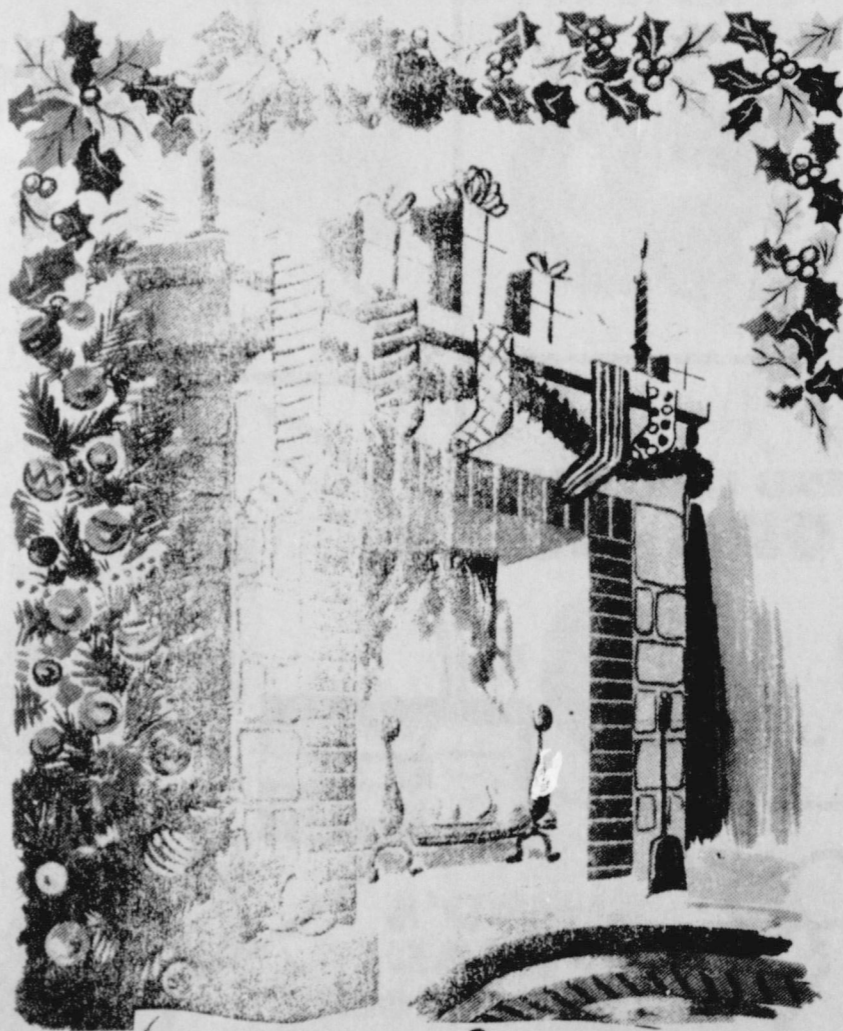


Spearman, TX 79081

Phone: 806-859-5565

Spearman

One NE Court



### The spirit of Christmas...



We're delighted to have this opportunity to send the season's best wishes to you. Sincere thanks for your support.

We will close December 24th at 4 p.m.

and all Day Christmas!

## Consumers Sales Co.

421 W. Kenneth Av.

Spearman

Ph. 659-2012