

Jim Ivey Announces For Sheriff

TPA MEMBER 1980
TEXAS PRESS ASSOCIATION

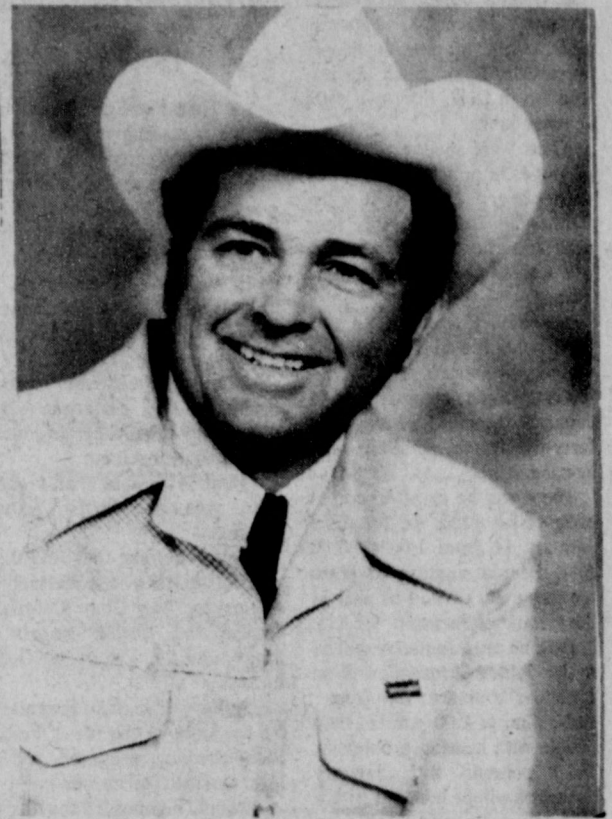


HANSFORD PLAINSMAN

VOL. 11, NO. 12

THE HANSFORD PLAINSMAN, SPEARMAN, TEXAS 79081

SUNDAY, JANUARY 13, 1980



JIM IVEY

Jim Ivey has authorized The Hansford Plainsman, The Spearman Reporter and The Gruver Statesman to announce his candidacy for election to the office of Sheriff of Hansford County, subject to the action of the voters in the Democratic Primary in May.

Jim Ivey, 40 years of age, resides at 720 Gibner Drive, Spearman, with his wife, Kay, and their four children, Kindra 17, Cindy 14, Cole 12, and Nancy 7. Also living in the Ivey home is Josefina Amezcua, a 15 year old exchange student from Culiacan, Mexico. Jim was born at Wheeler, Texas, and graduated from high school at Holly, Colorado. He has attended college at Panhandle State University, Goodwell, Oklahoma, and Adams State College, Alamosa, Colorado. He then changed his major to Police Science and Psychology and attended Phoenix College, Phoenix, Arizona, and Mesa Community College at Mesa, Arizona.

Jim began his career in law enforcement at Chandler, Arizona, a suburb of Phoenix, in 1964, rising to the position of Detective in 1968. He was promoted to Sergeant and Detective Division Commander in 1969, a position he held until March 1973, when he resigned to move to Spearman to raise his family in a smaller community.

Jim has attended the following special schools:
Federal Bureau of Investigation -- Arizona State University.

General Law Enforcement
Basic Police Academy
Narcotics and Dangerous Drugs
Photography
Sex Crimes
Arizona Department of Public Safety;

Traffic Accident Investigation
Traffic Law Enforcement
Special Enforcement in Crowd Control
National District Attorneys Association;
Narcotics and Dangerous Drugs
U.S. Department of Justice;

Narcotics and Dangerous Drugs Law Enforcement

Jim was nominated to attend the FBI National Academy. He has also periodically served as sheriff's deputy in Hansford County in the last three years during times of need.

Jim also has been a director on the YMCA board since its inception.

I believe that the fundamental duties of the sheriff are to serve the citizens of Hansford County, to protect the innocent against crime and criminals, to keep safe their lives and property; and to respect the Constitutional rights of all citizens to liberty, equality and justice. He should be constantly mindful of the welfare of all citizens of Hansford County.

The sheriff should never act officiously or permit personal feelings, prejudice, animosities or friendships to influence his decisions. He should enforce the law courteously and appropriately without favor, malice or ill will, never employing unnecessary force or violence.

I recognize the sheriff's badge as a symbol of public faith, and if elected to be Sheriff of Hansford County, I would accept it as a public trust to be held so long as I am true to the citizens of this county. As Sheriff of Hansford County I would strive to achieve these objectives and ideals.

I would appreciate the opportunity to serve the people of Hansford County as their Sheriff.

WHEAT MEETING
to be held Thursday morning, January 17th, 10 a. m. at the Hansford County Court room.

Jim Allison of Amarillo will conduct the meeting. Coffee and Donuts will be served!

C of C Annual Banquet Planned

The Spearman Chamber of commerce Annual Banquet will be held Saturday, January 26, at 7:30 p.m., in the high school cafeteria. The Guest Speaker this year will be Edward O. Daniel. Mr. Daniel spoke here last year and by popular demand was asked to return. Russell Pogue, Pastor of the First Baptist Church, will be the Master of Ceremonies.

Tickets will go on sale Monday, January 14, for \$8.00 each. There will be delicious steaks served with baked potatoes,

green beans and a salad. The cafeteria ladies will help prepare the food and the steaks will be cooked by volunteers.

The Celebrate group, under the direction of Travis Angel, will entertain the early arrivals in the auditorium from 7:00 till 7:30. We encourage you to arrive a little early and enjoy this fine group of young people. They always put on a great performance.

Come by or call the Chamber office for your banquet ticket.

Dinner-rally to open Buchanan state rep race

A steak dinner and rally on Jan. 17 will kick off the campaign of J.W. "Buck" Buchanan of Dumas for state representative in the 10-county Texas 64th legislative district.

Tickets for the dinner-rally are on sale by supporters of Buchanan, a former state representative for four years. The longtime Dumas resident will return this spring as manager of the North Plains Water District.

The kick-off affair will be at the Dumas Noon Lions building at 7 p.m. Thursday, Jan. 17. Buchanan is a candidate on the Democratic party ticket in a race that presently has two other candidates: Democrat Glenn Harris of Gruver and Republican R.C. Porter of Spearman.

State Rep. Bob Close of Perryton, in his third 2-year term in the 64th district office, is not seeking re-election. The district includes 10 counties in two tiers across the top of the Panhandle.

Hospital News

Patients in Hansford Hospital are L.G. Nobles, Steve Hicks, Dale Prindo, Opal Jones, Kubah Gandy, Gus Birdwell, Grace Archer, Lydia Spradlin, Patrick Scheehan, Willie Shields, Joe Bynum, Donald Burch, Don Savage, Rosalee Grotogut, Ada Deakin, Sarah Vela, Shirley Castor, Oneita Stewart, and Otis Fwenhaugen.

Dismissed were Russell Townsend, Teresa Bynum, Charlotte Jackson, Dorothy Wyatt, Ruby Hull, Sharon Pearson, Peggy Johnson and son, Jewel McClellan, Bessie Walker, Maria Cruz and daughter and Glen Ray Mackie.

Markets

Wheat	3.52
Milo	3.65
Corn	2.55
Soybeans	5.41

Fire Call Answered Thursday

Spearman Volunteer Fire Department answered a 6 p.m. call Thursday evening to Old Hansford where a trash barrel had caught some grass on fire.

The call was received at 6 p.m. and the units went in service at 6:02, arrived at the scene 6:09, and had the fire under control at 6:11 and completely out at 6:19.

American Ag Meet Set

American Agriculture will have an informational and alcohol meeting Thursday, Jan. 17 at 7:30 p.m. in the County Barn.

All interested persons are invited to attend.



As a result of the food embargo to Russia, Wheat, Corn and Milo prices dropped the limit in Hansford county this past week. However grain men say that the prices are possibly coming back,

Changes of Loan Program Due To Embargo

Acting Secretary of Agriculture Jim Williams announced Jan. 8 a series of actions designed to fully offset the potential impact on farm prices and income from the action taken to suspend shipment of agricultural commodities to the Soviet Union.

Effective immediately, the U.S. Department of Agriculture will: increase the wheat loan price to \$2.50; increase the corn loan price to \$2.10 a bushel, with comparable increases in loan prices for the other feed grains; increase the reserve release price to \$3.75 a bushel for wheat-representing 150 percent of new loan price; increase the reserve call price to \$4.63 a bushel for wheat-representing 185 percent of the new loan price; increase the reserve release price to \$2.63 a bushel for corn-representing 125 percent of the new loan price; increase the reserve call price to \$3.05 a bushel for corn-representing

145 percent of the new loan; make comparable increases in reserve release and call price for the other feed grains; waive first year interest costs for the next 13 million tons of corn (corn only) entering the reserve; increase reserve storage payments from 25 to 26 1/2 cents a bushel for all reserve commodities except oats, which is increased from 19 to 20 cents a bushel.

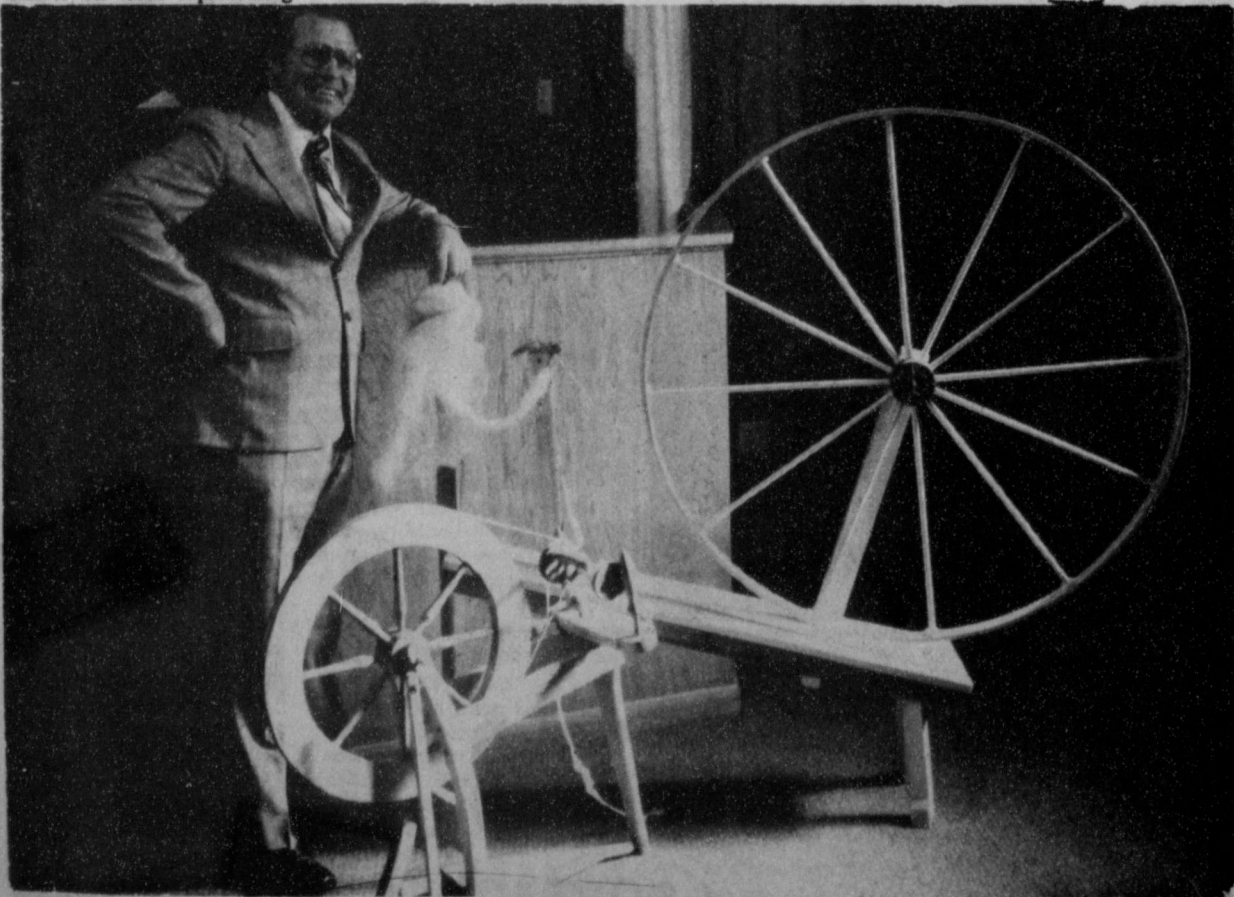
As the Vice President announced on January 7, the Department will also purchase 4 million tons (150 million bushels) of wheat, including the assumption of the contractual obligation on up to 3.7 million tons (135 million bushels) that will not be shipped to the Soviet Union; offer to assume the contractual obligation on up to 10.0 million tons (395 million bushels) of corn.

A decision on a paid diversion program for 1980 crop grains will be made at a later date.

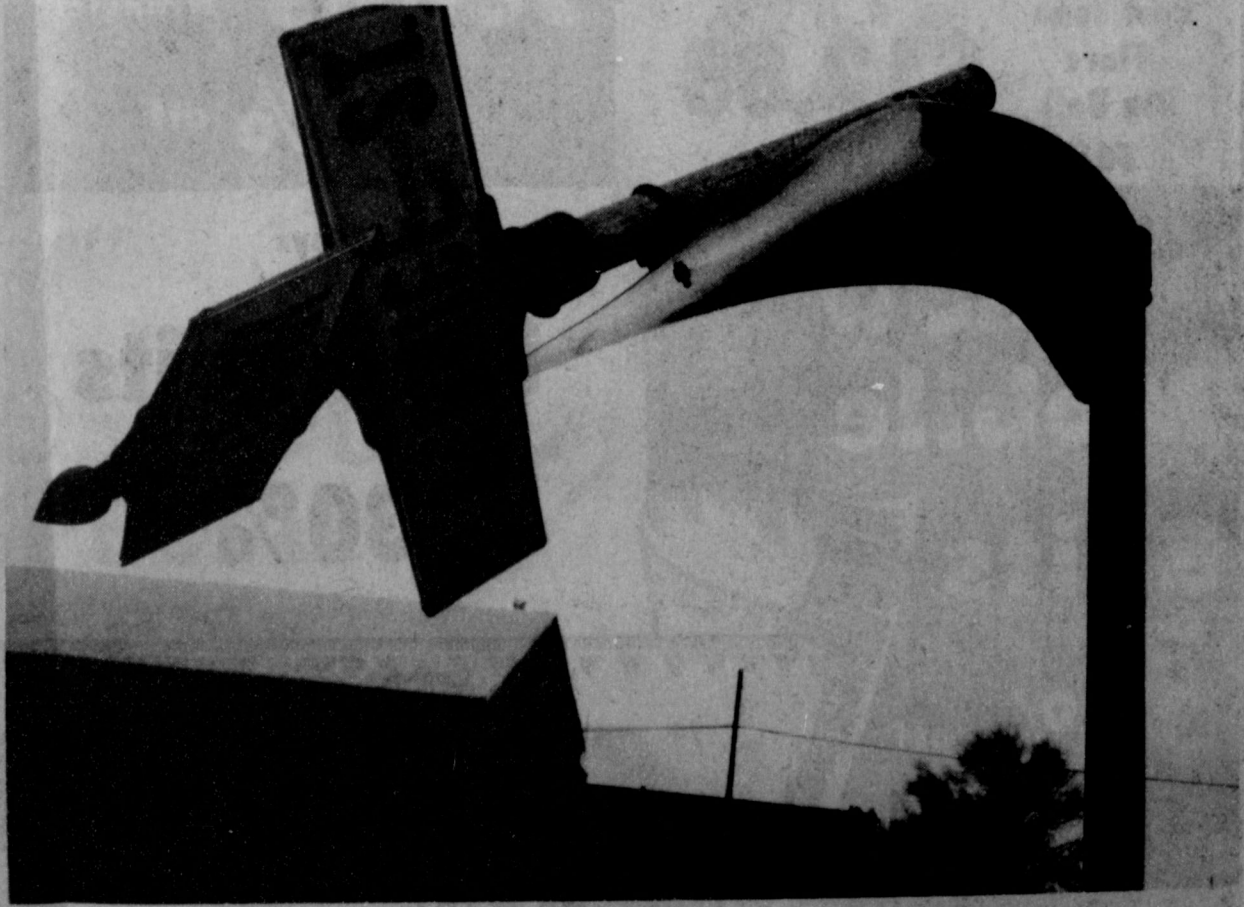
Williams said the increase in budget outlays for the entire package for fiscal years 1980 and 1981 is estimated at \$2.5 to \$3.0 billion. Most of this increase, around \$2.0 billion, will come in fiscal year 1980.

According to Martin Chandler, director of Hansford County ASCS, the prices based on Hansford County Loan Rate are as follows: the 1979 wheat loan is increased 15 cents, from \$2.32 to \$2.47. The Feed Grain loan increases corn 10 cents, from \$2.07 to \$2.17; grain sorghum increases 18 cents, from \$3.34 to \$3.52; Oats increases 5 cents; Barley, 8 cents from \$1.65 to \$1.73; Rye increases 9 cents.

JR. HIGH TOURNEY FINALS TONIGHT AND today (Sat.)



Proverbs 31-19: She layeth her hands to the spindle, and her hands to the distaff. The Rev. Archie Burress will preach on the spinning wheel, and the wonderful women who used them, in his special services at the Union Church Sunday morning!



HI WINDS ON S. BERNICE! If you think the wind was't blowing here last Thursday, you should have been here! In fact, the wind blew this street sign down, between the courthouse and the bank Thursday!

Golden Spread Center News

Women's Division of the Chamber of Commerce assisted with the covered dish dinner at the Golden Spread Center on Tuesday, January 8, beginning at 6:30 p.m. Member hostesses were Ollie Ryan, Ruth Shaver, and Susan Deik. Fifty-two were in attendance.

There were about eight tables of games in progress before the dinner began. Patsy Hunt of the Panhandle Home Health Service was there to take everyone's blood pressure before the dinner.

The Rev. Russell Pogue asked the blessing on the food. The evening's entertainment consisted of thirteen tables of bridge, canasta, dominoes, eighty-four, forty-two, pitch, scrabble, and skip-bo.

There will be an afternoon of progressive pitch on Monday, January 14 from 2:00 to 5:00 p.m. People wanting to learn the game are invited as well as the fanatic pitchers.

Belton representative will be at the Golden Spread Center on Tuesday, January 15, from 10:00 a.m. to 1:00 p.m. to help people with hearing problems.

All persons with January birthdays will be honored with a birthday party and games on Tuesday, January 15 at 6:30 p.m.

Helen Etter will be driving the Golden Spread Center's van-bus on Wednesday, January 16, from 9:00 a.m. to 12:00 noon to pick up the sixty plus bunch and take them shopping, on errands, and to meet appointments at the doctor, the dentist, the court house, the beauty parlor, the butcher, the baker, and the candlestick maker. People needing transportation should call the Golden Spread Center (3521) on Tuesday, January 15, and get your name on the list.

Arts and Crafts people will begin to work on various items for the annual bazaar for Hansford Days on Thursdays from 10:00 a.m. until you have to go home. There will be a break at noon for a covered-dish luncheon.

Table games will be played on Friday, January 18, from

2:00 to 5:00 p.m. Fifteen lucky people will be going to a dinner theatre in Amarillo on Friday, January 18. The Golden Spread Center's van-bus will be leaving the Center at 4:00 p.m.

Spearman Music Club Meets

"A Time For Felix Mendelssohn" was enjoyed and appreciated by members of the Spearman Music Club and their guests on Tuesday, January 8 at 7:30 p.m. at the First Baptist Church.

"If With All Your Hearts", tenor aria from "Elijah" was sung by Bonita Reimer, accompanied by Anne Sanders.

"March of the Priests" from "Athalia" was an organ and piano duet by Audrey Leighnor and Janie Kunselman.

"Hear My Prayer", an organ solo, was played by Anne Sanders.

Bonita Reimer led in the singing of two Mendelssohn hymns by the Club Chorus, "Hark, the Herald Angels Sing" and "O Word of God Incarnate".

The Rev. Edward D. Freeman led the study in the life of Felix Mendelssohn, prepared by Mrs. Russell Townsend.

Audrey Leighnor led the business section of the meeting and Dana Schnell and Phyllis Shedeck served refreshments to members Linda Butt, Betty Freeman, Janie Kunselman, Audrey Leighnor, Bonita Reimer, Anne Sanders, Dana Schnell, Jackie Womble, Eddie Largent, and guests Robbie Reid, Rhema Dell Harris, and the Rev. Edward D. Freeman.

The next meeting will be the Founders' Day program on Tuesday, January 22 at 7:30 p.m. at the First Christian Church. Members are asked to bring their special contribution for the National Federation of Music Club Founders' Day projects. Hostesses will be Wilma Clark, Marites Anolin, and Rosemarie Rivera.

Men who are at a loss for words might try the dictionary.

Ruth Sunday School Class

The Ruth Sunday School class met Monday afternoon, January 7 in the home of Matilda Entekin with Chairman Eva Adkison presiding over the meeting. The opening prayer was led by Sada Hoskins. The Devotional given by Mrs. Sanders was "Just For Today, God's One Another Plan for 1980" How To Follow Jesus" by Billy Graham and "Make New Friends But Keep The Old". The Closing prayer was led by Addie Novak.

Those present were: Eva Adkison, Viola Hutton, Lemmie Russell, Francis Stump, Verna Jrvs, Myrtice Ball, Sada Hoskins, Ora Sanders, Addie Novak, Altha Groves, and hostess Mrs. Entekin.

The next meeting will be Monday, February 4.

Marsha Key Study Group

The Marsha Key Study Group met Wednesday, January 9 in the home of Mrs. Rex Sanders. Mrs. Hiller led the prayer for the ill.

Mrs. F.W. Thomas opened the meeting. Under new business it was decided to have a work day for Mexican Missions January 23 & 30. Everyone is to bring items for packing.

Mrs. Pogue presented a plan that the Ministerial Alliance had brought up for women assisting in the Nursing Home which is to be built soon.

Mrs. Jarvis read the prayer calendar and the names of missionaries with birthdays. Mrs. Entekin led in the prayer of the missionaries.

Mrs. Pogue led the Bible Study on Mark 10 and Matthew 20.

Mrs. Novak closed the meeting with prayer.

Those attending were: Mmes Roscoe Nelson, F.W. Thomas, A.F. Loftin, Joe Entekin, Ed Hutton, Carl Kizziar, Joe Novak, Russell Pogue, Woodville Jarvis, Glenn Hiller, Fred Hoskins, and hostess Mrs. Rex Sanders.

The next meeting will be Wednesday, January 16 in the home of Mrs. F.W. Thomas.

Presbyterian Church News

There is a Sunday Church School class for you every Sunday at 9:45 a.m. with a warm, concerned, loving teacher with an interesting, well prepared Bible lesson.

The Rev. Lewis Koerselman, Jr., pastor of the First Presbyterian Church of Canadian, Texas, will preach at the First Presbyterian Church of Spearman on Sunday, January 13 at 11:00 a.m. at the service for the public worship of God. The Rev. Edward D. Freeman will be preaching at Trinity Presbyterian Church in Perryton. The Rev. Steven Rehrig will be preaching at Canadian. This is an exchange of the ministers of the cluster.

Sunday, January 20 will be Seminary Sunday. Following the morning church worship service there will be the annual congregational meeting to hear and receive the reports of church officers, committees, and organizations in the church and to elect a nominating committee. This meeting, in turn, will be followed by a family covered-dish dinner.

There is a warm, Christian welcome awaiting everyone who attends any of the services and activities of the First Presbyterian Church.

We recommend that everyone go to see the movie, "Jesus", currently showing at the Lyric Theater here in Spearman. It depicts the life of Jesus as it comes to us from the Gospel of Luke. The script is from the American Bible Society's Good News translation. It shows things just as they were in Israel in Bible times with none of the Hollywood glamorizing.

There's always the danger of remembering too much.

Religion, to many people, is meant for other people.

A compliment remains the best way of insuring cooperation.

Library News

The following films will be available at the Hansford County Library through Feb. 7. These films may be checked out.

GROUP 3
CURIOUS GEORGE RIDES A BIKE. 10 min.-color-distributed by Weston Woods-primary.

The marvelously mischievous monkey has several adventures with his new bicycle.

ADVENTURES OF A YOUNG EAGLE. 18 min.-color -distributed by EBEC-Jr. Hi. through adult.

After falling from the nest, the young eagle must learn to survive on the floor of the forest until he learns to fly.

LUCKY CORNER. 20 min.-b&w

distributed by Eastin-Phelan-all ages.

The Little Rascals come to the aid of Gus when he is forced to move his lemonade stand to a remote part of town.

AMERICA'S ENDANGERED SPECIES. 20 min.-color distributed by Films, Inc.-Sr. Hi. through adult.

An indelible presentation of the ways in which man has destroyed the delicate balance of life and death in nature by ignorant and waton devastation of wild creatures throughout the world.

PYGMIES OF THE ITURE FOREST. 19 min.-color-distributed by EBEC-Sr. Hi. through adult.

The Pygmies dwell in small nomadic bands, and so the film begins with account of typical group of Mluti Pygmies moving location of camp.

You are cordially invited to a bridal shower honoring Regina Kenney Monday, January 14 at 7:30 p.m. B & B Farm Industries Hostesses: Pat Trout, Joan Reed, JoLynn Burch, Kelley Trout, Lori Scroggs 9s-Itc

26 WEEK MONEY MARKET


(182 Day Maturity)

CERTIFICATES OF DEPOSIT

RATE **11.858%**

Thursday, Jan. 10 through Wednesday, Jan. 16, 1980

Minimum deposit \$10,000 Federal regulations require substantial Interest Penalty for early withdrawals



NATIONAL BANK
OF PERRYTON, TEXAS

FDIC

WINTER FUN TIME

January 14-19 - Downtown, Spearman

sale

<p>Tall mens</p> <p>Shirts</p> <p>30% off</p>	<p>Boys Denim Double knee</p> <p>SIZE 8-14</p> <p>Levis \$7.98</p> <p>SIZE 2-7 \$7.50</p>	<p>Mens winter</p> <p>Coats & Vests</p> <p>30% off</p>	<p>Boys long sleeve</p> <p>Shirts</p> <p>30% off</p>
<p>Levi Denims</p> <p>Boot Jean Flare Big Ball 501</p> <p>\$12.88</p>	<p>All student & mens fashion</p> <p>26"-38" waist</p> <p>Jeans Levi & Wrangler</p> <p>40% off</p>	<p>Boy Colored</p> <p>Jean</p> <p>25% off</p>	<p>Mens long sleeve knit, sport, & dress</p> <p>Shirts</p> <p>30% off</p>
<p>Mens</p> <p>Snow Mobile Suits</p> <p>30% off</p>	<p>Boys</p> <p>Snow Suits</p> <p>30% off</p>	<p>All young mens & mens dress & casual</p> <p>26"-48" waist</p> <p>Pants Levi, Farah & Haggar</p> <p>30%-50% off</p>	<p>Boys winter</p> <p>Coats & Vests</p> <p>30% off</p>

CATES MEN AND BOYS

221 MAIN Spearman 659-3426

8:30 - 6:00 MONDAY - FRIDAY 8:30 - 7:00 SATURDAY

AT RED HOT SAVINGS!

WANT ADS

CAPROCK MONUMENT CO.

Dealers of Georgia Granite, Georgia Marble, Colored Granite, & Bronze.

represented by

BOXWELL BROS. FUNERAL HOME

519 S. EVANS
659-3802

Hansford County Planned Parenthood
265. Haney
659-2483
Spearman
Mon.-Fri.
Call for an appointment,
305-Rtn

SERVICES

SERVICE: Pits cleaned, wet or dry. Dragline or loader. Also, dozer, grader, carry-all service. Lee Roy Mitchell, 806-733-2384, Gruver, Texas 79040.

Pee Wee's Plumbing Service
Roto-roooter, Acoustical Ceilings. Blown Insulation in walls and ceilings. Appliance Service, used appliances for sale. 659-2811 or 659-3781.
20-rtn

KIRBY SALES & SERVICE.
New & reconditioned vacuum cleaners. Claude Newell, 912 S. Bernice.
8-rtn

Alcoholic Anonymous meeting 8 p.m. Friday, Home Demonstration Club building, 305 N. Bernice. Phone 733-2170 for information.

Al-Anon meetings 8 p.m. Friday, Home Demonstration Club building, 305 N. Bernice in back room. Phone 659-3181 for information. Ask for Al-Anon.

NOTICE
Wallace Monument Co. Monuments, Curbings, Grave Covers
Local Representative
LEONARD JAMESON
Spearman, Texas
20-rtn

ATTENTION: List this phone number, 435-5289 with your emergency numbers. If a pipe breaks or washing machine overflows our machine can suck up the water and save your floors from damage.
J. & W. Steam Cleaning

SNOOPY'S DAY SCHOOL
Open 7 a.m. to 7 p.m. Mon-Fri. Sat 8 a.m. to 5 p.m. Phone 659-3328.
48-rtn

MONUMENTS
Save 20% to 30% Agents and Undertakers Commission
ALVA MONUMENT CO.
Alva, Okla.
51-rtn only

MEDICAL INSURANCE BILLING SERVICE

Will bill all types of medical insurance - Hospitalization, Out Patient, Medicare, Medicaid, Major Medical and yearly billings.
Ten years experience.
Contact Eileen Sutherland at 30 1/2 S. Barkley.

NEW STEAM SHAMPOOER
with brushes
Rental \$8.95 per day. Available at 716 Cotter Drive after 4 p.m. and Saturdays and Sundays. Regular Steam Rinse & Vac Shampooer, \$5.95 per day at Gordon's Drug and after 4 p.m. and Saturdays and Sundays at 716 Cotter Drive.

"Need some painting done?"
Call Rev. Ron Clark, Hitchland Community, 405-888-4468"
95-1tc

MISCELLANEOUS FOR SALE

MFF steel bins and buildings. All sizes 25% off thru Feb. 1. Phone Terry Haye 806-377-6115.
9-7tc

FOR SALE: 1977 Dodge Manaco 2 dr. very clean See at 604 Evans or call 659-3684.
25-rtn

MOBILE HOME FOR SALE: 1979 Chickasha 14 x 80 3 bedroom, 2 bath, fireplace, shingle roof, masonite siding, cedar in color; 3 ton central heat and air, 16 cubic feet frost free refrigerator with ice maker, washer-dryer. Call 658-4421 in Booker after 6.
9-rtn

FOR SALE: Fiber glass top Fits 74-77 El Camino \$175.00 Call 2892

FOR SALE: Copper, double kitchen sink, good stove top and hood.
Call 659-3972 after 4 p.m.
95-3tc

Reduce safe and fast with GoBese capsules and E-Vap "water pills" Spearman Drug.
8-6tp

Decorator cakes & cookies for parties, special or just at home. Call Debbie at 3986 or call 3328.
485-rtn

FOR SALE: 1979 Trans AM. Good condition. Call 659-3494 after 6 p.m.
9-2tp

FOR RENT

FOR RENT: Large 3 bedroom, 2 bath, redecorated. Deposit required. Inquire 303 Davis St.
9-rtn

REAL ESTATE FOR SALE

FOR SALE: 3 lots with 2 trailer hook-ups. Inquire at 733-2517 -Jay Henderson Womble Real Estate
95-4tc

MAYFIELD REAL ESTATE
Commercial building for sale or lease approx. 1800 sq. ft. on Stinnett highway.

House for sale 705 Wilbanks, 3 bedrooms, 2 baths, double car garage with elec. door, fenced yard. Can buy on several financial plans.

Trailer House lot, with all utilities on Industrial Rd. Owner will finance.
John Mayfield - Broker
435-6528 Salesperson Ruby Lair 659-3436 or 659-2188

FOR SALE-3 bedroom house, workroom, 1 1/2 baths, lots of closet space on 100' x 150 lot, includes 2 bedroom home on back of property. 106 S. Bernice 659-2766.
525-rtn

HELP WANTED

Career Insurance Sales Opportunity
I need an outstanding individual To sell and service established insurance accounts. Generous guarantee plus commission during 2 year Training period. No travel and approx. 120 hours of company paid training. Must be honest and willing to work hard.
Call Melvin Bradley 659-3133 office, or 659-3869.
15-rtn

BUSINESS OPPORTUNITIES

Have a highly profitable and beautiful Jean Shop of your own. Featuring the latest in Jeans, Denims and Sportswear. \$15,500.00 includes beginning inventory, fixtures and training. You may have your store open in as little as 15 days. Call any time for Mr. Kosticky (612) 423-0676.
95-1tp

TEXAS REFINERY CORP. offers PLENTY OF MONEY plus cash bonuses, fringe benefits to mature individual in Spearman area. Regardless of experience write A.P. Pate, Pres., Texas Refinery Corp., Box 711, Fort Worth, Texas 76101.
95-2tc

Own your own highly profitable blue jean or fashion shop for \$16,000. Call any time: Fashion Flair 1-704-753-4048.
95-1tp

McCathern Comments On Embargo

Dear Editor;
Just as the farmers of the nation have been warning for the past two years, governmental actions have been taken which have destroyed their economic base.
"Let the market work" has been the cry of the free traders. "Why should agriculture be protected any more by law than any other industry?", parrots those who fail to understand the intricacies of the agriculture markets.
The laws of nature demand that farmers produce a full years supply of their commodities twelve months in advance of the total demand. Consequently, immediately following harvest there is always a twelve months supply available with only a one day demand.
This past year, farmers were told by the government and by the traders that would demand now surpassed world supply. Farmers were convinced to plant for that demand, for who would deny food to the hungry of the world while we are capable of producing. Crops were planted fence row. Mother Nature blessed us with good growing conditions, and the harvest was bountiful, bins are now bursting with that production.
The past few years have seen a marketing system develop based on the demands of foreign customers, and especially the Russian market because Russia has been unable to produce for the growing demands of her people.
Russia had one of its worst droughts in history in 1979, harvesting only 175 million tons of wheat, in relation to 224 million tons in 1978. Hallelujah! The time had come for the American farmer to regain his economic losses of the past five years; he produced a bumper crop and has a bumper demand!
During the month of December, news releases from the USDA were programming farmers to be prepared for a better price in 1980 because of this increased demand. Campaign rhetoric by the President was emphasizing that his agriculture policy was working. Wheat prices, at the farm, were slightly above the \$4.00 per bushel level, corn prices were slightly above the \$5.00 per cwt. level. Of course, what wasn't being said was that in 1974, wheat prices were above the \$5.50 per bushel level, and corn prices above the \$6.00 per cwt. level, much above the 1979 prices.
BANG! January 5th, 1980, the farmers balloon again was busted! President Carter announced an embargo of all grains to the Soviet Union, because of Soviet actions against Afghanistan. Chaos reigned in the grain markets, markets were closed, and farmers could not sell a grain of their bumper crop at any price! Even the Boards of Trade were closed for the first two days of the following week. Why? Because by the stroke of a pen, markets for 17 million tons of American grains disappeared.
Farmers across the nation, being as patriotic as any other Americans said, "Fine, we aren't too particularly proud of selling grain to our enemies anyway. We only ask that the President implement the protective provisions of our present agriculture laws which were incorporated for just such an emergency as this". That provision states that "in the event of an embargo of grains to any country, the price support loan level will be immediately raised to 90% of parity in order to protect the nations' farmers." This provision was written into the law because history had proven that past embargos had always had an extreme adverse effect on farm commodity prices.
However, because 97% of the nations' voters are non-farmers, and because 1980 is a Presidential election year, the President's advisors, advised him that this provision of the farm law should not be implemented. There was a legal loop-hole which could be used, they said, which would not require him to raise the support level. There are six words which prefaced the embargo amendment. These words are "in the event of a shortage".
And so the nations' farmers once again are left holding the bag. Instead of being able to look forward to increased prices in 1980, most forecasters are predicting that prices now will

Political Announcements

The Hansford Plainman is authorized to announce the candidacy of the following candidates for public office, subject to the actions of the voters in the May Primary Election:
For Sheriff **JIM IVEY**

People who violate the sound laws of nature will pay the penalty without fail.

Some people are never happier than when they're getting others into difficulties.

The best way to become financially independent is to learn how to say "no" to yourself.

Moose Lodge 2212
BINGO
Every Wed. night
7:45 p.m.
Must be 21 years old.
Everyone Welcome
6-rtn

SPORTING GOODS FRANCHISE
Let us assist you in starting your own sporting goods business. Operate from store or residence, full or part-time. \$1000 required. Send name, address, and phone number to Sport-About Inc. 7691 Central Ave NE, Fridley, MN 55432 (612) 784-5819.
75-3tpOnly

Citizens who grow what they eat in 1980, may not have to grumble about the high cost of food.

The Hansford Plainsman

PUBLICATION (USPS 243-660)
SPEARMAN, TEXAS 79081
213 Main Box 458 659-3434
Published Weekly at 213 Main Street
Spearman, Texas 79081
Owner-Publisher William M. Miller
Editor Faye Lynch
Second Class Postage paid at Spearman, Texas 79081
Any erroneous reflection upon the character of any person or firm appearing in these columns will be gladly and promptly corrected upon being brought to the attention of the management.
SUBSCRIPTION RATE: Hansford, adjoining counties, combination with the Spearman Reporter, \$10.40.
Other points, \$14.40.

MEMBER
TEXAS PRESS ASSOCIATION

GORDON'S SEWER SERVICE

All kinds of plumbing repairs, new and residential. Serving Spearman, Gruver and surrounding counties, Call 659-3849 .
24 Hour service

HOUSE FOR SALE

3 bedroom, 2 full baths on corner lot. Call 659-2174 or 659-3425.
6-rtn

We observe that the postoffice delivers tax-due notices on time.
A broken toe is nature's way of emphasizing the importance of the foot.

Insulate Your Home & Save On Energy Costs

Stay Warm For Less
Wood Fiber Insulation
Call for Free Estimate
PeeWee's Service
307 Drossen 659-2811

SILVER COINS WANTED

1964 And Before
2.50 for each quarter
5.00 for each 1/2 dollar
12.00 for each silver dollar (1935 And Before) -
1.00 for each dime
Half Dollars - 1965 - 1970 - \$1 each
Franky Hill Phone A/C 806 273-3718

717 West 7th 659-3878
Spearman, Texas
1320 West Wilson
North Park Shopping Center
Borger, Texas 273-7011

Let Yourself Go!
Think Snow!



CLOSE OUT SPECIAL

ON CONVERSE Athletic Footwear

Sports Tally INC.

YEAR END SALE

MONDAY Jan. 14

T-SHIRTS 20% OFF

JEANS 10% OFF



THE SIGN OF YOUR SPECIALIST IN SPORTS

Social Security Office Open House

The Staff of the Pampa Social Security Office is having Open House January 17, 1980, 10:00 AM to 12:00 AM to show its new office to the public. The office is now located at 125 S. Gillespie. Telephone numbers are the same. Everyone is invited.

Ribbon cutting ceremonies will be at 11:00 AM. Guest speaker will be Mrs. Martha Mc Steen, Regional Commissioner, Social Security Administration, Dallas Region. The Dallas Region is made up of the states of Texas, Oklahoma, New Mexico, Arkansas and Louisiana. Mrs. Mc Steen has been in her present job since 1976. She is a native Texan and a graduate of Rice University and the University of Oklahoma. Some of her former positions were Manager of the New Orleans District Office and Regional Representative for

Health Insurance in both the Denver and Dallas Regions.

Other honored guests will be Ray Thompson, Mayor of Pampa and Artie Aftergut, President of the Pampa Chamber of Commerce.

Howard Weatherly, Branch Manager of the Pampa Office, said the Pampa office opened originally in December 1965 in the Hughes Building. The office moved to North Hobart Street in May 1970 and to its present location.

The office serves 14,755 beneficiaries in Gray, Hansford, Hemphill, Hutchinson, Lipscomb, Ochiltree, Roberts and Wheeler Counties.

If children could name themselves, changes would be made.

Host Families Sought For Students

1) American host families are being sought for 25 Scandinavian high school students from Sweden, Norway, Denmark and Finland for the high school year 1980-81, in a program sponsored by American Scandinavian Student Exchange (ASSE).

Interested families in this area should contact Edna Wilson, 2404 Teckla, Amarillo, Texas 79106. Telephone: 806/352-8822.

Letters should contain the writer's phone number.

The high school students, age 16 and 17, will arrive to the United States in late August 1980, attend the local high school, and return home in late June 1981. The students, all fluent in English, have been screened by their school representatives in Scandinavia and have spending money and medical insurance.

American families with small children are welcome to participate in this program. All host families having a student can deduct \$50.00 a month for income tax purposes.

2) ASSE is also seeking American high school students, age 16 and 17, who would like to spend a high school year with a Scandinavian family or participate in a five-week family stay in the summer of 1980.

AMERICAN SCANDINAVIAN STUDENT EXCHANGE (ASSE) IS THE OFFICIAL SWEDISH HIGH SCHOOL EXCHANGE PROGRAM IN THE UNITED STATES OPERATING UNDER THE AUSPICES OF THE ROYAL SWEDISH MINISTRY OF EDUCATION. THE ASSE PROGRAM IS OFFICIALLY DESIGNATED AS AN EXCHANGE/VISITOR PROGRAM BY THE U.S. STATE DEPARTMENT. SINCE ITS INCEPTION IN 1938 THE PROGRAM HAS RESULTED IN OVER 150,000 STUDENT EXCHANGES IN EUROPE AND THE UNITED STATES.

Corn & Grain Sorghum Conference Set

A Corn and Grain Sorghum Conference sponsored by the Crops and Subcommittee of the Hutchinson County Program Building Committee and the Texas Agricultural Extension Service will be held on Tuesday, January 15 at the Falcon Restaurant in Stinnett. The conference will begin with registration at 9:30 a.m.

Speakers for the conference will be Dr. Frank Petr, Area Extension Agronomist; Dr. Carl Patrick, Area Extension Entomologist; Dr. Robert Berry, Area Extension Plant Pathologist; Dr. Dale Pennington, Area Extension Soil Chemist; Richard Withers, State Extension Agricultural Engineer; and Dr. Fred Alston, Plant Breeder, George Warner Seed Company.

Topics to be discussed are weed control; disease prevention and control; insect identification and control; fertilizer

selection and application; handling, storing and drying of grain; and the future for corn and grain sorghum production.

A \$5.00 registration fee will be charged which will include the noon meal. This fee is payable at the door. However, if you can attend, please call the county extension office at 878-2884, to make reservations.

Only people get old; life is continually new and full of change.

No city or village brags about its climate during a snow storm.

When you abandon the idea that your mission is to regulate other people you're in a position to improve yourself.

THE SPEARMAN JR. HIGH TOURNAMENT, will continue through today, Saturday, Jan. 12th, with several outstanding games. The Lynx teams will be in the finals (boys 8th grade, with the game beginning at 7:10 p. m. tonight.

The Spearman varsity was within 1 point of Boys Ranch last night, in the 4th quarter, but lost a heartbreaker! See you at the Jr. High tourney today, Saturday!

SPEARMAN	15	27	39	52
BOYS RANCH	13	33	43	43
S-Steve Shields, 18; Steve Pindell, 11; BR-Mike Van Tyle, 15; Eddie Taylor, 13.				
Boys Ranch 87, Spearman 81 (JV)				
GRUVER (girls)	14	31	43	51
SUNRAY	10	12	24	33
G-Daris Armes 12, Terri Hart 10; S-Kris Nolan 9, Larresia Crenshaw 8.				
GRUVER	19	32	48	67
SUNRAY	10	22	30	39
G-Randy Karlin 24, Bruce Ammons 8; S-Danny Barton 21, Derrick Fletcher 8.				
Sunray 48 (girls) JV, Gruver 45				
Gruver JV 59, Sunray 43				

Your Asgrow seed dealer.



A mighty good man to know for seeds with a growing advantage.

come grow with asgrow

B&B Farm Industries, Inc.
P.O. Box 638
Spearman, Texas 806-659-2551

fabric from these mills assure you of uniform high quality and greater satisfaction...

- Abbot Fabrics
- Avondale Mills
- Ameritex Fabrics
- Bloomsberg Fabrics
- Blue Ridge Winkler
- Burlington/Klopman
- Charter Fabrics
- Concord Fabrics
- Dan River Mills
- Guilford Mills
- L. Hamrick
- S. H. Kunin
- Lida Counterprints
- Majestic Mills
- Malden Mills
- Mandel Fabrics
- Milliken & Company
- Oakhurst Textiles
- Pamlico Trading Corporation
- Rockland Industries
- Shirley Fabrics
- Spike Corporation
- Springs Mills
- Stafford Fabrics
- Steven/Wayne Knitting Mills
- V.I.P. Fabrics
- J. P. Stevens
- Wamsutta/ Pacific
- A. Wimpheimer
- Pellon Corporation
- United Embroidery
- VanArden
- Stacy Fabrics
- Cran/Cloth Retail

TG&Y fabric shops

you'll find exciting savings on all of these attractive prints

save 50% and dream up a new winter outfit

Fall Clearance Sale

Entire Stock of Fall FABRIC

save on quality!

Take advantage of the terrific savings on better quality fabric pieces today! You won't be able to walk away from this bargain...so stock up now and save.

a bouquet of savings...

Mini-Bouquet Dress Prints Stylishly created for dresses and blouses, these beautiful floral prints are designed from 50% Celanese® Fortrel® Polyester/50% Rayon. So, pick some flowers when you pick your next fabric! 44/45" wide.

1.47 Yd.

Reg. 1.67

V. I. P. fabrics
Spring Magic Florals

50% Fortel Polyester
50% Avril-Rayon
Machine wash, warm
44/45" wide

1.48 Yd.

Reg. 2.49

Wamsutta/Paufu
New Bedford
Calico Prints

100% Cotton
Machine wash, warm; Tumble Dry; Remove promptly
permant press 44/45" wide

1.87 Yd.

Reg. 1.98

HAS THE HIGH COST OF FERTILIZER GOT YOU WORRIED?

There are farmers ★ right here in the Gruver and Spearman area who have the problem solved by using Agri-formulated Compost at a fraction of the cost of fertilizer. They are saving water too! No job is too small or too large, but time is limited, so give us a call to schedule your application now. Free soil sampling is available.

★ Names upon Request
OFFICE: 727 Wilbanks, Spearman
PLANT LOCATION: Gruver, Texas



TG&Y'S ADVERTISED MERCHANDISE POLICY—TG&Y's policy is to always have advertised merchandise in adequate supply in our stores. In the event the advertised merchandise is not available due to unforeseen reasons, TG&Y will provide a Rain Check, upon request, in order that the merchandise may be purchased at the sale price when it becomes available, or you may purchase similar quality merchandise at a similar price reduction. • We will be happy to refund your money if you are not satisfied with your purchase. It is the policy of TG&Y to see that you are happy with your purchases. • It is TG&Y's policy to be priced competitively in the market. Regular Sale Prices may vary market by market, but the sale price will always be as advertised.

Items Available In Fabric Shops January 13-19

PRICES GOOD ONLY AT T.G. & Y. FAMILY CENTER
521 HWY. 207 SOUTH SPEARMAN, TEXAS 659-3742





Insurance Corner

issued, the insured cannot get any other insurance to cover the deductible amount.

Whereas small deductibles in property insurance policies are used to help eliminate "nuisance" claims, the much larger amounts mentioned above help reduce actual insurance costs. That's the purpose of the larger deductibles. Losses involving small amounts happen more frequently than losses involving large amounts. If a policyholder can pay for the smaller ones, thus eliminating them from this coverage, he gets a lower rate and a premium savings.

This information has been brought to you as a public service by John R. Collard, Jr., your one stop answer to complete business and personal insurance protection. Life, home, auto, group insurance, and profit-sharing plans. See John R. Collard, Jr., 405 Davis St., Telephone 659-2501.

LARGER DEDUCTIBLES

In any discussion of deductible insurance clauses, the question: "How much?" often comes up. That question refers to the amount by which the deductible will reduce the premium. Many people know there is a reduction, but some hard figures are sometimes wanted.

In fire insurance, deductibles from about \$5,000 to about \$250,000 are offered at the option of the insured. By referring to a certain schedule, an agent can tell his client the amount, percentagewise, that the premium is reduced with a given deductible amount. For example, a premium will be reduced 31% on a policy with a \$75,000 deductible clause. When a policy of this type is

Scouts Have Indian Costume Program

Cub Scout Pack #578 met Tuesday evening, January 8 at 7:00 p.m. at the Methodist Church with Cub Master Jim Beeson opening the meeting. The Opening Flag Ceremony was by den #3.

The program was given by Seth Cunningham and son Seth from Borger. They showed some their Indian Costumes and talked about the function of the various costumes.

Special guests at the meeting were Boy Scout Master Dwight Sumner and some of the Boy Scouts.

The Cub Master reminded all the Cubs and Dads to be working on their Pinewood Race for the upcoming Pinewood Derby which will be February 9 at the County Barn. This will serve as the Pack meeting for the month of February.

All the Dens were well represented by the Cubs and their families.

After the meeting the refreshments of Seafoam punch and cookies were served.



You can hear those distant drums beating, as these Scouts bring back the Indian customs to the Panhandle! Indians once roamed these very plains of Hansford!



THIS BEAUTIFUL INDIAN HEAD-DRESS IS BEING PREPARED BY THE LOCAL BOYS SCOUTS.

Bridge Clubs

Mrs. Faye Lynch was hostess for the Bid-A-Bit Bridge Club Thursday evening in her home. Mrs. R.E. Lee had high score and Mrs. Lynch had second high.

Enjoying dinner and bridge were members, Mmes. Lee, Frank Hefner, Carrie Marie Berry, Leonard Jameson, Gertrude Archer, W.L. Russell, a guest, Verna Gail Keim, and the hostess.

The Short Bridge Club met in the home of Rosa Lee Butt. Tuesday, January 8. Those attending were: Helen Etter, Lois Gibner, Virginia Head, Elizabeth Holton, Barbara Mc Clellan, Ruth Skinner, Mary Cornelius.

High was won by Elizabeth Holton, second high by Virginia Head and Traveling by Lois Gibner.

The next meeting will be Tuesday, January 22 in the home of Mary Cornelius.

SPEARMAN SCHOOL LUNCH MENUS

MONDAY, JAN. 14

- Pizza
- Fried Taters-Catsup
- Combination Salad-Dressing
- Applesauce
- Oatmeal Cake
- Milk

High School Choice

Steak-Bread

TUESDAY, JAN. 15

- Corndogs-Mustard
- Macaroni-Cheese Casserole
- Green Beans
- Carrot Sticks
- Chocolate Cake
- Yeast Batter Bread-Butter
- Milk

High School Choice

Burritos

LUNCH MENU

WEDNESDAY, JAN. 16

- Mexican Dumplings
- Cole Slaw
- Fruit Mix
- Cornbread-Butter
- Milk

High School Choice

BBQ Beef

THURSDAY, JAN. 17

- Grilled Cheese Sandwich
- Vegetable-Beef Stew
- Buttered Corn
- Congeaed Salad
- Gingerbread
- Milk

High School Choice

Steak Fingers-Catsup

FRIDAY, JAN. 18

- Hot Dog-Chili Sauce or Pimento Cheese Sandwich
- French Fries-Catsup
- Shredded Lettuce-Dressing
- Sweet Pickle Chips
- Birthday Cake
- Milk

SPEARMAN

BREAKFAST MENU

MON. Jan. 14

- Orange Juice
- Dry Cereal
- Milk

TUES. Jan. 15

- Mixed Fruit
- Texas Toast & Jelly
- Milk

WED. Jan. 16

- Apple Juice
- Dry Cereal
- Milk

THUR. Jan. 17

- Peaches
- Biscuit & Sausage
- Milk

FRI. Jan. 18

- Orange Juice
- Dry Cereal
- Milk

Spearman Texaco

We give full service truck & car flats Brake & Minor Tune-ups

FREE LUBE

With oil & filter change using our products

701 Collard

Jerry Hunt-Dealer

659-9973

Tires

Accessories

Batteries

Citizen of the Year Award

Citizen of the Year award Guidelines: (Please follow these guidelines when nominating your choice for the citizen of the year award)

The Guidelines are:

1. Individuals nominated for Citizen of the Year should be cited for activities outside those duties connected with his or her employment.
2. Unselfish with time and capabilities for the betterment of the community.
3. Friend of those in need.
4. Concern for his fellowperson, community and country.
5. Citizen of the community.
6. Above all must be of outstanding character, dependability and reliability.

We encourage you to submit your entry by January 21, 1980. The decision of the judges will be final. The award will be presented at the Annual Membership Banquet, Saturday, January 26, 1980.

NOMINATIONS MUST BE SUBMITTED BY LETTER OR FORM ONLY - NO PETITION OR PHONE CALLS WILL BE ACCEPTED. USE THE FORM FROM THE NEWSPAPER OR STOP BY THE CHAMBER OFFICE. YOUR COOPERATION WILL BE MOST APPRECIATED.

1979
CITIZEN OF THE YEAR AWARD

NAME _____

ADDRESS _____

REASONS _____

Please return your entry to the Spearman Chamber of Commerce, P. O. Box 161 Spearman, Texas by January 21, 1980. A box will be available for your entry, if you would like to stop by the Chamber office, 303 Main. Recipients of previous "Citizen of the Year" awards are:

- 1956 Mrs. R. B. Archer, Sr.
- 1957 E. J. Copeland
- 1958 Oscar Donnell
- 1961 Frank Massad
- 1963 John R. Collard, Jr.
- 1965 Sam Watson, Jr.
- 1967 J. B. Cooke
- 1969 Mrs. E.A. Greever & Jesse Davis
- 1970 Mrs. Frank Davis & Bruce Sheets
- 1971 Harry Stumpf
- 1972 Dean Weese
- 1973 Charlene Bulls
- 1974 L. L. Anthony
- 1975 J. L. Brock
- 1976 Dee Jackson
- 1977 Frances Loftin
- 1978 C. Ralph Blodgett

Fall & Winter

Clearance Sale



ALL LADIES FALL & WINTER SHOES & FASHION BOOTS

(Plus Select Groups of Men's & Children's Shoes)

2 FOR 1

Buy One Pair ...

Get Any Other Pair

FREE!



Reed's FAMILY SHOES

Serving you in two locations:

116 S. MAIN — PERRYTON
209 MAIN — SPEARMAN

Calendar Of Events

MONDAY, JANUARY 14
 Hansford Lodge #1040 - Hansford Lodge Hall
 Library Board Meeting - Library Board Room
 Rotary Club
TUESDAY, JANUARY 15
 Brownie Troop #129 - Girl Scout Hut
 Lions Club - Cliffhangers
 Tuesday Bridge Club - Home of Kathleen Sutton
 Cub Scout Den #2 - Union Church
 Cub Scout Den #3 - First Christian Church
 Cub Scout Den #4 - Boy Scout Room
 Town and Country Home Extension Club
 Old Hansford Home Extension Club
 Holt Home Extension Club
 Golden Spread Senior Citizen Meeting - Golden Spread Center
WEDNESDAY, JANUARY 16
 Women's Division of Chamber of Commerce
 Brownie Troop #99 - Girl Scout Hut
 Marsha Key Study Group - Home of F.W. Thomas
 Lilly Hunley Study Group - Home of JoDell Tigrett
 Presbyterian Women - Presbyterian Church
 Pheleo Circle - First Christian Church
 Susannah Wesley Circle - Methodist Church
 Mary Martha Circle - Methodist Church
THURSDAY, JANUARY 18
 Servitors - B&B Hospitality Room
 Cub Scout Den #1 and Webelos - Home of Linda Beeson
 Grand Slam Bridge Club
 Happy Homes Home Extension Club
 Hi-Lo Bridge Club - Home of Mrs. Faye Lynch
FRIDAY, JANUARY 19
 Girl Scout Troop #42 - Girl Scout Hut
 Art and Craft Guild

Happy Homes Club Met

Happy Home Extension Club met Thursday, January 3 in the home of Adalyn Barnes with President Nan Nicholson presiding. The roll call was answered with "Favorite Dieting Hint."
 The program, given by Peggy Winegarner, was "A Sensible Diet Plan."
 The hostess Adalyn Barnes served delicious refreshments to: Rose Cummings, Patty Sheppard, Nancy Ingle, Nan Nicholson, Wanda Reed, and guest Peggy Winegarner.
 The next meeting will be Thursday, January 17 in the home of Joyce Byers.

Boy Scout Club Met

Cub Scout Den #4 met Tuesday, January 8 at the Boy Scout Room. The boys worked on a "Goody Box" which will be taken home by the boy who is to serve refreshments for the next week.
 They also worked on folding the flag.
 Refreshments were served by Keith Clark to: James Tindell, Lance Harnish, Pete Mauk, Mickel Hargrove, Den Chief Nick Wirsdorfer and leaders Judy Tindell and Jody Tindell.
 The next meeting will be Tuesday, January 9 at the Boy Scout Room with James Tindell furnishing refreshments.

 The lucky man is the one who forgets his bad luck.

 The age of man has little relation to his intelligence.

McWhirter To Speak At FGMFI

Lloyd McWhirter will be the speaker at the Full Gospel Businessmen's Fellowship International meeting scheduled for Monday, January 14 at 6:30 p.m. at the Home Demonstration Building, 305 N. Bernice. A nursery will be provided. There will be a dinner before the speaker and fellowship.
 McWhirter, is a 1966 graduate of Spearman High School. He received a B.A. in Religion and Psychology from McMurry College in 1970, a Master of Divinity in Pastoral Counsel-

ing from Emory University in Atlanta, Ga. in 1972, and a Master of education in counseling and guidance from Georgia State University in 1975. Originally preparing for the youth ministry, he became increasingly frustrated and disillusioned with what he learned about organized denominational religion and finally gave it up entirely.
 For the past seven years he has worked as a Certified Additionologist in the largest private school and drug rehab

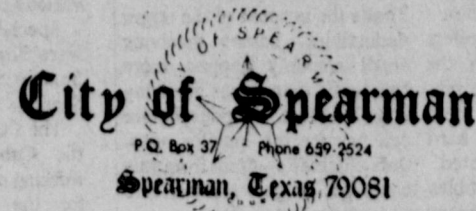
center in the Southwest. A friend and co-worker gradually introduced him to the new and fast growing Full Gospel Movement and together they witnessed many miracles with their new approach to addition counseling.
 Lloyd and his family returned to Spearman last year to resume farming with his father, Jack McWhirter, and plans to begin a part-time Music Ministry next year.
 Interested persons are invited to attend.

Mental Health Chairpersons To Be Recruited

Chairpersons around the state will soon be recruited for house-to-house campaigns in May that will benefit the Mental Health Association in Texas.
 The Mental Health Association is a voluntary citizens organization dedicated to the prevention of mental illness, while working on behalf of the emotionally disturbed and their families.

The 1980 goal of the Association is to improve the care of discharged long term mentally disabled persons. The Association is working for better housing opportunities for these individuals, as well as promoting the information of self-help groups for former patients and their families.

For information on mental health topics such as depression, helping as mentally disturbed person at home, tension, or where to find help, write to the Mental Health Association in Texas, 103 Lantern Lane, Austin, Texas 78731, 512-459-6584.



A G E N D A

TUESDAY JANUARY 15, 1980
 7:30 P.M.

1. PLEDGE AND INVOCATION
2. CONSIDERATION OF APPROVAL OF THE MINUTES OF THE REGULAR CITY COUNCIL MEETING ON DECEMBER 13, 1979 AND THE MINUTES OF THE SPECIAL CITY COUNCIL MEETINGS ON DECEMBER 10, 1979 AND DECEMBER 21, 1979.
3. CONSIDERATION OF APPOINTING ED WILLIAMSON AS THE DIRECTOR OF THE H & S EMERGENCY MEDICAL SERVICE.
4. CONSIDERATION OF SELECTING AN ARCHITECT TO PREPARE PLANS FOR THE NEW FIRE STATION.
5. CONSIDERATION OF ANNUAL REPORT ON THE H & S EMERGENCY MEDICAL SERVICE.
6. CONSIDERATION OF ANNUAL REPORT ON THE SPEARMAN VOLUNTEER FIRE DEPARTMENT.
7. CONSIDERATION OF MONTHLY FIRE, EMS, POLICE, ANIMAL CONTROL AND MUNICIPAL COURT REPORTS.
8. CONSIDERATION OF DECEMBER BILLS PAYABLE AND CURRENT CASH POSITION.
9. OTHER.
10. ADJOURN.

Jim Murray
 JIM MURRAY
 ADMINISTRATIVE ASSISTANT

I CERTIFY THAT THE ABOVE NOTICE OF MEETING WAS POSTED ON THE BULLETIN BOARD AT CITY HALL OF THE TOWN OF SPEARMAN, TEXAS ON THE 11TH DAY OF JANUARY, 1980 AT 3:00 P.M.

Donna Thomas
 DONNA THOMAS
 SECRETARY

AGENDA
 Spearman I.S.D.
 Board of Trustees
 Jan. 7, 1980

- I. Establish quorum
- II. Hearing of any group wishing to come before the board.
- III. Reading of minutes
 a. regular meeting of Dec. 17, 1979 1-2
- IV. Business Manager's report
 a. financial report 3
 b. ratification of bills 4-
 c. tax report 5
- V. Communications
- VI. Old Business
- VII. New business
 a. action on recommendation for Mrs. Tommye Duncan to fill aide's position for the Migrant program
 b. Letter of recommendation for Principals. (1980-81 & 1981-82). Action to be taken at the February meeting. The athletic director's current contract is for 1979-80 and 1980-81. Board policy 3:25 calls for consideration of this contract at the regular meeting of Feb., 1981.
 c. consideration of values to be placed on buildings for insurance purposes. 7
 d. Consider change in authorized reimbursement for use of vehicle 8
- VIII. Superintendent's report
 a. high school calendar for January 9
 b. lunchroom chart 10
 c. enrollment chart 11
 d. board breakfast
 e. recommendations for 1980-81 staff, as provided for in Board policy 3:30, will be submitted by the Principals and Athletic Director in February. These recommendations will require action in March.

Kelly Davis Places In Competition

WTSU -- Three West Texas State University students placed in recent forensic competition at El Paso Community College.
 John Dean, Muleshoe junior, received a first place in the oratory competition. Kristi Reed, Amarillo freshman, placed third in impromptu. Janice Grimes, Canyon freshman, placed third in afterdinner speaking.
 A total of 13 WTSU forensic team members advanced to

final competition before being eliminated.
 In addition, four team members qualified to compete in the National Forensic Association meet in Alabama in April.
 They include Grimes in afterdinner speaking, Kelly Gazaway, Pampa sophomore, in prose; Kelly Davis, Spearman freshman, poetry and Reed in oratory.
 The WTSU Forensic Team will travel to Sam Houston State University for the next competition Feb. 29.

Susannah Wesley Circle Met

The Susannah Wesley Circle met Wednesday, January 9 in the Methodist Church parlor with Barbara Collier as hostess.
 The devotional was excerpts read from GOD LOVES MY KITCHEN BEST by Patty Sheppard. The group then filled out their Yearbooks.
 Those attending were: Alva Garner, Mary Dixon, Lois Shieldknight, Linda Latta, Connie Steger, Judy Martin, Jane Meek, Patty Sheppard and Susan Poole.
 The next meeting will be Wednesday, January 16 at the church.

Bowling News

HIGH INDIVIDUAL GAME	
Merle Morrison	220
HIGH TEAM GAME	
Anthony Electric	822
HIGH INDIVIDUAL SERIES	
Dean McElroy	587
HIGH TEAM SERIES	
Anthony Electric	2407
STANDINGS	
Daley's	42-22
Fausset & Sons Conoco	36-28
Anthony Electric	35 1/2-28 1/2
Betty's	35 1/2-28 1/2
Dee's Grill	35 1/2-28 1/2
Big A Spreader	35-29
George Lease Service	35-29
Ranger Bowl	34 1/2-29 1/2
Frnk Oil Company	32-32
Kirby	32-32
Otis Engineering	29-35
Bull Rogers	26-38
Smith Rentals	23-41
Whits Pharmacy	17-47

A man that studieth revenge keeps his own wounds green.
 -Francis Bacon.
 Neglect will kill an injury sooner than revenge.
 -Owen.
 Living well is the best revenge.
 -George Herbert.
 The revenge of an idiot is without mercy.
 -Thomas Fuller.

Bible Study Group Has Luncheon

A noon luncheon was enjoyed January 9 in the home of Mrs. Lawrence Anthony to conclude an eight year study of the Bible.
 Revelation 20 and 21 were the final chapters discussed. Ladies revealed what they had enjoyed most about this verse-by-verse, in depth study of the entire Bible.
 Luncheon tables were laid with white linen and centered with fresh flowers. The buffet meal included beef crepes, cheesed asparagus, dainty sandwiches, a salad, spiced tea and coffee.
 Present for the occasion included: Susan Delk, Kathleen Sutton, Sylvia Robertson, Rubyjo Wilbanks, Eddie Largent, Betty Freeman, Mary Brown, martha Batton, Sybil Miller, Ruth Lackey, Frances Rhodes, Harriett Wilmeth & the hostess.
 Three charter members of the 8-year study present were: Har-

riett Wilmeth, Sybil Miller and Frances Rhodes.
 The group decided to begin again in the book of Genesis. Meetings are every Wednesday at 1:30 and are open to anyone wishing to study.

BOOK ORDER BLANK

Make checks payable to:
 Hansford County Historical Commission
 30 S. Townsend • Spearman, Texas 79081

- Please enter my order for _____ copies of the History of Hansford County at \$35.00 each plus \$1.75 sales tax. Add \$2.25 per copy for postage and handling, if mailed.
 - I am enclosing my family history and _____ (number of) pictures to be included if space is available.
 - I am interested in knowing more about the printed memorial sections of:
 1/4 page 1/2 page full page
 - I am interested in knowing more about the inclusion of histories of:
 businesses clubs churches
- Check one of the below:
 Please mail my order to me.
 I will pick up my order.

NAME _____
 ADDRESS _____
 CITY _____ STATE _____
 ZIP CODE _____ PHONE _____

LAST CALL FOR FAMILY STORIES

There is still time for you to include your family story in the Hansford County History Book even though the final deadline has come and gone. While materials are being processed to submit to the publisher, the book sponsor, the Hansford County Historical Commission, is accepting stories for a limited time only due to the many requests from both present and former county residents.

Each family unit who lives or has ever lived in Hansford County is entitled to 500 words of free space to tell their story and can submit up to three photos. The book will include stories of oldtimers as well as newcomers, so take time to write yours whether you have lived in Hansford County one month or fifty years.

The book, a beautiful 8 1/2 x 11 size, will be hard-bound in a durable leatherette cover with an emblem depicting the growth and development of the county. The several hundred pages of contents are planned to include the general history of Hansford County; histories of businesses, organizations, and churches; and memorials and tributes as well as family stories. It will be available on a pre-sale basis only for \$35.00 each plus \$1.75 sales tax; order your copies soon since only the number ordered will be printed and time is running out.

For further information about the History of Hansford County or assistance in writing your own family story, call 659-3008.

WE WANT YOUR STORY IN THE HANSFORD COUNTY HISTORY BOOK—DON'T MISS THIS FINAL OPPORTUNITY! OVER 500 STORIES HAVE ALREADY BEEN SUBMITTED.

First look up photos of your family and life, Second begin to think about your life and your family life and then begin to form a story in your mind. Use the following items to help you.

ITEMS TO CONSIDER IN WRITING YOUR FAMILY STORY

I. Account of earlier years

- Parents: Names; occupation; date and place of birth, marriage, death; origin of family name
- Childhood Memories: unusual happenings; special events; school days; reflections of brothers, sisters, and other relatives
- Courtship and marriage

II. Account of present life

- Reason for living in the county
- Vocation (career): training, achievements
- Children: names; date and place of birth, marriage; activities and interests, grandchildren
- Family activities: recreation, hobbies, travel, special recognitions