

Tennis Anyone? See Page 8

Hansford Co. Library
100 Main
Spearman, TX 79081

THE Hansford PLAINSMAN

24 hr. prayer
service 659-2911

Volume 17 No 40

The Hansford Plainsman, Spearman, Texas 79081

Sunday August 10, 1986

Sheriff R.L. McFarlin Receives Commendation

Hansford Sheriff is Retiring President



Sheriff R.L. McFarlin

We all had a right to feel proud last week in El Paso at the Sheriff's Association of Texas annual conference with R.L. McFarlin Jr. presiding. He did an excellent job. Kaye also did an excellent job of presiding for the womens functions.

That sheriff McFarlin had done an excellent job as leader for the board of directors was evident by the quality of the program. The association does a grand job of including the entire family in its conventions. The women and youth, as well as the men enjoyed superb programs and entertainment.

Anyone can belong to the sheriff's association as an associate member and anyone who desires to do so may attend the annual conference. We were proud that Frances and Gene Cudd showed their support of law enforcement by attending the conference. Also attending from Spearman was Judge Blackburn, who was a speaker; R.L. Kaye, Kellye, and Robbie McFarlin and their guests Liz Sumpter and Petty Younger. Those attending from Gruver were: Gary, Nelle, Will, and Kristin Evans.

At the final business session Sheriff McFarlin was surprised with a commendation which reads: "On behalf of the Hansford County Commissioners Court, I commend you for the high honor bestowed upon you. By the Sheriff's Association and for your conduct of that office, and the office you hold as sheriff of Hansford Co., Texas.

May the future bring you blessings and honors beyond and above those you have previously received."

Respectfully,
Hansford Co. Comm. Court
(Signed)
Roy L. McClellan
Hansford Co. Judge

Sheriff R. L. and Kaye McFarlin, Jr., Robbie and Kellye returned home from El Paso last week after attending the 108th. Conference of the Sheriff's Association of Texas.

Sheriff McFarlin has completed his term as President of the Sheriff's Association of Texas for 1985-86. The SAT was organized in 1878. This year saw the largest attendance on record of Sheriff's to attend.

Sheriff McFarlin was presented with the Bill Decker Award. He received a Smith & Wesson chrome plated 38 cal. With the engraving, Sheriff R. L. McFarlin, Jr. 1985-86. In memory of Sheriff Bill Decker of Dallas.

The Sheriff was also presented with a lifetime Sheriff's Association gold badge. A handmade SAT clock, a commendation from County Judge R. L. McClellan and the Hansford County Commissioner's Court. He was made an honorary Texas Police Chief by the President of the Texas Police Chief's James McLaughlin, Jr. Sheriff McFarlin was presented with the Texas State Flag that flew over the State Capitol on January 25, 1986, January 25, 1939 was the date the Texas State flag was officially approved. January 25th. is also the Sheriff's birthday.

Bus Drivers Training School

Bus Drivers training School, beginning 20th August 1986 at Spearman High School. Rm. 110 at 8:00 a.m. Anyone wishing to be certified needs to attend. Classes will be Aug. 20th thru Aug. 23, 1986.

School Dance

Back to School Dance 29 Aug. 1986. High School Cafeteria, 9:00 p.m.



PALO DURO RIVER AUTHORITY

Notice is hereby given there will be a meeting of the Palo Duro River Authority on Tuesday, August 12, 1986 at 2:00 p.m. in the meeting room of the Palo Duro River Authority in the Pittman-Shieldknight Building, 511 S. W. 11th St., Spearman, Texas for discussion and/or action:

1. Reading of the minutes of the last meeting.
 2. Treasurer's report.
 3. Payment of claims.
 4. Refund to Hansford County Tax Assessor for over-payment.
 5. Set tax rate.
 6. Report on progress of project.
- Johnnie C. Lee, Manager

New Student Enrollment Begins

New Students enrolling at Spearman High School may come by the principals office so we can send off for grades from previous school. There will be personal in the office beginning 11 Aug. 1986 from 8:00 a.m. to 4:00 p.m. each day.

Registration for NEW STUDENTS will be Wednesday August 20th and Thursday August 21st from 8:30 until 12:00 each day for grades Kindergarten thru grade Eight.

Registration for grades Kindergarten thru grade four will be August 29th from 8:30 Until 10:30.

Registration for grades five thru eight will be Sept 2, 1986 which will be the first day of school. Students will go to the Auditorium for registration at 8:20.

All new students moving into the District must have records from previous school attended, such as report card and immunization records.

FARM AID

There will be a Caucus for the United Farmer and Rancher Congress sponsored by Farm Aid.

It will be held at the Gruver Court Barn on Monday, Aug. 25th at 7:30 p.m.

Join the effort in achieving Unity!

High School Enrollment

High School inrollment 29 Aug 1986.

- Seniors - 9:00 - 10:30 a.m.
- Juniors - 10:30 - 12:00 a.m.
- Sophomore - 1:00 - 2:30 p.m.
- Freshman - 2:30 - 4:00 p.m.

First Day of School

First Day of School 1986-87 2 Sept. 1986, beginning at 8:15 a.m.

Teacher in Service

Teacher in-service and work days 25-29 Aug. 1986.

\$22.3 million PDRA project . . .

Absentee bond vote opens

Hansford County residents along with voters in Moore County and the town of Stinnett began voting absentee this week in a \$22.3 million dollar bond election to create a municipal water supply reservoir on the Palo Duro Creek.

Absentee voting for the Palo Duro River Authority bond election opened Wednesday at the county clerk's office in Spearman. It will continue through August 22nd.

The County Office is open from 8:30 a.m to 5 p.m. Monday through Friday.

The PDRA election will be held August 26 with three voting boxes in Hansford County. Polling places will be located at the Courthouse in Spearman, the County Barn in Gruver, and the Morse Community building in

Morse, Texas.

Harry Stumpf is the presiding judge, Marsha Kuehl is alternate presiding judge; Merle Delano and Marie Walker will handle the Gruver box, and Vicki Urban, and Milana Reisinger will handle the Morse voting.

Purpose of the PDRA election is to vote a \$22.3 million bond issue which would create a 60,900 acre foot water supply reservoir in northwest Hansford County.

The funds if approved by votes, would be used to construct a 4,900 foot long earthen dam at the junction of the Palo Duro and Horse Creeks.

Construction of the dam is the first phase of a 2-part project. The second will consist of a water treatment and

supply pipeline system to provide drinking water to the cities of Dumas, Sunray, Cactus, Gruver, Spearman and Stinnett.

The water treatment supply system will be built in the future when the lake fills.

The river authority already has a buyer for the bonds, the Texas Water Development Board. In a July meeting, the state agency agreed to purchase the \$22.3 million bond issue for 7.6 percent.

If approved by PDRA voters, the project would be the first to use Texas Water Plan funds. The water development plan was approved by Texas voters last November in a constitutional amendment election.



Robert Meyers, operations manager for GTE presents Tammy Robertson with a check for the YMCA in Spearman. Our many thanks to GTE for the donation, and their excellent improvements in the Spearman area.

Manor News



Our new van is here! We are very excited here at the nursing home. Having the van will enable us to take nine residents, including two wheelchair residents, shopping and visiting other residents in other homes or just for a ride to get out for awhile. The van is equipped with a wheelchair lift so it will enable us to take not only wheelchair residents but also residents that have problems going up

and down steps. The van is 80% federally funded and the 20% is needed in donations. The amount that is needed is \$5,000. Any group, individual or organization wishing to donate or help raise money needs to get in touch with Dennis Robertson or Jody Harnish here at the Manor. We have waited 3 years for this van and it will be put to good use. All help would be greatly appreciated.

Rain and Hail

Heavy rain, accompanied by hail 2 miles South of Spearman hit the Spearman area at about 11 p.m. Thursday night. Dopler Radar from Channel 10 in Amarillo pictured a yellow, green cloud formation North of Spearman, between Guymon and Canadian moving South, at 10:30 p.m. The rain began falling in Spearman at 11:00 p.m. Most observers thought there might be hail in the formation especially as it pictured so yellow on channel 10 dopler radar. Sure enough, 2 miles south of Spearman hail came down and much of the maize was damaged, and on down to the Agco Elevators where heavy rain fell forcing the hiway dept. to set up a traffic control blockade as of 11 a.m. Friday morning.

Spearman received 1.44 inches of moisture, with Gruver reporting little or no rain. Perryton received .25 with the rain and hail being scattered in the area.

Farmers get early details of 1987 wheat program

Details of the 1987 Farm Bill which relate to the wheat program have been revealed by Keith Martin, executive director of the Hansford County Agricultural Stabilization and Conservation Service.

Martin said provisions of this year's version of the Farm Bill are substantially the same, but are again subject to change before the program is implemented. Sign-up dates for the program are from Oct. 1, 1986 through March 30, 1987.

The 1987 base will be computed by averaging the base acreages of the years 1982-86 planted and considered planted.

"We'll look back at each of those years, add them together and divide by five. If, for instance, a farmer didn't participate one year, we'll still count that year to establish the (projected) 1987 yields. But if the 1986 yield is less than 95 percent of the 1985 yield, then we'll use 95 percent of the 1985 yield," Martin said.

For most farmers, the 1985 yield will probably be greater, but not five percent greater than 1986. Martin said established yields will be counted, not actual yields.

Target prices for 1987 will be \$4.38 a bushel, which is the same as 1985. Loan rates will be fixed at \$2.28, down from \$2.40 last year.

The 1987 program will require a 27.5 percent reduction from the base, and will permit to be planted 72.5 percent of the base. The reduction acreage probably will be available for haying and grazing during seven months of the year, but the months have not been set by the state committee, which must request the acreage conservation reserve (ACR) - what was formerly referred to as set-aside, diverted acreage or layout.

Instructions from the state are forthcoming, Martin said.

Last year, the Hansford County Committee banned grazing during the months of June through October.

The 50-92 provision will again be in effect this year, Martin said. This means a farmer will be paid 92 percent of the monies allowed if he plants at least 50 percent of the base allowed. (On a 100 acre farm, 72.5 acres are allowed, so the farmer must plant at least 36-25 acres.)

In the ACR acres, the farmer may plant non-program crops like hay-grazers, but must not plant crops like beets, cotton, soybeans, sorghums, or other grains.)

The greatest change in this program, Martin said, will be the elimination of the 5-10 percent paid diversion. New to 1987 program is the concept of cross-compliance, which means a farmer who enrolls in the wheat program but not in the milo program must also comply with the milo base, or face elimination from the wheat program. Not in effect for 1987 is the off-setting compliance.

Martin said payments were greater under the new farm program - which took effect during the 1986 season - than under the old program ending in 1985, but farmers are "doing more for it", such as holding out more land from planting.

The county loan rate has not been set for 1987, Martin said, but is expected to be slightly under the 1986 rate, \$2.37. The 1985 rate was \$3.26. The national average is presently \$2.28.

Martin gave this example of a wheat farm operation:

"Wheat CAB is 100 acres; 72.5 acres are permitted, and ACR require-

ment is 27.5 acres (based on 72.5 acres planted). Program payment yield is 33 bushels, harvested yield is 37 bushels, and farm market price is \$2.28. The farm is in compliance with all (other) requirements.

"Projected income for 1987 wheat crop: Operator plants the permitted 72.5 acres of wheat and harvests 37 bushels per acre (2683 bushels.) The wheat is sold at a farm market value of \$2.28 per bushel (a total production value of \$6,117.) The deficiency payment, target price (\$4.38) minus the national average loan level (\$2.28) of \$2.10 per bushel will be paid on the program yield (33 bushels) for the wheat acres, not to exceed the permitted acres (\$2.10 x 33 x 72.5 = \$5,024). The production value of \$6,117 plus the deficiency payment of \$5,024 makes a total wheat income of \$11,141."

Deficiency payment rates are determined in two phases:

"First, the rate is the difference (maximum level is \$1.53 per bushel) between target price (\$4.38 per bushel) and the weighted average farm price during first five months (June-October) of marketing year. Payments earned until this phase are limited to \$50,000 per person and will be paid after Dec. 1987.

"Second the rate is the difference (maximum level is 57 cents per bushel) basic loan level (\$2.85 per bushel) and higher of announced loan level (\$2.28 per bushel) or season average farm price (June, 1987 - May 1988). Payments earned under this phase are not subject to \$50,000 payment limitation and will be paid after July 1, 1988."

NOTICE

Silver Wedding Anniversary

CITY OF SPEARMAN NOTICE OF REGULAR MEETING

Notice is hereby given that the governing body of the City of Spearman, Texas, will meet at 8:00 p.m. on the 12th day of August, 1986, at its regular meeting place at City Hall, 30 S.W. Court, in the City of Spearman, Texas, for the purpose of considering the attached agenda.

Cheryl Gibson, City Secretary

CITY OF SPEARMAN AGENDA

Tuesday, August 12, 1986 8:00 P.M.

1. Pledge and Invocation.
2. Consideration of the minutes of regular City Council Meeting held on July 29, 1986.
3. Public hearing concerning the proposed use of revenue sharing funds for the 1986-1987 fiscal year.
4. Consideration of ordinance #536 an ordinance prohibiting consumption of alcoholic beverages and possession of open containers of alcoholic beverages in the City of Spearman, Texas; providing for definition of terms; providing a penalty; providing a severability clause; and providing for an effective date.
5. Consideration of resolution #10-86 a resolution repealing resolution #8-86 that provides for group hospitalization insurance for elected members of the governing body and providing for an effective date.
6. Consideration of authorizing the City Manager to solicit bids for a wrecker service for the removal of junked and impounded vehicles.
7. A report concerning the City Auction held August 7, 1986, to be given by the City Manager.
8. Consideration of executive session under article 6552.17G V.T.C.S. for the discussion of personnel matters.
9. Consideration of monthly fire, ambulance, Police, Municipal Court, and Animal Control Reports.
10. Consideration of monthly bills payable, current cash position, and revenue expense report.
12. Other.
13. Adjourn.



Mr. and Mrs. Harry Stumpf

Mr. and Mrs. Harry Stumpf celebrated their 25th Wedding Anniversary on Monday, July 28, 1986 at the 1st Christian Church in Spearman.

The Stumpfs were honored with a reception given by their four children and their families. Hazel and Harry's children are: Mr. and Mrs. Jimmy Stumpf of Chardette, North Carolina, Mr. and Mrs. Philip Stumpf of Spearman, Mr. and Mrs. Billy Cooper

of Randolph's Air Force Base, San Antonio, and Kayleen Thompson of Spearman.

The Stumpfs were married in Perryton, twenty-five years ago in the 1st Christian Church on July 28, 1961. The Stumpfs had four children and they now have 6 grandchildren.

Hazel and Harry were delighted with the reception and thank all their family and friends for making their 25th Wedding Anniversary so special.

Jim Murray, City Manager
I certify that the above notice of meeting was posted on the Bulletin Board of City Hall on August 8, 1986, at 10:30 A.M.
Cheryl Gibson City Secretary

Charles Ball
Ruth Hutton
Gloria Renteria
Richex Thompson
Jim Brown

Hospital

Patients who were admitted from the Hansford Hospital are:
Manuel Holguin
Cruz's daughter
Patients who were dismissed from the Hansford Hospital are:

How lizard keeps comfy
To help regulate its body temperature, the chuckwalla lizard changes skin color during the day. In early morning coolness the 20-inch reptile turns dark to absorb more solar heat. As the day grows warmer it becomes lighter to reflect the sun's radiation.



An inside view of the beautiful 35,000 sq ft. United Store in Perryton.



Andrea Mires, Bobby Cook, Molly Holton and Don Townsen were four of the outstanding players in the First National Bank Tennis Tournament held here last week.

LEGAL NOTICE

State of Texas County of Hansford

BUDGET HEARING

Whereas, the board of Directors of Hansford County Hospital District have caused to be prepared an annual budget for the fiscal year beginning October 1, 1986 and ending September 30, 1987.

Notice is hereby given that a public hearing on said proposed budget will be held on Thursday, 14 August 1986, at 7:00 p.m. in the board Room of the Hospital 707 S. Roland St., Spearman, Hansford County, Texas.

Dennis R. Robertson

Administrator

Sunday, August 10, 1986



PRICES GOOD AUGUST 10TH THRU 16TH IN PERRYTON, TEXAS ONLY



NO SALES TO DEALERS

CATCH UNITED'S BACK TO SCHOOL BARGAINS!



DOUBLE COUPONS EVERY THURSDAY
DOUBLE STAMPS ON WEDNESDAY & SATURDAY

WITH \$2.50 PURCHASE OR MORE EXCLUDING CIGARETTES

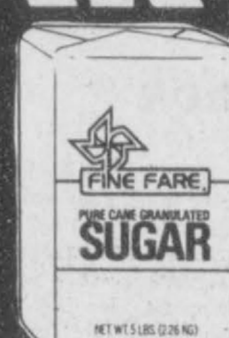
QUANTITY RIGHTS RESERVED

GROCERY

FINE FARE
SALAD DRESSING
69¢
32 OZ.




FINE FARE
SUGAR
\$1.29
5 LB.




DR. PEPPER
ALL VARIETIES
\$1.68¢
6 PACK
12 OZ. CANS

TOSTITOS
ASSORTED
\$2.19
16 OZ.




FINE FARE
VEGETABLE OIL.....48 OZ.
\$1.29

NILLA WAFERS
\$1.39
12 OZ.



HERSHEY'S CHOCOLATE SYRUP
89¢
16 OZ.



USA WET
FRUIT DRINK
ASSORTED.....32 OZ.
69¢

HUNTS SNACK PACK
\$1.09
ASSORTED



TREET LUNCHEON MEAT
20¢ OFF
89¢
12 OZ.



FINE FARE
ORANGE JUICE.....46 OZ.
98¢

POST RAISIN BRAN
\$1.98
20 OZ.



PETER PAN PEANUT BUTTER
SMOOTH OR CREAMY
\$1.59



ARMOUR VIENNA SAUSAGE
5¢ OFF
4 FOR 1
5 OZ. FOR



MRS. BAIRD'S WHEAT BREAD
15¢ OFF
79¢
1 1/2 LB.



CHARMIN TISSUE
\$1.49
6 ROLL



ARMOUR POTTED MEAT
3¢ OFF
4 FOR 1
3 OZ. FOR

DAIRY
PLAINS MILK
2% SUPER PROTEIN OR SLIM 'N TRIM..... HALF GAL.
88¢

WISK DETERGENT
40¢ OFF LABEL
\$1.69
32-OZ.



PLAINS COTTAGE CHEESE
79¢
12-OZ. REG. OR SLIM & TRIM 16-OZ.



PLAINS MILK
2% SUPER PROTEIN OR SLIM 'N TRIM..... HALF GAL.
88¢

FINE FARE BICUITS
SWEETMILK OR BUTTERMILK.....
\$1.10



BIC STICK BLACK PENS.....10 CT. **99¢**
EMPIRE PENCILS #2 L'AD.....EACH **5¢**

SCHOOL SUPPLIES FOR SCHOOL
BOXES.....**49¢**
ALADDIN PLASTIC LUNCH KIT.....**\$4.99**
WOOD RULER.....**25¢**

SPIRAL NOTEBOOK.....40 CT. **39¢**
MEAD SEE THRU BINDER.....**\$1.99**

ELMER'S GLUE
39¢
4 OZ.



CRAYOLAS
79¢
24 CT.

MEAD FILLER PAPER
2 FOR 1
200 SHEETS



QUALITY MEATS

CHUCK ROAST
BLADE CUT
UNITED TRU TENDR OR USDA CHOICE
SUPER VALU FAMILY PAK
LB. **68^c**
SINGLE PAK LB. **78^c**

BONELESS
FAMILY STEAK
UNITED TRU TENDR OR USDA CHOICE
SUPER VALU FAMILY PAK
LB. **98^c**
SINGLE PAK **\$1.08**

ARM ROAST (ROUND BONE)
UNITED TRU TENDR OR USDA CHOICE
SUPER VALU FAMILY PAK
LB. **\$1.08**
SINGLE PAK LB. **\$1.18**

KRAFT
AMERICAN SINGLES
\$1.58
12 OZ. PKG.

JIMMY DEAN
PORK SAUSAGE 2 LB. **\$3.48**
REG. HOT, SAGE

UNITED TRU TENDR
DELUXE BEEF RIBS
LB. **98^c**

HORMEL
FRANK 'N STUFF
CHEESE OR CHILI
1 LB. PKG. **\$1.88**

JIMMY DEAN
PORK SAUSAGE LB. **\$1.75**
REG. HOT, SAGE

LEAN
GROUND BEEF
LB. **\$1.38**

OSCAR MAYER
BOLOGNA
MEAT OR BEEF
8 OZ. PKG. **98^c**

SLICED
BEEF LIVER LB. **58^c**
PEELED AND DEVEINED

LEAN
CUBE STEAK LB. **\$2.28**
EXCELLENT FOR CHICKEN FRY

BONELESS
STEW MEAT
LEAN CUBES OF BEEF
LB. **\$1.58**

OSCAR MAYER
COOKED HAM 12 OZ. PKG. **\$2.98**

OSCAR MAYER
BACON 1 LB. PKG. **\$1.98**

FRESH PRODUCE

CALIFORNIA
ICEBURG LETTUCE
UNTRIMMED
LBS. **\$4.1**
TRIMMED
LB. **29^c**

TOMATOES
SALAD SIZE
LBS. **\$1.3**

FRESH PERSIAN
LIMES
EACH **\$1.10** FOR

LONG GREEN
CUCUMBERS
5 FOR **\$1**

THOMPSON WHITE
SEEDLESS GRAPES LB. **79^c**
FRESH

FRESH
MELONS
SANTA CLAUD CASABA, OR JUAN CANARY
3 LBS. **\$1**

GREEN
BELL PEPPERS
EACH 5 FOR **\$1**

CALIFORNIA
PEACHES LB. **79^c**
FRESH

NEW CROP GREEN
BARTLETT PEARS
LB. **69^c**

KIWI
FRUIT EACH 3 FOR **\$1**

FROZEN FOOD

MINUTE MAID
LEMONADE, LIMEADE, PINK LEMONADE, OR FRUIT PUNCH
12 OZ. **79^c**

BANQUET
DINNERS
(EXCEPT HAM AND BEEF)
11 OZ. **89^c**

TONY'S
PIZZAS
ASSORTED
10 1/2-INCH **\$1.69**

PLAINS
ICE CREAM
RED OR GOLD RING ALL FLAVORS
HALF GAL. **\$1.38**
RICHARDSON'S BUTTERSCOTCH CARMEL
18 OZ. **\$1.48**

GREEN GIANT
CORN ON COB 6 EARS **98^c**

PET RITZ
COBBLERS ASSORTED 26 OZ. **\$1.98**

BANQUET
CHICKEN
REGULAR OR SPICY
32 OZ. **\$2.98**

VAN DE CAMPS
FISH NUGGETS 12 OZ. **\$1.98**

Air Show Will Be Held August 16th?



Curtis P-40 Warhawk

A major air show will be held at Pampa, Texas, Perry Lefors Airport, Saturday, August 16, 1986. The show is sponsored by the Pampa Army Air Field Reunion Association in celebration of the 44th anniversary of the Advanced Twin-Engine Pilot Training School opening in 1942.

There will be over forty WW II vintage and EAA aircraft flying in the show and many other WW II and EAA aircraft will be on display.

One of the rare planes featured will be the Curtis P-40 Warhawk. It was between December, 1941, and July, 1942, that the Flying Tigers, American volunteers in China, made the P-40 fighters famous. Large quantities of these planes were subsequently built during the aircraft's long career. A total of 13,733 planes in a dozen versions came off the assembly lines

between 1939 and 1944. They were used on all fronts in Europe, Africa, and the Pacific and on the Russian front.

The famous shark-jaw symbol painted on the fuselages of the P-40's flown by General Clair Chennault's Flying Tigers was based on that of the RAF's Desert Air Force Squadron 112's planes. The first 100 P-40s sent to China were part of an order for Great Britain. In little more than six months of operations, the Flying Tigers downed 286 Japanese planes. Only 23 Flying Tiger pilots were lost in this period.

The P-40 shown in the above photo was flown by Frank Tallman and used in several Hollywood movies. This plane was flown in the movie Tora, Tora and was used as a pattern to make wooden models for that movie.

There are only 25 P-40s in existence in the world today and only 7 of these are flying.

The P-40 that will participate in the Pampa show will be flown by Col. Skip Trammell. Skip is a member of the Confederate Air Force and lives in Dallas.

Gates will open at 9 a.m., parking will be free. Opening ceremonies will begin at noon with a flag raising ceremony accompanied by the Pampa High School Marching Band. Congressman Beau Boulter Guest Speaker.

Admission will be \$3.00 for 12 years and older, \$1.00 for ages 6 to 12 and under 6 free. There will be lots of food, drinks and PX booths.

For information, call (806) 665-2526, Nina Spoonemore, Executive Secretary.



FarmAid is sponsoring the United Farmer and Rancher Congress in St. Louis, Mo. on Sept. 11-13, 1986.

The delegates for the Congress will be elected from local caucuses which are being held through out the United States.

In the Amarillo area, there are nine local meetings planned.

V.B. Morris, Area Coordinator for the Farmer/Rancher Congress, will be having a press conference in Amarillo on Monday, August 11, at 2:30 p.m. The press conference will be at the Texas Department of Agriculture Offices.

Local meetings are as follows on the next page. For any further information, please call V.B. Morris at 806-733-2203.

The purpose of the United Farmer & Rancher Congress is to provide a forum for the sharing of problems and their solutions for the family farmer. Recommendations for action will be carried to the congress by the approximately 1500 delegates who are being elected in some 500 meetings being carried on in the 48 contiguous United States between July 16 and August 30 of this year.

The delegates who are being selected in a democratic, grass roots program will bring to the congress the problems and solutions as identified by the farmers and ranchers they represent. Meeting in caucuses and forums at the congress, the delegates should be able to identify shared problems and possible solutions. It is the hope of the United Farmer & Rancher Congress steering committee that this cross-section of the American farm community can respond to repeated requests from members of the U.S. Congress to not only identify the real problems of the family farmer, and the causes, but to also suggest ways and means by which the U.S. House of Representatives and the U.S. Senate, together, can move to aid the plight of the American farming and ranching family.

Chamber Chatter

by Cora Queener

Chamber Chatter by Cora
ONLY twenty more working days until school starts! Are you ready?
COMMUNITY REVITALIZATION: Chairman Jim Murray reports that if you donated money to the Adopt-a-Tree project, he did not skip town with your money! There was simply not enough sponsors to plant the trees on National Arbor Day, the trees WILL be planted this fall, if you want to adopt a tree, call Jim or the Chamber of Commerce.

PLANS for the Hansford County Fair are already in progress, if you're interested call 9-5555. Let's make this the best Fair yet. Brice McRee is chairing the committee again this year, thanks Brice.

Thanks must go to Jeff Beedy and Scott Beedy for putting on a great tennis tournament! The Chambers' first one, I might add.

Did you know that the women's division purchased a copy machine for YOUR Chamber? Well, they did, by having fund raisers to pay for it. (Like the super Miss Hansford Pageants this year). A very special thanks to each member of the Women's Division, you have really made a difference in this Chamber managers' life!

Please, Please, please don't forget to vote on August 26. In conjunction with the Palo Duro River Authority manager, Johnnie Lee, the Chamber is planning to schedule a couple of "learning sessions" about the reservoir. You will be notified of the time and date later, but please give your employees and yourself 30 minutes to come by the Chamber office and see the film that has been put together, and to ask any questions they/you may have.

Some of you have asked about the Chamber sponsoring a question/answer session with long distance carriers that may be coming to Spearman in November. I have been in contact with GTE, and I'm working on it, don't give up!

Your membership investment made it possible for me to attend Institute for Organization Management in Dallas, June 23-27. Folks, this was not a vacation (but, I did have a neat time). Thanks to each of you for supporting this Chamber and for paying my salary! I feel that I learned lots of things, and during the next few months you will learn more about what I learned. (What a mouth full!) Thanks Martha Boyd & Rita Curtis for helping while I was gone.

Due to the Chambers financial status at this time, I am the only one here during office hours. So, if I'm a little slow in answering the phone, etc., be patient with me please, the office is now closed during the lunch hour. (but we're open from 8-12, 1-5)

Did you know that the office keeps state maps & brochures for your convenience? If we don't have it we will sure try to get it for you. So, remember us if you still have vacation time coming up!

Is the community calendar helpful to you? If you use it, or have any suggestions/improvements let me know. I still need to know about things going on in Spearman. If we don't know about it, we can't include it on the calendar.

Remember, when things get tough, the tough stick together!

Till next time,
Cora

AUGUST CALENDAR

Aug. 4 Rotary - 12:00 - Cattlemen's Eastern Star - 7:30	Aug. 18 - Rotary - 12:00 - Cattlemen's 19- Lions 12:00 Cattlemen's Defensive Driving - Library - 6-10
Aug. 5 - Lions - 12:00 - Cattlemen's Retail Merchants - 1:30 Chamber off. Co. Fair - 7:30 Chamber office	Aug. 20 - WDSCC - 12:00 - Cattlemen's
Aug. 6 - WDSCC Ex. Board 12:00 Chamber off. Chemical People 5:00 Library	Aug. 21 - Defensive Driving - Library - 6-10
Aug. 11 - Rotary 12:00 - Cattlemen's School Board - 7:30 School Masonic Lodge - 7:30	Aug. 25 - Rotary - 12:00 - Cattlemen's Masons Lodge - 7:30 TEACHER'S START SCHOOL
Aug. 12 - Lions - 12:00 - Cattlemen's City Council - 8:00 - City Hall	Aug. 26 - Lions - 12:00 - Cattlemen's Recognition Picnic - 7:00 Swimming Pool Park - City Council - 8:00 - City Hall
Aug. 14 - Chamber B of D - 12:00 Ext. Clubroom	Aug. 28 - Beginning Day all Sororities
	Aug. 29 - School Registration Aug. 29-30 - Labor Day Weekend

Carthage Jr. Olympian Won 4 Gold Medals at National Meet

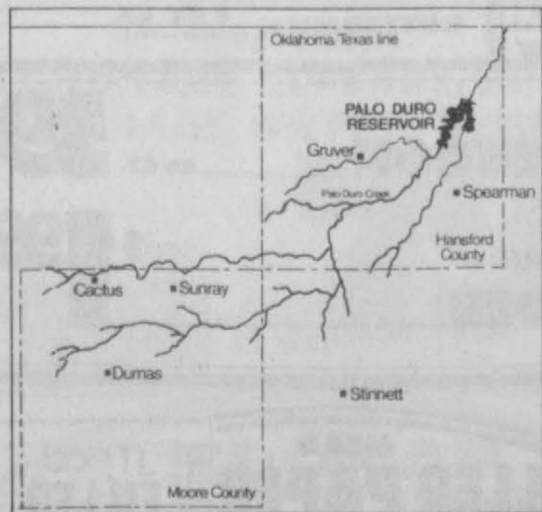


Mike Dayringer, grandson of Mr. and Mrs. Arthur Jacobs formerly of Spearman and now residing in Carthage, Missouri and grandnephew of Mr. and Mrs. Elmon Jacobs of Spearman is a Winner of Four Gold Medals at the National AAU Junior Olympic National Championship in the 13-14 age group competition in Pomona, California. The Events in which he won the Medals were the 100 meters, 200 meters, the long jump and the relay team.

Mike is a Freshman at Carthage High, Carthage, Missouri and had formerly won 4 gold medals in the boys age 13-14 competition, when he competed in the Region Eight AAU Junior Olympic Track Meet held in Lawrence, Kansas. Dayringer qualified for the nationals by winning the 4 gold medals in the 100 meter dash, the 200-meter dash, the long jump and the relay team.

We wish to congratulate this fine young man on these great accomplishments.

Mike Dayringer



A rose by any other name!

Jigs Brillhart says you spell rose, *Camelia reticulata* Luyehyinhung. Thanks to Jigs for this shot gun

Bogie Buggy. Ask Jigs to see his rose. He will be glad to show you the picture.

Light Styles

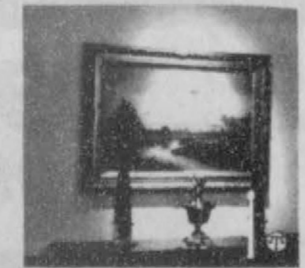
By Nancy Christensen
The paintings in your home can attract the attention they deserve if they are individually displayed with proper accent lighting. The best effect is achieved with controlled directional light such as a narrow beam or spot, combined with background light to reduce contrast.

The key to effective accent lighting is direction of the light source. The fixture housing the bulb should be adjustable or "aimable," and units aimed to the center of the work at a 30 degree angle to the vertical. This minimizes reflected glare, a particular problem with glass covered works.

The light itself should be directed so it falls just within the confines of a picture's frame. GE Reflector bulbs are available with different beam spreads to accomplish this and sometimes experimentation is necessary to determine the best effect. Some fixtures come with adjustable shutters, which give excellent beam spread control.

GE "Precision" bulbs are ideal for accent lighting. These are only two inches in diameter and fit into a wide variety of new recessed and track lighting fixtures.

Precision bulbs are low-voltage, tungsten-halogen lamps



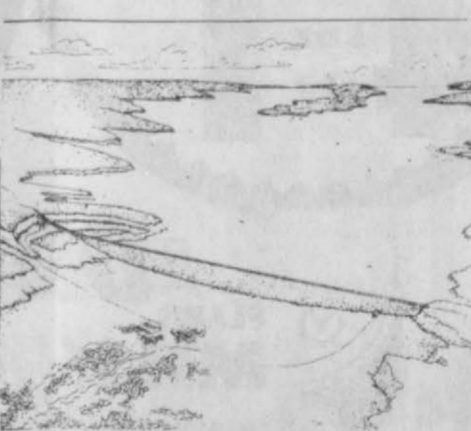
A simple recessed 50-watt Precision lamp is used to spotlight this painting.

that produce a whiter, brighter light than incandescent bulbs of equal wattage. They can be aimed directly at a painting without damage since they allow 60% of the heat to escape out the back of the fixture.

If you are unable to install recessed or track lighting, the old standby in accent lighting - a brass picture light mounted above a frame - will suffice. This should contain

an incandescent T (tubular) bulb of no more than 25-watts to avoid risk of heat damage. Frame mounted lamps are not ideal for lighting pictures more than 24 inches high, however, because the light is concentrated at the top of the fixture.

Nancy Christensen is the Residential Lighting Specialist at General Electric.



Among The Neighbors

For the 9th time Ira and Loree Harbour are delighted to announce the arrival of a grand child. The beautiful Miss Vada Loree arrived in Dallas at the Baylor Hospital, the daughter of Ted and Debra Harbour of Rockwell. Equally pleased is her five year old brother, Austin Ira. She came on July 5th weighing 8 lb and 15 oz. It has been 19 years since the Harbours had a new granddaugher. Her other grandparents are Farris and Vada Wood of Wellington, great grandparents Mr. and Mrs. Woody Wood-also of Wellington, great grandmother, Mrs. Jackie Bell of Quail.

Mr. and Mrs. Edward Dear attended the funeral of his aunt, Johnnie Turner Dear, at which Edward was a pall-bearer. It was held in Boxwell Brothers Chapel at Perryton with interment at Ochiltree cemetery. Mrs. Dear was a resident of Berryhill, Arkansas where Mr. Dear still lives.

Martha and Perry Coursey and son Cliff visited her father, T.D. Sansing, several days last week. They had to cut short their visit and return to Monahans when a burglary was reported on their premises.

Carolyn Davidson expects to be away from her work at Gordon's Drug for at least another two weeks as a result of her eye surgery at High Plains Baptist Hospital last week.

A house guest of Mr. and Mrs. Max Baggerly for several days last week was an old friend Barbara Phelps. She is from Tucson, Arizona.

Any Takers?
A vacation is what you take when you can't take what you've been taking any longer.
-Record, Columbia, SC



FRANK PHILLIPS COLLEGE

Cosmetology Program

Fast: Career Training in less than 10 months!

Inexpensive: Less than \$600 total costs!

Beginning costs: Books and Supplies - \$ 170
Tuition and Fees - \$126 maximum

Contact: Connie Lee
August 18 - 19
Extension 274-5311 Extension 47

Services Held Friday August 8th

Fred Chase
Fred Chase, 80 year old Gruver Pioneer, passed away at 3:30 a.m. Wed. morning Aug 6th. He was in the Hansford Manor.
Service for Mr. Chase will be held at 10:30 a.m., Friday August 8th, at the First Baptist Church, in Gruver.

La Leche League Met

Mothers who wish to breastfeed their babies or learn more about breastfeeding will find encouragement from the Spearman La Leche League. The meeting will be held on Thursday, August 14th, 7:00 p.m. at the First National Bank of Perryton, 201 Main Street.

The League offers mother-to-mother help in a series of four monthly meetings based on the manual *The Womanly Art of Breastfeeding*. The meeting discussions include the latest medical research as well as personal experience. Other services include a lending library of books on childbirth, child care and breastfeeding. For further information call Rebecca Bairley 659-5217 or Theresa Kirk, 659-2794.

Hansford County Fair

It's Almost Time for: Hansford County Fair
When: October 2, 3, 4, & 5
Where: Hansford County Show Barn
Sponsored by: Agriculture Committee, Spearman Chamber of Commerce

Start now on Your entries for the 3rd Annual Hansford County Fair. No matter what your talents or hobbies are, there will be a category for you to enter your exhibits in. Agriculture, Art, Baked goods, clothing, Food Preservation, Flowers, Horticulture, Needlework, Tole Painting, Crafts-Hobbies, Photography, the County Fair will have all these categories.

On Saturday, there will be a Tractor-pull for Kids, sponsored by Hansford Implement-John Deere. Also, a new item for this year's Fair is "Cow-patty bingo" sponsored by the Spearman Chamber of Commerce and the Spearman Jaycees.

Amber Pennington, will be at the County Barn on Saturday afternoon to entertain all of us. Betty Womble from Morse will be organizing more local talent for Saturday also. Melba Rasor from Gruver is working on the publicity for the County Fair. Superintendents for the Fair are: Kermit McKee-Agriculture, Doris Armes - Art, Clothing-Nell Evans, Baked Goods & Food Preservation-Marsha Pipkin, Flowers/Horticulture-Gladiola Flower Club, Needlework-Marilyn Cline, Photography-Mae Wofford Crafts/Hobbies-Nancy Graves, Tole Painting-Terry Womble.

Norma Jean Mackie and Gary York will be organizing the Children's Petting Zoo, and RHO RHO Sorority will have their annual Dog Show Saturday happenings also include the Lamb & Steer Show sponsored by the Hansford Co. Stock Show Board and Ivey's Hungry Cowboy Championship Team Roping.
Sunday afternoon there will be horse races at Panhandle Downs.

There will be concession booths at the Fair Friday and Saturday. Local clubs/organizations are urged to participate! If you are interested in having a booth, call YOUR Chamber of Commerce, 9-5555 now and avoid the reserved. Business booths/displays are \$50.00 each and the food booths are \$25.00. If your club/organization had a booth last year, you have first dibs on the same booth this year.

GET YOUR EXHIBITS READY NOW for the HANSFORD COUNTY FAIR-- October 2, 3, 4, & 5.

Ronald Reagan, President, on selection of ambassador to South Africa:

"The man that I will name will be the best one available for the job and I'm not going to look at what color he is."



Teachers from the Texas Panhandle recently attended a summer short course at Panhandle State University in Goodwell, OK to learn methods of motivating their students to read. The Super Sounder course uses puppets

and a fairy tale theme to make reading fun. Pictured above are: front row, [l to r] Chris McAdams, Stratford; Jan Heiskell, Dalhart; Wendy Gore, Perryton; Lavon Reid, Spearman, Barbara Unruh, Perryton; and Rhonda Craig,

instructor from Enid, OK. Back row, [s to r] Viola Kautz and Elaine Mungia, Stratford; Ginny Brown Dalhart; Patti Peil, Darrouzett; and Phyllis Phillips, instructor from Enid, OK.

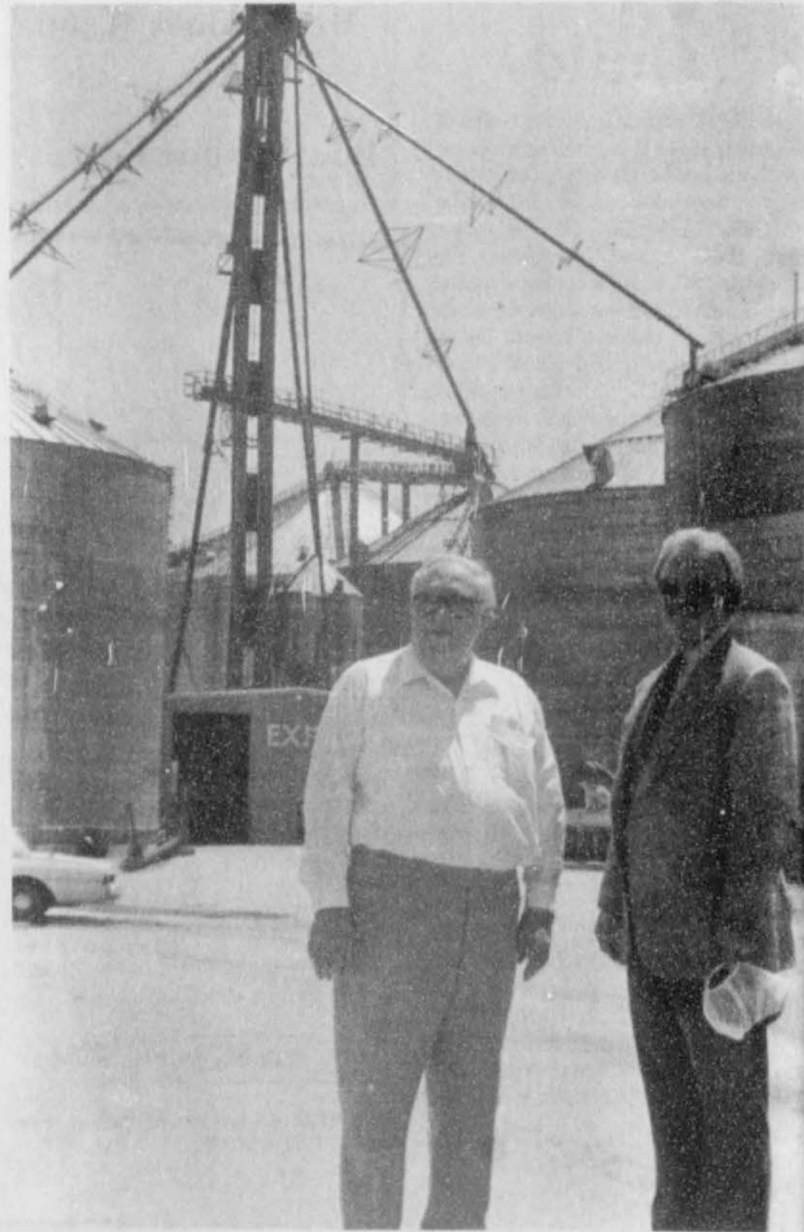
Card of Thanks

We would like to thank every one for their cards letters, phone calls, flowers, and prayers. Especially we would like to thank the First Baptist Church for their prayer-grams.

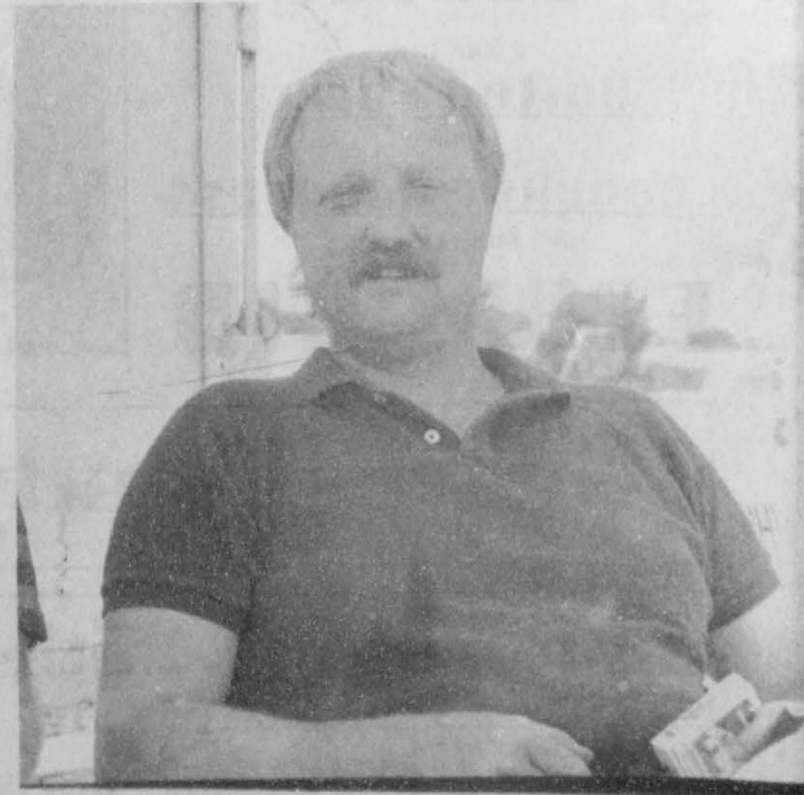
Albert is home and doing well.
Albert and Evelyn Mackie

Fire destroys Herman Boone Home in Miami

BULLETIN: Word was received this week that Herman Boones house in Miami, Texas burned to the ground last week. No one was injured and the home was total loss. The fire could have been caused by lightning.



Carl Archer and Banker Mike Schnell were on hand for the Rotary visit at SpearTex last week. First National Bank is helping with the financing of the local SpearTex Grain.



Ron Filkins Editor of the excellent Dumas Paper was on hand for the First National Bank Tennis Tournament this past week.

Texas History?

Members of the Hansford County Historical Commission have been approached by some local citizens, asking to have a class on Texas History. The Sesquicentennial Year for Texas seems to have sparked an interest for those who never attended school in Texas and want to know some of it's history.

The Historical Commission is considering such a class, if there is interest. Mr. G.W. Robinson, former history teacher in the Spearman Schools and present Chairman of the Commission, is willing to hold the classes. There would be no testing, and no cost, other than a minimal contribution to the Commission.

There are bound to be those who did not attend school in Texas who would like to learn more about the state in

which they reside. If you are interested in such a class, please contact one of the members of Hansford County Historical Commission.

Classes would be held this fall, 1986, once or twice a week from 7:00 to 8:00 p.m. This is for the adults in the community.

Contact by September 1, 1986, one of the following:

Spearman:
G.W. Robinson, Clementine (Mrs. B.F.) Renner, Rubyjo (Mrs. J.D.) Wilbanks, Sylvia (Mrs. T.Ray) Robertson, or Juanita (Mrs. J. L.) Pierce.

Gruver:
Helen Boyd (Mrs. Irvin), Joyce Johnson (Mrs. Wm. L.), and Melba Rasor (Mrs. Aubrey).

Morse:
Jenny Blankenship (Mrs. Sonny).

Happy Birthday



Guess Who?

Guess Who's almost 60?

From your children
and
six grandchildren



First National Bank

The First National Bank and Larry Butts' Family

Present for Spearman Area Residents:

A FREE One Week Clinic ON Basic Tennis Strokes

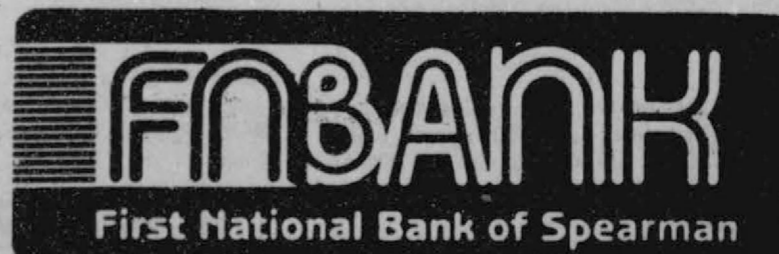
Instructor: Louis Zavala, Tennis Pro

at the Perryton Club

Classes to Begin August 11th at 4:00, 5:00, 6:00 & 7:00 p.m.

Classes for Children and Adults, for Beginners and more advanced Players. Five Hours of Instruction.

Classes will be limited in number of participants so sign up now at the First National Bank for you FREE lessons.



729 W. 7th St.

Spearman, Texas

Phone 659-5544

Weather

DATE	HI	LO
5	94	66
6	93	66
7	96	65

Date 6, Prec. .07

Markets

Wheat	\$2.10
Milo	\$3.50
Corn	\$2.20

Best
of
Press

