



# The Hansford Plainsman



VOLUME IV., NO. 47

SPEARMAN, TEXAS

THURSDAY, SEPTEMBER 5, 1963

## Determination Gets Test Friday



All the signs of fall are with us even if the temperature still gets in the summer figures.

The first football games of the year will be fought out Friday night with Spearman going to Panhandle and Gruver moving off the plains to meet Clarendon.

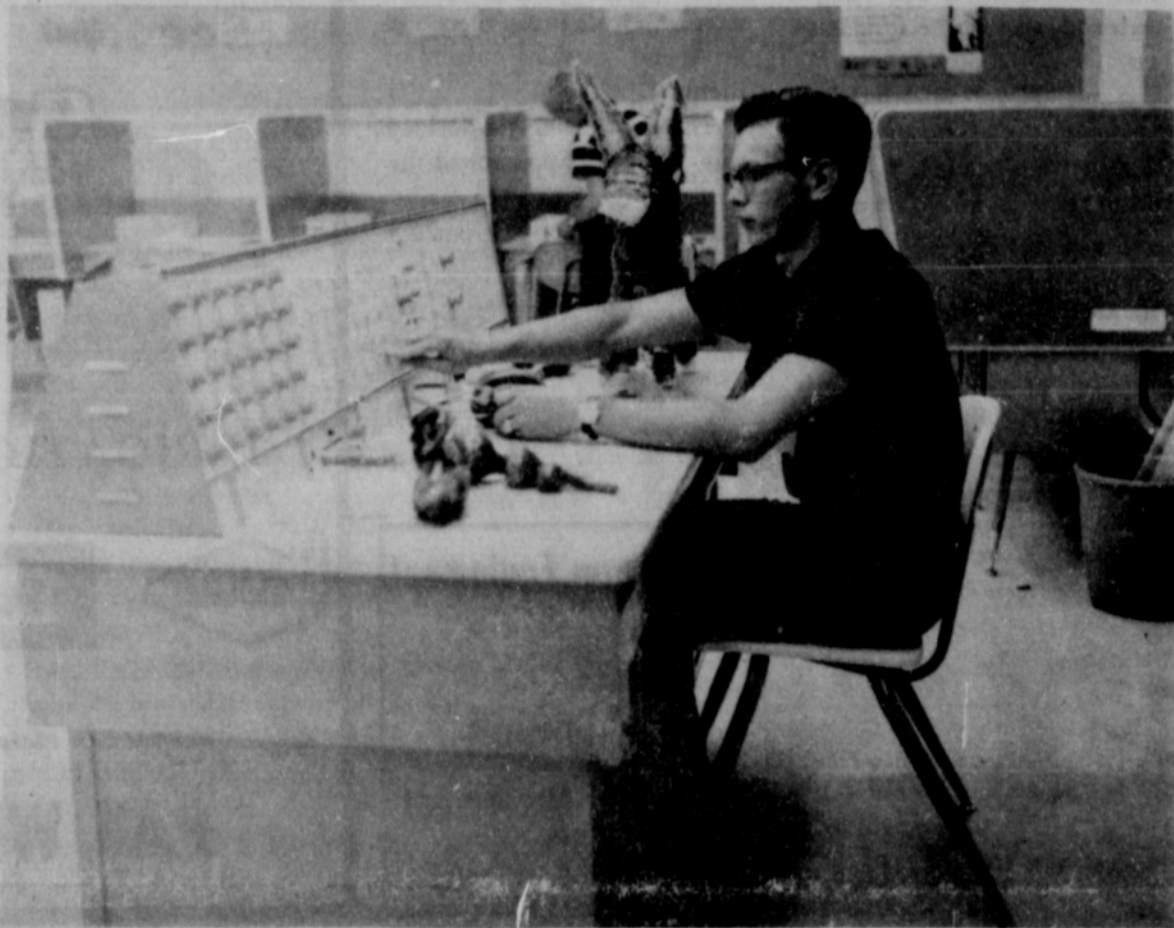
Another sure sign is the advent of new models of tractors, trucks and cars. North Plains has the new Farmall, Excel has the new Chevrolet trucks and Joe Traylor has the new Fords. At Bruce Motors the new Jeep vehicles are on display.

By the last of this month the new automobiles will begin to make their appearances. This year folks can just about have their choice of makes and models. Announcements will be made later this month about new dealerships in town to go with our already established models.

It is always nice to see all of the new models and drink the coffee and eat the donuts that go with the showings, but it means another year is almost gone and we are having another birthday.

We suppose there were a few people who went through the new High School Sunday who were not impressed, but we doubt it. Spearman can be truly proud of this modern facility and for the fact that when it invested its money it put it into a building that will be up to

Con't on page 2



ULTRA MODERN-- This Language Lab in the new Spearman High School has facilities for 30 students and is the latest method for teaching foreign languages. Rick Collins is shown at the control panel of the lab. Rick was on hand Sunday at the open house to explain how the lab facilities operate. More than 1,500 persons viewed the building Sunday. PLAINSMAN PHOTO

### Irrigation Well Permits at 170

Applications for irrigation wells in the county continue to come in at an average of two a day, according to Dallasene Reynolds, secretary of the Soil Conservation District.

Miss Reynolds said 170 permits have been issued this year. Fifteen of these have been cancelled, and five were dry holes, this leaves 155 permits still in effect.

Records turned in at her office show 75 wells completed. She said she knew many more were completed but the well logs have not been turned in.

### Farmers Union Planning County Organization Here

Jay Naman, President of the Texas Farmers Union, was in Spearman Wednesday and Wednesday night laying the groundwork for organizing a Farmers' Union in this area.

Naman said before the meetings in the First State Bank that contrary to some ideas, Farmers Union does not favor strict controls.

He added that his organization has always been concerned first with price. In agriculture, as in any other business, price is the first consideration. All

other questions are of secondary importance he added.

He said the Farmers Union would prefer no controls, but, if controls are necessary to give a profitable price, we favor the government programs.

Naman said he would also discuss proposed wheat and feed grain legislation at the meetings.

The President said integration in the livestock industry was also causing concern in

Con't on page 2

### Lightweight Lynx Meet Panhandle in First Game

Don Seymour and his pocket-size football team will start the big experiment Friday night to see how far a football team can go on sheer determination.

Seymour's Lynx open the season in Panhandle against the Panthers at 8 p. m. Friday.

There is no need to compare weights, Spearman can be rated as one of the smallest class AA teams in the state. The two largest boys on the team are quarterback Johnny Crawford, 166, and tackle Mac Crawford, 163.

Since Seymour and his staff opened drills Aug. 19, and found no hulking 200 pounders blocking the view of the field; the coaches have been stressing determination, second effort and toughness. Friday night this gets

its test.

Panhandle's offense is built around the power running of fullback Mike Eklund, 175. He is rated as one of the best in the area, Eklund did not play in the Panhandle-Stinnett scrimmage Friday night, but is expected to be ready tomorrow night.

Seven starters from last year are back to help Eklund. At ends there is Alton Daniels, 170, and rated by Seymour as a real good boy last year, Leon Shoat, 175, is also a letterman end.

The two man-eating tackles from last year are gone. This year there is Johnny Store, 150, and Glen Armstrong, 160. The Gray boys, Bob, 155, and Bill, 145, hold forth at guard.

Center is Jim Pendergrass, 145, a starter last year.

In the backfield are returnees Eklund and Joe Bob Rosellius, 145, Ronnie Edwards, 140, is the other halfback. Quarterback David Slagle started about half the games at quarterback last year.

In the pre-season picking Panhandle was picked at the bottom of its district, but some of the coaches in 1-A say watch the Panthers for they could easily be on the top.

From the Lynx bag of tricks will come an aerial attack that can be devastating, if the forward wall can be tough enough to give Crawford time to throw.

When not hurrying after one of Crawford's long bombs, Mike Morris will make up part of the running attack from halfback. Ronald McDonald and Larry Butts are scrambling after the other starting halfback job and both are fancy steppers.

At fullback this may be the year David Batson makes all other fullbacks look clumsy. He has the quickness of a halfback, the balance of a ballet dancer and the drive of a big fullback. He can be a mighty serious threat everytime he touches the football.

Up in that forward wall where things can get tough in a hurry Leroy Callaway, 132, and Don Archer, 161, will be at ends. Crawford and Clayton Cockran, 162, are at tackles. Bill Blackburn, 155, will be at center. Four boys are scrapping for the guard jobs. Skipper Robinson, 153, Larry Babbs, 132, Wesley Brinkley, 133, and Richard Smith, 138, are fighting for the positions.

### Golf Tourney Here This Sunday

Spearman Golf Club members will be competing for the trophies again Sunday in a membership tournament.

The tournament for members only will begin at 1:30 p. m. There will be four flights and 18 holes of competition.

### Rain Finally Hits Spearman Area

A sudden shower Wednesday afternoon at about 3 p. m. gave Spearman some much needed rainfall.

The official measurement in Spearman was .55 inch and a light sprinkle of rain was still falling at 5 p. m.

## Enrollment Up in Most County Schools

School enrollments are up in three of the five schools in this area, officials announced today.

Spearman, Gruver and Morse all showed increasing enrollment figures. New Hope was down drastically and Waka enrollment was four less.

New Hope grade school enrollment fell from approximately 40 students to 10 or 11 when the Panhandle Eastern Co. closed its pump station housing

camp. Waka lost four students when it graduated nine eighth graders last year and had only five first graders to enroll this fall. This year the school has 34 students.

High school enrollments at Spearman, Gruver and Morse are all larger than in past years. Spearman finished the first day of classes Tuesday with 308 students in the top four grades. Gruver has 179 in the same four classes and Morse 27.

Supt. W. H. Willoughby of the Gruver Schools says his school has a total enrollment of 633. There is an increase of approximately 25 in high school and 20 in grade school.

Total enrollment at Morse is 93, according to Supt. John Brumley. There are 27 in high school and 66 in the first eight grades. The 27 in high school is a big increase on the past few years. The school has four seniors, four juniors, seven

sophomores and 12 freshmen.

Spearman High School has an increased enrollment of 75 students. At the close of school in May there were 234 students in the high school. Most of the increase is the difference in the size of the 1963 senior class and this fall's freshman class. In May 33 seniors were graduated and this fall 103 freshmen enrolled.

In grade school and junior

high the enrollment remained about stable. The first four grades have 381 as compared to a 372 at the end of school. In the fifth through eighth grades the figure was down with 364 finishing the year and 351 enrolled Tuesday.

Spearman had 100 first graders in classes Tuesday.

Total Spearman enrollment is 1040 as compared to 970 at the end of school last year.

# Over 1,500 People View New Educational Facilities

A crowd of 1500 to 2000 persons visited the new Spearman High School Sunday for the formal dedication program and open house.

A near capacity crowd in the 750-seat auditorium heard Dr. J. W. Edgar, State Commissioner of Education, make the principal dedication address.

He was introduced by Herbert O. Wilborn of Amarillo, a member of the state board of education.

Dr. Edgar said the building was the symbol of Spearman's efforts to solve its own problems of educating its youth.

He went on to say that the state and nation need young

people whose talents have been trained and directed in the right paths.

Dr. Edgar and Spearman School Board President Dr. D. E. Hackley cut the ribbon officially opening the new school.

The dedication program started on the outside at the flag pole where several hundred persons watched the VFW and Boy Scouts raise the flags while the band played the national anthem.

After a band concert in the auditorium Mayor Bob Vaughn extended a welcome to all attending the dedication.

Supt. James Bramlett introduced the platform guests. These were members of the school board now and when the building was planned, school administrators, program speakers, architects and contractors.

Dr. Hackley concluded the program by giving a brief history of the way the building was planned and why the windowless plan was adopted.

Refreshments were served in the cafeteria by the Masonic Lodge, Eastern Star and Rainbows.

## District Court Opens Monday

The regular term of District Court in Hansford County will convene here Monday at 10 a. m.

There are 17 non-jury cases to be heard by District Judge Max Boyer.

Thirteen jury cases are set to be tried in two weeks beginning Oct. 1.

The Grand Jury will be empaneled on Tuesday, Oct. 1.

Under the provisions of a new law passed in the last legislature, more time has been allocated to Hansford County for terms of Court. There are now five weeks in the September term and five weeks in the April term each year.

Famous Hereford cattle of Clarksville, Tennessee are descendants of bulls originally imported by a local bank president. The banker was rightly convinced that a cattle industry could save the area's failing economy.

There were many wise men in earlier days but who reads what they wrote?

## Tall Texan...

Con't from page 1

date for many years to come.

Our father-in-law has been in the school administration business for 40 years and he has seen many changes in the education business. He was impressed with the building.

He said some of the biggest building problems he has are lighting, heat, ventilation and dust. All of these have been solved in this building.

The new building is the quietest school we have been in. Tuesday afternoon we were in the building while school was in session and we did not hear a sound.

With all the classroom doors closed there were no classroom noises and if the shops and band hall were in use there was no sound carrying outside of them.

The one thing we noticed was as we approached the building there was not a single student looking out the window.

New Zealand has a more varied scenery than any other of the world, for the same area, it is said. Its climate includes all types, excepting both extremes.

## Farmers Union...

Con't from page 1

the Farmers Union. He added he was not referring to racial integration.

The integration he was referring to is the practice of large food merchandising chains operating their own feed lots and manipulating the markets with these cattle.

Because of an incorrect time for the meeting in the Sunday Plainsman, two meetings were scheduled. One at 4 p. m. as incorrectly printed and another at 8 p. m. the scheduled time.

T. O. Lesley of Spearman is the Farmers Union representative in this area.

## New Deputy For Billy Hadens

Spearman has a new deputy sheriff, Deputy Sheriff and Mrs. Billy Haden are the parents of a son, James Douglas.

The new lawman was born Sept. 4 in Hansford Hospital and weighed 8 lbs. and eight ozs.

The maternal grandparents are Mr. and Mrs. N. W. Cayton and the paternal grandparents are Mr. and Mrs. Jim Haden.

Want to wear western hats and boots? Join the Texas Highway Patrol and go adventuring.

A weekly public service feature from the Texas State Department of Health

## Accent on Health

J. E. PEAVY, M.D., Commissioner of Health

AUSTIN—Hay fever is neither caused by hay nor is it associated with fever, but the 10,000,000 Americans who suffer from it know the misery of stuffed running noses, watery inflamed eyes, sneezing, wheezing and general discomfort.

Hay fever can be caused by trees, grasses, molds, weeds and even disintegrated insects' bodies. But the greatest sinner—nationwide—is the ragweed. In only five hours one ragweed plant can produce 8 million pollen grains that can be airborne over a distance of 75 miles.

In Texas some varieties of cedar trees are the principle offenders and in some areas of the State, there is no escaping drifting clouds of pollen sweeping across a city from rural areas nearby.

Of the four species of ragweed, three grow knee high, but the fourth—the giant ragweed—reaches head high. For some unknown reason, the giant ragweed's

scientific name is Ambrosia trifida. Ambrosia, of course, means "pleasing to taste or smell." No hay fever sufferer would agree with that definition.

It may seem strange, but the ragweed pollination season begins earlier in the north than in south. In parts of Canada ragweed starts pollinating in the latter part of July, whereas in South Texas it begins about the middle of September.

Reason for this phenomenon is that pollination occurs as the amount of sunlight becomes less. Thus the farther south the plants are, the later their pollination starts.

Why some of us become allergic to cedar pollen; others to ragweed, peanuts, molds or insects remains a mystery. But it is known that the allergic tendency is inherited.

Mild seasonal attacks can usually be treated effectively with simple medications prescribed by your doctor. More severe or persistent cases may require skin tests and desensitization against the offending substances, which differ from person to person.

If asthma or other complications occur, still other methods of treatment will be required. Your doctor can determine which treatment is best for the individual case.

There are also a number of personal measures one can take to avoid or ease the distressing symptoms. Try to keep doors and windows closed as much as possible during the susceptible period. Central air conditioning with filtration, although expensive, can provide gratifying relief.

### JEST A MINUTE

Imagination: Something that sits up with a wife who sits up waiting for her husband.

The toughest part of putting something away for a rainy day is finding a clear day to do it.

### ACCIDENT PREVENTERS

Sliding-door closets are excellent accident preventers, the Construction Research Bureau advises homebuilders.

## New Farmall On Display

The new Farmall tractor is now on display at North Plains Truck and Implement Co.

North Plains Manager Doug Connelly invites everyone to come by and see this big row crop tractor. He said this is the largest row crop tractor on the market.

Connelly said the big Farmall 806 is rated at 110 horsepower by the factory. It has not had its horsepower tests at the University of Nebraska, yet.

Connelly went on to say that this is a completely new tractor from front weights to rear drawbar.

For the best move you ever made contact the nearest office of the Texas Department of Public Safety about improved job benefits as a highway patrolman.

**Need Farm Equipment**  
Try  
**NORTH PLAINS**  
Truck and Implement  
We buy, sell or trade.

See...  
**BOSS**  
FOR  
IRRIGATION PIPE LINES  
**BISCO** **FLO-MOR** **OAKS**  
IF YOU CAN PLOW IT - WE CAN WATER IT  
DEALER  
**PAT WESTERFIELD**  
Box 117 - Ft 7-2700 - Gruver

**SEED WHEAT**  
We have the following **QUALITY** seeds to offer for your fall planting:  
**CERTIFIED**  
Improved Triumph  
Kaw  
**SELECT**  
Improved Triumph  
Kaw  
Tascosa  
Wichita  
SEE US AT AN EARLY DATE  
To Insure An Adequate Supply of  
**Quality Seed Wheat**  
We are equipped to clean and bag seeds and to treat with  
**Ceresan and Dieldrin**  
for smut and wireworms  
MAKE YOUR APPOINTMENTS NOW  
TO HAVE YOUR SEEDS CLEANED AND TREATED  
**B. & B. Grain Co., Inc.**  
659 - 2551 Spearman, Texas 659 - 2660

**The Hansford Plainsman**  
TEXAS PRESS ASSOCIATION  
Member 1963  
Hansford Plainsman Publishers, Inc.  
Jim Davis Burl McClellan  
County-wide independent newspaper published every Thursday at 209 Main in Spearman, Texas. Second class postage paid in Spearman, Texas.  
Editor..... Burl McClellan  
Production Mgr..... Jim Davis  
NOTICE: Any erroneous reflections upon the character, standing or reputation of any person, firm or corporation which may appear in the columns of The Hansford Plainsman will be corrected gladly upon its being brought to the attention of the publishers.

**Cummings**  
Refrigeration  
Heating  
Air Conditioning  
Refrigeration  
Specialist  
Sales-Service  
Phone 659-2721  
Spearman

## County Agent's Report

Arguments should be like fluorescent lamps, throw more light than heat.

### COUNTY BOOTH AT FAIR

I am planning on having a county booth at the Tri-State Fair in Amarillo, Sept. 15-21. I will if I can get enough crops and vegetables to go in. Anyone having vegetables please bring them in for the county display. Below are some vegetables needed and the number: Okra-12 pods, Bell Pepper-6, Summer Squash-3, Pie Pumpkin-1, Other Pumpkin-1, Cantaloupe-3, Cucumbers-3. I would appreciate any item to go in this county booth, but I will need it by Sept. 13.

### MORSE 4-H TRIP

I will be in Lubbock this weekend Sept. 6-7-8 with the Morse 4-H Jr. Leaders on a trip to visit the Plains Cooperative Oil Mill and Texas Tech College. Some 21 4-H members and 5 adult leaders will be making the trip.

### DEFENSE BOARD MEETING

I will be in Amarillo Sept. 11-12 attending the USDA County Defense Board Training Meeting.

### DEMONSTRATION PLOT

My plans are to have a wheat variety Demonstration plot in the county. 13 Varieties will be seeded and 9 pounds of seed of each variety will be available. I am looking for an irrigation farmer who would like to put out this demonstration plot on their farm. If you are interested please contact me and we will discuss the details.

### NEW WHEAT VARIETY

A new wheat variety, Caddo, has just been approved for release in the co-operative plant breeding program of the Texas Agricultural Experiment Station and the U.S.D.A. The new wheat variety was developed from a cross of Marquillo-Oro, Kansas Sel. 787-1 x Wichita made in 1943 at Denton by Dr. L. M. Atkins. This information which follows on Caddo was supplied to me by Dr. Atkins. It has been included in State Performance Trials nurseries since 1957 and in USDA Regional Nurseries since 1960.

Caddo wheat has wide adaptation, with many fine characteristics which will improve the quality of Texas wheat at the market and reduce the hazards of production to the grower. It is very attractive in field appearance and should replace the early varieties Early Black-hull, Wichita and to some extent Triumph and Crockett.

The new variety has several outstanding characteristics. Its test weight is equal or superior to any variety now grown commercially. Its seedling and adult plant resistance to leaf rust is among the best of varieties available. The ability to stand for combine harvesting, as shown by lodging data, is good. The maturity averages about the same as Wichita which will make it popular.

Foundation seed is available at \$6.00 per bushel FOB College Station, Texas. If you want some of this seed please

contact me and I will make the order.

### LAST LINE

"She misunderstood her wedding vow and said "to have and to scold."

## HOLT NEWS

Mr. and Mrs. Steve Jenkins of Lubbock spent a week visiting his parents, Mr. and Mrs. Phil Jenkins, Kathy and other relatives.

Mr. and Mrs. Vernie Rosson of Spearman visited Mr. and Mrs. Henry Self and family at Springfield, Colo. and also drove to LaJunta and Colorado Springs.

Mr. and Mrs. Arch Marshall of Houston were weekend guests of Mrs. B. C. Holt and other relatives. They had been to Colorado Springs and were enroute home to Houston.

Mr. and Mrs. Charles Davis attended the Reagan reunion Sunday in Amarillo.

Saturday night dinner guests of Mrs. B. C. Holt were Mr. and Mrs. Arch Marshall of Houston, Mr. and Mrs. O. C. Holt and Anita, Mr. and Mrs. Fred Holt and family and Mr. and Mrs. Nolan Holt and family.

Altha Groves, Mildred Chamberlain and Mable Edwards of Spearman and Mrs. Bertha Jenkins spent a week at Red River, Gunnison, Durango and Colorado Springs.

Hazel Holt of Sharon, Kans. spent Labor Day weekend with her parents, the Fred Holts and other relatives. Hazel teaches math, science and home ec. at Sharon.

Mr. and Mrs. Frank Gaines and family of Augusta, Kans., Mr. and Mrs. James Beck and Connie of Enid and Mr. and Mrs. Richard Gaines and family spent Labor Day weekend fishing at Canton, Okla.

Mr. and Mrs. Russell Robinson of Pringle were Sunday night dinner guests of Mr. and Mrs. C. W. Kirk.

Mr. and Mrs. Bob Phelps and family of Forgan, Okla. were Labor Day guests of Mr. and Mrs. Dan Jackson.

Mr. H. H. Chevalier is a patient in the Perryton hospital.

Guests in the J. D. Helms home over the weekend were his parents, Mr. and Mrs. P. D. Helms, and his two brothers, Mr. and Mrs. Adrian Helms and family and Mr. and Mrs. Cliff Helms, all of Floydadaya, his sister, Mr. and Mrs. Tom Pennington and an aunt and uncle, Mr. and Mrs. David Armstrong, all of Lubbock.

Mr. and Mrs. Dan Collins were in Amarillo over the weekend to see the Southwest Championship Stock Car races and also visited their parents, Mr. and Mrs. Ebb Collins and Mr. and Mrs. B. H. Savage.

## Crawford Gets Discharge From Union Infantry

In today's society where most of the male population has some kind of military service, a military discharge is about as common as a marriage license, but Cecil Crawford received a military discharge in the mail Tuesday that was worth noting. It was from the Union Army.

Crawford received the discharge papers his grandfather was given when he was mustered out of the Union Army on June 8, 1865.

Christopher P. Lyon was a corporal in Lt. R. C. Roeschlaub's Co. E. 84th Regiment of the Illinois Infantry.

Lyon volunteered for duty on Aug. 1, 1862 for three years of duty or the duration of the war. He was discharged at Camp Harker, Tenn.

The Union soldier was born in Ramney, Va., but had mo-

ved to Illinois before the Civil War. He was 18 years old and a farmer when he volunteered for the army.

John T. Mimms signed the discharge papers and Cpl. Lyon received his final army pay on June 16, 1865. G. M. McConnell was the paymaster.

Crawford said his grandfather came to Oklahoma and homesteaded near Buffalo sometime after the Civil War. He added that he did not know much about his grandfather, he died when Crawford was only four years old.

The discharge had been kept in a family safety deposit box in the Buffalo bank all these years and was still very legible.

Mr. and Mrs. Bob Potts were at Lake Altus, Okla. over the weekend.

## Gruver News

Mr. and Mrs. Frank Pittman are the parents of a son Chet Erlis born in the Perryton Hospital, Aug. 22. He weighed 7 lbs. 12 oz. Grandparents are Mr. and Mrs. Alvin Cator and Mr. and Mrs. Erlis Pittman of Morse. Great grandparents are Mr. and Mrs. Charlie Davis.

Troy Wayne Banther, new son of Mr. and Mrs. R. W. Banther arrived Aug. 25 at Hansford Hospital. Maternal grandparents are Mr. and Mrs. Wesley Latimer of Gruver.

W. C. Gammil of Randlette, Okla., father of Otho Gammil passed away last week.

Mr. and Mrs. Loyd Carroll spent the Labor Day weekend with his brothers, Oscar and Bryce Carroll and wives at Seminole.

Mr. and Mrs. J. W. Haynes of Santa Fe Springs, Calif., who have been guests in the home of her sister, Mr. and Mrs. W. C. Blevins left for their home Thursday of last week.

Mr. and Mrs. Ronnie Riley and Rona are moving to Logan, N. M. for a couple of months.

Miss Pam Cooksey will attend Lutheran College at Sequin this fall.

The Y. W. A. Girls honored Mrs. Dale Harris with a baby shower Aug. 21 in the home of Mrs. Fred Womble. The serving table was covered with white linen and centered with an arrangement of pink and white summer flowers. The honoree was presented with a corsage of pink and white carnations.

## Too Late to Classify

FOR SALE-Trailer house 40 x 48. Good condition. Priced to sell. Phone 659-3015.

T47-1p

WANTED-Lady to babysit in my home two days a week. Call Mrs. Brad Beedy 659-2605

T47-tfc

## ON DISPLAY IN OUR SHOWROOM

MORE **POWER** TO YOU  
FOR HIGH SPEED FARMING



NEW TOTAL POWER

110 H.P.\*

806

89 H.P.\*

706

\*Gross Engine Horse power. Manufacturer's corrected estimate.

See and try them... NOW!

**HP** The people who bring you the machines that work  
**NORTH PLAINS TRUCK & IMPLT.**

Spearman

659 - 2421

(Pride of the Plains)

102 W. Kenneth

**HANSFORD  
HOSPITAL NEWS**

Patients in Hansford Hospital this week are Billi Dean McGuire, Robert Gaston, Edith Dessaint, Sam Barr, Pura Perez, George Nesbitt, Allan Roper, Francis Allison, Erlene Chambers, Clydene Owens, Hez Frazier and James Walker.

Dismissed were Odus Umphrees, Geneva Eddleman, Olive Reamy, Bernice Beam, Seth Ralston, Mary Maddon, Linda Banther and baby, Deloris Healer, Eva Lee Clemons, Linda McAllister, Mabel Jameson, Michael Minyard, Barbara Helt-

**Future Readers  
Of The Plainsman**

Mr. and Mrs. John Clemens Helton are the parents of a son born last week in Hansford Hospital. He has been named Paul Avery.

Mr. and Mrs. Jerry Allan Morris are the parents of a daughter, Virginia Marie, born last week in Hansford Hospital.

Mr. and Mrs. Charles Wayne Cudd are the parents of a daughter, Teressa Sue, born last week in Hansford Hospital.

on and baby, Lilly Mae Chase, Bernice Weant, Betty Morris and baby, Eleanor Sanders, Olive Harbour, Patricia Cudd and baby.

**Gary Cates' Model Car  
Wins TG&Y Senior Contest**

Gary Cates built the winning model car in the TG&Y store model car contest judged Monday at the store in Spearman.

Cate's Golden Goose entry was winner in the senior division.

Second place in the division went to Ricky Butler, Ronny Ellsworth, third; Butler and Robinson, fourth, Cates, fifth and Larry Kenneth Williams sixth.

The identity of the Junior Division winner went with the car, according to store manager Melvin McDougal. He

said the boy had moved away since the contest started and he picked up his car, trophy and entry blank immediately after the judging.

Dennis Cockrell was second in the junior division, Kurt Shedeck, fourth, Rodney Schroder, fifth and Donnie Rhea sixth.

The car that was third, The Wild Kat, did not have a name on the entry blank and if he will identify his car he can get his award.

**Newcomers  
To Spearman**

Mr. and Mrs. Lester P. Hughes and children of 423 W. 5th are newcomers from Stigler, Okla.

Mr. and Mrs. Daniel B. Collins of 124 N. Hazelwood moved here recently from Gruber.

Mr. and Mrs. Ted N. Scroggs and family of 1020 S. Evans moved here from Pampa. He is the Humble Service Station operator.

Mr. and Mrs. Jerry R. Day of 310 S. Barkley moved here from Canyon and teach in the local school system.

Mr. and Mrs. Jack K. Bark-

er of 211 Roland are newcomers from Camp Pendleton, Calif. He is employed by Baker & Taylor.

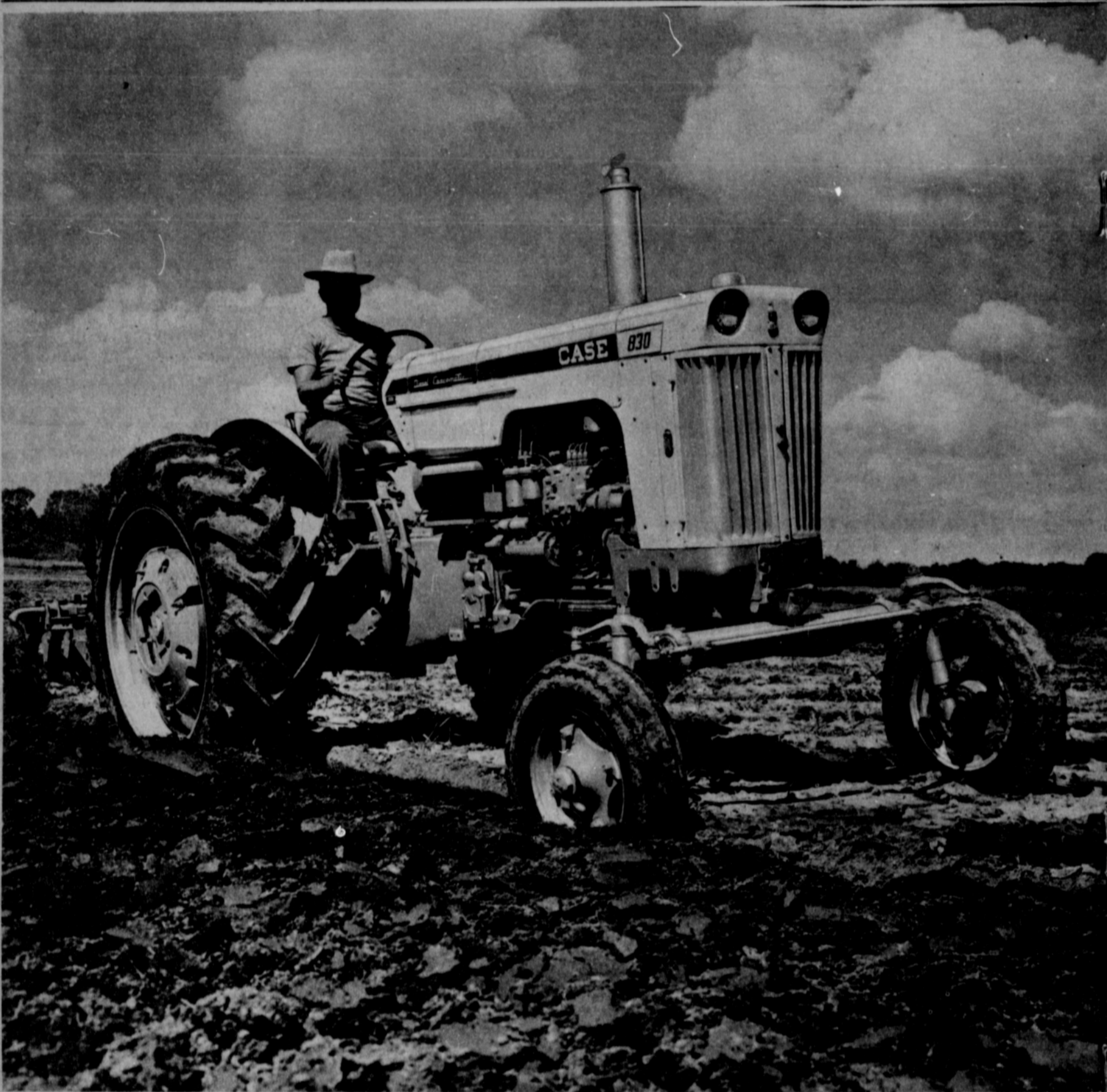
Mr. and Mrs. O. D. Green of 810 S. Evans moved here recently from Peyton, Colo. He is employed by Baker & Taylor.

Mr. and Mrs. Donald G. Gamble and family of 603 Evans are new residents from Adrian. He is employed by Baker & Taylor.

Mr. Milton J. Buchanan of 420 W. 2nd is a new resident from Itasca, and is teaching in the Spearman school.

Mr. and Mrs. Robert Morgan and family of 615 Highway 760 moved here from Tulsa, Okla. He is an employee of United Mud Co.

Mr. and Mrs. Enoch C. Es-



**YOU'RE EXACTING  
ABOUT HYDRAULIC**

The Case 830 duo-control hydraulics are proof, and short-coupled. Two hydraulics individually controlled by levers close give you fingertip control of front and rear pull-type implements.

One cylinder is built in for Eagle implements. The other, a portable cylinder, controls either mounted or trailing implement front or delayed rear gang cultivator adjustment of mounted plows or two-wheel control of trailing implements.

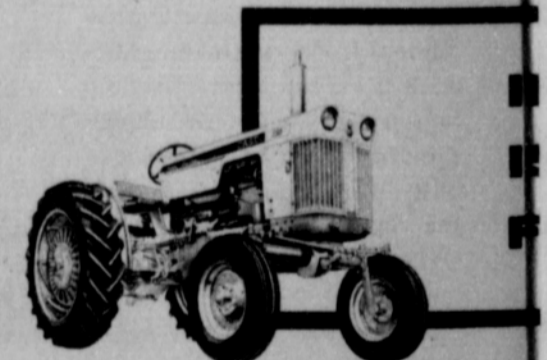
High capacity pressure — recently raised high — insures prompt and extremely accurate control when making adjustments.



**WANT INDEPENDENT  
PTO?**

The Case 830's independent PTO gives you either 545 or 1000 rpm. With independent PTO you bring PTO machines to correct speed before entering the crop. This speed is maintained when you stop or shift gears. You can have PTO standing still, or on-the-go while you turn at headlands.

With Case-o-matic Drive, the PTO is versatile. When the torque converter is engaged, PTO always has priority on engine power over tractor speed, drawbar load demands.



You have a wide choice of models in the line shown here. The Case 730 is available in 5 models, except for size.

The 4-plow Case 630 has a 188 cubic inch engine, and the 730 has a 267 cubic inch engine, and is champion of its class.

Both are available in 5 models, but may be had with Case-o-matic Drive.

**YOU WANT THE POWER-BOOSTING BENEFITS  
OF A TORQUE CONVERTER?**

With performance-proved Case-o-matic Drive you get up to double the pull power when you need it without clutching, shifting, or stalling.

You work in conventional drive when the going's easy, for you have two transmissions in one. But when it hits real hard going, and you just flick a lever to put Case-o-matic Drive in charge. Automatically, the torque converter goes into action . . . meters out the necessary extra pull-power — no more and no

less than the job calls for.

It harmlessly absorbs shock-loading strains on the engine, transmission, clutch and differential — to save you maintenance and repair costs.

And it speeds your work. Actual field tests have shown that Case-o-matic Drive tractors can pack 10 hours' results into 8 hours' work. You get 25% more for your wage dollar.

Your Complete  
Farm Machinery Store —

**R. L. McCLELLAN &**

# WANTED ADS

## FOR SALE

\$1 per day rental for Electric Carpet Shampooer with purchase of Blue Lustre, Spearman Hardware.

FOR SALE-Olds Cornet, Pair of football shoes, size six. Phone 659-2823.

T45-1c, S46-1c

FOR SALE-1961 Model Kirby Vacuum Cleaner. Like New. \$80.00 Call 659-3148.

S46-T45 3p

FOR SALE: Industrial lots and acreage. Financing available. Cecil Crawford. Phone 659-2409.

For Lifetime Mufflers, Clarence Pettitt Garage. No premium prices.

Two bedroom brick house for sale. Principal and interest approximately \$60 a month. Three bedroom or will build to suit Contract. R. L. Uptergrove.

T43, S44-tfc

BARGAINS-We have some real good bargains in repossessed appliances, etc. Come in and see. WESTERN AUTO ASSOCIATE STORE.

T45-tfc

BUY-EQUITY-Corner lot, 3 bedroom, 2 bath home fully carpeted. Large country kitchen with built-in range and oven, disposal and dishwasher, 8 closets and drapes. Ph 3234.

S47-T46-tfc

FOR SALE-Two bedroom house. Contact Joe Trayler.

T43-S44-tfc

FOR SALE-Large swivel rocker. \$15. Call 2497.

T45-S47-tfc

FOR SALE: Three bedroom brick, 1111 Dressen. Phone 3322. S48-3p - T47-2p

FOR SALE-Modern 2 room stucco house to be moved at the rear of 115 Collard, 2 bedroom house on 150 ft. lot with garage apt., 312 Haney St. 1/4 section of wheat land 1 mile south of Spearman on FM road No. 760. Call 2155 or 3185 after 5 p. m.

T45-tfc, S46-1c

FOR SALE-Frigidaire Electric Stove, 821 Dressen or phone 2003.

S47-T46-tfc

FOR SALE-New Lake Pump and aluminum pipe, Pat Westfield, Gruver, F17-2700.

S44-T43tfc

Mrs. J. D. Helms spent four days recently in the Canadian Hospital and a week recuperating at the home of her parents. She is now home and feeling much better.

Carl Nickles, son of Mr. and Mrs. C. A. Nickles spent the weekend with his parents. Carl is stationed near Dallas and is in weather operations. Mrs. Nickles and son Keat took him to Borger Sunday evening to catch the bus for Dallas.

## WANTED

Dirt Moving, Land Leveling, Silos Dug. General Dirt Work with a John Deere 4010, 10 yd. Hancock Carryall, D6 Caterpillar. See Willis Sheets or call 2256 or 2712.

T41-S43-tfc

Baby Sitting. Sharon Davis, Mary Hornsby. 50¢ hour. Phone 3455.

T46-1c

## LOST

LOST-Wilson Golf Putter. Contact Mrs. Pete Fisher, phone 3120.

47-1c

## Local Events

Mr. and Mrs. Garland Head and family went to Clovis Wednesday of last week where they visited in the home of his mother, Mrs. Joe Head and his brother and family, Mr. and Mrs. Allen Head. They returned home Friday.

Mrs. Garland Head, Ronnie and Delinda spent Saturday night in Pampa with her sister Mr. and Mrs. Zane Hall and family.

Mr. and Mrs. Steve McWithney of Penalosa, Kans. left Sunday for their home after a few days visit with her sister, Mr. and Mrs. Guy Remy.

Dennis Geneva, who is leaving Spearman to take a teaching position in Central High in Tulsa, spent the weekend with Mrs. Geneva. Accompanying him home were his parents, Mr. and Mrs. M. F. Geneva, his grandmother, Mrs. Ethel Sloan and Mr. and Mrs. Olin Easley, all of Corveta, Okla. They all returned to their homes Monday except Mrs. Sloan, who will stay with Mrs. Geneva until they can find a home to move into in Tulsa and sell their home here.

Mrs. W. S. Hiller of El Paso is a guest this week in the homes of her brothers, Clay, Pope and Woodrow Gibner.

Mrs. Pope Gibner and Mrs. W. S. Hiller of El Paso visited Monday afternoon with Mrs. Gibner's daughter, Mrs. Gene Steed in Perryton.

Mr. and Mrs. Howard Wolfe of Lubbock spent the Labor Day weekend with her parents, Mr. and Mrs. George Dick, Mrs. Wolfe was honored with a wedding shower Saturday morning in the home of Mrs. Ernest Archer.

Part of all

you

earn —

should be

yours

to keep.



ED DEAR,

703 Cotter Drive  
Spearman, Texas

Insurance  
Agent



Phone: 659-3073

If you want to drink that's your business-If you want to stop drinking... that's our business !!

**Inquire Box 383**

Meetings - Tuesday, 8 p. m.  
Second Floor - Court House  
Open to Public  
Every Fourth Tuesday.

# Attend Church



## Church Directory

**Apostolic Faith Church**  
Mrs. E. A. Greever, Pastor  
Sunday School 10:00 a.m.  
Morning Worship 11:00 a.m.  
Evening Worship 7:00 p.m.  
Thursday Fast and Prayer Service 9:30 3:00

Thursday Prayer Service 7:30 p.m.

**Assembly of God Church**  
Rev. Vance Barker, Pastor  
Sunday School 9:45 a.m.  
Morning Worship 11:00 a.m.  
Evening Worship 7:30 p.m.  
Wed. Bible Study 7:30 p.m.

**First Baptist Church**  
Rev. Luther M. Berry, Pastor  
Morning Service 8:30 a.m.  
Sunday School 9:45 a.m.  
Morning Worship 10:45 a.m.  
Training Union 6:30 p.m.  
Evening Worship 7:30 p.m.  
Wed. Evening Prayer Hour 7:30  
Wed. Choir Rehearsal 8:45 p.m.

**Fellowship Baptist Church**  
W. S. Herring, Pastor  
Sunday School 10:00 a.m.  
Preaching Service 11:00 a.m.  
Sunday Evening Service 11:00 a.m.  
Wed. Evening Service 7:30 p.m.

**First Christian Church**  
Rev. W. Graham Pugh, Minister  
Sunday School 9:45 a.m.  
Morning Worship 11:00 a.m.  
Youth Meetings 6:00 p.m.  
Evening Worship 7:30 p.m.  
Wed. Choir Practice 7:30 p.m.

**Church of Christ**  
Glen Crowe, Minister  
Sunday School 10:00 a.m.  
Worship 11:00 a.m.  
Worship 7:00 p.m.  
Wed. Ladies Bible Class 9:30 a.m.  
Wed. Bible Study 7:30 p.m.

**Pentecostal Church**  
Sunday School 9:45 a.m.  
Morning Worship 11:00 a.m.  
Evening Worship 7:30 p.m.  
5th & Hazelwood

**Union Full Gospel Church**  
Rev. George R. Bollinger, Pastor  
Sunday School 11:00 a.m.  
Morning Worship 10:00 a.m.  
Bible Classes, Sunday 6:45 p.m.  
Evening Worship 7:30 p.m.  
Wed. Bible Study 7:30 p.m.

**First Methodist Church**  
Brother Charles Gates, Minister  
Sunday School 9:45 a.m.  
Morning Worship 11:00 a.m.  
M. Y. T. 6:30 p.m.  
Evening Worship 7:30 p.m.  
Women's Society of Christian Service Wednesday 3:00 p.m.  
Choir Rehearsal 7:30 p.m.

**First United Presbyterian Church**  
Everett H. Cain, Jr., Pastor  
**Home Demonstration Club Room**  
311 Bernice  
Sunday Church School 9:45 a.m.  
Adult Class meets at (Blodgett & Linn Bldg.)  
Morning Worship 11:00 a.m.  
Evening Study Group 7:30 p.m.  
Meeting in homes of members as announced  
Wed. Choir Practice 7:30 p.m.  
Meets in home of members as announced

**Sacred Heart Catholic Church**  
Father Edward Kieran  
Sundays 10:00 a.m.  
Catechism Classes 11 a.m.  
Week Days  
Mon., Tues., Fri., Sat. 8:00 a.m.  
Holy Days of Obligation 7:30 a.m.  
First Friday of Month 7 a.m.

**Oslo Lutheran Church**  
18 Mi. N.W. of Gruver  
Robert L. Cordes, Pastor  
Sunday School 9:45 a.m.  
(includes adults)  
Worship Services 11:00 a.m.  
Women of Church meet 2nd Thursday of each month at 2 p.m.

**R. L. McClellan Grain Co.**  
**First State Bank**  
Member F. D. I. C.  
**B&B Grain Co., Inc.**

## City Directory

### CLEANERS

CLEANING  
PRESSING  
CARPET  
CLEANING SERVICE  
COIN OPERATED  
DRY CLEANING  
FREE  
PICK-UP & DELIVERY

PHONE 659-2511  
**Wardrobe Cleaners**  
Oscar Donnell  
302 MAIN ST.  
SPEARMAN, TEXAS

### DENTISTS

**F. J. Daily D.D.S.**  
16 SW COURT STREET  
SPEARMAN

### PHYSICIAN

**D. E. Hackley D.O.**  
CLINIC  
702 S. ROLAND  
659-2556  
659-2385

### ELECTRICIAN

**Anthony Electric**  
Industrial, Commercial  
and House Wiring  
Heating and  
Air Conditioning  
Contracting  
and Repairs  
Fully Insured  
PLAINS  
SHOPPING CENTER  
PHONE 659-2441  
BOX 727  
SPEARMAN, TEXAS

# LOWER THE BOOM



# ON FOOD BILLS

Bordens Mellorine 1/2 Gallon

**Charlotte Freeze 43¢**

Starkist Chunk Style  
**TUNA 4 FOR \$1.00**

Hersheys 8 oz.  
**COCOA 29¢**

Liptons Reg. 93¢ Size  
**Instant Tea 79¢**

VALUES FOR  
FRI. & SAT.,  
SEPT. 6 & 7

Shurfine Solid Pak  
**TOMATOES**  
303 Can  
**17¢**

**CHUCK ROAST**  lb. **45¢**

**ARM ROAST** lb. **55¢**

**GROUND BEEF**  2 lbs. **79¢**

**BEEF RIBS** lb **29¢**

**TENDER MEATS**  
THRIFTY PRICES

WE GIVE VALUABLE BUCCANEER STAMPS!

Libbys 303 Can  
**FRUIT COCKTAIL 2 FOR 45¢**

Shurfine 12 oz. can  
**LUNCHEON MEAT 35¢**

Shurfine Cut Bluelake 303 Can  
**GREEN BEANS 2 FOR 35¢**

Libbys Large 24 oz. can  
**LIMA BEANS WITH HAM 37¢**

Shurfine Evaporated Tall Can  
**MILK 2 FOR 23¢**

Sunshine Krispy lb. box  
**CRACKERS 29¢**

ZESTEE QUART JAR

**SALAD DRESSING 29¢**

Heinz Tomato 14 oz. bottle  
**CATSUP 21¢**

+ NEW Easy open  
**KEYLESS CAN +**   
RE-USABLE PLASTIC LID  
**49¢**  
With \$5 Purchase or More - Otherwise 63¢

Libbys 46 oz. can  
**TOMATO JUICE 4 FOR \$1.00**

**CRISCO** 3 lb. can **69¢**

REDEEM YOUR  
**CRISCO OIL**  
COUPONS HERE  
38 oz. bottle **55¢**



## FRUIT...VEGETABLES

Large Juicy Thompson Seedless  
**GRAPES lb. 17¢**

Large Vine Ripe  
**TOMATOES 2 lbs. 33¢**

Idaho Italian  
**PRUNES 2 lbs. 29¢ or \$3.49 ctn.**

New Crop Russett  
**POTATOES 10 lb. bag 49¢**



J & L FARMS  
LARGE GRADE "A"  
WHITE **EGGS**

**47¢**  
DOZEN



Personal Bars  
**IVORY 4 FOR 29¢**

**THRILL**  
Regular Size  
**39¢**

**OXYDOL**  
Regular Size  
**35¢**

Giant Size  
**TIDE 79¢**

Bathroom Tissue  
**NORTHERN 4 roll pack 29¢**

Bath Bars  
**CAMAY 2 FOR 33¢**

WIN A LOT SAVE A LOT  
**LUCKY COUPON SWEEPSTAKES**  
\$200,000 IN PRIZES

CHECK YOUR **LUCKY NUMBERS** IN OUR STORE

2 Bath Bars **39¢**

Giant **69¢**

REDEEM YOUR P-G COUPONS HERE

Giant Box **79¢**

Giant Size  
**DUZ 83¢**

Giant Size  
**SALVO 79¢**

400 Count Facial Tissues  
**SCOTTIES 4 FOR 89¢**

Complexion  
**CAMAY 3 FOR 33¢**

Complexion  
**ZEST 2 FOR 33¢**

Large Bars  
**LAVA 2 FOR 33¢**

King Size  
**JOY 99¢**

Regular Size  
**COMET 2 FOR 35¢**

Giant Size  
**DOWNY 89¢**

Dishwasher  
**CASCADE 49¢**

NIBLETT'S WHOLE KERNAL Vac. Pak.  
**CORN 2 Cans 33¢**

PLAY  **Baseball** WIN 1 TO \$100.  
EXCITING NEW GAME

HUNDREDS of WINNERS

Singles Win ..... \$1  
Doubles Win ..... \$5  
Triples Win ..... \$10  
Home Runs Win ..... \$25

Collect Cards with ALL HOME PLAYERS... **WIN \$100.**

Half Gallon  
**CLOROX 37¢**  
Bleach

PLAY BASEBALL - FINAL DAY SAT., SEPT. 7!

PATIO FROZEN  
**MEXICAN DINNERS EACH 39¢**

PATIO FROZEN BEEF  
**ENCHILADA DINNERS EACH 39¢**

Regular Size  
**MR. CLEAN 39¢**

# CUT RATE GROCERY

tep of 1009 S. Dressen came here from Ann Arbor, Mich. He is the music teacher in the local schools.

Mr. and Mrs. Don E. Beam and family of 413 W. 5th are newcomers from Duncan, Okla. He is employed by Baker & Taylor.

Mr. and Mrs. Doil W. Burnes and family of 606 S. Bernice moved here from Lawton, Okla. He is employed by Baker and Taylor.

Mr. and Mrs. Bobby J. Beam and family are newcomers from Midwest City, Okla. He is employed by Baker & Taylor.

Mr. and Mrs. Elvin Ray Myers of 210 N. Hazelwood moved here from Gruber recently. He is employed at Alton's Gulf Station.

## Services For I. H. Waggoner In Perryton

Funeral services for I. H. Waggoner, 81, of Perryton were conducted at 10 a. m. Wednesday in the First Christian Church of Perryton.

Mr. Waggoner, a retired farmer and carpenter is the father of Mrs. Jack Atchison of Spearman.

He died Sunday in a Perryton Hospital after being in ill health for several years.

Mr. Waggoner had lived in this area for about 20 years. He was born and raised in Okla.

homa. Besides Mrs. Atchison, he is survived by four other daughters, Mrs. Mabel Gatewood, Mrs. Hazel Allen and Mrs. Oma Stinson, all of Perryton, and Mrs. Edith Battles of Hollis, Okla.; four sons, Clarence H. and Ray of Perryton, Ernest of California, and Glen of Grand Prairie.

Mr. and Mrs. Verlin Dilger of Pampa spent Sunday afternoon and Labor Day with their niece and family, Mr. and Mrs. Walter Woolley.

Mr. and Mrs. Robert Hall and family spent Sunday boating at Lake Fryer.

## Art Studio Sets Show

An art studio for small fry artists, appropriately named the Peanut Art Studio will have an open house Sunday from 3 to 5 p. m. The studio is in the old city hall.

Studio director and teacher Nelda Sheets will have over 100 original oil paintings by young artists on display.

Mrs. Sheets, whose own art work has gained recognition in shows throughout the area, started the youth art classes over a year ago.

Mrs. Sheets said the show will be of interest to anyone interested in art or children. Most of the students will be at the open house.

## Robertson Moves TV Repair Firm

Robertson Radio and TV Service has been moved into a remodeled location by owner Ray Robertson.

The business has moved to Davis Street, directly behind the ASC office. The building was formerly occupied by Hobi Den.

Robertson said the new location will give him a better display area for his new televisions and radios and also a larger repair shop.

**E. C. Greene & Sons Agency**

REAL ESTATE — LOANS  
INSURANCE — CATTLE  
ALUMINUM PIPE

416 Davis      Spearman  
Phone 439-2327

Odus Umphress was moved from the Hansford Hospital to St. Anthony's in Amarillo Monday and has undergone surgery.

**NOTICE**  
The WSCS of the First Methodist Church will hold a rummage sale Saturday, Sept. 7, from 9 a. m. to 3 p. m. in the building formerly occupied by Chambers Dry Goods.

Mr. and Mrs. Fred Fewin of the Skelly Plant returned Sunday from a 2 weeks vacation visiting friends and relatives in Kansas and Oklahoma, Burk Burnett and their son and family at Lubbock.

**Irrigation Wells  
Gravel Packed  
Turn Key Jobs  
Pump Repairing**

**Williams Drilling  
& Supply**

**120 S. Industrial Rd.  
Perryton, Texas**

DAY      NIGHT  
435-2700. 435-5082



### YOU'RE FUSSY ABOUT THE HITCH?

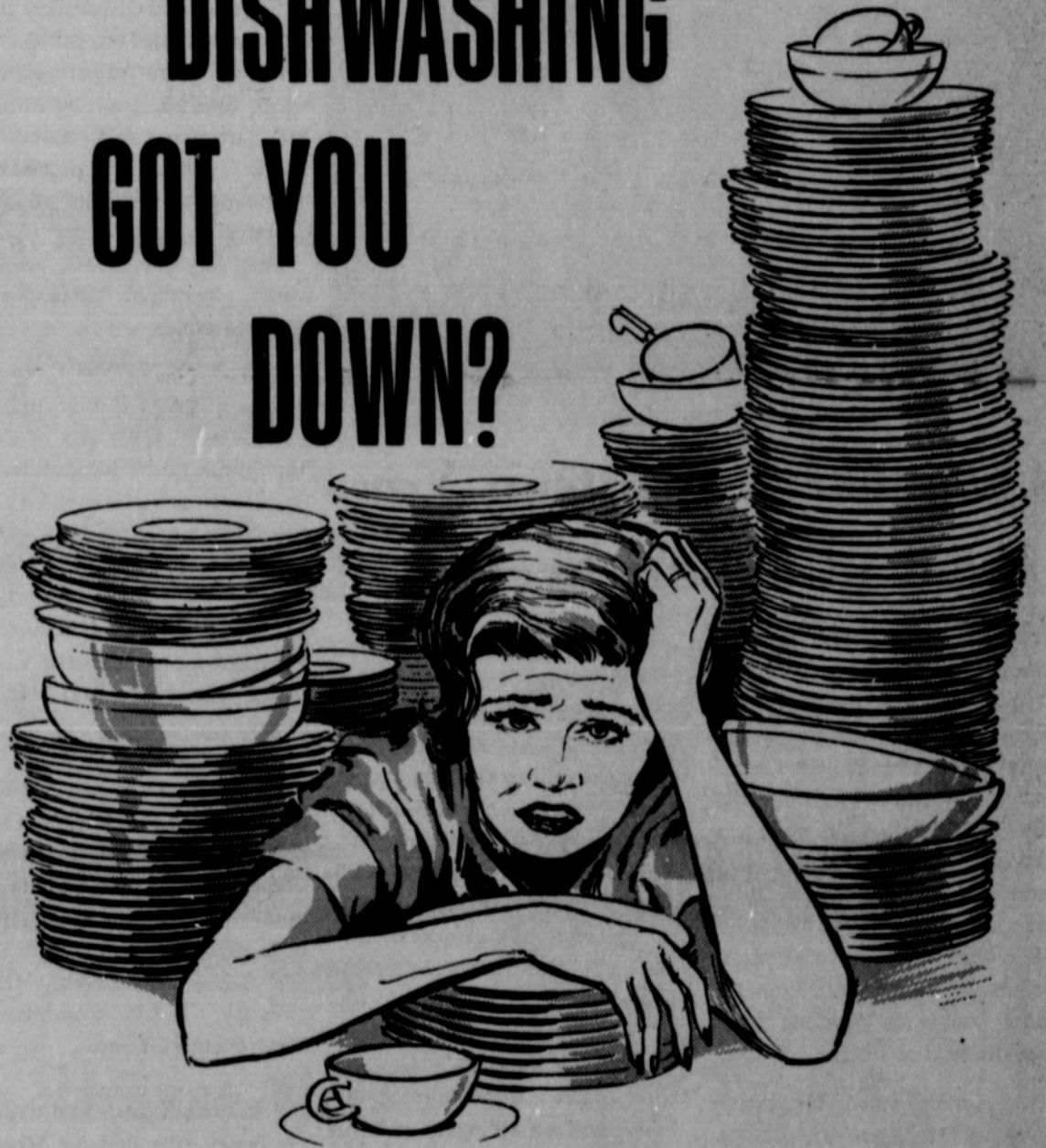
The famous Snap-lock Eagle Hitch is a Case exclusive. You needn't leave your seat to hook up most rear mounted implements. In one minute or less, you hook on, pin the top link and go! Mighty nice feature when you're working with big, rugged mounted implements like those designed for the 830!

Eagle Hitch provides quick entry and lift at headlands. Each of its two links has 3 holes which allow either or both draft arms to float up and down as much as 5½ inches. This provides extra float for wide toolbar planters and cultivators to conform to ground contour and keep at a constant depth in spite of ridges and hollows.

You "ride" your implements to work at fast, safe travel speeds. Storage is a simple, one-man operation. Eagle Hitch takes almost all 3-point implements.



# DISHWASHING GOT YOU DOWN?



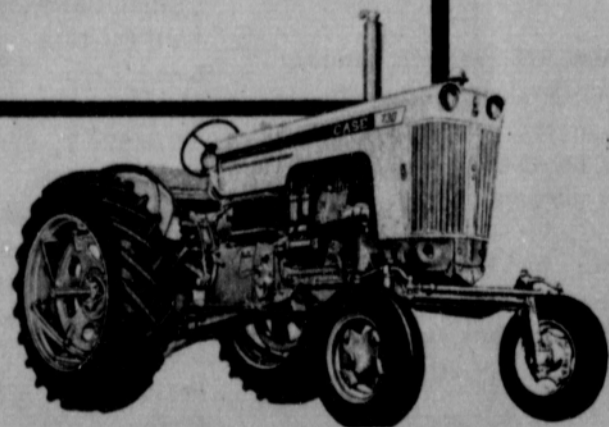
**an automatic electric dishwasher does the job for pennies a day!**

Dishwashing is so daily! No wonder women rate it as one of the most tedious and tiresome of household chores. But you can end hand dishwashing forever—spend the hours you save on more rewarding activities—with an automatic electric dishwasher. Dishes come cleaner, in water too hot for hands. Kitchen stays neater, too, with dishes stacked inside the dishwasher, out of sight. See your dealer soon about an electric dishwasher—built-in or portable.



## IF THE CASE 830 IS TOO MUCH TRACTOR FOR YOU . . .

in the somewhat smaller Case tractor is identical in construction to the cubic inch engine. The 5-plow Case is the world's diesel fuel economy



# SONS



Mrs. Bob Whitson

## Castleberry - Whitson Vows Read in Friona Service

Miss Linda Jo Castleberry became the bride of Bob Whitson Friday evening, Aug. 30 at 6 p. m. in a double ring ceremony at the First Baptist Church at Friona. The Rev. Audye Wiley officiated. Vows were exchanged before a large satin wedding ring accented by flowers and bows flanked by baskets of white gladioli and potted palms. The cathedral candelabra and satin kneeling bench completed the setting.

Mr. and Mrs. Ray Castleberry of Friona are the parents of the bride. The bridegroom is the son of Mr. and Mrs. Jack Whitson of Spearman.

Traditional wedding music was played by Mrs. Roy Miller. Miss Suzanne Taylor sang "Till" and "The Wedding Prayer."

Given in marriage by her father, the bride wore a formal wedding gown of peau-de-soie. The portrait neckline, elbow sleeve bodice was accented with bugle bead and seed pearl embroidery above a semi-controlled skirt with back fullness falling into a chapel train. She wore a bouffant veil of French illusion attached to a crown of seed pearls and carried a cascade arrangement of white orchids and lily of the valley.

Miss Pamela Roden was maid of honor and matron of honor was Mrs. Jerry Rankin. Bridesmaids were Mrs. Lee Jesks, Miss Marsha Bristow and Miss Frances

Whitson, sister of the groom. Connie Wiley was flower girl. They wore identical dresses of blue silk organza fashioned with a low neck, cap sleeved bodice with bow accents at the waist line above a bell shaped skirt. They wore matching bow head-dresses with circular veils of maline and each attendant carried a long stemmed American Beauty Rose.

Tom Whitson, brother of the groom, was best man. Groomsmen were Dean Horton, Bill Edwards, Don Stringer, and Bill Barkley of Spearman. Ushers were Jimmie and Ronnie Castleberry, brothers of the bride, W. J. Hill, and Fred Groves of Spearman.

The mother of the bride wore a gold silk organza over taffeta sheath topped by a short lace jacket with accessories of black. The mother of the groom wore a sheath dress of beige brocade accented by brown accessories. Their corsages were of white gardenias.

A reception was held in the fellowship hall. The bride's table was covered with white taffeta and tulle accented by blue bows and centered with blue flowers and candles. The wedding cake was decorated with blue flowers and topped by white wedding bells and a miniature bride and groom. White punch was also served. Presiding at the table were Mmes. Jimmie

## Shower Honors Mrs. Payne

A bridal shower honoring Mrs. Buddy Payne, the former Norma Archer, was held recently in the hospitality room of the First State Bank building. Hostesses for the occasion were Mmes. Tom Allen, Bill Sheets, E. D. Clement, Bob Archer, George Dick, Olin Sheets, Ned Turner, Roger Odegaard, Frank Dale, Gordon Parrish, Daniel Sheets, Joe Trayler, and E. R. Hester.

The serving table was laid with an ecru, cut-work linen cloth and centered with an arrangement of white rosebuds nestled at the feet of a miniature bride and groom. Silver and milk glass completed the appointments from which coffee and punch were served with nut bread and fresh fruit. Mmes. Bob Archer and Olin Sheets presided at the serving table.

Guests were registered in a white bride's book by Mmes. Bill Sheets and A. D. Reed.

Mrs. Ernest Archer assisted her daughter with the opening of the gifts.

Mrs. Payne and Mrs. Archer were presented corsages of white rosebuds.

Mrs. C. A. Gibner and her sister, Mrs. J. W. Fox of Gruber prepared a surprise birthday dinner complete with birthday cake and took it to Amarillo Wednesday of last week to help their sister, Mrs. G. F. Powers celebrate her birthday. Mrs. Powers remarked it was the happiest birthday she has had.

Mr. and Mrs. Ray Lackey, Tim and Ann entertained Saturday evening with a backyard barbeque and home made ice cream Mr. and Mrs. M. F. Geneva, Mrs. Ethel Sloan and Mr. and Mrs. Olin Easley, all of Corveta, Okla. and Mr. and Mrs. Dennis Geneva.

Mrs. Ray Devers and daughter Peggy attended the Moore-Simmons wedding held at the Baptist Church in Skellytown Saturday night.

Mrs. Bob Vaughn and Kandy have returned from a trip to Six Flags over Texas

and Ronnie Castleberry.

The bride's going away ensemble was a semi-fitted suit of navy blue accented by black accessories.

After a wedding trip to New Mexico the couple will be at home at 3205-33rd St., Lubbock. Mrs. Whitson graduated from Friona High School and is a student in Texas Tech, and a member of Gamma Phi Beta Sorority. The groom is a graduate of Spearman High School and is now a senior at Texas Tech. He is a member of the Sigma Chi Fraternity.

## Georges Observe 25th Anniversary

Mr. and Mrs. Clifford George celebrated their silver anniversary Sunday Aug. 25, at their home.

The serving table was covered with beige linen and net. The cake was double tiered with a miniature bride and groom, and also served as the centerpiece and was flanked by candelabras. Mrs. Bobby Thompson and Miss Lariece George, daughters of the honored couple served. Another daughter, Mrs. Bobby Coker of Oklahoma City registered guests.

Many friends and relatives called to wish Mr. and Mrs. George continued success and happiness.

## WSCS Has General Meeting

The WSCS of the Methodist Church had a general meeting Aug. 28 in the parlor of the church.

Mrs. George Collard, president, presided at the business meeting. Prayer was given by Mrs. Dick Hudson. The program was presented by Mrs. R. E. Lee on her trip to South America. She also showed slides of the trip.

Attending were Mmes. Lee, Ray Martin, Hudson, Robert Adamson, Charles Habberthur, Roy Jones, Collard, John Trindle, Bert Sheppard, and J. R. Keim.

## Mrs. Trayler Is Art Guild Hostess

The Arts & Craft Club met Aug. 30 in the home of Mrs. Joe Trayler.

Attending were Mmes. P. A. Lyon, Sr., Sada Hoskins, Ned Turner, Freeman Barkley, Ray Phelps, Garrett Allen, Deta Blodgett, C. A. Gibner, W. L. Russell, Guy Fuller and a guest, Mrs. J. B. Vernon.

The next meeting will be Sept. 6 with Mrs. Kiff White.

Mr. and Mrs. Oscar Mullins returned home Tuesday from Ponca City. Margaret stayed for a longer visit with relatives.

Mrs. R. E. Lee left Saturday for Colorado where she will visit in the homes of Mr. and Mrs. Bob Lee and Mr. and Mrs. Don Robinson.

Mr. and Mrs. Vernie Rosson have returned from a trip to Colorado. They visited one day in the home of his niece during the trip.

Mrs. Ray Devers returned home Wednesday of last week after visiting a week in the home of her uncle, G. B. Allen at Garrett, Kentucky.



## Engagement Revealed

Mr. and Mrs. Don Bellomy of 3708 Gulf St., Midland, former residents of Spearman, announce the engagement and approaching marriage of their daughter, Linda Carol, to Billy Pat McGuire, son of Mr. and Mrs. M. O. McGuire of Spearman. The wedding will be held November 30 in the Memorial Christian Church of Midland.

## School Lunch Menus

- MONDAY, SEPT. 9  
Country Fried Steak  
Tomato Relish  
Seasoned Green Peas  
Mashed Potatoes  
Chilled Pickle Slices  
Strawberry Short Cake  
Bread  
Milk
- TUESDAY, SEPT. 10  
Hot Dogs or Chicken Salad  
Sandwiches  
Baked Beans  
Buttered Whole Kernel Corn  
Tomato Slices  
Apple Sauce Jello  
Milk
- WEDNESDAY, SEPT. 11  
Oven Grilled Pork Chops  
Potato Salad  
Buttered Blackeyed Peas  
Chilled Cantaloupe Slices  
Fruit Pudding  
Bread  
Milk
- THURSDAY, SEPT. 12  
Fried Chicken  
Mashed Potatoes  
Buttered Green Beans  
Cabbage Slaw with Sour Dressing  
Ice Cream  
Bread  
Milk
- FRIDAY, SEPT. 13  
Hamburger on Buttered Bun or Tuna Salad Sandwiches  
Chopped Onions  
Potato Chips

## Kindergarten To Begin Soon

Both kindergarten classes will meet in Fellowship Hall of the First Christian Church Sept. 16 at 9:00 a. m. for enrollment. Mothers are asked to accompany their child.

## Art Classes Announced

Dord Fitz' art classes begin here Monday according to Nelda Sheets. Beginners as well as advanced students are eligible for the course. Contact Vera Beth Hicks at 2460 or Nelda Sheets at 2256 for information.

## NOTICE

The Mary Hill Davis offering for State Missions will be held at the First Baptist Church Sept. 9 thru 13 at 10 a. m. All members are urged to attend.

Mr. and Mrs. V. E. Rosson were in Dalhart and Texhoma this week visiting relatives.

- Seasoned Pinto Beans  
Lettuce and Tomato Salad  
Sliced Pickles  
Fruit Cup  
Milk



**OSLO NEWS**

Bible class for adults begins at 9:45 a. m. Sunday and the book of Mark is being studied.

Mrs. Anson Ward visited at Perryton Thursday with the Sid Johnsons. Pat Johnson leaves for college soon.

Mrs. Ingeborg Sogn, Mrs. John Dahl and Johnny were Sunday dinner guests last Sunday at the Carl Nieden home.

Mmes. Clarence Johnson and James Stedje were coffee guests at the Emil Knutson home Monday. They enjoyed a visit with Mrs. John Maakestad.

Visiting on Thursday at the Tom Schaeff home was Mrs. Stanley Lamendola from Mar-chville, La. and Mrs. John Gordon from Texhoma.

Sunday visitors in the David Knutson home were Mr. and Mrs. Guy Bennett of Guymon.

Visiting at the Knutson home Tuesday were Mr. and Mrs. Paul Smith of Texhoma.

The Jack Christoffersons had

as their guests Wednesday night Mr. H. E. Roy of Wichita, Kans.

The Lutheran Congregation of Oslo enjoyed a family picnic last Sunday at the Stedje Park. Games were enjoyed by all and was followed by supper.

The Young People's league had a campout Sunday night. The youth set up tents in case of rain and a real outing was enjoyed by all. Campfire was the setting for the devotional enjoyed by the youth. Sponsors for the occasion were David Knutson and Pastor and Mrs. Robert Cordes. Early morning breakfast ended the festivities.

John Mark Stavlo left Sunday for Canton, S. D. where he will attend Augustana Academy.

Jim Weinheimer of Huntington Beach, Calif. visited Monday in the Clifford Stedje home.

**Inexperience Causes Problems On Farms**

Absentee ownership and "weekend farmers" have created a unique problem in Texas agriculture this year.

Already this season, some 7,000 to 8,000 acres of Texas cotton has been affected by damaging doses of hormone-type herbicides such as 2-4D and 2-4,5T. Field investigations by Texas Department of Agriculture inspectors reveal most of the effect is caused by "new" or part-time farmers who are not acquainted with the dangerous potential of the chemicals.

Modern herbicides have been a real boon to farmers and ranchers in recent years in the constant fight against choking weeds and moisture-sapping brush. But when mishandled, the chemicals can be as harmful to susceptible crops as a raging fire. It has taken several years of experience with the herbicides by farmers and commercial applicator companies to develop proper safety techniques in field operations.

**The Way I See It**

Robert Cordes, pastor  
Oslo Lutheran Church

**THE SPIRIT & THE CHRISTIAN**

The Holy Spirit becomes a hidden power in the human heart, a ceaseless urge. "For as many as are led by the Spirit of God, these are sons of God." (Romans 8:14). A locomotive is driven by a motor, a watch by a spring, and a Christian by the Spirit.

The drunk is driven by his thirst. The sex pervert by his passions, the ambitious person is driven by his craving for honor. Everything that is in his path must be cleared away. His whole life, work and leisure, strength and ability are concentrated on this one thing: to win.

The Christian is driven by the Spirit of God. You need make no allowances for yourself. What is right you must do. If God has called, you must respond. No hindrance must stop you.

I must! I run a great man's errand.

What is His name? His name is God. (Ibsen)

Our liberty in God is also our captivity in Him. We live our lives under the divine must.

"We must work the works of Him that sent me, while it is day." (John 9:4) This is the condition of the heart where God is permitted to rule. The victorious Christian is the one who lets Christ rule in all things. Every nook and cranny of the heart is turned to the Lord.

How many of our friends are

not living under the power of the Holy Spirit? Perhaps even you yourself are guided by your own personal desires.

We are on this earth not to serve ourselves and to make a small utopia and to gain all the personal wealth we can so we can be ahead of the neighbor-- or to live a life of ease. We are on this earth to serve our God-- to be filled with the Holy Spirit.

As God speaks to you through His Word and Sacraments, do be filled with His power. Life thus takes on meaning and we live under the Divine must. Peace thus reigns in the heart. Try it! It works. Be filled with the Holy Spirit.

There is a life time career of security and prestige in the proud ranks of the Texas Highway Patrol. Stop the nearest Highway Patrolman.

In spite of literary assumptions, the cold fact seem to be that the true power of the Roman Empire resided in Constantinople more years than it did in Rome.

To serve those who depend on us, be a Texas Highway Patrolman.

Young trees become particularly susceptible to damage by pests during the hotter and drier parts of the summer. Trees set out last spring should be watched closely for damage from grasshoppers and spider mites as the summer lengthens.

**SUB Is Center Of WT Campus**

"The Student Union Building is the family center of West Texas University," is the way Bob Byrd, new program director for the "SUB", describes its activities.

"It is the one place on campus where the students can spend their leisure time in a family like atmosphere. Most of the student activities on campus center around the Student Union."

"One of the top activities by the SUB is the annual Homecoming celebration with after game dances featuring nationally known entertainers, parades complete with floats, and a big campus barbeque." Byrd said. As program director for the SUB, he is responsible for the supervision of all these activities.

During the Fall the Student Union sponsors some 24 dances in the ball room. These include dances after each home football game. The SUB also has facilities for conferences and meetings among the students, faculty and campus organizations.

The working part of the student senate is the student union board, composed entirely of students. It is responsible for the planning and actual work of setting up the various student union activities.

For example, when a dignitary is visiting the university and the president wants to have a reception, the Hospitality Committee plans the event.

With the opening of the newly constructed cafeteria services across campus, some of the load should be removed from the cafeteria located in the Student Union Building. It will continue to serve regular meals, according to Byrd. The food will be cooked in the kitchens of the new cafeteria and carried by special truck to the Student Union cafeteria.

**FINE WRITING PAPER**

by

**MONTAG**

A variety of styles and shades

in top-quality stationery--

priced from \$1.00 to \$4.00 a box.

**Send Hallmark Cards--**

"When You Care Enough

To Send The Very Best"

**Plainsman Office Supply**

**Dove Season Is Open**

**Hunting and Fishing License Now on Sale.**



\* Shotguns

\* Ammunition

\* Fishing Tackle

**Spearman Hardware**

"Everything for the Sportsman"