

Churches Join For Holy Week Services



THE HANSFORD PLAINSMAN

VOLUME 10, NO. 22

THE HANSFORD PLAINSMAN, SPEARMAN, TEXAS 79081

SUNDAY, MARCH 25, 1979



STUDENTS PARTICIPATE IN FESTIVAL-The students pictured above are members of the "Key Tickler's Junior Music Club. They participated in the Junior Division of the National Federation of Music Clubs Festival at Borger March 3. Each one played two memorized piano solos for the competition. They received the following ratings: Mark Allen, Excellent; Sara Avila, Excellent; Mary Lou Baker, Superior; Jon Garnett, Excellent; Mark Garnett, Excellent; Julie Kell, Very Good; Sha'rie McCoy, Fair; April Patterson, Excellent; Denise Rojas, Superior; Kari Schneider, Superior; Sheila Schneider, Excellent; Laura Umphress, Excellent; Jane Ann Wirsdorfer, Excellent; Nick Wirsdorfer, Superior. Not pictured are Christy Brown and Cindy Barkley. They received superior ratings. These are students of Janie Kunselman.

Spearman Girls Win Canadian Tennis Tourney

Boys Take Second

Spearman----10 points
Canadian----8 points
White Deer----8 points
Perryton----4 points

In doubles, Pam Largent and Beth Ann Flowers were defeated in the finals by Waterfield & Bruce of Canadian, 6-2, 6-2.

In the semi-finals, Largent and Flowers defeated Albin & Pickens of Canadian, 7-5, 5-7, 6-1.

In the Quarter-finals, Suzy Steele and Kelly Shaver were defeated by Shuman and Nunn of White Deer, 6-2, 6-3.

In the semi-finals, Connie Vernon was defeated by Cooper of White Deer, 6-3, 6-2.

In the quarter-finals, Connie Vernon was defeated by Cooper of White Deer, 6-3, 6-2.

In the quarter-finals, Vernon defeated Close of Perryton, 6-2, 6-1.

Susan Cope was defeated in the semi-finals by Jones of Perryton, 5-7, 6-2, 6-4.

Cope defeated Rogers of Canadian in the quarterfinals by a score of 7-5, 6-2.

Spearman Boys win 2nd at Canadian

Perryton----13 points
Spearman----10 points
White Deer----4 points
Canadian----3 points

Todd Brock & Kyle Beedy were defeated in the finals by McKay & Beasley of Perryton, 6-2, 6-3.

Brock & Beedy defeated Woolridge and Mashburn of Perryton in the semi-finals by a score of 3-6, 7-6, 6-3.

Kevin Russell and Jimmy Ladd were defeated in the semi-finals by McKay & Beasley of Perryton, 6-0, 7-6.

Russell and Ladd defeated Henthorn & Mitchell of White Deer in the quarter-finals by a score of 6-1, 6-0.

Karey Bodey was defeated in the semi-finals by Bohannon of White Deer, 7-6, 6-2.

Bodey defeated Bowerman of Canadian in the quarterfinals by a score of 6-1, 6-3.

Natural Gas Policy Act Book Available

Officials from the Rail Road commission have left a book concerning the Interim Regulations Implementing the Natural Gas Policy Act of 1978, at the Chamber of Commerce office. Anyone interested in reading or studying the book, can borrow it from the Chamber

office. For information concerning the book contact Mary Lou Wyszog, at the Chamber office.

MARKETS	
Wheat	\$3.02
Milo	3.65
Corn	2.45
Soybeans	6.97

USDA Authorizes Grazing & Haying Of 1979 Wheat

Farmers who planted wheat for 1979 harvest now have another option to consider: They may graze or cut hay on their wheat acreage, secretary of agriculture Bob Bergland said today. Wheat grazed or cut for hay under the special acreage grazing and hay program will qualify for the same deficiency payment rate as wheat harvested for grain.

Wheat program participants will be allowed to graze cattle or cut hay on wheat acreage equal to the higher of (1) 50 acres or (2) 40 percent or their total intended plantings or wheat, feed grains (Corn, sorghum and barley) and upland cotton.

"We are taking this action to encourage the production of more beef later on this year," Bergland said, "Calves now on wheat pasture ordinarily would

have to come off and be sold about March 15 to permit the wheat to mature for harvest, while the action we are taking today would permit them to remain an additional 60 days or 50. This should result in slightly higher rates of grain and therefore more beef later on this year. It should also encourage the movement of a few more calves onto wheat pasture and more beef from those calves as well.

"While the impacts of this action will be slight, it should non-the-less slow the expected increase in beef prices," he said.

Producers participating in the special wheat acreage grazing and hay program must also comply with crop acreage (NCA) requirements and with set-aside requirements for

wheat harvested for grain and feed grain crops planted on their farm(s). There will be no advance payment or minimum payment guarantee this year as was provided to 1978 special wheat acreage grazing and hay program participants. The deficiency payment rate for 1978-crop wheat was 52 cents per bushel.

The 1979 wheat deficiency payment rate will be determined in december and will be the difference between the established price (13.40 per bushel)

and the higher of either the national average market price during the first five months (June through October) of the

marketing year, or the national loan rate (12.35).

Producers wishing to use this option may indicate their intentions at their local agricultural stabilization and conservation service (ASCS) county office during the 1979 wheat and feed grains program signup period currently underway. The signup period ends April 30.

Thanks

On behalf of all 4-H members the Hansford County 4-H Council wishes to thank everyone who patronized the Concession Stand at the Hansford County Junior Livestock Show.

Special thanks are extended to Kay Loomis, Chairman and the Extension Homemakers for supplying homemade pies and sandwiches; to Britt Jarvis for donating the beef; to Jim Evans and Billy Haden for supplying the ice; to Carl Cooper (Loomix) for donating hot drink cups; and to Bob Farr for the use of Boy Scout ice chests.

Excellent support made this year's fund raising activity the most profitable ever.



W. T. McADAMS

ATTENDS TELEPHONE TRAINING

W. T. McAdams, Spearman, switching technician of a 2-week for General Telephone, recently attended Irving training school at the company's training center in Digital Electronic System Fundamentals. The course, computer theory as it relates to electronic telephone equipment, is designed to give employees up-to-date training in Myron Mahon.

WEATHER

HI LO PREC.

3-16-79	43	40
3-17-79	55	41
3-18-79	69	46 .42
3-19-79	65	29
3-20-79	55	35
3-21-79	55	43 .21
3-22-79	59	45 .31

Wayne Meek was defeated by Phillips of Perryton, 6-4, 6-0. Spearman wins Overall Championship

Spearman----20 points
Perryton----17 points
White Deer----12 points
Canadian----11 points

Next play for Spearman will be Saturday, March 24, at Perryton Sports Festival.

Mrs. Miller Suffers Injury

Mrs. Eddie Faye Miller, mother of publisher Billy Miller, fell Thursday afternoon and broke her hip. She underwent surgery at High Plains Baptist Hospital in Amarillo Friday.

Prayer Group Meetings Set

We have an Intercessory Prayer Group meeting every other Wed. It is an interdenominational group that prays according to the scriptures. We are learning to pray by the Word of God for our families, government, schools, churches, finances and other personal needs. We invite everyone, who is interested in learning to pray effectively, to join us. If you have a prayer need you're welcome to call 2167, 3334, or 3189, at any time for prayer.

Hospital News

Patients in Hansford Hospital are Frances Ramero, Margaret Hoggatt, Grace Jenkins, Lucio Moreno, Larry Bowen, Chris Wiley, William Powell, Iris Wood, Pauline Harris, Carla Dennis, Kathy Bowen, Paula Pope, Phillip Burnett, Mildred Chamberlain, Donna Atchison and Robert Eaton.

Dismissed were Essie Burkhardt, Margie Barkely, Allena Gould, E.W. Dickson, Charles Little, William Shields, Frankie Domingues, Lois Miller, Larry delano and Albert Mackie.



George Enloe of Gruver, a member of the Texas Cattle Feeders Association promotion committee, presents a \$300 first place check to Mrs. Gladys Geddes of Zavalla, the 1979 Texas Beef Cook-off champion. The cattle feeders gave \$600 in prize money to the contest held recently at Lanier Junior High School in Houston. Awards were given at the Albert Thomas Convention Center during the general session of the Texas and Southwestern Cattle Raisers Association Convention. Contest sponsors were the Texas Cowbelles, the Texas Cattle Feeders and the Texas Department of Agriculture. From left are John Armstrong, TSCRA president, Mrs. Geddes, Marian Balke, contest chairman and Enloe.

Girls State Delegates Named



KELLY SHAVER



VALERIE HAGERMAN

Girls State will be held at the Texas Lutheran College, Seguin, Texas June 19th depart June 29th.

Spearman delegates this year Valerie Hagerman and Kelly Shaver. They are sponsored by the Perryton American Legion Post and the Student Council of Spearman High School. All funds for the delegates expen-

active member of the UMY group at the Methodist Church.

Kelly Shaver is the daughter of Mrs. Ruth Shaver. Kelly participates in FCA, Lynettes Varsity Basketball, Student Council, Choir & the musical group Celebrate. She is currently serving as Junior Class President. Kelly was named the all-around girl choir member last year.

The purpose

The purpose of American Legion Auxiliary Bluebonnet Girls State is to educate our young women in the duties, privileges, rights and responsibilities of American citizenship. Its purpose is to awaken within the youth of our nation a sincere conviction that a well-formed, intelligent, participating citizenry is most vitally needed to protect and preserve our American institutions, our American democracy. It is a mythical 51st State where, for a period, the citizens of Girls State organize their own city, county and state governments. They choose their own officials in accordance with regular election procedures. They learn the duties of the various city, county and state

offices. They introduce and debate their own bills in a legislature. Justice is administered by their own law enforcement agencies and courts. In Girls State the young citizens "learn by doing."

A special thanks to Perryton American Legion Post and to the following for their donations.

- Excel Chevrolet
- Speartex Grain Co.
- Bakers Department Store
- First State Bank
- B & B Farm Industries
- J.L. Brock Insurance Agency
- Cut-Rate Thriftway
- Baker & Taylor
- Berry Cleaners
- Gordon's Drug
- Spearman Super Service
- Jarvis & Biggers
- J.E. Blackburn, attorney-at-law
- John Hutchison, attorney-at-law
- Brown, Graham & Co. CPA
- Mason & Henton CPA
- J.G.'s
- The Bunkhouse
- Masaud's
- Cates Men & Boys Inc
- Mr. & Mrs. Bill Pittman
- Consumer Sales Co.
- Dr. & Mrs. Earl Novak



Insurance Corner

PROTECTION AGAINST INFLATION

One of the biggest problems we face is inflation. It hits every one. No matter where we go and what we do, the problem of higher prices for products and services confronts us. We have no choice but to face it and deal with it.

We can, however, protect ourselves from it to a large extent by means of inflation insurance. It can't stop inflation from rising, but it can see to it that you're not caught napping by making sure your home and possessions don't outgrow their protection. It's available on both Homeowner and Tenant policies. With this type of insurance, the dollar amount of your policy is AUTOMATICALLY increased as the value of homes has increased dramatically--almost

spectacularly--during the past number of years. Yet, some policyholders may still have the same coverage they had when they first took out their insurance! Inflation insurance is like a silent guardian that watches over the policyholder, constantly checking his investments, home, furniture, etc.--to see to it that the replacement coverage keeps pace with rising values.

This information has been brought to you as a public service by John R. Collard, Jr., your one stop answer to complete business and personal insurance protection. Life, home, auto, group insurance, and profit-sharing plans. See John R. Collard, Jr., 405 Davis St., Telephone: 659-2501.



Chamber of Commerce Release

Been to a garage sale lately? What a fantastic experience. Bargain buying at such events is mind boggling.

It doesn't seem to matter if the item is useful, unworkable or out-of-date. The price is the thing. Someone said that one person's junk becomes another's treasure... at least temporarily.

When the glow fades, the purchase is usually added to the growing pile of former treasures in the attic, the basement or a storeroom. But it was a bargain. Buying something just because it's cheap serves no real purpose, but it's done every day. Some folk want to get something for nothing. Often they find the item is worth just that--nothing!

A good product takes time to

develop. Skills are needed in research, design and production. That has to have a price tag.

Quality counts--and a discerning buyer can identify quality at a glance. More importantly, the wise buyer will pay the price. And consider the purchase bargain.

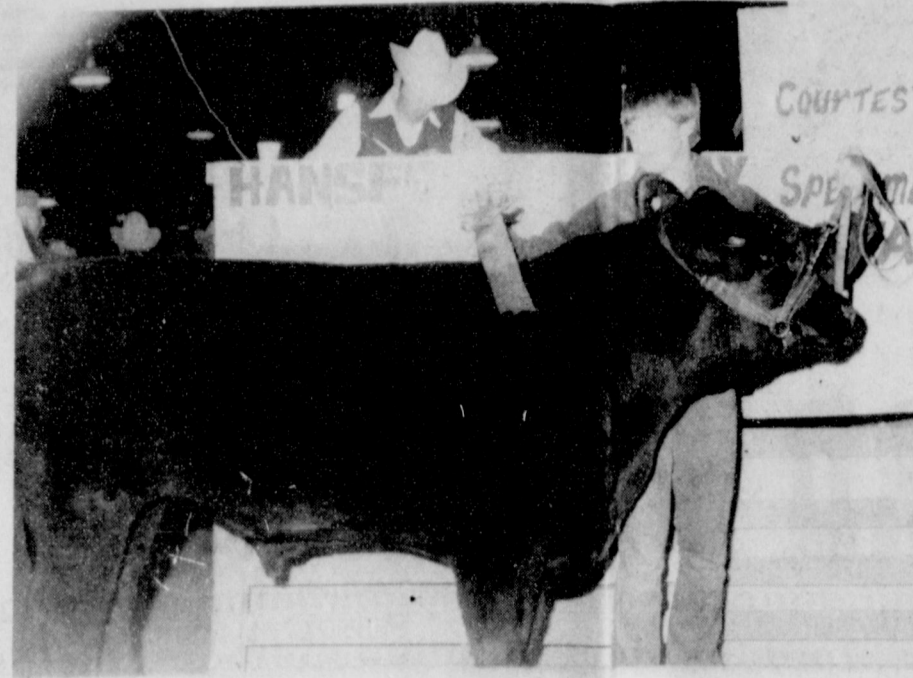
Communities deserve a quality product in the management of their affairs. An effective chamber of commerce is more than just a bargain--its a real buy.

GOAL SETTING SEMINAR
Monday, March 26, has been set for the Goal Setting Seminar for the Chamber of Commerce. This important meeting will be held at the "Y" building, 5th and Hazelwood at 7:30 p.m.

You are invited to attend this important meeting and help us establish our goals for 1979. What do you think the community needs to do next to help Spearman be a better place to live and do business? Attend this important meeting and help us set our priorities for this year--

WE NEED YOU!!!
YOU NEED US!!!

A study of twenty states and the District of Columbia disclosed that 13,000 employees of the Department of Health, Edu-



RON CLARK, SPEARMAN FFA, showed the Reserve Champion Steer at the Hansford County Livestock Show last weekend. The steer weighed 1058 lbs. and was sold to Hansford Implement for a total price of \$1163.80.



TRACY VERNON showed the 2nd place Lt. Wt. Steer at the Hansford County Livestock show last weekend. The steer weighed 975 lbs. and was sold to DGC Feeders.

cation and Welfare were receiving welfare payments of one kind or another.

FEDERAL ENERGY REGULATORY COMMISSION

A large crowd was on hand at the Federal Energy Regulatory Commission hearing in Amarillo, March 9. This hearing was to determine if the federal government can curtail natural gas use by agricultural customers on the High Plains. Barbara McClellan, President of the WIFE organization of Spearman, Mary Lou Wysong, Manager of the Chamber of Commerce and Gerald Heinrich, President of the Chamber of Commerce attended this important hearing.

RESOLUTION
A RESOLUTION STATING THE BOARD OF DIRECTORS OF THE SPEARMAN CHAMBER OF COMMERCE, SPEARMAN, TEXAS SUPPORTS THE OBJECTIVES OF INDIVIDUAL FARMERS AND RELATED ORGANIZATIONS IN THEIR PURSUIT OF HIGHER* FAIR AND EQUITABLE PRICES FOR AGRICULTURAL PRODUCTS.

FIREWORKS
The Board of Directors of the Spearman Chamber of Commerce voted to sponsor a fireworks display again on the 4th of July. Plans are being discussed to make this an all day event.

WATER
A special Department of Agriculture hearing on irrigation problems costs and issues will be held in Lubbock on March 28, at 10:00 a.m. in the Civic Center. Everyone is encouraged to attend this hearing so that the high level Department of Agriculture officials will know how concerned we are about our water situation.

WELCOME NEW MEMBERS
Kids Stuff
312 Main
Georgia Holt
Kids Stuff will have their grand opening Saturday, March 24, drop by and welcome them.

HANSFORD COUNTY HISTORY BOOK
The Hansford County Historical Commission is in the process of compiling a new

History book of Hansford County. These books will be of the highest quality in materials and appearance. Roy L. McClellan is the chairman and Jenny Blankenship of Gruver is treasurer. Contact them if you are interested and they will have a representative call on you.

The board of directors of the Spearman Chamber of Commerce passed the following resolution at the March 1, board meeting. Copies have been mailed to President Carter, Secretary of Agriculture Bob Bergland, Senators, Representatives and other interested organizations and individuals.

Whereas, agriculture has played a major role in helping the United States achieve its position of world pre-eminence, and

Whereas, in Spearman, Hansford County, Texas agriculture is a major industry and serves as a sound economic base for our community, and

Whereas, the Hansford County farm program is a key to our economic system, and

Whereas, individual farmers and related businesses provide employment and other means of support for a large number of individuals, families and businesses within Hansford County, and

Whereas, the agriculture industry is facing the dual threats of higher prices for operations, equipment and material and lower prices for their agriculture products, and

Whereas, the Board of Directors of the Spearman Chamber of Commerce, Spearman, Texas desires to express its unanimous and wholehearted support for the objectives of higher, fair and equitable prices for agriculture products which will provide for reasonable return for the farming industry and continuation of individual and family farms.

NOW THEREFORE, BE IT RESOLVED by the Board of Directors of the Spearman Chamber of Commerce, Spearman, Texas, that said Board supports the objectives of individual farmers and related organizations in their pursuit of higher and fair and equitable prices for their agriculture products.

Adopted and signed by the President of said organization this 1st day of March, 1979.
Gerald Heinrich
President
GH/dw

FOLLOWS
The Chamber and the "Y" are co-sponsoring a follies. This is a New York production com-

pany involving local people. Joy McCormack is the General Chairman and she has ask several local citizens to serve on her committees. The Cargill PRoduction Company supplies a professional director and a beautiful costumes. This should be a lot of fun and should involve a lot of people around the area. The dates have been set for November 30 and December 1. Work is already starting and the fun is just around the corner. There will be something for everyone at the fabulous follies. Watch for it!

DOWNTOWN RE-VITALIZATION
The downtown re-vitalization committee will meet at the City Hall, Thursday, March 29, at 7:30 p.m. Lenis Simpson is the chairman. Bobbie Novak, Kim Brock and Mary Davy are members of this committee.

1979 OFFICERS
Gerald Heinrich-President
Jim Shirley-First Vice President
Dick Elbert-Second Vice Pres.
Bobbie Novak-Treasurer
Jim A. McLain-Immediate Past President
1979 BOARD OF DIRECTORS
L.E. Thomas, Jr.
Grady McCormack
Mike Garnett
Eddie Martin
Kim Brock
Robert Elliott
Dick Hudson

OFFICE STAFF
Mary Lou Wysong, Manager
Donna Wirsdorfer, Secretary

GASOHOL
Ralph Blodgett, J.L. Brock, Ben Woodington, Mary Lou Wysong and Gerald Heinrich have just returned from a meeting of the National Gasohol Commission held in Denver March 18th and 19th. The possibility and feasibility of building a plant in Spearman will be discussed at the Goal Setting meeting. Be sure to attend and let us tell you what we learned about GASOHOL as a motor fuel and how it can serve as a market for the agriculture products raised in this area.

PLEASE ATTEND. YOU WILL BE GLAD THAT YOU DID!!!
Leonard Woodcock, Ambassador to communist China:
"I hope the new Sino-American friendship will form a 'stable base' that will eventually lead to world peace."

Hyman Rickover, Admiral U.S. Navy, on conglomerate mergers:
"The ability to dispense money provides their power. This violates the basic right of individuals to elect their political leaders."

★ SERVICE ★

We are proud to announce the addition of Junior Hollis to our business

With over 25 yrs. experience in appliance & Refrigeration service.

All Major Brands-

- Washers & Dryers
- Dishwashers
- Ranges
- Trash compactors
- Refrigerators
- Freezers

Central Heat & Air Conditioning

Same Day Service In Most Cases

Spearman Electronics

313 Main

659-3858

You'll want to remember how they look today



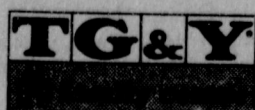
A professional 8 x 10 color portrait for

88¢

All ages welcome - babies, adults, and families! Choose from our selection of scenic and color backgrounds. We'll select poses, and additional portraits will be available

with no obligation. Satisfaction always, or your money cheerfully refunded.

March:
Thurs. 29, Fri. 30, Sat. 31
10 A.M. - 8 P.M.
Highway 207 South, Spearman



First subject 88¢. Additional subjects \$1.00 each. Backgrounds may occasionally change. Remember, children must be accompanied by a parent.

STALLION SERVICE STANDING — DOC QUICK —

His Sire is by Doc Bar - His Dam is by Quick Silver King
Making a top cutting horse.

FOR INFORMATION CALL:

435-4956 — Nights Perryton, Texas



DO YOU KNOW A CHILD WITH A HANDICAP?

In One Minute You May Change a Lifetime

Every handicapped child, from ages 3 through 21, has the right to a free public education. It's a state law, but many people are unaware of this fact.

If you know a handicapped child who is NOT receiving appropriate educational services,

Call Collect

806-376-7463

or complete & return the Referral Form below.

Region XVI Education Service Center can assist in obtaining the appropriate services for a handicapped child. Referral & Resources can be provided through the Direction Service Component. Certain Supportive Services in cooperation with your local school district can be provided by the Direct Service Component.

Please take one minute of your time to either fill out the attached form, call the above phone number, or contact the Special Education Director of your local school.

REFERRAL FORM

Name of Child _____ Age _____
Name of Parent/Guardian _____
Mailing Address _____
City _____ Zip _____ Phone () _____
Name of Person Making Referral _____
Telephone of Person Making Referral () _____
(By law, all information is held in strict confidence)

Mail Referral Form to:
Region XVI Education Service Center
Attn: Special Education Director
P. O. Box 30600 - Amarillo, TX 79120

Title VI B Education of the Handicapped Act

WANTED

ADS

To Set The Record Straight

by Gerald McCathern

ions had been made last December to reseed the forty acres where the tractors were impounded and that the contracts had already been let. This would indicate why, when we offered to reseed the mall free of charge, we were refused!

To say the situation inside the mall was confused would be putting it mildly. Groups who had traveled together had become separated. Approximately fifteen hundred tractors and as many support vehicles began trying to get regrouped. In the process of backing and turning and parking a few small trees were accidentally run over by dual tires, a few trash cans smashed, and park benches busted. But considering the magnitude of the vehicles and the size of the area, I feel the damage was very minimal to what it could have been if the farmers would have wanted to be destructive. As one farmer was heard to remark to a newsman, "You don't force a bull into a china shop without expecting a little china to get broken!"

Then came the "blizzard of '79." Twenty-four inches of snow fell in a twenty-four hour period. The city was paralyzed. Nothing could move. Hospitals were without help, fire trucks and ambulances could not run, and police could not patrol. Gangs broke into grocery stores and looted.

Calls went out to the farmers for help. They responded just as they would have responded at home. The only problem was that the police would not allow all of our tractors out of the compound. For four days, 24 hours a day, we hauled doctors and nurses to the hospitals. We dragged ambulances and fire-trucks to emergencies. We delivered medicines, we carried heart patients to hospitals, we pushed snow from parking lots, we opened streets, and we pulled thousands of cars from snow drifts. We established two command centers and instructed radio and T.V. stations how to contact us for emergency help. We received calls from the Pentagon, the National Guard, the C.I.A., the police stations, the hospitals, the fire stations, and yes, even the U.S.D.A. requesting aid to clear the snow. And we did it, with no thought of pay. We did it because we were farmers and our assistance was needed. We also gave several pints of blood when the blood bank got low.

The people of Washington were grateful. Plaques and certificates of appreciation were presented to us, stating that they would always support the farmers in their efforts! Houses were opened to us for as long as we wished to stay. The attitude of the police changed. Those on duty "guarding" the farmers became more open and friendly. One policeman apologized to me for the way we had been treated. He said he had been on the police for twenty-four years and that no protesters had been treated as badly as the farmers. They only followed orders, he said!

I visited with an employee of the park service responsible for the upkeep of the mall. He said that the damage figures being quoted were highly exaggerated. He also said the appropri-

CAPROCK MONUMENT CO.

Dealers of Georgia Granite, Georgia Marble, Colored Granite, & Bricks.

represented by **BOXWELL BROS. FUNERAL HOME** 519 S. EVANS 659-3802

FOR SALE: 1968, 2-door GranPrix Pontiac, Loaded, Call 659-2712. Also CJ-5 4 cylinder jeep engine complete. 6t-c

FOR SALE: Wurlitzer Spinnet Piano, one 18,500 BTU Refrigerated Air Conditioner, one 10,000BTU Refrigerated Air Conditioner. Call 3283. 16-rtn

YOURS FREE, 20 or more trees to be sawed down. Clean up and haul away. Call 2082. 17S-rtn

FOR SALE: 1978 S and S 4 horse gooseneck van, with sleeper. 28 ft. long, 6 ft. wide - 6 1/2 ft. high. The sleeper is 10 ft. by 6 ft. Call 733-2720. 18S-3c

Shasta travel trailer always been shedded Excellent Condition 21' 4675.00 405-253-6588 18S-4tp

FOR SALE: Nice riding saddle \$150.00. Call 2687 Spearman 19-rtn

FOR SALE Extra Special 74 Kawasaki 400: Good condition: sacrifice. Call 2924:3995

FOR SALE: 42" Camper Shell, upholstered Foam Bed, Curtains, carpet. Almost new. Call 733-2179. S-3p

FOR SALE:Gooseneck trailer, 3 axles, 6' x 24'; registered quarterhorses, mares in foal, yearling colts and geldings. Call 659-2774. 18S-5tc

ORGAN IN STORAGE - 1978 Home Model Organ stored locally. Reported like new. Responsible party can assume low balance. Automatic Rhythm, Walking Boogie Bass, Single Finger Chords, Banjo, etc. Call Person-to-Person Collect: Mr. Roberts, 512-459-8660. National Keyboard Inc. Austin, TX. 18S-8tp

NURSERY

We have a good selection of shade, fruit trees and evergreens. Plant now for early spring growth. Will have a good selection of bedding plants, tomatoes, peppers, etc. Ochiltree Growers, 8 mi S. of Perryton, Hwy 70. Phone 435-3545. 18S-6tc

FOR SALE-73 Delta 88, in good condition call 3648, after 5 3990. 19S-2tc

Baldwin spinet piano-walnut finish-less than 2 years old Phone 316-624-8421. Brier & Hale Music Liberal, Kansas 19S-2t

FOR SALE-1975 Lebaron 14 x 66 mobile home 2 bedroom 2 full baths built in kitchen wet bar and partially furnished low equity and take up payments. Call 2795 19S-4tp

FOR SALE-69 Bronco, completely rebuilt. Big tires and wheels, lights, roll bar, cam and headers. 659-3773. 19-7tc

REAL ESTATE FOR SALE

Commercial thirty acres corner on Highway 3 at Intersection of Optima Reservoir Access Road. 405-338-8289. 19-4tc

Three bedroom, 1 bath home FOR SALE. Family room, patio, fruit trees, horse pen or large lot edge of town. Call 659-3027. 17-rtn

FOR SALE: Nicely decorated 2 bedroom, 1 bath home, corner lot. Fenced backyard. Quiet neighborhood. Appliances optional. Call 3802. 16-rtn

FOR SALE: Brick 3 bedroom house with garage, central heat & air & storage, 1010 S. Barkley, call 659-2390. 17-rtn

LARGE, COMFORTABLE, IMPRESSIVE, all describe this new home located in Glover Place. 3 bedroom with walkin closets, 2 full baths, Fireplace, 3 skylight. Double insulation and finished patio. Approximately 1950 sq. ft. THIS HOME MUST BE SEEN TO APPRECIATE THE FULL VALUE OFFERED. A lot of extras that most contractors do not put in a home. ED WHEELER REAL ESTATE 17-8tc

FOR SALE: 1968-95 John Deere Combine in good condition. Nearly new 357 New Holland Bale and Grain Grinder. Contact James Martin, 659-2716. 16-rtn

FOR SALE-1976 Suzuki GT500, excellent condition. Call Mark Sheets, 659-2085. 17-8tc

FOR SALE-GE electric stove, self cleaning oven, in good condition. \$75. Call 3269. 18-4tc

There has been much rhetoric lately about those "bad radical farmers" who descended on Washington, D.C. with their tractors for the apparent purpose according to the news media, of making tracks on the mall. I would like to present the other side of the coin. I was involved in the National tractorcade from its inception. I am personally acquainted with virtually everyone of the people in this nation today. Concerned citizens who were willing to sacrifice a portion of their lives and their fortunes to try to save your farms and mine, your community and mine, and your nation and mine!

They were aware that our rural communities could not long exist in this inflation ridden society with grain producers receiving less for their commodities than they received in 1948! They were aware that the present farm bill has placed a ceiling price on wheat and feed grains at levels which will only equal to 1948 prices! They were aware that 1948 prices and 1979 costs equal only one thing, disaster for rural America. And so they committed themselves to trying to awaken America before it is too late by taking their tractors from their fields to the Nations highways heading East, traveling eighteen days through rain, sleet, snow, and blizzard to ultimately arrive in the Nations Capitol to a planned reception which was unbelievable, even to the citizenry of Washington, D.C.

Thousands of farmers, tractors, trucks, and campers traveled eighteen days through cities such as Oklahoma City, Little Rock, Memphis, Nashville, Dallas, Shreveport, Atlanta, Charleston, Kansas City, St. Louis, Indianapolis, and Cleveland without so much as a traffic ticket. All along the routes people greeted the tractorcade with flags and banners, good luck signs, and applause! It all ended however, when we crossed the Potomac.

We had secured our camp sites around the city at Bull Run Campground, Pohic Campground, and Greenbelt Campground, where we intended to return each night with our tractors after lobbying during the day. The police, however, had different plans. Buses, wreckers, garbage trucks, and snow plows had been gathered close to the mall before we entered the city on the morning of February 5th. The police were out in force. If a tractor was moving to slow, or if it turned the wrong direction, windows were immediately broken with night-sticks, and farmers were dragged from their cabs and arrested. Tempers flared but at no time did I see a farmer raise a hand against a police officer. I did, however see several farmers beaten unmercifully before being carried off and arrested. It was apparent that the police were trying to insight a reason for their previous laid plans.

HELP WANTED

HELP WANTED- The Texaco Wholesale at Gruver needs a full time truck driver. Salary open. 733-2511 18S-4tc

MECHANICS WANTED: \$6.00 per hr. plus benefits. Call for more details. Jim Lowing or Neil Brewer, 624-3886, Per Hoel Ford, Inc. Liberal, KS. 19-2Tc

HELP WANTED-Grain elevator superintendent and one general elevator employee. Two bedroom house and utilities furnished, group insurance. Start immediately. Call day or night 806-733-5067. 16-rtn

WANTED: Full time farm help. Experience in irrigation farming and cattle operation. Must be self-starter, drinkers need not apply. Call 806-733-2203 in Gruver for appointment. UTILITY MAN-TRUCK DRIVER Perryton, Tx 19-2tc

Applicants experienced in hole digger, aerial basket truck and hydraulic boom truck operation are needed. Call Mr. Parker at (806) 435-4051 for appointment. Community Public Service Co. An Equal Opportunity Employer 19-2tc

MATURE COUPLE: No children. Maintenance of yard and improvements and domestic service. Good house and utilities furnished. Halfway between Sunray and Gruver. Good Pay. Mr. and Mrs. Sam Cluck, 806-733-2515 or 806-733-2646. 19-2TC

HELP WANTED: One or two dependable and experienced persons to take care of my lawn & yard. Needed NOW. Must have proper equipment. Dr. Kleeburger. 659-2804, Spearman, TX. 19S-2tc

UTILITY MAN TRUCK DRIVER Perryton, Tx Applicants experienced in hole digger, aerial basket truck and hydraulic boom truck operation are needed. Call Mr. Parker at (806) 435-4051 for appointment. Community Public Service Co. An Equal Opportunity Employer 25-1tc

COMMUNITY PUBLIC SERVICE CO. An Equal Opportunity Employer

UTILITY MAN TRUCK DRIVER Perryton, Tx Applicants experienced in hole digger, aerial basket truck and hydraulic boom truck operation are needed. Call Mr. Parker at (806) 435-4051 for appointment. Community Public Service Co. An Equal Opportunity Employer 25-1tc

COMMUNITY PUBLIC SERVICE CO. An Equal Opportunity Employer

UTILITY MAN TRUCK DRIVER Perryton, Tx Applicants experienced in hole digger, aerial basket truck and hydraulic boom truck operation are needed. Call Mr. Parker at (806) 435-4051 for appointment. Community Public Service Co. An Equal Opportunity Employer 25-1tc

COMMUNITY PUBLIC SERVICE CO. An Equal Opportunity Employer

COMMUNITY PUBLIC SERVICE CO. An Equal Opportunity Employer

COMMUNITY PUBLIC SERVICE CO. An Equal Opportunity Employer

COMMUNITY PUBLIC SERVICE CO. An Equal Opportunity Employer

COMMUNITY PUBLIC SERVICE CO. An Equal Opportunity Employer

COMMUNITY PUBLIC SERVICE CO. An Equal Opportunity Employer

COMMUNITY PUBLIC SERVICE CO. An Equal Opportunity Employer

SERVICES

SERVICE: Pits cleaned, wet or dry. Dragline or loader. Also, dozer, grader, carry-all service. Lee Roy Mitchell, 806-733-2384, Grover, Texas, 79040.

WILL DO ALL TYPES OF CARPENTRY WORK: Repairs, Remodels, Additions, Floors, Ceilings, Walls & Roofs Satisfaction Guaranteed. Call Tommy Reger 659-3425 659-2174

WINTER RATES Jan. thru March Steam Rinsevac Shampooer \$4.95 per day Call Gordon's Drug, 2141. After 7 p.m. & Sunday call 3437. 716 Cotter Drive

NOTICE Wallace Monument Co. Monuments, Curbing, Grave Covers Local Representative LEONARD JAMESON 659-3406 20-rtn

Alcoholic Anonymous meeting 8 p.m. Friday, Home Demonstration Club building, 305 N. Bernice. Phone 659-3181 for information.

Al-Anon meetings 8 p.m. Friday, Home Demonstration Club building, 305 N. Bernice in back room. Phone 659-3181 for information. Ask for Al-Anon.

For Special Tours & Charters on Continental Trailways, check with Viola Graves at Bus Station 659-3446. Brochures, tickets available. 17rtn-Tonly

Pee Wee's Plumbing Service Roto-rooter, Acoustical Ceilings, Blown Insulation in walls and ceilings. 659-2811 or 659-3781. 18-rtn

KIRBY SALES & SERVICE* New & reconditioned vacuum cleaners. 912 S. Bernice. 659-2797. 19-rtn

Horse Shoeing, Dave Campbell 733-2720 Gruver. 19.

MISCELLANEOUS FOR SALE

FOR SALE: Stand By Electric Generators. Call Charles D. Smith, Perryton. 435-3781. 9S-rtn

FOR SALE: 3 Bed Room Double Wide Mobile Home. 1 1/2 Bath. Utility Room. Call 659-3292. 8S-rtn

FOR SALE: 1968-95 John Deere Combine in good condition. Nearly new 357 New Holland Bale and Grain Grinder. Contact James Martin, 659-2716. 16-rtn

FOR SALE-1976 Suzuki GT500, excellent condition. Call Mark Sheets, 659-2085. 17-8tc

FOR SALE-GE electric stove, self cleaning oven, in good condition. \$75. Call 3269. 18-4tc

The Hansford Plainsman

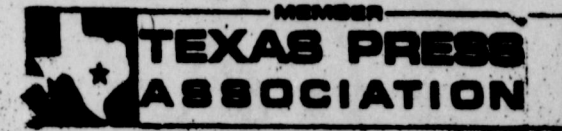
PUBLICATION (USPS 234-660) SPEARMAN, TEXAS 79081

213 Main Box 458 659-3434 Published Weekly at 213 Main Street Spearman, Texas 79081

Owner-Publisher.....William M. Miller Second Class Postage paid at Spearman, Texas 79081

Any erroneous reflection upon the character of any person or firm appearing in these columns will be gladly and promptly corrected upon being brought to the attention of the management.

SUBSCRIPTION RATE: Hansford, adjoining counties, combination with the Spearman Reporter, \$10.40. Other points, \$14.40.



For The Ultimate In STORM DOORS Custom Built, Designed, And In Colors To Fit Your Home.... Contact Howard Moyer at

Only Aluminum Industries

Gaymon, Okla. 114 W. 1st 405-338-6966 or 73942 338-6170

FOR SALE

FOR SALE-Brick and hollow tile building, 1500 square feet, on Main Street Corner. Central heat and refrigerated air. High traffic count, ideal for office, retail, or financial operations. Emmett R. Sanders Realtor. 659-2516, nights 659-2601. 16S-rtn

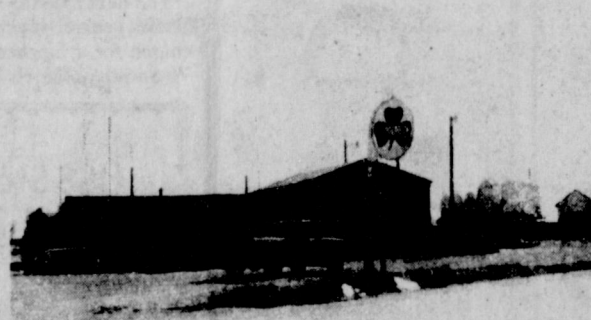
The first stewardess, Ellen Church, carried baggage, helped pull the airplane out of the hangar, cleaned the plane's interior and refueled it.

Gerald McCathern

The Permian Corporation has an opening for two drivers in the Spearman area. Must be 21 years old with a minimum of 6 months recent tractor trailer driving experience. Excellent pay and benefits, which includes free hospitalization and life insurance program, free retirement plan, thrift plan, free uniform program, safe driving pay, paid vacations, sick pay and paid holidays, 15% night differential pay. The job will consist of local hauling in the Spearman area. Equal opportunity employer, male or female. Apply in person or call the Spearman office.

Highway 207 Phone 659-2571 Spearman, Texas

Terrific Buy In WAKA A great Opportunity



Nice Family Business

Must see to appreciate. Gas Station--Grocery store, Warner seed business -- 2 bedroom home-- 2 car attached garage -- plus detached 2 car garage -- 20 x 40 ft. shop -- 2 car carport.

Ready To Go

Bud Aylett -- 435-2109 Christine Aylett -- 435-2109

GOLDEN SPREAD REALTY

(806) 435-5444 - 401 S. Main - Perryton

WE'RE THE NEIGHBORHOOD PROFESSIONALS.

© 1979 Century 21 Real Estate Corporation. Licensed Trademark of Century 21 Real Estate Corporation. Printed USA. Each office is independently owned and operated. Equal Housing Opportunity



If you would like to join us as one of our salespersons in Spearman, call or see us.

Karen Dennis On PSU Softball Team



Karen Dennis a graduate of Spearman High School, is a member of the Panhandle State University softball team where she will play pitcher, and outfield.
In high school, she was a member Speech Club, FCA, Deca, FHA, Basketball, Track, Cheerleader, Speech Communications Award, Most Friendly, Who's Who; Junior Hostess.
In college, she is a member of SEA and was a basketball cheerleader.
Karen is the daughter of Mr. and Mrs. George Dennis of Spearman. Her major at Panhandle State University is Elementary Education.

Faye's Daze

I received this letter this week. I hope you enjoy reading it as much as I did. I think I know who this No. 1 fan is but since I'm not positive I guess I'll keep it to myself. By the way, No. 1 fan, how about getting you to write this column for me. You do a better job than I do.

Dear Faye's Daze,

Today, I whipped out the recipe for "Stuff" featured in a recent column of yours. Since the outside temperature was forty degrees, you did specify this was tasty on a cold day if I recall---forty degrees does qualify I hope--- and since eldest was home from college, since Father loves new recipes, since my parents were coming for lunch and they had been out of town several days with circumstances requiring them to eat in restaurants and enjoying delightful treats from vending machines, I considered "Stuff" appropriate fare for Thursday lunch.

Well now, here is the problem. After cooking for nearly twenty-one years, I still cannot read "a pinch of this, a dab of that" type recipe. Having no canned tomatoes for the rice, I substituted tomatoe sauce---okay, so far. Browned the meat, added a rather large can of beans and then was ready to mix everything together. You forgot to mention this "Stuff" grows! Great-grandma's black kettle might have accommodated all the ingredients, but grandpa had used it for frying fish, so I scared up the biggest roasting pan quickly available. Meanwhile, the sink is running over with several graduated sizes of casserole dishes. With a great deal of smug satisfaction, "Stuff" finally was placed in the oven. Then to my horror, I read the fine print stating, "Stir in cheese chunks and place Fritos on top of last ten minutes of cooking time." Good grief, I had already dumped the whole thing in aforementioned pan. Thankfully, this procedure did not prove too disastrous. However, after the meal, my dad asked if he would get Alka-Seltzer after lunch or should he come back later for a dose. I really do love him and I love your column, too.

Oh by the way, it is now past suppertime and Dad has not made an appearance for a plop, plop, fizz, fizz treatment. My, my, you don't suppose--- I might better lock the back door and take the phone off the hook. Sincerely, Your # 1 Fan

Letter To The Editor

Dear Billy:
Just a note to tell you that you did a fine job on the stock show articles. The kids needed all the help they could get.
Thanks,
Lynn Davis

Extension Clubs

The Town & Country Home Extension Club met Thursday, March 20 in the home of Lisa Pipkin with Connie Steger presiding and the Roll Call answered with "An Accident I'll Never Forget."

The club was reminded of the Easter Egg Hunt April 10.
The TEHA District Meeting will be in Wellington March 22 and Lisa Pipkin will attend.

The Home and Living Committee is sponsoring a Parenting Seminar. It will be held in Gruver April 16 at the Church of Christ and in Spearman April 17 at the Methodist Church. Babysitting will be provided. The seminar will be 9:30-11:30. The public is invited.
Peggy Winegarner gave the program on "First Aid."

Refreshments were served by Lisa Pipkin to Joan Brown, Linda Close, Judy Hergert, Janie Kunselman, Delinda McLaughlin, Penny Ralston, Lynna Renner, Connie Steger and Cheryl Blankenship.
The next meeting will be Tuesday, April 3 at 1:00 p.m. The members are to meet at Lisa Pipkin's to go to the home of Linda Close who lives in the country.

The Holt Home Extension Club met Tuesday, March 20 in the home of Mrs. Rex McCloy. The minutes were read and approved and Roll Call was answered with Car License number.
The club made plans for the "42" party at the Holt Schoolhouse March 23.
The program was given by Trice Cook which was on "How to Cover Coat Hangers with Rug Yarn."

Refreshments were served by hostess Susan McCloy to Audene Beck, Myra Berner, Trice Cook, Wren Holt, Sue Holt, Louise Holt, Linda Jarvis, Teresa Kirk, Grace Kirk, Virginia Pool, Jo Ella Jones, and a new member Mrs. Jerry Womble.
The next meeting will be Tuesday, April 3 in the home of Mrs. W. C. Jackson.

The Las Amigas Home Extension Club met Monday Evening, March 19 at the Home Extension Club Room with president Adella Lopez calling the meeting to order.
They went through the yearbook and discussed the program scheduled for the coming year.
Agent, Peggy Winegarner announced upcoming events.
The program given by Peggy Winegarner was on "First Aid in the Home."

Those attending the meeting were Francis Ortega, Olivia Renteria, Adella Lopez and agent Peggy Winegarner.
The next meeting will be Monday, April 16 at 7:00 p.m. in the Home Extension Club Room.

Twentieth Century Club

The Twentieth Century Club met Thursday, March 22 in the Hansford County Library with Mrs. Tom Sutton and Mrs. Cecil Biggers as hostesses.

Mrs. K. C. Loftin introduced the Acting Chief of Police, Jimmy Jackson, who spoke on "Operation Identification." Jackson also advised that their department would be glad to assist anyone in changing their door locks and marking their personal items.

Mrs. Tommy Russell, president, presided over the business meeting.
Minutes of the previous meeting were read and approved.
The District Meeting to be held April 6 & 7 in Dumas was discussed and everyone was encouraged to attend.

Anyone having articles to be sent to M. D. Anderson Hospital may contact Mrs. Tommy Russell.
Deta Blodgett, chairman for the Artist of the Month division for the library, advised that Mrs. Fred Meyer of Gruver would have her work on display for the month of April.

Mrs. Palmer asked the members taking part in her skit at the district convention to meet at her house for dress rehearsal on Tuesday, March 27 at 2:30 p.m.
Delicious refreshments were served to Mmes. Tommy Russell, K. C. Loftin, C. U. Pope, P. A. Lyon, Woodville Jarvis, John Bishop, Michael Holt, Fred Holt, Deta Blodgett, Ed Garner, Don Kunselman, D. E. Spoonemore, Ed Freeman, J. R. Stump, Coy Palmer, John Brown, Tom Sutton, Cecil Biggers and guest Chief Jimmy Jackson.

Marsha Key Study Group Met

The Marsha Key Study Group met Wednesday, March 21 in the home of Mrs. Fred Holt with president Betty Thomas presiding. Mrs. Woodville Jarvis gave the program calendar and read the scripture reading from Col. 1:9-14. The prayer for the missionaries who have birthdays this month was led by Mrs. Joe Novak. The prayer for the sick was led by Wren Holt.
The program on Current Missions was given by Mrs. L. L. Anthony with participation by Mmes. F. J. Hoskins, Ed Hutton, Joe Novak, Arthur Adkinson and Altha Groves.
The next meeting will be Wednesday, March 28 at the church.

Mary Martha Circle Met

The Mary Martha Circle met Wednesday, March 21 in the Methodist Church Parlor at 2:30 p.m. with Chairman Mrs. Fendorf Schubert presiding. Mrs. Russell Townsend, hostess, gave the devotional from Matthew 26:20-25, Lenten Meditation.

Mrs. T. D. Sansing presented a very good lesson on Lent study "FOLLOWING THE WAY."
Mrs. Townsend served refreshments to Mmes. Sid Beck, J. B. Buchanan, Garland Head, T. D. Sansing, J. E. Tarbox, Fendorf Schubert and P. A. Lyon.
The next meeting will be the UMW general meeting at the church for a luncheon at noon Wednesday, March 28.

Women's Division of C of C Meets

The Women's Division of the Chamber of Commerce met Wednesday, March 21 at Martin's Steak Garden at noon.

A Bake Sale which is to be held April 7 at Gordon's Drug with Carolyn Cummings as chairman, was planned.
The club also is having a membership drive and wishes to extend a welcome to anyone who is interested in joining. For more information please contact any member or call The Chamber at 3330 for more details.

The guest speaker was the Hansford County Librarian, Rita Curtis. She gave a very informative talk enlightening the members about the library and some of the books and other materials that are available there.
Those attending were members Virginia Fowler, Colleen Schaefer, Emma Lou Collins, Carolyn Cummings, Gina Mc Lain, Pat Sutterfield, Cynthia Floyd, Byrnie Callaway, Irene Baker, Evelyn Kingsley, Altha Townsend, Mary Lou Woyson, Evelyn Mackie, Sandra Heinrich and guests Terry Womble, Phyllis Collins, Wanda Reed, Gina Hunt, Ora Lee Blackburn, Frances Biles, Cathy McClellan, Gloria Kent and speaker Rita Curtis.
The next meeting will be Wednesday, April 18 at Martin's Steak Garden.

The Short Bridge Club met Tuesday, March 20 in the home of Mary Cornelius. High was won by Elizabeth Holton, second high by Kathleen Sutton, and Traveling by Lois Gibner.
Those members present were Mmes. R. L. McClellan, Gene Cudd, Bob Skinner, Richard Holton, Tom Sutton, Woody Gibner and Garland Head.
The next meeting will be Tuesday, April 3 in the home of Mrs. Woody Gibner.

Bridge Club

The Short Bridge Club met Tuesday, March 20 in the home of Mary Cornelius. High was won by Elizabeth Holton, second high by Kathleen Sutton, and Traveling by Lois Gibner.
Those members present were Mmes. R. L. McClellan, Gene Cudd, Bob Skinner, Richard Holton, Tom Sutton, Woody Gibner and Garland Head.
The next meeting will be Tuesday, April 3 in the home of Mrs. Woody Gibner.

CALENDAR OF EVENTS

You are cordially invited to
a baby shower honoring
Karen Goodman and Kelly Renee
March 28 at 7 p.m.
Hospitality Room of First State Bank
Hostesses:
Belinda Benavidez Janice Smith
Mrs. Alfonso Nunez Beth Brown
Rita Reed Darlene Farris
19S-ltc

	S	M	T	W	T	F	S
MAR.	4	5	6	7	8	9	10
	11	12	13	14	15	16	17
	18	19	20	21	22	23	24
	25	26	27	28	29	30	31

- MONDAY, MARCH 26**
Brownie Troop #99-Girl Scout Hut
Boy Scout Troop #551-Community Bldg.
Boy Scout Troop #588-Fred Groves' Shop
Rotary Club-Martin's Steak Garden
Hansford Lodge #1040-Hansford Lodge Hall
Couples Duplicate Bridge Club-Jack Lasater's home
- TUESDAY, MARCH 27**
Brownie Troop #101-Girl Scout Hut
Lions Club-Martin's Steak Garden
Spearman Volunteer Fire-ettes
Tuesday Bridge Club-Virginia Head's home
Spearman Music Club-First Christian Church
Book Review Club-Mrs. F.J. Hoskin's home
Home Extension Council-Club Room
- WEDNESDAY, MARCH 28**
United Methodist Women-Methodist Church
Cadet Troop #120-Girl Scout Hut
Marsha Key Group-First Baptist Church
- THURSDAY, MARCH 29**
Brownie Troop #129-Girls Scout Hut
Cub Scout Den #1-Linda Beeson's Home
- FRIDAY, MARCH 30**
Arts and Crafts Guild
Troop #42-Girl Scout Hut
- SATURDAY, MARCH 31**
Webelos-Fred Groves' Shop

Alpha Delta Kappa News

"The Teaching Profession- the Past, the Future, and Now" was the subject of the panel discussion program for the March meeting of the Delta Kappa Gamma Society. The Saturday afternoon meeting of the honor society for woman teachers was held in the conference room of the Extension Office in Perryton.
Ms. Sandra Branch moderated a panel composed of Mrs. Donita Fiskin, Perryton High School History teacher, Mrs. Mollie Hanshu, Booker High School Science Teacher, and Mr. Rick Badgett, Booker Band Director. An interesting discussion centered on such topics as: Have children changed their attitudes about school? What changes have been made in the school curriculum? Does T.V. alter children's expectations of education? What about violence on T.V.? What are parent's reactions to discipline problems at school?
Following the program, refreshments were served by Mrs. O.W. Nowlin, Mrs. Violet

Igou, Mrs. E.N. Flathers, Mrs. Norman Crum, and Mrs. Henry Bechthold.

Members present for the afternoon meeting were: Mrs. Henry Bechthold, Ms. Sandra Branch, Mrs. Florence Hance, Mrs. Leo Kirksey, and Mrs. Ray Robinson of Booker; Mrs. Clifford Beck of Darrouzett; Mrs. Carlie Knight and Mrs. James Hoy of Gruver; Mrs. Ray Bain, Mrs. Ray Castle, Ms. Joe Champion, Mrs. Norman Crum, Mrs. Doug Fiskin, Mrs. E.N. Flathers, Mrs. Violet Igou, Mrs. Tom Knighton, Mrs. Albert Knox, Mrs. James Love, Mrs. Robert Langford, Mrs. O.W. Nowlin, Mrs. Boyce Scott, and Mrs. Violeta Mahood of Perryton.
The next meeting of Eta Alpha Chapter of Delta Kappa Gamma will be April 21 at 2:00 in the Perryton High School.

Gerald Ford: former President, on being a 1980 candidate:
"I certainly am not. We've got a lot of good candidates in the Republican fold."

Some have said eating nettles makes one lively.

Martha's Paint & Pantry

PHONE 806-659-3297

903 SO BERNICE SPEARMAN, TEXAS 79081

Boards & Boxes

Wood items

Canvas & Stretchers

custom framing

TOLE & DECORATIVE PAINTING

Classes in: Tole, Canvas,

Artist supplies and all kinds of goodies

PICTURE FRAMES

DECOUPAGE

Martha & Orville Latham

"HEAR MOBILE" Returns to SPEARMAN

The "HEAR MOBILE" is equipped with the latest scientific testing equipment for helping determine your individual hearing problem.



Joseph McCallister

Highly qualified specialist in the scientific fitting and dispensing of hearing aids.
If you Hear... But Fail to understand clearly... If you Must Require Others to constantly repeat... If you are left from group conversation, a hearing test will prove informative.
Hearing tests are given free as a public service. Whether it be your first test or an updated one-Perhaps... you owe it to yourself!
This special unit will be parked at

COURTHOUSE SQ.
WED., MAR. 28
10 a.m. to 2 p.m.

SAVE \$40.95

Mobile Transceiver
Channel 9 and 19 priority

\$79

Reg. \$119.95

- 3-Way PA/Monitor/CB Switch
- Large Back-Lighted S/RF Meter

Realistic TRC-422. Save 34% and give your family the convenience and protection of 40-channel CB! Just flip a switch for instant access to Emergency Channel 9 or Highway Information Channel 19. Features S/RF meter, LED channel readout and modulation indicator, squelch, switchable ANL, locking plug-in dynamic mike, external speaker and PA jacks, crystal and ceramic filters for freedom from adjacent channel interference. With universal mounting bracket. Buy now and really save!

Check the Red Tags
20% - 30% - 40%
Off Many Items
- GREAT BUYS -

PORTER BAKER ENTERPRISES, INC.
Radio Shack
DEALER

701 S. ASH PERRYTON, TEXAS

USS Steel Siding	Fight the Rising Cost of Utility Bills	Carports
T-Loc Vinyl Siding	Insulate and Beautify your Home & Never Paint Again	Patios
Styrofoam Insulation		Room Addition
Welded Steel Buildings	Ron's Exteriors Of Okla. - Texas Panhandle	Garages
Commercial & Farm	A.C. 806-659-2227	Storm Door
	Local Calls Patton Motel or Call Collect	& Windows
	A.C. 405-344-6211	

Presbyterian Church News

There is a Sunday Church School class for you every Sunday at 9:45 a.m. regardless of what your age may be.

"God Loves You" will be the subject of Pastor Edward D. Freeman's sermon at the service for the public worship of God on Sunday, March 25 at 11:00 a.m.

The Session will meet on Wednesday, March 28 at 7:30 p.m.

There is a mid-week Lenten service on Thursday, March 29 at 7:30 p.m.

Coordinating Council of Palo Duro Union Presbytery will meet at Covenant Presbyterian Church in Lubbock on Friday and Saturday, March 30-31.

You are always welcome at any service or activity of the First Presbyterian Church. You will receive a warm Christian welcome and will enjoy the friendly, loving caring fellowship.

Arthritis

Telethon Sunday

The Arthritis Foundation-West Texas Chapter will conduct a T.V. Special in the Panhandle Area, March 25, Noon to 5:00 P.M. on KAMR-TV Channel 4.

Dean Kelly and Bob Davis will co-host the special. Stars that will appear are: Mary Tyler Moore, Della Reese, Frankie Avalon, Abe Vigoda, Anson Williams, Betty White, Allen Ludden, Tom Kennedy, Lawrence Welk and his Orchestra, Gordon McRae, Doc Severinsen and his Band, Scatman Crothers, Buddy Rogers, Jane Wyman, Jack Klugman, Hal Linde, Robert Wagner, Natalie Wood, Carol Lawrence, Charleton Heston, Bob Hope, Peter Falk and several entertainers from the Panhandle Area.

The thrust of the T.V. special will be to educate Panhandle residents about Arthritis and accept pledges in support of patient care, education and research sponsored by the Arthritis Foundation. Interviews with doctors trained in the fields of rheumatology, Orthopedic surgery and reconstructive surgery, and physical therapy will be aired as well as patient interviews and discussions on the newest ways to "manage your arthritis".

"We are extremely grateful to KAMR-TV, Channel 4 for the opportunity to broadcast this vital program". Betty Childers, T.V. Special chairperson said "There are more than 50,000 men, women and children afflicted with Arthritis in the area, who will benefit from the programs established and continued by donations received during the program." I urge all area residents to participate.

Agricultural News

Layton Barton Co. Extension Agent The dust is beginning to settle after the Hansford County Stock Show this past weekend. The show and sale was a huge success with the sale total being \$94,257.40 for the animals being sold in the ring.

Hansford County 4-H'ers did extremely well in the show with Curt Porter showing the Grand Champion Market Hog, Scott Henderson the Grand Champion Lamb, and Karla Latta the Reserve Champion Lamb. Congratulations to these and all other 4-H'ers for their hard work and efforts.

SHOW STEERS FOR 1980

Hansford County 4-H'ers interested in showing a steer in any show in 1980 and needing help in finding one should contact me as soon as possible. I will be going to a number of steer sales and to several breeders for steers. If any 4-H'ers would like or needs any help in finding a steer give me a call at 659-2136 or 733-2901 and I will be glad to help.

ARMY CUTWORMS

Wheat producers should be on the lookout for Army cutworms in their wheat. Several producers have already sprayed for the cutworm and others are noticing considerable damage to their wheat.

The Army cutworm attacks wheat and causes damage by cutting off plants at or near the soil surface and then feeds on the fallen plant.

The larvae are pale green, greenish-gray to brown with black pale stripes and finely spotted with white and brown but without prominent marks.

The army cutworm larvae are active mostly at night and hide in the soil and under surface trash during the day. Several pesticides are recommended for control of the cutworm, however, most producers are using Toxaphene and having good luck with it. Remember, whatever pesticide is used, read the label and follow instructions.

For more information on the cutworm or recommended pesticides contact the Extension office at 659-2136 or 733-2901.

Susannah Wesley Circle Met

The Susannah Wesley Circle met Wednesday, March 21 in the Methodist Church Parlor to continue their Lent study. The lesson from "FOLLOWING THE WAY" was given by Sue Woolley. Those attending were Karen Countiss, Connie Steger and Sue Woolley.

The next meeting will be the UMW general meeting for a luncheon at the Church Wednesday, March 28.

WIFE Meeting Held

W.I.F.E. met Tuesday, March 20 in the Library Room at 7:30 p.m. with president Barbara McClellan presiding. Minutes of the previous meeting were read and approved.

The guest speaker was Mary Lou Wysong who reported on the National Gasohol Commission in Denver from which she just returned. Included in her report was the fact that there are 600 stations in the Midwest now pumping gasohol. She also reported the percentage of gasoline and alcohol used in making gasohol. There is 10% alcohol and 90% gasoline in gasohol and 80% alcohol and 20% diesel in diesel.

The members were also informed that the laws in Texas will have to be changed before we will be able to produce alcohol for use in making gasohol in the state.

The members were reminded about selling tickets for the Home Beautiful package. The package will contain household items such as sheets, towels, etc. valued at about \$300.00.

Those attending the meeting were Dodie Beedy, Barbara McClellan, Patty Spoonemore, Molly Turner, Mary Lou Wysong and Jean West.

The next meeting will be Tuesday, April 3 at 7:30.

Old Hansford Ext. Club

The Old Hansford Home Extension Club met Tuesday, March 20 in the home of Mrs. Virgil Floyd with the meeting called to order by president Susan Delk and the devotional given by Mrs. Floyd on the 100th Psalms and a poem "Golden Years." The Roll Call was answered with "Something I Wasted Time Doing." The treasury report was given.

The members are to bring stamps or whatever they wish to give to Girlstown at the next meeting.

The TEHA District Meeting will be held in Wellington on March 22.

The Club will be responsible for serving Meals on Wheels the first two weeks in July.

Mrs. Virgil Floyd and Mrs. Roscoe Nelson gave the program, "Living with Metrics."

Refreshments were served by hostess Mrs. Virgil Floyd to Mmes. Ernest Archer, Irvin Delk, Harold Howerter, Roscoe Nelson, Gordon Parrish, Fendorf Schubert and Claude Smith. The next meeting will be Tuesday, April 3 in the home of Mrs. Roscoe Nelson.

The Old Hansford Home Extension Club met Tuesday, March 6 at the Home Extension Room with Mary Brown as hostess. The Roll Call was answered with "An Accident I'll Never Forget." The meeting was called to order by president Susan Delk with the devotional given by Mary

Golden Spread Circle Meeting Held

Golden Spread Club had a potluck supper and evening of table games Tuesday, March 20 at 6:30 p.m. at the Golden Spread Center. Rho Rho were the hostesses for the meal and thirty-six were served.

There were two Early Bird tables of pitch going before supper.

Joan McClellan took the blood pressure of most of those in attendance.

Mabel Edwards and Deta Blodgett were hostesses for the evening's entertainment which consisted of six tables of dominoes, forty-two, eighty-eight, and pitch.

Golden Spread Club is an educational, philanthropic, and social organization for people fifty-five years of age or older without discrimination as to sex, race, ethnic background, national origin, religion, denomination, preference, or political affiliation.

Spearman Music Club

The Spearman Music Club will entertain the Gruver Music Club, at First Christian Church, Tuesday, March 27th, at 6:30 p.m. (note change of time) for a Salad and Pie Supper.

The Gruver Music Club will give a program, "On The Range" a musical skit. All active, Honorary, Associate and Past members of the Club are encouraged to attend. The Active members will be hostesses, with Mrs. Dean Leighnor and Mrs. Kurt Shedeck as co-chairman.

Pringle-Morse

Pringle-Morse PTA met at 7:00 p.m., Monday, March 19, preceded by an executive meeting at 6:30.

The regular meeting opened with the Pledge of Allegiance, prayer, and reading of the minutes. Officers for the 1979-1980 year were elected and are as follows: President - Karen McCloy; Vice President - Carol Pack; Secretary - Martha Davis; Treasurer - Betty Wombie; Historian - Chris Jarvis; Budget and Finance - Loretta Cook; Hospitality - Beverly Poole; Publicity - Cheri Jarvis; Membership - Linda Leib; Yearbook - Virginia Poole. We had a report from the projects committee chairman, Coach Bill Clemmons. Roy Harris, superintendent, announced our Town Hall meeting on March 30, concerning the band and board members election. Our program was Back to School Week and Open House. Refreshments of cake and punch were served in the cafeteria.

Lilly Hunley Baptist Young Women Met

The Lilly Hunley Group met Wednesday, March 21 at the First Baptist Church for their Bible Study. They continued the study on "Religion" with the opening prayer led by Mary Baker. Cheri Jarvis presented the program and Mary Baker dismissed the group in prayer.

Hostess Cheri Jarvis served refreshments to Mary Baker, Pat Dean and guest Coe Queener.

The next meeting will be the general meeting at the church April 4.

TRI-STATE RODEO

Gruver Arena Saturday afternoon Sunday afternoon (Starts each day at 1:30 p. m.)

Concession stand both days by Junior Class of Gruver high school.

Swine Shortcourse To Be Held

The potential advantages for small commercial pork producers and purebred swine breeders who use frozen semen for herd reproduction is one of the topics to be explored at the annual Texas A&M University Swine Shortcourse here Wednesday, April 4.

Leading the discussion will be Keith Olson, director and chief operating officer of International Boar Semen in Eldora, Iowa. He is one of 11 leading animal scientists and producers from Texas and four other states who will conduct the course. Their topics will focus on the latest methods and strategies in management and production.

The shortcourse at the Hale County Agricultural Center south of the city begins at 8 a.m. and ends at 4:15 p.m. There is a \$7 registration fee, said Dr. Robert S. Cohen, Extension area swine specialist at Lubbock.

The course is organized and sponsored by the Texas Agricultural Extension Service. Co-operating are the department of animal science at Texas A&M, Texas Agricultural Experiment Station, Texas Pork Producers Assn., and Texas Pork Producers Board.

Artificial insemination of swine offers several possible advantages to the pork producer, Cohen noted. One is a reduction in the number of boars needed to carry out a breeding program. It also provides access to semen from outstanding boars, provides a source of semen for the small producer who can't justify maintaining a herd sire, and reduces the chances of introducing boars, provides a source of semen for the small producer who can't justify maintaining a

herd sire, and reduces the chances of introducing a disease into the herd during breeding.

Olson will discuss such factors as conception rates, storage and shipment of semen, and procedures for artificial insemination.

In addition to heading IBS, Olson directs three swine pro-

duction operations in Iowa. These are a 650-sow feeder pig unit, a 6,000-head swine finishing operation, and a 450-sow feeder pig unit. Olson also directs a 100,000 commercial layer flock and is a partner in a contract egg production operation.

He holds a degree in agricultural education from Iowa State University.

Bowling News

PIN BENDERS 3-16-79			
4-TEX Grain	69 1/2	34 1/2	35144
Cinderella	62 1/2	37 1/2	36361
Brock Ins.	60	44	34305
Super Service	58 1/2	45 1/2	36102
Bowl Mor	52	52	33698
McClellan Grain	45	59	33009
Vernon's	38 1/2	65 1/2	31725
L.M.W.	28	76	32732

HI IND. GAME	
Sheryl Meek	258
Patty Spoonemore	214
Sheryl Meek	211

HI TEAM GAME	
Cinderella	560
Cinderella & Brock Ins.	505
4-TEX Grain	495

HI IND. SERIES	
Sheryl Meek	616
Shirley Greenwood	517
Patty Spoonemore	516

HI TEAM SERIES	
Cinderella	1516
Brock Ins.	1365
4-TEX Grain	1326

Sheryl Meek has the highest Game of all woman bowlers so far this season 258.

★ SPECIAL ★

Have Your Central Air Serviced Before The Summer Rush & Save

Now Only \$2250 Plus Materials Offer Good Only Thru April 30, 1979

Spearman Electronics

313 Main 659-3858

Feel Good About A Meal

Grade A Fresh Hot, Tender, Juicy Kentucky Fried Chicken



Original Recipe or Extra Crispy

Kentucky Fried Chicken

1222 S. Main Perryton, Tx. 435-3811

Thousands of Chimney Fires Annually Due To Dirty Flues.

"Make Your Home Safer From Fire.... Call Ron, The Chimney Sweep

Tues.-Fri. 405-338-3023 Sat.-Mon. 806-733-2040

"AGAIN" A STATE & NATIONAL YIELD CHAMPION NC+ 59

NATIONAL CORN GROWERS ASSOCIATION YIELD CONTEST (Irrigated Division)

- #1 IN TEXAS & NATION - 1978 BILLY MARSHALL - BOVINA, TEXAS (251.41 BU/ACRE - 14,079 LBS.)
- #1 IN NEBRASKA - 1978 HERB & JIM OPLIGER - COLUMBUS, NEBRASKA (240.64 BU/ACRE - 13,478 LBS.)
- #1 IN TEXAS #3 IN THE NATION - 1977 HI PLAINS FARMS - DALLAS, TEXAS (240.42 BU/ACRE - 13,464 LBS.)
- #1 IN KANSAS & THE NATION - 1976 DENNIS KINDSVATER - DODGE CITY, KANSAS (262.55 BU/ACRE - 14,703 LBS.)

CONTACT YOUR LOCAL NC+ REPRESENTATIVE AGCO of Spearman 659-2417 1 Mile N. E. Hiway 15 PROVEN PERFORMANCE IN FARMERS FIELDS



MONARCH Mauldoone says, "WE GOTTA NEW DISTRIBUTOR IN THESE PARTS AND HE'S A DANDY...BET YOUR SPURS ON IT, PAWDNER!"

We don't pick just anyone as a Monarch Distributor. We want distributors that more or less match our products...dependable, reliable with a reputation for quality and honesty. Our new Monarch Distributor in this area is...

Harold Crooks Rt. 1 - Box 7 Phone 659-2068 Spearman, Texas

ASK HIM ABOUT THESE MONARCH PRODUCTS

Monarch Continuous Flow Bin Drying Systems

Any size to meet your requirements...from a small 2-unit operation to large commercial sizes. Monarch proven and Monarch quality construction and components throughout.

Monarch All Steel Farm and Ranch Buildings

Unmatched for design versatility. Pre-engineered for fast, easy do-it-yourself erection. 9 durable colors, clear-span and ASC approved for grain storage.

Monarch Grain Storage and Drying Systems

You'll have to go a long way to beat a Monarch Grain Bin. A wide range of sizes and capacities to meet any need. Quality construction throughout...1000's now in use.

MONARCH INDUSTRIES, INC. (MONARCH) BRANDS

Rover Industrial Park, P.O. Box 1768 Kearney, Nebraska 68847 (308) 237-2134

**Breakfast
Lunch
Menu**

SPEARMAN SCHOOL MENUS

**MONDAY, MARCH 26
BREAKFAST**

Pears
English Muffin & Jelly
Milk

LUNCH

BBQ Turkey
Potato Salad
Cole Slaw
Fruit Salad w/Topping
Hot Rolls-Butter
Milk

**TUESDAY, MARCH 27
BREAKFAST**

Peaches
Waffle & Syrup
Milk

LUNCH

Roast & Gravy
Buttered Rice
Green Beans
Combination Salad-Dressing
Applesauce
Hot Rolls-Butter
Milk

**WEDNESDAY, MARCH 28
BREAKFAST**

Orange Juice
Pancake & Syrup-Ham Slice
Milk

LUNCH

Burritos
Scalloped Potatoes
Buttered Carrots
Celery Sticks
Banana Nut Cake
Yeast Batter Bread-Butter
Milk

**THURSDAY, MARCH 29
BREAKFAST**

Mixed Fruit
Donut
Milk

LUNCH

Mexican Dumplings
English Peas
Fresh green Salad-Dressing
Lemon Fruit Gelatin
Cornbread-Butter
Milk

**FRIDAY, MARCH 30
BREAKFAST**

Apple Juice
Egg Pattie & Toast
Milk

LUNCH

Hot Dog-Chili Sauce or Pimento
Cheese Sandwich
French Fries-Catsup
Whole Kernel Corn
Dill Pickle Slices
Strawberry Shortcake
Milk

General Revenue

Fund In Red

AUSTIN—State Comptroller Bob Bullock Tuesday said a "cash gap" would put the state's general revenue fund in the red sometime this week in spite of the fact the state has a huge cash surplus on hand.

"The state isn't broke, going broke or breaking the budget. Texas has sufficient funds to meet its financial obligations and is far from being bankrupt," Bullock said.

Records show that the general revenue fund has been in the red some 60 times during the past ten years.

The general revenue fund handles all state monies for which a specific fund has not been designated and is the source of financing for most state agencies.

The fund—one of 300 used to account for state revenue—is permitted by law to show a negative balance.

Bullock said the general revenue fund would be about \$200 million short, noting that the Comptroller's Funds Management Division shows an overall cash balance in state funds of about \$2 billion.

He said expenditures from the general revenue fund have been traditionally heavier during the first six months of the fiscal year than receipts during the same period.

It has always balanced out over a full 12-month period, Bullock said.

Bullock said the State Treasurer has the ability to cover warrants drawn on the general revenue fund by using other uncommitted state monies.

"We simply need to get it out of the savings account and put it into the checking account to pay for this week's groceries," Bullock said.

Stanford G. Ross, SS
Commissioner, on \$69 billion uncredited earnings since 1937:

"Usually these incorrect wage reports are for short-term and transient labor, such as restaurant workers or car wash employees."

TG&Y®

FABRIC SHOPS

**Why pay more?
Sew the best
with these bargains.**

SPECIAL

<p>save 15% Interlock Prints</p> <p>Comfortable 100% Polyester interlock prints, 58/60" wide. Makes beautiful and colorful coordinates for Spring. Sew's easily, keeps its good looks wash after wash.</p> <p>Reg. 1.97</p> <p>1.67 Yd.</p>	<p>save 13% Bright Cloud Qiana* Solids</p> <p>Spring's perfect fabric for soft, stunning dresses, blouses and lingerie. 100% Qiana* Nylon 63/65" wide. Fresh solid colors.</p> <p>*Registered Trademark of DuPont.</p> <p>Reg. 3.98</p> <p>3.47 Yd.</p>	<p>save 15% Dancheck Woven Gingham Checks</p> <p>Eye-catching gingham in bright colors. 65% Polyester/35% Cotton, 44/45" wide. A perfect fabric to round out a wardrobe or brighten up a room - sale priced now!</p> <p>Reg. 1.49</p> <p>1.27 Yd.</p>	<p>save 10% Stretch Gabardeme</p> <p>100% Textured Dacron® Polyester, 58/60" wide. 15-20% extra stretch. A no-fuss fabric for sensational pant suits, coordinates and more.</p> <p>Reg. 2.98</p> <p>2.67 Yd.</p>	<p>save 15% Embroidered Eyelet Batiste</p> <p>Just the right touch for a soft, feminine look. 65% Polyester/35% Cotton, 44/45" wide. Ideal for trim on blouses, dresses and loungewear.</p> <p>Reg. 3.49</p> <p>2.97 Yd.</p>
<p>save 10% Silky Linen-Look Solids</p> <p>67% Kodel® Polyester/23% Cotton/10% Silk. Soft permanent press solids, 44/45" wide, is great for tops and dresses.</p> <p>Reg. 2.98</p> <p>2.67 Yd.</p>	<p>save 16% Crepe Jolie Prints</p> <p>50% Dacron® Polyester/50% Avril® Rayon, 44/45" wide, is an ideal dress weight fabric. A cool collection of permanent press prints.</p> <p>Reg. 2.69</p> <p>2.27 Yd.</p>	<p>save 11% Courtesy Prints Plains</p> <p>Pure 100% Cotton percale in a wide array of Spring prints and solids. 36" wide. A lightweight, breezy choice for sunny days.</p> <p>Reg. 98¢</p> <p>.87 Yd.</p>	<p>save 11% Frozen Daiquiri Laundered Gauze Solids</p> <p>Flattering, breezy colors for Spring. Lightweight 50% Kodel® Polyester/50% Cotton, 41/42" wide. A natural for non-wilting wear.</p> <p>Reg. 1.98</p> <p>1.77 Yd.</p>	<p>save 11% Wash-Up Laundered Gauze Plains</p> <p>Making a new dress or blouse? Choose the ideal fabric 50% Fortrel® Polyester/50% Cotton, 44/45" wide, in soft solids.</p> <p>Reg. 1.98</p> <p>1.77 Yd.</p>

<p>coupon Yellow Band Sewing Machine Needles</p> <p>Size 11 needles 3 per pkg.</p> <p>.77</p>	<p>coupon Fiskars® Scissors</p> <p>8" lightweight stainless steel blades.</p> <p>5.97</p>	<p>coupon Ball Point Pins</p> <p>275 stainless steel dressmaker pins.</p> <p>.57</p>
<p>coupon Polyester 1/4" Elastic</p> <p>1/4" x 3 yds. white elastic.</p> <p>.37</p>	<p>coupon Stitch Witchery®</p> <p>3/4" x 15 yds. Joins fabric without stitching.</p> <p>.77</p>	<p>coupon TG&Y® Thread</p> <p>225 yard spools in many colors. A great buy!</p> <p>8 For \$1</p>

TG&Y'S ADVERTISED MERCHANDISE POLICY—TG&Y's policy is to always have advertised merchandise in adequate supply in our stores. In the event the advertised merchandise is not available due to unforeseen reasons, TG&Y will provide a Rain Check, upon request, in order that the merchandise may be purchased at the sale price when it becomes available, or you may purchase similar quality merchandise at a similar price reduction. It is the policy of TG&Y to see that you are happy with your purchases. • We will be happy to refund your money if you are not satisfied with your purchase. • It is TG&Y's policy to be priced competitively in the market. Regular Sale Prices may vary market by market, but the sale price will always be as advertised.



March 26-31

Your best buy is at TG&Y!

PRICES GOOD ONLY AT T.G. & Y. FAMILY CENTER

521 HWY. 207 SOUTH SPEARMAN, TEXAS 659-3742 OPEN 9 TIL 9