

Chamber breakfast held Thursday morning!



VOLUME 9, NO. 27

THE HANSFORD PLAINSMAN, SPEARMAN, TEXAS 79081

SUNDAY, APRIL 30, 1978

Wake Up And VOTE!

'Tis time "the walrus says to talk of many things--of agri plans--and canals--and Tri-lateral stings--of peanuts--and rings!" to Paraphrase a well-known quote from "Alice In Wonderland"--and now is the time to make your wants known not by talking but by voting!

If you find things not exactly to your liking in the world today, do something about it besides talk--exercise your privilege of voting. Primary elections may seem like a waste of time and effort "if I vote, I don't want to vote for party but for the person, etc." but these primaries are the reason why certain people are in office today and making decisions for you--big or little.

Primaries are the voter's right to make known who might best serve in a particular office and it's up to the voter to be aware that only those candidates which receive the nod in the Democratic and Republican Primaries will appear on the ballot in the general election in November.

Voting is your way of "hiring" someone to run our government whether at city, county, district, state or national levels and you had better be careful about studying a candidate's qualifications for the particular job for which one is running--how qualified, how does one stand on issues important to the voter--how long is the term of office--how much is the salary--all questions each of us would ask of a job candidate. Consult the United States Constitution and the Texas State Constitution for answers to many of the questions and ask the incumbent office-holder or candidate for that office about everything you need to know before you cast your important vote.

For registered voters in Hansford County, the Republican Primary Election will be held Saturday, May 6th, accord-

ing to Hansford County Republican Lola Reynolds (Mrs. Ralph) with the following polling place for voters in the Republican Primary in Precincts 2, 3, 4, 7 (Oslo), and 9 (Morse) to be in the Gruver Elementary School Lobby and in the Basement of the Courthouse at Spearman for Precincts 1, 5, and 6.

For registered voters in Hansford County the Democratic Primary Election will be held May 6th according to Hansford County Democratic Chairman Carl Archer with the polling place for voters in the Democratic Primary Precinct 1, Main Floor Courthouse, Spearman; Precinct 2, Renner Ranch; Precinct 3, Continental Grain Elevator; Precinct 4, Gruver County Barn; Precinct 5, Spearman County Barn; Precinct 6, Spearman High School; Precinct 7, Oslo Church; Precinct 9, Morse Community Building.

On the Republican Primary ticket there are two races with the remainder of the candidates unopposed. For U. S. Senator, John Tower; for United States Representative, 13th District, Clifford A. Jones and Larry Kelly; for Governor, Clarence G. Thompson, Ray Hutchison and Bill Clements; for Lieutenant Governor, Gaylord Marshall; for Attorney General, Jim Baker; for Railroad Commissioner (unexpired term), James W. Lacy; for State Representative, 64th District, Bob Close; for County Commissioner, Precinct 4, Val Winger; for County Chairman, write-in; for Precinct Chairman, write-in.

Also appearing on the Republican Primary ticket are the following for which one vote for or against: (1) The Proposition that the next session of the Texas Legislature should enact a bill to permit the pari-mutuel wagering on horse races by local option; (2) the proposition that the next session to the Texas Legislature should enact

a bill to provide for the election of the delegates to a political party's national nominating convention by the voters in that party's primary; (3) the proposition that the next session of the Texas legislature should propose a Constitutional Amendment to place a limit on the amount of taxes which can be levied by the state and local governments.

On the Democratic Primary ticket there are thirteen contested positions with the remainder of the candidates unopposed. For U. S. Senator, Joe Christie and Robert (Bob) Krueger; United States Representative, 13th District, Jack Hightower; For Governor, Donald R. Beagle, Dolph Briscoe, John Hill, Ray Allen Mayo, and Preston Smith; Lt. Governor, Bill Hobby, James L. (Jim) McNeese, Jr., Troy Skates, John Hill Westbrook; Attorney General, Price Daniel, Jr., Mark White; Comptroller of Public Accounts, Bob Bullock; State Treasurer, Warren G. Hardin, Harry Ledbetter, C. R. (Charlie) Sanderson; Commissioner of General Land Office, Bob Armstrong; Commissioner of Agriculture, Reagan V. Brown, Joe A. Hubenak, Don G. Sewell; Railroad Commissioner, John Thomas Henderson, Mack Wallace; Railroad Commissioner (unexpired term), Jake Johnson, Ray Lemmon, John H. Poerner, Jerry Sadler.

Continuing the Democratic Primary candidates: Chief Justice Supreme Court, Joe R. Greenhill; Associate Justice Supreme Court, Place 1, O'Neal Bacon, Franklin Spears; Associate Justice, Supreme Court, Place 2, Sam D. Johnson; Associate Justice, Supreme Court, Place 3 (unexpired term), Charles Barrow; Associate Justice Supreme Court, Place 4 (unexpired term), Robert M. Campbell, T. C. Chadick; Judge Court of Criminal Appeals, Place 1, Wendell A. Adom;

Municipal Property Sold

Bids totaling \$5,986.80 for municipal property being sold by the City of Spearman were opened and accepted by the city April 25 during the City Council session.

Sold by sealed bids were a 1973 green pickup, a 1966 red and white pickup, a 1968 green pickup, a 1951 flatbed, a blue tractor, a tractor with backhoe attachment, a yellow air compressor, a small compressor and portable air conditioner, a 35,000-gallon water storage tank on skids, two 800-gallon steel tanks previously used for asphalt storage, a six cylinder irrigation engine on stand ready for use and three adding machines.

The merchandise and equipment was sold on an as is basis. In other action during the session, including the approval of seeking a grant from Texas Aeronautics Commission for enlargement work of the airport in Spearman as well as a pre-application to HUD for Community Development Block Grant Program funding in the city, the council accepted the audit for fiscal year 1976-77 as presented along with some recommend-

ations for easier auditing procedures, approved the mid-year budget report and set May 16 and 30 as meeting dates for next month.

Postponed to a later date was consideration of a request by Spearman Golden Spread Center for lease of city property. A recommendation for an appointment to the Spearman Housing Board was made but will not become final until acceptance has been received by the appointee.

Hospital News

Patients in Hansford Hospital are Vena Roden, Dorothy Wyatt, Gene Gee, Carla Riggins, Sue Woolley and daughter, Harvey Urban, Delores Rylant, Mattie Dyer, Gina Nelson, Jeff Plumkett, R. E. Lee, Beverly Overton, Faye Schmehr, Ray Smith and Lee Phillips.

Dismissed were Mattie Grigby, Ann Vela and daughter, and Sumner Riggins was transferred.

RUN YOUR CLOCK FORWARD 1 HOUR...

Judge Court of Criminal Appeals, Place 2, Sam Houston, Sam Houston Clinton, Jim Volers; Judge Court of Criminal Appeals, Place 3, W. C. (Bill) Davis, Marvin O. Teague; Chief Justice, Court of Civil Appeals, 7th District, Mary Lou Robinson; Associate Judge, Court of Civil Appeals, 7th District, Carlton B. Dodson.

More candidates running on the Democratic Primary ticket include County Judge, Francis Biles, Roy L. McClellan; District and County Clerk, Marie H. Gould; County Treasurer, Verna Gail Keim; County Commissioner, Precinct 4, Alvin (Bill) Cator, George C. Lowe; County Chairman, Carl Archer; Precinct Chairman, Precinct 4, write-in.

The following propositions will also be on the ballot of the Democratic Primary for voters to signify for or against the (1) the 1979 Legislature's authorizing higher interest rates on loans under Five Thousand Dollars (\$5,000); (2) do you favor the proposition that the next session of the Texas Legislature should enact a law to permit the pari-mutuel wagering on horse races by local-county option.

The only thing you can do about "things that you think you can't do anything about" is to VOTE--wake up and vote your "knows" in the upcoming Republican Primary election May 6th or in the upcoming Democratic Primary election May 6th.

SHS Chorale Concert



The prize-winning Spearman High School Choir will be the center stage activity most of the night Tuesday, May 2, starting at 7:30 p.m. during presentation of the contest numbers which they sang in winning their sweepstakes and first designations and which they will

present during their appearance later in the week during the Sea-O-Rama Festival in Galveston.

Earlier this year they collected the sweepstakes and first ratings in competition at Canyon and the local aggregation was the only one in its category

to receive the sweepstakes designations.

The Tuesday night program also will feature The Celebrates, a vocal/musical combination.

The May 2 Spearman High School auditorium event is a fund raiser for the choir. They

can sing and they need a few more dollars for expenses to and from the Gulf Coast community and the support of Spearman is anticipated in helping the youngsters to get there and back. Adult tickets are \$2 per person with student ducats selling for \$1.

Conductor Travis Angel also announced that the chorale will present programs at Miami and Quana High Schools en route to Galveston. An overnight stay is to be made in the Dallas area and the Spearman bunch is to get into Galveston on the bay on May 4.



Did you ever try to shave a balloon? Well, this group of ladies is getting ready to "Flick their bic" at the chamber breakfast, held in Spearman on Thursday morning. Champion shaver was Verna Gail Keim.



Chorus line, at the Chamber breakfast this week, was made up of the "Muppets?" and whatever! Mary Lou Wysong, Chamber mnggr. and her group put on a real dance routine! Mary Lou worked with this group for quite some time!

It was a lot of fun, and good entertainment, when members of the Spearman Chamber of Commerce gathered for their monthly breakfast Thursday morning at 6:30 a.m. Eddie Martin and Kent Guthrie were Master of Ceremonies for the event, and the program opened by the entire group joining in singing "You Are My Sunshine!" Mrs. Fred Groves was at the piano and furnished breakfast music for the group. Of course, the usual good food of biscuits, gravy, and all of the trimmings was enjoyed by all. Sponsors of the event, The First State Bank, were all on hand, including president Clay Gibner and Mrs. Gibner. Also on hand, besides the regular bank personnel, was the first bank employee to retire from the First State Bank, Mrs. Ab Abston. Waitress for the morning breakfast was Gerald Heinrich, who kept the coffee "warm" for everyone. The invocation was given by the Rev. Don Wirsdorfer of the First Christian Church.

A game called "Flick your Bic" was played by several of those in attendance! Three men sat down and put a balloon in their mouth. The balloon was covered with shaving creme, and three of the lovely ladies had to shave the balloons! Winner in the big contest was

Verna Gail Keim. After the Flick your Bic game, all of the county candidates were introduced. They were Verna Gail Keim, Marie Gould, Francis Biles, R. L. McClellan and Joe Venneman! A big round of applause was given to these people who have made themselves available as candidates this year.

In the \$25.00 drawing, Ernest Newcomb won the cash money. A new member, Jim Reardon was introduced at the morning breakfast. Jim is the newest member in the Spearman Chamber of Commerce.

Highlight of the breakfast was the singing by Brenda Bowling, who sang "You Light Up My Life" accompanied on the piano by Eddie Martin. Also, other very outstanding entertainment was rendered by Melissa McLain who did a tap-dance number which garnered extra applause from the appreciative audience.

Orvil Brummett gave a report on the progress of the Golden Age money thus collected so far; Brummett stated that over \$17,000 was on deposit for the project, which includes the purchasing of the former Clarence Pettitt building now owned by Dorothy Groves. This building will be used for the Golden Age group and Brummett went ahead to state that the public will

be kept informed on the many needs of this project. Right now, tables and chairs will be needed along with desks, etc. to complete the project.

Another feature of the morning's entertainment was the dancing group, which was under the direction of Chamber secretary, Mary Lou Wysong. This group was dressed up in pillow cases and cowboy outfits and really "stole the show!"

Four of our most prominent business men were presented with plaques for making a trip to Washington on behalf of our community this year. They were Clay Gibner, Ralph Blodgett, Gene Cudd and J. L. Brock. The plaques were beautiful and had been made by Fred Groves, local business man and farmer.

Out of town guests included C. D. Riggins of Perryton. Safety Glass Company won the membership award of \$75.00, but they were not present so the membership prize will jump to \$100 next month! You must be present to win this prize!

This newspaper joins with all of the chamber members in thanking the First State Bank for sponsoring such a fine program, and we are looking forward to the next Chamber breakfast with enthusiasm.

Rotary Auction Date Set

The Spearman Rotary Club will conduct its annual "White Elephant" auction May 7, 1978 at 2:00 P.M., on the parking lot at Plains Shopping Center, Spearman, Texas. This auction has become an annual event, the purpose of which is to raise money for local youth activities. By way of example, the Rotary Club has made the following donations in the preceding year:

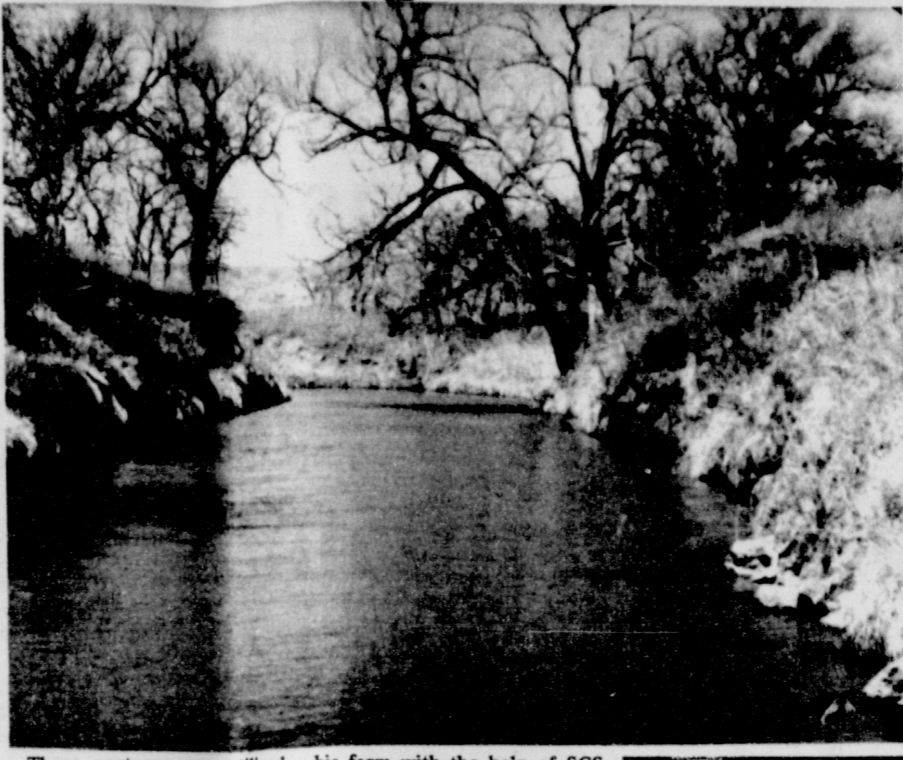
Larry Jones Crusade (youth materials) \$80.00
Spearman Swim Team 248.00 (travel bags)
Senior Citizens 50.00
Golden Spread Center
Hansford County Library (memorial-Peyton Gibner) 275.00

TOTAL \$5,868.00
Local citizens may be called upon in the next couple of weeks to donate items for this auction. In previous years, the items to be auctioned have been either new or slightly used

Markets

WHEAT	\$2.69
MILO	\$3.79
COBEN	\$2.32
SOTREANS	\$16.15

Conservation Key To Efficient Farming



Conservation is the key to a productive, efficient farming and ranching operation according to Joel Lackey, Hansford County farmer-rancher.

Lackey farms 416 acres, about half of which is under irrigation; and he operates a-

thing Lackey is exceptionally proud of.

Again, conservation through sound range management practices is the key to his success.

"I have my rangeland divided into eight separate pastures and run the stocker herd on a rotation system, trying to rest one pasture a full growing season every year," Lackey said. "The number of cattle I run in any year depends upon the grass available and during dry years, of course, I run less cattle."

Lackey has not only improved his rangeland through sound management, but also by over-seeding grasses such as switchgrass and indiangrass into the existing cover of native grasses.

Due to the high susceptibility to erosion on those sites over-seeded, the seeding operation was performed in a manner which ensured adequate erosion control.

In order to minimize site disturbance, weed control was accomplished by means of chemicals, and the existing vegetation was shredded to reduce competition during stand establishment.

The actual seeding operation was performed using a grass drill with a 10 inch spacing, thereby further minimizing site disturbance and erosion potential.

"I have had no erosion problems using this method," Lackey said, "and stand establishment has been excellent."

In addition to the traditional dry-rangeland operation, Lackey said, "and stand establishment has been excellent."

In addition to the traditional dry-rangeland operation, Lackey also has several small areas of irrigated pastureland which he waters with a pivot sprinkler and ground-move sprinklers. These areas provide additional forage during dry periods when there is a lack of grass production in the native range pastures.

These pastures are utilized mainly in his cow-calf operation and occasionally as weaning pens in his stocker operation.

A dependable forage supply is essential in a cow-calf operation and occasionally as weaning pens in his stocker operation.

A dependable forage supply is essential in a cow-calf operation, according to Lackey, and irrigation ensures that the necessary moisture to sustain that needed forage is present.

Indiangrass, switchgrass and sideoats grama are the main grasses under irrigation and all are responding well to management practices of water and fertilization.

A small area of Midland bermuda is also under irrigation and forage production seems to be excellent on this area as well.

Lackey has been operating the ranch since 1955. He has been a cooperator with the Hansford Soil & Water Conservation District since 1959 and is well aware of the benefits derived from a sound conservation plan in any type of farm or ranching operation.

Lackey's grandparents moved to the location of the present ranch farmstead in 1885. He has one of the few remaining rock corrals still standing and being used in the county.

"The corral was built in 1895 by hauling rock with a team and wagon and stacking by hand," Lackey said. "It was built out of rock because there was no timber available in those days."

There is timber available on the ranch now, but not for building corrals.

"The trees along the creek serve two purposes in my operation. One, they provide shade and shelter for the livestock. Secondly, they have a tremendous value in the control of erosion along the creek bank," said Lackey.

The timber along the creek also provides excellent wildlife habitat, which is a part of the Lackey farm and ranch operation.

"I enjoy having wildlife on the place," Lackey said. "But the populations of squirrel, rabbit, and quail have been reduced the last few years, probably due to the increase in predatory animals such as coyotes and bobcats rather than a reduction in suitable habitat."

Lackey's farming operation shows the same attention to conservation as does his ranching operation. And again it is through careful planning that these conservation objectives are accomplished.

As a basis for his operation, Lackey has developed a comprehensive conservation plan on

Spearman Youth Injured

A Spearman resident was taken to an Amarillo hospital for treatment of injuries he received in a near head-on collision Friday, April 28, on State Highway 15 near Farnsworth. Identity had not been confirmed by the DPS which covered the collision, according to preliminary reports.

Chip Spreader Acquired

The Commissioners Court of Hansford County meeting on April 24 in the Courthouse in Spearman received bids on a pickup for Precinct No. 4, a car for the sheriff's department and a chip spreader for Hansford County during the consideration of the agenda for that meeting.

The successful bidder for the chip spreader was an Amarillo firm.

Bids on the pickup truck and car are under consideration.

In other agenda item action: The County Treasurer was authorized to issue a time warrant for the acquisition of the tractor for Precinct No. 3.

Read and accepted the minutes of the last meeting.

Received the treasurer's report for the month.

Paid bills as presented.

Released On Bail

A Woodward, Okla., resident, Gary Scott Janzen, 20, who formerly lived in Gruver, had been released on \$2,000 bail after his arrest and appearance before Hansford County Justice of the Peace J. P. Vernon on a charge of felony theft. Janzen was informed of his rights, the charge and bond set.

Janzen was arrested at 11:25 a.m. April 27 in Spearman by deputies from the Hansford County Sheriff's Department. He works for a water well service in Woodward.

"It is the beautiful bird that gets caged," Chinese proverb

Letter To The Editor

Dear Editor,
Today we know that mental illness can be prevented in many cases. We can do this through education, especially of parents, and by learning to cope with stress. There is a group of citizens, like ourselves, trying to see that this happens - the Mental Health Association.

During May, Mental Health Month, your neighbor will be coming to your door to collect for mental health. I urge you to give generously. The Mental Health Association needs your support because:

- mental illness can be cured
- the cycle of child abuse can be stopped
- education of parents can prevent some emotional problems in children.

Your support is needed to accomplish this. Very truly yours,
Mary Lou Mathews,
Mental Health Chairperson

Farmers Union Meeting Set

There will be a Hansford & Hutchinson County Farmers Union meeting May 4 at 8:30 p.m. in the La Casita Room of the Gruver State Bank.

Jon Thomas of the state office will bring the program.

Cultivated farms are vanishing under asphalt and cement. Let's save our best farmlands for farming! Observe Stewardship Week April 30 through May 7.

Don't let your tax refund fly away. Put it in a savings account today.



It's a happy occasion when your IRS refund check arrives in the mail. Some people think of it as "new found" money and spend it in a wink. Others, however, put that money with us in a savings account. Why don't you?

That way, your refund money will earn a high rate of interest. It will grow in value because the interest you earn is compounded... and your money is safe with us because it's insured by a U.S. Government Agency. On top of all that, your money is available whenever you want it.

So remember, don't fitter your refund away. Put it with us and let it grow for another day.

Interstate Savings & Loan Ass'n.

322 Main Spearman, Texas 659-2344
Member Federal Savings and Loan Insurance Corporation
Member Savings and Loan Foundation, Inc.

FARM SALE

MONDAY, MAY 1, 1978 SALE TIME: 10:30 A.M.

LOCATION: 8 Mi. W. of Gruver, Tex. on Hwy. 15 then 2 Mi. N. on Calhoun Rd. then 1/2 Mi. W. -OR- 32 Mi. E. of Stratford on Hwy. 15, 2 Mi. N., 1/4 Mi. W. Watch For Sign.

CLIP THIS AD & TUNE IN RADIO STATIONS IN CASE OF STORM DATE
All our sales broadcast on Radio KDDD - 800 - Dumas, and KGYN - 1210 - Gayton, Oklahoma.

DUANE FULFER - OWNER (806) 733-2715

The Following Will Be Sold At Public Auction:

- TRACTORS - COMBINE - KART**
- 1-1976 JD 4630 Diesel, Power Shift, Cab, Air, Htr, Radio, Steel Radial Tires, Duals, 1030 hrs.
 - 1-MM Model U Gas Tractor
 - 1-1969 JD 95 Gas Combine, Cab, Water Cooler, 14' Hdr., Home Reel
 - 1-JD 435 N-4 Row 30" Cornhead
 - 5-Rows Hesstons
 - 1-Set 14 X 28 Combine Duals
 - 1-Big 12 Grain Kart
- MOBILE HOME**
- 1-Casa Manana 12' X 44' Tandem Axle, 2-Bedroom, Bath, G. E. Refrig., Tappan Range, Completely Furnished (also Frigidaire Washer) Central Heat, Clean
- FARM MACHINERY**
- 1-New 1976 Wilbeck 20 1/2" Offset, 24" Disk Dual Whl. Flotation Tires
 - 2-JD Offsets, 13' & 16'
 - 3-Krause 15' Oneways, 2-K2, 1-4S3
 - 1-22' Dbl. 4" Box Toolbar, 3 Pnt., Dual Gauge Whl's, 7 Shanks, 42" Sweeps
 - 1-1976 Tee Vee 13' H.D. Ripper Chisel
 - 1-22' 3 Pnt. Hi-Clearance Chisel Plow
 - 1-20' 3 Pnt. Graham Home
 - 1-14' Graham Home W/S - 32" Sweeps
 - 1-JD 4 Row Lister Planter
 - 1-HC 3 Bottom 16" Spinner
 - 1-Howard 80' PTO. Rotary Tiller
 - 1-New 1976 JD 9830 16' 10" Single Disc Drill
 - 2-Tye 6 Row Drills
 - 1-Dempster 8 Spout Drills
 - 1-Orchman 4 Row 3 Pnt. Bedder
 - 1-Tye 6 Row 28' Triple Toolbar Disc Bedder, Markers & Stabilizers
 - 1-18' Diamond 3 Pnt. Toolbar, Gauge Whl's, 5-11' X 3" Shanks W/Sweeps
- 1-22' Diamond Toolbar, 3 Shanks**
- 1-JD 9' 3 Pnt. Bording Toolbar**
- 1-1974 Lilliston 6 Row 5 Tine - 40" Cultivator W/Guide Cones**
- 1-Case 5 Sec. Drag Rotary Hoe**
- 1-Krause 24' 4 Sec. Harrow**
- 1-JD 5 Sec. Drag Springtooth Harrow**
- 1-6 Sec. Flex Harrow**
- 1-Int. 3 Sec. Harrow-In 3 Pnt. Frame**
- 1-Krause Drag 15' Rod Weeder**
- 1-14' Dirt Scraper**
- 1-Servis 4 Row Shredder**
- 1-6 Row Cultipacker**
- 1-Clark 30' Sprayer, 250 G. F.G. Tank**
- 1-Crusbuster 4 Row Knifing Sled**
- 3-3 Pnt. Blades, Super Rhino, Johnson, Caldwell**
- 1-Caldwell 3 Pnt. Posthole Digger**
- 1-3 Pnt. Backend Lift**

- TRUCKS - CARS - PICKUPS**
- 1-1969 Chev. Truck, 6 Cyl, 4 Sp, 2 Sp, 9,000 Tires on Back, 8.25 on Front, 18' Trade-wind Bed, Hyd. Lift, Fendon Tarp Roller, 32,500 Miles.
 - 1-1976 Dodge D 100 1/2 ton pickup, slant 6, automatic, power, air, 1w bed, tool box, 10,000 miles.
 - 1-1977 Chev., 3 1/2 T. Truck, V-8, 5 Sp, 2 Sp, L. Whl. Base, 9,000 Tires, No Bed, 16,000 miles.
 - 1-1974 Passenger Wagon, 400 V-8, Autom., Loaded, Steel Belted Tires
 - 1-1976 Plymouth 4 Dr. V-8, Loaded, Good Tires, 50,000 miles
 - 1-1967 Fiat Sports Coupe, New Eng. & Tires, 4 Sp.
 - 1-1967 Ford Mustang V-8, Autom., Good Shape
 - 1-1968 Chev. 1/2 T. Pickup, 350 V-8, Autom. Power, L.N. Box
 - 1-1978 1/2 T. Pickup, 350 V-8, 4 Sp, Power, air
- TOOL MARKET PS**
- 6-JD P71 Flex Planters, 300 Acres
 - 1-A.C. Flex Planter
 - 4-Diamond Toolbars, 2-16', 2-18'
 - 4-Sets Gauge Whl's
 - 4-3 Pt. A-Frames
 - 1-21' Triple Toolbar
 - 8-Rows JD Dbl. Disc For DRA Drill
 - 3-Set Row Markers, 16" & 20"
 - 21-Toolbar Spacers, 16" & 20"
 - 2-Stabilizer Coulters
 - 1-Toolbar Shanks
 - 1-B & J Rod Weeder
 - 5-Oliver Lister Bottom & Shanks
 - 15-Water Farrowing Sweeps
 - 7-Rows Fenders
 - 4-16" Bullet Drags
 - 2-18" Pipe Drags
 - 6-No-till Coulters & Clamps
- IRRIGATION - TANKS - AUGERS**
- 59-32' Joints 6" Gated Pipe, 42" Rows
 - 11-40' Joints 6" Flowline
 - 1-Lot Tubes, Plastic & Alum. (1" to 3") & T's, L's, Caps
 - 1-500 G. Fuel Tank on Stand, 20' Hose
 - 1-150 G. Pickup Fuel Tank
 - 1-44 G. Propane Tank
 - 2-19 Bottles
 - 1-100 G. Water Tank
 - 2-Augers, 110 Volt, 4 1/2" & 12 V.
 - 1-Mayrath 6" X 40' Auger, 3 H.P., 220 V. Motor
- LIVESTOCK EQUIPMENT - HAY**
- 1-Tilson Squeeze Chute
 - 1-Cattle Oiler & Hog Loading Chute
 - 1-Metal Slide-In Pickup Stock Racks
 - 12-12" X 4 1/2" Pipe Panels
 - 3-Cattle Feeders, (1-Liquid)
 - 1-Metal Calf Creep Feeder
 - 500-Bales Haygrazer Hay
- NON CLASSIFIED - MISC.**
- 1-E-Z Wire Roller, 7 H.P., B&S Eng.
 - 1-Lot Elec. Wire & 2 Elec. Fence Chargers
 - 1-3 Whl. Rotary Mower
 - 1-Lot Chains, Boomers, Tools, Chisels, Sweeps & Other Items

TERMS: CASH - ALL ACCOUNTS TO BE SETTLED DAY OF SALE * PLEASE BRING OWN CHECKBOOK * POSITIVE I.D.

FOR INFORMATION, BROCHURES OR ANY TYPE ACTION - CALL: LEE W. FREEMAN TKG5-019-0193 P.O. BOX 451 - 118 BELLAIRE DUMAS, TEXAS 79029 PHONE: 806-935-2419

ALL ANNOUNCEMENTS ON SALE DAY SUPERCEDES ALL PRINTED MATTER NOT RESPONSIBLE FOR ACCIDENTS

ROY L. McCLELLAN, Candidate for the office of Hansford County Judge

Seeks your support in the Democratic Primary

Saturday, May 6

"A Lifetime of Service to Hansford County Residents in the Public and Private Sectors and Ready to Serve Again."

Thanks for your consideration.

Political Adv. paid for by Roy L. McClellan

DEMONSTRATION TO BE HELD

Spearman Volunteer Fire Department, as part of the observance of Emergency Services Awareness Month in Spearman, held a fire extinguishing demonstration starting at 6 p.m. Saturday, April 29. The activity was on the north side of East 11th at the intersection of East 11th at the intersection of FM 760

In old Germany it was illegal to tie nine knots in anything.

NOTICE TO ALL ELIGIBLE VOTERS

The Democratic and Republican Primary election will be held Saturday, May 6th.

I would like to urge all registered voters to exercise their right to vote in this election.

Many tax dollars are spent on elections each year, but only a small percentage of voters take advantage of this privilege.

Let's use this great privilege and our money wisely by voting for the candidate of your choice on May 6th and again in the November general election.

Joe T. Venneman
Candidate For County Commissioner - Precinct 2

MILO CORN BARLEY



ALFALFA FORAGES SOYBEANS

If you want good, clean milo seed with high yieldability plant Browning Spirit of 76 (Green Bug Resistant) GBR and take advantage of this offer --

buy 10 BAGS & GET ONE FREE.

SEE

PHONE 659-2417
2 MILES E. ON HWY 15



FOR ALL YOUR SEED NEEDS

Also P&C feeds,

anhydrous ammonia,

custom feed mixing & saddles & Tack

WANT ADS

Boxwell Bros. Funeral Home and Flower Shop

FUNERAL HOME - 659-3802
FLOWER SHOP - 659-2212

Hansford County Planned Parenthood
26 S. Haney
659-2483
Spearman Mon. - Fri.
8 a.m. to 12 noon
305-rtn

SERVICES

HANSFORD LODGE
No. 1040
A.F. & A.M.

STATED MEETINGS
2nd & 4th MONDAY, 8 p.m.
Members Urged To Attend
Visitors Welcome
CERIL BATTON W.M.
JERRY E. GEE SEC'Y.

KIRBY SALES & SERVICE of Spearman, 912 S. Bernice. 659-2797. 30-rtn

STEAM RINSEVAC RUG SHAMPOOER
\$6.95 PER DAY
with Upholstery Attachment
\$8.95 PER DAY
Call Gordon's Drug
659-2141 or
after 7 p.m. & Sundays
call FREDDIE LARGENT:
659-3437
24-rtn

YOUR LOCAL USED COW DEALER: SPEARMAN BI-PRODUCTS.
Seven days a week dead stock removal. Please call us soon as possible.
659-3544.
8-rtn

SERVICE: Pits cleaned, wet or dry. Dragline or loader. Also, dozer, grader, carry-all service.
LeeRoy Mitchell, 806-733-2384, Gruver, Texas, 79040.
9-rtn

Alcoholic Anonymous Meeting 8 p.m. Friday, Home Demonstration Club building, 305 N. Bernice. Phone 659-3181 for information.

Al-Anon meetings 8 p.m. Friday Home Demonstration Club building, 305 N. Bernice in back room. Phone 659-3181 for information. Ask for Al-Anon.

NOTICE
Wallace Monument Co. Monuments, Curbing, Grave Covers
Local Representative
LEONARD JAMESON
659-3406
20-rtn

Can Drill Domestic or Irrigation Wells. Deepen domestic and gravel pack. Sell new domestic irrigation pumps. Call at night, Bill Block, 935-4088.
215-rtn

SAVE MONEY INSULATION DOESN'T COST...IT PAYS!

CELLULOSE INSULATION
Blow On
*Walls *Mobile Homes
*Attics *Steel Buildings

Free Estimates
ALL SEASONS INSULATION
Phone 806-249-2922
22-8tc

Baker's Faith

For information: Box 1556
Borger, Tx. 79007

For Moving Mobile Homes, Skirting and Leveling. Call Charlie Cook in Canadian. 806-323-5238.
22-rtn

PEE WEE'S PLUMBING & Appliance Service. Roto-roofer. 659-2811 or 659-2781.
24-rtn

CUSTOM HAY BALING: Jerry Virden, Gruver, Texas. 806-733-2236.
295-4tp

REAL ESTATE FOR SALE

FOR SALE BY OWNER: Two, 3 bedroom homes, 2 baths, good location, reasonably priced. Call 659-2283.
195-rtn

FOR SALE: Lot 150 ft. x 50 ft., garage, with utilities hookup for trailer at 18 N. Hazelwood. Call 665-6616.
245-5tc

LOTS FOR SALE: 82' X 160' located at 319 S. Endicott. Call 658-4890.
8-rtn

FOR SALE: 722 Collier 3 bedroom, 1 3/4 baths, garage, fenced yard, corner lot. CALL 659-3885 weekdays after 5:30.
22-8tp

Mayfield Real Estate
John Mayfield - Broker
435-6528
Ruby Lair - Salesperson
659-2188

1109 Townsend, 3 bedroom, 1 1/4 baths, new appliances, single car garage, fenced yard.

Land For Sale: 160 acres, 11 miles northeast of Follett, windmill water, some machinery, immediate possession, no minerals.

2 Lots in the Shaull Addition, zoned trailer houses.
175-rtn

FOR SALE: Approximately 2 acres on corner of Kenneth Ave. & F.M.760. 284 ft. frontage on Kenneth, zoned commercial. Call 3867.
23-rtn

House For Sale: 3 Bedroom Brick, 2 Baths, 659-3460.
23-rtn

RESTAURANT FOR SALE: 659-3648 between 8 to 5.
235-4tc

Pens For Sale: Crawford Addition, 659-3510.
165-rtn

FOR SALE: Immediate possession. 1013 S. Bernice, 3 bedroom, 1 Bath, extra built-ins and storage, carpeted, storm windows and doors, fenced-in back yard. After 5:00 for appointment 659-2872, during day call 2311, ask for William.
225-rtn

MISCELLANEOUS FOR SALE

MOVING SALE: Orange tweed sofa \$100. Three-piece olive gold sofa includes recliner and chair and ottoman \$225. Parheon exerciser table \$30. Call Dorothy Groves at 659-2647.
24-3tc

FOR SALE: Firewood. Burton Schubert. Call 659-2667.
5-rtn

FOR SALE: 1970 Grand Prix. Good condition. \$700.00. 733-2607, Gruver.
205-rtn

Reduce safe and fast with GoBese capsules and E-Vap "water pills", Spearman Drug.
24-8tp

FOR SALE: 44 sq. yd. of extra good, used carpet and pad. O. K. Pendergraft, 659-2623; or 659-3993.
24-2tp

FOR SALE: 1977 Chevette, automatic and air. Call 659-2927.
245-rtn

FOR SALE: 1976 Chevrolet pick-up, Silverado, \$3,800.00. 733-2180.
29-1tc

FOR SALE: Refrigerated Air Conditioner. 8000 BTU. Like new. Used Gas Oven and Range with Griddle and Rotisserie. 659-3962.
235-4tc

FOR SALE: Increase your safety on the highways with a slightly used radar detector-excellent condition. 733-2564.
23-2tc

FOR SALE: Motorcycle. 1976 Kawasaki 500. Call 659-3332.
205-rtn

FOR SALE: Stewing Size Chickens. \$1.50. 659-3460.
235-rtn

JEWELRY FROM PRIVATE ESTATES: 7.03 ct. Diamond and 14 K. handmade white gold ring containing 28 marquise diamonds, 16 round diamonds and .72 ct. round center diamond-\$4950.00; 5.65 ct. t.w. diamond and 14 K. white gold Ballarina Ring containing 32 tapered baquette diamonds, 12 round diamonds and a 2.22 ct. natural coffee colored pear shape diamond - \$5190.00; 2.24 ct. t.w. diamond and 14 K. white gold ring containing .60 ct. t.w. baquette diamonds and 1.64 ct. VVS1 grade European Cut Diamond - \$4200.00; 1.85 ct. t.w. Ruby and Diamond Platinum Ring containing 2 round diamonds, 4 baquette diamonds and 1.75 ct. Oriental Ruby of superb color and clarity - \$1450.00; .75 ct. flawless natural Canary European Cut Diamond Solitaire on 18 K. wide yellow gold band - \$785.00; 2.28 ct. t.w. excellen quality Diamond and platinum dinner Ring containing 6 baquette diamonds, 12 round diamonds and two .81 ct. round diamonds - \$2750.00; 13.54 ct. Aquamarine and Diamond Ring in fine handmade 18 K. white gold mounting containing 6 round diamonds and 13.27 ct. fine quality Aquamarine - \$1550.00; 3.58 ct. Diamond and 14 K. white gold handmade fillagree Pendant containing 91 flawless round diamonds - \$3590.00; 1.92 ct. t.w. Diamond and 14 K. yellow gold handmade fillagree Bracelet containing 84 fine quality diamonds - \$1450.00; Opals, Sapphires, Rubies, Diamonds and Burma Jade Jewelry too numerous to mention. Also very fine collection of Antique Chinese Jade Carvings consisting of bowls, cups, ink stand, jade screen and personal adornment items. Also, Sung miniature pottery vase and Kang Hsi miniature porcelain vase. For Further Information Call: 806-826-5748 Day or Night.
24-2tp

FOR SALE: AKC Registered Lassie colored Collies. Call Stinnett 818-2187 after 5:00.
245-4tc

FOR SALE: Six-year-old dun gelding. Call 659-3458 after 5:00 p.m.
245-4tc

FOR SALE: German Millet Seed, makes hay in 45 days. Farmers & Ranchers Supply, 733-2931, Gruver, Texas.
215-rtn

TO GIVE AWAY

PUPPIES TO GIVE AWAY. 810 S. BERNICE. 659-2338.

WANTED: Clerk for 3 to 11 shift and 3 to 9 shift starting \$2.65 hr. Apply at Allsup's.
24-3tp

HELP WANTED: No experience necessary. Apply in person. Berry Cleaners.
235-rtn

HELP WANTED: From 1 to 6, Monday through Friday, and 9 to 12 on Saturday. Apply at Earl's T.V., phone 659-2121.
22-rtn

HELP WANTED

WANTED: Clerk for 3 to 11 shift and 3 to 9 shift starting \$2.65 hr. Apply at Allsup's.
24-3tp

HELP WANTED: No experience necessary. Apply in person. Berry Cleaners.
235-rtn

HELP WANTED: From 1 to 6, Monday through Friday, and 9 to 12 on Saturday. Apply at Earl's T.V., phone 659-2121.
22-rtn

NOTICE

Recycle your aluminum at - Bruce Motors at ten cents a pound.
215-rtn

I, Ricky Morris, am responsible for no debts other than those incurred by me.
245-2tc

JIMMY GREENE
659-3196

BOX'S SPEARMAN
The Ladies' protecting her own.
KANSAS CITY LIFE
INSURANCE COMPANY
Since 1905

WANTED

Will Do Good Mowing, etc. Call 659-3839 or 659-2541.
225-rtn

FOR RENT

FOR RENT: 2 bedroom home. Contact Edwin Limbocker, phone 659-2344.
245-rtn

BUSINESS OPPORTUNITIES

DEALERS WANTED: To handle a major line of pre-engineered steel bins and buildings. Lucrative opportunity for the right person. Aggressive farm operator considered. Call 800-335-2246.
23-6tp

LEGAL NOTICE

PUBLIC NOTICE

A public hearing will be held in the District Courtroom of the Hansford County Courthouse on May 13, 1978 at 8:00 P.M.

The hearing is to discuss the Soil and Water Resources Conservation Act of 1977, (Public Law-95-192).

This is an important meeting; come prepared to express your opinion both orally and in writing.

Charles Brillhart, Chairman, Hansford SWCD
Warren Proctor, District Conservationist
Soil Conservation Service
235-275 only

CARD OF THANKS

We would like to thank all our friends for their kindnesses to us during the illness and death of our loved one, Thelma Blewins. A special thanks for the food, flowers, cards, memorials.

We would also like to express our sincere appreciation to Dr. Kleeberger and the hospital staff for their services.

Ethel Cookston
Pearl Pierce & Mike
Maurice & Leonard Garrard
and boys

POLITICAL ANNOUNCEMENTS

The Hansford Plainsman is authorized to announce the candidacy of the following candidates for public office, subject to the action of the voters in the 1978 primary elections.

FOR COUNTY JUDGE
R. L. McClellan
Francis Biles
FOR COUNTY TREASURER
Verna Gail Keim
FOR COUNTY & DISTRICT CLERK
Marie Gould
FOR COMMISSIONER PREC. 2
Joe T. Venneman
FOR COMMISSIONER PREC. 4
Alvin (Bill) Cator, Jr.
George C. (Bud) Lowe
Val Winger
FOR STATE REPRESENTATIVE 64th LEGISLATIVE DISTRICT
Bob Close

Dear Friends,
Thank you so much for the many kindnesses shown to our family while we were in Amarillo with Calvin. There are no words to express our gratitude.
Calvin and Linda Bodey
245-2T



Ralston Is County Agent

A new county Extension agent for agriculture has been named for Farmer County, effective May 16.

He is Seth H. Ralston, 24, former assistant county Extension Agent for Castro County. He replaces R. Mack Heald, who resigned to enter private business.

The appointment was announced by County Judge James P. Fortenberry and Billy C. Gunter, district agent for the Texas Agricultural Extension Service.

Ralston has served for the past two years as assistant county Extension agent for agriculture in Castro County. He is a native of Spearman and was graduated from Spearman High School in 1972.

He received an Associate of Science degree from Clarendon Junior College, Clarendon, in 1974. In 1976 he was graduated with honors from Texas A&M University, College Station, with a Bachelor of Science degree in agricultural education. At A&M he was active in the Collegiate Future Farmers of America and Alpha Zeta.

Ralston's hobbies are raising and showing livestock, hunting and fishing. He is a deacon in the First Christian Church of Dimmitt.

He is married to the former Anita Smith of Spearman. The couple has a daughter, Danna, who will be six in May, and a son, Wesley, six months old.

Mental Health Campaign Set

Bellringer marchers will go house-to-house during May collecting for mental health in Spearman.

Organizing the drive is Mary Lou Matthews of Spearman.

Proceeds from the campaign will benefit the Mental Health Association, a voluntary non-profit organization.

The Mental Health Association receives no government funds. The association must be supported through citizen contributions in order to continue its work.

For free information about mental health topics, such as how to deal with tension and stress, write to: Mental Health Association in Texas, 103 Lantern Lane, Austin, Texas 78731.

"Self-control is at the root of all virtues." Samuel Smiles

Swathing Baling
Hauling (16x18 Bale)

CUSTOM HAY BALING
JERRY D. VIRDEN

P. O. Box 595 806
Gruver, Texas 79040 733-2236

SECRETARY WANTED

The Permian Corp., Hiway

207, Spearman, Texas, has openings immediately for a secretary

Filing, typing, telephone and radio.

excellent pay and benefits.

Call 806-659-2571, or come by the office in Spearman, Texas.

AN EQUAL OPPORTUNITY EMPLOYER, MALE OR FEMALE.

ED WHEELER REAL ESTATE
HOMES - FARM
COMMERCIAL

Brick 3 bedroom, 1 1/2 baths, built-ins, new carpet, nice drapes, attached single garage, fenced, storage house.

3064 under roof, 3 bedroom, 1 1/2 baths, central heat and air, ash paneling and woodwork, extra large double garage, automatic underground lawn sprinkler, large storage building, concrete pad for boat, etc. Cinder block fence, nice patio. Appointment only.

3 bedroom brick, 2 full baths, recently redecorated, fenced, central heat and refrigerated air, large double garage detached with finished room & bath, can be used for bedroom or office. Must see to appreciate.

416 S. Haney, 2 bedroom, 1 bath, built-in appliances, washer & dryer, completely remodeled, new carpet, drapes, custom made, new roof, freshly painted, storm windows, detached garage made into bedroom. Must see to appreciate.

821 S. Barkley, 2 bedroom, 1 1/2 bath, new tile in kitchen, dining area, new carpet in den, storm windows, large lot, fenced storage building, single garage, large trees, sprinkling system. Extra nice home -- can be made into a three bedroom.

211 Lonita, 3 bedroom, single attached garage, single bath. Extra nice. Priced to sell.

Ed Wheeler 659-2613, Office
Jerry Gee or 659-2951, Home
659-3664
225-rtn

The Hansford Plainsman

PUBLICATION NO. 234660
SPEARMAN, TEXAS 79081
213 Main Box 458 659-3434
Published Weekly at 213 Main Street
Spearman, Texas 79081
Owner-Publisher.....William M. Miller
Second Class Postage paid at Spearman, Texas 79081

Any erroneous reflection upon the character of any person or firm appearing in these columns will be gladly and promptly corrected upon being brought to the attention of the management.

SUBSCRIPTION RATE: Hansford, adjoining counties, combination with the Spearman Reporter, \$10.40.
Other points, \$14.40.

MEMBER
TEXAS PRESS ASSOCIATION

CARDINAL CHEMICAL, INC.

NEEDS ONE OR TWO GOOD MECHANICS

Must have own tools and diesel experience. Group insurance, paid vacation, retirement plan, advancement. Age 21 years or over.

APPLY IN PERSON - 435-6588
PERRYTON, TEXAS

CARDINAL CHEMICAL, INC.

NEEDS EQUIPMENT OPERATORS

Must have commercial license and telephone. \$975 monthly guaranteed pay. Group insurance, paid vacation, retirement plan, advancement.

Experience helpful, but not required.
PERRYTON, TEXAS
APPLY IN PERSON - 435-6588.
MUST BE AGES 21 AND OVER

Home For Sale

THE ANCIENT GREEKS BELIEVED THAT SELLS WERE GENERATED BY MUD.

We offer one of the largest and finest homes in Southeast Spearman across from the high school. Five bedrooms, formal living room, den in basement with built-in fireplace. Approximately 4000 square feet with many extras. Includes 12'x20' storage building, fence, sprinkler system, TV and CB towers and antennas, many more features. Call for appointment, 659-2647, Mr. and Mrs. Harold Groves.
125-rtn

OFFERED BY: EMMETT R. SANDERS, REALTOR

GROWING WITH SPEARMAN, now under construction in The Dejon Kirk Addition, on South Brandt. This one is sold. Construction underway on another one. Why not enjoy a brand new 3 bedroom home, prices starting at \$27,500. Today's best housing buy for quality building. Low move-in cost - sure beats paying rent. Act now for choice of colors, floor plans, etc.

This 2 bedroom stucco home is in excellent condition. New carpets throughout. Formal dining room. Detached double garage; located near school on 75 ft. lot. See it now.

Older 3 bedroom house on 2 lots, large basement.

308 S. Hoskins -- 5 room house, carport, fenced yard, priced to sell.

Small 3 room stucco house on corner lot, near downtown, some used furniture included, ideal for single person.

EMMETT R. SANDERS, REALTOR

659-2516 NIGHTS 659-2601

United Presbyterian Church News

Sunday, April 30 is Rural Life and Soil Stewardship Sunday. There is a Sunday Church School class for everyone every Sunday at 9:45 a.m. with a well-prepared, interesting, practical Bible lesson for living as a Christian in to-day's world. "Those Who Feel the Gale of the Holy Spirit" will be the subject of Pastor Edward D. Freeman's sermon at the service for the public worship of God on Sunday, April 30 at 11:00 a.m. Eddy Gayle Martin will be playing the organ. Mrs. Franklin Horne will play a flute solo, accompanied by Mrs. Jim Mercer. Betty Freeman will be attending a meeting of the joint committee on Hunger Resource of the Synods of the Sun and Red River on Tuesday and Wednesday, May 2-3 at Briarwood. There is a Change the World School of Prayer beginning Friday, May 5 at 7:00 p.m. and closing at 4:00 p.m. on Satur-

day, May 6 at the Holiday Inn in Amarillo. If you are new to Spearman and/or do not yet have a church home, you are cordially invited to come and experience the warm, Christian fellowship at the First Presbyterian Church.

Dahlia Flower Club Met

The Dahlia Flower Club met Monday, April 24 in the home of Mrs. Ora Sanders for a regular business meeting. President Mrs. Hollie Riley presided over the meeting. Roll Call was answered to "How I Met My Husband". Mrs. Nelle Evans gave the program entitled "Threescore and Ten" written by Bro. Graham. First specimen went to Mrs. Mae Floyd with spirea (bridal wreath) and first arrangement was Mrs. Mae Floyd's with Phlox. Those present were members, Mesdames: Louise Archer, Martha Batton, Sammie Bishop, Mabel Edwards, Nelle Evans, Mae Floyd, Sada Hoskins, Hazel Loftin, Alma Remy, Hollie Riley, Margaret Shedeck,

Cora Smith, and Ora Sanders. The next meeting will be May 8 at 1:00 p.m. at Martin's Steak Garden for a luncheon. Then at 2:30 they will go to Callaway's House of Flowers and tour their green house.

Book Review Club Meets

The Book Review Club met Tuesday, April 25 at the home of Mrs. E. J. Copeland. Mrs. Judy Nelson was the guest reviewer reviewing the book "Anita Bryant Story" written by Anita Bryant. It was about her stand in Florida on the homosexual law conflict for women's rights. Refreshments were enjoyed by members, Mesdames: John Berry, R. E. Lee, Tom Etter, O. C. Holt, Bruce Sheets, Frank Hefner, and Sada Hoskins. The next meeting will be May 23 at Martin's Steak Garden with Mrs. Sada Hoskins to be the reviewer.

Union Church Missionary Meet

The Union Church Missionary Ladies met Tuesday, April 25 with President Mrs. Adalyn Barnes presiding over the business meeting. They took prayer requests. Mrs. Mae Floyd led in prayer. Members discussed the feeding and taking care of the MBE students on May 9th. At the second meeting in May, there will be the election of officers for the coming year. Mrs. Betty Graves dismissed the meeting and they then had their luncheon. Afterwards they made quilts and packed clothes for the Papago Indians. Some members and their husbands plugged grass around their new building.

Artist Of The Month

The Artist of the Month at Hansford Library is Mrs. John (Lucille) Allen of Spearman. Mrs. Allen has some 14 paintings hanging at the library during the month of May. She has studied under Ruth Hutton, Ben Konis and Dr. Emilio Cabellirio. She began painting in 1968. She paints in all the media but enjoys portraits the most. She did the sketches for the book "The Buchanan Odessey" written by her brother J. B. Buchanan. Another brother, J. W. Buchanan, made some of the frames for the pictures that are at Hansford Library.

Soil, like diamonds, possesses a wide range of qualities. There is prime farmland and there is soil so steep and erodible that it can't be farmed at all. It's important to know the difference. Because every year in the United States, we bury one million acres of our prime farmland under asphalt and cement. Too much of our best farmland is shifted to urban use. When you observe Soil Stewardship Week April 30 through May 7, consider community action to protect prime farmlands from further loss. This message from the Hansford Soil & Water Conservation District No. 148.

AAM Meet Beneficial

Much was accomplished at the Monday American Agriculture Movement meet in Oklahoma City with resolutions introduced, discussed, and passed which will form in a great measure the basis for the forthcoming activities of this group who are working so diligently to ease the plight of the nation's farmers. Gruverites attending the Oklahoma meet were Mr. and Mrs. Gene (Ramona) Reynolds and they have tried to consolidate some of the more important resolutions from this meet which they are sharing with "stay-at-homers" and all interested persons. The following are excerpts from the resolutions in Oklahoma City Meet including that the AAM will push participation in the set-aside provisions of the farm bill to encourage production cutbacks which are necessary to create a significant price increase. Excerpt from another resolution included that there is a National policy of a 50% cut in production. The AAM will accept the fact that some of our fellow farmers cannot remove 50% of their land from production that the individual farmer feels he can economically afford in his operation. The AAM backs and encourages the "no-buy, no-sell policy" that has been espoused from the very beginning. Each state active in the American Agriculture Movement plans to keep people in Washington on a rotating basis with each state with a voting delegate being assessed on an equal basis to pay for the expenses of this office in Washington, D. C. The AAM will continue to work for state laws which will prohibit the mass purchasing of farm land by foreign citizens and interests. Further the AAM will try to get Congress to draft a law for a 50-man Board to be composed of grass-roots farmers appointed on a one or two year term to serve in the United States Department of Agriculture in an advisory capacity and to help formulate agricultural policy. Further plans for the AAM include the forming of a committee to look into the gas hole issue. These are only a few of the resolutions which were passed by the body at the AAM Oklahoma City meet. Please come by the Gruver or Spearman offices of the AAM and read a copy of these in their entirety. "Nobody can help you, friend, if you don't want to help yourself," as it has been so well put by Alvin Jenkins, farmer from Colorado. Everyone is welcome in the American Agriculture Movement.



Mr. and Mrs. Robin Giblin of Morse were honored Sunday, April 16 with a reception commemorating their 40th anniversary at the Morse Community Building by members of their family.

Stream water is clean water if we protect it from pollution. Learn more about clean water when you observe Soil Stewardship Week April 30 through May 7 at your church. America's good farmland is one of our greatest gifts. We need to conserve and preserve that gift. Learn how during Soil Stewardship Week April 30 through May 7, at your church.

Beth Ann Holt In Honor Society

WTSU-Beth Ann Holt, a sophomore business education major at West Texas State University, was initiated into Phi Eta Sigma national freshman scholastic honor society April 13 in the WTSU Activities Center Ballroom. To be eligible for membership in Phi Eta Sigma, students must have a 3.5 average on a 4.0 scale for their first semester or year of college work. Miss Holt is the daughter of Mr. and Mrs. Pat Holt of Gruver.

JOHN POERNER

Railroad Commissioner of Texas

Keep an outstanding man in this important job. John Poerner's ability and integrity are proven in a decade of public service.



Pol. Ad. to elect John H. Poerner - Railroad Commission, Ed Ingram, Treas. 1037 Brown Bldg. Austin, Texas 78701

SUN MON TUE WED THU FRI SAT MAY 1978

1	2	3	4	5	6
7	8	9	10	11	12
14	15	16	17	18	19
21	22	23	24	25	26
28	29	30	31		

MONDAY, MAY 1, 1978

Ruth Sunday School Class - Home of Mrs. Bill Russell
Chapter #721, Order of Eastern Star - Hansford Lodge Hall
Rotary Club - Martin's Steak Garden
Blue Monday Bridge Club - Home of Mrs. Major Lackey
Spearman Study Club - Home of Mrs. Patty Sheppard, family picnic get-together
Little League - Major League, Astros vs. Yankees

TUESDAY, MAY 2, 1978

Golden Spread Circle Meeting - Home Demonstration Club Room, covered dish
Spearman Volunteer Fire-Ettes - Home of Mrs. Sherry Brand
Lion's Club - Martin's Steak Garden
Short Bridge Club - Home of Mrs. Woody Gibner
Baker and Taylor Women's Association
Holt Home Demonstration Club - Home of Mrs. Rex McCloy
Old Hansford Home Demonstration Club - Home of Mrs. Yonda Keim
Town and Country Home Demonstration Club - Home of Mrs. Janie Henton
Little League - Minor League, Pirates vs. Braves
Little League - Major League, Indians vs. Jets

WEDNESDAY, MAY 3, 1978

Maranatha Bible Study
Mary Martha Circle of the UMW - Methodist Church
C. W. F. - Christian Church
Baptist Women - First Baptist Church
Susannah Wesley Circle of the UMW - Methodist Church

THURSDAY, MAY 4, 1978

Serendipity Home Demonstration Club - Home of Mrs. Cathy Gafford
Sacred Heart Women's Guild - Sacred Heart Parish Hall
Happy Homes Home Demonstration Club - Home of Mrs. Nan Nicholson
Spearman Spinners Square Dance Club - County Barn
Thursday Dessert Bridge Club - Home of Mrs. Ted Godfrey
Gardiola Flower Club - Home of Mrs. Roy Flowers
Spearman Ministerial Fellowship Meeting - First Baptist Church, 9:30 a.m., day-long training session
Little League - Minor League, Braves vs. Pirates
Little League - Major League, Yankees vs. Indians

FRIDAY, MAY 5, 1978

Arts and Crafts Guild
Little League - Major League, Jets vs. Astros

SATURDAY, MAY 6, 1978

Pinochle Club

HAIL INSURANCE

Just call Jimmy Greene at 659-3196 and he will come to your place at your convenience.

We also have fire insurance which is "very inexpensive" for your crops.

Cimarron & Plains Insurance Co's.

J. F. "Jimmy" Greene

The Big Event at Beef Country Restaurant's First Anniversary

Flowers for the ladies!

Other prizes and surprizes!



Drawings for free meals and free dinners!

Canadian, Texas

During anniversary week May 2-6 drawings will be held daily.

Recent winners were:

Mr. B. J. Ward
who won a dinner for two at BEEF COUNTRY

Mrs. A. C. Taylor
who won a \$25 flower arrangement from Roxann's Florist in Canadian.

Both are residents of Canadian.

Closed: Sunday evening and Monday

Weekend of May 6 & 7

call 806/323-5397
Highway 83 North of Canadian
Across from the Canadian Golf Course

Dine at the BEEF COUNTRY this week and register for prizes.

Open:
11 a.m. until 2 p.m.
5 p.m. until 10 p.m.
Tuesday through Saturday
11 a.m. until 3 p.m.
Sunday

B SPEARMAN
659-2514
GRUYER
733-2981

**BROCK
AGENCY**

It's
**HAIL
INSURANCE
TIME**

**Lots Of Luck,
Tuwana**

At press time this week for The Hansford Plainsman, Tuwana Byrd of Spearman, the Hansford County Spelling Bee Champion, was representing the County in the 30th Annual Spelling Bee at Amarillo. The eighth grade student at Spearman Junior High School, accompanied by her mother, Mrs. Preston Byrd of 508 S. Bernice, participated in the luncheon for all County champions which was held at the Amarillo Country Club, 4800 Bushland Blvd. After the luncheon activities were concluded, the Regional Bee cranked up in the auditorium of Stephen F. Austin Junior

High School in Amarillo. Tuwana, one of the many champions from the Texas and Oklahoma Panhandle region, will be competing for the trip to Washington, D.C., and the National Spelling Bee Finals in June.

WEATHER		
April 21	74	40
April 22	74	45
April 23	74	43
April 24	70	38
April 25	71	36
April 26	75	42

AAM Meets Faces Felony Charges

Several supporters of the American Agriculture Movement from Hansford County were attending the AAM convention Monday in Oklahoma City where 2,000 had gathered from 44 states to discuss ways to earn more money and to determine a plan of action following the defeat in Congress of an emergency farm aid bill which included many provisions sought by the farmers. Attending from Spearman were Mr. and Mrs. Burton Schubert and Mr. and Mrs. Earl Taylor along with Mr. and Mrs. Gene Reynolds of Gruver.

Some people believed that wearing quartz stones would help them secure public favor.

A Spearman resident, Gary Lynn Pruitt, 28, has been transferred to Hale County authorities after his arrest in Spearman April 26 on felony warrants out of Hale and Randall Counties, it has been announced by the Hansford County Sheriff's Department. Pruitt was arrested at his residence in Spearman at 6:20 p.m. He was taken before Justice of the Peace J. P. Vernon in Spearman who advised the defendant of the charges of felony theft by check contained in the complaints. After his appearance in Spearman he was taken to Hale County for further court proceedings.

Pruitt is a construction worker.

**NEWS
OF NUTRITION**

VITAMIN E—ESSENTIAL TO GOOD HEALTH

Nutrition researchers have established vitamin E as being necessary in the human diet and essential to good health. Today, as more physicians recommend polyunsaturated fat diets to their health-conscious patients, experts say the need for vitamin E may increase—since vitamin E may protect unsaturated fats from abnormal breakdown within the body.

Farm Value Emphasized During Soil Stewardship Week

The United States' annual loss of five million acres of rural land to nonagricultural use is a special concern during this year's celebration of Soil Stewardship Week April 30 - May 7. Charles Brillhart, chairman of the Hansford Soil & Water Conservation District announced today.

This year's Soil Stewardship Week theme, "Compelling Ventures," also stresses the importance of controlling water pollution caused by run-off from unprotected farms, ranches, roadsides, and construction sites Brillhart added.

Soil Stewardship Week is a nationwide observance which emphasizes man's responsibility to protect and conserve soil, water, and other natural resources. Traditionally, churches and local citizen's groups participate.

"Nearly 3,000 conservation districts throughout the U. S. will focus their attention upon conserving and preserving America's best farmlands during this 21st annual observance of Soil Stewardship Week," Brillhart said. "The U. S. Department of Agriculture estimates that of the five million acres annually lost to agriculture, nearly one million acres are classed as 'prime' land -- the best and most productive land we have. We are encour-

aging the preservation of these top-quality farmlands for farming rather than their indiscriminate use for housing developments, highways, shopping centers, and the like."

All the district churches that are scheduling special Soil Stewardship services.

The 1978 Soil Stewardship Week reference booklet, "Compelling Ventures," and related materials are available to local churches and community groups through the Hansford Conservation District. The publications were prepared by the National Association of Conservation Districts.

PROCLAMATION

WHEREAS, the well-being of our people depends upon the production of ample supplies of food, fiber and other products of the soil; and

WHEREAS, the quality and quantity of these products depend upon the conservation, wise and proper management of the soil and water resources; and

WHEREAS, our people have a mutual interest in the land and share the responsibility of preserving its productivity; and

WHEREAS, conservation districts provide a practical and democratic organization through which landowners are taking the initiative to conserve and make proper use of these resources; and

WHEREAS, the conservation districts are carrying forward a program of soil and water conservation in cooperation with numerous agencies and countless individuals;

NOW, THEREFORE, I, in full appreciation of the value of the soil to the public welfare, and desiring to honor those who protect it, do hereby proclaim April 30 - May 7, 1978.

SOIL STEWARDSHIP WEEK

In witness Whereof, I have hereunto set my hand and caused the Great Seal to be affixed.

Done at the Courthouse in the County of Hansford this 21 day of April, in the Year of Our Lord one thousand nine hundred and seventy-eight.

Johnnie C. Lee, County Judge

Rules and penalties will be explained at the start of first go around.

Corriente steers from Jim Hansford of Memphis will be chute run. The roping will start promptly at 1:00 p.m. Sunday.

Clarendon Sets Team Roping

A team roping will be held at the Clarendon Rodeo Arena on May 7.

Sponsored by the Clarendon College Rodeo Club, the event is open to all high school and college students 21 years of age or younger. Entry fee is \$30.00 for three head. The roping is progressive after two head. Participants may enter up to three times but may only enter once the same way. Seventeen dollars of each entry fee will be paid back.

Entry fee may be made by cash or money order only. No

Harry Ledbetter's Money Management Program



As a fiscal conservative, I have developed a comprehensive program to effectively manage the \$2 Billion dollars on deposit in the State Treasury. Here are aspects of it:

Rate of Return: The State Treasurer should not play politics with our tax money. I pledge to put the taxpayer's money to work earning the highest interest available.

Cash Flow Forecasting: Using modern management techniques, we can accurately determine how much money the state needs in liquid funds. The state's obligations must be paid on a timely basis at minimum administrative cost.

People all over Texas are responding enthusiastically to my campaign. I appreciate your support. I know that the public trust must be earned, and it is a responsibility I accept. I ask for your vote on May 6th. If you share my concerns, encourage your friends and neighbors to vote for Harry Ledbetter for State Treasurer in the Democratic primary election May 6th.

**HARRY LEDBETTER
for State Treasurer**

You don't have to have a famous name to be State Treasurer.

Pd. Pol. Adv. paid for by Ledbetter for State Treasurer Committee. Bill Echols, Campaign Treasurer. P.O. Box 13524, Capitol Station, Austin, Texas 78711. Telephone (512) 476-6971.

PROFESSIONAL RODEO COWBOYS ASSOCIATION, INC.

A Special Invitation From The Heart of NO MAN'S LAND... Home of The Only P.R.C.A. Rodeo Within 400 Miles!

That's Guymon, Oklahoma's 48th ANNUAL Pioneer Days RODEO

5 Big Events

PIONEER DAYS MAY 5 & 6

Rodeo: 8:00 p.m. Friday, May 5
2:00 p.m. Saturday, May 6
8:00 p.m. Saturday, May 6

Gigantic Pioneer Day Parade
Saturday, May 6 — Parade Starts 11 a.m.

•Old Timers Reunion •Carnival •Talent Contests
•Western Dances •Bar-B-Que •Street Entertainment

Two -Day Pioneer Days Art Show
May 6 & 7



Willie Wiredhand says.....

SOIL STEWARDSHIP WEEK, April 30 - May 7, 1978



America's good farmland is one of our greatest gifts.



We need to conserve that gift through proper care of soil and water...



and by preserving our best farmland for farming.



Every year we lose nearly one million acres of prime farmland to non-farm development, like roads and housing.

When you observe Soil Stewardship Week April 30 through May 7, consider ways to preserve our best farmland --

America's priceless gift.

North Plains Electric Co-op, Inc.

435-5482

HWY. 83 N.

PERRYTON, TEXAS



CHEERLEADERS -- In case anyone in the auditorium at Spearman High School April 5 didn't know who they were, these Lynx/Lynxettes cheerleaders were part of the action during The Student's Choice in 1977-78 presentations on that date. To refresh one's memory, that's Robin Denham in the formal at right and the others are Karen Dennis, Shari Fox, Valerie Hagerman, Shelly Strawn, Kendra Ivey, Dalene Godfrey and Christy Collier.



SWEETHEART AND BEAUS -- FFA Sweetheart Christy Collier is escorted by the two FHA Beaus, Mike Bodey at right and Jamie Bulls during the April 5 presentation of The Student's Choice in 1977-78 at Spearman High School. Bodey was the FHA Senior Chapter Beau and Bulls was selected FHA Little Sister Chapter Beau.

Hightower Comments

WASHINGTON, D.C.--Congressman Jack Hightower said today that he was relieved and pleased by the House of Representatives' overwhelming endorsement Monday of the Agricultural Credit Act of 1978.

In separate action the House asked for further consideration of the Emergency Agricultural Act of 1978 by the House-Senate Conference Committee.

"Following the defeat April 12 of the Emergency Agricultural Act I had become deeply concerned that a majority of the House members apparently had

ignored the realities of the depressed market confronting so many of our farmers," Hightower said. "The vote Monday indicates that efforts of the hundreds of farmers who came to Washington from the 13th District were not in vain." Hightower said the bill is not the long-range solution to the farm problems, but it will help many farmers stay in business

until the solution of higher prices for farm commodities can become a reality.

In a speech on the House floor the Congressman said that when it became apparent last fall that the 1977 farm act was not the answer, the argument was made that farmers must have higher prices, not more credit. "We heard the arguments at that time and we

committed ourselves to trying to get the higher prices. The farm bill we had that would have done that failed," he told his House colleagues.

"In spite of the fact that they said they did not need more credit, the reality is that they must have more credit," he said.

Hightower said the bill would not stop all foreclosures, but it

would assist the good operator who is the innocent victim of the economic forces that have produced the present crisis.

The bill as passed also extended the Livestock Credit Act for one year. Hightower's amendment assures that farmers who choose to put cattle in custom feedyards will not be excluded from the bill's provisions. The Farmers Home Administration's interpretation of the 1974 act prevented participation by farmers who placed cattle in feedlots, even though many of these were small operators who were full-time cattlemen.

In floor debate on the amendment Hightower said the act had not been intended to assist outside investors, but it was intended to assist small operators who were primarily dependent upon livestock for their livelihood, regardless of where they may keep their livestock.

School Cafeteria

MONDAY, MAY 1
Salisbury Steak-Catsup
Buttered Potatoes
Blackeyed Peas
Combination Salad-Dressing
Fruit Cup
Hot Rolls-Butter
Milk
HIGH SCHOOL CHOICE
Roast & Gravy

TUESDAY, MAY 2
BBQ Franks
Potato Salad
Pinto Beans
Celery Sticks
Banana Pudding
Cornbread-Butter
Milk
HIGH SCHOOL CHOICE
Beef Raviola

WEDNESDAY, MAY 3

Burritos
Macaroni-Cheese Casserole
Green Beans
Cole Slaw
Cinnamon Rolls
Bread-Opt.
Milk
HIGH SCHOOL CHOICE
Corn dogs-Mustard

THURSDAY, MAY 4
Fried Chicken
Mashed Potatoes
English Peas
Dill Pickle Spears
Raspberry Gelatin
Bread
Milk
HIGH SCHOOL CHOICE
Breaded Steak-Catsup

FRIDAY, MAY 5
Pizza Burger or Tuna Salad Sandwich
French Fries-Catsup
Buttered Corn
Shredded Lettuce-Dressing
Strawberry Shortcake
Milk

GOOD PSYCHOLOGY



Psychologists suggest older people might feel younger if they participated in more community activities.

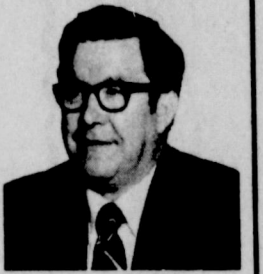


Another way people can feel younger is to take care of their health. One affliction many elderly people have is cataracts, which is curable in most cases. For free booklets

on cataracts and other aspects of eye care, write your state Prevention of Blindness Society or the National Society for the Prevention of Blindness, at 79 Madison Avenue, N.Y., N.Y. 10016. This is the Society's 70th year of saving sight.

Water pollution caused by run-off from unprotected farms and construction sites can be stopped! Find out how, when you observe Soil Stewardship Week April 30 through May 7.

Experienced Leadership For Our Most Vital Industry Keep ★ REAGAN V. BROWN



Texas Commissioner of AGRICULTURE Important to ALL Texans!

Pol. Adv. Pd. for by Reagan V. Brown, P.O. Box 13475, Austin, Texas 78711

Grand Opening

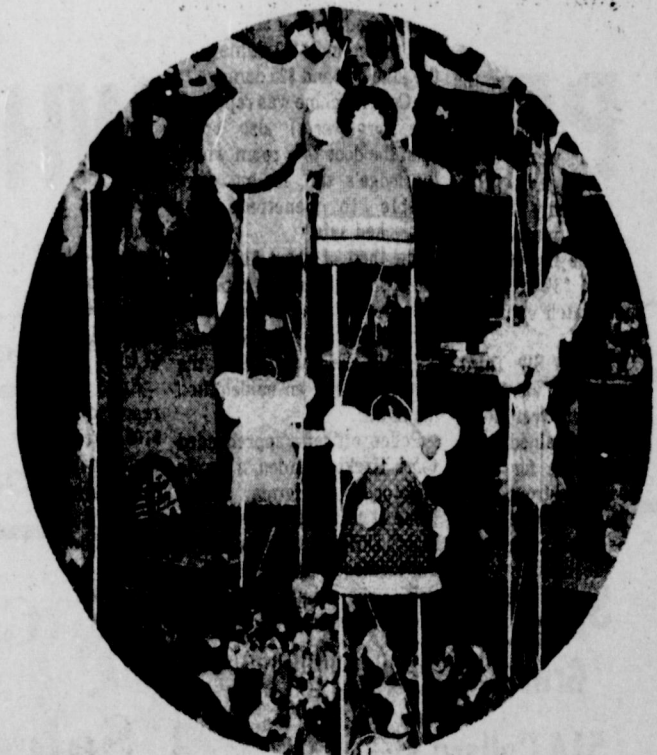
Perryton's New Gift Shop

Open 9 a.m. - 5 p.m.

— MONDAY, MAY 1 —

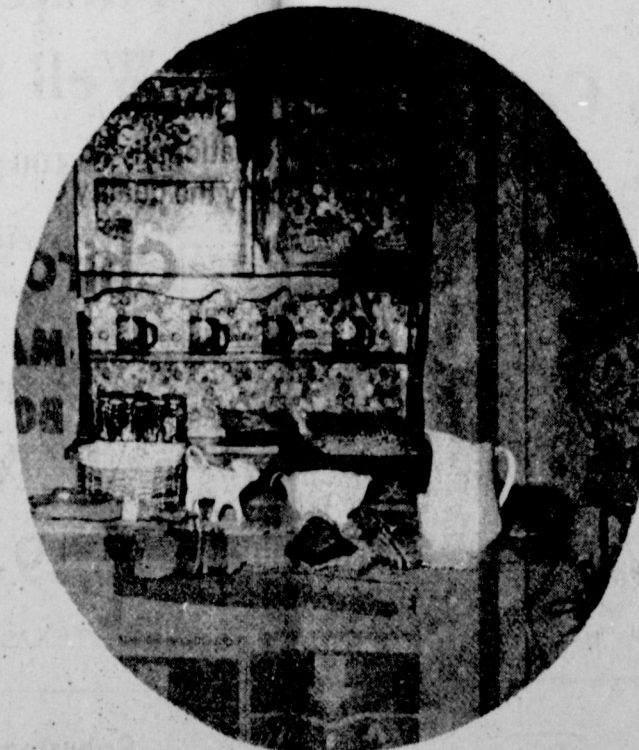
You're invited to come in and browse through our large selection of unique gifts.

We have something just right for those Mother's Day and graduation gifts you'll be needing soon!



Refreshments Served All Day!

Register For Door Prizes



There's Always Room For:

Something Else

Deeda Ford & Doris Hickey, Owners

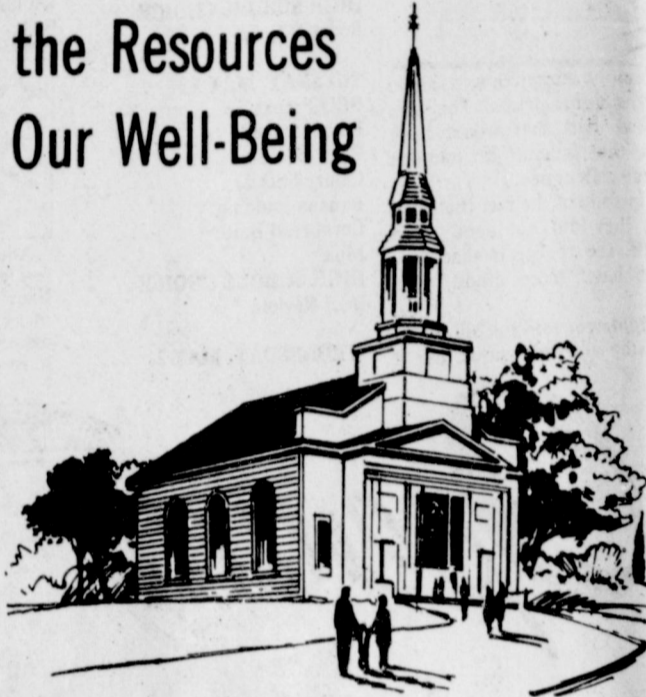
406 S. Main - Perryton 435-2490

SOIL STEWARDSHIP WEEK

April 30 -- May 7, 1978



This Sunday Observe Soil Stewardship Week at the Lord's Church, and Give Thanks for the Resources That Make Our Well-Being Possible.



At a time when pressures grow on the land, it is useful to remind ourselves of the origins and history of the Soil Stewardship observance. They stress the allegiance of all men to God and their dependence on His grace for all good things.

Throughout the ages, men have offered humble thanks to their Creator for the priceless gifts of air, soil, water, and sunshine which make all living things possible.

The custom of setting aside special days — Rogation Days — for this purpose began more than 1,500 years ago in the neighborhood of Vienne, France. Bad weather and earthquakes had brought crop failures and widespread hunger. The Bishop of Vienne called for prayer and penance on the three days preceding Ascension Day. The people responded and implored God for help in their suffering and privation.

Word of what had happened in Vienne spread throughout France — and then to other countries. The supplication filled a need in the hearts and minds of the people, and as the years went by, Rogation Days were widely observed as an annual custom. By the end of the eighth century, the Church formally adopted the custom. Now, the world over, people on Rogation Days beg the mercy of God and ask that He spare His children the evils of soul and body — and give good increase to the plants of the field.

In our own land it has met an evident need of the people to set aside a week each year to acknowledge before God our gratitude for His gifts of soil and all the bountiful resources associated with it. The week has become a special time to remind all people that these gifts warrant their best in Christian stewardship.

In America, the soil stewardship observance has always traced its origins to the Rogation Days. Throughout parts of the South, earlier in this century, churches and their congregations began to set aside the fifth Sunday after Easter as Soil and Soul Sunday.

Subsequently, this became Soil Stewardship Sunday when, in 1946, the publishers of Farm and Ranch magazine suggested to religious leaders in a few southern states that one Sunday be set aside each year to remind their congregations of man's duty to be a good steward of the land.

The response of clergymen and laymen was so warm and widespread that observance of Soil Stewardship Sunday spread steadily to additional states. In 1954, the publishers of the magazine suggested to the officers of the National Association of Conservation Districts that a still wider observance of Soil Stewardship Sunday could aid significantly in bringing about a national awakening and recognition of man's obligations to the Lord's earth. The publishers offered to relinquish their limited sponsorship of Soil Stewardship Sunday to the Association — which represents some 3,000 local soil and water conservation district organizations throughout America.

The Association accepted, and beginning in 1955 undertook to encourage a nation-wide observance — a mission to which it has dedicated itself ever since, under the guidance of a special Soil Stewardship Advisory Committee of clergymen representing many of the country's religious denominations. In 1956, recognizing possible conflicts with the observance of Rural Life Sunday, which was on the calendar of many churches, Soil Stewardship Sunday was changed to Soil Stewardship Week — beginning with the fifth Sunday after Easter and continuing through the sixth.

PROTECT WHAT THE LORD HAS GIVEN US

Call on Your Soil Conservation Service, Your County Extension Director, or Your County ASCS Office.

The Following Businessmen Are Helping Us to Help You:

<p>Speartex Grain Gruver Highway 514 Collard Street Phone 806/659-3711 - P.O. Box 666 Spearman, Texas 79081</p>	<p>Consumers Sales Co. Co-op 421 W. Kenneth Phone 659-2012 Spearman, Texas</p>	<p>Tucker Water Well Service 1100 West 7th Phone 659-3013</p>	<p>R. L. McClellan Grain Co.  Grain, Seeds, Acco Feeds, Purina Chow Ph: 659-3223 - Box 367 Spearman, Texas 79081</p>
<p>Spearman Industrial Engines Sales and Service Phone 659-2841 P. O. Box 1061 Spearman, Texas Industrial Engines Chrysler, International, Waukesha, Ford, also GAA Ford, Olds, GMC, Pontiac, Chevrolet</p>	<p> B & B Farm Industries, Inc. Spearman, Texas Phone 659-2551 Seed Cleaning & Treating Plastic Pipe for Gas & Water Lines</p>	<p>C. and S. TEXACO 659-9973 SPEARMAN, TEXAS HIWAY 15 EAST</p>	<p>Massads 214 Main Phone 2616 Spearman, Texas</p>
<p>Western Ag SALES CO. Irrigation Equipment Grain Handling Systems Farm Buildings ★ call us 659-2596 Wilton Green • P.O. Box 67 • Spearman, Texas 79018</p>	<p> Hansford Implement Co. Box 518 Spearman, Tex. 79081 Ph: (806) 659-2712</p>	<p>Spearman Redi-Mix Concrete Co. </p>	<p>Jr. Lusby Cats "WE DO EARTH MOVING THINGS" WEST GRUVER HIWAY Phone 659-3766</p>