

we salute

our Chamber of Commerce for the work that has been done this year.
Remember the Banquet is tonight... Plan to attend!



THE HANSFORD PLAINSMAN

VOLUME 10, NO. 13

THE HANSFORD PLAINSMAN, SPEARMAN, TEXAS 79081

SUNDAY, JANUARY 28, 1979

Same song, second verse, another blizzard hit, and it is getting worse

It isn't even news anymore, but we had another snow Friday evening. About 3 inches of snow fell beginning at noon Friday. However, it is clear Saturday morning, and should remain so for a day or two. In the meantime, the Lynx and Rangers thawed out the freeze at Lynx gym Friday night, as the awesome Lynettes won the first half of district 1-AA with an 89-49 win over a fine Rangerette team. Queen Tracie Keetch lead the scoring for the Lynettes. In the boys game, the Rangers won over the Lynx 77-55 in a game much closer than the score indicated.

New Officer And Directors Named



Michael Schnell



Ray Ingle

Jim Shirley

A former Citizen's Bank Credit Officer in Dallas has recently been named as Assistant Vice President at First State Bank in Spearman. Michael L. Schnell assumed his new duties this past week at the local Banking facility. A 1971 Spearman High School graduate, Mr. Schnell is married and his wife Dana are living at their new home at 1014 Lynn. They attended First United Methodist Church.

The newest addition to the officer complement at the Bank, is a 1975 graduate of SMU, with a BBA Degree. Mr. Schnell is the son of Mrs. Verna Lee Shirley, Vice President & Trust Officer at First State Bank.

Two new Directors were also named by the Bank: They are Ray Ingle, who assumed his duties as Executive Vice President several months ago, coming to Spearman from Walsh,

Colorado.

Jim Shirley, recently elected a Senior Vice President was also elected to the Board of Directors. J.W. Gibner was also named a Senior Vice President.

Other Officers include, C.A. Gibner, President and Chairman of the Board; Freeman Barkley, Vice President and Cashier; Felma B. Evans, Assistant Cashier, Lynanne Maize, Assistant Cashier and Eschol Blankenship, Assistant Cashier.

Directors include: C.A. Gibner; J.W. Gibner; Hazel Love Gibner; Lynn Hart; Verna Lee Shirley; Eris Pittman; Gene Cudd; Rex Sanders Jr.; R.M. Crawford; Jim Shirley and Ray Ingle.

Total Resources of the First State Bank as of December 29th, 1978 were reported to be almost Thirty One and One half Million Dollars.

Highlighting the evenings entertainment at Lynx gym, was the crowning of the new basketball King and Queen. The new King is Scott Martin, and the new Queen, is Tracie Keetch. Both of these were picked by their respective team mates.

Scott is an all-state football player (first team) and an outstanding basketballer. Tracie Keetch is an all state basketballer, and is currently the leading player for the Lynettes.

Adding to the Homecoming festivities at the school gym Friday evening, was the annual Lions Club pancake supper. A record crowd was on hand despite a heavy snowfall. In fact the Lions "fed up" about everything that they had for the big supper. A big thanks to all who attended the pancake supper and supported the Lions Club. Let's all do the same for our C. of C. tonite!

Tractorcaders In Festive Mood!

Encouraged by an unusually strong element of support from Hansford County and encouraged by continuing vocal support from passers by, members of the 1979 AAM Tractorcade continue to move towards the Nation's capital in what sometimes seems like a festive mood.

Reports coming in to the Plainsman reflect a positive attitude on the part of the Hansford County delegation, who at last report were heading their tractors and support vehicles towards Atlanta and a rendezvous with Georgia Movement members in "Carter Country."

The self contained group...replete with mechanical support vehicles cooking units... and support personnel, have had few problems as they have "Tractored" their way across several States. Currently in Tennessee, the group report that they are confident their approach to the Nation's lawmakers will be well accepted, and that some benefits will accrue from their pilgrimage across the Highways of America.

Information gathered by the Plainsman suggest that the Hansford County contingent seems to be the best prepared and most well organized of all groups in the caravan.

Put it on the line in '79! Join your Chamber of Commerce today....

Citations Issued

Spearman police have issued two citations in connection with two auto pileups recently. Wilbur Webb Weaver of 1106 Dessen was cited by officers for Failing To Yield the Right of Way at the scene of a two vehicle wreck Sunday January 21st at 1:20 P.M. Mr. Weaver's auto was Southbound on Hancock and failed to yield the right of way to a East Bound Vehicle on Kenneth driven by David Lee Slater of Spearman.

Both the 1976 Ford Granada

driven by Weaver and the 1978 Comarro Z 28 driven by Slater were demaned in the accident.

In another two vehicle altercation on January 23rd, in the 300 block of S. Brandt in Spearman, Timothy Welch of 218 N. James pulled out a parking place and caused an accident. A car driven by Nelda Dozier Cook was unable to stop in time to avoid striking the Welch auto. Welch, a student, was cited for an improper start from a parked position.

Three Injured: One Still Hospitalized

One person remained hospitalized in Amarillo as a result of two vehicle mishap January 17th. The accident occurred at noon time near Martin's Steak Garden. The two vehicle smash up involved a Northbound 1969 Ford driven by Mavis Hugg Collins of 116 Haney in Spearman and a 1974 Cadillac driven by Mildred Daily of 711 Haney. Police records state that the Daily vehicle was attempting to turn into the Steak Garden's parking lot and failed to Yield the Right of Way. Both vehicles were demolished totally. Mrs. Daily sustained cuts and

abrasions while Mrs. Collins sustained a broken ankle. A passenger in the Collins auto, Gordon Collins suffered a broken neck. Mrs. Daily and Mrs. Collins were taken to Hansford Hospital while Mr. Collins was transferred to an Amarillo Hospital. He remains hospitalized as of press time.

Mrs. Mildred Daily was ticketed by Police officers for failing to yield the right of way. Mrs. Collins had reportedly never had driver's license and was cited by police for Driving without a license.

Dr. Darnell in teaching sessions



The First Christian Church of Spearman is fortunate to have once again Dr. David Darnell.

Dr. Darnell earned his Ph.D. in Biblical Studies from Duke University, and he will be teaching four (4) sessions on the book of Mark, Feb. 2, 3, & 4 at 7:30 p.m. at the First Christian Church. He will also lead the morning worship service Sunday, February 4.

Dr. Darnell was educated at Abilene Christian University,

Florida Christian University (B.A. 1953), University of Toronto, Texas Christian University (B.D. 1962), and Duke University (Ph.D. 1973).

He has served Churches of Christ (non-instrumental) in New Mexico and Texas for nine years. He served the First Christian Church, Fayetteville, North Carolina, 1962-1977, and is at the present time serving the First Christian Church, in Perryton, Texas.

Police Chief Proud Pop!

Acting Police Chief Jimmy Jackson of Spearman is a proud new Poppa! A bouncing 6 pound 5 ounce baby boy was born to Mr. and Mrs. Jimmy Jackson in Amarillo's North West Texas Hospital January 19th. Joyce Jackson and Baby Kevin Lynn came home on January 24th. The Jacksons are Parents of two other children, Robby Dwayne, 5, and Wendy Lee, 2.

Congratulations to Our Acting Chief and his charming wife.

Leukemia Victim Fund Set Up

Paul Henry Renteria, 4 year old son of Jessie & Esmerelda (Nava) Renteria, was found to have leukemia in early December. He is being taken to Lubbock three times a week for chemotherapy.

A fund has been set up at the First State Bank to help the family with the expenses. Donations may also be made at Gruver Drug.

Annual Ground Hog Supper Set

The annual Ground Hog Supper prepared by the United Methodist Women will be Saturday, Feb. 3 from 5 p.m. until they run out of food. The supper will be held in the Fellowship Hall of the First United Methodist Church of Spearman.

The menu will consist of pork chops, sausage and ribs, applesauce, green beans, sweet potatoes, slaw, biscuits and gravy, homemade pies, tea and coffee.

All of this food is prepared by the women's group except for the biscuits.

Cost of the meal is \$1.00 for children up to 6; \$2.00 for ages 6 thru 12, and \$3.00 for ages 12-???

The proceeds of the annual supper are used by the group in their various benevolent concerns.

Benefit Performance

The choir of the First United Methodist Church will be performing Feb. 4, at 7 p.m. in the church for a benefit concert for the Gruver United Methodist Church.

Karen Countess, choir director, stated that their will approximately an hour and half of singing that evening.

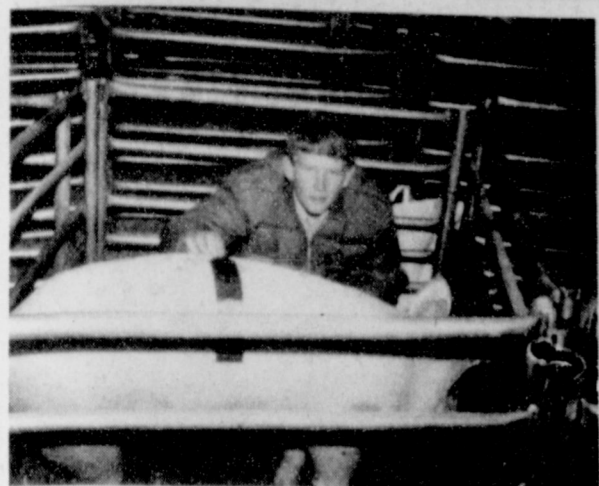
An offering will be taken which will go to the Gruver

church to help them raise funds for rebuilding their church which was destroyed by fire earlier this month.

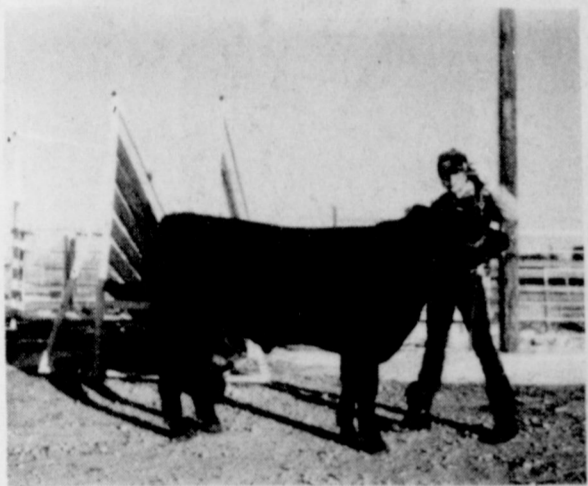
Members of that church are expected to be present at the concert.

There will be refreshments and a fellowship time following the performance.

Everyone is invited to attend.



Tracy Vernon Spearman FFA member exhibited the 2nd light Yorkshire barrow at the Amarillo Fat Stock Show. Tracys barrow sold to weight Diamond Shamrock Oil Company for \$1.60 per pound.



Ronnie Clark, Spearman FFA member exhibited the 1st light weight Angus Steer at the Amarillo Fat Stock Show. Ronnie plans to show his calf at the Houston Livestock and Rodeo this year.



Kerry McMullan exhibited the Champion Dorset lamb at the Amarillo Fat Stock Show. Kerrys lamb sold to the Amarillo Champion club for \$2.50 per pound. Kerry is a member of Spearman FFA Chapter.

Congress toward finding specific methods of assuring continued peace and economic prosperity, but I know that the President properly read the pulse of the American people in calling for less government compulsion and interference."

Last Eclipse Of The Sun This Century Will Be Feb. 26

Barring overcast skies, on Monday morning February 26th, panhandle residents will be able to observe the last eclipse of the sun in North America this century, according to Arthur Schneider, Director of the Don Harrington Discovery Center, Amarillo, Texas. Although partial for this area, the eclipse will be total in the northwestern section of the United States and central Canada.

The moon's shadow first strikes the earth in the North Pacific, about 1000 miles west of Vancouver, at sunrise. It then swiftly moves eastward, striking land at the mouth of the Columbia River, between Washington and Salem, Oregon near the path of total eclipse. The shadow continues to sweep eastward and then slightly northward, passing over Butte, Missoula, Helena, and Great Falls, Montana.

Astronomically, conditions for viewing the eclipse are similar along the path of totality. The sun will be positioned fairly low in the southeast, with totality lasting only 2 1/2 minutes. The panhandle of Texas will experience a partial eclipse with 70-75% of the solar disc eclipsed by the moon. The event begins about 9:08 a.m. CST with a dark notch appearing on the upper right of the sun's face. Around 10:18 a.m. CST greatest eclipse will take place. Although nearly 1/4 of the sun will be blocked by the moon and the sun's totality may be dimmed, it is extremely dangerous to look directly at the sun. The infra-red rays will be focused by the eye lens on the retina, burning the later and causing blindness. Direct viewing is not recommended with any means, unless astronomical-solar filters are available. Partial Eclipse Begins-9:08 a.m. CST Maximum Phase of Eclipse 10:19 a.m. CST Partial Eclipse Ends-11:37 a.m. CST. Percentage - 73% NOTE* The projected times may vary by several minutes.

For safety, one should never look directly at the partially eclipsed sun with the unprotected eye. One method of totally safe viewing is the pinhole projection method. In a darkened room, facing

battle lines over the budget have been drawn. I am afraid some of my colleagues have not heard the public's call for austerity. The Congress and the President must work together to reduce the federal deficit and control our run away inflation."

well as the District Officers. There was a lovely fine arts program enjoyed by the townspeople, to end the day. Mrs. E.A. Greever had presented the Religious Music Program several times for the club. She has composed both music and words to over 200 hymns plus her two books of poems. This club was instrumental in getting the choir in Spearman Schools. We had a memorial shelf in the library, now you give a music scholarship. Thats a wonderful way to keep music alive. Don't forget the clubs associate members. They are the bellweathers in any organization. If all the members that had joined Music Club had stayed active and in the club, there would be 396 members. In this small town. That says a lot for this Music Club. Now I would like to tell you another way that music speaks" "May I introduce our Foursome. Dancing, Literature, Painting and I am Music. We are all sisters and married to brothers-the Art Brothers. They are wonderful and everyone speaks of them as the "Fine Arts" there are two other sisters Drama and Architecture, they are fine too-but Drama is always acting and everything Architecture does is so square. We all have large families. I am the oldest, the most ancient of the Art family. My oldest son is named Primitive. My next son spends most of his time in large cities and his name is Symphony. My next son marches around a lot and his name is Band. I have a beautiful daughter named Opera. The youngest teenager son is Combo" Twin girls Choir and Chorus, and a grandson named Jazzband.

A variation of the pinhole projection technique is to use a flat mirror and project the solar image on a shaded wall of a nearby house or other structure. In order to see the sun properly, this image should be projected 30 to 50 feet away. Again, don't reflect the light directly into anyone eyes. We hope you will enjoy your look at the last eclipse visible in the United States this century. For more information contact: Arthur Schneider, Director Don Harrington Discovery Center 1200 Streit Drive Amarillo, Texas 79106 806/355-9547

History Of Spearman Music Club

by Mrs. H.P. Cates For the love of Music, and the desire to know more about it, the Spearman Music Club was started. In January 1956 several friends got together for coffee and the discussion turned to the amount of talent in the music field that Spearman had. This talent was not being utilized. There was a quick exchange of ideas and opinions, several phone calls, more ideas, and a club was born. It was a struggling club. The programs learned toward learning more about music and the enjoyment of it. Then it was decided we needed to federate. Federation was great, but were we ready? It takes lots of work to be a Federated Club, there are lots of requirements to fill. When the vote was taken, the majority ruled. And we were a Federated Club. I might mention, that the few that voted against federation worked as hard as anyone to see that these requirements were filled some members have served in District and State Offices and took lessons on string instruments to fill requirements, such as crusade for strings. None of the active members were traveling much, because of family commitments, but we had associate members to share their travels with us, we had exchange students to fill the gap on international programs. Opera requirements were handled by local members with the presentation of "Barber of Seville", "Sweet Betsy From Pike" and "Hansel and Gretel". We have had other more professional groups, but theres always the fond memories of doing the programs yourselves. Some members didn't like opera, but they did enjoy the range of voices and after the programs felt they had learned something about opera, and that was the purpose of the club. "To Learn" very few members had been to the District Conventions so the first convention held in Spearman was an experience to remember. Spearman was the host club, and everyone was willing to try. Because of limited motel facilities we had the first one day convention. Usually they were held two days. I believe, all conventions in this District are only one day now. Truly, we had a grand day, the State President was here, as

country. All countries and all peoples. I am the best friend you have among the Art family. I will stay with you longer and I will be your friend and constant companion long after the other Arts are gone. Really I'm a necessary luxury: Please let me stay in your life and home. I don't believe you could live without me, because you see, I am music.

Savings Bond Sales Noted

November sales of Series E and H United States Savings Bonds in Hansford County were reported by County Bond Chairman C.A. Gibner. Sales for the eleventh-month period totaled \$64,234.00 for 71% of the 1978 sales goal of \$90,000.00. Texas Sales during the month amounted \$24,401,702, while sales for the first eleven months of 1978 totaled \$280,318,626 with 91% of the yearly sales goal of 306.6 million achieved.

PSU To Select Carnival Queen

On of these Panhandle State University Winter Carnival queen contestants will be crowned at halftime of the basketball game Saturday. The contestants were chosen by the student body and one contestant will be selected this week by the student body as the queen. The contestants are: Kay Robins, Forgan, Ok; and Pam Chubbuck, Ordway, Co; Lynnetta Robins, Forgan, Ok; Anne Macias, Canadian, Tx; and Cathy Harr, Yarbrough, Ok; and Cindy Thoreson, Gruver, Tx.

The winter carnival is a homecoming and parents day combination as part of the basketball season. Parent registration and the carnival will be held from 9:00 a.m. until 12:00 p.m. in the Student Union. The girls basketball game will be at 2:00 p.m. against Bethany Nazarene College and the Men's basketball game will be at 7:30 p.m. Lunch will be served at noon and open house of the dorms and classroom buildings will be open until 5:00 p.m. The candle-light dinner will start at 5:30 p.m. in the cafeteria. Parent recognition for parents traveling the furthest distance; most children in school, and parents of the basketball players will start at 7:00 p.m. in the Oscar Williams Field House. A dance will be held in the Ballroom after the basketball game.

career with the state transportation agency on January 8, 1958, as a maintenance technician in Amarillo. He worked maintenance on the Amarillo expressway system, Potter County highways, and as a member of special maintenance project and core drilling crews before being promoted to Hansford County foreman. He served in the U.S. Army, completing basic training at Ft. Carson, Colorado, in 1957. He is a member of Tascosa Masonic Lodge 1375 in Amarillo. Stepp and his wife, Anna, have four daughters, Lisa, Cheryl, Carla, and Kathryn, all of the home in Gruver.

AMARILLO- Johnny C. Stepp, State Department of Highways and Public Transportation (SDHPT) maintenance foreman for Hansford County since April 1, 1976, recently was recognized for having been an employee of the state agency for 20 years.

The Hansford County maintenance section, the headquarters of which is located on State Highway 15 in Gruver, is responsible for upkeep on more than 200 miles of paved state and farm to market roads in the county. Stepp, who was born in Bangor, Alabama, began his career with the state transportation agency on January 8, 1958, as a maintenance technician in Amarillo. He worked maintenance on the Amarillo expressway system, Potter County highways, and as a member of special maintenance project and core drilling crews before being promoted to Hansford County foreman. He served in the U.S. Army, completing basic training at Ft. Carson, Colorado, in 1957. He is a member of Tascosa Masonic Lodge 1375 in Amarillo. Stepp and his wife, Anna, have four daughters, Lisa, Cheryl, Carla, and Kathryn, all of the home in Gruver.

RESOURCES & SERVICES NEEDED FOR HANDICAPPED CHILDREN

In One Minute You May Help In Changing the Life of a Handicapped Child One of the objectives of the Region XVI Education Service Center is to enhance educational services to handicapped children in cooperation with the local school district in the top 26 counties of the Texas Panhandle. To help meet this objective the Education Service Center is trying to locate service agencies and resources to add to its existing resource directory. This information is made available to parents, medical and educational personnel, and any other interested persons. The Service Center is interested in identifying agencies, clubs, civic & religious groups, individuals volunteers, service organizations, etc., that offers any of the following services to handicapped children (ages 0 through 21): AID - Equipment, Financial Assistance, Housing, Information/Referral, Language Interpreter, Legal, Provide Transportation & Volunteer help. SERVICES/TREATMENT - Camping Programs, Day Care, Foster Care, Halfway Houses, Homebound Programs, Mental Health Care, Physical Health Care, Residential Facilities & Respite Care Facilities. COUNSELING - Vocational Counseling, Parent/Family, Psychological & Occupational Counseling. THERAPY - Chemical, Occupational, Physical, Psychological & Speech Therapy. EDUCATION/TRAINING - Infant Development, Job Placement, Language Development, Sheltered Employment, Social/Recreational Development, Survival Skills Training, Vocational Training, also Parent, Regular, Remedial & Special Education. ASSESSMENT - Audiological, Educational, Medical, Psychiatric Psychological, Visual & Vocational. And any others not listed. If you know of a resource(s) in your city or county, please take one minute of your time to write the name of the organization, telephone number, city (address if you know it) and mail to Region XVI Education Service Center - ATTN: Nick Travis - P.O. Box 30600 - Amarillo, TX 79120 or call collect (806) 376-7463 and the information can be delivered over the phone. The Education Service Center will then be responsible for contacting the agency or service provider and gather additional details for inclusion in their directory. Handicapped clients include those who are Visually Impaired, Hearing Impaired, Deaf & Blind, Orthopedically Handicapped, Health Impaired, Mentally Retarded, Emotionally Disturbed, Language/Learning Disabled, Speech Handicapped, Pregnant or any other types of disabling or handicapping conditions.

Stepp Recognized For 20 Years Of Service



AMARILLO- Johnny C. Stepp, State Department of Highways and Public Transportation (SDHPT) maintenance foreman for Hansford County since April 1, 1976, recently was recognized for having been an employee of the state agency for 20 years.

The Service Center is interested in identifying agencies, clubs, civic & religious groups, individuals volunteers, service organizations, etc., that offers any of the following services to handicapped children (ages 0 through 21): AID - Equipment, Financial Assistance, Housing, Information/Referral, Language Interpreter, Legal, Provide Transportation & Volunteer help. SERVICES/TREATMENT - Camping Programs, Day Care, Foster Care, Halfway Houses, Homebound Programs, Mental Health Care, Physical Health Care, Residential Facilities & Respite Care Facilities. COUNSELING - Vocational Counseling, Parent/Family, Psychological & Occupational Counseling. THERAPY - Chemical, Occupational, Physical, Psychological & Speech Therapy. EDUCATION/TRAINING - Infant Development, Job Placement, Language Development, Sheltered Employment, Social/Recreational Development, Survival Skills Training, Vocational Training, also Parent, Regular, Remedial & Special Education. ASSESSMENT - Audiological, Educational, Medical, Psychiatric Psychological, Visual & Vocational. And any others not listed.

Hightower Comments On President's Message

(Washington, D.C.) "The President tried to address the principle concerns facing our nation in his State of the Union Address," Congressman Jack Hightower said after returning from the joint session of Congress tonight. "In his message the President spoke of balancing the budget, controlling inflation, keeping employment high and providing a national defense second to a none." "These are the principle issues that we will be facing during the session of the Congress."

**MAINTENANCE PERSON
REGULAR FULL TIME EMPLOYEE**
Northern Natural Gas Company will take applications on Thursday, February 8, 1979, between the hours of 9 A.M. and 3:30 P.M. for regular full time maintenance person. Apply at the Sunray Office, 3 miles south of Sunray, Texas. Typical job duties are: assisting with overhauls of large internal combustion gas compressor engine, maintenance of vessels and towers, all phases of pipeline repair, and some rotating shift work relieving regular operating crew during vacations or illness, etc. Pre-employment test will be given for the maintenance person job on Friday, February 9, 1979 at 7 P.M. and Saturday, February 10, 1979 at 9:00 A.M. at the Spearman High School in Spearman, Texas for all persons that have completed an application. Northern Natural Gas Company is a major diversified energy company offering an attractive salary, and has an excellent benefit program. Equal opportunity employer.

1978 - 79 Basketball Homecoming King Scott Martin Queen Tracie Keetch



Beth Ann Flowers



Scott Martin
1978 Homecoming King



Tracie Keetch
1978 Homecoming Queen



Chuck Eaton



Debbie Greene



Connie Vernon



James Whitaker



Zane Newton



Jo Nell Comegys

*The King
And Queen For
1978-79
Crowned Friday
Nite*



David Ortega





Paige Mitchell
Manager



Christie Collier

*1978-79
Basketball
King & Queen
Candidates Are
Pictured On
This Page*

This Homecoming Page Sponsored By:

<p>Nelson's Builders Supply 309 S. Main Spearman 659-3668 Water Damaged Carpet Sale In Progress! Plasters 50% Off Hobbies 25% off Best Wishes To The Candidates</p>	<p>Hansford Feedyard Inc. 2 Miles N.E. Spearman 659-2577 Commercial Feeders.. Custom Feeding Growing & Preconditioning Go Lynx Go!!</p>	<p>Cinderella Beauty Salon Plains Shopping Center Proudly Announces The Association Of Betty Nolder Providing Complete Beauty Salon Services Including Sculptured Nails Helen Whitaker...Certified "New Man Stylist" For Bald Or Thinning Hair 659-3413 Lynx: You've Got It!</p>
<p>Wolff's Sporting Goods 102 S. Main, Perryton. 435-3909 Going Skiing? Then See Us! Watch For Our Annual Ski Wear Sale! Best Wishes To The Teams</p>	<p> Hansford Implement Co. Box 518 Hiway 207 S. Spearman 659-2712 Watch Our Lynx Go!</p> <p><small>John Deere is the official supplier of snowmobiles to the 1980 Olympic Winter Games. We are your official dealer for these dependable products. See us now.</small></p> 	<p>Shieldknights Sport Shoppe Pepper Tree Square Amarillo 359-8597 Featuring Tennis Raquets...warmups Jogging Shorts...Spring Sportswear Swim Suits Long Time Lynx Supporters</p>