

## Spearman to take part in Labor Day Telethon

Spearman will again be one of the 34 cities taking part in the Panhandle segment of the Jerry Lewis Labor Day Telethon, with their own Pledge Center located at the Fire Department. Vicky Bullard is serving as coordinator for the Spearman Pledge Center which will be open throughout the Telethon from 8:00 p.m. Sunday, September 5th, until 6:30 p.m. Monday, September 6th. A special phone number 659-5577, has been assigned for use by the people of Spearman, to phone in their pledges. [Local coverage of Spearman Activities will be on Cable Channel 6 and KRDF FM Radio.]

of the Muscular Dystrophy Association (MDA). Telephone pledges and donations made through the Spearman Pledge Center, to be manned around the clock by the Rotary Club and Fire Department, will be credited to the citizens throughout the telethon.

The Panhandle show will again be broadcast by KFDD-TV 10 in Amarillo and will feature Mark Robertson-Baker and Ken Baierl as emcees. They will interview patients from pledge center towns, and will recognize various fund-raisers throughout the Panhandle, in addition to first-hand reports of pledge center activities.

Watch Cable Channel 6 for Day-to-day Activity Updates prior to September 5.

Originating from Las Vegas, the 2 1/2 hour TV Marathon is held to benefit the medical services and research programs

### City Receives Tax Rebate

The City of Spearman received \$25,111.08 in tax rebate from the state comptroller's office for the month of August. This is compared to \$33,519.10 from the same period last year. 1982 payments to the city total \$138,993.02 up 1.81% from the \$136,523.57.

Gruver received a check for \$5,926.68, up 4.75% from the same period last year of \$22,519.10.

Gruver has received \$22,057.06 to date in 1982, up from \$21,055.92 from 1981.

Bullock sent checks totaling \$97.9 million to 967 Texas Cities as their share of the one-percent city sales tax for August.

"So far, these monthly re-

bates of local taxes are running nearly 12 percent ahead of last year's totals," Bullock reported. "As we predicted last month, the oil glut has slowed down the pace of this growth markedly, especially in the places that were experiencing oil booms. But the general state growth rate is still strong and healthy."

# THE Hansford PLAINSMAN Sunday

Spearman (Hansford County) Texas

August 22, 1982

Volume 12

Number 42

## First National Bank Forms New Subsidiary

First National Bank in Perryton has formed a new subsidiary to be named Hi-Plains Ag Credit Corp. This wholly-owned subsidiary of the bank is an CFI. Other Financing Institution, the purpose being to make all types of agricultural loans. Officers of Hi-Plains Ag Credit Corp. are Larry J. Orman, President; Brady Yeary, Vice President; and Bruce Julian, Secretary-Treasurer. Directors are John Cluck, Drew Ellis, Larry Orman, Bruce Julian, Carl Ellis, Brady Yeary, H.C. Brillhart, Jr., Eldon Dudley, and Pat Patterson.

In making the announcement of the formation, bank president John Cluck stated: "This is just one more source of credit for the agribusiness industry. While agriculture has problems right now, we are strongly committed to meet the credit needs of our farmers, ranchers and ag people. With Hi-Plains Ag Credit Corp., we can work through the Federal Intermediate Credit Bank of Texas to secure addi-

tional money to loan to customers."

Approval was given to First National Bank to form the OFI after extensive consideration for the bank's credit demands, its strength, and the ability of the OFI's officers. All types of agricultural loans can be made through this new company, from crop production loans to equipment purchases to feeder

cattle loans. Hi-Plains Ag Credit Corp. operates within the First National Bank. Its officers maintain their normal duties with the bank.

At present there are 19 OFI's in the state of Texas. They discount notes with the Federal Intermediate Credit Bank of Texas. As of July 1, 1982, the total volume from Texas OFI's was 200 million dollars.

### Friemel, Lindley receive degrees

WTSU--More than 300 graduates of West Texas State University have received bachelor's and master's degrees during the summer commencement ceremonies.

During ceremonies at the Amarillo Civic Center Auditorium, 236 graduates received bachelor's degrees and 96 graduates were awarded master's degrees.

Summer graduation exercises conclude two summer sessions at WTSU.

Degree recipients from Spearman are Kenneth L. Friemel, Master of Education in administration, 1106 S. Barkley; and Paul A. Lindley, Bachelor of Music Education, 1017 Linn.

### AAM Districts To Meet

The American Agriculture Movement, Inc. of Texas, Districts I and II are having a joint meeting in Plainview, Texas on August 26, 1982. The meeting will start at 8:00 p.m. at the Hail County Ag Center.

The main speakers will be Gerald McCathern, the 1979 National Tractorcade Wagonmaster, David Senter, National Director of AAM Inc. of Washington D.C. will be in attendance to give a legislative update. Marvin Meek, National AAM Chairman will speak at this most important meeting.

Everyone is urged to attend this very important meeting. For further information please contact James Long at 806-492-3604 or V.B. Morris at 806-733-2203.

## Pringle-Morse School Begins Aug. 25

The Pringle-Morse School, located in Morse, will begin classes Aug. 25 at 8:30 a.m. Registration is set for the week beginning Aug. 16.

There are approximately 75 to 80 students who will attend school there. The school has kindergarten through 8th grade.

Two new teachers at the school this year are Collette Trammell and Helen Lee.

As of Tuesday morning, the board was still looking for a coach and science teacher.

Teachers are kindergarten, Peggy Wilkinson; first grade, Rhema Harris, second grade, Collette Trammell; third grade, Betty Clemmons; fourth grade, Shari Wilkinson. Junior high teachers are Ruth Powers, Peggy Lewis, George Snider and Helen Lee.

## School Registration

High school registration will be Friday, August 27. Principal Eddy Clemmons states that due to so many changes in courses, all students need to be present for orientation and final schedules.

Seniors will register from 8 to 10 a.m., Friday 27. Juniors, 10 to 1 p.m.; Sophomores, 1 to 2:30 p.m. and Freshmen 2:30 to 4 p.m.

New students may register at the high school August 16 thru 20 or at the regular registration August 27.

Kenneth Friemel, new junior high principal asks that new students to the district register at junior high Friday, August 27 any time.

The rest of the junior high students will register Monday, August 30.

Elementary students, kindergarten through 4th grade will register Friday, August 27 from 8:30 to 11:30 a.m.

All new elementary students to the district should register Aug. 23 and Aug. 24 from 9 until 2:30 each day, according to elementary principal Allen Alford.

### Hospital News

Patients at Hansford Hospital are Bill Kuehl, Mike Mintor, Ellen Babbs, Jeffie Hoy, Mary Murrell, Jesus Espinosa and Albert Mackie.

Dismissed were Neile Cummings, Iva Ballard and Frederick Camp.

### Joan Brown improved

Joan Brown, wife of Billy Brown, an accomplished horsewoman, was found in the pasture at their farm Tuesday, Aug. 17. Her horse had evidently thrown her and gone back to the barn.

Mrs. Brown sustained head injuries but is now in improved condition and may be able to return home soon from Northwest Texas Hospital in Amarillo.

The Browns have one child, Ashley, 2 years old. Both Billy and Joan have been very active in 4-H horse programs in the county.

### Gruver School dates set

Classes begin in Gruver schools Aug. 26.

Final stages of preparation for the start of the 1982-83 term at Gruver begins Aug. 19 with Teacher Orientation Day at the school.

The next day, Friday, Aug. 20, students will register for their classes between the hours of nine and 12 noon.

## School begins

Aug. 30

## Second Annual Arts & Crafts Show Set

The Spearman Study Club is happy to announce that all plans for their second arts and craft show and sale are coming along great! There is a total of 30 dealers from four states who have already made reservations for the show. The club plans to have dealers by September 1, the last day to send for reservations.

Texas, Oklahoma, Kansas, and Colorado dealers are bringing everything from antiques, quilts, paintings, tole paintings, depression glass, sculptures, bronzing, stained glasses, jewelry, breads, and many other items to long to list!

Local talents Kindra Davis, Lometa Sparks, Evelyn and Albert Mackie, Joe Close, Larry Porter, Orville and Martha Latham, and Dora Faries have entered booths in our sale. There is still time for more of our locals to sign up for one of

the biggest events in Spearman this year.

The club asks for your support by attending their sale September 11 and September 12 at the Plains Shopping Center. A successful show will mean an annual event in Spearman every year sponsored by Spearman Study Club.

Watch in the paper for future progress of events. Nothing will be shown or sold before the first day of the sale.

For further information contact Trudie Schneider 659-3691 or Francis Biles 659-2126.

### MARKETS

Barley	\$2.06
Corn	2.95
Wheat	3.15
Milo	4.30
Soybeans	5.05

### 4 County Accidents Investigated

Sergeant Charles Henderson, Area supervisor of Hansford County, reports that for the month of July the Texas Highway Patrol Troopers investigated a total of 4 accidents in this county. There were 3 injury accidents with a total of 3 persons injured, and 1 property damage accident. In District 5B, which includes the top 31 counties of the Texas Panhandle, there were 269 accidents investigated by the Texas Highway Patrol. Highway Patrol Captain Bob Russell reports that the Texas Highway Patrol Troopers investigated 9 fatal accidents with a total of 11 persons killed, 103 injury accidents with a total of 193 persons injured, and 157 property damage accidents.

## Reserve Seat Football Tickets On Sale

The Reserve Seat Season Football Tickets will go on sale at the school business office on Monday, August 23rd. Those persons holding tickets last year will have until Monday, September 7th to reclaim the same

seats. On September 7th all the remaining unsold tickets will be available to first come served. Reserve seat season tickets are \$12.50 each for the five home games.

A Senior Golden Age Pass is

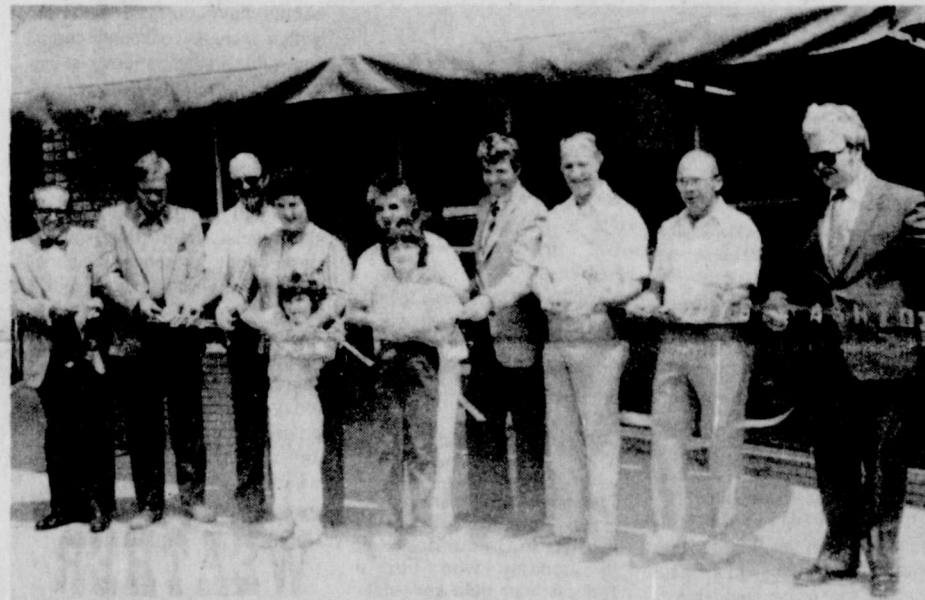
also available at the school business office which will allow senior citizens to attend any school sponsored function for one-half the adult general admission price.

## Putting A "Shine On Spearman"



Irene Snider and Coreata Ralston of Gruver are shown here as they paint trees, barns, etc. on the front of the building that the Sniders have taken on

as a beautification project this summer. The building is located south of Ideal Grocery on Barkley Street.



Ribbon cutting was held Thursday by members of the Chamber of Commerce for Spearman's newest business.

Trudy's Fashions 216 Main, Spearman. Mr. and Mrs. Earl Goodheart are the owners of the new business.



Shown above is the interior of the new Trudy's Fashions in Spearman. The store is located at 216 Main. Be sure and go by

and welcome this new business and look over their all new merchandise.

## August contest winners

The winners in this month's "Put A Shine On Spearman" contest are: Section 1, Bob Rylant, 221 N. Hazelwood; Section 2, Jerry Pat Davis, 302 S. Hwy 279; Section 3, Sheri McWhirter, 712 Collier Dr.; Section 4, Allen Alford, 1113 Barkley; Section 5, T.D. Sansing, 204 Dessen and Section 6, Horizon Oil & Gas Hwy 207 S. Signs will be put up Saturday, August 21 designating the winners.

## Blood Drive Aug. 30

The Coffee Memorial Blood Center will be in Spearman August 30 at the Sacred Heart Parish Hall, 901 S. Roland from 1 to 5 p.m. The goal for the drive is 75 pints.

For appointment call Carol Hall, 659-3356 or Rose Cator, 733-2317 in Gruver.

Walk in donors will also be taken. Come out and help us make our goal and over.

## Moonlight Madness At TG&Y

The local TG&Y family center is having a moonlight madness sale Saturday night.

There will be hourly drawings for prizes from 6 p.m. thru 11 p.m.

The grand prize drawing will

be at 10:30 p.m. You must be present to win although no purchase is necessary.

There will be in store specials every half hour and free coffee and cokes.

## Manor Birthday Party Held



Shown above is Vida Townsend, a birthday honoree at Hansford Manor this month.

Vida Townsend and Vera Harris were the honorees at the August birthday party at Hansford Manor.

Members of the auxiliary served punch, cookies, cake and ice cream.

The residents were treated to some great entertainment by James and Lometa Sparks playing the piano and fiddle.

Residents attending were

Vida Townsend, Elvin Garrett, Donnie Moyer, Velma Beck, Thelma Mitchell, Mary Gillispie, Keesee Richardson, Clara Jackson, Anson Ward, Mae Ballard, Aline Hyman, Pearl Johnson, Jewel Brandt, Pauline Johnson, Mable Edwards, Leonard Coryell, Leon Bowling, Leon Easley, Lillie Cox, Gwenfred Lackey, Elizabeth McClellan, Ann Thom and Ruby Lieb.



Jay and Bethany (Donnell) Lauersdorf are the proud parents of a son born Friday, Aug. 13, 1982. He weighed 8 lbs. 5 oz and was 20 inches long. The Lauersdorfs live in Splendora, Tx.

Maternal grandfather is Oscar Donnell and maternal great-grandparents are Bill and Ruth Hutton, all of Spearman.

Paternal grandparents are Mildred Lauersdorf and Vernon Lauersdorf, both of Houston.

Mr. and Mrs. Kenneth R. Worden and Jennifer (2 1/2), Spearman, Texas formerly of Edmond, Oklahoma have chosen the name Christopher Michael for their son and brother born August 16th at Edmond Memorial Hospital. He weighed 9 lbs. and 9 ozs. and measured 23 inches.

Maternal grandparents are retired Col. and Mrs. Richard L. Hunt, Oklahoma City. Mrs. Thomas N. Batten, Oklahoma City is the maternal great grandmother.

Paternal grandparents are Mr. and Mrs. James R. Worden Lindsay, Oklahoma. Mrs. Linda J. Worden, Houston, is the paternal great grandmother.

### Girls Scouts

#### Ready For Action

Be prepared Spearman! The girls scouts are ready to jump into action again. After a successful 1981-82 year involving 33 girls and 5 adults, Yucca Girl Scout Council is anxious to get the new year rolling soon.

In the past, Spearman girls scouts have enjoyed activities which include cookouts, camping and hiking, special rallies and parties, field trips and working on many badges and patches. The girl scout program prepares today's girls to meet today's challenges.

To join girl scouts, look for the special sheets that will be passed out as soon as school starts. The girls get very excited about scouting, but we can't have a successful program without adult volunteers. Share some time with the children of today, volunteer your help as a girl scout leader, troop consultant, a committee member or in whatever way you can.



The term "Hallmark" originates from the practice of jewelers in Goldsmiths' Hall in London who put a seal on their gold and silver products to certify value.

### WEATHER

	HI	LO	PREC.
AUG. 13	100	69	
14	101	71	
15	101	69	
16	93	66	.15
17	99	98	T
18	88	62	
19	91	66	

### Tri State Fair Art Show

The area's abundant artistic talent will be on display at the Art Show in the 1982 Amarillo Tri State Fair. Artists will be able to show their prize work and take home ribbons, awards, and cash prizes in several different divisions: (1) Professional Adult; (2) Adult; (3) Amateur Adult; (4) College Students; (5) High School Students; (6) Junior High School Students; (7) Sixth Grade Students and under. Prize money for first, second, and third place winners in the adult and college classes will be \$40, \$25, and \$15. Prize money for High School and under will be \$25, \$15, and \$10. A total of \$1110.00 will be awarded.

Participants are limited to two entries. All entries will be accepted at the Art Building on Friday, September 17, from 2 until 8 p.m. and on Saturday, September 18, until 10:00 a.m. Judging will take place that afternoon. All art will remain on display throughout the fair, September 20-25. For additional information contact Synott Matthews, Art Superintendent, or the office of the Tri State Fair.



Watermelons grown along the Tigris River in the Middle East have been known to weigh as much as 275 pounds.

The average baby doubles his original weight at about 5 months of age.

## FLB Promotes Stephens

AUSTIN, TX.--Harold Stephens has been promoted to field vice president of the Federal Land Bank of Texas, according to Thomas H. Benson, president.

Stephens supervises the operations of nine Federal Land Bank associations in the state: FLBA of Amarillo, FLBA of Childress, FLBA of Dalhart, FLBA of Dimmitt, FLBA of Hereford, High Plains FLBA of Pampa, FLBA of Muleshoe, FLBA of Plainview and FLBA of Tulia.

Stephens joined the Land Bank system in 1964 and

worked at the Dimmitt association until 1963 when he was named regional manager. In 1970 he was named district manager. He was promoted to field assistant vice president in September 1972.

Born in Dimmitt, Texas, Stephens graduated from Dimmitt High School and attended Baylor University in Waco until entering military service in 1943. Stephens and his wife, Shirley, live in Dimmitt.

The Federal Land Bank of Texas makes long-term real estate loans on farm and rural residence property throughout the state.

## Hightower Supports Bipartisan Tax Bill

WASHINGTON, D.C.--Saying it is "the only responsible option we have right now to further reduce the deficits that are keeping interest rates high" Congressman Jack Hightower announced his support for a bipartisan \$98.3 tax bill. The three-year revenue-raising measure has been called necessary by President Reagan and is being supported by key House and Senate Democrats and Republicans.

"As undesirable as all tax increases are to me, I plan to support this bipartisan tax bill," Hightower said. "It will help keep the fiscal 1983 deficit to around \$115 billion."

"Last year, I voted for the three-year 25 percent cut in personal income taxes, and I have consistently voted for major spending cuts as well. We've got to keep the pressure on to reduce the size of government and to achieve a balanced budget," Hightower said.

Hightower acknowledged different parts of the bill had

drawn opposition from various interest groups but said this version was the best that could be put together this year. "This bill is not perfect, but we will never see a perfect tax bill acceptable to everyone," Hightower said. "It is preferable to other more radical and fiscally harmful tax increases that are waiting in the wings if this fails to pass. I agree with those who believe this tax bill is perhaps the only way to close the deficit gap while preserving the personal income tax cuts we passed last year."

One of the key provisions Hightower said he favored was the section exempting senior citizens and low-income people from the withholding of interest income. "That is one of the good Democratic provisions that I may not be in the next version if we do not pass this one," Hightower said.

### New program at AC

Amarillo College Fall registration is August 25th for all credit courses from 9:00 a.m. to 8:00 p.m. in the College Union Building on the Washington Street Campus. Academic advisors will be available in their offices for advising on August 23-24 between the hours of 8:00 a.m. and 4:00 p.m.

Seven new programs are being offered this fall at A.C.

The Physical Therapy Assistant program is designed to prepare students for employment in a private clinic, school or hospital after completion of a two year curriculum. Ed Hankard, director of the program said enrollment is limited in this program which is the only one of its kind offered in the Panhandle.

Radiation Therapy will train students to operate equipment used in radiation treatment and is limited to eight students. Bill Crawford, chairman of radiologic technology at Amarillo College, advised that clinical work will be done at St. Anthony's Hospital and the Harrington Cancer Center. Students who complete the two-year program will be able to take a national exam to become registered radiation therapists.

Surgical Technology is a one year program to train students to be a part of the operating room responsible for cleanliness, safety and efficiency. Jeff Dorion, coordinator of the program said that students completing the program may take an examination for national certification.

The two-year Business Microcomputer System program is designed to meet the needs of small businesses and industries and will deal with the utilization of highly-sophisticated microcomputers which are now being marketed.

Two new two-year music programs will be offered-Music Merchandising and Music Technology. Music Merchandising is designed to provide students with a balanced background in music and in the principles and concepts of marketing and sales as they relate to merchandising musical books, records, instruments and accessories.

Music Technology is designed to prepare students for employment in the field of music recording and related industries. Many of the program's courses are applicable to the bachelor's degree program if the student decides to pursue an advanced degree at a later date.

Commercial Art is a two-year program designed to put students in the job market with training in layout and design, typography and illustration.

Late registration for the fall semester starts August 30th and continues through September 3rd. Additional information can be obtained by contacting the Registrar's Office on the Washington Street Campus.

## Hunter Safety Program Set Here

Hunter Safety Instructors Dwight Sumner, Wayne Cummings and Jim Beeson will be offering a Texas Hunter Safety Program Saturday August 28th at the Boy Scout Hall, beginning at 8:00 a.m. The program is an eight hour course with a break for lunch. There will be a \$1.00 registration fee.

The Texas Hunter Safety Program was initiated in 1971 and was designed primarily for the young hunter. However, all interested persons are invited to participate in the classes. There are many benefits enjoyed by a graduate of the Texas Hunter Safety program.

The student successfully completing the course is well versed in the basics of firearms handling and responsibility, hunter ethics, survival, conservation, archery and muzzle loading.

Each successful student 12 years of age or older is issued a hunter safety card from the Texas Parks and Wildlife Department. Permanent course completion records are maintained in Austin.

The basic outline of the course is:

1. Knowledge of Guns and Ammunition.
2. Proper Gun Handling.
3. Safe Hunting Methods.
4. The Rifle.
5. The Shotgun.
6. The Hunter's Responsibilities.

The Texas hunter safety card is also honored in other states requiring hunter safety training prior to the issuance of a hunting license. More than half of the states now require this training including Colorado, New Mexico, Montana, and Oregon.



Cat Sitters Are The Purrfect Solution!  
Have you always wanted a cat, but were hesitant to acquire one because of a busy travel or work schedule? Or do you already have a furry friend, but don't know what to do with him during vacation time? If so, here's the purrfect solution—a cat sitter.



Everyone who owns a cat knows that they can be finicky. Many are real homebodies who prefer not to leave the house. Others—the curious ones—like to visit other people. In any case, pet-sitting businesses are ideal for vacationers who prefer to leave their cats in a home environment—and for busy cat-owning couples, singles and families who spend long hours away from home.

In fact, so popular are these reasonably priced services, that pet-sitting businesses are leaving their paw prints across the country.

According to Jeanne Tusler, founder of the national Pet Vacations, Inc., pet sitters are carefully screened and understand the special responsibilities and sensitivities involved with caring for cats. Pet Vacations employees are trained people who welcome visiting pets into their homes. On the other hand, sitters for Pet Visitors, Inc. (a service created by Mary Slaughter in Richmond, VA) make housecalls, so the cats can remain in their own homes.

Either way, pet sitting gives the cat owner more freedom and peace of mind. Says Jeanne Tusler, "Everyone benefits from this service. Owners feel safe about leaving their cats; pet-loving sitters enjoy the extra companionship; and cats frolic in a home environment!"



The average cat usually does best on two small meals than on one large one.

The "art" of predicting the future in a crystal ball is called screeology.

## Faye's Daze

I have been reading a July 4, 1919 issue of the Hansford Headlight. It has four pages and the back page has a 1/2 page ad by Giant Oil Co. selling shares at ten cents a share. The ad claims that a well will be drilled and millions will be made. There are some ads from Hansford and some from Guymon.

McLarty's Grocer ad of Guymon began with "We are determined to cut the high cost of living to our customers." Some of the prices were best grade taffeta silk, the yard \$1.75; Special Fancy Sport Shirts, \$2.50 for 89 cents; Gingham, 22 cents a yard; percales, 24 cents a yard; Outing flannel 24 cents a yard; Men's Work Suits \$3.98; Men's Overalls, extra heavy, \$3.50; Heavy Work Shirts, 98 cents.

Groceries were listed as 100 lbs. sugar \$10.00; 100 lbs. flour \$6.25; bushel potatoes, \$1.45; 3 lbs. coffee, \$1.10; cocoa and chocolate, 1/2 lb. 17 cents; hominy, 3 large cans, 25 cents; Salmon, per can, 20 cents; Kraut, large can, 10 cents; Van Camp's Soups, per can, 10 cents; Jelly, per gallon, 98 cents; All Shotgun shells, 98 cents; Corn, per can, 15 cents; Catsup, the gallon, 95 cents.

There was also a notice by Palo Duro Hotel of "Raise in Prices" Owing to advances in price of everything, we are compelled to raise our prices in accordance. Beginning July 1, our prices will be as follows: Special meals, 50 cents; Board by the day, \$2.50; Board by the month, \$35.00 and meal tickets, \$8.00. For those of you that don't know, the Palo Duro Hotel was managed at that time at Hansford by Paddy Doyle. This hotel was moved to Spearman and is now the Bull's Inn.

Hansford Abstract Co. had an ad in the papers. W.T. Coble, owner of the Turkey Track Ranch, stated he would sell wood for \$5.00 per four-hour load and that it would be necessary to either phone or come to headquarters before getting the wood, otherwise you will be treated as trespassers.

Evidently the county had a good wheat crop that year, one item stated that P.A. Lyon, R.L. McClellan, J.G.B. Sparks and others went to Amarillo this week after harvest hands.

Another item about the harvest "Joe Close was in the city Wednesday night from his fine farm southeast of town, for binder repairs and supplies. Joe says they are running two binders at his place; pulling one with a Fordson and the other with teams, and that the Fordson is cutting rings around the teams. J.H. Buchanan is driving the Fordson and Joe Close is manipulating the binder, and they cut from 25 to 30 acres of grain per day."

Another farm note "Walter Wilmeth has in operation on his farm in the Grand Plains community one of the monster combined harvesting and threshing machines, which cuts and threshes the grain at one operation, thereby eliminating much labor. Jim and Wayne Edwards will start a similar machine on their farms south of town in a day or so. They are said to be the last word in farm machinery.

Here is another item "Mr. and Mrs. Jesse Womble are rejoicing over the arrival of a fine eight and one-half pound boy at their home in Hansford on Tuesday, July 1. The young gentleman has been named Joseph Douglas.

Here is one I liked--Miss Faye and Mrs. Virgil Wilbanks jined in from their homes east of town Wednesday, and spent the afternoon in the city.

I'd better quit, or might as well reprint the whole thing.

Be sure and drive by the house behind Ideal that the Vance Snider's have painted this summer. It now has an apple tree painted on the front as well as a barn and hay scene, complete with moon and stars on the door.



## Strake Talk

### FREE EDUCATION AND THE UNDOCUMENTED WORKER

On June 15, 1982, The Supreme Court ruled 5-4, that Texas and other states must provide free public education for the children of undocumented workers—people in this country illegally.

Our current Lt. Governor, Mr. Hobby, was happy with the decision, praising it as the "only rational decision" the court could have made.

On the contrary, I think it was a wrong decision that defied both law and logic.

One of the principal underpinnings of an orderly society is that one should not benefit from breaking the law. All around the world, thousands of people stand patiently in line at our embassies, waiting for legal entry into this country. By its recent ruling, the Supreme Court told these people that, if they are smart, they will ignore our immigration laws, find some other way to enter, and then there's a good likelihood all manner of taxpayer-supported benefits

will be open to them and their families.

We can all feel sympathy for people driven to emigrate by desperate economic conditions. And I believe we should be compassionate toward the children of undocumented workers who are here through no fault of their own. We have been told we must educate these children and we will: it is our duty. But I am deeply concerned about the effect this will have on our school systems and the quality of education. We have only a certain amount of desks and dollars with which to address the problems of educating Texas children.

The court was essentially establishing social policy under the guise of ruling on a constitutional question. The result was bad law and bad social policy. It should now be up to the Federal Government to help pay for the mess they have created by not properly policing our borders.

George W. Strake, Jr.

Paid Political Advertisement. Texans for Strake 1213 W. 34th Street, Austin, Texas 78705. Bayard Friedman Treasurer.

# FREE

## WALT DISNEY COLLECTABLE FIGURE

when you purchase an 8x10 Color Portrait for 88¢.

Select one of these Collectable Figures from a variety of delightful Disney characters. Each figure is hand-painted and is approximately 2 1/4" high.

**Valuable Coupon**  
Clip this coupon and present it to our photographer at time of sitting, to receive your FREE Walt Disney character.

August: Thur Fri Sat  
THESE DAYS ONLY: 26 27 28

DAILY: 10 a.m. - 8 p.m.

HIGHWAY 207 SOUTH, SPEARMAN

88¢ per sitting. One Walt Disney character and sitting per subject. Minors must be accompanied by a parent.

**Valuable Coupon**

# BUY, SELL, TRADE OR RENT THROUGH THE CLASSIFIED ADS

# 659-3434

### OSGOOD MONUMENT CO.

Amarillo, Texas  
Dealers of Rock of Ages Granite, as well as all colored granites, marble and bronze memorials.

represented by  
**BOXWELL BROS. FUNERAL HOME**

519 S. EVANS  
659-3802

Hansford County  
Planned Parenthood  
26 S. Haney  
659-2483  
Spearman  
Mon.-Fri.  
8:30-12:30

**NOTICE**  
Wallace Monument Co.  
Monuments, Curbing,  
Grave Covers  
Local Representative  
**LEONARD JAMESON**  
Spearman, Texas  
355-rtm

**STEAM RINSE & VAC**  
Steam Rinse-and-Vac Shampooers; \$10.95 for up to 24 hrs, available at Gordon's Drug; also at Freddie Largent's 716 Cotter Dr. after 4 p.m. and Saturdays and Sundays.

**SERVICE:** Pits cleaned, wet or dry. Dragline or loader. Also, dozer, grader, carry-all service. Lee Roy Mitchell, 806-733-2384, Gruver, Texas 79040  
12-rtm

**SNOOPY'S DAY SCHOOL**  
Open Mon. through Fri. from 7:00 a.m. to 6:00 p.m. Call 659-3328 or come by 620 1/2 Bernice for further information.  
23-rtm

**MONUMENTS**  
Save Agents and Undertakers Profits

If it is inconvenient for you to visit our large display, please phone collect (405) 327-0626 or write and we will call on you.

**ALVA MONUMENT WORKS, INC.**  
Alva OK 73717

New to area?  
Give us a try  
Call your local  
**USED COW DEALER**  
As soon as Possible.  
659-3544  
659-3545  
1-800-692-4043  
175-rtm

**S&H ROOFING:** Residential only. Shade Cedar Top, Spanish Tile Repair, Skylight. 5 year warranty on Mobile Homes. We give S&H Green Stamps. Call 806-383-9672 Amarillo.  
39s-rtm

**CAKE DECORATING:** Call: 659-2312.  
39s-7tp

**Trees & Shrubs Trimmed or Removed.** Yard Work, except mowing. Exterior Painting. Call after 5:00 p.m. 659-2787.  
18s-rtm

For a lifetime of pleasure, join Shaffer's Dance Class starting Sept. 15 in Perryton. Call 435-4121 for details.  
41-8tc

### Miscellaneous

**FOR SALE:** 261 yards good used carpet with pad. Call 3584 or 3227.  
40-rtm

New Rental Return Pianos at used piano prices. For Complete Details call 316-624-8421. Brier & Hale Music 424 N. Kansas, Liberal, Kansas 67901. 41S-4tc

**FOR SALE:** Girls new rust pile coat with fur-trim hood and hood. Washable-Size 12. Call 659-2739 for more information or come by 1118 S. Haney.  
NC

### Real Estate

**HOUSE FOR SALE:** 3 bedroom, two bathrooms, fully carpeted, basement, formal dining room, detached garage, sprinkler system, corner lot in nice neighborhood. Owner will finance. Reasonable down payment and interest rate. Call Cynthia Floyd 659-3308 or 659-3123 for appointment.  
28s-rtm

**FOR SALE:** 2 story house on 2 lots. Newly remodeled kitchen and dining room. 2 garages and storage house. Call 659-3482 for appointment.  
41-4tc

**HOUSE FOR SALE: Owner relocated.** 1111 Townsend; 2,000 sq. ft. living area, 3 bedroom, pool room, lots of storage, 1 1/2 baths, kitchen with built in appliances, fireplace, utility room, garage, new roof. To obtain key, contact Donnie Hergert--659-3721, daily, 659-3317, nights; or Darl Hergert at 435-3686, daily, 435-4132, nights.  
37S-rtm

**FOR SALE:** Beautiful 3 bedroom brick home in Golden Circle addition. Large family room with cathedral ceiling and fireplace. Moderate size kitchen with built in appliances and lots of cabinet space. Separate utility room with walk in pantry and lots of cabinets. 2 baths. Double car garage. Assumable loan. Call 659-3960 for appointment.  
39-8tc

### Help Wanted

First United Methodist Church needs nursery worker. If interested call 659-3220.  
44-6tc

### Wanted

**WANTED:** used boat, motor trailer. Must be cheap! Just for local fishing--659-2338.  
38-nc

### Automobiles

**FOR SALE:** 1979 Ford Mustang, good condition. Call Angie Francis, 659-2454.  
31-rtm

**FOR SALE:** '76 Buick Century and a chrome roll bar for pickup. Call 2764.  
40s-4tc

### Mobile Homes For Sale

**FOR SALE:** To be moved 12x60, 2 bedroom mobile home. Owner will help move local. For more information, call 659-3833 anytime.  
41-4tp

**NEED TO SELL** my 3 bedroom 12' x 65' mobilehome. Real nice and clean. Some furniture. Financing available. Quick Sale, \$6895. 383-5683.  
41S-2tc

### Lost & Found

**STRAYED:** 7 head of steers, weighing 700 lbs. near Northern Natural plant. Brand H on left side. Call 806-659-2189, Terry Butt.  
40S-4tp

### For Rent

**MOBILE HOME LOT** for rent in Spearman. Call 659-5029.  
41S-2tc

In old England it was believed that a double hazelnut carried in the pocket would prevent toothache.

Toronto, Canada, was originally named York.

### Legal Notice

**NOTICE TO ALL PERSONS HAVING CLAIMS AGAINST THE ESTATE OF ELLEN N. GROVES, DECEASED**  
Notice is hereby given that original Letters Testamentary for the Estate of ELLEN N. GROVES were issued on 2nd day of August, 1982, in cause No. 1671, pending in the County Court of Hansford County, Texas, to:  
**HAROLD ARTHUR GROVES**  
The residence of such Executor is Roosevelt County, New Mexico. The Post Office address is:  
c/o Harold Groves  
Box 711  
Portales, New Mexico 88130

All persons having claims against this Estate which is currently being administered are required to present them within the time and in the manner prescribed by law.  
DATED the 16th day of August, 1982.  
Harold Arthur Groves

**NOTICE TO ALL PERSONS HAVING CLAIMS AGAINST THE ESTATE OF MARVIN J. GROVES, DECEASED**  
Notice is hereby given that original Letters Testamentary for the Estate of Marvin J. Groves were issued on August 16, 1982, in Cause No. 1689, pending in the County Court of Hansford County, Texas, to:  
**HAROLD ARTHUR GROVES**  
The residence of such Executor is Roosevelt County, New Mexico. The Post Office address is:  
c/o Harold Groves  
Box 711  
Portales, New Mexico 88130

All persons having claims against this Estate which is currently being administered are required to present them within the time and in the manner prescribed by law.  
DATED the 16th day of August, 1982.  
Harold Arthur Groves

**NOTICE OF PUBLIC HEARING SPEARMAN ZONING BOARD OF ADJUSTMENT**  
Notice is hereby given that the Zoning Board of Adjustment will hold a public hearing on Tuesday, September 7, 1982, at 7:30 p.m. in the City Council Chambers of City Hall located at 221 Sanders. The purpose of the public hearing is to consider the following zoning variance application:

1. Request for a variance to waive the minimum lot requirement on Lot 1, Block 2, O.L. 23, Colliard Mathews Addition, (301 S. Hoskins).  
Any interested party may attend the open meeting to speak for or against the proposed zoning variance. For more information call 659-2524.  
/s/ Donna Thomas  
City Secretary

**FOR SALE:** Hansford County 4-H Council is taking bids on a gooseneck trailer made by Southwest Metal Works. It is 15' by 5', 1/2 steel top, 1 escape door and has a single axle. The trailer can be seen behind the County Ag Barn in Spearman. All bids are to be in the County Judge's Office by Monday, August 23rd, 10:00 a.m., at which time they will be opened. 4-H reserves the right to accept or decline any or all bids.  
40-4tc

### REAL ESTATE FORECLOSURE SALE

Property Owned by Hollis Bradford Hart and Tracy Ann Hart  
ALL OF THE TRACT AND PARCEL OF LAND DESCRIBED AS AN UNDIVIDED 1/2 INTEREST IN AND TO THE SURFACE ESTATE ONLY OF THE WEST 240 ACRES OF THE SOUTH HALF (S/2) OF SECTION 128, BLOCK 45, H & TC RY CO. SURVEY, HANSFORD COUNTY, TEXAS.  
AND  
ALL OF THE TRACT AND PARCEL OF LAND DESCRIBED AS AN UNDIVIDED 1/2 INTEREST IN AND TO THE SURFACE ESTATE ONLY OF THE EAST 80 ACRES OF THE SOUTH HALF (S/2) OF SECTION 128, BLOCK 45, H & TC RY CO. SURVEY, HANSFORD COUNTY, TEXAS.

PLACE: Hansford County Courthouse, Spearman, Texas  
DATE: September 7, 1982  
TIME: 4:00 p.m.  
TERMS: The real estate will be sold for cash to highest bidder. Sold subject to all taxes due thereon. Title will be conveyed by substitute trustee's deed.  
For information contact Barbara Hurt, Small Business Administration, 1205 Texas Ave. Lubbock, Texas 79041. Phone 806-762-7471.

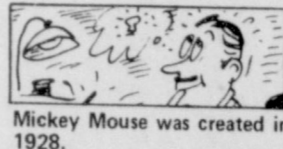
### Political Announcements DEMOCRATIC PARTY

For U.S. Congressman  
13th District  
**JACK HIGHTOWER**

State Representative  
88th District  
**J.W. "BUCK" BUCHANAN**

### REPUBLICAN PARTY

State Representative  
88th District  
**R.C. PORTER**



Mickey Mouse was created in 1928.



About the year 1500, the Aztec city on the site of present-day Mexico City had an estimated 100,000 people.

## Capital Ideas

AMERICA IS RICHER THAN MANY PEOPLE REALIZE

By David Mahoney  
Chairman of the Board,  
Norton Simon Inc.

Let's assume that we transform the U.S. Government into America, Inc., with a business-style balance sheet. There would be several surprises.

America, Inc. has enormous assets that are not widely publicized or known.



Mahoney

America, Inc.'s landholdings consist of 700 million acres—one-fifth of our nation's oil and gas resources, 50 percent of our coal, 80 percent of our oil shale, 50 percent of our uranium, and 50 percent of our geothermal energy resources.

Just one of the corporation's "operating companies," The Department of Defense, had capital holdings valued at over \$339 billion in 1980.

Unfortunately, no one really knows how much America, Inc.'s total assets are worth—we've never taken an inventory.

Clearly, a change is needed. But to what? As a first step in rebuilding our federal budgetary system, our national leaders can take a new look at an old idea—a capital budget.

The U.S. Government's current budget system lumps operating expenses (salaries for civil servants, office supplies, etc.) with capital expenditures (public buildings, roads, land, etc.). The government makes no distinction between one type of expenditure and another.

Construction of a capital asset such as a hospital for Veterans, for example, adds to the deficit, whereas the sale of land reduces the deficit. This is done, even though the hospital, under normal accounting practices, would be treated as a long-term asset, not a deficit.

Unlike the Federal government, nearly all private corporations, state governments and most local governments use a capital budget. Under a capital budget, expenditures are separated into current operating expenses and capital investments.

Under a capital budgeting system, capital or investment-type programs are financed separately from current expense programs. Included in a capital budget would be construction capital requirements and sources of financing.

### The Hansford Plainsman

PUBLICATION (USPS 243-660)  
SPEARMAN, TEXAS 79081  
213 Main Box 458 659-3434  
Published Weekly at 213 Main Street  
Spearman, Texas 79081  
Owner-Publisher.....William M. Miller  
Editor.....Faye Lynch  
Second Class Postage paid at Spearman, Texas 79081  
Any erroneous reflection upon the character of any person or firm appearing in these columns will be gladly and promptly corrected upon being brought to the attention of the management.  
POSTMASTER: Send address changes to Hansford Plainsman, Box 458, Spearman, Tx. 79081.  
SUBSCRIPTION RATE: Hansford, adjoining counties, combination with the Spearman Reporter, \$15.00. Other points, \$20.00.  
MEMBER  
1982  
**TEXAS PRESS ASSOCIATION**

### Capital Budgeting

shifting to a capital budget would be a necessary first step.  
The risk of a social and moral tragedy is high if we maintain our present system and course. The future price of the budget cuts both political parties are offering to reduce the deficits may be more than America can afford to pay.  
TAKING CARE OF OUR OWN  
We must not forget that a society's first obligation is to take care of its own generation. The capital idea would help America meet that obligation today.  
A capital budgeting system would provide a comprehensive and balanced picture of America. It would provide more openness in the budget process and provide more accurate accounting of total life-cycle costs. Decision, on proposed government expenditures could be made based on hard numbers, not on the politics of the moment.  
A capital budget is not a miracle cure. Other measures and proposals, such as a two-year budget cycle, a new look at off-budget items, and line item veto also must be discussed and evaluated in constructing a new budget system. But

### CHRISTMAS MONEY!!

Homemakers-you can earn to \$2,000 or MORE plus FREE GIFTS plus a TRIP TO HAWAII demonstrating quality toys and gifts.  
FREE  
The first 10 signing and qualifying from this ad receive \$20.00 in FREE MERCHANDISE!!  
No delivering-No collecting-FREE Hostess gifts. Call Raeleene 435-2561 Now!!  
Gifts 'n Gadgets-Our 32nd year.  
44S-4tp

Specializing in Roofing of all Types Residential & Commercial  
Tile Slate Rigid Asbestos Builtup Roofing Tar & Gravel Pitch Cedar Shingles Hand Split Snakes Composition  
**NORTH PLAINS ROOFING & SIDING CO.**  
806-352-7754  
Licensed Bonded Insured  
Call collect for free estimate  
806-352-7754 Amarillo, Texas

### Need man to manage irrigated farm. Must have experience. New home furnished.

Phone  
405-338-5506  
or 405-338-7307

### Need man experienced with livestock to work at small feed yard.

Phone  
405-338-5506  
or 405-338-7307

### KOEHN Mobile Homes

508 East Pancake  
Liberal, Kansas 67901  
Phone: 316-624-0338  
"Specializing in more QUALITY AND VALUE for your dollar!"  
**CHAMPION MHMC**  
OPEN SUNDAY AT 2 P.M.  
24-rtm

## Baptist Plan Bible Study



**Claude Cone**  
Pastor, First Baptist Church, Pampa

You are invited to attend a week of Bible study and Worship at the First Baptist Church of Gruver, August 22-27. Rev. Claude Cone, pastor for the past ten years of the First Baptist Church of Pampa, is the guest speaker for each service. Music worship will be

under the leadership of Bruce Ayres. Sunday's services are scheduled for 10:50 a.m. and 7:00 p.m. Weekday services are scheduled for 12:00 noon and 7:30 p.m. The weekday noon services include a "pot luck" luncheon.

In a world of many conflicts and uncertainties, it is very important to know what God has to say. Each service will be an exciting presentation of the Word of God. Claude Cone is an effective and genuine preacher of the Gospel of Jesus Christ. He has faithfully ministered for 28 years. He received his education at Wayland Baptist University and Southwestern Baptist Theological Seminary, and is currently working on a Doctor's Degree in Ministry. Possessing a pastor's heart, Rev. Cone is in touch with the needs of today's people, and will be ministering under the direction of the Holy Spirit.

Rev. Larry Miller, host pastor, believes there is no greater need in today's world than to know God. He urgently encourages you to join with him and his church in this week's study and worship. A nursery will be provided for each service.

### CITY OF SPEARMAN

#### AGENDA

TUESDAY, AUGUST 24, 1982  
8:00 P.M.

#### PLEDGE AND INVOCATION.

CONSIDERATION OF THE MINUTES OF REGULAR CITY COUNCIL MEETING HELD ON AUGUST 10, 1982.

CONSIDERATION OF RESOLUTION #12-82 A RESOLUTION EXPRESSING THE CITY'S NEED FOR HIGHWAY FUNDING AND DEVELOPMENT IN THE TEXAS PANHANDLE.

CONSIDERATION OF A MONTHLY CAR ALLOWANCE FOR THE CHIEF OF POLICE.

CONSIDERATION OF PURCHASING AN EIGHT CHANNEL RADIO WITH A FOUR CHANNEL SCAN FOR THE SPEARMAN POLICE DEPARTMENT FROM MOTOROLA COMMUNICATIONS IN THE AMOUNT OF \$2,059.00.

STATUS REPORT OF ACCOUNTS RECEIVABLE ON H & S EMERGENCY MEDICAL SERVICE.

## Livestock exports decline sharply

AUSTIN—Livestock exports for May of this year declined sharply from livestock export figures for May 1981. Agriculture Commissioner Reagan V. Brown has reported.

"In spite of a substantial decline from last year in the number of head of livestock exported from Texas during May, the accumulated 1982 export figures still compare favorably with those of 1981," Brown said.

"A total of 8,833 head of livestock were exported from Texas shipping facilities during May of this year as compared with the 14,714 head exported during the same month last year.

Figures released by the export marketing division of

the Texas Department of Agriculture show that 77,091 head of livestock, valued at \$10.5 million, have been exported from Texas shipping facilities so far this year. During the same period last

year 71,028 head of livestock were exported from the state.

Export figures for May show that 755 head of cattle, 182 goats, 275 swine, 7,602 sheep and 37 horses were sent through Texas shipping facilities. This is a sizable drop from the 1,333 head of cattle, 4,256 goats, 210 swine, 8,864 sheep and 51 horses that were exported from the state during May of last year.

Reports show that there have been 449 livestock shipments made from the state so far this year; 61 of these were made in May.

## California begins medfly treatments

AUSTIN—Quick action by officials in beginning treatment for the Mediterranean fruit fly in Stockton, California, alleviated the need for Texas to expand border check

stations and to take legal action that marked the outbreak last year.

Agriculture Commissioner Reagan V. Brown stated that as soon as the one male Medfly was discovered last week, aerial treatment was initiated and the U. S. Department of Agriculture (USDA) began cutting fruit and increasing traps to determine the extent of infestation in the area.

"This is a greatly different in California from the foot-dragging last year that caused the Medfly to spread to that state and threaten all receiving states," Brown said.

"No more flies have been found in Stockton, and our plant pest officials feel that this one was a hitch-hiker," Brown said. "Even so, we are maintaining daily contact with officials running the program in California."

In addition to aerial treatment, the number of traps per square mile was increased the day of the find from 10 to 50. Officials also ordered extensive cutting of fruit to determine if larvae were present.

No previous pesticide treatment had been performed in the area, which had been free of any infestation prior to the recent find.

## SPORTS QUIZ



How many consecutive no-hit, no-run games have been played in baseball history?

Two, pitched by Johnny Vander Meer of the Cincinnati Reds.

That was back in 1938, and no one has matched Vander Meer's accomplishment, either before or after "No Hit Johnny" broke all major and minor league records.

Today, Vander Meer re-

counts the story as he did countless times during his "second" career as sales manager for Jos. Schlitz Brewing Company.

Now retired, he recalls, "It was the first game under the lights in the Brooklyn Dodgers' old Ebbets Field. We played Casey Stengel's Boston Bees that night, finishing up with a score of 3-0."

Four days later, the 23-

year-old fast-balling youngster met the Dodgers. Inning after inning, the Brooklyn team was rendered hitless by the southpaw's blazing fastball.

"In the ninth inning, with three men to go, I gave it everything I had, nothing cheap."

The game ended 6-0, earning Johnny Vander Meer of the Cincinnati Reds a solid berth in baseball record books.

## Final Days of Summer

### Clearance Sale at

# LADY FAIR

Save up to 70%

on all Spring and Summer fashions

for a limited time.

# First Money Market Report

A Concise Report Of Rates Currently Paid On Money Market Investments At First National Bank

### Money Market Certificates

TERM	RATE
91 Days (3 Months)	8.366%

Invest \$7500  
Date Effective: August 17, 1982 Through August 23, 1982  
Compounding interest prohibited by law.

TERM	RATE
182 Days (6 Months)	10.952%

Invest \$10,000  
Date Effective: August 17, 1982 Through August 23, 1982  
Rate based on average of Money Market Certificates for preceding four weeks.  
Compounding interest prohibited by law.

### 30 Month Certificates

TERM	RATE	ANNUAL YIELD
30 Months	12.75%	13.595%

Invest \$500 or more.  
Date Effective: August 17, 1982 Through August 30, 1982  
Annual yield based on daily compounding.

### \$100,000 Certificates of Deposit

TERM	RATE	ANNUAL YIELD
30 Days	9.625%	10.102%
90 Days	10.25%	10.792%
120 Days	10.25%	10.792%
180 Days	11.00%	11.626%
1 Year	10.25%	10.792%

Invest \$100,000.  
Date Effective: August 17, 1982 Through August 23, 1982  
Annual yield based on daily compounding.

### Individual Retirement Accounts

TYPE	TERM	RATE	ANNUAL YIELD
Fixed Rate IRA	18 Months	10.952%	11.572%
Variable Rate IRA	18 Months	10.952%	Changes Weekly

Invest up to \$2000.  
Date Effective: August 17, 1982 Through August 23, 1982  
Annual yield based on daily compounding.



**First National Bank**  
Perryton, Texas  
806/435-3676  
Member FDIC

All deposits insured to \$100,000. Substantial interest penalties for early withdrawal on all certificates.

**When You're Ready To Invest, Call The Money Market Advisor At 435-3676.**

**DAYTIME**

CABLE	[3]	[4]	[5]	[7]	[8]	[9]	[10]	[11]	[12]
AM	OETA	KAMR	TMC	KVII	CBN	WGN	KFDA	WTBS	CNN
	Oklahoma City	Amarillo	Movie Channel	Amarillo	Christian Netw	Chicago	Amarillo	Atlanta	Cable News Ntwr
7:00	Weather Over Easy	Today	Prog Cont'd	Good Morning America	Prog Cont'd	Bozo Show	CBS Morning News	My Three Sons That Girl	Prog Cont'd
8:00	Sesame Street				Something Beautiful	Bewitched		Movie	News/Sports/Weather
9:00	Villa Alegre Electric Company	Diffrent Strokes Wheel of Fortune		Hour Magazine	700 Club	Movie	One Day at a Time Alice		
10:00	Vegetable Soup Varied Programs	Texas		Love Boat			Price Is Right	Movie	
11:00		The Doctors Search For Tomorrow		Family Feud Richard Simmons	Independent Network News Movie	Big Valley	News Young and the Restless		Take 2
12:00	Over Easy Varied Programs	Days of Our Lives		News Joker's Wild		My Three Sons	INN News As the World Turns	Movie	
1:00		Another World		One Life to Live	Varied Programs	Dick Van Dyke	Capitol		News/Sports/Weather
2:00	Vegetable Soup Villa Alegre	CHiPs		General Hospital	700 Club	I Dream of Jeannie Family Affair	Guiding Light	SuperStation Funtime Flintstones	
3:00	Sesame Street	People's Court Merv Griffin		Edge of Night Bugs Bunny		Scoby Doo	Tattletales	Addams Family	
4:00	Mr. Rogers' Neighborhood Electric Company	Muppet Show		Happy Days Again		McHale's Navy Gilligan's Island	Barney Miller	Partridge Family Hazel	Newswatch
5:00	Here's to Your Health Business Report	M*A*S*H NBC News		Laverne and Shirley ABC News	\$50,000 Pyramid	Good Times Hogan's Heroes	News CBS News	My Three Sons Father Knows Best	

**MONDAY**

CABLE	[3]	[4]	[5]	[7]	[8]	[9]	[10]	[11]	[12]
PM	OETA	KAMR	TMC	KVII	CBN	WGN	KFDA	WTBS	CNN
	Oklahoma City	Amarillo	Movie Channel	Amarillo	Christian Netw	Chicago	Amarillo	Atlanta	Cable News Ntwr
6:00	MacNeil-Lehrer Report Oklahoma Report	News M*A*S*H	Prog Cont'd	News Family Feud	Bull's Eye Another Life	Andy Griffith Carol Burnett and Friends	News Entertainment Tonight	Green Acres	Moneyline Sports Tonight
7:00	Evening at Pops	Little House on the Prairie		Best of the West To Be Announced	National Geographic Special	Peking Encounter	Private Benjamin WKRP in Cincinnati	Movie: Barefoot in the Park	Prime News
8:00	Beverly Hills In Concert	Movie: Mrs. R's Daughter	Movie: It Rained All Night the Day I Left	Miss Texas USA Pageant	700 Club	Solid Gold	M*A*S*H Fiftly Rich		
9:00	Great Performances					News	Lou Grant	TBS Evening News	Freeman Reports
10:00		News Tonight Show	Movie: Caddy	News Rockford Files	Nashville RFD	Twilight Zone	News Saturday Night	Quincy	All In the Family Movie: Treasure of Parcho Vila
11:00	MacNeil-Lehrer Report Sign Off	Late Night with David		Nightline	Burns & Allen	Jack Benny Show	Movie: The Rebels	Movie: Columbus	News Moneyline Update
12:00	Letterman NBC News Overnight	Movie: The Hideaways	Movie: America-thon	I Married Joan My Little Margie	Part 1	Etude in Black			Mike Douglas People Now

**TUESDAY**

CABLE	[3]	[4]	[5]	[7]	[8]	[9]	[10]	[11]	[12]
PM	OETA	KAMR	TMC	KVII	CBN	WGN	KFDA	WTBS	CNN
	Oklahoma City	Amarillo	Movie Channel	Amarillo	Christian Netw	Chicago	Amarillo	Atlanta	Cable News Ntwr
6:00	MacNeil-Lehrer Report Oklahoma Report	News M*A*S*H	Movie: Under the Rainbow	News Family Feud	Bull's Eye Another Life	Andy Griffith Carol Burnett and Friends	News Entertainment Tonight	Green Acres	Moneyline Sports Tonight
7:00	Election Coverage	Father Murphy		Happy Days	National Geographic Special	Movie: Return Of The Texan	Cronkite's Universe She's With Me	Teletthon: Republican National Committee	Prime News
8:00		Bret Maverick	Movie: J.D. and the Salt Flat Kid	Three's Company Too Close For Comfort	700 Club		Movie: The \$5.20 an Hour Dream		
9:00		McClain's Law		Hart to Hart		News		TBS Evening News	Freeman Reports
10:00		News	riders	News	Nashville RFD	Twilight Zone	News	All In the Family Movie: Legend of	Sports Tonight Crossfire
11:00	Sign Off	Late Night with David		Nightline	Burns & Allen	Jack Benny Show	Movie: Rebels	Movie: McCloud	News Moneyline Update
12:00	Letterman NBC News Overnight	Movie: Saturday the 14th		Fantasy Island	I Married Joan My Little Margie	Part 2	Lady on the Run		Mike Douglas People Now

**Spearman to hold Co-Ed Tourney**

A Co-Educational Invitational Slow Pitch Tournament has been scheduled for Spearman on August 28th and 29th. Ten teams will be accepted with the deadline for entering being Wednesday, August 25th. Team trophies will be presented to the 1st, 2nd, and 3rd place winners. Individual trophies will also be awarded to first place winners. Trophies will also be awarded to one

outstanding male and female player. The tournament will be double elimination. The run rule will be enforced and a third strike foul ball will be an automatic out. Only red stitch blue dot balls will be used. There are four teams listed so far. They are of Spearman, Baker & Taylor, Sports Tally, and Junior Lusby Cats. There is one team from Canadian enter-

ed, CRC. Six more teams will be entered at a later date. The entry fee of \$70 is needed by Thursday, August 26th. Each team should send it's entry fee to Tommy Barber, 304 Townsend, Spearman, Texas 79081. For more information, call 659-3338.

\*\*\*\*\*  
**1982 SPEARMAN LYNX SCHEDULE**  
 \*\*\*\*\*

DATE	OPPONENTS	PLACE	TIME
Sept. 3	Stratford	There	7:30
Sept. 10	FRITCH	HERE	7:30
Sept. 17	GRUVER	HERE	7:30
Sept. 24	STINNETT	HERE	7:30
Oct. 1	Sunray	There	7:30
Oct. 8	*Boys Ranch	There	8:00
Oct. 15	*Canadian	There	8:00
Oct. 22	*DALHART	HERE	8:00
Oct. 29	*RIVER ROAD	HERE	8:00
Nov. 5	*Perryton	There	8:00

\*\*\*\*\*  
 \*Denotes District I-AAA Games  
 \*\*\*\*\*

**WEDNESDAY**

CABLE	[3]	[4]	[5]	[7]	[8]	[9]	[10]	[11]	[12]
PM	OETA	KAMR	TMC	KVII	CBN	WGN	KFDA	WTBS	CNN
	Oklahoma City	Amarillo	Movie Channel	Amarillo	Christian Netw	Chicago	Amarillo	Atlanta	Cable News Ntwr
6:00	MacNeil-Lehrer Report Oklahoma Report	News M*A*S*H	Prog Cont'd	News Family Feud	Bull's Eye Another Life	Andy Griffith Carol Burnett and Friends	News Entertainment Tonight	Green Acres	Moneyline Sports Tonight
7:00	Survival Special	Real People	Movie: Friday the 13th Part 2	Phoenix	National Geographic Special	Movie: Coast of Skeletons	Fantastic Funnies	Philadelphia at Atlanta	Prime News
8:00	Junior Original Concert	Facts of Life	Love, Sidney	Fall Guy	700 Club		Movie: Ohms		
9:00	Time to Live With Leo Buscaglia	Quincy		Dynasty		News		TBS Evening News	Freeman Reports
10:00	MacNeil-Lehrer Report Business Report	News Tonight Show	Movie: Sitting Ducks	News Rockford Files	Nashville RFD	Twilight Zone	News Saturday Night	Movie: Medusa	Sports Tonight Crossfire
11:00	Sign Off				Burns & Allen	Jack Benny Show	Movie: The Helen Morgan	Touch	Movie: Wuthering Heights
12:00	Letterman NBC News Overnight	Night the Day I Left		The Love Boat	I Married Joan My Little Margie	Story		Sign Off	Mike Douglas People Now

**Holt & Stavlo Cause Tie For Title**

The Women's Softball Season is over for 1982. There still has been any sayings as to whether leave the Championship a tie, or go for a tie-breaker. June Sexton, the chairman for the Womens' Softball, will bring something in, if there is to be a make-up game. The question is how could there be a tie in a League?

The answer is simple, both teams played 12 games, both losing 2 and winning 10. The Jr. Lusby Cats lost to A&L Printing and to First State Bank Red Hots-at this point, the Cats were tied for second place. The First State Bank Red Hots had a fantastic season. They went up against the Holt & Stavlo team. The Red Hots, at this point, were on top of the League's standings, with only one loss-that being to the Jr. Lusby Cats. Well, the game was a tough game indeed, Holt & Stavlo got their act together and played extremely well against the leader of the "pack". Team members for Holt & Stavlo include Sharon Swan, Susan Altman, Lu Padilla, Nancy Graves, Elaine Swan, Merry

Gail Shelton, Lori Hart, Cindy Ivey, Kelli Crawford, Carol Stavlo, Sharon Whitefield, Rosetta Tindell and June Sexton. Each member of this team had to have played with the self-confidence that any team plays with when they go up against the #1 team in the League. Holt & Stavlo-(NOTE FROM SPORTS DESK: The results of Holt & Stavlo's last game, against the Sororities, was left out of Thursday's paper, they evidently won the game with pride.)-played a tremendous game, not even thinking that the Red Hots were the #1 team in the League. They-Holt & Stavlo-won the game. This was the game of the season for Holt & Stavlo, because they beat the #1 team in the League putting them in a three-way-tie for 1st Place with 2 losses. If Holt & Stavlo had lost the game, First State Bank Red Hots would be in sole-possession of 1st Place, but Holt & Stavlo did win the game, this led to the tie for first place and also having a 2-way tie for the Championship.

Congratulations to all the Holt & Stavlo players for having a fine season.

**1982 J.V. & 9th LYNX SCHEDULE**

DATE	OPPONENTS	PLACE	TIME
Sept. 9	Canadian	There	5:00-7:00
Sept. 16	Perryton	There	5:00-7:00
Sept. 23	GUYMON	HERE	5:00-7:00
Sept. 30	DALHART	HERE	5:00-7:00
Oct. 7	WHEELER (9th)	HERE	5:00
Oct. 7	BOYS RANCH (JV)	HERE	7:00
Oct. 14	CANADIAN	HERE	5:00-7:00
Oct. 21	Dalhart	There	5:00-7:00
Oct. 28	RIVER ROAD	There	5:00-7:00
Nov. 4	PERRYTON	HERE	5:00-7:00

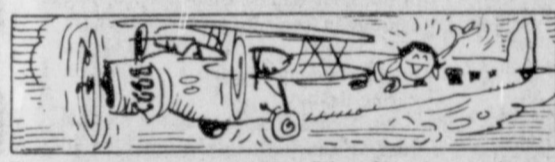
**1982 7th & 8th GRADE LYNX SCHEDULE**

DATE	OPPONENTS	PLACE	TIME
Sept. 9	CANADIAN	HERE	5:00-6:30
Sept. 16	PERRYTON	HERE	5:00-6:30
Sept. 23	Guymon	There	5:00-6:30
Sept. 30	Dalhart	There	5:00-6:30
Oct. 7	Boys Ranch	There	5:00-6:30
Oct. 14	Canadian	There	5:00-6:30
Oct. 21	DALHART	HERE	5:00-6:30
Oct. 28	RIVER ROAD	HERE	5:00-6:30
Nov. 4	Perryton	There	5:00-6:30

**Boys Ranch Rodeo**

Pint-size cowboys on professional rodeo animals will highlight the 38th Annual Boys Ranch Rodeo that gets underway over the Labor Day weekend.

Area riding clubs from a tri-state area will join the nearly 400 boys of Cal Farley's Boys Ranch when the rodeo is held on September 5 and 6. More than 200 boys will be riding bareback broncs, Brahma bulls, steers, calves and stick-horses, depending upon their ages. A specialty act that proved very popular last year, a wild-steer race, will be included in the action this year. Approximately 10,000 people, including many of the Ranch's former boys, are expected to attend the two performances at 2:30 p.m., Sunday and Monday. Reserve box seat tickets for \$3.50 are on sale at the Ranch administrative office at 600 West 11th Street in Amarillo, and can be obtained by calling 806/372-2341. General admission tickets are \$2.50 and can be purchased at the rodeo arena or in Amarillo. Barbecue beef plates will be sold by the boys for only \$3.00. The Boys Ranch Rodeo is the only rodeo of its kind in the nation, according to Ranch officials.



The first stewardess was Miss Ellen Church, a registered nurse, who welcomed 11 passengers aboard a flight from Oakland, Calif., to Cheyenne, Wyo. in 1930.

**Pssst... Pass it on!!!**

**NOW**  
**Fly Free to Alaska —**  
 7 or 11 Day Complete Alaska/Yukon Vacation Featuring  
 Inside Passage Cruise in September.  
 From \$1190 to \$1605 per person  
**WHEATHEART TRAVEL, INC.**  
 7 S.W. 3rd, Perryton Office Plaza Perryton, TX

HOURS: 9:00 A.M. to 5:00 P.M.  
 MONDAY THRU FRIDAY

**Whether you travel by air, land or sea —**  
**Remember our services are FREE.**

Please Call ... **435-9646**

Eve Childers,  
 Manager, Travel Consultant  
 Jerry & Harriett Conifer  
 Travel Agents  
 Owners

1966 LYNX Football members



GLENN BLODGETT Junior



JERRY HOLTON Junior



LARRY BUTTS Senior



MONTE LUSBY Sophomore



MIKE BARBS Honorable Mention Senior

1966 Lynxettes



LYNXETTES WIN 2nd PLACE AT DUNCANVILLE: The girls were defeated in the finals by Tulia, 51-53.

# Past Spearman . . . .

6 Years Ago

## A Review of 1976

# H I S T O R Y

The City of Spearman officials moved to accept the EDA grant for \$322,200 to rework the gas system and drill additional water wells for the city.

Hansford County was listed as 2nd in wheat production in 1975 in the state of Texas.

In April Judge Countiss refused to grant a temporary injunction to keep the names of L. M. Womble and Dan Desimone off the May 1 primary ballot as was being asked by Plaintiff, Ruth Gumfory of Gruver.

The announcement was made that Miss America 1975, Shirley Cothran would be in Spearman June 5 to emcee the Miss Hansford County Beauty Contest.

A record number of voters turned out Saturday to cast their votes in the Spearman city and school board elections. In the city election 895 votes were cast with Ralph Blodgett being elected mayor, and Bill Pittman and Brad Beedy, councilmen. Winners for the school board elections were Kent Guthrie and Jim Evans.

The Lynx band was chosen to play for the Ronald Reagan Rally in Amarillo, Thursday, April 15. They were on hand but bad weather prevented Reagan from appearing.

The first tornado alert came on April 15, with a tornado sighted 9 miles south and 1 1/2 miles southeast of town. The storm resulted in .57 moisture.

Little League Baseball Season began on April 19.

Hail, high winds and tornado sightings Monday, April 19, brought approximately 1 inch of moisture to the county.

Registered voters were up in the county with a total of 3824. Voters registered in 1975 totaled 3255. Cancellations were 273 either by people moving or by death.

City officials along with representatives of Canadian, Booker, Higgins and unincorporated communities being served by High Plains Gas Co. were present at a hearing before the Railroad Commission. High Plains was asking for a rate increase.

Honor students at Spearman High School were announced. Roger Jones was named Valdictorian, and Billy Jones, Salutatorian. Other honor students were Karl Johnson, Jimmy Jackson, Janyth Lackey, Suzy Gatlin, Mark Fox, Gary Burke and Rajan Martin. Commencement exercises were set for May 27 at 8 p.m. in the high school auditorium.

Sheriff R. L. McFarlin was returned to office in the May 1 primary. Helen Dry to the Tax Assessor-Collector spot, and County Attorney J. E. Blackburn was also re-elected. B. J. Renner was elected Commissioner Precinct 3 and a run-off race was set for commissioner Precinct 1, with candidates Garland Head and Roscoe Nelson competing.

Roy Harbour was named FFA Star Chapter Farmer. A new business, Brown L Supply, located at 102 Kenneth held its grand opening on May 14-15.

On May 17, city officials called for a bond election in the amount of \$265,000 to provide local matching funds for the EDA grant to rework the gas and water systems in the city.

Commissioners of Hansford County and city officials and local interested people met with representatives of the Army Corps of Engineers to discuss the Palo Duro River Dam project. A great deal of enthusiasm was generated at the meeting. The Corps of Engineers plan to make a study as to the feasibility of the construction of the dam.

The city fathers called a bond election for June 15 in the amount of \$275,000 for matching funds for the EDA grant.

The Dr. D. E. Hackley Memorial Golf Tourney netted \$3,800 for the Hackley Memorial Trust Fund which has been set up to promote the well being of handicapped children of Hansford County. This is a perpetual fund and will be governed by representatives of the Hansford Golf Club, Spearman and Gruver Banks, Spearman and Gruver schools, medical staff and Ministerial Alliance members.

A petition was presented to Hansford County Commissioners asking that an election be called to determine whether or not Hansford County Board members should be elected or appointed. The positions have been appointed up to this time.

The highlight of the first part of June was the big Hansford Roundup held June 3, 4, and 5. Miss Tina Clawson was named Miss Hansford County at the annual pageant which was graced with the performance of Shirley Cothran, Miss America 1975 as emcee. U.S. Representative Jack Hightower of Vernon was guest speaker at the dedication of the Station Master's Museum, Rodeos, a parade, a fiddlers contest, barbeque, etc.

The hospital board appointed Joan McClellan as Supervisor of Nurses and Loree Booth was appointed lab and x-ray technician.

Spearman voters set a new record June 15 when they voted overwhelmingly for the gas and water bond issue. The issue carried 396 which was a vote of confidence for Mayor Blodgett and the city council.

Speartex Grain completes a 500,000 bushel capacity addition to their elevator on the Gruver Highway.

All-day Bicentennial festivities were planned for July 4 with a community worship service, community picnic, afternoon fun and games, a musical "I Love America" presented by the community choir and a big display of fireworks at Lynx Stadium concluding the day.

Wheat harvest began to get underway June 21 with the yield better than had been anticipated.

A number of activities occurred July 4, 1976 in Hansford County. Members of the First Baptist Church set a time capsule in cement, to be opened in 2076, Sunday morning, followed by the big Bicentennial Birthday celebration during the day.

Dr. Thomas reapplied to the medical staff of Hansford Hospital on June 30 and was now using the hospital for his patients.

In a public meeting on the Palo Duro Dam project, Col. Anthony Smith of the Army Corps of Engineers stated that it will take 3 years of planning and then 10 years to build the dam if the study underway proves important to the flood control of the Canadian River Basin.

Gene Cudd, local John Deere dealer, was appointed as councilman to take James Jackson's place on the council.

Jackson resigned the position as he was leaving Spearman. Joel Lee Lackey was appointed to the school board to replace Bill Partridge, who is moving to Canyon. Joel Lee was a former member of the board.

4-Tex Elevator was open for the wheat harvest with their new facility with a capacity of 284,000. The directors announced that they expect to have an additional 254,000 capacity by corn harvest time.

Dr. R. L. Kleeberger of Spearman was honored at the Texas Division, American Cancer Society July 8-9 meeting in Dallas. He was the recipient of a twenty-five year award for his service to the Society.

The August 12 Red Cross Blood Drive netted 146 pints of blood. The goal was 150 and authorities were very well pleased with this amount.

County schools were set to open August 23.

Football season began Sept. 3 with a scrimmage with the Dumas Demons.

### 1 Year Ago

August 16th, Sunday morning, Johnny Moffit, President of A Voice in the Wilderness Prison Ministries, will be speaking at the Union Church. At one time, Johnny was Vice-president of the Banditoes Motorcycle Gang in Dallas, Texas. In 1971 his life was miraculously transformed by God's power. Besides being president and founder of AVIW prison ministries, Johnny was also the founder and one time president of Texas Boys Ranch in Lubbock, Texas. Pastor Steve Rogers of Union Church extends an open invitation to the entire community.

### 5 Years Ago

How many years of his life does the average man in Hansford County spend working and how many not working, under normal conditions? As for local women, what part of their lives is spent in jobs outside the home?

A male child, born at the present time in the local area, can be expected to put in fewer years at work during his lifetime than was the case a generation or two ago.

His young sister, however, has the prospect of being on the labor force much longer than her mother or grandmother were.

That is the trend. It has been developing nationally for a number of years, according to Government statistics.

Currently, as a result, American men are spending smaller and smaller portions of their lives at work while women are spending greater portions of theirs.

The American Council of Life Insurance reports, based upon Labor Department studies, that the work-life expectancy of women has increased by about 66 percent since 1950. During the same period, the expectancy of men has dropped nearly 4 percent.

Adapting these overall findings to Hansford County, local women, who represent 50 percent of the population, are putting in an average of 25.1 years of work during their lifetime, compared with 15.1 years in 1950.

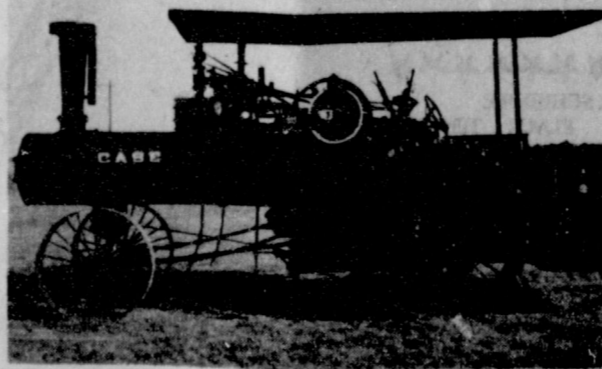
The average working life of the male population, on the other hand, has decreased from 41.5 to 39.8.

Various factors are attributed by the Labor Department as contributing to the earlier withdrawal of men from the work force.

It cites improved pension plans, higher social security payments, broader Government benefits and the greater labor force participation by wives.

Thus, it points out, older workers who either wanted to retire or found it difficult to get new jobs, became better able to get along financially without continuing to work.

At the present rate, the average Hansford County man has about 29 years of non-work during his lifetime and the average woman, 51 years. It is spent in growing up, in going to school, in rearing a family--when most women are out of the job market--and in eventual retirement.



This steam engine belonging to J.D. Wilbanks was used in the second annual Threshing Bee. See related story in 10 Years ago!

Files of  
The Spearman Reporter  
and  
The Hansford Plainsman

These stories and art works were compiled by Melissa Davis and Marla Harmon.