

CAROL AND PHILLIP STUMPF

Phillip Stumpf to Detroit in July . . .

Spearman man gets leader dog

A little bit of independence can go a long way and Spearman's Phillip Stumpf -- blind for the past five years -- will get an opportunity for some added independence when he goes to Michigan next month to pick up a seeing eye dog.

The specially-trained animal is one of several hundred such dogs which are provided free of charge through the work of Lions Club International each year.

And Stumpf is the first recipient of a leader dog from the Lions Clubs in the Top-O-Texas district which comprises the Texas Panhandle area.

The Spearman man is scheduled to be in Detroit, Mi., on July 5 to begin training with his dog.

"It'll take about a month for the dog to teach me what to do," laughs Stumpf. "I've been told the hardest thing to do is learn to trust the dog."

The time he arrives, Stumpf's dog will have gone through some six months of special training. The next four weeks will be used to acclimatize the Spearman man to the animal which picks him out.

"You don't get to choose which dog you want," he notes. "The dog picks you."

The leader dogs, their training and the training with the new owner costs approximately \$7,900 with all the cost being picked up by the Lions Club International.

"My only cost is my plane fare to

Detroit and the Spearman Lions Club is even picking up the tab on that," Stumpf says. "Everybody has just been super."

Stumpf's blindness was brought on by diabetes, a condition he's had for over 17 years. First he lost the use of his right eye and, some two months later, the vision in his left eye went as well.

Life hasn't been all that easy for the Spearman man since his condition was diagnosed almost two decades ago.

First came a 19-day stint in the hospital following his diagnosis. Years later the debilitating effects of his disease began surfacing.

The blindness was the first traumatic sign of the disease. Later he also

lost both kidneys and went through about 1-2 years of dialysis before getting a kidney transplant last year.

He has also suffered a minor stroke and currently has problems with numbness in his extremities -- especially his feet and his right hand.

Despite all the problems and set backs, Stumpf maintains an optimistic outlook.

"There are new procedures coming out all the time," he notes. "In fact, there's an operation right now which might help me see out of my left eye again, but the federal government has ordered it to be tested for five years before it can be performed on

See "LEADER DOG", p-2



The Hansford

Plainsman

25¢
Per Copy

8 Pages

Volume 18 No. 32

YOUR HOMETOWN NEWSPAPER

Sunday June 14, 1987

In report from Hansford Appraisal District . . .

Tax values down \$32 million

Declining oil, gas and mineral appraisals will result in lower tax collections for all but one of the nine taxing entities in Hansford County for the upcoming 1987-88 fiscal year as a report of evaluations from the Hansford County Appraisal District shows a drop in taxable values ranging from \$3.6 million to over \$32.8 million.

The resulting loss in tax revenues for the different taxing entities could be as high as \$262,494 in the case of the Spearman Independent School District.

However, the greatest loss percentage wise would come at the Pringle-Morse Consolidated Independent School District where their loss in tax revenues will be \$175,035 -- a substantial portion of their budget for the upcoming fiscal year.

The evaluation is handled by the Hansford County Tax Appraisal District and a complete re-evaluation is done every two years as mandated by state law.

With the decline in oil, gas and mineral values, in addition to declining land values, a substantial portion

of the tax base has been eroded from the different taxing entities.

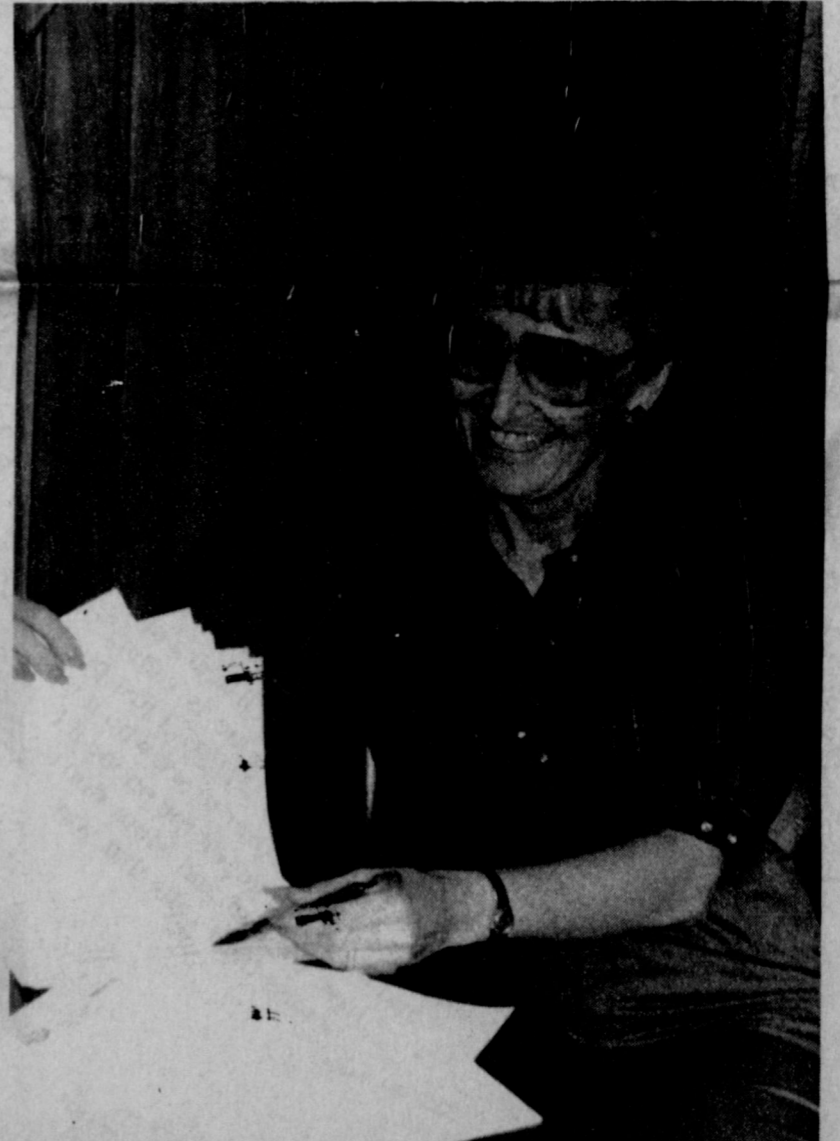
The only taxing unit which did not feel the decline in values was the City of Gruver which actually had a small increase -- \$273,100 -- in taxable valuations in the area covered by the taxing entity.

Gruver tax income will increase by a scant \$1,537.28 for the upcoming 1987-88 tax year based on their current tax rate.

The Hansford county city has no oil, gas or minerals covered under its taxing jurisdiction, nor has it had over the years. As a result, its tax base tends to remain more stable than any of the other taxing entities, observes Hansford County Chief Appraiser, Alice Peddy.

The declining tax revenues can be made up in a number of ways. One is by trimming services provided by the taxing bodies, another is by maintaining total revenues -- establishing an effective tax rate which would result in the same amount being collected as in

See "APPRAISAL", p-2



HANSFORD COUNTY CHIEF TAX APPRAISER Alice Peddy point out the 1987 tax appraisals which were sent out to the nine taxing entities in Hansford county this past week.

Tax appraisal district returns excess funds

A total of \$47,858.56 has been refunded Hansford county taxing entities by the Hansford County Appraisal District, reports Alice Peddy, Chief Appraiser for the county appraisal district.

The refunds -- sent to the nine different taxing agencies within the county -- represent unused funds from the 1985-86 appraisal district's budget.

Each fiscal year the Hansford Appraisal District makes budget projections and collects, on a pro-rata basis, the amounts needed to fund the budget from each taxing entity.

At the end of the year, any unused portion is returned on the same pro-rata basis to each taxing unit served by the appraisal district.

"We end each year with a zero balance by doing this," explains the chief appraiser. "In addition to the unused portion of the budget, we also refund any interest we may have made off the money while in our accounts."

The 1985-86 projected budget for

the appraisal district was \$232,070. Actual expenditures were \$198, 179, reports Mrs. Peddy. The difference between the \$33,891 on the actual expenditures and the \$47,858.56 refunded to the taxing entities is mainly attributable to interest income, she says.

The largest refund was to Hansford County which received a check this past week for \$17,009.90. The smallest refund was to the City of Gruver for \$661.93.

The Spearman Independent School District received a rebate of \$11,363.42 while the Gruver Independent School District's share was \$2,497.77.

The Pringle-Morse Consolidated Independent School District received a check for \$10,175.88. The Hansford Hospital District's share was \$1,552.73.

The City of Spearman received a check for \$2,561.96 and the Palo Duro River Authority received \$1,062.76. The North Plains Water District No. 2 received \$972.53.

THE HANSFORD REPORT

By JAMES JARRETT



Somehow it seems almost sacreligious to complain about rain in the Texas Panhandle. But . . .

Now, right around the corner in Moore county -- my old stomping grounds -- it just doesn't rain as much

as it does here. In fact, it hasn't rained as much.

According to some old Hansford county folks, it doesn't rain that much here either. But I have to tell you, all I've seen since I've come to Hansford county is rain . . . and mosquitoes.

Naturally, these aren't your average, garden-variety mosquitoes -- they're Texas mosquitoes. As such, I've kept my .22 loaded for the jackrabbit-sized buggers. Fortunately, they've yet to show up. I think it's been too wet for them to fly.

We had the privilege to meet Phillip Stumpf the other night. And it was a privilege.

Phillip is the gentleman who will be going to Michigan in July to get a leader dog. He's been blind for the past five years due to a diabetic condition he lives with.

He's also had numerous other problems -- all associated with the disease -- but, he keeps on smiling and going on.

There's another story there you won't find in the feature article on Phillip's trip to Detroit. That story surfaces when you see him with his family.

Phillip is blessed with a loving wife, Carol, and two daughters -- Rhonda Lynne who is a sophomore at Spearman High, and Pamela Carlie who lives with her husband and child in Wilberton, Ok.

Carol down plays her role around her husband, but her love and devotion is self-evident when she's around him or when she's talking about Phillip.

In this day and age when divorce is an easy way out of a difficult position, it's refreshing to find a situation such as the Stumpfs'. It's encouraging as well.

And, let's never forget -- Phillip is handicapped, but he's far from being an invalid. He walks from his home on the 1100 block of Haney to the Donut Shop for coffee whenever he wants.

He does this by himself, without the benefit of a leader dog. With the specially trained animal, he will become even more independent.

Somebody asked the other day why, in writing this column, I sometimes use singular pronouns and at other times use the plural.

I've heard the explanations before -- it's called the "editorial we". Some have even referred to it as the "we of royalty" since a monarch often uses "We" when referring to both himself and his country. I've never liked these explanations.

I do it because that's the way I was taught. Ideally, it would be better if I were sharp enough a writer to write a

See "REPORT", p-2



JOHN R. COLLARD, JR.

John Collard honored by legislature

John R. Collard, Jr., has been recognized by the 70th Legislature House of Representatives for the Spearman man's support of Free Enterprise Education.

The special recognition came in the form of a house resolution to the Texas constitution citing Collard, along with a number of other Texans, for their work with the Free Enterprise Education Program.

House Resolution Number 587 states in part, "Resolved, that the House of Representatives of the 70th Legislature of the State of Texas hereby commend the following individuals who, through their generous contributions of time and talent to the Free Enterprise Education Program, have shown great faith in the young people of Texas:

Ron Bailey of Lubbock; Ernie Baker of Houston; Dr. Terry Baucum of Abilene; Sherry Bowles of Duncanville; James Carter of Madisonville; John Collard of Spearman . . ."

"Resolved, that official copies of this resolution be prepared for these community and business leaders as an expression of appreciation and high regard from the Texas House of Representatives."

Collard is active in several Spearman civic groups, including both the Rotary and Masonic Lodge. He has also been active in numerous other civic programs, in local, area and state

Hospital district agrees to collect for physicians

The Hansford County Hospital District board of directors -- at their regular board meeting Thursday evening -- agreed to work with Spearman physicians to help collect emergency room fees charged by the doctors.

Under the current policy, the hospital and doctor fees are billed and collected separately by their respective offices.

At Thursday's board meeting, the Hansford Hospital District agreed in principle to the collections with details to be worked out between Hospital Administrator Al LaRochelle and the 3-doctor staff.

Drs. Romeo Sangalang and Fred J.

Taylor were present at the board meeting with Dr. Sangalang acting as spokesman for the physician.

"Because of emergency room work and my specialty, my malpractice insurance premiums have jumped 36 percent," the Spearman surgeon reported to the board. "Unfortunately, about two-thirds of my bad debts stem from emergency room services."

The three Spearman physicians, Sangalang, Taylor and Juan Viola, are on 24-hour call at the Hansford hospital for ER work.

During the course of the discussion both the hospital administrator and the physicians cited the number of non-emergency cases which are treated in the ER on a regular basis.

"During the past year from May 1986 to May, 1987 -- there were 1,192 ER visits," reports LaRochelle. "Of those, only 736 could be classified as true emergencies."

The poor collection rate for emergency room visits was also noted by both physicians and hospital personnel present at the meeting.

"If you collect 50 percent of your emergency room fees, you're doing a good job," the hospital administrator said. "A good number of those who use the emergency room have no intention of paying when they come in."

Dr. Sangalang reported to the board that he currently has some \$20,000 in bad debts attributable to ER work.

The Hansford Hospital board instructs LaRochelle to meet with the doctors to work out an equitable arrangement for the hospital to act as a collection agency for ER services performed by the physicians.

USDA eligibility is clarified

Clarification of eligibility requirements for surplus commodities from the USDA Surplus Commodity Program has been provided by the Hansford county judge's office.

Those eligible to receive surplus commodities include those individuals who are on the Supplemental Security Income -- SSI -- program;

Those who are on the Medical Assistance Only -- MAO -- program; those who are under the Aid for Dependent Children -- AFDC -- program; and those who currently receive food stamps.

Cheese distribution under the USDA Surplus Commodity Program will be held this Wednesday from 1 to 5 p.m. at the Hansford County Courthouse in Spearman.

Letter to the Editor

Dear Editor:
When you are co-chairman of some event like the Hansford Round-Up, you depend on a lot of people to make it an enjoyable weekend.
Although Rich, Karen, Buford and I get the praise and the good reports, we couldn't have done it without all the help.
There is no way to remember

everyone to say thanks, but two main people we want to thank are Cora Queener and Mike Cudd. They both worked tirelessly to help put things together.

We feel like fun was had by all who attended. I am sorry we forgot to set up the horse shoes. We had them in the van and I completely forgot till late in the day.

Again I say thanks to all who prayed and believed for the beautiful weather. Till Next Time.

Rich and Helen--Buford and Karen
Editor's Note: Both the Hansford Plainsman and the Spearman Reporter should be open forums for the communities they serve. As such, all letters to the editor will be printed in their entirety within these pages.

Letters from the community are invited and welcomed. There are only few guidelines. All letters must be signed, however, we will not print your name if you so request. Unsigned letters or anonymous letters will be filed in the wastebasket.

All letters to the editor should be typewritten and double spaced when possible. Length should be kept to a maximum of 300 words. We are unable to print lengthy letters.

Do not hesitate to write, whether the subject is positive or negative. We do reserve the right to edit any objectionable material. Material deemed to be slanderous or libelous will not be printed.

Take advantage of this public forum. You are invited to submit your letters to: Editor, Hansford County Plainsman and/or Spearman Reporter, Box 458, Spearman, Tx. 79081.

ART CLASSES for KIDS

1st - 6th Grade
(divided into classes by age)

- Sketching
- Acrylics
- Water color
- Drawing
- etc.



MONTH of JULY

For more information call
Stephanie Brock
659-3933

Condemnation jury trial correction

The jury panel listed in the condemnation trial story which appeared in Thursday's Spearman Reporter was in error. The panel listed was one selected for a January trial in the suit. That trial was cancelled and rescheduled.

The rescheduled trial was held this past Monday and Tuesday. Member of that jury panel included Jooleen Thompson, Jack Weldon;

Thelma Lamb, Jeffrey Lane Beedy, Dennis Baker, Willie Martinez Salgado, Adela Garcia Lopez;

Janice W. Mayfield, Eris Pittman, Mrs. Aubrey Rasor, Clyde Soapes, Jr., and Melinda Crooks Zimmer.

The newspaper regrets any embarrassment this error may have caused.

Hansford Hospital Report

Patients in the Hansford Hospital are Nellie McDonald, Bob Crawford, Larry Roberts, Nadine Atchley, Danna Iribeck, Jop Franz, Helen Shapley, Sarah Connelly, Jerry Rex, Jerry Pat Davis.

Dismissals from the Hansford Hospital are Willie Mae Cash, Cynthia Jenkins, Pearl Shapley and Faye Blount.

REPORT

Congratulations to John R. Collard, CLU. John was recently recognized by the Texas State Legislature for his work with the Free Enterprise Education Program.

Having recently come out of the life insurance industry ourselves, we have a certain amount of respect and admiration for anyone bearing the CLU -- Chartered Life Underwriter -- designation.

That small title signifies a commitment to superior service in the life insurance industry. And, while knowing John only shortly, we can easily believe he shares the same devotion for his business and clients as he does for the many and varied civic functions he attends to.

John has probably been a CLU longer than we've been alive -- that's a guess on our part. No matter, congratulations are still due -- and deservedly earned.

Market Quotes

WHEAT	\$2.24
CORN	\$2.10
MILO	\$3.15

LEADER DOG

"I really feel like I'll be able to see again, someday," he declares. "That's one of the things that keeps me going."

There has been more than one trying time for the Spearman man in the last five years, however.

Because of the dialysis, he had to have an artery removed from his right arm and replaced with a larger one -- this from a cow.

"The only thing keeping me alive right now is somebody else's kidney and a cow's artery," he says, smiling.

In addition, Stumpf also takes special anti-rejection medication twice a day. He also takes daily injections of insulin for his diabetes.

Stumpf began delving into the subject of a leader dog when his physicians urged him to do a lot of walking in order to maintain a healthy kidney following his transplant.

"At first all I could do was walk from the dining room out to the curb," he relates. "Now I walk a couple of miles each day -- mostly by myself and occasionally with somebody else."

The leader dog will give him more independence, however, as he has to go to Dallas on a regular schedule for routine kidney check ups.

"Now when I go, I won't have to drag somebody else along with me," he says.

In fact, Stumpf will be making the trip to and from Detroit by himself. It is one of the requirements at the school which will train him with the dog.

In December, the Spearman man began researching the idea in earnest and received a lot of help from the Top-O-Texas district.

He made his application in April and, one week later, on Good Friday, received notice that he had been accepted and was to report July 5 for training.

"I'm getting kinda excited," he laughs. "I have a second cousin at Bryan's Corner in Oklahoma who recently got a leader dog and I've talked with him about it. He tells me it's the best thing that's ever happened to him."

Stumpf's wife, Carol, is anxious as well, although probably not for the same reasons.

"I've got to stay here and let him go on his own and that's really hard to do," she says with a smile. "Phillip is independent, he always has been."

And that independence shows through in his joking demeanor and casual talk about his condition. Blindness is something he now accepts and, as he says, life goes on.

"The first time he went walking by himself, he called me at work and told me he was at his Dad's house," Carol remembers. "I asked him if he took his cane and he told me no."

"I told her that the cane was only good for beating off mad dogs and good looking women," he laughs. "And I didn't run into either one of those while I was out."

The Hansford Plainsman

PUBLICATION [USPS 2346-6000]
SPEARMAN, TEXAS 79081
213 main
box 458
659-3434

OWNED AND OPERATED BY
Texas Independent Newspapers, Inc.
Second Class postage paid at Spearman, Texas 79081.

Any erroneous reflection upon the character of any person or firm appearing in these columns will be gladly and promptly corrected upon being brought to the attention of the management.

PUBLISHER
JAMES C. JARRETT

SUBSCRIPTION RATE: Hansford, adjoining counties, combination with the Spearman Reporter, \$19.95 plus \$1.25 for tax.
POSTMASTER: Send address changes to Hansford Plainsman, Box 458, Spearman, Texas 79081.

APPRAISAL

the previous tax year -- or a combination of the two.

The effective tax rate method acts as a cost shift mechanism and is allowable by state law. The tax burden originally held by the oil, gas and mineral evaluations would be shifted on a prorata basis to all other taxable items.

As an example, a taxable base of \$10 million with a tax rate of 50 cents per \$100 of value would result in \$50,000 collected. If the tax base were to drop to \$9 million, the tax rate would have to climb to slightly over 55 cents per \$100 of value to gain the same \$50,000 in tax revenues.

While this results in higher taxes on the remaining properties, the effective tax rate is equal to the old tax rate since it provides the same income. Thus the tax burden is shifted from the declining values to those which have remained on a near status position.

All three school districts which serve Hansford County -- Pringle-Morse, Gruver and Spearman ISD's -- may also be adversely affected by budgetary restraints out of Austin which could see state funds sent to the school districts reduced as well.

"All in all, this is forcing us to take a hard look at the services, we are providing and making us trim some of the less necessary ones out," remarks one elected official. "It's really making better operators out of all of us."

None of the taxing units within Hansford county have yet set a budget, much less a tax rate, as they waited for the evaluations from the appraisal district.

Since most of the taxing bodies within Hansford county are on an October 1 fiscal year start, budgets and tax rates will have to be set by September.

A list of taxing entities, along with their 1986 taxable values, their 1987 taxable values, their 1986 tax rate and the resulting tax loss or gain follows.

CITY OF GRUVER; 1986 Value -- \$20,886,010. 1987 Value -- \$21,059,110. Difference -- +\$273,100. 1986 Tax Rate of \$.5629 per \$100 of value. Tax Gain for 1987 -- \$1,537.28.

CITY OF SPEARMAN; 1986 Value -- \$54,222,901. 1987 Value -- \$50,631,340. Difference -- -\$3,591,561. 1986 Tax Rate of \$.68 per \$100 of value. Tax Loss for 1987 -- -\$24,423.

GRUVER ISD; 1986 Value -- \$228,806,110. 1987 Value -- \$225,165,251. Difference -- \$3,640,859. 1986 Tax Rate of \$.798 per \$100 of value. Tax Loss for 1987 -- -\$29,054.

SPEARMAN ISD; 1986 Value -- \$254,404,661. 1987 Value -- \$222,892,791. Difference -- \$31,511,870. 1986 Tax Rate of \$.833 per \$100 of value. Tax Loss for 1987 -- -\$262,494.

PRINGLE - MORSE CISD; 1986 Value -- \$155,168,254. 1987 Value -- \$121,279,376. Difference -- -\$33,888,878. 1986 Tax Rate of \$.5322 per \$100 of value. Tax Loss for 1987 -- -\$175,035.

HANSFORD COUNTY; 1986 Value -- \$408,895,830. 1987 Value -- \$384,335,460. Difference -- -\$24,560,370. 1986 Tax Rate of \$.24011 per \$100 of value. Tax Loss for 1987 -- -\$58,972.

HANSFORD CO. HOSPITAL DIST; 1986 Value -- \$408,895,830. 1987 Value -- \$384,335,460. Difference -- -\$24,560,370. 1986 Tax Rate of \$.262 per \$100 of value. Tax Loss for 1987 -- -\$64,348.

NP WATER DIST. #2; 1986 Value -- \$419,093,840. 1987 Value -- \$387,461,640. Difference -- -\$31,632,200. 1986 Tax Rate of \$.0088 per \$100 of value. Tax Loss for 1987 -- -\$2,784.

PALO DURO WATER AUTH; 1986 Value -- \$419,093,840. 1987 Value -- \$387,461,640. Difference -- -\$31,632,200. 1986 Tax Rate of \$.0119 per \$100 of value. 1987 Tax Loss -- \$3,764.

the winning COMBINATION

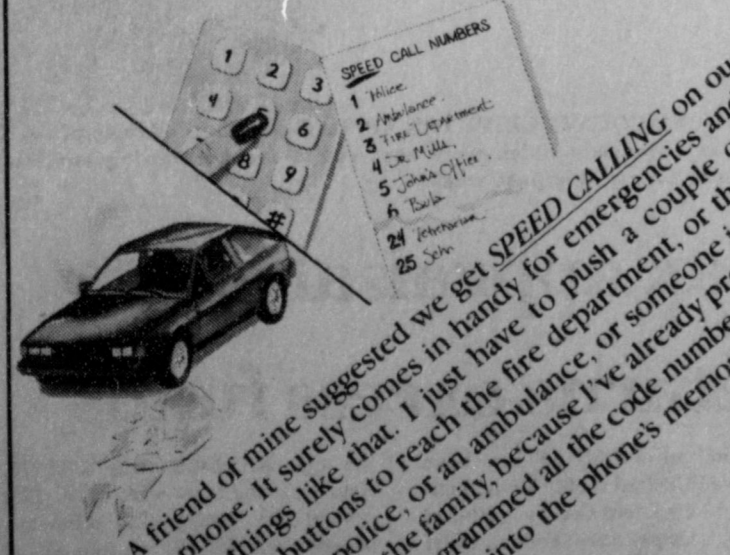
YOU AND GTE CUSTOM CALLING

For Spearman Customers

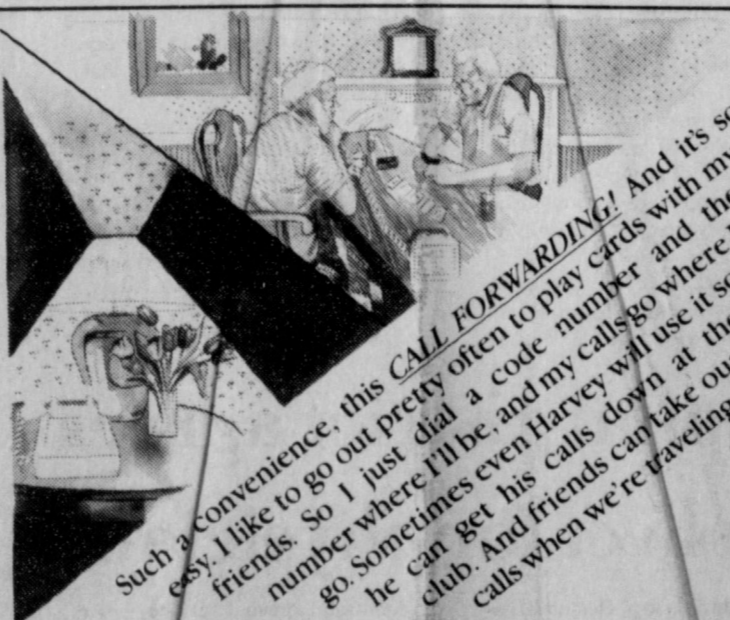
Buy any GTE Custom Calling Feature Before June 26, 1987, And The Installation Is Free.



My parent's phone is never busy, even when I'm talking on it! And do they ever like that idea. See, I'll hear a little beep on the line that means someone is calling our number. So with CALL WAITING, I just push the switch to check over to see who it is, and then I can get off the phone if I have to. Dad and Mom don't miss their calls that way.



A friend of mine suggested we get SPEED CALLING on our phone. It surely comes in handy for emergencies and things like that. I just have to push a couple of buttons to reach the fire department, or the police, or an ambulance, or someone in the family, because I've already programmed all the code numbers into the phone's memory.



Such a convenience, this CALL FORWARDING! And it's so easy. I like to go out pretty often to play cards with my friends. So I just dial a code number and the number where I'll be, and my calls go where I go. Sometimes even Harvey will use it so he can get his calls down at the club. And friends can take our calls when we're traveling.



Every holiday is very important to me. With THREE-WAY CALLING, both my children can get on the phone with me at once, even living so far apart. It's like having a sweetheart to arrange this for me.

Call your GTE business office or stop by a GTE Phone Mart/ Customer Service Center before June 26 to take advantage of this special offer.*

CALL WAITING: If you have Call Waiting, a tone will tell you that another call has come for you when you are on the line.

THREE-WAY CALLING: This feature lets you set up a three-way local or long-distance conference call without help from the operator.

CALL FORWARDING: This feature lets you automatically transfer incoming calls to another number.

SPEED CALLING: Speed Calling lets you store most frequently called or emergency phone numbers by dialing only a one or two digit code.

*Some limitations may apply. Call your local GTE business office for details.

General Telephone



YAMAHA INTO SUMMER SIZZLE SALE

XJ700N/Maxim

- Powerful 696cc inline-4 DOHC engine
- Yamaha's exclusive Induction Control System provides plenty of low-end torque and top-end performance
- Two-piece seat design and fat rear fender give it a tough, heavy appearance
- Upswept exhaust pipes for extra style
- More chrome and deep gloss paint for a sporty, hi-tech look

\$2,099.
Reg. \$3,199

On The Spot Financing

Eagle Cycle Shop

117 S. Main 435-3594
Perryton

YAMAHA
We make the difference™

To God a Note of Thanks

by Mrs. Greever

Friends this day we are going to think seriously I hope of the great difference in light and darkness and for our first thought we go to Acts chapter 26 verse 18.

We learn what Paul heard from a voice from heaven when he fell to earth because of a light brighter than the sun shone about him at midday.

This voice said arise and stand on thy feet, I have appeared unto thee to make thee a minister and witness of the things you have seen and heard unto whom I will send thee.

To open their eyes and to turn them from darkness to light and from the power of satan unto God. That they may receive forgiveness of sins and an inheritance among them which are sanctified by faith that is in me.

Now in the study of Paul's life he was a very learned man under the law. Very strict and so sincere in his belief that he was of all the worst it seems against Christ and in all punishment of people who accepted him.

There was none greater but when the Lord was through with his awakening or I would say opening his eyes by making blind and etc.

He certainly was changed from utter darkness to light, without delay preached Christ and him crucified.

To me the study of his experience is outstanding of a change from a sinner to a christian. This scripture plainly tells us they who are changed from darkness to light have their sins forgiven and also an inheritance among the sanctified.

Two definite works of grace, a person forgiven of all the sins they have committed and before they were dead in trespasses and in sin.

A conception of spiritual life. Then that person who will surrender all to follow Jesus who came to do for people. That the law could not do because of the weakness of the flesh. Rom. 8:3.

In Rom. 5:2 we read by whom also (Christ) we have access by faith into

the grace wherein we stand and rejoice in the hope of the glory of God.

Access - The right to come unto, yes grow in grace. It is for whosoever will who have repented with a godly sorrow and have been forgiven.

Freely given when surrendering spirit soul and body to the Lords will and to sanctify or set apart is what Gods word teaches us.

A born again experience, a spiritual birth. Now we are set free from sin. O praise the Lord for such marvelous mercy love and grace.

Once dead in sins and without hope in God now made alive by being covered with the blood shed by Christ at Calvary.

1 John 5:11 and 12; we read this life is in Gods Son. He that hath the Son hath life and he that hath not the Son hath not life.

Now we hear Jesus say John 8:12 I am the light of the world he that followeth me shall not walk in darkness but shall have the light of life. It is certain when we are in sin we are not and cannot follow Christ but instead in darkness and are followers of satan.

When in this state the Bible says "No hope in God." But now in Christ Jesus ye who sometimes were far off are made high by the blood of Christ. Eph 2:12 - 13.

Now what is Gods promise for all of us? John 3:17-21; God sent not his Son into the world to condemn the world but that the world through him might be saved (from sin).

He that believeth on Him is not condemned but he that believeth not is condemned already because he hath not believe in the name of the only begotten Son of God and this is the condemnation that light is come into the world and men loved darkness rather than light because their deeds were evil.

For every one that doeth evil hateth the light neither cometh to the light lest his deeds should be reproved.

But he that doeth truth cometh to the light that his deeds may be made

Spearman students raise \$4,700

More than \$4,700 was raised by 91 Spearman elementary students during an April MS Read-A-Thon. Three students were singled out for special recognition of their efforts for the Multiple Sclerosis event.

Haley Farber and Josh Bynum were recognized as leading money earners for the Spearman effort while Brandi Burch received a special award for most books read.

Awards were given to all participants who turned in their kits following the Read-A-Thon.

The Spearman contingent was composed of first through fourth grade students at the Spearman elementary school.

The over \$4,700 grand total was the second largest money total for any group in the Texas Panhandle area outside of Amarillo.

"None of this would have been possible without the teachers, the kids and their sponsors," declares Kevin Bynum coordinator of the event. "We'd like to thank all of them and Allen Alford and Mrs. Betty Uptergrove for their help in making this event a success."



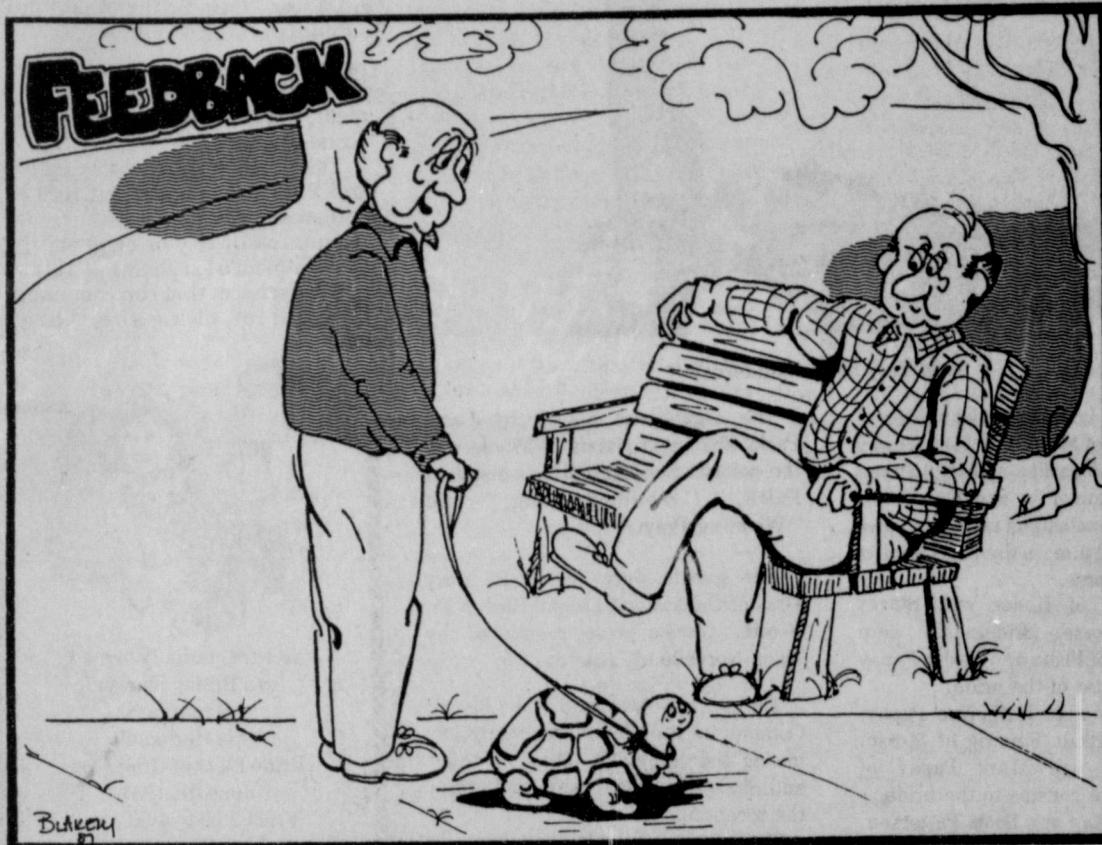
JOSH BYNUM



BRANDI BURCH



HALEY FARBER



DOCTOR'S ORDERS ... HE TOLD ME TO BUY A PET AND EXERCISE IT

manifest that they are wrought in God.

Now my dear friends in no way can we deceive God. He knows who is walking in the light and the ones who are not.

As I am thinking of our day and night I feel it is a parable in explanation of such. John 11:9 - 10; are there not twelve hours in the day?

If any man walk in the day he stumbleth not because he seeth the light of the world. But if a man walk in the night he stumbleth because there is no light in him.

Now the light is in Jesus and if we creatures made of dust will follow Him we will in Gods time have an abundant entrance into the city of God (new Jerusalem) coming down from God out of heaven.

Jesus will be the light of that city the place of pure delight where the walls are all of jasper, every gate of one pearl, the foundation of precious stones, and the street of pure gold.

By Gods grace promised us I wouldn't want to miss it would you? "Eternal Life".

Overloading the dryer causes wrinkling. To remove wrinkles, tumble clothes again on the permanent press cycle.

We thank you for your patronage - for your convenience our New Summer Hours are from 9 a.m. to 11 p.m. 7 days per week.

Tuesdays Special - 2 movies for the price of 1

The Knack Shoppe
317 Main Spearman

EASY AS ABC

(TO SHOP AT HOME)

Some things shouldn't be difficult. Shopping should be simple, easy and uncomplicated. If you agree, you're probably already shopping right here at home. No long drives on congested highways and none of the other "hassles" you encounter when you head for the "big city." When you shop at home, you deal with friendly merchants who appreciate your patronage and really care about you because they are your friends and neighbors!

Why roam?
The best shopping's right here at home!

Message brought to you by
Spearman Chamber of Commerce

semi-annual summer CLEARANCE

Starts Monday, June 15

All Summer Fashion Merchandise

30% to 50% OFF

J.G.'s

306 Hancock Spearman, Texas 659-3424

Wedding Vows Exchanged



Mrs. Paul Bryan Lauderdale

Cassandra Lyn Papay, daughter of Eddie Papay of Morse and Mrs. Peggy Stegeman of Amarillo, and Paul Bryan Lauderdale, son of Dr. and Mrs. W.H. Lauderdale, exchanged marriage vows Saturday, at 2 p.m. in the First Baptist Church of Morse.

The Maid of Honor was Stacey Poole of Morse. Bridesmaids were Christi Gore of Plano and Leslie Papay of Morse, sister of the bride.

Flowergirls were Katherine Papay, Morse and Mikala Reising of Morse. Ring bearer was Mark Papay of Morse. All are cousins to the bride.

The Best Man was Scott Patterson, of Houston. Groomsmen were Grant Lauderdale, of Houston and Lance Lauderdale of Odessa, both brothers of the groom.

The organ was played by Carol Pack. ShaLynna Harris of Morse was the soloist. She sang "Household of Faith," "Wedding Song," and "Wedding Prayer".

The guests were seated by Gary Gray of Odessa and Darrell Bird of Ft. Worth. Guests were registered by Dana Norvelle of Littleton, Co.

The reception was held at the Morse Community Building immediately following the ceremony. Dana Norvelle and ShaLynna Harris were servers at the reception.

The couple will make their home in Ft. Worth. Paul will continue to work for Austin Road Company. Cassandra will continue her education at UT of Arlington.



SENIOR CITIZEN'S CORNER

Medicare: Are You Eligible?

Medicare is a literal lifesaver for hundreds of thousands of Americans, and yet millions don't know exactly what it does, how it works, or if they are qualified to receive any benefits. If you are one of those millions, you could be spending more money than you should for health care.

Medicare is a government-sponsored health insurance program for Americans over the age of 65 and for severely disabled people who have been getting disability benefits from Social Security for at least two years. It also covers people insured by Social Security who have chronic kidney disease and need dialysis or a transplant. The Medicare program gets the money it pays out in benefits from three different sources. The money from Part A of the program, hospital insurance, comes from contributions from employers, their employees, and workers who are self-employed. Part B, the medical insurance, is funded by the people who pay monthly premiums to be enrolled in the program, and the Federal government, which pays at least half of the costs.

There are some things that Part A and Part B will not cover, such as cosmetic surgery or procedures that are not reasonable or necessary for the treatment of an illness. It will not pay for services that someone else is taking care of, such as a free chest X-ray.

Tinnitus meeting to be held at Pavilion

A special meeting for sufferers of Tinnitus will be held next Saturday, June 20, in Amarillo by the Tinnitus Association of the Panhandle.

The meeting will be held at the Northwest Texas Hospital Pavilion, 7201 Evans Blvd. beginning at 1 o'clock that afternoon.

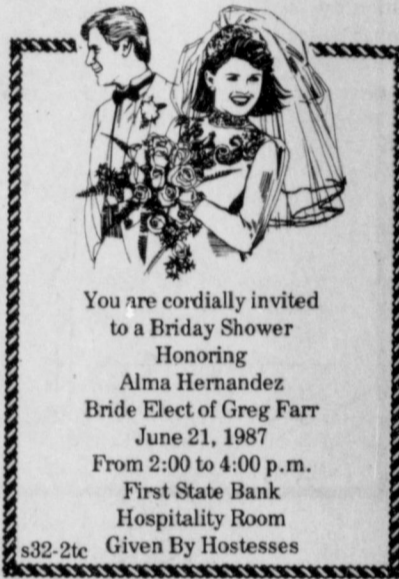
The Pavilion is located in the Amarillo Medical Center, just behind the Speech and hearing center in the Amarillo medical complex.

"Tinnitus is a persistent noise in the ear which may be continuous or it may come and go," reports Pat R. Cooper, executive director for the group. "People with the disease meet and share their experiences with others."

At the meetings, individuals share techniques they have discovered which give them some relief from the problem, the director says.

A speaker will give a short presentation on the possible causes of Tinnitus, the various coping techniques and some theories about cause and treatment.

Questions regarding either the meeting or the disease should be directed to Pat R. Cooper, TAP Director, 8405 Whittier Drive, Amarillo, Tx., 79110.



You are cordially invited to a Bridal Shower Honoring Alma Hernandez Bride Elect of Greg Farr June 21, 1987 From 2:00 to 4:00 p.m. First State Bank Hospitality Room Given By Hostesses

THOUGHT FOR FOOD

by GOULD CROOK

Vegetables Italiano

- 2 tbsp. green onions, chopped
- 1 tbsp. butter or margarine
- 1 can (8 oz.) stewed tomatoes
- 1/8 tsp. thyme
- Dash pepper

- 1 can (16 oz.) cut green beans
- 1 1/2 tsp. cornstarch

Saute onion in butter in medium skillet. Add tomatoes, thyme, pepper. Drain green beans, reserving liquid. Dissolve cornstarch in reserved liquid; add to tomato-onion mixture. Cook over low heat, stirring constantly until thickened. Add beans, heat. 6 servings.



4 WHEELERS

YFM60	Reg. 849.00	\$759.
YFM 80	Reg. 1199.00	\$1079.
YFM 100	Reg. 1499.00	\$1339.
YFM 200	Reg. 2299.00	\$2029.
YFM350ERT	Reg. 2949.00	\$2599.
YFM350XT (Warrior).....	Reg. 2979.00 (Demo)	\$2499.
YFM350FWT (4X4).....	Reg. 3649.00	\$3269.
YFZ350 (Banshee).....	Reg. 3149.00 (Demo)	\$2599.

ON THE SPOT FINANCING

EAGLE CYCLE SHOP

717 S. Main - Perryton - 435-3594

YAMAHA

We make the difference™

The Spearman Reporter and Hansford Plainsman Are Here to Serve You!

Special Subscription

Rates

For the Spearman Reporter and Hansford Plainsman

\$19.95 per year
PLUS \$1.25 TAX

In Hansford County

\$24.95 PLUS \$1.56 TAX
per year out-of-county subscriptions

Order Your

Spearman Reporter and Hansford Plainsman Today!

Yes, I would like a full years' subscription.

Name: _____

Address: _____

City: _____ State: _____ Zip: _____

Mail to: The Spearman Reporter, Box 458, Spearman, TX 79081

The Spearman Reporter and Hansford Plainsman features

★ Spearman Sports

★ Oil and Gas Report

★ Spearman Happenings

★ Spearman and Hansford County News

★ And More!

★ Weekly Features

Your comments are invited -

It's important to us to make your newspaper what you want. Please feel free to call or write us with your suggestions or comments.

CALL US TODAY!

Do Want Ads Work? - Do Mice Like Cheese?



Want Ads Work For You Everyday!

Call 659-3434



CLASSIFIED RATES
 Regular... Per Word-\$0.13
 Display... Per col. Inch-\$4.20
 Double rate for blind ads
 Minimum charges
 Cash.....\$4.00
 Charge.....\$4.50

CASH IN ADVANCE ADS
 •Work wanted •Trailers for Sale
 •Business Opportunities •No
 longer Responsible •Political
 Advertising •Child Care
 •Baby sitting •Garage Sales
 •Out-of-county Ads unless ad-
 vertiser has established credit
 with •The Spearman Reporter

DEADLINES
 To place or cancel ads
 Friday - 12:00 p.m. . . . Sunday
 edition.
 Tuesday - 12:00 p.m.
 Thursday edition

The Spearman Reporter re-
 serves the right to reject, edit,
 revise and properly classify all
 advertising submitted for publi-
 cation. The Spearman Reporter
 also reserves the right to cancel
 any advertisement at any time.
THE SPEARMAN REPORTER
 213 Main, P.O. Box 458
 Spearman, Texas 79081

Business Services

NOTICE
 Wallace Monument Co.
 Monuments, Curbing,
 Grave Covers
 Local Representative
LEONARD JAMESON
 Spearman, Texas

HANSFORD COUNTY
 Planned Parenthood
 412 Davis
 659-2483
 Spearman, Tx.
 Monday - Friday
 8:30 - 12:30

STEAM RINSE & VAC- Rinse and
 Vac Shampooer for rent at Gordons
 Drug. \$10.95 up to 24 hours.

APPLIANCE REPAIR- Call Jim
 Nobles at 659-3528.

ALCOHOLICS ANONYMOUS MEETING

Hansford County Library
 (Upstairs)
 122 Main-Spearman
 Open meeting 2nd Tuesday

AL ANON

Tuesday
 8:00 P.M.

L&M Body Works

1501 Hwy 15
 659-2775

Tailpipes - \$29.95
 Mufflers - \$39.95
 Most Dials \$160.00
 complete

OSGOOD MONUMENT CO.

Amarillo, Texas
 Dealers of Rock of Ages
 Granite, as well as all
 colored granites, marble
 and bronze memorials.

represented by
BOXWELL BROS.
FUNERAL HOME

519 S. Evans
 659-3802

Special Notice

PANHANDLE CRISIS CENTER: 101
 S.W. Forth, Perryton, Texas 79070,
 806-435-5013. Help is available at no
 charge for domestic violence and
 sexual assault. Call Panhandle Crisis
 Center, receive support during a
 difficult time. Counselors on call 24
 hours a day. Call for help.

WEIGHT WATCHERS: meets each
 Monday at 6:00 p.m. at the Home
 Demonstration Building, Spearman
 Texas.

TOPS #1245, SP meets every Tuesday
 night at 7:30 p.m. at Boyd's Beauty
 Salon located at 310 W. 4th. Drop by
 and join TOPS.

Situation Wanted

NEED your trim on your house painted?
 Contact: Coach Mireles - Phone:
 659-3615. Free Estimates - will work
 by the job or by the hour. Reasonable
 prices and references.
 31s-2tp

PIANO TUNING & REPAIR: Free
 estimates, references. E. E. Clark,
 Box 1016, Dalhart, Tx 79022. Call
 806-249-2783.
 31s-7tc

WINDOWS DIRTY? Moore's Profes-
 sional window service. Any other type
 odd jobs; including yards, carpentry
 work. Call 659-2826.
 32-6tc

For Rent

FOR RENT: one bedroom furnished
 apartment call Gus McLain at
 659-2274.

FOR RENT: Nicely furnished 2
 bedroom apartment. No pets. Call
 659-3471.
 27-rtn

FOR RENT: Trailer space in Spear-
 man. All utilities, fenced and concrete
 walk ways. Call 435-5080.
 38-rtn

FOR RENT: Nice small 3 bedroom
 house call 659-5297

FOR SALE OR RENT nice house. 3
 bedroom, office, 1 1/2 bath, good
 condition. Nice neighborhood. 727
 Wilbanks. Call Sheila Watley. 659-
 3970.
 s32-rtn

Real Estate

FOR SALE: 1980 Nasau Mobile
 Home, 14 X 60, 2 Bedroom. Refriger-
 ator and range included, \$10,000 like
 new. Also 5500 CFM Evaporative air
 conditioner - \$300. Also king size
 water be, like new, \$150. Sears heavy
 duty washer and dryer - \$500. Call
 Frank Lewis 733-2123 or 733-2241.
 S 32 S rtn

ABANDONED HOMES TAKE UP PAYMENTS!!!

Call Collect
 806-381-1352

\$99.00 down only \$235.15 144
 months 12.75 APR. Completely re-
 modeled mobile home. Call Frank at
 806-376-5363.

HOUSE FOR SALE: Large living room
 & Large Den. New kitchen - corner lot
 many extras. \$30,000.00 Call 659-2372
 S 32 2pt

HOUSE FOR SALE: 807 Haney - 3
 bedroom, 1 1/2 bath, basement, 150'
 lot. Owner has moved - must sell.
 Assumable loan. Call 659-5068.
 31s-4tp

FOR SALE: Located 204 N. Hazel-
 wood, 3 bedroom trailer, 1 1/2 bath.
 Small equity take up payments. Call
 405-254-3888 or 659-3380
 31s-5tp

Beautiful Tiffany double wide - front
 bay window with formal dining room
 spacious 3 bedroom 2 bath mediter-
 ranean style kitchen with built in name
 brand appliances. Call Bruce 806-376-
 5363.

FOR SALE: Nice 2 bedroom house.
 Large lot, 2 stall garage with apart-
 ment on back, storage sheds, storm
 cellar and fenced back yard. Priced,
 mid to high twenties. Call 659-2409.
 S31-rtn

CREDIT PROBLEMS? Down payment
 Problems? For sincere help call 806-
 381-1352.
 (Call Collect).

FOR SALE: 2 bedroom older home on
 large corner lot, large detached
 garage. Call Emmett R. Sanders
 Realtor at 659-2516 or 659-2601 -
 nights.
 s29-rtn

Remodded - 3 bedroom 2 bath
 Mobile Home only \$176.41 - 84
 months 12.77 APR \$700.00 down free
 delivery and set up. For more informa-
 tion call Art at 806-376-5363.

FOR SALE: Very nice - 1979 West
 Chestor 14x80 mobile home, 3 bed-
 room 2 bath. Central air & heat. Built
 in dishwasher, low equity and assu-
 mable low-interest loan. Serious in-
 quiries only. phone 659-2161.
 32s-Sunday only - 3tp

Help Wanted

R.N. Supervisor for primary home
 Services. Travel covering 8 northern
 counties of the Texas Panhandle.
 Salary plus mileage. Please contact
 Harold Lena Robertson or Nevada
 O'Pry at 372-2531 E. O. E.
 S32 3tc

HELP WANTED ADVERTISING SALES DIRECTOR

Coordinate and
 Sell advertising
 For Spearman
 and Gruver Newspapers

Apply in person
 10 a.m. to noon

Spearman Reporter

213 Main

Autos for Sale

MUST SALE: 1970 Chevey Truck. Full
 covered box on back. Good tires. make
 an offer. 659-2361.
 s32-4tc

Farm Items

WOULD LIKE to sell out and retire.
 Have one high-performance crop
 spraying machine, three high-perfor-
 mance combination toppers and Round
 up applicators in excellent condition.
 Also building, lot etc. Randy Hunt -
 Spearman. Call 806-659-3588.
 31s-rtn

Lost and Found

LOST Female Blue Healer - Black ears
 and one black eye. No collar. Missing
 since Sunday. 659-2830 before 5:00 or
 3170 after 5:00.
 s32-2tc

From Mobile Homes To Trucks
 To Feedboxes, Our Truck Shop
 Can Fix It. Call Red-273-7541
 At Bob Johnson
 Motor Co.
 In Borger

Garage Sales

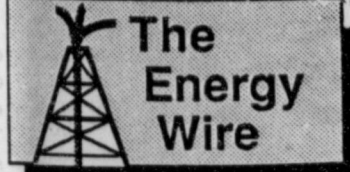
4 family garage sale Saturday June
 20 9:00 till 7:00 at the Home Demon-
 stration Club Room.

Miscellaneous

Steel Building 100,000 feet con-
 struction available commercial - farm -
 horse barn & arenas. Grain tanks
 factory direct. Don't buy before you
 call Texhoma, Ok.
 405/423-7118 S32 2t

Classified Ads Work!

Call 659-3434



Between Deputy Energy Security
 William F. Martin and American
 Petroleum Institute President Charles
 J. DiBona, there lies a gulf of
 difference in opinion: the Persian
 Gulf, to be specific.

At a recent hearing before a Senate
 energy subcommittee, Martin made
 his case that rising oil imports to the
 United States are not as a bad thing
 as they were in the 1970's.

The security of the nation's energy
 supply does not correspond directly to
 the level of imports, even if imports go
 over 50 percent of the nation's
 consumption, he told senators on the
 panel.

Martin—who headed the adminis-
 tration's research effort that led to last
 month's well-publicized "Energy
 Security" study -- listed several
 reasons why he believes import levels
 are not like a dip stick to measure the
 U.S. energy situation.

Other important factors, he said,
 are "spare (oil) production capacity"
 around the world, the level of U.S.
 company oil stocks and free world
 dependence on production from Mid-
 dle Eastern nations that form the core
 of the Organization of Petroleum
 Exporting Countries.

Spare oil production capacity is
 one of the sharpest areas of disagree-
 ment between Martin and DiBona,
 who heads up the largest oil industry
 trade organization. Spare capacity is
 the amount of oil that could be
 immediately produced, but is kept in
 the ground due to market conditions or
 OPEC policy.

Martin argued that the world had
 little spare capacity for production at
 the time of 1973 oil embargo and the
 1979 Iranian revolution, the two most
 severe shocks in the recent history of
 oil markets.

Spare capacity at the time of the
 1973 embargo was about 1 million
 barrels per day worldwide, and about
 2.8 million barrels per day at the time
 of the Iranian revolution, less than the
 amount of production lost during those
 events.

Spare capacity now is in the range of
 10 million barrels per day, about
 two-thirds of which is in the Persian
 Gulf, he said. "Only a catastrophic
 supply disruption could exceed or
 eliminate this spare capacity today,"
 Martin told the committee.

The fact that so much of the surplus
 capacity is in the Middle East was one
 of the key points made by DiBona at a
 briefing last week.

He said surplus capacity in the
 Persian Gulf is about 65 percent of the
 world's supply, and "almost all of the
 remainder lies in other OPEC
 nations."

DiBona noted that a crisis in the
 Persian Gulf, cutting off imports to the
 United States and other western
 nations, would immediately eliminate
 most of the spare capacity cited by
 Martin

And if the shortage resulted from an
 OPEC policy decision, even less of
 that capacity could be used.

The gap between DiBona and
 Martin reflects a larger difference
 between the view that U.S. production
 should be encouraged to hold down
 imports and the position that an
 increase in domestic production is less
 than a necessity.

The United States could add signifi-
 cantly to new oil reserves with a 50
 percent tax credit for drilling "wild-
 cat" oil wells, according to a Joint
 Taxation Committee report requested
 by three Senate leaders.

The report said a tax credit for
 wildcat wells, which seek to find oil in
 new areas, would add more to oil
 reserves than a 5 percent tax credit for
 all oil and gas drilling, which had been
 considered in the Regan adminis-
 tration's recent "Energy Security" re-
 port.

While the 5 percent credit would
 add to "depletion of th existing (oil)
 reserve Base," the 50 percent credit
 for wildcat wells "would tend more to
 encourage reserve additions," the
 report said.

Sen. Lloyd Bentsen, D-Texas, chair-
 man of the Senate Finance Com-
 mittee, sent the report to a number of
 Texas oil industry officials for their
 comments, according to Jack DeVore,
 Bentsen's press secretary.
 Bentsen, along with Sen. David

Boren, K-Okla., and Senate Majority
 Leader Bob Dole, R-Kan., asked the
 committee to prepare the report ex-
 amining five possible tax incentives
 for the oil industry, including the 50
 percent credit for wildcat drilling
 projects.

The report gave a detailed explana-
 tion of the incentives and their
 possible cost to the federal Treasury,
 with out describing the effect of the
 proposals on the industry.

Other incentives analyzed in the
 report by the committee were:

-- A 10 percent tax credit for research
 related to enhanced oil recovery.

-- Allowing a tax deduction for
 geological and geophysical costs for oil
 exploration.

-- Repealing a current limitation on the
 percentage depletion allowance tax
 deduction for independent oil and gas
 producers.

-- A 10 percent investment tax credit
 for replacing some equipment on a
 stripper well, which produces less
 than 10 barrels of oil per day.

DeVore said the proposals had not
 been endorsed by Bentsen or the other
 senators, but that they could become
 part of a package of legislation if they
 receive favorable backing from the
 industry.

In a letter accompanying the report,
 Bentsen explained that the senators
 wanted to know whether the propo-
 sals "would increase exploration
 activity significantly, lead to better
 techniques for existing reserves and
 help prevent the shutting in of
 marginal wells."

"There is no question that more
 generous proposals could be develop-
 ed which might do more to increase
 reserves," said Bentsen in the letter.
 "However, more generous proposals
 would require a substantially greater
 amount of federal revenues to be
 committed, and therefore would add
 to the pressures on the federal budget
 deficit. Our goal is to achieve the
 greatest incentive effect for the min-
 imum amount of revenue loss," he
 said.

Avocados Ripe On The Grocer's Shelf

Scientists at the University of Cali-
 fornia, Riverside have developed an
 inexpensive method for supermarkets
 to provide ripe, ready-to-eat avocados
 for retail sale.

Research has shown that treating
 avocados with the hormone "ethylene"
 accelerates normal ripening, without
 any ill effects to appearance or nu-
 tritional value. Although ethylene is
 used routinely on bananas, pine-
 apples and citrus, it has not been used
 on avocados until now.

Classified

Ads Work!

call

659-3434

CLASSIFIED AD FORM

Use this form to place your ad in the classified
 section. Mail with payment to P. O. Box 458,
 Spearman, Tex. 79081 or bring by our office at
 213 Main St.

Rates are 13¢ per word per paper. Minimum
 charge \$4.00

Check which paper you want your ad to appear

Spearman Reporter (Thurs.)

Gruver Statesman (Thurs.)

Hansford Plainman (Sun.)

For additional information, call 659-3434

Doc Blakely's

Pokin' Fun



St. Maarten is a Caribbean island
 under two flags. It is half Dutch and
 half French. Immediately, I thought of
 Brigitte Bardot in wooden shoes.

Then I learned there was a nude
 beach on this island. I thought of
 Brigitte without the wooden shoes.

Ladies, give this column to your
 husband. If he smiles at the second
 paragraph, hit him with your Dutch
 Cleanser.

Naturally, the nude beach was on
 the French side of the island but I
 didn't go sightseeing like all the young
 guys did. I was too dignified for that
 kind of behavior. Besides, they
 wouldn't let me on the bus with my
 telescope.

Just as well, I suppose. I under-
 stand it's very painful to sunburn your
 tongue.

Several of the guys told me about
 going there, though. One fellow was
 still wearing his binoculars. I asked if
 he got to use them. He replied,
 "Yes." When I asked how far away he
 was he answered, "about 12 feet."

Another college kid got through the
 laxly restricted beach entrance by
 convincing security people that he was
 an astronomer on a special assignment
 to study the newly discovered moons
 around St. Maarten.

I'll bet the old moons look a lot
 better in the dark.

One of the ladies in my party, who
 wouldn't let her husband go, over-
 heard the boys description of the
 French side of the island. "That's
 disgusting," she said.

"Yeah," replied her husband with
 a glazed look and a faint smile, "and
 something ought to be done about it in
 the next 40 . . . 50 years."

"Men!" she huffed, "if you had
 gone to that nude beach, the strain on
 your heart might have killed you."
 With a shrug, he muttered, "This is
 living?"

The guy had been looking forward
 to seeing the island ever since he saw
 a rerun of an old Brigitte Bardot
 movie, onboard the ship, which was
 made on St. Maarten. "Take away her
 long blonde hair," said his wife, "and
 what have you got?"

Looking at some souvenir wooden
 shoes on the Dutch side, he countered,
 "The most beautiful bald woman on
 the beach."

Do you wonder why tiny St.
 Maarten is divided by the Dutch and
 French? I did. I was told that the
 island was originally held by the
 French. The Dutch invaded and
 pushed inland until they got within
 sight of the nude beach. That's when
 they drew the line, laid down their
 arms . . . and picked up their
 telescopes.

Among the Neighbors

By Helen Fisher

R. T. Farris, who underwent surgery at Northwest Texas hospital several days ago, is at home now. He is recovering at a normal pace and expects to return to his duties at Leonard Hudson Drilling Company in

the near future. *****

Mrs. Ivan Allen has been busy getting her sister settled in Spearman. Mrs. Vera Cole of Amarillo, has moved here. Her health is not good

and she felt it wise to be near her sister. She is living at Nelson Apt #1 at 501 Cooke street. *****

Mr. and Mrs. Dee Allen have been looking after business interests in the Des Moines and Capulin area of New Mexico. They arranged their schedule to enjoy a few days at Red River and Eagle Nest. They expect to spend considerable time there this summer checking on their cattle. *****

Mrs. Sherill Wofford with Katy, Cali and Keenan have been visiting Dale and Mae Wofford since Friday. They returned to their home in Portales on Tuesday. *****

A week of very pleasant camping ended early this week for Hershall and Mary Ooley, along with Richard and Reba Ooley with Justin. Also in the group were Bob and Wanda Stewart. They were accompanied by their

grandsons, Dwayne and Phillip Creel of Spearman and another grandson, Stan Terwort of Wichita, Kansas. They fished, boated and camped at Great Salt Plains Lake in Oklahoma. *****

A welcome is being extended to newcomers, Mr. and Mrs. John Napoleone, who have lived in Spearman about a month. He is employed at the Spearman Equity and she is staying busy getting settled and homemaking.

He is a native Texan and she is originally from Pennsylvania. They have been living in Albuquerque prior to coming to Spearman.

They enjoy fishing and boating, but their main recreation is horseback riding. He participates in rodeos-roping and riding, and is involved in other cattle related activities.

They have no children, are attending the First Baptist Church and reside at 714 S. Bernice. *****

Lloyd Buzzard, who is an experienced hand at working cattle, has decided that turning one's back on a steer is unwise. Early this week he was assisting with working cattle, and had a run-in with one which resulted in both falling and Lloyd came up with a broken leg. He is in High Plains Baptist Hospital, with a complicated break in the lower leg. It is anticipated that recovery will be slow. *****

Years from now Clint Schnell will remember his 11th birthday. His aunt, who is a flight attendant on a major air line took him to Washington, D. C. for five days. He will do all the tourist places and historical sites as well as attend a function at Lincoln Center. *****

Former Spearman residents were in Spearman the early part of the week for several days visiting relatives and renewing old friendships. Guests of the Elvin Martins were Mrs. Alma Snowden and daughter, Mary Joy Robinson of Poolville. Mrs. Lila Fay Williamson who is now living in Lubbock accompanied them. *****



SHANNON SCROGGS

Shannon Scroggs completes Army training course

Pvt. Shannon D. Scroggs, son of James C. and Marlyn I. Scroggs of 21 N. Hazelwood, Spearman, Texas, has completed one station unit training (OSUT) at the U. S. Army Infantry School, Fort Benning, Ga.

OSUT is a 12-week period which combines basic combat training and advanced individual training.

The training included weapons qualifications, squad tactics, patrolling, landmine warfare, field communications and combat operations. Completion of this course qualifies the soldier as a light-weapons infantryman and as an indirect-fire crewman.

Soldiers were taught to perform any of the duties in a rifle or mortar squad. He is a 1986 graduate of Spearman High School.

LaLeche League lists survey results

Where should a new mother go for advice about breastfeeding? According to a recent survey, many doctors, childbirth educators, and nurses recommend that mothers turn to La Leche League.

Researchers also questioned nursing mothers, 90% of whom were familiar with La Leche League. Many of them identified La Leche League's book, The Womanly Art of Breastfeeding, as their most helpful source of information about nursing their babies.

The majority of the women who had been to LLL meetings said they would be likely to recommend the meetings to friends.

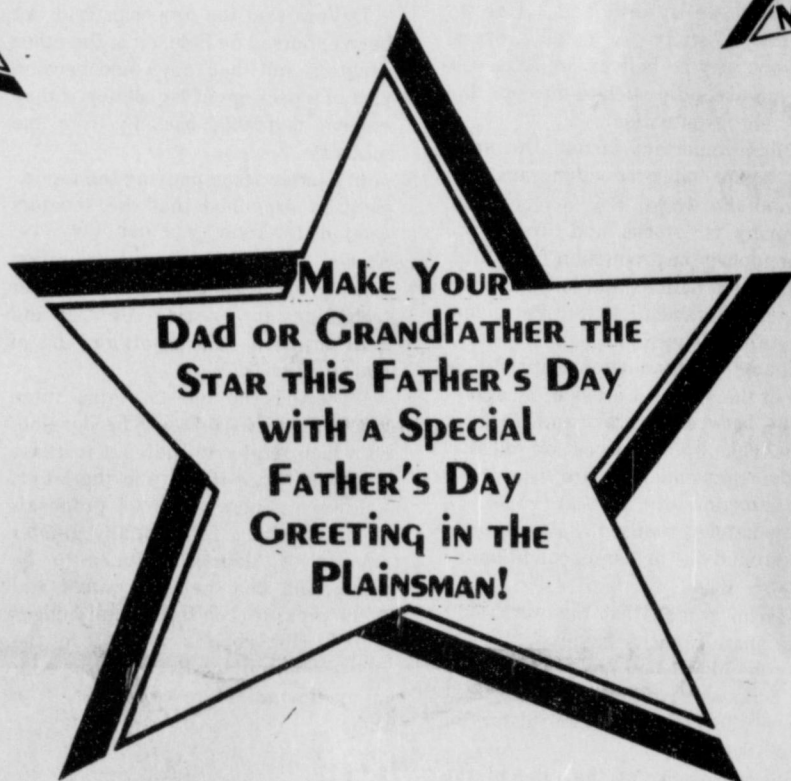
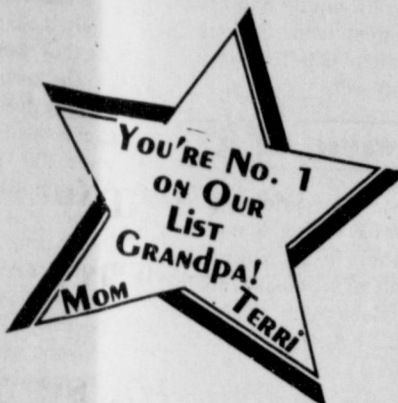
Mothers in the Spearman/Perryton area who are seeking information about breastfeeding can contact La Leche League of Spearman, the local Group's Leader, will answer questions and help breastfeeding mothers with problems.

In addition, the local Group meets monthly to discuss breastfeeding and mothering issues.

The Star is Dad



June 21st!



Yes, your personal message to your Father or Grandfather can appear on our Special Father's Day Page on Sunday June 21st And you can tell him and everybody in Gruver just how much you care for as little as \$5!

The two small stars above (approximately 1 col x 2 inches) can be used for your personal message for only \$5. Approximately 4 lines of type (20 characters per line). The larger star for extra long messages will be \$16. If you'd like to include his picture (large star only) include \$5 extra and a wallet size photograph (this size only, please). Money must accompany entry. (Deadline for sign up will be Wednesday, June 17

Use the Convenient Registration Form Above and Mail To or Bring By

Clip and Mail!

Yes, Make my Dad A Star!

Check one:

Small Star - \$5

Large Star - \$16

Photograph - \$5 extra large star only

Message: _____

Make checks Payable To: **The Hansford Plainsman, Box 458, Spearman, Tx, 79081**

THE HANSFORD PLAINSMAN

213 Main

Box 458

Spearman, TX 79081

19 WALLET SIZE COLOR PHOTOS

WE USE KODAK PAPER **99¢**

No limit on this offer

AT **KID'S STUFF**
719 West 7th
Date
Thursday June, 18

COME MEET OUR NEW PHOTOGRAPHER

Ask about our FREE 8 x 10 offer

Shugart's inc.

Group charge 99¢ per person per 19 wallets

Kodak paper. For a Good Look at the Times of Your Life. TM