

PDRA Calls Dam Election

HANSFORD LIBRARY
120 MAIN ST.
SPEARMAN, TX

THE Hansford PLAINSMAN

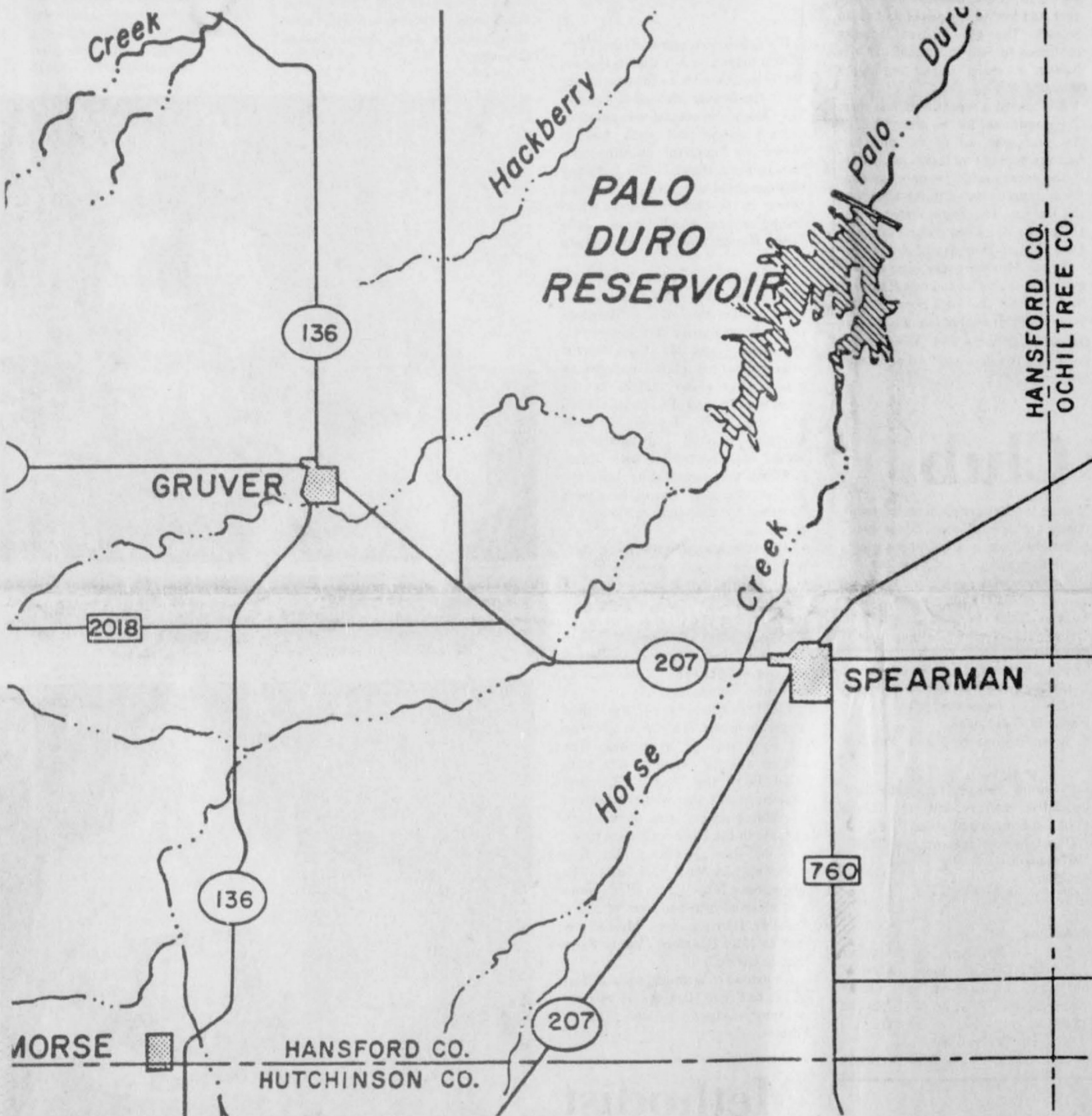
24 hr. prayer
service 659-2911

Volume 17 No 38

The Hansford Plainsman, Spearman, Texas 79081

Sunday July 27, 1986

Bond Election on New Reservoir Set August 26



State Water Board Approves Project

The Texas Water Development Board passed the request for the Palo Duro Dam. The Board held the hearing in Austin Thursday morning on a request from the Palo Duro River Authority to purchase the entire bond issue for the Palo Duro River project. "Lee had earlier stated that he anticipated no delay with the application to the state board, and he was right. Lee stated that it took about 30 minutes at the Austin meeting to get the project approved.

Absentee voting will start in Hansford county August 6th. The absentee voting for Spearman voters will be held at the courthouse; absentee voting in Gruver will probably be held at the City Hall or School House; Absentee voting will be held August 6th and will continue through August 22nd.

WHAT CITIES AND COUNTIES WOULD THE RESERVOIR SERVE?

Hansford and Moore counties and the City of Stinnett in Hutchinson County would be served by the reservoir. Cities within the service area include Dumas, Cactus, Spearman, Gruver, Sunray and Stinnett.

WHAT EXACTLY ARE WE VOTING ON?

Residents are being asked to authorize the Palo Duro River Authority to sell \$22.3 million in bonds to the Texas Water Development Board. The board is expected to purchase the bonds at a fixed 7.6 percent interest, maturing over a 25-year period.

WHY DO WE NEED A RESERVOIR?

The cities in the service area currently obtain water from the Ogallala Aquifer. This underground formation is being drained over the entire High Plains region. While the area's population and water use are expected to grow, the existing municipal well fields will be depleted between the years 2000 and 2037. The only long-term solution to the water supply needs of the area is development of a surface water reservoir. It is intended to operate the reservoir in a manner that maximizes available water. Based on studies of runoff between 1940 and 1982, Palo Duro Reservoir would yield 7,290 acre-feet of water per year (about 2.4 billion gallons) and provide 60,900 acre-feet of conservation storage. Studies based on weather patterns since 1982 indicate that some years could yield lesser amounts. Palo Duro Reservoir would also provide recreation outlets for the area.

HOW MUCH WILL CONSTRUCTION OF THE PROJECT COST?

Construction of the dam and reservoir would cost \$22.3 million. At a later date, a second phase of the project would involve constructing a water treatment plant, pumps and transmission lines to serve member cities of the Palo Duro River Authority. It is estimated that this second phase of the project would cost about \$31 million.

WHAT DOES THIS MEAN TO TAXPAYERS?

The \$22.3 million in bonds would be paid off through ad valorem property taxes amounting to about 15 cents per \$100 valuation.

WHEN WILL IT BE BUILT?

The Palo Duro Reservoir would be completed by 1993.

WHO WILL OWN THE RESERVOIR?

The Palo Duro Reservoir would be owned and operated by the Palo Duro River Authority.

WHAT IS THE PALO DURO RIVER AUTHORITY?

The Texas Legislature created the Palo Duro River Authority in June 1973 with the legal authority to construct a dam and reservoir on Palo Duro Creek in Hansford County. The Authority is located in the northern Panhandle and includes Hansford County, Moore County and the City of Stinnett in Hutchinson County. Member cities include Gruver, Spearman, Dumas, Sunray, Cactus and Stinnett. The Authority is governed by a nine-member board, with representatives appointed by each city or county in the Authority service area. The Authority also employs a general manager, who is responsible to the board of directors.

WHY IS IT IMPORTANT NOW?

Building the Palo Duro Reservoir now will save money in the future as well as ensure that the area has adequate long-term water resources. If approved by voters, the Texas Water Development Board is expected to purchase the bonds for a fixed 7.6 percent interest payable over 25 years. Whether such a favorable financial arrangement could be obtained at a later date is an unknown factor. All of the necessary permits already have been approved for the Reservoir, and failure to act on them could mean a costly re-permitting process. Due to the current economic climate, it is also anticipated favorable construction bids could be obtained now.

the future as well as recreational opportunities for the present. On August 26, 1986, residents of Moore and Hansford counties and the City of Stinnett will vote on whether to authorize the Palo Duro River Authority to issue \$22.3 million in bonds necessary to construct the dam and reservoir on Palo Duro Creek. The following are some key questions and answers about the project.

WHAT IS THE PALO DURO RESERVOIR

The Palo Duro Reservoir is a proposed 2,413-acre lake to be built on Palo Duro Creek. When completed, it would provide water resources to member communities of the Palo Duro River Authority and recreational opportunities for the entire Texas Panhandle. The proposed reservoir is included in the current state water plan, "Water for Texas, a Comprehensive Plan for the Future."

WHERE WOULD IT BE LOCATED?

The Palo Duro Reservoir would be located on Palo Duro Creek, north of Spearman in Hansford County. The dam site is 13.6 miles north of the State Highway 207 crossing between Spearman and Gruver, or at mile 34.7 on Palo Duro Creek. According to state planners, this is the only suitable reservoir site north of the Canadian River.

runoff we won't have any problems filling the reservoir," he said.

The second phase of the reservoir project would be built as the municipal wells begin to diminish and other sources of water are needed.

This second phase, estimated to cost about \$31 million, would involve building a water treatment plant, pumps and transmission lines to serve member communities.

Voting on the bond issue culminates more than 50 years of planning. The earliest recorded mention of the project is August 1935 when the Spearman Lions Club asked the Hansford County Commissioners to investigate the project.

A major milestone occurred in June 1973 when the Texas Legislature created the Palo Duro River Authority and gave it legal powers to build a dam and reservoir. Planning for the lake has closely involved the U.S. Army Corps of Engineers.

"We are not in a water crisis yet, but we need to think about what is going to happen to our communities in 10 years. We can't wait until the tap runs dry before starting to build a lake," Lee said.

PALO DURO RESERVOIR WHAT YOU NEED TO KNOW

The Palo Duro Reservoir, if approved, would provide water resources for

year in the new state water plan, Lee said.

"This is an excellent financial opportunity for us right now. In addition to the attractive interest rate, we also believe that we can obtain favorable construction bids," Lee said.

The 2,413-acre reservoir would be owned by the Palo Duro River Authority, whose nine member board is composed of representatives from Moore and Hansford counties and Stinnett.

According to engineers, there are no acceptable alternatives to meeting future water needs in this area other than building a surface lake. The lake would serve as an auxiliary source to the dwindling Ogallala formation.

"In addition to providing water, the Palo Duro Reservoir would increase property values, foster economic growth and offer recreational opportunities," Lee said.

"It will provide some assurance to our communities and businesses that the water will be there in the future," he said.

The Palo Duro Reservoir would be completed by 1993. It would be filled by runoff from Palo Duro Creek and its tributaries.

"Engineers say there is on the average enough runoff to fill the lake every three and half years. We feel that according to the history of our

Voters will decide on August 26th whether to authorize the Palo Duro River Authority to sell \$22.3 million in bonds to construct a new reservoir 10 miles north of Spearman, Johnnie C. Lee, the Authority's general manager, announced.

The Authority's board of directors set the election during a special meeting on Tuesday, July 22nd. The Authority covers Hansford and Moore counties and includes Spearman, Gruver, Sunray, Cactus and Dumas, as well as Stinnett in Hutchinson County.

The reservoir would provide water service and recreation opportunities in the Authority's district.

"The reservoir is needed to ensure that our cities have sufficient water resources for the future," Lee said.

"We currently get all of our water from municipal wells in the Ogallala Aquifer, but we anticipate that these wells will be depleted by the years 2000 to 2030," he said.

If approved by voters, the \$22.3 million in general obligation bonds are expected to be sold to the Texas Water Development Board at a fixed 7.6 percent interest, maturing over a 25-year period. This would cost property owners a maximum of 15 cents per \$100 valuation, or about \$75 a year for a home appraised at \$50,000, excluding exemptions.

This would mark the first use of bond monies approved by voters last

Spearman Cheerleading Squad Receives Spirit Stick



The Spearman High School cheerleaders were among 290 participants from Oklahoma, Texas, Kansas and Colorado at the 1986 NCA Cheerleading Camp held recently on the campus of Panhandle State University. The

forty-four squads received training in pompon and dance routines, new cheers, and leadership. Pictured above are team members: Neta Burger, Jill McLain, Kim Jenkins,

Kathy Poole, Heather Murrell, Ginger Pearson, Michelle Cook, Laci Lasater, and Cacy McGill. The Spearman squad was one of sixteen to be awarded a Spirit Stick.

Mid Year Numbers in County Banks Are In!!

Mid year numbers in County banks are in. Deposits one year ago, 1985, totaled \$87,151,000.00 dollars. The deposits in the three local banks for 1986 totals \$89,625,000.00 dollars. Up some 2 1/2 million dollars.

Loans for 1985 were \$46,187,000.00 dollars. Loans for 1986 are up \$3,400,000.00 dollars over last year.

1985 deposits for the First State Bank in Spearman ending July 28, 1985 were \$50,850,000.00 dollars. Deposits in the First National Bank ending July 28, 1985 were \$7,665,000.00 dollars. Deposits for the Gruver State Bank ending July 28, 1985 were \$28,636,000.00 dollars. Total Deposits one year ago in the three county banks was \$87,151,000.00 dollars.

1986 Deposits as of July 17, 1986 are as follows: First State Bank - \$52,527,000.00 dollars. First National Bank as of July 17, 1986 -

\$13,073,000.00 dollars. Gruver State Bank as of July 17, 1986 - \$24,025,000.00 dollars. The total deposits for the three banks as of July 17, 1986 was \$89,625,000.00 dollars up approximately 2 1/2 million dollars over last year.

1985 Loans - First State Bank: \$27,711,000.00 dollars; First National Bank - \$1,837,000.00 dollars; Gruver State Bank - \$16,639,000.00 dollars. Total Loans one year ago for all three banks was \$46,187,000.00 dollars.

The 1986 Loans for three banks are as follows: First State Bank \$26,547,000.00 dollars; First National Bank \$6,017,000.00 dollars; Gruver State Bank \$16,939,000.00 dollars. Total Loans as of July 17, 1986 for three county banks is \$49,503,000.00 dollars.

Bankers are hopeful that the Cattle Market will rebound later this year.

With the Cattle Market nearly down the tubes during the first half of the year and low wheat prices its had an impact. The Oil & Gas Industry continues to Sing the Blues. This is having a sharp impact on some retailers.

It is almost a repeat from last year. The stage is set for the second half of the year with all of us, plus our bankers hoping that things get better.

The county could be on a building boom unprecedented in the history of the county. The State Water Board O.Ked the 23 million dollar Palo Duro Dam Project Thursday of this week.

Board Members are planning a ground breaking for the new Hansford Manor within the week possible. The New Electric Generating Plant for Gruver is still in the Mill. About all we need now is a few good rains on our Milo crop.

Join The Booster Club

The membership drive for the Lynx and Lynxette Booster Club is now underway. Everyone interested in supporting the Spearman Lynx and Lynxettes are urged to join.

Membership fees are \$10 for a family a individual and \$25 for a business. Then fees will be used for

various things to help promote Lynx and Lynxette spirit.

On Monday, July 28, at 9 a.m. a few members of the Booster Club will be on KRDF-FM. President Johnny Crawford, our president, Linda Wilkerson and membership chairman, Jackie Pearson will be on hand to

discuss the Booster Club on the radio. There are several good things being planned so tune in and find out what's going to happen.

Anyone wishing to join the Lynx and Lynxette Booster Club may do so now. Contact Jackie Pearson at 9-3369 or Linder Wilkerson at 9-3849 and join!!

City of Spearman

Notice of Regular Meeting

Notice is hereby given that the Governing body of the City of Spearman, Texas, will meet at 8:00 P.M. on the 29th day of July, 1986, at its regular meeting place at City Hall, 30 S.W. Court, in the City of Spearman, Texas, for the Purpose of considering the Attached Agenda.

Cheryl Gibson
Cheryl Gibson, City Secretary

City of Spearman
AGENDA
Tuesday, July 29, 1986
8:00 P.M.

City Met

1. Pledge and Invocation.
2. Consideration of the minutes of regular City Council Meeting held on July 15, 1986.
3. Consideration of the Hansford County Appraisal District's 1985 Audit as presented by Chief Appraiser, Alice Paddy.
4. Consideration of ordinance #536 an ordinance prohibiting consumption of Alcoholic Beverages and Possession of open containers of Alcoholic Beverages in the City of Spearman, Texas; providing for definition of terms; providing a penalty; providing a severability clause; and providing for an effective date.

5. Consideration of a grass lease with Ron Clark for \$6.3 acres of land owned by the City located adjacent to the Hansford Golf Course.
6. A report given by Mayor Pro-Tem

Ed Garner concerning upcoming legislative matters with the Texas Public utilities commission.
7. Workshop on the proposed 1986-1987 budget.
8. Other.

9. Adjourn.
Jim Murry, City Manager
I certify that the above notice of meeting was posted on the Bulletin Board of City Hall on July 24, 1986, at 4:00 P.M.
Cheryl Gibson
City Secretary

Share a Part of Your Life and Give Blood



The Coffee Memorial Blood Bank will be in Spearman on August 4, 1986 from 2 p.m. - 8 p.m. at the Sacred Heart Parish Hall. Everyone is en-

couraged to share a part of their Life and give Blood.
Ether Vargas discusses the "Blood Drive" with Virginia Head.

The drive will be held August 4th, at Sacred Heart Parish Hall in Spearman.

Crowning of Miss Hansford County Farm Bureau



Runners-Up and Our New Farm Bureau Queen. L to R: Jill Garrett, Julie Latta - 1st Runner-Up, Carrie Hart - Winner, Glen Harris, Joanna Reynolds.

The ladies committee of the Farm Bureau helped with a Queen Contest and Talent Contest on Monday evening in the Gruver Methodist Church. The Queen contestants competed in evening gowns and each had to answer an important question concerning Farm Bureau. The following girls competed to represent Hansford County in the District Contest which will be in August: Jill Garrett, Julie Latta, Joanna Reynolds, and Carrie Hart.

The audience was welcomed by Delbert McCloy, President of the board of directors of the Hansford County Farm Bureau. The emcee for the evening was Mr. Glen Harris. Janie Kunselman played background music on the piano. Judges for the event were Dr. and Mrs. Gayle Gibson and Mrs. Judy Hayden all from Guymon. President, Judy Stedje presented each contestant with a gift certificate for participating from the Ladies committee. Decorations were furnished by Blackburn's Flowers of Spearman.

After the Queen contestants competed, the talent contest began. Competing in this group were Anne Sheets, Cindy Womble, Ty Seagler, Robin Karlin, and JoAnne Odegaard. Each contestant did a super job of presenting their talent. Miss Teresa Miesner entertained the audience as the scores were tallied.

The first runner-up in the talent competition was Cindy Womble, who did sign language to a song. The winner was Ty Seagler, who sang "God Bless the USA". The first runner-up and the winner received beautiful plaques. The winner will compete in the District Contest now.

In the Queen's contest, the first runner-up was Miss Julie Latta. The winner was Miss Carrie Hart. Both girls received arm bouquets of roses. Then Mr. Harris crowned Miss Carrie Hart as Miss Hansford County Farm Bureau Queen.

We extend congratulations and best wishes to Carrie Hart and Ty Seagler as they compete in the District Contest.



Master of Ceremony - Glen Harris and Past President - Board of Directors - Aubrey Rasor, Janie Kunselman at Piano and Teresa Miesner - sitting, entertained while scores were tallied. Judy Stedje - President of Farm Bureau Ladies.



Winner of the Talent Contest was Ty Seagler who sang "God Bless the USA" and Cindy Womble who did "Sign Language" was 1st Runner-up.

Methodist Youth Plan Exciting Week

The Senior High Youth Group of the First United Methodist Church will be enjoying a week full of activities. They would like to invite all High School Students to participate in the following activities:

- July 28 - Monday - "College Choices: What to look for - 8:00 p.m. at the church. Nancy Pittard: admissions counselor for McMurray college. Jeanne Winkels: Student at McMurray College.
- July 29 - Tuesday - Scavenger Hunt night a mixture of different hunts. Meet at the church at 7:30 p.m.
- July 30 - Wednesday - Yet to be decided.
- July 31 - Thursday - Mystery trip. Meet at the church at 5:45 p.m. and bring \$8.00.

We hope all the high school youth in the community will join us!

On Monday, July 28, at 9 a.m. a few members of the booster club will be on KRDF-FM.

**Blood
Drive**

BUY, SELL, TRADE OR RENT THROUGH THE CLASSIFIED ADS

CLASSIFIED RATES
 Regular.....Per Word-\$0.13
 Display.....Per Col. Inch-\$4.20
 Double rate for blind ads
 Minimum charges
 Cash.....\$4.00
 Charge.....\$4.50

CASH IN ADVANCE ADS
 Work Wanted*Trailers For Sale*
 Business Opportunities*No Longer
 Responsible*Political Advertising*
 Child Care* Babysitting*
 Garage Sales*Out-of-County Ads-
 unless advertiser has established
 credit with
 The Hansford Plainsman

DEADLINES
 To place or cancel ads
 Fri., 12:00 p.m.....Sun. edition
 Tues., 12:00 p.m.....Thurs. edition

The Hansford Plainsman reserves the right to reject, edit, revise and properly classify all advertising submitted for publication. The Hansford Plainsman also reserves the right to cancel any advertisement at any time.

The Hansford Plainsman
 213 Main, P.O. Box 458
 Spearman, Texas 79081

SERVICES

OSGOOD MONUMENT CO.
 Amarillo, Texas
 Dealers of Rock of Ages Granite as well as all colored granites, marbles and bronze memorials.
 represented by
BOXWELL BROS. FUNERAL HOME
 519 S. EVANS
 659-3802

NOTICE
 Wallace Monument Co. Monuments, Curbing, Grave Covers
 Local Representative
LEONARD J. AMESON
 Spearman, Texas
 35s-rtm

MONUMENTS
 Save Agents and Undertakers Profits
 If it is inconvenient for you to visit our large display please phone collect (405) 327-0626 or write and we will call on you.
ALVA MONUMENT WORKS, INC.
 Alva, OK 73717

PARA TODA OCACION
 BODAS * QUINCEANERAS * TODA CLASE DE EVENTOS
Grupo Los Turry's
 Estan a sus ordenes para cualquier informacion llame a los telefonos.
 659-3923 y 659-5182
 FOR ALL OCCASSIONS
 WEDDINGS* BIRTHDAYS OR ANY IMPORTANT EVENT
Grupo Los Turry's
 at your service for information contact them by calling
 659-3923 or 659-5182

STEAM RINSE & VAC
 Rinse and Vac Shampooer for rent at Gordons Drug. \$10.95 up to 24 hours.

HAY SWATHING & Baling done.
 Call 733-2517 or Dennis at 733-5214.
 27s-rtm-nc

APPLIANCE REPAIR: Call Jim Nobles, 659-3528.

Announcements

WEIGHT WATCHERS meets each Monday at 6:00 p.m. at the Home Demonstration Building, Spearman, Texas.

TOPS CHAPT # 1245 TOPS TAKE OFF POUNDS SENSIBLY. We Meet Thursday at 7:30 at Boyds Beauty Salon, 310 W. 4th.

Panhandle Crisis Center 101 S. W. Forth, Perryton, Texas 79070, 806-435-5013. Help is available at no charge for domestic violence and sexual assault. Call Panhandle Crisis Center, receive support during a difficult time. Counselors on call 24 hours a day. Call for help.
 19-rtm-nc

Real Estate

Take Up Payments: 14x60 Trailer 2 bedroom 1 bath. Call 659-5248. 38S-4tp

For Sale by Owner: Nearly new beautifully landscaped 3 bedroom, two bath, double garage, storm cellar, fireplace. Call 659-2618 for appointment to see.
 nc-rtm

WHY PAY RENT! Move into a beautiful home for less than you are paying in rent.

Alliance Homes Amarillo
 Qualify by Phone
 806-381-1352
 Call Collect

TAKE UP PAYMENTS ON TWO AND THREE BEDROOM HOMES.

Alliance Homes Amarillo
 Qualify by Phone
 806-381-1352
 Call Collect

Special Item

FRESH Local Home-Grown Produce you Pick or we'll Pick. For information, schedules, or appointments, call 659-2129. Mike Skinner.
 36S-6tp

SERVICES

REGISTER for fall Dance Classes Aug. 8th & 9th 1:00 to 5:00 at Carla's Dance Studio 300 Main or call 659-3061 or 3663 ages 3 yrs. and up instructor Carla Beesley

SUMMER "HOT" SALE! Flashing arrow sign \$269! Lighted, non-arrow \$259! Nonlighted \$229! Free letters! Few left. See locally. 1(800) 423-0163, anytime.

Help Wanted

EASY ASSEMBLY WORK! 600.00 per 100. Guaranteed Payment. No Experience/No Sales. Details send self-addressed stamped envelope: **ELAN VITAL** 5901 3418 Enterprise Rd., Ft. Pierce, FL 33482. 15-24tp

EXCELLENT INCOME: For part time home assembly work. For info. call 312-741-8400 Ext. 1290.

EASY ASSEMBLY WORK! \$174.00 per 100. Guaranteed Payment. No Sales. Details- Send Stamped Envelope: **ELAN** - 5901 3418 Enterprise, Ft. Pierce, FL 33482. 36S-12tp

Pets

FOR SALE: Registered Quarter Horse, very Gentle. Ideal for Kids. used in 4-H Pop. Call 806-659-3352. NC

FOR SALE: AKC Registered RE: Labrador Puppies. Call Perryton 435-7516. 37-4tp

FOR SALE: Full blood heeler Cowdog pups. Six weeks old. Call 274-7391 on weekdays, 878-2518 after six and on weekends. 38-2tc

For Sale

PIANO FOR SALE: Wanted: Responsible party to assume small monthly payments on Piano. See Locally. Call Credit Manager 1-800-447-4266. 36S-5tp

FOR SALE: Baldwin Console Piano also 3 Spinnet Pianos. Excellent condition. Will deliver. 1-355-2656. 38S-2tc

Autos for Sale

1984 NISSAN 300 ZX, Red with tan interior, 5 speed, extended warranty, excellent condition- 659-2052 after 5 p.m. 38-2tp

1971 Kit Companion 28 X 8 and 1958 Spartan 36 X 8. 405-487-3854. 38S-2tp

FOR SALE: 1980 Chevy 1/2 ton Van; 1980 Subaru Station Wagon. Call 659-5101. 38-1tc

Auto Wanted

WANTED: Older model car in good shape. Call 659-2325. NC

For Rent

FOR Rent: Furnished 2 bedroom house trailer. Call 659-2770 or 659-3017. 37S-4tc

FOR RENT: large lot for mobile home in Archer Mobile Home Park. Excellent location, 1 block from swimming pool and "Y", four blocks from elementary and 2 blocks from high school. Has 2-car cement off-street parking bay, sidewalk, 9 X 10 storage building, 6-ft. wood privacy fence on 3 sides and enough fencing to go across front. Large front porch and small back porch available for use. Call 659-3519. 34-8rtm

FOR RENT: 3 Bedroom House Just Redecorated Call 659-5297. 37S-rtm

FOR RENT: One bedroom apartment. Call 659-2864. 38S-1tp

FOR RENT: 1 bedroom furnished Apt. Call 659-2274. 34-rtm

FOR RENT: Trailer space in Spearman. All utilities, fenced and concrete walk ways. Call 435-5080. 38-rtm

FOR RENT: Air Conditioned and carpeted 2 bedroom furnished house. Yard maintenance included. Ideal for couple or couple with Child. Small Deposit Required. No pets. Call 659-3657. 38-1tp

Situations Wanted

HOUSE PAINTING: Interior or Exterior. Experienced and dependable. Reasonable rates. References available. 659-2787. 38-2tc

EXPERIENCED Will do house-cleaning can furnish references. Call 659-3586. 37S-rtm

MEEKS MOWING and Trimming, call 659-2200 or 659-2087. 35S-rtm

Personals

For Friends and Relatives who would like to write to Haley Lair, who is in the Texas Children's Hospital. Write her at this address: Texas Children's Hospital, 6621 Fannin, Houston, Tx. 77030.

POLITICAL ANNOUNCEMENTS

This newspaper is authorized to announce the candidacy of the following candidates for public office subject to the action of the voters in the **PRIMARY ELECTIONS:**

DEMOCRAT FOR COUNTY TREASURER

NORMA JEAN MACKIE FOR COUNTY AND DISTRICT CLERK

AMELIA C. JOHNSON FOR STATE REPRESENTATIVE

J.W. BUCHANAN REPUBLICAN FOR COUNTY TREASURER

ESCHOL BLANKENSHIP FOR STATE REPRESENTATIVE

DICK WATERFIELD

Legal Notice

"Be it known to all men, that as of March 1, 1986, Halliburton Services, a division of Halliburton Company, has assigned its entire interest in TRANSPETCO I Joint Venture (the "Venture") and the properties and assets associated therewith and is no longer a member of the Venture." 35S-7tc.

PUBLIC HEARING

A public hearing will be held on August 12, 1986, for all interested citizens of the City of Spearman. Citizens will be given an opportunity to make oral and written suggestions regarding public use of revenue sharing funds. The City is expecting to spend approximately \$15,297.00 from General Revenue Sharing funds. The hearing will be held at City Hall at 30 S.W. Court, Spearman, Texas, at 8:00 p.m. Senior citizens are encouraged to attend and comment. The City of Spearman will also hold a public hearing concerning the proposed budget for the 1986-1987 fiscal year. All local tax payers may attend and participate in the hearing.

Card of Thanks

I would like to thank everyone who called, visited & sent flowers while I was in the hospital, & to those who brought food when I came home. I would like to add a special thanks to Dr. Sangalang & the Nursing Staff at Hansford Hospital. God bless all of you
 Phyllis Cummings

Garage Sales

3 FAMILY GARAGE SALE: Friday & Saturday August 1-2; 9 a.m. - 6 p.m. Baby things, Furniture, Clothing even a sink! Something for everyone. 404 Townsend
 AKC registered miniature Schnauzer puppies for sale. 659-2810 38S-2tp

Piano Recital

George Thomas, pianist, native of Sunray, will give a piano recital at the Oslo Lutheran Church, Monday evening, July 28, 1986 at 7:30 P.M.
 Mr. Thomas did his undergraduate work at Abilene Christian University, receiving his degree in 1969. He studied with Roslyn Frantz in San Francisco and is presently working on his Masters in Piano Performance at Texas Christian University in Fort Worth.
 In February, 1984 Mr. Thomas performed in a series of "Brown Bag Recitals" at the Hollywood Congre-

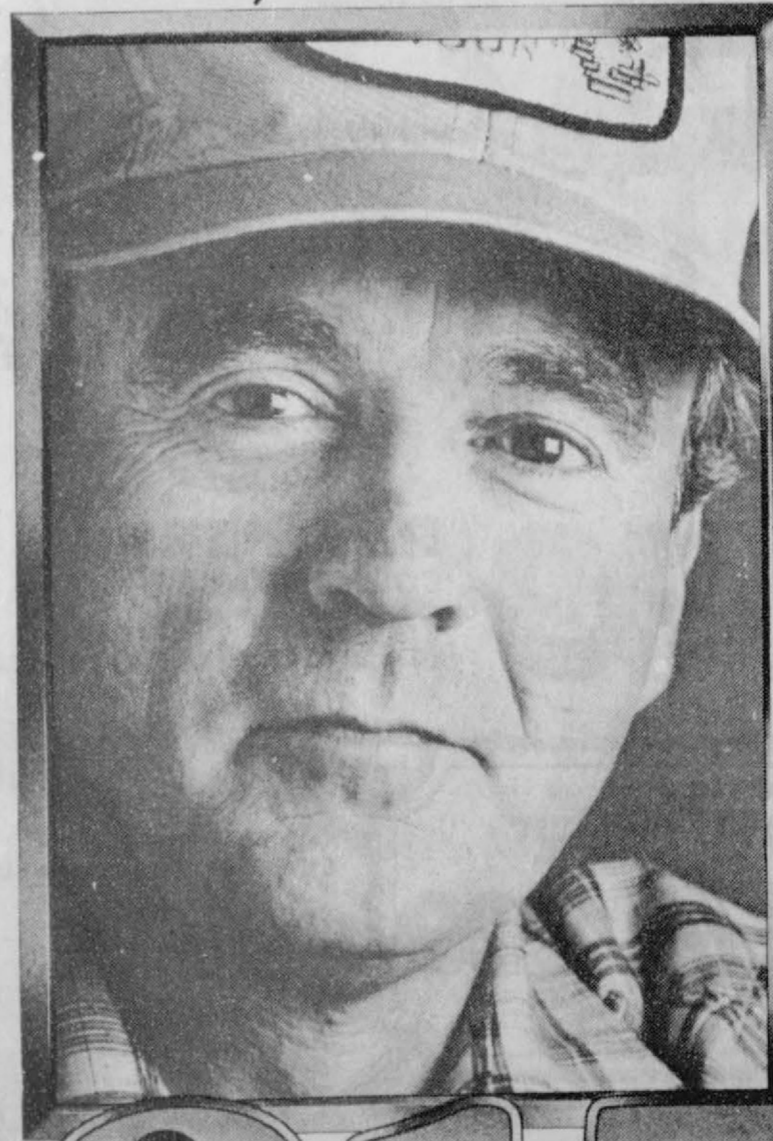
gational Church and in the summer of 1984, during the Summer Olympics in Los Angeles, he gave 8 recitals entitled "Celebration of the Olympics" at the Hollywood YMCA.

In December of 1984 he toured the western United States, in the spring of 1985, the midwest and in June of 1985, the East. His 1985 recitals featured the works of Beethoven. And his 1986 recitals feature the works of Johannes Brahms.

All are cordially invited to attend the recital at the Oslo Church on July 28.

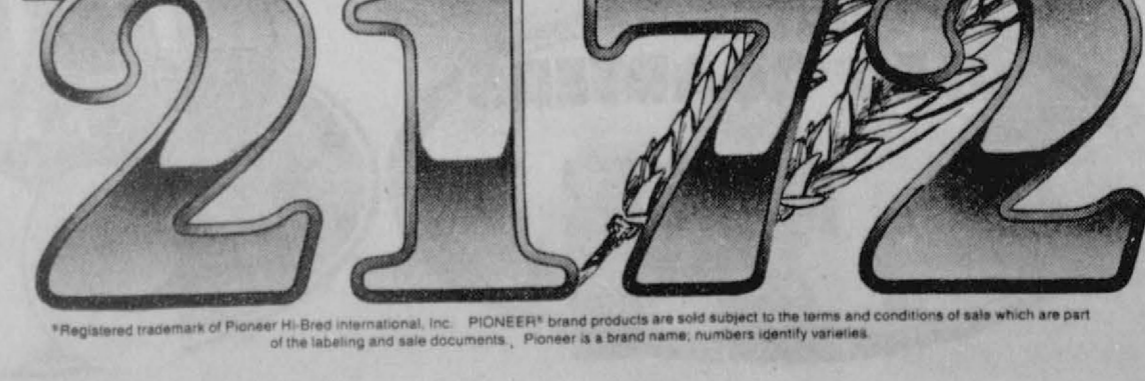


With 2172, where there's water, there's more wheat.



If you're growing wheat under irrigation and want maximum returns, don't plant a dryland wheat variety. Instead, plant a variety with the genetic potential to take advantage of that extra moisture.
 Pioneer wheat breeders developed 2172 to respond to the irrigated growing conditions of the Texas and Oklahoma High Plains. 2172 matures early, winters well, and offers good grazing qualities and good disease resistance.
 Get the wheat variety developed especially for irrigated areas. Get 2172.

PIONEER BRAND SEEDS
Billy Logsdon,
Spearman 733-2803
Watley Enterprises Inc.,
Spearman 659-3970



*Registered trademark of Pioneer Hi-Bred International, Inc. PIONEER brand products are sold subject to the terms and conditions of sale which are part of the labeling and sale documents. Pioneer is a brand name, numbers identify varieties.



PRICES GOOD JULY 27 - AUGUST 2
IN PERRYTON, TX ONLY

SUMMER

OPEN 8 AM TILL 9 PM
DOUBLE COUPONS
ON THURSDAY



DOUBLE STAMPS ON WED. & SAT.
WITH \$2.50 PURCHASE OR MORE
EXCLUDING CIGARETTES

GROCERY

COKES
6-32 OZ.
\$1.98
PLUS DEPOSIT

GLADIOLA FLOUR
5 LB. BAG
58c



FINE FARE SUGAR
5 LB.
\$1.29



WONDER LONG GRAIN RICE
28 OZ.
69c



GEBHARDT'S CHILI POWDER..... 3 OZ. **98c**
CHICKEN OF THE SEA TUNA
WATER OR OIL..... 12 1/2 OZ. **\$1.49**

BAMA PRESERVES PEACH OR APRICOT
16 OZ. **\$1.19**



GEBHARDT'S TAMALES
28 OZ. **98c**




ARM AND HAMMER BAKING SODA 16 OZ. **39c**

PREGO PLUS ASSORTED
15 1/2 OZ. **\$1.19**




OCEAN SPRAY CRANBERRY OR CRANAPPLE DRINK
32 OZ. **\$1.09**



FINE FARE BLACK PEPPER..... 4 OZ. **98c**

GEBHARDT'S REFRIED BEANS
16 OZ. **3 FOR \$1**



KELLOGG'S CORN FLAKES
18 OZ. **\$1.29**



UNITED BREAD
1 1/2 LB. LOAF
2.88c FOR



TETLEY FAMILY TEA BAGS
24 CT. **\$1.49**



FINE FARE POTATO CHIPS ASSORTED
7 OZ. **79c**



WHITE CLOUD TISSUES ASSORTED..... 4 ROLL **99c**

PAMPERS CONVENIENCE PACK DIAPERS (EXCEPT ULTRA) ASST. SIZES... **\$8.99**

SUNLIGHT AUTO DISH DETERGENT 50' OFF LABEL..... 50 OZ. **\$1.98**

COVER GIRL POWDER
BRUNETTE NATURAL BEIGE
CREAMY BEIGE MEDIUM
EACH **\$1.99**



HEALTH AND BEAUTY
DEXATRIM CAFFEINE FREE and EXTRA STRENGTH CAPSULES..... 40 CT. **\$4.99**
TUMS REGULAR OR ASSORTED..... 3 ROLL PKG. **99c**
MISS BRECK AEROSOL HAIR SPRAY..... 9 OZ. **\$1.69**

COVER GIRL LUMINESSE LIPSTICK **\$1.69**
EACH



PARKAY OLEO QUARTERS
LB. **2.1** FOR



DAIRY PLAINS
24 OZ. **98c**



PLAINS HOMO MILK
GAL. **\$1.88**



QUALITY MEATS

UNITED TRU TENDR OR USDA CHOICE
BONELESS SHOULDER ROAST
\$1.28
 LB.

UNITED TRU TENDR OR USDA CHOICE
BRISKET
 MARKET TRIMMED
\$1.58
 LB.

BACON WRAPPED BEEF FILLET
\$1.78
 6 OZ. EA.

HILLSHIRE
SMOKED SAUSAGE
 MEAT OR BEEF
\$1.88
 LB.

UNITED TRU TENDER OR USDA CHOICE
ARM ROAST
 BONELESS LB.
\$1.38

FAMILY PAK GROUND BEEF
 3-LBS. OR MORE
78c
 LB.

GOOCH, CEDAR CREEK
HALF HAM
BONELESS BUFFET STYLE
\$1.78
 LB.

FINE FARE HALFMOON
CHEDDAR OR COLBY CHEESE 10 OZ.
\$1.28

UNITED TRU TENDR
DELUXE BEEF RIBS
98c
 LB.

SCHRIEBER
SANDWICH SINGLES
78c
 12 OZ.

RANCHER SUMMER SAUSAGE LB.
\$1.28

LEAN
STEAK FINGERS
 EXCELLENT FOR CHICKEN FRY
\$2.68
 LB.

BONELESS STEW MEAT
 LEAN CUBES OF BEEF LB.
\$1.68

UNITED TRU TENDR OR USDA CHOICE
FAMILY STEAK
 BONELESS LB.
\$1.48

QUANTITY RIGHTS RESERVED

FRESH PRODUCE

NO SALES TO DEALERS

NECTARINES
39c
 LB.

PEACHES
39c
 LB.

THOMPSON SEEDLESS AND RED FLAIR
GRAPES
69c
 LB.

EGGPLANT
2 LBS. \$1
 FOR

YAMS **4 LBS. \$1**
 FOR

CANTALOUPE
2 FOR 88c

ORANGES
3 LBS. \$1
 FOR

BROCCOLI **2 LBS. \$1**
 FOR

BELL PEPPERS
5 FOR \$1
 EACH

HONEYDEY MELONS **2 LBS. \$1**
 FOR

DOUBLE COUPONS EVERY THURSDAY

FROZEN FOOD

DOUBLE STAMPS ON WED. & SAT.

TONY'S
MICROWAVE PIZZAS
\$1.39
 ASSORTED

BANQUET
POT PIES
\$1.39
 8 OZ. FOR

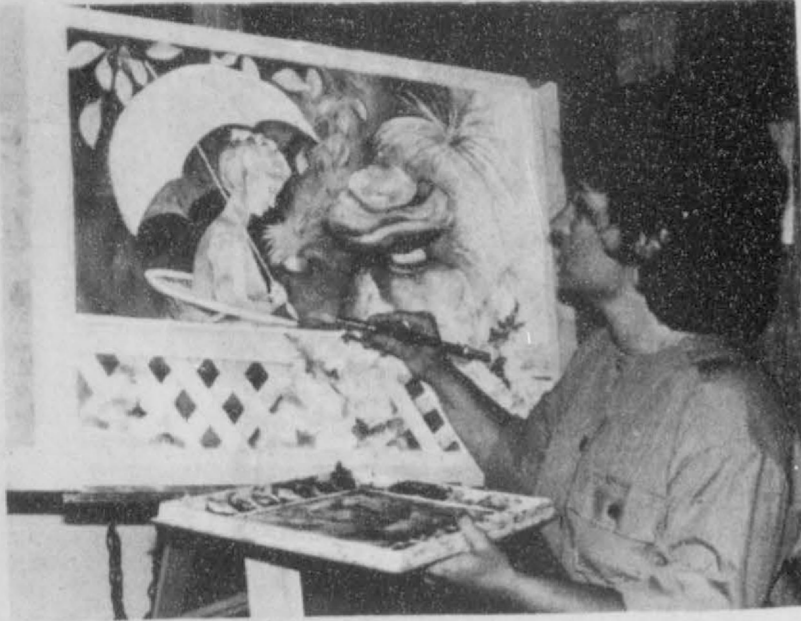
TREETOP
APPLE JUICE
89c
 12 OZ.

PLAINS
ICE CREAM
\$1.38
 RED OR GOLD RING
 1/2 GAL.

COOL WHIP **\$1.09**
 REGULAR 12 OZ.
JELL-O PUDDING POPS **\$2.59**
 CHOC. COATED, CHOC. CHIP 12 CT.
PILLSBURY TOASTER STRUDEL **\$1.29**
 11 1/2 OZ.

LYNDEN FARMS
SHOESTRING POTATOES
4 FOR \$1
 20 OZ.

Karen Reimer Exhibits Paintings



Karen Reimer

Karen Reimer local artist, is now exhibiting her original water colors at a Taos New Mexico gallery. The Galeria Nativa located in the Village Shop, which is on the Southwest corner of Plaza Square, began

showing Karen's painting this July alone with her fathers, Clarence Lewis, bird woodcarvings. This is a new adventure for Karen, for the past ten years she has shown her work at various places here in the Panhandle area.

Mary Kay Cosmetics Consultant

Norma Jean Mackie of Spearman, an independent beauty consultant for Mary Kay Cosmetics, has just returned home from three days of intensive sales and product training in Dallas as a participant in Mary Kay's 1986 National Seminar. More than 25,000 independent beauty consultants and sales directors flocked to Dallas between July 14 and July 26 to attend one of four consecutive three-day meetings. In keeping with the company's commitment to recognize outstanding business women, this year's multi-million dollar seminar was appropriately entitled "Starting Here, Starting Now!" To enable Norma Jean, who joined Mary Kay in March, 1984, to build her Mary Kay business in the months ahead, dozens of specialized classes

were held each day in product knowledge, Color Awareness, sales training, business management, goal setting and other valuable tools for business success. Besides intensive training, company founder and Chairman of the Board Mary Kay Ash also uses the annual meeting to personally reward and recognize the outstanding achievers of the past year. During four identical Awards Night extravaganzas, the company distributed more than a million dollars in fur coats and jackets, luxury vacations, shopping sprees and gold and diamond jewelry. Mary Kay Cosmetics, Inc. is an international manufacturer and distributor of premium skin, hair and body care products, cosmetics, toiletries and fragrances.

Among The Neighbors

To any one wondering why the sudden transition from sprightly parent to subdued grandparent of Dr. Tom Latta, the arrival of Kalli Dawn McGarrough will explain it. She came by way of Northwest Texas Hospital in Amarillo on July 21, weighing 7 lb. 12 oz. She is the daughter of Carla and Neil McGarrough.

Kalli Dawn is a VIP being the first grandchild and first great-grandchild in both families. Grandparents other than Dr. and Mrs. Latta are Cliff McGarrough and Tizzie Nelson of Perryton; great-grand parents are Mr. and Mrs. Bob Doffer and Mrs. Altha Wood, also of Perryton; Mr. and Mrs. Don Latta, Fort Supply and Mrs. Jack Harrison, Edmond, Oklahoma. If these do not succeed in spoiling her, there are four thrilled aunts and one uncle standing by.

Mr. and Mrs. Byron Kenny, for a change of pace after their daughter's lovely wedding on Saturday, attended an all school re-union on Sunday. Barbara is an alumni of Felt, Oklahoma school which holds a re-union every five years. The first graduating class held in Felt was in 1931.

Mrs. Jimmie Hester had as guests her nephew and wife, Mr. and Mrs. Roy Baze for a couple of days last week. They live at Snyder, Texas and were enroute from Missoula, Montana where they had been visiting in 35 degree weather.

Irvin Davis underwent emergency surgery Monday morning at St. Anthony's Hospital. He is at home now and recovering.

Returning after a weeks vacation in Michigan are the Lane Boyds and Chris. Accompanied by his mother of Dumas, they flew to Birmingham, near Detroit for a visit in the home of his sister. They enjoyed a variety of activities; boating, golfing, a Neil Diamond Show, and seeing a Tiger baseball game. The game disappointed them in that the Texas Rangers lost 2 to 1.

Stinson Gibner visited his mother, Mary Alice and other relatives in Spearman for several days recently. While here he made sure his granddad, C.A. Gibner had not lost his ability to beat him on the golf course. Stinson and Mary Alice flew to Benton, Louisiana and visited relatives. From there they went to Houston where they were guests in the home of her cousin, Joan Clark, and her husband. Stinson flew back to his home in Pasadena, California and Mary Alice returned home.

Mr. and Mrs. Tommy Russell returned Thursday from several days at Red River and Taos. They joined his cousins from Lubbock, Mr. and Mrs. Bill Barr, for the vacation.

To report locals call 659-3468

Host Families Needed

Families in the Panhandle area are invited to host visiting foreign exchange students. The American Institute for Foreign Study (AIFS) Scholarship Foundation sponsors international cultural exchanges by bringing English-speaking young people of high school age to the United States from Western Europe, Latin America, and Asia. "These teenagers want to learn more about the American way of life while improving their English language skills," said Paul A. Cook, Executive Director of the Foundation. Judy Fletcher of Amarillo is the Local Coordinator for the Foundation. "Many families here could provide an ideal home for a visiting student," said Mrs. Fletcher. "We can match the student's interests to yours, and you can screen applications to choose the teenager you like best." The greatest benefit of hosting a student is the exhilaration of cross-cultural contact. The "taken-for-grant

ed" routine of everyday life becomes more interesting and takes on new meaning. An active participation of student and family can lead to unexpected personal growth for all involved and lifelong friendships.

To encourage future international experience Host Families are eligible to receive up to \$800 in scholarship funds for family members to use for overseas study. In addition, a federal tax deduction may be allowable by the IRS.

To learn more about hosting a visiting student, please call or write Judy Fletcher at 806 622-1703, Rt. 8, Box 39-3 Amarillo, Texas 79118. More information is available from the AIFS Foundation, 3661 Bubbhanan St. San Francisco, California 94123.



Karen's Kozy Korner

Our early lives teach us food habits: "Don't skip meals," "Eat so you'll get big and strong," "Breakfast is a must!" For some people, a lifetime of certain eating habits leads to constant hunger and obesity. Some families teach that eating is fun and a social event. So whenever a group gathers, food is always available. Other families may teach the opposite - that food protects us from unhappiness. Family members eat when they are unhappy so they'll "feel better." To avoid feeding feelings rather than feeding the body, every person

ness and hostility. Honor the cook not by lusty eating but by words of praise for the food provided. **Losing Weight Adds up to Positives** Losing weight is NOT fun for overweight people. If you're trying to wanting to lose weight must be on constant guard for the automatic hunger pangs when things get "too right" or "too wrong." In this way, an overweight person can begin to break the eating habits learned from his or her family of origin. When your family gets together the next time, remember that we often feed feelings of joy, sorrow, helplessness and hostility.

shed extra pounds recognize that you may feel better after losing, but while you're losing you may feel awful. Try to focus on the many positive effects that weight loss has on your self-esteem: *You get back some of the

self-respect you may have lost when you were your heaviest. *You can look in mirrors and appreciate your reflection. *You may have a longer life because of better health. *You're

more alert, have more vigor, pride and spirit. *You can be an example for others. *You can enjoy success. Educational programs conducted by

the Texas Agricultural Extension Service serve people of all ages, regardless of Socio-Economic level, race, color, sex, religion, handicap or national origin.

FIRST NATIONAL BANK

SPEARMAN, TEXAS

JUNIOR AND OPEN TENNIS TOURNAMENT

DATE: Junior - July 31st and Aug. 1st
Open - Aug. 2nd and Aug. 3rd

PLACE: Spearman High School's Omni Courts

BENEFACTOR: Tournament Proceeds and Concessions to Benefit Spearman YMCA

ENTRY DEADLINE: Noon, Wednesday, July 30th

ENTRY FORM: Junior Tournament

\$7.00 per single event \$14.00 per doubles team.
Limit 3 events per person. Starting time 9:00 a.m.
July 31st.

	BOYS		GIRLS	
	Singles	Doubles	Singles	Doubles
10 and under	_____	_____	_____	_____
12 and under	_____	_____	_____	_____
14 and under	_____	_____	_____	_____
16 and under	_____	_____	_____	_____

NAME: _____ DOUBLES PARTNER: _____

ADDRESS: _____

TELEPHONE: _____

SEEDING INFORMATION:

Open Tournament

\$8.00 per single event, \$16.00 per doubles team.
Limit 2 events per person. Starting time 9:00 a.m.
August 2nd.

	A	B	C
	Women's singles	_____	_____
Women's doubles	_____	_____	_____
Men's singles	_____	_____	_____
Men's doubles	_____	_____	_____
Mixed doubles	_____	_____	_____

NAME: _____ DOUBLES PARTNER: _____

ADDRESS: _____

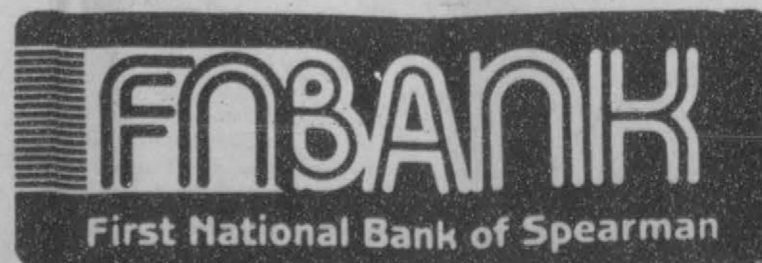
TELEPHONE: _____

SEEDING INFORMATION:

Send entries to: First National Bank, P.O. Box 337, Spearman, Texas 79081.
Phone: (806) 659-5544.

Tournament Directors: Don and Barbara Townsen, (806) 659-2735

We LOVE to SERVE you



729 W. 7th St.

Spearman, Texas

Phone 659-5544

50th Wedding Reception Held



Floyd & Ruby Hull by the reception table with their son Wilbur & wife Lois (left back side) and their grand-

children Allen & Valerie (right back side). Their grandson, Rodney was unable to attend.

Ruby Eads & Floyd Hull were united in marriage on July 21, 1936 in Spearman, Texas. They were blessed with one son Wilbur Hull who now resides in Sequin, Tx. with his wife Lois. Floyd & Ruby have three grand-

children, who are Allen, Rodney & Valerie.

Ruby & Floyd have been honored with a 50th Wedding Anniversary Reception on Sunday July 20, 1986 at the 1st Christian Church in Spearman. This special occasion was attended

by over 116 guests from California & Texas.

Ruby & Floyd would like to express their heartfelt thanks to all who attended and made their day so special.

Hansford County P.O.P. Show

The Hansford County 4-H P.O.P. horse show was held July 12, 1986 at the Oscar Archer Arena in Spearman. 4-H members from Texas and Okla. participated in the show. Results are as follows:

All around winner 8 & under Monte Eakin-Spearman

1st place Renee Schickedanz, Perryton
2nd place Tamra O'Toole, Fritch



Monte Eakin with Judge all around Winner of 8 & under award.



Mark Eakin All around winner 9-13

Class 1 Showmanship 9-13

1st place Kristin Kinsey, Guymon
2nd place Matt Archer, Spearman
3rd place Mark Eakin, Spearman
4th place Billy Hays, Gruver

Class 2 Showmanship 14-19

1st place Danette Raper, Perryton
2nd place Renee Schickedanz, Perryton
3rd place Tamra O'Toole, Fritch

Class 3 Mares 5 & over

1st place Kristin Kinsey, Guymon
2nd place Matt Archer, Spearman
3rd place Tamra O'Toole, Fritch

Class 4 Mares under 5

1st place Danette Raper, Perryton

Class 5 Geldings 5 & over

1st place Matt Archer, Spearman
2nd place Matt Eakin, Spearman
3rd place Clint Nickolson, Turpin Okla.
4th place Renee Schickedanz, Perryton

Class 6 Geldings under 5

1st place Billy Hays, Gruver
2nd place Robin Rutz, Perryton
3rd place Matt Eakin, Spearman
4th place Tamra O'Toole, Fritch

Class 7 Western Pleasure 8 & under

1st place Dustin Follis, Guymon
2nd place Britt Savage, Spearman
3rd place Monty Eakin, Spearman
4th place Cody McLeod, Spearman

Class 8 Western Pleasure 9-13

1st place Kristin Kinsey, Guymon
2nd place Mark Eakin, Spearman
3rd place Billy Hays, Gruver
4th place Clint Nickolson, Turpin Okla.

Class 9 Western Pleasure 14-19

1st place Renee Schickedanz, Perryton
2nd place Robin Rutz, Perryton
3rd place Tamra O'Toole, Fritch

Class 10 Western Horsemanship 8 & under

1st place Cody McLeod, Spearman
2nd place Matt Gafford, Spearman
3rd place Monty Eakin, Spearman
4th place Britt Savage, Spearman

Class 11 Western Horsemanship 9-13

1st place Kristin Kinsey, Guymon
2nd place Mark Eakin, Spearman
3rd place Jason Schickedanz, Perryton
4th place Clint Nickolson, Turpin Okla.

Class 12 Western Horsemanship 14-19

Class 13 Western Riding

1st place Kristin Kinsey, Guymon
2nd place Mark Eakin, Spearman
3rd place Joy Gafford, Spearman
4th place Matt Eakin, Spearman

Class 14 Trail 8 & under

1st place Dustin Follis, Guymon
2nd place Matt Gafford, Spearman
3rd place Cody McLeod, Spearman
4th place Britt Savage, Spearman

Class 15 Trail 9-13

1st place Kristin Kinsey, Guymon
2nd place Mark Eakin, Spearman
3rd place Matt Archer, Spearman
4th place Matt Eakin, Spearman

Class 16 Trail 14-19

1st place Renee Schickedanz, Perryton
2nd place Jacque Woodson
3rd place Tamra O'Toole, Fritch

Class 17 Pole Bending 8 & under

1st place Monty Eakin, Spearman
2nd place Matt Gafford, Spearman
3rd place Cheyenne Osborn, Guymon
4th place Clay Pope

Class 18 Pole Bending 9-13

1st place Matt Archer, Spearman
2nd place Matt Eakin, Spearman
3rd place Mark Eakin, Spearman
4th place Joy Gafford, Spearman

Class 19 Pole Bending 14-19

1st place Renee Schickedanz, Perryton
2nd place Tamra O'Toole, Fritch
3rd place Jacque Woodson

Class 20 Barrel Racing 8 & under

1st place Monty Eakin, Spearman
2nd place Matt Gafford, Spearman
3rd place Cheyenne Osborn, Guymon
4th place Britt Savage, Spearman

Class 21 Barrel Racing 9-13

1st place Mark Eakin, Spearman
2nd place Matt Archer, Spearman
3rd place Matt Eakin, Spearman
4th place Joy Gafford, Spearman

Class 22 Barrel Racing 14-19

1st place Jacque Woodson
2nd place Renee Schickedanz, Perryton
3rd place Tamra O'Toole, Fritch

Class 23 Stake Race 8 & under

1st place Monty Eakin, Spearman
2nd place Matt Gafford, Spearman
3rd place Britt Savage, Spearman

Class 24 Stake Race 9-13

1st place Mark Eakin, Spearman
2nd place Matt Archer, Spearman
3rd place Matt Eakin, Spearman
4th place Sandi Rich, Spearman

Class 25 Stake Race 14-19

1st place Renee Schickedanz, Perryton
2nd place Jacque Woodson (Tie)
3rd place Tamra O'Toole, Fritch

Attention Spearman and Gruver softball fans! If you are interested in entering the Servitors Coed softball tournament on August 15, 16, and 17 you better hurry. There are already 10 teams entered and there is a 16 team limit. The entry fee is \$100.00

The proceeds of the tournament go to many worthwhile projects such as Girls Town, American Red Cross, golden Spread Center, etc.

For more information and to enter the tournament contact Peggy Varnon at 9-3993 or Jan Howard at 9-2875.

LOUISA'S LETTER

Dear Louisa,
I am in love with a man who has asked me to marry him, but I am hesitating about accepting him because he has been married before, and I am afraid that he is still in love with his divorced wife. She has not remarried, and I do not know why they parted.

Do you think that if I married him he would forget his ex-wife, or do you think I am making a mistake by thinking of marrying him?
to be true. If he is, I am afraid that you will be building up unhappiness for yourself by such a marriage and I should not rush into it hastily if I were you. It may be that he is lonesome and unhappy and is turning to you on the rebound.

Of course, there are cases where young people rush into marriage before they realize what it's all about and are not happy until they separate.

But you should be able to judge your young man's feelings by the way he behaves and what he says.

Louisa

Address: Louisa, Box 532, Orangeburg, SC 29115

Answer:
You don't say why you think he still in love with his former wife, but you should have good reasons for hesitating.

You are cordially invited to a Kitchen Shower for Miss Jane Franklin Bride elect of Mr. Kirby Hargis Saturday, Aug. 2 3:00-4:30 P.M. First State Bank Hospitality Room

Hostesses
Judy Martin Barbara McClellan
Verna Strawn Helen Melton
Christy Brock Charlene Bulls
Deanne Latham Fances Loftin
Jeanne McClellan Sarah Garner
Gift selections at Sacks Third Ave. and Chalors.

38S-2tp

Give a part of yourself to a worthy Cause. Give to the Blood Drive, Aug. 8th, Parish Hall.

Give a part of yourself to a worthy Cause. Give to the Blood Drive, Aug. 8th, Parish Hall.

PALO DURO RESERVOIR

The Palo Duro River Authority (PDRA) called an election for the dam to be built on the Palo Duro River.

RECIPE

By Sarah Anne Sheridan

Macaroni salads are hearty enough to feature as main dishes for luncheon and evening menus.

Macaroni Crabmeat Salad

- 8 oz. elbow macaroni
- 1 c. cooked crabmeat
- 1 c. green pepper chopped
- 1/2 c. chopped pimientos
- 1 c. chopped celery
- 1/4 c. slivered almonds
- 3 hard cooked eggs, chopped
- 1/2 c. mayonnaise
- 1 salt
- Pepper to taste

Cook macaroni by directions. Chill. Flake crabmeat. Combine cooked macaroni, crabmeat and remaining ingredients. Mix thoroughly, but lightly. Chill several hours before serving or salting grapes.

Quality Doors & Energy-Efficient Windows Reasonably Priced!

Jenkins
Doors and Windows

820 W. 6th Amarillo, Texas TX 1-800-692-4066

Free Over 1,000.00 in drawings for new fall clothes!

2-\$25.00
1-\$50.00
Gift Certificates Daily

Free Gifts and Free Ballons for Kids!

In Store modeling 10:00AM-12:00AM Mon.-Sat.

Delicious Refreshments

Wonderful sales on summer clothes 40%-50%-70%

Faye, Kathy, and Judy Welcome You to our

Absolutely beautiful new fall clothes!

Grand Opening
July 28-Aug. 2

Main Street Store

506 Main Gruver, Texas

Man
Women
Children
Infants
Gifts

20% off most items daily

We would love to serve You!

Mixed Drink Tax is 4,116.01 Here

State Comptroller Bob Bullock Monday sent checks totaling \$12.1 million to the 220 counties and 426 cities as their share of the state's 12 percent mixed drink tax collected during the second quarter of 1986.

The Texas legislature raised the tax from 10 percent to 12 in 1984.

Bullock said the state collected \$50.7 million in mixed drink taxes for the second quarter, compared to \$51.3 million collected during the same period in 1985.

Texas cities and counties now each receive a 12.5 percent share of the tax collected on mixed drinks sold within their boundaries under the law that legalized the sale of mixed drinks in the state. Cities and counties received 15 percent rebates until the rate was changed in 1984.

Of the total \$50.7 million in state collections, counties received \$6.3 million, down from the \$6.4 million received during the second quarter in 1985. Cities received \$5.3 million,

down from the \$5.9 million rebated to cities last year during the second quarter. The state's general revenue fund received the balance.

Bullock said \$38.6 million was deposited in the state's general revenue fund from second quarter collections, compared to \$38.9 million collected in second quarter 1985.

The mixed drink tax is collected by the Alcoholic Beverage Commission and city-county rebates are sent out quarterly by Bullock's office.

Mixed Drink Tax Remittances Second Quarter (April, May, & June) 1986
Hansford County, Spearman, Texas

Total County Tax Revenue 4,116.01

County's 12.5 percent 514.50

Total City Tax Revenue 4,116.01

City's 12.5 percent Remittance 514.50



Surge Valve being utilized to save: pumping energy, labor and time.

Surge irrigation is an intermittent application of water to furrows in a series of pulses or surges, rather than a continuous furrow stream. Usually the water is alternated between two sets of furrows until the irrigation is completed. The switch is accomplished with a surge valve and an automatic controller located between two sets of furrows. Gated pipe is used to distribute the irrigation water to each of the two sets from opposite sides of the surge valve.

- Some advantages of using Surge:
1. The faster advance time gives a more uniform application, resulting in less deep percolation.
 2. The automatic cutback feature allows the use of cutback irrigation to reduce tailwater without the increased

labor and management needed under conventional furrow irrigation.

3. A lighter application of irrigation water can be applied much more efficiently.

4. The ability to apply lighter applications efficiently provides the opportunity to leave room to store rain.

5. The more efficient irrigation reduces the amount of water needed, the energy required to pump the water and loss of fertilizer.

With these advantages, one saves water, saves pumping energy and saves time and labor.

Contact the Soil Conservation Service at 505 W. 11th. or phone 659-2330 for more information on the use of surge irrigation on your farm.

The residents have acquired another new pet. A little terrier puppy named Patches. Janette Simpson gave him to the residents. We enjoy watching the kitten and puppy play.

The volunteers helping in the beauty shop this week were Maxine Little, Linda Lieb, Virginia Head, Ruby Riley, Grace Kirk, Maudine Patterson and Kathy Monk. Ruby Riley and Kathy Monk came for the first time this week and we sure are glad for the extra help.

The residents were very glad to see Mrs. Gruver week. She came up to visit us this week.

The big winners in bingo this week were Nina Evans, Pauline Johnson, Opal Jones, Viola Graves, Belle Dyer, Grace Bennett, Ruth Garner, Clara Hull, Blanche Tabler, Mabel Edwards, Edna Bayless, Evelyn Hale, Bob Thompson and Mildred Daily. The volunteers helping were Joann Graves and Virginia Head. Joann and Albert Graves donate the quarters for bingo each week.

Your Dog Was Impounded For Three Reasons

1. To protect the dog from cars, poisons, disease and irate citizens.
2. To protect the community from the dog's digging, biting, barking, breeding, and defecating.

Now that we know who the owner of this dog is, we want you to accept your responsibility to your dog and your community.

You cannot guarantee your dog's safety unless you know where it is; either in your yard or at the end of your leash.

People who disregard traffic laws sooner or later get injured or killed. People who disregard the leash law sooner or later get their dog killed. Then they get another dog.

Dogs are pretty smart; about as smart as a two year old human being. Would you leave a two year old child in the street to wander at will?

If the dog has done damage, either to property or persons, you are also liable to civil suit for the costs. These can range from a few dollars for a broken flower pot to thousands of dollars for plastic surgery on a child's face.

Your dog is valuable personal property, even aside from its emotional value. It is illegal to harm, destroy, or steal dogs, but it is foolish to put them at the anonymous mercy of the street.

Your dog has not been in jail. It is not appropriate to lecture the dog. The responsibility, the fees, and possibly the citations are for you, not the dog. If you are not willing to accept these, perhaps you don't really want to own a dog.

Dogs at large devalue property by destroying yards, scattering garbage, and interfering with traffic. Excessive loud barking and feces everywhere is unpleasant for everyone.

People often say, "Why isn't the leash law enforced?" You have just discovered that it is enforced.

Maybe your dog is normally confined or leashed and this is the first time it has escaped. In that case,

we're really glad your dog has been redeemed and is going to be safe at home.

Our goal is one responsible owner for every dog. A dog is a living creature that deserves safe and comfortable surroundings.

OUR RESPONSIBILITY BEGINS WHERE YOURS ENDS!!!



For hot, buttered corn, fill a large quart jar with hot water and sticks of butter. When butter melts and floats to the top, dip in the cobs and pull out slowly.

The Land Bank

Dependable long-term credit through good times and bad...

See us:



High Plains Federal Land Bank Association

506 South Main, Perryton, Texas

806-435-4319
Serving Ochiltree, Lipscomb & Hansford Counties.

Manor News



Opal Jones celebrate her birthday recently. Mrs. Jones is 84 year young.



This adorable creature is Patches, the Manor's new pup.

GRAND OPENING

Friday & Saturday, Aug. 1 & 2 -

Now in Stock:

Tall Girls
ROCKY MOUNTAIN
JEANS

All Summer Merchandise

30% to 50% off



All Boots 10% off

Register for \$100. Gift Certificate Plus Door Prizes!

Refreshments Served -

Fall & Winter Merchandise Now Arriving

Town & Country WESTERN WEAR

118 S. Main

Perryton, TX

435-2442



Candles burn more slowly and evenly with minimal dripping if you place them in the refrigerator for several hours before using.

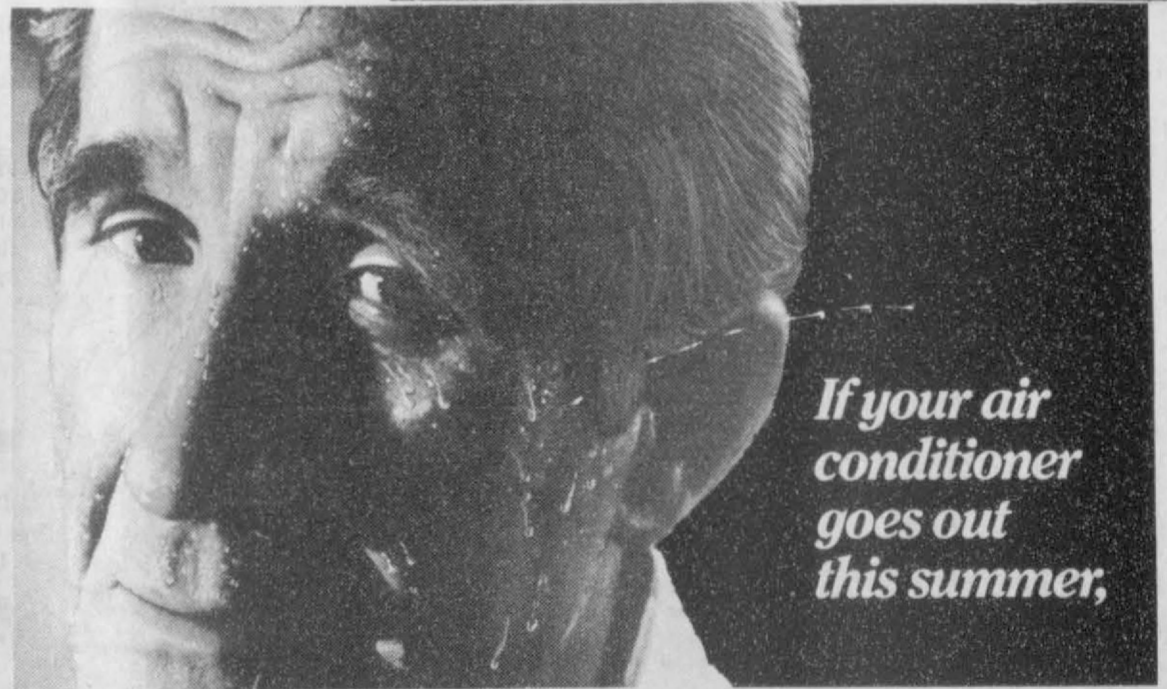
Oscar Rojas Jr.

659-2158

Design and Installation underground line for Irrigation

Repair all types of Irrigation Line

Welding and Straighten Aluminum Pipe



If your air conditioner goes out this summer,

Replace it with a heat pump.

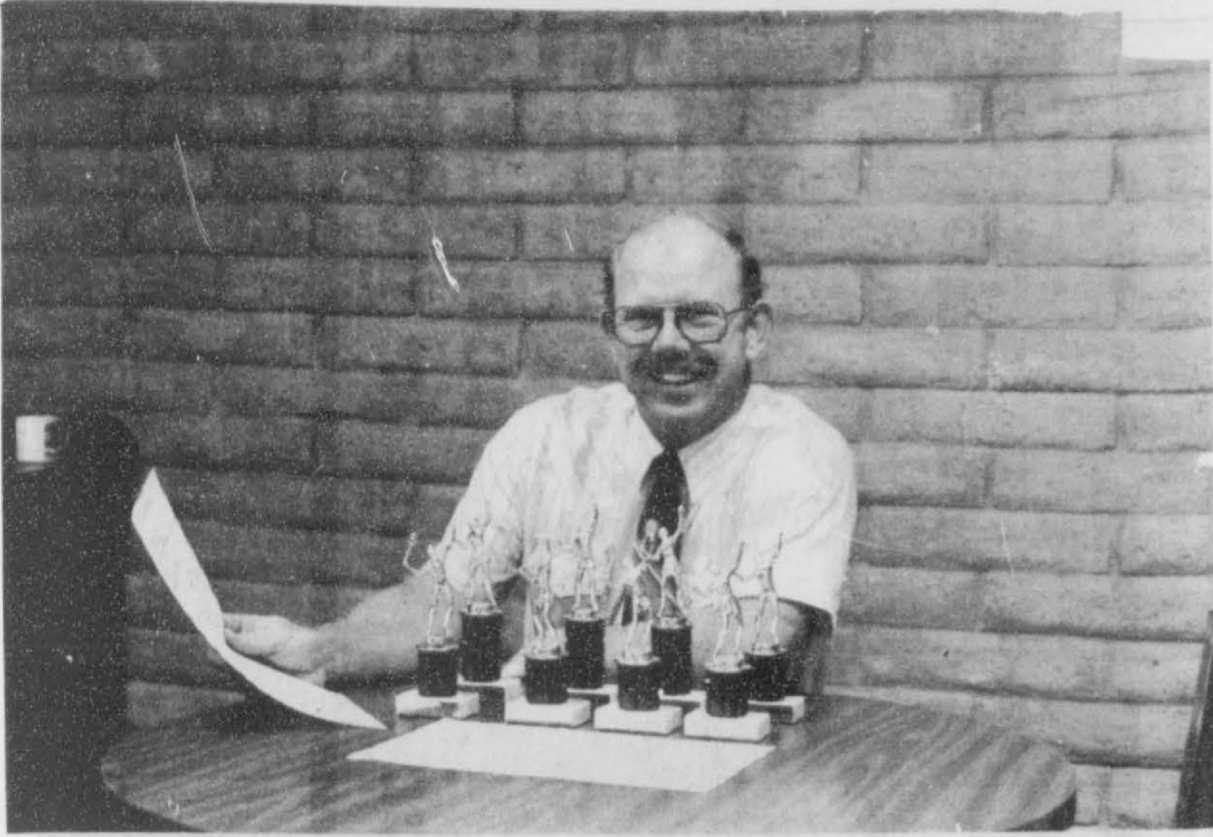
Call one of these top air conditioning and heating contractors.



Lee Shaver
Hansford Co. Electric

A heat pump can utilize your present system to both cool and heat your home. It offers the ultimate in home comfort. The heat pump is clean, quiet and efficient. Economical to operate, too. So, if your air conditioner has to be replaced, call one of these heat pump dealers. He will help you make the best of a bad situation.

Spearman junior and open tennis tournaments to benefit Y



FIRST NATIONAL BANK, SPEARMAN, President, Don Townsend is pictured with some of the trophies for the bank sponsored tennis tournament coming up in the near future in Spearman. Money from the tourney will go to the Y, in Spearman!

The First National Bank of Spearman will sponsor a Junior Tennis Tournament July 31-August 1 and an Open Tennis Tournament August 2-3 at the Spearman High School's Omni courts. All proceeds from the tournament and concession stand will be donated to the Spearman YMCA.

The Junior Tennis Tournament will contain four classes of youngsters. There will be a 10 and under, a 12 and under, a 14 and under, and a 16 and under division. These classes will compete in boys' singles and doubles and girls' singles and doubles.

The entry fee for the singles competition is \$7 per single event. For

the doubles event, the fee will be \$14 per team. There is a limit of three events per person.

First and second place winners in each competition will receive trophies to remain eligible for school athletics. The tournament will begin at 9 a.m., July 31.

The Open Tennis Tournament will have women's singles, men's singles, women's doubles, men's doubles, and mixed doubles, for classes A, B, and C. A competitor is limited to entering two events.

The entry fee for the Open Tennis Tournament will be \$8 per single event and \$16 per doubles team. The tourney will begin at 9 a.m., August 2.

The top two finishers will receive merchandise for their accomplishments. First place winners will receive water jugs and tennis towels with the bank emblem. Second place finishers will be given tennis towels with the bank emblem.

Entry deadline for both tournaments is noon, July 30. For more information, contact the tournament directors, Don and Barbara Townsen, at (806) 659-2735.

Markets

Wheat	Milo	Corn
2.10	3.50	2.20

Hospital

Patients in the Hospital are: Kelly Russell, Angel Chavez, Sammie Bishop, Faye Lynch.

Dismissals are: Phyllis Cummings, Thelma Mitchell, Sara Bass, Deanna Kenney.

In Fashion

Textures and colors are news makers for late summer and fall fashions. Sweaters are tops in the fashion news world again this fall. All kinds of garments are found in knit—ranging from jersey to hand-made.

Snare a Part of Your Life
Give Blood on August 8th
Sacred Heart Parish Hall

Weather

Date	Hi	Lo
23	94	65
24	99	69

Bridal Shower
For
Pam Stumpf & Allen Carlile
August 1st
7-8:30
Fellowship Hall First Christian Church
Hostess:

Margaret Evans
Carolyn McLeod
Sherry Shields
Mary Brock
Sandy Russell
Gwen Smith
Dorothy Haner
Jeannie Laughlin
Phyllis Collins
&
Betty Davis

Selections at Sacks.

HAS WHAT IT TAKES TO TAKE CARE OF YOU...AND YOUR CAR.

CLIP & SAVE

CAR CHECK

CLIP & SAVE

8 POINT AIR CONDITIONER CHECK
Includes Drive Belt Adjustment, Adding Freon, Checking For Leaks, Inspecting Hoses & Clamps, Checking Coolant Level, Cleaning the Condenser, Testing the Pressure, and Testing the Performance.

LUBE, OIL FILTER & OIL CHANGE
Proper Lubrication is Cheap Maintenance. If You Have Over 3,000 Miles On Your Oil, It's Time for a Genuine AC/Delco Oil Filter and GM Goodwrench Oil. Let Us Do It Quick and Easy!

REPLACE WORN SHOCK ABSORBERS
Spongy Shocks Are Bad For You AND Your Car. Replace Them With GM Goodwrench Shock Absorbers and Ride In Comfort! They Come With a Lifetime Limited Warranty. See Us For Details.

FRONT-END ALIGNMENT
Misalignment Can Wear Out Tires Before Their Time. Get Your Car Proper Alignment Including Camber, Caster & Toe Adjustment, Steering Linkage Check, and Tire Check. (Alignment Available Only at Hergert Pontiac-Buick-GMC, Spearman).

ONLY **\$24⁹⁵** SPEARMAN ONLY
(Front Wheel Drive Slightly Higher)

FRONT END ALIGNMENT

Improves Handling, Eliminates Shimmys, Shakes, Veering

Mr. Goodwrench

Call For Convenient Appointment
Offer Valid Until 8-31-86



BEAT THE HEAT

Mr. Goodwrench's Complete 8 Point Air Conditioning Check

NOW JUST **\$19⁹⁵**

INCLUDES Freon, Repair Parts Extra If Required

Mr. Goodwrench

Call For Convenient Appointment
Offer Valid Until 8-31-86

SHOCK THERAPY?

Let Us Install Genuine GM Goodwrench Shock Absorbers with a Lifetime Limited Warranty. See Us For Details.

FOUR SHOCKS INSTALLED	\$99⁹⁵	TWO SHOCKS INSTALLED	\$49⁹⁵
-----------------------	--------------------------	----------------------	--------------------------

Mr. Goodwrench

Call For Convenient Appointment. Offer Valid Until 8-31-86

SLICK SAVINGS!

LUBE, OIL FILTER, AND OIL CHANGE ONLY ...

Includes 5 Quarts GM Goodwrench Motor Oil

\$19⁹⁵

Mr. Goodwrench

Call For Convenient Appointment. Offer Good Until 8-31-86

Out of State 1-800-338-5871 Office 1-405-338-3378

Home Owned and Home Operated

SALE EVERY THURSDAY
BEGINNING AT 12:00pm

We have great plans for the money you don't have.

The money you spend foolishly instead of investing. The money that goes into Uncle Sam's pocket instead of yours. The money you could be using to help you make more money.

Before we talk, we listen.

At IREC, Integrated Resources Equity Corp., the first thing we do is sit down and understand your financial situation. From there we go on to your needs and wants. Then together we decide which plan is best for you.

Maybe mutual funds are right for you. Or variable annuities. Or any number of investments designed to help you keep more of what you earn. Not to mention earn more on what you keep.

Before you find a plan, find out about the planner.

IREC is a subsidiary of Integrated Resources, Inc., a nationally recognized financial services firm listed on the New York Stock Exchange.

So if you're interested in making plans for the money you don't have, we suggest you give us a call.

DON HERGERT MOTORS

Pontiac - Buick - Olds - Cadillac - GMC

420 S. MAIN - PERRYTON

Used Car Lot 1100 Block S. Main.

435-3686

HERGERT
PONTIAC-BUICK-GMC

S. HWY. 207 - SPEARMAN

659-3721

Mr. Goodwrench



City Park

Thanks to the City of Spearman for the beautiful Swimming Pool Park.



18 Years

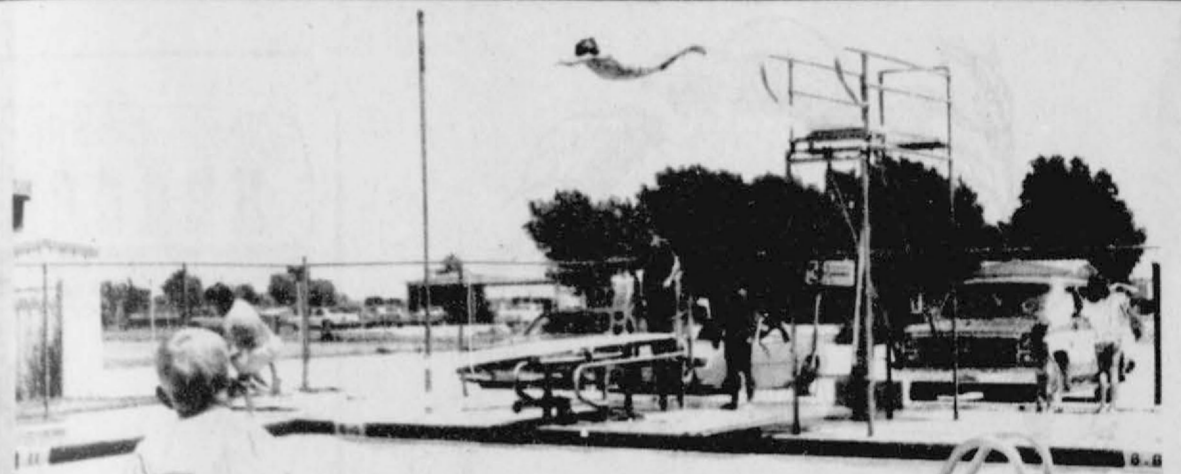
Rotarian John R. Collard Jr. receives an 18 year attendance Pen from Rotary President Ronnie Lusby. The

award was made at Mondays Rotary meeting in Spearman.



New Topping

New asphalt and gravel is being applied to streets in Spearman! Remember not to "flood" your gutters while watering your lawn!



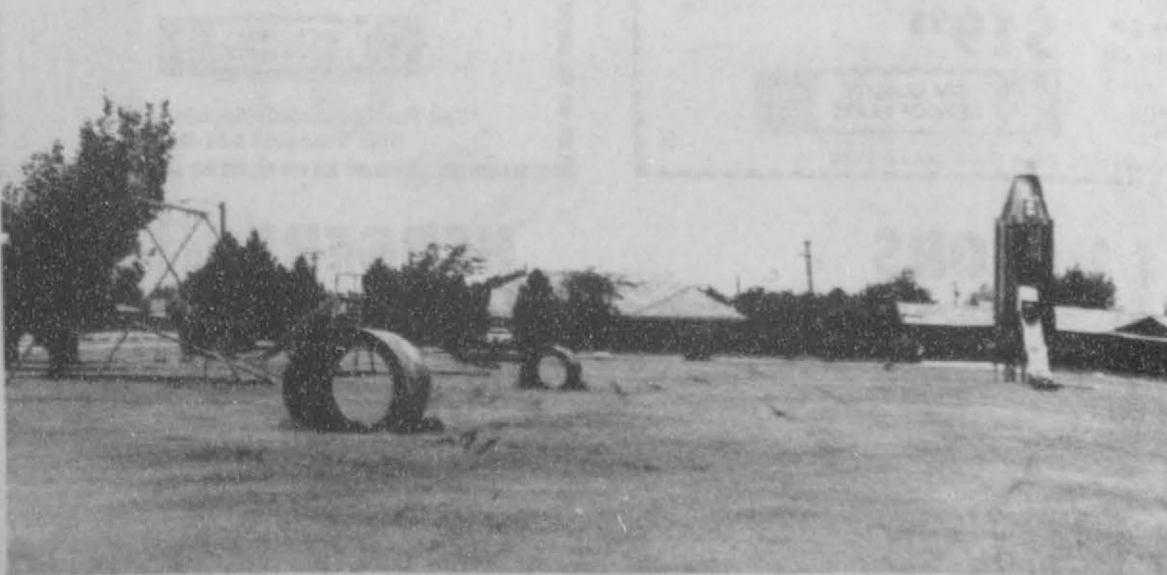
Swan Dive

The "Cascade Plunge"! With temperatures near 100 degrees daily, the beautiful cool, clear water at the Spearman Swimming Pool was the place to be!



Womble Park

The beautiful Womble Park is very inviting. Complete with Play-ground equipment and barbecue facilities. Another of Spearman's beautiful parks.



City Park

The Rocket-Slide Park is another of the outstanding Parks in Spearman.



BINGO

License No. 1-75-1072869-8

Family Fun at the

Perryton & Vinicity Y

1201 S.W. 15th

• No Admission Charge •

★ \$1,000 Giveaway Each Bingo Night

(Smallest Prize \$50.00 ... Up To \$300.00)

Entry Fee as Small as 75¢ Per Game

STATE LAW: No one under 18 years of age will be permitted in the gym during Bingo unless accompanied by a parent or legal guardian and all children will be required to remain seated with their parents.

Every Friday Night Beginning ...

FRIDAY, JULY 25, 1986

Bingo Time: 7:30 p.m. to 10 p.m. (Doors Open at 6 p.m.)

IMPORTANT: Come early the first few nights to understand the rules and be ready to play by 7:30.

Double Bingo or 9 in the Corner ...
Wild Number Bingo ...
Blackout Bingo ...

12 Games with 10 Instant
Winners of Cash and
2 Winners of Gift Certificates.

B	I	N	G	O
13	18	42	59	70
2	24	38	55	68
8	17	FREE SPACE	50	63
14	21	36	60	75
1	29	34	52	69

— CONCESSION STAND —

*Prizes may be adjusted according to attendance