



The

SUNDAY The Hansford Plainsman



PREPARING FOR TRIP - Foreign Exchange Student Geir Overland (left) packs his suitcase for the month-long trip around the United States before returning to his home in Norway. Geir receives some helpful instructions on how to pack from Lloyd McWhirter in whose home he has lived the past year.

-Plainsman photo

Overland Says Year Has Been Valuable

A very successful experiment in people-to-people diplomacy comes to an end in Spearman next Sunday.

Geir Overland, Spearman's first exchange student, leaves Amarillo, Sunday, June 26, to begin his month long trip home.

Although he has officially been the exchange student, Geir has been just another member of the Jack McWhirter family and the senior class of Spearman High School.

In fact, he became a part of the town and school so fast, it has been hard to realize Spearman has had its first exchange student.

"The first few weeks were a little confusing, but after that it was all right," Geir commented.

Mrs. McWhirter said they took him to the mountains right after he arrived last fall; when he returned there was a welcoming party and after the party, he seemed to be right at home.

The McWhirters are very enthusiastic about the exchange program. They feel they have learned more than their exchange student just from having him in their home.

"Learning to live with different nationalities is the only way we are going to have world peace," Mrs. McWhirter comments.

Even though the year puts him behind in his Norwegian school work, Geir believes he has gained much from this year in Texas.

"I will not receive credit for this year of work, but I came for the experience. Also, I have learned American history, Texas history and Civics, and my English is much improved.

"It has been a very valuable year for me," he commented.

Back at home in Steinkjer, Norway, he will re-enter high school where his major subjects are math and physics.

He has been an honor here and is an honor student in the Norwegian schools. When he finishes high school there, it will be equivalent to finishing a Texas Junior College.

Geir says the Spearman schools cover just as much as Norwegian schools, but here it is not as hard.

"We did more work in school this year, and not as much homework as in Norway. At home we have three or four hours of homework each day."

Geir says the honor students of Spearman would have no trouble in Norwegian schools, if they could speak the language. He says they could not enter the senior year, but would have no trouble in the schools.

There have been some exchange students in Steinkjer, Norway from the United States, but Geir said they were mostly there for the summers and they did not get to know the young people like they would if they had gone to school there.

The flat Texas Plains are a complete change from the mountains and trees of Norway, but that is what the student asked for when he was accepted into the American Field Service program.

"I wanted to come to Texas or California, because I wanted a complete change. Going to New England or other northern states would have been very little different from home."

He is looking forward to returning home and seeing his family, but he says he has not been too homesick.

"We had heard so much about students who became homesick, but I have had so much fun and been in such a nice family that I have not had time to be homesick."

The tall, handsome Norwegian has had the Texas farm treatment. The McWhirters have taught him to ride horses, and drive tractors.

While he was learning, Jack McWhirter recorded his progress on film. He is taking the movies home to show.

"I planted some maize and it has come up. But, I also planted some wheat and it did not do so good," Geir recalls.

Geir has been to many events over the Panhandle and state with school activities and with the McWhirters. At many of these he has had a chance to meet with the other exchange students in the area.

His biggest trip was with the band to the Cotton Bowl football game where he became an ardent Arkansas Razorback fan, complete with red hat and hog call.

He was such an outstanding part of the student body of the school this year, that this year's annual was dedicated to him.

And, although, he is allowed only 40 pounds of luggage on this tour of the country, the annual goes with him, even though he has shipped about 70 pounds of other things home ahead of his departure.

The McWhirter are looking forward to going to Norway to visit Geir and his family, the Rev. and Mrs. Berge Overland, and two brothers and one sister. "A good wheat crop and we are on our way. I have made arrangements for my son-in-law to run the farm when we go," Jack says.

The tour that begins June 26, will end in Washington D.C. on July 26 and the group will sail for Europe on the Seven Seas. They will arrive in Europe on Aug. 5.

We wonder how long it will take Steinkjer soccer fans to get used to a fan that wears a red cowboy hat and boots and jumps up and yells Soooooeeel at the soccer games.

Storm, Fire Scare Some Thursday

A wheat fire in the middle of a storm Wednesday night upset a few storm watchers over the area.

The heavy storm cloud produced only .40 inch of moisture here and very little outside of town. The moisture was spotted over the territory.

However, it was enough to stop or slow the wheat harvest for a day.

The fire was in a wheat field and the fire alarm set many people to hunting for the tornado.

Committee Planning Crazy Day Variety Show

More plans were made Thursday morning for the second Crazy Day celebration and the annual Christmas celebration at a meeting of the Retail Merchants Committee at the Chamber of Commerce.

Crazy Day will be held on Saturday, Sept. 17 with a full day of fun and sales items in co-operating stores. A committee is still working on planning a variety show for entertainment that night.

Crazy Day will open with a breakfast for all participating store owners, employees and guests.

There will be judging for the best costume and also the best decorated stores.

Other activities for the day are being planned.

It was voted by the group that the street Christmas decorations will be put up on Friday and Saturday after Thanksgiving and all business firms are urged to have their decorations up by Saturday, Dec. 3, when Santa Claus will make an early visit to Spearman.

There will be a second Christmas program on Wednesday, Dec. 21.

Saturday drawing is being discontinued this year, since there was little interest shown last year. This year it is planned that individual stores will decide what, if any, gifts they would like to give. Each store will have its own registration for its gifts.

At the second Christmas program on Wednesday, Dec. 21,

there will be one big drawing. Each store will bring its tickets to a central place. Then the winners of each individual store's gifts will be selected from that store's tickets.

To have a chance to get the gifts given in any one store, a shopper will have to register

Chief Leaves Over Dispute

A dispute over enforcement of one traffic law led to the dismissal of the Spearman Chief of Police Wayne Pierce Thursday. A second policeman resigned Friday morning.

City Manager Darce Foshee said the disagreement arose when the chief and city officials disagreed about his checking out-of-state wheat trucks for permits to operate in Texas. Police Officer John Fisher resigned his position on the police force Friday morning. He gave no reason for resigning. His resignation was effective immediately.

Foshee said there was no question about the police enforcing city traffic laws concerning the safe operation of vehicles, be they cars or trucks.

There is a state law that out-of-state trucks must have a

(Con't. on page 2.)

in the individual store. Another meeting of the merchants' committee will

be held Thursday, Aug. 4, to finalize plans for Crazy Day.

Fund for Purchasing Lynx Blazers Opened

A fund to buy athletic blazers for members of the Spearman Lynx Varsity squads is being started by team sponsors, it was announced this week.

An account has been opened at the First State Bank under the title "Lynx Blazers" and any one who would like to help with the drive may deposit money to the fund.

These blazers will be purple with a white Lynx crest on the pocket.

Coach George Wright said he hoped to get 40 coats and they will cost about \$20 per coat.

Each member of the varsity will be issued a blazer just like a uniform. He will wear it only on school sponsored athletic trips and it will be turned in at the end of the season.

The jackets will be worn by the members of the football, basketball, track, and tennis teams when they are making road trips.

Schools over the area are putting their teams in these blazers and it not only identifies

the members of the team, but also makes a nicer looking group when they are traveling.

Coach Wright said the program had been successful at Oddard High in Roswell, N. M., where he coached last year.

Band Invited To Pro Game

Another honor has been extended to the Spearman High School Lynx band.

This week the San Diego Chargers, the professional football team in San Diego, California, extended an invitation to the band to present a half-time show at a professional game on either Sunday, October 30 or

(Con't. on page 2.)

H.D. Club Holds Cook-out

The Happy Homes H.D. Club met at the country home of Mrs. Fendorf Schubert for the annual cook-out breakfast on Thursday morning, June 15 at 6 a.m.

A menu of bacon, eggs, hot biscuits home-made jelly, orange juice and pots of coffee were served.

Enjoying the early morning breakfast were F.B. and Maylynn Schubert, Robert and Margeret Adamson, James and Neil Cummings, Vaye West, Rose Cummings, Adolynn Barnes and Miss Linda Webb.

A recent letter received by Mr. and Mrs. Cecil Crawford from their son Mike who is a helicopter pilot-in Viet Nam, states that he is flying patrol and is involved in "Operation Crazy Horse" in the central highlands of Viet Nam.

Rita, his wife, and son Shawn are in Canyon where Rita is attending the summer session at W.T.

Husband to wife: "I'll say this for television — the more unsuitable the program the quieter it keeps the children."

KNAPP SHOES

Kenneth Bailey
212 N. James
Phone 659-2458
Spearman, Texas

For Cushioned Comfort

Cummings Refrigeration

HEATING
AIR CONDITIONING
SALES & SERVICE
SPECIALIST

659-2721
SPEARMAN

Bounty Set on Fish Swimming in Lake

A bounty which collectively totals \$100 has been placed on tagged fish swimming in the water of Lake Meredith it was announced Saturday by a spokesman for businessmen and individuals in Borger, Fritch and Sanford.

The fish are left from the recent Lake Meredith Festival fishing rodeo and each one bears a tag in his mouth or gill worth \$100 to the fisherman who comes up with one of them.

Judges have been named to verify all catches filed for reward. catfish worth \$1,000 during the festival rodeo is not carrying a price on his head, it was explained in the announcement.

Any angler who hooks one of the big tagged fish between now and Labor Day may claim his prize by exhibiting the catch at any one of the participating firms and have the fish verified by one of three judges, according to E.L. (Bud) Hollar, guiding hand behind the reward project and spokesman for the participants.

"We decided after the rodeo that this would be a good way to keep fishing at Lake Meredith before the people of the region," Hollar explained.

Six of the fish were "adopted" by individual firms who contributed \$100 each. These are Popular Supply, Coors Beer, Budweiser Distributing Co., all of Borger; Canadian Brezeze Motel, Fritch; Ole Buddy's Bait House in Sanford and Overton Construction Co., Dumas.

Teaming up on a fish per each two are Lake Meredith Worm Farm, Fitch; Fuzzy's Radiator Shop, Broger; A & B Service Station of Fritch.

Other contributors to the reward fund are H & W Pharmacy, Whaley and Compton, Fritch Hardware, Matthews Gulf Service, Bob's Grocery and Market, Kites Shamrock, all of Fritch along with River Cafe and Waynes Bait House of Sanford.

Hollar said the rewards were good until midnight Labor Day. The spokesman indicated that the practice might be carried on each year, if arrangements can be made with the Lake Meredith Festival Committee and other officials and interested parties.

Only Saturday Lake Meredith was listed by the U.S. Bureau of Sport Fisheries and Wildlife as one of eight new western lakes at which sports fishing will be available this season. Sen. John Tower made the announcement from Austin.

Tower said it was most appropriate that the Bureau should call Lake Meredith's attractions to the attention of all Americans everywhere.

Presumably the lake will be listed in official bureau literature and publications.

The fish "reward program" is the forerunner to a carp tournament to be sponsored by Sanford during the Labor Day weekend at the lake.

Full details and a prize list were to be announced soon, Hollar said Saturday.

Circle Installs New Officers

The Phleo Circle of the First Christian Church met on June 8 at the church for a salad supper and installation of officers.

Out going president Gwen Smith installed the new officers for the new year. Installed were President, Dorothy Haner; Vice President, Dorothy Buzzard; Secretary-Treasurer, Charlotte Jackson; Worship and Study Chairman, Margaret Evans; Service Chairman, Betty Davis.

The meeting closed with a devotional by Margaret Evans. Present were Loydell Hollar, Estelle Jackson, Gwen Smith, Marie Sparks, Dorothy Hanes, Dorothy Buzzard, Betty Davis, and Margaret Evans.

Mrs. Ralls Is Circle Hostess

The Alma Reed Circle met Wednesday with Mrs. Jerry Ralls in her home.

Mrs. Don Jones presided over the business and also read the prayer calendar followed with prayer by Mrs. Luther Berry.

Mrs. Fred Holt brought the Bible study taken from the book of Isaiah.

Present were Mmes Luther Berry, A.F. Loftin, R.H. Gray, Fred Holt, Jim Fowler, Don Denham, Major Lackey, Don Jones and the hostess.

Chemicals from the tree improve the wetting and flow properties of paint. It clings to a surface better and provides a smoother finish.

Students Attend Summer Session

Among students attending summer sessions at college are Polly McLain, Johnny Jo Vernon, Kathy Crawford, Mrs. Mike Crawford and Mrs. Don Cruce of Tulia all at WT.

David McClellan is attending 12 week course at the National Science Foundation at the University of Texas.

Bethany Donnell is also attending at the University of Texas. Eddie Gale Martin is attending Frank Phillips Junior College.

Nancy Wilmeth is attending Sam Houston State for the first 6 weeks and for the second term will attend at Pueblo, Mexico.

Mike Skinner will attend summer session for 6 weeks at the University of Hawaii.

Patty Simmons, Janice Phelps, Jimmy Ownbey, Robbie Ownbey, and James Ownbey are all attending Texas Tech.

Visiting the home of the Muri Pearson's are Mrs. Pearson's mother, Mrs. Carl H. Snyder, her older sister and her husband, Mr. and Mrs. Jesse Inder, her nephew and his wife, Mr. and Mrs. James Winder, and Tina, all of Pennsylvania.

Notice

Ladies Morning at the swimming pool, Thursdays from 10:30 to 12:00.

Mrs. Hutton Hosts Circle

Kezzia Mae Circle met at the church Wednesday morning with Mrs. E.A. Hutton hostess.

Prayer calendar was read by Mrs. Woodville Jarvis and Mrs. Roscoe Nelson led in prayer.

The Bible study was given by Mrs. R.L. Uptergrove.

Present for the meeting were Mmes. Dana Hazelwood, George Wright, Roscoe Nelson, R.L. Uptergrove, Oscar Johnston, Woodville Jarvis and the hostess.

'Texas' Will Open July 1

"TEXAS", the tremendous musical drama to be produced in the Palo Duro Canyon, this summer, is one of twelve shows of this kind. The musical is written by Paul Green.

Some of Green's other works include "The Legend of Daniel Boone", "Cross and Sword", "Trail of the Lonesome Pine", and "Till the Day Break." "Texas", the drama of Texas life in the 1880's, will be presented in Canyon, Texas from July 1 to September 5.



I have given thee a wise and an understanding heart. —(Kings 3:12)

In our daily association with people, we should remember that we play an important part on whether our relationship be disagreeable and unpleasant or happy and harmonious. God has put within our heart all the love and understanding to heal difficult situations and harmonize our associations.

HOSPITAL News

In the hospital are Agnes Windom, Billie J. Williams, Joe Camp, Omar Cotter, Juanita Brillhart, Lilly Mae Chase, Lupa Mijarez, Elva Beane, Bill Miller, Connie Trivio, Barbara Howe, Bertha Jenkins, Donnie Wilson.

Dismissed were Janice Ward, Charles Bridgeman, Doris Watson and daughter, Linda Pierce and daughter, Renee Woody, W.C. Tyler, Tomasa Longoria.

TOMMY GOOCH AGENCY
FARM BUREAU INSURANCE
Spearman, Texas

MAMA LOVES PAPA...



AND SO DO WE!

We wish Dad a happy Father's Day! He works hard, uses his money wisely. We know — we're his bank! We're his bank because we give full, personalized service in every financial area. With us, Dad saves his money, pays his bills, borrows money for any good reason, protects his valuables. May we help you?

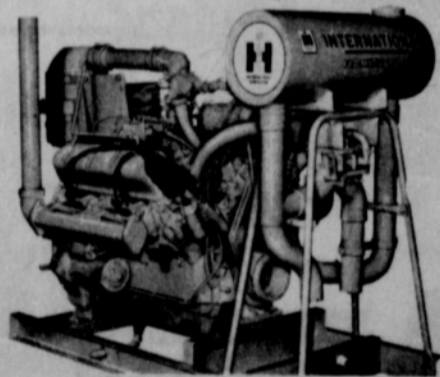
FULL BANKING SERVICES

- Mortgage Loans
- Bank Money Orders
- Modernization Loans
- Personal Loans
- Checking Accounts
- Business Loans
- Bank by Mail
- Safety Deposit Boxes
- Savings Certificates

First State Bank

Member Federal Deposit Insurance Corporation

BUY POWER THAT PAYS



UV-549 ENGINE

IT IS ENGINEERED FOR IRRIGATION

IT IS A COMPACT MODERNLY DESIGNED V8 VALVE-IN-HEAD ENGINE BUILT FOR HEAVY DUTY WORK.

NORTH PLAINS TRUCK & IMPLEMENT

Hansford Plainsman
Publishers Inc.

Jim O. Davis
Burl G. McClellan



County-wide independent newspaper published every Thursday and Sunday at 209 Main St., Box 668, Spearman, Texas 79081. Second Class postage paid in Spearman, Texas 79081. Editor . . . Burl McClellan

Enticing burgers are made with pizza, pickles, bagels, bananas, wine, nuts, onions, soybeans and lobsters . . . The first version of the versatile meat turned up on medieval menus in the Baltic states . . . Then it was eaten as raw beef shredded with a dull knife . . . Merchants from Hamburg, brought it home as Steak Tartar. German immigrants in the United States introduced the raw specialty here and named it hamburger . . . When a broiled version was introduced at the St. Louis World's Fair it became popularly known as hamburger . . .

SO THEY SAY

HE ATE LIKE A HORSE



...because he couldn't wait to get down to Burton's and choose his new TV set from their complete display. He knew their prices are reasonable, and their after-the-sale service reliable.



106 E. Kenneth

Chief . . .

(Con't. from page 1.)

temporary permit to operate in Texas. Pierce had stopped several trucks checking for these permits and had issued some citations to trucks failing to have such a permit.

City officials did not feel that it was necessarily the job of the local police to check for these permits. Foshee said that when Chief Pierce insisted upon checking these permits he was dismissed.

Foshee said there was never any question about the police enforcing speed laws, and other laws involving the controlling of traffic in the city.

Some of the city council members in past months had been critical of the police force for not issuing more traffic tickets for moving traffic violations within the city.

Pierce had resigned from the force earlier and his resignation was to become effective July 29. He had been Chief of Police here for two years. He came here from Amarillo.

Fisher has worked for the city since April 1962.

SHORT AND SWEET



An African sausage tree is one of the more intriguing specimens that can be found in Greater Miami. The tree bears fruit that looks like a wooden salami but can't be eaten. The fruits are 10 to 30 inches long, weigh nearly a pound an inch and are set in long, cord-like stalks. The tree has no known use . . . It is said that the tree's fruits are so woody that they must be sawed open for the pale seeds that are in abundance to be found . . . The sausage tree grows in a variety of soils, but only in the warmest parts of the peninsula. The sprawly, open tree, which can be anywhere from 20 to 40 feet high, is a native of Abyssinia . . . They are relatively rare in our part of the world because of pollinating problems . . .

Brazilian Student To Arrive Soon

A Brazilian girl will be the exchange student for Spearman High School this fall, it was announced this week by the American Field Service organization.

Miss Maria Christina Lobo of Salto, Brazil, will arrive in the United States on Aug. 14, then come to Amarillo and Spearman.

Miss Lobe will make her home with Mr. and Mrs. John Wilde and their daughter, Barbara, this year. Barbara will be a senior with the exchange student this fall.

She is the daughter of Mr. and Mrs. Alredo Lobo, Jr. The 17-year old girl speaks Spanish, Latin, French, Italian, and English.

An excellent party idea--give prizes to those who go home first.

Finally Too Far ?

The U.S. Supreme Court continues to aid the Supreme Court continues to aid and abet civil disobedience. In a recent decision, it upheld the right of five demonstrators to disrupt the quiet of a public library with a stand-in protest.

But there are encouraging signs that even the Supreme Court is getting fed up with demonstrators. The decision was by a 5 to 4 ruling. And Justice Hugo Black, long a fanatical supporter of individual rights, was one of the four dissenters.

In a fiery dissent, Justice Black asked: "Can any provision of the U.S. Constitution tell any citizen--white or black--they can march with impunity into a public library and demonstrate against public policy?"

Justice Black went on to say that the First Amendment of the Constitution protected one's right to speak or protest, but does not license him to "sit down," "lie down," or "stand up" in public places.

The Justice concluded, "It has become automatic for people to be turned loose as long as whatever they do has something to do with race. That is not the way I read the Constitution."

Justice Black has long been recognized as one of the court's liberals. In our opinion, he bears much responsibility for the situation he now deplores. But it is encouraging to know that at long last he thinks demonstrators have finally gone too far. You can rest assured that they have gone too far--if even Justice Black thinks so.

- Progressive Farmer

Two groups of people who complain about taxes--men and women.

Another hardship of the pioneers--they plodded westward all day long, without sunglasses.

Band . . .

(Con't. from page 1.)

Sunday, December 11. Director of Special Events for the team Ozzie Wissell said the Chargers anticipated that both games would be televised in color on NBC television.

Wissell said most bands tied in a performance with a tour of Disneyland either on the day before the game or the day after the performance.

Local School Supt. Dr. Bill Reeves is out of town and so is band director Sam Watson, therefore, neither were available for comment on the invitation.

African pygmies are so skilled with the bow and arrow, that they can have the third arrow into the air before the first or second hits the mark.

Ever since an enterprising chef at the St. Louis World's Fair of 1904 chopped beef, broiled it, and served it on a bun, the dish now known as hamburger has been an American favorite . . . Today more than 21 billion hamburgers are consumed in the United States every year and billions more in other nations . . . Hamburgers are now slapped into patties, rolled into balls, molded into loaves, stuffed in leaves, floated in soup, fried, broiled, barbecued, braised and served en brochette . . .

"Better Food For Less"

IDEAL FOOD STORES

Prices good Tues. & Wed., June 21-22

ANGEL FOOD CAKE REG. 49¢ EA. 39¢

IDEAL PIMENTO CHEESE BREAD 1-lb. Loaf 27¢

ADD TO YOUR SET TODAY AND SAVE! BEAUTIFUL MOUNTAIN ROSE DINNERWARE THIS WEEK EACH ONLY 9¢

FRUIT DISH 2 for 18¢. With \$15.00 purchase

CENTER CUT RIB

PORK CHOPS

79¢ lb.

WHY PAY MORE?

OTHER FINE MEAT VALUES!

First Cut PORK CHOPS	lb.	59¢
COUNTRY STYLE SPARE RIBS	lb.	69¢
SWIFT'S PREMIUM SKINLESS FRANKS	1-lb. Pkg.	59¢
COUNTRY KITCHEN WHIPPED DESSERT	10-oz. Ctn.	39¢

MARYLAND CLUB COFFEE	2-lb. Can	\$1.45
FOR DISHWASHING LIQUID CHIFFON	12-oz. Size	29¢
DAD'S OLD FASHIONED ROOT BEER	1/2-Gal. Btl.	39¢
DEL MONTE PINEAPPLE SLICES	4 No. 1 1/4 Cans	\$1.00
MEADOWDALE GRAPE JUICE	24-oz. Btl.	39¢
CRESTOP WHOLE GREEN BEANS	2 303 Cans	29¢
MORTON HOUSE BAKED BEANS	3 27-oz. Cans	\$1.00
LIPTON'S QUART SIZE TEA BAGS	Pkg. of 12	49¢

PURE GRANULATED CANE OR BEET SUGAR	5-lb. Bag	44¢
KRAFT SALAD DRESSING	Quart Jar	44¢
MIRACLE WHIP	Quart Jar	44¢
FOR COOKING OR SALADS KRAFT OIL	Quart Btl.	59¢
SANTA ROSA PINEAPPLE JUICE	3 46-oz. Cans	79¢
ALL GRINDS MARYLAND CLUB COFFEE	1-lb. Can	73¢

IDEAL FARM FRESH PRODUCE DEPT

U.S. NO. 1 RED

POTATOES

10 39¢ lbs.

CLOSE-OUT 6-PIECE Sandalwood CANISTER SET... 69¢

INDIVIDUAL PIECES 19¢ EACH

INCLUDES FLOUR, SUGAR, COFFEE, TEA, SALT & PEPPER SHAKER

YOUR CHOICE GRAPES 39¢

RED CARDINAL
WHITE PEARLETTE
BLACK SEEDLESS

Your Home

★ WILL LAST LONGER

★ BE MORE BEAUTIFUL

When You Protect It With Proved **REGAL LITE LATEX HOUSE PAINT**

★ Easy Working
★ Long lasting
★ Low Luster Finish

STERLING 12 PAINT

White House Lumber Co.

Margot Kilgore On Honor Roll

Margot Kilgore of Spearman was among 132 undergraduates listed on the spring semester honor roll at West Texas State University by Dean Walter H. Juniper.

The honor list is composed of undergraduates who compile at least a 2.5 grade point average of a possible 3.0 and who were enrolled for at least 15 semester hours of work.

Miss Kilgore is a 1965 graduate of Spearman High School. She was Salutatorian of her class.

She is the daughter of Mr. and Mrs. Dick Kilgore.

A house guest in the home of Mr. and Mrs. Cecil Crawford and Mac was Mac's friend Miss Cheryl Montaigne of New York and Canyon. Miss Montaigne spent the weekend in Spearman before leaving for her home in New York to spend the summer with her parents. She will return to W.T. in September.

Chemicals recovered from the pulping process when making paper are used in the manufacture of liquid soaps and floor waxes.

MOONLIGHT T V

Specializing in
Minor TV Repair,
EVENINGS &
SATURDAY
Sorry-No Sunday Calls
Phone
659-2792 or 659-3321
Service Calls - \$2.50

Virgil Holloway Gives Report on SS Tax

Have you noticed an increase in the amount of social security tax you are paying? Most people have! Virgil Holloway, Officer-in-charge in Pampa, explained today that on July 30, 1965, President Johnson signed the 1965 Amendments to the Social Security Act.

The changes in the Social Security Act established a program of health insurance for the aged and liberalized many other provisions of the law. In order to finance these changes, an increase in both the earnings base and schedule of social security taxes was made.

Effective January 1, 1966, the F.I.C.A. (Federal Insurance Contributions Act) tax was increased from 3-5/8 percent to 4.2 percent for both the employer and employee and the self-employment tax was increased from 5.4 percent to 6.15 percent. The earnings base was increased from \$4,800 to \$6,600.

The Hospital Insurance Trust Fund and the Supplementary Medical Insurance Trust Fund were created to finance the program of health insurance for the aged.

These funds will be used to pay the benefits and administrative expenses of each separate program; they may be used for no other purpose. 0.35 percent of each person's social security tax for the year will be used to finance hospital insurance and will be placed in the Hospital Insurance Trust Fund.

Voluntary payments of \$3 per month from people over 65, and an equal amount from the Federal Government,

will be placed in the Supplementary Medical Insurance Trust Fund and will be used to finance medical insurance. The Government's contribution will be taken from general revenue.

Mr. Holloway said that if there are any questions regarding the recent changes in the Social Security Act, get in touch with your social security office in Pampa, Tex. The office in Pampa is located at 400 W. Kingsmill, in the Hughes Building. Telephone MOhawk 4-3381.

Mrs. Robertson Gives Program For Flower Club

The home of Mrs. Walter Spoonmore was the place for the Gladiola Flower Club on Thursday morning at 9:30.

Refreshments of date nut cake and coffee were served as the members arrived.

Margaret Adamson, president, opened the meeting with roll call. Mrs. Spoonmore displayed a specimen of purple phlox.

The program "Whats New for '66" was given by Sylvia Robertson. Her talk included flowers, shrubs and trees and she showed the group pictures to illustrate her talk.

Present were Mimes, Margaret Adamson, Dorothy Buzzard, Betty Jean Davis, Dorothy Haner, Sylvia Robertson, Lil Turner and baby, Carolyn Wood, Sylvia Cranford and the hostess.

The next meeting will be the annual picnic to be held at the park by the swimming pool on Friday, July 7, at 7:30 p.m.

Mr. and Mrs. Ed Haner and Tommie went to Ceta Glen on Saturday of last week to pick up the youth attending Church Camp. Coming home with them were Pat Massad, Ann Jackson and Carolyn Schell. Coming home in Larry Campbell's car were Gale Beck, Glenda Yancy and sponsor Richard Yancy.



Marriage Announced

Mr. and Mrs. Ira Harbour are announcing the marriage of their daughter Jean to Donnie Jones, son of Mr. and Mrs. W. S. Jones. The ceremony was performed by Rev. Dudley E. Bragg in the Bueneau Vista Baptist Church May 14. The couple are at home in Morse where he farms.

Notice

The Board of Equalization of the Spearman Independent School District will be in session on Monday, June 27, 1966, beginning at 1:30 p.m. at the Spearman High School Building, for the purpose of hearing all protests and determining the valuation of property subject to taxation by the Spearman Independent School District.

Mr. and Mrs. Don Jones and children spent several days last week visiting the W. R. Morrison's at Pampa.

For Quick Courteous Service

Chevron Gasolines
Atlas Tires & Accessories
Washing-Greasing

**QUICK,
COURTEOUS
SERVICE**

Loren Simmons

**SIMMONS
CHEVRON
SERVICE**

Phone 659-9985
Plains Shopping Center

Want To Build a New Home, Remodel or Repair Your Home ?

CALL

R. L. UPTERGROVE

659-2677 Out of Town, Call Collect Spearman

For Sale :

3 Bedroom House--Several Lots--2 Commercial Buildings



Turn a Lion Loose On YOUR Lawn with a Sunbeam Electric Lawnmower

SAVE TIME FOUR WAYS:

1. Always ready to go... no tanks to fill!

2. Starts instantly... just flip a switch!

3. Faster turns... swing-over handle!

4. Trims faster... Low Silhouette trims under bushes!

Register for Big Stuffed Plush Lion
To Be Given Away Sat., June 25th!

See it in our window... it's a honey!!

-You need not be present to win!-

Spearman Hardware

This year plant

Quality Proven



• BRAND

hybrid-sorghums

PROVEN QUALITY PERFORMANCE THRU RESEARCH

We have these varieties

- Excel 404** Medium early maturing, short stalk, dryland & irrigation adapted.
- Excel 505** Medium early maturing, stands well, good yields, heads dry well
- Excel 707** medium maturity, excellent yields, stands good
- Excel B-52** full season hybrid for maximum yield areas under heavy irrigation.
- Excel Chowmaker** Sorghum-Sudangrass cross for grazing and greenchop

Excel Texas Varieties Texas 660 - RS 608

All Excel Hybrids Have Good Standability
And Are Resistant To All Known Head Smut

Buy your seed today

R.L. McClellan Grain Co., Inc.

**Buy, Sell, Trade
Hire, Rent, Find
THROUGH THE**

WANT ADS

LOST—One 650 lb. steer, one 800 lb. steer, branded LC on left hip. One lost 6 miles east of town, one lost 16 miles southeast of town. Call Jim or Gus McLain, 659-3418 or 659-2274.
60-tfc

FOR SALE

FOR SALE: 3 bedroom house with 1 1/2 baths, low equity. Phone 659-3119. 703 East Second, Green Acres.
63tfc

Feather-flower arrangements and supplies, Dorothy's Novelities, 912 S. Bernice, 659-3027.
69tfc

FOR SALE—3 bedroom house. Call 659-2687.
59-tfc

FOR SALE—3 bedroom, 1 1/2 bath home, south part of town. Collard Real Estate, Phone 2501.
58-4c

FOR SALE—Three bedroom brick, carpet, drapes and fence, 1006 S. Barkley, phone 2261.
58-8c

FOR SALE—Industrial lots on Gruver Highway. Cecil Crawford, 659-2409.
61-tfc

Electrolux

For Sale: The Amazing Electrolux with power nozzle. Rotating brush action cleans all rugs faster—gently fluffs carpet nap. Sales and Service call Don Seymour at 435-2064, Perryton, Texas.
68-69-p-10tfc

For Sale: 3 purebred screwtail bulldogs \$15 each. Johnny Rhea, Morse.
69-3p

FOR SALE—3 bedroom brick, 1 3/4 bath, 1121 S. Haney.
67-3p

For Sale: Like new. Electric Guitar with all accessories, \$100. Phone 659-2617
64tfc

For Sale or Rent: Two-story house partly furnished, or rent unfurnished. Three lots and two out buildings. 26 East Avenue B.
68-2-p

For Sale: Camp stove, ice box, cots, 8 by 20 tent with sewed in floor. Phone 659-2858.
68-tfc

FOR SALE—3 bedroom house, Blodgett Linn addition, one bath. Phone 659-2441, after 6 p.m., 659-2408.
40-tfc

For Sale: '53 model gleamer combine. Ready to go. New engine never been used, \$1100; or cut the machine out on my wheat. Contact Dr. Novak at 659-3384 or 659-3315.
66tfc-C

For Sale: 3 bedroom brick house with bath and 3 quarter, built in stove and oven, 2 years old. Contact Lewis Tilford or phone 659-2674. Located 1107 S. Townsend.
64tfc

FOR SALE—Approximately 1213 acres farmland in good water district. Write Box 366 or phone FI7-2417, Gruver, Tex.
62-8p

FOR SALE—Extra clean 195 Chevrolet, 4 Door Hardtop, \$395. One used Tappan gas range, \$10. One used vinyl 2 pc. sectional couch, \$5. One platform rocker, needs recovering \$5. 522 S. Bernice. Phone 659-3453.
62-tfc

For Sale: Lot 4, Blk 11. Reeves addition, lot size 60' X 140. Cost me \$2000 (make me an offer) in the 800 blk South Archer. Rena Gay Dorsett, 1130 Hedgecoke, Borger, Texas. Phone Br4-4795.
64tfc-c

For Sale: Five room house with basement, draperies, deep freeze, one-car garage, one and one-half acres of land. Phone FI7-2731 or FI7-2282, J. E. Sluder, Gruver, Texas.
64tfc

The Green Dragon, 1958 Opel, overhauled motor, good tires, and safety sticker. \$290. Phone 659-2329 or Kate Kilgore.
69-2-c

SERVICES

Poodle Grooming \$5, also AKC Black Poodle Puppies, 6 weeks old. Call 4-5134, Borger, Texas, 1307 Finger St.
62-10c

Amarillo Daily News & Globe Times home delivery. Call 2685.
14-tfc

ROSS CATERING SERVICE—Suppers, luncheons, teas, children's parties. Phone 659-3227.
55-tfc

SERVICE—Ditches from 3-12 inches, any desired depth. S. D. Jones 659-2809. Harold Shaver 659-3474.
17-tfc

If Dr. says ulcers, get new Ph5 tablets. Fast as liquids. Only 98¢ at Spearman Drug.
62-10c

Need babysitter 3 days a week in my home. Call 659-2913.
62-tfc

Experienced Piano Teacher. Classes for beginner and advanced students. All classes include theory, 30 minute lessons, \$1.00. Call 659-2393.
62-8c

Wanted: Temporary office work wanted. Some experience. Phone 659-2418.
66tfc-C

WANTED—Tree and Hedge trimming and removed. Call Bill Hand, 659-2967.
64tfc

Ne. reliable service station attendant. Contact Nelson's Texaco Station, Elmwood, Okla.
62-tfc

Wanted: Experienced baby-sitter. Will care for children by day or by week. Phone 659-2238.
66tfc-C

Will Baby-Sit. Phone 659-2372.
69-1c

Experienced seamstress. Full time or part time. Apply by phone, 659-3202, or in person. Charlene Bulls.
68-4-c

Wanted: Qualified instructor wishes to teach swimming lessons. Contact Rennie Berry by phoning 659-2122 or at the swimming pool.
68-3-p

FOR RENT

For Rent: Large 3-bedroom or 4-bedroom house. Call A.C. Greene at 659-2596 from 8 to 5 p.m.
67-1-c

For Rent: 3 bedroom house, carpeted, fenced, clean, mail inquiries Box 1, Hansford Plainsman, Box 668, Spearman, Tex.
68tfc

Our moon trip will cost 2 billion dollars, but that's American plan and includes meals.

To Chop & Bury Wheat Stubble

Get Ready For Fast, Deep Plowing Listing With One Pass Through The Field.



SELECTATILTH® GEARBOX

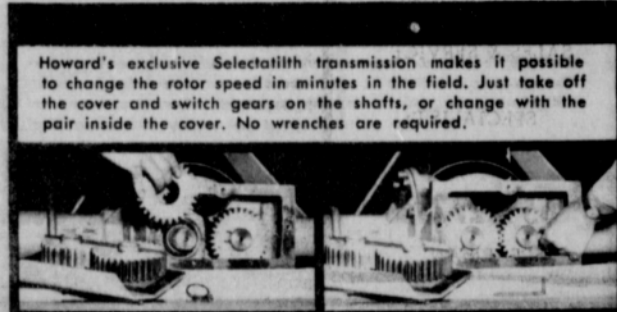
540 or 1000 P.T.O. for 5 PLOW TRACTORS
CENTRALLY MOUNTED
3 POINT, 2 POINT
OR TRAILER



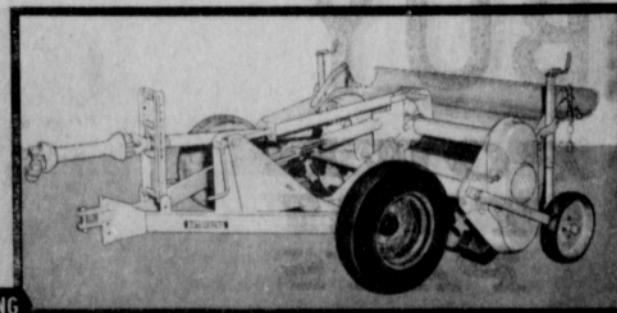
K-80 MODEL—preparing corn ground for winter wheat.

HOWARD ROTAVATOR

The Model K Rotavator, designed for today's 5 plow tractors, will handle all forms of tillage in a wide variety of soil types and crops. This model is mostly used in corn, beans, cotton, rice, alfalfa and other crops grown in large scale operations. A planter hitch is available to pull a planter or drill immediately behind the Rotavator for one pass, till and plant operations. Special shields available as extras enable it to be used for bedding and cultivating work.



Howard's exclusive Selectatilt transmission makes it possible to change the rotor speed in minutes in the field. Just take off the cover and switch gears on the shafts, or change with the pair inside the cover. No wrenches are required.



K-80 MODEL TRAILING

The K-80 is available as a trailing unit (above, right) or for direct mounting.



K-80 MODEL MOUNTED



EXCLUSIVE BLADE DESIGN — Howard's exclusive rotor and blade design for smooth running and even power requirement.

R.L. McClellan & Sons Inc.

"Your Complete Farm Headquarters"

make every drop count!



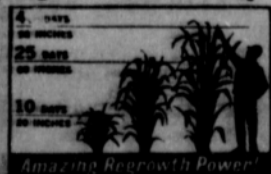
Best Thing That's Happened in Forage Crops Since Alfalfa!

Great for summer forage, whatever the season... DeKalb Sudax Brand SX-11, the Original Sorghum-Sudangrass hybrid, is bred to make the most of every drop of moisture. In favorable seasons, SX-11 grows and grows, producing green feed early—and often. When it's dry, growers say SX-11 continues to produce palatable forage, often after other crops dry up. Order DeKalb Sudax Brand SX-11 now. Supply is going fast so reserve yours TODAY!

For Pasture • Hay • Haylage • Green Chop

GROWS 2 INCHES OR MORE A DAY

Diagram of a Texas trial, shows remarkable regrowth power of DeKalb Sudax Brand SX-11—68 inches of new growth in 25 days!



Amazing Regrowth Power!

TROY SLOAN
659-2954

RAY MOORE
659-2886

SAVINGS



- Shurfine **PEANUT BUTTER**
12 oz.
3 FOR \$1.
- Shurfine 1/2 lb. **TEA**
59¢
- Shurfine 28 oz. **APPLE BUTTER**
3 FOR \$1.
- Shurfine 4 oz. **VIENNA SAUSAGE**
4 FOR \$1.
- Shurfine Fresh Buttermilk or Sweetmilk 8 oz. **BISCUITS 13 FOR \$1.**
Mix or Match
- Cut Green Spears No. 300 **ASPARAGUS 4 FOR \$1.**
- Shurfine 3 lb. Can **SHORTENING 69¢**
Soft In Bath Room 2 Ply

MORE THAN 25,000 HOME TOWN FOOD STORES FIGHTING TO KEEP YOUR FOOD COSTS DOWN!
Right here in your community and in the towns and cities across America...the local independent supermarkets and food stores where you shop, have held the line on high prices...provide the constant competitive check necessary to hold food costs down and to keep your food dollars in local circulation.

- TISSUE** Ass't. Colors
10 Roll Pkg. **79¢**
- Shurfine Cut No. 303 Can **BEETS 8 FOR \$1.**

FRESH PRODUCE

PRICES GOOD MON. JUNE 20 THROUGH WED. JUNE 22.

- U.S. NO. 1. LONG WHITE **POTATOES**
10 lb. bag **49¢** 20 lb. bag **79¢**
- CALIFORNIA SUNKIST **LEMONS 2 lbs. 33¢** LARGE TENDER HEADS **CABBAGE 7¢ lb.**
- LARGE THICK MEATED **CANTALOUPE 1 lb. 11¢**
- TEXAS MEDIUM YELLOW **ONIONS 3 lbs. 19¢**
- CALIFORNIA LARGE HAAS **AVOCADOS 2 for 29¢**
- FRESH TENDER KENTUCKY WONDER **BEANS 1 lb. 39¢**
- LARGE FRESH **PINEAPPLE HAWAIIAN EACH 69¢**

Shurfine Frozen 6 oz. **Lemonade 9 For \$1.**

Shurfine **Pork & Beans**
No. 300 Can **9 For \$1.**

MEMBER AFFILIATED FOOD STORES

Cut Rate GROCERY

BUCCANEER STAMPS

EISENHOWERS CELEBRATE GOLDEN ANNIVERSARY



LEFT: Newly married, Lieutenant and Mrs. Dwight David Eisenhower posed for this formal portrait following their marriage ceremony on July 1, 1916. ABOVE: The Eisenhowers beamed recently at a public function.

The Eisenhowers' July first golden wedding anniversary marks the first time in 119 years that a former President and his lady have reached this milestone. John Quincy Adams and his wife celebrated their 50th anniversary on July 26, 1847. Respecting the wishes of General and Mrs. Eisenhower, a committee headed by Bob Hope, comedian, and Robert B. Anderson, former Treasury Secretary, is urging that in lieu of gifts to the couple, contributions should be sent to Eisenhower College, a new co-educational liberal arts college named after the General. Contributions are tax deductible and may be sent to Eisenhower College, Seneca Falls, New York (or c/o Postmaster) where they will be permanently recorded.

Quarter Horse Show at Pampa

An official American Quarter Horse Show will be held in Pampa Saturday, June 25, beginning at 9:00 A.M. in the main arena of the Top o' Texas Rodeo Grounds at Recreation Park.

The one-day show will feature thirteen halter classes with a \$10 cash prize for first place in each class and appropriate ribbons. Eight performance

classes will also carry \$10 first place cash prizes for the winners and appropriate ribbons. There will be five open youth classes and three 4-H Club classes, with appropriate ribbons and an all-around trophy for the winner.

Judging the show will be Cotton Marriott, of Dallas, Texas, one of the nation's most outstanding quarter horse judges.

Approximately 200 horses are expected in Pampa for the one-day show, which will be free to the public.

Elmer Fisher and Ed Vincent,

"PARADISE"



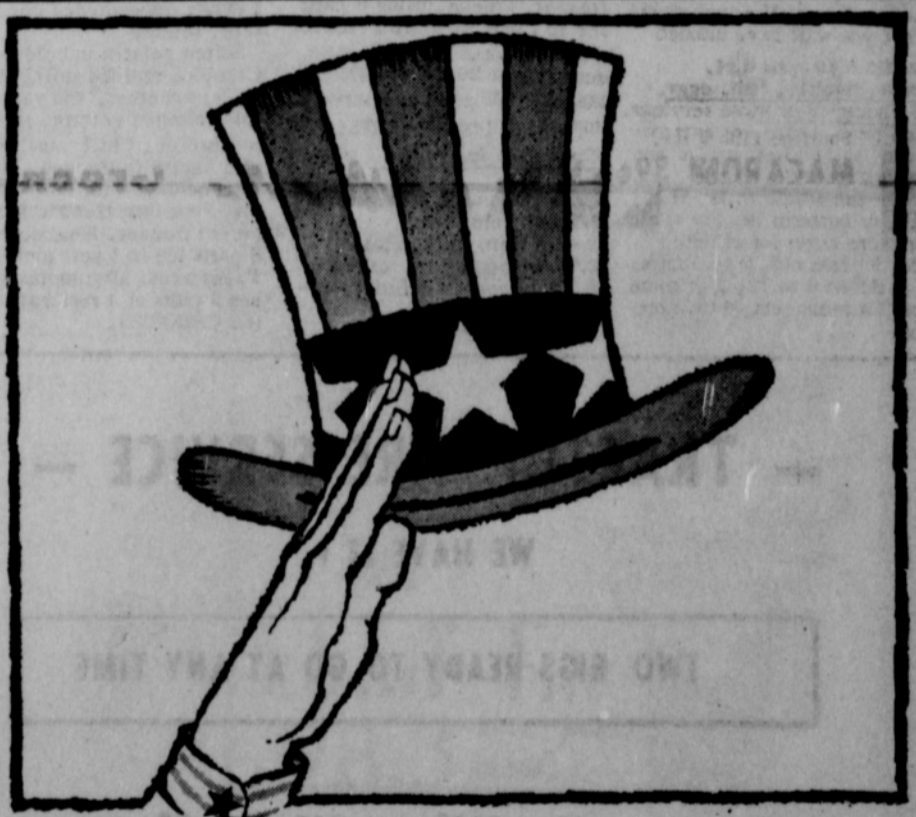
The houseboats and flower-boats are spruced up, and everyone is ready to welcome tourists from the four corners of the world in India's "paradise on earth"—Kashmir! A houseboat with a staff of four rents for \$50 a week.

Dr. and Mrs. W.C. Davis of Memphis are visiting Mr. and Mrs. Jim Davis, Jan and Jean and Mr. and Mrs. Burl McClellan. The Davises have just returned home after spending the winter in California.

Mince seafood — any kind — fine and mix with celery, mayonnaise and other seasonings. Use as a filling for stuffed celery.

Co-Chairman of the Quarter Horse Show, have extended invitations to all breeders of quarter horses in the southwestern area to be present, along with the youth and 4-H Club members.

The Quarter Horse Show is one of the officially approved shows sanctioned by the American Quarter Horse Association, with headquarters in Amarillo, and sponsored by the Top o' Texas Rodeo Association.



A 25th Anniversary Salute

to the 500,000 star-spangled Americans who work for this country's security without pay

The U. S. Treasury Department sells about \$4½ billion worth of Savings Bonds every year.

Yet no one ever tries to sell you Bonds on the phone. Though you rarely see them, there are about ½ million patriotic Americans who will help you buy Bonds. Have been, since the first Series E Savings Bond was issued 25 years ago.

Your banker, for instance, he'll give you folders and facts, issue your Bonds, make certain they're properly registered, cash them when the time comes.

Your employer and thousands of other employers who have set up the Payroll Savings Plan are also on the team. So are the officials of your union who have endorsed Bonds.

There are many others. Like your neighbor, the advertising man, and the radio, TV, poster, magazine and newspaper people he works with.

All of these volunteers work for the Bond program without pay.

You can do your part, too. Buy U. S. Savings Bonds.

NOW PAYING 4.15% WHEN HELD TO MATURITY

Buy U.S. Savings Bonds

The U. S. Government does not pay for this advertisement. It is presented as a public service in cooperation with the Treasury Department and The Advertising Council.



NOW 'TIL JULY 4TH

Shurfine

"INDEPENDENTS"

Free!

IN CONGRESS, JULY 4, 1776.

AGED COPY OF THE

Declaration of Independence

16" x 14" IDEAL FOR FRAMING! YOURS FREE WITH A \$5 FOOD PURCHASE NOW DURING SHURFINE'S "INDEPENDENTS" DAYS!

Shurfine
Corn, Peas, Beans & Mixed Vegetables 4 For \$1.
 Frozen in Butter Sauce "Mix or Match"



Quart
Salad Dressing 39¢
 Shurfine

Whole Sweet 16 oz. or 32 oz. Hamburger Sliced Dill Shurfine 12 oz. cans assorted Flavors
Pickles 3 For \$1. Pop "Mix or Match" 12 For \$1.

Natural Shurfine 46 oz. Shurfresh 1 lb.
Grapefruit Juice 3 For \$1. Margarine 5 For \$1.

Shurfine Elbo 2 lbs. Shurfine 4 SV, Cut Blue Lake No. 303 Can
MACARONI 39¢ Green Beans 5 For \$1.

Shurfine No. 303 Can
Spinach 7 For \$1.

Shurfine Chocolate or White 13 1/2 oz. "Mix or Match"
FROSTING MIX 4 FOR \$1.

Energy Liquid
DETERGENT 3 FOR \$1.
 22 oz.

USDA CHOICE BEEF
Chuck ROAST 53¢
 lb.

USDA CHOICE BEEF
ARM ROAST 59¢
 lb.

USDA CHOICE BEEF
SHORT RIBS 39¢
 lb.

CENTER CUT SLICED HAM 89¢
 lb.

"FRESH AND LEAN" **GROUND BEEF 89¢**
 2 lb. pkg.

Soft in Assorted
Napkins 2 For 49¢
 200 CT.

Shurfine 14 oz.
Catsup 5 For \$1.

Shurfresh 1 lb.
Crackers 2 For 45¢

10 lb. Bag Energy
Charcoal 49¢
 Briquets

Shurfine Chunk Style 6 1/2 oz. Can
Tuna 3 for \$1.



Shurfine Tall Can
Milk 7 For \$1

Shurfine 16 oz.
GRAPE JELLY 3 FOR \$1

Shurfine 16 oz.
MUSTARD 2 FOR \$1

Shurfine V.P. Reg or Imp
COFFEE 1 lb. 99¢

Shurfine "Mix or Match"
CAKE MIX 4 FOR \$1
 19 oz. Ass't. Flavors

SHURFRESH
Bacon 75¢
 lb.



Wholesome Goodness in EVERY Drop. It's Quality Milk AT ITS BEST

Man Receives First Texas Restoration Award

W.C. Windsor of Tyler named to receive the official Texas Restoration Award as announced to John Ben Shepperd of Odessa, president of the Texas Historical Survey Com-

mission. John Connally will present the award at 4:00 p.m., June 20, in ceremonies at the antebellum Windsor House in Van Zandt County. The first time such an award has been presented by the state of Texas. The award recognizes individuals and organizations for authentic restoration of historic buildings exemplify phases of cultural, social, government, political or economic history, or relate to significant events in the lives of important persons and that are good examples of architectural styles and craftsmanship.

The Windsor House is a two-story structure constructed of broadaxed timbers with cypress siding and wooden pegs, hand-

made square nails, one-piece 48-foot floor joists, board walk and Southern colonial porch columns. It is furnished with antiques that were contemporary with the pre-Civil War period.

Before restoration the house had no windows, the chimneys had fallen and a porch column was missing. Still the house was sturdy and had sagged less than an inch.

"This official recognition by the state is long past due" said Shepperd, "and the state Historical Survey Committee is proud that in the future those who have saved important structures will be recognized." Shepperd continued, "Restoration projects generate pride in Texas history, and restored buildings are a tangible link with the past, reminding us of our historical heritage. Restoration helps develop the state, too, because history and tourism are inseparable. Tourists are attracted to historic sites and landmarks."

A man weighing 180 pounds on earth would weigh 28 pounds on the moon.

North America has eight of the 13 largest lakes in the world.

WHERE DID YOU GET THAT SILVERWARE?



Next time you take up knife and fork, give a thought to the monk of 1480 who wrote, "It is wrong to grab your food with both hands; meat should be taken with three fingers."

And fingers it was, until a gold fork for eating mulberries was given to Charles VII of France in the 15th century. Before then, few people had even heard of forks! Diners picked up food with the sharp point of their knives, and at first forks were only used to steady the dish while the diner carved the meat.

When he traveled to Italy in 1611, an Englishman, Coryat, saw people there using forks to eat meat. Upon his return home, he introduced

the practice in his own country. At first, forks were scorned as effeminate, and men went on eating with their fingers.

While no one knows for sure when knives were introduced, historians believe that primitive man may have used a crude knife of shell or flint to saw off bits of meat.

The first spoons appeared on ancient Egyptian tables 4,000 years ago. The teaspoon was introduced in 1650, for exactly that purpose. The first ones were only about one-third the size of those we use today. Often they had perforated bowls. After stirring tea, these "strainer bowls" were used to lift stray leaves from the cup.

Today's homemaker prefers the gleam of silver—even to start off the day, when she has guests in for a special breakfast. Silver, such as Reed & Barton's new sterling flatware pattern, "Spanish Baroque," with each handle richly and deeply carved in a design of enfolding acanthus leaves, plays an important part in the table's decoration.

But a modern hostess who owns silverware of which she's proud, wouldn't think of emulating the lady of not too many years ago who, when she invited guests to dine, also requested that they bring their own eating utensils!

FHA Officers Attend Workshop In Lubbock

A group of Future Homemakers went to F.H.A. officers workshop at Texas Tech in Lubbock Monday through Wednesday. The theme of the workshop was "Leadership in Action." There were 1138 girls attending from the 161 Texas schools represented. Those attending from Spearman were Linda Edge, President; Penny Sanders, Program Chairman; Thel Danial, Degree Work Chairman; Ruth Riley, Project Chairman; Sue Sloan, Songs and Recreation; Jeanette Davis, Reporter; Debbie Benge, Secretary; Margaret White, Treasurer; Carolyn Coats, Parliamentarian.

There will be a local officers workshop held in the High School homemaking department Monday through Wednesday.

TART BARBEQUE SAUCE

For a deliciously tart sauce for barbecuing meats, combine 1 cup soy sauce, 1 cup salad oil, ¼ cup ReaLemon bottled lemon juice and 1 clove garlic cut in half. This sauce may be used as a marinade as well as for brushing on meat during broiling. Use it with beef, pork, lamb or chicken.

Checker Board Decor

Giant checkerboard squares—in contrasting colors to match decor—painted on a family room wall will create a vivid background to showcase pictures and provide guidelines for hanging them. The Picture and Frame Institute suggests hanging favorite prints, family photographs, needlework samples, children's drawings, or vacation snapshots. Frame separately and hang in individual squares.

Thomas Jefferson was the first president of the United States to be vaccinated against smallpox.

REXALL RED, WHITE and BLUE SALE

TUES. JUNE 21 thru SAT. JULY 2

SEE OUR 12-PAGE AD IN SATURDAY EVENING POST, JUNE 21 AND WATCH FOR REXALL SPECIALS ON "TODAY" and "TONITE" SHOWS ON NBC-TV.

REXALL ASPIRIN
Highest quality 5-gr. tablets.
100's **49c**

BRITE SET HAIR SPRAY
Casual, Regular or Hard-to-Hold.
14 oz. **59c**

REXALL REDI-SPRAY DEODORANT
24-hour protection from perspiration odor.
5 oz. **57c**

FREE! 69c REXALL DELUXE TOOTH BRUSH
with purchase of 6¾ oz. Rexall Tooth Paste at regular price. **BOTH FOR 89c**

REXALL CONCENTRATED SHAMPOOS
Emerald Brite or Brite Conditioning.
4½ oz. TUBE **59c**

CLOCK RADIO
With Snooz-Alarm. Wood-grain finish.
13.33

REXALL HYGIENIC SUPPOSITORIES
Mildly antiseptic.
REG. 1.29 **99c**

REXALL THERMOS BOTTLE
QUART. CUP-CAP. **1.49**

8" MIRROR
Plain, magnifying. Swivels. **87c**

HURRY! Enter our REXALL SUPER PLENAMINS MATCH and WIN SWEEPSTAKES
1,011 Fabulous Prizes Offered! Get details at our store now!

REXALL SUPER PLENAMINS IS NOW THE VITAMIN CHOSEN BY ALL 20 TEAMS IN THE AMERICAN AND NATIONAL BASEBALL LEAGUES.

REXALL MINUTEMAN CHEWABLE VITAMINS
for children. 365's **4.95**
REG. 6.95

REXALL GOLDEN SOVEREIGN MEN'S TOILETRIES
Cologne, After Shave, Pre-Shave Lotions. **2.00 TO 3.00**

"BIG VALUE" TABLETS or ENVELOPES
Choice of styles. **27c EACH**

REXALL SPRAY STARCH
Instant starching. 24 oz. **49c**

REXALL FAST PERMANENTS
5 TYPES. **1.00 ea.**
REG. 2.00

JASMINE FRAGRANCE
Dusting Powder, 5 oz. or Cologne 2-oz. aerosol. **1.00 ea.**

REXALL AEROSOL SHAVE CREAM
14-oz. **64c**
REG. 1.29

MOTH CRYSTALS, Rexall, 3 lbs. **1.19**
FLY KILLER BLOCK, Rexall, 2 oz. **.49**
DETERGENT, Rexall Clear or Pink Liquid, 22 fl. oz. **.47**
FACIAL TISSUES, Rexall 400's (200 2-ply) White, Colors. 5 Boxes **.99**
BILLFOLDS, Men's and Ladies' styles **1.99**
Prices plus Tax where applicable.

VITAMINS, Rexall One Tablet Daily, 365's **3.65**
STAG AFTER-SHAVE LOTION, 5 fl. oz. **1.25**
ROYAL STAG COLOGNE, 5 fl. oz. **2.50**
SUNGLASSES, Ladies' and Men's Styles **1.69**
HOUSE & GARDEN INSECT KILLER, Rexall, 14 oz. **.83**

SPEARMAN REXALL DRUG

ANY MORE ITEMS ON SALE **HURRY IN!**

Put Some **ZING** In Your Life

Hear The Best Music...

- * easy listening
- * top 40
- * country-western

on **k b m f - f m** 98.3 on your dial.



Three Pointed Comments

BUCKEYE, Ariz. —Mrs. Nancy Martin observed her 100th birthday with these observations:

"You want a happy life? Then mind your own business. "I live alone and like it. After outliving three husbands, it is nice to do things when and where you want to . . . "I can't understand why they don't let a person make their own whisky."

PAG 515 HAS EARNED THE NAME OF "Mr. Dependable"

FOR OUTSTANDING PERFORMANCE UNDER A WIDE RANGE OF SOIL & CLIMATIC CONDITIONS IN MANY AREAS!

THIS VARIETY HAS EXCELLENT FIELD CHARACTERISTICS FROM PLANTING THROUGH HARVEST AND IS CONSISTENTLY A TOP YIELDER, A MEDIUM MATURING GRAIN SORGHUM.

PLANT PAG FOR EXTRA PROFITS

PAG 430 GIVES EARLY MATURITY WITH EXTREMELY HIGH YIELD POTENTIAL!

ONE OF FEW EARLY MATURITY VARIETIES WITH HIGH YIELD POTENTIAL, SUITABLE FOR BOTH IRRIGATION AND DRY LAND.

Strawn Farm & Ranch Supply

HOMEMAKING NOTES

By Linda Webb
Home Demonstration Agent

Planning to diet this summer and shed a few pounds? That's fine. How do you plan to do it?

No matter what you may have heard, or from whom you heard it, there is really only ONE successful way to lose weight for the majority of "over-weights". That is to cut down on your eating.

Yes, it takes a lot of will-power and self determination, but dieting always does--any kind of dieting. So, the best advice I can give to you is to direct your determination into the right channels at the very beginning.

Fad diets of any kind you should never try. Oh, sure, people lose weight through some of them, but they are not nearly as successful as the old basic reducing plan recommended by doctors and nutritionists the world over.

Good health is your most important consideration in planning a reducing diet. Choose a wide variety of foods and eat at least three meals each day. These foods should satisfy your appetite but be low enough in calories to force the body to use stored fat. They should provide the following: Enriched or whole-grain products-- 4 or more servings. Baked goods, breads, cooked or ready-to-eat cereals, macaroni products. Potatoes may also be counted in this group.

Fruits and vegetables-- 4 or more servings. One serving should be a food that is high in vitamin C (citrus fruits, tomatoes, green cabbage, strawberries, cantaloupe). At least every other day select a dark green or deep yellow vegetable so that you will have enough vitamin A in your diet.

Meat, poultry, fish, eggs, and cheese-- 2 or more servings. Dried peas, beans, or nuts may be used as an alternate for one serving.

Milk-- use whole milk, skim milk, or buttermilk. For adults, 2 or more cups; for children under 9 years old, 2 to 3 cups; for children 9 to 12, 3 or more cups; for teenagers, 4 or more cups.

WHAT TO AVOID- Foods that are high in every but low in protein, vitamins, and minerals. Although sweet, sticky, and greasy foods produce energy because they are high in carbohydrates or fats, or both, they may be low in other important nutrients. For this reason, spend you calories on the foods listed above first.

Adding "extra calories"--sugars, fats, oils, nuts, salad dressings, cream, and other foods that are frequently added to food increase calories quickly. That lump of sugar you drop in your coffee or tea adds 25 calories to your diet and two tablespoons of cream add another 60. One tablespoon of butter means another 100 calories. So be sure that you count the number of calories in every food you add to other foods as well as the number of calories in food itself.

For some cool, refreshing low calorie dessert ideas, try these new recipes:

Strawberry Ice Milk
1 envelope unflavored gelatin
1/2 cup cold water
2 cups skim milk, scalded
3/4 cup nonfat dry milk
2 Tablespoons artificial sweetener
1 Tablespoon lemon juice
2 teaspoons vanilla
2 cups strawberries crushed
Soften gelatin in cold water. Combine scalded milk, dry milk, Sucaryl, lemon juice and vanilla. Add softened gelatin, stirring to dissolve. Chill until mixture begins to thicken. Fold in crushed berries. Pour into electric ice cream freezer. Freeze, using 8 parts ice to 1 part rock salt. Freezer will stop when ice milk is done (about 20 minutes.) Makes 2 1/2 pints or 5 servings, each 143 CALORIES.

Chocolate Ice Milk
1 envelope unflavored gelatin
1/2 cup cold water
2 cups skim milk, scalded
3/4 cup nonfat dry milk
2 Tablespoons artificial sweetener
2 teaspoons vanilla
1 ounce unsweetened chocolate, melted
Soften gelatin in cold water. Combine scalded milk, dry milk, sweetener, and vanilla. Add softened gelatin, stirring to dissolve. Chill until mixture begins to thicken. Blend in chocolate with rotary beater. Pour into electric ice cream freezer. Freeze, using 8 parts ice to 1 part rock salt. Takes about 30 minutes. Makes 2 pints or 4 servings, each 169 CALORIES.

Feeding Grain To Cattle On Grass Works

BEEVILLE — An old-time cattleman would be shocked. Researchers at Texas A&M University's Coastal Bend Experiment Station here, feed grain to cattle that are knee deep in grass.

The idea, according to Ed Neal and Bill Conrad, A&M researchers in charge of the recent tests, is to eliminate the big drop in gains that comes during the hot summer months.

During hot weather and short moisture periods, grass loses some of its nutritive value, and an animal's forage intake decreases. The result is a drop in gains.

In the A&M experiments, steers averaging about 500 pounds each were grazed on Coastal Bermuda grass. Half were given five pounds of sorghum grain each day and the other half got none.

Gains of the steers on Coastal without supplemental feed began to drop about the first of July and continued down, reaching a low in August. During one period in late August and September, these cattle lost weight.

Those on Coastal without the grain supplement gained 1.2 pounds a day from April 28 to July 7 and gained only .4 pound per day from July 7 to September 15.

The steers getting supplemental feed averaged 1.7 pounds a day from April 28 to July 7 and averaged 1.1 pounds a day from July 7 to September 15.

1 ounce unsweetened chocolate, melted

Soften gelatin in cold water. Combine scalded milk, dry milk, sweetener, and vanilla. Add softened gelatin, stirring to dissolve. Chill until mixture begins to thicken. Blend in chocolate with rotary beater. Pour into electric ice cream freezer. Freeze, using 8 parts ice to 1 part rock salt. Takes about 30 minutes. Makes 2 pints or 4 servings, each 169 CALORIES.

THE MILLION DOLLAR LOOK THAT'S A STEAL



A wardrobe styled by a fabulously expensive Paris couturier and modeled by a top film star--what more could a woman wish for?

Nothing, except maybe the cash to pay for it. This particular wardrobe, however can be financed without breaking the bank--even the piggy bank.

McCall's new pattern collection features Givenchy designs worn by Audrey Hepburn in the 20th Century Fox comedy, "How to Steal a Million." Audrey's million dollar look is fresh, feminine, and very easy to wear.

A back-belted, long-jacketed suit is young and lively, with a walking skirt pleated at the sides. McCall's Pattern #8336 (top) lends itself



to light wools, flannels and gabardines, as well as to warm-weather linens and piques.

Smashingly sporty is a seven-eighths coat with raglan sleeves and stitch trim, worn with matching slim skirt.

Be a sport about the fabric too, with a Tattersall check like the one Audrey Hepburn wears, or else a plaid or tweed. The coat in Pattern #8346 (left) can be worn belted or not, but Givenchy and McCall's prefer belted this season.



They even like the belted look for dress-up clothes. In Pattern #8340 (above), a belted cutaway jacket tops a full-skirted dress for a gala look that's all girl. The dress, which can also solo prettily, has a back-wrapped, back-buttoned bodice.

Givenchy's most fitting tribute to the female form is the suit in McCall's Pattern #8348. The skirt is slim, the waist-hugging jacket another neatly belted cutaway style.

The fresh lively treatment in "How to Steal a Million" concerning art forgery in Paris is only equalled by the authentic chic of Audrey Hepburn's Givenchy-designed wardrobe, so faithfully adapted by McCall's Patterns that—who knows?—perhaps only an expert might guess that the copy was not the original!

Genette Cudd On Honor Roll

ABILENE — Miss Genette Cudd, a sophomore math major at McMurry College, has been named to the Dean's list for the spring semester.

At McMurry Miss Cudd is minoring in English and is a member of Theta Chi Lambda women's social club. For her excellent work in math this year, she was awarded the Outstanding Math Student award.

Miss Cudd is the daughter of Mr. and Mrs. Gene Cudd, Route 1, Perryton. She graduated from Perryton High School in 1965, where she was a member of the National Honor Society, the student council, and the band.

To be named to the Dean's List, a student must have a 3.5 or better average for the semester.

Roast shoulder of veal makes a fine meat for Sunday dinner. Buy the shoulder boned and rolled. After rubbing the surface of the meat with olive oil, salt and pepper, roast it in a moderate oven for about 30 minutes to the pound. When the shoulder is carved, the slices tend to fall apart, but that's a mere trifle!

Ever wrap raw peeled shrimp in bacon and broil? Serve as an appetizer with a chutney sauce.

If you want your confectioners sugar frosting to be extra creamy and rich, add plenty of butter—more than most recipes call for! But after a cake is frosted with this icing, refrigerate.

With the addition of Atlanta in the National Football League this fall, each week one of the 15 teams will have a bye.

Ever top chocolate cake or pudding with peppermint-flavored whipped cream? Add peppermint extract to sweetened whipped cream — but use a light hand.

Cummings

Refrigeration

HEATING

AIR CONDITIONING

SALES & SERVICE

SPECIALIST

659-2721

SPEARMAN

— TRACTOR TIRE SERVICE —

WE HAVE IT!

TWO RIGS READY TO GO AT ANY TIME

Service Is What We Offer

WE ALSO HANDLE

Firestone Tractor Tires

"The Best Going"

LESS DOWN TIME

with Firestone Tires &

Snider - Pearson SERVICE!

Check our window for the winning license number, you may have won a FREE tank of gasoline!!

Planting Milo Behind Wheat?

USE THE QUICK, EASY FERTILIZER



Golden Uran 32

To Get The Job Done In A Hurry!

Easy To Apply - Just Spray It On The Stubble.

KILLS VOLUNTEER -
- ROTS STUBBLE FAST

We furnish rigs or custom apply

STRAWN FARM & RANCH SUPPLY

ORGAN HAS HISTORY OF PLAYING JAZZ, BLUES

Every so often, a jazz buff will hear an exceptionally fine jazz organist and think he has discovered something new and different. The technique may be new and different such as the fresh sounds made by the young artist, Freddie Roach, but the organ as a jazz instrument is not new at all.

The history of the jazz organ dates back to the early 1920's when the late "Fats" Waller studied it as a child. In 1926 he recorded *St. Louis Blues* and *Lennox Avenue Blues* playing a pipe organ. Then, the invention of the electric organ by Laurens Hammond in 1935 created a whole new area of musical exploration. Waller was enthusiastic and made a series of recordings on the Hammond organ during the three years before his death. One was his famous composition, *The Jitterbug Waltz*.

In the 1930's Count Basie released an organ recording of *Nobody Knows* and Milt Herth was heard in a series of jazz novelty records.

Toward the end of the war years, Bill Davis, who was playing with Louis Jordan's Tympany Five, developed a pedal technique which attracted the attention of Duke Ellington. Together, Ellington and Davis produced a recording with Davis on the organ and Ellington on the piano.

Another Davis, Jackie, who worked as accompanist for Ella Fitzgerald, Louis Jordan and Dinah Washington, claims to have been the first jazz pianist to switch to organ and make a name for himself as a jazz organist. Later, the spotlight turned to a young Pennsylvania pianist, popular Jimmy Smith. Jimmy had won a Major Bowes talent contest as a nine-year-old prodigy. By the time he was 29, he had formed his own organ trio. He arrived in New York in 1956 and was an immediate success, the first jazz organist—of international popularity—to reach the front ranks both musically and commercially.

With Smith as an inspiration,

many other jazz pianists switched to the organ throughout the 1950's and into the 1960's. The Hammond organ, too, as an instrument kept pace by challenging new young talent with a tremendous range of new sounds and combinations. Names such as Richard "Groove" Holmes, a brilliant blues artist, Charles Kynard, who swings with a guitarist, and Shirley Scott, a young Philadelphian, have sprung into prominence.

Is organ jazz new? Maybe it is . . . after all, 30 to 40 years in a musical world is not very old.

Gruver Hires New Coaches

New football coaches have been hired by the Gruver School, it was announced this week.

Bill Mayfield, an assistant at Plainview, has been hired as the new head coach and Stocky Lamberson from Amarillo has been hired as an assistant.

Mayfield has been coaching for five years. He was head coach at Farwell, then went to Plainview as an assistant coach.

He is a graduate of West Texas State and is a native of Quitaque.

Lamberson is a native of Groom and is a graduate of PAMC at Goodwell, Okla. He coached in Travis Junior High in Amarillo and this spring assisted with the Palo Duro High School spring training.

The coaches plan to move to Gruver by July 15. Football workouts will begin Aug. 15.

Corky Chapman, longtime and successful coach of the Greyhounds resigned recently to enter the insurance business in Dumas.

It's a fact--

A BRITISH THERMAL UNIT (BTU) IS AMOUNT OF HEAT NEEDED TO RAISE TEMPERATURE OF ONE POUND OF WATER ONE DEGREE (F)

AT SEA LEVEL - about amount given off by kitchen match.

AIR CONDITIONERS ARE CAPACITY RATED BY ABILITY TO REMOVE HEAT FROM ROOM OR HOUSE. A unit with capacity of 24,000 Btuh can remove heat of about that many kitchen matches in an hour.

90% OF "WHOLE-HOUSE" UNITS ARE RATED IN Btuh

--AIR CONDITIONING & REFRIGERATION INSTITUTE requires this before unit can bear Seal of Certification. ARI Seal means unit is covered by rigid inspection and testing program.

JEST A MINUTE

You save a lot of unnecessary conversation if you remember that people are not going to take your advice unless you charge for it.

Over half of West Virginia's boundary lines are streams and rivers.

The three kinds of women seem to be 1) the beautiful, 2) the intelligent, and 3) the majority.

Rural Accidents Cause Over \$12,000 in Damage

Texas Highway patrolmen investigated 14 rural accidents that injured eight and did a total of \$12,225 in property damage in Hansford, Hutchinson and Ochiltree counties in May.

The figures were released in the monthly report of accidents in the patrol's district 5B. There are 31 counties in the district. Four were killed and 70 injured in a total of 171 accidents in the county during the month. Property damage was \$112,882.

Hansford County had two accidents and three persons were injured in the wrecks. Property damage was \$3,550.

Hutchinson County had 12 rural accidents and three injuries with damage set at \$5,775.

Ochiltree County had two wrecks and two injured with property damage going to \$2,900.

For the second month, Sherman County did not have a rural traffic accident.

The rural traffic accident summary for Hansford during the first five months of 1966 shows a total of six accidents resulting in one person killed, six persons injured, and an estimated property damage of \$5,875.00 according to Sergeant W. J. McLean.

The number of traffic deaths in Texas has risen steadily since 1960 with 2254 deaths to 3028 deaths in 1965. "For the first five months of 1966, 1137 persons have died in traffic compared to 1032 deaths for the same period of 1965," the Sergeant stated. This 10% increase is very alarming, and when you realize our heavy volume traffic months are still ahead, we must anticipate increasing problems in the accident picture.

The Sergeant appealed to the motoring public to assist in the reduction of this trend, otherwise, the death count at the

end of the year will far exceed the record number of 3028 deaths in Texas during 1965.

NOW HEAR THIS

According to the Hearing Aid Industry Conference most hearing losses result from one of four principal causes. They are: infection, otosclerosis (bone disorder), noise and age. Six million Americans who are suffering from hearing losses of varying degrees could be helped through medicine, surgery or the use of a hearing aid. However, they do not know they can be helped because they will not admit to or recognize their loss and seek the available help. Why not invest a little of your time one of these long Summer days and get your hearing tested?

MEDICARE PACT SIGNED

WASHINGTON — A contract under which the Blue Cross Association will act as the government's financial agency in dealing with some 96 per cent of the hospitals participating in medicare was signed Thursday.

MOONLIGHT TV

Specializing in Minor TV Repair.

EVENINGS & SATURDAY
Sorry-No Sunday Calls
Phone 659-2792 or 659-3321

Service Calls - \$2.50

SUMMER FESTIVAL

GIRLS Size 7 to 14
SPORTS WEAR **30% OFF**

JR. ROBES
1/3 OFF

SLACKS
20% OFF

GIRLS DRESSES
Size 3 to 14
20% to 25% OFF

SWIMSUITS
25% OFF

LADIES DRESSES
25% to 50% OFF

LADIES Size 1 to 6X
SPORTS WEAR **30% OFF**

BOYS & GIRLS
SPORTS WEAR **30% OFF**

BOYS SUITS
Tom Sawyer
1/2 PRICE

MENS SHIRTS
\$2.50 \$1.50
\$3.00 \$2.00

DRESS & WESTERN HATS **1/2 PRICE**

SUITS & SPORTS COATS **20% OFF**

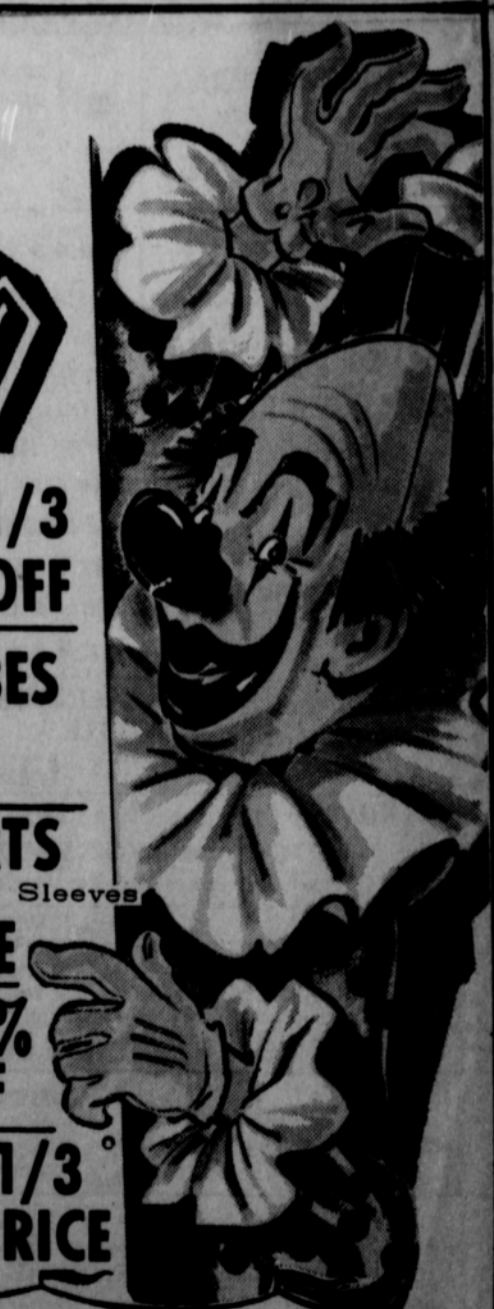
LADIES **1/3 OFF**
TERRY SHIRTS

LADIES ROBES
25% OFF

BOYS SHIRTS
Long Sleeves & Short Sleeves
1/2 PRICE

MENS **40% OFF**
KNIT SHIRTS

WESTERN SHIRTS **1/3 PRICE**
1 Table



JIM NEELY'S