



THE

# HANSFORD PLAINSMAN

VOLUME 9, NO. 10

THE HANSFORD PLAINSMAN, SPEARMAN, TEXAS 79081

SUNDAY, JANUARY 1, 1978

Texas farmers spend more than \$5 1/2 billion a year in total production expenses. They spend over \$457 million a year on fuel for major crops, with about 2.5 million tons of fertilizer and minerals used annually in the state to produce food and fiber.

## American Agriculture rally Tuesday

Special-Spearman, Tex. A group of retail merchants met in Spearman, Texas, at 2 p. m. Friday evening, and voted unanimously to close down the town for the tractor rally in Spearman Tuesday, January 3rd. All members of the retail merchants committee were in sympathy with the farmers, and even the few who have to stay open to guard our "health" problems, will have signs in their windows supporting the American Agriculture movement. The retail meeting at the Chamber office in Spearman was the largest meeting of the year for the merchants.

The agenda for the farm strike is as follows: January 1st, National prayer day. The farmers will be praying for guidance. They are having a meeting at the strike office in Spearman, at 6:30 p. m. Sunday evening. The public is invited to attend. A local pastor, Archie Burrus of the Union Church will be in charge of the services at the strike office. January 3rd is National Tractor rally day. Farmers are urged to sign up for the rally at strike headquarters TODAY! Late Tuesday afternoon the tractor rally will parade down main street in Spearman. Merchants and friends are invited to bring their horses, vans, and parade equipment and join in the rally. At 5:30 p. m. Tuesday evening, channel 6 on the cable will host television for question and answer period. You are invited to call.

Friday January 6th, local American Agricultural chapter will have some specialists in on parity and beef cattle at the county barn, 7:30 p. m. Public is invited to attend.

January 6th, the group will meet with Sec. of agriculture Bob Bergland, to discuss the farm situation.

January 13th, American Agriculture kicks off a national investigation on farm imports, with special interest on beef and imported feed grains. To date, 529 strike offices have been counted nation wide. And, the movement is growing!

The American Agriculture movement was conceived to preserve the family farm system, the most efficient food producing unit in this nation. We have little time left as more than 25% of farmers and ranchers will be forced to either liquidate or refinance their operations this year. We have lost equity and enormous sums of money for the last four years and we are now on the verge of bankruptcy. Unless something is done, only big money entities, or possibly the government, will be left to produce the food.

The American Agriculture movement is not another farm organization. There are no memberships, dues, secretaries, or presidents. We are a group of individual farmers, ranchers, and agribusinessmen, unified together in order to achieve the fair price of 100% parity for all agricultural products.

The American people today pay only 18.8% of their total disposable income for food. The people of other nations purchase food in a relatively raw state, yet these nations spend a minimum of 28% of their income for food. By achieving parity pricing, it will increase the percentage by 3.1% to a total only of 19.9%. This is by far the cheapest and best food in the world. By eliminating speculation, boom and bust from the market, and excessive profits from some middlemen, we can achieve parity and raise the price to consumer very little. The 3.1% shift of total disposable income is only a small shift in priority, but means the difference between existence and non-existence of the family farms.

We do not want government subsidies. At this time we are actually subsidizing this nation and the world with cheap food and fiber. For each unit of



Farmers are seeking special guidance, and prayer, in their agricultural strike. Special prayer services will be held Sunday evening at this location.

have increased from \$95 billion to approximately \$150 billion dollars. This is new wealth injected into the national economy and is renewable each year. Tax rebates and other efforts to boost the economy and reduce unemployment have had limited success. It is time to try a healthy agriculture industry for a change.

COMMODITY	PARITY	FARMER'S PERCENT OF PARITY AT MARKET PRICES AS OF SEPT. 15, 1977 (NATIONWIDE)
Wheat	5.02/bushel	43% (2.17)
Corn	3.45/bushel	46% (1.59)
Barley	2.99/bushel	52% (1.56)
Soybeans	7.60/bushel	63% (4.81)
Sorghum	5.77/hundred	45% (2.60)
Cotton	83.60/cwt	70% (54.30)
Cattle	58.20/cwt	60% (34.80)
Calves	68.00/cwt	56% (30.30)
Hogs	55.30/cwt	73% (40.20)
Milk	12.90/cwt	76% (9.80)
Wool	1.30/lb.	52% (1.71)
Potatoes	5.75/cwt	61% (3.43)
Rice	13.90/cwt	56% (7.86)
Listed Farm Commodities Composite Average		
Total Farm Commodities Average		
58% 63% (including commodities other than those listed here.)		
Figures taken from the U.S.D.A. Crop and Livestock Reporting Service.		

The current action is not an appeal for price supports, the creation of a false economy for agriculture, or for government subsidies. It is rather, a rejection of the current farm program. It is a demand for 100% parity for agriculture products. This means, according to Sec. 101 of the USDA's National Economic Stability Act of 1977, that agriculture product prices "shall be increased or decreased on a period basis to justify increases in production costs and living costs for producers." Another way to explain parity is that if it cost a bushel of corn or a pound of beef to buy a product in 1967 (the last time parity was adjusted), it should still cost a bushel of corn or pound of beef, regardless of the dollar of the product - prices must fluctuate together.

AMERICAN AGRICULTURE PRODUCERS REJECT the current farm program and instead DEMAND the following:

1. 100% of parity for all domestic and foreign used and/or consumed agricultural products.
2. All agricultural products produced for national or international food reserve shall be contracted at 100% parity.
3. Creation of an entity or structure composed of agricultural producers to devise and approve policies that affect agricultural products.
4. Imports of all agricultural products which are domestically produced must be stopped until 100% of parity price is reached.

Thereafter, imports must be limited to the amount that American producers cannot supply. 5. All announcements pertaining to any agricultural production cycle shall be made far enough in advance that the producer will have adequate time to make needed adjustments in his operation. These demands dictate the need for possible production and marketing curtailments that will allow supplies to match demand. We are willing to accept these conditions. All commodity groups will participate in the formulation of policies from the local level that affect their respective commodity. Unless our demands are met by midnight, December 13, 1977, we will be forced to implement the following measures:

1. WE WILL NOT SELL ANY AGRICULTURAL PRODUCTS.
2. WE WILL NOT PRODUCE ANY MORE AGRICULTURAL PRODUCTS.
3. WE WILL NOT BUY ANY AGRICULTURAL EQUIPMENT, PRODUCTION SUPPLIES, OR ANY NON-ESSENTIAL ITEM.

Our proposals are reasonable. Our goals are obtainable. Our ultimatum is justified. We ask your support. Strike for your homes, farms and ranches and businesses. Strike with the same dedication you have long employed to make this the greatest food-producing nation



Drop by and drink a cup of coffee at the strike headquarters during the holidays. You will be welcome.

In 1896 William Jennings Bryan said it best, "Burn down your cities and leave our farms, and your cities will spring up again as if by magic, but destroy our farms and the grass will grow in the streets of every city in the country." As long as the North American farmer can supply our food at a price that allows us to spend the greatest part of our income for our cars and TVs and recreational items, our high standard of living can continue. But, when our farmers can no longer produce our low-cost food, or when they have no economic incentive or ability to produce this food - truly, again, "the grass will grow in the streets of every city in the country."

Submitted by Mr. E.T. Evans, Bozav, Idaho, in response to a request from Hesston Corporation to the membership of the American National Cattleman's Association (now the National Cattleman's Association).



**Notice**  
There will be a meeting of the Texas Farmers Union Thursday, Jan. 5, at 7:30 p.m. The meeting will be held at the Home Demonstration Building. All members and prospective members are urged to attend. The featured speaker will Ron Benzer of Dalhart.

**Notice**  
The Organization W.I.F.E. will meet Tuesday, Jan. 3 at the Spearman County Barn at 7:00 p.m.

the world has ever known.

1. Disperse handbills, talk to you neighbors.
2. Park your tractors and other farm equipment with a sign saying that we will strike on Dec. 14, 1977, for 100% parity. Park the tractors on private property next to the highway or right of way.
3. WE WILL NOT ADVOCATE VIOLENT ACTION. WE WILL NOT CONDONE VIOLENCE BUT..... WE WILL STRIKE.....

The word "parity" is a key to the American Agricultural movement, which seeks 100 percent of parity for farm products. It has been defined by the Yearbook of Agriculture as follows:  
"Parity price represents a ratio between an index of prices received by farmers for products sold and one of prices paid for supplies they buy."

## Late December Wedding Unites Couple



gown of candlelight chiffon design accented by a high rise bodice, with the controlled skirt front tapering to the back, the center front was appliqued with a medallion of Venice lace. The shoulder cape edged in matching lace formed the chapel train. Her veil of imported illusion was attached to a bandeau overlaid with lace. She carried a cascading bouquet of white roses, baby breath and white cusion mums with wheat.

The bridal attendants wore gowns of spice (lana fashioned with a Halston neckline edged with matching Venice lace, and full accoridian pleated skirt flowed from the empire bodice. The sleeves were long and slender. They carried bouquets of fall flowers.

The reception was held following the ceremony in Fellowship Hall of the church. Assisting in the serving were Mrs. Tab Daniel, Lubbock; Mrs. Steve Benton, Spearman; and Mrs. Don Schrayner of Morse. The couple will reside at 4609 Detroit, Lubbock, where they are both students at Texas Tech University.

The rehearsal dinner was held at Martin's Steak Garden. Attending were Mr. and Mrs. Ross Josephson, Stan Josephson of Borger; Mrs. A.L. Parks, Amarillo, Mr. and Mrs. Dean McLain, Colorado Springs, Mr. and Mrs. Glen Harris, Gruver; Mr. and Mrs. Don Schrayner and Terri, Nanelle McCloy of Morse. Spearman residents were Mr. and Mrs. R.L. Uptergrove and Alan Uptergrove, Lee Ann Uptergrove, Rev. and Mrs. Russell Pogue, Mrs. Neil Pack, Miss Kathy Garner and Mr. Roger Brown.

Lee Ann Uptergrove and Stanley Regan Josephson were married in a ceremony December 30, 1977 at 7 p.m. in the First Baptist Church here. Rev. Russell Pogue, minister of the double ring ceremony.

Lee Ann is the daughter of Mr. and Mrs. Roy Lee Uptergrove, 403 Endicott, Spearman and Stanley Regan is the son of Mr. and Mrs. Ross Sherman Josephson, 1513 Balin Road, Borger.

Mrs. Neil Pack of Spearman was the organist and Glen

Harris of Gruver was vocalist.

Mrs. Dean McLain, sister of the bride, of Colorado Springs was matron of honor and Miss Kathy Garner of Spearman was bridesmaid. Miss Terri Schrayner of Morse was the flower girl.

Mr. Ross Sherman Josephson of Borger, father of the groom, was best man. Groomsman was Mr. Eddie Miller of Lubbock.

Ushers were Alan Uptergrove, brother of the bride, of Spearman and Dean McLain, brother-in-law of the bride, Colorado Springs.

The bride wore a floor length

Following the program, a visit from Santa thrilled the children. Santa and his helpers handed out gifts from under the big

Christmas tree. Also sack treats of fruit, candy and nuts were given to everyone in attendance.

## Rook-Smith Vows Exchanged

Wedding vows were exchanged Friday, December 23 at 8 p.m. in the Southside Baptist Church of Perryton by Tammy Lynette Rook and Gary James Smith. Rev. Paul E. Watson performed the ceremony at the altar which was decorated with Christmas greenery and red candles.

Parents of the couple are Mr. and Mrs. George S. Rook, Jr., 1117 S. Archer, Spearman and Mr. and Mrs. Delbert Smith, 1602 Harvard, Perryton.

Mrs. Kenneth McKay was the organist. Special music included "Color My World", "First Time Ever I Saw Your Face" and the traditional wedding march.

Karen Tope of Spearman was the maid of honor and Rick Smith of the USAF, brother of the groom was best man. The bride given in marriage

by her father, was radiant in her formal floor length wedding gown of poly-organza and re-embroidered Chantilly lace over bridal taffeta designed with square neckline, empire waist, long camelot sleeves and full skirt. Inserts of the lace, complimented with tiny seed pearls, enhanced the neckline, sleeves, bodice and skirt of the gown. A wide border of matching Chantilly lace complimented hemline of the gown, and the full back ended in a "Sleeping Chapel length train. She carried a long stemmed rose.

For the wedding trip the bride chose a tan pantsuit with coordinating accessories.

The couple is at home at 1106 S. Colgate in Perryton where the groom is employed by Misco United Supply of Perryton.

## School Menu

**TUESDAY, JAN. 3**  
BBQ on a Bun  
Tater Tots - Catsup  
Buttered Corn

Cole Slaw  
Chocolate Cake  
Milk

**High School Choice**  
Ham Salad Sandwich  
**WEDNESDAY, JAN. 4**  
Grilled Cheese Sandwich  
Vegetable-Beef Stew  
Celery Sticks

Lime Fruit Gelatin  
Gingerbread  
Milk

**High School Choice**  
Corn dogs - Mustard  
**THURSDAY, JAN. 5**  
Salisbury Steak - Catsup  
Mashed Potatoes

Green Beans  
Fruit Mix  
Hot Rolls - Butter  
Milk

**High School Choice**  
Burritos  
**FRIDAY, JAN. 6**  
Hamburger or Chicken Salad  
Sausich

French Fries - Catsup  
Shredded Lettuce - Dressing  
Dill Slices  
Chopped Onion  
Apple Cobbler  
Milk

## The Blue Planet

Earth, the blue planet, covered by clouds and seas, presents itself as an impressive body to anyone viewing it from a vantage point in space.

The rather small planet carries as its passengers all the life that is known to exist in the entire solar system. Earth alone has the requirements and balances necessary for that magic of all entities the living organism. But earth was not always like this, nor will it always be as it is.

To understand our planet we must journey back in time some five-billion years—back to a time when our entire solar system was an enormous cloud of swirling gas and dust.

Visitors to the Don Harrington Discovery Center, a non-profit organization in Amarillo,

will have the opportunity to do just that at public performances of "THE BLUE PLANET" on Saturday and Sunday afternoons at 3:00 p.m., January 7/8 through March 11/12. Admission prices are \$1.50 for adults and \$1.00 for students under eighteen. The box-office opens one-half hour early.

The Don Harrington Discovery Center, located across from High Plains Baptist Hospital on the Medical Center at the western edge of the city just north of I-40, is operated for students Monday through Friday during the school year (over 27,000 attended last year) and for the general public on weekends. The address is 1200 Street Drive.

## Adult Typing Course Offered

There will be an adult typing course offered at Spearman High School beginning Monday night, January 9 at 6:30 p.m. Fee for the course will be \$25 which will include all materials including typing paper.

Mrs. John Davey will be the instructor for the thirty hour course. The course is for beginning typists and will be held in the high school typing room. There will be a 3 hour session each evening.

Anyone interested in taking the course may contact the superintendent's office, 659-3233.

## Mrs. Seitz To Host Bridge

Blue Monday Bridge Club will meet January 9 in the home of Mrs. W.B. Seitz.

## Hospital News

Patients in Hansford Hospital are Mary Sparks, Lindey Gyger, Verna Finley, Jewel Ward, Mose Lamb, Robert Speck, and Velma Roden.

Dismissed was Loraine Dorman.

## Markets

Wheat	\$2.48
Milo	\$3.25
Corn	\$2.13
Soybeans	\$8.42

You are cordially invited

to a

Bridal Shower

honoring

Mrs. Gary Smith nee Tammy Rook

Jan. 7, 1978

First Baptist Church

Fellowship Hall

Hostesses

Frances Hudson	Betty Davis
Bette Hazelwood	Tami Janzen
Lynanne Maize	Veleta Bowen
Patty Sheppard	Betty Hogue
Joan Farr	Marie Weckesser

Avo Tope

7S-2tn

## SVFD Meeting

Spearman Volunteer Fire Department personnel held a thorough equipment inspection, including vehicular and personal fire fighting and first aid/rescue equipment, during the regular meeting Thursday, Dec. 29, and all equipment was found to be ready to respond to any situation. Fire Chief Steve Slater

reported. The inspection included all connections, tire pressures, possible oil leaks, nozzles, air packs, masks, ladders, lights and other items and where maintenance was necessary, such work was completed. "To every man his own life is a mystery." Latin proverb

5 storage spaces available

for your boat or truck storage!

**MINI-STORAGE NOW AVAILABLE**

10x12-12x30 14' per Sq. Ft. Per Mo.

Phone 659-2155 or 2201

Concrete Blocks, Metal Doors

**DON SCHELL SPEARMAN, TEXAS**

# HANSFORD HOSPITAL

707 S. ROLAND  
SPEARMAN, TEXAS

PHONE  
659-2535

Offers You A Quick and Economical Means of Preparing For A Career As A

## VOCATIONAL NURSE

Join other students from the Northern Panhandle at the superbly equipped and expertly staffed classroom facilities of Frank Phillips College, Borger, and do your clinical training at Hansford Hospital in Spearman.

### PLAN OF INSTRUCTION:

Length of Course-12 Months  
Preclinical Instruction-5 Months at Frank Phillips College  
Clinical Instruction-7 Months in Hansford Hospital

**APPLY NOW!**

**Application Deadline Is Jan. 15, 1978**

Student Loans  
Student Grants  
Scholarships

All Available Through Frank Phillips College

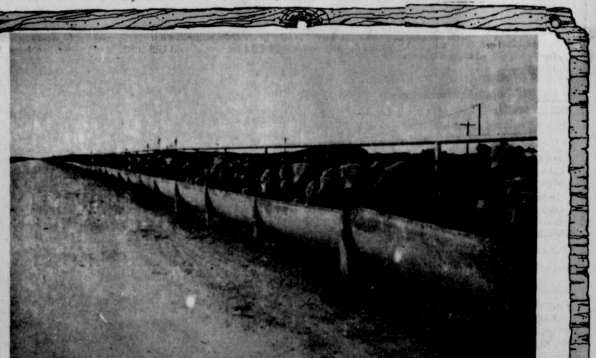
**TO APPLY CONTACT: Business Office  
Hansford Hospital Spearman, Tx.**

**659-2535**

or Ella Weeter or Andy Hicks at Frank Phillips College

Box 311, Borger, Texas

On Roosevelt, Borger, Texas 274-5311



★ Feeder Cattle ★ Custom Cattle Feeding

★ Feed Financing ★ Locally Owned

★ Our objective is to furnish the best service available

## Palo Duro Feeders

Penny Brooks, Manager

John Hatton, Assistant

10 Mi. S. of Gruver Hiway 136

PHONE 733-2416

and 733-2417



NEW YEAR GREETINGS

May the days ahead reflect the peace of the greenery of all holidays.

FROM THE STAFF AND MANAGEMENT



# WANT ADS

**Boxwell Bros. Funeral Home and Flower Shop**

FUNERAL HOME - 659-3802  
FLOWER SHOP - 659-2212

**Hansford County Planned Parenthood**  
26 S. Hance  
659-2483  
Spearman  
Mon. - Fri.  
8 a.m. to 12 noon  
305-rtm

### SERVICES

**HANSFORD LODGE**  
No. 1040  
A.F.A.M.

**Stated Communications**  
2nd & 4th Mondays  
7:30 P.M.  
Visitors Welcome  
Curt Barton, W.M.  
Jerry E. Gee, Sec'y.

**KIRBY SALES & SERVICE** of Spearman, 912 S. Bernice.  
659-2797.  
30-rtm

**HOLIDAY RATES \$6.95 PER DAY**  
EVERY DAY New Year Jan. For Steam Rinsinacev Rug Shampooer Call Gordon's Drug 659-2141 or after 7 p.m. & Sundays call FREDDIE LARGENT: 659-3437 51-rtm

**YOUR LOCAL USED COW DEALER: SPEARMAN BI-PRODUCTS.** Seven days a week dead stock removal. Please call as soon as possible. 659-3544. 8-rtm

**SERVICE:** Pits cleaned, wet or dry. Dragline or loader. Also, dozer, grader, carry-all service. Leckley Mitchell, 806-733-2394, Gruver, Texas, 79040. 9-rtm

Alcoholic Anonymous Meetings 8 p.m. Friday. Home Demonstration Club building, 305 N. Bernice. Phone 659-3181 for information. \*\*\*\*\*

Al-Anon meetings 8 p.m. Friday Home Demonstration Club building, 305 N. Bernice in back room. Phone 659-3181 for information. Ask for Al-Anon.

**SPEARMAN INSULATION SERVICE**  
We will apply or rent machine with purchase of insulation.  
659-2316  
Mr. and Mrs. S. B. Sheets  
5-4tc

**Real Estate For Sale**

**FOR SALE:** Two bedroom house with large workshop and small trailer on three lots. House is newly carpeted and painted. Fenced with large trees. 205 S. Main, Gruver, 806-733-2464. 4-8tc

**FOR SALE:** Lovely 3 bedroom brick home, fenced yard, double garage, choice lot 104 ft. wide, cozy fireplace, carpets throughout, insulated windows and doors, central heat and air, built-in kitchen with dishwasher, disposal, cooktop and oven. Shown by appointment only. Emmett R. Sanders, Realtor. 659-2516, nights 659-2601. 4-rtm

**OFFERED BY:**  
Emmett R. Sanders  
Realtor

Good older 3 bedroom home, carpets, fenced yard, carport, tool house.

120 ft. lot on County Road (13th St.) zoned residential. Mobile home park, 6 spaces, good location.

Charming 3 bedroom brick home with garage, fenced yard, heat & air, carpets, kitchen with dishwasher, disposal, range and vent hood. Financing for qualified purchasers.

**EMMETT R. SANDERS**  
REALTOR  
659-2516  
659-2601 (nights)  
3-rtm

**LOTS FOR SALE:** 82' X 160' located at 319 S. Endicott. Call 658-4890.

**FOR SALE:** 2 bedroom stucco home, plus large storage room, living room, dining room, kitchen with extra space, detached double garage, quiet location on 110 ft. lot, owner will carry loan. Emmett R. Sanders, Realtor. 659-2516, nights 659-2601. 35-rtm

**FOR SALE:** Two-bedroom house with garage and barn, edge of city limits on large lot. Call 659-2883 after 5:00 P.M. 6-rtm

**Miscellaneous FOR SALE**

**FOR SALE:** 74 Elite. Appliance wheels, new tires. 733-2827. 75-2tc

**FOR SALE:** Firewood. Burton Schubert. Call 659-2667. 5-rtm

**FOR SALE:** 1970 Grand Prix. Best offer. Call 733-2607. 3-rtm

**FOR SALE:** 64'x26' double wide mobile home. Immaculate and cozy. 33 N. James. Shown by appointment only. 659-2621 or 2556. 4-rtm

**Manure Fertilizer** from Captrock Pens \$1.60 per ton plus 7 cents a mile. Call or see Billy Baker 659-3642 45-rtm

### FOR RENT

**FOR RENT:** Furnished apartments. Call 2274. 6-rtm

**FOR RENT:** Nice two bedroom trailer house. Call 659-2770 or 659-3017. 5-rtm

### WANTED

**WANTED:** Pheasant feathers. Call 659-2129. 6-4tc

### Help Wanted

**HELP WANTED:** 3-11 shift, starting pay \$2.50 an hour. Allsup's Convenience Store. Inquire at store. 6-3tc

**TEXAS REFINERY CORP.** offers PLENTY OF MONEY plus cash bonuses, fringe benefits to mature individuals in Spearman area. Regardless of experience, write A.P. Pate, Pres., Texas Refinery Corp., Box 711, Fort Worth Texas 76101. 75-2tc

### LEGAL NOTICE

Among other business to be considered at the January 9 1978, meeting of the Hansford County Commissioners Court will be a proposed cost of living raise of approximately 10% for elected officials and for regular full time employees, plus some adjustment in travel expense.

"We always love those who admire us, but we do not always love those whom we admire." La Rochefoucauld

THE STATE OF TEXAS TO: HUME MCKEAN and LILLIAN P. WILLIAMS if living, and if deceased, by their legal representatives and the unknown owners of the interest of the said HUME MCKEAN and LILLIAN P. WILLIAMS, the places of whose residences are unknown. Defendants: GREETING:

You and each of you are hereby commanded to be and appear before the District Court of Hansford County, Texas, at the Courthouse thereof in the town of Spearman, Texas, at or before 10:00 o'clock A.M. on the first Monday after the expiration of 42 days from the date of issuance hereof, the same being Monday, the 6th day of February, 1978, then and there to answer a petition filed in said Court on the 21 day of December, 1977, in a suit numbered on the docket of said Court No. 2471, and styled "M.F. HARBOUR et al vs. HUME MCKEAN et al, wherein M.P. Harbour and wife, Marie Harbour, and Robin Giblin and wife, Ollie L. Giblin, are Plaintiffs, and Hume McKean and Lillian P. Williams, if living, and if deceased, their legal representatives and the unknown owners of the interest of the said Hume McKean and Lillian P. Williams in and to said lands are Defendants, whose places of residences are unknown, the nature of said suit being one for partition of the hereinafter described lands brought by Plaintiffs against said Defendants, wherein said parties are alleged to own the hereinafter described lands in the following proportion, to-wit: Plaintiffs, M.P. Harbour and wife, Marie Harbour, and Robin Giblin and wife, Ollie L. Giblin, owning an undivided 620/640 interest in an to said lands; said Hume McKean, if living, or his legal representatives, and the unknown owners of the interest of said Hume McKean, if deceased, owning an undivided 10/640 interest in and to said lands; and the said Lillian P. Williams, if living, or her legal representatives, and the unknown owners of the interest of said Lillian P. Williams, if deceased, owning an undivided 4/640 interest in and to said lands.

The statement of the nature of said suit is more fully shown in Plaintiffs' Petition, this suit is for judgment for partition in dividing the following described land, to-wit: Section 20, Block 3, SA&MG RR Co., in Hansford and Hutchinson Counties, Texas among the owners of land; plaintiffs pray that said lands be partitioned among the joint owners as provided by law; that commissioners be appointed and a writ of partition issue, and for possession of that portion that by judgment of the Court may be ascertained and declared to be the property of Plaintiffs, and for such other and further relief, special and general, in law and equity that Plaintiffs may be justly entitled; as more fully shown by Plaintiffs' Petition on file in this suit.

**Lynx teams win doubleheader at Spearman Thursday night!**

Spearman's boys teams continued to roll, as they hammered two fine Clarendon Bronco teams at Lynx gym Thursday night. The Spearman B team blunted Clarendon 69-57 in the opening game. Franklin and Bone led the Lynx in scoring with 12 points each; Ortega hit 11, Trevino 10, Shields 11, Bealy 6, and Whitaker 7 to round out the scoring for the B team. Rounding out the action for the evening, including the following players: Morrison, Unpress, Snider, Edwards, Conneys, Bodery, Dennis, Reid, Vernon, Eaton and Owens.

### Consumer Food News

**COLLEGE STATION** - Mid-holiday food bargains at Texas grocery markets appear on fryer chickens, citrus fruits, some dairy items—and oranges are plentiful, reports Mrs. Gwendolyn Clyatt, a consumer market information specialist.

Mrs. Clyatt is with the Texas Agricultural Extension Service, The Texas A&M University System. **POULTRY** - Fryer chicken prices are down slightly, and some markets offer them as "features." Mid-holiday turkey prices are slightly higher than they were before Thanksgiving and hen-turkey supplies are short due to heavy demand at Thanksgiving. However, a few stores are featuring all sizes.

**FRESH FRUITS** - Tangerines and navel oranges are improving in supplies and prices. Grapefruit quality is outstanding with moderate prices. Other good fruit choices are grapes, bananas, apples, pears and avocados.

**FRESH VEGETABLES** - Onions and potatoes are the best buys. Look for firm, or hard, dry onions with small roots, and choose well-shaped potatoes that are free from defects, sunburn (greening) and decay.

**DAIRY COUNTERS** - Special prices appear on milk, half-and-half, sour cream, yogurt and a variety of cheeses.

**BEEF** - Chuck cuts are "features" in some markets. Other attractive-price items are ground beef, round, sirloin and rib steaks. Rib roasts, however, have higher-than-usual prices due to heavy demand.

**PORK** - Supplies are down, so prices are higher than forecast for this time of year. However, scattered features are Boston butt roasts, quartered cut into chops, rib-roasted roasts and chops, liver, smoked picnics and ham portions, frankfurters and bacon.

Newton with 16 points, Jones and Reid with 11, Barber hit 10, Pooler 8, Martin 6, Whitaker 4, Sherwood and McCalman 2, and Shields with 8 points. Connelly and Franklin also played well for the local variety!

The Lynx are now 8-3 for the season and will go to Dumas January 3rd (Tuesday night) for A and B boys and girls games at Dumas!

The B team jumped into a 20 point lead late in the game, and coach Tomlin substituted freely to give the local boys some playing time. Excellent offense was shown by 5 men who hit in double figures, and all of the team played well on defense! After the B team game, Coach Moore and his gladiators took the floor, and the game was so close the first quarter, it was all tied up at the end of the first quarter, 12-12, and it looked like the Lynx had their hands full with the Classy Bronco's! But, with the score tied at 19-19, easily in the second quarter, the Lynx hit an unbelievable 15 unanswered points just before the half, as they jumped into a 34-19 lead! Big guns for the Lynx, was Newton, who hit the nets for several long shots, and Jones, Reid and Barber who willed under for baskets!

Joining for the Lynx, were **United Presbyterian Church News** Begins Wed. 4th at the Bunkhouse

There is fascinating Bible lesson awaiting you at the Sunday Church School every Sunday at 9:45 a.m. "What Does It Mean to Be an Elder in the Presbyterian Church?" will be the subject of Pastor Edward D. Freeman's sermon on Sunday, January 1 at 11:00 a.m. at the service for the public worship of God. Larry Moore and Jim Mercer will be ordained as elders and those two and Jim Evans will be installed as members of the Session.

**HAPPY NEW YEAR!**

**The Hansford Plainsman**  
PUBLICATION NO. 234660  
SPEARMAN, TEXAS 79061  
213 Main Box 458 659-3434  
Published Weekly at 213 Main Street  
Spearman, Texas 79061  
Owner-Publisher: William M. Miller  
Spearman, Texas, 79061  
Any erroneous reflection upon the character of any person or firm appearing in these columns will be gladly and promptly corrected upon being brought to the attention of the management.  
SUBSCRIPTION RATES: Standard, adjoining counties, combination with the Spearman Reporter, \$18.40.  
Other points, \$14.40.

**TEXAS PRESS ASSOCIATION**

**January Clearance**  
There's Good News  
January Clearance Sale Begins Wed. 4th at the Bunkhouse  
Bunkhouse  
210 S. MAIN  
SPEARMAN

**WANTED: EQUIPMENT OPERATORS**  
and men to train for operators on pumping and bulk equipment are now being hired by BJ-Hughes, Inc., for placement in Peryton, Texas.

**MECHANICS**  
For heavy equipment maintenance are also needed.  
For further information, call 435-4054 or apply at 322 N. Industrial Road.  
Long term employment, company benefits, advancement opportunities.

**ED WHEELER REAL ESTATE**  
Homes - Farms  
Commercial

Large lot with nice two bedroom home in front, nice one bedroom house in the back. Double garage with efficiency in the rear. One year rental one bedroom house paid at time of sale. \*\*\*\*\*

1009 S. Drensen, 2 story, 4 bedroom, 2 bath, fenced yard, carpeted. \*\*\*\*\*

9 Glover, near new, 3 bedroom, 2 bath, 2,700 sq. ft., utility room, double garage, fireplace. \*\*\*\*\*

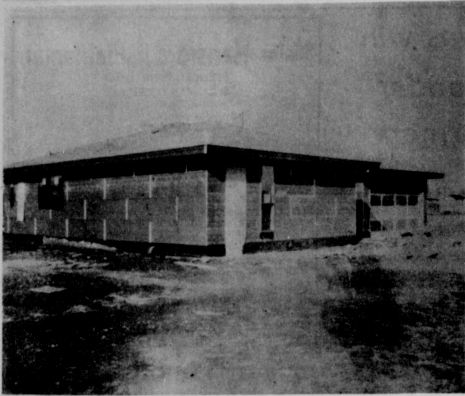
106 Endicott, Two bedroom, nice stucco, single bath, detached garage, fenced. \*\*\*\*\*

224 N. Snider, 3 bedroom, single bath, built-in appliances, new 12x14 storage building. \*\*\*\*\*

Ed Wheeler 659-2613, Office  
or 659-2951, Home  
Jerry Gee 659-3664  
5-rtm

Never a Christmas morning.  
Never an old year ends...  
But someone thinks of someone.  
Old days, old times, old friends.

**Spearman**  
Spearman, Texas



One of the big news items of 1977 is the building boom which continues in Spearman. Many new homes are now under construction!

**CRUM REAL ESTATE**

Perryton, Texas

(Nadine Crum, Broker)

**ANNOUNCES THE  
OPENING  
OF A BRANCH OFFICE**

1105 Barkley Street  
Spearman, Texas



Virginia White,  
Salesperson

Mrs. Virginia has met educational requirements, requirements, qualifying her as a licensed real estate salesperson. She has had special study consisting of Real Estate Principles, Real Estate Law, Finance and Appraising, having been a student of Frank Phillips College and Amarillo College. She is prepared to assist you with all your real estate transactions.

THIS SPACE RESERVED FOR  
THE LISTING OF YOUR  
HOUSE. CALL US TODAY.

Call after 5:00 P.M. and Week-ends 659-2053.

**Nurse Course  
Application  
Deadline Set**

The deadline for applying to take the vocational nurse course being offered by Hansford Hospital in cooperation with Frank Phillips College in Borger is Jan. 15, 1978, and those who already have made application at the hospital business office in Spearman are requested to come by and pick up an application, complete it and return it to the hospital business office so it can be forwarded to the college in Borger.

All those who applied for such training in 1977 are requested to come by the hospital business office and get an application.

It was pointed out in the announcement about the course offering that student loans, student grants and scholarships are available through Frank Phillips College.

The VNC is 12 months, with five months preclinical instruction at Frank Phillips College and clinical instruction for seven

months in Hansford Hospital. In addition to students from Spearman, others from the Northern Panhandle are expected to participate in the course at the superbly equipped and expertly staffed classroom facilities at Frank Phillips College in Borger and Hansford Hospital in Spearman.

Application blanks can be picked up at the business office at the hospital in Spearman, 659-2535, or from Ella Weeter or Andy Hicks at the college in Borger. The mailing address is Box 111 in Borger, Texas 79007, or telephoning 274-4311.

**Library Notice**

There will be no story hour at Hansford Library on Tuesday, Dec. 27 or on Tuesday, Jan. 3. The library will be closed on Monday, Dec. 26 and on Monday, Jan. 3.

**Holiday Closings Set**

A New Year's Day holiday closing schedule has been announced for the county, city and the Agricultural Stabilization and Conservation Service office in Spearman.

City offices, with the exception of the police department and other departments as required will be closed Saturday, Dec. 31 through Monday, Jan. 2, 1978, and be opened on Jan. 3. It was noted in announcing the schedule that calls to the City Hall telephone number will be answered, as will calls to the 3707 number for fire, police and ambulance service.

City offices will operate on a limited basis on Jan. 3, it was pointed out.

County officials in announcing the closing schedule for the Hansford County Courthouse noted that offices, with the exception of law enforcement will be closed on Monday, Jan. 2, opening again at 8 a.m. Tuesday, Jan. 3.

It was pointed out that county officials are in sympathy with the farmers and that the doors of the Courthouse will be closed but not locked Jan. 3 since it will be impossible to close down the governmental functions carried on in the Courthouse.

The ASCS office will be closed Jan. 2 but will be open at the regular time Jan. 3, according to information at this time.

**Bowling  
News**

Wed. Morning Glories  
12-21-77

Team	W	L
York Electric	39	25
J.G.'s	38½	25½
Anthony Electric	38	26
Whites Auto	37	27
McClellan Welding	29½	34½
Bunkhouse	25	39
Thriftway	25	39
Gordon's Drug	24	40
High Ind. Series		
Millie Craig	403	
Sheryl Meek	481	
Judy Everson	470	
High Ind. Game		
Millie Craig	245	
Sandy Heinrich	190	
Millie Craig	187	
High Team Series		
1st State Bank	1419	
J.G.'s	1323	
Gordon's	1320	
High Team Game		
1st State Bank	506	
1st State Bank	463	
Gordon's	460	

**American  
Agriculture  
Meeting Set**

There will be an American Agriculture Meeting, Jan. 6 at 7:30 p.m. at the county barn. There will be speakers on beef as well as parity. Everyone is invited to attend.

"The silent man is the best to listen to." Japanese proverb

**COYOTES**

Top  
Prices

BILL'S  
TAXIDERMY

111 MORSE ST.  
STINNETT, TEXAS  
PHONE 878-2134



This is his very first New Year. He's celebrating it in his own talented fashion, just being cute.

Last year thousands of boys and girls were arrested. They had all been cute—once!

But did they have the priceless example of active Christian parents? Were they given moral and spiritual training in the Church? Did they grow up in a Christian atmosphere?

This young fellow can't be absolutely sure that the New Year is worth celebrating. His future is in the hands of his parents. But he's smiling because of his confidence in them.

During this New Year their faith in God, and the sincerity of their relationship with the Church will begin to determine just what their son is going to be when he stops being cute.

**When he  
stops  
being cute**

**BAKER'S  
DEPT. STORE**

(CLOTHING FOR THE ENTIRE FAMILY)

STOREWIDE

JANUARY

CLEARANCE

SALE

BEGINS

WED - JAN. 4

**Speartex Grain Co.**

659-3711

514 Collard

Spearman, Texas

**Consumer Sales Co.**

421 W. Kenneth Ave.

Spearman, Texas

659-2012

**Equity Elevators**

659-2420

104 Collard

Spearman, Texas





### Insurance Corner Chimney Fires

When more fireplaces in regular use, fire chiefs throughout the country report more chimney fires than they have seen in the last century.

Chimney fires are usually the result of soot buildup in the flue. Whenever you have a fire, carbon particles rise - especially when green wood is burned - and coat the inside walls of the chimney. Old brick or stone fireplaces with their rough surfaces are particularly vulnerable, but even modern homes with their smooth tile flue liners are not immune. Soot build-ups - some are two or three inches thick - burn like charcoal once they are ignited. While there is little danger that such a fire will get past a tile liner in good

condition, there is plenty of danger that it can work its way through the decaying mortar joints of old brick or stone chimneys. By the time such a smoldering fire is discovered, it may have a head start that cannot be overtaken.

The easiest - and most expensive - way to take care of you chimney is to hire a professional chimney cleaner ("sweep").

This information has been brought to you as a public service by John R. Collard, Jr. you one stop answer to complete business and personal insurance protection. Life, home, auto, group insurance, and profit-sharing plans. See John R. Collard, Jr., 405 Davis St., Telephone 659-2581.

### County Commissioners Session

Hansford County Commissioners Court met in regular session at the Courthouse in Spearman Tuesday, Dec. 17, for consideration of several agenda items including ordering a wind erosion law into effect and a proposed cost of living raise for elected officials and for regular full time employees plus some adjustment in travel expense.

It was noted during discussion of the proposed cost of living increase, which is to be on the agenda for the Jan. 9, 1978, meeting that the increase would amount to approximately 10 per cent for those qualifying and making below \$800 a per month and approximately eight per cent for those making \$800 per month or more.

A wind erosion law would become effective after working out details with the Hansford County Soil Conservation Service organization.

Commissioners also moved to

combine funds such as jury, general including roads and bridges and sinking, and cemetery funds into one bank account to accommodate a new banking system being utilized by the First State Bank. It was pointed out that separate books under the jurisdiction of the county will be maintained for the funds. Commissioners also received and approved minutes of the last meeting, authorized payment of bills as presented and received the treasurer's report.

### City Court Set

Spearman Municipal Court will be in session twice between now and Jan. 16, according to the posted notice at City Hall. Court will be in session Jan. 9 from 10 a.m. to noon and from 1 to 3 p.m. and again on Jan. 16 from 10 a.m. to noon and again from 1 to 3 p.m.

DECEMBER						
S	M	T	W	T	F	S
	1	2	3			
4	5	6	7	8	9	10
11	12	13	14	15	16	17
18	19	20	21	22	23	24
25	26	27	28	29	30	31

### Calendar Of Events

- MONDAY, JANUARY 2, 1978**  
 Rotary Club - Martin's Steak Garden  
 Sacred Heart Women's Guild - Sacred Heart Parish Hall  
 Ruth Sunday Class  
 Chapter #721, Order of Eastern Star - Hansford Lodge Hall
- TUESDAY, JANUARY 3, 1978**  
 Spearman Volunteer Fire-Ettes  
 Baker and Taylor Women's Association  
 Tuesday Bridge Club - Home of Mrs. Don McClain  
 Holt Home Demonstration Club  
 Ministerial Alliance Fellowship Meeting  
 Lion's Club - Martin's Steak Garden  
 Town and Country Home Demonstration Club - Old Hansford Home Demonstration Club - Home of Mrs. Irvin Delk  
 Golden Spread Circle Meeting - Home Demonstration Club Room, covered dish
- WEDNESDAY, JANUARY 4, 1978**  
 Lilly Handley Young Women - Home of Mrs. John Hutchison  
 Mary Martha Circle of the UMW - Methodist Church  
 Susannah Wesley Circle of the UMW - Methodist Church  
 C. W. F. - Christian Church  
 Marsha Key Study Group - First Baptist Church  
 Maranatha Bible Study
- THURSDAY, JANUARY 5, 1978**  
 Happy Homes Home Demonstration Club - Home Demonstration Club Room  
 Thursday Dessert Bridge Club - Home of Mrs. Clark Mires  
 Serendipity Home Demonstration Club Room - Home Demonstration Club Room, Mrs. Lynn Kuykendall, hostess  
 Spearman Spinners Square Dance Club - County Barr
- FRIDAY, January 6, 1978**  
 Girl Scout Leaders Neighborhood Meeting - Girl Scout House  
 Arts and Crafts Guild - Home of Mrs. Guy Fuller

### Notice

Due to New Year's Day being such a widely observed holiday, there will be no incoming or outgoing mail service Sunday, January 1.

The Spearman Post office will be closed Monday, January 2, in observance of New Year's Day. There will be incoming and outgoing mail service and post office lock box service will be provided. No deliveries will be made on city or rural routes.

### Measurable Precipitation

Spearman and vicinity received some moisture Thursday, Dec. 29, in the form of a slow, early morning rain which formed an icy coating on automobiles and bridges. The official measurement for the date was .10 inch and was the first measurable amount in Spearman in several weeks.

# Sale

Lady Fair

WE WILL BE CLOSED  
January 2nd

LEGAL HOLIDAY

January 3rd in support  
of the farmers strike

JANUARY CLEARANCE SALE  
WILL START WEDNESDAY

January 4th

Lady Fair

Spearman, Texas 79061

# SALE

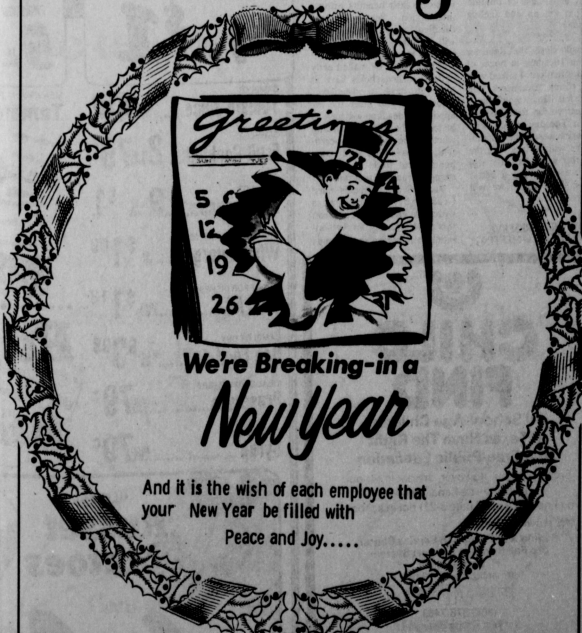


Have a very  
Happy New Year,  
everyone.

We wish you  
health, wealth  
and happiness.

## Cates Men & Boys Wear

# Greetings



We're Breaking-in a  
New Year

And it is the wish of each employee that  
your New Year be filled with  
Peace and Joy.....

## Boxwell Brothers

# You Name It! New Food Stamp Rules

The Dallas Cowboys will play Minnesota at Texas Stadium Sunday, and those of us at home watching on TV will enjoy the comfort of our living rooms, dens, etc. as we watch the game. But, for real comfort, and enjoyment, you need to be in one of the choice "box seat rooms" at the Texas stadium. These rooms are about 15X20 feet, and they are all in glassed-in at the front and sides. The rooms seat 12 people, and they cost \$50,000. That's right, you can buy this room and get a deed to it, just like buying a house. Also, besides the money for the room, you have to buy your ticket to the games. Across from the box seat rooms, about 10 feet, is access to all types of rest room facilities. And, of course you have cafes, which serve smorgasborg, and anything you want to eat, before the game. As we said before, the rooms are glassed in with sound-proof glass, and the glass on the front of the booths is about 7 feet high! You can see all of the people in the stadium, but you can't hear a thing in the sound proof boxes!

Most of all of the rooms have plush furniture in them, and on the left of each room is a TV re-play set, you can watch re-plays on! On the right side of your room, is another TV which your groups can watch another game in progress! You vote which game you want to watch, and this game will be shown in progress as you watch the cowboys live!

But, for real live comfort, you can't beat setting in Spearman and watching Denver-Oakland, and Dallas-Minnesota from your own TV! Special thanks to Ronnie Antalex and his cable TV for doing such a great job in Spearman. We have some of the finest TV in the country, and I can hardly wait to tune in these big games this week-end.

Speaking of Dallas, I suppose they will ship the stadium off to the Minnesota Vikings! I don't know anyone that I hate as bad as Frank Taranton's bunch! I sure am glad we are playing there this Sunday, as we need to get even with those rascals! And, I hope that Denver beats Oakland! If Denver wins, I am going to talk J.C. Harris into inviting Craig Morton down to Gruver and Spearman for a little banquet, etc! Craig has him a new wife, a new life in Denver, and we are real proud of him!

I am real proud of Jim Jones and Lori McDiams. Jim is the new basketball king, and Lori is the basketball queen. As soon as I can get the two together, I will get some new pictures of them. We made pictures of the crowning but only ended up with ring bearers! I was down with my usual case of flu that night, but am up and feeling great now!

We will close the Reporter Office on Tuesday, in honor of the farm situation! I talked with several of my advertisers, and they all felt like it would be a good gesture for the paper to close on Tuesday, along with other businesses in the community. We will be late with the papers this week, but if it will help our farmers get a better price for their wheat, we will join them.

**THE ARMY RESERVE IT PAYS TO GO TO MEETINGS**

The U.S. Department of Agriculture (USDA) is making sure people using food stamps are given enough time to renew their eligibility before it runs out. Assistant Secretary Carol Tucker Foreman said today.

Ms. Foreman said new USDA rules will require local welfare agencies to give people using food stamps advance written notice that their eligibility is ending. These notices must arrive in time for people to re-apply for their stamps without an interruption in benefits, she said.

The Assistant Secretary said the department is issuing these rules to settle a nationwide class action lawsuit. Basel V. Butz, which challenged USDA's food stamp re-certification procedures. Ms. Foreman said the new rules will make the re-certification process fairer by requiring state and local agencies to take more responsibility for keeping food stamp users informed about the status of their eligibility.

When a household is approved for food stamps, Assistant Secretary Foreman explained, it is certified for a specified length of time and is re-certified when this certification period ends. Periodic re-certification is necessary, she said, because it gives local agencies an opportunity to review changes in family income or resources.

Under the old rules, households were told at the time of application when their eligibility would expire, and no further notice was given.

Basel v. Butz was filed in October 1974 in U.S. District Court for the District of Columbia. The District Court ruled in USDA's favor, but the U.S. Court of Appeals reversed the lower court early in 1977. On May 13, USDA agreed to settle the case by issuing new regulations.

The proposed rules would have allowed people who appeal food stamp cutbacks or cutoffs to get full benefits pending a hearing decision. But, because of a conflict with the recently-enacted Food Stamp Act of 1977, this provision was dropped from final regulations.

Under the final rules, local agencies must notify households in writing between 30 and 45 days before their certification periods end. Expiration notices will tell households they must re-apply for food stamps by a certain date to continue receiving their benefits without interruption. People who are certified for one month or less will be given their expiration notice when they apply.

Notices must be mailed early enough so households have at least 15 days to respond. Households who meet the re-application deadline will have to be told by the end of that month whether they will be re-certified, will have their food stamp benefits cut back, or will be dropped from the program.

Recertified households must be able to buy their food stamps without interruption. For most, this means getting an Authorization to Purchase food stamps

(ATP) card by the first of the next month. People who miss their re-approval deadline without good cause would not be guaranteed uninterrupted benefits.

If there is not enough time to mail out an ATP card because of an agency delay, the food stamp office would have to issue an "over-the-counter" ATP or use other special means to make sure the household can buy its food stamps without interruption.

Households who re-apply on time will be able to file claims for any food stamp benefits lost because of agency delays.

Expiration notices will explain food stamp re-application procedures, including alternatives to in-person interviews at the food stamp office. Alternatives include home visits by eligibility workers, and telephone interviews.

The final rules are scheduled to be published in the Federal Register of Dec. 23, 1977.

# New Year Resolutions--For Health

COLLEGE STATION-- Make 1978 the healthiest year of your life--with simple New Year's Resolutions that focus on health, advises Carla Shearer, a health education specialist with the Texas Agricultural Extension Service, The Texas A&M University System.

"Get physical check-ups regularly."

"Most people take special care with car check-ups, but their bodies are their most important investment. Regular checks will determine if the body is "running smoothly."

"Take good care of teeth. Regular brushing and flossing--and dental check-ups--help insure the continued good condition of teeth."

"Keep your body in shape and get it there."

"Being overweight can contribute to health problems, such as high blood pressure, hardening of the arteries and various forms of heart disease."

"Improved eating habits and regular exercise program will avoid an overweight condition."

"Stop smoking."

Evidence that links smoking to lung cancer and heart disease is still mounting. For those who are still smoking, now is the time to stop.

"Be sure the entire family is fully immunized."

"Immunizations are the most effective way to prevent diseases. Take advantage of this. Check to see that children and adults in the family have full protection."

"Be sure each family member's medical history is up-to-date."

"Each person's medical history is one of the most valuable records he owns. Keep up-to-date information on such things as lab-test results, hospital experiences, drug allergies and chronic diseases."

Contrary to popular image, most company-owned aircraft are not powered by jet engines. Piston-engine, four-seat aircraft are used more than any other type of business travel, according to Piper Aircraft Corporation.



Claude Newell, and the "Kirby Kids" are pictured above. On the left is Jacqueline, and on the right is Kelly! Better known as Claude's Angel's, these two pretty grand children were Christmas guests of Mr. and Mrs. Claude Newell of Spearman! Mr. Newell is counselor for Spearman high school!

## ..... WISHES YOU A HAPPY NEW YEAR!

<p><b>IDEAL FOOD STORES</b></p> <p>PRICES EFFECTIVE THRU WEDNESDAY, JANUARY 4, 1978. QUANTITY RIGHTS RESERVED. NO SALES TO DEALERS.</p> <p>MON.-SAT. 8:00 a.m.-9:00 p.m. SUN. 10:00 a.m.-7:00 p.m.</p> <p>BLUE MORROW PRE-COOKED Sliced Fingers 1/2 LB. \$1.19</p> <p>OSCAR MAYER MEAT OR BEEF Skinless Frank ..... \$1.39</p> <p>OSCAR MAYER MEAT OR BEEF Sliced Bologna ..... \$1.85</p> <p>OSCAR MAYER Chopped Ham ..... \$1.49</p> <p>OSCAR MAYER Luncheon Meat ..... \$1.99</p>	<p><b>Ground Chuck</b> EXTRA LEAN TO 5-LB. PKG. <b>89¢</b> LB.</p> <p><b>Pork Roast</b> <b>99¢</b> LB.</p> <p><b>Pork Steak</b> FRESH PORK SHOULDER BOSTON CUTS <b>99¢</b> LB.</p>	<p><b>BONELESS Chuck Roast</b> U.S.D.A. CHOICE BUTCHER BLOCK BEEF <b>\$1.09</b> LB.</p> <p><b>BONELESS Chuck Steak</b> U.S.D.A. CHOICE BUTCHER BLOCK BEEF <b>\$1.19</b> LB.</p>
<p>SLAB CUT HICKORY SMOKED Sliced Bacon 1/2 LB. \$1.99</p> <p>BATH BLACKHAWK Sliced Bacon 1/2 LB. \$1.29</p>	<p><b>Golden Corn</b> 4 16-OZ. CANS <b>\$1.48</b></p> <p><b>Gold Medal Flour</b> ENRICHED 5 LB. BAG <b>58¢</b></p> <p><b>Crisco Shortening</b> 3 LB. CAN <b>\$1.48</b></p>	<p><b>PLAY CASH KING</b></p> <p>Some of our latest CASH KING Winners of \$1,000*...</p> <p>Mrs. Harriet Woodward of Berger, Bess Hilder of Beaver, Victor Banamer of Beaver</p> <p>YOU COULD BE OUR NEXT WINNER. VISIT YOUR IDEAL STORE TODAY!</p>
<p>CAMELOT WHOLE KERNEL OR CREAM STYLE <b>Tomato Juice</b> 4 16-OZ. CANS <b>48¢</b></p> <p>CAMELOT <b>Fruit Cocktail</b> 2 1/2 16-OZ. CANS <b>79¢</b></p> <p>CAMELOT <b>Applesauce</b> 3 1/2 16-OZ. CANS <b>\$1</b></p> <p>GREAT FOR WASHING <b>Wisk Detergent</b> 1/2 GAL. <b>\$1.09</b></p> <p>GREAT FOR DISHES <b>Dish All</b> 1/2 GAL. <b>\$1.13</b></p> <p>CAMELOT DRY <b>Dog Food</b> 25-LB. BAG <b>\$3.98</b></p> <p>IDEAL STRAWBERRY <b>Preserves</b> 1/2 GAL. <b>79¢</b></p> <p>MEADOWDALE <b>Syrup</b> 1/2 GAL. <b>79¢</b></p>	<p>MEADOWDALE WHOLE <b>Tomatoes</b> 3 1/2 16-OZ. CANS <b>\$1</b></p> <p><b>Green Beans</b> 4 16-OZ. CANS <b>\$1.00</b></p> <p><b>Paper Towels</b> 54¢</p> <p><b>Russet Potatoes</b> 10 6-LB. BAG <b>64¢</b></p> <p><b>Grapefruit</b> RUBY RED 4 <b>\$1.</b> FOR ONLY</p> <p><b>GOLDEN RIPE BANANAS</b> 18 LB <b>18¢</b></p> <p><b>GOLDEN SWEET CORN</b> 10 / \$1</p>	<p><b>Sweet Peas</b> 4 16-OZ. CANS <b>\$1</b></p> <p><b>Ice Milk</b> SUPER SCOOP 1/2-GAL. CTR. <b>69¢</b></p> <p><b>DAIRY FOODS</b></p> <p>MEL-O-CRUST <b>Biscuits</b> 8 \$1</p> <p>CAMELOT SLICED CHEESE FOOD <b>American Singles</b> 1/2 LB. <b>\$1.39</b></p> <p><b>FROZEN FOODS</b></p> <p><b>Cream Pies</b> 53¢</p> <p>BANQUET ALL FLAVOR 14-OZ. PIE <b>69¢</b></p> <p>BOSTON BONNIE <b>Glazed Donuts</b> 1/2 GAL. <b>69¢</b></p>

## CHILD FIND

All School-Age Children In Texas Have The Right To A Free-Public Education

Some children, however, are not in school. They may be handicapped.

If you know of a child (age 3-21) not in school...

Mail this information to:  
Region XVI Education Service Center  
c/o Full Services Support System  
P.O. Box 30600  
Amarillo, Texas 79120

CALL (806) 376-7463 (collect if long distance)

Call Your Local School District's Special Education Director

(Name of child) \_\_\_\_\_ (Age) \_\_\_\_\_

(Address) \_\_\_\_\_

(Parent's or guardian's name) \_\_\_\_\_

(Phone number) \_\_\_\_\_

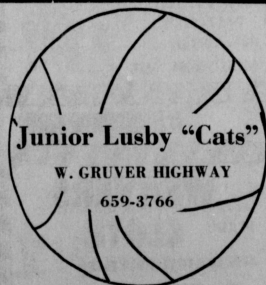
# '77 PROGRAM



## Lynx and Lynxette Basketball

DECEMBER 26, 27, 28	MID AMERICA TOURNEY - Ada, Oklahoma A Girls	
DECEMBER 29	CLARENDON - A and B Boys -----	HERE
JANUARY 3	DUMAS - A and B Boys and Girls -----	THERE
JANUARY 5, 6, 7	FRITCH B TOURNEY	
JANUARY 6	STINNETT - A and B Boys and Girls -----	THERE
JANUARY 10	GUYMON - A and B Girls -----	HERE
JANUARY 13	RIVER ROAD - A and B Boys and Girls -----	THERE
JANUARY 17	CANADIAN - A and B Boys and Girls -----	HERE
JANUARY 20	DALHART - A and B Boys and Girls -----	THERE
JANUARY 24	BOYS RANCH - A and B Boys -----	HERE
JANUARY 26, 27, 28	SPEARMAN B TOURNEY	
JANUARY 27	PANHANDLE - A Boys and Girls -----	THERE
JANUARY 31	RIVER ROAD - A and B Boys and Girls -----	HERE
FEBRUARY 3	CANADIAN - A and B Boys and Girls -----	THERE
FEBRUARY 7	DALHART - A and B Boys and Girls -----	HERE
FEBRUARY 10	BOYS RANCH - A and B Boys -----	THERE
FEBRUARY 14	PANHANDLE - A and B Boys and Girls -----	HERE


Go team - Win state again



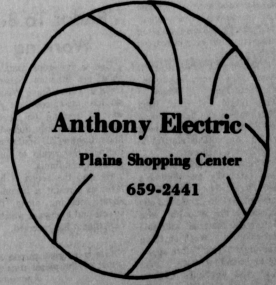
Junior Lusby "Cats"  
W. GRUVER HIGHWAY  
659-3766



Louis Schnell  
Electric  
208 Hancock  
659-3433



Excel Chevrolet-  
Olds Inc.  
Hwy 207  
659-2541



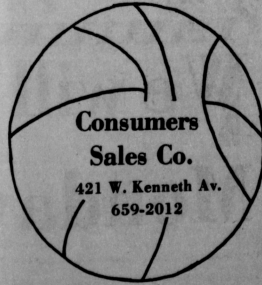
Anthony Electric  
Plains Shopping Center  
659-2441



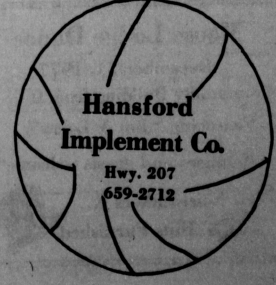
*New Year  
Greetings*



DRILLING  
**BAKER & TAYLOR**  
COMPANY



Consumers  
Sales Co.  
421 W. Kenneth Av.  
659-2012



Hansford  
Implement Co.  
Hwy. 207  
659-2712

...UARY 1, 1978

...m the left

...aude's

...uests of

...ounselor

**AR!**

...R BLOCK BEEF

**SS**

**ck**

**k**

**19**

**Y**

**U**

**G**

...atest

...nners

...of Borger

...over

...Beaver

...R NEXT

...OUR

...DAY!

**9¢**

1/2-GAL.

CTN.

**8\$1.**

14-oz.

**\$1.39**

**53¢**

14-oz.

**69¢**

...AL

...IVE

...WE GLADLY

...ACCEPT

...U.S.A.

...FOOD STAMPS



**Peggy's Pointers**

Sales on children's clothing mean a bargain only if the clothes are comfortable and fit well, allow for some growth, are durable and easy care.

These sales can offer good buys on children's clothing, especially cold weather fashions, including coats, hats, boy's suits and shoes as well as general clothing items.

Check these features for comfort and good fit:

- Neckline does not gape or bind.
- Shoulders are wide enough for free arm movement.
- Sleeves are roomy and will not pull out with strain.
- Shirts and blouses are long enough to tuck in at the waist and stay tucked in.
- Pant legs are short enough so the child won't trip on them.
- Fabrics are soft, not stiff or scratchy.

- Elastic at the waistline or wrist is not tight enough to cause red marks on the skin.

- Look for these growth features in children's clothing:

- Deep hems in skirts, pants and sleeves can be lengthened as a child grows taller. Remember to use decorative stitching, rick-rack or trim to hide marks from the old hem if necessary.

- Wide seams at the center back of pants allow adjustments in width.

- Two-piece garments usually have room for growth than one-piece items.

- Adjustable straps and waistbands allow for increasing sizes.

- Garments without a definite waistline can be worn longer than those with fitted waists.

- Stretchy fabrics and knitted garments have "give" to allow for growth.

- Elastic waistbands on skirts and pants provide room for growth.

- For durability and care check for these features:

- Wide seams that will not ravel or pull out, or on knits, narrow seams that are stitched and overcast securely.

- Double stitched seams at pants' crotch or arm holes for strength.

- Reinforcements or patches on the knees and elbows of clothes that receive hard wear.

- Evenly stitched buttonholes.

- Reinforcement stitching, such as bar tacks, at points of stress, at pocket corners and the ends of flys.

- Check the labels and hang tags for terms like "machine washable, permanent press, soil release, little or no ironing, crease resistant and stain resistant." SPRUCE UP HAND-ME-DOWNS - Most children's clothing is outgrown before it shows much sign of fatigue.

- The exception may be clothing worn for rough and tumble play. Thus, many items are in good enough condition to become hand-me-downs for a younger child. The practice is even more attractive with ever-increasing clothing costs.

- Add a fresh look for the new owner with trims, appliques, fancy stitching or buttons. Scrap fabric and trims from other projects can help shape a new look, too. Or, check through the notions and fabric departments in stores.

- Washability is always important, especially for children's clothing. When redoing a garment, be sure fabric and any accessories are compatible with the original material, washable and colorfast. Wash anything that might shrink before applying to a hand-me-down. Some trims and appliques can be

either sewn or fused on. Here are some ideas to get creative going. Personalize a T-shirt or dress by embroidering a child's name on it. Add a decorative pocket. Sew buttons along a side seam of a skirt, dress or pants or on the shoulder seam of a shirt or blouse. Appliques here, there and everywhere are fun and very "in." They are especially popular for covering worn spots on jeans -- which when outgrown by one child, can still give more wear for another youngster. Ribbons, fringes, beads and rick-rack offer many possibilities and fit in with today's popular peasant looks. It is also possible to restyle a garment. Accomplished seamstresses can cut a new item from a discarded adult garment or make alterations for better fit in a child's garment. Even the novice can refashion a child's dress into a tank or smock top, or make a skirt from jeans by adding a different fabric for the center panel. Or, try fashioning one out of a dress by removing sleeves and collar. Bear in mind that proper laundering methods help keep garments in good condition so that they can be successfully passed on to another youngster. Wash clothes before they become heavily soiled. Pretreat stains and spots before laundering. Repair split seams and tears promptly. For more information on children's clothing please call the Extension office, 659-2030 or 733-2901.

**IF YOU WORK IN THE FOOD PROCESSING INDUSTRY**

The food and kindred products industry group has an annual payroll that ranks fourth among Texas manufacturing industries, being exceeded only by transportation equipment, machinery, excluding electrical; and fabricated metals.

Texas has over 1,500 manufacturing plants for processing food and kindred products.

**IF YOU WORK FOR A PUBLIC UTILITY**

Texas farmers pay for the use of large quantities of energy to produce food and fiber. Annually, more than \$170 million are spent on the energy from natural gas, electricity, and LP gas to irrigate Texas' major crops alone.

**Saturday, December 31 -- Sun Bowl at El Paso, Texas; Louisiana State (8-3) vs Stanford (8-3) Peace Bowl at Atlanta, Georgia; North Carolina State (7-4) vs Iowa State (8-3) Bluebonnet Bowl at Houston, Texas; Texas A&M (7-3) vs Southern Cal (7-4)**

\*\*\*\*\*

**Monday, January 2, 1978 -- Cotton Bowl at Dallas; No. 5 Notre Dame (9-2) vs No. 1 Texas (11-0)**

Orange Bowl, at Miami, Florida; No. 2 Oklahoma (10-1) vs No. 6 Arkansas (10-1)

Rose Bowl at Pasadena, California; No. 4 Michigan (10-1) vs No. 13 University of Washington Huskies (7-4)

Sugar Bowl at New Orleans, Louisiana; No. 9 Ohio State (9-2) vs No. 3 Alabama (10-1)

**IF YOU ARE IN JUST ABOUT ANY BUSINESS IN TEXAS, YOU ARE IN AGRIBUSINESS!**

Fence posts  
lawn mowers  
auto tires  
cultivators  
baling wire  
electric cable  
tractors  
lumber

siding  
nails  
brick  
feed  
seed  
shingles  
packing crates  
glass jars

tin cans  
gasoline  
shovels  
concrete blocks  
fertilizer  
pesticides  
Etc., Etc., Etc.

The average Texas farmer uses 18,100 kilowatt-hours in a year, far above the average urban household use of around 10,000 kilowatt-hours.

**IF YOU ARE A FARM WORKER**

In 1976, 93,000 of the total 264,000 farm labor force in Texas was comprised of hired labor. Texas farmers have been paying over \$100 million annually to hired workers.

In recent years, Texas has also made important strides in providing better living conditions and educational opportunities for migrant farm workers.

**IF YOU WORK IN THE TRANSPORTATION INDUSTRY**

Along with the thousands of miles covered by ground transport throughout the state, transportation by both air and sea of agricultural products for export markets has increased dramatically in Texas. Availability of superior transportation has helped the state to become the third largest exporting region in the nation.

In 1975, Texas exported \$1,262.7 billion in agricultural products and returns from exported food and fiber constitute an estimated 20 percent of the cash receipts for agriculture in the state.

**IF YOU ARE A MERCHANT**

Farmers are consumers, too -- food and tobacco, clothing, household operation, household furnishing, building materials, autos and auto supplies, and much more are purchased each year by the Texas farm and ranch family.

**IF YOU ARE IN FINANCE**

Excluding loans on real estate, Texas banks loaned the state's farmers more than \$1.570 billion in 1975.

**IF YOU ARE A TAXPAYER**

At \$37.7 billion, the total value of Texas farmland provides the state with a large portion of its tax base. Farmers in Texas pay more than \$188 million annually in farm property taxes.

# Happy New Year

**Car Overturns, Driver Treated**

The driver of a late model small car, Kenneth J. Hayhurst, 19, of Guyton was taken to a private physician in Spearman for treatment and released after Hayhurst's car turned over on State Highway 136 some five miles north of Gruver, the Hansford County Sheriff's Department reported.

The turnover occurred at approximately 6:30 a.m. Hayhurst an employee of Palo Duro Feeders of Gruver, was southbound at the time and fell asleep, the investigator reported.

No charges were filed. The vehicle was totaled. Hayhurst was taken to the doctor's office in the deputy's automobile.

**Vehicle Overturns, Driver Treated**

A one-vehicle turnover on the Grave Highway Thursday, Dec. 29, totaled the late model El Camino driver, Nikki Jones, 20, of 204 S. Bartley, was treated by a local doctor for removal of some glass which got into her eyes, her only reported injuries, and released.

According to investigating officers from the Hansford County Sheriff's Department, the vehicle was westbound when ice was encountered on a bridge 1.5 miles west of town. The driver skidded into a culvert and the vehicle overturned.

The vehicle was owned by Clark Brites of Spearman. No charges were filed. The incident was reported to the sheriff's department at 8:54 a.m.

**Radar To Be Working**

Due to numerous complaints about the situation, Spearman Chief of Police Steve Wisniewski has announced that radar will be working on Seventh, Eleventh, Kenneth, Roland and State Highway 207 South during the next few weeks to enforce posted speed limits.

He said the action is being taken as a result of complaints about speeding along those streets and highways which his department has received.

"Life is a jigsaw puzzle with most of the pieces missing." Anonymous



**TG&Y FABRIC SHOPS**

## fabric sale

521 HWY. 207 SOUTH  
659-3741  
OPEN: 9 A.M. - 9 P.M.  
Spearman, Texas

**CALICO PRINT**

**QUILTING**

50% POLYESTER  
50% COTTON  
44/45" WIDE

REG. 1" \$1.49  
YD.

**LUXURY**

**BROADCLOTH**

PRINTS

80% DACRON  
POLYESTER  
20% COTTON

44/45" WIDE REG 1" \$1.49  
YD.

**DOUBLE KNIT**

100% POLYESTER  
58/60" WIDE

PRINTS AND  
SOLIDS

REG 1" \$1.37  
YD.

**WEAVERS**

**CLOTH**

50% FORTREL POLYESTER

50% COTTON  
44/45" WIDE

REG 1" \$1.77  
YD.

## We will be open

# Monday January 2, 1978

**Moose Lodge Dance**

December 31, 1977

Community Building from 9 to 1

Featuring "Jim & Larry"

Members and guests welcome

Noisemakers & Hats Furnished