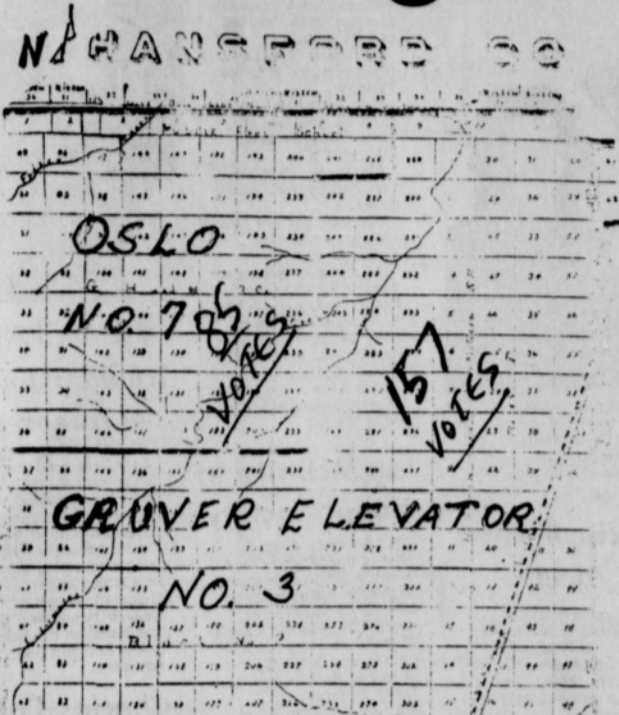
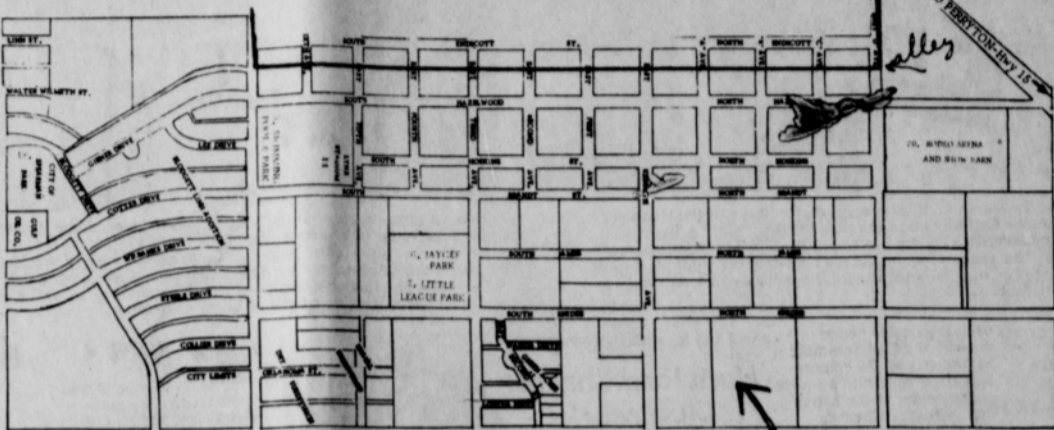


Judge rules court, democrats, and clerk as necessary parties



This is the Northwest quarter of the county, and contains one fourth of the county (geographically).



This is a portion of down-town (city limits) of Spearman, Texas. This area has a total of 507 votes, while the Northwest part of the county, has a total of 85 votes in the Oslo area, and 157 votes in the Gruver elevator area.

507
VOTES

Judge Richard Counts ruled that Ms. Ruth Gumfory "had the right to bring suit" against Womble and Desimone in the hearing in Spearman held Monday. The Judge then ruled that the Commissioners Court, the Democratic executive committee and the Democratic Chairman and the County Clerk were "necessary parties" in the suit.

A new hearing will be held Friday, March 26, in the Court room in Spearman at 10 A. M. The meeting will be open to the public.

The nature of the hearing, originally, was whether Desimone and Womble were legally qualified to enter their names as candidates for commissioner of precinct 3.

Precinct 3, the one which the hearing is about, contains 85 votes in the Oslo area and 157 votes in the Gruver elevator area. The other part of precinct 3, the voting precinct 5, is in Spearman and contains 507 votes. In any event, those of you who are in precinct 3 can check the maps above, and wait and see what the next step will be.

We are printing the entire re-districting story below, so that voters will know in which precinct to vote. We will have stories telling the voting places and sample ballots for our readers in the near future.

"THURSDAY'S STORY"

Judge Richard Counts presided over the hearing of Mrs. Ruth Gumfory vs. Dan Desimone and L. M. Womble, held in Spearman Monday afternoon. Nature of the suit was an injunction to stop Desimone and Womble from entering the commission race, precinct 3. The election for a commissioner of precinct 3 will be held May 3rd.

The lengthy hearing began at 2 p.m., and lasted approximately 4 hours. Ms. Gumfory's lawyer contended that neither of these men (L. M. or Dan) had resided in precinct 3 for the required 6 months, nor in fact, were they residents at all when they filed for the commission race.

Lawyer for the defendants, Womble and Desimone, claimed that Ms. Gumfory was "requiring these men to improperly remove their name from the ballot." The lawyers claimed that this decision of whether a person is eligible to run in the precinct rests with the democratic chairman and the democratic county executive committee.

Highlights of the hearing included the testimonies of Judge Lee, and 3 of the county commissioners. The commissioners testimony differed in that one of the commissioners could not remember which of the commissioners were present when the commissioners met for the meeting of March 8, 1976.

Also, a discrepancy arose when the legal description of the "new" precincts was not entered in the county record in Nov. 1974.

It was also not recorded whether the motion to redistrict had passed or failed. One of the purposes of the meeting of March 8, 1976, was to correct these deficiencies.

Your voting precincts and the total of the above and see which voting precincts vote in Commission Precincts, you will arrive at how we figured the 4-way split of the eligible 3,029 votes in the county! Confusing, it really isn't if you will study the maps and figures we have given you! And, bear in mind that this is the law, the counties must be divided according to "bodies" and not square miles or number of anything except people! No one in the county, or any of the cities made the law, it was made somewhere else! And, it is the law.

Needless to say, the re-districting of the county, is a mystery as far as the voters in the county are concerned. We are going to try and explain the re-districting so that each of you will know where you vote, or we might even succeed in making the re-districting even more confusing to you.

First off, we will start with Precinct 1. Precinct 1 goes from the top of Collard street, down to West Ninth Avenue, North and South. East and West it goes from Townsend over to the alley between Endicott and Hazelwood. Precinct 1 includes voting precincts 1 and 10. Also, it is interesting to note that Precinct 1 includes all of the land from Section 109 East to section 9, then south to Section 58 and back West to Section 19 (approximately). This takes in approximately 200 square miles.

Precinct 2 includes the area West of the school house known as the motorcycle course area, and the block where the high school and tennis courts is located, on West to Pioneer Manor and the Glover Terrace addition, then North up Roland Street to West Seventh, then West to Highway 15, then North East to South Townsend Street, then South to West Ninth Avenue back to the alley on South Benice, down to 11th Avenue and East to the East boundary of the motorcycle track. Precinct 2 includes approximately 200 square miles, from Section 12, East to Section 22, then South to Section 24, then West to Section 9 (approximately).

Precinct 3 starts at West 11th Avenue on the South, and North to the Rodeo grounds and goes approximately from the swimming pool on the west to the State FM 760 on the East. Precinct 3 includes voting precincts 7 in the Oslo Community. This includes Section 1 going East to Section 11, then South to 48, then West to Section 65, approximately 200 square miles.

Precinct 4 includes the towns of Gruver and Morse, from Section 64 East to WDC Hull land, then South to Section 20, then back West one mile South of Section 27. This includes approximately 200 square miles of land.

To further enlighten our readers on the issue, we might remind them that there are 3,029 eligible voters in the county, as of November 1975. Precinct 1 has a total of 762 eligible voters. Precinct 2 has a total of 809 eligible voters. Precinct 3 has a total number of 749 eligible voters. Precinct 4 has 709 votes. To further confuse our readers, voting precincts 1 through 9 are as follows: (now remember these are voting precincts and not commission precincts). Precinct 1, 661 votes; Precinct 2, 89 votes; Precinct 3, 157 votes; Precinct 4, 709 votes; Precinct 5, 507 votes; Precinct 6, 716 votes; Precinct 7, 85 votes; Precinct 8, 101 votes. Now if you will take

BULLETIN: Eric Brown won 1st place in the lamb show, and Lonnie Clemmons won first in the hog show at Gruver Friday.

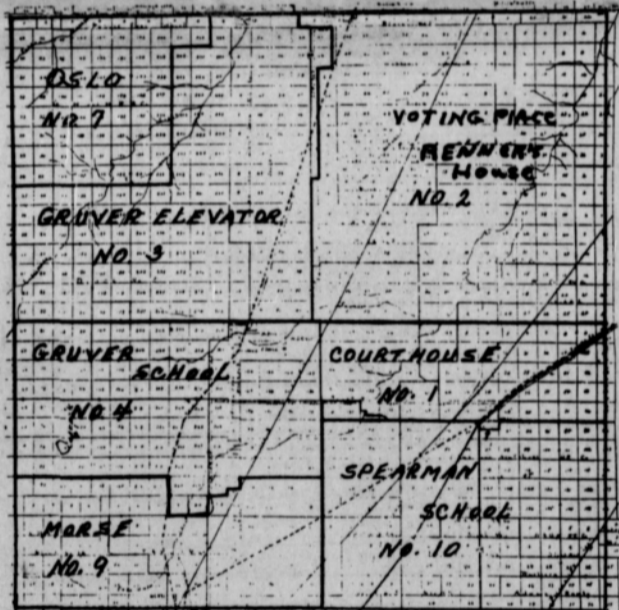


The Hansford Plainsman

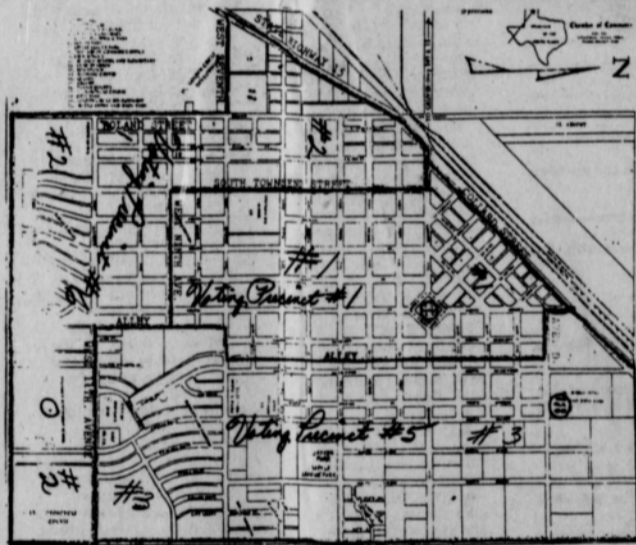
VOLUME 7, NO. 21

THE HANSFORD PLAINSMAN, SPEARMAN, TEXAS 79081

SUNDAY, MARCH 21, 1976



In rural Spearman: Voting Precinct No. 1 and No. 10 were combined into one voting Precinct called voting Precinct #1.



STATE FM 760

This re-districting change only applies to the County Commissioners Precinct number 2, 3, and 4 and only affects the City of Spearman, so far as this map is concerned.

Livestock Show

County FFA and 4-H members are busy readying animals for showing at the annual Hansford County Junior Livestock Show to be held at the County Barn in Gruver this Friday and Saturday, March 19th and 20th. The two day affair will include the judging of swine, sheep, and cattle with each exhibitor allowed no more than one entry in each of the three divisions.

The Show Schedule includes the Friday, March 19th Lamb Show which will begin at 2:00 P. M., to be followed by the Swine Show. Saturday, March 20, the Steer Show is scheduled to begin at 10:00 A. M. to be followed by the Heifer Division of the Show. The Livestock Judging Contest is slated to begin at 1:30 P. M. Saturday and the Auction Sale will begin at 6:00 P. M. with the following order of sale including 1 lamb, 1 swine, 1 steer, and so on.

The Hansford County Stock Show Board of Dir-

ector members include Dr. Tom Latta, Bob Ferguson, John Armes, Carl Cooper, Lynn Davis, Ed Dear, Mike Garnett, Jimmy Greene, Monty Harbour, J. C. Harris, Buddy Murrell, Sonny Patterson, Frank Pittman, Charles Reid, Phillip Renner, Troy Sloan, Raymond Walker and Jerry Williams.

Advisors to the Board are the Vocational Agriculture teachers in the County including Herman Boone and Burt Williams, Spearman and Oran Burton, Gruver. There is no County Agent at the present time but former County Agent Joe VanZandt is expected to arrive March 18 to assist with the Show.

The Concession stand will be under the direction of the 4-H Clubs in the County and is the only means of fund-raising that the 4-H has during the year.

Each exhibitor in the Show will be required to submit a completed record book which will be judged according to accuracy,

completeness, and neatness. Cash prizes will be \$7.50, \$5.00, and \$2.50 for 1st, 2nd, and 3rd places in both FFA records and 4-H records. 1st, 2nd, and 3rd place ribbons will also be given as premiums in each organization. Area residents are invited and urged to attend this two-day show, the biggest County-wide event of the year.

CROSSWALK PATROL SCHEDULE
Morning, March 22, Orlene Martin; Afternoon, Vicky Bullard.
Morning, March 23, Winnie Carol Urban; Afternoon, Carol Stumpf.
Morning, March 24, Elaine Odegaard; Afternoon, Gladys Dunaway.
Morning, March 25, Helen Martin; Afternoon, Glenda Guthrie.
Morning, March 26, Carmen Laird; Afternoon, Marilyn Groves.

This is a condensed summary of these two meetings. Dates, Nov. 11, 1974 and March 8, 1976.

COMMISSIONERS COURT

On Nov. 11, 1974 a regular meeting was held with officers: Johnnie Lee, Judge; Joe Day, Prec. 1; John Venneman, Prec. 2; B. W. Renner, Prec. 3; George C. Lowe, Prec. 4; Norma Jean Covell, Clerk.

Order approving minutes approved by all; order to pay bills approved by all.

Order to Canvass returns of General Election held on November 5, 1974.

Order to re-district commissioners' precincts: motion by Renner, seconded by Venneman to re-district Commissioners' Precincts according to order of the 84th District Court (all approved).

On March 8, 1976 a regular meeting was held with officers: Johnnie Lee, Judge; Joe Day, Prec. 1; Joe T. Venneman, Prec. 2; B. W. Renner, Prec. 3; George C. Lowe, Prec. 4; and Marie H. Gould, Clerk.

Order approving minutes approved by all; order to invest monies approved by all; order to invest monies approved by all; order authorizing use of County Barn for Emergency Medical Technical School.

All approved to correct the minutes of Nov. 11, '74. Judge Lee placed before the Commissioners for discussion Item 5 on the Agenda, re-districting of Commissioner & Justice Precincts of County. On October 4, 1973, 84th Judicial District Court issued Writ of Injunction concerning re-districting of Commissioners Precincts in the County.

The boundaries that were discussed in '74 did not appear in the minutes. It was intended that the proposed re-districting boundaries were to be effective on the day approved in 1974.

Blackburn stated that by entering a nunc pro tunc order correcting the commission the plan of re-districting would relate back to and be effective from

the date the Commissioners originally re-districted.

On Oct. 1973 it was established that approximately 5,021 resided in Prec. 1 with 1 Commissioner; 1,200 resided in Prec. 4 with 1 Commissioner; 100 resided in Prec. 3 with 1 Commissioner; and 30 resided in Prec. 2 with 1 commissioner.

On this same date the Commissioners' Court has failed to reapportion the Districts to obtain districts with no substantial variation from equal population. (Emmett R. Sanders vs. Johnnie Lee.)

Clerk of the District issued Writ of Injunction directing Commissioners to re-establish Precincts so that they will have an equal number of residents.

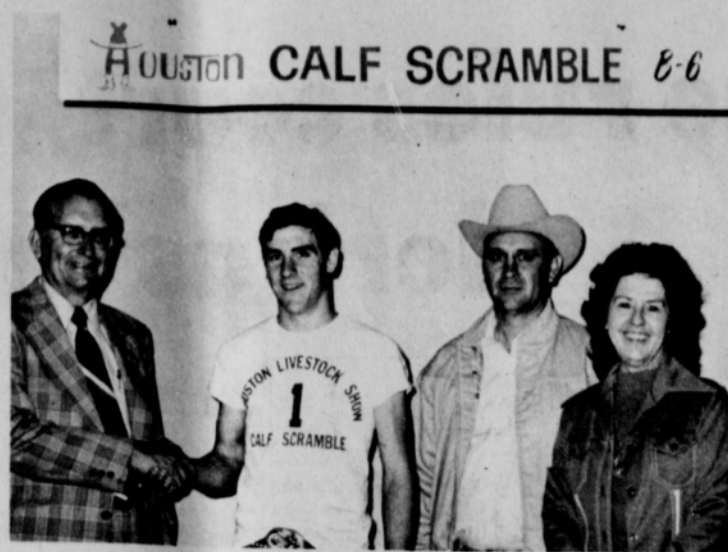
It is ordered that minutes of Nov. 11, 1974 be corrected by adding thereto the new re-districting laws.

In the corrected minutes of August 12, 1974 the Commissioners had defined the geographical locations of the voting precincts.

Martin & Boone Win In Calf Scramble



Pictured together at the March 6, 1976 evening performance of the Houston Livestock Show and Rodeo Calf Scramble are (left to right) Mark Schwettman, Scott Martin, and Herman Boone. Scot was one of the 388 boys taking part in this year's scramble. The young winner received a \$275 check from his sponsor, Channel Bearing & Supply Co. to be used toward the purchase of a registered calf of his own choosing.



Pictured together at the 3-6-76 performance of the Houston Livestock Show and Rodeo Calf Scramble are (left to right) Vernon Hearn, Sam Boone, Herman R. Boone and Louise Hearn. Sam Boone was one of the 388 boys taking part in this year's scramble. The young winner received a \$275 check from his sponsor, Vermore Hearn of Hearn Lithographing Co. to be used toward the purchase of a registered calf of his own choosing.

Scot Martin and Sam Boone of Spearman were lucky winners in the Calf Scramble event at recent evening performances of the Houston Livestock Show and Rodeo. Scot received a \$275 certificate from Mark Schwettman of Channel Bearing and Supply and Sam received a \$275 certificate from Vernon Hearn of Hearn Lithographing Co. The certificates are to be used toward the purchase of a registered calf of their own choosing. Under the direction of Herman S. Boone & Burt Williams, Spearman High School Ag instructors, they will feed, raise and care for the calves until next year's show, when he will return it to Houston for judging in the calf scramble division and the junior breeding division. As the fourth event of

each 1976 rodeo performance, the Calf Scramble begins with all 24 contestants lined up within a square in the center of the Astrodome arena. When the signal is given, the youngsters race after 12 calves which have been turned loose. The object is to place a halter on a calf and return it to the square. The 12 contestants who manage this feat receive a certificate from an area businessman for the purchase of a calf of their choice. Other events of the Houston Livestock Show and Rodeo prove as exciting as the popular calf scramble. The show which ran Feb. 25 through March 7, featured top professional cowboys who came to compete for the world's largest rodeo purse... more than \$150,000. Top names in the entertainment world were also

on hand for each performance.

Hansford Shrine Club Met

The Hansford Shrine Club met Thursday, March 18th at Martin's Steak Garden. Good food and great fellowship was enjoyed by all present. President, George Young presided over the business. Discussion was held on Ladies Night to be held April 15th at 7:30 at Martin's Steak Garden. The theme will be Easter and all Shriners and their ladies are invited to attend. Discussion was held on having a float for the celebration but no definite plans were made. Next meeting will be April 15th at Martin's Steak Garden.



ROSEMARY JOLLEY Gives Program

The Spearman Music Club, members of State and National Federated Music Clubs, met Tuesday, March 16th in the home of Mrs. Ronnie Schaefer as co-hostess. President, Mrs. Paul Reimer introduced special guest, Mrs. Rosemary (Burkhart) Jolley, who presented the following program on blues. Mrs. Jolley, accompanied by Mrs. K. D. Clark, sang the following musical selections: "People", "The Birth of the Blues", "Good Morning Heartache", "Mood Indigo", "Someone to Watch Over Me", "I'll Close My Eyes", "I'll Walk Alone", "Stormy Weather", "My Man's Gone Now", "School Days", and "You Will Be My Music." Following the program, Mrs. Reimer presented Mrs. Jolley with a scholarship check. Refreshments of chocolate cake, coffee and spice tea were served by hostesses, Mrs. Sanden and Mrs. Schaefer to guests, Mrs. K. D. Clark and Mrs. Jolley and to members, Mesdames: James Dunahoo, Carl Kunselman, Dean Leighnor, Tom Sutton, Kurt Shedeck, Russell Townsend and J. D. Wilbanks. Next meeting will be March 23rd in the Home Demonstration Club Room.

UMW NEWS

The Mary Martha Circle of the U. M. W. met Wednesday, March 17th in the Parlor of the First United Methodist Church. Chairman, Mrs. J. B. Buchanan presided over the meeting. Mrs. Russell Townsend gave the devotional, taken from Exodus. The Study on Exodus was continued by Mrs. T. D. Sansing. Delicious refreshments were served by Mrs. Townsend to members, Mesdames: J. B. Buchanan, T. D. Sansing, P. A. Lyon, Freeman Barkley, Fendorf Schubert and R. E. Lee. Next circle meeting will be March 31st at the church.

Baptist Women Meet

The Baptist Women Study Group met Wednesday, March 17th in the home of Miss Altha Groves. President, Mr. J. L. Denman presided over the meeting. The opening prayer was led by Mrs. Fred Holt. Mrs. Woodville Jarvis read the Prayer Calendar and Mrs. Mable Edwards led in prayer for the birthday missionaries. The program on current missions was given by Mrs. Mable Edwards, who was assisted by Mrs. Russell Pogue, Mrs. J. L. Denman, Mrs. Woodville Jarvis and Mrs. L. L. Anthony. Delicious refreshments were served by Miss

EL ESTADO DE TEXAS

CONDADO DE Hansford

En este día 9 de Febrero de 1976, el Consejo de Administradores del Distrito Escolar Independiente de Morse se reunió en sesión regular, abierta al público, con los siguientes miembros presentes, a saber:

- | | |
|---------------|----------------|
| Frank Pittman | Presidente |
| Donnie Jones | Willard McCloy |
| Tom Dortch | Charles Reid |
| Bob Womble | |

constituyendo a quorum, y entre otras actas tomadas por dicho Consejo de Administradores se encuentra la siguiente:

EN VISTA de que este distrito escolar tiene menos de 150 escolásticos y esta sujeto a los términos y provisiones del Capítulo 22, Código Educativo de Texas.

EN VISTA de que en el primer sábado de abril de 1976, siendo el 3 de abril de 1976, se llevará a cabo una elección de administrador en dicho Distrito Escolar para el propósito de elegir a 3 miembros al Consejo de Administradores de Distrito Escolar.

POR LO TANTO SE ORDENA POR EL CONSEJO DE ADMINISTRADORES DEL DISTRITO ESCOLAR INDEPENDIENTE DE Morse:

Que se lleve a cabo una elección en dicho Distrito Escolar el día 3 de abril de 1976, para elegir a 3 miembros al Consejo de Administradores de dicho Distrito.

Que todas las solicitudes de candidatos a que se incluyan sus nombres en la boleta de la arriba mencionada elección se hagan por escrito y registradas con el Juez del Condado en el condado en donde se encuentra este distrito, por lo menos 30 días anteriores a la fecha de dicha elección.

Que dicha elección se llevará a cabo en el siguiente lugar y las personas nombradas a continuación se les nombra por la presente como oficiales de dicha elección:

En el Edificio Morse Escuela en Morse, Texas, en dicho Distrito Escolar con Nell Henderson como Juez Directivo y Grace Finch y LaVerne Parks, Ayudantes.

A Roy Harris se le nombra por la presente como Secretario para votación ausente. La votación ausente para la elección arriba designada se llevará a cabo en

Frank Lewis dentro de los límites del Distrito arriba mencionado y dicho lugar de votación ausente se mantendrá abierto por lo menos ocho horas en cada día de votación ausente no siendo sábado, domingo, o día festivo oficial del Estado, principiando 20 días y continuando al cuarto día anterior a la fecha de dicha elección. Dicho lugar de votación se mantendrá abierto de las horas de 8

a 5 en cada día de votación ausente. El lugar arriba descrito para votación ausente es también la dirección postal del secretario de votación ausente a la cual se pueden enviar por correo solicitudes de boletas y también las boletas con votos.

La forma de llevar a cabo dicha elección será gobernada, en todo lo posible, por el Código Electoral de este Estado, y el Juez del Condado deberá suministrar, a costa del Distrito Escolar, todas las boletas necesarias y demás materiales de elección necesarias para dicha elección.

Inmediatamente después de haberse llevado a cabo la elección, los oficiales a cargo de la misma, deberán hacer saber los resultados de la misma al Secretario del Condado y regresar las urnas electorales y demás materiales electorales al Juez del Condado para su custodia, y la Corte de Comisionados examinará los resultados de dicha elección y notificará los resultados de la misma a los candidatos y al Consejo de Administradores.

Una copia de esta orden servirá como aviso de dicha elección y será colocada en tres diferentes lugares en dicho Distrito Escolar, dicha colocación se hará por lo menos 20 días anteriores a la fecha de dicha elección. El Secretario de este Consejo de Administradores también causará aviso por medio de publicación de esta elección que sea publicada una vez en un periódico de circulación general en el condado en que se encuentra este distrito escolar, siendo esta publicación no más de 30 días ni menos de 10 días anteriores a dicha elección.

Además se encuentra y determina que de acuerdo con una orden del Consejo de Administradores, el Secretario colocó aviso escrito de la fecha, lugar y propósito de esta junta en la tabilla de avisos situada en la oficina central administrativa de este distrito escolar, un lugar conveniente y fácilmente accesible al público en general, y dicho aviso, habiéndose colocado en esta forma, permaneció colocado por lo menos 72 horas anteriores a la hora programada para dicha junta.

Además se encuentra y determina que de acuerdo con una orden del Consejo de Administradores, el Secretario proporcionó aviso de la fecha, lugar y propósito de esta junta al secretario del condado, Condado de Hansford, Texas, el condado en el cual residen el mayor número, sino es que todos los alumnos de este distrito escolar.

Habiéndose dado lectura a lo anterior, se hizo la moción y fue secundada para ser adoptada. Después al llamado sobre esta pregunta, los siguientes miembros del Consejo votaron AFIRMATIVAMENTE: Frank Pittman

Donnie Jones Tom Dortch Bob Womble

Willard McCloy Charles Reid

y los siguientes votaron NEGATIVAMENTE:

CERTIFICA: David Reid, Secretario del Consejo de Administradores

Ryde
MAY 8th, 1976

Rhonda Jones Is Honored

Rhonda Jones, daughter of Mr. and Mrs. Hershel Jones was honored recently by being named, Best Member of the Zeta Tau Alpha Sorority at Texas Tech University. Rhonda is also an active member of the Red Raider Recruit Team and serves as a University hostess. She was listed on the Dean's Honor Roll this past semester.

Charles Cates Receives Degree

Charles P. Cates, son of Mr. and Mrs. H. P. Cates of 522 S. Evans, Spearman, graduated from Texas State Technical Institute, Amarillo, in February. Charles received a associate degree in Printing Technology. Printing Technology is a two-year program.

THE STATE OF TEXAS

COUNTY OF Hansford

On this the 9 day of February, 1976, the Board of Trustees of Morse Independent School District convened in Regular session, open to the public, with the following members present, to-wit:

- | | |
|---------------|----------------|
| Frank Pittman | President |
| Donnie Jones | Willard McCloy |
| Tom Dortch | Charles Reid |
| Bob Womble | |

constituting a quorum, and among other proceedings had by said Board of Trustees was the following:

WHEREAS this school district has less than 150 scholastics and is subject to the terms and provisions of Chapter 22, Texas Education Code.

WHEREAS on the first Saturday in April, 1976, being April 3, 1976, a trustee election will be held in said School District for the purpose of electing 3 members to the Board of Trustees of said School District.

THEREFORE, BE IT ORDERED BY THE BOARD OF TRUSTEES OF Morse INDEPENDENT SCHOOL DISTRICT:

That an election be held in said School District on April 3, 1976, for the purpose of electing 3 members to the Board of Trustees of said District.

That all requests by candidates to have their names placed upon the ballot for the above mentioned election shall be in writing and filed with the County Judge of the county in which this district is located not later than 30 days prior to date of said election.

That said election shall be held at the following place and the following named persons are hereby appointed officers for said election.

At Morse School Building, in Morse, Texas, in said School District with Nell Henderson as Presiding Judge and Grace Finch and LaVerne Parks, Clerks.

Roy Harris is hereby appointed Clerk for absentee voting, and Frank Lewis are hereby appointed Deputy Clerks for absentee voting. The absentee voting for the above designated election shall be held at Morse School

within the boundaries of the above named District and said place of absentee voting shall remain open for at least eight hours on each day of absentee voting which is not a Saturday, a Sunday, or an official State holiday, beginning on the 20th day and continuing through the 4th day preceding the date of said election. Said place of voting shall remain open between the hours of 8 a.m. and 5 p.m. on each day for said absentee voting. The above described place for absentee voting is also the absentee clerk's mailing address to which ballot applications and ballots voted by mail may be sent.

The manner of holding said election shall be governed as near as may be by the Election Code of this state, and the County Judge shall furnish, at the expense of this School District, all necessary ballots and other election supplies requisite to said election.

Immediately after said election has been held, the officers holding the same shall make returns of the results thereof to the County Clerk and return the ballot boxes and other supplies of said election to the County Judge for safekeeping, and the Commissioners' Court shall canvass the returns of said election and notify the candidates and this Board of Trustees of the results thereof.

A copy of this order shall serve as notice of said election, and be posted in three different places in said School District, which posting shall be done not less than 20 days prior to the date for said election. The Secretary of this Board of Trustees shall also cause a notice by publication of this election to be published one time in a newspaper of general circulation in the county where this school district is located, which publication shall be not more than 30 days nor less than 10 days before said election.

It is further found and determined that in accordance with an order of the Board of Trustees, the Secretary posted written notice of the date, place and subject of this meeting on the bulletin board located in the central administrative office of this school district, a place convenient and readily accessible to the general public, and said notice, having been so posted, remained posted for at least 72 hours preceding the scheduled time of said meeting.

It is further found and determined that in accordance with an order of the Board of Trustees, the Secretary furnished a notice of the date, place and subject of this meeting to the county clerk of Hansford County, Texas, the county in which most, if not all, of this school district's pupils reside.

The above order being read, it was moved and seconded that same do pass. Thereupon, the question being called for, the following members of the Board voted AYE: Frank Pittman

Donnie Jones Tom Dortch Bob Womble

Willard McCloy Charles Reid

and the following voted NO:

ATTEST: David Reid, Secretary, Board of Trustees

Jaycee Corner

The Spearman Jaycees met Tuesday, March 9th at 6:30 P. M. in the Community Building Meeting Room.

Committees for the Field Trips were set up. Trophies have been obtained for it and a group will go this weekend after quail. The Field Trips will be held March 28th.

Plans were firm up for the 4th of July Celebration. The group worked on their volleyball strategy and set up Thursday evening for practice.

Those present at the meeting were Steven Slater, Fred Groves, Rusty Tindell, Dwayne Smith, John Sheld, Keith Kelp and William King.

Next meeting will be March 16th in the Community Building.

Consumers Sales Sets Annual Meet

Consumers Sales Company has scheduled its 48th Annual Stockholders Meeting for March 25 at 7:30 p.m. in the Junior High Cafeteria in Spearman. The meal will be catered by Sutphens of Borger.

The business meeting will be held after the dinner. The purpose of the meeting is to hear the report of business to date and to elect two members to the Board of Directors for a 3 year term. Terms will expire for C. J. Renner and Newell Allen.

Present board members are Mike Gameit, Ray Phelps, John Trindle, Newell Allen and C. J. Renner.

All members and their wives are urged to attend.

WANTED

Boxwell Bros.
Funeral Home and Flower Shop
Day-Night Phone 659-2212
Spearman, Texas

O. J. ROOK
PHONE 274-4968
PAINTING-INDUSTRIAL RESIDENTIAL
FREE ESTIMATES
ACOUSTICAL CEILINGS
CARS AND TRUCKS

YOUR LOCAL USED COW DEALER: Spearman Bi-Products. Seven days a week dead stock removal. Please call as soon as possible. 659-3544. 8-rtn

Hansford Lodge
1040
A.F. & A.M.
Regular Meeting
2nd & 4th Monday
7:30 P.M.
Dan Farles, W.M.
Cecil Barton, Secy.

SERVICES
Hansford County Planned Parenthood
26 S. Haney
659-2483
Spearman
Mon. - Fri.
8 A.M. to 12 Noon
30S-rtn

Custom fertilizing and any type of farming.
W. B. Barnes
659-3493

Alcoholics Anonymous Meeting every Tuesday, 8:00 P.M. at the Girl Scout Little House, 22 S. Endicott. Call 3394 or 2762 for information.
4S-rtn

KIRBY SALES & SERVICE of Spearman, 912 S. Bernice. 659-2797. 30-rtn

GRADER, Dozier, and Drag Line work. Call Lee Roy Mitchell, Gruver, 733-2384. 28-rtn

RAWLEIGH SALE-Vanilla. Janie Kunselman. 659-2631. 18S-8tc

REOPENING Pet Grooming. 509 S. Endicott. 659-3401. Caroline Billings Murphy. 13-rtn
Custom Farming. Reasonable Rates. Call Jack McWhiter, Phone 659-2249 or 659-3308. 13S-rtn

PORTABLE DISC ROLLING. BALLARD'S, 935-5229, Dumas, Texas. 48-rtn

For your Shaklee Products call Eileen Sutherland at 659-2062 after 5:00.

GENERAL PLUMBING
Phone 733-2912
Gruver
Phone 659-3781
Spearman
Steve Phillips
"Licensed"
10 Yrs. Experience

Emie's Plumbing
659-3781 Spearman
733-2938 Gruver
19S-rtn

All Type Building Remodeling and Roofing.
659-2118. 15-24tp

GENERAL FIX-IT SHOP
Minor repair, will fix faucets, hot water heaters, floor furnaces, wall heaters.
Lawton Guthrie
659-2487

Miscellaneous For Sale

FOR SALE: 1974 Airstream, 31 foot International Series. Center bath, twin beds. Under 4,000 miles. Clean, many extras. 659-2886 or come by 1103 S. Archer. 18S-4tp

FOR SALE: Downdraft Airconditioner, good condition, Cycle Exerciser. Like new. Call 659-2259. 18S-2tp

FOR SALE: 1970 Impala Chevrolet, good rubber, clean. 659-2494. 18-3tc

FOR SALE: 1973, 4-door Mercury, loaded, excellent condition. 733-2083. Gruver. 18-2tc

Hay for sale. Call 659-2947. 17-4tc

FOR SALE: 1964 Cadillac. Clean and reasonably priced. See at 22 Townsend or call 3792. 17S-rtn

FOR SALE: Miniature Schnauzer Puppies, 8 weeks old, A. K. C. Registered. Call after 5:00 P. M. 659-2668. 18-2tc

REAL ESTATE FOR SALE

PRICE REDUCED on nice 3 bedroom home, many extras including carpets, drapes, dishwasher, central heat and air, large storm shelter, fenced yard. Shown by appointment. Emmett R. Sanders, Realtor, 659-2516, nights 659-2601. 4S-rtn

In Gruver, 508 Cluck St., 4 bedroom, 2 baths, large living area. Utility room, gas stove, refrigerator. \$21,500.

307 Hoskins St., small two bedroom. \$8,000.

404 Endicott, Large home on 3 lots. Will accept an offer.

In Oldham County, one section dry land.

In Waka, 21 acres, east edge of Waka.

In Farnsworth, 3 bedroom, 1 3/4 bath, home. 40 x 80 steel building.
Call Perryton, Mayfield Real Estate, 435-6528 or Ruby Lair, Salesperson, Spearman 659-2188.

FOR SALE: 3 Bedroom House. 733-2070. 18-4tc

FOR SALE: 708 S. Townsend. 3 Bedrooms, 2 Full Baths, 1732 Sq. ft. Carpeted, drapes, central heat and air, two water heaters, disposal, built-in dishwasher and stove. Phone 372-3790 or write: Ila Kibler, 4405 West 2nd, Amarillo. 19S-rtn

FOR SALE: No Down Payment, \$8,500.00. No Interest. No other charges except insurance. Pay \$85.00 per month. Russell Beckwith, Berger, Texas. 1130 N. Hedgecoke. Phone 274-4795. 17S-rtn

MOBILE HOMES For Sale

FOR SALE: 1974 Town and Country "Holiday Manor" Mobile Home. 14 x 80. 3 Bedrooms, 2 Full Baths, House Type Furniture, Refrigerator, Air, Carpeted, Side by Side Refrigerator-Freezer with Ice Maker, Dish Washer, Garbage Disposal, Built-in Oven, Washer and Dryer. Call 659-2062 after 5.

FOR SALE: 8 x 31 Ft. Spartum Trailer House. Good Condition. 659-3301. 17S-6tc

FOR RENT

FOR RENT: Furnished Apartment. 303 Davis. Phone 659-3792. 51S-rtn

FOR RENT: Trailer Space. 213 S. Endicott. Call 2404. 17-rtn

LBL Trailer Spaces -340 Monthly. 50' x 150' Lot. Call Manager, 659-2617. 48S-rtn T only

Notice

TO WHOM IT MAY CONCERN - No credit extended to Hardesty & Langston will be honored unless approved by me in writing. James B. Langston, Jr., Box 1028, Guymon, Okla. 73942. 18S-2tc

Card of Thanks

We would like to express our heartfelt thanks to everyone, for the prayers, food, flowers and concern for us during our loss. It is times like this when we realize how much our friends really mean. Thank you. The family of Dylan Stewart Bucy Greg, Pam & Brian Bucy Sam, Mary Lou, Jan and Gary Wysong Kay and Tommy Hubbell Jesse and Dorothy Davis Mary Ruth Bucy Dr. Roy S. Bucy Mr. and Mrs. Ernest Taylor

SCHOOL CAFETERIA MENU

MONDAY, MARCH 22
Hot-Steak Sandwich
Mashed Potatoes
Buttered Com
Cole Slaw
Applesauce Cake
W/Caramel Icing
Milk
HIGH SCHOOL CHOICE
Steak Frites

TUESDAY, MARCH 23
BBQ Weiners
Potato Salad
Pinto Beans
Lime Gelatin w/pineapple
Combread-Butter
Milk
HIGH SCHOOL CHOICE
Beef Raviola

WEDNESDAY, MARCH 24
Comdogs-Mustard
Macaroni-Cheese Casserole
Green Beans
Tossed Salad-Dressing
Fruit Cup
Hot Rolls-Butter
Milk
HIGH SCHOOL CHOICE
Burritos

THURSDAY, MARCH 25
Oven Baked Fish-Tartar Sauce
Buttered Potatoes
English Peas
Carrot Sticks
Peanut Butter Blend
Hot Rolls-Butter
Milk
HIGH SCHOOL CHOICE
Meat Loaf

FRIDAY, MARCH 26
Hamburger or Tuna Salad Sandwich
French Fries-Catsup
Shredded Lettuce-Dressing
Dill Slices
Chopped Onion
Peach Cobbler
Milk

FOR SALE
Used T.V.'s
Call 659-2663
or 659-3363
Color or B&W

Political Announcements

The Reporter-Plainsman is authorized to announce the candidacy of the following candidates for public office, subject to the action of the voters in the May Primary Elections. FOR COUNTY COMMISSIONER

PRECINCT 1
Garland Head
Roscoe Nelson
James Kenney
Ray Phelps

PRECINCT 3
B. J. Renner
Dan Desimone
R. C. (Bob) Ferguson
L. M. Womble
FOR SHERIFF
R. L. McFarlin
Lee Phillips
FOR STATE REPRESENTATIVE 64th DISTRICT
G. R. (Bob) Close
M. Leo (Daisy) Moore
Bill Jackson

FOR MAYOR
Ralph Blodgett

YOU'VE GOT A DISPOSABLE LAWN MOWER...



GET A JACOBSEN®
All Makes of LAWN MOWERS REPAIRED... at PORTER BAKER 7th & Ash

Briggs & Stratton and Tecumseh Parts Dealer...

Closeout 1/2 Price
All new and rebuilt Sewing Machines:
1-4 Drawer Sewing Desk \$99.50
New Portable Cases \$25.00 each
Hassonettes \$25.00 each
408 East Kenneth
659-2415

Library Board Meets

The Library Board met Tuesday, March 16th in the Library Board Room. Chairman, Mrs. Mary Alice Gibner presided over the meeting.

Minutes of the previous meeting were read and approved, and the treasury report was given. Librarian, Mrs. Celestine Thompson reported a circulation of 1678 adult books. There were eleven new cards issued and 56 new books added. Discussion was held on the memorial for Dr. Hackley from the area people.

The library is still receiving non-fiction and fiction books.

Election of officers was held and it was decided to keep the same state of officers, which consist of: Mrs. Mary Alice Gibner - Chairman; James Cunningham - Vice Chairman; J. L. Brock - Treasurer; and Mrs. Richard Kilgore - Secretary.

Librarian, Mrs. Thompson will be attending a T. L. A. meeting in Houston April 7th through the 10th. Those present at the meeting were Mrs. Thompson, Mrs. Charles Eaton, Mrs. Francis Kilgore, Mrs. Frank Davis, Mrs. Mary Alice Gibner and James Cunningham. Next meeting will be April 13th at 3:30 P. M. in the Board Room.

Bridge Clubs

Mrs. R. E. Lee was hostess for the Bid-A-Bit Bridge Club Thursday evening in her home. Mrs. Vi Whitson had high and Mrs. Willie Seitz had second high. Attending were guests, Mrs. Seitz and Mrs. Viola Graves, and members Mmes. Leonard Jameson, John Berry, Vi Whitson, Faye Lynch, Gertrude Archer and Gwenfred Lackey.



4-H Food Show Winners Named

Deaf Smith County 4-H'ers took top honors in the District I 4-H Food Show here Saturday, March 13, winning first in two of the four food classes for seniors, plus having one second place senior and four top junior wins.

Collingsworth and Potter Counties each also had a first place senior win.

The four top seniors, who will compete in the state 4-H food show in June at Texas A&M University, are Peggy Popwell of Collingsworth County; Carla West, Deaf Smith County; Chris Cummins, Potter County; and Rhonda Hagar, Deaf Smith County. Named as alternates were Bekki McComick, Moore County; Elaine Webb, Gray County; Gent Weity, Deaf Smith County; and Jenny Dylhe, Donley County.

The four top juniors of each of the four food classes were named but they will not compete beyond the district level. In the junior division, Deaf Smith captured top honors by having one junior named among the top four in each of the four classes. Carson and

Moore Counties followed close behind with three winners each. Pamela Claxson of Gruver was one of the top four in the junior bread and dessert division. Over 130 4-H'ers from 20 Panhandle counties vied for honors in senior and junior divisions. The district show was the second phase of competition, with entrants having already won in county contests earlier in the year. Only the top seniors of the four food classes will go on to the third and final rung of the ladder which is the state 4-H food show. There, they compete with winners from 13 other districts of the Texas Agricultural Extension Service.

All winners at this year's district food show received 4-H award ribbons, and senior division champions were presented miniature silver bowls by the Morrison Milling Company. Senator Max Sherman of Amarillo, and J. R. Durham, sales representative for Morrison Milling Company, San Angelo, presented the awards. Entries were divided into four classes: breads

The Hansford Plainsman
Spearman, Texas 79081
213 Main Box 458 659-3434
Published Weekly at 213 Main Street
Spearman, Texas 79081

Owner-Publisher..... William M. Miller
Second Class Postage Paid at Spearman, Tex.

Any erroneous reflection upon the character of any person or firm appearing in these columns will be gladly and promptly corrected upon being brought to the attention of the management.
SUBSCRIPTION RATE -- Hansford, adjoining counties, combination with the Spearman, Reporter, \$10.92 Tax included.
Other points \$15.12 Tax included.

MEMBER
TEXAS PRESS ASSOCIATION

YORK ELECTRIC PHONE 659-3625

WE DO ALL TYPES OF ELECTRICAL WIRING... WE WANT YOUR BUSINESS...
Downtown Spearman
SPEARMAN, TEXAS

and desserts, main dish, side dish and snacks and beverages.
Members of the 1976 District Food Show Committee were County Extension Agents Elaine Houston of Gray County, chairman; Sherry Harder of Deaf Smith County; Alby Peters of Moore County; Cynthia Manning of Donley County; Blanche Chisum of Sherman County; and Nellie Evans of Hansford County.

Ryde
MAY 8th, 1976

Dismissed were Letha McBroom, Ila Buchanan, Hattie Mackle, Thelma Blevins, Doug Connelly, Benito Fuentes, J. B. Lee, Bill Burger, Willard Davidson and James Holm.

Hospital News

The patient list for Hansford Hospital is down considerably this weekend from what it has been for the past several months. Patients include Clarence Pettitt, Eunice Richards, Edna Hays, Vera Campbell, Maurine Erling, Edna Briley, Ophelia Vela, Rose Beck and Mattie Davis.

Notice of the 48th Annual Stockholders Meeting of Consumers Sales Company

NOTICE OF THE 48TH ANNUAL STOCKHOLDERS MEETING OF CONSUMERS SALES COMPANY
In accordance with the provisions of the by-laws of CONSUMERS SALES COMPANY of Spearman, Texas you are hereby notified that the 48th ANNUAL STOCKHOLDERS MEETING of the Consumers Sales Company will be held at the Jr. High Cafeteria in Spearman on March 25, 1976 at 7:30 P.M. The meal will be catered by Stephens of Berger. Meeting will be held after the meal. MEMBERS AND WIVES ARE URGED TO ATTEND.
Purpose of the meeting is to hear the report of business to date and to elect two members to the Board of Directors for a 3 year term. Terms will expire for C. J. Renner and Newell Allen.
Present Board members are: Mike Gamett, Ray Phelps, John Trindle, Newell Allen and C. J. Renner.
Dated this 19th day of February 1976.
Mike Gamett, President
John Trindle, Secretary



Engagement Announced

Mr. and Mrs. Joe C. Robinson of Garland, Texas announce the engagement of their daughter, Donna Lynn, to Steven Anthony Reed of Abilene, son of Mr. and Mrs. Carl Reed of Spearman.

The wedding will be May 22nd at Axe Memorial United Methodist Church in Garland.

The bride-elect is a 1973 graduate of South Garland High School. She attended McMurry College at Abilene where she was active in Chanters and Morning Star.

The bridegroom is a 1973 graduate of Spearman High School. He is a senior political science major at McMurry College and will receive his B. A. degree May 2nd. He is a member of Alpha Chi, Phi Alpha Theta, Alpha Phi Omega, and has been active in student government and the band.

MARCH	1976					
S	M	T	W	T	F	S
1	2	3	4	5	6	
7	8	9	10	11	12	13
14	15	16	17	18	19	20
21	22	23	24	25	26	27
28	29	30	31			

Calendar Of Events

- MONDAY, MARCH 22**
 Duplicate Bridge Club - Home of Mr. and Mrs. S. B. Sheets
 Rotary Club - Martin's Steak Garden
 Blue Monday Bridge Club - Home of Mrs. Bill Gandy
 Hansford Lodge #1040 A, F, & A, M. - Hansford Lodge Hall
 Ladies Dinner Bridge Club - Home of Mrs. Troy Sloan
- TUESDAY, MARCH 23**
 Jaycees - Community Building
 Spearman Music Club - Home Demonstration Club Room
 Lions Club - Plains Restaurant
 Tuesday Bridge Club - Martin's Steak Garden
 Night Owls Home Demonstration Club - Home of Mrs. Celestine Thompson
 Union Church Missionary Ladies - Union Church
 Home Demonstration Council - Home Demonstration Club Room
- WEDNESDAY, MARCH 24**
 Cadet Troop #3 - Girl Scout House
 Baptist Women Study Group - Mrs. A. F. Loftin
 C. W. F. Craft Day - First Christian Church
 Baptist Young Women - Home of Mrs. Buford Baker
 United Methodist Women - First United Methodist Church
- THURSDAY, MARCH 25**
 Hi-Lo Bridge Club - Home of Mrs. R. E. Lee
 Twentieth Century Club - Home of Mrs. Deta Blodgett
 Rho Rho Sorority - Home of Mrs. Phillip Renner
 Xi Zeta Upsilon - Home of Mrs. Bob Meek
 Rebekah Lodge #290 - I, O, O, F, Lodge Hall
 Den #4 - Home of Mrs. Floyd Close
- FRIDAY, MARCH 26**
 Arts & Crafts Guild
Mrs. McWhirter Tells Of Trip

The Dahlia Flower Club met Monday, March 15th in the home of Mrs. H. M. Shedeck. President, Mrs. Ceril Batton presided over the meeting. Roll Call was answered with "A Book Written By A Texas Author". Attention was called to the fact that there are several men in Hansford County doing arts and crafts and the club voted to give them room to exhibit at the annual arts & crafts show. Mrs. Jack McWhirter presented the program with a slide presentation of her trip to Norway to visit Geir Overland last summer. Mrs. C. W. Smith won first with her mixed flower arrangement and Mrs. John Bishop won first with her purple hyacinth specimen.

Delicious Norwegian refreshments were served by Mrs. Shedeck to guests, Mrs. Nellie Albrecht of Tullia and Mrs. Jack McWhirter and to members, Mesdames: Garrett Allen, Ceril Batton, John Bishop, Frank Davis, J. L. Denman, Mable Edwards, Gary Evans, Virgil Floyd, F. J. Hoskins, A. F. Loftin, Guy Remy, Earl Riley, Olin Sheets, C. W. Smith, Ned Turner and J. W. Walker. Next meeting will be March 29th. Bi-Centennial Fashion Show & Luncheon, April 3-High School Cafeteria. Bi-Centennial Fashion Show & Luncheon, April 3-High School Cafeteria.



Mrs. Gary Taylor, member of the Calico Cowbells, is shown here presenting an "All Beef Cookbook" to Jan Tumbough, home economics advisor at Spearman High School for the Homemaking Dept. The Cowbells have also donated these cookbooks to Hansford County Library, the high school library and the junior high library.

Gladiola Club Has Luncheon

The Gladiola Flower Club met Thursday, March 18th in the home of Mrs. M. D. McLaughlin for a spring luncheon and their first meeting of the year. President, Mrs. Gordon Cummings presided over the meetings. Mrs. Clois Baker was elected as new Vice President.

There will be a work day March 23rd at 9:00 A.M. at the club park. Mrs. Doyle Jackson won first place with her home grown jonquil arrangement and Mrs. McLaughlin won first place with her pussy willow arrangement. Those present at the meeting were Mesdames: Clois Baker, Wallace Ber-

ner, John Brown, Lloyd Buzzard, Gordon Cummings, Kenneth Evans, Doyle Jackson, Marcus Larson, Ray Martin, Claude Newell, M. D. McLaughlin, Coy Palmer, Tom Sutton and Ed Gamer. Next meeting will be April 1st at 9:30 A.M. in the home of Mrs. Ed Garner.



BETA Upsilon chapter of the Rho Chi national pharmacy society at Southwestern State University, Weatherford, Okla., has initiated 30 new members. Included in the group were these six Texans (from left): Seated-Mitchell James Farrell, BORGER, Marian Jean Cox, GAINESVILLE, and William Bruce McArally, BONHAM; standing--Danny Marshall Carroll, SPEARMAN, Danny Edward Reeves, GAINESVILLE, and Daniel Kendon Anderson, HEREFORD.

RYDE Auction Set

The Rotary Club is planning another RYDE Auction this year for the benefit of the youth in Hansford County. A very successful drive was held last year with merchants and individuals donating various kinds of merchandise for sale at the auction. Anyone wishing to contribute to the RYDE (Rotary Youth Drive En-

terprise) may contact any Rotarian. Club members will pick up donated merchandise and deliver same to the auction site. Donors will be given a receipt for the cash value of all donations. This drive is to raise funds for Rotary Youth work in Hansford County and everyone is urged to contribute items for the auction sale.

The sale will be held this year on May 8 at the County Barn.

Bi-Centennial Fashion Show & Luncheon April 3-High School Cafeteria

Save Food Dollars!

Here's the Ideal Place to

the home of THRI-T-Prices

MATURE BUTCHER BLOCK BEEF

Round Steaks

CENTER SLICES OF BEEF ROUND

98¢

LB.

MATURE BUTCHER BLOCK BEEF

RIB STEAK

LARGE END, BEEF RIB

98¢

LB.

MATURE BUTCHER BLOCK BEEF

CHUCK ROAST

BLADE CUTS, BEEF CHUCK

69¢

LB.

MR. BOSTON, BREADED PRE-COOKED 3-LB. PKG. **49¢**

MR. BOSTON, BREADED PRE-COOKED 3-LB. PKG. **79¢**

BLUE MORROW COOKED PORK OR BULK PACK **\$1.09**

HICKORY SMOKED, SIAB CUT BULK PACK **\$1.09**

WINCHESTER IMITATION CHUNK Bologna **69¢**

JIMMY DEAN ... 24-OZ. PKG. **\$2.57**

Pork Sausage 12-OZ. PKG. **\$1.29**

WILSON'S PURE

Bake-Rite Shortening

LIMIT-1 WITH \$7.50 OR MORE PURCHASE

94¢

3-LB. CAN

ENRICHED

Camelot Flour

5-LB. BAG

54¢

CHICKEN OF THE SEA LIGHT

Chunk Tuna

6 1/2-OZ. CAN

48¢

LIMIT-2 WITH \$7.50 OR MORE PURCHASE.

COLUMBINE SHORT CUT

Green Beans

16-OZ. CANS

5 FOR \$1

KUNER'S

Tomato Sauce

3 8-OZ. CANS **49¢**

LARSEN'S MIXED VEGETABLES

Veg-All

3 16-OZ. CANS **\$1.00**

CAMELOT Honey **59¢**

THRIF-T Health & Beauty

MOUTHWASH OR GARGLE

Copacol

32-OZ. BTL. **\$1.18**

PAIN RELIEF

Tylenol Tablets **\$1.18**

MACARONI AND CHEESE

Kraft 3 7-OZ. CTNS. **69¢**

A AND W ... REG. OR DIET

Root Beer 6 12-OZ. BTL. **\$1.08**

WELCH'S JAM OR

Grape Jelly 18-OZ. JAR **44¢**

OREGON TRAIL

Purple Plums 29-OZ. CAN **48¢**

CARNATION EVAPORATED

Canned Milk 3 14-OZ. CANS **89¢**

PLASTIC CONTAINER

Comet Cleanser 3 17-OZ. CANS **\$1**

THRIF-T PRICED CLEANER

Spic n' Span 54-OZ. BOX **\$1.38**

DELSEY

Bath Tissue 2-ROLL PKG. **42¢**

TEXAS RUBY RED

Grapefruit

5 lb. Bag **69¢**

WASHINGTON, RED

Delicious Apples... 3 LBS. **\$1.00**

U.S. NO. 1

Russet Potatoes... 5 LB. BAG **79¢**

Thrif-T Dairy Foods

KRAFT QUARTERED

PARKAY

1-LB. CTN. **38¢**

LIMIT-2 WITH \$7.50 OR MORE PURCH.

CAMELOT COLBY

Longhorn Cheese 18-OZ. PKG. **99¢**

FAIRMONT ORANGE OR

Grape Drink 1 1/2-GAL. CTN. **41¢**

Thrif-T Frozen Foods

FAIRMONT VANILLA

ICE CREAM

1-GALLON CARTON **\$1.69**

SARA LEE GERMAN

Chocolate Cake 13 1/2-OZ. CTN. **\$1.18**

ORE IDA

Crinkle Cut Potatoes 5-LB. BAG **\$1.77**

TROPHY SLICED

Strawberries 18-OZ. PKG. **32¢**

REAMES

Egg Noodles 12-OZ. PKG. **59¢**



David West, Jamie Bulls, David Hall, Greg Meek, Chris Bodey, and Greg Hazelwood.



James Pierce, Stan Sherwood, Randy Stafford, Kyle Beedy, and Kevin Kirk.

Farm Bureau Queen Contest Set

The Hansford County Farm Bureau is looking for entries for their annual Queen Contest to be held in Spearman on April 30th. The winner will compete in the District Contest to be held in Amarillo this summer.

The purpose of the contest is to give recognition to our beautiful farm and ranch girls.

It is anticipated that through the institution of this contest these girls and others will become better acquainted with Farm Bureau.

Eligibility requirements are the girl must be between the ages of sixteen through twenty-two years old, must be the daughter or sister of a Farm Bureau member and must never have been married.

The girls will be judged on appearance, poise, personality and their answer to the question "Why You Are Glad Your Family Belongs To Farm Bureau".

For further information, contact Linda Davis at 659-2266 or the Farm Bureau office by April 1st.

EDA Grant Awarded To City

Congressman Jack Hightower notified City of Spearman officials Thursday that the Economic Development Agency of the U. S. Department of Commerce had approved a grant to the city in the amount of \$322,200 to be used for additional water wells and water storage

and to rework the gas system.

This grant is 60% of the projected cost of the project. The other 40% will come from a loan from the FHA, a bond election or certificates of obligation. The city made the formal application in November, 1975.

Jr. High Students Named To Region Band

On Saturday March 13, 25 Spearman Jr. High Band Students tried out for the Class C Jr. High All Region Band at Gruver. There were approximately 210 students make the band and 4 students selected as alternates. The students who made the band are as follows: On Alto Sax, Dawn Bridges and Vicki Kyler; on Baritone Sax, Leisa Merrill; on Tuba, Kevin Kirk and Greg Hazelwood 2nd alternate; on Trombone, Stan Sherwood and Randy Stafford; on Alto Clarinet, Patti Short; on Clarinet, Deanne Baker and Connie Ederedge; on Comet, Chris Bodey, Wayne Meek, and Kyle Beedy 2nd Alternate; on Snare Drum, Jamie Bulls; on French Horn, James Pierce and David West 1st Alternate; on Flute, April Pearcy 1st Alternate; and on Baritone, Suzy Steele and David Hall. The concert for the All

Region Band is scheduled on Saturday March 27 at 7:30 P. M. at the Gruver High School Auditorium. The concert will be free to the public. This is the first organization of any Class C Jr. High All Region Band. Of the 90 band participants selected from the 210 who tried out, these students from Spearman Jr. High are to be commended for their hard work and determination to make the All Region Band.

Bi-Centennial Fashion Show & Luncheon, April 3-High School Cafeteria

Bi-Centennial Fashion Show & Luncheon, April 3-High School Cafeteria

Revival Planned

Revival services are planned for March 21 thru March 28 at the First Assembly of God Church.

Rev. H. L. Wampler will be the evangelist. Sunday morning services are at 11 a.m. and evening services at 7 p.m. Services Monday through Friday will be at 7:30. Pastor Nuckels and members of the church extend to each of you an invitation to attend any or all of these services.

Market Report

This is Bill Blackmore with Panhandle Livestock Commission Company, Guymon, Oklahoma.

Our Friday Sale was very active with buyers present from Colorado, Texas, New Mexico, Kansas, Arkansas, Missouri and Oklahoma.

The market on choice steers and heifer calves and light yearlings was

2.00 to 3.00 higher on choice kind, and 37.00 to 41.00 on the good kind, which would be 2.00 higher than last week.

Heifer calves were selling from 32.00 to 37.00 on a very active market. Yearling steers sold on a 1.00 higher market. Yearling steers sold from 37.00 to 42.80.

Feeder Heifers sold in odd lots from 30.00 to 34.25. Heiferettes sold readily from 26.00 to 32.50.

Top bulls sold from 32.00 with the better bulls selling up to 36.70 for a top.

Packer Cows were in great demand. Cows were fully steady with last weeks market here at the Panhandle Livestock Commission Company with cows selling up and around the 31.00 mark.

The Hog market was a little lower this week with top hogs selling at 45.50. Lighter hogs sold from 40¢ to 48¢ per lb. Sows sold up to 42.00 per hundred weight. Stock Pigs sold up to

37.50 per head. Estimating 1500 cattle for next Friday's sale and 250 hogs.

Don't forget our Special Feeder Pig Sale Saturday March 27th at 7:00 P. M. For information contact Bill Blackmore, Guymon, Phone 338-3378.

Bill Blackmore

Bowling News

FRIDAY MORNING PIN BENDER'S 3-12-76

Cinderella	73	27
Brock Ins.	67	33
Spmn. Spr. Ser.	58	42
McClellan Gm.	50	50
Farm Bureau	46	53
Bowl Mor	42	58
Dairy Queen	33	66
Vemons	30	70

HIGH TEAM GAME		
Brock Ins.	1529	
Cinderella	1485	
Bowl Mor	1437	
HIGH TEAM SERIES		
June Lee	570	
Joyce Frost	546	
Sheryl Meek	537	
HIGH IND. GAME		

June Lee	222
Peggy Shelton	197
Joyce Frost	194

MONDAY NITE SCATTER PINS 3-15-76

Equity	88	20
Co-op	80	27
Anthony Elec.	59	49
Bakey & Taylor	52	56
Martins Stk Grdn.	44	64
Evelyn's	40	67
Excel	39	69
Shelton's Gulf	29	79

HIGH TEAM GAME		
Equity	1914	
Co-op	1780	
Baker & Taylor	1709	
HIGH TEAM SERIES		
Rita Reed	523	
Joyce Frost	495	
Judy Black	490	
HIGH IND. GAME		
Rita Reed	210	
Millie Craig	184	
Gloria Kingham	178	

WEDNESDAY MIXED DOUBLES 3-17-76

Wardrobe Clns.	70	34
Spmn. Auto Spl.	62	42
Lyon Ins. Agcy.	56	48
Cates	51	53

Keep the Ball Rolling

Research to save more lives from cancer—which claims over 365,000 lives a year—mustn't be allowed to stop in midstream. Funds are urgently needed to keep hundreds of research projects going. Your contribution to the American Cancer Society Crusade can help this vital work.

Big Helping Hand

Want your contributions to help people now? Donations to the American Cancer Society do. Among those assisted are women recovering from breast surgery and men and women who lost their voices to cancer. ACS units also loan sickroom equipment and provide transportation services.

Dollars That Stretch

Looking for a way to stretch your contribution dollars? A gift to the American Cancer Society is a good way to make your money do the most toward a big job: conquering cancer.

EARLY SPRING CARPET

CLEARANCE

Our Genuine Schaffer Leather

Furniture Has Arrived

You'll have to sit on it to believe the comfort and luxury it offers

Hide - A - Beds

From \$50 to \$150 OFF!!
Now \$219.50



JUST ARRIVED!
New Shipment of Plants

51 Colors of Hi Lo Sculptured Shag

\$9.95 per sq. yd.

installed



Choice of Three Colors of Mohawk Carpet

\$12.95 per sq. yd.

We're participating in the Booster Club's Easter Treasure Hunt

CHARLODAN'S

Furniture and Gifts

110 S. Main
658-4828

Open 9 to 5
Booker, Texas

KIDS VOLLEYBALL TOURNAMENT

Spearman High School Spearman, Texas

Thursday, Friday, Saturday March 24, 25 & 26th

DRUGSTORE COWGIRLS

6:00

FIRE-ETTES

H&H WATER WELL SER.

6:30

LUSBY CATS

SUNRAY CO-OP

7:00

MESSERS DEPT. STORE

BUNKHOUSE BUNNIES

7:30

G&G FOODLINER

CON. CHEM. CO.

8:00

FRANK PHILLIPS COLLEGE

METHODIST WOMEN

8:30

THE MOMMA "KIDS"

ALLSUPS OF BORGER

9:00

THE DAIRY QUEEN

HESS TANK TRUCK SER.

9:30

LADY FAIR

3-A CLEANERS

10:00

PHILLIPS

SPORTSMAN HEADQUARTERS

10:30

THRIFTWAY GROCERY

BUSTER'S DUSTERS

11:00

PLEMONS

GO GETIERS

11:30

HVE

SENIOR HAS BEENS

6:00

CAVILEIRS

MILLER EXPRESS

6:30

DOUBLE "D" EXPRESS

METHODIST CHURCH

7:00

GRUVER TEACHERS

MARK NEFF

7:30

PERRYTON JAYCEES

THE POUNCH-O'S

8:00

GRUVER BUMS

EASLEY'S SPORTING GOODS

8:30

CRADDUCK CONSTRUCTION

SPEARTEX

9:00

JAYCEES

LIONS CLUB

9:30

GARRET SCHOOL

CITIES SERVICE GAS #1

10:00

PLEMONS

PLAYHOUSE CLUB

10:30

DAVIS OIL COMPANY

WATER BOYS

11:00

COORS

MISFITS

11:30

BYE

85507

85507

Loser

Loser

**White House
Lumber Co.**
of Spearman

**Gruver
State Bank**

**Daco Lease &
Well Service**
Spearman, Texas

Spearman Jewelry
Spearman, Texas

ALLSUPS
CONVENIENCE STORE
OPEN 24 HOURS

**Tucker Water
Well Service**


Hansford Implement
Spearman, Texas

**R. L. McClellan
& Sons**
Spearman, Texas

**CONSUMERS
SALES**


Jr. Lusby Cats
825-5971 Canadian
825-5146 Spearman

Boxwell Bros.
Spearman, Texas

**P. A. Lyon
Insurance**
Spearman, Texas

Speartex Grain Co.
Spearman, Texas

York Electric
Spearman, Texas

**Gifford-Hill
& Co., Inc.**
Spearman, Texas

Spearman Redi-Mix
Spearman, Texas

BICENTENNIAL BONUS BONANZA

1000 EXTRA



An American way of thrift
Since 1896

★ BICENTENNIAL BONUS BONANZA ★

1000 EXTRA



To our founding fathers, being thrifty was a way of life. It had to be. And for 80 of our country's 200 years, American shoppers have been following in that tradition by enjoying the extra value and valuable extra gifts of S&H Green Stamps. All... at no extra cost! And thrifter than that, you just can't get. So, for 1,000 Extra Stamps come on in and join our salute to America! To American shoppers! And to an American way of thrift! Pick up your Bicentennial Bonus Bonanza Sticker Card the next time you shop and start saving. You get a sticker with every \$10.00 purchase. Save any 24 stickers and be 1,000 Extra S&H Green Stamps thrifter... as many times as you can. Start today!

BELL LUXURY ASSORTED FLV'S.
ICE CREAM
 ROUND HALF GAL. PLASTIC CARTON **\$1.09**

BETTY CROCKER LAYER CAKE MIX
 ASSORTED FLAVORS REG. 69c
2 BOXES \$1



GET 1000 EXTRA STAMPS WITH EACH FILLED CARD!



Ryde

MAY 8th, 1976

ACS Sets Bi-Centennial Goal

Some years ago the American Cancer Society sets itself a worthy goal for this bi-centennial year. They set up a task force whose aim was to get every American woman to have a Pap test before the end of 1976.

Many thought this a good slogan but suspected that it was somewhat utopian as a goal. However, there has been such amazing headway made in this life-saving campaign of the Society that it remains a quite practical and realizable objective.

The Pap test itself is a quick and painless procedure for detecting cancer of the cervix (neck of the womb) in the earliest possible stage when it is practically 100 percent curable.

An American Cancer Society study two years ago showed that a steadily growing number of women reporting for this test. Figures rose from 48 percent to 78 percent between 1963 and 1973 and is undoubtedly higher today. Studies have also shown, however, that it is among low income groups, non-whites, and rural women that a higher percentage have still not had the Pap test.

The efforts of the American Cancer Society to reach these women in order to wipe out cervical cancer as a cause of death is most laudable and a fitting means of celebrating this country's 200th birthday.

When ACS volunteers ask for contributions during this year's April Cancer Crusade in Hansford County, remember you are giving practical assistance to saving the lives of American women.

Be aware that cervical cancer can be detected and cured--have a Pap test--the life you save may be your own.



Fly-Up Ceremonies were conducted by Junior Troop #120 Thursday, March 18th for Brownie Troop #65 at the Girl Scout House.

Brownie members were escorted over the bridge by Junior members, where the Brownies recited the Girl Scout Pledge. The girls were then presented wings and their Girl Scout Pin and were promoted to Junior Troop #65.

Following the Fly-Up ceremony, a wafel roast was held in the backyard.

Junior Troop #65 members present for the Fly-Up ceremony were Kelly Groves, Stephanie Hays, Janise Kyler, Jeannie Laird, Tisha Percy, Rosa Pierce, Geny Womble, Lee Barnes, Ann Barnes, Karla Latta, Cristie Black, Michelle Wright, and leaders, Mrs. Bruce Womble and Marietta Davis.

Not present was Donna Martin.

Junior Troop #120 members present were Inna Flores, Cindy Hansen, Teresa Miesner, Shenell Phelps, Tonya Sexton, Tammy Welch, Tracie Stewart, Christi Dossott, leaders, Mrs. Junior Hansen and Mrs. Raymond Flores. Guest present was Mrs. Tim Welch, who helped with the cook-out.

Junior Troop #65 and Junior Troop #120 will not meet again.

Spearman Could Be Known As Home

At the rate we are going this year in our women's sports in the Spearman school system, this community could be soon known as the home of the worlds "fastest" women. Already, Spearman is known as the home of the girls basketball champions, along with the golf champions of the whole state of Texas! But, the big news this week is the number of our young females who are in the track program. The high school track program is as follows:

Rhoda Bingham, who specializes in the 220 yard dash and the long jump. Brenda Bowling, 220 yd. dash and shot put. Donna Brogdon, 440 yd. dash, Carrie Clark, Mile relay and triple jump; JoNell Comegs, 80 yd. hurdles, mile relay, high jump; Jennifer Umphress, 60 yd. dash; B. J. Dennis, 60 yd. dash, 440 relay; Karen Dennis, 440 yd. dash; Brenda Wadsworth, 100 yd. dash, long jump; Dalene Godfrey, 60 yd. dash, 440 yd. relay, high jump and long jump;

Debbie Greene, 880 yd. relay, Mile relay, high jump, long jump and triple jump; Lonita Greene, 880 yd. run; Cindy Hamilton, 880 yd. run; Carla Harper, 80 yd. hurdles, 440 yd. relay, 880 yd. relay and triple jump; Lori McAdams, 60 yd. dash; Gina Hutchison, 880 yd. run; LaVon Kunselman, 440 yd. dash; Tammy Robertson, 60 yd. dash and 220 yd. dash; Gail Montgomery, 440 yd. dash and 440 yd. relay; Kandy Montgomery, 440 yd. dash; Denise

Ware, 440 yd. relay and 80 yd. hurdles; Milana Papay, 880 yd. relay and mile relay; Leslie Piatt, 100 yd. dash and 440 yd. relay; Gwenna Wilson; Tish Piatt, Shot put and Discus; Brenda Cook, Shotput and discus, Suzie Gatlin, Shotput, discus; Beth Ann Flowers, Shotput and discus; Tracie Keetch, Shotput and discus and Linda Lewis, Shotput and discus. The results of the Canadian Track Meet are as follows:

Carla Harper, 4th, 80 yd. Hurdles. Debbie Greene, 4th, Long Jump. Debbie Greene, 1st, Triple Jump. Brenda Cook, 7th, Discus. The 8th Grade Girls Track members are as follows: Deanne Baker, Karen Barber, Brenda Boyd, Melinda Cook, D'Anda Close, Debbie Eller, Beth English, Connie Ethereedge, Jan Flowers, Jane Flowers, Tammy Ford, Val Hagerman, Kin-

dra Ivey, Vicki Kyler, Jeanie McClellan, Sabre McCoy, Pat Miller, Debbie Padilla, Hallee Reed, Joanne Reed, Melissa Robertson, Linda Rodriguez, Kelly Rylant, Deatta Scroggs, Kelly Shaver, Patti Short, Margie Shubert, Suzie Steele, Orfelinda Vela. The 7th Grade Girls Track members are as follows: Gloria Arjona, Cassie Baker, Brenda Bradshaw, Dawn Bridges, Kenda Burke, Kelly Bynum, Terry Bynum,

Eadie Clemmons, Jeanie Close, D'Ann Cummings, Marietta Davis, Stacey Dewitt, Sandra Dry, Julie Farr, Kamala Ford, Cammie Gee, Michelle Graham, Sherry Green, Tammi Jackson, Melanie Kenney, Angela Lesly, Becky Lusby, Tammie Maize, Juanita Martinez, Thelma McBroom, Jana McCoy, Jennifer McLean, Kim Mills, Virginia Morris, Teresa Morrison, Darla Moyer, April Pearcy, Jackie Reed, Kim Reed, Margaret Reed, Rita Ring,

Prices good in Perryton's United Super Market

QUANTITY RIGHTS RESERVED **PRICES GOOD THRU MARCH 24TH** **BUDGET GETTING TIGHTER?**

\$ PRICE

 <p>UNITED SUPER MARKETS</p>	<table style="width: 100%;"> <tr> <td style="width: 60%;">32 OZ. HEAVY DUTY DETERGENT MARINA</td> <td style="width: 20%;">FINE FARE REG. '19"</td> <td style="width: 20%; text-align: right;">89¢</td> </tr> <tr> <td>BATH TISSUE</td> <td>4 ROLL REG. 83¢</td> <td style="text-align: right;">69¢</td> </tr> <tr> <td>LYSOL SPRAY DISINFECTANT 21 OZ. AEROSOL CAN</td> <td>REG. \$2.29</td> <td style="text-align: right;">\$1.99</td> </tr> <tr> <td>STA-PUFF FABRIC SOFTENER 64 OZ. BTL. REG. \$1.89</td> <td></td> <td style="text-align: right;">\$1.59</td> </tr> </table>	32 OZ. HEAVY DUTY DETERGENT MARINA	FINE FARE REG. '19"	89¢	BATH TISSUE	4 ROLL REG. 83¢	69¢	LYSOL SPRAY DISINFECTANT 21 OZ. AEROSOL CAN	REG. \$2.29	\$1.99	STA-PUFF FABRIC SOFTENER 64 OZ. BTL. REG. \$1.89		\$1.59
32 OZ. HEAVY DUTY DETERGENT MARINA	FINE FARE REG. '19"	89¢											
BATH TISSUE	4 ROLL REG. 83¢	69¢											
LYSOL SPRAY DISINFECTANT 21 OZ. AEROSOL CAN	REG. \$2.29	\$1.99											
STA-PUFF FABRIC SOFTENER 64 OZ. BTL. REG. \$1.89		\$1.59											
<p>GOLD MEDAL FLOUR 5 LB. BAG</p> <p style="font-size: 3em;">79¢</p>	<p>GIANT SIZE TIDE</p> <p style="font-size: 2em;">\$1.25</p>												
<p>ALL VEGETABLE CRISCO 3 LB. CAN</p> <p style="font-size: 3em;">\$1.39</p>	<p>BETTY CROCKER LAYER CAKE MIX ASSORTED FLAVORS</p> <p style="font-size: 2em;">2 FOR \$1</p>												
<p>WHITE SWAN FRUIT COCKTAIL 16 OZ. CANS</p> <p style="font-size: 2em;">3 FOR \$1</p>	<p>BELL LUXURY ICE ASSORTED FLAVORS</p> <p style="font-size: 2em;">\$1.09</p>												
<p>NEW EARTH BORN BABY 8 OZ. SHAMPOO REG. \$1.29</p> <p style="font-size: 2em;">99¢</p>	<p>COLGATE SHAVE REG. OR MENTHOL CREAM 11 OZ. REG. \$1.29</p> <p style="font-size: 2em;">49¢</p>												
<p>TOOTH PASTE 7 OZ. TUBE</p> <p style="font-size: 2em;">69¢</p>	<p>HAIR TONIC 12 OZ. BTL.</p> <p style="font-size: 2em;">\$1.69</p>												

1000 extra S&H Green Stamps **DOUBLE STAMPS WED.!**

come make history in our big **BICENTENNIAL BONUS BONANZA**

pick up your card today!

WITH A \$2.50 PURCHASE OR MORE EXCLUDING CIGARETTES.

<p>CALIF NEW CROP STRAWBERRIES</p> <p style="font-size: 3em;">59¢</p> <p>PINT BASKET</p>	<table style="width: 100%;"> <tr> <td style="width: 60%;">RED OR GOLDEN DELICIOUS APPLES EXTRA FANCY</td> <td style="width: 20%;">3</td> <td style="width: 20%;">LBS.</td> </tr> <tr> <td>SUNKIST EXTRA FANCY NAVAL ORANGES</td> <td>5</td> <td>LBS.</td> </tr> <tr> <td>SUNKIST FANCY LEMONS</td> <td>3</td> <td>LBS.</td> </tr> <tr> <td>TEXAS RUBY RED GRAPEFRUIT</td> <td>10</td> <td>FOR</td> </tr> <tr> <td>CRYSTAL WAX WHITE ONIONS</td> <td>4</td> <td>LBS.</td> </tr> </table>	RED OR GOLDEN DELICIOUS APPLES EXTRA FANCY	3	LBS.	SUNKIST EXTRA FANCY NAVAL ORANGES	5	LBS.	SUNKIST FANCY LEMONS	3	LBS.	TEXAS RUBY RED GRAPEFRUIT	10	FOR	CRYSTAL WAX WHITE ONIONS	4	LBS.
RED OR GOLDEN DELICIOUS APPLES EXTRA FANCY	3	LBS.														
SUNKIST EXTRA FANCY NAVAL ORANGES	5	LBS.														
SUNKIST FANCY LEMONS	3	LBS.														
TEXAS RUBY RED GRAPEFRUIT	10	FOR														
CRYSTAL WAX WHITE ONIONS	4	LBS.														

Of The "World's Fastest Women"!

Ford Finance Chairman Named

Tamera Scroggs, Lisa Sheets, Sharon Sheets, Judy Shrader, Tracie Smith, Shelly Strawn, Laurie Swenn, Lesa Thomas, Carla Tucker, Angela VanBuskirk, Cathy West, Donna Willis, Arceli Nava.

DALLAS -- Robert E. Aikman will assume responsibilities as Finance Chairman for the President Gerald R. Ford Finance Committee in the Amarillo area according to Trammell Crow, Texas Financial Chairman. Crow, Dallas real estate developer, is heading the committee of around 50 chairmen throughout the state. The thrust of the committee is to raise money for President Ford's campaign for re-election.

A member of the Republican party for 8 years, Aikman will serve the areas of Amarillo, Pampa, Borger, and Dumas and the counties of Dallam, Sherman, Hansford, Lipscomb, Ochiltree, Hemphill, Roberts, Gray, Carson, Potter, Randall, Moore, Armstrong, and Oldham as finance chairman. Aikman is President of Dorchester Exploration, Inc. in Amarillo. He has held that position for five years. Previously Aikman was President of Aikman Brothers, Inc., President of

Mana Resources, Inc. and the Vice-President of Cardinal Corporation. Serving in a professional capacity, Aikman is Director of the Executive Committee for the Panhandle Producers and Royalty Owners Association, is director of the Independent Petroleum Association of America and director of TIPRO. He was also a director of the Campfire Girls, Inc. Aikman attended the University of Oklahoma in Norman, Oklahoma.

Aikman was born in Oklahoma City, but he has lived in Amarillo, Texas for 21 years. He still resides there at 3201 Hawthorne Drive with his wife Rachel.

Help Needed For Concession Stand

A volleyball Tournament will be held March 25, 26, & 27 to raise money for the K. I. D. S. program. The mothers will have the concession stand and all proceeds will go to the K. I. D. S. program. If you can make sandwiches (1 doz.) and cookies (1 batch) for this Tournament, call TRUDIE GOODHEART - 659-2121 or 659-2871 TODAY!

Bridge Club

The Grand Slam Bridge Club met Thursday, March 18th in the home of Mrs. S. B. Sheets. High was won by Mrs. Ted Godfrey, second high was won by Mrs. Dennis Nelson and low was won by Mrs. Clark Mires. Delicious refreshments were served by Mrs. Sheets to guests, Mrs. Ray Gressett, Mrs. Bob Meek, Mrs. James Jackson and Mrs. Albert Baker, Ted Godfrey,

Rydo
MAY 8th, 1976

Roy Flowers, Mack Mc Cormack, Clark Mires, Monty Blackman, Dennis Nelson and Wayne Garrett. Next meeting will be April 15th.

Don't use hot water unless you really need it. Rinse dishes and operate your garbage disposal with cold. You'll save energy and the cost of heating the water.

K.I.D.S. Donations Being Received

Many interested individuals and business people have contributed to the K. I. D. S. program in the last few weeks. The money is being used to adapt the Community Building so that it may be used for basketball and for other activities the K. I. D. S. will be participating in.

Those who have donated include Baker & Taylor, Tim Woodington, J. G. Parrish, Gordon, Drug, Spearman Chamber of Commerce Youth Committee, Mr. and Mrs. Kent Guthrie, Excel Chevrolet, Mark Neff, Mr. and Mrs. J. C. Jackson, Mrs. Eleanor Reed, the Town & Country H. D. Club, Mr. and Mrs. Bobby Archer, Mr. and Mrs. Fred Van Buskirk, Local Outreach Dept. First Christian Church, Mr. and Mrs. Gene Cudd, Mr. and Mrs. Claude Owens, Mr. and Mrs. Don McLain, Mr. and Mrs. James Tarwater, Mr. and Mrs. Raymond Sparks, Mrs. Chet Wise, Mr. and Mrs. Mike Garnett, Mr. and Mrs. Bobby Nollner, Mrs. Jane Meek, Mr. and Mrs. Johnny White, Mr. and Mrs. Louis Miesner, Mr. and Mrs. Price Hayes of Amarillo, Mr. and Mrs. Henry Herring, Mrs. Irene Reed, Mr. and Mrs. Thomas Reed, Mr. and Mrs. Danny Kingsley, Mr. and Mrs. Carl Archer, Speartex Grain, Mr. and Mrs. Ned Turner, Mr. and Mrs. Earl Goodheart, Mr. and Mrs. Charles Littlejohn, Mr. and Mrs. David Stewart, Xi-Zeta, I. O. O. F., H & H Water Well Service, Mary Alice Gibnet, Freddie Largent, Rho Rho Sorority and Mr. and Mrs. Jessie Davis.

Royal Blue Band Entertains At Spearman High Auditorium

The Royal Blue Band, representing Lubbock Christian College, entertained the community with a band concert at the high school auditorium Tuesday evening. The band is directed by Eddie Chance, and guest conductor for the evening was our own Vic Kyler.

The band presented numbers, America the Beautiful, Poet and Peasant Overture, An Irish Rhapsody, Beguine Festival, Orange Bowl March, Emperata Overture, The Blue and Gray and closed the concert with John Philip Sousa's Stars and Stripes Forever.

Spearman High School band director, Vic Kyler, thrilled the audience as he directed this fine band, in the Orange Bowl March. Vic will take his prize winning Spearman band to concert next week. The band will play three numbers: Credence, by Claude Smith; Custer's Calvary by K. L. King and Black Knight Overture, by Grundman.

We would like to thank the Royal Blue Band from Lubbock Christian College for stopping by Spearman on their tour and hope to hear them again next year.

MARKETS
WHEAT \$3.71
MILO 4.20
CORN 2.62

Prices good in Perryton's United Super Market

SHOP THE HOME OF THE PRICE FIGHTERS! **DOUBLE STAMPS WED.!** WITH A \$2.50 PURCHASE OR MORE EXCLUDING CIGARETTES.

FIGHTERS!

UNITED TRU-TENDR BEEF!

ROUND RIB SIRLOIN STEAK	LB.	98¢	
BONELESS STEW	EXTRA LEAN CUBES OF BEEF	LB.	\$1.09
CHUCK STEAK	BLADE CUTS	LB.	69¢
LEAN BEEF CUTLETS	WASTE FREE	LB.	\$1.79
BONELESS SIRLOIN STEAK	WASTE FREE BEEF	LB.	\$1.39

KRAFT SINGLES CHEESE AMERICAN OR PIMENTO 12 OZ. PKG. **\$1.09**

"AS SEEN ON JOHNNY CARSON'S TONIGHT SHOW" SWIFT'S PREMIUM BEEF SAUSAGE LINKS BROWN 'N SERVE 8 OZ. PKG. **98¢**

SMUCKER'S STRAWBERRY PRESERVES 18 OZ. JAR REG. \$1.09 **89¢**

ZEE TOWELS SPICE TONE OR PRINT JUMBO ROLL **49¢**

SOFT PLY NAPKINS ASSORTED COLORS 180 CT. **49¢**

SANDWICH BAGS GLAD 80 CT. BOX **49¢**

MAXI PADS NEW FREEDOM 30 CT. BOX **\$1.69**

MINI PADS NEW FREEDOM 30 CT. BOX **\$1.25**

"SHOP & SAVE ON UNITED'S FROZEN VALUES"

JOHNSTON APPLE PIES LARGE \$1.49 SIZE **98¢**

PIE SHELLS JOHNSTON REG. 55' PKG. OF 2 **39¢**

TURNOVERS PEPPERIDGE FARMS ALL FLAVORS REG. 79' **69¢**

"MINUTE MAID FROZEN" ORANGE JUICE REG. \$1.79 LARGE 32 OZ. CAN **\$1.39**

THICK & MEATY SPARE RIBS

98¢ LB.

SLICED BACON ENDS

3 LB. BOX \$1.79

SHASTA REG. OR DIET POP ASSORTED FLAVORS 12 OZ. CANS **7 \$1**

WE RESERVE THE RIGHT TO LIMIT QUANTITIES

PRICES GOOD THRU' MARCH 24TH

UNITED SUPER MARKETS

WE GIVE GREEN STAMPS

Baker-Taylor Hosts Early Breakfast



Karen Tope, Lonita Greene, Rhoda Bingham and David Evans will compete in the state band competition later this year.

Baker & Taylor Drilling Co. was host to the Chamber of Commerce breakfast held at the country club in Spearman, Tuesday morning at 6:30 a.m. The breakfast entertainment began at 6:30 with the Spearman Stage Band furnishing the entertainment. At 7:00 Rev. Russell Pogue of the First Baptist Church in Spearman gave the invocation. At 7:03 the welcome was

Girls K.I.D.S. Program To Resume

The K. I. D. S. girls program will begin again March 22. Girls kindergarten age through 6th grade are all asked to come the same time as before. Girls will be participating in track at this time.

given by Clark-Kent (Clark Mires and Kent Guthrie), who thanked Baker & Taylor and the High School Stage Band, plus Vic, the music clubs and the cooks for the fine breakfast, etc. At 7:06 the Hula, Hula show began. Outstanding hula's were Roy Bulls, James Cunningham (the old paratrooper), and Janie Kunselman. Needless to say Janie won the hula contest.

At 7:12 Herman Boone made the stock show announcement, urging everyone to attend the stock show and sale in Gruver Friday and Saturday nights of this week.

A new member, General Plumbing, Steve Phillips was introduced at 7:15. The drawing was held at 7:16. The 4-H clubs won the drawing for the clubs but were not present. Alva Garner won the \$25.00 individual gift and gave it to the museum fund in Spearman. Paul Garza won the \$50.00 but was not present, so the membership award

will go to a big \$75.00 at the next breakfast.

Mary Brock and her music club highlighted the entertainment, with several numbers.

At 7:32 Eulalia Mires announced about the Spearman Study Club style show which will be April 3rd. At 7:34 everyone looked under their chairs to see if there was any "cash" stuck on the seats! Jim Evans and Earl Goodheart discussed the upcoming KIDS volleyball tournament at 7:37. A quiz was held at 7:40 and everyone was reminded that the next breakfast will be April 15th.

A big thanks to Baker & Taylor and the Chamber of Commerce for such a fine breakfast program.



Insurance Corner

If Attacked By A Dog

If you're confronted by a snarling dog and can't bluff him out of attacking (see last week's column), here's some armchair advice by experts.

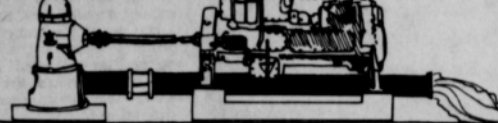
Prepare for the attack. Cross your arms, gripping your elbows firmly. When the animal leaps, try to knock it off balance by giving it an uppercut with your arms. Since its legs are off the ground, making its balance precarious, it usually can be thrown (hopefully).

But if the animal's lunging attack bowls you over, stop fighting. Fold your arms over your face and lie PERFECTLY still.

Amazingly, your savage attacker will probably lose interest and stalk away. (A little dog when menaced by a bigger one employs this tactic. It surrenders, lies down, and its attacker walks away.) Let me know how it works.

This information has been brought to you as a public service by John R. Collard, Jr. your one stop answer to complete business and personal insurance protection. Life, home, auto, group insurance and profit-sharing plans. See John R. Collard, Jr., 405 Davis St., Telephone 659-2501.

POWER UP



...to pump down deeper!

Cat Irrigation Engine performance, economy, reliability pay off on deep wells—big!

Caterpillar puts more into an engine... so you can get more out of it — year after year. Low-friction design results in high fuel economy whether you're burning natural gas or diesel.

Best yet, West Texas CAT PLUS services make sure you get the right engine... make sure it keeps pumping. Let our irrigation specialists analyze your need... and recommend the Cat-built power unit to meet it. No obligation.

WEST TEXAS EQUIPMENT CO.
Caterpillar Power Headquarters

I-40E and 1912 • Amarillo • (806) 335-1511
Caterpillar, Cat and are Trademarks of Caterpillar Tractor Co.

HELP NEEDED

A volleyball Tournament will be held March 25, 26, & 27 to raise money for the K. I. D. S. program. The mothers will have the concession stand and all proceeds will go to the K. I. D. S. program. If you can make sandwiches (1 doz.) and cookies (1 batch) for this Tournament, call TRUDIE GOODHEART - 659-2121 or 659-2871 TODAY!!

Jean Porter On Honor Roll

Mildred Jean Porter of Spearman was one of 176 students named to the College of Humanities at The University of Texas honor roll for the fall semester.

To be listed on the humanities honor roll, a student must earn at least 52 grade points on work done in one semester, passing all work attempted. Total grade points are calculated by multiplying the number of semester hours undertaken by the value of each grade. An average semester's work is 15 hours. (A equals 4 points).

BRIDGE CLUB

The Short Bridge Club met Tuesday, March 16th in the home of Mrs. Roy L. McClellan.

High score was won by Mrs. Garland Head, second high was won by Mrs. Bob Skinner and the traveling prize was won by Mrs. McClellan.

Delicious refreshments were served by Mrs. McClellan.

Delicious refreshments were served by Mrs. McClellan to members, Mesdames: Gertrude Jones, Max Baggerly, Garland Head, Elsie Mathews, Tom Etter, Bob Sidner and Richard Holton.

Next meeting will be March 30th in the home of Mrs. Tom Etter.

Ryde

MAY 8th, 1976

A BETTER CITY GOVERNMENT FOR THE BEST PEOPLE

VERLIN BEHNE

Candidate For City Councilman

YOUR VOTE AND SUPPORT APPRECIATED

Paid for by Citizens to elect Verlin Behne, Nell White, Chairman



PASTOR NUCKELS and THE

First Assembly of God Church

Invites You to Attend

REVIVAL SERVICES

MARCH 21-28

with Rev. H. L. Wampler as Evangelist

Sunday Morning - 11:00 Mon. - Fri. at 7:30
Sunday Evening - 7:00

STAR-SPANGLED HISTORY

HISTORICAL DRAWINGS BY JOSEPH BOGGS BEALE (1841-1928)

Yes... we are proud of our country and we want to help make it better... In keeping with the American Revolution Bi-Centennial over the next few weeks we will be presenting the "Star-Spangled History" Historical Drawings by Joseph Boggs Beale, a famous artist of Historical Drawings... we hope you enjoy each of them....

"We don't want to get bigger, we want to get better!"

Spearman

Canadian

Perryton

"MOLLY PITCHER"

"Molly Pitcher" became a heroine of the American Revolution on June 25, 1778, in the battle of Monmouth. Molly was married to John Hays, an enlisted man in the 1st Pennsylvania Artillery. She accompanied her husband's regiment, helping with the cooking and washing for the men. She followed the troops into battle and carried water to them in a pitcher, earning both her nickname and her place in history. When her husband fell from a heat stroke, she assumed his position as a fighting soldier for the rest of the battle. From the collection of American National Insurance Company, Galveston, Texas.

"We are proud of our country, and we want to help make America "Better" for everyone...."

New Home Demonstration Agent Hired



Peggy Mars
Miss Peggy Jean Mars has been appointed Hansford County Extension

Agent for home economics effective April 1, 1976. The announcement was made by the Hansford County Commissioners' Court and District Agent Sue Farris.

She is a 1975 graduate from Abilene Christian College with a degree in home economics education. Peggy is the daughter of Mr. and Mrs. Edwin Marrs of Matador, Texas. She was a 4-H Club Member in Motley County for nine years. She completed many projects in 4-H. She was a district dress revue winner and participated in the State Dress Revue, attended 4-H RoundUp in Method Demonstrations, State Leadership Lab, Junior Leader, entered the District 4-H Food Show, leader for District Rally Day, was District Secretary of Council, County

Club President and Secretary and received the Plains Key Award. Peggy was Chapter President, Secretary and Social Chairman of FHA. She was FHA girl of the year.

Peggy was an active member of AHEA, secretary of the home economics club, Student Education Association, Kappa Delta Pi, Alpha Chi, Omega Rho Alpha; W. Club and Campus Service Organization. She participated in Sing Song, a campus music festival and in women's basketball. She enjoys all sports and recreation.

Peggy is an active member of the Church of Christ.

Bi-Centennial Fashion Show & Luncheon



Engagement Announced

Mr. and Mrs. Bob Kile of Perryton announce the engagement and forthcoming marriage of their daughter, Rita, to Jerry Joe Leatherman of Canyon. He is the son of Mr. and Mrs. True Leatherman of Gruver.

Miss Kile, a Perryton High School graduate, is presently attending West Texas State University where she is a graduating Senior majoring in Elementary and Secondary Physical Education.

Mr. Leatherman, a Gruver High School graduate and a graduate of WTSU, is employed at the Grand Avenue Baptist Church in Amarillo as Interim Music and Youth Director.

Vows will be exchanged in a 7:00 P.M. ceremony, May 22nd, at the First Baptist Church, 5th and Baylor, in Perryton, Texas.

Bi-Centennial Fashion Show & Luncheon, April 3-High School Cafeteria

Ryde

MAY 8th, 1976



Marva Hohertz, representative of Xi Zeta Chapter of Beta Sigma Upsilon, left, presents a check to K. I. D. S. treasurer, Jim Evans, and Eulalafa Mires, representative of Rho Rho Chapter of Beta Sigma Upsilon, also had a check for him. The checks were each for \$100.00.

Coffee Honors Mrs. Barnum

Friends enjoyed coffee and cookies and visiting in the house of Mrs. Don Kunselman Thursday morning. Guests were given a tour of Mrs. Kunselman's newly decorated home and later gathered in the dining area for coffee and more visiting. The dining table depicted the season by having a bright orange cloth with a center piece of yellow Jonquils and pussywillow.

Doc and Mrs. Barnum and children from Ft. Towson, Oklahoma, are here visiting in the Kunselman home and her parents, Mr. and Mrs. Fred Meyer of Gruver.

Those present for the coffee were: Linda Venneman, Linda Latta, Charlette Jackson, Wanda Schubert, Cathy Patterson

and Debra's mother, Doris Meyer, Gruver.

HD Club News

The Town & Country Home Demonstration Club met Tuesday, March 16th in the home of Mrs. Bob Pearson.

President, Mrs. Jerry Holton presided over the meeting.

The raffle was won by Mrs. Charles Shieldknight. Home Demonstration Agent, Nelle Evans gave the program on Fashions.

Roll Call was answered to "A Good Book I've Read Lately".

The treasury report was given by Mrs. Dan Ralston. Mrs. Cecil Bigges was

elected as Council Delegate. A committee was appointed to make sloppy joes and sandwiches for the County Livestock Show.

Agent, Nelle Evans told the group about the new Agent, Peggy Mars, who will be taking her place beginning in April.

Delicious refreshments were served by Mrs. Pearson to members:

Mesdames: Cecil Bigges, Joe Close, Bobby Evenson, Carl Hergert, Jerry Holton, Carl Kunselman, Dan Ralston, Jerald Ray Scribner, Charles Shieldknight, John Trimmell and Doug Holmes.

Next meeting will be April 6th in the Home Demonstration Club Room with Mrs. Charles Shieldknight as hostess.

ATTENTION

Farmers

Stockmen

PANHANDLE LIVESTOCK COMMISSION CO.

Would like to announce a change in sale date. Auction will be held every Friday, starting March 5th, 11:00 A.M. C.S.T. If you have any consignments or need information on special sales, contact Bill Blackmore, 338-3378, H.W.Y. 54 NE Guymon. Home phone 49-2583.



SPECIAL

P.O. Box 190 / Delano, Calif. 93215 / Telephone 806/728-4811

INTRODUCTORY INCENTIVE PROGRAM:

BUY 10 BAGS OF

CONTINENTAL HYBRID CORN

OR

SORGHUM SEED AND RECEIVE

2 BAGS FREE!

VARIETIES ELIGIBLE:

- CONSORGA 46-Y
- CONSORGA 50-YY
- CONSORGA 56-Y
- CONSORGA 66-Y
- CG-335-A
- CG-925

MIXED COMMODITIES OF CORN AND SORGHUM NOT ELIGIBLE

LIMITED TIME OFFER

CONTACT YOUR LOCAL CONTI-DEALER CONTINENTAL GRAIN GRUVER, TEXAS 806-733-2481 or CONTI-MAN TOM RASOR, SUNRAY, TEXAS, PHONE 806-948-4337

CONTINENTAL GRAIN CO. warrants that the seeds sold conform to the label description within recognized tolerances. The liability of CONTINENTAL GRAIN CO. on this warranty is limited to amount to the purchase price of the seeds. This warranty is in lieu of all other warranties, expressed or implied, including warranties of merchantability and fitness for a particular purpose. There are no warranties which extend beyond the face hereof.

America's future



...is as bright as America's children.

This is America's Bicentennial year. And many people are looking back at our country's long and glorious past.

We would like to suggest you also look ahead...to our future.

And America's future is reflected in our children.

Honest. Hopeful. Imaginative. Our children are what the American Dream is all about.

Interstate Savings & Loan Association

Member Federal Savings and Loan Insurance Corporation

Member Savings and Loan Foundation, Inc.

SPEARMAN, TEXAS

TG & Y



family centers

FAVORITE
FASHIONS
FABULOUS

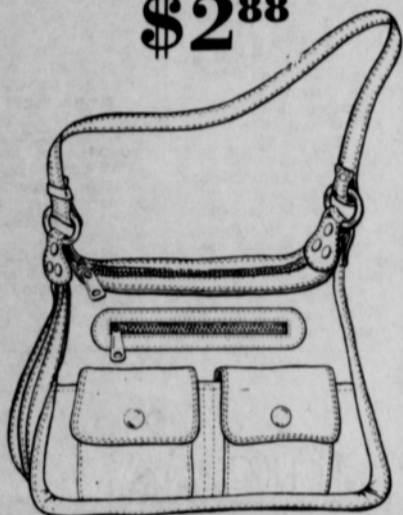
SAVINGS



**Shoulder Strap
HANDBAGS**

Go anywhere handbags of tough polyurethane. Assorted styles with outside pockets. Choose from fashion colors.

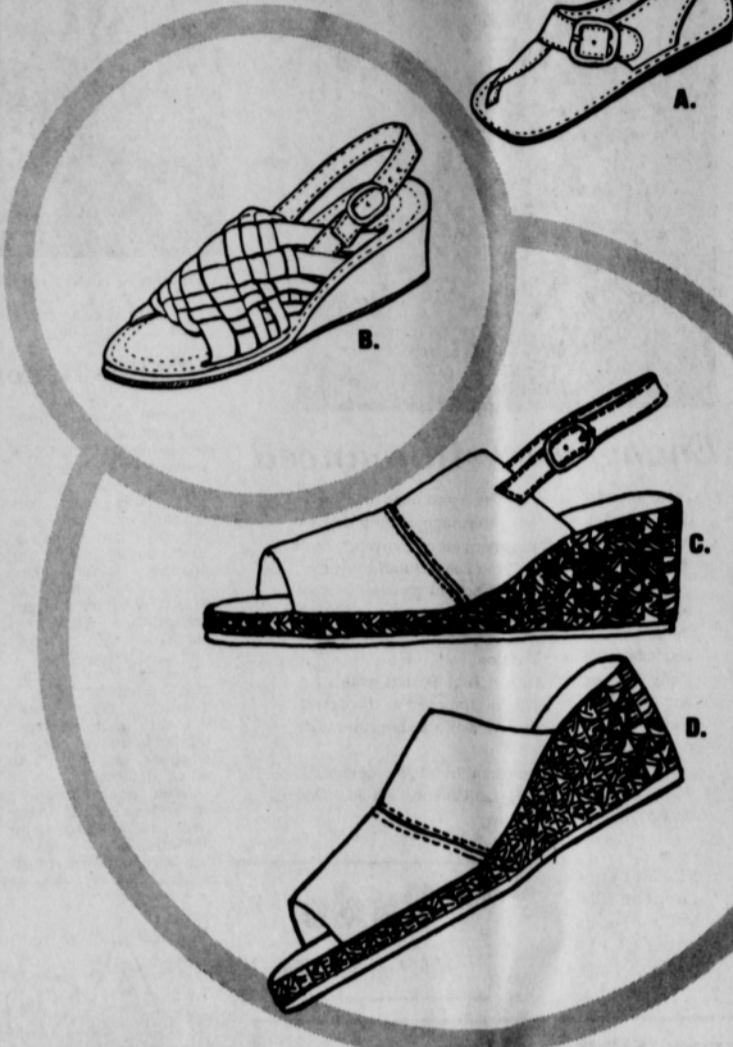
\$2⁸⁸



**Shoulder Strap
HANDBAGS**

Polyurethane in assorted styles and colors. Lots of outside pockets and handy compartments! Great looking. Fun to carry!

\$2⁸⁸



**Ladies'
THONGS**

A. Halter backstrap, padded insole. White thong upper. Assorted sizes.

276 PR.

**Ladies'
BRAIDED SANDALS**

B. Sing back, open toe. Assorted sizes and colors.

276 PR.

**Ladies'
"POPSICLE" SLINGS**

C. Polyurethane upper & sock. Jute covered heel and platform. Assorted sizes.

376 PR.

**Ladies'
"POPSICLE" SHOES**

D. Polyurethane upper and sock. Jute covered heel and platform. Assorted sizes.

346 PR.

**COORDINATED
COLLECTION**

LADIES' TWIN SET

100% Polyester gauze. Sizes 10-20. Assorted colors and prints to match pants.

17⁸⁸

LADIES' POLY PANTS

Many colors. Fine quality. 100% snag proof polyester. Sizes 10-20.

988 PR.

LADIES' POLY SHIRT

Assorted colors and prints to match. 100% Arnel® Triacetate. Sizes 10-20. Bargain buys!

888 EA.



T.G.&Y.'s ADVERTISED MERCHANDISE POLICY
Our company's policy is to always have advertised merchandise in adequate supply in our stores. In the event the advertised merchandise is not available due to unforeseen reasons, T.G.&Y. will provide a Fair Check, upon request, in order that the merchandise may be purchased at the sale price when it becomes available, or you may purchase similar quality merchandise at a similar price reduction. It is the policy of T.G.&Y. to see that you are happy with your purchase.

Hamilton "8"

VERSATILE SEPARATES TO MIX AND MATCH IN A CRUSHLESS BLEND OF 80% POLYESTER AND 20% COTTON DOUBLEKNOT

BLAZER 0344 **\$17⁸⁸**
 SHIRT 0336 **\$10⁸⁸**
 JEAN 0399 **\$10⁸⁸**
 SCARF 0894 **\$9⁸⁸**
 SHIRT 948
 SKIRT 0818

**521 S. Hwy 207
Spearman, Texas**

**Mon. - Sat.
9 AM - 9 P.M.**

TEXAS Swinger
by FAME FASHIONS

PRINT SHIRTS, Style 546
A valuable collection of water-color pastel print shirts in care-free acetate and nylon fabric artfully designed to mix 'n match their mates, solid pastel pants and skirts. **\$11⁴⁴**

TEXTURED POLYESTER SKIRT, Style 691R
One of two pretty styles in crushless 100% woven, textured polyester. In four solid color pastels: aqua, peach, blue, and yellow. **\$8⁸⁸**

FORTREL FOR KNITS

POLYESTER T-SHIRTS, Style 431
Scoop-necked, cap-sleeved, designed to go it alone or as a shell under one of our pretty shirts. In all four solid pastel colors: aqua, peach, blue, yellow. **\$6⁸⁸**

WOVEN POLYESTER PANT, Style 690R
Shown, just one of four belted styles. All available in four pastel solid colors: aqua, peach, blue, yellow. **\$11⁴⁴**