

Lynx lose to Eagles Friday, 60-71

The second game of the season for the varsity Lynx basketball team was an exciting one as they played against the Sanford-Fritch Eagles Friday night at the Spearman varsity gym. The Lynx got off to a bad start in the first quarter of the game, came back some in the second, and managed to tie the Eagles at one time in the third quarter, but lost in the final score 60 to 71.

Both teams got into foul trouble early in the game. Sanford-Fritch had three players with three fouls each by the end of the second quarter and one player already accumulated four fouls at that point. The Lynx had four players with three fouls each also at the end of the second quarter.

At the end of the first quarter of play, the Lynx trailed the Eagles 8 to 25, by 17 points.

The Lynx managed to narrow the lead in the second quarter, mostly by making more of their free throw attempts, and at the end of the second it was Lynx 30, Sanford-Fritch 36.

In the third quarter of play, the Lynx improved their percentage of field goals that were good, making nine out of 18 shots. This managed to tie them to Fritch for a brief time in the third, but the Eagles still out shot the Lynx, making eight out of 13 field goal attempts, or 62 percent. This had Sanford-Fritch still leading at the end of the third, 53 to the Lynx 48 points.

Both teams early foul trouble caught up with them in the fourth quarter, when the Lynx had three players foul out of the game including Pat Shields, Jerold Blum and Slaid Jones. Sanford-Fritch had two players with five fouls, forcing them to be taken from the game, Turban and Sharp.

The Lynx had two players in the double digits for the evening, compared to Sanford-Fritch's three players in the double digit numbers. High scorers for the Lynx Friday night were J. Garnett and Carson Womble each with ten points a piece. Next was Pat Shields with seven, Shawn Cook and Jerold Blum each added six for

2 local FFA teams earn chance at Area Contest

Members of the Spearman Future Farmers of America club traveled to Clarendon Saturday, Nov. 5 to compete with 16 other schools in the Top O' Texas District FFA Leadership competition at

Varsity Lynx lose to Rangers

In the varsity Lynx very first basketball game of the season against the 3-A Perryton Rangers, the Lynx played well, but still fell to the Rangers by the score of 51 to 68.

Pat Shields was the leading scorer in the game for the Lynx making five field goals and five free throws, for a total of 15 points.

Next high scorer for the Lynx was Shawn Cook with 2-two point field goals and one three pointer for nine points on the scoreboard for the Lynx. J. Garnett and Jerold Blum each added seven points to the Lynx score.

Slaid Jones tacked on five points, followed by Clint DeArmond's four, and Carson Womble had two points. Mark Garcia and Ron McCown brought the total to 51, each making one free throw.

Perryton had three players in the double digits Tuesday night. Cameron racked up 15 points for the Rangers. Butler added 12 and Hodges was next for the Rangers with 10 points. Seven other players added points to bring Perryton's win about with 68 points.

The next game for the Lynx was against the Sanford Fritch Eagles Friday night. Results will also be found in this issue.

the Lynx. Then it was Kiley Coombs with five. Three players each had four points for the Lynx, Ron McCown, Mark Garcia, and Slaid Jones. Clint DeArmond and Billy Clubb each added two points to the Lynx score, bringing the total to 60 for the Lynx.

For the Fritch Eagles Clark was the high scorer of the night with 24 points. Next was Watley with 15 points. Then Mueller with 12. Five other players added to Fritch's score in the game against the Lynx, bringing Fritch the win with 71 points at the end of the fourth.

Clarendon College. The Senior Chapter Conducting team made up of members Bonnie Jarvis, Pat Shields, James Tindell, Lance Swan, Billy Clubb, Joel Shields and Keith Clark, placed third in the district.

Junior Chapter Conducting team members, Chris Strawn, Dallas Trooper, Leslie Latta, Chris Adams, Traci Scribner, Olivia Salgado, Chad Riggins, and Shannon Burke captured second place. This entitles the Junior Chapter team to compete in the Area FFA competition.

The FFA Quiz team consisting of members Mark Eakin, Tim Dooley, Brian Beck, and Alfonso Martinez, won second place in the district competition also earning their way to the Area Competition.

FFA Creed Speaker, Dallas Trooper won third place in the district competition. Spearman had to compete against all schools in the Top O' Texas District this included some 3-A and 4-A Schools.

All first and second place wins at the district competition earned their way to compete in the Area contest at Clarendon Saturday, Nov. 19. They competed against 193 other schools in that Leadership Contest. Results from that contest were unavailable at press-time of *The Hansford Plainsman*.



The Coffee Memorial Blood Center Blood Drive in cooperation with the Spearman High School Student Council seemed to be a success last Thursday. Many students donated to the cause as well as adults. The Student Council was offering a prize to the class that had the most donations attributed to their class. The

senior class won this year with the most blood donations, but only those 17 years or older could donate blood so the younger classmen needed more adults to come give blood and register under their class.

The Hansford Plainsman

25¢
Per Copy

6 Pages

Volume 20, No. 3

YOUR HOMETOWN NEWSPAPER

Sunday, November 20, 1988

Hutchison and Jones receive awards at 28th Annual Banker's Awards Banquet

The 28th Annual Hansford Banker's Awards Banquet was held Thursday night at the Spearman High School. 192 people attended the event. The program was sponsored by the First State Bank and the First National Bank of Spearman and the Gruver State Bank of Gruver.

Mike Schnell from the First State Bank was Master of Ceremonies for the event. Zane Gray of the Community Bible Church of Gruver lead the invocation before the program got underway. Todd Tittle of the Gruver State Bank welcomed those attending.

Don Townsen of the First National Bank introduced the

guests, and Bill Pittman introduced the speaker for the evening, Doc Blakely. Blakely is a humorist who writes many articles for a syndicated column and is invited to speak at many special events throughout several states.

The presentation of the Outstanding Homemaker award was made by the 1987 recipient of the award, Janie Kunselman, and presented to Georgianne Hutchison. Hutchison was married to the late Dwight Hutchison, farmer. She has three daughters. She has spent much of her time helping to run the farm.

Hutchison also has worked in the Spearman Independent School

District for over twenty-seven years. She first taught as a Home Economics teacher, and later as an art and spelling teacher. She has added to her teaching abilities by traveling through foreign countries and observing history and art in many museums. Her respect of discipline in her classes also made her a valued teacher.

She also is involved in work for the First Presbyterian Church. The award saluted her efforts for her support of the home and community.

Presenting the Outstanding Conservation Farmer award for the evening was Soil and Water Conservation District member Willard "Si" McCloy. He presented the award to Bryan Jones. Jones owns or operates several farms in the northeastern portion of Hansford County.

In 1988, he converted some

eroding cropland back to permanent vegetative cover under the Conservation Reserve Program (CRP). A diversion terrace was constructed and a waterway shaped and seeded to grass to control water erosion.

On leased farms, Jones has worked with landowners to install underground irrigation pipeline, diversions and waterways to conserve and protect water and soil resources.

Jones also utilizes sweep tillage on dryland to reduce the wind erosion hazard and conserve soil moisture. He runs stocker cattle on leased rangeland during summer months and on wheat and grain sorghum stalks the rest of the year.

The award was presented to him to acknowledge his efforts to conserve valuable resources in our community.

Lynxette varsity wins over Perryton, 41-35

The Spearman Lynxette Varsity basketball team traveled to Perryton Tuesday, Nov. 15 to play against the Perryton girls. Spearman girls came out on top with a score of 41 to Perryton's 35.

Head basketball coach, Jimmy Kirkland noted, "They played even better than we expected, and we were pleased we still managed to win."

Londie Bradley was high scorer for the Lynxettes with 17 points. She made six field goals and five free throws to set the pace for the Lynxettes. Krista Kirkland was close behind. She also made six field goals and three free throws for a total of 15 points for the Lynxettes.

Other scorers for the Lynxettes include Vonda Benson with two points, Michelle Cook with five points, and Heather Murrell with two.

One of the deciding factors in the game seemed to be the percentage of shots that were made. Both

teams totaled 14 field goal shots that were good, but Perryton attempted 40 shots to Spearman's 31. In field goals the Lynxettes attempted 22, making 13, for 59%, and Perryton attempted 15, making 7 for 47%. Spearman girls made 45% of the field goals shot to Perryton's 35%.

Another deciding factor was the amount of fouls. Perryton was called on 21 fouls and Spearman 14.

On the defensive side of the game, Ginger Pearson and Carly Shieldknight each had two rebounds. Vonda Benson and Joy Gaffard had two steals each, and Laci Lasater contributed one steal.

The Lynxettes played Sanford Fritch Lady Eagles Friday night. The results of that game are found also in this issue. Fritch was to be a tough opponent for the Lynxettes as they had four returning starters. Last year the Lady Eagles lost in the playoffs, and the team that beat them went on to win the state championship.



Brent Wagner & Cinda Turner

Two county youth get top honors at banquet

Hansford County was well represented at the District Gold Star Banquet. Brent Wagner and Cinda Turner won top honors for their achievements in 4-H. On Saturday, Nov. 5, in Amarillo at the Cattle Call Banquet Hall, the two 4-H'ers were among 40 from the Panhandle who were honored with this special banquet. The local Rural Electric Cooperatives sponsored the banquet. This year's theme was "Blazing Future Trails".

Texas Agricultural Extension Service has a two fold purpose with the Gold Star Award. First, it is to recognize outstanding achievement, leadership and contribution to each county's 4-H program.

Second, it stimulates Gold Star winners to further achievements and encourages others to participate in the county's 4-H program. The Extension Service is the donor of the Gold Star Award.

The District I 4-H Council, with the help of the four host counties conducted the ceremonies for the evening. As each 4-H'er was presented, their parents were introduced. Brent's parents are Richard and Wanda Wagner of Gruver, while Cinda's parents are Phillip and Molly Turner of Spearman. They then received their Gold Star Certificates. The meal and ceremonies were topped off by entertainment by the Sweet Adelines of Amarillo.



1988-89 FFA officers include, from left to right, Anna Hutchison, Secretary/Treasurer, Monica Blackman, Freshman Representative, Robbie McFarlin, President, Christa Sims, Vice-President of Recreation, and Dana Barker, Vice-President of Projects.

Ask Ann Richards

Editors Note: State Treasurer Ann W. Richards each week answers questions about personal finance and state government. These questions are compiled from various letters to the State Treasury. Answers are not intended to take the advice of reputable financial advisers or other professional counselors. If you have a question to ask, write to:



Ask Ann Richards
PO Box 12608
Capitol Station
Austin, Texas 78711

savings and loans and credit unions.

The act also spells out guidelines for the way checks are to be endorsed.

When you endorse a check, it's best to sign in the 1-1/2-inch space on the back "trailing edge" of the check. That's the left-hand side of the check when you turn the check over.

The rules will change a bit in 1990, with the hold decreasing even more.

I read recently that the rules have been changed concerning how long a hold my bank can put on a deposit before I can make a withdrawal. What has changed?

The Expedited Funds Availability Act was passed in 1987 after complaints some banks were holding checks for 21 days!

Effective September 1, 1988, this federal law limits the length of time a financial institution can hold your money.

When you deposit a local check, all of your money must be available by the third business day following the day of your deposit. On non-local checks the wait increases to five days.

However, \$100 must be available to you the day after your deposit, regardless of whether the check is local or non-local.

This does not apply to cash deposits, cashier checks or government checks. On those deposits, you must have access to all of your money the next business day.

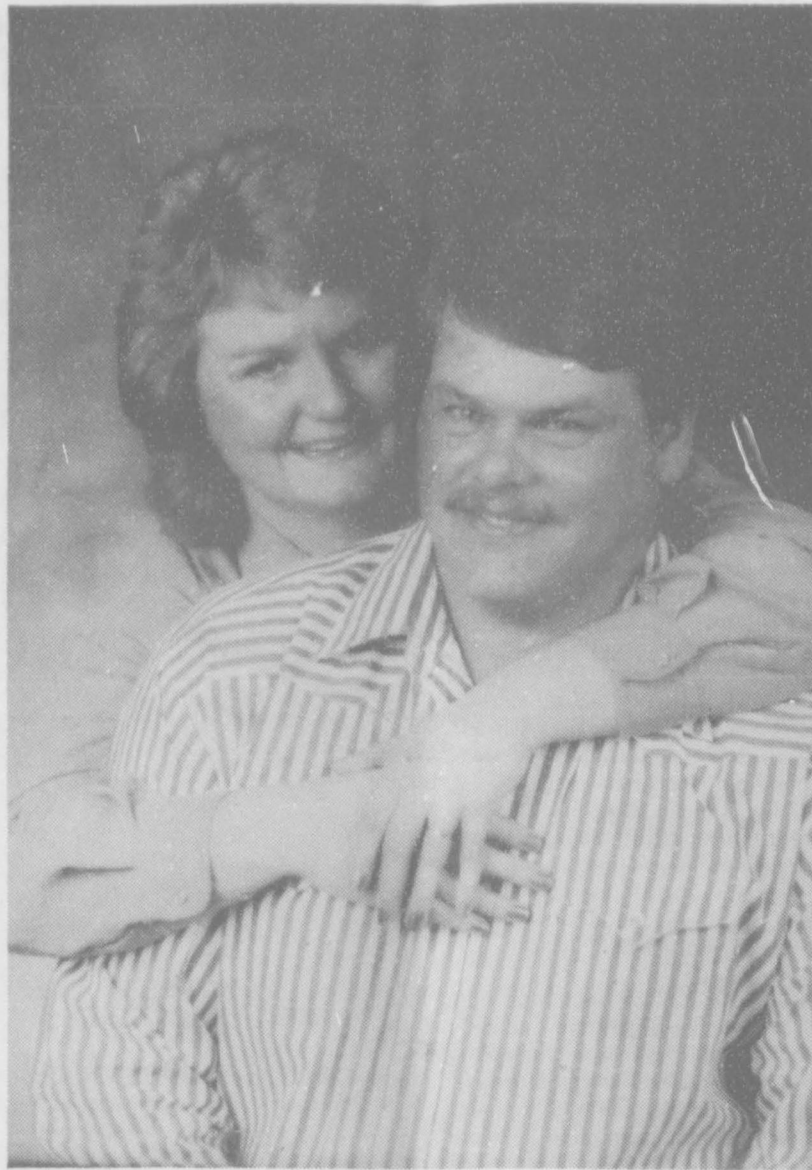
The new act applies to banks,

I got my first full-time job this summer, and would like to open a checking account so I can enjoy some of my hard-earned money. Do some banks have better checking accounts than others?

Not all checking account plans are created equal! That's why it's important to shop around so you can get the best deal for your money.

When looking into different institutions' checking account plans, there are some basic questions you should ask, such as:

- Is the institution federally insured?
- How much interest is earned on the account and how often is it compounded?
- What is the minimum balance required?
- What is the fee if the balance drops below the minimum required?
- What is the charge for each check written?
- Is there overdraft protection?



Engagement announced

Cliff Lang and Jeanne Close are announcing their engagement and approaching marriage.

The prospective bride is the daughter of Mrs. Jean Close, and of Mrs. and Mrs. Billy Close. She is a 1981 graduate of Spearman High School and a graduate of Frank Phillips College-School of Nursing. She is a member of the Phi Theta

Kappa Honor Society and is employed by the Hansford County Hospital District.

The prospective groom is the son of Mr. and Mrs. Ted Lang of Nevada, Mi. He is a 1979 graduate of Nevada High School, and a graduate of Nevada Area Vocational Technical School, and is employed by Bill Hodges Truck Company Incorporated of Perryton.

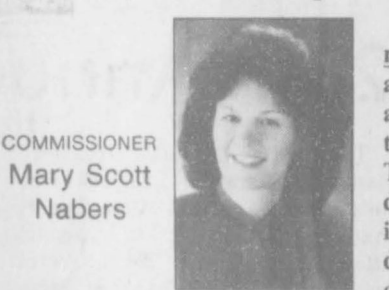
Businesses warned about using pay cuts as disciplinary measure

Dear Commissioner Nabers: I have an employee who is not doing a very good job and I want to cut his pay. This employee has been with me for a few years and was pretty productive when he started. But lately I have found that some new hires that I pay considerably less are working circles around this guy. It does not seem fair for me to pay him more for doing less. Where do I stand if he quits and files for unemployment?

- G.S. Tyler, Texas

Dear G.S.: As a general rule I do not recommend pay reductions as a disciplinary measure for poor performance. If the employee is capable of doing the job as evidenced by past satisfactory performance, it is better to document instances of negligence, carelessness, inattentiveness, failure to do assignments, failure to follow instructions, etc., and confront the employee with these problems in writing. These written warnings should specifically put the employee on notice that failure to improve in designated areas could result in termination.

There are times when a full demotion with simultaneous



COMMISSIONER
Mary Scott
Nabers

TEXAS BUSINESS TODAY

reduction in pay and job responsibilities can be well justified and may not give an employee good cause to quit. A simple pay reduction, however, with no change in job duties is often more problematic than an outright termination for well-documented cause. (Keep in mind that I am speaking strictly from the perspective of unemployment insurance liability.)

Dear Commissioner Nabers: Our company recently won a case before the Texas Employment Commission and today we received notice that the ex-employee is taking the matter to court. She is suing both the TEC and our company. Do we need to be represented legally in this matter or does the TEC represent us?

- F.S. Waxahachie, Texas

The Hansford Plainsman

Your Hometown Newspaper

USPS 2346-6000 Spearman, Tx. 79081

213 Main, Box 458, 659-3434

Published Weekly at
213 Main, Spearman, Texas

Panhandle Press Association
1988
Award Winner

Owned and Operated by:
Texas Independent Newspapers, Inc.
19906 Encino Grove, San Antonio, Tx 78259

Second class postage paid at Spearman, Texas 79081.

Any erroneous reflection upon the character of any person or firm appearing in these pages will be gladly and promptly corrected upon being brought to the attention of the management.

PUBLISHER - Karen Goodman

Subscription Rate: Spearman, adjoining counties, combination with the **Spearman Reporter**, \$19.95; non-adjointing counties, \$24.95 annually.

Postmaster: Send address changes to **Hansford Plainsman Box 458, Spearman, Tx. 79081.**

The publisher reserves the right to revise or reject at its option any advertisement which it deems objectionable, either in subject or phraseology, or which it may deem detrimental to its business.

Changes allow nurses credit for experience

Army nurse recruiters are excited about a recent change to a Department of Defense directive that now grants credit for experience in a health profession.

"The change authorizes credit towards time in grade for experience in a health profession if that experience is directly used by the Army," said Sgt. 1st Class Tommy Daniels, Army Nurse Corps recruiter.

"Prior to the change, all we could offer was credit for advanced education. Now, applicants can use their professional work experience to receive up to three years credit toward a higher grade.

"For instance, a nurse with six years acceptable experience and a nursing degree could be com-

missioned as a first lieutenant. That's one pay grade higher than the normal starting grade. It's just as if they served three years," explained Daniels.

Applicants can be granted one-half year credit for each year of full-time professional experience earned after initial licensure, up to a maximum of three years. Qualifying periods of less than one full year are prorated to the nearest day. Experience under six months, however, earns no credit.

The change is another step in an effort to help ease the effects of a nursing shortage. An earlier policy shift now allows nurses over the age of 40 to apply for appointment as an Army nurse.

"It's another attractive incentive we can use to interest working nurses in an exciting and rewarding Army nursing career," said Daniels. "We are excited about the change, and I think it will have a tremendous effect on our recruiting efforts."

Nurses interested in full-time career opportunities in the Army Nurse Corps can call Daniels in Oklahoma City at (405) 235-7104. For part-time career opportunities in nearby Army Reserve units, contact Sgt. 1st Class Don Smith in Amarillo at (806) 374-2175.

"HIP, HIP, HOORAY!"

The Meat and Poultry Hotline has expanded its hours for the holiday season.

Call 1-800-535-4555 for advice on the safe handling, storage, and preparation of turkey, and other meat and poultry products.

Monday - Friday, Nov. 1-30, 9 to 5, EST
Saturday - Sunday, Nov. 19-20, 9 to 5, EST
Thanksgiving Day, Nov. 24, 8 to 2, EST
Monday - Friday, Year-round, 10 to 4, EST

A public service of this publication and the U.S. Department of Agriculture.

BY ORDER OF THE U.S. BANKRUPTCY COURT OF ARIZONA

153.5 ACRES (mol) C.R.P. LAND

and
EQUIPMENT

at
AUCTION
(Booker, Texas)

TUES. ★ NOV. 29 ★ 10:00 A.M.

Directions to Auction Site: Appx. 5 miles East of Booker, Texas on Hwy 15, 1/2 mile South to Auction Site. WATCH FOR SIGNS!

Land and equipment is being sold free and clear of all liens pursuant to an order by the U.S. Bankruptcy Court.

153.5 Acres (mol)

LEGAL: NE/4, Section 1080, Block 43 of the H & TC Railroad Survey, Lipscomb County, Texas (Surface only)

THIS PROPERTY IS LOCATED 2 1/2 MILES SOUTH AND 1/2 MILE EAST OF AUCTION SITE.

* Property will be sold in One Tract * Property is in Conservation Reserve Program at \$38.90 per acre per year (9 years remaining)

* Well on property * The purchaser will assume the CRP contract as a successor in interest until the expiration of the contract.

THIS IS ONLY A PARTIAL LIST OF THE EQUIPMENT TO BE SOLD:

<p>TRACTORS:</p> <p>1979 John Deere 4840 4008123R 1967 Massey Ferguson 1100 (duals) 9813434 1963 John Deere 2010 #66378</p> <p>TRUCKS & TRAILERS:</p> <p>1973 Chevrolet 1/2 Ton Van Pickup (Salvage) 1966 Dodge 500 Grain Truck #1081391037 1966 Chevrolet 1/2 Ton, 4WD 1961 Chevrolet C60 Grain Truck 16' Hale Open Top Stock Trailer 1960 16' Shop Boat</p> <p>IRRIGATION EQUIPMENT:</p> <p>1980 IHC Irrigation Engine 605 1966 Lany Irrigation Engine 884 (Salvage) 1977 Valley 8 Tower (Electric) Sprinkler #171327 1972 Valley 10 Tower Sprinkler #166727 (no engine or gear/head) 5000' - 8" Flow Line</p> <p>*The 2 Sprinkler systems are not located at sale site. Buyer will be responsible for making the necessary arrangements with the farmer/operator where systems are located for convenient removal. Contact Auction Co. for appointment to inspect.</p>	<p>FARM EQUIPMENT:</p> <p>1978 Tandem Disc Bush Hog 1978 12' Speedrower Bush Hog 1970 IHC Cultivator 6R Rotary IHC Model 58 6R Planter w/feet 1974 42' John Springtooth #765Y John Deere 6R Lister 1979 Noble 7 Section Sweep 1971 Flecking 5 Section Sweep #1398 2 - 18' Portable Ranchers Pride Cattle Feeders 2 - Hay Loaders Clark 500 Gal 24" Sprayer Big Ox 9 Shank 1972 - 21' double offset disc Crustar #1712 1970 - 46' Cullins Rotowelder 2 - 186" - 18' Miller Rotowelders 1960 Phoenix Wilbur 14' Pad Shredder 3 Pl. E' Servis Shredder 3 Pl. Servis Blade 3 Pl. Danhauser Post Hole Diggers 46 Pl. Auger 4' X 18' Auger 2 - 500 Gal. Fuel Tanks 1 - 3000 Gal. Fuel Tank 16' Tandem Utility Trailer 3 Wheeler</p> <p style="text-align: center;">... PLUS OTHER CONSIGNED ITEMS!</p>
--	---

INSPECTION - DAY OF SALE 9:00 a.m.

TERMS ON EQUIPMENT: Complete payment day of sale by cash or pre-approved check with proper identification. Immediate possession of all merchandise upon proper settlement. All items sold "as is, where is". Announcements made day of sale supersede any prior advertising. Not responsible for accidents.
DO NOT REMOVE ANY MERCHANDISE UNTIL PAID FOR.

TERMS ON REAL ESTATE: 10% escrow deposit day of sale. Warranty Deed and Marketable Title will be furnished according to the standards of the Texas Bar Association. This contract is subject to the court's approval. Closing will be held within 30 days after acceptance by the court.

In cooperation with
Fred Guzik
Guzik Realty Inc./Inc.
Frostburg, Md.

TX AUCTIONEERS LICENSE #AU-7543
TX BROKERS LICENSE #B77113-08

FOR INSPECTION OF PROPERTY PRIOR TO THE AUCTION OR FURTHER INFORMATION REGARDING THE SPRINKLER SYSTEMS CONTACT JOHN PAUL FOR APPOINTMENT (806) 435-5864

FOR FURTHER INFORMATION CONTACT:

EDDIE HAYNES, INC.
AUCTION & REALTY
4318 W. Reno
Oklahoma City, OK 73107
(405) 942-SOLD

High Plains Pizza Hut

High Plains Pizza would like to wish Gary Wysong all the luck in the world in his new adventure, we will really miss you.

Also we would like to Welcome Michael Carr our new Spearman Pizza Hut Manager to our Spearman Store. Michael has managed our Perryton Tx. Store for 3 years and our Canadian Tx. Store for 1 year. He moves to Spearman with his wife Peggy and three daughters, Jessica, Terri, and Ashler. Michael invites everyone to come out to the Store and meet him and enjoy the same great service and pizza everyone is use to.

High Plains Pizza Inc.
Michael Kitch
Area Supervisor

CHRISTMAS CHRISTMAS CHRISTMAS

It's almost here.

Come one, Come all, to see all the ideas Santa has helped Adela's Flowers design especially for your homes for the holidays

Hear Ye, Hear Ye!
Come one, Come all!
Adela's Flowers Christmas Open House
Nov. 27
2:00-4:00

511 Plains Shopping Center
Spearman 806-659-5180

Guest Editorial

By Jean Ann Behney

At Thanksgiving, many of us make an effort to, mentally at least, remember all the things for which we are truly thankful. Good health and family inevitably crowd the top of this happy list, but this Thanksgiving I am most aware of a handful of remarkable individuals living in Hansford County, because they represent the living ideals and spirit of our pilgrim ancestors.

Mrs. E.A. Greever, J.B. Buchanan, Myrtle Lee, and I.W. Ayres are people who have much in common. They were all early pioneers of the Texas Panhandle and West Texas and shared many experiences historically, such as the Dust Bowl years, the Great Depression, and World War II.

They grew up in large happy families where "less was more," more appreciated, that is: a Christmas stocking filled with nuts, a penny and an orange was pure Paradise and a bottle of real soda pop was a much-anticipated, once-a-year Fourth of July treat. These four individuals shared a day-to-day relationship with their land, shelter, and animals that was not artificially blunted by air conditioning, electricity and other "conveniences."

But these life experiences are not what makes my four people remarkable, for everyone of their generation would be just as extraordinary if this were so. No, the pioneers I'm writing about took these experiences in a gladness of spirit and with attitude of humor and adventure to make them self-enrichments. Far from being mere survivors, these two men and two women are the silver linings to the clouds, shining out even more as age slows them down and gives them time to reflect on their pasts.

They now look to the future with one eye, however, and they are worried. What will my generation of baby boomers offer this country? We have never "done without" and are accustomed to the instant gratification modern technology dishes out on a daily basis. We live very differently than they did. "Maybe it really was easier back then for us," J.B. Buchanan's wife, La Mae, mused aloud not long ago, "because none of us had much, so we didn't feel that we were going without." Instead, her generation "owned" the beauty of nature's bounty and the love given freely in a close-knit family and community life, both important treasures from which my generation has certainly been distanced, if not entirely divorced.

The Buchanans and others like them are fulfilled people because they have reaped the rewards that come with struggle and their faith has sustained them in times of hardship. My generation has this same opportunity, although our struggles will be somewhat different. In between the microwaved suppers and the evenings of television, the weekends spent in shopping malls or sports stadiums, will we too develop into strong individuals with pioneer spirits? I hope so, but it won't happen automatically. We need to listen to our elders and learn how to live from them if we want to capture

even a fraction of their joyfulness.

In the windmills of their minds, in the tick-tock mechanisms of their hearts, in the steady working of their hands, I have seen and touched the extraordinary, and I am thankful.

Quilt show to be held on Dec 4

The Committee for the Country Store and Quilt Show met Wednesday Nov. 16 in the home of Mrs. Bill K. Jackson.

It was decided to report to Gladiola Flower Club members at the Thanksgiving Supper the final plans.

The date will be Sunday, Dec. 4 at the City Hall Building from 1:30 until 4 p.m. with \$1 admission charge.

Mrs. Garland Head will be chairperson for the Country Store. All members will be providing arts, crafts, baked goods, home canned preserves, jellies, jams and homemade candies.

Mrs. Lloyd Buzzard, Mrs. Doyle Jackson assisting Mrs. Bill K. Jackson for the Quilt Show.

Mrs. Buzzard reported several award winning quilts to be shown.

Several categories will be included for the quilt display, such as patchwork, applique, lap quilting, cross stitch, Trapunto or Tufting, Hoop quilting, crib quilts, reverse applique, and several other categories.

Flower Club members noted there may be something of interest for the experienced collectors and novices alike.

Club members have decided to give a \$25 Gift Certificate to the winning admission ticket.

All proceeds will be donated back to community projects.

Lynxettes beat Lady Eagles Friday, 64-27

The varsity Lynxettes had control all the way, in the basketball game against the Lady Eagles Friday night. The final score for the evening was Lynxettes 64, Lady Eagles, 27.

The Lynxettes biggest advantage in the game seemed to be their quickness and ability to keep control of the ball.

Final statistics for the game were unavailable at presstime of the *Hansford Plainsman*, but will be reported in the next edition of the *Spearman Reporter*.

Jv's lose to Fritch

In the four basketball games Friday night in Spearman against Sanford-Fritch, the Eagles managed to win three out of the four. The only win for Spearman came from the varsity Lynxettes. In the junior varsity games the boys Sanford-Fritch jv beat Spearman 49 to 39. And the Lady Eagles jv beat the Lynxette jv with a score of 52 to 31.

Book helps older citizens start in business

The years after 50 may be the best time to start a business, says author Ina Lee Selden in her new book, *Going Into Business for Yourself*. She points to the skills, experience and knowledge older persons can apply to such a venture.

The new book is the latest in a series of AARP Books, an educational co-publishing project of the American Association of Retired Persons.

Ms. Selden shows older persons how to assess their entrepreneurial qualities and analyze their marketable skills. She provides expert advice and practical information about securing venture capital and trade credit; preparing a sound, workable business plan; and weighing the pros and cons of working full-or part-time and away

from or in the home.

The experiences of more than 20 people who started successful businesses after 50 are also described. An appendix lists organizations and publications that might provide prospective entrepreneurs with helpful information.

The author successfully began her own travel planning business several years ago. She has also been a journalist for *The New York Times*, *Washington Post*, business magazines and other publications.

AARP Books are co-published by AARP and Scott, Foresman and Company. They are available in bookstores through Little, Brown and Company.

Going Into Business for Yourself can be ordered by mail for \$8.95 (\$6.50 to AARP members who include membership number) plus

\$1.75 per order for postage and handling from: AARP Books, Scott, Foresman and Company, Dept. 836, 1965 Miner St., Des Plaines, IL 60016.

AARP is the nation's largest organization of Americans 50 and older. The nonprofit, nonpartisan organization offers a wide range of membership benefits, legislative

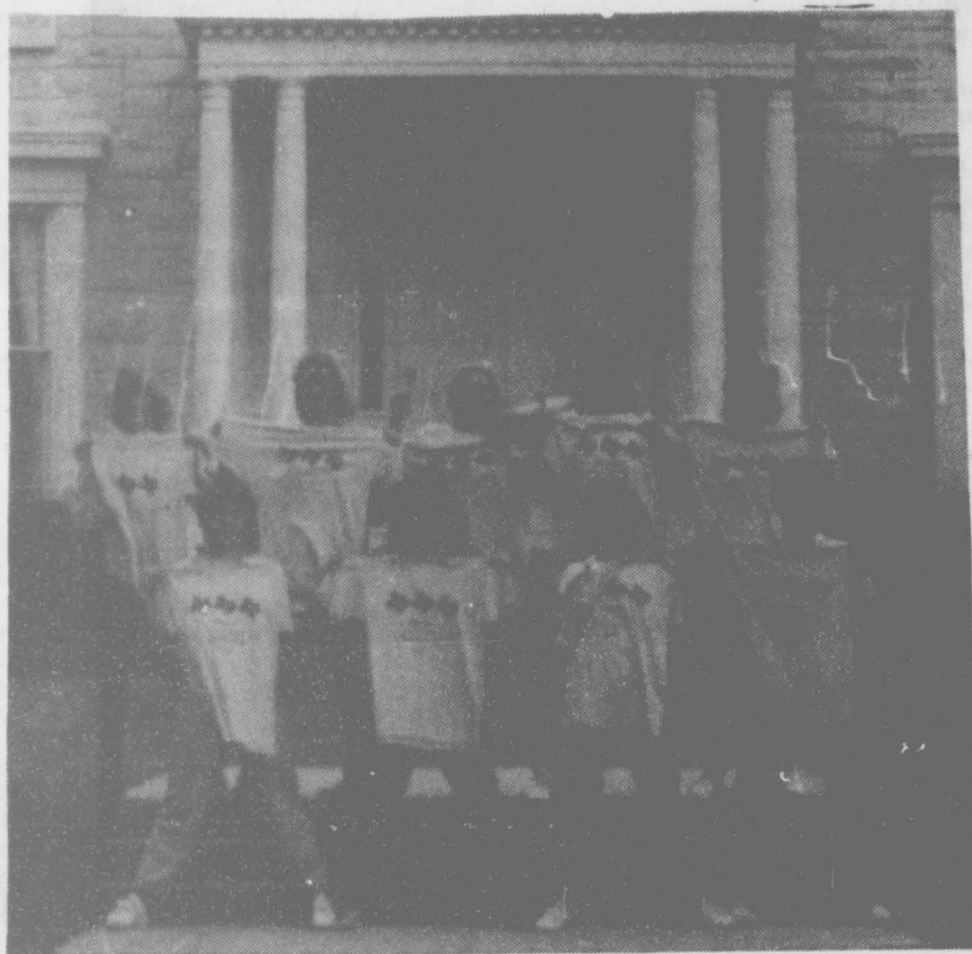
representation at federal and state levels, and educational and community service programs carried out through a national network of volunteers and local chapters. The Association, based in Washington, D.C., also offers a variety of educational and advocacy programs for older workers, who make up one-third of its total membership.



**Not All TURKEYS
Are On The Table.
BUCKLE UP
This Thanksgiving.**

Texas Coalition for Safety Belts

Lynxette Cross Country Team



Good for You

Congratulations Lynxettes on your first place win at Georgetown. You have made the community proud again by displaying your best efforts.

You captured a first place win at regional competition and again at the state competition.

We at First National Bank want to encourage these fine efforts in the youth of our community. Competition results such as these reflect your self-discipline and hard work.

Keep up the good work in all that you do, and you will continue to make your community proud and can be proud of yourselves.

Congratulations to Krista Kirkland, Heather Murrell, Shannon Holton, Michelle Cook, Haley Shieldknight, Nancy Ivey, Carly Shieldknight, and Suzanne Sanders.

And a special congratulations to Jerold Blan for representing Spearman in the boy's competition at Georgetown, placing in the top ten individually.

Hours: Mon. - Fri.
7:30 - 3:00
Thurs.
7:30 - 3:00
4:00 - 6:00

We will be closed Thanksgiving Day.



MEMBER
FDIC

First National Bank of Spearman

Consign your cattle now for the Satellite next Satellite Cattle Exchange. Contact Rick Hefley Cattle Exchange 639-3986 off. or Ron Cook 639-3171 off.

THE BRASS REGISTER

210 S. Main

435-9797

Perryton, Texas

**Cordially Invites You
to a
Holiday Open House
Sunday, November 27, 1988
1:30 p.m. to 5:00 p.m.**

15% Savings
Storewide

Refreshments served from
our own kitchen products

Army has committed \$34 million to educations

The U.S. Army and Army Reserve has committed more than \$34 million to the college education of young people from Oklahoma, southwest Kansas and the Texas panhandle area during the fiscal year ending Sept. 30. That's the amount available for 2,256 active duty and 1,349 Army Reserve enlistees from the 109 counties served by the Oklahoma City Recruiting Battalion.

"That's a significant financial investment in the future of our young people. Our colleges and other institutions of higher learning throughout this area will feel this impact as these young soldiers return to their hometowns following their enlistments and pursue their educations," said Lt. Col. Richard M. Colbert, the recruiting battalion commander.

Of the above active duty number, 250 young people qualified for \$5.6 million through the Army College Fund, an incentive program available only to qualified Army enlistees accepting an enlistment in one of nearly 90 selected skill training programs.

The remaining 2,006 enlistments are eligible to participate in the Montgomery G.I. Bill program.

Each qualified enlistee who participates in the Montgomery G.I. Bill or the G.I. Bill Plus the Army College Fund program has \$100 per month deducted from his or her paycheck for the first year of enlistment—a total of \$1,200. The Montgomery G.I. Bill adds

to the individual's investment \$7,800 for a two-year enlistment and \$9,600 for a three or four-year enlistment, for a total higher education assistance package of \$9,000 and \$10,800 respectively.

For those qualifying for the G.I. Bill Plus Army College Fund, the Army adds a bonus, from \$8,000 to \$14,400, to the G.I. Bill package. An enlistee for two years would get \$17,000 for college, a return of more than 14 dollars for every one dollar the enlistee contributes. Three-year enlistments can be worth \$22,800 and four-year enlistments can earn the maximum amount, \$25,200.

For fiscal 1988, the Oklahoma City Recruiting Battalion reported that 47 persons qualified for \$799,000 (two-year commitments); 98 enlistees qualified for \$2,234,400 (three-year commitments); and 105 new soldiers qualified for \$2,646,000 (four-year commitments) for a total of \$5.6 million in local Army College Fund benefits.

An additional \$6.8 million has been made available for the higher education plans of 1,349 Army Reserve enlistees. Each of these citizen-soldiers qualifies for \$5,040 to use toward their choice of Veteran's Administration approved training.

Colbert said any young man or woman interested in these higher education assistance plans can obtain full details from local Army or Army Reserve recruiters.

Spearman Lynx & Lynxette 1988-89 Basketball Schedule

DATE	OPPONENT	TEAMS	SITE	TIME
Nov. 22	Channing	JV&V Girls & V Boys	There	5:30
Nov. 24, 25, 26	QUEENS CLASSIC	V Girls	Plainview	TBA
Nov. 25, 26	HIGHLAND PARK T.	V Boys	Amarillo	TBA
Nov. 29	Dalhart	JV&V Girls & Boys	Here	5:00
Dec. 1, 2, 3	CANYON TOURNAMENT	V Girls	Canyon	TBA
Dec. 1, 2, 3	DUMAS TOURNAMENT	V Boys	Dumas	TBA
Dec. 1, 2, 3	GRUVER TOURNAMENT	JV Girls & Boys	Gruver	TBA
Dec. 6	Channing	JV&V Girls & V Boys	Here	5:30
Dec. 9	White Deer	V Girls & Boys	Here	6:30
Dec. 13	Canadian	JV&V Girls & Boys	There	5:00
Dec. 16	Perryton	V Girls & Boys	Here	6:30
Dec. 15, 16, 17	PERRYTON JV T.	JV Girls & Boys	Perryton	TBA
Dec. 20	Nazareth	JV&V Girls & Boys	Here	5:00
Dec. 27	Gruver	V Girls & Boys	There	6:30
Dec. 29, 30, 31	CANADIAN TOURNAMENT	V Girls & Boys	Canadian	TBA
Jan. 3	Sanford-Fritch	JV&V Girls & Boys	There	5:00
Jan. 6	Dalhart	JV&V Girls & Boys	There	5:00
*Jan. 10	Boys Ranch	JV&V Boys	There	6:00
*Jan. 13	Stratford	JV&V Girls & Boys	Here	5:00
*Jan. 16	Panhandle	JV&V Girls & Boys	There	5:00
*Jan. 20	Highland Park	JV&V Girls & Boys	There	5:00
*Jan. 24	WT High School	JV&V Girls & Boys	Here	5:00
*Jan. 27	Boys Ranch	JV&V Boys	Here	5:00
Jan. 27	Gruver	JV&V Girls	Here	5:00
*Jan. 31	Stratford	JV&V Girls & Boys	There	5:00
*Feb. 3	Panhandle	JV&V Girls & Boys	Here	5:00
*Feb. 7	Highland Park	JV&V Girls & Boys	Here	5:00
*Feb. 10	WT High School	V Girls & Boys	There	6:30
Feb. 9, 10, 11	WHITE DEER T.	JV Girls & Boys	White Deer	TBA

*Denotes District Games

Texas wheat meeting set for Dec 1

A "Wheat Symposium" sponsored by the Texas Wheat Producers Board and the "Annual Meeting" of the Texas Wheat Producers Association have been set for Dec. 1, at the Civic Center in cooperation with the Amarillo Farm & Ranch Show, according to Kenneth Keisling, Dumas, Chairman of the Board and Cagle Kendrick, Stratford, Association president.

Texas producers beleaguered by drought, changing government programs, disease and insects which have combined to reduce production by 50% in the last 4-years and a large part of their acres in the ten-year Conservation Reserve Program, will face a multitude of decisions as they address resolutions directing their association's activities for 1989 and into the '90's the wheat officers said.

The Texas legislature which meets only every other year will be in session in 1989. Deputy Commissioner of Agriculture, Mike Moeller of Austin, will open the session with a review of "Agricultural Issues Facing the 1989 State Legislative Session". It is expected that Moeller will address an array of issues including water, pesticides, workman's compensation as well as rural agricultural development.

Setting the stage for the "Current Wheat Situation Outlook" will be Dr. Bill Tierney, Kansas State University at Manhattan. Dr. Tierney is expected to focus on the changing supply and demand situation for wheat as well as producer alternatives in marketing.

Texas Wheat Producers conduct their overseas market development as do 16 other wheat producing states through U.S. Wheat Associates. Reporting to the producers on USWA worldwide activities through 13 foreign offices will be farmer-elected USWA Secretary Wayne Klindworth, Connell, Washington. Klindworth is chairman of the Washington Wheat Commission and a board member of U.S. Wheat.

TWPA conducts their national legislative and administrative governmental affairs activities through the National Association of Wheat Growers. Reporting to the Texas growers on NAWG's accomplishments this year and projected agenda to be considered for 1989 will be newly farmer-elected secretary, Del Wiedeman, Wakeeney, Kansas.

The no-fee registration will begin at 8:30 a.m. Keisling will chair the morning program beginning at 9:30 a.m. and report on the Producer-Board's activities in attempting to enhance producer markets and income.

Kendrick will chair the afternoon session and will report on the Association's state and national activities and conduct the business session which will adopt resolutions for 1989 and the election of officers.

It is expected that the 1-day session will adjourn by 4 p.m.

Sponsoring activities and awards during the session will be Monsanto, DuPont, Mobay, Ultram, Sweep & Agricultural Insurance Administrators.

HOSPITAL REPORT

Patients in Hansford Hospital are Monte George, Betty Perry, Marguerite Nelson, Gene Leatherman and J.C. Hickerson.

Select teachers eligible for grant program

Seventh through twelfth grade math and science teachers in Texas are eligible for a grant program providing opportunities for school enrichment and professional development.

The program, called Growth Initiatives for Teachers (GIFT), is entering its fourth year in Texas under the sponsorship of GTE and

GTE Southwest.

Since starting the program in 1983 as a pilot effort in North Carolina, GTE has expanded the program to eight states and the District of Columbia. Over 500 math and science teachers, including 128 from Texas, have won the grants.

The GIFT grants allow ex-

perienced math and science teachers to broaden their subject knowledge, network with other talented teachers, and carry out a classroom-based project for the benefit of students and school. The program is designed to offer new opportunities and enhance secondary school teaching.

A feature of the program is its

team approach with a GIFT team composed of one math and one science teacher from the same school. Each team submits a school enrichment program and two professional development proposals.

The school enrichment portion of the grant is \$7,000 while the professional development portion is \$2,500 for each team member. Unlike previous programs, the grants do not have to be matched by the school or community.

In addition to the grants, GTE will bring together all GIFT teachers from throughout the country in late June 1989 for a week-long seminar in Boston and Washington, D.C., including a tour of GTE laboratory facilities.

Science and math teachers interested in applying for the program may call 215-750-8480 8 a.m. to 4 p.m. (EST) Monday through Friday.

Scott Taylor named as messiah soloist

Scott Taylor, Minister of Youth and Education at Spearman's First Baptist Church was named as soloist for Perryton's 34th annual presentation of Handel's Messiah, to be held Saturday evening, Dec. 3 at the Perryton High School Auditorium.

Other soloists named in Sunday's auditions were sopranos Sharon Ellzey, Donna Sheppard and Verna Wilson of Perryton and Beverly Wiebe of Waka; altos Debbie Blackshear and Jill Ellzey of Perryton; tenor Roy Weibe of Waka, and Basses John Ellzey and Keith Harris of Perryton.

Accompanying this year's performance will be members of the Amarillo Symphony Orchestra, including members of the widely acclaimed Harrington String Quartet. Chorus rehearsals have been scheduled on Nov. 17 and Dec. 1 from 7 to 9 p.m. in the High School Choir Room. All interested area singers are invited to participate in the presentation and are urged to be present at all rehearsals. Rehearsal with the orchestra will precede the performance on Dec. 3. This year's presentation will be directed by Cloys Webb.



Dallasites may scorn Houston as a cultural backwater, but Houston was the site of the first professional theatrical performance in Texas. The play, a comedy called "The Hunchback," was presented on June 11, 1836. President Sam Houston complimented the leading lady, remarking that she was as "pretty as a head of swamp cabbage."



Congratulations

Cross Country

team members

You are number 1 in the state!

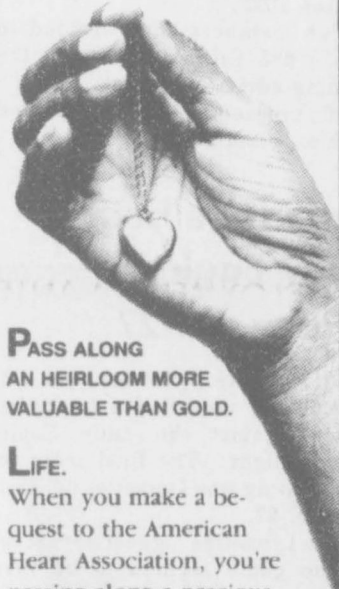
Keep up the good work in all you do.



First National Bank
Perryton and Booker

201 S. Main Perryton, TX 79070
115 S. Main Booker, TX 79005

Member Federal Deposit Insurance Corporation



PASS ALONG AN HEIRLOOM MORE VALUABLE THAN GOLD.

LIFE. When you make a bequest to the American Heart Association, you're passing along a precious legacy. The gift of life. That's because your contribution supports research that could save your descendants from America's number one killer.

To learn more about the Planned Giving Program, call us today. It's the first step in making a memory that lasts beyond a lifetime.



This space provided as a public service.



Come and see what good things you can find in a trunk. Share our OPEN HOUSE Sunday, Nov. 20 2:00-4:00 p.m. at 313 Main.

15% off of everything in the store.

Charolette Ford Trunks
313 Main
Spearman, Tx. 79081

806-659-3027

Put Yourself in the Marketplace, in the **Classifieds**

For Sale

FOR SALE: 2 Bedroom, 2 Bath, Lancer Mobile Home. Call 435-2439. No equity, take up 30 payments, or \$7,000.00 cash. S03 - 4tp

FOR SALE: 3 bedroom, 2 1/2 bath, 2 car garage, fireplace, sprinkler system and water softener system. 403 Cooper or call 733-2009. S01 - 8tp

HOUSE FOR SALE: 2 Bedroom, 207 Haney. Call 659-2692. S02S-rtn

"ATTENTION - GOVERNMENT HOMES from \$1 (U-repair). Delinquent tax property. Repossessions. Call 602-838-8885 Ext H-4514. S02 7tp

For Rent

FOR RENT: 3 bedroom trailer, call 733-5130 or come by 905 King in Gruver. S03-4tc

FREE RENT: First Month and reduced rates in Perryton's best mobile home park. Call Leo Meyers 435-2276 or 435-7676. S46S rtn

FOR RENT: Nice private trailer lot, established lawn and nice neighborhood. Call 659-3657. S02S-rtn

Autos for Sale

FOR SALE: 1985 Chevy Suburban. 6.2 Diesel engine, clean. 47,000 miles. Call 659-3642. S02-4tc

Trucks for Sale

FOR SALE: Two water trucks, excellent for hauling water to cattle. Nothing ever in tanks except clean water. \$1,995 and \$2,495. Call Randy Hunt at 659-3588. S03-rtn

Help Wanted

HELP WANTED: Full-time watchman, 6 nights per week, references required. If interested apply in person at Caprock No. 1, Gruver, Tx. EOE S52S rtn

Miscellaneous

USED AUTO PARTS, nationwide parts locating hotline, we buy late model wrecked vehicles, MussCat Auto Salvage, located 4 miles west of Hooker, OK. Hwy 54. Call us toll free 1-800-999-5080. S50 12/88

TUTOR WANTED: For individual. Needs help with math and English, grades nine through twelve. Need to provide books or have access for learning materials. Pay rate negotiable. 659-3662. S03-1tp

GRASS FOR SALE: 2 sections of Western Lipscomb County native grass. Located on pavement, well watered and good fences. Sell individually or as a unit. Alternative financing available to qualified buyers. Contact Ken Burton, High Plains FLBA, Perryton, Tex. 806-435-4319. S51 rtn

Caprock No. 2 has a 10 X 45' trailer house and a '71 Buick car that were abandoned by Raymundo Loya 9/87. If the trailer house is not claimed by the owner by 12/10/88, it will be sold for salvage to the highest bidder. S02S 4t

PIANO FOR SALE
WANTED: RESPONSIBLE PARTY TO ASSUME SMALL MONTHLY PAYMENTS ON PIANO. SEE LOCALLY. CALL CREDIT MANAGER 1-800-447-4266 S52S 7tp

FOR SALE: Air Stream travel trailer, 29 ft, A-1 shape, reasonable price. Call 733-2266. S03-2tp

FOR SALE: hand quilted quilts and pillows. Also will do quilting for others. Call 659-2350 or 659-2217. S03S 5tp

EMPLOYMENT WANTED

WORK WANTED: Will do cleaning. Houses, offices, and businesses. Call 659-2950 or 659-3061. S03 4tp

WORK WANTED: Experienced, farm hand, truck driver, and construction work. Call 435-5670. S03-3t

L & M Body Works
1501 Hwy. 15
659-2775
Tailpipes-\$29.95
Mufflers-\$39.95
Most Duals-\$160.00 complete

OSGOOD MONUMENT CO.
Amarillo, Texas
Dealers of Rock of Ages Granite, as well as all colored granites, marble and bronze memorials.
represented by
BOXWELL BROS. FUNERAL HOME
519 S. Evans
659-3802

BEHLEN Curvet
Unmatched performance.
Building widths of 40', 51' and 68'
Hatfield Design Builders
Art Hatfield
Phone: 338-7542
124 N. Quinn Guymer

Quest service opens teen program

QUEST, the psychiatric service of St. Anthony's Hospital, is proud to announce the opening of their adolescent psychiatric program, in addition to their adult program.

Bruce Baca, M.S.S.W., leads a group which focuses on relationships and communication for couples providing individual, marital and family therapy.

Jeannie Curtis, C.B.F.T., provides individual and group biofeedback therapy. Her focus includes pain management, stress management, nutritional counseling and psycho-physiological disorders.

B. William Freund, M.D., is a board certified psychiatrist whose practice emphasizes the treatment of adolescents. Dr. Freund provides clinical supervision for QUEST Professional Services and is associate medical director.

Carol Gardner, R.M.T. is a registered music therapist and activities therapy director. Ms. Gardner leads the QUEST group focused on problem solving.

Joe Garms, Ph.D., is widely regarded for his work with adolescents and adults. He oversees the psychology testing services.

James E. Johnson, M.D., is a board certified psychiatrist and Diplomat of the American Psychiatric Association. Dr. Johnson leads the Assertiveness Training group for both adolescents and adults.

Megan Kinen, P.T., is a licensed physical therapist directing patients in aerobics and other fitness activities as an important part of their overall wellness.

Bradley K. Klein, M.A. is a psychological associate and, under the supervision of Dr. Kracke, provides individual psychotherapy for adult inpatients at QUEST.

Jerry Kleinpeter, Ph.D., is particularly regarded for his work with children and adolescents. With his wife Priscilla, Dr. Kleinpeter provides leadership for the Parent and Child Development Issues Group.

Priscilla Kleinpeter, M.A., is a psychological associate and under the supervision of Dr. Kleinpeter provides psychotherapy for QUEST patients.

William I. Kracke, M.D., Quest's medical director is recognized for his practice emphasizing individual and group psychotherapy.

Watt Salmon, M.D., is professor of psychiatry at Texas Tech University School of Medicine. He leads the group which focuses on personal issues related to relationships and intimacy.

Don Snellman, M.S.W., provides administrative services for QUEST as well as individual and family therapy.

If you would like more information about QUEST or would be interested in a tour, feel free to contact Quest Professional Services at (806) 376-4678.

HIGH SCHOOL MENU

Nov. 21-25

Monday

Tacos

Pinto Beans

Salad Bar

Sopapillo/Honey

Milk

Tuesday

Cheeseburger

Fries

Salad Bar

Cookies

Milk

Wednesday

No School

Thursday

No School

Friday

No School

Have a fun, safe holiday!

JR. HIGH-ELEMENTARY MENU

Nov. 21-25

Monday

Taco

Pinto Beans

Lettuce/Tomato

Pineapple Tidbits

Sopapillo/Honey

Milk

Tuesday

Cheeseburger

Fries

Lettuce/Tomato

Pickle/Onion

Cookie

Milk

Wednesday

No School

Thursday

No School

Friday

No School

Have a fun, safe holiday!

Jr. High 1988 - 89 Basketball Schedule

DATE	OPPONENT	TEAMS	SITE	TIME
Nov. 21	Boys Ranch	7-8-9	Boys-T	5:00
Nov. 21	Gruver	7-8-9	Girls-T	5:00
Nov. 28	Stratford	7-8-9	(B) Boys-H	5:00
Dec. 5	Panhandle	7-8-9	Girls-T	5:00
Dec. 8,9,10	GRUVER TOURNAMENT	7-8	Boys-H	5:00
Dec. 12	Highland Park	7-8-9	Boys-T	TBA
Dec. 15,16,17	PERRYTON TOURNAMENT	9	Girls	5:00
Dec. 19	West Texas	7-8-9	Boys-T	TBA
Jan. 5	Boys Ranch	7-8-9	Boys	5:00
Jan. 7	Perryton	7-8-9	Girls-T	5:00
Jan. 7	SPEARMAN TOURNAMENT	7	Boys	TBA
Jan. 9	Stratford	7-8-9	Girls	5:00
Jan. 21	SPEARMAN TOURNAMENT	8	Boys-T	TBA
Jan. 21	GRUVER TOURNAMENT	9	Girls	TBA
Jan. 23	Panhandle	7-8-9	Boys	5:00
Jan. 26-27-28	WEST TEXAS TOURN.	9	Girls-T	TBA
Jan. 30	Highland Park	7-8-9	Boys	5:00
Feb. 6	West Texas	7-8-9	Girls-H	5:00
			Boys-T	

Poet's Corner

Editors Note: The following was written by a local lady. It is focused on the windy weather we've had in the area lately.

by Lometa Sparks

Mother Nature cleaned her house today,
She swept out every room.
The air was thick with dust,
As she wielded her giant broom.
She dusted all the open spaces,
And swept it into the strangest places.
As she deftly lifted the edge,
And swept the trash beneath the hedge.

Unlike a furnace that converts fossil fuel or electricity into heat, a heat pump collects heat that already exists in the outdoor air.

WILLIAMS AUCTION

LEGAL NOTICE

Notice is hereby given that on Tuesday the 6th day of December, 1988 at 2:00 P.M. the following described Real Estate will be sold within 30 feet of the Main Street entrance of the Hansford County Courthouse, Spearman, Texas, to the highest bidder for cash subject to any and all taxes.

An undivided .0244048 royalty interest in and to all oil, gas, and other minerals produced from Section 61, H & GN Survey, Hansford County, Texas.

An undivided .0366071 royalty interest in and to all oil, gas, and other minerals produced from all of Sections 27 & 29, Block 1, Certificate No. 27, original grantee, Cherokee Furnace Company, Hansford County, Texas, containing 160 acres, more or less.

An undivided .0117105 royalty interest in and to all of the oil, gas, and other minerals produced from all of Section 31, Block 1, Certificate No. 31, Cherokee Furnace Company Survey; all of the East half of Section 2, Block 1, Central & Montgomery Ry. Co. Survey, Certificate No. 206; all of the East half of the B Venneman Survey, Abstract No. 1269, containing 666.88 acres, more or less, in Hansford County, Texas.

This property is owned by Jacqueline K. Thoreson, and is being sold by The U.S. Small Business Administration in foreclosure proceedings, subject to the right of borrower to pay the debt in its entirety. Please contact Williams & Webb, Inc. at (806) 374-9387 or 2208 Canyon Drive - Amarillo, Texas 79109 for additional information concerning the auction.

TXE029-006849

**Local Happening?
Special Event?
Club Meeting?**

**If it's important to you,
it's important to us.**

**Let us know about your event
and we'll do our best to get you
the publicity it deserves both before and after.**

Call 659-3434 Today!

**The Spearman Reporter
The Gruver Statesman
The Hansford Plainsman**

NOTICE
Wallace Monument Co.
Monuments, Curbing,
Grave Covers
Local Representative
LEONARD JAMESON
Spearman, Texas

CLASSIFIED RATES
Regular... Per Word-\$0.13
Display... Per col. Inch-\$4.20
Double rate for blind ads
Minimum charges
Cash... \$4.00
Charge... \$4.50

CASH IN ADVANCE ADS
•Work wanted •Trailers for Sale •
•Business Opportunites •No
(ong) Responsible •Political
Advertising •Child Care •
•Baby sitting •Garage Sales •
•Out-of-county Ads unless ad-
vertiser has established credit
with •The Spearman Reporter•

DEADLINES
To place or cancel ads
Friday - 12:00 p.m. . . . Sunday
edition.
Tuesday - 12:00 p.m. . .
Thursday edition
The Spearman Reporter re-
serves the right to reject, edit,
revise and properly classify all
advertising submitted for publi-
cation. The Spearman Reporter
also reserves the right to cancel
any advertisement at any time.
THE SPEARMAN REPORTER

Among the Neighbors

Editors Note:
This column has been enjoyed by many readers for a long time now. Helen generously gives of her time for the enjoyment of the community and to add to the quality of the newspaper. Helen receives very little credit for the effort she makes, so I would like to extend our gratitude from the staff here for the fine job she does. Also I would like for those of you who have enjoyed her column to let her know that if you haven't already. Thanks again, Helen.

by Helen Fisher

Freda and Bruce Sheets are relaxing at home after an extremely busy week. Weekend before last their guests for the weekend were his brother Dale Sheets and wife from Bethany, Okla.

Mrs. Harry Douglass of MeCook, Neb., stopped by the Sheets for a short visit. They were enroute to Fulton, Tex. on the coast for the winter. The Sheets and Douglass spent many pleasant winters at Fulton.

Following their visit, Bruce and Freda went to Lakin, Kan. and joined Nina and Del Taylor for a trip to Scott City. The Taylor's granddaughter, Sarai Blackett, had a leading role in the high school presentation of the musical "The Sound of Music."

Soon after their return, other guests arrived from Memphis, Tenn., Mr. and Mrs. Sid Carroll. Mrs. Carroll was a friend of many, many years of the Sheets, although they had not been together for 50 years.

Though the Sheets enjoyed each of the activities, they are ready to just "let the rest of the world go

by." *****
Mrs. Florence Bruner of Truth or Consequences, N.M. is a guest of Mrs. Grace Bruner for a few weeks. She has visited here on previous occasions. *****

June and Glen Day enjoyed a recent trip to south Texas where they visited their son, Randy and family at Kirbyville. Later they joined their other son, Carrol and family in Houston for a few days. *****

To the many who indulged in an early Thanksgiving dinner with the ladies of the Union Church on Thursday, it was obvious that in addition to their Bible lessons, they have been having cooking lessons. Cooks as effective as they couldn't be developed by ordinary means.

Overheard at the dinner "I have lost a few pounds on my diet, so now it is full feed ahead."

Thanksgiving dinner shows Texas' bounty

Sweet potatoes are produced in central Texas around Elgin, in the Lubbock area and in east Texas where they're harvested in the early fall.

White potatoes are grown in Texas too, although by Thanksgiving most white potatoes are coming from Idaho and other northern states. The Texas white potatoes are harvested in July and August.

Fresh fall vegetables for your dinner, especially winter squash, cauliflower, broccoli, carrots and spinach come from Texas' Rio Grande Valley and the winter garden area of southwest Texas.

For dessert, both pumpkin and pecan pies are Thanksgiving favorites. This year Texas produced about 39 million pounds of pumpkin. Many of them wound up as jack o'lanterns, but others will find their way into fresh pumpkin pie.

Pecans are grown commercially in 183 Texas counties. This year's crop is estimated at 45 million pounds. Although the pecans are slightly smaller due to the drought, they're of excellent quality.

It's unlikely that cranberries will ever be grown in Texas because they require a cold, wet climate.

If you make cranberry-orange relish, however, you can add a touch of Texas by using oranges from the Rio Grande Valley. The Texas citrus harvest began in October and will continue through June.

The Thanksgiving meal illustrates the fact that Texas agriculture is increasingly diverse. Although meat animals and cotton are still the major income-producers for the state, Texas produces hundreds of other crops.

In addition to producing food, agriculture provides another kind of bounty for the state. Dr. Carl Anderson, an agricultural economist with the Extension Service, said the economic impact of agricultural production in Texas is estimated at about \$33 billion and businesses related to agriculture employ more than 20 percent of the state's work force.

Club News

FHA Club News

The Spearman Future Homemakers of America have planned the 1988-89 school year to include a variety of service and social projects. The major project for November is a food drive for the needy. This project, "Feeding the Hungry", is not only a local project but also a major FHA project throughout the state.

From now until the end of November, FHA members are selling new crop Irish Acres pecans as a fundraiser to help support our service projects and leadership training conferences. Shelled pecan halves sell for \$3.50 per one pound bag or a case of fifteen one-pound bags sells for \$50.00.

In January, the FHA members will spend two evenings at the Golden Spread Senior Citizen Center to offer sandwiches, fruit and involvement with the senior citizens of the community.

February 12-18 is National FHA Week with a variety of activities in the planning to include member recognition and teacher appreciation.

April is the month for highway clean-up as FHA members plan to don orange reflective vests and carry plastic bags to pick up trash on our adopted section of Highway 207 south of town.

Though service is a main aspect of FHA, social activities are also a major part of the organization. Dec. 10 is the date of the FHA Christmas Ball and a time for members and their guests to share in the festivities of the season. Other socials are scheduled throughout the school year in conjunction with several service projects.

The Region I Leadership conference is scheduled for Odessa in March and the State FHA Leadership Conference will be in Houston in April.

Future Homemakers of America is a student organization within the Vocational Home Economics Department at Spearman High School. Advisors to the organization are Mrs. Claudine Clark and Mrs. Connie Engle.

Rainbows & Ranglers

Rainbows & Ranglers Square Dance Club held its monthly Square Dance Thursday, Nov. 17 in the County Barn. Two squares enjoyed the calling of Curtis Sarah. Refreshments were served by the club. The "Salty Dog Rag" was danced by some and attempted by some.

Visitors from Perryton were Jack Clark, June Kindy, Carol Highfield, and Norma & James Burris; From Booker were: Clyde & Jo Ann Bechtold, and Ed & Lois Merydith;

Members present were: Joe & Wanda Archer, Myrna Biggers, Becky Byers, Benny & Joyce Byers, Danny & Debbie Herrington, Sonny & Marlane Nollner, Richard & Melba Olsen.

The next dance will be a Plus Dance on Thursday, Dec. 8, at 8 p.m. at the Hansford County Barn with Murray Beasley calling. The public is invited.

Square dance lessons will begin in January. Anyone interested in taking lessons should contact one of the members.

Little Theatre presents plays

The Amarillo Little Theatre will be presenting "A NIGHT OF ONE ACTS" on Wednesday, Nov. 30 and Thursday, Dec. 1, at 8 p.m. at the Amarillo Theatre Center, 2019 Civic Circle.

Four one-acts plays will be

presented both evenings and will feature the talents of four different guest directors and casts. Plays include "THE SHOCK OF RECOGNITION", "BIRDBATH", "APPROACHING LAVENDAR", and, "SUPRESSED DESIRES".

SPEARMAN FAMILY CLINIC
P.O. BOX 265
Spearman, Texas 79081

Dear Patients and Friends:

We are sorry to have to announce the closing of our Spearman Clinic.

Due to the loss of several physicians in Perryton, it has become increasingly difficult to provide the time and care we feel our patients deserve. We however, will be available to handle whatever needs you may have through our Perryton Clinic.

We have every confidence in the health care delivery system in Spearman, and will be available through the month of November to provide you with your records if you so desire. After December 1st, your charts will be kept in our Perryton office.

Past due accounts will be carried for a maximum of thirty days. If further arrangements are not made in this time period, they will be turned over to a collection agency.

It has been a great pleasure and honor to have made so many new friends here in Spearman and we will miss the hugs and handshakes, but we won't be far away and look forward to seeing you in Perryton.

Sincerely,
Rick A. Stewert, D.O.
Manon E. Childers, M.D.

Postmaster opens carrier examination

Donald S. Bloyd, Sectional Center Manager/Postmaster, Lubbock, TX has announced that the Rural Carrier examination for the Amarillo, TX area will be open from Nov. 28, 1988 through Dec. 2, 1988.

This examination will be used to fill Rural Carrier Associate and Rural Carrier vacancies in the following cities: Amarillo, TX, Canyon, TX, Groom, TX, Hereford, TX, Fritch, TX and Claude, TX.

Persons who are interested may apply at their local Post Office during the week of Nov. 28 through Dec. 2, 1988. No applications will be accepted prior to or after these dates.

Starting salary for Rural Carrier Associates is \$10.39 (average hourly rate). The salary range for Rural Carriers is \$19,824 - \$26,826.

Happy Thanksgiving



Begin your holiday feasts with quality products, good buys, and courteous service.

Double Blue Stamps
Monday, Tuesday, Wednesday,
Nov. 21, — Nov. 23.

We will be closed on Thanksgiving Day, Thursday, Nov. 24, so our employees may enjoy the holiday with their families.

Thriftway punch cards available now, through Christmas

\$20		\$150.00 WORTH EXTRA CIRCLE W BLUE STAMPS WHEN COMPLETELY PUNCHED OUT	\$40
\$20			\$40
\$20			\$40
\$20			\$40
\$20			\$40
\$20			\$40
\$20			\$40
\$20			\$40
\$20			\$40
\$20			\$40
\$5	\$5	\$5	\$5



THRIFTWAY

Spearman 505 Plains Shopping Center 659-3212