

HANSFORD COUNTY'S LEADING NEWSPAPER



The Hansford Plainsman



VOLUME VII, NO. 34

SPEARMAN, HANSFORD COUNTY, TEXAS 79081

THURSDAY, FEBRUARY 17, 1966



Five Hansford Men in Large March Military Draft Call

The largest military draft induction call in a number of years and the first to include married men since the Korean war has been issued for March 2.

The men come from Hansford, Ochiltree, Lipscomb and Hemphill counties.

Mrs. Don Shackley, board secretary, said Wednesday the quotas are increasing and the board is running out of single men.

Some boys who are 18 years and 11 months of age are being called for physicals, but they will not be inducted until they are 19.

We are also reclassifying some boys who have dropped out of school. The dropouts will be reclassified and be inducted, before the married men, Mrs. Shackley said.

The selective service board

were meeting Wednesday night to select the names of 20 men to be called for physicals on March 2. These men will be notified later this week.

Ben Flowers and Freddie Smith were the two married men called for induction on March 2.

Five men from Hansford County were called. They are Jay Fulfer, Laddie Cluck, Lloyd Carroll, Alvin Cator Jr., and Martin Hart.

Others to be inducted are Rodney Callaway, Ronald Fries, Kenneth Willis, Junior Pack, Billy Mathews and Charles Atchison.

Mrs. Shackley said men who receive orders from their draft board for induction will no longer have these orders cancelled if they subsequently join reserve or national guard units.

About 50 percent of the men sent to Amarillo for physical and mental examinations pass the tests. The number of rejections in February was higher because some of the men sent had been rejected earlier.

After a man has passed the examinations the board is notified that the man is acceptable and he may be called for induction in 21 days.

Before the Viet Nam conflict there were only eight to 10 men per year being inducted into the military service by the board in Perryton.

Heart Days For Business Start Monday

The "Heart Days for Business" fund campaign will begin here Monday, Feb. 21, according to Frank Massad, the business fund campaign chairman.

Massad was appointed to the job by the 1966 campaign chairman J.B. Cooke.

Massad said the campaign will begin Monday and continue through February 25.

Massad will be assisted in the campaign by other volunteer workers.

The heart fund campaign should have special meaning to businessmen, Massad said. In the pre-retirement years before 65, diseases of the heart and blood vessels take more lives than the next five leading causes of death combined, he pointed out. Heart diseases pose a constant threat to business and industry, afflicting skilled workers and executives in their most productive years.

Scribner Will Play With All-Stars

Jerald Ray Scribner, a senior in Morse High School, has been selected to play in the all star football game this summer for the 8 man coaching school.

Scribner was one of the four boys from District 5-B to make the team. Other boys from this district include Jody Rapp and Danny Longbine of Estelline and Loyd Coppedge of Guthrie.

Scribner, co-captain of the Morse Mustangs, was listed on the all district 5-B offense team

MOST SERIOUS--There were three accidents Monday morning on the snow covered streets. O.C. Roles of Spearman was injured in this one on Collard street when his small car skidded into the path of a car driven by a Balko, Okla. man.

Plainsman Photo

Slick Streets Cause Wrecks; Odis Roles Injured in One

One man is hospitalized with an injury received Monday morning in one of three accidents credited to the slick, snow covered streets.

Odis Clyde Roles of Spearman was still in the hospital Wednesday morning. His wife said he had a neck injury and a bump on the head.

Roles was injured Monday morning when his small foreign car went into a skid on Collard street and spun around into the path of an oncoming car, according to police officers who investigated the accident.

Officers said Roles car was hit in the rear by a car driven by Darrell Dean Morris of Balko, Okla.

Officers said Roles was going toward Perryton and Mor-

ris was traveling toward Spearman when Roles car skidded around on the slick street.

In a second accident a parked pick-up owned by Ray Martin was hit by a car driven by Mrs. Onita McCalman. The pick-up was parked on W. Kenneth and was hit when Mrs. McCalman's car skidded on the ice.

The third accident was a three car accident involving cars driven by Alfred Mason Tindell, Walter Duane Coates and Robert Lowell Hall Jr. The accident happened on 11th near the intersection of Cotter.

Officers said Tindell stopped on 11th and one car skidded into Tindell and the third car

skidded into the second vehicle. Damage was minor, officers said.

Sheriff Gives Annual Report

Hansford County Sheriff J.B. Cooke and his officers arrested 251 adults on felony and misdemeanor crimes during 1965, according to an annual report released this week.

Of this number only 18 were felony crimes. Of the 18 arrested, 18 were charged with crimes and 12 were convicted. Two cases were acquitted or dismissed and four are still pending.

In the felony crimes there was one murder, one forcible rape, one aggravated assault. All of these were charged and convicted.

Other felony charges include six burglary, seven larceny and two auto thefts. Six were charged with burglary, two were convicted and four cases are pending. All seven larceny cases were convicted. The two auto thefts were dismissed.

There were 216 misdemeanor cases. Of the number arrested, 212 were charged and 179 were convicted. There were 25 cases dismissed, one referred to juvenile court and 11 are pending.

The officers also arrested 21 persons on warrants from other counties or states. Of the 251 arrested, 234 were charged with crimes, 191 convicted, 27 cases were dismissed, one referred to juvenile court and 15 cases were pending at the end of the year.

The sheriff's officers also handled 10 juvenile offenses. There were four burglaries, one larceny theft, two vandalism cases and three run-aways.

Shufeldt Has Knee Injury

Kenneth Shufeldt will have his knee in a splint for two weeks while the injured knee mends.

Shufeldt injured the knee in the final basketball game Friday night and was examined in Oklahoma City Tuesday. The doctor did not think the knee would require surgery.

This was the third knee injury for the basketball teams this year. Two girls, Bethany Donnell and Kathi Pattison underwent surgery the past two weeks.

Miss Donnell is now home and Miss Pattison is still in the Oklahoma City hospital.

Kenneth's mother, said Wednesday that they visited with Miss Pattison Tuesday and she was recovering well. She did not know when she would be released from the hospital.

Trap Shoot Set

The Spearman Gun Club is having a registered trap shoot here Sunday at the range at the Spearman airport.

There will be 100 singles and 100 handicaps. Practice begins at 11 a.m. and the shoot starts at 1 p.m.



Jerald Ray Scribner

as a back and on the defense as a linebacker. He averaged 8.6 yards per carry and 7.4 unassisted tackles per game.

Mickey Cook, a senior at Morse, is listed as an alternate for the all star game. He also made the all district team, both of offense and defense.

There are 12 eight man football districts in Texas and 57 schools represented. The all star game will be between the East and West with District 5-B boys playing for the West.

The game will be played in central Texas in the latter part of July. Exact date and location will be determined in March.

Right-of-Way Dedicated

The additional right-of-way for Farm to Market Road 2018 between State highways 136 and 282 was dedicated Monday by the Hansford County Commissioners Court.

A right-of-way of 100 feet was dedicated for the extension of the FM road from 136 east to 282, a distance of 6.9 miles.

The new paved road will be south of Gruver from the electric sub-station at the top of Hansford hill west to the Gruver-Morse highway. It will join the farm-to-market road there that goes west to Sunray.

In accordance with the new criminal code passed by the

(Con't. on page 2.)

Supt's. Contract

Renewed at Waka

The contract of the Superintendent of the Waka school was renewed Thursday night by the Waka School Board.

Jim Jackson Jr., was given a new contract. He is heading the Waka schools for the first year. Waka also has a new coach and science teacher, Harvey Amos Wilson was hired to replace Larry Brummett who resigned Jan. 14 to accept a federal job.

Wilson is a West Texas State graduate. He coaches all athletics in the school and teaches science.

Lynxettes Set Game With No. 1 'A' Team

Spearman's Lynxettes take on the number one class A team in the state Friday night when they meet Springlake in Claude at 7 p.m.

In a recent Girls Basketball Coaches Association newsletter, Springlake was rated first in class A and Tulia rated first in AAA. Spearman meets Tulia Friday, Feb. 25.

Saturday night the Lynxettes jumped to a big 22-8 first quarter lead, then were able to beat Nazareth 53-48 in Palo Duro High School gym.

Nazareth is a class B district winner on the south plains.

Spearman's scoring was well balanced with all three forwards breaking into the double

figures. Barbara Wilde scored 20 points in the first half, then was shut off with only one point in the second half.

Karen Gibson and Marcia Shieldknight took up the slack with each hitting 16 points. Wilde had 10 field goals and one free shot. Gibson had five field goals and six free shots and Shieldknight had seven field goals and two free shots. The Lynxettes hit only nine of 19 gratis shots. Nazareth hit 18 of 28. They had only 15 field goals.

The Lynxettes will meet Electra in the bi-district game in the Shamrock High School gym Monday, Feb. 28. This is the sixth year the Lynxettes have won the district title.

Women's Bowling Assoc. Holds Annual Tourney

The Hansford County Women's Bowling Association held their annual tournament at Bowl Mor Lanes last weekend. Team winners were Equity in first place with 2855 pins, Bowl Mor Travel Team second with 2734 and Anthony Electric third with 2723. Doubles winners were first place Lou Harvey and Jodie

McCreauy with 1218, second place to Millie Craig and Velma Sanders with 1193, and third to Tubby Hays and Tommie Arbsland with 1158. Gwen Smith had 630 pins to win the singles first place, Ann Sanders second with 625; and Tubby Hays third with 613. Ann Sanders was first in the scratch event with 1532, Tub-

by Hays second with 1473 and Tommie Arbsland third with 1464.

Handicap first place winner was Ann Sanders with 1810, Tubby Hays second with 1770 and Millie Craig third with 1764.

Trophies will be presented at the next open meeting to be held April 8 at the Pioneer Cafe.

Mr. and Mrs. Fred Fewin spent the weekend visiting their son Fred Fewin, Jr. and family at Lubbock. The Fred Fewin Jr. family will be moving to Chicago this week.

Pampa SS Branch Office Open For Enrollment in Medical Program

The Pampa Social Security Branch Office will remain open to the public February 22, according to Virgil L. Holloway, Officer-in-charge. This is being done to give every opportunity for people to enroll in the medicare program. Even though a person does not plan to retire or if he has never worked under social security

he still may be eligible for the full medicare benefits. People who are not yet 65 may enroll no earlier than three (3) months before their 65th birthday. However, for anyone born before 1901 the deadline for enrolling in this new health insurance program, commonly known as "Medicare", is March 31. Time is

growing short. Act now! Get in touch with the social security office in Pampa, or contact the representative who comes to your area on his next visit.

In addition to remaining open to the public on Washington's birthday, Tuesday, February 22, the Pampa Social Security office is open until 8:30 p.m. each Thursday evening for the convenience of those who cannot come in during regular daytime hours.

The regular daytime hours of the Pampa office located on the ground floor of the Hughes Building remain 8:30 a.m. to 4:45 p.m. Monday thru Friday except on Thursday when the office remains open until 8:30 p.m. Schedules of trips to surrounding towns are posted in post offices and courthouses. Please check the time and place for the visit to your area. If you cannot meet the representative when he comes to your area, you may come into the Pampa office anytime, said Mr. Holloway. Likely you will not have to wait as long to conduct your business if you come to the Pampa Office.

The address of the Pampa Social Security Branch Office is 400 W. Kingsmill, Hughes Building, Pampa, Texas, 79065.

News from The Holt Community

Mr. and Mrs. Richard Gaines and family were weekend guests of Mr. and Mrs. James Beck at Enid.

Mr. and Mrs. Ira Harbour were hosts for a barbecue dinner Saturday night, Feb. 5 honoring a new arrival, Jo Ann daughter of Mr. and Mrs. Tom Jarvis of Stinnett. Present were Messrs. and Mmes. Doug Reed of Stinnett, Bill Sloan of Dumas, Monty Harbour, David and Roy, J.B. Buchanan, Doyle Jackson and family, the Jarvisses and the hosts.

Mrs. Maude Rosson was honored with a birthday party, Wednesday, Feb. 9. Gifts were received by the honoree and refreshments were served to Mmes. Raymond Kirk, C.W. Kirk, Travis Reger, Debbie and Dale, Wesley Jenkins, Phil Jenkins, Bertha Jenkins, Richard Gaines, Glenda Louise and Peggy, Berda Holt and Owen Pendergraft.

Mrs. Ervin Lamb of Springer, N.M. has been with her father who is in the Shattuck hospital. She came home with Mrs. Jake Lamb of Spearman and spent Friday night. Then, Saturday, they went to Springer for a few days.

Mr. and Mrs. Doyle Jackson and family were Saturday night guests of her parents, Mr. and Mrs. J.C. Galloway of Kress.

Mr. and Mrs. Howell Sampson and family were Saturday night guests of her parents, Mr. and Mrs. Bud Jackson of Kelton.

Saturday dinner guests of the Ira Harbour's were Mr. and Mrs. Dan Jackson.

Mmes. Claude Jackson and Jo McLaughlin spent Saturday visiting relatives in Mangum.



2332

*Manufacturer's suggested retail price for Special V-6, 2-dr. coupe. Price includes Federal Excise Tax and suggested dealer delivery and handling charge.

Would you believe your car's vehicle identification number might be worth \$2,332.00 in cash to you?

(This odd figure is also the price of a Buick Special*. Pleasant surprise, isn't it?)

HERE'S HOW IT WORKS: Check that car registration of yours. If the first symbols of your vehicle identification number on it match up with one of those listed at the right, you might have won yourself \$2,332 cash. No slogan to invent, no puzzle to solve. To find out for sure if you won, just hop down to your nearest Buick dealer's. He's got a list of complete winning numbers posted. (No, you don't have to own a Buick to have a winning number.) If your complete vehicle identification number appears on his list—you're in the money.

Residents of Kansas, Missouri and Nebraska may, if they prefer, send in a postcard to R. L. Polk and Co., P. O. Box 1347, Detroit, Michigan 48231 and receive this week's list of winning numbers by mail for comparison with their own vehicle identification number. An official entry form will be included. Sweepstakes limited to persons over 21 living in the continental U.S. Entries must be postmarked before midnight, Thursday, March 31, 1966. Not valid in Florida or states where prohibited by law.

011	2D63	2U74	313	3G47	3P72	3Z57	4D78	4J64	4Y85	626M	7J8	8K1
162M	2D64	2U76	314	3G62	3P74	3Z62	4E41	4J65	4Z41	626W	7K8	962P
163M	2D67	2U78	31511	3G65	3P76	41111	4E43	4J66	4Z43	628L	804C	963L
111	2D69	2W26	31611	3G69	3P78	412	4E51	4J68	4Z52	630C	804F	AJ1
21111	2E62	2W63	362A	311	3S31	41211	4E52	4J69	4Z53	631M	814M	BJ1
212	2E67	2W64	363W	3J4	3S54	413	4E53	4J8	4Z54	632L	834K	AK1
21211	2F31	2W67	3D60	3J60	3S57	41511	4E54	4K8	4Z61	635M	834T	BK1
213	2F41	2W69	3D63	3J63	3S65	41611	4E61	4P72	4Z62	636L	844K	L14
214	2F47	2Y85	3D66	3J65	3W54	422	4E68	4P74	4Z68	638T	854L	L34
21511	2J62	2Z51	3D67	3K31	3W57	433	4F31	4P76	512	639A	862L	
21611	2J67	2Z52	3D68	3K4	3W60	45311	4F32	4P78	604B	662D	863P	
263P	2K31	2Z61	3E60	3K41	3W62	45411	4F41	4S41	604K	663S	864A	
2A51	2S31	2Z62	3E63	3N51	3W63	45545	4F42	4S43	614M	6J8	864C	
2A52	2S41	2Z65	3E65	3N52	3W66	45645	4I4	4S68	614P	6K8	874A	
2A61	2S62	2Z67	3F31	3N53	3W67	4D64	4J41	4U51	620K	6I3	884K	
2A62	2S67	31111	3F32	3N54	3W68	4D72	4J43	4W41	622C	7I4	894S	
2A65	2U71	31112	3F41	3N61	3Y85	4D74	4J60	4W43	622T	734	8I2	
2D26	2U72	312	3G43	3P64	3Z54	4D76	4J62	4W68	625A	762K	8J8	

SEE THE WINNING NUMBERS AT YOUR BUICK DEALER'S

(A new list every week from now until March 31st. Good luck!)

There's an authorized Buick dealer near you. See his Double-Checked used cars, too.

1st WEEK

429 FIRST PRIZES 429

1st WEEK

Book Discussion Slated February 10

A textbook education workshop will be held at the high school Saturday, Feb. 10 beginning at 8:45 a.m. and lasting until noon.

Seventeen publishers will have representatives here to discuss textbooks to be adopted for the coming school year.

Invitations have been issued to 20 schools, with acceptances received from Stinnett, Dumas, Follett, Waka, Stratford and Spearman.

Mayor R.E. Vaughn will welcome the visitors.

The Hansford Plainsman
Publishers Inc.

Jim O. Davis
Burl G. McClellan



County-wide independent newspaper published every Thursday and Sunday at 209 Main St., Box 668, Spearman, Texas 79081. Second Class postage paid in Spearman, Texas 79081. Editor . . . Burl McClellan

Homemaking Notes

by Linda Webb
Home Demonstration Agent

New foods appear on the market everyday—many are convenience foods, which save time and money in family meal planning. It has been the opinion of many that the purchase of prepared foods would increase food costs, but this is no longer true in every instance.

In fact, for a considerable number of desirable products, both the quality and the cost are comparable, or advantageous, as contrasted with the more time-consuming products prepared entirely at home.

One reason for the increasing popularity of convenience foods has been the emphasis on improving their eating quality. More research than ever before goes into a product before it is marketed. The consumer is becoming more discriminating in her tastes, too. If her family doesn't enjoy the convenience food, she doesn't buy it again.

Food companies spend hundreds of thousands of dollars every year to introduce foods they hope the consumers will enjoy and buy again and again. First, the technologists and home economists in the research and development department of the food manufacturing company test the product. They work on the basic formula, or recipe, and figure how it can be produced in large quantities. Another department works with packaging materials, selecting those that keep the product in perfect condition for the longest time on the grocers shelf.

The home economics department tests the products under homelike conditions and gives suggestions that would appeal to homemakers. The market research department may also send variations of the product to a sampling of consumers for them to evaluate.

In the meantime, information is being prepared for the label. Labels must be attractive, informative and easy to read. The Federal Food, Drug and Cosmetic Law required that certain information be prominently and conspicuously printed on every label. Here is the information which is to be included:

1. The legal name of the food.
2. Name and address of the manufacturer, packer or distributor.
3. The net quantity of con-

portion of a day.
The court paid all the bills presented for payment including \$392.71 in charity bills for food and medical bills.

tents.

4. Dietary properties, if it is made for special dietary uses.

5. Statement of artificial coloring, chemical preservatives or flavoring.

6. Ingredients (unless a product such as canned peas or mayonnaise has a government "standard of identity.")

7. All information required by law to be on the label must be in the English language.

8. In the case of certain canned fruits and vegetables, the variety, style and packing medium (sugar syrup, water) are required.

9. If product is below a standard of quality, or below a standard of fill of container set by the Food and Drug Administration, this must be stated in a certain legal manner.

Of course, other information helpful to the consumer is often included, such as the number of portions, nutritional values, recipes or manufacturer's offers of booklets or other materials.

After the product is manufactured, packed in its container and labeled, it is ready for sale.

Usually the manufacturer introduces it in a few cities across the country called test markets. These cities are selected because they represent a cross section of consumers. This is the reason why a family in one town may be enjoying a product several months before its friends in the next town are able to buy it. If the product sells well in the test markets, then it will be sold nationally.

Not all work is concentrated on developing new food products; in fact a considerable amount of research is being conducted to make a good product even better. One of the most famous examples of this type of experimentation is the

Beltsville white turkey—a small meaty bird suitable for use by smaller families. Since its introduction the per capita consumption of turkey has almost doubled and turkey has become a year-round staple food rather than a seasonal item. Research in breeding, feeding, and managing all types of livestock is being conducted to produce more tender and flavorful meat with less fat and waste. Since these changes are more subtle the consumer is not always aware of the difference.

Funeral Services Held For Mrs. Marie Stedje

Funeral services for a former Hansford County teacher were conducted at 2:30 p.m. Tuesday in the Oslo Lutheran Church by the Rev. Robert Cordes.

Miss Marie L. Stedje, 54, Guymon business woman and civic worker died Saturday night in Guymon Memorial Hospital. She had been ill for several months.

Burial was in the Oslo Cemetery under the direction of Henson Funeral Home of Guymon.

Miss Stedje moved to the Oslo community in 1922 from Leland, Iowa. She taught in the Oslo, Doyle and Spring Creek schools for several years. Before moving to Guymon in 1948, she was a girl scout executive in Pampa.

The business woman had been associated with Knutson elevators in Guymon for 18 years. She was an active member of the Oslo Lutheran Church, the B&PW club in Guymon, American Association of University Women and the Beta Sigma Phi sorority.

She has also served on the Guymon Planning Commission, the Park Board and the United Fund board.

She is survived by a sister, Mrs. Emil Knutson, and brothers James, Gordon and Clifford Stedje, all of the Oslo community.

MYF Sponsoring Chili Supper

The Methodist Youth Fellowship of the First Methodist Church will have a chili supper in the Fellowship Hall of the church at 5:30 p.m. Sunday.

The menu will be chili, crackers, coffee, tea, cake and pie.

The price of the food is a donation to the MYF to help them with their work.

Hickey Hosts Discussion Club

The Discussion Club of the Sacred Heart Catholic Church met Wednesday, Feb. 9 in the home of John Hickey. The topic for discussion was "The Religious Background of The First Century".

Mr. and Mrs. Ralph Bynum served coffee to the following members: Mr. and Mrs. Jerry Morris, Clarence Renner, Father James Gurzynski, Mrs. C.A. Kleeberger, Misses Priscilla Thayer and Sally Pfab, both of Perryton, Mr. and Mrs. Joe Battenhorst, Mrs. James King, Mrs. Damon Gregg and Mr. John Hickey.

Future Readers of The Plainsman

Mr. and Mrs. Dean McClenagan are the parents of a son, Brian Dan born Feb. 12 in Hansford Hospital.

Mr. and Mrs. Paul Hagerman are the parents of a son born Feb. 12 at Hansford Hospital. He weighed 6 lbs. 13 oz.

Mr. and Mrs. Larry James Smith of Perryton are the parents of a son born Feb. 15 at Hansford Hospital. He weighed 6 lbs. 2 1/2 oz.

Right . . .

(Con't. from page 1.)

Legislature last year the court increased the pay for people called for jury duty in district court.

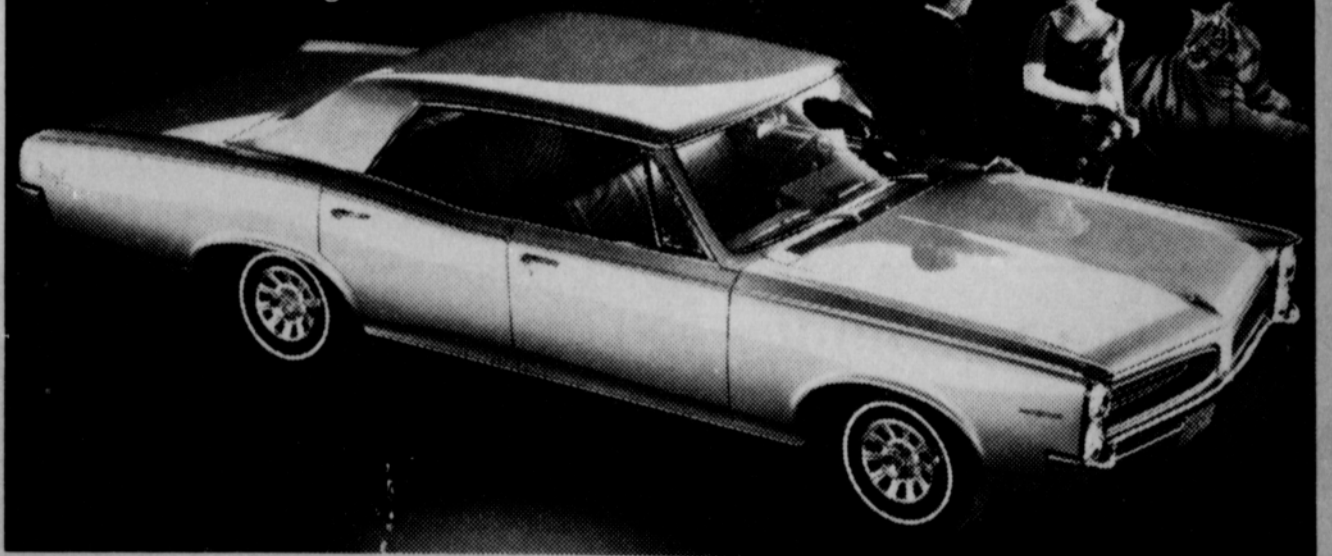
Under the new schedule all persons called for jury duty and excused will receive \$5 per day. Those called and accepted will receive \$10 per day or

portion of a day.
The court paid all the bills presented for payment including \$392.71 in charity bills for food and medical bills.

Calendar of Events

- | | |
|--------------------|--|
| THURSDAY, FEB. 17 | Twentieth Century Club
Home Science—Mrs. Raymond Kirk
Fine Arts—Mrs. Bill Massie |
| | Happy Homes HD Club—Mrs. Gordon Cummings |
| | Xi Zeta Upsilon sorority at 9:30 at Mrs. Sonny Windom's for trip to Amarillo. |
| FRIDAY, FEB. 18 | Spearman HD Club—Mrs. Claude Jackson |
| | Arts & Craft Guild—Mrs. Garrett Allen |
| MONDAY, FEB. 21 | Aletha Fuller Circle of WMU |
| TUESDAY, FEB. 22 | Lions Club |
| WEDNESDAY, FEB. 23 | General Meeting of WSCS—Methodist Church. |
| THURSDAY, FEB. 24 | B&PW Luncheon at HD Clubroom |
| | Rho Rho—Home of Mrs. Gene Sparks |
| | Rainbow Girls—Masonic Hall—5:30 p.m. |
| | Rebekah Lodge—IOOF Hall |
| | Jaycees |

Come in and take on a tiger!



The only thing that looks low-priced on a Pontiac Tempest is its price sticker.

And that's removable.

Take it off, and there's just a pure, unabridged Pontiac: crisp, Wide-Track style and handling. A handsome interior. Plus the effervescent performance of a new, overhead cam 6 engine that puts out with all the spunk of an 8, yet saves like the traditional 6. And of course, being a Pontiac, Tempest allows you the luxury of choice—with options in engines, transmissions, suspensions,

practically everywhere. And like all Pontiacs; Tempest also has a standard safety package with items like seat belts to buckle—front and rear. (That ought to do for now. We'll tell you the rest when you get here.)

Wide-Track Pontiac

COME IN AND TAKE ON A TIGER AT YOUR PONTIAC DEALERS—A GOOD PLACE TO BUY USED CARS, TOO.

NORTH PLAINS TRUCK & IMPLEMENT, CO., INC. HIGHWAY 15 PHONE 659-2421
SPEARMAN, TEXAS

Mrs. Jackson Has Program

Mrs. Kay Dean Jackson gave the lesson for the Town and Country HD Club when they met Tuesday, Feb. 15 in the home of Mrs. Dale Hawkins.

Mrs. Nedra Hays presided at the business and the devotional was given by Linda Bodey. Plans were made for a luncheon and hat sale to be held March 8.

Roll call was answered with "A Personal Goal for 1966" by Sherry Anderson, Toni Archer, Linda Bodey, Nellie Buchanan, Donetta Greene, Nedra Hays, Kay Dean Jackson, Jan Rinker, Nelva White, a new member, Barbara Bell and the hostess.

What used to be television station breaks are now more like compound fractures.

THE LAST NOTE: Then there was the shopper in the supermarket who couldn't remember the brand but could hum the commercial.

Panhandle Eastern Pipe Line Company offers for sale to the highest bidder, "As is-where is" the material described below:

Approximately 1500' 24" x .281" Wall x 71.25#/ft. Gr. B Seamless Used Line Pipe. This pipe, in random lengths, is located at Panhandle Eastern's Hansford, Texas Compressor Station which is, in turn, located approximately 10 miles south and two miles west of Hardesty, Okla.

The pipe will be sold as a lot on a per foot basis and bids submitted for a portion thereof will not be considered.

For further information and bid forms please contact Mr. E.L. Hoff or Mr. Hugh Walters at Panhandle's Liberal Kansas Sales Warehouse, Phone MA4-7241. The pipe may be inspected between the hours of 9:00 a.m. and 3:00 p.m. Monday through Friday, until March 3, 1966. The pipe may be inspected by contacting Mr. E.F. Wright, Station Superintendent. His phone is TU2-4725 (Hardesty). Mr. Wright will also have bid forms available.

No warranty, express or implied, is made with the sale of this pipe and Panhandle Eastern reserves the right to reject any and all bids.

Bids received in the Kansas City office after 12:00 o'clock noon, CST, March 8, 1966 will not be considered.

The successful bidder will be notified by March 11, 1966.

33-2c

SLIDES OF HOMELAND

Overland Presents Program on Norway

The Business & Professional Women's Club met Thursday evening at the Hospitality Room of the First State Bank with Lou Howerter and Ola Mae Henry as co-hostesses.

After a short business session, Mrs. Bud King introduced the guest speaker, Geir Overland, exchange student, who gave the program showing slides of his home country of Norway and his home town. This was followed by a question and answer period on customs and traditions of the Norwegian people.

Refreshments were served

from a beautifully appointed serving table carrying out the Valentine motif.

Present were Vera Campbell, Bell Crawford, Mable Edwards, Lou Howerter, Mable Jameson, Ola Mae Henry, Leona King, Ludie Mae Lovett, Jennie Massad, Rhoda Overton, Mary Lou Wysong, Mavis Bybee, Hazel Jackson, Evelyn Mackie, Mildred Roles and guests, Mmes. Sada Hoskins, Jack McWhirter, Mr. Harold Howerter and the guest speaker.

Class Meets In Russell Home

The Ruth Class of the First Baptist Church met Tuesday with Mrs. Bill Russell.

Mable Edwards, president, presided at the business and Mrs. Woodville Jarvis opened the meeting with prayer followed by the devotional given by Abbye Ownbey.

A social hour and refreshments were enjoyed by Mmes. J.W. Brown, E.S. Uptergrove, Woodville Jarvis, Mable Edwards, Abbye Ownbey, Bill Gandy and the hostess.

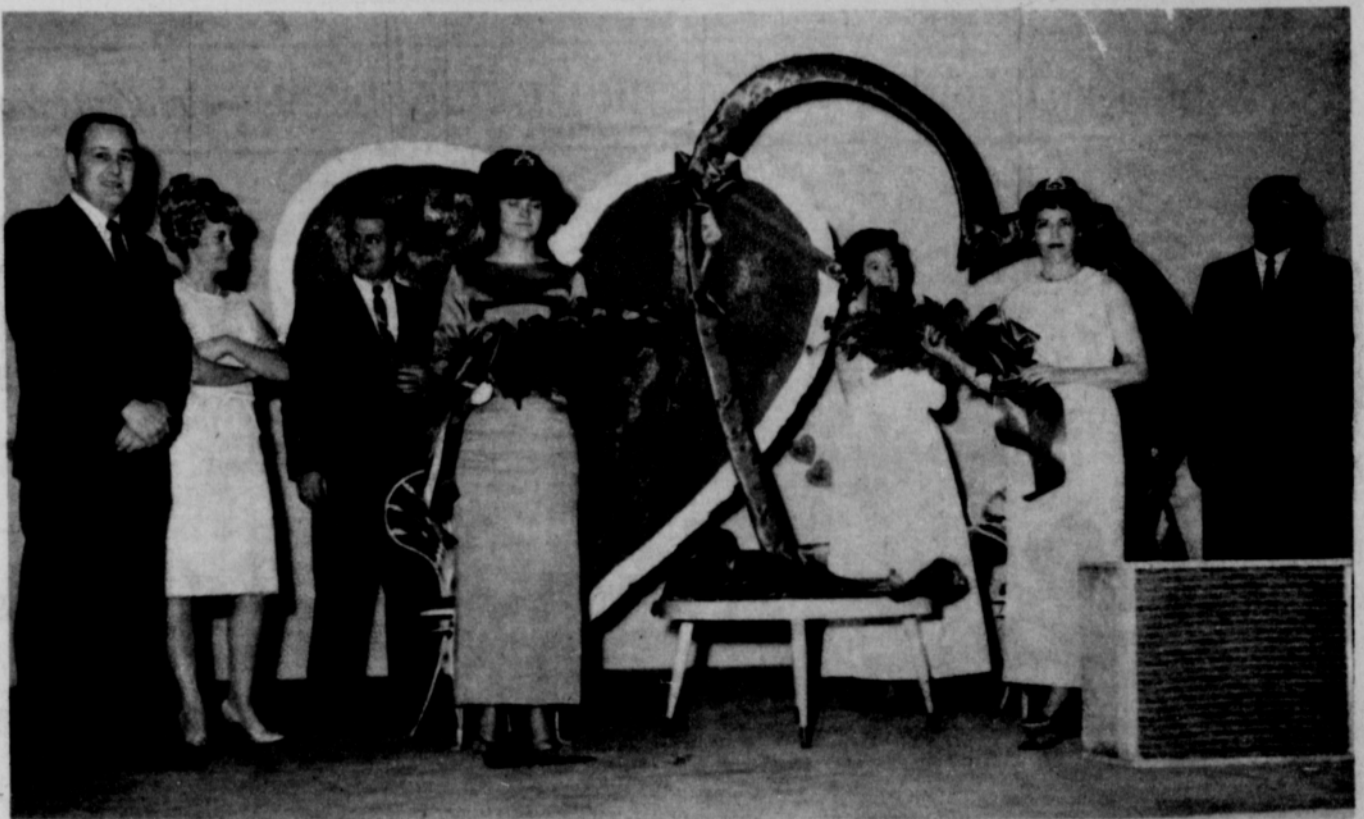
Party Honors Shelly Strawn

Mrs. Bill Strawn honored her daughter Shelly with a party Saturday afternoon in celebration of her 3rd birthday.

The little friends came at 2 and were taken to the movie "Old Yeller."

A beautiful heart-shaped red and white birthday cake and punch was served the children by Mrs. Strawn and Mrs. Richard Baxter.

Attending were Julie and Lisa Douglas, Connie Vernon, Jeanie McClellan, Brad Guthrie, Marla and Christina Baxter and the honoree.



VALENTINE ROYALTY----Mrs. James Lair (third from right) and Mrs. Jim Davis (fourth from left) were crowned Valentine Queens of Xi Zeta Upsilon and Rho Rho Chapter respectively, Saturday night. Also shown (left to right) are Jim Davis, Mrs. Jim Fox, Jim Fox, Mrs. Davis, Mrs. R.L. McClellan, Mrs. Lair, R.L. McClellan and James Lair.

Plainsman Photo

Local Beta Sigma Phi Chapters Crown Mrs. Davis, Mrs. Lair Valentine Queens

Mrs. Jim O Davis of Rho Chapter and Mrs. James Lair of Xi Zeta Upsilon Chapter reigned as Queens of the annual Queen of Hearts Ball

Saturday night sponsored by the local chapters of Beta Sigma Phi.

Valentine decorations at the Community Building were

highlighted with elaborate thrones and appropriate decorations on the stage where the queens were crowned. Other Valentine decorations were used throughout the room.

Mrs. Davis, escorted by her husband, was crowned by last year's Rho Rho Queen, Mrs.

Jim Fox, and presented with an arm bouquet of American Beauty roses. She wore a moss green formal gown of peau de soie.

Mrs. Lair, escorted by her husband, was crowned by last year's Xi Zeta Upsilon queen, Mrs. R.L. McClellan, and was also presented with an arm bouquet of American Beauty roses. She wore a white formal gown highlighted with iridescents.

Plans for the ball were under the direction of the two chapters' social committees with Mrs. Gene Sparks and Mrs. Don Floyd serving as chairmen.

Music was furnished by the Steve Mathews trio.

Mrs. Parris, Mrs. Nollner Present Drama Program

Rho Rho Chapter of Beta Sigma Phi met Thursday, Feb. 10 in the home of Beth Fox. Kay Nollner presided at the business meeting after which

the program titled "Drama-How To Read A Play" was given by Mary Kathryn Parris and Kay Nollner.

Attending were Jeanette Allen, Dody Beedy, Sarah Gooch, Deloris Guthrie, Ola Mae Henry, Judy Martin, Kay Nollner, Beverly Sparks, Toni Archer, Peggy Boatwright, Glenda Guthrie, Charlene Jackson, Peggy West, Mary Kathryn Parris and the hostess.

Presbyterian Women Meet

The United Presbyterian Women's meeting was held Feb. 9 at the church with Mrs. Wiles Burges as hostess.

For the program Mrs. Glen Bohanan gave the 3rd chapter of the study "The Reluctant Missionary" and Mrs. Nelson Turnbull, presided at the short business meeting preceding the program.

Present were Mmes. J.W. Davis, Chalmers Porter, Dwight Hutchison, Ben McIntyre, Max Baggerly, Nelson Turnbull, Glen Bohanan and Walter Spoonemore.

Mrs. Head Hosts Bridge Club

Mrs. Garland Head was hostess for the Tuesday Luncheon Bridge Club meeting held at her country home Feb. 15.

Helen Watson had high score and Barbara McClellan had second high.

Members present were Mary Cornelius, Dorothy Baggerly, Gertrude Jones, Ruth Skinner, Helen Etter, Elizabeth Holton, Barbara McClellan, Helen Watson and the hostess.

Mr. and Mrs. Ed Haner and boys spent Sunday in Pampa with her parents, Mr. and Mrs. Dallas Bowsher.

While Johnnie Rhea, manager of the Morse Equity, was attending a short course in Kansas City last week, Mrs. Rhea spent some time with Mr. and Mrs. Bud Beeson. Mrs. Beeson went to Morse with her and spent a couple of days. Mrs. Rhea returned home Friday.

Miss Pearson Sings for Class

The Dorcas Sunday School class met Tuesday evening at Fellowship Hall of the Baptist church for their regular business meeting with Pat Frances, hostess.

President, Doris Holderman gave the devotional and then introduced Melinda Pearson who sang a solo "Green Pastures" accompanied by Mrs. John Berry.

Mrs. Wesley Garnett, church librarian, conducted a tour of the library.

The meeting closed with prayer and refreshments were served to Rose Cummings, Melva Rook, Ann Frye, Joan Chisum, Pat Denham, Doris Holderman, guests, Mrs. Wesley Garnett, Melinda Pearson and Mrs. John Berry.

Scouts Study Morse Code

Troop 253 Junior Girl Scouts met Feb. 15 in the Girl Scout House.

The girls worked on the Morse Code and refreshments were served by Rhonda Jones to Linda Sutton, Pam Frye, Mary Lou DeArmond, Peggy Floyd, Dixie Sheppard, Brenda Thomas, DeAnn Reed, Debra Davis, Monete Slater, Becky Reynolds, Debra Johnson, Nancy Lair, Kelly Laws, Marcia Larson and leaders, Jo Larson and Betty Davis.

Valentine Party Held For Kindergarten

Mrs. Jesse Womble's kindergarten students had a Valentine party Monday.

The children had heart-shaped mailboxes filled with Valentines. They all wore Valentine hats. The entertainment was listening to records and seeing picture stories.

Refreshments of ice cream and cake were served the students.

Circle Studies Book of Acts

The Susannah Wesley Circle of WSCS met for a continued study of the Book of Acts Wednesday morning at the First Methodist Church. Mrs. Beth Daniel is the lesson leader.

Present were Margaret Adamson, Marie Beck, Marie Hays, Virginia Trindle, Donna Baxter, Patty Sheppard, Carolyn Messer, Virginia Sell, Linda McLain, Wanda Reed and Beth Daniel.

Mr. and Mrs. R.E. Lee and children of Odessa visited over the weekend with her parents, Mr. and Mrs. Arthur Adkison. Added Sunday dinner guests were the Charles Adkisons.

Mr. and Mrs. Cy Ainsworth were Saturday overnight and Sunday guests of Mr. and Mrs. Jim Davis and other friends in Pampa.

Mrs. Bryce Carroll of Seminole who has spent several days with the Loyd Carrolls left to return to her home on Monday.

Larry Archer, son of Mr. and Mrs. Earl Archer received his discharge from the service on Feb. 7. Larry finished 4 years last September and his time was extended 4 months. He is expected home this week.

Mrs. Loftin Is Hostess

The Fidelis Sunday School Class of the First Baptist Church met Tuesday evening in the home of the teacher, Mrs. A.F. Loftin. Mrs. Loftin gave the devotional after which Dee Deere was in charge of the social hour.

Attending were Mmes. Deere, Dot Jenkins, Frances Stump, Vaye West, Fern West, Alma Bradford, Mathilda Entreklin, June Conner, Ima Love Sims, Altha Groves and the hostess.

GS Cookies Go On Sale

The Girl Scouts will be going from house to house this week conducting their annual cookie sale. Orders will be taken by the girls and cookies delivered March 24. The cookies are 50¢ per box, and there are several varieties to chose from.

The Girl Scouts would appreciate your patronage.

Mr. and Mrs. Stanley Lair, Byron and David of Canyon spent the weekend in the home of his brother, Mr. and Mrs. James Lair and children.

Mr. and Mrs. Jim Strawn were in Littlefield Tuesday attending the funeral services for Mrs. Strawn's aunt.

Mr. and Mrs. Bill Balfinger of Perryton were in Spearman Saturday night for the Beta Sigma Phi Valentine Ball.

Mr. and Mrs. Jerry Taylor of Amarillo visited here over the weekend with her parents, Mr. and Mrs. Gayle I. Brown.



Day by Day

by Day McClellan

Our Hallmark salesman visited the store Tuesday and showed us all the newest Hallmark pretties. So, in a week or two we'll have some beautiful new Hallmark stationeries, additional cards (You know the ones you send when you care enough . . .) pretty gift wraps and tags, and spring party goods of all kinds.

It may not seem much like spring, weather-wise, but nevertheless, we're going to be ready and waiting when it does arrive, so keep that in mind.

...

Here's a little poem to refresh your memory along the lines of the correct usage of parts of speech.

Three little words you often see
Are Articles--A, An and The
A Noun's the name of anything
As School, or Garden Hoop or Swing

Adjectives tell the king of Noun
As Great, Small, Pretty, White or Brown.
Instead of Nouns the Pronouns stand:
Her head, his face, your arm, my hand.

Verbs tell of something being done--
To read, count, laugh, sing, jump and run,
How things are done the Adverbs tell,
As slowly, quickly, ill or well.

Conjunctions join the words together,
As man and woman, wind or weather.

The Preposition stands before,
A Noun, as in or through a door.
The Interjection show surprise
As Oh! How pretty! Ah! How wise;

The whole are called the Parts of Speech.
Which reading, writing, speaking teach.

...

My sister-in-law, Mrs. Bill Davis of Decatur, shares this luscious cookie recipe with us.

Seems the home economics teacher down there made them and set them out for the high school teachers to try. My brother, who is as fond of sweets as I am, liked them so well he brought the recipe home.

Can't say the name isn't right up to date can you!

HELLO DOLLY COOKIES

Melt one stick of butter
Add 1 1/4 cup graham cracker crumbs
Pat out in 11" x 16" pan
Add in layers
1 can angel flake coconut
1 six oz. package chocolate chips
1 cup of nuts
Cover with one can of Eagle Brand Milk. Bake at 275 degrees for one hour. Cut in squares.

Mr. and Mrs. Don Allen spent the weekend with her parents Mr. and Mrs. Lewis Frank at Clayton, N.M.

Glen Keim, has recently returned to school at Texas A&M after spending mid-term vacation with his parents, Mr. and Mrs. J.R. Keim.

Bill Hutton and Bruce Sheets of Spearman and Marty Fulton of Lakin, Kans. are spending a few days at South Padre Island fishing.

Final Rites Conducted For Well Known Oslo Farmer

James L. Dahl, 80, well known Oslo community farmer, died Friday morning Feb. 11 in the Newman Memorial Hospital in Shattuck.

The son of John J. and Alma Dahl, he was born January 25, 1885 at Clear Lake, S. Dak. He came to the Oslo community in 1926 and has been ac-

tive in farming since that time. He was an active member of the Oslo Lutheran Church.

Survivors include four sisters, Mrs. Frank Leirmann and Miss Clara Dahl, Arcadia, Calif.; Mrs. Emma Traxler and Mrs. George Lake, Wheeler, Wis.; five brothers, Peter, Amarillo; Henry, Clear Lake, S. Dak.; Oscar, Gruver; John, Roy, N. M. and Melvin Vernon.

Funeral services were held at Oslo Lutheran Church Monday Feb. 14 at 10 a.m. Pastor Robert Cordes officiated and Henson Funeral Home of Guymon was in charge of arrangements.

Mrs. Berry Is Hostess

The home of Mrs. Luther Berry was the meeting place for the Roundtable Thursday morning.

The book "Star Over Adobe" by Dorothy L. Pillsburg was reviewed by Mrs. Don Jones. Attending were Mmes. Glen Hiller, J.D. Helms, Woodville Jarvis, Jones and the hostess.

Mrs. May Gilbert of Esteline is visiting her son and family, Mr. and Mrs. Jack Gilbert.

The people of Texas and the United States use upwards of 453 pounds of paper and paper board products per capita each year.

P-TA County Council Holds Annual Unit Meeting

The Parent-Teachers Council met Friday, Feb. 11 at the Morse school.

Each local unit was represented and reports were given by the presidents of each unit. Health chairman, Mrs. Don Hudson, stated that individual personal health records will be sent to each child in the home for family health records. The local unit health chairman is to report to Mrs. Hudson the number of health records needed.

State by-laws and amendments were read by Mrs. D.E. Spoonmore. By-laws were accepted by the council.

Mrs. M.W. McCloy, county historian, asked for the local units to report at the next council meeting the number of life membership pins given and also the number of members that completed the parliamentary procedure course. The next county council meeting will be the first Friday in April.

Girl Scouts Hold Meeting

Cadette Troop No. 180 met Feb. 8 at 4 p.m. in the Girl Scout House to work on their badges.

Cindy Hutchison and Connie Seymour served refreshments to Cindy Dear, Bonnie Seymour, Cheryl Craig, Betty Nixon, Cindy Hutchison, Karen Waggoner, Diane Gregg, Melinda Crooks, Toni Delozier, Rita Simmons, Ann Lackey, helpers, Leslie Crooks and D'ee Collard and the leader, Mrs. Harold Crooks.

Party Honors Third Birthday

Brenda Longley was honored on her third birthday with a party given by her mother, Mrs. Darrell Longley, Saturday, Feb. 12 at 3 p.m.

The guests were given favors of play horns and birthday cake and ice cream was served. Attending were Carri Lynn Gilley, Tammy Scroggs, Steve Dortch, Kelly Shaver, Tammie and Kathy Born and the honoree.

Card of Thanks

It is difficult to find adequate words to express our deep appreciation for all the kindnesses shown us at the death of our father.

Thank you so very much for the flowers, cards, memorial donations, the visits, calls, food, and for remembering us in your prayers. A special thank you goes to our pastor, Wesley Daniel, for his comforting words and presence.

May God bless each of you in a special way. Mrs. Brynice Callaway and Family Mrs. Myra Grimes and Family

Mrs. McLain Hosts Club

The Blue Monday Bridge Club met Feb. 14 in the home of Mrs. L.S. McLain with all members present.

Mrs. J.E. Womble had high score and Mrs. Gwenfred Lackey had low.

Attending were Mmes. Delta Blodgett, E.D. Clement, F.J. Daily, Pope Gibner, Sam Graves, Vester Hill, Delon Kirk, Gwenfred Lackey, Bill Miller, R.W. Morton, J.E. Womble, Bill Gandy and the hostess.

Math Class Slates Feb. 22 Meeting

The seventh meeting of the Adult Math Class will be held Feb. 21 at 7:30 at the Jr. High Cafeteria. The final meeting will be March 14.

Mr. Thomas and Mr. Summerville will be in charge.

Rebekah Lodge Holds Meeting

The Spearman Rebekah Lodge #290 met Thursday, Feb. 10 in the IOOF Hall at 7:30 p.m.

Deanna Kenney, Noble Grand, and Inez Holland, Vice Grand, presided.

The Lodge will hold a bake sale on March 5. Ten members plan to attend a school of instruction at Pampa Thursday.

Dorothy Longley, Lodge Deputy, held a school of instruction.

Juanita Boxford and Ethel Black served refreshments to 13 members.

Have Meeting

The American Cancer Society Board of Directors will meet in the community room of the First State Bank Feb. 21 at 7:30 p.m.

Mr. and Mrs. Everett Tracy and Richard spent the weekend at Mulberry, Kans. visiting his parents, Mr. and Mrs. Frank Tracy and with her mother, Mrs. Charlotte McDowell at Liberal, Mo.

Want To Build a New Home, remodel or Repair Your Home ?

CALL R. L. UPTERGROVE

659-2677 Spearman

Out of Town, Call Collect

For Sale :

3 Bedroom House-Several Lots - 2 Commercial Buildings

Pre-Pioneer Day Show & Dance

Direct from WSM, Nashville &

"The Grand Ole Opry"

Friday, Feb. 18th

Community Bldg., Fair Grounds, Guymon, Okla.

SHEB WOOLEY - CLAUDE GRAY

Bill Wilbourne & Kathy Morrison

HAL WILLIS & THE LUMBERJACKS

Show At 7:00 P.M. — Dance At 9:30 P.M.

Adm. \$2.00 Show or Dance -Both \$3.50

Jr. Hi & Hi School - \$1.00 Each-Show or Dance

Sponsor - F W Jordan Quinn Post 1203

Put your finger over the first two letters of its name

Caprice

Now you know one of the nicest things this luxury car has going for it.



Caprice Custom Coupe with Body by Fisher

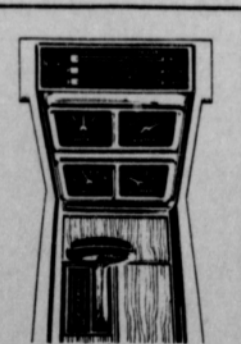
ELEGANCE THE CHEVROLET WAY



You can cover the coupe's special roof (it's different from any other car's) with black or beige vinyl to give it that convertible look.

And all this you can add certainly does it no harm: Strato-bucket front seats or a full-width seat with a folding center armrest. An AM-FM Multiplex Stereo radio. True four-speaker stereo. A steering wheel that adjusts up, down, in and out. Comfortron automatic heating and air conditioning. Set the thermostat for "Bermuda" the year round.

Eight features now standard for your added safety—including two-speed electric windshield wipers, windshield washers and back-up lights . . . all for a bright, clear picture of who's in front of you and what's behind you.



The Custom Coupe's also available with this center console housing special instrumentation and topped with the rich look of wood.



All kinds of cars all in one place... at your Chevrolet dealer's: Chevrolet • Chevelle • Chevy II • Corvair • Corvette

EXCEL CHEVROLET CO.

42 8055

SPEARMAN, TEXAS

120 MAIN

Get ready for

FUN!

Hear the best on radio

Top 40

Country-Western

Easy Listening

Variety

FOR YOU

EVERY DAY!

KBMF-FM

98.3 on your dial

THE WAY I SEE IT

Robert Cordes, Pastor
Faith & Oslo Lutheran

"The Son of man came not to be ministered to, but to minister, and to give His life a ransom for many." (Matthew 20:28)

A certain Jew had embraced Jesus Christ as the true Messiah that they had been expecting for years. The Jew though had to pay a price for

accepting Jesus. He had lost his business and been compelled to move to another city. He was rejected by his parents, and his fiancée. They disowned him for claiming Christ as the only Savior from sin and death.

Is it with shame we remember that in denying ourselves little things we had imagined we were taking up our cross and following the Lord? Had we suffered more for Christ, I wonder, would we not cherish Him more dearly?

Think of the greatest example of rejection. Jesus had taken up His cross and gave His life a ransom--paid it to God himself---to satisfy that righteousness had been shed for sinful man. Sinful men crucified Christ who sought to bring them salvation. The core of all tragedy is man's rejection of God.

Thus with new clarity we glimpse the torture of loneliness endured by Jesus on the cross. "My God, My God, why have You forsaken Me?" Jesus was experiencing the bitter load of all men's guilt--your guilt and shame.

Why will you not get up and worship this God who has done so much for you? Why will you continue to reject His Word by despising the preaching of it? Why will you not come to the One who can give you perfect peace--and then take up your cross and be counted for Him and as one of His own disciples? You give your answer to God!

So we see the Son of Man, yet true God, who came not to be ministered to but to give His life a ransom for many--for you. Help us to be willing to pay any price in order to re-



THE RIGHT NUMBER—Secretary of State Crawford C. Martin draws numbers from a hat to determine the sequence of 16 Constitutional Amendments on the general election ballot. The amendments, which contain a total of approximately 14,300 words, will be published four times each in Texas newspapers in August. Holding the hat is Mary Mae Hartley, associate editor of The Texas Press Messenger, official magazine of the Texas Press Association. The portrait is of Stephen F. Austin, the first Secretary of State for Texas in 1836.

4-H Boys & Girls Elect Officers

The Hansford County 4-H Boys and Girls Council met February 5 in the Home Demonstration Club Room in Spearman. The meeting was presided over by Delbert McCloy in the absence of the president.

Officers for the new year were elected as follows: President-Delbert McCloy; Girls Vice President-Patricia Henderson; Boys Vice President-Wade Parks; Secretary-Sylvia Parks and Treasurer-Rebecca Hutchison.

The Council voted to have a 4-H Camp next summer. Plans for National 4-H Week will be made at the next meeting which will be held early in September. They voted to sell "Slow Moving Vehicle" signs for a safety project. Fifty percent of the bake sale profits at the County Livestock Show will be put in a fund for round-up expenses.

Members present were Sylvia Parks, Patricia Henderson, Kaye Johnson, Wade Parks, Delbert McCloy, Mart Raser, Sherilee Maupin, Gloria Lopez, Vicky Cummings, Catherine Lyon, Rebecca Hutchison, Janice Trindle and John Wheeler.

main true to the faith. The core of all tragedy is man's rejection of God. Do you? Come, learn more of His love for you!

Mr. and Mrs. W.H. Gandy spent the weekend visiting their niece, Mr. and Mrs. Louis Amick and daughters of Plainview.

Mrs. Bill Strawn and children spent part of last week with her mother, Mrs. Vern Estes in Bovina, while Bill and her father and party were fishing near Hermanilla, N.M.

WE WELCOME ALL NEWCOMERS TO SPEARMAN

NEWCOMERS CALL

2822

FOR A

Free Shampoo & Set

or \$5.00 off on any price permanent



Ann Darnell

FROSTING SPECIAL regularly \$15.00 \$12.00

Stylist Beauty Salon

Ann Darnell

Rhoda Overton

YOU'RE A Winner Sweepstakes

Come by and get your Free Coupon Booklet Worth \$11.10 On Designated Purchases of Rexall Products.

Watch for the Feb. 21 Issue of Life Magazine to get your Rexall Number. Check for Winning Numbers on a Poster in our Store! Come in Today.

- 1st PRIZE: OLDS TORNADO
- 2nd PRIZE: TWO OLDS CUTLASS SUPREMES
- 3rd PRIZE: TEN HONDA 50 cc. MOTORCYCLES
- 4th PRIZE : 500 BOYS & GIRLS BIKES
- 5th PRIZE: 500 TYCO ROAD RACING SETS
- 6th PRIZE: EVERYONE WINS A COUPON BOOK

Spearman Rexall Drug

\$3000.

Farmers - Let Us Show

You How To Get

This Check

From J. I. Case Co.

R. L. McCLELLAN & SONS, INC.

SPEARMAN, TEXAS

Take your problems to Church this week — millions leave them there!

The Family Who Prays Together Stays Together



Attend

The Church Of Your Choice Sunday

—Weekly Opportunities For Worship—

Apostolic Faith Church V. E. (Hap) Blythe, Pastor

9th & Dressen
 Sunday School 10:00 a.m.
 Morning Worship 11:00 a.m.
 Young People 6:30 p.m.
 Children's Church 7:00 p.m.
 Evening Worship 7:30 p.m.
 Thurs.:
 Ladies Bible Study 2:00 p.m.
 Prayer Meeting 7:30 p.m.

Assembly of God Church Rev. T. J. Taylor, Jr.

403 N. Bernice
 Sunday School 9:45 a.m.
 Morning Worship 11:00 a.m.
 Sunday C.A.'s 6:30 p.m.
 Evening Worship 7:30 p.m.
 Wed. Bible Study 7:30 p.m.

Church of Christ Charles Milner, Minister

121 S. Haney
 Bible Class 10:00 a.m.
 Worship 10:50 a.m.
 Teen Age Class 6:00 p.m.
 Worship 7:00 p.m.
 Wed. Ladies
 Bible Class 9:30 a.m.
 Wed. Bible Study 7:30 p.m.
 Daily Television on Channel 3,
 Mon. thru Fri. 10:15 a.m.

Our Lady of Guadalupe Mission

Gruver
 Sunday Mass 4:00 p.m.

First Christian Church Rev. W. Graham

Rev. W. Graham
 Pugh, Minister
 29 S. Bernice
 Sunday School 9:45 a.m.
 Morning Worship 11:00 a.m.
 Youth Meetings 5:30 p.m.
 Evening Worship 7:30 p.m.
 Wed. Choir Practice 7:30 p.m.

Fellowship Baptist Church

Rev. W. S. Herring,
 11th & Archer
 Sunday School 10:00 a.m.
 Preaching Service 11:00 a.m.
 Sunday Evening
 Service 7:30 p.m.
 Wed. Evening
 Service 7:30 p.m.

Union Full Gospel Church Rev. George R. Bollinger, Pastor

1st & Endicott
 Sunday School 10:00 a.m.
 Morning Worship 11:00 a.m.
 Bible Classes Sunday 6:45 a.m.
 Evening Worship 7:30 p.m.
 Wed. Bible Study 7:30 p.m.

Pentecostal Church

Sunday School 9:45 a.m.
 Morning Worship 11:00 a.m.
 Evening Worship 7:30 p.m.

First Methodist Church Rev. Wesley Daniel, Pastor

407 S. Haney
 Sunday School 9:45 a.m.
 Morning Worship 11:00 a.m.
 M.Y.F. 6:30 p.m.
 Evening Worship 7:00 p.m.
 Women's Society of Christian
 Service Wed. 3:00 p.m. and
 9 a.m.
 Choir Rehearsal 7:30 p.m.

Waka Church of the Brethren Lawrence Lehman, Pastor

Sunday School 10:00 a.m.
 Morning Worship 11:00 a.m.
 Evening Service 7:00 p.m.
 Choir Practice
 Wed. 7:30 p.m.

Oslo Lutheran Church Robert L. Cordes, Pastor

18 mi. N.W. of Gruver
 Sunday School 9:45 a.m.
 (includes adults)
 Worship Services 11:00 a.m.

Faith Lutheran Church Robert L. Cordes, Pastor

11th & Bernice
 Worship Services 9:00 a.m.
 Sunday School 10:00 a.m.

Sacred Heart Catholic Church

Rev. James C. Gurzynski
 901 S. Roland
 Sunday Mass 9:00 a.m.
 Wednesday & Friday 8:00 p.m.
 Saturday Mass 8:00 a.m.
 Other Days Mass 7:30 p.m.

First Baptist Church Rev. Luther M. Berry, Pastor

123 S. Bernice
 Sunday School 9:45 a.m.
 Morning Worship 10:55 a.m.
 Training Union 5:30 p.m.
 (Oct. 1-Apr. 30)
 Training Union 6:00 p.m.
 (May 1-Sept. 30)
 Evening Worship 6:30 p.m.
 (Oct. 1-Apr. 30)
 Evening Worship 7:00 p.m.
 (May 1-Sept. 30)
 Wed. Evening Prayer
 Hour 8:00 p.m.

First United Presbyterian Church

1021 Cotter Drive,
 Sunday Church
 School 9:45 a.m.
 Morning Worship 11:00 a.m.
 Evening Study Group 7:30 p.m.
 Wed. Choir
 Practice 7:30 p.m.



Sponsored By

**R. L. McCLELLAN
GRAIN CO., INC.**

FIRST STATE BANK
Member F.D.I.C.

B & B GRAIN CO., INC.

The Hansford Plainsman

Arts & Craft Guild Has Meeting

Mrs. Ned Turner entertained the Arts and Craft Guild when they met Friday, February 11 for an afternoon of china painting. Attending were Mmes. F.J. Daily, W.L. Russell, Clay Gibner, Pope Gibner, Garrett Allen, Nolan Holt, P.A. Lyon, Guy Fuller, Kiff White, J.E. Womble and a guest, Mrs. Bill Gandy. The next meeting will be Feb. 19 in the home of Mrs. Garrett Allen.

SCHOOL MENU

MONDAY, FEBRUARY 21
 Country Fried Steaks
 Buttered Rice
 Seasoned Green Beans
 Combination Tossed Salad
 Mixed Fruit Cup
 Bread
 Chocolate or Plain Milk
 TUESDAY, FEBRUARY 22
 Meat Loaf
 Mashed Potatoes
 Seasoned Spinach
 Carrot Sticks
 Cherry Cobbler
 Texas Toast
 Chocolate or Plain Milk
 WEDNESDAY, FEBRUARY 23
 Barbecue on Bun
 Seasoned Blackeye Peas
 Buttered Corn
 Apple Wedges
 Banana Pudding
 Chocolate or Plain Milk
 THURSDAY, FEBRUARY 24
 Chicken Pie
 Buttered Peas and Carrots
 Cabbage-Pickle Relish Slaw
 Lemon Gelatin with Fruit
 Honey-Peanut Butter Spread
 Hot Rolls-Butter
 Chocolate or Plain Milk
 FRIDAY, FEBRUARY 25
 Hamburger-Mustard or
 Tuna Salad Sandwich
 French Fries-Catsup
 Lettuce-Tomato Salad
 Dill Pickle Slices
 Applesauce
 Chocolate Chip Bar
 Chocolate or Plain Milk

Bowling Beat

SCATTER PINS LEAGUE 2-10-66		
TEAM	WON	LOST
Equity	54	22
Anthony Electric	53	23
Taylor-Evans	48	28
Grunewalds	38	38
Pioneer Rest.	37	39
Gruver Motor	33	43
G&G Foodliner	30	46
Ideal	11	65
HIGH TEAM GAME		
Grunewalds	664	
Pioneer Restaurant	640	
Anthony Electric	601	
HIGH TEAM SERIES		
Grunewald's	1792	
Taylor-Evans	1771	
Pioneer Restaurant	1753	
HIGH INDIVIDUAL GAME		
Bertie Frazier	190	
Darlene Pierce	186	
Jewell McClellan	185	
HIGH INDIVIDUAL SERIES		
Jane Meek	505	
Bertie Frazier	496	
Helen Dry	483	
PIN BENDERS 2-11-66		
TEAM	WON	LOST
Nancy's Cafe	54	26
McClellan Grain	49	31
Bowl-Mor	43	37
Brock Ins.	43	37
Lee Oil	42	38
Independents	36	44
Crawford Imp.	271/2	521/2
Hansford Co. Mot.	251/2	541/2
HIGH TEAM GAME		
McClellan Grain	507	
Lee Oil	498	
McClellan Grain	478	
HIGH TEAM SERIES		
McClellan Grain	1442	
Lee Oil	1386	
Bowl-Mor	1281	
HIGH INDIVIDUAL GAME		
Dorothy Baggerly	199	
Kate Farris	193	
Gwen Smith	192	
HIGH INDIVIDUAL SERIES		
Dorothy Baggerly	519	
Kate Farris	500	
Tubby Hays	500	

**Buy, Sell, Trade
Hire, Rent, Find
THROUGH THE**

WANT ADS

**HANSFORD
HOSPITAL NEWS**

FOR SALE

FOR SALE: General Electric washer, yellow, excellent condition, \$85.00. Call 2466 weekdays 9 to 5.
29-tfc

FOR SALE-Two bedroom house, corner lot, excellent location. Phone Mrs. Wilburn McGuire 2359 after 5:30 p.
29-tfc

FOR SALE-1963 Chevrolet pick-up. Phone Mrs. Wilburn McGuire, 2359 after 5:30 p.
29-tfc

FOR SALE: Tract 1: Lot 7, Block 14, original Town of Spearman, Hansford County, Texas, on Main Street.
Tract 2: The South 132 1/2 feet of W 1/2 of Out Lot 6, lying adjacent to town of Spearman, Hansford County, Texas.
Sealed bids will be taken separately on each tract until 5:00 p.m. on February 28, 1966, when bids will be opened. Tract 1 to be sold with title as is. Deed without warranty of title to be given on tract 1. Abstract furnished on tract 2 and Warranty Deed given, 10 days to examine abstract. Cashier's check for 10% of each bid must accompany bid. Money will be returned on bids not accepted. Not necessary to be present at opening of bids. Bids accepted will be accepted subject to being able to secure all signatures necessary to convey the property. Right is reserved to accept or reject any and all bids. Balance of purchase price on bids accepted will be due on delivery of deed. Mail or deliver bids to Mary Sparks, 220 West 5th Avenue, Spearman, Texas, where bids will be opened.
28-9c

FOR SALE-7 room, 2 bath, good sturdy built house, 301 N. Hoskins, Sam Condo. Call 659-2368.
1-tfc

FOR SALE-3 bedroom house, redwood fenced backyard, 1010 S. Haney. Call 659-3103 or 659-2754.
25-tfc

FOR SALE-4 Wheel drive jeep pickup, 1954 Chevrolet 2-door hardtop. Phone 659-3181.
32-tfc

FOR SALE-14 Volume set of Junior Classics and 20 Volume set of Collier's Encyclopedias. Phone 659-2067.
23-tfc

FOR SALE-1963 American-Westwood 2 bedroom mobile home. Excellent condition, 119 N. Brandt, Phone 659-2454 after 6 p.m.
24-tfc

FOR SALE-Two registered wire haired terrier puppies, Irvin Boyd, Star Route, Guymon, Okla.
31-4p

FOR SALE-Used Furniture: good living room suite, couch, dinette sets and excellent Barcalounger. Excellent mahogany dining room suite-6 chairs, buffet and table, Beedy Furniture, Plains Shopping Center.
34-tfc

FOR SALE-3 bedroom, 2 bath brick home, large rooms, 306 Chase St., Gruver, Texas, phone Ft7-2329.
32-tfc

FOR SALE--61871 Silvertone 21" color television with chromax colorguard, \$495.95. Phone 659-2573, Sears, Plains Shopping Center.
33-5c

FOR SALE--4W47V6590 Coldspot air conditioner, 28,000 BTU, \$298.00, Phone 659-2573, Sears, Plains Shopping Center.
33-5c

FOR SALE--Acrilan carpet with foam rubber pad and installed for \$8.65 sq. yard. Sears, Phone 659-2573, Plains Shopping Center.
33-5c

FOR SALE-3 bedroom house. Call 3494.
32-4p

Small ownerships prevail in the forest land ownership pattern in East Texas. There are approximately 120,000 owners of commercial forest land in East Texas.

Dry Texas yellow pine lumber has as much as 400 percent greater nail and bolt holding power than other construction species, according to the Texas Forestry Association.

FOR SALE--26L6470 Kenmore automatic washer delivered and installed \$194.95, Phone 659-2573, Sears, Plains Shopping Center.
33-5c

FOR SALE: 1957 GMC pick-up V-8, 4-speed, long bed. Call 659-2677.
33-tfc

FOR SALE-Beautiful tiny toy poodle puppies, Colors cream or apricot, AKC Registered. Papers furnished. Will hold for Easter. Phone 659-2082, 428 S. Bernice.
32-tfc

FOR SALE--47L662 Coldspot Freezer, 21 cubic feet, holds 736 pounds. \$249.88. Phone 659-2573, Sears, Plains Shopping Center.
33-5c

FOR SALE--Special on central air conditioning. Phone for free estimate. Phone 659-2573, Sears, Plains Shopping Center.
33-5c

FOR SALE-Ironrite Ironer, Trombone, Accordion, two bicycles, also antiques, 306 Chase St., Gruver, Texas, phone Ft7-2329.
32-tfc

Club Meets In Parrish Home

Mrs. Hartley Simmons presided at the Hansford HD Club meeting Feb. 14 in the home of Mrs. Gordon Parrish. The devotional was given by Mrs. Ellzey Vanderburg and council report was given by Mmes. Daniel Sheets and Simmons. Roll call was answered with a new recipe. It was announced that April 28 is the

POLITICAL ANNOUNCEMENTS
The following persons have authorized this newspaper to announce their candidacy for the following offices in the Democratic Primaries, May 7, 1966.

STATE REPRESENTATIVE 83RD DISTRICT
A.C. Hallmark
U.S. REPRESENTATIVE 18TH CONGRESSIONAL DIST.
Walter Rogers
STATE SENATOR 31ST SENATORIAL DIST.
Grady Hazlewood
COUNTY, DIST. CLERK
Mrs. Keese Richardson
Donald Heath
COUNTY TREASURER
Mrs. Juanita Kemper
Mrs. Selma Dahl Reneau

REPUBLICAN CANDIDATE STATE REPRESENTATIVE 83 DISTRICT
Jack H. Hart

SERVICES

Amarillo Daily News & Globe Times home delivery. Call 2685.
14-tfc

SERVICE-Ditches from 3-12 inches, any desired depth. S. D. Jones 659-2809. Harold Shaver 659-3474.
17-tfc

Stock water hauling. Dependable service. Olin Sheets, 659-3167.
4-tfc

-WANTED-

Four kittens to give away, 1106 S. Haney.
34-2c

TRUCK DRIVERS NEEDED-Applications are being taken for professional drivers. Good working conditions and pay. Apply to Permian Corporation in Spearman.
32-4c

date of the district meeting at Dalhart.

Mrs. Vanderburg gave a short talk on safety of slow moving vehicles.

Mrs. Sheets gave the demonstration on new foods on the market.

Refreshments were served by the hostess to members Mmes. Virgil Floyd, Hartley Simmons, Daniel Sheets, Ellzey Vanderburg, Stella White and one guest, Lorene McGuire.

LOST

LOST: Beagle Hound, two years old, Collar and tags. Call Wilbur Hull, 659-2397.

Don't throw lighted cigarettes from your automobile. Use your car's ash tray. Help Keep Texas Green! Your ash tray is a forest fire prevention tool in easy reach.

According to the United States Forest Service, many wellbuilt frame structures have withstood dozens of hurricanes with winds exceeding 125 miles per hour.

Burton's TV
Your PHILCO Dealer
106 E. Kenneth Spearman, Texas
Phone 659-2121

E. C. Greene & Sons Agency
Real Estate-Loans Insurance-Cattle Aluminum Pipes
410 Davis, Spearman Phone 659-2587

For Quick Courteous Service
Chevron Gasolines Atlas Tires & Accessories Washing-Greasing
QUICK, COURTEOUS SERVICE
Loren Simmons
SIMMONS CHEVRON SERVICE
Phone 659-9985 Plains Shopping Center

YOUR HALLMARK STORE
Hallmark Cards
PLAINS MAN OFFICE SUPPLY INC.
OFFICE SUPPLY HEADQUARTERS FOR HANSFORD COUNTY

PLAINS MAN OFFICE SUPPLY INC.
OFFICE SUPPLY HEADQUARTERS FOR HANSFORD COUNTY
PHONE 659-2441 BOX 727 SPEARMAN, TEXAS

Patients in Hansford Hospital this week are Sarah Townsend, Ann Frye, Lucille Hagerman and son, Frank Kirk, Naman Swyden, Roy Oliver, Joe Day, Judith Wilmeth, Willie Mathis, Margaret Novak, J.W. Lowrey, Robert Greene, Nicki Rylant, Rose Whitehead, Rae Woods, Odis Roles, Sandra Smith and son, Nat Ramirez. Dismissed Elizabeth Galbreath, Edna Hays, Charles Beagle, Pat Brodie, Pamela Dry, Leonard Dedmon, Patsy Gates, Obera Winkler, Jannie Ravan, Glenda Guthrie, Henry Terrell, John Fickling, Rosalynn McClenagan and son.

Haner Receives 20 Year Pin

Ed Haner, employee of the Humble Oil and Refining Co. received his 20 year pin Friday Feb. 11. Mr. B.O. Lilly of Oklahoma City made the presentation. Ed has worked 14 years in Pampa with the pipeline department and for the past 6 years with Humble at Spearman.

City Directory

CLEANERS
CLEANING PRESSING CARPET CLEANING SERVICE COIN OPERATED DRY CLEANING FREE PICK UP & DELIVERY PHONE 659-2511
Wardrobe Cleaners
Oscar Donnell
302 MAIN ST. SPEARMAN, TEXAS

DENTISTS
F. J. Daily D.D.S.
16 SW COURT STREET SPEARMAN

ELECTRICIAN
Anthony Electric
Industrial, Commercial and House Wiring Heating and Air Conditioning Contracting and Repairs Fully Insured
PLAINS SHOPPING CENTER PHONE 659-2441 BOX 727 SPEARMAN, TEXAS

TOMMY GOOCH AGENCY
FARM BUREAU INSURANCE
Spearman, Texas

Farm-Ranch Loans
Improving-Refinancing Developing-Purchasing Long Term-Competitive Interest-No Appraisal Fee

BROOKSHIRE-ELLIOTT LOAN & REALTY CO.
'We make loans anywhere'
COME BY 211 East 7th St. OR Telephone 806-935-3325 Dumas, Texas 79029

Cummings Refrigeration HEATING AIR CONDITIONING SALES & SERVICE SPECIALIST
659-2721 SPEARMAN

Ed Dear
PART OF ALL YOU EARN... SHOULD BE YOURS TO KEEP
703 Cotter Drive Spearman, Texas
Office 2516 Home 3073

TELEGAGS by BOB NOBLES

IS YOUR WIFE HAPPILY MARRIED?
I'LL SAY SHE IS-- SHE'S GOT ME SCARED TO DEATH OF HER.
I'M GOING TO TOOT THE HORN FOR...
BOB'S SALES & SERVICE
GIVE MORE REAL SATISFACTION EACH AND EVERY TIME.

Bob's SALES and SERVICE
WE SELL THE BEST and SERVICE THE REST
SPEARMAN, TEXAS
Phone 659-3222

Mrs. Tom Allen's Brother, Sister-in-Law Die Within Week

Funeral services for the brother and sister-in-law of Mrs. Tom Allen of Spearman were held Feb. 3 and Feb. 8 in Bristo, Okla.

Funeral services were held Feb. 3, for W.S. Thomason, 75, in Bristo. He had been ill for many months.

His wife, Mrs. Thomason, 74, suffered a fatal heart attack a few days after his death. Services for her were held on Feb. 8 in Bristo.

Both services were held in the chapel of the Bates Funeral Home.

Pete Fishet, Ronnie Gibson and Harold Harris have returned from a deep sea fishing trip in the Gulf of California on the west coast of Mexico.

HOOVER DAM

Hoover Dam, on the Colorado River, is 726 feet high. Construction required 4,400,000 cubic yards of concrete — enough to build a whole city block higher than the Empire State Building.

THE MORSE CODE

Allen McCloy, the 18 year old son of Mr. and Mrs. Wilson McCloy of Morse, is listed on the Dean's Honor Roll for the fall semester at Panhandle A&M college at Goodwell.

A student must achieve at least a 3.3 average to be listed on this honor roll. McCloy is a 1965 graduate of Morse High School.

Plans are being made by the Morse Lions Club to stage the annual queen's contest on Feb. 24 at the school auditorium.

All high school girls from Morse are eligible to enter the contest. The winner will be entered in the district contest which will be held in Hereford in April.

Miss Patricia Henderson, the 1965 queen, will crown the new queen.

The Morse PTA will sponsor a study course on Medical Self-Help. This study will begin Thursday (tonight) at 7:30 p. m. at the school.

Johnny Brumley, superintendent of Morse School, will be the instructor for the course. He is well qualified, having

taken several courses in first aid, civil defense and having a number of college hours in health courses.

Brumley states that this course is designed to assist people when competent medical help is not available. He plans to secure qualified speakers for some of the sessions.

The first meeting of the Dale Carnegie course at Morse was held Monday night at the Community building. There were 56 present with Joel Combs of Pampa teaching the course. He was assisted by five graduate students.

If enough enrollments can be secured, the group will organize into two classes with one class meeting on Monday and the other on Tuesday. There must be 60 students enrolled to justify two classes.

Morse PTA Executive committee met Tuesday for the purpose of making plans for Public School week and for the regular February meeting.

The regular meeting of the Morse PTA will be Monday

night with the two Citizenship Seminar delegates, Delbert McCloy and Patricia Henderson, presenting the program.

Founder's Day will also be observed with a special program at this meeting.

Morse Community 4-H Club met at the school Wednesday afternoon.

The program was given by Terry Womble and Lynn Parks who presented a safety demonstration on artificial respiration.

A share the fun skit was discussed and plans were made to enter such a group in the county contest in March.

The Morse Junior Leaders 4-H Club held a short business meeting Monday night.

Bob Womble was elected as the new county council delegate and Doug McCloy was selected as alternate.

Plans were made for a meeting to be held Feb. 28 at the school auditorium when Geir Overland, foreign exchange student at Spearman, will present a program.

Mrs. Tom Dortch presented a program "New Foods on the Market" to the Morse Home Demonstration club Thursday afternoon. Hostess was Mrs. H. B. Parks.

Mrs. Dortch had samples of various new foods now available and she told of the processes used in the manufacture of such items.

Recreation was led by Mrs. Dean Lieb.

Those present were Mmes. O. E. Hext, M. W. McCloy, Besse Henderson, Lily Johnson, Ella Parks, Mack Dortch, Frank Lewis, Tom Dortch, Mary Gillispie, and the hostess.

A personal shower was given for Gail Pool on Thursday af-

ternoon at the home of Gene Cator. Co-hostess was Carol Hall.

Guests included Bobbie Reid, Shirley McCammond, Charlotte Alexander, Virginia Hill and Mary Schooling.

Several couples gathered at the Jerry Alexander home Saturday night to wish Charlotte Alexander a happy birthday.

An evening of bridge was enjoyed by Linda and Grant Miner, Charles and Bobbie Reid, Al and Lila Carter, Ray and Gretchen Alexander and Jerry and Charlotte Alexander.

Mr. and Mrs. Jack Dortch and family from Amarillo were guests of his mother, Mrs. Mack Dortch Sunday. Others gathering at the Dortch home were the Doyle Dortchs of Spearman, the Joe Reiswigs, Tom Dortchs and Desmond Kellys.

Mrs. Annie Harris returned home Sunday after spending several days in the Berger hospital.

Mmes. Mack Dortch and Desmond Kelly visited Friday in Pampa with Mrs. James Long. They also visited with Mrs. Fannie Flowers who stays with Mrs. Long and with Mrs. Mortimer, both former residents of Morse.

The junior class of Morse High School are working on a three act play, "Her Kissin' Cousin." Plans call for the play to be presented at the school auditorium Friday, March 4.

Mrs. Bruce Sheets flew to Dallas Thursday to visit her daughter, Mr. and Mrs. Jeff Noell. She returned home Monday.

Mr. and Mrs. Ned Turner had as weekend guests, Mr. and Mrs. Louis Held of Hildreth, Nebr.

WMU Circles Have Meetings

Mrs. A. F. Loftin was hostess for the Alma Reed Circle of WMU Wednesday morning in her home.

Mrs. Don Jones was in charge of the business session and also read the prayer calendar. Mrs. R. H. Gray led the group in prayer.

The program was given by Mrs. Don Denham, assisted by Mmes. John Brown, Luther Berry, Don Jones and Gray.

Others present were Mrs. Wren Holt and the hostess. The Betty Morris Circle met at the First Baptist Church Wednesday morning with Barbara Howe as hostess. Mrs. Howe presided at the business and the prayer calendar was read by Gowonda Golightley.

The program was in charge of Mrs. Howe with Magda Garnett closing with prayer. Attending were four members, Mmes. Garnett, Howe, Golightly and Verna Jarvis.

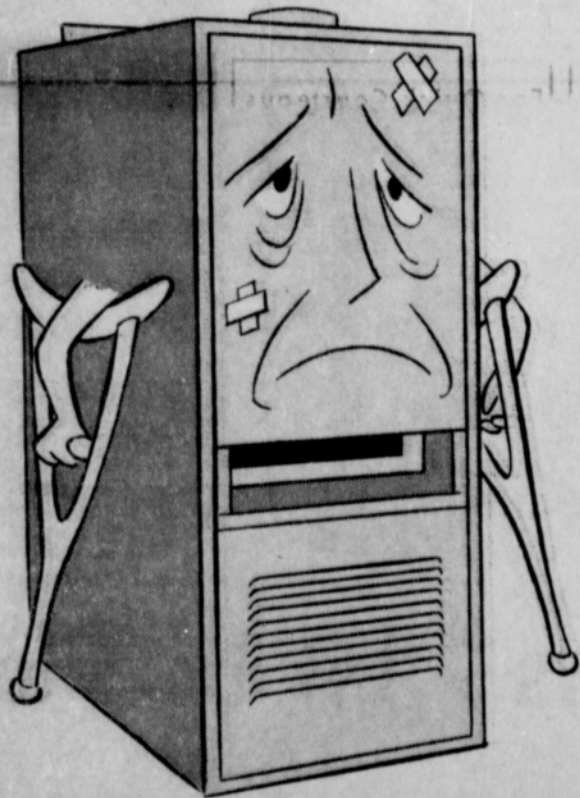
Preceding the meeting coffee was enjoyed with the Kezzia Mae Circle.

The Kezzia Mae Circle met at the church with Frances Kilgore presiding at the business and presenting the lesson. Prayer calendar was read by Wanda McIver.

Present were one new member, Mrs. Johnson, Viola Hutton, Dana Hazelwood, Lena Stephenson, Betty Uptergrove, Wanda McIver, Joan Eaton and Frances Kilgore.

Use a roast meat thermometer when roasting meat. It is the only accurate way to be sure a roast is done.

Is your present furnace in need of repairs?



Check the advantages of FLAMELESS ELECTRIC HEAT

Electric heat is clean, safe, modern and wonderfully comfortable. It requires no venting, is economical to install, has high efficiency, long life and low maintenance. Whether you replace your present furnace with an electric furnace or with individual room units, you get even, automatically controlled warmth for truly enjoyable wintertime living. Come in and let us tell you more about it . . . soon!

COMMUNITY PUBLIC SERVICE

Your Electric Light & Power Company



Read this chart, and it's easy to see why Chrysler is setting all-time sales records again:

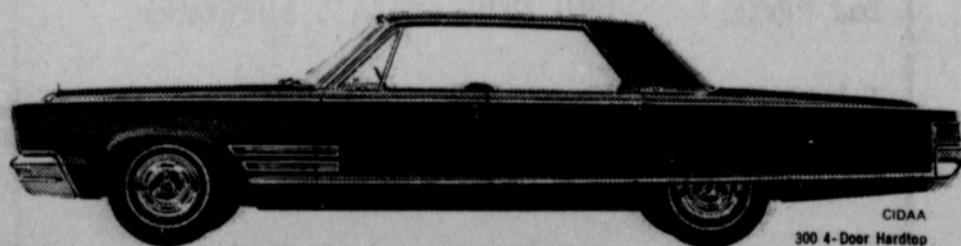
Make	Wheelbase	Overall Length	V-8 Engine Cubic Inch Displacement	Base Monthly Payments	Difference Per Month
CHRYSLER NEWPORT	124"	219.0"	383	\$65.80	—
FORD GALAXIE 500	119"	210.0"	289	\$58.32	\$7.48
CHEVROLET IMPALA	119"	213.2"	283	\$58.45	\$7.35

BASIS OF COMPARISON—All models are two-door hardtops equipped with V-8 engine, automatic transmission, power steering, power brakes, radio and heater. Monthly payments have been computed on manufacturer's suggested retail price, 1/3 down and 36-monthly payments. Not included are the extras you pay for on practically any new car: whitewall tires, deluxe wheel covers, destination charges, state and local taxes, interest, insurance, and licensing fees.

CHRYSLER'S 5-YEAR/50,000-MILE ENGINE AND DRIVE TRAIN WARRANTY WITH THIS COVERAGE: Chrysler Corporation warrants, for 5 years or 50,000 miles, whichever comes first, against defects in materials and workmanship and will replace or repair at a Chrysler Motors Corporation Authorized Dealer's place of business, without charge for required parts and labor, the engine block, head and internal parts, intake manifold, water pump, transmission case and internal parts (excluding manual clutch), torque converter, drive shaft, universal joints, rear axle and differential, and rear wheel bearings of its 1966 automobiles, provided the owner has the engine oil changed every 3 months or 4,000 miles, whichever comes first, the oil filter replaced every second oil change and the carburetor air filter cleaned every 6 months and replaced every 2 years, and every 6 months furnishes to such a dealer evidence of performance of the required service, and requests the dealer to certify (1) receipt of such evidence and (2) the car's then current mileage.

One thing the chart can't show: the kick people get out of moving up to a car of Chrysler's size and class for just a few dollars a month more than the car they were thinking of! Come in and see how easy we'll make your move up.

AUTHORIZED DEALER  **CHRYSLER** MOTORS CORPORATION



Move up to Chrysler—the big car you can afford

SPEARMAN MOTOR CO.

316 W. Kenneth Ave.

Spearman, Texas

Be "SHELF CONSCIOUS"

When It Comes to Prices

Sure, "specials" save you money--when they're on things you like, need and want. But the place to look for BIG SAVINGS is at everyday low SHELF PRICES on foods & supplies you buy the most of--most often. And CUT RATE shelf prices are LOW PRICES up & down every aisle. Combined with our "specials", and we have plenty of them, our shelf prices save you more money on more items.

Values for Fri. & Sat., Feb. 18-19



Make Sure Your Children drink the best...

SHURFRESH MILK



Sara Lee Frozen Assorted Your choice **CAKES** each **69¢**

Del Monte 46 oz. Cans **Tomato Juice** **29¢**

Shortening **Snowdrift** 3 lb. Can **69¢**

Imperial Pure Cane U.S. # 1 Red **Sugar** 20 lbs. **79¢**

Arizona-Sweet-Juicy **Oranges** 4 lbs. **39¢**
 Firm-Red-Ripe lb. **Tomatoes** **23¢**



Fresh lean **Ground Beef** **49¢** lb.

Lean Northern Fed **Pork Steak** lb **59¢**

COFFEE Maxwell House lb. Can **75¢**

J. & L. Farms Grade A Large **EGGS** Dozen **53¢**

Plastic Jug Gallon **DISTILLED WATER** **47¢**

Bring your... **BUCCANEER** *Bonus* **COUPONS AND RECEIVE**

50 FREE STAMPS

With the Purchase of Each of These Items!

- PINTO BEANS** 4 lbs. Arrow
- FLOUR** Shurfine 10 lbs.
- ICE CREAM** 1/2 Gallon
- BACON** A.F. Brand Hickory Smoked Sliced 1 lb.
- TOMATOES** HUNTS' 3 cans No. 300 Size

75 FREE STAMPS

With the Purchase of Each of These Items!

- POPCORN** Georgie Porgie 2 lb. bag
- SWEET PICKLES** Shurfine 22 oz. Whole
- CORN** Four Shurfine No. 303 Cream or Whole Kernal
- DOWNY** 32 oz. Size
- FRANKS** A.F. Brand All Meat Two 1 lb. pkgs.

100 FREE STAMPS

With the Purchase of Each of These Items!

- RED SALMON** Shurfine or Del Monte 2 cans 16 oz.
- SHAVE BOMB** Gillette Foamy 98¢ Size
- SWEET MILK** Shurfresh Two 1/2 gallons
- LISTERINE** 14 oz.

Toothpaste Crest Extra Large Tube **53¢**

Dog Food Dash Tall Can **3 for 39¢**

Jumbo SALVO \$2.29	Giant DASH 79¢
Giant BOLD 79¢	Regular CHEER 30¢
Personal Bars IVORY 4 for 32¢	Giant TIDE 69¢
Giant OXYDOL 83¢	Giant DUZ 83¢
Giant DOWNY 89¢	Giant CASCADE 83¢
Giant Liquid JOY 65¢	Bath Bars SAFEGUARD 2 for 44¢

Gerbers Strained Fruits & Vegts. **BABY FOOD** Glass Pak **3 for 29¢**

Shurfine **LUNCHEON MEAT** 12 oz. Tin **39¢**

CRACKERS Nabisco Premium Saltine lb. Box **31¢**



Dan River Muslin Fitted or Flat Twin or Double

BED SHEETS \$1.88 each

Dan River 'Matching' **PILLOW CASES 88¢** Pair

Cut Rate GROCERY

with \$2.50 purchase & over

BUCCANEER STAMPS



Edward Howk

Mrs. Howk To Join Husband In Europe

Mrs. Edward Howk of Austin, the former Lou Clark of Spearman, will go to Dublin, Ireland, in April to join her husband who is touring Europe with the University of Texas Madrigal singers.

The 21 member group is on a U.S. State Department tour of Europe as a cultural exchange program.

This concert tour began Feb. 1, and will be completed in England with a concert in London on April 23. During this tour the singers will present 53 concerts in Portugal, Spain, Austria, Egypt, Lebanon, Cyprus, Greece, Italy, Luxembourg, Belgium, Ireland and England.

After the Madrigal Singers complete their Ireland concerts they will go to London for a final concert, then a professional recording session.

Howk is a tenor with the group and is a senior music education major at the University of Texas. He has been active in the University choral organizations and played an important role in gaining effective representation for the School of Fine Arts within the Student Assembly.

He plans a career in high school and college choral music. He plans to do graduate work following completion of the Bachelor's degree.

Mrs. Howk completed her Bachelor's degree in May and is employed as a dorm supervisor in the Austin Detention Home. She is a social worker.

Gilliam's Mother's And Grandfather's Rites in Granbury

Funeral services for Mrs. C.H. Gilliam Sr., of Koppel, mother of Charles Gilliam of Spearman, will be conducted at 2 p.m. today in Granbury.

Final rites for John Lockhart, the father of Mrs. C.H. Gilliam, were conducted at 2 p.m. Wednesday in Granbury.

Charles Gilliam was notified Tuesday that his mother had been hospitalized with pneumonia. He left for Granbury soon after receiving the message.

When he arrived there he learned that his grandfather had been found dead in his home where he lived alone. Tuesday night Mrs. Gilliam died.

Lorance Dossett is doing as well as can be expected after undergoing surgery last Friday in Northwest Texas Hospital in Amarillo.

Don't be a litterbug! Help Keep Texas Green and Clean!

Forests contribute to the regularity of stream flow by reducing the rate and amount of runoff, and allowing rain water to soak into the ground.