



The Hansford Plainsman



VOLUME V., NUMBER 26

SPEARMAN, TEXAS

THURSDAY, APRIL 9, 1964

School Feels Economic Ax



Our senior Senator Ralph W. Yarborough apparently remembered this is election year and there are still a few cattlemen or ex-cattlemen in the state to vote.

Just a few weeks ago he came out in his weekly newsletter saying the import agreements worked out with New Zealand and Australia were going to be a big help in solving the cattle price collapse. We were going to eat our way out of the low prices and everything was just going to be rosy.

Apparently someone has passed him the word that it is not so. In his April 2 newsletter, he came out against the measure.

He says because the livestock industry has been severely damaged by unfair competition from abroad he is co-sponsoring a measure to cut back and regulate meat imports.

Sen. Yarborough now wants to cut back imports to an average of the imports from 1959 through 1963.

All of our esteemed lawmakers sure might have a closer feeling for the wishes of the voters, if the voters went to the polls every year, or if the voters could remember things that happen more than six months before elections.

Some of the Lynx football team members would like to have their complaints of being overworked back, now that it looks like the complaints have hurt the athletic program.

Some of the players approached us Tuesday asking if we would publish a statement signed by the team members stating they are not being overworked.

The two boys who came to see us said the team did not like the changes being made in the athletic program and the prospects of losing their coaches.

The two boys said the whole team has worked hard for two years and have not won many games. Now, the boys said, the team feels it can win this fall if the coaches stay.

The two said the team met Tuesday and there was not a single player who really thought he was being worked too hard. Some of them admitted they complained about the hard work when they got home in the afternoon so they could get out of work around home.

After the two team spokesmen left, we remembered they were two of the boys who were supposed to have been paddled so hard by the coaches for miss-

(Con't. on page 2.)



TOP SHS ATHLETES—These four students won the top awards at the athletic banquet Saturday night. Shown (left-right) are Johnny Crawford, outstanding football player, Mike Babbs, Fighting Heart Award, Phyllis Patterson, outstanding Lynxette, and Burton Williamson, outstanding in boys basketball.

PLAINSMAN PHOTO

Spearman P-TA Will Host District 19 Convention

"We the Parent Teacher Association Co-operate in the Family Story" is the theme for

Hearing Set Monday Night

A public hearing before the City Council on the changing of zoning at the corner of Eleventh and Roland will be held at 8 p. m. Monday in the City Hall.

The hearing was called after a protest was filed on the City Zoning Board's decision to change the zoning on a 300' X 300' area at the corner of Eleventh and Roland from an A zone to a C zone for the construction of a home for Senior Citizens.

Didlake and Trout Developers of Borger requested the change in the zoning to allow them to build the home at the location.

A delegation of residents living in the block north of Eleventh presented a petition to the Zoning Board opposing the change in zoning. Persons signing the petition were Mr. and Mrs. Ray Lackey, Mr. and Mrs. Lloyd Carroll, Mr. and Mrs. George Dix, Mrs. J. O. Hollar and Mr. and Mrs. Guy Remy.

After the zoning board voted

(Con't. on page 2.)

the District 19 convention of the Texas Congress of Parents and Teachers in Spearman High School, April 20-21.

The theme of the convention was taken from the next year's plan of study for the PTA.

Speakers for the convention will be Mrs. Cary Snyder, State Vice President of Fort Worth who will bring the State Association's greetings, Dr. John McFarland, State Safety Civil Defense Chairman of Houston, will talk on "How Parent-Teacher Associations Help Build Better Schools".

Music will be by the Spearman High School Choir.

Bill Harter will be coordinator of all workshops. Dr. Firman Haynie of Borger and President of District 19 will preside over the general sessions with Mrs. Sam Reck, Vice President as his aide.

The Spearman PTA will be the host organization. Mrs. E. J. Callaway is general chairman with Mrs. D. E. Spoonmore as co-chairman. They are working with the local unit president, James P. Linn.

Committee chairmen are: Registration, Mrs. Bill Brown; Platform Decorations, Mrs. Jack Crum; State Flowers, Mrs. P. A. Lyon, Jr.; Exhibits, Mrs. Bert Sheppard; Housing, Mrs. Everett Tracy; Pages and Ushers, Student Council under the direction of High School Principal Frank Cockrell; Board Meeting Arrangements, Mrs. William Massie; Banquet, Mrs.

Pete Fisher; Luncheon, Mrs. Jimmy Shieldknight; Publicity, Mrs. J. R. Stump.

Programs for the convention are being furnished by the Chamber of Commerce.

Revival Starts Here Monday

A revival meeting begins Monday, April 13, and runs through next Sunday at the Spearman Church of Christ.

Gene Glaeser of Corpus Christi and son-in-law of Mr. and Mrs. Frank Dale of Spearman will be the evangelist.

Glaeser is a graduate of Abilene Christian College, and has his Master's degree from Texas A&I.

He has been preaching for five years. He taught school for five years. He has served congregations in Pearsall, Odem and Windsor Park in Corpus Christi.

There will be morning services Tuesday through Friday at 10 a. m. His topic will concern "Giving Yourself to Christ." Tuesday will be "Through Personal Work"; Wednesday, "Through Teaching"; Thursday, "Through Worship"; and Friday, "Through Service."

The evening services will begin at 7:30 Monday through

(Con't. on page 2.)

Physical Education Loses Two Teachers

Spearman's new school board took big chunks out of the school's physical education department in an economy

drive, after buying 150 new band uniforms, Monday night.

After canvassing Saturday election and certifying the vote count, the board reorganized. The official vote count for the candidates was: Max Baggerly 252, Ray Moore 230, William J. Massie 196, Charles Gilliam 158, Jimmie Hester 106, R. E. Sanders, Jr., five write-ins and Vernoi Crooks one write-in.

Vaughn, Holton, Copeland Win City Elections

A record vote returned Mayor R. E. Vaughn for a third term and put Richard Holton and E. J. Copeland in the two aldermen's positions.

A new record number of voters, 472 went to the polls in the election.

Vaughn easily outdistanced his two opponents. He received 309 votes, Clarence Pettit received 97 and Otto Holland 53.

Richard Holton proved the best vote getter. He polled 409 votes and E. J. Copeland was returned to the council for a third term with 380 votes. The third candidate, Ray Lackey received 117.

After canvassing the returns and swearing in the new members, Baggerly and Moore, Dr. D. E. Hackley was named president, Lloyd Buzzard, vice president and Ray Moore secretary.

After tax assessor Troy Sloan told the board they could expect about the same tax income this coming tax year, and Supt. James Bramlett said the growing school could not operate on the same amount of money, the board started looking for ways to cut expenses.

The apparently unpopular physical education program was the prime target. President Hackley, and members Ira Harbour and Baggerly favored cutting the high school requirement for physical education from four to two years and cutting the program out of many of the lower grades.

Jack Lovett quickly opposed tampering with the program and said physical education was important to the students.

The opponents of physical education contended the program interfered with class scheduling in high school and denied students the chance to take more subjects. The PE teachers could also be used for more classroom subjects.

Supt. Bramlett and High School Principal Frank Cockrell strongly opposed the change. They pointed out that with seven class periods per day, most students are allowed to take five solid subjects besides band and physical education.

The Texas department of education frowns on schools letting anyone other than a small percent of the top students take more than four solid subjects per year.

Cockrell pointed out that by letting students out of PE, the students who could and would carry only the required four solids would have three study halls per day, if they were not in band.

The principal said we cannot force a student to take more than four subjects, and many of them with three off periods per day will be discipline problems.

(Con't. on page 2.)

Celebration Starts Here Wednesday

Hansford County's Diamond Jubilee Celebration will be opened Wednesday at 8 p. m. in the Spearman Football Stadium.

The Celebration opens with a County-wide religious program. Dr. Winfred Moore of the First Baptist Church in Amarillo will be the speaker.

This meeting will feature a presentation of the religious history of the county and a song service.

Thursday night the Celebration moves to the Spearman High School Auditorium where a big Hootennanny will be staged. There will be prizes for the best entertainers and a night of folk music.

Friday is the Miss Hansford County Day. The entries for the contest will attend a tea in the A. R. Bort home in Gruver, then the contest will be at 8 p. m. in the Spearman High School Auditorium.

The special attraction for the contest will be Miss Texas who will act as Mistress of Ceremonies. Approximately 20 girls have entered the show. The Queen's Ball will be held after

(Con't. on page 2.)

The Hansford Plainsman



Hansford Plainsman Publishers, Inc.
Jim Davis Burl McClellan

County-wide independent newspaper published every Thursday at 209 Main in Spearman, Texas. Second class postage paid in Spearman, Texas
Editor.....Burl McClellan
Production Mgr.....Jim Davis
NOTICE: Any erroneous reflections upon the character, standing or reputation of any person, firm or corporation which may appear in the columns of The Hansford Plainsman will be corrected gladly upon its being brought to the attention of the publishers.

School Board ...

(Con't. from page 1.)

Finally on a 4-2 vote the board agreed to continue the program as set up by the administration. Lloyd Buzzard said in making the motion that the administrators of the school were better informed on the needs of the students than the board members.

Even though he received the vote, Supt. Bramlett agreed to make changes in the program.

The thrashed out changes will leave the physical education program like this:

Four years of physical education will still be required, but band and athletics can be substituted.

There will be only one girls' physical education teacher in the system. She will teach physical education in grades seven through 12. There will be no program for girls below these grades.

Larry Dawson will have high school physical education and as far into the junior high school as the scheduling of classes will allow.

Fred Dawson will be moved from high school physical education and history, to James Pendergraft's social studies classes in the eighth grade.

Ken Thomas will be moved to the eighth grade coaching duties, he taught seventh grade this year. Perry Coursey will be made seventh grade coach.

This year he is sixth grade coach.

There will be no organized athletic program for boys or girls in the sixth grade.

Band director Sam Watson presented three different styles of uniforms to the board. After inspecting the uniforms and discussing ways to pay for the uniforms out of an already over-spent budget, the board voted to accept bids for the uniforms.

It was estimated the 150 uniforms will cost approximately \$12,000. Watson said the bids would probably run from \$76 to \$80 per uniform.

It was voted to ask for bids on paying for the uniforms on a two year basis. However, if this makes them cost much more than a cash price, the money should be borrowed until it can be repaid from the budget.

Three days were taken out of the school holidays next year to allow school to be completed before June 1. Classes will begin Aug. 31, this fall.

Two days were taken off the Christmas holidays and one from the Easter vacation. The school year will have four extra days to allow for days lost because of unforeseen loss of school days.

The board accepted the resignations of Mr. and Mrs. Enoch Estep and Mrs. Rowena Day.

Worley Smith was hired to teach English and Social Studies in High School. Supt. Bramlett said he was qualified in these fields. He was highly

recommended by both Boise City, Okla. where he taught three years and also by the Stinnett administration. He is teaching there this year.

On a split vote the board passed a motion that all meetings stop at midnight and another meeting be held to take care of any business that cannot be transacted before the deadline.

Supt. Bramlett urged as many board members as possible to attend the regional school board members meeting in Canyon and the National Convention of School Board Members in Houston this month. The school will pay the members travel and hotel expenses for the three-day Houston meeting.

Bramlett stressed that both meetings will be of great benefit to the members.

Home ...

(Con't. from page 1.)

to allow the change, Ray Lackey filed a protest to the decision on behalf of the five protesting families. This makes it necessary for the council to hold a public hearing.

Persons filing the petition said they were not opposed to the home being located in Spearman, they just did not want the area to the south of them changed from residential zoning.

Bill Didlake said after the protest was filed that the home would be built in Hansford County, but he did not know where it would be.

The home is to be a large colonial style home with a capacity of 36 persons. It is to cost \$150,000 to build.

In discussing the construction of the home, Didlake stressed it would be put in a good residential area, for it was a home and not an institution to be put on "the wrong side of the tracks" or stuck out in the country.

Tall Texan ...

(Con't. from page 1.)

ing workouts.

We did not get the statement. The boys called us Tuesday night and told us the coaches had asked them not to print the statement.

...

The Negroes continue to work and demonstrate for Civil Rights. The ironic part is if they force through the present Civil Rights bill there will be no individual rights left for anyone, no matter what their color might be.

You read it FIRST in The Plainsman!

Church ...

(Con't. from page 1.)

Sunday, Monday, "How We Got Our Bible"; Tuesday, "The Gospel"; Wednesday, "What Shall I Do Then With Jesus Which Is Called Christ?"; Thursday, "The Great Invitation"; Friday, "The Importance the Lord Places on Baptism"; Saturday, "O Foolish Galatians."

Sunday morning he will speak about the "End of The World" and Sunday evening the topic will be "The Judgment."

The church extends an invitation to everyone to attend the services.

Celebration ...

(Con't. from page 1.)

the contest.

Saturday is the big day with a fly-in breakfast, Old Timers Reunion, Parade, Barbecue, Rodeo, and Dance at 9 p. m.

The final performance of the rodeo will be Sunday afternoon.

This year's theme will naturally be the Diamond Jubilee. There is no size regulation on floats.

Non-commercial floats will receive cash prizes of \$50, \$30 and \$20. There will be first, second and third place trophies for commercial floats.

There are trophies for decorated bicycles, small cars, scooters and wagons, small children in costumes, bands, cowboys and riding clubs.

The Riding Club trophies are being furnished by the Rolling Plains Wagon Train, Spearman Riding Club and the Panhandle Corral.

Out of town entries in the

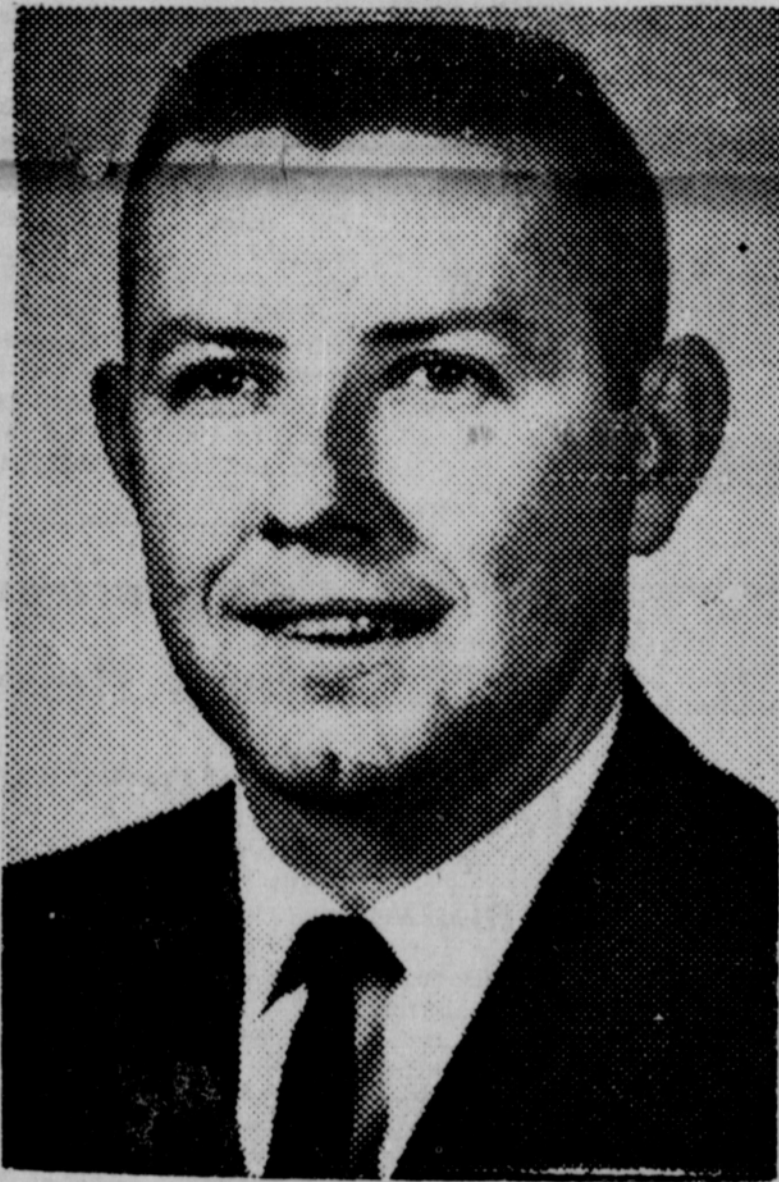
Coach Promised Boys Football

Spearman's Athletic Director Don Seymour was not in agreement with the administration's and school board's action in cutting organized athletics for sixth grade students.

Seymour said Tuesday that last year when football was dropped out of the fifth grade program, many of the future football players were told that they would get to play as sixth graders.

Those boys were looking forward to playing this fall, Seymour pointed out, and I want them to know I am not the one doing away with the program.

This is Your Invitation to Hear



GENE GLAESER, Evangelist

Evening Services

7:30 p.m.

Mornings

Tues.-Sat.

10:00 a.m.

GOSPEL MEETINGS

APRIL 13 - 19, 1964

CHURCH OF CHRIST

Second and Haney
SPEARMAN, TEXAS



WE APPRECIATE YOUR BUSINESS

Vance Snider

And Invite You To Stop By For Complete Car Care and Good Texaco Products.

"Trust Your Car To The Man Who Wears the Star"
SNIDER TEXACO

parade are: Canyon ROTC Drill Team, Khiva Band, Drum and Bugle Corps and Klowns, Canadian Riding Club, Guymon Jaycees, Wheeler Band, and representatives of KFDD-TV.

Local entries are floats by the Rho Rho Chapter of Beta Sigma Phi, Gladiola Flower Club, Rainbow Girls, Town and Country HD Club, Spearman Jaycees, Spearman Cable TV, A Spearman School Band, Rolling Plains Mule Train, Spearman Riding Club, Doss Atchley's Chuck Wagon and miscellaneous entries.

Choose your Pharmacist as you would choose a doctor



HE'S THERE WHEN NEEDED

For emergency or regular health service — the hour is never too late at our pharmacy. Our prescription service is always available!



GORDON & LEE'S DRUG

659-2141



Mrs. Buzzard Is Hostess

Mrs. Lloyd Buzzard was hostess to the Gladiola Flower Club April 2.

President Sylvia Robertson conducted the business session. Plans were made for a float for the parade.

Dorothy Haner gave a very interesting program on "Shady Places and What Plants Require Shade".

Attending were Dorothy Faye Baggerly, Jackie Banks, Betty Jean Davis, Beth Fox, Dorothy Haner, Bodil Hutchison, Estelle Jackson, Jo Larson, Sherry Parttridge, Sylvia Robertson, Barbara Schnell, Alice Snyder and the hostess.

Mrs. Sheets Is Circle Hostess

The Mary Martha Circle of WSCS met April 1 in the parlor of the First Methodist Church with Freda Sheets as hostess.

The meeting was opened with prayer by Coise Gates, and the devotional consisted of a song "When the Whole World Lives for Jesus" and scripture and meditation by Margaret Gibner.

The second lesson of the new study was given by Patty Sheppard assisted by Altha Townsend.

Attending were Altha Townsend, Mary Sansing, Hazel Morton, Bertha Tarbox, Margaret Gibner, Frances Rhodes, Minnie Jones, Grace Lyon, Vera McClellan, Coise Gates, Patty Sheppard and the hostess.

Blue Monday Club Has Meeting

The Blue Monday Bridge Club met Monday, April 6 in the home of Mrs. E. D. Clement.

Margaret Kirk won high, Delta Blodgett low, and Hazel Morton won the traveling prize. Snacks were served throughout the afternoon.

Attending were Mmes. F. J. Daily, W. H. Gandy, Jesse Womble, Delon Kirk, Delta Blodgett, Vester Hill, R. W. Morton, Pope Gibner and the hostess.

Nollners Host Bridge Dinner

Mr. and Mrs. Bobby Nollner were hosts to a dinner bridge party April 4 in their home.

Mr. and Mrs. Bobby Nollner had high score, and Barbara Schnell and Sonny Nollner won the traveling prizes.

Attending were Messrs. and Mmes. Louis Schnell, James Lair, Brad Beedy, Sonny Nollner, Glen Mackie and the hosts.

Art Guild Meets In Gibner Home

Mrs. C. A. Gibner was hostess to the Arts & Craft Guild April 3 in her home.

Enjoying an afternoon of china painting and refreshments were Mmes. Ned Turner, Bruce Sheets, Guy Fuller, Pope Gibner, P. A. Lyon, Bill Russell, Delta Blodgett, Jesse Womble, Ray Phelps, Fred Hoskins, Nolan Holt and the hostess.

The next meeting will be April 10 in the Pope Gibner home.

Mr. and Mrs. Ray Devers spent the weekend in Oklahoma. They visited his parents, Mr. and Mrs. O. A. Devers at Luther, his sister, Mr. and Mrs. Charles Clark of Holdenville and with his brother, Mr. and Mrs. Roy Devers and family of Velma.

Guests of Mrs. Ben Maize over the weekend were her daughter and family, Mr. and Mrs. Guy Shields, Barbara and Susan of Satanta, Kans.

Day By Day

It's less than a week now until the celebration and I'm beginning to worry about some help from Jaycee wives in decorating for the queen's ball.

I've been assured that every Jaycee has told his wife that we're all to help... but I know how I usually get the message. Someone calls and says "Why weren't you there" and that's the first I've heard of it. So, I'm taking this opportunity to say we'll meet Friday, April 17 at 9 a. m. at the Community building and I'll appreciate all the help I can get.

Speaking of decorations, the pep squad girls and their sponsor, Miss Deere, did a marvelous job of decorating for the athletic banquet Saturday night. And, the banquet itself was well planned and a big success.

It was a pleasure to see three hard-working students, Johnny Crawford, Phyllis Patterson and Burton Williamson, receive the school's highest athletic awards.

Not surprising, if you've been a football fan, was the fact that Mike Babbs won the Jaycee's coveted "Fighting Heart Award". The only surprise was, to me, that he is even smaller in ordinary clothes than he looked in that football uniform. So, I think it is especially commendable that he has such tremendous desire to excel.

It was a real catastrophe Sunday when Kyra Crum fell in the bath tub and was hospitalized. After they decided she was pretty well "banged up" but had no broken bones, another catastrophe came to mind.

Kyra had the lead role in the one-act play that was scheduled for Interscholastic League competition Monday and Mrs. Simmons realized that if the school forfeited, they would be ineligible next year.

Mrs. Simmons hurriedly found Jane Allen in the movie and I understand Jane memorized the lead role between 10:30 Sunday night and curtain time Monday night.

Mrs. Simmons said Jane stayed up all night memorizing the part and did a miraculous job, especially since the group rehearsed only twice on the stage before they were judged.

While Mrs. Simmons couldn't have praised Jane more highly, she said that it was somewhat like a football team having to change quarterbacks just before game time and the situation was a difficult one.

The play didn't win first or second place but Mrs. Simmons said she wasn't a bit disappointed in the performance. "I feel the superior rating the play won at the speech tournament in Lubbock makes up for not winning this time. And, the terrific effort and job Jane Allen did in filling in was certainly heartening.

It has been very interesting for us, working on the historical edition which will be published next week during the celebration. We appreciate all the help we're getting in gathering historical data and pictures and we really feel you're going to enjoy this special paper. Be sure and watch for it next Thursday.

Here's a delicious and again very simple recipe I think you'll enjoy. I snipped it from the Canyon News a few weeks ago, thinking it sounded good (and easy). Later, when I was trying the recipe I found it came from the aunt of a good friend of mine in Canyon.

PINEAPPLE CAKE

1 box white cake mix (1 lb. 2 1/2 oz. size)
1 box pineapple (or orange pineapple) gelatin
2/3 cup water
2/3 cup salad oil

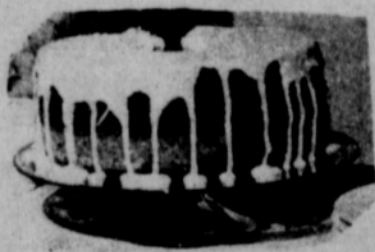
4 eggs
small can of drained, crushed pineapple
Mix cake mix, gelatin and blend well. Add water, salad oil, and mix thoroughly. Add eggs, separately, beating well after each addition. (This is the secret of the cake.)

Bake 45 minutes in a greased and floured tube pan at 350 degrees.
Let cool completely before removing from pan. Then glaze with the following, allowing to dribble down sides.

GLAZE FROSTING

2 T. salad oil
1 egg white
1/4 tsp. salt
1 tsp. lemon extract
1 T. each lemon, orange juice

Beat egg slightly, add oil and beat well until fluffy. Add sugar gradually. Add juice and pour over cake.



Club To Study Flower Arranging

The Northern Natural Ladies Club will meet Tuesday, April

14 at 6:45 p. m. at the Hospitality Room of the First State Bank. Hostesses will be Patty Spoonemore and Joyce Jennings. The program will be given by Mrs. Flavel Ayers on "Flower Arrangement". Every member is urged to attend.

Mrs. Fisher Gives Program For Jonquil Flower Club

The Jonquil Flower Club met April 3 in the home of Mrs. Herb Butts.

The program was given by

Alta Fisher titled "New Plants and Plants Out of the Ordinary".

All members are to meet at the Steak House at 9 a. m. April 10 for the Cancer Drive.

Attending were Alta Fisher, Virginia Trindle, Kathleen Sutton, Louene Hutchison, Dixie Tracy, Eloise Renner, Elvonna Davis, Verna Gail Keim and the hostess.

Tickets Available For P-TA Banquet

Tickets for the PTA District Banquet to be held in the Junior High Cafeteria April 20th are now on sale. You may secure a ticket from the following ladies, Mmes. Pete Fisher, Jimmy Linn, Jack McWhirter, and Gene Sparks. Price of the tickets are \$2.50 and April 13th is the deadline on the sale of these tickets.

All local members of PTA are urged to attend.

Anniversary

To Be Celebrated

All Odd Fellows, Rebekahs and their families are invited to attend a party and potluck supper April 11, at 7:00 p. m. in the L. O. O. F. Hall. The party will celebrate the third anniversary of the hall. The film "Follow The Bamboo" will be shown and there will be games for all.

Mrs. Asbill Honored At Baby Shower

Mrs. Charles Asbill was honored Friday evening, April 3 with a pink and blue shower in the Hospitality Room of the First State Bank.

Hostesses were Mmes. Granville Boyd, Jim Nicholson, Dale Sutton, A. F. Holland and Hugh Banks.

The honoree was presented a corsage of yellow french mums.

The serving table was covered with a lace cloth over blue and was centered with a lovely cake baked in the shape of a baby kimono decorated in blue and white. The confection was flanked on either side with pink umbrellas highlighted with butterflies that covered a miniature baby doll. The cake was baked and decorated by Mrs. Bill Cochran.

The gift table was centered with a stork and held the beautifully wrapped shower gifts.

After the gifts were opened by Mrs. Asbill, lovely refreshments of cake, mints and nuts, and coffee were served to approximately 20 guests.

Mrs. Cecil Crawford and Mrs. F. K. Banister visited over the weekend with friends in Oklahoma and at Hardtner, Kans. with Mr. and Mrs. Dewey Merrihew and Mrs. Madalene Gordon.

Emmett Gatlin of Guymon was a recent visitor in the home of his sister, Mrs. E. D. Clement.

Club Makes Serving Plans For Old-Timers Reunion

The Home Science Dept. of the 20th Century Club met April 2 in the home of Mrs. Fred Holt.

The business session was conducted by the reporter, Mrs. C. J. Renner, in the absence of

the presiding officers.

The Cancer Drive to be held April 10 was discussed and streets were assigned to each member.

Tentative plans were made for the Old Settlers Reunion Coffee to be held during the celebration.

Program Given On Counseling

The Kimberly Jr. Study Club met April 3 in the home of Mrs. Bill Wilmeth with Mrs. Bob Parris as co-hostess.

Jerry Day, school counselor, was guest speaker and spoke on school counseling.

Mrs. Doyle Jackson conducted the business meeting after refreshments were served.

Guests present were Mmes. Jim Davis, Everett Cain, Zack B. Fisher, Ted Collier and Vance Collier. Members present were Mmes. Carroll Ladd, David Wilson, Claude Pearson, Kenneth Pope, Doyle Jackson, and the hostesses.

Mrs. Jimmy Davis, Mrs. Gladys Richardson and Mrs. Jim King of Clovis, N. M. recently returned from a trip to Abilene, San Antonio, Austin, Graham, Uvalde and San Marcos.

Mr. and Mrs. Pat Banister of Denver visited the F. K. Banisters over the weekend.

The Thomas L. Chitwood family visited Sunday in Canadian with the Bill Pophams. Sally Popham returned home with them for a few days. Her mother will come after her.

Beauty for the asking

Vera Mae Hays, Beauty Consultant
MERLE NORMAN COSMETICS STUDIO

When fashion oracles say "the natural look" is in, you can be pretty certain that the exaggerated makeup of a sloop-eyed Cleopatra is definitely out.

And that's how it is, girls, for the seasons ahead. We're all going to try for the natural look, the glow of clear, healthy skin, bright eyes, pink cheeks. However, if time (and nature) have dried your lovely skin, dimmed your eyes and maybe even faded those naturally rosy cheeks, all is not lost by a long shot.

In the first place, you can re-acquire a clear complexion with a great all-purpose cleansing cream, a very special complexion conditioner, and a creamy powder base which blends perfectly with the color of your very own skin. And I just happen to know exactly the right ones for you.

Next step on the route to that natural glowing look is the oldest makeup trick in history—blush rouge, a soft gentle pink.

Use sparingly. Start at the cheekbone and blend smoothly, under the eye from nose to temple and over your smile area. Smile, so you know the area I mean.

When you blend this creamy rouge to the very edge of the lower lid, you'll see a surprising thing—your eyes brighten. Your face gets a glowing look. Add face powder to set and soften your new look. For the finishing touches to your makeup, you're on your own. Or, write or telephone and ask me about a free hour of beauty.





Hansford Farm News

659-2466

Hansford County Still Rated Second Wheat Producing County In State

County Agent's Report

Hansford County retained its second place position as the second largest wheat county in the state, according to acreage planted.

The Texas Employment Commission's Wheat Harvest Control Report for March 31 shows Hansford County with 224,000 acres of wheat.

Ochiltree County continues

to lead the acreage parade with 266,000 acres. It has long held the title as the largest wheat county in the state.

No other county approaches the 200,000 acre mark. Sherman county in acreage with 174,000 acres. Moore County has 138,000 acres, Hutchinson County has 70,000 acres.

The April 1, Santa Fe Crop

Report says that wheat prospects in all of the Texas and Oklahoma Panhandles, Eastern Colorado and New Mexico and Western Kansas are not bright.

High winds have sapped the short supply of moisture and caused blowing in many fields. A recent survey shows that 1,732,000 acres in the five state drouth area have suffered wind erosion damage. This compared to 325,578 acres last year at the same time.

A local index to wheat crop conditions, crop-hail insurance, give indication of a good irrigated crop. One local insurance agent says he has already sold 50 per cent of his total sales last year, and the season for the insurance has not started, yet.

The estimates on the amount of irrigated wheat in the county varies widely. The estimates vary from 40,000 to 75,000 acres.

The most effective sermon is that given by a good example.

GRAIN SORGHUM RATES

Plant grain sorghum drilled or two rows per bed, use 8 to 10 pounds seed per acre, and take advantage of chemicals to keep the weeds out. This is the production combination that can yield more grain, more profit, with less work.

Tests at the Southwestern Great Plains Field Station at Bushland and at the South

Plains Research and Extension Center, Lubbock, have shown narrow-row grain sorghum a yield-booster when properly managed. Billy Gunter, Area Extension Agronomist, emphasizes fertility level of the soil is a determining factor in getting high yields from narrow-row sorghum. Water must also be available when needed to maintain high grain yields, Gunter stresses. According to the agronomist, the fertility and irrigation levels should have a potential of at least 6500 pounds grain per acre or more before narrow-row planting could be expected to out yield regular 40" rows.

At the Bushland Station, experiments were conducted with different row spacings and planting rates over a three-year period. The 12 and 20 inch spacings consistently produced grain yields of 1000 pounds per acre higher and also produced more grain per inch of water used than the 30 or 40-inch row spacings. This is the report from Dr. Kenneth Porter, Texas Agricultural Experiment Station agronomist headquartered at Bushland.

Dr. Porter says rate of seed planted per acre had little influence on grain yields. Pounds of seed planted per acre were 4, 8, and 12 pounds at each row spacing. The higher planting rates produced the higher forage yields--but not more grain. According to Dr. Porter, about 8 to 10 pounds seed per acre should give sufficient plants for maximum grain yield under most conditions, regardless of row spacing used. If the crop is being produced for grain, seed planting rates higher than 10 pounds per acre would then serve no useful purpose--in fact, these tests showed the fer-

tilizer may not be as efficient for grain production as at lower seed planting rates.

Comparable increases in yields are possible by planting two narrow rows on beds spaced about 40-inches apart. Many Plains farmers are going to this planting method--spacing rows on the bed 12-16 inches apart. But, as Gunter emphasizes, to obtain the most benefit from narrow-row spacing, adequate fertilizer and moisture levels must be maintained.

Narrow-row spacings also have the advantage over wide rows in weed control. Plants in narrow rows will shade out many of the weeds. With the addition of a new herbicide, propazine, to the grain sorghum chemicals list, weed control in narrow row sorghum is made even more efficient.

The herbicide is ideal for irrigated fields and is especially useful in narrow rows where mechanical cultivation would be difficult. Gunter says application recommendations call for spraying the chemical on immediately after planting at a rate of 1 to 2 pounds herbicide in 20-40 gallons water, per treated acre. For careless or pigweed control, use the one-pound rate. But for annual grass control, use the two pound rate on silty clay loam soils. On fine sandy loam or coarser soil, use the one pound rate as a maximum. Apply the chemical immediately after planting so the first rain can leach it into the root zone. If rainfall occurs before chemical application, weeds may germinate and grow through the propazine on the soil surface.

The chemical will control both grasses and broadleaf weeds. It is not toxic to cotton if drift occurs.

With propazine, weeds are controlled for a month or more if the soil is not disturbed.

A point to consider is "mapping" of fields where propazine or chemicals for other crops are applied. Many chemicals have a long residual action which can seriously damage germination and plant growth of susceptible crops. Propazine, for example, should be used only where grain sorghum or corn can be grown the second crop season. Other crops could be subject to damage if planted too soon on soil that was propazine treated. According to Gunter, keeping an accurate map of what crops were grown and what chemicals were applied to all crops is well worth while.

Sunday afternoon callers at the Guy Retern home were his sister and family, Mr. and Mrs. Don Roberts of Fritch.



Plant **PIONEER.**
BRAND
sorghum for high yields and smooth, low-loss combining.



PIONEER.
BRAND
SORGHUM

B & B GRAIN CO., INC.
SPEARMAN

BILL LOGSDON
GRUVER



TIPS FOR OUTDOORSMEN
Chief cause of accidents with spinning tackle is loose line on the spool. Be sure to reel it under sufficient tension.

To Quick-Dry Boots

For a quick-dry job on a pair of hunting or fishing boots in camp, heat rocks and dropping them in the boots.

Repeat until the interiors are entirely dry.

Simple Coon Trap

Put a 55-gallon steel drum next to a tree and bait it with corn. A coon can jump into it from the tree but can't jump out. Makes a good trap!

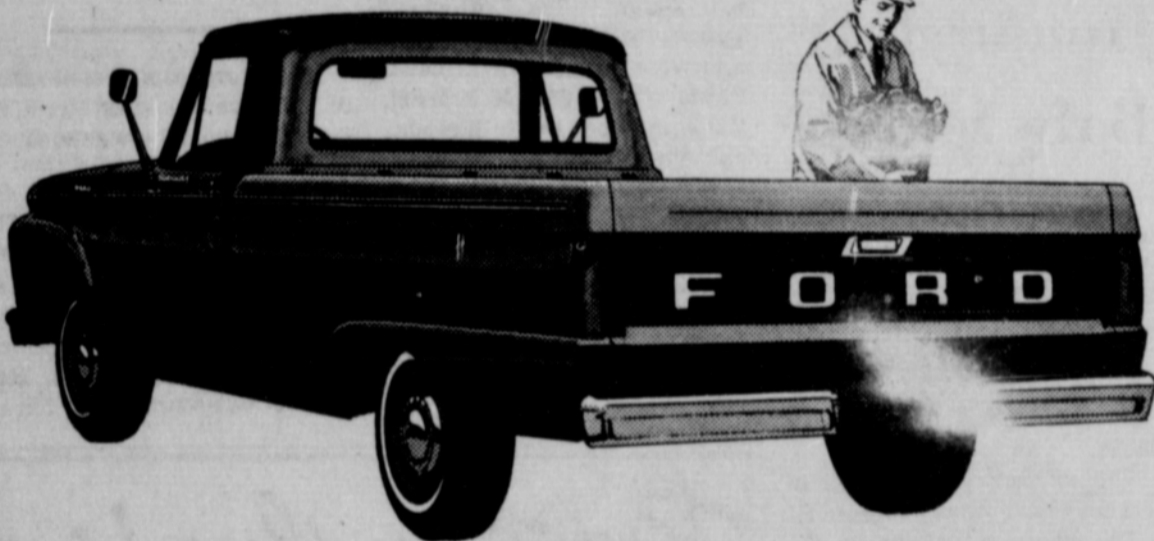
Rubber Boot Anchor

An old rubber boot filled with cement makes a cheap, handy boat anchor. Thread a steel rod in it for an eye.

Being rubber covered the anchor won't scrape, scratch or scar the boat but will hold her steady. Also, it makes a quiet anchor when carried inside the boat.

Bobbypins for Clothespins

Bobbypins make handy clothespins in camp. Ordinary fishing line will serve as a clothesline.



WHO
brings you the
BIG NEWS
in pickups for '64?

BIG NEW DOUBLE-WALL BOX WITH EASY ONE-HAND TAILGATE

Rugged double-sidewall Styleside box . . . stronger inside, sleeker outside. New tailgate can support a ton!

NEW BIG SIX ENGINE

Now available . . . 262 Big Six for top power and economy! Eats up the miles, not the gas!

NEW "BIG CAR" RIDE

New 128-in. wheelbase, longer than many luxury cars, gives you the smoothest pickup ride yet!

BIG NEW SAVINGS

New self-adjusting brakes! New, up to 32% longer lining life! New double-life muffler, tailpipe!

Who but your
FORD
DEALER



BUILT LIKE THE BIG TRUCKS, WITH A BIG COMFORT BONUS

JOE TRAYLER MOTOR CO.

659-2829 Spearman, Texas 321 Main

Announcing
New Plumbing Co.

P & B
Plumbing
Co.

For Repair Work
Call 659-3264

after five
659-3414

Licensed Plumbers



Jim's Fina Station

Hwy 15

Open 7 a.m. - 10 p.m.

Regular
29.9¢

Ethyl
32.9¢

ALL POPULAR BRAND OILS

55¢ and 65¢

A Mans Best Friend?
HIS DOG
A Ladys Best Friend?
ELECTROLUX

J. V. BARKER
Vacuum Cleaner
sales & service
659-2295

Here's your schedule for the
"Diamond Jubilee"
HANSFORD COUNTY
CELEBRATION

April 15/16/17/18/19

Wed.	8 P.M.	Religious Gathering
Thurs.	8 P.M.	Hootenanny
Fri.	8 P.M.	Beauty Contest
Sat.	6 A.M.	Queen's Ball Following
	9 A.M.	Fly-In Breakfast
		Old-Timers Reunion
	10:30	Parade
	Noon	Barbecue
	2 P.M.	Rodeo
	9 P.M.	Dance
Sun.	2 P.M.	Rodeo

HOLT NEWS

Mr. and Mrs. Charles Davis spent the Easter weekend visiting relatives in Tucumcari, N. M.

Mrs. Bertha Jenkins was a guest last week of the Bob Tevebaughs at Claude.

Mr. John Campbell, who has been in the North Plains Hospital at Borger, is now recuperating at home.

Thursday dinner guests of Mrs. Lex Board of Morse were Mmes. Owen Pendergraft, Ceril Batton and Maude Rosson. They were also callers of Mrs. Annie Harris and Mrs. Boss Davis at Morse.

Mr. and Mrs. Steve Jenkins of Lubbock were weekend guests of the Phil Jenkins.

Mr. and Mrs. Don Chisum of Stinnett, and Mr. and Mrs. Bob Phelps and family of Forgan, Okla. were Sunday afternoon callers of Mr. and Mrs. Dan Jackson.

Mr. and Mrs. Richard Gaines and family visited Sunday with Mr. and Mrs. Clyde Gaines at Borger.

Spearman Hosts Meet in Perryton

Stinnett and Dalhart will be the favorites in the District 1-AA track meet to be held in Perryton Saturday.

Spearman is host school for the meet, but because of lack of track facilities here the meet is being held on the new Perryton track.

Both Dalhart and Stinnett have rolled up the points in earlier meets this Spring and they are expected to far outdistance the other schools.

Other schools entering will be White Deer, Shamrock, Spearman and Boys Ranch.

Spearman Athletic Director Don Seymour will be the director of the meet.

The preliminary events will begin at 9 a. m. Saturday and the finals will start at 2 p. m.

Future Readers Of The Plainsman

Mr. and Mrs. Thomas L. Rawls of Guymon announce the arrival of a son, Timothy Edward, born March 22.

Paternal grandparents are Mr. and Mrs. L. L. Rawls of Perryton, formerly of Spearman and maternal grandparents are Mr. and Mrs. Arnold Winter of Guymon.

If you want to capture the excitement of a trip hear Charles Cates tell of his and his mother's trip to California. Charles and Virginia visited in San Diego with daughter and son-in-law and also went to Disneyland.

Had a party... out of town company? The Plainsman would like to know about it! Call 659-2466 or 659-3258 to report society news.

Choose Hallmark cards when you care enough to send the very best. Plainsman Office Supply.

Bowling Beat

SCATTER PIN'S LEAGUE

4-2-64	WON	LOST
TEAM		
Equity	77	23-P
Miller's Cafe	68	36
Floyd's Locker	63	41
Anthony Electric	54	50
Swyden's	48	56
Bowl Mor	41	63
Burton's Radio	40	60-P
West Cosden	21	83
HIGH TEAM GAME		
Floyd's Locker	798	
Equity	773	
Miller's	759	
HIGH TEAM SERIES		
Equity	2259	
Floyd's Locker	2075	
Miller's	2054	
HIGH INDIVIDUAL GAME		
Tommye Arbsland	199	
Bertie Frazier	189	
Gracie Kunkel	185	
HIGH INDIVIDUAL SERIES		
Tommye Arbsland	494	
Bertie Frazier	481	
Tubby Hays	471	

STRIKE OUT LEAGUE

4-2-64	WON	LOST
TEAM		
Blodgett & Linn	30	14
Swyden's	24	20
Sparks	22	22
Southwell	20½	23½
Lee Oil	19½	24½
B&B Sales	16	28
HIGH TEAM GAME		
Swydens	905	
Blodgett & Linn	872	
Blodgett & Linn	846	
HIGH TEAM SERIES		
Blodgett & Linn	2542	
Swydens	2518	
Lee Oil	2429	
HIGH INDIVIDUAL GAME		
McWhirter & Hohertz	224	
Dan Faries	218	
Russell Townend	215	
HIGH INDIVIDUAL SERIES		
Jack McWhirter	591	
Dan Faries	568	
Bob Hohertz	554	

NIGHT OWL LEAGUE

Final Standings		
4-6-64	WON	LOST
TEAM		
Beedy's Furniture	78½	33½
Hansford Grain	72½	39½
Rexall Drug	69½	43½
G&G Foodliner	58½	53½
Universal Oil	57	55
Cates Men & Boys	45	67
Harvey's Aerial	44	68
Spearman Grain	23½	88½
HIGH TEAM GAME		
Rexall Drug	769	
HIGH TEAM SERIES		
Rexall Drug	2075	
HIGH INDIVIDUAL GAME		
Creacy	214	

Malone Rites Are Pending

The Rev. Sam Malone, former pastor of the Spearman First Baptist Church, died Wednesday in a Lubbock Hospital.

Late Wednesday afternoon services were pending the arrival of relatives. Singleton Funeral Home of Seminole is in charge of funeral arrangements.

The Rev. Malone was pastor of the church here from 1944 until Sept. 1, 1948. He was pastor of the church when the present sanctuary was built.

TOPS Club Will Hear PE Teacher

Miss Doris Dear, High School Physical Education teacher, will present the TOPS club program this Thursday night.

The club met last Thursday night for a game party in the community room of the First State Bank. The members first weighed in at Hackley Clinic.

Vivian Simms, weight recorder, reported a total weight loss for the year of 63½ pounds.

Janice Callaway was the best weight loser this past week. Vonda Keim was the Top Pig. Other Pigs were Jean Higgins, Jessie Faries, Vivian Sitams and Abbye Ownbey.

Nina Lou Neely was the Turtle.

Members who weighed in were Abbye Ownbey, Jean Higgins, Jessie Faries, Lanell Cummings, Carolyn Davidson, Freddie Largent, Janice Callaway, Sara Neely, Nina Lou Neely, Vonda Keim, Viola Hutton, Vivian Simms, Nordeen Cochran and an unidentified new member.

What Line Cast Thou?

When you put a new line on a reel, write the type and test on a piece of paper and tape under the reel seat with clear tape. This way you'll always know what size line you're using.

Sparks, Kingsley,	200
McCreary	197
Duryee, Frankie	197
HIGH INDIVIDUAL SERIES	
McCreary	519
Farene Williams	496
E. M. Williams	494
RAISED AVERAGE MOST PINS	
Maxine Ferguson	



END THE 8-DAY ALLOWABLE FAMINE
 PROTECT PROPERTY RIGHTS
 STOP FRESH WATER POLLUTION

WITH JUDGE

JESSE OWENS

Place 1 Railroad Commission

CHEVY II by Chevrolet

How to get away from it all including the high cost of travel!

A Chevy II Station Wagon is the way to get the whole family there and back on a small vacation budget. You get 76 cu. ft. of cargo space for less than you'd pay for most sedans. You get money-saving, easy-care features, too. And you'll go so far between gas stops you'll think we built in a



FOR THE GREAT HIGHWAY PERFORMERS

spare tank. And now that it's Trade 'N' Travel Time at your Chevrolet dealer's, you'll never find a better time to buy a Chevy II. There's a wide range of engines and transmissions to choose from. And whatever you pick, you can be sure you'll always get a good run for your money.

Chevy II Nova 4-Door Station Wagon



CHECK THE T-N-T DEALS ON CHEVROLET · CHEVELLE · CHEVY II · CORVAIR AND CORVETTE NOW AT YOUR CHEVROLET DEALER'S

EXCEL CHEVROLET COMPANY

120 MAIN

SPEARMAN, TEXAS

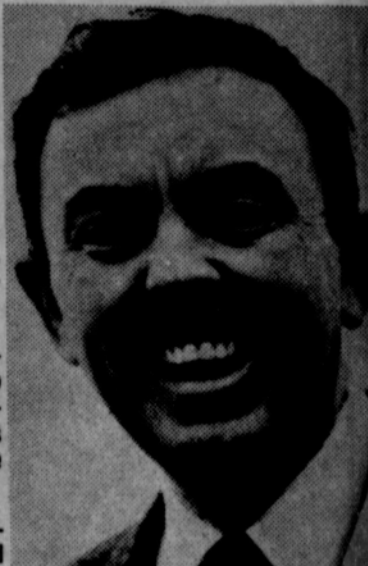
659-2541

GORDON McLENDON

Your Candidate for the U. S. Senate
 in the May 2 Democratic Primary

BELIEVES . . .

- **CIVIL RIGHTS**—Equal educational and voting rights for all, but firm opposition to attempts to deprive anyone of the rights of trial by jury, private property and civil liberties.
- **JOB OPPORTUNITIES**—Free business from bureaucratic restraints in order to promote business expansion and thus create greater employment.
- **MEDICAL CARE FOR THE AGED**—Retain the right of the aged to select their own doctor and hospital as outlined in the provisions of the Kerr-Mills law and the Texas-65 program.
- **FEDERAL AID TO EDUCATION**—Staunch opposition to federal aid to and control over schools, and encouragement of a realistic tax exemption for families supporting students in higher education.



GORDON McLENDON
 Democratic Candidate
 For U. S. Senator

Vote for Gordon McLendon
 All Texans will be proud you did

Political Adv. paid for by McLendon Committee, George Sandlin, comp.

PRICES that SLING of SAVINGS in SPRING



Facial Tissue 400 Count
Kleenex 4 for 93¢

Tide Giant Size **59¢**

Dash Jumbo Size **\$2.19**

Lydia Grey 10 roll pack
BATHROOM TISSUE 78¢

Morton's All 7 flavors Your choice
Cream Pies 3 for 88¢

Morton's Apple, Cherry or Peach
 Your Choice **Fruit Pies 3 for 78¢**

Fox Deluxe All Varieties
 Large 22 oz. each
PIZZAS 79¢

Durkees Shredded 3 1/2 oz. can
Coconut 10¢

Duncan Hines Layer pkg.
Cake Mix 33¢

Carnation Tall Can
Milk 3 for 37¢

Maryland Club lb. can
Coffee 78¢

Imperial Powd. or lb.
BROWN SUGAR 15¢

Posts Cereal 13 oz. pkg.
CRISPY CRITTERS 39¢

Nestle's 5 flavors 12 oz. jar
Keen 3 for 98¢

Margarine lb. yellow quarters
Meadowlake 19¢

Florida Ruby Red
GRAPEFRUIT
 Extra Fancy Red York
APPLES
 Sunkist
LEMONS

Mix or Match
 lb.
13¢

Texas Cello Pkg.
Carrots 2 pkgs. 17¢

Medium Yellow lb.
Onions 9¢

Gold Medal 5 lb. bag
Flour 49¢

Honey Boy Tall Can
SALMON 48¢

Van Cam's Tall Can
Pork & Beans 11¢

Bordens Mellorine Half Gallon
Charlotte Freeze 39¢

Niblets Whole Kernal
 12 oz. cans
 vac. pac.
Corn 6 for 88¢

Shurfine Clings
Peaches 3 for 79¢

Chuck Wagon 5 lb. bag
Charcoal Briquets 38¢

Krafts 28 oz. jar
Barbecue Sauce 49¢

Shurfine Fancy Whole Solid Pac
Tomatoes 17¢

Crisco 3 LB. CAN 59¢
 WITH PURCHASE OF \$5.00 AND OVER
 OTHERWISE.....73¢

BEST MEAT BUYS!

Top O' Texas Sliced
Bacon 2 LBS. 79¢

Top O' Texas Quality lb.
Bologna 43¢

Fresh
GROUND BEEF lb. 39¢

Shurfine Crushed Flat Can
Pineapple 2 for 29¢

Homefolk Fresh with snaps tall can
BLACKEYE PEAS 2 for 27¢

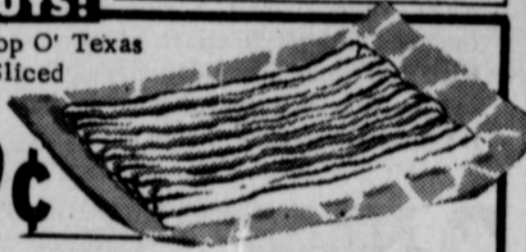
Shurfine 18 oz.
PEACH PRESERVES 3 for \$1.

Ideal Tall Can
Dog Food 2 for 25¢

CUT RATE GROCERY

FREE
 Little League and Softball Equipment with ...

COUPONS
 REDEEM THEM IN OUR STORE
 Let's all support our community baseball program



"COME

**Let us go unto
the house of the Lord."**

**C
h
u
r
c
h

D
i
r
e
c
t
o
r
y**

Apostolic Faith Church
Roland Haney, Pastor
Sunday School 10:00 a. m.
Morning Worship 11:00 a. m.
Evening Worship 7:00 p. m.
Thursday Fast and Prayer Service 9:30 3:00

Assembly of God Church
Rev. Vance Barker, Pastor
Sunday School 9:45 a. m.
Morning Worship 11:00 a. m.
Evening Worship 7:30 p. m.
Wed. Bible Study 7:30 p. m.

Church of Christ
Charles Milner, Minister
Sunday School 10:00 a. m.
Worship 11:00 a. m.
Worship 7:00 p. m.
Wed. Ladies Bible Class 9:30 a. m.
Wed. Bible Study 7:30 p. m.

Fellowship Baptist Church
W. S. Herring, Pastor
Sunday School 10:00 a. m.
Preaching Service 11:00 a. m.
Sunday Evening Service 7:30 p. m.
Wed. Evening Service 7:30 p. m.

First Christian Church
Rev. W. Graham Pugh, Minister
Sunday School 9:45 a. m.
Morning Worship 11:00 a. m.
Youth Meetings 6:00 p. m.
Evening Worship 7:30 p. m.
Wed. Choir Practice 7:30 p. m.

First Baptist Church
Rev. Luther M. Berry, Pastor
Sunday School 9:45 a. m.
Morning Worship 10:45 a. m.
Training Union 5:30 p. m.
Evening Worship 6:30 p. m.
Wed. Evening Prayer Hour 7:30
Wed. Choir Rehearsal 8:45 p. m.

Oslo Lutheran Church
18 MI. N. W. of Gruver
Robert L. Cordes, Pastor
Sunday School 9:45 a. m.
(Includes adults)
Worship Services 11:00 a. m.

SPONSORING FIRMS:

Western Auto Assoc. Store
Home Owned
R.L. McClellan Grain Co., Inc.
B & B Grain Co., Inc.
First State Bank
Member F.D.I.C.

First Methodist Church
Brother Charles Gates, Minister
Sunday School 9:45 a. m.
Morning Worship 11:00 a. m.
M. Y. T. 6:30 p. m.
Evening Worship 7:30 p. m.
Women's Society of Christian Service
Wednesday 3:00 p. m.
Choir Rehearsal 7:30 p. m.

First United Presbyterian Church
Everett H. Cain, Jr., Pastor
11th and Cotter Drive
Sunday Church School 9:45 a. m.
Morning Worship 11:00 a. m.
Evening Study Group 7:30 p. m.
Wed. Choir Practice 7:30 p. m.

Pentecostal Church
Sunday School 9:45 a. m.
Morning Worship 11:00 a. m.
Evening Worship 7:30 p. m.
5th & Hazelwood

Sacred Heart Catholic Church
Rev. Fr. Fred Hyland
Sundays 10:00 a. m.
Catechism Classes 11:00 a. m.
Week Days
Mon., Tues., Fri., Sat. 8:00 a. m.
Holy Days of Obligation 7:30 a. m.
First Friday of Month 7:00 a. m.

Spearman Lutheran Mission
Farm Bureau Bldg. - Spearman
Robert Cordes, Pastor
Worship Services..... 9:00 a. m.
Sunday School 10:00 a. m.

Union Full Gospel Church
Rev. George R. Bollinger, Pastor
Sunday School 10:00 a. m.
Morning Worship 11:00 a. m.
Bible Classes, Sunday 6:45 p. m.
Evening Worship 7:30 p. m.
Wed. Bible Study 7:30 p. m.



**LET WANT ADS
WORK FOR YOU**

FOR SALE

FOR SALE: Three Bedroom Brick, 3 1/2 blocks from grade school. FHA Loan. 1014 Townsend. Phone 659-2403.

FOR SALE-Industrial lots and acreage. Financing available. Cecil Crawford. Phone 659-2409.

SERVICE-Ditches from 3-12 inches, any desired depth. S. D. Jones 659-2809. Harold Shaver 659-3474.

FOR SALE: new three bedroom brick, 1 3/4 bath, all electric kitchen, one car garage, F. H. A. or VA loan. 1105 Townsend Spearman, Tex., phone 435-5464, Macias Construction Company, Perryton, Texas.

For Lifetime Mufflers, Clarence Pettitt Garage. No premium prices.

FOR SALE-1960 Hard top Starliner Ford in good condition. Phone 659-3325.

FOR SALE-Nice 800 Case Row-crop Tractor with wide front end, and propane. 625-8861, Beaver, Okla.

FOR SALE-Two bedroom house at 116 Haney. 659-2681.

FOR SALE-Four 50 foot lots facing Collard Street, Block C. Collard Real Estate.

FOR SALE: New Lake Pump and aluminum pipe, Pat Westfield, Gruver. FI 7-2700

FOUND

FOUND-Black steer weighing about 650 lbs. branded on right shoulder. Call 659-2385. S23-T24-tfc

YOUR PHILCO DEALER
Burton's T.V.
WE REPAIR COLOR & BLACK & WHITE T. V.'S AND ALSO, RADIOS
659-2121
20 South Archer
Spearman

Part of all you earn — should be yours to keep.
ED DEAR,



703 Cotter Drive
Spearman, Texas

Phone 659-3073

WANTED

Dirt Moving, Land Leveling, Silos Dug. General Dirt Work with a John Deere 4010, 10 yd. Hancock Carryall, D6 Caterpillar. See Willis Sheets or call 2256 or 2712.

Yards worked and seeded, Gardens worked. Fertilizing done. Shrubs planted. Don Schmehr, 659-2858.

Two reliable high school girls desire work at close of school. Will work in homes or public. References furnished. Call 708-4271 or write Cynthia and Shanna Hendrix, Hardesty, Okla.

WANTED-Nursery attendant Sunday mornings at the First Christian Church. Pays well. Call E. D. Mundy at 659-2942 after six.

Mr. and Mrs. Lee Keys visit-ed relatives in Ponca City over the weekend.

ROGER R. WALTON
DISTRICT REPRESENTATIVE
OSGOOD MONUMENT CO.
1313 SO. AMHERST ST. - 435-3299
PERRYTON, TEXAS
STONE ETERNAL

E.C. Greene & Sons Agency
Real Estate-Loans
Insurance-Cattle
Aluminum Pipes
410 Davis Spearman
Phone 659-2587

remember every special occasion with a **HALLMARK CARD** from **Plainsman Office Supply**

If you want to drink that's your business-If you want to stop drinking... that's our business !!
Inquire Box 383
Meetings - Tuesday, 8 p. m.
Second Floor - Court House
Open to Public
Every Fourth Tuesday.

FOR RENT

FOR RENT-2 bedrooms with kitchen privileges. 906 Dresden. 659-2425 after 5 p. m. T6-S7-tfc

Three candidates are seeking the U. S. Senate Democratic nomination: Ralph Yarborough, Gordon McClendon and J. Van Cronkhite.

City Directory

CLEANERS

CLEANING
PRESSING
CARPET
CLEANING SERVICE

COIN OPERATED
DRY CLEANING
FREE
PICK UP & DELIVERY
PHONE 659-2511

Wardrobe Cleaners

Oscar Donnell
302 MAIN ST.
SPEARMAN, TEXAS

DENTISTS

F. J. Daily D.D.S.

16 SW COURT STREET
SPEARMAN

PHYSICIAN

D. E. Hackley D.O.

CLINIC
702 S. ROLAND
659-2556
659-2385

ELECTRICIAN

Anthony Electric
Industrial, Commercial
and House Wiring

Heating and
Air Conditioning
Contracting
and Repairs
Fully Insured

PLAINS
SHOPPING CENTER
PHONE 659-2441
BOX 727
SPEARMAN, TEXAS

THE WAY I SEE IT

Robert Cordes, Pastor
Oslo Lutheran Church

"PRACTICAL ATHEISTS?"

America is a nation of "practical atheists". Americans have lost their "sense of the supernatural God" because of the rise in prestige of natural science and material progress.

Ninety-five percent of Americans assert belief in God, but make most of life's decisions as if God did not exist. The church is commonly seen as a parallel to parent-teacher associations, service clubs, lodges or trade unions. Thus many persons use their time, efforts etc. in lodges, clubs and feel they are serving God.

The way I see it, we in this progressive land of ours thus are raising a generation of believers in God but not in practice. We are breeding a bunch of "practical atheists".

This past week so many persons went to church on Easter Sunday that felt a little urge to still worship God. But the Guyton Daily Herald wrote "an exceptional amount of persons attended Sunday School-50%"

Is it outstanding when say 60% of the people worship God in Church on a given Sunday? Ought not it to be near 100%.

Practical atheists. People who may believe in God but in practice demonstrate God is not first in their life. This is true in Gruver, Spearman and throughout our supposedly Christian land.

We slave away to earn dollars to buy things. This is number one in many persons lives. How many cattle feeders feel it necessary to deprive their help the privilege of attending worship services on Sunday! And the owners of the cattle too often love their cattle more than God.

Look into your own life and you will see how easily you too could be called a practical atheist. Our heart, our goal of life, our strivings are often on things of the material world. They become our gods.

Watch your life--lest you say with your lips, I believe in God. I believe in Christ my

Mrs. Kilgore Is Speaker

Mrs. James Pendergraft was hostess to the Spearman Study Club Monday, April 6.

Mrs. Dick Kilgore, guest speaker, spoke on Federated Clubs.

Mrs. Bert Sheppard was in charge of the business meeting. Names for new members were presented at this time.

Mrs. Don DeArmond will be hostess for the meeting April 20 at 1 p. m. Mrs. Bob Fletcher of Perryton, will speak on "A Tour of Homes" which is being considered for a future program. The club will visit the Gibner ranch at this time.

Attending were guests Mmes. Ray Martin, J. D. Helms, Jack Oakes, Owen Montgomery and members, Bert Sheppard, Tommy Gooch, Charles Gill, Curtis Frances, Wayne Chapman, Frances Larson, Robert Adamson, the guest speaker, Mrs. Kilgore and the hostess.

Savior. But in your actions you demonstrate your true faith--atheism... no transcendent, supernatural, living God Triune.

Six Win Awards At Science Fair

Six Spearman school scientists won awards in the area Science Fair held recently in Amarillo.

There were five winners in the seven entries from the Spearman Senior Division and Jan Jones an Intermediate entry

placed third in Intermediate Botany.

David Knox received the American Chemical Society Award. Instructor Bob Barker said this award is given to the best chemical entry selected by a representative of the society.

Gwen Hanners placed second in the Bio-Chemistry division. The judges said her exhibit was very close to the National award winning entry from Pampa.

Nan Sheets had a third place winner in the physical division.

Larry Sell and Kate Kilgore both received honorable mentions in the Bio-Chemistry division.

Barker said there were 527 entries from 109 schools at the fair.

The fair was outstanding and the competition was strong, Barker commented. "I am real proud of the students and their exhibits."

Cancer Drive To Be Friday

The Home Science Dept. of the Twentieth Century Club and the Jonquil Flower Club will conduct the Cancer Drive in Spearman, Friday, April 10.

The drive will be a house to house canvass.

Mrs. James Stedje of Gruver is County Chairman of the drive and J. W. Gibner is treasurer.

Persons who are not contacted who would like to contribute should mail their checks to J. W. Gibner, % First State Bank in Spearman.

SCHOOL MENUS

- MONDAY, APRIL 13
- Corn Dogs-Mustard
- Seasoned Blackeyed Peas
- Mashed Potatoes
- One-Half Apple
- Honey-Peanut Butter Spread
- Hot Rolls-Butter Milk
- TUESDAY, APRIL 14
- Seasoned Beef on Bun or Ham Salad Sandwich
- French Fries-Catsup
- Green Pea Salad
- Strawberry Shortcake Milk
- WEDNESDAY, APRIL 15
- Grilled Cheese Sandwich
- Buttered Corn
- Beef and Vegetable Soup
- Pickle Spears
- Mixed Fruit Salad
- Peanut Butter Cookies Milk
- THURSDAY, APRIL 16
- Steak
- Buttered Rice
- Seasoned Peas and Carrots
- Buttered Spinach
- Tomato Relish
- Apricot Preserve
- Hot Rolls-Butter Milk
- FRIDAY, APRIL 17
- Hamburger-Mustard
- Pickle, Onions or Salmon Croquettes-Chili Sauce
- French Fries
- Baked Beans
- Lettuce-Tomato Salad
- Peach Cobbler
- Milk

NOTICE

NOTICE TO CREDITORS
I, F. C. CATES, whose residence in Hansford County, Texas and whose Post Office Address is Spearman, Texas, having on the 26th day of August, 1963, been duly granted Letters Testamentary of the Estate of Flora Cates, deceased, and having qualified according to law as Independent Executor, NOW GIVE NOTICE TO ALL PERSONS HAVING CLAIMS AGAINST SAID ESTATE, requiring them to present the same properly authenticated, to the undersigned within Twelve Months from the date of said appointment, for allowance.
(s) F. C. Cates
Independent Executor
Post Office Address:
Spearman, Texas
T26-1c

News while it's news... in The Plainsman newspapers.

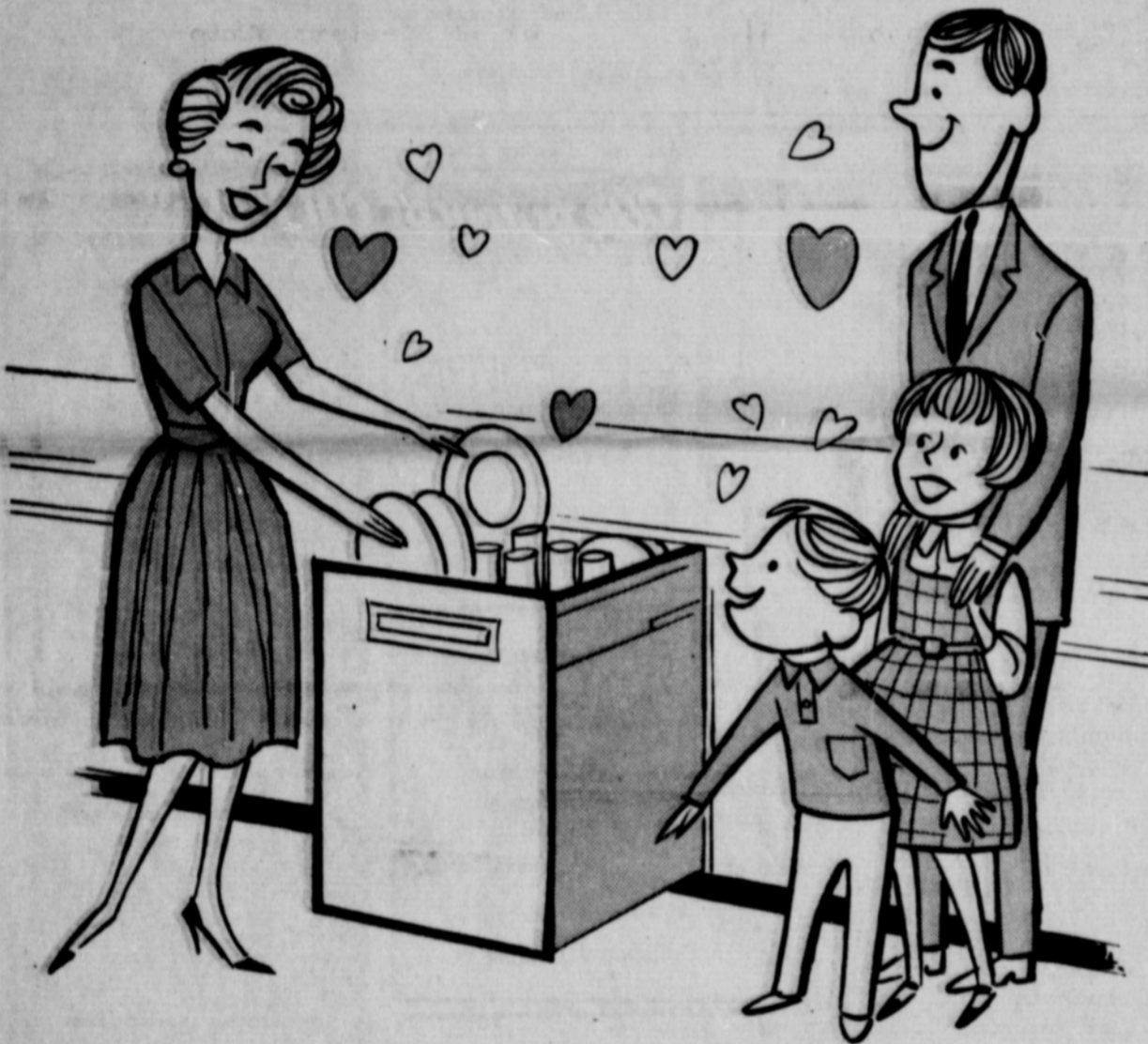
IRRIGATION WELL SERVICE

- * Bailing
- * Completions
- * All Sizes

New & Used Wells
Largest Bailing Unit
In The Panhandle

CONTACT

H. H. CHEVALIER
Perryton 435-2822
Spearman 659-2504
659-2598
Amarillo Dr-33271
Dr-38307



All the family loves an ELECTRIC DISHWASHER

As a household convenience from which the entire family benefits, nothing can match an electric dishwasher. It relieves Mother of a monotonous three-times-a-day chore and gives her more time to spend with the family. It lets Father read the paper or watch TV after dinner with a clear conscience. There are no more squabbles among the children as to who's going to help with the dishes. And everyone enjoys the health benefits of cleaner, more sanitary dishes — washed in water too hot for hands and dried sparkling clean... electrically. See the electric dishwashers... built-in or portable... at your appliance dealer's soon.



E15-64

Ruth McLain in Hospital

Ruth McLain of Amarillo and formerly of Spearman is in St. Anthony's Hospital in Amarillo where she will undergo an operation in about two weeks. She has a tonsil infection. Mr. and Mrs. Lester Denton McLain and daughter visited his mother this week.

Choose Hallmark cards when you care enough to send the very best. Plainsman Office Supply, 209 Main Street in Spearman.

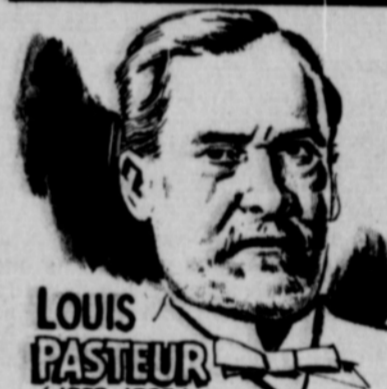
Cummings Refrigeration

HEATING
AIR CONDITIONING
REFRIGERATION
SPECIALIST
SALES & SERVICE

659-2721

Spearman

FACTS ABOUT STROKE



LOUIS PASTEUR (1822-1895)

HE SURVIVED A "BIG STROKE" AT 45 - THEN WORKED PRODUCTIVELY 27 MORE YEARS DURING WHICH HE HAD 50 "LITTLE STROKES"

I will be out of my office at

Spearman Clinic

April 18 through April 25

to attend the T.M.A. meeting

in Houston.

Damon D. Gregg, M.D.

Four Athletic Awards Made At Banquet Saturday Night

All students who participated in athletics this year at Spearman High School were honored

Saturday evening at the annual athletic banquet.

The Pep Squad and its sponsor, Miss Doris Deere, were hosts for the banquet which was held in the high school cafeteria.

teria.

The Lynx Quartet opened the banquet program. The Welcome was given by Jennifer Patton and the Response by Mac Crawford.

Burl McClellan was master of ceremonies and introduced the honored guests.

Head Coach Don Seymour made the Outstanding Lynx Football Player award to Johnny Crawford, Lynx quarterback.

Basketball Coach Dean Weese presented the Outstanding Lynx-ette award to Phyllis Patterson and the Outstanding Boys Basketball award to Burton Williamson.

Dr. Damon Gregg made the Fighting Heart Award for the Spearman Jaycees, to Mike Babbs.

The cafeteria decorations depicted all the different sports at Spearman High School, carried out in the school colors, purple and white.

The banquet ended with the group singing the Alma Mater, led by the cheerleaders.

Following the banquet, a dance was held in the hall of the high school building. Huge clusters of white balloons and an artificial lilac tree were noted among the decorations.

Cars Increase In County

The number of motor vehicles in Hansford County continues to increase as the county grows.

Tax Assessor-Collector J. B. Cooke said as of April 8, his office has issued license for 4,425 vehicles. The cost of these licenses totals \$121,774.07.

Of this amount the county has received \$85,832.77 for county road maintenance and the state gets \$35,941.30. The county gets the first \$50,000 in license fees and one-half of all license above that amount.

To the same date last year the tax office had registered 4,828 vehicles and the income was \$119,918.63. The county received \$84,940.36 and the state \$34,978.27.

Gruver Re-elects Board Members

Gruver School District voters returned the incumbents to office Saturday by a decided margin.

Bill Logsdon received 157

votes and Eugene Wood 124. Chester Lieb received 68 votes and Burton Olson 32.

There were a total of 192 votes cast in the election.

Monday the board canvassed the election and re-organized the board. Bill Ething was elected President, Jack Hart Vice President and Gene Fletcher Secretary.

Murder Trial Is Postponed

The murder trial of Jack Day of Spearman has been postponed by District Judge Max Boyer.

Day has been charged with the murder of Harold Cook of Spearman. Day was to go on trial Tuesday, April 14 in 84th District Court here.

Monday, Judge Boyer postponed the trial until the September term of court.

Shapley Returned To Gruver Post

Marvin Shapley was re-elected to the Gruver City Commission in the election Tuesday.

No candidate had filed for the office, but Shapley was re-elected to the post with 24 of the 26 write-in votes.

Merle Delano received the other two votes.

Know Your Candidate

GORDON McLENDON
Democratic Candidate
For U. S. Senator



Gordon McLendon, 43, is making his political debut as a candidate in the Democratic primary on May 2 for nomination as United States Senator.

He lives in Dallas, is a veteran of World War II, and has extensive business interests.

Early in his career he became known to radio listeners as the "Old Scotchman" through his broadcasts of major league baseball games and other features.

McLendon was born on June 8, 1921 in Paris, Texas. His father, Barton R. McLendon, a lawyer, operated a group of motion picture theaters in East Texas, Southern Oklahoma and Louisiana.

After graduating from high school in Atlanta, Texas, McLendon attended Kemper Military School in Booneville, Mo., and was graduated from Yale University with a Bachelor of Arts degree.

During World War II, he was a naval intelligence officer

in the combat area of the South Pacific.

In 1943, he married Gay Noe, daughter of former Louisiana Governor James A. Noe. The McLendons have four children: Mrs. Kenneth D. Starnes Jr., Austin resident and University of Texas student; Gordon B. Jr., student at Cate School, Carpinteria, Calif.; Kristen Margaret, 13, and Anna Gray, 12, both students at Hockaday School in Dallas.

The McLendons are members of the Methodist Church, and he is a former member of the Board of Stewards of the Highland Park Methodist Church, Dallas.

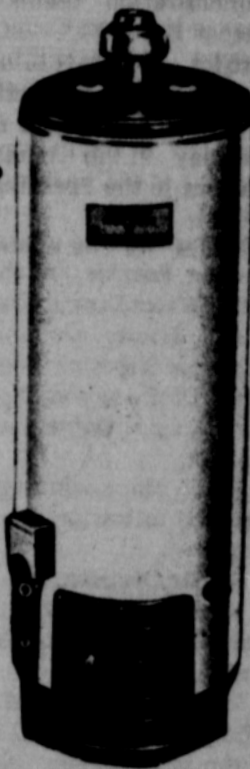
After leaving the naval service in 1945, McLendon and his father formed a business partnership, principally in the broadcasting field. Together they own and operate radio stations in Dallas, San Antonio, Houston, Buffalo, Chicago and San Francisco. They also share interests in motion picture theaters, film production, oil and real estate.

In 1951 McLendon was appointed Honorary National Commander of the Annual VFW Poppy Drive and the same year was selected as one of America's outstanding young men by the U. S. Junior Chamber of Commerce. He presently is a sponsor of the Chinese Refugee Relief, a nationwide charitable project. He also is an advisor in communications matters affecting the Peace Corps.

McLendon has served as a member of Gov. Price Daniel's Water Development Committee and board member of the Texas Law Enforcement Foundation. He is a member of the board of the Richmond Freeman Memorial Clinic, the Dallas Theatre Center, the Dallas Symphony Orchestra, the Dallas Services for Blind Children, and the Variety Club of Dallas. Twice he has been president of the latter group.

40 Gallon Water Heater

Installed
\$74.00



Plumbing Contracting

Plumbing Repair

Dependable Plumbing

Service Phone 659-3484

or at Western Auto

Herschel Secrest, Licensed Plumber

In Case Of Fire

Phone

659-2222

WE'RE OPEN!

Come by and see our new store and station

COFFEE FOLGERS lb. **77¢**

Van Camp's With 2¢ off Label
VIENNA SAUSAGE 5/\$1.00

Dad's Old Fashioned 1/2 gallon
ROOT BEER **49¢**

VINE RIPENED

BANANAS



LB.

10¢

OUR BUTCHER'S CUT PRICES

...to the Bone!

Delbert Allen, well-known butcher will handle our meat market... Shop for these big SPECIALS this weekend!

Boneless-seasoned-

Rolled Roast



ready to cook **69¢**

lb.
Beef Rib **29¢**

Fresh Ground
Beef ... **2# 89¢**

Chuck Roast

lb. **39¢**

Shasta

CANNED POP **6/49¢**

County Kist Whole Kernel Reg. 19¢

CORN **4/49¢**

Open 7 A. M. - 9 P.M. Mon.- Sat.
8 A.M.- 9 P.M. Sun. & all holidays

M & M SHAMROCK

WE NOW FEATURE COMPLETE CAR WASH & GREASE SERVICE

DR. EARL NOVAK

WILL BE OUT OF HIS OFFICE

APRIL 20

THROUGH

MAY 2

TO ATTEND A DENTAL SEMINAR

& ON VACATION

16 4-H Teams Represent County in District Contests



Sixteen Hansford County 4-H Demonstration teams will represent Hansford County in the District I 4-H Elimination Contest in Canyon April 25.

The teams were selected Saturday in the County Eliminations in the Spearman High School.

Judges for the contest were Darrel Renfro of the North Plains Water District, Frederica Ellis, Home Demonstration Agent for Sherman County and Mrs. Dick Hudson, Spearman High School Home Economics teacher.

First place winning entries were the following demonstrations:

Senior Division
Windbreaks-Evelyn Kelly and Don Kelly of the Morse Junior Leaders.

Feedlot Profits and Losses-Allen McCloy and Bill McCloy of the Morse Junior Leaders.

Safe Water for Survival-David Johnson and Judy Gillispie of Morse Junior Leaders.

Lawful Drivers are Survivors-Sharon Parks and Patricia Henderson of Morse Junior Leaders.

Adequate Circuit Protection-Sylvia Parks and Suzanne Dixon of the Morse Junior Leaders.

Junior Division
Feedlot Profits or Losses-Doug and Mark McCloy of the Morse 4-H.

Tornado Tips-Ricky Roper and Don Ross of Gruver Community 4-H.

Let Wee Willie Help You-Kay Johnson of Morse Community 4-H.

Color for Safety-Nancy and Steve McCloy of the Morse Community 4-H.

Re-wire a Lamp-Be a Lamp Detective-Lynda Webb and Douglas Messer of the Gruver Community 4-H.

Community 4-H.

Our 4-H Pledge-Jan Jones of 4-H Clovers.

Magic Interlude-Wade Parks and Carolyn Henderson of Morse Community 4-H.

Beef for Fitness-Gail Brothers of Morse Community 4-H.
Tossed Vegetable Salad-Vicki Rosenbaum and Ronda Duryee of 4-H Clovers.

In the favorite foods contest Rebecca Hutchison of the 4-H Pals won the Junior Division, Cindy Hutchison of the 4-H Clovers won the Meat Division of the contest.

Four teams won second place ribbons in the contest. The entries and the teams were:

Poisonous Snakes of Texas-Mindy Murrell and Mike Ralston of the Gruver Community 4-H.

How to Protect Your Electric Motors-Alfred Ralston and Joe Dondlinger of Gruver Community 4-H.

How to Make Buzzers Work for You-Gary Heath and O'dell Webb of the Community 4-H.

The Kitchen Lasses-Vicki Shedeck and Jolinda Lee of the 4-H Clovers

Mrs. Hicks Hosts Hi-Lo Bridge

Mrs. J. K. Hicks was hostess to the Hi-Lo Bridge Club April 2. Mabel Jameson had high score and Elizabeth Holton had low.

Attending were Mmes. John Berry, W. H. Gandy, Leonard Jameson, Bruce Sheets, guests, Mmes. VI Whitson, Richard Holton, Winfred Lewis, Roy L. McClellan and the hostess.

10 Get Votes In Morse Race

Ten men received votes in the Morse School Board election Saturday. There were six candidates and four others received at least one write-in vote.

Grant Miner led the ticket with 47 votes. Lynn Davis was second with 41. The third winner was Jim Womble with 36.

The other candidates placed like this, David Reid 31, R. C. Womble 27 and Willard McCloy 26. Gene Brothers received two write-ins. L. M. Womble, Charles Reid and Tom Dortch each received one vote.

Two men seek the Democratic nomination for Lt. Gov. of Texas in the May 2 Primary. They are Preston Smith and Albert Fuentes, Jr.

Donations Are Made To Historical Survey

The Hansford County Historical Survey Committee met April 3 at 1:30 p. m. in Judge Lee's office.

Tom Jones, president, presided at the business meeting. The committee voted to buy

two evergreen trees to be planted for landscaping around the Dodge City-Tascosa Trail Marker at Old Hansford.

The following have made donations to the survey since the last meeting: Gwenfred Lackey, Mrs. R. B. Archer, R. L. McClellan, Ruby Jo Wilbanks, Dave McClellan and Mrs. N. F. Renner. Any donations from any organization or individual will be thankfully accepted.

Mrs. R. W. Morton gave a very interesting report of the early day camp meetings.

Orvil Brummett was present to gain information on the churches of Hansford County to be used at the Religious Gathering to be held April 15 at the football stadium.

Others attending were Johnnie Lee, Gwenfred Lackey, Tom Jones, Lee McClellan, Gertie Archer and Mrs. N. F. Renner.

Mrs. Floyd Is Bridge Hostess

Elaine Floyd was hostess to a luncheon bridge party Tuesday April 7 in her home.

Gwen Smith had high score and Betty Jean Davis had second high. Mona Beth Windom won the traveling prize.

Attending were Betty Jean Davis, Mona Beth Windom, Ruth Ann King, Norma Jean Mackie, Barbara Schnell, Peggy Dawson, Gwen Smith and the hostess.

Sanders Host Couples Bridge

Mr. and Mrs. Rue Sanders were hosts to the Couples Bridge Club Tuesday evening, April 7.

Vera Beth Hicks had high score for the women and Ralph Blodgett had high score for the men.

Attending were Messrs. and Mmes. Ralph Blodgett, Carl Archer, Richard Holton, Roy L. McClellan, J. K. Hicks and the hosts.

You read the news FIRST in the Plainsman serving you with complete news coverage twice weekly. Subscribe today!

Fashionable women have used cosmetics since antiquity. Archeologists excavating Roman ruins in Syria found ivory boxes containing white face powder, eyebrow pencils and tubes of perfume.

Presbyterians To Dedicate New Church

The new Presbyterian Church in Spearman will be formally dedicated at 3 p. m. Sunday, April 12, according to the Rev. Everett Cain, minister.

Special dignitaries, including Dr. Lynn Rankin and the Rev. Dawson Tunnel of Denton and Dr. Raymond Burnes of Perryton will be present for the service.

The Rev. Clarence Wylie of Lubbock, the church's first minister, will give the sermon.

St. Augustine, Fla., founded in 1565, is nearing its 400th birthday.

Nicaragua is named for a native Indian chief.

SING!
OF HIS FAITHFULNESS

We are having a Loyalty emphasis in our Sunday school. When we think of the Lord, we cannot help but say, "Great is Thy faithfulness." Join us in our expression of loyalty, a joyous, happy response to all of God's goodness. As the Psalmist said, "It is a good thing...to sing praises unto thy name." You'll enjoy our Sunday school. Come and see!

GEORGE BOLLINGER
Pastor

SPEARMAN UNION CHURCH
Sunday School 10:00 A. M.

EXPERT DRY CLEANING SERVICE

Grooms the winning Clothes Horse

Pick up and Delivery

Lustre-Sheen
Process CLEANING AND RE-DYEING

BERRY CLEANERS
Phone 659-3122
412 Davis

FOOD BARGAINS GALORE

FREE SUGAR
5 lb. bag
PURE CANE OR BEET SUGAR

WITH PURCHASE OF \$7.00 OR MORE... Limit one bag per customer.

Vienna Sausage Reg. 5 for \$1. 4 oz. cans	FREE SUGAR 5 lb. bag PURE CANE OR BEET SUGAR
Vienna Sausage Chili Flavored 4 for \$1. 4 oz. cans	WITH PURCHASE OF \$7.00 OR MORE... Limit one bag per customer.
Treet Armour Star 12 oz. can 49¢	Mayflower Sliced Peaches No. 2 1/2 4/\$1.
Ice Milk 1/2 gal. carton 39¢	Hunts Stewed Tomatoes Size 300 6/\$1.
Round Steak lb. 75¢	Mayflower No. 2 1/2 cans Mixed Fruit 4/\$1.
Sirloin Steak lb. 85¢	Chocolate Fireside pkgs.
T-Bone Steak lb. 95¢	Grahams 3 for \$1.
Chuck Roast lb. 45¢	VALUABLE COUPON
Arm Roast lb. 55¢	Jumbo 16 oz. Insulated Double Walled BEVERAGE MUG 18¢
Ground Beef 2 lbs. 89¢	Reg. 39¢ With This Coupon
Bologna 49¢	Limit One Coupon Per Customer

Swift's Premium Proten Beef Sale

Limit One Coupon Per Customer

Better Food For Less

IDEAL FOOD STORES