



The

SUNDAY Hansford Plainsman



VOLUME VI., NUMBER 13

SPEARMAN, TEXAS

SUNDAY, DECEMBER 6, 1964

SNOW STORM CHILLS AREA



SPEARMAN IN SNOW AND CHRISTMAS LIGHTS — The winter's first snow was beautiful and unsoiled at 5 a.m. Thursday under the street and Christmas lights of Main Street. The installation of the Christmas decorations and lights had just been completed by the Chamber of Commerce early in the week

PLAINSMAN PHOTO

Temperature Drops To 3

Spearmanites who stuck their noses out unprotected the past few days, got them frostbitten as the first snow and hard freeze of the winter blanketed the area.

The lowest temperature of this winter was registered Saturday morning when the mercury dropped to three degrees on the official weather thermometer at the Pat Cates'.

Mrs. Cates said the official moisture measurement for this snow storm is .28 of an inch. She said we have received five inches of the dry snow.

Apparently, the results of the snow are all good. There have been no reported livestock losses and cattlemen have been able to feed and water cattle on pastures and wheat.

No major traffic accidents have been reported. In Spearman, cars and pickups had trouble backing away from the curbs, starting and stopping, but traffic was not stopped.

Hansford hill, between Spearman and Gruver was treacherous and could not be pulled at times without chains. Some large trucks had to be pulled up the hill with tractors.

Farmers report that practically all of the maize is out of the fields. That which remained after the rains was harvested just before the snow.

Some farmers were still trying to sow late dryland wheat and this was halted by the snow and cold.

Overall, the wheat growers feel this snow will go a long way in helping guarantee a dryland wheat crop next spring.

Dee Jacksons Wins Silver Beaver Award

One of Spearman's most consistent volunteer Boy Scout workers received the Silver Beaver award at the Adobe Walls District Banquet in Borger Thursday night.

Dee A Jackson, the surprised recipient of the award, has been a volunteer worker with the Spearman and Adobe Walls Boy Scout program for 15 years. The Silver Beaver is the highest award a person can receive for volunteer work with the Boy Scouts.

Jackson was completely surprised when called forward to receive the award at the banquet in Borger.

"My wife and Joe Trayler told

me we were going to the banquet Wednesday. Joe and Mrs. Trayler and my wife and I went. I never dreamed I would receive the Silver Beaver," Jackson said.

Jackson served as a Scoutmaster and an Explorer Advisor for five years, as a member of the Unit Committee, and as a member of the District Advancement Committee.

He is now a member of the Executive board of the Adobe Walls Council.

Jackson has been a civic leader in Spearman and Hansford County for many years. He has served in fund drives, Chamber of Commerce work, soil and



DEE JACKSON

water conservation and with the ASC programs in agriculture.

Jackson is a member of the Church of Christ.

Over and above his services as a Unit Leader and a member of the Executive Board, Jackson has worked actively with the District and Council Order of the Arrow, has been instrumental in providing equipment, labor and finances in the development of Camp Kiowa. He has also served as finance chairman in past years.

Only two Silver Beavers are awarded each year to volunteer workers. Frank M. Culberson of Pampa received the second award this year.

Write To Santa At Plainsman

The Plainsman urges all youngsters to write their letters to Santa now and mail them to Box 668, Spearman. They will be published in the Christmas edition of the paper and will be mailed to the North Pole.

Gruver Farmers Win Soil Awards Banquet

Two Gruver farmers took home the top awards from the annual Bankers Soil Conservation Awards banquet here Thursday night.

The Outstanding Soil Conservation farmer award was presented to Eugene F. Wood of Gruver, by Clay Gibner, president of the First State Bank of Spearman.

Gibner said Wood had been a top contender for the conservation award last year, and it was with great pleasure that he presented the award to him this year.

A first year supervisor, Robert C. (Bob) Ferguson received the Outstanding Soil Conservation District Supervisor Award. Kenneth Irwin of the Gruver State Bank presented the award to Ferguson.

Wood farms two miles south of Gruver. His farm consists of 1129 acres, 494 in native rangeland, 546 of irrigated cropland and 38 acres of irrigated pasture.

Wood has a Great Plains Conservation program for his farm. He practices land leveling, deferred grazing, uses underground pipe for irrigation water, returned cropland to grass, built an erosion control dam to protect bottomland and has constructed a tailwater recovery pit to use in watering irrigated pasture.

Ferguson has been very enthusiastic about his work since being elected as supervisor from the Gruver area in 1963. He practices good conservation on his farm and is "one of the

outstanding young men in Hansford County."

The speaker for the banquet was Leon McDonald, a true apostle of soil conservation. The retired SCS Assistant Director of Oklahoma is a true believer in soil and water conservation.

He used slides showing conservation, dust storms and beautiful farmsteads from this county, and over the area to illustrate his sometimes humorous but always evangelistic conservation message.

McDonald said even though there are fewer and fewer farmers, agriculture is still grow-

Continued Back Page

Basketball Scheduled

December 8
Darrouzett, There
Varsity teams
B Boys

December 10
Booker, There
7 & 8 Boys and Girls
Guymon, Here
Freshmen



TOP CONSERVATION FARMER— Clay Gibner (left) president of First State Bank of Spearman, presents Eugene Wood of Gruver with the plaque for the county's best conservation farmer of the year.

PLAINSMAN PHOTO



NEW SUPERVISOR — Bob Ferguson of Gruver (right) was named the Outstanding District Supervisor at the Banker's Banquet Thursday night. Kenneth Irwin of Gruver State Bank makes the presentation.

PLAINSMAN PHOTO

Altar Society To Assist Needy During Christmas

The Sacred Heart Altar Society met Tuesday, Dec. 1 in the rectory. Mrs. Frank Porter led the group in prayer and also presided at the business meeting.

The Charity Committee reported that 100 pounds of clothing had been given to the children's home in November.

For Christmas, the group will supply delicious visual aids and as a monthly project, will donate detergents to the home.

Donations will be made to St. Joseph's Mission in Hereford and the Madonna Plan, which is for the feeding of hungry children in foreign countries.

Mrs. Dick Reimund and Mrs. Jerry Day were appointed co-chairman for the Christmas party for the children of the Parish.

Plans were also made for giving gifts to the children in the home at Panhandle.

Plans were made for the Society's Christmas Bazaar and Bake Sale to be held Saturday, Dec. 12 at Excel Chevrolet. Handmade Christmas gifts and baked goods will be sold.

The meeting closed with prayer.

Attending were Fr. Walko, Misses Janice Gleichner and Sally Pfab and Mnes. Frank Porter, Elio Gallegos, C. A. Kleeberger, Dick Reimund, Steve Lopez, Jerry Morris, Jack Moran, Don Allen, Carolyn Billingsley and N. F. Renner. The next meeting will be January 5 with Mrs. Hugh Banks in charge of the program.

Eastern Star Has Meeting

The Higgins, Booker, Follett and Spearman Chapters of the Order of the Eastern Star held their Friendship Night Monday evening in Follett.

Attending from Spearman were Deta Blodgett, Virus Wilbanks, Lometa Sparks, Fronye Close, Minnie Jones and Mr. and Mrs. Ned Turner.

Consumer Food On Increase

The volume of consumer food purchases is expected to continue to expand, food is expected to continue to be a bargain, and retail clothing prices are expected to increase slightly.

These trends were predicted recently at the annual Agricultural Outlook Conference at Washington, D. C.

Food expenditures this year are increasing sharply and are totaling around 80 billion, nearly 5 percent above the 1963 level.

The outlook for 1965 is for continued expansion in food expenditures, though at a rate. This year's increase in food expenditures is partly due to increased population, larger consumption of food per capita, and partly due to more and higher priced marketing services. Continued strength in incomes and strength in incomes and economy in general was predicted by Dr. Hiemstra, who pointed to the exceptionally large in-

crease in consumer incomes this year.

Food is one of the better buys in this nation. Today we are purchasing more of the foods we like, more foods that are partially or wholly prepared for the table, and more food the year round that we did even a year ago, yet the share of take-home pay going for food is at an all-time low.

A gradual increase in the retail level for clothing in the months ahead was foreseen by Dr. Virginia Britton of the Agricultural Research Service. Possible rises in prices for wool apparel and leather shoes may be partially counterbalanced by

Mrs. Strawn Hosts Club

Mrs. Bill Strawn was hostess this week to the Thursday Afternoon Bridge Club.

The high score was held by Mrs. Bob Meek and Mrs. Bill Wilmeth had second high.

Refreshments were served by the hostess to Mmes. Bob Meek, Bill Wilmeth, Bob Parris, Jim Davis, Lawton Guthrie and Zack Fisher.

decreases in prices of cotton apparel and silk garments, she predicted.

We Are Now OPEN
8:30 a.m.-8:00 p.m.
Mon.-Sat.
Until Christmas

5¢ TO \$1.00 STORES

SPECIALS GOOD WHILE QUANTITIES LAST!

Ride 'Em JEEP \$4.97

Army green heavy duty for active youngsters. Plastic with all steel frame construction & fool proof steering. 23" Long, 9 1/2" High.

\$4.00 VALUE
\$2.99
T.G.&Y. STORES DISCOUNT PRICE

FOLD-A-WAY ARM CHAIR

Height 23 1/2", Seat 11" x 11 1/2", height of seat from floor 13" and writing area 9" x 11". All metal frame with poly padded seat.

\$6.00 VALUE
Discount Priced

Colorful Outdoor LIVING SET \$8.88

Everything a child needs for an exciting vacation is included in this set . . . Jeep Surrey, Camper, Jeep Runabout and Realistic Boat. All vehicles made of steel with white sidewall tires.

\$12.95 VALUE
T.G.&Y. STORES DISCOUNT PRICE

BARBIE® & KEN® SPORTS CAR

Magnificently styled English sports car in pastel colored, poly with white interior featuring bucket seats.

\$4.99 VALUE
T.G.&Y.'s DISCOUNT PRICE
\$3.91

MODEL MOTORING SET

2 Thunderjet "500" Cars . . . 1 pc. of 9" terminal straight . . . 2 Racing speed controls . . . 3 pcs. of 9" straight roadway . . . 6 pc. of 9" radius curve . . . 2 Trestle parts . . . 2 pcs. of straight roadway . . . 1 D. C. Power Pack.

\$17.95 VALUE
Discount Priced
\$12.87

Perfect POOL TABLES

Ball Size 3/4" Cue Length 24" Table Size 25 x 17 x 3 1/2"

Fine lacquered wood frame on enameled steel legs. Playing surface is warp proof covered with green cloth. Sponge rubber cushions, automatic ball return, complete with full set of numbered and colored balls, triangle, cue ball, rubber tipped lacquered cue sticks.

\$5.98 VALUE
Discount Priced
\$4.88

TV HORSE

29" Long Vinyl head and saddle. Plastic reins. Stuffed cloth body.

\$4.98 VALUE
Discount Priced
\$3.97

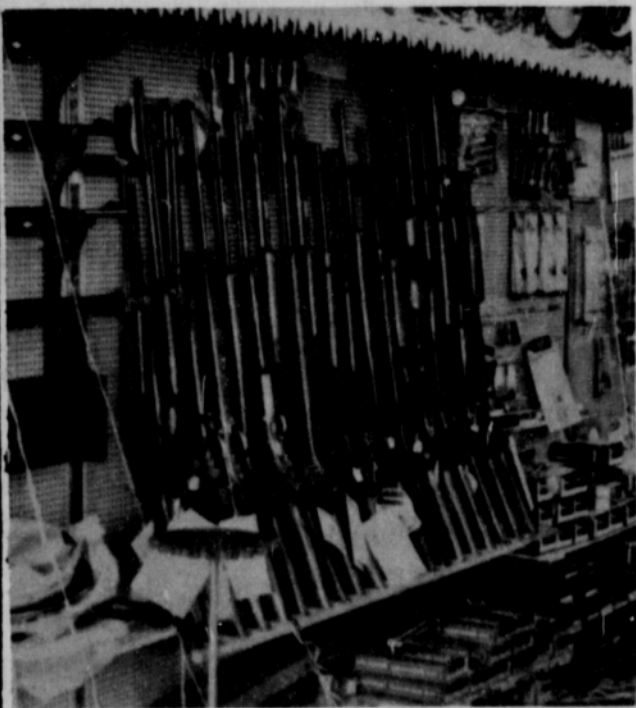
PLAY WIGS

T.G.&Y.'s Discount Price \$2.00 VALUES

Set of 4 different hair styles and hair colors. Little girls from 3 to 8 will delight in playing grown-up just like "Mommy."

\$1.57

Christmas Gifts For The Hunter

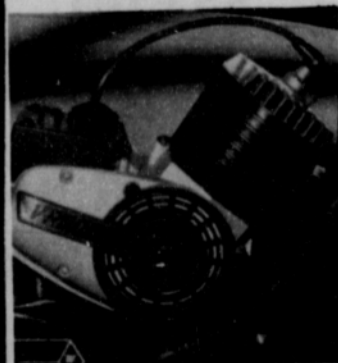


A Big Selection of Rifles and Shotguns

Hand guns make a big hit with the shooter.



A new bicycle with a V-RROOM Engine Thrills the boys The V-RROOM looks & sounds like an engine, but the boy provides the power.



See our big Selection of Christmas Gifts

Western Auto Assoc. Store

Fred Jackson, Owner

Christmas Open House

Sunday, December 6

1:30 - 5:30



CHRISTMAS ARRANGEMENTS



FLOCKED & PLAIN CHRISTMAS TREES



Refreshments & Door Prizes

Everyone Invited

Boxwell Flowers

Mrs. Chisum Is Hostess

The Mary Nell Giles Circle met Wednesday morning in the home of Omega Chisum.

Donna Helms read the prayer calendar and Betty Fancher led the prayer for missionaries.

The program on Mission study was presented by Marie Berry.

Attending were Wanda McIver, Marie Berry, Donna Helms, Deloris Guthrie, Betty Fancher, Edith Cage and the hostess.

Future Readers Of The Plainsman

Mr. and Mrs. Lee Phillips are the parents of a son born December 2 in Hansford Hospital. He weighed 5 lbs. 6 1/4 ozs.

HANSFORD HOSPITAL NEWS

Patients in Hansford Hospital are B. W. Renner, Fred Smith, Elizabeth Prater, Shannon Thompson, Roger Ayers, Mary Baker, Maude Patton, Nancy Phillips and baby, Lillie Mae Chase and Jean Wright.

Dismissed were Robert Walters and Barbara Beckham.

Mrs. Denham Hosts Circle

Mrs. Don Denham was hostess to the Alma Reid Circle Wednesday morning in her home. The prayer calendar was read by Mrs. John Brown.

Mrs. Denham, assisted by Mrs. Eddie Gates, Don Jones, Kkitt Gilley, John Brown and Fred Holt, presented the program, "Worship through Giving."

Others attending were Mrs. A. F. Loftin and Mrs. W. H. Cox.

Choose Montag stationery for an inexpensive Christmas gift choice. We have a complete supply. Plainsman Office Supply, 209 Main Street.

BUY SELL CLASSIFIED ADS TRADE LEASE

FOR SALE

FOR SALE-Niemeyer's three bedroom brick home, air conditioned, carpeted, phone 435-4859, Perryton. 8-tfc

FOR SALE OR TRADE-2 bedroom 10'x55' trailer home with extended living room. \$500 for my \$2000 equity. Take up payments. See at Fina Station. 12-2p

FOR SALE - Industrial lots and acreage. Financing available. Cecil Crawford. Two good lots in town. Phone 659-2409.

Choose your Christmas cards today at Plainsman Office Supply, 209 Main.

FOR SALE-3 bedroom house, carpeted, fenced yard, built in oven and cook top. 1008 Haney. Phone 2358. T2-S2-tfc

FOR SALE-The Aquarium has a new shipment of fish, tanks, supplies, novelty items. 902 S. Colgate in Perryton. 9-9c

FOR SALE:New Lake Pump and Aluminum pipe, Pat Westfield, Gruver, F17-2700. S44-T43-tfc

FOR SALE-1955 Chevrolet. Re-built motor. Phone 659-3427. T2-S2-tfc

Will make buttonholes, plain and contour belts. Mrs. F.S. Ayers, Phone 3052. 9-8c

FOR SALE-Niemeyer's three bedroom brick home, air conditioned, carpeted, phone 435-4859, Perryton. 8-tfc

SERVICE-Ditches from 3-12 inches, any desired depth. S. D. Jones 659-2809. Harold Shaver 659-3474. T17-s18-tfc

FOR LIFETIME MUFFLERS-Clarence Pettitt Garage. No premium prices.

FOR RENT

FOR RENT-Nice clean four room furnished apartment. Phone 659-2080. 821 S. Haney. 12-2p

FOR RENT-2 bedroom unfurnished house. 117 S. Hazelwood. Phone 659-2698. 5-tfc

FOR RENT-New States Apartments in Gruver. Phone F17-2244 or F17-2241. Come to 100 Line Ave. after 4 p.m. to be shown apts. 7-8p

FOR RENT-Nice clean redecorated apartment. 505 1/2 S. Haney. 7tfc

WANTED

TO GIVE AWAY-Female collie pups, 6 weeks old. Phone 659-2319, 734 Gibner Drive. T2-S2-tfc

Land Leveling to SCS specifications. General dirt work with Hancock carryalls. Willis Sheets, 659-2256. T46-S46-tfc

Will do ironing and baby sitting in my home. Phone 2964. Joyce Harper 10-4c

Will make buttonholes, plain and contour belts. Mrs. F.S. Ayers, Phone 3052. 9-8c

POODLE GROOMING by appointment. See Mrs. Burke at 117 Townsend after 4 p.m. 11-tfc

"Better Food For Less"

IDEAL

FOOD STORES

BOSTON BUTT STYLE PORK ROASTS

LEAN...PRACTICALLY BONELESS

39¢

NEW CROP NAVEL

ORANGES

4-lbs. 59¢

FRESH FLORIDA

Golden Bantam

CORN

5 EARS 39¢

LEAN, TENDER, MEATY

PORK STEAKS

49¢

BONELESS, ROLLED AND TIED

PORK ROAST SUPREME

55¢

FRESH! TENDER, MEATY

SPARERIBS

49¢

GERBER'S STRAINED FRUITS AND VEGETABLES

BABY FOODS

10 JARS 1.00

ELLIS CAN-VENIENCE FOODS

- LIM BEANS & HAM 2 30¢ CANS 69¢
- BEANS & MEAT BALLS 4 30¢ CANS 1.00
- WHITE BEANS & HAM NO. 300 CAN 33¢
- SPAGHETTI WITH ITALIAN SAUSAGE NO. 300 CAN 33¢
- VIENNA SAUSAGE WITH SAUSAGE NO. 300 CAN 4 1.00
- SPAGHETTI AND MEAT BALLS NO. 300 CAN 4 1.00
- CORN BEEF HASH NO. 300 CAN 39¢
- BEEF STEW NO. 1/2 CAN 49¢
- BEEF STEW NO. 300 CAN 39¢
- CHILE WITHOUT BEANS NO. 1/2 CAN 49¢

CUT AND WHOLE

BILOXI BAY OYSTERS

FOR DELICIOUS OYSTER STEW

4 8-OZ CANS 1.00

PINK BEAUTY

PINK SALMON

TALL CAN 59¢

SEX-TEX

PINEAPPLE JUICE

46-OZ CAN 29¢

SAVE \$1.50 ON IMPORTED FINE CHINA DINNERWARE WITH THESE COUPONS

THIS COUPON WORTH \$1.00 TOWARD THE PURCHASE OF ONE 4 PIECE PLACE SETTING IMPORTED FINE CHINA COUPON GOOD DEC. 8 THRU DEC. 12 ONLY SEE PRICE LIST FOR COUPON VALUE WITH COUPON \$1.50 & \$5 PURCHASE

THIS COUPON WORTH 50¢ TOWARD THE PURCHASE OF ONE 4 PC. ADD ON SET OF CHINA SALAD PLATES COUPON GOOD DEC. 8 THRU DEC. 12 ONLY SEE PRICE LIST FOR COUPON VALUE WITH COUPON \$1.50

BARBEQUE PLAIN OR MEXICAN STYLE

BROWN BEAUTY BEANS

8 303 CANS 1.00

HUNT'S

PORK & BEANS

8 300 CANS 1.00

HART'S

RED PITTED CHERRIES

5 303 CANS 1.00

SPECIAL LABEL INSTANT COFFEE

MAXWELL HOUSE

6-OZ JAR 99¢

BEER RABBIT SPECIAL LABEL

WAFFLE SYRUP

32-OZ BOTTLE 39¢

CHEF BOY-AR-DEE

CHEESE PIZZA

15 1/2-OZ PKG. 49¢

CHEF BOY-AR-DEE

SAUSAGE PIZZA

17-OZ PKG. 59¢

BALE-RITE

SHORTENING

3-LB CAN 59¢

CHICKEN OF THE SEA

LIGHT CHUNK TUNA

NO. 1/2 CAN 39¢

BLUE PLATE

COVE OYSTERS

8-OZ CAN 39¢

BETTY CROCKER

PANCAKE MIX

28-OZ PKG. 39¢

BETTY CROCKER

PANCAKE MIX

42-OZ PKG. 49¢

BECK'S Fina Station

Now Open Under New Management

We Are Open

24 hours a day

7 days a week

WE WOULD APPRECIATE YOUR BUSINESS

Lynxettes Top Clarendon; Behind At Half 40-28

Spearman's injury riddled Lynxettes had to come from far behind in their game with Clarendon to make it to the finals of the Shamrock Tournament late Saturday afternoon.

The Lynxettes beat Clarendon 59-58 in the second game of the tournament, after trailing 19 points in the second quarter.

In a telephone interview, Coach Dean Weese said the Lynxettes pulled no miracles to win, they just decided they were not going to be beaten and came on to win the game. Clarendon wasted no time trying to put the game out of reach as they jumped off to a 25-15 first quarter lead. They built this on to 19 points in the sec-

ond quarter before the Lynxettes started chopping away. At the half the score was 40-28.

Clarendon led 48-42 at the end of three quarters. Spearman led only once, at the end of the game.

The old scoring punch of Vicki Wilde and Phyllis Patterson was working full speed. Patterson led the scoring parade with 28 points and Wilde had 23.

Spearman had only four regular forwards in action for the game. Sharpshooter Linda Bengé who had been slowed by a bad knee was injured in the first game and did not see anymore action. Barbara Wilde has not played this week because of a leg injury.

Johnnie Vernon scored seven

points and Karen Gibson scored one while playing both as a forward and a guard.

The Lynxettes had little trouble winning the first game as they wiped out Mobeetie 61-13. The quarter scores were 20-4, 35-8, 52-8, and 61-13.

Patterson again led with 25 points. Wilde had 22, Vernon, 8, Gibson 4, and Linda Lesly playing as a forward scored two points on free shots.

BOX SCORE FOR CLARENDON

Name	fg	ft	f	tp
Patterson	12	4	4	28
Wilde	10	3	3	23
Vernon	3	1	1	7
Gibson	0	1	2	1
Totals	25	9	10	59
Cl. Totals	21	16	14	

BOX SCORE FOR MOBEETIE

Name	fg	ft	f	tp
Patterson	11	3	2	25
Wilde	11	0	1	22
Vernon	3	2	1	8
Gibson	2	0	1	4
Totals	27	7	10	61
M. Totals	6	1	15	13

Family Get More Money

At least two major changes affecting the financial status of many American families have taken place during the past decade: Double paychecks and more family savings.

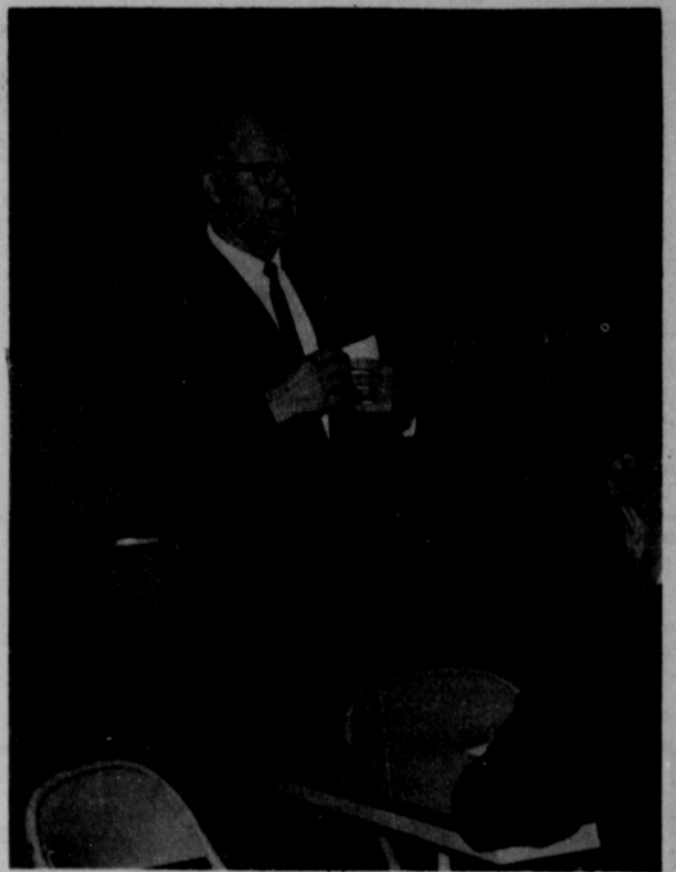
Approximately 40 percent of the families with wage earners in 1950 were receiving two or more paychecks, compared with more than 50 percent of wage earner families now receiving two or more paychecks.

The working wife is primarily responsible. One out of three married women is now employed.

Average family income during the past two years has risen from about \$3,300 to just under \$6,000. The average is for the nation as a whole. In many instances, two or more paychecks have served to boost family income into the \$10,000 or higher bracket.

Naturally, two paychecks and higher incomes have had an effect on savings. The Home Loan Bank, a government agency that keeps an eye on the thrift of the nation, reports that total savings of individuals are now approximately \$400 billions, or nearly twice that of a decade ago.

This works out to the equivalent of over \$7,000 per family as the government measures thrift.



GUEST SPEAKER- Leon McDonald was the guest speaker for the annual Banker's Conservation Banquet Thursday night. He is a former SCS Assistant Director of Oklahoma, now retired.

Sear's Is This Year's Santa For The Home! Christmas Savings Galore

Three Years To Pay

No Money Down

TELEVISION FOR FAMILY ENJOYMENT

23" Console TV

Was \$299.95

Now \$229.95

Our best all channel TV. Walnut or Mahogany. Price includes delivery, installation and 15 months warranty on all parts and labor.

19" Portable TV

Was \$149.95

Now \$139.95

One dial all-channel tuning with private earphone

19" Portable TV

Was \$169.95

Now \$149.95

Our brightest all channel 20,000 volts

—Stereo—

For Listening Pleasure

Was \$199.00

NOW \$144.95

Console with AM-FM radio price includes delivery & 15 month service on all parts & labor.

Automatic Washers

2 Speed - 6 Cycle

Was \$234.95

Now \$199.95

Automatic dispenser-self cleaning lint filter, delivered & installed. One full year warranty on all parts & labor.

—Refrigerators—

2 door-defrostless, adjustable shelves in refrigerator & doors, butter conditioner-delivered & installed.

Was \$359.95

Now \$274.95

Deep Freeze

22' Chest - Delivered

Was \$284.95

Now \$214.95

ALL ADVERTISED ITEMS IN STOCK



LOCAL SERVICE ON ALL MERCHANDISE
Shop at Sears

Plains Shopping Center

Phone 6592573



Ball and Chain Mixed doubles 12-2-64

Team	Won	Lost
Spearman Grain	22	14
Taylor-Evans	22	14
The Duds	20	16
Gruver-Texaco	16	20
Gordon's Drug	13	21
Cates Men's	13	23
HIGH TEAM SERIES		
Spearman Grain		1696
Cates Men's		1589
Gordon's Drug		1557
HIGH TEAM GAME		
Spearman Grain		577
Spearman Grain		576
Gordon's Drug		569
HIGH INDIVIDUAL SERIES		
Tito Ramirez		495
Juanita Arrington		470
Vernon Arrington		445
HIGH INDIVIDUAL GAME		
Juanita Arrington		183
Owen Montgomery		179
Bobby Pieratt		171
Night Owl League 11/30/64		
Team	Won	Lost
Harvey's Aerial	35	13
Rexall Drug	31	17
Beady Furn.	39	19
Universal Oil	23	25
Hansford Grain	22	26

M & M 4 44

HIGH INDIVIDUAL GAME

Meek	196
Duncan	174
Armes	166
HIGH INDIVIDUAL SERIES	
Meek	485
Grange	460
Harvey	458
HIGH TEAM GAME	
Harvey's Aerial	736
Beady Furniture	647
Rexall Drug	609
HIGH TEAM SERIES	
Harvey's Aerial	1912
Beady Furniture	1840
Rexall Drug	1771

KNAPP SHOES

KENNETH BAILEY

212 N. James

Phone 659-2458

Spearman, Texas

FOR CUSHIONED COMFORT

NOTICE: Additional Film

Due to Weather Conditions and Public Demand

Free Showings of Life-Saving Film
Time and Two Women

SPEARMAN, TEXAS

THURSDAY, DECEMBER 10, 1964

10:00 A.M.

LYRIC THEATER



Sponsored by Hansford County Unit, American Cancer Society

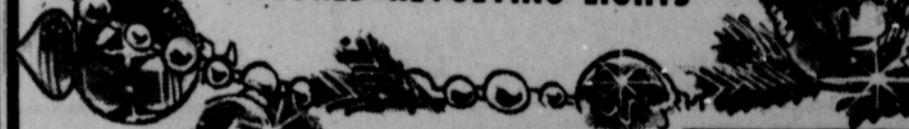
FOR WOMEN ONLY

Unbreakable Christmas Tree Decorations

Many Colors of Lights & Bulbs

FLOOD LIGHTS STRINGS OF LIGHTS

COLORED REVOLVING LIGHTS



Toys
Gifts

Games
Houseware

Electric Blankets

Dual Control Specially Priced



Deficiency Should Be Checked

With green grazing becoming limited, beef cattle producers need to give special consideration to supplying phosphorus for their herds. This mineral is deficient at times in all sections of Texas, with late summer, fall and winter being critical in all areas.

Cows fed phosphorus supplements where the deficiency occurs may average as much as 200 pounds heavier than those not receiving the supplements, says Uel D. Thompson, Extension animal husbandman, Texas A & M University. Calves may weigh 50-70 pounds more at weaning time, calf crops can be increased as much as 30 percent and cows may conceive earlier after calving.

Practical methods of supplying phosphorus to range cattle include soluble phosphorus in drinking water and phosphorus supplements in mineral feeders.

Where the water supply of cattle can be controlled, adding phosphorus to the water may be the most satisfactory method.

Monosodium phosphate may be added to water troughs by hand, while there are automatic dispensers which add the desired amount of mineral solution to a given amount of water.

Where the mineral is added by hand, recommendations generally call for one-fourth ounce of monosodium phosphate per eight gallons of water or 100 pounds to 40 gallons of water is recommended when using an automatic dispenser. This machine automatically proportions the mineral to the water.

The Hansford Plainsman



Hansford Plainsman Publishers, Inc.
County-wide independent newspaper published every Thursday and Sunday at 209 Main in Spearman, Texas. Second class postage paid in Spearman, Texas.
Editor.....Burl McClellan
Production Mgr.....Jim Davis
NOTICE: Any erroneous reflections upon the character, standing or reputation of any person, firm or corporation which may appear in the columns of The Hansford Plainsman will be corrected gladly upon its being brought to the attention of the publishers.

JEST A MINUTE

Fun gets more expensive as you grow older—gets scarcer, too.

Sheltered mineral feeders offer protection from wind and rain and thereby lessen waste. The weathervane type is satisfactory if kept level and treated with a rust preventive. Having the feeding trough 12-18 inches above the ground will permit calves free access to the mineral. The feeding box should be divided so that only salt can be supplied in one compartment and additional

minerals in the other. A mixture of one part salt and two parts steamed bonemeal by weight is recommended for self-feeding where phosphorus is highly deficient. Half and half mixes are best under borderline conditions. Additional information on phosphorus and other minerals needed by beef cattle is available at the county Extension office, Thompson said.



SCHOLARSHIP SPECIAL — Sharon Parks of Morse (third from left) was one of four outstanding Texas 4-H Club members to be awarded \$500 scholarships for college by Santa Fe Railway in Chicago Monday, November 30, during the National 4-H Club Congress. Presenting the scholarships to Miss Parks and (left to right) Linda Berkley of Odessa, Sidney Holec of Fayetteville and Stanley Young of Tulia, was Ernest S. Marsh, president of the railroad. Santa Fe annually presents 25 scholarships to outstanding 4-H Club members residing in nine western and southwestern states it serves.

THE WAY I SEE IT

Robert Cordes, Pastor
Oslo and Faith Lutheran

Himself. This is Christmas. But Christmas is nothing without Good Friday and Easter.

You may remember that Christmas is Christ's birthday. But does Christmas go beyond that in your life? Shouldn't it bring a response of love? Shouldn't it see your life being transformed by His Spirit?

Don't lose yourself in your own celebrating only to satisfy your own personal desires. Celebrate Christmas as it is meant to be—being amazed at the willingness of God to love us and sacrifice Himself to again make us His own. This is Christmas.

It's a good thing teen-age Beatle fans can't vote, or some mophead would be elected president.

We may remember why we celebrate Christmas but do we allow the event to change our lives? Christmas is Christ, Christmas is Jesus the Savior taking on human form. Christmas is God loving the earth bound—yes even hell bound—creatures so much that He was willing to come into our form that He might be tempted like we are and yet not sin. Christmas is God being born in the likeness of human flesh that He could suffer and die as a substitute for us.

In an athletic contest, substitutions are put into the game to spark a team to action, to fill a weak spot where the opponents are gaining.

What substitutes could we send into the game of life? Where could we find the help needed to cleanse us of our sharp and biting tongues? Or to remove our gossipy lips and laziness, etc.?

God Almighty, the Triune Godhead, could see we needed help. We were struggling unto death. The enemy was so cunning and powerful our plays were not working. We were being shoved around, trampled upon. Our fears were evident. Our in-

juries of guilt and power of sin could not be healed. We were crippled into permanent injuries.

God thus entered this world in the form of a baby, our substitute for righteousness, His holiness thus could become ours. He carried out His mission until He became the sinless sacrificial lamb of God on the cross. There God again brought man into a living relationship with

You're Invited To Our CHRISTMAS OPEN HOUSE



Complete Christmas Decorations ON DISPLAY

- Wall Plaques
- Centerpieces
- Candle Arrangements
- Door Decorations

Sunday, December 6 - 2 to 5 P. M.

Register for a FREE Centerpiece



Come in and browse around. We'll be expecting you!

SPEARMAN
FLORAL & GIFTS
Plains Shopping Center Phone 659-2593
SPEARMAN, TEXAS

Gifts For Everyone

By Bulova Shock Proof Jeweled, Water Proof
Boys Watch \$10.95

Diamond For Men 14 K Gold
Rings \$69.95

Keepsake Wedding Bands 14 K Gold
\$19.95

Frankoma Pottery \$15.00
A Large Stock 16 pc. Place Starter Set

Bulova - A Beauty
Clock Radio \$29.95

We can't please everyone but we try Your Satisfaction is our Asset.

Gold Case Shock Proof
Ladies Watches \$14.95

One Carat Diamonds \$895.00
Registered and Insured Only

Bulova 4 Speed Stereo All Transistor
Phonograph Only \$59.95

Ladies Bulova
Diamond Watch \$150.00

Speidel Watch Bands
Yes, We Have Them

23 Jewel Watch
Bulova Automatic \$49.95

Boys' Sterling
Rings \$5.25

Girls' Gold Birthstone
Rings \$6.95

Bulova Transistor AM
Radios \$11.95

Men's Initial 10 K Gold
Rings \$14.88

We have a full line of Sterling Charms and Bracelets from \$1.00 up.

14 K Gold Mounted
Diamond Pendant \$35.00

Tie Tacks Only \$1.95

This is just a sample of our many Gift Items. Come in and browse around. We are in our new building now.

LYRIC
Sun. Mon. Tues. Wed.
INGRED BERGMAN and ANTHONY QUINN in **"THE VISIT"**
Thur. Fri. Sat.
The COMEDY of TERRORS
VINCENT PRICE · PETER LORRE · BORIS KARLOFF
Every shroud has a silver lining!

HARP'S Credit JEWELERS
310 S. Main Phone 659-2700

Lynx Lose To Broncs In Shamrock Tourney

Fouls and one free shot in an overtime period Friday knocked the Spearman Lynx out of the finals of the Shamrock Tournament.

Spearman lost to the Clarendon Broncos 42-41 in a three-minute overtime.

Fouls made the difference in the contest. Spearman was charged with 27 fouls and Clarendon was called on only 17 miscues.

The Lynx did not take advantage of their free shots, making only four of them. Clarendon scored on 12.

Spearman held the lead until the fourth quarter, then saw it change to defeat as four of the Lynx starters and top scorers left the game on fouls. Jimmy Kirkland, Bob Phillips, Ken Shufeldt and Johnny Crawford

all fouled out of the game. Shufeldt, Kirkland and Phillips were the top Spearman point makers.

The score was tied 41-41 just as the game ended. It went into a three minute overtime and Clarendon won on a single free shot.

The quarter scored had Spearman in the lead, 10-3, 21-15, 32-29 and 41-41.

The Lynx had to come from behind to win their first game of the tournament with Briscoe 59-49.

A wide scoring attack by four different players provided the margin of victory for Spearman.

Spearman was leading 12-11 at the end of the first quarter, but trailed 26-28 at the half. A strong scoring attack, coupled with good defense put Spear-

man out in front 44-34 at the end of three quarters. Phillips led the scoring with 15 points.

CLARENDON BOX SCORES

Name	fg	ft	f	tp
Kirkland	3	0	2	6
Phillips	4	1	5	9
Shufeldt	6	2	5	14
McDonald			2	
Clements			2	
Crawford			5	
Blevins			1	
Totals	18	4	27	41
Cl. Totals	15	12	17	42

MOBEETIE BOX SCORES

Name	fg	ft	f	tp
Butts	3	3	2	9
Kirkland	5	1	4	11
Phillips	7	4	4	15
Shufeldt	4	3	4	11
McDonald			1	
Close	1	1	2	3
Crawford	5	0	1	10
Blevins			1	
Totals	25	9	19	59
Mb. totals	16	19	12	49

Gruver...

Continued From Page 1
ing bigger. It is still the biggest business in the nation's economy.

It is five times bigger than the automobile industry; it has bigger investment in machinery than the steel industry.

There are 10 people employed for every farm and ranch in the nation.

The sale of agricultural products in Hansford County is ap-

MAN DIES DIGGING GRAVE

JET, Okla. — Dale Metcalf, 47-year-old Mayor of Jet, died Wednesday of a heart attack while helping dig a grave for a neighbor at Timberlake Cemetery.

There are about 700 motion picture producers in France.

proaching 15 million dollars annually, McDonald said.

Choose your Christmas cards now at Plainsman Office Supply while our supply is still good. We have a variety of Hallmark cards for traditional, religious, humorous, and other tastes. Shop today.

Cummings

Refrigeration

HEATING

AIR CONDITIONING

REFRIGERATION

SPECIALIST

SALES & SERVICE

659-2721

SPEARMAN

FOR ALL YOUR FLORAL NEEDS

PHONE

659-2593



Spearman
FLORAL
GIFTS

YOUR FULL SERVICE FLORIST

All Varieties

Christmas Wrap

Ribbons-Bows-Seals & Tape

HALF PRICE

Fresh Candy 1b.

Orange Slices

15¢

3 CHEERS
for Your Budget

QUALITY
LOW PRICES
VARIETY

Shop our full selections of
CHRISTMAS GOODIES, Candies & Nuts

Special Prices for School & Church Parties

MELLORINE

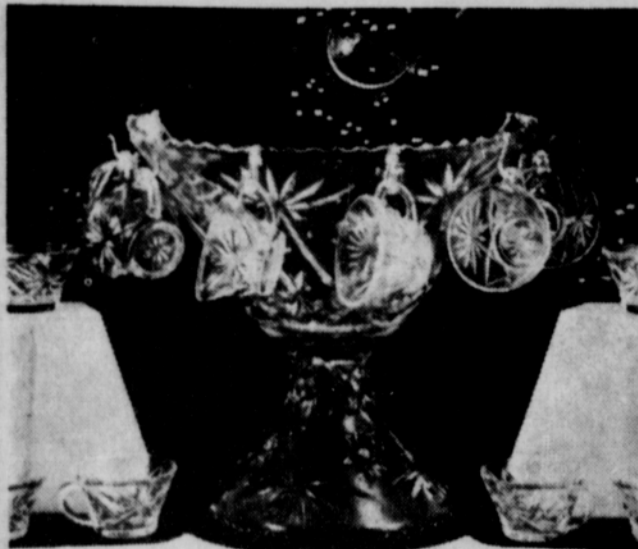
Lanes Party Time Half Gallon

43¢

TREE LIGHTS

Christmas 8 Bulbs Series each

59¢



27 Piece PUNCH BOWL SET

With \$7.00 Purchase \$4.98
Excluding Cigaretts

Pears Shurfine Bartlett 2 for 49¢
303 size can

Pineapple Juice 29¢
Shurfine 46 oz. can

Cheese Slices 43¢
Shurfresh Indv. Wrapped 12 oz. Pkg.

Mid-Week Values For Tues. & Wed., Dec. 8 & 9.

Austex with Beans Tall Can

Chili 27¢

Bathroom Tissue 4 Roll Pak

Northern 29¢

Mortons Frozen all Varieties

Meat Pies 2 for 29¢

Mortons Frozen All Varieties each

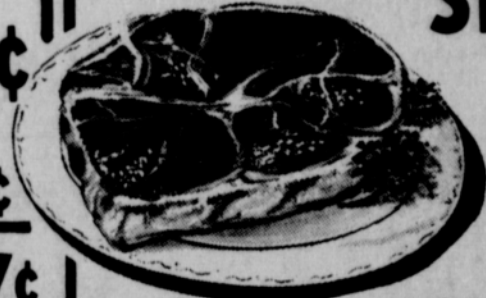
T.V. Dinners 37¢

Pecans Georgia-Stewart lb. 49¢

Yams Maryland-Sweet lb. 15¢

Oranges 2 for 29¢
Sweet-Juicy-Navel

Tenderized Steak 98¢
Lean Ready to Cook lb.



Extra Lean-Fresh lb.

Ground Chuck 59¢

Black Pepper 19¢
Schillings 2 oz. can

Shortening 59¢
Mrs. Tuckers 3 lb. can

Waxpaper 19¢
Northern Waxtex 100 ft. roll

This week's FREE DISH

1 elegant "Gold Crown" China

Saucer

With purchase of \$7. and over

Cut Rate

We Give

Buccaneer Stamps

DOUBLE STAMPS WEDNESDAY