

first celebrated in Washington

Dodd recognized for Father's Day

Today is Sunday, June 19, 1988. Today is also Father's Day. Father's Day is observed on the third Sunday in June. The special day in honor of dads was recommended for national observance in 1924 by President Calvin Coolidge.

The original idea for a special day just for dads came from Mrs. John Bruce Dodd, who in 1909 persuaded the Ministerial Society of Spokane, Wash. to salute fathers with a special church service.

Dodd's inspiration for the special day, was her own father, William Smart, a Civil War veteran who had been widowed when his daughter and five sons were very young -- one of them, in fact, newborn, since the mother died in childbirth. Dodd, realizing the difficulties of a young father without a wife for support sparked the idea to form a day in recognition for all fathers.

Along with the support of the Spokane Ministerial Association, the Spokane Minister's Alliance, and the city YMCA, the first Father's Day was celebrated in Spokane on the third Sunday of June -- the month of her father's birth -- in 1910 with local ministers

calling the attention of their congregations to the appreciation fathers deserved. June 19 was the actual date of that initial observance.

Among the first notables to endorse Dodd's idea formally was political leader William Jennings Bryan, who complimented her on the inspiration for Father's Day and remarked "too much emphasis cannot be placed upon the relation between parent and child."

The observance of Father's Day did not spread rapidly -- no, for instance, as rapidly as Mother's Day, whose celebration in this country predated it only slightly.

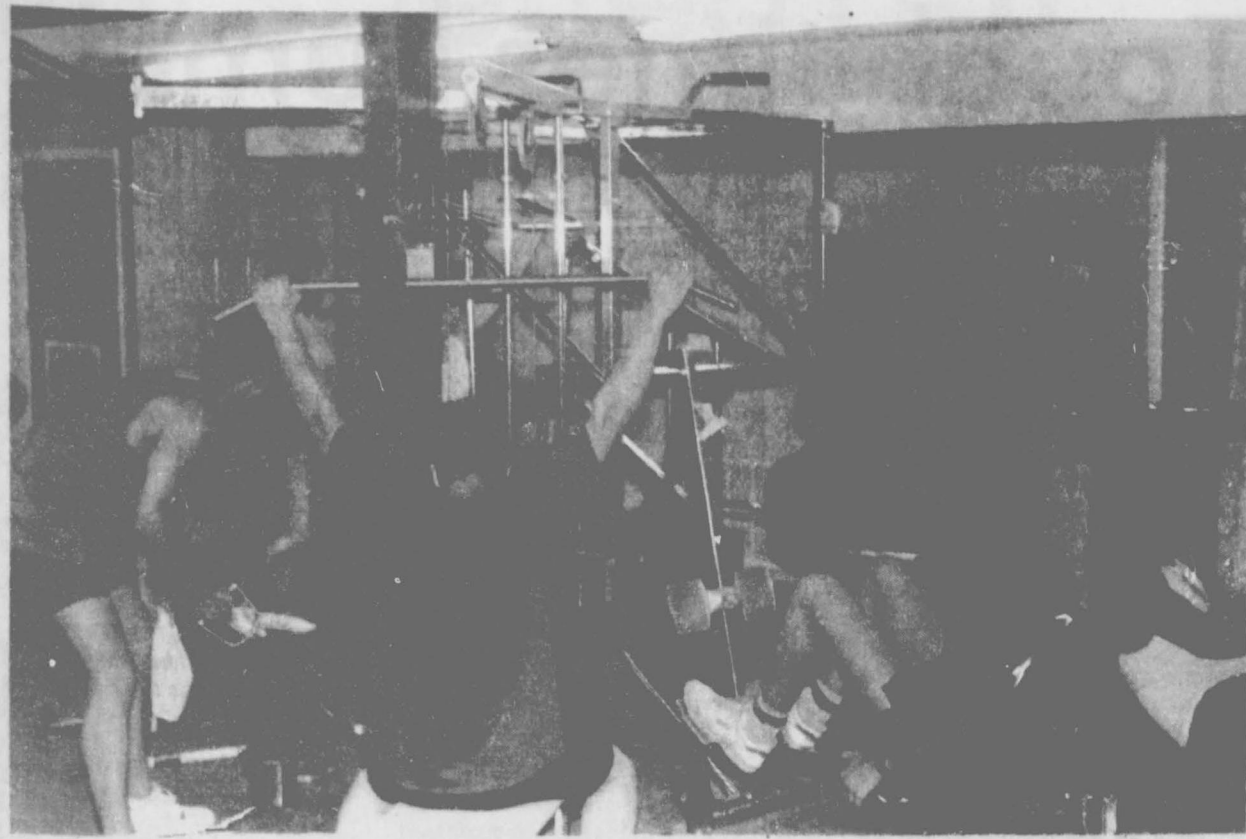
Although Father's Day is almost universally marked in the United States today, it is not an official holiday in all parts of the nation. The observance of Father's Day is promoted by the Father's Day Committee, founded in 1936, which each year sponsors an annual award banquet in New York City to honor the Father of the Year and fathers in special categories. Those chosen as Fathers of the Year have included Presidents, entertainers, and other notables. Community groups in individual

towns and cities also often select Fathers of the Year as part of their own local celebrations.

One originally intended feature of Father's Day, the wearing of a red rose to honor a living father, or a white rose to honor one not living, has been a commercial aspect of Father's Day -- deplored by many -- have burgeoned; an estimated \$1 billion is spent each year for gifts.

In June 1970 a few days before Father's Day, Dodd appeared on three major television shows. She stressed the fact that one most important, timely and practical value attached to the observance of Father's Day was to help bridge the "generation gap". Since the day provides time for children to express appreciation of their fathers and for fathers to acknowledge their responsibilities to their children.

Father's Day is also celebrated in at least 20 foreign countries, although not necessarily on the same day as in this country.



Coed aerobics and weight training have been combined at the Hansford County Activities Center. This just another of the many programs the Center sponsors for the citizens of Spearman. The Activity

Center is holding a sustaining membership drive to help raise funds to keep the Center open. Anyone interested in the drive or the programs of the Center can call the Center for more information.

H. S. students of America

Benson in honor society



will also be a candidate for scholarships as a result of the directory.

Benson completed his freshman and sophomore years in Kit Carson High School in Kit Carson, Colorado. There he was active in several school activities including student council, class president, class vice president, K-Club, journalism, F.H.A., annual staff, C.Y.F., and F.C.A. Keith also played varsity baseball, varsity football, and varsity basketball.

While attending Spearman High in Spearman, Benson continued to play varsity football and varsity basketball. In basketball he won Honorable Mention and the Fighting Heart award. In football, he started on offense, defense, and special teams and won the award as Best Defensive End. He was also F.H.A. beau in his senior year and active in F.H.A., F.C.A., F.F.A. and C.Y.F.

He plans to attend Bethany College in the fall of 1988 in Lindsborg, Kansas.

He is the son of Mr. and Mrs. Frank Benson of Spearman. He is the grandson of Mr. and Mrs. Rudolph Benson of Kit Carson, Colorado.

As a new inductee of the Outstanding High School Student's of America Directory, Hank (Keith) Benson will be listed among the top high school students across the country. The directory is distributed to American colleges, universities, and corporations for their use in student recruiting. He

June 24, July 16, Aug. 1

FPC holds summer "prep days"

Frank Phillips College is sponsoring its first series of summer orientation, Prep Days, June 24, July 16 and August 1, for new students who will be attending the college in the fall.

Prospective students need to be aware of these dates because it gives them "an opportunity for academic advising and advanced registration in classes for fall semester," according to Glenda Thompson, FPC Dean of Students.

"The FPC Days are designed to give students the opportunity to get acquainted with the College,

faculty, staff and other students," Thompson said.

A session for the adult learner will also be included in the schedule. "We are particularly interested in meeting the needs of the non-traditional student returning to the campus," Thompson said. "These students are invited to participate in any of the sessions. However, a Prep Day on August 4 has been scheduled specifically to meet the needs of these students," she said.

Also offered is an optional parents session which will include

information about the college student of the '80's, specific information about college costs, an introduction to FPC by meeting faculty, staff and touring the campus, Thompson said.

The program will begin at 8:45 a.m. on each of the three Prep Days with registration in the Borger Community Activity Center on campus.

Following check-in the students will complete a brief asset test to aid in accurate academic placement for college courses. Afterwards, FPC student leaders will sponsor an introduction to campus activities and provide "ice breakers" for group interaction.

At 11 a.m. Dr. Vance Gipson, vice president for academic and student affairs, will speak on success in college course.

Students will be treated to a hamburger cookout at noon on the Library lawn. Faculty, administrators, coaches, and current FPC students will host the meal.

Academic advising and registration will begin at 1 p.m. in the classrooms of the lower library building. Students will have the opportunity to complete all steps of the registration process, buy textbooks, fill out housing applications and be officially entered in courses for the fall semester.

A tour of the campus will conclude the activities for the Prep Day.

All new students who will be enrolling at FPC in the fall are encouraged to attend one of the Prep Days.

For more information please contact Frank Phillips College at (806)274-5311.

Social Security representative in Spearman on scheduled day

A representative of the Pampa Social Security office will be in Spearman on July 14 and 28, Aug. 11 and 25 and Sept. 8 and 22. The representative will be at the Hansford County Courthouse from 10 to 11:30 a.m.

The representative will assist you in filing for Social Security, Medicare, Supplemental Security income or other business you may have with Social Security.

Almost all Social Security matters can be handled by telephone. You may save a lot of time and travel by calling SSA at (806)669-1018. SSA also take appointments, if you wish to do business at a specified time.

Social Security Administration is open Monday through Friday, except on national holidays, from 9

a.m. to 4:30 p.m. For more information of filed Medicare claims call 1-800-442-2620 (Texas) and 1-800-522-9079 (Oklahoma).

4-H holds junior rodeo on July 9

The Hansford County 4-H will be having a Junior Rodeo on July 9 in the Oscar Archer Rodeo Arena in Spearman.

The rodeo will begin at 6 p.m. All entries must be received by July 1. For more information contact the County Extension office or Wanda Eakin at 659-3445.

Kansas State University

Hansford County in irrigation project

Hansford County of the Texas Panhandle has been chosen for a study of irrigation practices which will be conducted by Kansas State University Professor David E. Kromm and Professor Steve White who will be contacting irrigators in Hansford County this summer to discuss their attitude about water conservation.

These two men have written the following publications which deal with studies of the Ogallala Aquifer: *Public Perception of Groundwater Depletion in Southwestern Kansas; Response to*

Groundwater Depletion in Southwestern Kansas; Adjustment Preferences to Groundwater Depletion in the American High Plains; Public Perceptions of Kansas Water Problems; Conserving the Ogallala: What Next?; Variability in Adjustment Preferences to Groundwater Depletion in the American High Plains; Public Preferences for Recommendations Made by the High Plains Ogallala Aquifer Study; and Interstate Groundwater Management Preferences Differences.

The North Plains Groundwater Conservation District No. 2 certainly encourages all irrigators who are contacted by KSU this summer to participate in the study. We feel the information from this report will help the Water District to better serve the people of the North Plains.

The following is a brief description of the study these men will be doing this summer.

The ability of small-scale irrigators to adjust to water depletion by adopting improved conservation practices could determine whether or not they survive.

The problems facing Great Plains irrigated agriculture vary throughout the Ogallala region. In some areas the aquifer has always

been too thin to permit irrigation, while in other places, it is being rapidly depleted and costs of irrigation will soon be prohibitive. At present, approximately 14 million acres from Texas to Nebraska are under irrigation. The aquifer, the main water source for the Plains, gets only minimal recharge each year and is essentially being "mined" by irrigators.

To adjust to the ever diminishing water supply, Great Plains irrigators can choose from more than 40 different techniques and water use practices. What motivates them to adopt one conservation practice instead of another is a mystery, and unless better understood, any attempts by local officials and others to promote more water conservation will have very little effect, experts say.

For the next two years, two geographers from Kansas State University, with a \$50,000 grant from the Ford Foundation, will be looking at attitudes and motivations of Great Plains irrigators in western parts of Kansas, Nebraska, Oklahoma and Texas. Dave Kromm and Steve White will be trying to determine why water conservation is not more widespread and what is keeping Great Plains irrigators from adopting more widely the water-saving

techniques available to them. The researchers will begin surveying irrigators this summer from the western parts of Kansas - including Finney, Wichita and Thomas counties - and Nebraska, Oklahoma and Texas to identify the barriers to greater conservation.

"Perhaps we can help improve the adoption of conserving irrigation practices so the dwindling groundwater supplies can be used better," Kromm said.

White explained there is a range of variables in the High Plains context affecting water conservation decisions and practices. These include social and economic conditions, water and energy availability, crops and markets, soil and rainfall, farmer awareness and preferences, farm structure, the scale of irrigation and capital.

In an earlier study, The KSU geographers found that important water saving practices were used in some parts of the Great Plains and not in others. Texas irrigators were most likely to be using water conservation innovations; Kansas irrigators lead in prewatering and Nebraska irrigators most frequently metered water flow. "We found a spatially varied adoption

see, WATER p. 2



The Golden Spread Senior Citizens Center has many activities for Hansford County senior citizens. The board of directors for the Center has established an

Endowment Fund to make the Center self supporting. Anyone interested in the Fund may call the Center for more information.

Tough times humor

A depressed economy brings out the creativity in people. A well-dressed businessman in Houston jumped into Buffalo Bayou and was drowning. Another guy jumped in and was pulling him to shore. The first guy says, "Leave me alone. I want to die. Don't save me."

The other replied, "I'm not trying to save you. I want to know where you're working."

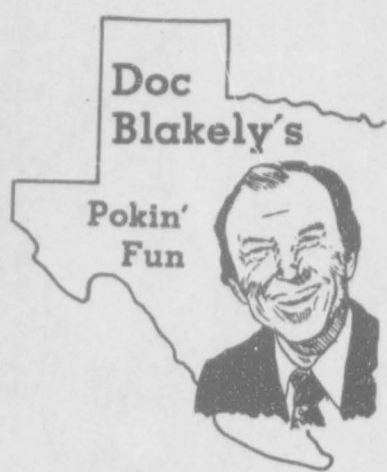
A panhandler asked a woman for a handout. "I haven't eaten in three days," he said.

She gave him money, but replied, "I wish I had your will-power."

"Do you want some of yesterday's soup?" asked a woman of a tramp.

"Yes," he answered. "Then come back tomorrow."

Sometimes things are put in perspective, too. When we get to thinking we are really bad off, we should reflect on the story of the guy who found a good job with security and a great retirement program. He had to have a physical before going to work. Returning home, he told his wife, "Darn, the doctor told me I had to take these little green pills the rest of my life."



"What's so bad about that?" she asked.

"He only gave me six," he moaned.

A fellow was turned down for a job because the manager of the company said he needed someone twice as smart. The applicant complained, "I had half-a-mind to tell him off."

If it wasn't for a sense of humor, the tough economic times in some parts of the country could get you down. A laid-off worker planted a spring garden to help out during the crisis. He was watering it by

hand with a garden hose. Another idle worker came over and asked the dumb question, "Whatcha doin'?"

He said with a poker face, "Rinsing out my hose."

The work ethic suffers and dies unless we use it; so we have to guard against complacency or we become indecisive. Of course, I'm not sure about that.

If we work at it, we'll eventually come up with the right answer. Take the case of the three workers sent in to see the company psychiatrist. The first one was asked, "What's two plus two?"

He answered, "37."

"Send in the other fellow."

"What's two plus two?" asked the shrink.

"Wednesday."

"Next!" called the doctor.

"What's two plus two?"

"Four."

"Very good. How did you arrive at that answer?"

He said, "Easy, I just took Wednesday from 37."

If you have no empathy for those who are out of work, deep in debt, and think this can never happen to you ... Remember the Alamo, Remember John Connally.

Obituary

Vonnie Jewel Cummings
Vonnie Jewel Cummings, 78, died June 8.

Services were at 2:30 p.m. June 10 at the Church of Christ with Leonard Harper, minister, and Gaylord Cook, of Dalhart Church of Christ, officiating. Burial was in Panhandle Cemetery by Smith Funeral Home.

Mrs. Cummings, born Montague County, was a homemaker. She married Arthur Cummings in 1930 at Panhandle. He died in 1987. She was a long time resident of Panhandle. She was a member of the Church of Christ and was a charter member of the Tony Ridge Home Demonstration Extension Club. She attended Tyler schools.

Survivors include two sons, James Cummings of Spearman and Gary D. Cummings of Amarillo; two brothers, Jesse Trayler of Panhandle and Joe Trayler of Spearman; four grandchildren; and 10 great-grandchildren.

The Hansford **Plainsman**
Your Hometown Newspaper
USPS 2346-6000 Spearman, Tx. 79081
213 Main, Box 458, 659-3434
Published Weekly at
213 Main, Spearman, Texas

Owned and Operated by:
Texas Independent Newspapers, Inc.
19906 Encino Grove, San Antonio, Tx 78259
Second class postage paid at Spearman, Texas 79081.
Any erroneous reflection upon the character of any person or firm appearing in these pages will be gladly and promptly corrected upon being brought to the attention of the management.
PUBLISHER - Laddie Hale

Subscription Rate: Spearman, adjoining counties, combination with the **Hansford Plainsman**, \$19.95; non-adjointing counties, \$24.95 annually.
Postmaster: Send address changes to **Spearman Reporter**, Box 458, Spearman, Tx. 79081.
The publisher reserves the right to revise or reject at its option any advertisement which it deems objectionable, either in subject or phraseology, or which it may deem detrimental to its business.

Panhandle Press Association
1988 Award Winner

Growing horses and broodmares may benefit from more fatty diet

Added fat in the diets of horses is gaining much attention — early studies showed that fat increases the performance and condition of working horses, and now, newer studies are finding that growing horses and gestating mares also may benefit from more fat in the diet.

Recent research has demonstrated that mares should be fed to a fatter condition than was previously recommended; however, old habits die hard, and because excessive fatness is known to have deleterious effects on reproduction in other species, many people in the horse industry are concerned about letting broodmares get too fat.

While one might suspect overly fat mares to have a greater likelihood of foaling difficulties, a recent Texas Agricultural Experiment Station study did not find that to be the case. Scientists in the Equine Science Program of the Department of Animal Science set out to determine whether nutrition-induced obesity, initiated early in gestation, would adversely affect parturition (foaling).

At 40 to 75 days of pregnancy, 20 mares of quarter horse breeding were blocked by expected foaling date and assigned to one of two treatment groups: the control, which was fed to maintain and foal in a moderate condition, and the obese group, which was fed to foal at an extremely high degree of body fat.

Body condition was evaluated according to a scoring system based on visual appraisal, palpation of fat cover, and ultrasonography. All mares were

maintained on Coastal bermudagrass pastures and fed a balanced ration to achieve or maintain assigned condition scores.

To minimize distractions at foaling, parturition was observed and videotaped from a raised platform located outside the stall. The times when the mare stood and passed the placenta, when the umbilicus was severed, and when the foal stood, nursed, and passed the meconium were recorded. Each foal was weighed, scored for body condition, ultrasonographically scanned for rump fat thickness, and measured for wither height, heart girth circumfer-

ence, and length.

A subjective visual score reflecting the amount of cervical and vaginal bruising that may have occurred during parturition was given to each mare within 48 hours postpartum.

The study found that neither nutritional treatment nor the sex of the foal influenced the timing of the birth nor the interval from birth until standing or nursing. Nor was vaginal bruising related to fatness. Foal birth weight and placenta weight did not differ between the treatments. However, mares in the obese group had a greater nonfoal/

See DIET, p.3

Births announced

Mrs. Buena Hays, announces the arrival of her second great-grandchild, Kyle Mark Hays, son of Mark and Dottie Hays of Plainview.

Kyle Mark arrived via Methodist Hospital in Lubbock on April 7, 1988. He weighed 6-pounds, 14-ounces.

On June 4, 1988, at Stillwater Medical Center in Stillwater, Ok., Aaron James Aulgur made his debut into this world. He is the son of Jim and Joanne (Hays) Aulgur. Aaron weighed 9-pounds, 2 1/2-ounces.

Floyd Enterline of Spearman is the babies' great grandmother.

Wallace and Ruth Kirkland, Spearman residents before their death, would be great grandparents also.

The babies' parents, Mark Hays, and Joanne Aulgur, are the children of former residents, Larry and Nedra Hays.

Aaron and Kyle also have a great aunt and uncle residing in Spearman, Jim and Phyllis Kirkland.

WATER, from p. 1

pattern, and we were surprised at how varied irrigation practices were and how different the perceptions of the farmers were about the need to conserve."

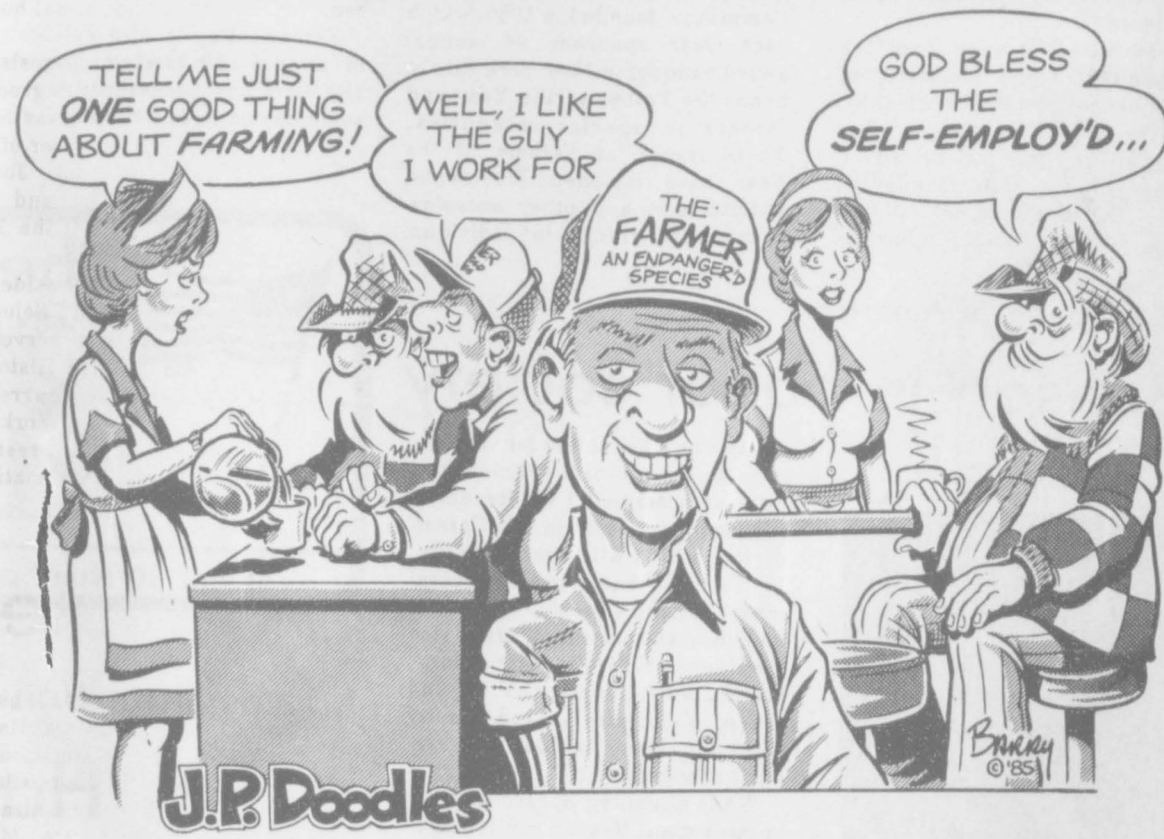
The two learned that Kansas farmers who had been irrigating prior to 1961 and those who were large-scale irrigators, were more likely to have adopted various conservation practices as the groundwater dwindles. But they do not know why one irrigator adopts a specific water saving practice and a neighbor may not. "What's being done can vary from one part of a county to another," Kromm said.

There are strong social implications associated with adopting irrigation practices, they noted. "One observer has said center pivot irrigation marked a physical change from the landscape of the yeoman farmer to that of the corporation," White said. But farmers unable to make such adjustments may not survive economically.

You Are Invited To a Wedding Shower honoring Julie Latta bride elect of Tim Stedje on Saturday, June 25 from 2:30 to 4 p.m. at the home of Sheri Benton 26 Golden Circle

HOSTESSES:
Jeanette Allen Glenda Guthrie
Toni Archer Virginia Head
Audene Beck Judy Martin
Sheri Benton Mary Lou Mathews
Eulalia Blankenship Kay Vernon
Kitty Edwards Carolyn McLeod
Alva Garner Patty Sheppard
Marti Garnett Sue Woolley
Hazel Shieldknight

Selections at:
Sacks 3rd Ave. Cha Lor's



Waggoner Estate Sale

JUNE 21, 1988 - 10:00 P.M.
OCHILTREE COUNTY COURTHOUSE
Courthouse Steps
(Or Courtrooms, in case of inclement weather)

LOCATION: Go 21 Miles South on Hwy 83 from stop light on South Main & 24 St., Perryton, Texas - Then North 1 1/4 Mile on Caliche Road - Will Put You In Southwest Corner of Waggoner Land.

ALL OF SECTION 318 AND SOUTH 1/2 AND NORTHEAST 1/4 QUARTER OF SECTION 387, BLOCK 43, OCHILTREE COUNTY - SURFACE ONLY.

FACTS:
Section 318 - Approx. 168.6 Acres Cultivated - CBP Planted, Caucasian Blue Stem Grass - 471.4 Acres Grass. Has a set of poor improvements, one windmill, located on south 1/2 and one windmill, on north side of section. One well with electric submersible pump on west side.
Section 387 - Approx. 245.3 Cultivated Acres that is in CRP at \$40 per acre. Has been planted to Caucasian Blue Stem, 234.7 Acres Grass.

TERMS:
Immediate Possession on Closing -10% In Escrow Immediately - Balance at Closing - Not Later than August 1, 1988. Licensed Survey to be Furnished at Date of Sale.

FOR FURTHER INFORMATION: Contact
TARK COOK, (806)435-2610 or 435-2042
or JOHN MAYFIELD, Receiver (806)435-5701
Estate of Etta Waggoner & G. L. F. Waggoner Estate.

NOTE:
Every effort has been made to assure the accuracy of the information with guarantee of authenticity. Any announcements made day of sale supercede all other announcements of advertising.

LINDSEY FURNITURE

OPEN SUNDAYS 12 TO 6 DURING SALE

Entire inventory reduced from 33 to 50%

REG. \$629.95	LAZY BOY ROCKING RECLINER PEACH VELVET 1 ONLY	SALE \$468	REG. \$169.95	MERSMAN MAPLE COCKTAIL TABLE WOOD MAPLE 5 ONLY	SALE \$54.95
REG. \$399.95	A-BRANDT SPOT CHAIRS CHERRY WOOD & VELVET SEATS 2-ONLY	SALE \$228	REG. \$249.95	GRANDFATHER CLOCK TABLE TOP WOOD 1 ONLY	SALE \$168
REG. \$319.95	WM. WALKER RECLINER BROWN VELVET 1 ONLY	SALE \$188	REG. \$319.95	BROYHILL SPOT CHAIRS HI-BACK VELVET STRIPES 2 ONLY	SALE \$158
REG. \$399.95	BROYHILL SWIVEL ROCKER BROWN VELVET 1 ONLY	SALE \$168	REG. \$1,299.95	GENUINE CRYSTAL CHANDELIER REQUIRES 12-FT. CEILING 1 ONLY	SALE \$659.95

FATHER'S DAY RECLINERS STARTING AT \$88

REG. \$399.95	FLOOR LAMP ALL BRASS 1 ONLY	SALE \$219.95	REG. \$549.95	OAK ROOM DIVIDER 3 PANEL 1 ONLY	SALE \$299.95
REG. \$219.95	ELECTRIC RAIN LAMPS HANGING 3 ONLY	SALE \$119.95	REG. \$319.95	WHITE BABY BED MATTRESS & BUMPER PAD 1 ONLY	SALE \$189.95
REG. \$189.95	ASSORTED TABLES ODDS & ENDS 3 ONLY	SALE \$58	REG. \$269.95	WHITE BABY CHEST MATCHES BED WITH DRESSING TOP	SALE \$159.95
REG. \$407.95	TELL CITY MAPLE DESK SMALL ROLL TOP 1 ONLY	SALE \$229.95	REG. ODD	NIGHT STANDS WALNUT FINISH TWO DRAWER	SALE \$38 EACH
REG. \$769.95	STAINLESS ROOM DIVIDER 3 PANEL 1 ONLY MIRROR ONE SIDE	SALE \$419.95	REG. ODD	CHEST OF DRAWERS WALNUT FINISH 4 DRAWER UPRIGHT	SALE \$88 EACH

LINDSEY FURNITURE
910 N. Main
Berger, Tx
VISA MasterCard
CREDIT AVAILABLE
273-6436

Dads responsibility spelled out

Father's Day is an appropriate time for us to thank the thousands of non-custodial fathers who support their children with regular child-support payments. Many of you are separated from your children by painful divorces, and perhaps, by many miles; yet, your support cuts across the distances. It is a steady reminder to your children of your love and concern for their well-being.

Unfortunately, you responsible parents are outnumbered by the irresponsible parents who fail to make child-support payments.

Golden Plains Hospital

The Attorney General's Office of Child Support Enforcement works overtime to track down these deadbeats who refuse to support their children.

Historically, the courts have given custody of the children to divorce cases to the mothers. Consequently, most of our cases involving failure to pay child-support are against fathers.

Our statistics show that 40 percent of the women with children in need of child support don't even have a court order for child support. Of the women with child

support awards or agreements, 26 percent receive no payment, and another 26 percent receive some payment, but not the full amount. Nationwide, only about 30 percent of non-custodial parents make regular child-support payments. That's a national disgrace.

Because the job of enforcing child-support laws is so overwhelming, I have had to focus my efforts and public pleas on those who fail to pay. Our aim is to stimulate voluntary compliance through public education, and occasionally making an example out of the more aggravated cases of

non-support.

Sometimes we have to put people in jail, because a law without enforcement is no law at all. And nothing stimulates voluntary compliance like the real possibility of going to jail.

Each time we conduct arrests, voluntary compliance increases by about five percent. That equals approximately \$1 million for the children.

Our public education and enforcement efforts have paid off.

Since the Attorney General's Office took over the child-support enforcement responsibility in 1983,

our child-support collections have risen to \$70 million in fiscal 1987 from the \$18 million that was collected the year before I took over the program. That is more than a 300 percent increase. We expect collections to top \$100 million by the end of this year.

We are proud of our accomplishments, but very aware of how much more needs to be done. Our caseload has doubled to 335,000 applicants who need help getting child-support. Unfortunately, we have the resources to handle only about 60,000 cases at a time. Therefore, clients sometimes have

to wait months for help. We have asked the Texas Legislature for some resources.

It is a tragedy that so many custodial parents are having to bear sole responsibility for supporting their children, while the non-custodial parents are able to improve their standard of living by avoiding all legal and moral responsibility for their children. One study discovered that non-custodial parents are making higher and more consistent new car payments

see, **FATHERS** p. 6

Spahich named PR director

Eck Spahich, former Borger News-Herald editor, has been named public relations director of Golden Plains Community Hospital, Borger.

Hospital serves."

"I am certain his varied experience will contribute to our ongoing efforts in making the public aware of the quality medical care available at the local facility," Florey said.

Spahich served as editor of the Borger News-Herald before going into real estate. He came to Borger in the spring of 1972, following his return from South Vietnam, where he served as combat correspondent and editor with the famed 173rd Airborne Brigade.

For the past five year, he has been involved in real estate marketing and appraising. He has also served Amarillo Globe-News and

United Press International staff correspondent, and editor of the Trumpeter, an international hobby journal.

A native of Tuzla, Yugoslavia, Spahich holds a B.A. degree in journalism from West Texas State University. He is a member of the Society of Professional Journalists, Sigma Delta Chi, and is a former board member of the Panhandle Press Association.

In 1985, he received Presidential appointment to District 5 Selective Service Board. He also serves on the Hutchinson County Historical Commission and is currently president of the Borger Workshop Center, and is founding president of the Borger Soccer Association.

Announcement of the appointment, effective immediately, was made by George Florey and David Odum, copmanagers-consultants of the hospital.

"We are delighted to bring a journalist with Spahich's background into our organization," Odum said. "He will head our public relations department and assist us in developing an impressive public relations profile and an outstanding image and identity within the area Golden Plains

Servitors Club

Softball tournament scheduled

June 21 is the deadline for the Spearman Servitor's Club softball tournament. The men's softball tournament is scheduled for June 24, 25, and 26 in Spearman. The tournament will be played at Jaycee Park in Spearman. A \$100 entry fee is required for the tournament. All proceeds will go toward charitable associations or service projects such as needy families and the American Heart Association.

The tournament will be called by ASA umpires. Trophies will be awarded to the first, second, and third place teams. The first place team will receive individual jackets and the second place team will receive individual trophies.

The run rules for the tournament are 15 after three innings, 10 runs after five innings and each game has a time limit of one hour.

Anyone interested in the tournament can call Terri Dewberry at

659-3915, Linda Cummings at 659-3942 or Cindy Avila at 659-3830 for more information.

The Spearman Servitors Club is a community service organization. They were organized in March 1977. Some of the community service projects the organization has been involved in are giving scholarships, contributing to the Golden Spread Center, and painting the downtown park among others.

DIET, from p. 2

nonplacenta weight loss than mares in the control group.

When broodmares were fed diets containing added fat, energy consumption increased and milk fat content was increased. Birth weights of foals were similar, but foals nursing mares grew faster initially and were fatter at 60 days of age than those foals nursing mares fed conventional diets. Mares fed fat tended to ovulate sooner after foaling and required fewer cycles per pregnancy than the control mares.

In other studies involving added fat in the diets of horses, actively growing yearling horses fed 10 percent fat were able to achieve a rapid weight gain without suffering the deleterious skeletal effects thought to be caused by feeding high-carbohydrate diets.

Twenty-four yearling quarter horses were divided into three treatment groups; fed bermudagrass hay at one percent of body weight; and given one of the following concentrates: no added fat, 5-percent added fat, or 10-

percent added fat.

A small increase in average daily weight gain was reported on the 10-percent-fat diet, while total feed intake tended to be lower. There also was a trend for horses fed the 10-percent-fat diet to require less total feed per pound of weight gain than the others.

No treatment differences were found for gain in height at the withers or hips or for increase of heart girth. Those on the high-fat diet tended to store more rump fat.

In another study of race horses and cutting horses, the effects of added fat in the diet for aerobically conditioned (race) horses and anaerobically conditioned (cutting) horses were measured.

Digestibility of energy and other components of the diet were increased or unchanged by adding fat to the diet, researchers found. The horses gained weight and body condition, they worked harder on the cutting performance test, and they worked more efficiently on a treadmill test.

Riders who worked the horses reported that the animals appeared to feel better, to have more energy, and to work harder when they were fed the 10 percent fat diet. The horses' heart rates did recover more slowly when the 10 percent fat was added, which was reflective of a higher work output when they were fed fat.



These young musicians attended Piano Camp at Southwestern Oklahoma State University at Weatherford on June 6 - 10. Camp director was Dr. James Breckenridge of the Southwestern faculty. Attending the camp included [front from left]: Elizabeth Pipkin, Spearman; Roxane Holt, Gruver; Amy Sue Taylor, Kankakee, Ill.; Michelle Hooker, Iowa Park;

and Mike Schmitt, Liberal, Kan. Back row -- Amy Krupicka, Birmingham, Ala.; Macy Krupicka, Birmingham, Ala.; Becky Barber, Johnson, Kan.; Jennifer Floyd, Johnson, Kan.; Kristy Hooker, Wichita Falls; Jennifer Riney, Liberal, Kan.; Audra Koochel, Liberal, Kan.; and Montana Loepp, Turpin, Okla.

Good for You

Dad On Father's Day!

Children, Parents, Family...



That is what makes Hansford County strong.

Hansford County is full of outstanding youth. One reason we have such excellent youth is because of the support and recognition Hansford County children receive at home.

Dad plays a big part in that support.

Today the First National bank congratulates all Hansford County fathers on their special day.

Good for You AND HANSFORD COUNTY TOO!

MEMBER FDIC

Hours: Mon. - Fri. 7:30 - 3:00
Open Thurs. 4 p.m. - 6 p.m.



Hansford County Veterinary Hospital, Inc. would like to announce the opening of **PAMPERED PETS** on Monday, June 20, 1988. For boarding, grooming, dipping, bathing, and pet supplies call 659-3755 after June 22, 1988 or come by from 8 to 12 Monday through Friday and from 8 to 5 on Thursdays. (Located south of the veterinary hospital)

Don't miss out!

J.G.'s has just begun the **summer**

Sale 30 to 50% off

spring & summer merchandise.

306 Hancock Spearman

J.G.'s

Monday, June 20

Agriculture workshop to be held June 29 - July 1 in St. Louis, Mo.

Secretary of Agriculture Richard E. Lyng has added a workshop on public perceptions to the program for the Agricultural Products Quality and Competitiveness Conference, which the U.S. Department of Agriculture will sponsor June 29 through July 1 in St. Louis, Mo.

The conference will now have a total of 15 workshops.

"The conference is attracting registrants with wide-ranging interests," said Secretary of Agriculture Richard E. Lyng. "Because of substantial public interest, I've added a new workshop called 'Public Perceptions of Agricultural Quality and Competitiveness.'

"This workshop," Lyng said, "will address general agricultural concerns and will be open to any paid participant attending the conference and to the press. Amy Barr, executive editor-at-large, *McCalls Magazine*, New York, N.Y., will lead this session."

The 14 other workshops and their leaders are:

Food Grains: Winston Wilson,

president, U.S. Wheat Associates, Inc., Washington, D.C.

Feed Grains: T.L. Sam Irmen, vice president for governmental affairs for The Andersons, Maumee, Oh.;

Forage: Donald R. Ast, president, National Hay Association, Hazelton, Id.;

Oilseeds: Kenneth L. Badger, chief executive officer, American Soybean Association, St. Louis, Mo.;

Fresh Fruits and Vegetables: Carol D. Scroggins, vice president for consumer services, Fleming Companies, Inc., Oklahoma City, Ok.;

Processed Fruits and Vegetables: Jerome B. Siebert, economist and special assistant to the vice president for agriculture and natural resources, University of California, Davis;

Processed Edible Nuts: Ronald J. Henning, president, Henning Peanut Technical Services, Colquitt, Ga.;

Red Meat: Tom Miller, past

president, National Pork Producers Council, Maricopa, Ariz. and Kenneth W. Monfort, president and chief operating officer, ConAgra Fresh Meats Companies, Greeley, Colo.;

Poultry: Richard H. Forsythe, vice president for research, Campbell Soup Co., Fayetteville, Ark.;

Dairy: James A. Kasten, regional manager of Morning Glory Farm Region of Associated Milk Producers, Inc., Shawano, Wis.;

Aquaculture: George Williams, executive vice president, Catfish Farmers of America, Jackson, Miss.;

Sugar and Sweeteners: William A. Cromarty, vice president Sparks Commodities, Inc., Bloomfield, N.J.;

Cotton: William B. Dunavant, chairman of the board and chief executive officer of Dunavant Enterprises, Inc., Memphis, Tenn.;

Wool and Mohair: Edgar Olson, president American Sheep Producer Council, Denver, Colo.

Local families can tour Europe

Imagine being able to absorb the culture of a foreign country for a whole year without ever having to leave home. That's exactly what the ASSE Student Exchange Program offers local families who want to host an outstanding teenager from abroad.

Having a European or Australian youngster become part of the family for an academic year gives everyone in the house the opportunity to learn more about themselves and the world they live in.

ASSE teenagers are outstanding students from Europe, Australia and all points in-between. They're motivated 15-18 year olds who want to become part of an American household, which means they pitch in on everything from chores to family discussions. They're also enthusiastic about sharing the culture and customs of their own homeland. And although most ASSE kids are fluent in English, they love to help teach their own language to their American family. And what better way to learn?

Host families also gain a new perspective on their own way of life. Parents and kids alike come to appreciate lots of things they've probably taken for granted. Like all the TV channels they have to choose from (not to mention MTV) plus all the great things to buy in our consumer wonderland.

And it's reassuring to know that the ASSE Program is affiliated with the most esteemed government education departments in the world: the National Swedish and Finnish Departments of Education, The Canadian Provincial Ministries of Education and the Australian and New Zealand Departments of Education, have approved the ASSE program, and the United States Information Agency has officially designated ASSE as an exchange visitor program. If you want to give your family a foreign accent for a year and even a lifetime, contact ASSE Area Coordinator: Ingalill Toles, 415 Azle Highway, Weatherford, TX 76086, call collect: 817/599-0686.

Chili Cook-off to be held in Guymon June 25

The Beta Tau Chapter of Epsilon Sigma Alpha and the Guymon Ambucs will sponsor the second annual Dust Bowl Chili Cook-off, June 25th at the Guymon North Park. The park is located across the street from the Memorial Hospital. The cook-off will start at 9:30 a.m. with the cooks meeting. Cooking will start at 10:00 a.m. with turn in at 2:00 p.m. Show time will run from 11:00 a.m. to 12:30 p.m. Entry fee is \$15.00 per cook. Entries may be made the morning of the cook-off. Trophies will be awarded to the first 10 place chilies and to the top three show teams. There will also be a humanitarian award.

A Chili Cook-off is a community fund raiser with all proceeds going to a charity or worth while cause. This year the sorority and the ambucs have selected the Panhandle Treatment Center, the Big Brothers/Big Sisters, the Panhandle Area Sheltered Workshop, and the Leaves and Fishes Program. All money raised will be divided between these four community services.

A Competition Cook-off is basically, who can make a better pot of chili. There are rules and points will be awarded to the top Chili Cookers and Show Teams. Those cooks and showteams that have earned 15 points or more are then eligible to go to Terlingua, Texas in November for the National Chili Cook-off. This is a sanctioned Cook-off and will be governed by the C.A.S.I. and Tolbert rules. The main rule is that the chili must be prepared at the site and nothing may be prepared ahead of time, such as precooking the meat. No fillers, such as beans, rice, macaroni or any thing foreign may be added to the chili. Such additions will result in a disqualification.

There will be games, food booths and entertainment for those not wanting to participate in the actual cook-off. Some of the games plan-

ned are egg toss, lemon roll, hula hoop contest and others. There is also a horse shoe tournament planned. The Oklahoma Kids, a group of talented kids from the surrounding area and the state, will provide the entertainment from 12:30 to 2:00 p.m. Various other clubs and organizations will participate in the cook-off festivities by offering food booths. The Texas County Cattlewomen Association will have a bar-be-que and ice tea booth, The Big Brothers/Big Sisters will have a snow cone concession, the Panhandle Treatment Center will offer pop corn, the Guymon Community Theatre will have ice cream or yogurt available and several other clubs that have not yet determined their concession.

For further information on the cook-off and entries please contact one of the following: Bobbie Cooper, (405) 338-7697, Chris Smith (405) 338-7690, or Lee Pekrul (405) 338-3186.

Dollars Against Diabetes

Did you know Father's Day is also DAD's Day? That's right. DAD stands for Dollars Against Diabetes. It's held every year on Father's Day weekend.

"Dollars Against Diabetes" works like this: All across the country, heavily traveled traffic intersections will be manned by volunteer union members, their families and friends who go up to car windows when the light is red and ask drivers if they can give a dollar or some change to help cure diabetes. Busy intersections can raise as much as \$3,000 in six hours.

"Dollars Against Diabetes" is a fundraising program designed to raise money for the Diabetes Research Institute located at the University of Miami School of Medicine. The fundraising project is spearheaded by the AFL-CIO's Building and Construction Trades Department's Blueprint For Cure campaign.

With your help, they may construct a cure for this disease.

Texas Medical Association suggests safety precautions for vacations

Now that school is out, family vacations are just around the corner. The Texas Medical Association reminds you to "think safety" to help avoid some of the most common "accidents" that can spoil your vacation.

If you are driving long distances, you or a mechanic should give your car a thorough inspection. Check the brakes, battery, fluids, oil, and tires, including the spare.

Buckle up every time you get into the car. If you have toddlers,

be sure to have child restraint seats -- not only for safety reasons, but also to allow the child to see outside and enjoy the ride more.

Being outdoors in the summer sun and heat can cause unpleasant side effects such as sunburn and heat exhaustion if you're not careful. Use a sunscreen whenever you plan to be outdoors -- even on cloudy days. Wear protective clothing such as t-shirts, hats, and sunglasses. Take the sun in small doses, and don't overexert yourself in the heat. Drink plenty of water

to replace what you lose through perspiration.

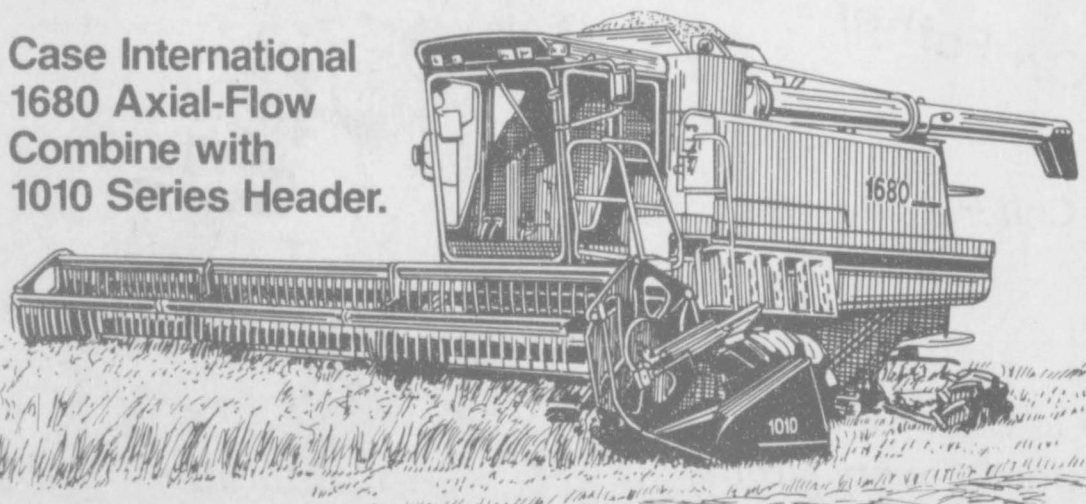
Review first aid, pack accordingly for your trip, and remember to pack a first aid kit.

Finally, use your common sense and "Think safety" to make your vacation accident free.

The Texas Medical Association is a professional organization with more than 28,000 physician and medical student members. It is located in Austin, and has 116 component county medical societies around the state.

THE HARVESTING TEAM THAT TAKES BIG ACREAGE IN STRIDE.

Case International
1680 Axial-Flow
Combine with
1010 Series Header.



If you're looking for a combine to harvest big acreage in a hurry, you can't settle for almost. And you won't have to if you team it with any of our acre-eating headers. The 1600 Series Combines have the capacity and power to take charge of any amount of any crop, in any conditions. Their threshing and separating capacity produces grain that's cleaner... and puts more of it in the bin by day's end.

Axial-Flow Design. A single rotor threshes and separates the crop, gently and more completely than cylinder-and-concave machines. You get more bushels per acre... less damaged grain that reduces your revenue. Simple rotor system means no cylinders, cylinder beaters, straw

walkers or racks to fail when your harvest is waiting.

1010 Series Rigid Header. For standing crops, this rigid cutterbar header can be perfectly matched to the 1600 that's right for you and your acreage. Choose from six size options of 15 to 30 feet to match your field and crop conditions.

1020 Series Flexible Header. When close-cutting and following change in ground contours are important to crop recovery, select these efficient headers to maximize yield. In sizes up to 25 feet.

1000 Series Corn Head. For high-yielding corn producers. Match one of these ear-saving heads to your 1600 Combines. Sizes four to eight rows.

Stop in... get the details on this big-league harvesting team.

Five Star Equipment Inc.

Hi-Way 15 West Spearman

659-3743

case

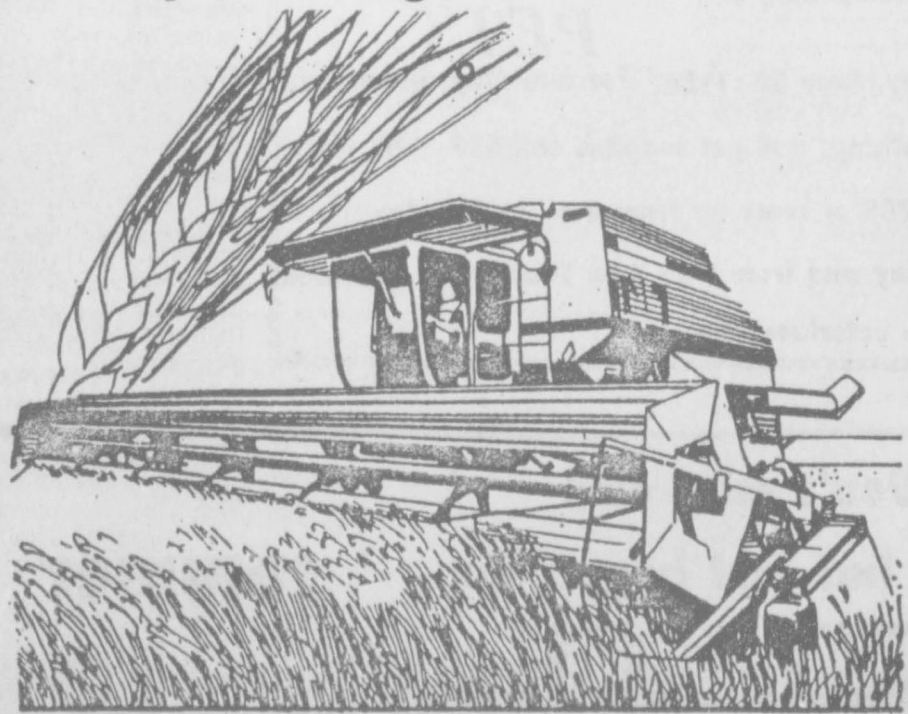
HARVEST TIME

Fast, friendly, courteous service!

We can unload trucks fast!

Top Market Prices!

Plenty of storage for loan wheat!



**Agco of
Spearman Inc.**

Main Office - 511 S W 11 Spearman 659-3751

Elevator A-RT, 659-3779

Elevator B - E. HWY 15 - 659-2417

Elevator Buzzard - Rt. - 659-3478

Your Home Is Full Of Hidden Dollars



Call 659-3434

Turn idle items into cash fast with a Want Ad

You are invited to a Come and Go Bridal Shower honoring Pamela Ring Bride Elect of Wayne Groves June 25 from 2 to 4 p.m. Fellowship Hall Assembly of God Church

HOSTESSES:
Nita Bynum Sandra Eaton
Debi Baskin Elaine Cook
Janice Johnson Betty Dunaway
Janet Scarborough Gwen Smith
Candy Ochoa Betty Jean Davis
Gail Vanlandingham Mary Brock
Janie Kunselman Sandy Russell
Janett Trooper Jeanie Laughlin

Selections at Cha Lora's
S83S-2tp

HELP WANTED

DISTRICT REPRESENTATIVE HIGH CALIBER PERSON
Sales career position with management opportunities in growing organization. Intensive training program. Starting income to \$3,200. per month. No experience necessary. Outstanding group insurance and retirement benefits. Relocation not necessary. For confidential personal interview, call (806)435-9448 or write Manager, P.O. Box 602, Perryton, TX 79070.
S32S-4tp

GET PAID for reading books! \$100. per title. Write: PASE- B3134, 161 S. Lincolnway, N. Aurora, IL 60542.
S32-4tp

Real Estate

\$182.73 per month buys 1985 14x52 2 bedroom mobile home, \$1000 total down payment, 11.75 APR for 144 months ask for Art 806-376-4694.
S32 7t

\$164.05 per month for a 3 bedroom home, free delivery and set-up, call 806-376-5364, ask for Marina, \$596 down at 96 months, 8.5 APR.
S32 7t

\$99 total down payment for 4 bedroom, 2 bath, double wide, free delivery and tie down, ask for Rubin at 806-376-5630. 132 months at \$335, 11.75 APR.
S32 7t

\$193.23 per month buys Cameo, 14' x 80', 3 bedroom, 2 bath, 10% down, 12% APR, 180 months, like new, call 806-376-5363 ask for Lee.
S32 7t

FOR SALE: Nice small 3 bedroom home. Fenced, carport, close to school. Great rental property or starter home. 1010 Dressen. Call 1-669-9765, Pampa.
S18-rtn

ABANDONED HOMES - Take over payments on 2 and 3 bedroom homes. Qualify by phone. (806) 381-1352. Call collect.
S46-rtn

\$188.36 per month for new 3 bedroom, 2 bath, 14x80 mobile home, free delivery. 806-376-5363, 13% APR, 240 months 10% down, A-1 homes.
S32 7t

For Rent

FOR RENT: One bedroom house, also one bedroom apartment. Call Gus McLain 659-2274.
S32S-4tp

FOR RENT: 1 bedroom furnished apartment. Call 659-3491.
S33-rtn



Avoid buying grapefruit with a soft and tender peel that breaks easily with finger pressure.

SERVICES

REPAIR on vacuum cleaners and appliances. Call 659-3301.
S19S-rtn

For Sale

FOR SALE: 1985 Ford Tra Tech Van, captain seats, queen size couch bed, TV, front/rear AC & heating, high ceiling, and many more extras. Call 733-2129 or 733-2002.
S33-4tc

FOR SALE: 1972 Toyota Land-cruiser Jeep 4 x 4, 2 dr., call 733-2129 or 733-2002.
S33-4tc

FOR SALE: Smith & Barnes vertical Grand Piano, at least 63 years old. Needs some work. \$150. 322 Hazelwood, Spearman.
S32S-4tp

FOR SALE: 1 pace - setter garage door. Call 659-3286.
S33S(3t)

FOR SALE: 1980 14 x 80 Town & Country Mobile Home. 3 Bdrm - 2 Bath. Call 659-3629.
S32S - 10tp

FOR SALE: 1977 Pontiac, 4 dr. Call 659-2049 between 7 & 10 p.m.
S32-3tp

FOR SALE: Remington 270, Winchester model 760 with scope, remington 300 SAV model 760, Browning automatic sweet 16. Call 733-2209. S33 2tp

Be prepared to help heart attack victims

Heart attacks can happen without much warning, and they happen anywhere, any time. Do you know how to help someone who is having a heart attack? The Texas Medical Association says that you can help save a life if you recognize the signs of an attack and take action immediately.

Severe chest pain usually is the first sign. The pain often is described as pressure beneath the breast bone. It can become severe, and can move into the neck and jaw area and the left shoulder or arm. Any kind of exertion makes it worse. The pain will be continuous, but may subside.

Other early warning signals of a heart attack that accompany the pain include nausea, sweating, difficulty in breathing, and dizziness.

The first step of helping a victim is to call an ambulance immediately. Then, make the person as comfortable as possible, which is usually sitting, with the legs up and bent at the knees. Loosen ties, collars and any tight clothing around his or her upper body.

Another way you can help is simply by being prepared for all types of emergencies. Know what the emergency number is in your area. Know where the closest hospital is. Learn CPR. If the victim loses consciousness, and has no pulse or stops breathing -- you may not have time to wait for medical help to start CPR.

Knowing all of these things also will help you remain calm and reassure the victim.

The Texas Medical Association is a professional organization with more than 28,000 physician and medical student members. It is located in Austin, and has 116 component county medical societies around the state.

LEGAL NOTICE

Hansford County Commissioners' Court will receive bids until 4:00 p.m. on Friday, June 24, 1988 on one, new, 1988 3/4 ton super cab pickup with and without trade-in. Bids will be opened on Monday, June 27, 1988 at the regular Commissioners' Court meeting.

Specifications are available at the County Judge's office or the County Auditor's office in the Hansford County Courthouse. The Court reserves the right to accept or reject any or all bids.

Roy L. McClellan
Hansford County Judge
S33s 2tc

NOTICE TO BIDDERS

Sealed bids for the sale of a 1976 CHEVROLET TYPE I AMBULANCE, built by SOUTHERN AMBULANCE, will be received by the City of Spearman until 2:00 p.m., September 22, 1988, and then publicly opened and read.

The City reserves the right to reject any or all bids, to waive formalities, and to accept the bid deemed to be the most advantageous to the City. All bids received after the closing hour will be returned unopened.

Information and bidding documents may be secured from the office of the City Manager, P.O. Box 37, Spearman, Texas 79081. S32&33-t'only

A gift in loving memory to the American Heart Association is a gift that lives on--giving us hope for a healthy future. Please give generously. We're fighting for your life. Give through your local bank of call 659-3493. rtn

You Are Invited to a Bridal Shower honoring Linda Stark Bride-elect of Randy Janzen

7:30 to 9 p.m. June 22

AT THE FIRST STATE BANK'S HOSPITALITY ROOM

Gift selections at Cha Lora's Sacks Third Ave.

SALES HELP

NEEDED

Advertising salesperson needed to work in surrounding area. Apply in person only, at The Spearman Reporter 213 Main Spearman, Tx Office hours: 8-5, Mon. - Fri.

HELP WANTED

Nursery attendant during Church services (Sunday's from 11 to 12) for First Presbyterian Church Call 659-2033 or 659-2708.

L & M Body Works
1501 Hwy. 15
659-2775
Tailpipes - \$29.95
Mufflers - \$39.95
Most Duals - \$160.00 complete

NOTICE
Wallace Monument Co. Monuments, Curbing, Grave Covers Local Representative **LEONARD JAMESON** Spearman, Texas

OSGOOD MONUMENT CO.
Amarillo, Texas
Dealers of Rock of Ages Granite, as well as all colored granites, marble and bronze memorials.
represented by **BOXWELL BROS. FUNERAL HOME**
519 S. Evans
659-3802

ALCOHOLICS ANONYMOUS MEETING
Hansford County Library
122 Main - Spearman
Open Meeting 2nd Tuesday
ALANON
TUESDAY
8:00 P.M.

Quit smoking.
American Heart Association
WERE FIGHTING FOR YOUR LIFE

CLASSIFIED RATES
Regular . . . Per Word-\$0.13
Display . . . Per col. Inch-\$4.20
Double rate for blind ads
Minimum charges
Cash \$4.00
Charge \$4.50

CASH IN ADVANCE ADS
Work wanted *Trailers for Sale*
Business Opportunities *No long Responsible* *Political Advertising* *Child Care*
Baby sitting *Garage Sales*
*Out-of-county Ads unless advertiser has established credit with *The Spearman Reporter*

DEADLINES
To place or cancel ads
Friday - 12:00 p.m. Sunday edition.
Tuesday - 12:00 p.m. Thursday edition
The Spearman Reporter reserves the right to reject, edit, revise and properly classify all advertising submitted for publication. The Spearman Reporter also reserves the right to cancel any advertisement at any time. **THE SPEARMAN REPORTER** 213 Main, P.O. Box 458 Spearman, Texas 79081

Custom Combining & Farming
Stephenson Farms
Canyon, TX.
(806)655-4904
Dudley Stephenson

Local Happening?

Special Event?

Club Meeting?

If it's important to you, it's important to us.

Let us know about your event and we'll do our best to get you the publicity it deserves both before and after.

Call 659-3434 Today!

The Spearman Reporter
The Gruver Statesman
The Hansford Plainsman

Among the Neighbors

By Helen Fisher

There have been several temporary residents enter the Hansford Manor the past month. Vera Beth Hicks plans to be there indefinitely due to her ill health.

A group of ladies had a pleasant trip and several days in Santa Fe the first of the week. Those enjoying sight-seeing, shopping and relaxing were Judy Martin, Barbara Collier, Mary Ann Laster, Mary Dixon and Charlotte Jackson.

Mr. and Mrs. Spike Ooley and 4 children of Hesperia, Calif., spent several days here last week in the home of his grandparents, Mary and Hershah Ooley. He is the son of Pat Ooley.

They were enroute to Kansas City to visit her relatives, and plan to stop here again on the return trip the latter part of the month.

While they were here Mary and Hershah hosted a family cook-out and swimming party for them at the swimming pool park on Saturday.

On Sunday the family gathered at Lake Fryer for an afternoon of fishing and relaxing.

Those attending were Marilee and Bob Bulls and two children of

Amarillo; David and Hershah Turner and son of Gruver; from Spearman - the families of Mr. and Mrs. Richard Ooley, Joe Cage, Glen Ray Mackie, Jim Ooley and his two grandchildren.

On Saturday Edith Cage and Mary Ooley drove to Quanah and take Edith's grandchildren, April and Lindsey Mitchell. They attended school here last year, and met their mother in Quanah to return to their home in Ft. Worth.

Spearman missed the good rain that fell Wednesday night south of the county line. All reported excellent moisture with the gauge at the Tom Jarvis farm showing two inches.

Ray and Sylvia Robertson have had more activity than usual since last Saturday when their grandson, Jon Mac, came to visit. He also visited his other grandfather in Waka.

His sister, Saige Rhea, had been here several days prior to his coming and returned home last week. They are from rural Dimmitt.

To report locals for use in this column, call 659-3468. Do not leave them at the Reporter office.

TDH warns about 'cure-all' skin patches

If someone were to tell you that by wearing a Band-Aid, you could lose weight, quit smoking, or even avoid AIDS and other diseases, would you think the claim ridiculous? Or would you pay \$30 or \$40 for your first month's supply of the devices and urge your friends to do the same?

Unfortunately, the latter occurs every day, according to the Texas Department of Health (TDH). Sales of adhesive skin "patches", purported to contain non-standard drugs, alleged to be effective against a wide range of disorders, have boomed in Texas in recent months.

TDH has joined the federal Food and Drug Administration (FDA) and the Texas Attorney General in investigating the products, claims, and sales practices of some 30 skin patch manufacturers and their distributors known to be operating in the state.

Ken Davis, an inspector for the TDH Division of Food and Drugs, said that none of the products currently being sold without prescription as skin patch medications have been approved by the FDA, either as safe or as effective. By law, he said, any drugs manufactured in Texas must be registered and must undergo TDH inspection as well as be approved by FDA. A manufacturer's failure to comply with the law is a Class A misdemeanor.

"To date", Davis said, "all the over-the-counter skin patch remedies we have seen have not been in legal compliance. The patches and the literature or advertising for them that have come to our attention have consistently been misleading, and the products we have sampled have been misbranded and adulterated."

Davis said that the so-called active ingredients, usually supplied in a vial or tube with the adhesive strips, often contain mixtures of common herbs and chemi-

cal, or water. The products may be harmless, but investigations are under way about reports of skin rashes by users.

The Division of Food and Drugs and the Attorney General's office continue to gather information about the skin patch remedy industry, since it appears to be growing. "One manufacturer claims to have as many as 600 distributors in Texas, alone," Davis added.

He said that anyone wishing to report adverse reactions or illness following use of the patches should call the local health department or the TDH Division of Food and Drugs.

FATHERS, from p. 3

than payments for the support of their children.

Public opinion must be changed about those who neglect and abuse their children. The failure to pay child support is another form of child abuse. It deprives the child of his basic needs for proper nutrition, shelter and clothing.

This Father's Day, I want to acknowledge and congratulate those responsible parents who consistently contribute to their children's lives. Others need to follow your example, because we want your numbers to grow. Happy Father's Day.



When you barbecue, replace marinades and sauces high in sodium with salt-free herb and spice blends.

Nursing shortage affects Texas hospitals

The vacancy rate for registered nurses in Texas stood at 12.1 percent in January 1988, according to the Texas Hospital Association. The vacancy rate for licensed vocational nurses was 6.6 percent.

Each January and July, the THA Hospital Employees Salary Survey is conducted. Information is gathered on the number of full time equivalents (FTEs) and budgeted vacancies for each more than 80 hospital positions. Reported statistics are based on the responses of 205 Texas hospitals, according to Karl Shaner, Dr. P.H., vice president for research and information services at THA.

A statewide vacancy rate of 12.2 percent was reported for staff registered nurses; 14,838 FTEs were reported plus 2,067 vacancies. "There was a higher vacancy rate in rural areas than in metropolitan area -- 13.8 percent versus 12.1 percent, respectively," Dr. Shaner noted. The vacancy rate for critical care registered nurses was 15 percent for both metropolitan and rural area. Head nurse vacancies were slightly higher in rural areas, with 4.4 percent versus 3.7 percent in metropolitan areas.

The national vacancy rate for almost 1,500 surveyed hospitals for registered nurses was 11.3 percent in December 1987, according to a

report from the American Hospital Association. "Because Texas has a high percentage of rural hospitals, and because vacancy rates tend to be higher in rural area, it is not surprising that Texas exceeds the national statistics," Shaner said.

A statewide vacancy rate of 6.6 percent was reported for staff licensed vocational nurses, with 8,331 FTEs and 589 budgeted vacancies. Metropolitan areas reported a 7.1 percent vacancy rate; rural hospitals reported 4.8 percent.

"Nursing shortages affect hospitals adversely, in some areas causing temporary closure of hospital beds, and even temporarily closing emergency departments, usually because no critical care beds are available," Dr. Shaner said.

The Texas Hospital Association is working with the Texas Nurses Association, the Texas Medical Association and the Texas Legislature to find solutions to the problems causing the statewide nursing shortage.

GOOD CITIZENSHIP

On Father's Day thousands of good citizens will be soliciting funds to help find a cure for diabetes.

Polo Ralph Lauren
for
Father's Day, June 19

BRENT & CO.

NOW OPEN

352-3600
in Wolfth Village, Amarillo, TX.

Monday - Saturday 10 - 6
across from Hastings

Free Hearing Test

HIGH PLAINS HEARING ASSOCIATION in conjunction with GOLDEN SPREAD CITIZEN CENTER located at 14 S. Han... will offer Free hearing tests this Tuesday, June 21, from 1:30 to 4 p.m.

All walk-ins welcome or phone for appointment by calling 659-3521.

Test will be conducted by Lyle Wassell H.A.S.

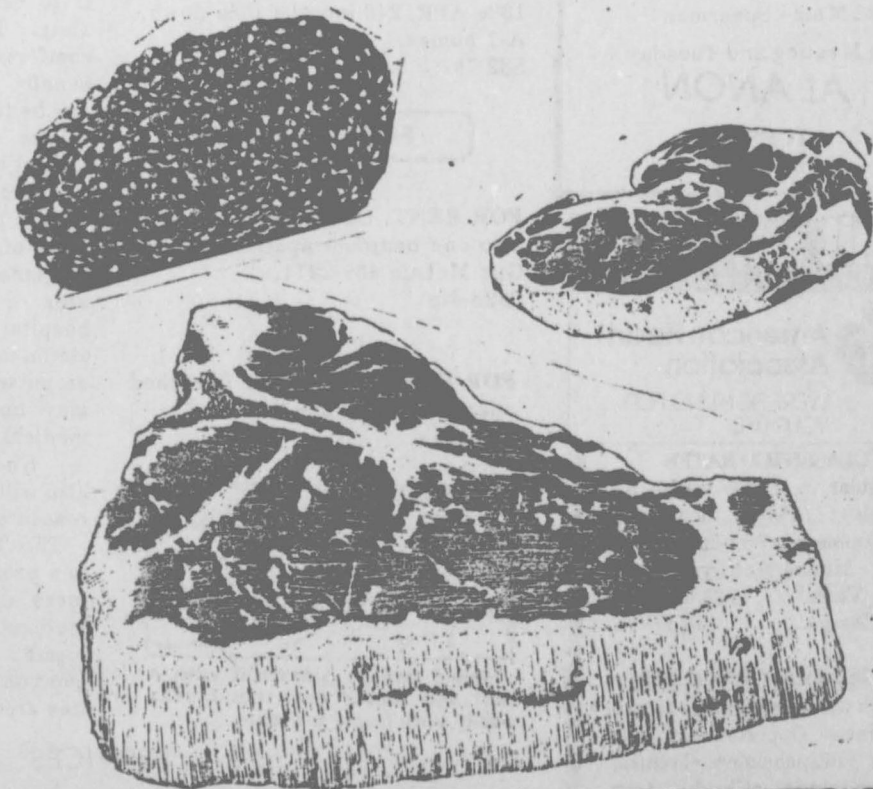
Happy Father's Day from Palo Duro Feeders

Special GIFTS for a Special DAD



Fix DAD a steak for Fathers Day

Give Dad a Break Fix Him a Steak



733-2416

Hwy. 136 S. of Gruver

PALO DURO FEEDERS, Inc.

Phone 606-733-2416 GRUVER, TEXAS 79002

Craig Clyburn