

YOUR HOMETOWN NEWSPAPER — WITH THE HIGHEST OFFICIAL CIRCULATION IN HANSFORD COUNTY



The Hansford Plainsman



VOLUME VII., NUMBER 104

SPEARMAN, HANSFORD COUNTY, TEXAS 79081

SUNDAY, OCTOBER 16, 1966

Lynx Maul S-F Eagles, 39-0

Mercury Goes To 28 Degrees Friday Night

Spearman had its first official freeze of the new fall and winter season Friday night, but you can take your choice as to the amount of damage done to the late maize crop.

Mrs. Pat Cates, official weather observer, said the low for early Saturday morning was 28 degrees, but she has no way of recording how long the temperature was below freezing.

Friday was a raw day in Spearman as the wind blew a gale all day and there was sleet and some rain in the air. There was one hard downpour of sleet for about five minutes.

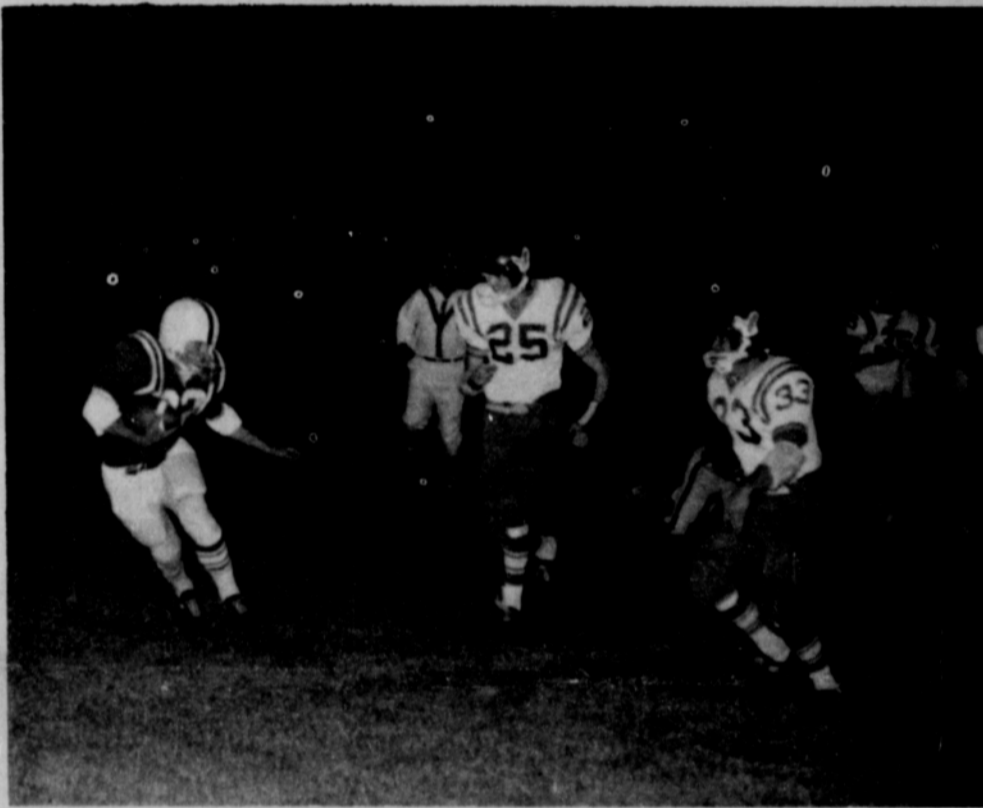
Estimates of the freeze damage ranges from "the maize is black," to none.

Farmers with mature maize were hoping the freeze would get the maize ready to cut, but those with late crops are waiting to see how much damage had been done.

One farmer said he had 40 acres of green maize southwest of Spearman and he did not find any damage. Another said he had been driving around and the maize was black from the freeze.

It was the opinion of some that the temperature would have had to stay at 28 degrees for a long time for it to really kill the maize.

Some reports in town said that plants outside Friday night were not seriously damaged.



BIG MAN — Steve "Scooter" Jordan is cornered by two Fritch Eagles after he picked up several yards on a pitch-out. Jordan scored three touchdowns in the 39-0 win over Sanford-Fritch. Plainsman photo

'Scooter' Sparks Lynx To Second District Win

Four long years of battling to prove he is big enough to play football exploded into glory Friday night as Steve "Scooter" Jordan led the Spearman Lynx to a 39-0 victory over the hapless Sanford-Fritch Eagles.

The 5'4" muscleman scored three touchdowns, set up two more and played his usual hardnose style of defense.

Lynx Coach George Wright shifted over to his sophomore quarterback Mike Davis and his second unit midway of the third quarter as Spearman was leading 33-0.

Spearman lost little time taking command of the wind-blown contest. The Lynx received and were facing the gale from the north. The Eagles nor the wind had much luck stopping the Jerry Holton led rushing surge. He was helped by halfbacks Bobby Smith and Wesley Jenkins. At the 35 quarterback Charles Shieldknight sent everyone in to the line without the ball and he rolled around end for 26 yards.

He fumbled as he was tackled but center Karl Kunselman was there to recover for the Lynx. Two plays later, Shieldknight faked everyone out again and went 10 yards for the first touchdown. Bobby Smith galloped over for two points and Spearman led 8-0.

Fritch got to the Lynx 35 late in the first quarter, but the drive fizzled when Hal Shufeldt intercepted a Danny Page pass on the Lynx 22.

Early in the second quarter, Shieldknight set up the second, Lynx scoring drive with a pass interception. He set up the score with a 32 yard run to the Fritch 20. Smith got nine after a 5 yard penalty, then Jordan went 14 to the two. Jerry Holton bulled in on the second play from the one. Shieldknight kicked the point to make the score 15-0.

A 12-yard Fritch punt set up the third score for Spearman. The Lynx took only four plays to cover the 30 yards. The big one was a 23 yard pass from Shieldknight to Jordan to put the ball on the four. Jordan raced over on the next play. Shieldknight's kick hit the crossbar after the holder had trouble handling the snap from center. The score was 21-0.

Jordan started the second half with a bang. He got the ball about the Lynx 30 near the sideline and roared straight ahead. The line cleared him running room and with Kunselman leading the way, he went the last 30 yards unmolested. The run was good for 70 yards. The try for points was no good and Spearman led 27-0.

Fritch tried to punt but the snap from center was high and punter Charles Conyers was dropped at the Fritch nine. The wave of tacklers was led by Steve Holton.

Jenkins and Shufeldt pushed to the five and Jordan scored. The try for points was no good and the Lynx led 33-0.

Spearman did not get another

marker on the board until late in the fourth quarter, but they kept the Eagles bottled up in their own end of the field throughout the second half.

Spearman had several deep penetrations that stopped. Shieldknight hit Jordan for a 21-yard pass but the Lynx fumbled the ball away late in the third quarter.

Ronnie Gray got the ball back by recovering a fumble two plays later, but the Lynx were unable to score from the 26.

Another drive died at the nine when Pat Anderholt intercepted a Lynx pass in the end zone.

Late in the fourth quarter, Spearman drove in from the Fritch 34 for the last score of the game. Shufeldt, Gary Cates and Davis drove the ball to the five and Bobby Smith went over. Jordan failed on his try for two points after Spearman was penalized back to the eight.

In the last effort Fritch got to mid-field, then Steve Holton and Keith Reeves dropped the Eagles on two successive plays for a total of 15 yards lost. They never recovered.

Fritch fumbled five times and the Lynx got four of them. Steve Holton got two, Jerry Holton and Ronnie Gray each got one.

STATISTICS

Spearman	Sanford-Fritch
233 yards rushing	28
52 yards passing	17
16 first downs	4
5-45 penalties	6-50
8-3-1 passing	9-2-2
0 punts	4-23

B-Team Beats Fritch B 14-0

Spearman's B-Team got its first victory of the year Thursday night by beating Fritch 14-0 on Lynx Field.

The Lynx scored in the first quarter and made it stand up until the fourth period as the 13 boys on the team battled to hold onto their first win.

A blocked punt gave Spearman its first score. P. A. Lyon, III led a charge of three Lynx linemen who blocked the Fritch punt. Lyon managed to get the bouncing ball at the Fritch 20.

He stepped away from two or three would-be tacklers

and went in to score. Quarterback Jim Brown rolled out around end to make the score 8-0.

Brown stopped one Fritch drive at the Lynx 25 when he intercepted a pass on the Lynx 25. He ran it back to the Fritch 24 before being tripped up. Lyon stopped another Fritch effort by recovering a fumble at the 42 yard line.

Coach Allen Simpson said Lyon, Don Mach, Jock Lee and Howard Klos did a good job in the defensive line.

Spearman got its final score on a quarterback option. Brown kept the ball and went 21 yards to score. A fake kick on the extra points try failed.

Joe Hutchison and Bruce Brown turned in some good runs. Hutchison, the mighty-mite fullback, was effective on smashes into the big Fritch line. He was also a steady performer as defensive linebacker.

Brown kept Fritch in the hole with some booming punts.

ARTISTS HAVING OPEN HOUSE TODAY

Open house will be held this afternoon at the Memorial Library in Perryton from 2 until 5 p.m. honoring Mrs. Bill Hutton of Spearman and her oil painting class.

There are approximately 40 paintings in the exhibit the class has on display. Beginning as well as experienced artists have work in the exhibit, according to Mrs. Hutton.

The public is invited to attend the open house and exhibit.



QUARTERBACK CAUGHT - Quarterback Charles Shieldknight is caught by a Fritch Eagle after rolling out around end for a good gain. The big quarterback was a dangerous runner in the 39-0 win over Fritch. Plainsman photo

Rites Held For Victim Of Accident

Funeral services for William Millard Hicks, 51, of Spearman were conducted at 10:30 a.m. Saturday in the Chapel of Boxwell's Funeral Home.

Services were conducted by the Rev. James C. Gurzynski of the Sacred Heart Catholic Church of Spearman. Boxwell's was in charge of interment in Hansford Cemetery.

Mr. Hicks was born November 25, 1914. He died Thursday at 10:10 a.m. in an Arapahoe Hospital. He was injured Tuesday night in a one-car accident 10 miles north of Stinnett.

He had lived here since July and was employed by W. O. Groves.

He is survived by his mother, Mrs. Edna Daniels of Sutherland, Neb.; three step-sons, John Hisey of Spearman, Milton Hisey of Kearney, Neb., and Eugene Hisey of Montana; a step-daughter, Elizabeth Hisey of Montana.

Railroads Are Paying Palmer Gets WSCS Study \$19,058 Local Taxes Scholarship Canada Church

Current annual taxes paid to the various government agencies in Hansford County totaled \$19,058, it is announced by the Texas Railroad Association.

That amount was the county's share of the nearly \$10,000,000 the railroads paid in Texas on their own right of way and other property.

The biggest railroad contribution was to the school systems throughout the state. Large sums were also distributed to city, village and county governments and for road and bridge funds.

In addition, of course, was the large total in taxes the railroads' nearly 35,000 Texas employees contributed on their own property. The vast majority of rail workers, many of whom live in Hansford County, own their own homes.

"With the future of our

country and state depending to a great extent upon the education of our youth, I am delighted that nearly half of the taxes paid by the railroads go to support the schools," said Walter Caven, general counsel of the Texas Railroad Association. "Recognizing this need for education, many of the railroads operating in Texas also make scholarships available to a large number of students every year."

Carry-All Can Help

Convert a metal six-pack pop bottle carton into a carry-all to use as you clean the house. Furniture polish, sponges, rags, cleaning solutions are then within your reach at all times.

ABILENE--Michael Palmer is one of six McMurry College students that has been awarded a National Methodist Scholarship by the Board of Education of The Methodist Church.

The scholarship covers tuition and fees up to \$500 and are granted on the basis of superior academic standing, leadership ability, active churchmanship, character, personality and need.

Palmer is the son of Mr. and Mrs. Coy C. Palmer, 603 Kenneth. The philosophy major and English minor is a member of the Methodist Student Movement on the McMurry campus. Palmer, a senior, is also active in youth work in churches.

Solids in Air

A cubic inch of air normally contains about 109,000 solid particles.

The Susannah Wesley Circle of the WSCS met Wednesday morning in the parlor of the First Methodist Church with Carolyn Messer as hostess.

Donna Baxter opened the meeting and conducted the business session. Reports were read.

For the study, Sherry Partridge concluded the book "The Church Grows in Canada".

Patty Sheppard closed the meeting with prayer.

Refreshments were served by the hostess to members Margaret Adamson, Donna Baxter, Beth Daniel, Judy Martin, Sherry Partridge, Patty Sheppard, Verna Strawn, Linda McLain, Rita Reed, Nell Buchanan, Dorcas Collard, Virginia Trindle and Mary Jane DeArmond.

In 1871, about 70,000 cattle were driven to Abilene, Kan. from Texas.

Spearman, Gruver Freshmen Deadlock

Spearman's freshman Lynx and the Gruver Greyhound freshmen battled to a 0-0 deadlock here Thursday night in the second meeting of the two teams this season.

The first game was also a 0-0 deadlock.

The cross-county rivals went at each other hard all night and both teams were plagued with fumbles.

Spearman had two drives

deep into Gruver territory stopped by the ball being separated from the runner by jarring tackles.

Both teams were able to move the ball until they neared the goal line, then the defense got real tough.

Coach Eddy Clemmons said Richard Larson, Thomas Collard, Randy Weston, DonLain Whitefield, Bobby Brown, Joe Clement and David Holland were outstanding in a rugged defensive group.

Clemmons was pleased with the running of Weston, Whitefield, and Larson. "They ran real well for us," Frank Wilmeth, Joe Crawford and Collard were the outstanding blockers in the line.

The coach singled out Keith Hutton for praise on his pass receiving when he could reach the ball.

Junior High Honor Roll

The following students are on the honor roll and honorable mention in Spearman Junior High school

FIFTH GRADE
Jayne Massie
Devota Neal
HONORABLE MENTION
Dixie Sheppard
Robert Cochran
Rhonda Jones
DeAnn Reed
Billy Paul Hazelwood
Brenda Thomas
Gaye Daniel
Rickey Cullon
Vicky George
Monnette Slater
Randy Sims
Mike Self
Theresa Pearson

SIXTH GRADE
Jim Linn
Jean Porter
HONORABLE MENTION
Bruce Roles
Steven Reed
David Harbour
Douglas Porter
David Pond
Steve George
Randy Green
Kendra Brack
Janna Robinson
Linda Ricketts
Kerry Evans

SEVENTH GRADE
Sharlyn Shell
Debi Daniel
Sheila Patterson
Billy Brown
Bradley Pendergraft

HONORABLE MENTION
Margaret Hall
Ricky Driscoll
Robert Beck
Judy Barfield
Gary Upchurch
Patricia Schnell
Karen Kunselman
Lee Watson
Ronnie Head
Linda Reneau
Nancy Anderson
Marla McWhirter
Liz Hohertz
Amy Renner

EIGHTH GRADE
Susan Brillhart
Wanda Greene
HONORABLE MENTION
Kandy Vaughn
Rosemary Burkhart
Richard Tracy
Beverly Bohanan
Mary Hazelwood
Anita Smith
Dalynn Brummett
Mark Massie
Betty Nixon
Frank Lemons
Steve Benton
Roy Pipkin
Danny Carroll
Jim Jenkins
Jolinda Lee
Karen Waggoner
Sheryl Curry
Ernest Wilmeth
Devorah Jackson
Pat Sloan
Mike Schnell

GS Troop Has Meeting

Junior Girl Scout Troop met Oct. 13 at the Scout House. Refreshments were served to the Mustang Patrol by Gina Bulls and Nikki Jones.

Attending were Debrah Shelton, Stacy Pendergraft, Julie Calaway, Debbie Sheppard, Angela Craig, Cheryl Gibson, Nikki Jones, Sheryl McCalman, Debbie Simmons, Debbie Gregg, Carma Burch, Linda Hamilton, Rhonda Nelson, Gina Bulls, Linda Jordan and Sheila Cochran.

Leaders of the troop are Mrs. Shelton, Mrs. Sheppard and Diane Gregg.

Phillips Will Drill Wildcat

Phillips Petroleum Co. is to drill a 10,500 wildcat 8.5 miles south of Waka.

The wildcat will be one location east of Cleveland sand gas production: in the southwest Ochiltree County portion of the Hansford multipay area.

It will be the No. 1-A Nitschke, 660 feet from south and 1,980 feet from east lines of section 110, block 4T, T&NO survey.

Choir Having Morning Show

The high school choir will present a program at 11 a.m. Tuesday, Oct. 18 in the high school auditorium.

The choir is planning a new and different program for this presentation and all parents are urged and invited to attend.

Bowling News

WEDNESDAY MIXED DOUBLES 10-12-66

TEAM	WON	LOST
Cable TV	16	8
Shurfresh Milk	15	9
Wardrobe Cl.	15	9
Riley Bros.	14	10
United Mud	11	13
Spearman Rad.	10	14
M&M Shamrock	8	16
#7	7	17

HIGH TEAM GAME

Cable TV	659
Cable TV	613
Cable TV	601

HIGH TEAM SERIES

Cable TV	1873
Wardrobe Cleaners	1748
Riley Bros.	1745

HIGH INDIVIDUAL GAME

Buch Behne (Sub.)	222
Oscar Donnell	207
Oscar Donnell	203

HIGH INDIVIDUAL SERIES

Oscar Donnell	557
Gene Duryee	533
Maurice Hamlett	523

HURRY! ONLY TWO MORE WEEKS TO PLAY

LUCKY BINGO

WIN FOOD - WIN STAMPS - WIN UP TO \$1000.00 CASH
IT'S FUN! IT'S FREE! IT'S EASY! GET DETAILS AT IDEAL!



FRESH, LEAN.

GROUND BEEF

49¢

LB.

"Better Food For Less"

IDEAL

FOOD STORES



WOLF BRAND

CHILI WITH BEANS

3

ALL MEAT CHILI

NO SALT 57¢
CAN

EXTRA LEAN

GROUND CHUCK

69¢

LB.

CHUCK WAGON

SLICED BACON

79¢

1 LB. PKG.

COUNTRY KITCHEN

WHIPPED DESSERT

39¢

10 OZ. PKG.

BAKE-RITE - WITH \$5.00 OR MORE PURCHASE

SHORTENING

59¢

3 LB. CAN

Food Club

CAKE COMBINATION

14 OZ. WHITE or CHOC. FROSTING MIX. OR 19 OZ. DEVIL FOOD. WHITE OR YELLOW CAKE MIXES.

4 \$1.00

MIX OR MATCH PKGS.

CASCADE

DISHWASHING DETERGENT

63¢

GIANT SIZE BOX

NU SOFT

FABRIC SOFTENER

79¢

Quart Bottle

GERBER BABY FOODS

10

4 OZ. JARS

\$1.00

D.A.K. SPICED

LUNCHEON MEAT

39¢

12 OZ. CAN

GAYLA ASSORTED

FRUIT DRINKS

3

46 OZ. CANS

88¢

FISHER

Spanish Peanuts

49¢

14 OZ. CAN

BRADSHAW'S

Spun Honey

29¢

10 OZ. Ctn

PAPA BEAR

Bradshaw Honey

59¢

31 OZ. Jar

JARDIN VEGAL

Mixed Vegetables

23¢

NO. 302 CAN

MY LU

Cove Oysters

43¢

8 OZ. Can

FRID. FR.

Whitener Coffee

39¢

6 OZ. JAR

BALLARD BISCUITS

3

29¢

Whitener Coffee

2

29¢

RED ROME

APPLES

THE PERFECT BAKING APPLE

4 49¢

1 LB. BAG

OCEAN SPRAY

CRANBERRIES

29¢

1 LB.

Prices Good Tues. & Wed. Oct. 18 & 19

Future Readers of

The Plainsman

Mr. and Mrs. Troy Barclay are the parents of a girl born Oct. 11 at Hansford Hospital. She weighed 8 lbs. 5 oz.

Mr. and Mrs. Dale Henson are the parents of a girl born Oct. 12 at Hansford Hospital. She weighed 6 lbs. 13 1/2 oz.

Mr. and Mrs. Kay Neal are the parents of a son born Oct. 13 at Hansford Hospital. He weighed 6 lbs. 7 3/4 oz.

CLASSIFIED ADS WORK WONDERS

FOR SALE

Plainsman want ads get results. Try one.

MERLE NORMAN COSMETICS-706 King Street (2 blocks south of Gruver Clinic) Gruver, Tex. Closed Thursday and Friday afternoons only. Gerry Davis. 103-2p

FOR SALE-1966 Gleaner C-2 Combine 20 foot, 1965 John Deere 95 combine 19 foot. Dale Davis, Spearman, 1/2 mile west on Gruver Hwy. 94-tfc

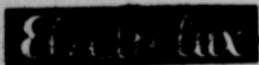
1 practically new 3-bedroom home and 1 new 3 bedroom home with 1 1/2 baths. Collard Realestate, ph. 659-2501. 86tfc-c

Industrial lots on Gruver Highway. Cecil Crawford, 659-2409. 61tfc

GARAGE SALE-new items added. 424 S. Bernice, Friday, Oct. 14, 2 to 5, Saturday, Oct. 15 all day. 103-1c

Picture frames made to order. Any size, selection of molding. Fast Service. C&B Studio, Spearman, Tex. 78tfc

3 bedroom brick house, 2 baths, fenced--to be shown by appointment. Only call 659-3166, 1005 Barkley, will take trade for equity. 80tfc



The Amazing Electrolux with power nozzle. Rotating brush action cleans all rugs faster--gently fluffs carpet nap. Sales and Service, call Don Seymour at 435-2064, Perryton, Texas. 68-69-p-70tfc

Five room house with basement, draperies, deep freeze, one-car garage, one and one-half acres of land. Phone FT-2731 or FT-7-2282, J.E. Sluder, Gruver, Texas. 64tfc

For Fuller Brush products write 2301 Georgia Drive, Perryton, Texas or call 435-4967. 73tfc

Small houses for sale. Can be moved. Suitable for farm, tenant dwellings. Some have 320 square feet. Price \$2500 to \$3500. J.B. Rector, Cactus Texas, Phone 966-3501. 97-10p

For Sale: Story and 1/2 home, living room, formal dining room, 3 bedrooms and 2 baths. On Corner lot. Collard Real Estate Phone 659-2501. 89tfc

FOR SALE-10' x 43' trailer, 1964 model. \$250 equity, payments \$69.39 mo. 15 N. Endicott. Phone 2310. 99-tfc

FOR SALE-Perfect half section, 13 miles SW Spearman, fully allotted wheat, milo & cotton, two six inch wells natural gas, possession after wheat crop. Buy 200 acres at \$300.00, 30% down and lease 120 acres. Owner, Harold Womble, Spearman, Texas. 102-tfc

FOR SALE-4 bedroom bath and half brick home, carpeted, double garage, fireplace. Built 3 years ago; owner says sell at his loss. Will be shown to qualified persons by appointment. Emmett Sanders, real estate, phone 659-2516; nights 659-2601. 103-2c

FOR SALE-Lot and barn with water in Crawford addition. Cheap. See Pete Vernon. 104-tfc

SERVICES

REGISTERED male chihuahua dog for breeding. Phone 2747. 95-8p

Amarillo Daily News & Globe Times home delivery. Call 2685. 14tfc

Ironing, \$1.50 a dozen. Mrs. W.E. Innis, Phone 659-2080. 91tfc

LOST-550 lb. white face steer. 4-H Club calf. Lazy 7 brand on hip. Strayed from pen west of town. Contact Louis Schnell. Phone 659-3433. 103-tfc

SERVICE-Ditches from 3-12 inches, any desired dept. S. D. Jones 659-2809. Harold Shaver 659-3474. 17tfc-c

Proven Registered White Toy Poodle Stud Service. Reasonable. Call 659-2082. 104-tfc

FOR RENT

FOR RENT: 2 room furnished apartment. 222 S. Roland, Bert Briley. 104-tfc

Furnished one and two bedroom apts. Downtown Apts. Call 659-2269. 103-tfc

FOR RENT-One bedroom brick apt. Call 2274. 93-tfc

WANTED

WANTED-Septic tank pumping and portable disc rolling. Bobby Joe Grayson, phone 659-2209. 80tfc

WANTED: Real estate listings. Emmett Sanders, real estate broker. Phone 659-2516, nights 659-2601. 104-tfc

Cummings

Refrigeration

Heating

Air Conditioning

Sales & Service

Specialist

659 - 2721

Spearman



LYNX RECEPTION - A Fritch B-team runner gets a big reception from the Lynx B-team defenders. P. A. Lyon, III, has him in a bear hug, coming in the help is James Lemons (left), Joe Hutchison (30) and Jim Brown. Plainsman photo

"Happiness is Texas Tech" To Be Homecoming Theme

Lubbock, Oct. 15- "Happiness is Texas Tech" will be the theme of Tech's 1966 Homecoming Celebration Friday and Saturday (Oct. 21-22).

The Homecoming parade and all other major weekend events will be based on the "Happiness" theme as Tech observes its 41st anniversary and honors students from past years.

While alumni are looking forward to reunions with old friends, Tech students will be busy next week selecting Homecoming Queen finalists, putting finishing touches on floats and dorm decorations and preparing for the multitude of receptions by the various fraternities, sororities and departments of the university.

Special guests on campus during the festive weekend will include 41 former editors of

The Toreador.

Highlighting the jam-packed schedule will be the Tech-SMU football game at 2 p.m. Saturday in Jones Stadium, preceded by the presentation of the Homecoming Queen and her Court.

The two-day program will include events of interest to both current and former students, as well as thousands of fans, friends and boosters.

At 7:30 Friday, the Southwest Conference Circle will be the scene of a giant pep rally featuring members of the Red Raider football team, that Go-in' Band from Raiderland and thousands of students.

After the pep rally, the scene will shift to Municipal Auditorium where the Homecoming Queen will be crowned in an elaborate ceremony beginning at 8:30 p.m. Identity of the Queen, chosen by campus-wide vote from the 30 nominees representing Tech student organizations, will not be revealed until time for the ceremonies. Miss Mary Ellen Barkley, a junior student at Tech, and the daughter of Mr. and Mrs. Freeman Barkley of Spearman, is one of the Homecoming Queen candidates. She will represent Doak Hall in the Homecoming Queen contest this year.

Alumni will gather for class reunions Friday night. Members of the classes of 1946-66 will have a reunion and dance in the Union's Coronado Room beginning at 9:30 p.m.

Members of the classes of 1925-1945 will hold their get-together and oldtimers dance at KoKo Palace Ballroom, 50th St. and Avenue Q at 9 p.m. Both dances will feature the "Happiness" theme.

Traditionally one of the most colorful events of the gala weekend, the 1966 Homecoming Parade will begin at 10 a.m. through downtown Lubbock with more than 25 floats and six bands.

Downtown Lubbock, Inc., an organization of 50 Lubbock firms will present a Sweepstakes trophy and a \$100 cash award to the top float in the parade. Other prizes will also be awarded.

All Exes will be guests of several Lubbock firms at 11:30

a.m. Saturday at a free luncheon in Lubbock Municipal Coliseum. Hosts will be Furr, Dunlaps and Frontier Stamps.

Finale of the weekend will be a series of Saturday night dances. The Exes dance will begin at 9 p.m. at KoKo Palace to the music of the Mark Anthony orchestra.

Union sponsored dances will begin at 8:30 p.m. in the Coliseum and the Union Ballroom to the music of The Outsiders and The All Good Orchestra. Tickets will admit students to either dance.

FOOD FOR SERVICES

About \$1.22 billion in food was procured for U.S. armed forces in the fiscal year ended June 1966, the Defense Personnel Support Center, Philadelphia, reports.

For Your Convenience

We now have

ICE

L. D. Staggs

Top Mechanic

Simmons CHEVRON SERVICE

Loren Simmons
659-9985
Plains Shopping Center

SO THEY SAY

THE WORLD IS HIS OYSTER



or so it seems, as he enjoys his new Stereo. He bought it at Burton's TV for much less than he had expected. He can relax, knowing their motto is "We Service What We Sell".

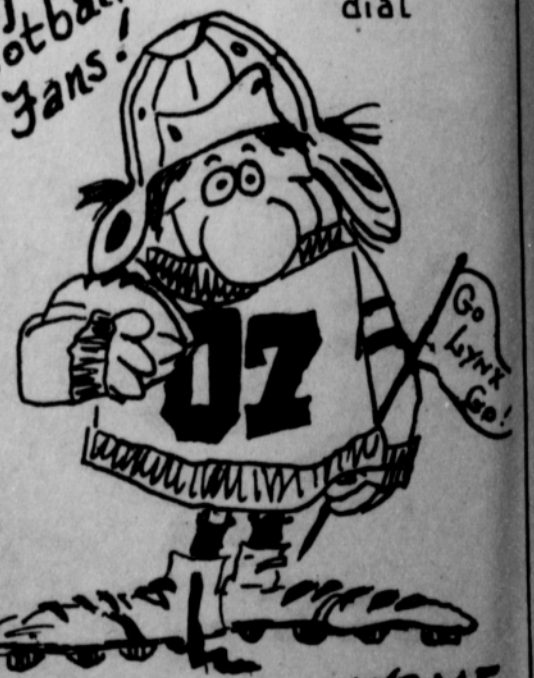
White House Lumber Co.

Building & Plumbing Supplies

Phone 659-2818
306 Davis



Hey Football Fans!



98.3 on your dial

Follow The Lynx on **KBMF** fm

Oct. 21
Oct. 28
Nov. 4
Nov. 11

Spearman at Stinnett
Shamrock at Spearman
Spearman at Panhandle
Dalhart at Spearman

Gift Box MEMO:

Everything is real modern this week with us. We have Shake 'N' Twist and Spray A Go Go.

The Shake "N" Twist is a beautiful new pepper grinder. It lets you determine in advance the grade of fresh pepper you are going to use.

Spray A Go Go is a new hair spray can that goes right with you. The small container fits in your purse and you can refill it from your own larger can.

Something else new is the Early American Wood Decorator pieces.

For you tole painters we have many new pieces to be decorated, these have just arrived. Also, for you artists, we have lots of odd size picture frames that are real good buys.

Many new items are arriving. Come see us soon.

The Gift Box

B&PW Inviting Women To Tea

The Spearman Business and Professional Womens Club would like to invite all the women of Spearman to a tea Sunday afternoon, Oct. 16 from 3 to 5 in the hospitality room of the First State Bank.

YOU CAN NOW SAVE 10% ON YOUR CHRISTMAS CARDS BY ORDERING IN OCTOBER FROM THE BEAUTIFUL ALBUMS AT PLAINSMAN OFFICE SUPPLY

Charles Brillhart, Bob Crawford Attend Soil, Water Meeting

Charles Brillhart attended the 26th annual meeting of Texas Soil and Water Conservation district supervisors at Austin. He is supervisor of the local Hansford Soil and Water Conservation District. Bob Crawford, Work Unit Conservationist, Soil Conservation Service, attended as a guest of the conservation district. Governor John Connally

highlighted the statewide meeting by speaking at the banquet Wednesday night. "Today's Challenge: To Meet Tomorrow's Needs" was the theme of the convention. Supervisors, who are local landowners elected to govern local conservation districts, are attending committee meetings and other business sessions. They are strengthening their

soil and water conservation efforts to help rural and town people. Other distinguished speakers include C.G. Scruggs, Vice-President and Editor, PROGRESSIVE FARMER; John E. Hutchison, Director, Texas Agricultural Extension Service; A. E. Cascino, Group Vice-President-Agriculture, International Mine and Chemical.



DELEGATES (left) Charles Brillhart and Bob Crawford, who are attending the annual meeting of Texas Soil and Water Conservation district supervisors. Charles Brillhart is supervisor of the local Hansford Soil and Water Conservation District. Bob Crawford is a Soil Conservation Service technician.

Toys & Toys & Toys & More Toys!

W. A. TOYLAND OPEN NOW



Unbreakable "Rock-A-Stack!" Teaches colors, shape, perception! E6611
High-Heels & Cosmetic Set! Pretty jeweled shoes, play lipstick, rouge! E6612

12" Tall Plush Dolls! Choose bright or sleepy face! Soft & cuddly! E6601
Little Miss Dresser Set! 3-piece set includes mirror, comb, brush! E6610

Play Jewelry & Handbag Sets! Your choice of pearl or rhinestone necklace, earrings, bracelet and handbag! E6606
You Save More at W.A.!



Slugger Submachine Gun! Camouflaged heavy plastic gun rattats when trigger is pulled! E6622

Pint-Sized Cap Gun-Holster Set! Canteen, stamped deputy badge and 3-bullet clip! E6603

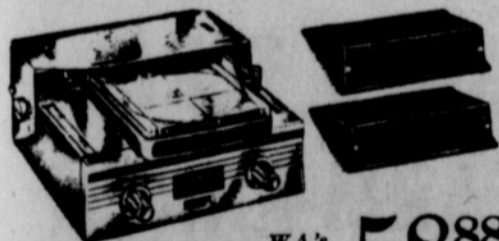
Spelling and Counting Board! 32 Slotted pieces form words and numbers! E6619

Army Combat Set has dig-in shovel, cap firing grenade & 2 dog-tags! E6605

YOUR CHOICE
88¢ each
Save Buy Any 12 for \$9.88
Use Our LAY AWAY

100's Of Toys To Choose From !

Relax and Enjoy Static-Free STEREO Music as You Drive!
Truetone® STEREO Tape Player!



W.A.'s **LOW PRICE** **58⁸⁸**

No Money Down!
Pay as Little as 2.00 Week!

- ALL SOLID STATE Circuitry! Instant sound! Long life! Cool, quiet operation!
- Full-Fidelity Stereo Sound! Extended range performance through matched 10" oval speakers!
- Easily Installed! Plays Standard Stereo Tape Cartridges! See W.A. for a complete selection! 4DC7600

72"x90" Rayon Blend Blanket Gives Warmth without Weight!
THERMAL WEAVE **4⁵⁵** Regular 4.99
BC6025-7

HUNTING FISHING LICENSE SOLD HERE

LARGE SELECTION

Shotguns And Rifles
Famous Names Like
Browning-Ruger
Savage-Winchester
Remington
Revelation

Western Auto
...the family store
and **CATALOG ORDER CENTER**
As Close as Your Telephone!

Protect Yourself Against Attack With SENTRY Rescue Gun!
Aerosol tube delivers pepper & oil spray to astonish & repulse attacker!
W.A.'s Low Price Only **1⁴⁹** Save
Security worth having at any price! M1650

Club Sponsoring Art Show For Area Artists Thursday

The Twentieth Century Club is sponsoring an art show to be held Thursday, Oct. 20 in the Home Demonstration Club-room from 2:30 to 5 p.m.

rounding towns have been contacted and the club is expecting a good exhibit.

There will be exhibits of china, oil and tole paintings, and needlework. Besides the local artists, artists from sur-

A silver tea will be held in conjunction with the show, the proceeds of which will go to help pay for a historical marker for Spearman.

CHANEL



THE MOST TREASURED NAME IN PERFUME

CHANEL

No. 5 and No. 22

Are Now Sold in Our Cosmetic Department. Where you find only the finest cosmetics and beauty aids

Spearman Rexall Drug

PHONE FOR FREE DELIVERY
659-2226 Two Registered Pharmacists

The Hansford Plainsman
PUBLISHERS INC.
TEXAS PRESS ASSOCIATION
Member **1966**
Co-Publishers.....Jim Davis and Burl McClellan
County-Wide, Independent Newspaper published every Thursday and Sunday at 209 Main St., Post Office Box 668, Spearman, Texas 79081. Second Class postage paid in Spearman, Texas 79081.
Editor.....Burl McClellan
Manager.....Jim O. Davis

of these three main phases:(1) Recharging for twenty-two hours and pumping for two hours, (2) recharging water at 85 percent of the pumping rate, and (3) use of the multi-purpose well for irrigation whenever possible--use this well more than the other wells. Each phase is designed to remove any solids which are placed in the formation and keep the well at peak pumping and recharge capacity.

Grasses and other crops such as hybrid grazers are being studied as a means of clearing water in the playa lakes and to obtain income from an otherwise unprofitable area on the farm.

Results obtained at the Foundation and by many farmers through the use of multi-purpose (recharge) wells indicate that artificial recharge of surplus water can be an immediate means of conserving water and replenishing the ground-water formation in the Texas High Plains, as well as being profitable.

Mr. C.H. Janeway, Special Representative of the Foundation, in reporting this interview with Mr. Valliant said: "Jim has assisted many farmers and some irrigation companies as consultant in planning and supervising the installation of multi-purpose (recharge) wells at the Foundation. Some of these locations are Hart, Edmondson, Olton, Littlefield, Lockney, Tulia, Hale Center, Cotton Center, and Plainview."

Mr. and Mrs. Garland Head and Ronnie spent last weekend in Amarillo.

Kathi Pattison At Phillips U.

Kathryn Pattison, the daughter of Mrs. Helen J. Yeary of Waka is enrolled at Phillips University for the institution's 60th academic year which began September 14, according to Merrill H. Ziegler, University registrar.

Kathryn, a 1966 graduate of Spearman High School is a freshman at Phillips this year. Her major is Political Science.

Phillips is a fully accredited, four year liberal arts university affiliated with the Christian Churches (Disciples of Christ).

Harris On Kerbel Show

CANYON--James Harris, coach of the rugged Phillips Blackhawks of District 1-AA, will be the feature guest on the Joe Kerbel TV show Monday night.

The Kerbel Show, a favorite among West Texas State Buffalo fans, will be telecast Monday night (10:30-11 p.m.) over KFDD-TV channel 10, Amarillo.

Harris, in his first season as head football coach at Phillips, was given the pre-season nod as district favorite. The Blackhawks are currently 4-1 with wins over Canyon (18-6), Hereford (20-8), Spearman (35-8), and Dalhart (20-0). Phillips loss was to state ranked Dumas of District 1-AAA.

Other features planned for Monday night's show will include a scouting report on New Mexico State, the Buffs next opponent, film highlights of the University of Richmond game and the usual candid commentary from the affable Buffalo head coach.

Mr. and Mrs. Garland Head were in Dumas Wednesday attending the funeral of Everett Jones.

Texas Highway Department Issues New Travel Book

Two years of detailed research were culminated today with the release of a comprehensive, 176-page "Texas Travel Handbook," published by the Travel and Information Division of the Texas Highway Department.

The glove-compartment-sized book contains more than 1,500 items of interest ranging from Alibates Flint Quarries to General Zaragoza's birthplace. In the family of materials now published by the Highway Department, the new Handbook fills a need by providing specific information on points of interest and where they are located.

As State Highway Engineer Engineer D.C. Greer pointed out, "We have in the past attracted visitors with a colorful array of brochures, maps, motion pictures and posters--all broad in scope. But once within our borders, there was no single volume to introduce specific sites of interest."

"This new publication," Greer said, "will lead our visitors to attractions in every corner of the state."

In addition to guiding the individual visitor, the new "Texas Travel Handbook" will serve as a reference tool for national travel writers, whose interest is increasingly focused upon Texas.

"Through Highway Department distribution channels," Greer said, "the new travel handbook will be placed in the hands of travel writers, editors and publishers throughout the United States--and in fact, in many countries over the world. However, Greer said, "the Handbook will not be available in bulk quantities for redistribution. Rather, it will be provided on a select and individual basis to the actual traveler."

The publication represents the first attempt by a state agency to compile a comprehensive visitor's guide to Texas.

"We realize," Greer said, "in a volume of this depth and

detail, some omissions are inevitable at the first printing. As new sites and attractions develop, and our information is updated, subsequent printings will include those new items."

Handbook subjects are as varied as the state itself, ranging from the melancholy Empty Saddle monument in Dalhart to the humorous Popeye statue in Crystal City. With the Handbook as a guide, travelers will discover dinosaur tracks and Indian pictographs; learn the location of little-known ghost towns, and follow specific directions to the most popular attractions of modern Texas cities.

Special sections provide information on recreational facilities in Big Bend National Park, four National Forests, and more than 50 Texas State Parks. Summaries of Texas hunting and fishing regulations are provided, as well as information on visiting Mexico.

In producing the book, the Highway Department was assisted by several groups including the Regional Chambers of Commerce of Texas, the Texas State Historical Survey Committee, Parks and Wildlife Department, Texas Water Development Board, and many other state and private groups. Significant contributions were also realized from city officials, civic and fraternal organizations, and numerous individuals interested in the Texas travel program.

The new "Texas Travel Handbook" will be available to more than 750,000 visitors who annually call at Highway Department Tourist Bureaus, and by mail in response to travel inquiries now totaling some 224,000 each year.

Like all Highway Department travel literature, the new book will be free. It will become a major item in more than three and a half million pieces of travel material annually distributed by the Texas Highway Department.

Two Playa Lakes Produce 84 Acre Feet Of Water

"Eighty-four acre feet of water have been stored in the Ogallala formation from the two playa lakes at the High Plains Research Foundation thus far in 1966. The water conserved is enough to apply four inches per acre on 253.8 acres," according to Jim Valliant, Soil Scientist, who completed his B.S. in Agricultural Engineering at Texas Technological College.

Five hundred and eighty-one acre-feet of surplus lake water from rain and tailwater run-off into the playa lakes have been placed underground through recharge from 1959 to January, 1966. This does not include the 84 acre-feet recharged this year. The 581

acre-feet amount to 27.6 percent of the total amount pumped from all four wells on the Foundation farm during this time.

These artificial recharge wells are multi-purpose. They are (1) an irrigation well, (2) a recharge and drainage well, (3) a lake pump, and (4) a tailwater return system.

Proper installation and proper maintenance are the keys to the success of multi-purpose (recharge) wells. The three major installation factors are (1) an intake control valve, (2) an air vent, and (3) the casing perforated 20 to 30 feet above the static water level.

Proper maintenance consists



How to "Fatten" Profits

Use The Cattle Feed That Has "Pound Power"

Now — get more pounds of gain per pound of feed when you fatten beef cattle for market. Our scientifically formulated feed not only puts extra weight on your cattle but helps maintain their health, increases and quickens their growth — helps you get mileage out of your feed dollar. See us now for all types of livestock and poultry feeds, additives, too. See what "pound power" can do for you!

Come in today and Book your Big E. Range Cubes and Protein feeds to insure fast delivery when winter weather hits.

EQUITY

104 Collard

Phone 659-2420

You Can Save ALL WEEK

AT OUR

Rexall ORIGINAL **1c Sale**
2 for the price of 1 PLUS A PENNY!

EXPERT PRESCRIPTION SERVICE

Rely on our Rexall Pharmacist to fill your prescriptions promptly from our complete stock of fine pharmaceuticals.

There Are Great Buys All Over The Store! Besides The 1c Buys You'll Find Great

SURPRISE BUYS

Shop All This Week

Spearman Rexall Drug

PHONE FOR FREE DELIVERY

659-2226

Two Registered Pharmacists

An Editorial

Guest Editorial

Just A Democrat

I do not class myself as either a liberal or a conservative, and am shocked when people refer to me as either. I am only a democrat who believes in the principles of the national Democratic party. I voted for John W. Davis, for Al Smith, for FDR, Truman, Adlai Stevenson, Kennedy and LBJ.

Those of us who have a feeling of loyalty and love for our national Democratic party--and nothing but contempt for the state Democratic party of Texas, are, in reality loyal to the principles which the national Democratic party upholds.

When special interests diametrically opposed to those national party principles seize control of the Democratic party in any county or in any state, as they have in Texas, we are not bound to follow a suicidal course of continuing loyalty to a party which opposes our principles. When a political party upholds those principles it merits our loyalty. We owe no loyalty to a name, or to a nostalgic memory, or to any special interests which may dominate our state's Democratic party.

In Texas we must beat and rebuild. For we have principles. In Texas, many Texas congressman, state senators, state representatives, all of whom say they are Democrats, are nothing more than lackeys for the major oil companies and very big business special interest group which is the Republican party in progressive states.

We want every one to understand why it is that you and I, who toiled for Roosevelt and Truman, the noble Adlai Stevenson, Kennedy and LBJ, are outcasts in the Democratic party of Texas.

-The Kountze News.



WINNER— Spearman Agriculture teacher Jerry Felder shows the bull owned by Glen Blodgett and Phillip Renner, that won its class in the Hereford Show at the Tri-County Fair in Guymon, Okla., recently. The boys plan to show the bull some more before they sell him. Plainsman photo

Local Bull Wins Show

A Registered Hereford bull owned by two Spearman Future Farmers of America recently won its class in the Tri-County Fair Hereford Show in Guymon recently.

The bull, HR Ideal Onward, was sired by HR Ideal Onward 201 from HR Miss Silver 1100. The breeder was R.H. Holland of Perryton.

Glen Blodgett and Phillip Renner are the owners of the bull. It was shown by Jay Woodward.

Hansford

Hospital News

Patients in Hansford Hospital are Gayle Brown, A.W. Mobley, R.D. Stephenson, Sr., Elva Beane, Pauline Wyrick, Joyce Pierce, Elsie Trolinder, Mamie Carr, Erwin Sasser, Judith Johnson, Laura Henson and daughter, Betty Neal and son, Rock McLeod, John Hissey, Brenda Dodd, Ronald and Donald Criddle.

Dismissed were Angelica Griego, Shirlene Dodd, Elwanna Criddle, Georgia McLeod, Connie Trivino, Chester Ferguson.

Roy McClellan Is Improving

Roy L. McClellan, Spearman implement dealer, was removed from the intensive care ward of Methodist Hospital in Lubbock and is reported to be doing fine.

McClellan is recovering from injuries received in a two car accident in Lubbock two weeks ago.

Right Word

I hear a local high school teacher walked into a noisy class on the other day, slapped his hand on the desk sharply: "Now for this! I demand absolute pandemonium!" and the class quieted completely at once.

The Lake City (Iowa) Graphic

Mr. and Mrs. L. R. Hackley of Oskaloosa, Iowa are here visiting in the home of their son, Dr. and Mrs. D. E. Hackley.

Mrs. Burl McClellan spent Friday in Amarillo where she met Dr. and Mrs. W. C. Davis of Memphis.

Mule Train Invited To Miss America Show

Spearman's Rolling Plains Mule Train will take part in the Homecoming Celebration for Miss America, Jane Jayroe, in LaVerne, Okla., on Oct. 21.

Some 12 to 14 wagons of the train will be in the parade of floats, bands and marching groups that will cover the two and a half mile parade route.

The new Miss America will arrive in Woodward that morning and come by Motorcade to LaVerne.

There will be a day of entertainment and parading, plus

a football game that night.

The Spearman-based organization was the only out-of-state group invited to take part in the program, according to Wagonmaster Earl Riley.

The train will meet at the Dave Ashpaugh farm near Slapout, Okla., Oct. 19.

They will have a cook-out that night, then make the 18-mile drive to LaVerne the next day.

They will be in the parade at 10:30 a.m. that day.

Want Ads Pay

Converting Your TV To UHF Reception

Let Us Do The Job

We Have The Equipment and know how to install UHF Antennas and Equipment .

To Convert Older Sets you need a converter and antenna.

1965 and later models need only UHF antennas.

Call Or See Us Soon

Burton's TV

E KENNETH

PHONE 659-2121

WINTERIZE YOUR CAR

SPECIALS ON ANTI-FREEZE



Act Now & Save Two Ways FIRESTONE NO. 1 ANTI-FREEZE

INSTALLED \$2.55 Gal.
TAKE-OUT PRICE \$1.55 Gal.
BY THE DRUM \$1.44 Gal.

Farmers these are fleet prices so come in today and winterize your tractors and irrigation motors.

FRAM FILTERS

FLEET PRICES FOR TRUCK TRACTORS AND IRRIGATION MOTORS
CHECK OUR PRICES BEFORE YOU BUY
FRAM FILTER #PH-10

INSTALLED. \$3.85
TAKE OUT PRICE on 1 to 23. . . . \$2.50
TAKE OUT PRICE on over 24 . . . \$2.12

PRESTOLITE BATTERIES

WE CAN SUPPLY ANY BATTERY YOU NEED
SEE US BEFORE YOU BUY
EXAMPLE OF PRICES

24-A7Z 24 mo. Guarantee Chevrolet-Installed \$18.95
24-NFA8Z 24 mo. Guarantee Ford-Installed \$18.95
SETA9Z 32 mo. Guarantee John Deere Installed \$29.00

MR. FARMER & RANCHER

MAKE US YOUR HEADQUARTERS FOR ALL YOUR NEEDS! WE CAN SUPPLY ALL YOUR NEEDS AT FLEET PRICES ON CARS-TRUCKS-TRACTORS AND IRRIGATION MOTORS. SEE US BEFORE YOU BUY!

SNIDER-PEARSON TEXACO

701 Collard & Highway 15 phone 659-9972

T.G. & Y.
5¢ TO \$1.00 STORES

Prices Good
Mon., Tues. &
Wed. Oct. 17,
18 & 19

OCTOBER

Mon.-Fri.
8:30 to 6:00
Sat. 8:30 to 8:00

PRICES
GOOD
WHILE
QUANTITIES
LAST!

SAVINGS

Baby Magic DOLL
18" Tall
Drink and Wet Doll. Operates by Means of A Magic Finger Thimble. Changes Expressions from Pout to Smile.
Compare At **\$11.88**
\$16.88



CHILDRENS' PANTIES
Brief Style . . . Acetate
. . . Double Back and Front . . . White. Stock Up Now at This Low Price.
Reg. 39c
3 PRS. FOR **\$1.00**
SIZES 2-14



Ladies' GOWNS
Beautiful Acetate-Nylon Blend Gowns in Assorted Colors. Outstanding Quality at Such A Low Price!
Perfect for Dreaming!
SIZES S-M-L
\$1.99 Each



Decorator PILLOWS
Fringed Pillows in assorted Colors. Shantung, Upholstery Material and Orlon Pile.
Compare At **\$1.98**
2 FOR **\$3.00**



Giant Mercerized CROCHET COTTON
550 to 650 Yards. Giant Mercerized Three-Ply. White and Natural.
Reg. 49c
2 FOR **88¢**



VALUABLE COUPON
Gillette Super Stainless STEEL BLADES
5-Ct.
Reg. 79c WITH COUPON **57¢**



VALUABLE COUPON
NYLON SCARFS
Assorted Flocked Patterns
29" Size
Reg. 59c WITH COUPON **37¢** EACH



VALUABLE COUPON
ANACIN
50-Ct.
89c Size WITH COUPON **67¢**



VALUABLE COUPON
Ladies' Micro-Mesh HOSIERY
Sizes 9-11
WITH COUPON **33¢** Pr.



VALUABLE COUPON
ELMER'S GLUE-ALL
4-Oz. Size
Reg. 59c WITH COUPON **37¢**



VALUABLE COUPON
Jumbo GARMENT BAG
Holds 16 Garments
Compare At \$1.87 WITH COUPON **\$1.17**



VALUABLE COUPON
AQUA NET HAIR SPRAY
13-Oz. Size
Reg. & Super WITH COUPON **47¢**



VALUABLE COUPON
Eveready Flashlight BATTERIES
Standard Size
Reg. 20c WITH COUPON **26¢**
2 FOR



VALUABLE COUPON
LISTERINE ANTISEPTIC
14-Oz. Size
98¢ Size WITH COUPON **73¢**



VALUABLE COUPON
CREST TOOTH PASTE
Extra Large
79¢ Size WITH COUPON **53¢**



David McClellan Is Outstanding At U.T.

David McClellan was named as an outstanding participant in the Biology Summer Science Training Program for High Ability Secondary School Students at the University of Texas this summer. Irwin Spear, Director of the program, said McClellan was an "outstanding participant even in this group of carefully selected, outstanding students chosen from among 525 nominees." The director said the Spearman student performed exceedingly well in both the classroom and in his research par-

ticipation. His research was on, "Induced Pigment Shifts in *Phaeodactylum tricornutum*" under the direction of Dr. Jack Myers and Jim Man. Spear went on to say that he believed David learned a great deal from his research and became quite adept at the various techniques involved. Because of the fine job he did, he was selected for three additional weeks of full time research.

"In our opinion," Spear wrote, "David has a great deal of native ability coupled with very high performance and we feel he holds excellent promise for the future."

"His high performance in this program is all the more noteworthy because of the limitations imposed by his small town background. We hope you will encourage David to attend a major university instead of a small college, because, in our opinion, he can succeed anywhere."

Spear said he was looking forward to similar nominees from the Spearman school in the future.

Mary Martha Circle Meets

The Mary Martha Circle of the WSCS of the First Methodist Church met in the church parlor at 3 p.m. with Mrs. H. H. Crooks as hostess.

Mrs. Roy Jones, chairman presided at the business session and the devotional was given by Mrs. T.D. Sansing. Mrs. R.E. Lee gave the opening prayer.

The study "The Church Grows in Canada" was concluded by the guest speaker, Mrs. Bill Partridge.

Attending were Meses, Sam Patterson, W.H. Tarbox, Bruce Sheets, Kenneth Williams, Roy Jones, Andy Rhodes, T.D. Sansing, Sid Beck, Jr., P.A. Lyon, R.E. Lee and the guest, Mrs. Partridge.

WMU Meets At Church

The W.M.U. of the First Baptist Church met Wednesday morning at the church for their annual planning meeting.

Betty Uptergrove presided at the business session and Jerry Ralls, Educational Director, gave the devotional.

The prayer calendar was read by Gowonda Golightly followed with prayer by Marie Berry.

The assembly then divided into groups for GA and Sunbeam auxiliaries and the general officers to make plans for the new year.

Approximately 20 attended the meeting.

CWF Studies Canadians

The Pheleo Circle of the C. W.F. met Wednesday morning at the First Christian Church for their regular monthly meeting with Mrs. Ed Haner as hostess.

Mrs. Haner presided at the business and Mrs. Lloyd Buzzard gave the devotional.

The program "Canada and Its People" was brought by Mrs. Don E. Smith.

Refreshments of coffee and doughnuts were served by Mrs. Haner to Meses, Irvin Davis, Lloyd Buzzard, Don E. Smith, James Hollar, Kenneth Evans, Elmer Longley, Don Kunselman, and Doyle Schnelle.

Freddie Largent and Mrs. Gordon Parrish attended the Fabege School of instruction Wednesday at the Holiday Inn West Motel in Amarillo.

Mrs. Buri McClellan was in Amarillo Friday.

Mrs. Carl Nickles is visiting in Irving with her parents this week.

Spearmanites At District Board Meeting

Several women from Spearman attended the District Board meeting of the Top of Texas District held in Perryton High School Tuesday, October 11. A noon luncheon was served at the First Methodist Church.

Attending were Meses, D.E. Spoonmore, C.U. Pope, Raymond Kirk, Guy Fuller, Joe Traylor, J.R. Stump, Frank Davis and J.R. Keim, all from the Twentieth Century Club and Meses, Ray Martin, Robert Adamson, Bert Sheppard, David Wilson and Sandra Ladd, all from the Spearman Study Club.

The meeting was presided over by District President, Mrs. Guy Crawford of Borger and the speaker was Mrs. Phillip A. Carpenter of Burkburnett, 2nd Vice President of Texas Federated Women's Club.

Elementary Honor Roll

Students on the honor roll in Spearman Elementary school are:

SECOND GRADE

Jan Mason
Lonita Green

THIRD GRADE

Roger Jones
Everett Rosenbaum
Denise Benton
Janyth Lackey
Lynda Reed
Carol Reeves

FOURTH GRADE

William Porter
Rhonda Nelson
Debbie Sheppard
HONORABLE MENTION

Ted Harbour
Linda Hamilton
Connie Kiser
Sheryl McCalman
Jana Ralls
Stephen Green

MORE ITALY AUTOS

ROME — Italy produced 807,549 automobiles in the first nine months of this year, an increase of 12.7 per cent over the corresponding period last year.

LONG TERM FARM-RANCH LOANS

SEE

J. L. Brock Agency
Representing
Major Insurance Companies

206 Main

Phone 659-2514



WINNER - Gifford-Hill Western manager Jim Burks and Spearman Mayor Bob Vaughn look at the name of the winner of \$1,000 worth of pipe given by the company. The winner was Pete Shrader of Etter. Plainsman photo

Spearman Eighth Grade Rolls Over Fritch 50-0

Spearman's Eighth Grade rolled on Thursday night in Fritch and beat the Sanford-Fritch Eighth Grade 50-0.

Coach Jerry King used his entire squad in the one-sided contest. Scoring for Spearman were

James Lyon with one, Rodney Schroeder on a pass from Frank Lemons of 40 yards (this was the first touchdown pass of the year) and Victor Schuman got another TD on a pass from Gary Staggs.

Henry Flores scored one touchdown and two extra

FANCY THAT!..... by THOMPSON

TO PROTECT THE FINGERS OF HIS ROYAL BANQUET GUESTS, NAPOLEON III ORDERED ALUMINUM KNIVES AND FORKS. EARLIER, THEY ATE WITH THEIR FINGERS!



TO PROTECT THE CRANKSHAFT IN THE ENGINE OF THEIR FLYING MACHINE, THE WRIGHT BROTHERS USED AN ALUMINUM CRANKCASE!



TO PROTECT MODERN AMERICANS, SAYS THE ARCHITECTURAL ALUMINUM MANUFACTURERS ASSOCIATION, ALUMINUM SLIDING GLASS DOORS AND STORM DOORS SHOULD CONTAIN SAFETY GLASS!

points, Tommy Loveday scored two touchdowns, Robert Archer scored a touchdown and

two extra points and tackles Ronnie Lusby and Paul Torries each scored two extra points.

Golf Tourney Here Today

The Hansford Golf Club will have a membership tournament at the golf club this afternoon (Sunday).

The 18-holes of competition will begin at 12:30 p.m. Entry fee is \$2.

There will be four flights, Championship, A, B and C.

Tommy Gooch Agency

Farm Bureau Insurance

Spearman, Texas

FEATHER FLOWERS
RESIN GRAPES
&
SUPPLIES
FLOWER VASES
HANDBAGS

Dorothy's Novelties

912 S. Bernice
Phone 659-3027

8-INCH SAUTE PAN

Available Oct. 17 to Oct. 22



99¢
with \$5.00 Purchase

Food just can't stick to this heavy aluminum pan finished with super-slick DuPont TEFLON. Cleans with just a soapy cloth, no scraping or scouring ever. Chef-styled sloped sides, heatproof handle.

FRESH PRODUCE SPECIALS

LARGE GOLDEN RIPE

Bananas
25¢

WASHINGTON DELICIOUS
Apples 17¢

Cello Wrap

Bread

King Size Loaf **23¢**

Wolfs "with Beans"
CHILI Tall Can **35¢**

Wolfs
TAMALES Tall Can **27¢**

Del Monte Cling no. 2 1/2 can
PEACHES **27¢**

Ranch Style Tall Can
BEANS 2 for **29¢**

Nestles'
QUICK 2 lb. **77¢**

Kraft 7 1/2 oz. Box
DINNERS 2 for **39¢**

MAZOLA OIL Quart

Shurfresh Grade A

EGGS

USDA Medium Dozen

49¢

Imperial Pure Cane 10 lb. Bag

SUGAR 98¢

Soft Margarine

Parkay 39¢

2 Tubs 1b. Carton



Maxwell House

1b. Can

COFFEE

69¢



Facial Tissue Reg. 29¢ size All Colors

Kleenex 2 for **49¢**

Morrison's Apple Cherry or Peach
Fruit Pies Frozen 20 oz. Size
3 for **\$1.00**

Del Monte Cream Golden
CORN 303 Size Can **19¢**

Household
BLEACH Energy Gallon **39¢**

All Purpose Detergent
ENERGY Giant Pkg. **49¢**

Del Monte Assorted 46 oz. Can
FRUIT DRINKS 3 for **\$1.00**

Welch's Frozen 6 oz. Cans
GRAPE JUICE **19¢**

Wholesome Goodness In EVERY Drop. It's Quality Milk AT ITS BEST



USDA Choice Beef

Steak
89¢

RATHS ALL MEAT

Coney
12 oz. pkg. **45¢**



CAKE MIX

DUNCAN HINES LAYER

35¢
Pkg.

KICK OFF Your Shopping with these LOW PRICES

Cut Rate GROCERY