

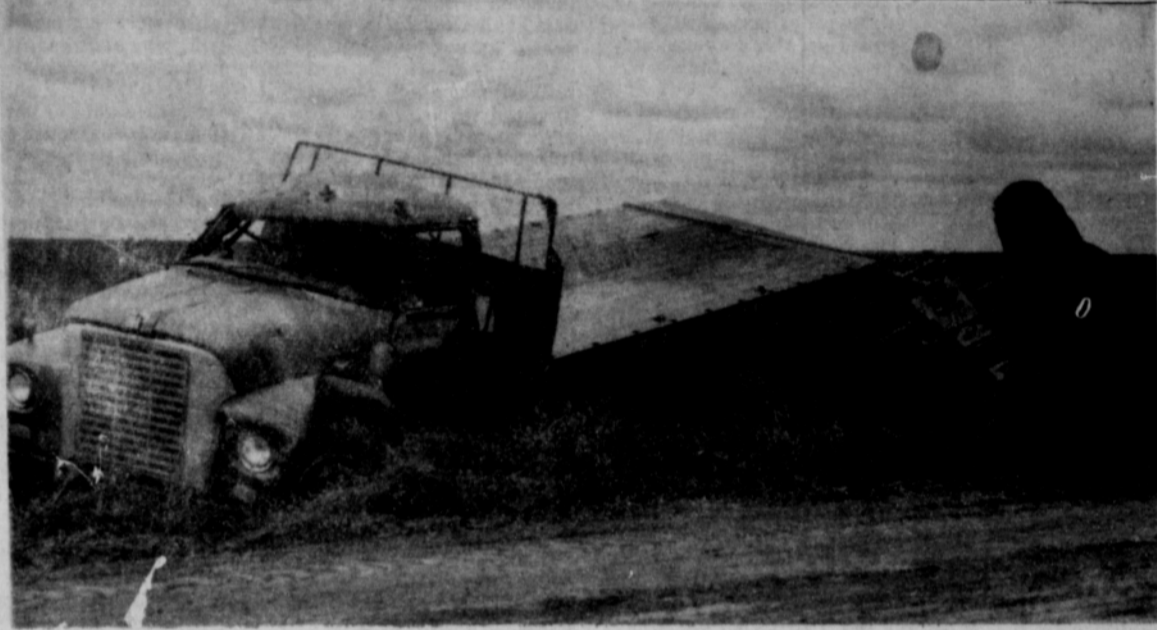
YOUR HOMETOWN NEWSPAPER — WITH THE HIGHEST OFFICIAL CIRCULATION IN HANSFORD COUNTY

SUNDAY The Hansford Plainsman

VOLUME VII., NUMBER 100

SPEARMAN, HANSFORD COUNTY, TEXAS 79081

SUNDAY, OCTOBER 2, 1966



Man Killed Friday In Oslo Accident

One man was killed and another was injured in an accident at the intersection of FM 2342 and a county road in the Oslo community about 8:45 a.m. Friday.

Killed in the accident was Dallas Clifford Giddens, 35, who lived at the Phillips Booster Plant in Sherman County, south of Goodwell, Okla.

Ray H. McKelvey, 29, of Portales, N.M., was injured and was listed in fair condition in Guymon Memorial Hospital in Guymon Friday afternoon.

Sheriff J. B. Cooke said a pick-up driven by Giddens and an ensilage truck driven by McKelvey collided at the intersection. Giddens was traveling east on the FM road and Mc-

Kelvey was traveling south. The officer said the pick-up turned over and Giddens was partially out of the pick-up when help arrived. McKelvey was thrown out of the ensilage truck. It spun around and stopped in a field.

Giddens was an employee of Phillips Petroleum Co., for 15 years. He was born March 30, 1931, in Lefors. He moved with his family to Goodwell in 1945 from Boise City, Okla.

Survivors include his wife, Nelta, daughters, Marieta, Corinna and Nancy and a son, Dallas, Jr., all of the home, and his mother, Mrs. Freida Giddens of Goodwell.

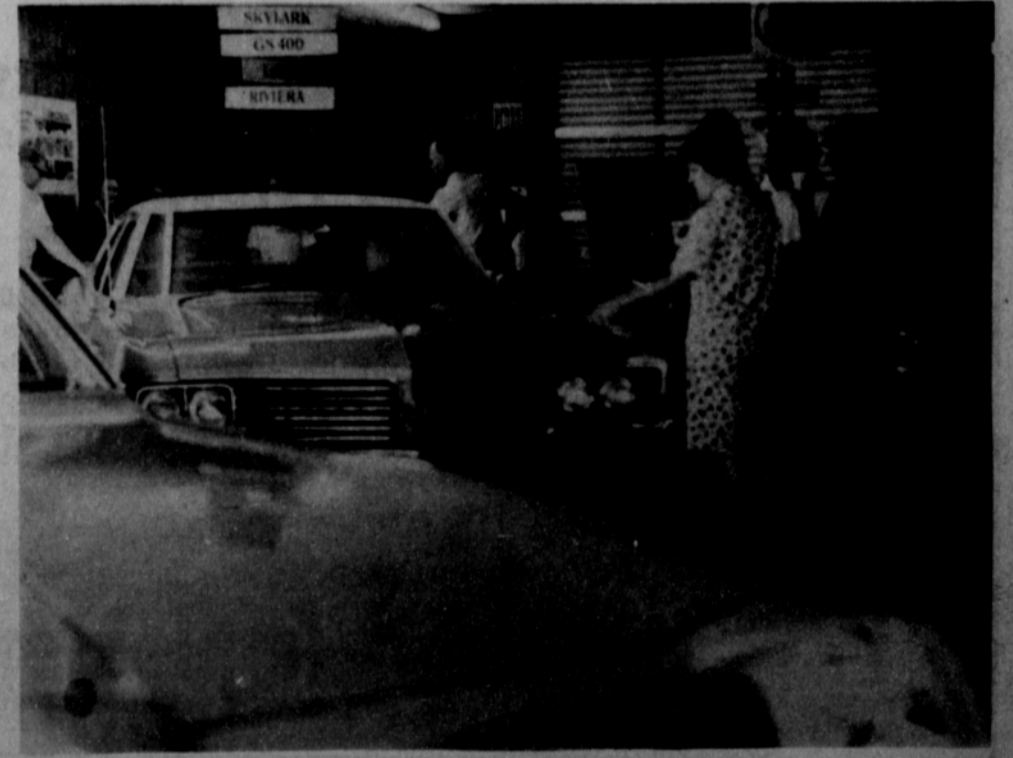
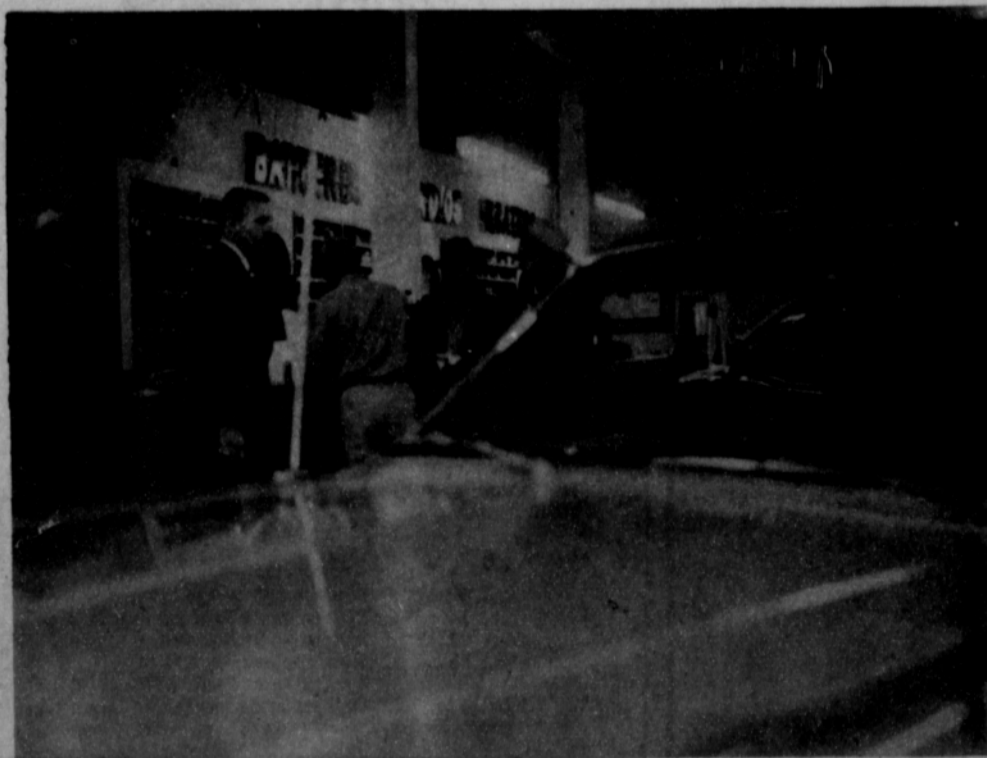
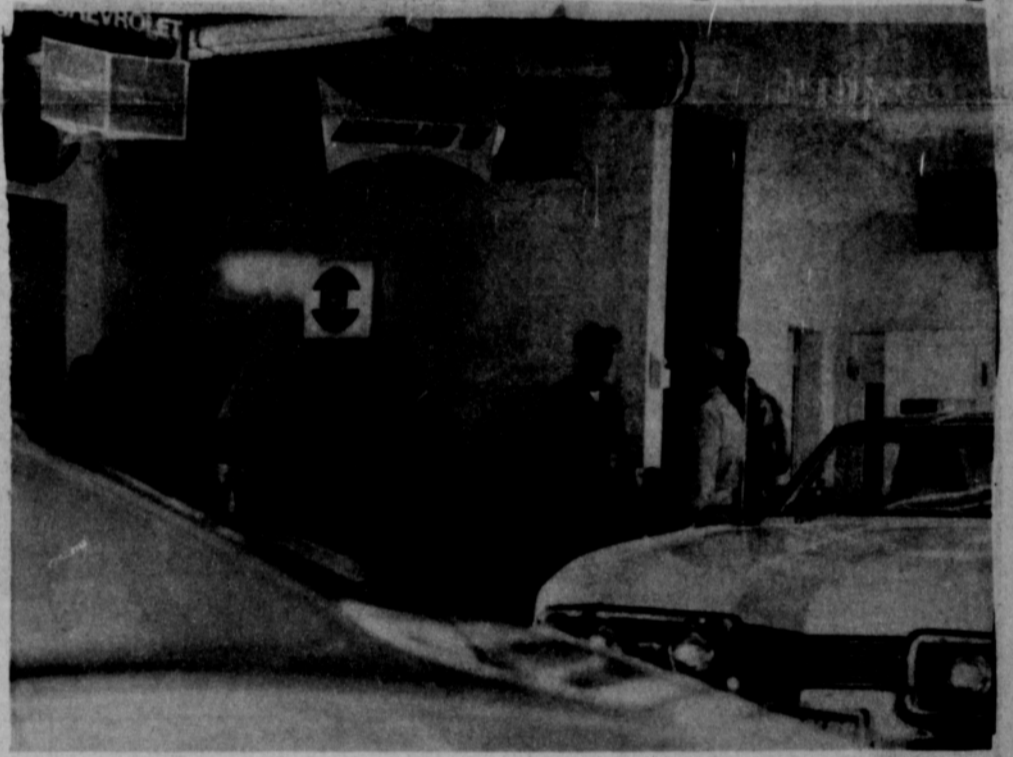
Services are pending at Bunch Funeral Home in Guymon.

MAN HURT --Charles Adkison received a laceration on his head Friday morning when this truck and tractor turned over on a county road five miles south of Spearman. Adkison got on a shoulder of the road and lost control of the

truck. He moved over to let a car pass his truck. See the story on page five.

Plainsman Photo

People Turned Out To See New Cars Thursday, Friday



"Mid-Week Values for Tuesday & Wednesday October 4 & 5th"

We Don't Keep Fresh Produce - WE SELL IT!



Produce is at its best ONLY when it's FRESH. And CUT RATE wastes no time in rushing fresh fruits and vegetables to your table. What comes in today is sold TODAY... LOW PRICED for quick sales to make room for tomorrow's arrivals. Some markets claim to keep the freshest produce. We don't - we sell it to you every day of every week. Get some today - just for the taste of it!

LARGE VINE RIPE

DEL MONTE ROUND-UP



Del Monte Cling Peaches 4 for 97¢
no. 2 1/2 can

Del Monte Bartlett Pears 3 for 89¢
303 size can

Del Monte Fruit Cocktail 4 for 89¢
303 size can

Del Monte Sliced or Crushed Pineapple 3 for 89¢
no. 2 can

Del Monte 46 oz. Cans Pineapple Juice 3 for 89¢

Del Monte 46 oz. cans Orange Drink 3 for 89¢

Del Monte 46 oz. cans Tomato Juice 3 for 89¢

Del Monte 46 oz. cans Pink Pineapple Grapefruit Drink 3 for 89¢

Del Monte 46 oz. cans Grape Drink 3 for 89¢

Del Monte 303 Size Cans Cut Blueiak® Green Beans 4 for 89¢

Del Monte English Peas 4 for 89¢
303 size cans

Del Monte 303 size cans Spinach 4 for 59¢

Del Monte W.R. or Cream Golden Corn 4 for 79¢
303 size cans

Shurfresh Cottage Cheese 49¢
Sparkling Creamed Curds 2 lb. carton

Imperial Pure Cane Sugar 44¢
5 lb. Bag
Limit 1 bag with \$5.00 purchase and over
Thereafter 57¢

Meadowlake Margarine 43¢
2 lbs. Yellow Quarters

Zestee 18 oz. Tumbler Strawberry Preserves 3 for \$1.00

TOMATOES 15¢ lb.

APPLES COLORADO JONATHAN "COOKING" 2 lbs. 25¢

NEW CROP TEXAS SWEET POTATOES 1 lb. 13¢

LARGE FIRM HEADS FRESH CRISP CELLO PKG. COLORADO CABBAGE 2 lbs. 15¢ RADISHES 10¢ lb.

U.S. No. 1 IDAHO RUSSET POTATOES 10 lb. bag 39¢

Armours Luncheon Treet 45¢
12 oz. Tin

Lanes Party Time Mellorine 35¢
Half Gallon

Friskies "Chicken Flavored Only" Dog Food 3 for 39¢
Tall Can

Del Monte Chunk-Flat Can Tuna 3 for 79¢

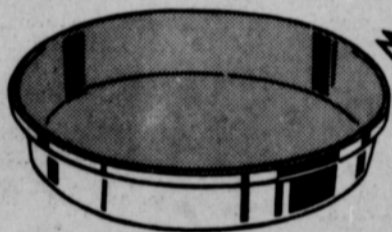
Del Monte Tomato 20 oz. Catsup 2 for 49¢

Del Monte Fresh Dill Spears Pickles 4 for \$1.00
11 3/4 oz.

Del Monte Cuc. Chip 15 oz. Pickles 4 for \$1.00

Del Monte Whole Dill-22 oz. Pickles 3 for \$1.00

LAYER CAKE PAN Available Oct. 3 to Oct. 8



99¢ with \$5.00 Purchase

Super-slick TEFLON finish makes cleanup so easy. Cakes bake evenly, crusts come out a rich golden brown. Size: 9 x 1 1/2"

White Swirl CUP 9¢
This Week's

Shortening Bakerite 69¢
3 lb. can

Shurfine "Quality Controlled" Flour 45¢
5 lb. Bag

Complete Detergent Bonus \$1.19
King Size

Giant Size TIDE 69¢

All Purpose Detergent Energy 59¢
Giant Size

A.F. BRAND THICK SLICED BACON 2 lbs. pkg. \$1.55

HOMEMADE COUNTRY STYLE PORK SAUSAGE 59¢

USDA CHOICE BEEF SIRLOIN TIP STEAK 1 lb. 98¢



"WE GIVE VALUABLE BUCCANEER STAMPS!"



Cut Rate GROCERY

Some Changes In 40 Years

"The country needs more farmers, especially farmers who practice diversification." Thus reads a small pamphlet produced by the Spearman Commercial Club sometime back in the 1920's.

The pamphlet said there are many good opportunities to rent good farms, but the country offers particularly attractive propositions to the man who wants to own a home of his own.

"This land may be bought at from \$20 per acre up, depending on the location and improvements and on easy terms."

The pamphlet was produced shortly before wheat harvest and the writer was predicting a harvest of 30 bushels per acre on the wheat and a total crop of more than three and a half million bushels of wheat. Seventy four combine were sold that year.

Grain sorghum was an important crop back in the 20's, for it was called the crop that had never been known to fail. The grain sorghum consisted of Milo, Maize, Nafir, Corn, Dorso, Feterita, Higeria and the nonsaccáharine sorghums.

"Truck gardens can also be raised here including strawberries, melons, tomatoes and other vegetable because these crops are not damaged by insects as in the older part of the state."

According to the pamphlet the rainfall for the previous 10 years had averaged 22 to 24 inches per year. Most of the moisture was reported to fall during the growing season.

This statement dates the pamphlet before the 1930's.

Underground water was another strong selling point for the area long before anyone dreamed of irrigation. "The entire Spearman Country is underlaid by a sheet of pure, soft water reached at an average depth of 200 feet, and is raised to the surface by means of windmills."

Besides the crops, the country along the Palo Duro was called a ranchman's paradise with grass, shelter, water and an abundance of prairie hay.

Hog raising, poultry and dairy cattle were promoted as profitable enterprises.

There were pictures of beef cattle, dairy cattle, and a turkey farm.

The people then were just as proud of their school as the present citizens are. There is a picture of the new \$100,000 school building. The school was called the best affiliated high school north of the Canadian river in Texas.

In the description of the town Spearman was called: "One of the fastest growing towns of the North Plains and offers the homeseekers and investors all that could be desired without he be one of the kind who is looking for something for nothing."

The 1920 census ranked Hansford county at the top of the line in point of literacy. They have the interest of the whole community at heart and are not building for a day. Spearman citizenship is here to stay.

"Our businessmen are wide-awake and up-to-date, and almost all lines of business are represented."

"Spearman business and residence lots can be bought worth the money and on easy terms. There is an opening here for many new businesses, and a royal welcome awaits you."

"One good crop pays for your farm in the Spearman country."

Attending a WMU Area Workshop in Borger Sept. 26 were Mmes. R.H. Gray, Don Jones, Verlin Beck, Don Denham, Luther Berry, Carl Archer and R.L. Uptergrove.

The workshop was held at the First Baptist Church with conferences from 10 until noon and a prayer retreat from 1 to 2 p.m.



FRESHMAN ACTION -- The Phillips freshmen put a lot of blockers in front of their ball-carrier in the game here Thursday night. The little Blackhawks were too much for the Lynx and won 34-8. In the bottom picture Lynx Don Lain Whitefield (22) has a host of blockers around as he runs for a first down. Plainsman Photo

Teams Lose To Phillips 34-8, 20-0

Spearman's freshmen and B-Team found the going tough against the Phillips freshmen and B-Team here Thursday night.

The freshmen went down 34-8 and the B-Team lost 20-0.

Passes proved the undoing of both teams as both Phillips teams were able to complete long passes against the young Lynx secondaries.

In the freshman contest, Phillips was leading 28-0 when Lynx quarterback Randy Weston raced 28 yards to score. Joe Bill Cochran carried over for the extra points.

The freshmen were again operating without their big full-back Bobby Mosier. He was suited up, but had not been given a medical release to play. He is supposed to return to action this week. He has had a knee injury.

The short-handed Lynx B-Team fell behind 20-0 in the first half, then shut down the Phillips offense.

Phillips scored on one run, a long pass and returned a punt for a touchdown just before the half.

Jimmy Brown, Joe Hutchison and Gary Faries led the Lynx defense in the second half to contain the Blackhawks.

Carcass Traits Valuable In Selecting Beef Cattle

Carcass traits are an additional tool that can be used in beef cattle selection along with production and other traits, according to Frank A. Orts, Extension meat specialist at Texas A&M University.

Beef carcass evaluation is not really a new procedure, as some breeders have been involved in some type of carcass evaluation for about 10 years. It involves a critical study of those attributes of the beef carcass which increase its retail value. These attributes are also genetically linked and therefore can be used as selection and breeding criteria, says the specialist.

The carcass characteristics which are normally studied are ribeye area and ribeye area per hundredweight, fat thickness and fat thickness per hundredweight, quality grade, percent kidney fat, chilled carcass weight per day of age and yield of closely trimmed boneless chuck, loin, rib, and round. The last attribute can either be actual cutout or estimated cutout using one of several formulas.

Orts says that in order to be considered desirable from a retail standpoint, a carcass

should have at least 2.0 square inches of ribeye per hundredweight of carcass if eighteen months old or younger, have no more than .11 inches of fat covering over the ribeye per hundredweight of carcass, grade at least minimum choice, and yield at least 49 percent of the carcass weight in boneless closely trimmed chuck, loin, rib, and round. From a production standpoint, a carcass should have a chilled carcass weight per day of age at least 1.25 pounds for steer carcasses.

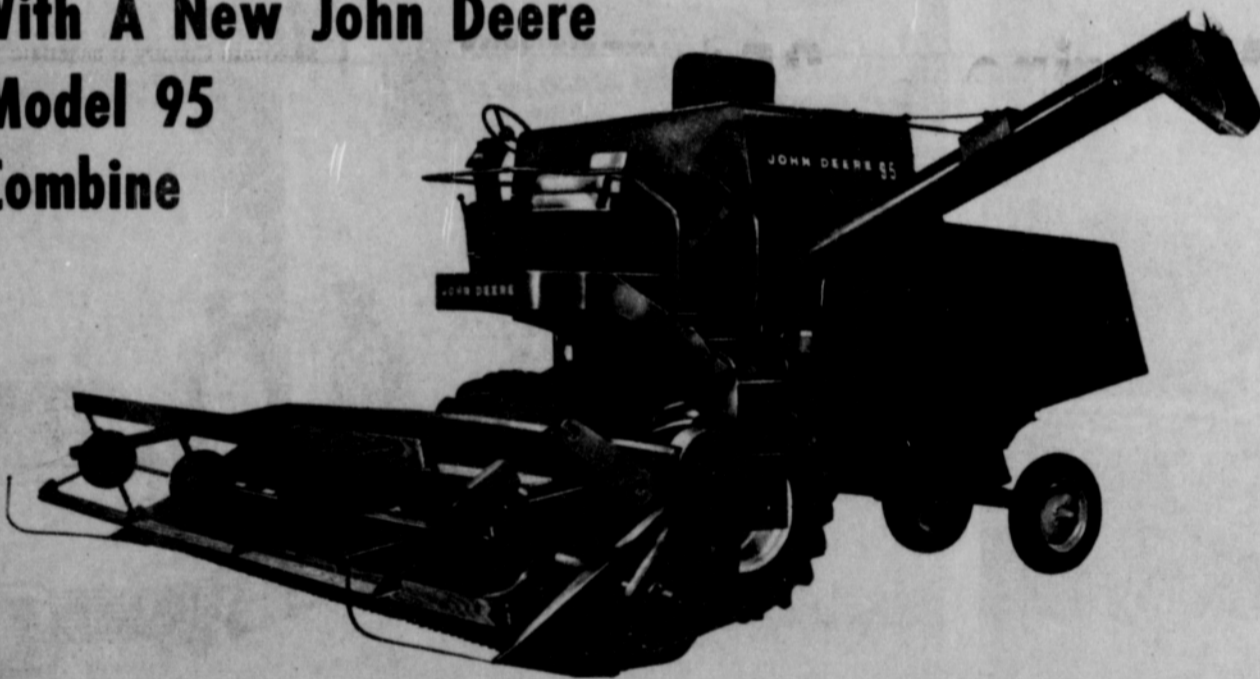
Purebred breeders are encouraged to cooperate with breed associations in their carcass evaluation programs. If this does not apply, the Extension Service will assist any producer, whether a breeder or commercial, in obtaining carcass information.

Orts advises that one should never make a decision about an individual sire without having data from at least ten of the sire's offspring. Herds can also be evaluated in addition to sires.

Orts suggests a visit with the local county agent for more information on carcass evaluation.

Speed Your Maize Harvest

With A New John Deere Model 95 Combine



We Have Four In Stock
19 and 20 Foot Platforms
With Cabs For Comfort

Check all the plus features and you will buy a John Deere Combine for this and many harvests to come. From the sickle to the rear you will find everything on the John Deere combine designed for faster, better and easier operation. John Deere combines cover more acres and get more grain for you, so harvest goes faster and you make more money.

SEE US TODAY.

Hansford Implement

Highway 15

Spearman, Texas

Handicapped Girl Honored By State

Miss Carolyn Osborn of Amarillo, niece of Mrs. Cecil Crawford of Spearman and Mrs. F.K. Banister of Steamboat Springs, Colo., and the granddaughter of Mr. and Mrs. J.D. Miller has been named "Handicapped Texan of the Year".

Miss Osborn, 21, has been paralyzed since she was six years old and has learned to paint by holding the brush in her teeth.

Recently the young Amarillo artist sold more than \$200 worth of paintings at an individual art show held in an Amarillo art gallery.

4-H
Sept.
24th
to
OCT.
1st
CLUB WEEK

98.3 on your dial

Hey Football Fans!

Follow The Lynx on **XBMF** fm

- | | |
|---------|----------------------------|
| Oct. 7 | Boy's Ranch at Spearman |
| Oct. 14 | Spearman at Sanford Pritch |
| Oct. 21 | Spearman at Stinnett |
| Oct. 28 | Shamrock at Spearman |
| Nov. 4 | Spearman at Panhandle |
| Nov. 11 | Dalhart at Spearman |

CLASSIFIED ADS WORK WONDERS

The elegant leather cordovan is derived from horsehide. Early Greek and Roman warriors used to decorate their helmets with the names of horses and, in modern times, the tails served as a battle standard among the Turks, according to the Encyclopaedia Britannica.

FOR SALE

German Shepard puppies. Some white.
223 N. Hazelwood,
91tfc-c

2 Bedroom house 1 block from elementary school--4 years 10 months Pay off. See at 619 S. Evans, Equity \$900. Balance \$3875.

FOR SALE-1966 Gleaner C-2 Combine 20 foot, 1965 John Deere 95 combine 19 foot. Dale Davis, Spearman, 1/2 mile west on Gruver Hwy.
94-tfc

1 practically new 3-bedroom home and 1 new 3 bedroom home with 1 1/2 baths.
Collard Real Estate, ph. 659-2501.
86tfc-c

3 bedroom brick house, 2 baths, fenced--to be shown by appointment. Only call 659-3166, 1005 Barkley, will take trade for equiy.
80tfc

Industrial lots on Gruver Highway. Cecil Crawford, 659-2409.
61t c

1955 Chevrolet Pick-up. A1 condition. Floyd Mitts, Phone 659-2203.
84tfc

3 bedroom brick, 2 baths. Corner lot, fenced yard. Low equity. Assumed GI loan. Phone 659-3215 or after five, 2158.
77tfc

The Amazing Electrolux with power nozzle. Rotating brush action cleans all rugs faster--gently fluffs carpet nap. Sales and Service, call Don Seymour at 435-2064, Perryton, Texas.
68-69-p-70tfc

Five room house with basement, draperies, deep freeze, one-car garage, one and one-half acres of land. Phone FI7-2731 or FI-7-2282, J.E. Sluder, Gruver, Texas.
64tfc

LOSE WEIGHT safely with Dex-A-Diet Tablets. Only 98¢ at Spearman Drug.
92-6wp

For Fuller Brush products write 2301 Georgia Drive, Perryton, Texas or call 435-4967.
73tfc

1961 Corvair, 57,000 miles, bargain. Phone 659-2559 or 2114.
74tfc

For Sale: Story and 1/2 home, living room, formal dining room, 3 bedrooms and 2 baths. On Corner lot. Collard Real Estate Phone 659-2501.
89tfc

Small houses for sale. Can be moved. Suitable for farm, tenant dwellings. Some have 320 square feet. Price \$2500 to \$3500. J.B. Rector, Cactus, Texas, Phone 966-3501.
97-10p

FOR SALE-Special sale on carpet. Call us for free estimates. Sears, Plains Shopping Center. Phone 659-2573.
98-2c

FOR SALE-Silvertone transistorized clock radio. \$21.49. Sears, Plains Shopping Center. Phone 659-2573.
98-2c

FOR SALE-1965 Yamaha "80 C. C." motorcycle and 1 camper for pickup. See at 323 1/2 Townsend.
93-tfc

FOR SALE-Sept. 20, black and silver German Shepherd pups. Full Blood from Lady Sheba 19th. 118 S. Brandt St. or phone 659-3229.
93-6c

FOR SALE-30 cu. ft. Coldspot Food Center. Matching refrigerator and freezer. \$579.90. plus tax. Sears, Plains Shopping Center. Phone 659-2573.
98-2c

Picture frames made to order. Any size, selection of molding. Fast Service. C&B Studio, Spearman, Tex.
78tfc

FOR SALE-Just reconditioned King Alto Saxophone. \$140. Phone 2644.
96-tfc

FOR SALE-1964 Falcon Station Wagon. Low Mileage, 6 cyl. Sacrifice price. See at 22 S. Townsend. Phone 2269.
96-tfc

FOR SALE-Kenmore Soft Heat Electric Dryer Mate. \$144.95. Sears, Plains Shopping Center. Phone 659-2573.
98-2c

One Kid Horse, good and gentle, one green broke. John Sell, 659-3440.
98-2p

FOR SALE-10' x 43' trailer, 1964 model. \$250 equity, payments \$69.39 mo. 15 N. Endicott. Phone 2310.
99-tfc

FOR SALE-Barbecue grill electric spit, enclosed hood on wheels. \$29.95. Sears, Plains Shopping Center. Phone 659-2573.
98-2c

FOR SALE-Washer and dryer. Call 659-3304 or see at 704 Cotter Drive.
98tfc

FOR SALE-316 acres irrigated farm 6 miles north Plainview, Texas. 1 mile front on state highway. 2 eight inch electric wells, 1 mile under ground tile and gated pipe. Nice frame, 3 bedroom, 1 bath, large kitchen with lots of built in cabinets. House size 32 x 43 with 24 x 8 sun porch. 27 x 80 round top barn with 16 x 80 shed, 26 x 32 shop. Two or three other out buildings. Submersible pump and pressure system for house. Has good cotton and maize base, some wheat. 37 acre lake with commercial possibilities. 1/2 minerals goes. Must sell for cash to settle estate. Make offer. Contact Russell Nowlin, 2213 Joliet, Plainview, Texas. Phone CA4-5026.
99-4p

FOR SALE-riding lawnmower. 619 S. Evans.
100-2c

FOR SALE-Remington portable typewriter. Used little. Inquire at Plainsman.
100-2c

SERVICES

SERVICE-Ditches from 3-12 inches, any desired dept. S. D. Jones 659-2809. Harold Shaver 659-3474.
17tfc-c

REGISTERED male chihuahua dog for breeding. Phone 2747.
95-8p

Amarillo Daily News & Globe Times home delivery. Call 2685.
14tfc

GARAGE SALE-Clothing, toys, miscellaneous. Friday and Saturday, Sept. 30 & Oct. 1, 1100 S. Haney.
99-1p

Use a Plainsman Classified.

Ironing, \$1.50 a dozen. Mrs. W.E. Innis. Phone 659-2080.
91tfc

EVERYTHING YOU NEED TO

ADD BEAUTY to that fall artificial arrangement, CATTAILS, FOLIAGE, GRAPES, FRUIT. Low footed or bud vases and accessory items.

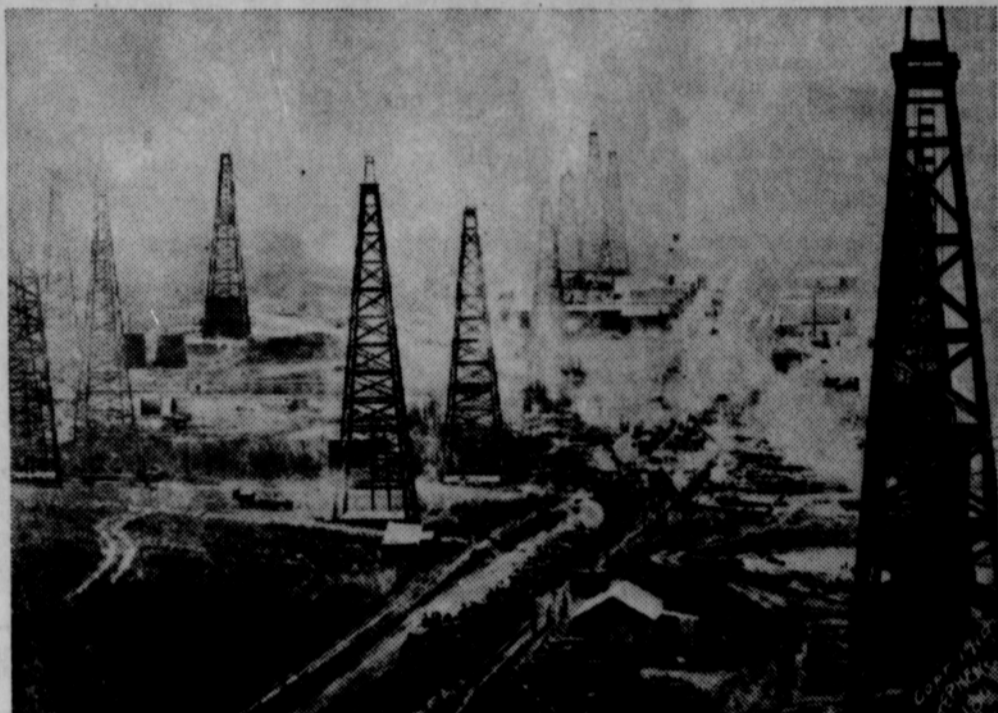
Assorted Flower Vases.
Dorothy's Novelties
912 S. Bernice
Phone 659-3027

WHITE HOUSE LUMBER CO.

Building & Plumbing Supplies
Phone 659-2818
306 Davis

TOMMY GOOCH

AGENCY
Farm Bureau Insurance
Spearman, Texas



BURKBURNETT, 1919 — North Texas ranchlands had been producing oil since 1905 and early Burkburnett production started around 1912 but by 1919, when this picture was made, it was one of the state's leading oil boom centers.

Candidates Will Speak To Gruver Lions Club

The Democratic and Republican candidates for Representative of the 18th Congressional District will speak this month before the Gruver Lions Club. Dee Miller, Democrat, will

speaking at the noon meeting of the club Wednesday, Oct. 5. Republican candidate Bob Price will speak to the club on Wednesday, Oct. 19. This is the first appearance as a candidate for Miller in the county. Price was here earlier for the dedication of the Republican headquarters in Gruver.

Eighth Still Undefeated

Spearman's junior high teams split their two games in Phillips Thursday night. The seventh graders dropped their game 12-0 and the eighth grade won 8-0.

The seventh graders put up a strong defensive effort, but were unable to move the ball against Phillips. This was the beginning of the Lynx' second game of the year.

A recovered fumble in the second quarter set up the lone touchdown in the tough eighth grade battle and proved enough for Spearman.

James Ray Lyon pounced on a Phillips fumble on the Phillips 40 yard line. The Lynx punched the ball down to the Phillips three and Lyon went in to score from there.

Robert Archer carried over for the extra points to make the score 8-0.

In the fourth quarter a Phillips drive was stopped on the Spearman 35 when Terry Butt intercepted a Phillips pass.

Coach Jerry King said this was the toughest opponent the eighth graders have had this season.

"The victory was an entire team effort. Every boy did an outstanding job," King said.

FOR RENT

FOR RENT-One bedroom brick apt. Call 2274.
93-tfc

WANTED

WANTED-Septic tank pumping and portable disc rolling. Bobby Joe Grayson, phone 659-2209.
80tfc

INVISIBLE REWEAVING, burns, tears, moth holes. Mrs. James Pendergraft, 735 Cotter Drive. Phone 2872.
99-3p

Henna is the Persian name for a small shrub found in Asia, Australia and along the Mediterranean coasts of Africa. The paste made of powdered henna leaves has been in use as a cosmetic since ancient times.

SO THEY SAY



when he dragged her all over shopping for Hi-Fi. But then she brought him right in to Burton's TV. They found just what they wanted, at less than they feared it might cost, backed up by experienced service.



Gift Box MEMO:

If you act fast you may be able to get some of our new Coronado woven rayon place mats. These are reversible and washable. They are in seven colors and we have matching napkins.

There are just a few of the 72-inch round vinyl table cloths left. These very popular items are hard to keep in stock.

In the new department we have some new Spanish decorator fruit. This is beautiful merchandise. Also, we have some new gift items for your bridge parties.

We have expanded our greeting card line and now have the Roth contemporary cards. These are funny.

There is something new almost every day. Come take a look.

The Gift Box

BARBECUE SAUCE

For a deliciously tart sauce for barbecuing meats, combine 1 cup soy sauce, 1 cup salad oil, 3/4 cup bottled lemon juice and 1 clove garlic cut in half. This sauce may be used as a marinade as well as for brushing on meat during broiling. Use it with beef, pork, lamb or chicken.

The Hansford Plainsman
PUBLISHERS INC.

TEXAS PRESS ASSOCIATION

Member **1966**

Co-Publishers.....Jim Davis and Burl McClellan
County-Wide, Independent Newspaper published every Thursday and Sunday at 209 Main St., Post Office Box 668, Spearman, Texas 79081. Second Class postage paid in Spearman, Texas 79081.
Editor.....Burl McClellan
Manager.....Jim O. Davis

Rho Rho Chapter Holds Annual Rushee Party

Rho Rho Chapter of Kappa Sigma Phi held a rushee party and dinner at the VFW hall Thursday evening.

A Parisian theme was carried out in the decorations with Paris scene murals. Tables were covered with red and white checked cloths centered with floating mums flanked on either side with drip candles.

For the program Tina West,

Kathy Brown and Glenell Bullard gave demonstration dances.

Attending were Messrs. and Mmes. Bill West, Andy Anderson, Bobby Nollner, Jim Davis, Mike Garnett, Brad Beedy, Dick Countiss, Bill Turner, Dee Allen, Eddie Stewart, Danny Jackson, Bobby Archer, Bill Strawn, Bill Wilmeth, Jim McLain, Lawton Guthrie, Ray Martin and Kent Guthrie.

Ladies for Carr Chairman named For County

Mrs. J.L. (Mary) Brock of Spearman has been named chairman of the "Ladies for Carr" Committee in Hansford County, it was announced here today.

Statewide activities of the women's groups are being directed by Mrs. Lois Parkhouse of San Antonio and Mrs. Hermine Tobolowski of Dallas, state-co-chairwomen.

This is one of 171 counties that have ladies groups working for Carr, the Democratic party nominee for the U.S. Senate.

Other groups organized to work for Carr on a county-wide basis are "Young Texans" composed of people between 22 and 40 years of age and "Students", in addition to the central county organizations.

Four Spearman Students Attend Lubbock CC

Four Spearman students are enrolled for the fall semester at Lubbock Christian College and are now attending classes.

They are Martin Brillhart, son of Mr. and Mrs. G.C. Brillhart, Jr.; Patsy Kingsley, daughter of Mr. and Mrs. R.F. Kingsley; Larry Roberts, son of Mr. and Mrs. Lloyd W. Roberts; and Ernie Vanderburg, son of Mr. and Mrs. Ellzey Vanderburg.

LCC is celebrating its tenth anniversary this year. All campus events will be directed toward highlighting this decade of development.

An evening college has been initiated this year allowing students to earn up to 6 hours at night.

Bowling Beat

SCATTER PINS LEAGUE
9-29-66

TEAM	WON	LOST
Taylor-Evans	12	4
Equity	12	4
Sanders Farm	8	8
Spearman, Ind., En.	8	8
Anthony Electric	7	9
G&G Foodliner	7	9
Owens Sales	6	10
Gruver Motor	4	12

HIGH TEAM GAME

Taylor-Evans	620
Sanders Farm	612
Sanders Farm	606

HIGH TEAM SERIES

Anthony Electric	1750
Sanders Farm	1741
Taylor-Evans	1621

HIGH INDIVIDUAL GAME

V. Sanders	210
L. Williams	192
M. Craig	177

HIGH INDIVIDUAL SERIES

V. Sanders	25
P. Robinson	24
T. Arbsland	448

Morse Homecoming Set For Saturday October 15

Reservations are now being taken for the Morse High School Homecoming on Saturday, Oct. 15, at the Morse school.

The homecoming banquet will be held at 6 p.m. Saturday in the school cafeteria. Persons wishing to make reservations write Mrs. David Reid, Box 104, Morse, before Oct. 7. Only a limited number of tickets will be sold by the Senior Class and the Ex-Student Association.

Special honorees for the homecoming will be the first four graduating classes, 1931, 1932, 1933 and 1934. The first girls basketball team will also be honored.

Members of the team expected are Helen Gay Womble.

Opal Knox Patterson, Emily Ryan Tompkins, Ruby Gibrin Womble, Hazel Gay Lasater, Ina Ryan Meirs, Dorothy Ann Cox Burrows and Sybil Parks Alexander. The girls' coach, Hattie Cambem is also expected.

The schedule of homecoming events include a pep rally on the track field at 7:30 p.m. Thursday, Oct. 13, Saturday registration will begin at 1:30 p.m. at the auditorium. The Mustangs will play Patton Springs at 2 p.m. and the banquet and business meeting will be held at 6 p.m.

There will be a dance in Teen-Town after the banquet. It is being sponsored by Teen-Town. Everyone is invited to the banquet.

HANSFORD HOSPITAL NEWS

Patients in Hansford Hospital are Willie Mae Howell and daughter, Patsy Matheson and daughter, Irene Snider, Linda Crawford, Lillie Mae Chase, R.D. Stephenson, Sr., Dot Jenkins, Sylvia Lash, James Lamb, Ronald and Donald Criddle, Kim Townsend and Charles Adkison.

Dismissed were Nan Prutsman, Sandra Schufeldt, Carmen Erickson, Helen Blau and daughter, Almeda Frishe, Kathy Jenkins, Connie Cotter, Darrell Longley, Juanita Beagle and Carma Burch.

Future Readers of The Plainsman

Mr. and Mrs. Lloyd Matheson are the parents of a girl born Sept. 27 and weighing 6 lbs. 15 oz.

ELECTION

ANNOUNCED

Hansford Soil & Water Conservation District Supervisors Election for District Three will be held at 7:30 Oct. 4 in the Farm Bureau Building in Spearman.

Dr. Bill Ott of Panhandle A&M will speak on residue management on irrigated land. Refreshments will be served courtesy of the Hansford Soil & Water Conservation District.

4-H Clover Club Elects Officers for Coming Year

The 4-H Clovers met Sept. 26 in the club house to organize for the new club year. New officer elected are president, Cindy Ratzloff; vice president, Wanda Greene; secretary, Anita Cook; reporter, Rebecca Hutchison; Council delegates, Vicki Rosenbaum and Rebecca Hutchison and alternate, Cindy Hutchison.

The club decided to meet the first Monday of every month. Vicki Cummings and Cindy Ratzloff volunteered to bring refreshments for the next meeting. Miss Linda Webb,

HD Agent, gave a demonstration on the making of "play-dough" for youngsters as an introduction to the Child Care project. Each member decided what projects she would take in the coming year.

New members in the club were Cindy Ratzloff, Anita Cook, Vicki Cummings and Rebecca Hutchison. Others present were Vicki Rosenbaum, Cindy Hutchison, Wanda Greene and Miss Linda Webb.

Mmes Baxter and Strawn Host Methodist W.S.C.S.

The WSCS of the First Methodist Church met Wednesday in general session at the church with Mrs. Richard Baxter and Mrs. Bill Strawn as hostesses.

Mrs. Bert Sheppard, president, presided at the short business session.

Mrs. Bill Reeves was program leader and gave the program "Following the Crowd." Present were Mmes. Bill

Reeves, Larry McIntire, Ray Messer, Sam Patterson, George Buzzard, Robert Adamson, Bill Strawn, Wesley Daniel, P.A. Lyon, Bob Hohertz, Bill Partridge, Bert Sheppard, George Collard, Kenneth Williams, Don Reed, Thomas Reed, Burl Buchanan, Richard Baxter, two guests, Mmes. Eddie Healer and Don DeArmond.

Sacrifice Price! On 1966 Models



These New 1966 Models

- 1 Four Door Ford LTD
- 4 Galaxie 500
- 1 Falcon
- 1 Bronco
- 1 Half Ton Pick-Up

Demonstrators

- 1 Two Door Ford LTD
- 1 Mustang Hardtop
- 1 Fairlane Ranchero

We Are Making Sacrifice Deals On All Of These Vehicles

They Must Be Sold!

Joe Trayler Ford

310 S. Main Harp's Jewelry Spearman, Texas

BRONZED BABY SHOES **REDUCED** **IF YOU ORDER NOW for CHRISTMAS**

LIMITED TIME ONLY

Grandparents love baby's adorable tiny shoes gorgeously bronzed as lifetime keepsakes. Give them "the gift with a lasting thrill" and watch their faces light up Christmas Day. Take advantage of this special sale which ends November 7.

STYLE 50 "Aristocrat" Bookends. The ultimate in quality and beauty. Reg. \$15.95 pr. Bronze **NOW \$13.99**

STYLE 62 Oval Miniature Frame. Truly lovely! Reg. \$15.95 Bronze. **NOW \$13.49**

STYLE 91 Genuine Onyx Paperweight. Stunning! Reg. \$10.50 Bronze. **NOW \$8.99**

STYLE 49 Ashtray Perfect for Dad! Reg. \$8.95 Bronze **NOW \$7.79**

AND... Have baby's name and birth-date engraved... only 10c per letter

CAN'T COME IN? Fill out and mail this coupon today for free baby shoe mailing bag.

Name _____
Address _____
City _____ State _____

Harp's Credit Jewelry
310 S. Main Spearman, Texas

SALE ENDS SATURDAY, OCT. 24 Bring Shoes in NOW

Mrs. Clark's Mother Dies; Rites Tuesday

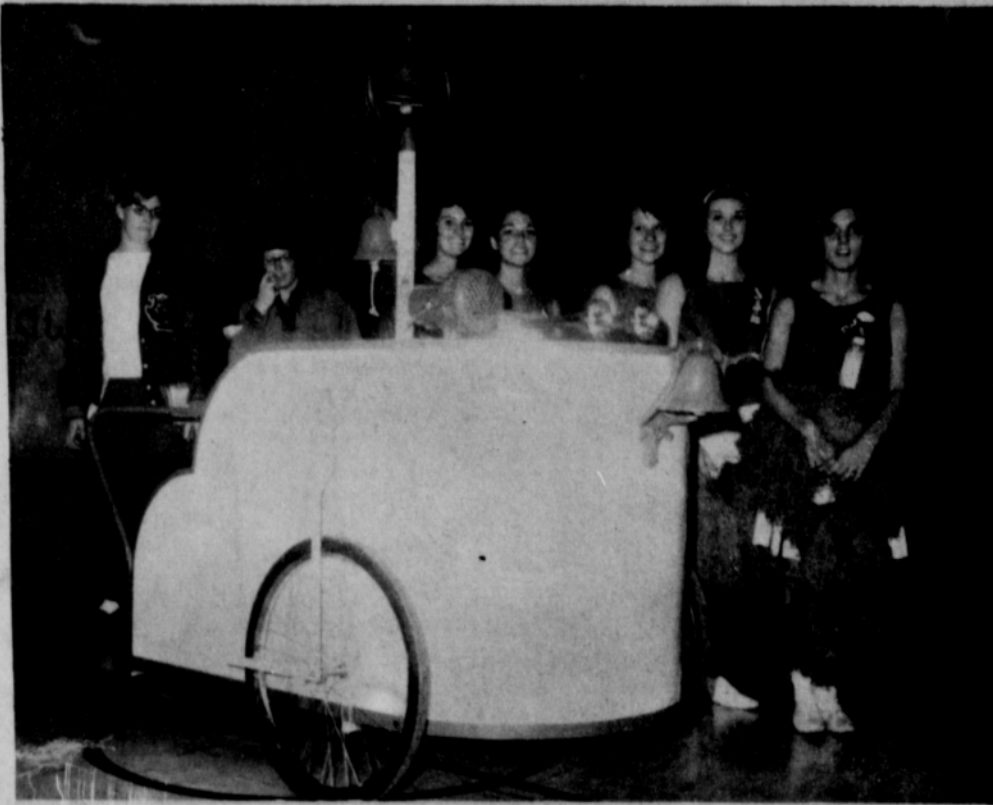
Funeral services for Mrs. Sylvia Lash, 63, mother of Mrs. Wilma Clark of Spearman, will be held at 2 p.m. Tuesday in the First Methodist Church of Darrouzett.

Services will be conducted by the Rev. Luther Berry, pastor of the First Baptist Church of Spearman.

Burial will be in Sunset Cemetery under the direction of Mason Funeral Home of Shattuck.

Mrs. Lash died in Hansford Hospital Friday after being a patient there for a month. Mr. and Mrs. Lash had lived in California, coming to Spearman just a month ago.

Jett Mason, Sonny Windom and Lawrence Brown attended the ballgame in Pampa Friday night.



Chamber Names Chairmen For Seven Committees

Chairmen for seven different committees have been named by Chamber of Commerce President Kenneth Evans.

These chairmen will select their committee members to work on the projects of each committee.

The committees and the chairmen are: Agriculture, N. F. Renner and Troy Sloan; Water Resources, Jim Burks and Johnnie Lee; Retail Merchants, Brad Beedy; Industrial, J. L. Brock; Education, Dick Countiss; Highway and Transportation, Johnnie Lee; Civic Im-

provement, Ed Dear and Burl McClellan.

Each committee will be presented with a list of projects recommended by the program of work committee. These suggestions were taken from recommendations made by the chamber members attending the planning meeting early in September.

Friends Attend Thorne Rites

Long time friends of the W. Q. Thorne's, Mr. and Mrs. Delon Kirk, Martha Delon Allison, Inez Bennett, Ella Jones and Mr. and Mrs. L. T. Dossett attended the funeral services for Mr. Thorne which were held Sunday Sept. 25 at Miami.

Mr. and Mrs. Jim King spent last weekend in Groom visiting his mother, Mrs. Bonnie King.

Attending the football game between Pampa and Plainview Friday night were Faye Dawson, Jo Ann and Jim David Crawford, Misses Bonnie and Donna Seymour from Plainview returned with them to spend the night and visit with friends Saturday. They attended the Spearman-Phillips game Saturday night before returning home.

Dr. and Mrs. W. C. Davis of Memphis are spending the weekend in Spearman with Mr. and Mrs. Jim Davis, Jean and Jan and Mr. and Mrs. Burl McClellan.

P-TA Council To Meet Friday

The Hansford P-TA County Council will meet in Gruver Friday, Oct. 7 at 9:30 a.m. in the home economics room. The program will be a summary of the State meeting in Austin by L. L. Laws.

Remove Signature

If you wish to frame an extra pretty card or even a picture that has a signature on it, you can sometimes remove the signature. Dip a cotton ball in bleach and rub the writing lightly.

Parts of the Bible have been translated into 1,151 languages, according to the Encyclopaedia Britannica.

EVERYBODY'S PLAYING IDEAL'S EXCITING FUN GAME...

LUCKY BINGO

TRY YOUR LUCK...WIN UP TO \$1000 COLD CASH!

IT'S FUN! IT'S FREE! IT'S EASY AS PIE! GET COMPLETE DETAILS AT YOUR FRIENDLY IDEAL!

ALWAYS FRESH...ALWAYS LEAN

GROUND BEEF

GROUND FRESH DAILY

"Better Food For Less"

IDEAL

FOOD STORES

Prices Good Tuesday & Wednesday October 3 & 4

PRICES EFFECTIVE THRU WED. OCT. 5, 1966. LIMIT RIGHTS RESERVED.

EXTRA LEAN GROUND CHUCK	LB.	69¢
BAR S SLICED BACON	1 LB. PKG.	89¢
COUNTRY KITCHEN POTATO SALAD	PINT CTN.	39¢

FOOD CLUB FANCY FRUIT COCKTAIL NO. 2 1/2 CAN 37¢

ASSORTED FLAVORS JELL-O DESSERT 6 3 OZ PKGS. 59¢

DELICIOUS RANCH STYLE BEANS 6 300 CANS \$1.00

IF YOU HAD ALL THE MONEY IN THE WORLD YOU COULDN'T BUY A BETTER COFFEE

MARYLAND CLUB REGULAR DRIP OR FINE GRIND 2 LB CAN \$1.37

HUNT'S CATSUP 4 20-OZ BTL. \$1.00

CARNATION INSTANT BREAKFAST PKG. of 6 69¢

U.S. No. 1 COLORADO RED POTATOES 20 LB. BAG 59¢

IDAHO RED DELICIOUS APPLES 4 LBS. 49¢

SPICY DELICIOUS WOLF CHILI WITH BEANS NO. 300 CAN 39¢

IDEAL WHITE OF CARM CARAMEL ICED CINNAMON ROLLS PKG. of 6 33¢

ALL MEAT CHILI NO. 2 CAN 69¢

EVERY DAY LOW PRICES!

GOLDEN GLOW SOFT MARGARINE	1 LB. CTN.	47¢
PILLSBURY CHOC. CHIP COOKIE LOGS	16 OZ. PKG.	47¢
PILLSBURY SUGAR COOKIE LOGS	18 OZ. PKG.	47¢
PILLSBURY OR BALLARD BISCUITS	3 8 OZ. CANS	29¢
PLASTIC DOLL PACK SIOUX BEE HONEY	17 OZ. BTL.	49¢
SUGARINE LIQUID SWEETENER	4 OZ. BTL.	69¢
AMERICAN BEAUTY KRINKLEY NOODLES	10 OZ. PKG.	29¢
WITH SHAKER GREAT SHAKE	EA.	39¢
OHIO SAFETY BOOK MATCHES	PKG. of 50	17¢

Only furnace backed by \$1000 warranty bond..

Coleman Trim Boy GAS FURNACE

Like all Coleman heating products, this Trim Boy Gas Furnace is backed by a \$1000 bond underwriting your Coleman guarantee. It's the strongest guarantee for any furnace — and it doesn't cost you a penny more!

More Coleman exclusives give you more for your money!

- Super-size heat exchanger increases warmth, reduces gas bills.
- Takes less than 3 sq. ft. — fits anywhere!
- No alterations needed for add-on air conditioning.

White House Lumber Co.