



# HANSFORD PLAINSMAN

MEMBER 1981  
TEXAS PRESS ASSOCIATION

VOL. II, NO. 45

THE HANSFORD PLAINSMAN, SPEARMAN, TEXAS 79081

SUNDAY, AUGUST 30, 1981

## Plane crash injures two

A spray plane crash late Tuesday about 18 miles west of Gruver critically injured the pilot, Kim Cluck, 29, of Gruver and Londa Barber, 18, also of Gruver.

Miss Barber, who had been directing Cluck's flight path, was reported in critical condition at Northwest Texas Hospital in Amarillo.

The plane apparently crashed in a corn field about 9 p.m. Tuesday and was not located by searchers until about midnight. The search began about 10:30 p.m. when Cluck failed to arrive in Gruver at the appointed time. Someone had called in from the Carthel area where the plane went down that they thought they had heard the plane engine stop suddenly. The plane was spotted by a pilot from Sparks Brothers Flying Service.

A Sherman county deputy Gary Graham was hospitalized in Dumas Memorial Hospital for observation from inhaling parathion in the field where the plane was found.

Cluck suffered head injuries and a severely cut leg. He is a member of a pioneer Gruver family and his wife is the daughter of Amarillo City Secretary Marvelle Marshall.

A blood donation drive for Cluck has been inaugurated by Amarillo city employees.

## Police Activity Mostly Traffic

There was only one accident reported with no injuries noted in the police report of Aug. 21-26 compiled by Spearman Police Chief Ron Robinson. In the accident incident Aug. 23, a Spearman resident was arrested for failure to stop and leave information at the scene of an accident, operating a motor vehicle without a valid drivers license and driving on the wrong side of the road. Five incidents appeared on the police blotter the first day of the current reporting period, Aug. 21. A female juvenile, reported as a runaway from her Spearman home, was returned home the same day. There was a citizen complaint of traffic violations filed in Spearman municipal court. The complaint alleged exhibition of acceleration and driving on the wrong side of the road--on the part of the same driver--in the 100 block of South Townsend. A female juvenile was taken in custody following a reported shoplifting incident at Ideal Food Store. There was a complaint from a Spearman resident of youths shooting "B-B" guns in the

vicinity of the 400 block of West Fourth Ave. Rounding out activity for Friday, Aug. 21, a Spearman resident filed a complaint in municipal court of failure to yield the right of way at a "stop" intersection. The incident allegedly occurred at the intersection of South Townsend and Eleventh Ave. Tuesday, Aug. 25, a Spearman resident reported that she had been involved in a traffic accident in June and that the other party involved in the accident had failed to make restitution for damages caused. The accident was not investigated by law enforcement officials at the time of its occurrence. On that same day, a citizen complaint was lodged in municipal court for failure to yield the right of way at a yield intersection at Townsend and Third Ave. There were no injuries in the Aug. 23 accident involving a vehicle driven by Natividad H. Carbal and a parked car belonging to Vance Snider. It occurred in the 100 block of West First Ave.

## Schools Enroll 851 Students



Students in class at SHS and teachers taking a break as another school year begins.



Enrollment at Spearman Schools following the first two days of school is 851 students. Elementary, grades kindergarten through 4th, had enrolled 329 the first day and expect several more to enroll. Junior high enrollment was listed as 255 for grades 5 through 8. High school enrollment was 267. These enrollment figures are down from last year's enrollment of 889.

## Rev. Wesley Putnam In Revival Here

Wesley Putnam, musician, singer, composer, recording artist and pastor, will be in revival at First United Methodist Church in Spearman on August 30-September 2. The services on Sunday will be at the regular hours of 11 a.m. and 7 p.m. Monday thru Wednesday the services will be each morning at 7 a.m. with a Continental Breakfast and each evening at 7:30 p.m.

Rev. Putnam has a unique ministry through music. Many of the songs he has written come directly out of experiences in the pastorate. They touch on virtually every aspect of Christian living, from temptation and suffering to forgiveness and praise. In addition to the songs he has written, he has a varied repertoire of the best of Christian music, past and present," stated Albert F. Lindley, Pastor of the First United Methodist Church in Spearman.

Rev. Putnam has pastored in the United Methodist Church for eight years, but his ministry has extended beyond the local pastorate. He has sung in churches across Northwest Texas for revivals and concerts and has sung in both national and regional conferences," continued Rev. Lindley.

## Thelma Kenney Services Held

Services were held Saturday, August 29, in the First Christian Church for Thelma M. Kenney who died Thursday in Canadian. The Rev. Don Wirsdorfer officiated. Burial was in Ochiltree Cemetery by Boxwell Funeral Home.

Mrs. Kenney was born in Roberts County. She was a lifelong resident of the Spearman area. She married J.E. Kenney in 1924 in Canadian.

She was a member of the First Christian Church, Rebekah Lodge and the Hansford Home Demonstration Club.

Survivors include her husband; a daughter, Mrs. Kathleen Pulliam of Abilene; a son James Kenney of Spearman; four grandchildren and six great-grandchildren.

## Pledge Center To Support Telethon

In conjunction with the Jerry Lewis Labor Day Telethon, members of the Spearman Emergency Services will be operating a pledge center in Spearman. Ed Williamson and Ronnie Bullard will be the coordinators for the center this year, which will be located at the Fire Department. The pledge center will be open during the same hours as the Telethon, from 8:00 P.M. Sunday, Sept. 6 to 6:30 P.M. Monday, Sept. 7.

Residents in Spearman can call a special number during those hours to make their pledges to the Telethon, in support of the Muscular Dystrophy Association. The number which has been assigned to operate during the 21 1/2 hour telethon will be 659-5565.

Pledge center volunteers are also planning a door-to-door drive for Labor Day. Children interested in helping Jerry's Kids should come by the center location on Monday, September 7, to pick up an official canister.

Telethon Badge, and instructions. In addition, anyone wishing to volunteer their time to assist with pledge center activities should contact Mr. Williamson or Mr. Bullard, the center coordinators.

Another activity that has

been planned is a boot stuff. Members of the Fire Department will be at some of the

major intersections of town and will be seeking donations to fill their fire boots. Anyone giving a donation will be given a small plastic Fireman's hat. There will also be a pre-sale of Jerry Lewis Labor Day decals to be ironed on shirts. These decals are selling for \$1.50 each. Each one of the kids that goes on the door-to-door drive will receive one of these decals

and one of the little fire hats when they return with their donations to the fish bowl. If you would like to purchase a decal you may do so by contacting Ed Williamson at 93843 or Ronnie Bullard at 93319. There will be a meeting at the Fire station for anyone wishing to help at the Telethon Saturday afternoon, August 29 at 3:00 P.M.

The Telethon will be broadcast in the Panhandle area by KFDD-TV Channel 10 and locally can be seen on Cable Channel 6, cutaways will be approximately 15 minutes out of every hour to let you know what is going on in Spearman. The outways will feature recognition of fund raising events in addition to first hand reports of pledge center activities.

## City of Spearman

P.O. Box 37 Phone 659-2524  
Spearman, Texas 79081

### PROCLAMATION

WHEREAS, the citizens of Spearman share with citizens the nation over our concern for the welfare of this country's victims of neuromuscular diseases; and

WHEREAS, the Muscular Dystrophy Association sponsors worldwide programs of scientific research, and maintains a nationwide network of 230 clinics to serve patients suffering from these crippling diseases; and

WHEREAS, the City of Spearman is proud to support the Jerry Lewis Muscular Dystrophy Labor Day Telethon, and event which each year unites millions of volunteers from every corner of America and which with the dollars it raises benefits the lives of so many more;

NOW, THEREFORE, WE, MAYOR AND CITY COUNCIL of the City of Spearman, Texas, do hereby proclaim the week-end of September 6th and 7th, 1981

### JERRY LEWIS MUSCULAR DYSTROPHY TELETHON WEEKEND

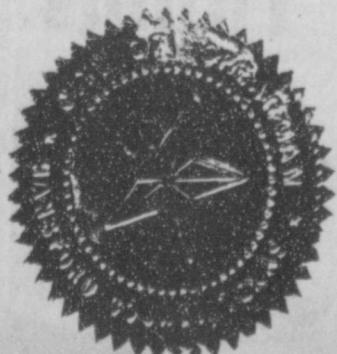
in and for the City of Spearman, and we do hereby urge all citizens to give full support as they have done so generously in the past to the programs of the Muscular Dystrophy Association, and to the untiring efforts of its National Chairman, Jerry Lewis.

GIVEN UNDER OUR HAND AND SEAL OF OFFICE, this 24 day of August, 1981.

IN WITNESS WHEREOF, I have hereto set my hand and caused to be affixed the great seal of the City of Spearman, Texas.

DATED the twenty-fourth day of August, Nineteen Hundred and Eighty-one.

Mayor C. Ralph Blodgett



## Gruver Enrolls 473

School got underway Tuesday, August 25 with 473 students enrolling on the first day.

There were 234 registered in kindergarten through 5th grades; 110 registered in junior high, 6th through 8th grades; and 129 registered in high school.

### Hospital news

Patients at Hansford Hospital are Edith Roper, J.T. Pond, Brenda East and daughter, Harriet Collard, Jan Dunn, Tammy Bradley, Hattie Mackie, Carla Terr, Donna Davis, Candy Delozier and twins, Ruth Skinner, Albert Mackie, Frank Baca, Alex Vela, Andy Rhodes, Albert Prachar, Lillie Cox and Tony Henry.

Dismissed from Hansford Hospital were Jesse Bratton, Winnie Urban, LeRoy Mitchell, Debra Gee, Vickie Miller, Mark Harden and Martin Vela.

### MARKETS

Barley	\$1.90
Corn	2.93
Wheat	3.60
Milo	4.00

## The Great Plains Experience To Be Shown

The "Great Plains Experience" is coming to the Hansford County Library on September 10, 1981.

The "Great Plains Experience" is a free series of six film programs with museum exhibits and discussion sessions. The project is funded by a grant from the National Endowment for the Humanities and will be presented at the Hansford County Library each Thursday night at 7:00 p.m. from September 10 through October 15.

Professors from West Texas State University will show the films, give brief lectures, and conduct discussion sessions on different aspects of the Great Plains each week at the library.

The films will be shown at the Hansford County Library on the following dates:

1. September 10--"The Land"--the Great Plains as seen by different people who lived there.
2. September 17--"The Lakota"--the story of the Plains Indians.
3. September 24--"Clash of Cultures"--the conflict between the Indians and settlers.

4. October 1--"The Settling of the Plains"--pioneers on the Plains.
5. October 8--"Heirs to No Man's Land"--Dust Bowl days.
6. October 15--"Four Portraits"--modern Plains life.

These film programs will be held in the large upstairs meeting room at the Hansford County Library. They will be enhanced by exhibits from the

Stationmaster's House Museum and by articles on loan from local residents. Library books relating to each week's film program will also be displayed.

These outstanding programs make history a living entity. Everyone who lives on the Great Plains is a part of this experience. Come, learn, experience and share history in a meaningful way. People of all ages are invited to attend this excellent, free film series at the Hansford County Library. For more information call the library at 659-2231 or pick up brochures at the library at 122 Main St., Spearman, Tx.

## First Quarter Sales Tax Figures

State Comptroller Bob Bullock reports that gross sales in Texas for the first quarter of 1981 totaled \$70.8 billion.

He said first quarter sales this year passed 1980 first quarter sales by \$9.9 billion.

The 127 reporting outlets in Hansford County reported gross taxable sales of 12,227,068, for the first quarter. Deductions were 8,562,856 and use tax purchases were 515,459.

The amount subject to tax for Hansford County for the first quarter \$4,179,671.

### WEATHER

DATE	HI	LO	PREC.
Aug. 18	80	60	
Aug. 19	83	57	
Aug. 20	88	58	
Aug. 21	90	59	
Aug. 22	90	60	
Aug. 23	89	61	.24
Aug. 24	92	58	
Aug. 25	93	62	
Aug. 26	93	62	
Aug. 27	92	64	



# Grand Opening

of

## SOUTHERN COMFORT HOME FURNISHINGS

SATURDAY, AUG. 29 THRU TUESDAY, SEPT. 1

Saturday Hours: 9-8

Ribbon Cutting: 9:00 A.M.

Register for Door Prizes ...

2 — \$100.00; 3 — \$50.00; Gift Certificates To Be Given Away!  
5 — \$25.00



218 S. Main — Booker  
(806) 658-9303

### — Grand Opening Specials —

50% off on Republic Fans 25% off on all other fans  
WHILE SUPPLY LASTS!

30% off suggested retail price of Serta Mattresses

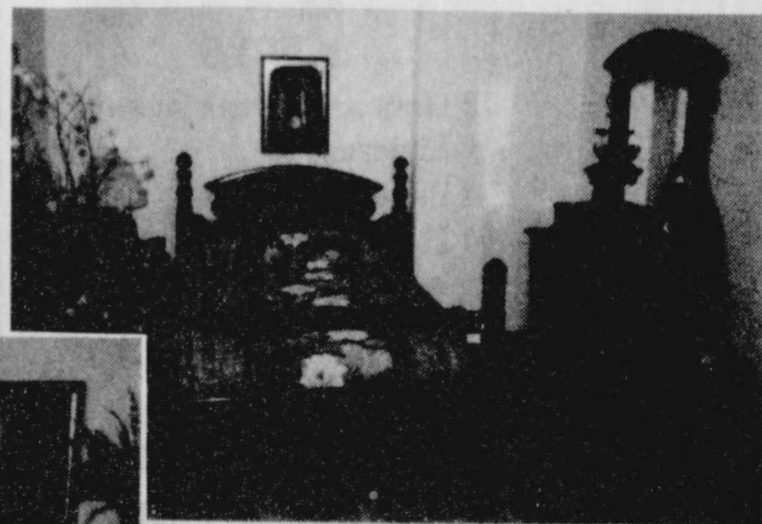
BIG SAVINGS ON LAMPS

20% off on all floral arrangements

15% off on all paintings and pictures

Complete line of furniture

for the entire home!



- Floor Clocks
- Mirrors
- Water Beds and Accessories
- Ceiling Fans
- Paintings
- Silk Trees
- Congoleum
- Brass

We invite you to come in, have refreshments and get acquainted, and view our furniture displayed in room settings — unique to this area.

Owners: Greg & Denise Schroeder



# HANSFORD PLAINSMAN

VOL. 11, NO. 45 THE HANSFORD PLAINSMAN, SPEARMAN, TEXAS 79081 SUNDAY, AUGUST 30, 1981

## Plane crash injures two

A spray plane crash late Tuesday about 18 miles west of Gruver critically injured the pilot, Kim Cluck, 29, of Gruver and Londa Barber, 18, also of Gruver.

Cluck is in "very critical" condition in High Plains Baptist Hospital at Amarillo, where he was transferred from Sparks Memorial Hospital.

Miss Barber, who had been directing Cluck's flight path, was reported in critical condition at Northwest Texas Hospital in Amarillo.

The plane apparently crashed in a corn field about 9 p.m. Tuesday and was not located by searchers until about midnight. The search began about 10:30 p.m. when Cluck failed to arrive in Gruver at the appointed time. Someone had called in from the Carthel area where the plane went down that they thought they had heard the plane engine stop suddenly. The plane was spotted by a pilot from Sparks Brothers Flying Service.

A Sherman county deputy Gary Graham was hospitalized in Dumas Memorial Hospital for observation from inhaling parathion in the field where the plane was found.

Cluck suffered head injuries and a severely cut leg.

He is a member of a pioneer Gruver family and his wife is the daughter of Amarillo City Secretary Marvella Marshall.

A blood donation drive for Cluck has been inaugurated by Amarillo city employees.

## Police Activity Mostly Traffic

There was only one accident reported with no injuries noted in the police report of Aug. 21-26 compiled by Spearman Police Chief Ron Robinson.

In the accident incident Aug. 23, a Spearman resident was arrested for failure to stop and leave information at the scene of an accident, operating a motor vehicle without a valid drivers license and driving on the wrong side of the road.

Five incidents appeared on the police blotter the first day of the current reporting period, Aug. 21.

A female juvenile, reported as a runaway from her Spearman home, was returned home the same day.

There was a citizen complaint of traffic violations filed in Spearman municipal court. The complaint alleged exhibition of acceleration and driving on the wrong side of the road--on the part of the same driver--in the 100 block of South Townsend.

A female juvenile was taken in custody following a reported shoplifting incident at Ideal Food Store.

There was a complaint from a Spearman resident of youths shooting "B-B" guns in the vicinity of the 400 block of West Fourth Ave.

Rounding out activity for Friday, Aug. 21, a Spearman resident filed a complaint in municipal court of failure to yield the right of way at a "stop" intersection. The incident allegedly occurred at the intersection of South Townsend and Eleventh Ave.

Tuesday, Aug. 25, a Spearman resident reported that she had been involved in a traffic accident in June and that the other party involved in the accident had failed to make restitution for damages caused. The accident was not investigated by law enforcement officials at the time of its occurrence.

On that same day, a citizen complaint was lodged in municipal court for failure to yield the right of way at a yield intersection at Townsend and Third Ave.

There were no injuries in the Aug. 23 accident involving a vehicle driven by Natividad H. Carbalhal and a parked car belonging to Vance Snider. It occurred in the 100 block of West First Ave.

## Schools Enroll 851 Students



Students in class at SHS and teachers taking a break as another school year begins.



## Rev. Wesley Putnam In Revival Here

Wesley Putnam, musician, singer, composer, recording artist and pastor, will be in revival at First United Methodist Church in Spearman on August 30-September 2. The services on Sunday will be at the regular hours of 11 a.m. and 7 p.m. Monday thru Wednesday the services will be each morning at 7 a.m. with a Continental Breakfast and each evening at 7:30 n.m.

"Rev. Putnam has a unique ministry through music. Many of the songs he has written come directly out of experiences in the pastorate. They touch on virtually every aspect of Christian living, from temptation and suffering to forgiveness and praise. In addition to the songs he has written, he has a varied repertoire of the best of Christian music, past and present," stated Albert F. Lindley, Pastor of the First United Methodist Church in Spearman.

"Rev. Putnam has pastored in the United Methodist Church for eight years, but his ministry has extended beyond the local pastorate. He has sung in churches across Northwest Texas for revivals and concerts and has sung in both national and regional conferences," continued Rev. Lindley.

## Pledge Center To Support Telethon

In conjunction with the Jerry Lewis Labor Day Telethon, members of the Spearman Emergency Services will be operating a pledge center in Spearman. Ed Williamson and Ronnie Bullard will be the coordinators for the center this year, which will be located at the Fire Department. The pledge center will be open during the same hours as the Telethon, from 8:00 P.M. Sunday, Sept. 6 to 6:30 P.M. Monday, Sept. 7.

Residents in Spearman can all a special number during those hours to make their pledges to the Telethon, in support of the Muscular Dystrophy Association. The number which has been assigned to operate during the 21 1/2 hour telethon will be 659-5565.

Pledge center volunteers are also planning a door-to-door drive for Labor Day. Children interested in helping Jerry's Kids should come by the center location on Monday, September 7, to pick up an official canister, Telethon Badge, and instructions. In addition, anyone wishing to volunteer their time to assist with pledge center activities should contact Mr. Williamson or Mr. Bullard, the center coordinators.

Another activity that has been planned is a boot stoff. Members of the Fire Department will be at some of the major intersections of town and will be seeking donations to fill their fire boots. Anyone giving a donation will be given a small plastic Fireman's hat. There will also be a pre-sale of Jerry Lewis Labor Day decals to be ironed on shirts. These decals are selling for \$1.50 each. Each one of the kids that goes on the door-to-door drive will receive one of these decals and one of the little fire hats when they return with their donations to the fish bowl. If you would like to purchase a decal you may do so by contacting Ed Williamson at 93843 or Ronnie Bullard at 93319. There will be a meeting at the Fire station for anyone wishing to help at the Telethon Saturday afternoon, August 29 at 3:00 P.M.

The Telethon will be broadcast in the Panhandle area by KFDD-TV Channel 10 and locally can be seen on Cable Channel 6, cutaways will be approximately 15 minutes out of every hour to let you know what is going on in Spearman. The cutaways will feature recognition of fund raising events in addition to first hand reports of pledge center activities.

**City of Spearman**  
P.O. Box 37 Phone 659-2524  
Spearman, Texas 79081

**PROCLAMATION**

WHEREAS, the citizens of Spearman share with citizens the nation over our concern for the welfare of this country's victims of neuromuscular diseases; and

WHEREAS, the Muscular Dystrophy Association sponsors worldwide programs of scientific research, and maintains a nationwide network of 230 clinics to serve patients suffering from these crippling diseases; and

WHEREAS, the City of Spearman is proud to support the Jerry Lewis Muscular Dystrophy Labor Day Telethon, and event which each year unites millions of volunteers from every corner of America and which with the dollars it raises benefits the lives of so many more;

NOW, THEREFORE, WE, MAYOR AND CITY COUNCIL of the City of Spearman, Texas, do hereby proclaim the week-end of September 6th and 7th, 1981

JERRY LEWIS MUSCULAR DYSTROPHY TELETHON WEEKEND

in and for the City of Spearman, and we do hereby urge all citizens to give full support as they have done so generously in the past to the programs of the Muscular Dystrophy Association, and to the untiring efforts of its National Chairman, Jerry Lewis.

GIVEN UNDER OUR HAND AND SEAL OF OFFICE, this 24 day of August, 1981.

IN WITNESS WHEREOF, I have hereto set my hand and caused to be affixed the great seal of the City of Spearman, Texas.

DATED the twenty-fourth day of August, Nineteen Hundred and Eighty-one.

Mayor C. Ralph Blodgett

Enrollment at Spearman Schools following the first two days of school is 851 students. Elementary, grades kindergarten through 4th, had enrolled 329 the first day and expect several more to enroll. Junior high enrollment was listed as 255 for grades 5 through 8. High school enrollment was 267.

These enrollment figures are down from last year's enrollment of 889.

## Gruver Enrolls 473

School got underway Tuesday, August 25 with 473 students enrolling on the first day.

There were 234 registered in kindergarten through 5th grades; 110 registered in junior high, 6th through 8th grades; and 129 registered in high school.

## Thelma Kenney Services Held

Services were held Saturday, August 29, in the First Christian Church for Thelma M. Kenney who died Thursday in Canadian. The Rev. Don Wirsdorfer officiated. Burial was in Ochiltree Cemetery by Boxwell Funeral Home.

Mrs. Kenney was born in Roberts County. She was a lifelong resident of the Spearman area.

She married J.E. Kenney in 1924 in Canadian.

She was a member of the First Christian Church, Rebekah Lodge and the Hansford Home Demonstration Club.

Survivors include her husband; a daughter, Mrs. Kathleen Pulliam of Abilene; a son James Kenney of Spearman; four grandchildren and six great-grandchildren.

## Hospital news

Patients at Hansford Hospital are Edith Roper, J.T. Pond, Brenda East and daughter, Harriet Collard, Jan Dunn, Tammy Bradley, Hattie Mackie, Carla Terry, Donna Davis, Candy Delozier and twins, Ruth Skinner, Albert Mackie, Frank Baca, Alex Vela, Andy Rhodes, Albert Prachar, Lillie Cox and Tony Henry.

Dismissed from Hansford Hospital were Jesse Bratton, Winnie Urban, LeRoy Mitchell, Debra Gee, Vickie Miller, Mark Harden and Martin Vela.

**MARKETS**

Barley	\$1.90
Corn	2.93
Wheat	3.60
Milo	4.00

## 'The Great Plains Experience' To Be Shown

The "Great Plains Experience" is coming to the Hansford County Library on September 10, 1981.

The "Great Plains Experience" is a free series of six film programs with museum exhibits and discussion sessions. The project is funded by a grant from the National Endowment for the Humanities and will be presented at the Hansford County Library each Thursday night at 7:00 p.m. from September 10 through October 15.

Professors from West Texas State University will show the films, give brief lectures, and conduct discussion sessions on different aspects of the Great Plains each week at the library.

The films will be shown at the Hansford County Library on the following dates:

1. September 10--"The Land"--the Great Plains as seen by different people who lived there.
2. September 17--"The Lakota"--the story of the Plains Indians.
3. September 24--"Clash of Cultures"--the conflict between the Indians and settlers.

## First Quarter Sales Tax Figures

State Comptroller Bob Bullock reports that gross sales in Texas for the first quarter of 1981 totaled \$70.8 billion.

He said first quarter sales this year passed 1980 first quarter sales by \$9.9 billion.

The 127 reporting outlets in Hansford County reported gross taxable sales of 12,227,068, for the first quarter. Deductions were 8,562,856 and use tax purchases were 515,459.

The amount subject to tax for Hansford County for the first quarter \$4,179,671.

**WEATHER**

DATE	HI	LO	PREC.
Aug. 18	80	60	
Aug. 19	83	57	
Aug. 20	88	58	
Aug. 21	90	59	
Aug. 22	90	60	
Aug. 23	89	61	.24
Aug. 24	92	58	
Aug. 25	93	62	
Aug. 26	93	62	
Aug. 27	92	64	

\*\*\*\*  
 Can you remember the good old days when a man's word was his bond?  
 \*\*\*\*  
 The individual does not have to advertise his or her religion in big type.

\*\*\*\*  
 Envy and jealousy eat out one's soul and warp one's personality.  
 \*\*\*\*  
 An honest laborer, when paid for his work, gives himself to his work.

\*\*\*\*  
 Never waste time in argument with a fool unless you want to make a fool of yourself.  
 \*\*\*\*  
 Intelligence does not always accompany the degrees that some people acquire.



There is a touch of autumn in the air, children are going back to school, football games are being played, and a cool front has come through that hopefully signals the end of really hot weather for this year. I looked at the clouds a little while ago hoping it would rain because my lawn needs watering. After these past few weeks of showers and cooler weather I haven't had to water so I'll keep my fingers crossed hoping it will rain tonight.

Thanks to my neighbors I have been eating some delicious homegrown tomatoes, green beans and okra. I also found some blackeyed peas to put in the freezer. I invited the girls here at the office to a pea shelling party but for some reason, they didn't show up.

Since school has started we have lost two employees, one has gone to college or soon will be, and one is a senior in high school, but we do have a new employee. Donna Yarbrough has joined our staff.

There are some interesting things coming to Spearman in the next few weeks. The Spearman Study Club is having an Antique and Arts & Craft Sale and Show on Sept. 12 and 13 at the old Beedy Furniture building at Plains Shopping Center. There will be all sorts of lovely things to see and buy as well as food will be served in the back for those who want to browse and shop all day.

Sept. 10 will begin a free series of 6 film programs with museum exhibits and discussions at Hansford Library beginning at 7 p.m. and running successive Thursdays through October 15. This film series is presented by Amarillo Public Library, Panhandle-Plains Historical Museum in Canyon, and the library and museum here in Spearman. The title of the series is "The Great Plains Experience". Titles of films are "The Land", "Lakota: One Nation on the Plains", "Clash of Cultures", "Settling of the Plains", "Heirs to No Man's Land (Dust Bowl Years)", and "Four Portraits: Challenges and Changes (Plains today)".

The brochure states the series is for newcomers and survivors—the only two kinds of human beings who live on the Great Plains.

More details concerning these events are in stories elsewhere in the paper.

Now that clubs will be resuming meetings we would like to have your club news. You may either bring it by or call it in to us.

Now is the time to have your heating equipment cleaned and checked for cold weather.

For a better paint job, dip the brush or roller in water and wring or shake out excess.

Keep faded roses cut and you'll probably have roses until frost.

### Golden Spread Center News

On August 18th around 50 members and guests ate a delicious meal. The meat dishes and some deserts were furnished by the 20th Century Study Club and there hostesses were Bertha Spoonemore and Jane Meek. Most all of the members present stayed and enjoyed an evening of games, bridges, skipbo-racket rummy, dominoes, etc. Everyone had a good time!!  
 The van went to Palo Duro Canyon Friday, August 21st to see "TEXAS". Fourteen members and guests went and enjoyed the evening very much. On Monday afternoon Pearl's sister-in-law, Mrs. Beu Maize from Casa Grande, Arizona, gave a lesson on burlap pillows. It was very interesting and all present are busy making pillows now.

Thursday (our Arts and Crafts day) Velma Bennett from Borger, Texas, came over and gave a lesson on "Repousse". Several Gruver women came over and their company was wonderful.

Marv Hendrickson is back from her vacation to Canada and North Dakota and we are all happy she has returned to give us guidance in the coming year.

### 90,000 See Texas

In spite of the welcome rains, "TEXAS" was able to play all scheduled nights except two, and a storm of orders swept through the box office in the first days of the season and has continued until the end. Attendance is about 90,000 for 1981.

The show has been rained out twenty-one times in sixteen years. Two of these rain-outs were added this year.

As usual, about a third of the crowd came from more than 500 miles away, and another third traveled more than a hundred miles to come.

Now the preparations for the fall show, the "Festival of Stars" are quickening, and the "TEXAS" cast prepares to close out their part of the building and turn to other things.

You are invited to a Wedding Shower Honoring

Mrs. Scotty DeWitt (nee Jerilyn Gay Smith)

Thursday, September 3

7:00 to 9:00 p.m.

Come and Go

at Bulls Inn

HOSTESSES

Sara Dossett  
 June Kelp  
 Reta Reed  
 Donna Coates  
 Betty Thomas

Carol Stumpf  
 Avo Tope  
 Frankie Duryee  
 Francis Scroggs  
 Jody Robertson

42s-2tp

### EMS Plans Spice Sale

The Spearman Emergency Services, which is the Fire Department, Ambulance and Rescue Service will soon be starting another spice sale. The last one was a huge success and helped a great deal in paying on the building but more money is needed to finish paying off the loan and to finish the rooms and furnish them. Since the spice sale was so good we decided to offer another set in addition to the original one. Those of you that purchased the sets last year know what a great gift they are and they are coming just in time for Christmas this year.

The original set was sneeze-proof pepper, cryless onions, bacon bits, and seasonall salt, the second set is cheese bits, salad crisps, garlic salt and oregano. The sets are selling for \$8.00 or individual bottles can be ordered for \$2.00.

Anyone wishing to help take orders for the Spearman Emergency Services is invited to come to the fire station at 7:30 P.M. September 22, which is the date which has been designated as the kick off for the sale. The sale will last until October 3.

Prizes will be awarded for those taking orders. And the prizes are super! For taking orders on only 75 sets, you can win a 12" black and white TV, for taking orders on 50 sets the prize is an AM/FM cassette player, for 35 sets you can have your choice of a pleaser camera or a pair of Walkie Talkies, for 25 sets - a pocket camera, for 20 sets - AM/FM headphone set, 15 sets - an electronic calculator or a Nimbus 4 sailplane, for 10 orders an AM pocket radio and for taking orders for 6 sets, an astrolite. Prizes will be awarded when the orders have been delivered and the money turned in. You don't have to be a kid to help sell spices so everyone come on down to the Fire Station Sept. 22 at 7:30 P.M.

Need an extra large hot dish mat, cover a magazine with kitchen foil.

For those who get a little too much sun this Labor Day weekend, a chilled bottle of baby oil is soothing and may prevent peeling.

## 12% FEED FINANCE AVAILABLE

Palo Duro Feeders is making available to its customers 12% feed finance. The 1981 tax law has made cattle feeding an attractive means of lowering your tax bill.

Come by and visit with JOE MAXWELL and see what kind of job we have been doing.

Wheat pasture is going to be good this year. We will precondition your calves for pasture.

### THANKS FOR YOUR SUPPORT



## PALO DURO FEEDERS

BOX 866  
 Phone: 806-733-2416  
 7 miles south of  
 JOE MAXWELL-MANAGER  
 GRUVER, TEXAS

## Everybody's Asking... HOW DO WE DO IT?



Economic uncertainties are now creating substantial investment opportunities for you in the commodity futures market.

Contact the pros at:

## C & C COMMODITIES

Agent of Heinold Commodities, Inc.

for the latest quotes and trades on all commodity exchanges.



Call 806-435-6886 Collect  
 Nights 806-435-2892



We assure you that we will do everything in our power, using Heinold Commodities Research expertise to assure you of the high degree of service necessary to make your account profitable.

Open Monday Thru Friday — 8:30 a.m. - 3 p.m.  
 415 S. Main • Perryton, Texas

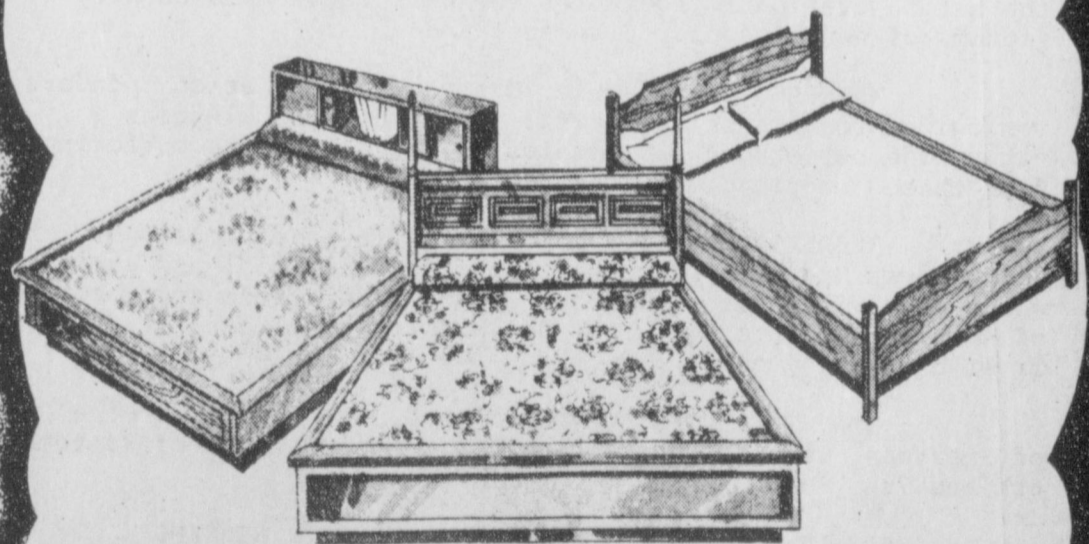
## WE'RE NEW IN TOWN ...

and to celebrate our arrival, we're having a

truckload MARKET TEST SALE of

## WATERBEDS

20% OFF September 3-4-5



Full line of waterbeds and accessories.

Watch for Grand Opening Soon

## Waterbeds 'n' Things

308 S. Main  
 (Formerly Western Auto)  
 Perryton, Texas

102 S. Main  
 Guymon, Okla.

WANT ADS

CAPROCK MONUMENT CO.

Dealers of Georgia Granite, Georgia Marble, Colorado Granite, and Bronze.

represented by

BOXWELL BROS. FUNERAL HOME

519 S. EVANS 659-3802

Hansford County Planned Parenthood 26 S. Haney 659-2483 Spearman Mon.-Fri. 8:30-12:30

NOTICE Wallace Monument Co. Monuments, Curbing, Grave Covers Local Representative LEONARD JAMESON Spearman, Texas 20-rtn

STEAM RINSE & VAC Steam Rinse-and-Vac Sham-pooers; \$8.95 for up to 24 hrs, available at Gordon's Drug; also at Freddie Largent's 716 Cotter Dr. after 4 p.m. and Saturdays and Sundays.

MONUMENTS Save 20% to 30% Agents and Undertakers Commission ALVA MONUMENT CO. Alva, Okla. 51-rtn tonly

Town & Country all Steel Bldg. 70'x80'x14' Colored Walls; Galv. Roof 2-20'x14' Framed Openings 1-30'x6'8" Steel Walk Door \$13,680.00 1-806-435-3107 35-rtn

Pee Wee's Plumbing Service Roto-roter, Acoustical Ceilings. Blown Insulation in walls and ceilings. Appliance Service, used appliances for sale. 659-2811 or 659-3781. 20-rtn

SERVICES

Will decorate cakes all occasions. Also cookies and cupcakes. Call Nelda 659-3984. 51-rtn

Carpet & upholstery cleaning Rogers Steam Way, Guymon, 405-338-7926 55-rtn

CALL S&H REMODELING for your painting or papering needs-659-3328. 32-rtn

SERVICE: Pits cleaned, wet or dry. Dragline or loader. Also, dozer, grader, carry-all service. Lee Roy Mitchell, 806-733-2384, Gruver, Texas 79040.

SNOOPY'S DAY SCHOOL Open from 7 a.m. to 6 p.m., we have Hot Lunches and Snacks Morning and Afternoon. Our van takes kids to and from Track-Swimming Lessons, etc. Call 659-3328 or come by 620 1/2 Bernice and ask about our Swimming Program on Monday, Wednesday and Friday. Receive Western gift stamps for your bill--and double on Friday. Licensed for ages 18 months to 12 years. 32-rtn

PATTY B'S WORK SHOP, Furniture stripping, re-finishing, repair. 700 South Main, Berger, Texas. Phone 806 273-3916. Open Tuesday, thru Saturday, 9:30 A.M. to 5 P.M. 41s-8tp

FOR SALE

FARM MACHINERY FOR SALE: Dempster Drills, deep furrows set of six, John Deere Points, all hydraulic, cable hitch, call late evenings, 733-2213. 41-4tc FOR SALE: Registered Hamp-Ram for sale. Call 733-2517. NC

MISCELLANEOUS FOR SALE

SAVE! Free Delivery--HEAVY SHAKES, 65.00 per square. Light medium Shakes \$57.00 per square. All other Cedar roofing--Cedar Beams--Plywood, Rough Cedar, Cedar Fencing materials or turn-key fencing--Composition Shingles, and felt. LAKESIDE FENCE MFG. AND WHOLESALE INC. DRAWER L FRITCH, TEX. 79036 Phone 806-857-2411.

FOR SALE: House to be moved, 6 years old. Built by Bob's Ready Built, Lubbock. 1,400 sq. ft., 3 bedroom, 2 bath, utility, central heat and air, \$37,000. Larry Holt, 659-2640. 42-4tc

BUILDING SALE Dealer Price Available on selected sizes, due to customer cancellations for financial reasons. 32' wide & 50' wide Grain Storage Curvettes; 40' wide & 60' wide Straightwalls. Call for size and special pricing: Joe 800-525-9926. 42-4tc

A new six piece Sloppy Jo set, \$499. A new plaid Hercules sofa and chair, \$279. A new plaid sofa, \$159. A new recliner, \$139. A three piece coffee and end table set, \$199. A new love seat, \$299. New and used dinette sets, \$89 to \$199. New and used bedroom sets. Several nice chest of drawers. Good selections of used sofas. A Kenmore sewing machine, and many more bargains. Linda's Furniture, 12 E. Brillhart, Perryton. 42s-2tc

FOR SALE: AKC Labrador retriever puppies. 659-3962. 42s-rtn

FOR SALE: Good, dependable work or school car. '64 Ford, Radio, and A/C. Call 659-2842 after 6 42-2tc

FOR SALE: Good gas range. Call: 9-3446 42-rtn

FOR SALE: Sofa and loveseat. Phone 3203. 42-2tc

GARAGE SALES

GARAGE SALE--MOVING SALE: at 312 1st Ave. West; Lots of toys, dishes, curtains in good condition, 1 broiler oven, luggage. Open every day until everything is sold. Prices to sell--good deals on everything. 40-rtn NC

AUTOMOBILES FOR SALE

SURPLUS JEEPS, CARS, TRUCKS CAR-inv. value \$2143 sold for \$100. For information on purchasing similar bargains, Call 602-941-8014 Ext. 518. Phone Call Refundable. 39-4tc

FOR SALE: 1971 olds 98 motor & trans. good. Cheap--659-2105 40-rtn

REAL ESTATE FOR SALE

FOR SALE: 3 bedroom, 2 bath, brick home 1 block from elementary and junior high. Central heat and air, carpeted. Call 659-2201. 42s-4tc

HELP WANTED

DAIRY QUEEN IS TAKING Applications for counter help. Apply to Russell Bland at Spearman Dairy Queen. 42s-2tc

HELP WANTED: Truck driver position available. Apply between the hours of 8 a.m. to 5 p.m. at the office of Spearman Super Service, Inc. Hwy 207 South. 41-8tc

WANTED

WANTED: NEED by Sept. 1--nice mobile home lot for new mobile home--want to buy or want reasonable rent. Prefer country lot in or near Spearman will consider lot in town. 659-5071. 41-4tp

WANTED TO RENT: 1 or 2 bedroom home, with fenced backyard. Have 2 poodles. Will take care of property. Phone 9-2008--Leave messages. 42-2tc

WILL DO BABYSITTING in my home Monday thru Friday from: 8:00 a.m. to 6:00 p.m. Call Beth Brown 9-3949. 42s-2tc

Carson County Museum Anniversary Set

Saturday, September 19, will mark the sixteenth anniversary of the Carson County Square House Museum Day and the twenty-third year of the reunion of area pioneers.

Special programs and art exhibits are planned throughout the day culminating with the barbecue at the Carson County Agriculture Building. The Museum Day program at 2 p.m. at the High School Auditorium will be highlighted with an address by Lieutenant Governor Bill Hobby. The West Texas State University Orchestra under the direction of Dr. Gary Garner will be featured. Art exhibits for Museum Day and for the month of September will be "Morning Sun", a collection of thirty-nine graphics and etchings from the 1920's and 1930's. Artists featured in the exhibit, on loan from the Sarah Campbell Blaffer Foundation, Houston and a part of the permanent collection of the Evansville Museum of Arts and Science, Evansville, Indiana, are among America's best known: John Taylor Arms, Samuel Chamberlain, Philip Cheney, Albert William Heckman, Chester Leich, Martin Lewis, Thomas Willoughby Nason, Frederick Polley, Wilson Silsby and Grant Wood. This delightful exhibit of eight pioneer families titled "Builders of Texas."

Eight area pioneers who owned land or ranged cattle in Carson County before 1900 will be featured in eight separate exhibits. All eight families share a common bond; all were cattlemen and though they engaged in banking and commerce, all operated a ranch. All came to the Panhandle of Texas with either substantial backing from friends or were able to finance their own operation. None were "drifters" nor moving westward after a failure elsewhere. All were married men and most of them had families when they moved to this area. They remained and though they endured the rigors of pioneer life, left of legacy of hospitals, homes to care for the elderly and children, schools, parks, institutions of higher

learning, cultural institutions and churches. Families in the "Builders of Texas" exhibit are Adair-Ritchie, Finch-Lord-Nelson, Masterson, Paul, Bivins, Burnett, Weatherly and Purvine.

In the Mary Moody Northern Gallery of the Square House Museum, sculpture and paintings by the Western Artist, Kenneth Wyatt will be on display. Art exhibits and the Builders of Texas exhibit will be on display from 9 a.m. Saturday, September 19 through 9:30 in the evening. The American Graphics exhibits and the "Builders of Texas" exhibit will remain through the month of September.

At one o'clock Saturday, the days program will begin with a branding party. Area cattlemen

are asked to bring their brand, a sketch of the brand and brief history, and with the hot fire furnished by the arrangements committee, put their brand on the beams. Later the Museum will publish a guide to the exhibit of brands. Following the program at the High School Auditorium, there will be a reception at the Carson County War Memorial Building, hosted by Mrs. J.B. Howe and the Carson County Federated Clubs.

The barbecue will be served from 5 to 7:30 in the evening at the County Agriculture Building.

The public is invited to attend. All activities, except the barbecue which requires a \$5 minimum donation to the Museum, are free to the public.

Marketing Key To Crop Profits

COLLEGE STATION--Although most Texas farmers are looking at a good crop year, the financial rewards they reap will depend heavily on their ability as astute farm marketers.

"Developing pricing strategies and evaluating marketing options are activities that distinguish 'farm marketers' from 'farm producers,'" says Dr. Ashley Lovell of Stephenville, area economist in management with the Texas Agricultural Extension Service, Texas A&M University System.

"Traditionally, many farm producers have sought to sell at the highest price during the marketing year, to sell everything at one time, and to market at about the same time each year. Selling based upon habit is unlikely to consistently result in maximum returns," warns Lovell.

Instead, farmers should take a look at these marketing options:

- Selling at harvest.
- Storing and selling at a later date.
- Forward contracting for delivery at harvest or at a later date.

--Hedging in the futures market.

--Using the Commodity Credit Corp. loan program or the extended grain reserve program.

To shift to the farm marketing orientation, current production cost estimates are needed for individual enterprises. Cost estimates should include variable expenses incurred to date plus projections of any remaining costs necessary to move the crop from the field, says the economist.

By combining actual preharvest variable costs with projected harvest costs and share rent, a farmer can estimate the breakeven price necessary to cover variable cost and land rent. Although this estimated breakeven value may not be adequate for developing all pricing strategies and evaluating all marketing options, it is an essential step, believes Lovell.

"When combined with the per unit fixed cost, the marketer has the production cost estimate which is required in making valid marketing decisions," says the economist.

STORAGE VANS FOR SALE

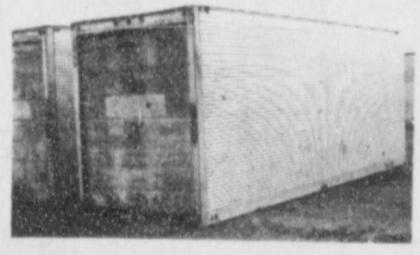
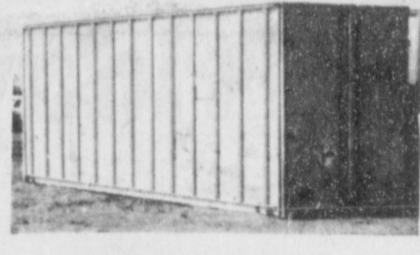
26 - 27 - 28 Feet Long - 8 Feet Wide 250 Vans Available Immediately \$1000 to \$1500

Waterproof - Ratproof - Lockable EASY TO MOVE - NO FOUNDATION NECESSARY Perfect storage for farms, ranches Store feed, tools, supplies & equipment

Put for home or recreational uses Put it anywhere - Store anything MOVING SERVICES AVAILABLE

OWENS SALVAGE CO., INC.

806-447-2581 Hwy 83 So. Wellington Tex. 79095



Fold Out Doors

Roll Up Doors



**FOR SALE--approximately 2200 sq. feet, 3 bedroom, 2 bath, sunken living room.**

**JAMES WHITE**  
**PHONE - 659-3569**  
**9 Glover Place**  
**Spearman, Texas**

**The Hansford Plainsman**  
PUBLICATION (USPS 243-660) SPEARMAN, TEXAS 79081  
213 Main Box 458 659-3434  
Published Weekly at 213 Main Street Spearman, Texas 79081  
Owner-Publisher.....William M. Miller  
Editor.....Faye Lynch  
Second Class Postage paid at Spearman, Texas 79081  
Any erroneous reflection upon the character of any person or firm appearing in these columns will be gladly and promptly corrected upon being brought to the attention of the management.  
POSTMASTER: Send address changes to Hansford Plainsman, Box 458, Spearman, Tx. 79081.  
SUBSCRIPTION RATE: Hansford, adjoining counties, combination with the Spearman Reporter, \$15.00.  
Other points, \$20.00.

MEMBER  
**TEXAS PRESS ASSOCIATION**

SENIOR VILLAGE NURSING HOME



NURSES AIDES NEEDED

No experience necessary

WE WILL TRAIN

Dial 435-5403

Hwy. 83 S.

Perryton



1106 Wilmeth

**FOR SALE - 2285 square feet, ranch style home, 3 bedrooms, 2 1/2 baths, double car garage. Exceptionally nice home, in the nicest part of town.**

Call **MAYFIELD**  
**Real Estate - 435-6528**  
**Perryton,**  
**for appointment.**



**WE EXPECT THE BEST!**

**Hansford Abstract Co.**

16 S. Haney 659-2516



# Spearman Lynx

**VS**

# Stratford Elks

## Here Friday Nite

### KickOff 8:00

**TG & Y Stores Company**

**We Support The Team And Coaches In Their Upcoming Season.**

FAMILY CENTER  
521 HWY. 207 S.  
659-3741



Your local used cow dealer is

**SPEARMAN BI-PRODUCTS**



1 800 692-4043

**Nursanickel Motel**

**GO GET 'EM**



HWY. 207 S.  
659-3737

**Clark Aerial Spraying**



**GO TEAM GO!**

HWY. 207 S.  
659-2344

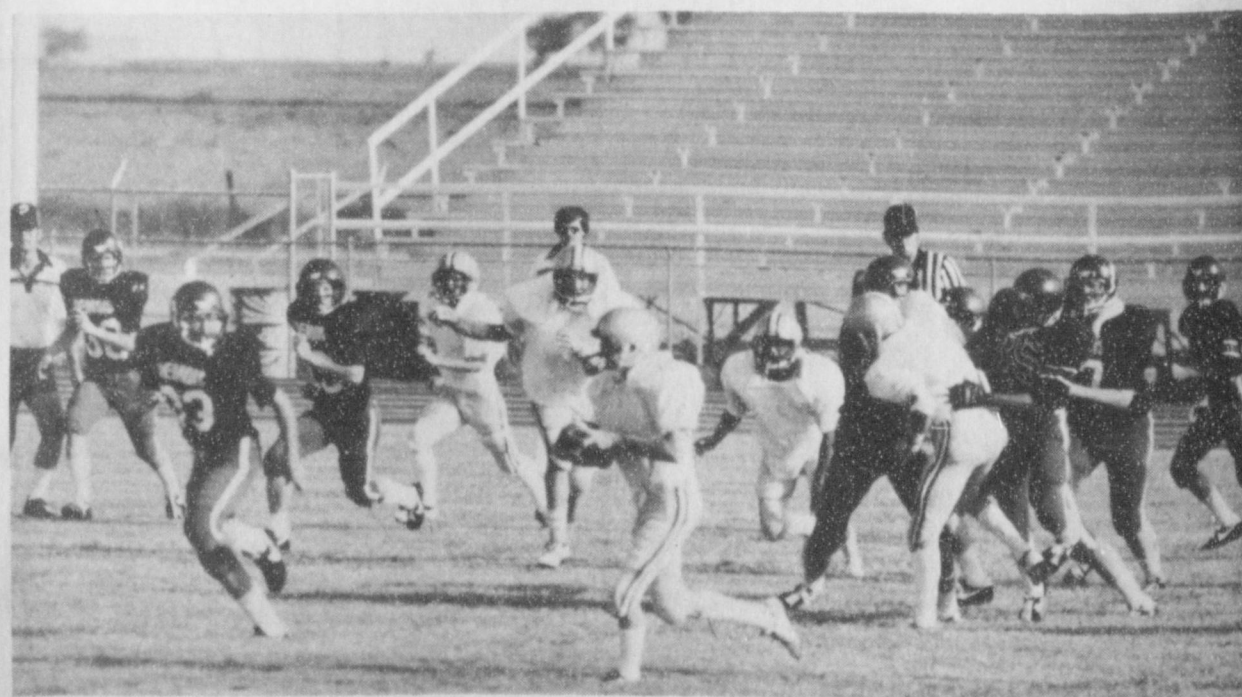
**Keep On Trucking For A Touchdown!**



**John R. Collard, Jr.**

Real Estate & Insurance

**Kick Off to a Super Season Palo Duro Feeders**



**Charolette Ford Antique Trunks**



**GO! FIGHT! WIN!**

511 J S. HWY. 207  
659-3027

**Buster's Aerial Dusters**

**We Wish You A Super Season**



**Baker & Taylor Drilling Co.**

**WE EXPECT THE BEST!**

GRUVER HWY.  
659-2503



**Break Through To A Winning Season**

**Daco**

**DACO**



DACO INC 1700 S Main Berger.....273-7321  
DACO INC Spmn.....659-2290

### CHEERLEADERS

Johnny Eaton     Angie Francis  
 Janet Reed        Lorie Diffie  
 Kim Elbert        Kayla Russell  
 Teresa Tindell    Loree Morris

### 1981 SPEARMAN LYNX FOOTBALL SCHEDULE

DATE	OPPONENT	PLACE
September 4	STRATFORD	HERE
September 11	Sanford-Fritch	There
September 18	Gruver	There
September 25	BOISE CITY	HERE
October 2	Canadian	There
October 9	**GUYMON	**HERE
October 16	*River Road	*There
October 23	*Perryton	*HERE
November 6	*Boys Ranch	*HERE
November 13	*Dalhart	*There

\*--District Games

\*\*--Homecoming Game

### LYNX

#### 1981 JUNIOR VARSITY FOOTBALL SCHEDULE

Sept. 10	River Road	There
Sept. 17	PERRYTON	HERE
Sept. 24	Guymon	There
Oct. 1	BOYS RANCH	HERE
Oct. 8	Dalhart	There
Oct. 15	RIVER ROAD	HERE
Oct. 22	Perryton	There
Oct. 29	OPEN	
Nov. 5	Boys Ranch	There
Nov. 12	DALHART	HERE

#### 1981 FRESHMAN FOOTBALL SCHEDULE

Sept. 10	River Road	There
Sept. 17	PERRYTON	HERE
Sept. 24	Guymon	There
Oct. 8	Dalhart	There
Oct. 15	RIVER ROAD	HERE
Oct. 22	Perryton	There
Oct. 29	OPEN	
Nov. 5	OPEN	
Nov. 12	DALHART	HERE

#### 1981 7th & 8th GRADE FOOTBALL SCHEDULE

Sept. 10	RIVER ROAD	HERE
Sept. 17	Perryton	There
Sept. 24	GUYMON	HERE
Oct. 1	Boys Ranch	There
Oct. 8	DALHART	HERE
Oct. 15	River Road	There
Oct. 22	PERRYTON	HERE
Oct. 29	OPEN	
Nov. 5	BOYS RANCH	HERE
Nov. 12	Dalhart	There



Our Team's  
A Winner!

306 DAVIS  
659-3792

White House  
Lumber Co.



GO  
TEAM  
GO!

Sack's 3rd Ave.

Dairy  
Queen

GO  
GET  
'EM

Dairy Queen

Spearman     Gruver



GO! GO!

Lindsey  
Furniture

Borger



Speartex  
Grain Co.

GOOD  
LUCK

514 COLLARD  
659-3711



Keep On  
Trucking For A  
Touchdown!

Cattlemen's  
Restaurant



We Wish You  
A Super  
Season

Brystr's  
Young Fashions  
Guymon, Okla.



GO!  
FIGHT!  
WIN!

Hansford  
Insurance  
Agency



VICTORY  
To You,

Spearman  
Redi-Mix



We know we can count  
on 100% effort and a  
winning season.



Nelson's  
Builders Supply

309 Main - P.O. Box 993  
Phone 659-3668  
Spearman, Texas 79081  
Paint and Carpet Center



Boyd's Shoes



The Big Game is NOW

Lawrence Ward  
Trucking

HAULING:  
Feed & Grain  
Sand & Gravel  
733-5025  
West of Gruver



**sunday**

AUG. 30, 1981

**MORNING**

- 6:00 **Warren Roberts Presents**
- 6:30 **International Byline**
- Movie - (Drama) \*\*\***
- "Gloria" 1980 Gena Rowlands, Buck Henry. A retired gun moll and ex-showgirl becomes the reluctant guardian of a seven year old boy who is being sought by the mob. (Rated PG) (2 hrs.)
- Closeup**
- Cartoons**
- Carrascalondas**
- Women's Channel**
- 7:00 **James Robison Presents**
- Gospel Singing Jubilee**
- The Lesson**
- Faith 20**
- Faith For Today**
- Zola Levitt**
- Video Comics**
- 7:30 **Amazing Grace Bible Class**
- The Deaf Hear**
- Three Score And Community Calendar**
- Robert Schuller From Crystal Cathedral**
- Women's Channel**
- Pinwheel**
- 8:00 **Day Of Discovery**
- Bugs Bunny And Friends**

- 8:30 **Outdoor Oklahoma**
- Larry Jones Ministry**
- Movie - (Comedy) \*\*\***
- "Cheech And Chong's Next Movie" 1980 Cheech Marin, Tommy Chong. Chicano Marin dons a long, blonde wig in an attempt to capture the California Look, and joins Chong in an impromptu concert in a local music store. (Rated R) (2 hrs.)
- Brady Bunch**
- Chicagoland Church Hour**
- First Baptist Church**
- Billy James Hargis**
- 9:00 **National Geographic Mysteries of the Mind**
- This program delves into some of the intriguing research being done to unlock the secrets of how the brain functions.
- Rex Humbard**
- Big Blue Marble**
- Changed Lives**
- Crystal Cathedral (Closed-Captioned)**
- Westbrook Hospital**
- Oral Roberts**
- Kids Are People Too; Dear Alex And Annie**
- E. J. Daniels**
- Sgt. Preston Of The Yukon**
- Sunday Morning**
- Hour Of Power (Closed-Captioned)**
- 10:00 **Undersea World Of**

- Jacques Cousteau
- San Jacinto Baptist Church**
- Grove Avenue Baptist Church**
- Tarzan**
- Movie - (Comedy) \*\***
- "Oh, God! Book II" 1980 George Burns, Suzanne Pleshette. A young girl is asked by God to come up with a slogan to make God a household word. (Rated PG) (2 hrs.)
- Animals, Animals, Animals: School, Rock**
- Day Of Discovery**
- Nova: Resolution on Saturn**
- On Tuesday, August 25, the spacecraft Voyager II will encounter Saturn. To commemorate this event, Nova presents an update on the information gathered by Voyager I during its fly-by of the majestic ringed planet in 1979. (Closed-Captioned; U.S.A.)
- Jimmy Swaggart**
- To Be Announced**
- The King Is Coming**
- Cisco Kid**
- Face The Nation**
- Oral Roberts**
- 11:30 **ABC's NFL Pre-Season Football**
- ABC Sports will provide live coverage of the game between the Washington Redskins at the New England Patriots.
- Larry Jones**
- Lone Ranger**
- To Be Announced**
- Rex Humbard**

**AFTERNOON**

- 12:00 **Washington Week In Review**
- Movie - (Adventure)**
- \*\*1/2 "Thunderhead-Son Of Flicka" 1945 Roddy McDowall, Preston Foster. The story of a youth's affection for a collie and his determination to show him off. (2 hrs.)
- D. James Kennedy**
- Twilight Zone**
- Super Bowl XIII And XIV**
- Herald Of Truth**
- 12:30 **Wall Street Week With Louis Rukeyser**
- Bullish on Bonds**
- Movie - (Comedy) \*\*\***
- "The Blues Brothers" 1980 John Belushi, Dan Aykroyd. Jake and Elwood embark on an amusing mission from God with the help of rhythm and blues greats Ray Charles, Aretha Franklin and Cab Calloway. (Rated R) (2 hrs., 30 mins.)
- One Step Beyond**
- It Is Written**
- Dusty's Treehouse**
- 1:00 **Voyage Of Charles Darwin**
- Can Any Mountain Withstand Such Waste? Darwin discovers fossilized seashells in the Andes mountains, and hypothesizes that the Andes were pushed up from the sea.
- Rosewell Street Baptist Church**
- Movie - (Mystery) \*\*\***
- "Adventures Of Sherlock Holmes" 1939 Basil

- Rathbone, Nigel Bruce. Holmes stops the attempt to steal the Crown Jewels of England. (105 mins.)
- 1980 Houston Oilers**
- On The Square**
- Matt And Jenny**
- 1:30 **Like A Mighty River**
- Adventures In Rainbow Country**
- 2:00 **Southbound**
- SportsWorld Boxing**
- Coverage of Tomorrow's Champions' eighth round heavy weight bout between Chris McDonald and Lou Benson; also, an eighth round featherweight bout between Bernard Taylor and Nico Perez. (60 mins.)
- Words Of Hope**
- Get Smart**
- Solid Gold**
- Studio See**
- 2:30 **Vikings!**
- ABC's Sunday Afternoon Baseball**
- The teams were not announced at press time.
- The Heritage Singers**
- World Series Of Golf**
- Final round coverage with a select field of pro golfers who have qualified for this \$400,000 event, from the South Course Firestone Country Club in Akron, Ohio. (2 hrs., 30 mins.)
- Livewire**
- 2:45 **Lead Off Man**
- 3:00 **Mark Russell Comedy**
- Special Political satirist Mark Russell is presented live from the stage of the Katherine Cornell Theater

- on the campus of the State University of New York at Buffalo.
- SportsWorld Live**
- Coverage of the Arlington Million, the world's richest thoroughbred horse race, from Arlington Park, Illinois. Also, coverage of the World Series of Track and Field Golden Mile from Brussels, Belgium. (90 mins.)
- Movie - (Drama) \*\*\***
- "Gloria" 1980 Gena Rowlands, Buck Henry. A retired gun moll and ex-showgirl becomes the reluctant guardian of a seven year old boy who is being sought by the mob. (Rated PG) (2 hrs.)
- E. J. Daniels**
- Baseball Chicago**
- Cubs vs Los Angeles Dodgers (3 hrs.)
- Music City News Top Country Hits Of 1980**
- 3:30 **Manimals**
- This program presents an intriguing portrait of city pets and their owners.
- Calvary With Rev. Webb**
- Special Delivery**
- 4:00 **Tom Cottle Show**
- "Mental Patient" A woman shares her horrifying experiences while having been confined to four different mental institutions.
- This Is The Life**
- 4:30 **French Chef**
- Souvenir Program**
- Zola Levitt**
- What Will They Think Of Next?**
- 5:00 **Firing Line**
- "A Traditional Concert For Europe" Guest: Otto von Habsburg, author and representative to the European Parliament. Host: William F. Buckley, Jr. (60 mins.)
- News**
- Movie - (Comedy) \*\***
- "Oh, God! Book II" 1980 George Burns, Suzanne Pleshette. A young girl is asked by God to come up with a slogan to make God a household word. (Rated PG) (2 hrs.)
- ABC News**
- Priority One International**
- World Of Survival**
- Movie - (Drama) \*\*\***
- "Time Limit" 1957 Richard Widmark, Richard Basehart. The story of the trial of an American military officer suspected of collaborating with the enemy as a P. O. W. in North Korea. (2 hrs.)
- Matt And Jenny**
- 5:30 **NBC News**
- Larry Jones**
- CBS News**
- Adventures In Rainbow Country**

- Evening**
- 6:00 **Nova: Resolution on Saturn**
- On Tuesday, August 25, the spacecraft Voyager II will encounter Saturn. To commemorate this event, Nova presents an update on the information gathered by Voyager I during its fly-by of the majestic ringed planet in 1979. (Closed-Captioned; U.S.A.)
- Disney's Wonderful World: Big Red**
- A sportsman makes his pure-bred Irish setter with another and sells both dogs, but they escape and are sheltered by an orphan who soon discovers a litter of pups to care for as well. Stars: Walter Pidgeon, Gilles Puyant. (Repeat; 60 mins.) (Conclusion) (Closed-Captioned; U.S.A.)
- Those Amazing Animals**
- The amorous exploits of Frazier the lion

- are recounted, sophisticated military tactics harvester ants use in battle are revealed, a dangerous bucking horse on today's rodeo circuit that sends cowboys flying and a weasel fights a poisonous snake in a battle to the death. (Repeat; 60 mins.)
- Warren Roberts Presents**
- Movie "Son Of Flicka"**
- (2 hrs.)
- 60 Minutes CBS News**
- correspondents Mike Wallace, Morley Safer, Dan Rather and Harry Reasoner are the on-air editors of this weekly news magazine. (60 mins.)
- Studio See**
- 6:30 **Livewire**
- 7:00 **Evening At Pops**
- "Sesame Street Goes To Pops and Big Bird Gets the Baton" John Williams introduces this rebroadcast of a program which brought the gang from Sesame Street to Arthur Fiedler and the Pops Orchestra. Selections include "Rubber Duckie" and "Count Five". (60 mins.)
- CHIPs Baker and Poncherello**
- reluctantly undertake an assignment to train the California Highway Patrol's first female motorcycle officers, but the task gets easier as love appears to blossom and the women prove their capabilities. (Conclusion; 60 mins.)
- Movie - (Comedy) \*\*\***
- "The Blues Brothers" 1980 John Belushi, Dan Aykroyd, Jake and Elwood embark on an amusing mission from God with the help of rhythm and blues greats Ray Charles, Aretha Franklin and Cab Calloway. (Rated R) (2 hrs., 30 mins.)
- Foul Play**
- Tucker and Gloria match wits with a dangerous gang of car thieves after a mysterious red-haired man hands over a videotape to Gloria that incriminates his former associates, thus putting Gloria on their hit list. (60 mins.)
- In Touch**
- Archie Bunker's Place**
- Archie's agonizing over Murray's having driven fiancée Marcie away, but when he finally convinces Murray to win her back, he discovers he'll be out a partner if Murray does. (Conclusion) (Repeat)
- Movie - (Adventure) \*\*\***
- "Cast A Giant Shadow" 1966 Kirk Douglas, Senta Berger. The adviser to President Roosevelt is persuaded by an agent for Israel to undertake the training of Israel's first "general" in 2000 years. (3 hrs.)
- 7:30 **One Day At A Time**
- Schneider gets involved with a 22 year old who could prove to be more than he can handle. (Conclusion) (Repeat)
- What Will They Think Of Next?**
- 8:00 **Masterpiece Theatre**
- "Sunset Song: Ploughing" After her mother commits suicide, Chris leaves college to manage the farm household. (60 mins.)
- The Sunday Big Event**
- "Airport '77" 1977 Stars: Jack Lemmon, Lee Grant. A millionaire art collector's plans to fly friends to an exclusive museum opening aboard his private jumbo jet meet with tragedy when the plane crash lands at sea.



**NOW**  
**15.900%**  
**INTEREST**

**MONEY SALE**

**THE NEW 30 MONTH CERTIFICATE**

INTEREST RATE EQUAL TO 2-1/2 YEAR TREASURY BILLS	1/4% HIGHER THAN COMMERCIAL BANKS
COMPOUNDED DAILY PAID QUARTERLY	\$100.00 MINIMUM

**SEE US FOR DETAILS**



**MEMBER FSLIC**  
Federal Savings & Loan Insurance Corp.  
Your Savings Insured to \$100,000  
Federal regulations require a substantial interest penalty for early withdrawal or conversion of certificates

- Home Office**  
1518 Oklahoma Ave.  
405/254-3301
- Downs Branch**  
1623 Downs Ave.  
405/256-7000
- Guymon**  
Northridge Shopping Center  
405/338-8461
- Cordell**  
110 East First Street  
405/832-3831

**THE FIRST UNITED METHODIST CHURCH OF SPEARMAN WILL FEATURE THE REVEREND WESLEY PUTNAM IN A REVIVAL August 30-September 2**

*The Sunday Worship Services will be at the regular hours of 11 am and 7 pm*

**Monday thru Wednesday**

**7 A.M. with a Continental Breakfast**  
**7:30 P.M. Preaching and Music**

**A Nursery will be provided for the evening worship service**

**Everyone is most cordially invited to attend**





# Películas Mexicanas

## 'El Futbolista Fenomeno...Gol!'

La Película Mexicana para este Domingo, el 30 de Agosto, se llama "El Futbolista Fenomeno...Gol!". Esta Película va estar bien curiosa porque va salir Adalberto Martínez. Ustedes saben quien es Adalberto Martínez—"Resortes". Va ser muy buena, y mas buena si no desvaratan el retrato-muchas veces es lo que pasa cuando va salir una Película muy buena, como esta, por eso ojala que no lo desvaraten!!

Los actores y actrices que van a salir en esta Película con "Resortes" son Javier Cardenas, Walter Gassire, Mario Medina, Rigoberto Cisneros, Morris Ruiz.

Con Joaquín García "Borolas", Polo Ortín, Alfonso Zayas, Jorge Zamora "Zamorita". Niño: Guicho Ravez, Pedro D'Aguiñon, Sergio Barrios, Hector Goddy, y Humberto Elizondo.

Cuando ballan para el cine en los Domingos por la tarde o por la noche, Miercoles por la noche, Jueves por la noche, Viernes por la noche o el Sabado por la noche, los "Gran"-Adultos-los que tienen 65 hasta los que tienen 100, pagan \$2.50; los Adultos-los que tienen 64 hasta los que tienen 13--pagan \$3.50 y los Jovenes-los que tienen 12 hasta los que tienen 6--pagan \$2.00. Si van para el cine por la noche el Lunes o el Martes, todos-los "Gran"-Adultos, los Adultos, los Jovenes--pagan \$2.00 cada quien. En esos dias

**CORRECTION**

Jack Hanson will not be playing football this season because of health reasons. He will be a team manager. The statement in Thursday's paper that he would be on the team was an error.

hay mucha, mucha jente. La Película Americana para esta semana--el 26 de Agosto hasta el primero de Septiembre--se llama "The Fox and the Hound" y "Once Upon a Mouse". Van a ver dos Películas por el precio de una, pero todos pagan nomas bebitos que nomas nacieron porque tiene una G no una PG o R, y ese es una ley.

La ultima Película que va salir en el Auto-Cine se llama "Take This Job and Shove It." Esta Película tambien va estar curiosa, y trieste. Va salir el 28, 29 y 30 de Agosto.

Las oficinas de el Triato Lirico de Spearman se abre a las 1:30 de la tarde para la Película Mexicana y la Película se comienza a las 2:00 de la tarde en punto. La Oficina del Triato Lirico de Spearman se abre a las 7:30 de la noche para las Películas que salen en la noche, y la Película se comienza a las 8:00 de la noche. La oficina del Auto-Cine se abre a las 8:00 de la noche y la Película se comienza a las 9:45 o cuando este muy oscuro.

Si quieren saber de la Película Mexicana que va salir el Domingo que viene--el 6 de Septiembre--pongan su radio a KRDF-FM 98 en Spearman cada Domingo en la tarde a las cinco, y pongan muy buen cuidado, porque el Senior Juan Avila o la Señora María Antonia Avila les van a decir de que se va tratar la Película que viene.

\*\*\*\*  
The best show on earth is the human race, and the performance is continuous, and free.

## Xi Zeta Meeting Held

Xi Zeta Sorority resumed their meetings after breaking for Summer Vacation. A morning brunch was held in the backyard of Charlotte Jackson, Thursday, August 27.

President Zetha Blackburn, presided. Program Chair, Sharon Cook, distributed new yearbooks and members reviewed the year's coming activities. Members welcomed new honorary member, Barbara Collier.

The next meeting will be September 10, in the home of Linda Blackman.

Members present were Mrs. Pat Jackson, Ray Gressett, Lynn Cook, Bob Meek, Steve Mathews, Perry Dixon, Bob Collier, Brice McRee, Jack Lasater, Ronnie Lusby, Charles Sheildknight, Tom Latta, Dennis Nelson, J.E. Blackburn, Vernon Pipkin, Phillip Renner, Terry Butt and Ken Schneider.

\*\*\*\*  
The Bible can solve more of your personal problems than you might suspect; read it.

\*\*\*\*  
Principle must be above expediency if our political system is to endure.

\*\*\*\*  
The fellow who always knows the answer, in positive form, has finished learning.

\*\*\*\*  
People without responsibility are usually anxious to solve tremendous problems.

\*\*\*\*  
The bad luck that you grumble about is probably the direct result of your own activity.

# WTSU To Have Parents of the Year

WTSU--Nominations for the West Texas State University Parents of the Year will be accepted through Friday, Sept. 18.

The Parents of the Year will be announced during the Fourth Annual Parents' Day on Saturday, Sept. 26, at halftime ceremonies of the football game between the WTSU Buffaloes and the University of Texas at Arlington.

The 7:30 p.m. football game at Kimbrough Memorial Stadium will conclude the day of activities for parents and students which begins with registration and a reception.

Registration will continue from 11 a.m. through 3 p.m. in the foyer of the East Dining Hall.

A 9 a.m. reception will honor more than 350 Don and Sybil Harrington Honor Scholars and their parents in the East Dining Hall followed by a reception at 11 a.m. for Parents' Day participants who will visit with WTSU administrators, faculty and staff members.

WTSU President Max Sherman will welcome students and their parents at the luncheon in the East Dining Hall at 12:30 p.m. and entertainment will be provided by WTSU's New Day Singers. The buffet luncheon is \$2.75 for parents, half price for children who are eight years old and younger and free for students with meal cards.

Following the luncheon, each of the seven schools and

colleges, 12 residence halls and five church centers will host open house from 2 p.m. to 3 p.m. Also during that hour, parents may choose between a style show sponsored by Jean's of Canyon in the East Dining Hall or a preview of Buffalo football with Head Coach Bill Yung in the Activities Center Ballroom.

Parent Olympics from 3 p.m. to 5 p.m. at the Activities Center will test each parent's aptitude for competition and fun in bowling, bridge, billiards, "42," basketball free shot, fun relays, co-rec volleyball and the two-mile run or walk. The olympics will be sponsored by members of the WTSU Recreation Club.

At 3 p.m., the University Chorale will perform as part of the Honor Choir Festival featuring high school choirs from the area in Northern Recital Hall.

Equestrian skills will be displayed from 4 p.m. to 5 p.m. at the Horse Center located north of campus on the Canyon Expressway.

Tickets are available for the football game at \$7 for reserved seats and \$4 for general admission and may be reserved by mail to be picked up during registration.

In addition to Parents of the Year, parents who have traveled the greatest distance to attend Parents' Day and who have the largest number of children enrolled at WTSU will be recognized during halftime ceremonies.



Stacey Cook, who graduated in 1981, painted "Victory" on The Spirit Wagon

# USDA Studies New Sales Policy For CCC Corn

Southwest sorghum and corn producers have recommended to Agriculture Secretary John Block that corn shipped into the Texas High Plains from the upper Midwest be restricted to export sales only.

Officials of Grain Sorghum Producers Association (GSPA) and Texas Corn Growers Association (TCGA) and their legal counsel met with Block and other USDA officials to discuss the effect of sales of the corn by Commodity Credit Corporation.

The CCC purchased more than 200 million bushels of corn last year after President Jimmy Carter announced the embargo of grain to the Soviet Union. More than 45 million bushels of the corn was shipped from the northern corn belt to the Texas

High Plains for storage, where it is now being offered for sale on a bid basis.

Noting that very little of the corn has been sold in recent weeks because CCC has refused most bids, GSPA-TCGA spokesman Elbert Harp said, "CCC's self-imposed limits offer farmers little assurance as long as the official policy is to sell the corn for unrestricted use. The threat of sales," Harp observed, "depresses prices just as much as actual sales."

The plan which GSPA-TCGA proposed to USDA was endorsed by 15 state and national farm organizations which represent grain farmers in the Southwest. Their recommendation was that the corn which CCC shipped to

the High Plains from the northern corn belt and has now marked for sale be restricted to the export market. If USDA must sell any of the CCC corn because it is out of condition, it should be replaced with purchases of corn in the area of sales.

The GSPA-TCGA plan was endorsed by the National Association of Wheat Growers and the Texas Wheat Producers Association. The state Grain Sorghum Producers Association in Nebraska, Kansas and New Mexico, Texas Grain Sorghum Producers Board, South Texas Cotton and Grain Producers Association and the Cotton and Grain Producers of the Lower Rio Grande Valley also were co-signers of the proposal.

The commodity organizations were joined by general farm organizations of the area: Texas Farmers Union, New Mexico Farmers Union, National Women Involved in Farm Economics, the state W.I.F.E. organizations in Texas and New Mexico, the National American Agriculture Movement and the New Mexico A.A.M.

Harp said USDA made no commitments but agreed to study the proposal and would give the group an answer soon.

# Sunday Route Cut By PO

Effective Sunday, September 13, 1981, Star Route mail trucks will no longer operate on Sundays and Holidays including New Year's Day, July 4, Labor Day, Thanksgiving and Christmas Day.

This change has been effected as an energy conservation measure and because of the small quantities of mail currently received and dispatched on Sundays and on widely observed Holidays.

# CAFETERIA MENU

**BREAKFAST MENU**

MONDAY, AUGUST 31  
Orange Juice  
Dry Cereal  
Milk

TUESDAY, SEPTEMBER 1  
Mixed Fruit  
Texas Toast & Jelly  
Milk

WEDNESDAY, SEPTEMBER 2  
Apple Juice  
Dry Cereal  
Milk

THURSDAY, SEPTEMBER 3  
Peaches  
Biscuit & Sausage  
Milk

FRIDAY, SEPTEMBER 4  
Orange Juice  
Dry Cereal  
Milk

**LUNCH MENU**

MONDAY, AUGUST 31  
BBQ Beef  
Potato Salad  
Baked Beans  
Cole Slaw  
Fruit  
Cornbread-Butter  
Milk

TUESDAY, SEPTEMBER 1  
Burritos  
Spaghetti in Sauce  
Green Beans  
Combination Salad-Dressing  
Cinnamon Rolls  
Milk

WEDNESDAY, SEPTEMBER 2  
Salisbury Steak-Catsup  
Buttered Potatoes  
Whole Kernel Corn  
Celery Sticks  
Strawberry Shortcake  
Yeast Batter Bread-Butter  
Milk

THURSDAY, SEPTEMBER 3  
Roast & Gravy  
Mashed Potatoes  
English Peas  
Carrot Sticks  
Mandarin Orange Gelatin  
Hot Rolls-Butter  
Milk

FRIDAY, SEPTEMBER 4  
Hamburger or Ham Salad Sandwich  
French Fries-Catsup  
Shredded Lettuce-Dressing  
Sliced Pickles & Chopped Onions  
Lemon Chiffon Pie  
Milk

**Definition**  
Tact: To lie about others as you would have them lie about you.  
-Gospport, Pensacola.

**Strange**  
Conceit is a queer disease. It makes everyone sick except the fellow who has it.  
-Grit.

**Insanity**  
The reason some people are overweight is because at times they go starch craving mad.  
-Record, Columbia, S.C.

**Fair Play**  
The trouble with being a good sport is that you have to lose to prove it.  
-Klying K., Kingsville.

**Effective**  
There's nothing like a dish towel for wiping that contented look off a married man's face.  
-Busy Bee, Davisville.

\*\*\*\*  
A treaty of peace is worth exactly the value that one attaches to the character of those who sign it.

\*\*\*\*\*  
Intelligence tells us that things change and wisdom indicates that the change is often for the better.



## EXPECTING WHEAT PASTURE?

*Let the Professionals start your cattle.*

### McGuire Feedlot Is Now Taking Fall Calves.

Call us For Pricing & Scheduling  
**405-837-5276**

After 7 P.M. Call: Orville Robison, 405-837-5523  
or Mike Matthews, 405-837-5256

# Sports Tally

717 W. 7th  
Spearman, Texas

# Fall Kick-Off

Starting Saturday, Aug. 29



Men's Levi long sleeved shirts-----	50% off
Selected group of warm-ups-----	50% off
Selected group of T-shirts as low as-----	60% off
Nike shoes (excluding football)-----	40% off
Rawlings Youth NFL jerseys & Helmets-----	20% off
Youth football pants and pads-----	20% off

Life jackets 20% off

All footballs 20% off

Men, ladies & childrens shorts & tops-----



# Sports Tally

659-3878

75% off

**ATTENTION LIVESTOCK PRODUCERS**  
CATTLEMEN'S LIVESTOCK COMMISSION CO.  
Box 50, Dalhart, TX 79022  
4 miles West of Dalhart on HWY 54. Brand new facilities. Auction every Friday. Start 9:30 a.m. on Hogs.

Phone (806) 249-5505  
Nite Phone (806) 249-6297  
Larry Wing Manager

**MARKET REPORT**  
**FRIDAY, AUGUST 21**

Sold 1782 Cattle, 359 Hogs. Top Hogs \$50.00 to \$52.10; Sows \$39 to \$42; Boars \$32 to \$36.

Butcher Cows \$40 to \$47. Bulls \$50 to \$58. Feeder Steers steady with last week--\$50 to 650 lbs.--\$64.50 to \$68; 650 to 750 lbs.--\$64 to \$67; 750 to 850 lbs.--\$63 to \$65. Feeders Heifers \$1.00 higher--\$50 to 650 lbs.--\$58 to \$61; 650 to 800 lbs.--\$58 to \$61.

**CALF MARKET**  
Calf Market \$2 to \$5 higher--all prices quoted on choice native calves. Steers 250 to 300 lbs.--\$75 to \$85; 300 to 400 lbs.--\$70 to \$80; 400 to 500 lbs.--\$68 to \$75. Heifers 250 to 300 lbs.--\$65 to \$75; 300 to 400 lbs.--\$65 to \$72; 400 to 500 lbs.--\$58 to \$65.

WELCOME ALL TO OUR NEW FACILITIES.