

DOLLIES DUNK DALHART — LYNX LOSE HEARTBREAK



The Hansford Plainsman

MEMBER
1977
TEXAS PRESS ASSOCIATION

VOLUME 8, NO. 12

THE HANSFORD PLAINSMAN, SPEARMAN, TEXAS 79081

SUNDAY, JANUARY 16, 1977

Crime Down In Co.

There are 907 square miles in Hansford County under the jurisdiction of Sheriff R. J. McFarlin and he and his department with the continued cooperation of the residents of the community plan on continuing to make Hansford County as safe in the future as it has been in the past with crime prevention programs aimed at furthering the decrease in crime.

A total of 344 persons were arrested during 1976, the majority of them for theft by check and one of the first of the numerous crime prevention programs for Hansford County in 1977 will be a worthless check program.

The number of arrests last year was a decrease from the more than 544 in 1975.

McFarlin has a department which includes four deputies and four dispatchers, one of them being the relief dispatcher. The department has four vehicles, all equipped for law enforcement work as needed, as well as all the other modern equipment, electronic and non-electronic, required for an up-to-date department of this day and age.

Department personnel includes Chief Deputy Tom Messer and Deputies Doug Davis, Clint Dodd and Shirley Pate and Dispatchers Evelyn Dodd, Nell McDade, Floyd Close and Kay Chisholm.

The sheriff is serving his first full term of office, having been appointed in 1973 after the death of then Sheriff J. B. Cooke. McFarlin ran for the unexpired term in 1974 and then last May was elected to a full term.

He is a native of Dumas and in addition to his prior experience with the Hansford County Sheriff's Department, he has three years of U.S. Army Military Police training. This background coupled with several years as Canadian Chief of Police has provided this 37-year-old man with a comprehensive background in law enforcement which is of great value now and in the future.

Nothing that drug and drug related crime has pretty well quieted down locally, McFarlin pointed out that much of such crime stems from 70 per cent stems and 30 per cent local population groups.

"The people in the community are fine and it is this spirit of cooperation between the residents of the community and the department that is extremely helpful in combating crime," McFarlin related during the discussion about his office and offering his compliment to the community for its efforts.

The sheriff also stressed another important facet of crime prevention and law enforcement in Hansford County and that is that his department is open seven days per week, 24 hours per day in contrast to some other similar departments where different operating schedules are in force.

A graduate of Dumas High School, McFarlin married his high school sweetheart and the marriage has been a good one for 16 years.

The sheriff and his wife and their two daughters, ages six and seven are members of the Church of Christ.

GIBSON'S - open 1 til 6
Sunday afternoon, See A.d.

Spearman Student Has Letter From Carter

Very few people have a letter from President-elect Jimmy Carter as does David Rosser of Spearman but then there are few people who have the individual personal interest in American politics that David has at this point in his life.

Simply stated, David said, "He'd love to be a politician" and during the campaign, in order to learn as much as he could about politics, he sent letters to three of the front-runners in both parties; President Gerald Ford, President-elect Jimmy Carter and Ronald Reagan who was then a candidate.

On last June 10 David sent a letter to each of them, requesting campaign literature and anything having to do with the campaign.

President-elect Carter's reply, dated June 28, 1976, was received in Spearman about June 30 from the campaign headquarters in

Plains, Georgia.

To David Rosser, then Presidential Candidate Jimmy Carter wrote:

I have received your request and I appreciate your interest.

You will find the materials you requested enclosed.

I will do my best never to disappoint you.

The letter is signed Sincerely, Jimmy

A senior at Spearman High School, David has plans for college which include political science and history so he can be active in the future political process in the United States.

As he phrased it when he brought the letter into the office of The Hansford Plainsman and Spearman Reporter January 13, "even though I'm not for Carter and even though there are some people who are not for Carter, he should receive our support because it is hard to

do a job when there are those trying to get you out of it."

In addition to his political interests in life, David has other interests.

He is a member of the Future Teachers of America, a former football team manager and will be seen as the Second Knight in the upcoming musical production of "Once Upon A Mattress" which will be presented February 19 at SHS.

David is the son of Mr. and Mrs. Morris Rosser of 312 S. Roland and he says that anyone who wants to see the letter should get in touch with him.

Not only will they see the letter from the President-elect, they'll also see the reply from President Ford which David received.

And as for his college career, he hopes to be a Red Raider from Texas Tech University in Lubbock after successfully completing his courses there.

Burglary

A Spearman man has been charged with burglary of a residence and released under \$2,500 bond in connection with the felony which was reported January 11 at 515 S. Archer.

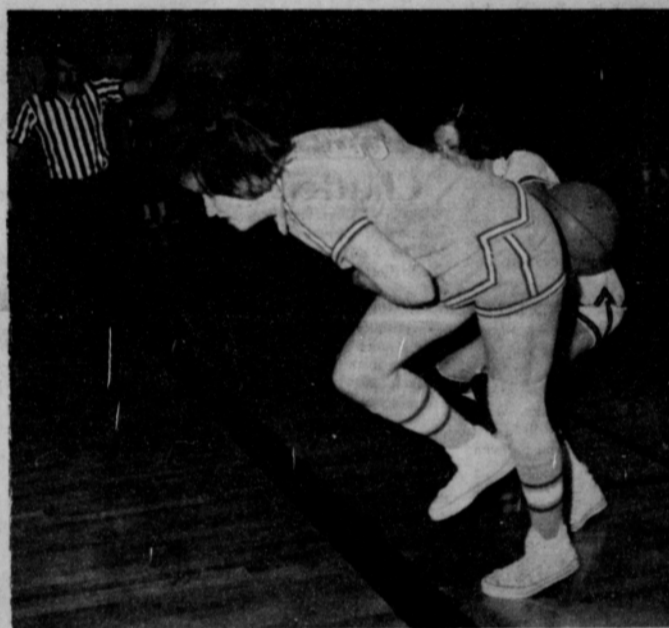
Sheriff R. L. McFarlin reported the residence was illegally entered and some furniture taken. The burglary was reported at 7 p.m. and by 7:30 p.m. the subject had been arrested and was booked and taken before Justice of the Peace Johnny P. Vernon.

Furniture taken was recovered, the sheriff reported. Owner of the residence is Gary Upchurch. The residence was unoccupied at the time.

No trial date has been set. This is the first felony in Hansford County in 1977, the sheriff noted.



A little trick shot—as all of the Lynxettes and Lynx "got in the action" at Canadian this week! Both teams won at Canadian, and almost won at Spearman Friday night! The Lynxettes blasted Dalhart here Friday, and The Lynx lost a heartbreaker!



The old "hide the ball trick" is displayed here by Tracie Keetch, as she dribbles behind her back, and prepares to take a shot! Keetch played an outstanding game at Canadian, and at Spearman Friday night. The Lynxettes now lead the District 1-AA race.

The Dalhart Wolves won a District 1AA basketball game in Spearman Friday night but just barely, 55 to 54. An over-eager Lynx quintet was hungry for the win and kept the pressure on the entire session only to be the holders of 54 points when the final buzzer sounded.

The Lynxettes did better -- 71 to 33.

The cold seasonal weather appeared to have its influence on the Lynx shooters as shot after shot hit either on the rim or came off the backboard and back of the basket and fell by the wayside.

Excellent rebounding work by the Lynx kept the session from being a runaway in favor of the victors. But

some of the free throws which came Spearman's way, had they fallen home would have managed to be the difference.

As an example, four points was the difference in the first period with the Wolves holding only a 16 to 12 count. In the second quarter, the Lynx had closed the gap to a 25 to 23 reading for the visitors.

The Wolves came out strong in the third stanza and at its end held a 41 to 35 advantage but the Lynx got warmer in that final session and closed the game to the point where, in the last three minutes of the game, the score was tied at least twice before the final buzzer settled the matter at 55 to 54 in Dalhart's favor.

The Lynxettes had an easy time in their game. They were never in any trouble and when the final buzzer sounded they had more than doubled the 33 points managed by the opposition. The Lynxettes, with 4:14 to go in the game, led 66 to 33 and Dalhart was shut out for the rest of the game.

LYNX TO BOYS RANCH TUESDAY Jan. 18th
The Lynx will travel to Boys Ranch Tuesday January 18th, with the games starting at 6:30.

Lion sausage at Pancake Supper!

Pancakes, sausage and syrup mixed with the excitement of a doubleheader basketball session is enough to create enthusiasm in almost anyone at this time of year.

And if that isn't enough add to the menu the fact that the proceeds from such a night of activities are utilized by the local Lions Club members in financially supporting some of their projects.

The word is there'll be fresh prepared sausage (and as the old saying goes cold weather is prime time for butchering the hog which has been fattened up for just such a purpose) served February 4 in the Junior High School cafeteria from 5 until 7 p.m. to accompany the pancakes, syrup, coffee, hot chocolate and milk.

All Lions Club members are selling tickets. And the price is right, \$2 for each adult and \$1 for each student ticket. In addition to the food for the inner being, the court action afterward should be enough to more than satisfy any avid basketball fan.

Spearman and Gruver girls will have at each other in the first of the two basketball sessions.

After the dust has settled on that meeting, the Spearman and Boys Ranch boys will have a go at each other.

And attendance is not restricted to Spearman residents. The Friday night session, weather or not permitting, is open to one and all with the price of admission.

And who knows how many gallons of syrup, coffee, hot chocolate or milk, or how many pounds of sausage, bacon or ham will go with all those pancakes. After it's all over, then we'll know.

Gibson's quilting business sale. Open Sunday.

One Traffic Death In December

The Texas Highway Patrol investigated six accidents on rural highways in Hansford County during the month of December, 1976 according to Sergeant C. E. Henderson, Highway Patrol supervisor of this area.

These crashes resulted in one person killed and six persons injured.

The rural traffic accident summary for this county during the first twelve months of 1976 shows a total of 41 accidents resulting in six persons killed and 26 persons injured.

The rural traffic accident summary for the 60 counties of the Lubbock Department

of Public Safety Region for December, 1976, shows a total of 514 accidents resulting in 10 persons killed and 255 injured, as compared to December, 1975, with 534 accidents resulting in 22 persons killed and 325 persons injured. This was 20 less accidents, 12 less killed, and 70 less injured in 1976 at the same period of time.

The 10 traffic deaths for the month of December, 1976 occurred in the following counties: Two each in Dickens, Deaf Smith; one each in Collingsworth, Hansford, Parmer, Swisher, Hockley and Montague.

Vote Today

Will Hansford Hospital Board members be elected in the future or will the county Commissioners continue to appoint them?

That decision will be reached in an election which was held January 15.

There have been several pros and cons on the issue.

In fairness to all concerned, your newspaper simply wants the people to decide on the matter in the manner duly authorized by law for such a decision--by the vote of the people served!

MARKETS

Wheat \$2.39
Milo 3.40
Corn 2.26

Luther Ryan Services Held

Funeral services were held at 2 p.m. Saturday in the First United Methodist Church with the Rev. H. O. Abbott Jr., pastor, officiating. Burial was in Hansford Cemetery by Boxwell Brothers Funeral Home.

Mr. Ryan was born in Montague, and had lived in Spearman 12 years, moving here from Sublette, Kan. He was a retired farmer and rancher, and a member of National Horsemen's Association. He married Ollie Slatton in 1921 at Cordell, Okla.

Survivors include his widow, one daughter, Mrs. Ruth Shaver of Spearman, two brothers, four sisters, three grandchildren and three great-grandchildren.

City Awards Contracts

The City Council of Spearman met in regular session of the Council Chamber of City Hall December 21, 1976, at 7:30 p.m. with Mayor C. Ralph Blodgett presiding. Present were Alderman Gene Cudd, Bill Pittman, Alton Ellsworth and Brad Beedy; City Manager Mark Neff, City Secretary Amelia Johnson, City Attorney J. E. (Chunky) Blackburn and visitors, L. D. Burns, a representative of T.O.K. Company of Amarillo and Eugene Yeager. The Pledge of Allegiance to our Flag was led by Councilman Ellsworth followed by the invocation by Blackburn. The motion by Beedy, seconded by Ellsworth that the minutes of the

December 14, 1976, regular City Council meeting be approved as written, carried.

The motion by Ellsworth, with a second by Cudd, to award the contracts for the Economic Development Administration water and gas improvements projects to the low bidders carried.

Approval by the EDA has been received for the awarding of the contracts.

W.E. Jones Drilling of Dumas was the low bidder for water wells Nos. 9 and 10. Bid was \$79,500.

Taylor Construction of Canyon was the low bidder for installation of the water sup-

ply line and miscellaneous equipment. Bid was \$71,583.60.

T.O.K. Company of Amarillo was the low bidder for gas system reconstruction and improvements to the system. Bid was \$282,079.50.

Contracts are to be signed in the near future.

Also City Council took no action on a proposed zoning ordinance or the Community Block Grant Program for this fiscal year.

Next City Council meeting is to be January 25 in the Council Chamber of City Hall, beginning at 7:30 p.m.

day, January 20, at 7:30 p.m. at Martin's Steak Gardens. The outgoing president and directors will receive their plaques at this dinner. Judge Richard N. Countiss will give the charge to the incoming officers and directors. Judge Countiss presents the chamber's role in the community and the role of the directors so well that he has become an annual part of our installation dinner.

CHAMBER MEMBERS IN PROFILE

Each month a member of the Chamber will be featured in our news column. The abston's were selected to be the members for this month.

In 1963 Ab Abston moved his family to Spearman where he became manager of the White House Lumber Company. Ab has done a good job and has been a good civic worker. Along with his work in the Chamber, Ab is a member of the Spearman Lions Club, the Masonic Lodge and the First United Methodist Church.

Like many of our busi-

nessmen, he is dedicated to his work and his community. Beside every good man is his wife, and Ab has a gem. Beulah was the teller at the drive-in window at the First State Bank for quite some time. She started working there in October of 1963 and retired December 31, 1976. We miss your friendly smile. Beulah. She now has more time to enjoy Regina and April (her beautiful granddaughters), who are the children of their son and daughter-in-law, Sam and Patty Abston, who also reside in Spearman, where he is employed by Northern Natural Gas Co.

Ab will soon be retiring and we would like to thank White House Lumber Company for bringing this fine family to our community and we are so fortunate having them to continue making their home here in Spearman. Good luck, Beulah and Ab, and thanks for coming our way.

Committees are now being formed and chairpersons will be soon selected. America's food chain today

may well begin in oilfields of the Middle-east. Since 1930, United States farm production has doubled, while energy consumption for agriculture uses has increased by 400 per cent. Today it takes a half barrel of oil to grow an acre of wheat and 1.3 barrels for an acre of corn. Adequate fuel supplies will be mandatory for the United States to continue its agricultural productivity. Reprint from the January 3, Water Brief Water, Inc.

EMPLOYMENT SERVICE:

There have been 28 male applicants register with the Employment Service during December. They are mainly general laborers. There have been 7 female applicants, which include bookkeepers, clerks, secretaries, practical nurses, etc. If you are in need of an employee, call 659-3330. These people need employment now.

THANK YOU:

The office staff of the Spearman Chamber of Commerce would like to thank the

membership for their added support in our time of need. The response was terrific and we appreciate each and every of you. A special thanks to Baker & Taylor, Don Schell and Frank Yancey.

Fifty-six West Texas State University football tickets have been pledged by individuals and businesses in Spearman to help them with their athletic finance problems. If you are interested in helping W.T., call the Chamber office, 659-3330. This is the only four year University in the Panhandle, and they need our support.

Don't forget to VOTE* Saturday, January 15, on the Hospital election.

...THINGS HAPPEN BECAUSE PEOPLE WHO CARE* MAKE THEM HAPPEN AND THEY HAPPEN WHEN PEOPLE WORK TOGETHER*...

Biggers Is

Guest Speaker

The Spearman 20th Century Club met on Thursday at the home of Deta Blodgett.

The guest speaker for the day was Attorney Cecil Biggers, who presented an absorbing report on Estate Planning. He emphasized the importance of wills and explained some of the Federal Government's new laws concerning estate planning and inheritance.

Following a beneficial question and answer session, hostesses Deta Blodgett and Mrs. Tommy Russel served dessert and coffee to those present, who included, Mr. Biggers and Mesdames: L.L. Anthon, Cecil Biggers, John Brown, George Buzard, Terry Curtis, Michael Holt, O.C. Holt, Wayne Hutchinson, C.A. Kleeberger, Woodville Jarvis, P.A. Lyon, Claude Newell, D.E. Spoonemore, J.R. Stump, Tom Sutton, and John Trindle.

The next meeting of the club will be Thursday, Jan. 27 at the home of Mrs. P.A. Lyon.

Girl Scout

News

Girl Scout Troup #42 met Tuesday, Jan. 11 with all members present. Dickie Allen, school nurse, gave the program on the basics of first aid.

After the program refreshments were served by Carla Nickles. While the girls had their refreshments they played the game of gossip, and afterwards the girls painted cans to make a small first aid kit and some of them worked on tying knots.

Attending were Shelia Brand, Mary Anne Evans, Angela Gaither, Cana Irlbeck, Alicia Langston, Tammy Ring, Kim Younger, and Carla Nickles; leaders, Georgie Gathier, Margarette Evans and Joyce Cummings.

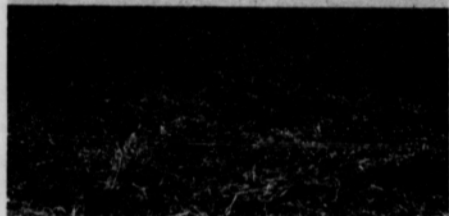
Tammy Ring will be hostess for the next meeting.



The average American eats one-half ton of cheese during a lifetime.



No cover causes land to be highly susceptible to wind erosion



Good cover, no danger of wind erosion

Good Cover Solves Wind Erosion

Wind erosion is detrimental to soil because it removes the silt first, which is the part of the soil containing plant food. After the silt becomes air borne, small fine clay particles begin to move along the soil surface causing an abrasive action on the soil surface grinding and cutting away the top soil layer.

Wind has a rolling motion as it moves along the soil surface and as it rotates it picks up soil particles and deposits them in road ditches, near trees, in land with cover, etc.

This erosion can be controlled by keeping cover on the land so that the wind never touches the soil surface.

Wheat stubble & straw, corn, or maize stalks, weeds or growing crops will furnish good soil cover and prevent wind erosion.

If no cover is available emergency tillage is another

alternative to prevent wind erosion by roughing up the soil by means of chiseling cross ways to the prevailing winds. The clodiness of the soil will prevent the wind from picking up the soil particles.

Chamber Chatter

The Chamber of Commerce annual Banquet will be Saturday, February 26, in the high school cafeteria. The Booker Bank Notes will be providing the entertainment. We will be having more publicity on the banquet in the near future. Tickets will go on sale Thursday, February 3, for \$6.50 each. You may call the Chamber office now for reservations.

The Installation Dinner for the incoming officers and directors will be held Thurs-

Before I lost 20 pounds my husband couldn't believe my thighs. Now he can't believe his eyes.

Judy Boyum's True Story: My husband never said, "You look fat." But he must have thought it.

Three years ago, my weight had reached 130, and on my 5'3" build that was just too much, since most of the pounds seemed to be between my waist and my knees.



See where my weight problem was twenty pounds ago.

It wasn't as if I hadn't ever dieted or exercised. I'd been going to a spa for a long time...and yet, the big change I wanted hadn't happened.

Then a friend began going to Pat Walkers. She told me about her treatments on the passive exercise unit, and how she didn't have to undress or muss her hair. When she started losing weight, I decided to give Pat Walker's a try.

I became a believer so fast. Within a month I'd lost eight pounds! Suddenly I had such energy, and I was feeling much happier with myself.

Over the next several months I went from a size 12 to a size 5. That summer, for the first time in my life, I wore a bikini.

I've been able to maintain my figure from that day two years ago to this. Now, as manager and buyer for a gift shop in Houston, I have the confidence I need to do my job well.

My husband thinks I look super. And you know what? No matter what your age, if you're as heavy as I once was, I'll bet your husband would like to see you happier, too. Maybe he'd give you a Pat Walker's program

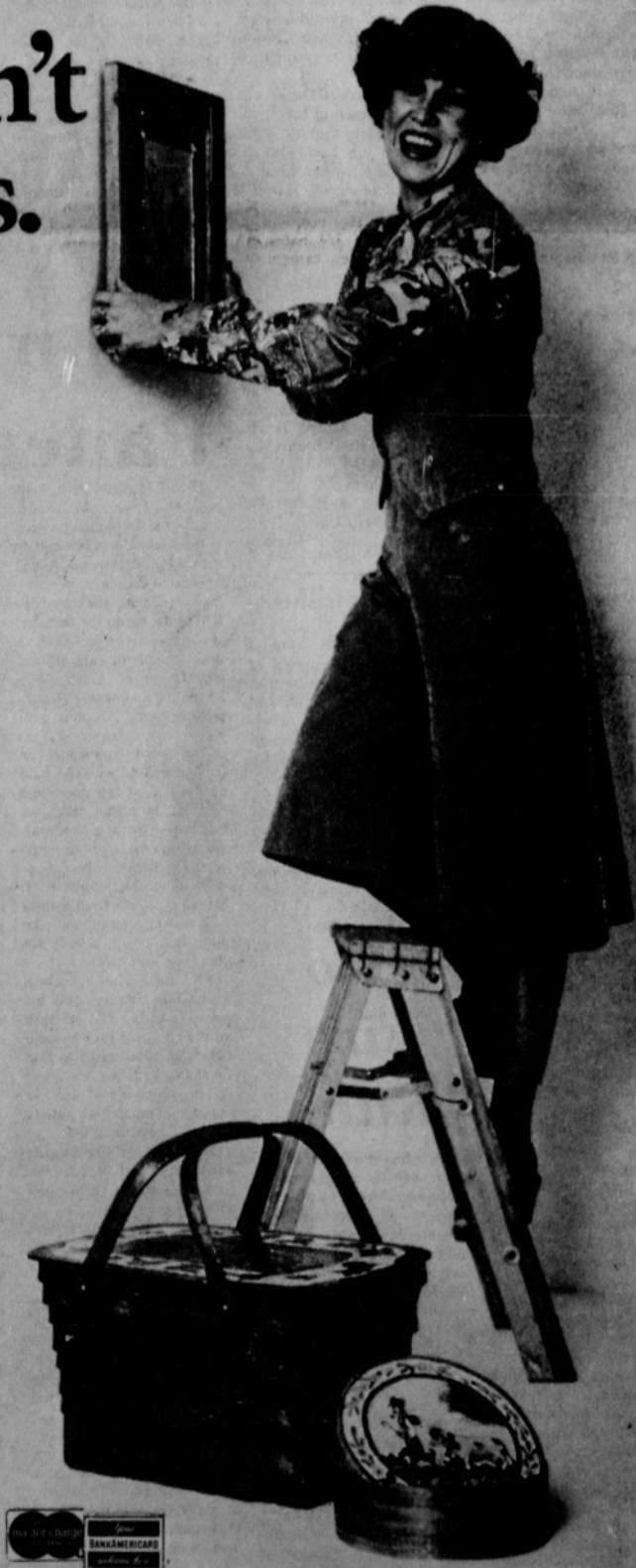
Go ahead. Call for your free figure analysis and sample treatment, and tell your husband all about it. This could be as special for you as it will be for me—you may be starting a new way of life.

Pat Walker's
Figure Perfection Salons, International
of Perryton, Tx., and Liberal, Ka.

DIAL 435-2423

514 S. MAIN * PERRYTON, TX

8 a.m. - 7 p.m. Monday thru Friday
- 9 a.m. - 12 Noon Saturday



Deadline: January 15, 1977

SAVE UP TO 10%!

ON **P-A-G** SEED

5% CASH REBATE

on certain size purchases of 11 or more bags when your signed order is on record by Jan. 15, 1977.

5% CASH DISCOUNT

if you elect to pay for your P-A-G Seed by Jan. 15, 1977. See your local P-A-G Dealer today.

P-A-G IS THE ONE TO PLANT FOR THIS AREA

P-A-G 344

Hybrid Field Corn

"I like P-A-G 344 because it is a very good dual purpose corn. I cut 158 bushels of dry corn per acre from 80 acres. And it looks like I would have cut around 24 to 25 tons of silage per acre. I will plant all P-A-G 344 next year."

BOBBY FAVER
Dalhart, Texas

FOR MORE INFORMATION, CONTACT YOUR LOCAL P-A-G DEALER.

P-A-G SEEDS, BOX 10303, LUBBOCK, TEXAS 79408
Performance of this seed may be adversely affected by environmental conditions, mutant strains of insects or diseases, or other factors beyond the control of P-A-G.



YOU NAME IT FROM THE DEN OF POISON PEN

Great goodness alive! I have had to go to work this past week, and never in my life have I had to get out of so many jams! I haven't run an offset press in many, many years, and had to go back into the shop and get out a funeral notice early Friday morning! On top of that, have had to re-do my picture system and am using new techniques in the dark room. If this wasn't enough to put the old man in shock, all of my typewriters quit at the same time and I had to re-build and clean all of them Thursday of this week. I still lack one typewriter, and lot of research on my 1250 press, and I'll have this thing figured out. I made the mistake of buying a bunch of brand new equipment, and refused to learn how to run it! But, this time next week,

I'll be running everything one way or another. You will probably notice the new style of news-writing for the paper, and I hope that you like it. I have a new editor working with our papers now, and he is Bob Bundy, from Alpine, Texas. I am very pleased with his work, and I think you will enjoy his stories. He will add a profession touch to the papers, and he has really worked hard this week. You will see a bunch of fine stories, and I'm betting that you will like them. I'll guarantee you one thing, we have some of the hardest working people left in this paper, that I have ever seen, and we are really having some fun! Keep that job work and advertising, and news coming in! And, forgive us if we are a little

late on some of our deliveries! The ice has just about ruined us this week on deliveries!

Some of our new crew members include Bob Wright, who is setting on the computer, typesetting machine; Bob Bundy, news, editor for Reporter-Plainsman, Evelyn Thiele, advertising: Bob is a graduate of the University of Denver. Evelyn is also a college journalism graduate (I think from Arkansas) and was head of the Jonesboro, Arkansas, advertising dept. She makes beautiful lay-outs, and is a very good sales woman. Bob Bundy and I worked so hard Thursday and missed the Jr. High School games Thursday night. We attended the hospital meeting and by 8:30, I told Bob I couldn't stand up and to come let's go home. We will cover the Jr. High games this week-end! And, Bob was really looking forward to seeing the varsity Lynz and Lynxettes in action Friday night against Dalhart.

Other employees in the county newspapers, include Faye Lynch, bookkeeper, news writer, officer supply dept; Sandy Bowar, Type-setter, add-make-up, news make-up, job dept; Brenda Davis, advertising, photo dept., and job dept. Gruver editor, Fran Maupin. We have probably missed some of our crew, but will get them next week! Keep sending in those cards and letters, and especially the advertising and job printing, and help stamp out poverty by buying office supplies here!

DEAR BILLY

How are you? How is Snooper? Say, could you do us a favor and have our paper sent to our new address? It is Route 1, Box 114, Alvarado, Texas, 76009. We'd appreciate it as we want to keep up with the news back home.

The family is getting used to the new routine. For a low pressure residency Jim is really being pushed. He's on all night every 4th night so

has to stay at the hospital. We've had bad weather so it takes longer to drive so he's been leaving shortly after 6 a.m. to get there (hospital) on time at 7 o'clock. The 1st year of residency is always the hardest they say.

We like our country home now that we are settled in. Sure do miss all our Spearman friends! Hope we can get up there frequently to see all of you.

If there is a charge for sending papers out of town, give me a bill. Thank You. As Ever

MARY THOMAS

EDITORS NOTE: Mary Thomas is the wife of Dr. Thomas, and Snooper, is a long haired siamese (Bela-mese) cat that refused to leave Spearman, so he moved in with us! And, Mary you asked about Snooper, he is doing fine. He has his own personal

chair in the den, and is doing very well. He slept in a car during the extreme cold weather this week, and I am sure when the big thaw comes this spring Snooper and I will have to come to see all of you, I know he misses all of you. So, don't be surprised if Snooper and I drop in to see all of you in the future.

The editor,.....

HIGH TEAM SERIES		TEAM HIGH GAME	
Equity	1907	Hi-Plains Auto	776
Co-Op	1882	Cates Men's Wear	767
Martin's	1823	Hi-Plains Auto	746
HIGH TEAM GAME		HIGH MEN'S SERIES	
Equity	683	Tommy Reger	598
Co-Op	683	Millard Tucker	502
Martin's	679	Ken Schneider	470
HIGH IND. SERIES		HIGH MEN'S GAME	
June Lee	532	Tommy Reger	221
Joyce Frost	524	Tommy Reger	206
Bertie Frazier	507	Millard Tucker	199
HIGH IND. GAME		HIGH WOMEN'S SERIES	
Bertie Frazier	205	Shirley Greenwood	492
June Lee	195	June Lee	476
Joyce Frost	192	Rita Reed	453
Tues. Night Mixed League 1-4-77		HIGH WOMEN'S GAME	
		June Lee	189
		Shirley Greenwood	183
		Shirley Greenwood	179
Bowling News		Thurs. Night Mixed League 1-6-77	
		Dairy Queen	40 16
		Baker & Taylor	35 21
		Hansford Implement	33 23
		Callaway Const.	32 24
		Davis Oil	26 29 1/2
		Anthony Electric	23 33
		Kenda & Jines	19 37
		Hergert Motors	15 40 1/2
Monday Nite Scatter Pins 1-3-77		HIGH TEAM SERIES	
		Baker & Taylor	2164
Won Lost		Won Lost	
Co-Op	49 1/2 14 1/2	H & H Water Wells	8 0
Equity	48 1/2 15 1/2	Lyon Insurance	5 3
Anthony Electric	34 30	Cates Men's Wear	4 4
Baker & Taylor	32 32	Bunkhouse	4 4
Martin's	31 33	Hi-Plains Conoco	4 4
Evelyn's	24 30	Hi-Plains Auto Parts	4 4
Excel	19 45	John's Hair Styles	3 5
Spear. Steak House	18 46	Spearman Auto	0 8

GIBSON'S DISCOUNT CENTER

WHERE YOU BUY THE BEST FOR LESS

317 MAIN
SPEARMAN

FINAL

OPEN SUNDAY 1-6

CANDLES

ENTIRE STOCK **75% OFF**

FAMILY BIBLES

REG. \$14⁸⁸

\$7⁹⁷

SANKYO SEIKE DIGITAL CLOCKS

40% OFF

POLAROID SUPER SHOOTER CAMERA

\$17⁰⁰

Rings, Necklaces, Earrings and Cuff Links

60% OFF

Make-Up

REDUCED **50%**

ALL SHIRTS MEN'S & BOYS'

REDUCED **25%**

ALL ELECTRICAL APPLIANCES

25% OFF

ALL SHOES & BOOTS

25% OFF

ALL PAINT

40% OFF

FISHING REELS

REDUCED **25%**

ALL OTHER FISHING LURES & TACKLE **50% OFF**

BEDSPREADS

ENTIRE STOCK **1/3 OFF**

ALL PAPER BACK BOOKS

40% OFF

WHERE YOU ALWAYS BUY THE BEST FOR LESS

GIBSON'S DISCOUNT CENTER

317 Main Spearman Open Weekdays 9 A.M. - 6 P.M.

SHELF PAPER

50% off

ALL RUBBER FOOTWEAR

25% OFF

SHEETS AND PILLOW CASES

25% OFF

Oil	2126	Spear. Steak House	18 50
Way Const.	2116	HIGH TEAM SERIES	
HIGH TEAM SERIES		Baker & Taylor	2078
er & Taylor	741	Co-Op	1934
ert Motors	734	Equity	1884
Way Const.	732	HIGH TEAM GAME	
HIGH IND. SERIES		Baker & Taylor	775
Reger	525	Baker & Taylor	679
Shaver	484	Equity	660
Mercer	479	HIGH IND. SERIES	
HIGH IND. GAME		Bertie Frazier	531
Reger	189	June Lee	515
ie Taylor	179	Marion Nollner	510
Reger	178	HIGH IND. GAME	
HIGH IND. SERIES		Penny Thomas	203
Everson	476	Beth Baker	203
ie Crouch	452	June Lee	198
Sha Shaver	446		
HIGH IND. GAME			
Everson	179		
ie Crouch	172		
ada Russell	166		



'Gay Nineties Club' Party Planned

of the Club in recognizing them and enjoy visiting with them, their friends, and families.



A community party has been planned for Sunday, January 16, honoring the members of the ultra-exclusive "Gay Nineties Club"...

of 3:00 p.m. to 4:30 p.m., at the LaCasita Room of the Gruver State Bank. The "Club", formed in 1973, draws membership from the community and was started so that others in the community could take heart that life truly begins at "90" and to join with the members

1977 Club meeting, please contact Fran Maupin at 733:

2564 in Gruver or send a card to Fran Maupin at Box 542, Gruver in time to make special plans for your being at the party.

Cookies, punch and coffee will be served during the party hours. Everybody is invited to come and get a new lease on life from having these delightful members of our community. Sunday,



Now: A popular fashion today is soft shag carpeting. And it's easy to clean (and pile is, too!) with Spray 'n Vac, the no-scrub rug cleaner. Simply spray it on and wait about an hour while the foam brings greasy dirt to the carpet surface. Then all you have to do is vacuum up the dried foam and your carpet is clean and bright again!

KBMF RADIO	KBMF RADIO
Needs Eight Men, Women, or Students with transportation for Light Delivery	Needs eight telephone Receptionists at once
work at once	Work At Once
Full or Part Time	Full or Part Time
No Experience Necessary	No Experience Necessary
Between 9:00 A.M. & 5:00 P.M. Mon. - Sat.	Between 9:00 A.M. and 5:00 P.M. Mon. - Sat.
417 S. Amherst Kengle Building, Room 7 No phone calls accepted	Apply in Person 417 S. Amherst Kengle Building, Room 7 No Phone Calls Accepted

MARKDOWN QUITTING BUSINESS SALE

ALL STORE FIXTURES FOR SALE!

EVERY ITEM REDUCED 20% OR MORE

Bike Tires Tubes Accessories 50% off	All Radios, Stereos, 8-Track Players & Record Players REDUCED 25%	NYLONS Stocking & Panty Hose BUY ONE PAIR AND GET ONE FREE PAIR
ALL OIL BUY 4 QUARTS GET ONE FREE	ALL TOYS & GAMES 50% OFF	
ALL POWER TOOLS 25% off	CIGARETTES ALL BRANDS \$4⁷⁹ CTN.	LP'S REG. \$6⁹⁸ \$3⁹⁹
BLOW HAIR DRYERS 1/3 OFF	LADIES HEAD SCARFS 4 FOR 97^c	8-TRACK TAPES REG. \$7⁹⁸ \$4⁹⁹
Bic Butane Lighters RETAIL \$2⁹⁹ 97^c	TUFFIES TRASH BAGS	ALL other LP'S and TAPES REDUCED ACCORDINGLY
		REG. \$1¹⁹ REG. \$4⁹⁹ 73^c \$2⁹⁹

MEN' & BOYS' BELTS 1/2 PRICE	TOWELS & WASH CLOTHS 1/3 OFF	GLASSWARE 50% OFF
SUNGLASSES 50% off	BILLFOLDS 1/2 price	FURNACE FILTERS 39^c

WHERE YOU ALWAYS BUY THE BEST FOR THE

GIBSON'S DISCOUNT CENTER

317 Main Spearman Open Weekdays 9 A.M. - 6 P.M.



World Missionaries from Gruver
Gene and Josephine Fletcher

Fletchers On Mission In India

An inspiring Christian couple from Gruver are in the process of making this world a better place for their having been here in joining an evangelism group who are in mission meetings in Sri Lanka (formerly Ceylon) off the coast of far-off India.

Mr. and Mrs. Gene Fletcher left last Tuesday to take part in this crusade which is sponsored by World Evangelism, Inc. Dub Jackson is president of the organization and sixty people from churches all over Texas are a part of the group who will minister to 23 Baptist churches in Sri Lanka. The mission was requested by the churches in Sri Lanka and after much time spent in setting up such a mission, an official invitation was forthcoming from Sri Lanka's Ambassador to the United States.

The group, sixty strong, left from the Dallas-Fort Worth Regional Airport with stops in New York, London, and Colombo which is the capital city of Sri Lanka. They spent 48 hours in the

capital city for briefing before going to their appointed stations.

Gene, Josephine, and Ben Mieth, who is head of the International Crusades, make up one team who will stay in the central Sri Lankan town of Kandy (pronounced just like 'candy') and they will work each day with the church in Matale. Kandy and Matale are in the mountains and conditions are believed to be quite primitive. They will be conducting revival services in the evenings and doing door-to-door witnessing during the day.

The group will return to the States January 18th. The Fletchers have been in phone communication with their daughter, Kathy (Mrs. Bob Gillispie) and have reported that the mission is tremendous and that they have been given a most warm and loving reception by the people there.

Gruver is indeed proud to have two such Christian ambassadors represent us in the world mission field.

Library Board Meeting

Hansford County Library Board met in regular session on January 12, 1977, at 3:30 o'clock in the Library Board Room.

Chairman, Mary Alice Gibner presided over the business meeting.

Minutes of the previous meeting were read and approved as read and the treasurer's report was given.

The following library report was presented: 1166 adult books and 306 children's books were circulated in the month of December, for a total circulation of 1472 books. Nine new membership cards were issued. One hundred twelve new books were processed. The new books include the non-fiction books given to our library by the Amarillo Public Library through the Texas State Library Systems Title I books.

The Library Board will employ a new Librarian after the first of February. Employment Applications are now available at the Library

for any person wishing to apply for the position. Applications will be accepted from January 17th until February 1, 1977. Interested persons may inquire at the Library.

The copier at the Library has been out of order. A Minolta Copier will be available at the Library for the next few weeks on a trial basis.

Those present at the meeting were James Cunningham, Mrs. Charles Eaton, Mrs. J.R. Stump, Mary Alice Gibner and Mrs. Dick Kilgore.

Happy Anniversary

Mr. and Mrs. James Scroggs will celebrate their wedding anniversary on January 22, and Shannon Dale Scroggs will celebrate his birthday January 15. These occasions were omitted from our Happy Anniversary and Happy Birthday columns for this month.

Lion sausage and pancakes---Feb. 4 Hi school cafeteria

Tickets available from any Lion----



Basketball 1977 Lynx & Lynxettes

Jan. 4.....*River Road.....	H.....	4:00
Jan. 6.....B-Team Tournament.....	T.....	Fritch
Jan. 7.....Channing [Homecoming] H.....	6:30	
Jan. 11...*Canadian.....	T.....	4:00
Jan. 13...Jr. Hi. Tournament.....	H.....	Spearman
Jan. 14...*Dalhart.....	H.....	4:00
Jan. 18...*Boys Ranch.....	T.....	6:30
Jan. 20...Stinnett 7th, 8th & 9th	T.....	5:00
Jan. 20...Stinnett.....	H.....	5:00
Jan. 20...Tournament.....	T.....	Waka
Jan. 21...*Panhandle.....	H.....	4:00
Jan. 24...Perryton.. 7th, 8th & 9th	T.....	4:00
Jan. 24...Boys Ranch.....	H.....	4:30
Jan. 25...*River Road.....	T.....	4:00
Jan. 27...B-Team Tournament.....	H.....	Spearman
Jan. 28...*Canadian.....	H.....	6:30
Feb. 1.....*Dalhart.....	T.....	4:00
Feb. 4.....*Boys Ranch.....	H.....	7:00
Feb. 4.....Gruver.....	T.....	4:00
Feb. 7.....Boys Ranch.....	T.....	5:00
Feb. 7.....Perryton.. 7th, 8th & 9th	H.....	5:00
Feb. 8.....*Panhandle.....	T.....	4:00

TEACHERS
West Texas State University
ANNOUNCES ITS
Spring Semester Class in Perryton
EDUCATIONAL PSYCHOLOGY,
EdX 5510-1
Time and Place: Thursday afternoons
at 4:15 p.m. in the Mize Vocational
Center, Room V-6
Registration: Thursday, January 20,
at first class meeting
Instructor: Dr. Dorothy Barnes
Registration will be fully processed
at the designated time. Please come
prepared to pay by check. Tuition
and fees for three hours (not
including books) is \$69.95 and for
six hours, \$89.90.
WTSU is an Equal Opportunity
Institution

<p>White House Lumber Co. 306 Davis 659-2818</p>	<p>Hansford Implement Co. Hwy. 207 659-2712 Spearman, Texas</p>	<p>Consumer Sales Co. 421 W. Kenneth Ave. Spearman, Texas 659-2012</p>
<p>Jr. Lusby "Cats" W. Gruver Hwy. Spearman, Texas 659-3766</p>	<p>DRILLING BAKER & TAYLOR COMPANY</p>	<p>Equity Elevators 104 Collard Spearman, Texas 659-2420</p>
<p>Speartex Grain Co. 514 Collard 659-3711</p>	<p>Gruver State Bank GRUVER 733-5061</p>	<p>Lil' Lynx Shoppe 312 Main 659-2608 Spearman, Texas</p>

B GRUVER

A S K E T



B A L L 76

1976-77 COMPOSITE BASKETBALL SCHEDULE

			Varsity	Junior Varsity
DEC. 21	STRATFORD	HOME - 4:00	Boys-Girls	Boys-Girls
DEC. 27-28-29	AMARILLO TOURNAMENT		Boys	Boys
DEC. 30-31	DUNCANVILLE TOURNAMENT		Girls	Girls
JAN. 3	SUNRAY	HOME - 4:00	Boys-Girls	Boys-Girls
JAN. 4	PHILLIPS	AWAY - 4:00	Boys-Girls	Boys-Girls
JAN. 6-7-8	STRATFORD TOURNAMENT		Boys-Girls	Boys-Girls
JAN. 6-7-8	FRITCH JUNIOR VARSITY TOURNAMENT			
JAN. 11	BOOKER	HOME - 4:00	Boys-Girls	Boys-Girls
JAN. 14	FRITCH	AWAY - 4:00	Boys-Girls	Boys-Girls
JAN. 18	WHITE DEER	AWAY - 5:30	Boys-Girls	Boys-Girls
JAN. 21	STINNETT	HOME - 4:00	Boys-Girls	Boys-Girls
JAN. 25	STRATFORD	AWAY - 4:00	Boys-Girls	Boys-Girls
JAN. 28	PHILLIPS	HOME - 4:00	Boys-Girls	Boys-Girls
FEB. 1	SUNRAY	AWAY - 4:00	Boys-Girls	Boys-Girls
FEB. 3-4-5	WHITE DEER JUNIOR VARSITY TOURNAMENT			
FEB. 4	SPEARMAN	AWAY - 4:00	Girls	Girls
FEB. 8	FRITCH	HOME - 4:00	Boys-Girls	Boys-Girls
FEB. 11	WHITE DEER	HOME - 6:30	Boys	Boys
FEB. 15	STINNETT	AWAY - 5:00	Fresh. Boys	Boys
FEB. 15	STINNETT	AWAY - 6:30		

1976-77 JR. HIGH BASKETBALL SCHEDULE

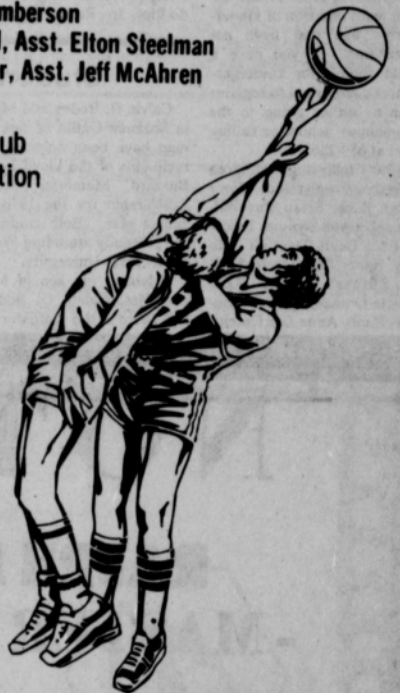
DEC. 20	SUNRAY	AWAY - 4:00	7&8	G&B
JAN. 3	PHILLIPS	AWAY - 4:00	7&8	G&B
JAN. 10	FRITCH	AWAY - 4:00	7&8	G&B
JAN. 17	STRATFORD	AWAY - 4:00	7&8	G&B
JAN. 20-22	WAKA TOURNAMENT		7th only	G&B
JAN. 24	STINNETT	AWAY - 4:00	7&8	G&B
JAN. 27-29	CHANNING TOURNAMENT		8th only	G&B
JAN. 31	SUNRAY	HOME - 4:00	7&8	G&B
FEB. 3-5	GRUVER TOURNAMENT		7&8	G&B
FEB. 7	PHILLIPS	HOME - 4:00	7&8	G&B

Athletic Director: Stocky Lamberson
 Girls Coaches: F.G. Crofford, Asst. Elton Steelman
 Boys Coaches: Dick Sumpter, Asst. Jeff McAhren

The Spearman Lions Club extends a special invitation to everyone to attend

Pancake Supper

The Lions Club is planning a pancake supper for Feb. 4 in the Junior High School cafeteria from 5 til 7 p.m. The supper will be before the basketball games scheduled that night. Spearman and Gruver girls will be playing and Spearman and Boys Ranch will also play. Cost of the supper is \$2.00 for adults and \$1.00 for students. Tickets may be purchased from any Lions Club member.



Gruver Statesman

Universal Oil Company
 Box 688
 Phone 733-2463
 Gruver, Tex.
 79040

PASS IT ON!

Gruver State Bank
 3 Main Plaza
 733-5061

Gruver John Deere Service Center
 733-2043
 Gruver Tex.

THE SPEARMAN REPORTER

Hergert Pontiac Buick GMC
 So. Hwy. 207
 Phone 659-3722
 Spearman, Texas

Double "D" AG Center
 733-2459
 Gruver, Tex.

El Vaquero
 425 Main
 733-9407
 Gruver Tex.

Gruver Tractor & Equipment
 433 Main
 733-2432
 Gruver, Tex.

Gruver Texaco Service
 733-2411
 Fletcher Petroleum Products
 733-2511

Enroll Your Kindergarten Age Child

The Spearman Elementary School is starting the 1977-78 kindergarten students list. It is important that next years' students be known now in order that they may be given information on the immunizations and other planning which is necessary.

If you have a child or know of any child whose birthdate was prior to September 1, 1972, and who will be 5 years old before or as of Sept. 1, 1977, please complete the form and return it to the Spearman Elementary School, 511 S. Townsend. This should be done before January 20, 1977.

REGISTRATION FORM FOR 1977-78 KINDERGARTEN

Full Name of Child	Parent's names	Address & Phone	Birthdate	Sex

Please check whether the child will be a town student or a bus student. () ()
Town Bus

Please list other younger children below:

Register Your Kindergarten Age Children

Elementary school principal Allen Alford stated this week that he is sure there are still many children of kindergarten age that have not registered. If you have a child eligible for kindergarten, you are asked to register him by either going to the elementary school or calling him at 659-2565.

The following children have been registered: Barry Dean Beck, Brian Ray Belows, LeeAnn Bynum, Pamela Elice Dean, Dauthilt Jean Fry, Nancy Ann Garcia, Maria Elizitas Gomez, April Presta Graham, Jeffrey Thomas Hand, Anna Lee Hutchi-

son, Bonnie Lea Jarvis, Lisa Ann Love, Melinda June Phelps, Cynthia Leigh, Cirildo Rios, Jr., Ramon Rosales,

Johnny Temp Sheppard, Jeffery Wilson Spencer, Frances Straily, Rhonda Lynne Stumpf, Jamie Adams Sut-

ton, Shelly Rana Tomlin, Teresa Vela, Kristine Lynn Williford, Joshua Cody Zachiesche.

Students Receive Scholarships

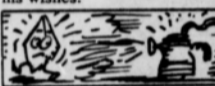
Calvin H. Bodey and Maria Suzanne Gatlin of Spearman have been selected as recipients of the Lloyd Lynn Buzzard Memorial Trust Scholarship for the 1976-77 school year. Both students are presently attending West Texas State University.

Calvin is the son of Mr. and Mrs. Calvin G. Bodey and Suzie is the daughter of

Mrs. Floydgan Gatlin.

The trust fund was established by residents of Hansford County in memory of Lloyd Lynn Buzzard who was killed in Viet Nam in June of 1969. The funds in the trust were donated by his family and the citizens of the area as an expression of their love, respect and admiration for Lloyd Lynn Buzzard. Mr.

Buzzard had a deep and sincere concern for all persons desiring a full and complete education and this trust was created to carry on his wishes.



A blow torch can burn a diamond.

What Is Home Family Living?

Do you spend as much time making your family and home as successful as you do in pursuing social and professional success? So many times in today's world we get so involved with our jobs and school or out side activities that we often seem to forget our families, the basic unit of society.

The home is the first and most effective place for children to learn the lesson of life: truth, honor, virtue, self control, the value of education, honest work, and the privilege of life. Nothing can take the place of the home in rearing and teaching children, and no other success can compensate for failure in the home.

Some examples of family activities are: Write a skit, play checkers, bake a cake to take to a neighbor, visit someone in the hospital, play games with your children. It doesn't matter what you do as long as you do it as a family. Family Home Evening is a time to cultivate love and understanding in your home.

There is beauty all around, when there's love at home. There is joy in every sound when there's love at home. Peace and plenty here abide Smiling sweet on every side Time doth softly sweetly glide when there's love at home. In the cottage there is joy when there's love at home. Hate and envy ne're annoy when there's love at home. Roses bloom beneath our feet All the earth's a garden sweet

Making life a bliss complete when there's love at home.

Kindly heaven smiles above when there's love at home. Sweeter sings the brooklet by Brighter beams the azure sky Oh there's one who smiles on high when there's love at home.

FGBMFI Speaker Named

Larry R. Boggs, Jr., D.C. of Dumas will be the speaker at the Monday, January 17 meeting of the Spearman Chapter of the Full Gospel Business Men's Fellowship International. He is vice president of the Dumas Chapter. The meeting will be at Martin's Steak Garden with the evening meal set for 7 p.m. and Boggs to speak at 8 p.m. All pastors and their wives are guests for the evening meal.

Larry was born in Amarillo, August 1948, then he grew up in Hereford. He graduated from Texas Chiropractic college in 1971. He and his wife, Linda, have three children. Larry was raised in the Church of Christ, he tried hypnotism, mind control and ESP until He found Jesus Christ on Oct. 20, 1973. The young fellow has a very interested witness in his work.

Everyone is invited to be present even if you are not a member of the chapter.

Other fellowship evenings have been scheduled for February, March and April. Sammy Ventura of Dallas will be the February 21 speaker and Laurence Hammond, author of "Beyond Love" will be here March 21 and on April 18, Jerry Jordan will be the speaker. March 21 and on April 18, Jerry Jordan will be the speaker.

TRAP SHOOT SUNDAY

The Morse Lions Club will sponsor a Trap Shoot Sunday, January 16 beginning at 1 p.m. They invite everyone out to the shoot.

KBMF RADIO GIFT BOOK

WITH OVER \$300⁰⁰

IN GIFTS, SERVICES, FOOD, MERCHANDISE AND ENTERTAINMENT

FOR ONLY \$24⁹⁵

LISTEN FOR YOUR PHONE TO RING

"I'll Be Calling You Soon"



OR CALL US FOR FREE HOME DELIVERY

435-5626

WHEN THE KBMF RADIO GIFT BOOK TELEPHONE OPERATORS CALL YOU, YOU WILL BE ENTITLED TO BUY YOUR GIFT BOOK WORTH OVER \$300.00 FOR ONLY \$24.95.

Your KBMF Radio Gift Book has many things for everyone in your family. There are two sections in your gift book. The first section is filled with \$250.00 in merchandise, food and services from participating merchants on a no charge basis. The second section contains \$75.00 food and dinners on a buy-one-get-one basis. The KBMF Radio Gift Book is made possible by the following progressive merchants.

PLAINS RESTAURANT
WRIGHT'S DINER
EVELYN'S BEAUTY SALON
CONSUMERS SALES COMPANY - COOP

SILVER SPUR STEAK HOUSE
C & T AUTOMOTIVE
WOOLF CREEK GOLF COURSE
NORTHSIDE "66"

RANGER CERAMIC SHOP
SIMPSON'S SERVICE STATION
SHIRLEY'S CURIO
LEO SHULER PHOTOGRAPHIC STUDIO

J & O CLOTHING
SAIED'S LADIES WEAR
SELECT CARPET COMPANY
KIRBY COMPANY OF PERRYTON

LOUISE'S HY-STYLE
EIGHTH AVENUE DRY CLEANER
HOME TROPICAL FISH
VAN HOESEN SHAMROCK

WE ACCEPT THESE CREDIT CARDS



NOTICE

RALPH MURRAY - MASTER PLUMBER -

is now employed at

BROWN L SUPPLY CO.

We will be able to assist you in:

- ★ New Construction
- ★ Remodeling
- ★ Repairs
- ★ Sewer Lines
- ★ Heating

8 Years experience - available now.

Home of all your plumbing supplies.

We are dealers for Kitchenaid, Tappan, & Speed Queen

THE



BROWN SUPPLY CO.

102 W. Kenneth
659-3781

SPEARMAN, TEXAS
79081

BOX 1115



Insurance Corner

CRIB SAFETY

It is estimated that some 200 infants die each year and another 40,000 are injured in accidents involving cribs. If you are buying a new crib, here are some things to look for: Buy a crib with as narrow a space as possible between the slats. Be sure that the mattress you buy fits the crib very snugly. This will prevent baby from wedging its head between the mattress and crib. If you can fit more than two fingers between the mattress and crib, the mattress is too small. Buy a crib with a latch or lock for the drop side that can't be easily tripped by baby. Most accidents occur when infants fall when climbing out of their crib. So buy one with as large a dis-

tance between the top of the rail and the mattress support. Check the crib's metal parts and edges of crib frame for sharp or rough edges. Buy bumper pads and make sure they run around the entire crib and that tie or snap in place.

This information has been brought to you as a public service by John R. Collard, Jr. your one stop answer to complete business and personal insurance protection. Life, home, auto, group insurance, and profit-sharing plans. See John R. Collard, Jr., 405 Davis St., Telephone 659-2501.



-Wedding Is Planned

Mr. and Mrs. Truman J. Been of Gruver, Texas, wish to announce the engagement of their daughter, Jackie Lynn, to Scott Arnold Barkley, son of Mr. and Mrs. Howard Barkley, also of Gruver.

Scott is presently attending Southwestern Oklahoma State University in Weatherford, Oklahoma, and Jackie will graduate from Gruver High School this Spring. A June wedding is planned. The Beens are former residents of Larksburg, Colorado.

the compilation of By-Laws for Hospital Board, required by the change from a County Hospital status to that of a Hospital District, until the next board meeting in February.

The board paid current bills, including liability insurance and American Hospital Association membership, before adjourning.

The Hansford Clinic is operational Monday through Friday from 9 a.m. to 5 p.m. and from 9 a.m. to noon on Saturday. It was pointed out the clinic is closed on Wednesday.

Dr. Khun Son is at the clinic.

Board members present included Chairman Dick Kilgore; Richie Fletcher, vice chairman; Jimmie Vernon, secretary, and Bill Eiling, Max Baggerly and Wayman Edwards.

Visitors were Billy Miller, Mrs. Cecil Biggers and Robert Bundy Jr.

Union Church Missionary Meet

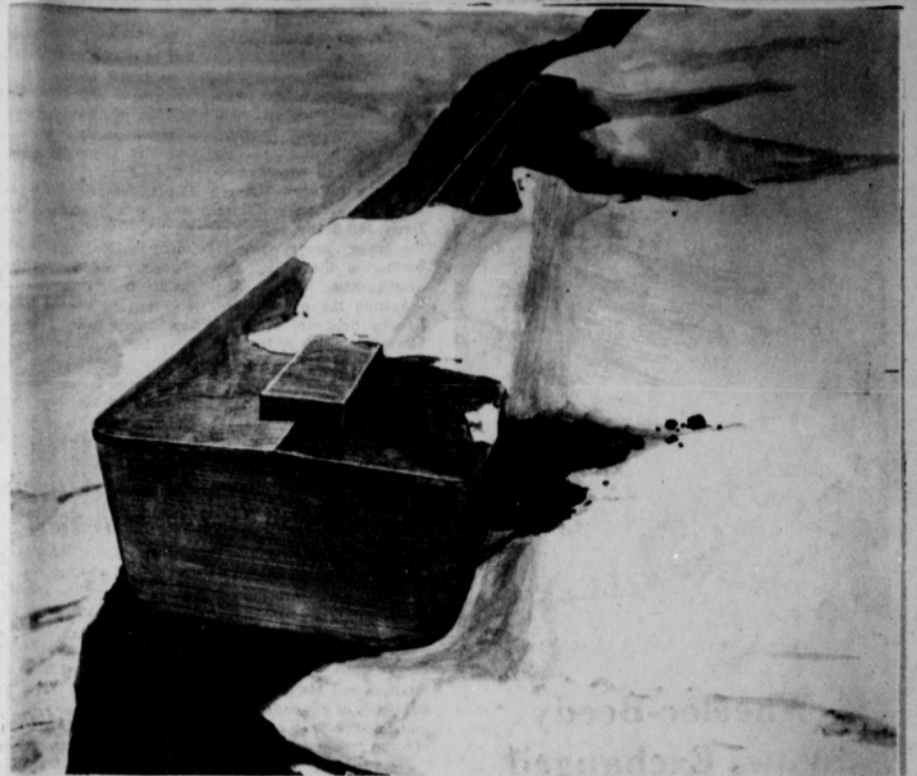
The Spearman Union Church Missionary Ladies met January 11 at the church. President Adalyn Barnes called the meeting to order.

Attending were Adalyn Barnes, Doris Jean Pipkin, Wilma Francis, Patsy Burress, Myrtle Fullbright and Jessie Schubert.

The next meeting will be January 18.

Choir Members Send Out S.O.S.

Members of the high school choir are sending out a S.O.S. for anyone who has white sheets or large cardboard boxes that they may



This drawing by Elfred Lee is based on eyewitness sightings of Noah's Ark on Mt. Ararat. The drawing is believed to be an accurate depiction of what Noah's Ark really looked like.

"In Search Of Noah's Ark" Will Show Here

Sun Classic Pictures' "In Search of Noah's Ark" starts at the Lyric Theatre in Spearman on January 19-20.

The feature film explores the ancient legend of Noah and examines evidence supporting the Ark's existence

today atop Mt. Ararat in Eastern Turkey.

The film, produced by Charles E. Sellier, Jr., directed by James L. Conway is another in a series of motion pictures designed to explore unresolved mysteries

of the world.

Previous films in the series have been "Chariots of the Gods", "The Outer Space Connection" and "The Mysterious Monsters". The screenplay which was written by producer Sellier and

director Conway features the recently filmed rediscovery of the Ark by an expedition.

The picture is based on the book "In Search of Noah's Ark" which was co-authored by Ark scholar David Balsiger and producer Sellier.

Hospital Board Acts On Items

The Hansford Hospital Board reviewed some old business items and took action as required on some new business items at the monthly meeting Thursday, January 13, in the library at Hansford Hospital.

All members of the board were present.

Under old business, the board completed preparations for the annual Medicare inspection to be conducted next month, heard the report that the Hansford Clinic is now in operation at 721 S. Evans and were

informed that the law suit has been filed against Dr. Stanley D. Abrams now of Keene, Texas, and that the board is awaiting service on the doctor and trial date to be set.

Under new business, the board reviewed By-Laws and Rules and Regulations for Medical Staff and brought them up-to-date in order to comply with Medicare Rules and regulations and the Joint Commission on Accreditation Standards.

In other new business, the board delayed any action on

use to take them to the school or call 2584 or 2585 and someone will pick them up.

These items will be used in the high school musical "Once Upon A Mattress" which will be presented on February 19.

Kindergarten Day At Waka

Children in the Waka School District who are eligi-

ble for kindergarten next fall are invited to attend a special kindergarten day, Monday, January 31, 1977. Texas law requires that a child be five on or before September 1, in order to attend kindergarten.

There will be a milk break, which will be 10 cents. If you wish your child to stay for lunch, he may; lunches are 50 cents. School begins at 8:15 and ends at 11:25. If your child stays for lunch, he

will be ready to leave at 12:00.

and for them to get better acquainted with the teacher, Judy Anderson. If you have any questions, please feel free to call the Waka School at 435-4308.

Thank you, Judy Anderson Kindergarten Teacher Waka ISD



Cranberries will keep for 4 to 8 weeks in your refrigerator. Or you can freeze them with no preparation.

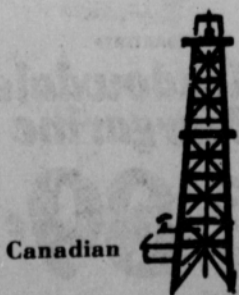
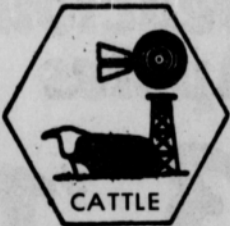
Bulletin Board

HOSPITAL BOARD

ELECTION TODAY

- Be sure and vote -

- TODAY Saturday -



Perryton

"We don't want to get bigger, We want to get better!"





Wheeler-Beedy Vows Exchanged

The First Baptist Church of Spearman, Texas was the scene of the Wednesday evening, December 29, wedding of Becky Jan Wheeler and Bradley Scott Beedy.

The officiant for the double ring ceremony was the Reverend Russell Pogue, minister of the First Baptist Church.

Parents of the bride are Mr. and Mrs. Edward Wheeler, and the groom's parents are Mr. and Mrs. Bradford Beedy, both of Spearman.

Wedding guests were registered by Miss Lee Ann Uptergrove of Spearman.

Organ music was presented by Mrs. Neal Pack, and she accompanied Miss Debra Clawson of Gruver as she sang "Time in a Bottle" and "The Lord's Prayer".

The altar was decorated with two seven branched gold candelabras and gold baskets which held gold mums with tangerine carnations. The candles were lighted by the bride's cousins, Misses Jane McGuffin and Jill Heatly of Mangum, Oklahoma.

The aisle of the church was decorated with aisle candelabras with hurricane globes. They were entwined with greenery and tied with gold bows.

Attending the bride were the bride's sister, Mrs. Jerry Hart of Gruver, who served as matron of honor and Miss Rajan Martin of Spearman who was maid of honor.

Bridesmaids were Miss Christi Gressett of Spearman, Miss Elaine Martin of Ackerly, Texas, and Miss Pat Langford of Hearne, Texas.

They wore formal gowns of rust jersey designed with a V-neckline and empire waist and enhanced by a diamond pattern of self fabric weaving at the bodice. The dresses were completed by soft capes of jersey enhanced with a flourish. They carried Woburn Abby roses tied with gold ribbon.

Jennifer Hart, niece of the bride, served as flower girl. She wore a rust-colored velvet dress with a lace pinafore over it.

The bride, who was escorted to the altar by her father, selected a formal gown of candlelight chiffonette over bridal taffeta designed with a Queen Anne neckline of scalloped Alencan lace and seed pearls. Her long full sleeves were appliqued in lace and seed pearls and were caught up at the wrists by deep cuffs of lace and seed pearls which

fell over the hands. The softly gathered A-line skirt was appliqued in lace and seed pearls and fell to a scalloped hemline which swept to back fullness and cascaded into a full chapel train.

She wore a matching lace coif accented by miniature

satin bows enhanced by a full mantilla of bridal illusion applique and bordered in Alencan lace.

Her wedding bouquet was a white bible topped with white roses with Phalaenopsis orchids.

Attending the groom as his best man was Joey Wolley. Groomsmen were Jerry Davis, Jeff Beedy, brother of the groom, Brent Wheeler, brother of the bride, and Scott Latham.

Seating the guests were Randy Beedy of Flodada, Steve Pemberton of Dumas, and Kyle Beedy brother of the groom.

Mrs. Wheeler chose for her daughter's wedding a formal gown of terra-cotta with a chiffon tunic. The groom's mother chose a blue formal gown with a blue chiffon cape. They both wore corsages of Cymbidium orchids.

Special guests at the wedding was the bride's grandmother, Mrs. Alta Wheeler of Mangum, Oklahoma, and the groom's grandparents, Mr. and Mrs. Lew Bruni of Stratford and Mr. and Mrs. Bill Beedy of Floydada. The grandmothers wore corsages of white Japhet orchids.

Following the ceremony the reception was held in Fellowship Hall of the church. The reception table was laid with a candlelight knit cloth edged with lace which was made by the groom's maternal grandmother, Mrs. Lew Bruni of Stratford. The white, four tiered wedding cake was topped with gold

roses and baby's breath. Serving at the bride's table was Miss Rhonda Jones and Miss Janyth Lackey both of Spearman, and Mrs. Rick Whitlow of Amarillo.

Serving in the houseparty was Mrs. Glenn Day, Mrs. Doug Connelly, Mrs. Mary Hutton, Mrs. Hershel Jones, Mrs. Nina Hendricks, Mrs. Walter Woolley, Mrs. Roscoe Nelson.

For her wedding trip Mrs. Beedy chose a camel color wool skirt and a brown velvet vest topped with a brown velvet jacket.

After a honeymoon in Hawaii, the couple will return to Lubbock where they are both students at Texas Tech University.

Senior Citizen Activities

All Hansford County Senior Citizens who are Ninety years or older will be specially honored at a "Gay Nineties Club" party on Sunday, January 16, from 3:00 to 4:30 p.m. at the LaCasita Room at the Gruver State Bank in Gruver.

Golden Spread Center will have a game evening on Tuesday, January 18 at 7:00 p.m. at the Home Demonstration Clubroom. Golden Spread Center is for all citizens 55 years of age or older without discrimination as to race, creed, sex, economic condition, or ethnic background. Anyone needing a ride can call any of these numbers: 3495, 2478, 2246, 2059, or 3340.

Square Dance Lessons Set

Spearman Square Dance Club will start a new series of lessons beginning Wednesday, January 19, at 8 p.m. in the County Barn.

Anyone interested in taking lessons or needs information may call Jerry Hayes, 3643 or Jerry Holton, 3573.

United Presbyterian Church News

There is a Sunday Church School class for every age group every Sunday at 9:45 a.m.

"Adjusting My Schedule" will be the subject of Pastor Ed Freeman's children's sermon and "The Glory of Jesus" will be the subject of his adult sermon at the service for the public worship of God, Sunday, January 16, at 11:00 a.m. Jennifer Ann Moore will receive the sacrament of infant baptism. Parsonages for all the seasons of the church year, given by Mr. and Mrs. Ceril Batton, in memory of Mrs. Lorraine Sims, will be dedicated.

Mid-week Bible study will be Wednesday, January 19 at 7:30 p.m. and continues the study of the Life of Christ from the four gospels.

Choir practice is Wednesday, January 19 at 8:30 p.m.

Presbyterian Women will meet at the church Wednesday, January 19 at 9:30 a.m. No one ever remains a stranger at the First Presbyterian Church. Come and sample the warm, Christian fellowship found here.

UMW MEETS

The Susannah Wesley Circle of the U.M.W. met Wednesday, January 12th at

the First United Methodist Church. Chairman, Mrs. Ray Martin presided over the meeting.

The Devotional was led by Mrs. Bob Pearson. The Ground Hog Supper, set for January 28, was discussed.

Mrs. Dennis Nelson led the study: "Women of the Bible" with a comparison of women of today.

The meeting was closed

with the W.S.C.S. benediction.

Delicious refreshments were served by Mrs. Pearson to members and guests, Mesdames: Mary Brown, Ray Martin, Dennis Nelson, Doug Steger, Monty Blackman, Garland Head, Terry Curtis, Kent Guthrie, Dick Countiss, Bill Strawn and Grady McCormack.

Next meeting will be January 19, at the church.

IT'S HERE

KBMF RADIO

GIFT BOOK

with over

\$300

IN GIFTS, SERVICES, FOOD, MERCHANDISE & ENTERTAINMENT

Look through today's paper for more details or call me at

1-435-5626

LISTEN FOR YOUR PHONE TO RING



FARM-FRESH



Whole Fryers
FRESH DRESSED
39¢
LB.

U.S.D.A. CHOICE BUTCHER BLOCK BEEF

Boneless Chuck Roast
99¢
LB.

HICKORY SMOKED

Slab Cut Sliced Bacon
BULK PACK
79¢
LB.

PLAY WIN UP TO \$1,000 CASH!

CASH KING

WILSON'S PURE SHORTENING

BAKE-RITE
LIMIT-1 WITH \$5.00 OR MORE PURCH.
96¢
3-LB. CAN

MEADOWDALE

Enriched Flour
44¢
5-LB. BAG

MEADOWDALE WHOLE KERNEL OR CREAM STYLE

Golden Corn..... **5 \$1**
16-OZ. CANS

CAMELOT

Sweet Peas..... **3 85¢**
16-OZ. CANS

CAMELOT ... ALL FLAVORS

Fruit Drinks..... **39¢**
44-OZ. CAN

REGULAR OR DIET ... CANNED

Shasta Pop..... **8 \$1**
12-OZ. CAN

KRAFT CATALINA

Salad Dressing..... **56¢**
8-OZ. BTL.

SCOTT ... SOFT N' PRETTY

Bath Tissue..... **83¢**
6-ROLL PKG.

JENO'S DOUBLE SIZE

Cheese Pizza..... **99¢**
12 1/4-OZ. PKG.

GENERAL MILLS

Wheaties Cereal..... **58¢**
12-OZ. BOX

CANNED LUNCHEON MEAT

Armours Toot..... **94¢**
13-OZ. CAN

CAMELOT

Long Grain Rice..... **49¢**
2-LB. PKG.

SUPER MOTTS

Promo Juice..... **68¢**
48-OZ. BTL.

GLAD LARGE

Garbage Bags..... **79¢**
CTN. OF 15

WASHINGTON STATE, EXTRA FANCY RED

Delicious Apples
3 \$1
LBS.

JUICY

California Tangelos..... **4 \$1**
LBS.

TANGY

California Avocados..... **4 \$1**
LBS.

Thrif-T Frozen Foods

CAMELOT ORANGE JUICE
19¢
6-OZ. CAN

Thrif-T Dairy Foods

MEADOWDALE MARGARINE
QUARTERED
3 89¢
1-LB. CTN.

CAMELOT WHOLE KERNEL

Golden Corn..... **43¢**
16-OZ. BAG

CAMELOT

Cut Carrots..... **33¢**
16-OZ. BAG

DELICIOUS

Fairmont Sherbet..... **48¢**
1/2-GAL. CTN.

KRAFT SHREDDED

Mozzarella..... **99¢**
8-OZ. PKG.

FRESH FROM NATURE

THAKLEE DISTRIBUTION

We have the gift you need to give:

- Food Supplements
- Beauty Aids
- Cleaning Products

THINK GOOD HEALTH
see or call

Dorothymae Groves
14 So. Haney
Spearman, Texas
806-652-3027
Wholesale or Retail