

G-H Begins Pipe Production

Production in the new Gifford-Hill Western concrete pipe plant in Spearman officially began at 9 a.m. Tuesday morning before a large crowd of local businessmen and Gifford-Hill officials.

Spearman Mayor Bob Vaughn clipped a large red ribbon in a ceremony at the front door of the plant at 9 a.m. as the large crowd watched.

Mayor Vaughn told the company officials that Spearman was happy to have a firm like Gifford-Hill Western as a new member of the community.

Vaughn said the company asked no concessions nor special favors for locating its plant here.

Jim Burks, Division Manager for Gifford-Hill in this area, thanked Mayor Vaughn and everyone in Spearman for the friendly welcome extended the company.

Burks then presented to Chamber of Commerce President J.L. Brock the first section of pipe manufactured in the plant.

All the visitors were taken on a tour of the plant and watched the new machinery begin making pipe.

Burks said when the new crew is trained and the plant is in smooth operation it will produce approximately 500

units of pipe a day.

The pipe is formed under extreme pressure and is taken out of the form within 45 seconds after it is poured. It is cured in a steam bay for 10

Deposits And Loans Up In County

Deposits and loans were up over last year at the First State Bank of Spearman at the end of business on Dec. 31, according to the statement of condition.

Deposits were \$8,326,329.35 at the end of 1965 as compared to \$7,827,000 at the close of 1964. Loans at the last call was \$6,207,042.06 as compared to \$5.5 million last year.

President Clay Gibner said this was the highest figure for deposits and loans in the local bank for several years.

Gibner said money is in short supply and the past bumper maize harvest had not relieved the situation as much as was expected. He said the prospects for a profitable year in cattle should be a big financial help to the area.

hours after being formed.

Gifford-Hill officials here for the opening included Fred Harper, Malcomb Hammond and Archie Wilson, all of Dallas.

There are nine men working in the plant under the direction of plant superintendent Horace Ring.

In the office the firm will have division manager Jim Burks, salesman Mack Mauldin, dispatcher John Cranford, office manager Carroll Meeker and inventory man Wayne Smith. A secretary will be employed later.

Ray Salsman and Joe Martinez will be the field foremen over the two field crews that will work out of Spearman. These crews will work in Hansford, Ochiltree, Hutchinson and part of Sherman counties in Texas and Texas and Beaver counties in Oklahoma.

Burks said the plant here, including the land and all improvements cost approximately \$250,000. The plant cost between \$165,000 and \$170,000.

Stover Steel Building Co. of Dallas constructed the buildings. Anthony Electric of Spearman was the electrical contractor. A.E. Swift of Amarillo did the concrete work and Ed Mundy of Spearman is doing the carpentry work in the office.



RIBBON CLIPPED - Mayor Bob Vaughn (left) clips the ribbon officially opening the new Gifford-Hill Western concrete pipe plant in Spearman. Watching the ceremony are Gifford-Hill officials Jim Burks and Malcomb Hammond. A large crowd attended the opening Tuesday.
-Plainsman photo

Hazlewood Will Run

Senator Grady Hazlewood will seek re-election to the Texas Senate post for the 31st Senatorial District.

The district has been enlarged by four counties so that it is comprised of the 20 upper Panhandle counties. Additions are Armstrong, Collingsworth, Deaf Smith and Donley Counties.

Hazlewood's tenure in the Texas Senate is exceeded by only one member, Senator A. M. Aikin, Jr. of Paris. The veteran Panhandle legislator has served for a quarter of a century.

For many months, the Panhandle district has sought Hazlewood's announcement of candidacy, recognizing that the redistricting of Texas legislative boundaries has placed large power in the downstate cities, emphasizing the necessity of keeping an old hand as representative of the 31st District.

HANSFORD COUNTY'S LEADING NEWSPAPER



The Hansford Plainsman



VOLUME VII., NUMBER 24

SPEARMAN, HANSFORD COUNTY, TEXAS 79081

THURSDAY, JANUARY 13, 1966

AFS Seeking 'Family' For Exchange Student

A sponsoring family for an exchange student in Spearman High School next year, is being sought now by the Spearman Committee of the American Field Service.

Mrs. J.R. Keim, president, is heading up the committee and interested persons can also contact Jack McWhirter. Mc-

Whirter said the family must be located immediately because the necessary forms must be in New York by Feb. 15.

The student will be 16 to 18 years of age and a senior in high school. The country from

(Con't. on page 2.)

New Wider Highway To Be Built Between Spearman and Gruver

A new and wider highway with passing lanes on the hills will be built this year between Spearman and Gruver the County Commissioners Court was officially notified Monday.

The new highway will have a crown 36 feet wide and the paved shoulders will extend it another eight feet to a total width of 44 feet.

Three bridges between Spearman and Gruver will be widened to 36 feet.

Judge Johnnie Lee said the county is to provide the right-of-way for the new highway. This will be part of the new state highway 15 that will go across the top of the Panhan-

dle. On hills at Old Hansford there will be extra passing

One Contest Develops In County Race

One local political contest has developed in the Democratic Primary this year and a second is probable.

Incumbent Keesee C. Richardson has filed for re-election to the office of County and District Clerk. She is being opposed by Donald Heath of Gruver.

Juanita Kemper of Spearman has filed for County Treasurer. Incumbent Merle Washington has not filed, but it is believed that she will seek re-election.

Other incumbents who have filed include County Judge Johnnie C. Lee; Justice of the Peace, Precinct 1, Place 1, Johnny P. Vernon; Commissioner Precinct 2, Ed Vernon; and Commissioner Precinct 4, George C. Lowe.

Three men have filed for Precinct Chairman. They are Emmett Sanders, Precinct 1; J.L. Brock, Precinct 10; and C.T. Collier, Precinct 2.

Incumbent J.D. Helms has filed for Democratic Chairman of the county.

County Republican Chairman S.B. Hale said there were no local candidates and he did not know if any area candidates were going to file.

lanes constructed and on the hill at Ned Turners place 4 miles southeast of Gruver, another passing lane will be constructed. There will not be a no-passing stripe on the new highway.

In other action the court divided the money provided for maintaining the cemeteries between the Hansford, Gruver and Oslo cemeteries.

Salaries for county officials and employees will remain the same for another year.

Judge Lee was authorized to invest \$3,914 of the permanent school funds in government bonds to mature in 1974.

Poll Taxes Are Behind

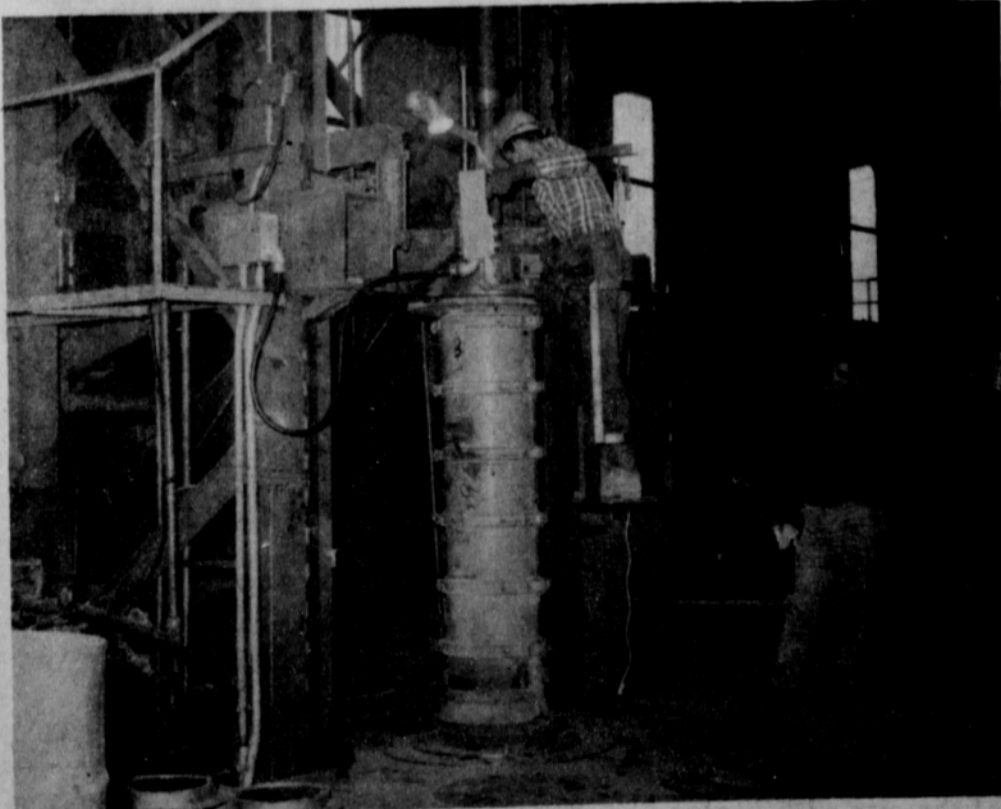
I cannot remember a year when the payment of poll taxes has been so far behind, Tax Assessor-Collector J.B. Cooke, said Wednesday.

At noon Wednesday only 587 of the some 2,500 persons eligible to pay the tax and vote in the county had qualified.

Cooke is worried about the unconcern of people toward qualifying to vote in state and local elections.

"I don't know whether a \$1.50 means that much to people now, or they are just not concerned about our government."

Cooke says some people are
(Con't. on page 2.)



FIRST PIPE - The operator of the Gifford-Hill Western packer head machine sends the first concrete into the form as the plant began operation here Tuesday morning. The machine turns out a six-foot section every 45 seconds.

-Plainsman photo



THANK YOU - Jim Burks of Gifford-Hill Western (right) expresses his company's thanks for the welcome given them by Spearman. He presented J. L. Brock (left) Chamber of Commerce president with this first section of pipe produced in the new plant.
-Plainsman photo

FOUNDED IN 1575
National University at Leiden, Holland, was founded in 1575.

The National Wildlife Federation has about 2,000,000 members.

HALF-WAY ISLE
Pitcairn island is half way between America and Australia.

PASS 100 MARK
There are 12,000 Americans

who have reached the age of 100 years or over.

Movement of potatoes to fresh market from the 1964 crops dropped 13 per cent from a year earlier.

Lynx Lose to Rattlers 60-56; Lynxettes Come From Behind

Spearman's Lynx turned in one of their best performances of the season Tuesday night in Stinnett but again it was just a few points short. Stinnett won the district battle 60-56.

The Lynxettes piddled around for a quarter before getting started, then went on to beat Stinnett 49-34. Spearman was trailing 8-4 at the end of the first quarter.

Playing without their tall man, Carl Close, Spearman battled the tall, powerful Stinnett Rattlers all night and were tied with them 43-43 at the end of three quarters. Stinnett took the lead with two minutes left in the game. Spearman trailed 10-13 at the end of the first quarter and 28-

30 at the half.

Dave Clement got in foul trouble in the third quarter, when he picked up his fourth foul. He got back in the game in the fourth quarter and fouled out with about three minutes to go in the game. His loss hurt the Lynx defensive effort.

Charles Shieldknight turned in a great defensive game. He held Guymon Phillips to 13 points. The big boy had been scoring 20 to 25 points a game. Shieldknight collected only one foul in the game and stuffed in eight points on offense.

Ken Shufeldt led the scoring with 17 points. Two other Lynx got in the double figures. Larry Butts had 13 and Mike Hendricks had 12. Clement and

Monte Black each had three points.

Spearman hit 22 of 30 free throws to stay in the game. Stinnett made 23 field goals to the Lynx 17.

Lynxette forwards made only four free throws in the first quarter, while the Stinnett forwards were scooting past the Spearman defenders for eight points to take the first quarter lead.

In the second quarter Barbara Wilde and Karen Gibson found the range and began pushing in the points. Spearman was leading 20-15 at the half, then went on to make it 39-28 at the end of three quarters.

The Spearman defense slowed Stinnett to six points in the final quarter as Spearman stretched their lead.

Wilde led the scoring with 27 points on 11 field goals and five free shots. Gibson had 14 points and Marcia Shieldknight five, Susan Hutchison two and Cecilia Wilson one.

Planning to build or remodel?



CHECK THE MANY ADVANTAGES OF

ELECTRIC HOME HEATING

You'll enjoy wonderful new living comfort with flameless electric heat. It's sunshine-clean, whisper-quiet, safe as electric light, modern as tomorrow. Whether you choose a central system or individual room units, you'll enjoy even, automatically controlled warmth that's the last word in carefree comfort and convenience. While your new home is still in the planning stage, let us give you all the facts about electric home heating. Phone or visit our office soon.

COMMUNITY PUBLIC SERVICE
Your Electric Light & Power Company



Regier Will Speak Here

Cecil Regier, head of the new North Plains Research Farm at Etter will be the guest speaker tonight (Thursday) at 7:30 in the Vo-Ag room at the high school for the Young Farmers and Ranchers meeting.

Regier will be showing slides of experimental crops last year checking on the adaptability of these crops to this area. He will also discuss the aims, purposes and future plans of experiments at the farm.

Everyone is invited to attend whether or not you are a member of the club.

Hansford Plainsman

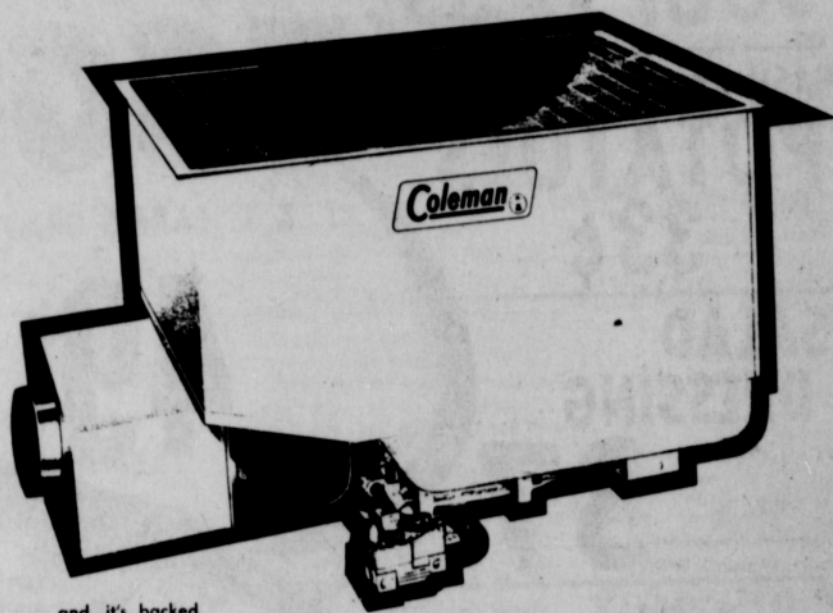
Publishers Inc.

Jim O. Davis
Burl G. McClellan



County-wide independent newspaper published every Thursday and Sunday at 209 Main St., Box 668, Spearman, Texas 79081. Second Class postage paid in Spearman, Texas 79081. Editor . . . Burl McClellan

AERO-DYNAMIC DESIGN gives you more **HEAT** more **COMFORT**



and, it's backed by the Coleman exclusive \$500 Warranty Bond

with the **NEW**

Coleman SHALLOFLOW AUTOMATIC GAS FLOOR FURNACE

White House Lumber Co.



GET IN ON THE RUN FOR THE BUICKS

Buick Special
\$2332

*Manufacturer's suggested retail price for Special V-6 2-dr. coupe. Price includes Federal Excise Tax and suggested dealer delivery and handling charge (transportation charges, accessories, other optional equipment, state and local taxes additional).

Compare Special's looks and performance with anything else in this price range. There. You really can afford to own a Buick. In fact, you can't afford not to. See your Buick dealer now while he's in the mood to give you the very best deal in town. Hurry.

See your local authorized Buick dealer

AFS . . .

(Con't. from page 1.)

which he will come cannot be designated by the local group. Foster parents for the student must be at least 37 years old. The only expense is room and board for the student. McWhirter's have been the foster parents for Geir Overland of Norway this year. McWhirter said it has been a very rewarding experience for the family. They have shared many new experiences with the student.

Lodge Sets

Trap Shoot

The IOOF lodge will sponsor a trapshoot at the range at the north end of the airport Sunday, Jan. 16 beginning at 1 p. m.

Entry fee is \$5.50; \$2.75 for 25 targets-16 yd., \$2.75 for 25 target-Handicap, \$2.00 of this fee will applied to the winner of the 16 yd. and handicap.

Poll . . .

(Con't. from page 1.)

parently think the tax is going to be removed, but if they expect to vote in state, district and local elections this year, they had better pay the tax.

The Texas poll tax law is in the courts, but there is little or no chance for the case to be decided before election time. Even the federal judges who will decide the case admonish Texans to pay the tax. Besides the regular state offices to be voted upon this year, every seat in the Texas House of Representatives and Senate are up for election because of the re-districting.

A poll tax is also required for voting in city and school board elections, plus any bond elections that might be called.

Cooke urges everyone to pay their poll tax before the Jan. 31 deadline.

Wilma Clark, Nikki Cotter, and Mr. and Mrs. Eck Lee attended the Broadway play "The Subject Was Roses" with Dennis O'Keefe and Peter Duryea Saturday night at Amarillo.



Tuesday night the final part of the school board meeting was an executive session to discuss school personnel. It is good that the people whose opinions count prefer to discuss their employees in private until it is time for official action. They are the only ones who keep their opinions of the personnel private.

Executive sessions by local governing boards are rare things in Spearman. As a news reporter we have always found a friendly welcome at the meetings.

We believe this open attitude by the governing groups has killed many rumor situations and helps keep the local

governments running as smooth as possible.

This poll tax thing is getting serious. We, like J.B. Cooke, wonder if people are really this eager to turn the responsibility of government over to someone else.

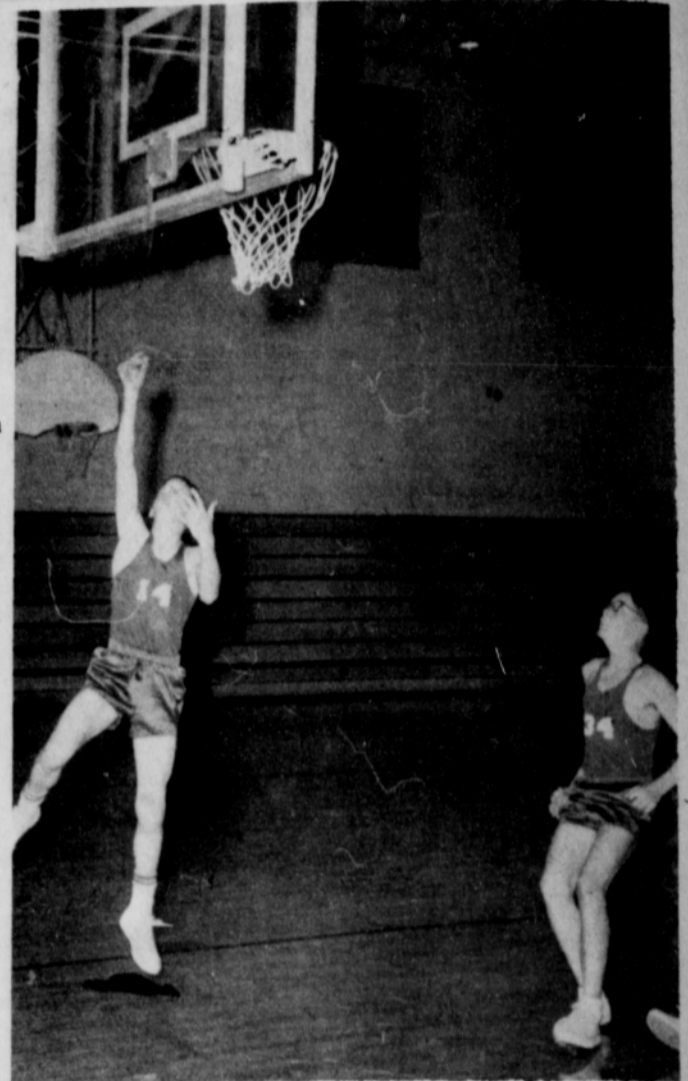
There is nothing as important as going to the polls and voting on the candidates seeking the public offices. Everyday these men gain more control over our lives. We should want some voice in selecting them.

Our part of the state is on the short end of the population count. If we are going to have any voice in the operation of the state and national government, everyone of us must go to the polls and make our marks count.

We were glad to receive an announcement Wednesday that Senator Grady Hazlewood is seeking re-election.

Senator Hazlewood has the seniority and political skill to represent the Panhandle well in the Senate.

With our small representation we need the strongest



LONELY LYNX -- Randy Weston is accompanied only by Frank Willmeth as he goes in to score against Stinnett. The two play on the Spearman Eighth Grade team. -Plainsman photo

Welcome

GIFFORD-HILL

WESTERN

AND EMPLOYEES

WE'RE PROUD TO HAVE YOU IN SPEARMAN

and are looking forward to a long and friendly association with you. We hope we can be of service to you. Our bank is always available with friendly, efficient and complete banking service.

FIRST STATE BANK
SPEARMAN, TEXAS



"The progressive bank of the city with a plan for the future"

men possible to fight our battle.

We have heard many stories about the Panhandle winters, but we wonder if there is anyone who can remember a year when there has been so little winter.

We have even had some nights in January when it did not get down to freezing. That is probably a record and ruins our icebox image downstate.

The oilfield and drilling industry has many tools and pieces of equipment with

strange names. It also seems to be a tradition to send green employees after non-existing things.

We heard a story this week about a green roughneck who turned the tables.

It seems there is a large piece of equipment on a rig that is called a "spider".

The story is that a driller told the new employee who had been through a week of initiation to put a line on the spider so he could pull it out of the hole.

The green roughneck did not move. He said, "If it's that big just let it jump out."

—LAST THREE DAYS—



1/2 PRICE

S A L E

ON ALL WINTER

MERCHANDISE FOR TOTS & TEENS

YOUNG FASHIONS

ON ALL WINTER MERCHANDISE FOR TOTS & TEENS

YOUNG FASHIONS

306 Hancock

The Morse Code

Half of the school plant was tied onto natural gas last weekend, according to Johnny Brumley, superintendent. The remaining part will be connected to gas this next weekend.

Brumley reports an enjoyable trip to Austin last week where he attended the Schools Administrators Conference on Education. He stated the governor reported the 15 member committee on Study of Public Education in Texas will soon begin work.

This week is mid-semester time and students will be taking exams Tuesday through Friday.

Morse basketball teams will play away from home this week, Tuesday at Follett and Friday at Higgins. Both are district contests. The teams entered the Canadian tournament this past weekend and the girls brought home the consolation trophy. Suzanne Dixon made the all tournament team.

On Saturday afternoon a group of ladies from Morse and Pringle took gifts and went to visit with Mrs. Effie Jarvis of Pioneer Manor in Spearman. Mrs. Jarvis was 92 years old Saturday. Those going were Mmes. Ella Parks, Besse Henderson, M.W. McCloy, Lily Johnson, Maye Board, Maudie Henderson, and Mr. and Mrs. Ernest Leib.

Bill Coppock, also a resident of the home, joined the party. He worked in the Morse and Pringle areas for many years and has many friends here.

Morse Home Demonstration Club will meet this afternoon at 2 p.m. at the home of Mrs. M.W. McCloy.

A real treat is in store, for

the program will be given by Mrs. Barbara Kenney, former HD agent of the county. She will give a demonstration on good grooming.

Guests are invited.

Mrs. Mack Dortch and Mr. and Mrs. Desmond Kelly went to Plainview and Lubbock over the weekend. Mrs. Dortch visited her sister, Mrs. Annie Craig in Plainview and the Kellys visited his brother and family, the Wayne Kellys in Lubbock.

Mmes. Charles Reid, John Thompson and H.B. Parks attended the bridal shower given in honor of Mrs. Mike Burnett in Dumas Saturday morning.

Mrs. Annie Clifton is back at home in Morse after visiting for several weeks with her daughter and grandson, Josie and Kurt Aaron of Denver.

Flue and pneumonia have struck a number of people in this community. Gene and Gail Pool's baby has pneumonia and she is keeping him in Pampa in order to be near a doctor.

The baby daughter of Mr. and Mrs. Marvin Myers is critically ill in the Hansford Hospital.

Mrs. Annie Harris is another person who has the flu.

The Tom Dortchs were supper guests of the Frank Lewis' on Saturday night.

Rev. Harold Fleming, pastor of the Community Church, is starting a morning Bible class for interested persons in the community. The class will meet each Tuesday morning at 9 a.m. at the home of Mrs. Al Carter.

Mr. and Mrs. Sam Watson were in Pampa Sunday and visited in the home of Mr. and Mrs. Joe Page.



CONSOLATION WINNERS--These members of the Morse Girls Basketball team brought home the consolation trophy from the Canadian tourney last weekend. They are (left-right) Mary Lanners, Judy Reising, Betty Knight, Patricia Henderson, Suzanne Dixon, Peggy Giblin and Sylvia Parks. Not shown is Elaine Schick, also a team member. Staff Photo

Mule Train Holds Meeting

The members of the Rolling Train Mule Train met Thursday evening Jan. 6 at the Home Demonstration Clubroom with Judge Johnnie Lee presiding at the meeting.

Earl Riley then took charge and reviewed the happenings and trips made by the train in 1965 and discussion was held by the group as to trips to be taken in 1966. Many invitations were read for the train to attend but as yet plans for a trip this summer are not completed.

This, the first meeting of the new year got off to a good start with approximately 45 attending. Those coming from some distance were Messrs. and Mmes. Elmer Hunt of Binger, Okla., Dave Aspaugh of Laverne, Okla., Melvin Miller of Woodward, Marvin Yell and Kay of Berger, Joe D. Evans, Gruver, Gordon Green and granddaughter Tammie of Perryton and Mrs. John Sheppard of Fargo, Okla.

Games were enjoyed and much visiting with pie and coffee served at the close of the meeting.

The brown recluse spider, in addition to the well-known black widow, can cause trouble. Entomologists at Texas A&M University say the recluse's bite is not as potent as the better known black widow's but it can cause sickness and pain in man. The recluse is shy and non-aggressive and wants to be left alone to catch flies and other insects. It is a small insect and its color varies from orange-yellow to dark brown to almost black--is three-tenths to a half-inch in length and the body and legs are short haired.

Do-Si-Do Square Dance News

The Spearman Do-Si-Do Square dance club held its regular dance Saturday night with more than four squares enjoying the dance with Robert Adamson as caller. Guest callers were Ray Halsey, Archie Flowers and Aaron Love.

Out of town guests were from Dumas, Stinnett, Stratford and Perryton with the Ochiltree Square dance club capturing the banner.

The next dance will be Saturday, Jan. 22 at the community building. The public is invited.

Tax Man Sam Sez

The new medicare bill requires employers to withhold Social Security and Federal income taxes from all tips reported to them by their employees. The employer, however, does not have to match the employee's Social Security contribution.

A good tip is to withhold on tips this year.

Wallace Klussman, wildlife conservation specialist for the Texas Agricultural Extension Service, says evidence is available which indicates the bounty system for controlling predators, such as wolves, coyotes, mountain lions or other animals does not always accomplish its purpose nor objective. He suggests when a control program is needed, the one offered by the Predator and Rodent Control Division, U.S. Fish and Wildlife Service be investigated.

Mr. and Mrs. Elmer Hunt of Binger, Okla. members of the Rolling Plains Wagon Train were Thursday overnight guests of Judge and Mrs. Johnnie Lee and family.

Thursday, Friday & Saturday

ANNUAL JANUARY

CLEARANCE

Come one... come all to the great storewide clearance on men's wear. All fabulous buys on the things you need and want for winter and the rest of the year!



Men's Shirts

1 GROUP \$1.50 & \$2.50

1 GROUP 1/3 off

1/2

PRICE

Ties

\$1.00

HIGH TOP TENNIS SHOES

\$2.98 \$5.75 \$4.50

1/2 PRICE

Men's & Boys' COATS & JACKETS 1/3 Off



SWEATER CLEARANCE



1/3 OFF

Bulky knits, pullovers, cardigans and many others to choose from at our lower-than-ever prices

CATES MEN'S & BOYS' WEAR

Sta-Pressed Pants \$4.98

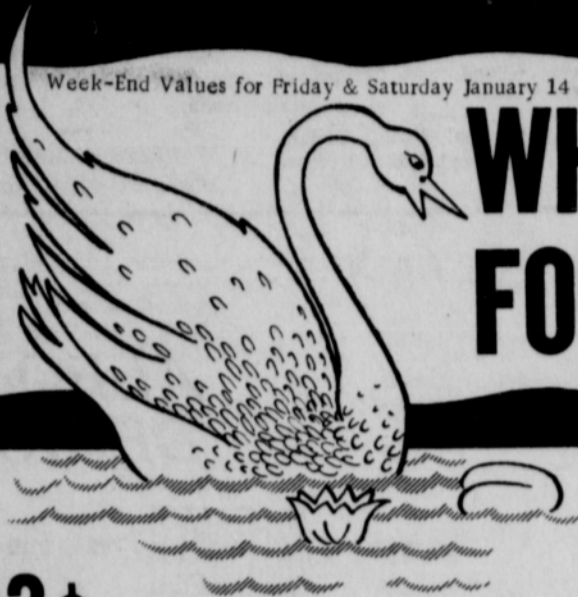
Our Sale Prices Are The Lowest Anywhere!

Shop Early FOR BEST SELECTION!

**Swanderful
BUYS**

Week-End Values for Friday & Saturday January 14 & 15th

WHITE FOODS SALE



Make Sure Your Children drink the best...
SHURFRESH MILK

Campbells
CHICKEN NOODLE SOUP Tall Can 2 for **33¢**

HASH BROWN POTATOES Shurfine Fresh Frozen 2 lb. Bag **33¢**

SALAD DRESSING Shurfine Quart **37¢**

Bakers Angel Flake 3 1/2 oz. Can
COCONUT **23¢**

Dragon Brand White
RICE 2 lb. Bag **27¢**

Like a swan takes to water, your budget will be swimming in savings when you shop our wonderful WHITE FOODS SALE. All the oh-so-good foods that are white in color... delicious nutritious foods you enjoy in ALL your meals every day... are priced 'way down low for this big bargain event. Come shop! Come SAVE! Every department's just flooded with "Swanderful" buys in fine quality foods for the best of good eating three times a day.

EGGS

J. & L. FARMS GRADE A LARGE

49¢ DOZEN

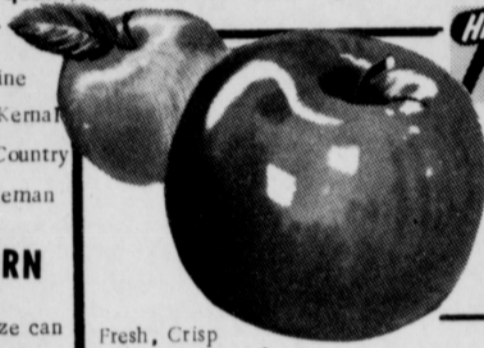


Shurfine Whole Kernel White Country Gentleman

CORN

303 size can

2 for **37¢**



Fresh, Crisp

Cello Bags

RADISHES

9¢ Bag

Sweet, Juicy Navel

ORANGES

7 lbs. 98¢

HEALTHFUL DELICIOUS
Fresh Fruit

Washington Extra Fancy Winesap

APPLES lb. **15¢**

Fresh, Tender Texas

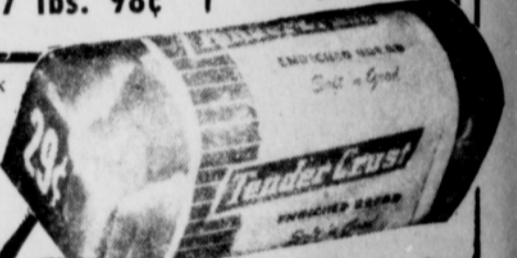
CARROTS

Cello 2 bags 19¢

Quick or Regular
QUAKER OATS 18 oz. Box **23¢**

Del Monte Pineapple
GRAPEFRUIT

46 oz. Can **29¢**



BREAD

Tendercrust "Fresh Daily" Red White & Blue Wrapper

King Size Loaf **23¢**



Shurfine Frozen
CAULIFLOWER 10 oz. Pkg. **23¢**

Betty Crocker Layer
CAKE MIXES 4 for \$1.

MILK 2 Tall Can for **27¢**

Facial Tissue 200-2 Ply Count

KLEENEX 5 for \$1.00

Shurfresh "Fresh Daily"
COTTAGE CHEESE 39¢

2 lb. Carton

Holly Brand
SUGAR 99¢

10 lb. Bag

Meadowlake Quarters lb. Box 2
MARGARINE for **39¢**

Soflin White **BATHROOM TISSUE** 10 roll Pak **69¢**

quality
MEATS



Cured Hickory Smoked
PORK CHOPS

Center Cut **98¢ lb.**



A.F. Brand All Meat
FRANKS lb. **59¢**

Armour Banner
BACON Squares **49¢**

Ramirez Fresh
TORTILLAS 2 for **25¢**

Shortening 3 lb. Can
CRISCO **79¢**

Lanes Party Time
MELLORINE **37¢**

Half Gallon

303 Size Can
PEARS 4 for **\$1.00**

Shurfine Bartlett Halves

Shasta Ginger Ale and
BEVERAGES

19¢ 28 oz. "No Deposit" Bottle

Just look at these "White Bargains"

GIANT TIDE

10¢ OFF

Tide 59¢

Salvo 45¢ OFF

REGULAR PRICE Jumbo size \$1.94

JUMBO SIZE ONLY

3¢ OFF REGULAR PRICE

4 PERSONAL SIZE ONLY

IVORY 29¢

4 bars

15¢ OFF REGULAR PRICE

King Size

TOP JOB 84¢

KING SIZE ONLY



Cut Rate GROCERY



The Plainswoman

Hansford Plainsman

Mrs. Lee Shows Films of Russia At Study Club Meeting

The Spearman Study Club met for the first meeting of the new year at the HD club-

Watsons, Coxes Host Party

Mr. and Mrs. Sam Watson and Mr. and Mrs. Charles Cox were hosts for the Staruday Night Couples Dinner Bridge held at the Farm Bureau building January 8.

James Lair and Pat Dear had high scores and Ruby Lair and Don Floyd had low.

Attending were Messrs. and Mmes. Richard Holton, Garland Head, J.K. Hicks, Winfred Lewis, Roy Bulls, Ed Dear, James P. Linn, Ben McEntyre, and guest couples, the James Lair and the Don Floyds.

Mrs. Mathews

Hosts Luncheon

The home of Mrs. Virgil Mathews was the scene for the Bridge Club luncheon Thursday, Jan. 6 with Mrs. Steve Mathews as hostess.

High score was held by Mary Kathryn Parris.

Attending were members Gala Mathews, Sheryl Meek, Judy Wilmeth, Karen Countiss, Deloris Guthrie, Mary Parris, Ann Archer, Charlene Jackson, Verna Strawn, guests, Glenda Guthrie, Nelva White, and the hostess, Jackie Mathews.

Mrs. Bulls Gives Xi Zeta Program

The Xi Zeta Upsilon Chapter of Beta Sigma Phi met Wednesday evening Jan. 5 at the Hospitality Room of the First State Bank.

Mona Beth Windom presided at the business session and the program "Background Walls" was given by Charlene Bulls.

Present were Mona Beth Windom, Charlene Bulls, Dorcas Collard, Pat Dear, Elaine Floyd, Marva Hohertz, Ruby Lair, Elsie Mathews, Barbara McClellan, Barbara Schnell, Ola Sparks, Altha Townsend and Helen Watson.

The next meeting will be January 20.

New Semester Beginning For Fitz's Art Students

A new semester of the Spearman, Perryton, Gruver area Art Class taught by Dord Fitz starts Monday, Jan. 17. The class meets each Monday night in the Farm Bureau Community Room from 7 to 10 p. m.

Fitz teaches each person to follow his own style, yet be able to paint visually as well as in the abstract. Students are taught to appreciate all paintings, from cave paintings to modern times, also to appreciate the relationship of painting to poetry, music, prose, science, religion, philosophy, etc.

Fitz is recognized by the top New York artists as one of the outstanding teachers of the art world. Each year his students have the opportunity to

room Monday afternoon with Mmes. Bert Sheppard and Doug Grimes as hostesses.

After a short business meeting presided over by the president, Mrs. Marcus Larson, Mrs. R.E. Lee was introduced. She showed pictures taken on her recent trip to Russia.

Attending were Mmes. Bill

Rebekahs Hold Annual Banquet

The Spearman Rebekah Lodge #290 held its annual Past Noble Grand Banquet Jan. 8 in the banquet room of the Pioneer Restaurant.

The tables were beautifully decorated with floral arrangements and red birds.

The invocation was given by Margaret Kirk, Sylvia Wilcox was emcee and introduced incoming and outgoing past and affiliated Noble Grands.

Attending were Thelma Kenney, Deana Kenney, Margaret Kirk, Sylvia Wilcox, Thelma Scott, Mildred Chamberlain, Gladys Richardson, Hazel Wilbanks, Virus Wilbanks, Inez Holland, Ruth Caro, Rose Cummings, Frankie Duryee, Ethel Black, Nina Mae Hughes and 8 guests from Perryton Lodge 225, Pearl Allen, Roberta Moulton, Lucille McDonald, Elnora Harness, Winnie Edler, Alice Kohler, Alice Moore and Bobby Hall.

Worthy Matron Makes Report

Spearman Order of the Eastern Star #721 met at a regular slated meeting at the hall Friday evening Jan. 7 with Mary Brock-Worthy Matron and Preston Scott-Worthy Patron presiding.

During the business session the Worthy Matron gave her report on the School of Instruction held at Borger Chapter #811 Wednesday, Jan. 5. Nineteen members from Spearman chapter attended.

Present for the meeting were 16 officers, 2 pro tems, 4 members and one visitor.

A called meeting will be held January 21 for the purpose of the conferring of the degrees. Members are urged to attend.

Partridge, Kenneth Evans, Sandra Ladd, Don DeArmond, James Pendergraft, Marcus Larson, Curtis Frances, Troy Sloan, Ray Martin, Joel Lackey, Richard Baxter, Robert Adamson, Jimmie Shield-knight and the hostesses.

Leader Training Being Offered

A training series for leaders and parents of Girl Scouts is being offered on KFDD-Channel 10 from 3:30 to 4 p.m. on Jan. 17 & 19.

All parents and leaders are urged to watch this program.

Geir Overland gave the program and showed slides of his country at a fellowship and league meeting at the new Lutheran church Sunday evening.

Mrs. Buri McClellan spent last week in Memphis in the home of her father, Dr. and Mrs. W.C. Davis.

Mr. and Mrs. R.C. Bradford entertained at supper last Tuesday Mr. and Mrs. Richard Fancher and Christi Gayle and Mr. and Mrs. Ray Devers and Peggy.

Comic Valentines at Plainsman Office Supply.



Day by Day

by Day McClellan

Being a guest of my Dad last week, I learned another of many lessons I've gleaned from him in my lifetime.

It has to do with being the "perfect host." You simply take said guest with you to the golf course . . . casually brag on her progress as you go along and then on about number seven, let her tie you on one hole.

I'm still bragging because if my Dad was playing less than his best game, he hid the fact very well. The rest of the week (and during all the other bad games I played) I've still been remembering with delight my "finest hour."

Another nice thing happened to me this week, I realized I was the "go-getter" at The Plainsman!

Then I noticed in Harold Hudson's column over at Perryton that a go-getter in some offices is just the fellow they send out for Cokes, so I guess that title didn't mean much.

Oh well, it's nice to have a title anyway.

Noticed somewhere the other day a think-pink-drink-pink program for those with five or so pounds gained between Thanksgiving and New Years.

The campaign revolves around the 225-calorie liquid diet drink with a few added extras. For instance: put a 10-ounce can of vanilla-flavored liquid in a bowl and freeze until almost firm in the center. Put the drink in your blender, add an 8-ounce can of artificially sweetened peaches and few drops of almond extract. Blend to frappe stage and you have a 284-calorie "meal." Another variation uses coconut creme diet drink and artificially sweetened apricots whirred a few seconds in the blender.

I'm finding all kinds of things to make in the new blender we got for Christmas, even these low-calorie "meals" are good.

During the holidays Community Public Service gave away little packets of recipes that many of you may have gone by and picked up. I'm just getting around to trying some of them but this one for rice and sour cream casserole is excellent. It's unusual, but try it if you're adventuresome.

RICE AND SOUR CREAM CASSEROLE

3/4 pound Monterey Jack cheese
3 cups sour cream, salted slightly
2 cans peeled green chilies, chopped
3 cups cooked rice
salt and pepper
1/2 cup grated cheddar cheese

Cut Monterey Jack cheese in strips. Thoroughly mix sour cream and chilies. Season rice with salt and pepper. Butter a 1 1/2 quart casserole well. Layer rice, sour cream mixture and cheese strips finishing with rice on top. Bake 25-30 minutes at 350 degrees. During last few minutes of baking, sprinkle cheddar cheese over rice and allow to melt.

(Suit your own taste when adding the canned chilies. I thought one can was quite ample.)

Club Meets In Oakes Home

The home of Mrs. Jack Oakes was the meeting place for the Tuesday Bridge Club luncheon Jan. 11.

Holding high score was Verna Gail Keim and low was held by Rosa Lee Butts.

Attending were Georgia Cox, Estelle Jackson, Fern Bell of Perryton, Rosa Lee Butts, Verna Gail Keim and guests, Coleen Schaefer and Linda Pierce and the hostess.

Agent Gives Club Program

The Hansford HD Club met Monday afternoon Jan. 10 in the home of Mrs. Virgil Floyd.

Mrs. Herb Howe, president, presided at the business session.

The devotional was given by Mrs. Daniel Sheets and roll call was answered by telling of the biggest surprise each received for Christmas.

Miss Linda Webb, agent, gave a talk and demonstration on the use and care of electrical appliances.

Refreshments were served to Mmes. Roscoe Nelson, Herb Howe, Daniel Sheets, Ellzey Vanderburg, Harry Shedeck, Gordon Parrish and one new member, Mrs. Stella White, Miss Webb by the hostess.

Recent visitors in Borger were Mrs. R.E. Bradford and Sue. While there they spent the day with her nieces Mrs. Charles Chambless and Mrs. Owen Nay.

Mr. and Mrs. Carl Galbreath and family went to Eunice, N.M. over the weekend to visit his father, L.R. Galbreath. On the trip home they visited the Rev. and Mrs. Charles Gates in Morton.



WELCOMING JANUARY--Robert James Sparks, son of Mr. and Mrs. Larry Sparks of Sundown welcomes January for Plainsman readers. Robert James is the grandson of Mr. and Mrs. James Sparks and Mr. and Mrs. Bob Vaughn, all of Spearman. He is 21 months old.

-Portrait by C&B Studio

Bride-Elect Is Honored With Shower Saturday

A bridal shower honoring Miss Dee Brunner of Lubbock, bride elect of Joe Mike Bryan was held Saturday evening January 8 from 7 to 9 at the Hospitality Room of the First State Bank.

Hostesses for the courtesy were Mmes. Gertrude Archer, Freeman Barkley, Cecil Crawford, Deta Blodgett, J.K. Hicks, Willis Sheets, Nolan Holt, Virgil Mathews, E.J. Copeland, Bill Russell, Guy Fuller and C.A. Gibner.

The honoree was presented a corsage of a white orchid with a miniature bride and her mother, Mrs. William Brunner and Mrs. Joe Dan Bryan were each presented corsages of white pom-pom mums.

A colorscheme of cranberry red and white was carried out

in the decorations and refreshments. The serving table was laid with a hand made Normandy lace cloth and was centered with an arrangement of Rome Glory roses and white Fujii mums, highlighted with a miniature bridal couple and wedding bells. The silver coffee service was presided over by Mrs. E.J. Copeland. Dainty white cake squares decorated with red rosebuds, nuts and mints were served.

On the registration table was noted a bouquet of red rosebuds and the guest book was kept by Mmes. Nolan Holt and Willis Sheets.

Approximately 45 attended the courtesy. Out of town guests were Mrs. Brunner of Lubbock and Mrs. Ruben Hintergardt of Gruver.

Calendar of Events

- THURSDAY, JAN. 13 Jaycees
Rho Rho meets at 1 p.m. with Mrs. Bill West as hostess.
Rainbow Girls meet at 6:30
Rebekah Lodge meets at IOOF Hall
- FRIDAY, JAN. 14 Rolling Plains Mule Train Board of Directors meeting at Earl Riley home at 7 p.m.
Arts and Craft Guild meets with Mrs. Joe Trayler
Spearman HD Club meets with Mrs. B.J. Garnett
- MONDAY, JAN. 17 Blue Monday Bridge Club meets Mrs. J.E. Womble hostess.
- TUESDAY, JAN. 18 Lions Club
Town and Country HD Club meets with Mrs. H.B. Rinker
- THURSDAY, JAN. 20 Twentieth Century Club meets: Home Science-Mrs. Carl Archer Fine Arts-Mrs. P.A. Lyon, Sr.
Happy Homes HD Club meets with Margaret Adamson hostess.
Xi Zeta Upsilon meets

County Agent's Report

by Robert Adamson

INTERESTED IN CASTORBEANS?

Farmers that are interested in growing castorbeans this year are asked to contact my office. If we can get about 400-500 acres we can get a dump here in Spearman.

Drop by the office or write me a card or letter if you want to plant castorbeans and the number of acres.

DON'T OVERFEED COWS

High condition, or overfatness, can cause temporary or permanent sterility in both cows and bulls. This occurs frequently in purebred heifers fitted for shows.

Excess condition can also affect the longevity of the cow. In addition to reproduction problems, overfeeding can also result in the wastage of large amounts of feed not needed by the animal to meet growth requirements. Stockmen must know the nutritional requirements of his animals and feed them accordingly.

On the other hand, some cattlemen may neglect their animals by failing to recognize the existence of ration deficiencies. As a result, animals may not receive sufficient amounts of calcium, phosphorus, salt, vitamin A, protein supplement and energy.

I invite stockmen to visit my office for copies of publications dealing with livestock nutrition and other subjects relating to beef productions.

VITAMIN A FOR BEEF

The uncertainty surrounding the use of supplemental vitamin A for range beef cattle is being cleared up by ag researchers. Vitamin A plays a vital role in reproductive performance of mother cows and in growth of young animals. Research indicates vitamin A is more critical for heifers than older cows.

A.A. Melton, animal husbandman at Texas A&M University's Livestock and Forage Research Center, McGregor, has come up with some revealing information concerning vitamin A. Melton did the research in Culberson County, in the Trans-Pecos area of Texas.

In his latest test, 70 yearling heifers were bred to calve as two-year-olds. Thirty-five heifers were used as the control group and were given no supplemental vitamin A.

The other half were injected with two million units of vitamin A one month before the breeding season began and again two months later. Three weeks before calving they were given another two million units, for a total of six million units of supplemental vitamin A.

Melton said the vitamin A was injected so both groups of cattle could graze on the same pasture and to ensure accurate measurement of the dosage. But he added, "Cattle can be fed supplemental vitamin A in concentrates if desirable--and it may be more

economical."

Results of the test at calving time are as follows:

From the 35 heifers injected with vitamin A, one calf was lost at calving time and 23 heifers needed help having their calves.

In the group which got no supplemental vitamin A, seven calves died at calving. Two of the heifers also died at calving time and 28 heifers needed help calving.

Researchers are reluctant to draw definite conclusions from the limited information--but indications are that the supplemental vitamin A usually pays off for cattlemen--during dry years.

In an earlier A&M test, on the Joe T. Lane ranch near Alpine, Texas, heifers given vitamin A calved an average of five days earlier than the heifers which got no supplemental vitamin A. The Average adjusted weaning weights from the group given vitamin A was 23 pounds more than calves from untreated heifers. Again, researchers believe supplemental vitamin A could have been responsible for the higher weaning weights and earlier calving dates.

Although vitamin A deficiency is noticed more frequently in western counties where there is often a lack of green vegetation, it may occur in areas of higher rainfall when excessive nitrogen is applied as fertilizer. The excessive nitrogen may accumulate in plants and block the conversion of carotene to vitamin A in an animal. The result--vitamin A deficiency.

The dietary source of vitamin A is carotene, which comes from green vegetation.

Bowling

NIGHT OWL LEAGUE

TEAM	WON	LOST
Excel Chev.	44	16
Beedy Furniture	34 1/2	25 1/2
Harvey's Aerial	33	27
Hansford Grain	29 1/2	30 1/2
Berry's Cleaners	27 1/2	32 1/2
George Redi Mix	30	30
Washburn Weld.	22 1/2	27 1/2
M&M Shamrock	20	40
HIGH TEAM GAME		
Hansford Grain	458	
Harvey's Aerial	420	
Excel Chevrolet	412	
HIGH TEAM SERIES		
Hansford Grain	1248	
Excel Chevrolet	1190	
Harvey's Aerial	1155	
HIGH INDIVIDUAL SERIES		
Agnes Mayhew	441	
Maxine Ferguson	429	
Doris Armes	428	
HIGH INDIVIDUAL GAME		
Joyce Duncan	183	
Maxine Ferguson	179	
Agnes Mayhew	166	

In dry years, or in dry regions, mother cows may be deprived of green vegetation for several months before the calf is born. This causes two conditions.

1. The vitamin A supply of the mother cow may be depleted, thus limiting her reproductive performance.

2. A limited supply of vitamin A in the newly born calf. This is made worse by the fact that there will be little vitamin A in the milk since the cow's supply is low.

Doses of supplemental vitamin A seem to solve both these problems under normal circumstances, says A&M researchers.

Guest Editorial

Recently the Arizona Farm Bureau Federation lashed out at the U.S. Department of Agriculture for the tactics used in dumping wheat on the market for the purpose of controlling prices. The organization news release stated:

"Few farmers were surprised by the recent decision of the administration to dump government stocks of bread wheat on the market. After all, such punitive price-cutting practices have been going on in feed grains and wheat for the last four years.

"In this case, however, there was no attempt by the administration to conceal its purpose or disguise its motives. Previous dumping actions to penalize non-cooperators have been denied with considerable vehemence by government officials.

"With arrogance born of tremendous political power, the administration has served notice on farmers that it intends to use every available means to control prices.

"Here's how the U.S. Department of Agriculture explained its arbitrary exercises of executive price control: "... the 1965 wheat crop is somewhat lower than average in protein content. As a result, higher quality bread wheat is attracting abnormally high market premiums which could be reflected in higher flour and bread prices."

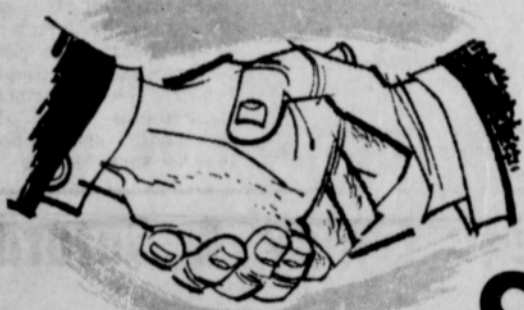
"Within 24 hours of this announcement, the Department of Agriculture was selling bread wheat from its tremendous Commodity Credit Corporations stocks which stood at 180 million bushels on Sept. 1. The market reaction was equally swift and sharp. Cash prices for high protein wheat dropped as much as seven cents a bushel in two days on the Minneapolis market.

"To those wheat producers who have steadfastly refused to participate in the government's so-called 'voluntary' program, the message was loud and clear.

"To the consumer, the reason given by the department for its action--to hold down bread and flour prices--may have been confusing. When the administration was trying to persuade Congress to increase the bread tax, the matter of higher bread prices was brushed aside as propaganda from the 'bread trust.' However, when wheat prices rise in the market instead of through government action, the department labels them as 'abnormally high.'

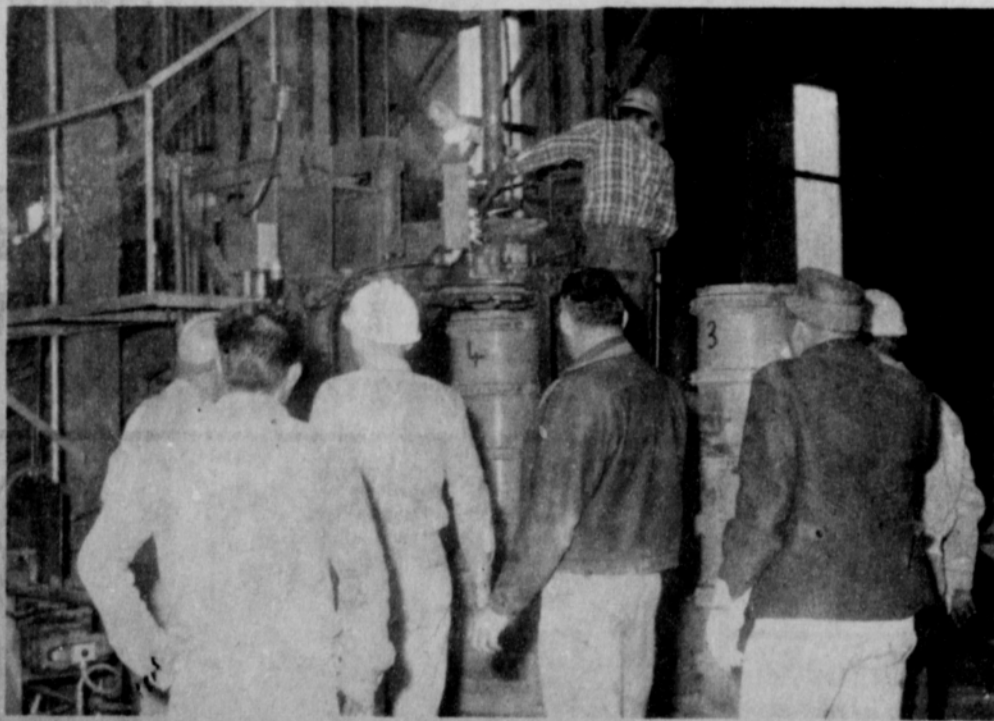
"The administration's growing interest in instituting selective price controls without congressional approval apparently stems from growing concern over the continued increases in the cost of living index. While the administration bears the chief responsibility for such rises because of its inflationary spending policies, there is hope among government officials that they can divert consumers' ire by making farmers and producers of aluminum and copper the whipping boys. President Johnson has recently expressed concern over the rising cost of living while announcing that federal spending will likely push to \$110 billion in the next year."

-The Record-Stockman



WELCOME TO SPEARMAN,

GIFFORD - HILL WESTERN



We're glad to welcome Gifford-Hill Western & its employees to this growing community. Spearman is a fine place in which to live . . . We think you'll like it here & we're sure this plant will add much to Spearman's economic picture.

R. L. McCLELLAN GRAIN CO., INC.

Consumers benefited in many ways from research conducted by the U.S. Department of Agriculture and the State Agricultural Experiment Stations during 1965. Research developed new products and processes, more efficient marketing and information to help homemakers with family nutrition and home management.

The uncertainty surrounding the use of supplemental vitamin A for range beef cattle is being cleared up by ag researchers at Texas A&M. Vitamin A plays a vital role in

reproductive performance of mother cows and in growth of young animals. Research indicates it is more critical for heifers than older cows.

SHOESHINE FURNITURE

If your wood furniture has minor scratches, select a paste shoe polish to match the color of the wood. Apply the wax to the scratch with a cotton-tipped toothpick. Let it dry and rub to a shine.



ENJOYS BASKETBALL ON KBMF-FM

Listen In.....

HEAR THE LYNX & LYNKETTES IN ACTION!

ON

98.3 kbmf-fm

Take your problems to Church this week — millions leave them there!



Indestructible

Pictures and other mementos are treasured, for they serve to remind us of someone we love, some occasion or rich experience. If these mementos be lost or destroyed we do not lose our love nor does the loss erase from our minds the memories.

Discovery of additional religious manuscripts from time to time is of value, both to Hebrew and Christian scholars, for it enables them to make corrections in the Bible, make additions and alterations and correct omissions. While some may become alarmed lest these discoveries disclose something that might weaken or destroy their faith, the scholar knows that the value of the Bible does not depend upon newly found manuscripts.

No manuscript, old or new, can throw discredit upon the authority of religion, of doing justly, loving mercy and walking humbly with God. No translation in any language can black out the Sermon On The Mount or destroy the authority of the two great Commandments, love God with all your heart and your neighbor as yourself. You can help perpetuate this authority in your own mind by regular attendance at the church of your faith.

—Weekly Opportunities For Worship—

Apostolic Faith Church
W. E. (Hap) Blythe, Pastor
Sunday School 10:00 a.m.
Morning Worship 11:00 a.m.
Evening Worship 7:00 p.m.

First Christian Church
Rev. W. Graham Pugh, Minister
Sunday School 9:45 a.m.
Morning Worship 11:00 a.m.
Youth Meetings 6:00 p.m.
Evening Worship 7:30 p.m.
Wed. Choir Practice 7:30 p.m.

First Methodist Church
Brother Wesley Daniel, Minister
Sunday School 9:45 a.m.
Morning Worship 11:00 a.m.
M.Y.T. 6:30 p.m.
Evening Worship 7:30 p.m.
Women's Society of Christian Service Wed. 3:00 p.m.
Choir Rehearsal 7:30 p.m.

Sacred Heart Catholic Church
Spearman
Rev. James C. Gurzynski
Sunday Mass 9:00 a.m.
Wednesday & Friday 8:00 p.m.
Saturday Mass 8:00 a.m.
Other Days Mass 6:30 a.m.

Assembly of God Church
Rev. T.J. Taylor Jr.
Sunday School 9:45 a.m.
Morning Worship 11:00 a.m.
Evening Worship 7:30 p.m.
Wed. Bible Study 7:30 p.m.

First Baptist Church
The Rev. Luther M. Berry, Pastor
Sunday School 9:45 a.m.
Morning Worship 10:45 a.m.
Training Union (Oct. 1-Apr. 30) 5:30 p.m.
Training Union (May 1-Sept. 30) 6:00 p.m.
Evening Worship (Oct. 1-Apr. 30) 6:30 p.m.
Evening Worship (May 1-Sept. 30) 7:00 p.m.
Wed. Evening Prayer Hour 7:30 p.m.
Thurs. Choir Rehearsal 7:00 p.m.

First United Presbyterian Church
Everett H. Cain, Jr., Pastor
Sunday Church School 9:45 a.m.
Morning Worship 11:00 a.m.
Evening Study Group 7:30 p.m.
Wed. Choir Practice 7:30 p.m.

Faith Lutheran Church
11th & Bernice
Robert Cordes, Pastor
Worship Services 9:00 a.m.
Sunday School 10:00 a.m.

Church of Christ
Charles Milner, Minister
Sunday School 10:00 a.m.
Worship 11:00 a.m.
Worship 7:00 a.m.
Wed. Ladies Bible Class 9:30 a.m.
Wed. Bible Study 7:30 p.m.

Our Lady of Guadalupe Mission, Gruver
Sunday Mass 4:00 p.m.

Union Full Gospel Church
Rev. George R. Bollinger, Pastor
Sunday School 10:00 a.m.
Morning Worship 11:00 a.m.
Bible Classes Sunday 6:45 p.m.
Evening Worship 7:30 p.m.
Wed. Bible Study 7:30 p.m.

Fellowship Baptist Church
W. S. Herring, Pastor
Sunday School 10:00 a.m.
Preaching Service 11:00 a.m.
Sunday Evening Service 7:30 p.m.
Wed. Evening Service 7:30 p.m.

Oslo Lutheran Church
18 mi. N.W. of Gruver
Robert L. Cordes, Pastor
Sunday School 9:45 a.m.
Worship Services 11:00 a.m.

Pentecostal Church
Sunday School 9:45 a.m.
Morning Worship 11:00 a.m.
Evening Worship 7:30 p.m.

Waka Church of the Brethren
Lawrence Lehman, Pastor
Sunday School 10:00 a.m.
Morning Worship 11:00 a.m.
Evening Service 7:00 p.m.
Choir Practice Wed. 7:00 p.m.
Adult Bible Study Wed. 8:00 p.m.

Sponsored by

**R. L. McCLELLAN
GRAIN CO., INC.**

FIRST STATE BANK
Member F.D.I.C.

B & B GRAIN CO., INC.

The Hansford Plainsman

Final Rites Conducted For Vern Osborn

Final rites for William Vern Osborn, 71, of Spearman were conducted at 1:30 p.m. Tuesday in the Methodist Church of Spearman.

Services were conducted by the Rev. Wesley Daniel, pastor, and burial was in Fairview cemetery in Pampa. Arrangements were by Boxwells of Spearman.

Mr. Osborn died at 5:30 a.m. Sunday in Hansford Hospital. He had lived in Pioneer Manor for the past year. Before moving to the home, he had lived at 607 S. Barkley.

The retired farmer moved to Spearman in 1941. He farmed in this area before retiring.

Mr. Osborn was born Aug. 30, 1894 in Tonkawa, Okla., the son of Mr. and Mrs. Sidney L. Osborn. He was a member of the Methodist Church.

Survivors include his wife, Floy of Pioneer Manor, a sister, Mrs. Ruby Chapman of Ponca City, Okla., and a brother James Ray Osborn of Billings, Okla.

Pallbearers were Woody Gibner, Andy Gorman, Jack McWhirter, J.D. Helms, Albert Mackie and J.W. Jenkins.

Honorary pallbearers were Harry Shedeck, Joe Smith, Everett Clement, Jesse Davis, Bill Russell, Ervin Hester, Bob Vaughn, Clay Gibner and Claude Jackson.

Holt News

Sunday guests of Mr. and Mrs. Richard Gaines were Mr. and Mrs. Clyde Gaines of Phillips.

Mr. and Mrs. Bruce Fiedler of Big Fork, Montana returned home Tuesday after spending two weeks with her parents Mr. and Mrs. C.W. Kirk and other relatives.

Vernie Rosson of Spearman, C.B. Dodson of Dalhart, Mr. and Mrs. Owen Pendergraft and Maude Rosson attended the funeral of Tom Rosson in Erick, Okla. Thursday, Jan. 6. Virgil Rosson of Fall Brook, Calif. & Jean Witt of Van Nuys, Calif. returned home with them Friday, Saturday, Virgil and Jean, Mr. and Mrs. C.W. Kirk and Maude Rosson were dinner guests of the Pendergrafts. Sunday Virgil and Jean caught a flight from Amarillo to Los Angeles.

Mr. and Mrs. Troy Bynum and daughter of Kress were Sunday callers of her sister, Mr. and Mrs. Doyle Jackson and family.

Mr. and Mrs. Dan Jackson were Monday night guests of their daughter, Mr. and Mrs. Bob Phelps and family of Forgan, Okla.

Bowling Beat

SCATTER PIN LEAGUE 1-6-1966		
TEAM	WON	LOST
Anthony Electric	43	17
Equity	42	18
Taylor-Evans	38	22
Pioneer Restaur.	30	30
Grunewalds	28	32
Gruver Motor	27	33
G&G Foodliner	23	27
Ideal	9	51
HIGH TEAM GAME		
Equity	628	
Equity	600	
Pioneer	592	
HIGH TEAM SERIES		
Equity	1794	
Gruver Motor	1671	
Anthony Elec.	1622	
HIGH INDIVIDUAL GAME		
Jane Meek	186	
Tommie Arbsland	181	
Tommie Arbsland	180	
HIGH INDIVIDUAL SERIES		
Jane Meek	531	
Tommie Arbsland	523	
Kate Farris	470	

Screwworms Increasing

Texas farmers and ranchers detected more than twice as many screwworm infestations in 1965 as during the previous year, but the total was still negligible when compared to what they used to experience before the screwworm eradication program came along.

Livestock authorities have estimated that up to one million screwworm infestations occurred annually in the southwestern United States before agricultural researchers learned the livestock insects could be eradicated by overwhelming them with billions of screwworm flies reared in a plant and sexually sterilized with atomic radiation. Sterile flies mate with fertile flies and prevent reproduction. Nearly 17 1/2 billion sterile flies have been dispersed during the past four years.

Statistics maintained at the screwworm eradication center, near Mission, revealed that 466 infestations were recorded in 53 counties during 1965. The previous year, a total of 223 cases were found in 65 counties.

The majority of the infestations were detected in counties adjacent or near the United States-Mexico border, leading eradication authorities to believe that most of them were the result of fertile screwworm flies migrating out of Mexico. In 1964, cases were scattered over much of the state, including the Panhandle and East Texas.

Also contributing to the increase in infestations, according to officials, were weather conditions on both sides of the border which were ideal for screwworms to develop and spread.

Screwworms have been eradicated from all states except California and Arizona, where eradication activities are currently underway, and a barrier zone of live sterile flies has been stretched across northern Mexico to prevent reinfestation. Screwworm outbreaks can be expected to continue to occur in states bordering on Mexico, officials declared, until this barrier zone can be extended farther south.

Eradicators hope to expand the barrier in the coming months and thus reduce outbreaks in the United States. They plan to disperse the majority of the flies produced in Mexico this winter and spring to wipe out colonies of fertile flies that could survive near the international boundary.

Deta Blodgett Is Guild President

The regular meeting of the Arts & Craft Guild was held Friday Jan. 7 in the home of Mrs. Guy Fuller.

Election of officers was held. Elected were President-Deta Blodgett, Secretary and Treasurer-Mrs. Kiff White, Reporter-Mrs. Ned Turner.

Attending were Mmes. Deta Blodgett, J.E. Womble, Nolan Holt, Clay Gibner, Kiff White, F.J. Hoskins, P.A. Lyon, Sr., Joe Dan Bryan, Ray Phelps, Freeman Barkley, Joe Traylor, Ned Turner and W.L. Russell. The next meeting will be Jan. 14 with Mrs. Joe Traylor.

A piece of driftwood can make a dramatic planter. Do a little beachcombing, find a suitable piece and let it dry. If the wood is close-grained, you can build up a beautiful finish by rubbing it with paste wax.

TOMMY BOOCH AGENCY
FARM BUREAU INSURANCE
Spearman, Texas

WATCH FOR REXALL SALE SPECIALS

Rexall
CUT COST OF LIVING SALE

AS SEEN ON NBC-TV
THE TODAY SHOW starring **HUGH DOWNS** and
THE TONIGHT SHOW starring **JOHNNY CARSON**

THURS. JAN. 13 through SAT. JAN. 22

FEATURING 1/2 PRICE SPECIALS

CARA NOME HAND LOTION
Fragrant, lanolin-rich.
16 fl. oz. **98c**
REG. 2.00

CARA NOME HAND CREAM
Vanishing type, greaseless.
8-oz. jar **87c**
Reg. 1.75

300 REXALL ASPIRIN
None fined, none faster-acting.
REG. 1.69 **84c**
59c Child's Aspirin, 100's 29c
1.49 Buffered Aspirin, 200's 74c

REXALL KLENZO ANTISEPTIC MOUTHWASH
Ruby-red, spicy-flavored.
24 fl. oz. **54c**
REG. 1.09

REXALL Mi-37 ANTISEPTIC MOUTHWASH
Amber color, wake-up taste!
24 fl. oz. **62c**
REG. 1.25

REXALL BLUE ORAL ANTISEPTIC MOUTHWASH
Cool, refreshing flavor.
Pint **49c**
REG. 98c

REXALL INSTANT SPRAY STARCH
Iron glides easier. Won't scorch.
24-oz. Aerosol **49c**

REXALL LIQUID DETERGENT
Pink Lotion or Clear Liquid.
22 fl. oz. **47c**

HOUSEHOLD RUBBER GLOVES
Small, medium and large sizes.
REG. 79c **3 PRS. 99c**

FIRST QUALITY SEAMLESS NYLONS
Mesh or Regular knit. Popular shades.
2 PRS. 77c

LADIES' AND MEN'S HAIR BRUSHES
Nylon bristles. Choice of styles.
each **29c**

REXALL SHAMPOOS
Fast Dandruff Treatment, Emerald Brite, Brite Conditioning, 16 fl. oz. each. Or Silque Cream, 10-oz. jar.
1/2 PRICE REG. 1.89 each **94c**

BRITE SET HAIR SPRAY
3 types. Regular, Hard-to-Hold and new light spray for Casual styles.
14 oz. Aerosol **59c**

REXALL FACIAL TISSUES
White, pink, yellow or orchid.
Box of 400 (200 2-ply) tissues. **5 Boxes 97c**
REG. 1.99

REXALL BATHROOM TISSUE
White, pink, yellow or orchid.
4 Roll Pack **44c**
REG. 1.76

SAVE UP TO 1/2 ON VITAMINS

6.95 CHEWABLE VITAMINS Rexall MinuteMan. 365's	3.97
3.18 CHEWABLE VITAMIN C 100 mg. 120's	2 for 1.59
3.00 MULTI-VITAMINS Rexall One Tablet Daily. 200's	1.50
10.95 PANOVITE VITAMINS with Minerals. 250's	5.47

BUDGET-PRICED QUALITY RUBBER GOODS

HOT WATER BOTTLE red rubber	1.19
FOUNTAIN SYRINGE with attachments. Red	1.39
COMBINATION SYRINGE and Hot Water Bottle. Red	1.49
FOLDING SYRINGE in poly bag. With attachments	1.19
BULB SYRINGE Feminine. White	1.39

REXALL DELUXE TOOTH BRUSHES
Long-wearing nylon bristles. 6 medically-approved styles.
REG. 69c each **3 for 88c**

89c Natural Bristle Tooth Brushes Professional or Convex. Each **44c**
69c Denture Brush Rexall. Nylon bristle **34c**

100% PLASTIC PLAYING CARDS
Bridge. Washable, long-wearing.
Single Deck **79c**

SUNBEAM ELECTRIC CLOCK
Modern case with new curved crystal face. Easy to Read **2.69**

REXALL GALLON VAPORIZER
Automatic shut-off. Steams 8 to 10 hours.
Guaranteed **2.89**

REXALL ELECTRIC HEAT PAD
3 positive heats. Removable outer cover. U.L. Appvd. **1.79**

STAINLESS STEEL RAZOR BLADES
Sharp surgical steel. Double edge. Dispenser Pack of 5 **29c**
4 Packs **1.00**

CARA NOME DEODORANTS
Check perspiration and odor. Cream, 2 oz., or Roll-on, 1 1/4 oz.
1/2 PRICE REG. 1.00 each **50c**

REXALL FAST HOME PERMANENTS
Leave hair easier to manage. Super, Regular, Gentle, Silver or Little Girls'.
REG. 2.00 **1.00**

SAVE ON REXALL COMBINATION PACKS

FREE! 500 Rexall SACCHARIN with 1000 1/4-grain tablets at regular price	99c	Rexall Twin-Pack GLYCERIN SUPPOSITORIES Adult or Infant. Jars of 24 each.	99c	Rexall Twin-Pack FUNGI-REX Athlete's Foot Powder	89c
BOTH FOR 99c		2 Jars of 24 99c		2 4-oz. Cans 89c	

NEW REXALL MILK of MAGNESIA and Mineral Oil Emulsion
Antacid, laxative, lubricant.
Pint. **79c**
Reg. 98c

ALARM CLOCKS Rex. Ivory, pink, aqua	1.99
ALARM CLOCKS Rex. Ivory, Pink, Aqua. Luminous dial	2.69
16.95 VAPORIZER Cold Vapor. Rexall, 1 1/2 gal.	11.88
39c 9-VOLT ELECTREX TRANSISTOR BATTERY	29c
VACUUM BOTTLES Rexall. Pint	99c
500 SHEETS FILLER PAPER	66c
300 SHEETS FILLER PAPER	47c
25c BOBBY PINS Black or Bronze. 60's	12c
BILLFOLDS Men's or Ladies'. Each	1.00
EXTENSION CORDS 2 6-ft. and 1 9-ft. cord. Set of 3	88c
BATTERIES for Flashlights. Electrex AA, C, D	4 for 50c

Some Items Plus Tax where Applicable

REXALL REDI-SPRAY DEODORANT
Dries instantly on contact.
7 oz. **1.00**
REG. 1.29

REXALL Lavender SHAVE CREAM
Rich, foamy lather. Regular or Menthol.
14 oz. **64c**
REG. 1.29

Sheer Lycra Spandex SUPPORT HOSE
Ladies', slightly irregular. Petite, Average, Tall, X-Long.
PAIR **1.99**

Easy-to-Read FEVER THERMOMETER
Guaranteed. Oral or Stub style.
Each **77c**

Washable Vinyl BABY PANTS
Roomy bloomer style. Small, medium, large, X-large.
4-PAIR PACK **49c**

"Big Value" WRITING TABLET or ENVELOPES
Ruled or unruled tablet. Envelopes in many styles.
PACK **27c**

REXALL TOOTH PASTE
Regular or Fluoride
6 1/4 oz. tube. **59c**
REG. 83c

300 REXALL COTTON BALLS
Jumbo pack, for manicure and cosmetic needs.
BAG OF 300 **69c**

BOXED STATIONERY or NOTES
Several styles, with envelopes.
Your Choice **39c**

SUNBEAM II RAZOR
Reg. \$21.50 **\$15.00**

SUNBEAM SHAVEMASTER
Reg. \$29.95 **\$20.00**

SPEARMAN REXALL DRUG

Reg. \$19.95 Battery Operated **NORELCO RAZOR \$10.00**
Reg. \$38.95 Ladies Remington **ELECTRONIC \$22.95**

MANY MORE ITEMS ON SALE - Come Early!

Examination Dates Set

Recruiters

The Army "Graduate Specialist Program" offers high school senior, both men and women, an opportunity to receive the exact technical training, vocational training, travel for which they qualify according to Lt. Colonel...

Examinations are scheduled to be given in Amarillo on the following dates: Saturday, Feb. 19, Feb. 26, March 12, March 26, April 2, April 16, April 30, May 7, May 28, June 4, and June 11.

Seniors will depart from Amarillo Friday afternoon or evening and return Saturday. If qualified, a chosen course or field will be reserved until after graduation. Graduate specialist appointments are limited, and applicants are selected on a "first come...first served" basis.

For further details contact Lt. James Parish, 411 Main St., Guymon, Okla., or call collect, 338-7600.

School Lunch Menu

- MONDAY, JAN. 17: Sliced Steak, Fried Potatoes, Seasoned Green Peas, Potato Sticks, Apple Pudding. TUESDAY, JAN. 18: Baked Chicken Egg Noodles, Buttered Corn, Seasoned Green Beans, Cabbage Slaw, Honey-Peanut Butter Spread, Rolls-Butter. WEDNESDAY, JAN. 19: Hamburger, Mustard, Western Beans, Lettuce-Tomato Salad, Pickle Slices, Lemon Gelatin with Fruit, Fingerbread. THURSDAY, JAN. 20: Chocolate or Plain Milk, Beef Stew-Crackers, Cheese Slice, Buttered Corn, Celery Sticks, Creamed Prunes, Applesauce Cake. FRIDAY, JAN. 21: Chocolate or Plain Milk, Hot Dog-Chili Sauce or Tuna Salad Sandwich, Seasoned Blackeye Peas, Buttered Potatoes, Spicy Apple Rings, Butter Cake-Chocolate Frosting, Chocolate or Plain Milk.

G.A.'s Meet At Church

The Mary Ruth Bridges 10 year old group of G.A.'s met at the First Baptist Church Wednesday for a Plan-It meeting. Marilee Ooley, president presided at the business session with each officer presenting her plans for the new year. Mrs. R.E. Bradford, counselor, brought the devotional. Present were Janeth Robinson, Suellen Womble, Lee Ann Smith, Nedra Black, Susan Gates, Darlene Wilkerson, Debbie McCoy, Sabrina McIver, Florie Uptergrove, Lela Golightly and Mrs. Bradford.



WELCOME-Mayor Bob Vaughn (left) welcomes Gifford-Hill Western to Spearman in a ceremony Tuesday. Gifford-Hill officials are: Jim Burks, Division Manager, Malcomb Hammond of Dallas, Archie Wilson of Dallas and Fred Harper of Dallas. A large crowd of businessmen attended the opening.

Homemaking Notes

By Linda Webb, H.D. Agent

Almost every type of cookware and bakeware now offers the advantages of non-stick cooking with no-scour cleaning. Several new colors are being introduced, including mint frost, almond, ginger, and Swiss chocolate.

New additions to the list of electrical cookware are: an automatic corn popper, deep-fat fryers, frying pans with waffle irons--round and rectangular, griddles, and combinations sandwich toasters-waffle irons.

Making the first departure from kitchen ware is the spray steam and dry iron with sole-plate coated with "Teflon" TFE non-stick finishes. This feature provides several advantages--it prevents troublesome starch and lint build up and the formation of rough edges causing fabrics to snag. It eliminates the problem of heat-sensitive fabrics, fabric finishes, and plastic laundry bags sticking to the sole-plate.

On the non-electrical list are a number of newcomers. An attractive ten-piece set of glass ovenware is available in aqua and white. The set includes a deep rectangular loaf pan, a rectangular baking pan, an oval casserole with lid, a round cake pan, and two round casseroles with covers. A server cradle with walnut handles is included in the set. Other new pieces being offered include many sets of metal cookware and bakeware, Dutch ovens, egg poachers, ice cream scoops, egg beater, cheese shaver, pizza pan and cutter, drip catcher, turners, and even a dog dish coated with "Teflon."

Although many people have used cookware coated with "Teflon", we still receive many questions on proper care. So to insure long wear and efficient performance we recommend the following methods on care.

Before using non-stick cookware, wash with warm, soapy water and rinse with hot water. It is suggested that all utensils--and particularly bakeware--be oiled before using for the first time to condition the non-stick surface. This may be done by wiping the surface with salad oil. The one exception is the angel food cake pan. It should not be greased because the cake batter must cling to the sides of the pan during baking.

As a rule, it is not necessary to grease the "Teflon" finish to prevent foods from sticking. Most people find, however, that fats and oils are desirable in frying or baking as they contribute flavor and aid in browning. Pans for baking butter cakes, cupcakes, or mixes that contain fruits or lots of sugar should be greased

before every use. Cake pans may be floured.

The basic procedures for cooking with utensils finished with "Teflon" are the same as

for other types of utensils. Avoid extremely high temperatures. Empty pans should not be left on hot burners or in heated ovens. At temperatures above 450 degrees F. the finish may discolor rapidly. Foods will burn in non-stick pans just as they do in ordinary pans, but burned foods are as easy to remove

as other foods.

Scratches seldom affect the non-stick property of the finish. Damage is usually a matter of appearance, not of performance. The coating will not peel off, nor will a scratch open wider. If you don't have a "light touch" use spoons and other utensils made of nylon, rubber, wood or metal coated with "Teflon." A dull-edged table knife may be used when cutting food in cookware coated with "Teflon".

Clean utensils with hot, sudsy water. Water from the faucet will rinse away most visible residue, but a thin layer of food or grease may cling to the surface and eventually build up and cause the finish to stain or lose its release properties. Periodically, the finish should be scrubbed with a plastic or rubber scrubber, or stiff sponge. They may be washed in automatic dishwashers without affecting the finish, although certain metals on the outside of the pan may become dull.

Most "Teflon" finishes, especially light pastel colors, may stain with continued use. This is normal and within limits, does not affect the performance of the pan.

While it is not possible to remove all stains, considerable success has been obtained with "Stain-Aid Cleaner for Teflon, manufactured by the Lewis Research Lab. of Englewood, N.J.

In some cases, stains may be lightened or removed by the following procedure:

Mix two tablespoons of baking soda and one-half cup of liquid household bleach with one cup of water. Boil this solution for five to ten minutes

HANSFORD HOSPITAL NEWS

Patients in Hansford Hospital this week are W.S. Jones, Willie Mathis, Martha Coursey and son, Sherry Anderson and son, Joe Day, Gladys O'Connell, Jesse Tompkins, Charles Broyles, Angie Sheets, Wm. Alvin Ellsworth, Leonard Jameson, Charles Kirbo.

Dismissed were Edith Curlee, Rose Marie Crowl, Linda Vera, Moyia Myers, G.I. Brown, Willie Lois Edwards, Frank Kirk, Opal Jones, Gregg Taylor, Theron Messer, Myrtle Parsons, Louis Mathews, Lannis Cook, Virgil Mathews.

Mrs. Inez Kirk has now moved into her apartment on Hazelwood after spending the past three weeks with Mr. and Mrs. Herb Howe.

Mr. and Mrs. Guy Remy and granddaughters spent Sunday afternoon at Skellytown and Pampa.

In the stained utensils. After this treatment, thoroughly wash, rinse, and dry the utensil, then wipe it with salad oil before using again.

Widespread, dark staining of "Teflon" finishes usually indicates that the utensil has been consistently overheated or inadequately washed.

THE LAST NOTE: This is the season when we complain, if the house isn't as hot as it was in the summer when we complained about the heat.

Sears Big... New! 22 Cu. Ft. Coldspot Freezers

2 DAY SALE FRIDAY AND SATURDAY

Your Best Freezer Buy! 28% MORE STORAGE ROOM IN 27% LESS FLOOR SPACE

Superior foamed-in-place insulation permits walls to be thinner. So you store more food in less space than in freezers with old-fashioned insulation.

COSTS 27% LESS TO OPERATE



Freezing coils are welded directly to the liner for TOTAL CONTACT COLD. This more efficient method of cold transfer takes less electricity than is required with ordinary freezers.

PORCELAIN FINISH INSIDE Rust, chip and stain resistant. Won't discolor or peel off. Won't absorb food odors.

BAKED ENAMEL OUTSIDE Gleaming white exterior is easy to keep clean--just wipe with a damp cloth. Super wall construction prevents moisture from forming.

GREATEST FOOD PROTECTION PLAN IN AMERICA Sears will reimburse you for the value of food in your freezer from a minimum of \$5.00, up to a cumulative total of \$200.00, against loss caused by mechanical failure of freezing unit or power failure due to an act of God for 5 years.



Lowest Price in Sears history for a freezer this big 2 Days Only!

Model 1561 194.88 NO MONEY DOWN \$9 Monthly on Sears Easy Payment Plan

Stores 770 lbs. at peak-of-flavor freshness Big? YES! More floor space? LESS! Less operating costs, too! Here's family-size storage... the kind that saves you money. Lets you stock-up when prices are lowest. The fast-freeze that lets you store entire pre-cooked meals... serve them when convenient. Has cold control, interior light, two sliding baskets, fast-freeze section. Balanced lid opens and closes at a touch, has 2-key lock, magnetic gasket. UL listed. Shipping wt. 315 lbs. One of our finest freezers at an all time low price--2 days only!



CATALOG SALES OFFICE - CALL NOW!

Buy, Sell, Trade
Hire, Rent, Find
THROUGH THE

WANT ADS

Open House For Fuller Is Cancelled

The open house scheduled Sunday in the Perry Memorial Library in Perryton for Guy Fuller of Spearman has been cancelled.

Fuller, who is having a one man art show in the library, underwent knee surgery this week.

His work is hanging in the library this month and may be seen during regular library hours.

The open house was being given by the Spearman Art Class.

Etters Visit Southern States

Mr. and Mrs. Tom Etter returned Saturday from a 12-day vacation in New Orleans and Louisiana.

They attended the Missouri-Florida football game in the Sugar Bowl.

They toured much of the state and saw some of the sugar cane harvest in the southern part of the state. Etter said a big rain did not slow the operation. The men and machines just slogged through the mud to get the crop.

Save Tape Pieces

Do not throw away bits of leftover bias tape. Instead, sew them together, end to end, on the bias. Use as borders for dish towels, potholders or aprons.

Tissue Partition

Never dry multi-colored sweaters without inserting a piece of cardboard or several thickness of tissue as drying frame on the inside. This separates back from front and prevents color stains.

Zero, or Lower

Frozen foods require a temperature of zero degrees Fahrenheit or lower to keep them at top quality longer than a few days or a week, the Agricultural Research Service advises.

FOR SALE

FOR SALE-3 bedroom brick veneer, 1102 S. Haney, 14-tfc

FOR SALE-8 ft. Frigidaire deep freeze. Call 659-2350. 95-tfc

FOR SALE-8x40 ft. mobile home furnished, good condition, \$1250, 2 air conditioners. Phone 659-3422. 16-tfc

FOR SALE: To settle estate, lot 132 1/2 feet front and small house, 311 N. James. Mail bid to Box 633, Spearman, Texas. Reserve right to accept or refuse all bids. Inquire Raymond Sparks, 22-tfc

FOR SALE-Lot 7, block 14 on Main Street. To settle estate. Title as is. Mail bid to Box 633, Spearman, Texas. Reserve right to accept or reject bids. Inquire Raymond Sparks, 22-tfc

FOR SALE-95 acres southeast of Spearman, irrigation water, 1/2 minerals, industrial lots and acreage. Financing available. Cecil Crawford. Phone 659-2409. 49-tfc

FOR SALE-7 room, 2 bath, good sturdy built house, 301 N. Hoskins, Sam Condo. Call 659-2368. 1-tfc

Used Furniture: One extra nice used bedroom suite, one good Danish modern sofa, several dinettes, one new king size mattress, springs and frames, slightly damaged, one used Barcalounger in excellent condition. Several other used odd pieces. Beedy Furniture, 24-tfc

FOR SALE-Unfinished 3 bedroom house. Central heating unit. Paving. 27 N. Hoskins, 659-2685. 24-8c

FOR SALE-Two bedroom home and 2 room house on 100 ft. front. Good location. Collard Real Estate. 659-2501. 24-2c

FOR SALE-1963 American-Westwood 2 bedroom mobile home. Excellent condition. 119 N. Brandt. Phone 659-2454 after 6 p.m. 24-tfc

-WANTED-

WANTED-Farm job in Spearman School district. Irrigating and cattle. Richard Mickler, Rt. 1, Box 70, Perryton. 13-17p

Cubs Have Won Six Contests

The Waka Cubs have won six and lost two for the season. Their two losses came from Pleinons 19-46 in the consolation finals in the Pringle tournament, and by St. John's of Borger in the first round of the tourney by a score of 30-28.

The Cubs next win was over Garrett, Okla. by a 23-24 margin. High point man for Waka was Bob Mosier with 14 points.

In other league competition the Waka Cubs continued to win by downing Bethany, Okla. 33-18, and Clearlake, Okla. by 33-22. High point man in both games was Bob Mosier with a total of 37 points.

The next game for the Cubs is Bethany, Okla. January 13. The Pee Wee game will start at 7 p.m., the girls game at 7:30 p.m. and the boys game at 8:40. The Cubs enter the Garrett tournament Jan. 20-22. The Waka tournament is Feb. 3, 4, 5. Ten teams from the surrounding area are entered.

Less Fertilizer

Indian consumption of chemical fertilizers is only 2.5 pounds per acre of land against 23 pounds in the United States and 20.9 pounds in Japan.

Invisible Repair

To mend sheer curtains, apply a bit of colorless nail polish and press torn edges together. It makes the tear almost invisible.

Pour From Back Side

When emptying a can of coffee into a canister, pour from the back side toward you—and very little coffee will spill.

Test Cooker Gauge

To be sure the gauge on your pressure cooker is working properly before you use it for canning, test first with plain water.

Cool Stuck Stamps

Stamps stuck together should be placed in the freezer compartment of your refrigerator. After an hour or so you can pull them apart with the mucilage intact.

Saturday, Jan. 15
Jerry
& the Pledges
at the
KON-TIKI
Teen-Age Dance
Every Saturday
8-12 P.M.
Ages 13-19
Properly
Chaperoned

- SERVICES -

Amarillo Daily News & Globe Times home delivery. Call 2685. 14-tfc

SERVICE-Ditches from 3-12 inches, any desired depth. S. D. Jones 659-2809, Harold Shaver 659-3474. 17-tfc

Borger Lock & Key-Be in town Feb. 22 at Spearman Hardware. Safe opening-keys by code, 3 keys-lock in shop \$1.50. Bob Shuler, 1021 Lee Ave. Borger, Phone BR3-5924. 24-8c

Stock water hauling. Dependable service. Olin Sheets, 659-3167. 4-tfc

Need baby sitter to stay in my home. Call 2822 or 3009. 18-tfc

Paint On Decorations With Child's Brush

With the aid of a child's paint brush and food coloring, you can do a good job of decorating a party cake. A butter frosting makes a good base, and you can sketch the intended design with a toothpick before beginning. It can be easily "erased" with one sweep of the blunt edge of a table knife if you make a mistake.

The four basic food colors are all that is necessary to mix any color you wish—and you can paint the decoration as elaborate—or as simple—as you wish.

Carry Was Convinced

Carry Amelia Nation believed she was divinely protected and that her name, Carry A. Nation, was preordained.

The colonies captured the Hessians at the Battle of Trenton on Dec. 26, 1776.

Cummings
Refrigeration
HEATING
AIR CONDITIONING
SALES & SERVICE
SPECIALIST
659-2721
SPEARMAN

Southwestern Life
Insurance Co.
LIFE INSURANCE
IS MY
ONLY
BUSINESS...
LET ME HELP YOU
PLAN YOUR NEEDS
DON KNOX
Phone 659-3701
Spearman

- FOR RENT -

FOR RENT-Downtown Apts. Nicely furnished, bills paid, 2 bedroom. \$80. Call 659-2264. 7-tfc

FOR RENT-small 4 room house. Phone 2941. 5-tfc

FOR RENT-4 room furnished apartment, 821 S. Haney. 659-2084. 22-tfc

Future Readers Of The Plainsman

Mr. and Mrs. Lenzie Anderson are the parents of a son, Lawrence Gene, born Jan. 7 in Hansford Hospital. He weighed 6 lbs. 7 1/2 oz.

Mr. and Mrs. Carroll Cook are the parents of a son, John Fitzgerald, born Jan. 8 at Hansford Hospital. He weighed 8 lbs. 4 oz.

Cheap Hampers

If you need a clothes hamper in every bedroom closet, but find them to be rather expensive—how about the huge plastic garbage cans that have hinged doors in the tops?

Rummage Sale

The Girl Scouts will have a rummage sale January 15 from 9 to 4 in the old Jim Neely building.

Anyone with goods they wish to donate may call the following women and they will pick up the items—Mrs. James Pendergraft 2872; Mrs. Marcus Larson 2004, Mrs. Wade Tackitt 2154.

For Quick Courteous
Service
Chevron Gasolines
Atlas Tires & Accessories
Washing-Greasing
**QUICK,
COURTEOUS
SERVICE**
Loren Simmons
**SIMMONS
CHEVRON
SERVICE**
Phone 659-9986
Plains Shopping Center

TELEGAGS by BOB NOBLES
WHEN I ASKED FOR A RAISE, I SAID SEVERAL IMPORTANT COMPANIES WERE AFTER ME.
WHY, PERCY, FIBBING ON GEORGE WASHINGTON'S BIRTH DAY?
WHO'S FIBBING? AREN'T THE ELECTRIC, GAS AND TWO FINANCIAL COMPANIES AFTER ME FOR UNPAID BILLS?
YOU'LL ENJOY TRUE SATISFACTION AFTER YOU GET ACQUAINTED WITH
BOB'S SALES & SERVICE
Bob's SALES and SERVICE
WE SELL THE BEST and SERVICE THE REST
SPEARMAN, TEXAS
Phone 659-3222

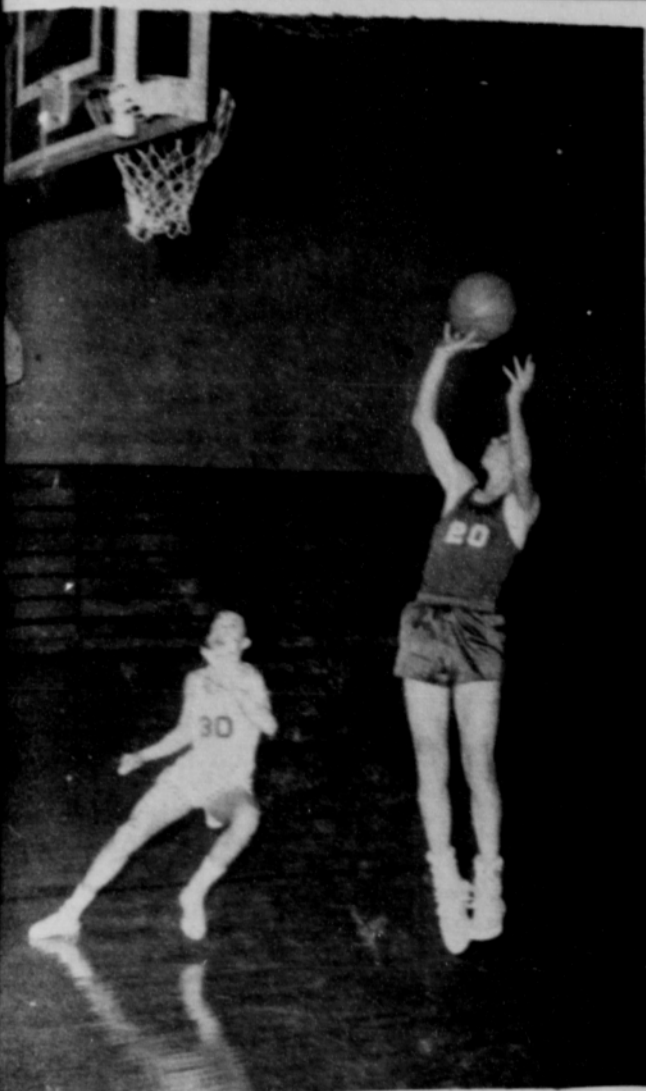
City Directory
CLEANERS
CLEANING
PRESSING
CARPET
CLEANING SERVICE
COIN OPERATED
DRY CLEANING
FREE
PICK-UP & DELIVERY
PHONE 659-2511
Wardrobe Cleaners
Oscar Donnell
302 MAIN ST.
SPEARMAN, TEXAS
DENTISTS
F. J. Daily D.D.S.
16 SW COURT STREET
SPEARMAN
ELECTRICIAN
Anthony Electric
Industrial, Commercial
and House Wiring
Heating and
Air Conditioning
Contracting
and Repairs.
Fully Insured
PLAINS
SHOPPING CENTER
PHONE 659-2441
BOX 727
SPEARMAN, TEXAS

JEST A MINUTE
Best rule when reading a restaurant menu: "If you can't pronounce it, you can't afford it."
Soft cheeses, such as cottage and cream cheese, are perishable and should not be stored for lengthy periods.

Burton's TV
Your PHILCO Dealer
Phone 659-2121
318 DAVIS-SPEARMAN, TEX.

E. C. Greene & Sons Agency
Real Estate-Loans
Insurance-Cattle
Aluminum Pipes
410 Davis, Spearman
Phone 659-2587

YOUR
HALLMARK STORE
Hallmark Cards
PLAINSMAN OFFICE SUPPLY INC.
OFFICE SUPPLY
HEADQUARTERS
FOR
HANSFORD COUNTY



SCORING -- Joe Bill Cochran got free on a fast break to score two points for the Spearman Eighth Grade in their game against Stinnett here Monday night.

-Plainsman photo



Lynx Claw

JANE KIRKLAND, Editor CARLA ARCHER, Asst. Ed. Mr. JOHN HICKEY, Sponsor

Spearman H S To Host Play Festival

The Speech students are working on four plays at the present time. They are "Madame Butterfly", "Enter A Queen", "Sister McIntosh", and the 3 act play "The Miracle Worker". In March our school will be host to the Play Festival, which will consist of schools presenting their contest plays for entertainment and practice. Perryton will be the scene of another contest on Jan. 28. Spearman students will participate in this contest, which should prove to be very valuable because the students will be competing with the same schools in the UIL contest.

Orders Being Taken On FHA Cookbook

The FHA is working on the annual cookbook sale. Vegetable and fruits will be the topic of this year's book.

Linda Edge is general chairman of the cookbook sales. Kate Kilgore is publicity chairman, Gwen Hantem is sales manager and Arbeta Tackitt is finance chairman. All FHA girls will be selling cookbooks, they sell for \$2.95 each. Each book includes 2,000 favorite recipes of Home Economics teachers.

This is the fifth year of cookbook sales and all previous cookbooks will be available also. These include: Desserts, Meats, Salads, Cakes and Breads, as well as the new Vegetable book.

Announcements will be made by radio, newspaper,

and posters as soon as the books are off the press this month.

Advance orders will be taken by any FHA girl or by calling Mrs. Hudson at 659-2153.

Meteor Showers

Meteors sometimes follow one another so quickly that their luminous streaks give the impression of rainfall, hence the term "meteor shower."

Weather Teamwork

The U.S. Department of Agriculture and the Weather Bureau cooperate in issuing local weather-crop bulletins in various areas of the country.

Counselor's Corner

Thursday evening Jan. 27 we will have Jean Moore from Chandon Jr. College here to tell us about the cost of jr. colleges, the fields of education, and the distinct advantages of a jr. college.

Saddle Shoes Coming Back

1966 brings back many of the popular looks that highlighted the '65 fashion parade, and one of the tops is still the baby-doll dress with slight variations. To the stylish high waistline is added shape; instead of being full, it fits around the hips this year.

Dig into the old trunk girls and drag out those old saddle shoes? They're to be seen again in '66!

Paisley print for boys is popular this season. Add a tie and matching handkerchief to sharpen up your suit wardrobe. Found in such gay colors as deep blue and pale yellow with contrasting colors in the designs, you're sure to look and feel your best.

The Romance Of 2 Turtles

A new romance is starting in the science lab under the direction of Mr. Barker. The romance involves 2 turtles—Horace and Hortense.

On Friday, Jan. 7, 1966 at 2:06 p.m. our own Hortense met Horace in the aquarium for a frivolous weekend. Horace was a bit bashful, but our own Hortense was rather forward. She chased poor old Horace all around and among the aquatic plants. Horace's TM (turtle mentality) isn't very high, as we found out.

Join us next week to find out more about the adventures in the love-life of Hortense and Horace.

We would like to express our appreciation to Peggy Devers for giving Hortense her companion.

Tidy Leather Belt

To clean leather belts, wash with a cloth dipped in mild soap suds. Rinse with cloth wrung out in clear water. Dry well; rub lightly with wax polish.

Editorial

by Carla Archer

If our nation went to war, what would you do? This is a loaded question, but one with a variety of answers.

Men are not the only ones involved in a war; women play important roles, too. Weeping over a sweetheart or husband on the front is one way to avoid the real issue. If these women are really concerned with the conditions met by the men who are fighting, there are ways which they can improve them. Packing boxes with needed supplies, working in war offices as secretaries, or training to be nurses are only a minute fraction of services. Also, a few encouraging words in a letter can be invaluable by giving the men moral support.

Boys will be drafted soon after they have reached the required age. They will be doing their part in the war. For those unable to fight, there would be many job openings for farmers, factory workers and business men.

Have you given your part in a war crisis any consideration? Only as a nation working together can we defeat an invading force. Each individual contributing all he can, added to the contributions of others and combining these to become victors. This means you; working diligently with your colleagues must be the team to preserve freedom.

Good Answers

What would you do with an ex-ebec? (An ex-ebec is a small thru-masted ship, once common in the Mediterranean.)

Geir Overland-Drag main in it and then throw it in the trash.

Linda Smith-Throw it away. Susan Uptergrove-I don't know.

Kate Kilgore-Probably nothing. Qua Crum-Try to get rid of it.

Mrs. Patterson-I wouldn't do anything with it because I don't know what it is.

Connie Fowler-Wear it. Donna Ownbey-I'd date it. Debbie Standtfer-Set it on my bed.

Toni Morgan-Eat it, (I am always hungry.)

Drama Class To Present 'The Miracle Worker'

The Drama Class in the Speech Department of Spearman High School have announced that they have completed arrangements with Samuel French, Inc., of New York for a local production of "The Miracle Worker" by William Gibson.

This enormously successful New York stage play, from which was made the equally successful motion picture, has been described as "continuously and enthrallingly interesting, one of the greatest inspirational, true-life dramas in all theatrical history."

The two central characters, Helen Keller as a child and her compassionate tutor, Annie Sullivan, which were played in both the Broadway and Hollywood versions by the remarkable young actress, Patty Duke, and Anne Bancroft, will be portrayed locally by Donna Ownbey and Cloetta Fullbright.

The production will be under the personal direction of Mrs. Frank Porter. Assisting on the technical staff are Clay Schnell, Ronnie Burke and Randy Collard.

An exciting, true-life drama, "The Miracle Worker" tells the story of the child, Helen Keller, born deaf, dumb and sightless, and of the herculean efforts of her compassionate tutor, Annie Sullivan, to help Helen make a place for herself in the frightening world about her. The Drama Class's presentation of this outstanding stage and motion picture success will take place Feb. 12 at 7:30 at the High School Auditorium.

Dog Population

The country's canine population is estimated at 26 million by the Pet Food Institute, which puts the cat population between 20 and 29 million.

JEST A MINUTE

A sure test of will power is to see a friend with a black eye and not ask any questions.

WEEK-END Specials!

GOOD FRI. & SAT. - JAN. 14-15

3 Piece

DISH DRAIN SET

98¢

Large-

LAUNDRY BASKET

FREE

WITH \$20.00 PURCHASE

Top Of Texas

BACON

93¢

lb.

Del Monte Early Garden

PEAS

303 size

2 FOR 45¢

White Colo. Burbank

POTATOES

10 lb.

49¢

(With \$5.00 Purchase)

Del Monte Whole Kernel

Corn

303 size

2 FOR 45¢

Reg. \$1.09 VO-S

HAIR DRESSING

89¢

WITH FREE 40¢ CREAM RINSE

Reg. \$1.50 VO-S

HAIR SPRAY

\$1.29

WITH FREE 60¢ BOTTLE SHAMPOO

Reg. \$1.00 VO-S

HAIR SPRAY

89¢

WITH 40¢ CREAM RINSE FREE

Patio

ENCHILADA DINNERS

each 53¢

Combination

MEXICAN DINNERS

47¢ each

Patio

MEXICAN DINNERS

59¢ each

Del Monte q 20 oz.

CATSUP

25¢

M & M Grocery

We Give Buccaneer Stamps



SCRAMBLE -- A Spearman Eighth Grader gets high in the air for this rebound against the Stinnett team here Monday night.

-Plainsman photo

Routine Business Handled by Board

Routine business occupied the Spearman School Board Tuesday night.

The resignation of agriculture teacher Herman Boone was officially accepted. Boone is resigning to enter private business in Olney. He asked to be relieved of his duties at mid-term or as soon as a replacement can be found.

The administration and board expressed regret in losing Boone. Supt. Bill Reeves said he had done an outstanding job here.

Mrs. L.L. Laws was changed from a fifth grade teacher to a reading specialist to handle the new reading program being established under the new federal aid to education assistance program.

The employment of a teacher to replace Mrs. Laws and a reading instructor in high school was approved by the board. Dr. Reeves said the employment of the teachers is subject to a final check of their credentials.

Final payment was made to contractors and the architect for the remodeling work of the junior high school plant, and the paving at the high school.

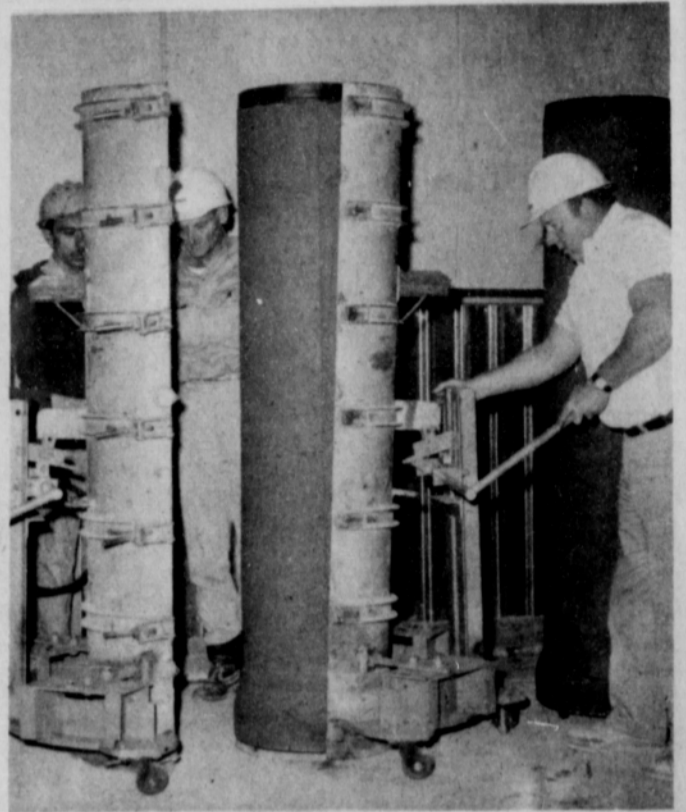
Bids on an old school bus were opened and it was sold to a Mr. Carpenter of El Paso on a bid of \$302, the high bid.

Dr. Reeves was authorized to open another bank account for the school for the deposit of Federal Title One and Two funds. This money must be kept separate and be audited separate from other school funds.

Dr. Reeves said enrollment in the schools showed a small increase over the opening enrollment. High school now has 334 students, junior high has 401 and the elementary grades 396. Total enrollment is 1131 students.

The final business for the meeting was an executive session for the discussion of school personnel.

A survey taken by the Bureau of the Census shows that in the peak travel months of July, August and September, 167 million travelers from 55 per cent of the nation's households took trips. Of these jaunts, 86 per cent involved the use of the auto.



OPENING -- Gifford-Hill workmen take the form from a new section of concrete pipe at the new plant in Spearman. This plant will produce about 500 sections of pipe a day.

-Plainsman photo

Tulia, Boys Ranch Come Here for Games Friday

After being on the road for a week the Spearman varsity basketball team will be playing at home Friday night.

The powerful Tulia Hornettes will be coming to town to try and make it two in a row over the Lynxettes.

Boys Ranch will be here for a district game with the Lynx. After two good games that went against them, the Lynx should get their first district win.

Boys Ranch has been having trouble finding the victory ring this season, also.

The Lynx now have lost four district games by a total of 10 points.

Tulia beat the Lynxettes in Duncanville by two points for the title.

Coach Dean Weese says he

does not know if Kathi Pattison will be able to play against the Hornettes.

She has been working out, but he is not going to rush her back into action before the knee is ready.

Pattison injured her knee in the Tulia game at Duncanville and has not seen action since.

PLASTIC AUTOMOBILES?

The use of plastics in cars is growing steadily, from 3 million pounds in 1960 to 25 million in 1965. A 100 million-pound year by 1970 is forecast. Major use is for interior parts but some 1966 cars have plastic grilles and hoods.

Hallmark Valentines

- * 'Filly' Valentines
- * 'Monster' Valentines
- * Comic Valentines

VALENTINES FOR SPECIAL FRIENDS & RELATIVES

VALENTINES FOR TEACHER



CHILDREN'S PACKAGED VALENTINES SPECIALLY PRICED AT LESS THAN 1¢ EACH

'LOLLIPOP' VALENTINES

Plainsman Office Supply

209 Main 659-2466 Spearman



VALENTINE DECORATION BOOKS



HIGH FIDELTY MIRRORS OF TWIN GROUND

DOOR MIRRORS \$13.95
16" X 60"
Beveled Edge

GOLD FRAMED

MIRRORS \$29.95
29" X 41" Two Styles

All Mirrors of Heavy Plate Glass by Pittsburg



FURNITURE CO.
PLAINS SHOPPING CENTER
659-3044
Spearman, Texas

Welcome Gifford-Hill Western

We're proud to have been the electrical Contractor for the new Gifford-Hill Western plant which opened here this week. This plant is another important step forward in the increasing industrial growth of Spearman.



If you need a light bulb or an entire industrial plant wired, see us.

RESIDENTIAL, INDUSTRIAL & COMMERCIAL ELECTRICAL CONTRACTING

ANTHONY ELECTRIC

PLAINS SHOPPING CENTER

Four FTA Chapters Honored At Tea Given by Eta Alpha

Future Teachers Association Chapters of Gruver, Darrouzett, Booker and Spearman were honored with a tea given by Eta Alpha Chapter of Delta Kappa Gamma Monday night Jan. 10 at 7 p.m. in the Spearman High School.

Punch and cookies were served to approximately 80 people from a table centered with the FTA emblem rising above a styrofoam teacher and student arranged with red carnations, carrying out the FTA colors of white, black,

and flaming red. Decorations and refreshments were by Ross Catering Service.

Thelma Vaughn welcomed the guests followed by a re-

sponse by Kathi Pattison, president of the Spearman FTA.

The program "The Influence of Teachers on the Development of Creative Thinking" was led by Gladys Phillips assisted by Roberta Pugh, Virginia Howle, Bernice Beck and students from Darrouzett.

AUTO FACTS

Motor trucks make up 10 per cent of toll road traffic and pay 28 per cent of toll charges.

There are 3,620,000 miles of roads and streets in the United States. Rural mileage is 3,146,000 and urban roads and streets account for 474,000 more miles.

Since the end of World War II, the automobile industry has spent \$18.4 billion for new plants and equipment.

Manufacturers of motor vehicles have 504 plants and other facilities located in 38 states.

The most popular passenger car body type is the four-door sedan, currently accounting for 32 per cent of total production.

Diesel truck output now runs about 75,000 units per year—12 times the rate in the late 1940s.

Legal Notice

NOTICE TO CREDITORS

I, Jack Thomas, whose residence is Hansford County, Texas, and whose Post Office address is Gruver, Texas, having on the 22nd day of March, 1965, been duly granted Letters Testamentary of the Estate of Lonnie L. Thomas, deceased, and having qualified according to law as Independent Executor, NOW GIVE NOTICE TO ALL PERSONS HAVING CLAIMS AGAINST SAID ESTATE, requiring them to present the same properly authenticated, to the undersigned within Twelve Months from the date of said appointment, for allowance.

s/ Jack Thomas
Independent Executor
Post Office Address:
Gruver, Texas

Only 16 Vote In Election

Only 16 persons voted in the North Plains Water District election here Tuesday.

N.F. Renner was re-elected the precinct two director. Everett Vanderburg, T.C. Harvey and Dee Jackson were re-elected committeemen.

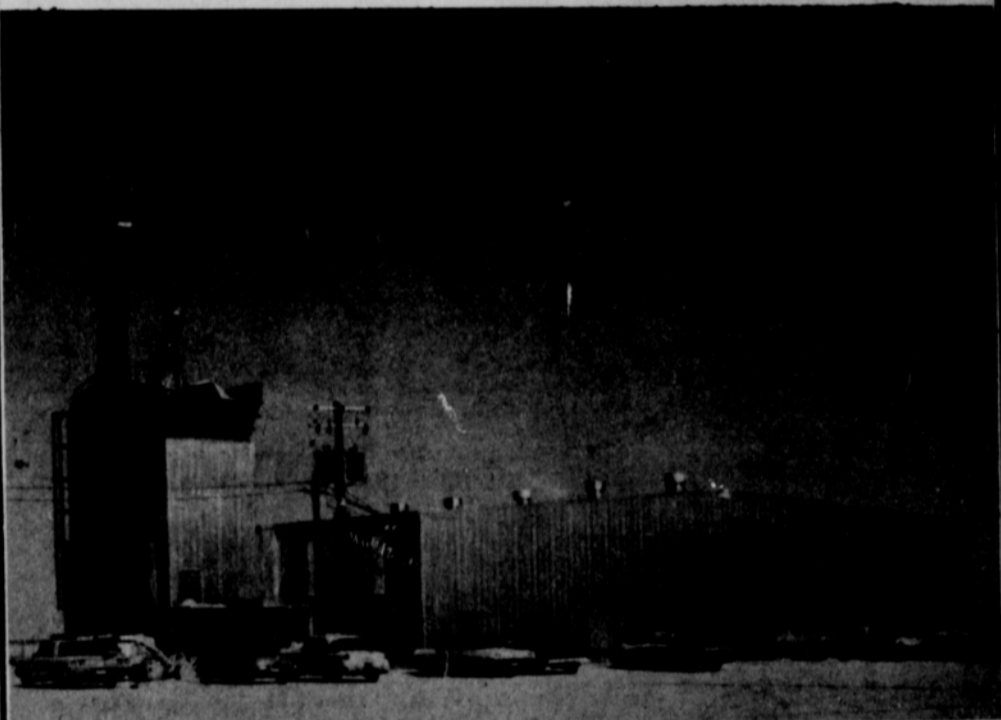
REVENUE FUND DOWN

AUSTIN —State comptroller Robert S. Calvert Thursday said Texas' general revenue fund showed a net cash balance of \$54,902,784 at the end of 1965.

Development of Oats

It is believed oats were developed from wild grass and that the grain first grew in Asia.

Welcome GIFFORD-HILL WESTERN



TO PROGRESSIVE, GROWING SPEARMAN

We add our sincere welcome to each employee of the new Spearman plant. This addition to our business community is a sign of even more growth expansion.

Welcome to a growing city with a plan for the future!

COMMUNITY PUBLIC SERVICE