



The Hansford Plainsman



VOLUME VI., NUMBER 9

SPEARMAN, TEXAS

THURSDAY, NOVEMBER 19, 1964

Continuous Rain Soaks County

Thanksgiving Service Set Monday Night

The Rev. Vance Barker, pastor of the Spearman Assembly of God Church will deliver the principal address for the annual Spearman Unified Thanksgiving Service at 7:30 p.m. Monday.

The service will be held in the High School Auditorium.

This service is sponsored by the Spearman Ministerial Alliance.

Richard Fancher, music director of the First Baptist Church, will lead the congregational singing. Special music will be by the High School Choir under the direction of Lewis Tilford.

After the service there will be a fellowship in the cafeteria.



LONG FORGOTTEN SIGHT — There are muddy roads like this all over Hansford County this week after five days of continuous slow rains. The official total for this rain is 1.46 in Spearman and 3.42 for November.

PLAINSMAN PHOTO

Moisture Totals 3.42 Since November First

A wet blanket of moisture has transformed Hansford County from a dry, dusty plain into a muddy bog in just a few short days.

The moisture began falling Saturday night and has continued in some form and intensity through Wednesday. There has been rain, fog, drizzle, sleet, hail and reports of some snow flakes in the 96 hours of continuous moisture.

The official measurements by Mrs. Pat Cates, local weather observer, are: .85 Sunday morning, .14 Monday, .33 Tuesday and .14 Wednesday. These measurements are taken at 7 a.m. each day for the preceding 24 hours.

This total added to the rains of the opening days of November now bring the total for the month to 3.42.

The heaviest hail has been reported from the Hitchland area. Some damage to maize still in the fields has been reported there. However, there

are no estimates of damage because no one has been able to get into the fields to examine the crop. Reports from Hitchland say there were two or three inches of hail on the ground there Sunday morning.

Some light hail has been reported east of Spearman and there is a possibility of some damage to maize there.

The biggest damage to maize, cotton and soybeans still in the field, is the loss from just having to stay in the fields too long. The maize is beginning to fall in some places, the rain lowering the grade of the open cotton and there is danger the soybeans will shatter before the fields dry enough to hold up a combine.

The oil industry is battling the mud in four wheel drive equipment — and with crawler tractors.

Bill Massie of Baker-Taylor said the mud getting to their rigs is deep, but their four-wheel drive equipment is keeping crews and supplies where needed.

Massie said there are two rigs waiting for dry weather before they can be moved, but the law is delaying these moves. The highway department will not issue permits for wide and overweight loads in wet, muddy weather.

This kind of weather does put the crawler tractors to work, and Lusby "Cats" report that all of their tractors are staying busy.

The dirt roads are muddy, but have good ruts and are wet enough that they do not seem to be balling up, yet. Tractors and pick-ups apparently are still able to get over them in emergencies.

Supt. James Bramlett said the buses are only running on the hard surface roads, but attendance is not being hurt by the weather to any great extent. A siege of virus during the past week has cut into attendance.

Burglars Hit Gruver School

Burglars did not find any money in the Gruver school Tuesday night, so they helped themselves to the food.

The burglary of the junior high school building was discovered about 6 a.m. Wednesday.

Sheriff J.B. Cooke said the thieves were looking for money and damaged filing cabinets and other equipment in the search.

After finding very little money, the crooks took three turkeys and some hamburger meat from the cafeteria.

The burglars gained entry into the building by prying open a door to the cafeteria. They ransacked the cafeteria, the band room, principal's office and janitor's supply room.

Sheriff Cooke said the biggest loss is in damaged equipment.

Study Clinic Is Tonight

The second Better Study Habits clinic will be held tonight (Thursday) at 7 p.m. in the Junior High School auditorium.

Approximately 80 people attended the first meeting and enough interest was expressed to require that three additional meetings be held.

Tonight's meeting will be on how to review for a test and how to take and pass a test.

The third meeting, Nov. 30, will study Modern Math, purpose of having it, basic concepts, and how to approach it through basic study habit procedures.

The final meeting on Dec. 7, will be on how to take class notes, how to read faster and how to study on a schedule.

School Counselor Jerry Day invites everyone interested to attend the meetings.

Will You Help This Child Live Normally?

There is not a person in this area who would not help this little blonde-haired first grader. She needs your help now! Bethany Day will undergo open heart surgery in Dallas on Dec. 8. She needs 20 blood donors for this type of surgery.

No one will have to go to Dallas, and any type of blood can be used. The blood will be donated in Amarillo and will be credited to Bethany

all donors may go to Amarillo at the same time. A time and date for the donors to go to Amarillo will be set just as soon as enough donors have volunteered.

Anyone wishing to donate blood should call radio sta-

tion KBMF-fm in Spearman. The number is 659-2835.

Bethany is the six-year old daughter of Mrs. Jeanene Day and the granddaughter of Mrs. Vida Jones of Spearman.

After this operation the young girl can lead a normal, active life.

The Hansford County National Foundation March of Dimes and the Hansford County Red Cross is sponsoring the operation for Bethany.

She will go to Dallas, Dec. 4, and will have the surgery, Dec. 8.

Basketball Season Gets Underway Boys and Girls Play Friday

The regular boys' and girls basketball season will get underway here Friday night when the Spearman Lynx and Lynettes meet the Sunray teams. The Lynettes have a 1-1 record with a victory over Follett and a loss to Tulia. The Lynx reported for practice Monday and this will be their season opener.

A squad of 31 boys greeted Coach Dean Weese Monday

afternoon and in the group were eight lettermen from past seasons, plus numerous year include Bob Phillips, Larry Butts, Leroy Callaway, Jim Kirkland, Ken Shufeldt, Lloyd McWhirter, and Ron McDonald. Mike Morris, a letterman as a sophomore, is back after being out with a knee injury last year.

Height is going to be a problem for the Lynx again this year. Sophomores Carl Close and James Schnell are the only two boys looking down at six feet from a comfortable margin. Letterman Jim Kirkland has passed the six foot mark, but only by an inch or so.

Weese said early this week that the best looking boys in the early workouts would be wearing the varsity uniforms Friday night, but there could be considerable shifting in the boys up from the B-team and new roundball hopefuls.

The freshmen are not contending for varsity or B-team positions. Lettermen back from last

early weeks of the season.

Gone from last year's team are Pat Pattison, Burton Williamson and Mac Crawford by graduation. Johnny Crawford and Jim Ownbey are passing up the sport this year.

Rites Held For Mrs. Johnson

Funeral services were held Nov. 9 in Erick, Okla., for Mrs. Dottie Johnson, aunt of Mrs. Bob Stewart of Spearman.

Mrs. Johnson died Nov. 6. She was born July 29, 1872.

Services were conducted in the First Baptist Church in Erick with the Rev. Richard Waters conducting the services.

Burial was in the Erick Cemetery.



Bethany Day

in Parkland Hospital in Dallas.

Transportation for all donors to Amarillo is being arranged and it is hoped that

LYNXETTES
BEAT
FOLLETT

(See Story Inside.)

Pay Phone Ripped Open

An outside pay telephone at the Spearman Elementary School was ripped open early Sunday morning, but no money was taken.

City police found the damaged telephone at 2:26 a.m. Sunday. The vandalism took place after midnight because the phone was checked then.

Officers said the top part of the telephone was torn open, but the thieves failed to open the bottom part of the phone containing the money.

This is the second telephone burglary reported this year. Earlier, a thief took the entire pay phone from the Easy Laundry on Davis street.

Toastmasters' Installation Set

Officers of the Spearman Toastmasters will be installed at the Charter Night Banquet in Grunewald's Restaurant at 7:30 p.m. Saturday.

The officers to be installed are President Ed Dear, Educational Vice President Robert Adamson, Administrative Vice President Jack Oakes, Secretary Bill Massie, Treasurer Doug Moore and Sgt.-at-Arms Don DeArmond.

Wives of all the members will be special guests at the meeting. A model meeting will be conducted after the installation service.

You Are Cordially Invited To Our

GRAND OPENING

Friday and Saturday, November 20 and 21

— Register For Two Door Prizes Each Day —

**General Electric
Dryer**

#510Y

\$99.95 With Trade

**General Electric
Dryer**

#820Y

Fully Automatic, Fabric Selector, Dries 12 lbs. Clothes, Fluff Dry

\$199.95 With Trade

**General Electric
Matching Washer & Dryer**

Automatic #520Y 2-Speed Dryer, Single Load Filter Washer #504Y with Load Selector.

\$299.95 With Trade

With Features Offered only
by General Electric in this
Price Range



Model TB-304Y

NO COILS
ON BACK -
FITS FLUSH

SLIDE OUT SHELF

- Four cabinet shelves
- Automatic defrosting in big refrigerator section
- Big zero-degree freezer holds 100 lbs.
- Door Steps
- Deep door shelf stores 1/2 gallon ice cream cartons
- Twin porcelain vegetable bins hold 1/2 bushel
- Three door shelves hold butter keeper, tall bottles 1/2 gal.
- Big 13.2 cu. ft. capacity

\$228⁸⁸
with trade

LIMITED TIME ONLY
AT THIS LOW PRICE

* Available in
Dark Coppertone
and Gleaming White

NEW!
GE Americana
REFRIGERATOR-FREEZER

FRESH FOOD AT EYE LEVEL
Opens Like a Book!

CONVENIENT NEW READY-TO-USE COUNTERTOP!
Illuminated area for loading, unloading, preparing, serving food!

BIG ROLL-OUT FREEZER
Brings Food right out front!

SELF-FILLING ICE TRAY
Fills itself... automatically!
No more filling or spilling.

FROST-GUARD, NO DEFROSTING EVER, IN REFRIGERATOR OR FREEZER

- Removable, adjustable refrigerator shelves • Vegetable Crisper • Cheese Keeper • Butter Conditioner • Meat Pan • Egg Container • 15 Cu. Ft. Net Volume • Coppertone or White

MODEL TD-486Y

GE americana. New P7 oven
cleans itself...electrically!

Set "clean" controls, latch oven door, set timer... master oven cleaned completely, electrically, in 2-3 hours!

- BUILT-IN 2-WAY EXHAUST SYSTEM! • 2-OVEN CONVENIENCE! • ONLY 30" WIDE! • Dark Coppertone, Mix-or-Match Colors, or White



MODEL J-796

Portable Dishwasher

3-Way Washing Action
Washes up to 15 Place Settings

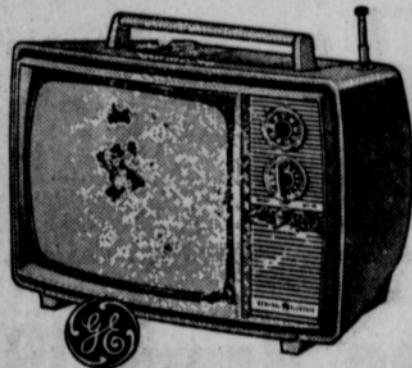
No Pre-Rinsing Of Dishes

\$189.95

MOBILE MAID® DISHWASHER

- ★ Convenient Lift-Top Rack
- ★ Sparkling dishes without rinsing or scraping
- ★ Power Shower washes down
- ★ Power Tower washes up
- ★ Power Arm washes all around
- ★ Flushaway Drain

SP 307Y



Model M 111 A

PERSONAL PORTABLE TV

- All-channel VHF-UHF reception with the new G-E Tandem "82" integrated tuning system featuring the exclusive "410" parametric transistor tuner.
- Front controls and front sound—easy to see... easy to use... easy to hear.
- Attractive textured plastic cabinet with matching carrying handle.

**New GE Show & Tell
Record Players**

Industrial, Commercial & House Wiring
ELECTRICAL CONTRACTING
Heating and Air-Conditioning
Contracting & Repairs

ANTHONY ELECTRIC
Full Time Appliance Repair Man

We Service All
Brands of Appliances

Phone 659-2441
For Appliance Repair

The Hansford Plainsman



Hansford Plainsman Publishers, Inc.
 County-wide independent newspaper published every
 Thursday and Sunday at 209 Main in Spearman,
 Texas. Second class postage paid in Spearman, Texas.
 Editor.....Burl McClellan
 Production Mgr.Jim Davis
 NOTICE: Any erroneous reflections upon the char-
 acter, standing or reputation of any person, firm or
 corporation which may appear in the columns of The
 Hansford Plainsman will be corrected gladly upon its
 being brought to the attention of the publishers.

Thousands Of Yule Lights
 Again To Decorate Tech

LUBBOCK-Texas Tech will again celebrate the opening of the Christmas Season with its spectacular Carol of Lights ceremony, scheduled this year for Dec. 1.
 More than 16,500 Christmas lights, outlining campus buildings, will be turned on simultaneously shortly after 7 p.m. that night, followed by a program of Christmas music and group singing with the audience.
 The annual ceremony, held at the Science Quadrangle on campus, is enhanced by wreaths and luminarias placed around the Tech grounds.
 At 7 p.m. all lights on the campus are turned off, then

the Christmas lights are turned on as students, faculty and visitors join in the singing.
 The idea for the Christmas lights outlining buildings of Tech's central campus was begun in 1959 by Harold Hinn of Plainview, a member of Tech's Board of Directors.
 Tech's Women's Residence Council sponsors the Carol of Lights program, which has become a Christmas season tradition in Lubbock. Thousands of visitors drive through the campus nightly after Dec. 1 to see the results.

Described as one of the unique college Christmas season displays in the nation, the Christmas scene unfolds on the Tech campus each night at dusk as photo-electric cells connected to the buildings' lighting systems automatically turns the lights on.
 Tech maintenance crews work about three weeks in advance of the ceremony, uncrating bulbs and electrical systems and placing thousands of feet of cord on building facings.

Ice Tray Fudge Easy

To save yourself time and to have uniform pieces of fudge for the holidays, spoon fudge into ice-cube trays, press in the ice-cube divider and cool. The fudge comes out in even squares

Mrs. R.C Stewart recently returned home after attending the funeral of an aunt in Erick, Okla. Mrs. Stewart and Ruth Keller of Williams, Calif. visited with relatives in Mountain View, El Reno and Edmond, Okla. and with Mrs. Stewart's son, Dwayne in Wichita, Kans. They were joined in Kansas by Mrs. Willie Mathis, Patty and Betty.

CULTURAL BLEND

The 6.5 million people in Mozambique blend African, Portuguese and Arab cultures.

Mrs. Guthrie
 Gives Program

The Town and Country Home Demonstration Club met Tuesday afternoon in the home of Ann Archer.
 Roll call was answered with "How I Lost Weight." Ann Archer, President, conducted the business session.
 The demonstration on "The Latest Food Research and Dental Care" was given by Deloris Guthrie.
 Attending were Lenora Beagle, Donetta Greene, Linda Pierce, Nelva White, Deloris Guthrie, Nedra Hays, Janet Hutto, one guest, Margaret Langford and the hostess.

Whites Host
 Couples Bridge

Mr. and Mrs. Tommy White were hosts to the Couples Bridge Club November 11 in their home.
 Mr. and Mrs. Bobby Nollner won high and Mr. and Mrs. Bobby Archer were second high. The traveling prizes were won by Wayne Pierce and Deloris Guthrie.
 Attending were Messrs. and Mmes. Bobby Archer, Zack Fisher, Bobby Nollner, guests, Wayne Pierce and the hostess.

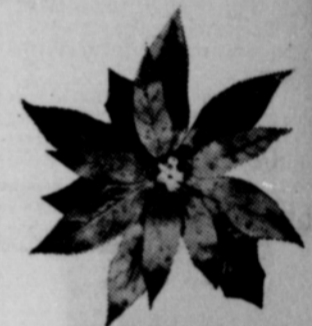
Ruth Keller from Williams, Calif. was a recent guest of Mr. and Mrs. R.C. Stewart. Monday night, members of the family, Mr. and Mrs. R. C. Stewart, Mr. and Mrs. Willie Mathis, Mr. and Mrs. Ben Hand, George Stewart and Vora Woody held a "farewell get-together" honoring Ruth Keller before she returned to California.

BABY STATISTICS

If you have a new baby on the way, you are destined to wash an average of 70 diapers a week for the next year or more. That's a staggering load of work for a woman without a clothes dryer. According to hospital tests at the University of Michigan, diapers dried in an automatic dryer are more sterile than those hung out on a line. In addition, mother never again will have to carry and hang heavy loads of wet diapers out-of-doors in all kinds of weather.



EGG
 NOG



Freshness
 and Flavor



For the brightest taste in holiday cheer, serve a festive cup of creamy rich All Star Egg Nog. The wholesome goodness of All Star Egg Nog is the perfect way to delight family and friends throughout these fun-filled days.



At your store or call Joe Newby, Perryton, ph. 435-2919 collect for home delivery!

City Moving To Solve
 Water Drainage Problem

Another step toward solving the water draining problem in the east part of Spearman was made Monday night by the City of Spearman and representatives of the LaMaster Estate, owners of land adjoining Spearman on the east.
 After discussing the problem of excess water in the east side of Spearman it was agreed to work on a plan to make a waterway across the property to handle the water draining from Spearman and the south of town.

City Attorney J.D. Helms told the council that the summary judgement case filed by the cities of Perryton and Spearman against the gas rate increase asked by the High Plains Gas Co., will be heard in District Court in Stinnett Monday.

This is one of the legal steps being taken by the two cities against the rate increase asked by High Plains Gas.

Corporation Court Judge T. J. Pittman reported that 11 cases had been tried in his court last month. He assessed a total of \$138 in fines. Of this amount \$16.50 was suspended and one high school student wrote a theme in lieu of a fine.

Pittman told the council that students brought to his court for traffic violations can either pay their fines or write a theme on traffic safety and safe driving. They have their choice.

City Manager Ken Conrey reported that income from city utilities during fiscal 1964 totaled \$225,000. Last year the income was \$214,000.

The cost of gas from the sup-

plier in 1964 was \$70,000 and the cost of pumping water and maintaining the utility system totaled \$84,000 for the year.

The cost of gas in 1963 was \$66,000 and the cost of water and operating the utility system during that year was \$88,000.

Conrey pointed out that the increase in gross profits on the utility system is now more than two times the average yearly bond requirement of \$33,400 per year.

Based on water and gas meters in the city, Conrey estimated Spearman's population at 4,200 persons.

HOW MUCH
 "WOMAN-POWER"
 DOES IT TAKE TO RUN A HOME?

Once it took a great amount. Women wore themselves out... and became old before their time, trying to stretch their energy, simply to do the work that had to be done.

Today, it takes much less "woman-power" to run a home... beautifully. For nowadays no home is without that faithful helper, electricity. In dozens of ways women's loads have been lightened and their energy conserved. Today, busy homemakers are able to accomplish more in less time, thanks to the help of their electric appliances.

Electricity makes possible better living for us all. In our homes, it provides light for seeing, power to accomplish easily what once were backbreaking chores, heat for cooking, and the comfort of indoor climate control.

Electricity is today's dependable household servant that does so much, yet costs so little.



Look Your Best

TRUST US WITH ALL YOUR SWEATERS SUITS, COATS, DRESSES OR SKIRTS...

WE'LL TREAT THEM LIKE THEY'RE OUR VERY OWN!

Call 659-3122

BERRY CLEANERS
 412 Davis

Xi Zeta Initiates Three; Holds Exemplar Luncheon

Exemplar Day was observed Monday, Nov. 16 by Xi Zeta Upsilon Chapter of Beta Sigma Phi with a luncheon in fellowship hall of the Methodist Church.

Preceding the luncheon, the regular business meeting was held with Elsie Mathews, president, presiding.

Helen Etter gave a report during the meeting of her recent trip to International Headquarters of Beta Sigma Phi in Kansas City, Mo.

An autumn color scheme was carried out in the table decorations for the luncheon. An arrangement of autumn flowers and candles highlighted the head table and favors were

match boxes covered with green felt and decorated with autumn arrangements.

The menu consisted of baked ham, a variety of salads, hot rolls, coffee, tea and cake.

Miss Kathy Pattison was a guest at the luncheon and presented a reading as part of the program.

Following the luncheon, Elaine Floyd, Joyce Lackey and Day McClellan were initiated into Xi Zeta Upsilon Chapter in a ceremony led by Mary Lee, honorary member of the chapter.

Attending the luncheon and meeting were Elsie Mathews, Mary Lee, Helen Watson, Ola Sparks, Barbara McClellan, Ruth Skinner, Betty Brown, Helen Etter, Ruby Lair, LaVonna Davis, Joan McClellan, Pat Donnell, Mona Beth Windom, Elaine Floyd, Day McClellan, Joyce Lackey and Dorcas Col-lard.

Couple Wed Here Sunday

In a double ring ceremony performed Sunday, Nov. 15 at 9 a. m. in the First Christian Church Mrs. Mattie Ruth Richardson became the bride of Pate Grisby of Amarillo. Rev. W. Graham Pugh officiated.

After the wedding, the couple and Mable Edwards ate breakfast with Mr. and Mrs. Wesley Jenkins.

The couple will reside in Amarillo after a trip to Corpus Christi.

Mr. and Mrs. T. D. Sansing visited over the weekend in Tyler with Mr. and Mrs. David Jordan and family and in Athens with his brother and wife, Mr. and Mrs. Earl Sansing.

Mr. and Mrs. Lawton Guthrie visited recently in Dallas with his mother, Mrs. Evelyn Guthrie and with Mr. and Mrs. Kent Guthrie.

Choose your Christmas Cards now while our selection is complete. Plainsman Office Supply, 209 Main.

Mrs. Mackie Is Honored By Family

Thirty-four members of the Mackie family gathered Sunday to celebrate the birthday of Mrs. W. L. Mackie. The birthdays of Paula Jean Mackie, Faye Dawson and Albert Mackie were also celebrated since they occur during the month of November.

A turkey dinner with all the trimmings was enjoyed by Don Mackie of Dumas, Mr. and Mrs. Jim Haden, Paula Mackie of Perryton, Mr. and Mrs. Billy Haden, Mr. and Mrs. Albert Mackie and family, Mr. and Mrs. Fred Dawson and girls, Mr. and Mrs. Glen Mackie and children, Mrs. Faye Dawson and Harold from Stinnett, O. J. Hoel and children from Gruver and Mr. and Mrs. Ed Ogle and girls from Borger.



Mrs. Bobby Ray Williams

Miss Monet Washington Is Bride of Bobby Williams

Miss Monet Norvina Washington, daughter of Mrs. Merle Washington, became the bride of Bobby Ray Williams, son of Mr. and Mrs. Joe A. Reaves of Gruver, Sunday November 15, at 5 p. m. in the First Methodist Church.

Rev. J. Waid Griffin of Asbury Methodist Church of Lubbock performed the double ring ceremony.

The couple pledged their wedding vows under an arch of green foliage. The altar was adorned with two spiral

candelabras with white rose trees on each side. White bows marked the pews.

Coy Palmersang "Because", "Always", and "The Lord's Prayer". The traditional wedding march and the recessional were played by Eddie Gail Martin.

The bride was given away by her grandfather, I. P. Baggerly. She wore a formal wedding gown of white peau de soie with a scalloped neckline, petal point sleeves, bell-

(Con't. on next page.)



Engagement Revealed

Dr. and Mrs. D. E. Hackley announce the engagement of Mrs. Hackley's daughter, Catherine Mae Archer, to Larry Pat Patterson, the son of Mr. and Mrs. L. M. Patterson. The wedding will take place in December.

Day by Day

A growing community needs to be "on its toes" and moving all the time. Spearman is growing everyday but in one area it seems to be at a standstill.

We need a library building and many more books in the worst kind of way. Mrs. Richardson does a good job in her position as librarian but she is crowded down in a corner of the Court House basement with too many books for the space allowed and far too few books to adequately serve a community of this size.

The Twentieth Century Club was instrumental in getting the library started several years ago. Now this group is again working on a project to help the library.

In the spring the club will sponsor an art auction with proceeds going to the library building fund. Local artists will be asked to donate original art work to the project.

Rho Rho Chapter of Beta Sigma Phi is using the library as its service project this year. The money the chapter gives will go for a little table and chairs and some books for children.

Individuals and clubs have aided the library from time to time and it has helped but the fact remains that the library is inadequate and crowded. It needs more than just a "shot in the arm".

We desperately need a new library building, volume after volume of reference books and other reading materials.

Just go visit the local library if you don't believe me.

...

There are only 43 more days until Christmas and many fewer shopping days than that.

I can remember when my mother used to begin about now making delicious sweets for the holidays. She always made a light fruit cake among other storable delicacies. Closer to Christmas she made a fresh cocoanut cake and smooth chocolate candy kisses made with marshmallow cream.

Here is one of her recipes for Hungarian Coffeecake that is unusual. It takes a little time and effort to make but it is really delicious.

HUNGARIAN COFFECAKE

Mix together: 1 cup lukewarm water
1/4 cup sugar
1 tsp. salt
1/4 cup shortening

Crumble into mixture 1 cake of yeast, stirring until dissolved. Stir in one egg or 2 egg yolks plus one tbsp. water.

Mix in, first with spoon, then with hands, 3 1/2 to 3 3/4 cups sifted flour, adding in two additions, using the amount necessary to make dough easy to handle.

Turn dough onto lightly floured board, cover and let stand 10 minutes to tighten up, then knead until smooth and elastic. Round up and place in greased bowl. Cover with damp cloth and set to rise at 85 degrees until double in bulk... about 2 hours. Punch down dough. Round up and set to rise again until not quite double in bulk... about 45 minutes. Punch down dough. Round up on board, cover and let rest 15 minutes. Cut into pieces the size of walnuts and form into balls. Roll each in melted butter (using 1/2 cup in all), then in a mixture of 3/4 cup sugar, 1 tsp. cinnamon, and 1/2 cup finely chopped nuts.

Place one layer of balls in a well greased 9" tube pan so that they barely touch. Sprinkle with 1/2 cup seedless raisins. Add another layer of balls, sprinkle with remaining raisins in crevices, pressing them in slightly. Cover with Damp cloth and let rise at 85 degrees until double in bulk... 45 minutes.

Bake 35 to 40 minutes in a quick moderate oven (350 degrees). Immediately remove from pan with spatula. Invert pan so sugar-butter mixture runs down over it. To serve, break apart.



Mrs. D. E. Spoonemore

Meet The Presidents—

Mrs. Spoonemore Heads Twentieth Century Club

A genuine interest in other people makes Mrs. D. E. Spoonemore a natural leader for the Twentieth Century Club of Spearman. The club is one of the largest and most active Women's Clubs in Spearman.

With her family stretching from a 12 year old son to a five year old grandson, Mrs. Spoonemore's interests cover a wide age range and many act-

ivities.

The President of the Twentieth Century Club finds the many projects of her club corresponding closely to her own personal interests.

Mrs. Spoonemore likes to read and her club is one of the major promoters and sponsors of the local library. In fact, it was the early members of

(Con't. on next page.)



Marriage Announced

Mr. and Mrs. Willie Mathis announce the marriage of their daughter, Mary Elizabeth, on Thursday, November 12 to Roy Dale Morrison, son of Mrs. Ercell Morrison of Long Beach, California. Mrs. Morrison is a 1964 graduate of Spearman High School. He is an instrument technician with Garvin, Inc. The couple is residing in Wichita, Kans.

Rogers Discusses U.S. Representation

PROPER REPRESENTATION

It is the burning issue of our time--the issue of whether State governments are to possess the right to take into account the particular economic, social, and political composition of their States in determining the proper apportionment of seats in State legislatures.

The 88th Congress adjourned without reaching a solution to the problem posed by the Supreme Court's so-called "re-apportionment" decisions which require that both houses of State legislatures be structured solely on population factors--along the lines of the "One man, one vote" theory. The 89th Congress, to convene in January, will face the issue squarely and early in its first session.

Further reflecting the shift of the Nation's population to metropolitan centers, the U.S. House of Representatives and Senate will be composed of more members from large cities than ever before in history. However, every effort will continue to be made to impress upon House and Senate members that the recent Supreme Court decisions pose a threat not only to the sound functioning of State representative government but also to the needs and desires of people residing in the less-populated areas of our 50 States. It seems certain that the effect of the Supreme Court rulings will be to concentrate massive and dominant legislative power in the hands of representatives from high-density population areas; it is also certain that many Americans view such power concentrations with deep foreboding.

Would residents of rural and semi-rural areas be well and properly represented in legislatures whose solid majorities are comprised of members unfamiliar with, or who care little about, any but the problems of municipalities? Would not urban-oriented legislatures be susceptible to the corrupting influence of boss rule? Would there not follow a consolidation of many State legislatures into unicameral--one-house--bodies if both their houses are to be structured along lines taking only population into account as a factor in representation?

Justice Harlan's dissenting opinion in the reapportionment cases decided by the Supreme Court provides a reasoned summation against the "one man, one vote" dictum. Justice Harlan observed at one point in his dissent, "In one or another of today's opinions, the Court declares it unconstitutional for a

State to give effective consideration to any of the following in establishing legislative districts: (1) history (2) economic or other sorts of group interests (3) area (4) geographical considerations (5) a desire 'to insure effective representation for sparsely settled areas' (6) 'availability of access of citizens to their representatives' (7) theories of bicameralism (except those approved by the Court) (8) occupation (9) 'an attempt to balance urban and rural power' (10) the preference of a majority of voters in the State."

Is not each of these factors vital? I believe they all are, as I believe that people are not ciphers and that they can be represented well only if their variety of interests is taken into account.

Thomas Jefferson believed, as I do, that the Congress of the United States should have the power to overturn unwise decisions of the Supreme Court just as the Congress is able to override a veto by the President. I have proposed in past sessions of the Congress--and I shall continue to propose--an amendment to the Constitution to permit Congress to set aside Supreme Court decisions which two-thirds majorities in each house of Congress believe to be at odds with the U.S. Constitution. The strength of the United States rests upon the base of properly representative government, with the people through their duly elected representatives--making the vital decisions as to the direction to be followed by our Ship of State.

HANSFORD HOSPITAL NEWS

Patients in Hansford Hospital this week are Hall Jones, Mike Close, Mabel Carpenter, Vertie Davis, Ernestine Collier.

Dismissed were Glen Smith, Linda Thompson and son, Barbara Hoveland and daughter, Wayne Beebe, Randy Bowling, Pat Underwood, Richard Fancher, Gene H. Pugh, A.K. Wilson, Loretta Goodheart, Nick Nemsgerm, Robert Walters, Pat Marchman and son, Flora Mae Ford, Faye Foss, Gary Gumfory, Hazel Morton, Frank Karr, Caroline Erickson, Melvin Guffey, Barbara Reger, Carol McCoy, Virginia Burton and daughter.

THE WAY I SEE IT

Robert Cordes, Pastor Oslo & Faith Lutheran

America on the go--but lonely! Our pioneer parents may have lived on a broad prairie with the nearest neighbors miles away. Transportation was limited to the distance a horse or wagon would travel. It surely must have been a lonely existence. Maybe the wife home alone for days while the husband was hauling supplies or grain.

Now we have wonderful means of communication. The phone brings us close to our friends. We can jump in the car and go visiting many miles away in a short time. Our cities are bulging with new neighbors that we seldom visit. Even our nearest neighbors are often strangers to whom we may just say "Hi?" We may be afraid of becoming too close with them and so live estranged lines.

In spite of close neighbors, means of communication etc. we find people are often lonely. We have our own circle of little friendships and seldom look beyond to the elderly couple that may just like to visit, or the new family that is invited to church by the visitation committee but want to meet people.

Many a parent waits for a letter from their children who are away at school, grown up and left for other states. Loneliness is prevalent as children forget their parents live to hear from them. But parents too often forget their children want some correspondence from them--any thing just so it is a letter from home.

Loneliness gnaws at the heart and destroys peace and solitude. What are you doing to help some person in need of a friend? They may only want to talk. They may want to share their past experiences. But what do we do?

Yes, what do you do? Too busy earning a living? The T. V. program has become chief interest and our neighbors lives alone with no close friends. Too busy to write that letter? And someone waits for the postman to deliver a joyous letter. Lonely? Let's get busy and be neighbors--not overdoing it--but show love, concern and friendship.

Mr. and Mrs. Paul Hazelwood and family visited in Gruver Sunday with her parents, Mr. and Mrs. Silva Davis and with her brother, Bobby Dean Davis from Albuquerque.

Mr. and Mrs. A.L. Wilson from Lubbock visited here Monday night with her parents, Mr. and Mrs. Major Lackey.

Discrimination Program Given At Circle Meet

Colleen Brummett was hostess to the Tuesday Night Circle of the First Christian Church November 10 in her home.

The business meeting was conducted by Nan Nicholson. Plans were discussed for making health kits to be given to the migrant workers in Hereford.

The program, Discrimination Against South American People was given by Bobbie Novak.

Nan Nicholson gave the worship on "Free or Captive?"

Attending were Bobbie Novak, Jean West, Nan Nicholson, Kay Vernon, Sandy Russell, Dorothy Groves and the hostess.

T.E.L. Class Has Meeting

Members of the T.E.L. Sunday School Class of the First Baptist Church met Saturday in the home of Mrs. J.L. Wagon. The class held a business meeting and Mrs. Bob Baley gave the devotional.

Refreshments of cake, punch and coffee were served by the hostess to the following members: Mmes. W.E. Hacker, Bob Baley, D.W. Hazelwood, Fred Fewin, Mareta Martin, Lena Stephenson, Dennis Jones, Lera Langston and W.L. Mackie.



FURNACE got the FLU?

Why let a sickly furnace make your home uncomfortable, endanger your health, run up fuel bills?

TRADE NOW for

★ wonderful comfort
★ lower heat bills

Coleman

FURNACES

America's only bonded line of home heating... Every Coleman furnace backed by \$500 Warranty Bond!

White House Lumber Co.

Load up your THANKSGIVING TABLE

without groaning about

Riverside Brand **the Budget!**
Plump, Tender, Meaty, Oven-Ready

Kraft Philadelphia 3 oz. pkg.

Cream Cheese 10¢

Banquet Froze 20 oz. pkg.

Pumpkin Pies 25¢

Kuner's Golden Cream or Whole Kernel 303 Cans

Corn 6 \$ 1.

Egg Nog 59¢ Delicious Qt.

Borden's Condensed 15 oz. Cans

Milk 3 \$ 1. Eagle Brand

White or Wheat Pkgs. of 12

Rolls 2 29¢ Brown 'N Serve

Hunt's Whole 2 1/2 Cans

Spiced Peaches 4 \$ 1.

We Give Gunn Bros. Stamps

Values good Fri., Nov. 20 thru Wed. Nov. 25

Toms 35¢ 20 to 24 lb. Toms lb.

Hens 43¢ 12 to 16 lbs. Hens lb.

U.S.D.A. Grade 'A' Oven-Ready, Plump Tender

Baking Hens 39¢

4 to 6 lb. Average lb.

16 to 20 lb. Toms lb.

Toms 39¢



Ideal 1 lb. loaf

Stuffing Bread 19¢

Ocean Spray Fresh 1 lb. Bag

Cranberries 19¢

U.S. #1 Yellow 3 lbs.

Onions 17¢

Celery 9¢ Pascal lb.

Yams 25¢ southern 2 lbs.

Food Club

Pumpkin 8 \$ 1.

Serve Chilled Ocean Spray Quart

Cranberry 49¢
Cocktail

IDEAL FOOD STORES



WE PUT THE SURE IN INSURANCE

... WITH OUR COMPREHENSIVE HOMEOWNER'S PACKAGE PLAN

Don't overlook the possibility of losses due to theft or damages done by burglars... be sure you're covered for this by carrying our all-inclusive homeowner's policy.

J. L. BROCK AGENCY

659-2514

Insurance

Mrs. Blodgett

Is Hostess

The Arts and Craft Guild met Friday in the home of Delta Blodgett.

The afternoon was spent china painting.

Attending were Mmes. Guy Fuller, P.A. Lyon, Bill Russell, Nolan Holt, Joe Dan Bryan, Freeman Barkley, Jess Womble, F.J. Daily, C.A. Gibner, Ned Turner, Joe Trayler, Kiff White and the hostess.

The next meeting will be held Friday, Nov. 20 in the home of Mrs. Kiff White.

BOWLING!

PIN BENDERS LEAGUE

11-13-64		
TEAM	WON	LOST
Lyon Insurance	28	16
Bowl Mor	25	19
McClellan Grain	24 1/2	19 1/2
Malls	22	22
First State Bank	21 1/2	22 1/2
Gruver Motors	21	23
Lee Oil	20 1/2	23 1/2
Holiday DriveIn	131/2	301/2
HIGH TEAM GAME		
Gruver Motors	479	
Lee Oil	444	
Lyon Ins. & First State	439	
HIGH TEAM SERIES		
First State Bank	1271	
Gruver Motors	1260	
McClellan Grain	1200	
HIGH INDIVIDUAL GAME		
Buena Lyon	201	
Helen Shapley	191	
Helen Etter	165	
HIGH INDIVIDUAL SERIES		
Helen Shapley	490	
Buena Lyon	475	
Helen Etter	447	

BALL & CHAIN LEAGUE

11-11-64		
TEAM	WON	LOST
Taylor-Evans	18	10
Spearman Grain	16	12
Gruver-Texaco	14	14
Team #1	13	15
Cates Mens Wear	12	16
Gordons Drug	11	17
HIGH TEAM GAME		
Spearman Grain	640	
Taylor Evans	582	
Spearman Grain	578	
HIGH TEAM SERIES		
Spearman Grain	1711	
Taylor-Evans	1680	
Gordons Drug	1589	
HIGH INDIVIDUAL GAME		
Tito Ramirez	216	
Tito Ramirez	185	
Ramirez & Arrington	179	
HIGH INDIVIDUAL SERIES		
Tito Ramirez	580	
Vernon Arrington	458	
Juanita Arrington	449	



DON'T PAMPER YOUR WIFE

Let Her Winterproof the Porch with

FLEX-O-GLASS This Year

Any little lady can enclose a porch or breezeway with Warp's FLEX-O-GLASS. It's so easy! Just cut with shears and tack over screens. Makes a warm, sunlit room, flooded with healthful Ultraviolet rays, where the children can play all winter long—or use as an extra Store-room. Genuine, crystal-clear FLEX-O-GLASS lasts for years at a fraction the cost of glass. Only 90¢ a sq. yd. at your local hdwre. or lmbr. dealer.

Duncan Hines Layer Devils-White-Golden- Lemon or Pineapple

Cake Mixes 3 for 89¢

Jello 3 for 25¢ All Flavors Gelatin

Margarine 25¢ Shurfresh Corn Oil

Coffee 67¢ Shurfine Instant 6 oz. Jar

Wrights Hickory Smoked Shank Half or Whole 1b.

Ham 45¢

Norbest Grade A Hen Turkeys 12 lb. & up

Hen Turkeys 43¢ lb.

Hen Turkeys 10 lb. to 12 lb. lb. **45¢**

Tom Turkeys 39¢ 20 lbs. dn.

BLAST OFF
for Soaring Savings

Register for 5 Free Turkeys to be given away at 6 p.m. Wed. Nov. 25

Hi C Grape or
Orange Drink 3 for 89¢
46 oz. Cans

We Give Valuable Buccaneer Stamps.

Libbys Tall Can
Fruit Cocktail 2 for 39¢

Hunts Whole no. 2 1/2 can
Apricots 2 for 49¢

Sweet-Juicy-Emperor lb.
Grapes 15¢

Colorado-Red-McClure 10 lb. Bag
Potatoes 59¢

Pumpkin Pies 33¢ Mortons Frozen each

Fruit Pies 27¢ Mortons Frozen-Apple Cherry or Peach each

Honey Buns 25¢ Mortons Frozen 9 oz. oz. Box

Nestle's Instant Chocolate
Quik 2 lb. Box 69¢

3 lb. Can
Crisco 73¢

This week's FREE DISH
1 elegant "Gold Crown" China
Fruit Dish
With purchase of \$7. and over

"Week End Values for Friday & Saturday November 21 and 22"
Cut Rate Grocery

Tom Turkeys 35¢ 20 lbs. up

Swifts Premium Fine For Baking lb.
Hens 39¢

A.F. Brand 2 lb. Pkg.
Bacon 98¢

Shurfine Vac. Pak'd lb. Can
Coffee 59¢

Libbys 46 oz. Can
Tomato Juice 2 for 49¢

Del Monte BlueLake 303 Size Cut
Green Beans 2 for 47¢

Supreme Saltines lb. Box
Crackers 27¢

Austex Tall Can With Beans
Chili 27¢

Bathroom Tissue 4 roll Pak
Soflin 25¢

Bordens Ice Cream Half Gallon
Glacier Club 59¢

Del Monte 303 size can
Spinach 2 for 29¢

Heavy Detergent Home Laundry Size
All \$3.98

Imperial Pure Cane 10 lb. Bag
Sugar 97¢

Agent Speaks To Club

The Young Homemaker's Club met Tuesday afternoon in the Home Economics Dept. of the High School.

Penny Pearson, president, presided at the business meeting. The club adopted the project of putting a favorite recipe in the grocery stores each month.

Miss Linda Webb, Hansford County Home Demonstration Agent, presented the program on "Money Management."

Refreshments were served by members of the Home Economics classes of the high school.

Attending were Francis Hudson, Martha Straw, Penny Pearson, Donetta Greene, Verma Word, Isabelle Marshall, Sandy Russell, Karen Johnson, Shirley Buzzard, Dorothy Mae Groves, Patsy Gates, Nancy Thomas, Catherine Patterson, Joan Gilley, Vera Longley, Georgia Gaither and Linda Webb.

The next meeting will feature a program on gift wrapping and will be held Dec. 8 at 2 p.m. in the Home Economics room of the high school. A baby sitter will be provided.

Choose your Christmas Cards now from the beautiful Hallmark selection at Plainsman Office Supply.

Phone 2266 or 2466 to report local news

YOUR FRIEND FOR LIFE



Don R. Knox

Is this man a friend of yours already? If so, you have a valuable friend indeed.

Southwestern Life agents are highly skilled in the business of planning for the future. The Company requires them to complete a graduate-level life insurance education which requires over 500 extra hours of study.

So, when you marry, when a baby comes along, when you begin planning for retirement, the counsel of this well-trained man can be of great importance to you.

If you do not know your Southwestern Life agent yet, talk to him when he calls: Your Southwestern Life Agent... your friend for life.



Southwestern Life INSURANCE COMPANY • DALLAS • SINCE 1903

Box 1016 659-3294

Spearman, Texas

Wash, Wear Guaranteed By Designer

They have it--a wash and wear process that is sold with a money-back guarantee if you have to iron the garment after you machine wash and dry it.

The fabric story highlighted the opening collections shown in the 14th annual Press Week of California Fashion Creators. California designers also have shown a strong trend to ruffles, crochet trim, the jump suit, checks, tunics, black and white, the vivid hues that have been dubbed California colors, and button down the front dresses.

Koret of California, a San Francisco firm, broke the money-back guarantee fabric story by showing skirts and pants in pairs—one of each pair had been washed five times, and not ironed. Fashion editors were unable to determine the washed from the unwashed.

THE GARMENTS were treated with Koret's patented process, Koratron, a fabric finishing achieved by treating fabric with a chemical called Permafresh to pre-sensitize it. The treated cloth is cut and sewn; pants are creased and pleats are pressed in; then the finished garment is oven set.

Available for spring in this no-iron process will be garments in two fabrics, a Fortrel and cotton blend, and a cotton stretch denim. Both are used for classic trim pants, knee cappers, pleated skirts, and slim skirts that have no side seams.

Koret has made a success of the cotton knit, and continues its habit of presenting knit separates in a variety of new knits; Valencia, a combination of cotton and rayon with the appearance of crocheted lace; Constanza, a double knit of Zefkrome Acrylic, which is hand washable and wrinkle resistant and has the look of an Italian flat knit; Celara, a four-ply 100 per cent texture acetate knit, knitted in full fashion co-ordinates.

Both Constanza and Celara knits have an additional treatment called "Constant Color." The fibers are dyed in the solution to give depth and clarity to the color, but it has the added advantage of never varying a tone in color, so that an additional jacket may be bought for the skirt months later—and it will match perfectly.

CALIFORNIA STILL endorses stretch, but it is more frequently an east-west stretch than a north-south stretch. In other words, pants stretch sideways, not up and down, so the unbecoming stirrup strap is eliminated.

Pleated and straight skirts and pants are paired with mid-dy tops. Chanel inspired cardigans and double-breasted jackets.

Circle Meets In Church Parlor

The Susannah Wesley Circle met Nov. 11 in the church parlor of the First Methodist Church.

Judy Martin presided at the business meeting in the absence of Virginia Trindle, circle chairman.

Maylynn Schubert gave the devotional and Dorcas Collard gave the first lesson from the study on Spanish Americans.

Attending were Margaret Adamson, Marie Beck, Donna Bowen, Bette Brummett, Dorcas Collard, Coise Gates, Myra Grimes, Judy Martin, Maylynn Schubert, Virginia Sell and Patty Sheppard.

Spoonmore . . .

(Continued)

the club who started the library here.

Besides her work in the Twentieth Century Club, Mrs. Spoonmore is the teacher of a Young Married Women's Class in the First Baptist Church Sunday School. "Their welfare, both spiritual and otherwise, is very close to my heart," Mrs. Spoonmore said.

This work is also very close to the purpose of the Twentieth Century Club. This being to promote the culture of its members and the mental, moral, physical and spiritual development of the members and their families.

Mrs. Spoonmore is a native of Lea County, N.M., and grew up there. She has lived in Spearman for 10 years, her husband being employed in the oil industry.

Since joining the Twentieth Century Clubs six years ago Mrs. Spoonmore has been a department chairman, division chairman, historian and vice president.

Besides her work in the Twentieth Century Club, Mrs. Spoonmore is President of the Hansford County Council of the Parent-Teacher Association.

Mr. and Mrs. Spoonmore have four children and three grandchildren. The oldest son, Donald, of Hobbs, N.M., has three children, Gary, Marc and Debbie. Robert Spoonmore lives in El Monte, Calif. and Linda and Steve are still at home.

When not busy with her family or club work, Mrs. Spoonmore likes to sew, work in her garden or relax in a good game of scrabble.

This year Mrs. Spoonmore is leading the Twentieth Century Club in one of its most ambitious projects of several years.

The club is taking the lead in raising money for a new library building in Spearman. The club's major fund raising function will be a public art

Washington . . .

(Continued)

shaped skirt. Appliques of Alencon lace re-embroidered with miniature pearls traced a pattern of roses on the gown bodice and trailed over the skirt. A chapel train was detachable by a self-fabric butterfly bow at the waist. The veil of illusion was attached to a butterfly bow. The bride carried a white Rainbow Bible given to her by the maid of

auction.

The art will be done by local artists and donated to help the building fund. Other organizations will help the Twentieth Century group conduct the auction.

The sale is planned for the Spring months and will feature oils, china, tole painting and needlework.

Mrs. Spoonmore said the club realized this is a very big undertaking, but with the help and cooperation of the entire community, it should be a big help to the library building fund.

Besides this special project, the club will continue with many of its regular projects. These include the coffee for the pioneers at the annual celebration; the annual tea for the Girl Scouts; the club started this organization many years ago; membership in the Texas Heritage Foundation; Christmas gifts for the State Hospital in Wichita Falls; and donations to other worthy organizations.

honor, topped with a white orchid and two roses, which were given to the mothers, and Lily-of-the-valley streamed down the front. The groom's white rose boutonniere was also taken from the bridal bouquet.

Miss Shirley Terry of Eunice, N.M. was maid of honor. Bridesmaids were Miss Lynda Holleman of Borger, Mrs. Edith Carson of Spearman and Miss Kay Sessions of Canadian. They wore identical floor-length dresses fashioned with empire waists. The bodices were hot pink velvet with pale pink crepe skirts. Their headpieces were hot pink bows and each carried a long-stemmed pink rose.

Crystal Carson was flower girl. She wore a pink crepe dress identical to the bridesmaids and wore an identical bow headpiece. Candlelighters were Misses Vera and Judy Reaves, sisters of the bridegroom. Their dresses were of green and identical to the flowergirl. They wore wrist corsages of pink rosebuds.

Dean Chishom of Lubbock, was best man, Groomsman and ushers were Perry Washington, brother of the bride, Lyndell Chishom of Lubbock and Joe Butler of Spearman.

Ring bearer was Jim Raegh of Amarillo.

For her daughters wedding, Mrs. Washington chose a pink metallic dress with pink and silver accessories. Mrs. Baggerly, grandmother of the bride, wore a pink brocade satin dress with white and pink accessories. Mrs. M.C. Washington, grandmother of the bride, wore a royal blue dress with black accessories. Mrs.

Reaves, mother of the groom chose a avocado green silk jacket dress with green and black accessories. The mothers wore orchids and the grandmothers corsages were of white rosebuds.

Miss Ruth Brown and Mrs. Danny Jackson registered the guests.

At the reception in the Fellowship Hall the brides table was covered with a white hand-crocheted cloth belonging to a great-aunt of the bride. A four-tiered wedding cake, topped with a miniature bride and groom under an umbrella trimmed with pink rosebuds centered the table. Misses Don Knox and Max Baggerly served. At the grooms table Miss Ruth Brown and Mrs. Danny Jackson served. The table was laid with an ecru lace cloth centered with a three-tiered chocolate cake with chocolate roses.

For her wedding trip the bride chose a cranberry suede suit with matching accessories. She wore the orchid from her bridal bouquet.

The couple will make their home in Richmond, Calif.

Out of town guests were Mrs. M.C. Washington of Flo-mot, Mr. and Mrs. Lawrence Washington of Umberger, Do-cia Denison of Paris, Mr. and Mrs. Roy Smith of Cotton Center, Mr. and Mrs. Pete Hackmey of Tulia, Mr. and Mrs. Charles Raegh and Jim of Amarillo, June and Sherry Weant, Mrs. T.J. Bergin and daughters, and Don Heath of Gruver; Mr. and Mrs. James Morris of Perryton, Mr. and Mrs. Curtis Lomax of Sunray, Geneive Hollingsworth of Guy-mon, and the Joe Reiswig family of Morse.

GIFT IDEAS

Gifts For The Home Are Always Sure To Please

Come In Today And Begin Your Christmas Shopping

USE OUR LAY-AWAY

Every Woman Loves Beautiful FRANCISCAN POTTERY

We have the most popular traditional patterns and the newest designs in this really beautiful pottery . . . a pattern to suit every taste. This makes a wonderful, very much appreciated Christmas gift.

Shop Beedy Furniture & Beedy's Gift Gallery Today

* Lamps	* Pictures	* Wall Decorations
* Incidental Gifts	* Glassware	* Home Accessories
* Furnishings of All Kinds		
* Nettle Creek Bed Spreads		
* Decorator Pillows		

BEEDY FURNITURE CO.
PLAINS SHOPPING CENTER
659-3044
Spearman, Texas

CHRISTMAS Is Almost Here!

LAYAWAY GIFTS NOW!

We have all the most wanted gift items ready and waiting for you to come in and make your gift choices.

Motorcycles
Bicycles

Guns
Toys

Shop Now & Use Our Layaway!

WESTERN AUTO ASSOC. STORE

Fred Jackson, Owner

Come to Church

Church Directory

Apostolic Faith Church
V.E. (Hap) Blythe, Pastor
Sunday School 10:00 a. m.
Morning Worship 11:00 a. m.
Evening Worship 7:00 p. m.

Assembly of God Church
Rev. Vance Barker, Pastor
Sunday School 9:45 a. m.
Morning Worship 11:00 a. m.
Evening Worship 7:30 p. m.
Wed. Bible Study 7:30 p. m.

Church of Christ
Charles Milner, Minister
Sunday School 10:00 a. m.
Worship 11:00 a. m.
Worship 7:00 p. m.
Wed. Ladies Bible Class 9:30 a. m.
Wed. Bible Study 7:30 p. m.

Fellowship Baptist Church
W.S. Herring, Pastor
Sunday School 10:00 a. m.
Preaching Service 11:00 a. m.
Sunday Evening Service 7:30 p. m.
Wed. Evening Service 7:30 p. m.

First Christian Church
Rev. W. Graham Pugh, Minister
Sunday School 9:45 a. m.
Morning Worship 11:00 a. m.
Youth Meetings 6:00 p. m.
Evening Worship 7:30 p. m.
Wed. Choir Practice 7:30 p. m.

First Baptist Church
Rev. Luther M. Berry, Pastor
Sunday School 9:45 a. m.
Morning Worship 10:45 a. m.
Training Union 5:30 p. m.
Evening Worship 6:30 p. m.
Wed. Evening Prayer Hour 7:30
Wed. Choir Rehearsal 8:45 p. m.

Oslo Lutheran Church
18 Mi. N.W. of Gruver
Robert L. Cordes, Pastor
Sunday School 9:45 a. m.
(includes adults)
Worship Services 11:00 a. m.

First Methodist Church
Brother Charles Gates, Minister
Sunday School 9:45 a. m.
Morning Worship 11:00 a. m.
M. Y. T. 6:30 p. m.
Evening Worship 7:30 p. m.
Women's Society of Christian Service
Wednesday 3:00 p. m.
Choir Rehearsal 7:30 p. m.

First United Presbyterian Church
Everett H. Cain, Jr., Pastor
11th and Cotter Drive
Sunday Church School 9:45 a. m.
Morning Worship 11:00 a. m.
Evening Study Group 7:30 p. m.
Wed. Choir Practice 7:30 p. m.

Pentecostal Church
Sunday School 9:45 a. m.
Morning Worship 11:00 a. m.
Evening Worship 7:30 p. m.
5th & Hazelwood

Sacred Heart Catholic Church
Rev. Fr. Fred Hyland
Sundays 10:00 a. m.
Catechism Classes 11:00 a. m.
Week Days
Mon., Tues., Fri., Sat. 8:00 a. m.
Holy Days of Obligation 7:30 a. m.
First Friday of Month 7:00 a. m.

Spearman Lutheran Mission
Farm Bureau Bldg. - Spearman
Robert Cordes, Pastor
Worship Services 9:00 a. m.
Sunday School 10:00 a. m.

Union Full Gospel Church
Rev. George R. Bollinger, Pastor
Sunday School 10:00 a. m.
Morning Worship 11:00 a. m.
Bible Classes, Sunday 6:45 p. m.
Evening Worship 7:30 p. m.
Wed. Bible Study 7:30 p. m.

Waka Church of the Brethren
Lawrence Lehman, Pastor
Sunday School 10 a. m.
Morning Worship 11 a. m.
Evening Service 7 p. m.
Choir Practice . . . Wed. 7 p. m.
Adult Bible Study . Wed. 8 p. m.

Mrs. McClellan Hosts Circle

The Mary Martha Circle of the First Methodist Church met Nov. 11 in the home of Mrs. Lee McClellan.

During the short business session preceding the lesson the members were urged to share the responsibility of securing attendance for the revival.

Verna Strawn began a new study, "The United States and the United Nations." Each member chose a newly formed independent nation to report upon at each meeting. Problems of these nations were discussed.

Attending were Bertha Tarbox, Freda Sheets, Mary Sansing, Grace Lyon, Frances Williams, Verna Strawn, Coise Gates, Alice Johnson and the hostess.

Mrs. King Is Circle Hostess

The Aletha Fuller Circle of the First Baptist Church met Monday night in the home of Mrs. V.N. King.

The Royal Service Program on Korea was given.

The following officers were elected: Chairman - Mrs. Granville Boyd, Co-Chairman - Mrs. W.E. Hacker; Secretary - Mabel Edwards; Program Chairman - Mrs. Walter Woolley, Prayer Chairman - Mrs. F.J. Hoskins; Community Missions Chairman - Mrs. Joe Entreklin and Mission Study Chairman - Mrs. Glen Day.

Attending were Mmes. Joe Entreklin, Walter Woolley, F. J. Hoskins, Granville Boyd, Mabel Edwards, Miss Vera Campbell and the hostess.

Mr. and Mrs. F.M. Jones from Floydada visited here Saturday with Mr. and Mrs. Carl Hughes and with her mother, Mrs. Luther Trolinder who has been ill.

Leroy Hughes from Willington, Calif. visited here over the weekend with his parents, Mr. and Mrs. Carl Hughes.

Homemaking Notes

by Linda Webb
Home Demonstration Agent

Every hostess should be relaxed enough to enjoy her own hospitality, and only the best will do for the Thanksgiving dinner table. Plan ahead for Thanksgiving hospitality so you won't get swamped with people, food, and table settings at the last minute.

Look over your best linens. If they have yellowed in storage, choose a sunny day and then follow this old-fashioned bleaching method: First saturate them with thick, hot soap or detergent suds. Next, without rinsing, hang them in the sun to bleach. Then launder them as usual.

Even the finest silver improves with daily use, but the family may not be able to use all of its lovely silver pieces for daily living. So give those extra silver bowls and vases and goblets and flatware a hot sudsing and rinsing, then polish if needed. Be sure to wash them again, to remove all traces of polish.

Dusty china platters and dishes should be washed a day or two before Thanksgiving, which is much easier than trying to do it at the last moment.

Good things can come from mistakes from time to time. For instance, an Italian textile technician made a mistake and created a new fabric.

The fabric was discovered when a silicone finish was applied to the napped surface of a cotton fabric. It has the luxury look and feel of real leather, but is water-repellent, supple and is dry cleanable or washable.

Imported from Italy, Spain and West Germany, the fabric is trademarked under the names of Aerpel, Carcloba, Haledora, Leatha-cotta, Leathakin, and Wampelt. Those of you who have tastes in high fashion, keep your eye out for this fabric on the local market.

Is there anything you as a

Rebekahs Plan Country Store

The Rebekah Lodge #290 met Thursday night in the IOOF Hall.

The meeting was conducted by Caro Lee Franz, Noble Grand.

Attending were Helen Condo, Dorothy Longley, Myrtle Russell, Sylvia Wilcox, Ethel Ellsworth, Juanita Boxford, Nina Hendricks, Inez Holland, Mildred Chamberlain, Deanna Kenny, Thelma Kenny, Rose Cummings, Gowanda Golightly, Iva Longley, Zina Longley, Gladys Richardson, Jackie Hall, Ruth Caro, Mary Lou Walker, Ina Mae Hughes and a guest, Sam Condo.

Members of the lodge will hold formal initiation services December 10 at 7:30 at the IOOF Hall.

The lodge will sponsor a "county store" Dec. 5 beginning at 9 a.m. at Bob's Sales and Service.

The annual Christmas party will be held at the IOOF Hall Dec. 17 at 7:30 p.m.

Mrs. Hazelwood Is Class Hostess

Mrs. Paul Hazelwood was hostess Monday night to the Euzalian Sunday School Class of the First Baptist Church.

After a short business session a discussion on visitation was held.

Attending were Mmes. Fred Holt, Phil Jenkins, Craig Hutchison, Bill Massie, Doug Connelly, A.F. Holland, Roscoe Nelson and the hostess.

homemaker are interested in knowing more about or questions on a particular subject? I will be glad to answer them for you, beginning a special feature in this column in January.

Phone 659-2030, or write me, Linda Webb at Box 997, Spearman. I'll be happy to help you out in my column or personally, and I will be looking forward to hearing from my readers.

How long have you waited for your new Buick?
Too long.
If you have an order in, your Buick's on its way.
If you haven't, better hurry.
Choose your color,
choose your model.
Convertible? Coupe?
Sedan? Station wagon?
Order yours soon. We might have your favorite right here, right now.
Hurry. To your Buick dealer's.
Special. Skylark. LeSabre. Wildcat.
Electra 225. Riviera.
The '65 Buicks are rolling again.



Wouldn't you really rather have a Buick?

SEE YOUR LOCAL AUTHORIZED BUICK DEALER. AUTHORIZED BUICK DEALER IN THIS AREA:

NORTH PLAINS TRUCK & IMPLT., INC. Highway 15 Spearman, Texas

Sponsored By These Progressive Merchants
R.L. McClellan Grain Co., Inc.

B & B Grain Co., Inc.

First State Bank

Member F.D.A.C.

News From The

County Agent

By Robert Adamson

A man is not old until regrets take the place of dreams.

GRUVER 4-H RUMMAGE SALE
The Gruver Junior Community 4-H Club will have a "General Store Sale (rummage) Saturday, November 21 from 9 a.m. to 5 p.m. in the Southwestern Public Service Company building in Gruver. The club invites anyone to come over and see what they have and take advantage of the many bargains.

WINDBREAK PLANTING
The Texas Forest Service is again making available trees for windbreak planting for your farm and homestead. Orders must be received on or before February 12, 1965. The trees cost \$1.50 per hundred and no order for less than a total of 100 trees will be accepted but you can order trees in multiples of 50. The application forms are available in my office. Trees that are available are: Austrian pine, black locust, black walnut, catalpa, Chinese elm, cottonwood, loblolly pine, mulberry, osage orange, ponderosa pine, redcedar, rose multiflora, shortleaf pine, slash pine, sycamore, euonymus and buffaloberry.

SCREWORM THREAT
Screwworms detected in High Plains Saturday, Nov. 7 could pose a threat not only to other Texas Panhandle counties, but also to Oklahoma. This is the warning from screwworm eradication program authorities.

The screwworm infestation was reported 5 miles southwest of Clarendon in Donley County. This was the furthest north screwworms have been found this year, and the closest to Oklahoma, where the livestock pest has been absent during 1964. An infestation discovered in neighboring Briscoe County in late September broke a 53-day screwworm free period for Texas.

While eradication workers are confident cold weather will diminish any serious threat from further screwworm activity in the Panhandle, they are treating the infestation area through release of sterile flies. The first air drop of flies was to take place Tuesday.

However the danger may not be past. A continuation of the unseasonable warm weather experienced in the Southwest could present some spillover of screwworms into nearby areas. Therefore livestock producers in the Texas Panhandle and in Oklahoma counties adjoining the border are asked to stay alert for screwworms.

Animal wounds should be treated with preventive smears and livestock should be examined regularly for infestations,

says Dixon Hubbard, Area Extension Livestock Specialist. When infestations are found, larvae should be collected from deep within the wound and placed in water or alcohol. This specimen should be taken to the county agent or mailed directly to Box 969, Mission, Texas. There, at screwworm eradication headquarters, the sample is positively diagnosed and arrangements for sterile fly drops are made if screwworms are found to be present.

Future Readers Of The Plainsman Cancer Film Showing Set

December 3

Mr. and Mrs. John H. Burton are the parents of a daughter born Nov. 12 weighing 7 lbs. 6 1/2 oz.

Mr. and Mrs. C.P. Collier are the parents of a daughter born Nov. 16 weighing 5 lbs. 8 1/2 oz.

New STATIONERY in a variety of textures, colors and designs make wonderful gifts. Give Montag and Hallmark stationery from Plainsman Office Supply.

The American Cancer Society's film for women, "Time and Two Women" will be shown Thursday morning, Dec. 3 at 10 a.m. in the Lyric Theatre.

This film is designed to acquaint women with the necessity of a complete annual medical examination.

There will be no charge for the open showing of this film.

Mrs. W.L. Nixon Wins Station

This current seige of wet, wonderful weather was no surprise to Mrs. W.L. Nixon of Spearman. She could tell the weather change was coming.

After the film, a physician will be present to answer any questions viewers might have.

Sponsors for the showing are the Sacred Heart Altar Society and the Hansford County Unit of the American Cancer Society in cooperation with the Hansford County Medical Society, management of the Lyric Theatre and dozens of volunteers.

Mrs. Nixon was presented with a Springfield Weather Station by Jim Pingleton of Jim's Fina Service Saturday. Mrs. Nixon was one of the customers at the station to register for the gift.

Girls Have Charity Project

The Rainbow Girls are collecting toys and clothing for their charity project. The items will be distributed to the needy for Christmas.

If anyone wants to donate to the project, they should contact Barbara Kitchens at 659-3353 or bring the items by 107 W. 12th after 4 p.m.

BOB'S Pre Christmas VALUES ---



Now As Low As **\$579⁹⁵** With Trade

new 1965 color tv
FROM WORLD FAMOUS **ZENITH**
World's top quality electronic specialists

Zenith Color TV Now As Low As **\$399⁹⁵** With Old TV



The HADLEY • Model 5204 Compact table Color TV in rich maroon color. Peak Picture control, tone control, VHF spotlite dial.

BIG SCREEN LIGHTWEIGHT



The SUNSET • Model M2002 The Companion Series Super Compact! Lightweight! Big-Screen! in Ebony color and White color (or) Brown color and Off White color. **\$179.95**

ZENITH THE WORLD LEADER IN FINE HOME RADIOS
AM & FM Portables Transistors Table Models

BOB'S SALES & SERVICE

COME IN AND BROWSE AROUND

"We Sell the Best & Service the Rest"

Do Your Christmas Shopping Here and Please The Whole Family

Rexall

TOURISTA Kaolin and Pectin Mixture



8 fl. oz. **81¢**

At home or away... prompt, soothing relief from simple diarrhea and upset stomach.

Spearman Rexall Drug

The Morse Code

INVITATION

Parents and friends of Morse School are invited to eat Thanksgiving lunch with the students on Tuesday, Nov. 24 at the school cafeteria. Prices will be 40¢ for adults and 30¢ for children.

If you plan to eat at the school, please notify Mrs. Frank Karr, cafeteria manager, by Monday, Nov. 23.

School will be dismissed for the Thanksgiving holidays on Wednesday, Nov. 25 at 2:40 p.m., according to Johnny Brumley, superintendent.

PTA HEARS DELEGATES

Morse PTA met in regular session Monday night at the school auditorium to hear the delegates to the state convention report.

Business was dispensed with due to the fact that a quorum was not present.

Mrs. M.W. McCloy and Besse Henderson gave highlights of their trip to the convention in Dallas. Alan Dixon presented the devotional.

HD CLUB MEETS

Morse HD Club met in the home of Mrs. Mack Dortch Thursday with the president, Mrs. Jack Crowl, presiding.

Miss Linda Webb presented the program on weight control. The recreation was led by Mrs. Jack Johnson, Sr.

Attending were Beth Dortch, Lily Johnson, LaVerne Parks, Mary Gillispie, Lela Dortch, Rosie Crowl, Linda Webb and one new member, Charlotte Hurley.

DISTRICT GOVERNOR VISITS

Morse Lions Club observed ladies night Saturday and had as their guests, the district governor and his wife, Mr. and Mrs. James C. Wheeler and Barney Wiegand of San Jacinto Lions Club in Amarillo.

Following the dinner, Lion Paul Preall introduced the program on the crippled children's camp which is sponsored by the Lions Clubs of Texas. Barney Wiegand showed the film "Pathway to Happiness."

HOMECOMING A SUCCESS

The annual homecoming for Morse High School was held this past weekend and was termed very successful by those attending.

Activities started on Thursday night with a huge bonfire held on the track field at the school. Following a rousing pep rally, the football boys speared a stuffed bear cub and burned it in the bonfire, then the students had a snake dance up and down the streets of Morse.

Friday, another pep rally in the form of a radio broadcast, was held in the school auditorium. This was followed by the reception for the ex-students in the school cafeteria.

At the reception new offic-

ers for the association were elected. They are Mrs. Wilson McCloy, president, and Mrs. David Reid, secretary. The graduate from the earliest class to attend was Mrs. Frank Womble of Dalhart of the class of 1931. The latest graduate was Mrs. Tommy West of Pampa, class of 1963. Coming the greatest distance to attend homecoming were Mr. and Mrs. Carson McCloy of LaJunta, Colo.

The halftime activities at the football game and the game itself were given in the Sunday Hansford Plainsman.

Congratulations to the Morse Mustang football team and their coach, Rufus Graves. They worked long and hard for their victory Friday night and deserved to win. Determination and teamwork as well as ability play a large part in the success of any game. To the two senior boys, Alan Dixon and Allen McCloy, it was a tremendous victory for they have worked for four years to bring it about.

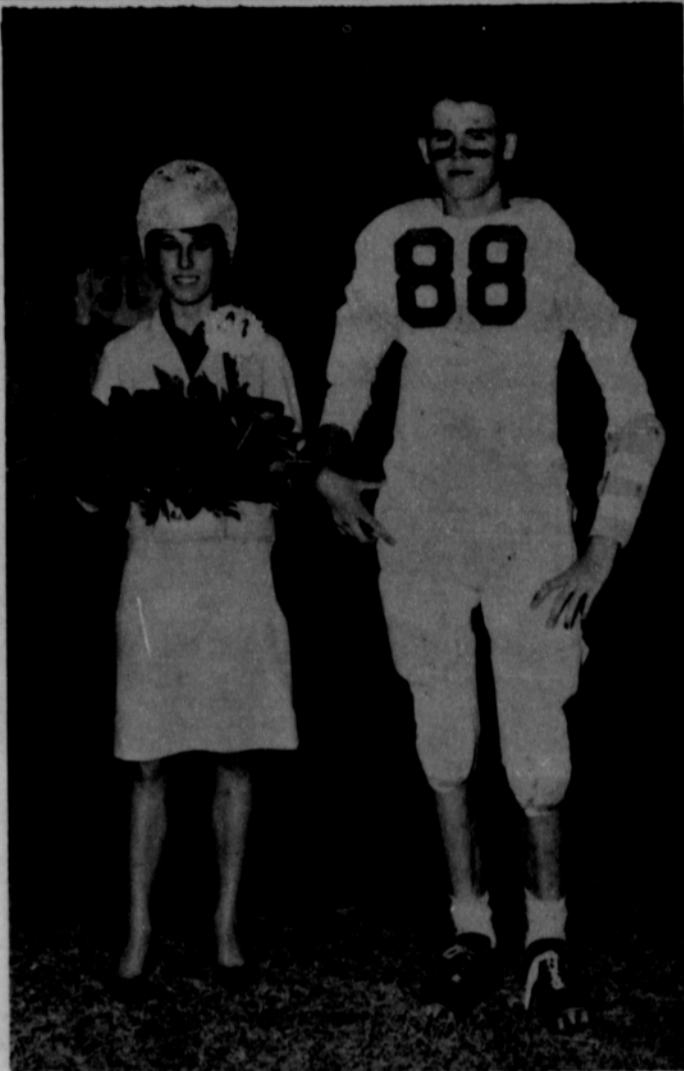
Among those seen at the Morse Homecoming were Mr. and Mrs. Jimmy Rickles of Amarillo, Evelyn and Carson McCloy of LaJunta, Colo., Ruby Womble of Dalhart, Carolyn and Jim Shields of Pringle, Richard and Betty Gaines of Spearman, Wes and Freeda Balentine of Borger, Pat and Kay Blankenship of Masterson, Beverly Pool of Pringle, and Tommy and Jeanie West of Pampa.

Mr. and Mrs. Bill Keyes of Borger furnished the convertible for the queens to ride in at the halftime ceremonies Friday night. After the game, they visited in the home of Mrs. Pearl Dixon.

The Jimmy Rickles of Amarillo spent Friday visiting in the home of Mr. and Mrs. Frank Karr, Jr.

Mr. and Mrs. L.L. Cook and Mickey spent the weekend in Hays, Kans. with his brother and family. Mr. Cook and Mickey did some pheasant hunting while there.

Mrs. Elva Evans, mother of Coach Rufus Graves, visited in



FOOTBALL QUEEN--Miss Elaine Schick was crowned at the Morse Homecoming game last Friday night by Eddie Papay. Miss Schick is a sophomore in Morse High School. Morse won the game with Estelline on first downs after fighting to a 20-20 tie.

Photo by C&B



ALUMNI QUEEN--Mrs. Frank Womble of Dalhart was crowned Alumni Queen by Willard McCloy at the Homecoming festivities last Friday night at Morse. Mrs. Womble is a Morse High School graduate of 1931 and one of the first graduates of the school.

Photo by C&B

Social Calendar

Friday, November 20, 1964

The Arts and Craft Guild will meet at 2:30 in the home of Mrs. Kiff White.

Saturday, November 21, 1964

The Gladiola Flower Club will hold their annual Thanksgiving dinner at 7 p.m. in the Home Demonstration Club Room.

The Toastmaster's Club will hold their Charter banquet at 7:30 at Grunewald's Restaurant.

Sunday, November 23, 1964

Unified Thanksgiving Service at 7:30 p.m. in the high school auditorium sponsored by the Ministerial Alliance.

Rho Rho Chapter of Beta Sigma Phi will meet at 7:30 p.m. in the home of Joan Crawford.

Tuesday, November 24, 1964

The Lions Club will meet at noon at Grunewald's Restaurant.

Housewarming

Friends of Mr. and Mrs. B. W. Renner are invited to a housewarming to be given in their honor Sunday, Nov. 22 from 2:30 until 4:30 p.m. in their country home north of Gruver. The honorees will be presented gifts along with a money tree. Friends of the couple are hosts.

Mrs. Grant Miner and children spent the weekend in Tucumcari, N.M. Visiting relatives.

the Graves home last week, Saturday she returned to her home in Amarillo.

Mrs. D.S. Sidwell of Texline is a guest of Mrs. H.H. Jones this week.

Frank Karr, Sr., was a patient in the Spearman hospital last week. He is at home now.

Mrs. O.E. Hext honored her son Derrel, on his birthday Thursday with a party at the Community Building. Guests were his classmates.

Attending the Lions Zone meeting in Sunray Sunday afternoon were Grant Miner, Willard McCloy and H.B. Parks.

NOW! Big travel bargain for cities along Santa Fe

It's Chico Bargain Fare time again on the Santa Fe—through April 30, 1965.

For example, a regular round-trip ticket costing \$100 will be sold at the off-season bargain fare of \$80. Round trips costing \$75 now will be only \$60, and similar reductions will apply for round-trip tickets from all stations except for local trips within the State of California.

No matter where you travel on Santa Fe trains, round-trip bargain fares will save you approximately 20%. Tickets on sale every day with a return limit of 30 days. Yes, bargain fares apply for both round-trip coach and first-class tickets.

Now you can leave the car at home and save money traveling by Santa Fe.

See the Santa Fe Agent in your home town for complete information



WE ARE OPEN

We have a full line of Chevron Gasolines, Oils, Tires & Accessories.

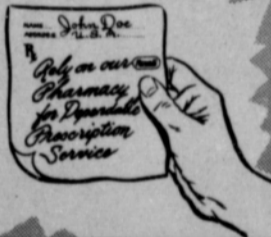
We Give Buccaneer Stamps

We Are Open 7 days a week
6 a.m. to 9 p.m.
Call 659-9985

We Appreciate Your Business

Simmons Chevron Station

Plains Shopping Center
Highway 15



UNIQUELY YOURS

When your doctor prescribes for you, he takes into consideration your age, height, weight, past history, present condition, and many other factors... that's why your prescription is uniquely yours. Rexall Pharmacists take the same care in preparing your prescription. Rely on our Rexall Pharmacist for prompt, accurate, personal service.

Your **Rexall** Pharmacist

**Spearman Rexall
Drug**

LEGAL NOTICES

NOTICE OF SALE

THE STATE OF TEXAS
COUNTY OF HANSFORD

By virtue of an Order of Sale issued out of the Honorable District Court, 150th Judicial District of Texas, in and for Bexar County, Texas, on the 6th day of October, 1964 by the Clerk thereof, in the case of FIRST OF TEXAS CORPORATION VS C.W. WILSON ET AL., and being numbered F-155, 909 on the docket of said Court, and to me, as Sheriff, directed and delivered, I will proceed to sell the hereinafter described tract of land to the highest bidder, for cash, between the hours of 10:00 A.M. and 4:00 o'clock P.M., on December 1, 1964, it being the first Tuesday of said month, at the Courthouse door of Hansford County, Texas, in the City of Spearman, Texas; said tract of land having been levied on by me on the 9th day of October 1964, and to be sold to satisfy a judgment rendered in the above described cause on the 4th day of November, 1963, and recorded in the Minutes of said Court in Volume 19, Pages 501-502. Said judgment was in favor of Plaintiff, FIRST OF TEXAS CORPORATION, establishing its debts: for the sum of ONE THOUSAND FIVE HUNDRED TWO AND 77/100 (\$1,502.77) DOLLARS, with interest on the sum of NINE HUNDRED NINE-TY EIGHT AND 27/100 (\$998.27) DOLLARS at the rate of eight per cent (8%) per annum and interest on the sum of FIVE HUNDRED FOUR AND 50/100 (\$504.50) DOLLARS thereof at the rate of six per cent (6%) per annum from November 4, 1963, until paid, and all costs of suit, together with foreclosure against the Defendants, C.W. WILSON and ALVIN DIEHL, and all those claiming under said Defendants, whose claims originated since the filing of Plaintiff's Notice of Lis Pendens with the County Clerk of Hansford County, Texas, on the 30th day of September, 1963, of a certain lien securing Plaintiff's debt upon the following described property, to-wit:

Lots 11 and 12, Block 28, First Addition, to the City of Spearman, Hansford County, Texas;

Said Judgment and Order of Sale direct that the above described property be seized and sold as under execution in satisfaction of said judgment, and the proceeds of sale applied: First, to the satisfaction of all costs of court and sale; second, to the payment of said judgment in the amount of ONE THOUSAND FIVE HUNDRED TWO AND 77/100 (\$1,502.77) DOLLARS, together with interest that may be due thereon.

GIVEN UNDER MY HAND AND SEAL OF OFFICE on this, the 9th day of October, 1964.
J.B. Cooke
Sheriff, Hansford County, TEXAS
t8-3c

"If Communism is as wonderful as they claim it is, it seems that they would take down their iron curtain and put in some picture windows."
—Ernest Miskell, Minneapolis (Minn.) Argus.

Protect your credit, pay your accounts promptly.
RETAIL CREDIT CORP. OF SPEARMAN

KNAPP SHOES
KENNETH BAILEY
212 N. James
Phone 659-2458
Spearman, Texas

FOR CUSHIONED COMFORT

**BUY
SELL**

FOR SALE

FOR SALE-1 female poodle puppy. Also poodle grooming by appointment. See Mrs. Burke, 117 Townsend after 4 p.m.
S1-tfc. T2-tfc

FOR SALE - Industrial lots and acreage. Financing available. Cecil Crawford. Two good lots in town. Phone 659-2409.
T43-tfc

Will make buttonholes, plain and contour belts. Mrs. F.S. Ayers, Phone 3052.
9-8c

FOR SALE-3 bedroom house, carpeted, fenced yard, built in oven and cook top. 1008 Haney, Phone 2358.
T2-S2-tfc

FOR SALE-Income property-rooming house. Collard Realty. 6-2c

FOR SALE-Two lots. All connections for trailer. Collard Real Estate. 7-2c

FOR SALE-Cushman 1958 motor scooter, Call 659-2177 or see at 19 N. Hazelwood. 7-2p

FOR SALE:New Lake Pump and Aluminum pipe, Pat Westfield, Gruver, FI7-2700.
S44-T43-tfc

FOR SALE-1955 Chevrolet. Rebuilt motor. Phone 659-3427.
T2-S2-tfc

FOR SALE-The Aquarium has a new shipment of fish, tanks, supplies, novelty items. 902 S. Colgate in Perryton.
9-9c

FOR RENT

FOR RENT-New States Apartments in Gruver. Phone FI7-2244 or FI7-2241. Come to 100 Line Ave. after 4 p.m. to be shown apts.
7-8p

FOR RENT-2 bedroom unfurnished house. 117 S. Hazelwood, Phone 659-2698.
5-tfc

LEGAL NOTICES

The Board of Trustees will accept bids on one 1952 GMC School Bus. This bus may be inspected on the west parking lot of the High School in Spearman. Bids will be sealed and delivered to the office of Orville Latham at the High School not later than 5:00 p.m. Monday, December 14, 1964. The Board of Trustees reserve the right to reject any or all bids.
9-2c

BEAUTY...without BOTHER

**DU PONT
LUCITE[®]
WALL PAINT**

AVAILABLE IN NEW COLORS

Goodbye to drip, dribble and spatter. Farewell to stirring and thinning. Lucite covers more and better. Dries in 30 min. Brushes clean with soap & water.



OWENS SALES
118 N. MAIN
Spearman, Texas
659-2506

WANTED

TO GIVE AWAY-Female collie pups, 6 weeks old. Phone 359-2319, 734 Gibner Drive.
T2-S2-tfc

Land Leveling to SCS specifications. General dirt work with Hancock carryalls. Willis Sheets, 659-2256.
T46-S46-tfc

SERVICE-Ditches from 3/12 inches, any desired depth. S. D. Jones 659-2809. Harold Shaver 659-3474.
T17-s18-tfc

FOR LIFETIME MUFFLERS-Clarence Pettitt Garage. No premium prices.

Holt News

Mr. and Mrs. Owen Pendergraft were weekend guests of his brother, Mr. and Mrs. Lloyd Pendergraft at Wichita, Kans. and also visited at Enid, Okla. with Mr. and Mrs. James Beck and Connie.

Mr. and Mrs. Richard Gaines and family were Saturday night guests of Mr. and Mrs. Gary Abrahams at Elkhart, Kans.

Mr. and Mrs. Lewis Williams and family of Stinnett were Wednesday luncheon guests of Mr. and Mrs. Travis Reger.

Mr. and Mrs. Oliver Jones of the C.W. Kirk farm were Sunday guests of her son, Mr. and Mrs. Ralph Hale of Perryton.

Mmes. Berea Holt, Bertha Jenkins and Maude Rosson were Sunday afternoon callers of Mmes. Annie Harris, Lorene Williams and Vera Anderson of Morse.

Mr. and Mrs. Jimmy Davis of Spearman spent several days visiting relatives at Austin and friends at Corpus Christi. Jimmy and son Bill of Austin did some fishing at Port Aransas.

Mr. and Mrs. Dan Jackson spent the weekend at Mangum, Okla. On Saturday they attended the funeral of a cousin Mrs. Allie Orendorff.

Mr. and Mrs. Doyle Jackson and boys were Saturday night guests of the Bob Phelps at Forgan, Okla.

Holt Community got .80 inches of rain over the weekend.

Piano Tuning & Repairing

NOW AVAILABLE
SPEARMAN & VICINITY
COMPETENT & EFFICIENT
RATES REASONABLE
Call 2295

Part of all you earn — should be yours to keep.



ED DEAR,



703 Cutter Drive
Spearman, Texas

Office 659-3444 Phone 659-3073



SCATTER PIN LEAGUE
11-12-64

TEAM	WON	LOST
Equity	30 1/2	9 1/2
Anthony Electric	30 1/2	9 1/2
Millers	29	11
G&G Foodliner	22 1/2	17 1/2
Floyd Locker	15	25
Grunewald	12	28
Gruver Agency	12	28
Bowl Mor	8 1/2	31 1/2

HIGH TEAM GAME
Equity 633
Millers 566
G&G Foodliner 562

HIGH TEAM SERIES
Equity 1688
Millers 1605
Floyd Locker 1593

HIGH INDIVIDUAL GAME
Jane Meek 182
Edna Marie Williams 181
Tommie Arbsland 176

HIGH INDIVIDUAL SERIES
Tommie Arbsland 479
Jane Meek 452
Helen Dry 435

STRIKE OUT LEAGUE
11-12-64

TEAM	WON	LOST
Corner Service	33	11
B&B Sales	23	21
Consumers	23	21
Ideal Food	22	22
Behne Electric	21	23
Super Service	18 1/2	25 1/2
Gordons Drug	18 1/2	25 1/2
Waka Bunch	17	27

HIGH TEAM GAME
Corner Service 926
Behne Electric 861
Ideal Food 834

HIGH TEAM SERIES
Corner Service 2445
Behne Electric 2414
Ideal Food 2411

HIGH INDIVIDUAL GAME
Shields 212
Burke 211
Gilley 210

HIGH INDIVIDUAL SERIES
Shields 554
Gates 545
Frye 542

NIGHT OWL LEAGUE
11-16-64

TEAM	WON	LOST
Harveys Aerial	30	10
Rexall Drug	29	11
Beedy Furniture	22	18
Universal Oil	19	21
Hansford Grain	17	23
M&M Shamrock	3	37

Spearman Radiator & Supply
Radiator Sales & Service
Auto & Industrial
Highway 15
Phone 659-2446
Home 659-2654
Spearman
Doyle McBride

Camblings Refrigeration
659-2721

School Lunch Menu

MONDAY, NOV. 23
Barbecue on Bun
Potato Salad
Buttered Corn
Cole Slaw
Banana Cake
Chocolate or White Milk

TUESDAY, NOV. 24
Bakes Turkey-Gravy
Sage Dressing
Seasoned Green Beans
Cranberry Sauce
Mixed Fruit Salad
Chocolate Cream Pie
Bread
Chocolate or White Milk

WEDNESDAY, NOV. 25
Baked Wieners
Coney Sauce-Buns
Tri-Tators
Western Beans
Combination Tossed Salad
Spicy Apple Bars
Chocolate or White Milk

THURSDAY, NOV. 26
HAPPY THANKSGIVING

Trap Shoot

The Future Farmers of America are sponsoring a trap shoot Sunday, Nov. 22 at 2 p.m. at the local range.

Mr. and Mrs. Major Lackey visited in Berger Sunday with her sister, Thelma Moreland.

HIGH TEAM GAME	
Rexall Drug	688
Hansford Grain	686
Harveys Aerial	658
HIGH TEAM SERIES	
Rexall Drug	1958
Harvey's Aerial	1947
Hansford Grain	1906
HIGH INDIVIDUAL GAME	
Armes	178
F. Williams	163
M. Jones	158
HIGH INDIVIDUAL SERIES	
Armes	516
Meek	440
C. Jones	427

E. C. Greene & Sons Agency

Real Estate-Loans
Insurance-Cattle
Aluminum Pipes

410 Davis Spearman
Phone 659-2587

**WE APPRECIATE
YOUR BUSINESS**

And Invite You To

Stop By For
Complete Car Care
and Good
Texaco Products.

"Trust Your Car To
The Man Who Wears
The Star"

SNIDER TEXACO
Vance Snider,
Owner

**YOUR PHILCO DEALER
Burton's T.V.**

WE REPAIR COLOR &
BLACK & WHITE T. V.'S
AND ALSO, RADIOS

659-2121

20 South Archer
Spearman

**City
Directory**

CLEANERS

CLEANING
PRESSING
CARPET
CLEANING SERVICE
COIN OPERATED
DRY CLEANING
FREE
PICK UP & DELIVERY
PHONE 659-2511

Wardrobe Cleaners

Oscar Donnell
302 MAIN ST.
SPEARMAN, TEXAS

DENTISTS

F. J. Daily D.D.S.

16 SW COURT STREET

SPEARMAN

PHYSICIAN

D. E. Hackley D.O.

CLINIC

702 S. ROLAND

659-2556

659-2385

ELECTRICIAN

Anthony Electric

Industrial, Commercial
and House Wiring

Heating and
Air Conditioning

Contracting
and Repairs

Fully Insured

PLAINS
SHOPPING CENTER

PHONE 659-2441
BOX 727
SPEARMAN, TEXAS



Girls Beat Follett; Fall To Tulia

Spearman's Lynxettes got their young basketball season back on the winning track here Tuesday night with a 72-37 win over Follett.

The girls dropped their first game of the season 60-69 to Tulia in the Plainview Girls' Basketball Clinic last Saturday.

Tuesday night Coach Dean Weese used his entire squad from the first quarter of the one-sided contest. The starting forward combination of Phyllis Patterson, Vicki Wilde and Johny Jo Vernon rolled up a 21-2 margin before the first quarter was over.

Starting guards Susan Hutchison, Bethany Donnell and Robbie Ownbey stopped the Follett scoring attack cold.

All of the Lynxettes were scoring well, when in the game. Patterson had 28, Vicki Wilde 16, Barbara Wilde 9, Vernon 8, Linda Bengé 7 and Karen Gibson 4.

Saturday the Lynxettes had trouble with the rules and donated Tulia 32 points at the foul line.

Spearman was leading 14-13 at the end of the first quarter, but fell behind and could not close the gap the rest of the way.

Vicki Wilde had 29 points, Patterson 21, Vernon 6 and Barbara Wilde 3.



ROOKIES- These members of the Royal Ambassador football team got their first taste of competitive football this fall. The team is sponsored by the First Baptist Church, but boys from all churches play. The boys are: (1-r) front row, Denham, Hazelwood; second row, Vernon, Mock, Batson, Grayson, Brown, Cockrell, Lynx; third row, Lyon, Fry, Kelp, Davis, Morris, Beedy and Jones; back row, Harper, Shieldknight, Butts, Womble and RA Leader Don Denham. Plainsman Photo

Campus Casuals, a California fashion house slanted to the high school and college girl's taste and pocket book, emphasizes ruffles, checks and crochet trim in its spring collection.

Then there's the cowboy star who got into financial trouble because he was so much faster on the draw than the deposit.

FIRST OF MANY- Vicki Wilde goes high to score against Follett. The tall sharpshooter will score many of these two-pointers this season as the Lynxettes go after their sixth consecutive district title.

Plainsman photo

Two Wrecks This Week

City police officers have investigated two minor accidents during the past week. There were no injuries in either wreck.

Friday the 13th, a teacher and a student were involved in an accident at the intersection of Second and Dressen streets.

Student Phillip Renner was driving one car and Miss Dorothy Roden was driving the other car.

The accident happened at 8:10 a.m.

Monday, at 8:55 a.m., two cars were involved in a minor fender bender accident at the intersection of Dressen and Kenneth Streets.



Mrs. Jack Johnson, Sr.

HD Woman of the Year Attends Hawaiian Meet

Mrs. Jack Johnson, Sr. of Morse, the HD woman of the year in Hansford County, recently returned from a trip to the National THDA Convention which was held in Honolulu, Hawaii.

This event climaxed thirty three years work in the Home Demonstration club for Mrs. Johnson. She joined the Pringle Club in Hutchinson County in 1931 and was a member of that club for 16 years prior to becoming a member of the Morse Club in Hansford County.

A very active clubwoman, Mrs. Johnson rarely misses a local or county meeting. She has served in every office of her local club and has been a member of the Hansford County Council for a number of years. She has attended her share of district and state conventions, but this was the first national convention Mrs. Johnson had attended.

She stated the convention in Honolulu was the highlight of her clubwork. There were 3,084 women from every state in the union and from Puerto Rico in attendance.

"We were well entertained

by our hosts," stated Mrs. Johnson. "The hospitality of the Hawaiian people is wonderful and Hawaii is a paradise with its beautiful flowers which grow wild all over the islands."

The outstanding speakers at the convention impressed Mrs. Johnson. She noted the theme of "our heritage" was used throughout the various speakers' addresses.

Several huge tents were put together to shelter the general sessions of the convention and this added to the informal holiday air that permeated the area, stated Mrs. Johnson. She said it was not always easy to tell the Kamaainas from the malihinis (newcomers) at the convention. Many of the latter were attired in muumuis and everyone wore comfortable shoes or slippers. The newcomers, however, clutched anthuriums and birds of paradise close to their chests and wore the kukui nut pendants that their hostesses had provided.

Mrs. Johnson said the theme of the convention "Hands Across the Waters," expressed the aloha that Hawaii extended to all homemakers.



FUTURE LYNXETTES- The Lynxette B-team saw plenty of action Tuesday night as they fell to the Follett B-team 29-23. Coach Perry Coursey used all his squad in the game. Plainsman photo



**New Stock of
Montag Stationery**
An Ideal Inexpensive Gift Choice

Beautiful Hallmark

CHRISTMAS CARDS



Holiday Party Goods

<ul style="list-style-type: none"> Coasters Tallies Invitations Score Pads Place Mats Place Cards 	<ul style="list-style-type: none"> Centerpieces Refreshment Plates Beverage Napkins Dinner Napkins Bridge Cloths Decoration Books
---	---

Plainsman Office Supply

FOR ALL YOUR FLORAL NEEDS

**PHONE
659-2593**



Spearman
**FLORAL
GIFTS**

YOUR FULL SERVICE FLORIST