

LOCATIONS OF POLLING PLACES
(DIRECCIONES) DE LAS CASILLAS ELECTORALES)

- Precinct #1 - County Courthouse (La Casa de corte de Spearman)
- Precinct #2 - Renner Ranch (El rancho de los Renner)
- Precinct #3 - Community Bible Church, Gruver (Iglesia Biblica de la Comunidad de Gruver)
- Precinct #4 - Gruver County Agri. Bldg. (El edificio agri. del condado de Gruver)
- Precinct #5 - Spearman County Agri. Bldg. (El edificio agri. del condado de Spearman)
- Precinct #6 - Spearman High School (La escuela secundaria de Spearman)
- Precinct #7 - Oslo Church (La iglesia de Oslo)
- Precinct #8 - Absentee Voting, Courthouse
- Precinct #9 - Morse Community Building (el edificio de Comunidad de Morse)

See SAMPLE BALLOT PAGE 10

Spearman G.T.E. Customers Will Have To
Start Using 7 Digits Today. (659-3434)

HANSFORD LIBRARY
120 MAIN ST.
SPEARMAN, TEXAS

THE Hansford Plainsman

24 hr. prayer
service 659-2911

Volume 17 No. 52

The Hansford Plainsman, Spearman, Texas 79081

Sunday November 2, 1986

Community Halloween Carnival



Palo Duro River Authority

October 30, 1986

Notice is hereby given there will be a **SPECIAL MEETING** of the Palo Duro River Authority on Tuesday, November 4, 1986 at 2:00 p.m. in the meeting room of the Palo Duro River Authority in the Pittman-Shieldknight Building, 511 S.W. 11th, Spearman, Texas for discussion and/or action:

1. Meeting called to order by the President, Robert Novak.
2. Reading of minutes of the last meeting.
3. Discussion of Geotechnical proposals and selection of Geotechnical firm and authorize the President of the Board, Robert H. Novak, to execute contract.

Johnnie C. Lee, Manager

In a special interview with Johnnie Lee, manager of the Palo Duro River Authority, Johnnie C. Lee informed the newspaper that a geotechnical firm will begin core testing at the Dam site immediately. The core testing should be concluded by January 1st.

The Hideout

Spearman Teens would like to thank the volunteers who helped to open the new teen center. The grand opening dance at The Hideout was a lot of fun. It was great being with all our friends and having a place to go. Among the people we would like to thank are: those who donated furniture and blue stamp books, Kelly Fuller, Sue Woolley, Scott Beedy and The Volunteer Committee, Betty Womble and the others who volunteered and made The Hideout a success.

Painting on Display

An original painting by Marilyn Yanke will be on display at the First National Bank in Spearman. Another painting will be on display in Gruver. The American Cancer Society (Hansford Unit) are taking donations of \$1 per ticket or 6 tickets for \$5 and the drawing will be November 20th at the monthly meeting in Spearman. You need not be present to win. The winner will have his or her choice of these paintings.

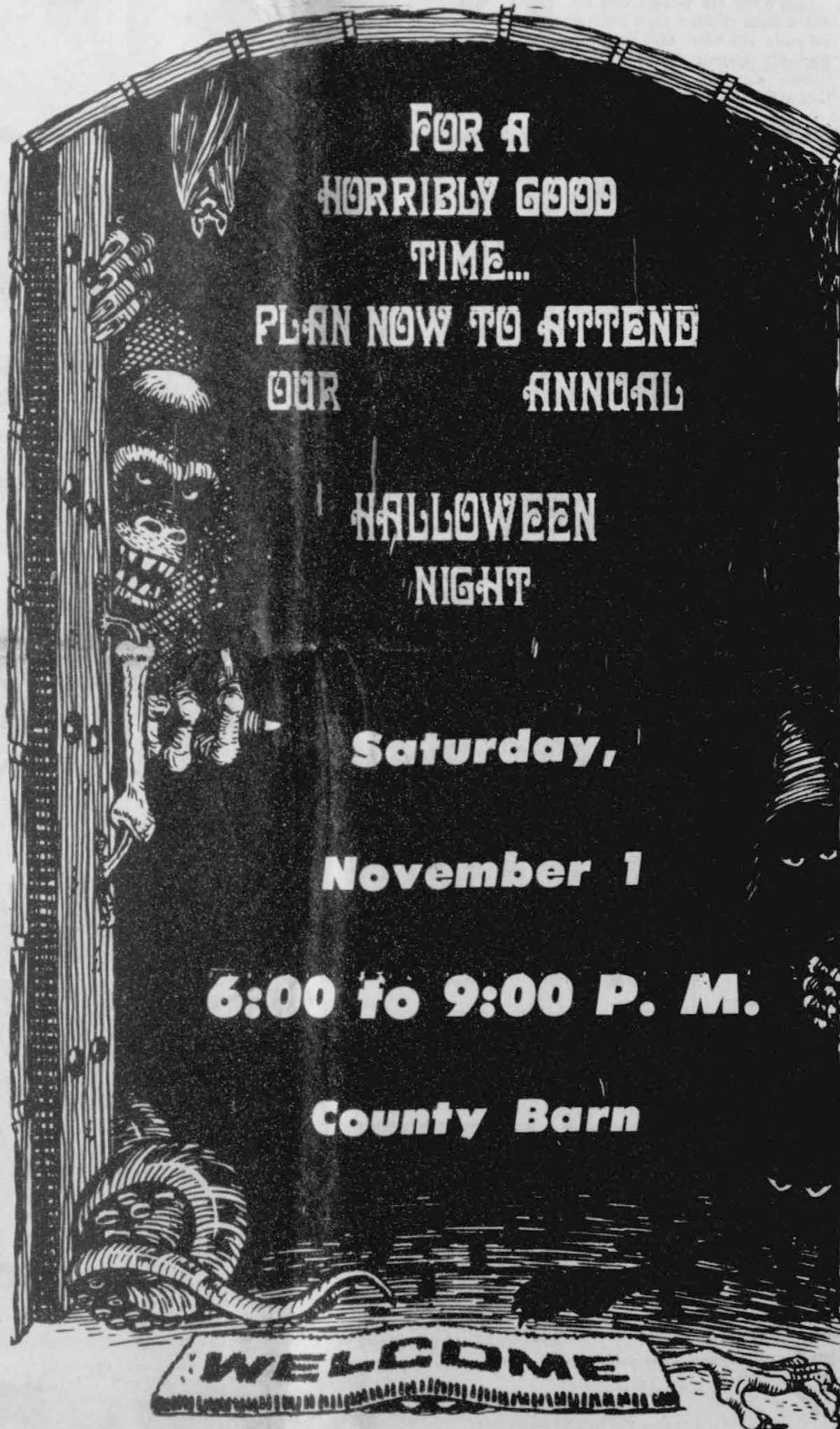
Public Service

Persons age 16 - up may apply for the Job Training Program November 4, 1986 from 9:30 a.m. - 12:00 at the Hansford County Court House, Spearman.

Qualifications for enrollment in JTPA is based on your or your family's income for the last 6 months.

Applicants should bring their Social Security card and provide a photo copy of their birth certificate to be kept in applicant's file.

For more information call Panhandle Community Services at 274-3518, Borger.



FOR A
HORRIBLY GOOD
TIME...
PLAN NOW TO ATTEND
OUR ANNUAL

HALLOWEEN
NIGHT

Saturday,

November 1

6:00 to 9:00 P. M.

County Barn

WELCOME

COME TO THE
FALL FESTIVAL
WHERE: COUNTY BARN
WHEN: NOV. 1
TIME: 6:00 - 9:00

- Jaycees- Spook House
- Student Council- Basketball Throw
- Celebrate- Log Fight
- PTA- Dunking Board
- Shieldknights- Balloons
- Xi Zeta- Nacho, Rice Krispis
- Lions Club- Hamburgers
- PTA- Drinks Booth

AND LOTS, LOTS MORE

(If some club or organization would like to participate in the Fall Festival, it's not too late. Just contact Lynna Renner or Eddie Gage.)

NOTE: Mayor Blodgett has declared November 1st as the official "Trick or Treat" night. (Due to the football game on Friday night) So get dressed up in your costume, go trick or treating... and come by the County Barn for lots of FUN!!!!

Get Married & Divorced

Spooks attending the Halloween Carnival at the County Barn in Spearman Saturday night can get married and divorced at the same time! A marriage booth and divorce court will be conducted by the Spearman Lynx Marching Band. The

"Revered" Pete Ochoa will perform the wedding ceremonies. "Judge" Darby Davis will preside over divorce court. Pictures of the couples will be taken in a cardboard car, wedding dress provided; picture may be purchased from band students.

Spearman Lynx Booster Club

The Spearman Lynx Booster Club will meet Monday, Nov. 3, at 6:00 p.m. instead of Tuesday night. Coach Moon Mullins will bring film on the Panhandle game. Refreshments will be served. The Lynx booster Club would like to salute the following 9 senior football players for their outstanding contributions to our community; Mark Garnett, Kris York, Mike Pearson, Dusty Hill, Jesse Lozano, Mark Allen, Allen Gardiner, Mike Parks, and David Cazarez.

President Johnny Crawford on behalf of the Lynx Booster Club would like to thank Head Coach, Don Mullins, and Assistant Coaches, Ric

Smith, Bobby Jones, Kenny Rutherford, James Mireles, and Jeff Rowland.

A special thanks to team managers; Pete Mauk, and John Adams, Cheerleader; Neta Burger, Jill McLain, Kim Jenkins, Kathy Poole, Heather Murrell, Ginger Pearson, Laci Lasater, Michelle Cook, and Cacy McGill (Mascot). Also the Lynx Booster Club would like to thank Cheerleader Sponsor Gerri Maize, Band Director; Dena Kidd, Superintendent; Lary Butler, and High School Principal; Ken Friemel. Also thanks to the greatest student body in the world.

SPEARMAN STUDY CLUB'S SIXTH ANNUAL ANTIQU* COLLECTABLES ARTS AND CRAFTS SHOW AND SALE

The Spearman Study Club will host their Annual Antique, Collectables, Arts and Crafts Show and Sale on November 8th and 9th, 1986. Times are 9 to 6 on Saturday, the 8th and 10 to 5 on Sunday, the 9th. The show will be held at the Spearman High School

Cafeteria. All persons interested in purchasing a booth for this show should contact Trudie Schneider, 659-3691 or Linda Close 659-3097 (after 6:00 p.m.) Center spaces will rent for \$15.00 and Wall spaces for \$20.00 a table. The public is invited to the show with no admission charge.

Hospital

Patients in the Hansford Hospital are: Carrie Russell, Francis Williams, William Russell, Ty Seagler, Sara Shufeldt, Clifford Brown.

Patients dismissed are: Rita Underwood, Maria Saldivar, Maria Lopez, Chris Kauffman.

Police

October 24
11:39 p.m. Minor Accident

October 25
10:14 p.m. Arrest
10:59 p.m. Disturbance
11:38 p.m. Service Call

October 26
4:44 p.m. Minor Accident
8:39 p.m. Service Call

October 27
6:32 a.m. Service call
3:12 p.m. Minor Accident
6:56 p.m. Traffic complaint
8:31 p.m. Disturbance

October 28
7:00 p.m. Suspicious Person
7:17 p.m. Service Call

October 29
12:13 a.m. Prowler report
9:32 a.m. Theft Investigation
5:49 p.m. Criminal Trespass complaint



Chorale Members Fair Well at the First Audition to All-State

This past Saturday, nine members of the Spearman High School Lynx Chorale traveled to Pampa for the first in a series of auditions that wind up in San Antonio, Texas for the presentation of the Texas All-State Choir. These students have been working on this music since early this summer. Many of them attended the WTSU Choir Camp offered in the Fall for kids who are interested in getting a head start on the All-State Music.

The students who made the All-District Choir are: Soprano I - Anne Sheets, Mechelle Graham, Soprano II - Connie Woolley, Marnada Loomis, Alto I - Kellie McWhirter, Alto II - Charlotte Brandt, and Tenor I - Clint Patterson.

The students who made the All-Region Choir and who will be continuing the audition series toward an opportunity to be a member of the All-State Choir in February are: Soprano I - Anne Sheets - 5th chair, Mechelle Graham - 6th chair, Alto I - Kellie

McWhirter - 2nd Chair, Alto II - Charlotte Brandt - 4th Chair, Tenor I - Clint Patterson - 11th chair and Soprano II - Connie Woolley - 10th Chair.

These students are to be congratulated for their efforts and their fine representation of the Spearman High School Lynx Chorale. They will be involved in another audition on December 5, 1986, and will be performing with the other members of the All-Region Choir, which is made up of students from all High School in this area. From one A, to Five A, on Saturday December 6, 1986.

I am proud and pleased with the efforts these students show and the diligence with which they work and represent Spearman and the Lynx Chorale. Congratulations and Good Luck at the next audition.



Anne Sheets



Connie Woolley



Kellie McWhirter



Clint Patterson



Mechelle Graham



Maranda Loomis



Charlotte Brandt

National Teen-Ager Foundation

Scholarships will be presented to Texas participants in the 16th Annual Miss Texas National Teen-Ager program that will be held at Texas Christian University in Fort Worth on June 5-7, 1987.

Young women must be between the ages of 13 through 18 and are judged on scholastic achievement-leadership; poise-personality, and appearance. There is no swimsuit competition. Each finalist may, at her option, present a talent or an essay on "What's Right About America."

The Texas winner will receive a \$1,000 U.S. Savings Bond and a two year tuition scholarship to Oklahoma City University (with provision for renewal) and an all expense paid trip to compete in the national program in August where \$40,000 in cash scholarships and prizes will be awarded.

To provide additional scholarships for Texas participants, tuition scholarships will be awarded based solely on scholastic achievement and leadership, and others based on potential in Business and Hospitality related programs. The Miss National Teen-Ager program will award over two million

dollars in cash and tuition scholarships in 1987 throughout America.

Miss ReJana White, of Hawkins, is the current reigning "Miss Texas National Teen-Ager", and will crown the 1987 Texas winner.

Applications may be obtained by writing MISS NATIONAL TEEN-AGER PAGEANT, 215 Piedmont Avenue, N. E., Atlanta, Georgia 30308.

Obituary

Buddy Morrow

Buddy Morrow of Texarkana, Texas died Friday October 24th. He was the brother of Evelyn Mackie. Services were held on October 27th in Texarkana, Texas.

Survivors are his wife & daughter, two sisters; Evelyn Mackie of Spearman, Annie Boyd of Camanche, Okla., one brother, J. M. of Texarkana, Texas and two grandsons.

Evelyn and Debra Clement of Spearman attended the funeral. Also Nancy Allen, of Pampa, (Evelyn's Daughter) joined them.



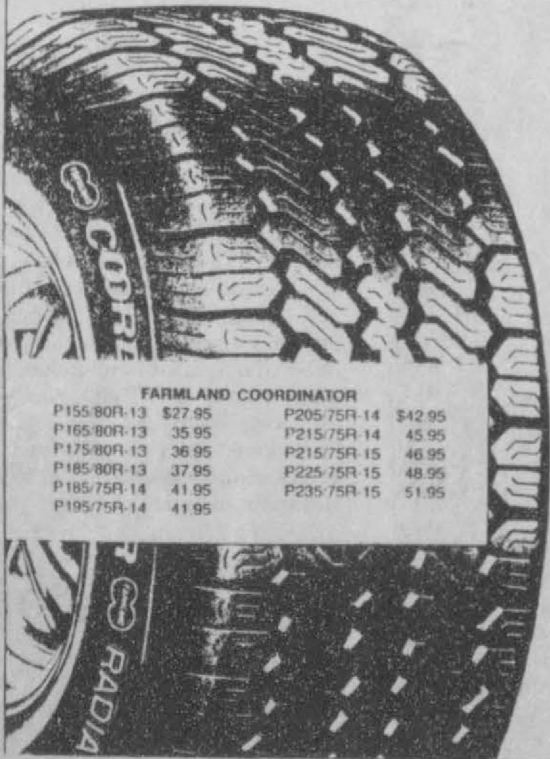
RELIABLE RADIAL TIRES

Farmland Coordinator

Radial reliability at an economical price

- Radial construction and wide tread design give stable tire-to-road contact for good mileage, easy handling, and a smooth ride.
- Two steel cord belts and two polyester cord plies give extra strength.
- Limited road hazard warranty.

As low as . . .
\$27⁹⁵



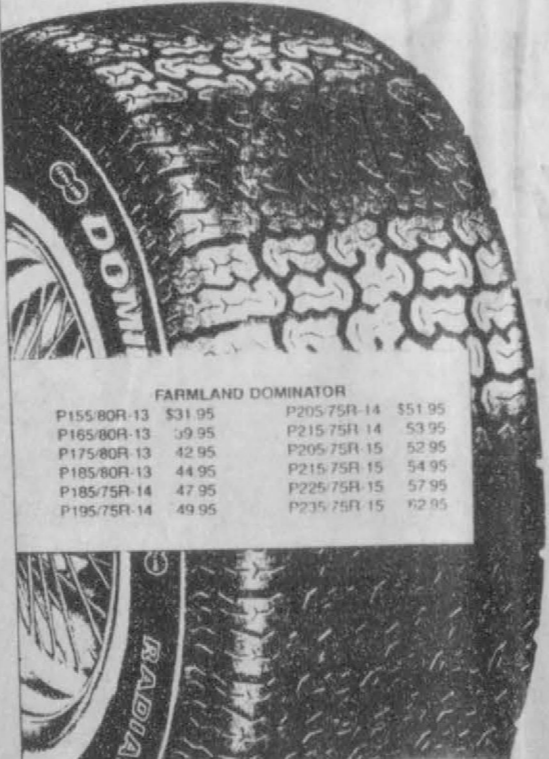
FARMLAND COORDINATOR	
P155-80R-13	\$27.95
P165-80R-13	35.95
P175-80R-13	36.95
P185-80R-13	37.95
P185-75R-14	41.95
P195-75R-14	41.95
P205-75R-14	42.95
P215-75R-14	45.95
P215-75R-15	46.95
P225-75R-15	48.95
P235-75R-15	51.95

Farmland Dominator

Outstanding All-Season Performance

- A premium steel-belted radial for more miles per gallon and extended tire life.
- New concept profile offers an extra-wide "footprint" for excellent traction.
- Free replacement for failure due to workmanship or materials during first 50% of tread life.

As low as . . .
\$31⁹⁵



FARMLAND DOMINATOR	
P155-80R-13	\$31.95
P165-80R-13	39.95
P175-80R-13	42.95
P185-80R-13	44.95
P185-75R-14	47.95
P195-75R-14	49.95
P205-75R-14	51.95
P215-75R-14	53.95
P215-75R-15	52.95
P225-75R-15	54.95
P225-75R-15	57.95
P235-75R-15	62.95

CO-OP Grip Spur Radial

Steel-Belted Performance for Light Trucks

- Good traction on all surfaces.
- Improved mileage and handling.
- Pinned for studs to give extra traction on snow and ice.
- Limited road hazard warranty.

\$81⁹⁵

with exchange, group size 215/75R-15C



CO-OP GRIP SPUR RADIAL			
215-75R-15C	\$ 81.95	8.75R-16.5D	\$ 99.95
235-75R-15C	89.95	9.50R-16.5D	113.95
7.50R-16D	106.95	31x10.5R-15C	105.95
235-85R-16E	115.95	33x12.5R-15C	129.95

Farmland Dominator A/T

The all-terrain, all-season, steel-belted radial for light trucks and recreational vehicles

- All-season tread bites deep, runs quietly.
- Advanced radial design offers fuel economy.
- Wide footprint gives extra flotation.
- Limited road hazard warranty.

\$79⁹⁵

with exchange, group size 7.50 16.0 11



FARMLAND DOMINATOR A/T			
7.50R-16.0 11	\$79.95	31x10.5R-15C TL	81.95
235-85R-16E TL	94.95	215-75R-15C TL	69.95
8.75R-16.5D TL	79.95	235-75R-15C TL	81.95
9.50R-16.5D TL	\$91.95		

Farmland Radial Snow

Get more "GO" in the snow with Farmland Radial Snow Tires

- Positive traction for winter driving ease and safety.
- Special snow-gripping tread design bites in.
- Fiberglass belts combined with radial cord plies for mileage and long wear.
- Limited road hazard warranty.

As low as . . .
\$34⁹⁵

with exchange, group size P155-80R-13



FARMLAND RADIAL SNOW	
P155-80R-13	\$34.95
P165-80R-13	41.95
P195-75R-14	44.95
P205-75R-14	45.95
P215-75R-14	48.95
P205-75R-15	48.95
P215-75R-15	49.95
P225-75R-15	51.95
P235-75R-15	56.95

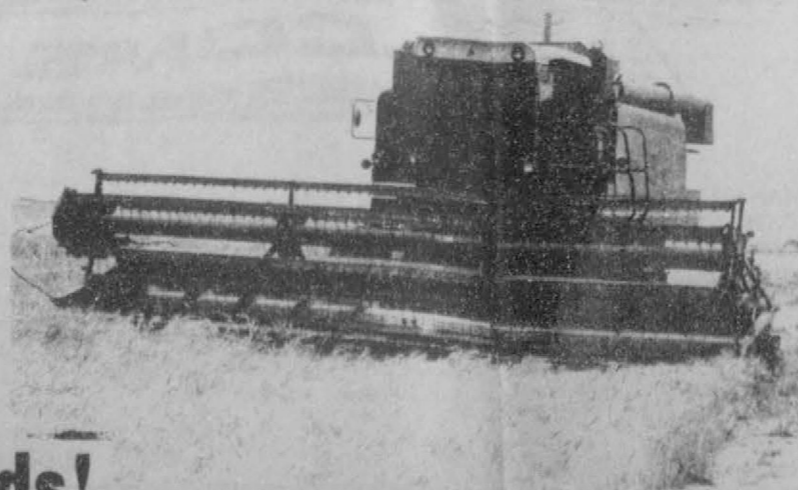


Standing together. Standing strong.

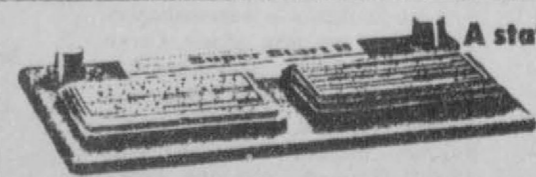
Call on Us for all of your Harvest needs!

Consumers Sales Co.

421 W. Kenneth 659-2012 Spearman, Texas



Farmland Super Start II



A state-of-the-art battery designed for high-powered cars or light trucks

- Higher amperage and improved cranking power to handle big engines (up to 620 cubic inch displacement) and loads of accessories.
- 5-year warranty with first-year free replacement.
- Reduced maintenance design.

As low as
\$47⁹⁵

with exchange, group size 60 14

SUPER START II	
SSR-24	\$47.95
SSR-24F	47.95
SSR-62	47.95
SSR-58	\$47.95
SSR-74	49.50
SSR-41	60.95

BUY, SELL, TRADE OR RENT THROUGH THE CLASSIFIED ADS

CLASSIFIED RATES

Regular.....Per Word-\$0.13
 Display.....Per Col. Inch-\$4.20
 Double rate for blind ads
 Minimum charges
 Cash.....\$4.00
 Charge.....\$4.50

CASH IN ADVANCE ADS

Work Wanted*Trailers For Sale*
 Business Opportunities*No Longer
 Responsible*Political Advertis-
 ing*Child Care*Baby-sitting*
 Garage Sales*Out-of-County Ads-
 unless advertiser has established
 credit with
 The Spearman Reporter

DEADLINES
 To place or cancel ads
 Fri., 12:00 p.m.....Sun. edition
 Tues., 12:00 p.m.....Thurs. edition

The Spearman Reporter reserves the right to reject, edit, revise and properly classify all advertising submitted for publication. The Spearman Reporter also reserves the right to cancel any advertise- ment at any time.

The Spearman Reporter,
 213 Main, P.O. Box 458
 Spearman, Texas 79081

Business Services

NOTICE
 Wallace Monument Co.
 Monuments, Curbing,
 Grave Covers
 Local Representative
LEONARD J AMESON
 Spearman, Texas
 359-rtn

MONUMENTS

Save Agents and
 Undertakers Profits
 If it is inconvenient for you to visit our large display please phone collect (405) 327-0626 or write and we will call on you.
ALVA MONUMENT WORKS, INC.
 Alva, OK 73717

STEAM RINSE & VAC

Rinse and Vac Shampooer for rent at Gordons Drug. \$10.95 up to 24 hours.

HAY SWATHING & Baling done.
 Call 733-2517 or Dennis at 733-5214.
 27s-rtn-nc

APPLIANCE REPAIR: Call Jim Nobles, 659-3528.

OSGOOD MONUMENT CO.

Amarillo, Texas
 Dealers of Rock of Ages Granite as well as all colored granites, marbles and bronze memorials.

represented by
BOXWELL BROS.
FUNERAL HOME
519 S. EVANS
659-3802

PARA TODA OCAACION

BODAS*QUINCEANERAS* TODA CLASE DE EVENTOS
 Grupo Los Tury's
 Estan a sus ordenes para cualquier informacion llame a los telefonos 659-3923 y 659-5182
 FOR ALL OCCASSIONS WEDDINGS*BIRTHDAYS OR ANY IMPORTANT EVENT
 Grupo Los Tury's
 at your service for information contact them by calling 659-3923 or 659-5182
 N.C.

Special Notice

Panhandle Crisis Center 101 S. W. Forth, Perryton, Texas 79070, 806-435-5013. Help is available at no charge for domestic violence and sexual assault. Call Panhandle Crisis Center, receive support during a difficult time. Counselors on call 24 hours a day. Call for help.
 19-rtn-nc

TOPS CHAPT.#1245 TOPS TAKE OFF POUNDS SENSIBLY. We Meet Thursday at 6:30 at Boyds Beauty Salon, 310 W. 4th.

WEIGHT WATCHERS meets each Monday at 6:00 p.m. at the Home Demonstration Building, Spearman, Texas.

Real Estate

0 DOWN PAYMENT!
 No payment for 45 Days
 Qualify by Phone
 806-381-1352
 Call Collect
 Financing by
 Shelter America Corp.
 Alliance Homes Inc.

TAKE UP PAYMENTS ON TWO AND THREE BEDROOM HOMES.
Alliance Homes Amarillo
 Qualify by Phone
 806-381-1352
 Call Collect

FOR SALE: 3 bedroom, 2 bath house recently redecorated, new carpet, customized drapes, fireplace. Nice fenced yard with storage shed. Call 659-3711 until 6 p.m.; 659-5183 after 6 p.m. and weekends.
 52s-1tc

For Rent

FOR RENT: Nicely Furnished 2 bedroom apartment, rent reduced - No Pets 659-3471
 43-rtn.

FOR RENT: Efficiency apartment furnished, bills paid. Call 659-2117.
 48S-rtn

For Rent: 2 bedroom House call 358-9684 in Amarillo
 46
 rtn

FOR SALE OR RENT: in Spearman two bedroom two bath Lancer mobile home. 435-2928
 52-4tp

FOR RENT: Trailer space in Spearman. All utilities, fenced and concrete walk ways. Call 435-5080.
 38-rtn-nc

FOR RENT: 1 Bedroom Brick Apt. Furnished (no pets) call Gus McLain 659-2274
 52-rtn

Pets

FOR SALE: Registered Cocker Spanial Puppies. Call 659-2409.
 51S-rtn

to give away free Kittens 1/2 persian. Call 659-3039 or 659-3986
 52-4tc

ALCOHOLICS ANONYMOUS MEETING

Tuesday
 8:00 P.M.
 Hansford County Library
 [Upstairs]
 122 Main - Spearman

AL ANON

Tuesday
 8:00 P.M.

Miscellaneous

JUST ARRIVED- 1986 Tri-Chem Christmas catalogue. See the new Sun-glo, Sticker Art & Liquid Embroidery items. Get a head start on your gift list or craft projects. Call Joy at 733-2517.

Center Stage Productions Presents Doll Festival November 29, 1986 W. K. Brown Auditorium. Over \$5,600.00 will be awarded in cash and prizes. Talent and Living Doll Pageant Open to ages 0-19 & up. For more information call 806-323-8581 or 806-323-8067.
 52s-1tc

If you want to feel better and enjoy life more and save money.
 Call NICK
 659-2049
 rtn-nc

Help Wanted

Help Wanted:
 Experienced roll operator with references. Apply in person at Spearman Cattlefeeders 2 miles N.E. of Spearman. No phone calls please.
 52S-4tc

Situation Wanted

Housecleaning by Jeanett Simpson and Maria Harmon. Deep thorough cleaning. References available. Free estimates. 659-2272
 52S-2tp

WANTED: Custom work get a jump on your 1987 crop by working your ground this fall. Will Do; Chisel Plowing, discing, listing, rodweeding, NH3 application, combining of corn and milo, for less guaranteed fully insured. 806-384-2086.
 50s-8tp

Sewing wanted, alterations etc. Baking and decorating cakes. I now have the Wuzzles cake pan "EleRo". Call Joy 733-2517.
 46-rtn-nc

Notice to Bidders

NOTICE TO BIDDERS
 Sealed proposals for the purchase of one (1) four door police special sedan will be received by the City of Spearman, Texas, at the office of the City Manager up until 10:00 a.m., November 12, 1986, and then publicly opened and read.

The City reserved the right to reject any or all bids, to waive informalities and to accept the bid deemed to be the most advantageous to the City. All bids received after the above closing hour will be returned unopened.

Specifications and bidding documents may be secured from the office of the City Manager, P. O. Box 37, Spearman, Texas 79081.
 51s-2tc-S, only

C.W.F. Selling Pecans and Mixed Nuts

The C.W.F. of First Christian Church will again be selling pecan halves, pieces, mixed nuts (no peanuts), honey roasted peanuts, giant cashews and dried apricots. Orders are being taken now, orders will be ready by Nov. 10. These are new crop, from Illinois, good for cooking now and for freezing for later use.
 Call the church office #2036 to place your orders.

Automobiles

WANTED: Older model pick-up in good condition - call 659-2325
 nc

for sale; 1980 Buick Regal 659-5047.
 52s-6tp

FOR SALE: 357 Colt Python 6" nickel, 357 S&W model 686, 6" Stainless. Also Dillon RL450B Progressive Reloader for more details Call 659-5189.
 After 5:00 p.m.
 48S-49S-4tp

Political Calendar

This newspaper is authorized to announce the candidacy of the following candidates for public office subject to the action of the voters in the PRIMARY ELECTIONS:

* **DEMOCRAT**
FOR COUNTY TREASURER
 NORMA JEAN MACKIE
FOR COUNTY AND DISTRICT CLERK
 AMELIA C. JOHNSON
FOR STATE REPRESENTATIVE
 J.W. BUCHANAN
REPUBLICAN
FOR COUNTY TREASURER
 ESCHOL BLANKENSHIP
FOR STATE REPRESENTATIVE
 DICK WATERFIELD

GRASS SEED

Blue Grama Sand Dropseed
 Side Oats Morpa Lovegrass
 Plains Bluestem Ermelo Lovegrass
 Spar Bluestem
 Mixes Available

Watley Seed Company
 Hwy 15 Spearman, Tx.
 659-3838 day or night
 50S-rtn Sonly

Vote for

Doug Seal
 Democrat for Congress
Political Ad. Paid for by Doug Seal for Congress Committee, Bobbie Thomas, Treasurer, 806 East Avenue, Wellington, Texas 79097

WAKA

SHAMROCK

Thank You Spearman Area from Wayne & Wanda at Waka Shamrock
 Open 6 a.m. to 6 p.m. Mon - Fri.
 435-5623 - Deli, Service, Toyo Tires
 Experienced Mechanic on duty

The Spearman

Reporter

PUBLICATION [USPS 2346-6000]
SPEARMAN, TEXAS 79081
 213 Main
 Box 458

Published Weekly at
 213 Main Street
 Spearman, Texas 79081

OWNER-PUBLISHER
 William M. Miller
EDITOR
 William M. Miller

Second Class postage paid at Spearman, Texas 79081.

Any erroneous reflection upon the character of any person or firm appearing in these columns will be gladly and promptly corrected upon being brought to the attention of the management.

POSTMASTER: Send address changes to Spearman Reporter, Box 458, Spearman, Tx. 79081.

SUBSCRIPTION RATE: Hansford adjoining counties, combination with the Spearman Reporter, \$35.00 plus tax. Other points \$52.00 plus tax.

Card of thanks

Thanks so very much to the doctors, the other hospital staff members, the EMS, Rev. Lane Boyd and all my other friends who have been of so much help during these difficult months. May God Bless you for caring.
 Frances Williams

I would like to thank all of those who remembered my birthday. It really made my day.
 Clifford Brown

WANTED
Wheat Pasture
Phone 806-659-3711
Nite Phone
806-659-2291
Spearman Grain Co.
Carl M. Archer

SPECIAL HEARING OUT OF FOCUS?

HEARING TESTS SET FOR SPEARMAN
November 6th

10:00 a.m. - 1:00 p.m.
 Golden Spread Senior Citizen Center

If you have a friend or loved one who is especially difficult for you to hear and understand, please bring them along if you can.

Free Hearing Tests - sales - Service of Hearing Aids

A.W. (Butch) McGinnas, H.A.S.
Chuck Groer, H.A.S.



- IF...
- You hear but do not always understand
 - Words run together
 - People seem to mumble
 - You ask people to repeat
- You may have **NERVE DEAFNESS**

Don't miss this opportunity

Have your hearing tested to find if the Argosy Custom All-in-The Ear Hearing Aid is the answer you have been looking for.

DOUG SEAL : FOR THE PEOPLE

Doug Seal supports:

- Balanced budget-** Doug Seal believes the budget must be balanced and that the needs of people must be respected in the process.
- Strengthened National Defense-** Our national defense must be kept strong but without the \$500.00 claw hammers that have made the military budget wasteful.
- Re-vamping farm policy-** Current farm policy bankrupts not only the farmer but the taxpayer. Doug Seal has a comprehensive plan for re-vamping U.S. farm policy.
- Import Oil Policy-** The U.S. needs an oil policy of, by, and for the American people. An oil import fee would keep us from being held hostage by foreign interests, and would immediately create exploration and jobs in the domestic oil industry.

November 4th - Elect

DOUG SEAL
 DEMOCRAT FOR U.S. CONGRESS



Doug, Wyvon, Derek, and Deeda Seal

Wedding Announcement



Mr. and Mrs. A. V. Mayfield of Spearman wish to announce the Wedding of their daughter Loretta Deane Mayfield to Roy Lynn Reed son of Mr. and Mrs. Fred Reed of Stinnett.

They were married October 3rd at the Candlelight Wedding Chapel in Las Vegas, Nev.

Diane is a 1975 graduate of Stinnett High School. She graduated in 1981 from Amarillo College with honors in their ADN program. Graduated from

WTSU - BSN program in 1985. Received certification as Critical Care Registered Nurse in 1985. She is currently working at High Plains Baptist Hospital in L.C.U.

Roy graduated from Stinnett High School in 1975. He has worked for Panhandle Eastern for 9 years. He is currently stationed at Sneed as a Maintenance Mechanic.

The couple are at home in Amarillo. A reception will be held.

Homecoming Queen



Kerri Lamb

Kerri Lamb, 17 year - old daughter of former Gruver residents, Jim and Linda Lamb, and granddaughter of Keith Lamb of Gruver was recently named 1986 Football Homecoming Queen at Stigler, Oklahoma.

The Stigler High School senior has blue eyes and sandy blonde hair and is 5'7" tall.

She is a member of Student Senate where she has been an officer for 3 years; has been a cheerleader for 3 years and was in drill team 1 year.

Kerri is a member of the Gifted and

Talented Program, Fellowship of Christian Athletes and the yearbook staff and has been named as an Oklahoma State University Alumni Scholar and listed on the A and B honor roll for three years and in the Who's Who Among American High School Students.

She attends the United Methodist Church and works as a lifeguard at the Stigler City Pool.

Miss Lamb was crowned and her six attendants presented during Homecoming ceremonies October 3.

Vote For Eschol Blankenship



County Treasurer

"The Person For The Job"

Education	15 Years Experience	Leadership
BBA Degree	State of Texas Auditor	Military Officer
Accounting Major	CPA Firm	Civic Organization Officer
Texas Tech University	Private Business	Church Officer

Pol. ad paid by, Eschol Blankenship

West Texas State News

High school juniors and seniors, and their parents, are invited to spend a day on the West Texas State University campus Saturday, Nov. 15. The university's admissions office is sponsoring "College 101," a program to introduce prospective students and their parents to university life.

Topics such as paying for college, student organizations, academic advising and career placement will be addressed throughout the morning program. A College Life Panel featuring students, faculty and staff will

answer the questions concerning all aspects of university life.

Following a luncheon hosted by Dr. Ed Roach, university president, participants are invited to cheer on the WTSU Buffaloes as they meet Eastern New Mexico University at 1:30 p.m.

Cost for College 101 is \$7 per person, including lunch and the football game. Deadline for registration is Monday, Nov. 3.

For more information or to register, call Admissions, 656-2541.

Karen's Kozy Korner

Last fall plans were made to construct something that would be outstanding and tell a story in the State of Texas. The Sesquicentennial was coming up and the Panhandle wanted to let Texas know just how they felt about the 150 years of traditions, memories, economies and values of the pioneers of our area.

A contest was held in each county to construct a quilt block depicting the county's situation. One winner was sent in to the Panhandle Plains Museum where Jo Anne Arasim, curator of Textiles and Beck Saunders, Clothing Specialist for TAEX, held an old fashion quilting bee to construct this unique quilt. Hansford County's block was submitted by Nelle Evans of Gruver.

The Texas Panhandle Sesquicentennial Quilt measures 114 1/2 inches wide by 97 1/2 inches long consisting of 30-14 inch hand appliqued blocks on white backgrounds. These have been hand-quilted together with a solid red 3 inch border sashing in a crisscross

pattern, adjoining all blocks into an overall design known as the Rope Pattern. There is a 4 inch wide navy blue border sashing with a rope design around the outer edge of te quilt.

The month of November will be your chance to view this unique quilt at the Stationmaster House Museum. It will be ondisplay November 3 thru 25. A special day has been planned on Saturday, November 8 to display antique guns of the era. Along with this, the museum will be having chances on a sesquicentennial rifle to be given away that day. The quilt is just another attraction to see during this time. The museum board has been working hard to get ready for this show. Hopefully, you will be able to make it on November 8 or sometime during the month to see this beautiful quilt, because it tells a story about our history and heritage.

EDUCATIONAL PROGRAMS CONDUCTED BY THE TEXAS AGRICULTURAL EXTENSION SERVICE SERVE PEOPLE OF ALL AGES, REGARDLESS OF SOCIO-ECONOMIC LEVEL, RACE, COLOR, SEX, RELIGION, HANDICAP OR NATIONAL ORIGIN.

You are Cordially Invited to a Bridal Shower Honoring Jana McCoy Bride-Elect of Stephen Tindell on Saturday, November 8th 2:00 until 3:30 p.m. at the Hospitality Room First State Bank

Hostesses

Delphine Kopke	Margaret Reid
Betty Vernon	Wanda Reed
Bobbie Novak	Lynanne Maize
Ruth Kizziar	Carolyn Taylor
Lorene Burke	Jennifer Nollner
Charolette Ford	Betty Perry
Deanne Kenny	JoAnn Eaton
Jeanie Close	Charolette Jackson
Tammy Maize	Dorothy Nollner

51s-2tp



How much does one vote count? It could be a lot. The narrowest recorded percentage win in an election would seem to be for the office of Southern District Highway Commissioner in Mississippi in 1979. The winner got 133,587 votes; the loser, 133,582; a difference of .0001 percent.

A hardworking woman needs a hardworking investment plan.

Your career keeps you busy. That's why you've gained in responsibilities and income. And it's why you now need sound investment counsel to help make more of all you make.

Chances are you have neither the time nor the special skills necessary to develop a financial program in these uncertain economic times. We can help with a wide range of capital appreciation opportunities from real estate to cable television, leasing to oil and gas, from \$1000 up. For every working woman who wants to put her money to work. Call or write us soon.

Checklight, Widen, Stepper, Wood & Associates, Inc.
3014 W. 28th #8000
AMARILLO, TX 79109 358-7131
516 659-3880

Integrated Resources Equity Corporation

Maria Checklight
Debra Stepper

Weather

Date	Hi	Lo
28	76	41
29	69	41
30	74	46
31		51

For Proposition 4

Imagine if there was a law that said you could shop at only one grocery store or buy gasoline at only one service station. In 1904, such a law was passed. It says that no Texan can make deposits or cash checks at more than one office of the same bank.

Proposition 4 changes that law.

VOTE YES FOR PROPOSITION 4 ON NOVEMBER 4.
VOTE YES FOR CONVENIENT, FULL-SERVICE BANKING.

Vote Tuesday, November 4th

Among The Neighbors

Mr. and Mrs. Woodrow Gibner returned Monday from a weeks visit with his sister, Mrs. Beatrice Hiler, in San Diego. They also visited his nephew Bill Hiler and family who live near San Diego. They enjoyed the horse races at Santa Anita and other events.

Mr. and Mrs. Jimmy Shieldknight returned Tuesday from a trip to Marlinton, West Virginia. They accompanied Mr. and Mrs. Frank Buzard who remained for a longer stay. The purpose of the trip was to get acquainted with some relatives of their grandfather, and they enjoyed unearthing some of their genealogy. From West Virginia they drove thru Virginia, toured Washington D. C., and went on to North and South Carolina. The entire trip was made in lovely weather, and the color of the foliage thru the mountains was spectacular.

Mrs. Maxine Banister has had a busy three weeks, beginning in October when her foster son, Chad Boxwell, came to visit her. He drove her to Brady to assist her in closing her home there which she had recently sold. Sherrill and Terrell Evans and little Wade came down and brought back a load of furniture for her. Chad returned to his work at Arlington, and Janice Black brought Mrs. Banister back to Spearman and has been visiting in the home of her mother, Mr. and Mrs. Delbert Allen.

During her stay in Brady, Mrs. Banister enjoyed a visit from her grandson, Brent Banister and his two children from Austin.

Interment at Hansford Cemetery following funeral services at Gruver for Mr. Arthur Wallin was on Saturday. Mr. Wallin, 89, is another of the fast dwindling number of early day citizens of Hansford County. The Wallin family was raised north of Gruver and all attended school there.

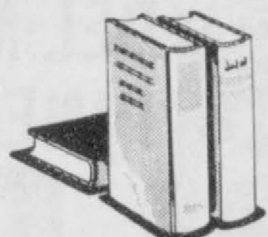
The First Methodist Church hosted the Pampa District of the United Methodist Women on Tuesday with more than 125 in attendance. Halley

Burrell, president from Shamrock, presided with Paula Britt, Wheeler, incharge of the excellent program. The Theme of the conference was "To everything there is a season" The Reverend Jo Carr, minister of the Christ Methodist Church of Levelland, was the featured speaker. She is a published author and those in attendance were much impressed by her message.

The fellowship hall was decorated in a fall theme and luncheon was served by the host church. Delegates registered from Higgins, Shamrock, Darrouzett, Borger, Perryton, Gruver, Follet, Pampa, Sunnett, Wheeler, Clarendon, Fritch, Wellington and Kelton.

CORRECTION

Clint Jackson was the V.I.P. at his third birthday Sunday, with grandparents Zane and Catherine Hall, coming from Pampa to help him celebrate. Other guests in the home of Roy and Aleta Jackson were his other grandparents, Mr. and Mrs. W.C. Jackson, Delinda and Kyle McLaughlin, and Mr. and Mrs. Garland Head.



Hansford County Library

New Books

There are a lot of new books coming into the Hansford County Library now. YES, I CAN SAY NO by Dr. Smith is a new book for parents on assertiveness training for children. It teaches skills to resist drugs, alcohol and peer pressure. THE 1987 WRITER'S MARKET is now in. It contains current information for anyone wanting to get their material published. HIS WAY is the new unauthorized

biography on Sinatra by Kitty Kelley. We also have a new array of children's joke books in. Everyone needs a good laugh, and these titles are guaranteed to provide it: GARFIELD'S BIG FAT BOOK OF JOKES AND RIDDLES, OLD TURTLE'S RIDDLE AND JOKE BOOK, ASTRONUTS: SPACE JOKES AND RIDDLES, and JOKES TO TELL YOUR WORST ENEMY. The library also has some new Young Adult titles in.

New Memorials

The following memorials have been given to the library as follows:

For Faye Lynch from Danny and Delinda McLaughlin, Jimmie and Vera Beth Hicks, David and Robbie Reid.

For Wanda Lyon and for Aubie Sparks from Danny and Delinda McLaughlin.

For Jack Giblin from David and Robbie Reid.

For Dwight Hutchison from Jimmie and Vera Beth Hicks, Danny and Delinda McLaughlin, Jack and Melba Oakes, J. R. and Frances Stump, Orvil and Colene Brummett, Joel Lee and Joyce Lackey.

Storytime

Storytime for 4 year olds will be held at the library next Wednesday, Nov. 5 from 10:30 - 11:00 a.m.

HIGH SCHOOL MENU

November 3-7

Monday, Nov. 3
Pig in Poke
Macaroni/Cheese
Salad Bar
Chocolate Pudding
Milk

Tuesday, Nov. 4
Chili/ Crackers
Pinto Beans
Salad Bar
Peach Pieces
Milk

Wednesday, Nov. 5
Hamburger
Salad Bar
French Fries
Toasted Bun
Butter Cookie
Milk

Thursday, Nov. 6
Fried Chicken
Potatoes/Gravy
Salad Bar

Hot Bread
Honey
Milk

Friday, Nov. 7
Sloppy Joe/ Bun
Tator Tots
Salad Bar
Birthday Cake
Milk

ELEMENTARY & JR. HIGH

November 3-7

Monday, Nov. 3
Pig in Poke
Macaroni/Cheese
Seasoned Green Beans
Chocolate Pudding
Milk

Tuesday, Nov. 4
Chili/ Crackers
Pinto Beans
Chopped Spinach
Peach Slice

Wednesday, Nov. 5
Hamburger/ Bun
Shredded Lettuce
French Fries
Butter Cookie
Milk

Thursday, Nov. 6
Fried Chicken
Potatoes/ Gravy
Whole Kernel Corn
Red Jello/ Mixed Fruit
Milk

Friday, Nov. 7
Sloppy Joe/ Bun
French Fries
Mixed Vegetable
Birthday Cake
Milk

Raffle

The Spearman Volunteer Fire Department is holding a turkey raffle. Raffles tickets are \$1.00 each and can be purchased from members of the fire department or at Pride-Mart. Raffle will be held on Thursday, November 20. Winning ticket holder will be contacted in person that afternoon. Prize package to be given away will include a 12 to 13 pound turkey and \$25.00 in cash to be used towards trimmings of your choice.

To Spearman with Love

Although this is not a Fiftieth, a Seventy-fifth, or a Centennial Celebration, sixty years of ministry in Spearman is something to celebrate. For sixty years the First Christian Church has benefited from the support of the fine people of Spearman. For sixty years the First Christian Church has had the privilege of ministry in our community. And so, we, the members of the First Christian Church, thank you for the joy of being a part of this community.

From a humble beginning in Spearman in 1926, the First Christian Church has committed itself to pro-

claiming the gospel of Jesus Christ, to insisting upon the authority of God's word, and to bringing people into the fellowship of His church. These commitments still summarize its ministry. From the church's viewpoint, "We are

celebrating sixty years of ministry, AND we are JUST BEGINNING that ministry.

BECAUSE WE LOVE YOU and want to say THANK YOU SPEARMAN you are invited to celebrate with us November 9!
2:00-2:45 p.m. Memories & History
2:45-3:30 p.m. Worship
3:30-5:00 p.m. Reception



The first Republican to run for President was John C. Fremont in 1856. He was defeated by James Buchanan. The second Republican Presidential candidate was Abraham Lincoln. He won.



STORE-WIDE Pre-Christmas Sale

Everything from 20% to 50% off

★ Diamond Rings ★ Pearls
★ Watches ★ China

Dunlavy Jewelry

Perryton, Tx.
Phone 435-3136

Master-charge Visa

"To Spearman With Love"

First

Christian Church

(Disciples of Christ)

29 S. Bernice

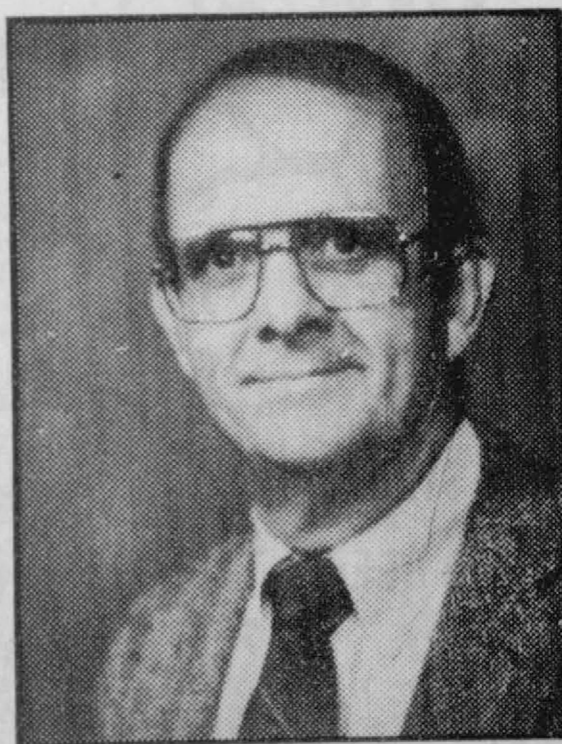
Spearman, Texas 7908

In celebration of 60 Years of Ministry
we want to thank you for the joy of being
a part of the community!

FIRST CHRISTIAN'S SPEARMAN

George & Juna Rex
David Stewart
Scott Thompson
Martha Denton
Jessie Denton
Betty Sharp
Ruth May Whitson
Laura Kunkel
Bill Whitson
Mattie Reynolds
Paula Foster
Jettie Davis
Kim & Stephanie Brock
Ray
Mary Brock
Hona Schell
John Newcomb
Ray
Mattie Reynolds
Paula Foster
Jettie Davis
Kim & Stephanie Brock
Ray
Mattie Reynolds
Paula Foster
Jettie Davis
Kim & Stephanie Brock

VOTE



Dick Waterfield



For State Representative District 88
TIME FOR A CHANGE

Paid Pol Ad The Dick Waterfield Campaign, Malouf Abraham, Treasurer
P.O. Box 36, Canadian, Texas 79014

Ideal
Supermarket

Haunting Halloween Savings

DOUBLE DISCOUNT STAMPS MONDAY
OPEN 24 HOURS
7 DAYS A WEEK

DISCOUNT STAMP ITEMS Pleasmor 1 LB. Tub SOFT MARGARINE Free Limit 1 With A Filled Certificate	DISCOUNT STAMP ITEMS De Witt 32 oz. Btl. TOMATO CATSUP 49¢ Limit 1 With A Filled Certificate	DISCOUNT STAMP ITEMS Mr. Big Pkg. Of 6 Rolls BATH TISSUE 89¢ Limit 1 With A Filled Certificate	DISCOUNT STAMP ITEMS Regular or Light 32 oz. Jar KRAFT MAYONNAISE \$1.39 Limit 1 With A Filled Certificate	DISCOUNT STAMP ITEMS Assorted Box of 130 KLEENEX TISSUES 29¢ Limit 1 With A Filled Certificate	DISCOUNT STAMP ITEMS PLAINS BUTTERMILK ½ Gal. Ctn. 69¢ Limit 1 With A Filled Certificate
---	--	--	--	--	---

SAVE MORE WITH THESE 6 DISCOUNT STAMP SPECIALS ABOVE

- American Beauty INSTANT POTATOES 16 oz. Pkg. **\$1.29**
- Martha Gooch Big ELBO MACARONI 24 oz. Pkg. **99¢**
- Creamette Noodles EGG DUMPLINGS 10 oz. Pkg. **49¢**
- Dinty Moore BEEF STEW 24 oz. Can **\$1.59**
- Pure Vegetable V-8 JUICE 6-12 oz. Cans **\$2.39**

- La Choy All Varieties BI-PACK CHOW MEIN 42 oz. Can **\$2.59**
- La Choy BEAN SPROUTS 14 oz. Can **59¢**
- La Choy CHOW MEIN NOODLES 5 oz. Can **79¢**
- La Choy SOY SAUCE 10 oz. Btl. **89¢**
- La Choy Sliced WATER CHESTNUTS 8 oz. Can **79¢**

Delicious
DEL MONTE PINEAPPLE
— IN IT'S OWN JUICE —
Crushed - Sliced Tidbits - Spears or Chunks 15.3 oz. Can **59¢**

Hudson Cream
FLOUR
10 LB. Bag **\$1.59**

Cleaner Whiter Laundry
FRESH START
Concentrated Detergent
70 oz. Bottle **\$5.99**
\$2.50 off Label

Tender Lean PORK STEAK LB. **\$1.49**
WILSON Meat or
BEEF WIENERS 12 oz. Pkg. **89¢**

Tender Taste® 'BONELESS' ROUND ROAST
'BOTTOM CUT'
Tender Juicy, Mouth Watering Roast With Dewy Fresh Potatoes and Carrots a delicious Dinner Combination.
LB. **\$1.48**

Regular or No Salt
Del Monte Cut or French Style
GREEN BEANS - PEAS or GOLDEN CORN
3 16 oz. Cans **\$1.00**

Great for the Holidays
Wilderness APPLE CIDER
Gallon Jug **\$2.19**

- Tender Taste® 'Boneless' EYE OF ROUND STEAK LB. **\$1.99**
- Tender Taste® Tenderized BEEF CUBE STEAK LB. **\$2.29**
- Tender Taste® Boneless TOP SIRLOIN STEAK LB. **\$2.29**
- 85% Lean LEAN GROUND BEEF LB. **\$1.59**
- Tender Lean PORK STEAK LB. **\$1.49**
- Tender Lean PORK ROAST LB. **\$1.39**
- Hulsen 100% Pure BEEF PATTIES 10 lb. Pkg. **\$13.69**
- Hormel's W/Chili or W/Cheese FRANK 'N STUFF 16 oz. Pkg. **\$2.19**
- Wilson 93% Lean Reg. or Honey HALF HAM LB. **\$3.19**

Ohse
LUNCHEON MEATS
12 oz. Pkg. **\$1.19**
• Bologna
• Garlic Bologna
• Mac & Cheese
• Salami
• Luncheon
• Pickle Pimento

- Count Chocula or FRANKLIN BERRY 12 oz. Box **\$2.29**
- Fisher Honey Roasted CASHEW-PEANUTS 11½ oz. Can **\$2.99**
- Fisher HONEY-ROAST PEANUTS 16oz. Jar **\$2.99**

Mazola
CORN OIL
32 oz. Btl. **\$1.69**

- Mini-Pack (Pkg. of 14 ½-oz. Boxes) SUNMAID RAISINS Pkg. **99¢**
- Orville Redenbacher GOURMET POPCORN 15 oz. Jar **\$1.29**
- Glad 3-Ply TRASH BAGS Box of 30 **\$2.99**
- Lysol PINE ACTION 15 oz. Btl. **\$1.29**
- Lysol TUB-TILE CLEANER 17 oz. Btl. **\$1.49**
- Lysol BOWL CLEANER 24 oz. Btl. **\$1.29**
- Lysol Multi-Purpose DIRECT CLEANSER 24 oz. Btl. **\$1.19**
- Regular LOVE-MY-CARPET 14 oz. Can **\$1.89**

20% FREE BONUS PACK
Kraft
MACARONI & CHEESE DINNER
"Big Bonus Box"
8.7 oz. Boxes **2 for 89¢**

Dark or White
KARO SYRUP Pnt. Btl. **99¢**

Tender Taste® BONELESS ROUND STEAK
'Bottom Cut'
Stock-Up Now And Save
LB. **\$1.58**

- Make Delicious 'Caramel Apples' KRAFT CARMELS 14 oz. Pkg. **\$1.39**
- Kraft VELVEETA SINGLES 16 oz. Pkg. **\$2.49**
- Kraft Regular or Jalepeno CHEEZ WHIZ 16 oz. Jar **\$2.29**
- Our Family Frozen CORN-ON-THE-COB Pkg. of 4 **\$1.39**
- Bright & Early Frozen ORANGE BEVERAGE 12 oz. Can **69¢**
- Reames Frozen EGG NOODLES 16 oz. Pkg. **\$1.29**

Kraft 100% Pure
ORANGE JUICE
64 oz. Bottle **\$1.89**

- Non-Deodorant Reg. or Super PLAYTEX TAMPONS Box of 28 **\$2.99**
- Pkg. of 2 'AA' ENERGIZER BATTERIES Pkg. **\$1.59**
- Alkaline BATTERIES Pkg. of 4 **\$1.99**
- HAWAIIAN PUNCH 46 oz. Can **99¢**
- Non-Deodorant Reg. or Super PLAYTEX TAMPONS Box of 28 **\$2.99**
- Pkg. of 2 'AA' ENERGIZER BATTERIES Pkg. **\$1.59**
- Alkaline BATTERIES Pkg. of 4 **\$1.99**

Shasta Orange - Lemon Lime - Lime - Regular
TONY'S PIZZA **\$1.79**
SELTZER WATER 2 Liter **59¢**

Crisp California
HEAD LETTUCE
A crisp tossed salad makes a 'treat' anytime.
Save Up-To 30¢ Per Head
HEAD **39¢**

Solid Colorado
GREEN CABBAGE Lb. **25¢**

California
FRESH BROCCOLI Bunch **79¢**

Florida
RED GRAPEFRUIT 5 Lb. Bag **\$1.99**

Colorado Medium
YELLOW ONIONS LB. **19¢**

Michigan
JONATHAN APPLES 3 Lb. Bag **\$1.39**

BUY NOW AND SAVE

EMPEROR GRAPES LB. **79¢**

A Natural 'Treat'
TOFU BEAN CAKES 10½ oz. **39¢**

PEPSI 2-Liter **\$1.09**



Presents Beautiful Savings on Glassware from Anchor...
Collect A Complete Tablesetting Through This Exclusive Offer!
Canfield™ Styled in every way for today's living. A distinctive pattern perfect for entertaining, yet practical enough for everyday use.
Now you can build a beautiful collection of this contemporary glassware through our convenient, low-cost plan. Collect a service for eight, twelve, or even more easily and economically. You'll take pride in serving family and friends with lovely Canfield™ Glassware from Anchor.
ONLY 79¢ Per Feature Item
How Our Plan Works...
Each featured piece is available twice during the program at our special, low price. And there is no limit to the number of pieces you may purchase!
FEATURE-OF-THE-WEEK SCHEDULE
Lined Tea Glass 79¢
Beverage Glass 79¢
On-The-Rocks Glass 79¢
Small Bowl 79¢
ATRA RAZOR \$3.99
ATRA BLADES \$3.99
TRAC II BLADES \$3.69
SHAVE CREAM \$1.89

Register For ...
FREE COLOR TV & GIFT CERTIFICATES
To Be Given Away

Ideal

We Proudly Salute Our Lynx



**BILL CLEMENTS SAYS
UNEMPLOYMENT IS GOOD FOR US.
SO DID HERBERT HOOVER.**



In 1931, with unemployment at 16%, Herbert Hoover said the Great Depression was good for America:

"Depressions are but transitory . . . they bring the nation increased strength and virility."

- Herbert Hoover
State of the Union Address
December 8, 1931



Today Bill Clements says unemployment is good for Texas:

"I think this is good for us . . . Every once in a while we have to take our medicine."

- Bill Clements
The Dallas Morning News
September 3, 1986

VOTE FOR THE FUTURE



"Mr. White had the foresight to push for long-needed reforms in the important areas of education, highways and water development . . . The next four years will be critical ones for Texas. Mark White has the energy and vision to do what needs to be done."

- Dallas Times Herald
October 19, 1986

"For governor, we support Mark White for re-election. We do so on his record for education and political courage . . . White has proved he is willing to take responsibility for actions necessary for Texas."

- San Antonio Express-News
October 19, 1986

"Governor Mark White should be elected to a second term on the basis of his record of political courage and outstanding leadership."

- Galveston Daily News
October 6, 1986

"White has grown into the job in remarkable fashion, demonstrating courage, leadership and a firm grasp of the issues . . . White's unwavering leadership in educational reform - and his frank willingness to take the heat generated by changes necessary to bring Texas schools up from the bottom and into the nation's first rank - would alone qualify him for re-election . . . White gets high marks for his positive approach and his vision of Texas' future. Texas voters should permit him to lead the way toward that future."

- Fort Worth Star Telegram
October 19, 1986

"Texas can't go back. Texas must go forward with Governor Mark White . . . The Houston Chronicle supports Governor Mark White for re-election because he has an agenda for the future and has demonstrated the vision and leadership that future demands . . . We remember the past with pride, but for 150 years we have looked to the future. Governor Mark White can guide this state to an even brighter future."

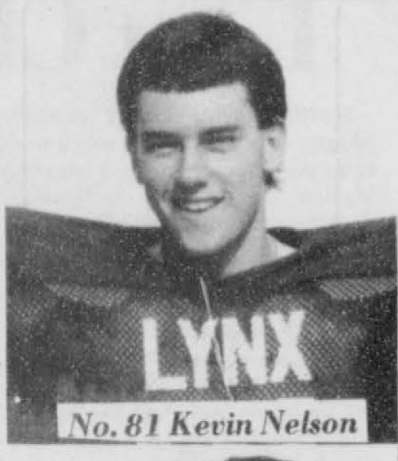
- Houston Chronicle
October 19, 1986

**VOTE TUESDAY.
VOTE FOR YOUR FUTURE.
VOTE FOR MARK WHITE.**

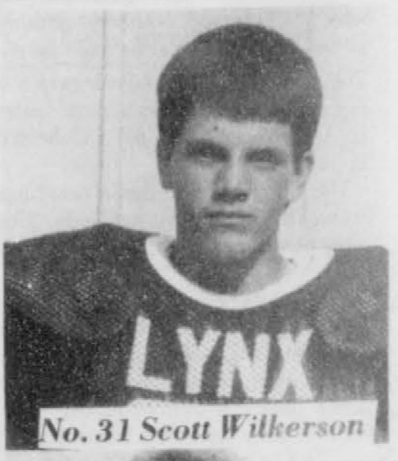
KEEP MARK WHITE FIGHTING FOR TEXAS



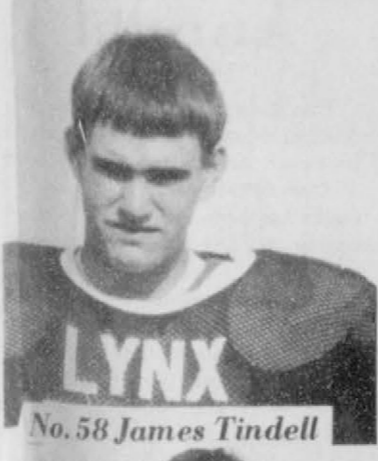
No. 33 Pete Saenz



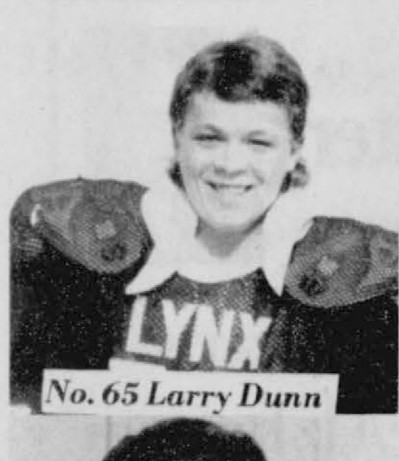
No. 81 Kevin Nelson



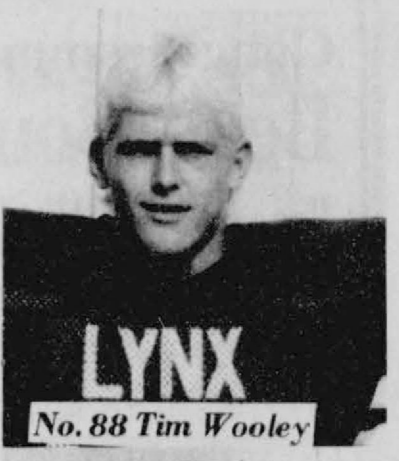
No. 31 Scott Wilkerson



No. 58 James Tindell



No. 65 Larry Dunn



No. 88 Tim Wooley



No. 78 Scott Swan



No. 80 Keith Benson



No. 10 Brett Davis



No. 11 Will Black



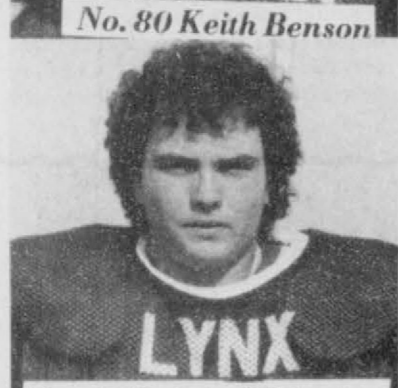
No. 84 Keith Slaton



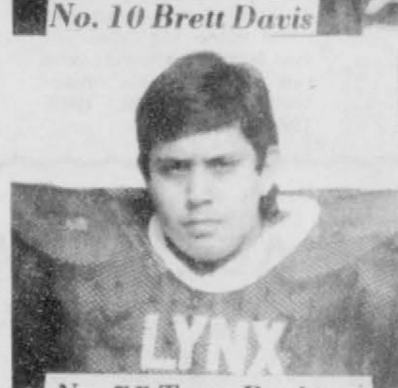
No. 28 Alan Beeson



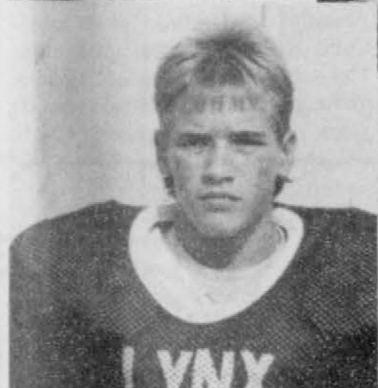
No. 64 Norman Scroggs



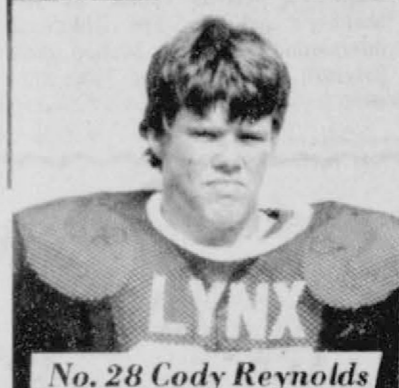
No. 40 Delwin Whitmire



No. 77 Tony Pacheco



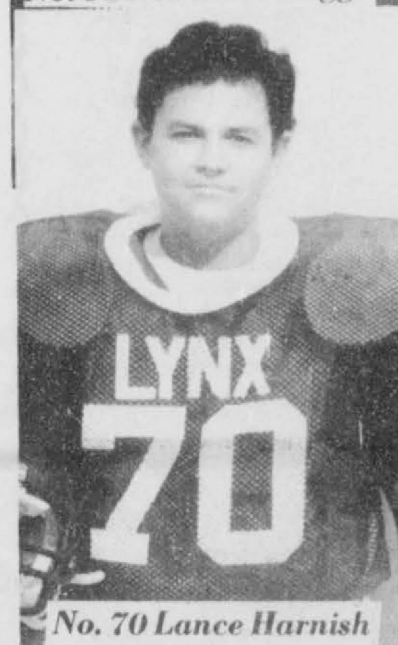
Daniel Hopkins



No. 28 Cody Reynolds



No. 40 Jeff Gustin



No. 70 Lance Harnish



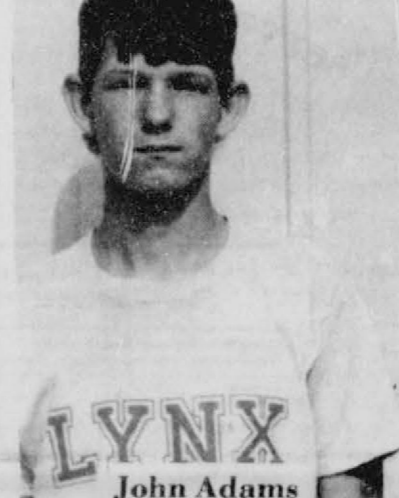
No. 77 Matt Tucker



No. 51 Monty Ross



No. 30 Chris Lopez



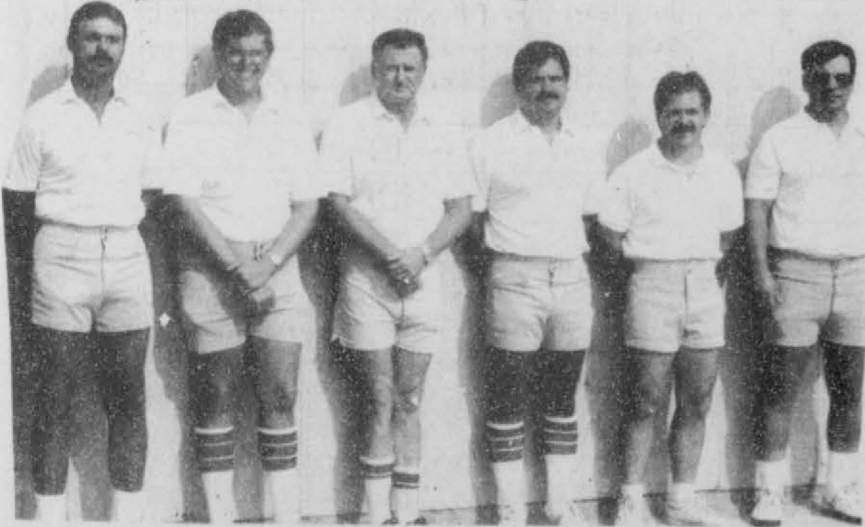
John Adams



Pete Maek



Lynx Coaching Staff



No. 33 Stan Brandt



No. 52 Lance Swan



Lynx

Panhandle Community Services

HELPING PEOPLE HELP THEMSELVES is the motto for Panhandle Community Services, a human service delivery system headquartered in Amarillo and serving the people in the 26 counties of the Texas Panhandle with a multitude of services. The agency's slogan has taken a vital new meaning with its special new program, PROJECT SELF-SUFFICIENCY. This demonstration project assists single men and women who are raising minor dependent children in our area. PROJECT SELF-SUFFICIENCY aids them in achieving independence, a SELF-SUFFICIENT standard of living and a more meaningful and productive place in our community.

Sometimes, "Pulling yourself up by your own bootstraps", requires a little help. Panhandle Community Services, (PCS), administers the locally designed demonstration project, directly providing section 8 rental assistance funded through the United States Department of Housing and Urban Development. A vital component of this project is the identification of and referral to other community resources for which the participant may also be eligible. These resources may include: grants, loans or scholarships, child care, transportation services, job search and placement opportunities. In addition, PCS strives to utilize as

many of the other possible services available through the agency in order to assist the eligible applicants in successfully attaining their goal of SELF-SUFFICIENCY.

The project is scheduled to conclude in April, 1988. All of the housing certificates awarded to PCS for this special demonstration project, which is the largest awarded nationally, must be issued by the end of January, 1987. It is the goal of PCS, PROJECT SELF-SUFFICIENCY, staff and Task Force members to serve as many eligible participants as possible.

Throughout the entire Panhandle many men and women who are single parents with young dependent children are being aided in many ways to be come SELF-SUFFICIENT. Four PROJECT SELF-SUFFICIENCY participants are currently attending

Frank Phillips College and 73 others are enrolled in local and regional universities, colleges and vocational institutions such as West Texas State University, Amarillo College, Clarendon College, Wayland Baptist University, Texas State Technical Institute and North American Education Center. These students are pursuing completion of their life-long goals in various occupations such as Licensed Vocational Nursing, medical occupa-

tions, business degrees, computer science, mechanics, law enforcement and many more. Concurrently, many are working, soon-to-be working and receiving assistance from various sources in housing, school opportunities and child care.

To become eligible for PROJECT SELF-SUFFICIENCY an individual must be a single head of household raising minor dependent children, qualify as having a very low income determined by guidelines established by the Department of Housing and Urban Development and must be currently paying rent without federal assistance.

Applicants are required to supply verification of marital status, custody of minor children, high school/ or college transcripts or certificates of completion, verification of income and letters of reference from personal acquaintances and employers. All applicants receive a battery of tests which are designed to provide indicators of motivational, achievement and aptitude levels to better determine their potential for success in the Project.

All applicants are formally reviewed to determine if they can be recommended for enrollment and participation based largely upon the absence of substantial barriers to training and

employment success. Participants are interviewed and selected by a Task Force of representatives from their home community. The Task Force which serves Hutchinson, Hansford, Ochiltree and Lipscomb counties in

composed of the following individuals: Judge James P. Shearer, Judge Howard E. Stone, Joyce Duke, Steve Wilkinson, Pearl Pierce and Imogene

Wilcox.

Single parents with minor children who are currently in need of assistance to complete their education through college, university, or vocational institutions on or before May 31, 1988, or those individuals desiring additional information about PROJECT SELF-

SUFFICIENCY should contact:

Tina Gallegos
Ochiltree County Courthouse
511 S. Main
Perryton, Texas
(806) 435-9141

For Hansford, Ochiltree and Lipscomb Counties

The remaining 23 Panhandle counties are served by their respective PCS Housing Coordinator. Contact your local County Judge for the location of the Housing Coordinator for your area.

Altrusa Club

Plans have been announced by the Altrusa Club of Borger for their November Flea Market, to be held November 15 and 16 at the Aluminum Dome, north of Wilson Street on Highway 136, in Borger, from 9 a.m. to 5 p.m. each day.

The Aluminum Dome location was chosen because of additional space for exhibitors as well as better facilities for the sidewalk cafe and more parking for both exhibitors and customers.

Changes have also been made in the administration of the Flea Market by the Altrusa Club. Anyone wishing

PTA's

Meeting

PTA's next meeting will be on Nov. 24th. It will be a film narrated by Phil Donahue. All parents of Jr. High and High School students are urged to attend.

Final Planting November 15

November 15 is the Final Planting Date for Insured Barley and Wheat in Hansford County, Texas, according to Jackie Harris, a representative for the Federal Crop Insurance Corporation (FCIC).

Insured Barley and Wheat planted by November 15 must be reported by November 30 in order to receive full Crop Insurance Coverage. The Acreage Report reflects the actual Acreage planted and reported by the farmer.

"During the Growing Season, if damage occurs, notice should be given promptly," Harris said.

Crop Insurance based on actual production history (aph), is available this year to producers of Wheat, Barley, Oats and Rye in addition to Corn, Grain Sorghum, Soybeans, Peanuts, Cotton, Rice and other Crops.

"Increasingly, our Insured Producers and discovering that with a yield guarantee which reflects production capability, Crop Insurance establishes a Farm Income Floor. Thus, Cash Flow and the ability to repay a loan may be more accurately projected," explained Harris.

Congressman Beau Boulter Reports from Washington



TAXING THE PUBLIC'S PATIENCE

This past week, along with over 100 of my colleagues in the House of Representatives, I took a pledge. A pledge that I feel will work to the benefit of not only the citizens of the 13th Congressional District, but the nation as a whole. I pledged that at any future opportunity, I will vote against any income tax increase on the American worker.

Over the past two years, the majority of Congress has avoided facing up to what could be the most important fight this country will ever face. Probably every one of these representatives realizes that unless the current policy of borrow and spend is curtailed, our children and grandchildren will be saddled with a national debt, the size of which staggers the imagination. This debt currently stands at over \$2 trillion.

Not many of these Congressmen, however, seem to want to make the hard choices necessary to reduce this tremendous flood of red ink. True, they pay an equally tremendous amount of lip service to reducing the national debt. But when push comes to shove, the lip service ends and the fast talking begins.

In fact, before this fiscal year, not one of the over 2000 federal programs managed to be cut. Unnecessary government spending must be reduced, and bureaucratic fat must be trimmed. It must happen, and it must happen soon.

Some Members of the House of Representatives, however, have another solution to our fiscal worries in mind. If given free rein, they would rather raise the taxes of the people that make this country productive. They don't feel that the federal government spends above its means. On the contrary, they believe that the American public is undertaxed.

I wholeheartedly disagree with this defeatist perspective. The American worker is the best engine for economic progress, not the federal government. By giving the individual the chance to dispose of the fruits of his or her own labor, the fate and priorities of the nation will be decided on by the people who should be making these decisions, not bureaucrats in Washington.

If this is not the case, why then did the Congress spend the better part of two years debating a massive restructuring of the federal tax code? Tax reform was, after all, a change of economic philosophy. Our representatives in Washington reached the conclusion that tax breaks for major corporations were not the answer to our economic problems, letting the individual retain more disposable income through lower rates was.

Now, however, some Members of Congress seem bent on turning their backs on this wise philosophy. They would like to raise taxes, take money away from the people who earn it, and replace the big corporations with the federal government as the engine for economic progress.

I didn't agree with every provision of the tax reform bill. It wasn't perfect, but compared to the current system of high rates, loopholes and tax breaks, it was a significantly better alternative. The point is, we have now committed ourselves to a course of lower taxes for the individual. You have my pledge that I will do whatever possible to stay that sensible course.

Obituary

Arthur P. Wallin
Guymon, Okla. - Arthur P. Wallin, 89, died Tuesday.
Services will be at 2:30 p.m. Saturday in Gruber United Methodist Church with the Rev. Jim Terry, Pastor, officiating. Burial will be in Hansford Cemetery by Henson Funeral Home.

Mr. Wallin was born in Hollis. He was married to Minnie Shapley in 1918. She died in 1956. He was farmer in the Gruber area for many years before moving into Guymon in 1943. He was married to Anna Thompson in 1957. He was a Methodist.

Survivors include his wife; three daughters, Mrs. Jay Stanfield of Guymon, Mrs. Paul Buchanan of Pampa, Texas, and Mrs. Jim Shirm of Tuttle; three sons, Merl of Grapevine, Texas, Walter of Lindsey and Oliver of Gruber; four stepsons, Melvin Thompson of Guymon, Ronald Thompson of Hooker, Roy Lee Thompson of Cement and Jim Thompson of Hillsboro, Kan; and 16 grandchildren.

Annual

The Annual Staff is working very hard to make this year's annual the best ever. Annual orders are pouring in from Spearman ISD Students. The public has been very helpful through buying ads and sponsoring pages in the annual.

Annual Staff members can be seen roaming the halls in search of unsuspecting students to take pictures of. Editors for this year's annual are: Diane Sorgi and Elizabeth Sumner. The price of an annual this year will be \$18.00. Also available are plastic covers for \$1.00 each and imprinted names on the cover of the annual will be \$2.50. The last day to order an annual at this price is November 25. If there are any extra annuals when they arrive in May, they will be sold for \$25.00.

Quilter's Guild

The High Plains Quilter's Guild of Amarillo, Texas is continuing preparation for its fall quilt show. The date is set for November 22 and 23 at the Amarillo Federation of Women's Clubs Building at 2001 Civic Circle. The categories will include applique quilts, pieced quilts, antique quilts 50 years old or older, children's work

small items (miniature quilts, pillows, baby quilts, etc.), quilted clothing quilted Amarillo Centennial items.

The Amarillo Centennial category is to encourage area quilters to participate in Amarillo's Centennial Celebration in 1987.

The High Plains Quilter's Guild has been active here for three years. This is the first quilt show sponsored by the guild.

Four Amarillo women currently have quilts touring in the Texas Quilt Roundup. These are quilts made by these women in conjunction with this year's Texas Sesquicentennial Celebration. They are Joyce Pryor, Rachel



In 1984, 47.9 percent of the voting age population participated in electing their representatives to Congress.



The candidate who ran most often for President was Norman Thomas who ran—and lost—six times: 1928, 1932, 1936, 1940, 1944 and 1948.

Last Chance

Hansford county citizens, especially you gun enthusiasts, have only a week to try your luck in winning a once in a life-time Carbine. It is the beautiful Sesquicentennial Carbine/Rifle on display at the Museum.

Through the year the gun has been described in detail. We all know it's beauty and wish we could own it.

There is a way. On Nov. 8th at 4:00 p.m. at the Museum a donation ticket will be drawn indicating the winner. Will it be you? Try your luck. Some

tickets are still available and may be purchased at the Museum or from any Board member. They sell for \$5.00 each or three for \$10.00. Your presence is not necessary to win.

If you have an antique gun you would like to display, bring it to the Museum. It will be recorded by serial number and placed in a locked display case. Several have indicated they will bring their guns, so bring yours too and let's have a good show. Coffee and cookies will be served. See you on November 8th!

Sesquicentennial Gun

The Gun Show will be held at the Stationmaster's House Museum on Nov. 8th from 10:00 a.m. to 4:00 p.m.

If you have an antique gun you would like to display, feel free to bring it by the Museum and it will be placed in a locked display case.

Also on Nov. 8th some lucky person will be the proud owner of the beautiful Sesquicentennial Carbine on display at the Museum—manufactured only this year. Never again! Donation tickets have been and are being sold

on this particular gun for \$5.00 each or three for \$10.00.

Do you have yours? If not, you may obtain tickets at the Museum or from any member of the Museum Board. Not much time is left. Buy yours now!!



It's traditional to
serve beef on Election Day!

GENERAL ELECTION (ELECCION GENERAL)

(Condado de) Hansford County, Texas
November 4, 1986 (4 de noviembre de 1986)

SAMPLE BALLOT (OFICIAL)

INSTRUCTION NOTE: (NOTA DE INSTRUCCION)
Vote for the candidate of your choice in each race by placing an "X" in the square beside the candidate's name. You may cast a straight-party vote (that is, cast a vote for all the nominees of one party) by placing an "X" in the square beside the name of the party of your choice. (Vote por el candidato de su preferencia para cada candidatura marcando con una "X" el cuadro al lado del nombre del candidato. Usted puede votar por todos los candidatos de un solo partido marcando con una "X" en el cuadro al lado del partido de su preferencia.)

Candidates for: (Candidatos para:)	Democratic Party (Partido Democrático)	Republican Party (Partido Republicano)	Libertarian Party (Partido Libertariano)	Independent (Independiente)	Write-In (Voto Escrito)
United States Representative, District 13 (Representante de los Estados Unidos, Distrito Núm. 13)	<input type="checkbox"/> Doug Seal	<input type="checkbox"/> Beau Boulter			<input type="checkbox"/>
Governor (Gobernador)	<input type="checkbox"/> Mark White	<input type="checkbox"/> Bill Clements	<input type="checkbox"/> Theresa Doyle		<input type="checkbox"/>
Lieutenant Governor (Gobernador Teniente)	<input type="checkbox"/> Bill Hobby	<input type="checkbox"/> David Davidson	<input type="checkbox"/> Bill Howell		<input type="checkbox"/>
Attorney General (Procurador General)	<input type="checkbox"/> Jim Mattox	<input type="checkbox"/> Ray B. Berres, Jr.	<input type="checkbox"/> Mike Stephens		<input type="checkbox"/>
Comptroller of Public Accounts (Comisario de Cuentas Publicas)	<input type="checkbox"/> Bob Bullock		<input type="checkbox"/> George Hicks		<input type="checkbox"/>
State Treasurer (Tesorero Estatal)	<input type="checkbox"/> Ann W. Richards		<input type="checkbox"/> Robert F. Reid		<input type="checkbox"/>
Commissioner of the General Land Office (Comisionado de la Oficina General de Terrenos)	<input type="checkbox"/> Gary Mauro	<input type="checkbox"/> M. D. Anderson, Jr.	<input type="checkbox"/> Henry Sue Lasham		<input type="checkbox"/>
Commissioner of Agriculture (Comisionado de Agricultura)	<input type="checkbox"/> Jim Hightower	<input type="checkbox"/> Bill Powers	<input type="checkbox"/> Rebecca Reed		<input type="checkbox"/>
Railroad Commissioner (Comisionado de Ferrocarriles)	<input type="checkbox"/> John Sharp	<input type="checkbox"/> Milton E. Fox	<input type="checkbox"/> Chloë "Jack" Dandel		<input type="checkbox"/>
Justice, Supreme Court, Place 1 (Just, Corte Suprema, Lugar Núm. 1)	<input type="checkbox"/> Oscar H. Mauzy	<input type="checkbox"/> Charles Bee Howell			<input type="checkbox"/>
Justice, Supreme Court, Place 2 (Just, Corte Suprema, Lugar Núm. 2)	<input type="checkbox"/> Robert M. Campbell	<input type="checkbox"/> Nathan E. White, Jr.			<input type="checkbox"/>
Justice, Supreme Court, Place 3 (Just, Corte Suprema, Lugar Núm. 3)	<input type="checkbox"/> Jim Wallace		<input type="checkbox"/> Wiley H. Rawlin		<input type="checkbox"/>
Justice, Supreme Court, Place 4, Unexpired Term (Just, Corte Suprema, Lugar Núm. 4, Término no Completado)	<input type="checkbox"/> Basil A. Gonzalez	<input type="checkbox"/> John L. Bates			<input type="checkbox"/>
Judge, Court of Criminal Appeals, Place 1 (Just, Corte de Apelaciones Criminales, Lugar Núm. 1)	<input type="checkbox"/> Rusty Duncan				<input type="checkbox"/>
Judge, Court of Criminal Appeals, Place 2 (Just, Corte de Apelaciones Criminales, Lugar Núm. 2)	<input type="checkbox"/> Mike McCormick				<input type="checkbox"/>
Judge, Court of Criminal Appeals, Place 3 (Just, Corte de Apelaciones Criminales, Lugar Núm. 3)	<input type="checkbox"/> Marvin O. Tregue				<input type="checkbox"/>
State Representative, District 88 (Representante Estatal, Distrito Núm. 88)	<input type="checkbox"/> J. W. "Buck" Buchanan	<input type="checkbox"/> Dick Waterfield			<input type="checkbox"/>
Justice, Court of Appeals, 7th District (Just, Corte de Apelaciones, Distrito Núm. 7)	<input type="checkbox"/> Carlton B. Dodson				<input type="checkbox"/>
County Judge (Jefe del Condado)	<input type="checkbox"/> Ray L. McClellan				<input type="checkbox"/>
District and County Clerk (Secretario del Distrito y Condado)	<input type="checkbox"/> Annette C. Johnson				<input type="checkbox"/>
County Treasurer (Tesorero del Condado)	<input type="checkbox"/> Norma Jean Skelie	<input type="checkbox"/> Enoch Blankenship			<input type="checkbox"/>
Justice of the Peace, Precinct No. 1 (Just de Paz, Precincto Núm. 1)	<input type="checkbox"/> Johnny F. Vernon				<input type="checkbox"/>
County Commissioner, Precinct No. 2 (Voting Precincts No. 2 & 6)	<input type="checkbox"/> Joe T. Venneman				<input type="checkbox"/>
County Commissioner, Precinct No. 4 (Voting Precincts No. 4 & 9)		<input type="checkbox"/> Val Winger			<input type="checkbox"/>

PROPOSED CONSTITUTIONAL AMENDMENTS (ENMIENDAS PROPUESTAS A LA CONSTITUCION)

INSTRUCTION NOTE: (NOTA DE INSTRUCCION)
Place an "X" in the square beside the statement indicating the way you wish to vote. (Marque con una "X" el cuadro al lado de la frase que indica la manera en que quiere usted votar.)

No. 1 FOR (A FAVOR DE)
 AGAINST (EN CONTRA DE)

"The constitutional amendment to allow the legislature to provide by general law for the apportionment of the value of railroad rolling stock among counties for purposes of property taxation."
(La enmienda a la constitución para permitir que la legislatura disponga por ley general el repartimiento del valor de los materiales rodantes de ferrocarril entre los condados a propósito de impuestos sobre bienes.)

No. 3 FOR (A FAVOR DE)
 AGAINST (EN CONTRA DE)

"The constitutional amendment allowing political subdivisions the opportunity to engage in and transact business with authorized mutual insurance companies in the same manner as with other insurance companies."
(La enmienda a la constitución permitiendo que las subdivisiones políticas tengan la oportunidad de comprometerse en y transitar negocios con las compañías de seguros mutuos que están autorizadas del mismo modo que se comprometen en y transitan negocios con otras compañías de seguros.)

No. 2 FOR (A FAVOR DE)
 AGAINST (EN CONTRA DE)

"The constitutional amendment requiring each house to include in its rules of procedure a rule that each bill contain a title expressing the bill's subject, and providing for the continued review of the bill's subject."
(La enmienda a la constitución que requiere que cada cámara de la legislatura incluya en sus reglas de procedimiento una regla declarando que cada proyecto de ley incluya un título expresando el tema del proyecto de ley, y que disponga que se revisen continuamente las leyes del estado.)

No. 4 FOR (A FAVOR DE)
 AGAINST (EN CONTRA DE)

"The constitutional amendment to provide that a bank may offer full service banking at more than one location within the city or county where its principal facility is located, subject to limitations and restrictions provided by law."
(La enmienda a la constitución disponiendo que un banco puede ofrecer todos los servicios de banco en más de un sitio dentro de la ciudad o del condado donde se encuentra el banco principal, sujeta a las limitaciones y restricciones provistas por ley.)

This advertisement sponsored by:

Spearman Cattle Feeders

Spearman, Texas

Phone 806 659-2577

Fall Foliage Tour



Panhandle Travelers Fall Foliage Tour at Uncle Matt's Cabin on The

Shepherd of the Hills Farm near Branson, Missouri. The Excort was

Mae Wofford from Spearman.

The Fall Foliage Tour of Panhandle Travelers, Inc. departed Booker, Texas, October 7th early in the day, for Branson, Missouri. The group went directly to the Starlight Theater for a great show that same evening after arriving in Branson. After a 500 mile plus motor coach ride, the show was very relaxing.

The following morning, a cruise aboard the Lake Queen Paddle Boat on Lake Tannycomo, plus a scenic drive to Table Rock Lake Dam, occupied the time. The Sons of the Pioneers matinee along with the Presleys show that evening, kept the group hopping.

Thursday morning at 6:00 a.m. saw the troopers off to breakfast, then a day long visit to Eureka Springs, Arkansas. The high light was viewing the Crown Thorn Chapel out in the woods, made completely of glass with only wood as the sole support. A short message and an inspiring song was enjoyed by all in attendance there. Additionally, the Miles Musical Mu-

seum, where many antique music boxes, organs and pianos demonstrated the statue of Christ at the site of the Passion Play, was a stop plus a picturesque hotel and Catholic Church were viewed. After shopping time, the group traveled back to Branson via another route so more scenery could be taken in. The foliage was turning, but had not reached its full color because of recent rains and the lack of frost.

After breakfast in Sammy's Cabin at Mutton Hollar on Friday, the Harold Bell Wright Museum and shopping were the dish for the morning, plus a tour of the Shepherd of the Hills farm where Marlane Nollner of Spearman and Emma Daily of Darrouzett were chosen to participate in the frog race. Marlane begged off and Emma's frog lost the race. At the White Lightening Still that same day, Marlane was picked as the "shotgun wedding bride" for the skit performed there and gained the everlasting nickname

of "Mary from Texas" on the spot. Waltzing Waters, a fantastic show done solely with lights, water and music, turned out to be a favorite with several of the participants, before a trek to Silver Dollar City where several shows were viewed, including a musical program in Echo Hollar, an outdoor theater that included a canyon, the moon and stars as the backdrop.

Breakfast back at Silver Dollar City Saturday morning in the Old Mill Restaurant left Ethel Ellsworth of Spearman in stitches, as she and three companions were placed at a table that rose as they tried to eat. Of course, Ethel was the "giggler" of the group, anyway. After additional time for shopping and more shows at Silver Dollar City, dinner was served that evening at Aunt Mollie's Restaurant on the Shepherd of the Hills Farm, but the amphitheater production was rained out that evening, so this tour took in the Braschlers Music Show.



ELECT

NORMA JEAN MACKIE

COUNTY TREASURER

★ Resident of Hansford County for 43 years

★ ASCS Payroll Clerk for 2½ years

★ 18 years Secretary for Hansford County Extension Agents

★ For the past 14 years assistant Treasurer for the Stock Show Board

*I would appreciate your vote
Tuesday, November 4th.
Norma Jean*

Paid Political Advertisement by Michele Davis, Campaign Treasurer, Box 693, Spearman, Texas.

Rho Rho

Rho Rho Chapter of Beta Sigma Phi held its 516th meeting on October 23rd in the home of Leann Gillaspie.

Rho Rho was happy to hear that all seven of our pledges were going to join Rho Rho.

Christy reported that we were having our couples Halloween party on October 25th in the home of Joyce and Ernie Vanderburg. The party theme is "Haunted House".

Holly reported that we would not have a booth at the Halloween carnival, but that we were going to donate money to the PTA.

At Rho Rho's meeting we revealed secret sisters and drew for new secret sisters.

The five members that were moving up put on a get skit for the sorority before they were escorted by a policeman to Xi Zeta.

Members Present: Denise Harbour, Peggy Varmon, Tammy Beaton, Leann Gillaspie, Michelle Mahanay, Barbara Townsend, Christy Brock, Peggy Archer, Beckee Baker, Becky Beedy, Paula Butler, Kitty Edwards, Mollie Holton, Marsha Murphy, Frances Pipkin, Judith Schaefer, Holly Simpson, Joyce Vanderburg, Sheila Watley, Linda Winegarner, and Peggy Winegarner.

Markets

Wheat	\$2.10
Milo	\$2.55
Barley	\$1.60

New Law for Illegal Aliens

State Comptroller Bob Bullock Monday said the economic impact on Texas of the federal immigration reform law may take years to measure.

"There's going to be little effect on the state's finances or the Texas economy in the short run and there's simply no concrete evidence to predict an impact for the long-term picture," Bullock said.

Bullock said his office has calculated that as many as 600,000 of the one million estimated illegal aliens in Texas might be eligible to apply for American citizenship under the new law.

But, he said that strict enforcement sanctions against employers of illegal aliens called for in the immigration bill might dry up a source of cheap labor

for many Texas businesses and industries.

"For the most part, illegal aliens in Texas are paying virtually all the same taxes--sales taxes, gasoline taxes and excise taxes--as you and me," he said, "and if they become permanent citizens we aren't going to see a big jump in state revenue."

Bullock said that the federal government will make \$220 million in federal impact payments over the next five years to help the state adjust for aliens use of public services if they become citizens.

"I'm not sure that amount of money is really going to take up the slack, but still there is no evidence to say that the impact is as severe as some officials suggest."

Noticias Importantes

La noticias de importancia en este Domingo son:

1. No se les ovide Botar en las elecciones el Martes, Noviembre 4.

2. Nueva ley para personas ilegales. 600,000 personas pueden ser Cuidados Americanos con una nueva ley que pasaron. Informe con el gobierno si Usted puede ser unas de los 600,000 personas que pueda obtener su Ciudadania.

3. No se les ovide hir a la tienda Las Dos Amigas por la calle 26 S. Haney en Spearman.

4. El Spearman Study Club va tener su Sexto Annual Collection de Arte y otros Articulos. El exhibicion sera el 8 y 9 de Noviembre de las 9 a 6 el Sabado 8 y de las 10 a 5 el Domingo 9. La exhibicion sera en la cafeteria de la escuela grande. Toda persona interesada en obtener un buson puede llamar a estos telefonos (659-3691) o (659-3097 - despues de las 6:00. Spacio central sera cobrado a \$15.00 y spacio contra la pader sera a \$20.00 la mesa. El publico sera muy invitado.

5. Un cuadro de pintura estara exhibido en el Banco Nacional de Spearman y otro en el Banco de Gruver. Este cuadro es pintado por la gran artista local de Marilyn Yanke. Para beneficio de la Sociedad de Cancer Americano.

Donaciones para el cuadro son solamente \$1 or 5 chanzas por \$5. Lo rifaran el 20 de Noviembre. No necesitan estar presente para ganar. Todas las donaciones van para el estudio de la enfermedad de Cancer.

6. Personas 16 - para arriba - pueden aser sus aplicaciones para el Programa de Trabajo Entrenador, Nov. 6 1986 de las 9:30 a.m. - 12:00 a.m. en la Courte de Spearman.

Qualificaciones sera en lo que hiso su familia los ultimos 6 meses.

Debe de traer una copia de su Acta de Nacimiento y su Numero Social.

Para mas informacion contacte Panhandle Community Services en Berger el numero es 274-3518.

Country Stitches

715 W. 7th Spearman, Tx.

Grand Opening Sale

25% off

Everything in the Store!

except Sale Fabric

Monday,

Nov. 3rd Only!!

A complete fabric and counted cross stitch shop.

Marilyn Cline, Owner 659-2080



FARM AUCTION

Barry Mounsey & Others

NOVEMBER 22, 1986 — 10 AM

Limited Consignments Welcome
Consignment Deadline for Advertisement:
November 3, 1986

SWINK & COOK AUCTION CO.

"Pound for Pound the Best Team Around."

Rt. 1, Box 72 — Perryton, TX 79070
Phone 806-435-7279 — Mobile 806-435-7435
Howard L. Swink — Lic. TXS 027-0175
Bobby D. Cook — Lic. TxSA 037-5228
Licensed — Bonded — Insured

SAMPLE OUR FARE AT THE FALL FOOD FAIR!

The Food Emporium is celebrating our Fall Food Fair with all kinds of great things going on inside our store!

There are free balloons for the kids. We're drawing names and giving away \$50 worth of groceries every day of our Fair. And we are holding a great Tasting Fair just to introduce you to some of our great products!



You might sample a bit of tortilla from our Tortilleria or perhaps a bit of fresh pineapple from the Produce Department. For the baked goods and sweet roll lovers, you'll enjoy a tasty tidbit from our in-store Bakery. The Tasting Fair is taking place in almost all our departments and you'll want to try a little of everything our sample booths have to offer. Come in and enjoy our Fall Food Fair Tasting Fair!

REGISTER FOR PRIZES, TOO!

The Food Emporium is giving away some super prizes during the Fall Food Fair. The Grand Prize is a great mini-vacation for two to fabulous Las Vegas! This includes a three-day, two night stay in the Fun Capital of the West.

We are also giving away two Panasonic Color TVs, so be sure and fill the official entry form you'll find at the Food Emporium and drop it off in the entry box while you are shopping with us

WEEKENDER SPECIAL!

Be sure to plan to come out to the Food Emporium this weekend! This Saturday and Sunday, our Dog and Coke cart will be in the parking lot offering a steaming hot hot dog and a Coke for just a quarter. And for the sausage lovers, there will be a Bratwurst, made from our own Smokehouse, and Coke for just 50¢! It's a real taste treat and it's happening this weekend!

No matter when you drop by the Food Emporium, it's sure to be a treat during our Fall Food Fair! There are great prizes, tasty snacks and samples and Fall Food Fair specials throughout our store. Shop our Fall Food Fair today and harvest the values!



PAMPA

**1233 N.
HOBART**

THE FOOD EMPORIUM

**THERE'S
NEVER BEEN
ANYTHING
LIKE IT!**