

HANSFORD COUNTY'S LEADING NEWSPAPER



The Hansford Plainsman

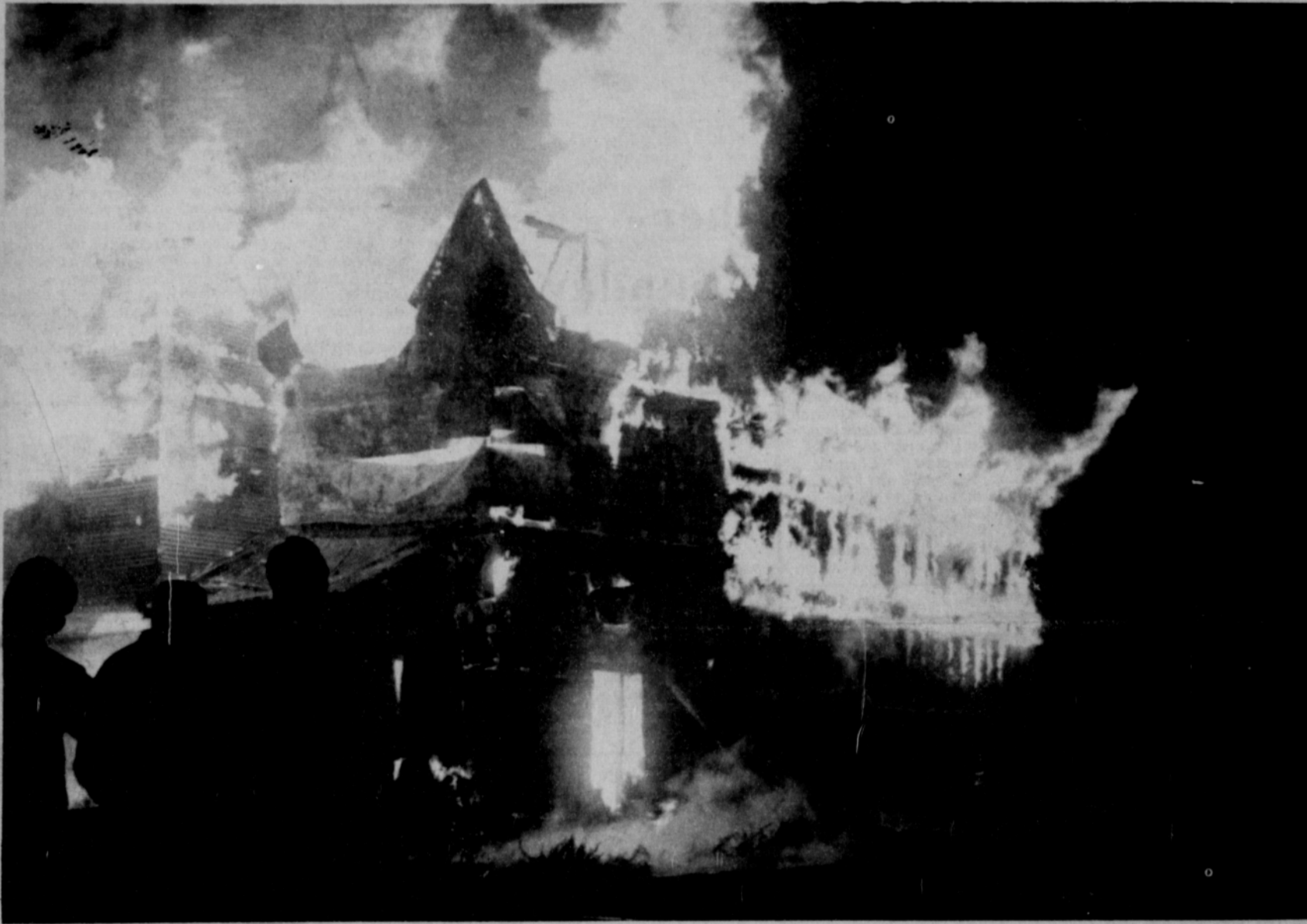


VOLUME VII., NUMBER 4

SPEARMAN, HANSFORD COUNTY, TEXAS 79081

THURSDAY, NOVEMBER 4, 1965

McLAIN ELEVATOR BURNS



ELEVATOR FIRE - Three men watch the fire in the McLain Elevators as it spreads through the wood and metal building. The fire was discovered about 11 p. m. Sunday and firemen from Spearman, Gruver and Perryton battled the blaze for two hours before putting it out. A lack of wind and fast work by

firemen kept the roaring blaze from spreading to the R. L. McClellan Grain Co. and Equity elevators on each side of the fire. There was no grain in the destroyed elevator.

PLAINSMAN PHOTO

Police Check For Arson

Local officers are investigating the possibility of arson in the McLain Elevator fire at 11 p. m. Sunday night.

Only a windless night and strong work by the Fire departments from Spearman, Gruver and Perryton prevented the giant blaze from spreading to the R. L. McClellan Grain Co. Inc. and Equity elevators on each side of the destroyed elevator.

Owner L. S. McLain said he placed no value on the old elevators and carried no insurance on them. The elevators had not been used for storage for three or four years.

McLain said they were some of the first elevators built in Spearman and had become obsolete and unusable.

Officers have no clues as to the cause of the fire or suspects, but some Halloween vandalism was reported close to the elevator on the T. D. Sansing and Don Kusselman farm.

The fire was discovered at 11 a. m. by men loading grain cars at Equity. They turned in the alarm, but the entire headhouse on the northeast end of the elevator was a fire when the firemen arrived.

A large steel building full of grain owned by McClellan Grain was just about 25 feet from the burning building, but firemen managed to keep the McClellan building cooled down and put enough water on the front of the burning building that it fell away from the McClellan building.

The fire moved down the building connecting the two headhouses and soon had the entire structure aflame.

The Equity elevator nearest the fire was a wood and metal structure, but by the time the fire got close to it, Perryton firemen were on the scene and helped keep the Equity building cool.

The Gruver and county fire units were on the back side of the fire extinguishing grass fires along the railroad tracks and near the Baker-Taylor yard.

When the buildings fell in, the area along the railroad tracks were showered with sparks and burning debris.

The threat of the fire spreading to the neighboring elevators was whipped shortly after midnight, but firemen poured water into the twisted metal until about 2 a. m. A fire watch was kept on the area all night.

McLain said he wished to express his deep appreciation to the fire departments from Spearman, Gruver, Perryton and the county for their work in containing the fire.

"The men did an excellent job in containing the fire and keeping it from damaging the elevators around mine and also in saving my quonset building and materials in the building. I deeply appreciate

(Con't. on page 2.)

County Votes Yes On Five Amendments

Hansford County voters said yes to spending more money for education, assistance to the sick and needy and retirement of judges, but no to longer terms for state officers and salary changes. Ten constitutional amendments were voted on Tuesday.

With about 335 persons voting of an approximate 2,500 qualified voters in the county, the local election drew better than the 10 percent turnout expected over the state.

County voters said yes to amendments one, three, five, six and eight.

Amendment one to raise ad valorem taxes for colleges was approved 189-133.

Amendment three to give wider coverage under the Kerr-Mills law and improve other welfare programs was approved 176-155.

Amendment five allowing the Texas Teacher Retirement Board to have constitutional authority and wider authority

to invest retirement funds was approved 183-142.

Amendment six to establish a Texas Opportunity Plan for needy college students was approved 204-85.

Amendment eight to retire judges at the age of 75 and provide a means of removal for misconduct was approved 209-117.

Amendments two, four, seven, nine and 10 were turned down.

Amendment two to extend the life of the Veterans' land program was defeated 131-194.

Four was to extend the terms of office for State officers, it was defeated 144-183.

Seven was the tax question for Harris County and was turned down 117-207.

Nine gave the legislature the power to set the salaries of Lt. Governor and increase per diem for legislators. It went down 115-210.

Ten would have given leg-

(Con't. on page 2.)



ROY GUSTAFSON



WESLEY BOYD



MRS. WESLEY BOYD

Crusade Begins Wednesday

The Christ For All Crusade with a team from the Billy Graham Association will open at 7:30 p. m. Wednesday in the High School Auditorium. Evangelist Roy Gustafson and musicians, Mr. and Mrs. Wesley Boyd of the Graham association and organist, the Rev. Billy Clark of Austin will lead

the crusade. Over 500 pastors of cooperating churches and lay workers from the area are participating in the many parts of the Crusade. There are over 200 singers signed up for the Choir. The Crusade will have services each night at 7:30 and

the two Sunday services will be at 3 p. m., so they will not interfere with regular church services. The Crusade closes Nov. 21. The first event of the Crusade will be held Saturday night when the youth of the area will have a Christ For All

(Con't. on page 2.)



COOLING --One Spearman fireman puts water on the burning McLain Elevator while another sprays the metal grain building just 25 feet from the fire. The firemen were successful in keeping the fire from spreading to the grain-filled metal building.
Plainsman Photo

THE WAY I SEE IT

Robert Cordes, Pastor
Oslo & Faith Lutheran

Can you be a "proper Christian" at work and keep your job? Or must there be some compromise with worldly ways? For many it is a struggle. There are some ethically tough jobs. If only the church would recognize this and find ways to support the young politician, or shop keeper, or soldier, instead of wishing all the time that people would go into what are (quite erroneously) considered the ethically "pure" jobs of teaching and the ministry.

It is very easy to say that men and women must wrestle with their problems before the Lord in prayer, and that then it will all become clear. Sometimes it will. Sometimes it will not--despite all that some say about prayer giving us all the answers.

God is gracious enough to give to His servants some assurance that they can persevere through the fogs of life: but the fogs do not always disperse after a few hours. It is this kind of reality which the Christian Church should teach us to face, and it is this kind of life which we should be taught to pray about and to relate to the sacraments.

How can you serve God in your work--as farmer, administrator, lawyer, housewife, shop keeper, or teacher? You cannot view the world from the outside. You are to be a Christian in the midst of the world and its sins.

In the work you are doing day by day you are a partner of God in His work of creation and realizing the purpose for the human race. But as we stated, the fogs of life and its storms will strike your life. Often the spirit of compromise will offer its ugly head. How can I keep my job if I don't meet cut throat competition, kick-backs, or other under-handed methods.

God may not give you every answer clearly as you pray. But God has offered us strength for each task, and with continued trusting in His Godly ways, you can see purpose in your life, and service to God. God asks you to be a "proper Christian at your work". The world says "no, compromise with me." A battle rages. God offers power for your daily tasks. Don't yield to the underworld of sin.

IN THE BAG

Put lingerie and other delicate items such as sheer blouses and hose into a pillowcase before drying them in the clothes dryer. Remove them from the bag at once to prevent wrinkling.

Hallmark cards . . . when you care enough to send the very best! Plainsman Office Supply, 209 Main.

Flaked cooked fresh salmon and finely chopped celery make a delicious luncheon salad mix lightly with salad dressing -- any kind you like -- and serve on salad greens with gherkins.

You can create a pretty centerpiece to use as a table centerpiece by placing compotes of different sizes on top of one another. For summer use, fill with fresh fruit using clusters of seedless grapes and cherries as the "garnish." Tuck fresh green leaves from the garden among the fruit.

A silver, stainless steel or pottery water jug make a delightful holder for flowers.

When you are using a nut crust for a pie, it is usually best to spread the mixture only over the bottom and sides -- but not the rim -- of the pie plate. This type of crust calls for sugar, nuts (finely chopped, rotarygrated or ground) and a suspicion of flour or crumbs.

The top edge of a molded gelatin salad, dessert or other dish, may stick when you try to unmold it. As insurance against this, run a small spatula around the edge of the mold to release the gelatin mixture before dipping the outside of the mold in hot water.

Keep that empty copper-tone (anodized aluminum) mold out of direct sunlight or its color may fade. And never put such a mold in a dishwasher.

Give those homemade rolls real interest: brush them with beaten egg and sprinkle with toasted sesame seed before putting them in the oven to bake.

In the Long Run, No One Pays for Advertising!

Advertising expense is not a "cost" in the true sense of the word.

If chewing gum manufacturers worried about sales paying for the cost of an advertisement in a certain town immediately after the ad was run, they would never advertise. Also, they would not become successful "nickel collectors."

The merchant who sells low-price goods is in fact just the person who SHOULD advertise. By obtaining mass market sales through advertising the businessman is able to maintain higher profits and lower costs per unit of the product.

Successful advertisers, especially "nickel collectors," know that one advertisement doesn't make a campaign. The overall effect in the mind of the consumer makes advertising pay.

Advertising is part of the overall expense of doing business, but it differs greatly from other expenses. In the long run, no one has to pay for advertising.

The merchant who advertises gains larger sales areas and more profits. He doesn't, in the true sense, have to pay for the ad. But, unlike some items, the cost is still not shifted to the consumer via higher prices. Direct competition induces lower prices to ultimate consumers, and the cost of advertising lies somewhere in the profit zone between consumers and sellers. "Nickel collectors" such as

gum, candy, and soft drink vendors, know that much of their success can be attributed to local advertising. Such products are all sold on the local level to the whole public which is the consistent consumer of the local newspaper, and itself a nickel-collector product.

For extra-delicious mashed potatoes, add sour cream (instead of other liquid) and crumbled blue cheese.

Ever add a suspicion of cinnamon and nutmeg to a graham-cracker crust for a cheese pie?

DECORATING HELP

Vertical rows of colored tiles on either side of a door or picture window can be an interesting decorator touch and add height to rooms with low ceilings.

CLEAN PIE

Learn to seal a fruit pie before baking or place foil beneath it in the oven. Fruit juice acids pit the enamel of the oven bottom.

VINEGAR RINSE

If detergent or soap leaves a film on tiled or plastic surfaces, try adding a dash of vinegar to the rinse water.

To spike that pitcher of punch made with citrus fruit, add a little sherry.



IRRIGATION MUNICIPAL
INDUSTRIAL DOMESTIC

NORTH PLAINS WATER WELL CHLORINATION SERVICE

WATER WELL CLEANING STERILIZATION

We Can Rid Your Well of All Organic Growths such as Algae to

INCREASE PRODUCTION

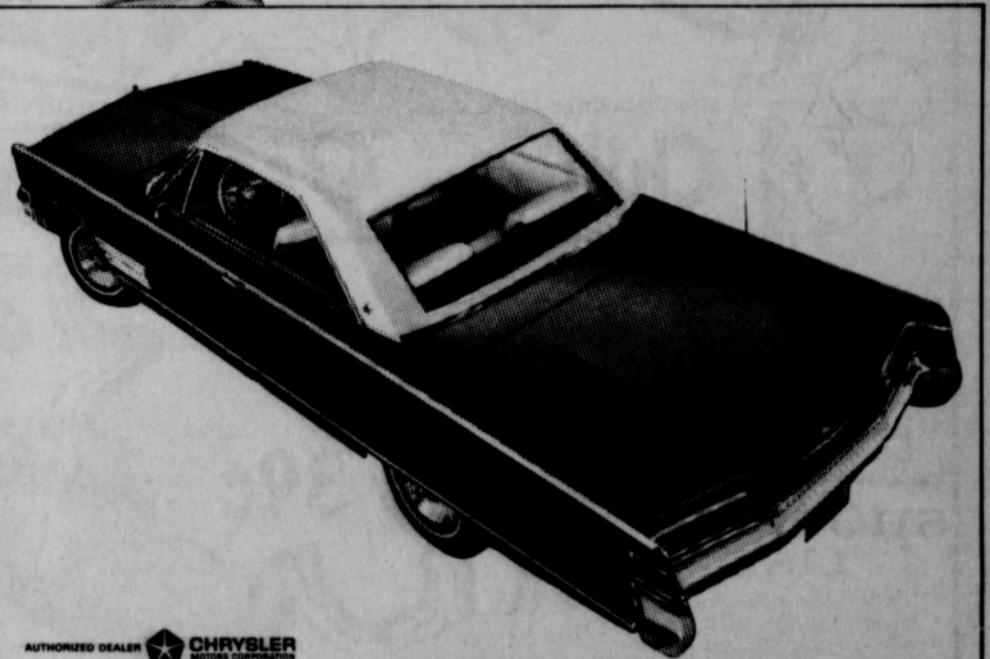
412 N. DUMAS AVE. P. O. BOX 986
PHONE 935-2929 DUMAS TEXAS 79029

NELSON LEWIS MACARTY
MANAGER
RES. PHONE 935-2055



A 5-year/50,000-mile warranty* comes with every Chrysler.

It could be worth a lot when you sell.



AUTHORIZED DEALER CHRYSLER MOTORS CORPORATION

The famous 5-year/50,000-mile warranty on important Chrysler engine and drive train parts is standard when you buy. And it can add a lot of value to your car when you sell.

That's Chrysler for you. Big value -- when you buy, drive, and sell!

We can get it going for you today. See us.

CHRYSLER '66

*CHRYSLER'S 5-YEAR/50,000-MILE WARRANTY WITH THIS COVERAGE: Chrysler Corporation warrants, for 5 years or 50,000 miles, whichever comes first, against defects in materials and workmanship and will replace or repair at a Chrysler Motors Corporation Authorized Dealer's place of business, without charge for required parts and labor, the engine block, head and internal parts, intake manifold, water pump, transmission case and internal parts (excluding manual clutch), torque converter, drive shaft, universal joints, rear axle and differential, and rear wheel bearings of its 1966 automobiles, provided the owner has the engine oil changed every 3 months or 4,000 miles, whichever comes first, the oil filter replaced every second oil change and the carburetor air filter cleaned every 6 months and replaced every 2 years, and every 6 months furnishes to such a dealer evidence of performance of the required service, and requests the dealer to certify (1) receipt of such evidence and (2) the car's then current mileage.

Post Office Will Be Closed Sat.

The post office will be closed Thursday, Nov. 11, in observance of Veterans Day.

There will be no deliveries by city or rural carriers. All outgoing mail should be posted at the Post Office as there will be no residential collections.

Card of Thanks

My deepest thanks to Dr. Gregg and the wonderful staff of the hospital for their care. And a special thank you to each friend for their prayers, visits, cards, flowers and gifts while I was in the hospital. May God bless each of you for your kindness.

Mrs. Glen Hiller.

TOMMY GOOCH
AGENCY
FARM BUREAU
INSURANCE
SPEARMAN, TEXAS

-FOOTBALL-FOOTBALL-FOOTBALL-FOOTBALL-

HEAR THE GAME FRIDAY NIGHT

SPEARMAN VS. DALHART

On KBMF-FM

BEGINNING AT 7:30 P.M.

KBMF-FM KBMF-FM KBMF-FM KBMF-FM

Spearman Motor Company 316 West Kenneth Spearman, Texas

County . . .

(Con't. from page 1.)

istators four year terms of office and it was defeated 123-187.

A complete count of each of the eight voting boxes in the county is being published in this issue of the paper.

McLain . . .

(Con't. from page 1.)

their efforts."

This is the third major elevator fire in Spearman in 10 years. McClellan Grain elevator burned in 1956 and B&B Grain lost its elevators in 1958. These were full of grain.

Stores Warned

About Checks

Sheriff J.B. Cooke this week issued a warning to merchants that some payroll checks had been stolen from the Pinkston-Hollar firm in Borger.

He said the thieves might try to pass some of the checks in this area.



FOUR GENERATIONS--These are the four generations of the T.H. Benton family. They are Mrs. Roy Bulls and her son James, her father, C.W. Benton and her grandfather, T.H. Benton. They were together Sunday at the Bulls home in Spearman.

Plainsman Photo

Four Generations Gather At Roy Bulls Home Sunday

Four generations of the T.H. Benton family were together Sunday at the Roy Bulls home in Spearman.

The four generations are T.H. Benton, C.W. Benton both of Plainview, Mrs. Roy Bulls and her son, James Ray Bulls of Spearman.

T.H. Benton is a Choctaw Indian born at McCurtain, Oklahoma Indian Territory in 1880. T.H. Benton and his son both attended Indian schools in

Oklahoma.

The elder Benton's grandchildren came to Oklahoma in 1832 over the "Trail of Tears" from Alabama. This march was the result of treaties made with the five civilized tribes, the Choctaw, Cherokee, Creek, Seminole and Chickasaw to move from Georgia and Alabama to the Indian Territory, now Oklahoma.

T.H. Benton is the father of eight children, and has 22

grandchildren and 17 great-grandchildren.

Youth Have Quiet Halloween Here

Only one major act of vandalism was reported Halloween night to police officers in the county.

Someone cranked a tractor

and drove it through a fence into the irrigated wheat field of T.D. Sansing and Don Kunselman at the edge of the airport.

The vandals drove the tractor across the muddy field in several directions, broke an irrigation ditch, then drove the tractor through the fence in another location and into a pile of milo, then took the tractor back to where it had been parked.

In town the only things reported were some horses let out, some tires thrown in the street, a boat and trailer rolled into second street and the water was turned on at the football field.

Crusade . . .

(Con't. from page 1.)

Hootenanny in the Community Building at 7:30 p.m.

Speaker for the youth program will be Glenn Cunningham, a world record holder for the mile run in the 1930's. Cunningham now operates a home for boys at Augusta, Kan.

Entertainment will be by musical groups from Spearman, Perryton and Pampa.

There will be a coke, chip and dip refreshment session after the program.

Workers in the Crusade have been preparing for the Crusade since August. In the last month there have been regular prayer sessions for the men, home prayer sessions for the women and morning watch meetings for the youth.

For the past month 100 persons have been attending religious counseling classes preparing to assist those making decisions at the Crusade.

The Graham team will arrive in Spearman Tuesday. They will be traveling throughout the area meeting

Plainsman classifieds get results.

with different groups while conducting the Crusade services here.

Evangelist Gustafson is a Bible scholar who has conducted Bible schools for the Graham Association. He is also a Director of travel tours to the Holy Lands and has just returned from a tour.

Boyd is a native of Ireland and was a concert singer before joining the Graham organization. He has been in the United States for eight years.

Hansford Plainsman Publishers Inc.

**Jim O. Davis
Burl G. McClellan**



County-wide independent newspaper published every Thursday and Sunday at 209 Main St., Box 668, Spearman, Texas 79081. Second Class postage paid in Spearman, Texas 79081.

Higher Grocery Bills Laid to Farmer

WASHINGTON — Wondering why your grocery bills are so high these days?

Government experts say higher food costs all along the line — from farmer to processor to shipper to greer-- are partly to blame.

But, they add, it's still mainly the old textbook law of supply and demand that ultimately rules the supermarket cash register.

A Labor Department spot check of supermarket prices in major cities across the nation shows what every housewife already knows from her most recent shopping trip — sky-high meat prices and generally higher costs for many other dinner table staples.

But there were some surprising exceptions.

Some examples from one major supermarket chain:

Rib end pork roast that cost 24 cents a pound a year

ago was more than doubled in price at 57 cents a pound.

But if you like to daub your meat with catsup, one major brand was selling at exactly the same price as a year ago — 23 cents for a 14-ounce bottle.

THE LABOR Department also reported most fresh fruits and vegetables were cheaper than a year ago, despite higher wages paid to U.S. farm laborers who replaced foreign workers this year under a new government policy.

While food prices generally dropped nearly one per cent in August — the latest available official figure — this was merely slight relief from abnormally high prices over the past summer.

TOMATO JUICE and apple sauce prices remained the

same as last year — 49 cents for two 46-ounce cans and 89 cents for eight 16-ounce cans respectively.

As with meats, eggs, milk and most other dairy products were high and were expected to go higher.

Poultry, a popular standby for many families when meat prices are high, was still a year ago. Turkeys were selling for 37 cents a pound only 2 cents more than last year.

Continued short supplies of livestock will keep meat and dairy products high in price for some time, government economists predict.

GIFT BOX MEMO:

This is surprise week at Gift Box. We have been buying fall and Christmas merchandise for the past six months and it has finally begun arriving. Since we cannot remember everything we bought, opening shipments is surprising to us, also.

Among the items we have opened are some beautiful Spanish Olivewood decorator pieces. These are perfect for gifts or decorating.

We have some more of those pretty decorated coffee mugs that sold so fast recently. You will like these, also.

Also, in the mug department is something new in hand etched crystal mugs. These are the first we have had and we believe you will like them.

There is something new coming in everyday, so visit us often.

Have You Heard



ON *kbnmfm* 98.3

Gift Box

DEL MONTE PEACHES Sliced or Half 5/88¢	303 Del Monte FRUIT COCKTAIL 4/88¢
DEL MONTE TOMATO JUICE 46 oz. 3/88¢	Diamond-No. 300 Size TOMATOES 7/\$1.
303 Del Monte Cream Style CORN 5/88¢	300 Del Monte TOMATO JUICE 8/88¢
14 oz. Del Monte CATSUP 5/88¢	303 Del Monte WK Corn CORN 5/88¢
Tomatoes 23¢	303 Del Monte Early Garden PEAS 4/88¢
TUNA flat cans Del Monte 3/88¢	-Market Specials-
3 piece Dish DRAIN SET \$1.49	FRYERS lb. 27¢
GROUND BEEF lb. 49¢	ARM ROAST lb. 59¢
T-BONE STEAK lb. 98¢	CHUCK ROAST lb. 49¢
SIRLOIN STEAK lb. 79¢	
ROUND STEAK lb. 89¢	

VALUES FOR FRIDAY AND SATURDAY.

M & M GROCERY

We Give Buccaneer Stamps

Double Stamps Wednesday

BOWLING

BEAT

NIGHT OWL LEAGUE		
11-1-65	TEAM	WON LOST
	Excel Chev.	23 5
	Harvey's Aerial	16 12
	M&M Shamrock	13 15
	Hansford Grain	13 15
	Berry's Cleaners	13 15
	C. Geo. Redi Mix	13 15
	Beedy Furn.	12 1/2 15 1 2
	R. Washburn Weld.	9 1/2 18 1 2
HIGH TEAM GAME		
	Excel Chevrolet	450
	Harvey's Aerial	441
	Hansford Grain	426
HIGH TEAM SERIES		
	Excel Chev.	1293
	Harvey's Aerial	1236
	Hansford Grain	1198
HIGH INDIVIDUAL GAME		
	Sheryl Meek	187
	Lou Harvey	164
	Maxine Ferguson	161
HIGH INDIVIDUAL SERIES		
	Sheryl Meek	482
	Harvey's Aerial	441
	Hansford Grain	426
SCATTER PIN LEAGUE		
10-28-65	TEAM	WON LOST
	Taylor-Evans	25 7
	Equity	23 9
	Anthony Elec.	21 11
	Pioneer Restaurant	17 15
	Grunewald's	13 19
	G&G Foodliner	12 20
	Gruver Motor	12 20
	Ideal	5 27
HIGH TEAM GAME		
	Pioneer Rest.	612
	Equity	592
	Equity	587
HIGH TEAM SERIES		
	Equity	1736
	Pioneer Rest.	1724
	Taylor-Evans	1652
HIGH INDIVIDUAL GAME		
	Jane Meek	191
	Helen Dry	178
	Bertie Frazier	173
	Juanita Tucker (Sub)	200
HIGH INDIVIDUAL SERIES		
	Jane Meek	471
	Helen Dry	469
	Bertie Frazier	447
	Juanita Tucker (Sub.)	485

Take your problems to Church this week — millions leave them there!



A WORKER IN MORE WAYS THAN ONE

"I can do all things through Him who strengthens me". Philipians 4:13.

Men are beginning to discover that positive statements from the Bible such as the above quotation are a source of undreamed-of power when contemplated upon in their work-a-day life. Repeated daily to themselves these statements bring a positive outlook to life and a faith that cannot be shaken, proving to have a wealth of hidden power that enables man to attain worthwhile goals.

The Church as an institution established for the glorification of the individual can aid everyone to tap this source of faith and strength. Regular attendance at church with its guidance in Bible study can gain for each this new outlook on life, this faith that is yours for the cultivating and can change your life until you "can do all things."

—Weekly Opportunities For Worship—

Apostolic Faith Church
W. E. (Hap) Blythe, Pastor
Sunday School 10:00 a.m.
Morning Worship 11:00 a.m.
Evening Worship 7:00 p.m.

Assembly of God Church
Rev. T. J. Taylor Jr.
Sunday School 9:45 a.m.
Morning Worship 11:00 a.m.
Evening Worship 7:30 p.m.
Wed. Bible Study 7:30 p.m.

Church of Christ
Charles Milner, Minister
Sunday School 10:00 a.m.
Worship 11:00 a.m.
Worship 7:00 a.m.
Wed. Ladies Bible Class 9:30 a.m.
Wed. Bible Study 7:30 p.m.

Fellowship Baptist Church
W. S. Herring, Pastor
Sunday School 10:00 a.m.
Preaching Service 11:00 a.m.
Sunday Evening Service 7:30 p.m.
Wed. Evening Service 7:30 p.m.

First Christian Church
Rev. W. Graham Pugh, Minister
Sunday School 9:45 a.m.
Morning Worship 11:00 a.m.
Youth Meetings 6:00 p.m.
Evening Worship 7:30 p.m.
Wed. Choir Practice 7:30 p.m.

First Baptist Church
The Rev. Luther M. Berry, Pastor
Sunday School 9:45 a.m.
Morning Worship 10:45 a.m.
Training Union 5:30 p.m.
(Oct. 1-Apr. 30)
Training Union 6:00 p.m.
(May 1-Sept. 30)
Evening Worship 6:30 p.m.
(Oct. 1-Apr. 30)
Evening Worship 7:00 p.m.
(May 1-Sept. 30)
Wed. Evening Prayer Hour 7:30 p.m.
Thurs. Choir Rehearsal 7:00 p.m.

Oslo Lutheran Church
18 mi. N.W. of Gruver
Robert L. Cordes, Pastor
Sunday School 9:45 a.m.
(includes adults)
Worship Services 11:00 a.m.

First Methodist Church
Brother Wesley Daniel, Minister
Sunday School 9:45 a.m.
Morning Worship 11:00 a.m.
M.Y.T. 6:30 p.m.
Evening Worship 7:30 p.m.
Women's Society of Christian Service Wed. 3:00 p.m.
Choir Rehearsal 7:30 p.m.

First United Presbyterian Church
Everett H. Cain, Jr., Pastor
Sunday Church School 9:45 a.m.
Morning Worship 11:00 a.m.
Evening Study Group 7:30 p.m.
Wed. Choir Practice 7:30 p.m.

Our Lady of Guadalupe Mission, Gruver
Sunday Mass 4:00 p.m.

Pentecostal Church
Sunday School 9:45 a.m.
Morning Worship 11:00 a.m.
Evening Worship 7:30 p.m.

Sacred Heart Catholic Church
Spearman
Rev. James C. Gurzynski
Sunday Mass 9:00 a.m.
Holy Day of Obligation 7:00 a.m.
8:00 p.m.
Weekdays 6:30 a.m.

Faith Lutheran Church
Farm Bureau Bldg.
Robert Cordes, Pastor
Worship Services 9:00 a.m.
Sunday School 10:00 a.m.

Union Full Gospel Church
Rev. George R. Bollinger, Pastor
Sunday School 10:00 a.m.
Morning Worship 11:00 a.m.
Bible Classes Sunday 6:45 p.m.
Evening Worship 7:30 p.m.
Wed. Bible Study 7:30 p.m.

Waka Church of the Brethren
Lawrence Lehman, Pastor
Sunday School 10:00 a.m.
Morning Worship 11:00 a.m.
Evening Service 7:00 p.m.
Choir Practice Wed. 7:00 p.m.
Adult Bible Study Wed. 8:00 p.m.



Lutheran Youth Enjoy Party

Mr. and Mrs. Joe Conner were hosts for a Halloween party for the Faith Lutheran League at their home Tuesday evening at 7:30.

The group enjoyed a spook show and various games and fellowship.

All members and sponsors of the league were present with guests including Jim Gruver, Marie Gruver, John Stavlo, Mary Ann Stavlo, Jackie Hudson, Leah Cordes, Anita Schroeder, Robert Schroeder, Linda Schaefer, Brenda Robertson and Pastor Robert Cordes.

Sandwiches, punch and cokes were served.

Party Honors Larry Roberts

Miss Cindy Henderson was hostess for a surprise birthday party for Larry Roberts recently in the home of Mr. and Mrs. Cecil Crawford.

The Halloween motif was carried out in the decorations and refreshments and dancing were enjoyed during the evening.

Attending were Mr. and Mrs. L.W. Roberts, Mrs. Minnie C. Ellis, Mr. and Mrs. Sam Henderson, Mr. and Mrs. Cecil Crawford, Linda and Glenda Roberts, Tommie Henderson, Richard Laird, Andy Rhodes, Lynn and Glynn Pattison, Yvonne White, Tommie Baxter, Rickie Hendricks, Cleydus Harper, Kathy and Brenton Haworth, the honoree and the hostess.

Phil Sell, son of Mr. and Mrs. John Sell, underwent surgery Monday at Northwest Texas Hospital in Amarillo.

Get a head start on Christmas. Choose those Christmas cards now at Plainsman Office Supply, Hallmark and Masterpiece Albums on display.

Shurfine Help-yourself-to-Savings CARNIVAL of '65

SHURFINE **APPLE SAUCE** 303 6 FOR \$1 SHURFINE **SHORTENING** 69¢

SHURFINE **CRUSHED PINEAPPLE** 303 4 FOR \$1
 SHURFINE 46 OZ **TOMATO JUICE** 4 FOR \$1
 SHURFRESH **MARGARINE** 1/4 5 FOR \$1

LUNCHEON MEAT 39¢ | **PEACHES** 4/\$1

Campbell's Tall Can
Tomato Soup 2 FOR 19¢

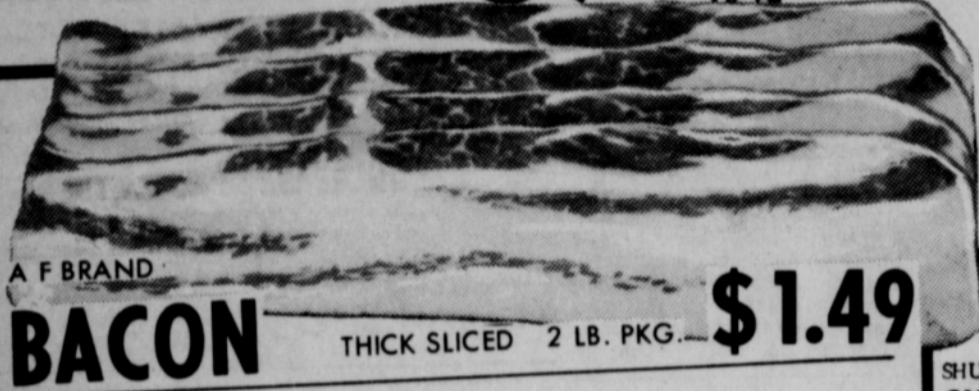
Lanes Regular **ICE CREAM** Half Gallon 67¢

Mortons Frozen Cinnamon or Apple
DANISH COFFEE RING Large Size 57¢

Energy Brand **Bleach** Plastic Jug 29¢
 Shurfine Golden CS-WK 303 Can **GOLDEN CORN** 6 FOR \$1.

Imperial Pure Cane **Sugar** 10 lb. Bag \$1.00

Cucumber Chip PICKLES 4 FOR \$1



AF BRAND **BACON** THICK SLICED 2 LB. PKG. \$1.49

U.S.D.A. Choice Beef **Rib Steak** lb. 79¢

CORN KING **Canned Hams** Cooked-Boneless-Defatted 5 LB. CAN \$4.89

SHURFINE **CHUNK STYLE TUNA** 6 1/2 OZ 4/\$1

• TASTE
 • QUALITY
 • FRESHNESS

SHURFRESH MILK

King Size **Tide** \$1.
 Nestles' Instant Chocolate 2 lb. Box
Quik 77¢



Chili "no beans" 47¢

BANANAS 10¢

SHURFINE **CATSUP** 14 OZ 5 FOR \$1
 Ellis Plain Large 24 oz. Can
Crackers 2 FOR 39¢

Grapefruit lb. 13¢

Potatoes 39¢

ORANGE SLICE CANDY 19¢

Hair Spray 57¢

J. & L. Farms Grade A Large **EGGS** Dozen 47¢
 Mortons Frozen Ready to Heat & Eat
Donuts Pkg. of 18 33¢

SHOPPING LIST

- Shurfine Apple Butter 28 oz. 3/\$1.00
- Shurfine Asparagus All Grn Cut 300 Can 4/\$1.00
- Shurfine Sliced Beets 303 Can 7/\$1.00
- Shurfine Blackeyes Fr. Shelled 300 Can 7/\$1.00
- Shurfresh Biscuits Butter-Sweetmilk 8 oz. 13/\$1.00
- Shurfine Broccoli Frozen Spears 10 oz. 4/\$1.00
- Shurfine Cake Mixes Asst'd. Flavors 19 oz. 4/\$1.00
- Shurfresh Cheese Spread 2 lbs. \$.69
- Shurfine Cherries R SP 303 Can 5/\$1.00
- Shurfine Coffee Reg. or Drip 1 lb. \$.69
- Shurfine Corn Golden CS-WK 303 Can 6/\$1.00
- Shurfine Str. Cranberry Sauce 300 Can 4/\$1.00
- Shurfine Flour 25 lb. Print Bag \$1.79
- Shurfine Flour 10 lb. Paper Bag \$.79
- Shurfine Frosting Mix Choco.-Whit. 1 1/2 oz. 4/\$1.00
- Shurfine Fruit Cocktail 303 Can 4/\$1.00
- Shurfine Grape Jelly 18 oz. 3/\$1.00
- Shurfine Grape Juice 24 oz. 3/\$1.00
- Shurfine Green Beans 4 Sv. Cut B.L. 303 5/\$1.00
- Shurfresh Margarine 1 Lb. 5/\$1.00
- Shurfine Milk Evaporated Tall Can 8/\$1.00
- Shurfine Olives Stuff Thr. Manz 7 oz. 2/\$1.00
- Shurfine Frozen Orange Juice 6 oz. 6/\$1.00
- Shurfine Peaches YC Hlvs. or Sli. 2 1/2 Can 4/\$1.00
- Shurfine Peanut Butter 12 oz. 3/\$1.00
- Shurfine Pears Bartlett Hlvs. 303 Can 4/\$1.00
- Shurfine Peas Early Harv. 303 Can 5/\$1.00
- Shurfine Pineapple Juice 46 oz. 3/\$1.00
- Shurfine Pork and Beans 300 Can 9/\$1.00
- Shurfine Potatoes Hash Brown Froz. 2 lbs. 3/\$1.00
- Shurfine Potatoes Wh. Sweet No. 3 Squat 3/\$1.00
- Shurfine Preserves Asst'd. Flavors 18 oz. 3/\$1.00
- Shurfine Pumpkin 300 Can 8/\$1.00
- Shurfine Salad Dressing Qt. \$.39
- Shurfine Red Alaska Salmon 16 oz. \$.89
- Shurfine Sauer Kraut 303 Can 6/\$1.00
- Shurfresh Suckers Asst'd. 34 Ct. \$.19
- Shurfine Tea Bags 48 Ct. \$.33
- Shurfine Tomato Juice 46 oz. 4/\$1.00
- Shurfine Tuna Chunk Style 6 1/2 oz. 4/\$1.00
- Shurfine Waffle Syrup Qt. 2/\$.79

Rebekahs Have Meeting

Spearman Rebekah Lodge #290 met Thursday Oct. 28. The meeting was called to order by Noble Grand Thelma Kenney. The devotional was given by chaplain Jackie Hall. Mildred Chamberlain was voted as 1966 Lodge Deputy. Dorothy Longley installed Frankie Duryee as left supporter to Vice Grand. Members attending were Thelma Kenney, Deanna Kenney, Ruth Caro, Ethel Black, Ethel Ellsworth, Sylvia Wilcox, Lillian Whitford, Gwonda Golightley, Dorothy Longley, Jackie Hall, Mary Hutton, Grace Nemsger, Lois Gaither, Frankie Duryee, Zina Longley, Kenneth Longley, Iva Longley, Inez Holland, May Shaull, Gladys Richardson, Mildred Chamberlain, Jennetta Montgomery and Ima Mae Hughes.

Leadership Course Held

The Waka Parent-Teacher Association sponsored a Leadership Procedure Course Thursday, Oct. 28 at the Waka School. Mrs. W.A. Spoonmore of Spearman, conducted the class. Those who attended were Mmes. David Wilson, Neal Thompson, Clyde Yeary, Mr. and Mrs. J.H. Jackson, Jr., Larry Brummett and Harold Marshall.

4-H News

Six young 4-H'ers met Oct. 27 in the home of Connie Trindle, their junior leader. The group's first project was making simple fudge. Each girl took a sample home. Members present were DeLinda Head, Linda Sutton, Rhonda Jones, Sharon Scroggs, Debra Smith, Nancy Anderson, and the leader, Connie Trindle. Janice Trindle, Junior Foods leader, met with her Foods I group Wed. Oct. 27 at the Home Demonstration building. They enjoyed making uncooked fudge. Those present were Pat Walls, Donna Walls, Evelyn Cullen, Zelpha and Carlessa Galbreath.

One of the first year foods group of the Busy Bee 4-H Club met Oct. 28 in the home of Mrs. Frank Davis with their foods leader, Rebecca Hutchison. Each girl made caramel apples, a banana milk shake and a cream cheese sandwich. Kitchen tips on measuring, safety habits and nutrition were also studied. Those attending were: Gloria Lopez, Nannette McIntyre, Donna Reed, Susie Sell and LeAnn Shieldknight. Another first year foods group of the Club met Oct. 29 in the clubroom with Cindy Hutchison, Jr. Leader, preparing the same foods. Present were Lydia Reed, LeAnn Smith and Susan Gates.

The executive committee of the 4-H Clovers met Oct. 25 with Miss Linda Webb, Agent to plan the programs for the year. Demonstrations given by club members, corsage making, tour of local girls bedrooms to study interior decoration and self-medical care were the programs chosen. Those present were Jyniece Callaway, vice president; Connie Trindle, secretary; and Cindy Hutchison, news reporter.

Mrs. Mary Holland of Powderly, Ky. mother of A. F. Holland, came last week for an indefinite visit with the Hollands. Added weekend guests were her sister and family, Mr. and Mrs. Leroy Meisenheimer and daughter of Kingman, Kans.

Cut Rate GROCERY

Shurfine Specials Good thru Nov. 6

Annual Home Tour Scheduled Sunday

The home tour sponsored by the Spearman Study Club will be Sunday, Nov. 7 from 2 to 5.

Homes that may be visited Sunday are Ray Martin, 716 Gibner Drive; Craig Hutchison, 512 Endicott; Joel Lackey, 224 S. Barkley; J.L. Brock, 717 Gibner Dr.; Dr. Damon Green, 302 E. 11th; Jimmy

Shieldknight, 724 Gibner Dr.; Rev. Graham Pugh, 1002 S. Barkley.

Tickets are \$1 and may be purchased from any member of the Spearman Study Club.

Coffee and cookies will be served at the Ray Martin home. A door prize of a floral arrangement, courtesy of Spearman Floral, will be given.



Mr. and Mrs. John Arlie Morgan

Van Cleave - Morgan Vows Are Read in California

In wedding vows solemnized at Bell Baptist Church in Cudahy, Calif., recently, Miss Linda Sue Van Cleave became the bride of John Arlie Morgan. The bride is the daughter of Mr. and Mrs. Sam Van Cleave of Bell, Calif., and the granddaughter of Mrs. Mabel Edwards of Spearman. The bridegroom's parents are Mr. and Mrs. Arlie Morgan of Glendale, Calif.

The altar of the church was decorated with a white heart trimmed with floral sprays of white gladioli, blue carnations and blue satin ribbon swags, flanked by three tall single candlesticks. Pews were marked with blue chenille hearts holding ribbons and roses.

Mrs. Bill Parker presented traditional wedding music on the organ and accompanied Elton Rose who sang "Because" and "A Wedding Prayer".

The Rev. Paul Horn, pastor of the church, directed the exchange of vows.

Given in marriage by her father, the bride wore a formal gown fashioned of organza over bridal taffeta designed with a round neckline and elbow length sleeves. The molded bodice had an empire waistline in front which dipped to a point in back where a large organza rose was placed. Two rows of organza roses trailed down the back of the dress to the center of the chapel-length train.

A large organza rose encircled by petals of the same material held the bride's short bouffant veil of illusion and she carried a bouquet of China mums and white roses crested on a Bible which had been carried by all the brides in the Morgan family in this generation.

The bride's attendants were Miss Betty West, maid of honor, and Mrs. John Baker and Patricia Sparks. They wore identical street-length dresses of blue chiffon over taffeta designed like the bride's. A cluster of organza roses held their short matching veils and they carried hearts of frilly net crested with blue carnations.

Judy and Susan Van Cleave, cousins of the bride, were candlelighters.

Timmy Morgan was his brother's best man and ushers were

John Baker and Richard Roy. The wedding reception was held in the Memorial Chapel of the church following the ceremony.

The bride is a Bell High School graduate and from East Los Angeles and Biola Colleges. She is presently engaged as a child care teacher in Los Angeles City Schools.

Her husband is a graduate of Hoover High School in Glendale, Glendale College and is now attending Biola College working for a teacher credential while working for Smart and Final Wholesale Co.

Guests attending the wedding included the bride's grandmother, Mrs. Mabel Edwards of Spearman and her cousin, Miss Sherry Weant of Gruver.

The newly weds are at home in Maywood, Calif.

Arts and Crafts Guild Meets

The Arts and Craft Guild met Friday, Oct. 29 in the home of Mrs. Bill Gandy with Mrs. F.J. Daily as co-hostess. The afternoon was spent china painting.

Present were Mmes. Fred Hoskins, Clay Gibner, Jesse Womble, Bill Russell, Joe Traylor, P.A. Lyon and the hostess.

The next meeting will be in the home of Mrs. P.A. Lyon.



Betrothed—

Mr. and Mrs. Robert L. Newton of Groom announce the engagement and approaching marriage of their daughter, Molly to Phillip Dean Turner, son of Mr. and Mrs. B.J. Turner of Waka.

The wedding will be held at the Church of Christ in Groom, Nov. 20.

Molly is a graduate of Groom High School and has attended Lubbock Christian College and West Texas State University. Phillips is a graduate of Perryton High School and is attending West Texas State University.

Engaged—

Mr. and Mrs. Warren Jeffries announce the engagement and approaching marriage of their daughter, Marian, to Rex Gruver Shapley, son of Mr. and Mrs. Marvin Shapley of Gruver.

Young Daughters Honored With Halloween Party

Lynanne Kendrick honored her daughters Gerri Lynn and Tammi Jo with a Halloween

party Saturday afternoon at her home.

The guests came at 2 and were presented gay Halloween hats decorated with black cats, owls and witches. Pictures were taken of each child with her face as Casper the friendly Halloween ghost. Various competitive games were played with Sherisse Partridge winning the prize for pinning the tail on the donkey.

The serving table was laid with an orange cloth bordered with goblins and witches and was centered with a smiling Jack-O-Lantern wearing a gay party hat. Cup cakes with chocolate icing topped with a tiny pumpkin, ice cream and witches brew were served. Favors were noisemakers and whistles which were taken home in trick-or-treat sacks with the pictures taken earlier.

Invited guests were Stinson Gibner, Sherisse Partridge, Billy Jones, D'Anda Close, Scott Stalder, Scott Boyd, Gary McCalman, Tammy Rook, Kim Keyser and Wanda Jones.

Blue Monday Club Meets

Mrs. Sam Graves entertained the Blue Monday Bridge Club for their first November meeting. Holding high score was Mrs. Bill Miller.

Present were Mmes. Deta Blodgett, F.J. Daily, W.H. Gandy, Pope Gibner, Vester Hill, Gwenfred Lackey, L.S. McLain, Bill Miller, R.W. Morton, J.E. Womble, guests, Major Lackey, Betty Lackey and the hostess.

The next meeting will be with Mrs. Gwenfred Lackey.

Having a party? Company? The Plainsman would like to know about it and so would its readers. Phone 2466 or 3258 to report local news.

Homemaking Notes

By Linda Webb

Home Demonstration Agent

Many homemakers often have questions regarding the cooking meats—especially beef, since this is the favorite for people in this area.

Some of your questions about oven roasts may be answered in the following paragraphs.

To cook a beef roast, place the roast fat side up on a rack in a shallow pan. A meat thermometer may be inserted into the center of the thickest portion, making sure that the point of the thermometer doesn't touch bone.

Do not add any moisture, and do not cover. Place the roast in a 325 degree oven, and roast until thermometer shows desired doneness—140 degree F. rare; 160 degrees F. medium; 170 degrees F. well done.

Roasting schedules serve as guides to tell you when to place the roast in the oven. For example, allow about 2 1/4 hours for a four pound standing rib of beef roast to cook medium done.

Using a rack keeps the meat up out of the juices and allows an even circulation of warm air around the roast to cook the meat uniformly. Rib roasts don't need racks because the rib bones form natural racks of their own.

Using a low oven temperature produces more even cooking, less shrinking and less oven spattering than higher temperatures.

Searing (or browning) a roast before placing it in the oven is not necessary. The old-fashioned notion about searing was that it sealed in the juices. Research has shown that actually, the high browning temperature draws out juices, making greater cooking shrinkage. Oven roasts aren't covered because a cover causes steam to form. The roast will have a steamed flavor and won't be richly browned.

It makes little difference when you season a roast—before or after. The flavoring of the seasonings will penetrate only about 1/8 inch into the meat either way.

Some different seasoning for roasts you might like to try—rub the roast before cooking with a mixture of 1 teaspoon each ground ginger and

salt, and 1/8 teaspoon black pepper. Both are delicious with roast beef.

Letting a roast stand 15 to 20 minutes before it is carved "sets" the juices, which makes the meat firmer and easier to carve.

"Roast Beef au jus" is simply roast beef served "with the juice". Any fat is skimmed off the drippings and the remainder is poured into a gravy bowl to serve with the sliced roast. Sometimes a little hot water is added to the drippings to make them go further.

To store leftover roast beef: if still warm, cool roast uncovered in the refrigerator or in a cool room with good air circulation. Then wrap the cooled meat loosely to prevent drying, and keep in the refrigerator. Use in one to two days to enjoy the best eating qualities.

THE LAST NOTE: I invite you to join NAPNSCENTFCO—the National Association for the Prevention of National Safety Council Estimates of Holiday Traffic Fatalities Checking Out.

Julie Sanders, Camille Baggerly On Music Program

Mrs. Max Baggerly and Camille and Mrs. Rue Sanders and Julie attended the National Federated Music Clubs Jr. Day Convention held in Amarillo, Saturday, Oct. 30.

Julie Sanders led the pledge to the flag for the opening ceremony and Camille played a piano solo in the Young Artist's program.

In the afternoon they attended the Bewitching Concert for children given by the Amarillo Symphony.

Mrs. Batton Is Hostess

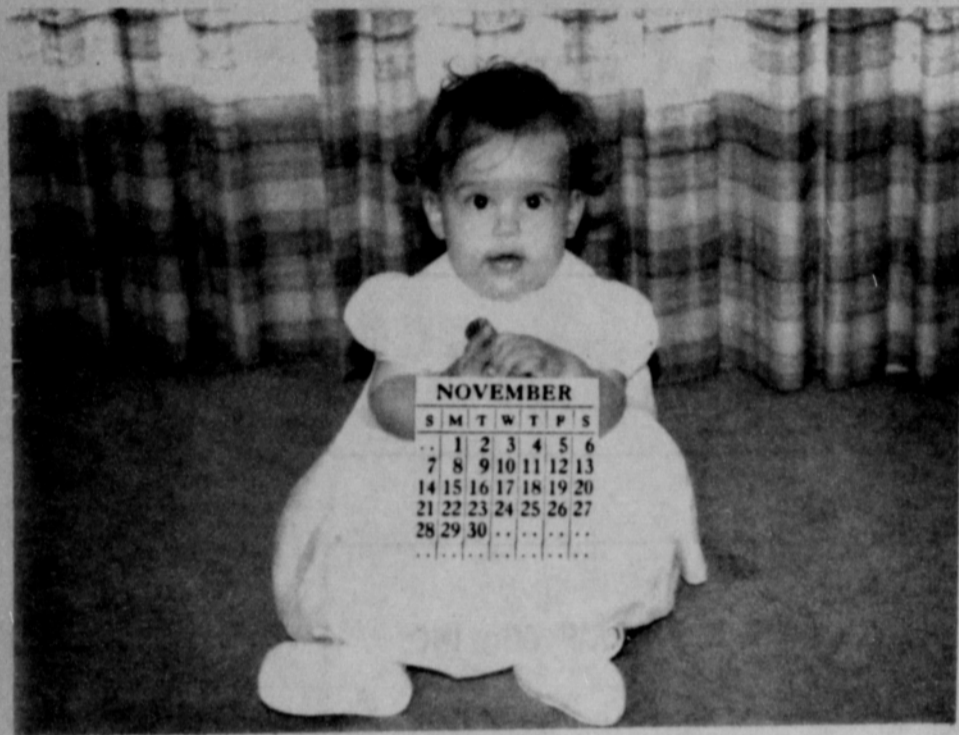
The Canasta Club met with Mrs. E.E. Bratton for their regular Tuesday afternoon meeting. Attending were Mmes. H. W. Bagley, W.W. Cypert, Ben Maize, A.W. Mobley, M. E. Jagers and the hostess.



To Wed—

Mrs. Myreta Elam of Fairfax, Okla. announces the engagement and approaching marriage of her daughter, Kathy Robinson to Max Taylor, son of Mr. and Mrs. Orville Taylor of Spearman. The wedding date will be announced later.

The Plainswoman



WELCOME NOVEMBER!—Little Miss Lea Ann Gibner welcomes November, the Thanksgiving month, for Plainsman readers. She is the eight-month-old daughter of Mr. and Mrs. Peyton Gibner of Spearman. Lea Ann has one brother, Stinson.

Shower Is Given For Mrs. Turner

A bridal shower honoring Mrs. Loyall Turner was given recently at the hospitality room of the First State Bank.

A pink and white color scheme was carried out in the decorations and refreshments. The serving table was laid with a white cut work cloth and was centered with an arrangement of pink carnations. White cake squares decorated with pink rosebuds, coffee, tea, punch, nuts and mints were served.

The honoree, the mothers and grandmothers were each presented corsages of pink carnations.

Mrs. W.R. Greever registered the guests.

Hostesses for the courtesies were Mrs. R.F. Kingsley, Daniel Sheets, Frank Dale, Joe Traylor, Everett Tracy, Don E. Smith, W.R. Greever, W. W. Richeson, Ernest Archer, Bill Brown, Deacon Clement, Nolan Holt, Richard Shedeck, Tom Sutton and Miss Sharon Close.

Circle Meets In Helms Home

The first meeting of the newly organized Training Circle met for their first meeting Wednesday, Oct. 26 in the J.D. Helms home.

Mrs. Helms presided at the business session and Mrs. Florene Devers, W.M.U. president, gave the program on organization of W.M.U.

Eleanor Douglas, co-chairman, had the mission book display and Vicki Adkison read the prayer calendar. Mrs. Douglas also led in prayer for the missionaries.

The circle project was discussed for sending candy and cookies to service boys for Christmas.

Attending were Vicki Adkison, Jane Moyer, Eleanor Douglas, Gary Jones, the speaker Florene Devers and the hostesses.

Mr. and Mrs. Charles Gilliam visited in Hillsboro recently with their daughter Linda who is a junior college student. They also attended the State Fair in Dallas and visited Mrs. Gilliam's parents in Cleburne.

Day by Day

by Day McClellan

You didn't miss the ballgame last Friday night did you? Well, if you did happen to skip this one, I'm sure you've heard it was very exciting every minute from the kick-off to the final whistle.

There's just nothing like the thrill of backing a winner, is there!

After much discussion and reliving each exciting play after the game, we were thrilled even further when we got a long distance call. My brother's team had upset Jacksonville, the number five team in the state, and my Dad called to tell us since area coverage of Texas football scores is rather limited.

I guess Coach Seymour and Coach Davis, in their respective towns, "out-rank the mayor" this week. They deserve a few pats-on-the-back now and then though. Football fans, for the most part, are pretty odd creatures. They jubilantly roar for "our side" when the hometown is winning . . . and just as quickly and loudly renounce the coach for "some dumb stunt" or "the lack of fundamentals" when things aren't going so well.

Having grown up in a coaching and sports-minded family, I'm aware that a coach's life can be pretty trying when his team doesn't win. I'm sure there's a royal family down in Austin who'll agree with that.

And since I'm on the subject of football, I think I might have been just a moment too hasty in laughing (in print) when Texas Tech fans mentioned beating Arkansas. Things look a little different every week, but what you say in print can't be changed once it's down there. That's for sure!

Dotty Jones of Gruver has edited and published an interesting history of most of this county's pioneer families and it's off the press now. A book many of you will enjoy.

There are several campaigns, all needed, going on here now to raise funds for equipment for the hospital.

I'd like to see several clubs or groups unite in some sort of fund-raising campaign for the library building. Not many dollars have been added to it for a long time now. There's probably just as great a need for adequate public library facilities here as for additional hospital equipment if you think of it in terms of growth, inner development and appreciation of some of life's finer things.

That's my opinion anyway. And I'm not belittling the current hospital equipment drives. I just think we are neglecting our town's need for a first class library.

We had a quiet Halloween in Spearman as far as I can tell. Our young people seemed to have had a very gay time without the destructive antics some other towns experienced.

We have some very fine teenagers in our midst. Have you noticed?

I found this little kitchen hint in that same Christian Women's cookbook from which I quoted a recipe a few weeks ago. "A delicious whipped cream substitute is easily made by adding one sliced banana to the whites of one beaten egg and beating until stiff. The banana will completely dissolve.

The substitute for whipped cream is very good on this date pudding. Mrs. W.L. Russell's recipe from the same book.

DATE PUDDING

2 eggs	2 tbsp. milk
1 cup flour	1 tsp. baking powder
4 tbsp. flour	1-10 oz. pkg. dates
1 tsp. milk	1 cup nuts
1/4 tsp. salt	2 tsp. melted shortening

Beat eggs with sugar until light. Stir in flour, sifted with baking powder and salt. Add milk, chopped dates, shortening and vanilla. Bake 20 minutes at 350 degrees in a 4" square pan.

Speech Students Have Program For Spearman Study Club

The Spearman Study Club met Monday evening at the Hospitality Room of the First State Bank with Mmes. Billy Boatwright and Carl Reed as hostesses.

Mrs. Marcus Larson called the meeting to order and presided at the business session.

The program titled "Speaking" was presented by Debra Brock, Donna Ownbey and Cloetta Fullbright of the drama class at Spearman High School. The girls gave special readings and a tape recording was made of each members voice then played back with constructive criticism given by the group.

The serving table was laid with a white cut work cloth centered with an arrangement of white roses. The hostesses

served dainty open faced sandwiches and individual pecan pies to Mmes. Bill Partridge, Bert Sheppard, Ray Martin,

Marcus Larson, Curtis Frances, Troy Sloan, Jimmie Shield-knight, Richard Baxter, Robert Adamson and Kenneth Evans.

"ROUND THE TOWN"

Patsy Kingsley, who attends college at Lubbock Christian, spent the weekend with her parents the R.F. Kingsleys, Saturday evening visitors in the Kingsley home were Miss Carroll Higgins, a college friend and her sister, Miss Linda Higgins, a teacher from Colorado.

Mrs. Kingsley and Mrs. Loyall Turner took Patsy and Carroll back to Lubbock Sunday and visited the college Monday.

Mrs. Coke Cudd of Perryton and Miss Sandra Miller spent Saturday afternoon shopping in Borger.

Mr. and Mrs. R.E. Bradford went to Plainview Friday evening where they picked up their daughter, Sue, who attends Wayland College and all spent the weekend in Dallas. The Bradfords visited their son David and wife and new grandson Eric, who is six weeks old. He is the Bradfords first grandchild and this was the first time they had seen him. While in Plainview they also visited Mr. and Mrs. Rick Ricci, former residents of Spearman.

Mr. and Mrs. John R. Miller and Mrs. Guy Remmy drove to Guymon Sunday afternoon to visit Mr. and Mrs. Oscar Mullins, former residents of Spearman.

Hobo Party Is Given At Helms Home

Mrs. J.D. Helms entertained with a hobo party for her son, Brent Saturday, Oct. 30.

The boys came at 5 p.m. dressed in colorful hobo costumes. The garage of the Helms home was used as the entertaining room where they played various games, had a scavenger hunt, ping pong tournament and bobbed for apples.

Brent decorated his own serving table with red bandana handkerchiefs and centered it with a brakeman's lantern. The sandwiches were wrapped in a napkin and tied to a stick.

A prize was to be given for the best costume but all were so good, all received prizes. Attending were Jimbo and Rex Linn, Randy Reger, Stanley Pendergraft, Steve George, Randy Schell, Randy Hargis and the honoree, Brent Helms.

Mr. and Mrs. Claude Danford of Lamont, Okla. were overnight guests in the Ray Skinner home last week. He is a brother of Mrs. Skinner. They were on their way to Fort Morgan, Colo. to visit their son and family, the Jerral Danfords.

Messrs. and Mmes. Guy Remmy, John R. Miller, Ralph Bynum, Jim Fowler and family, Lee Keys, Mr. Fred Fewin and Mr. Paul Farren attended a retirement dinner at Skellytown Thursday evening of last week. Retiring was G. I. Harkrader Skelly employee. Mr. and Mrs. Harkrader liver at the Kingsmill Plant near Pampa. Approximately 250 Skelly employees attended the dinner.

Mr. and Mrs. Gary Kingsley of York, Neb. have recently moved to Newton, Kans. where he is employed by the Heston Mfg. Co. Gary is the son of Mr. and Mrs. R.F. Kingsley.

Waka Carnival Set Saturday

A carnival is being sponsored by the Waka Parent-Teacher Association Saturday, Nov. 6 at the Waka school. This will be an evening of fun for the whole family. Come at 6:30 for supper and stay for games and fun.

HALLMARK



VISIT OUR STORE & SEE THE ALBUM OF BEAUTIFUL HALLMARK

CHRISTMAS CARDS TODAY.

*beautiful designs

*complete selection

*unique cards to express your greetings in a beautiful way

CHOOSE YOUR CARDS NOW
AHEAD OF THE DECEMBER RUSH

Plainsman Office Supply



THE MORSE CODE

Morse Mustangs won their second district game Friday night at Morse when they trampled the Guthrie team 42-22. The Mustangs are now 2-1 in district play and 4-3 for the season.

In the first quarter the Mustangs scored twice on a pass from Alva Henderson to Eddie Papay and a four yard run by Henderson. Gerald Scribner ran for two extra points.

Second quarter play saw the Guthrie team light the scoreboard with 16 points while the Mustangs tallied six on a run by Bob Womble.

In the third quarter Bob Womble broke for a 28 yard run for the fourth touchdown with Papay scoring the extra points on a pass from Henderson. Alva Henderson ran for seven yards for the fifth touchdown and Gerald Scribner ran the two points. Guthrie made one touchdown in this quarter.

The fourth quarter play produced only one touchdown and this by the Mustangs on a pass from Henderson to Doug McDloy for 20 yards.

Total yardage was Morse, 385, and Guthrie, 387. First downs Morse, 20; and Guthrie, 14.

This Friday night the Mustangs will travel to Bula where they will play a non-district game.

RUMMAGE SALE TODAY

Morse Lions Club is sponsoring a rummage sale this afternoon (Thursday) in the Community Building from 1:30 until 8 p.m.

On Saturday the merchandise will be taken to the Neely building in Spearman where it will be on sale all day.

This is a benefit for the fire station.

HALLOWEEN CARNIVAL HELD
Saturday night the annual Halloween Carnival was held at the Morse School. Each class had booths set up in the gym and various classrooms. The PTA served supper in the school cafeteria.

The climax of the night's activities was the crowning of the queens and kings. This year

Holt News

Mrs. Effie Witcher of Portersville, Calif., and her mother, Mrs. Charlie Davis are visiting relatives Mr. and Mrs. Neal Armstrong at Wichita Falls.

Mrs. Phil Jenkins was hostess for a going away party Wednesday afternoon, Oct. 27 honoring Mrs. Martha Batton. She will visit relatives in Oklahoma City and then fly to Tokyo, Japan to visit a daughter, Frieda La Foe. Gifts were received by the honoree and refreshments were served to Mmes. Jimmy Davis of Spearman, Herbert Kirk, Raymond Kirk, Wesley Jenkins, C.W. Kirk, Bertha Jenkins, Travis Reger, Richard Gaines, Owen Pendergraft, Berda Holt, Phil Jenkins and Maude Rosson.

Mr. and Mrs. Frank Reger of Stinnett were Saturday night guests of their son, Mr. and Mrs. Travis Reger and family.

Mrs. Vertha Jenkins was a weekend guest of her daughter, Mr. and Mrs. Bob Tevebaugh of Claude.

Mr. and Mrs. Richard Gaines and family were Saturday night guests of his brother, Mr. and Mrs. Bob Gaines of Cyril, Okla.

Mr. and Mrs. Robert Janzen and boys, Mr. and Mrs. Jake Lamb of Spearman were Sunday guests of Mr. and Mrs. Bud Jackson of Kelton, Okla. Mr. and Mrs. Johnnie Close are visiting the Jackson's.

Mrs. Phil Bancroft of Borgert has returned home from visiting her brother, Richard Kirk, who has been in the hospital in Oklahoma City. He has improved and is at home.

there were three pairs crowned. Reigning over the grade school were Karis Fleming and Nelson Heron, Junior High king and queen were Kaye Johnson and Travis Reiswig, High school winners were Patricia Henderson and David Johnson.

Other candidates in the grade school were Stan Miner, Kim Brumley, Gail Reiswig, Sam Fleming, Teresa Dortch and Johnny Tenneson. In junior high the candidates were Gail Miner, Gary Papay, Jill Myers and Wade Parks. High School nominees were Suzanne Dixon, Mike Johnson, Mary Lanners and Bob Womble.

BASKETBALL TONIGHT

Morse grade school basketball teams open their season tonight at Morse with a game with Bivins at 6:30 p.m.

4-H MEETS MONDAY NIGHT

Morse Junior Leaders 4-H Club will hold their November meeting Monday night at the school auditorium at 8:00 p.m. Members should note that one must attend at least six organization meetings before he can enter any contest events.

Mrs. Harold Halverson of Pagosa Springs, Colo. has been visiting in the home of her grandparents, Mr. and Mrs. J. H. Davis, and her brother, Mr. and Mrs. Lynn Davis, the past week. Her husband came after her the early part of the week.

The Desmond Kellys and Mrs. Mack Dortch visited with the Corum Dortch's of Stratford Thursday.

Mr. and Mrs. Carson McCloy and family of LaJunta, Colo. were weekend guests of his mother, Mrs. M.W. McCloy.

While in Chicago last week Mrs. Earl Henderson, Mrs. H. B. Parks, Susan Graves and Patricia Henderson had dinner with Mr. and Mrs. David Jamerson and Peggy. David is a former Morse boy who now



BALL OF FIRE--The first headhouse on the McLain elevator turned into a ball of fire when it collapsed about 11:30 p.m. Sunday. The fire was discovered about 11 p.m. and firemen from Spearman, Gruber and Perryton fought it for two hours before bringing it under control.

PLAINSMAN PHOTO

Newcomers To Spearman

Newcomers to Spearman are Mr. and Mrs. Charles Leroy Campbell of 907 S. Townsend.

They moved here from Elk City, Okla. They have two children and he is employed by Jr. Lusby "Cats".

Mr. and Mrs. L.E. Ryan are making their home at 118 N. James. They are retired and formerly lived at Sublette, Kans.

Mr. and Mrs. Robert Lynn Presnell of 905 S. Drexler moved here from Tulsa, Okla. He is employed by B & K En-

gine Service. They have two children.

Mr. and Mrs. Ralph Carl Watson of 215 N. Endicott are new residents from Medford, Okla. They have 3 boys and 1 girl.

Modern Math Course Planned

An organizational meeting for a Modern Math Class will be held Monday night, Nov. 8 after the P-TA meeting in the high school auditorium.

This will be a general course in modern mathematics grades 1 thru 8. Grade school teachers will be instructors for the course.

All interested persons are invited to attend Monday night.

Weekend guests of Rev. and Mrs. Luther Berry and Rennie were their daughter and husband, Mr. and Mrs. Wendell Crittenden of Shawnee, Okla.

School Menu

- MONDAY, NOV. 8
- Meat Balls and Spaghetti
- Seasoned Blackeye Peas
- Buttered Spinach
- Fresh Onion Slices
- Mixed Fruit Cup
- Cornbread-Butter
- Chocolate or Plain Milk
- TUESDAY, NOV. 9
- Salisbury Steak
- Barbecued Green Beans
- Buttered Potatoes
- Cole Slaw
- Applesauce Cake
- Bread
- Chocolate or Plain Milk
- WEDNESDAY, NOV. 10
- Hot Dogs-Chili Sauce
- Buttered Corn
- Western Beans
- Lime Gelatin Salad
- Oatmeal Cookies
- Chocolate or Plain Milk
- THURSDAY, NOV. 11
- Fried Chicken
- Mashed Potatoes
- Seasoned Green Peas
- Combination Green Salad
- Yeast Doughnuts
- Bread
- Chocolate or Plain Milk
- FRIDAY, NOV. 12
- Ranch Burger or Peanut Butter Sandwich
- Vegetable Soup
- Crackers
- Celery Sticks
- One-half Orange
- Butter Cake-Chocolate Frosting
- Chocolate or Plain Milk

FALL STARTS

Here at

CATES MEN & BOYS WEAR

NOW THAT COLDER WEATHER HAS ARRIVED, you'll need new warm weather clothing for maximum style and comfort.

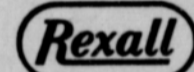
CHOOSE YOUR WINTER CLOTHING NOW FROM OUR SELECTION.

LAY-AWAY NOW for CHRISTMAS!



"Everything for men and boys"

famous



brite set

CASUAL — for informal hairdos and easy-to-manage hair
REGULAR — for hair that needs more "holding" power
HARD-TO-HOLD — for baby-fine or formal hair styles

Brite set Hair Spray sets hair right, keeps it bright! Contains no lacquer, won't flake off. Non-sticky, humidity-resistant.



MONEY-SAVING COUPON

This coupon, when validated by Rexall Drug Store Salesperson, entitles customer who purchases one 14-oz. can of Brite Set Hair Spray at our regular price to receive a second 14-oz. can for only

39¢

(Limit: one 39¢ can to a customer with validated coupon)

Must be validated by _____ (REXALL SALESPERSON'S SIGNATURE)

Offer good until December 5, 1965 only. Void where restricted or taxed by law.

AT OUR **Rexall** DRUG STORE
Spearman Rexall Drug



Lynx Claw

JANIE KIRKLAND, Editor CARLA ARCHER, Asst. Ed. Mr. JOHN HICKEY, Sponsor

Students Comment on Draft Card Burning

Pacifists all across the United States have rallied against and protested the war in Vietnam. The rallies consist of college students giving anti-war speeches and the burning of draft cards.

There are many views concerning this behavior. One student (21) fighting in Vietnam wrote to his parents, "We are fighting two battles against Communism—one in Vietnam, the other in the United States with these senseless demonstrations."

Many of the students and teachers in S.H.S. were asked their opinions on draft card burning. A few of the answers are stated below.

Toni Morgan-It does no good.

Nelda Archer-They have to go sooner or later, this will only cause more trouble. If they don't have any more respect for their country, I don't know whether I would want them to fight for me or not.

Mr. Cherry-It promotes disunity to a country rather than unity. This mob action causes disrespect for the law thus destroying the pride in one's country. If this is allowed, what kind of leadership are we headed for?

Nicki Keyser-I don't think they should burn them. We should stay out of other people's affairs and everyone would be better off.

Carla Archer-If these people think that it will aid the smothering of Communism and help our nation stay free they are poor excuses for Americans.

Mr. Barker-It is utter stupidity. They are rebelling against authority. This is of no value because they don't need draft cards. There is a permanent record on file.

Ernie Vanderburg-They are getting themselves into more trouble. They should go on and serve because they are going to have to anyway.

Harvey Whitfield-They are not loyal to their country.

Dr. Reeves Talks to FFA

Dr. Bill Reeves spoke on "The Importance of Agriculture" for a recent meeting of the Spearman Future Farmers of America.

Nominees for Chapter Sweetheart were Susan Hutchison, Bette Brown, Phyllis Davis, Nelda Archer and Robbie Ownbey.

Math Students' Progress Lauded

Mr. W.W. Smith, one of S.H.S. math teachers, reports that he is proud of the students who

are enrolled in geometry, Algebra II, and Mathematics IV this year. All classes are work-

ing well and are making more rapid progress than their counterparts of a year ago.

There are 36 students enrolled in his geometry class, 37 in his Algebra II classes, and 14 in his Mathematics IV class. Of this number 27 made a grade of 90 or above for the first six weeks. He reports that this is a record of which the students are justly proud and he hopes there are others who join the "90 plusers" this six weeks.

Nelda Archer Named Cheerleader of Week

Nelda Archer, a senior, is cheerleader of the week. This is her second year to be a cheerleader at S.H.S. She has also attended two summers of cheerleading school at S.M.U. in Dallas.

Nelda thinks cheerleading has helped her do her share as a student of S.H.S. She has helped decorate the halls, raised money and served at banquets when needed. Nelda is a credit

to S.H.S. because of her work and determination to help make our school a little bit better.

The first steam-powered water pump designed to fight fires operated in England in 1829. Its debut was met with laughter from onlookers who called it the "steam squirt." Sparks from the smoke stacks of these early horse-drawn fire engines were a fire hazard themselves.

Panel Gives FHA Program

Susan Hutchison, president, presided at the Future Homemakers of America meeting Monday. Bette Brown was program chairman. The program was a panel discussion on "Dating and Marriage". Panel members were: Mr. and Mrs. Joe Granato, Mr. L.L. Laws, Mrs. June Porter and Mrs. Dickie Robinson. Following the program refreshments were served by Linda Edge and Carolyn Coates.

JEST A MINUTE

Some men owe their success to their first wife—and owe their second wife to their success.

Science Fair Set in February

The science department will be sponsoring a science fair again this year, during the last week in February. It will be under the direction of Mr. Barker.

Many students are taking projects to the science fair. Most of the students have already started their projects.

Beginning next week there will be an article on a student about his science project.

More Noise, Please

YORK, Pa. — Silence is golden in most situations, but air conditioning engineers here were asked recently to create more noise on one of their office installations.

Doctors in the Rhode Island Hospital in Providence complained that the air conditioning system was too quiet to assure conversational privacy or to muffle street noises.

The manufacturer complied by altering the equipment to raise the sound level without affecting cooling.

Mason Rudolph of Lehigh Acres, Fla., made his best showing in the recent U.S. Open — his seventh. He shot 290 to tie for 11th place. He won \$1,150.



HALLOWEEN QUEEN - Marty (Mirdle) Jones was crowned Halloween Queen at the Student Council Carnival Saturday night. He is escorted by Dr. Bill Reeves, Superintendent of Spearman Schools Plainsman Photo

'Mirdle' Jones Is Halloween Queen

Saturday night, October 30, was a big night for Marty (Mirdle) Jones. He was crowned "Halloween Queen" for 1965-66 by Lynn Buzzard, Student Council president of SHS. Mirdle's escort was Dr. Bill Reeves, Superintendent. Marty received 10,015 votes. Second place was won by Mike (Maude) Stewart trailing Marty by nearly 2000 votes. Mike was escorted by Gary Faries. The third place winner with a little over 6000 votes was Steve (Samantha) Drake, who was escorted by Phillip Renner. The senior candidate, Clayton

(Clara) Cochran, receiving almost 3000 votes, came in last place. He was escorted by Skipper Robinson.

The Student Council will present to Marty's class, Freshman, one-half of the amount of money he received, which will be fifty dollars.

Now that the Halloween Carnival is over, the Council will begin working on a new constitution for SHS.

None Injured In Accident

A car and a pick-up were damaged in an accident Tuesday afternoon on Highway 15, four miles southwest of Spearman.

The pick-up was driven by Sammy Don Jones and the car by Mrs. J.W. Bullard, both of Spearman.

No one was injured in the accident, but damage to both vehicles totaled approximately \$900 according to officers.

The car driven by Mrs. Bullard struck the rear of the pick-up driven by Jones. Jones was making a left turn off the highway.

Maybe it's called cold cash because so few of us can keep it long enough for it to warm up.

A well-adjusted motorist is one who can enjoy the scenery on a detour.

Sunday Night Soup
Quick Sunday-night supper soup: add milk and diced cooked ham to creamstyle corn and heat to serving temperature.



RUNNER-UP - Mike (Maude) Stewart was runner-up in the Halloween Queen's contest conducted Saturday night at the Student Council Halloween Carnival. He is escorted by Gary Faries. Plainsman Photo

Huge Increase in College Enrollment Seen in Future

CINCINNATI — There may be 5.5 million college and university degree-credit students enrolled in American schools this year as compared with less than 5 million last year.

That was the prediction Wednesday by Dr. Garland G. Parker, University of Cincinnati registrar and dean of admissions and nationally-known authority on collegiate enrollments.

THE PREDICTION was made in the annual preliminary report on a survey made for the educational journal, School and Society. The final report will be made in De-

The number of freshman collegians in 1965-66 may rise to a record 800,000 in the four-year accredited colleges and universities and as many as 1.4 million across the nation as a whole, Dr. Parker said.

"Full-time students command a position of prime importance this year in the collegiate enrollment scene," Dean Parker said. Their number may reach 3,175,000 in the accredited schools and perhaps 3.9 million in all institutions. Last year there were 2,813,328 and 3,441,814 in the same categories."

AMONG SCHOOLS listing full-time enrollees, there are

changes, and 493 increases. The 46 large public universities responding show no decreases, one no change, and 45 increases. The 34 large private universities answering tallied two decreases, two no changes, and 30 increases.

"The bulging birth rate years of 1946 and 1947 account for the human potential out of which the bumper freshman classes of last year and this have come," Dean Parker noted.

AMONG INSTITUTIONS reporting freshmen, there are 66 decreases, 85 with no change, and 417 increases.

"Under the impact of the

surviving from last year's record class and the even greater total of incoming freshmen this year, the nation's institutions of higher education must prepare for much larger numbers in junior and senior levels in the next two years," Dean Parker warned.

"At the same time, on the trial academically will be two more entering freshman classes that will be equal at least to the present one.

"The education of the teeming millions of students now in college and on the way in the next few years is a matter of highest import to the republic and the society which

COUNTY ELECTION RESULTS

	1	2	3	4	5	6	7	8	9	10
	F-A	F-A	F-A	F-A	F-A	F-A	F-A	F-A	F-A	F-A
1	44-28	30-42	42-31	35-36	39-32	44-27	35-36	44-25	25-45	28-43
2	5-7	6-6	10-2	8-4	6-6	8-3	7-5	8-7	6-6	5-5
3	12-9	15-12	9-13	11-11	10-12	13-9	4-18	13-9	7-15	8-13
4	35-33	28-43	32-37	26-44	31-35	38-32	14-52	35-33	15-52	25-36
7	9-4	5-8	9-7	9-7	5-9	5-11	5-10	11-3	2-13	7-7
8	11-9	13-7	13-7	3-17	11-8	8-11	7-12	16-4	9-10	4-16
9	21-6	5-22	9-18	13-15	14-14	24-4	5-23	19-9	12-16	9-16
10	52-37	34-54	52-40	44-49	67-26	64-28	40-51	46-27	34-53	37-51
	189-133	131-194	176-155	144-183	183-142	204-125	117-207	209-117	115-210	123-87

Calendar of Events

- THURSDAY, NOV. 4**
- Twentieth Century Club meets Fine Arts-Mrs. Wesley Garnett Home Science-Mrs. O.C. Holt
 - Regular meeting of Rolling Plains Wagon Train at 7:30
 - Happy Homes HD Club meets with Mrs. Harold Groves
- FRIDAY, NOV. 5**
- Arts and Craft meet with Mrs. P.A. Lyon, Sr.
 - Eastern Star meets
- MONDAY, NOV. 8**
- P.T.A. meets
 - Hansford HD Club meets with Mrs. L.W. Rosenbaum.
- TUESDAY, NOV. 9**
- Young Homemakers Club-Mrs. Kenneth Thomas hostess.
 - Lions Club
 - Short Club-Mrs. Sam Watson, hostess.
 - Music Club-Mrs. Tom Sutton, hostess.
- THURSDAY, NOV. 11**
- Jaycees
 - B&PW meets
 - Rho Rho Chapter meets with Kay Nollner
 - Rainbow girls meet

Salad Supper Honors Rainbow Grand Visitor

A salad supper honoring Mrs. A.G. Coots of Dalhart, grand visitor for the Assembly for Rainbow Girls was held on Thursday evening, Oct. 28 at 5:30 in the Masonic Hall.

The color scheme of gold and white was carried out in the decorations. The serving table was laid with a white lace cloth with an arrangement of gold mums in a white hob-nail vase. On the dining tables were white mum arrangements in gold vases.

The supper was served by Mmes. Cecil Crawford, Ned Turner and Sam Henderson.

Guests were Ceril Batton, Preston Scott, A.G. Coots, Sam Henderson and Mr. and Mrs. Duke Roberts of near Hardesty.

After the supper the regular meeting of the Assembly for Rainbow Girls was held with Cindy Henderson, Worthy Advisor. Initiatory work was

conducted for Linda Roberts and Karen Mathis.

Refreshments of punch and cake were served at the close of the meeting.

Make Sundae Best

Party fare: make-your-own sundaes! Serve vanilla and chocolate ice cream with small bowls of slivered preserved ginger (along with some of the syrup), chopped toasted almonds, chocolate sauce; flaked coconut.

ON TIME

A clock installed in the bathroom as a permanent fixture can be a surprising help in getting to work or school or to appointments on time.

The American Meat Institute reports that the word "barbecue" comes from the Spanish word "barbacoa". This is the name natives of the West Indies gave to the wooden framework they use in grilling smoked meat and fish. French-Canadians borrowed the word "barboka" from the western Indians. French explorers of the Mississippi Valley twisted it into the modern "barbecue".

Mrs. Outdoes Miss In Aids for Beauty

PARIS —Latest statistics reported by France's beauticians reveal that married women use more beauty products than single women. They buy 20 per cent more lipsticks, foundation creams, shampoos and hair laquers.

"The married Frenchwoman knows that she must look attractive to her husband if she is going to hold his attention," explained Francoise Bazin of the Orlane Company. "A wife quickly learns that it requires more to hold a man than to attract him in the first place."

SAFETY HINTS

Don't touch the inside of a wet freezer unit with a wet finger or hand: You may leave skin behind. Don't light a mouth-held cigarette from the flame of the gas burner: You may light more than the cigarette.

TRIVET TRIVIA

For heating muffins, coffee cake or rolls without using the oven, place bread to be heated on a rack or trivet in the bottom of a frying pan, cover with a domed lid, turn gas to low and heat for 15 to 20 minutes.

YEA, TEAM!



All-Americans... Every One!

These men and women are representative of all Community Public Service Company employees—linemen, service men, cashiers, meter readers, engineers, local managers and others. Individually, each does his own particular job. Collectively, they make up the effi-

cient power company "team" that serves you. Away from the job, they have a wide variety of hobbies and interests. But on the job, their main concern is to provide you with the best electric service possible... so that you can work better and live better... electrically!

COMMUNITY PUBLIC SERVICE

Your Electric Light & Power Company



Stop in and see personalized Christmas cards

by **MASTERPIECE** GREETINGS

Top quality, distinctive design, budget-priced and luxury-class cards (and everything in between)...

Plainsman Office Supply

MR. FARMER

With Winter coming on, Now is the time to put in a supply of —

20% 32%

RANGE CUBES

PROTEIN PACKED EQUITY RANGE CUBES CAN MAKE THE DIFFERENCE IN YOUR CATTLE NEXT SPRING —

Order your supply now while there's still time to process and fill orders prior to winter.



KEEP YOUR ANIMALS HEALTHY —

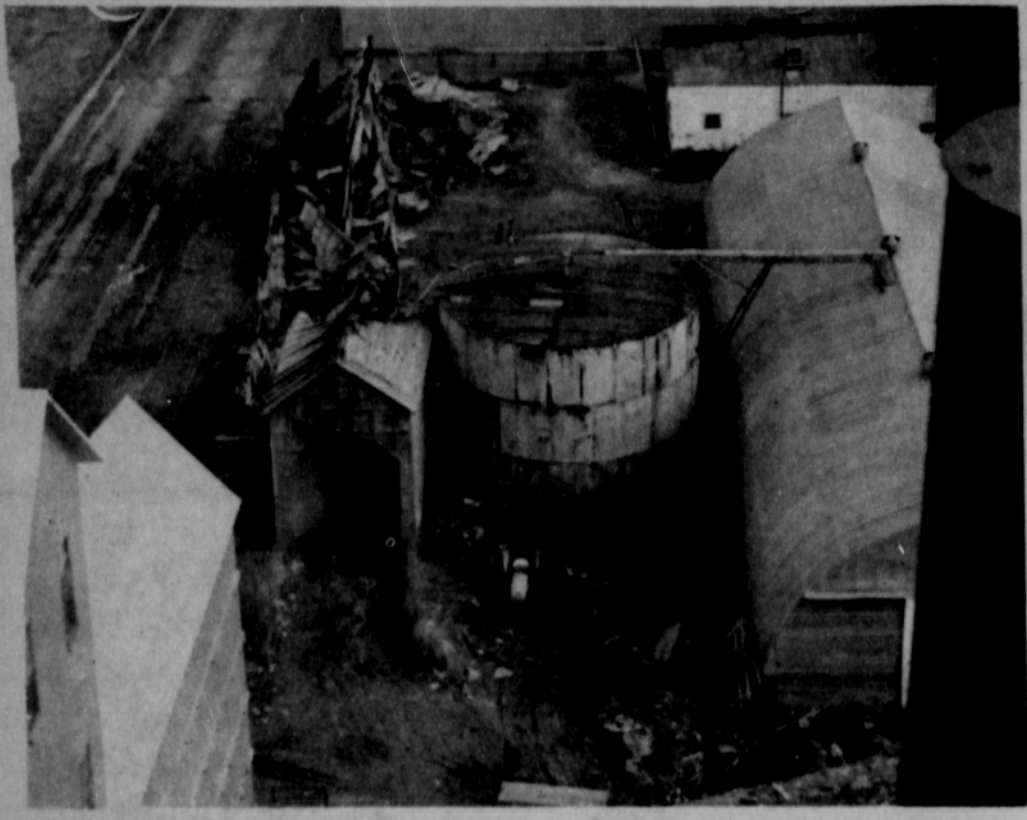
We have in stock Animal Health products...

VACCINES — REMEDIES —

... See Us today For All Your Farm Medical Supplies.



EQUITY



MORNING AFTER- There was just a pile of rubble left the next morning where the McLain Elevator burned Sunday night. The wood and metal building was destroyed in a two-hour blaze. This picture was made from the top of Equity Elevator. Plainsman photo

Funeral Services Held For Mrs. E.C. Hays

Funeral services for Mrs. E.C. Hays were conducted at 2 p.m. Wednesday in the First Baptist Church of Spearman with the Rev. Luther Berry, pastor, officiating.

The pioneer woman died late Monday afternoon in Pioneer Manor in Spearman.

Interment was in Hansford Cemetery with Boxwell's of Spearman in charge of arrangements.

Mary Minerva Shaw was born Jan. 22, 1868, in the Oklahoma Indian territory and moved with her parents to Parker County when a small girl.

She married Ervin C. Hays in 1885 and they moved to Tarrant County before coming to the Panhandle in 1898. They lived at Mobeetie before moving to Old Hansford in 1900.

At Hansford the couple opened the first grocery store in the county. In 1904 E.C. Hays was elected judge of Hansford County and served until 1907. Mrs. Hays operated the store while her husband was in office.

The couple sold their store to a son, Lon, in 1917 and re-

man and Stinnett will be tied for the district title. Stinnett plays Boys Ranch Friday.

Stinnett plays Phillips in the final game of the year and Dalhart will entertain Sanford-Fritch.

Phone 3258 or 2466 to report local news for your Plainsman newspapers.

tired. In 1919, they joined the move to the new townsite

of Spearman. Mr. Hays died in 1936. Mrs. Hays is survived by two sons, Bob and Floyd of Spearman, six grandchildren, four great-grandchildren and two great-great-grandchildren. Pallbearers were Omar Cotter, Floyd Close, W.E. Sparks, Elvin Martin, Roy Wilmeth and P.A. Lyon, Jr.

Lynx Could Win Part Of District Crown

A chance for a share of the district title will be on the line Friday night when the Spearman Lynx meet the Dalhart Wolves in Dalhart at 8 p.m.

Lynx fans are wondering if this recent resurrection of the Lynx is going to be permanent. The team has made more comebacks than Satchel Paige this season.

Before the season started the Lynx were figured as contenders, then were counted out after faltering in the early games. They bounced back for two victories, then collapsed under the Stinnett attack.

They recovered from the Stinnett whipping to upset Boys Ranch and Phillips, beating Phillips at their own game, the long break away run. They turned the track against the favored Ranchers with three starters injured, and against Phillips with two starters not in uniform.

This week two starters are out and will be out the rest of the year. Larry Butts has a back injury and Randy Moore a fractured ankle. Coach Don Seymour says the rest of the team is sound.

A defense that contained Phillips is going to get an even bigger test this week. Dalhart comes at the Lynx with Danny Bush, 205 pound fullback, and Bob Locke at 225 as a half-back. Quarterback Asher Isaacs is a speedster at quarterback and James Langford is a 180 pound wingback.

The biggest Wolves are in the backfield, but Dalhart can match or surpass Spearman in most positions in the line.

The defense is led by middle linebacker Jim Colquitt who is carried on the program at 158.

The offensive forward wall is led by center Alan Newman at 170 and guard Robert Dilworth at 170.

Dalhart has been a ground team all year, grinding out the yards until they can break for a long gainer. All four backs have broke for long runs this year. Spearman coaches report the Wolves have an aerial game when needed.

Spearman will counter with Ken Shufeldt who has become a break-away threat every time he touches the ball. He has broke for four touchdowns in the last two games. Three for 79 to 83 yards and one for 33 yards. Against Phillips he gained 182 yards in 20 carries.

Teaming in the backfield with Shufeldt is fullback Clayton Cochran, a strong inside runner and at wingback Hal Shufeldt. Dave Clement has

reclaimed his starting quarterback job with outstanding play against Phillips in the second half.

Across the front wall will be ends Mike Babbs and Rennie Berry, tackles, Jerry Holton and Ronnie Gilbert, guards

Lynn Buzzard and Mart Brillhart and early in the week Glenn Blodgett was starting at center. He and Skipper Robinson are battling for the job.

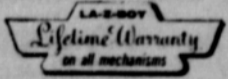
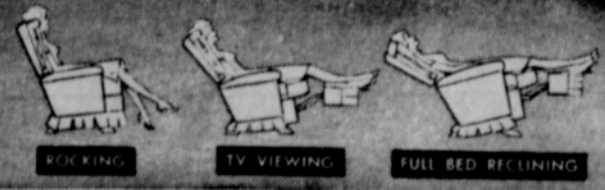
On defense the front four are tackles Cochran and Robinson, guards, Hal Shufeldt and Lusby. Behind them are linebackers Holton, Buzzard and Clement. In the secondary is Babbs, Berry, Ken Shufeldt and Gary Cates.

If Spearman can continue their winning ways against Dalhart and Shamrock, and Stinnett does not falter against Phillips, then Dalhart, Spear-

TV Time is Comfort Time in a LA-Z-BOY®

RECLINA-ROCKER®

The World Famous Reclining Rocker



The World's Largest Manufacturer of Reclining Rockers and Reclining Chairs

THE IDEAL GIFT FOR MOTHER OR DAD. TV time or ANY time is comfort time in a Reclina-Rocker. Want to rock? It's smooth. Want to read? It's comfortable. Want to recline? Go ahead—all the way to full bed. Add high styling for Mom to the luxurious comfort for Dad, and you'll choose the Reclina-Rocker—the magical all-in-one chair.

Boody

FURNITURE CO.

PLAINS SHOPPING CENTER

659-3044

Spearman, Texas

✓ Your NEW DEKALB DEALER

IS
RAY MOORE **TROY SLOAN**
659-2886 659-2954

Your DeKalb Dealer is well-qualified to help you plan a more profitable farm operation with DeKalb Products . . . ready to serve you at all times. Call on him soon.



DEKALB

A Great Name in Agriculture

DEKALB COUNTY, GEORGIA

