

# The SUNDAY Plainsman

YOU ARE CORDIALLY INVITED TO ATTEND THE MINISTERIAL ALLIANCE SPONSORED ANNUAL THANKSGIVING SERVICE, MONDAY, NOVEMBER 21, AT 7:30 P.M. IN THE UNION CHURCH

VOLUME VIII., NUMBER 10

SPEARMAN, HANSFORD COUNTY, TEXAS 79081

SUNDAY, NOVEMBER 20, 1966

## Lynx Open With Win Over Elks

Lynx basketball coach Allen Simpson made his debut here Thursday night as his 1966-67 Lynx opened the season with a 43-38 win over Stratford.

Starting slow, the Lynx fell behind five points before getting on the score board, but were behind only 9-11 at the end of the first quarter.

The score was tied 11, then Spearman pulled in the lead and stayed there the rest of the night, but it was a narrow one at times.

Simpson said he was pleased with the play of the team in its first game. We made lots of mistakes and need improvement in all phases, but the boys are hustling, Simpson said.

Tall Carl Close hit for 16 points on four field goals and eight free shots. He scored from both inside and outside, which was pleasing to Simpson.

Hustling Charles Shieldknight controlled the boards on offense and defense for the Lynx. He scored 13 points on four field goals and five free shots.

Simpson found a ball handler he believes will be able to break the full court press. Steve (Scooter) Jordan turned in two brilliant dribbling performances against the press.

Gary Farles hit six points on three field goals, Benny McCullough had five on two field goals and a free shot, Mike Hendrick had two points and Carroll Day 1.

Donnie Hendrick led Stratford with 13 points.

## Team Comes From Behind To Win 45-41

Spearman's Lynxettes fouled away an 11 point lead in the second quarter, but came back to beat the Stratford Elkettes 45-41 in a thriller here Thursday night.

Spearman rode to a big lead on the early shooting of Barbara Wilde and were ahead 17-11 at the end of the first quarter.

The girls went on to stretch the lead out to 11 points before things began coming apart. Veteran guard Nancy McCullough picked up some quick fouls and had to go to the bench.

A long siege of fouls by the Lynxettes in the second period let the Elkettes close the gap and they were only trailing 26-27 at the half.

In the third quarter, neither team could find the range, but Stratford took the lead and was ahead 32-31 at the end of three quarters.

Barbara Wilde picked up the tempo on the forward end and McCullough rallied the guards as the Lynxettes surged into the lead and held off the scrapping Stratford six.

Wilde turned in one of her strongest performances in scoring 25 points and rallying the Lynxettes. She hit nine field goals and seven free shots.

Shieldknight had 13 points on five field goals and three free shots. Lynn Robinson had seven points.



GROWING BUSINESS - Mrs. Don Wilcox checks one of the 3,000 poinsettias she is growing in the Wilcox greenhouse in the Crawford industrial area. The business started 12 years ago with a cold frame. It just keeps growing.

HOUSE AND GARDEN FOR THE PLAINSMAN photo

## Cold Frame Grows Into Big Business

A cold frame to take care of a few gift plants has grown into a full-fledged wholesale and retail greenhouse business for Mr. and Mrs. Don Wilcox. The couple recently built a 25 ft. by 100 ft. hothouse in the Crawford industrial addi-

tion to give them more room. They have the same amount of space in three smaller hothouses in their backyard in town.

Mrs. Wilcox, who looks after the business, says that 75 percent of her business is wholesale trade, but she does sell some plants retail.

Right now she has 3,000 poinsettias she is growing for the Christmas trade. These, along with thousands of other plants including mums, cyclamen, pansies and others, make the hothouses a riot of color.

In the spring, Mrs. Wilcox changes from flowers to tomato plants.

Last year she grew and sold more than 75,000 tomato plants. These go in individual pots and boxes of 12 plants, to supermarkets all over Kansas. That is where she sells most of her potted plants.

Mrs. Clyde Hacker helps Mrs. Wilcox most of the time and during the tomato packaging time, there are two more women helping.

The Wilcoxes got into the greenhouse business through the generosity of a relative about 12 years ago. A sister-in-law had a greenhouse and was continually bringing them plants.

Mrs. Wilcox got the small 3 ft. by 6 ft. cold frame just to take care of these gifts. Soon she had more than she could use.

After giving them away for awhile, she decided to begin selling the plants. The couple then built a small greenhouse in their backyard, then expanded to two and finally to three.

There was no more space in the backyard, so they moved to the industrial area. As the business continues to "grow" they plan to build more greenhouses, a cinderblock potting and work room and loading area.

Mrs. Wilcox has done most of the growing and delivering in past years, but last year the volume was so large, Don had to help on some of the deliveries to retail outlets.

Mrs. Wilcox sees no limit to the amount of growth for the business. They have been adding customers all the time in Kansas and also there have been new customers in the hot-house tomato business.

Mrs. Wilcox has grown the plants for two new tomato houses in the area.

It is really a business that grows, more than the plants grow.

## Morse Plays Harrold for Bi-District

The Morse Mustangs will meet Harrold on Thanksgiving day, Nov. 24 in Vernon. The game will begin at 2:30 p.m., according to word received from Supt. Johnny Brummett of Morse Saturday morning.

The Harrold team beat Gore to take its district and be eligible to meet Morse for bi-district.

The Plainsman will have a picture and story in the next edition of the paper.

## Yule Decoration Contest Slated

There is \$50 in prize money for the home with the best Christmas decorations, if the home is entered in the Chamber of Commerce Christmas Decoration Contest.

Retail Merchant Committee Chairman Brad Beedy said the prizes this year will be \$25. for first, \$15. for second and \$10. for third place in the contest.

Persons wishing to enter the contest should call the Chamber of Commerce and enter before Dec. 20. Three judges will select the winner that night. No home will be considered if it is not officially entered.

The homes will be judged on the basis of originality, effort and Christmas theme.

Downtown businesses will have a similar contest with the same prizes and same rules.

Beedy urged all merchants to remember that decorations are supposed to be up by Dec. 3 in all the stores. Santa Claus will be here that day to kick-off the season.

There will be a big treasure hunt with merchants all over town giving large prizes to the holders of the right numbers.

## Shieldknight Leads Team with 33 Points

Knock one down and another takes and load and goes. That is the story of the Spearman Lynxettes. They did it all the way to Austin last year and did it again Friday night at Sunray.

Sophomore Marcia Shieldknight went on a rampage to score 33 points and lead the Lynxettes to a 43-34 victory over Sunray.

Senior forward Barbara Wilde

sprained her ankle mid-way of the first quarter, leaving Shieldknight to carry the load. The sophomore came through in fine style, hitting 14 field goals and five free shots for 33 points.

Wilde had two points before leaving the game. Linn Robinson had four and Sandra Shufeldt had four.

The Lynxette guards held the

Sunray six under control and they were never really close after the game started rolling. Spearman was leading 12-7, 24-13 and 31-23 at the quarter stops.

Spearman scored on 16 of 34 field goal attempts for a 47 percent average and 11 of 20 free throws for a 55 percent average. The Lynxettes only committed eight fouls.

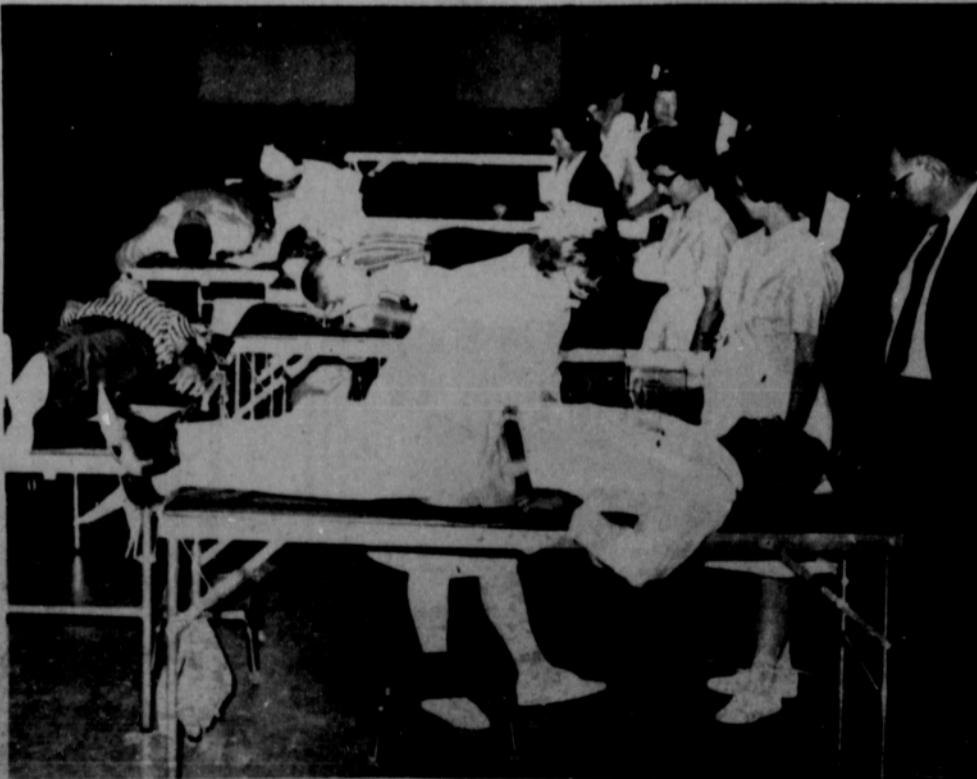
## Lynx Top Bobcats 37-33

After a slow start, the Spearman Lynx went on to beat the Sunray Bobcats 37-33 in Sunray Friday night.

Carl Close was again the top scorer with another 16 points on seven field goals and two free shots. He got new help from Mike Hendricks who hit five field goals for 10 points and Carroll Day who put in three for six points. Gary Farles had two points and Charles Shieldknight had two.

While the tall men were pushing in the points, it was

(Con't. on back page.)



BLOOD DONORS - The tables were full Friday afternoon as Hansford County residents donated blood to the Red Cross bloodmobile here. This blood allows the local hospital to cooperate in the Red Cross blood program.

## Next Edition Out Early

The next edition of The Hansford Plainsman will be published one day early and will be in the mail Wednesday, Nov. 23, due to the Thanksgiving holiday.

Deadlines will be moved up one day due to the early publishing date.



The Hansford Plainsman  
PUBLISHERS INC.  
**TEXAS PRESS ASSOCIATION**  
Member **1966**  
Co-Publishers.....Jim Davis and Burl McClellan  
County-Wide, Independent Newspaper published every Thursday and Sunday at 209 Main St., Post Office Box 668, Spearman, Texas 79081. Second Class postage paid in Spearman, Texas 79081.  
Editor.....Burl McClellan  
Manager.....Jim O. Davis

## HD Members Two Circles Hear Expert Met Together

Members of the Hansford HD Club attended the Consumers Clothing Information Program held recently at the Holiday Inn West in Amarillo. Speakers for the morning were Winston Watson and Paul Sagen who spoke on "Coming Forecasts for Spring" showing fabrics and materials, followed by a question and answer discussion. After luncheon, Miss Muriel Bridge, home economist, spoke on the selection of fabrics, which was followed by a style show by Sears, Roebuck and Co. Attending were Mmes. Herb Howe, L.W. Rosenbaum and Flavel Ayers.

The Betty Morris Circle met Wednesday morning in the home of Mrs. Bob Baley with the Willa Dean Murry Circle as guests. Mrs. Barbara Howe presided at the business session and opening prayer was given by Ernestine Gray. Prayer calendar was read by Lena Stephenson. Frances Kilgore gave the mission study book "Beneath the Himalayas". Refreshments were served by the hostess to members Frances Kilgore, Lena Stephenson, Wanda Widener, Alma Kizziar, Barbara Howe and guest circle members, Magda Garnett, June Conner, Dean Green, Ernestine Gray, Viola Hutton, Margarite Nelson, Peggy Archer, a visitor, Sarah Jane Gooch. After the meeting the Betty Morris Circle took gifts to Pioneer Manor where two birthdays were celebrated.



Mrs. Monty C. Black

## Texas 4-H Members Going to Convention

COLLEGE STATION--Thirty-seven of Texas' most outstanding 4-H Club members will represent their state at the upcoming National 4-H Club Congress, Chicago, Nov. 26-Dec. 2.

Tom Davison, assistant state 4-H leader, said the Texans would be among the 1,600 boys and girls from throughout the nation attending this "number one 4-H meeting." Each of the delegates has earned his or her trip on the basis of outstanding achievements in 4-H over a period of several years, the state leader added. Theme for this year's Congress is the "Pursuit of Excellence." In their general assemblies, the delegates will hear prominent leaders from government, education, business and industry challenge them to set even higher standards for their adult lives.

Receptions, special breakfasts, luncheons and dinners will be held for the delegates. Tours have been scheduled to the International Livestock Exposition, Museum of Science and Industry, Art Institute of Chicago, Field Museum of Natural History and other cultural and educational centers in Chicago. Davison said the Texans

would assemble in Dallas on Nov. 25 and would be luncheon guests of the First National Bank, Robert Stewart, president and R.P. Murphy, senior vice president of the host bank, will welcome the group to Dallas. Immediately following the luncheon, the group will leave by train for Chicago and a never-to-be-forgotten experience, Davison said. They will return to Dallas on December 3.

In addition to Davison, Dr. Ed Schlutt, associate state leader and County Extension Agents Floyd Key, Comanche, and Mrs. Mettie Fae Conner, Lockhart, will serve as chaperons for the trip. The Extension agents were selected on the basis of outstanding 4-H program supervision in their respective counties of Comanche and Caldwell. Both counties are represented by state winners in this year's delegation.

Hallmark cards, when you care enough to send the very best. -Plainsman Office Supply.

Having a party? The Plainsman and its readers would like to know about it. Phone 2466 or 3258 to report local news.

## Charity Class Holds Meeting

The Charity Sunday School Class of the First Baptist Church enjoyed a social Monday night, Nov. 7. The class met in the home of Mrs. Paul Hazelwood and drove to Borg-er where they ate at Sutphens and went bowling afterwards.

Attending were Mmes. Hazelwood, L.C. Craig, Jr., Eddie Gates, Green, F.W. Thomas, Dale Hawkins, Verlin Beck, Ed Dear, Billy Boatwright and Doyle Jackson.

## Ivan's Bowlers Have Party

Ivan's bowling team enjoyed a pizza party Saturday evening in the home of Gertrude Archer.

The group planned a Christmas party which will be Dec. 6 including the Jim Neely bowling team members.

Attending were Ivan Vernon, Elsie Mathews, Jo Larson, Patsy Gates and Gertrude Archer.

## Mrs. Reeves Has Program

The Twentieth Century Club, Fine Arts met Thursday, Nov. 17 in the home of Mrs. J.T. McWhirter with Mrs. Tom Sutton, president, presiding.

A new member, Mrs. Lewis Koerselman was accepted into the club. The program on education; class room living, educational TV and extension program was presented by Mrs. Bill Reeves. The second part, arts and crafts was given by Mrs. R.C. Fisher.

Attending were Mmes. John Allen, Deta Bidgett, George Buzzard, R.C. Fisher, Woodville Jarvis, P.A. Lyon, W.J. Massie, C.U. Pope, D.E. Spoonemore, Bill Reeves and the hostess.

## Marriage Announced

Miss Sharon Lynn Burger and Monty C. Black were united in marriage in a single ring ceremony at the brides home Friday, Nov. 11.

The bride is the daughter of Mr. and Mrs. David Burger of Route 1, Perryton. Mr. Black is the son of Mrs. Ethel Black, 510 South Hazelwood, Spearman.

The bride wore a street length dress of turquoise wool with accents of black and black accessories.

Members of the immediate families were present. Mr. and Mrs. Black are at home to their friends at Route 1, Perryton.

## Box Small Toys

Use a transparent plastic sandwich box for a child's small toy. You can then stack many such boxes and see at a glance what each contains.

## Soak Bowl Covers

An occasional soaking of plastic bowl covers on cool soda water, followed by a rinse, will keep them sweet and fresh smelling.

## Santa Claus is Sales Manager at Gordon's



**10 % OFF**  
**ON ALL TOYS**

From now until Christmas

Nationally advertised toys of every kind on Sale!  
Put yours on Lay-away or charge them Today!

**Gordon's Drug**

## Pumpkin Pie Specials

Visit Our Gift Department

COLORED GLASS  
WARE

GENUINE HANDCUT  
LEADED CUT GLASS



## Electric Gifts

IMPERIAL STAINLESS STEEL  
SHERWOOD STAINLESS STEEL  
CUTLERY SETS

## TURKEY ROASTERS

MANY DIFFERENT SIZES  
MANY DIFFERENT MATERIALS

TOYS

HARDWARE

**SPEARMAN HARDWARE**



# Oil Drillers Pump Brine Underground

New York--For many years, oilmen were in a pickle over what to do with their brine. Now many of them are solving the problem by putting the extremely salty water back where it came from--deep in the earth. In the process they are careful to protect vegetation, fish, wildlife and fresh water supplies.

Oil Facts, published by the American Petroleum Institute, points out that oilfield brine is many times saltier than the

ocean. The nation's oil wells produce close to 6 billion barrels of brine a year. The ratio is two or three barrels of salt water to each barrel of petroleum.

Secretary of the Interior Stewart L. Udall recently congratulated U.S. oilmen on their progress in handling the brine-disposal problem.

In some areas, part of the brine is injected into oil-bearing strata to boost underground pressure. The effect is to increase the amount of petroleum that can be recovered.

Oil Facts also reports that scientists are studying the possibility of extracting from oilfield brine such valuable minerals as chlorine, iodine, bromine, magnesium and lithium.

# Fuel Cells No Threat

New York--Neither fuel cells nor batteries will put the gasoline-powered automobile engine out of business any time soon.

That prediction comes from Oil Facts, published by the American Petroleum Institute.

A story in the latest issue says oil companies and other firms are spending an estimated \$40 million a year on fuel cell research. Meanwhile, automobile manufacturers and others are experimenting with new types of batteries to run motor vehicles.

But practical application of either development to general automotive transportation seems to be years in the future, according to many scientists. And if fuel cells ever do come into everyday use, most scientists believe they will get their power from petroleum.

Mr. and Mrs. Herb Howe were in Pampa Sunday afternoon visiting in the home of their niece, Mr. and Mrs. Don Huffaker.

# Mrs. Sheets Reviews Book

The Mary Martha Circle of WSCS met Wednesday afternoon Nov. 16 at the parlor of the First Methodist Church with Mrs. Roy Jones presiding.

Mrs. Bruce Sheets gave the opening prayer followed by a book review "Ten Fingers for God" by Dorothy Brand.

Attending were Meses, Trindle, Sid Beck Jr., Sheets, Andy Rhodes, H.M. Shedeck, George Buzzard, P.A. Lyon, Sam Patterson, Kenneth Williams, T.D. Sansing, R.E. Lee and the hostess.

December is almost here. . . choose your Christmas cards at Plainsman Office Supply now while our selection is the prettiest ever. We'll add your name in gold or whatever color you like, to add that special touch.

Hallmark Christmas Cards at Plainsman Office Supply.



PATSY KINGSLEY

# Patsy Kingsley Finalist In 1966 LCC Homecoming

Patsy Kingsley, Lubbock Christian College sophomore, was a finalist in the 1966 Homecoming court at LCC November 19.

She is the daughter of Mr. and Mrs. R.F. Kingsley.

A 1965 graduate of Spearman High School, Miss Kingsley is a music major at LCC. She is secretary of the Royal Blue Band and was a finalist for Band Sweetheart. She was runner-up for Freshman class favorite and served as Freshman class secretary. She is a member of Music Masters and Theta Rho social club. She was also a freshman attendant during Homecoming activities in 1965.

In high school she was a member of band, chorus, Future Teachers of American and Future Homemakers of Ameri-

ca. Miss Kingsley was escorted by Harvev Rhodes, Lubbock

# New Dumping Plan For City Dump Yard

A planned dumping procedure and hours for dumping have been established for the Spearman City dump grounds, according to City Manager Darc Foshee.

A man has contracted to keep the dump grounds for the resaleable metal and other things he can reclaim. For this he will work at the dump grounds showing people where to dump and keeping the roads

through the grounds open. During the week the dump ground will be open from 8 a. m. until 12 and from 1:30 p. m. until dark. On Saturday it will be open from 1:30 p. m. until dark and all day Sunday.

A dead animal pit has been built at the grounds and all animals will be put there. These will be burned.

Foshee said no one will be allowed to haul anything out of the dump grounds. Everyone hauling to the grounds will be required to dump where the grounds keeper instructs.

The dump ground is vastly overcrowded and careless dumping has wasted much of the badly needed space.

The city is working to secure more dumping space, but until that is accomplished, cooperation by everyone is needed to make the best use of the available area.

Foshee pointed out that by keeping all the animal carcasses burned, it will be easier to poison the rats and control them at the grounds. Rats have been a big problem for sometime.

# Baptist Attend Workers Meeting

Seven members from the First Baptist Church attended the Canadian Workers Conference Association held at Higgins Monday evening, Nov. 14. Donna Helms, vice president of the association, presided at the meeting. Others attending were Addie Novak, Ernestine Gray, Bro. and Mrs. Luther Berry, Jerry Ralls and Blake Helms.

sophomore, as she and the other two finalists were driven around the college Fieldhouse in antique cars.

This is the tenth anniversary of Lubbock Christian College, a private junior institution which offers associate degrees in 12 different fields.

"We hope you blood donors did not go to the Community Building and let your blood run on the floor. We looked at the calendar wrong in picking out Nov. 18. Friday was the correct day. We apologize for any inconvenience we caused.

# LANDSLIDE

## SALE of COATS

GET READY FOR THAT COLD WEATHER

## WINTER COATS

FUR TRIMED AND UNTRIMED

Reg. Price	Sale Price
\$165.00	\$115.00
\$145.00	\$100.00
\$132.00	\$92.00
\$126.00	\$88.00
\$117.00	\$82.00
\$108.00	\$75.00
\$85.00	\$60.00
\$75.00	\$52.00
\$72.00	\$50.00
\$65.00	\$45.00
\$55.00	\$38.00
\$47.00	\$33.00

COME LOOK OVER OUR COMPLETE SELECTION

# CHAMBERS DEPT. STORE

104 Main Street Spearman, Texas

Say "Thank You" so thoughtfully to those who count on Thanksgiving with

**Spearman Rexall Drug**

PHONE FOR FREE DELIVERY

659-2226 Two Registered Pharmacists



"WE WILL BE CLOSED THURSDAY THANKSGIVING DAY"

**LOW PRICES**  
**PLENTY**

**Thanksgiving**



**78¢**

Dessert Topping

**Dream Whip**

Large 8 oz. Box

**67¢**

Values Good Monday Thru Wednesday Nov. 23

Tendercrust "All Varieties"

**Brown-N-Serve Rolls**

Pkg. of 12's

**4 for 1**

Del Monte Large No. 2 1/2 can

**Pumpkin**

**19¢**

Shurfine Whole Spear

**Broccoli**

10 oz. Pkg. Frozen

**27¢**

Bonds Dessert

**Short Cake**

pkg. of 4s

**20¢**

Viking 25 ft x 12 in. roll

**Aluminum Foil**

**19¢**

Scotts Luncheon Scotkins

**Napkins**

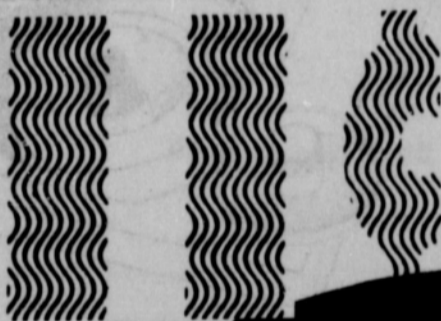
Pkg. of 50s

**19¢**

**HOLIDAY FIXIN NEEDS**

Durkoes, Shredded Large		
<b>COCONUT</b>	14 oz. Bag	<b>49¢</b>
Bonds		
<b>STUFFING MIX</b>	Large Bag	<b>29¢</b>
Quaker White or Yellow		
<b>CORN MEAL</b>	1 1/2 lb. box	<b>23¢</b>
Supreme Honey Graham		
<b>CRACKERS</b>	lb. box	<b>33¢</b>
Par Vanilla		
<b>EXTRACT</b>	8 oz. Bottle	<b>10¢</b>
Schillings		
<b>SAGE</b>	Rubbed or Grd.	<b>17¢</b>
<b>CINNAMON</b>	Schillings 1 -1/8 oz. Can	<b>29¢</b>

**cream cheese**



Large Each

**69¢**

U. S. #1 Russet **POTATOES 10 LB. Bag 59¢**

Large Golden Ripe **BANANAS 2 LBS. 25¢**

Fresh Tender Green Heads **LETTUCE LB. 19¢**

Colorado Ruby Red Rome **APPLES 2 LBS. 25¢**

Poscal Large Stalks **CELERY 15¢ ea.**

East Texas Fresh **YAMS LB. 10¢**

**88¢**

**29¢**

**9¢ Candy**

Fresh Tasty Orange Slice

lb. bag

**15¢**

**BERRIES**

Shurfine Sweetened

Halves Frozen

10 oz. Box

**25¢**



**Cut Rate GROCERY**

**Oilmen Drilling Deeper For Oil and Gas Reserves**

New York--Oilmen are drilling deeper than ever in their search for new oil and gas reserves.

Oil Facts reports that during 1965 a total of 330 drilling

projects in the United States went below 15,000 feet. Their average cost was \$611,000--nearly 12 times the cost of the average oil well. Of the extra-deep holes drilled in previously unproductive areas, 78 per cent were dry.

The deepest well ever drilled anywhere in the world is a Texas dry hole finished seven years ago at a cost of more than \$3 million. Its total depth of 25,340 feet is the equivalent of stacking 17 Empire State Buildings on top of each other.

The world's second deepest hole is another non-productive Texas well. Completed in the summer of 1965, it went down 24,220 feet.

**Walker Rites Are Held In Memphis**

Funeral services for Mrs. E. E. Walker of Memphis, mother of Mrs. R. E. Vaughn of Spearman, were held Friday, Nov. 11 in the First Baptist Church of Memphis with the Rev. Gene Jorgenson, pastor, officiating. Mrs. Walker, the former Daisy Lee Adams, was born in Georgia on April 12, 1881 and moved to Texas with her parents when she was eight years old. She moved to Hall County in 1911.

She was married to Emmett Ernest Walker in 1901 in Smith County. Mr. Walker passed away in 1952.

Mrs. Walker had been a member of the First Baptist Church for over 55 years.

Survivors besides her daughter in Spearman include two sons, Harold (Chesty) of Seattle, Wash., and Emmett Lee of Houston; four other daughters, Miss Zady Belle Walker of Memphis, Mes. Fred Pilcher of Midland, Mrs. R. E. Higginbotham of Wichita Falls, and Mrs. L. C. May of Amarillo; one sister, Mrs. J. A. Stanford of Memphis; 12 grandchildren and four great-grandchildren.

Interment was in Fairview Cemetery at Memphis with Spicer Funeral Home in charge of arrangements.

Pallbearers were L. C. May, R. E. Vaughn, James D. Fanning, Larry J. Sparks, Ned Pilcher, Sr., Ned Pilcher, Jr., Robert Higginbotham, Sr., and Robert Higginbotham, Jr.

**Lets' Share Holiday Recipes**

Would you like to share a holiday recipe with your neighbor in Spearman?

Other Spearman housewives would like a chance to serve the dishes that you have had success with in the past... so we are requesting that you send your favorites for a collection to be compiled during December.

Recipes submitted should be legible with correct measurements, definite temperature and cooking times, and signed by the person submitting them.

Recipes for punch, party appetizers, holiday cakes and desserts, holiday candies and cookies, holiday salads and traditional or unusual favorites for Christmas dinner are requested.

Recipes should be mailed to The Hansford Plainsman, Society Editor, or can be brought by the office. Your recipe contribution will be appreciated by the Plainsman and its readers.

**OH OH MY MISTAKE!**



**Kids! Don't Take A Chance**

**Write Your Order To Santa Claus**

Mail Them In Our **SANTA Mail Box**

**Moms And Dads**

Ask Our Clerks

About The Special **Santa Letters**

**Act Now!**

**Spearman Rexall Drug**



PHONE FOR FREE DELIVERY

659-2226 Two Registered Pharmacists



## Liquid Petroleum Fills 213,000 Miles of Pipeline

New York--The nation's 213,000 miles of liquid petroleum pipelines transport more than 500 million gallons of crude oil and refined products every day.

Oil Facts, a publication of the American Petroleum Institute, says this amount of fuel would fill the cargo tanks of 63,000 tank trucks. Parked bumper to bumper, they would form a line 400 miles long. If all of this fuel were gasoline,

it could fill the tanks of 25 million automobiles.

With more than 100 years of experience behind them, oil pipelines have achieved remarkable records in efficiency, economy and safety, according to Oil Facts. No system for moving freight has a better safety record than oil pipelines. Accidents involving these lines are so rare that they accounted for only three one-thousandths of one percent of the accidental deaths recorded in the United States in the past decade.

Oil pipeliners adhere strictly to a series of safety codes and standards, and spend more than \$70 million a year on maintenance. They also supported federal legislation enacted in 1965, giving the Interstate Commerce Commission authority to set safety standards for oil pipelines.

### Mrs. Trindle Reviews Book For Circle

The Susannah Wesley Circle met Wednesday morning in the First Methodist Church parlor for their regular meeting with Mrs. Bert Sheppard as hostess.

Mrs. Richard Baxter conducted the business meeting.

For the program, Mrs. John Trindle, gave a book review, titled "Ten Fingers For God."

Attending were Mmes. Robert Adamson, Richard Baxter, Wesley Daniel, Ray Martin, Bert Sheppard, Bill Strawn, Winfred Lewis, Larry McIntire, Burl Buchanan, George Collard, Don DeArmond, John Trindle and Ray Messer.

The meeting closed with the WSCS benediction led by Mrs. Messer.

### BILL MILLER IS IN HANSFORD HOSPITAL

Bill Miller, publisher of the Spearman Reporter has been brought back to Hansford Hospital this week, according to his son, Billy. He has been in Veteran's Hospital in Amarillo the past few weeks.

Mr. and Mrs. Jim Davis spent the day in Lubbock Saturday, attending the football game and visiting with Dr. and Mrs. W. C. Davis of Memphis.

### Mrs. Burks Is Circle Hostess

The home of Mrs. Jim Burk was the meeting place for the Oleta Scnell Circle.

Betty Uptergrove, WMU president, presided at the business session with Vicki Adkison reading the prayer calendar followed with prayer by Donna Helms.

Barbara Sampson gave the lesson from the mission study book "Beneath the Himalayas" illustrating her talk with articles showing the animal life of India.

The next meeting will have a "Mission in Action" theme and the group will take fruit to shut-ins.

Attending were Vicki Adkison, Donna Helms, Barbara Sampson, Betty Uptergrove and a guest, Ann Flowers.

## Gift Box MEMO:

December is the longest month of the year for children. When they are waiting for Santa Claus, the days are 10 months long. Help them speed the days along by giving them a novelty advent calendar. The calendars are in many designs and have a window for each day. The child gets to open one window each day and see what surprise is waiting for him. Get one now, so they will have it throughout December.

Something else for the children is the pop-up story book. The illustrations in this pop-up book do just that as you turn the pages and read the stories. Children love them! Wrapping Christmas presents? Well good for you! You will want to put some of our new and very beautiful Christmas tags on your packages. These are imported from Germany. We had a few of them last year and they went very quickly. We have a larger supply this time, but don't wait until too late!

For gifts right now, we have the ever-popular padded sachet clothes hangers that make a hit with everyone. Also we are just unpacking some more Westmoreland colored glass pieces and we have those popular glass canister sets too.

These are some of the new things we have. And, naturally, we have many, many more things for you to choose from.

Stop by to see us today!

### THE GIFT BOX

### Discussion Club Meets At Rectory

The Discussion Club of the Sacred Heart Church met Wednesday evening, Nov. 16 at the rectory with Ralph Bynum, lesson leader. The title of the lesson was "Catholic Children in Public Schools".

Mr. and Mrs. James King were hosts and others attending were Mr. and Mrs. Hugh Banks, Mr. and Mrs. Jerry Morris, Ralph Bynum and Father James Gurzynski. The next meeting will be Nov. 30.

Omar Sutton who attends WTSU spent last weekend with his parents, the Tom Suttons.



## MILK

Shurfresh Half Gallon 49¢  
Gallon Carton 98¢

Bordo Pitted lb. box

## Dates

43¢



USDA GRADE A NORBEST  
**TOM TURKEYS**  
18 to 24 lb. 35¢

USDA GRADE A NORBEST  
**TOM TURKEYS**  
16 to 18 lbs. 39¢

USDA GRADE A NORBEST  
**HEN TURKEYS**  
10 to 16 lb. 45¢

USDA GRADE A NORBEST  
**HEN TURKEYS**  
7 to 10 lb. 49¢

USDA GRADE A SWIFTS PRFMIIM  
**BELTSVILLE TURKEYS**  
5 to 7 lb. 49¢

USDA GRADE A SWIFTS  
**BUTTER BALL TURKEYS**  
7 to 9 lb. 49¢

USDA GRADE A WILSONS  
**Boneless TURKEY ROAST**  
4 1/2 lb. \$4.79

## HAMS

BAR-S BONELESS, DEFATTED NO WASTE FULLY COOKED  
9 to 11 lb. 99¢

SUNKA Y HICKORY SMOKED WHOLE OR HALF lb. 59¢

AF BRAND SLICED LB. **BACON** 79¢  
SHURFRESH SLICED **BACON** lb. 65¢

TASTY BIRD USDA GRADE A **BAKING HEN** 5 to 7 lb. 39¢  
BLUE MORROW-FINE FOR STUFFING 2 lb. Bag **SAUSAGE** \$1.29  
Hot or Mild

Shurfresh "Creamy Rich" 8 oz. Carton

**Whipping Cream** 29¢

Maxwell House lb. Can

**Coffee** 69¢



Maxwell House Instant

**Coffee** 6 oz. Jar 79¢

### Happy Holidays from the JOLLY GREEN GIANT

"Green Giant" Very Young Tender **SWEET PEAS** Tall Can 25¢

"Green Giant" Early Peas with Tiny Imported **PEAS & ONIONS** Onion Tall Can 29¢

"Green Giant" Gold Corn **NIBLETS** 12 oz. V.P. Can 2 for 39¢

"Green Giant" with Red & Green Peppers **MEXICORN** 12 oz. V.P. Can 25¢

"Green Giant" White W.K. **SHOE PEG CORN** 12 oz. V.P. Can 25¢

"Green Giant" Kitchen Sliced **GREEN BEANS** Tall Can 23¢

"Green Giant" Cut Spears **ASPARAGUS** no. 1 Tall Can 29¢

## PECAN MEATS

Kizy Kitchen German-Choc., Banana, Choc. Fudge or Pecan Pralines

**Cakes** each 8

Libbys Select

**Ripe Olive**

Gelatin All Flavors

**Jello** 3 oz. Pkg.

**STRAWBERRY**



**Ice Cream**

Bordens Fancy Round Tub Pack

Krafts Philadelphia

**Cream Cheese**

Mortons "Nutty Rich" Large Eggs



# Waterway To Save Farmers Big Money

WICHITA, Kansas--Hansford County farmers will save an average of \$234,000 a year on wheat shipping costs if river navigation is extended into Central Kansas, a university research team said today.

Dr. F.O. Woodard, head of the department of economics at Wichita State University, said the savings are based upon "the lowest-cost form of transportation available." Navigation could be extended into Mid-Kansas as early as 1985.

Woodard headed a research team which is preparing a study for agencies being asked to make a comprehensive study of land and water resources on the Arkansas River and its tributaries upstream from Tulsa, Okla. The figures will be submitted at a hearing here Dec. 15.

The study shows total savings to wheat producers in just six Panhandle counties would be more than \$75.6 million during a 50-year period. Savings on phosphates shipped into the area would be an additional \$300,700. There would be comparable savings on all other goods and products which can be carried by water.

Don W. Pray, Wichita, president of the Mid-Arkansas Valley Association, said the WSU findings would be included in testimony MAVDA will give at the hearing on the comprehensive study of the river.

"This hearing--and the continuing study we hope will result from it--includes all beneficial uses of the river and its tributaries," Pray said. "Flood control; irrigation; water supply for farms, people and industry; pollution abatement and recreation all will be included," he said.

The study will be carried out by federal agencies under the direction of the Army Corps of Engineers.

Pray said MAVDA now is contacting people in Oklahoma, Kansas and Colorado to ask them to support the study at the hearing.

River improvements will be complete on the Arkansas between the Mississippi river and Tulsa by 1970, according to present timetables.

Pray said preliminary reports indicate full development of the river upstream from Tulsa "will be possible although the answer will not really be known

until the federal study is made." But Pray said improvements including navigation have already been recommended on other rivers in this area. "Engineering techniques have advanced so far that engineers have recommended navigation on the Deep Fort of the Canadian River into Oklahoma City. Yet it has only half the water flow available on the Arkansas River at the Kansas-Oklahoma line."

## Waka P-TA Sets Meeting

The Waka P-TA will have their monthly meeting Monday evening, November 21 at 7:30 p.m. at the school cafeteria.

Mrs. Clyde Yeary, Program Leader, will give a short talk on "The Individual Learner Comes First", the monthly topic. Mrs. Neal Thompson's first and second grade class will give a short skit.

Mr. and Mrs. Art Boese and Mr. and Mrs. Eldon Gurley are on the social committee.

## NEW SHIPMENT

A new shipment of needlepoint has arrived--footstool covers, chair seats, samplers, pictures, purses, luggage straps, and many frame pieces.

Also have many new crewel kits--pillows, pictures, tote bags, perpetual calendars, candle scones, and etc.

The new fall and winter yarn is fantastic--Spinnerin's Nordia & Arly along with Fleisher's Crepe Velaine in luscious winter colors.

For excellent Christmas gifts, there are the Boye Needlemasters and Needlemasters, Jr.; all sizes and shapes of knitting bags--all just in time for Christmas stitching.

## Needlework Nook in Waka

# 20th Century Club Studies Wild Flowers

The country home of Mrs. O.C. Holt was the meeting place for the Twentieth Century Club, Home Science on Thursday afternoon, Nov. 17.

Presiding was president Mrs. Johnnie Lee and the roll call was answered with "A Wild Flower I Remember."

Mrs. Raymond Kirk presented the program titled "Observe the Wild Flowers of Texas". She illustrated her talks by showing slides and displaying many wild flowers from the farm and yard.

Attending were Mmes. Dick Kilgore, Dwight Hutchison, Frank Davis, Ben McIntire, J. R. Stump, Guy Fuller, Fred Holt, Raymond Kirk, Wayne Hutchison, Carl Archer, H.H. Chevalier, Everett Tracy, Johnnie Lee and the hostess.

Want Ads Pay

# Hansford Hospital News

Patients in Hansford Hospital are Dorothy LaFever, Grace L. Patton, Ethel Davis, Randy Washburn, Sue Taylor and son, Sue Davis and son, Paulette Fryear and son, Sandra Collier and son, Elsie Owens, Rhonda Cook, Emma Koechel, Vera McClellan, Eva Holt, Brenda Cotten, Z.T. Harnish, Leonard Mackie, Elsie Trolinder, baby boy Crandall.

Dismissed were David Jobe, Elaine O'degaard and daughter, Marilyn Hughes and son, Venita Martin, Nina Merkle and son.

Noreen Sutton, who is attending International Beauty School in Amarillo attended homecoming last weekend at Goodwell.

Send a Hallmark card when you care enough to send the very best. Plainsman Office Supply.

Americans are using nearly twice as much motor fuel now as they did in 1950, according to Oil Facts. Total consumption in 1966 is expected to average 216 million gallons a day.

The governments of the

free world nations collected an estimated \$26 billion in fees, taxes, royalties, etc., on petroleum operations in 1965. Oil Facts says this is about four times more than the total net income of all free world's oil companies.

## TOO-DRY HOME?

Humidify with an

# APRILLAIRE

AUTOMATIC HUMIDIFIER

CALL: Cummings Refrigeration  
519 S. Hwy 15 659-2721

# TOYLAND Sale

SHOP EARLY--SHOP WITH EASE!

### DOG ACCESSORIES



### BICYCLES BABY DOLLS

### GAMES

### BABY CARRIAGE

### WAGONS TRUCKS

### TRACTORS GUNS





## COLOR TV IN STOCK FOR ONLY \$449.00 UP

PORTABLE TV MAKE A PERFECT PRESENT

### WATCHES

### BILLFOLDS

### GAS HEATERS

### ELECTRIC HEATERS

### UHF ANTENNAS

### POLAROID CAMERAS



### ELECTRIC RAZORS FOR MEN & WOMEN

## CITIZEN BAND RADIOS

COBRA 5 - JOHNSTON - HALLICRAFTER

### POCKET BOOKS 1/2 PRICE

BOOKS FOR TODDLERS AND ADULTS



COME BY AND SEE OUR SELECTION OF GUNS AND GET THAT HUNTING LICENSE NOW SO YOU WILL BE READY WHEN THE SEASON OPENS





## Your Home

★ WILL LAST LONGER

★ BE MORE BEAUTIFUL

When You Protect It With Proved

### REGAL LITE LATEX HOUSE PAINT

## STERLING 12 PAINT

★ Easy Working

★ Long Lasting

★ Low Luster Finish

# White House Lumber Co.

Spearman, Texas



# APPLIANCE SALE

GE SWINGS FROZEN FOOD RIGHT OUT

## REFRIGERATOR

Reg. \$349.95

SALE

**\$277.<sup>77</sup>** with trade



TCF-15-DB

**'No Frost 15'**  
No Defrosting Ever  
Refrigerator or Freezer

GE COPPER TONE WA850 A

Reg. \$279.95 with trade

**WASHER** ----- **\$229.95**

GE COPPER TONE DE 820

Reg. \$229.25

**DRYER** ----- with trade **\$169.95**

One Avocado 19 ft. Reg. \$629.95 with trade

TCF-19-LB R-AV GE REFRIGERATOR

**FREEZER** ----- **\$489.95**

GE 19 INCH WITH STAND

Reg. \$199.95

**PORTABLE TV** **\$139.<sup>95</sup>**

M 402 C

G. E. 12 Inch. Automatic Clock & Radio

Reg. 169.95

**PORTABLE TV** **\$129.<sup>95</sup>**

M 181 A

GE TBF-16-SB AV One Avocado

16 ft. Reg. \$359.95 with trade

**REFRIGERATOR** **\$279.00**

GE TBF-16-SB White 16 ft. Reg. \$359.95 with trade

**REFRIGERATOR** **\$299.95**

GE J-348-B-30 inch FULLY AUTOMATIC Reg. \$399.95

**RANGE** ----- SELF CLEANING **\$319.95**

GE J-327-B FULLY AUTOMATIC 30 Inch.

Reg. \$269.95

**RANGE** ----- **\$189.95**

12 INCH GE PORTABLE TV

REG. \$269.96

**COLOR TV** ----- **\$255.00**

M 213 B

GE 11 INCH INSTANT ON

**PORTABLE TV**

M 156 C

Reg. \$129.95

**\$99.95**



WA-840-B

**GE WASHER**

FREE WITH THIS WASHER A GE IRON

No. 54

Reg. \$269.95

**\$209.<sup>95</sup>**

with trade



- Big family load capacity • Variable Time Dry Control • 3 Heat selections
- Air Fluff Selection • Big capacity, easy-to-reach Lint Trap

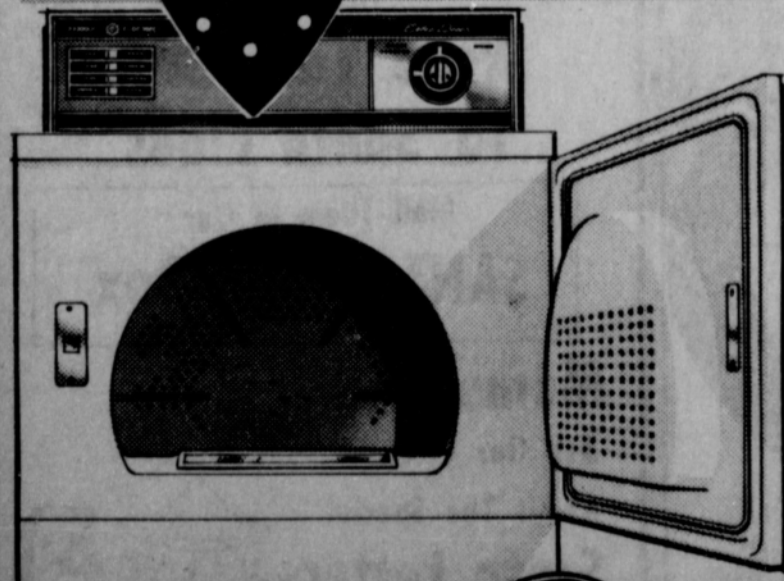
**DRYER**  
REG. \$179.95

SALE  
**\$109.<sup>95</sup>**

with trade

Permanent Press fabrics tumble dry crisply-creased, wrinkle-free!

THIS G-E DRYER IRONS AS IT DRIES



DA-620-



# ANTHONY ELECTRIC



# CLASSIFIED ADS WORK WONDERS

Attend the bi-district game, Morse vs. Harrold, Thursday, Nov. 24, Thanksgiving afternoon at 2:30 in Vernon.

## SO THEY SAY



when it came to discussing the good values on TV and Hi-Fi at Burton's TV. Now she's told everyone "They Service What They Sell".

### FOR SALE

For Fuller Brush products write 2301 Georgia Drive, Perryton, Texas or call 435-4967. 73tfc

Five room house with basement, draperies, deep freeze, one-car garage, one and one-half acres of land, Phone F17-2731 or F1-7-2282, J.E. Sluder, Gruver, Texas. 64tfc

FOR SALE-10' x 43' trailer, 1964 model, \$250 equity, payments \$69.39 mo. 15 N. Endicott, Phone 2310. 99-tfc

1 new 3 bedroom home with 1 1/2 baths. Collard Realestate, ph. 659-2501. 86tfc-c

Industrial lots on Gruver Highway. Cecil Crawford, 659-2409. 61tfc

FOR SALE-Corner bathrub, Virgil Wilbanks, 659-3385. 3-tfc

3 bedroom brick house, 2 baths, fenced--to be shown by appointment. Only call 659-3166, 1605 Barkley, will take trade for equity. 80tfc

80tfc  
WILL TAKE TRADE FOR EQUITY

### Electrolux

The Amazing Electrolux with power nozzle. Rotating brush action cleans all rugs faster--gently fluffs carpet nap. Sales and Service, call Don Seymour at 435-3880, Perryton, Texas. 68-69-p-70tfc

FOR SALE-Ideal, industrial lot 100' x 225' with good fence. Emmett Sanders, Real Estate. 6-tfc

FOR SALE-Lot on Spearman airport, 100 ft. wide, 200 ft. deep. Call 3065 after 5 p.m. 1-tfc

FOR SALE-Lot and barn with water in Crawford addition. Cheap. See Pete Vernon. 104-tfc

FOR SALE-1962 Skyline house trailer, size 10' x 50' with kitchen, living room, 2 bedrooms and bath. This mobile home is in excellent condition and can be seen by contacting George C. Miller, Darrrouzett, Texas. 7-tfc

The stupidest mumbblings in the world are what come out of two people in a store who have mistaken each other for a clerk.

FOR SALE-Dresser with large mirror. Phone 2941. 7-tfc

FOR SALE: All sizes candled eggs. Grade AA. Mrs. W. O. Groves. Phone 659-2247. 9-1p

### WANTED

WANTED-Shop Hand. Apply in person at Permian Corporation. Phone 659-2572. 9-tfc

Farmer from Lockney would like to rent land in this area. Will consider some equipment. Write Robert Carthel, Rt. 1, Lockney, or call 806-OL4-3549. 9-8c

WANTED: Real estate listings. Emmett Sanders, real estate broker. Phone 659-2516, nights 659-2601. 104-tfc

WANTED: Baby Sitter, in my home - Phone 659-2375 between hours of 8:30 a.m. and 2:30 p.m. Mrs. Sheryl Byrd. 8-2c

### LOST

LOST-Liver spotted bird dog. Leather collar, answers to the name of Roger. Strayed Monday night. Phone 2620, 727 Cotter Drive. 10-tfc

LOST-550 lb. white face steer. 4-H Club calf. Lazy 7 brand on hip. Strayed from pen west of town. Contact Louis Schnell. Phone 659-3433. 103-tfc

### SERVICES

SERVICE-Ditches from 3-12 inches, any desired dept. S. D. Jones 659-2809. Harold Shaver 659-3474. 17tfc-c

Christmas Cards, by Hallmark at Plainsman Office Supply, 209 Main.

Amarillo Daily News & Globe Times home delivery. Call 2685. 14tfc

Proven Registered White Toy Poodle Stud Service. Reasonable. Call 659-2082. 104-tfc

WANTED: Irrigated and dry farmland. Cash lease or crop rent. Phone 3063. Spearman. 1-tfc

TO GIVE AWAY-part Collie puppy and part Collie grown female dog. 717 S. Townsend. Ph. 659-2156. 7-tfc

Will keep children in my home. 103 Wanda Drive. Phone 2837. 8-4p

GARAGE & ATTIC SALE-Fri, and Saturday, Nov. 11 and 12, and Fri. and Sat., Nov. 18 and 19, Back door of Ann's Beauty Salon, 303 Main. 7-3c

REDUCE - safe, simple and fast with GoBese Tablets. Only 98¢. Gordon's Corner Drug. 8-12-c

Select your Christmas cards today from our selection of Hallmark cards in a wide variety of choices. Plainsman Office Supply.

### FOR RENT

FOR RENT-One bedroom brick apt. Call 2274. 93-tfc

FOR RENT: Nice furnished apartments. Call 2860, 307 S. Dresen. 9-1c

l; tu

MACIAS CONST. CO. is proud to announce that Mr. Lloyd King has joined their staff to bring his experience as a custom builder of fine and larger homes to the Panhandle area. Complete services from planning through building is now available. If you are thinking of trading in your present home or building call Mr. Lloyd King at 435-5464 or 435-2030 in Perryton.

THE HOME FOR ACTIVE FAMILIES-2019 feet of floor space with all the closets a home needs, two full baths, play room, formal living room and the biggest master bedroom you've ever seen. Three bedrooms, built in appliances. Don't spend another cramped Christmas season. Call Macias Construction Co. Perryton-435-5464 or 435-2030. FHA Loan, lots of money available for homes. 10-12c

### Future Readers of The Plainsman

Mr. and Mrs. Cecil Fryrear are the parents of a son born Nov. 16 at Hansford Hospital. He weighed 7 lbs. 4 1/2 oz.

Mr. and Mrs. Robert Davis are the parents of a son born Nov. 16 at Hansford Hospital. He weighed 7 lbs. 12 1/2 oz.

Mr. and Mrs. Max Taylor are the parents of a son born Nov. 18 at Hansford Hospital. He weighed 7 lbs.

### ZACK FISHERS ATTEND FARM BUREAU CONVENTION

Mr. and Mrs. Zack B. Fisher of Memphis have returned to their home following the Farm Bureau convention in Corpus Christi. Mrs. Fisher was the statewide chairman for the annual Farm Bureau beauty contest and Zack, Hall County Farm Bureau Insurance Agent, won several awards at the meeting.

Both Mr. and Mrs. Fisher are former Hansford County residents. He is the son of Mrs. Helen Fisher of Spearman and his wife is the former Textie Barkley, daughter of Mr. and Mrs. Harry Barkley of Gruver.

### Lynx . . .

(Con't. from page 1.)

Steve (Scooter) Jordan who thrilled the crowd and broke the Sunray full court press with another fine night of dribbling. Sunray took the lead in a very slow first quarter and was leading 6-5 after the first eight minutes. Spearman held them to two points in the second quarter and pushed in eight to lead 13-8 at the half. Spearman got rolling in the third quarter to score 16 points and lead 29-16 at the end of the period. In the final eight, Coach Allen Simpson went to his bench and Sunray closed the gap, but they were too late.

Speculation about life on Mars began after the invention of the telescope.

Since the 1950's, farm productivity has zoomed a spectacular 7.7 per cent a year, the United States Department of Agriculture reports.

### Thanksgiving Service Set Monday Night

Spearman's Ministerial Alliance will have its Unified Thanksgiving service Monday, Nov. 21 at 7:30 p.m. in the Union Church.

The Rev. Wesley Daniel of the Methodist Church will bring the message, Jerry Ralls, music director of the First Baptist Church, will direct the music. The Handbell Choir of the Baptist Church will present part of the program.

The Presbyterian Church will serve refreshments in the Union Church Annex after the service.

The public is invited and urged to attend this annual service, according to the Rev. George Bollinger, pastor of the Union Church.

The services have been held for the past few years, with a large crowd attending each time. Members of the Ministerial Alliance are planning for another good crowd at the service this year.

**5¢ TO 50¢ STORES**

Store Hours: Mon.-Fri. 8:30 to 6:00 & Sat.-8:30 to 8:00

<p>17 oz. Family Size <b>Scope</b></p>	<p>TG&amp;Y PRICE <b>Mouth Wash 67¢</b></p>
<p>Liquid Prell <b>Shampoo</b></p>	<p>60¢ Size TG&amp;Y PRICE <b>47¢</b></p>
<p><b>Prell Concentrate Shampoo</b></p>	<p>60¢ Size TG&amp;Y PRICE <b>47¢</b></p>
<p><b>Lilt Home Permanent</b></p>	<p>\$2.00 Value TG&amp;Y PRICE <b>\$1.27</b></p>
<p><b>Lilt Special Home Permanent</b></p>	<p>\$1.69 Value TG&amp;Y PRICE <b>99¢</b></p>

**White House Lumber Co.**

Building & Plumbing Supplies

Phone 659-2818  
306 Davis

**Tommy Gooch Agency**

Farm Bureau Insurance

Spearman, Texas

**Cummings Refrigeration**

Heating  
Air Conditioning  
Sales & Service

Specialist  
**659-2721**  
Spearman

For Your Convenience  
We now have  
**ICE**

L. D. Stegg  
Top Mechanic

**Simmons CHEVRON SERVICE**

Loren Simmons  
659-2586  
Plains Shopping Center

**RON'S PLAN SERVICE**

Residential and Commercial  
1817 Colgate in Perryton  
**PHONE 435-5287**

**LET US HELP YOU DESIGN YOUR HOME**