

HANSFORD LIBRARY
120 MAIN ST.
SPEARMAN, TX.

THE Hansford PLAINSMAN

24 hr. prayer
service 659-2911

Volume 17, No. 22

The Hansford Plainsman, Spearman, Texas 79081

Sunday, April 6, 1986

Valley View Signs Agreement

KRDF Radio Thon
April 10, 1986
See Sunday paper
for further de-
tails.

Colo. River Authority

The lower Colorado River Authority today announced the signing of an agreement with a small North Texas producer to bring Electricity to the City of Austin.

Valley view energy corporation of Dallas will transmit its electricity part of the way to Austin using L-C-R-A transmission lines.

Valley View is building two 50-Megawatt plants in the vicinity of large feed lots near Hereford and Gruver. The plants will use cattle manure as boiler fuel and will supply Austin within 100-Megawatt capacity for 30 years.

Southwestern Public Service and Valley View Energy Corp. have inked an agreement allowing electricity generated by Valley View's two planned manure plants in the Texas Panhandle to be transmitted on SPS lines.

Valley View of Dallas plans to construct 50,000 kilowatt, manure-fueled power plants at Hereford and Gruver to generate power that will be used by the city of Austin. Both units will be built near cattle feedlots.

"This is the first of several agreements we need to sign to deliver power to Austin," B.R. Farris, Valley View spokesman, said Wednesday.

Construction is expected to begin in Hereford "possibly in February and no later than April," he said.

Initially, the Hereford plant was scheduled to be operating by October 1986, but Farris said that has been pushed back to late 1987.

The Gruver plant is expected to be completed four to six months after the Hereford plant, he said.

The agreement, the first of its kind by SPS for transmitting and wheeling power owned by another generator, was hailed Wednesday by SPS President Bill Esler as "another milestone in Southwestern's ongoing support of alternative-energy generation projects."

It is also the first wheeling contract signed by Valley View, which is spending an estimated 100 million to build the two plants in the Texas Panhandle.

Under the agreement, SPS will transfer Valley View's power to facilities owned by Public Service of Oklahoma near Vernon. In turn, the energy will be transmitted to Austin through a direct-current inter-connection and a string of other utility company lines.

Esler said Valley View is paying a "fair wheeling rate" for use of SPS transmission lines, and accord that took several months to reach.

In September, the two companies hit a blockade when officials at Valley View contended SPS was dragging its feet in the negotiations. At the same time, SPS argued Valley View was causing the delay.

Nina Hendricks named Fire Person of the Year



Roby Schaeffer Vicki Bullard Nina Hendricks Gallan Coates Bill Porter

Nina Hendricks was named as "FireFighter of the Year" in Spearman Thursday evening.

Mayor Ralph Blodgett presented Nina with a plaque and then thanked her and all of the Firemen for the outstanding service to our community.

Also receiving patches for outstanding service in the Spearman Fire Department were; Roby Schaeffer, Vicki Bullard, Nina Hendricks, Galan Coates, and Bill Porter.

Chief Ronnie Antelek presided at the meeting Thursday night.

Mayor Blodgett went ahead to thank the firemen for their Ambulance Service as well as their fire fighting ability.

The Firemen answered the call at Hansford Manor this week, which turned out to be a faulty fire alarm

Immunization Clinic

Immunization Clinic offering vaccines that give protection against several childhood diseases is scheduled for April. Protection is against Polio, Diphtheria, Lock Jaw (Tet-

anus), Whooping Cough (Pertussis), Measles, Rubella, and Mumps. In Spearman - Spearman Elementary School, April 7, 2-4 p.m.

There will be no charge.

Proclamation



Mayor Blodgett - Virgil Floyd

"Senior Citizens Week"

April 6 - April 12, 1986
To The Citizens of Spearman, Texas:

Whereas, it is of importance that the City of Spearman, Texas, show recognition and appreciation to the SENIOR CITIZENS of our City;

Whereas, the GOLDEN SPREAD SENIOR CITIZENS CENTER has served the senior citizens of Spearman for the past several years;

Whereas, the City of Spearman is proud to support the GOLDEN SPREAD SENIOR CITIZENS CENTER and the annual radiothon in a fund raising drive to support the many worthwhile activities and projects of the center;

Now, Therefore, I, C. Ralph

Blodgett, by virtue of the authority vested in me as Mayor of Spearman, hereby proclaim April 6 through April 12, 1986, as

"SENIOR CITIZENS WEEK" in and for the City of Spearman, and I do hereby urge all citizens to give full support as they have done so generously in the past to the GOLDEN SPREAD SENIOR CITIZENS CENTER.

Given Under My Hand and Seal of Office this 3rd day of April, 1986. In Witness Whereof, I have hereto set my hand and caused to be affixed the great seal of the City of Spearman, Texas.

Dated the third day of April, Nineteen Hundred and Eighty-six.

Mayor C. Ralph Blodgett

Election Today

City Elections for the City of Spearman will be held Saturday, April 5, 1986. A Mayor and Two Aldermen will be elected for the City of Spearman. All three candidates are unopposed. C. Ralph Blodgett is running for Mayor and Jim Nicholson and Ed Garner are running for Alderman.

In the School Board race five candidates are running for three positions on the Board. The ballot will list the following; Tom Latta, Robert Queener, Jr., Charles Shieldknight, Dennis Nelson, and Craig D. Schumann.

The Election will be held at the High School in Spearman with the voting boxes opening at 7:00 a.m. and closing at 7:00 p.m. Both City and School Elections will be held at the School.

RadioThon

K. R.D.F.-F.M. Will broadcast The Annual Golden Spread Senior Citizen's Radiothon, from the center at 14 S. Haney, April 10, 1986.

Local talent will be presented throughout the day. Volunteers will answer the telephones, and pickup donations. All proceeds will be used to cover operational costs at the center.

Tune in or come by Thursday, April 10th starting at 9:30 a.m. for details of activities & services of the center, plenty of coffee and cookies will be waiting for you. We appreciate your support in the past years and hope for your continued assistance.

Hospital

Patients in the Hansford Hospital are: Bonnie Patterson, Mary Ayers, JoAnn Hazelwood, Haylen Russell, Dennis Monk, Bryan Dudley.

Dismissals are: David Arrington, Andy Rhodes.

Scout Sale: April 5th

Starts at 8:00 a.m.
Scout Hall - YMCA
All Proceeds go to Scouts.
Building Supplies will be sold. These supplies were kindly donated by Roscoe Nelson. Some of the supplies include; Doors, windows, and other excess building supplies.

Bonds Sold for Manor Addition



It will take approximately one year to complete the project. At the completion, we feel that Hansford Manor will be an outstanding asset to our community and to the residents of Hansford County.

Pictured above is an overall view of the existing facility and the proposed expansion.

The new building will contain 15,312 square feet and 2,171 square feet in the remodeling of the existing facility.

gin in May, according to Hospital officials.

In many ways our facility will be a pace setter for this area. We will be capable of offering "suites" to our residents who request such. The suites are designed primarily to accommodate residents that need only minimal supervision, assistance with medications or diets, or only the assurance that licensed medical personnel is available, if needed, 24 hours per day.

BULLETIN:

The Hansford Hospital board sold the bonds for the new addition to the Hansford Manor for 7.196755% Construction on the new addition will be-

WEATHER

Date	Hi	Lo
1st	62	44
2nd	79	44
3rd	68	39

Catacomb Service



Allen Mires, president of the United Methodist Youth Fellowship, by cross built by the youth

Wednesday, March 26, a group of United Methodist Youth along with some Baptist friends celebrated Easter with a catacomb service. This service gave the youth the opportunity to in some ways reenact the secret worship of the early Christians under Roman persecution.

The group met at the United Methodist Church and were given instructions of how to find the transportation to the catacomb. Armed with the first clue, the youth were sent out with warnings of not to get caught and not to tell anyone where they were going! Clues took the youth all over town from Main Street, to the "drag", to homes of friendly Christians. Finally, exhausted but smiling, the youth found the awaiting vehicles which traveled a far distance to the "cave". After the treacherous journey over steep,

narrow roads and a rocky climb by candlelight, the group arrived safely.

After arrival, the group sang together and recalled the crucifixion of Christ as told in the Gospel of Mark. After meditation on the sacrifice that Jesus had made to make each of us his own, the group shared in the ritual of ashes. In this ritual, the individuals were signed with a cross on the forehead in ashes and charged to "Remember whose you are".

The United Methodist Youth and counselors Frank and Kitty Edwards, and Stephen and Susan Poole sincerely invite any high school youth interested to visit the group and be a part of its fellowship. The UMYF meets on Sunday evenings at 6:00 p.m. at the First United Methodist Church.

Chamber Chatter

By Cora Queener

OFFICIAL PUBLICATION OF THE SPEARMAN CHAMBER OF COMMERCE, APRIL, 1986.

Chamber chatter by Cora
Well people, April is half way gone and I'm late again with the news from your Chamber of Commerce. I truly hope you'll forgive me when you've finished this chamber chatter.....

April 1. Mr. Bill Metcalfe, Project Manager for (Valley View Energy and Mr. Jim Harvey, General Manager for Daniel Construction Co., visited with your Chamber manager and members of the Industrial & Economic Development Committee at the Chamber office. This meeting's purpose was to see how the Chamber could help Valley View 9 Daniel Construction and vice-versa. Construction should begin about Sept. 1. It will take approximately 18 mo. to build the plant, and at the peak of construction some 200 people will be employed. Mr. Harvey assured us that during all phases as many local people will be employed, this figure does not include haulers. Daniel Construction will be sending the Chamber a "man power projection" list by crafts that will be needed and used during and after construction is completed.

THE CHAMBER OFFICE IS NOW WORKING ON COMPIING A "BUSINESSES AND SERVICES" DIRECTORY. WE NEED EVERY SUPPLY HOUSE--ELECTRICIAN--WELDER, ETC. IN OUR AREA TO BE IN THIS DIRECTORY. Also, in the very near future, we will be putting together a "package" for every employee that is hired for this project, to be included: information on housing, schools, churches, entertainment, banking, motels, food, stores, etc. FOLKS, THE Chamber can't do this by ourselves, WE NEED YOUR HELP. NOW, SPREAD THE WORD and CALL US. Let's prove why we feel SPEARMAN IS SOMEPLACE SPECIAL!!!! For any craftsman or business interested in finding out if Daniel Const. can use your services call me... I've got the name and address of the purchasing agent for Daniel Const., and I'll be happy to give it to you, all you 'gotta do' is send them a letter and let them know what services/products you have to offer, if you have a house/apartment for sale/rent, WE NEED TO KNOW, NOW. If you can't tell by now, I'm

excited about this project, it will be super, great, fantastic for Spearman.....

April 9----This year the Chamber of Commerce and the Rotary Club are co-sponsoring CAREER DAY. Twenty-nine consultants will be at our school to help the high school students learn more about careers they've shown an interest in. Mr. Craig Timberlake will be the key-note speaker. Lunch will be catered by Ivey's Hungry Cowboy at the Extension Homemakers Clubroom.

April 16----Hansford Roundup Meeting. This celebration is sooooo important to Hansford County, come to this meeting and see what's goin' on.

COMMUNITY REVITALIZATION COMMITTEE: Jim Murray, Chairman & committee members Lois Shieldknight, Muriel Boyd, Richey Thompson, Robert Elliott met Apr. 2. The ADOPT-A-TREE Project will continue this year. We need more trees! Last year 29 trees were planted. The brochures will be mailed shortly so we can have the trees planted--National Arbor Day, April 25. For those of you who planted a tree last year in memory of.. or in honor of.. our plaque tree is now "under construction." Hopefully it will be completed before we start this years project. In conjunction with the State of Texas, this committee is working on a cleanup campaign "Don't Mess With Texas", more details in the near future.

To those of you who missed our membership breakfast, on March 17, you missed great food (thanks Pete Fisher), Celebrate 9 (thanks Johnny Miller & Celebrate), a "first appearance" by Miss PCB (thanks Linda Butt), and just a good 'ole time. Chamber President, Mike Cudd, welcomed 49 new members into the Chamber "family" (we added #50 last week!) Membership in the Chamber now stands at 180 - business and individual. We do plan on having another "get together" soon.

The Agricultural Committee - hosted a "Farmers Breakfast" - March 20, for about 40 farmers. MARTHA MCGREE can bake the best biscuits! Mr. Cluck spoke on options and Dr. Thomason spoke on alternate crops for our area.

Sorry this newsletter took up more space than usual, but this stuff is really important for all of you to know about.....

Until the middle of next month.
Cora

CITY OF SPEARMAN AGENDA TUESDAY, APRIL 8, 1986 7:30 P.M.

1. PLEDGE AND INVOCATION.
2. CONSIDERATION OF THE MINUTES OF REGULAR CITY COUNCIL MEETING HELD ON MARCH 25, 1986.
3. CONSIDERATION OF ORDER DECLARING THE RESULTS OF THE 1986 CITY OFFICIALS' ELECTION HELD APRIL 5, 1986, AND CANVASSING THE BALLOTS OF SAIDD ELECTION.
4. ADMINISTRATION OF OATH OF OFFICE TO THE MAYOR AND TWO CITY ALDERMEN.
5. CONSIDERATION OF REFINANCING THE LEASE PURCHASE AGREEMENT FOR THE T-HANGERS LOCATED AT THE

MUNICIPAL AIRPORT TO PROVIDE FOR A LOWER RATE OF INTEREST.

6. CONSIDERATION OF MONTHLY FIRE, AMBULANCE, POLICE, MUNICIPAL COURT AND ANIMAL CONTROL REPORTS.
7. CONSIDERATION OF MONTHLY BILLS PAYABLE, CURRENT CASH POSITION, AND REVENUE EXPENSE REPORT.
8. OTHER.
9. ADJOURN.

JIM MURRAY, CITY MANAGER
I CERTIFY THAT THE ABOVE NOTICE OF MEETING WAS POSTED ON THE BULLETIN BOARD OF CITY HALL ON APRIL 4, 1986, AT 10:30 A.M.

Elem. & Jr. High Menu

HIGH SCHOOL MENU APRIL 7--11

MONDAY, APRIL 7
SUBMARINE SANDWICH
SALAD BAR
TATOR TOTS
SWEET RELISH
CHOCOLATE CAKE
MILK

TUESDAY, APRIL 8
STEAK FINGERS
BAKED POTATO
SALAD BAR
HOT BREAD
FRUIT CUP
MILK

WEDNESDAY, APRIL 9
HAMBURGER/BUN
FRENCH FRIES
SALAD BAR
PICKLE/ONION
CINNAMON ROLL
MILK

THURSDAY, APRIL 10
2 TACOS
SALAD BAR
PINTO BEANS
SOPAPELLA
HONEY
MILK

FRIDAY, APRIL 11
QUICK CHIC/BUN
ONION RINGS
SALAD BAR
COOKIE
MILK

ELEMENTARY & JR HIGH APRIL 7--11

MONDAY, APRIL 7
SUBMARINE SANDWICH
TATOR TOTS
PORK & BEANS
BROWNIE
MILK

TUESDAY, APRIL 8
STEAK FINGERS
POTATOES/GRAVY
DICED CARROTS
FRUIT CUP
MILK

WEDNESDAY, APRIL 9
HAMBURGER/BUN
FRENCH FRIES
PICKLE/ONION/LETTUCE
COOKIE
MILK

THURSDAY, APRIL 10
TACO PIE
PINTO BEANS
CHOPPED SPINACH
RAISIN
MILK

FRIDAY, APRIL 11
CHICKEN PATTIE/BUN
SHREDDED LETTUCE
WHOLE KERNEL CORN
CINNAMON ROLL
MILK


Markets

Wheat	\$2.82
Milo	\$3.95
Corn	\$2.70

I have enjoyed serving this community as a member of the Spearman Independent School District.

I have tried to represent the views of the community and taxpayers concerning the quality of our school system and the use of tax dollars. I will appreciate your support and vote

April 5, 1986. Sincerely, **Tom Latta**



Tom Latta
President

Pd. Pol. Adv.
Tom Latta
1101 Barkley
Spearman, Texas



Over 125 dozen Easter Eggs were hid by the Moose Lodge at their Annual Easter Egg Hunt in Spearman Saturday.



The Four and under group at the Easter Egg hunt were; Brett Widener, Mistie Mize and Richard Varnon. The Easter Hunt was last Saturday, March 29th.

ACCOUNTANT - OFFICE MANAGER

Opportunity for a dedicated professional with accounting degree

College Degree Required

2 (two) years Experience

Computer Experience Helpful

Agricultural Experience Helpful

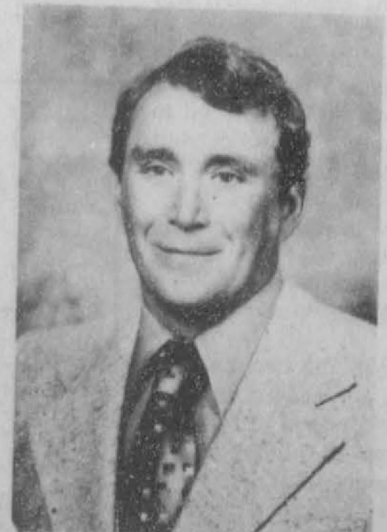
Compensation Commensurate with experience and abilities.

SEND RESUME TO LOCAL NEWSPAPER

The Reporter
Box 458
Spearman, Texas 79081

It is my desire to continue to serve Spearman Independent School District as a trustee on the Board.

I would appreciate your support and vote on April 5th



Charles Shieldknight

Fd Pol Adv.
Charles Shieldknight
P. O. Box 36
Spearman, Texas

BUY, SELL, TRADE OR RENT THROUGH THE CLASSIFIED ADS

**Call
659-3434**

SERVICES

New to area?
Give us a try
Call your local
USED COW DEALER
As soon as Possible
659-3544
659-3545
1-800-692-4043

MONUMENTS
Save Agents and
Undertakers Profits

If it is inconvenient for you
to visit our large display please
phone collect (405) 327-0626 or
write and we will call on you.
**ALVA MONUMENT
WORKS, INC.**
Alva, OK 73717

NOTICE
Wallace Monument Co.
Monuments, Curbing,
Grave Covers
Local Representative
LEONARD J AMESON
Spearman, Texas
35s-rtm

**OSGOOD
MONUMENT CO.**
Amarillo, Texas
Dealers of Rock of Ages
Granite as well as all colored
granites, marbles and bronze
memorials.

represented by
**BOXWELL BROS.
FUNERAL HOME**
519 S. EVANS
659-3802

JEAN E. SHOTTS
Attorney & Counselor at Law

wishes to announce
New Office Hours
at 410 Davis Street
Spearman, Texas 79081

Telephone
(806) 659-2939

Office Hours:
Tues: 1:30 to 5:00
Thursday: 9:30 to 5:00

PUBLIC NOTICE

WEIGHT WATCHERS meets each
Monday at 6:00 p.m. at the Home
Demonstration Building, Spear-
man, Texas.

Tops Chpt #1245 SP

TOPS Take Off Pounds
Sensibly. We will meet
Thursday at 7:30 at
YMCA

PANHANDLE CRISIS CENTER
101 S. W Forth, Perryton, Texas
79070, 806-435-5008, 806-435-5013.
Help is available at no charge for
domestic violence and sexual assault.
Call Panhandle Crisis Center, receive
support during a difficult time.
Counselors on call 24 hours a day.
Call for help.
19-rtm-nc

WANTED

EASY ASSEMBLY WORK! \$600.
00 per 100. Guaranteed Payment.
No Experience/No Sales. Details
send self-addressed stamped enve-
lope: **ELAN VITAL -5901 3418**
Enterprise Rd., Ft. Pierce, FL
33482
15-24tp

Own your own Jean-Sportswear,
Ladies Apparel, Childrens, Large
Size, Petite, Combination Store,
Maternity, Dancewear, Accessor-
ies. Jordache, Chic, Lee, Levi,
Izod, Gitano, Tomboy, Calvin
Klein, Sergio Valente, Evan Pi-
cone, Liz Claiborne, Members
only, Gasoline, HealthTex, Over
1000 others. \$13,300 to \$24,900
Inventory, training, fixtures,
grand opening etc. CAN open 15
days. Mr. Louglin (612) 888-6555.
22s-1tp

Open your won beautiful discount
shoe store. Ladies-Childrens-
Mens. Nationally known brands
Liz Claiborne, Evan Picone, 9
West, Amalfi, Nike, Old Main
Trotter, Naturalizer, Famolare,
Adidas, Converse, Andrew Gel-
ler, Gloria Vanderbilt and many
more. \$21,900.00 to \$39,900.00
includes beginning inventory-
training-fixtures-grand opening
promotions and round trip air
fare. All first quality merchand-
ise. Call today. Prestige Fas-
hions 501-329-2362.
22s-1tp

REAL ESTATE

Credit Problems?
Down/Payment Problems?
For sincere help call 381-1352 call
collect Alliance Homes Amarillo.

**TAKE UP PAYMENTS ON TWO
AND THREE BEDROOM HOMES.**
Qualify by phone. Call 381-1352,
Call Collect. Alliance Homes of
Amarillo.

For Sale: 3 Bedroom Brick home on
large lot. 2,190 Sq. ft. 811 S.
Bernice Call 659-2285 or 659-3703.
20S-rtmC

FOR SALE: Well irrigated, 320
acres, near Cruver. Modern 3
bedroom home with fireplace good
level dry land farm, all cultivated.
Delano Realty 806-733-5000, or
home phone 806-733-2291.
rtm-c

TAKE UP PAYMENTS-Double
wide trailer lived in 7 months. 3
bedrooms, 2 baths, fireplace, cathe-
dral ceilings, Coleman central air
and under pinning. Must be moved
Call 733-5269.
19s-rtmc

**ANNUAL HANSFORD HUTCHISON
FARMERS UNION SALE--to be held**
April 17th. Please call consignments
to Joe Morris 733-2132, T. O. Lesley
659-2028, Homer Sutton 659-2357 or
Burton Schubert 659-2667.
19s-9tc

FOR SALE: 3 acres in beautiful
Park Valley, Colorado. Only min-
utes away from Skiing, fishing and
hunting. Great vacation, retire-
ment, or investment property.
Priced well below market value.
Call (806)659-5101, Days or nights.
21-3tc

FOR SALE: 2 bedroom mobile
home. Call 659-3371, 2255 or 2220.
21-3tp

FOR RENT

Trailer space for rent in Spear-
man. All utilities, fenced and
concrete walk ways. call 435-5080.
22-rtmc

FOR SALE OR RENT: 2 bedroom
home. Call 806-358-9684.
22-rtm

FOR SALE: 1982 14x60 Trailer - 2
bdm, 1 bath, low equity - take-up
payments. After 5 call 659-5248.
21-8tp

FOR RENT: Two (2) bedroom
apartment for rent. Nicely fur-
nished. No Pets. Call 659-3471.
21-4tc

**AUTOMOBILES
FOR SALE**

FOR SALE: 1977 Cutless 2-door
and air condition in good condition.
Call 435-4752.
12-rtm-nc

FOR SALE: 14ft. Starcraft Boat,
65 Hp Mercury motor just over-
hauled. 659-2046
21-4tp

BUSINESS SERVICES

STEAM RINSE & VAC
Rinse and Vac Shampooer for
rent at Gordons Drug. \$10.95 up to
24 hours.

HAY SWATHING & Baling done.
Call 733-2517 or Dennis at 733-
5214.
27s-rtm-nc

APPLIANCE REPAIR: Call Jim
Nobles, 659-3528.

**Termite Season
is Here!!!**

Call Tri-City Pest Control, for
all your pest control needs. Also
tree, shrub spraying and lawn
fertilization. Call 665-9429.
21s-5tp-s only

HELP WANTED

Responsible Person
Wanted to own and operate
candy vending route. Pleasant
business with high profit items.
Can start part time. Cash invest-
ment of \$3996 to \$12,996. Call
1-800-328-0723.
EAGLE INDUSTRIES
26 Years of Service
22s-1tp

**MISCELLANEOUS
FOR SALE**

For Sale: Repossessed Piano - Can
Assume low Monthly Payments -
Will Show Locally - Call Brier and
Hale Music at 318-624-8422 For
Complete Details.
22-3tc

FRESH EGGS: 75 cents a Doz. at
304 S. Drossen. Call 659-2682.
22-2tc

Card of Thanks

We wish to thank the Spearman
Volunteer Fire Department for their
expert handling of the fire at our
apartments. Spearman can be very
proud that we have a Volunteer
Service that is so well trained. Also
we would like to express our
gratitude to Viola Boyd for alerting
the fire department.

Harriett and Craig Hutchison

**POLITICAL
ANNOUNCEMENTS**

This newspaper is authorized to
announce the candidacy of the
following candidates for public office
subject to the action of the voters in
the **MAY PRIMARY ELECTIONS:**

- DEMOCRAT**
- FOR COUNTY TREASURER**
HARRIETT HUTCHISON
- JEAN PEARCY
- NORMA JEAN MACKIE
- PEARL PIERCE
- FOR COUNTY AND DISTRICT
CLERK**
- AMELIA C. JOHNSON
- FOR STATE REPRESENTATIVE**
J. W. BUCHANAN
- REPUBLICAN**
- FOR COUNTY TREASURER**
ESCHOL BLANKENSHIP
- FOR STATE REPRESENTATIVE**
DICK WATERFIELD
- FOR SCHOOL BOARD**
CRAIG SCHUMAN

GARAGE SALES

GARAGE SALE: April 10th &
11th, from 9-5. Many items for
men & women-two family 1004
Bernice.
22s-2tp


Roofing

Lakeside Wholesales Hot,
Shakes, Tile, Composition.

Turn key or material

Call collect

857-2411 or 857-2352



**GUYMON
LIVESTOCK AUCTION**
Box 879
Grymon, Oklahoma 73942

Office
1-405-338-3378

Out of State
1-800-338-5871

Home Owned and Home Operated

SALE EVERY THURSDAY
BEGINNING AT 12:00pm



**For dryland,
limited water
or full irrigation...
Pioneer has you
covered!**

8493
We just can't say enough good things about the perform-
ance this hybrid has shown under dryland or limited water
conditions. On farm after farm, it produced outstanding
yields of high test weight, hard textured grain even
under extreme heat! 8493 has excellent root and stalk
strength and outstanding resistance to Biotype C and E
greenbugs. If you grow sorghum on the Plains, try this one!

8333
When you're pouring on the water and pushing for top sor-
ghum yields, this hybrid will come along with you to make
the most of everything you put into the crop. And it has the
heat and drought tolerance to withstand the tough sum-
mers you've come to expect. Outstanding resistance to
Biotype C greenbugs, very good root and stalk strength.
Performance characteristics you need to grow good sor-
ghum on the Plains. It's all yours with 8333 from Pioneer.

See your Pioneer dealer right away.



Andy Watley
659-3970



**PIONEER
BRAND SEEDS**

*Registered trademark of Pioneer Hi-Bred International, Inc.
Pioneer® brand products are sold subject to the terms and conditions of sale which are part of the labeling and
sale documents. Pioneer is a brand name; numbers identify varieties. 8-84-84

The Hansford Plainsman

PUBLICATION (USPS 2346-6000)
SPEARMAN, TEXAS 79081
213 Main Box 458 659-3434
Published Weekly at 213 Main Street
Spearman, Texas 79081

Owner-Publisher.....William M. Miller
Editor.....Faye Lynch Esther Vargas
Second Class postage paid at Spearman,
Texas 79081

Any erroneous reflection upon the character of
any person or firm appearing in these columns
will be gladly and promptly corrected upon
being brought to the attention of the
management.

POSTMASTER: Send address changes to
Hansford Plainsman, Box 458, Spearman, Tx.
79081

SUBSCRIPTION RATE: Hansford, adjoining
counties, combination with the Spearman
Reporter, \$25.00.
Other points, \$30.00.

Member
Texas Press Association



In the ten and over - Shae Mize won 2nd place and Christa Dement won 3rd place.

The three children coming the furthest to the Easter Egg Hunt were; Christin, Chad, and Clay Carter. They were visiting the Lawrence Anthonys.



NEWS VIEWS

Caspar Weinberger, Defense Secretary:

"...their (Russia) military has moved increasingly into an era of high technology, and they're challenging the technological edge on which our security depends."

Thomas P. Foley, Rep. (D-Wash), on Contra aid:

"The opinion of the American people is on the other side of the question; they don't support the president's policy..."

Mrs. Don Hergert Sr. underwent surgery in Amarillo the past week. She is expected to be home this week-end.

Louis Schnell is undergoing treatment at an Amarillo hospital. He is doing fine at this writing.

Peggy Archer underwent surgery in an Amarillo Hospital this week. She is doing fine.

Malcolm Baldrige, Commerce Secretary:

"The net impact of lower oil prices and the declines in interest rates and the value of the dollar are improving the outlook for durable goods producers."

Among The Neighbors

A typical Spearman neighborly event was the gathering on March 25 at the home of Frances Cudd to observe the birthday of Mrs. Deta Blodgett. Even after 89 birthdays, Deta is still touched by the consideration of her neighbors. Those enjoying coffee and cake with her were Mary Brock, Rosalie Butt, Helen Etter, Jo Copeland, Jewell Turner, Ina Martin, Margaret Gibner, Glenda Guthrie, Jenny Massad, Marilyn Cline, Jo Anne Blodgett, Debbie Brown, Ada McLain, Fern Fulker-son and Frances Cudd.

Mrs. Ruby Boyd of McLean is staying in the home of her son, Granville and Muriel Boyd for a couple of weeks while she is recovering from a stroke. On Sunday, Donna and Wesley Brinkley and girls of Liberal, Kansas visited her and also his parents, the John Brinkleys. Donna is the daughter of Mr. Boyd.

Mrs. Winnie Allen, Mrs. Lena McCrory and Wynne Payne spent a long Easter week-end in Portales, New Mexico visiting Mrs. Della Dacus.

Mr. and Mrs. Edwin Percy had a very enjoyable week-end at Canton Lake, Oklahoma where they met her sister and family

from Rush Spring, Oklahoma and her brother and family of Yukon, Oklahoma. The Percys daughter, April and Lane Heitz of Canyon also joined them. In addition to some very successful fishing they did some photography. Edwin is proudly exhibiting a 30 inch catfish which he caught.

The gathering was a belated observance of the Percys 25th wedding anniversary; it was on the 18th and the Percys had quietly celebrated it at that time.

Dr. Earl E. Novak drove to Binger, Oklahoma during the Easter week-end. He visited his mother, Mr. and Mrs. Ben Yanda, who are in a rest home there.

Easter week-end for the Bill Strawns, Chris and Nikki, was a family gathering in Bovina. Her parents, the Vernon Estus and his, the Norvell Strawns all live there. Their son, Scott, student at Texas Tech and daughter, Shelly of Amarillo, completed the group.

Birthdays and Easter were combined in the home of Mr. and Mrs. Ralph Blodgett on Sunday. Dr. and Mrs. Glenn Blodgett and girls from Guthrie were there in addition to Mr. and Mrs. Dennis Cline, Grady and Bethany, and Deta Blodgett.



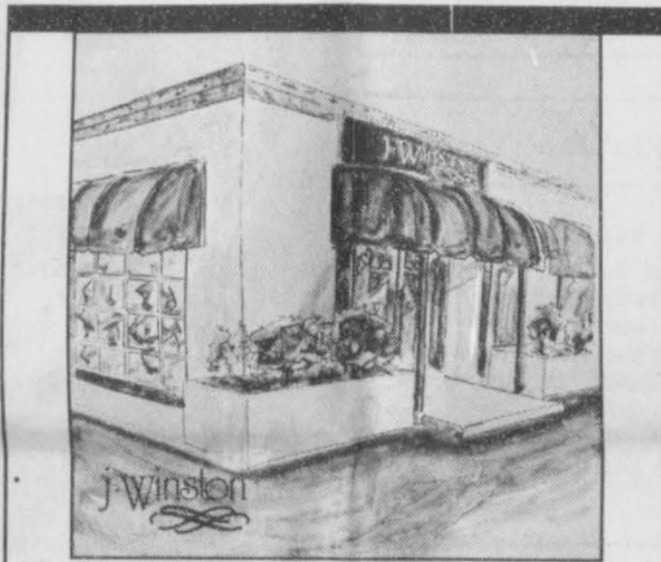
Verlin Behne was the Head Moose at the Annual Easter Egg Hunt in Spearman, Saturday.



In the Five to Nine group - Wright won 2nd place, and Felix Dennis Hennessee won first; Eric Lopon won 3rd place.



The 10 & over winners of the Easter Egg Hunt were; Tiffany Hendricks - 14 mos. old, Shea Mize, and Krista Dement. These youngsters really enjoyed themselves at the Easter Egg Hunt held by the Moose Lodge.



Women's Fashion

SPRING FASHIONS THE COLOR OF THE RAINBOW

2701 Paramount
Amarillo, 358-2457
Mastercard and Visa Welcome

NOTICE IS HEREBY GIVEN THAT THE GOVERNING BODY OF THE CITY OF SPEARMAN, TEXAS, WILL MEET AT 7:30 P.M. ON THE 8TH DAY OF APRIL, 1986, AT ITS REGULAR MEETING PLACE AT CITY HALL, 30 S. W. COURT, IN THE CITY OF SPEARMAN, TEXAS, FOR THE PURPOSES OF CONSIDERING THE ATTACHED AGENDA.

AUCTION

TUES., APRIL 8, 1986 — SALE TIME 10:00 AM

LOCATION: From the East Side of Spearman, Texas On Hwy. 759 Go 1 Mile East Then 1/2 South On Blacktop. Winch Truck Furnished Sale Day — Lunch Will Be Available.

JOE DAN BRYAN ESTATE — RUTH BRYAN — OWNER

TRACTORS

- 1-1979 IHC 1586 Dsl. Tractor, Cab/Air/Htr/ Radio, 18.4-38 Tires W/Duals, Wts. 4303 Hrs.
- 1-1979 IHC 1486 Dsl. Tractor, Cab/Air/Htr/ Radio, 18.4-38 Tires W/Duals, Wts. 4416 Hrs.
- 1-1978 Case 1175 Tractor W/451 Turbo Dsl. Cab/Air/Htr, Wts. 18.4-38 Tires W/Duals
- 1- Case 930 LP Tractor, Cab. Good Tires
- 1- IHC 400 LP Tractor - Needs Repairs
- 1- Ferguson Tractor, Older Model

TRUCK—PICKUPS

- 1-1974 GMC 2T. Truck, 350 V-8, 4 Sp, 2 Sp, 9.00-20 Tires, 13' Bed, 40" Sides W/Hoist
- 1-1983 GMC 4 W.D. 1/2T. Pickup, 305 V-8, Autom. LWB, P/A, Cruise Tilt Elect Windows
- 1-1979 GMC 1/2T. Pickup, 350 V-8, Autom. P/A, LWB
- 1-1975 GMC 1/2T. Pickup, 350 V-8, Autom. LWB
- 1-1971 Chev. 1/2T. Pickup, 6 Cyl, 4 Sp, LWB, Needs Repair

FARM MACHINERY

- 1- Miller 16" Offset Disc
- 1- JD 12" Offset Disc
- 1- Krause H-224 19" Oneway, 23" Disk, 9" Spacing, Hyd. Control
- 1- Krause 15' Sq. Bean Oneway
- 1- Krause 17" K-2 Oneway
- 1- 1984 Miller Flex Blade Sweep Plow W/5 60" Sweeps W/Tines
- 1- Case 4 Bottom 16" Spinner
- 2- Lilliston Cultivators, 4 & 6 Row
- 1- JD 4 Row 8 Box Dbl. Row Planter
- 1- JD 6 Row Flute Feed Dbl. Disk Planter On 4"x7" Toolbar W/Bed Roller
- 1- Dbl. Dia. 4 Row Rodweeder

- 1- IHC #510 Slant Whl. 20 Hole 8" Dbl. Disk Drill
- 1- JD Van Brunt 16-10" Drill
- 2- Dempster Drills, 2-8 & 1-7 Spout
- 2- Dempster 6 Hole Drills For Parts
- 1- Myers 10"x36" Land Plane
- 1- 16"x30" Steel Land Drag, Dual Gauge Whis. Hyd. Control
- 1- 3 Pt. 8" Blade
- 1- Servis 3 Pt. Blade
- 1- Myers V-Ditcher
- 1- 16" Graham Hoeme
- 2- Servis 2 Row Drag Shredder
- 1- Bushog 6 Row Shredder
- 1- 3 Pt. 5 Row Lister
- 1- M&M Sickle Mower
- 1- 6' 3 Pt. Toolbar
- 1- Continental 3 Pt. P.H. Digger
- 1- Speeco 3 Pt. P.H. Digger
- 1- Shopbuilt 3 Pt. Round Bale Mover
- 1- Spray Pump W/B&S Engine
- 1- 4 Section Harrow

TRAILERS—TANKS

- 1- 1985 East Side 2 Whl. Car Tow Trailer
- 1- Hale 16' Stock Trailer, 1/2 Canvas Top, Center & Side Gates
- 2- Pipe Trailers
- 1- Gooseneck Dual Whl. Trailer, 9.00-20 Tires, W/1100g. Water Tank
- 1- 2 Whl. Trailer W/300 g. LP Tank
- 1- 110g. Fuel Tank W/110 V. Pump
- 7- Stock Tanks, 6-8', 1-12'

IRRIGATION

- 4- MM HD 800 Engs. Complete (1-W/Water Cooled Manifold)
- 1- IHC 605 Engine
- 1- Ro-Line 884 Engine
- 1- Ro-Line 844, Salvage

- 3- Amarillo Gearheads, 110 HP (2-1 to 1 Ratio, 1-5 to 6 Ratio)
- 6- 8" Cooling Coils
- 6- 48" Drive Shafts
- 8- 12"x8" Hydrants
- 30-30" Jts 8" Gated Pipe, 40" Row, Slide Gates
- 20-20" Jts 8" Gated Pipe, 40" Row, Butterfly Gates
- 28-20" Jts 6" Gated Pipe, 40" Row, Butterfly Gates
- 1- Lot T's, L's, End Plugs, Tubes
- SHOP—GUN CABINET—ANTIQUE GAS PUMP
- 1- Sears 1/2" Floor Drill Press
- 1- Sears 30 to 230 Amp. Elec. Welder
- 1- 1/2 HP Bench Grinder
- 1- Sears 1-HP Air Compressor
- 1- Lot Air Tanks
- 1- Craftsman Acetylene Torch
- 1- B&D 6 1/2" Elec. Saw
- 1- Lot Hand Tools
- 1- 9 1/2"x4 1/2" Gun Cabinet
- 1- Antique Upright Gas Pump
- NON-CLASSIFIED
- 150-Round Bales Wheat Hay
- 1- Set Lance 6 Row Harvesters
- 1- Set Roll-A-Cone 5 Row Harvesters
- 1- Lot Elec. Fence Post, Chargers & Cedar Post
- 8- Mile Elec. Wire
- 1- Cattle Guard
- 3- Steel Coverters, 16" & 24"
- 1- Set LW Pickup Bed Stock Racks
- 5- 12" Metal Feeders
- 1- H&L 12V Grain Auger
- 1- 80"x8" Open Auger
- 1- 2 Whl. Pony Cart W/Harness
- 1- Crossbed Toolbox
- 1- Lot 55g. Drums, Tires & Much More

TERMS: CASH — ALL ACCOUNTS TO BE SETTLED DAY OF SALE PLEASE BRING OWN CHECKBOOK — POSITIVE I.D.



BONDED LICENSED EXPERIENCED

LEE W. FREEMAN 7403-019-0193
P.O. BOX 483-118 Belaire
DUMAS TEXAS 79029
PHONE: 806/935-2419
AGENTS ONLY

THE DESCRIPTION AND CONDITIONS AS SET FORTH ON EACH ITEM IS IN NO WAY A WARRANTY OR GUARANTEE. WE ACT AS AGENTS ONLY

Your Personal Invitation Gospel Meeting

April 6-10

7:30 p.m.

Spearman Church of Christ

Sunday Bible Classes 9:45 am
Sunday Worship 10:35 AM
"Christ In You"
Sunday Worship 6:00 P.M.
"Home and Family"



Lemuel Phillip

Ulysses, Kansas

Second & Haney

Monday P.M. "Youth"
Tuesday P.M. "Salvation"
Wednesday P.M. "The Church"
Thursday P.M. "Name Written There"



Spearman, Texas

Dumas, Texas

JCPENNEY IS PUTTING ON THE RITZ

IN A DAZZLING ONE DAY MILLION DOLLAR JEWELRY SALE

Saturday, April 5th, It's a show-stopping, eye-popping, glittering extravaganza of values. And what a cast! Lustrous pearls. Elegant watches. Stone rings. Gold chains. And so much more. All star attractions sure to make a hit with you, or some other special person. (Mother's Day is just 36 days away.) So, for a steller collection of jewelry at spectacular savings, come to J C Penney and see us strut our stuff. We're putting on the ritz ---

Saturday, April 5th only. Layaway now for Mother's Day.



SATURDAY, APRIL 5th

25% To 60% OFF

30% OFF Entire line of fashion jewelry.

50% OFF 3 piece pearl onyx set. This set contains 18" necklace, 7" bracelet and 14kt earrings. Original \$200. Now \$99.

\$3 Fashion chains in gold tones and sterling silver finish. Assorted lengths.

\$39⁹⁹ Special Buy! Famous name Quartz watches. men's and ladies styles.

\$5⁹⁹ Special Buy! Fashion bangle bracelets. Open clasps with safety chains. Assorted styles.

\$9⁹⁹ to \$27⁹⁹ Special Buy! Jewelry boxes. Original \$14 to \$38.

25% OFF All watches for men and women, except special buys.

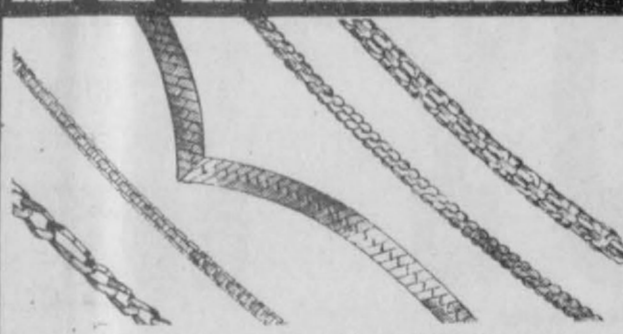
30% OFF All sterling silver jewelry. Earrings, pendants, chains, charms. Some set with stones.

30%-50% OFF All men's 14kt and gold-filled jewelry. Collection includes money clips, chains, cuff links.

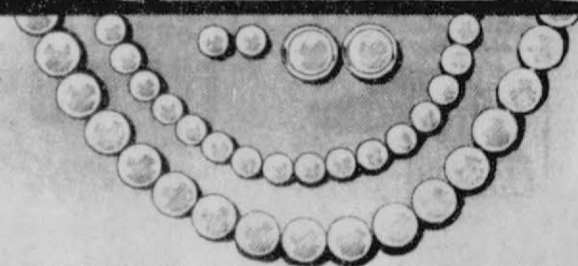
30% OFF All 14kt gold-filled jewelry. Save on chains, charms, pendants, and earrings. Some set with stones.

50% OFF All cultured pearl earrings, strands and pendants. A favorite accessory for day or evening.

50% OFF All 14kt chains, charms, earrings, pendants and bracelets.



60% OFF Special Group of 14 kt Gold Chains



SPECIAL 4.99-9.99 Hand-knotted glass pearls. Such pretty pretenders you'll want several. Choose from necklaces in 18" to 60" lengths, earrings and bracelets.



50% OFF Special group of Pulsar watches. Collection includes styles for men and women. Calendars, day/dates. Straps, bracelets. Dress and sport models.



2 FOR 7.99 Fashion Earrings

Special Buy. A stunning assortment of fashion earrings at a price that lets you choose several pairs.

Services offered Saturday only will be One Red Carnation to our first 200 customers. Free gift wrap and no layaway handling charge on any jewelry purchase. An ear piercing clinic for \$4.99. Fashion ring trunk show with over 400 styles to select from . . . only \$12.99 to \$14.99. Customer drawing for a 14kt gold chain valued at \$100.00 to take place at 7 p.m. So come in and register now. Remember Mother's Day is May 11th.

You are invited to come see our new 1986 model cars on display on our parking lot helping to promote our Million Dollar Jewelry Day!

Represented will be:

Murphy Olds-GMC
Witt Pontiac, Buick, AMC, Jeep
Edward Chrysler-Plymouth-Dodge
Mickey Ford Chevrolet
Owens Ford-Mercury-Lincoln

Intermediate markdowns may have been taken on originally priced merchandise shown in this ad. Reductions from originally priced merchandise effective until stock is depleted. Sale prices on regularly priced merchandise effective only Saturday, April 5th. Available at JCPenney stores with Fine Jewelry Departments. Jewelry enlarged to show detail.

Catalog Phone: 1-800-222-6161

JCPenney



© 1986, J. C. Penney Company, Inc.

Open 9 a.m.-9 p.m.
Monday-Saturday

Dumas, Texas

12:30-5:30 p.m.
Sunday

Percentages off represent savings on original prices. Available at J C Penney stores with Fine Jewelry Departments. Jewelry enlarged to show detail. Sale prices effective only Saturday, April 5th.

Dumas SoftBall

April 18, 19, 20
 Double Elimination with Consolation
 All Teams Guaranteed Four Games.
 Twenty-four team limit
 Entry Fee: \$100.00
 Deadline: Wednesday, April 16, 6:00 p.m.
 Site: Dumas Softball Parks, 14th and Twichell
AWARDS
 Large Team Trophies: First, Second, Third, Fourth, and Consolation
 Individual Awards:

First Place: lined Nylon Jackets
 Second Place: Nylon Duffle Bags
 Third Place: Softball Shirts
 Consolation: Individual Trophies
ADDITIONAL COMPETITION
 "Home Run" Hitting Contest (Small Field)
 "Base Hit" Hitting Contest (Small Field)
 For more information:
 During Business Hours Contact - Jim Phillips, 806-935-5108 and Terry McKee, 806-935-4523
 After 6:00 p.m., Contact - Danny Bilbrey, 806-935-7312, and Mike Artho, 806-935-7507



Quarreling is the weapon of the weak.
 -Hebrew Proverb.

Seek the Lord

Therefore came I forth to meet thee, diligently to seek thy face, and I have found thee.

Proverbs 7:15

Stork Report

Felipe and Nikki Lozano are proud to announce the arrival of a son, Phillip Michael, born at 6:58 p.m. on March 10, 1986, in Perryton Texas. He weighed 8 lbs. and 13.2 oz. and was 20 inches long.

Welcoming him home is 3 year old sister, Nicole. Paternal grandparents are Mr. and Mrs. Francisco Lozano of Spearman. Maternal grandparents are Mr. and Mrs. Bob Rylant of Spearman. Paternal great-grandparents are Mr. and Mrs. Andres Benavidez also of Spearman. Maternal great-grandfather is Mr. Jim Rylant of Perkins, Okla.

The fear of the Lord is the beginning of knowledge; but fools despise wisdom and instruction.

Proverbs 1:7

Career Day Clinic

The Free Enterprise Committee of the Spearman Chamber of Commerce and the Spearman Rotary Club will co-sponsor a Career Day Clinic at Spearman High School, Wednesday, April 9, according to John R. Collard, Jr. Chairman of the committee.

The keynote speaker will be Mr.

Craig Timberlake a blind, law student from Dallas.

The purpose of the Clinic is to assist and encourage the student

in selecting his life work. The sponsors of the program do the work, but the consultants are the ones who make the program a success.

BUSINESS OUTLOOK

By Edward Thorlund

April is to be a key month in persuading investors and economists how strong the 1986 business year will be.

After the 15th, IRA money which has been going into the stock market will slacken. More important, earnings reports for the first quarter will be released in April.

Some disappointments are certain, along with the good news.

The stock market--which no one seems to be able to explain--may react to some of these earnings. It may react to less IRA fueling.

But some believe most companies will earn fat profits this year, because of the absence of inflation, lower fuel and transportation costs and lower interest rates.

These are all bullish indicators for business. The question is whether they have already been taken into account by the very strong market of the first quarter.

That may begin to become apparent after the 15th.

8th Grade Class went to Court

On Tuesday, April 1, the eighth grade class of Spearman Junior High went to the Hansford County Courthouse to watch a trial. The students learned about many court procedures. On Wednesday, Mayor Blodgett spoke to the eighth class about how our city is governed. Mayor Blodgett also spoke about where our city gets money for general operations and projects such as new schools or our new city hall. Finally, on

Thursday, Judge Blackburn visited the eighth grade. He brought with him the results of the trial the class attended on Tuesday and explained some of the details of the case. All of these visits are part of Mr. Tranthum's civics class. The eighth grade students would like to thank Mayor Blodgett, Judge Blackburn, Mr. Tranthum, and all the other people who made the visits possible.



Rick Gordon has recently opened his new Custom Cabinet Shop in Spearman. He is in Partnership with Randy Hendrickson and the Cabinet Shop is located behind Busters Aerial Duster's Business,

209 S. Hwy in Spearman.
 209 S. Hwy 207 in Spearman.
 Rick has installed cabinets in many of the new homes in Spearman.



A Happy Easter Egg Hunter. This young man found a whole basket of Easter Eggs at the Easter Egg Hunt Saturday by the Moose Lodge.

Every day you delay your IRA costs you money!

ARE YOUR RETIREMENT DOLLARS GROWING FAST ENOUGH?

If not, and you would like your retirement dollars to grow faster or to assure yourself that you are getting the best possible rate available, call us at 659-3880 or 358-7133.

Integrated Resources Equity Corporation Member SIPC

MARCIA SHIELDKNIGHT & DEBBIE STOPPER P. O. Box 516 Spearman, Texas 79081

(806) 659-3880 or (806) 358-7133

Integrated Resources



WOODY'S

"The Home Of Greater Values"

BROYHILLS "LILLE"



Bachelor Chest	\$129	Vertical Mirror	\$99	42" Hutch Top	\$199
30" Hutch Top	\$129	Desk Chair	\$99	Twin Canopy Bed	\$199
Night Stand	\$129	Double Dresser	\$259	Full Canopy Bed	\$219
Twin Size Hdbd.	\$129	Single Dresser	\$199	Chest	\$249
Full Size Hdbd.	\$149	Desk	\$199	Lingerie Chest	\$249

HOME Savings SALE

SAVE 50% off our STEARNS & FOSTER SEALY Premium Bedding Collection

Sealy Ortho Rest Super
 Reg. \$179.95 ea. **\$89.95**
 Twin Size
 Reg. \$239.95 ea. Full Size \$119.95
 Reg. \$599.95 set Queen Size \$299.95 set
 Reg. \$799.95 set King Size \$399.95 set

Sealy Ortho Rest Century
 15 Year Warranty
 Reg. \$239.95 ea. **\$119.95**
 Reg. \$319.95 ea. Full Size \$159.95
 Reg. \$899.95 set Queen Size \$449.95 set
 Reg. \$1099.95 set King Size \$549.95 set

Stearns & Foster Comfort Cloud
 Foam Encased - 15 Year Warranty
 Reg. \$319.95 ea. **\$159.95**
 Twin Size
 Reg. \$459.95 ea. Full Size \$229.95
 Reg. \$1199.95 set Queen Size \$599.95 set
 Reg. \$1599.95 set King Size \$799.95 set

Home Savings SALE

715 Bliss
 Credit Terms Available
 Free Delivery
 935-4811
 Dumas, Texas

5 PIECE FAMILY GROUP

2 Wall-A-Way Recliners, 2 Armless Units, One Wedge Corner Unit
 All 5 Pieces **\$1598**

Traditional Living Room

Save \$100 **\$499** Save \$100 **\$399** Save \$50 **\$249** Save \$100 **\$599**
 Sofa Loveseat Chair Sleeper Sofa

Miss Hansford County Pageant Coming Soon

The 1986 "MISS HANSFORD COUNTY" pageant, sponsored by the Women's Division of the Chamber of Commerce will be held June 5th, 7:30 p.m., at the Spearman High School Auditorium. Anyone interested in being a SPONSOR should contact the girl of their choice and offer their support in recruiting her to enter the pageant. Anyone interested in participating as a contestant is encouraged to pick up an application at any of the following businesses after April 1st: J. C.'s Lady Fair; Chalors; Boyds; Bunkhouse; Spearman Chamber of Commerce and Main Street in Gruver. A SPONSOR Committee will be at work and offer any assistance or information needed. A contestant must be between 16 and 21 years old and be a resident of Hansford County. (College girls are eligible.) All contestants will be judged this year, on interview, talent, swimsuit, and evening gown. The 1986 Miss Hansford will be expected to compete in the Miss Wheatheart contest and she will be sponsored by the Spearman Chamber of Commerce and the Women's Division. Prizes will be awarded in this competition for each category of talent, interview, swimsuit, evening gown and Miss Congeniality.

In conjunction with this pageant, there will be a "LITTLE MISS" contest (ages 4 and 5 years) and a "Jr. Miss" contest (age 6 - 8 years). Only the first ten entries in each of the children's Contests can be accepted. Applications will be available after April 1st at Kid's Stuff; Spearman Chamber of Commerce and Main Street in Gruver.

The sponsor fee for Miss Hansford Contestants is \$50.00 per entry and the sponsor fee for Little Miss and Jr. Miss contestants is \$35.00 per entry. The following schedule of events should explain the additional costs in Sponsor fees as we are providing several special events for our contestants and all proceeds from this pageant will go toward scholarships for the winner and 1st and 2nd runners-up. Prizes will be awarded in all contests and any profit from this pageant will be returned to the community in various programs set forth by the Chamber of Commerce.

April 1st: Applications will be available to above named stores.

April 15th: Recruiting seminar held at the B & B Farm Industries Hospitality Room, 7:30 p.m. led by Mrs. Mike Garnett.

May 1st: Deadline for entries to be turned in to Chamber of Commerce office.

May 4th: Clinic on Hair/Make up, Talent, Interview with Jean Tarbet, Renea Sheffield and George Bethel. Time & Place announced later.

May 21st: Deadline for talent arrangements.

June 3: Rehearsal at Auditorium 4:00 p.m. - Full Dress Rehearsal.

June 5th: Interview with judges at 4:00 p.m. at the First State Bank.

June 5th: at 7:30 p.m.: Pageant.

For any information, please contact Nancy Graves at 659-2514 or 659-3974 or Sheri Benton at 659-2441 or 659-3568. The Wo-

men's Division of the Chamber of Commerce would like to express our appreciation to the Hansford County Community for the past support and the great interest shown in making this pageant a success. We are all looking forward to this year's pageant.

Please remember: ALL APPLICATIONS MUST BE TURNED IN TO THE SPEARMAN CHAMBER OF COMMERCE OFFICE, 211 Main Street by May 1, 1986.

Quarrels would not last long if the fault was only on one side.
-La Rochefoucauld.

Fire Fighters

Ever Wonder What It Might Be Like To Fight A Fire?

Should you be interested, allow me to briefly share the experience in the following paragraphs. This short narrative will be true (or closely related) and the names have been changed to protect the author. So no one can be indicted by direct evidence, please...refer to the author as ("Mokey"). Any coincidental actions or descriptions have merely slipped and are not direct evidence, but only circumstantial. Seriously though, all is written in jest.

As anyone, who has ever attended an awards presentation will testify, the prestigious presenters will always refer to the "Awardee" or "Awardette", (depending on gender), as Dedicated. This is the presenters pleasant manner of saying the "Awardee" is not to bright. In layman's language, the fireman has plenty of room for expansion (mentally). After all, how many people Plan to enter a building when all others have decided it is much safer outside.

To help you understand why I, ("Mokey"), began my career as a Volunteer, let me take you back to my entrance into a fire department. I was given an application and was recommended for membership. Well, I filled out the application without too many misspelled words and I suppose that's why I was recommended for membership by someone who I'd never even seen before. Later, I was to find out that my adequate penmanship would reward me with the much coveted Secretary's position. So much with my early career advancement.

Once accepted, I was placed on a three month's probation. I never figured out what I had done to deserve probation, but I was certainly glad I didn't receive a life sentence!!! It was during this probation that I found out the heroism of the fire service. I began to envision great ticker-tape parades!!

Riding in a chauffeur driven limosine, waving briskly at the thousands lining Main Street. Straining my eyesight into the mid-morning sunlight, I could see the multitudes on the roofs of the buildings. Finally, the limosine would stop in front of the podium where the Governor and city officials would greet me, (after paying the limo driver the fee plus 10 per cent tip). Climbing the stairs of the podium, I would see the empty chairs where the President and First Lady were to have sat. But, I would realize the great security risk involved of a two-block parade route and would receive my plaque for the great "dedication" and heroic efforts of saving the puppy from the sewer pipe, undaunted. Yes, it was a job only few would accept, but I could not allow such suffering to continue, after all, the Chief was using such awful language!!!

Oh, I was going to relate what fire fighting is like. Well, maybe next time. Oh! By the way, the Chief asked me to write this. If you think of any questions you might like answered, you can write; P.O. Box 214, Spearman. Maybe the Chief will start doing something and possibly write out a brief answer in a future column. Of course, we can answer all of the questions relating to politics and world events, but prefer to address fire-related questions first. By the way, do you know anyone needing a puppy?

The Spearman Fire Department meets every Thursday night at 7:00 pm at 513 South Hazelwood. Drop by for a visit. But be careful of those dreaded applications!!!

Our Bible God's Gift to Us Boys' Track Honor Roll

by David V. Fultz, Evangelist, Church of Christ

There is no question but that we need to understand the Bible for it is the Book that deals with our eternal salvation. Most of the real difficulties of man can be traced to his unbelief or unwillingness to abide in the divine truths revealed in the Bible. The word Bible comes from the word "biblos" and is actually a library of 66 books, 39 of which are in the Old Testament and 27 in the New Testament. It was written over a period of about 1600 years by 40 different writers with different backgrounds, and many with little formal education. Yet it contains no contradictions, when properly understood, and this gives credence to its claim of divine inspiration. 2 Pet. 1:21; 2 Tim. 3:16; Rev. 1:1-2; 1 Thess. 2:13.

The Old Testament was completed and circulated among the Jews several hundred years before Christ and even translated from the Hebrew into the Greek language. The New Testament was completed by the end of the first century A.D. and Eusebius quotes from each of the books, 270-340 A.D. Origen, born in 185 A.D. gives account of all the New Testament books, and it has had undying influence in our world for good wherever it has gone.

"It molded the lives of Gladstone, Bismark, Lincoln, and other great statesmen and had no small share in molding in the English language." J. G. Lawson.

On the Pitcairn Island which was a small island where some from the Bounty landed in 1790, there were nine mutineers, six men and twelve women of Tahiti who landed. Soon all the men were dead through drunkenness and fulfillment of like passions, only one John Adams, who found a copy of the Bible and commenced reading it became changed from this vileness and became known the world over for his kindness and gentleness. This is true with everyone wherever the Bible has been believed and obeyed. We invite you to hear Lemuel Phillips next week speaking on "What Does the Bible Say?"

SPE Scholarship

The Anadarko Basin Section of the Society of Petroleum Engineers (SPE) is seeking qualified applicants for its annual scholarship. Funding this year is for two scholarships of \$1,130.00 each for the 1986-87 school term. The successful applicant must be a resident of this area and may be either an incoming freshman or a college undergraduate interested in pursuing a degree in engineering (preferably petroleum or ge-

logical engineering). In addition to receiving the local section award, the top incoming freshman candidate will be invited to apply for the SPE Gus Archie Memorial Scholarship, a 4-year award in the amount of \$3,000.00 per year.

Detailed information about the SPE scholarship may be obtained by contacting Brian Powers, Amoco Production Company, P. O. Box 432, Liberal, Kansas 67901, phone (316) 824 - 6241.

'Tis by our quarrels that we spoil our prayers.
-Cotton Mather.

Real Estate Foreclosure Sale

Property owned by Vernon M. and Marsha Pipkin.

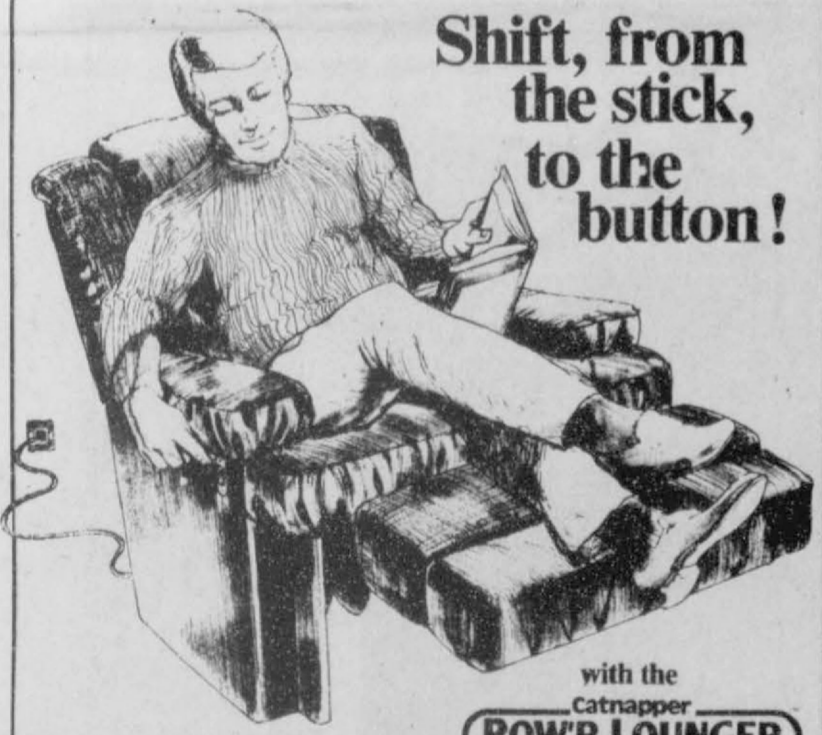
LEGAL DESCRIPTION: All of the Northwest One-fourth (NW/4) of Section 142, Block 4-T, Texas and New Orleans Railroad Company, containing 160 acres, in Hansford and Ochiltree Counties, Texas.

PLACE: Hansford County Courthouse, Spearman, Texas DATE: May 6, 1986 TIME: 10:05 A.M.

TERMS: The real estate will be sold for cash to highest bidder. Sold subject to all taxes due thereon. Title will be conveyed by substitute trustee's deed. For information, contact REBA HEWLETT, Small Business Administration, 1611 Tenth Street, Suite 200, Lubbock, Texas Phone (806) 743-7471.

BROCK'S FURNITURE

317 Main Perryton 435-2033

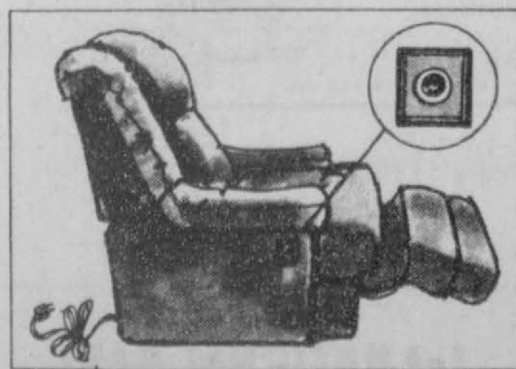


Shift, from the stick, to the button!

with the Catnapper POW'R LOUNGER

No more handles to push or pull! Just touch a button and recline!

\$499 Your choice of styles and fabrics! Never before, an automatic at this price!



The Pow'r Lounger has been tested to 50,000 cycles without failure! Over three times more than others!

- Total chair design and construction is U.L. approved.
- Infinite number of reclining positions... all within close proximity of the wall... from all the way up to all the way down.
- The only mechanism and drive specifically designed to be powerized.
- Many styles and fabrics to choose from.
- Pow'r Lounger is not only the Original Power Reclining upholstery, but the best available in the world.

SNAPPER

SPRING SAVINGS EVENT

FREE ATTACHMENT AT PARTICIPATING DEALERS

SNAPPERIZER



MULCHERIZER



THATCHERIZER



*Not available on Blade-Brake-Clutch models

It's a snap with SNAPPER
A division of Fuqua Industries

2 YEAR LIMITED WARRANTY

HURRY! OFFER ENDS SOON

Spearman Auto Supply
South Hwy 207
Spearman 659-2588

Eagle's 17th Anniversary

Street Cycle SALE

RIDER EDUCATION CYCLES

SR185J - Reg. \$1299.00	SALE \$ 849⁰⁰
SR250J - Reg. \$1449.00	SALE \$ 959⁰⁰



YAMAHA
We make the difference™

XS400RJ - Reg. \$2079.00	SALE \$ 1159⁰⁰
XV500K - Reg. \$2399.00	SALE \$ 1499⁰⁰
XJ650K - Reg. \$3099.00	SALE \$ 1999⁰⁰
XV750K - Reg. \$3099.00	SALE \$ 2129⁰⁰
XJ750R - Reg. \$3399.00	SALE \$ 2299⁰⁰

ALL STREET & TOUR CYCLES ON SALE

EAGLE CYCLE SHOP

717 S. Main
435-3594
Perryton, TX

Two Bit Sermons

Fellowship Baptist Church

by Rev. James D. Jones

In the last few weeks we have seen not a little controversy. As anyone would imagine I am in favor of private education. The number of students in private education increases. As of 1986 about 14 percent of all school age children are enrolled in private schools. One to two percent of these are in programs such as we have at the Fellowship Baptist Church.

Where do we at the Fellowship Baptist Church stand on this issue of education. We believe that you as a parent should have the right to educate your child in the manner of your choosing. If your choice is public schools, private schools, or home schooling you

should have that right. Greatest among all the reasons should be the quality of education that the child receives. All statistics show where the best education lies. It lies where the amount of Government influence is the least.

The issue that we have facing us now is not concerning the quality of education that our children receive. Only someone with their head in sand could deny the statistics involved in education today. The issue is who will control the private educational system. In the private system we ask nor do we accept any Government aid. Our system on a regular basis produces high quality students, who always score well on

their yearly achievement test. We do not condemn those who use the public system. As I said this should be your choice as parent. It is my opinion that the major element needing in the public system is a very large dose of less Government.

In the next few weeks I will write more about our school and why we have it. We are opposed to no one. I feel along with my church that we have a God given command to do what we are doing. All I could ask is a fair learning.

Crusader News

Greeting to all! I would like to introduce you to the Fellowship Baptist JOY Crusaders. You may wonder why the name JOY. It stands for Jesus first, Others second, and Yourself last. Jesus should be of the most importance

in our lives. We must tell others about him and show them how he works in our lives. Then we can think of ourselves.

Things are moving right along with the Youth group. Singing, soft-ball, ping pong, After glows, and many more activities keep our schedules filled. Tonight we are having Youth Choir practice at 6:30 p.m. I would like to extend an invitation to those of you who would like to sing with our youth group to be here at 6:30. I would also like to extend the invitation to anyone who would like to join in our activities to come to our church and listen for the activities schedule.

An After glow is planned for Sunday evening, April 6, after the evening services. There will be games, refreshments, and fun fellowship. Just come to it yourself and see.

Again I would like to invite anyone and everyone to come join in our fellowship and service of our God. Good-bye for now! May God bless you!!!

Gladiola

Club News

Kidnap Breakfast at Wanda Brown. Minutes read and approved- appointed Fay Palmer- Scholarship Chairman. Thank you from: Larry and Marsha Murphy June Jackson Dorothy Hanes moved that we buy glasses for elementary school girl, Kathleen Sutton seconded, passed.

Dorothy Buzzard said April 9-23 is the Azelea Tour at Muskogee Okla. week of 13-19.

Hansford Round-up- June 6-7. Parade theme "Texas Our History and our Heritage." Present were: Berner, Brown, Buzzard Davis, Evans, Hanes, Martin, Palmer, Smith and Sutton.

When two quarrel, both are to blame.

-Dutch Proverb.

PTA

The Spearman PTA held a special program on seat belt safety for the 4th graders in Spearman Elementary. A film on Seatbelt safety was shown.

Dusty Dillo appeared in person and visited with the students. The students will be given a free ice cream cone by the Dairy Queen if they complete their seat belt safety charts- Dusty Dillo also visited some of the other elem. children. Dusty Dillo is Debbie Clement.

In Fashion

An ensemble in black and white soft wool with good but simple lines is elegant for spring.

The white sheath dress featuring a deep V-neckline is banded in black.

A 7/8-length cardigan coat, banded in black, fits loosely to complete the sophisticated look.

SPEARMAN CHURCH DIRECTORY

APOSTOLIC FAITH CHURCH:

Leland Grimmer, Pastor
824 South Dressen
Sunday School: 10:00
Morning Worship: 11:00
Evening Worship: 7:00
Wednesday Service: 7:30
659-2870

CHURCH OF THE BRETHREN:

Milton Robinson, Pastor
Waka, Texas
Sunday School: 10:00
Morning Worship: 11:00
No Evening Services
435-4598

FAITH LUTHERAN CHURCH:

William Schardin, Pastor
1101 South Bernice
Sunday School: 9:45
Morning Worship: 10:45
No Evening Worship
659-2252

CHURCH OF CHRIST:

John Scott & David Fultz,
Co-ministers
121 South Haney
Sunday School: 9:45
Morning Worship: 10:35
Evening Worship: 6:00
Wednesday Service: 7:30
659-3244

FIRST UNITED PRESBYTERIAN CHURCH:

Lelan McCullough, Pastor
1021 Cotter
Sunday School: 9:45
Morning Worship: 11:00
No Evening Services
659-2033

FELLOWSHIP BAPTIST CHURCH

Jim Jones, Pastor
1102 South Archer
Sunday School: 10:00
Morning Worship: 11:00
Evening Worship: 7:00
Wednesday Service: 7:30
659-2782

FIRST UNITED METHODIST CHURCH:

Lane Boyd, Pastor
407 South Haney
Sunday School: 9:45
Morning Worship: 11:00
Evening Worship: 7:00
659-5503

SPEARMAN UNION CHURCH

(Inter-Denominational):
Steve Rogers, Pastor
31 South Endicott
Sunday School: 9:45
Morning Worship: 10:45
Evening Service: 6:30
Wednesday Service: 7:30
659-2644

SPEARMAN-GRUBER SPANISH BAPTIST MISSION:

Romeo Reyes, Pastor
502 E. 7th
Sunday School: 9:45
Morning Worship: 11:00
Church Training: 6:00
Evening Worship: 7:00
Wednesday Service: 7:00
659-3948

FIRST CHRISTIAN CHURCH: [DISCIPLES OF CHRIST]:

Martin Foster, Pastor
29 South Bernice
Sunday School: 9:30
Morning Worship: 10:50
Evening Worship: 6:30
659-2036

FIRST ASSEMBLY OF GOD:

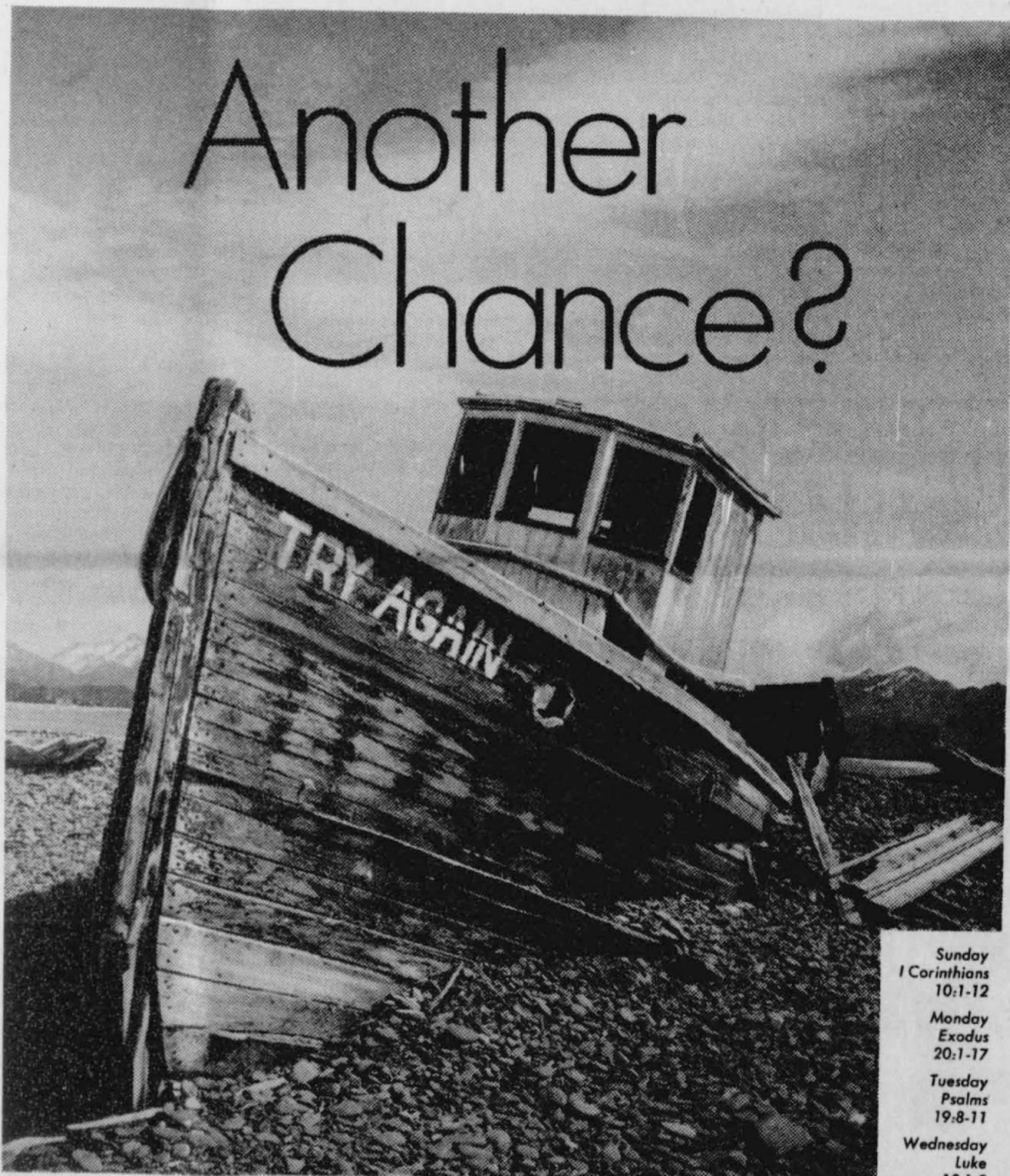
David Nuckles, Pastor
401 North Bernice
Sunday School: 9:45
Morning Worship: 11:00
Evening Worship: 7:00
Wednesday Service: 7:00
659-2295

FIRST BAPTIST CHURCH [SOUTHERN BAPTIST]:

Russ Gibbs, Pastor
Jerry Don Davis,
Minister of Youth
123 South Bernice
Sunday School: 9:45
Morning Worship: 11:00
Church Training: 6:00
Evening Worship: 7:00
Wednesday Service: 7:00
659-5557
Intercessory Prayer Line 659-2911

SACRED HEART CATHOLIC CHURCH:

Father Brendan Sherry, Priest
Saturday Evening Mass: 7:00
Friday Mass: 8:30 AM
Sunday Mass: 8:30 AM
Thursday Mass: 6:30 PM
659-2166



Was "Try Again" really the name of the boat? Or did some joker paint those words on the old hull after the wreck? Either way the irony wasn't wasted.

Lots of people used to sail through life confidently and contentedly. Today they aren't so sure they're on the right course.

There are some who think it's only a matter of time before our whole civilization runs aground.

Christianity has often been called "the religion of another chance." Yes, for Christ teaches that we can rise out of our failures through God's forgiveness and power.

Millions today are rediscovering Christian precepts. It is a new generation which will soon be sailing toward a Christian destiny.

Copyright 1974 Keister Advertising Service, Inc., Strasburg, Virginia

Scriptures Selected By The American Bible Society

Sunday
1 Corinthians
10:1-12

Monday
Exodus
20:1-17

Tuesday
Psalms
19:8-11

Wednesday
Luke
13:1-9

Thursday
Romans
5:1-8

Friday
1 Samuel
16:1-13

Saturday
Psalms
23:1-6



Church page
compliments of:

BOXWELL BROTHERS

519 Evans Spearman 659-2212

THE SPEARMAN REPORTER

THE HANSFORD PLAINSMAN

1st NATIONAL BANK

201 S. Main Perryton 435-3676

BAKER & TAYLOR

Gruver Hwy. Spearman 659-2503