

Winning over 200. . . .

Hansford Library  
120 Main  
Spearman, Tx 79081

# Aggressive Eagle Award Goes to Post Office



Post Office employees hold award they received from the Lubbock Management Section Center. Pictured left to right are: [back row] Otis McMillan, David

Collins, Regie Robertson, Marjie Crockett; [front] Debbie Dingman, Jessie Ryan, Loydell Sparks.

Don Jones, Director of Field Operation, Lubbock Management Section of the United State's Post Office, was in town on Friday to present Otis McMillan Jr., Postmaster, and his staff with the Aggressive Eagle Award. McMillan and his staff were chosen to receive the award over 200 other post offices in the area.

According to Jones, at the end of an accounting period, approximately one month, the district managers get together and nominate post offices for the award. The post offices are nominated based on their performance in eight areas. Out of the post offices nominated, one is chosen for that period to receive the aggressive Eagle Award.

The eight areas the Spearman Post Office was judged on were: work hours, dollar budget, sick leave, overtime, accidents, lost work day injuries, express mail, and DCEA (number of hours of worked versus volume of mail).

The work hours area is based on the amount of time the post office staff takes to do a job versus a time established in the past. A

post office is doing well in this area when it continually uses less time than budgeted for a job.

If a post office spending less money than it has budgeted for that accounting period. It becomes eligible for the award.

The next four areas have to do with employee hours. If the post office is within 2.5 percent of the employee sick leave and overtime budgeted, has no on the job accidents, and no lost work day injuries, it becomes eligible for the award.

The Express Mail and DCEA are measurements of the amount of bussiness volume the post office is doing versus the market it is in. If the post office exceeds a set standard, then it becomes eligible for the award.

Doing well in these eight areas indicates the post office is working efficiently and saving money. "If everybody would save money the way you do, we would not need to raise rates," Jones said as he presented the award to McMillan and his staff.

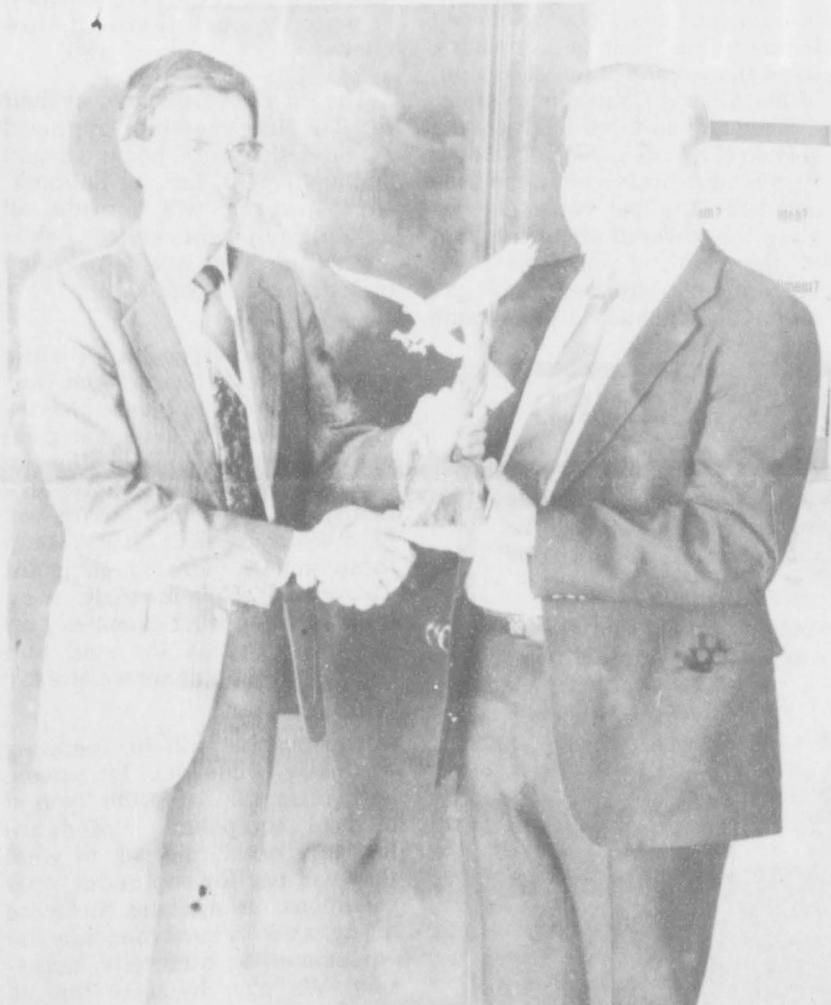
McMillan and his staff now

become eligible for the end of the

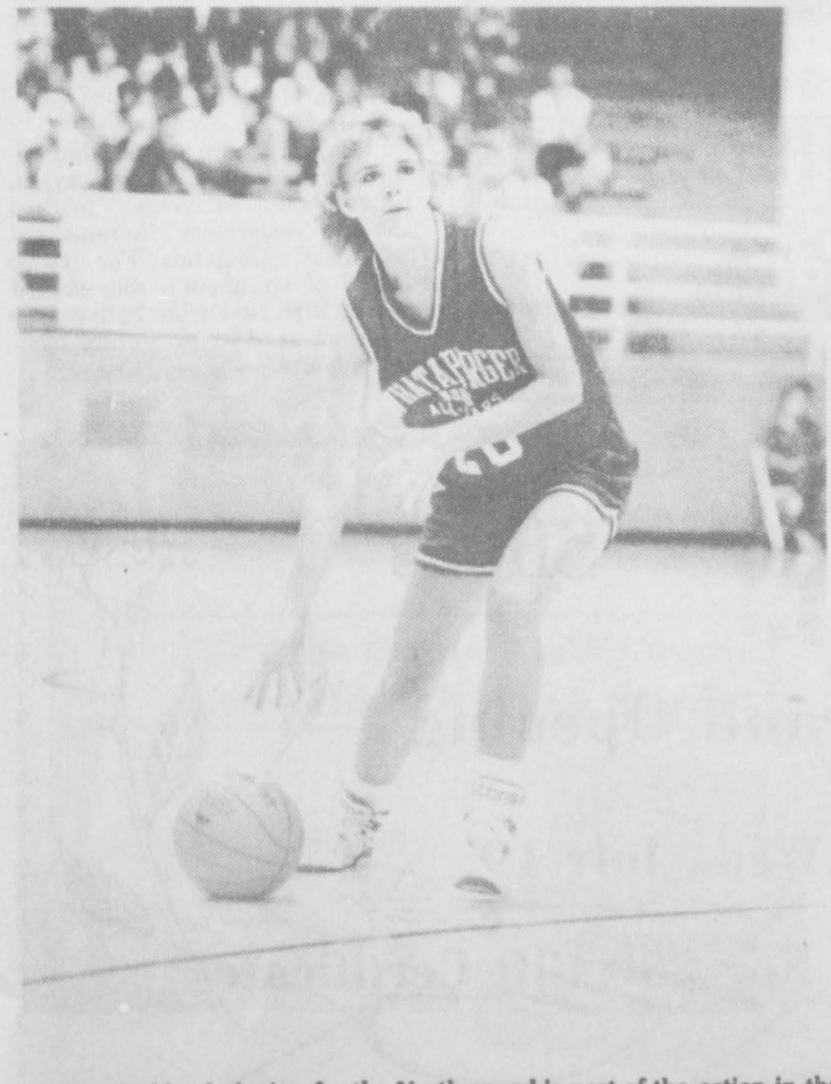
year Aggressive Eagle Award. This award is presented to one of the post offices that received the award during the previous year. It is presented at a Postmasters Awards Banquet at the end of the year.

In summing up his thoughts during the presentation of the award, Jones said, "I just want to tell you all, thank you, for the job you are doing." The award will be on display at the Spearman Post Office.

Jean Ann Behney's historical series will not be in the paper until the first week in August. Mrs. Behney has had an illness in her family and is now, taking a well-deserved vacation. Please look for the continuation of this series the first week in August.



Post Master Otis McMillan [on the right] accepts "Aggressive Eagle Award" from Don Jones, Director of Field Operator.



Krista Kirkland playing for the North squad is part of the action in the 1989 Whataburger Girls All-Star Basketball Game. The North triumphed over the South 81-78 in a close contest played Sat., July 8, at Austin's Toney Burger Activity Center. The North's three-point victory, before a crowd of almost 3,500 at Austin's Toney Burger Activity Center, was the result of a close competition which had the South ahead at the end of the first quarter, 15-13 and at halftime, 38-37. But the North came back, using aggressive defense and last-minute free-throws to secure the win.

The Hansford

# Plainsman

25¢  
Per Copy

6 Pages

---

Volume 19, No. 37

YOUR HOMETOWN NEWSPAPER

Sunday, July 16, 1989

## "Creature Features" ends

By Rita Curtis, Librarian

"Creature Features", summer reading program of the Hansford County Library, ended on Friday, July 7, with a swimming party at the pool.

159 children, ages 5 through 12, were enrolled in the six-week program. Approximately 55 kids enjoyed the weekly film shows each Thursday morning at the library.

Winners of the bookmark contest were announced at the last film show on July 6. The winners this year are Chelsea Nollner, age 6, and Candice Pipkin, age 9. The bookmarks were judged by Spearman artist, Karen Reimer. The two winning bookmarks will be printed by funds made available through Texas Panhandle Library System. They will be distributed at our library in the fall.

36 of the children participating in "Creature Features" received

Texas State Library Reading Certificates for having read at least 10 books during the program. Children may continue reading for certificates until the end of August. The most enthusiastic reader during the program was 10 year old Felix Lopez who read a total of 71 books and who continues to read.

The library's delightful resident dragon once again journeyed downstairs to decorate the library for the summer reading program. The dragon was constructed several years ago by Wanda Reed and the Spearman Study Club for the Hansford Roundup parade. Following his appearance in the parade that year the club donated him to the library and we've been dragonsitting ever since. The library is currently accepting suggestions for a name for our dragon.

The displays made from found objects or "junk" that the children made during the summer reading program will be on display at the library until the end of August. Stop by and see the "creatures" that evolved from egg cartons, boxes, tin foil, cartons, plastic containers, paper rolls and lots of youthful imagination.



These kids are attending the last session of the "Creature Feature" summer reading program.



"Creature Feature" summer reading program has these kids reading and having fun.





Cora Queener

## Queener completes Management Week

Cora Queener, Executive Vice President of the Chamber of Commerce recently completed a week's Institute for Organization Management at Southern Methodist University. Over 300 voluntary organization executives from all over the country participated in this professional development program.

The Southern Methodist University Institute is one of seven annual, one-week sessions sponsored by the Center for Leadership Development, a division of the National Chamber Foundation, at leading universities throughout the country. Other universities that host Institutes are the University of Notre Dame, the University of Georgia, San Jose State University, the University of Colorado, the University of Delaware and the University of Oklahoma.

During the five-day session,

participants spent 27 classroom hours in the Institute course of study, which is designed to assist voluntary organization executives improve the knowledge and skills necessary to enhance the effectiveness of their organization. The Institutes' curriculum includes coursework in management philosophy, interpersonal processes, government, law and organization structure, as well as in more contemporary issues such as economic and environmental concerns. Each participant may attend progressive levels of the program throughout his/her professional career.

University professors chosen to serve as faculty are distinguished authorities in their fields. Additional courses are led by top-level Chamber of Commerce executives, making the faculty unique in its depth and range of knowledge and experience.

### Station Master's

#### House has meeting

The Station Master's House Museum Committee met on Monday, July 10th. There were two main pieces of business taken care of.

Memorials were made to Maggie Dixon, Don Gross, and Margorie Collard. The Memorials were donated by Irvin and Helen Boyd, Johnnie and Joan Lee, Gus and Clementine Renner, and Virginia Cates.

Mrs. Harley Alexander and the Servitors were recognized and thanked for their donations to the Station Master's House Museum.

#### Second Annual

#### Relay Race

#### being planned

The Hansford Activity Center in Spearman is having the second incredible, exciting Texas Panhandle Relay Race! It will start promptly at 7:30 a.m. in the pool at the Borger Community Activity Center at Frank Phillips College and will end (hopefully the same day) at the Swimming Pool Park - 7th and Hazelwood - in Spearman. It will be on Saturday, August 19th.

Each team will have nine members. It will begin with a 400 meter swim in the BCAC Pool, will have male and female cyclists and runners covering various distances, and will end with a female runner to the park in Spearman. All proceeds will go to the Activity Center. The race had 13 teams (107 people) last year and many good comments.

If you would like to get up a team and enter this fun, crazy race, call Joe or Wanda Archer at 806-659-3519 or Philip Archer at

### Club News

#### Rainbows and Ranglers

by Debbie Herrington

Five Squares danced to the calls of Murry Beasley on Thursday night. All enjoyed the different line dances, in between tips, and the ice cream and cake.

Guests visiting our club were Maudie and Cecil Stewart from Elkhart, Kansas. Don and Carol Gillaspie, Ali and Fay Gokmen, and Koscoe and Roberta Casady for Liberal, Kansas. Lester and Peggy Miller from Goodwell, Oklahoma. C.A. and Wilda Brown, Morris and Ada Creele and Jim and Ethel Gray from Fritch. Bob and Lural Enns and Harry and Mary Reynolds from Fritch. Kenneth and Carolyn Limbocker, Margaret Swinney, Ed and Lois Merydith, Violet Helker, Howard and Nancy Barkley, James and Norma Burris, and June Kingley from Perryton. Jack Clarke came from Booker. James Lair was a hometown visitor.

Members present were Tommie Dickey, Gwen Shuler, Delbert and Louise Limmons, Benny and Joyce Byers, Danny and Debbie Herrington, and Sonny and Marline Nollner.

#### Car crashes through store windows

"Alfred Avila was going out the front door. I yelled, look out!" These were the words of Kelly Fuller as he began to describe the accident that took place at the Allsups Convenience Store on W. Kenneth Street.

A 1980 red and white Ford Fairlane was driven through the

The Hansford **Plainsman**  
 Your Hometown Newspaper  
 Spearman, Tx. 79081  
 USPS 2346-6000  
 213 Main, Box 458, 659-3434  
 Published Weekly at  
 213 Main, Spearman, Texas  
 Owned and Operated by:  
**Texas Independent Newspapers, Inc.**  
 19906 Encino Grove, San Antonio, Tx 78259  
 Second class postage paid at Spearman, Texas 79081.  
 Any erroneous reflection upon the character of any person or firm appearing in these pages will be gladly and promptly corrected upon being brought to the attention of the management.  
**PUBLISHER - ROBERT M. HULETT**

Subscription Rate: Spearman, adjoining counties, combination with the Spearman Reporter, \$19.95; non-adjointing counties, \$24.95 annually.  
 Postmaster: Send address changes to Hansford Plainsman Box 458, Spearman, Tx. 79081.  
 The publisher reserves the right to revise or reject at its option any advertisement which it deems objectionable, either in subject or phraseology, or which it may deem detrimental to its business.

#### Hospital provides new health care

Hansford County Hospital District has announced that it has entered a new field in providing health care services to Hansford County residents. Durable Medical Equipment, such as wheel chairs, hospital beds and oxygen machines can now be purchased or rented through Hansford Hospital.

The Board of Directors, at their regular June meeting, approved an affiliation with home oxygen and equipment, Inc., of Lubbock. Home oxygen will provide all oxygen equipment services, while other equipment will be provided directly by the hospital.

Albert La Rochelle, District Administrator, stated, "The Durable Medical Equipment Service is another way that we can expand our role in meeting the health care needs of Hansford County residents. We think this service will be more convenient. It will keep those monies here in Hansford County that were formerly going to Amarillo or other cities, and we can do this using the staff and much of the equipment we already have."

The hospital will be following Medicare guidelines in pricing and making available this type of medical equipment. "Medicare has very exact rules as to what they will pay for and under what conditions. In order for Medicare to pay, a doctor must prescribe the equipment as medically necessary. We plan to make this as simple and convenient for our customers and their physicians as possible. We would be glad to hear from anyone who has a need for this service, to answer their questions and let them know what is available," said Kaye McFarlin, Director of Nursing.

Mrs. McFarlin stated that inquiries regarding home oxygen units should be directed to Rich Smith, respiratory therapist at Hansford Hospital. For other types of equipment, one should contact Mrs. McFarlin, both can be reached at 659-2535 during business hours.

### You Are Invited! ! ART SHOW & SALE

A Show and Sale of the Art Collection and Works of the late Vera Beth Hicks will be opened for public display at the Hansford County Library beginning Sunday July 16, 2 p.m. until 7 p.m., and Monday through Saturday 2 p.m. to 8 p.m. and close after a Sunday showing July 23, 2 to 7 p.m.

The executors of the estate will accept sealed bids for items not previously sold or marked "No Sale" until the close of the show. Bids will be opened at the close of the show.

Terms: Cash upon delivery. Items not paid for within 10 days of bidder's notification of award will be considered "no sale" and may be offered to the next higher bidder. In case of tie or equal bids, rebids will be asked of those who are tied. The sellers reserve the right to reject any or all bids.

James K. Hicks  
 Wilson McClellan  
 Roy L. McClellan

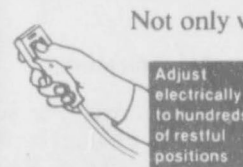
Executors of the Estate of Vera Beth Hicks

#### Artists represented in the collection include:

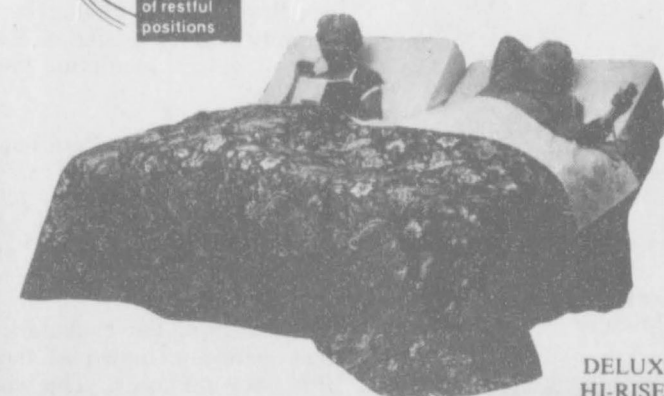
- |                  |                 |                    |
|------------------|-----------------|--------------------|
| Larry Bell       | Ruth Hutton     | Jean Reynal        |
| Charlie Bunnell  | Tommy Hicks     | Kenneth Rothe      |
| L. Calgagno      | M. Hindergardt  | Arlene Schloss     |
| J. Boynton       | Stephen Kramer  | J. Scott           |
| Tom Beasley      | Ray Kelly       | Nelda Sheets       |
| Gary Cartwright  | Elroy Kee       | Freda Sheets       |
| Chase            | Gerald Lang     | Steve Sheets       |
| Genevieve Currie | Bob Lile        | Lometa Sparks      |
| Elaine DeKoening | Lee Mullican    | Leon Smith         |
| De Grazia        | Meador          | Jack Soreson       |
| Ken Drew         | Louise Nevelson | Chuck Seward       |
| Warren Davis     | Pade'           | Mack Stewart       |
| Hans Emri        | Patricia Nix    | Hedda Sterne       |
| Dord Fitz        | Nell Patterson  | Mary Toft          |
| Lincoln Fox      | E. Pennebaker   | Ernest Wilmeth     |
| Al Lee Fugua     | Beth Phelps     | Lara Jo Wilson     |
| Blanche Fuller   | Louie Rimmel    | M. Yanke           |
| Ernest Hint      | E. Renner       | Lena Mae Brillhart |
- and Vera Beth Hicks

### "LOCAL ADJUSTABLE BED HEADQUARTERS"

If you are one of the millions who have seen adjustable beds on T.V....Loved the idea but were hesitant to call the 800 number for fear a salesman would come to your door...Well you were right....



Not only will you save but you can try Flex-A-Bed at your local dealer before you buy.



HONEST SAVINGS  
 DELIVERY + SERVICE  
 SOLD ONLY BY  
 LOCAL EXCLUSIVE DEALERS

15 YEAR WARRANTY

**FLEX-A-BED**

You owe it to yourself to come in or call for prices today.

**Perryton FURNITURE CO.**  
 Phone 435-5131  
 206 SO. MAIN • PERRYTON, TEXAS

### Miss B's Shoes

#### Grand Opening

Wed., July 19

Brands carried:

- Life Stride
- Calico
- Nicole
- Sensations
- Razzmatazz
- Bellini
- Truffles

Drawing For \$30 Gift Certificate

Refreshments

209 Main Spearman Owners: Sam & Brenda Pierson





Players on the Babe Ruth All Star Team from Spearman are Chad Davis, and Brian Beck.



The "Top of Texas" Babe Ruth All Star Team and Coaches.

## Babe Ruth All Stars finish 4th in tournament

The Babe Ruth Top O Texas West All Stars finished 4th in the Pampa All Star tournament this week. Fifteen guys, ages 14 and 15, were picked from a field of 80 to make up this All Star team. The boys that were picked for the West team were from Perryton, Booker, Gruver, and Spearman. The Spearman boys who were picked for this team were Chad Davis, Brian Beck, and Brandon Rex.

The first game was played last Saturday against North Randall County. Top O Texas lost 11-1.

The second game played Monday against Dumas proved to be far more successful as Top O Texas West won 15-14. Entering the bottom of the 7th inning, Top O Texas West was down 8 runs (14-6), but came back to score 9 runs. Chad Davis got on base 5 out of 5 times and scored one run being left on base 3 times and was called out by the umpire stealing home (a close call).

Brian Beck was injured running to first base. He was taken to the hospital and is now on crutches due to a bruised and sprained ankle. Brian played short stop before leaving the game.

Brandon Rex scored 2 runs for the evening and kept busy going from 2nd base to short stop.

The third game played Tuesday night against Canyon resulted in a 25-2 loss. Chad Davis pitched until he was injured shortly after the 2nd inning began. A hard-hit fast line drive connected with Chad's hand and knuckles. He stopped pitching and moved to center field, but finally had to

come out of the game because of swelling. Of course, Brian was still injured and two other players didn't show for the game. So, the All Stars struggled through this game using 5 different pitchers.

A high light of the series was when Brandon Rex and Brian Beck combined for a picture perfect 4-6-3 double play. "Spearman can be proud of these three boys who represented this town as they are excellent baseball players and give 100% all the time," said Marlene Davis, the score keeper.

## Class of 1979 to hold reunion

The Spearman High School Class of 1979 will be having their ten year reunion this summer. The date scheduled for the event is July 29.

The class is inviting any teachers, friends of these classmates, or family of these classmates to come visit with them. Any of these people are more than welcome to attend the family picnic.

The picnic will be held at the Swimming Pool Park at 12 noon. Each person, or family, is responsible for his own lunch.

Please feel welcome to bring your lunch and lawn chair and visit all you want.

Get your entries ready!

for the

# Fifth Annual First National Bank Junior and Open Tennis Tournament

## OFFICIAL ENTRY FORM

FIFTH ANNUAL  
FIRST NATIONAL BANK SPEARMAN, TEXAS  
JUNIOR AND OPEN TENNIS TOURNAMENT



DATE: Junior - July 27th and 28th  
Open - July 29th and 30th

PLACE: Spearman High School's Omni Courts

BENEFIT: Tournament Proceeds and Concessions to benefit Hansford County Activity Center

ENTRY DEADLINE: Noon, Wednesday, July 26th

ENTRY FORM: Junior Tournament  
All Singles events will be played through to the finals on Thursday.  
All Doubles events will be played through to the finals on Friday.  
\$5.00 per single event, \$16.00 per doubles team.  
Limit (3) events per person. Starting time is 8:30 a.m. each morning.

Age Group	BOYS		GIRLS	
	Singles	Doubles	Singles	Doubles
10 and under	_____	_____	_____	_____
12 and under	_____	_____	_____	_____
14 and under	_____	_____	_____	_____
16 and under	_____	_____	_____	_____
18 and under	_____	_____	_____	_____

NAME: \_\_\_\_\_ DOUBLES PARTNER: \_\_\_\_\_  
ADDRESS: \_\_\_\_\_  
TELEPHONE: \_\_\_\_\_  
SEEDING INFORMATION: \_\_\_\_\_

Open Tournament  
All Singles events will be played through to the finals on Saturday.  
All Doubles events will be played through and finished on Sunday.  
\$8.00 per single event, \$16.00 per doubles team.  
Limit (2) events per person. Starting time is 8:30 a.m. each day.

Event	A	B	C
	Women's Singles	_____	_____
Women's Doubles	_____	_____	_____
Men's Singles	_____	_____	_____
Men's Doubles	_____	_____	_____
Mixed Doubles	_____	_____	_____

NAME: \_\_\_\_\_ DOUBLES PARTNER: \_\_\_\_\_  
ADDRESS: \_\_\_\_\_  
TELEPHONE: \_\_\_\_\_  
SEEDING INFORMATION: \_\_\_\_\_

Send entries to: First National Bank, P. O. Box 337, Spearman, Texas 79081  
Phone: (806) 659-5544 or  
Don and Barbara Townsen, P. O. Box 613, Spearman, Texas 79081  
Phone: (806) 659-2735

Tournament Directors: Don and Barbara Townsen

**Learning About God's World!**  
4 & 5 yr. olds Preschool  
**Emphasis on Christian Teaching and Basic Skills**  
School will also include learning situations on manners, music, arts, play-acting, & field trips.  
Monday & Wednesday 9 - 11 a.m.  
Begins in Sept.  
**\$50 per month**  
For registration, please contact  
**Judy Hutchison 659-5162**

**Whit's Pharmacy, Inc.**  
3010 Carrett Drive Perryton, Texas 79070 806-435-3759

**We can supply all your Home Health Care needs!**

- 24 Hour Service
- Sales & Rentals
- Medicare Assignments Accepted

**We will bill your Insurance & Medicare for you.**  
Blue Cross - Blue Shield and PCS Cards accepted.

Proceeds to benefit Hansford County Activity Center

FDIC

**FNBANK**  
First National Bank of Spearman

Hours: Mon. - Fri. 7:30 - 3:00  
Open Thurs. 4p.m. - 6 p.m.

Entry Forms available at First National Bank of Spearman



## Among the Neighbors

by Helen Fisher

Betty and Roy Lee Uptergrove recently spent some days traveling across Texas and into Mexico. In Dallas they visited their son, and daughter-in-law, Alan and Valerie, then went to San Antonio.

They drove on to Matamoros, Mexico where they spent some time with friends at the Matamoros, Baptist Children's Home and Clinic. This is the place where Roy Lee and others spend so many hours and days every winter helping with repairs and building, beds or bookshelves-whatever is needed.

Dr. Saul Comaches is the director of the home, as well as doctor at the clinic. He provided the Uptergroves with an apartment for their five day stay. Most of their time was spent getting acquainted and renewing friendships with the more than 70 children and the 10 houseparents.

Two of the teen-aged girls, Rosa Gonzales and Alma Ambrosio, returned to Spearman with the Uptergroves.

Enroute to Spearman, stops were made at San Antonio and Sea World. They also visited with their daughter, Lee Ann, and family in Lubbock.

The girls will be in Spearman about three weeks before returning to Matamoros. Since neither speak English, Roy Lee will be practicing his Spanish and probably will be proficient in the three weeks.

What was expected to be a routine birthday observance for Eulalie Greever last Tuesday turned out to be a festive occasion.

Old friends, Fred and Fay Marshall, of Lubbock, arrived in their Beechcraft to help her celebrate.

Ice cream and birthday cake was shared with other family members.

Eulalie and W.R. have been back from South Fork for a couple of weeks but will return later in the summer.

A native born Texan has arrived in the home of some transplanted Coloradans in the person of Travis Wayne, the new son of Ann and Jim Turner, III. He was born July 6 at Northwest Texas Hospital in Amarillo, weighing 6 lb. 7 oz.

His 20 month old brother, Trevor, has decided to accept him. Travis Wayne's grandparents are Mr. and Mrs. Jim Turner, II, Nunn, Colo. and Mr. and Mrs. Wayne Hamilton, Jr., of Rocky Ford. Great-grandparents are Mr. and Mrs. Wayne Hamilton, Sr. La Junta, and Mr. and Mrs. Paul Lusk, Rocky Ford, and Mrs. Ida Turner, Nunn.

Jim's mother, Mrs. Jim II, has been here a week keeping Trevor Company.

\*\*\*

Blanche Greene and daughter, Joan Vernon, returned recently from a week in Phoenix, Ariz. They flew to and from Amarillo. Joan and Eldon's daughter, Shannon, and Allen Loggins are living in Phoenix. This summer, their other daughter, Tanya, is spending the summer there and is employed at the same place as Shannon.

\*\*\*

Hollie and Earl Riley attended services for Gordon C. Greene in Borger on Tuesday. Mr. Greene, 69, died Sunday and interment

was in Durant, Okla. He had a number of friends in Spearman as for many years he was active in the wagon train.

\*\*\*

Since Sunday, guests of the Roscoe Nelsons have been their daughter, Rhonda Burress, with Amanda and Randy. They now live in Evansville, Indiana and her husband, Jeff, will arrive later, after a visit with his parents in Bentonville, Ark. they expect to be in Spearman and Gruver for several weeks.

Sue Ann and Danny Fiel of Gruver, and children Sheri and Lesli, had been visiting Rhonda and Jeff, so all returned together.

Other relatives visiting with the Burress family are Jeff's brother, Lonnie and Linda Burress, of Houston. They are enroute home from Colo. and are accompanied by children Wendi, Staci and Rusty.

\*\*\*

Wanda and Bob Burke are at home after a stay at Cave City, Ark. Their son, Mr. and Mrs. Ronnie Burke and Josh, of Amarillo, accompanied them.

They visited Wanda's brother, Chester Stewart, who has undergone surgery recently.

Another purpose of the visit was the 46th reunion of Wanda's high school class at Cave. Wanda was surprised at how much classmates had aged, but really distressed by their failing eyesight--since they didn't recognize her!

\*\*\*

Vickie Schmehr from Indianapolis is here visiting her son, Jeffrey Schmehr for a few days. She was accompanied by her sister, Mary Ann Brinson. Mary Ann attended school here when her family lived in Spearman a number of years ago.

\*\*\*

A precious new addition to the family of Gina and Jerry Pat Davis is Mattie Beatrice. She arrived by way of Northwest Texas Hospital on July 7 and weighed 7 lb. 6 oz. and was 18 1/2 inches long.

Her sister Grace, 9, and brother Charles, 5, joined the welcoming committee.

Her grandparents are Betty and Irvin Davis and Charlene and Roy Bulls, Spearman; great-grandparents are Beatrice Benton, Amarillo, Carrie Clement Russell, and J.W. Davis, Spearman. Mr. and Mrs. Benton is here with the Davis family for several days.

**Cancer Information Service**  
1-800-4-CANCER

## Immunization Clinics offering vaccines

Immunization Clinics offering vaccines that give protection against several childhood diseases are scheduled for July. Protection is against polio, diphtheria, lock jaw (tetanus), whooping cough (pertussis), measles, rubella, and mumps.

The Texas Department of Health is charging money to help with the cost of keeping the clinic open. The amount of money charged will be based on family income and size, and the ability to pay.

The closest locations and dates are listed below.

Borger-Texas Department of Health Office 600 Cedar, Suite 400 - July 12, 1-4 p.m.  
July 26 9-12 & 1-4 p.m.

Canadian - City Hall, First Floor 6 Main Street - July 20 - 10-12 noon.

## Crude oil production averaged

July 11, Texas crude oil production averaged 1,806,946 barrels daily in April, according to preliminary figures released by Railroad Commission Chairman Kent Hance.

This figure compares with preliminary March production of 1,810,711 barrels daily. Final production reports for March indicated average production at 1,818,072 barrels daily.

Hance said the preliminary Texas oil production figure for April is 54,208,392 barrels, down from 56,132,054 barrels in March.

According to Hance the state's top producing counties, rank ordered by preliminary April production were: Gaines, 3,504,912 barrels; Ector, 3,175,791 barrels; Andrews, 3,154,051 barrels; Yoakum, 2,909,195 barrels; Pecos, 2,685,419 barrels; Hockley, 2,614,608 barrels; Gregg, 2,502,521 barrels; Crane, 1,551,611 barrels; Scurry, 1,346,164 barrels; and Kent 981,152 barrels.

# Texas

It's Like A Whole Other Country.

HAVE YOUR HEARING TESTED BY A PROFESSIONALLY TRAINED BELTONE HEARING AID SPECIALIST TODAY!



Charlene Blalock

Come To:  
Hansford Manor  
707 S. Roland  
Spearman, Texas

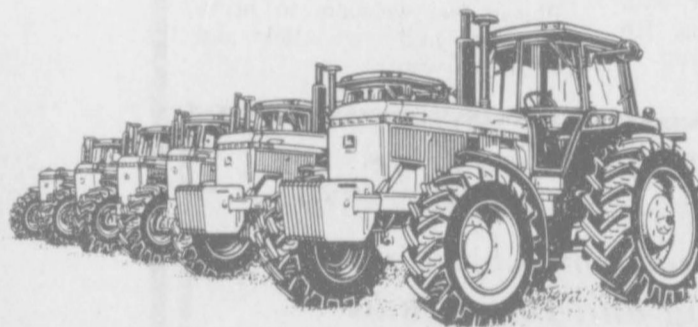
Thursday  
July 20, 1989  
10:00 a.m. to  
12:00 noon

**Beltone**  
Better Hearing Through Professional Care

## FREE HEARING TESTS

STOP IN AND SEE

## TAKE A LOOK AT JOHN DEERE'S 'NEW' LONG GREEN LINE



105-200 hp 55 Series Tractors

We're celebrating 35 years of serving Hansford County and **STILL** going strong.

No. 1 in New & Used Farm Machinery  
No. 1 in Fast, Efficient Parts Service  
No. 1 in Technical Support



LEADERSHIP AT WORK

## HANSFORD IMPLEMENT

HWY 207 South

659-2712

Spearman, Texas

## HANSFORD HOSPITAL

Now Has A Full Line of  
**MEDICAL EQUIPMENT**

For  
Your Special Needs

**WHEELCHAIRS**  
**HOSPITAL BEDS**

**CRUTCHES**  
**WALKERS**  
**COMMUNES**

BUY OR RENT

Please Call Kaye McFarlin  
Director of Nursing  
659-2535



# Classifieds

**For Sale**      **For Sale**      **Miscellaneous**

**FOR SALE:** 1 Metal Building and Property 35' x 50' - 1 Large Cinder Block Building and Property 3000 sq ft. Contact: First State Bank, Box 247, Spearman 659-5565. S23-RTN

**FOR SALE:** 3 bedroom, 2 bath home. Sunken living room, parquet floors, fireplace, covered patio, 2 car garage, sprinkler system, 2193 sq. ft. living space, excellent location. Call 659-3587 or 659-5022. S33-RTN

**FOR SALE:** 4 Bedroom, 1 3/4 bath. New carpet, central heat, carport. Assumable. Owner would consider carrying sidenote on equity. 1112 S. Dressen. 659-2125. S35S-RTN

**HOUSE FOR SALE:** APPROX. 1525 sq ft - 1 3/4 bath - Large master bedroom - Lots of custom cabinets - Garbage disposal - 5 ceiling fans - Dishwasher - 2 Fireplaces. 1025 S. Townsend. Phone 659-3089. S35-8tp

**FOR SALE:** 3 bedroom, 2 bath home fireplace, large living area, drapes, mini-blinds, completely remodeled and large deck patio. Nice neighborhood. 1110 S. Barkley. Call 659-3100 S36rtn

**FOR SALE:** 1979 Ford Supercab. Rebuilt engine & transmission. call 733-2188 S364tc

**FOR SALE:** Bedroom suite, Living room suite, 2 Bedside tables, Brass floor lamps, 25" Color T.V., Occasional chairs, Recliner, Patio table & chairs. Phone 659-2654 S37-4tp

**FOR SALE:** 1982 Artcraft Airline mobile home 16x80' 3 bedroom 2 full baths, dishwasher, A.C., masonite siding storm windows. Excellent condition. \$8,800.00 Call: 659-2582. S-37-3tp

**USED AUTO PARTS FOR SALE:** Located 4 miles west of Hooker, Ok. on highway 54. **Muss Cat Auto Salvage.** (405) 652-2400. S10-rtm

**HOUSE FOR SALE:** 4 Bedroom 1 3/4 bath 2 Car Garage, Fireplace Remodeled, New Carpet. 1119 Archer. Call: Sue Gerardy - 659-5196 or 733-5101. S 37 - RTN 1tp

**FOR SALE:** 1989 Chev. Silverado Pickup - want someone to take up payments. Call: 659-5217 or 659-2664. S36S - 4tp

**FOR SALE:** 1984 Pontiac Firebird Full Power, Excellent Condition, New Tires 659-2287. S37S - 2tp

**AVON WHOLESALE CLUB:** Join for only \$5, get products at cost. Call Billie 806-857-3772. S37-8tp

**For Rent**

**FOR RENT:** Efficiency furnished Apartment. Single preferred. Call: 659-2764 S37 - RTN

**FOR RENT:** 3 Bdr., 1 Bath, House for rent. Will take repairs for a deposit. Call: 659-2245. S37 - RTN

**FOR RENT:** Nice unfurnished 3 bedroom 1 bath with new carpet and paint. Completely remodeled. Storage building, air conditioner. Fenced back yard. Washer/Dryer hook-up and cable furnished. Call 659-3657. S37-RTN

**FOR RENT:** Nice private trailer horse lot. New utilities. Call: 659-3657. S37-RTN

**FOR RENT:** 1 Bdr. Furnished Apt. Call: 659-3185 S37S - 2tp

**Help Wanted**

**HELP WANTED:** Experienced tractor & diesel mechanic for farm implement dealer. Send resume to: **Perryton Ford New Holland**, Rt. 1, Box 93, Perryton, Tx. 79070. S37-2tc

**HELP WANTED:** Full time male 18 years or older. Must have valid class C drivers license. Honest, dependable, clean and willing to work or do not apply. Apply in person. **White House Lumber Co.**, 306 Davis St. in Spearman. S37 - RTN

**GOVERNMENT JOBS!** Now hiring in your area, both skilled and unskilled. For a current list of jobs and application, call 1-615-383-2627 Ext. P705 S37S - 4tp

**WANTED:** Part-time Homemaker attendant for Spearman. Please call 806-371-7313 Collect, Mon. thru Fri. from 9 - 5. S37S - 1tc

**Work Wanted**

**LAWN MOWING:** Neat job promised by a dependable worker. Call: Chad Davis at 659-2912. S37-RTN

**WORK WANTED:** Man with tractor with large mower for acreage or large lots. Teenager with riding and push lawnmowers for lawns. Good service, cheap price. Light trucking & small loader. Call: 659-3657 S37-RTN

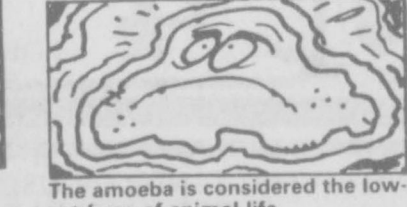
**Garage Sales**

Golden Sperad Senior Citizen Center will have a garage sale on Friday July 28th, from 9 a.m. to 6 p.m. at Paula's Dance Studio in the Shopping Center in Spearman.

Please help the Senior Citizen's Center by donating items to be sold in the Garage Sale which will be held on July 28th, from 9-6, at Paula's Dance Studio in the shopping center in Spearman. You can bring garage sale items by the Center at 14 S. Haney or call 659-3521 and someone will pick up the items for you.

**Business Opportunity**

**RESPONSIBLE PERSON** wanted to own and operate high profit candy vending route. Nationally proven program since 1959 - includes training. Requires cash investment of \$4237 to \$14070. Call: 1-800-328-0723. **EAGLE INDUSTRIES** - Since 1959. S37S - 1tp



The amoeba is considered the lowest form of animal life.

**Legal Notices**

Sealed bids for the purchase of natural gas pressure controls, pressure transmitters and temperature transmitter equipment will be received by the City of Spearman at the office of the City Manager up until 10:00 a.m. on August 7, 1989 and then publicly opened and read.

The city reserves the right to eject any or all bids, to waive informalities, and to accept the bid deemed to be the most advantageous to the City. All bids received after the closing hour will be returned unopened.

Specifications and bidding documents may be secured from the office of the City Manager, P.O. Box 37, Spearman, Texas 79081.

**NOTICE**  
**Wallace Monument Co.**  
Monuments, Curbing,  
Grave Covers  
Local Representative  
**LEONARD JAMESON**  
Spearman, Texas

**CAR WASH**  
Church of Jesus Christ of Latter Day Saints  
The LDS Young Women are having a "car wash" July 19th, 3:30 - 8:30 p.m. \$10 per car. **FREE PICK UP AND DELIVERY.** Contact: Michelle Garnett 659-3265 or Vonda & Gwen Benson 659-2213 or Elizabeth Pipkin 659-3938

**OSGOOD MONUMENT CO.**  
Amarillo, Texas  
Dealers of Rock of Ages Granite, as well as all colored granites, marble and bronze memorials.  
represented by  
**BOXWELL BROS.**  
**FUNERAL HOME**  
519 S. Evans  
659-3802

Count on the  
**Classifieds**  
to Do the Job

**Public Notice**  
Anyone having medical records with doctors **Kleeberger, Thomas, or Manese**, please notify **Hansford Hospital 659-2535, EXT. 201** within **thirty (30) days**, if you want to pick up these records. They will be destroyed after **thirty (30) days**.

**Dr. Laurence Behney**  
**Hansford Family Medicine Clinic**  
will be on vacation  
Sat., July 15 - Sun., July 30  
The Clinic will reopen Mon., July 31 at 9 a.m.  
School physicals at reduced rates  
Aug. 1st - 31st, 1989

# AUCTION

**THE PLAZA CLUB (FORMERLY THE PAMPA CLUB)**  
— A Luxury Private Dining Facility —  
A Complete Liquidation of Restaurant, Dining, and Lounge Equipment  
**NO MINIMUMS — NO RESERVES**  
**10:00 A.M. — THURSDAY — JULY 20th**  
SALE LOCATION: 1224 N. HOBART, PAMPA, TX On the 2nd Floor of NBC Plaza  
INSPECTION: 9:00 A.M. - 5:00 P.M. DAY PRIOR TO SALE

- KITCHEN EQUIPMENT & APPLIANCES**
- 1 GARLAND 6 Burner, 2 Oven Range w/24" Griddle, Over Shelf
  - 1 VULCAN Chargas Table Top Grill, 2'x3', Model M6B8
  - 1 S/S GE Table Top Electric 2 Basket Fryer, Model HK8
  - 1 S/S FRYMASTER Gas 2 Basket Fryer, Model MJ35SP
  - 6 Assorted Fry Baskets
  - 2 Commercial Gas Convection Ovens, 1-VULCAN, 1-SNORKEL
  - 1 5'x12" Double Vent Hood w/Blower, Lights, Fire Ext. Nozzles
  - 1 Fire System for Above Hood
  - 1 59" L x 26" D x 24" H Griddle Table
  - 1 5 Well Elec. Steam Table w/Overshelf, Undershelf, Workbench
  - 1 PANASONIC Commercial Microwave Model 6030
  - 1 AEROHOT Elec. Food Warmer, 5 Well, Wood Finish
  - 1 28"x72" Salad Bar w/Sneeze Guard & Light, Ice Contained
  - 1 S/S HOBART Gas Dishwasher Model C-44
  - 1 HATCO Booster Water Heater, Model C-45, 220 V
  - 1 ISE ERATOR SS50 Commercial Disposal, 220V
  - 2 S/S Dishwasher Approaches - Left-28"x84" - Right-28"x60"
  - 6 Plastic Dish Racks
  - 1 S/S Vent Hood for Above Dishwasher, 36"x54"
  - 4 S/S ALTO SHAAM Holding Ovens, Model 500S
  - 1 S/S GROEN Self Contained Steam Kettle, 220 V, Model 19
  - 2 S/S Hanging Warming Lights, 48"
  - 1 HOBART 12" Slicer, Model 512
  - 1 UNIVEX 10" Slicer
  - 1 S/S AMF Table Top Griddle 18"x21", Model G211 8L
  - 1 S/S PRINCE CASTLE Chain Toaster, Model 197
  - 1 S/S TOASTMASTER 4 Slice Elec. Toaster, 220V
  - 1 HOBART 2 Drawer Bun Warmer Model HF071
  - 1 BAKER'S PRIDE Countertop Oven
  - 1 S/S STAR 2 Bulb Warmer, Model 14HL
  - 1 HOBART Kitchen Aid Mixer
  - 1 CUISINART Food Processor
  - 1 Hand Grinder
  - 1 Tomato Witch, 3/16" Cut
  - 1 Wedgemaster II
  - 3 Kitchen Scales
  - 3 Commercial Can Openers
  - 2 Mobile Bins
  - 1 HOBART 20 qt. Mixer w/Bowl, Model A-200
  - 1 Lot Attachments for above Mixer - Dough Hook, Whip, Meat Grinder, Vegetable Slicer
  - 1 S/S EM3ER GLO Table Top Steamer, Model ES5M
  - 1 S/S 2 Well Elec. Hot Food Server
  - 2 PRESTO 7 qt. Pressure Cookers (1 New)
  - 2 Potato Cutters, 9/32" & 3/8"
  - 1 S/S Table Top Food Warmer
  - 1 Elec. Flurry Machine
  - 1 Formica Back Bar w/Glass Rocks & Ice Bin, 145" L x 26 1/2" D
  - 1 Formica Counter w/4 Doors, 119" L x 18" D
  - 1 Lot Assorted SUPER ERECTA Shelving
  - 1 S/S Hand Sink
  - 33 CAMBRO Pans - Full, 1/2, 1/3, 1/4, 1/8 & 1/9 Sizes
  - 1 Lot CAMBRO Lids
  - 2 CAMBRO Tubs
- VEGETABLE SINKS, WORK TABLES, MISC.**
- 1 S/S 2 Well Vegetable Sink, 25"x6", w/Splashboard, Under Storage, 2 Drawers & Drainboards
  - 1 S/S 2 Well Vegetable Sink, 2'x6", Single Drain Board
  - 1 S/S Work Table, 30"x6", w/1 Drawer & Undershelf
  - 1 S/S Work Table, 24"x30", w/1 Drawer
  - 1 S/S Work Table, 30"x4", w/1 Drawer, Over Shelf & Under Shelf
  - 1 S/S Work Table, 2'x4", w/Splashguard & Undershelf
  - 1 S/S Work Table, 2'x4", w/Undershelf
  - 1 S/S Work Table, 2'x6", w/Splashboard, Overshelf & 2 Undershelves
  - 1 Wood Baker's Table, 30"x60", w/1 Drawer
  - 6 S/S Wall Shelves
  - 1 Lot Assorted Cutting Boards
  - 3 Rubber Mats, 39"x59"
  - 1 3 Shelf Wall Shelf, 240" L x 12" D x 36" H
  - 1 7 Station Waitress PAGING System
  - 1 Inventory Kitchen Utensils - Knives, Ladies, Skimmers, Whips, Potato Mashers, Tongs, Scoops, Hollow Handle Forks & Spoons, etc.
- REFRIGERATION EQUIPMENT**
- 1 S/S McCALL 2 Door Reach In Refrigerator
  - 1 S/S VICTORY 2 Door Reach-In Refrigerator, Model AR-47-S3
  - 1 S/S CRC 32" Reach Thru Stack Door Refrigerator
  - 1 S/S CRC Commander 29" 1 Door Reach In Freezer
  - 1 VULCAN Combination Walk In Inline Self Contained Cooler Freezer, w/Floor, Model WICF Cooler - 76"x90" ID, Freezer - 76"x67" ID
- 1 S/S DELFIELD Under Counter Freezer, 27" W x 26" D**
- 1 S/S DELFIELD Pie Case w/Glass Front Display & Understorage
  - 1 S/S 27" DELFIELD Sandwich Table w/Overshelf
  - 1 Sandwich Table, Brand N/A
  - 1 HUSSMAN Ice Cream Cabinet
  - 1 BEVERAGE AIRE Under Counter Keg Cooler, 3 Door, 1 Tower w/2 Dispensers, Walnut Grain Front, 79"Lx27"Dx37"H
  - 1 BEVERAGE AIRE Under Counter Beer Cooler, 2 Door Walnut Grain Front, 59"L x 27"D x 37"H
  - 1 MANITOWOC 400 Ice Cube Maker
- POTS, PANS, INSERTS, KITCHENWARE**
- 1 60 qt. Stock Pot
  - 2 40 qt. Stock Pots
  - 2 20 qt. Stock Pots
  - 1 8 qt. Stock Pot
  - 1 19"x21" Covered Roaster
  - 1 10"x19" Covered Roaster
  - 2 10 qt. Sauce Pans
  - 1 4 1/2 qt. Sauce Pan
  - 1 5 1/2 qt. Sauce Pan
  - 2 Sets 4 Pc. Sauce Pans - 1 qt. to 5 qt.
  - 1 Lot Teflon Skillets
  - 1 12" Saute Skillet
  - 2 7" Saute Skillets
  - 2 Flambeau Skillets
  - 1 5 1/2 qt. S/S China Cap
  - 1 1 qt. Double Boiler
  - 4 4 qt. Bain Maries
  - 4 1 qt. Bain Maries
  - 2 13 qt. S/S Mixing Bowls
  - 2 Large S/S Colanders
  - 4 7 1/2 qt. Round S/S Inserts
  - 1 Lot Round Insert Lids
  - 15 4" & 6" Water Jackets, Full Size
  - 22 S/S Assorted Full Pans
  - 15 S/S Assorted Half Pans
  - 1 S/S 2/3 Pans
  - 6 S/S 1/3 Pans
  - 1 S/S Long Half Pan
  - 20 S/S 1/6 Pans
  - 6 S/S 1/9 Pans
  - 1 S/S Butter Spreader
  - 4 S/S Full Size Dome Lids
  - 4 Half Size Flat Lids
  - 5 Hinged Dome Lids
  - 1 Lot Steam Table Dividers
  - 1 Lot Assorted Pie Pans
  - 1 Lot Assorted Loaf Pans
  - 15 Full Sheet Pans
  - 8 Half Sheet Pans
- SERVING EQUIPMENT, UTENSILS & GLASSWARE**
- 312+ Dinner Knives - Mostly ONEIDA - Monte Carlo Style
  - 61 Wood Handle Steak Knives
  - 15 Bread Boards w/Knives
  - 144+ Iced Teaspoons, ONEIDA
  - 108+ Teaspoons
  - 72+ Soup Spoons, ONEIDA
  - 12 Table Spoons
  - 132+ Salad Forks, ONEIDA
  - 96+ Dinner Forks, ONEIDA
  - 132+ Oyster Forks
  - 1 Lot Serving Forks & Spoons
  - 3 Shiska Bob Platters w/Inserts
  - 5 Steak Platters w/Inserts
  - 25 11" Dinner Plates
- NOTE:** The following down to the Creamers is HOMER LAUGHLIN - All Matching Scalloped Shape
- 10 12 1/2" Platters
  - 94 9 1/2" Plates
  - 30 9" Soup Bowls
  - 77 6" Soup Bowls
  - 54 Dessert Dishes
  - 8 6 1/2" Plates
  - 87 7 1/2" Plates
  - 108 Butter Plates
  - 114 Saucers
  - 158 Coffee Cups
  - 10 Soup Cups
  - 18 Creamers
  - 24 Coffee Cup Trays
  - 33 Plastic Domed Plate Covers
  - 16 Casserole Dishes
  - 12 Quiche Dishes
  - 20 Clear Glass Salad Bowls
  - 40 Assorted Glass & Clear Salad Plates
  - 5 Hot Onion Soup Bowls
  - 8 Butter Warmers
  - 5 Hot Tea Pitchers
  - 44 S/S Butter Cups
  - 11 Cocktail Cups
  - 13 Shrimp Cocktail Bowls w/Rings
  - 9 S/S Gravy Servers
  - 9 Cocktail Bowls
  - 21 Glass Sugar Bowls
  - 47 16 oz. Tea Glasses
  - 50 12 oz. Stemmed Tea Glasses
  - 53 8 oz. Stemmed Tea Glasses
  - 21 10 oz. Glass Stem Ware
  - 28 8 oz. Glass Stem Ware
  - 16 6 oz. Glass Stem Ware
  - 145 4 1/2 oz. Sherbet/Champagne Glasses
  - 50 Sundae Glasses
  - 2 Punch Bowl Sets
  - 30 Ice Cream Dishes
  - 4 9" Relish Trays
  - 19 Cruets
  - 55 Salt & Pepper Shakers
  - 4 Pepper Mills
  - 1 Lot Assorted Cracker & Bread Baskets
  - 33 Plastic Sugar Caddies
  - 1 Lot Assorted Bus & Serving Trays
  - 4 Wooden Tray Stands
  - 5 Serving Carts
  - 8 S/S Pitchers
  - 5 Plastic Pitchers
  - 5 Glass Coffee Decanters
  - 2 S/S Coffee Decanters
  - 7 Glass Bowls
  - 3 Plastic Footed Bowls
  - 10 Chafers w/Lids
  - 1 Round Chafar w/Lid
- 2 S/S Carousel Salad Dressing Servers**
- 1 S/S AuJus Sauce Warmer
  - 1 Lot Sterno Cans
- LOUNGE EQUIPMENT & FURNISHINGS**
- 42 8 oz. Glass Tumblers
  - 50 6 oz. Glass Tumblers
  - 4 4 oz. Heavy Glass Tumblers
  - 11 2 oz. Heavy Glass Tumblers
  - 35 10 oz. Rock Glasses
  - 46 Collins Glasses
  - 11 Assorted Tulip Glasses
  - 10 Hurricane Glasses
  - 20 Stemmed Beer Glasses
  - 8 Assorted Footed Hi Ball Glasses
  - 9 Assorted Coffee Mugs
  - 22 6 oz. Brandy Snifters
  - 4 10 oz. Buige Plisners
  - 7 Footed Rock Glasses
  - 15 Full Wine Carafes
  - 22 Half Wine Carafes
  - 4 Acrylic Wine Chillers
  - 1 Wooden Wine Stand
  - 3 S/S Champagne Buckets & Stands
  - 3 28"x35" Wooden Hanging Glass Racks
  - 1 S/S 59" 3 Well Bar Sink w/Drain Boards
  - 2 S/S 24" Speed Sinks
  - 1 S/S 24" Drain Board
  - 1 21" Custom Made Bar w/Padded Rail
  - 8 Solid Rubber Interlocking Bar Mats, 28"x35
  - 1 T.E.C. MA-1100 Cash Register
  - 1 Realistic AM-FM Stereo w/2 Speakers
  - 1 G.E. 19" Color T.V.
  - 1 Lighted Mirror Sign, 26"x38"
  - 1 Gold Rush Table Top Popcorn Popper
  - 60+ Ash Trays
  - 19 Assorted Ready Servers
  - 1 HAMILTON BEACH Bar Blender
  - 1 BRITTE WAY 5 Brush Bar Glass Washer
  - 1 Lot Assorted Bar Mix
  - 1 Lot Assorted Straws & Napkins
  - 1 Wall Mounted Brass Coat & Hat Rack
- FURNITURE, TABLES & CHAIRS, HIGH CHAIRS**
- 1 20"x60" Antique Bureau
  - 1 22"x50" Wooden French Reception Desk
  - 1 19"x92" 4 Door Wooden Credenza
  - 1 17"x44" Slate Top Credenza
  - 1 Wood Hall Cabinet
  - 1 25" Hexagon End Table
  - 2 Table Lamps
  - 3 Stuffed Love Seats
  - 8 Overstuffed Lobby/Lounge Chairs - 2 Swivel
  - 3 Padded Wicker Arm Chairs
  - 5 Assorted Laminated Cube Tables
  - 8 36" Drop Leaf Pedestal Tables - Make to 51" Round
  - 2 60" Round Wooden Pedestal Tables
  - 1 60" Round Formica Top Table
  - 9 36" Square Wooden Pedestal Tables
  - 1 48" Round Table
  - 3 36" Square Formica Top Pedestal Tables
  - 2 24" Square Light Oak Pedestal Tables
  - 2 24"x48" Light Oak Pedestal Tables
  - 12 Light Oak Bow Back Chairs
  - 8 6" Folding Tables
  - 9 8" Folding Tables
  - 107 Black Vinyl Armed Dining Chairs on Rollers
  - 5 Brass Frame Stools
  - 5 Padded Armed Bar Stools
  - 112 Metal Framed Black Vinyl Stacking Chairs
  - 1 Stack Chair Mover
  - 7 30" Round Lounge Pedestal Tables - 1 Tall
  - 1 24" Round Lounge Pedestal Table
  - 2 24" Square Lounge Pedestal Tables
  - 3 42" Round Lounge Pedestal Tables
  - 10 Stuffed Square Back Lounge Chairs on Rollers
  - 12 Padded Armed Lounge Chairs on Rollers
  - 12 High Chairs & Booster Chairs
- OFFICE**
- 1 36"x72" Executive Wood Desk
  - 1 19"x66" Matching Wood Credenza
  - 1 Executive Desk Chair
  - 1 Conference Table
  - 4 Conference Chairs
  - 1 Metal Desk w/Typewriter Stand
  - 1 Wood Computer Desk
  - 1 NCR Matrix Printer
  - 1 SAVIN 870 Copier w/Stand
  - 1 CANON PC 20 Table Top Copier
  - 2 OLYMPIA Elec. Typewriters
  - 1 Wood Drafting Table & Chair
  - 3 Legal 4 Drawer Filing Cabinets
  - 2 Wood Shelves
  - 3 Calculators
  - 1 MAJOR SAFE, Model 171718, 21"Wx23"Dx23"H
  - 1 LATHAM Elec Time Clock w/Card Rack
  - 1 Check Protector
  - 2 Paper Cutters
  - 6 Push Button Rotary Telephones, 1 Wall Mount
  - 3 Portable Wall Partitions
- SPECIAL**  
**MASON & HAMLIN Baby Grand Piano on Mover**  
**HAMMOND Electric Organ**  
Model 148115

**DENZEL TEVIS** (806) 435-2768  
AUCTION & REALTY  
P. O. Box 861 Perryton, TX 79070  
TL# 7498



# UNITED Supermarket

DOUBLE SEALS ON WEDNESDAY  
IT TAKES 24 SEALS TO FILL A SAVER FOLDER  
ONE SEAL ISSUED FOR EVERY \$5 EXCLUDING TOBACCO PRODUCTS

Valuable Coupon  
Worth \$2.00 Off  
your purchase of \$10.00 or  
more, excluding tobacco products  
Good at United in Perryton  
JULY 16 THRU JULY 22

PRICES GOOD IN PERRYTON  
ONLY THRU JULY 22 DOUBLE  
COUPONS UP TO & INCLUDING  
75 CENTS ON THURSDAY



## COOL SAVINGS ON HOT WEATHER FOODS

### Grocery



BESTMAID  
HAMBURGER  
DILLS  
32 OZ. **.99**



TREETOP  
APPLE  
JUICE  
48 OZ. **.98**



HEINZ  
KETCHUP  
HEINZ 57  
SAUCE  
10 OZ. **\$2.29**  
32 OZ. **.99**



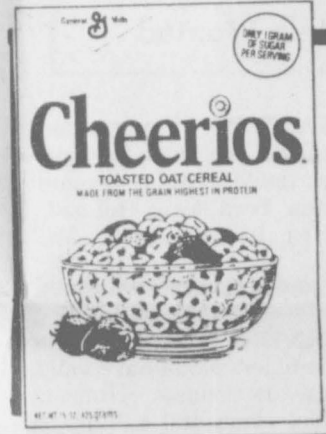
ARMOUR  
VIENNA SAUSAGE  
5 OZ.  
DORITOS  
CHIPS  
11 OZ. **\$1.69**  
**3 FOR \$1**



MRS. BAIRD'S  
WHITE BREAD  
EXTRA THIN OR LARGE  
NABISCO  
VANILLA  
WAFERS  
12 OZ. **\$1.49**  
1/2 LB.  
LOAF **.79**



COKES OR 7-UP  
6-12 OZ. CANS  
POP SECRET  
MICROWAVE  
POPCORN  
ASST.  
10.5 OZ. **\$1.49**  
**\$1.59**



CHEERIOS  
CEREAL  
15 OZ. **\$1.99**

MAXWELL HOUSE  
INSTANT  
COFFEE  
REG. 8 OZ. **\$3.49**

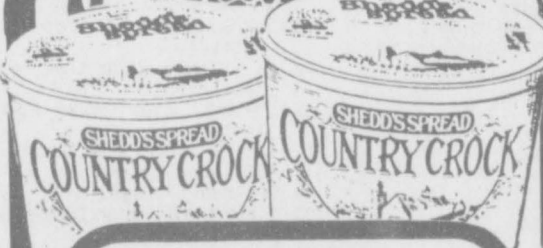
TIDE  
DETERGENT  
147 OZ. **\$5.99**  
•REG. •BLEACH •UNSCENTED

NORTHERN  
BATH TISSUE **\$2.59**  
ASST. 12 ROLL

### Dairy

### Frozen

### Produce



SHEDD'S  
COUNTRY CROCK  
MARGARINE  
3 LB.  
TUB **\$1.69**



MINUTE MAID  
ORANGE  
JUICE  
ASST.  
10-12 OZ. **\$1.19**

PATIO  
MEXICAN  
DINNERS  
ASST. 11-13.25 OZ. **\$1.19**



CRISP  
LEAF LETTUCE  
RED OR GREEN **2 BUNCHES \$1**

GREEN  
BELL PEPPERS  
**4 FOR \$1**

### Meat

QUANTITY RIGHTS RESERVED • NO SALES TO DEALERS



ECKRICH  
SMOKED SAUSAGE  
•MEAT  
•BEEF  
•POLISH  
LB. **\$1.68**



UNITED TRU TENDR OR USDA CHOICE  
SUPER VALU PAK  
BONELESS  
SHOULDER ROAST  
LB. **\$1.68**  
SINGLE PAK **\$1.78**



UNITED TRU TENDR  
OR USDA CHOICE  
SUPER VALU PAK  
BONELESS  
FAMILY  
STEAK  
LB. **\$1.78**  
SINGLE PAK **\$1.88**



OWENS  
PORK  
SAUSAGE  
•REG. •HOT •MILD •SAGE  
2 LB. **\$3.28**  
1 LB. PKG. **\$1.65**



BORDEN  
AMERICAN  
SINGLES  
12 OZ. PKG. **\$1.88**