

Eat at the Horse Races with the Spearman Lions Club Horse Racing at old Hansford Sunday, Oct. 5th

THE Hansford Plainsman

24 hr. prayer
service 659-2911

Volume 17 No 47

The Hansford Plainsman, Spearman, Texas 79081

Sunday October 5, 1986

But farmers may wait . . .

Wheat signup to begin

A 6-month signup period for the nation's wheat growers to enroll in the 1987 federal commodity program opened Wednesday but Hansford grain producers may wait to see if the U.S. Congress steps in and changes farm legislation.

The signup period extends through March 30, 1987, and wheat program provisions were outlined by the U.S. Department of Agriculture in a series of announcements earlier this year.

However, Congress is considering legislation which will change, modify and add to the 1987 wheat and other commodity programs.

"With the number of changes under consideration--from the possibility of diversion payments to an increase in the limit of federal payments--Hansford wheat growers may wait to sign up," believes Keith Martin, executive director of the Hansford county Agricultural Stabilization and Conservation Service office.

He notes that the sign-up period

began Wednesday but reports that the Hansford office may not be able to write contracts. Martin explains that his office has not received the contracts because of a printing delay.

The wheat program provisions announced early this year set the target price for the 1987 wheat crop at \$4.38 a bushel and the national average loan rate at \$2.28 a bushel.

Both of the figures are used to estimate a deficiency payment and are the basis for advance program payments to wheat growers.

"Wheat growers were eligible for an advance payment in 1986 but there has been no announcement yet whether or not it will be included in the 1987 program," the Hansford ASCS executive notes.

Under 1987 provisions, the wheat deficiency payment is estimated at \$2.10 a bushel. Of the payment, \$1.53 per bushel will be subject to the \$50,000 limitation on federal program

payments while the remaining 57 cents will not.

Whether this provision will remain is a question since Congress is considering legislation to increase the payment limit.

Wheat growers will be required to reduce planting from their acreage base by 27.5 percent but will receive no payment for the diversion.

They must also observe a "limited" cross compliance provision for other crops covered by USDA programs even though they do not enroll in those Programs, says Martin.

He explains that "limited" compliance requires a farmer to remain within the farm acreage base for those crops.

The acreage base, defined in federal programs, is the average of acres planted for harvest over a 5-year period. The base for the 1987 wheat crop will be computed using the years, 1982 through 1986.

Wheat farmers have the option of reducing their wheat planted for harvest beyond the 27.5 percent diversion.

They may plant only 50 percent of their base but will receive a payment on 92 percent of a permitted crop.

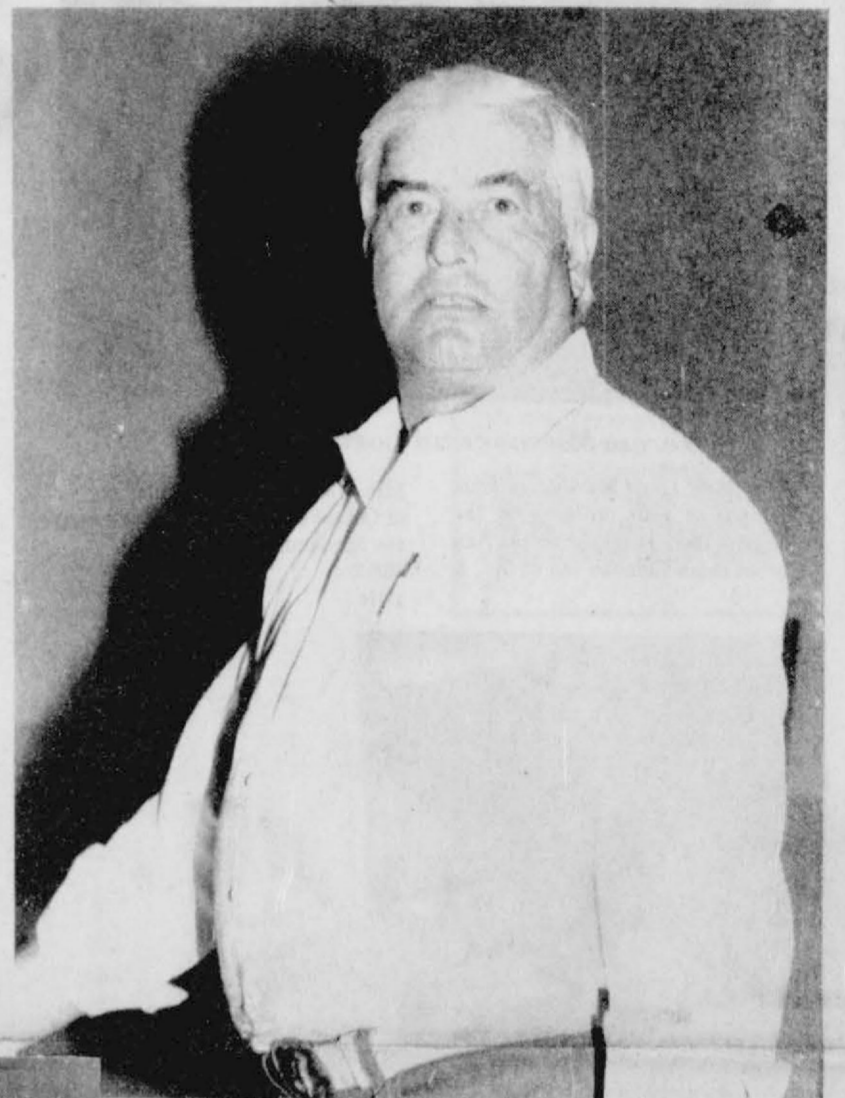
Even though there is uncertainty about the 1987 wheat program, Hansford grain producers have gone ahead with planting. Many of them have a winter crop in the ground.

"There is a lot of confusion about the 1987 program," notes Marion Garland of Sunray, president of Texas American Agriculture Movement.

He notes that several bills are pending Congress, including a new farm bill to replace a law passed in late 1985.

"Farmers might as well wait to sign up," he declares.

"There is no need to enroll now and make 10 trips to the ASCS Office because of program changes."



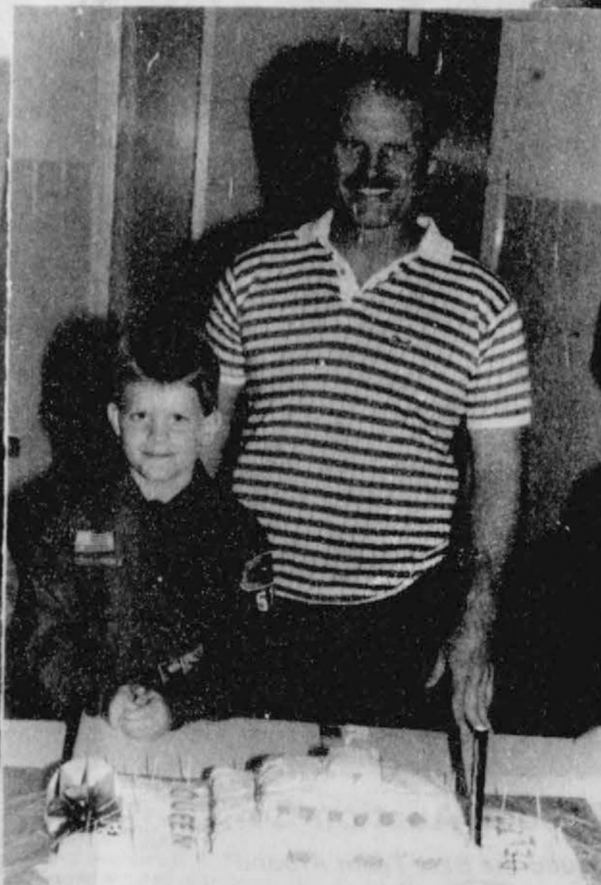
Ed Dear was the auctioneer at the Scout Dad-Dad bake sale in Spearman Tuesday night. Ed auctioned off over \$4000.00 worth of cakes for the scouts, a new record! Thanks Ed!



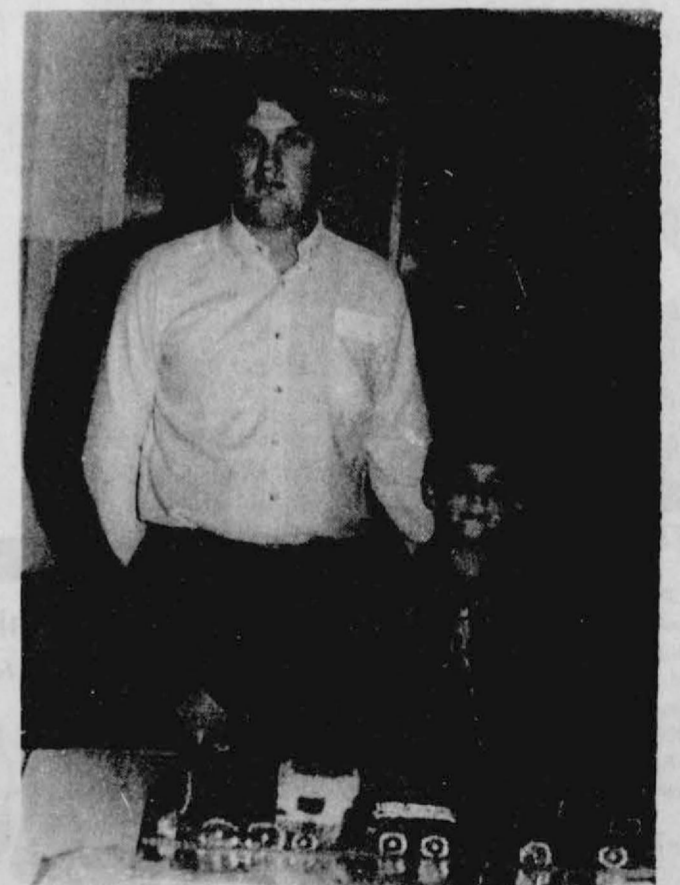
Cheryl O'Quinn and one of the twins, we think Shad, with their cake, at the scout sale Tuesday night!



Cameron Kunselman and son Carl Kunselman had a pair of "hot wheels" for their cake at the scout sale Tuesday.



Gregg Elliott and son Charles Elliott with their cake "River Queen" which sold at the scout sale Tuesday.



First place winner Eric Varnon and son Allen Varnon with their "tractor" cake. The cake was purchased by the Rotary Club for \$200.00!

Fire

The Spearman Volunteer Fire Department will be holding an open house on October 12th at 2:00 p.m. Many different phases of fire prevention and safety will be shown in demonstrations. There will also be films for the children.

Over \$150 in prizes have been donated for this occasion. Drawings will be held approximately every fifteen minutes. In order to enter drawings you must be eighteen years of age, and you must be present to win. Final drawing will be for several pounds of beef.

The Fire Department will also sponsor the annual fire prevention poster contest. Poster must be 14 inches by 22 inches, must not contain glass or live matches, and must not have anything over 1/2 inch thick on face of poster. Poster categories are: Primary-grades K, 1,2; Intermediate-grades 3,4,5; Junior high-grades 6,7,8; high school-grades 9 thru 12; and special education.

The theme for this years poster is LEARN NOT TO BURN, posters may be of fire prevention.

8th Grade

by Billy Close

The eighth grade Lynx lost a devastating game to a larger, faster White Deer ball club here Thursday following the seventh grade game. The size and speed of one of the White Deer backs allowed the Bucks to get the big plays. White Deer managed to get three touchdowns in the first half. The Lynx were able to contain the Bucks better during the second half and only allowed one touchdown and a safety. The Lynx lost their second game of the season by a score of 32 to 0.

The eighth graders will not play again until the 16th of October when they will travel to Gruver. The game against Gruver earlier was a close game, with the Lynx winning by an 8 to 0 score. The next game against the Greyhounds should prove to be just as exciting.

7th Grade

by Billy Close

The seventh grade Lynx played a strong defensive game against White Deer here Thursday night. Both teams held each other scoreless for the first three quarters of play. During the fourth quarter White Deer managed to score twice with 4:44 left in the game. Both touchdowns coming off of turnovers. Final score was White Deer 16, Lynx 0.

The Spearman seventh graders are 2-2-0 on the season. Due to 6 week test there will not be a game next week. On Thursday, October 16, the Seventh grade will play Gruver at the Greyhounds' stadium. Opening kick-off will be at 5:00 p.m.. This should be an exciting game since the seventh graders beat Gruver earlier in the year. Gruver will be trying to redeem themselves after their loss to the Lynx.

Junior V

Following the two junior high games the Lynx Junior Varsity played an exciting game against the White Deer Bucks. The first score of the game was in the second quarter with Spearman's #12 Shawn Cook intercepting a White Deer pass on the 35 yard line and returning it for the touchdown. Extra point was good on a kick by #28 Cody Reynolds. The Lynx took a 7 point lead to the locker room at half time.

During the third quarter on 4th and long from within White Deer territory #31 Scott Wilkerson takes the deep snap and scampered 26 yards to the Bucks 7 yard line and the first down. With the clock going into the fourth quarter #33 Pete Saenz scored on a two yard run. Extra point conversion failed. The remainder of the game was a seesaw battle that took place between the 36 and 45 yard line of White Deer. Lynx won by a 13 to 0 score.

The Junior Varsity will not play next week due to test. The Lynx are primed and ready for the Gruver Greyhounds on Oct. 16th. Gruver beat the Lynx earlier this year and the Spearman JV are planning on making this game go in their favor. Kick-off will follow the two Junior high games at Gruver.

Obituary

Austin Tex Cotter
Austin Tex Cotter, 68, of Amarillo, died Thursday.

Services are pending with Blackburn Shaw Memorial Chapel. Mr. Cotter, born in Hansford County, was a Navy veteran of World War II. He was a law enforcement officer for several years. He was an investment banker, having offices in the West Texas area.

Survivors include his wife, Mary Elizabeth; a daughter, Jean V. Crail of Amarillo; a son, Austin S. of Dallas; a stepdaughter, Carol Warren of Dimmitt; a stepson, Raymon McCabe of Borger; a brother, Omar C. of Spearman; two grandchildren; four stepgrandchildren; and eight great-grandchildren.

The family will be at 1116 Beverly.

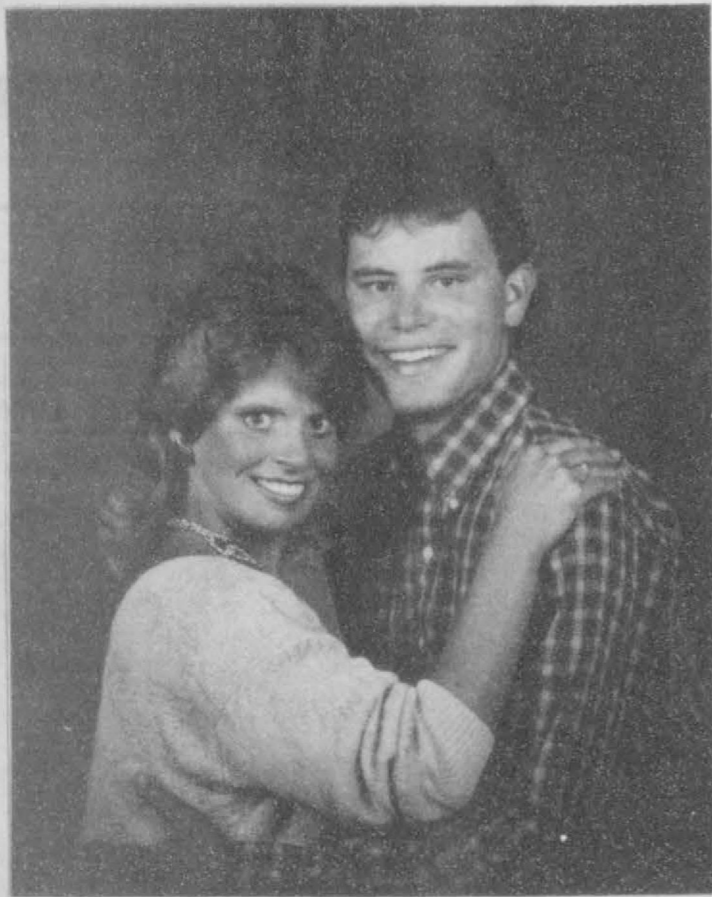
Clinics Offering Vaccines

Immunization Clinics offering vaccines that give protection against several childhood diseases are scheduled for October. Protection is against Polio, Diphtheria, Lock Jaw (Tetanus), Whooping Cough (Pertussis), Measles, Rubella, and Mumps.

The Texas Department of Health is beginning (approximately October 1, 1986) to charge money to help with the cost of keeping the clinic open. The amount of money charged will be based on family income and size, and the ability to pay.

The Clinic will be in Spearman October 6, 1986 in the Spearman Elementary School, Foyer of Varsity Gym from 11:00-1:00 P.M.

Wedding Vows to be Exchanged



Teresa Miesner and Corbet Gomoke

Mr. & Mrs. Louis Miesner request the honour of your presence at the marriage of their daughter Teresa Ann to Corbet Brian Gomoke son of Mr. &

Mrs. Charles Gomoke Friday the tenth of Oct. at six o'clock in the evening at the Spearman Union Church. 48S-2tc 1-1tc

25th wedding anniversary



Mr. and Mrs. Walter Spoonemore

Mr. & Mrs. Walter Spoonemore of Spearman will celebrate their 25th Wedding Anniversary on Sunday, Oct. 12th with a reception at the First Presbyterian Church from 3 till 5. Sons of the couple, Tim & Kurt Spoonemore of Ft. Worth will serve as hosts along with other family members, and friends.

Walter and the former Patty Enns were Married on Oct. 13, 1961 in Guymon, Okla. For the Past 25 years

they have made their home at 709 Lee Dr. in Spearman.

Walter was employed by Northern Natural Gas from 1957 to 1974, when he resigned to go into business for himself. He is owner & operator of Spoonemore Bros. Oil Co. & does contract pumping. His wife assists him in their business.

The Spoonemores are members of the First Presbyterian Church of Spearman, Texas.

Wedding Vows Exchanged



Mrs. Erin Bergin

Erin Marie Colwell and David Walter Bergin were united in Marriage Saturday afternoon with the Rev. Deacon Pevehouse officiating. The ceremony was held at St. Thomas the Apostle Catholic Church.

The bride is the daughter of Mr. and Mrs. James R. Colwell of Amarillo. Parents of the groom are Mr. and Mrs. T.J. Bergin of Gruver.

Maid of honor was Kathie M. Colwell.

Best man was Dr. Clint Irwin of Spearman.

Guests were seated by Michael P. Colwell.

The bride is a graduate of Kansas State University in Manhattan. She is employed by the Texas Department of Human Service as a social worker.

The groom is a graduate of Texas A&M University in College Station. He is employed by Caprock Industries.



Gladiola Flower Club met with Mrs. Sutton

The Gladiola Flower Club met in the home of Mrs. Kathleen Sutton with President June Jackson presiding. Roll call was answered with "Something I Treasure."

Officers were elected for the coming year:

President - Mike Hergert
Vice President - Wanda Brown
Secretary - Gwen Smith
Treasurer - Estelle Jackson
Historian - Margaret Evans
Project Chairman - Charlsie Baker
Flower Chairman - Rose Cummings
Estelle Jackson presented the program "Trees" and How to Know them.

Present were: June Jackson, Gwen Smith, Virginia Head, Wanda Brown, Charlsie Baker, Betty Davis, Rose Cummings, Estelle Jackson, Margaret Evans, Dorothy Haner, Lorene Kunselman, Faye Palmer, Myra Berner & hostess Kathleen Sutton.

TOPS Meet

New Leader, Wayne brought meeting to order with 7 members present.

Sherry recorded the weigh-in of each member & called roll. Each member did great. The best night we've had in a long time.

Sherry led the TOPS pledge & was awarded the TOPS Basket. Keep up the great work and bring back that happy smile.

Marion led the KOPS Pledge and had great results, too.

The rest of the night dealt with finishing old business, so the rest of the year can stay on schedule.

New buddies were drawn and absent members will be contacted about their buddies.

Keep up the great work - TOPS! (ERS)!

Bridal Shower

for

Bride:

Sally Farris

Bride of

Darl Farris

Tuesday, Oct. 7

7-8:30 p.m.

FSB Hospitality Room

HOSTESSES

Carla Woodington

Darlene Pierce

Mary Schumann

Jeanie Pearcy

Martha Hayden

Wilma Hamilton

Carey Mackie

Donetta Greene

Liz Bentley

Iris Wood

Rita Reed

Zetha Blackburn

48-2tp

Paw Power Cutie

The students of Spearman ISD would like to offer their congratulations to Mr. and Mrs. Bobby Jones on the birth of their daughter, Ki Zan Jones. Ki was born September 13, 1986 and weighed 6 lbs. 4 oz.

Ki is simply adorable and her parents are filled with pride.

Middle school student council members

Student Council Members and Officers

Kyla Nelson - President

Cam Butts - Vice President

Mendy Lasater - Treasurer

Jill Lusby - Secretary

8th: Traci Scribner, Chris Williamson, Jana Hawkins, Jay York

7th: Chad Riggins, Suzanne Sanders, Josie Holl, Brian Beck, Darian Hawkins

6th: Chris Brooks, Justin Boyd, Randie Renner, Clint Townsen, Kinbre Townsen

5th: Cass Lasater, Keili Butts, Elizabeth Pipkin, Toby Thompson, Carrie Pearson, Matt Archer

Nothing is lost except our honor.

-Byron.

An ill deed cannot bring honor.

-George Herbert.

No man can justly aspire to honor

but at the hazard of disgrace.

-Samuel Johnson.

Swink & Cook Auction Co.

"Pound for Pound the Best Team Around"

AUCTION

Saturday October 11, 1986
Sale Time 10:00 a.m.

LOCATED: 5 1/2 miles south on Farm Road 760 from Spearman, Texas
OWNERS: LICHARD SHEDECK and OTHERS

MISCELLANEOUS

- 1 - Sours valve grinding Machine, w/2 seat guns (complete)
- 1 - Forney electric 180 Amp. Welder w/leads
- 1 - Portable blower for grain bins
- 1 - lot of old style door handles & barn door rollers
- Plains Blue Stems & Spur Grass Seed, 150 lbs., in 10 lb. lots, will meet CFR regulations & take orders for more
- 1 - lot Lilliston, 1 x 3 shanks & clamps
- 1 - 4 h.p. motor & Water pump
- 1 - Drag bullets
- 4 - JD Lister Bottoms for 2 1/4 Diamond Bar
- 1 - Lot of hand tools
- 1 - Air Compressor

MORE ITEMS BY SALE DAY
NOT MANY SMALL ITEMS, BE ON TIME

TRACTORS

- 1 - 1982, Case 4690, 4 wheel drive, duals, good rubber, 2200 hrs. (Very Good)
- 1 - 1975, International 4366, 4 wheel drive, 2249 hrs. (Very Good)
- 1 - 1973, Case 1070, w duals, 5120 hrs. Cab, a.c. radio, good rubber. Shredded
- 1 - 1974, Allis Chalmers 200, diesel, 1415 hrs., cab, a.c.
- 1 - 1966, Allis Chalmers XT 190, LP, 3050 hrs., cab
- 1 - 1961, JD 4010
- 1 - Case 900, LP, Standard, (2 hydraulics)
- 1 - Farmall H, highboy, 8 row Wicks, wipe surfs, (mower, rotor-tiller, blade, 3 pt. disc w tool bar, w sweeps) Very Good
- 1 - JD 111, lawn tractor, w/mower & bagger
- 1 - JD 110, lawn tractor, w/mower
- 1 - Longlife, riding lawn mower, 11 h.p., 38" cut

COMBINES

- 1 - 1971, JD combine, 7700, heater & air, new cylinder bars, 24' header, 3050 hrs. Grain monitor, Shredded (Good Shape)
- 1 - Lynch Row Harvestors for 24' platform
- 2 - Case, Threshing Machines, Size 22 x 37 (Early 1900's)

VEHICLES

- 1 - 1969, C50 Chev, single axle truck, w 14' bed, 48,900 miles. (Good shape, cattle rack for truck bed) w lift
- 1 - 1965, Ford, 16' Grain bed, w lift, good rubt, Good Shape
- 1 - 1972, Chevy, C60, 427 V-8 motor, less than 10,000 miles on motor! a.c. w 1969 American 42 cattle trailer. Good Shape
- 1 - 1973, International, 26 passenger School bus
- 1 - 1972, Travel All, International (Clean)
- 1 - 1964, Studebaker Commander, 327 V-8 motor, Good Rubber
- 1 - Terry Travel Trailer 27', Fully contained, Sleeps six people

Howard L Swink
(TxS-027-0175)
Bobby D. Cook
(TxSA-037-5226)

Phone: (806) 435-7279
Mobile: (806) 435-7435

EQUIPMENT

- 1 - International 760, Offset Disc, 17' NEW
- 1 - Hutch Master, 7610, 28' Foldup, Double Offset Disc. (Like New)
- 1 - Rhino, F90B, 25' Tandem Disc, Good Discs.
- 1 - JD Tandem Disc
- 1 - JD, PKM, 16' Offset Disc.
- 1 - JD, 12' Offset Disc.
- 1 - 35' Richardson Sweeps, Rugged for Anhydrous Fertilizer, Noble Harrows
- 1 - Krause Sweeps, 3 x 5
- 1 - Noble Sweeps, 3 x 5
- 1 - Category No. 2 Quick Hitch
- 1 - JD, 6 row disc bedder
- 1 - 3 pt. 4 x 4 Folding Tool Bar, 28"
- 1 - 6 row Tye drill
- 1 - JD DR 20 x 8 Grain Drill, w.cyl. Press Wheels
- 1 - Dempster, 8-hole, Aluminum Box Drill (Parts)
- 1 - JD High Wheel Drill
- 1 - DR Drill, for double row milo (levers)
- 3 - Dempster, 8-hole, grain drills, w/galvanized box & hitch
- 2 - 4 row Cultipackers, 3 pt. or drag
- 1 - Lilliston, 6 row, Rolling Cultivator
- 1 - Lilliston, 4 row, Rolling Cultivator
- 1 - Krause, 14' Rodweeder
- 1 - Krause, 12' Chisel
- 1 - Graham-Hoeme, Chisel, 14'
- 1 - Stratton, 5 bottom Rollover Plow
- 1 - Case, 4 bottom, 16" Rollover Plow
- 1 - Case, 3 bottom Rollover Plow
- 1 - Moline, 4 bottom Rollover Plow
- 1 - Meyer Ditcher
- 1 - JD V Ditcher
- 1 - 4 Row, 642 Rotary Hoe
- 1 - Krause, K-2, Oneway
- 2 - 10' Oneways
- 1 - Krause, K-20, 18' Oneway
- 1 - Case, 3 pt., Sweep Tool Bar
- 1 - Case Drag Sweep
- 1 - 2 Section Flex Harrow
- 1 - JD 5 Section Flex Harrow
- 1 - 5 bottom water furrow opener
- 1 - Rhino, 6' Rear Blade (New)
- 1 - 8' Super Rhino Blade
- 1 - 8' Little Beaver Blade
- 1 - 7', 3 pt. Rear Blade
- 1 - Bush Hog Pull Type Shredder, 6'
- 1 - JD, 940, Land Plane, 12' Blade, Big Wheels
- 1 - JD, 5 row lister, w markers
- 1 - Shop Built, 2 drill head
- 1 - Injection Pump & Fiberglass tank

IRRIGATION EQUIPMENT

- 1 - MM, HD 800 IRR Motor, Field Ready
- 1 - Ford Tank Motor (Junk)
- 1 - MM, HD 800 Motor, (thruashed)
- 1 - Shop Built Pipe Trailer
- 3 - 10 x 8, hydrants
- 1 - Lot, 8" T's, elbows & extensions
- 1 - Amarillo Gearhead, 5 to 6 Ratio, 150 h.p.
- 1 - Amarillo Gearhead, 4 to 3 Ratio, 110 h.p.
- 1 - Amarillo Gearhead, 10 to 11 Ratio, 150 h.p.
- 1 - 8", 8', 20" Sliding gates, 40" centers
- 8 - 8", 8', 20", opp gates, 40" centers
- 16 - 8", 8', 20", sliding gates, 40" centers
- 35 - 8", 8', 20" round gaskets, sliding gates 40" centers
- 10 - 8", 8', 20" sliding gates, boot gate, 40" centers
- 1 - 8", 20" jts. sliding gates, boot gate, 40" centers
- 1 - 8", 8', 20" butterfly gate, 40" centers
- 5 - 8", 8', 40", sliding gates, 40" centers
- 1 - lot of dam rods
- 1 - lot of 2" irrigation tubes
- 1 - lot of 1 1/2" irrigation tubes

LIVESTOCK EQUIPMENT & TRAILERS & AUGERS

- 1 - Botez, 32' Gooseneck Stock Trailer, Tandem Duals, all Michelin tires, Full Top, opt. double deck
- 1 - 18' Stock trailer, Tandem Axle, (1 4 canvas top)
- 1 - 2 wheel, heavy axle, wide bed trailer, w hand winch
- 1 - Mathison pump on 2 wheel trailer
- 1 - New Holland 357 Grinder Mixer
- 1 - Squeeze Chute
- 1 - Old Scratch Cattle Oiler
- 18 - Wire Panels
- 2 - Metal Feed Bunks
- 1 - shop tank heater
- 2 - stock racks for pickup
- 2 - Hay racks
- 2 - Mayrath 5' 40" Grain Augers
- 1 - Mayrath 15' Grain Auger
- 2 - 1000 gal. water tanks on trailers
- 1 - 500 gal. LP tank on truck chassis
- 1 - 200 gal. fuel tank w electric pump

Lunch Available
Night Watchman Provided

BUY, SELL, TRADE OR RENT THROUGH THE CLASSIFIED ADS

CLASSIFIED RATES
 Regular.....Per Word-\$0.13
 Display.....Per Col. Inch-\$4.20
 Double rate for blind ads
 Minimum charges
 Cash.....\$4.00
 Charge.....\$4.50

CASH IN ADVANCE ADS
 Work Wanted*Trailers For Sale*
 Business Opportunities*No Longer
 Responsible*Political Advertising*
 Child Care*Babysitting*
 Garage Sales*Out-of-County Ads-
 unless advertiser has established
 credit with

The Hansford Plainsman
DEADLINES
 To place or cancel ads
 Fri., 12:00 p.m.....Sun. edition
 Tues., 12:00 p.m.....Thurs. edition

The Hansford Plainsman reserves
 the right to reject, edit, revise and
 properly classify all advertising
 submitted for publication. The
 Hansford Plainsman also reserves
 the right to cancel any advertise-
 ment at any time.

The Hansford Plainsman
 213 Main, P.O. Box 458
 Spearman, Texas 79081

Business Services

PARA TODA OCAACION
BODAS*QUINCEANERAS*TODA
CLASE DE EVENTOS
 Grupo Los Tury's
 Estan a sus ordenes para cualquier
 informacion llame a los telefonos
 659-3923 y 659-5182
FOR ALL OCCASSIONS
WEDDINGS*BIRTHDAYS OR
ANY IMPORTANT EVENT
 Grupo Los Tury's
 at your service for information
 contact them by calling
 659-3923 or 659-5182
 M.C.

MONUMENTS
 Save Agents and
 Undertakers Profits

If it is inconvenient for you
 to visit our large display please
 phone collect (405) 327-0626 or
 write and we will call on you.
ALVA MONUMENT
WORKS, INC.
 Alva, OK 73717

OSGOOD
MONUMENT CO.

Amarillo, Texas
 Dealers of Rock of Ages Granite
 as well as all colored granites,
 marbles and bronze memorials.

represented by
BOXWELL BROS.
FUNERAL HOME
519 S. EVANS
659-3802

STEAM RINSE & VAC

Rinse and Vac Shampooer for
 rent at Gordons Drug. \$10.95 up to
 24 hours.

HAY SWATHING & Baling done.
 Call 733-2517 or Dennis at 733-
 5214.
 27s-rtn-nc

APPLIANCE REPAIR: Call Jim
 Nobles, 659-3528.

NOTICE

Wallace Monument Co.
 Monuments, Curbing,
 Grave Covers
 Local Representative
LEONARD J AMESON
 Spearman, Texas

Special Notice

Panhandle Crisis Center 101 S. W.
 Forth, Perryton, Texas 79070,
 806-435-5013. Help is available at
 no charge for domestic violence
 and sexual assault. Call Panhandle
 Crisis Center, receive support
 during a difficult time. Counselors
 on call 24 hours a day. Call for
 help.
 19-rtn-nc

TOPS CHAPT.#1245 TOPS TAKE
OFF POUNDS SENSIBLY. We
 Meet Thursday at 6:30 at Boyds
 Beauty Salon, 310 W. 4th.

WEIGHT WATCHERS meets each
 Monday at 6:00 p.m. at the Home
 Demonstration Building, Spearman,
 Texas.

Special Mother's Mums for Home-
coming!! Purchase from Lynx &
 Lynxette Booster Club. To order call
 Marlene Davis, 9-2912; Linda Butt,
 9-2189; Kathy Beck, 9-2503 or 9-2866;
 Judy Schaefer, 9-2468.
 rtn until Oct. 12

Duran's Disc-Rolling
 405-423-7012 Texhoma
 405-262-1121 El Reno
 47-4tc

Real Estate

0 DOWN PAYMENT!
 No payment for 45 Days
 Qualify by Phone
 806-381-1352
 Call Collect
 Financing by
 All Valley Acceptance
 Alliance Homes Inc.

TAKE UP PAYMENTS ON TWO AND
THREE BEDROOM HOMES.
 Alliance Homes Amarillo
 Qualify by Phone
 806-381-1352
 Call Collect

FOR SALE: Three bedroom, 2 bath
 home on larger corner lot, many
 features newly decorated, new wall-
 paper, paint, very clean, large utility,
 plant room, nice yard with large trees
 and scrubs, double garage 20 x 40
 insulated workshop, 8 x 10 storage
 building, good price. 1116 South
 Townsend 659-3027 business or 2768
 home.
 46 S-6tp

For Rent

FOR RENT:
 Efficiency apartment for rent fur-
 nished, bills paid. Call 659-2117
 48S-rtn

FOR RENT: Nicely furnished 2 bed-
 room apartment, air conditioned - No
 Pets 659-3471
 43-rtn

For Rent: 2 bedroom House call
 358-9684 in Amarillo
 46
 rtn

FOR RENT: 2 bedroom partially
 furnished house. Call 9-5, 659-3311
 after 5, 659-2468.
 47-rtn

House For Rent:
 Two Bedroom, Garage, Central Air
 and Heat located at 316 S. Roland
 Spearman. Call 733-2838
 48-4tc

FOR RENT: Trailer space in Spear-
 man. All utilities, fenced and concrete
 walk ways. Call 435-5080.
 38-rtn

FOR RENT: Why live in a trailer Park?
 Nice lot For Rent with Big Yard.
 \$65.00 per month. Call 659-3657
 47S-1tp

FOR RENT: 2 bedroom and 3 bedroom
 Mobile Home, 659-3017 or 659-3727.
 47S-4tc

Automobiles

WANTED: Older model pick up in
 good condition - call 659-2325
 nc

Help Wanted

HOMEWORKERS WANTED
 Top Pay-Work at Home-
 Call Cottage Industries
 (405) 360-4062

Pets

FOR SALE: AKC Reg. Boston
 Terriers. 1 male, 9 weeks old. For
 more info call 659-3056.
 nc

LOST:
 Female Samoyed about 7 mo. old if
 found call 659-5097 or 659-5015
 48S-2tp

Situation Wanted

Sewing wanted, alterations etc.
 Baking and decorating cakes. I now
 have the Wuzzles cake pan "EleRo".
 Call Joy 733-2517.
 46-rtn-nc

Miscellaneous

JUST ARRIVED- 1986 Tri-Chem
 Christmas catalogue. See the new
 Sun-glo, Sticker Art & Liquid Em-
 broidery items. Get a head start on
 your gift list or craft projects. Call Joy
 at 733-2517.

FOR SALE: Compaq Computer with
 Okidata 182 Printer \$1500.00 Call
 659-3743.
 46S-4tc

½ Beef - \$1.29
POUND
 Processing Included
 K-Mac Packing Co.
Free Delivery to Spearman
 Booker, Texas 806-658-4582

FOR SALE: Ceramic Shop with good
 established location. Fixtures and
 inventory included. Call 659-5180 after
 5:00 p.m. 659-2840. Ask for Adela.
 47-rtn

FOR SALE:
 King Size Bed-Serta Perfect Sleep-
 er. Complete with headboard, custom
 spread, etc. Hickerson 659-3566 or
 659-2403.
 47-rtn

International Metal Building Manu-
 facturer Selecting builder/dealer in
 some open areas. High potential profit
 in our growth industry. (303) 759-3200
 EXT. 2403.

No one is interested
 in excuses.

Money is whatever
 you make it in your life.

Your success, if you
 are wise, doesn't depend
 upon someone else.

Even a new broom
 won't sweep clean un-
 less someone uses it.

It's not what a man
 makes but what he saves
 that gives him security.

An intelligent man
 has sense enough to
 recognize his own limita-
 tions.

Dennis L. Knudsen, M.D.
 Announces the Association
 of
Robert C. Henderson II,
 D.O., M.D.
 in the practice of
 Obstetrics and Gynecology
 Including
 Gynecologic Oncology and
 Premenstrual Syndrome

OFFICE:
 222 W. 15th
 Liberal, Ks.
 316-624-3811

For Appointment
 pd

AT HOME - SPARE TIME. Paint
 lovely homemade molds and toys
 which we provide. No experience
 necessary; our unique dipping method
 allows you to paint quickly. We pay
 \$20 for each dozen molds/novelties
 sent us according to our instructions
 and we pay the shipping. No selling,
 no placing ads, no stuffing envelopes,
 no phone calls to make; your only job
 is painting the products which we
 distribute through our own outlets.
 Have the entire family help you; this
 kind of work is very educational for
 children. For more information, please
 call us at (213) 856-2233
 48S-3tp

Jr. High Menu

MONDAY* OCT. 6
 PIZZA BURGER/BUN
 WHOLE KERNEL CORN
 TATOR TOTS
 CHOCOLATE PUDDING
 MILK

TUESDAY, OCT. 7
 FRIED CHICKEN
 POTATOES/GRAVY
 GREEN PEAS
 FRUIT CUP
 MILK

WEDNESDAY, OCT. 8
 HAM & CHEESE SANDWICH
 MIXED VEGETABLE
 PORK & BEANS
 CHOCOLATE CAKE
 MILK

THURSDAY, OCT. 9
 TACA PIE
 PINTO BEANS
 CHOPPED SPINACH
 JELLO/PEARS
 MILK

FRIDAY, OCT. 10
 HAMBURGER/BUN
 FRENCH FRIES
 FRENCH FRIES
 PICKLE/ONION/LETTUCE
 COOKIE
 MILK

High school

menu

October 6-10
 PIZZA BURGER
 TOASTED BUN
 TATOR TOTS
 SALAD BAR
 FRUIT CUP
 MILK
TUESDAY, OCT. 7
 FRIED CHICKEN
 POTATOES/GRAVY
 SALAD BAR
 HOT BREAD
 PEANUT BUTTER BLEND
 MILK

WEDNESDAY, OCT. 8
 HAM & CHEESE/BUN
 SALAD BAR
 ONION RINGS
 CHOCOLATE CAKE
 MILK

THURSDAY, OCT. 9
 TACOS
 PINTO BEANS
 SALAD BAR
 SOPAPELLA/HONEY
 MILK

FRIDAY, OCT. 10
 HAMBURGER/BUN
 FRENCH FRIES
 SALAD BAR
 COOKIE
 MILK

The Hansford Plainsman

PUBLICATION (USPS 2346-6000)
SPEARMAN, TEXAS 79081
 213 Main
 Box 458
 659-3434

Published Weekly
 at 213 Main Street
 Spearman, Texas 79081

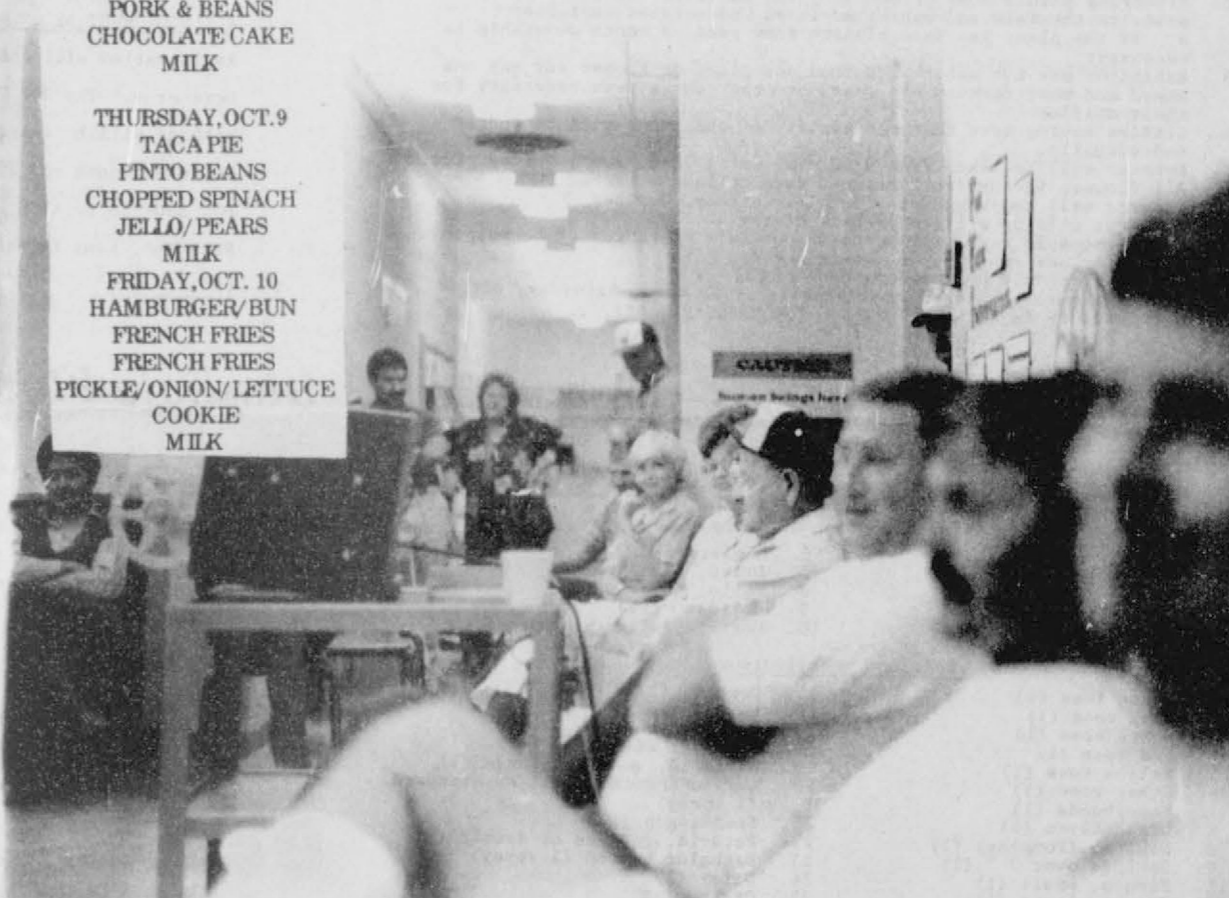
OWNER-PUBLISHER
 William M. Miller
EDITOR
 William M. Miller

Second Class postage paid at
 Spearman, Texas 79081.

Any erroneous reflection upon
 the character of any person or firm
 appearing in these columns will be
 gladly and promptly corrected upon
 being brought to the attention
 of the management.

POSTMASTER: Send address
 changes to Hansford Plainsman,
 Box 458, Spearman, Tx. 79081.

SUBSCRIPTION RATE: Hansford,
 adjoining counties, combination
 with the Spearman Reporter, \$35.00
 plus tax. Other points, \$52.00 plus
 tax.



REMEMBER Booster Club meeting Tuesday night -7 p. m.

Storytime

Storytime for 4 year old children is
 coming to the Hansford County Lib-
 rary on Wednesday, October 8.

Librarian Rita Curtis will present
 the ½ hour Storytime sessions from
 10:30-11:00 on the following Wednes-
 day mornings: Oct. 8, 15, 22, Nov. 5,
 12, 19, Dec. 3, 10, 17.

Parents are encouraged to pre-
 register their children at the library.
 Hansford County Library is located at
 122 Main St. Library hours are 10-12;
 2-6 on weekdays and 9-1 on Saturdays.

It is gone, that sensibility of prin-
 ciple, that chastity of honor,
 which felt a stain like a
 wound.

-Edmund Burke.

Political Calendar

This newspaper is authorized to
 announce the candidacy of the
 following candidates for public of-
 fice subject to the action of the
 voters in the **PRIMARY ELECT-**
IONS:

DEMOCRAT
FOR COUNTY TREASURER
 NORMA JEAN MACKIE
FOR COUNTY AND DISTRICT
CLERK
 AMELIA C. JOHNSON
FOR STATE REPRESENTATIVE
 J.W. BUCHANAN
REPUBLICAN
FOR COUNTY TREASURER
 ESCHOL BLANKENSHIP
FOR STATE REPRESENTATIVE
 DICK WATERFIELD

Quality Doors & Energy-Efficient Windows
 Reasonably Priced!

Jenkins
Doors and Windows

Ph. 1-806-372-4336 820 W. 6th Amarillo, Texas TX. 1-800-692-4066

A hardworking woman needs a hardworking investment plan.

Your career keeps you busy. That's why you've gained in responsibilities and income. And it's why you now need sound investment counsel to help make more of all you make.

Chances are you have neither the time nor the special skills necessary to develop a financial program in these uncertain economic times. We can help with a wide range of capital appreciation opportunities from real estate to cable television, leasing to oil and gas, from \$1000 up. For every working woman who wants to put her money to work. Call or write us soon.

Shackelton, Wilson,
 Slippert, Wood
 & Associates, Inc.
 3014 W. 26th, #4000
 AMARILLO, TX 79109 659-7151
 P.O. Box 516
 SPEARMAN, TX 79081 659-3880

IR Integrated Resources
 Equity Corporation

Marcia Shackelton
 Debra Slippert

Member SIPC

1986 Hansford Fair BAKED GOODS

Marsha Pipkin, Superintendent

- I. Juniors (12 and under)
II. Seniors (13-18)
III. Adults (19 and over)

- 1. Cakes will not be judged in baking pans.
2. The size of loaf bread to be displayed is determined by the Exhibitor.
3. Cakes may be made in mold or l ayer pans.
4. Cardboard, plexiglass, plywood, masonite or plastic rounds may be used, not over 1/2" thick. Square or oblong cakes are not to exceed 12" in width and 18" in length.
5. Zip lock bags or clear plastic bags may be used.
6. Candies to be displayed in 1/2 pound units. (Prefer glass jars).

Bread should be so completely baked that, when pressed upon, it will spring out immediately upon release of pressure. The flavor should be nutty, agreeable to taste, and with no suggestion of sourness. The crumb should be slightly moist, tender, yet no crumbling when compressed, light in weight in proportion to size, even grain, slightly creamy white in color. The crust of a standard loaf should be tender and of medium thickness.

- CLASSES:
A. Quick Breads
1. Biscuits (3)
2. Cornbread
3. Muffins (3)
4. Quick Loaf Bread
5. Nutbreads
6. Cake Doughnuts (3)
B. Yeast Breads
1. Rolls (3)
2. White Loaf
3. Whole Wheat Loaf
4. Cinnamon Rolls
5. Fancy Sweet Breads
6. Doughnuts
C. Pastry
1. Fruit Pies
2. Cream Pies
3. Pecan Pies
4. Fried Pies
5. Turnovers
D. Candy
1. Divinity
2. Peanut Brittle
3. Peanut Patty
4. Mint Wafers
5. Popcorn Treats
6. Chocolate Coated
7. Fudge a. Chocolate
b. Peanut Butter
c. Blonde
E. Cookies (6 each)
1. Unbaked
2. Bar
3. Drop
4. Decorated
5. Rolled
F. Cakes (Will be tasted)
1. Chocolate
2. White
3. Pound
4. Fruity
5. Chiffon
6. Angel Food
G. Novelty Cakes (Judged on appearance only)
1. Birthday
2. Holiday
3. Fancy
4. Specialty

FLOWERS DIVISION

Gladiola Flower Club
June Jackson, Superintendent 659-2384

- 1. Foliage plants entered for awards must have been in the possession of the exhibitor at least one year previous to the fair.
2. Flowering plants must be owned by the exhibitor at least one year prior to the fair and exhibited in an undecorated container.
a. If the plant has been planted from seed, 3 month ownership is necessary.
3. Exhibitor may not enter more than one plant or flower for any one award and must furnish all vases or other containers necessary for their display.
4. Classes having more than one variety of specimen will be judged individually.
5. Entries will be taken from 9:00 a.m. until 11:00 a.m., Friday, Oct. 3.
6. All flowers in horticulture must have foliage attached.
7. Flowers will be judged at 1:00 p.m., Friday, October 3.
8. Comments will be written on back of tag.
9. All reasonable care will be taken but Fair Board cannot be responsible for any exhibitor or container.
10. Exhibitor should put name on back of tag.
11. Exhibits must be picked anytime after 4:00 p.m., Saturday, Oct. 4.
12. Horticulture in a PLAIN BOTTLE. (NO VASES PLEASE).

A. Section: House Plants

- 1. Begonia
2. Boleus
3. Geranium
4. Chrysanthemum
5. Ornamental Pepper
6. Cactus
7. Fern
8. Succulent
9. African Violet
10. Terrarium
11. Ivy
12. Hanging Basket
13. Petunia
14. Other

B. Section: Arrangements

- Entrant must make own classification of entry.
1. Church, live
2. Coffee Table, live
3. Dining Room, live
4. Hall, live
5. Mantel, live
6. Miniature
7. Dried
8. Patio, live
9. Holiday, live
10. Corsage, all occasion

C. Section: Horticulture

- 1. Peace rose (1)
2. Pink rose (1)
3. White rose (1)
4. Red rose (1)
5. Yellow rose (1)
6. Other rose (1)
7. Floribunda (1)
8. Grandiflora (1)
9. Gahlias (Pompoms) (1)
10. Dahlias over 3" (1)
11. Zinnia, small (1)
12. Zinnia, large (1)
13. Cosmos (1)
14. Asters (1)
15. Coxcomb (1)
16. Calandula (1)
17. Gaillardia (1)
18. Phlox (1 stem)
19. Marigold, small or large (1)
20. Chrysanthemum, small or standard (1 spray)
21. Snapdragon (1)
22. Petunia, ruffled or double (1)
23. Bachelor button (1 spray)
24. Daisy (1)
25. Other

PLEASE CHECK EXHIBITS FOR INSECTS

HORTICULTURE DIVISION

Gladiola Flower Club
June Jackson, Superintendent 659-2384

All entries must come from gardens or fields where the entrant had done the work or assisted with the work required to raise the product. Characteristics must be "true to type." All specimens in an entry must be uniform in size, shape, color and maturity. All specimens must be trimmed alike, at prime eating quality--never too old or too young, never scratched or bruised. Free from insect and disease damage, drought and nutrient deficiency injury. Must be exhibited clean without having a scrubbed appearance. Leafy vegetables should be briefly soaked and gently sprayed with water, then stored in a cool, damp place for the short period before the show. Fruiting vegetables should be rubbed lightly with a soft cloth as they are rinsed under a gentle stream of water, then carefully dried and stored in a dry, cool place. Root crops should be soaked for several minutes immediately after harvest, and then rubbed gently with a soft cloth under running water to remove soil. Vegetables and fruits should be displayed on a large, white, paper plate. Vegetables must be shucked.

DIVISION A - FRUITS

- 1. Apples (3) with stems
2. Cantaloupe (1) with stem
3. Pears (3) with stems
4. Watermelon (1) with stems
5. Berries (6)
6. Grapes (1 bunch with stem)
7. Other

DIVISION B - VEGETABLES

- 1. Beets (3) 1 1/2-2 1/2 diameter with tap root and with tops
2. Blackeyed peas (6) 1/2" stem
3. Broccoli (1 bunch) 6 to 7" stem
4. Cabbage (1 head) cut clean at base
5. Carrots (1 bunch) 6 to 8 roots, 3/4 to 1 1/2" to bunch. Must have taproots
6. Cucumbers (3) size determined by variety, 1 1/2 to 2 1/2" diameter. 1/2" stem from fruit shoulder.
7. Eggplant (1) stem 1 to 1 1/2" beyond calyx base
8. Okra (6 pods) 1/2" stem
9. Bell Peppers (3) stems even with shoulders
10. Hot Peppers (3-6) stems should be cut 1/2" to 1" from shoulder of fruit according to variety.
11. Potatoes (3) should be 6 to 12 oz., 1 7/8" diameter.
12. Pumpkin (1) must have stem
13. Squash (3) size determined by variety
14. Tomatoes (3) with stems cut at vine
15. Turnips (1 bunch) bunches should be 2 to 3" diameter taproot should be left intact. (3 to 5 per bunch) must have tops.
16. Other

World progress would move faster if people would talk less and work harder.

The amazing thing about man's intelligence is his failure to use what he has.

Weather

Table with 3 columns: DATE, HI, LO. Values for 10/5: HI 74, LO 50. Values for 10/6: HI 79, LO 58. Values for 10/7: HI 69, LO 65.

TOLE PAINTING DIVISION

Terry Womble, Superintendent 659-3272

- Categories:
1) Folk Art
2) Rosemaling
3) Decorative (realistic)
4) Pennsylvania Dutch
5) Beginners
1. Beginner's Tole items will be judged against each other regardless of category.

- RULES:
1. All entries must be the work of the exhibitor.
2. No Wet Paint
3. Enter no more than 3 items per person.
4. Ribbons will be awarded as follows: 1st, 2nd, 3rd, Honorable mention in each category with an overall Best of Tole Show award.
5. Bring items to be entered between the hours of 3:00 p.m. - 7:00 p.m., Thursday, October 2nd. Judging will be Friday, October 3rd. All entries are to be picked up beginning at 4:00 p.m., Saturday, October 4th. Each item will be numbered and a claim check issued.
6. All entries to have been completed in the last year.

DIVISIONS:

- 1. Youth (13 yrs - 18 yrs.) All categories
2. Senior Division (18 & up) All Categories

HEY KIDS !!

The Rho Rho Chapter of Beta Sigma Phi Sorority is sponsoring a DOG SHOW at the Hansford County Fair. Children 12 and under may pre-register their dogs by contacting Donna Murray, First National Bank, 659-5544 or 659-3057. Registration can also be mail to Donna Murray, Box 272, Spearman TX, 79081. Entry fee is \$1.00 per dog.

ALL DOGS MUST BE ON A LEASH!!!!!!!!!!!!!!!!!!!!!!!!!!!!!!

Registration will also be held at 8:30 a.m., Saturday, October 4. The DOG SHOW will begin at 9:30 a.m. Ribbons will be awarded in 13 categories. So, call Donna now and register your dog for the DOG SHOW to be held at the HANSFORD COUNTY FAIR. REMEMBER, kids 12 and under and YOUR DOG MUST BE ON A LEASH!

LAMB & STEER SHOW

HANSFORD COUNTY STOCK SHOW BOARD

STEERS - \$20.00 Entry Fee
Prospect steers - 1,000 lbs. and less
Progress steers - 1,001 lbs. and over
LAMBS - \$10.00 Entry Fee
Prospect lambs - 100 lbs. or less
Market lambs - 101 lbs. & more (Southdown - 80 lbs. & up will be market)
Ewe & weather lambs may be shown, no weight limits.
SATURDAY, OCTOBER 4, 1986
9:30 - 10:30 - Weigh & measure steers
9:30 - 11:30 - Weigh Lambs
11:30 - STEER SHOW
1:00 - LAMB SHOW or immediately following steer show

GENERAL RULES

- 1. Show is open to all bonafide 4-H & FFA members.
2. Exhibitors must own the animals they are showing as indicated by a signature of Vo-Ag Teacher, County Extension Agent, or Adult Leader.
3. No limits on the number of entries per exhibitor.
4. Violations of rules or unsportsmanlike conduct is a disqualification and forfeiture of premium money.
5. The show does not require health papers but the State of Texas does.
Mail entries by September 26. Entries will be accepted the day of the show. No late fees.
Mail entries to: Hansford County Extension Office, Box 115, Spearman, Texas 79081
FOR MORE INFORMATION CONTACT:
Burt Williams 659-2136 or 659-3680
Gary York 659-2584
Craig Solomon 733-2091

FOOD PRESERVATION

Marsha Pipkin, Superintendent

- I. Juniors (12 and under)
II. Seniors (13 - 18)
III. Adults (19 and over)

All canned products must be exhibited in standard regulation glass canning jars. (Size specified for each division). No mayonnaise, coffee, or other odd jars will be accepted. All jars must have a properly sealed lid to be accepted. Jellies and preserves may be sealed with paraffin if desired. Dehydrated foods may be exhibited in closed, see-through packages.

All canning entries must have been canned after August 31, 1985, and canned from fresh products by the person exhibiting.
Fruits and vegetables must have been preserved at least two weeks before exhibition.

An entry must be made, baked, or canned, in its entirety by the individual in whose name the entry is listed.

Preserved vegetables, fruits, pickles and relishes will be judged according to the following:

SELECTION: Uniform size, shape and ripeness.
COLOR: Natural color of vegetables or fruits.
PACK: Economical and uniform.
CONDITION OF SOLIDS: Firm and tender.
CONDITION OF LIQUID: Clear.

- A. Fruits (Quarts, Pints or Pint-and-one-half)
1. Apples
2. Apricots
3. Berries, any kind
4. Cherries
5. Holiday Fancy Pack
6. Peaches
7. Pears
8. Plums
9. Pineapple, Chunk or crushed
10. Apple Juice
11. Grape Juice
12. Plum Juice
13. Any other fruit not listed
14. Any other juice not listed

Food Preservation - page 2

B. Vegetables (Quarts, Pints or Pint-and-one-half)

- 1. Asparagus
2. Beans, shelled
3. Beans, green, snap
4. Beans, wax, snap
5. Beets
6. Blackeyed Peas, snapped, shelled or mixed
7. Carrots
8. Corn, whole grain or creamed
9. Crowder Peas
10. English Peas
11. Fancy Pack
12. Green Lima Beans
13. Greens
14. Okra
15. Potatoes, Irish or red
16. Pumpkin
17. Soup Mixture,
18. Squash
19. Sweet Potatoes
20. Tomatoes
21. Tomato Juice
22. Any other vegetable not listed

C. Pickles and Relishes (Quarts, Pints or Pint-and-one-half)

- 1. Bean
2. Beets
3. Bread and Butter
4. Carrot
5. Cucumbers, dill
6. Cucumbers, sweet
7. Cucumbers, Sweet - (Christmas red cinnamon green)
8. Mixed Vegetable
9. Okra
10. Onion
11. Peaches
12. Peppers, any kind
13. Squash, any kind
14. Tomato
15. Watermelon
16. Any other fruit pickle not listed
17. Any other vegetable pickle not listed
18. Corn relish
19. Chow-Chow
20. Pepper Relish
21. Squash Relish
22. Any other relish not listed
23. Sauerkraut
24. Catsup
25. Chili Sauce
26. Hot Sauce
27. Salsa

D. Meats (Quarts, Pints or Pint-and-one-half)

- 1. Bacon
2. Beef
3. Chicken
4. Chili
5. Mincedmeat, any kind
6. Sausage
7. Soup - must contain meat
8. Any other not listed

E. Jelly (Pints, Half-Pints or Jelly Glasses) - Jelly will not be opened for judging.

Jelly will be judged according to following: COLOR and CLEARNESS: Color determined by the kind of fruit; should be free from cloudiness. CONSISTENCY: Should retain shape when removed from glass, should quiver, be tender. TEXTURE: Smooth and free from grains, determined by "feel in mouth." FLAVOR: Pronounced and corresponding to natural fruit flavor.

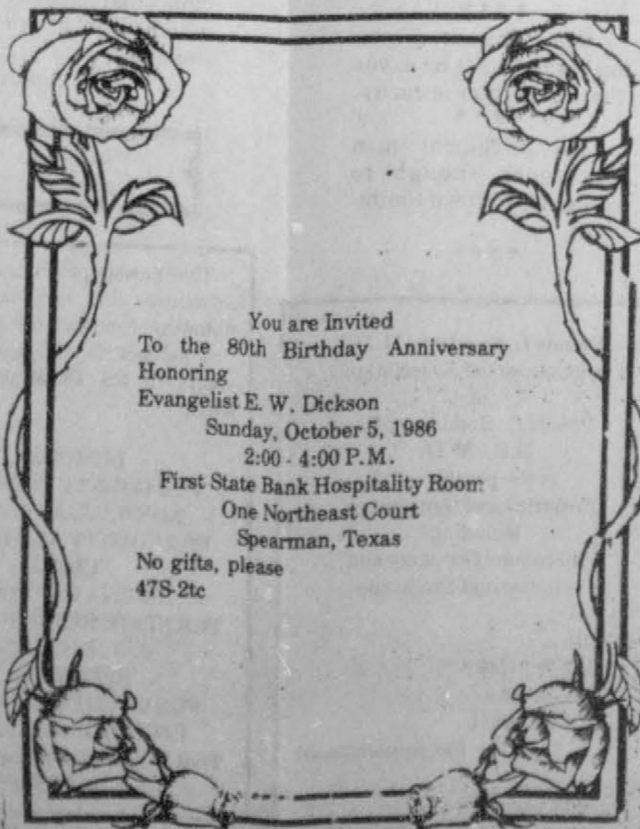
- 1. Apple
2. Berry, any kind
3. Cherry
4. Crab Apple
5. Grape
6. Plum
7. Wild grape
8. Wild plum
9. Pepper (Jalapeño)

Food Preservation - Page 3

F. Preserves (Pints, Half-Pints or Jelly Glasses) To be opened for Judging.

FRUIT PRESERVES: Preserves are fruits preserved with sugar so that the fruit retains its shape, is clear, shiny, tender and plump. The syrup is clear and varies from thickness of honey to that of a soft jelly. FRUIT BUTTERS: Fruit butters are the fruit pulp which has been pressed through a sieve or a colander and cooked with sugar (spices if desired) until it is thick enough to spread. MARMALADES: Marmalades are made from fruits or a combination of fruits often including citrus fruits. The fruit and peel appear in small pieces throughout the clear, transparent jelly-like product. CONSERVES: Conserves are a jam-like product made of two or more fruits which contain either nuts or raisins or both.

- a. Preserves
1. Apricot
2. Cherry
3. Peach
4. Pear
5. Strawberry
6. Tomato
7. Watermelon
8. Any other preserves not listed
b. Butter or Jam
1. Apple
2. Apricot
3. Grape
4. Peach
5. Plum
6. Wild Grape
7. Wild Plum
8. Any other jam or butter not listed
c. Miscellaneous
1. Applesauce, no spice
2. Conserves, any kind
3. Marmalades, any kind
G. Dehydrated Foods (May be displayed in a tightly closed plastic bag)
a. Fruits
1. Apples
2. Bananas
3. Peaches
4. Strawberries
5. Rhubarb
6. Apricots
7. Fruit Leather
8. Other
b. Vegetables
1. Celery
2. Carrots
3. Green Peppers
4. Onions
5. Tomatoes
6. Other
c. Meats
1. Jerky
d. Herbs
1. Chives
2. Parsley
3. Other



Horse Racing at old Hansford Sunday, Oct. 5th

1986 Hansford Fair

ART

Doris Armes, Superintendent 733-2269

- This department will be open to receive entries from 3:00 p.m. until 7:00 p.m., Thursday, October 2.
- All entries to have been completed in the last year.
- Have art ready for hanging with wires attached on the back and they must be dry.
- Youth Exhibitors may not make more than one entry in each class for judging.
- Exhibits will be judged at 9:00 a.m., Friday, Oct. 3.
- Articles will be released anytime after 4:00 p.m., Saturday, October 4.
- Copies of other pictures will be a separate group and so labeled, regardless of age group. Enter at each department, same rules to apply.
- No entries entered last year may be entered this year.
- Limit of 3 (three) entries per person per category.
- All work must be entered under the name of the artist who did the work.
- Ribbons will be awarded and Grand Champion ribbons will be awarded also.
- Each exhibitor will put his/her name on the back of the entry tag, name of painting, for sale/not for sale, and the price if said item is for sale.
- When judging is concluded, please turn the name tag over so that exhibitor's name can be seen.

- | | | |
|---|--|--|
| SECTION A.
YOUTH | SECTION B.
ADULT | SECTION C.
ADULT BEGINNERS |
| 1. - to Jr. high
2. Jr. high - high school | F. Pen and Ink
G. Copies
H. Sculpture
I. Landscapes
J. Portraits
K. Animals
L. Flowers
M. Abstracts
N. Snowscapes
O. Still life
P. Other | A. Threshed Grain and Seeds: (Each sample one gallon)
Classes: 1) Wheat 2) Other
B. Head or Ear Grains: All samples shall be 10 heads or ears. Head samples should have stem cut off one inch long.
1) Division for Seed Dealers 2) Farmers
C. Soybeans
D. Other Agricultural Products:
1. Grain Sorghum - Red Hybrid
2. Grain Sorghum - White Hybrid
3. Hegari
4. Corn - Yellow Hybrid
5. Corn - White Hybrid
6. Popcorn
7. Other
E. Bales of Forage and Grass:
Classes:
1. Sorghums 2. Alfalfa 3. Others
F. Sheaf Grains & Seeds: (Sheaf samples to be at least 3 inches and not over 5 inches in diameter at center band).
G. Any other Cultivated Field Crop - (attractively displayed) |

- DIVISION:
- A. Oils
 - B. Watercolors
 - C. Crayola
 - D. Pastels
 - E. Pencil or Charcoal

AGRICULTURE DIVISION

Superintendent: Kermit McKee

- All entries will be accepted on Friday, October 3, from 9:00 a.m. until 12:00 noon.
- Only products produced or harvested during current year may compete in this department.
- Exhibits shall remain in place until 4:00 p.m., Saturday, October 4.
- Exhibits will be judged at 1:00 p.m., Friday, October 3.
- Each exhibitor should put his/her name on back of the entry tag.
- When judging is concluded, please turn the tags over so that the exhibitor's name can be seen.

YOUTH AND ADULT

- A. Threshed Grain and Seeds: (Each sample one gallon)
Classes: 1) Wheat 2) Other
- B. Head or Ear Grains: All samples shall be 10 heads or ears. Head samples should have stem cut off one inch long.
1) Division for Seed Dealers 2) Farmers
- C. Soybeans
- D. Other Agricultural Products:
1. Grain Sorghum - Red Hybrid
2. Grain Sorghum - White Hybrid
3. Hegari
4. Corn - Yellow Hybrid
5. Corn - White Hybrid
6. Popcorn
7. Other
- E. Bales of Forage and Grass:
Classes:
1. Sorghums 2. Alfalfa 3. Others
- F. Sheaf Grains & Seeds: (Sheaf samples to be at least 3 inches and not over 5 inches in diameter at center band).
- G. Any other Cultivated Field Crop - (attractively displayed)

CLOTHING

Nelle Evans, Superintendent 733-5057

- Juniors (12 and under)
 - Seniors (13-18)
 - Adults (19 and over)
- Garments should be on a hanger.
 - All articles must be the work of the exhibitor and done in the last two years.
 - An exhibitor can not enter more than three pieces of work in each class.
 - Garments must be clean, with all name tags removed.

CLASSES:

- A. Women's Garments
1. Dresses, plain
2. Dresses, fancy
3. Skirts, culottes
4. Blouses & tops
5. Coats
6. Suits
7. House coats, lingerie
8. Pants, shorts, jumpsuits
9. Other
- B. Men's Garments
1. Trousers, shorts
2. Shirts, plain
3. Shirts, fancy
4. Jackets, overcoats
5. Sport coats
6. Suits
7. Robes, pajamas
8. Other
- C. Children's Garments
1. Pants, shorts, overalls
2. Blouses, shirts, tops
3. Jackets, suits, coats
4. Dresses, plain
5. Dresses, fancy
6. Robes, pajamas, lingerie
7. Skirts, jumpers
8. Baby garments, plain
9. Baby garments, fancy
10. Other
- D. Other

ANTIQUES

Linda Davis, Superintendent 659-3033

Entries for this category will be accepted Thursday, October 2, 3:00 p.m. until 7:00 p.m. Judging will be on Friday, Oct. 3, at 9:00 a.m.

Antiques must be 50 years old or older. Items will be judged on 1) Age, 2) Condition, 3) History and 4) Appeal. Articles too large for display will not be accepted.

Articles entered may be removed from the County Barn anytime after 4:00 p.m., Saturday, October 4.

All reasonable care will be taken of exhibits and security will be provided Thursday & Friday nights. The Fair Board cannot be responsible for any exhibit.

Categories:

- A. Cut Glass
- B. China/Porcelain
- C. Clocks/Watches
- D. Clothing
- E. Pictures/Photographs
- F. Documents/Books
- G. Jewelry
- H. Guns
- I. Silver
- J. Dolls/Toys
- K. Ironstone, Crockery Stoneware
- L. Buttons (must be mounted) no loose buttons 2-10 per card
- M. Metals 1. Brass
2. Tin
3. Iron
- N. Miscellaneous

Hospital

Patients who were admitted in the Hansford Hospital are:
Candice Boyett Dennis Cline
Frances Williams Lena McCrory
Jim Eddleman

Patients who were dismissed from the Hansford Hospital are:
Nelda Cook Shawn Tanner

Markets

WHEAT	\$2.08
MILK	\$2.90
CORN	\$1.75

Crisis Center Report

You'll not believe this, but we still encounter persons who are unaware of the work of the PCC! When they learn about it, they are astonished that the problem in our counties (Hansford, Lipscomb, and Ochiltree) is great enough to warrant the cost and effort of what we are doing.

This is distressing, for we make strong efforts to inform everyone of the extent of the problem. Even national TV programs document the situation across the nation. But perhaps we change channels when they come on. Or perhaps we say, "Yes, elsewhere, but not here"

Such is not the case. We have our share! Furthermore, we keep records of the origin of our cases, and by far the largest majority come from anglos.

Since we've opened our shelter, which provides a safe place for up to thirty days for victims of domestic violence, our effectiveness has increased enormously. Compared with shelters elsewhere, our effectiveness is superior, for we also provide counseling and support group therapy.

One young woman, who had on five occasions returned to battering husband, never ceases to sing our praises. She is a new woman, capable of managing for herself. Other women are able to return to their companion without the fear of continued battering. Even the batterers are seeking and receiving help!

Our shelter manager is an outstanding woman. We certainly did not want to burn her out, so we decided to hire a relief manager for weekends. All the applicants were high caliber, so selection was difficult. But find a good one we did.

Probably we'll always have to contend with the need for funding. Funds diminish their

funding each year, until it reaches only 50% of our request. All of them require matching funds (cash and/or in-kind) from the local area. This means that we must raise \$3000 this year, in addition to the United Way funds and other generous donations. Our first fund-raiser this year was the ham sandwiches we made and sold under the auspices of Moore's Grocery. Our two-and-a-half days of intensive labor netted us \$514. The second fund-raiser is the Raging Red banners, made by Zita LaMaster and promoted by Sharon Ellzey. Have you bought yours? They are only \$8 apiece. These have netted us \$932.

But we need another \$1554. We are hoping to have a Mexican Pile-on Sunday dinner some time soon. Believe me, boys and girls, this is delicious! Watch for notices!

Our heart-felt thanks go to the volunteers who have been coming forward, including Hansford and Lipscomb counties. The more we have, the less work any one of us has to do. We even want qualified men to help with the men's therapy groups. We were surprised at the number of requests for a men's group.

Another request we receive is for parenting courses, for singles or paired parents. Many people love their children, but have no idea of good parenting, nearly all of us could improve! If we can secure a parenting course, would any of you readers be interested? Such courses meet once a week for two hours, and last six weeks. Call us if you are interested. What a commitment to happier parents and children, and better citizens!

Wouldn't it be wonderful if we should be able to dispense with our police force except for traffic jams?

PHOTOGRAPHY

Mae Wofford, Superintendent (9-5233, 2390)

- All entries in this department are subject to the general rules and regulations.
- Entries will be received Thursday, October 2, 1986 from 3:00 p.m. until 7:00 p.m.
- All entries except snapshots must be framed or matted.
- All entries except snapshots must be prepared for hanging with wires or hooks.
- All snapshots must have the name of the entrant on the back.
- Articles will be released from 4:00 p.m. until 8:00 p.m., Saturday.
- Ribbons will be awarded.
- Categories are: 1) Color
2) Black and white
- Divisions are: 1) Portraits
a. Studio
b. Candid
2) Humorous
3) Scenic (Nature scenes) Landscapes
4) Still Life
5) Special (lighting) effects
6) Snapshots
7) Misc.
- Judged upon:
1. Composition symmetry, overall content including background
2. Subject public appeal, draws attention and interest
3. Contrast brighter colors add to appeal
4. Clarity sharpness, focus (lighting on subject and background)
5. Art Value

CRAFTS - HOBBIES

Linda Davis, Superintendent 659-3033

- This department will receive entries Thursday, Oct. 2, from 3:00 p.m. until 7:00 p.m. Judging will begin at 9:00 a.m., Friday, October 3.
- All articles must be the work of the exhibitor. All work must have been completed in the last year. All work must be complete and ready for display.
- Each person may submit up to 3 articles in each category.
- Ribbons will be awarded as follows: blue, red, white. A Grand Prize and Reserve Grand Prize ribbon will be awarded in each category.
- All entries must be picked up anytime after 4:00 p.m., Saturday, October 4.

CATEGORIES:

- | | |
|---|---|
| A. Wood Crafts
1. Handmade
2. Kits
3. Other | J. Dolls
Classes: a. Stuffed Animals
b. Dressed
c. Crochet
d. Other |
| B. Model Craft
1. Handmade
2. Kits | K. Macrame and Braid
Classes: a. Hangers
b. Belts
c. Other |
| C. Ceramics
1. Molded 2. Freehand
a. Pitchers a. Figurines
b. Bowls b. Planters
c. Other c. Other | L. Miscellaneous |
| D. Artificial Flowers | |
| E. Metal Crafts
Classes: a. Figurines
b. Windmills
c. Chimes
d. Other | |
| F. Plaster
Classes: a. Plaques
b. Figurines
c. Other | |
| G. Jewelry
Classes: a. Rings, bracelets & Necklaces
b. Belt Buckles | |
| H. Leathercraft, feathercraft
Classes: a. Belts
b. Billfolds, Purses
c. Hatbands
d. Other | |
| I. Wallhangings
Classes: a. String Art
b. Beans or Rocks
c. Woven
d. Decoupage
e. Other | |

Eat at the Horse Races with the Spearman Lions Club



Randy Kirk and son baked a beautiful covered wagon cake for the scout sale here Tuesday night.

Hackley Memorial



The Hackley Memorial fund was used to buy the Hansford Manor a new hair dryer and nail manicure set. The Hackley Memorial was in memory of the late Dr. Hackley.

Pictured above left to right: Altha Fisher, Carol Hergert, Dennis Robertson, Jody Harnish and Peggy Harnish. Seated under the new hair dryer is Manor resident Mabel Edwards.

C of C. of C. women met in Stratford

The Fifth Annual Regional Conference, Chamber of Commerce Women was held Saturday, September 27 at the Stratford Country Club, Stratford, Texas. Timmie Brown welcomed approximately 70 representatives from Amarillo, Borger, Canyon, Dalhart, Dumas, Hereford, Memphis, Muleshoe, Spearman and Stratford. Joyce McBryde, Stratford Women's Division Board, presided over the meeting and speakers were introduced by Leonda Fedric and Oline Caraway, also of the Women's Division board. Assisting throughout the conference, were Jan Phelps, Stefanie Harrison, Carla Crabtree, Trisha Tillery, and Rene Allen.

Martha Mitts, Vice-President and Trust Officer of the First State Bank of Stratford, was the opening speaker. In her presentation on "Financial Fitness" she emphasized the importance of having a will and pointed out that the State of Texas has a will drafted for those who do not make their own

arrangements. "Sometimes people are reluctant to discuss a last will and testament because it implies that the end of life is near... writing will doesn't cause a property owner to live any longer or die any sooner" Mrs. Mitts stated. She closed by advising individuals to make ready and prepare for on one knows when they will be called upon to pass the test for financial fitness.

Viola Kautz, Counselor with the Stratford Public Schools then provided insight and information on "Scholarship Opportunities" for continuing education. She highlighted financial aid in the areas of Scholarships, Grants, Loans, and Work Study Programs. Financial aid is available for those wanting a college education.

Women, from 18 to 80, can take advantage of opportunity planning and other financial assistance when returning to college.

Speaking about Sherman County

and the Texas Panhandle, LeRayne Donelson member of the Texas Child Welfare Board, said, "The Child Welfare Board is proud of the job parents are doing raising their kids... but things go on that you don't hear about, an informative slide presentation prepared by the gifted and talented class of Stratford High School, was then shown by Mrs. Donelson. She closed by reminding each of us that "Help" for abused children is only a phone call away.

Nancy Garms, Amarillo Attorney, was the key note speaker for the conference. Speaking along the conference theme "Together Today in Building Tomorrow" Mrs. Garms said "What better way to challenge ourselves, in what unique ways women can examine and accept this call to unity. Women are doing things we've always done, but now we are not satisfied to let someone else take the

credit". Speaking on the need for fiscal fitness, Mrs. Garms stated, "All women must move to be more assertive" and then she emphasized that "most current issues are economic...there is no such thing as a women's issue, they are people issues". Mrs. Garms, in closing her most enlightening, entertaining, and challenging address, reminded the group that in accepting the challenges of becoming involved, maintaining an awareness of current issues, and taking responsibility and recognition for achievement, that, "it is always easier to get forgiveness than to ask permission".

Concluding the conference was the announcement of herford as the 1987 meeting site, memphis as the 1988 site and Muleshoe as the 1989 site.

Attending from Spearman were Cora Queener, Sheri Benton and Helen Melton.

Round-Up Sunday

October 5th, has been designated as "Round-Up Sunday" at Union Church. The manner of dress will be western or old fashion, if you so desire. The goal for the day will be rounding up 160 for Sunday School beginning at 9:45 a.m.. Monty Matthews will be our special guest in both the morning and evening services. There will be a noon covered dish luncheon and fellowship following the morning service. All are welcome!

Monty Matthews, at the age of eleven began singing in his father's church with his brothers. From then on, singing led to a recording contract on the Decca label and national recognition for him and his group, the Jordanaires, as they entered a new career on the Grand Ole Opry with Red Foley. Monty's excellence in musical arrangement gained him a well-deserved national following. Later Monty became one of the original Foggy River Boys, the internationally acclaimed gospel group. Monty sang with that group for six years, and to this day does their

musical arranging.

At this time, Monty recognized that his work was keeping him away from his family too much. Knowing the importance of the family unit to God, Monty, in a strong show of faith, put his family before his career despite many attempts to lure him out of his temporary semi-retirement.

To the delight of many, Monty Matthews is back! With the children grown, Monty and his lovely wife Betty Mae are reaching out hand in hand to fulfill their commission from God. As a devoted Christian Communicator, Monty communicates the "Good News" of Jesus Christ in his musical performance as well as his day to day living.

Pastor Steve Rogers extends to all a warm welcome to come join us as we worship our Lord Jesus Christ and fellowship together with other of like precious faith.

MORNING SERVICE.....10:45
EVENING SERVICES.....6:30
Nursery provided

Queen candidate

Denise Rojas the 17 year old daughter of Mr. & Mrs. Oscar Rojas Jr. of Spearman is running for Queen at Guymon Oklahoma on October 18th to help St. Peters Catholic Church in Guymon. Denise's sponsor is Oscar's Welding and Backhoe Service. Your vote will be appreciated.

Card of thanks

I would like to give a special thanks to Mr. and Mrs. N.F. Renner for a donation of \$250.00 dollars to help me out in running for queen to help Saint Peters Catholic Church in Guymon, Oklahoma. yours donations is greatly appreciated.

Thank You,
and God Bless you,
Denise Rojas

Mexican dance

There will be a Mexican dance at the YMCA on Oct. 11 at 8:00 p.m. till 1:00 a.m. in Spearman, Texas.

The tickets will be six dollars at the door.

This dance is to raise votes for Denise to help the Catholic Church in Guymon, Okla. your presence is greatly appreciated. The music will be provided by el Grupo Atlantico of Booker, Texas.

Thank You
Denise Rojas

Grand Balie

Grande Balie enel Y.M.C.A. el 11 de Octubre de las 8:00 p.m. - 1:00 a.m. El Balie es para ayudar la Iglesia Caholica Y para que la candidata Denise Rojas evante votos para Reina de la Iglesia.

Las tiquetes se venderan a \$6.00 en la puerta.

Denise es ase eota candial invitacion Y espera see presencia y su voto. Los Atlantico que assistira en este Balie.

Mrs. Fred Holt is hostess

Twentieth Century Club met Sept. 25, 1986, at the home of Mrs. Fred Holt. Mrs. O.C. Holt was Co-hostess.

The president, Marjorie Curtis, conducted the business meeting. Mrs. J.R. Stump outlined the plans for the Lake Fryer and Buried City tour that the club plans to take on October 23.

Several members will attend the Top of Texas Fall Board Meeting, Workshop, and Luncheon to be held in Perryton on October 18 at the First United Methodist Church.

Marjorie Curtis gave the program on the Texas Rangers, detailing their early history, their part in Borger's periods of martial law and subsequent clean-up, and their current duties.

Refreshments were served by the hostesses to Mrs. L.L. Anthony, Mrs. Cecil Biggers, Mrs. Wirt Davis, Mrs. Coy Palmer, Mrs. J.R. Stump, Mrs. Walter Woolley, Marjorie Curtis, and Wilma Clark.

Arts & Crafts Show

Spearman Study Club will be having the Annual Arts and Crafts Show on November 8th and 9th this year. 9:00 a.m.-6:00 p.m. Saturday, 10:00 a.m.-5:00 p.m. Sunday. Dealers may set up Friday, November 7th.

It will be held at the High School Cafeteria Contact any Study Club member for more information.

MS arrest raises over \$4,000

MS Arrest raises over \$4000.00. Approximately 70 People were "arrested" Saturday Sept. 20 to help raise money for Multiple Sclerosis. Individuals from all over Spearman were arrested by the local Police Dept. along with the Spearman Jaycees. They were then read their rights (of which they had none) by Bailiff LeRoy Farris. At this time, Judge U.R. Hung read their charge and set their bail. The prisoners were escorted to the jail room where they had 1 hour to raise their bail money. The workers and prisoners were treated very well by the Hansford County 4-H and various other individuals with doughnuts and cookies. At lunch, Pizza Hut donated pizza for everyone. During the morning, KDRF provided hourly radio spots, and then they ran non-stop from

1:00 until 6:00 p.m. having the radio really added to the program and a big "Thank You" goes out to George young and all the gang at KRDF. There are many people who helped to organize this event and also many others who provided services. To those people we say "THANKS A LOT." The people of Spearman and Hansford County are a generous and giving people and the monies raised will be put to good use and are available to those persons who in our community who suffer from Multiple Sclerosis. On behalf of the MS Arrest Committee we thank everyone who helped to make this event a huge success!

May God richly Bless
Kevin and Ronda Bynum

Among The Neighbors

Eddie Lee and Betty Blackburn of Houston spent the week-end with his mother, Mrs. Ora Lee Blackburn. They were enroute to the Colorado mountains.

Guests of Mr. and Mrs. Lenis Simpson over the week end were her mother, Mrs. Margie Williams, and grandmother, Mrs. Lena McDowe. They are from Lubbock.

Mr. and Mrs. James Cunningham enjoyed having their son and family here for the week end. Mark and Suzanne with two year old Regan are from Dumas. Regan felt she didn't get enough grandparental spoiling, so she is spending a few more days here.

He who has lost honor can lose nothing more.
-Publius Syrus.

Imin Hollis of Texhoma spent Sunday here with his cousin Paul Hazlewood. Mr. Hollis attended school in Spearman. Mrs. Illie Palmer was also a guests of the Hazlewoods.

According to sources familiar with the circumstances, it is still a mystery as to what caused the fire that burned the house belonging to John Patterson on Monday night. It is 12 miles southeast of Spearman and was dly covered by The Conny Pattersons. The electricity and butane had been turned off and the lightning in the area was insignificant. In addition to the complete destruction of the house, several pieces of antique furniture were burned.

If it be a sin to covet honor,
I am the most offending soul alive.
-Shakespeare.

SPECIAL HEARING OUT OF FOCUS?

HEARING TESTS SET FOR SPEARMAN.


October 7th

10:00 a.m. - 1:00 p.m.
Golden Spread Senior Citizen Center

If you have a friend or loved one who is especially difficult for you to hear and understand, please bring them along if you can.

Free Hearing Tests - sales - Service of Hearing Aids

A.W. (Butch) McGinnas, H.A.S.
Chet Greer H. A. S.



IF...
• You hear but do not always understand
• Words run together
• People seem to mumble
• You ask people to repeat
You may have NERVE DEAFNESS

Don't miss this opportunity

Have your hearing tested to find if the Argosy Custom All-in-The Ear Hearing Aid is the answer you have been looking for.

JUAN F. VIOLA, M.D., P.A.

General Practice

Announces the Incorporation of the Following Services

ALLERGY TESTING / TREATMENT

MEDICAL ACUPUNCTURE / ACUPRESSURE

for

PAIN CONTROL

SMOKING CESSATION

Gruver

733-5011

Spearman

Call: 659-3733



HAS WHAT IT TAKES TO TAKE CARE OF YOU...AND YOUR CAR.

CLIP & SAVE

We will give a **10% discount** on all **labor and parts** for **CASH** or for being a **Preferred Charge Customer** (bill paid in full every 30 days). This offer is excluded on the **Following low specials** and **inspection stickers**. This offer ends October 31st, 1986.

CLIP & SAVE

8 POINT AIR CONDITIONER CHECK
Includes Drive Belt Adjustment, Adding Freon, Checking For Leaks, Inspecting Hoses & Clamps, Checking Coolant Level, Cleaning the Condenser, Testing the Pressure, and Testing the Performance.

LUBE, OIL FILTER & OIL CHANGE
Proper Lubrication is Cheap Maintenance. If You Have Over 3,000 Miles On Your Oil, It's Time for a Genuine A/Delco Oil Filter and GM Goodwrench Oil. Let Us Do It Quick and Easy!

REPLACE WORN SHOCK ABSORBERS
Spongy Shocks Are Bad For You AND Your Car. Replace Them With GM Goodwrench Shock Absorbers and Ride In Comfort! They Come With a Lifetime Limited Warranty. See Us For Details.

FRONT-END ALIGNMENT
Misalignment Can Wear Out Tires Before Their Time. Get Your Car Proper Alignment Including Camber, Caster & Toe Adjustment, Steering Linkage Check, and Tire Check. (Alignment Available Only at Hergert Pontiac-Buick-GMC, Spearman).

HERGERT GM SPEARMAN

SHOCK THERAPY?

Let Us Install Genuine GM Goodwrench Shock Absorbers with a Lifetime Limited Warranty. See Us For Details.

FOUR SHOCKS INSTALLED **\$99⁹⁵**

TWO SHOCKS INSTALLED **\$49⁹⁵**

Call For Convenient Appointment. Offer Valid Until 10-31-86

HERGERT GM SPEARMAN

SLICK SAVINGS!

LUBE, OIL FILTER, AND OIL CHANGE ONLY ...

Includes 5 Quarts GM Goodwrench Motor Oil **\$19⁹⁵**

Call For Convenient Appointment. Offer Good Until 10-31-86

HERGERT GM SPEARMAN

BEAT THE HEAT

Mr. Goodwrench's Complete 8 Point Air Conditioning Check

NOW JUST **\$19⁹⁵** INCLUDES Freon, Repair Parts Extra If Required

Call For Convenient Appointment Offer Valid Until 10-31-86

HERGERT GM SPEARMAN

10% discount

(PARTS AND LABOR)

Call For Convenient Appointment Offer Valid Until 10-31-86

HERGERT PONTIAC-BUICK-GMC

S. HWY. 207 - SPEARMAN 659-3721






Mr. Goodwrench