



The

SUNDAY Hansford Plainsman



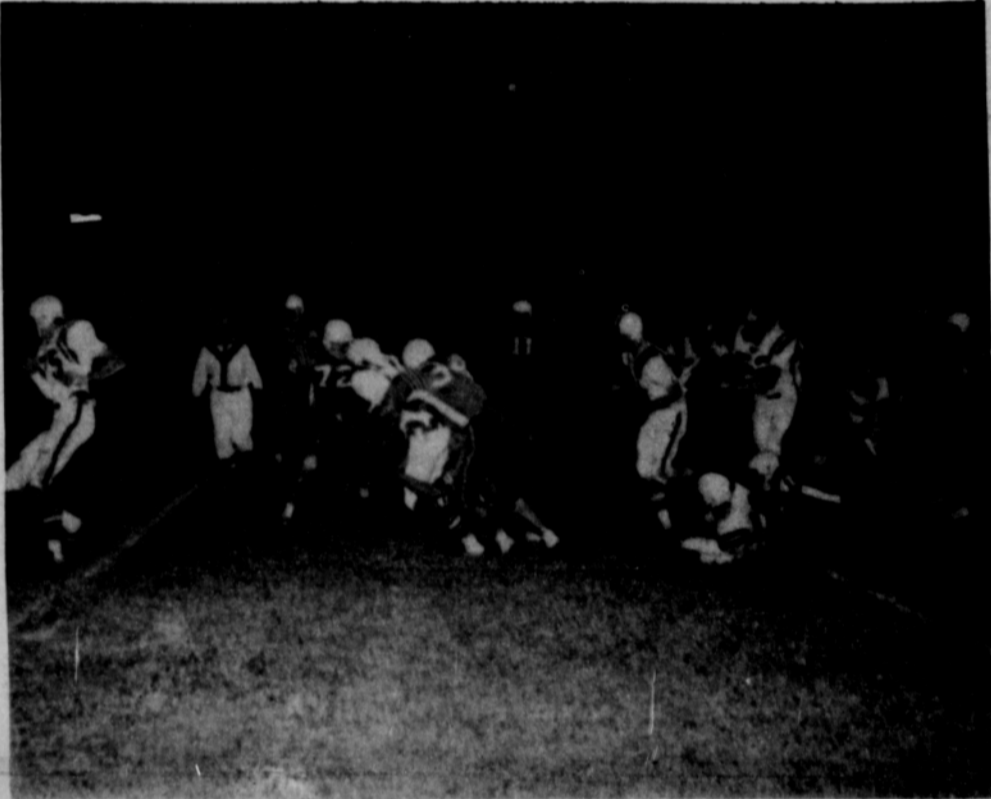
VOLUME VIII., NUMBER 4

SPEARMAN, HANSFORD COUNTY, TEXAS 79081

SUNDAY, OCTOBER 30, 1966

Lynx Defeat Irishmen 28 - 23

Capacity Homecoming Crowd Sees Lynx Up-Set Shamrock



ACTION- A Lynx, Charles Shieldknight is wrapped by the Irish. In front of him is Ronnie Gilbert (75). Wesley Jenkins is on the ground behind are Mike Hendrick and Steve Holton. Spearman won 28-23 in an upset.



SWEETHEART AND HER ROYALTY - The 1966 Lynx Football Sweetheart was crowned in ceremonies before the Homecoming game Friday. They are (left) Sue Sloan and Steve Jordan, Glenda Yancy and Randy Moore, Sweetheart Jeri Grange and Jerry Holton, Cheryl Bollinger and Harley Reeves, Hazel Leslie and Ronnie Gilbert and cheerleader Linda Hand. Plainsman photo

Jeri Grange, Crowned Queen

There were tears streaking the make-up of the Spearman Lynx Football Queen Friday night, but her gladiators gave her and her court much to cheer about as they upset the Shamrock Irish in the Homecoming clash.

In ceremonies before the game Miss Jeri Grange, a senior, was crowned 1966 Football Sweet. She was escorted, crowned and presented the traditional kiss by one of the five captains for the night, Jerry Holton. Ladies in Waiting for the new Sweetheart and their captain escorts were senior Cheryl Bollinger escorted by Harley

Reeves; junior Glenda Yancy escorted by Randy Moore; sophomore Sue Sloan escorted by Steve Jordan and freshman Hazel Leslie escorted by Ronnie Gilbert. At the halftime, members of the class of 1947 were recognized as the honor class of this year's homecoming.

Long drives and big breaks were the pattern here Friday night as the Spearman Lynx upset the highly rated Shamrock Irish 28-23 in a district 1-AA contest.

Spearman had the ball only four plays in the first 14 minutes, but they made up for lost time in the second and third quarters to lead 20-7 at the end of three periods.

Penalties at crucial times hurt the Lynx. They were penalized six times for 60 yards. Shamrock had three for 25 yards.

Two big drives in the first quarter gave Shamrock a rushing edge of 207 yards to 175 for the Lynx.

It was a great night for the Spearman offensive line. In pre-game planning the Lynx coaches had picked the Shamrock tackle spots as the places to hit and Jerry Holton and Hal Shufeldt made big yardage behind tackles Ronnie Moore and Randy Moore.

Shamrock took the opening kick-off and marched to the Lynx 35. Larry Flowers and Bill Littlejohn were the big movers. A 15-yard penalty at the Shamrock 38 on third down against the Lynx was the biggest help for the Irish.

At the Lynx 35, Mike Hendrick, Randy Moore and Charles Shieldknight dumped Irish quarterback Ike Shipman for a five yard loss on fourth down and Spearman got the ball at the 40.

Spearman was immediately penalized five yards for being offside. On one run and two passes they made three yards. Randy Moore got off a 43-yard punt to put Shamrock in a hole.

On the second play Spearman was stuck 10 yards on a pass-interference call and Shamrock had a first at the Irish 28. On the play the receiver was on the ground and one official ruled a trap on the pass and called it incomplete. A second official said the Lynx who was in on top of the receiver after the ball got there, was guilty of pass interference.

Flowers, Littlejohn and Dickey did the rest of the work, pushing the ball 72 yards in 19 plays to score. Flowers went in from the five. Dickey kicked the point to make the score 7-0.

Spearman started punching at the Irish tackles after taking the kick-off. Jerry Holton got the big bite when he rolled from the Lynx 31 to the Shamrock 49 in three straight smashed off tackle.

Bobby Smith, Wesley Jenkins, Charles Shieldknight and Holton continued to dig out the yards behind good blocking in the line and downfield.

On fourth and one at the Irish 11, Shamrock was offside and Spearman had a first at the six. It was Shufeldt, Smith and Holton on blasts into the

line to put the ball on the one yard line. Then Shufeldt rode the charge of guards Phillip Renner and Ronnie Gray and center Karl Kunselman into glory land. Shieldknight kicked the point with Mike Davis holding and Spearman had tied the score.

Shamrock started back but two good defensive plays by Jerry Holton and Mike Hendrick slowed the drive and the halftime clock killed it.

Spearman wasted no time after the half. Bobby Smith almost broke away with the kick-off, but was hauled down on the Lynx 45.

From the 45, Shieldknight turned Smith and Shufeldt loose and they marched right down the field. Shieldknight got a crucial first at the 20 when he sneaked two yards when the Lynx needed inches for the first.

Inside the 20, the still hobbling Jerry Holton joined the tackle smashing party and it was he carried in from the one. Shieldknight again kicked the point and Spearman led 14-7.

Shamrock again got out of the hole on a 15-yard penalty against Spearman and were digging out the yards in little bites. A clipping penalty at the Lynx 40 put them back on the Irish 45 and they went to

the air.

Steve (Scooter) Jordan almost got an Irish pass on two similar plays, but at the Spearman 40 he got his hands on a Shipman pass and the race was on. At the Irish 30 he squirted between two tacklers and it looked like he would go all the way but the little giant was overhauled at the Irish six.

Jerry Holton and Shufeldt took only three plays to score. Shufeldt went over from the one.

STATISTICS

Spearman	Shamrock
175 Yards Rushing	207
0 Yards passing	27
14 First Downs	17
6-65 Penalties	3-25
0 Fumbles	4-2
1-43 Punts	0
3-0 Passes	8-2-1

Shieldknight's kick was blocked and Spearman led 20-7.

Hendrick recovered an Irish fumble of the kick-off but the drive died at the Irish 29.

The defense was tough and Shamrock was forced to punt from their own 28. The snap went over Dickey's head and deep into the end zone. He tried to run out and was stop-

(Con't. on back page.)



LYNX SWEETHEART- Miss Jeri Grange, a senior, is the 1966 Lynx Football Sweetheart. She was crowned before the homecoming game Friday night. Plainsman photo

Late Surge Drope Irish

The Spearman Eighth grade waited until late in the game to turn on the effort and whip Shamrock 36-8 here Thursday.

Tommy Loveday got a touchdown in the first half and the all-winning Lynx seemed content to roll along protecting the slim lead.

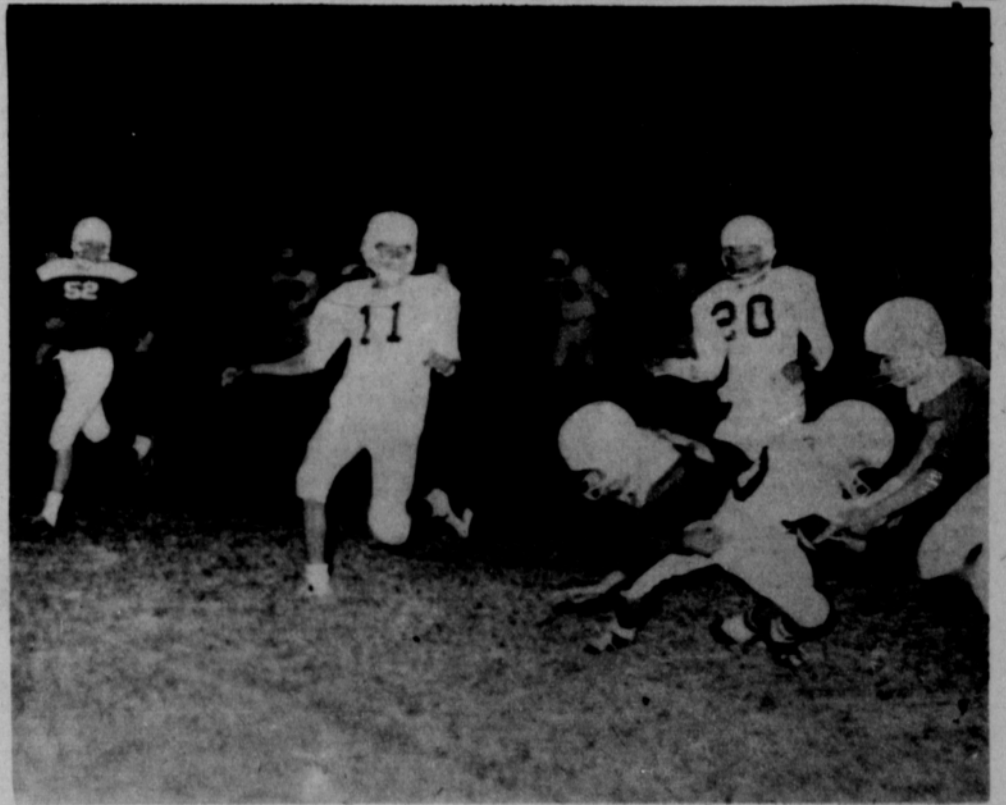
Early in the second things started happening and the score mounted. Loveday went off tackle and found such a hole that all he had to do was run. Sixty yards later he scored to make the score 12-0. Robert Archer added the points.

Loveday got another one on a six yard dash and Archer added two more points to make the score 22-0.

Matt Lair got the next score from one yard out and the extra points failed leaving the score 28-0.

Archer got the final touchdown when he intercepted a pass and ran it back 40 yards for a touchdown. Frank Lemons ran the points over.

Shamrock scored in the closing minute on a pass against the third team secondary. They also passed for the extra points to make the score 36-8.



MIGHT MITE - Lynx Eighth grader Frank Lemons is hauled in by two young Shamrock Irishmen in a game here Thursday. Spearman won the game. Other Lynx are Robert Archer and Terry Butt. Plainsman photo



Technical Sergeant Claude E. Chisum

Bronze Star Medal Awarded To Chisum

Claude E. Chisum, formerly of Morse, has been awarded the Bronze Star Medal at James Connally Air Force Base for meritorious achievement while serving in Viet Nam.

Now a U.S. Air Force Technical Sergeant, Chisum is

a 1947 graduate of Morse High School. He is the son of Mrs. Thelma Chisum of Arlington. His wife is the daughter of Mrs. W.E. Hacker of Spearman.

Sgt. Chisum is now assigned as a communications technician at James Connally Air Force Base.

The Comstock Lode, Virginia City, Nevada, produced ore valued at \$8,000 per ton, and was classed as the richest mineral strike ever found on earth. Profits from it helped build the western cities, build trans-

continental railroads, the transatlantic cable, and reduce the Civil War debt.

John Quincy Adams was a professor of rhetoric and oratory at Harvard College.

Auto Establishments

Auto establishments, including gasoline stations, car dealers and accessory shops, reached 318,480 in number this year.



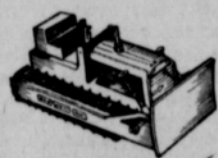
BILL BARTON

DEMOCRAT for
State Representative

- - - will represent the North Plains area effectively in Austin. He is closely acquainted with the programs of Texas . . . the growing needs of education, water development, agri-business, senior citizens, a workable Texas Criminal Code.

Bill Barton is an attorney, native Texan, familiar with how Texas government runs. Your vote for BILL BARTON is a vote for working representation in Austin!

Pol. Adv. Pd. for by Bill Barton



Hi Everyone



TOYLAND IS OPEN

- BABY DOLLS
- BABY CARRIAGE
- GAMES
- GUNS
- BICYCLES
- WAGONS
- TRACTORS
- TRUCKS

TOYS OF ALL KINDS

Lay away now for that special Christmas present.

COME BY AND SEE OUR SELECTION OF GUNS AND GET THAT HUNTING LICENS NOW SO YOU WILL BE READY WHEN THE SEASON OPENS

COLOR TV IN STOCK FOR ONLY \$449.00 UP

PORTABLE TV MAKE A PERFECT PRESENT

JUST IN NEW GAS POWERED CARS CHAPPRELL, CORVETTE STINGRAY
PUT ONE ON LAY-AWAY TODAY!

LAY-AWAY GIFTS

BE AN EARLY SANTA
PUT YOUR GIFTS ON LAY-AWAY





A GLIMPSE OF HEMISFAIR—The accidental meeting of some Braniff International hostesses in their new Pucci-designed uniforms and some girls posing at HemisFair '68 headquarters in traditional Mexican costumes resulted in this "something old, something new" picture. This is just the sort of happenstance that intrigues HemisFair officials, who plan the San Antonio World's Fair as a colorful mixture of the ancient and futuristic. The Fair, which runs from April 6 to October 6, 1968, expects the participation of some 37 private industrial exhibitors and more than 30 nations from every continent. The girls are Misses Iree Van Cleave and Susan Greenwood (L and R) of Dallas, and Estela Yvonne Herrera (C) of San Antonio.

SS Group Has Dinner

The Adult II Department of the Sunday School of the First Baptist Church met at Grunewald's Restaurant Tuesday eve-

ning for the annual installation dinner. Fred Fewin, department superintendent, acted as master of ceremonies.

The Hallowe'en motif was cleverly carried out in the decorations with favors for everyone.

Rev. Luther M. Berry installed all officers and teachers.

Jerry Ralls, director of music, led the group in singing "Happy Birthday" in a surprise honoring the pastor on his birthday. In behalf of the Adult II Department, Fred Fewin presented a monetary gift from the class.

Approximately 30 members attended.

3 Baptist Circles Meet

CAROLYN MCCLELLAN Circle of WMU met Wednesday morning in the home of Mrs. Arthur Adkison. Mrs. Don Jones, chairman, presided and the prayer calendar was read by Mrs. Bob Parsons who also gave the opening prayer.

The first portion of the mission book "Beneath the Himalayas" was given by Mrs. Major Lackey.

Attending were Mmes. Ray Devers, Marshall Walker, Bob Parsons, Abbye Ownbey, Leland Golightly, A. F. Loftin, Lawrence Anthony, Fred Holt, Major Lackey, Don Jones and the hostess.

WILLA DEAN MURRY Circle met Wednesday morning at the First Baptist Church for mission study. Pat Denham gave a review of missionary terms, showing their field of service.

Barbara Sampson, member of the Oleta Scnell Circle, taught the first chapter of the mission book "Beneath the Himalayas" by Joseph L. McPhail.

Attending were Magda Garnett, Marguerite Nelson, Pat Denham, June Conner, Dean Green, Ernestine Gray and guests, Mrs. Lena Stephenson and Barbara Reger both members of the Betty Morris Circle.

ONETA SCHNELL Circle met Wednesday morning in the home of Frankie Brandt.

Betty Uptergrove, chairman, called the meeting to order and conducted the business session.

Mary Lovett presented the prayer calendar, reading scriptures and naming the missionaries, followed with prayer by Vicki Adkison.

Food was brought for the kitchen and it was decided to visit Pioneer Manor at the next meeting.

Donna Helms presented the program, the Bible study lesson, covering the four gospels, with each member reading verses of scripture. Mrs. Helms also dismissed the meeting with prayer.

Attending were Vicki Adkison, Donna Helms, Mary Lovett, Margaret Torres, Wynona Stewart, Louise Hawkins, Betty Uptergrove, a visitor, Wanda Widener and the hostess, Frankie Brandt.

Five Attend Meeting

Attending the annual Canadian Associational meeting held at the First Baptist Church in Perryton, Oct. 21 from the local church were Betty Uptergrove, Donna Helms, Edrie Jones, Eva Adkison and Ernestine Gray.

An inspiring message was brought by the State WMU President, Mrs. C.J. Humphries of Amarillo.

Wednesday overnight and Thursday guests of Mr. and Mrs. Ray Messer were his sister and family, Mr. and Mrs. Don Cline of Denver.

Seventh Grade Loses To Irish


A Shamrock Seventh grade team that has been winning by big scores was held to one touchdown here Thursday afternoon by the Spearman Seventh grade.

Spearman lost the game 8-0, but turned in a strong defensive game. The young Lynx made two strong goal line stands inside the Spearman five to keep Shamrock from scoring.

The official state motto of Louisiana is "Union, Justice, Confidence."

The Hansford Plainsman PUBLISHERS INC.

TEXAS PRESS ASSOCIATION

Member  1966

Co-Publishers.....Jim Davis and Burl McClellan

County-Wide, Independent Newspaper published every Thursday and Sunday at 209 Main St., Post Office Box 668, Spearman, Texas 79081. Second Class postage paid in Spearman, Texas 79081.

Editor.....Burl McClellan

Manager.....Jim O. Davis

New Hallmark party items in beautiful solid colors to blend with all our seasonal designs. We have avocado green, gold and persimmon plates, napkins, bridge cloths, etc.

Come in and see these lovely new colors and items to make entertaining a pleasure.

Plainsman Office Supply.

Use Plainsman want ads.

LONG TERM FARM-RANCH LOANS

SEE

J. L. Brock Agency
Representing
Major Insurance
Companies

206 Main

Phone 659-2514

HORN OF PLENTY

Centerpieces or Vases

Orange, Gold, Ming Red, Mother of Pearl

Phone 659-3027 **Dorothy's Novelties** 912 S. Bernice

YOU CAN NOW SAVE 10% ON YOUR CHRISTMAS CARDS BY ORDERING IN OCTOBER FROM THE BEAUTIFUL ALBUMS AT PLAINSMAN OFFICE SUPPLY



BRITISH STERLING

YOU HAVE SEEN IT ADVERTISED NATIONALLY

YOU NOW CAN BUY

BRITISH STERLING

MEN'S TOILETRIES

IN SPEARMAN

COLOGNES

AFTER SHAVE

BEAUTIFUL SETS

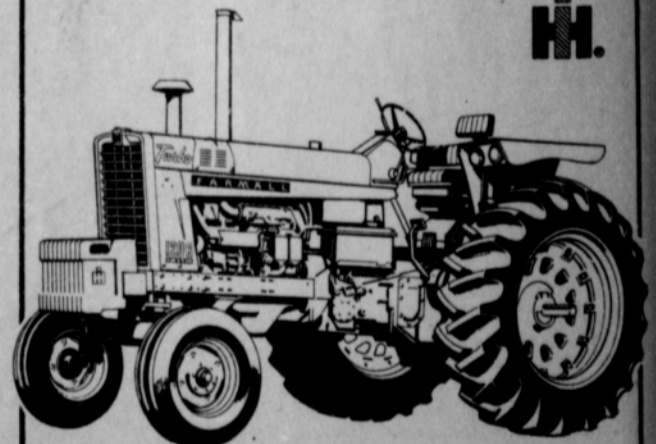
Spearman Rexall Drug

PHONE FOR FREE DELIVERY

659-2226 Two Registered Pharmacists

POWER! IH Turbocharged

IH.



FARMALL® 1206 112.6 HP*

Tremendous power—to pull big implements at fast speeds, handle seven plow bottoms. The Farmall 1206 tractor is built tough so that it can take the demands of big-power farming. Heavy-duty from end to end, you get full dependability along with massive power. Plus... exclusive 3-point fast-hitch that lets you couple and uncouple most all 3-point equipment without leaving the tractor seat.

*112.6 hp, pto (from official test)

NORTH PLAINS TRUCK & IMPL.

Highway 15 Phone 659-2421

Lynxettes Begin Work To Defend State Title

Basketball action begins Nov. 1 for the defending state champion Lynxettes with a scrimmage with Canyon there.

The Lynxettes will have a closed scrimmage here Wednesday night with Tyrone, Okla.

Dean Weese began sending his girls through full drills Oct. 17, as he attempts to build a team to defend the state title won last year by the "Surviving Six."

There are three of the starters from the six back this year and two additional letter winners who were reserves.

Weese has all-state guard Linda McCullough to build his defensive unit around and on the forward end is all-district forward Barbara Wilde and sophomore Marsha Shield-knight who came on in the play-off games to play like a veteran.

The two other letter win-

ners are Lynnann Robinson and Judy Jones, a forward and a guard.

Ten more girls are fighting for starting jobs. They are Sandra Shufeldt, Cathy Mackie, Frances Nollner, Catherine Lyon, Jeanette McAdams, Jyniece Callaway, Marilyn Jones, Sue Sloan, Penny Sanders and Cindy Cochran.

Managers are Darlene Waggoner and Debra Largent.

Members of the B-team who will scrimmage also, will be Marsha White, Judy Craig, Myrna Crum, Mary Hornsby, Karon Baggerly, Kathy Hayworth, Marsha Shuman, Marilyn Blodgett, Hazel Leslie, Vickie Rosenbaum, Lynn Hohertz, Joellen Kirkland, Rhonda Duryee, Marilyn Smith, Debbie Sell and Manager Becky McClellan.

Saturday, Nov. 5, the team and Coach Weese will participate in the Girls Basketball Clinic at Darrouzette. Saturday morning Weese will lecture on defense and use three of his freshman forwards against three sophomore guards in the demonstration. At 5 p.m. the Lynxettes will play O'Keene, Okla.

The following Saturday the Lynxettes will go to Wayland College in Plainview and play Tulia in one of the feature games of that basketball clinic.

Future Readers of

The Plainsman

Mr. and Mrs. Clayton Barker are the parents of a girl born Oct. 24 at Hansford Hospital. She weighed 6 lb. 1/2 oz.

Mr. and Mrs. Joe Stewart are the parents of a girl born Oct. 27 at Hansford Hospital. She weighed 7 lbs. 2 1/2 oz.

Mr. and Mrs. Jerrel Black are the parents of a boy born Oct. 28 at Hansford Hospital. He weighed 9 lbs. 6 1/2 oz.

Mrs. Archer Host Rho Rho

Rho Rho Chapter of Beta Sigma Phi met Thursday at 1 p.m. in the home of Mrs. Bobby Archer.

Mrs. Jim O. Davis, president, presided at the business session.

Mrs. Wesley Daniel was introduced and gave an interesting lesson titled "Personality and Relationship."

Attending were members, Jeanette Allen, Ann Archer, Dody Beedy, Linda Davis, Deloris Guthrie, Glenda Guthrie, Ola Mae Henry, Judy Martin, Kay Nollner, Verna Strawn, Lil Turner, Peggy West, Judy Wilmeth, Ramah Bosecker, the guest speaker, Beth Daniel and the hostess.

Hansford Hospital News

Patients in Hansford Hospital are Kay Vernon, Gayle Brown, Reba Hunter, A.W. Mobley, DeWayne Cook, Mary Allen, Roy Woods, Eva Holt, Elva Bean, Veneta Martin, Lula Newcomb and Peggy Stewart.

Patients dismissed were Royce Mathews, Elizabeth Casas and daughter, Wm. Penn, Ruth Roper, Danny West, Rock McLeod, Terry Smith, Herbert McClellan, Barbara Smith, Ellen Barker and daughter, transferred to Amarillo. Ted Collier, Marie Veatch, and Elsie Trolinder.

Booster Club Change Date

The Lynx Athletic Booster Club will meet Tuesday night at 7:30 p.m. instead of the regular meeting time on Monday.

The change was necessitated so as not to interfere with the Hallowe'en Carnival.



DEMOCRATIC WOMEN - Here Thursday night for the organization of the Democratic League of Women were Mrs. Dee Miller and Miss Claudia Brummett of Amarillo, Mrs. Bill Barton of Borger and Mrs. J. D. Helms. The meeting was held in the Home Demonstration club room. Plainsman photo

Bowling News

SCATTER PINS LEAGUE 10-27-66

TEAM	WON	LOST
Taylor-Evans	23	9
Sanders Farm	18	14
Equity	18	14
G&G Foodliner	17	15
Anthony Electric	15	17
Owens Sales	15	17
Spearman Ind. Eng.	12	20
Gruver Motor	10	22

HIGH TEAM GAME

Taylor-Evans	614
Sanders Farm	601
Sanders Farm	600

HIGH TEAM SERIES

Sanders Farm	1728
Taylor-Evans	1684
Owens Sales	1642

HIGH INDIVIDUAL SERIES

Edna Marie Williams	524
Lou Harvey	482
Tommie Floyd	468

HIGH INDIVIDUAL GAME

Edna Marie Williams	201
Jane Meek	190
Lou Harvey	181

Girl Scouts Hold Meeting

Troop No. 82 of Junior Girl Scouts met Oct. 27 at the Scout house for their regular meeting.

Attending were Julie Calaway, Angela Craig, Cheryl Gibson, Stacy Pendergraft, Debbie Sheppard, Debbie Simmons, Debbie Gregg, Carma Burch, Linda Jordan, Gina Bulls, Linda Hamilton, Sheila Cochran, Deborah Shelton, and Rhonda Nelson. The leaders are Mrs. Shelton and Mrs. Sheppard.

The girls played games and bobbed for apples and ate popcorn.

The Black Hills of South Dakota are not hills but mountains — the highest east of their parent range, the Rockies.

Crop Report Predicts Record Milo Harvest

Another record milo harvest is underway in the nation with production expected to reach 725 million bushels, according to the Santa Fe Railroad Crop report.

While grain sorghums are setting a new production record, corn production is down slightly this year. Hot, dry weather in June and July cut corn production. The crop is estimated at just over 4 billion bushels in comparison with 4.1 billion bushels last year.

Soybeans are again at a record level with the crop expected to reach 925 million bushels, about 10 percent above the 1965 crop and about 40 percent more than the 1960-64 average.

Cotton production is expected to be down about 25 percent from last year as

farmers retired much of their land to try and cut down on the cotton surplus.

Texas far exceeds the nation in grain sorghum production with an Oct. 1, crop prediction of 329,450,000 bushels. Last year the state produced 285.7 million bushels.

If numbers are any guide, there should be plenty of cattle on feed to consume much of the corn and milo crops. As of Oct. 1, there were an estimated 7,943,000 head on feed in the nation. There were 7,374,000 on feed in 1965.

Livestock range conditions in the southern great plains and adjacent states were in good conditions early in October because of the late summer rains.

In the Pacific and intermountain regions conditions were below normal and winter grazing prospects were limited.

Moisture to set the wheat will give a large amount of winter wheat pasture all over the southern great plains.

Mr. and Mrs. Herb Howe returned Wednesday from a deer hunting trip into the mountains of Colorado. Deer were scarce this year and they came home without their limit, the first time in many years.

Gift Box MEMO:

For the really beautiful gift select one of our new Renoir candle holders. These make beautiful gifts or holiday decorations for your own home. They are something anyone will cherish for many years.

We truly like to brag on our candles for we really believe we have as large and unusual a selection as you will find in this area. The newest candles are some imported from Germany. Some are in antique designs and can be described only as unusual. If you are a candle lover or just want some for decorations you will find what you are looking for in our selection.

Another gift item is the ice buckets. These are new and like all of our gift items, beautiful.

Want to make your ears look different, try some of our new earrings. You will find a completely new selection to chose from.

Come in and browse around. You will find ideas for gifts, or you will enjoy just looking.

THE GIFT BOX

BOB PRICE...
knows about war...
he's been there

As a jet pilot, Bob Price experienced first hand the effects of war on the young men of today. This knowledge acts as a guideline to decision in regards to foreign policy. Experience is a valuable teacher.



BOB PRICE... keeps in touch

Over the past 2 years, Bob Price has talked to citizens of every county in this district. He has learned the problems facing us today and has the experience to work toward their solutions. Bob Price owes no debt to any single group and can give all of you representation in our nation's capital.

VOTE FOR BOB PRICE FOR U.S. HOUSE OF REPRESENTATIVES

*Yes, you can vote for BOB PRICE regardless of your choice of other candidates. A split vote ticket is a legal ballot and will be counted.

PRICE IS RIGHT FOR U.S. CONGRESS

PAID FOR BY THE PRICE IS RIGHT COMMITTEE, E. J. MCCARTY JR., CHAIRMAN

WT Group Collecting For Olympic Fund

CANYON-The Ghost Riders, a male student organization dedicated to boost athletic teams and campus spirit here at West Texas State University, have joined the nationwide drive to help raise money for the United States Olympic Team.

Outfitted in red corduroy shirts, the 50 WT Ghost Riders will be seeking voluntary contributions from spectators at the West Texas State-Memphis State game here in Buffalo Bowl Saturday night.

The cost of selecting, outfitting, training, transporting, housing and feeding more than 1,100 of America's finest young amateur athletes through the Olympic Games is \$3,500,000. This amount is

derived from contributions by people throughout America, without government subsidy, and is the responsibility of the United States Olympic Committee.

The Olympic Team's first competition will come July 22-August 7, 1967 when they compete in the V Pan American Games in Winnipeg, Canada. The X Olympic Games are held six months later, followed by the XIX Olympiad Games in Mexico City eight months later.

Reception Set For Bob Price

A reception for Republican Bob Price candidate for U.S. Representative from the 18th Congressional District, will be held here at 7:30 p.m. Thursday.

The reception for Mr. and Mrs. Price will be in the Rex Sanders home at 707 S. Barkley.

Frances Fatheree, state Republican committee woman from Pampa, is expected to accompany Price to Spearman.

Everyone is invited to attend the reception and meet the Republican candidate.

Gruver Girl Homecoming Candidate

A Gruver girl is one of the five candidates for Homecoming Queen at Panhandle A&M College in Goodwell, Okla.

The candidate is Karen Clawson, daughter of Mr. and Mrs. Carl Clawson.

She is a junior English major with a minor in speech. She plans to be a teacher.

In her first two years at PAMC she has been "O" Club Sweetheart and Honorary Cadet Colonel. She was also a candidate for Plainsman Queen.

This year she is a member of the Student Education Association and Baptist Student Union. She is Secretary-Treasurer of Anglistics Society.

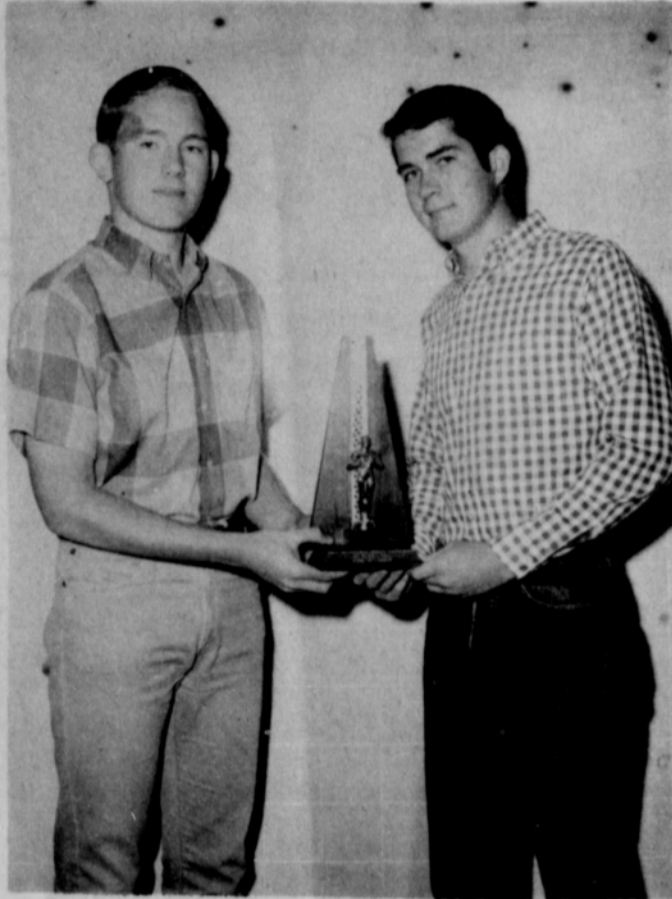
The winner and successor to the 1965-66 Homecoming Queen, Elaine Allen, will be revealed at the dance after the pep rally on Friday, Nov. 11.

Students at PAMC elect the Homecoming Queen.

Xi Zeta Upsilon Changes Dinner

Xi Zeta Upsilon will hold its ritual and dinner Wednesday evening, Nov. 2 rather than on Thursday as scheduled. The ritual will be at 7 p.m. at the hospitality room of the First State Bank with the dinner following at the home of Elsie Mathews.

Mr. and Mrs. W.C. Crump of Paducah were weekend guests of their daughter and family, Mr. and Mrs. Ray Messer.



DEBATE WINNERS - Spearman High School debaters Hal Sanders and Gary Bengel won the high school debate contest at PAMC in Goodwell recently. Plainsman photo

Methodist Church Circles Hear Beth Daniel

The circles of WSCS of the First Methodist Church met Wednesday afternoon at the church parlor with Mmes. Kenneth Williams and Roy Jones as hostesses.

Patty Sheppard, president, presided at the business session. At the meeting next week both circles will meet together at 9:30 at which time a play "Two In A Trap" will be presented. Anyone wishing to come in welcome.

Beth Daniel gave the program for "Quiet Day" and each member held individual meditation.

Attending were Mmes. Sid Beck, Jr., Robert Adamson, Bert Sheppard, Jim McLain, Bill Strawn, Wesley Daniel, George Collard, George Buzard, Roy Jones, Kenneth Williams, John Trindle, Larry McIntire, Burl Buchanan, Garland Head, H.M. Shedeck, Andy Rhodes, Sam Patterson and Bruce Sheets.

Shelly and Scott Strawn spent last week in the home of their grandparents, Mr. and Mrs. Vernon Estes of Bovina. They returned the children to Spearman last Sunday and were dinner guests of their daughter and husband, Mr. and Mrs. Bill Strawn.

WMU Council Enjoy Noon Fellowship

Betty Uptergrove presided at the quarterly WMU Council meeting held at the First Baptist Church Wednesday morning.

Minutes from the previous meeting were read by Magda Garnett, followed by reports by Frances Kilgore, Peggy Archer, Joy Ralls, Edrie Jones, Donna Helms, Pat Denham, Ernestine Gray, Marie Berry and Cloie Walker.

The Rev. Luther Berry was present at the meeting.

After the close of the meeting a noon luncheon was enjoyed in fellowship hall.

Ed Dear Wins Sales Award

Ed Dear, Spearman representative of the South Coast Life Insurance Company was a number one in his agency for premium placed in force in September. His production for September also placed him among the company's top five representatives for the month. The announcement was made by Art Lara, manager for the company.

Dear has been with his company for more than five years and is one of the company's top twenty producers for the year to date. He recently received notification that he had qualified for the National Quality Award of the National Association of Life Underwriters.

AUCKLAND, New Zealand — One in every 250 New Zealanders visited the United States in 1965, according to Charles A. McGee, regional director of the U.S. Travel Service.

He said this was the highest visitor percentage of any country, except for the neighbors, Canada and Mexico.

"Two hardy New Zealanders also hold a Greyhound bus travel record," McGee told a travel meeting. "On a '99 days for 99 dollars' ticket, they covered 32,000 miles in 42 days."

Faye Lynch Has Bridge Club

Mrs. Faye Lynch was hostess for the Hi-Lo Bridge Club on Thursday evening in her home.

Gwenfred Lackey had high score for the evening, and Virginia Cates had low.

Attending were members.

Carrie Marie Berry, Kubah Gandy, Mary Lee, Ruth Bryan, Vi Whitson, two guests, Gwenfred Lackey, Virginia Cates and the hostess.

Action Program For Junior GA

The Jr. G.A.'s met at the First Baptist Church with Vicki Adkison as counselor.

Debra Smith called the meeting to order and also led in the GA hymn. Lela Golightly led the prayer and Lee Ann Smith read the prayer calendar with scriptures.

The program titled "Let Action Speak" was presented by Darlene Wilkerson, Sherry Simmons, Lee Ann Smith, Marilee Ooley, Lela Golightly, Valorie Uptergrove and Susan Sheets.

Others present were a new member, Sue Sledd and La Veda Gaither.

Mrs. Adkison gave forward step assignments to each girl.

Miss Barkley Joins Sorority

Mary Ellen Barkley has been elected into Epsilon Mu Phi Music Sorority at Texas Tech, Lubbock. Her election was in recognition of her scholarship and ability in music fields.

Mary Ellen is the daughter of Mr. and Mrs. Freeman Barkley and is a sophomore at Texas Tech.

Tuesday overnight guests of Mr. and Mrs. Don Jones and children were her uncle and aunt, Mr. and Mrs. Warren R. Barrett and Terri of Wichita, Kans.

PRICE IS RIGHT FOR U.S. CONGRESS



BOB PRICE... the family man

Bob Price is a man whose interests are centered around his family. It's his desire to help create a better America for his children that led Bob Price into seeking the office of Representative to Congress. Bob and his wife Marty, along with their children, Janice, Carl and Grant, are a family we can be proud to send to Washington.

BOB PRICE... wants to stop inflation

Food, clothing and house payments must be paid out of take home pay after taxes. Inflation makes this more and more difficult for every family in the Panhandle. As a man operating his own business, Bob Price knows the effect of inflation on earnings.



BOB PRICE a man known for his vital interest in water

Bob Price's family started ranching in the Panhandle in 1907. Following in his father's footsteps as a businessman and rancher, Bob Price knows that we must use greater water conservation to raise food and to attract new industry to the Panhandle. City and County alike are concerned with this problem. Bob Price has the knowledge and experience to plan ahead for our future water needs.



CLASSIFIED ADS WORK WONDERS

FOR SALE

FOR SALE-Lot on Spearman airport, 100 ft. wide, 200 ft. deep. Call 3065 after 5 p.m. 1-tfc

FOR SALE-Lot and barn with water in Crawford addition. Cheap. See Pete Vernon. 104-tfc

FOR SALE-One 26" and one 24" bicycle, one reel type lawn mower, cheap. 721 Cotter Drive. 4-4c

FOR SALE-3 bedroom home, redwood fence, newly redecorated, Low equity. Call 659-2944, 109 W. 12th. 2-3p

For Sale: Story and 1/2 home, living room, formal dining room, 3 bedrooms and 2 baths. On Corner lot. Collard Real Estate Phone 659-2501. 89tfc

FOR SALE-1959 John Deere 55 Combine, good condition, 4-Row set of pickups roller cones, like new. I.V. Pierce, 702 Cotter Drive, phone 659-2673. 1-4c

FOR SALE-10' x 43' trailer, 1964 model, \$250 equity, payments \$69.39 mo. 15 N. Endicott, Phone 2310, 99-tfc

1 new 3 bedroom home with 1 1/2 baths. Collard Realestate, ph. 659-2501. 86tfc-c

Industri-! lots on Gruver Highway, Cecil Crawford, 659-2409. 61tfc

FOR SALE-Corner bathtub, Virgil Wilbanks, 659-3385, 3-tfc

3 bedroom brick house, 2 baths, fenced--to be shown by appointment. Only call 659-3166, 1005 Barkley, will take trade for equity. 80tfc

FOR SALE-1964 Falcon and two Renaults, wrecking a 1959 air conditioned Ford, Phone 659-2269. 3-tfc

FOR SALE-A desirable residential lot. Will sell lot or will build or move on a 3 bedroom home. Collard Real Estate. 659-2501. 3-3c

Electrolux

The Amazing Electrolux with power nozzle. Rotating brush action cleans all rugs faster--gently fluffs carpet nap. Sales and Service, call Don Seymour at 435-3880, Perryton, Texas. 68-69-p-70tfc

Five room house with basement, draperies, deep freeze, one-car garage, one and one-half acres of land. Phone FI7-2731 or FI-7-2282, J.E. Sluder, Gruver, Texas. 64tfc

For Fuller Brush products write 2301 Georgia Drive, Perryton, Texas or call 435-4967. 73tfc

Starch Curtains Crisp
If your dacron curtains have that tired, limp look, starch them very lightly with instant starch, then press them with the steam iron. Back will come the crispness.

A reactionary is someone who has never recovered from the self-satisfaction of having solved an itty-bitty problem by himself.

RON'S PLAN SERVICE
Residential and Commercial
1817 Colgate in Perryton
PHONE 435-5287
LET US HELP YOU DESIGN YOUR HOME

FOR RENT

FOR RENT-2 bedroom furnished house. 1002 Evans, Call 2770 or 3017. 3-1c

FOR RENT-One bedroom brick apt. Call 2274. 93-tfc

WANTED

HELP WANTED: Girl or woman, Monday-Friday, Lynx Den, Phone 2310. 3tfc

WANTED-Septic tank pumping and portable disc rolling. Bobby Joe, Swayson, phone 659-2209. 80tfc

WANTED: Real estate listings, Emmett Sanders, real estate broker, Phone 659-2516, nights 659-2601. 104-tfc

OPPORTUNITY FOR MEN OR WOMEN EARNING LESS THAN \$1,000 PER MONTH: You should be investigating auto accidents and other loss claims for insurance adjusting firms. Expenses paid and car furnished. We train you at home in your spare time and give free placement service; you keep your present job until ready to switch. Pick your location; full or part time people needed almost everywhere. For personal interview in this area to see if you can qualify for this specialized training, write, giving phone number to: NORTH AMERICAN CLAIMS TRAINING DIVISION, 3435 East Bayaud Ave., Denver, Colo. 80209 4-1p

JEST A MINUTE
Many people sim to do right, but are just poor shots.

LOST

LOST-550 lb. white face steer, 4-H Club calf, Lazy 7 brand on hip. Strayed from pen west of town. Contact Louis Schnell, Phone 659-3433. 103-tfc

SERVICES

SERVICE-Ditches from 3-12 inches, any desired dept. S. D. Jones 659-2809, Harold Shaver 659-3474. 17tfc-c

Amarillo Daily News & Globe Times home delivery. Call 2685. 14tfc

Proven Registered White Toy Poodle Stud Service. Reasonable. Call 659-2082. 104-tfc

WANTED: Irrigated and dry farmland. Cash lease or crop rent. Phone 3063, Spearman. 1-tfc

Styles have changed so radically that when you go shopping nowadays you can't tell whether you're in the underwear or the overwear department

Are you going to be out of town Tuesday, Nov. 8?
Texas is a great state of on-the-go people. If YOU intend to be out of town on Tuesday, November 8—Election Day—be sure to exercise your right as a citizen to vote absentee. Your vote counts, but only if you cast it!

ABSENTEE VOTING
Ends Friday, Nov. 4!
See your County Clerk for full details

Spikes Feed Plants
Give your potted plants regular feedings of plant food, using the commercial "fertile spikes" also known as manure fingers or cow nails. This pure organic odorless non-burn food brings out the best in your plants.

Ridges Right Records
Your record albums will stand up, even when some are removed from the shelf, if you glue a sheet of corrugated cardboard inside the back of the cabinet. The cardboard ridges will keep the remaining albums upright.

Cummings
Refrigeration
Heating
Air Conditioning
Sales & Service
Specialist
659 - 2721
Spearman



REPUBLICAN CANDIDATES - Bob Price of Pampa and Jack Hart of Gruver spoke here to a group of farmers Thursday night. The meeting was held in the Farm Bureau building. Plainsman photo

The one thing a doctor never fails to check before giving advice is his patient's bank account.

White House Lumber Co.
Building & Plumbing Supplies
Phone 659-2818
306 Davis

Halloween Carnival Set Monday Night

The Spearman High School Student Council will sponsor a Halloween Carnival Monday night, Oct. 31, beginning at 7 p.m. The carnival will be held in the Community Building. Booths and concession stands will be available at the carnival. The Young Homemakers Club will have a Country Kitchen Bazaar of homemade foods. The public is invited to attend, according to Student Council representatives.

Tommy Gooch Agency
Farm Bureau Insurance
Spearman, Texas

For Your Convenience
We now have
ICE
L. D. Steggs
Top Mechanic
Simmons CHEVRON SERVICE
Loren Simmons
659-9985
Plains Shopping Center

Just Pass the Spice
It's a good idea to add only sugar to homemade apple-sauce; then when the sauce is served, pass the cinnamon shaker and nutmeg grinder and let family and guests add their own spice—or pass it up!

SO THEY SAY
HE STOOD HIS GROUND

and insisted you get your money's worth in TV, Radio and Hi-Fi at Burton's T.V. He reminded everyone of their motto "We Service What We Sell".

Burton's RADIO & TV
Phone 659-2121

Hey football fans!
98.3 on your dial

Follow The Lynx on **KBMF**
Nov. 4 Spearman at panhandle
Nov. 11 Dalhart at Spearman

THE YEAR'S GREATEST "TEAM-UP" FOR SAVINGS!



Shurfine CARNIVAL '66



Team up with your independent supermarket for the biggest savings ever during the Shurfine Carnival of 1966! Score with the quality and goodness of Shurfine foods and other famous brands at storewide savings. Remember, because we are independent, our investment and income stay right here at home to benefit our community. Don't sit on the sidelines when there are savings to be won! Join in the Shurfine Carnival of 1966... the Year's Greatest Team-up-for-Savings Sale!

- Shurfine Apple Butter 28 oz.3/\$1.00
- Shurfine Apple Sauce 3036/\$1.00
- Shurfine Apricots Hlvs. Unpl. 303.....4/\$1.00
- Shurfine Beets Cut 3038/\$1.00
- Shurfresh Biscuits Sw.-But. Milk 8 oz... 13/\$1.00
- Shurfine Blackeyes Fr. Shelled 300.....7/\$1.00
- Shurfine Cucumber Chips F.P. 16 oz.4/\$1.00
- Shurfine Cake Mixes Asst'd. 19 oz.4/\$1.00
- Shurfine Frost. Mix Wht-Choc. 13½ oz....4/\$1.00
- Shurfine Grape Jelly 18 oz.3/\$1.00
- Shurfine Grape Juice 24 oz.3/\$1.00
- Shurfine Gr. Beans 4 Sv.-Cut B.L. 303....5/\$1.00
- Shurfine Luncheon Meat 12 oz.2/\$1.00
- Shurfine Milk Evap. Tall Can.....7/\$1.00
- Shurfine Olives 7 oz. Stuff-Thr-Manz.....2/\$1.00
- Shurfine Peanut Butter 12 oz.3/\$1.00
- Shurfine Pickles Wh. Sweet 22 oz.2/\$.89
- Shurfine Potatoes Irish Whole 3038/\$1.00
- Shurfine Sauer Kraut 3036/\$1.00
- Shurfine Spinach 3037/\$1.00
- Shurfine Swt. Potatoes Wh. No. 3 Squat..3/\$1.00
- Shurfine Strawberry Preserves 18 oz.2/\$1.00
- Soflin Toilet Tissue 2 Ply Asst'd..10 rolls\$.79
- Shurfine Tomatoes Wh. Peeled 303.....5/\$1.00
- Shurfine Tomato Sauce 8 oz.9/\$1.00
- Shurfine Waffle Syrup Ot.2/\$.79
- Shurfine Broccoli Sp. 10 oz. Frozen.....4/\$1.00
- Shurfine Orange Juice Frozen 6 oz.5/\$1.00

Shurfine Red Alaska No. 1 Tall Can
SALMON 89¢

Shurfine Early Harvest No. 303 Can
SWEET PEAS 5 for \$1.

Shurfine 14 oz.
Catsup 5 for \$1.

Colorado Red Rome
APPLES 1 lb. **10¢**
Large, firm green heads
CABBAGE 2 lbs. **15¢**
Medium Yellow Spanish
ONIONS 3 lbs. **19¢**
U.S. No. 1 Colorado Red McClure
POTATOES 10 lb. bag **39¢**
Texas New Crop
YAMS 1 lb. **10¢**

Shurfresh 2 lbs.
CHEESE SPREAD 89¢

Shurfine Regular or Drip 1 lb. Lanes Party Time Half Gallon
COFFEE 69¢ MELLORINE 39¢

Shurfine Golden Whole Kernal or Cream Style No. 303 Can
CORN 5 for \$1.

Shurfine Quart Shurfresh 1 lb. 2 for
SALAD DRESSING 39¢ Crackers 45¢

Shurfine Cut All Green No. 300 Can Shurfine No. 300 Can
Asparagus 4 for \$1. PORK & BEANS 9 for \$1.

Shurfine Halves Bartlett No. 303 Can
PEARS 4 for \$1.

Roxey Canned Shurfine No. 300 Can
DOG FOOD 13 for \$1.
No. 1 Cans
Blue-Giant Size
BONUS
Shurfine No. 300 Can
Pumpkin 8 for \$1.
Mortons Frozen
PUMPKIN PIE 29¢
Each

Shurfine 303 Can
Fruit Cocktail 5 for \$1.

Shurfine Strained No. 300 Can
CRANBERRY SAUCE 4 for \$1.

Shurfresh 1 lb. Qtrs. 5 for Shurfine Yellow Cling Halves or Sliced No. 2 1/2 Can 4 for
Margarine \$1. PEACHES \$1.

Shurfine 10 lb. Paper Bag 10 lb. 98¢
Shurfine 25 lb. Print Bag 25 lb. \$2.19
Shurfine 3 lb. Can
SHORTENING 79¢

Shurfresh Milk 1/2 Gallon **49¢**
Gallon **98¢**

Shurfine Chunk Style 6 1/2 oz. Can
TUNA 3 for 89¢

Sunray Hickory Smoked Whole 12-16 lbs. Center Slices lb. **55¢**
Shank Portion lb. **98¢**
Butt Portion lb. **59¢**

BACON Shurfresh Sliced lb. **79¢**

FRANKS Shurfresh All Meat lb. **55¢**

Shurfresh Hickory Smoked **BACON** Thick Sliced 2 lb. pkg. **\$1.49**

B-Team Wins 26-12

After losing two points on a slick fake, the Spearman Lynx B-team went on to beat the Shamrock B-team 26-12 there Thursday night.

The 26 points represents two points for each man on the 13-player squad. They had to come from behind to break the game open in the fourth quarter.

Big Jock Lee and P.A. Lyon III combined on two big defensive plays in the fourth quarter to salt the game away for the Lynx.

The game was tied 12-12 going into the fourth quarter. Lee blocked a Shamrock punt to set up the go-ahead touchdown.

Bruce Brown scored from 13 yards out to make the score 18-12. Jimmy Brown added the two points.

The final touchdown came when again Lee broke through on a punt and he and Lyon dropped the punter before he could kick the ball.

Bruce Brown scored from three yards out and Burke missed the try for the extra point.

The score was tied 6-6 at the end of the first quarter. Shamrock has scored on a 60 yard gallop to take the lead. James Lemons went one yard on a dive play to score and tie the game.

Shamrock had a 12-6 half time lead, then Jim Brown passed 19 yards to Gary Woolley for a touchdown. It was on this extra point that Brown faked the Lynx out of two points.

On the try for two points, Brown put the ball in the stomach of fullback Joe Hutchison, then took it out and rolled around end. The fake was so good that Hutchison was tackled and the official blew the play dead. Hutchison did not have the ball to the official's surprise, but another official said Brown was still on the three yard line when the official whistled the ball dead.

Brown has crossed the goal line untouched and unseen, but he did not get the two points.

It looked like the official "bust" was going to be costly until the fourth quarter when Lee and Lyon untied the knotted score.

Coach Allen Simpson had high praise for his 13 players. He said Jock Lee did a tremendous job as middle defensive guard and defensive ends Lyon and Tim Fisher played good ball.

"Shamrock did not run a reverse they did not lose yardage on," Simpson said.

The entire team played outstanding ball. One or two boys were shaken up, but stayed in the game all the way.

Lynx Freshmen Dropped 22-6

Freshman coach Eddy Clemmons was not happy with the performance of his team at Shamrock Thursday night. The Lynx freshmen lost the game 22-6.

The score was tied 6-6 at the half. Randy Weston scored the Lynx touchdown on an eight yard dash.

Clemmons said the team played its poorest game of the year.

We had opportunities to win, but did not take advantage of them, Clemmons said.

LONG TAIL FEATHERS

Peru's rare marvelous hummingbird has only four tail feathers. Two are several times longer than the bird itself and tipped with feathered flags. The other two tail feathers are shaped like long thorns.



Homemakers Will Have Food Bazaar

The Spearman Chapter of the State Association of the Young Homemakers of Texas met in

the Homemaking Department on Tuesday, Oct. 25, Hobbies and handmade gift ideas were displayed and discussed. Plans were made for the Country Kitchen, a bazaar of home-made foods, to be sold at the Halloween Carnival. Mrs. Albert Crouch, hostess, served refreshments to the following members and guests: Mmes, Darrell Longley, Clifford Longley, Larry McEntire, Finis Marchman, Bill Gaither, Thomas Reed, Joy Barkowsky

LARGE CONTINENT
Africa is the second largest continent in the world.

and Mrs. Frances Hudson. The next meeting will be on November 9 at 2 p.m. in the homemaking department when Mrs. Flavil Ayers will present a program on home decoration. All young women are invited to attend.

Mrs. and Mrs. Zack Jagers of Bonham were here Thursday for a brief visit with his mother, Mrs. M. E. Jagers and other relatives.

Mr. and Mrs. Larry Ed Beck of Lubbock are home for the weekend.

Mr. and Mrs. Jimmy Kirkland of Canyon are home for the weekend.

Bari Blevins of West Texas State is home this weekend.

Mr. and Mrs. Mike Garnett and son have returned from a vacation in Salt Lake City, Utah.

Dave Clement, Skipper Robinson, Clayton Cochran, Eddie Jenkins, Gary Payne, Eddie Butler and Janie Kirkland, all college students, are at home this weekend.

Attend the Halloween carnival Monday night!

Morse Stomps Guthrie 72-12

There was a big horse stampede in the ranch country around Guthrie Friday night. When it was over, the Morse Mustangs had routed Guthrie 72-12.

The Mustangs sat out much of the last half as Coach Bill Tennison used his reserves in the one-sided contest. Morse is still undefeated in district play and is tied for the lead with Darrouzett. The two teams clash this Friday night.

Details of the Guthrie game were incomplete Saturday morning as the Mustangs were enroute home.

Kings Rough On Right Side

The Jim King family has a hard time with the right side of their car.

Several months ago Jim was involved in a minor accident that smashed up the right side of the car. They got it repaired.

This week Mrs. King was involved in a minor accident about 14 miles southwest of Spearman on Highway 15. It was the right side of the car that was smashed up again.

Sale Secrets Sold

LONDON — Cooks at Prunier, the famous fish restaurant, wasted so much time writing out recipes for delighted lady customers that the management has now printed them to be served with each dish. A cookbook containing all the secrets of the chef is also on sale for 63 cents.

Nice Magazine Mailer

Nothing is better for mailing a magazine to a friend than the cardboard from the inside of a paper toweling roll.

No Prying Needed

To separate tumblers that have stuck together after being stacked, pour cool water into the one on top and set the bottom one in warm water. This loosens them at once.

Football . . .

(Con't from page 1.)

ped at the one. Shieldknight scored on the first play and then pitched the ball to Bobby Smith who made the two points to make the score 28-7.

Spearman was going to need every point.

The Irish came out fired up and drove 71 yards in 12 plays and Martin scored from 10 yards out. The snap for the extra point was fumbled, Martin picked the ball up, retreated to the 15, then lofted a pass downfield. It was caught on the goal for two points and the Lynx lead was cut to 15-28. Spearman receivers let the

kick-off bounce around at the 32 and Spearman managed to touch the ball just before it went out of bounds to get the ball at the Lynx 32.

They drove in to score in seven plays with Dickey scoring from the one. Shipman managed to inch across for the extra points to make the score 28-23.

The big play in the drive was a 21 yard pass from Shipman to Mark Young that set up a first at the Lynx eight.

Spearman got the onside kick at the 50 and marched down the field. Bobby Smith put the Lynx on the Irish seven on a 39 yard gallop. The Lynx were on the one when the game ended.



CHECK THESE LOW PRICES...

THERE IS A DIFFERENCE WHEN YOU SHOP IDEAL!

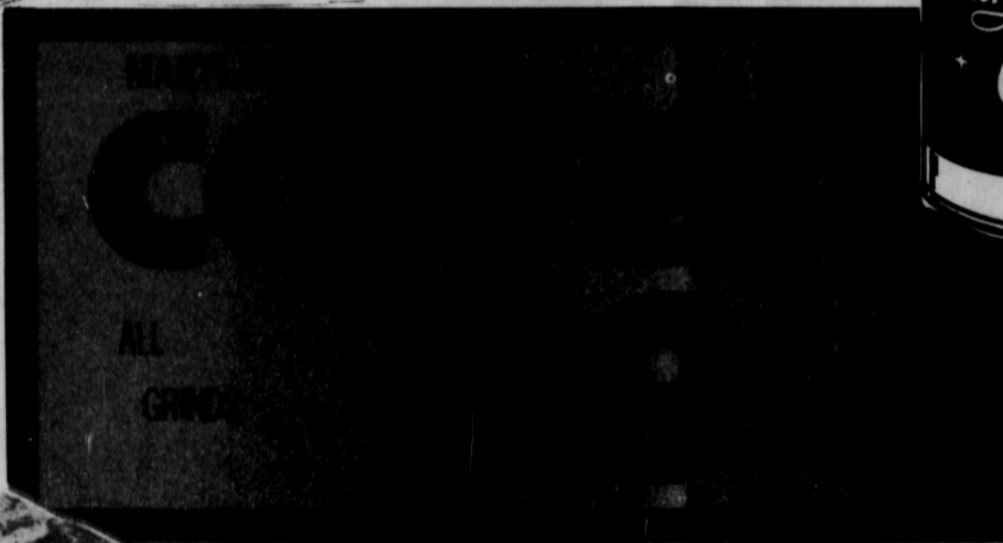
"Better Food For Less"
IDEAL
FOOD STORES

Prices Good
Nov. 1 & 2
Tues. & Wed.



EVAPORATED
PET MILK
6 Tall Cans **89¢**

APPLE BAY
APPLE SAUCE
303 Cans **79¢**



SWIFTS' PREMIUM PROTEIN BEEF

CHUCK ROASTS

FIRST CUT
CHUCK ROAST

CENTER CUT
ARM ROAST

49¢ **59¢**

Swift's Premium Protein Beef
BONELESS CHUCK ROAST lb. 79¢

SWIFT'S PREMIUM SKINLESS FRANKS 1-LB. PKG. **59¢** COUNTRY KITCHEN BAKED BEANS PT. CTN. **39¢**

IDEAL FRUIT CENTERED
FRUIT TWISTS
PKG. OF 6 **39¢**
IDEAL HOMESTYLE
WHITE BREAD
2 1 1/2-LB. LOAVES **49¢**

NINE LIVES
CAT FOOD 2 NO. 1/2 CANS **29¢**
VAN CAMPS
PORK & BEANS 2 52-OZ. CANS **89¢**
MEADOWDALE
SALAD MUSTARD 20-OZ. JAR **23¢**
GREEN GIANT
PEAS 3 303 CANS **69¢**
PILLSBURY EXTRA LIGHT
PANCAKE MIX 2-LB. PKG. **39¢**
PILLSBURY HUNGRY JACK
PANCAKE MIX 2-LB. PKG. **49¢**
LONG GRAIN
COMET RICE 2-LB. PKG. **49¢**
CHIFFON SOFT TUB
MARGARINE 1-LB. CTN. **45¢**



MEADOWDALE
ELBERTA PEACHES
SLICED OR HALVES
3 2 1/2 Cans **\$1.00**

MEADOWDALE
PINEAPPLE JUICE
SO REFRESHING!
4 46-oz. Cans **\$1.00**

WITH BEANS
WOLF CHILI
With Lots of Lean Beef!
3 300 Cans **\$1.00**

SPICY, DELICIOUS
WOLF TAMALES
HAVE A "FIESTA" LUNCH!
3 300 Cans **\$1.00**

LOW CALORIE
WELCH'S WELCHADE
GRAPE DRINK
3 46-oz. Cans **\$1.00**

PILLSBURY OR
BALLARD BISCUITS
READY TO BAKE AND SERVE
10 8-oz. Cans **89¢**

PILLSBURY LAYER
CAKE MIXES
7-VARIETIES MIX 'EM OR MATCH 'EM
3 18-oz. Pkgs **88¢**

FINE QUALITY
HI PLAINS TOMATOES
STOCK UP NOW!
7 303 Cans **\$1.00**