



HANSFORD PLAINSMAN



Goodson Family Fund

The home of the Gloria Goodson Family burned last Saturday.
Any donations of clothing sizes: Boys-4; Girls-7, 8, 12; Ladies-14 and any household items can be taken to 619 Haney.
A Gloria Goodson Fund is also set up at the First State Bank. Any donations would be greatly appreciated.

Frosty Hickerson is Lion of the Year

Elbre "Frosty" Hickerson was named as the Lion of the Year at the Ladies night banquet, held here Tuesday evening, at the First Methodist Church.

Other awards included: special singing award, to Ray Ingle, for his "exhuberant" song leading this year. Also, T. Ray Robertson received an award for his "broom sale" promotion. Steve Krug for the Pancake Supper, and Butch Baker for the Dunking Board! And, incidentally, the Lions will have their Dunking Board at the park this 4th of July Celebration!

Other Plaques and awards went to Butch Baker as an outstanding Tail Twister for the past year, Bob Queener as Boss Lion, and Frosty Hickerson won the "Liars" award, for claiming that he was going to bring a lady friend to the Ladies Night, but always ended up with Lion Bobby Snider.

Besides these awards, Lion Dr. Kleeberger and Billy were presented books on "rules of order" for the Lions Club.

Two new members were initiated, Lion Jim Smith and Anthony Wilkerson. The complete program is printed below:

OFFICERS 1980-1981

PRESIDENT Robert Queener
1st Doug Steger
2nd Burl Buchanan
3rd T. Ray Robertson
SECRETARY Elbre Hickerson
TREASURER Bobby Snider
TAILTWISTER Butch Baker
LION TAMER Claude Newell

DIRECTORS

2 Year Cecil Biggers
Oscar Donnell
1 Year Ray Ingle
Doug Connelly
Russell Pogue

1981-82

PRESIDENT Doug Steger
1st Burl Buchanan
2nd T. Ray Robertson
3rd Anthony Wilkerson
SECRETARY Elbre Hickerson
TREASURER Bobby Snider
TAILTWISTER Steve Krug
LION TAMER Don Reed

DIRECTORS

2 Year Steve Holton
John Trimmell
1 Year Oscar Donnell
Cecil Biggers
Robert Queener



Frank Lewis, of Morse Lions Club, on the left installed the officers here Tuesday.

Old Lion Boss Bob Queener, New Boss Lion Dr. Doug Steger, Lion of the Year, Frosty Hickerson, and new Tail Twister Steve Krug. This fearless foursome was on hand to conduct the program Tuesday evening at ladies night.



G. W. Robinson
Junior High Principal



Dickie Allen
Nurse

Orville Latham

SPEARMAN LIONS CLUB



INSTALLATION BANQUET

Ladies Night
June 30, 1981
7:30 p.m.
First United Methodist Church

PROGRAM

MINI-CONCERT Mrs. Neal Pack

OPENING CEREMONY

DINNER SERVED
INTRODUCTION OF THE GUEST

SPECIAL PRESENTATION Frosty Hickerson
Bobby Snider
Ray Ingle
SERVICE AWARDS Robert Queener
INITIATION OF NEW MEMBERS Ray Ingle
EVENING OF ENTERTAINMENT Mrs. Neal Pack
INSTALLATION OF NEW OFFICERS Frank Lewis
LION OF THE YEAR AWARD Burl Buchanan

History Of Spearman Schools

When people moved from Hansford to Spearman in 1920 they moved the school building also, consolidating the schools of Hansford Happy Jack and Micou with the Spearman School. The school house burned to the ground and in 1923 a two story brick building was constructed, which is still in use. In 1930-31 another brick building was built for a School, the two being connected. The High School had a larger and nicer gymnasium.

The first lunch room for the school was run by Mrs. Buchanan in the room between the "Cracker Box" gym and the boiler room. The menu consisted of a large bowl of soup with crackers and cooked fruit for dessert, the soup cost 5 cents a bowl. This room was later used for a "Shop" for the boys to do wood working. During the '40's, Mrs. Paul Roach had a lunch room cafeteria style, in a small building behind the schools.

When the country schools began to close, the children from the Black, Holt, Lackey, and Medlin Communities were added to the Spearman Independent School District, later those from New Hope, and High School students from Morse and Waka came into Spearman.

to help in the teaching in the schools.

In the 1950's Spearman began to grow and the need for more classrooms became apparent. In 1957 a renovation of the older building was undertaken and the North Wing of the Elementary School was built, along with a cafeteria and Ag. Building. The old Black Community School house was moved in to be made into a band hall. In 1959, more room was needed and the South Wing of the Elementary School was built and the new gymnasium. The 1957 Ag Building is now being used as the Junior High Band House.

The need for a new High School building was seen and a bond issue called for by the Board of Trustees. The bond issue was for \$1,000,000. The issue passed by 7 votes and the building was completed in 1963 with the first classes held in the Fall of 1963. H.A. Paggett, Jr. of Lubbock, Texas was the build-

ing contractor for the ultra-modern "no window" school facility. A football field, stadium and track, was added later, behind the complex which is on 12th St. in the Blodgett-Linn Addition.

The 1923 building is now used by the Elementary and Junior High Schools. The bottom floor is used by the 4th Grade and for Special Program. The old "Cracker Box" gym has been converted into rooms for Art and Music. The upper floor and the old high school is used for classes for Junior High School.

During the tenure of Sam Watson, who came to Spearman in 1951 as Band Director, and Dean Weese who was the girls High School Basketball Coach, Spearman Schools became well known for their fine bands and girls basketball teams. Both organizations won many honors for our school system.

The three people who have been with the Spearman

Schools System longer than anyone now on the staff are Business Manager and Tax Assessor-Collector, Orville Latham, he began his job in the Spring of 1955. G.W. Robinson who came to Spearman as a teacher in 1953 and is now Junior High Principal and Dickie Kiker Allen the School Nurse since 1955.

The present school system employs 70 school teachers and teachers aids. Superintendent of the Spearman Schools is Mr. James Cunningham. High School Principal is Mr. Eddie Clemmons, Junior High Principal is Mr. G.W. Robinson and Elementary Principal is Mr. Allen Alford.

Present members of the Board of Trustees are: Jim O. Davis, Kent Guthrie, Tommy White, Tom Latta, Charles Shieldknight, Dennis Nelson and Mike Garnett.

Spearman has an excellent school plant and faculty and we owe this to these dedicated board members and the many

others who have served on the board in the past 60 years.

We extend a cordial welcome to all ex-students to this first all school reunion. Inside this newspaper you will find memorabilia of your school days.

Hospital news

Patients at Hansford Hospital are Dot Jenkins, Rae Butler, Willie Harris, Bill Etling, Aaron Thompson, and Melton Brown.

Dismissed from Hansford Hospital were Richard Goehring, Thelma Beck, Susan Thompson and son, Lera Langston, Charles Asbill, Reba Bennett, Grace Bennett, Eunice Miller, and Jose Ananaya.

Welcome Home Ex-Students

Deer Season opens for the Spearman Lynx Friday night, as they journey to Snyder, Texas, to meet the Alpine Bucks, in a quarterfinal football game, to determine the semi-finalists in the AA state championship football race. Out of 200 AA football teams in the state of Texas there are only 8 teams left. Spearman is rated rather high in this select group according to many football experts, but in the Panhandle of Texas, the Lynx, always the undercats (or rather underdogs) still feel that they are in for a really tough one at Snyder Friday night.

Of course coach Greg Sherwood thinks that the Lynx will be meeting a real tough football team, but the big coach is so happy with his team, we note a rather satisfied look in his eye as he discusses the coming game at Snyder.

First, coach Sherwood stated that the Alpine team runs the same type of offense that the Lynx run, and on defense they are not much bigger than the Lynx, although they do boast a lot of speed in their small backs.

About the only big advantage that Alpine will have over the Lynx is the fact that they have been to the quarterfinal and semifinal playoffs the past several years, whereas this is the first time for the Lynx.

The Spearman Lynx team will probably spend the night in Spearman Thursday, then board their bus early Friday morning, and head for Snyder. Coach Sherwood would probably prefer that the team spends Thursday night in their own beds, and we feel sure that the Alpine Bucks will do the same.

As we said before, the game will begin at 7:30 p.m. Friday, in Snyder. This site was the only site that both schools could agree on. And, according to local fans, Snyder is the very best place they could have picked, as it is a fine town, and especially a fine football town. Plus the fact that ample seating is available in the Snyder stadium.

A chartered bus for fans will leave Spearman at noon Friday, if enough fans want to ride the bus instead of drive their car down. Contact officials at the bus station if you want a seat on the bus, before Thursday noon!

THURSDAY, DECEMBER 5, 1974

The complete starting lineup for both teams is printed in this week's Lynx booster ad. Once again we want to thank the boosters for making these available to our readers, plus the pictures, compliments of our boosters.

The following Lynx will make the trip to Snyder Friday:

10-TIMMY HARPER	QB	154
11-MIKE TUCKER	HB	168
12-MIKE PACK	QB	149
17-JIMMY JACKSON	QB	152
20-DONNIE DAVIS	HB	160
21-PHILIP ARCHER	FB	162
22-MARK FOX	FB	166
32-CARY COLLIER	HB	162
40-ROGER JONES	E	175
41-REGIE ROBERTSON	HB	158
42-RICK MORRIS	HB	139
44-GREG PRICE	HB	139
50-LARRY BOWEN	C	177
51-TERRELL EVANS	C	160
52-CARL ROBINSON	C	170
55-JIMMY KENNEY	C	160
60-NED DAVIS	G	160
61-ROGER BROWN	G	157
62-KENT HARGIS	FB	138
63-DAVID WITT	G	153
64-VIRGINIO ORTEGA	T	175
65-TERRY LATHAM	G	173
66-MARK CUNNINGHAM	G	172
70-BO DEARMOND	T	236
71-BOBBY SNIDER	G	144
72-CALVIN BODEY	T	162
73-DON COOPER	T	206
74-SCOTTY DEWITT	T	209
75-LEON HAGERMAN	T	184
80-ROBERT WHITE	G	158
81-JEFF BEEDEY	E	153
82-DANIEL TRUELOVE	E	156
83-JIMMY VERNON	E	155
84-EARL CAMPBELL	E	138
85-LONNIE CLEMMONS	E	133
88-STEVE SWITZER	E	180

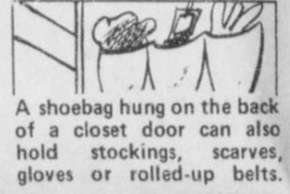
Two To Receive LVN Degrees

Two Spearman women, Donna Atkinson and Shari Thomas will graduate from the Vocational Nurse program at Frank Phillips College, July 10, 1981 at 7 p.m. in the Fine Arts Building, at 7 p.m.

These women are among 33 graduates from Berger, Canadian, Dumas, Pampa, Perryton, and Spearman.

MARKETS

Barley	\$2.46
Corn	3.23
Wheat	3.52
Soybeans	4.61
Milo	5.15



A shoebag hung on the back of a closet door can also hold stockings, scarves, gloves or rolled-up belts.

Spearman Lynx Annex Championship

N CAGE TITLE AT CANYON MEET

...d to Be the Fastest and Most Hotly Contested Tourny in History of District

MORE HARD WORK NOW

...Lubbock Today to Play Ralls For Bi-District Championship -Austin Next

The Spearman Lynx, pride and joy of the Spearman schools and the entire Spearman country, are champion basketball players of District No. 1, having won this much coveted title at the Interscholastic League Meet held at Canyon on Friday and Saturday, February 21 and 22.

The Lynx played four fast games at the tournament to establish themselves as the champions. They defeated the teams from Arwell, Perryton, Stratford and Happy. Seventeen teams participated in the tournament, which was said to be the most thrilling and hotly contested sectional tournament in the history of the district.

The score in the games in which the Lynx participated was: Spearman 25, Farwell 16; Spearman 24, Perryton 15; Spearman 38, Stratford 25; Spearman 24, Happy 20. The Happy Jacks from Happy gave the Lynx a real run for their money, but the other games were won by safe margins. All teams from the North Plains country made good showings at the meet. Dalhart, Stratford, Spearman, Perryton and Follett sent their teams and all of them were in the running on the second day except Dalhart. The boys from the Sweetheart of the Plains pulled down the big Happy Jacks for their first go and failed to win. Follett sent the Golden Sandstorm to Amarillo by a score of 9 to 12, and they in turn were put out of the running by those terrible Happy Jacks. The Happy Jacks also defeated Berger, 23-27, while little Stratford poured it out loud-speaking Canyon, 25 to 10.

Lynx were followed to a large crowd of enthusiastic fans, who backed them from start to finish. The cheerleaders enjoyed the tournament very much and are loud in their praises of the men who had charge of affairs. The referees were Gerald, Jones, Bandy and Newman, all of whom are West Texas State Teachers College cage stars.

Two Lynx Players in All Star Selections

The all Star selections from all teams participating, made by the officials who refereed the games at the Canyon Tournament, assisted by Coach Burton of the Canyon Buffaloes, are as follows: Owen, Spearman, Forward. Cate, Canyon, Forward. Fortenberry, Happy, Center. Magness, Happy, Guard. Sippy, Spearman Guard.

Those deserving honorable mention are: Teed, Amarillo; Tucker, Perryton; Newman, Perryton; Morgan, Happy; Jennings, Canyon; Windom, Spearman; Walker, Spearman.

The winning Lynx were presented with a beautiful silver basketball trophy by the West Texas State Teachers College, in whose gymnasium the tournament was played.

And Now To Lubbock For Bi-District Honors

While the Lynx were fighting their way to the top in District No. 1 at Canyon another team from a small town was doing the same thing at Lubbock for the championship of district No. 2. This honor was won by the team from Ralls. And today the Lynx must journey to Lubbock and meet this fast team to decide, in the best two out of three games, who shall go to Austin to the state meet. The Lynx will play Ralls at Lubbock tonight, Friday night and Saturday night, provided it takes three games to decide the bi-district championship.

Coach Jarvis was seen Wednesday and said his boys are in fine fettle and that he believed he could down Ralls. But Ralls is strong, no doubt of that. Spearman will "wait up" for news from the battle field because she knows her boys will stay in there and fight to the last whistle.

If the Lynx succeed in winning the bi-district championship over Ralls at Lubbock, the team will be taken from there to Austin to participate in the state meet to be held next week. Coach Jarvis will take his boys down state a few days early to give them a little H chance to become accustomed to the lower altitude.

OUR SKILL TRAINING COMES WITH PAY.

In the Army Reserve, you can learn one of hundreds of skills and get paid while you learn. Earn over \$2,000 during initial entry skill training at an Army post. You return home to a part-time job with your Reserve unit, earning over \$1,100 your first year. It takes only one weekend a month and two weeks a year. Call your Army Reserve representative, in the Yellow Pages under "Recruiting."



Ikey Vernon Takes Punt And Runs 40 Yards For Lone Touchdown Beating Perryton Score 6 To 0

Before a crowd of more than a thousand excited Spearman and Perryton fans that thronged the sidelines, Ikey Vernon, fleet-footed halfback of the Spearman Lynx in the second quarter took a punt and zigzagged his way over a 40 yard course for the lone touchdown that beat the Perryton Rangers on their home field last Friday, 6 to 0.

When Perryton was held for down smack up against their own goal they were forced to kick. Tindel, Witt and Cator rushed the Perryton back and his punt was short. It floated into the waiting arms of Ikey Vernon, Ikey shifted his position to the right and then like a whirlwind, tore around the left side of the field, slipping off a couple of Perryton tackles, ducked and sidestepped his way across the goal line. Spearman failed to make the extra point.

From that moment of the game until it ended, it was Spearman's game. In the pinches when the Rangers threatened the Lynx goal line, Atherton, Schubert, Witt, Jenkins and big captain Archer, made a stone wall of their line and held the Rangers for downs.

Throughout the entire game the Rangers failed to get within 10 yards of the Lynx Goal line. The Spearman fighting men outplayed Perryton, outwitted them in most every stage of the game. Witt played a splendid game at center. He never made a bad pass and Spearman's team never fumbled a ball during the entire battle.

In the first quarter of the game Perryton out punted the Lynx slightly and in the third quarter, outplayed them by a slight margin. Officials for the game were F. A. Stocking, Columbia University, referee; R. White, Texas Tech, umpire and E. Bowen, Mc-

The Lineup

Rangers	Lynx
Grogan	RE Tindell
Mounts	RT Atherton
Ruppercht	RG Schubert
Murphy	C Witt
Dean	LG Archer
Bradford	LT Jenkins
Hill	LE Cator
Garrison	QB Owens
Tucker	LH Vernon
Shockley	RH Madden
Johnson	FB Gamble

Spearman, first downs, 6; total yardage, 230. Perryton, first downs, 2; total yardage, 123.

First Quarter

Owens, for Spearman, kicked off to Johnson who was downed by Vernon. Garrison goes through line for 1 yard. Johnson picks up 2 more. Tucker ploughs through for 6 yards. On fourth down Shockley punts 35 yards to Vernon who returns 10. Vernon kicks 40 yards against wind. Tucker makes 1 yard through center of the line. Garrison passed to Johnson for 14 yards and first down. Perryton makes 1 yard. Shockley gains three through the line. Shockley kicks up 1 more. Shockley kicks 38 yards to Gamble who returns 12 yards. Gamble loses 1 yard. Vernon Kicks 35 yards to Garrison. Hull 6 yards Tucker drops one yard for Perryton. Owens breaks up Johnson's pass. Shockley kicks out of bounds on Spearman's 12 yard line. Vernon picks up 3 through the line. Vernon kicks 25 yards. Perryton ball on Spearman 45 yard line. Tucker loses 6 on a try around Spearman's left end. Garrison's pass is incomplete. Perryton draws a 5 yard penalty on Garrison's second incomplete pass. Shockley kicks 45 yards. Madden loses 7 for Spearman. Vernon kicks 30.

(Continued on Page Four)

Summer Clearance Sale
at
Kids' Stuff
in
Spearman
All Spring & Summer Merchandise
Reduced to 40%
Sale starts Tuesday, July 7th
(Store will be closed Monday, July 6th to prepare for sale.)

NEWS OF SAFETY

SHARING THE ROAD

Ever get annoyed when someone follows your car too closely? For a motorcyclist, without the security of an enclosed compartment, a tailgater can be downright scary.



The Motorcycle Safety Foundation recommends that you use a two-second following distance whatever vehicle you operate. Here's an easy way to determine if there are two seconds between you and the vehicle ahead.

Pick a reference point up ahead—a signpost or overpass will do.

When the rear of the vehicle you are following passes the point, start counting off two seconds.

If you pass the reference point before two seconds are up, you're following too closely: drop back.

Using a two-second following distance is a good habit to learn. You will be able to see potential problems up ahead more easily and others will see you better.

IN 1981 IT'S NOTHING BUT FORWARD FOR THE U.S. ARMY, WITH EDUCATIONAL, INCIETIVES, HIGH TECHNOLOGY EXPERIENCE AND SKILL TRAINING OPPORTUNITIES WHICH KEEP THE ARMY AHEAD OF THE REST.

Notice ...

The Texas Grain Sorghum Producers Board will hold a special meeting on Wednesday, July 8, 1981 at the Community Center at 16th & Maddox in Dumas, Texas.

The purpose of the meeting is to discuss the law suit against the USDA due to the Grain Embargo.

The meeting will begin at Noon with a free barbecue sponsored by area elevators.

Elbert Harp of the Texas Grain Producers Board is the scheduled speaker.

Advertisement Paid For By PERRYTON EQUITY EXCHANGE

WANTED ADS

CAPROCK MONUMENT CO.

Dealers of Georgia Granite, Georgia Marble, Colored Granite, & Bronze.

represented by **BOXWELL BROS. FUNERAL HOME**

519 S. EVANS
659-3802

Hansford County Planned Parenthood
26 S. Haney
659-2483
Spearman
Mon.-Fri.
Call for an appointment.
305-rtn

NOTICE
Wallace Monument Co.
Monuments, Curbing,
Grave Covers.
Local Representative
LEONARD JAMESON
Spearman, Texas
20-rtn

STEAM RINSE & VAC
Steam Rinse-and-Vac Shampooers; \$8.95 for up to 24 hrs, available at Gordon's Drug; also at Freddie Largent's 716 Cotter Dr. after 4 p.m. and Saturdays and Sundays.

MONUMENTS
Save 20% to 30%
Agents and Undertakers
Commission
ALVA MONUMENT CO.
Alva, Okla.
51-rtn tonly

ALL STEEL BUILDINGS
STRAIGHT WALLS
40' x 80' x 14'
COLORED WALLS,
GALV. ROOF
Two 20"x14" dbl. slide doors
One steel walk door
\$13,980 Erected
806-435-3107
Bob Slaughter - Rep.
1306 S. Grinnell, J2A

Pee Wee's Plumbing Service
Roto-roter, Acoustical Ceilings,
Blown Insulation in
walls and ceilings. **Appliance Service**, use appliances for sale. 659-2811 pr 659-3781.
20-rtn

SERVICES

Will decorate cakes all occasions. Also cookies and cupcakes. Call Nelda 659-3984.
51-rtn

Carpet & upholstery cleaning
Rogers Steam Way, Guymon, 405-338-7926
5s-rtn

KIRBY SALES & SERVICE.
New & reconditioned vacuum cleaners. Claude Newell, 912 S. Bernice.
8-rtn

SERVICE: Pits cleaned, wet or dry. Dragline or loader. Also, dozer, grader, carry-all service. Lee Roy Mitchell, 806-733-2384, Gruver, Texas 79040.
Will do yard mowing and edging. Call Earl Goodheart at 659-2081 or 659-2121.
29-rtn

SNOOPY'S DAY SCHOOL
Open from 7 a.m. to 6 p.m., we have Hot Lunches and Snacks Morning and Afternoon. Our van takes kids to and from Track-Swimming Lessons, etc. Call 659-3328 or come by 620 1/2 Bernice and ask about our Swimming Program on Monday, Wednesday and Friday.
Receive Western gift stamps for your bill-and double on Friday. Licensed for ages 18 months to 12 years.
32-rtn

CALL S&H REMODELING for your painting or papering needs-659-3328.
32-rtn

WILL SERVICE appliances in Hansford County. Call Bob Nobles, 733-2413 after 5 p.m. 37-4tc

Miscellaneous For Sale

FOR SALE: 2 horse in-line trailer. Call 659-2096.
34s-2tc

FOR SALE: Butane Set-up for pickup or truck \$250. Call 9-2514.
33-rtn

FOR SALE: New ovation guitar with new case and amplifier. \$500. Call 733-2783
33-4tc

FOR SALE: Kenmore gas range, good condition, \$30. 659-9260.
34-2tc

FOR SALE BY ESTATE: 1976 Chevrolet pickup, under 18,000 miles, 350 engine, power, air, automatic transmission. Submit sealed bids c/o John Hutchison, Box 506, Spearman, Texas 79081 until August 1.
33-rtn

SAVE! Free Delivery---HEAVY SHAKES, 65.00 per square. Light medium Shakes \$57.00 per square. All other Cedar roofing--Cedar Beams--Plywood, Rough Cedar, Cedar Fencing materials or turn-key fencing--Composition Shingles, and felt. **LAKESIDE FENCE MFG. AND WHOLESALERS INC. DRAWER L FRITCH, TEX. 79036** Phone 806-857-2411.

STEEL BUILDINGS!!!
Need a steel building NOW!! Quality at lowest price!
Our Buildings will be suited to your individual needs.
JUST A SAMPLE:
30'x50'x12 with 16"x11" door \$4,343.00
60'x100'x16' Straightwall \$15,695.00
AS LOW AS \$2.61 per Square foot
FAST DELIVERY
CALL TOLL FREE TODAY 800-525-7849
(ask for Win)
GREAT WESTERN BUILDINGS by Farm Building Brokers, Inc.
34-5tp

Real Estate For Sale

FOR SALE: Three bedroom house located at 908 S. Dressen, close to schools, central air and heat, 1 bath, living room, den combination, fenced back yard. Call for appointment 659-3327.
25s-rtn

FOR SALE: Brick, 3 bedroom, 2 bath, basement, 2 car garage, fireplace, automatic sprinkling. Near High School. 1010 Blodgett 659-3323.
32-rtn

FOR SALE: 320 acres 8" well grain storage, well head gas 5 mile S. Spearman. Call 659-3664.
32-rtn

320 acres with 2 center pivot sprinklers. 3 miles South of Morse.

JERRY WOMBLE REAL ESTATE BROKER
Phone: 733-2286
33s-4tc

FOR SALE: 2 Bedroom frame house newly painted, clean and carpeted. Located at 908 S. Haney St. Call 659-2335 after 5 o'clock.
34-1tp

FOR SALE: 3 bedroom, garage, good location. Blankenship Real Estate, 9-3052.
27s-rtn

OLDER 3 BEDROOM rock house for sale, partially remodeled. Small equity and take up payments. Call 806-733-2339, 304 Cluck, Gruver.
33-4tc

Help Wanted

DIRECTOR OF NURSES position available. Please call or apply in person between 9 and 5 at the Senior Village Nursing Home, HWY 83 S. Perryton--435-5403.
32s-8tc

WANTED

WILL DO BABYSITTING in my home-301 E. 4th, Call Beth 659-3949.
33s-2tc

WILL SERVICE appliances in Hansford County. Call Bob Nobles, 733-2413 after 5 p.m. 33s-5tc



When buying potatoes, avoid those with a green color. This is known as "sunburn" and can be caused by too much exposure to either sun or store lights.

Women's Softball Schedule

HANSFORD COUNTY YMCA WOMEN'S SOFTBALL SCHEDULE 1981		
July 6 7:00	Bottoms Up vs Busters Dusters	8:30 Red Hots vs Lusby Cats
July 13 7:00	Lusby Cats vs Busters Dusters	8:30 Bottoms up vs A&L Printing
July 20 7:00	Bottoms Up vs Red Hots	8:30 Busters Dusters vs A&L Printing
July 27 7:00	A&L Printing vs Red Hots	8:30 Lusby Cats vs Bottoms Up
August 3 7:00 p.m.	A&L Printing vs Lusby Cats	8:30 Red Hots vs Busters Dusters

This schedule is the OFFICIAL SOFTBALL SCHEDULE FOR THE WOMEN FOR 1981.

The Hansford County Appraisal District will receive applications for a bookkeeper until July 15, 1981. Applicants should send resume listing experience, qualifications and education to Alice Peddy, Chief Appraiser, Box 514, Gruver Texas.

The Hansford County Appraisal District will receive applications for a secretary until July 15, 1981. Applicants should send resume listing experience, qualifications and education to Alice Peddy, Chief Appraiser, Box 514, Gruver, Texas.

Legal Notice

NOTICE OF EQUALIZATION BOARD MEETING

Notice is hereby given that the Equalization board of the City of Spearman will meet at 3:00 p.m. on the 8th day of July, 1981, in Council Chambers of City Hall in the City of Spearman, Texas, for the purpose of considering and equalizing the 1981 tax values.

Donna Thomas
Deputy City Secretary
Posted this 3rd day of July, 1981, at 3:00 p.m.

AGENDA ZONING BOARD OF ADJUSTMENT TUESDAY, JULY 7, 1981 7:30 P.M.

1. Call to order.
2. Consideration of Approval of the minutes of the Zoning Board of Adjustment meeting held on June 18, 1981.
3. Consideration of a zoning variance to waive a minimum lot requirement on Lot 12, Block 26 Original Town, City of Spearman, Texas; Street Address 102 N. Endicott.
4. Other.
5. Adjourn.

Jim Murray, City Manager
I certify that the above notice of meeting was posted on the bulletin board at City Hall on July 2, 1981 at 3:00 P.M.
Donna Thomas
Deputy City Secretary

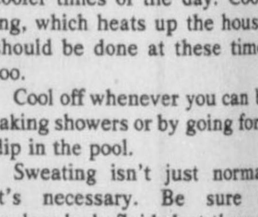
AGENDA Spearman ISD July 6, 1981

- I. Establish quorum
- II. Hearing of any group wishing to come before the board
- III. Reading of minutes
 - a. regular meeting of June 8, 1981
 - b. special meeting of June 15, 1981
- IV. Business Manager's report
 - a. ratification of bills 3
 - b. financial report 4
 - c. tax report 5
- V. Communications
 - a. Texas Municipal Reports financial statement of Spearman I.S.D. 6
 - b. letter from Blue Cross-Blue Shield 6a
- VI. Old business
 - a. 1981-82 budget consideration
 - b. Board action on bids for roof repair on high school and varsity gym
- VII. New Business
 - a. Board action on recommendations to fill staff positions
 1. Asst band director
 2. Elementary teacher
 3. Spanish/English teacher
 - b. Board action on supplementary textbook committee report for 1981-82
 - c. Action on Texas Assn. of Community School membership
- VIII. Superintendent's report
 - a. Annual evaluation report of progress on the five-year plan 8
 - b. Transportation report for 1980-81 for all vehicles

Cool It: Hot Weather Living

The dog days of summer are with us again. As the temperature outside rises, so does our need to keep cool. There are some positive steps you can take to make the heat at least somewhat bearable, says the Texas Medical Association (TMA).
Summer heat should not be taken lightly--except when it comes to clothing. Wear light-colored clothes that reflect the light away from the body. Loose-fitting clothes allow air to circulate, keeping you skin cooler. Also, try to choose fabrics that "breathe," such as natural cotton.
Stay out of the direct sun as much as possible, especially during the middle of the day when the sun's rays are hottest. Do your heavy work, including gardening, either early in the day or in the evening when it's cooler. Strenuous sports also should be reserved for the cooler times of the day. Cooking, which heats up the house, should be done at these times too.
Sweating isn't just normal, it's necessary. Be sure to replace body fluids lost through sweating by drinking lots of liquids. Don't take salt tablets except on advice from your physician.
If you have air-conditioning, keep it set on moderate. Going from the hot outdoors to a freezing home or apartment is hard on the body's own temperature controls. The heat will seem even worse when you go outside again. Gradually increase your heat tolerance by spending more time outdoors each day, but slow your pace to match the weather. The key to healthy summer activity is moderation. Too much or too sudden activity in the heat can result in heat illness, says TMA.
Heat illness is an extreme rise in body temperature. It is characterized by profuse sweating, fatigue and perhaps muscle cramps. Heat exhaustion includes these symptoms, plus a rapid pulse and nausea. Heat exhaustion can progress rapidly to heat stroke, the main sign being the cessation of sweating. All heat illness is potentially dangerous.
The ideal treatment for heat illness is prevention. Beat the heat by learning the best ways to live with it.

The Library of Congress contains about 300 miles of shelf space and about 40 acres of floor space.



Tee Ball - Softball Action

The Tee Ball and Softball (Girls) Teams will not be playing tomorrow, Friday--July 3, because of the Reunion. The only games that will be played were tonight's--Thursday, July 2--and next week, if the weather permits.
There will be plenty of action for Monday, Tuesday, Thursday and Friday of next week--July 6 thru July 10.
First of all in Girls Tee Ball, a game between the Cinderella Cuties, coached by Judy Tindell, will battle the tough Berry Cleaner Bears, coached by Linda Butt Monday night, July 6, at 6:30 p.m. These two teams are very equal--mainly in the size of the girls.
In Girl's Softball, the two teams playing will be the Anthony Electric Stars, coached by Kathy Beck and Sharon Swan, against the Pink Panthers, coached by Donna Yarbrough--Monday, July 6--beginning at 7:45 or immediately following the Tee Ball game.
Then, for the Tee Ball girls, on Friday, July 10--this is the last game on the schedule for the girls; there will be two Tee Ball games played--one in Spearman and the other in Gruver. The game played at Spearman will have the Babes, coached by Cindy Schneider, going up against the Gruver Orioles. The game will begin at 6:30. The Berry Cleaner Bears, coached by Linda Butt, will travel to Gruver to meet up with the tough Gruver Angels--this game is also scheduled for 6:30 playing time.

There will be two Girl's Softball games played this Friday, July 10--one will be played at Spearman and the other at Gruver--this is also the girl's last game scheduled for the Summer. The game played at Spearman will have a batter between two SUPER teams, the Anthony Electric Stars, coached by Kathy Beck and Sharon Swan and the Wy-Tex Pink Panthers, coached by Donna Yarbrough. This game will begin at 7:45 or right after the Tee Ball game. This is a good rivalry--like all competitors, there are friends going up against friends and on the field it is competitor against competitor, but off the field, it's friends talking to friends--nicely. The

other Softball game will have the Consumer Sales team, coached by Ray Thomas', going up against Gruver Angels.
In the Women's Softball, there is a whole line-up of excellent players on all four teams. The first game for this Monday, July 6, at 7:00 p.m., will have the Speartex Bottoms Up going up against the Busters Dusters. This will be the first time these two teams meet, and should be a very good match indeed, since some of the Busters Dusters players had been in the Bottoms Up organization, meaning that both teams know where the players like to hit and what pitches they hate to hit, etc. The second game of the night will be between the Red Hots and the Jr. Lusby Cats. The game will begin at 8:30 or right after the Bottoms Up/Busters Dusters classical game is over! The A&L Printing team will have the night off until the following Monday when they will go up against the Speartex Bottoms Up, who have already beaten them.

In the Men's Softball action for July 7, Tuesday, there will be lots of action. The 7:00 game to be played at the Babe Ruth Field will have Tico matched up against Spearman Auto. John Deere will take on Hi Plains when they play Tuesday at 7:00 at the field east of the Y. The 8:30 game that will be played at the Babe Ruth Field will be between North Plains and Crawford Implement. Super Service will fight against Agco at 8:30 at the field east of the Y.
Then on Thursday, July 9, again there will be lots of exciting action. Super Service will battle against Hi Plains at the Babe Ruth Field at 7:00 p.m. While they are playing, Agco will fight the Crawford Implement team at 7:00 at the field east of the Y. North Plains and Spearman Auto will go at it at 8:30 at the east of the Y field. The Union Church will fight Tico at 8:30 at the Babe Ruth Field.

There is lots of action in the YMCA Leagues of Softball and Tee Ball. So don't miss out on any action.
DON'T FORGET THAT ALL THE GAMES ARE CANCELED FOR FRIDAY NIGHT, JULY 3!!!

Wheat Producers Board Election Ends

The fifth biennial election of the Texas Wheat Producers Board ended with the canvassing of ballots today, according to Leo Witkowski, Chairman.
Re-elected to serve additional six year terms were W.R. Moore, Jr. of Munday and C.L. Edwards of Panhandle. A new member of the Board, elected to serve as a representative from the North Plains area, is Kenneth Keisling of Dumas. The 27 year old Sunray area, 1800 acre irrigated wheat and milo farmer attended Texas State Technical Institute at Waco. He studied automotive engineering. He lives in Dumas with his wife, Pam and daughters, M'liiss, Kenna and Pamela.

The three elected board members had their names placed on the ballot with the support of ten local producers from their area. They had applied in response to legal notices run in area newspapers and mailed to the Commissioner of Agriculture, County Agricultural Agents, and the News Media. Ballots were sent to 12,000 commercial wheat producers in the state, with available space provided for write-in candidates. There were a total of eight write-in names placed on the ballot, none gaining a majority.
The TWPB program is supported by a 1/2 cent per bushel self-assessment on producer deliveries of wheat to commercial grain handlers. The funds are directed by the Board for use in research, market development and education programs designed to enhance wheat producer income.
Other TWPB officers in addition to Chairman Witkowski and those recently elected are: Cagle Kendrick, Stratford; Otis Harman, Tullia; Robert Graves, Perryton; Dwight Hamilton, Olney; Wiley Tabor, Quanah and Troy Sloan, Spearman, the outgoing member who did not seek re-election. The board's programs are administered from offices headquartered in Amarillo by Bill Nelson, Executive Vice President and Ross Wilson, Executive Assistant.

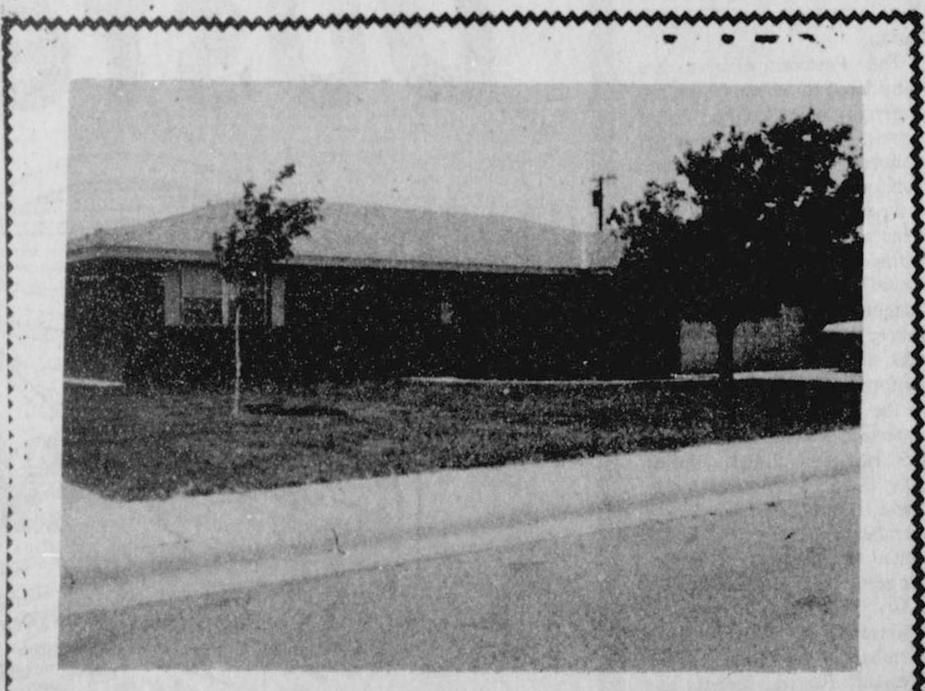
The Hansford Plainsman
PUBLICATION [USPS 243-660]
SPEARMAN, TEXAS 79081
213 Main Box 458 659-3434
Published Weekly at 213 Main Street
Spearman, Texas 79081
Owner-Publisher.....William M. Miller
Editor.....Faye Lynch
Second Class Postage paid at Spearman,
Texas 79081
Any erroneous reflection upon the character of any person or firm appearing in these columns will be gladly and promptly corrected upon being brought to the attention of the management.
SUBSCRIPTION RATE: Hansford, adjoining counties, combination with the Spearman Reporter, \$15.00.
Other points, \$20.00.
MEMBER
TEXAS PRESS ASSOCIATION

Películas Mexicanas 'Lo Blanco, Lo Rojo y Lo Negro'

La Película Mexicana para este Domingo, el 5 de Julio, es "Lo Blanco, Lo Rojo, y Lo Negro". Esta Película va ser de un Blanco-Hugo Stiglitz, un Rojo o Indio-Jorge Luke, y una Negra-Shandria. Va ser de vidas de estos tres.

Otros actores y actrices son Carlos East, Martha Elena Cervantes, Hector Godoy, Rodrigo Puebla, Jose Antonio Edwards y Wally Barron.
La oficina del auto-cine se abre a las ocho de la noche, y la película comienza cuando el sol se abaje. La Película se llama, "Kill and Kill Again". Hay una cosa que dice de este hombre, James Ryan, que sabe karati muy bien, "No es uno de los mas mejores, es el mas mejor." Si les gusta ver películas de karati, vayan a ver esta Película que va salir el Viernes, Sabado y Domingo, el tres, cuatro y cinco de Julio.
En el auto-cine de Spearman, va salir una película de karati. La oficina del auto-cine se abre a las ocho de la noche, y la película comienza cuando el sol se abaje. La Película se llama, "Kill and Kill Again". Hay una cosa que dice de este hombre, James Ryan, que sabe karati muy bien, "No es uno de los mas mejores, es el mas mejor." Si les gusta ver películas de karati, vayan a ver esta Película que va salir el Viernes, Sabado y Domingo, el tres, cuatro y cinco de Julio.

Salen Películas cada Miércoles en el auto-cine, yo si que no puedo garar informacion muy pronto, pero la Película Mexicana para el Miércoles que viene, el ocho de Julio, es "El Guardespaldas". Si quieren saber de que se trata, prendan su radio a KRDF el Domingo a las cinco de la tarde y pongan mucho cuidado porque Juan y Maria Antonia Avila dicen un poco de que se va tratar la Película Mexicana del Miércoles que viene.
Marketing for the Texas Department of Agriculture; Paul Gross, District I Dir., Texas Agricultural Extension Service in Amarillo; Phil Haynes, Potter County Commissioner, representing County Judge Cliff Roberts; and Otis Harman, representing the sponsoring organization the Texas Wheat Producers Association.
Results of the election have been certified to Texas Commissioner of Agriculture Reagan Brown, as required by law.



1106 Wilmeth

FOR SALE - 2285 square feet, ranch style home, 3 bedrooms, 2 1/2 baths, double car garage. Exceptionally nice home, in the nicest part of town.
Call **MAYFIELD**
Real Estate - 435-6528
Perryton,
for appointment.

Coach Jarvis Has Promising Bunch of Youngsters Working Out For Foot Ball

Thirty-three fine young athletes responded to the clarion call of Coach Billy Jarvis for a football team to represent Spearman High school on the gridiron during the coming season. They are working out daily, and are a promising bunch, though many of them have had no experience whatever and others but very little experience. Six members of last year's battlers are again in the line, they being Thorne, Jenkins, Jackson, Curtis, Gay, Parks, Wilson and Munroe Buchanan. These letter men are doing uniforms regularly and making a sincere effort to again make the team, but Coach Jarvis is going to make the old heads step along if they pull through this year. A hard schedule has been arranged. Every team with which a game is matched for the coming season has a little edge to begin with on the home boys. The opposing teams have had more experience, which is a mighty important factor in successful football as in other matters. The first game of the season will be played with the Wheeler team on the local gridiron on Friday, September 28.

The second game will be played with Borger on the local grounds, October 5. This is the Reporter editor's birthday, so we sincerely hope the home boys will pull through to a complete and satisfactory victory. The third and most important game is matched with the Follett eleven, at Follett, on Friday, October 12. This is the first conference game of the season. Either Spearman or Follett will be eliminated from the interscholastic league games for this season at this game. Of course the home fans will line up with blood in their eyes, and in perfect phalanx, will move upon the little city of Follett, determined to win, if by fair means such a thing is possible. Follett is a substantial town, has a good football team and they play hard. High school girls have canvassed the town rather closely this week, selling season tickets to the football games, the proceeds from such sales to be used in putting a floor in the gymnasium. The coach and athletes, both boys and girls, are very anxious to see this much needed improvement put in at an early date.

Irrigated-Cropland Maps of High Plains Areas Released

Maps showing irrigated cropland in 15 counties in eight states of the High Plains Aquifer region, stretching from South Dakota to New Mexico, have been prepared by the U.S. Geological Survey, Department of the Interior. The maps are part of a five-year project started in 1978 by the USGS to develop a ground-water flow computer model of the Ogallala aquifer and associated water-bearing sediments that underlie about 177,000 square-miles of the High Plains region. Once developed, the model can be used to evaluate alternative ground-water management methods and proposals in the region. Ground-water levels have been falling in most parts of the region since pumping for irrigation of farm lands began increasing shortly after World War II. Most of the irrigation water is being pumped from the Ogallala aquifer.

The computer model will help state and local water managers to better evaluate how best to use and conserve the supplies of ground water in the High Plains region," said John B. Weeks, a USGS hydrologist in Denver, Colo., who is coordinating the High Plains regional aquifer study. The nine irrigated-cropland maps, showing 15 counties, depict Cherry County, Neb.; Chase, Dundy and Perkins counties, Neb.; Todd County, S.D.; Cheyenne and Sherman counties, Kan.; Laramie County, Wyo.; Kit Carson, Phillips and Yuma counties, Colo.; Texas County, Okla.; Hockley and Lamb counties, Texas; and Curry County, N.M. In order to complete the computer model simulating ground-water flows in the aquifer, Weeks said the USGS first has to determine pumpage of ground water in the region. This is being documented through preparation of irrigated-cropland maps. The USGS scientist said the nine maps of the 15 counties were prepared by the Survey's Office of Geographic Research using Landsat Earth resources survey satellite images taken in 1978. Landsat images taken in 1980 will be used to prepare an irrigated-cropland map of the entire High Plains region. Copies of the maps of the counties in Wyoming, Colorado, New Mexico and Texas may be purchased from the Rocky Mountain National Cartographic Information Center, U.S. Geological Survey, Box 25046, Federal Center, Mail Stop 504, Denver, Colo. 80225, telephone (303) 234-2326. The Open-File Report identification numbers are 80-638 for Laramie County, Wyo.; 80-639 for Kit Carson, Phillips and Yuma counties, Colo.; 80-169 for Curry County, N.M.; and 80-168 for Hockley and Lamb counties, Texas.

Copies of the maps of the counties in South Dakota, Nebraska, Kansas and Oklahoma may be purchased from the Mid-Continent National Cartographic Information Center, U.S. Geological Survey, 1400 Independence Road, Rolla, Mo. 65401, telephone (314) 341-0851. The Open-File Report identification numbers are 79-1627 for Todd County, S.D.; 79-1626 for Cherry County, Neb.; 80-641 for Chase, Dundy and Perkins counties, Neb.; 80-640 for Cheyenne and Sherman counties, Kan.; and 80-170 for Texas County, Okla. Prices of the maps are \$2.25 for each paper copy, \$12.50 for each film diazo copy and \$26 for each stable-base film positive copy. Orders must specify map identification number and include checks or money orders payable to the U.S. Geological Survey.

Amarillo College Registration Set

Amarillo College advance registration for fall will begin July 13th through August 12 for all semester hour courses. Advance registration allows the student to pick the class times and days and assure their schedule for fall if tuition and all fees are paid by August 17th. The student also has more time in arranging schedules and financing if necessary rather than waiting until the last minute. This also provides more time for counseling and advising if a student is undecided about a major or career goals. The Registrar's Office on the Washington Street Campus will be open from 8:30 a.m. until 7:30 p.m. Monday through Thursday and on Friday from 8:30 a.m. to 4:00 p.m. for advance registration. A schedule of fall classes is available at the Registrar's Office or can be requested by writing the Registrar, Box 447, Amarillo, Texas 79178. Regular Registration this fall will be August 26th on the Washington Street Campus in the College Union Building for all semester hour courses from 9:00 a.m. to 8:00 p.m. First day of classes this fall is August 31st.

Know the Team!

BACKFIELD

- Orville Rippey
- Ikey Vernon
- Carl Owens
- John Walker
- Alvin Cator
- Marion Gaylor
- Francis Reed
- Harbert Clark
- Eugene Gaylor

ENDS

- Cloyd Windom
- Earl Riley
- Joe Atherton
- Noel Womble
- Reese Kesler
- Albert Tindle

GUARDS

- R. B. Archer
- John Schubert
- Harry Haines
- Homer Beck
- Dan Archer

CENTERS

- Jarvis Witt
- Clyde Longley

TACKLES

- Lloyd Terry
- Thomas Tindle
- Verney Black
- Elbert Kesler
- Z. T. Monroe
- Walter Broadhurst
- Phillip Jenkins

Plymouth Festival Ringers

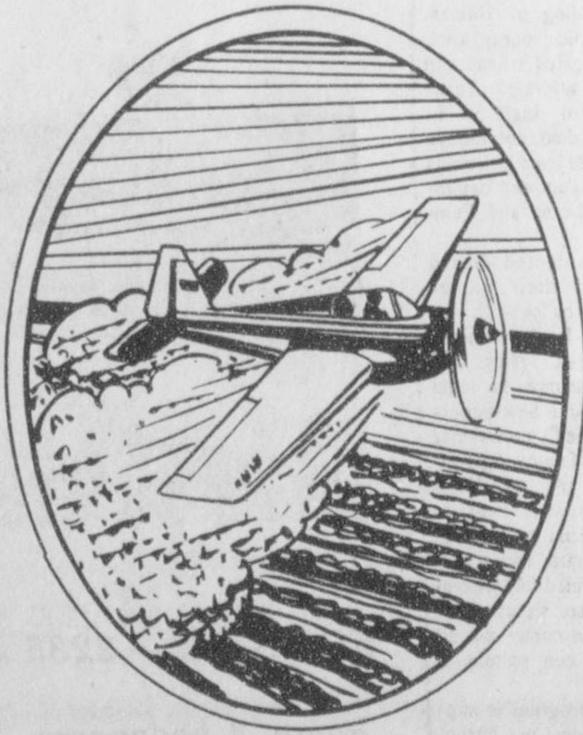
The Plymouth Festival Ringers, a group of 13 high school handbell ringers, from Plymouth Congregational Church in Lawrence, Kansas, will perform a program of handbell music at Victory Memorial United Methodist Church in Guymon on July 8. The 8 p.m. concert will feature selections from Bach to Leroy Anderson, by way of Brahms, Bizet, Tschickowsky, and Khachaturian.

The Festival Ringers are considered to be one of the top ringing groups in the United States. They have performed at national, regional, and state conventions and festivals over the past five years. They have been acclaimed for their varied technique, musicianship, and varied repertoire. The Festival Ringers are touring to Lawrence, Kansas, from San Diego, California, where they will have performed three honor concerts at the National Festival of the American Association of English Handbell Ringers during July 3-4-5. Victory Memorial United Methodist Church is a member of the American Association of English Handbell Ringers.

Dr. William L. Kelly, a University of Kansas Staff Member, is the Director of the Plymouth Festival Ringers and is assisted by his wife, Barbara. Together, they direct six handbell choirs at Plymouth Congregational Church, a United Church of Christ, in Lawrence, Kansas. They conduct handbell workshops and write extensively for and about handbell groups.

Victory Memorial United Methodist Church is pleased to invite our community to enjoy the concert of beautiful handbell music at Victory Memorial United Methodist Church, July 8, at 8 p.m. Senior Minister at Victory Memorial United Methodist Church is Rev. Clayton Hughes. Dr. Jerry Tucker is Minister of Music.

Buster's Aerial Dusters



For Your Weed Control

(806) 659-3648

SPEARMAN, TEXAS

Public Notice

Southwestern Bell, in accordance with the rules of the Public Utility Commission of Texas, hereby gives notice of the company's intent to implement a new schedule of telephone rates in Texas effective July 21, 1981, unless otherwise determined by the Commission.

It is expected that the requested rate schedule will furnish a 15.8 percent increase in the company's intrastate revenues.

A complete copy of the new rate schedule is on file with the Public Utility Commission at Austin, Texas, and with each affected municipality served by Southwestern Bell, and is available for inspection in each of the company's public business offices in Texas.

Notice to Customers of Other Telephone Companies

The filing includes, but is not limited to, proposals to increase rates for interexchange private line and foreign exchange (FX) service. Changes in such rates would also affect customers of other telephone companies because such companies provide interexchange private line and foreign exchange service in accordance with rates specified in Southwestern Bell's tariffs.

Aviso Público

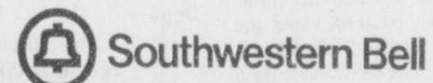
Southwestern Bell, en conformidad a las reglas del Public Utility Commission (Comisión de Servicios Públicos) de Texas, por la presente hace saber su intención de establecer un nuevo arancel para servicio de teléfono en Texas con vigencia a partir del 21 de Julio de 1981, a menos que la Comisión haga otra determinación.

Se espera que el nuevo arancel que se ha solicitado rendirá un aumento de 15.8 por ciento en los ingresos intraestatales de la compañía.

Una copia completa del nuevo arancel se ha archivado en las oficinas del Public Utility Commission en Austin, Texas, al igual que en cada municipalidad afectada y servida por Southwestern Bell, y cada una de las oficinas de la compañía para negocios con el público en Texas tiene una copia para lectura pública.

Aviso a los Clientes de Otras Compañías de Teléfono

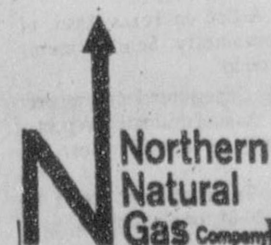
El registro incluye, pero no se limita a, propuestas para aumentar las tarifas para servicio de línea privada entre centrales telefónicas (interexchange private line) y servicio de central telefónica extranjera (foreign exchange FX). Cambios en dichas tarifas de servicio también afectarían a clientes de otras compañías de teléfono porque dichas compañías proveen los servicios ya mencionados en conformidad a tarifas especificadas por Southwestern Bell.



MAINTENANCE PERSON

REGULAR FULL TIME EMPLOYEE

Northern Natural Gas Company will take applications on Wednesday, July 8, 1981, between the hours of 9 A.M. and 3 P.M. for regular full time Maintenance Person to work at the Spearman Plant. Apply at the Spearman District Office, 8 miles south and 7 miles east of Spearman, Texas on Highway 281. Typical job duties are: facility clean up, assisting with overhauls of large internal combustion gas compressor engines, maintenance of vessels and towers, all phases of pipeline repair, and some rotating shift work relieving regular operating crew during vacations or illness, etc. Pre-employment test will be given for the Maintenance Person job on Friday, July 10, 1981 at 7 P.M. and Saturday, July 11, 1981 at 9 A.M. at the Spearman High School in Spearman, Texas for all persons that have completed an application. Northern Natural Gas Company is a major diversified energy company offering an attractive salary, and has an excellent benefit program. Equal Opportunity Employer.



B SPEARMAN
659-2514

**BROCK
AGENCY**

**It's
HAIL INSURANCE
TIME**

State Champions of 1966



LINN ANN ROBINSON
Forward



MARCIA SHIELDKNIGHT
Forward



CECILIA WILSON
Forward



BARBARA WILDE
Forward



KAREN GIBSON
Forward



BETHANY DONNELL
Guard



KATHI PATTISON
Guard



NANCY McCULLOUGH
Guard



ROBBIE OWNBEY
Guard



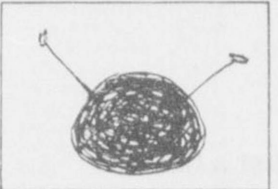
SUSAN HUTCHISON
Forward



KAY SCHRODER
Guard



Benjamin Franklin was the first head of the U.S. postal system.



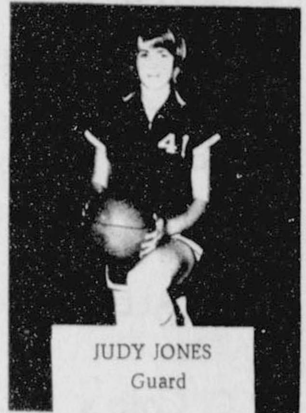
The art of knitting is said to have originated in Scotland.



The Amazon Basin's immense tropical jungle is said to contain mankind's greatest reserve of natural resources.



The spoon as we know it today, with its spatulate handle, dates from only the 18th century.



JUDY JONES
Guard

RAIN FALLS IN SPEARMAN

Spearman received .80 moisture in a shower that began at 3 a. m. Friday morning.

CALL FOR BIDS

The Board of Directors, Hansford County Appraisal District, will receive bids to furnish furniture and equipment for the District.

Bid sheet and specifications are available in the Gruver Independent School Tax Office; 600 Garrett; Gruver, Texas.

Deadline for submitting bids is Thursday, July 9, 1981, at 4:30 p.m. Bids will be opened and read aloud at the regular meeting July 10, 1981, at 3:00 p.m.

The Board reserves the right to accept or reject any or all bids, and to waive all technicalities.

Board of Directors
Hansford County Appraisal District

MR. FARMER . . .

DO IT IN ONE OPERATION WITH A PENGU 6 ROW 40 PLOW!

Prepare your maize, or wheat ground in one operation- conserve moisture-increase yield & apply fertilizer or herbicides!

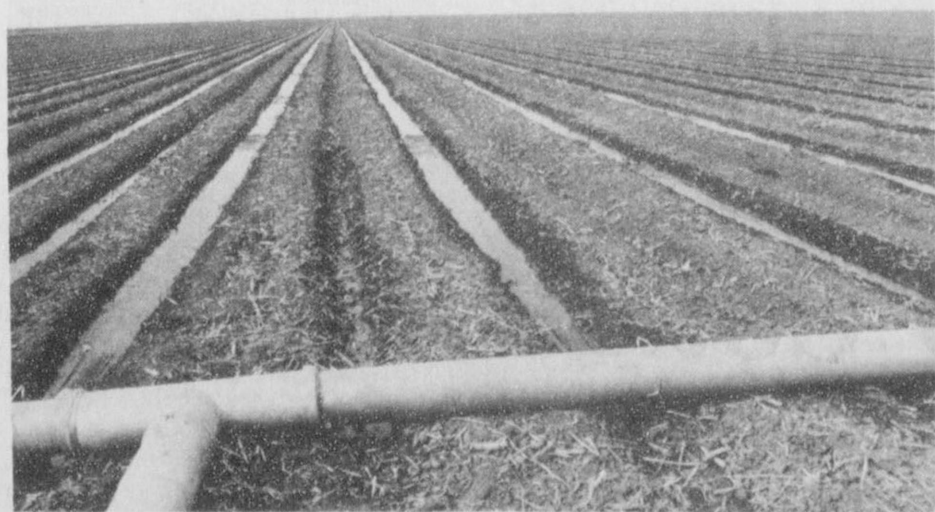
This plow available on lease only!

\$12.00 per acre

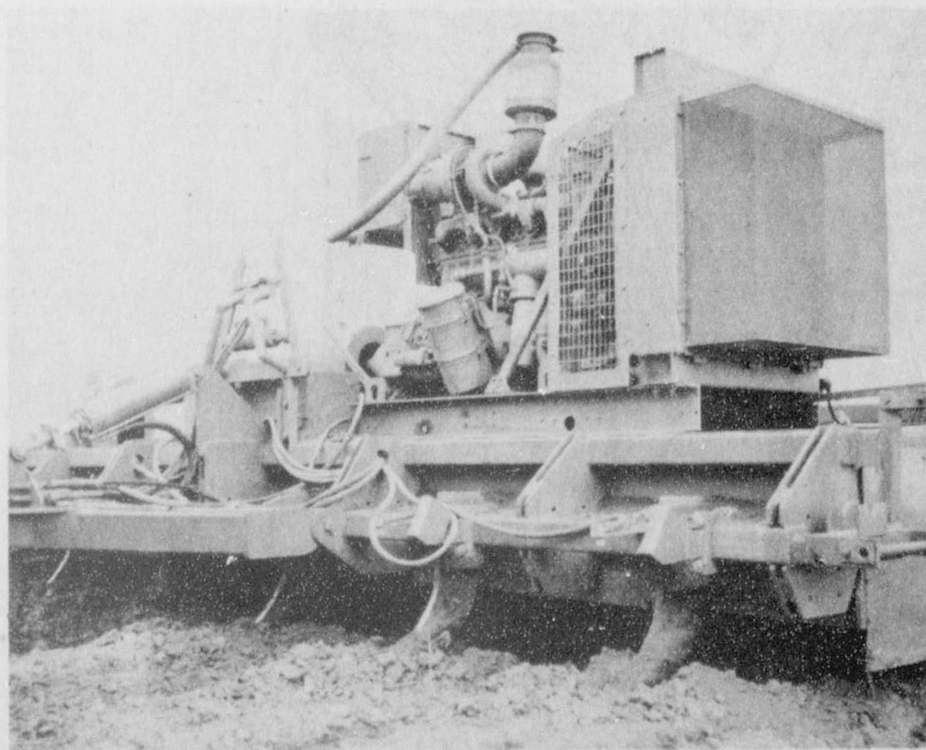
From shred to bed in one operation.



The 6 row 40 in action-Makes a perfect seed bed.



Watering every other row.



Applying fertilizer or herbicide.



Farm Services

Contact Bobby Thompson--

Phone 733-2583

Gruver, Texas

Rotary Club News

Taylor's Krazy Korner Shamrock

Where you will find Fresh
Daylight Donuts and Coffee

Picnic Supplys, Film, Snacks,
Sandwiches, Fountain Cokes, Soft
Drinks, Slush Puppies, Kelly Milk

ALL Cigarettes 70c pk.

R.C. Cola's cans
Diet Rite cans **1 59**
R.C. 100's cans **6 pk.**

Major brands of oil
Out board motor oil
Shamrock Lush Lawn Fertilizer

6²⁵

And the UNLEADED FUEL

GASOHOL

Have a Safe 4th of July

DRIVE SAFELY

Two representatives from the Texas Panhandle Community Action Corporation, representing their programs spoke at the June 29th meeting of the Spearman Rotary Club. Molly Epps, who is a Job Coordinator and Winnie Spears, Job Developer showed a film and answered questions regarding the government's CETA program for businesses and workers under the On-the-Job Training program.

The film highlighted the basics of the program. A businessman who needs beginning job level trainees applies to the CETA office for workers. The workers, if needed, need specific prior training, are provided this through pre-training programs of the CETA offices. Training was shown for those in welding, heavy equipment operation, radio broadcasting, auto mechanics and the like.

The businessman talks with a job developer and coordinator about needs. A skills level and training program is established. The contract is signed. The O.J.T. worker comes to work. Time sheets are kept. The employer pays the employee. A voucher is sent to the CETA office on time worked and compensation paid. The CETA office then re-emburses the employer one half the salary. The object of the program is to help the employer have trainees at a lower cost, provide good workers and in the end, if the employee works out to offer him/her a full time job. The program comes at a time when the employer cannot always afford the training expenses of a new employee. This program helps fill the gap.

Some examples of the relationship of worker and employer came through visits to businesses with O.J.T.s. There was a local grocery store, an accountant's office which needed a receptionist, a radio station which needed a disc jockey, a pharmacy which employed a pharmacist, a restaurant and a car dealership in a smaller community which trained a number of mechanics and was able to keep them as full

employees after the training program. Mrs. Spears encouraged those in attendance to look into this program and spread the word around the community about its availability. The program is solid and can be important for both the business-

man and the one needing employment.

ANNOUNCEMENTS

The Board of Directors met July 2 at 7:00 in John R. Collard's office.

The new Rotary year began July 1, 1981. The new officers and board also began their terms of office.

ATTENDANCE:
Junior Lusby, Robert Elliott, Coy Palmer, John Hutchison, Jim Murray, Jack McWhirter,

Eschol Blankenship, John R. Collard, Ed Garner, Jim Shirley, Mike Schnell, David McClan, Kerry Henton, Roy Bulls, and Jim Benson.

GUESTS:
Judge Gene Snider from Borger.

ABSENT:
Steve Rogers, Pete Fisher, and Gary Sims.

Claude Newell, school counselor at Spearman, underwent surgery at Scott and White, in Temple this week.



Charles Dickens' pen name was "Boz".



President Wilson is pictured on the \$100,000 bill.

THE MONEY MAKERS

Money Market Certificates

RATE
13.871%
\$10,000
Minimum Deposit
182 DAY MATURITY
Effective June 30, 1981
Through July 6, 1981
Regulation Prohibits
Compoundings of Earnings

Jumbo Certificates

TERM	RATE	ANNUAL YIELD (Compounded Daily)
30 DAY	17.25%	18.82%
90 DAY	17.00%	18.53%
180 DAY	16.50%	17.94%
1 YEAR	15.25%	16.47%

\$100,000
Minimum Deposit
Rates Subject to
Change Without Notice

30 Month Certificates

RATE
11.75%
ANNUAL YIELD★
12.47%
\$1,000
Minimum Deposit
Rates Change Bi-Weekly
★ Compounded Daily

NOTICE: As Required By Law, All Certificates Are Subject To Substantial Penalty For Early Withdrawal.



... more than just a bank
First Bank & Trust Co. Booker, Texas (806) 658-4551



ALL DEPOSITS INSURED
UP TO \$100,000 by F.D.I.C.



BARBECUE SPECIALS

Eat Beef For July 4th
and every day thereafter!

The **Calico CowBelles**

Wish all of you a **Happy 4th!**

DRIVE CAREFULLY



sunday

AFTERNOON

- 12:00 Washington Week In Review
12:30 Wall Street Week
1:00 National Symphony Orchestra July 4th Concert

- 1:30 Baseball Chicago Cubs vs St. Louis Cardinals
2:00 At Home With The Bible
2:30 Spoleto '81
3:00 This Old House

- 3:30 CBS Sports Sunday
4:00 Special Delivery
4:30 The American Sportsman
4:55 Firing Line

- 5:00 The Jeffersons
5:30 Flambards
6:30 Studio See
6:55 The Last Convertible

- 6:30 Oklahoma Report
6:55 M.A.S.H.
7:00 Great Performances
7:30 Monday Night Baseball

- 7:00 Flamingo Road
7:30 CBS Late Movie
8:00 The Last Convertible
8:30 House Calls

- 8:00 Mystery: Rebecca
8:30 Mystery: Rebecca
9:00 Let's Go Omnibox
9:30 Inside Story

- 9:00 CBS Late Movie
9:30 The Best Of Carson
10:00 The Tonight Show
10:30 The Tonight Show

- 10:30 The Tonight Show
11:00 Kung-Fu
11:35 ABC News Nightline
12:00 The Island 1980

WEDNESDAY

EVENING

- 6:00 Macneil Lehrer Report
6:30 News

THURSDAY

EVENING

- 6:00 Macneil Lehrer Report
6:30 News

FRIDAY

EVENING

- 6:00 Macneil Lehrer Report
6:30 News

SATURDAY

EVENING

- 6:00 Macneil Lehrer Report
6:30 News

SUNDAY

EVENING

- 6:00 Macneil Lehrer Report
6:30 News

All School Reunion Plans

REGISTRATION at the High School July 4th at 9:30 a.m.; GENERAL ASSEMBLY in the Auditorium at 10:30 a.m.; BARBEQUE at noon in the cafeteria; RECEPTION at 7:30 p.m. at the B&B Farm Industries Building and DANCE at 9 p.m.

The following individual class activities have been planned:

- Classes of 1921 - 1930--The upstairs art room at the Library Friday & Saturday afternoon.
- Class of 1931--The Home Demonstration Club House Saturday afternoon.
- Classes of 1932 & 1933--Dinner buffet at the Blodgett & Linn Building Friday evening at 8 o'clock p.m.
- Classes of 1934 & 1935--Fellowship Hall of the Methodist Church Friday at 7 p.m.
- Classes of 1936 & 1937--B&B Farm Industries Building Friday evening at 7:30 p.m. A light buffet will be served.
- Classes of 1938 & 1939--Hospitality Room of the First State Bank Friday at 7:30 p.m.
- Class of 1940--The P.A. Lyon, Jr. residence Saturday afternoon after the barbeque.
- Class of 1941--The Gene Cudd residence at 7 p.m. Friday evening.
- Classes of 1942 & 1944--The Lloyd Buzzard home Friday evening at 7:30 p.m. A light buffet will be served.
- Class of 1943--A meeting Saturday afternoon after the barbeque at the High School.
- Class of 1945--At the Roy L. McClellan home Friday evening at 8 p.m.
- Class of 1946--The Shieldknight Building Saturday afternoon from 2 until 4.
- Class of 1947--Will meet at the Methodist Church from 2 to 4 p.m. on Saturday, July 4.
- Classes of 1948, 1949, 1950, 1951 & 1952--A picnic at the Joel Lee Lackey ranch Friday evening at 7:30 p.m.
- Class of 1954--The meeting room of the

Nursnickel Motel Friday afternoon and evening from 2 until 9 o'clock.

- Class of 1955--Front room upstairs at the Library Friday evening at 7 p.m.
 - Classes of 1956 & 1957--The Home Demonstration Club House Friday evening at 7:30 p.m.
 - *Class of 1959--The Jim McLain residence Friday evening at 7:30 p.m. The pool has been rented so bring the children to swim.
 - Classes of 1961, 1962, 1963, 1964, 1965 & 1966--A picnic at the Steve Mathews ranch Friday evening.
 - Class of 1962--Will also meet at the High School Saturday afternoon after barbeque.
 - Class of 1966--Will also meet at the Loyal Turner farm Saturday afternoon at 3 p.m.
 - Class of 1967--The Glen Blodgett farm Friday evening at 7 p.m.
 - Class of 1968--Busters' Dusters Building Saturday afternoon.
 - Class of 1969--Country Home of Marilyn Cline, Friday evening at 7:30 p.m. Refreshments will be served.
 - Class of 1971--Friday night party at the County Barn.
 - Class of 1972--An ice cream social at the Kim Brock home Saturday afternoon at 3 p.m.
 - Class of 1973--Picnic at Womble Park Saturday evening from 6 until 8:30 p.m.
 - Class of 1974--Lynn Sheets barn at 8 p.m. Friday evening for cokes and chips; at the same place Saturday afternoon at 5:30 for hamburgers.
 - Class of 1975--The Steve Benton residence, 1103 Townsend Friday evening at 7 p.m.
 - Class of 1976--The L.C. Owens residence, 1017 Wilmeth Drive at 7:30 p.m. Friday.
 - Class of 1979--Roy Flowers' home, 12 Glover Place, Friday at 7:30 p.m.
- *Other classes are invited to let their children swim also.

YMCA

YMCA & CHAMBER OLD FASHIONED FOURTH OF JULY CELEBRATION

Saturday, July 4, the YMCA and Spearman Chamber of Commerce will have the Second Annual Old Fashioned Fourth of July Celebration. Beginning at 8:00 a.m. the Fun Run marathon and mini-marathons will be held starting at the Plains Shopping Center. Contests will be held in the Swimming Pool Park beginning at:

- 10:30...Sack Races
 - 11:00...Skillet Toss
 - 11:30...Three-Legged Races
 - 12:00...Water Balloon Tosses
 - 12:30...Box Relay Races
 - 1:00...Pool Games & Relays
 - 1:30...Recreational Swimming
- The contests will be divided into age groupings: 8 & Under, 9-12, 13-17, 18 and older. The pool games will include a coin toss in the baby pool for those who are toddlers, a coin toss for those who are non-swimmers in the two foot area of the pool and non-swimmers in the three foot area of the pool. For those who can swim the length of the pool there will be a watermelon relay race. The prize for the coin toss will be the coins gathered and for the watermelon relay the winning teams will eat the watermelon. Ribbons will be

awarded for the races and relays, with presentation at the fireworks display at approximately at 9:30 p.m.

FREE WATERMELON feed will be in Swimming Pool Park beginning at 4:30 p.m. and sponsored by the Retail Merchants Association.

FIREWORKS DISPLAY will begin at approximately 9:45 p.m. at the Lynx Stadium. The Chamber of Commerce is the sponsor of the annual fireworks program.

EMCY TRAT!



IN 1930 THE MEN FROM MISSOURI DROVE A FORD MODEL A FROM NEW YORK TO LOS ANGELES AND BACK IN REVERSE!

How True

Young people have to try their wings, but a lot of parents wish they wouldn't try putting them on the family car.

-Republican, Boone, Ia.

Smart Thinking

The will read: "And so being of sound mind, I spent every cent I had before I died."

-Tribune, Chicago, Ill.

THE YMCA AND CHAMBER OF COMMERCE JULY 4th CELEBRATION

The Old Fashioned Fourth of July Celebration will again be held by the Hansford County YMCA and Spearman Chamber of Commerce. Activities will begin on Saturday, July 4th at 8:00 with a marathon and mini-marathon race at the Plains Shopping Center and end with the Fireworks in Lynx Stadium Saturday evening.

TIME	ACTIVITIES
8:00 a.m.	Marathon and Mini-Marathon Run
10:30	Sack Races
11:00	Skillet Toss
11:30	Skillet Toss
11:30	Three-Legged Races
12:00 NOON	Water Balloon Toss
12:30 p.m.	Box Relay Races
1:00	Pool Games & Relays
1:30	Recreational Swimming
4:30	FREE WATERMELON BY: RETAIL MERCHANTS ASSOCIATION AT SWIMMING POOL PARK FIREWORKS DISPLAY

9:45 There will also be booths in the park, with various clubs and organizations selling good food and drinks, including Sno Cones, Hot Dogs, Hamburgers, Popcorn, Ice Cream and the like.

Do make plans to attend this family fun on Saturday, July 4th.



A low chest will fit in the bottom of your closet to hold scarves, gloves, handkerchiefs, underwear, stockings and jewelry. It can be a real space saver.



LYNXETTES OF 1935--Top Row (Left to Right): Mary Daugherty, Catherin Lyon, Helen Browder, Eileen Davis, Darol Lee Pratt, Maxine Allen, Geraldine Bolen, Elizabeth White; Middle Row (l to r) Marjorie Hann, Maybelle Horn, Helen McLeod, Ruth Buchanan, Violet Hanners, Lola Andrews.; Bottom Row (l to r) Florence Holton, Elsie Ruth Porter, Juanita Hill, Gertrude Barkley, Elsie Reed, Julia Wilbanks, and Helen Richardson.



1954 CHEERLEADERS Nell Close, Rose Marie Coury, Janis Blanford, and Judy Meek.



1930 FOOTBALL TEAM: (Top Row) Elmer Gunn, Coach; Ikey Vernon; R.B. Archer; Cloyd Tip Windom; Walter Broadhurst; Earl Riley; and Billy Jarvis, Coach. (Middle Row): Phillip Jenkins; Francis Reed; Clyde Longley; Emma Reeves, Football Queen; Carl Owens; and John Schubert. (Front Row): Newton Holt; Jarvis Witt; Z.T. Monroe; John Walter; Marian Gaylor; and Orville Rippey. They lost one game on penetration. In 1930--Won District--all teams in same class (Basketball).



FOOTBALL TEAM OF 1934. Top Row (Left to Right): Coach John L. Morris, Daily Easley, Richard Holton, Oran Ross Kelly, A.J. Curtis, Hershel Ooiey, Ruben Deering, Coach Elma Gunn. Middle Row (L to R): Arthur (Stine)

Haines, Rodney Harmon, Elmon Jacobs, Willard Davis, Paul Buchanan, H.L. Wilbanks, W.C. Robertson. Front Row (L to R): Oliver Leverton, Paul Robertson, Sam Patterson, Dick Vernon, C.D. Haines.



This is the Lynxettes of 1929-30. In the Back Row from l to r are Emma Reaves, Mildred Neilson, Miss Hunt-Coach, Obera Gay, Chloe Gill; in the Front Row from l to r are Lucile Robinson Womble, Virginia Patterson, Eva

DeArmond Patterson, Chloe Olham, Lucille Buchanan Allen, and Joyce Wilbanks. This was the first year that the girls were allowed to wear shorts.



LYNXETTES 1929 Vintage-shown back row, Eva Reaves, Lila Waters. Front row, Virginia Patterson, Olive Kirk, Lola Mae Bowling, Lucille Buchanan, and Obera Gay Darnell.

Spearman Lynx Defeated The Follett Panthers

Friday afternoon, October 17, 1930, the Spearman High School Lynx defeated the Follett Panthers in the first conference game of the season for the Lynx. The locals were easily the best team as was shown in the first quarter of the game.

The Lynx made sixteen first downs while the Panthers made only three. The Lynx were assessed thirty-five yards on penalties, while the Panthers were assessed ten yards.

For the Lynx, Walker made one touchdown, Owen two touchdowns Vernon one touchdown, and Monroe one touchdown. Travis, Follett Halfback, made the only touchdown for the Panthers.

The score at the end of the first quarter was 14 to 0; at the end of the half it was 19 to 0; at

the end of the third quarter it was 26 to 0, and the score at the end of the game was 33 to 6.

The starting lineup was as follows:

The Fullbacks were Walker, Spearman and Brown, Follett; Halfbacks, Rippy and Vernon, Spearman; Harrelson and Miller, Follett; Quarterbacks, Owen, Spearman; and Elmore, Follett; Right Ends--Riley, Spearman; and Sheldon, Follett; Left Ends--Windom, Spearman; and Follett's Bruce; Right Tackles were Spearman's Monroe and Follett's Courtney; Left Tackles were Holt-Spearman; and Sperry-Follett; Right Guards--Archer, Spearman; and Frazier, Follett; Left Guards were Jenkins of Spearman; and Jones of Follett; and the Centers were Spearman's

Witt and Follett's C. Frazier. The following substitutes were used--Spearman, Gaylor, Schubert, Cator, Reed, Gamble, Longley, Howard, Neilson, Beck and Tindell; Follett, Travis.

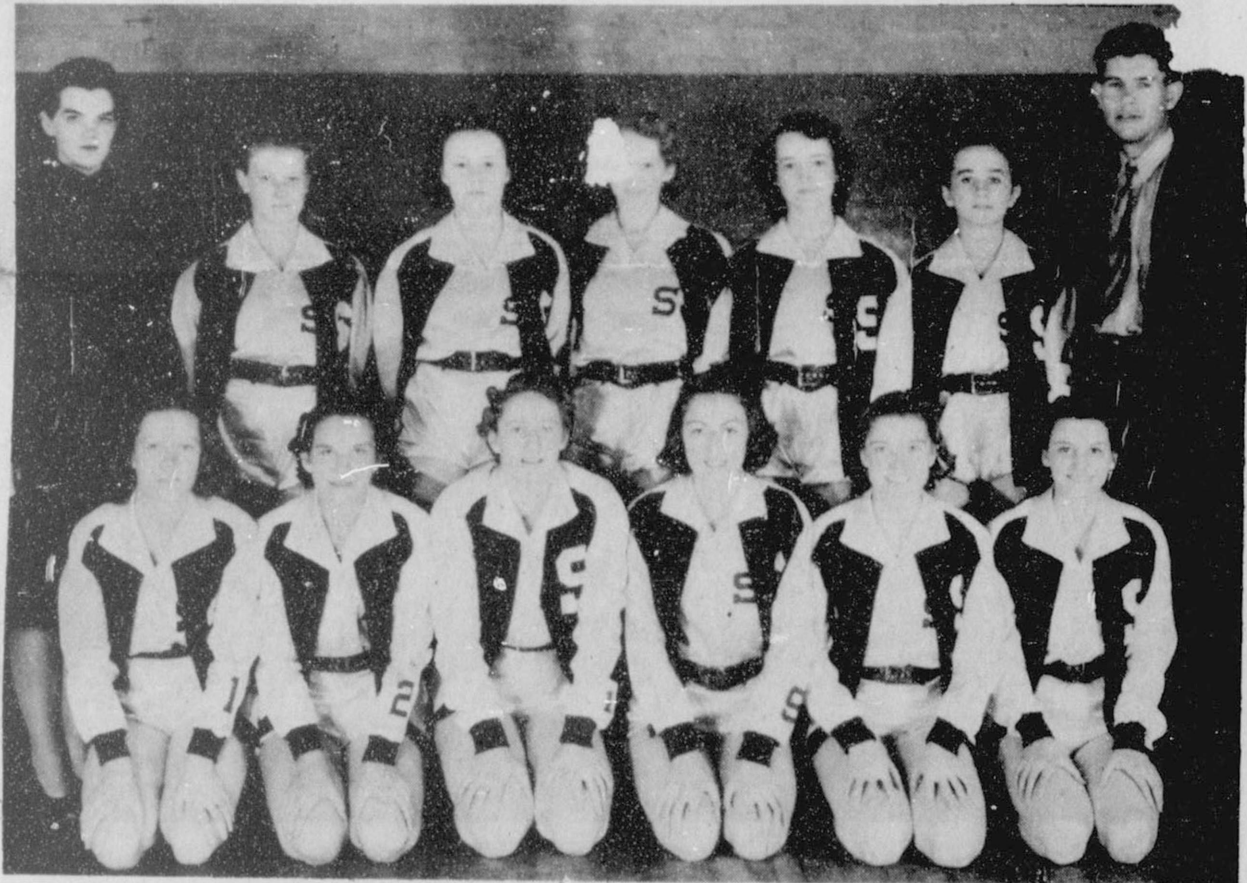
ON ARTHRITIS

BOSTON -- Many of the nation's 20 million arthritis victims may suffer added pain because their bodies manufacture lower than usual levels of a natural narcotic-like pain killer, a study says. A researcher says the agony may actually be beneficial, serving as an unpleasant safeguard against abusing disease-weakened joints.



CLASS OF 1931--Back Row (Left to Right): Elizabeth Noe Rainwater, Amarillo; Opal Dietrich Brewer, Torrance, Calif.; Dr. Orville Rippy, Stillwater, Okla.; Alda Tompkins Mitts, Stratford; John Schubert, Spearman; Loretta Wilbanks Boyd, Amarillo; Owen Pendergraft, Ollie Kirk Pendergraft, Spearman; Elbert Kesler, Amarillo; Fannie Sparks Venneman, Gruver; Eddie McCanley, Phillips; Garland Thorne, Wentworth, Mo.; John Walker, Midland; Joe Reaves, Morse. Second Row (l to r): Rhoda Tower Overton. Spearman; Virginia Patterson Sparks, Spearman; Chloe Oldham Baker, Albuquerque,

N.M.; Annie Deering Glover, Pampa; Zelma Gay Bister, Oakland, Calif.; FACULTY: Mrs. Woodville Jarvis, Spearman; Billy Jarvis, Stinnett; C.A. Robinson, Plainview; Elma Gunn, Pampa; Clody Windom, Morton; Edna McLeod Cunningham, Perryton; Virginia Pittman Wallace, Hereford; Hollie Brown Riley, Spearman. Third Row (l to r): Eva DeArmond Patterson, Spearman; Walter Broadhurst, Donna Murphey Broadhurst, Friona; Emma Reaves Atteberry, Mercedes; Frances Noe Perkins, Pampa; Freeman Barkley, Clyde Longley, and Earl Riley, all of Spearman.



This is the Spearman Lynxettes of 1940. The Coaches were Odell Washington and Eula Goodall. In the Back Row are Anta Cleo Reed, Virginia White, Orzeta Horn, Marjorie Ellen

Russell, and Patricia Hutton. In the Front Row are Buena Vernon, Colleen Kelly, Estelle Baley, Janelle Womble, Julia Kern and Frances Sheets.



LYNX 1928-shown are back rown, Eldon Cluck, Gordon Parks, Wesley Jenkins, Earl Smith, Coach, John Nelson, Willie Ray Gay, Wilson

Buchanan, front row, Raymond Sparks, Pat Balentine, Freeman Eckley, Jack Hancock and Bill Burran.



FRESHMAN CLASS 1934-35

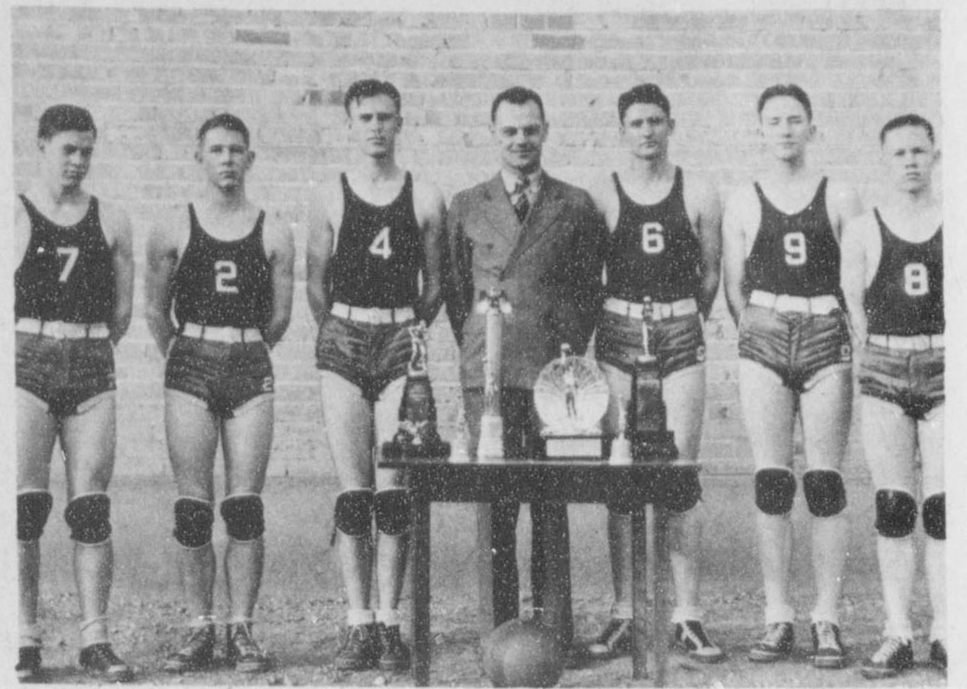
Top row (left to right): Robert Neilson, Jack Monrow, Floyd Sheets, Donnie Clark, Edwin Reed, C.D. Baland. Second row from top (left to right): Chester Jones, J.D. Tompson, Carl Archer, Miss Crittton, Maxine Allen, Mary Dougherty, Dixie Ruth Buckner, Ruby Ruth Kelly, Laura Elizabeth Burgess, Reba Parker, Edith Fullbright, Onitta Hollingshead, Alta Mae Haun, Nolan Holt, Miss Maize, J.D. Wilbanks.

Third row (left to right): Alice Hazelwood, Hayle Jenkins, Retha Beady, Eillen Davis, Louise Linn, Lena Mae Deering, June Peters, Francis Hoskins, Mary Fern Terry, Martha Delon Kirk, Elizabeth Ann Miller, Elsie Ruth Porter, Marie Morris, Garnett Harmon. Front row (left to right): Paul Cox, Archie Sallars, Herman James, Rue Sanders, Harlan Terry, Wayne Hutchison, R.E. Sanders, Perrion Lyon, R.L. McCellan.



The top six from l to r are Fionnie May Cecil, Raymond Kirk, Agnes Wilmeth, Juanita Tackitt, W.R. Greever, Obera Gay Darnell; in the 2nd Row from l to r are Martin Sheets, Greta Wilbanks, Bill Buran, Ross Oldham, Susie James, John Walker; in the 3rd Row l to r are Juanita Wilmeth, Amrine Easley, Chloe Gill,

Grace Smith, Donald Bennett, Emma Reaves; in the 4th Row from l to r are Lucille Buchanan, Willie Helen Lamb, Thelma Maize, Mathilda Reimer. The teachers for the Class of 1930 are from top to bottom-middle three--Superintendent R.L. Snider, Ethel Deacon and A.H. Word.



SPEARMAN LYNX 1939 with their coach Tad Platt and their trophies. L to r, Roy Reed, L.M. Womble, Leon Yates, Coach Platt, Ledru Jacobs, C.P. Archer and Melvin Schell.



LYNXETTES--1937 are back row (L to R) Coach John R. Pool, Elsie Porter, Maxine Allen, Alta Mae Hann, Georgia Maize, Barbara Hawkins--Coach. First Row (L to R) Florence Holton, Helen Richardson, Julia Wilbanks and Lola Andrews.



SPEARMAN HIGH SCHOOL'S PRIZEWINNING BAND year 1942. W.I. Byron was the director and Joy Close and Floydean Crawford were band majorettes.



SECOND GRADE CLASS OF 1926: J.D. Andrews, Lady Archer, Mary Brandt, Gertrude Barkley, Wanda Rae Beck, Lometa Buchner, Paul Buchanan, Alvino Caldwell, A.J. Curtis, Willard Davis, T.R. Douglas, Reba Dillow, Woodrow Gibner, Katie Lee Graham, Bernice Sue Graham, Marjorie Haun, Rodney Harmond, Sylvia Harmond, C.D. Haines, Vaughn Hill, Willie Mae Hillard, Leonard Howard, Richard Holton, Sidney Jasper, Paul Jones, Hattie Pearl Karr, Oran Ross Kelly, Wilson McCloy, Fred Taylor Miller, Carrie B. Wesbitt, Dee Oldham, Elsie Reid, Charley Reaves, Oscar Riemer, Joy Rogers, Jane Rogers, W.C. Robertson, Sylvester Storrs, Margaret Stephens, Bessie Tice, William Tomlinson, Jewel Ward, Elnora Wilcox, Irvin Wilson, Ruth Wilbanks, Beth Wilbanks, H.L. Wilbanks, and Hyron Wilburn. The Principal for the second grade class of 1926 was O.L. Savage, Superintendent was A.H. Wilcox and their teacher was Ann Beck.



THE FIFTH GRADE class of Spearman in 1936. Most of these students went on to graduate from Spearman High School in 1943.



Spearman High School's 1937-38 Freshman Class. The teachers were Miss Barbra Hawkins and Mr. Snodgrass. The students were (Bottom Row) Left to Right: Litch Sparks, Tommy Harve, Delbert Mizar, not identified, not identified, Newell Allen, P.D. Brockus, Albert Graves, R.C. Parker, Billy Miller, Chalmers Porter, J.E. Gerber. In the 2nd Row from l to r; Anna Mae Files, Garland Caldwell, Viola James, Jo Jackson, Ada Rose Jackson, Anita Clea Reed, Ola Jean Rossen, Evelyn Longley, Joan Dixon, Kathleen Greener, Mary Nell Harbour, Bonita Harmond, Georgia Thompson, Della Beth Uptergrove, Joyce Dulaney, Jerry Stephens,

Isie Cyfert, and Marie Deek. In the 3rd Row from l to r. June Reed, Dorothy Nelle Scott, Frances Sheets, Marilyn Snider, Collen Kelly, Joyce Lamb, Della Taylor, Viola Dillow, Nellie Derring, Virginia Cates, Sophia Birdwell, Vonita Fields, George Ruth Hightower, Elnara Close, Adelaide Shedeck, Mary Horn, Eva Hilton, Miss Hawkins. And in the Back Row from l to r; Emmett Sanders, Vance Prutsman, Delmar Fields, Joe Harmond, Mr. Snodgrass, Bennie Bowling, J.D. Harrelson, not identified, Arnold DeArmond, Dian Church, Everett Dave Clements, Harold Crooks, Lee Roy Easley, and D.W. Hazelwood.



This is the 1939 Spearman Lynxettes, the Coach was Tad Platt and the Assistant Coach was Barbara Hawkins. The players are in the back row Verna Gail Allen, Doris Jean Russell, Ida Mae

McLeod, Norma Hull and Frances Sheets. In the Front Row are Buena Vernon, Janelle Womble, Julia Kern, Colleen Kelly and Marilyn Snider. The 1939 Lynxettes are pictured with the trophies they won.



This picture was taken in front of the Cracker Box. In the Back Row from l to r are Doris Jean Russell, not identified, Leota Hull, Carol Powers, Dorcilla Clark, Buena Vernon, Lola Mae Ging, Verna Gail Allen, Estelle Balev, and

Colleen Kelly. In the Front Row from l to r are; Jack Gillespie, Vance Prutsman, Frank Baker, Joe Harmond, Eugene Buckner, and Earnest Sheets.



GIRL'S BASKETBALL TEAM OF 1930--Eva DeArmond, Virginia Patterson, Mildred Nelson, Lucille Buchanan, Emma Reaves, Chloe Oldham, Obera Gay Darnell, Coach Ozella Hunt.

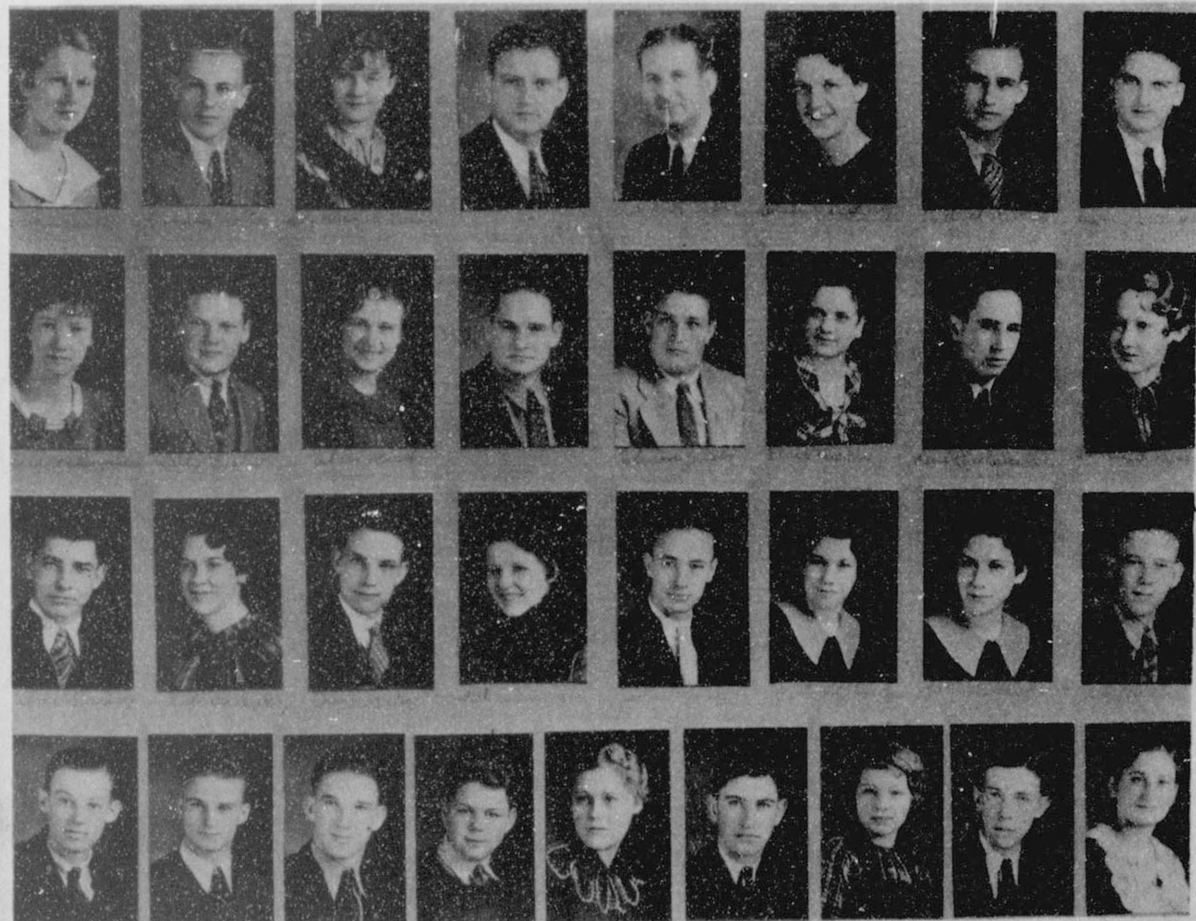


FEATURED HERE IS THE FRESHMAN CLASS OF 1932-33. The picture was taken in the Gym of Spearman High School. Pictured are: Clyde Maize, Robert Douglass, Richard Holton, Elmon Jacobs, Willard Davis, Jack (Arthur) Jacobs, Oran Ross Kelly, Vaught Hill, Woodrow Gibner, Ervin Floyd, W.C. Robertson, J.D. Andrews, Charles Newcomb, Miss Deakin, Roscoe Sparks, Eddie Vaughn, Vernie Caldwell, Alvino 'Daffy'

Caldwell, Elsie 'Puny' Mackie, Lometa 'Dilly' Buckner, Ruben Deering, Dee Oldham, W.E. Sparks, Ohmar Cotter, Lady Maurice Archer, Juanita Lamb, Valerie Hollenshead, Beth Wilbanks, Gertrude Barkley, Ruth Wilbanks, Mary Brandt, Silvia Harmond, Bessie Tice, Marjorie 'Midge' Hann, Ruby Delbriggie and Gorgie Shives.



GIRL'S BASKETBALL TEAM OF 1927--Top Row (L to R) Lila Waters, Lucille Buchanan, Lola Mae Bowling, Reba Barkley, Bernice Rainey, Bessie Snowden and Obera Gay.



THE CLASS OF 1935 will be among those gathering during the All-School Reunion July 3-4. Pictured top row, Marva Smith, Richard Holton, Lady Marie Archer, J.E. Gunn, Prin., W.H. Word, Supt., Adalyn Daugherty, Willard Davis, Sam Patterson, Velira Hollingshead, Daily

Easley, Elsie Reed, Elmon Jacobs, Omar Cotter, Elsie Mackie, Paul Buchanan, Carrie B. Nesbitt, Ruben Deering, Gertrude Barkley, Oran Kelly, Helen Browder, John Cox, Beth Wilbanks, Ruth Wilbanks, J.D. Andrews, Woodie Gibner, Arthur Haines, Charles Newcomb, and Sylvia Harmond.

Powerful Spearman Lynx To Play Dumas High

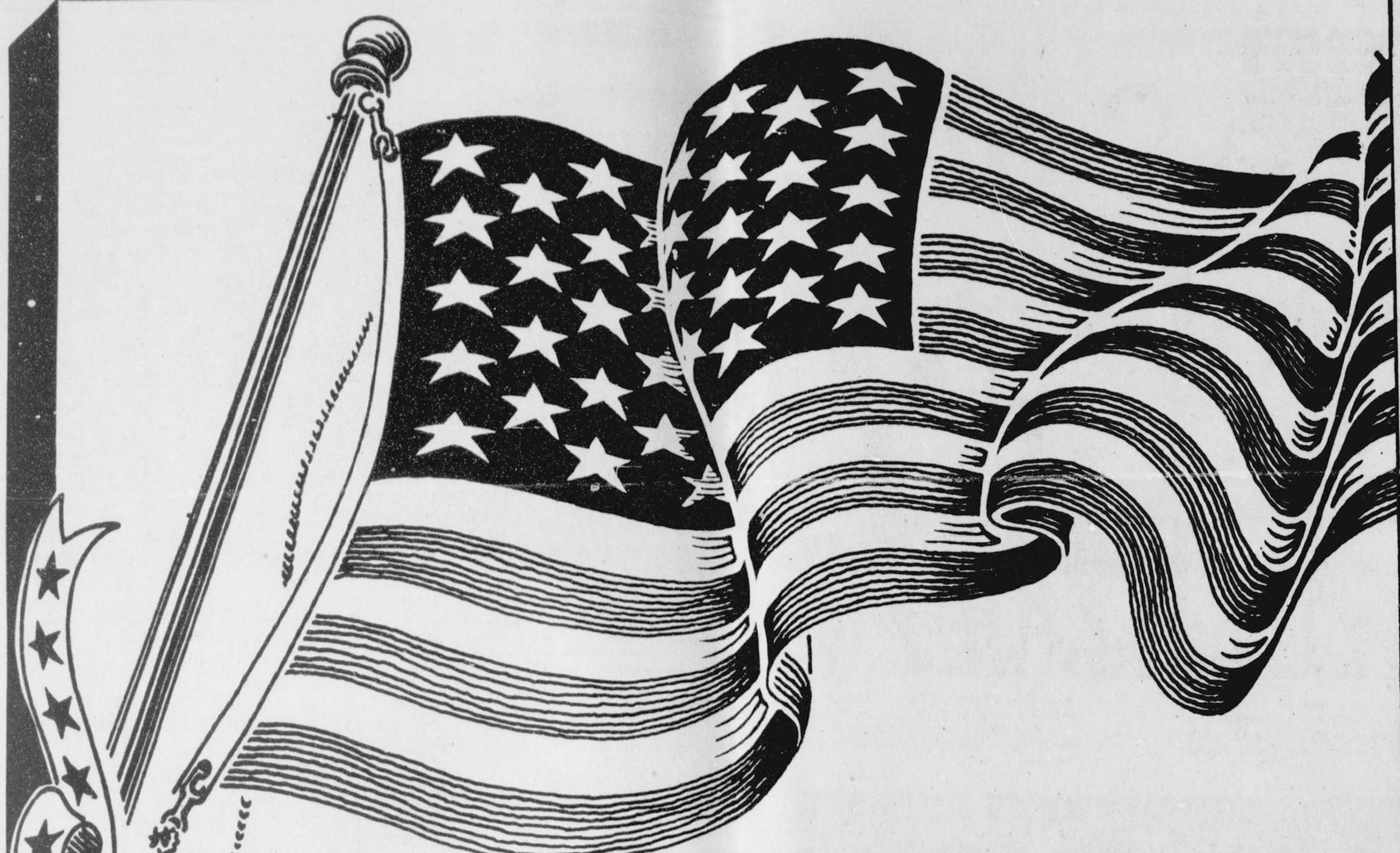
On Friday afternoon at 3:30 p.m. the Spearman High School grid eleven will engage the team from Dumas High School in a football game. The Lynx are hoped to win this game because they have won three games against strong teams already this season, while the Dumas eleven have lost three games, the last one to the Panhandle aggregation by a score of 42-0. Coach Jarvis has been putting the boys thru some stiff workouts this week and the

game Friday out to be very interesting. The starting line up for the locals will probably be: Captain John Walker, Fullback; Orville Rippey and Ikey Vernon, Halfbacks; Carl Owen, Quarterback, Riley and Windom, Ends; Gaylon and Holt, Tackles; Jenkins and Archer Guards; and Witt Center. Every loyal fan should be on hand Friday afternoon to see the locals in their second home encounter.

Spearman Lynx Defeat The Borger Bulldogs

The Spearman Lynx defeated the Borger Bulldogs in a spectacular football game at Borger on Friday afternoon, September 26, 1930. This game was considered one of the most important that will be played by the local team this season. The score at the half was six and six, both teams scoring early in the game. In the last quarter the Lynx opened up a series of forward

passes which spelled the downfall of the mighty Bulldogs. The final score was Spearman, 32; Borger, 6. Rippey, Halfback, and Walker, Captain and Fullback, were the Outstanding Players of the home team, while Hann and La Barge led the Bulldogs in spectacular playing.



JULY 4th

A Time to Repledge Ourselves . . .

Born of a revolution, this country began with a pledge: liberty and justice for all. Now . . . 205 years later . . . we, the American people, are still striving for these goals. It's easy to find fault . . . but it takes dedication and unity to bring about change, as our forefathers did. We have the freedom now to do it peacefully. Let's celebrate that freedom . . . and honor our nation for what's been achieved . . . let's join together . . . with a renewed sense of purpose . . . to reach our goals.

OLD FASHIONED FOURTH OF JULY CELEBRATION

CONTESTS*

Sponsored by YMCA

TIME	ACTIVITIES
8:00 a.m.	Marathon and Mini-Marathon Run
10:30	Sack Races
11:00	Skillet Toss
11:30	Three-Legged Races
12:00 NOON	Water Balloon Toss
12:30	Box Relay Races
1:00	Pool Games & Relays
1:30	Recreational Swimming

*Winners of contests announced at Lynx Stadium at 9:15 p.m. at the Fireworks Display

BOOTHS

- YMCAHOT DOGS, COKES, LEMONADE
- WOMEN'S DIVISION OF CHAMBERCOOKIES
- CHEERLEADERSFACE PAINTING
- BOY SCOUTSSNO CONES

Refreshments will be in the Swimming Pool Park

FREE WATERMELON FEED 4:30 P.M.

Sponsored by Spearman Retail Merchants Association

AT THE SWIMMING POOL PARK.

FIREWORKS AT LYNX STADIUM 9:45 P.M.

Sponsored by Spearman Chamber of Commerce

THIS ADVERTISEMENT SPONSORED BY:

