



# Spearman Schools To Register About 1150 Students Friday

Approximately 1150 students will register for classes in the Spearman Public Schools Friday and begin classes Monday, Aug. 30.

A staff of 64 teachers and administrators will meet at 9 a.m. today (Thursday) in the High School for the first gen-

eral faculty meeting.

Besides meeting the new administrators, Supt. Bill Reeves and High School Principal Jim Cherry, the faculty will be briefed on policies and procedures for this year.

The faculty still has one official vacancy that of assistant homemaking instructor, but it has tentatively been filled by Mrs. Claudine Clark of Spearman, who has taught homemaking in other schools. The board will act on her contract officially at the next meeting.

She replaces Mrs. Allen Alford who resigned just two weeks ago.

Thursday, Aug. 26, when the faculty meets for a general

faculty meeting.

Students begin their school year on Friday when they register for classes.

Grades one through eight will register from 9 until 11 a.m. Buses will run to bring these children to the school and take them home.

High school students will begin registering at 9 a.m. when the seniors begin registering. Juniors will be registered a 10:30 a.m., sophomores at 1 p.m. and freshmen at 2 p.m.

Principal James Cherry said all students taking typing should come prepared to pay their typing fee of \$9 for the year. Also, all seniors wanting to pick up their senior rings should bring the money to pay for the ring.

This is the staff under Supt. Bill Reeves:

Members of the High School staff are: Principal, James Cherry; Counselor, Loren Laws; instructors, Robert Barker, Terry Schneider, Marshall Benton, Joe Granato, Kay Bussard, Gerald Felder, John Hickey, Frances Hudson, Herman Boone, Barbara Patterson, June Porter, Dorothy Roden, Don Seymour, W.W. Smith, Worley Smith, Nancy Felder, Lewis Tilford, Sam Watson, Dean Weese, Howard Raff, Blant McGee and Fred Dawson.

Junior High staff members are: James Pendergraft, Principal; teachers, Eddie Allen, Perry Coursey, Doris Crum, Marlene Dietrich, Mrs. Blant McGee, Eula Goodall, Frances Read, Edwin Percy, Frank Porter, Lloyd Looper, G.W. Robinson, Dwan Summer-ville, Larry Anthony, Kenneth Thomas, Eddie Clemmons, Betty Witcher, Mrs. Loren Laws.

Members of the Elementary staff are: Principal, Allen Alford; Glenda Allen, Louise Archer, Nell Benton, Wilma Clark, Dee Deere, Mathilda Entekin, Evalyn Fowler, Marcella Hobbs, Doris Looper, Nellie Payne, Mikie Riche-son, Fern Robinson, Ely Lee Sheets, Charlie Theis, Thelma Vaughn, Fern West, Ruth Whitson and Lois Hull.

Dickie Robinson is the school nurse, Business Manager is Orville Latham. Secretaries are Mrs. Fay Palmer, Altha Townsend, Joe Cochran and Peggy Devers.

HANSFORD COUNTY'S LEADING NEWSPAPER



## The Hansford Plainsman



VOLUME VI., NUMBER 88

SPEARMAN, HANSFORD COUNTY, TEXAS 79081

THURSDAY, AUGUST 26, 1965



### Funeral Rites Today For Mr. Chambers

Funeral services for William Sylvester Chambers, 70, are scheduled at 3 p.m. today in the First Methodist Church of Spearman.

The Rev. Wesley Daniel, pastor of the church, will conduct the services. Burial will be in Hansford Cemetery with Boxwell's in charge of arrangements.

Mr. Chambers, a rural mail carrier, died in his home at 523 W. Second, Tuesday night.

He has lived in Spearman for 40 years, coming here in 1925. Mr. Chambers was born in Nocona, May 7, 1895, the son of Mr. and Mrs. John Chambers.

Survivors are his wife, Delphia, of the home, one daughter, Mrs. William Ashley of Glendale, Ariz., four brothers, Marvin of Spearman, Olin and Charley of Dalhart and Walter of Nocona; one sister, Mrs. R. P. Short of Odessa; three grandchildren and three great-grandchildren.

Pallbearers will be J.C., Bobby, W.L. and Glen Chambers, Bobby Short and William Ashley.

### Burglars Hit Morse Store

Burglars were active over the weekend, hitting a Morse business firm and a barn on a farm in the county.

Burglars took money, candy, cigarettes and a radio from the Dortch service station in Morse Sunday night. Tom Dortch discovered the burglary Monday morning.

Sheriff's officers said the burglars broke a window in the back of the building, then reached through and unlocked the window to gain entry.

Once inside the thieves took approximately \$5 in change and several boxes of candy.

(Con't. on page 2.)



Buddy King

### Buddy King Instructor In Job Corps

Buddy King has recently been appointed Recreation Specialist from the Job Corp Conservation Center at Eight Canyon, New Mexico.

King is now living in Ruidoso, N.M., and working at the camp. He and other staff members are to have the camp ready for the first trainees on Dec. 15.

After receiving the appointment King had three weeks of special training at the Job Corp center at Springfield College in Springfield, Mass.

The West Texas graduate will be in charge of the physical education program at the 200-man camp.

A 1958 graduate of Spearman High School, King attended West Texas State and received his Bachelor's degree in 1963.

He taught physical education in Hereford for one year after finishing college.

King participated in athletics in Spearman High School and lettered three years for the West Texas State baseball team. He was a member of the Alpha Tau Omega social fraternity.

The son of Mr. and Mrs. Bud King of Spearman, Buddy is married to the former Jeanne Sneed of Amarillo. They have one daughter, Kari Jo.

### County Oil Production Totals \$15.5 Millions

Hansford County's producers and royalty owners are marketing some \$15.5 million in crude oil and natural gas a year, according to statistics released by Texas Mid-Continent Oil & Gas Association this week.

Ranking 70th among Texas oil and gas producing counties, Hansford County in 1963 received some \$7.1 million from wellhead sales of oil and an estimated \$8.4 million from natural gas. County production of oil was approximately 2.4 million barrels; natural gas, 67.2 billion cubic feet.

Farmers, ranchers and other mineral owners share in a \$1.9 million distribution of oil and gas royalty payments annually.

The Association based its annual study of this county's oil and gas output on statistics compiled by the U.S. Bureau of Mines for 1963. Production data for 1964 would be approximately the same.

Statewide, Texas oil and gas wells produced an estimated \$3.5 billion in income; \$2.9 billion from oil, \$730 million from gas.

Data from the Texas Employment Commission indicate direct employment in oil and gas industry jobs for more than 470 Hansford County citizens with a payroll of approximately \$3.2 million a year. Because oil operations require such a large number of service contractors and supply firms, which are not included in this figure, direct employment figures are only part of the story of local economic impact.

An important indicator of activity is the amount expended on drilling of wildcat wells seeking new fields and those wells drilled to develop fields already located. The Association estimates that in 1964 approximately \$3.2 million risked by Texas oil and gas operators on drilling ventures in Hansford County. About 41 per cent of this expenditure, or \$1.3 million, went into dry holes.

A tabulation by the Oil and Gas Journal shows 39 wells were drilled in the county in

1964: 12 oil, 11 gas and 6 dry holes. A total of 262,000 feet of hole were drilled--218,000 for development wells and 44,000 for wildcats.

In addition to local school and county property taxes by oil and gas operators, taxes on production from Hansford County flowed into the State Treasury at the rate of about \$916,000 a year.

An upgrading of the county's gross economic output is contributed by the operation of 3 plants which can process some 680 million cubic feet of natural gas a day to remove liquids such as butane and propane.



SMALL ALARM -- Spearman Volunteer Firemen quickly extinguished the fire under the hood of this pick-up driven by Dean Lee. The fire started when Lee stopped the pick-up at the intersection of Main and Collard streets.

Plainsman Photo

(Con't. on page 2.)

# 'Come as You Are' Breakfast Opens Year for Beta Sigma Phi

The social committees of Rho Rho and Xi Zeta Upsilon Chapters of Beta Sigma Phi headed by Dolores Healer and Betty Brown surprised members of the two chapters with a come as you are breakfast Tuesday at 8 a.m. The social was held in the backyard of Joyce Lackey's home.

A melon filled with strawberries, pineapple chunks, cantaloupe and melon balls, centered the table. Cinnamon rolls, bacon-wrapped pineapple, fruit juice and coffee were served.

Lucille Lewis, honorary member of Rho Rho Chapter won the prize for the best "costume".

Those attending were Beverly Sparks, Deloris Guthrie, Pat Donnell, Ruth Skinner, Verna Strawn, Judy Martin, Betty Brown, Dolores Healer, Jeanette Allen, Ruby Lair, Helen Watson, Elsie Mathews, Pat Dear, Lucile Lewis, Jane Meek, Barbara McClellan, Joan McClellan, Elaine Floyd,

Day McClellan, Charlene Bulls, Helen Etter, Vera Beth Hicks, Sara Gooch, Mary Brock, Ola Mae Henry, Mona Beth Windom, Elizabeth Holt-on, Marva Hohertz, Kay Nollner and Dodie Beedy.

## Mrs. Schubert Hosts Club

The Happy Homes HD Club met Thursday, Aug. 19 in the country home of Mrs. Fendorf Schubert.

Maylynn Schubert presided at the business meeting. The devotional was given by Rose Cummings, and Dorothy Groves read an article on family life. The program was on "Crafts" with each member displaying her own favorite craft.

Attending were Wanda Schubert, Rose Cummings, Dorothy Groves, Vaye West, Adalyn Barnes, Margaret Adamson, Bonnie Adamson and the hostess.

Mr. and Mrs. Don Devers and baby of Pampa were Sunday guests of his parents, Mr. and Mrs. Ray Devers.

Mr. and Mrs. Guy Remy spent Sunday afternoon in Minneola, Kans. visiting relatives.

Mr. and Mrs. J.D. Helms were called to Little Rock, Ark. over the weekend due to the serious illness of an uncle.



Draped leather turban, roomy embossed leather handbag make fashion news on the fall scene.

Mrs. Jeff Noell of Dallas has spent the past week visiting her parents, Mr. and Mrs. Bruce Sheets.

Miss Nancy Wilmeth, a student at Sam Houston State College in Huntsville, will arrive home today (Thursday) for a few days visit. She has been attending summer school for both summer semesters.

A recent guest in the Arthur Adkison home was Mrs. Adkison's sister, Mrs. Lora Adkison, a teacher in the Tulsa schools.

## Workday And Luncheon Held By Eta Alpha

The Eta Alpha Chapter of the Delta Kappa Gamma society held a workday at the Home Ec Department at the high school Tuesday, Aug. 17.

This was preceded by a luncheon hosted by Thelma Vaughn, Helen Yeary, Lucy Mundy, Wilma Clark and Nickie Cotter.

In the workshop various committees made reports and plans for the 1965-66 year.

Attending were Mmes. Glen Phillips, James Love, Violet Igou, A.F. Bockelman, J.W. Bockelman, Joe Champion, Russell Howle, O.W. Nowlin, Richard Strong, Katy Price, Bernice Beck and the hostesses.

## LOCAL SCHOOL

# Menus Will Meet National Lunchroom Requirements

The junior high and high school lunchrooms will be ready for serving the first day of school August 30, 1965.

The same menu will be

served throughout the school system with each lunch designed to meet the requirements of the National School Lunch Program. In meeting these requirements each lunch shall consist of one-half pint whole milk, two ounces protein rich food, three-fourth cup fruit or vegetable, one slice enriched bread, two teaspoon butter and other foods needed for energy and to satisfy the appetite. This Type A lunch will generally meet one-third to one-half of the daily dietary allowances recommended by the National Research Council.

Since studies show that vitamin A and vitamin C are frequently short in children's diet, special attention will be given to include a vitamin C food in each lunch and a vitamin A food in lunches twice during the week.

Cost of these lunches for elementary and junior high students will be 30¢, as their nutritional needs will be minimum to average portions, also seconds will be available at no extra cost for these students.

Lunches for high school students and all faculty and others who wish to eat at the lunchrooms will be 40¢, since larger servings are needed to meet the nutritional needs of teenagers.

## BUY A PRIZE

There are no bottles to throw, no pennies to pitch, just walk in and pick out the beautiful pieces of genuine and authentic reissue of "Carnival Glass." This glass is made from the moulds used over 50 years ago when this glass was a great prize to be won at carnivals. It is perfection for today's colorful Spanish and Victoriana decors.

If you are wanting to add an extra touch of beauty to your bath or your dressing room there is nothing to compare to our new Fieldcrest towels and face towels with embroidered borders. These, of course, will make beautiful gifts.

You are always welcome and we hope you will come in and browse around.

## THE GIFT BOX

## Party Honors D. Moores

Mr. and Mrs. J.D. Helms were hosts for a going away party honoring Mr. and Mrs. Doug Moore Friday evening, Aug. 20.

Those enjoying the get-together and home made ice cream and cookies served on the patio of the Helms home were Messrs. and Mmes. Lu-

ther Berry, Richard Fancher, R.L. Uptergrove, Ted Widen-er, Glen Hiller, Marvin Jones, Jim Davis, Tommie Reger, Bobby Archer, Ray Moore, the honorees and hosts.

The Moores moved to Lub-bock over the weekend where Doug is employed.

## Homemaking Notes

by Linda Webb

### Home Demonstration Agent

To let you in on some of the new things across my desk, I've composed quite a pot-pourri of items for you this week.

For those of you who have lots of tomatoes and don't want to can them, you now can successfully freeze tomatoes. It's still true that fresh ripe tomatoes do not freeze well. But they may be frozen, either stewed or as juice.

Here's how: For juice-wash, sort and trim vine-ripened tomatoes. Cut in quarters or eighths, and simmer 5 to 10 minutes. Press through a sieve. Season with a teaspoon salt to each quart of juice. Pour into freezing containers with wide top opening, allowing 1-inch space at

top of each quart. Seal and freeze.

Stewed Tomatoes-Remove stem ends, peel, and quarter ripe tomatoes. Cover and cook until tender (10 to 20 minutes). Place pan containing tomatoes in cold water to cool. Pack into wide-topped freezing containers, leaving 1-inch head space per quart; 1/2 inch per pint. Seal and freeze.

If you plan to freeze a cake, be sure you use pure vanilla. The USDA says synthetic vanilla may give an off-flavor to frozen cakes.

There's a difference between chocolate milk and chocolate drink. Food experts

in the U.S.D.A. point out that only when its made with whole milk can the product be sold as chocolate milk. If skim or partially skimmed milk is used, it must be labeled chocolate drink.

If cocoa or chocolate sirup made with cocoa is used instead of chocolate, it becomes either chocolate-flavored milk or chocolate-flavored drink.

Maybe this will help you better understand the different terms used on these products when you shop.

There is also a difference between Roquefort and bleu cheese, which is simply a matter of milk. Roquefort is made from the milk of ewes (female sheep) only in South France. Bleu cheese is made by the same methods but from the milk of cows-anywhere.

Speaking of cheese, a low-fat cheese that looks and tastes like a very mild cheddar has been developed. Compared with cheddar's 31 percent butterfat, the new low fat cheese contains only 5 to 7 percent.

Made from skim milk, this is the first time a skim milk cheese has had acceptable body, flavor and texture for table use. Ratings given by sample consumers are "good to excellent", so dieters, here is another product for you to look for in the near future.

THE LAST NOTE: Yes, space technology has made rapid strides. Look how much more you can get into a modern refrigerator.

agers (particularly boys) and adults.

For the convenience of students and parents lunch tickets

are available in 5 lunches, 10 lunches, 20 lunches per tickets with no reduction made on the number of lunches pur-

chased. No refunds will be made on lost tickets as tickets are to be considered the same as cash.

Ice cream novelties are available at the high school lunchroom with additional cost of 5¢, also extra cartons of milk (chocolate or white) are available at either lunchroom at extra cost of 2¢ per carton.

A choice of meat, fish or cheese, will be offered on Friday at each lunchroom for those people whose religious convictions do not permit the eating of meats.

Parents are welcome to eat lunch with their children, but because of the large number of students served at the elementary and junior high lunchroom, it would be appreciated if you would call the manager and make arrangements before your scheduled visit.

## MENUS

MONDAY, AUGUST 30  
Ranchburger  
Seasoned Green Beans  
Buttered Corn  
Carrot Sticks  
Fruit Cup with Bananas  
Chocolate or Plain Milk  
TUESDAY, AUG. 31  
Stewed Chicken with Egg Noodles  
Seasoned Green Peas  
Lyonnaise Carrots  
Fresh Vegetable Salad  
Chilled Apple Rings  
Chocolate Cake  
Bread  
Chocolate or Plain Milk

WEDNESDAY, SEPT. 1  
Salisbury Steak  
Mashed Potatoes  
Buttered Spinach  
Fresh Onion Rings  
Coconut Cream Pie  
Bread  
Chocolate or Plain Milk

THURSDAY, SEPT. 2  
Cubed Beef in Barbecue Sauce  
Potato Salad  
Seasoned Pinto Beans  
Cabbage Slaw  
Lime Gelatin Dessert  
Texas Toast  
Chocolate or Plain Milk

FRIDAY, SEPT. 4  
Hot Dogs or Pimiento Cheese Sandwich  
French Fries-Catsup  
Seasoned Blackeyed Peas  
Cantaloupe Wedge  
Chocolate Chip Bar Cookie  
Chocolate or Plain Milk

## Last Tourney of Season Set by Women Golfers

The Ladies Golf Tournament will be held Sunday, August 29 with tee off time at 2 p.m.

This is a handicap tournament. The mens club is giving the trophies for first, second and third places. In case of handicap ties, there will be a sudden death play off.

No entry fee will be charged.

All women golfers are urged to participate in this last tournament of the season.

## Council Meets At Church

The Council of First Christian Church met August 18 in Fellowship hall with the president, Margaret Evans, presiding.

Dorothy Buzzard presented the program "Passport to Understanding". Sandy Russell gave the devotional and closed the meeting with prayer.

Circle 1 served refreshments to Lucy Mundy, Hazel Wilbanks, Virus Wilbanks, Eleanor Reed, Betty Davis, Sandy Russell, Dorothy Buzzard, Margaret Evans, Marilyn Groves and Ada McLain.

## Women Bowlers To Meet Friday

The Hansford County Women's Bowling Association will hold their annual meeting Friday, Aug. 27 at 7:30 p.m. at Grunwald's Restaurant. Anyone interested in bowling please attend.

Mr. and Mrs. Jack McWhirter and family and Geir Berge Overland, left for the McWhirter cabin near Taos Thursday and spent some time fishing and sightseeing. Geir Berge Overland is Spearman's foreign exchange student and is making his home with the McWhirter's.

Weekend guests of Mr. and Mrs. James Pendergraft were his parents, Mr. and Mrs. D. M. Pendergraft of Amarillo.

Mr. and Mrs. Fred Adkison and family of Enid were Saturday and Sunday guests of his parents, Mr. and Mrs. Arthur Adkison and family. Added Sunday dinner guests were her nephew and wife, Mr. and Mrs. Leonard Simon and children of Okmulgee, Okla.

## Day by Day

Way back when I first started writing a column, I promised one of my bosses that I'd write it every single week. This week I'm just barely living up to my promise.

However, (and I'm not usually a name-dropper) since the Richard Burtons are visiting us this week, I do have a good excuse.

...

Do I need to explain any further, or have you already guessed we're not expecting to entertain Cleopatra and Mark Anthony?

In reality, I'm looking forward very much to the arrival of a college friend whom I've not seen since way-back-when at T.C.U. and she just happens to be Mrs. Richard Burton now.

They do get a lot of unusual phone calls and comments like "Oh, you don't say!" when they register at hotels, etc.

...

I noticed on Ruth Brent's show Tuesday that Mrs. Pete Fisher has a recipe in this week's Tendercrust TV schedule. The schedule is available every week at Cut Rate Grocery and features a recipe each time from an area cook. Many of the recipes have been excellent and I always look forward to them.

...

There's just one nice thing about a come-as-you-are breakfast. You do find out that you're not the only one who wakes up looking somewhat like Lady Dracula.

Rho Rho and Xi Zeta Upsilon members were surprised with a breakfast Tuesday. I was back home before I really awakened fully but I think it must have been fun.

...

Club seasons are beginning now and many of you will be collecting clippings for yearbooks. We'll sure appreciate it if you will collect the clippings as they are published rather than asking us at the end of the year to go through and dig them out. If you do miss one, come by the next week and it'll be no trouble to find it for you.

...

Read somewhere these six errors of life. They're universal. (1.) The delusion that individual advancement is made by crushing down others. (2.) The tendency to worry about a thing that cannot be changed or corrected. (3.) Insisting that a thing is impossible because we ourselves have not accomplished it. (4.) Refusing to set aside trivial preferences in order that important things may be accomplished. (5.) Attempting to compel others to believe and live as we do. And (6.) The failure to establish the habit of saving money.

Washington is the ninth largest metropolitan area in the United States.

Retail sales of cosmetics and toilet goods last year reached \$2.5 billion.

### Tall Texan ...

(Con't. from page 1.)

working the boys in the area at the south end of the football field and south of the gym, but there are just too many holes. They are now using the playing field.

Ronnie Gilbert must have the title for mishaps. Early last week he sprained a knee. Since then he has received a burn, a cut from some barbed wire and a sprained ankle, all on the same leg.

One of the coaches told him to be careful if he picked up anything, he might drop it and smash a toe.

All of us railbirds were treated to a real surprise Monday night. In a goal line defense drill the coaches had the third and freshman teams running against the second unit of the varsity. Everyone along the fence was very much impressed with the way the freshmen handled themselves against tough competition.

To the untrained eyes watching, the prospects for the coming years is not bad. The well planned and coordinated physical education program is producing some good athletes.

This program, coupled with a sound academic program is

### Twenty-Four Farmers Nominated for Committee

Twenty-four county farmers have been nominated for places of the four Agriculture Stabilization and Conservation Community Committees.

Five men from each of the four designated communities in the county will serve as community committeemen and delegates from these communities will serve on the county committee.

Community A nominees are Dayton Barkley, Andy Burleson, Elmo Dahl, Robert Ferguson, Gene Fletcher and W. L. Johnson.

Community B candidates are Irvin Boyd, Joe Chase, Max Clawson, Glen Hiller, Bill Logsdon and Donnie

Thoreson.

Community C candidates are Don Allen, Wallace Berner, Bill K. Jackson, Marcus Larson, Ray J. Martin, Rue Sanders.

Community D candidates are Tommy Joe Bergin, Perry Dixon, Jack Henson, Pat Holt, Desmond Kelly and Dorsey Schadd.

There are spaces on the ballots also for write-in candidates.

Voting instructions were sent to every eligible voter in the county by the ASC office.

### Burglars ...

(Con't. from page 1.)

They also pried the front off the cigarette machine and took an undetermined amount of change and a large amount of cigarettes. A small, red radio was also taken from the firm.

Kenneth Williams reported to Sheriff's officers Monday that a barn on his farm south-

Jim O. Davis  
Burl G. McClellan



County-wide independent newspaper published every Thursday and Sunday at 209 Main St., Box 668, Spearman, Texas 79081. Second Class postage paid in Spearman, Texas 79081. Editor . . . . Burl McClellan

west of Spearman had been broken into.

The burglars took only the 20-foot long cables from an electric welder.

They entered the building by taking a padlock off a chain holding the sliding barn doors closed.

No one ever objects to how much you say if you say it in a few words.

**FOR SALE-**

**CADDO**

FROM REGISTERED SEED

**IMPROVED**

**EARLY TRIUMPH**

FROM CERTIFIED SEED

**\$2.00 Per Bushel**

**I.W. AYERS, JR.**

RT.3 - GRUVER - F17-2267

**T.G. & Y.**

5¢ TO \$1.00 STORES

A Division of City Products Corporation

**PRICES GOOD THRU SATURDAY WHILE QUANTITIES LAST!**

**BIG, BIG SAVINGS ON SCHOOL SUPPLIES**

Hundreds of Items Priced For Savings - Stock Up Now!

**10 COUNT PENCIL PACK**

All number 2 lead, eraser tipped pencils. Save 11¢ now!

29¢ VALUE

**18¢**

T.G. & Y. STORES DISCOUNT PRICE

**FREE!** WITH PURCHASE OF \$1.00 OR MORE

Your Choice, While Quantities Last! One of These Useful T.G. & Y. Items Values from 10¢ to 19¢

• Wooden Ruler • Jar of Paste • Ball Point Pen

**SHEAFFER Cartridge Pen**

Famous brand pen with 7 Strip cartridges. Save now!

\$1.00 VALUE

Low Priced **57¢**

**Plasti-Color CLIPBOARD**

Baked in plastic finish for long life. Assorted designs.

69¢ VALUE

**57¢**

9 x 12 1/2"

T.G. & Y. STORES DISCOUNT PRICE

**T.G. & Y. SPECIAL! LOOSELEAF FILLER**

2 Or 5 hole paper . . . ruled and punched. Top quality, perfect for all your school work. Stock up now during this tremendous event and save!

98¢ VALUE, 500 CT.

**66¢**

69¢ VALUE, 300 CT.

**37¢**

STOCK UP NOW!... FOR THE WHOLE SCHOOL YEAR

**BIG STICK PASTE**

In an unbreakable plastic jar, flexible plastic spreader, 5.1 oz. size. For home or school.

29¢ VALUE

**18¢**

**Gold Medal CRAYOLA 16 Count Crayons**

Easy to use, famous!

25¢ VALUE

**17¢**

T.G. & Y. STORES DISCOUNT PRICE

**66 Page COMPOSITION BOOK**

By Progressive. Heavy quality. Buy Several and save!

49¢ VALUE

**27¢**

Save Here!

<b>Note Books</b> ----- Steno	<b>15¢ to 39¢</b>	<b>Crayolas</b> ----- Reg. 35¢	<b>23¢</b>
<b>P. E. Shorts</b> ----- Boy's White Size 24-32	<b>\$1.00</b>	<b>Kleenex</b> ----- 200-2 Ply Reg. 29¢	<b>2 for 39¢</b>
<b>Slide Rules</b> -----	<b>\$1.29</b>	<b>Elmers Glue</b> ----- Reg. 29¢	<b>17¢</b>
<b>Gym Bag</b> ----- 3 Colors with Draw String Top	<b>79¢</b>	<b>Loose leaf Binders</b> -----	<b>67¢ to \$1.67</b>
<b>Elmers Glue</b> ----- 4 oz. size Reg. 59¢ Discount Price	<b>37¢</b>	<b>Manila Folder</b> ----- Colored	<b>10¢ to 29¢</b>
		<b>Kindergarten Mat</b> ----- All Vinyl 20" x 48"	<b>\$1.87</b>

**Spearman Store Hours:**  
Monday-Friday: 8:30a.m. - 6p.m.  
Saturday: 8:30a.m. - 8p.m.  
We Reserve The Right To Limit Quantities

## THE WAY I SEE IT

In a charity baseball game between the comedians and the actors, Bob Hope was made manager of the comedians. He picked Jack Benny to lead off and told him, "All right, Jack, get up there and hit a home run."

But Jack Benny struck out. When this happened, Bob Hope resigned as manager, saying, "I can't manage a team that won't follow instructions."

Of course, Bob Hope was being funny. But thinking seriously, we can be thankful that God didn't act like this when Adam and Eve committed the first sin. God had given specific instructions not to eat of a certain tree. Adam and Eve didn't follow instructions. God could have said, "I quit. They didn't follow instructions."

Instead of giving up, God immediately promised that He would save our first parents. His Son would come into the world to redeem them and all other people. Even though Adam and Eve disobeyed God's will and had to leave the Garden of Eden, God still loved them. They could count on His mercy and forgiveness.

Remember when Peter sinned

by denying Jesus? Jesus didn't give up on him either. He looked at Peter, and that look helped Peter realize what he had done. Jesus wanted Peter to know that He still loved him. Peter went out and wept and then asked for forgiveness.

None of us can follow God's commandments perfectly. We don't measure up to them because we are sinners. But when we "strike out," Jesus is ready to forgive us. When He died on the cross, He took all our failures on Himself. He took our place. We know He loves us.

## Youth Choir Visits Here

A service in song was presented Thursday night at the First Baptist Church by the 36 voice Youth Choir of the Highland Baptist Church of Waco.

Under the direction of the pastor of the church, The Rev. John DeFore, substituting for the music director who moved shortly before the tour started. The choir was on a week's tour of the state, singing in the mental hospitals at Rusk, Terrell, Wichita Falls and Big Spring. They came to Spearman at the request of Mrs. E. N. Pack, the former Carolyn Jarvis, one of the directors of the choir, and a former Spearman resident.

In the service were songs by the choir, soloists, a folk group and a piano solo. Members of the choir stayed with members of the church here. They left early Friday morning for Big Spring.

This tour was financed by the choir. They washed cars and had other fund raising projects, then each member paid \$20 into the tour fund.

College Subscriptions for both The Hansford and Sunday Plainsman are only \$2.00. Subscribe today!

## Little Damage In Two Fires

A pick-up truck driven by Dean Lee of Spearman caught fire at 12:10 p.m. Monday when he stopped at the intersection of Main and Collard streets.

City firemen quickly brought the fire under the hood of the pick-up under control. Damage was light.

Friday firemen answered an alarm at an apartment behind the George Randall home on E. B Ave. A mattress in the apartment was burning. Damage was confined to the smoldering bedding.

## Safety Association Warns Motorists

A special bulletin on how to get killed in holiday traffic was issued today by the Texas Safety Association.

The bulletin, "How to Do-It-Yourself--in Holiday Traffic," is a reversal of the safety group's usual stern warnings to drive cautiously when traveling on the state's streets

and highways during the holiday weekend.

The revolutionary bulletin is not intended as a psychological approach to curbing traffic accidents, according to J.O. Musick, TSA General Manager.

"It's simply a special 'how-to-do-it' bulletin, as the name

suggest," he explained.

"It is for those drivers who feel they have a built-in personal immunity to accidents and therefore can disregard any or all warnings about safe driving on holidays.

The bulletin is based on the five major driver errors involved in fatal traffic accidents in Texas last year over the Labor Day holiday weekend.

Topping the list of driver errors is 1) failure to yield the right-of-way.

"This is a 'sure-fire' killer," the safety director commented. "All a driver has to do is throw caution and courtesy out the window."

For the past three years the Association has stressed the necessity of being cautious and displaying courtesy while driving in holiday traffic.

The other four fatal driver errors cited in the bulletin, in order of importance, are:

2) driving at a speed excessive for existing conditions; 3) driving faster than posted speed limits; 4) driving while intoxicated and 5) driving on the wrong side of the road.

Does the new bulletin mean the Association has given up trying to get Texas' five million drivers to put safety "first" during holidays?

Musick says not. "The usual safe driving tips will be released for those who sincerely try to stay alive," he said.

"But, for those who don't--well, here's 'how-to-do-it.'"

## W.T. Buffs Facing Toughest Schedule

It appears that 1965 is going to be a rough year for "bringing home the bacon," says Ed Uvacek, Extension livestock marketing specialist at Texas A&M University. He is referring to unusually high prices for bacon and other retail pork cuts.

Housewives are currently paying around one dollar for a pound of good quality bacon, and from all indications prices will remain above normal throughout the year, Uvacek adds.

An insufficient supply of slaughter hogs is causing the increase in prices, economists explain. During most of 1964, market prices for slaughter hogs were low compared to production costs. As a result, producers responded by reducing hog raising operations.

Production figures reveal that Texas' pig crop for the period of December, '64-May, '65 is down 10 percent from a year earlier. Slaughter hogs presently reaching market were born during that period, and the decrease in supply is maintaining the higher retail prices.

Indications are that pork supplies for June-November of this year will be about 7 per-

cent less than those for the same period last year, Uvacek states.

For consumers who complain about the wide margin between market prices of hogs and retail prices of bacon, Uvacek points out that only three-fourths of a hog carcass can be marketed as salable retail cuts. And only about 25 pounds of bacon is obtained from a 200-pound market hog.

## Card of Thanks

I express my sincere appreciation for the cards, gifts, flowers, thoughts and prayers of those who have been so kind to me during my illness.  
Bonnie Driscoll.

IT'S ENTERTAINING TIME AGAIN--Choose new autumn designs in party goods by Hallmark at Plainsman Office Supply, 209 Main.

A camping enthusiast pays good money to do all the things he griped about in the army.

## Masonic Ritual Examination Set

An examination for proficiency in Masonic ritual has been set for Saturday, Sept. 4 at 9 a.m. at Ochiltree Lodge 910, Perryton. The examination will be conducted by Bob G. Andis, a Pampa rancher and a member of the Texas Masonic Grand Lodge Committee on Work.

Masons in this area who qualify in the examination will be granted certificates of proficiency in the Masonic ritual at the Annual Communication of the Masonic Grand Lodge of Texas to be held in Waco Dec. 1.

**REGISTRATION**  
**AUG. 28**  
**1-3 P.M.**  
Community Hall  
**DIANA'S DANCE**  
**STUDIO**  
Ballet - Tap - Jazz  
**Classes**  
**For All Ages**  
For Further Information  
Call BR 3-9963  
Berger, Texas  
or write  
**DIANA TEKELL**  
1818 Boyd  
Berger, Texas

**SEED WHEAT**

- \* REGISTERED IMPROVED TRIUMPH
- \* REGISTERED CADDO
- \* CERTIFIED IMPROVED TRIUMPH
- \* CERTIFIED CADDO
- \* SELECT TASCOSA
- \* IMPROVED TRIUMPH
- \* KAW
- \* WICHITA

**MAKE YOUR APPOINTMENTS NOW TO HAVE YOUR WHEAT CLEANED & TREATED**

**B & B Grain Co., Inc.**

**LIGHT THE WAY TO BETTER GRADES**



with this  
**LIGHTOLIER STUDY LAMP**

Only **\$9<sup>95</sup>**  
INCLUDING THREE-WAY 50-100-150 WATT BULB

**Designed to provide proper light for home study**

- Correct height to spread light evenly over the work surface
- Easy-to-clean translucent plastic shade conceals light source from the eyes
- Diffusing bowl prevents glare, directs part of light upward for general room lighting
- Extra heavy base resists accidental tipping
- Three-way bulb may be turned to lower levels when the lamp is not in use for home study

See this Lightolier Study Lamp on display at our office.

**COMMUNITY PUBLIC SERVICE**  
Your Electric Light & Power Company



# Calendar of Events

**THURSDAY, AUGUST 26, 1965** Jaycees meet

B&PW meets at Spearman Floral at 7:30 p.m. Program-Flower Arrangement

Rainbow Girls meet at 5:30 for Initiation

Rho Rho meets

**FRIDAY, AUGUST 27, 1965** Spearman HD Club meets with Mrs. W.H. Tarbox

**MONDAY, AUGUST 30, 1965** Dahlia Flower Club meets in the Major Lackey home.

**TUESDAY, AUGUST 31, 1965** Lions Club meets

**WEDNESDAY, SEPT. 1, 1965** Farmers Union meeting at noon in the Hospitality Room of the First State Bank. All interested persons invited.

Rolling Plains Wagon Train meets at 8 p.m. in the HD Clubroom

**THURSDAY, SEPT. 2, 1965** Jaycees meet

Gladiola Flower Club meets with Mrs. Ed Haner

## W.T. Buffs Facing Toughest Schedule

When fall football practice opens for West Texas State early Wednesday (September 1), head coach Joe Kerbel will be grooming his charges for perhaps the toughest schedule ever undertaken by a West Texas State team.

The Buffaloes have 20 lettermen back and have added some outstanding transfers in addition to several fine sophomores.

Kerbel plans to use the two-platoon system this fall, but also had indicated that a few folks will probably see some two-way duty. Among these are Terry Funk, senior tackle, who is capable of fine work at either offensive tackle or guard or defensive guard. Funk, a two year letterman, is still growing and will play at 220 or more this fall.

Vern Kosub is another Buff scheduled to see action on both units. The San Antonio native is a solid 200-pounder who has won two letters at guard.

Two other two-year veterans will be key men in the offensive and defensive lines. George has won a pair of letters and has seen some defensive duty, but because of his fine speed (10.5 sec. in the 100-yard dash) his 1965 efforts will be confined to offense.

The leader of the defensive front foursome is Butch Walterscheid, a 215-pounder from Hereford. Butch won a pair of letters playing two-ways at end, but the 1965 plans call for him to be at defensive tackle.

Even though Funk and Walterscheid are going to be in relatively new spots, Kerbel is not worried about their performances being below par. "They are two of our finest," says Joe. "I'm sure that they will soon be at home in their new positions. They both showed fine adaptability in spring drills."

With the possible exception of quarterback, the Buffs will field an all-letterman offensive unit, however, depth is once again a big problem and sophomores and transfers will be depended upon in many places for reserve strength.

The key transfers are quarterback Spencer Washington and linebackers Burl and Earl Wood

and Dave Gasser. All proved their mettle in the spring and linebacking trio was a real God-send since the Buff's linebacking corps was reduced to near zero with the graduation of Charlie Daves and Doc Rowell.

Prior to the opening of practice, the coaches and squad will host the area news media in the annual Press Day luncheon and picture-taking session on Aug. 31.

## Richardson Boys Visiting Here

Phil and Tom Richardson of Brunswick, Maine, are here visiting their grandmother, Mrs. Gladys Richardson, and aunt and uncle, Mr. and Mrs. Tom Etter.

Their father, Maj. A.L. Richardson, brought the boys

to Spearman as he was enroute to Lowry Field for a week of special Air Force school.

He will take Tom back to Maine with him this weekend and Phil will remain here to enroll for his sophomore year in Texas Tech.

Mrs. W.B. Barnes and Laura recently returned from a trip to California where they visited her mother, Mrs. A.A. Dougherty at Los Angeles and her sister and family at Santa Monica.

## NOTICE IRRIGATION WELL OWNERS

The Dowell Division of The Dow Chemical Company has recently performed three experimental well treatments in the North Plains Water District. One treatment was southwest of Stratford, one was northwest of Spearman and one was southeast of Spearman.

The purpose of these treatments was to remove plant growth (such as algae and brown mold), bacteria, iron scale, and clay or silt from the gravel pack, slotted casing and pump column. All of these things are known to be causing a loss of water production.

Two of these three responded with increases of over 125 gallons per minute. The third well increased less than 25 gallons per minute-however, it was relatively new and did not appear to contain a lot of plugging material.

Dowell is seeking at least twenty more wells on which to develop the process. Reasonable charges will be made for the treatment if good production increases are obtained. No charge will be made if increase is not substantial.

Wells are wanted with the following conditions:

- (1) Gravel packed
- (2) 16-inch or larger casing
- (3) 8-inch pump column
- (4) Production off by 200 gpm or more

The development program is planned to begin on or about September 1. Wells which meet the requirements will be considered in the order that they are received until the program is closed.

For further details and scheduling of treatments please call R.E. Hurst, Manager of Technical Services, Dowell, Tulsa, Oklahoma. Office phone: Area Code 918-LUthur 2-0101. Home phone: Area Code 918-National 7-2319.

## Miss Henderson Wins Singer Sewing Contest



Miss Patricia Henderson of Morse holds the fitted sewing case she won in the Young Dressmaker Singer contest Friday night at Pampa.

She won the deb division ages 16-18. This entitles her to send her dress to Dallas where it will be judged in competition with other garments from over the state.

She made an all wool ensemble. The dress is of aqua wool crepe and the coat is of a matching woolen fabric.

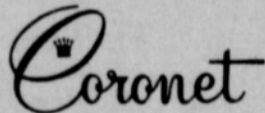
Mrs. Jack Kemper has been working at Community Public Service this week.

Mr. and Mrs. Darc Foshee have returned home from a vacation at Grand Lake, near Denver, Colo.

Mrs. Nell White has returned to work at Anthony Electric after being on vacation.

## Order Your Trousseau of Wedding Stationery

Exquisitely Thermograved by



You'll be so proud of your lovely stationery, done in beautifully correct taste . . . and you'll be pleased at the sensible price made possible by famous Coronet Thermograving.



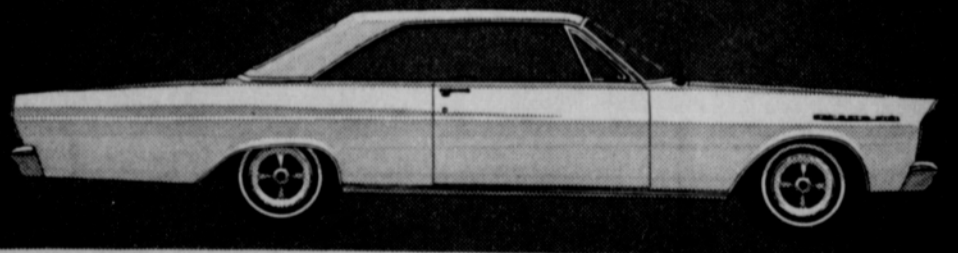
Wedding Invitations and Announcements  
Luncheon Invitations  
Gift Acknowledgments  
At Home Announcements

Calling Cards  
Personalized Stationery  
Informal Notes  
Monogrammed Napkins  
Monogrammed Matchbooks

A complete selection of correct styles  
PROMPT DELIVERIES

The Hansford Plainsman

# You've waited all year-here's the payoff: biggest Ford clearance in history



What an opportunity to save real money! Choose from all the most popular of the all-time best-selling Fords. All the most popular styles and colors—all at low, low end-of-season prices. But hurry!

ON NOW AT YOUR

## Ford Dealer's

### Joe Trayler Motor Co.

321 Main Street • Spearman, Texas

Shurfine All Vegetable  
**SHORTENING** 3 lb. can **59¢**

**BACK - TO - SCHOOL - SALE**

Libbys W.K. or Cream Golden

**CORN**  
303 size can  
**2 for 33¢**

# FOOD



"Week-End Values  
for Friday & Saturday  
August 27 & 28"

Shurfresh  
**Cheese Spread**  
2 lb. loaf **59¢**

Shurfine  
**FLOUR**  
"Better Baking"  
10 lb. bag **79¢**

Shurfine  
All Green  
Tall Can  
**ASPARAGUS**  
**SPEARS**  
**29¢**

Shurfine Fancy Sliced  
no. 2 can  
**PINEAPPLE 29¢**

**NEW RECIPE**  
**FRIDAY**

**WIN-FREE \$100. DURING THE ROYAL RECIPE SWEEPSTAKES**  
**25,000.00 CASH!**  
FREE! OVER 140,000 SHURFINE FOOD PRODUCTS



for **THOUGHT** and  
**ENERGY, TOO!**

Brachs Fresh Candy  
**MARSHMALLOW**  
**Peanuts**  
lb. Bag **25¢**

Shurfine 303 Size Can  
**FRUIT COCKTAIL 2 for 43¢**

Del Monte Seedless  
**RAISINS** 15 oz. Pkg. **25¢**

Maryland Club  
**COFFEE** lb. can **75¢**

Welchs Grape Drink Quart Cans

**Welchade 4 FOR \$1.00**

Food King Yellow Quarters "The Right Spread for TENDERCRUST Bread"

**MARGARINE 15¢**

Imperial Brown or  
**POWDERED SUGAR** lb. box **2 for 33¢**

U.S. No. 1 Arkansas Jonathan  
**APPLES** lb. **10¢**

Colorado  
**Cantaloupe 4 FOR \$1.**

Red **POTATOES 10 lbs. 39¢**

Shurfine Concord 18 oz. Tumbler "Try with TENDERCRUST Bread"

**Grape Jelly 29¢**

Bama Red Plum  
**JAM** 18 oz. Tumbler **33¢**

Del Monte  
Pineapple  
**GRAPEFRUIT**  
**DRINK 33¢** 46 oz. Can

Softin 200 2 ply Pkg.  
**Facial Tissue 19¢**

**SPECIAL BORDEN'S ICE CREAM**  
IN THE NEW ROUND CARTON  
**69¢** 1/2 GAL.

Shop our complete selection of school supplies while picking up this value  
**Notebook Paper 58¢**  
Affiliated Best Quality  
400 Count Package

Supreme Crackers Box  
**Honey Grahams 29¢**  
"Delicious with Shurfresh Milk"

Shurfine Frozen  
**Orange Juice 3 FOR 49¢**  
6 oz. Cans

The right combination for Back to School Energy  
**Tendercrust Bread**  
and **Shurfresh Milk**

Hersheys lb. Can  
**CHOCOLATE SYRUP 23¢**

Top O' Texas Sliced  
**Bologna 49¢**

AF Brand lb.  
**FRANKS 55¢**

Fresh Dressed U.S.D.A. Grade A  
**FRYERS 29¢**

AF Brand  
**BACON 79¢**

Tendercrust Hot Dog or  
**HAMBURGER Buns**  
Cluster Pak of 8 **23¢**

Shurfine Fancy Tasty 303 Size  
**SPINACH 2 for 27¢**

Post Toasties Giant Size 18 oz. Pkg.

**Corn Flakes 35¢**



**Cut Rate GROCERY**



# Park Service Present Plans for Meredith

By Rep. Walter Rogers

I have received from the National Park Service its proposed recreation facilities development plan for Lake Meredith. The report presents Park Service recommendations for spending \$1.1 million authorized by the Rogers Bill passed in 1963 to insure proper recreation development at the reservoir. The plan will be reviewed by the House Committee on Interior and Insular Affairs, with special attention to be given by my Subcommittee on Irrigation and Reclamation, which has initial legislative jurisdiction over Federal reclamation projects such as that on the Canadian River. Construction will begin after changes, if any, are made following committee review and contracts are let.

Now, construction is completed or underway on projects costing \$790,000. This was the amount authorized several years ago for access roads, boat ramps, and other projects to insure adequate access and accommodation of the public for fish and wildlife use of the reservoir. The \$1.1 million total provided by my bill enacted last year will provide supplemental facilities.

The National Park Service report presents in detail its plan for developing the eight designated shoreline recreation sites--Sanford-Yake, Blue West, Fritch Fortress, Alibates, McBride, Plum Creek, Bugbee, and Blue East. Work under the fish and wildlife authorization has begun at the first six of these areas; the new plan provides for completing these developments as well as providing initial developments at Bugbee and Blue East, both of which are located on the north shore of the

reservoir not far from Sanford Dam.

Meanwhile, in Washington and Santa Fe offices of the Park Service a prospectus is being prepared for mailing to prospective concessioners who would make private enterprise investments in facilities at the reservoir. The bid invitations, I understand, will be ready to go out sometime this fall. The suggested concessioner program at Lake Meredith includes overnight accommodations; meal services; grovery or general store operations to provide camping, picnicking, fishing, boating, and sporting goods; souvenir or curio shops; transportation, boat rentals and sales; operation of mechanical boat-launching facilities; marina or dock operations; marine fueling stations; automobile and boat repair services, trailer park facilities--and, perhaps, a helicopter and small plane landing strip. Park service policy is not to suggest concessioner developments inside recreation areas when similar accommodations or services exist or can be developed by private enterprise outside the area but in the vicinity.

As an example of proposed development, the Park Service proposal affecting Sanford-Yake would be of special interest because this area is now perhaps most familiar of all to the general public. Thousands of persons have viewed the dam in stages of construction from the Sanford-Yake vista point high above the river bed. In this area, \$173,000 is being spent from the fish and wildlife allocation and \$155,000 is the proposed expenditure from the \$1.1 authorization for roads, launching ramp, parking areas, water supply, sanitary facilities, picnic area and other projects. An interpretive shelter--presumably containing a map of the project area and explanatory information) and extensive picnicking facilities are planned for the former overlook. The concession plan, when completed, may call for a concessioner-operated marina there. Another of the recreation sites already familiar to thousands of Panhandle residents is Fritch Fortress, also on the reser-

## NEWS FROM

# Your County Agent

ROBERT ADAMSON

I'd like to marry your daughter," said the young bank employee to the president. "That is, if you have one."

**ALFALFA VARIETY TO PLANT**  
Several farmers have indicated they are going to plant some alfalfa this fall and wondered about the variety to

plant. The variety, Southwestern Common, is the variety recommended for this area. This variety produces more forage than the Buffalo variety, which is also good for this area.

Southwestern Common is winter hardy and comes out earlier in the spring than Buffalo. There may be other varieties you have heard about but until they are proven by test to be better than some of the varieties listed above we cannot recommend them.

I have a bulletin titled "Alfalfa for Forage and Seed" in my office if you would like to pick one up.

**WHEAT VARIETIES**  
Wheat planting time is here again and many farmers are wondering about new varieties on the market. Below is a rundown on some varieties of wheat.

Improved Triumph--a very popular wheat and the superior strain of the triumph wheats. Triumph 64 will be available next year.

Kaw and Bison are established Kansas varieties which are recommended for this area.

Caddo--a new variety released last year that should replace the Wichita variety. This wheat is a cross with Wichita and an experimental strain.

Warrior, Scout, Lancer and Gage are relatively new Ne-

braska varieties adapted to Texas. Seed may be obtained from the Nebraska Crop Improvement Association. All have resistance to race 56 of stem rust but not to many races prevalent in Texas. Warrior is very late in maturity but has performed well in High Plains tests. Scout has done well in the High and Rolling Plains tests. Lancer has produced only fair yields and has no advantage over present varieties. The quality of warrior is very good but the others are acceptable but not classed as strong wheats.

Gaines wheat--a short wheat that is not recommended for Texas.

Below is a list of the wheat. If it is recommended, will use "R" or acceptable, will use "A".

Bison	R
Caddo	R
Improved Triumph	R
Kaw	R
Scout	R
Tascosa	R
Warrior	R
Aztec	A
Comanche	A
Concho	A
Crockett	A
Gage	A
Lancer	A

It would not be advisable to plant any of the acceptable varieties.

Mr. and Mrs. W. B. Barnes spent last weekend at Red River returning home Sunday evening.

Lynn Hohertz who has spent some time in Canadian with her grandparents, Mr. and Mrs. Van Petrie came home on Sunday.

## HANSFORD HOSPITAL NEWS

Patients in Hansford Hospital this week are R. E. Martin, Mareta Malone, Neva Day, Isla Patorf, Helen Beckham, Bonnie Thompson, Kay Dean Jackson, Rickie Brumley, Ray Phelps, Susan Kamp, George Stewart, Bruce Sheets, Ruth Wright, Hazel Morton, Suzanne Dixon, Levi J. Miller, Ivan Usher, Mary Joy and Daniel Boyd.

Dismissed were Bessie Jones, Geraldine Brack, Ruth Rhodes, LaDean Broughton, Sally Butler, Darlel Hollar and O. R. Blundt.

## Future Readers Of The Plainsman

Mr. and Mrs. Frederick Alvin Jackson are the parents of a daughter, Jodie Janean, born August 20 at 5:30 p.m. in Hansford Hospital.

Mrs. Susan Bidwell of Los Angeles, daughter of Pat Bennett and his brother Don Bennett of Oakview, spent the past week in Amarillo to be with Mr. Bennett during his surgery and stay in the hospital.

## Holt News

August is vacation time for the farmers and especially since the Holt Community got over two inches of rain last week.

Nolan Holt and Larry and Mr. and Mrs. Mike Holt are vacationing at Creed, Colo.

Mr. and Mrs. Richard Gaines and family were Saturday night guests of his nephew, Mr. and Mrs. Charles Thomas at Hugoton, Kans. Thomas was badly burned and is getting along as well as can be expected.

Mr. and Mrs. O. C. Holt transacted business over the weekend at Omaha, Neb.

Mrs. Jake Lamb of Spearman was Thursday night guest of her daughter, Mr. and Mrs. Bud Jackson at Kenton, Okla.

Mr. and Mrs. Travis Reger and family have been sightseeing in and around Colorado Springs, Colo.

Mrs. Jimmy Cook and family recently visited her grandmother, Mrs. Bertha Jenkins and the Phil Jenkins.

Mr. and Mrs. Fred Holt and Susan returned home the past week after spending five weeks sightseeing, touring the Northern states and Alaska.

Mr. and Mrs. Doyle Jackson and boys vacationed the past week at Red River.

Mr. and Mrs. Medlin Patterson spent the weekend with their daughter-in-law, Mrs. John Patterson, who is in the Scott & White Hospital at Temple. She had surgery and is getting along as well as can be expected.

Mr. and Mrs. Dan Jackson spent Thursday and Friday night visiting relatives in and around Mangum, Okla.

Mr. and Mrs. Walter Baade of Enid were Friday night guests of the Phil Jenkins. They had been to the mountains and were enroute home. Steve Jenkins of Lubbock is visiting his parents, Mr. and Mrs. Phil Jenkins and Kathy.

Mr. and Mrs. Arch Marshall of Houston were weekend guests of her mother, Mrs. B. C. Holt. They were enroute to Colorado Springs, Colo.

Mr. and Mrs. Owen Pendergraft, Mr. and Mrs. C. W. Kirk have returned home from a vacation of sightseeing and visiting the Kirk's daughter, Mr. and Mrs. Bruce Fiedler at Big Fork, Montana.

voir's south shore, a high peninsula providing a spectacular view of the lake and surrounding land. In addition to roads, launch facilities, picnic areas and so forth mentioned in the report, the Park Service expresses the view that Fritch Fortress would be well suited for "a concessioner lodge or similar development which will attract visitors who want the comforts and convenience of luxurious facilities and who expect to pay for extra services." The report notes also that a marina, a golf course, and a landing strip would be other likely concessioner projects.

As many of you know, Congressional action was completed in recent days on my bills to name the reservoir "Lake Meredith," in memory of that great conservationist and Borger citizen, A. A. Meredith, and to establish the Alibates Flint Quarries National Monument in conjunction with the Alibates recreation area.

A great sales year has put your Buick dealer in the mood to deal. See him today. He'll put you in the mood to buy.

We've put a lot of people in Buicks this year. And we're not about to stop now. A few more, and we might just break a few sales records. So here goes. You come in and pick your kind of Buick. Electra 225, Wildcat, LeSabre, or Special. Then, let's just see if we can't give you the kind of deal you've always wanted. Fair enough?

Wouldn't you really rather go first class? Go Buick!



## NORTH PLAINS TRUCK & IMPLT. CO.

Highway 15

659-2421

Spearman, Tex.

WE HAVE A GOOD SELECTION OF USED CARS.

Guaranteed Watch & Jewelry Repair  
Diamond Setting  
Quick Service  
At Reasonable Prices.  
**HARPS JEWELERS**  
659-2711---310 Main

**BIGGEST VINYL VALUE EVER!**

**NEW Armstrong DECOLON**  
vinyl rugs

only **\$10.95**  
9' x 12' SIZE

Tough, long-wearing Decolon Vinyl Rugs from Armstrong--the name you know and trust. Rugged vinyl stays bright, wipes clean in seconds, discourages scuffing, resists staining. Give every room in your home the luxury look of vinyl--at a new low price. Choose from floral prints, tile and carpet effects, marble designs.

**White House Lumber Co.**

# Farm Tour Scheduled August 28

Final arrangements are now complete for the 1965 Agricultural Tour, according to Robert Holland, Tour Chairman. This year's tour is being sponsored by the Ochiltree County Chamber of Commerce, in cooperation with the County Agent's Office, represented by Douglas Smith, County Agent, and the Soil Conservation Service, represented by Tommy Hayes.

The tour will assemble on the parking lot immediately south of the Perryton High School on Saturday morning, the 28th of August, 1965, from 8:30 to 9:00 a.m., and will depart at 9 a.m.

All interested persons are invited to attend the tour, which should be completed by mid-afternoon.

Members of the Agriculture Committee of the Ochiltree County Chamber of Commerce will participate in the tour and are arranging for transportation for persons who would like to ride with someone.

West German camera makers offer a variety of over 160 different cameras, with more than 700 different photographic lenses.

## City Directory

### CLEANERS

CLEANING  
PRESSING  
CARPET  
CLEANING SERVICE

COIN OPERATED  
DRY CLEANING

FREE  
PICK-UP & DELIVERY  
PHONE 659-2511

### Wardrobe Cleaners

**Oscar Donnell**

302 MAIN ST.  
SPEARMAN, TEXAS

### DENTISTS

**F. J. Daily D.D.S.**

16 SW COURT STREET  
SPEARMAN

### ELECTRICIAN

**Anthony Electric**

Industrial, Commercial  
and House Wiring

Heating and  
Air Conditioning

Contracting  
and Repairs  
Fully Insured

PLAINS  
SHOPPING CENTER  
PHONE 659-2441  
BOX 727  
SPEARMAN, TEXAS

Buy, Sell, Trade  
Hire, Rent, Find  
THROUGH THE

# WANT ADS

### — WANTED —

Ironing Wanted. \$1.50 a doz-  
ea. 821 S. Archer or call  
2944.

88-2c

Classified ads are only 4¢ per  
word for the first insertion and  
2¢ per word, without charges,  
after that. Use the classifieds,  
they're little but they do a  
big job!

### Stocking Story

In fall's animated fash-  
ions, there's every kind of  
skirt to call attention to  
feminine legs, and every  
kind of stocking to make  
sure they're well dressed.

New stockings may be  
anything from sheer nylons  
to sporty knits, but what-  
ever they are, they're new-  
est when textured. The lacy  
look, the diamond pattern,  
the thin rib, cables are just  
some of the textures avail-  
able, says the National As-  
sociation of Hosiery Manu-  
facturers.

There's variety in colors,  
too. Sheer nylons come in  
every conceivable shade,  
from pale and pearly to  
dark.

For after-five, there's the  
lacy look in black, white,  
beige, cocoa or salmon—  
plus shimmery gold with a  
hint of black or misty green.

### — FOR SALE —

FOR SALE--3 bedroom house  
carpeted. Good location with  
low equity. Call 659-2418.  
82-tfc-c

FOR SALE--95 acres southeast  
of Spearman, irrigation water,  
1 1/2 minerals, Industrial lots  
and acreage. Financing avail-  
able. Cecil Crawford. Phone  
659-2409.

49-tfc

FOR SALE--105 ft. chain link  
fence. 2 gates, 5 feet tall  
with aluminum stripping.  
Robert Janzen. Phone 2455.  
82-tfc

FOR SALE-3 bedroom home,  
excellent location, carpeted  
and fenced. 904 S. Dessen.  
Call 659-2178.

56-tfc

FOR SALE--One bedroom  
house and two bedroom house  
Reasonable-Choice Location.  
No down Payment. Pay like  
rent. Contact Raymond Sparks  
at Sparks Laundry.

77-tfc

FOR SALE -- 1963 Cushman  
Eagle motor scooter low  
mileage, excellent condition  
fully equipped. Phone 2458.  
Kenneth Bailey.

77-tfc.

FOR SALE-3 bedroom house,  
carpeted, fenced, land-  
scaped, real nice. Call 3103  
daytime, or 2754 at night.

86-tfc

FOR SALE--Small Admiral  
Refrigerator. Phone 2322.

78-tfc

FOR SALE--Alfalfa Hay . 800  
bale. Phone 659-3259.

79-8-p

FOR SALE--One lot, 120 ft.  
frontage, fenced on three  
sides, garage 24 x 30 ft.,  
concrete floor, large window  
in rear. Fiberglass doors, one-  
8 ft. high, one-10 ft. high.  
\$5,000.00 cash. Phone FI 7-  
2332. Joe Chase, Gruver.

80-tfc

FOR SALE--201 Main St. in  
Gruver, Native rock, 3-bed-  
room, bath and half, large  
kitchen. Dining room and  
living have indirect lighting.  
Enclosed yard. Garage apt.  
also. \$17,000.00. Will take  
1/4 down, balance like rent.  
20 yr. pay. Phone FI 7-2332,  
Joe Chase, Gruver.

80-tfc

FOR SALE--Buescher Clarinet,  
excellent condition. Mike  
Shedeck, Phone 659-2772.

88-2c

FOR SALE--1954 Chevrolet,  
standard shift, 1002 S. Evans.

88-1c

FOR SALE--Under half price  
for equity in 3 bedroom, bath  
and half, brick home, attach-  
ed garage. Carpets, drapes,  
fenced yard, air conditioner,  
built-in range, TV tower.  
Walking distance grade and  
high schools. Call Emmett  
Sanders, 2516 or 2601.

80-tfc

FOR SALE--3 bdrm. house,  
1,164 sq. ft. floor space,  
double garage, utility plumb-  
ing in house and garage. 165'  
front. 2 additional lots avail-  
able. 118 N. James St. Call  
659-2259 between 1 p.m. and  
7:30 p.m.

80-tfc

FOR SALE--Adorable white tiny  
toy poodles, AKC Registered,  
Champion blood line, papers  
furnished. 428 Bernice. Call  
659-2082.

86-tfc

FOR SALE--1964 Malibu Che-  
velle. Phone 3328.

88-4c

FOR SALE--55' lot plumbed for  
trailer. Reasonable. Call 659-  
2259.

88-tfc

### — SERVICES —

New yards a speciality. Work-  
ed, leveled, seeded and ferti-  
lized. Phone 659-2857.

50-tfc

SERVICE--Ditches from 3-12  
inches, any desired depth. S.  
D. Jones 659-2809. Harold  
Shaver 659-3474.

T17-tfc

ONE WAY PLOWING-- Jack  
Kemper, 903 S. Dessen,  
Phone 3475.

61-tfc

Amarillo Daily News & Globe  
Times home delivery. Call  
2685.

T14-tfc

SERVICES--For Singer Sale &  
Service. Call Edwards Fabric  
Shop, 3132

88-c

For Borger News-Herald call  
Ricky Warren. 659-3170.

86-tfc

FOR LIFETIME MUFFLERS--  
Clarence Pettitt Garage. No  
premium prices.

T46-tfc

Land Leveling to SCS speci-  
fications. General dirt work  
with Hancock carryalls. Willis  
Sheets, 659-2256.

T46-tfc

Receptionist or special nurs-  
ing wanted. Call 2783.

88-4p

FOR BUSY MOMS  
To help busy mothers dress  
their sons smartly, easily, fall  
trend is to coordinates such as  
matching shirts, socks.

### — FOR RENT —

FOR RENT--New furnished brick  
apartment. Phone 2274.  
46-tfc.

FOR RENT--Two room furni-  
shed apartment. Call 3212 be-  
fore 5 p.m.

80-tfc

Try a Plainsman Classified  
ad.

### ★ Legal Notices ★

CITATION BY PUBLICATION  
STATE OF TEXAS

TO: L.B. Maxwell and the un-  
known heirs, their heirs and  
legal representatives of the said  
L.B. Maxwell, if he now be  
deceased; and the legal repre-  
sentatives and unknown heirs,  
if any, of Jack Berger, De-  
fendants, GREETING:

You are hereby commanded  
to appear before the Honorable  
District Court of Hansford  
County, at or before 10:00 A.  
M. of the first Monday after  
the expiration of 42 days from  
the date of issuance of this  
citation, being the 4th day of  
October, 1965, then and there  
to answer the Plaintiff's peti-  
tion filed in said court on the  
17th day of August, 1965, in  
this cause No. 1406 on the  
docket of said court, wherein  
P.F. Hawkins is Plaintiff and  
L.B. Maxwell, whose place of  
residence is unknown, and if  
deceased, the legal repre-  
sentatives and the unknown heirs  
of the said L.B. Maxwell; the  
legal representatives and the  
unknown heirs of the said L.B.  
Maxwell; the legal repre-  
sentatives and the unknown heirs  
of the unknown heirs of the  
said L.B. Maxwell; Wynona  
Berger Cannon, Individually  
and as Guardian of the Estates  
of Jack Buell Berger and Victor  
Lee Berger, and husband, Wil-  
son Cannon, Texarkana, Ark-  
ansas; Billie Jo Berger Marshall  
and husband, T.W. Marshall,  
San Diego, California; Jack  
Buell Berger, Parish of Ouch-  
ita, Louisiana and Victor Lee  
Berger, Texarkana, Arkansas  
and the legal representatives  
and unknown heirs, if any,  
of Jack Berger, whose place of  
residence are unknown are De-  
fendants.

A brief statement of the na-  
ture of this suit is as follows:

A suit in trespass to try title  
for rents, damages, removal  
of cloud, writ of restitution and  
possession, general and special  
relief, in law and equity of  
and concerning All of Lots  
Nos. Seventeen (17) through  
Lot No. Thirty-one (31), in-  
clusive, in Block No. Thirty-  
eight (38), Original Town of  
Gruver, Hansford County,  
Texas; Plaintiff alleging stat-  
utory trespass to try title;  
three, five and ten years Statutes  
of Limitation and holding under  
a registered deed for more  
than three and five years; and  
payment of taxes during such

period; as more fully shown by  
Plaintiff's petition on file in  
this suit.

The officer executing this  
process shall execute the same  
according to law and make  
due return as the law directs,  
if this citation is not served  
within 90 days from issuance,  
it shall be returned unexecuted.

Issued and given under my  
hand and the seal of said  
court, at office, in Spearman,  
Texas, this 17th day of Aug-  
ust, 1965

s/ Keese C. Richardson  
Clerk of the District Court  
of Hansford County, Texas  
86-4T

### —LOST—

LOST--One Bird Watt Meter,  
in a black leather case belong-  
ing to Hawkins Radio Service  
of Pampa. If found, please re-  
turn to R. E. Lee Oil Co.  
\$25.00 reward for anyone who  
finds it.

84-6-c

SKI MINDED  
Lively fall gloves show the  
ski influence, in bold colors  
and patterns.

### Charlene Bulls

INTERIOR  
DECORATOR

Draperies Furniture  
Carpet  
659-3202

1105 Townsend

Spearman, Texas

### E. C. Groene & Sons Agency

Real Estate--Loans  
Insurance--Cattle  
Aluminum Pipes

410 Davis, Spearman  
Phone 659-2587

### YOUR PHILCO DEALER

### Burton's T.V.

We Repair Color &  
Black & White TV's,  
And Also, Radios

659-2121

318 Davis

Spearman

YOUR  
HALLMARK STORE

Hallmark  
Cards  
PLAINSMAN  
OFFICE  
SUPPLY  
INC.

OFFICE SUPPLY  
HEADQUARTERS  
FOR  
HANSFORD COUNTY

### SUBSCRIBE TO YOUR

HOMETOWN NEWSPAPERS

THE HANSFORD PLAINSMAN

THE SUNDAY PLAINSMAN

BOTH FOR JUST

\$3.50 PER YEAR

### TELEGAGS by BOB NOBLES



**Bob's SALES and SERVICE**

WE SELL THE BEST and SERVICE THE REST  
SPEARMAN, TEXAS

Phone 659-3222





## Church Programs



**Apostolic Faith Church**  
W. E. (Hap) Blythe, Pastor  
Sunday School 10:00 a.m.  
Morning Worship 11:00 a.m.  
Evening Worship 7:00 p.m.

**Assembly of God Church**  
Rev. T. J. Taylor Jr.  
Sunday School 9:45 a.m.  
Morning Worship 11:00 a.m.  
Evening Worship 7:30 p.m.  
Wed. Bible Study 7:30 p.m.

**Church of Christ**  
Charles Milner, Minister  
Sunday School 10:00 a.m.  
Worship 11:00 a.m.  
Worship 7:00 a.m.  
Wed. Ladies Bible Class 9:30 a.m.  
Wed. Bible Study 7:30 p.m.

**Fellowship Baptist Church**  
W. S. Herring, Pastor  
Sunday School 10:00 a.m.  
Preaching Service 11:00 a.m.  
Sunday Evening Service 7:30 p.m.  
Wed. Evening Service 7:30 p.m.

**First Christian Church**  
Rev. W. Graham Pugh, Minister  
Sunday School 9:45 a.m.  
Morning Worship 11:00 a.m.  
Youth Meetings 6:00 p.m.  
Evening Worship 7:30 p.m.  
Wed. Choir Practice 7:30 p.m.

**First Baptist Church**  
The Rev. Luther M. Berry, Pastor  
Sunday School 9:45 a.m.  
Morning Worship 10:45 a.m.  
Training Union 5:30 p.m.  
(Oct. 1-Apr. 30)  
Training Union 6:00 p.m.  
(May 1-Sept. 30)  
Evening Worship 6:30 p.m.  
(Oct. 1-Apr. 30)  
Evening Worship 7:00 p.m.  
(May 1-Sept. 30)  
Wed. Evening Prayer Hour 7:30 p.m.  
Thurs. Choir Rehearsal 7:00 p.m.

**Oslo Lutheran Church**  
18 mi. N.W. of Gruber  
Robert L. Cordes, Pastor  
Sunday School 9:45 a.m.  
(includes adults)  
Worship Services 11:00 a.m.

**First Methodist Church**  
Brother Wesley Daniel, Minister  
Sunday School 9:45 a.m.  
Morning Worship 11:00 a.m.  
M.Y.T. 6:30 p.m.  
Evening Worship 7:30 p.m.  
Women's Society of Christian Service Wed. 3:00 p.m.  
Choir Rehearsal 7:30 p.m.

**First United Presbyterian Church**  
Everett H. Cain, Jr., Pastor  
Sunday School 9:45 a.m.  
Morning Worship 11:00 a.m.  
Evening Study Group 7:30 p.m.  
Wed. Choir Practice 7:30 p.m.

**Pentecostal Church**  
Sunday School 9:45 a.m.  
Morning Worship 11:00 a.m.  
Evening Worship 7:30 p.m.

**Sacred Heart Catholic Church**  
Spearman  
Rev. James C. Gurzynski  
Sunday Mass 10:00 a.m.  
Holy Day of Obligation 7:00 a.m.  
8:00 p.m.  
Weekdays 7:00 a.m.

**Our Lady of Guadalupe Mission,**  
Gruber  
Sunday Mass 4:00 p.m.

**Faith Lutheran Church**  
Farm Bureau Bldg.  
Robert Cordes, Pastor  
Worship Services 9:00 a.m.  
Sunday School 10:00 a.m.

**Union Full Gospel Church**  
Rev. George R. Bollinger, Pastor  
Sunday School 10:00 a.m.  
Morning Worship 11:00 a.m.  
Bible Classes Sunday 6:45 p.m.  
Evening Worship 7:30 p.m.  
Wed. Bible Study 7:30 p.m.

**Waka Church of the Brethren**  
Lawrence Lehman, Pastor  
Sunday School 10:00 a.m.  
Morning Worship 11:00 a.m.  
Evening Service 7:00 p.m.  
Choir Practice Wed. 7:00 p.m.  
Adult Bible Study Wed. 8:00 p.m.

## Bruce Sheets Has Heart Attack

Bruce Sheets, retired druggist, is in Hansford Hospital after suffering a heart attack in his home over the weekend. Sheets had operated a drug store in Spearman since 1933. He sold the store to Orville Brummett this year.

Joe Cummings, son of Mr. and Mrs. James Cummings, who has spent the summer with his grandparents, Mr. and Mrs. Arthur Cummings of Panhandle, returned home last week. Joe has worked on his grandfathers farm helping with the harvest and plowing.

Mr. and Mrs. Carl Archer and Carla and Mr. and Mrs. Tommie Lovett and son spent the weekend at Red River.

Mr. and Mrs. James Cummings were in Panhandle recently to be with his mother, Mrs. Arthur Cummings, who underwent surgery at the hospital in Groom. Mrs. Cummings and children remained in Panhandle to stay with his father while his mother was in the hospital.

Mrs. Jack Moran and children returned Monday from a two weeks vacation with her parents, Mr. and Mrs. J. B. Hynal in Brownsfield.

Mr. and Mrs. Frank Porter, Jeanie and Mrs. Audrey Heidelberg returned from a two weeks trip to California. In addition to visiting points of interest in Arizona and New Mexico they enjoyed such California attractions as Disneyland, Marineland, the beaches and others. They also visited with Mrs. Heidelberg's two brothers and two of her sisters and their families.

NEW-Fall bridge supplies by Hallmark in a variety of beautiful new designs. PLAINSMAN OFFICE SUPPLY.

## Farmers Union Plans Organizational Meeting

Plans have been formalized for an organizational meeting of Farmers Union members and other interested persons at noon Wednesday, Sept. 1 in the hospitality room of the First State Bank. Invitations have been extended to persons in both Hansford and Ochiltree counties.

Formerly partially organized After being home only a few days after a week at their grandparents, Mr. and Mrs. Sam Janzen of Waka, Randy and Scott Janzen left for Wheeler. They have been visiting the maternal grandparents, Mr. and Mrs. Bud Jackson. Their mother, Mrs. Robert Janzen went to Wheeler Wednesday to get the boys.

Mr. and Mrs. W. J. Lewis returned last week from a 3 weeks vacation spent in Alaska. The Lewis family left Spearman July 26 driving to Denver where they took a plane to Anchorage. While there they visited her sister, Mrs. Amy Craig and son, F. B. Craig, a nephew and family, Mr. and Mrs. Lewis Craig, Mrs. Bessie Douglas and Mrs. Rozina Bryant, all of Anchorage and their daughter and family, Mr. and Mrs. Charles Schulz of Egle River. While in Seward they saw the extensive damage done by the recent earthquake.

Mr. and Mrs. Calvin Bodey and boys spent the weekend visiting her grandmother, Mrs. De la Jennings at Dallas.

Mr. and Mrs. M. D. McLaughlin and Danny and Jay Holland went to Oklahoma City Thursday where Danny had an appointment at the clinic.

two years ago, T. O. Lesly was selected as chairman; Dean Slaughter of Perryton, vice-chairman; and Jenna V. Ownbey, Spearman, publicity director.

Jay Naman, Texas Farmers Union president of Waco, will be present to discuss the farm bill legislation and to help any persons interested in farm and ranch problems which are a concern to the community, as well as the entire nation. Also present will be Kenneth Moss, Plains Area Fieldman of Paducah; and Mr. Norbert Schlegel, President of Wheeler County's Farmers Union.

Townsmen and members of other farm organizations are invited to attend in order that they may compare standards and policies of the Farmers Union groups. It is hoped that there will be enough membership present at this meeting to charter the county.

## Card of Thanks

The family of Pat Bennett wishes to thank everyone for their help during his recent operation, for their cards, letters, flowers and a special thanks to the blood donors.

Pat Bennett  
Mr. and Mrs. F. K. Banister  
Mr. and Mrs. Cecil Crawford  
Mr. and Mrs. J. D. Miller  
Mr. and Mrs. R. C. Bennett

Mrs. Ben Maize entertained her Canasta Club Tuesday afternoon in her home. Playing were Mmes. W. E. Bratton, W. H. Neilson, M. E. Jagers, A. W. Mobley, H. W. Bagley and the hostess.

Mrs. Tom Allen attended a family reunion in Frederick, Okla., and attended a school alumni meeting and banquet over the weekend.

# FREE



We'd give the world for a chance to demonstrate a **CASE** TRACTOR on your farm!

That's a picture of it above. A genuine Rand McNally world globe that stands 17 inches high. An \$11.95 value. It's our gift to you for your test-time behind the wheel.

We think we can show you a world of difference in tractor performance. Big-bore, long-stroke, high-torque engines that lean into your work with extra leverage. And record fuel economy that's been proved in official tests.

See us for a demonstration and the world is yours. No obligation to buy, but offer limited to qualified tractor users.

TRY CASE — THERE'S A WORLD OF DIFFERENCE



10- and 12-hp Garden Tractors    3-plow 430    3-4 plow 530    4-5 plow 730    5-plow 830    6-plow 930    8-plow 1200



**R. L. McCLELLAN & SONS, INC.**

Sponsored by

**R. L. McClellan Grain Co., Inc.**

**First State Bank**

Member F.D.I.C.

**B & B Grain Co., Inc.**

## Six Birthdays Anniversary Are Observed

Mr. and Mrs. Sam Henderson entertained recently with a patio ice cream party honoring the following people on their birthdays, Cindy Henderson, Phyllis Cook, G.M. Nichols, Mrs. Annie Allen, Judith Creacy and Katherine Smith and also honoring Mr. and Mrs. Don Allen on their wedding anniversary.

Homemade ice cream in several flavors and cakes were served to Messrs. and Mrs. L.F. Cook and Phyllis; G.M. Nichols & Garland; Jim Miller, Garrett Allen; John Bishop; Don Allen; Lloyd Roberts; Glenna, Lyndia and Larry; Cecil Crawford and Mac; Mr. Jim Williams and Mrs. Don Baldrige, and the hosts, Mr. and Mrs. Henderson and Cindy and Tommy.

## Allens Have Family Dinner

Mrs. Tom Allen and son, Newell, had a large number of their family with them for a buffet dinner Thursday.

Those attending were Mrs. Lanell Hood and children of Norman, Okla., Tommy Pearson of San Luis Obispo, Calif., Mr. and Mrs. Dave Wilson and children of Waka; Mr. and Mrs. Frank Allen and Mr. and Mrs. John Allen and Mrs. Nell McClellan, all of Spearman and Miss Jane Allen of Goodwell, Okla.

## Girls' Shoes Sport Fancy Footwork

Fall sees some fancy young footwork as girls step smartly into fall in new shoes designed for comfort, styled for fun and built for wear.

Style interest for school-age girls is heightened by a new and large choice of leather textures, including smooth, grained, patent, brushed, waxed, suede and embossed, reports Shoe Fashion Service of Leather Industries of America. She's Fashion Minded.

The fashion-minded young miss starts her season off on the right foot in a pair of smartly styled slippers or sandals. The lass who likes the classics steps out in trim updated moccasins and saddle shoes.

Saddle treatments may be the standard type, or the rounded "bubble" — in smooth leather, or in newer versions of patent leather or suede.

Pert tie shoes in brushed, smooth and grained leathers appeal to pert young ladies. Gaily colored ties, tassels, ghillies are featured. These trim ties are perfect playmates for fall corduroys and plaids.

**Boots Move Around**

The grammar-school gang — junior division of the boot brigade — likes the calf-high boot and the ankle bootie for school and play. In polished leather, textured grained and brushed leathers, and interesting embossed leathers, children's boots use buckles, Western fringe or buttons as trim. Long play periods out-of-doors call for sheepskin-lined boots.

## Boys' Wear Is Bolder And Brighter for Fall

The rugged look, the bright look, the bold look — these are the looks that are catching on in fall's boyswear. The range of styles, colors and textures sizzles with excitement.

The layered look is foremost among the new trends. Shirts and stretch turtleneck pull-overs under sweaters, sweater sets, vests with suits look especially well in a variety of textures and color combinations.

A return to tradition is seen in slacks sporting cuffs and new, wider belt loops, to ac-

## Mrs. Groves Tells Council Of Trip to Convention

The Home Demonstration County Council met at the HD Clubroom Tuesday, Aug.

## Student Enrolls In Nursing School

Miss Gladly Hopper is in Temple this week enrolling in nurse's training at the Scott and White hospital.

Her father, Bill Hopper, took her to Temple. They were accompanied to Temple by Miss Phyllis Cook.

Miss Hopper will return to Spearman and return to school in Temple in September.

She is a 1965 graduate of Spearman High School.

## Miss Creacy Returns to Job

Miss Judith Creacy returned to work this week as radio dispatcher in the Sheriff's office.

Miss Creacy underwent surgery about a month ago and has been recuperating at her home in Stinnett.

## Mrs. Day To Be Released Soon

Friends report that Mrs. Joe Day is to be released from Hansford Hospital soon. She has been hospitalized since suffering a heart attack recently.

Joe had just been released from the hospital after having a heart attack and had been home only a day or two when Mrs. Day was stricken.

## Local Buyers Attend Market

Representatives from four stores were attending a merchandise market in Dallas this past weekend.

Mrs. Bobby Nollner attended for Lady Fair and Chambers, Mrs. Jim Neely was there buying for Neely's and Frank Massad and his daughters, Jenny Lynn and Pat were buying for Massad's.

Mr. and Mrs. Virgil Mathews and Karen and Susan Barnes returned Saturday night after 11 days vacationing and sightseeing and visiting relatives in California. While there they visited Mr. and Mrs. C.L. Cox and family at Lynwood, visited Disneyland and Knotts Berry Farm, drove up the coast to San Francisco where they met and had dinner with Dr. and Mrs. D. E. Hackley and daughter, Joan and Mary Ellen Barkley. Mrs. Mathews states they were within a half block of the boundary of the race riots and where the National Guard were stationed in Los Angeles.

Mrs. Pat Cates was in Perryton Wednesday.

commodate wide, chunky belts and, often, Western touches.

Fit is important to boys of all ages. Hence the popularity of stretch fabrics in everything from sportshirts to suits.

Colors are brighter and richer. Burnished tones of pumpkin, rust, gold as well as vintage shades stand out.

Textures make news, especially brushed mohair and tweed; and fleece in outerwear.

Lake Meredith's

HARBOR BAY

Have you bought your lot?

24. The meeting was opened by Mrs. Claude Jackson, president, who presided at the business session.

Five HD clubs of the county were represented and each club president gave a report of her club activities for the summer months.

Mrs. Harold Groves reported on her trip as a delegate to the convention held at Purdue University recently and of the workshops she attended.

A Nominating committee composed of Mmes. Herb Howe, L.W. Rosenbaum and Claude Jackson was named.

The council voted to hold a food and furniture sale and bazaar Sept. 18 with the place sale will be held to be announced later. The proceeds from the sale will be used for the building fund and anyone wishing to donate articles may contact any club member.

The yearbook committee will meet August 27 in the office of the home demonstration agent, Miss Webb.

Attending were Mmes. B.J. Garnett, H.H. Crooks, James Cummings, Jack Johnson, W. H. Tarbox, L.W. Rosenbaum, Claude Jackson, Herb Howe, Tommie White, Bernard Barnes, Mary Gillispie, Frank Davis and the agent, Linda Webb.

Mrs. Bud King has returned from a visit with her son and family, Mr. and Mrs. Buddy King in Ruidoso, N.M.



While They Last— We're Giving These With Complete School Supply Orders:

- \* PANGBURN'S ROUND-UP CHOCOLATES
- \* REXALL THANK-YOU TISSUES

- \* TRANSPORTATION BOOK COVERS

Spearman Rexall Drug

## Large Selection of Pens

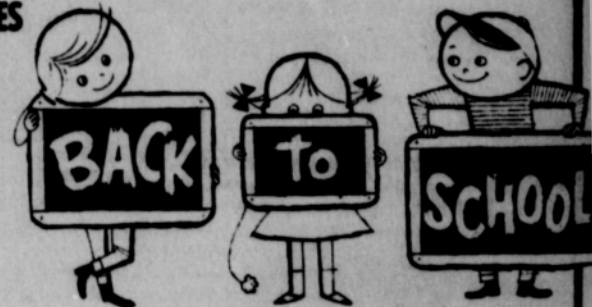
- \* SHEAFFER
- \* PARKER
- \* BK
- \* PAPER MATE

## Complete Line of School Supplies

including

- NOTEBOOK PAPER
- CRAYONS
- FILLER BOOKS
- BOOK SATCHELS
- PENCIL CRAYONS
- SCISSORS

Let's Get Ready To Go



## Great Starters !!



## - - - and Finishers !!

You'll find the vehicle you want among these Chevrolets and Oldsmobiles.

In our line-up you will find El Caminos, Corvairs, Chevrolets and Oldsmobiles in many models and colors.

Backing up this line-up you will find pick-ups and trucks by Chevrolet, plus good used cars and trucks.

For The Deal You Want See

# EXCEL CHEVROLET - OLDS.