

The SUNDAY Hansford Plainsman

VOLUME VIII., NUMBER 8

SPEARMAN, HANSFORD COUNTY, TEXAS 79081

SUNDAY, NOVEMBER 13, 1966

City Trying To Get More Low-Cost Units

The City of Spearman has taken the first steps to see about getting additional low cost housing units here. A representative of an architect firm met with the city council Monday night.

To get additional units the city will have to be re-certified by the federal department in charge of the housing program.

The spokesman for the architect firm said Spearman's Housing Authority has an excellent record with the federal authorities in Fort Worth, also, the fact there is waiting list of people wanting housing, will help.

There have been several new requirements put in the program since Spearman got its first housing units, the town will have to be recertified.

The council agreed to begin the work but with the understanding it can stop the work, if the council decides it is too costly.

Police investigated three thefts, seven accidents, and issued 71 traffic tickets in October. The animal control department collected 46 stray dogs during the month.

Corporation Court had 76 cases in October. A total of \$679,50 was assessed in fines. Of this amount \$205 was suspended, worked out of paid

(Con't. on page 7.)

Wolves Top Lynx 20-6



BIG CROWD- Lynx fullback Jerry Holton, in middle, finds plenty of Wolves in his way as he tries to pick-up some yardage for the Lynx. This was one of the few times the fullback was able to ramble Friday night. Plainsman photo

Loss Gives Spearman Lynx Season Record Of 4-5-1

A 50-yard pass play for a touchdown fired up the Dalhart Wolves here Friday night and they went on to rip the Spearman Lynx 20-6 in the final game of the year.

The long pass play broke open a cold first quarter defensive battle that saw the Lynx let two scoring opportunities slip through their cold fingers.

Spearman fumbled three times and lost two of them at critical points. Dalhart had four fumbles and lost two. One of these killed a drive deep in Lynx-land.

Speedy Dalhart wingback Stanley Moore and halfback Don Bowers gave the Lynx fits in the second half with their quick, elusive slashes into the line.

Spearman quickly got the ball in the first quarter when Garv Cates recovered a Dalhart fumble at the Dalhart 46.

Lynx Hal Shufeldt and Jerry Holton rolled the ball down to the Dalhart 28. Facing fourth and needing two, Charles Shieldknight dropped the snap from center, but still managed to get the ball to Shufeldt, but he was stopped short of the needed first down.

After the teams exchanged three punts, Spearman went to work on the Lynx 26. On the third play, Shieldknight hit Wesley Jenkins with a pass and he went 39 yards. He ran away from the last tackler, but the Wolf managed to get him off balance and he went down after stumbling for about 10 yards.

On the first play from the Dalhart 30, Spearman was knocked loose from the ball and Dalhart recovered.

A good defensive play by Mike Hendricks forced Dalhart to punt from their own 28. Spearman started from the Lynx 41, but on the third play the Lynx again fumbled and Dalhart recovered the ball at mid-field.

On the second play Bobby Smith dropped Moore for a loss and the Wolves went to the air. Doug Beasley lofted a pass downfield to Ricky Cunningham who had gotten behind the Lynx safety by a step. He took the perfect throw and won the race to the end zone.

Steve Holton blocked Robert Stout's extra point try.

The touchdown fired the Wolves and they took control of the game from that point. The Lynx lost eight yards on the next three plays and were never able to muster a scoring drive or offensive effort until the final seconds of the game.

Dalhart threatened twice more in the quarter, but had to settle for unsuccessful field goal attempts. Stout tried one from the Lynx 15 and another from the Lynx 11. Both were long enough, but off to the left.

In the third quarter Spearman took the kick-off and made their last offensive showing. Holton and Shufeldt pushed from the Lynx 27 out to the Lynx 45 where Dalhart got off a short punt and Dalhart started on its second scoring march.

Moore and Bowers took the ball 60 yards in 11 plays with Moore scoring from five yards out. Beasley pulled loose from a tackle and went in for the extra points to make the score 14-0.

Dalhart mounted its last scoring drive late in the third quarter and finished it in the opening minute of the fourth stanza.

The Wolves started the drive at mid-field and went in to score in nine plays. Moore scored from 17 yards out. Steve Holton again managed to get his hand on the extra point kick.

Dalhart got one more big break mid-way of the fourth quarter when Bobby Dilworth intercepted a Shieldknight pass at mid-field.

The Lynx defense stopped the drive at the Lynx 41.

With time running out, Dalhart sent in its second team and they pushed the ball from the Wolf 40 down to the Lynx 15. A 15-yard face-mask penalty helped the march.

At the Lynx 15, Joe Vandenburg got on a Dalhart fumble to set up the scoring dash by Bobby Smith.

With seconds left to play, Smith took a pitch-out and outran the Wolves for 75 yards and a touchdown. Shieldknight passed to Hendrick for the extra points, but the ball got away from the junior end.

On the next to last play of the game Smith intercepted a Dalhart pass at the Lynx 35 and ran it back to the Dalhart 45. A 15-yard penalty against Dalhart put the ball at the Dalhart 30 as time ran out, but Spearman got one more play, only to lose five yards.

Both teams went to the air in an attempt to open the defenses. Spearman completed one of eight and had two intercepted. Dalhart completed two of seven and had one intercepted.

STATISTICS

Spearman		Dalhart
106	Yards rushing	287
39	Yards passing	58
4	First downs	17
7-30	Punts	5-31
2-20	Penalties	4-40
8-1-2	Passes	7-2-1

Morse Takes District Crown

The first Interscholastic League District Football Championship in the history of the Morse School was wrapped up Friday night when the Mustangs beat Estelline 26-12 in Morse.

It was the same team that last year knocked the Mus-

tangs out of a part of the title. If the Mustangs could have beaten Estelline last year, they would have shared the district championship, but Estelline knocked the Mustangs out of the picture.

Morse got on the scoreboard in the first and third quarters.

Mike Johnson scored the first Mustang marker on a seven yard run. Bob Womble got the second touchdown when he went 55 yards with an Estelline punt.

Estelline scored in the second quarter when Triston Nar-

(Con't. on page 7.)



Randall Nichols

City Hires Patrolman

A new patrolman is now on the Spearman Police force, according to Chief of Police Leland Wood.

Randall Nichols of Plainview went to work here on Oct. 31.

He comes to Spearman after being with the Plainview police force for two and one-half years.

He is a native of Borger. Patrolman Nichols is married and he and his wife, Lynnette, have three children, Nick, Lisa and Marc.

The addition of Nichols to the force brings the Spearman department to full force. There are three patrolmen and the chief, plus a night radio dispatcher working now.



TOO TALL - This Charles Shieldknight pass was just too tall for Steve (Scooter) Jordan in the opening minutes of the last football game for the little senior. Behind him is Dalhart's Doug Beasley. Dalhart won the game 20-6. Plainsman photo

P-TA To Meet Monday Night

Dr. Bill Reeves, Superintendent of Schools here, will be in charge of the Parent-Teacher Association meeting Monday night, Nov. 14 in the Junior High School Auditorium at 7:30 p.m.

A nursery will be provided for small children.

The Hansford Plainsman
PUBLISHERS INC.
TEXAS PRESS ASSOCIATION
Member **1966**
Co-Publishers.....Jim Davis and Burl McClellan
County-Wide, Independent Newspaper published every Thursday and Sunday at 209 Main St., Post Office Box 668, Spearman, Texas 79081, Second Class postage paid in Spearman, Texas 79081.
Editor.....Burl McClellan
Manager.....Jim O. Davis

Mrs. Sanders, Clark Hosts Spearman Music Club

The Spearman Music Club met Tuesday evening at the HD Club Room with Mmes. Rue Sanders and Rafor Clark as hostesses.

Mrs. Russell Townsend, president, presided at the business session and the group heard a report from the District Convention held at Dawn, by Mrs. J.D. Wilbanks.

The study course "Free Form" was given by Mrs. Bernard Barnes.

Mrs. Wilbanks gave the program on "Old Instruments".

Mrs. George Bollinger gave two piano selections "Rhapsody" by Listz and "Climb Every Mountain" by Rogers.

Attending were Mmes. Barnes, Bollinger, Don Knox, Billy Miller, Fay Palmer, Russell Townsend, Wilbanks, Kenneth McKay, Miss Linda Webb and the hostesses.

George Warren is in Northwest Texas Hospital and is doing fine after surgery.

Girl Scouts Hold Meeting

Junior Girl scouts met Nov. 10 at the Scout house for their regular meeting.

Attending were Carma Burch, Gina Bulls, Sheila Cochran, Debbie Gregg, Rhonda Nelson, Linda Jordan, Nikki Jones, Stacy Pendergraft, Debbie Sheppard, Debbie Simmons, Cheryl Gibson, Angela Craig, Julie Calaway and the leaders Mrs. Shelton, Mrs. Sheppard and Diane Gregg.

Mrs. Lyon Hosts WSCS

The Mary Martha Circle of WSCS met at the First Methodist Church Wednesday with Mrs. P.A. Lyon as hostess.

Mrs. T.D. Sansing presided in the absence of the president and conducted the business session.

Program leader was Mrs. Kenneth Williams who introduced the skit "Is That My Kid." She was assisted by Mmes. Pope Gibner, Ray Messer, John Allen, T.D. Sansing and Jack McWhirter. Larry Williams played the part of the teen-ager.

Others attending were Mmes. R.E. Lee, P.A. Lyon and H.M. Shedeck.

Aerodynamics is the study of air as it moves around objects.



Miss Janie Beck

Study Club Names Winner Of Girl Of Month Award

The Spearman Study Club has announced their selection for the girl of the month for November. She is Janie Beck, daughter of Mr. and Mrs. Woodie Beck.

Janie is a senior this year at Spearman High School, and is head cheerleader. She has been active in choir, F.T.A., F.H.A., Band, the annual staff. She has been in the All Regional Band, participated in interscholastic league science competition and was in the cast of the junior play.

She was president of her freshman class, Sgt.-at-Arms, of her junior class, F.H.A. parliamentarian and has been a cheerleader for four years. Janie plans to attend West Texas State University in Canyon on completion of her high school work and will major in English.

Card Of Thanks

I would like to take this means to thank all my friends for the cards, both get well and birthday, and flowers that I received while I was in the hospital.

Walter E. Davis.

Mr. and Mrs. Sam Graves were called to Oklahoma City last week and left Thursday morning to be with his brother, W.L., who is seriously ill in the hospital at Oklahoma City. They returned home Sunday but are expecting a call any day to go back.

Mr. Walter E. Davis, a former resident, is now in a rest home in Pampa. He has been in the hospital there but was able to be moved last week. He recently celebrated his 91st birthday.

TOYLAND Sale

DOG ACCESSORIES



WATCHES

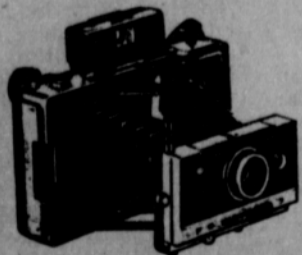
BILLFOLDS

GAS HEATERS

ELECTRIC HEATERS

UHF ANTENNAS

POLAROID CAMERAS



COME BY AND SEE OUR SELECTION OF GUNS AND GET THAT HUNTING LICENSE NOW SO YOU WILL BE READY WHEN THE SEASON OPENS



BICYCLES BABY DOLLS

GAMES GUNS

BABY CARRIAGE

WAGONS TRUCKS

TRACTORS



COLOR TV
IN STOCK
FOR ONLY

\$449.00 UP

PORTABLE TV MAKE A PERFECT PRESENT

ELECTRIC RAZORS FOR MEN & WOMEN

CITIZEN BAND RADIOS

COBRA 5 - JOHNSTON - HALLICRAFTER

POCKET BOOKS 1/2 PRICE

BOOKS FOR TODDLERS AND ADULTS



Western
Auto
Associate Store

FANCY THAT!..... by HAGGERTY

THE FIRST THANKSGIVING WAS CELEBRATED IN DECEMBER, 1621, AFTER A SUCCESSFUL HARVEST; 90 INDIANS AND THEIR CHIEF MASSASOIT FEASTED WITH THE PILGRIMS FOR THREE DAYS.



LINCOLN WAS THE FIRST TO PROCLAIM THANKSGIVING A RECURRING NOVEMBER HOLIDAY



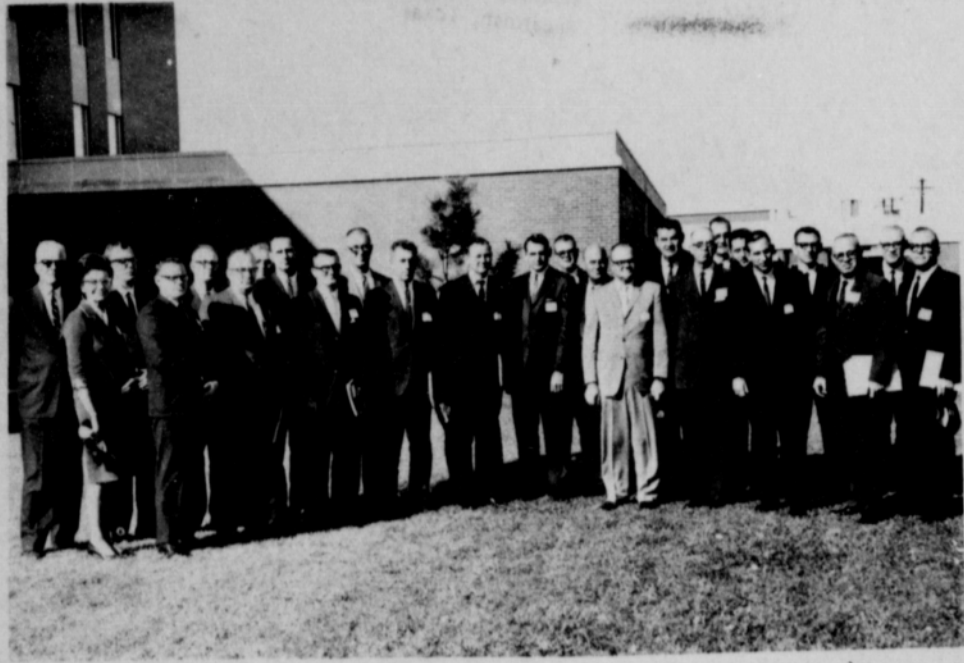
THANKSGIVING THE NEAR-OBSCURE IS THE AIM OF THE CATHOLIC BISHOPS' THANKSGIVING CLOTHING CAMPAIGN. DONATIONS COLLECTED IN NOVEMBER ARE SHIPPED TO THE WORLD'S POOR THROUGHOUT THE YEAR. BRING YOUR GIMBLE TO THE NEAREST CATHOLIC CHURCH.

Color TVs Popular

About half of the \$6 million that will be spent by Americans for home entertainment units this year will go for color television sets. About 5 million color sets will be sold in 1966, bringing the

total number in use to 10 million.

Sign at edge of desert: "Last chance to buy gas — next five stations are mirages."



CONFERENCE- Among 25 counselors and principals attending the conference recently on the campus of P.A.M.C. were L. L. Laws, Spearman High School counselor, and Clyde Barber, Gruver High School principal. photo courtesy P.A.M.C.

Barber and Laws Attend Conference

Twenty-five principals and counselors from Oklahoma, Kansas and Texas attended the annual conference meeting held on the campus of Panhandle A. & M. College recently. L. L. Laws of Spearman, counselor, and Clyde Barber, of Gruver, high school principal, were among those attending.

The program consisted of the admissions policy for colleges, testing programs for college students, student financial aid and proposed curricular changes in Oklahoma colleges.

A special guest at the conference was Dr. Vernon Odom, Regional III Director for ACT Testing Program, of Lubbock.

BULOVA WATCH INVENTORY REDUCTION

LOOK WHAT WE HAVE DONE TO PRICES

LADIES BULOVA WATCHES

- 14 Kt. White Gold Reg. \$71.96 Now \$36.00
- 23 Jewel diamond watch \$65 Now \$32.50
- 17 Jewel diamond watch, Reg. \$49.50 Now \$25.00
- 17 Jewel Reg. \$35.95 Now \$18.00
- 17 Jewel Reg. \$35.95 Now \$20.00
- 17 Jewel Reg. \$49.95 Now \$25.00

MEN'S BULOVA WATCHES

- 23 Jewel, self-winding, shock resistant Reg. \$59.95 Now \$30.00
- 17 Jewel, shock resistant Reg. \$39.95 Now \$20.00

Spearman Rexall Drug

PHONE FOR FREE DELIVERY
659-2226 Two Registered Pharmacists

Blood Drive Set Again; Bloodmobile Will Be in Spearman November 18

Hansford County will get a second chance to donate to the Red Cross Blood Drive this Friday, Nov. 18, when the Bloodmobile will be in Spearman. The bloodmobile will be collecting blood from donors at the Home Demonstration Club Room on North Bernice from 9 a.m. until 2 p.m. Friday. The last time the blood drive was conducted here, the county yielded only 99 pints of blood, less than half of the 200 pint quota that had been set. Dr. Bill Reeves, Superintendent of the Spearman Schools, is heading the drive this time. He asks that everyone who can give, please make plans to

donate to the drive this time. The blood from the Red Cross Drive goes both to the Armed Services and also to hospitals over the country participating in the Red Cross Blood Program. Hansford Hospital participates in the program. The Red Cross program serves over 97 million people in more than 1,300 counties. The Red Cross collects over 2.5 million units of blood annually. This is approximately 50 percent of all blood used in the nation. About 80 percent of this blood is collected during visits of the Red Cross bloodmobile to cities, towns, industrial plants and college campuses.

Nearly 2,400 hospitals receive all of their blood from the Red Cross and an additional 1,900 have their need supplemented by the program. Any whole blood not used in 21 days by the hospitals is returned to the Red Cross Center and is made into plasma and other medical products. These include Serum Albumin for treatment of shock and the replacement of lost proteins in the kidney and liver diseases; Fibrinogen, for treatment of hemorrhaging in certain complications of childbirth; Gamma globulin for prevention and modification of measles and hepatitis; Vaccinia immune

globulin for specific treatment for severe complications resulting from smallpox vaccinations. The Red Cross blood program has made possible the service to the American people and at the same time met all the blood needs of the military.

Have a windowless blank wall at the end of a passage or hallway? Try creating an illusion of spaciousness simply by hanging draperies as if to conceal a window, or try a colorful mural or a mosaic of small ceramic tiles.

Can My Family EAT!

Wagners Quart
ORANGE DRINK 4 FOR \$1.

Austex Tall Can
TAMALES 4 FOR \$1.

Facial Tissue Assorted Colors
KLEENEX 4 FOR 88¢

Mortons Frozen Large Size Each
MINCE PIES 29¢

California Sunkist
LEMONS LB. 17¢

Large, Firm, Green Heads
CABBAGE 2 lbs. 15¢

Texas Firm, Fresh, SWEET
POTATOES LB. 10¢

Campbells Tall Can
TOMATO SOUP 10¢

Bathroom Tissue Assorted Colors
DELSEY 4 roll Pak 39¢

Shurfine Vac. Pac. 1b. can
COFFEE 65¢

That's Why I Shop at CUT RATE

The MORE mouths to feed, the MORE good reasons for shopping at YOUR NAME'S! The bigger your family's appetites, the better our STOREWIDE LOW PRICES for giving your budget a break. Thrift gets a big lift here because you can count on QUALITY while you count up CASH SAVINGS! We've the famous brand products your family likes best — and best of all, our really LOW PRICES let 'em eat up while you SAVE UP — at CUT RATE

Krafts Cheese Spread 2 lb. Loaf
VELVEETA 97¢

Zestee 18 oz. Tumbler Assorted
PRESERVES 3 FOR 88¢

AF BRAND ALL MEAT
FRANKS LB. 59¢

FRESH HOMEMADE
SAUSAGE LB. 59¢

Austex Plain "no beans" Tall Can
CHILI 38¢

Shurfine Cashed No. 2 can
PINEAPPLE 25¢

Regular 10 oz. Bottles Ctn. of 6 plus deposit
PEPSI COLAS 39¢

Premium Saltines lb. box
CRACKERS 35¢

Wholesome Goodness In EVERY Drop. It's Quality Milk AT ITS BEST

MILK

Shurfresh Half Gallon 49¢
Gallon Carton 98¢

Ranch Style Tall Can
BEANS 2 FOR 27¢

Shurfine Whole Kernal 12 oz. V.P. Cans
CORN 2 FOR 37¢

Starkist Chunk Style Flat Can
Tuna 33¢

Shortening 3 lb. can
BAKERITE 59¢

"Mid-Week Values for Tuesday & Wednesday Nov. 15th & 16th"

Cut Rate GROCERY



SEVENTH GRADE TEAM--These are the members of the Seventh Grade team. The picture was made early in the season. Back Row, left, David Slater, Timmy Ratzloff, Gary Upchurch, Gerry Harnish, Kirby McAdams, Rex Cook, Terry Burch, Danny McLaughlin, Art Lyuch, Denny Schmehr, Ricky Reger,

Danny Ennis, Gerald Bowers, Emie Garcia, Front Row, left, Phil Stumpf, Richard Sasser, Harvey Locke, Larry Fryer, Ronnie Head, Dee Vanderburg, Joe Bob Grayson, Kim Brock, Jay Holland, Seth Ralston, Ricky Driscoll, Bradley Pendergraft, Billy Brown and Bobby DeArmond.

C&B Photo

Hansford Hospital News

Patients in Hansford Hospital are Dorothy LaFaver, Rebecca Butcher, Sus Crandall, Marilyn Hughes, Mel Byrd, Elaine Odgaard, Elsie Trohoder, Velma Martin, James Wellman. Dismissed were Gene Cudd, Clara Leib, Sarah Lotmax, Randy and Roy Washburn.

Future Readers of The Plainsman

Mr. and Mrs. Stewart Crandall are the parents of a boy born Nov. 9, at Hansford Hospital. He weighed 8 lbs. 1 1/2 oz.
Mr. and Mrs. Roger D. O'degaard are the parents of a girl born Nov. 9. She weighed 6 lbs. 8 oz.
Mr. and Mrs. William Hughes are the parents of a boy born Nov. 10. He weighed 8 lbs. 10 1/2 oz.

Big Dalhart B-Team Whips Spearman 44-8 Eighth Grade Defeats Dalhart Eighth 26-8

A big, strong Dalhart B-Team whipped the Spearman B-Team 44-8 in Dalhart Thursday night. The Wolves boosted a line built around two boys who weighed over 220 pounds. Both have moved to Dalhart this year and are ineligible for varsity play.

Dalhart was leading 38-0 before Spearman got on the scoreboard. Bruce Brown went 36 yards for the first score. Jimmy Brown scored the extra points. Spearman had a boy injured in the game and finished up with only 11 players.

Spearman's Eighth Grade team ended its season Thursday night by beating Dalhart here 26-8. Quarterback Robert Archer scored three touchdowns and two extra points and Henry Flores scored the other Spearman touchdown. The win in this final game

gave the Junior High team a season record of eight wins, one tie and one loss. Coach Jerry King said the team either ended up second or third in the district. Boys Ranch won it with a record of nine wins and a tie. If Phillips beat Panhandle, then Spearman was second. If Panhandle won, Spearman is third.

Birthday Party For Grandson

Mrs. Mabel Edwards honored her grandson, Allen Weant of Gruver, with a family get-together on Saturday evening. Those enjoying the birthday cake were Mr. and Mrs. Billy Weant and family of Gruver, Mr. and Mrs. Waymon Edwards and family and Mrs. Mabel Edwards.

Hi-Low Bridge Club Meets

Mrs. W. H. Gandy was hostess Thursday evening in her home to the Hi-Low Bridge Club. Gwendred Lackey held high score and Mrs. J. K. Hicks had low. Attending were Misses, Joe Dan Bryan, John Berry, J. K. Hicks, R. E. Lee, Faye Lynch, two guests, Mrs. Gwendred Lackey and Mrs. W. L. Russell and the hostess, Mrs. Gandy.

Rennie Berry, son of the Rev. and Mrs. Luther Berry, was reported to have received a back injury while playing touch football at Oklahoma Baptist University at Shawnee. The Berry's left Wednesday to go to Shawnee.

Mr. and Mrs. R. E. Lee had as guests last weekend, Mr. and Mrs. Van R. Reed of Groom.

Out-Manned Freshmen Fall To Dalhart 34-16

"The boys played hard, but Dalhart just out-manned us," said Coach Eddy Clemmons after his Freshmen Team lost to Dalhart 34-16 there Thursday night. Joe Bill Cochran scored the first touchdown on a four yard dash and Donlain Whitefield got the extra points.

The second Lynx score came on a 25 yard pass from Randy Weston to Whitefield. They did the same act for the extra points. Clemmons said the freshmen played real well in the second half and held the big Dalhart freshmen.

Mrs. Oscar Donnell and Steve and Mrs. Ed Hutton spent last weekend with Miss Bethany Donnell who is a student at Texas University.

Mr. and Mrs. R. E. Lee were in Colorado Springs last week where they visited their children and families and Mrs. Lee had a check up following her recent surgery.

Mrs. Burl McClellan and Dr. and Mrs. W. C. Davis of Memphis spent last weekend visiting Coach and Mrs. Bill Davis and children in Decatur.

Mr. and Mrs. Knox Pipkin, who were injured in a car wreck in Amarillo recently are reported to be improving.

A guest in the home of Mr. and Mrs. Bert Briley on Monday was Mrs. Mary Haines of Per-ryton.

WHERE DID WE GET THE WORD "THANKS"? FROM THE NORSE "THANKA"...



TO TODAY'S THANKSGIVING CLOTHING CAMPAIGN!



Language scholar Eric Partridge suggests that we owe "thanks" in its verb form to the Nordic invaders - to the Frisian "thankia", to the Saxon "thankon" or to the Norse "thakka". They all meant "to thank" and to this day are preserved in modern Germanic words for "thank you": the Danish "tak" and the German "danke", for instance.

As a noun, Partridge theorizes, the word "perhaps comes straight from the Old English *thanc* or *thonc*, meaning 'a thought', hence a grateful thought, hence the expression of such a thought."

That's where the definition has returned to its starting point. For through their generosity, Americans are putting "a thought" back into "thanks". Sometimes it's by sharing the Thanksgiving table with a few boys and girls from an orphan's home



THE CHRISTMAS CARD YOU SEND represents you in the homes of friends and family. Don't you want it to be the best? Come in now and select a personalized card from one of our Hallmark Albums.

PLAINSMAN OFFICE SUPPLY

DO YOU KNOW

IS IT GOLD, OR JUST LOOK LIKE IT! HOW MANY JEWELS, OR DOES IT STATE! WHAT KIND OF MATERIAL IS IN CASE & BAND GUARANTEED!!! WHERE IS IMMEDIATE WATCH SERVICE AVAILABLE - OR IS MAILING AND WAITING THE SERVICE!



NATIONAL BRAND WATCHES

SPECIAL \$19.95

REG. \$29.95 17 JEWEL SHOCKPROOF ANTI-MAGNETIC GOLD CASE SWISS MADE



SPECIAL \$19.95

REG. \$27.50 ALL STEEL CASE 17 JEWEL SHOCKPROOF WATERPROOF ANTI-MAGNETIC SWISS MADE

GUARANTEED IN OUR STORE--NO MAILING!!! REMEMBER--DON'T DISAPPOINT THAT "SPECIAL SOMEONE" FOR THE WATCH YOU'LL GIVE WITH PRIDE LET YOUR JEWELER BY YOUR GUIDE

JEWELRY IS OUR BUSINESS - NOT A SIDELINE

REMEMBER YOU ALWAYS SAVE AT HARPS YOUR HOMETOWN JEWELER

310 S. MAIN

659-2700

SPEARMAN

Deloris Guthrie Gives Rho Rho Program

The home of Mrs. Jim O. Davis was the scene of the Thursday, Nov. 10 meeting of Rho Rho Chapter of Beta Sigma Phi.

Mrs. Davis, president, conducted a short business session at which time the group drew names for new secret sisters and revealed last year's secret sisters' identity.

Glenda Guthrie read a portion of the Book of Beta Sigma Phi.

The program, "Awareness of Blessings", was presented by Deloris Guthrie after which a group discussion was held.

Refreshments were served to

Jeanette Allen, Anne Archer, Peggy Boatwright, Karen Countiss, Marti Garnett, Deloris Guthrie, Charlene Jackson, Glenda Guthrie, Judy Martin, Linda McLain, Beverly Sparks, Joan Stewart, Verna Strawn, Peggy West, Ramah Bosecker and the hostess, Linda Davis.

The George Buzzards had as recent guests Mr. and Mrs. Will Sanders of Oklahoma City, Mr. and Mrs. George Miller of Chicago and Mr. and Mrs. Joe Koechel of Enid, Okla.

Judo Program Will Be Given

Xi Zeta Upsilon Chapter of Beta Sigma Phi will have its meeting, originally scheduled for Thursday, on Wednesday evening, Nov. 16 at 7:30 p. m. in the Farm Bureau building.

The program will be a judo demonstration by Mr. Elliott of Amarillo.

Members of Rho Rho Chapter will be special guests at the meeting which will be hosted by Day McClellan assisted by Marva Hohertz and Mona Beth Windom. Members are urged to attend the meeting.

Mr. and Mrs. T. C. Kitchens and Barbara and Donna Boyd went to Lubbock last weekend where they attended the ballgame and visited Sandra Kitchens and Wesley Brinkley, students at Texas Tech.

Expense Paid Trip To Capital Goes To North Plains Winner

All expense paid trips to the nation's capitol city will be awarded to winners of an oratorical contest was announced this week by Earl Waide, manager of North Plains Electric Cooperative in Perryton.

The contest is open to any boy or girl at least 15 years of age to 17 years of age prior to Sept. 1, 1967, Mr. Waide said. Winners will join winners of similar contests sponsored by other electric cooperatives across Texas on the third annual Texas Electric Cooperative Government-in-Action Youth Tour to Washington, D.C.

All expenses of the 13 day trip beginning June 8 will be paid by North Plains Electric Cooperative Mr. Waide said. Each entrant will be required to give a 5 to 10 minute talk on the subject "Rural Electric

Cooperatives Helping Texas Grow" and answer 1 or more of 50 questions asked by the judges.

The oratorical contest will be judged on the basis of knowledge of subject-40%; speaking ability-30%; poise-10%; personality-10%; appearance-10%.

Interested young people may obtain an official entry blank from their county agent or the office of North Plains Electric Cooperative. The deadline for submitting entries will be Dec. 18, 1966 Mr. Waide said.

As participants in the Texas Electric Cooperative Youth Tour, local contest winners will travel by chartered bus to Washington, D.C., where they will spend four days visiting places of historical interest and seeing the nation's government in action.

On Wednesday, June 14th,

the Texas group will meet more than 800 students from other states for a program sponsored by the National Rural Electric Cooperative Association and the Rural Electrification Administration. The program will feature presentations by officials of these organizations and other Washington personalities and possibly the Presidential staff.

The eventful day will end with a charter cruise down the Potomac River which will include entertainment and refreshments.

Also included on the 13 day agenda will be visits to the following: George Washington's Mount Vernon home, Arlington National Cemetery, the U.S. House and Senate, the U.S. Department of Agriculture, the Smithsonian Institute, the Lincoln Memorial and other places of interest.

FALL THANKSGIVING ARRANGEMENTS

20% off on all feather supplies. 10% off on all vases.

Phone 659-3027 **Dorothy's Novelties** 912 S. Bernice

Consider This

We know our PRICE is Right

**P
R
I
C
E**

POWER KING of high-speed, hard pull tractors. Total powered for Total performance, When it comes to picking-pick the one that puts you AHEAD.

RUGGED STRENGTH any way you look at it the Rear End of 1206 tells you a story of tremendous strength and reliability.

INTERNATIONAL INTEREST there will be no interest on any new tractor purchased until March 1, 1967! Come in for a Demonstration.

COMPLETE COMFORT AND CONVENIENCE

The 1206 is engineered with you in mind. Designed with Convenient controls with utmost comfort so you don't suffer to make it work.

ECONOMY more acres worked---less fuel burned. Toughest tractor ever built with Power, Versatility, service, economy---but most---dependability.

Here's 112.6 hp on the pto...in a new tractor built tough from the tires up to stand the cruel demands of big power pulling big implement as fast speeds. Farmall 1206 Turbo tractors have all the strength and capacity boosters listed above plus a basic dependability already well established with American farmers. And they offer the best power steering, power brakes, power shift pto, and power shift Torque Amplifier-in addition to a new pressurized cab, all wheel drive and other desirable accessories. If you're the kind of farmer who wants tremendous power, and who insists on full dependability....test a Farmall 1206 Turbo soon.

NORTH PLAINS TRUCK & IMPLT. CO.

HWY 15
SPEARMAN, TEXAS



The people who bring you the machines that work

PHONE
659-2421

An Editorial

Why Football

By Coach Bert Graham

(Published in Stroud, Oklahoma weekly newspaper)

If is the time of the year for footballs to start flying and the cheers from fans all over America to go up for their favorite team. For many parents whose sons are football players or prospective football players, it is a time of aches, pains and sometimes wondering if it is worth it.

As Paul (Bear) Bryant, football coach at the University of Alabama stated: "If you take all of the ingredients that go into making up the game of football and pour out, you have a well-portioned phase of the American way of life."

Football is very much the American way of life. It teaches boys to have complete control of themselves, to gain self-respect, give forth a tremendous effort and at the same time learn to observe the rules of the game, regard the rights of others and stay within the limits of sportsmanship.

As in life the players face challenges where they learn to succeed or accept failure. They have an opportunity to match skills, strength and determination against each other. They learn that if they are willing to work hard, rise to the occasion when opportunity presents itself, look people in the eye, try harder when tired, they will win. Not only win the game, but more important the boys will win the battle over themselves. They will learn to associate, depend upon and work with other people. They will develop the confidence and poise that comes from the satisfaction of being a winner.

For many young men the most developmental and memorable times of their life are, the pre-game prayer when they seem so close to their teammates, the hard practices that make you so tired you think you are going to die, but instead you reach back for that little extra and keep going, and the feeling of satisfaction and accomplishment that comes from knowing you have done your best.

In a time when there are so many questionable activities available to capture the interest of our young people, it seems very refreshing to realize there is something as wholesome and All-American as football, in which they can participate and develop these qualities that are so vitally important. At the same time they are developing these priceless characteristics they are playing and enjoying fellowship with the finest grade and quality of present day American youth.

Patrolmen Investigate County Accidents

The Texas Highway Patrol investigated 27 highway accidents in the four county area of Hansford, Hutchinson, Ochiltree and Sherman counties during October.

In these accidents four people were killed and 16 were injured. The damage to property totaled \$23,537.

There were two accidents in Hansford County during October. There were three persons injured and one killed in these mishaps. The property damage was estimated at \$3,125. The fatal accident was on Sept. 30, and was not in the September report.

Hutchinson County had 16 accidents on the highway. Two people were killed and seven were injured. Damage was estimated at \$14,302.

Ochiltree County accounted for six accidents in which one was killed and three injured. The damage in these wrecks was estimated at \$3,260.

In Sherman County there

were three accidents and three people were hurt. The damage was set at \$3,260.

In Sherman County there were three accidents and three people were hurt. The damage was set at \$2,850.

Hansford County has had 14 traffic accidents on the highways of the county this year. There have been two people killed and 13 persons injured. Total property damage was estimated at \$19,600.

The Highway Patrol recommends that drivers get the jump on winter driving by having cars safety inspected now. Cars can be safety inspected now for the coming year.

In the 31 counties in the Panhandle district there were 229 accidents during the month. There were 23 people killed and 116 injured. Property damage was \$199,237.

Queen ants may live as long as 10 to 15 years.

CLASSIFIED ADS WORK WONDERS

SO THEY SAY

FOR SALE

For Fuller Brush products write 2301 Georgia Drive, Perryton, Texas or call 435-4967. 73tfc

Five room house with basement, draperies, deep freeze, one-car garage, one and one-half acres of land. Phone F17-2731 or F1-7-2282, J.E. Sluder, Gruver, Texas. 64tfc

FOR SALE-10' x 43' trailer, 1964 model, \$250 equity, payments \$69.39 mo. 15 N. Endicott. Phone 2310. 99-tfc

1 new 3 bedroom home with 1 1/2 baths. Collard Realestate, ph. 659-2501. 86tfc-c

Industrial lots on Gruver Highway, Cecil Crawford, 659-2409. 61tfc

FOR SALE-Corner bathrhub, Virgil Wilbanks, 659-3385. 3-tfc

3 bedroom brick house, 2 baths, fenced--to be shown by appointment. Only call 659-3166, 1005 Barkley, will take trade for equity. 80tfc

Electrolux

The Amazing Electrolux with power nozzle. Rotating brush action cleans all rugs faster--gently fluffs carpet nap. Sales and Service. Call Don Seymour at 435-3880, Perryton, Texas. 68-69-p-70tfc

FOR SALE-Ideal, industrial lot 100' x 225' with good fence, Emmett Sanders, Real Estate. 6-tfc

FOR SALE-Lot on Spearman airport, 100 ft. wide, 200 ft. deep. Call 3065 after 5 p.m. 1-tfc

FOR SALE-Lot and barn with water in Crawford addition. Cheap. See Pete Vernon. 104-tfc

FOR SALE-1962 Skyline house trailer, size 10' x 50' with kitchen, living room, 2 bedrooms and bath. This mobile home is in excellent condition and can be seen by contacting George C. Miller, Darrrouzett, Texas. 7-tfc

FOR SALE-1966 Plymouth, 2 door V-8 automatic, P.S. 56 Ford 1/2 ton pickup V-8. Phone 659-2295. 8-1p

FOR SALE-Dresser with large mirror. Phone 2941. 7-tfc

FOR RENT

FOR RENT-One bedroom brick apt. Call 2274. 93-tfc

WANTED

Wonder Destroyed

One of the original seven wonders of the world, the Pharos Lighthouse of Alexandria, was destroyed by an earthquake in the 13th century.

WANTED: Real estate listings. Emmett Sanders, real estate broker. (Phone 659-2516, nights 659-2601. 104-tfc

WANTED: Baby Sitter, in my home - Phone 659-2375 between hours of 8:30 a.m. and 2:30 p.m. Mrs. Sheryl Byrd. 8-2c

LOST

LOST-550 lb, white face steer, 4-H Club calf, Lazy 7 brand on hip. Strayed from pen west of town. Contact Louis Schnell. Phone 659-3433. 103-tfc

SERVICES

SERVICE-Ditches from 3-12 inches, any desired dept. S. D. Jones 659-2809. Harold Shaver 659-3474. 17tfc-c

Christmas Cards, by Hallmark at Plainsman Office Supply, 209 Main.

Amarillo Daily News & Globe Times home delivery. Call 2685. 14tfc

Proven Registered White Toy Poodle Stud Service. Reasonable. Call 659-2082. 104-tfc

WANTED: Irrigated and dry farmland, Cash lease or crop rent. Phone 3063. Spearman. 1-tfc

TO GIVE AWAY-part Collie puppy and part Collie grown female dog. 717 S. Townsend. Ph. 659-2156. 7-tfc

Will keep children in my home. 103 Wanda Drive. Phone 2837. 8-4p

GARAGE & ATTIC SALE-Fri. and Saturday, Nov. 11 and 12, and Fri. and Sat., Nov. 18 and 19. Back door of Ann's Beauty Salon, 303 Main. 7-3c

REDUCE - safe, simple and fast with GoBese Tablets, Only 98¢. Gordon's Corner Drug. 8-12-c

Select your Christmas cards today from our selection of Hallmark cards in a wide variety of choices. Plainsman Office Supply.

Non-Food Store Items

Non-food items account for about 25 cents of every dollar spent in food stores nowadays, says the Texas A&M University home economics research service.

Mold Egg Salad

Mound chopped egg salad in a mixing bowl and chill; turn out and surround with salad greens; garnish the top with piment and parsley or water-cress springs. Chicken salad may be treated the same way. And so can potato salad.



GLITTERY—Use scraps of Christmas wrap and gold-hued cord for dangling ornaments—or a mobile. Shapes may be cut of cardboard and glittery trim applied with rubber cement.

City . . .

(Con't. from page 1.)

for by theme writing. A total of \$474.50 was collected.

The city's legal council informed the council that under the franchise with General Telephone Co., the city had no control over the prices charged by the company for installing phones, reconnecting and moving phones.

Therefore, the council took no action on the increase in service charges the telephone company said it was going to initiate. The council said if the telephone company increased the charges, they did it without the council's agreeing to it.

Decorate Kitchen

Tired of conventional designs for kitchen decorations? Try printing favorite recipes on colorful paper, with or without mats, framing them and hanging them on the vacant wall or the strip between backsplash and cabinets.

Lemon Lifts Pie

For a delightful change when baking your favorite apple pie, change the pastry by adding lemon juice and grated lemon peel to the pastry, using the lemon juice as part of the required water.

Morse . . .

(Con't. from page 1.)

by went over from six yards out. The try for points was no good.

Morse put the game out of reach in the third quarter when Henderson scored from the six yard line.

Henderson passed to Womble for a touchdown. The play covered 23 yards. Johnson scampered in for the extra points.

Narby returned the scoring favor by taking the Morse kick-off 70 yards.

The bi-district opponents for the Mustangs will be either Goree or Harrold. The title will be decided this Friday and the bi-district title will be decided on Thanksgiving weekend.

The eight-man league plays to a regional championship. Morse has had some championship teams, but not under Interscholastic League play.

Bowlers Will Benefit Heart Fund

This week is "Bowl to Strike Out Heart Disease" week across the nation and at Bowl Mor Lanes in Spearman, according to Heart Bowling Week Committee Chairman Jane Meek.

There is competition for both league and open bowlers. The bowlers pay \$1 to enter the competition, then bowl three games in open bowling or in a league in regular competition.

The bowler with the highest score in each league will get a prize and those in open bowling will compete against the owner, Shorty Hamlett. Those who beat Hamlett get a free game.

Mrs. Meek is being assisted in Bowling Week by Mrs. Gertrude Archer and Hamlett. Of the \$1 entry fee, 70 cents goes to the Heart Fund and 30 cents goes into the prizes.

Since bowling is good exercise and is healthy, and the money goes to fight heart disease, Mrs. Meek urges everyone to take part in this week of bowling.

School Menus

MONDAY, NOV. 14
Meat Balls/Brown Gravy
Seasoned Blackeyed Peas
Mashed Potatoes
Tossed Salad/Fr. Dressing
Banana Pudding
Bread Milk
High School Meat Choice
Salisbury Steak
TUESDAY, NOV. 15
Chicken Pie
Buttered Corn
Green Beans with Bacon
Dill Pickle Spears
Citrus Jello with Fruit
Honey-Peanut Butter Spread
Hot Rolls-Butter Milk
High School Meat Choice
Beef Stew-Crackers
WEDNESDAY, NOV. 16
Hot Dogs-Mustard
Seasoned Pinto Beans
Potato Chips
Cabbage, Vegetable Slaw
Cherry Cobbler Milk
High School Meat Choice
Grilled Cheese Sandwich
THURSDAY, NOV. 17
Oven Fried Steaks
Baked Potatoes
Green Peas with Celery Soup
Apple Wedges
Birthday Cake(November birth.)
Break Milk
High School Meat Choice
Ham Salad Sandwich
FRIDAY, NOV. 18
Hamburger-Mustard or
Tuna Salad Sandwich
Potato Gems-Catsup
Lettuce-Tomato Salad
Dill Pickle Slices
Fruit Cup
Chocolate Chip Bars Milk



when they heard that Hi-Fi and Stereo values at Burton's TV can't be beat. When they heard that "We Service What We Sell" they knew they were safe.



White House Lumber Co.

Building & Plumbing Supplies

Phone 659-2818
306 Davis

Tommy Gooch Agency

Farm Bureau Insurance

Spearman, Texas

Cummings

Refrigeration

Heating

Air Conditioning

Sales & Service

Specialist

659 - 2721

Spearman

For Your Convenience

We now have

ICE

L. D. Stagg

Top Mechanic

Simmons CHEVRON SERVICE

Loren Simmons

659-9985

Plains Shopping Center

RON'S PLAN SERVICE

Residential and Commercial

1817 Colgate in Perryton

PHONE 435-5287

LET US HELP YOU DESIGN YOUR HOME

"IF YOU'RE DRIVING DOWN THE ROAD AND YOU SEE A FINA STATION AND IT IS ON YOUR SIDE SO YOU DON'T HAVE TO MAKE A U-TURN THROUGH TRAFFIC AND THERE AREN'T SIX CARS WAITING AND YOU NEED GAS OR SOMETHING PLEASE STOP IN"
SPEARMAN FINA SERVICE STATION

Mrs. Hohertz Gives Program For WSCS

The Susannah Wesley Circle of WSCS met Wednesday morning at the First Methodist Church with Mrs. Richard Baxter presiding.

Minutes were read and roll called by Mrs. Ray Messer.

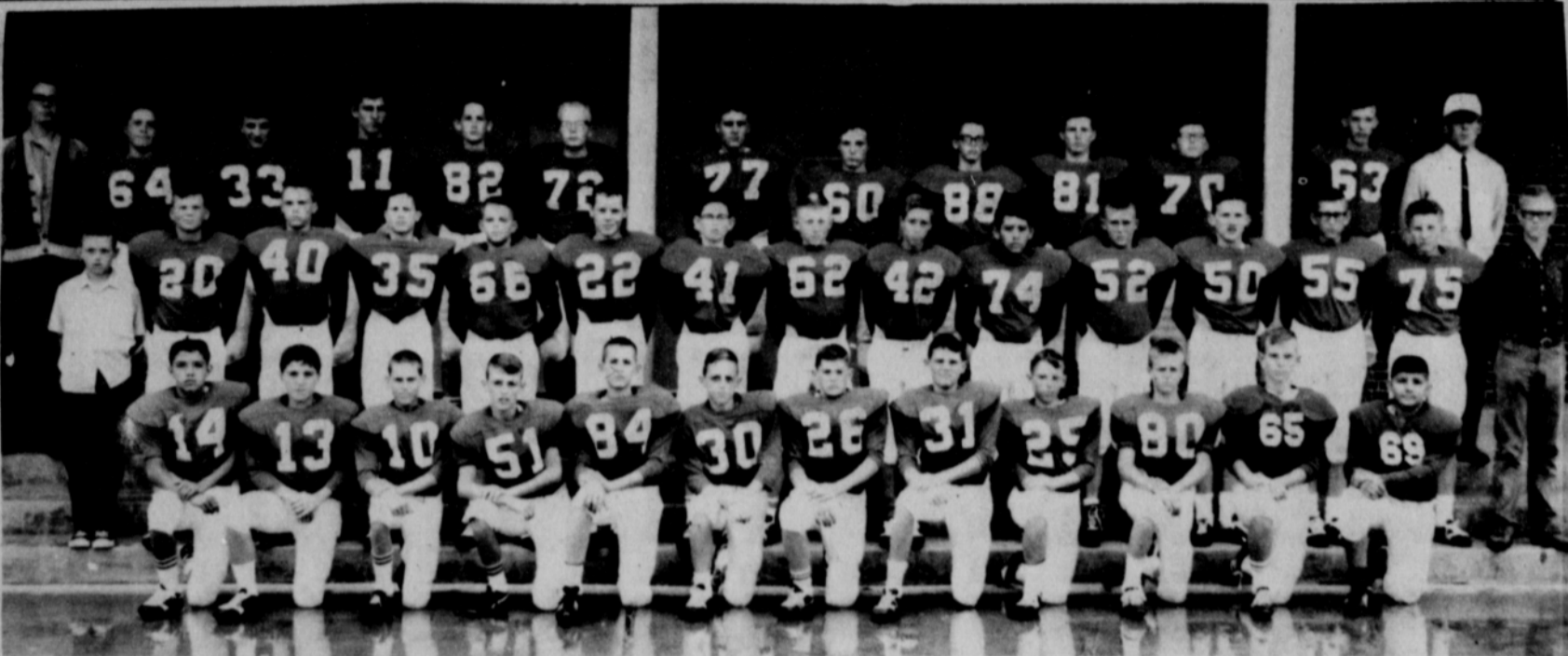
Mrs. Bob Hohertz gave the program titled "Is That My Kid?"

The meeting closed with the WSCS benediction.

Mrs. Robert Adamson, hostess, served refreshments to members, Mmes. Baxter, Wesley Daniel, Garland Head, Ray Martin, Bert Sheppard, Bill Strawn, Winfred Lewis, Larry McIntire, Burl Buchanan, Don DeArmond, George Collard, Bob Hohertz, John Trindle, Messer and a guest, Mrs. John Villarreal.

MIAMI, Fla. — Cuba's population has increased by 1,200,000 since Fidel Castro took over in 1959, Havana radio says.

Some 500,000 Cubans have gone into exile during the period but Havana radio, monitored in Miami, reported Cuba has 7,800,000 inhabitants, according to a new census, as against 6,600,000 in 1959.



EIGHTH GRADE TEAM--These are the members of the Eighth Grade football team. The picture was made early in the season. Back row, left, Mgr. Byron Henderson, Rodney Simms, Tommy Loveday, Robert Archer, Gary Evans, Mike Schnell, Ronnie Lusby, Edgar Womble, Larry Laws, Eddie Richeson, Kenneth Buchanan, Steve Thomas and Coach Jerry King. Middle Row, Left, Mgr. Steve Benton, Terry Butt, Kelly Rosenbaum, Steve Greever, Pat Sloan,

James Lyon, James Glover, Ronnie Coats, Truitt Gates, Paul Torres, Andy Stumpf, Danny Carroll, Richard Moch, Jim Jenkins, Steve Hicks. Front Row, left Henry Flores, Gary Staggs, Frank Lemons, Tony Harper, Freddie Shield-knight, Jimmy Henry, Rodney Schroder, Matt Lair, Phil Windom, Victor Schuman, Karl Kingham, Carol Lopez. Not pictured, Eugene Reneau. C&B Photo

JUMP NO JOY

FORLI, Italy — At 900 feet, Maria Grazia Faietta, 19, collided with another practicing parachutist after leaping from a plane for her second jump in amateur training. Her chute opened only halfway and she plummeted to earth but landed in rain-soaked soil and suffered only minor bruises.

Hand-Mix Cookies

Cookie mixtures that contain butter, sugar, flour and flavoring will work together well if you use your hands for the mixing. However, the dough usually needs to be chilled before it is shaped.

ISRAEL SHOP STRIKE

JERUSALEM — Most of Israel's shops closed Tuesday for 24 hours in a "warning strike" protesting increased business taxes levied by municipalities. Movie houses stayed open but turned off their outside lights to show sympathy with the businessmen.

Rainbow Girls Plan Masquerade Party

Rainbow Assembly No. 106 met Thursday, Nov. 10 in the Hansford Lodge Hall. A masquerade party was planned for Nov. 19. The Nov. 24 meeting was cancelled because of the Thanksgiving holidays.

Current projects discussed were the continuation of Lynx Booster Tags sale and the hose drive.

Refreshments were served to the following: Penny Gaither, Susan Uptergrove, Toni Hudson, Becky McClellan, Betty Mathis, Sandra Fowler, Patsy Powell, Margaret Hall, Cheryl Craig, Carol Booth, Faye Palmer and guests, Mr. and Mrs. Don Hendricks and Ceril Batton.

Mrs. Don Jones Hosts Roundtable

The Roundtable of the Women's Missionary Union met Thursday, Nov. 10 in the home of Mrs. Don Jones.

The book reviewed was titled "Innocent Dreamer" by Alice Hobart and was given by Mrs. Luther Berry.

Present for the meeting were Mmes. Abbye Ownbey, A.D. Parson, Rex Sanders, Sr., A.C. Greene, Glen Hiller, Woodville Jarvis, R.H. Gray, Roscoe Nelson, Luther Berry and the hostess.

Mrs. Sam Graves and her sister-in-law, Mrs. Russell Baker returned last week from a trip to Raleigh, N. Carolina where they visited Mrs. Graves' son, Mr. and Mrs. Albert Graves and girls. While there they made a trip to the coast enjoying the beautiful fall foliage during the entire trip. They returned via Oklahoma City where Mrs. Baker visited her sister, Mr. and Mrs. Uel McCain at Edmond and with Mr. and Mrs. Leonard Tevebaugh at Bethany, before returning to Spearman to visit her sister, Mrs. C.W. Kirk and to return to Stratford where her husband is custom harvesting.

June Conner Gives Program

The Fidelis Sunday School Class of the First Baptist Church met Tuesday evening, Nov. 8 in the home of Altha Groves with Cleo Taylor as co-hostess.

June Conner gave the devotional using the Thanksgiving theme.

A social hour followed and refreshments were served to Mmes. Vaye West, June Conner, Mathilde Entrekin, Lillian Smith, Dee Deere, A. F. Loftin, Verna Hutchison, Ora Lee Blackburn, Alma Bradford and the hostesses.

Bridge Club Hold Meeting

Mrs. Bill Gandy was hostess for the Hi-Lo Bridge Club Thursday evening in her home.

Mrs. Gwenfred Lackey had high score and Mrs. Joe Dan Bryan had low score.

Playing were members, Mmes. R.E. Lee, Jimmy Hicks, Faye Lynch, John Berry, Joe Dan Bryan, two guests, Mrs. W.L. Russell, and Mrs. Gwenfred Lackey and the hostess.

Gift Box MEMO:

This place is about the biggest candle store in the entire area. Now, we have a decorative light we think may out do candles. It is Aerolux's Cheer Lights with flicker flame bulbs. Some of our more mature customers say the light looks like a kerosene lamp burning a poor grade of fuel. (Of course, we would not know.) These are beautiful, new, charming and will add much to your room decor. There are several styles.

Here is something else right out of the past, Grandma's Fruit Cake. These are the cakes we have had for the past two years. We have plenty of repeat customers, because the cakes are more popular every year. It is a fruit cake that requires long, lazy mellowing to achieve perfection. It has the perfection. Come by and get yours now.

Another item that goes fast are the 1967 linen print calendars. We suppose these are as popular a gift as we sell. We also have the Gibson Inspirational Calendars.

There will be plenty happening around here from now until Christmas. Come to see us.

THE GIFT BOX

ANNOUNCING A NEW SERVICE MAN



GLEN MAYBEN

GLEN MAYBEN COMES TO US FROM AMARILLO. HE HAS OVER 20 YEARS EXPERIENCE IN THE SERVICE FIELD. GLEN HAS ATTENDED SUCH SCHOOLS AS PHILCO, RCA AND ZENITH ON COLOR TV AND REPAIR

When you need Service think first of Burton's

Call 659-2121

BURTON'S TV

Farmers Union Honors Membership Achievements

During the Awards Day Program on the final day of the Texas Farmers Union convention held last week at Mineral Wells, H. M. Baggerly of Tullia, editor of the Tullia Herald, was presented the Farmers Union Editor of the Year Award.

The state Farmers Union president, Jay Naman, who made the award cited Editor Baggerly for his weekly editorials which, according to Naman, "courageously defend farm programs and other government policies which strengthen the rural community and enhance the family farm system of agriculture." The award plaque was fashioned from alabaster flint, a rare mineral from the only quarry in the world, located north of Amarillo.

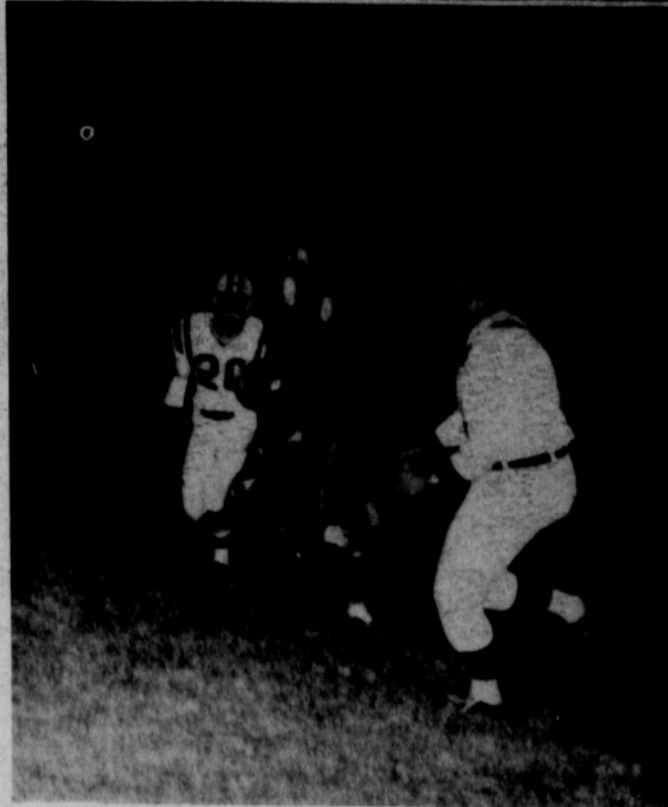
The award recipient has received numerous awards from press associations and newspaper organizations for his

lengthy weekly editorials and articles. Recently, a book entitled "The Country Editor of Texas" concerning the efforts of editorials on Texas politics was written by Dr. E. N. Jones, academic dean and head of the department of Political Science at Wavland College.

A Farmers Union Minister of the Year was also cited during the Awards Day Program. The Rev. Jacinto Alderete of Crosbyton was selected for this award.

Other awards presented were for outstanding membership with these awards going to members over the state who were active in enrolling new members in Farmers Union.

Those members from this area who were honored at the convention for membership achievement were Harold Groves of Spearman and F. A. Stapley of Gruver.



DEFENSIVE ACTION - At left, Lynx Karl Kunselman, tackling the ballcarrier, Wesley Jenkins (41); Phillip Renner (60) and Mike Hendrick get down on a Dalhart safety man returning a punt. Above, Gary Cates closes in on Dalhart's Don Bowers (44) as another Lynx comes up to help.

Plainsman photo

Work-outs Begin Monday For Lynx Basketballers

Basketball work-outs for the Spearman Lynx begin Monday afternoon under the direction of new coach Allen Simpson. Simpson had a meeting with prospective team members Saturday to issue equipment, but regular workouts begin Monday.

The new coach, who coached last year at Big Springs, says he does not know just how many boys will be playing or what to expect.

He will have only four days to get a team organized. The Lynx and Lynettes host the Stratford teams here Thursday and go to Sunray Friday.

Returning lettermen from last year include Carl Close, Charles Shieldknight, Mike Hendrick, Carroll Day, Randy Moore and Gary Farles.

Letterman Monte Black got married Friday and will not be playing. Also, Carroll Day injured a foot in football and has not yet been released by the doctor.

Simpson is expecting several boys from the B-team and others to report for work-outs.

Close, a two year letterman, will be the big man in the Lynx attack. He will get help on the boards from Charles Shieldknight, a six-footer who can get off the floor.

Hendrick was showing good promise last year until he ran into scholastic troubles and Moore got statted late last year after having a leg broken in football.

Carroll Day got stronger as the season went along last year and should be a big help, if his foot is playable.

Simpson said he will be looking for some fast boys who can get the ball down court and in the opening sessions will be working on the boys' shooting.

Simpson took Canyon High School to the state tournament in Austin two years. They were runner-up the first year and won the title the second year.

MET SINCE 1883

New York's Metropolitan Opera House was opened in 1883.

Spotlight on Improving Business . . .

Who Reads Newspaper Advertising . . . ?

By: S. S. Talbert, Ph. D.
University of Mississippi

Who is the reader of newspaper advertising? This is not a hypothetical question. Research agencies have found some of the answers to the question during a quarter of century study:

He is likely to be more intelligent and more literate than people who respond to other advertising.

He is likely to have more money to spend than other people. She is over 80 percent of the women about to go grocery shopping.

He is nearly every man considering the purchase of automobiles, trucks or tractors.

If she is older, she gives advice on foods, electrical appliances, sewing and parties.

If she is a teenager, she sets the pace in selecting skirts, snacks and sneakers.

If he is a teenager, others follow him to dress shops, cycle shops and sports stores.

The newspaper reader is someone looking for a house to rent, or someone trying to rent a house.

He is a lawyer looking for a typist, or a typist looking for a job.

He is a tycoon looking for a Cadillac, or a salesman looking for a tycoon.

He is a boy looking for a puppy, or someone with a litter of mongrels.

He is a builder looking for a loan, or a banker looking for an investment.

He or she is the whole local community with unsatisfied wants and needs.

Prices Good Tues & Wed. November 15 & 16



Crystal Chimes CRYSTAL SERVICE
SPECIAL THIS WEEK
GONDOLA DISH
9¢ WITH \$7.50 PURCHASE
2 FOR 18¢ WITH \$15 PURCHASE ETC.
THIS WEEK'S COMPLETE PIECE - 9 PIECE
LAZY SUSAN Values Only \$3.79

Better Food For Less
IDEAL FOOD STORES
IDEAL ENRICHED
FLOUR 5 LB BAG 39¢

DEL MONTE SLICED OR HALVES
CLING PEACHES 4 2 1/2 OZ CANS \$1.00

VAN CAMP'S
PORK & BEANS 5 NO. 2 CANS 89¢
ALL GRINDS
MAXWELL HOUSE COFFEE 1 LB CAN 69¢
MAXWELL HOUSE
INSTANT COFFEE 10 OZ. JAR \$1.59
EVAPORATED
CARNATION MILK 3 TALL CANS 47¢
GAYLA
FRUIT DRINKS 4 46 OZ. CANS \$1.00
ORANGE, GRAPE PUNCH OR ORANGE PINEAPPLE
FOR DISHWASHERS
CASCADE DETERGENT GIANT SIZE 59¢
SPICY
AUSTEX TAMALES 3 NO. 300 CANS \$1.00
ORANGE FLAVORED BREAKFAST DRINK
BIRDS EYE AWAKE 3 9 OZ. CANS \$1.00

IDEAL FEATURES ONLY THE FINEST Swifts Proten
Tender Aged Mature Beef
Swifts Proten WHOLE SLICES
ROUND STEAK 89¢
Swifts Proten CENTER SLICES
SIRLOIN STEAK 89¢
Swifts Proten
T-BONE STEAK 98¢
MEADOWDALE
SLICED BACON 1 LB. PKG. 69¢

AUSTEX
ALL MEAT CHILI 59¢
NO. 300 CAN

PILLSBURY OR
BALLARD BISCUITS 2 8 OZ. CANS 19¢

THIN, LONG OR CUT
SKINNER'S SPAGHETTI 2 7 OZ. PKGS. 29¢

YOUR CHOICE
GRAPEFRUIT OR ORANGES 5 LB BAG 49¢
TEXAS RUBY RED
TEXAS JUICE
MAY PAW MAKE?
ONIONS 2 LBS. 15¢
MED. YELLOW
LONG SLENDER
CARROTS 10¢

LYSOL SPRAY
DISINFECTANT 14 OZ. CAN \$1.69

SELF RISING
GOLD MEDAL FLOUR 5 LB. BAG 65¢

CRESTOP WHOLE
GREEN BEANS 2 NO. 303 CANS 29¢

IDEAL BROWN & SERVE
DINNER ROLLS 2 PKGS. 29¢

IDEAL TEM TEE YATO
DINNER ROLLS PKG. of 12 25¢