

HANSFORD COUNTY LIBRARY
120 MAIN
SPEARMAN, TEXAS 75661

FATHER'S DAY

Serve Beef To
Father On His Day -

THE

Hansford PLAINSMAN

24 hr. prayer
service 659-2911

Volume 16, Number 32

The Hansford Plainsman, Spearman, Texas 75661

Sunday, June 16, 1985

Elevators report first loads of 1985 grain

by Paige Holt

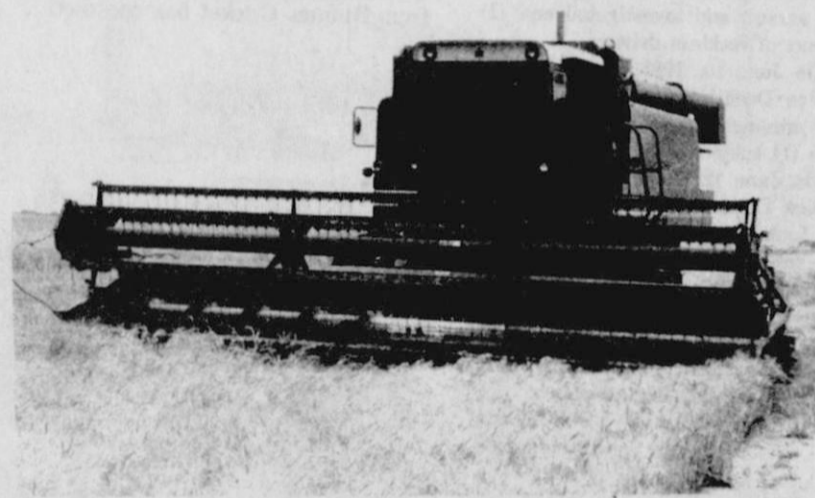
Despite recent rains the combines and trucks are running as the 1985 harvest gets well underway. Several area elevators reported on the first loads of grain received.

Perry Dixon dumped the first load of wheat at Spearman's Speartex elevator on Saturday, June 8th. The truck carried 600 bushels of dry land wheat with a test weight of 59 and moisture weight of 10.7.

Ageo of Spearman reported Fred and Charles Shieldknight dumped the first load of wheat at Ageo on June 8th. The load which was from the Hutchison place, carried 564 bushels of dry land wheat with a test weight of 60 and moisture weight of 10.7.

Roy Lee McClellan dumped the first load of wheat at Gruver's Continental Grain on Monday, June 10th. 550 bushels were reported in the load with a test weight of 57 and moisture weight of 16.7.

Equity of Spearman reported Jack McWhirter brought their first load in on Sunday, June, 9th. The wheat made 45 bushels to the acre and tested 62 with a moisture weight of 12.9.



Two new teachers

The Board of Trustees of the Spearman I.S.D. met in regular session June 10, 1985 at 8:00 p.m. at the Spearman High School building.

Officers present were Tom Latta, president; Mike Garnett, vice-president and Charles Shieldknight, secretary. Members present were Jim Davis, Dennis Nelson, Phillip Renner and Joe Clement.

School officials present were Orville Latham, Larry Lanier, Eddy Clemmons, Allen Alford, Kenneth Friemel and Eddie Gage.

A motion was made by Mike and seconded by Dennis Nelson that the minutes of previous meetings be approved. The motion was carried.

A motion was made by Phillip Renner and seconded by Mike Garnett that bills and accounts numbers 43717 thru 43834, as recorded on pages 431 thru 435, Volume Five, Minutes of Accounts Allowed,

be allowed and paid. The motion was carried.

A motion was made by Mike Garnett and seconded by Joe Clement that the membership in the Texas Association of Community Schools for 1985-86 be accepted. The motion was carried.

A motion was made by Jim Davis and seconded by Mike Garnett that the resignation of Deryll Friday be accepted. The motion was carried.

A motion was made by Phillip Renner and seconded by Charles Shieldknight that Paula Butler and James Mireles be employed for the 1985-86 school year. The motion was carried.

A motion was made by Dennis Nelson and seconded by Phillip Renner that the Spearman I.S.D. accept bids for depository. The motion was carried, and the meeting was adjourned.

years. The Board of Directors expressed its appreciation to Mr. Hunt for his presentation and extended its appreciation to the other two members of the review board, Joel Lackey and Austell Burrus for a job well done.

Motion was made by Lynn Hart and seconded by Jimmy Shieldknight to pay the bills presented in the amount of \$14,403.64 and to

approve the bills paid prior to regular board meeting in the amount of \$1,101.92. Motion carried.

Chief Appraiser Alice Peddy presented the budgets and revenue statements as per attachments to the Minutes of this meeting.

There being no further business to bring before the Board, meeting adjourned at 10:00 a.m.

Appraisal District meeting

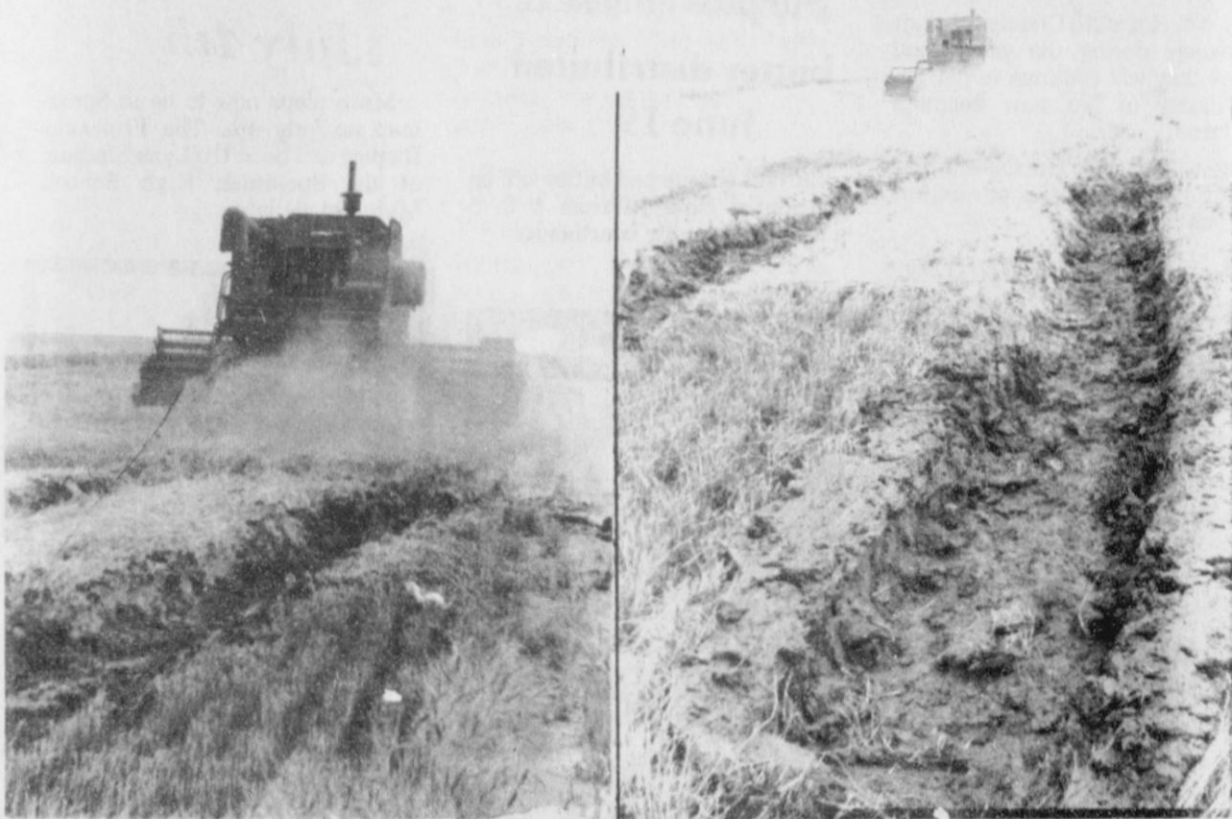
The Board of Directors of the Hansford County Appraisal District met in regular session Wednesday, June 12, 1985, at 9:00 a.m., in the conference room of the appraisal district's offices located at 709 West 7th, Spearman, Texas. Members present were Roy Bulls, Lynn Hart, Thane McCloy, Jimmy Shieldknight, Gene Fletcher and Chief Appraiser Alice Peddy. One guest was also present, Jerry Hunt, chairman of the appraisal review board.

Chairman Bulls called the meeting to order and presented the Agenda for this meeting:

1. Call to Order
2. Approve Minutes
3. Old Business:
 - a. Collection Reports
 4. New Business:
 - a. Report on Appraisal Review Board's Public Hearings
 5. Pay Bills
 6. Chief Appraiser's Reports
 - a. Budgets
 - b. Financial

Minutes of the regular meeting held May 8, 1985, were approved as read. Motion was made by Lynn Hart and seconded by Jimmy Shieldknight to approve the 1985 contracts for assessment and collection services for the City of Spearman and Pringle-Morse C.I.S.D. Motion carried 5-0.

Jerry Hunt, chairman of the appraisal review board reported to the Board concerning the 1985 public hearings held June 10, 1985. Mr. Hunt commended the District's office staff and Pritchard & Abbott for their conscientious efforts to present the 1985 appraisal records in a clear and concise manner. He reported the public hearings were conducted without any major problems, with only one protest actually presented to the review board. He stated the overall acceptance of the appraisal values by the public had improved considerably in the past three



Farmers "muddin" wheat out of fields

50 teams enter bankers annual golf tournament

Fifty teams entered the Hansford County Bankers Annual Golf Tournament, which was held Saturday and Sunday, June 8 and 9, at the Hansford County Golf Course.

A play-off between the top three teams entered in the Championship Flight of the two-man scramble ended at the second hole. Rod Been and Chuck Morgan, both of Gruver, captured first place following stiff competition.

Jerry Pat Davis of Spearman and Tony Harper of Gruver received second place in the Championship Flight. Third place went to Juan Macias of Spearman and Russell McClure of Gruver. Following in fourth were Dale Wofford of Spearman and Alex Dugan of Farnsworth.

First place in the First Flight competition went to Randy Brown of Gruver and Sam Goodnight of Levelland. Second place winners were Don Smith and Garland Head, both of Spearman. Spearman's Cliff and Melvin Bradley received third place, followed by James and Mark Cunningham of Spearman in fourth.

First place in Second Flight competition went to Bob Hardy and Del Hendricks, both of Spearman. Second place went to Kenneth Irwin and Bill Duncan, both of Gruver.

Danny Henson and Carl Cooper, both of Gruver, received third place, followed by Mark Irwin and Robert Meyer, both of Gruver, in fourth.



Banker Larry Trosper-Brian Noel, Golf Pro.

First place in Third Flight competition went to Buddy Lowe and J.W. Ward of Gruver, Jack Lamb of Spearman and Bill Nowell of Dumas received second place. Mark Guthrie and Pat Tucker, both of Spearman, received third place, followed by Mike Cudd and Tindell Ramon, both of Spearman, in fourth.

Alex Dugan of Farnsworth received a very nice out-door cooker for coming closest to the pin on the fourth hole.

The tournament was sponsored by Gruver State Bank, First National Bank of Spearman and First State Bank of Spearman.

The Hansford County Banks would like to express their appreciation to all those who participated

and helped make the 1985 tournament another success.

A special thanks is extended to Brian Noel, the golf professional of the Hansford County Golf Club, for his time spent as director of the tournament.

The banks would like to express appreciation to Nick Gray of Taylor Petroleum for donating ice used during the two-day tournament.

Thanks goes to Max Baggerly, with B&B Sales Company, for providing the tank used to ice down the watermelon, along with Dorothy Karns of Pride Mart, who also donated ice and storage.

This year's meal of fried catfish was catered by Ivey's Hungry Cowboy of Spearman. Almost 200 people were served Saturday night.

Murray reports on gas leaks

The City Council of the City of Spearman met in regular session in council chambers of City Hall June 11, 1985 with Mayor C. Ralph Blodgett presiding. Aldermen present were Wilson McClellan, Jim Nicholson, Burl Buchanan, and Mike Cudd.

Jim Murray, city manager, Charlotte Sheets, city secretary, D.J. Alberts, police chief, Ron Antalek, fire chief, and Ed Williamson, EMS director were also

present. City Manager Murray gave a report on the status of the 1985 gas leak survey which was performed by Health Consultants, Inc. The following leaks were found: 23 underground leaks: 1 class I leak, 4 class II leaks; 18 class III leaks; 467 above ground leaks; 13 underground leaks on the customer's side.

Murray stated that these leaks will be repaired as soon as possible.

Monthly fire, ambulance, police, municipal court and animal control reports were presented.

Motion was made by Nicholson to approve the monthly bills payable in the amount of \$671,358.53 and current cash position. Second by Cudd with motion unanimously carried.

Meeting dates for the month of July were set for the 16th and the 30th.



Going away cookout honored

Rev. Ray Crosier

A going away cookout was held by the Catholic Youth group in honor of Rev. Ray Crosier on June 7th at 8 p.m. Hamburgers and homemade ice cream were enjoyed by the youth, their sponsors and Rev. Crosier. The Rev. Crosier will be moving to Dalhart on July 1st. A gift was presented to him by the youth along with well wishes in his new parish and school. Games were enjoyed by all.

Police Report

On June 6, 1985, the Spearman Police Department arrested one (1) subject.

On June 7, 1985, the Spearman Police Department investigated one (1) criminal mischief, arrested one (1) subject, and investigated (2) accidents both with no reported injuries.

On June 8, 1985, the Spearman Police Department investigated one (1) found property, investigated one (1) assault, and arrested one (1) subject.

On June 9, 1985, the Spearman Police Department investigated one (1) assault and investigated one (1) report of reckless driving.

On June 10, 1985, the Spearman Police Department investigated one (1) criminal mischief, and arrested one (1) subject.

On June 12, 1985, the Spearman Police Department investigated one (1) found property, and arrested one (1) subject.

On June 13, 1985, the Spearman Police Department had one (1) report of a runaway.

The Spearman Police Department received 79 calls for assistance.

D.J. Alberts
Chief of Police

Need a gift for Dad?

Need a Father's Day present for Dad?

The Spearman Chamber of Commerce still has Belt Buckles for sale. Contact the Chamber Office at 211 Main or call 659-555 for more details.

Commissioners have budget hearing

The Hansford County Commissioners met Monday in regular session.

They ordered bills paid, approved minutes of the last meeting and heard the treasurer's report.

They held a budget hearing with representative of Hansford Library,

Gruver Library, Golden Spread Center and the HD Council.

Approval was given to General Telephone for a ditch easement in the southwest part of the county.

Discussion of the fire contract with the City of Spearman was held and the item tabled.

Ed Garner was appointed to the Panhandle Regional Housing Financial Corp. to serve thru Dec. 31, 1987.

Discussion was held with H & S Ambulance who are requesting a new desilicator. The item was tabled.

Manor residents enjoy cookout

Residents of Hansford Manor were treated to a cookout Wednesday and are looking forward to a birthday party Friday, June 14.

Residents at the Manor include Mary Gillispie, Keesee Richardson, Pete Bayless, Ruth Garner, Mildred Daily, Blanche Tabor,

Lemmie Russell, John Kenney, Fred Chase, Donnie Moyer, Aline Hyman, Vida Townsend, Velma Beck, Reba Bennett, Ruth Hutton, Nina Evans, Bob Thompson, Bill Goodson, Grace Bennett, Belle Dyer, Mabel Edwards, Pauline Johnson, Leonard Coryell, Milton

Brown, Ella Parks, Clara Hull, Leon Easley, Leon Bowling, Lillie Cox, Evelyn Shrader, Jesse Bratton, Ollie Ryan, Thelma Mitchell, Elizabeth McClellan, Ann O' Loughlin, Maxie Stayton, Myrtle Farrington, Alice Frye, and Opal Jones.

C & B Studio has new owner

Cricket Giles, owner of C & B Studio, announced this week that she sold her studio to Penny Thomas.

The phone number 659-3081 will be the same but the name will be changed to Penny's Photos.

Bill and Cricket Giles opened the studio here in 1958 coming here from Dumas. Cricket has operated

the business since Bill's death several years ago.

Penny took over the business Tuesday. She had helped Cricket in the business for the past several years.

Cricket plans to move to Amarillo this fall to be near her son and his family.

She wishes to thank all the

people of Hansford County for their patronage during the years, and hopes they will continue to patronize Penny in her new business venture.

We will all miss Cricket and her cheerful attitude in the adversities she has faced.

Lowry Gospels to be here

"JESUS... THE FAMILY'S ANSWER" Pastor David Nuckels of the First Assembly of God and the congregation extends to you special invitation to hear the Lowry Gospels of Oklahoma, minister in SONG and DYNAMIC PREACHING of the WORD on June 23 thru June 28 Services nightly at 7:30.

Rev. Lowry received his M. Ed. Degree in Counseling from northeastern Okla. State University, has been a High School Teacher, and served in the U.S. Air Force. As an ordained Minister of the ASSEMBLIES OF GOD, he has been active in pastoral and evangelistic work for over 25 years, in 18 states. You will marvel as you hear their 9 yr. old daughter and 13 yr. old son play their instruments and sing.



Shown above are Hansford Manor residents [left to right] are Nina Evans, Ruth Garner and Opal

Jones as they toured the museum recently.

Surplus cheese & butter distributed June 19

Surplus cheese and butter will be distributed June 19 from 1 to 5 p.m. at the county courthouse.

Fireworks July 4th

Make plans now to be in Spearman on July 4th. The Fireworks Display will be at the Lynx Stadium at the Spearman High School. More details later.



Members of Hansford Manor toured the station masters House Museum.

THERE'S NOTHING PUZZLING ABOUT IT.

DRINKING AND DRIVING DON'T FIT TOGETHER

PLEASE, DON'T DRINK IF YOU PLAN TO DRIVE.

A MESSAGE FROM THE TEXAS DEPARTMENT OF PUBLIC SAFETY

I Make The Most of Time

HERSCHEDE & PEARL
Grandfather & Grandmother Mantel, Wall, also Antique clocks

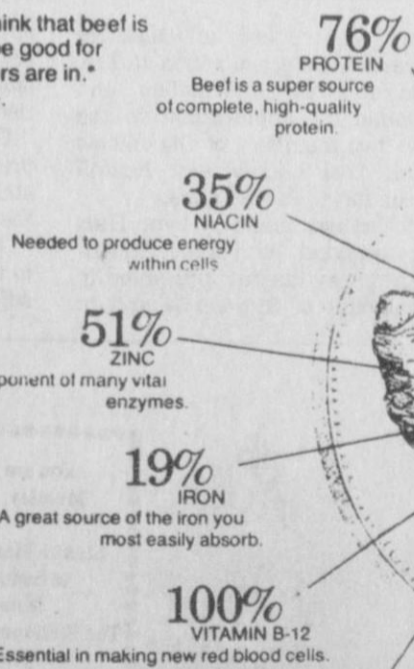
I. W. AYRES
Clock Repair
Phone 806-733-2267
Route 3
Gruver, Texas 79040

THERE'S STRENGTH

in numbers...

in facts.

Some people seem to think that beef is just too good tasting to be good for you. But the new numbers are in. And they are impressive.



13% CALORIES
You get all the bigger numbers for just 250 calories. 13% of a day's intake

*1983 Beef Nutrient Composition Study coordinated by the Meat Board with the USDA, Michigan State University, and University of Kentucky

**All percentages are based on a 4 oz serving and recommended dietary allowances, women 23 to 50 years.

MYTH: The fat in beef is saturated fat.

FACT: Beef fat contains only about 47-49% saturated fatty acids. The rest is unsaturated fatty acids, including significant amounts of polyunsaturated fatty acids.

MYTH: Beef contains more cholesterol than most other animal-source proteins.

FACT: Three ounces of cooked lean beef contain 73 mg. of cholesterol; 3 ounces of roast chicken, 76 mg.; 3 ounces of flounder 52 mg.; 3 ounces of shrimp, 128 mg.; 3 ounces of pork, 79 mg.; 3 ounces of turkey, dark 72 mg.; light 59 mg.

MYTH: Heart disease risk can be reduced by reducing intake of saturated fat and cholesterol.

FACT: The current trend in the scientific literature is away from thinking that reducing heart disease risk is simply a matter of cutting down on foods high in saturated fatty acids and cholesterol. More scientists are now saying that more scientific answers are needed before marked changes in diets can be recommended for the general population.

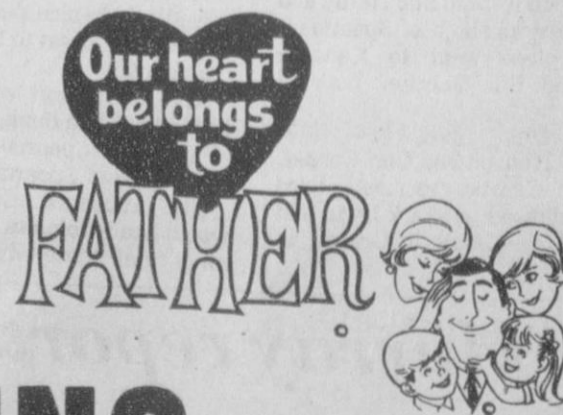
MYTH: Dietary cholesterol has a direct effect on blood cholesterol level.

FACT: In most persons, dietary cholesterol and blood cholesterol are not closely related. In fact, in most persons, heredity and weight or amount of fatty tissue in the body are more important than diet, including dietary cholesterol, in determining blood cholesterol level. If a person keeps his weight at recommended levels, odds are that his blood cholesterol will not be above normal.

Extra Special for Dad!

It's Traditional To Serve Beef To Father On

His Day-- June 16th



BEEF GIVES STRENGTH.

PERRYTON FEEDERS, INC.

Virl LaMunyon, Owner

Perryton, Texas 806-435-5466

Lonnie Winterrowd, Manager 435-4130

BUY, SELL, TRADE OR RENT THROUGH THE CLASSIFIED ADS

**Call
659-3434**

SERVICES

New to area? Give us a try Call your local USED COW DEALER As soon as Possible 659-3544 659-3545 1-800-692-4043 17S-rtm

MONUMENTS

Save Agents and Undertakers Profits If it is inconvenient for you to visit our large display, please phone collect (405) 327-0626 or write and we will call on you. ALVA MONUMENT WORKS, INC. Alva, OK 73717

NOTICE

Wallace Monument Co. Monuments, Curbings, Grave Covers Local Representative LEONARD JAMESON Spearman, Texas 35S-RTN

OSGOOD MONUMENT CO.

Amarillo, Texas Dealers of Rock of Ages Granite as well as all colored granites, marble and bronze memorials. represented by **BOXWELL BROS. FUNERAL HOME** 519 S. EVANS 659-3802

ODD JOBS around your house, don't know who to call? Call C.W. Handy Man Services, Charles West 659-3833. 17S-rtm

Hansford County Planned Parenthood 412 Davis 659-2483 Spearman, TX Monday-Friday 8:30-12:30

STEAM RINSE & VAC Rinse and Vac Shampooer for rent at Gordons Drug. \$10.95 up to 24 hours.

SEARS BLOWN-IN ATTIC INSULATION. Completely installed. For FREE Estimate at your convenience dial 659-2373. Sears, Roebuck and Co., 517 S. Hwy. 207. 45S-rtm

Graduation, Mother's Day, Father's Day cakes, novelty birthday cakes. Made to order. Call Joy, 733-2517. 26S-rtm nc

Tree Trimming Handy Man. Phone 659-3115. **Bill Hopper**

PANHANDLE CRISIS CENTER 101 S. W. Fourth, Perryton, Texas 79070, 806-435/5008, 806-435-5013. Help is available at no charge for domestic violence and sexual assault. Call Panhandle Crisis Center, receive support during a difficult time. Counselors on call 24 hours a day. Call for help. 19-rtm-nc

SERVICES

Need to oil your wood shake or shingle roof? Give it extra life and beauty.

Whatever your painting needs may be - from taping and textures to custom finishes with any coating on any surface. We also feature energywave insulating paints. Call today for a free estimate.

BEASLEY PAINTING
ALLAN 733-2858 JIM 733-2012 15-rtm

Disc Rolling and Sharpening from Spearman Disc and Implement 505-683-5362. Any style, size or make. We come to you. 28s-7-to-sonly

Hay Swathing & Baling done. Call 733-2517 or Dennis at 733-5214. 27s-rtm nc

APPLIANCE REPAIR: Call Jim Nobles, 659-3528. 20-rtm

REAL ESTATE

FOR SALE: Farm home, 25 miles SE of Spearman. 3 bdrm. 1/2 basement, on 6 acres. Swimming pool, out buildings. Phone Perryton - 435-3722. 14s-rtm

FOR SALE OR RENT: redecorated 2 bedroom home with 2 lots. Call 358-9684. 29S-rtm

TO MOVE: Lubbock Home 16 miles SW of Spearman. 3 bdrm., 2 bath, large kitchen and dining area, large living room. About 1700 sq. ft. 659-2794. 23-rtm

FOR SALE: 1/4 section grass land with improvements and exceptionally good horse barn located 6 miles S. of Hardesty on farm to market highway. Also 10 portable Powder River stalls in good condition. Contact Buddy or Curt Wilkins phone 405-888-4565 preferably after 5:30 p.m. 32-2tp

BRICK HOME
2 acres, 3 bedroom, with fireplace, utility room. Garage for car. Fenced back yard with four fruit trees. 3 miles east of Spearman. Need to sell quick, call 435-6029 32s-7tp

MOBILE HOMES FOR SALE

DEALER REPO
3 bdrm. mobile home, 2 baths, wood siding, storm windows, garden tub, etc. Assume payments of \$248.00, with approved credit. Includes delivery and insurance. **WE TAKE TRADES-ANYTHING OF VALUE!** 6325 Canyon Dr. Amarillo, Tx. 806-358-3257 31s-8tc

INVOICE SALE
Special purchase of bankrupt dealer inventory will be sold at dealer's whole sale cost. large selection of 14' and 16' wide mobile homes. Dealers welcome--save \$\$ **WE TAKE TRADES-ANYTHING OF VALUE!** 6325 Canyon Dr. Amarillo, Tx. 806-358-3257 31s-8tc

PUBLIC NOTICE

Guymon Elks Supper Club is open to the public. Our hours are Wednesday-Thursday 6-10 p.m. Friday-Saturday 6-10:30 p.m. We have a Prime Rib Special every Friday. 46s-rtm

WEIGHT WATCHERS meets each Monday at 6:00 p.m. at the Home Demonstration Building, Spearman, Texas.

LIVESTOCK FOR SALE

FOR SALE: Texas longhorns - cows, bulls, heifers and roping steers. 806-828-5877 or 5718. 31-8tp

FOR SALE

ALFALFA HAY FOR SALE: Call Lewis Henderson 733-2517. 27s-rtm nc

FOR SALE: Cabover Camper. 45 HP Chrysler Motor. 16 ft. Lone Star Boat. 806-659-2325. 17-rtm-nc

FOR SALE: Couch, living room chairs, complete twin bed. Call 659-3151. 32-2tp

FOR SALE: 15 ft. Prestige Travel Trailer, self contained \$1250, 12 ft. Sears Aluminum 5 hp motor and trailer \$325.00. Call 733-2832, Morse, Tx. 32S-1tc

FOR SALE: AKC registered English bulldogs. Call 435-9108. 32-2tc

SIAMESE Kittens For Sale 435-5233. 32s-2tc

DRILL PRESS FOR SALE: commercial size, 6 speed Jacobs Chuck, bits included. Color TV. Admiral, 19" screen. Dog house, custom designed to protect animal from heat & cold. Canvas jeep doors 9 top. See at 1114 Bernice. 9-3972. 31S-8tc

FOR SALE: Fishing boat 659-3470. 32s-4tp

FOR SALE: Nearly new range with griddle in middle, a \$600.00 value for only \$200.00. Can be seen at 421 S. Dressen or call 659-5270. 32-rtm nc

FOR SALE: Eva. airconditioner call 659-5108 after 5 o'clock. 32-3tc

SLIGHT PAINT DAMAGE. New flashing arrow sign. \$259 complete, was \$499. Free letters! Warranty. Very few left. Call 1(800) 423-0163, anytime. 32s-1tp

GARAGE SALES

GARAGE SALE: Tues. & Wed., June 18 & 19. 9 to 5. 803 Wilmeth Dr. 32s-1tc

WANTED

WANT TO BUY good long, wide topper. 659-2325. 32-rtm nc

FOR RENT

FOR RENT: One bedroom house. 659-5423. 31-rtm

Nicely furnished 2 bedroom apt. No pets-afternoon or evenings 659-3471. 32s-rtm

HELP WANTED

PUBLIC NOTICE
THE HOUSING DEPARTMENT OF TEXAS PANHANDLE COMMUNITY ACTION CORPORATION HEREBY GIVES NOTICE THAT NO NEW CONTRACTS WILL BE INITIATED FOR THE HUD SECTION 8 RENTAL ASSISTANCE PAYMENTS PROGRAM.

APPLICATION WILL CONTINUE TO BE TAKEN IN THE AREA OFFICES THROUGHOUT THE TEXAS PANHANDLE WITH A WAITING LIST OF AT LEAST 120 DAYS UNTIL FURTHER NOTICE. 32s-2tc

The First National Bank of Spearman is now accepting employment applications for the position of executive secretary. A minimum of two years secretarial experience and good secretarial skill is required. Please contact Brenda O'Brien at the bank for further information. The First National Bank is an equal opportunity employer. 31s-rtm

THERE IS NO PLACE LIKE HOME SO GUARANT!

Texas Army National guard has several openings in Pampa. Good pay and other benefits while you learn. A part-time (one weekend a month), \$35,000 insurance and a retirement plan. The GI Bill is now available for education. 32-19tc

HELP WANTED

EARN \$4.87 HR.
We need assistance in evaluating and responding to daily work reports submitted by our agents throughout the state. No experience necessary; Paid to complete training. Work at home. For information send self-addressed, stamped envelope 9 1/2 inches long to: AWGA, Dept. E, Box 49204, Atlanta, GA 30359.

AUTOMOBILES FOR SALE

FOR SALE: 1984 extended van with raised top. Electric lift for handicapped. Custom made. Front and rear air. CB, Tilt and Power. Call 659-3605 or 659-3566. 24-rtm

FOR SALE: Clean 1981 Silver Datsun 210 automatic with air in excellent condition 733-2060 nights & weekends. 31s-rtm

1978 Toronado, below wholesale. 659-2808. 32-4tc

FOR SALE: 81 Citation, 4 door, air, power steering. Excellent condition. 659-3629. 32-4tp

SATURDAY 6/22/85

6/16/85-6/22/85

Spearman TX/REPORTER 6855 2248

CABLE	(2)	(3)	(4)	(5)	(6)	(7)	(8)	(9)	(10)	(11)	(12)	(13)	SHOW TIME
AM	ESPN	OETA	KAMR CH.4	TMC	KVII CH.7	CBN	WGN CH.9	KFDA CH.10	WTBS CH.17	CNN	TBN	Santa Ana	Showings
	Sports Network	Oklahoma City	Amarillo	Movie Channel	Amarillo	Ch. Cable News	Chicago	Chicago	Atlanta	Atlanta	Atlanta	Atlanta	
7	Prog Conf												7:00
8	Whelan/Book												8:00
9	USA												9:00
10													10:00
11													11:00
12													12:00
1													1:00
2													2:00
3													3:00
4													4:00
5													5:00

Powder Puff Mechanics

The vocational agriculture department of Spearman High School will be sponsoring a mini mechanics work shop for women on Thursday, June 27th in the Ag shop at Spearman High School. The workshop is designed to inform interested people on the standard maintenance of an automobile. There will be 3 sessions as follows. 9:00 a.m. - 11:30 a.m.; 2:00 p.m. - 4:30 p.m.; 6:30 p.m. - 9:00 p.m. The workshop is open to women in Hansford county and all are welcome to attend. Interested persons should call 9-2584 or 9-2166 to R.S.V.P. Instructors for the workshop are Gary York and David Scott, vocational agriculture teachers.



In old Persia it was believed the moon was created on a Wednesday.

THERE'S NOTHING PUZZLING ABOUT IT.



DRINKING AND DRIVING DON'T FIT TOGETHER PLEASE, DON'T DRINK IF YOU PLAN TO DRIVE.

A MESSAGE FROM THE TEXAS DEPARTMENT OF PUBLIC SAFETY

Fire Insurance

on wheat

Rate .25 cents

per \$100⁰⁰

Coverage for 30 days.

BROCK INSURANCE AGENCY

121 MAIN • SPEARMAN, TEXAS 79081 • 806-659-2514



Collette McElroy & Celia Parvin

Lions hear child abuse program

Collette McElroy, R.N. and Celia Parvin of Perryton, Tx. brought the program at the Spearman Lions Club Tuesday. The program was on child abuse and featured educational films for school children. The club enjoyed the films and recommended that they be shown in the Spearman

School System as soon as possible. Highlighting the noon luncheon was the presentation of special service plaques to former Lions president Frosty Hickerson and club secretary Craig Vinson. New Boes Lion Al La Rochelle presided at the largest noon meeting of the year for the local club.

Prepared childbirth classes

Prepared childbirth classes will start June 25, from 7 to 9 p.m. at First State Bank in Spearman. For further information call Carol Stavio at 659-2535 or 682-4476.

Reunion News

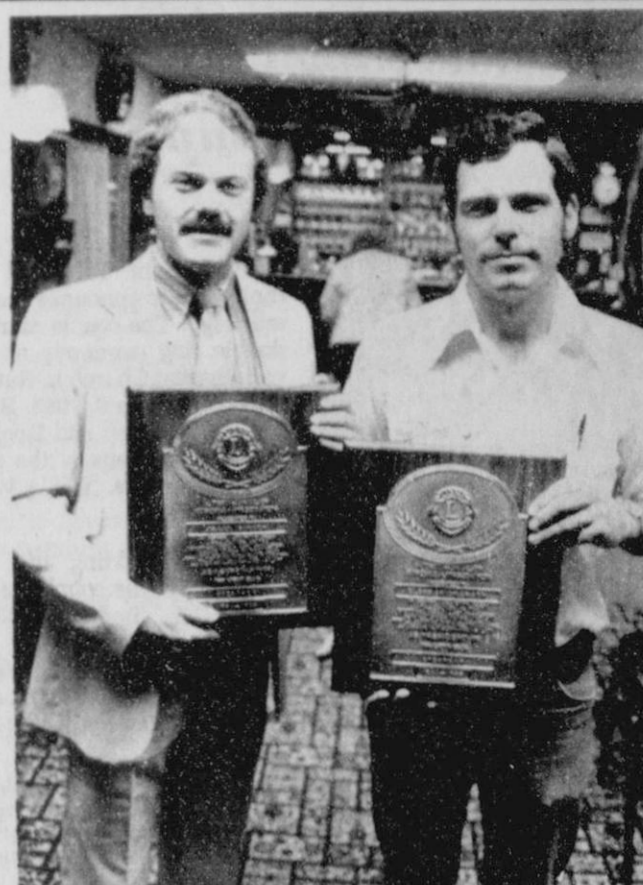
The Second Spearman High School all-school Reunion is nearly here. The Agenda for Saturday, July 6, is as follows: Registration at the High School begins at 9:00 a.m. everyone registers at classrooms which will be designated. Ruth Bryan, Beth Phelps and Gertrude Archer are in charge of this event.

General Assembly will be in the High School Auditorium at 10:30 a.m. Honor Classes of 1932-33-34-35. Mike Schnell will be the Master of Ceremonies and Frank Buzzard will conduct Memorial Service honoring all deceased students of Spearman High School.

Tickets to the 12:00 Noon bar-b-que on the 6th will be \$5.50 for a combination plate, Catered by IV's Hungry Cowboy. If you would like to purchase your tickets in advance please contact Pat Howell Dear, The Bunkhouse, 210 S. Main, 659-2476, Spearman, Texas 79061. We do need a two week notice to give the caterer.

A reception will be held at the City Hall, 7:00 p.m., Lois Shieldknight is hostess for this event and if you would like to help in anyway call her at 659-3290.

The Dance Saturday will be at the Wilson McClellan barn corner of Highway 15 and F.M. road 760 North.



Frosty Hickerson & Craig Vinson

Residents enjoy Senior Olympics

Five residents of Hansford Manor entered the Senior Olympics, June 8, 1985 at the Civic Center. They were Velma Beck, Mabel Edwards, Nina Evans, Bob Thompson and Pauline Johnson.

Mabel Edwards, Velma Beck, Nina Evans, and Pauline Johnson, also participated in the softball throw.

Five residents of the manor entered contests.

Mabel Edwards received 1st place in the funny face contest and participated in the dance contest. Bob Thompson won 2nd place in the softball throw.

Others attending were Jody and Bill Harnish, Betty Jean Davis, Deloris Guthrie, Sherry Shields, and volunteers Linda Lujan and husband, Becky Crooks and Jeanie Close.



Betty Crooks & Mabel Edwards are shown in the dance contest at the Senior Olympics in Amarillo.



Mabel Edwards is shown here with the award winning funny face at the Senior Olympics in Amarillo Sunday. Mabel took 1st place.



Bob Thompson and niece Carrie are shown at the Senior Olympics where Bob won 2nd in the softball throw.



Recent visitors at the Stationmaster's House Museum were residents of the Hansford Manor. They are Nina Evans, Opal Jones, Ruth Garner and Activity Director Jody Harnish.

WEATHER

DATE	HI	LO	PRE:
JUNE 7	96	61	0.00
JUNE 8	101	67	0.00
JUNE 9	82	63	0.00
JUNE 10	94	61	0.02
JUNE 11	75	56	0.71
JUNE 12	74	52	0.00
JUNE 13	83	55	0.00

Mikhail S. Gorbachev, Soviet leader: "If preparations for 'Star Wars' go on, we will have no other choice but to take response measures..."

Les Aspin Rep. (D-Wis): "Congress hasn't been able to deal with it (the military pension system) before because of the political sensitivity..."

MONDAY 6/17/85 6/16/85-6/22/85 Spearman TX/REPORTER 6855

CABLE	PM	ESPN	OETA	KAMR	TMC	KVII	CBN	WGN	KFDA	WTBS	CNN	TBN	SHOW TIME
6:30	ESPN's SportsCenter	ESPN's SportsCenter	ESPN's SportsCenter	ESPN's SportsCenter	ESPN's SportsCenter	ESPN's SportsCenter	ESPN's SportsCenter	ESPN's SportsCenter	ESPN's SportsCenter	ESPN's SportsCenter	ESPN's SportsCenter	ESPN's SportsCenter	ESPN's SportsCenter
7:00	ESPN's SportsCenter	ESPN's SportsCenter	ESPN's SportsCenter	ESPN's SportsCenter	ESPN's SportsCenter	ESPN's SportsCenter	ESPN's SportsCenter	ESPN's SportsCenter	ESPN's SportsCenter	ESPN's SportsCenter	ESPN's SportsCenter	ESPN's SportsCenter	ESPN's SportsCenter
8:00	ESPN's SportsCenter	ESPN's SportsCenter	ESPN's SportsCenter	ESPN's SportsCenter	ESPN's SportsCenter	ESPN's SportsCenter	ESPN's SportsCenter	ESPN's SportsCenter	ESPN's SportsCenter	ESPN's SportsCenter	ESPN's SportsCenter	ESPN's SportsCenter	ESPN's SportsCenter
9:00	ESPN's SportsCenter	ESPN's SportsCenter	ESPN's SportsCenter	ESPN's SportsCenter	ESPN's SportsCenter	ESPN's SportsCenter	ESPN's SportsCenter	ESPN's SportsCenter	ESPN's SportsCenter	ESPN's SportsCenter	ESPN's SportsCenter	ESPN's SportsCenter	ESPN's SportsCenter
10:00	ESPN's SportsCenter	ESPN's SportsCenter	ESPN's SportsCenter	ESPN's SportsCenter	ESPN's SportsCenter	ESPN's SportsCenter	ESPN's SportsCenter	ESPN's SportsCenter	ESPN's SportsCenter	ESPN's SportsCenter	ESPN's SportsCenter	ESPN's SportsCenter	ESPN's SportsCenter
11:00	ESPN's SportsCenter	ESPN's SportsCenter	ESPN's SportsCenter	ESPN's SportsCenter	ESPN's SportsCenter	ESPN's SportsCenter	ESPN's SportsCenter	ESPN's SportsCenter	ESPN's SportsCenter	ESPN's SportsCenter	ESPN's SportsCenter	ESPN's SportsCenter	ESPN's SportsCenter
12:00	ESPN's SportsCenter	ESPN's SportsCenter	ESPN's SportsCenter	ESPN's SportsCenter	ESPN's SportsCenter	ESPN's SportsCenter	ESPN's SportsCenter	ESPN's SportsCenter	ESPN's SportsCenter	ESPN's SportsCenter	ESPN's SportsCenter	ESPN's SportsCenter	ESPN's SportsCenter

TUESDAY 6/18/85 6/16/85-6/22/85 Spearman TX/REPORTER 6855

CABLE	PM	ESPN	OETA	KAMR	TMC	KVII	CBN	WGN	KFDA	WTBS	CNN	TBN	SHOW TIME
6:30	ESPN's SportsCenter	ESPN's SportsCenter	ESPN's SportsCenter	ESPN's SportsCenter	ESPN's SportsCenter	ESPN's SportsCenter	ESPN's SportsCenter	ESPN's SportsCenter	ESPN's SportsCenter	ESPN's SportsCenter	ESPN's SportsCenter	ESPN's SportsCenter	ESPN's SportsCenter
7:00	ESPN's SportsCenter	ESPN's SportsCenter	ESPN's SportsCenter	ESPN's SportsCenter	ESPN's SportsCenter	ESPN's SportsCenter	ESPN's SportsCenter	ESPN's SportsCenter	ESPN's SportsCenter	ESPN's SportsCenter	ESPN's SportsCenter	ESPN's SportsCenter	ESPN's SportsCenter
8:00	ESPN's SportsCenter	ESPN's SportsCenter	ESPN's SportsCenter	ESPN's SportsCenter	ESPN's SportsCenter	ESPN's SportsCenter	ESPN's SportsCenter	ESPN's SportsCenter	ESPN's SportsCenter	ESPN's SportsCenter	ESPN's SportsCenter	ESPN's SportsCenter	ESPN's SportsCenter
9:00	ESPN's SportsCenter	ESPN's SportsCenter	ESPN's SportsCenter	ESPN's SportsCenter	ESPN's SportsCenter	ESPN's SportsCenter	ESPN's SportsCenter	ESPN's SportsCenter	ESPN's SportsCenter	ESPN's SportsCenter	ESPN's SportsCenter	ESPN's SportsCenter	ESPN's SportsCenter
10:00	ESPN's SportsCenter	ESPN's SportsCenter	ESPN's SportsCenter	ESPN's SportsCenter	ESPN's SportsCenter	ESPN's SportsCenter	ESPN's SportsCenter	ESPN's SportsCenter	ESPN's SportsCenter	ESPN's SportsCenter	ESPN's SportsCenter	ESPN's SportsCenter	ESPN's SportsCenter
11:00	ESPN's SportsCenter	ESPN's SportsCenter	ESPN's SportsCenter	ESPN's SportsCenter	ESPN's SportsCenter	ESPN's SportsCenter	ESPN's SportsCenter	ESPN's SportsCenter	ESPN's SportsCenter	ESPN's SportsCenter	ESPN's SportsCenter	ESPN's SportsCenter	ESPN's SportsCenter
12:00	ESPN's SportsCenter	ESPN's SportsCenter	ESPN's SportsCenter	ESPN's SportsCenter	ESPN's SportsCenter	ESPN's SportsCenter	ESPN's SportsCenter	ESPN's SportsCenter	ESPN's SportsCenter	ESPN's SportsCenter	ESPN's SportsCenter	ESPN's SportsCenter	ESPN's SportsCenter

Athletic ineligibility identified ...

UIL rules now govern junior high sports

An athlete in Texas who repeats the seventh grade for athletic purposes will be ineligible in the eighth grade to compete in school sports, according to rules recently passed by the University Interscholastic League.

This rule is now commonly known as the "redshirt rule." The UIL will govern junior high school sports now in addition to high school sports.

Other rules passed include ages for seventh and eighth

grade athletes, requirements for being scholastically eligible for athletics, and a rule against transferring from one school to another for athletic reasons.

A seventh grade student must be less than 14 years old on Sept. 1 to be eligible for athletics in his grade, and an eighth grade student must be less than 15 years old on Sept. 1 to be eligible to participate in his grade's sports.

When asked what would be the eligibility of a student

who repeats the seventh grade for athletic reasons before these new rules were passed, school officials noted that an eighth grader cannot play a ninth grade or high school sports.

But if the student was less than 15 years old on Sept. 1, he would be eligible to compete in eighth grade athletics in the 1984-85 school year.

Officials also note that with the new rules, any student who repeats the seventh

grade for athletic purposes from now on will be ineligible for seventh grade athletics the second time around, but would be eligible for eighth grade.

Scholastic eligibility requirements are the same as the current semester scholarship rule used for high school sports. That rule is: passing four one-half credit courses or the equivalent for seven days before an athletic contest, including at least three courses other than phy-

sical education or activity courses.

Another rule states that a student who is failing a class may not miss the class to travel to UIL competition or participate in an athletic contest.

The other eligibility rule is that to be eligible, a student must not have changed schools within the previous year for athletic purposes.

A rule not passed yet, but which is under consideration, is that no athletic event

should begin before the academic school day ends.

Also under consideration is a recommendation, not a rule, that junior high schools hold athletic events on non-school nights, or end the competition to allow students to return to their home school by 10 p.m. on a school night.

In parts of Texas such as the Texas Panhandle, travel time often will make it impossible for athletic teams to be back at their home school by 10 p.m.

Double Ring Ceremony unites couple



MR. & MRS. JOHN ROBERT TAFT

John (Bob) Taft and Darlene Innis wish to announce their recent marriage. The couple married in a double ring ceremony at the Calvary Baptist Church in Raton, New Mexico on June 8, 1985. Bob is the son of Clyde Taft and Dorothy Taft of Raton. Darlene is the daughter of Mr. and Mrs. Willie Wilkerson of Spearman.

After a wedding trip to Red River, N.M. the couple will reside at 601 S. Barkley with their daughter Stefania. Mr. Taft is employed at Panhandle Vet Clinic and Mrs. Taft will attend Frank Phillips Jr. College in the fall.

Denmark is a country about the size of Massachusetts and New Hampshire combined. It sits between the North Sea and the Baltic Sea.

© 1985 Suburban Features

Lodge elects new officers

Hansford Lodge 1040 newly elected officers for 1985-1986 include Worshipful Master, Hugh Mansel Bryan; Senior Warden, William Stevens, Junior Warden, Michael Schnell; Treasurer, Albert Graves, Secretary, Cecil Bigger, Chaplain, Tommie Russell, Senior Deacon, John R. Collard J., Junior Deacon, Roy Lee Uptergrove, Senior Steward, Loyall Turner; Junior Steward, R.L. McCellan, Tiler, Raymond Kirk.

Mansel Bryan will be installed as Worshipful Master, by the District Deputy, June 24. All other officers will be installed July 13 with Gruber Lodge #1325 of Gruber.

The Most Worshipful Grand Master, Grand Lodge of Texas will be the installing officer, July 13.

The famous steam engine "Tom Thumb" raced with a horse-drawn railroad car on Aug. 25, 1829, with the horse winning after the engine broke down.

You are cordially invited to a Bridal Shower honoring

Rhonda Hall
bride-elect of
Nick Dettmann

Saturday, June 22, 1985
from 10:30 - 12:00 a.m., at the
First State Bank
Hospitality Room

HOSTESSES

June Tucker Charelle Martin
Judy Nelson Judy Irbeck
Pat Sutterfield Alva Garner
Reba Benge Deannie Gilley
Virginia Fowler Phyllis Shadock
Lula Mitchell Donna Sheets
Beverly Vinson

32s-1tc

You are cordially invited to a bridal shower honoring

Bonnie McCloy and Hunter Novak

on June 22, from 3 to 4:30
in the home of Mary Brock
715 Gibner Drive

Hostesses:

Byrnice Callaway Frankie Sloan
Virginia Trindle Marva Hohertz
Marsha Murphy Joyce Lackey
Mart Garnett Charolette Jackson
Dodie Beedy Patty Spoonmore
Glenda Guthrie Kay Vemon
Mary Brock Colene Brummett
32s-1tp

JoNell Comegys doing mission work



JoNell Comegys of Spearman, a student at Hardin-Simmons University, Abilene, is serving as a Texas Baptist Student Union summer missionary.

Miss Comegys is serving at Houston Mission Center doing general mission work.

She is among 119 summer missionaries serving in 18 states and three foreign countries. They are supported by fellow students at 100 colleges and universities throughout Texas. Last year students raised more than \$140,000 to support their summer missionaries.

Texas Baptist Student Unions are supported through Cooperative Program gifts from 4900 churches and missions of the 2.3-million-member Baptist General Convention of Texas.

WEDNESDAY 6/19/85 6/16/85-6/22/85 Spearman TX/REPORTER 6855 0342

CABLE	(2)	(3)	(4)	(5)	(6)	(7)	(8)	(9)	(10)	(11)	(12)	(13)	SHOW TIME
PM	ESPN	OETA	KAMR	TMC	KVII	CBN	WGN	KFDA	WTBS	CNN	TBN		
	Sports Network	Oklahoma City	CH.4 Amarillo	Movie Channel	CH.7 Amarillo	Cin Cable Netwr	CH.9 Chicago	CH.10 Amarillo	CH.17 Atlanta	Cable News Ntw	Santa Ana		
6:00	Sportscenter	Nightly Business Report	News	Prog Cont'd	News	Branded	Private	News	Sanford and	Moneyline	Prize the	Prog Cont'd	
6:30	Inside the PGA Tour	News	WFA'S '85 Report	Wheel of Fortune	News	Cisco Kid	Benjamin	News	Major League Baseball	Crossfire	Prize the	Prog Cont'd	
7:00	Professional Bowlers Association \$118,000	People's Business	Highway 99	Movie: 1 Love You, 1 Love Me	Fall Guy (CC)	Flippo	Chicago Cubs at New York Mets	Movie: "Candace Jones"	Houston at Atlanta	Prime News	Behind Scenes Short Program	Movie: "Something Wicked This Way Comes"	
8:00	Seattle Open	Mark Russell Comedy Show	Movie: "Double Trouble"	Dynasty (CC)	700 Club					Larry King Live	Prize the	Movie: "The Land of the Bible"	
9:00	Australian Football	St. Elmo's	Movie: "Friday the 13th - The Final"	Arthur	News	Trans World	News	CBS Reports - "Who's in the Shadows"	Movie: "The Third Day"	Evening News	Prize the	Movie: "Paragon of Comedy"	
10:00	Dr. Who	News	Chapin	News	Bill Cosby	News	News	News	Barney Miller	Moneyline	Prize the	Movie: "To All a Good Night"	
11:00	Sports Focus	Julius Erving Tennis Magazine	Society	Late Night with David	ABC News Nightline	Love That Bob	Movie: "The Royal Hunt"	Movie: "The Night of the Owl"	D.G.A.	Crossfire	Behind Scenes	Movie: "The Pink Panther"	
12:00	Fisher's Hole	Sign Off	Letterman	Movie: "Muppet Show"	Movie: "Yankee Doodle"	Mary Tyler Moore	Movie: "Mark & Mindy"			Newsnight Update	Good News		

THURSDAY 6/20/85 6/16/85-6/22/85 Spearman TX/REPORTER 6855 0342

CABLE	(2)	(3)	(4)	(5)	(6)	(7)	(8)	(9)	(10)	(11)	(12)	(13)	SHOW TIME
PM	ESPN	OETA	KAMR	TMC	KVII	CBN	WGN	KFDA	WTBS	CNN	TBN		
	Sports Network	Oklahoma City	CH.4 Amarillo	Movie Channel	CH.7 Amarillo	Cin Cable Netwr	CH.9 Chicago	CH.10 Amarillo	CH.17 Atlanta	Cable News Ntw	Santa Ana		
6:00	Sportscenter	Nightly Business Report	News	Movie: "Bachelor Party"	News	Gene of Will	Private	News	Sanford and	Moneyline	Prize the	Prog Cont'd	
6:30	ESPN's Super Bouts of the 80's	Wild America (CC)	Crash Show	Movie: "In Like Flynn"	News	Have Come the Brides	Movie: "Prisoner of Second Avenue"	Magnum, P.I.	Houston at Atlanta	Prime News	Behind Scenes Short Program	Movie: "The Escape Artist"	
8:00	Top Rank Boxing - 12 Round Heavyweight	Mystery (CC)	Cher's	Movie: "The Servant"	700 Club			Simon and Simon (CC)		Larry King Live	Prize the	Movie: "The Chapman"	
9:00	Championship Jesse vs. Tony Anthony	All Creatures Great and Small	Will Street Blues	20/20 (CC)	News	Mr. Little	News	Ken's Landing (CC)	Movie: "The Parallax View"	Evening News	Prize the	Movie: "Blame (CC)"	
10:00	Iron Atlantic City	Dr. Who	News	Movie: "Greyfriars Place"	News	Bill Cosby	Second City TV	News	Barney Miller	Moneyline	Prize the	Movie: "9 to 5"	
11:00	PKA Full Contact Karate	New Literacy	Late Night with David	ABC News Nightline	Love That Bob	Movie: "Naked"	Movie: "The Night of the Owl"			Crossfire	Behind Scenes	Movie: "The Lady in Red"	
12:00	ESPN's Horse Racing Weekly	Sign Off	Letterman	Movie: "Muppet Show"	Movie: "Yankee Doodle"	Mary Tyler Moore	Movie: "Mark & Mindy"			Newsnight Update	Good News		



Abraham Lincoln was born in Kentucky.

Tri-City Pest Control
now serving the Spearman area
all work guaranteed.
Call 665-9429.

Out of State 1-800-338-5871 Office 1405-338-3376
GUYMON LIVESTOCK AUCTION
Home Owned and Home Operated
SALE EVERY THURSDAY AT 10:00 AM

High Plains Professional Hearing Aid
Free Hearing Tests
Tuesday, June 18
Golden Spread Center
10-1 P.M.
Every 1st and 3rd Tuesday
Repair work on all brands of hearing aids \$50
Jerry Lile H.A.S.
A.W. McGinnis Audiologist

19 WALLET SIZE COLOR PHOTOS
WE USE KODAK PAPER **99¢**
No limit on this offer
AT Kids' Stuff
719 West 7th
Friday, June 21
Ask about our FREE 8 x 10 offer
Shugart's inc.
Group charge 99¢ per person per 19 wallets
Kodak paper. For a Good Look at the Times of Your Life. TM

FREE 10 x 13 Portrait
(a \$12.00 Value)
With EVERY Package
To introduce you to our exceptionally high quality portrait packages we are making this limited time offer. We will include a 10 x 13 decorator wall portrait in each package at no extra charge.
NO SALES PRESSURE, NO SURPRISES
We have no salespeople. The store personnel deliver the pictures. They will not try to sell you additional pictures. Reorders are available by mail at what we believe are the lowest prices in the area.
Studio Quality Portraits by Kolorkraft
2 - 8 x 10's
2 - 5 x 7's
10 Billfolds in 2 Poses
You get all of this for only \$300 deposit when photographed \$1195 balance on delivery
Satisfaction Guaranteed or your money refunded
No Age Limit
No Quantity Limit
No Extra Charge for Groups
Families Welcome
Infants to Adults
We use Kodak paper. For a good look.
Tuesday, June 18th
10:00 a.m. thru 5:00 p.m.
KIDS' STUFF
719 W. 7th
Spearman, Texas

FAMILY CRUSADE
P R E A C H I N G

S I N G I N G
LOWRY GOSPELETTES
"Presenting Good News for ALL ages"
WHEN June 23-26, 7:30 p.m.
WHERE FIRST ASSEMBLY OF GOD
JESUS... The Family's Answer

Local girls competing in Championship Show



ANDREA ARCHER

Quarter Horse enthusiast Andrea Archer will be competing at the fourteenth Annual American Junior Quarter Horse Association World Championship Show and Convention in Tulsa, Oklahoma, August 4-10.

Andrea will be among the 1,300 young people, 18 and under, from the United States, Canada and Australia, selected to participate in the show. She will compete with her registered American Quarter Horse, Barney Joe Bounder, a 1972 Sorrel Gelding in the Barrel Racing, Stake Racing and Pole Bending at the show.

Andrea is the 18 year-old daughter of Mr. and Mrs. Bobby Archer of Spearman and will be a freshman at Texas A&M University this fall.



ANN MARIE JARVIS

Quarter Horse enthusiast Ann Marie Jarvis will be competing at the fourteenth Annual American Junior Quarter Horse Association World Championship Show and Convention in Tulsa, Oklahoma, August 4-10.

Ann Marie Jarvis will be among the 1,300 young people, 18 and under, from the United States,

Canada and Australia, selected to participate in the show. She will compete with her registered American Quarter Horse, Trish Gold Bar, a 1971 Sorrel Gelding in the Western Riding at the show.

Ann Marie Jarvis is the 16-year-old daughter of Mr. and Mrs. Britt Jarvis of Spearman and is a junior at Spearman High School.

Cecil Tucker services held

Cecil B. Tucker, 46, died Wednesday.

Services were held June 14 in the Church of Christ with Gaylord Cook, minister, officiating. Burial was in Hansford Cemetery by Boxwell Brothers Funeral Directors.

Mrs. Tucker was born in Olney and moved to Spearman in 1945. He was a member of Church of Christ.

Survivors include five brothers, Millard, Al, and Buck, all of Spearman and Wilburn of Ralls and Bob of Tucumcari, N.M.; and five sisters; Mildred Sloss of Amarillo, Violet Hornsby of Spearman, Ruth Shelton of Dumas, and Betty Refich and Mary Sue Sloan, both of Canyon.

Wilkerson's to host class of '67

The class of '67 will be having a get together for adults on Friday evening, July 5 beginning at 8:00 p.m. It will be held in the home of Anthony & Linda Wilkerson at 604 Barkley.

Each person or couple attending is asked to bring a snack food and cakes for the evening's refreshments. The get together will last until everyone gets through visiting.

Plan now to attend the 1985 class reunion. The class of '67 will be looking forward to seeing each of you.

President reaffirms support to S. Korea.

Museum News

Eighty-Four persons have visited the Stationmaster's House Museum since June 1.

On display for a few weeks has been an assortment of old toys which has proved to be an interesting exhibit.

The next exhibit will be early school items. Auxiliary members are asking people to lend their old school pictures, books, slates, mementos, etc for this exhibit. Bring items to the museum in paper sacks with name and phone number attached by June 24 which is the deadline. Items will be returned.

This "Old School" display will be ready for Spearman's All-school reunion set for July 4 week-end, and will remain in place till schools open for the fall term.

The pot bellied stove, wall black boards desks, the school marm. McGuffey readers, all will be exhibited. Please search your old trunk for interesting mementos

from yester - year. (Pictures please.)

The Museum is open every afternoon except Monday.

MUSEUM NEEDS

- * Old pine kitchen table. Have you looked in your barn?
- * Old jars canned meat. Search the cellar.
- * Old-time fly swatter.
- * Pictures for walls. Farm scenes. End of trail, Coyote baying at moon, etc.
- * Thanks to W.E. Sparks for the jar of sand hill plums canned in 1955 by Mrs. Jess Womble.
- * Thanks to Allen Pierce for the bit which was hand made and used on King Ranch.

Auxiliary members include: Ruth Bryan, Bobby Novak, Buena Lyon, Sybil Miller, Margery Curtis. They appreciate your interest & help.

House rejects all aid to Nicaraguan Contras.

FRIDAY 6/21/85		6/16/85-6/22/85										Spearman TX/REPORTER 6855 12/7	
CABLE	PM	(2) ESPN	(3) OETA	(4) KAMR CH.4	(5) TMC	(6) KVII CH.7	(8) CBN	(9) WGN CH.9	(10) KFDA CH.10	(11) WTBS CH.17	(12) CRN	(13) TBN	SHOW TIME
6:00	Sportscenter Bowling Tournament	Nightly Business Report Oklahoma	News MPA'S '81	News	Prog Con'd	News Wheel of Fortune	Branded Coo Ed	Private Benjamin Soap	News Three's Company	Prog Con'd	Moviefile	Prize the Land	Prog Con'd
7:00	USFL Football Los Angeles at Orlando	Washington Week/Review	Mike Nesmith in TV Paris	Movie: 'Chest of the Titans'	Movie: 'Chest of the Titans'	Movie: 'Chest of the Titans'	Movie: 'Chest of the Titans'	Movie: 'Chest of the Titans'	Movie: 'Chest of the Titans'	Movie: 'Chest of the Titans'	Movie: 'Chest of the Titans'	Movie: 'Chest of the Titans'	Movie: 'Chest of the Titans'
8:00	USFL Football Los Angeles at Orlando	Capital Journal McLaughlin Group	Y	Y	Y	Y	Y	Y	Y	Y	Y	Y	Y
9:00	USFL Football Los Angeles at Orlando	Oklahoma Week in Review	Movie: 'Cross Country'	Movie: 'Cross Country'	Movie: 'Cross Country'	Movie: 'Cross Country'	Movie: 'Cross Country'	Movie: 'Cross Country'	Movie: 'Cross Country'	Movie: 'Cross Country'	Movie: 'Cross Country'	Movie: 'Cross Country'	Movie: 'Cross Country'
10:00	NFL Super Bowl	Dr. Who	News	News	News	News	News	News	News	News	News	News	News
11:00	USFL Football Los Angeles at Orlando	New Library	Friday Night Videos	Friday Night Videos	Friday Night Videos	Friday Night Videos	Friday Night Videos	Friday Night Videos	Friday Night Videos	Friday Night Videos	Friday Night Videos	Friday Night Videos	Friday Night Videos
12:00	Sign Off	Sign Off	Sign Off	Sign Off	Sign Off	Sign Off	Sign Off	Sign Off	Sign Off	Sign Off	Sign Off	Sign Off	Sign Off

Sale

Spring + Summer Fashions

30% OFF

J. Winston

WOMEN'S FASHION . . . MORE THAN TRADITIONAL

2701 PARAMOUNT - AMARILLO

SEARS

KENMORE COOLING SALE

Special prices on selected models now through June 22, 1985 only. All refrigerators and freezers on our sales floor reduced. Shop early for best selection.

#74851

17.7-cu. ft. frostless Refrigerator

save \$120 **589⁹⁹** white

#74081

19.5-cu. ft. frostless Refrigerator with ice maker

save \$150 **749⁹⁹** white

#54271

22.2-cu. ft. Kenmore Side By Side with ice and water in door

save \$250 **1059⁹⁹** white

#15152

15.1-cu. ft. Freezer

324⁹⁹ white only

#25152

15.1-cu. ft. Freezer

324⁹⁹ white only

#29313

31.1-cu. ft. Kenmore Upright Freezer

619⁹⁹ white only

Each of these advertised items is readily available for sale as advertised

Prices include shipping, delivery and normal installation. Many Kenmore models available in colors at extra cost. Ask about Sears credit plans.

Satisfaction guaranteed or your money back *Sears, Roebuck and Co., 1985

517 Hwy. 207 Phone 659-2573 Most merchandise available for pick-up within a few days

There's more for your life at **SEARS**

GRAIN DEPOSITS IN THIS ELEVATOR INSURED BY

F. G. I. C.

FARMERS GRAIN INSURANCE COVERAGE

SPEARTEX GRAIN COMPANY
P. O. BOX 248
SPEARMAN, TEXAS 79061

BY **AGRI*RISK**

Farmers Worry About Bankrupt Elevators

SPEARTEX GRAIN COMPANY is Proud to be covered by F G I C (Farmers Grain Insurance Coverage) at no cost to the farmer.

F G I C coverage guarantees that Warehouse Receipts and open stored grain which is held by farmers, companies involved in Farming, Feedyards, Cattle Feeders, Investors, Banks, Other lending institutions or anybody else, is 100% insured against loss caused by bankruptcy of the elevator where the grain is stored.

If the front door of the elevator does not have the insignia "Grain deposited in this elevator insured by F G I C (Farmers Grain Insurance Coverage) by Agri*Risk", then the elevator is **NOT** covered to fully protect their customers.

We have our 1985-86 License & Bond approved from Texas Department of Agriculture & are ready to receive your grain.

We would like to take this opportunity to wish each farmer much success with the upcoming wheat harvest and we stand ready to be of service to each of you.

SPEARTEX GRAIN COMPANY
P. O. BOX 248
PHONE (806) 659-3711
SPEARMAN, TEXAS 79061

Carl Archer
Gen. mgr.

Mae Wofford and group return from trip

MAE WOFFORD of Panhandle Travelers in Spearman, has recently returned from escorting a group of 34 Senior Citizens from Booker, Darrrouzett, Perryton, plus some from the Oklahoma Panhandle and Kansas areas, on a sixteen day motor coach tour.

These groups traveled to fifteen different states. The highlights in Nashville, Tennessee were the Hermitage, Opryland and the Grand Ole Opry, where George and Barbara Bush were special guests the night these groups were in attendance.

After traveling through the Smokey Mountains, the group toured Williamsburg and Jamestown, Virginia. During the two days in Washington, D.C., a visit with Beau Boulter, plus attending the Dinner Theater production of "Showboat" was a HIGH, highlight.

Philadelphia, Pennsylvania shared the Liberty Bell, Betsy Ross House and Carpenters' Hall with

us, with lunch at the Bourse (the old stock exchange building that has been converted into a posh shopping center) very near the Liberty Bell.

Valley Forge, Amish Country Tour near Lancaster and a family style Amish meal at Intercourse, Pennsylvania were shared by the group.

Topping off the tour, a night was spent in Pittsburg, a visit to the Fostoria Glass outlet and a ride around the Indy 500 track in Indianapolis, Indiana.

"We had a wonderful group of travelers that made my job easy. It's a shame to have so much fun and get paid for it! The average age of this group was 68.6 years...from age 55 to 84. They kept me hopping! We had sing-a-longs, played bingo, Trivia and Bible Trivia while we rolled down the freeways in our classic Continental Trailways Golden Eagle with driver Al Plexico, from Amarillo, at the wheel. He is the "best"! Much of

the time you couldn't see past the barrow ditch because of all the trees."

Mae was honored June 3 by the First Bank and Trust of Booker with a cash award for "Service above and beyond the call of duty" for the very successful trip.

Hansford County Fair planned

The Spearman Chamber of Commerce is sponsoring the Hansford County Fair, October 4 & 5 at the Hansford County Show Barn in Spearman. Start now on your canned goods, needlecrafts, art, flowers, etc., that you plan to enter. More details to follow later.

CBS rejected Ted Turner's offer to buy.

Coca Cola changing its secret brew.

Catholic Youth Group meets

The Catholic Youth group met on June 9th, 1985 for their regular meeting. The meeting was opened with prayer by Ted Vela. Minutes were read by secretary Mary Lou Baker. Business meeting held. Sponsor Ray Ortega spoke to the group on working together as a group. A devotional was given by sponsor Bob Farr about taking a little time out for prayer each day.

Election of new officers was made. New officers for the coming year are President: Jessie Lozano, Vice Pres.: Gerald Blan, Secretary: Mark Allen, Treasurer: Jenifer Sintas, Reporter: Amy Blan, Historian: Maria Vela.

Meeting was closed with prayer given by Leticia Vela. Next meeting will be June 23, 1985 at 7 - 8 p.m.

Refreshments were served and the Youth enjoyed playing Volleyball.

Bradford named county agent

Jody M. Bradford has been appointed County Extension Agent - Agriculture (assistant) in Wilbarger County effective July 1, 1985 according to the Wilbarger County Commissioners Court and District Extension Director Ed Garnett.

A graduate of Gruver High School and a six-year veteran in 4-H, Bradford received his Bachelor of Science Degree in Animal Production from Texas Tech University. While at Tech, he was a member of the Saddle and Siroin Club and Texas Tech Saddle Tramps. He was also on the Texas Tech Wool Judging Team and Senior Livestock Judging Team as well as the Junior Livestock Judging Team. Bradford was on the Dean's List and received the King Ranch Scholarship in Animal Science. He worked as a Student Assistant in the Tech Animal Science Department and the Texas Tech Horse Center while in college.

As Wilbarger County Extension Agent, Bradford's primary respon-

sibility will be to give leadership to the 4-H and youth agricultural program in Wilbarger County as well as work jointly with County Extension Agents D.W. "Korky" Wise and Pam Prather in developing educational programs through the Wilbarger County Program Building Committee.

Bradford enjoys hunting and fishing. He is the son of Van and Lee Bradford and is married to the former Eadie Clemmons, daughter of Eddy and Anita Clemmons of Spearman.

Students receive degrees

LUBBOCK--Texas Tech University has awarded degrees in 1984-85 to the following students from Spearman:

Bachelor's degrees--Douglas Hohertz, finance and Lynn Vernon, electrical engineering.

SPEARMAN CHURCH DIRECTORY

APOSTOLIC FAITH CHURCH:
Leland Grimmer, Pastor
824 South Dressen
Sunday School: 10:00
Morning Worship: 11:00
Evening Worship: 7:00
Wednesday Service: 7:30
659-2870

CHURCH OF THE BRETHREN:
Milton Robinson, Pastor
Waka, Texas
Sunday School: 10:00
Morning Worship: 11:00
No Evening Services
435-4598

CHURCH OF CHRIST:
Gaylord Cook & David Fultz,
Co-ministers
121 South Haney
Sunday School: 9:45
Morning Worship: 10:35
Evening Worship: 6:00
Wednesday Service: 7:30
659-3244

FAITH LUTHERAN CHURCH:
William Schardin, Pastor
1101 South Bernice
Sunday School: 9:45
Morning Worship: 10:45
No Evening Worship
659-2252

FELLOWSHIP BAPTIST CHURCH
Jim Jones, Pastor
1102 South Archer
Sunday School: 10:00
Morning Worship: 11:00
Evening Worship: 7:00
Wednesday Service: 7:30
659-2782

FIRST ASSEMBLY OF GOD:
David Nuckels, Pastor
401 North Bernice
Sunday School: 9:45
Morning Worship: 11:00
Evening Worship: 7:00
Wednesday Service: 7:00
659-2295

FIRST CHRISTIAN CHURCH:
[DISCIPLES OF CHRIST]:
Martin Foster, Pastor
29 South Bernice
Sunday School: 9:30
Morning Worship: 10:50
Evening Worship: 6:30
659-2036

FIRST BAPTIST CHURCH
[SOUTHERN BAPTIST]:
Russ Gibbs, Pastor
Jerry Don Davis,
Minister of Youth
123 South Bernice
Sunday School: 9:45
Morning Worship: 11:00
Church Training: 8:00
Evening Worship: 7:00
Wednesday Service: 7:00
659-5557
Intercessory Prayer Line 659-2911
659-2445

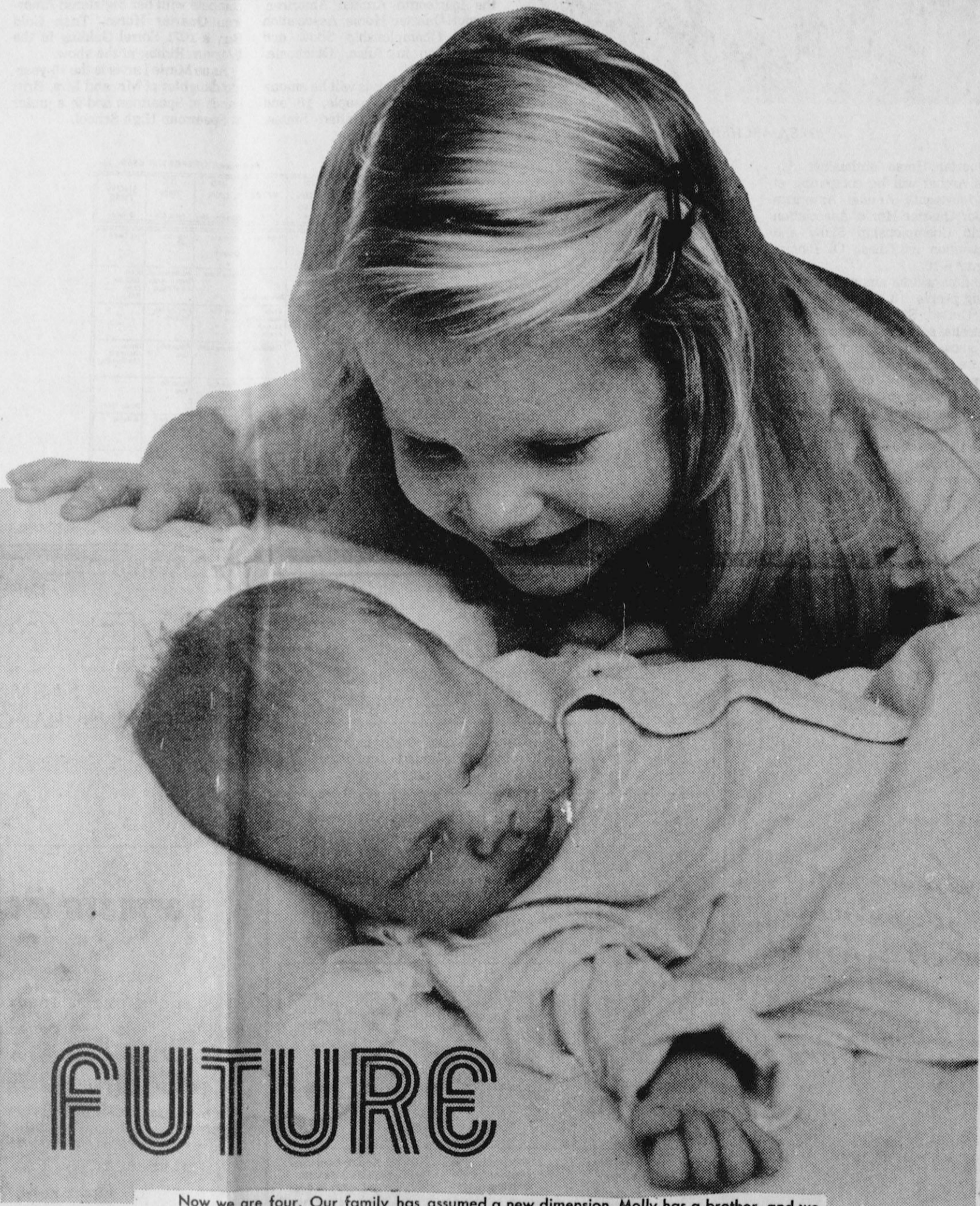
SACRED HEART CATHOLIC CHURCH:
Father Raymond Crosier, Priest
Saturday Evening Mass: 7:00
Friday Mass: 8:30 AM
Sunday Mass: 8:00 AM
Thursday Mass: 6:30 PM
659-2166

FIRST UNITED PRESBYTERIAN CHURCH:
Lelan McCullough, Pastor
1021 Cotter
Sunday School: 9:45
Morning Worship: 11:00
No Evening Services
659-2033

FIRST UNITED METHODIST CHURCH:
Lane Boyd, Pastor
407 South Haney
Sunday School: 9:45
Morning Worship: 11:00
Evening Worship: 7:00
659-3220

SPEARMAN UNION CHURCH
(Inter-Denominational):
Steve Rogers, Pastor
31 South Endicott
Sunday School: 9:45
Morning Worship: 10:45
Evening Service: 6:30
Wednesday Service: 7:30
659-2644

SPEARMAN-GRUVER SPANISH BAPTIST MISSION:
Romeo Reyes, Pastor
502 E. 7th
Sunday School: 9:45
Morning Worship: 11:00
Church Training: 6:00
Evening Worship: 7:00
Wednesday Service: 7:00
659-3948



FUTURE

Now we are four. Our family has assumed a new dimension. Molly has a brother, and we have a son.

There is new richness and happiness in our lives, but there is also new responsibility. Sure, we'll need to keep that "roof over the head," but there's much more to being a parent than that. Sometimes, when you look at the headlines in the paper, you get scared. As these kids grow up, can you face "the new moralities," the endless changes?

No — not alone. But you have the strongest ally in history to help you: the Church. In case you haven't noticed, the Church has been keeping pace with change.

Why not start next Sunday—and bring yourself up to date?

Church page
compliments of:

INTERSTATE SAVINGS & LOAN

1st NATIONAL BANK

322 Main Spearman 659-2559

201 S. Main Perryton 435-3676

BOXWELL BROTHERS

THE HANSFORD PLAINSMAN

BAKER & TAYLOR

519 Evans Spearman 659-2212

Gruver Hwy. Spearman 659-2503