

YOUR HOMETOWN NEWSPAPER — WITH THE HIGHEST OFFICIAL CIRCULATION IN HANSFORD COUNTY

The Hansford Plainsman

VOLUME VII., NUMBER 74

SPEARMAN, HANSFORD COUNTY, TEXAS 79081

THURSDAY, JULY 7, 1966



General Telephone and Electronic Corp. has developed the first electrically scanned laser system that is more precise than radar in tracking rockets during launch periods. We are glad to learn General is making such great strides forward. We wonder when they will solve the problem of getting a long distance operator without waiting five minutes.

We sure do like to brag, especially when there is hard fact on which to base our claims.

Of all the county plaques on the wall of the Pioneer Amphitheatre in Palo Duro Canyon, Hansford County has the best, in our opinion.

The plaque was designed by Ray Kelly of Morse and is one of the very few that depict something of the history of the county.

We did not get to see the finished plaque. For some reason it had not been finished, but the metal engraving had been made and we suppose the plaque will be finished soon.

Kelly's drawing was on the wall in the place where the plaque will be.

It is on the east end of the amphitheatre and when you go to the show be sure to go by and see it. We think you will agree.

If you have not guessed from reading "Day by Day", we fell in love with the show "Texas" in Palo Duro Canyon. It was real entertainment from the stage and we happen to be sitting next to two elderly gentlemen who apparently had lived some of the early history. Their comments were interesting and amusing.

At one point in one square
(continued on page 2.)



TEXAN -- Bill Devers poses by a chuck wagon on the stage of Pioneer Amphitheatre, Palo Duro Canyon, following one of the opening performances of the musical "Texas." Bill has a supporting role in Paul Green's musical romance.

Plainsman Photo

Bill Devers Is Successful In Professional Stage Debut

Spearman's representative in the cast of the Paul Green production "Texas" in the Pioneer Amphitheatre in Palo Duro Canyon fills up a large part of the stage and his booming voice fills the canyon. Bill Devers plays Archie Dyer, one of the cowboys working on Uncle Henry's ranch. Dever's booming bass voice is one of the major supporting voices in all the musical numbers. He, also, sings in the quartet and has a solo and a speaking part.

This is the big, 6'4", Spearmanite's first venture into outdoor and professional musical drama work. However, he has appeared in several productions at West Texas State University where he is a music major.

The cast selected and received their scripts on June 1. They began rehearsals soon afterwards and worked eight or nine hours per day getting ready to open July 1.

Bill had a part in some of the dances until an old football knee injury sidelined him. The knee sometimes wants to bend four ways instead of two, and when he was rehearsing the dance, the knee refused to take the strain.

Devers is very enthusiastic about the show and being a part of it.

"It is fun to do and we are all just like one big family. We all work so close together it cannot be any other way," he commented.

The show is scheduled to run every night except Tuesdays until Sept. 5. Devers said there is a possibility there might be some Tuesday performances if the demand for tickets is great enough.

Leads in the show are played by experienced professional entertainers and all the performers are on salary.

"We are not getting rich, but it is all right," Devers said.

He agreed that it was much better work and pay than driving a tractor all summer. It sure is, he commented, "however, I have made lots of good money driving tractors. But on this job I can stay home under the air conditioner until it gets cool at night."

In the theatre the stage is large and the canyon wall forms a backdrop. The performers have much territory to cover, not only on the stage, but in a draw behind

the stage, on a road across the draw and up the canyon wall.

Devers said at first the cast was rather exhausted from all the frantic movement required on stage and getting in place for the next cue. Then, choreographer Neil Hess began putting the cast through exercises to warm-up before show time.

"It was just like getting ready for a football game, except some of the exercises were different," Devers said.

The performance on stage is smooth and professional, but backstage it is something else. People are making costume changes all over the place.

During the interview one actor inquired of Devers if he had seen part of his costume. In a few minutes he came back with a shirt and pants he had left behind a bush in the creek.

"We have to change all over the place. Some of the cast who have several changes go on stage with two or three years of costumes," Devers said.

Lil Cowart, who plays Elsie McLean in the show, makes her last costume change on the train as it steams into town in the final scene of the play.

When the show closes this first year on Sept. 5, the cast will have done about 60 performances. Devers said he hopes he can do something like this every summer. He has no desire for a full time professional performer's life, but would like to do summer theatre.

When he completes his degree at West Texas this summer, the son of Mr. and Mrs. Ray Devers, will be choral music director in Hereford High School.

Cars Damaged In 2 Wrecks

Officers have investigated two accidents, one in town and one in the country since Sunday afternoon.

Sunday afternoon a car driven by Sheriff J. B. Cooke and a pick-up driven by Wallace Berner were involved in an accident at the intersection of a farm road and highway 760 one mile south of town.

Cooke was on the highway and Berner was on the dirt road, according to officers.

Both cars were heavily damaged, but the drivers were only shaken up and bruised.

Tuesday at 11:50 a.m. a car driven by Ed Dear and a pick-up driven by Bill Wright were involved in an accident on Cotter street.

Officers said Dear was turning across the street from in front of his home when he was struck by the pick-up.

Officers said the damage to the pick-up was light and estimated the damage to Dear's car at \$300.

Temperature Passes 100 For 5 Consecutive Days

It has been hot in Spearman for the past five days and no one will make any arguments.

Since Saturday the mercury climbed above the 100 degree mark each day. Tuesday was the record holder for the week and year, to date. The official high for Tuesday was 105 degrees, according to Mrs. Pat Cates, official observer.

The highs by the days were: Saturday, 102; Sunday, 101;

Monday, 101, Tuesday, 105; and Wednesday at 1 p.m. the mercury was 101. This was not the official high for Wednesday because Mrs. Cates said the highest mark is not usually reached until 4:30 or 5 p.m.

**Branch T. Archer
To Be Honored**

(See story page 2.)



FIRST HALF WINNERS -- These Dodgers of the Spearman Little League won the first half of the Little League season without a defeat. The team is coached by Bobby Joe Grayson and Jimmy Kees.



SECOND HALF WINNERS -- The Yankees forced the Little League of Spearman into a play-off when they came alive in the second half and won it in the last week. They are coached by Bud Jennings and Bob Driscoll.

Did you know Texas is a "restless land of energy and opportunity, a place where a man can undertake almost anything--and probably make it work." That statement will not surprise most Texans; they know it already.

But it may be news to the many millions of Americans who read it this week as Life Magazine begins a major two-part series on the Lone Star state. The two installments appear in the July 1, and July 8 issues, a total of 32 pages.

The Morse Code

John and Lovenia Thompson spent the weekend visiting with their daughter and husband, the Julian Cordovas of Denver, Colo.

The Alexander family celebrated the fourth of July by having a picnic at the park in Borger on Sunday. Those attending were the Alec Alexanders of Farmington, N.M., the Gordon Parks of Borger, the Jerry Alexanders, Ray Alexanders and W.R. Parks, and Ronnie Womble of Morse.

Mrs. Mary Gillispie returned Saturday from a trip down state where she visited relatives. Her traveling companion was Mrs. Vina Huffman who attended an insurance school while Mrs. Gillispie visited relatives.

Desmond Kelly and Mrs. Mack Dortch attended the opening production at Palo Duro Canyon Sunday night. Their son and grandson, Ray Kelly, was honored for his creation of the plaque for Hansford County which was hung in the Pioneer Amphitheatre.

Gary Reiswig has enrolled in a mechanic school in Oklahoma City. He is a 1966 graduate of Morse High.

Miss Patricia Henderson underwent a tonsillectomy at Dalhart on Tuesday.

Miss Peggy Giblin has recently returned home from the Borger hospital where she underwent minor foot surgery.

Miss Joyce Schick of Lubbock was a weekend visitor in the

WILD WEST SHOW AND PORPOISE ACT NEWEST ATTRACTIONS AT SIX FLAGS



The Overland Stagecoach being attacked by Kiowa Indians is just one of the exciting features of Six Flags Over Texas' newest attraction, the Wild West Show. Visitors to the 2,500-seat, open-air arena see the turbulent days of early Texas re-created as part of the colorful pageant which is presented three times daily throughout the summer.

Arlington, Texas: The size and scope of Six Flags Over Texas continues to expand as the state's most popular single tourist attraction recently added a Wild West Show and a performing porpoise to its entertainment list.

The Wild West Show presented by Six Flags is a throwback to the traveling spectaculars of yesteryear. An especially built 2,500-seat open-air arena located in the west corner of the Texas Section provides the setting for a recreation of the turbulent life of the early days of the Old West. Visitors see war-painted Kiowa Indians attacking the Overland Stagecoach, followed by mounted cavalry coming to the rescue. The action-packed show features trick riders, bull whip and rope artists and dance-hall girls among the cast of forty performers.

Produced for Six Flags by pioneer rodeo impresario Frank Rush of Lawton, Oklahoma, the performances are staged at 1:00, 3:00 and 5:00 p.m. seven days a week throughout the summer months. The Wild West Show here is not on the tomahawk and souvenir bead level, but rather places its emphasis on the excitement and historical pageantry of early Texas.

Over on Skull Island, in the Confederate Section of the 115-acre Park, a bottle-nose porpoise named Skipper II now ranks as the favorite of the young set. Put through his paces four times daily by his pretty blonde trainer, Diana Langer of Marathon, Florida, the talented and acrobatic 400-pound mammal frolics in his newly built 25,000-gallon water tank.

Both the Wild West Show and the Porpoise Act are free, as are all the rides, attractions and shows inside Six Flags being covered by the one all-inclusive ticket purchased at the main gate.

Hansford Hospital News

In the hospital are Lilly Mae Chase, Idolina Garcia, Susie Current and daughter, Doris Beck, Sue Crandall, Madelon Burleson, Ray Oliver, Stella Thomas, James Cummings, Bill Miller.

Dismissed were Tennie Elledge, Mary Lou Barnes, Genevieve Wagoner, Laura Wilson, James Jones, Patty McGuffin, Billy Evans, Bennie Black, Gloria Greenwood, James Hughes, Coy Palmer, Dee Deere, Barbara Dees and daughter Marv Te Best, Melba Stegall.

Mrs. Copeland Hosts Club

Mrs. E.J. Copeland was hostess for the Spearman Book Club when they met in her home on Tuesday, June 28, for a salad supper.

After eating, the group went to the home of Mrs. John Berry. Playing at two pianos Verna Lee Schnell and Mrs. John Berry presented a musical program which consisted of patriotic, classical, semi-classical and popular music.

Present were members Mmes. O.C. Holt, Cecil Crawford, Fred Hoskins, C.A. Gibner, E.J. Copeland, R.E. Lee, Miss Vera Campbell and guests Mrs. Peyton Gibner, Verna Lee Schnell and Mrs. Berry.



Your Home
★ WILL LAST LONGER
★ BE MORE BEAUTIFUL
When You Protect It With Proved
REGAL LITE LATEX HOUSE PAINT

- ★ Easy Working
- ★ Long Lasting
- ★ Low Lustre Finish

STERLING PAINT

White House Lumber Co.

Yes, YOU

may already be the winner of a

Full Tank of Gas

check our window & see !!

TRACTOR TIRE SERVICE

WE HAVE IT !

TWO RIGS
READY TO GO
AT ANY TIME

Service Is What We Offer

LESS DOWN TIME

with Firestone Tires &

Snider - Pearson SERVICE !

DRIVE RIGHT IN FOR BETTER CAR CARE

Snider - Pearson Texaco

701 Collard

659-9972

home of her parents, the Dave Schicks.

The Gerald Scribner family celebrated the fourth by spending the weekend with relatives at Skipout Lake.

Mrs. Amanda Holton and daughter Eris of Amarillo were Monday guests in the home of Mrs. M.W. McCloy.

Allen McCloy entered the Will Rogers rodeo at Amarillo this weekend and won second in the saddle bronc riding event. He was two points from first place. Allen is on the college rodeo team at Panhandle A&M.

Mr. and Mrs. Jack Johnson, Jr., went to Denver on Tuesday to visit her sister, Mr. and Mrs. Robert McCullough.

Mr. and Mrs. Jack Gillispie and Dwight spent the weekend in Okla. City visiting their daughter and family, Linda and Junior Davis and

son.

The Jerry Alexanders entertained with a bridge party Friday night. Guests were Ray and Gretchen Alexander, Sybil and Alec Alexander, and H.B. and Laverne Parks.

Beth and Tom Dortch and girls and Lynn and Marsha Davis and children spent Monday with Pat and Kaye Blankenship of Bivins.

Vicki Dortch is spending the week with her cousin, Sherry Blankenship.

Card of Thanks

We want to thank all who had a part in helping make our 50th anniversary an unforgettable occasion. The beautiful cards, letters, and gifts all were deeply appreciated. Orville and Alice Walker.

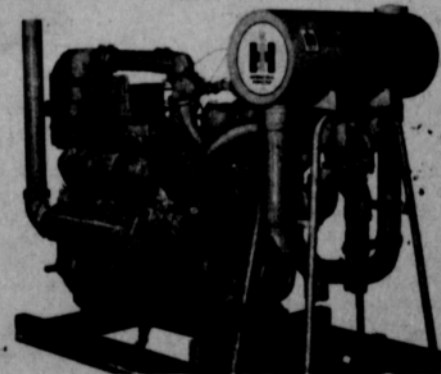
GOOD BUY



Consumers are paying consistently lower prices for prescription drugs, while the cost of living continues to rise—according to U.S. Bureau of Labor statistics and the Pharmaceutical Manufacturers Association.

Matrimony is one state that permits a woman to work 18 hours per day.

BUY
POWER
THAT
PAYS



H H UV-549
ENGINE

IT IS ENGINEERED
FOR IRRIGATION

IT IS A COMPACT MODERNLY DESIGNED V8 VALVE-IN-HEAD ENGINE BUILT FOR HEAVY DUTY WORK.

NORTH PLAINS TRUCK & IMPLEMENT

The Hansford Plainsman
Publishers Inc.

Jim O. Davis
Burl G. McClellan



County-wide independent newspaper published every Thursday and Sunday at 209 Main St., Box 668, Spearman, Texas 79081. Second Class postage paid in Spearman, Texas 79081. Editor . . . Burl McClellan

Texan . . .

(continued from page 1.)
ance number one of the men said, "Dang, I bet I have been a thousand miles dancing that one."

The next time you get provoked at a school teacher and wish he was run out of town, think twice, he may not be replaceable.

Dr. Bill Reeves has just returned from a teacher hunting tour over the state and the applications are not piled high on his desk.

At Texas A&M he learned the college had received over 100 inquiries for science teachers and did not have a single one to send.

Under new Texas school accreditation rules a teacher must



HANSFORD COUNTY -- is well represented in the promenade of Pioneer Amphitheatre with Ray Kelly's drawing shown in the center above. The drawing is now made into a plaque like those of the other counties.

have 24 college hours in a subject to teach it in high school. When a person gets that many hours in science, it is hard to interest him in teaching.

Here is something else to ponder, Dr. Reeves said he talked to one science teacher who had already moved, but last year he taught science in one of the poorer districts of

the state. There was no money for chemicals or equipment. The teacher dug out some old stale chemicals and the students brought fruit jars from home to use in the chemistry experiments.

How many science whizzes like James Ownbey, David McClellan and Bethany Donnell

will graduate from that school? We are certainly blessed.

JEST A MINUTE

If you're a man of few words, you won't have to take so many of them back.

Distant Relative To Be Honored

A very distant ancestor of some longtime Hansford County residents will be honored by the Texas State Historical Survey Committee in a program July 16 in Baytown.

On that day a Texas Historical Marker honoring the First Speaker of the Texas House of Representatives, Ira Ingram, and all former speakers of the House will be dedicated.

One of the names appearing on the back of the marker will be Branch T. Archer, Speaker of the House of Representatives of the Republic of Texas in 1837. He was the second man to hold the office.

Mrs. R. B. Archer of Spearman, and a member of the county historical society,

says Dr. Branch T. Archer was a very distant relative of the Archer family.

"Grandpaw John Archer used to tell us that the former speaker was very distant kin," Mrs. Archer said. "In fact, it was so distant we did not know just how he was kin."

Even though the kinship was very distant John Archer, who came to Hansford County in 1899 named a son for the former Speaker and there is now a Branch T. Archer Jr., who is a lawyer in Amarillo.

The original Branch T. Archer was Speaker in 1837, one year before John M. Hansford served in 1838. Neither man had any idea their names would be so closely connected over a century later.

4-H Dress Revue Is Today at HD Clubroom

Hansford County's annual 4-H Dress Revue will be held today in the Home Demonstration Clubroom.

Judging of the entries from some 30 4-H dressmakers will begin at 10 a.m. The judges will be Mrs. Ross Lee Meeks, the Moore County Home Demonstration Agent, and Mrs. Mrs. Cula Nowlan, the Ochiltree agent.

The public revue and presentation of awards will be-

gin at 3 p.m. in the clubroom.

There will be refreshments and everyone is invited to attend.

Floyds Visit Relatives Here

Mr. and Mrs. Jerry Floyd have returned to the United States after living three years in France. He is in the Army and was stationed there.

They and their daughter, Stephanie, are here visiting relatives. He is the son of Mr. and Mrs. Virgil Floyd and she is the granddaughter of Mrs. E. N. Wilbanks.

After their leave here, the Floyds will go to Washington, D.C. for eight months duty.

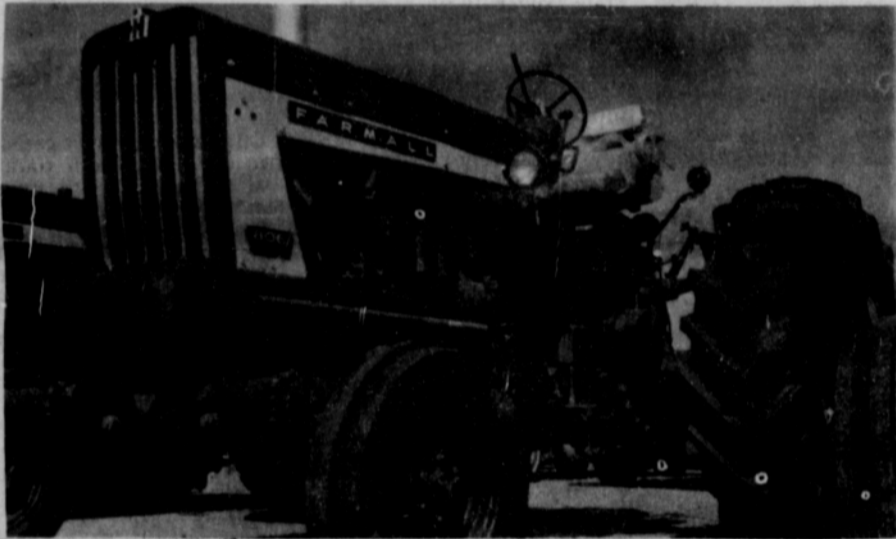
test for alcohol in his blood. The charge was a misdemeanor.

Man Enters Guilty Plea

A man entered a plea of guilty to a charge of driving while intoxicated charge in County Court and was fined \$50 and court cost and received the mandatory jail sentence of three days.

The man was arrested by city police and was jailed after asking for and receiving a blood

If You Need One Or If You Need More...



FARMALL 806

Thousands of Farmall 706 and 806 tractors working hundreds of thousands of hard-pull hours have written a record for total power . . . and proved the standout performance of the SURE ONES.



We Have The Tractors And We Are Making The Deals.

Come In Today And You Can Try The Sure One. North Plains Truck & Implt.

THE PEOPLE WHO BRING YOU THE MACHINES THAT WORK



Hear the best

on radio

Top 40

Easy Listening Country-Western

Variety

FOR YOU

Get ready for



KBMF-FM

98.3 on your dial



Mr. and Mrs. Donald L. Davidson

Photo C&B Studio

Miss McGuire Is Bride Of Donald L. Davidson

Before an archway of entwined white daisies and chrysanthemums flanked by candelabra holding white tapers, Miss Joyce Ann McGuire, daughter of Mr. and Mrs. M.O. McGuire of Spearman became the bride of Donald L. Davidson, Parents of the bridegroom are Mr. and Mrs. Sam N. Davidson of Corpus Christi.

The double-ring ceremony took place at 7 p.m., Saturday, July 2 in the Church of Christ in Spearman with the Minister of the church Charles Milner officiating.

Steve Riley of Dallas was soloist and a quartet from the Church of Christ sang the traditional wedding marches.

David McGuire, brother of the bride, gave his sister in marriage. She wore a formal gown of chantilly lace over silk peau de soie designed with a scalloped Sabrina neckline and fitted bodice which was re-embroidered with crystal beads. Long tapered sleeves ended at points over her hands and the bouffant skirt, highlighted with satin cabbage roses at the back waistline, ended in a chapel-length train.

The bride's elbow-length veil of silk illusion fell from a tiara of seed pearls and crystal beads and she carried a white Bible crested with white gardenias and spider mums tied with white satin ribbons.

Linda McGuire was her sister-in-law's matron of honor. She wore a floor-length dress of blue satin and carried a bouquet of white gardenias.

Frank Davidson was his brother's best man and ushers were Ronnie Ford and Phil Cates, cousin of the bride.

Bart McGuire, nephew of the bride, was ringbearer.

Mrs. McGuire, the bride's mother, wore a pink dress with matching accessories. Her corsage was also of pink rosebuds.

Following the ceremony, guests were greeted in the reception room of the church. The bride's table was covered with a white lace cloth over blue and highlighted with a blue and white centerpiece of spider mums and roses. Patty McGuire, Mary Ellen Barkley and Dolores Van Hooser presided at the table serving the three tiered wedding cake which was topped with the traditional bridal couple. Punch, nuts and mints were also served.

When the couple left on their wedding trip, the bride wore

a white suit of ribbon lace with white accessories and the corsage from her bridal bouquet.

She is a graduate of Spearman High School and is employed by Texas Instruments of Dallas.

The bridegroom is a graduate of Texas A&M and is also employed at Texas Instruments.

The couple will make their home in Dallas.

Out of town guests in Spearman for the wedding included Patty McGuire and Bart of Lubbock; Mrs. Lille Jacks of Grand Prairie; Mrs. J.L. Newell, Odessa; Mr. and Mrs. Frank Davidson and son Pat, Lubbock; Mrs. Pat McGuire, Amarillo; Ronnie Ford, Indianapolis, Ind.; Miss Dolores Van Hooser, Dallas; Steve Riley, Dallas; Mr. and Mrs. Sam Davidson, Corpus Christi; and Misses Darlene and Cynthia Pool of Brea, Calif.

Mrs. Fisher Is Jonquil Club Hostess

The Jonquil Flower Club hostess for Friday July 3 was Mrs. Pete Fisher.

Virginia Trindle presided in the absence of Jo McLaughlin and conducted the business.

Linda Webb guest speaker was introduced and gave a very interesting program on "Deep Freeze," telling the group how to prepare and package food for the freezer.

Kate Massie won first on her specimen of a daisy and also first on her arrangement of Day Lilies.

Attending the meeting were Patty Sheppard, Effie Hackley, Loriene Hutchison, Kate Massie, Kathleen Sutton, Virginia Head, Virginia Trindle, Verma Gail Kelm, Peggy Archer, and guest speaker Linda Webb, and the hostess.

Mr. and Mrs. Mike Berry of Odessa left for their home after spending the holiday weekend with his mother Mrs. John Berry, Mrs. Berry's two granddaughters, Kimberly and Linda stayed for a longer visit.



Day by Day

by Day McClellan

I've been trying, ever since Sunday evening to think of some appropriate way to describe the fascinating premiere of the "Musical Romance of the Texas Panhandle," Paul Green's "Texas." I do hate to deal in superlatives so often, but this is simply no other honest way to describe this unique theater under the stars.

In the first place, Pahr Canyon is a tremendous spectacularly beautiful site.

Its rugged beauty is enhanced by the addition of Pahr Amphitheatre which blends ever so subtly into the colorful canyon's terrain.

An aura of friendly western hospitality of another day greets you as you enter the theatre. College students in rather authentic costumes of the late 1800's are gracious hosts and add a great deal to the theatre's pleasant atmosphere.

I could go on at length about "Texas". The sound effects alone are phenomenal. The lightning and sound of the storm were so effective most of us found ourselves looking expectantly upward for rain. The fire dance was so expressive of a real prairie fire that it was indeed quite eerie as well as beautiful.

Spearmanites will be proud of Bill Devers who has a supporting role in the drama, one solo part and several numbers with the barbershop quartet. Bill's booming bass voice is very pleasant.

Bill's wife Elva, by the way, is also employed by the Texas Panhandle Heritage Foundation. She is on the hospitality staff and also works in the ticket office in Canyon this summer, according to her mother-in-law, Mrs. Ray Devers.

As you might guess, I strongly recommend that you see, hear and experience "Texas" this summer. You'll enjoy the evening, I promise that.

"Texas" is among other things, very entertaining. A family of four from Denmark sat by us in the Amphitheatre. They evidently understood very little English and yet they were wildly enthusiastic in their appreciation and applause. I think you will be too.

To make our holiday complete, we also saw "The Sound of Music" Sunday afternoon in Amarillo. I remember thinking as we left the movie, "Texas, no matter how good, couldn't compare with this." (You see what I mean about superlatives!)

Really though, this is a movie I'd gladly see several times. The scenery is fabulous and well, what are some other adjectives I can use without repeating myself?

In almost every movie though, have you noticed that someone behind you ad libs at the most indescribable moment.

Sunday it happened this way: beautiful Julie Andrews was dancing with Christopher Plummer in a gold and glistening summer house in the moonlight. Julie's fresh, lovely face was glowing as she looked up at her handsome partner. She wore a misty, flowing chiffon dress of the most beautiful blue and the whole setting was one of romance and delight.

At this point the man behind us loudly said to his wife "Did you ever notice how FLAT-FOOTED that girl is?"

Can you imagine! I felt just a little sorry for his poor wife. Do you suppose anyone alive is really that oblivious to beauty? Oh well, maybe she dragged him away from his golf courses or a baseball game on TV or something.



Engaged-

Mr. and Mrs. Ray L. Salsman of Spearman announce the engagement and approaching marriage of their daughter, Lora Sue to Larry Wayne Roberts, son of Mr. and Mrs. Lloyd W. Roberts, son of Mr. and Mrs. Lloyd W. Roberts also of Spearman.

The couple plan to be married August 1.



Marriage Announced-

The recent marriage of Miss Sheena D. Loftin and John Allen Zachary is announced by her parents, Mr. and Mrs. K. C. Loftin of 1026 S. Dresson, Spearman. The bridegroom's parents are Mr. and Mrs. J. Fred Zachary of 1301 S. Grinnell, Perryton.

Wedding vows were read by I in Clayton, N.M. Both young people are graduates of Perryton High School and they both attended West Texas State University last year.

They will make their home in Amarillo when school starts.

Shower Given To Honor Mrs. John Braselton

Mrs. John Braselton, nee Pat Dunning, was complimented with a bridal shower on Saturday afternoon, July 2 at the home of Mrs. Irvin Molesworth, of Waka.

Hostesses for the shower were Mrs. Irvin Molesworth, Carl Carter, Lester Barnes, B.J. Turner, Phillip Turner, Charles Cudd, and Eldon Gurley.

The refreshment table was covered with a net and lace bridal veil. Its crystal beaded tiara was grouped with a bride's bouquet, a blue satin and lace garter and an English six-pe-

nce to form the centerpiece. Punch from a crystal punch bowl and white cake squares were served by the bride's mother, Mrs. D.W. Dunning, Waka, and by Mrs. W.R. Shaul, the bride's grandmother, of Spearman.

Corsages of white flowers were presented to those who served, the honoree, and to Miss Linda Hines from Hobbs, N.M., cousin of the bride, who registered the guests who called during the party hours between 3:00 and 5:00 p.m.

Comedies Will Spotlight Next Year's ALT Season

The Panhandle's most popular live theatre, Amarillo Little Theatre, is beginning its membership drive for its fortieth season.

Five productions ranging from a Japanese folk legend to musical comedy are scheduled for this coming season. Comedy has the spotlight this year with three comedy productions.

This season opens Sept. 7, with a five-day run of the musical comedy "Little Mary Sunshine" by Rick Besoyan. Fay and Michael Kanin's "Rashomon", a Japanese folk legend, will open for five days on Oct. 19.

On Jan. 18, "Ondine" by Jean Giraudoux, a romantic fantasy, will open for five days.

The famous comedy by William Inge, "Bus Stop", will have a five day run beginning March 15.

"Cheaper By The Dozen" by Perry Clark, will open for the five day schedule on May 10.

Adult membership in the Little Theatre is \$7.50 per year and gives the member five tickets for the season. Student and military memberships are \$2.50. Sustaining memberships are \$25 with 10

tickets for the season and the privilege of permanent reservations. Then there are other and more expensive memberships.

Admission for each play is \$2.50 for adults and \$1.25 for students and military personnel.

The Little Theatre is located just at the east edge of Wolfen Village.

More information may be secured by writing, Amarillo Little Theatre, Amarillo, Texas.

Weekend guests of Mr. and Mrs. L.S. McLain were their daughter, Polly McLain, her room-mates Helen Calder of Canyon and Sharon Kay Nies of Perryton. Miss Calder is a teacher, working on her masters at West Texas State and is the daughter of Col. Calder, head of the R.O.T.C. at Canyon. Miss McLain will graduate in 2 weeks and will teach next year in the junior high at Canyon coaching basketball and tennis.

Overnight guests on Saturday and Sunday dinner guests of Mrs. James Hollar, Linda and Darrel were her parents Mr. and Mrs. Morre ofampa.

Take your problems to Church this week — millions leave them there!

A&M Staff Meets for Industry Study

About 175 Texas agricultural leaders and Texas A&M University College of Agriculture staff members met here June 27-28 to begin a study of the state's farming and ranching industry.

The session was the Agricultural Study Convocation, a project requested by the A&M Board of Directors because of the importance of agriculture to the Texas economy, its increasing complexity, and the state wide responsibility of A&M to the industry.

Nationally known authorities spoke at the meetings and suggested various approaches for the study.

A. E. Cascino, vice president for sales of International Minerals, Inc., in Illinois, said the study should be aware of the "great transition" underway internationally. The U.S. has operated in an economy dominated by agricultural surpluses, but if it is to help feed the world, it must learn to live with the world shift to a food deficient economy.

"The most important thing is to get rid of provincial interests and bias," Cascino said. "You can't think entirely as citizens of Texas or the United States. There are no political boundaries. You are citizens of the world, producing food for the world."

F. R. Wilcox of the American Arbitration Association at Pasadena, Calif., said farm people can no longer leave merchandising of their products to other persons.

"Through group action of various kinds, producers will find it necessary to advertise and merchandise to the extent of expenditures which, in some instances, will be as much as 10 to 20 percent of the wholesale price," he said.

H. C. Heldenfels of Corpus Christi, president of the A&M Board of Directors, said the convocation could be the most important planning effort ever made by the university.

He said if Texas is to remain an agricultural leader, it must use advanced technology and management, develop enterprises which have advantages over those of other states, and encourage in-state, out-of-state and world markets for its products.

W. W. Lynch of Dallas, president of the Texas Power and Light Company, said nothing is more important than research to agriculture, and nothing is more profitable.

The problem "seems to be one of enlisting the interest and support of the local people, of showing what can be accomplished and of laying the ground work for the rather substantial financial program necessary to put the lands in a suitable condition for high productivity," he said.

The Provost for Agriculture of the University of Florida, E. T. York, said that land-grant universities, such as Texas A&M, should seek help from other sections of the university instead of leaving the job entirely to the college of agriculture.

His talk centered on mobilizing resources of a land-grant university to support a dynamic agricultural industry.

"I would suggest very strongly that we need to mobilize resources within the university, but outside the college of agricultural technology," he said. "I should emphasize the fact that while some of these problems are peculiar to agriculture, many others are problems of a total society which are merely shared by agriculture."

A&M President Earl Rudder said an internal study by the university's College of Agriculture staff members has just been completed as a possible reference for the external study group. The external study should be finished late this year.

the Word

"Thy word is a lamp unto my feet; and a light unto my path." — Psalm 119:105

If you are a Christian, you are blessed with a great heritage. It is a heritage of truth and has nothing to do with imagination or myths. It is a truth that remains unchanged, no matter how many times someone attempts to rewrite or offers a "studied" translation.

This truth is the word of God. It is found in the Holy Bible. It is found in Ten Commandments, which form a guidepost for Christian living.

Accept this truth; it is useless to argue against it. Conscience and common sense will not permit you to be unaware. You fool no one, not even yourself, if you pretend to ignore or disbelieve.



Read your BIBLE daily and GO TO CHURCH SUNDAY

Sponsored By

R. L. McCLELLAN GRAIN CO., INC.

FIRST STATE BANK

Member F.D.I.C.

B & B GRAIN CO., INC.

The Hansford Plainsman

Attend

The Church Of Your Choice Sunday

—Weekly Opportunities For Worship—



"Do not be afraid; for I know that you seek Jesus who was crucified. He is not here; for He is risen as He said . . ."

Matthew 28:5-6



Apostolic Faith Church V. E. (Hap) Blythe, Pastor

9th & Dressen
Sunday School 10:00 a.m.
Morning Worship 11:00 a.m.
Young People 6:30 p.m.
Children's Church 7:00 p.m.
Evening Worship 7:30 p.m.
Thurs.:
Ladies Bible Study 2:00 p.m.
Prayer Meeting 7:30 p.m.

Assembly of God Church Rev. T. J. Taylor, Jr.

403 N. Bernice
Sunday School 9:45 a.m.
Morning Worship 11:00 a.m.
Sunday C.A.'s 6:30 p.m.
Evening Worship 7:30 p.m.
Wed. Bible Study 7:30 p.m.

Church of Christ Charles Milner, Minister

121 S. Haney
Bible Class 10:00 a.m.
Worship 10:50 a.m.
Teen Age Class 6:00 p.m.
Worship 7:00 p.m.
Wed. Ladies Bible Class 9:30 a.m.
Wed. Bible Study 7:30 p.m.
Daily Television on Channel 3, Mon. thru Fri. 10:15 a.m.

First Christian Church

29 S. Bernice
Sunday School 9:45 a.m.
Morning Worship 11:00 a.m.
Youth Meetings 5:30 p.m.
Evening Worship 7:30 p.m.
Wed. Choir Practice 7:30 p.m.

Fellowship Baptist Church

Rev. Roy Mersch
11th & Archer
Sunday School 10:00 a.m.
Preaching Service 11:00 a.m.
Sunday Evening Service 7:30 p.m.
Wed. Evening Service 7:30 p.m.

Union Full Gospel Church Rev. George R. Bollinger, Pastor

1st & Endicott
Sunday School 10:00 a.m.
Morning Worship 11:00 a.m.
Bible Classes Sunday 8:45 a.m.
Evening Worship 7:30 p.m.
Wed. Bible Study 7:30 p.m.

Pentecostal Church

Sunday School 9:45 a.m.
Morning Worship 11:00 a.m.
Evening Worship 7:30 p.m.

First Methodist Church Rev. Wesley Daniel, Pastor

407 S. Haney
Sunday School 9:45 a.m.
Morning Worship 11:00 a.m.
M. Y. F. 6:30 p.m.
Evening Worship 7:00 p.m.
Women's Society of Christian Service Wed. 3:00 p.m. and 9 a.m.
Choir Rehearsal 7:30 p.m.

Waka Church of the Brethren Lawrence Lehman, Pastor

Sunday School 10:00 a.m.
Morning Worship 11:00 a.m.
Evening Service 7:00 p.m.
Choir Practice Wed. 7:30 p.m.

Oslo Lutheran Church Robert L. Cordes, Pastor

18 mi. N.W. of Gruver
Sunday School 9:45 a.m. (includes adults)
Worship Services 11:00 a.m.

Faith Lutheran Church Robert L. Cordes, Pastor

11th & Bernice
Worship Services 9:00 a.m.
Sunday School 10:00 a.m.

Sacred Heart Catholic Church Rev. James C. Gurzynski

901 S. Roland
Sunday Mass 8 a.m. & 11 a.m.
Wednesday & Friday 8:00 p.m.
Saturday Mass 8:00 a.m.
Other Days Mass 7:30 p.m.

First Baptist Church Rev. Luther M. Berry, Pastor

123 S. Bernice
Sunday School 9:45 a.m.
Worship 10:55 a.m.
Union 5:30 p.m.
(Oct. 1-Apr. 30)
Training Union 6:00 p.m.
(May 1-Sept. 30)
Evening Worship 6:30 p.m.
(Oct. 1-Apr. 30)
Evening Worship 7:00 p.m.
(May 1-Sept. 30)
Wed. Evening Prayer Hour 8:00 p.m.

First United Presbyterian Church

1021 Cotter Drive.
Sunday Church School 9:45 a.m.
Morning Worship 11:00 a.m.
Evening Study Group 7:30 p.m.
Wed. Choir Practice 7:30 p.m.

Homemaking Notes

During the summertime, luncheon meat is a regular at many meals for sandwiches. Most luncheon meat today is sold in small packages containing 6 to 12 slices, although considerable bologna and other sausage meats are sold in "sticks" (whole rolls) or in chunks.

I thought that you might be interested as I was, to see how some of the more common types of luncheon meats are made to add variety to your sandwiches or cold cut plate:

Cheese and meat loaf-made from extra lean, finely chopped pork trimmings. The seasoned meat mixture is poured into a molded pan to fill it part way; a layer of cheese is added, and the remaining space is filled with more meat mixture.

Corned beef, jellied-precooked, lean, corned beef is shredded and mixed with pure gelatin and formed into a loaf and cooked.

Ham, cooked-sometimes called boiled ham, it is a boneless, cooked product that is cured but not smoked. It is usually sold thinly sliced.

Head cheese-a cured mixture of hog head meat and meat by-products which is cured and stuffed into casings about 4 inches in diameter.

Honey loaf-a meat mixture similar to franks and bologna which contains about equal amounts of port and beef. Flavorings include honey, spices, and sometimes pickles and/or pimientos.

Liver sausage-finely ground and mildly seasoned with onions and spices, this is a combination of liver and pork. It is cooked; maybe smoked, in which case it is called Braunschweiger, and is sometimes cured to achieve a pink color. Also, it may be shaped in loaf form and covered with white pork fat to keep it moist.

Luncheon meat-pieces of cured pork pressed together,

some large or chopped or ground. It is all meat, and often times more highly seasoned and labeled as "spiced" luncheon meat.

Macaroni and cheese loaf-finely ground pork and beef with generous quantities of cheddar cheese and macaroni.

Olive loaf-a blend of lean pork and beef, it is finely chopped, seasoned, and mixed with whole stuffed olives.

Pastrami-made from flat pieces of lean beef which have been spiced, dry-cured, and smoked.

Peppered loaf-made from extra lean beef which have been cured, and the loaf covered with cracked, black peppercorns.

Pickle and pimiento loaf-is finely chopped lean pork and beef to which has been added sweet pickles and pimientos.

Salami, cooked-made from highly seasoned ground meat, it is softer than the "hard salamis", because it is first cooked and then air-dried for only a short time or not at all.

Soase-similar to head cheese (the names are often used interchangeably) except for the addition of a vinegar pickle which gives it a sweet-sour flavor.

With such a wide variety of luncheon meats available today, you need not serve the same one time after time. All are delicious and nourishing.

THE LAST NOTE: (from personal experience) No one who can read is ever successful in cleaning out the attic.

Mr. and Mrs. Jim Davis, Jan and Jean returned Sunday from New Mexico where they vacationed last week.

Mr. and Mrs. Jimmy Kirkland and Jo Ellen Kirkland spent the Fourth of July weekend at Buffalo Lake.

Party Honors Todd Brock

Todd Brock, son of Mr. and Mrs. J. L. Brock, celebrated his 5th birthday on Friday, July 1.

His friends came to his home at 3 p.m., played games and enjoyed watching Todd open his gifts.

Carrying out the cowboy and Indian theme with decorated plates, cups and napkins, a chocolate cowboy cake was served with ice cream and punch.

Todd's guests were Kevin Russell, Christy West, Pam Grayson, Beth Sheppard, Jamie Butler, Scott Martin, Kyle Beedy, Chuck Eaton.

Mrs. Grayson assisted Mrs. Brock with the party.

The length of a string of pearls determines the name of the necklace. A choker is 15 inches long and is one strand. Princess length is 18 inches, matinee length is 22 inches and opera is 30 inches and two strands. The traditional "rope of pearls" starts at 45 inches, can make three strands, and can be worn long or short as the wearer wishes.

Dawson Hired At Plainview

Fred Dawson has been hired as an assistant coach at Plainview High School, it was learned Wednesday.

Dawson was an assistant in the Spearman High School for four years. At Plainview he will join Don Seymour, who is also an assistant there.

Seymour was head coach here. The two men have coached together since Dawson joined Seymour's staff in Stinnett after graduating from West Texas State University.

Mrs. Fuller Is Hostess

The Arts and Crafts Guild met on Friday, July 3, in the home of Mrs. Guy Fuller.

Enjoying an afternoon of china painting and refreshments were Meses. W.R. Russell, Pope Gibner, C.A. Gibner, Jesse Womble, Ned Turner, Deta Blodgett, P.A. Lyon and the hostess.

The next meeting will be on Friday, July 10 in the home of Mrs. F.J. Daily.

For a Better Lawn...

- Fertilize in Spring and Fall
- Control Weeds and Pests
- Mow Properly
- Water Wisely



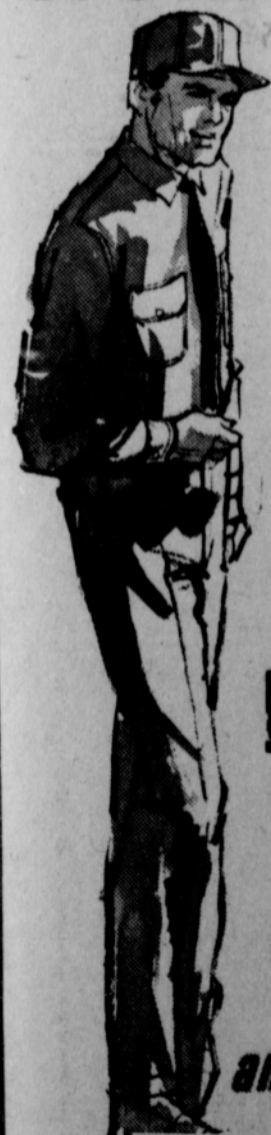
Washington, D.C.—(C.F.N.) Each spring, many homeowners vow that *this* year they'll have a greener, healthier lawn. Many will, because there are better lawn products and more information now than ever before on how to mow, water and fertilize for best lawn appearance.

One of the essentials, often neglected, is proper feeding, notes National Plant Food Institute. U.S. Department of Agriculture says about half the nation's homeowners use some lawn fertilizer, but less than half use enough for a healthy, attractive lawn. Proper feeding means fertilizing at least once in spring, once in fall. There is still time to fertilize.

Mr. and Mrs. Burl McClellan spent Saturday at Lake Meredith.

Anthony Wilkerson and Lind Hand spent the Fourth of July picnicking at Lake Fryer.

HUSKY WORK CLOTHES



We have the best quality work clothes that will hold up and wear well under even the most adverse working conditions.

RUGGED WORK CLOTHES...

and SAVING TOO!

CATES MEN & BOYS WEAR

T.G. & Y.

5¢ TO 10¢ STORES

PRICES GOOD WHILE QUANTITIES LAST!

Many Items Will Be Different in Each Store. See Shop All T. G. & Y. Stores in This Area!

CHECK ALL DEPARTMENTS
Hundreds of Timely Items...

1/4 OFF
Sale Items Will Vary By Stores

Close-Out Reg. \$1.00
LADIES' SHORTS

A Large Selection of Bermuda Shorts in Assorted Styles, Colors, Sizes, Prints and Solids. Shop Early for Best Selection!

T. G. & Y.'s LOW CLEARANCE PRICE!

67¢ EACH

Close-outs On
LADIES' BLOUSES

Choose Your Favorites From Many Styles, Colors and Sizes. (Assortment Varies By Store)

REG. \$1.17

T. G. & Y.'s LOW CLEARANCE PRICE!

67¢ EACH

CHECK ALL DEPARTMENTS

Selected Groups of Close-Out Items Reduced...

1/2 OFF
UP TO...

Store Hours
Mon.-Fri.
8:30 to 6:00
Sat. 8:30 to 6:00

RED ARROW CLEARANCE Sale

SETIQUE HAIR SPRAY

by Lanolin Plus

New! All-in-One Hair Cosmetic that is Both a Setting Lotion and a Hair Spray!



14-Oz. Size Good in All Stores

2 CANS FOR 87¢

TOSS PILLOWS

Close-Out of popular styles and fabrics in Toss Pillows. Don't Miss These!

Save Up To... **50%**

Discontinued Numbers... Broken Lots... All Good Merchandise...
1/3 OFF
AS IS...
Assortment Will Vary By Store

CHECK ALL DEPARTMENTS

Color Fast
KITCHEN TOWELS

21"x36" Size. All Hemmed Cotton Towel. Assorted Solid Colors.

T. G. & Y.'s LOW CLEARANCE PRICE!

27¢ EACH



SHORT SLEEVE SWEAT SHIRT WITH NOVELTY LETTERING

SIZE S-M-L
REG \$2.47

CLEARANCE PRICED

ASST. COLORS

\$1.66

Rev. Berry Will Lead Revival

The Rev. Luther Berry will conduct a week's revival meeting in the First Baptist Church of Alba, in East Texas. The services will begin July 11. Laymen of the church will conduct the services for the local First Baptist Church on Sunday, July 17.

Cherrys Move To Brownfield

Mr. and Mrs. Jim Cherry moved from Spearman Wednesday to their new home in Brownfield. Cherry was high school principal for one year and resigned to become principal of the Brownfield high school, a school twice the size of Spearman.



BIRTHDAY PARTY -- Little friends of Sherisse Partridge help her celebrate her sixth birthday at a party given by her mother, Mrs. Bill Partridge.

Party Honors Sherisse Partridge

Mrs. Bill Partridge honored her daughter Sherisse with a party in her home on Saturday afternoon. The little guests came at 3 p.m. to help her celebrate her sixth birthday. They enjoyed playing games and watching Sherisse open her gifts. Mrs. Partridge assisted by

Mrs. Allen Simpson served white birthday cake decorated in pink and blue, ice cream and punch to Kelli Simpson, Lance Simpson, Robin Reeves, Sheryl Gibson, Denise Ware, Ray Partridge, Melanie Partridge, Gerrie Lynn Kendrick and the honoree. Favors of punch-out color books were given to the girls. The boys received toy racing cars.

Mr. and Mrs. James Pendergraph and children hosted a Fourth of July ice cream social in their backyard. Those attending were Mr. and Mrs. Don DeArmond and children, Mr. and Mrs. Billy Haden and boys, and Mr. and Mrs. Jim Davis.

Weekend guests of Mr. and Mrs. Ed Haner were Mr. and Mrs. E.L. Kressley and son Tommie of Flora, Indiana.

Pfc. Roy Woodson of Fort Gordon, Ga. is here visiting his parents, Mr. and Mrs. W.L. Wilkerson, Anthony, Darlene, Marvin and Ronald. Upon his return to Georgia, Woodson will be sent to Vietnam.

Mr. and Mrs. Jesse Davis spent the holiday weekend visiting Tony Stone at Colorado Springs.

Recent guests in the home of Mr. and Mrs. Ed Haner were his father, Mr. Frank Haner of Odessa, and Mrs. Haner's aunt and uncle, Mr. and Mrs. Homer Rafferty of Marysville, Ohio.

Saturday guests of Mr. and Mrs. Ed Haner were her mother, Mrs. Dallas Bowsher and her sister Mrs. Jim Hall and Nancy of Pampa.

Mr. and Mrs. Sam Henderson returned Monday evening from Ute Lake where they had spent the holiday weekend camping and fishing.

James Cummings entered Okla. City hospital on Wednesday for observation and treatment.

Jay and Jan Mason spent the weekend with their grandparents Mr. and Mrs. B.N. Mason in Amarillo.

Saturday guests of Mr. and Mrs. Arthur Adkison were her sister Mrs. Lora Adkison of Tulsa and her niece Mrs. Johnny Ross of Amarillo.

Calendar of Events

- Thursday, July 7
 - Gladiola Flower Club's annual picnic at the park by the swimming pool at 7:30 p.m.
 - Rainbow Girls meet in the Masonic Hall.
 - County wide Dress Revue in the Home Demonstration Club Room at 3:00 p.m.
- Friday, July 8
 - Arts and Craft Guild with the hostess Mrs. F.J. Daily.
- Monday, July 11
 - Dahlia Flower Club meets at 3:00 p.m. with Mrs. Ervin Hester.
 - Delphinium Flower Club meets with Mrs. A.D. Reed.
- Tuesday, July 12
 - Lions club.
- Wednesday, July 13
 - Phelos Circle C.W.F. in the Christian Church.

Holiday weekend visitors in the home of Mr. and Mrs. I. H. Prater were Mr. and Mrs. Vivian Prater and Terry of San Angelo, Mr. and Mrs. Ivy Prater, Ronnie, Roger and Sandy of Dalhart, Mr. and Mrs. Fred Mates and Charley of Clayton, N.M. and Mr. and Mrs. Joe Day.

Mr. and Mrs. Bill Partridge and childre and Mr. and Mrs. Slim Cates and Gary spent the weekend in Carnegie, Oklahoma visiting Mr. and Mrs. Joe Duke. Mrs. Partridge and children remained for a longer visit.

Mr. and Mrs. C.E. Blackburn and granddaughter, Lisa Hutchison, have been visiting the J.E. Blackburns in San Antonio.

Loyd De Carroll is home on a 30 day leave from Sheppard Air Force Base at Wichita Falls, visiting his parents Mr. and Mrs. Loyd Carroll, Richard Biscoff of Honolulu, Hawaii, who is also based at Sheppard Field, came home with him and spent a few days before going to Colorado Springs on Tuesday to visit friends.

Mr. and Mrs. Ray Houston and Mr. and Mrs. Jerry Houston of Portland, Oregon were visitors in the home of Mr. and Mrs. Archie Morse. Mrs. Ray Houston, the former Ruth Livingston, daughter of Mr. and Mrs. Clarence Livingston, is the cousin of Mrs. Morse. Mrs. Houston formerly lived here and attended school here.

Mr. and Mrs. Jim Evans attended a family reunion at Hooker, Okla. on Sunday, July 3.



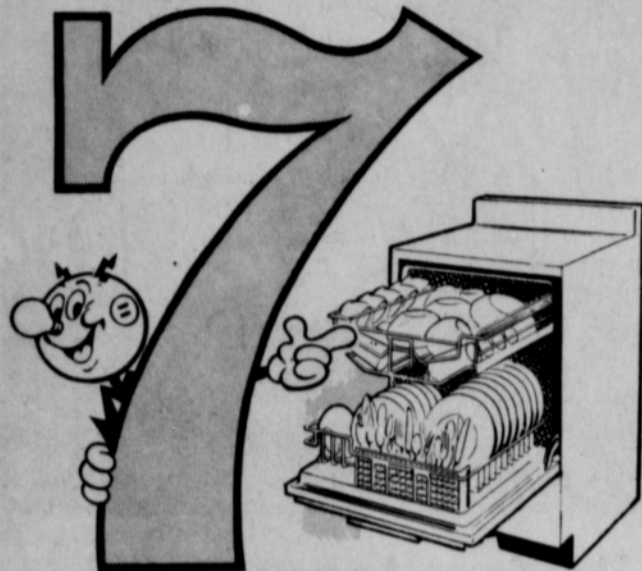
- ★ ACCURACY
- ★ DEPENDABILITY
- ★ DEDICATION

Proud passwords of our profession

We are guided by these principles throughout every working day. This is one reason for our personal interest in your good health. Bring your prescriptions to us with the understanding you will receive only the best in products and service.

Your **Rexall** Pharmacist

Spearman Rexall Drug



Reasons why you should own an automatic dishwasher

- 1 IT washes the dishes—YOU don't.
- 2 It sanitizes the dishes, cuts down on germ-spreading. (Hand-washing can't do that.)
- 3 It rinses and re-rinses the dishes.
- 4 It dries the dishes—CLEAN. (Ever wonder why a dish towel gets so grubby drying "clean" dishes?)
- 5 Reduces family chores and tensions.
- 6 Helps keep kitchen free from clutter during meal preparation. (Dirty dishes and utensils go right into the dishwasher.)
- 7 Reduces breakage.

SEE YOUR APPLIANCE DEALER SOON

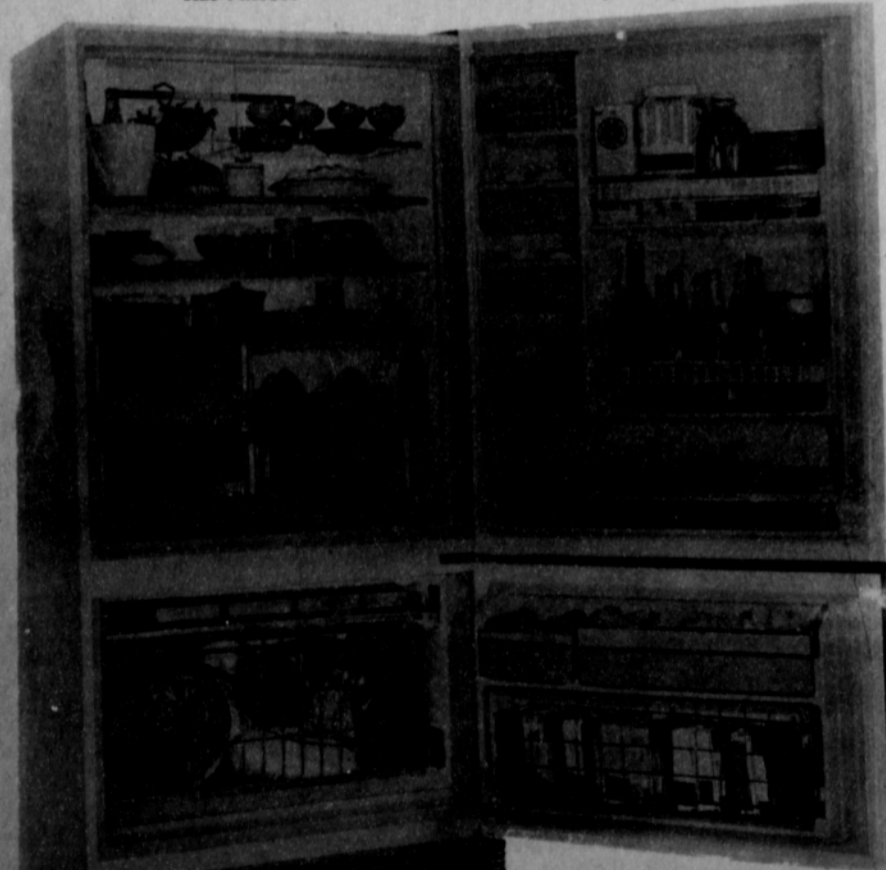
COMMUNITY PUBLIC SERVICE

Your Electric Light & Power Company



Philco's Supermarketer

REFRIGERATOR - FREEZER --gives you 16, 3 cu. feet of storage space. It stores 163 lbs. in frozen foods. No frost. Has Philco's Power Saver. See it before you buy.



Burton's TV

106 E. Kenneth

LAND AUCTION

SATURDAY, JULY 16, 10 A.M.

640 ACRES OF WHEAT & GRASS LAND ALL UNDER ONE FENCE. AT LAND SITE 3 1/2 MILES NORTH BALKO, OKLAHOMA 9 MILES WEST, 8 1/2 MILES SOUTH BEAVER, OKLAHOMA

MR. & MRS. OREN MALONE, OWNERS

DESCRIPTION

ALL OF SECTION 33, TWP. RNG. 22, Beaver County, Oklahoma

MODE OF SELLING

This land will be offered in five different tracts.

- TRACT No. 1- Will be the SE 1/4 of Section 33-3-23 surface only.
- TRACT No. 2- Will be the NE 1/4 of Section 33-3-23 surface only.
- TRACT No. 3 Will be the SW 1/4 of Section 33-3-23 surface only.
- TRACT No. 4 Will be the NW 1/4 of Section 33-3-23 surface only.
- TRACT No. 5 Will be a combination of the above four tracts of land. A square section under one fence, surface only.

Immediate possession. 1965 taxes paid. Surface only. Terms by owner. Modern three bedroom home. A good barn 38' x 50' with loft. Concrete storm cellar, chicken houses, hog houses, two good wells, good corrals, fences and cross fences, 20 cows with calves by side. 11 steers, 12 bred and open heifers, 2 dry cows, 1 Herd bull, 1-1938 CC Case tractor, 1-2-row Lister, 1-Case 5-sickle mower, 1-8' Gand Detour plow, 1-Continental post hole digger, 1-John Deere Tumble Bug, 1-300 Watt, 110 volt Wards light plant. Many other items. Approximately 200 bales prairie hay. 1-Cattle oiler, 2-Stock water tanks, 1-Lot of fence posts, 1-Lot Electric fence 1-8' x 8' steel grainary.

For full details write or call, Floyd VanDeburgh, World Wide Auctioneer P.O. Box 487 Phone AC 405-625-5761

Floyd VanDeburgh
Auctioneer

All invoices to be paid must have name of seller indicated on invoices.

Texas Grain Producers Have Election of Officers

Directors of the Grain Sorghum Producers Association, covering Texas and the Southwest's largest acreage crop, held their regular quarterly meeting and annual election of officers in Amarillo, Thursday, June 30. Highlight of the meeting came with the report of the Association reached a record membership and operating budget this year and programs of research, market development and service which it provided have helped push the use of grain sorghum to its record level of an expected 742 million bushels at home and abroad for this marketing year ending September 30.

Sam Attebury of Attebury Elevators in Amarillo reported to GSPA, who named him to U.S. Feed Grains Council assignment to India to study grain sorghum distribution and handling. Attebury pointed out that 1,750,000 tons or about 10 million worth of grain sorghum had either been shipped or committed to India this year and that the need for it in food certainly would continue for some time, but that it appeared that it would take long administrative liaison and promotional efforts on the part of GSPA to keep sorghum moving at this level to India in the future.

Ken Kendrick, immediate Executive Vice President

of the National Association of Wheatgrowers in Washington, D.C., pointed out that inasmuch as current farm legislation continues to allow the substitution between wheat and feed grains that this makes the problems and opportunities of grain sorghum and wheat one and the same in this area. He indicated that it would probably be easy to get administrative program changes which would allow for the production of the necessary acreage and bushels of wheat and feed grains as stocks are rebuilt for the future, but that it is going to be difficult and take much effort on the part of sorghum and wheat producers to get program decisions giving assurance of adequate price and income during this period.

During the afternoon business session, the Board adopted the following policies:

- To continue to furnish the trophy for the winner of the Miss Grain Sorghum of the Nation Pageant in Dimmitt which will be August 5 & 6.
- To decline the offer of free exhibit space at the Panhandle South Plains Fair in September due to lack of adequate funds and staff to develop and supervise a grain sorghum exhibit in keeping with the desires of the Association and the fair.
- To continue \$3,500.00 a year support to the U.S. Feed Grains Council through which Grain



"No! No! No! This is not a model! This is all the house you can get in your price-range now!"

Sorghum Producers Association conducts its foreign market development activities.

To oppose programs of United States AID missions which promote the production of grain sorghum in other nations unless such AID missions also have adequate grain utilization programs included which will assure the use of the increase production in the individual country in which it is produced so that it will not move into the foreign markets in competition with United States grain sorghum.

In recommending the elec-

tion of the same slate of officers for another year, the nominating committee pointed out that "during the years ahead, farm organizations and commodity groups are faced with some of the greatest changes facing farmers and the organizations themselves and that experienced leadership available for continuing committee assignments was imperative." In an unanimous vote of the directors, the entire executive committee was re-elected which includes: Mr. Elbert Harp of

Abermathy, President; Mr. Pat Northcutt of Silverton, Vice President for Research and Education; Mr. R.G. Pender of Hereford, Vice President for Market Development and Mr. Frank Moore of Plainview, Vice President for Legislative Services and Mr. A. W. Anthony, Jr. of Friona, Secretary-Treasurer.

Mrs. Visa Compton of Rockport and her daughter, Mrs. Mary Wells of Fentress, were here over the holidays visiting Mrs. Compton's sister, Mrs. E.N. Wilbanks.

Newcomers to Spearman

Mr. and Mrs. Jerry M. Hawkins and their four year old boy of 1006 S. Barkley have moved here from Clarendon, Texas. Mr. Hawkins is employed as the Spearman School as the vocational agriculture teacher.

Mr. and Mrs. Charles D. Kuhlman and their daughter of 212 S. Brandt are former residents of Lucerne Valley, California. Mr. Kuhlman is employed by Daco.

Mr. and Mrs. Henry Babitke and their three children have moved here from Booker, Texas. They are now living at 209 N. Bernice.

Guests in the home of Mr. and Mrs. Jack Taylor for the 4th of July weekend were their son and family of Longmont, Colo., and their daughter and family of Irving, Texas.

Mrs. Tom Allen and Newell Allen entertained with ice cream and cake in their home the following: Mr. and Mrs. Frank Allen, Mr. and Mrs. John Allen, Nell McClellan, Mr. and Mrs. Dave Wilson and children of Waka, Tommy Pariging of San Louis Obispo, California.

Mr. and Mrs. Joe George and Mr. and Mrs. Bert George visited with Mr. and Mrs. J.W. Walker over the Fourth of July weekend.



You Caught Us With Our Mouth Open...

With Appreciation For The Priviledge Of Handling
Your Grain During This Wheat Harvest.

As In The Past-

This Business Is Based On Service To
The Farmer. We Will Always Be Ready
To Meet Your Every Need.

R.L. McClellan Grain Co., Inc.



Buy, Sell, Trade
Hire, Rent, Find
THROUGH THE

WANT ADS

VISITORS

Sunday and Monday holiday guests of Mr. and Mrs. Carl Archer and Carla were her brother Mr. and Mrs. J.W. Garrett of Calvery, Alberta, Canada, the Garretts' daughter and husband Mr. and Mrs. Lynn Hankins of Denver and their son and wife Mr. and Mrs. Gordon Garrett of San Francisco, California.

Mrs. Virginia Mathis and Betty and Mrs. Roy Morrison went to Wichita, Kansas over the Fourth of July holiday to get Patty and visit with Dwaine Stewart and family, Mrs. Mathis' brother. Patty had been their visiting for three weeks.

Having the gang over for a party? Company from out of town? or maybe you're returning from a trip yourself? The Plainsman and its readers, would like to know about it! Call 659-2466 to report news.

CARD OF THANKS

As a means of thanking the nurses at the Hansford Hospital for their kindness and thoughtfulness during my recent illness, I have made a donation to the Hansford County Farm Bureau Heart Fund. I want to especially thank Dr. Gregg, Mr. Anderson, and Helen Prochar.
Margaret Novak


Vicki Crawford is visiting her aunt, Mrs. Loretta Lucas in Amarillo this week.

Mrs. Robert Janzen, owner of Gift Box, has been in Dallas this week attending a gift market.

The latest news from Lieut. Mike Crawford, who is in Viet Nam, is that he is based on the South China Sea and is in Operation Nathan Hale. Mike has been promoted to flight leader of the Lift Platoon.

ates that although farm prices of a market basket of foods were unchanged between 1950 and 1965, the farm-retail spread rose 37 percent and retail prices increased 20 percent.

Part of all you earn — should be yours to keep.



ED DEAR,
703 Center Drive
Spearman, Texas
Office: 659-2516
Home: 659-3073

Cummings
Refrigeration
HEATING
AIR CONDITIONING
SALES & SERVICE
SPECIALIST
659-2721
SPEARMAN

For Quick Courteous Service
Chevron Gasolines
Atlas Tires & Accessories
Washing-Greasing
QUICK, COURTEOUS SERVICE
Loren Simmons
SIMMONS CHEVRON SERVICE
Phone 659-9885
Plains Shopping Center

Effective July 2 Burton's TV Will be closed Saturday At Noon

City Directory

CLEANERS
CLEANING
PRESSING
CARPET
CLEANING SERVICE
COIN OPERATED
DRY CLEANING
FREE
PICK-UP & DELIVERY
PHONE 659-2511

Wardrobe Cleaners
Oscar Donnell
302 MAIN ST.
SPEARMAN, TEXAS

DENTISTS
F. J. Daily D.D.S.
16 SW COURT STREET
SPEARMAN

ELECTRICIAN
Anthony Electric
Industrial, Commercial and House Wiring
Heating and Air Conditioning
Contracting and Repairs
Fully Insured
PLAINS SHOPPING CENTER
PHONE 659-2441
BOX 727
SPEARMAN, TEXAS

--- SERVICES ---

Need babysitter 3 days a week in my home. Call 659-2973.
62-tfc

Amarillo Daily News & Globe Times home delivery. Call 2685.
14-tfc

Three dollars and fifty cents may not sound like much to you...but it buys 104 newsy issues of The Hansford and Sunday Plainsman. Subscribe to your hometown newspaper today.

ROSS CATERING SERVICE—Suppers, luncheons, teas, children's parties. Phone 659-3227.
55-tfc

SERVICE—Ditches from 3-12 inches, any desired depth, S. D. Jones 659-2809. Harold Shaver 659-3474.
17-tfc

Need reliable service station attendant. Contact Nelson's Texaco Station, Elmwood, Okla.
62-tfc

Work Wanted: So I can earn funds for college. Have done office work. Phone 659-2177.
72-2p

Feather-flower arrangements and supplies. Dorothy's Novelities, 912 S. Bernice, 659-3027.
69tfc

WANTED--Tree and hedge trimming and removed. Call Bill Hand, 659-2967.
64tfc

Custom plowing wanted. Phone 659-2914.
72tfc

In this research the Commission and its staff performed a helpful service.

It is obvious that when the housewife buys a food product in the market, she pays for all the services involved in producing, processing, and distributing the food.

Many housewives, however, don't understand the relationship of the price received by the farmer to the price she pays. Since the product is food, too many housewives tend to blame the farmer for the cost.

The Commission report should help many Americans to understand the truth in the farm retail price spread.

Using figures for 1964, the Commission determined that consumers' expenditures for domestically produced farm food totaled \$69.8 billion.

The marketing bill made up 68 percent of the consumer's food dollar that year; the farm value was 32 percent.

That \$69.8 billion spent by consumers in 1964 breaks down as follows: Of the \$47.3 billion marketing bill, \$20.8 billion went to labor costs; \$5.1 billion went to transportation; \$18.7 billion is classed as "other" costs, including costs of buildings and equipment, con-

Want To Build a New Home, Remodel or Repair Your Home ?
CALL
R. L. UPTERGROVE
659-2677
Out of Town, Call Collect
Spearman
For Sale :
3 Bedroom House—Several Lots—2 Commercial Buildings,

--- WANTED ---

Wanted: Will baby-sit in my home. Phone 659-2133.
74-c-c

Wanted: I need full time house keeper. Charlene Bulls, 659-3202.
74tfc

Work wanted: Pits filled, ditches back filled. Dozer Work! Roy McCammond, Call 659-3393.
74tfc

tainers and supplies, and advertising and promotion; and \$2.7 billion were corporation profits. The farm value—again, 32 percent of the total spent—was \$22.5 billion.

As indicated above, the report notes differences in the farm share of the consumer's dollar for specific products. For example, the farm share for butter is approximately 70 percent because processing is relatively simple, transportation costs are low since the product is highly concentrated, and handling costs are moderate.

By contrast, the farm share of the dollar spent for canned tomatoes is low—16 percent—mainly because of high processing and container costs.

Twenty-one leading farm food products were surveyed in detail. This is the breakdown for a pound of choice beef retailing for 70.8 cents: Retailing costs were 17 cents; wholesaling, transportation, and other distribution costs were 2.3 cents; processing costs were 5.3 cents; assembly cost 3.8 cents; and farm value was 42.4 cents. For one pound of white bread, retailing at 20.7 cents, the breakdown is: Retailing, 3.7 cents; wholesaling, transportation, and other distribution, 6.1 cents; processing, 6.7 cents; assembly, .2 cents; a farm value, 4 cents.

Hand it to the farmer and his efficiency. The report st-

TOMMY GOOCH AGENCY
FARM BUREAU INSURANCE
Spearman, Texas

Burton's TV
Your PHILCO Dealer
Phone 659-2121
106 E. Kenneth

Everett E. Greene & AGENCY
Real Estate—Loans
Insurance—Cattle
Aluminum Pipes
410 Davis, Spearman
Phone 659-2587

--- FOR SALE ---

For Sale: 30 inch coppertone range, was \$164.99, now \$150.99, delivered and installed. Sears Roebuck Co. Plains Shopping Center. Phone 659-2573.
70tfc

Used Furniture: Several good used items including one bedroom suite, a set of dinette, and occasional chairs. Beedy Furniture.
71-2-c

FOR SALE—3 bedroom house. Call 659-2687.
59-tfc

FOR SALE—3 bedroom, 1 1/2 bath home, south part of town. Collard Real Estate. Phone 2501.
58-4c

For Sale: 14 ft. frostless refrigerator, was \$329.95, now \$300.95, delivered and installed. Sears Roebuck Co., Plains Shopping Center, Phone 659-2573.

For Sale: Camp stove, ice box, cots, 8 by 20 tent with sewed in floor. Phone 659-2858.
68-tfc

FOR SALE—3 bedroom house, Blodgett Linn addition, one bath. Phone 659-2441, after 6 p.m., 659-2408.
40-tfc

FOR SALE: 3 bedroom house with 1 1/2 baths, low equity. Phone 659-3119, 703 East Second, Green Acres.
63tfc

For Sale: New house—3 bedroom, den, fenced, wired 220, plumbed for washer, 703 Steele Drive. For information phone 659-3233.
74tfc

FOR SALE—Industrial lots on Gruver Highway. Cecil Crawford, 659-2409.
51-tfc

Electrolux
For Sale: The Amazing Electrolux with power nozzle. Rotating brush action cleans all rugs faster—gently fluffs carpet nap. Sales and Service call Don Seymour at 435-2064, Perryton, Texas.
68-69-p-70tfc

For Sale: Lady Kenmore washer, delivered and installed. \$189.95. Sears Roebuck Co., Plains Shopping Center, Phone 659-2573.
70tfc

Could you use \$30-\$40 a week extra cash if you can work 2-3 hours a day. For information call 435-4967 or write 2301 Georgia Drive, Perryton, Texas.
73tfc

SALE: Garage Sale 312 West Third beginning Saturday, July 9, at 5 p.m. Butane range, water heater, old furniture and many other useful items. Mrs. Jack Taylor.
74-1-p

Future Readers of The Plainsman

Mr. and Mrs. Jerry Current are the parents of a baby girl born 4 a.m. July 5 weighing 9 lbs., 1/2 oz.

Mr. and Mrs. W.E. Kirkland and Janie attended "Texas" in Palo Duro Canyon Saturday.

For Sale: Five room house with basement, draperies, deep freeze, one-car garage, one and one-half acres of land. Phone F17-2731 or F17-2282, J. E. Sluder, Gruver, Texas.
64tfc

Kenmore convertible dishwasher only delivered and installed. \$217.88 --Sears Roebuck Co., Plains Shopping Center. Phone 659-2573.
70tfc

Entertaining this summer? Use Hallmark paper party items. They're pretty, colorful and easy to use. Shop at the Plainsman Office Supply for Hallmark cards and entertaining items. 209 Main.

For Sale: Lot 4, Blk II, Reeves addition, lot size 50' X 140. Cost me \$2000 (make me an offer) in the 800 blk South Archer, Rena Gay Dorsett, 1130 Hedgecote, Berger, Texas. Phone Br-4795.
64tfc-c

For Sale: Like new Electric Guitar with all accessories, \$100. Phone 659-2617
64tfc

For Fuller Brush products write 2301 Georgia Drive, Perryton, Texas or call 435-4967.
73tfc

For Sale: 1961 Corvair, 57,000 miles, bargain. Phone 659-2559 or 2441.
74tfc

For Sale: Rebuilt Lawn Mowers ready to go. 824 S. Haney.
74-4-c

SALE: Garage sale, Saturday, 717 Townsend.
74-1-c

For Sale: ...this space in the next issue of The Plainsman. At only 4¢ per word you can afford to list what you want to buy, sell or trade!

Survey Shows Farmer Not To Blame

From Rep. Walter Rogers

The farm share of the consumer's dollar spent for food ranges from about 10 to 70 percent, according to the recently issued report of the National Commission on Food Marketing.

This lengthy survey of the economics of food marketing, which from farmer through retailer comprises the Nation's largest industry, shows that farmers are not to blame for higher food prices in recent years.

The report points up the extent to which farmers are being made the scapegoats by other segments of the economy.

The Commission's report is highly controversial, especially as it concerns ostensible problems of size and bigness in food marketing and in proposing new regulations and restrictions. In the view of many, the Commission exceeded its grant of Congressional authority by making recommendations for action to be taken.

But the factual side of the report—the studies on where the housewife's food dollar goes—are very revealing, and

More Americans Will Vacation by Automobile

More Americans will vacation by car this year than ever before. Many older citizens will be among these travelers, says Miss Leota Lane, Texas A&M University Extension specialist in family life education.

Research done in connection with the recent national driving test indicates that many drivers need to brush up on their driving skills. Additionally, older citizens, especially, will want to check up on these safe-driving points:

1. With the aid of a road map, plan the route you will take by dividing the distance into even periods of driving. Outline rest stops, scenic points, and overnight lodging to provide variety in each day's travel.

2. Allow plenty of driving time. Schedule arrival in major cities to avoid rush hour traffic.

3. More people travel on weekends than during the week. Plan your long trips during the week, and schedule weekends for visiting.

4. Summer means that more vacationers will be traveling. When possible, plan trips before the close of school in the spring and after the start of school in the fall.

5. To reduce eyestrain, wear sunglasses for daytime driving and keep night driving to a minimum.

6. All stopping, passing and turning distances are more difficult to judge after dark. Plan most of the driving during the daylight hours.

Miss Lane says that research indicates that many medicines can affect the way a driver handles the wheel. Certain drugs such as antihistamines, cold tablets, and sedatives may

dull your reflexes or impair your coordination.

Tranquilizing drugs can cloud your judgment and interfere with your driving skills. Stimulants may cause undue nervousness. Consult your doctor about side effects of any drug he prescribes. Don't drive until you know that the drugs you take won't affect your driving skill.

County Eligible For Assistance

According to a telegram Wednesday morning from Congressman Walter Rogers "farmers, ranchers in Hansford, Lipcomb, Ochiltree counties today declared eligible for Farmers Home Administration emergency loan assistance."

Ellzey Vanderburg, ASC office manager, said this means that the FHA may make some additional loans. Also, the county could apply for help as a drought disaster county.

Vanderburg said the county committee last year was against such a move.

Cummings Makes Examination Trip

James Cummings went to Oklahoma City Wednesday for medical examination.

The salesman at Joe Traylor Ford had been in Hansford Hospital since Sunday.

"I hope Ze Bear Has Lock-Jaw!"



Time Ripe For Sports To Invest

AUSTIN—The landowner-sportsman alliance that originates in the spring many times pays early dividends, according to the Texas Parks and Wildlife Department.

And a Department spokesman said there were some current reasons why hunters should originate the new soil contacts and reactivate the old ones.

He pointed out that because of the heavy rains that flooded fields some crops are being replanted. Those busy farmers, he noted, should not be expected to further stretch their budget by picking up even a small amount of seed for quail and/or dove food and cover.

"It might be the setting for a timely gesture," said the spokesman, "just to offer to provide some sorghum, millet or some such domestic seed. It definitely would be a sporting approach and at a time when hard-put farmers might stand something more than a smile and a promise. After all they too, like to hunt."

Certainly, the bountiful rains that were followed by sunny days has the soil in the mood.

Quick-growing varieties like the old favorite--sunflower seeds--will get most of the hunters' attention but the Department suggested that most seed dealers will be ready with a good assortment.

The spokesman observed that the dyed-in-the-wool quail hunter already has been on the scene, looking ahead to the late fall bobwhite harvest.

Any child who gets raised strictly by the book is probably a first edition.

ANNUAL SUMMER CLEARANCE SALE

Many, many Sale Items Not Listed!

One Group of Bedspreads 40% Off

Several Groups OF OCCASIONAL Tables

All Styles 1/2 off

LIVING ROOM FURNITURE

	WAS	NOW
Traditional Brown Sofa	329.50	179.50
Traditional Gold Sofa	319.50	169.95
Gold Loose Pillow Back Sofa	399.50	298.50
Italian Occasional Chair	129.50	69.95
Italian Cane Panel Occasional Chair	94.50	59.95
French Provincial Turquoise Chair	149.50	79.95
Quilted Lounge Chair	119.95	69.95
Mediterranean Occasional Chairs	159.50	98.50
French Provincial Green/Gold Chairs	74.50	49.95
White Occasional Chair	136.50	69.95
Early American Gold Tweed Sofa	298.50	198.50
Early American Gold Print Chairs	139.50	79.95
Early American Rust Tweed Chair	119.95	79.95
Early American Print Sofa	298.50	198.50
Early American Green Tweed Sofa	319.50	219.95
Early American Turquoise Print Rocker	69.95	39.95
Modern Green-Gold Chair & Ottoman	139.95	79.95
Modern Green Chair	109.50	59.95
Early American Green Print Occasional Chair	84.50	44.50
Modern Turquoise Sofa	249.50	139.95
Modern Gold Sofa	329.50	189.95
Modern Brown Loose Pillow Back Sofa	359.50	198.50
Modern Gold Tweed Sofa	239.50	129.50

BEDROOM FURNITURE

	WAS	NOW
Early American Double Dresser, Mirror and Double Bed	339.00	198.50
Early American King Size Bed	119.95	69.95
Early American Triple Dresser, Bed and Night Stand	317.95	239.50
Early American Bunk Beds	129.50	89.95
Early American Red Blanket Chest	64.50	49.95
Solid Oak Double Dresser, Twin Beds and Night Stand	294.95	198.50
Early American Corner Desk	56.50	34.50
Mediterranean Triple Dresser, Bed and 2 Night Stands	548.00	359.95
Spanish Double Dresser, Mirror, Bed and Night Stand	423.95	339.50
Modern Walnut Triple Dresser, Mirror and Bed	239.90	159.95
French Provincial Double Dresser, Mirror, Bed and Night Stand	339.95	198.50
French Provincial White and Gold (Formica top) Powder Table with Chair	128.45	79.95

Miscellaneous Furniture Items

	WAS	NOW
Gold Traditional Hide-A-Bed	379.95	329.95
Early American Gold Plaid Hide-A-Bed	279.95	239.95
18" Maple Swivel Chairs	29.95	19.95
24" Maple Bar Stools	44.50	34.50
Pine Valet Chair	19.95	14.50
Maple Bookcase	54.50	39.95
Maple Organ Desk	198.50	149.95
Maple Secretary Desk	169.50	119.95
Fruitwood Roll Top Desk	179.95	98.50

DINING ROOM

5 Pc Mediterranean Dinette
WAS 249.95 NOW 198.50

56" Early American Hutch
298.50 239.95

7 Pc Brown and Gold Dinette
149.95 119.95

7 Pc Brown/Beige Dinette
139.95 109.95

All Bedding REDUCED For This Sale

All Lamps 20% to 50% Off
All Lawn Furniture 30% Off



FURNITURE CO.

PLAINS SHOPPING CENTER
659-3044
Spearman, Texas

Order of Eastern Star Holds Regular Meeting

Spearman Chapter #721 Order of the Eastern Star met Friday July 3 for a regular meeting at the Masonic Hall. Presiding were the new officers with Nina Hendricks, Worthy Matron and Don Hendricks, Worthy Patron. Junior Past Matron, Mary Brock gave her report for the past year and spoke words of appreciation for the cooperation of her officers and members to make her year as worthy matron a successful one. She also gave a report on a piece of furniture which is being purchased during her year in office.

It was announced that there is to be a study every 3rd Tuesday of the month for officers and members of the O.E.S., in the home of Mrs. Deta Blodgett.

Mother Advisor, Fay Palmer, reported on the Rainbow Girls and their trip to Stinnett and Borger.

The following officers were installed who were absent on Installation night: Preston Sc-

ott, Associate Patron, Thelma Scott, Associate Conductress, Frances Hudson, Organist and Lequita Evans Ruth.

The report given on sickness named Coy Palmer in the Hansford Hospital and Jeff Porter in the Borger Hospital.

Present were 16 officers, 2 proteems and 5 members.

Refreshment's were served at the close of the meeting by Mrs. E.S. Uptergrove and Deta Blodgett.



"The only trouble with being a good sport is that you have to lose to prove it!"

Return Of Summer



CHARLESTON, SOUTH CAROLINA — Fast becoming "the most photographed plantation in America," Boone Hall was opened to the public less than 10 years ago after lying quiet and hidden since the land was granted to Maj. John Boone by the Lord Proprietors in 1681. Although still a relative newcomer as a major tourist attraction, Boone Hall already has been featured in 12 major pictures and national television shows. The mansion, flanked by vast formal gardens of camellias and azaleas, is located only a mile off the "Ocean Highway" (U.S. 17). Young lady in the picture is Miss Nancy Elizabeth McRae, daughter of the owners.

Most any record sounds good, after listening to a disk-jockey trying to be funny.

Some men have wives who never know what they want, while others are not so lucky.

The Holt News

"A well adjusted person is one who makes the same mistake twice without getting nervous."

Mrs. C.W. Kirk was hostess to a double birthday party Thursday afternoon, June 28, honoring Mmes. Bertha Jenkins and Frankie Honeycutt. Gifts were given to the honorees and refreshments were served to Marilyn Sims of Minot, N.D., Mmes. Effie Sanders of Albuquerque, N.M., Raymond Kirk, Frankie Honeycutt and children, Martha Batton, Wesley Jenkins, Phil Jenkins, and Kathy, Berda Holt, Bertha Jenkins, Owen Pendergraft, Richard Gaines, Glenda and Peggy, Travis Reger, Debra and Dale, C.W. Kirk and Maude Rosson.

Mr. and Mrs. Russell Baker of Cheyenne Wills, Colo. have been here for harvest and they have returned home.

Mrs. Joe Rutledge and children of Portland, Oregon, recently visited her mother, Mrs. Hazel Marton of Spearman, also her sister, Mr. and Mrs. Raymond Kirk.

July 4, weekend guests of Mr. and Mrs. Owen Pendergraft were Mr. and Mrs. James Beck of Enid.

Mrs. Bob Tivebaugh of Claude was Saturday night guest of her mother, Mrs. Bertha Jenkins.

Mrs. Myrtle Stephens of Borger was Sunday night guest of Mr. and Mrs. Phil Jenkins and Kathy.

Mr. and Mrs. Bill Lackey and family of Albuquerque, N.M. were July 4th weekend guests of his parents, Mr. and Mrs. Major Lackey and Doug of Spearman.

Mrs. Ted Berry and family of Texhoma were Sunday guests of Vernie Rosson of Spearman.

July 4th Luncheon guests of Maude Rosson were Marilyn Sims of Minot, N.D. and Martha Batton.

Mrs. Dan Jackson spent July 4 weekend visiting relatives and friends in Mangum, Okla. and also attended the reunion at Sulphur.

Mr. and Mrs. Fre Holt were hostess to a Sunday evening cook-out dinner July 3. Present were Susan Holt of W.T. at Canyon, Messers and Mmes. Mike Holt, O.C. Holt, Nolan Holt and Larry, Britt Jarvis and son, and Mrs. B.C. Holt.

Mr. and Mrs. Eldon Smith and family of Spearman spent the weekend visiting relatives in Erick, Okla.

Mrs. Jake Lamb of Spearman, her grandsons, Tony and Troy Lamb of Springer, N.M. were Sunday night guests of the Tip Collingsworth's at Perryton.

Chamber of Commerce News Letter

I hope your Fourth of July was an enjoyable one! The weather was a little on the warm side, but that is to be expected.

There were not very many flags flying to be the 4th of July and it looks like we had better get busy and start promoting more flag flying. This is something we should all be proud to do without being asked. It should be an honor to fly our flag. Do you own a United States flag? If so why not fly it on the next Holiday. If not call the Chamber of Commerce office and I will be glad to give you the information on ordering one or several. We have some catalogs with all sizes and prices. The younger generation thinks the 4th of July is only for popping firecrackers, the meaning is gone.

It was nice to see that business men took time out from their Holiday to go to town and put their flag up. How many do you think we could have flying next time?

Congratulations to Gruver Jaycees for the real nice celebration. Seems like everyone had a lot of fun.

I would like to thank my Board of Directors for giving me Fridays off. This certainly does help when you have four children at home. Mrs. Jo Cochran is keeping the office open on Fridays.

We received our first Banquet invitation for the season from Stratford. This will be held on Thursday, July 7, and I think they are real smart in getting their banquet over before everyone else starts. Don't forget to see about your flag. Get it out of storage for the next holiday so you can find it.



"The bigger the bankroll, the tighter the rubberband"

V-7 CHISEL... MULTI-PURPOSE PLOW

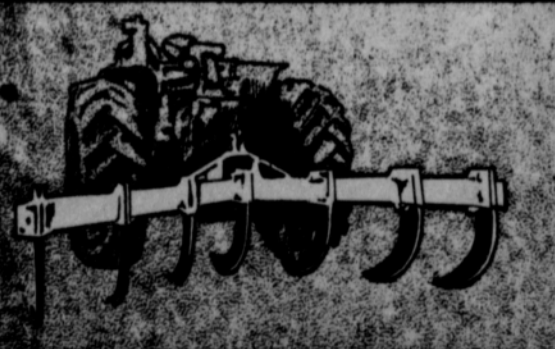
NEW



The V-7 is engineered to solve the deep tillage problem that soil conservation men have been asking for — The V frame plus forward sweep teeth enable you to accomplish with your farm tractor what was formerly possible only with industrial equipment.

What the V-7 Accomplishes

1. Breaks virgin sub soil.
2. Enables soil to capture and retain sub soil moisture.
3. Stubble mulch and chisel plow in one operation.
4. Bed, chisel and fertilize in one operation.
5. Reduces operating cost with light draft.
6. Conserves soil for future by erosion control.



SPECIFICATIONS

Length — 10 Ft. Weight — 1380 Lbs. 7 chisels with hard wedge on points. Chisels on 20" centers. Shear pins for protection. All steel welded frame.

Optional Features

Mulch Knives — Middle Buster — Gauge Wheel Bracket — Row Marker

R. L. McClellan & Sons Inc.

"Your Complete Farm Machinery Headquarters"

Join the **PARADE**
 BUILD THE SIZE SET
 YOU WANT... **NOW!**

Come In And Examine This
 Fine Dinnerware ---- **THIS**
IS NOT PLASTIC!!!

With each food purchase of \$5.00 or over, you are
 entitled to buy 1 piece of dinnerware at 9c — if your
 order is \$10.00, you are entitled to 2 pieces at 9c
 each — if it is \$15.00, you may obtain 3 pieces at
 9c each — and so on.

EXAMPLE:

Service For 6	\$270
Service For 8	\$300
Service For 10	\$450
Service For 12	\$540

GET YOUR SET OF
WHITE SWIRL
DINNERWARE



40 Piece Set of *White Swirl* **DINNERWARE**
 SERVICE FOR 8 --- NOW FOR ONLY **\$360**
 You Save \$19²⁰ On Our Plan! **With Your Food Purchase**

**ATTRACTIVE WHITE SWIRL
 DINNERWARE**

By Salem China Co.

- ✓ Bone China Glass
- ✓ Every Piece Overglazed
- ✓ Guaranteed Against Cracking
- ✓ Dishwasher Tough
- ✓ AMERICAN MADE

9c

HERE'S HOW OUR PLAN WORKS: With each food purchase of \$5.00 or over, you are entitled to buy 1 piece of dinnerware at 9c — if your order is \$10.00, you are entitled to 2 pieces at 9c each — if it is \$15.00, you may obtain 3 pieces at 9c each — and so on.

FOLLOW THIS WEEKLY SCHEDULE

A different piece will be featured each week, in the following sequence... don't miss a week!

You can build a service for SIX... EIGHT... TWELVE or more.

FIRST WEEK DINNER PLATE™ 9c	SECOND WEEK BREAD & BUTTER 9c	THIRD WEEK FRUIT DISH 9c	FOURTH WEEK COFFEE CUP 9c	FIFTH WEEK SAUCER 9c
--------------------------------	----------------------------------	-----------------------------	------------------------------	-------------------------



SALAD DRESSING

Shurfine Pint **27c**

PINEAPPLE

Shurfine Crushed
 no. 2 can **4 for \$1.00**

Del Monte Bartlett Halves
 303 Size Can

PEARS 29c

Welch's Grape Drink 46 oz. Can

WELCHADE 3 for \$1.00

Shortening 3 lb. Can

BAKERITE 59c

Barbers Strained

Baby Food

Fruits & Vegetables Glass Pak

10 for 89c

Dad's Flavorful
Root Beer

Half Gallon **39c**

Lanes "Old Fashioned"

Ice Cream 69c

Half Gallon All Flavors

Patio Large Frozen 15 oz. Pkg.

Mexican Dinners 49c

Bama-Grape Jam, Red-Plum Jam or 18 oz. Tumbler

Grape Jelly 3 for \$1.

Gladiola 10 lb. Print Bag

Flour 98c



Imperial Size	Brylcream	Regular \$1.39	99c
MacLeans-Family Size	Tooth Paste	Regular .95c	68c

Hunts Solid Pac Whole 303 Size Can	TOMATOES	2 for	37c
Libbys Tall Can	TOMATO JUICE	3 for	29c
	RINSO BLUE	Giant Size	59c

Sara Lee "All Butter" 8 1/2 oz. Pkg.	Danish Cinnamon Rolls	57c
Bleach Gallon	PUREX	
Plastic Jug		49c

SALAD DAYS ARE HERE!

VISIT OUR PRODUCE DEPARTMENT
 "FRESHEST PRODUCE IN TOWN!"

FIRM, LARGE

Avocados 10¢ each
 FRESH, TENDER, SLICING

Cucumbers 13¢ lb.
 LARGE, THICK-MEATED

Bell Peppers 25¢ lb.
 TENDER, CRISP, KENTUCKY WONDER

Green Beans 25¢ lb.
 CALIFORNIA, JUICY

Lemons 33¢
 SWEET & JUICY "SEEDLESS"

Grapes 29¢

Weekend Values for Friday & Saturday, July 8th & 9th

USDA Choice Beef Rib Steak lb. 69¢

USDA Choice Beef Boneless Club \$1.49 lb.

"Fresh & Lean" Ground Beef 39¢ lb.

Ranch Style or Cello Wrap Bread King Size Loaf Tendercrust 23¢

Maxwell House Coffee Vac. Pac. 1b. can 75¢

Maxwell House INSTANT Coffee 6 oz. Jar 79¢

WE GIVE VALUABLE BUCCANOR STAMPS

Cut Rate GROCERY

Plus Valuable Coupon in every Loaf