

The Hansford Plainsman

VOLUME VII. NUMBER 91

SPEARMAN, HANSFORD COUNTY, TEXAS, 79081

THURSDAY, SEPTEMBER 1, 1966

THE TALL TEXAN



BY BURL McCLELLAN

We walked right into the past Sunday and found there had been another from Hansford County there ahead of us by some 79 years.

Day and I and my parents all made our first visit to Dodge City, Kan., and its old Front Street. The area is much like a movie set, but the museums are interesting.

We were looking at a register for the Dodge House and reading the names when we came across one from Hansford Texas. J.H. Burkholder from Hansford Texas registered at the Dodge House on Friday, Dec. 23, 1887. He had room number 30 and paid \$5 for it.

Chief of Police Leland Wood this week asked for everyone's cooperation in a careful driving program around the schools. Wood said the driving has been very good around the schools in the morning and afternoon and he hopes it will continue throughout the year.

There is a great amount of traffic around the schools in the morning and afternoon, but Wood said he had only issued one ticket.

"Everyone is doing a good job this first week," he commented. "However, the police will continue to patrol the area to help make sure this kind of driving continues."

The Chamber of Commerce is making an all out effort to get everyone to attend the program planning meeting on Sept. 6. Everyone should make the same effort to be there and help with this important program.

Work by the Chamber is only as effective as the members make it and everyone of us can find some free time to help make our investment in the organization return more dollars for us.

Mark you calendar and be prepared to attend and help plan the program of work for the coming year.

Debbie Brock Will Lead Lynx Band

A drum major and six twirlers were selected Tuesday afternoon for the Spearman High School Lynx Band by out-of-town band directors.

Miss Debra Brock was selected as the drum major for this year. She won the competition over two other trying for the position.

The twirlers selected from a large number of contestants are Donna Ownbey, Shirley Love, Debbie Standerfer, Myrna Crum, Debbie Hazelwood, and alternate Patsy Powell.



NEW SIGN -- Sixth graders show a new sign for Spearman Junior High. Class members showing the sign are (left side, front row) Marvin Wilkerson, Shirley Buchanan, Katrina Kelp, Lindy Ward and the designer of the sign Scott Latham, (back row) Robert Beck, Gene Sutherland and Gene Lomax. (Right side) Mary Lee Cooley, Lavonne Johnson, Kathy Brown, Bobby Bulls, Terry Innis, Tim Jackson and Mike Brown.

Local School Enrollment Down But Educators Expect Increase

Enrollment in the Spearman Public Schools is down from last year, but has increased since classes opened and administrators are expecting the increase to continue.

Monday morning the schools began classes with 1,098 students enrolled in the 12 grades. The figure increased to 1,101 Wednesday morning.

The big drop in attendance has been in the middle grades, fifth through eighth grades, but some of this was expected. Principal James Pendergraft said he graduated a class of 109 last spring from the eighth grade and only had a class of

82 fifth graders this year. The middle grades had 393 last year, but only 359 this year.

High school enrollment has exceeded expectations, according to Supt. Bill Reeves. He said the school was expecting about 365, and the enrollment Wednesday morning was 371.

Enrollment in the elementary grades is off from last year also. Wednesday Principal Allen Alford had 371 students enrolled.

Monday he had 97 in the first grade, 82 in the second, 103 in the third and 82 in the fourth grade.

Officials are expecting several children to enroll after the Labor Day holiday as some families have late vacations. Also, there have been some late summer transfers by companies which have moved children out of the district and the replacement families have not moved to Spearman yet.

New Businesses Announce Plans To Locate Here

Two new businesses are going to be opened in Spearman in the near future.

An experienced bootmaker is opening a shop on Main street and a new Humble station is under construction across from Equity Elevators.

Bill Damron who has been operating a boot shop in Matador for over 17 years and is an experienced boot man, is moving to Spearman.

The building next door to Wilmeth Cattle Co. is being remodeled and Damron will open his shop there about Sept. 12.

Kenneth Kyle, Humble consignee in Perryton, is constructing a new Humble station on the property across the street from Equity.

The small frame building which at one time housed a grocery store and later a livestock supply house and a house, moved recently and the property cleared last week.

This new station will have access to both Kenneth and Collard streets.

BUY YOUR SEASON FOOTBALL TICKETS NOW AT THE HIGH SCHOOL BUSINESS OFFICE.

Chamber Will Plan Program of Work

Program of work planning meetings will be held Tuesday, Sept. 6, in the Chamber of Commerce, President Kenneth Evans announced this week.

Billed as "Can Do--Come See" meetings, Chamber officials are working to have a big turnout for the two meetings. One will be at 10:30 a.m. and the second at 3 p.m.

Evans said this was the most important meeting of the year for the Chamber. It will be at this meeting, he pointed out, that the plans for the next 12 months of work will be made.

Special invitations are being sent to pastors and a few other individuals. Every member has received a post card invitation and will receive another.

Manager Red Smith said his office will also try to call each member just before the meeting to remind them of the meeting.

This planning session must have representation of the full membership, Evans said. "If the chamber is to represent the majority of the members then a majority of the members must help form the policies."

At the meeting the members and guests will be asked to submit at least five suggestions for immediate and long range projects for the Chamber to work on.

After the suggestions are all compiled, then a committee will take the suggestions and draw up a program of work for the organization.

When the program is completed, the president will appoint committees to go to work on the various projects included in the program.

Several attempts have been made in past years to have such

a meeting compile a program of work, but attendance has been so light, the work has been ineffectual.

Evans said if the Chamber is to be as effective as possible for Spearman, it must have this cooperation from members in compiling a blueprint from which to work.

A Board of Directors meeting will be held at 9:30 a.m. that morning.

Boosters Raise Enough Money For Blazers

Spearman Lynx Booster Club completed its first project last week when enough money was raised to purchase purple blazers for the members of the varsity athletic teams.

Club President Slim Cates said the businesses and individuals donated \$1,035 to purchase the coats.

Coach George Wright said the blazers are being ordered and the supply house said they would be here for the first road game, that being Canyon, Sept. 23.

These blazers will be issued to members of the varsity teams at the beginning of the season. The players will wear them on road trips. At the end of the season the coats will be turned in to be used by the next team.

Cates said the booster club, coaches and players wished to thank everyone helping

(Continued on page 2.)



BAND LEADERS -- It was a wind blown group of girls who finally were named twirlers and drum major for the Lynx Band. They are Shirley Love, Debbie Hazelwood, Patsy Powell, alternate; Debra Brock, drum major; Debbie Standerfer, Donna Ownbey and Myrna Crum.

WELCOME TEACHERS!

It's that time again- - - time to say goodbye to another summer vacation and to welcome the change back to more organized living for our youngsters.

We appreciate the work of our Teachers!

The future of Spearman's fine young people is in your capable hands. We wish you every success in your job of fostering enthusiasm for acquiring knowledge. If you are new in Spearman this fall, we are sure you will find it's a wonderful place to work and live.

We welcome you to Spearman and cordially invite you to come by and visit us .

Cates

MEN & BOYS WEAR

Boxwell's Flowers

Western Auto

Cates Grocery

Gordon's Drug

Complete Prescription Service

The Hansford Plainsman

Cattleman's Cafe

"Best Food in Town"

Chambers Dept. Store

**Spearman Floral
and Gifts**

Spearman Rexall Drug

Wardrobe Cleaners

Lady Fair

Plains Shopping Center

Spearman Hardware

Massad's

The Hansford Plainsman
PUBLISHERS INC.

TEXAS PRESS ASSOCIATION

Member **1966**

Co-Publishers.....Jim Davis and Burl McClellan
County-Wide, Independent Newspaper published every Thursday and Sunday at 209 Main St., Post Office Box 668, Spearman, Texas 79081. Second Class postage paid in Spearman, Texas 79081.
Editor.....Burl McClellan
Manager.....Jim O. Davis

Boosters- - -

(Continued from page 1.)

purchase the blazers. Individuals and business who donated are:

- George Wright
- Irwin Davis
- Marcus Larson
- Jimmie Shieldknight
- Cates Men & Boys Wear
- Sparks Laundry
- Ray Moore
- Dr. Bill Reeves
- Dr. R.L. Kleeberger
- excel Chevrolet
- Ralph Blodgett
- H.H. Crooks
- Deacon Clement
- Community Public Service
- J.L. Brock
- Don E. Smith
- Cloyd Windom
- Jack Reed
- First State Bank
- Pete Fisher
- Wesley Garnett
- Beedy Furniture Co.
- George Warren
- Equity Elevators
- Dr. D.E. Hackley
- Dr. E.E. Novak
- Spearman Motors
- Troy Sloan
- Cater Grocery
- Gordons Drug
- A.F. Cook
- Spearman Hardware
- Spearman Drug Co.
- Roy Russell
- Hansford Plainsman
- Spearman Reporter
- Dee Allen
- Phillips 66 Service Station
- Carl Archer
- H & H Well Service
- Linn & Helms
- Spearman Super Service
- Spearman Barber Shop
- Louis Schnell
- Lloyd Buzzard
- Pope Gibner
- Dr. Damon Gregg
- R.L. McClellan Grain Co.
- P.A. Lyon
- North Plains Truck & Imp.
- Hubert Hays Jr.
- Anthony Electric
- B&B Sales Co.

Stratford Fair Is Scheduled This Weekend

Crowds will be arriving in Stratford Sept. 8 for the annual Sherman County Fair and Jamboree which runs through Sept. 10.

The beginning event of the fair and jamboree will be the beauty contest Saturday, Sept. 3. It will begin at 8 p.m. in the school auditorium.

Thursday, Sept. 8 the Fair opens to receive exhibits. There will also be a children's Dog Show and Art Show in the Exhibit Building.

The Fair opens Friday, Sept. 9 and other activities will include the American Quarter Horse Show with Youth activities. There will be three adult and 12 youth trophies in the show.

Saturday will be the big day at the Fair and Jamboree. The festivities begin at 8 with the Old Timers pre-registration until 11 a.m. The parade forms and begins in front of the school at 11 a.m. The parade theme is "Comic Books A-Go-Go."

At noon, there will be a barbecue at the fair grounds. At 2 p.m. the children's race, turtle, bike, foot, father-son sack race and mother-daughter sack races will be held.

Other activities include three dances that evening. There will be a western dance from 9 until 12 at the Legion Hall, a teen dance at the old gym from 8 until 12 and a square dance at the Sherman Implement Building from 8 until 12 p.m.

Old Timers King and Queen will be Mrs. Sam Wohlford and Marvin Harrison.

They used to serenade girls with guitars. Now an auto horn brings them out quicker.

Calendar of Events

- Thursday, Sept. 1
 - Xi Zet Upsilon meets at 1:30.
 - Gladiola Flower Club meets with Mrs. Bill Reeves.
 - Rainbow Girls meet for initiation.
- Friday, Sept. 2
 - Arts and Crafts Guild meet with Mrs. F.J. Hoskins.
 - Eastern Star meets at the usual time at the Masonic Hall.
 - Jonquil Flower Club meets at 9:30 a.m. with Patty Sheppard as the hostess.
- Monday, Sept. 5
 - Dahlia Flower Club meets at 3 p.m. with Mrs. Major Lackey.
- Tuesday, Sept. 6
 - Lions Club meets.
 - Town and Country H.D. meets with Jan Rinker.
- Thursday, Sept. 8
 - General meeting of 20th Century Club at H.D. Club Room at 2:30.
 - Rebekah Lodge Meets at 7:30--100F Hall.
 - Happy Homes H.D. Club meets with Mrs. Kenneth Evans.
- Saturday, Sept. 10
 - Rho Rho Chapter's rummage sale in building formerly occupied by Jim Neely's.

Buff Tickets Now On Sale

CANYON--Athletic Director Frank Kimbrough announced that tickets to the West Texas State Buffaloes' six home games are on sale at 12 outlets in the Panhandle. West Texas State's first home game is Saturday, Sept. 17, against Arlington State. Kick-off time is set for 7:30 p.m. Amarillo ticket locations

are: Maxor Drug Co., 106 W. 8 and White and Kirk Dry Goods, 518 Polk.

Season tickets as well as individual game tickets may be purchased from the outlets in Happy, Pampa, Vega, Hereford and both Amarillo locations. Individual game tickets will be sold at the other outlets.

Price of season tickets is \$24 (with chair) and \$21 and \$18 without a chair. Cost of individual game tickets ranges from \$3-\$4. Bleachers seats cost \$2 for adults and 50¢ for children (high school and under).

Historical Committee Has Meeting

The Historical Survey Committee meeting was held on Friday, Aug. 26, at 1:30 in the office of the County Judge, Johnnie Lee, with Tom Jones presiding.

Olin Sheets gave a report on additional information for the rifle pits and the group hopes to have something definite for the October meeting.

The Committee desires to mark the creeks in the county and Judge Lee has taken the matter up with the highway

officials in Amarillo.

Further work is being done relative to the Spearman 50 anniversary marker and the Hansford Cemetery marker. They further voted to indorse the commemorative stamp of the Old Chisolm Trail and the report has been sent to Washington.

A progress report was filled out since 1950 and sent to the Texas State Historical association in Austin. This will be contained in the 3rd Volume of the Handbook of Texas which provides ready reference assemblage of information about the widest possible range of Texas topics.

Present were members Tom Jones, Gwenfred Lackey, Olin Sheets, Grace Lyon, Verna Gail Kalm and Clementine

Payne Heating & Air-Conditioning

Louis Schnell Electric

208 Hancock Spearman, Texas

Phone 659-3433

Sales & Service

- Free Estimates -

Complete Electric Service

- Easy Finance -

Card of Thanks

I would like to take this opportunity to thank my friends for your prayers, cards, letters, gifts and food while I was in the hospital and since I have been home. May God bless each one of you.

Mrs. Tom Sutton

Renner.
The next meeting will be on Sept. 23 at the usual time and place.

For people who need an excuse to buy a new Pontiac:

Pontiac Catalina has the best resale value of any car in the medium-priced group, which includes the top models of the low-priced three—according to the latest N.A.D.A. Official Used Car Guide figures based on 1963-1965 V-8 4-door sedans with automatic transmissions.

(But who needs an excuse?)

North Plains Truck & Implt. Co.

IT'S SUMMER BONUS DAYS AT YOUR PONTIAC DEALER'S. SEE HIM

FOR A GREAT DEAL ON A NEW WIDE-TRACK.



The GM Motor Division



A Checking Account Makes My Homemaking Bookkeeping Easy

... It gives me a permanent record and receipt for every bill I pay. Lots of convenience... prestige, too...

there's no minimum balance required.

• CHECK THESE ADDITIONAL BANKING SERVICES

Savings Accounts • Bank-By-Mail • Savings Certificates
Mortgage Loans • Safety Deposit Boxes • Personal Loans • Money Orders

FIRST STATE BANK

Your Friendly Family Bank

Homemaking Notes

By Linda Webb

Your Home Demonstration Agent

Are you one of those persons who has ordered from a menu and wondered what would show up on your plate? Foreign terms on today's menu puzzle many people, for example, if you wanted ordinary green beans amadine, or green bean julienne.

Some of the foreign terms that appear most often on menus are listed here. Look it over so that the next time you eat out this summer, you will know what you have ordered before the waitress sets it in front of you.

A la--A French term which means to be with, such as apple pie a la mode means to serve with ice cream.

A la carte (a lah CART) -- means that each dish is purchased separately; the dish is not part of the complete meal.

A la king (ah lah KING) -- served in a rich sauce which may contain green peppers, mushrooms, etc.

A la creme (a lah CREAM) -- to serve with cream.

Amadine (AH-mah-deen) -- served with almonds.

A jus (o ZHUS) -- Served in the natural juice or gravy.

Meat is often served this way. **u lait** (oh LAY) -- either made or served with milk.

Au gratin (oh GRAT-in) -- a dish topped with crumbles, grated cheese or cheese sauce.

Canape (CAN-a-pay) -- an appetizer, usually some type of bread which had been spread with a highly seasoned food.

Consomme (KON-su-may) -- a clear soup or broth.

Crepe (Krayp) -- a thin pancake.

Crouton (Kroo-TON) -- Bread cubes either toasted or fried.

Demitasse (DUH-me-tass) -- After dinner coffee served in a small cup.

Friscassee (FRIK-a-see) -- Browned and simmered in a small amount of liquid.

Hors d'oeuvre (or DUH-vr) -- Small portions of food served as appetizers, usually prior to or at the beginning of a meal.

Entree (AHN-tray) -- a main dish.

Julienne (Zhoo-li-ANN) -- vegetables cut into thin strips.

Petite fours (PUH-tee, four) -- small cakes with icing.

Puree (pew-RA Y) -- Foods that have been strained or put through a sieve.

Saute (saw-TAY) -- cooked in a small amount of fat.

How often do you take time to read labels on the food you buy?

The label on a food package is the window through which you "see" inside the package.

You may find a full list of ingredients, or there may be no list of ingredients if the manufacturers using choice ingredients may wish to name them.

Consumers should read the list of ingredients when it is available. Remember that the ingredients are listed in the order of their predominance, from the most to the least.

It's a good idea to check the ingredient list of even familiar products occasionally to determine the nutritive value and cost of the food.

THE LAST NOTE: Like most people, I took a vacation to forget everything. And sure enough, when I got there and unpacked, I had.

Mr. and Mrs. Ray Devers and Peggy went to Canyon Thursday evening for the Commencement exercises at W.T.S.U. to see their son Bill receive his Bachelor's degree in Music Education. Bill will teach at Hansford this year.

Take your problems to Church this week — millions leave them there!

the Word

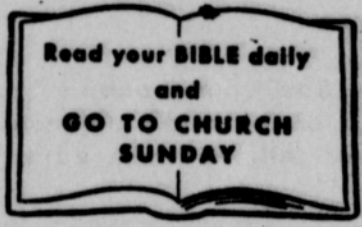
"Thy word is a lamp unto my feet; and a light unto my path." — Psalm 119:105



If you are a Christian, you are blessed with a great heritage. It is a heritage of truth and has nothing to do with imagination or myths. It is a truth that remains unchanged, no matter how many times someone attempts to rewrite or offers a "studied" translation.

This truth is the word of God. It is found in the Holy Bible. It is found in Ten Commandments, which form a guidepost for Christian living.

Accept this truth; it is useless to argue against it. Conscience and common sense will not permit you to be unaware. You fool no one, not even yourself, if you pretend to ignore or disbelieve.



Sponsored By

R. L. McCLELLAN GRAIN CO., INC.

FIRST STATE BANK
Member F.D.I.C.

B & B GRAIN CO., INC.

The Hansford Plainsman

Attend

The Church Of Your Choice Sunday

—Weekly Opportunities For Worship—



"Do not be afraid; for I know that you seek Jesus who was crucified. He is not here; for He is risen as He said . . ."
Matthew 28:5-6



Apostolic Faith Church
V. E. (Hap) Blythe, Pastor
9th & Dressen
Sunday School 9:45 a.m.
Morning Worship 10:35 a.m.
Young People 6:30 p.m.
Children's Church 7:00 p.m.
Evening Worship 7:30 p.m.
Thurs.:
Ladies Bible Study 2:00 p.m.
Prayer Meeting 7:30 p.m.

Assembly of God Church
Rev. T. J. Taylor, Jr.
403 N. Bemice
Sunday School 9:45 a.m.
Morning Worship 11:00 a.m.
Sunday C.A.'s 6:30 p.m.
Evening Worship 7:30 p.m.
Wed. Bible Study 7:30 p.m.

Church of Christ
Charles Milner, Minister
121 S. Haney
Bible Class 10:00 a.m.
Worship 10:50 a.m.
Teen Age Class 6:00 p.m.
Worship 7:00 p.m.
Wed. Ladies Bible Class 9:30 a.m.
Wed. Bible Study 7:30 p.m.
Daily Television on Channel 3, Mon. thru Fri. 10:15 a.m.

First Christian Church
Rev. Dayle Schnell
29 S. Bemice
Sunday School 9:45 a.m.
Morning Worship 11:00 a.m.
Youth Meetings 5:30 p.m.
Evening Worship 7:30 p.m.
Wed. Choir Practice 7:30 p.m.

Fellowship Baptist Church
Rev. Roy Meksch
11th & Archer
Sunday School 10:00 a.m.
Preaching Service 11:00 a.m.
Sunday Evening Service 7:30 p.m.
Wed. Evening Service 7:30 p.m.

Union Full Gospel Church
Rev. George R. Bollinger, Pastor
1st & Endicott
Sunday School 10:00 a.m.
Morning Worship 11:00 a.m.
Bible Classes Sunday 6:45 a.m.
Evening Worship 7:30 p.m.
Wed. Bible Study 7:30 p.m.

Pentecostal Church
Sunday School 9:45 a.m.
Morning Worship 11:00 a.m.
Evening Worship 7:30 p.m.

First Methodist Church
Rev. Wesley Daniel, Pastor
407 S. Haney
Sunday School 9:45 a.m.
Morning Worship 11:00 a.m.
M.Y.F. 6:30 p.m.
Evening Worship 7:00 p.m.
Women's Society of Christian Service Wed. 3:00 p.m. and 9 a.m.
Choir Rehearsal 7:30 p.m.

Waka Church of the Brethren
Lawrence Lehman, Pastor
Sunday School 10:00 a.m.
Morning Worship 11:00 a.m.
Evening Service 7:00 p.m.
Choir Practice Wed. 7:30 p.m.

Oslo Lutheran Church
Robert L. Cordes, Pastor
18 mi. N.W. of Gruver
Sunday School 9:45 a.m. (includes adults)
Worship Services 11:00 a.m.

Faith Lutheran Church
Robert L. Cordes, Pastor
11th & Bemice
Worship Services 9:00 a.m.
Sunday School 10:00 a.m.

Sacred Heart Catholic Church
Rev. James C. Gurzynski
901 S. Roland
Sunday Mass 8:00 a.m. & 11 a.m.
Wednesday & Friday 8:00 p.m.
Saturday Mass 8:00 a.m.
Other Days Mass 7:30 p.m.

First Baptist Church
Rev. Luther M. Berry, Pastor
123 S. Bemice
Sunday School 9:45 a.m.
Morning Worship 10:55 a.m.
Training Union 5:30 p.m.
(Oct. 1-Apr. 30)
Training Union 6:00 p.m.
(May 1-Sept. 30)
Evening Worship 6:30 p.m.
(Oct. 1-Apr. 30)
Evening Worship 7:00 p.m.
(May 1-Sept. 30)
Wed. Evening Prayer Hour 8:00 p.m.

First United Presbyterian Church
Rev. Lewis Koerselman, Sr.
1021 Cotter Drive.
Sunday Church School 9:45 a.m.
Morning Worship 11:00 a.m.
Evening Study Group 7:30 p.m.
Wed. Choir Practice 7:30 p.m.

Homemaking Notes

By Linda Webb

Your Home Demonstration Agent

Are you one of those persons who has ordered from a menu and wondered what would show up on your plate? Foreign terms on today's menu puzzle many people, for example, if you wanted ordinary green beans amandine, or green bean julienne.

Some of the foreign terms that appear most often on menus are listed here. Look it over so that the next time you eat out this summer, you will know what you have ordered before the waitress sets it in front of you.

A la--A French term which means to be with, such as apple pie a la mode means to serve with ice cream.

A la carte (a lah CART) -- means that each dish is purchased separately; the dish is not part of the complete meal.

A la king (ah lah KING) -- served in a rich sauce which may contain green peppers, mushrooms, etc.

A la creme (a lah CREAM) -- to serve with cream.

Amandine (AH-mah-deen) -- served with almonds.

A jus (o ZHUS) -- Served in the natural juice or gravy.

Meat is often served this way.

au lait (oh LAY) -- either made or served with milk.

Au gratin (oh GRAT-in) -- a dish topped with crumbs, grated cheese or cheese sauce.

Canape (CAN-a-pay) -- an appetizer, usually some type of bread which had been spread with a highly seasoned food.

Consomme (KON-su-may) -- a clear soup or broth.

Crepe (Krayp) -- a thin pancake.

Crouton (Kroo-TON) -- Bread cubes either toasted or fried.

Demitasse (DUH-mc-tass) -- After dinner coffee served in a small cup.

Friscassee (FRIK-a-see) -- Browned and simmered in a small amount of liquid.

Hors d'oeuvre (or DUH-vr) -- Small portions of food served as appetizers, usually prior to or at the beginning of a meal.

Entree (AHN-tray) -- a main dish.

Julienne (Zhoo-li-ANN) -- vegetables cut into thin strips.

Petite fours (PUH-tee, four) -- small cakes with icing.

Puree (pew-RA Y) -- Foods that have been strained or put through a sieve.

Saute (saw-TA Y) -- cooked in a small amount of fat.

How often do you take time to read labels on the food you buy?

The label on a food package is the window through which you "see" inside the package.

You may find a full list of ingredients, or there may be no list of ingredients if the manufacturers using choice ingredients may wish to name them.

Consumers should read the list of ingredients when it is available. Remember that the ingredients are listed in the order of their predominance, from the most to the least.

It's a good idea to check the ingredient list of even familiar products occasionally to determine the nutritive value and cost of the food.

THE LAST NOTE: Like most people, I took a vacation to forget everything. And sure enough, when I got there and unpacked, I had.

Mr. and Mrs. Ray Devers and Peggy went to Canyon Thursday evening for the Commencement exercises at W.T.S.U. to see their son Bill receive his Bachelor's degree in Music Education. Bill will teach at Hansford this year.

Take your problems to Church this week — millions leave them there!

Sponsored By

**R. L. McCLELLAN
GRAIN CO., INC.**

FIRST STATE BANK
Member F.D.I.C.

B & B GRAIN CO., INC.

The Hansford Plainsman

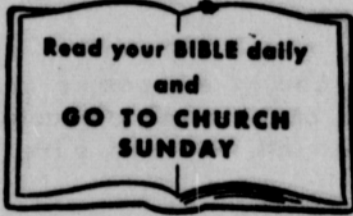
the Word

"Thy word is a lamp unto my feet; and a light unto my path."
— Psalm 119:105

If you are a Christian, you are blessed with a great heritage. It is a heritage of truth and has nothing to do with imagination or myths. It is a truth that remains unchanged, no matter how many times someone attempts to rewrite or offers a "studied" translation.

This truth is the word of God. It is found in the Holy Bible. It is found in Ten Commandments, which form a guidepost for Christian living.

Accept this truth; it is useless to argue against it. Conscience and common sense will not permit you to be unaware. You fool no one, not even yourself, if you pretend to ignore or disbelieve.



Attend

The Church Of Your Choice Sunday

—Weekly Opportunities For Worship—



"Do not be afraid; for I know that you seek Jesus who was crucified. He is not here; for He is risen as He said . . ."
Matthew 28:5-6



Apostolic Faith Church
V. E. (Hap) Blythe, Pastor

9th & Dressen
Sunday School 9:45 a.m.
Morning Worship 10:35 a.m.
Young People 6:30 p.m.
Children's Church 7:00 p.m.
Evening Worship 7:30 p.m.
Thurs.:
Ladies Bible Study 2:00 p.m.
Prayer Meeting 7:30 p.m.

Assembly of God Church
Rev. T. J. Taylor, Jr.

403 N. Bemice
Sunday School 9:45 a.m.
Morning Worship 11:00 a.m.
Sunday C.A.'s 6:30 p.m.
Evening Worship 7:30 p.m.
Wed. Bible Study 7:30 p.m.

Church of Christ
Charles Milner, Minister

121 S. Haney
Bible Class 10:00 a.m.
Worship 10:50 a.m.
Teen Age Class 6:00 p.m.
Worship 7:00 p.m.
Wed. Ladies Bible Class 9:30 a.m.
Wed. Bible Study 7:30 p.m.
Daily Television on Channel 3, Mon. thru Fri. 10:15 a.m.

First Christian Church
Rev. Dayle Schnell

29 S. Bemice
Sunday School 9:45 a.m.
Morning Worship 11:00 a.m.
Youth Meetings 5:30 p.m.
Evening Worship 7:30 p.m.
Wed. Choir Practice 7:30 p.m.

Fellowship Baptist Church
Rev. Roy Meksch

11th & Archer
Sunday School 10:00 a.m.
Preaching Service 11:00 a.m.
Sunday Evening Service 7:30 p.m.
Wed. Evening Service 7:30 p.m.

Union Full Gospel Church
Rev. George R. Bollinger, Pastor

1st & Endicott
Sunday School 10:00 a.m.
Morning Worship 11:00 a.m.
Bible Classes Sunday 6:45 a.m.
Evening Worship 7:30 p.m.
Wed. Bible Study 7:30 p.m.

Pentecostal Church

Sunday School 9:45 a.m.
Morning Worship 11:00 a.m.
Evening Worship 7:30 p.m.

First Methodist Church
Rev. Wesley Daniel, Pastor

407 S. Haney
Sunday School 9:45 a.m.
Morning Worship 11:00 a.m.
M.Y.F. 6:30 p.m.
Evening Worship 7:00 p.m.
Women's Society of Christian Service Wed. 3:00 p.m. and 9 a.m.
Choir Rehearsal 7:30 p.m.

Waka Church of the Brethren
Lawrence Lehman, Pastor

Sunday School 10:00 a.m.
Morning Worship 11:00 a.m.
Evening Service 7:00 p.m.
Choir Practice Wed. 7:30 p.m.

Oslo Lutheran Church
Robert L. Cordes, Pastor

18 mi. N.W. of Gruver
Sunday School 9:45 a.m. (includes adults)
Worship Services 11:00 a.m.

Faith Lutheran Church
Robert L. Cordes, Pastor

11th & Bemice
Worship Services 9:00 a.m.
Sunday School 10:00 a.m.

Sacred Heart Catholic Church
Rev. James C. Gurzynski

901 S. Roland
Sunday Mass 8:00 a.m. & 11 a.m.
Wednesday & Friday 8:00 p.m.
Saturday Mass 8:00 a.m.
Other Days Mass 7:30 p.m.

First Baptist Church
Rev. Luther M. Berry, Pastor

123 S. Bemice
Sunday School 9:45 a.m.
Morning Worship 10:55 a.m.
Training Union 5:30 p.m.
(Oct. 1-Apr. 30)
Training Union 6:00 p.m.
(May 1-Sept. 30)
Evening Worship 6:30 p.m.
(Oct. 1-Apr. 30)
Evening Worship 7:00 p.m.
(May 1-Sept. 30)
Wed. Evening Prayer Hour 8:00 p.m.

First United Presbyterian Church
Rev. Lewis Koerselman, Sr.

1021 Cotter Drive.
Sunday Church School 9:45 a.m.
Morning Worship 11:00 a.m.
Evening Study Group 7:30 p.m.
Wed. Choir Practice 7:30 p.m.

Church Has Picnic at Lake

Members and friends of the First Christian Church met at Lake Fryer on Sunday evening for an all church picnic dinner. The get-together lasted from 3 to 9:30 and all enjoyed volleyball, water skiing and various other games.

Vesper services were held in the evening conducted by the youth of the church followed by a sermon by Rev. Schnelle titled "Whistling in the Dark."

Hansford

Hospital News

In the hospital are Joe Spencer, Bill Miller, Johnnie Martin, Linda Lamb and son, Joe Day, John R. Collard Jr., Peggy Cook, Ernest Arnold, Elwana Eaton, Eileen Red, Vanessa Leslie.

Dismissed were Mechelle Scott, Arden Lewis, Wanda Estes, J.L. Hurter, Mercedes Rivas and son, Linda Torres, Ray Brown, Edith Sheets, Ray Oliver.

Future Readers of The Plainsman

Mr. and Mrs. James Lamb of Gruver are the parents of a baby boy born Aug. 29 at 3:16 a.m. weighing 7 lb. They named him Kelly Ray.

Crawford, McLain and Devers Get WT Degrees

Some 257 students were candidates for degrees at West Texas University on Thursday, Aug. 25 held at the Field House at Canyon.

exercises were the L.S. McLains, Don McLains and the J.L. Brock family and Mr. and Mrs. Ray Devers and Peggy. Kathy, who had only been

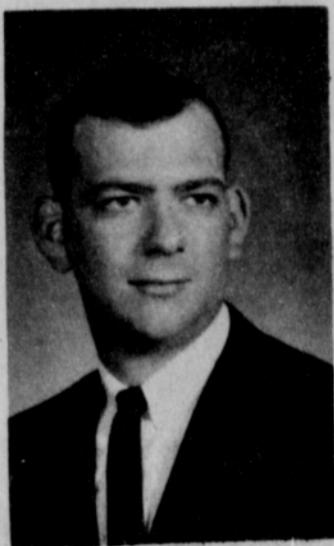


Miss Kathy Crawford



Miss Polly McLain

Three students were from Spearman. They were Polly McLain who received her degree in Physical Education and Government, Kathy Crawford a BA in Education and Bill Devers in Musical Education. Polly is the daughter of Mr. and Mrs. L.S. McLain, Kathy is the daughter of Mr. and Mrs. Cecil Crawford and Bill is the son of Mr. and Mrs. Ray Devers. Attending the graduation



Bill Devers

released from the hospital on the 24th was unable to be present for her graduation exercises.

Miss McLain is now teaching at Canyon in the junior high school as a physical education director. Miss Crawford will be in Civil Service at Tucson, Ariz. and Bill Devers is teaching music in the Hereford schools.

Miss Cator Is Graduate of Business School

Mrs. Bill Cator of Spearman was one of the 75 graduates from Western Republic College at Amarillo Friday evening, Aug. 26.

She received her diploma after taking a course for legal secretary, accounting and law.

After graduation exercises a reception was held for all



Mrs. Bill Cator

parents of the graduates. Mr. and Mrs. Preston Smith are the parents of Mrs. Cator and attended the exercises. Mrs. Cator received the honor of being chosen as the student "Most Likely to Succeed" and was also runner-up for the most beautiful student.

Officers Named By Junior MYF

The Junior MYF of the Methodist Church started meeting again after a summer vacation.

The officers for this term are president, Larry Laws; vice-president, Bobby DeArmond; secretary, Liz Hartz; treasurer, Bradley Pendergraft; parliamentarian, Ronnie Head; reporter, Billy Messer; party committee, Debi Daniel, Sheila Patterson and Pat Sloan; game committee, Wanda Greene and Patricia Schnell.

Card of Thanks

I wish to take this means of expressing my sincere thanks and appreciation for all the cards, letters, calls and prayers of all my friends while I was a patient in Hansford Hospital, also at Northwest and since my return home.

Your kindness will always be remembered. Thank you. Mrs. N.W. Cayton

Mr. and Mrs. Robert Adamson and sons and Mrs. Bonnie Adamson spent last week at Red River where they kept the community building open for the week while the regular attendants were gone. Young Keith Adamson called his first square dance for the first out of town group while there. This is the 3rd year the Adamson's have taken over the recreation for a week or two at Red River.

Guests in the home of Mr. and Mrs. B.J. Garnett were Mr. and Mrs. Nick Holzschuh from Guam.

Sunday dinner guests of Mr. and Mrs. B.J. Garnett were Mr. and Mrs. Wesley Garnett, Sr. and Lynn, Mr. and Mrs. Stanley Garnett and Howard, Mr. and Mrs. Mike Garnett and Jon and Mr. and Mrs. Wesley Garnett, Jr. from Bryon, Texas.

4-H Week Will Be Observed

National 4-H Club Week in Hansford County will be climaxed on Oct. 1 with a County 4-H Achievement Awards Banquet. It was announced this week.

The banquet will be held in the Home Demonstration Club Building at 309 N. Bernice in Spearman at 6:30 p.m. Awards for outstanding 4-H work during the year will be presented to 4-H members.

Home Demonstration Club members are giving the banquet for the 4-H members.

98.3
on your
dial

Hey Football Fans!

Follow The Lynx on **KBMF-FM**

Sept. 9	Sunray at Spearman
Sept. 16	Gruver at Spearman
Sept. 23	Spearman at Canyon
Oct. 1	Spearman at Phillips
Oct. 7	Boy's Ranch at Spearman
Oct. 14	Spearman at Sanford Fritch
Oct. 21	Spearman at Stinnett
Oct. 28	Shamrock at Spearman
Nov. 4	Spearman at Panhandle
Nov. 11	Dalhart at Spearman

If you can't attend the game - listen to it on **KBMF-FM**

Announcing -

Diana's Dance Studio

At The Kon Tiki

Registration For Classes

Tuesday,
Sept. 6

3:00 P.M.
to **5:00 P.M.**

• Classes for all ages — 3 yrs. and up.

Top • Ballet • Jazz

For information, Call Diane Tekell
BR3-9963 - Borger.

EVERY day is LABOR DAY for Reddy Kilowatt

On the job 365 days a year, electricity is ready and waiting to serve you instantly when you push in a plug or flip a switch. And only electricity is such a versatile worker . . . providing light, heating and cooling . . . operating time-saving, work-saving household appliances . . . supplying power for office, farm and factory equipment. Yes, EVERY day is LABOR DAY for Reddy Kilowatt — your low-cost, dependable electric servant.

COMMUNITY PUBLIC SERVICE

Your Electric Light & Power Company

joyce

...adds joy to your life!

Turned on! Tuned in! Our nifty new Joyce hits fashion right on the button. Four buttons, in fact. Broad toe. Flat heel. So soft, so supple, so weightless. Hitch on to a Joyce-ful pair for your dashing autumn!

Black Suede

\$12.00

Chambers Dept. Store



STATE WINNER -- Miss Wanda Sue Greene and her horse won second in Western Pleasure riding competition recently in the State 4-H Horse Show in San Antonio. She is the daughter of Mr. and Mrs. Everett Greene.

Legal Notice

NOTICE TO BIDDERS
Sealed bids will be Received at the office of the City of Spearman, Texas until 8:00 p.m. September 12, 1966 for the purchase of a truck with the following specifications:
1966 or 1967 Model-2 Ton Capacity-6 Cylinder, Minimum 275 Cubic inch,
15 Ton Hoist,
Flat Bed With Steel Floor and Stake Pockets (15' Minimum Length),
Clearance Lights,
Flaps and Reflectors,
Fresh Air Heater and Defrosters,
8:25-20 10 Ply Tires,
2 Speed Windshield Wiper,
15,000 Pound Rear Axle,
5000 Pound Front Axle,
11,000 Pound Heavy Duty Rear Springs,
Auxiliary Overload Springs,
Oil Filter Sufficient For Size of Engine,
Heavy Duty Radiator,
Oil Bath Air Cleaner,
2-West Coast Mirrors Mounted,
Cab Lights and Flasher Attachment,
Two Speed Axle or 5 Speed Transmission.
Payment for this equipment to be made from funds available during the 1966-67 Budget year which will be after October 1, 1966 but not later than October 15, 1966.
The City reserves the right to reject any and all bids or waive any informality in the bid or accept any bid regardless.
By Order of the Mayor and City Council of the City of Spearman, Texas this 22nd day of August 1966.
R.E. Vaughn, Mayor
ATTEST:
Darce Foshee, City Sec.

B&PW Makes Plans for 'Crazy Day'

The BP&W Club met Aug. 25 at 7:30 in the bank building. The meeting was called to order by president Leona King.
The evening was spent in discussing business. They decided to order club membership pins. They also planned a booth for crazy day to serve coffee, donuts and pie to the public.
Programs for the coming year was planned and discussed.
Those attending were Ludie Mae Lovett, Jennie Massad, Lou Howerter, Hazel Jackson, Evelyn Mackie, Mildred Roles, Lou Turner, Ola Mae Henry, Bell Crawford, Juanita Kempet, Mae Floyd, Leona King.

OES Members In Arlington For Ceremony

Detta Blodgett, Fay Palmer, Nina Hendricks and Lucille Rial the Worthy Matron from Perryton, went to Arlington, Texas for Founders Day celebrated at the Eastern Star Home each year.
They had a dedication of a monument marking a plot set aside in the Parkdale Cemetery in Arlington for the deceased members of the Eastern Star Home purchased by the Grand Chapter of Texas Order of the Eastern Star.
Edna Greer was Founders Day Chairman, Worthy Grand Patron Judge, Marvin Simpson, gave the dedication and the Worthy Grand Matron, Edna



STATE WINNER -- Walter Murrell recently showed this mare to a third place finish in the State 4-H Horse Show in San Antonio. He is the son of Mr. and Mrs. Buddy Murrell who live west of Gruver.

Agents To Hear Gov. Connally

Texas Governor John Connally is slated to speak at the Texas Agricultural Extension Service State Conference.
The state conference is being this week of August 29 thru September 2, according to Extension Director John Hutchison. He said the conference will be the largest Extension State Conference ever held.
Attending with over 1,000 county agricultural agents, and home demonstration

agents are Hansford County Extension Agents, Linda Webb, and Robert Adamson. It's being held on the Texas A&M University campus at College Station.
Other speakers at the conference are Dr. William A. Lufburrow, executive vice president, Good will Industries, Houston; Earl Rudder, A&M president; H.C. Heldenfels, president, A&M Board of Directors; Senator W.T. Moore, Bryan; Dr. R.E. Patterson, Dean of Agriculture At A&M; and John Hutchison, Extension Director.

About 5 per cent of the American food dollar goes for meat.

Earl Duke unveiled the monument.
Following the ceremony, a reception and tea was held in the Eastern Star Home honoring all Worthy Matrons whose chapter was 100% in the welfare program. Spearman was one of these.

RUMMAGE SALE
Rho Rho Chapter of Beta Sigma Phi will hold a rummage sale Saturday, Sept. 10 in the building formerly occupied by Jim Neely's.

Saturday, Aug. 27. While there they saw many old friends and visited with Mr. and Mrs. Claude Phillips of Matador, Mr. and Mrs. Muri Gill and Mr. and Mrs. Ferrell both of Higgins.

Mr. and Mrs. Carl Hughes were out of town last weekend attending the Will Rogers celebration held in Higgins on

The Fall Party Season Has Arrived.

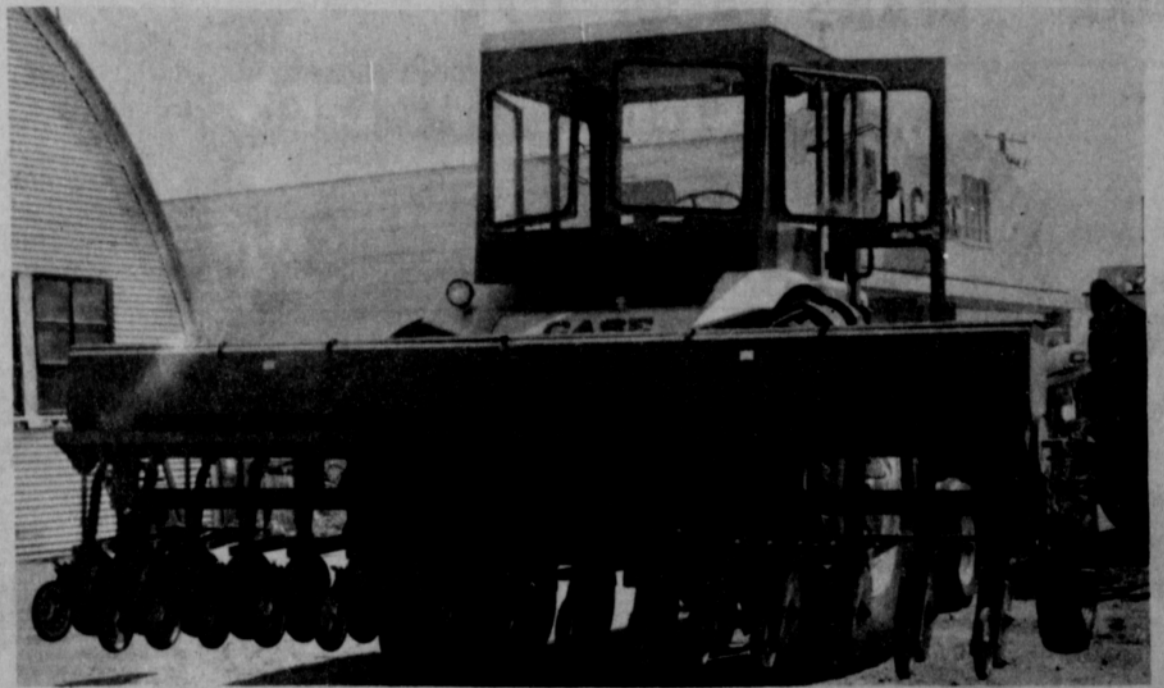


Make entertaining easy. Use Hallmark's colorful paper party goods for all your entertaining.

We have a nice selection of new fall designs and a wide variety of party items for every occasion.

PLAINSMAN OFFICE SUPPLY
209 Main

Designed For Irrigation!



Tye 3-Point Hitch Drills

Designed to seed 40-inch beds. It Will seed single or double Row Maize on beds! 3-Point Hitch gives you complete control of your drills. The drills lift and turn like a tool bar.

See The Tye Drill Today.

R.L. McClellan and Sons, Inc.

"WEEKEND VALUES FOR FRIDAY & SATURDAY, SEPT. 2 & 3"

PICNIC - Packin'



Wholesome Goodness In EVERY Drop. It's Quality Milk AT ITS BEST

Soflin "Color or Print" 200 count **NAPKINS** pkg. **27¢**
 Viking 25 ft. X 12 in. Roll ALUMINUM **FOIL** **19¢**
 Detergent- Giant Size **FAB** **67¢**
 Wizard Half Gallon Charcoal **Lighter** **68¢**

WE WILL BE CLOSED MONDAY, SEPT. 5TH, LABOR DAY

LABOR DAY FOOD SALE

It'll be all play and little work THIS Labor Day weekend if you do your picnic-packin' at CUT RATE. Look! You can have your pick of the finest picnic-pleasers - everything you need for easy, breezy fun-feasts - and pick up WONDERFUL Holiday SAVINGS in the bargain! That's because your favorite fast-fix foods are sale-priced EXTRA LOW to help you enjoy a LABOR-less holiday with the VERY BEST for LESS.

Shurfine Frozen 6 oz. cans

LEMONADE 3 for 25¢

Lanes Party Time All Flavors Half Gallon

MELLORINE 3 for \$1.00

"QUALITY CONTROLLED"

White Swirl This Week's Dish **SAUCER 9¢**

Tendercrust Cluster Pak of 8 **HAMBURGER BUNS 10¢**
 "With purchase of Each Pound of GROUND BEEF... otherwise 23¢"



TENDERCRUST Cluster Pak of 8

HOT DOG BUNS 23¢

Shurfresh 2 lb. Loaf "QUALITY CONTROLLED"

CHEESE SPREAD 67¢

Shurfine Tall Can "QUALITY CONTROLLED"

PORK and BEANS 3 for 29¢



"Best Buy of the Week" **USDA Grade A Fryers FRESH 29¢ lb.**
SWIFT'S PREMIUM Franks "All Meat" 55¢

PICNIC SUPPLIES

6 Bottle Carton of 12 ozs.

Pepsi Colas Plus Deposit 39¢

Morton's **Potato Chips Reg. 59¢ Twin-Pak 44¢**

Energy **Charcoal Briquets 10 lb. Bag 49¢**

Del Monte Chunk- **Tuna Flat Can 3 for 89¢**

Lipton's Reg. 98¢ Size

INSTANT

Tea 77¢ Frenchs 6 oz. Jar **MUSTARD 10¢** Shurfine "QUALITY CONTROLLED" **SALAD DRESSING Quart 37¢**

Large California Hass **Avocados 10¢ each**



New Crop Bartlett **Pears lb. 17¢**

Colorado Fresh **Onions 2 lb. 15¢**
 Fresh Thompson Seedling **Grapes lb. 17¢**

Del Monte Whole **SWEET pickles 22 oz. Jar 47¢**

Kraft's 28 oz. Bottle **BARBECUE SAUCE 45¢**

Nabisco lb. Box **RITZ CRACKERS 33¢**

Shurfresh Saltines lb. box "QUALITY CONTROLLED" **Crackers 25¢**

All Flavors Gelatin **JELLO 3 oz. pkg. 3 for 27¢**

Morton's "All Varieties" Frozen Large 14 oz. **Cream Pies 4 for \$1.**

Del Monte Crushed Flat Can **PINEAPPLE 15¢** Schillings 4 oz. Can **BLACK PEPPER 35¢**

IMPERIAL CANE **SUGAR 49¢** 5 LB. BAG

GROTON'S BREADED **Catfish Steaks 89¢** 2 lb. 6 oz. pkg.



Cut Rate GROCERY