



A HUG FROM THE TOP — President Ronald Reagan holds the 1981 March of Dimes National Poster Child, Missy Jablonski, of St. Louis, Mo., during a visit to Washington, D.C. Missy, six, who was born with spina bifida (open spine), represents more than a quarter-million children born each year in the U.S. with birth defects.



HANSFORD PLAINSMAN

VOL. 11, NO. 14

THE HANSFORD PLAINSMAN, SPEARMAN, TEXAS 79081

SUNDAY, JANUARY 25, 1981

Record production land dry!

"Hansford County is dry without an election!"

That was the observation of one man who lives by the land and he wasn't referring to the sale of Spirits.

His remark on the state of the soil was born out this week by ASCS Executive Director Martin Chandler who spent most of the week in the field.

"Snow and other precip has given us about four inches of top soil moisture—maybe!" Chandler observed. "However, there is no deep down moisture."

This can be further confirmed by any eyeballs in the county if you stop and watch any plowing underway. The moisture is a thin, damp skim at the top of the ground. The turned soil at any significant depth is powder dry.

--With no relief in sight so far as predicted precipitation.

Hansford County farmers who produced a very respectable harvest this past season of

a variety of crops are wondering if they will be able to do it this year. --And it is small consolation that conditions range from the same to worse across the High Plains which contains the counties that produced 33.5 percent of the state's wheat crop in 1980.

Neighboring Ochiltree County for 5.8 percent with Hansford in second place production with 4.2 percent of state production. However, there are other laurels. Ochiltree County is the number one wheat-producing county in the nation. Again, Hansford is right behind it in second place.

There are some Doubting Thomases when the subject comes up but USDA figures bear it out. Widely-traveled people understand how this can be. In most of the wheat-producing areas of the nation farms are small due to heavy population. Too, the margin of other crops grown there in relation to wheat acreage is greater than on the High Plains--although neither Hansford nor Ochiltree counties grow wheat only.

An official high in Texas agriculture circles who wanted to remain nameless in print, said recently that Hansford County has the POTENTIAL to surpass Ochiltree in wheat production. The counties are identical in size and Hansford has the advantage of a large underground water supply that Ochiltree does not have.

However, this official was NOT recommending that this race by run. He felt the strong agri-future of Hansford County lies in doing what is being done so far as diversification is concerned.

Which is a good place to look at planting and production. Figures have been rounded off without distorting ratios. All figures represent PRODUCTION acreage for distribution and public consumption. They do not include grazing acreage nor acreage harvested for the operator's private feed supply.

Hansford County wheat farmers planted 199,9-thousand acres in 1980. Approximately 60 percent of this was irrigated crop; 40 percent dry-land planting. From this, producers harvested a total of 5.5-million bushels.

wheatland was 37.5 bushels per acre, down about 10 bushels per acre from 1979. This trend was established early in the harvesting season and blamed directly on the drought. The government concurred in naming the villian and officially declared a state of drought.

Dryland wheat yield for 1980 was some 21.5 bushels to the acre--down about seven bushels per acre from 1979. Again, the drought.

At this point, operators with irrigation technology ready to use are wondering if they can afford to do so when the high cost of fuel is measured against the dryland production ration.

--And the grim spectre of drought is still with us. Neighboring Ochiltree County with its first rank was only 2-million bushel ahead of Hansford in production in 1980. While that county's irrigated planting was less than half that of Hansford County, bushel-per-acre production was almost double. Ochiltree's dryland acreage was about double that of Hansford but the bushel-per-acre yield drop was greater than in Hansford County.

EDITOR'S NOTE: These are Texas state ag statistics and are at the mercy of the consistency of operator reporting.

In Hansford, grain sorghum was the next largest crop with a total of 75,629.2 acres planted. Of this, 71,335.3 was under irrigation. Corn production was from 15,959.9 acres while only 1,217.2 acres of Oats and 1,208.5 acres of Barley were planted. Soy Beans were the smallest crop at 276.1 acres. No per-acre yield figures were available for these crops.

Oh, yes. Hansford County has a very promising "oil patch" being worked along with production growth from the soil of the High Plains.

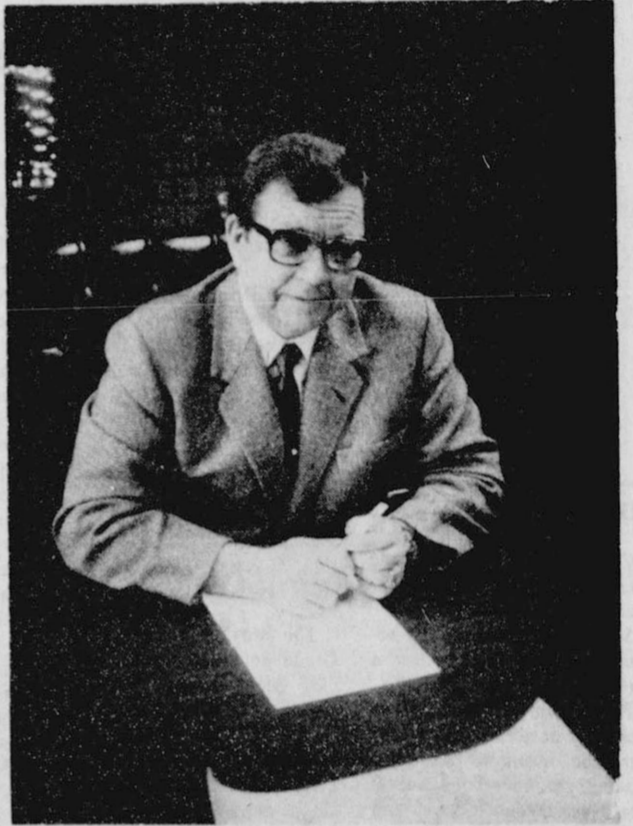
Letter To The Editor

Dear Sir:

We would like to thank you for donating a trophy for our Junior High Tournament.

We sincerely appreciate your interest in our school activities.

Sincerely,
C. W. Robinson, Principal



SPEARMAN MAYOR Ralph Blodgett has been an outspoken fan of the work of the Chamber throughout his tenure. He feels much of the city's progress and prosperity can be attributed to efforts of the staff and membership.

Schubert Obituary

Services were held for John Archie Schubert at 10 a.m. on Friday in the Spearman Union Church, with the Rev. Steve Rogers officiating. Burial was in Hansford Cemetery by Boxwell Brothers Funeral Directors.

Mr. Schubert was born February 23, 1913, in Iberia, Mo. Moved to Texas with his parents as a child. Spent his school days in Spearman graduating from Spearman High School in 1932.

He became a Christian during his high school years. Served in the Army after finishing High School. He was married to Jessie, Lowe in 1964.

Departed this life. January 20, 1981, after a long illness at the Veterans Hospital, Ft. Lyon, Colo.

He leaves to mourn his passing, his wife, Jessie of the home, two sisters: Nova Bair of Amarillo, Texas and Fran Caldwell, Garland, Texas, and a sister-in-law, Maylynn Schubert of Spearman, Texas.

One niece, Marilyn Groves of Spearman, Texas.

Three nephews--Burton Schubert of Spearman, Texas, Buddy Schubert of Washington State and Captain Gerry W. Caldwell, of Beaufort, South Carolina.

Five great-nephews and three great-nieces.

MARKETS

Wheat	\$3.94
Soybean	5.58
Corn	3.57
Milo	5.40

Antique Shop Opening

Mrs. Ray Ralston (Coreata) will have her Antique Shop open Monday, February 2. She invites everyone to come any time during the day beginning at 9 a.m.

The shop stocked with country primitive furniture and accessories, is located at the Ralston home, Northeast of Gruver. Located in the valley on the banks of Farwell Creek, the lovely home is one of the oldest in the area. The late Henry Ralston homesteaded here in a dug-out. Later, the family built a large kitchen above ground which is still used by Ray and Coreata. The site is a perfect location for an Antique Shop which has long been a dream for Coreata. For years she has bought and sold antiques and has become an authority on the country primitives, furnishing her home throughout in this style. She laughingly says "when my home became so crowded I had no more room for antiques, I moved my car and put the over-flown in the garage." So she turned the garage into a shop. The couple has just returned from a buying trip to Ohio and Illinois and she has a very unique collection for buyers. Coreata is a very talented artist and many of her painted pieces are for sale in her shop along with other Folk art objects. Lovers of the golden oak era will also be pleased with



Mrs. Ray Ralston (Coreata) invites people to the opening of her Antique Shop, Monday, Feb. 2.

a beautiful round table and large ice chest.

To reach the antique shop from the Spearman area, take highway 15 to Gruver about 9 miles, turn North on Highway 207 to Guymon about 4 miles.

After you cross the bridge in a draw and top the hill take the first calachi road to the east which leads to the Ralston

home. Signs will be placed.

Mrs. Ralston says she will operate her shop "by chance or by appointment" and hopes customers will call 733-2567 so they won't be disappointed.

The grand-opening Monday, Feb. 2, is from 9 a.m. till--She invites everyone to come--see her shop--have a cup of coffee.

Police Report

The Spearman Police Department activity for the week of Jan. 16 through Jan. 22, included the following:

OFFENSE REPORTS

Jan. 16, a 15 year old female was reported as a runaway from her home in Spearman.

Jan. 17, a Mr. Burger reported a theft at the Thumbs Up Club on Main Street.

Jan. 17, a Gruver man was arrested for harboring a runaway juvenile.

Jan. 18, a Missouri resident was arrested for a traffic violation.

Jan. 18, Otho Gammill reported the theft of a jacket from the main lobby of the Hansford Hospital.

Jan. 19, Leonard Garrard reported the theft of a Turbo-Charger from a vehicle parked at the Spearman Texaco. At the same time, he also, reported one of the gas pumps at the Spearman Texaco had been vandalized.

If any citizen has any information regarding the above incidents their notification to the Spearman Police Department would be greatly appreciated and all inquiries may be kept confidential.

Your Chamber of Commerce

"PRIDE" will be the theme when members of the Spearman business community and the Chamber of Commerce -- citizens of the city and friends from neighboring areas sit down to the Chamber's annual banquet Saturday night, 7 p.m. at the high school cafeteria. "It is both appropriate and the easy way out," commented Chamber Manager Mary Lou Wysong. "Pride has always been a part of the personality of Spearman and with the accomplishments of the past year and the promise efforts underway hold for the future, we just could not think of a theme that better expressed the state of mind and the state of progress at this point in the life of our city."

Hospital news

Patients in Hansford Hospital are LeRoy Watson, Ofelia Vela, Karen Shields, Pearl Shapley, Kathleen Gorman, Verna Hutchison, Mike Clore, Sharon Moore, Edna Briley, Jeff Melton, Janie Mendoza, Aloha Bentley, and Alfred Ramirez.

Dismissed were Grace Lyon, Cheryl Bayless, Cathy Odom, Lola Melton, Rhonda Bynum, Evelyn Burch, Maria Avila, Cecil Berryman, Arthur Adkison, Leo Cummings, Ellen Jones, Onita Stewart, Clifton Harbor, K.C. Valines, Sharon Wilson, Edith Roper.



NEW PRESIDENT -- Dick Elbert took the helm of the Spearman Chamber of Commerce at the annual banquet Saturday night. The Spearman businessman chaired the Chamber Agriculture Committee last year.

Darnell To Lead Bible Study



LAUREN BUCK

David Darnell, Minister of the First Christian Church in Perryton, will be leading a Bible Study on the book of Ephesians, January 29-31, at the First Christian Church in Spearman.

David has preached and lectured in various national, regional, and area gatherings of the Christian Churches. (Disciples of Christ) He has just returned from a study trip to Jerusalem, and is planning to lead a tour of Israel later this year. David makes the Scriptures "come alive" as he teaches directly from Hebrew and Greek.

Lauren Buck, director of music at the First Christian Church in Perryton, will have a program of singing and fellowship for the youth. Lauren, a very talented young lady, is the daughter of missionaries and has grown up in the island of Micronesia. She has a great love and enthusiasm for the work of the church and its place in our day to day lives. The youth are in for a real treat.

The First Christian Church welcomes you to come and join us on January 29, 30, and 31st for this time of study and fellowship. Each evening there will be a supper beginning at 6:30 p.m. There will be a time



DAVID DARNELL

for discussion, questions, and answers following each session. We hope you will make plans to attend.



Engagement Announced

Mr. & Mrs. Joel Lee Lackey are announcing the engagement of their daughter Janyth Lee to Charles William Bowers, son of the late Mr. & Mrs. Paul R. Bowers of Pampa.

Janyth is a 1976 graduate of Spearman High School and a 1980 graduate of Texas Tech University. She received a Bachelor's of Science degree in business education and was a member of Delta Gamma social fraternity. She is presently employed by Groom ISD as business education teacher.

Charles is a 1974 graduate of Pampa High School and attended Texas Tech where he majored in Ag. Ed. and was a member of Phi Delta Theta social fraternity. He is currently engaged in farming south of Pampa. The couple are planning an April 11 wedding in the Lackey home.

Peggy's Pointers

Coordinate pattern and fabric for a professional-looking home-sewn garment.

Selecting fashionable and becoming fabrics suitable for a certain pattern takes planning.

First, plan the garment to meet your needs. Consider your wardrobe inventory for color scheme, year-round or seasonal wear, best design features and needs.

Next, analyze trends. Study fashionable fabrics, colors and designs.

Consider that more classic designs and fabrics will probably remain fashionable longer.

Investigate quality, ready-to-wear in similar garments for ideas.

Now, narrow the fashion-fabric selection. Solid colors are more versatile, however, in some situations, a multicolored pattern may tie together unrelated wardrobe separates.

Fabric weight and texture are important.

Consider that inner fabrics may show to the right side of light-colored fabrics.

Easy-to-sew and hard-to-sew fabrics are important to a professional look, too.

Smooth-surfaced, solid-colored fabrics are harder to sew—construction details are emphasized such as evenness of topstitching, straight seams, or symmetrical notched collar.

Fabrics that need matching or that ravel excessively also require additional time.

Therefore, consider your own clothing-construction skills in selecting fabrics, and choose fabrics according to your talents, expertise and time.

Also, read the backs of pattern envelopes for recommended fabric choices.

Select the pattern by current body measurements.

For garments with shoulder pads, buy a pattern that specifies the thickness of shoulder pads to use. Some patterns will state thickness by fraction of an inch or weight.

Consider time and skills needed to make a garment.

For example, patch and fake flap pockets are easiest while double and single welt pockets are harder.

Finally, buy fabrics and notions.

For the fashion fabric, add yardage for any required matching.

Select matching or contrasting linings in lightweight, slick-surfaced fabrics.

For inner fabrics, obtain and keep instructions because products vary. One garment may require several different weights of inner fabrics depending on the purpose and effect needed.

Check pattern envelope back for all other notions listed.

"Look Like Yourself & Love It" will be the topic of a special leader training session, Thursday, January 29, at 1:30 p.m. in the Extension Homemakers Clubroom. Any club or organization is welcome to send leaders. Call me at 659-2030 or 733-2901 for more information.

Brownie Troop News

The Brownie Troop #60 (1st Grade) held their meeting at the Girl Scout House. Leader's: Shirley Lenbusch, Martha McRee, Theresa Weaver.

Girls present were, Beth Lenbusch, Karla Kunselman, Olivia Salgado, Heidi McRee, Lisa Collins, Cinda Turner, Adrian Blackburn, Suzanne Sanders, Billie Jo Moore, Kimberly Bridgeman, Deziree Pearson, Monica Blackman, April Brown, Buffle Blodgett, Tina Darlene Smith, Penny Weaver, and Theresa Zinch.

Brownie Troop #60 (1st Grade) went to KRDF-FM Radio Station here in Spearman. Dwayne Smith gave us a tour of the Radio Station and explained how everything worked. The news machine, how they made commercials for Radio and how all the computers worked. We wish to thank Dwayne Smith for taking time out for us.

Town & Country Club Met

The Town & Country Extension Homemakers Club met January 20th, in the home of Joan Brown. President Penny Ralston called the meeting to order. The devotional was given by Lynna Renner intitled "If I were starting my family again". Roll call was then answered with "The best way to get acquainted with someone new". The minutes of the previous meeting were read and approved. Judy Hergert gave the treasurer's report and reminded those who hadn't paid their dues to do so.

Penny Ralston reminded those who need to attend the council meeting that the meeting will be Tuesday, January 27th at 1:30.

Penny, also, reported that January and February is our time to clean the clubroom. Joan Brown made the motion to have all members meet one day to clean this month and then next month hire someone to clean the clubroom. The motion was seconded and passed. The day set to clean was January 26th at 1:30.

The leaders training meeting will be January 29th, for those who need to attend.

The raffle was won by Penny Ralston. The next meeting will be February 3, in the home of Kay Crocker.

Mrs. Pogue then gave a very interesting program on her "Chalk Talks" which was enjoyed by everyone.

Members present were: Cheryl Blankenship, Joan Brown and Ashley, Judy Hergert, Janie Kunselman, Delinda McLaughlin and Brian, Lisa Pipkin, Cora Queener, Penny Ralston, Lynna Renner, Dixie Smith, and guest Gail Woodington.

Neighborhood Meeting

Brownie Troop #60 (1st grade) discussed Girl Scout Week in March, Family night, supper and display down town honoring Girl Scout week. Girl Scout Sunday each troop goes to choosen church in a group.

The Brownie Troop #60 discussed Outdoor Training for leaders, Jan. 27, 9:30 to 2:30. We will be learning Nature activities and much more. It will be held at Camp Parnell south of Perryton.

They also discussed day camp and Brownie Rally's to be held later in the year, and will be discussed at meet Neighborhood Meeting.

Women's Division of C of C Meets

The Women's Division of the Chamber of Commerce met Wednesday, January 21, at the Cattlemans Restaurant.

Dick Elbert, President of the Spearman Chamber of Commerce was the guest speaker. He spoke on the Chamber and what it hopes to accomplish during the coming year.

A short business meeting was held. The organization donated \$50.00 toward the Christmas decorations that were purchased for the city.

The members present were: Pat Sutterfield, Helen Dry, Virginia Fowler, Peggy Winegarner, JoAnn Hawkins, Norma Jean Mackie, Janet Trooper, Sheri McWhirter, Colleen Schaefer, Carolyn Cummings, Nancy Graves, Sandra Heinrich, Altha Townsend, Dana Schnell, Joy McCormack, Mary Lee, Mary Lou Wysong, Friday Wise, Emma Lou Collins, Evelyn Kingsley, Wanda Reed, Rita Curtis, and guest, Kay Ivey.

The next meeting will be on February 18.

La Leche League

"The Advantages of Breast-feeding" will be the topic at the January meeting of La Leche League. The meeting will be held on Tuesday, January 27, at 10:00 at 222 S. Hazelwood. This is the first in a series of four discussion meetings which offer both encouragement & breast-feeding information to interested mothers. For further information call 659-2794.

Spearman Music Club Meets

Spearman Music Club met on Tuesday, January 20, at 7:30 p.m. at the First Christian Church. The theme of the evening was "Love Opens the Door to our Heritage--Founder's Day".

Betty Freeman presided at the business meeting after the members prayed the Club Collect. Charlotte Angel announced a special program "Bambi" presented by the sixth grade in the Junior High auditorium on Tuesday, January 27, at 7:30 p.m. to which the general public is invited. Small children will especially enjoy this presentation.

Mrs. Angel also announced that the sixth grade choir, and the seventh and eighth grade choir, and the fifth grade recorders group will be available to play for various groups throughout the community.

March 9-14 is Music In Our Schools Week.

Members were urged to watch for bills in the legislature being introduced under the title of Back to Basics which eliminate music and art programs from school curriculums.

Anne Sanders reported on the Sweetheart dinner for our husbands to be on Tuesday, February 10, at the home of Rue and Anne Sanders, at 6:30 p.m. Those wishing to pool r'ides will meet at the First Christian Church at 6:15 p.m.

Myrna Biggers gave the story of the hymn, "O Worship the King, All Glorious Above" and the club chorus sang it, under the direction of Charlotte Angel, accompanied by Anne Sanders. They also sang the Official Invocation by Julia Smith.

Anne Sanders gave a short history of the founding of the National Federation of Music Clubs.

Charlotte Angel sang a lovely vocal solo, "Thank You for the Music", accompanied by Donna DePee.

Altha Townsend read a paper prepared by Rubyjo Wilbanks giving a short history of the Texas State Federation of Music Clubs.

Betty Freeman gave a very brief history of the Spearman Music Club and Kathleen Sutton was recognized as a charter member, and the past presidents recognized are Kathleen Sutton, Altha Townsend, Anne Sanders, and Audrey Leighnor. An offering were received for projects of the National Federation of Music Clubs at this meeting.

The Club Chorus sang the official benediction.

Jackie Womble served a delicious blueberry dessert to guests Donna DePee and Gail Woodington and members Charlotte Angel, Myrna Biggers, Betty Freeman, Fran Glass, Janie Kunselman, Eddie Largent, Audrey Leighnor, Anne Sanders, Colleen Schaefer, Margie Schoenhals, Kathleen Sutton, Altha Townsend, and Jackie Womble.

Enchilada Sale

The ladies of the Sacred Heart Parish will be selling enchiladas on Saturday, January 24th, at the Parish Hall. They will be made and sold the same day at \$7.00 per dozen, with a choice of either meat or cheese.

Advance orders may be made by calling Petra Lozano at 659-2610 or Clementine Renner at 659-2335.

1981 National Music Week

The 1981 National Music Week Theme is: Music--the Magic Key to Daily Living. This theme could also be applied to the early day history of music in Texas.

As we have noted from previous study of the history of music in Texas, it was a struggle to promote any type of culture to this almost savage land. But in spite of the hard and gruelling times there were those who yearned for one of humanity's noblest talents--MUSIC.

Picture if you will, a community with no form of music other than perhaps a squeaky "fiddle" or two. Then the new that a REAL piano was being transported into the town. Chances are it would arrive by ox cart, depending on whether a railroad ran through town. In 1845 railroads were still scarce in Texas. Merchandise was shipped to the nearest railhead and then freighted to what towns were in existence by ox cart or if the town were affluent a mule freight system was possible.

So it is believed that in 1845 the first piano arrived in Texas at Fredericksburg; and for those who felt the need of music it was truly a Magic Key to soothe the dangerous and rigorous life of those early days.

Due to the many people of Spanish, Mexican, Indian and French descent settling in San Antonio and people of German

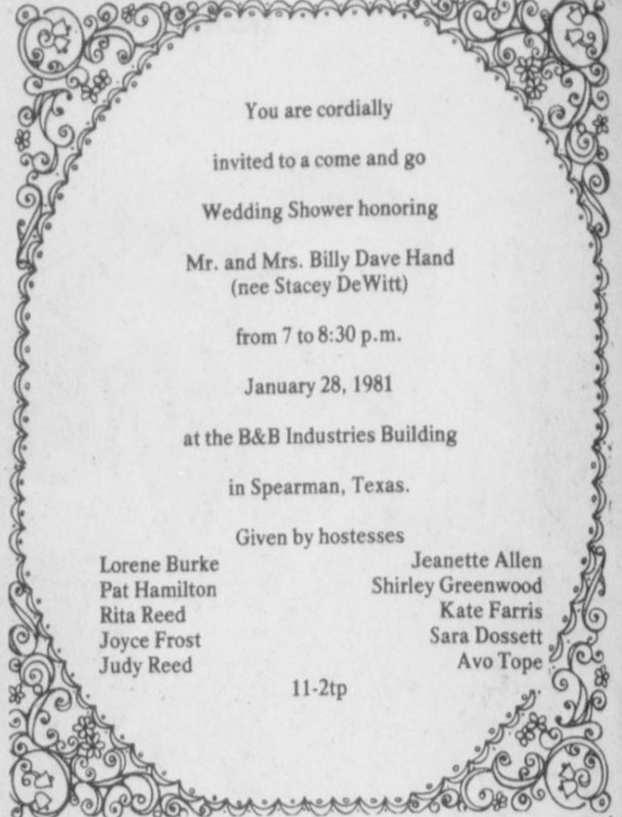
heritage coming to Fredericksburg area it can readily be seen why Texas was an early day melting pot of musical cultures.

In the year 1900 the first interest in a musical appreciation group was formed in Austin. Then in 1915 a conference was held in Ft. Worth to decide whether there was a need for a Federation of Music Clubs in Texas. In May 1916 the first convention of the Texas Federation of Music Clubs was held in Waco with thirty-one charter member clubs. The State Federation of Music Clubs which had been organized since 1898.

The TFMC has come a long way, now boasting of 109 Senior Clubs and some 280 Junior Clubs. The State Federation is proud of the many state composers and artists who have contributed to making music great not only for the state of Texas but world wide.

We are all proud of Van Cliburn being a TFMC Scholarship artist. James Dick, another of Texas' sons and as talented as Cliburn, has organized the James Dick Festival Hill in Roundtop (in the Austin area and where the State Convention will be held this Spring). Festival Hill is not only well known for its advantages of music study but non-musical organizations hold conventions there as well, which help defray the expense of this worthy campus.

Perhaps the greatest tribute



You are cordially invited to a come and go Wedding Shower honoring Mr. and Mrs. Billy Dave Hand (nee Stacey DeWitt) from 7 to 8:30 p.m. January 28, 1981 at the B&B Industries Building in Spearman, Texas.

Given by hostesses

Lorene Burke	Janette Allen
Pat Hamilton	Shirley Greenwood
Rita Reed	Kate Farris
Joyce Frost	Sara Dossett
Judy Reed	Avo Tope

11-2tp

to our TFMC is the dedication each club displays in presenting scholarships to worthy students for their continued study in music and for the time and talent each club member gives so freely to promote GOOD music in the community. We can't realize how empty our lives would be until this Magic Key--MUSIC, were taken from our daily lives.



Libel is printed; slander spoken.

ON AMBASSADORSHIP

President-elect Ronald Reagan announced that he will nominate Mike Mansfield, former longtime Senate Democratic leader, to continue as ambassador to Japan. The surprise announcement, which Reagan said was prompted by advice from Secretary of State-designate Alexander M. Haig, was greeted with delight from Democratic senators.

LOOKING AHEAD...

A brighter tomorrow.

It's possible because of today's accomplishments.

The great potential of concerned individuals and the Chamber has kept the wheels of progress in motion. Business, industry, technology, and the people of our fine community assure our future.

"It Takes Two - Your Chamber and You"

DRILLING BAKER & TAYLOR COMPANY

WANT ADS

CAPROCK MONUMENT CO.

Dealers of Georgia Granite, Georgia Marble, Colored Granite, & Bronze.

represented by BOXWELL BROS. FUNERAL HOME

519 S. EVANS
659-3802

Hansford County Planned Parenthood
26 S. Haney
659-2483
Spearman
Mon.-Fri.
Call for an appointment.
305-rtn

SERVICES

SERVICE: Pits cleaned, wet or dry. Dragline or loader. Also, dozer, grader, carry-all service. Lee Roy Mitchell, 806-733-2384, Gruver, Texas 79040.

KIRBY SALES & SERVICE.
New & reconditioned vacuum cleaners. Claude Newell, 912 S. Bernice.
8-rtn

Pee Wee's Plumbing Service
Roto-rooter, Acoustical Ceilings, Blown Insulation in walls and ceilings. Appliance Service, used appliances for sale. 659-2811 or 659-3781.
20-rtn

MONUMENTS
Save 20% to 30%
Agents and Undertakers
Commission
ALVA MONUMENT CO.
Alva, Okla.
51-rtn only

NOTICE
Wallace Monument Co.
Monuments, Curbing, Grave Covers
Local Representative
LEONARD JAMESON
Spearman, Texas
20-rtn

WINTER RATES
The Winter rates are \$6.95 per day for Stern Rinse & Vac shampooer. Available at Gordon's Drug. Also available at Freddie Largets; 716 Cotter Drive; after 4:00 p.m. and Saturday and Sunday.

A. and A. Gas Leak Survey, inc.
Commercial, Residential, and Irrigation.
GAS LEAK DETECTION
Call: 659-3519 anytime
659-3019 after 5 p.m.

Will decorate cakes all occasions. Also cookies and cupcakes. Call Nelda 659-3984.
51-rtn

Carpet & upholstery cleaning
Rogers Steam Way, Guymon, 405-338-7926
5s-rtn

Taylor Springs Service, Termite & Pest control, tree spraying, pine tree service especially serving the Panhandle for 17 years with personalized service. Home Industry Business. Monthly service available without contract. 669-9992, Pampa.
10s-rtn

MISCELLANEOUS FOR SALE

FOR SALE OR LEASE-Service station, cafe & house. 21 miles south of Perryton. Phone 806-659-3414.
40s-rtn

FOR SALE: Brick home, nice Southwest location, corner lot, 3 bedrooms, bath and half, den, utility room, carpet throughout, priced under \$40,000. Shown by appointment only. Emmett R. Sanders, Realtor, 659-2516, nights 659-2601.
40-rtn

FOR SALE: Weiland Tunnel Ram tor Small Bik Chevy single 4 BBL. "New" contact: David Stafford 310 S. Hoskins, Phone No. 659-2021. New \$350.00 sell for \$350.00.
9s-rtn

BUSINESS OPPORTUNITIES

Dealer Inquiries Welcome! 10% over cost. Pre-Fab ready to erect custom steel buildings for commercial, farm or homes! Matrex (24 hrs.) 512/231-2079. 9-Stct only

Own your own Jean Shop; go direct--no middle man, no salesman's fee. Offering all the nationally known brands such as Jordache, Vanderbilt, Calvin Klein, Sedgefield, Levi and over 70 other brands. \$15,500.00 includes beginning inventory, airfare for 1 to our national warehouse, training, fixtures and Grand Opening Promotions. Call Mr. Loughlin at Mademoiselle Fashions 612-835-1304.
11-2tp

FOR RENT

OFFICE SPACE FOR RENT
11 West Kenneth - West side two offices, file and storage area receptionist's office and lounge. Call J.E. Blackburn (806) 659-2766 or 659-2719.
10s-rtn

NOTICE

YMCA ACCEPTING INSURANCE BIDS
The Hansford County YMCA will accept bids, from local insurance agencies on its property liability, workmen's comprehensive and vehicles for 1981. Interested agents please contact Jim Benson at the YMCA, 659-2591. The YMCA is located at 501 South Hazelwood Spearman.

JEEPS CARS TRUCKS

Available through government agencies. Many sell under \$200. Call: 602-941-8014 Ext: 518 for your directory on how to purchase.

ALL STEEL BUILDINGS
STRAIGHT WALLS
40' x 80' x 14'
COLORED WALLS,
GALV. ROOF.
Two 20'x14' dbl. slide doors
One steel walk door
\$13,800 Erected
806-435-5107
Bob Slaughter - Rep.
1306 S. Grinnell

ELECTRICAL WORK

Service calls and TROUBLE-SHOOTING
No **BILL LAIRD** Delays
Quick Service **Spearman**
659-2409

CUSTOM FARMING

GARY BRELAND
806-733-2539

Presbyterian Church News

Sunday, January 25, brings to a close the Week of Prayer for Christian Unity.

There is a Sunday Church School class for everyone every Sunday at 9:45 a.m. and a concerned teacher with an interesting, practical, well prepared Bible lesson in each class.

"The Importance of Spiritual Unity" will be the subject of Pastor Edward D. Freeman's sermon at the service for the public worship of God on Sunday, January 25, at 11:00 a.m.

The Session will meet on Wednesday, January 28, at 7:30 p.m. at the church and reorganize for the year's work.

Presbyterians have been invited to participate in the studies in Paul's letter to the Ephesians conducted by Dr. David Darnell at the First Christian Church on Thursday, Friday, and Saturday, January 29-30-31, at 6:30 p.m.

There is a warm, Christian welcome awaiting everyone who attends any of the services and activities of the First Presbyterian Church.

School Menus

BREAKFAST MENU

MONDAY, JANUARY 26
Mixed Fruit
Dry Cereal
Milk

TUESDAY, JANUARY 27
Apple Juice
Donut
Milk

WEDNESDAY, JANUARY 28
Pineapple Juice
Dry Cereal
Milk

THURSDAY, JANUARY 29
Pineapple Chunks
Toast & Jelly
Milk

FRIDAY, JANUARY 30
Orange Juice
Dry Cereal
Milk

LUNCH MENU

MONDAY, JANUARY 26
Deep Fried Fish/Tartar Sauce
Macaroni/Cheese Casserole
Green Beans
Combination Salad/Dressing
Chocolate Pudding
Hot Rolls/Butter
Milk

HIGH SCHOOL CHOICE
Corn Dogs/Mustard

TUESDAY, JANUARY 27
Chili & Crackers
Seasoned Pinto Beans
Cabbage Slaw
Fruit Mix
Donuts
Milk

HIGH SCHOOL CHOICE
Braised Ham & Bread

WEDNESDAY, JANUARY 28
Meat Balls in Sauce
Mashed Potatoes
Buttered Green Peas
Carrot Sticks
English Bar Cookie
Cornbread-Butter
Milk

HIGH SCHOOL CHOICE
Burritos

THURSDAY, JANUARY 29
Salisbury Steak/Catsup
Buttered Potatoes
Diced Carrots
Plain Cake w/Pineapple
Yeast Batter Bread/Butter
Milk

HIGH SCHOOL CHOICE
Steak Fingers

FRIDAY, JANUARY 30
Hamburger or Oven Fried Liver
French Fries/Catsup
Shredded Lettuce/Dressing
Buttered Corn
Onions & Pickles
Cherry Gelatin
Milk

Pictures Returned

The pictures used in the Hansford County History Book may be picked up at the Stationmaster's House Museum, 30 S. Townsend, on Wednesday, January 28, from 1 until 5 p.m. or on Tuesday, February 3, from 1 until 4 p.m.

Cochran & Greene On Honor Roll

ABILENE, Texas--Two students from the Spearman area have been named to the Dean's Honor Roll for the fall semester at Abilene Christian University. They were among 586 undergraduate students who earned at least a 3.45 grade point average for at least 12 hours during the semester.

The students are: Tina Cochran, daughter of Mr. and Mrs. Robert O. Cochran of 405 Archer, who is a

sophomore elementary education major at ACU and a 1979 graduate of Spearman High School; Debbie Greene, daughter of Mr. and Mrs. James F. Greene, who is a sophomore home economics major at ACU and a 1979 graduate of Spearman High School.

ACU is a four-year liberal arts institution with an enrollment of 4,560 undergraduate and graduate students.

20th Century Club Meets

Twentieth Century Club met December 11, 1980, for their Christmas Party.

President Mrs. Michael Holt opened the business meeting. The financial goal of the President's project to carpet the stairs at the Library was reached and work will start soon.

The Collect was led by Mrs. Ed Freeman. Roll call was answered with a "Memory of a Childhood Christmas." Mrs. Tommy Russell gave "Reflections from Past Christmas Observances of the Club." Mrs. Russell Pogue had each member read a Christmas tradition.

Mrs. Ed Freeman read the Christmas story from Luke 2:1-14. Mrs. George Cook told the story of "The Other Wise Man." Gifts were exchanged.

Hostesses Mrs. John Trindle, Mrs. John Bishop and Mrs. Coy Palmer served refreshments to Mesdames: J.R. Stump, C.A. Kleeberger, O.E. Spoonemore, Tom Sutton, Ed Freeman, C.U. Pope, L.L. Anthony, Wayne

Hutchison, Fred Holt, O.C. Holt, Jane Meek, Deta Blodgett, Tommy Russell, George Cook, Russell Pogue, Woodville Jarvis, John Brown, Michael Holt, and Cecil Biggers.

Twentieth Century Club met January 8, 1981, in the Library. The meeting was opened by President Mrs. Michael Holt. Mrs. Holt introduced special guest Edith Womble who spoke on "The Right to Life and Death."

Roll call was answered with a "Favorite Saying of Your Child or Grandchild." The carpet for the Library stairs has been ordered.

Mrs. Tommy Russell read the Constitution and By-Laws. The Collect was led by Mrs. Russell Pogue.

Hostesses Mrs. Woodville Jarvis and Mrs. Michael Holt served refreshments to Mesdames: Cecil Biggers, Russell Pogue, C.U. Pope, Tommy Russell, Wayne Hutchison, O. C. Holt, George Cook, J.R. Stump and Ed Freeman.

CHILDREN'S MATINEES

Every Saturday - 2 P.M.

LYRIC THEATRE

-SPEARMAN-

ATTENTION DERRICK HANDS!

Will pay 20' for clean cottonseed hull sacks in good condition. Wrap in bundles of 25.

Call 659-3491 after 6.

The Hansford Plainsman
PUBLICATION (USPS 243-660)
SPEARMAN, TEXAS 79081
213 Main Box 458 659-3434
Published Weekly at 213 Main Street
Spearman, Texas 79081
Owner-Publisher William M. Miller
Editor Faye Lynch
Second Class Postage paid at Spearman, Texas 79081
Any erroneous reflection upon the character of any person or firm appearing in these columns will be gladly and promptly corrected upon being brought to the attention of the management.
SUBSCRIPTION RATE: Hansford, adjoining counties, combination with the Spearman Reporter, \$15.00.
Other points, \$20.00.
MEMBER
TEXAS PRESS ASSOCIATION

For The Ultimate In
STORM DOORS
Custom Built, Designed, And In Colors To Fit Your Home....
Contact Howard Moyer at
Only Aluminum Industries
Guymon, Okla. 114 W. 1st 405-338-6966 or 73942 338-6170

Circle Steel Corp.
Buildings Slant Wall Straight wall
Grain Bins 15'-60'
on-Farm & Commercial Turnkey
Concrete & erection call
Jerry Hill 806-226-2291

Enrollment is up
Area friends of WTSU.
Another semester has begun at West Texas State University. First-day registration figures show that our enrollment is up six percent or 320 students over last spring for a total of 5,589 students. Numerous activities have been planned for the spring semester, which is always a busy time, and we're enclosing an activities calendar and a tentative calendar of events from the Department of Music. Thank you for your interest. Please call if the University News Service can be of any assistance to you.
Mona Williams Statser
University Editor

1/2


Price SALE!

Starts
MONDAY
at
Lady Fair
Plains Shopping Center
Spearman

HAS THE HIGH COST OF FERTILIZER GOT YOU WORRIED?

There are farmers right here in the Gruver and Spearman area who have the problem solved by using Agri-formulated Compost at a fraction of the cost of fertilizer. They are saving water too! No job is too small or too large, but time is limited, so give us a call to schedule your application now. Free soil sampling is available.

OFFICE: 727 Wilbanks, Spearman
PLANT LOCATION: Gruver, Texas



HANSFORD CO. COMPOST
SPEARMAN, TEXAS
727 WILBANKS
806/659-3970
ANDY WATLEY, OWNER

6th Graders To Perform 'Bambi'

There is gonna be a play entitled "Bambi". It is gonna be a musical and it will be performed by Mrs. Charlotte Angels' sixth grade choir. There will be two performances: one on Tuesday, January 27, at 7:30 p.m. at the Junior High Auditorium and the other performance will be Wednesday, January 28, at 2:30 p.m. at the Junior High School Auditorium. It is FREE TO THE PUBLIC and it is gonna be a GREAT performance, so ya'll go on out to see "Bambi". If some of ya'll are goin' to go done to Higgins to see the Varsity Lynx and Lynxettes play against Higgins and want to see the play "Bambi", you will have a chance to see it in its "entirety" the following day at 2:30 p.m. at the Jr. High Auditorium.

If some of you remember reading "Bambi" when you were goin' to school, then you'll have some knowledge of how good this play is gonna be!!

The ones in the cast are: Flower--NETA BURGER; Falline--MELISSA McLAIN; Bambi--KELLI McWHIRTER; Thumper--ANNE MARIE JARVIS; Owl--KERRI HOLT; Mrs. Magpie--JILL McLAIN; Mrs. O Possum--CARRIE ANN GUTHRIE; Mr. Quall--MONTE BECK; Mr. Woodchuck--ALLEN MIRE; Mr. Fox--NORMAN HILL; Mrs. Fox--VICCI ELBERT; Mr. Raccoon--RHONDA GIBSON; Mrs. Raccoon--PATTY McGUIRE; The Stag--MARK GARNETT; Mother Deer--SHARI VERNON; Mr. Squirrel--JESSIE LOZANO; Mrs. Squirrel--MICHELLE SAVAGE; Mother Rabbit--ANNE SHEETS; Jumper--RHONDA MATHEWS; Bumper--TAMMY THOMAS;

Busy--CAYLA EATON; Lazy--TAMMY NOLLNER; Willie Weasel--JAN ALLEN; Snowman--JANA PITTMAN; the Squirrels are--LETICIA VELA, PAM STUMP, LYNETTE DUNAWAY, JANICE GARRARD, DIANA SORGI and MELISSA KELLY; the rats are--CRISTA URBAN, TAMMY SHIELDS, JENNIFER SINTAS, TAMMY GOODSON, KATHY LOVE; the birds are--DENISE ROJAS, JULIE LATTI, APRIL ABSTON, JENNIFER YARBROUGH; the otters are--DANIEL DeLaROSA, KRISTI WRIGHT, GAY PIPKIN, ROCIO ROSALES; and the folks working the lights will be MARGARET ESPINOSA--the spotlight holder--DIANA ARJONA, SALLY OLIVAREZ, LIZ SUMNER, KELLIE McFARLIN and DICK SMITH will be working with the other

Lynxettes 'Clobber' cats

Tuesday night, January 20, was the night that the River Road Wildcats came to town to "de-throne" the Lynxettes from the District reign! I'll give them credit for trying, but that's it. This game was very important to the Lynxettes--they had to beat the Wildcats, so that they could be undefeated in District play and as for the River Road Wildcats, they hadn't competed in District action and they wanted to open their District opener with a victory over the reigning Queens of District--the Spearman Lynxettes!

The game started out fast, but it was a very low scoring quarter for both teams! The girls playing for the Lynxettes were Kenda Burke, Nancy Wilson, Tammi Maize, Bonnie McCloy Kamala Ford, Margaret Reed--all Seniors, Mary Ann Martin, Johnnie Eaton, Mary McIntyre--all Juniors, Susan Davis, Lea Ann Gibner, Janet Reed, and Cindy Young--all Sophomores--had something to do with the win over River Road. When the 1st quarter was over, the scoreboard had the score of 8 to 6, the Lynxettes leading. Well, the 2nd quarter was vice-versa that of the 1st quarter. Kenda Burke started hitting all kinds of shots that, by the way, went in for points. Mary Ann Martin helped Kenda out on the Offensive while all the other Lynxettes helped out on the defensive side and assisted Kenda and Mary Ann. There was also action on the River Road side also, they fought as hard as a rabbit does when he tries to escape from the cougar! The Lynxettes had a 19-10 lead in the 2nd quarter, then the Wildcats fought back and tied the Lynxettes at 21. With time running out, the Lynxettes, as usual, put 6 "unanswered" points on the board and took the halftime lead with them into the locker

room--27-21. Now, "unanswered" in any sport means when a team scores points and stops the other team defensively and then the offense takes over and scores again. That is what the Lynxettes did--they stole the ball on the fullcourt pressure and they let the Wildcats have only one chance to get 2 points and then the Lynxettes rebounded and scored again.

At halftime Kenda Burke had 10 points, and she looked like this would be another big night for her. Mary Ann Martin had 8 points, Susan Davis and Lea Ann Gibner had 4 points a piece and Nancy Wilson had 1 point. The Lynxettes wanted to win because they wanted to be District Champs again! One thing for sure, in the first half it looked like Coach Newton had really worked with the girls on their fullcourt pressure, and it seemed that the Lynxettes had worked individually on their freethrows. The Lynxettes had a "decent" 6 point lead, but would the 2nd half bother the Lynxettes once again? Well, if the Lynxettes had polished up on their other rusty parts, I'm sure that they polished up on the 2nd half of play.

With 16 more minutes to go, the Lynxettes had a real good chance of winning. Coach Newton used all his players, he knows where there is talent and he knows how to use everyone's talent! And the girls, on the other hand, when they were in, didn't let Coach Newton down. The 3rd quarter was a fast and scoring kind of quarter. The Lynxettes couldn't do anything wrong in the 3rd quarter, but when and if they did, they would be extra-careful and do their mistake right. When the 3rd quarter buzzer rang, the Lynxettes had a 44-32 lead--an 8 point lead. The Lynxettes outscored the River Road Wildcats

17 - 11 and were ready for the final quarter. All the Lynxettes played in this game, and after the game, they all were proud of winning, but prouder of the job that they--individually--had done! The Wildcats came out scoring and blocking some shots but Kenda just had her hot-hand, and when she does have a hot-hand then "Dandy" Don, if he were in the audience, would sing his favorite--"The party is over!" Although the River Road Wildcats did outscore the Lady Lynx in the final quarter--14-12; it wasn't enough--the Lynxettes won by the score of 56-46. Now the Lynxettes were 11-10 for the year and 2-0 in District.

Kenda Burke had the most points for the Lynxettes with 22 points--getting 12 more points in the 2nd half; Mary Ann Martin was the other Lynxette who had gotten into double figures with 12 points--getting 4 points in the 2nd half; Lea Ann Gibner had 7 points--getting 3 of those points in the 2nd half; Margaret Reed had 6 points--all in the 2nd half and Susan Davis also, had 6 points--2 of those points in the 2nd half, and Nancy Wilson had 3 points.

The next game for the Lynxettes is tonight, Friday--January 23--at Dalhart against the Dalhart Wolverines. This game will decide the winner of the 1st half of District. In other words, if the Lynxettes win tonight, they will be crown 1st half District Champs! After tonight, the Lynxettes will play Perryton, River Road and Dalhart one last time to see who will be the District Champs for 1981 in Class AAA! The game will begin at #00 or whenever the JV boys' game is over. See ya'll at Dalhart! Then on Tuesday, January 27, the Lady Lynx will travel to Higgins to play the Higgins girls. The game is scheduled for 6:30 p.m.

Deadline Nears

LUBBOCK--During the months of December and January the U.S. Small Business Administration (SBA) made arrangements for representatives from the Lubbock Disaster Office to meet with Texas agriculture producers and related business at various locations available for persons to apply for low-interest recovery loans," said John H. Fall, Branch Manager of the SBA Lubbock Disaster Office.

Fall continued, "The farm disaster loan program is designed to provide low interest recovery loans for losses sustained during the 1980 production year as declared by SBA's declaration #1900".

Declaration #1900 expires February 12, 1981, and physical loss applications must be received by the SBA Lubbock Disaster Office by the close of business or postmarked by midnight. The deadline for economic injury disaster loan applications is May 12, 1981.

For more information, interested persons may contact the SBA Lubbock Disaster Office, located at 720 Texas Avenue, by calling (806) 762-7481.

ASCS Executive Director Martin Chandler said there had been about 50 applications from Hansford County. Chandler also emphasized the Feb. 12 deadline.

CORRECTION

In the story "All School Reunion July 4th" we made a mistake, the name is suppose to be Helen Etter as Secretary instead of Helen Fisher.

Monday Night Party Planned

Judy Nelson and Glenda Guthrie, co-chairpersons for the "Meet the Director" party for Fruitcake Review Too, emphasized that the whole community of Spearman need to turn out for the party which will be held on Monday night, January 26, at 7:30 p.m. in the old Beedy Furniture Store building. It is important for the director to get a real feel of what Spearman is like.

There will be surprise entertainment, including slides of last year's shows, and plenty of refreshments. It will be a real fun evening. Attendance at the party does not mean commitment to participate. It is important for people who have no intentions of being in the show to come and put some input into what our community is like.

The director, who is a professional employed by the Cargill Agency in New York, is arriving on Sunday, January 25. He will be introduced following most of the entertainment and will share his dreams and aspirations for the show. He will tell about the numbers to be used

and what people can sign up to participate in. We hope to have an interview with him in Thursday's paper.

People who are thinking about participating have been debating about the amount of time involved. That is entirely up to the individual. If you sign up for only one skit, your probably wouldn't have to rehearse it more than a few times in the two week rehearsal period. You can sign up for as many or as few numbers as you want to. You don't have to have a specific talent to participate. The show could use about 150 people. There are lots of spots in chorus lines and routines and very simple walk parts. People with special talent in singing, playing of instruments, dancing and acting would sign up for some of the solo numbers.

At the close of the party there will be an opportunity for people to sign up for specific numbers.

Gerald Heinrich, the ticket chairman, will have packets of tickets for everyone who would like to go out and sell tickets. Or

people can buy there tickets for the show that night.

At the close of the party, it will be revealed what Spearman citizens have been leading a life of crime. There will be an opportunity for you to help your community track these people down.

DROPS PROBE

Attorney General Benjamin R. Civiletti said the government is dropping its criminal investigation into a trip by Ramsey Clark and nine other Americans to Iran last spring. Clark's group went to Iran in defiance of a travel ban.

RAISES RECOMMENDED

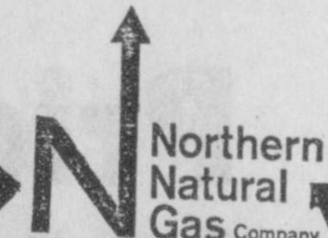
President Carter recommended that senior officials of the executive branch and members of Congress receive an immediate 16.8 percent pay raise, a proposal that if approved by Congress would affect almost 35,500 top government employees and cost \$183.1 million during the current fiscal year.

Bowling News

HIGH INDIVIDUAL GAME	
Dean McElroy	212
HIGH INDIVIDUAL SERIES	
Dean McElroy	591
HIGH TEAM GAME	
Frank Oil Company	803
HIGH TEAM SERIES	
Deis Grill	2280
STANDINGS	
Frank Oil Company	49-23
Smith Rentals	43-29
Deis Grill	41-31
Daley's	40 1/2-31 1/2
Baclay Child Care	40-32
Ranger Bowl	40-32
Big A Spreader	39 1/2-32 1/2
Fausset & Sons Conoco	38-34
Anthony Electric	36 1/2-35 1/2
Bull Rogers	35-37
Kirby	34-38
George Lease Service	29-43
Giles Const.	26 1/2-45 1/2
Otis Engineering	12-60
RESTORE DRAFT?	
The new chairman of the Senate Judiciary Committee, Strom Thurmond, called for the restoration of the military draft and said the all-volunteer Army is undermanned and underqualified.	

MAINTENANCE PERSON
REGULAR FULL TIME EMPLOYEE

Northern Natural Gas Company will take applications on Thursday, January 29, 1981, between the hours of 9 A.M. and 3 P.M. for regular full time maintenance person. Apply at the Canadian Office on Highway 83 & 60 South of Canadian, Texas. Typical job duties are: facility clean up, assisting with overhauls of large internal combustion gas compressor engines, maintenance of vessels and towers, all phases of pipeline repair and relieving regular operating crew during vacation or illness, etc. Pre-employment test will be given for the Maintenance Person job on Saturday, January 31, 1981 at 9:00 A.M. at the Canadian Office on Highway 83 & 60 South, for all persons that have completed an application. Northern Natural Gas Company is a major diversified energy company offering an attractive salary, and has an excellent benefit program. Equal Opportunity Employer.



Northern Natural Gas Company

All Fall and Winter Merchandise

1/3 to 1/2 OFF!

Sale starts **MONDAY** at

KIDS' STUFF

312 Main Spearman

Baker & Taylor Drilling Co.

GRUVER HWY.
659-2503

Buster's Dusters

PLAINS SHPG. CNTR.
659-3648

1981 →

1980 SPEARMAN 1981 LYNX & LYNXETTES	
NOVEMBER 15 FOLLETT CLINIC - A Girls	
NOVEMBER 18 STINNETT - A & B Boys and Girls	HERE
NOVEMBER 20 SUNRAY - A & B Boys and Girls	HERE
NOVEMBER 24 STINNETT - A & B Boys and Girls	HERE
NOVEMBER 25 STRATFORD - A & B Boys and Girls	HERE
DECEMBER 2 GRUVER - A & B Boys and Girls	HERE
DECEMBER 4-6 SPEARMAN VARSITY TOURNAMENT - Boys and Girls	
DECEMBER 4-6 GRUVER JV TOURNAMENT - Boys and Girls	
DECEMBER 9 STRATFORD - A & B Boys and Girls	HERE
DECEMBER 11-13 FRITCH TOURNAMENT - A Boys and Girls	
DECEMBER 16 SUNRAY - A & B Boys and Girls	HERE
DECEMBER 19 CANADIAN - A & B Boys and Girls	HERE
DECEMBER 22 GRUVER - A & B Boys and Girls	HERE
JANUARY 2 PHILLIPS - A & B Boys	HERE
JANUARY 6 FOLLETT - A & B Boys and Girls	HERE
JANUARY 8-10 CANADIAN TOURNAMENT - A Boys and Girls	
JANUARY 13 PERRYTON - A Boys and Girls	HERE
JANUARY 16 CHANNING - A Girls	HERE
JANUARY 16 BOYS RANCH - A & B Boys	HERE
JANUARY 20 RIVER ROAD - A Boys and Girls	HERE
JANUARY 23 DALHART - A & B Boys and Girls	HERE
JANUARY 27 HIGGINS - A Boys and Girls	HERE
JANUARY 27-31 PERRYTON TOURNAMENT - Boys and Girls	
JANUARY 30 PERRYTON - A Boys and Girls	HERE
FEBRUARY 3 BOYS RANCH - A & B Boys	HERE
FEBRUARY 3 MIAMI - A & B Girls	HERE
FEBRUARY 6 RIVER ROAD - A & B Boys and Girls	HERE
FEBRUARY 10 DALHART - A Boys and Girls	HERE
FEBRUARY 13 DARROUZETT - A Boys and Girls	HERE
FEBRUARY 19-21 DISTRICT ONE TOURNAMENT (Spearman) - Boys and Girls	

* Denotes District Games

Junior Lusby Cats

W. GRUVER HWY.
659-3766

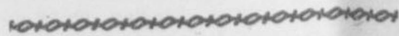
Speartex Grain Co.

514 COLLARD
659-3711

CREATORS OF PROGRESS ...



People ... working together!



Your CHAMBER OF COMMERCE ...

It Keeps the Wheels Of Time Turning For a Better Tomorrow

Go
With
The
Chamber!

Supporting the Chamber, and assisting it any way possible will keep the wheels turning for a long time, and insure a more prosperous future.



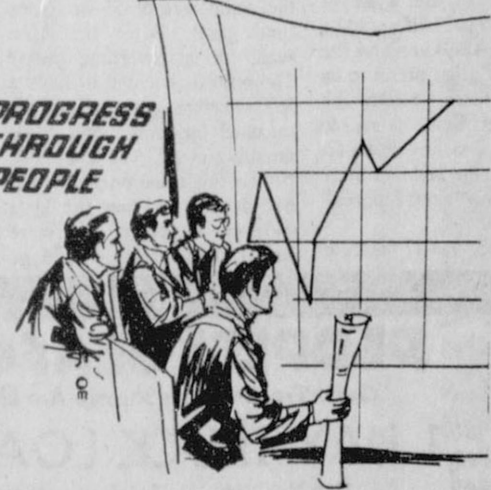
HANSFORD COUNTY...is the second largest WHEAT-PRODUCING county in the NATION!

WE at LAWRENCE WARD TRUCKING, INC., feel we have the trucks and services to help make HANSFORD county the No. 1 LIVESTOCK and GRAIN producing county in TEXAS!

At the same time, we are supporting our Chamber whose staff and membership are working to put ideas into action, hopes into achievement...people concerned enough about the future to work for a better one. In this most promising spot in the nation, we promise to do our best!

1981

PROGRESS THROUGH PEOPLE



▣ This advertisement compliments of . . . ▣

Lawrence Ward Trucking, Inc.

Phone 733-5025
Permitted and Insured (call collect)
Gruver, Tx.

364-1171
Hereford, Tx.

Livestock and Grain Hauling

Contact us for all of your
Hauling Needs —

We are located in the
John Deere Building

West Hwy. 15

Gruver, Tx.





Insurance Corner

INSTALLATION INSURANCE

There are many types of businesses that sell products requiring installation. Examples of these items include heating equipment, boilers, water softening units, machinery, refrigeration and air conditioning apparatus, humidifiers, and water heaters. The buyer doesn't actually own (take title to) the equipment until after it has been installed.

Companies that fall into this category can get insurance known as an installation floater. This floater protects the equipment throughout the entire transaction. Coverage is provided from the time the product

leaves the seller's warehouse or showroom, through transporting it to the buyer, until it is finally installed on his (the buyer's) premises. After installation, the purchaser is the owner (takes title to) the equipment and the insurance installation floater is no longer in force.

The purchaser of this type of insurance can choose from a wide range of coverages to suit his particular needs. He can get certain specific perils, such as burglary, fire, theft, and extended coverage or an all-risk policy.

This information has been brought to you as a public service by John R. Collard, Jr., your one stop answer to complete business and personal insurance protection. Life, home, auto, group insurance, and profit-sharing plans. See John R. Collard, Jr., 405 Davis St., Telephone 659-2501.

2 Local Churches to Present Family Films

America's newest Family film series will be presented in two of Spearman's local churches. The seven films will be presented on seven successive Sunday evenings beginning Feb. 1, and concluding March 15.

"Focus on the Family" by Dr. James C. Dobson features such topics as:

The Strong Willed Child Feb. 1

Shaping the Will Without Breaking the Spirit Feb. 8

Christian Fathering Feb. 15

Preparing for Adolescence; The Origins of Doubt Feb. 22

Preparing for Adolescence Peer Pressure and Sexuality Mar. 1

What Wives Wish Their Husbands Knew About

Women; The Lonely Housewife Mar. 8

What Wives Wish Their Husbands Knew About Women; Money, Sex and Children Mar. 15

These films are being presented jointly by First Baptist Church at 6 p.m. and First United Methodist Church at 7 p.m. An invitation to attend either of the churches and give help concerning better homes is extended by the Pastors Russell Pogue and Frank Oglesby.

There will be no offerings. Workbooks for families are available at each of the churches.

Golden Spread Center News

Sixty-two people enjoyed the Inaugural Ball at the Golden Spread Center on Tuesday, January 20. It began with a covered-dish dinner at 6:30 p.m. with the First Christian Church women furnishing part of the meal. Mathilde Entekin

and Addie Novak were Golden Spread Club hostesses. Naturally, many people arrived early and many tables of games were in progress before the dinner began. JoAnn McClellan of the Texas Department of Health was also present to take blood sugars and pressures. The Rev. Russell Pogue prayed the table grace. Carlyn Cummings talked to the group about the RSVP program and other programs at the YMCA. Throughout the evening there were fifteen tables of bridge, canasta, dominoes, forty-two, pitch, and skip-bo in progress.

There will be two game afternoons at the Golden Spread Center on Monday, January 26, and Friday, January 30, from 2:00 to 5:00 p.m. and an evening of table games on Tuesday, January 27, beginning at 6:30 p.m.

Nina Hendricks will drive the Golden Spread Center's van on Wednesday, January 28, from 9:00 a.m. to noon, picking up the sixty-plus bunch and taking them shopping, on errands, and to meet appointments. This service is furnished free to all persons who are sixty years of age or older without discrimination as to sex, color, race, religion, politics, or handicap. People needing this service should call the Golden Spread Center (659-3521) on Tuesday and get your name on the list.

PROGRAM

Entertainment.....The Celebrate Singers
Spearman High School
Master of Ceremonies.....E. E. Novak, D.D.S.
Invocation.....Robert Queener
Rotary Employer of the Year.....Ed Freeman
Introduction of out of town Guest.....The Ambassadors
Women Division.....Sandy Heinrich
Chamber of Commerce President, 1980
Women Division.....Altha Townsend
Members of the Year Award
1980 President.....L. E. Thomas, Jr.
1981 President.....Dick Elbert
Entertainment.....Booker Bank Notes
Citizen of the Year Award.....Jim McLain
Miss Hansford County.....Eadie Clemmons
Doris Wilde and the
Spearman High School
Meal.....Cafeteria Staff
Serving.....Spearman High School-FHA Girls
Decorations.....Womens Division
Custodian.....Jesse Burke

Beth Phelps is teaching Rosemaling at the Golden Spread Center on Thursdays from 10:00 a.m. to 5:00 p.m. There is a break at noon for a covered-dish luncheon.
Fifteen fortunate friends will leave the Golden Spread Center

at 5:00 p.m. on Friday, January 30, for a pleasant evening at the dinner theater in Amarillo. If you would like to be one of those fifteen, you may sign up at the Golden Spread Center or call in your reservation.



The giant sequoia tree lives about 2,500 years.

Lynx Lose Battle

The Lynx were 11-10 for the season and 1-1 in District play. The River Road Wildcats were 1-1 in District play also. The Lynx wanted to win Tuesday, January 20, so that they could be as close to the Perryton Rangers as possible, and the River Road Wildcats wanted the same thing. The question now was which team would be close enough to Perryton to try and make a 2nd half go at it? Well, it was a great game and the best team would have to be the one to come out on top.

The 1st quarter was the fastest quarter the Lynx would be in all night, and the best offensive wise. Steve Shields was already having a night to remember, but it would turn out that the Lynx would not be able to win on this night. The Lynx had a 7 point lead after the 1st quarter was over. The score was 19-12. The quarter was very offensive on both sides. The 2nd quarter was a little more defense than offense, although the Lynx did manage to get into the double figure mark and stopped the Wildcats from breaking into the double figure mark—they missed by 1 point. The Lynx outscored the Wildcats again in the 2nd quarter this time—12-9—and had the first half lead—31-21. The Lynx knew that the Wildcats had a "come-from-behind" instinct, and the Wildcats knew that it would be tough, very tough, to try and defeat the Lynx at home!! So the 2nd half would be a mouthful!! The Lynx and the Wildcats had great pressure on the ball that there were enough turnovers on both sides, to cause their Coaches heart-attacks!! But in the 2nd half there would be more "heart failures" for sure!!

Steve Shields had 17 points at

the halfway mark—isn't that "incredible"?! The Lynx players are Steve Shields, Jimmy Ladd, Jamie Bulls, Wayne Meek, Carey Bodey, David Hall Mike Blanton—all Seniors, Kyle Brack, Monte George, Steven Tindell—all Juniors, Jay Pack—a Sophomore, and Buddy Pool—the fine Freshman player. They all do a great job when they play.

The 3rd quarter was not the Lynx' kind of quarter. Sure, the Lynx got 14 points but the Wildcats from River Road had 18 points and at the end of 3 quarters of play the score was now 45-39, the Lynx' favor. The lead had shrunk from 10 points to 6 points, but there was only 8 more minutes and the Lynx had a great chance of winning, if they could hold on to their lead!! The 4th and final regulation quarter. The Lynx could not get "unlogged", but the Wildcats were putting points on the board as if there was a "magnet" on the other side of the court. The score became tied at 45 in a matter of seconds. The Lynx finally got "on the ball"—as the saying goes—and started putting points on the board. When the Lynx were caught by surprise when the Wildcats got 6 unanswered points, then that was what was the difference when the buzzer rang. The Lynx had 10 points compared to the 16 points the Wildcats had, this meant that the score was 55-55—an overtime game. Were the Lynx ready for this overtime game? The officials decided to have a 3:00 overtime game—that's not too much time sometimes, to do anything at all. The Lynx had been in this situation before and had done great, now the Lynx were put to the test one more time!! Well, nothing could go

wrong this time, not with 3:00 minutes only. Before anyone knew it, the Lynx were down by 4 points. Jimmy Ladd with those great hands, got into the act by stealing the ball and throw to one of his teammates to score. The buzzer finally went off to end the game and the Wildcats won by a mere score of 61-59! That was a very exciting game.

The Lynx are now 11-11 and 1-2 in District Play. The next game the Lynx will play will be tonight, Friday-January 23--against the Dalhart Wolves. The game will be at Dalhart, and it's tough to beat the Wolves at home, but this time the Lynx are hoping for a win over this team. Then on Tuesday, January 27, the Lynx will travel to Higgins and play the Higgins boys. Both of these games--Dalhart and Higgins--are gonna be good games, so go and cheer the Lynx to Victory.

Bookkeeping

Course Offered

Fundamental Bookkeeping Course sponsored by Frank Phillips College. The course will be taught by Andrea Bayless. Beginning February 5 and lasting for 10 weeks at Gruver High School. Call 733-2655.

ON POSTAL RATE HIKE
The public's ombudsman on postal rates urged the independent Postal Rate Commission to trim two cents from the Postal Service's proposal for a 20-cent first-class stamp by raising rates for business mail.

PEOPLES SEAFOOD
"Quick Frozen Fresh Shrimp Are Better"

1 DAY TRUCK LOAD SALE
1 DAY ONLY Friday, Jan. 30
Truckload located at Shamrock

Look For The Red Truck

Rock Shrimp

Colossal Shrimp
Jumbo Shrimp
Large Shrimp
Medium Large Shrimp
Parch Fillets
Lobster
Crab Legs

You'll love this
Frog Legs
Oysters
Scallops
Fish & Batter
Fish & Chip Style
Canadian Cod, Mild

10:00 to 6:00 PM

**Fresh Flounder
Fresh Redfish**

Plenty of Fresh
Catfish (Fresh Water)
Sheep Fries
Turkey Fries

Film-Flash-Photo Department

FILM DEVELOPING SPECIAL!

Borderless **Color Prints** **10¢** PER PRINT

DELUX LUSTER Clear

Plus **99¢ DEVELOPING**
12 EXP. ROLL..... ONLY **2¹⁹**
on original roll orders only.
Includes Kodak, Focal, Fuji & Fotomat Films.

BRING your FILM to 521 Hwy. 207 S
SPEARMAN, TX.

TG&Y

TG&Y family centers

GOOD ONLY AT T.G. & Y. FAMILY CENTER
207 SOUTH SPEARMAN, TEXAS 659-3742

year 'round savings

.99
Head & Shoulders® Shampoo 7 oz. Price reflects 30% off label. Limit 2

5 \$1 save 41%
FOR Duo Tang Binder 11 x 8 1/2", with "pockets". Reg. .34 ea.

.88 save 31%
TG&Y Light Bulbs 60 or 100 watt, 4 bulbs per pkg. Reg. 1.28 Limit 2 pkgs.

3 1.00
ROLLS
Coronet® Paper Towels Jumbo roll, 125 one-ply sheets per roll. Limit 3 rolls

1.96
Pine Sol® Disinfectant Cleans, deodorizes, disinfects. Limit 2

4 \$1 save 49%
FOR Composition Book 10 1/2 x 8", wide ruled. 40 pages. Reg. .49 ea.

4.27
Field Trial® Dog Food A and nutritious meal in chunks. 25 lb. bag. Limit 2

3 1.00
BARS
Dial® Soap New and improved gold-wrap bar with deodorant protection. 5.5 oz. Limit 6

1.77
Listerine® Mouth wash Antiseptic. Controls bad breath. 32 oz. Limit 2

2 1.00
FOR Filler Paper 10 1/2 x 8", wide ruled. 150 ct. pkg. Limit 2 pkgs.

1.26
Soft Scrub® Cleanser Non-abrasive formula. 26 oz. Limit 2

3 1.00
FOR Sweet-Heart® Dish Detergent Compare and SAVE! 22-ounce bottle. Limit 3

.88
Duralflame II® Log Burns colored flames up to 3 hours. 3 1/2 lbs. Limit 6

3 SKEINS 2.00
Acrilan® Yarn Choose from a wide selection of fashion shades. 100% Acrilan® acrylic, 3.52 oz. skein. Reg. 1.07 ea. Limit 12

2 3.00
FOR rianes® Underalls® Pantyhose Sandalfoot with brief. Reg. 2.03 pr. Limit 4

TG&Y'S ADVERTISED MERCHANDISE POLICY-TG&Y's policy is to always have advertised merchandise in adequate supply in our stores. In the event the advertised merchandise is not available due to unforeseen reasons, TG&Y will provide a Rain Check, upon request, in order that the merchandise may be purchased at the sale price when it becomes available, or you may purchase similar quality merchandise at a similar price reduction. It is the policy of TG&Y to see that you are happy with your purchases. *It is TG&Y's policy to be priced competitively in the market. Regular Sale Prices may vary market by market, but the sale price will always be as advertised. *We will be happy to refund your money if you are not satisfied with your purchase. **VISA® and MasterCard® accepted.**

Your best buy is at TG&Y!

