



FORMER NEWSPAPER OWNER BILLY MILLER looks over a bound edition of the Spearman Reporter which celebrates its 80th year of publishing with next Thursday's paper.

And Billy Miller's seen most of them 'Reporter' to celebrate 80th year

When this coming Thursday's Spearman Reporter rolls off the press, it will mark its 80th year of publication. There won't be any candles or cakes, no tinsel or noise makers. But there's probably no better supporter of the Reporter than former publisher, Billy Miller.

The genial Miller is at once a walking chamber of commerce for Spearman and Hansford county, an encyclopaedia of county information, and avid back slapper and well wisher to every person he meets.

"You know, the Reporter is the oldest continuous operating business in Hansford county," he says proudly. And rightly so, after all, he and his family have been running it since 1932 -- a family operation which continued until

Miller sold it this spring to Texas Independent Newspapers, Inc.

Over the past 80 years, the Spearman Reporter has undergone a good deal of change, as has Hansford county itself.

It began as the Hansford Headlight on the first Thursday in November, 1907. When it moved to Spearman, the name was changed to the Reporter and has maintained that title since then.

It has been owned, over the years, by various individuals, partnerships and groups. But no single person has been with it for as many years as Billy Miller.

The veteran newspaperman literally grew up with the Reporter, moving to Spearman and Hansford county in 1932 at the age of eight years.

"I remember when we hit the

county line, my Dad talking about what a pretty country this is," Miller states. "And it hasn't done anything but gotten better."

Billy's father, W.J. Miller, was editor and publisher from 1932 until he purchased the publication in the mid-1940's. Then he not only was editor and publisher, but had to pay the bills as well.

He continued to operate the weekly newspaper until his death in 1966. At that time, Billy took over and -- in his father's footsteps -- kept the newspaper thriving and growing right along with the community he loves.

At age 63, Miller can state he spent over 55 years with the Reporter in one capacity or another. And that's no small accomplishment for anyone.

"Back when we came to Spear-

man country newspapers did everything to stay alive," Miller reports. "We sold advertising, did job printing and sold office supplies."

There's been a lot of changes over the years and Billy was on hand to see that the paper stayed abreast of the latest innovations in the newspaper industry.

That included doing away with a way of life for most all country newspapers -- the hot type presses. Billy was on hand and helped install the first piece of lithographic or "cold" type equipment in the Spearman Reporter.

For a while, all newspapers operated with a mixture of equipment until the medium had completely changed and even the old asbestos mats were done away with

See "REPORTER", p-2



The Hansford Plainsman

25¢
Per Copy
8 Pages

Volume 18 No. 52

YOUR HOMETOWN NEWSPAPER

Sunday, November 1, 1987

Polls open 7 a.m. Tuesday . . .

Voters to decide fate of 25 amendments, 2 referenda

Polls will open at 7 a.m. across Hansford county and the state of Texas this Tuesday with a less than respectable number of voters expected to decide the fate of 25 amendments and two binding referenda.

Interest in Hansford county appeared to be light as well with some 20 absentee ballots cast as of presstime Friday -- less than one percent of the county's 3,309 registered voters.

Statewide estimates are for a voter turnout of around 12 percent while Hansford county clerk Amelia Johnson is estimating a voter turnout of around 15 percent. Both estimates may be optimistic as there are no contested offices on the ballot.

The only issues gaining local attention appear to be the pari-mutuel racing referendum, the state school board referendum and amendment 17 which deals with tort reform in the state of Texas.

Polling stations throughout the county will be open from the 7 a.m. start to 7 o'clock that evening. There are eight voting stations in Hansford county.

Voters in voting precinct one will cast their ballots at the Hansford county courthouse; precinct two voters ballot at the Renner ranch;

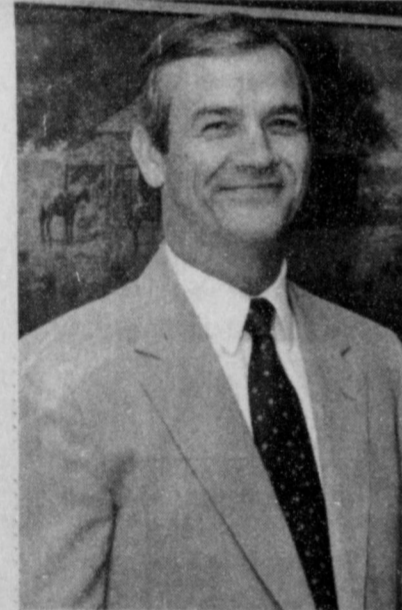
Voters in precinct three vote at the Community Bible Church in Gruver; precinct four voters cast ballots at the county barn in Gruver;

Voters in precinct five vote at the county barn in Spearman;

Precinct six voters ballot at Spearman high school;

In precinct seven, voters cast ballots at the Oslo Church and in voting precinct nine, voters cast ballots in the Morse Community building.

Voting precinct number eight is the absentee voting box.



RICHIE FLETCHER
... Named FNB Officer

Fletcher named Spearman bank vice-president

Richie Fletcher, a long-time Hansford county financial officer, has been named as a vice-president at Frist National Bank in Spearman, announces Don Townsen, president and chief executive officer of the Spearman bank.

A Gruver native, Fletcher will assume his new duties in the Spearman bank Monday.

"I'm looking forward to working with my friends and customers in Spearman and all across Hansford county here at the Frist National," notes Fletcher.

The new Spearman bank officer currently serves as a city commissioner in Gruver. His wife, Carolyn, is librarian for the Gruver City Library.

The couple have three children. Stan, 22, is a student at North Texas State University in Deton while Lori is a housewife and is married to Darrell Messer, also of Gruver.

Their youngest son, Tim, is a senior at Gruver high school.

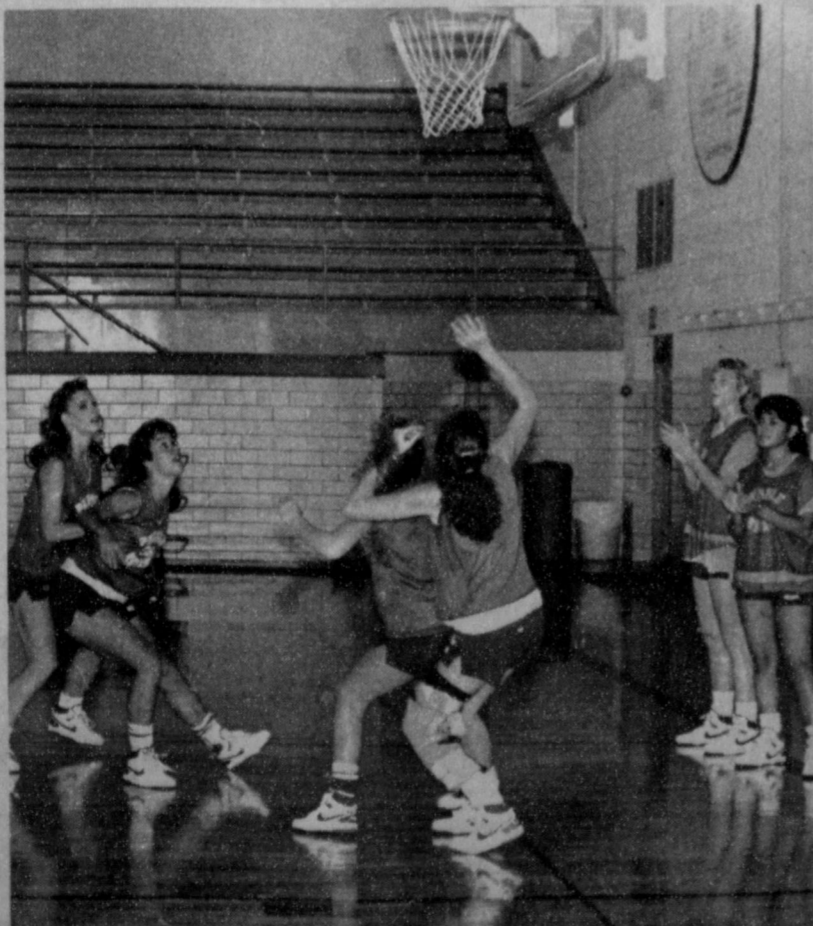
The couple plan to maintain their home in Gruver, Fletcher adds.

A 1960 graduate of Gruver high school, Fletcher graduated from Baylor University in 1965.

He had been with another Hansford banking firm for over 18 years before accepting his new position in Spearman.

Panthers end Lynx playoff hopes, 28-20

Complete details on Page 3.



GOING THROUGH THEIR PACES and getting ready for the 1987-88 girls roundball season are these members of the Spearman Lynxette basketball squad. The Spearman girls tip off the new season Nov. 17 by hosting the Perryton Lady Rangers in the Spearman junior high gym.



REGIONAL CROSS COUNTRY QUALIFIERS include [back, l-r] Heather Murrell, Kyla Nelson, Krista Kirkland, Carly Shieldknight, [front, l-r] Cam Butts, Laci Lasater, Haley Shieldknight and Michelle Cook.

With best possible score . . . Lynxettes claim 1-AA title

The best possible score a cross county team can make is 15 -- and that's very seldom done. But that's exactly what the Spearman Lynxettes did Wednesday afternoon in claiming first place in the girls

1-AA district cross country meet held at the Hansford Golf Course.

The Lynxettes claimed all but one of the top 13 places, making a clean sweep of first through ninth place enroute to the district winning performance.

Junior Krista Kirkland turned in her best time of the season with a 12:51 in the 2-mile run to lead the Lynxettes with a first place finish.

She was followed by teammates Haley Shieldknight, Heather Murrell, Kyla Nelson, Michelle Cook, Carly Shieldknight, Lacy Lasater, Cam Butts and Shannon Holton for second through ninth place, respectively.

In cross country, individual placings are totaled to get the team score. The lower the score the higher the placing.

And the best possible score is 15. That comes from adding 1-2-3-4-5 and that's how a team has to place to get the score.

Spearman had 15 points with Panhandle in second place with 60 and West Texas in third with a score of 66. Only the first five finishers for each team are counted.

Coach Richard North and crew will now head to Lubbock next Saturday to compete in the regional track meet. The top three girls teams will then advance to the state finals which will be held in Georgetown the following weekend.

The top seven Spearman girls along with one alternate will advance to the regionals meet next weekend.

A complete listing of Spearman placings along with their times follows.

1. Krista Kirkland, Junior, 12:51*
2. Haley Shieldknight, freshman, 13:03*
3. Heather Murrell, junior, 13:11*
4. Kyla Nelson, freshman, 13:19*
5. Michelle Cook, sophomore, 13:23*
6. Carly Shieldknight, junior, 13:27*

See "LYNXETTES", p-2

Voters will carry pair of vote cards

Registered voters in Hansford county and across the state of Texas will have to carry two voter registration cards for a 90-day period or better when new voter registration cards go out this month.

Current voter registration cards which are yellow, are effective through the end of February next year.

The new voter registration cards will be white and will be effective beginning March 1, 1988.

The new cards are expected to be mailed around Nov. 15, reports Linda Cummings, deputy voter registrar in the tax assessor-collector's office.

"It's important that voters not throw away their yellow cards when they get their new ones," she reports. "They'll still be good and necessary in order to vote in any elections between now and March 1."

Lynx JV gridders blank Panhandle

The Spearman JV Lynx pulled out all the stops and fashioned a 4-TD effort Thursday evening to blast their Panhandle counterparts, 24-6, in Lynx stadium.

The win ups the JV Lynx's season record to 7-1 and puts their district mark at 3-1.

In one of their most balanced attacks of the season, Spearman scored one aerial TD and three different backs crossed double stripe territory enroute to the junior varsity win.

Edward Mayfield hit tight end Keith Slaton on a 44-yard touchdown toss to open the scoring for Spearman. This culminated a 60-yard drive in the second frame.

Cody Reynolds point after touchdown kick failed to make in over his linemen, but the Lynx JV held a 6-0 lead.

On the ensuing kickoff, Panhandle muffed the kick reception and an alert Lynx kickoff team corralled the ball on the Panther JV 30.

Edgar Nava stepped off the final eight yards for the touchdown. Reynolds PAT kick failed again, but Spearman had schooled their

Panhandle guests with two back-to-back TD's and controlled the ball game with a 12-0 score.

Before the halftime intermission, Panhandle was able to put together a 60-yard drive, capping it with a 40-yard aerial TD of their own. Their PAT kick failed as well and the score stood at 12-6, Spearman, going into the halftime lockers.

The Lynx showed their intent early in the second half of play as they took the opening kickoff and marched from their own 30-yard line to paydirt.

Scott Wilkerson slashed in from two yards out for the Lynx marker. A PAT run was unsuccessful, but the Lynx had extended their lead to 18-6 and dampened any enthusiasm Panhandle might have carried over from the second quarter.

In the fourth and final frame, Spearman's Scott Balsar blocked a Panhandle punt with the Lynx jumping on top of the ball at the Panther 1-yard line.

Chris Williamson's score on the very next play put the icing on the cake for the Lynx JV team. The PAT run was short again, but Spearman held their final score, 24-6.

The only blemish for Spearman came near the end of the game when Williamson suffered a broken collarbone. As a result, the Lynx JV regular will be sidelined for the final game of the season next week. He had already been playing with a pair of broken fingers.

"Mayfield did a good job throwing the ball," declares Lynx JV head coach James Mireles. "He kept Panhandle off balance all night long."

Joel Shields proved his defensive talents with yet another interception this week, a key turnover which killed a Panhandle drive late in the game.

The Lynx JV was scheduled to play Highland Park in Amarillo next Thursday, but due to injuries to both the Highland Park Varsity and JV, the Amarillo school will not be able to field a JV ball club.

Instead, a game with Dalhart has been scheduled for Thursday afternoon in Lynx stadium. This will be the final game of the year for the Spearman junior varsity squad.

by advertising firms -- a process which took better than a decade.

"We can put out three papers easier now than we could put out one back then," the veteran publisher declares. "It's probably the best thing that ever happened to us."

But the changes Miller saw in the newspaper and the news industry itself were no more bold than the changes occurring in the Hansford county community and Spearman -- and those changes have been chronicled by the paper he ran, the **Spearman Reporter**.

After some 50-odd years in the newspaper business in Hansford county, Miller was hard pressed to pick out a single major event.

"I guess the progress from dirt streets to paved streets to one of the most progressive communities in the Panhandle is what I really see when I look back," he states matter-of-factly.

A newspaper should reflect the community it serves and that attitude was an important one to the former publisher.

REPORTER

"I wanted to build up the community as much as possible," he states. "I felt it was my obligation to point out all the good things, the positive things about Spearman and Hansford county."

The Reporter has chronicled Hansford county and the Spearman community it now serves -- and it has for some 80 years.

During that time a goodly amount of county history has been recorded in its pages -- from the then-controversial move of the county's courthouse to the eventual demise of Old Hansford itself and events on into the 1980's.

Billy Miller has seen the Reporter through both the good times and the rough times. He even remembers when his father had to go to Hereford to borrow newsprint during WWII because there was such a shortage.

There's probably some more rough times and good times ahead. And Reporter readers can rest assured they'll continue to have a publication in the county to make sure these events are recorded as well.

The Hansford Plainsman

Publication [USPS 2346-6000]
SPEARMAN, TEXAS 79081
231 Main, Box 458, 659-3434
Published weekly at
213 Main Street
Spearman, Texas
Texas Independent
Newspapers Inc.



19906 Encino Grove
San Antonio, Tx 78259

Second Class postage paid
at Spearman, Texas 79081.

Any erroneous reflection upon the character of any person or firm appearing in these columns will be gladly and promptly corrected upon being brought to the attention of the management.

Member of the Texas Press Association.

PUBLISHER

James C. Jarrett

ADVERTISING DIRECTOR

Kirby McAdams

SUBSCRIPTION RATE:

Hansford, adjoining counties, combination with the Spearman Reporter, \$19.95; out of county \$24.95.

POSTMASTER: Send

address changes to Hansford Plainsman, Box 458, Spearman, Texas 79081.

The publisher reserves the right to revise or reject at its option any advertisement which it deems objectionable, either in subject or phraseology, or which it may deem detrimental to its business.

continued form p-1

LYNXETTES

- 7. Lacy Lasater, sophomore, 13:31*
 - 8. Cam Butts, freshman, 13:38 **
 - 9. Shannon Holton, 13:39*
 - 11. Sonya Nitsche, 15:43
 - 13. Joy Gafford, 14:20
 - 22. Mindy Lasater, 15:06
 - 28. Cecely Porter, 15:30
 - 29. Bonnie Thompson, 15:35
 - 30. Melody Schuman, 15:53
 - 33. Kathlene Sangalang, 17:45
- *Denotes Regional Qualifier
**Denotes Regional Alternate

Spearman 7th, 8th Lynx split Panhandle games

The Spearman seventh and eighth graders blanked their Panther counterparts, 14-0.

This marked the final game of the year for the seventh grade team as Highland Park will be unable to field a squad next week due to the no-pass, no-play rule.

The seventh grade Lynx finish the year at 1-4 following their rout Thursday by Panhandle.

The eighth grade Spearman crew saw their record go to 4-2 and their district mark to 3-2 with Thursday's win.

"It was an outstanding game all around," declares Lynx junior high coach Ken Rutherford. "We had an excellent defensive effort."

Thursday's game was, indeed, a defensive contest with a halftime score seemingly deadlocked at 0-0.

But Spearman fashioned touchdowns in both the third and fourth stanzas to pull the game out and take the win.

Lynx signal caller Kris Kelp scored both touchdowns on 1-yard

quarterback sneaks.

The first marker was set up by a 40-yard punt return by Darren Hawkins which set up the Lynx first and goal on the Panhandle 10-yard line.

The PAT run failed, but Spearman held a 6-0 lead in a tight defensive contest.

In the fourth quarter, Raymond Lozano zeroed in on a Panther punt receiver, knocked the ball loose, then pounced on the fumble to put Spearman in control of things at the Panhandle 30.

Spearman drove the ball on down and Kelp did the final honors from the one-yard line.

Kelp then hit Chris Stawn for the 2-point PAT conversion to put the final at 14-0, Spearman.

Defensive accolades went to defensive ends Timmy Kizziar and Kelp as well as linebackers Lazano and Strawn.

Coach Rutherford also praised the efforts of the secondary which consists of Brian Beck, Chad

TSTI conducts registration

AMARILLO-- Texas State Technical Institute will conduct early registration for returning students from 8:30 a.m. to 3:30 p.m., Nov. 16 to 20 at the Resource Center.

Programs accepting students include Diesel Mechanics, Automotive, Transport Refrigeration, Welding and Fabrication, Computer Electronics, Boot and Shoe Operations, Meat Processing and Marketing, Professional Truck Operations, Saddle and Tack Making, Machining Technologies, Auto Repair, Drafting and Design, Commercial Art in Advertising, Mechanical Electrical, Technical Office Training, Industrial Instrumentation, Aviation Maintenance, Computer Science, Feedmill and Elevator, Laser Electro-Optics, Cosmetology and Interior Design.

riggins and Hawkins.

Offensively he gave nods to Brandon Rex, Mark Eakin, Chad Davis, Jessie Tindle, Brian Kidder, Lazano, Kizziar and Strawn.

Thursday the eighth grade will travel to Amarillo to take on Highland Park in the season finale. Game time is set for 5 p.m.

Come on in
and see our selection of
New Country Crafts now
10% off

CHAROLETTE FORD TRUNKS

Publisher of Trunk Talk
Supplier and Restorer



313 Main

659-3027

Layaway for Christmas Now
Prices effective Nov. 2-6

Introducing the new

MAGNUM 7120



And the first all-new tractors from Case IH

Case IH put more into the new MAGNUM tractor line than any farm tractors developed in over twenty years. Here's why you'll get more out of it:

MAGNUM means more. Outstanding field performance from a new 505 cubic inch turbocharged engine with reserve power. MAGNUM power.

The MAGNUM tractor's powershift puts 18-speeds of shift-on-the-go workpower at your fingertips—standard. And only MAGNUM tractors offer a full powershift creeper transmission with six additional

speeds from .5 to 2.1 mph... for more control and performance. MAGNUM performance.

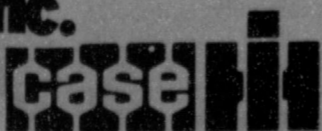
The MAGNUM tractor's new larger cab has 48 square feet of window area... virtually unobstructed visibility... more seating comfort. MAGNUM comfort.

It all adds up. The Case IH MAGNUM 7120 tractor sets new standards for the 150 hp (112 kW) class... and for you. See us for details.

MAGNUM means more.

Five Star Equipment Inc.

Spearman
659-3743 Hi-Way 15 West



MAGNUM COMFORT



See more. Feel better.

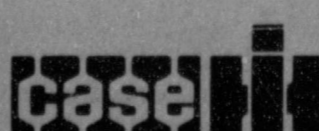
MAGNUM comfort means more comfort and operator efficiency. There's 48 square feet of visibility. And the tractor's sloping hood and hidden exhaust provide unobstructed visibility ahead. This cab is bigger, with more head room, and a wide, fully-adjustable swivel seat. All controls are conveniently located, and designed for comfortable low-effort operation.

The new MAGNUM tractor cab will keep you going strong and feeling good. And it's standard on all Case IH MAGNUM tractors. Four all-new models. 130 to 195 PTO hp. See us for details.

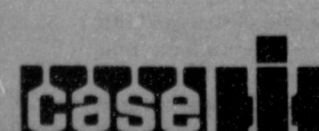


MAGNUM means more.

Five Star Equipment Inc.



659-3743



Playoff hopes evaporate for Spearman . . .

Close match up leaves Lynx stymied, 20-28

Lady Luck proved a feckless partner for the Spearman Lynx Friday night in Panhandle as the Panthers latched on to every bit of opportunity they could scavenge, dumping the Lynx and any Spearman hopes for a post-season playoff spot, 28-20.

The loss by Spearman drops their district mark to 2-3 and their season record to 4-3-1 with only one game remaining in 1-AA play for the 1987 season.

In one of the closest games the Lynx have played this season, a see-saw scoring contest finally dumped on the Panthers' side of the ledger as Panhandle fought back the tenacious Spearman crew all evening long.

The lead swapped hands seven times before Panhandle managed to score a safety and add an insurance TD to pull the game away from a strong-willed Lynx gridiron eleven.

Kent Nix proved to be a thorn in the Lynx' paw as he hit on 18 of 38 pass attempts for 355 yards, including a 93-yard TD pass to flanker Del Smith.

Nix -- filling in at quarterback for starter Tommy Kotara who was sidelined last week with a knee injury -- also kicked two field goals, two PAT's and set Spearman up for that safety with a towering punt which was wrapped up on the Lynx 1-foot line.

Kevin Nelson proved the big gun for Spearman as he hauled in five of Davis' passes for 104 yards.

He also caught a 2-point conversion pass. Shawn Cook caught three passes for 73 yards.

Panhandle opened the scoring Friday evening on their first possession of the game, marching off 62 yards in five plays -- Smith caught passes of 14 and 28 yards in that drive.

Rocha ran in from one yard out to put the first marker on the boards. Nix toed the PAT and the score stood 7-0 with only 4:30 run off the first-quarter clock.

Midway through the second stanza, Spearman put their scoring machine in gear following a fumble recovery on the Panhandle 45.

Eight plays later, Davis found Beeson for a 25-yard TD pass.

The Lynx lined up to kick the ball, but Davis rolled out and found Nelson all alone for the 2-point conversion and an 8-7 lead with 4:31 remaining before halftime.

Panhandle threatened again before intermission, but the Spearman defense rose to the occasion and a Nix field goal attempt was partially blocked to thwart that drive.

It looked as if Panhandle would establish a strong piece of momentum when they opened the second half of schoolboy action with a 93-yard TD bomb from Nix to Smith on a third down and 28 needed from the Panhandle 7-yard line.

The Panthers went for a 2-point conversion and made it, only to have it nullified by a yellow penalty flag.

Their second attempt from 13 yards out was intercepted by Spearman, but Panhandle had regained the lead, 13-8, with 10:14 showing on the third-quarter clock.

But Spearman wasn't about to be outdone by their Panhandle hosts. Following the kickoff, Davis and crew set up shop on their own 27 and covered the 73-yard distance in only five plays -- one of those a 52-yard pass reception via the Davis to Nelson connection.

Cook ran the ball in from three yards out as the Lynx took back the lead by a 14-13 count.

When the snap from center went haywire, Spearman was unable to convert any type of PAT, but with 8:04 left in the third stanza, they held that slim one point edge.

Panhandle took the ensuing kickoff and marched to the Spearman 3-yard line where they were set up with a first and goal from that point.

The Lynx defense proved to be set up as hard as concrete, however, and the Panthers were unable to cross double stripe territory on three consecutive plays, forcing Nix to hit on a 17-yard field goal with 4:25 left that stanza.

That gave Panhandle the lead again, 16-14.

The Spearman defense was called on yet again when, on the ensuing kickoff Spearman fumbled and Panhandle grabbed the errant ball to set up shop on the Spearman 25.

The Lynx defenders proved worthy of that task and -- just five plays later -- Panhandle found themselves with a fourth and goal from the Lynx 5-yard line.

Nix toed this field goal from 22 yards out and upped the Panther lead to five points, 19-14, with 2:44 left in the third frame.

In a quarter-spanning march, Spearman took the kickoff and marched from their own 25 in 14 plays.

Davis provided the final honors on a 1-yard plunge with 8:35 left in the contest. A fake PAT kick didn't work this time, but the Lynx had regained the lead again, 20-19.

Later in the quarter, Spearman stopped Panhandle on the Lynx 45. Nix punted a high, booming kick which was hauled in by Davis, but the Lynx punt receiver was swarmed by a host of Panther defenders and the ball was nestled just outside the Lynx goal line.

The very next play, Davis was tackled in the backfield as he ran up the left side of his line and Panhandle had a safety and the return of the lead with 4:42 left to play.

The safety put the score at 21-20 for the Panthers and forced the Lynx into a free kick from their own 20-yard line.

Matt Tucker kicked the ball to

the Panhandle 25 where Smith hauled it in and then raced back to the Spearman 40.

There, a facemask penalty against Spearman saw the ball marched deeper into Lynx territory to give the Panthers strong field position on the Lynx 25.

Six plays later, Panhandle's Brandon Wood squirted in from the Spearman 4-yard line to give the Panther's an insurance TD and to put them out in front by an 8-point margin following Nix's PAT boot.

GAME STATS

SPM	0	8	6	6	20
PAN	7	0	12	9	28
First Downs	SPM		PAN		
	16		20		
Yds Rush	132		43		
Yds Pass	231		355		
Total Yds	363		398		
Pass Md/Attm	11/27		18/38		
Fum Rec By	1		1		
Int By	0		2		
Pen/Yds	10/100		4/35		

That score came with only 2:24 left in the game. Spearman took the following kickoff from their own 29 on into Panther territory, only to have the drive stopped short on a pass interception at Panhandle's 32.

That interception came with only

10 seconds left to play as the Lynx were desperately trying to get points on the board.

Nix kneeled in the dirt twice to run off those final 10 ticks of the clock and Panhandle had their win while Spearman's hopes of post-season play evaporated.



Free Hearing Test

HIGH PLAINS HEARING ASSOCIATION in conjunction with **GOLDEN SPREAD SENIOR CITIZEN CENTER** located at 14 S. Haney will offer **Free hearing tests** this Tuesday November 3, from 1:30 to 4:30 p.m.

All walk-ins welcome or phone for appointment by calling 659-3521.

Test will be conducted by Jerry Stingley, H.A.S.

Spearman S&L named top profit maker

A Spearman branch office and its home office has been named as the top profit making savings and loan in the Panhandle area by a leading bank and S&L consulting firm.

Interstate Savings and Loan with home offices in Perryton and a branch office in Spearman, reported earnings of \$216,000 in the first half of 1987, the firm notes.

Meanwhile, savings and loan associations across the South Plains and Panhandle area are not fairing as well with losses exceeding \$149.6 million during that same period.

The report was issued by Shesunoff and Company, an Austin-based analyst firm.

A total of 20 of the 26 S&L's in the South Plains and Panhandle are lost money during the first six months of the year, largely because of loan problems and soft loan demand, the report notes.

At Interstate Savings and Loan Association, our customers call it "Peace of Mind"

THANK YOU!

for helping us gain this special recognition . . .

AUCTION SALE

400 ACRES OF CROPLAND AND GRASSLAND
ALSO 4 SEPARATE TRACTS OF PRODUCING MINERALS
— ALL LOCATED IN TEXAS COUNTY, OKLAHOMA —

NOVEMBER 16, 1987 At 2:00 P.M.
IN THE AMERICAN LEGION BUILDING, HOOKER, OKLAHOMA

OFFERING

400 ACRES (Surface Only): The East Half (E½) of Section 8, and The West Half of the SW¼ of Section 9, ALL in Township 1 North, Range 18 E.C.M., Texas County, Oklahoma (400 acres, more or less). LOCATION: From Hardesty, Oklahoma, drive 4 miles south, then 2 and 7/10 miles east to tract entry. (Pavement all the way)

1987 ASC STATISTICS SHOW: 400 acres in farm, 159.1 acres as cropland, a wheat base of 85.1 acres, and the balance as native grassland pasture.

CROP SHARE: Buyer will receive ALL the 1988 wheat crop and ASC payments earned on the same. Approximately 86 acres of wheat are sown.

POSSESSION: Possession of ALL 400 acres will be granted to Buyer upon closing of the sale and delivery of deed.

MINERALS OFFERED SEPARATELY: An undivided three-fourths (¾) interest in all oil, gas and other minerals underlying the foregoing tract will be offered in three (3) separate tracts which are identified below as tracts #1, #2, and #3.

MINERAL TRACT #1: The SE¼ of Section 8, Township 1 North, Range 18 E.C.M., Texas County, Oklahoma, (160 acres, more or less). Royalties paid \$1,210.35 for the first nine months of 1987.

MINERAL TRACT #2: The NE¼ of Section 8, Township 1 North, Range 18 E.C.M., Texas County, Oklahoma, (160 acres, more or less). Royalties paid \$1,210.35 for the first nine months of 1987.

NOTE: Tracts #1 and #2 participate in production from both the Headrick No. 1 and the Headrick No. 2 gas wells, AND both tracts will also share in another well (The Headrick No. 3-8) recently completed in the same section and presently being tied into delivery pipe lines.

MINERAL TRACT #3: The West ½ of the SW¼ of Section 9, Township 1 North, Range 18 E.C.M., Texas County, Oklahoma, (80 acres, more or less). This tract participates in production from the Stinson #1 and #2 gas wells. Royalties paid \$843.60 for the first nine months of 1987.

MINERAL TRACT #4: Offering an undivided one-seventh (1/7) interest in all oil, gas and other minerals underlying The NE¼ of Section 6, Township 5 North, Range 12 E.C.M., Texas County, Oklahoma, (160 acres, more or less). Royalties paid \$64.95 for the first nine months of 1987.

PAYMENT TERMS: 10% of the purchase price is to be paid sale date for placement in escrow with the First National Bank of Hooker, Oklahoma. The balance of the total consideration is to be paid upon closing and delivery of deed. Seller pays all 1987 and prior taxes. Buyer pays all 1988 and subsequent taxes. The sale of all properties is subject to Court Confirmation.

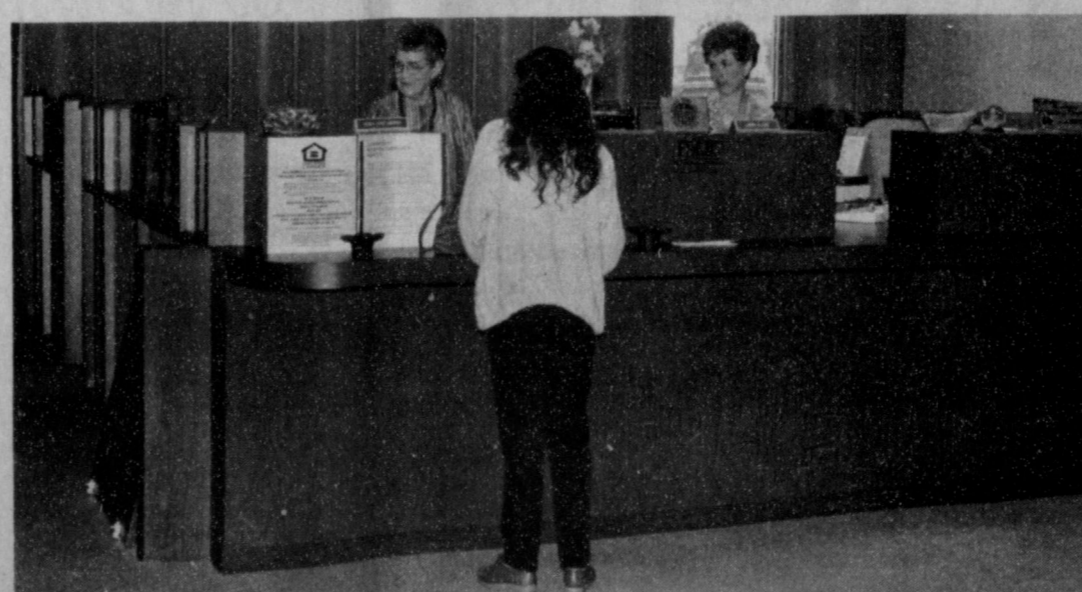
TITLE: Seller will furnish current abstract of title for Buyer's examination. All properties are offered subject to all existing easements, right-of-ways, and oil and gas leases of record.

COMMENTS: This sale provides many advantages for a livestock base of operations -- fenced and cross-fenced into holding areas of grass pasture, feed ground, and wheat land. Hackberry Creek provides water, winter wind breaks, and summer tree shade. Vacant frame dwelling with water well, surrounded by large cottonwood trees, would convert to ideal weekend retreat. Contact AUCTIONEER C.D. HOEME (evenings, Res. also 405-652-2196).

MARY ANNA HEADRICK ESTATE—OWNER
Metbourne D. Headrick—Personal Representative (Phone: 405-652-2337)


C.D. HOEME REAL ESTATE
— BROKER FOR —
FARM & RANCHLANDS
(AUCTION or PRIVATE TREATY)
LICENSED - OKLAHOMA/KANSAS
Phone (405) 652-2196
P.O. Box 751 • Hooker, OK 73946

WRIGHT, DALE & JETT
Guyman, Oklahoma
(405) 338-6591
All Arrangements for Personal Representatives
All Arrangements of Sale Supervised Advertising


Robert Queener, Vice-President

Where Your Deposits are Insured Up To \$100,000 by the FSLIC



MEMBER
FSLIC
Federal Savings & Loan Insurance Corp.
Your Savings Insured to \$100,000

Interstate

Savings and Loan Association

322 Main
Spearman
659-2559

Messiah auditions set in Perryton

Solo auditions for Perryton's annual presentation of The Messiah have been set for next Sunday at 2 p.m. in the Perryton High School choir room.

Persons interested in auditioning should be prepared to sing a selection for The Messiah. An accompanist will be present to play for auditions.

This year's performance has been scheduled for Sunday, Nov. 29 in order to avoid conflicts for

members of the Amarillo Symphony Orchestra who will perform with the choir.

Persons interested in singing with the choir should be present at rehearsals which have been scheduled for Nov. 12 and 19 at 7 p.m. in the high school choir room.

Rehearsal with the orchestra will precede the performance. This year's presentation will be directed by Cloys Webb, Perryton High School choral director.



ELIZABETH ANN CROOK and LONNIE E. LUSBY

Crook-Lusby engagement is announced

Mr. and Mrs. William G. Crook Jr. of Jonesboro, Ark., announce the engagement of their daughter, Elizabeth Ann Crook, to Lonnie E. Lusby, son of Mrs. Dorothy Lusby and the late Albert E. Lusby Jr. of Spearman.

Ms. Crook was graduated from Northern Arizona University and has resided in Durango, Colo., where she was employed as an interior designer.

Lusby attended Texas Tech University and the University of Oklahoma. He is at present a managing partner at Junior Lusby "CATS" Dirt Contractors, in Spearman.

A November 28 wedding is planned in Santa Fe, N. Mex.

MARKETS

WHEAT	\$2.40
MILK	\$3.00
CORN	\$1.92



THE 1987-88 SPEARMAN HIGH SCHOOL STUDENT COUNCIL

SHS elects new student council

A full slate of student council members for the 1987-88 school year have been elected at Spearman high school with Kevin Nelson named as president of the group.

Serving as vice-president will be Krista Kirkland and secretary is Carly Shieldknight. Staff sponsor is Wanda Jones.

Senior class members include Paige Pittman, Norman Scorggs, Matt Jones and Nelson.

Junior class representatives include Jan Crawford, Ginger Pearson, Shieldknight and Kirkland.

Clint DeArmond, Michelle Cook, Laci Lasater and Cacy McGill will represent the sophomore class.

While freshman council members are Cam Butts, Chris Williamson, Kyla Nelson and Marci Womble.

Among the Neighbors

by Helen Fisher

Ann and Jim Turner are proudly announcing the arrival of their son, Trevor Thane. He was born on October 23, at Northwest Texas Hospital in Amarillo, weighing 7-pounds, 4 1/2-oz.

Already making plans for first Christmas with a grandchild is Mr. and Mrs. James Turner, Jr. of Nunn, Co. and great grandmother, Mrs. Ida Turner, also of Nunn.

On the maternal side is grandparents Mr. and Mrs. Wayne Hamilton, Jr. of Rocky Ford, Co.; great grandparents Mr. and Mrs. Paul Lusk, Rocky Ford and Mr. and Mrs. Wayne Hamilton, Sr. of LaJunta, Co.

Ann's mother, Mrs. Wayne Hamilton Jr., is here now for several days helping Trevor Thane adjust to the ways of the world.

flew to New Carlisle, Oh. recently to visit her sister, Mary Nell and Gale Webster.

Old friends here will be distressed to learn that Mary Nell is having a very slow recovery from knee surgery.

Bud Jackson is back at home after a stay in St. Anthony's hospital in Amarillo. He is making good recovery and pleased with the results of his tests.

Their daughter, Robbie (Mrs. Dean) Rogers flew in from Winfield, Al. to be with them and is expecting to return home Monday. The Rogers were transferred from Brownwood, Tx. about five months ago. He is with the 3-M Company.

Altha Groves returned Tuesday from a three weeks stay in Arizona. She flew to Phoenix to attend the wedding of a cousin. Later she visited other cousins in Mesa and Benson.

Mr. and Mrs. Russell McClure spent Thursday through Monday with his parents, Mr. and Mrs. Bill McClure, in Austin.

He has number of relatives in the Austin area all of whom they visited.

Mr. and Mrs. Ira Harbour returned empty handed, but full of memories, from a deer and elk hunting trip in Colorado last week.

They hunted in the area of Chermo and Ground Hog, co. Though the snow is deep in the high mountains, the weather is still warm in the valleys and the game had not come down.

The Harbours enjoyed visiting old friends as well as their daughter, Ann and Russell Hindmarsh. At Durango they visited their granddaughter, Manda, who is a senior at Ft Lewis College there.

Sharon Sutton spent a long weekend at San Marcos, visiting her daughter, Kristi Wright. Kristi is a freshman at Southwest Texas University.

Mrs. Lois Bailey McCarty of Oklahoma City, a long ago resident of Spearman, was here several days last week.

She was attending business interests here and was accompanied by her son and little grandson.

Robin and Leota Giblin of Morse

During their absence they left their business, McClure Paint and Supply, in the capable hands of her mother and aunt, Mrs. Betsy Ward and Selma Reneau. The ladies made good paint salesmen, but turned down the painting detail.

Mr. and Mrs. Monte Harbour had made a full schedule for most of October. They were in Cassidy, Kan. to oversee moving of their cattle from grass in the Flint Hills.

From there they spent several days in the Ozarks touring the foliage areas. They enjoyed "Shepherd of the Hills" at Branson and the Passion Play at Eureka Springs, Ark.

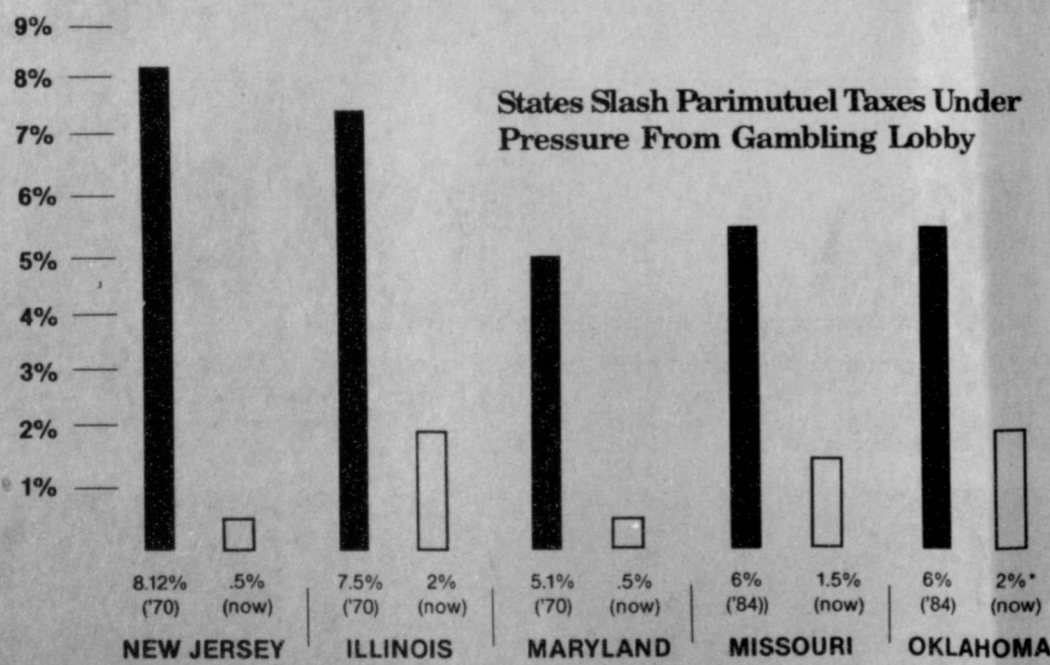
Soon after their return, Mary K. wife of their son David, underwent surgery at the Golden Plains Community Hospital at Borger. That was last Thursday and on Monday, as a result of developing complications, surgery was again necessitated.

Monte and Marie have been looking after grandchildren Lena

See "NEIGHBORS", p-7

OOOPS

What the dog and horse gambling industry forgot to tell you.



Across the country, highly-paid lobbyists are begging state legislatures to slash the state's portion of the gambling take. Why? Because racing is a dying industry. 50% of horse breeders lose money; 90% of horse owners lose money; racetrack attendance is declining steadily.

Last year the racetrack lobbyists convinced our legislature that racing was a good business deal for Texas. But if we vote in parimutuel gambling, they'll be back in Austin next year telling a much different, sadder story.

Texas doesn't need another sick industry crying to the state for help. Gambling is a bad bet for Texas.

DON'T BET ON IT.

Vote NO to dog and horse gambling on November 3rd

Vote NO to Referendum 2... it is near the end of the ballot.

Paid political advertisement by Texas' Who Care, Alan Griswood, Treasurer, 2506 McKinney, Suite B, Dallas, Texas 75201.

FIRST BAPTIST CHURCH

GRUVER

SPEARMAN

STARTING NOV. 1

SENIOR CITIZENS (w/age i.d.)
(65 yr. YOUNG OR OLDER)
COME IN AND SIGN UP FOR YOUR FREE

Club Membership Card
Which entitles you to
2.00 movies everyday!!

Rent Your Movies from the
Knack Shoppe
WHERE EVERY 100TH CUSTOMER RECIEVES
1 FREE TAPE RENTAL
REGISTER NOW!

FOR FREE TURKEY TO BE GIVEN AWAY
just in time for Thanksgiving!

Knack Shoppe

317 MAIN 659-5046 9 A.M. - 11 P.M. DAILY

SPEARMAN LYNX!

Watch out Highland Park

ANGRY PURPLE



HIGHLAND PARK
here Nov. 6

Come out and support
the LYNX!!!

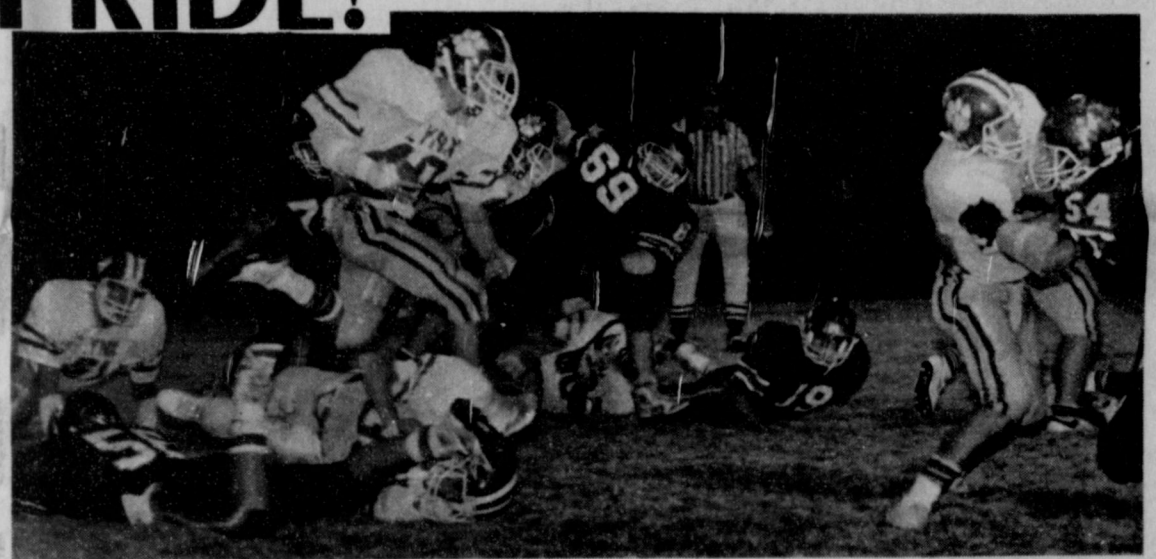


show THAT



IS COMING AT YOU

PURPLE PRIDE!



WIN, LOSE OR DRAW, WE SUPPORT THE SPEARMAN LYNX!!!

B&B Farm Industries
703 Collard
659-5507
Spearman, Tx.

Tucker Water Well
120 Hwy. 207
659-3013
Spearman, Tx.

Spearman Cable T.V. Systems
308 Main
659-3363
Spearman, Tx.

J.G.'s
306 Hancock
659-3424
Spearman, Tx.

Spearman Jack & Jill
123 W. Kenneth
659-3190
Spearman, Tx.

White House Lumber Co.
306 Davis
659-3792
Spearman, Tx.

Gordon's Drug
314 Main
659-2141
Spearman, Tx.

Archer Inc.
Airport addition
659-5272
Spearman, Tx.

Golden Spread Sales
412 Collard
659-3776
Spearman, Tx.

First State Bank
1 N.E. Court
659-5565
Spearman, Tx.

Hansford Implement
Hwy. 207
659-2568
Spearman, Tx.

Hansford Co. Farm Bureau
307 W. Davis
659-3133
Spearman, Tx.

Nursanickel
Hwy 207 S.
Spearman, Texas
659-3737

B&B Sales
205 N. Dillon
659-5507
Spearman, Tx.

Beedy Furniture
725 W. 7th
659-3701
Spearman, Tx.

Thriftway
505 Plains Shopping Center
659-2522
Spearman, Tx.

H&H Water Well Service
Gruver Hwy
Spearman, Tx
659-5577

Jr. Lusby Cats
W. Gruver Hwy
Spearman, Texas
659-3766

Spearman Jaycees
Spearman, Texas

Mark Sheets Automotive
RFD
Spearman, Tx
659-2773

Man-wife evangelists to speak

Tim and Darla Jack will minister in song and by sharing personal experiences in a special program Tuesday evening at the Union Church in Spearman.

The program will begin at 7 p.m. and a nursery will be provided for children 2-years old and younger.

The evangelical man and wife team have appeared on Pat Robertson's 700 club and on the Trinity Broadcasting Network.

They have also appeared on 100 Huntley Street, Canada's widely

received Christian program and are regulars on PTL's Campmeeting U.S.A.

Accomplished gospel singers, the two have been members of the Continental singers, Festival of Praise and the Spurrflows.

Now they travel extensively across the United States and other parts of the world in their evangelical effort.

"We'd like to invite the public to attend this special event," notes Union Church pastor Steve Rogers.

United in Marriage



EDWARD and LEANN BECK

Edward Clarence Beck and Thea LeAnn Robertson were united in marriage October 17 at 4 p.m. with the Rev. Russell Gibbs officiating.

The ceremony was held at First Baptist Church in Spearman.

The bride is the daughter of Mr. and Mrs. Robert Moore of Amarillo. Parents of the groom are Mr. and Mrs. Verlin Beck.

Maid of honor was Christina Mathews, sister of the bride of Sulphur Springs, Tex.

Bridal attendants were Becky Wieck, Etter Tex, Lori Broxson, Sunray.

Best man was Chad Guthrie of Amarillo. Groomsmen were Bob Jarvis of Spearman and Damron Henson of Amarillo.

Guests were seated by Monte Beck, Lubbock and Brooks Beck, Spearman both brothers of the Groom.

Flower girl was Elissa Ray of Kelton, Tex. Ring Bearer was Dustin Robertson of Denison, Tx. Candlelighters were Amy Stewart of Amarillo and Barry Beck brother of the Groom.

Playing the piano and organ for the wedding ceremony was Eddie Gail Martin and singing the special wedding songs were Carolyn and Scott Taylor singing "Wedding Song", "Together" and "The Lord's Prayer".

Shea Crawford of Spearman registered the wedding guests.

The bride graduated from Amarillo College and is working at Texoma Medical Center in Denison, Tx. as a Radiation Therapy Technologist.

The groom graduated from Spearman High School and has been attending college at West Texas State University. He will be attending college in Denison where the couple will reside.

Amendments address variety of subjects

Justice of the Peace courts, governmental and proprietary functions of a municipality, creation of jail districts, super collider funding, and ad valorem tax relief for certain off-shore drilling equipment are the topics of proposed Constitutional amendments 16 through 20, which the public will decide on Nov. 3.

In all, 25 amendments and two referendum questions await the state's electorate. Absentee voting continues through Friday.

Based on information provided by the League of Women Voters, here is a pro and con look at five of the proposals.

Amendment 16 would provide that certain justice precincts could have more than one justice of the peace court. It is basically designed for the state's metropolitan areas, arising from a dispute in Dallas county. In all, 15 of the state's counties would be affected, if the proposal passes.

The state constitution currently allows for no county to have more than eight justice precincts and no more than two justices in any one precinct unless a city of 18,000 or more people is wholly contained in that precinct.

Proponents say the amendment is needed to correct a workload imbalance. The against crowd points out that discretion to set the number of justices of the peace in each precinct would open up various abuses, including using the office as an award or getting rid of it as a punishment.

Amendment 17 would authorize the legislature to define for all purposes the governmental and proprietary functions of a municipality. In this context, governmental functions might include law enforcement and fire protection services. Proprietary functions might include ownership of a library.

Courts traditionally have decided whether a municipal governmental function if governmental or proprietary. This amendment would change that. Proponents say the tort reform measure is needed

because cities have been unable to obtain liability insurance or unable to obtain it at affordable rate.

Opponents claim the amendment would eliminate 200 years of common law decisions to resolve the liability insurance crisis. Defining most functions as governmental to make them subject to a cap, they continue, would mean that citizens whose damage claims are higher than the cap would not be able to recover what they deserve. The courts, opponents claim, should continue to define the functions.

Special jail districts could be created, if Amendment 18 passes. The authority to create such districts would rest with county commissioners. Proponents say the amendment would allow counties which need to build new jails or rehabilitate old ones to pool resources.

On the other side of the issue, opponents say that Texas residents do not need another governmental agency to tax them. While voters would have a vote on the issuance of bonds, they would have no voice on whom commissioners would appoint to the jail district board, they add.

Amendment 19 would permit the legislature to authorize an appropriate state agency to issue up to \$500 million in general obligation bonds for the superconducting super collider. An additional \$500 million in revenue bonds could be issued.

Supporters say the \$4.4 billion federal project, to be used for basic research, would be an economic boon to Texas at a time when it is essential to diversify the Texas economy.

The negative word is that the super collider is a high-cost, scientific boondoggle of unknown purpose and little practical application. The super collider would triple the amount of low-level nuclear waste Texas must dispose of every year, the opposition states.

Amendment 20 would authorize the legislature to provide ad valorem tax relief for certain off-shore drilling equipment that is not in use. such rights currently are subject to local taxation if they are located in Texas coastal waters but not if they are in federal waters.

Supporters say the offshore drilling industry is depressed and needs relief. The tax relief would give Texas an advantage in competing as a location for the future construction of a large new rig storage facility currently under construction.

Opponents claim the amendment would create a virtual windfall or subsidy to the oil industry, while removing a large source of revenue from taxing entities. Relief for the oil industry should be tied to the price of oil, with any subsidy ending as prices of oil increase.

KEEPING THE FAITH

Readers Rank Newspapers 1st In Advertising

The newspaper is the "most believable" ad medium. Consumers also "look forward" to reading newspaper ads far more than they do any other kind of advertising.

Most Believable Advertising Medium

Newspapers	42%
TV	26%
Radio	11%
Magazine	11%
Direct Mail	5%

(SOURCE: Opinion Research)

* * * *

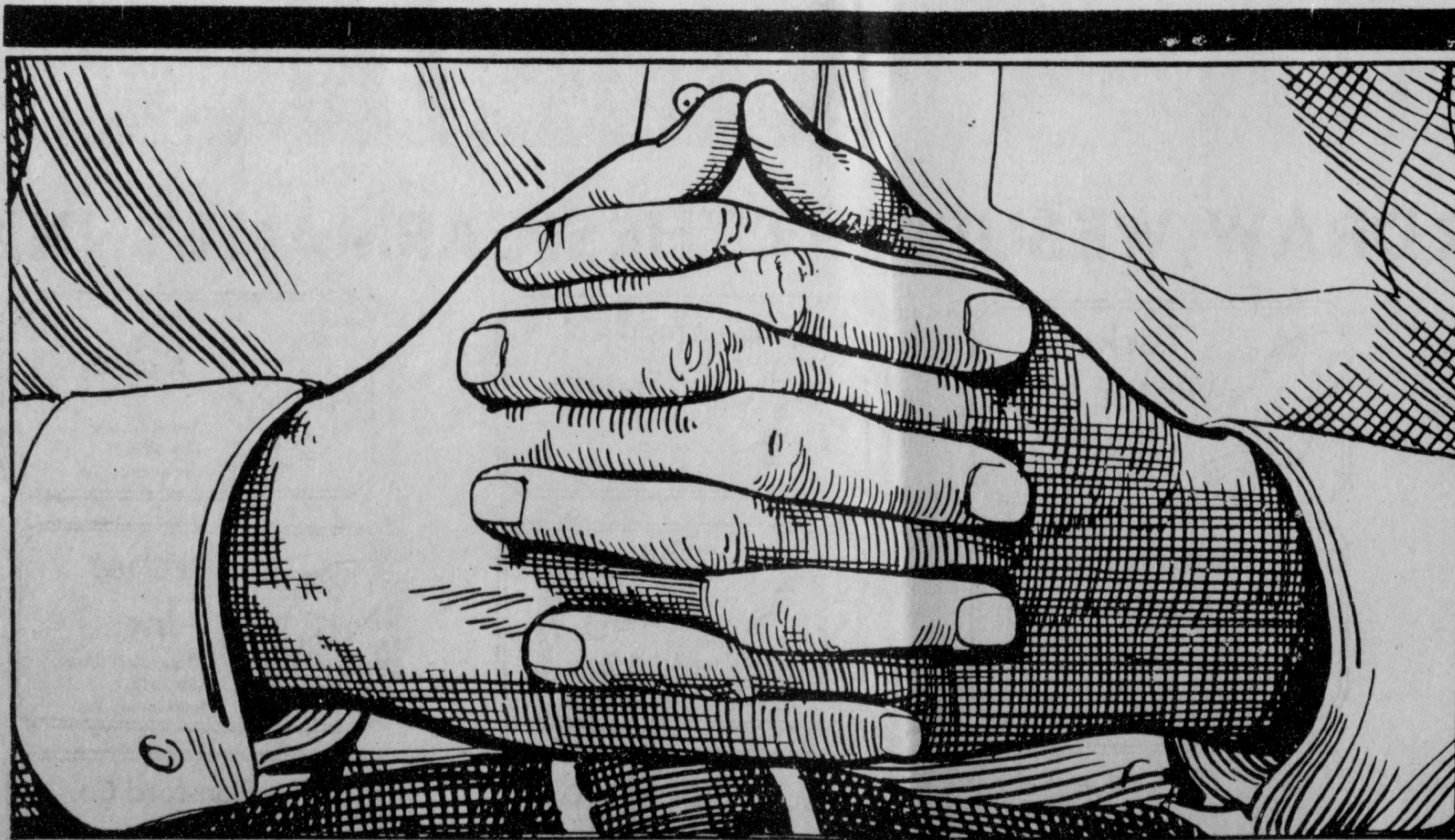
Readers Look Forward To Media Advertising

Newspapers	44%
Radio	10%
TV	9%
Direct Mail	(fractional)

(SOURCE: Audits and Surveys, Inc.)

Prepared by Texas Newspaper Advertising Bureau (TNAB)
An affiliate of the Texas Press Association

Trust In Newspapers ... far exceeds media



DON'T JUST SIT THERE

Something to Give Away?

Whether it's a cat or dog or a white elephant, your classified ad is free!

Maximum of three lines

Take Advantage of our Free Classified Ads!

Looking for a Job?

Any individual seeking employment may take advantage of our free offer. Call or come by today!

Maximum of three lines.

Hansford Plainsman

Your Carat Diamond Jewelers

Hickerson Jewelers

Hickerson Signature Watch

This Week's special

\$79⁹⁹



- Swiss quartz accuracy
- 10 Genuine diamonds
- Scratch resistant crystal
- Adjustable expansion bracelet

Limited Quantity for Only \$79⁹⁹



721 W. 7th 659-3566
Spearman

Your Home Is Full Of Hidden Dollars



Call 659-3434

Turn idle items into cash fast with a Want Ad

CLASSIFIED RATES

Regular . . . Per Word-\$0.13
 Display . . . Per col. Inch-\$4.20
 Double rate for blind ads
 Minimum charges
 Cash \$4.00
 Charge \$4.50

CASH IN ADVANCE ADS

•Work wanted• •Trailers for Sale•
 •Business Opportunities• •No longer Responsible• •Political Advertising• •Child Care•
 •Baby sitting• •Garage Sales•
 •Out-of-county Ads unless advertiser has established credit with •The Spearman Reporter•

DEADLINES

To place or cancel ads
 Friday - 12:00 p.m. Sunday edition.
 Tuesday - 12:00 p.m. Thursday edition

The Spearman Reporter reserves the right to reject, edit, revise and properly classify all advertising submitted for publication. The Spearman Reporter also reserves the right to cancel any advertisement at any time.

THE SPEARMAN REPORTER
 213 Main, P.O. Box 458
 Spearman, Texas 79081

Real Estate

FOR RENT: Nice 3 bedroom unfurnished house. Carpet, drapes, central air & heat. Elec. or gas hookup for cook stove. Cleaning deposit required. No pets. Call 659-3657.
 s51-rtm

HOUSE FOR SALE: 2 bedroom 1 1/2 bath 2 car garage newly remodeled 1 block from school priced in the low 20's call 659-3987 S 51 rtn

COMPLETE MOBILE HOME Services available. Check our cheaper rates on transporting, escorting, and skirting anchors and cool seal for all makes. Large selection of new, used and repos. B & D Mobile Homes. Guymon, Ok. 405/338-5315.
 s47-2tc

\$99 total down payment for 1987 doublewide, 3 bedroom, 2 bath, delivered to your location. 120 months at 11% APR at \$333 per month. Cat Art at (806)376-5630.
 S49-9t

16x80 mobile home, 3 bedrooms, 2 full baths, fireplace, split level kitchen, lots of living space. Set up on corner lot with fenced back yard. Must see to appreciate. Located at 401 S. Hazelwood. Call 659-2354 after 5:00.
 s51-8tp

\$130 per month payment for 14- foot wide mobile home. Remodeled and ready for delivery. 12.77% APR at \$500 down for 60 months. Call (806)376-4612 and ask for Tim. S49-9t

\$179 per month for 3 bedroom, 2 bath mobile home. Completely refurbished with new carpet. \$743 down at 12.77% APR. for 84 months. Free delivery and set up. Call A-1 Mobile Homes at (806) 376-5363.
 S49-9t

ABANDONED HOMES - Take over payments on 2 and 3 bedroom homes. **Quality by phone.** 806/381-1352. Call collect.
 S46-rtm

\$206 PER MONTH for new 1988 doublewide. 3 bedroom, 2 bath. Free delivery and set up. 13.75% APR at 240 months. \$1,591 down. Ask for Ruben at (806)376-8611.
 S49-9t

WANTED TO BUY: House to be moved. Minimum 1200 sq. ft. 659-2808.
 s51s-4tc

FOR SALE OR RENT: Vacant, clean, and ready for new owners. 3 bedrooms, 1 1/2 baths, office, lots of cabinet storage. Good condition. Nice neighborhood 727 Wilbanks. Call Sheila Watley 659-3970 or 659-3838.
 S52-rtm

FOR RENT: 3 bedroom, brick, fully carpeted - with attached garage. 526 S. Bernice. Call J.C. Miller 274-4427 Borger. If no answer call 659-2147.
 S52-2tc

STEAM RINSE & VAC-Rinse and Vac Shampooer for rent at Gordons Drug. \$10.95 up to 24 hours.



You are cordially invited to a Baby Shower for Kamala Goodheart Saturday, Nov. 7 3:30-5:00 Reception room of Blackburn's Flower Basket Given by Hostesses
 S48-2tc

HANSFORD COUNTY Planned Parenthood 412 Davis 659-2483 Spearman, Tx. Monday - Friday 8:30 - 12:30

Crisis Center Report

Mary Frances Ellzey

As of our October Annual Meeting, the PCC board is operating under new officers. The new Chairman is Celestine Thompson; Vice-Chairman is Dr. Rick Seiwert; Secretary is Mary Dudley; Treasurer is Cecile Parvin.

The retiring officers, including me, are still deeply involved in PCC board business, and I am back on the list of active crisis counselors.

Three new board members from Hansford County are Marcia Murphy, Michelle Davis, and Denise Harbor. Two new board members from Booker are Steve Campbell and Betty Jones. Dr. Manon Childers is a new member from Perryton. We are delighted to welcome them to our working force. These new board members replace former board members who have rotated off the membership list.

One of our volunteers, Linda Hall, and I spoke to the junior high students and again to the senior high students of Follett during this past month, on the subject of Date Rape. Auditors were their supervising teacher, Mrs. File, and mothers of students. The occasion was sponsored by the PHI BETA EPSIBN Sorority of Follett. Boys and girls were addressed together, and the presentation was well received.

The PCC wishes that all the school districts in our three counties would permit such presentations. Date Rape is becoming a major problem.

Speaking of problems - our area is having problems with enforcing protective orders when or if the offender is found to have "performed some reconciliatory action or to have made some reconciliatory statement." Often enough the victim is arrested in such cases.

The lawmakers of Texas have realized that the offender is frequently successful in forcing or cajoling his way into the house of the victim, thus nullifying the order. Many times in the past such action or statement has been interpreted to establish that the principles are married under common law.

SB 887 by Krier and Morales, and SB 1111 by Krier and Collazo clarifies that such actions and/or statements do not affect the duty of an officer to enforce a protective order.

Be aware of your rights under the new legislation.

Furthermore, spousal rape is now a crime under HB161 by Danburg and Krier.
 Be ye therefore warned.

Mayor expresses support of tort reform ballot

Mayor C. Ralph Blodgett of the city of Spearman today expressed support for Amendment Number 17 on the November 3 general election ballot. The Mayor said that

Amendment 17 must pass if Texas Cities are to successfully face the liability insurance crisis which has plagued municipal government for several years.

Amendment 17 would empower the state legislature, and not the courts, to determine how much liability a city has for each of its activities. Some municipal activities, known as "governmental" activities, are subject to limits of liability. For other activities, known as "proprietary" activities, the city faces unlimited liability.

"This amendment will finally bring some predictability to the municipal insurance marketplace," the Mayor said, "because it will allow the legislature to specifically determine which activities are governmental and which are proprietary. I believe that with predictability will come stabilized insurance costs."

Historically in Texas, the courts have decided whether a municipal function was governmental or proprietary. "Each court decision changed the playing field," the Mayor said, "and insurance premiums continued to climb, if coverage was available at all."

The Mayor noted that premiums for municipal liability insurance have skyrocketed in recent years, and pointed out that taxpayers suffer when municipal insurance rates increase, because taxpayers ultimately pay the premiums. "We believe that over the long term, Amendment 17 will help hold costs down," the Mayor said.

Help wanted

PART TIME-HOME MAILING PROGRAM Excellent income. Details, send self-addressed, stamped envelope. West, Box 5877, Hillside, NJ 07205.
 S52-12tc

HIRING! Government jobs - your area. \$15,000 - \$68,000. Call (602) 838-8885. EXT 4514.
 S47-9tp

Help Wanted: Nurse needed for doctors office beginning Dec. 1. Will need 2 weeks orientation. Call 659-5551.
 S52-2tc
 S52S-2tc

EXCELLENT INCOME FOR HOME ASSEMBLY WORK. For Info. Call 504-646-1700. Dept. P-1039
 S-Nov. 1,5,15 & 19

EXCELLENT INCOME - Taking short phone messages at home. For information call (504)649-7922. Ext. 1290-A.
 SOct. 15,29-Nov. 12

Work wanted

Will do babysitting in my home. Monday - Friday, call 659-5298.
 S52S-2tp

For Sale

ARABIAN HORSES - Beautiful, well-mannered, reasonably priced. 87 stud colt, handled by children. \$400. Others ready to train! \$500 and up. Offers-trades, 435-9279 evenings.
 51s-3tc

FOR SALE: Silvertone Chord Organ in good condition. For information call 659-2809.
 s49-7tp

High Plains 100% natural organic fertilizer. Steer manure compost. Apply to lawns, flowers, gardens or potted plants. \$2.00 or \$2.50 for delivery. 40 lb. bags. 416 W. 13th or call 659-3301.
 S52-4tp

Miscellaneous

WANTED MILO to harvest and haul after November 1. I have 2-8820 John Deere Combines, Turcks, and grain cart.
 806-1935-6414.

continued from p-4

NEIGHBORS

K. and Jacob while David is otherwise occupied.

After a second go-round of 11 days with hip surgery and complications, Jo Ella Jones is back at home.

Billy Jones brought her back on Monday from the Methodist Hospital in Lubbock.

She feels that she is now recuperating, but will be in a wheel chair for another month.

LEGAL NOTICE

The Hansford County Hospital District is now accepting sealed bids on some items in storage that are no longer of any use to the Hospital District. All bids must be specific as to the item wanted, and all bids must be for an individual price. Each bid must state the number of items you want if there are more than one item for sale.

All bids must be received no later than November 20 1987. On items of quantity, the highest bidder will have first choice, second highest bidder will have second choice, etc.

Hansford County Hospital District reserves the right to refuse any and all bids. For information regarding any of the items to be bid, contact Ken Freeman, Monday - Friday 8 a.m. to 5 p.m. at (806)659-2535.

All bids must be addressed to: Hansford County Hospital District, Attn: Albert La Rochelle, 707 S. Roland, Spearman, Texas 79081.

The following items are up for bid:

- 4 - 30" hollow core doors, with knobs (fair condition)
- 2 - 36" hollow core doors, with knobs (fair condition)
- 26 - 46" wood veneer 1/4 Hr. fire doors (fair condition)
- 1 - 36" steel door with wired glass
- 1 - 4 ton block pully with hook
- 1 - old stainless steel stretcher
- 4 - ton block pully with hook
- 1 - old stainless steel stretcher
- 4 - 2" x 10" x 16' boards
- 2 - nutone heat vent units, flush type
- 6 - drop in type 4' (2 bulb) florescent fixtures
- 1 - T.V. stand
- 1 - bedside table
- 1 - 4' counter top with beige drop-in round sink w/faucets
- 1 - school chair with half desk top
- 1 - small metal rolling table
- 3 - handicap commode support racks
- 2 - incubators
- 1 - explosion proof hanging outside light fixture
- 2 - 36" solid core wood doors
- 2 - 30" solid core wood doors
- 3 - 36" solid core wood doors w/wired glass viewing panels
- 32 - self-adhesive floor tiles
- 1 - fold-away door
- 4 - beige high-back reclining chairs
- 2 - gold high-back reclining chairs
- 4 - brown steel framed chairs
- 7 - orange high-back cushion chairs
- 4 - gold high-back cushion chairs
- 1000' - 18 gage stranded wire
- 1 - Craftsman 30" lawn sweeper
- 1 - 15 gallon 115 volt electric water heater
- 4 - white porcelain sinks with faucets
- 1 - pink porcelain sink with faucet
- 1 - pink commode
- 1 - yellow steel framed chair
- 1 - speaking podium
- 1 - coffee table
- 1 - white porcelain drinking fountain

Arts, crafts show set Saturday in Guymon

Time is drawing near for the fifth annual Pumpkin Patch Arts & Crafts Festival. Lambda Psi Chapter of Beta Sigma Phi will host the event scheduled for Saturday, November 7, from 10:00 a.m. to 6:00 p.m. at the Texas County Activity Center in Guymon, Oklahoma.

Over one hundred exhibitors with various arts and crafts will be present along with a concession provided by Lambda Psi including homemade desserts, luncheon items, soft drinks, tea and coffee.

As yet another attraction, the Panhandle Business Professional Women will be conducting a Book Fair at the Activity Center in a room adjacent to the craft exhibits.

School Menu

Monday, Nov. 2
 Sloppy Joe/Bun
 French Fries
 Salad Bar
 Pudding Pop
 Milk

Tuesday, Nov. 3
 Fried Chicken
 Salad Bar
 Potatoes/Gravy
 Hot Bread/Honey
 Milk

Wednesday, Nov. 4
 Lasagna/TY Toast
 Green Beans
 Cole Slaw
 Pineapple
 Milk

Thursday, Nov. 5
 Hot Turkey Sandwich
 Corn on Cob
 Salad Bar
 Birthday Cake
 Milk

Friday, Nov. 6
 Hamburger/Bun
 French Fries
 Salad Bar
 Cookie
 Milk

Elementary & Jr. High
 Nov. 2
 Sloppy Joe/Bun
 French Fries
 Mixed Vegetable
 Pudding Pop
 Milk

Nov. 3
 Fried Chicken
 Diced Carrots
 Potatoes/Gravy
 Hot Bread/Blend
 Milk

Nov. 4
 Lasagna/Bread
 Cole Slaw
 Green Beans
 Pineapple Tidbit
 Milk

Nov. 5
 Hot Turkey Sandwich
 Corn on Cob
 Chopped Spinach
 Birthday Cake
 Milk

Nov. 6
 Hamburger
 French Fries
 Shredded Lettuce
 Cookie
 Milk

For Quality Dry Cleaning



Shirts & Jeans Starched

to Your Liking

Free pickup and Delivery

Mon and Thur. Afternoons

Call Collect 435-4211

OSGOOD MONUMENT CO.

Amarillo, Texas
 Dealers of Rock of Ages Granite, as well as all colored granites, marble and bronze memorials.

represented by
BOXWELL BROS. FUNERAL HOME

519 S. Evans
 659-3802

ALCOHOLICS ANONYMOUS MEETING

Hansford County Library (Upstairs)

122 Main-Spearman

Open meeting 2nd Tuesday

AL ANON

Tuesday
 8:00 P.M.

WEIGHT WATCHERS: meets each Monday at 6:00 p.m. at the Home Demonstration Building, Spearman Texas.

NOTICE

Wallace Monument Co. Monuments, Curbing, Grave Covers Local Representative **LEONARD JAMESON** Spearman, Texas

PANHANDLE CRISIS CENTER: 101 S.W. Forth, Perryton, Texas 79070, 806-435-5013. Help is available at no charge for domestic violence and sexual assault. Call Panhandle Crisis Center, receive support during a difficult time. Counselors on call 24 hours a day. Call for help.

APPLIANCE REPAIR - Call Jim Nobles at 659-3528.

TOPS 1245, SP meets every Tuesday night at 7:30 p.m. at the Girl Scout House located at 22 S. Endicott. Drop by and join TOPS.

L&M Body Works

1501 Hwy 15
 659-2775

Tailpipes - \$29.95
 Mufflers - \$39.95
 Most Duals - \$160.00 complete

Ochiltree hosts November show

Ochiltree County Extension Homemakers Council will be hosting the sixth annual "Christmas in November", on November 4th, at the EXPO Center in Perryton.

From 9:30 to 10:00, coffee will be served while the participants register. At 10:00, there will be a demonstration by John Rogers on making pine cone wreaths, pine cone Christmas trees and other decorations. During noon, a tasting bee will be prepared by the entire Extension Homemakers Club mem-

bership of Ochiltree County.

The Ladies will be wearing Christmas ensembles which they have made. The tables will be set for demonstrating proper types of Christmas entertaining along with a demonstration on folding table napkins.

Afternoon entertainment and instruction will include "Forty-five different ways to tie a scarf", by Jo Dunham of Guyton, and "Gems of Interest" by Gene Buban, owner of Gene's Jewelry and Gifts of Perryton.



ONE OF THREE WREATHS TO BE GIVEN AWAY by the Spearman Study Club is displayed here by club members Linda Close [left] and Trudie Schneider. The Club is using the special fund raiser to help provide funds for paving at the Spearman county barn.

Study Club to give wreaths

A chance at walking away with one of three handmade Christmas wreaths is being offered by the Spearman Study Club as a fund-raising project for improvements to the Spearman county barn.

The three wreaths have been handmade by members of the club with tickets available for \$3 each or two for \$5, notes Trudie Schneider.

The wreaths are on display at Lady Fair, J.G.'s and Chalors in Spearman and tickets are available there or from any club members, notes Schneider.

The drawing for the wreaths will be held at the Study Club's annual Arts and Craft Show and Sale Nov. 15.

The annual show and sale will be held in the Spearman high school cafeteria where handmade arts and crafts will be offered to the general public.

The drawing on the wreaths will be held at 4 o'clock that afternoon. All money raised from the wreaths will go toward the paving project at the Spearman county barn, notes Schneider.

Have a voice in your child's education!

VOTE NO!

on referendum No. 1.

Paid for by Spearman CTA

MINERALS FOR SALE

Four [4] Separate Tracts of Producing Minerals, [All located in Texas County, Oklahoma] will be offered at Auction November 16, 1987 at 2:00 p.m. in the American Legion Building in Hooker, Oklahoma. See details of this Estate Auction advertised in this issue.

Mary Anna Headrick Estate Owner
C.D. Hoeme, Broker-Auctioneer, [405] 652-2196
Hooker, Oklahoma

We are pleased to announce . . .



. . . the association of Richie Fletcher

Come in and say, "Howdy" to Richie Fletcher, First National Bank's new vice - president and loan officer. The addition of Richie to our staff will further serve our customers and is in keeping with our commitment to service, professionalism and community service.

Richie's no stranger. A native of Hansford County, he graduated from Gruver High School in 1960 and has spent over 18 years in Hansford financial service industry.

He and his wife, Carolyn, have three children -- Stan, 22, is a student at North Texas State University in Denton. Lori Messer, 19, is a housewife and is married to Gruver's Darrell Messer. Tim, 17, is a senior at Gruver High School.

A 1965 graduate of Baylor University, Richie is an active community leader. He currently serves on the Gruver city commission and is a member of the board of directors for Gruver Memorial Cemetery Association. A member of the Gruver Lion's Club, he is their past-program chairman. He is also a former member of the Gruver Planning and Zoning commission.

Active in his church, Richie serves as Sunday school teacher for the Young Marrieds class and is a deacon of the Gruver First Baptist Church. Carolyn shares responsibility here by playing the piano for church services.

A member of the North Panhandle Bank Association, he has also served as president for two years of the Panhandle Chapter of the Bank Administration Institute.

A bank should be more than a place to keep your money. We run our business on that belief. It's because of bank officers the calibre of Richie Fletcher we feel we can truly say that First National Bank in Spearman is doing everything possible to make banking . . .



Good for You
SM
and Hansford County Too!