



The

SUNDAY Hansford Plainsman



VOLUME VI, NO. 23

SPEARMAN, TEXAS

SUNDAY, JANUARY 10, 1965

Colleens Fall To Lynxettes

Spearman's Lynxette forwards got back on the scoring trail Friday night as the guards continued to shut out the opposition's scoring. This combination beat Shamrock 68-22.

The game was no competition as the Lynxettes lacked only five points having enough points to win in the first quarter. The Lynxettes were leading 18-2 after eight minutes.

The Lynxettes led 33-7 at halftime and 47-17 at the end of three quarters.

Vicki Wilde led the big scoring parade with 19 points. Four of the five Lynxette forwards scored in the double figures.

Phyllis Patterson scored 15, Johnie Vernon, 13, and Karen Gibson 12. Barbara Wilde had nine.

Coach Dean Weese used all seven guards and they were tough.

BOX SCORE				
Name	fg	ft	f	tp
Patterson	6	3	2	16
Wilde, V.	8	3	1	19
Wilde, B.	3	3	1	9
Vernon	4	5	4	13
Gibson	6	0	1	12
Ownbey				2
Hutchison				1
Lesly				1
Smith				1
Archer				3



NEW LICENSE PLATES-- Mrs. Joe Day, a clerk in the Hansford County Tax Office shows off the new plates that will be on Texas cars this year. The 1965 plates will have three letters as well as numbers this year. The new plates will go on sale Feb. 1 and the deadline is April 1. The black plate is the 1964 one.

PLAINSMAN PHOTO

Three Are Injured In Two Car Wrecks

Three persons were injured in two separate accidents Friday night. One accident happened in Spearman, the other 13 miles south of town in Hutchison County.

Two men, Thomas Chitwood of Spearman and Paul Owen were injured in a one-car turnover 13 miles south and two miles east of Spearman. Chitwood was treated for cuts on his head and released from Hansford Hospital. Owen was hospitalized overnight for observation of possible chest injuries.

In the second accident, Gary Haner received a small cut over

er his eye. City Police said this second accident happened about 10:45 p. m. at 316 S. Roland when a car driven by Genie Warren hit a parked pickup. The pickup is owned by J. D. Lycon.

The Texas Highway Patrolman who investigated the accident in Hutchison County said the car driven by Chitwood was going south on a hardtop county road and failed to make a curve. The accident happened about 9 p. m.

Patrolman Richardson said the car looked as if it had rolled over twice before going into the pasture.

Irish Beat Lynx 48-40

Spearman's hard-luck Lynx came close, then fell away as the Shamrock Irish handed them their third district loss 48-40 Friday night in Lynx gym.

A great third quarter recovery by the Lynx put them back in the game after being behind 28-18 at the half. But, they fell apart in the final eight minutes as Shamrock broke the game apart.

The score was tied 10-10 at the end of the first quarter, then Shamrock got rolling and was ahead 28-18 at halftime.

In the third quarter Spearman's defense received some patches and the offense a push. The Lynx were trailing only 34-36 at the end of three quarters.

Spearman held close until the final minutes of the game when

Shamrock started leaving a man under their basket or fast breaking and Spearman saw the game put out of reach.

Jim Kirkland was the only Lynx to break into the double figures. He led with 14. Reeves and Edwards led Shamrock with 12 each.

BOX SCORE				
Name	fg	ft	f	tp
Butts	3	0	0	6
Kirkland	5	4	4	14
Phillips	3	1	5	7
Shufeldt	1	4	4	6
McDonald	1	1	1	3
Close				2
Clement				1
Adkinson	1	0	2	2
Callaway	1	0	2	2
Elevins				1
Total	15	10	21	40

New Hinn Soybeans Pass Shatter Tests

The new Hinn Soybean passed the standability test this fall with flying colors according to Don Robinson of Spearman.

Robinson had 136 acres of the new variety of soybeans and bad weather forced him to leave the beans in the field almost two months after they were ready to harvest.

The young farmer says the beans were ready to harvest about Nov. 5 and it was Dec. 27 before the harvest was finished.

During the two months, the

bean field received two heavy rains, a six-inch snow, another snow and sleet coating, more rain and wind.

The bean stalks were still standing and very few of the pods shattered or fell off. Robinson figures he lost about three bushels of beans per acre in the two months. However, the crop still made 31.06 bushels per acre.

Robinson said he managed to get 40 acres harvested during the bad weather and these made 32 bushels per acre, but

this was the poorest part of the field.

County Agent Robert Adamson reports that the High Plains Research Foundation, developer of the new strain of beans, reported an area-wide average of 30 bushels per acre this year.

Weather was a problem for the beans all this year. Robinson had planned to plant the beans about June 1, but again there were rains to interrupt the plans; the beans were planted the last of June.

There had been preplant irrigation and after the beans were finally planted, he watered them three more times.

The Hinn soybean was deve-

loped at the High Plains Research Station at Halfway. It

was to be more shatter resistant and to have a plant more easily combined.

Robinson thinks the bean is a success. He said had his crop been the old beans, they would have shattered, popped open and his entire crop would have been lost.

The local bean market has been about \$2.45 per bushel but Robinson said he will sell his for seed. They are being tested now for germination. When this test is completed the beans will be registered seed.

Local Library Growth Strains Facilities

If Spearman's Public Library grows anymore, it is going to have to find new quarters or the courthouse basement is going to have to develop rubber walls.

The small three rooms that house the library in the basement of the courthouse are jammed with books and periodicals. Space on the shelves is at a premium and should all the books be returned at once there would be no room.

The library now has 7,080 volumes. During the past year there were 333 new books purchased and 40 books discarded because they became too worn to be used.

It is doubtful that space can be found for this much growth in the number of volumes this year.

Librarian Mrs. Gladys Richardson reports that 6,151 books were checked out of the library this past year. The youngsters read more than the adults with more than 1,000 books.

Adults checked out 2,448 books or magazines during the year. Of these, 1945 were fiction, 495 were non-fiction and eight were magazines.

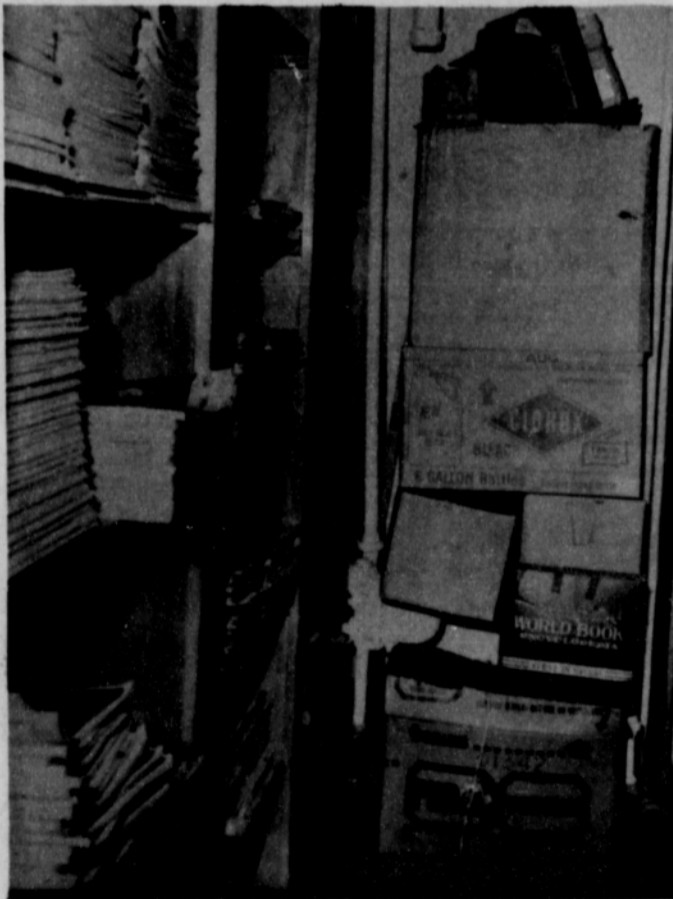
The young readers read 3,259 juvenile fiction books, 452 non-fiction books and 16 magazines. This makes the juvenile total 3,727.

A few people have recognized the need for a new and larger library here, but the need is growing faster than the solution to the problem-- a new building.

The library board has established a building fund and although this fund has received little promotion, it is slowly growing. It now has \$1,649.92.

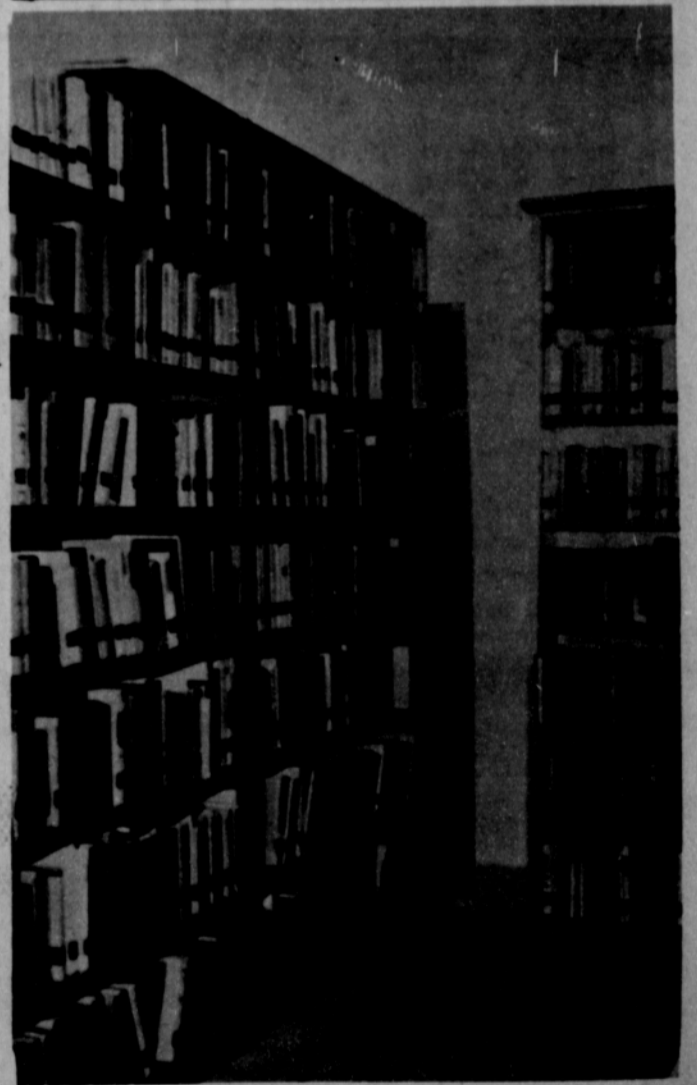
The fund grows from gifts, memorial donations and interest earned on the principle.

A very serious shortage of reference books and a reading room suitable for reference work is the most serious shortage in the library, besides space for more books.



NEWSPAPER FILES-- These cardboard boxes are all the facilities available for filing newspapers in the Spearman Library. The magazines are filed in these shelves behind the book cases.

PLAINSMAN PHOTO



JAMMED SHELVES-- These are just a few of the shelves in the crowded Spearman Library in the Hansford County Courthouse. The library has little room for continued growth.

PLAINSMAN PHOTO

W.M.U. Has Meetings

The Executive Board of the W.M.U. of the First Baptist Church met Tuesday at the church. Committee reports were given by the various chairmen.

Wednesday morning the W.M.U. members met for a business meeting and Royal Service program at the church.

Mrs. Ray Devers conducted the business meeting.

The program "Christ for the Cubans" was introduced by Mrs. Jerry Day, program chairman. "The Historian's View" was presented by Mrs. Herb Howe. "The Missionary's View" was given by Mrs. Eddie Gates. "The Cuban Baptist View" by Mrs. Loyd Gilley and "The Refugee's View" by Betty Uptergrove.

There are over 725 two-year colleges in the United States.

Club Meets In Guthrie Home

Deloris Guthrie was hostess this week to the Thursday afternoon bridge club.

Sheryl Meek had the high score and Betty Brummett had second high.

Snacks, pecan pie and ice cream were served by the hostess to Sheryl Meek, Judy Wilmeth, Betty Brummett, Linda Pierce, Linda Davis, Gayla Ithews and Marilyn Cain.

Mrs. Lynch Is Bridge Hostess

Faye Lynch was hostess in her home Thursday night to the Hi-Lo Bridge Club.

Freda Sheets was the high scorer and Barbara McClellan was second high.

Guests attending were Barbara McClellan, Deta Blodgett and Vi Whitson. Members present

Valerie Uptergrove Gives Program

The Winnie White G.A.'s met Tuesday afternoon after school at the First Baptist Church.

Cathy Dear presided at the business meeting and Sabrina Melver read the minutes of the last meeting.

Suellen Womble read the prayer calendar and Cathy Dear led in the prayer for missionaries.

The program, "Cuba Was My Home", was presented by Valerie Uptergrove.

Others attending were Lela Golightly, Debbie McCoy, Janice Whitefield, Janiece Thomas, Susan Gates, Lee Ann Smith and leaders, Pat Denham and Deloris Guthrie.

were Carrie Marie Berry, Kubah Gandy, Freda Sheets, Ruth Bryan, Mabel Jameson and Faye Lynch.

Neighbors Have Celebration

Neighbors of Mr. and Mrs. A. C. Green surprised the couple with a Golden Wedding Anniversary party Tuesday night in the W. S. Thomas home.

The couple was honored with a large white cake with the traditional gold 50 on top. Mr. and Mrs. Green had been honored earlier with another celebration in Roswell, N.M. Their son, Austin Green of Santa Fe was able to attend this celebration. Their other children were unable to attend.

Mr. and Mrs. Green, the former Euga Jennings, were married Dec. 27, 1914 in Sturgeon, Mo., her hometown. They boarded a train immediately for Ravia, Okla. where he ran a gin. The couple moved to Temple in 1917, then four years later to Brownfield. They



Mr. and Mrs. A. C. Green

Neighbors attending the party were Messrs. and Mmes. W. H. Forrest, Olin Sheets, C.U. Pope, Carter Crawford, L.L. Ralls of Perryton and G.C. Reasoner of Amarillo.

"Better Food For Less"

IDEAL FOOD STORES

... A Thrifty Reminder ... Redeem Your **CASH SAVINGS COUPONS**
From Ideal's "Decorator's White Sale" Mailer
Delivered to Your Home Last Week.
ENJOY NEW ECONOMY AND BEAUTY IN YOUR HOME THIS YEAR!

FRESHNESS...ECONOMY... PURITY GUARANTEED

GROUND MEATS

PRICES EFFECTIVE THRU WED., JAN-13-1965
LIMIT RIGHTS RESERVED

FRESH / LEAN / PURE

GROUND BEEF 49¢

lb. SERVE DELICIOUS HAMBURGERS TONIGHT!

FRESH / EXTRA LEAN / PURE!

GROUND CHUCK 65¢

lb. EXCELLENT FOR THE MOST DEMANDING GROUND BEEF RECIPES!

Swift's Premium Proten BEEF

SHORT RIBS 29¢

lb.

EVERYDAY LOW PRICES!

CHUNK STYLE

STAR-KIST TUNA 49¢

9 1/2-OZ. CAN

KUNER'S

APRICOT HALVES 4 2oz. CANS \$1.00

WELCHADE

GRAPE DRINK 3 1/2 QT. CANS \$1.00

REGULAR OR INSTANT

QUAKER OATS 25¢

18-OZ. BOX

PILLSBURY

PANCAKE MIX 45¢

2-lb. PKG.

PILLSBURY

PANCAKE MIX 59¢

3-lb. PKG.

PLASTIC DOLL PACK

SIoux BEE HONEY 39¢

12-OZ. BTL.

LYSOL SPRAY

DISINFECTANT 98¢

7-OZ. CAN

LIQUID

TOPCO DETERGENT 49¢

22-OZ. PLASTIC

IDEAL THICK SLICED **BACON 98¢**

2-lb. PKG.

WASHDAY MIRACLE

TIDE 59¢

SPECIAL LABEL! GIANT SIZE

HEINZ TOMATO SOUP 10	VISTA THIN SALTINES 19¢	MAYFLOWER ELBERTA PEACHES 4 2 1/2 CANS \$1.00	REGULAR OR INSTANT QUAKER OATS 25¢
10-OZ. CANS	1-lb. BOX		18-OZ. BOX
FOOD CLUB VACUUM PACK COFFEE 69¢	STAR-KIST CHUNK-STYLE TUNA 3 NO. 7 1/2 CANS \$1.00	LIBBY YELLOW CLING PEACHES 29¢	PILLSBURY PANCAKE MIX 45¢
REG. OR DIMP GRIND 1-lb. CAN		SLICED OR HALVES NO. 2 1/2 CAN	2-lb. PKG.
			PILLSBURY PANCAKE MIX 59¢
			3-lb. PKG.
			PLASTIC DOLL PACK SIoux BEE HONEY 39¢
			12-OZ. BTL.
			LYSOL SPRAY DISINFECTANT 98¢
			7-OZ. CAN
			LIQUID TOPCO DETERGENT 49¢
			22-OZ. PLASTIC

CALIFORNIA LARGE SIZE "FULL OF JUICE"

ORANGES 2 lbs. 25¢

PURPLE TOP

TURNIPS 2 lbs. 19¢

Western Wear SALE

20% Off
Men's Coats & Vests
Ladies Coats & Suits

1/3 Off
Boys' Coats & Suits
Ladies Shirts & Pants
Men's White Western Shirts

1/2 Off
Girls Shirts, Pants, & Vests Sets

Reduced
1 Group Boys' Western Shirts
1 Group Men's Western Shirts
Boys' & Youths Boots

	Reg.	Now
Men's Wool Shirts - Corduroy & Polished Cotton	\$15.	\$9.95
Jeans - Men's & Boys'	\$4.98	\$3.99
Caps - Hooded	\$2.25	\$1.
Sweat Shirts	\$3.98	\$2.49

THE ARENA
Complete Western Wear
216 South Main Street
PERRYTON, TEXAS

German Exchange Student Speaks To F.T.A. Groups

The Future Teacher Associations of Hansford, Ochiltree and Lipscomb Counties were entertained at a tea Monday night, Jan. 4 in the South Elementary School of Perryton by Eta Alpha Chapter of Delta Kappa Gamma. Wassall and cookies were served by President Thelma Vaughn and First Vice-president Annie Love. Hostesses were Addye Boyer, Violet Igou, Martha Thomas, Thelma Davis, Pat Eastup and Mac Strong. Wilma Clark played a recording of the Star Spangled Banner made by the Univer-

sity of Texas band, to which the group sang. Mrs. Gladys Phillips gave the invocation. Thelma Vaughn welcomed the guests and Dwayne Heaton, president of the Perryton F.T.A., made the response for the F.T.A. groups attending. Mrs. Annie Love introduced the speaker, Barbara Repenthin, a German Exchange student of Perryton who spoke on "The Role and Problems of Teenagers in Germany and India." Miss Repenthin made three classifications of teenagers in Germany: 1. The Wild Teenager, who dresses and thinks

similarly to our Beatniks, 2. The Existentialists, who are more intellectual, but oddballs so to speak, and 3. The Normal Teenagers, who have fads of dress, and haircuts somewhat different from pre-teens and adults, similar to our teenagers here - as a matter of fact, when something becomes popular here, the German teenagers adopt it. They like to play chess, spend much time talking of religion and politics, enjoy classical music, go to the opera, and have collections of classical music recordings. Horrors of the war have given the young people of Germany much more serious views than in this country. "It is vital", she said, "for everyone in Germany to be political minded." West Germany is anti-communistic, and no place on ballots is allowed for Communist politicians. The teenagers, and adults attend political rallies, and know everyone's platforms. They do not intend for another Hitler to rise! They are not satisfied with Germany being divided, and do not intend for it to remain so. German teenagers have no immediate plans for marriage because they want first an education. Many attend universities before getting a job and plan some time after that for fun before marriage. The usual age for marriage is 28. In Germany, drivers license are not issued before the age of 18 and even then cars are so precious that few fathers trust their sons with a family automobile. They may ride motor scooters. There is no "dragging of

Main" in Germany. With a twinkle in her eye, Miss Repenthin stated she wasn't sure but what that habit was "unique of Perryton." Schools have very few organizations; there is a notable lack of school spirit and at this time it not even a national anthem. They had one when Hitler was in power but no one wants to keep that. After this statement made by Barbara, plans were altered somewhat, as the former German National Anthem was to have been played. Barbara Repenthin had been pleased to speak on January 4, this being her nineteenth birthday. A very impressed audience sang "Happy Birthday, Barbara" and presented a gift to her, a vivacious, intelligent, normal German teenager.

The Golden Rain tree was one of the earliest planted trees in China, three thousand years ago, being especially planted on the tombs of scholars, according to the American Association of Nurserymen.

Hansford Plainsman
Hansford Plainsman Publishers, Inc.
JIM O. DAVIS
BURL G. McCLELLAN

The Old Times
"Women come in four sizes - thin, medium, plump and WOW!"

County-wide independent newspaper published every Thursday and Sunday at 209 Main in Spearman, Texas. Second class postage paid in Spearman, Texas. Editor Burl McClellan

KNAPP SHOES
KENNETH BAILEY
212 N. James
Phone 659-2458
Spearman, Texas
FOR CUSHIONED COMFORT

LYRIC
Sun. Mon. Tues.
Wed.
YOUNG BLOOD HAWKE
Starring JAMES FRANCISCUS
SUZANNE PLESHETTE
GENEVIEVE PAGE

Thurs. Fri. Sat.

GLENN FORD - NANCY KWAN
ROD TAYLOR - SUZANNE PLESHETTE
"FATE Is The Hunter"

Spearman Radiator & Supply
Radiator Sales & Service
Auto & Industrial
Highway 15
Phone 659-2446
Home 659-2654
Spearman
Doyle McBride

Cummings Refrigeration
HEATING
AIR CONDITIONING
REFRIGERATION
SPECIALIST
SALES & SERVICE
659-2721
SPEARMAN

FOR ALL YOUR FLORAL NEEDS
PHONE 659-2593
Spearman
FLORAL GIFTS

JANUARY JUBILEE of FOOD VALUES



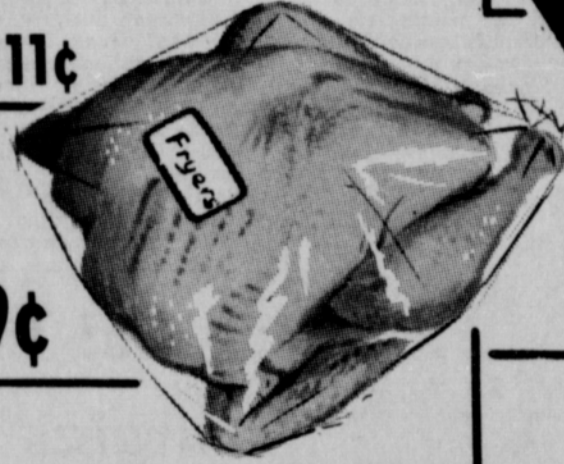
It's Here NOW
"for Quality and Freshness at its Best"
Shurfresh homogenized
Half Gallon **49¢**
Gallon **97¢**
Milk

Jello All Flavors Gelatin **4 for 29¢**

Shurfine Frozen Orange Juice 6 oz. cans **2 for 47¢**

Shurfresh King Size Loaf **Bread** **2 for 49¢**

Mountain Pass 303 Size Can **Tomatoes** **11¢**



Scotties
Scotts Facial Tissue 400 Count **23¢**

Shurfresh 2 lb. loaf **Cheese Spread** **65¢**

Fresh Homemade Lean Pork Lb. **Sausage** **49¢**

Ellis 10 oz. Pkg. **Pecan Meats** **59¢**

Grade A Whole Fresh **Fryers** **29¢**

Chico Tall Can **Tamales** **3 for 39¢**

Shurfine 12 oz. tin **Luncheon Meat** **35¢**

Campbells Tall Can **Vegetable Soup** **2 for 27¢**

Medium-Yellow-Spanish **Onions 3 lbs.** **19¢**

Shurfine Tall Can **Pumpkin** **2 for 15¢**

Extra-Fancy-Red-Delicious **Apples 2 lbs.** **25¢**

Shurfine 18 oz. Tumbler **Strawberry Preserves** **39¢**

Sweet-Juicy-Ruby-Red-Lb. **Grapefruit** **13¢**

Lb. Can **Maryland Club Coffee** **77¢**

Cut Rate Grocery
Mid Week Values for Tues. & Wed., January 12 & 13.

It's Here . . . It's New . . . Shurfresh Milk



Guaranteed Quality

In Convenient Gallon and Half

Gallon Cartons

Buy It At Your Nearest Affiliated Food Stores

Legal Notice

NOTICE OF SALE
THE STATE OF TEXAS
COUNTY OF HANSFORD

By virtue of an Order of Sale issued out of the Honorable District Court, 73rd Judicial District of Texas, in and for Bexar County, Texas, on the 29th day of December, 1964 by the Clerk thereof, in the case of FIRST OF TEXAS CORPORATION VS KENNETH M. LONGLEY ET AL, and being numbered F-155, 913 on the docket of said Court, and to me, as Sheriff, directed and delivered, I will proceed to sell the hereinafter described tracts of land to the highest bidder, for cash, between the hours of 10:00 o'clock A.M. and 4:00 o'clock P.M. on February 2, 1965, it being the first Tuesday of said month, at the Courthouse door of Hansford County, Texas, in the City of Spearman, Texas; said tracts of land having been levied on by me on the 4th day of January, 1965, and to be sold to satisfy a judgment rendered in the above described cause on the 10th day of November, 1964, and recorded in the Minutes of said Court in Volume 84, Pages 519-522. Said judgment was in favor of Plaintiff, FIRST OF TEXAS CORPORATION, establishing its debts against the Defendants, KENNETH M. LONGLEY, HELEN R. SCHRALL SHAW (also known as HELEN R. SCHRALL SHAW and/or HELEN R. SCHRALL SHAW), VIDA MAY SCHRALL HINDS (also known as VIDA MAY SCHRALL HINDS, VIDA MAY SCHRALL HINDS, VIDA MAY SCHRALL HINES, VIDA MAY SCHRALL HINES and/or VIDA MAY SCHRALL HINES), MILDRED C. SCHRALL LAKE (also known as MILDRED C. SCHRALL LAKE and/or MILDRED C. SCHRALL LAKE), HESTER SCHRALL HACKNEY (also known as HESTER SCHRALL HACKNEY and/or HESTER SCHRALL HACKNEY), or if she be deceased, the unknown heirs of HESTER SCHRALL HACKNEY, if any, their heirs or legal representatives, if any, the unknown heirs of MRS. E. E. SCHRALL, Deceased (also known as MRS. E. E. SCHRALL and/or Mrs. E. E. SCHRALL), and the unknown heirs of CHARLES SCHRALL, Deceased (also known as CHARLES SCHRALL and/or CHARLES SCHRALL), for the sum of SEVEN THOUSAND TWO HUNDRED NINETY SIX AND 94/100 (\$7,296.94) DOLLARS, together with interest on the sum of FIVE THOUSAND TWO HUNDRED EIGHTY NINE AND 44/100 (\$5,289.44) DOLLARS thereof at the rate of eight per cent (8%) per annum, and interest on the sum of TWO THOUSAND SEVEN AND 50/100 (\$2,007.50) DOLLARS thereof at the rate of six per cent (6%) per annum from November 10, 1964 until paid, and all costs of suit, together with foreclosure of Plaintiff's liens securing \$3,632.80 of said judgment, together with interest on \$2,629.05 thereof from November 10, 1964 at the rate of 8% per annum, and with interest on \$1,003.75 thereof from November 10, 1964 at the rate of 6% per annum, and one-half of the costs of suit against the Defendants, KENNETH M. LONGLEY and wife, ZINA Z. LONGLEY, CHARLES RICHARD SCHRALL (also known as CHARLES RICHARD SCHRALL and/or CHARLES RICHARD SCHRALL), the unknown heirs of MRS. E. E. SCHRALL, Deceased (also known as MRS. E. E. SCHRALL and/or MRS. E. E. SCHRALL), if any, their heirs or legal representatives, if any, the unknown heirs of CHARLES SCHRALL, Deceased (also known as CHARLES SCHRALL and/or CHARLES SCHRALL), if any, their heirs or legal representatives, if any, HELEN R. SCHRALL SHAW (also known as HELEN R. SCHRALL SHAW and/or HELEN R. SCHRALL SHAW) and husband, CHARLES W. SHAW, VIDA MAY SCHRALL HINDS (also known as VIDA MAY SCHRALL HINDS, VIDA MAY SCHRALL HINDS, VIDA MAY SCHRALL HINES, VIDA MAY SCHRALL HINES and/or VIDA MAY SCHRALL HINES), MILDRED C. SCHRALL LAKE (also known as MILDRED C. SCHRALL LAKE and/or MILDRED C. SCHRALL LAKE), HESTER SCHRALL HACKNEY (also known as HESTER SCHRALL HACKNEY and/or HESTER SCHRALL HACKNEY), or if she be deceased, the unknown heirs of HESTER SCHRALL HACKNEY, if any, their heirs or legal representatives, if any, and all those claiming under said Defendants, whose claims originated since the filing of Plaintiff's Notice of Lis Pendens with the County Clerk of Hansford County, Texas on the 30th day of September, 1963, of certain liens securing Plaintiff's debts upon the following described property, to-wit:

The North Half of Outlot Number 6, lying adjacent to the Town of Spearman, Hansford County, Texas;

and foreclosure of Plaintiff's liens securing \$3,664.14 of said judgment, together with interest on \$2,660.39 thereof from November 10, 1964 at the rate of 8% per annum, and with interest on \$1,003.75 thereof from November 10, 1964 at the rate of 6% per annum, and one-half of the costs of suit against all of the aforesaid Defendants and all those claiming under said Defendants, whose claims originated since the filing of Plaintiff's Notice of Lis Pendens with the County Clerk of Hansford County, Texas on the 30th day of September, 1963, of certain liens securing Plaintiff's debts upon the following described property, to-wit:

The North Half of Outlot Number 5, lying adjacent to the Town of Spearman, Hansford County, Texas.

Said Judgment and Order of sale direct that the above described properties be seized and sold as under execution in satisfaction of said judgment, to-wit: said North Half of Outlot 6, lying adjacent to the Town of Spearman, Hansford County, Texas, and said North Half of Outlot 5, lying adjacent to the Town of Spearman, Hansford County, Texas, and that one of said tracts be first sold and the proceeds of sale applied as follows: First, to the satisfaction of one half of all costs of court and sale; second, to the payment of \$3,632.80 of said judgment rendered in favor of Plaintiff, together with interest on \$2,629.05 thereof from November 10, 1964 until date of sale at the rate of 8% per annum, and with interest on \$1,003.75, thereof from November 10, 1964 until date of sale at the rate of 6% per annum; and that the other of said tracts be next sold and the proceeds of sale applied as follows:

First, to the satisfaction of one half of all costs of court and sale; second, to the payment of \$3,664.14 of said judgment rendered in favor of Plaintiff, together with interest on \$2,660.39 thereof from November 10, 1964 until date of sale at the rate of 8% per annum, and with interest on \$1,003.75 thereof from November 10, 1964 until date of sale at the rate of 6% per annum.

GIVEN UNDER MY HAND AND SEAL OF OFFICE on this, the 4th day of January, 1965.

J. B. Cooke
Sheriff, Hansford County,
Texas

WANT ADS

FOR SALE

FOR SALE-Niemeyer's three bedroom brick home, air conditioned, carpeted, phone 435-4859, Perryton. 8-tfc

MAY SCHRALL HINES, VIDA MAY SCHRALL HINES and/or VIDA MAY SCHRALL HINES) and husband, H. HINDS (also known as H. HINES), ETHEL SCHRALL BOHNEFELD (also known as ETHEL SCHRALL BOHNEFELD and/or ETHEL SCHRALL BOHNEFELD), a female sole, MILDRED C. SCHRALL LAKE (also known as MILDRED C. SCHRALL LAKE and/or MILDRED C. SCHRALL LAKE) and husband SULO A. LAKE, and HESTER SCHRALL HACKNEY, (also known as HESTER SCHRALL HACKNEY and/or HESTER SCHRALL HACKNEY), or if she be deceased, the unknown heirs of HESTER SCHRALL HACKNEY, if any, their heirs or legal representatives, if any, and all those claiming under said Defendants, whose claims originated since the filing of Plaintiff's Notice of Lis Pendens with the County Clerk of Hansford County, Texas on the 30th day of September, 1963, of certain liens securing Plaintiff's debts upon the following described property, to-wit:

The North Half of Outlot Number 6, lying adjacent to the Town of Spearman, Hansford County, Texas;

and foreclosure of Plaintiff's liens securing \$3,664.14 of said judgment, together with interest on \$2,660.39 thereof from November 10, 1964 at the rate of 8% per annum, and with interest on \$1,003.75 thereof from November 10, 1964 at the rate of 6% per annum, and one-half of the costs of suit against all of the aforesaid Defendants and all those claiming under said Defendants, whose claims originated since the filing of Plaintiff's Notice of Lis Pendens with the County Clerk of Hansford County, Texas on the 30th day of September, 1963, of certain liens securing Plaintiff's debts upon the following described property, to-wit:

The North Half of Outlot Number 5, lying adjacent to the Town of Spearman, Hansford County, Texas.

Said Judgment and Order of sale direct that the above described properties be seized and sold as under execution in satisfaction of said judgment, to-wit: said North Half of Outlot 6, lying adjacent to the Town of Spearman, Hansford County, Texas, and said North Half of Outlot 5, lying adjacent to the Town of Spearman, Hansford County, Texas, and that one of said tracts be first sold and the proceeds of sale applied as follows: First, to the satisfaction of one half of all costs of court and sale; second, to the payment of \$3,632.80 of said judgment rendered in favor of Plaintiff, together with interest on \$2,629.05 thereof from November 10, 1964 until date of sale at the rate of 8% per annum, and with interest on \$1,003.75, thereof from November 10, 1964 until date of sale at the rate of 6% per annum; and that the other of said tracts be next sold and the proceeds of sale applied as follows:

First, to the satisfaction of one half of all costs of court and sale; second, to the payment of \$3,664.14 of said judgment rendered in favor of Plaintiff, together with interest on \$2,660.39 thereof from November 10, 1964 until date of sale at the rate of 8% per annum, and with interest on \$1,003.75 thereof from November 10, 1964 until date of sale at the rate of 6% per annum.

GIVEN UNDER MY HAND AND SEAL OF OFFICE on this, the 4th day of January, 1965.

J. B. Cooke
Sheriff, Hansford County,
Texas

FOR SALE-1957 GMC Pickup. Roy Lee Uptergrove. 14-tfc

FOR SALE - Industrial lots and acreage. Financing available. Cecil Crawford. Two good lots in town. Phone 659-2409. T43-tfc

FOR SALE- 8 X 30 House trailer. Good Condition. \$450. Inquire at Plainsman, 2466 22 tfc

FOR SALE: New Lake Pump and Aluminum pipe, Pat Westfield, Gruver, F17-2700. S44-T43-tf

FOR SALE-3 bedroom, 1 1/2 bath brick home. Central air conditioning. 1110 S. Barkley. 659-3080. 20-tfc

FOR SALE: 1954 Ford 4-Door sedan. Good Work Car. 722 East 2nd Street.

FOR SALE: 1962 Buick Electra Call 659-2964. 2 - 23 - P

FOR SALE: 10 ft. windmill, 180 feet, 2 inch well casing, 1200 gallon storage tank, propane tank. Collard Real Estate. 23 tfc

FOR RENT

FOR RENT-New furnished one bedroom apartment. Call Gus McLain at 2274. 11-tfc

FOR RENT-Four room furnished apt. 821 S. Haney. Ph. 659-2084. 22-tfc

WANTED

Need a decorated cake for shower or party? \$3.50 and up. Wedding cakes \$9.50 and up. Call Mrs. J. V. Barker, 2296. 22-tfc

Bookkeeping Service done in my home or in your place of business. Call 2466. 22-tfc

Land Leveling to SCS specifications. General dirt work with Hancock carryalls. Willis Sheets, 659-2256. T46-S46-tfc

SERVICE-Ditches from 3612 inches, any desired depth. S. D. Jones 659-2809. Harold Shaver 659-3474. T17-s18-tfc

FOR LIFETIME MUFFLERS-Clarence Pettitt Garage. No premium prices.

POODLE GROOMING by appointment. See Mrs. Burke at 117 Townsend after 4 p.m. 11-tfc

Department

Has Party

After Game

Mr. and Mrs. Buri McClellan entertained members of the Young Peoples Department of the First Baptist Church with a party following the basketball games Friday night.

Refreshments of dips, brownies, Cokes and hot chocolate were served.

Members of the class and their guests attending included Marcus Connelly, Nelda Vanderburg, Leroy Callaway, May Belle Witcher, Bari Blevins, Sue Stubblefield, Rennie Berry, Sandra Kitchens, Phyllis Patterson, Ronnie Love, Sue Bradford, Mike Morris, Nelda Archer, Donna Boyd, Wesley Brinkley, Margot Kilgore, Gloria Ricketts and Buri and Day McClellan.