



MARIA OCHOA AND KIM VERA point out one of the seven forms political candidates must file for primary and general elections each year. In addition to being costly, electioneering can be time consuming as well.

Even on the local level . . .

## Campaign '88 -- an expensive item

As the 1988 political season begins to warm up, both incumbents and new candidates alike are taking a long, hard look at the cost of campaigning in the 1980's.

Filing fees alone have doubled, from \$300 in 1983 to \$600 in 1987 for most county offices. District offices -- such as district judge -- require a \$1,200 filing fee this year.

These fees are paid directly to the county chairman of whichever party the candidate choose to represent -- either the Democratic or Republican party.

Filing fees are then used to pay for the primary elections, including the cost of the ballot, election judges and workers and supplies.

If a candidate is unopposed, that filing fee will be the bulk of his or her expenses other than a possible thank you ad to that particular person's supporters at the end of the election process.

But, if an opponent surfaces, costs begin to mount -- from printing to advertising in the newspaper and on the radio, electioneering can be a costly enterprise.

Even local elections can prove expensive, ranging on up to \$6,000 if a candidate has opposition in both the primary and general election.

Actually, the cost will depend upon what the candidate can afford to spend -- or what he or she can raise in contributions to feed the campaign effort.

A county candidate could probably expect to expend at least \$2,000 for a well-run race and the figure can go up from there.

But running and campaigning -- as well as hoping contributions come in -- are only a portion of the work. State and federal law also mandates a good deal of bookkeep-

ing along with the campaign.

That bookkeeping includes three forms for the primary election where candidates have to list contributors and amounts as well as expenditures and amounts.

In addition, there's a semi-annual report to file, along with three more reports for the general election -- for those who make it that far, that is.

The IRS even throws a little salt into the wounds of those who do not get elected -- a winning candidate can deduct his campaign costs as an expense incidental to doing business. A losing politician cannot.

But there are rewards for those who do win the race -- rewards which are in addition to the civic spirit. For county and district offices, it's called salary.

Filing fees for the county offices open to election in 1988 are \$300

each, but salaries range from just shy of \$14,000 a year to over \$30,000 annually.

County commissioners in precincts one and three are paid an annual salary of \$10,908 plus a car allowance of \$3,000 per year for a total of \$13,908.

The Hansford county attorney's position carries a salary of \$16,632 along with an office allowance of \$2,700.

The tax assessor-collector's office is paid \$21,588 annually while the county sheriff -- who also acts as jailer and appointment secretary for the county barn -- is paid a total of \$30,432.

The 84th District Judge's office -- which covers three counties; Hansford, Ochiltree and Hutchinson -- carries a filing fee of \$1,200 and if an opponent surfaces, campaigns must be waged in all three

See "CAMPAIGN", p-2




The Hansford  
**Plainsman**

25¢  
Per Copy  
6 Pages

Volume 18, No. 4      YOUR HOMETOWN NEWSPAPER      Sunday, November 29, 1987

### The HANSFORD REPORT

by JAMES JARRETT



Being a native Panhandler -- I know that sounds bad, but the use is correct -- I've come to realize over the years that the area north of Lubbock gets a bum rap when it comes to the weather.

This past Thanksgiving Day is but one more example of how the National Weather Bureau has dumped on our area's reputation.

All day Thursday, I watched as sparse flakes of snow fell off and on. And I listened as the weathermen persisted in their forecasts of four to eight inches of snow.

I lived in Odessa in West Texas through two winters. The heaviest item I wore the entire time was a sweater.

One winter's day, a heavy mist fell early in the morning and froze, leaving a glaze over all the streets in town. School was let out all day long.

People would exclaim when I told them where I had lived and been raised -- "How could you stand all that snow?" was their invariable question.

During the summer, the query would change to "Were you ever in a tornado?"

Being a true product of the Texas Panhandle, I would counter with a description of the snow of '57, or tell of tornadoes which danced around and played with the community in which I was raised.

Okay, sure . . . sometimes I might add a little embellishment here and there. In true Texas fashion, the snow might have been a little bit worse in my story than in

fact. And, the truth is, I've never even seen a tornado, only the aftermath. That was in open country.

But when has a good Texas story teller allowed truth to stand in the way of a good tall tale? I felt it important to carry on that tradition.

Now I understand that all I did was reinforce the misconception that the area called the Texas Panhandle is nothing more than a wasteland which has been deserted by God and left to wrack and ruin by the elements of nature.

Those people who believe that have never had the opportunity to enjoy a Panhandle sunrise or glory in its golden sunsets.

Nor have they traveled across its expansive prairies full of golden ripe grain or seen the beauty of its rolling plains as they undulate beneath a carpet of fresh spring grass.

Sure, there are bad times as far as the weather is concerned -- but I've yet to see the Panhandle weather live up to anyone's worst expectations.

I've come to the conclusion that the weather forecasters, if not true

See "REPORT", p-2

### On school bond issue . . . Interest light for absentee ballot

A Thanksgiving holiday and a spurt of winter weather may have combined to put a damper on a \$2.185-million bond issue with absentee votes totalling only four at presstime Friday.

The absentee balloting will continue through next week with the actual vote to come Tuesday, Dec. 8.

Absentee ballots can be cast at the business office in the east wing of Spearman High School from 8 a.m. to 4:30 p.m. each day through next Friday.

Election day, ballots will be cast in the foyer of the high school building with polls open from 7 a.m. to 7 p.m. that day.

At stake is the fate of a building project at the Spearman Junior High - Elementary campus which will see the east wing of the junior high building demolished and additions made to the elementary building.

The additions will bring the capacity of the elementary campus up to house classes for kindergar-

ten through fifth grades. Junior high would maintain classes for grades six through eight in what remains of the junior high building.

Since the campus auditorium is housed in the east wing of the junior high building, also included in construction plans is an all-purpose gym which will act as an auditorium for both elementary and junior high students.

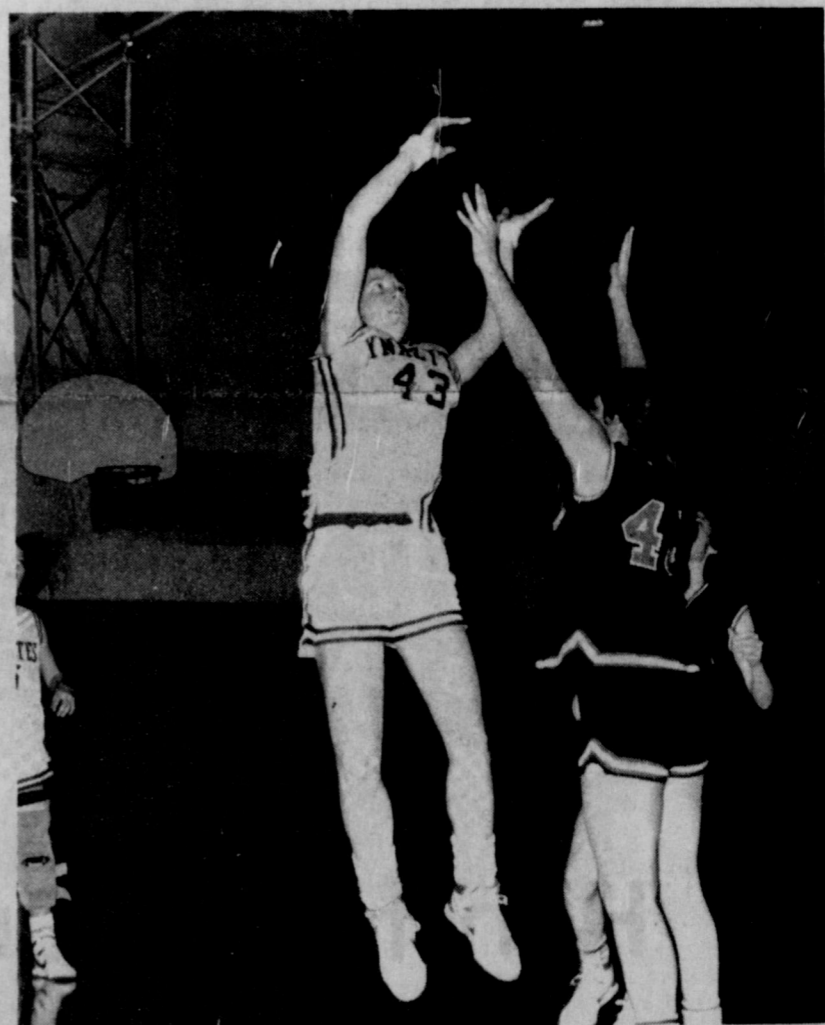
Construction costs -- including the razing of the east wing -- have been estimated at \$2.185-million by an Andrews architect firm.

A decision to proceed with the bond election was made by the SISD board of trustees following a lengthy examination of the junior high building.

Last spring, students were shifted around to eliminate classes on the second floor when an architectural report showed deficiencies in the building.

The deficiencies were caused by a number of factors, including a couple of renovations which re-

See "INTEREST", p-2



UP AND OVER . . . Lynxette Londae Bradley [43, white] goes up and over a Channing Lady Eagle defender in this past week's non-conference cager contest held in Spearman. The Lynxettes won the contest, 58-45.

### Nature decorates Hansford county . . . There was snow, just not 8-inches

A winter storm watch forecast for the Texas Panhandle failed to produce more than an inch of snow in Hansford County Thanksgiving Day and night, leaving weather forecasters calmly declaring that the worst had just missed.

The light snow and freezing rain did produce some slick spots on highways and bridges, but left roads in better condition than expected for the holiday weekend.

The snow gave Hansford County an additional .13 of an inch of moisture, according to Dwayne Smith at the county's official weather reporting station, KRDF-FM in Spearman.

Thursday's precip brought moisture totals up to .64 inch for the month of November. That included 2-1/2 inches of snow and a light rain earlier in the month.

Precipitation for the year now stands just shy of 26 inches -- well above the average annual moisture total of 19.01 inches.

Through Friday, total precipitation in Hansford County stood at 25.99 inches since Jan. 1.



IT'S NOT QUITE A FROCKED CHRISTMAS TREE but a Thanksgiving Day snow storm gave this cactus a decorative air. Despite weather forecasters' predictions of four to eight inches of snow, Hansford county was treated to one inch over the annual holiday period. STAFF PHOTO BY KIRBY McADAMS

### Illegal parking has \$63 fine levied by city

A custom harvester discovered the high price of running afoul of the law this past week when he was assessed a total fine of \$63 for illegally parking his truck on a residential street.

Municipal court judge Albert Graves fined Ronald Larence \$58.50 for violating a city ordinance regarding trucks parked in a residential area, and added \$4.50 court costs to bring the total to \$63.

The fine was levied in city court Tuesday. Lawrence had been ticketed for parking his truck at First and Archer Streets in Spearman Nov. 4 by city patrolman Dale Gable.

The truck allegedly violated the city's ordinance against parking vehicles 30 feet long or longer in a residential area.

### County men named to commission

Hansford county judge Roy McClellan, has appointed a number of county residents to serve on the local Emergency Planning Commission -- a group mandated by federal law.

The LEPC is required to take into account any plans of other entities within its jurisdiction who have hazardous material response plans.

According to a letter received from the judge's office, the city of Spearman has such a plan at the present time.

One of the requirements of the commission is to complete hazardous material planning by October, 1988, for emergency response to sites holding or using them.

Those who store and use hazardous materials in Hansford county are required to notify the LEPC through the county judge's office that these materials are in their possession and control.

Asked to serve on the commission by Judge McClellan are Jeff Lackey, Dick Waterfield of Canadian, Joe T. Venneman;

R.L. McFarlin, Joe Raper, Bill Porter, Juan Viola, Larry Williams, Al La Rochelle, Larry Butler, George Young, James Jarrett and Charles C. Franklin.

In games held this past week . . .

# Lynx, Lynxettes out gun Channing

The Spearman Lynx and Lynxette basketball teams put together a pair of solid performances Tuesday evening in the Spearman competition gym to down their respective Channing Eagle counterparts in non-conference cager action in Spearman.

The Lynx downed the Eagles, 53-45, to even out their season mark at 1-1 while the Lynxettes were 58-45 victors over the Lady Eagles.

The Spearman girls roundball squad holds an unblemished 2-0 mark in early rounds this year.

In boys varsity play, a total of eight players got on the scoreboard with Carson Womble the only Lynx cager in double figures with 13

points. Despite a poor night from the grace line -- Spearman hit on only six of 27 free throws for 22 percent -- the Lynx were able to outman a 36-point performance by Channing's Mark Stephens.

The Lynx hit on 22 of 70 field goal attempts for 31 percent from

the field. Womble hit on one 2-point field goal and swished through three 3-point shots along with a pair of grace shots to account for his 13-point effort.

"We're getting there, but we've still got a long way to go," notes Lynx basketball mentor H.M. Garrett. "Right now it's mainly a matter of conditioning."

Garrett and company will be working in the ensuing weeks to improve that conditioning and their percentages, both from the free throw line and from the field.

"To win consistantly, we've got to shoot 70 percent from the free throw line and 45 to 47 percent from the field," declares Garrett. "That's our goal and we've got to get there."

The Lynx managed to shake off a close first quarter that saw the score knotted at 9-ALL to build a slim halftime lead, 25-21.

And they came out strong in the third frame, going out to an 11-point edge by the frame's end on the strength of a 42-31 tally.

In the final eight minutes of play, Spearman took the measure of their Channing guests to hold on for the 53-45 win.

The Lynx finished the night with 27 offensive and 21 defensive rebounds. In addition, they took 13 steals from their Eagle opponents.

Girls varsity play saw the Lynxettes dominate from the outset as they went to a 10-6 first quarter lead which they refused to relinquish for the remainder of the evening.

The 32-point effort of junior Kirsta Kirkland proved the undoing of their Channing Lady Eagle

counterparts as she hit for 11 2-pointers, one 3-pointer and seven of eight grace shots.

Londee Bradley also made it into double figures for the Lynxettes as she hit for 10 points.

Spearman hit for 45 percent from the field with 20 of 44 attempts dropping through the nets. They also added 17 of 27 free throws for a 63 percent mark there.

The Lynxettes doubled their first quarter effort to stretch a 4-point lead into an 8-point halftime advantage, 28-20.

Their lead was never in danger in the second half, either, as they held the big end of a 40-33 third quarter effort, then tacked on 18 fourth-quarter points to put the final at 58-45.

Both the Lynx and Lynxettes will be in Booker Tuesday evening for another round of non-conference basketball action.

Beginning Thursday, the two Spearman varsity squads will be in Dumas for tournament action there. The double elimination tourney will run through Saturday.

continued from p-1

## CAMPAIGN

counties.

The district judge's office also carries the highest salary of any elected official -- generally in any county.

State law mandates a base salary of \$56,135 annually, with counties served by the judicial district paying a supplement.

Hansford county's supplemental wage is \$708 annually, while Ochiltree tags on another \$3,900 and Hutchinson county antes up with \$5,746.92.

However attractive the salaries may be, there's generally more to running a campaign than coming up with a filing fee -- and more to running a good office than getting elected.

For what it's worth, there is a law on the books that can help a person get their name on the ballot without paying a filing fee.

According to state law, if a petition signed by two percent of the voters who cast ballots in the last gubernatorial election -- or 25, if that number is greater -- requests a name to be placed on a particular primary ballot, the political party is required to do so without cost to the office seeker.



The globefish staves off predators by gulping a large quantity of water, till it becomes simply too large to be swallowed by its enemies.

## GIRLS VARSITY

Channing: 6 20 33 45  
Spearman: 10 28 40 58  
C-Nancy Hill, 2-0-0-4; Lilly Portillo, 0-0-2-2; Cassie Blout, 0-0-1-1; Amy Hill, 1-0-2-4; April Shackelford, 7-0-10-24; Kay Koonce, 1-0-0-2; Penny Glenn, 0-0-3-3; Andrea Allison, 2-0-1-5; Team, 13-0-19-45.

S-Krista Kirkland, 11-1-7-31; Heather Murrell, 2-0-5-9; Ginger Pearson, 1-0-1-3; Londee Bradley, 4-0-2-10; Margie Evans, 0-0-2-2; Jennifer Turner, 1-0-0-2; Team, 19-1-17-58.

## BOYS VARSITY

Channing: 9 21 31 45  
Spearman: 9 25 42 53

C-Stephens, 13-0-10-36; Turner, 0-1-0-3; Ham, 0-0-1-1; Miller, 0-0-4-4; Lowry, 0-0-1-1; Team, 13-1-16-45.

S-Kevin Nelson, 3-0-0-6; Keith Benson, 4-0-0-8; Carl Urban, 1-0-1-3; Brett Davis, 4-0-0-8; Shawn Cook, 4-0-1-9; Matt Tucker, 0-0-2-2; Carson Womble, 1-3-2-13; Pat Shields, 2-0-0-4; Team, 19-3-6-53.

continued from p-1

## REPORT

Texans themselves, have been at least touched by Texas' answer to the Irish Blarneystone.

Now they feel it is their bound duty to glorify the weather in the Texas Panhandle by forecasting the worst possible situations.

Yet they never apologize for the missed forecasts -- they just talk about how lucky we are to have escaped that fantastic weather.

But I know what makes news. Down south you can bet everyone was informed of the four to eight inches of snow forecast for our area.

Do you really think that the fact it 'missed' us is going to make a big splash in Dallas or Houston?

So, as far as they're concerned, we're up here digging our way out of yet another typical winter blizzard. And, again they wonder how the Panhandle ever became a part of Texas, anyway.

I'd vote for secession, but I don't want to give up the Alamo. That's basic to every Texan -- if not, then it should be.

What we need to do is band together and do a good deal of PRT work for that area north of Lubbock to help change the misconceptions which have grown over the years.

Course, we may have to wait for the spring thaw 'fore we can get the Tin Lizzie started.

## The Hansford Plainsman

Publication [USPS 2346-6000]  
SPEARMAN, TEXAS 79081  
231 Main, Box 458, 659-3434

Published weekly at  
213 Main Street  
Spearman, Texas  
Texas Independent  
Newspapers Inc.

19906 Encino Grove  
San Antonio, Tx 78259

Second Class postage paid at Spearman, Texas 79081.

Any erroneous reflection upon the character of any person or firm appearing in these columns will be gladly and promptly corrected upon being brought to the attention of the management.

Member of the Texas Press Association.

**PUBLISHER**  
James C. Jarrett  
**ADVERTISING DIRECTOR**  
Kirby McAdams

**SUBSCRIPTION RATE:** Hansford, adjoining counties, combination with the Spearman Reporter, \$19.95; out of county \$24.95.

**POSTMASTER:** Send address changes to Hansford Plainsman, Box 458, Spearman, Texas 79081.

The publisher reserves the right to revise or reject at its option any advertisement which it deems objectionable, either in subject or phraseology, or which it may deem detrimental to its business.

continued from p-1

## INTEREST

moved load-bearing walls and saw the second floor of the structure floored with cement.

That, in combination with settling of the 1920's building, served to buckle outside walls of the structure -- creating what trustees felt was a potential hazard to students and faculty.

This summer some stop-gap repairs where done at the junior high building to help solidify the top floor of the structure; architects were unable to come up with a plan to remedy the deterioration of the building.

Under the proposed plan of additions, architects have left the new structures where future additions can be made without addition to remodeling expense to then existing structures.

Trustees estimate the bonds will raise tax rates some 11 cents per \$100 evaluation, based on current interest rates. The actual tax rate will vary either up or down, depending upon the rate in effect when the bonds are sold.

**Classified Ads:**  
**FAST**  
**HIGHLY VISIBLE**  
**DEPENDABLE**

## Hansford County's Market Place

... the classified section of the Spearman Reporter and the Hansford Plainsman

Reach your potential with an inexpensive, cost effective classified ad ...

Call 659-3434 Today!

**THE CLASSIFIEDS**

**INEXPENSIVE**

**PROFITABLE**

## Statement of Financial Condition Hansford County

RECONCILIATION WITH DEPOSITORY BANKS AS OF NOVEMBER 1, 1987

FUND	BOOK BALANCE	OUTSTANDING CHECKS	OUTSTANDING DEPOSITS	BANK BALANCE
JURY GENERAL	4,374.07	2,926.98	256.06	7,044.99
	40,877.32	46,291.65	830.52	86,338.45
ROAD & BRIDGE, GENERAL				
Precinct No. 1	13,362.85	7,662.06	510.62	21,246.95
Precinct No. 2	15,203.17	7,937.34	510.61	23,099.25
Precinct No. 3	25,384.80	3,842.04		29,807.27
Precinct No. 4	17,300.09	4,280.72		22,110.04
ROAD & BRIDGE, PRECINCT				
No. 1, Improvement	732.66			
No. 2, Improvement	469.35			
No. 3, Sinking	580.43			
No. 4, Sinking	529.23			

## SUMMARY OF RECEIPTS AND DISBURSEMENTS

FUND	BALANCE 8/1/87	RECEIPTS	DISBURSEMENTS	BALANCE 10/31/87
JURY GENERAL	14,066.68	1,081.63	10,774.24	4,374.07
	128,987.97	108,480.14	196,590.79	40,877.32
ROAD & BRIDGE, GENERAL				
Precinct No. 1	17,556.11	68,498.87	72,692.13	13,362.85
Precinct No. 2	22,593.29	123,648.94	131,039.06	15,203.17
Precinct No. 3	34,344.61	102,759.24	111,719.05	25,384.80
Precinct No. 4	57,960.81	72,606.56	113,267.28	17,300.09
ROAD & BRIDGE, PRECINCT				
No. 1 Improvement	5,436.50	25,296.16	30,000.00	732.66
No. 2 Improvement	22,466.89	15,158.92	37,156.46	469.35
No. 3 Sinking	18,384.12	2,196.31	20,000.00	580.43
No. 4 Sinking	372.52	156.71		529.23

## HANSFORD COUNTY INVESTMENTS

FUND #8	25,000.00
FUND #9	81,000.00
FUND #10	30,000.00
FUND #11	55,000.00
FUND #12	20,000.00
FUND #13	15,000.00
FUND #14	20,000.00
TOTAL	246,000.00
<b>HANSFORD COUNTY INDEBTEDNESS</b>	
FUND #14	20,000.00
FUND #15	30,000.00



FREE FOR ALL . . . a host of Channing Eagles and Spearman Lynx converge on a loose ball during this week's non-conference matchup in the Spearman competition gym.

### The Energy Wire

The oil and gas industry can expect continued improvement looking toward next year in spite of the sag in stock prices, according to a top analyst for a major oil company.

"We've already had our recession in oil and we don't anticipate another one," said Theodore R. Eck, chief economist for Amoco Corp., referring to last year's crash in oil prices.

Eck and a few other industry experts are presenting views on the "Economic Outlook for the Oil and Gas Industry" at the annual meeting in Chicago this week of the American Petroleum Institute, the industry's largest trade organization.

Eck said he disagreed with the view that the worldwide decline in stock prices would strongly dampen petroleum consumption and lead to another fall in oil prices.

He said the stock market situation could lead to a drop in the burning of residual fuels by major industries, but that gasoline makes up a far greater portion of petroleum use.

"Gasoline demand is pretty much based on a growth trend that is independent of the general economy," said Eck. "We're less vulnerable (in the industry) because we're down to the point where most residual fuel is being burned by apartment buildings and not by heavy industry."

"One would think that the decline of the dollar increases the



A GENTLE SNOW lent a special air at this Nativity scene in front of one Spearman residence over the Thanksgiving holiday period. The Christmas season got a cold start Friday morning when an inch of snow blanketed Hansford county. STAFF PHOTO BY KIRBY McADAMS

probability of OPEC increasing prices rather than decreasing it," said Eck.

However, a negative view of the stock situation was offered by industry analyst Philip K. Ver-

In the Petroleum Economics Monthly report put out by Boston-based Charles River Associates, Verleger said "the potential for trouble in the oil industry is substantial. The likelihood of a further decline in the dollar will lead oil exporting countries to push for higher prices at a time when the demand for their exports will be shrinking," he said.

In other areas, Eck said he expected oil and gas drilling in 1988 to be about "10 percent better

than where we are right now," leger, who predicted that the decline in stock prices would force OPEC to seek a price hike in the midst of a recession.

"I think the industry is a lot more optimistic this year than last year," said Eck. "We're settling down to business. We're on a slow path of recovery and we're not likely to be dissuaded" from that course, he said.

He noted that prices for natural gas are continuing to have a negative impact on industry drilling prospects. "With present gas prices, it's hard to get excited about gas drilling. The real problem facing the drilling industry is the low price of gas," he said.

The Gift That Never Goes Out of Style . . .

TRAMPOLINES  
By Now & Save!  
CALL TO ORDER

Free Deliveries within a 50 mile radius.

733-2978 or 733-2514

## Crisis Center Report

by Mary Frances Elzey

At last . . . we've moved to larger quarters. How good it feels to have space enough to breathe and to provide ample opportunity for confidentiality to our clients, despite the boxes and boxes of 'stuff' still in the hall waiting to be relocated.

Just the same, we miss and will continue to miss the good companions in the old location. We also continue to appreciate our former landlord, he who helped us get started.

So now, more about Date Rape. This is the situation wherein a girl or woman feels herself to be having a legitimate date. But lo and

behold, the gentleman expects a certain 'fee' for having escorted her.

The pressures he can exert are enormous. The most obvious one is to make her feel guilty for having accepted all his 'favors' with no expectation of giving 'something in return'.

Another type of date rape is that of the girl who went with a group of her friends to a certain location, only to discover one of the fellows, whom she knew fairly well, pinning her arms behind her back and compelling her to go outdoors with him.

In this particular instance, she thought it was only a game, but

when he took her to a secluded spot, and disclosed his intent, her screams were to no avail.

In addition, since the fellow was a 'friend', she did not realize that his action could be called a rape until two weeks later. Do not permit anyone, friend or acquaintance, to compel you to leave a party, or to entice you away from the group.

Yet another type of date rape is that of a date who takes you to his quarters, then plies you with beer or some other drink.

One such young woman found herself doped -- he had put something in the beer which knocked her out.

When she came to, she realized what had happened. But even at that she did not realize that it could be classified as rape until some time later.

This kind of thing must be stopped. One of the best ways is always to prosecute the perpetrator; that is, to bring charges against him.

First, after such an experience, report it at once. Do not take a bath, do not change your clothes, do not even go to the bathroom.

Take your courage in hand, call the Panhandle Crisis Center for help and support, and permit yourself to be examined.

Introducing the new

# MAGNUM 7110

**And the first all-new tractors from Case IH**

Case IH put more into the new MAGNUM tractor line than any farm tractors developed in over twenty years. Here's why you'll get more out of it:

**MAGNUM means more.** Outstanding field performance from a new 505 cubic inch turbocharged engine with reserve power. MAGNUM power.

The MAGNUM tractor's powershift puts 18-speeds of shift-on-the-go workpower at your fingertips—standard. And only MAGNUM tractors offer a full powershift creeper transmission with six additional

speeds from .5 to 2.1 mph . . . for more control and performance. MAGNUM performance.

The MAGNUM tractor's new larger cab has 48 square feet of window area . . . virtually unobstructed visibility . . . more seating comfort. MAGNUM comfort.

It all adds up: The Case IH MAGNUM 7110 tractor sets new standards for the 130 hp (97 kW) class . . . and for you. See us for details.

**MAGNUM means more.**

**Five Star Equipment Inc.**  
Hi-Way 15 West Spearman  
659-3743

# MAGNUM COMFORT

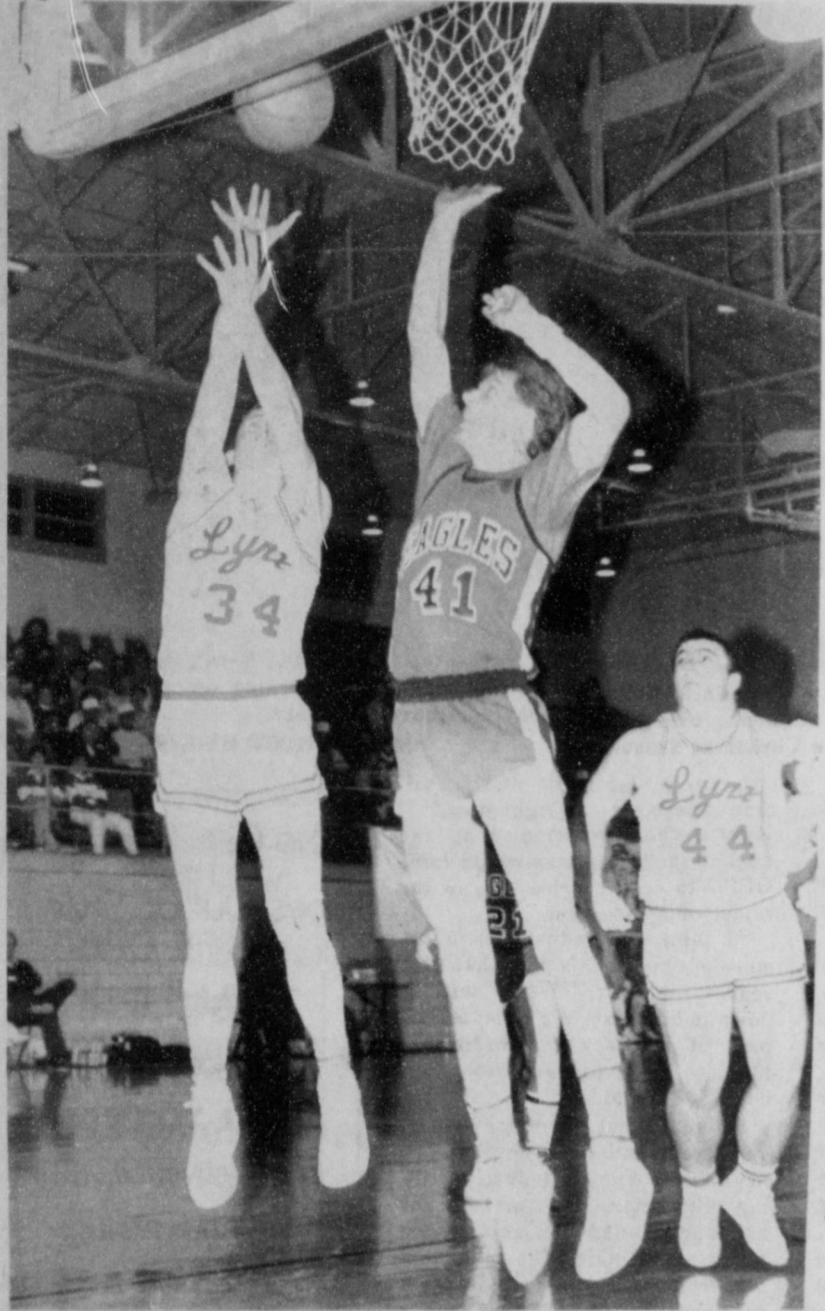
**See more. Feel better.**

MAGNUM comfort means more comfort and operator efficiency. There's 48 square feet of visibility. And the tractor's sloping hood and hidden exhaust provide unobstructed visibility ahead. This cab is bigger, with more head room, and a wide, fully-adjustable swivel seat. All controls are conveniently located, and designed for comfortable low-effort operation.

The new MAGNUM tractor cab will keep you going strong and feeling good. And it's standard on all Case IH MAGNUM tractors. Four all-new models, 130 to 195 PTO hp. See us for details.

**MAGNUM means more.**

**Five Star Equipment Inc.**  
Hi-Way 15 West Spearman  
659-3743



HEADS AND HANDS UP . . . Spearman Lynx Pat Shields (34, white) goes up for two while a hapless Channing Eagle defender attempts a block in vain during roundball games played this week in Spearman. The Lynx downed the Eagles, 53-45, to even out their season mark at 1-1.

## Waterfield named head of special committee

Texas house speaker Gib Lewis (D-Ft. Worth) has appointed state representative Richard 'Dick' Waterfield as chairman of the House Special Committee on Security Interests in Farm Products.

The committee was established with the passage of House Resolution 620 during the regular session of the 70th Texas Legislature.

Current Texas law states that a creditor lending to a person engaged in farm operations may not enforce his security interest in certain farm products generated by those operations unless the buyer of those products has been notified of the lien.

Federal law provides that a creditor may make his security interest known to a buy either by pre-notification or by filing notice with a central office. There is currently no central filing office for such activities in Texas.

This committee will examine the

need for potential changes in Texas law that would enhance a creditor's ability to enforce their security interests while providing for the protection of the purchaser of certain farm products.

The study will also include the evaluation of the operation of central filing systems in other states that have established such systems.

The committee will prepare a complete report, including findings and recommendations and drafts of any legislation considered necessary, to the 71st Legislature.

Waterfield is a first-term Republican lawmaker from Canadian. He currently serves as a member of the House Agriculture and Livestock and Human Services committees.

## City police recover missing transmission

An automatic transmission, allegedly stolen from a Spearman residence Nov. 20, has been recovered by Spearman city police.

City patrolman Bruce Goehring, investigating officer, located the transmission -- valued at \$150 -- at a Spearman mechanic shop Tuesday.

The owners of the shop had purchased the transmission for \$10, according to the police report.

The transmission was reported stolen from the Paul Moore residence in Spearman, Nov. 20.

Police are continuing their investigation.

## Musical to be presented by FBC choir

The radiant Christmas musical, "Light of His Love", will be presented next Sunday at 7 p.m. by the Sanctuary Choir of the First Baptist Church of Spearman.

This celebration of the Christmas season will be accompanied by the "Hanging of the Green", a seasonal tradition at the church.

The 38-voice sanctuary choir is under the direction of Carol Pack.

Soloists for the musical are Vicki Gibbs, soprano; Kathy Archer soprano; Carolyn Taylor, alto; Gary Smith, tenor; and Scott Taylor, baritone.

Larry Butler is narrator for the presentation. The musical will be sung with a full orchestral accompaniment track.

The public is invited to attend the special musical worship service to usher in the Christmas season. A nursery will be provided for children 3-years of age and younger.

There will be a rehearsal Thursday evening at 7 o'clock.

## Among the Neighbors

by Helen Fisher

Mr. and Mrs. Lowell Denman enjoyed having grandsons, Kyle and Kent Lee of Amarillo spend Thanksgiving with them.

The Denmans had returned a few days earlier from a two weeks stay in Arkansas. They visited in the home of her son, Mr. and Mrs. Tommy Taylor, at Heber Springs and her brother and his wife, Mr. and Mrs. Paul Gill at Batesville, and also with her niece and her husband, the Donald Wrights.

The four generations gathering in the home of Mr. and Mrs. John Allen on Thanksgiving began with their daughters -- and husbands -- Mr. and Mrs. David Wilson, Waka; Mr. and Mrs. Dick Finchum, Meade, Ks.

Mr. and Mrs. Willis Friesen, Perryton. Third generation -- Mr. and Mrs. Lyndel Schiffler, Liberal; Kathleen and Anita Rapp, Guyton;

Melissa and Lacy Friesen, Nancy Ridgeway, Perryton; 4th generation -- Bridget and Sam Schiffler and John Ridgeway.

An unexpected event on Wednesday evening changed the Thanksgiving Day plans for Dora Lee and Joanna Jarvis. They were just north of the Borger city limits on highway 207, when a pick-up suddenly pulled out in front of them and they struck it broadside.

The driver of the pickup was slightly injured, but the ladies were taken to the Borger hospital, treated and released.

Dora Lee sustained ankle and knee injuries and Joanna facial lacerations.

Both vehicles were damaged.

Although gnawing the turkey drumstick from a hospital bed was a new experience, Raymond Sparks found much to be thankful for. He has been a patient in Hansford Hospital for several days.

His daughters, Nadine Milam of Sunray, and Joyce Ray and her husband Charles Hanes of Carrollton and their daughter, Elaine, and Mr. and Mrs. Clifford Milam of Etter were sharing Thanksgiving with him.

They brought him a delicious and entire Thanksgiving dinner.

Thanksgiving guests in the home of Mr. and Mrs. Burl Buchanan were her father, William Sharp of Oklahoma; Mr. and Mrs. Don Parker, Stinnett; Mrs. Bessie Waller, Gruver;

Jana Buchanan of Snyder; Roger Buchanan, Lubbock; Mr. and Mrs. J.B. Buchanan and Helen Fisher.

A houseful of guests emphasized the true spirit of Thanksgiving in the home of Dee and Winnie Carol Allen and Carl Urban.

Those sharing were Mr. and Mrs. Wilbur Hull of Seguin; Carol Ratliffe, Canyon; Mr. and Mrs. Kenny Barton and two children, Hoss Ratliffe, Raby Lee Ratliffe, all of Amarillo;

From Spearman Mr. and Mrs. Roy Gene Boyd, Viola Boyd, Mr. and Mrs. Floyd Hull, and Crista Urban. She is here for the holidays from Amarillo College.

Jeanette and Mike Simpson took the children to Amarillo on Wednesday to catch a plane for Houston for the holidays.

Alicia, Deanna and David Zabin are seasoned travelers as they have flown on other occasions. They are spending the holidays with relatives in Houston.

## First Oklahoma modern dance troupe performs

Oklahoma's first professional modern dance company, Prairie Dance Theatre, will be performing at Panhandle State University in Hughes-Strong Auditorium on Dec. 6 at 3 p.m. This will be an adult performance.

Founded in 1978, Prairie Dance Theatre is considered unique in the dance world due to its focus on Southwestern and Oklahoma heritage in the majority of its original works. Comprised of five dancers

and a technical director, the company tours the region performing concerts, special children's performances, teaching residencies for all ages.

Tickets for the performance of Prairie Dance Theatre may be purchased at the door. Adult tickets are \$4 and student tickets are \$1.

For more information, call Jesse Hankla (405)349-2611 EXT 260.



WOULDN'T IT BE BETTER IN THE FIRE? . . . this scenic backdrop shows a glaze of snow covering a rick of firewood as Mother Nature's characteristic show of non-favoritism dampened Hansford county over the Thanksgiving holiday.

**Thank You**

Thank you, to all that attended our Open House. We had a great day and you made it a day to remember. We also celebrated our 10th year in business.

Without great people in this area and surrounding area we couldn't have made that milestone.

We continue to serve you in trunk restoration, trunk parts and our Trunk Talk Volumes on trunk restoration.

Our new addition is Country Crafts. We carry many hand-made items such as crocheted collars, quilted wall hanging, wooden benches with quilted tops, bears, Santas, joy, Noel, Ho-Ho-Ho pillows, shelves.

Most wood items are made by Jerry Ford.

We take special orders on some items.

Mildred Martin and Tamala Benton do most of the hand-made items.

My thanks to all that attended our open house and supported us all these years. As always, I couldn't do anything without all of the support from my family!

Charollette Ford Trunks  
313 Main  
Spearman, Tx. 79081  
806-659-3027

**Without advertising a terrible thing happens ...**

**nothing**

**Tuesday Dec. 1**

**GRAND OPENING**

**CRAFTS GALORE**

415 S. Ash Perryton 435-4778

During our grand opening register for 3 - \$25 shopping sprees.

- Artist Supplies
- Wooden Toys
- Embroidery Floss
- Bandanas & Conchos
- Beads

Plus Lots More!

Open 9 - 9

OPEN  
Mon-Fri 9-8  
Saturdays 10-6  
Sundays Noon-6

Owner,  
Phyllis Laird

# Your Home Is Full Of Hidden Dollars



Turn idle items into cash fast with a Want Ad

Call 659-3434

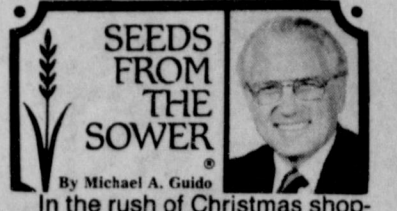
**SCOTT'S CHIMNEY SWEEP**  
Prevent Chimney Fires  
Call 806/323-5859  
Serving the Panhandle Area for 5 Years  
\$45 per Chimney  
Have your Chimney cleaned today!  
**CLEAN-RELIABLE-FRIENDLY**  
Thurs. only til Jan. 28

You are cordially invited to a bridal shower honoring Jennifer Sintas bride elect of Guadalupe Renteria Saturday, December 5 at First State Bank Hospitality Room 2:30 to 4:00 p.m. Given by hostesses  
S04S-2tc

**Help Wanted**  
HELP WANTED: Registered nurses at Ochiltee General Hospital, contact Roy Grunden, director of nurses at 435-3606. S04-2tc

## School Menu

- Elementary and Junior High**
- Monday, Nov. 30**  
Beef Burrito  
Pinto Beans  
Sliced Spinach  
Cookie  
Milk
  - Tuesday, Dec. 1**  
Corn Dog  
Mararoni w/Cheese  
Mixed Vegetables  
Fruit  
Milk
  - Wednesday, Dec. 2**  
Turkey/Potatoes/Gravy  
Blackeyed Peas  
Hot Bread  
Peanut Butter Blend  
Milk
  - Thursday, Dec. 3**  
Chicken Pattie/Bun  
Tator Tots  
Green Beans  
Vanilla Pudding  
Milk
  - Friday, Dec. 4**  
Hamburger/Bun  
Salad Bar  
French Fries  
Birthday Cake  
Milk
- High School**
- Monday, Nov. 30**  
Beef Burrito  
Pinto Beans  
Salad Bar  
Cookie  
Milk
  - Tuesday, Dec. 1**  
Corn Dog  
Mararoni w/Cheese  
Salad Bar  
Fruit  
Milk
  - Wednesday, Dec. 2**  
Steak/Potatoes/Gravy  
Salad Bar



**SEEDS FROM THE SOWER**  
By Michael A. Guido  
In the rush of Christmas shopping, a lady bought a box of fifty identical cards. She didn't bother to read them. She hastily signed her name and addressed all but one. Several days later, after they had been mailed, she read the message of the unsent card. It said: "This card is just to say a gift is on the way." God has sent sixty-six cards - the books of the Bible. They're just to say "a Gift is on the way." The Gift? His Son. There are two sides to a gift - giving and receiving. "God so loved the world that He gave." You will receive God's Gift, won't you?

**DIET CENTER. THE WEIGHT-LOSS PROFESSIONALS!**  
CALL US TODAY.  
for a free introductory consultation  
1604 Hwy. 75 N. Sherman 868-2727

**WATER HAULING:** Will do water hauling, more water for your money. Call 659-3125. S04S-8tp-S

## Resolving Car Repair Disputes

Car repairs are among the most common sources of complaints received by the Attorney General's Office. Almost everyone needs an auto mechanic from time to time. So if you're not an expert on auto repair, you're going to have to find someone who is. The best advice we've heard is this: Ask your friends for the names of reliable mechanics and locate several you feel comfortable with BEFORE the car needs repairing. Your investigation should include a call to your local Better Business Bureau and/or the nearest branch of the Attorney General's Office to see if there are unresolved complaints against those you are considering.

- When you take your car in for repair, ask for a written estimate before any work is done on your car. Tell the mechanic to call you for authorization if any additional work or parts are needed.
- If the charge is much higher than the estimate or if work was done without your authorization and you feel you have been overcharged, question the bill. Ask for a written explanation and keep the statement in case you decide to take further action. You may wish to try to talk the mechanic into lowering the price.

**PANHANDLE CRISIS CENTER:** 101 S.W. Forth, Perryton, Texas 79070, 806-435-5013. Help is available at no charge for domestic violence and sexual assault. Call Panhandle Crisis Center, receive support during a difficult time. Counselors on call 24 hours a day. Call for help.

**For Sale**  
FOR SALE: Boys twin size captains bed with underdrawers, mattress and boxsprings. Excellent condition \$125. Girls Twin Green French Provincial bed \$50. Small Girls Pajama dresses-1 pink, 1 white, excellent condition. Sherry Moore 659-2826. s01-rtn

**HANSFORD COUNTY**  
Planned Parenthood  
412 Davis  
659-2483  
Spearman, Tx.  
Monday - Friday  
8:30 - 12:30

**Real Estate**  
NEW 1988 TIFFANY - Beautiful 16x80 Balcony dining area, ash cabinets, built-in stereo system. Tri-level composition roof. Hollywood glamour bath. Fully furnished. 9 1/2 foot ceiling in living room. A-1 mobile homes. Call 806-376-5363. s02s-6tc

**OSGOOD MONUMENT CO.**  
Amarillo, Texas  
Dealers of Rock of Ages Granite, as well as all colored granites, marble and bronze memorials.  
represented by  
**BOXWELL BROS. FUNERAL HOME**  
519 S. Evans  
659-3802

**\$156 Per Month - 3 bedroom, 2 bath home.** Completely remodeled. New appliances. New carpet. \$644 down. 12.77% APR. 84 months, free delivery and set up. Call 806-376-4612. Ask for Tim s02s-6tc

**\$206 Per Month - for new 1988 double wide, 3 bedroom, 2 bath, free delivery and set up.** 13.75% APR 240 months, \$1,591 down, Ask for Ruben. Call 806-376-8611 s02s-6tc

**\$99 Total Down payment for 1987 double wide - 3 bedroom, 2 bath, free delivery to your location.** 120 months 11.0% APR, \$333 per month. Call Art 806-376-5630. s02s-6tc

**L&M Body Works**  
1501 Hwy 15  
659-2775  
Tailpipes - \$29.95  
Mufflers - \$39.95  
Most Duals \$160.00 complete

**ABANDONED HOMES -** Take over payments on 2 and 3 bedroom homes. Quality by phone. 806/381-1352. Call collect. S46-rtn

**HOUSE FOR SALE:** 2 bedroom 1 1/2 bath 2 car garage newly remodeled 1 block from school priced in the low 20's call 659-3987 S 51 rtn

**\$112 Per Month for 3 bedroom, 2 bath home.** Completely refurbished. New carpet, \$840 down, 12.77% APR, 84 months, free delivery and set up. A-1 Mobile Homes. Call 806-376-5363. s02s-6tc

**NOTICE**  
Wallace Monument Co.  
Monuments, Curbings,  
Grave Covers  
Local Representative  
**LEONARD JAMESON**  
Spearman, Texas

**COMPLETE MOBILE HOME** Services available. Check our cheaper rates on transporting, escorting, and skirting anchors and cool seal for all makes. Large selection of new, used and repos. B & D Mobile Homes. Guymon, Ok. 405/338-5315. s47-2tc

**STEAM RINSE & VAC-Rinse** and Vac Shampooer for rent at Gordons Drug. \$10.95 up to 24 hours.

**FOR SALE:** 1983 Bonneville Mobile Home, 16x80, 3 bedroom, 2 full baths, fireplace, spacious bi-level kitchen. Skirting and stairs go with it. Must see to appreciate. Call 659-2354 after 5:30 p.m. s03s-9tc

**ALCOHOLICS ANONYMOUS MEETING**  
Hansford County Library (Upstairs)  
122 Main-Spearman  
Open meeting 2nd Tuesday  
**AL ANON**  
Tuesday  
8:00 P.M.

**For Sale:** 2 bedroom, 2 bath trailer house at 115 N. James. Call 659-2245.

**FOR RENT:** 1 bedroom house located at 321 Endicott. Either furnished or unfurnished. Call Gus McLain 659-2274 or 659-2744. S03-rtn

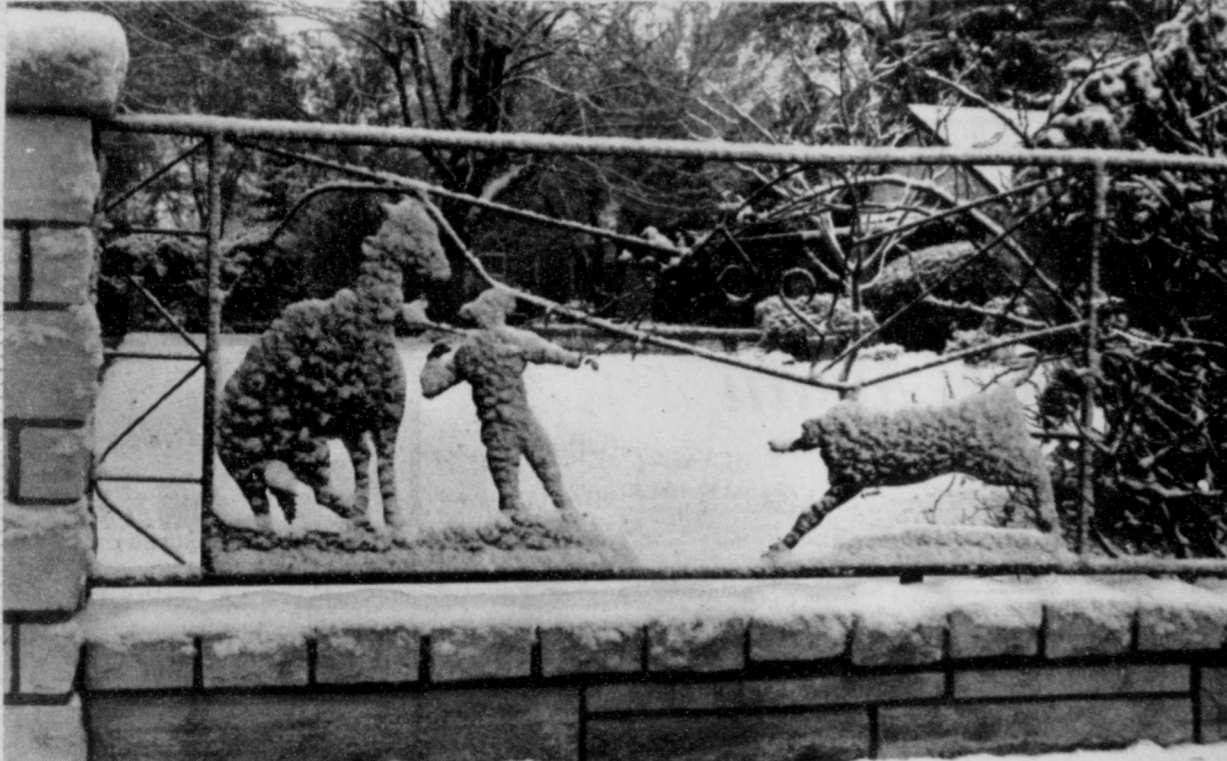
**FOR RENT:** Nice 2 bedroom house, fenced yard, storage building, storm cellar, freshly painted inside and out. Call 659-2506 after six call 2327. s01-rtn

**FOR RENT:** Nice 3 bedroom unfurnished house. Carpet, drapes, central air & heat. Elec. or gas hookup for cook stove. Cleaning deposit required. No pets. Call 659-3657. s51-rtn

**WEIGHT WATCHERS:** meets each Monday at 6:00 p.m. at the Home Demonstration Building, Spearman Texas.  
Is it True You Can buy Jeeps for \$44 through the U. S. Government? Get the facts today! Call 1-312-742-1142 Ext. 8631.  
11-26, 12, 10, 12, 24, 1-7

**Legal Notice**  
Railroad Commission of Texas  
Oil and Gas Division  
District 10  
November 6, 1987  
Case No. 103,511  
Notice of Hearing  
NOTICE IS HEREBY GIVEN: to the public and to all interested persons that under the legal authority and jurisdiction of title 3, Oil and Gas, Subtitles A, B, and C of the Texas Natural Resources Code, and pursuant to Article 6252-13a, Revised Civil Statutes of Texas, the RAILROAD COMMISSION OF TEXAS will hold a hearing on December 16, 1987 at 9:00 a.m. at the William B. Travis State Office Building, 1701 N. Congress Avenue, Austin, Texas. For room assignment, on the date of the hearing please check the bulletin board in the 1st floor lobby. Persons planning to attend this hearing are urged to contact the applicant (see service list) immediately prior to the hearing date to be sure that the hearing will proceed on the scheduled date. The Commission will consider the application of:  
Strat Land Exploration Company, 9 E. 4th Street, Suite 800, Tulsa, Ok 74103  
for a spacing exception permit under the provisions of the 16 Texas Administrative Code #3.37 (Railroad Commission Statewide Rule 37) to  
drill Well No. 1, Lillie Lease, 640 Acres, Section 200, Block 2, GH&H RR Co. Survey, Wildcat and Shapley (Morrow) Fields, Hansford County, being 9 miles in a northwest direction from Gruver, Texas. The location of this well is as follows:  
467' from north line and 660' from east line of lease.  
467' from westerly north line and 660' from east line of survey. This well is to be completed at an approximate depth of 7150 feet. If a continuation is necessary, this hearing will proceed at the William B. Travis State Office Building, 1701 N. Congress Avenue, Austin, Texas, and, to the extent possible, on subsequent working days. The room number and exact time of the continuation will be announced on the record in this proceeding and recorded with Docket Services, Oil and Gas Division, Railroad Commission of Texas. Rule 37 Case No. 103,511  
PURSUANT TO SAID HEARING, the Commission may enter such rules and orders as in its judgment the evidence may justify, including placement of the proposed well at a different location from that requested by applicant.  
TO APPEAR in support of or in opposition to this proceeding, a party other than the applicant must file with the Rule 37 Department, at least five (5) days in advance of the hearing date, a notice of intent to appear.  
ALL EXHIBITS filed as a part of the record in this cause must be specific, and, if a reference includes an exhibit filed in prior proceedings before the Commission, a copy of such exhibit properly identified shall be submitted for this record.  
A list of the names and addresses of those persons receiving notice of this hearing is contained in the Commission's file on this proceeding and is available for inspection at the Railroad Commission's offices in the William B. Travis State Office Building, 1701 North Congress Avenue, Austin, Texas 78701.  
THIS HEARING REQUIRES NOTICE BY PUBLICATION

**WILLIAMS & WEBB AUCTION**  
AN AGGRESSIVE SELLING TEAM  
3 PARCELS OF REAL ESTATE LOCATED IN Farnsworth, TX being sold in foreclosure proceedings for the U.S. Small Business Administration. SALE LOCATION: The West steps of the Ochiltee County Courthouse, Perryton, TX.  
PROPERTY LOCATION: MATLOCK PETROLEUM CO., Farnsworth, TX. INSPECTION: Anytime on a drive by basis. Interior of building may be inspected by appointment with the auctioneers.  
PARCEL A: LEGAL DESCRIPTION: All lots 1,2,3,4,5,17, and the north half (N/2) of Lot 18, Block 5, original townsite of Farnsworth, Ochiltee County, TX.  
COMMON DESCRIPTION: A commercial business situated on 6 1/2 Lots located on the south side of State Hwy. 15 in Farnsworth, Ochiltee County, TX. This property has been utilized as a bulk fuel plant and a retail operation with offices. It contains the following buildings:  
MAIN BUILDING: A metal quonset type building measuring approximately 48' x 103' (4,944 sq. feet) with an added on metal building containing approximately 300 sq. feet utilized as office space. This area contains three offices, a showroom, and restrooms. Drop ceilings, recessed lighting, paneled walls, and carpeted and tiled floors are in place in this portion of the building as is central gas fired heat and air conditioning. The balance of the building is open with a clear span shop type area except for a work room area. This area has 12 foot overhead doors in each end and the building has a concrete slab floor.  
STORAGE BUILDING: A small wood framed storage building is located South of the main building. It has corrugated metal covered walls with a gabled roof.  
TANK BATTERY: The Tank Battery, is still on the premises at the time of sale, is not included with the sale of the property. It will have been sold in the equipment auction earlier. The same is true for the loading dock equipment. The buyers for this equipment have until December 15 to remove it.  
CITY WATER WELL & FIRE STATION: Please note that the property sells subject to the rights of the City of Farnsworth is a city water well which is located on the property. No representation is made regarding what these rights may be.  
PARKING AREA & DRIVEWAYS: These areas are gravel covered and appear to be suitable for all weather operation. The streets on both the East and West sides are paved. The street on the North side of the property is dirt.  
PARCEL B: LEGAL DESCRIPTION: All lots 2,3, and 4 in Block 1, original townsite of Farnsworth, Ochiltee County, TX.  
COMMON DESCRIPTION: A triangular shaped parcel of land containing a Phillips 66 Service Station. This is a two bay station with approximately 1400 sq. feet of area. The floor plan provides a small office, customer area, two restrooms, a store room and two service areas with the hydraulic lifts in place. Underground tanks, pump islands, and concrete drives are in place. The building also has a concrete slab floor and is heated by gas wall heat and overhead heaters.  
PARCEL C: LEGAL DESCRIPTION: All of that certain 1.08 acre tract of land out of Section 50, Block 4, G.H.&H. Ry. Co. Survey, Ochiltee County, TX. more fully described by a metes and bounds description available from the auctioneers.  
COMMON DESCRIPTION: A parcel of land located on the West side of Farm to Market Road 376 which is the road on the East side of Farnsworth. This property is a block East of Parcel A and is presently utilized as a propane storage facility. A chain link fence surrounds a portion of the one plus acre contained in this parcel. This fence will remain in place, but propane bulk tanks, if still on the property at the time of sale, are not included in this sale. These will have been sold earlier with the purchaser possibly desiring to leave them in place pending the sale of this property. They should also be removed by December 15. Also a water well utilized by the City of Farnsworth is situated on this property and the sale is made subject to their rights, whatever they may be. Otherwise the property is flat but unimproved. The tanks piers can be left in place by the purchaser of the tanks at his option.  
TERMS (FOR ALL PARCELS): All three parcels will be sold at 10:05 a.m. Tuesday, December 1 on the West steps of the Ochiltee County Courthouse in Perryton, TX. These properties are being sold in foreclosure proceedings by the U.S. Small Business Administration subject to any or all taxes due (Auctioneers will have amounts at sale time). Said agency reserves the right to enter the bidding process. Each parcel will be offered individually and as a combination of three properties, selling in the manner deemed most advantageous to the seller. The seller requires all cash for each parcel (Checks are acceptable). The seller will convey all rights, title, and interest in the property to the buyer by a substitute Trustee's Deed only. No title insurance or abstract will be provided by the S.B.A., however, the agency will guarantee ownership to the property. The deed to the property will be exchanged for full payment at the time of sale at the courthouse. Survey, if desired to be at buyer's expense. Possession to be at time of sale. Please note the "subject to" provision regarding the wells on Parcel A & C described above. A pre-sale inspection can be arranged or additional information obtained by contacting the auctioneers.  
FOR FULL DESCRIPTIVE BROCHURE CONTACT THE AGGRESSIVE SELLING TEAM  
106-374-9387 2709 Canyon Drive, Amarillo, TX 79109 T41010734



A WINTER WONDERLAND decorated Spearman and Hansford county Friday morning after a snow storm left about an inch of the cold, white fluff covering the ground. A pair of scenes above reflect the beauty of Mother Nature when combined with the hand of man. Left, a fence motif of a cowboy and his horse roping a steer is given a special touch by Jack Frost. And a wintry landscape brings a motif of elegance [right] to this home in Spearman. The snow left .13 inch of moisture to bring Hansford county's 1987 moisture total up to 25.99 inches since Jan. 1. STAFF PHOTO BY KIRBY McADAMS

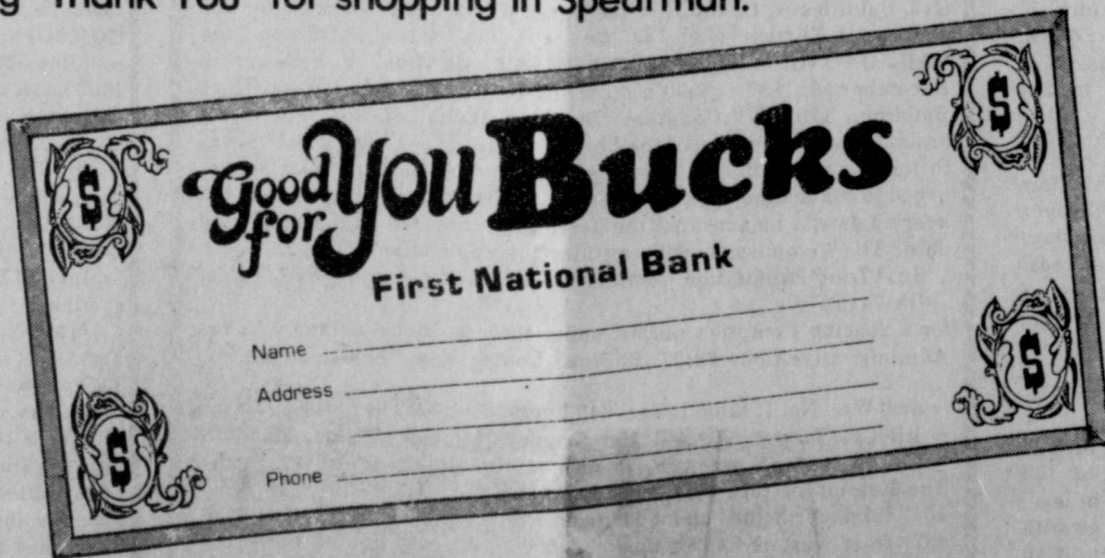
# Good For You, Spearman . . .



And, we've got \$600 Cash to say "Thank You" for shopping in Spearman this Christmas season!

That's right -- beginning this Tuesday for for every \$25 you spend this December for new purchases at any Spearman retail merchant you'll be given a special First National Bank "Good For You Buck" to register your name, address and telephone number.

Bring your Good For You Bucks to the bank and place them in a special hopper in the lobby. Then, at 10 a.m. Christmas Eve, three names will be drawn and we'll give away \$200 to each of the lucky winners . . . our way of saying "Thank You" for shopping in Spearman.



Get an extra Christmas bonus this holiday season . . . shop Spearman and get a chance at \$600 in Good For You Cash



We're more than a money store, we're friendly neighbors, too.

And we're out to make banking in Hansford County

