

# THE Hansford PLAINSMAN

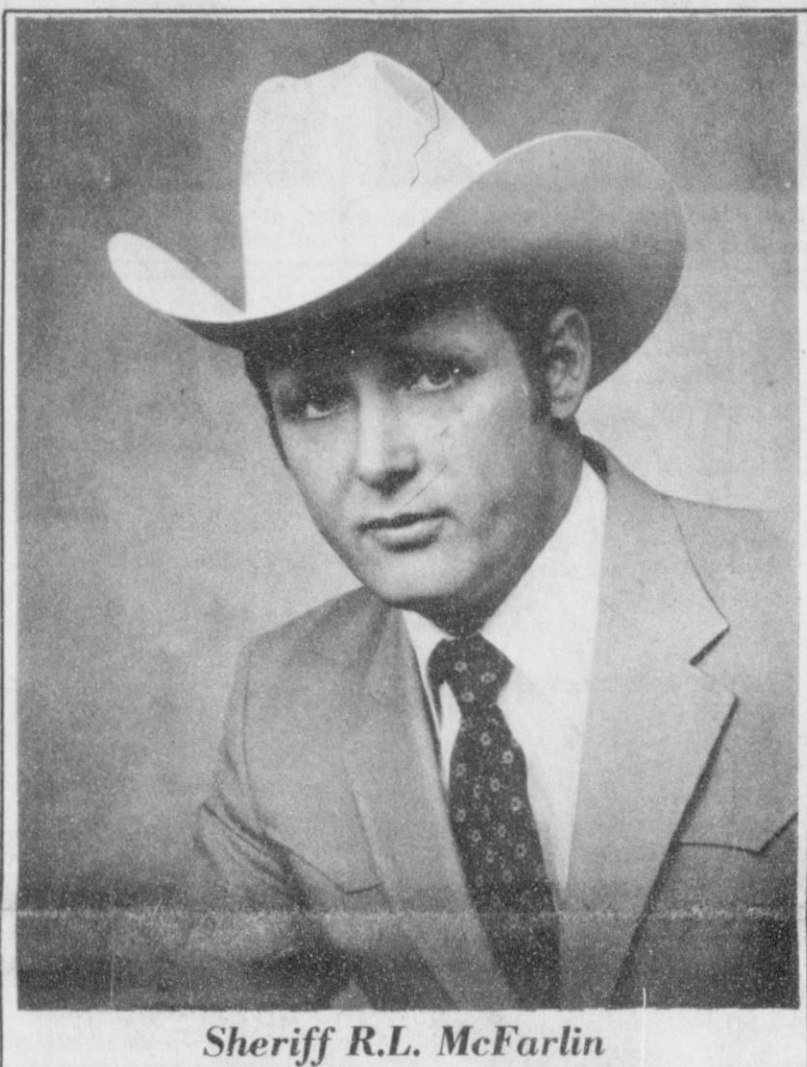
24 hr. prayer  
service 659-2911

Volume 16, Number 11

The Hansford Plainsman, Spearman, Texas 75081

Sunday, January 27, 1985

## Crime Down in Hansford County By 21%



Sheriff R.L. McFarlin

Sheriff R.L. McFarlin reported that the crime in Hansford County in 1984 was 21% below the crimes committed in the county for 1983.

Total number of arrests by the Sheriff's Department for 1984 were as follows: contempt of court - 1, probation violation - 13, fugitives - 17, public intoxication - 19, sale of prescription drug - 1, failure to appear - 1, theft by check 54 in county and 15 out of county, illegal alien - 15, possession of controlled substance - 1, murder - 1, driving while intoxicated - 8, carrying prohibited weapon - 2, assault - 4, theft - 8, auto theft - 2, forgery - 5, shop lifting - 1, mental - 1, burglary - 5, assault with deadly weapon - 1, sexual assault - 1, indecency with a child - 1, and injury to a child - 1.

Sheriff McFarlin reported that the Sheriff's Department served 264 civil papers and 24 indictments.

The Hansford County Sheriff's Office has started a National Neighborhood Watch Program.

The Sheriff has put out brochures on rural crime in Morse, Hitchland, Bernstein, and all county feed lots. The Sheriff reports that he will begin circulating the Rural Crime Prevention

brochures to each county residence in the near future.

The Sheriff reminds everyone that the secret of crime prevention is the reduction of criminal opportunities through the employment of some simple crime prevention practices. One of the most important crime prevention alternatives is to start or join a neighborhood crime watch.

### Deadline draws near

The deadline for nominations for the "Citizen of the Year" and "Citizen Over The Years" for Spearman is nearing. Nominations must be submitted by letter or form only. No petitions or phone calls will be accepted. Use the form from the Spearman newspaper of stop by the Chamber

of Commerce office, 211 S. Main and pick one up. Please return your entry to the Chamber of Commerce office by February 1, 1985.

The decision of the judge's will be final. The awards are to be presented at the Annual Banquet on February 23, 1985.

### Class Reunion will be July 5-6



The Spearman Reunion Class meeting was held this week. President Joel Lackey conducted the meeting with class members from nearly every graduating class in attendance. Ex-students are reminded that the big 1985 class

reunion will be held July 5-6, 1985. All ex-students are reminded to plan their receptions and registration will be at the High School July 6. A big all school dance will be held at the Wilson McClellan

building, west of Spearman, Saturday night, July 6. President Joel Lackey stated that the same band that played at the big reunion in 1981 will be back to play at the 1985 class reunion.

### ELECTIONS WILL BE APRIL 6

The City of Spearman will have their election on Saturday, April 6. Terms for 3 aldermen will end in April. The 3 aldermen are: Burl

Buchanan, Wilson McClellan and Bob Pearson. Mayor Blodgett has one more year before his term ends.

Jim Murray, City Manager, informed the Plainsman that an order for an election will probably be made at the next city meeting.

The Spearman School Board will have their election on April 6 also. The three year terms for Kent Guthrie and Mike Garnett will end this year.

### FFA Selling Sausage

The F.F.A. is presently selling sausage. This is whole hog sausage and can be purchased in 3 lb. boxes of patties or 2 1/2 lb. boxes of links. The price for patties and links is \$7.00 per box. They will be selling the sausage through February.

Contact any F.F.A. member or F.F.A. advisors, Gary York or David Scott.

### Spearman Music

#### Boosters to sponsor Chili Supper

Spearman Music Boosters are sponsoring a Chili Supper, Feb. 1. This will be held during the Spearman/Sanford-Fritch basketball game. Starting at 5:00 pm in the Jr. High Cafeteria.

There will be Chili & Beans, as well as cornbread. Charges are:

### MARKETS

WHEAT	\$3.16
MILO	4.25
CORN	2.95

### HOSPITAL

Patients in Hansford Hospital are Gwenfred Lackey, Jimmy Bonham, Salvador Luciano, Sandra Ortega, Grace Bennett, Lemmie Russell, Maude Alexander, Ann Arravoea and Pete Bayless.

Dismissed were Lometa Sparks, Chip Martin, Jimmy Collier, Brenda Vera and son, Ray Phelps.

### WEATHER

DATE	HI	LO
Jan. 18	58	27
Jan. 19	34	19
Jan. 20	28	5
Jan. 21	38	12
Jan. 22	41	20
Jan. 23	48	14
Jan. 24	54	22

## Up With People show premiers in Perryton

The energy, the excitement, and the entertainment of the new Up With People Show is coming to Perryton on Saturday, February 9 at 7:00 p.m. in the Perryton High School Auditorium.

The Perryton First National Bank is sponsoring this highly acclaimed two hour musical experience performed by a cast of 130 young men and women from 17 countries.

Tickets are \$5.50 for reserved seats and \$5.00 for general admission seats. There is a discount for senior citizens 62 and over and students 18 and under. The tickets are now on sale at the Perryton First National Bank.

Five international casts from 22 countries are participating in the Up With People program this year. These young men and women are performing in famous concert halls, village squares and school gymnasiums.

One of the most valuable and rewarding experiences during a cast member's year is living as a guest in homes of the local residents. This cultural exchange is a unique opportunity for host families. Local residents can enjoy the cultural diversity of Up With People cast members as ideas and experiences are shared.

Up With People's music is a dynamic combination of popular medleys and original composi-



UP WITH PEOPLE A World of Entertainment for the Entire Family. On Saturday, February 9

at 7:00 p.m. in the Perryton High School Auditorium the UP WITH PEOPLE entertainment extravaganza will be held. It is sponsored by the First National Bank of Perryton.

ganza will be held. It is sponsored by the First National Bank of Perryton.

tions, energetically performed by the talented cast and band. The choreography is non-stop and finds its way from the stage into the aisles.

Throughout the show, the cast

takes the audience on a musical journey of the world. From Yugoslavian folk dancing to a Belgian beer garden then back to the states where the colorful costumes and talented dancers

take the audience back to the 1800's to experience the "Cake Walk". The Up With People Show offers all the excitement of a global tour without the jet lag.

There's music for almost every

taste and age, from Renaissance and Modern Classic to Michael Jackson and Kool and the Gang.

In a medley from the 1950's, the stage is transformed into a huge high school gymnasium for the junior/senior prom when girls in their ball gowns and guys in their tuxes hop and swing to the music of Tony Bennett, the Cordetts, and Bill Haley and the Comets.

Some of the old Up With People favorites are there too, including the group's theme song, "Up With People!" and the poignant ballad of a little boy's curiosity about equality, "What Color is God's Skin?"

High-tech society meets its musical future when "Robbie Robot" and his back-up trio, the Transisters, make their escape from a factory assembly line to the Up With People stage.

Up With People has been seen live in concert by over 8 million people in 47 countries. They have performed at three Super Bowl halftimes, with the Boston Pops and 10 other symphonies, at the 1982 World's Fair and in world settings from Peking, China to Warsaw, Poland.

"Up With People smoothes the cares and frets of the day with a shower of light and color and music," wrote one reviewer. It's an evening of entertainment little short of sheer magic.



# Couple United In Double Ring Ceremony



MR. AND MRS. KIRK THOMPSON

On the evening of December 29, 1984, Sherry Greene, of Spearman, and Kirk Thompson, of Tulia, were united in marriage at the Union Church in Spearman.

The bride chose a holiday setting for the decor. At the front of the building stood a beautifully

flocked Christmas tree with white lights and deep red velvet bows. A candelabra set to each side of the tree. Each was enhanced with flocked greenery. Flocked greenery was also located along the halfwalls at the front of the building and along side each of the

front pews.

The bride and groom were each dressed in white. The bride's dress was truly a wintery wedding dress. It was made of satin and lace and was draped along the shoulders and skirt with maribu. Her veil was decorated with pearls and lace and hung waist to hip length. The dress itself was a gift of love for it was made by the bride's mother, Donetta Greene.

The bride's attendants each wore deep red velvet dresses with white maribu collars, and each carried white furry muffs. Each girl wore a wreath of baby breath that was enhanced with little red bows in back of the wreaths. The groomsmen wore charcoal gray tuxedos with black velvet vests.

The bride was given in marriage by her father, Jimmy Greene.

The music was all sung by family members, each one being accompanied by their favorite accompanist, Eddie Martin.

"God, A Woman, and a Man" was the first song. It was sung by Debbie and Victor Schumann, the bride's sister and brother-in-law. All three of Sherry's sisters, Lonita

James, Debbie Schumann and Carla sang, "The Rose" and best of all was the surprise when the bride and groom sang to each other. They sang "To Me".

Sherry's attendants were Debbie Schumann, Lonita James, Janell Smith and Carla Greene. Kirk's groomsmen were Lance Jones, Wade Littlefield and Brent Palmer. Mark Eakin was the ring bearer. Mark was also a candle-lighter along with Carla Greene.

The officiating minister was Bob Sheppard of Canyon.

A reception followed the cere-

mony.

The couple will make their home in Canyon where both are students at West Texas State University.

# MUSEUM



Ruth Bryan and Sybil Miller polish the oak book case which has its spot in the parlor at the museum.



Buena Lyon, Bobby Novak and Margery Curtis working at the Museum Monday. The photograph made in 1893 is Mrs. Fanny Richardson and son Alvino. The dress Margery is holding is the one worn by the baby in the picture. This is displayed at the museum.

## Museum Making Progress

Mrs. Harley Alexander of Gruver gave Stationmaster's Museum a "shot in the arm" recently when she presented an old oil lamp and a sizeable donation. The Alexanders are old-timers, known well in this area.

Museum Auxillary workers are making some head-way in furnishing the bedroom and parlor. A few more pieces of furniture have been moved in this week: a table from the E. J. Callaways; a book case and a secretary-all from the "golden oak" period which dates before the turn of the century. The book case belonged to the late Jess and Lula Womble and the secretary to the late Caleb and Mary Pettitt family. Other items of interest are being brought in. Progress is slow, but people are beginning to respond.

A museum such as the one at

### New Arrival

Jeffrey Sean Thomas Reed was born to John Reed and Vicki Schmehr on December 27, 1985. The young gentleman weighed 7 pounds and 15 ounces.

Meanwhile, in large skillet, heat corn oil over medium-high heat. Add beef, 1/2 at a time; brown well on all sides, about 3 minutes. Drain excess fat. Add beef to soup. Stirring occasionally, simmer 45 minutes or until beef is tender. Increase heat to medium. Add noodles and paprika. Stirring occasionally, cook 10 minutes or until noodles are tender. Stir in sour cream. Makes 4 servings.

© 1985 Suburban Features

## Coming Out Party For Blanca Baca



Blanca Baca had a happy birthday Saturday, January 19th at the First Baptist Church in Spearman. Rev. Romeo Reyes gave thanks for her and she would like to thank the people that attended.



## You're Cooking

Start the New Year off right, by dedicating yourself to easy-but-elegant home dinners. While the weather outside is chilly, keep the family warm with a hearty, heart-warming soup. Not just any soup, but one you can sink your teeth into... a meaty Stroganoff Stew. You and your family will enjoy this rich, European-inspired stew!

- HEARTY STROGANOFF STEW**  
 1 package KNORR® Onion or French Onion Soup Mix  
 4 cups water  
 1 tablespoon corn oil  
 1 lb. lean stew beef, cut in 1/2-inch cubes  
 2 oz. medium egg noodles  
 2 teaspoons paprika  
 1/2 cup dairy sour cream

In 3-quart saucepan stir together soup mix and water. Stirring occasionally, bring to boil. Reduce heat and simmer.

Canyon, this will never be! However, with the help of interested individuals, this little museum could house much area history and memorabilia of by-gone days-preserved for others to enjoy.

Pictures needed for the wall include the one of wolves howling at the moon, and the tired horse and rider called "end of the trail". (look in your attic.)

- MUSEUM NEEDS:**  
 Pitcher and bowl set  
 Chair with rope bottom  
 Mannequins  
 Old hats of the 1920-1930's

## Special Occasions

Last week of our bridal gown sale.

Prom dresses arriving daily

715 N. Main 274-5515 Borger, Texas



K. Dale Johnson, D.D.S., Inc.  
 3102 Garrett Drive  
 Peryton, Texas 79070

## 1985 Open House...

you are invited!!



During our nationwide Open House. Enjoy free coffee and doughnuts while discussing your building project... and register for free door prizes to be given away daily! Tour a Morton Building and receive a written price estimate



You won't want to miss our 1985 Open House celebration, during which our buildings will be featured with valuable discounts. We're also offering a free \$500 United States Savings Bond with every building purchased

and you'll receive a free pair of sturdy work gloves... embossed with the Morton Buildings' logo. NOTE: Bond offer expires on the last day of the Open House. Good only on erected buildings larger than 24'x36'. Material only orders are excluded.



OPEN HOUSE

Jan. 31-Feb. 1 & 2  
 9:00 AM to 6:00 PM

For information, call toll free  
**1-800-447-7436**  
 Illinois customers call collect - 308/253-2411



**MORTON BUILDINGS**  
 Over 80 Yrs. of Service

Morton Buildings, Inc.  
 Hwy. 287, North  
 Dumas, Tx. 79029  
 806 935-6881  
 Bob Martin - Manager

FREE Morton Buildings work gloves when you present this coupon, request a written quote and tour a nearby Morton Building (Offer good during Open House. No mail-in coupons accepted. Limit one coupon per family.)

Name \_\_\_\_\_  
 Address \_\_\_\_\_  
 Phone \_\_\_\_\_

Morton Buildings, Inc.  
 1/4 Pg. Black & White ("You are invited!!")  
 4 1/2" x 7"  
 Jan., 1985 issue of:

Film No. 41



BROKERS:  
 GIB DICKENS · CHRIS DICKENS · JAN PRATER  
 112 MAIN STREET · CANADIAN, TEXAS

## COMMODITIES inc.

- WE WELCOME SMALL OR LARGE HEDGING OR SPECULATIVE ACCOUNTS!
- DEALERS IN GOLD AND SILVER
- OUR CLEARING HOUSE IS R.B. & H.
- INFORMAL — NO HIGH PRESSURE
- SPECIALISTS IN THE CATTLE INDUSTRY

COME BY OUR OFFICES, HAVE A CUP OF COFFEE AND CHECK OUR COMPUTER SCREENS. OR, IF YOU PREFER, CALL US COLLECT AT 806/323-8309. IN KANSAS, NEW MEXICO, OKLAHOMA, COLORADO OR ARKANSAS, CALL TOLL FREE: 1-800-292-0103.



# BUY, SELL, TRADE OR RENT THROUGH THE CLASSIFIED ADS

**Call  
659-3434**

**SERVICES**

**MONUMENTS**

**Save Agents and Undertakers Profits**

If it is inconvenient for you to visit our large display, please phone collect (405) 327-0626 or write and we will call on you.

**ALVA MONUMENT WORKS, INC.**  
Alva, OK 73717

New to area?  
Give us a try  
Call your local  
**USED COW DEALER**  
As soon as Possible  
659-3544  
659-3545  
1-800-692-4043  
17S-rtm

**NOTICE**  
**Wallace Monument Co.**  
Monuments, Curbing,  
Grave Covers  
Local Representative  
**LEONARD JAMESON**  
Spearman, Texas  
35S-RTN

**OSGOOD  
MONUMENT CO.**

Amarillo, Texas  
Dealers of Rock of Ages  
Granite as well as all  
colored granites, marble  
and bronze memorials.

represented by  
**BOXWELL BROS.  
FUNERAL HOME**  
**519 S. EVANS**  
**659-3802**

CONCERT QUALITY piano tuning  
and repair. Free estimates. Write  
Elson Clark, Box 1016, Dalhart, TX  
79022 or call collect 806-249-2783.  
2-8tp-rtm

Hansford County  
Planned Parenthood  
412 Davis  
659-2483  
Spearman, TX  
Monday-Friday  
8:30-12:30

Home Baked Goods!!! Baked to  
order by the Spearman High  
School Cheerleaders. We will  
bake anything! To place an order  
call 659-2807. We will appreciate  
your support.

**STEAM RINSE & VAC**  
Rinse and Vac Shampooer  
for rent at Gordons Drug.  
\$10.95 up to 24 hours.

**SEARS BLOWN-IN ATTIC  
INSULATION.** Completely  
installed. For FREE Estimate  
at your convenience dial  
659-2373. Sears, Roebuck and  
Co., 517 S. Hwy. 207.  
45S-rtm

**MINOR APPLIANCE WORK.**  
Phone 659-5238. Randy Hollis  
11-rtm

**WANTED**

I still need a job. I am willing to  
work for the minimum wage  
starting salary, and will be a good  
and dependable employee. Please  
call Rodney Strawn 659-2754.  
12-rtm

**LIVESTOCK**

Breaking and training horses.  
Jeff Chase 435-5239.  
10s-18tc

**REAL ESTATE**

House for sale: moving out-of-  
town. 3 bdrms., new carpet  
throughout, new kitchen. Easily  
assumed mortgage. 9-5177, 9-  
2591, 9-3823.  
5-rtm

FOR SALE: nice 3 bedroom, 1  
bath. brick house with carport.  
1,080 sq. ft., fenced backyard.  
8x10 storage building. \$31,500  
9-3292.  
10s-rtm

FOR SALE OR RENT: 3 bedroom,  
1 1/4 bath house with 2 car garage  
at 1118 Barkley. Call 249-6673.  
rtm

HOUSE FOR SALE-3 bedroom, 1  
bath, 1 car garage, fenced back-  
yard. 659-5101.  
9-rtm

House For Sale: 1018 S. Evans, 3  
bedroom, 1 1/4 bath, new paint on  
trim, ceiling fan.  
9s-8tc

**AUTOMOBILES  
FOR SALE**

FOR SALE: 1981 Corvette-good  
condition-Red exterior and inter-  
ior. Call 659-3821 or 659-2859.  
11-6tc

FOR SALE: 1979 Sierra Grande  
GMC pickup with topper. 659-2301  
or come by 715 Cotter Dr. Asking  
\$4,000.  
12-2tc

**FOR RENT**

FOR RENT: Large corner trailer  
space in nice park. Two car cement,  
off-street parking bay, 9 x 10 storage  
building, 6 ft. wood privacy fence.  
Near schools. Call 659-3519 and leave  
name and number.  
11-RTN

2 bedroom trailer for rent.  
Partially furnished. Phone 659-  
5067.  
12-RTN

FOR RENT: 3 bedroom mobil  
home, partially furnished; 3 bed-  
room house, partially furnished; 2  
bedroom house. 659-2392.  
9s-rtm

FOR RENT: Nicely furnished 2  
bedroom apartment. Call 659-  
3471 afternoons or evenings. No  
pets.  
10-rtm

**HELP WANTED**

Expanding business needs design  
consultant; \$15.00 - \$40.00/hr.;  
full/part time; must have flair for  
decorating. Call 806-435-7261.  
11S-6tp

**BUSINESS  
OPPORTUNITIES**

Texsat Satellite Antenna Dealer  
needed. No Experience required.  
For information, Call 800-292-4503  
or 512-367-4401.  
12s-4tc

**PUBLIC NOTICE**

The COWBOY SUB-CHAPTER  
of the F.C.A. meets the fourth  
Saturday of every month at 7:30  
p.m. at the Home Demonstration  
Building, Spearman, Texas.

Guymon Elks Supper Club is  
open to the public. Our hours are  
Wednesday-Thursday 6-10 p.m.,  
Friday-Saturday 6-10:30 p.m. We  
have a Prime Rib Special every  
Friday.  
46s-rtm

COMING SOON: The Spearman  
Chamber of Commerce Banquet,  
February 23, 1985. Watch for  
details later.

WEIGHT WATCHERS meets  
each Monday at 6:00 p.m. at the  
Home Demonstration Building,  
Spearman, Texas.

Starting this Saturday, January  
26th, the Cupboard will be open  
(on a trial basis) serving from  
11:30 am to 1:30 pm.

**MISC. FOR SALE**

FOR SALE: Full size box spring,  
mattress and frame. Call 659-2037  
or come by 204 N. Hazelwood after  
5 p.m.  
12-2tc

FOR SALE: Simmons King Size  
mattress, box springs and frame.  
One year old. \$275.00. Phone  
659-2619 or 659-5557.  
12s-1tc

**MOBILE HOMES  
FOR SALE**

FOR SALE: 1978 14X70 Wayside  
Mobile home. 3 bedrooms, 2 full  
baths, fireplace. \$12,500. 659-3238  
12s-4tp

**REAL ESTATE**

HOUSE FOR SALE  
Nice starter home. 222 Endicott.  
Call from 8-5:00 at 9-2541 or  
9-2588. After 5 call 9-5153.  
12s-4tc

FOR SALE: 3 bedroom house, 2  
baths, attached garage. Call after  
5:00 p.m. 659-3096.  
16-rtm

## Freshmen Lynx zap Sanford-Fritch

The Freshmen Lynx played San-  
ford-Fritch here Thursday night.  
The score was tied at the end of the  
first quarter 8 to 8. By half time the  
Lynx trailed by two points with a score  
of 17 - 19. The Lynx came alive in the  
third quarter to lead 33 to 24 and  
increased their lead in the final  
quarter to win 41 to 30.



Trevor Pool shoots during the  
Junior Varsity Lynx-Stinnett Ratt-  
ler game, while team members  
Dusty Hill, Dean Greene, Michael  
Lopez and Monte Morris move in  
to guard the basket.

## Coffee Memorial Blood Bank will be in Spearman Feb. 4

The Coffee Memorial Blood  
Bank will be in Spearman, Feb.  
4th from 4 to 7 p.m. for its  
semi-annual Blood Drive. The  
Drive will be held in the Sacred  
Heart Catholic Church Parish  
Hall.

Each donor will receive a free  
coke mug.

Coffee Memorial Blood Center  
in Amarillo, a non-profit organiza-  
tion, is the only source of blood for  
23 area hospitals encompassed in  
a 26-county, 100-mile radius.

In addition to providing the  
"Fluid of Life", the center pro-  
vides specific blood components  
such as plasma, platelets and  
clotting agents which are needed  
by many patients to save or  
prolong their lives.

Because less than 5% of the  
eligible donor population are at-  
tempting to meet the needs of  
these 23 area hospitals, the Coffee  
center's primary goal is to encour-  
age more physically healthy per-  
sons to become volunteer donors.

Blood donations may be given to  
partially pay processing charges  
incurred by any member of a blood  
club or anyone designated by the  
chairman of the blood donor club.  
Each donation or credit to the  
blood donor club is valued at \$10.

Donors may also request per-  
sonal credit, which will be kept on  
record and may be used at the  
donor's discretion any time during  
the next 12 months, to be trans-  
ferred to a specific donor club or  
used as a replacement credit.

This year the Blood Center faces  
a greater challenge because of the  
new school regulations concerning  
participation of high school stu-  
dents in extra-curricular activities.  
The new rules do not allow  
flexibility for continuation of high  
school blood drives during school  
hours, but having the local drive at  
the high school location will make  
it possible for some students to  
donate blood immediately after  
school hours.

High school blood drives ordi-  
narily account for 10.8% of the  
blood donations or 2,000 to 2,500  
units annually.

The United States continues to

import over 300,000 units of blood  
from Europe annually to meet the  
blood needs due to the annual  
shortage and the inability of  
Americans to keep abreast of our  
own blood usage. The state of  
Texas has not yet been the  
recipient of this "Euro" blood.  
Donations in Spearman Feb. 4 will  
help to keep this record intact.

## AUCTION

COMPLETE LUMBER & HARDWARE,  
APPROX. \$100,000. RETAIL  
INVENTORY  
REAL ESTATE - MOBILE HOMES -  
TRUCKS  
AUTOMOBILES - BOATS - LUMBER -  
HARDWARE - AIR COMPRESSORS -  
PLEASANT VALLEY BUILDING SUPPLY  
4631 RIVER ROAD  
AMARILLO, TEXAS  
FRIDAY - FEBRUARY 8  
SATURDAY - FEBRUARY 9  
9:30 a.m. Daily  
1964 Chev. Flat Bed Dump Truck  
1962 Chev. Pickup, 4 spd.  
Toyota Forklift  
1982 Lincoln Town Car  
1979 Volvo Beetle Convertible  
1973 Olds Delta 88 Convertible  
1977 Mids Motor Home, 30'  
Ford Econoline Van - Succaneer  
Deck Boat - Lone Star Fishing  
Boat - Self Contained Camp  
Trailer - Idle Time Camper Top  
Volks Dune Buggies - Mazda Dune  
Buggy - Elec. Golf Cart -  
APPROX. 20,000 B/F LUMBER  
Plywood - Studs - Insulation -  
Siding - Power Tools - Portable  
Air Compressors - Paint - Paint  
Supplies - Electrical Supplies  
Plumbing Supplies - Automotive  
Supplies - Hand Tools - Nails -  
Bolts - Fencing - Roofing  
Materials - Wrangler & Laredo  
Boots - Work Shoes - Gloves -  
Yard & Garden Tools & Supplies  
Porch Swing - Smoke Alarms -  
Fletcher Terry Glass Catches -  
Sanyo Electronic Cash Registers  
Displays - Gondolas - 1976 to 1983,  
14'x75' to 10'x50', Many  
Furnished  
MOBILE HOMES & REAL ESTATE  
TO BE OFFERED 12:00 NOON, Friday,  
February 8 - Owner Reserves right  
to accept high bid on real estate  
4631 River Road, 225'x550' with  
improvements incl. 3 bdrms home  
and lumber yard buildings.  
Mobile Home Park located at  
312 E. Central, 12 hook ups -  
Approx. 5,000 sq. ft. home -  
90% complete w/indoor swimming  
pool and attached 3 car garage.  
For details contact auctioneer,  
INSPECT: Thurs, Feb. 7, 10:00  
a.m. to 3:00 p.m. Prior  
inspection is urged due to  
the size of this inventory!  
TERMS: Cash or Cashier's Check  
Personal or Company Checks MUST  
be accompanied by Bank Letter  
of Guarantee - NO TRADES  
T&E-015-0275  
For Brochure Contact:

**Ernest St. Clair**  
**AUCTIONEERS**  
2336 LAKEVIEW DRIVE  
AMARILLO, TEXAS 806/358-4522

**THE Hansford Plainsman**

PUBLICATION (USPS 2346-6000)  
SPEARMAN, TEXAS 79081

213 Main Box 458 659-3434

Published Weekly at 213 Main Street

Spearman, Texas 79081

Owner-Publisher.....William M. Miller  
Editor.....Faye Lynch  
Second Class postage paid at Spearman, Texas  
79081

Any erroneous reflection upon the character of  
any person or firm appearing in these columns  
will be gladly and promptly corrected upon being  
brought to the attention of the management.

POSTMASTER: Send address changes to  
Hansford Plainsman, Box 458, Spearman, Tx.  
79081.

SUBSCRIPTION RATE: Hansford, adjoining  
counties, combination with the Spearman  
Reporter, \$25.00.  
Other points, \$30.00.

**MEMBER**

**texas press association**

### Interested in Learning Crochet

If you are interested in learning to  
crochet a rag vest or jacket, please  
contact Claudine Clark at 9-3419,  
Susan Daniel at 9-5006 or the  
Spearman High School at 9-2584.

Enrollment is limited to 15 people  
and the fee is \$15.00. Classes will  
begin soon at the High School in the  
home economics department.

Dorothy Hale from Stratford will be  
teaching the classes.

Tree Trimming, Handy  
Man. Phone 659-3115.  
Bill Hopper

## Complete

Janitorial Service of Spearman  
Floor and Carpet Care  
P.O. Box 305  
Farnsworth, Texas 79033  
Phone 435-3043 or 659-5014

## YOUR CHILD WILL ALWAYS BE SPECIAL... CAPTURE THOSE PRECIOUS MOMENTS NOW! PORTRAIT SPECIAL!



**NOW 25% OFF!**  
**20 STUDIO QUALITY  
COLOR PORTRAITS** **970** Our Reg.  
12.95

TWO 8x10 • THREE 5x7 • 15 WALLET SIZE

We Welcome Everyone...

**BABIES, CHILDREN, ADULTS and FAMILY GROUPS**  
95¢ Deposit - Balance \$8.75. Poses our selection. Special  
effects poses extra. Limit: One package per subject. \$1.00  
each additional subject in portrait. Minors must be accom-  
panied by an adult. Satisfaction guaranteed. Satin-textured  
finish at no extra charge.

Ask about our NIMSLO 3-Dimensional Portraits

**TG&Y**  
**Family Centers**

Copyright 1984, TG&Y Stores Co

A HOUSEHOLD INTERNATIONAL COMPANY

**521 S. Highway 207**

**659-3741**



### 7th and 8th Grade Lynx host Sanford-Fritch

The 7th Grade Lynx were hosts to Sanford-Fritch Monday, Jan. 21. The Lynx lost to Sanford-Fritch 19 to 30.

Scores by quarters was: (1st) Spearman 2 - S.F. 6; (2nd) Spearman 4 - S.F. 12; (3rd) Spearman 11 - S.F. 21; (Final) Spearman 19 - S.F. 30.

Individual scoring (F.G., F.T., F., T.P.): Scott Wilkerson (3-0-2-6); Danny Lopez (2-1-1-5); Edward Mayfield (2-0-5-4); Frank Baca (2-0-2-4); Clint DeArmond (0-0-0-0); Chris Porter (0-0-0-0); Reed Campbell (0-0-1-0); Danin Irbeck (0-0-0-0); Greg Gilbreath (0-0-0-0); David Boese (0-0-1-0); and Tracy Thompson (0-0-0-0).

\*\*\*\*\*  
The 8th Grade Lynx played Sanford-Fritch here Monday night. The Lynx led 14 to 10 at the end of

the first quarter and increased the lead to 22 to 16 by half time. During the third quarter, the Lynx scored only 5 points, while S.F. almost doubled their score to lead the Lynx 27 to 30. The Lynx came alive in the fourth quarter and just barely won with a final score of Spearman 45 - Sanford-Fritch 43.

Individual scoring (F.G., F.T., F., T.P.): Keith Slaten (7-0-3-14); Matt Tucker (5-3-1-13); J Garnett (3-1-4-7); Stan Brandt (3-1-3-7); Shawn Cook (2-0-2-4); Mark Garcia (0-0-1-0); Pete Saenz (0-0-0-0); Kyle Coombs (0-0-0-0); Larry Dupont (0-0-0-0); Keith Clark (0-0-0-0); Pete Ochoa (0-0-0-0); Jose Torres (0-0-0-0); James Tindell (0-0-0-0); Clint Patterson (0-0-0-0); and Tony Pacheco (0-0-0-0).

Coach for the 7th and 8th Grade Lynx is Jeff Rowland.

#### Waka Calendar

Sunday, January 27.  
Sunday School-10:00 a.m.  
Morning Worship-11:00 a.m.  
Micah Mission Films & Supper- 6:30 p.m.

Monday, January 28-  
Waka Cubs at Darrouzett-6:00 p.m.

#### Dates to Remember

Birthdays:  
January 29-Bud Heath & Alvin Buschman  
January 30-Tim Aylor

### Wawaka Talk By Mary-Ann Hooper

Saint's preserve us. I can't think of anything to say. Surely a blast of lightning will come out of the heaven's and strike me dead! I hope you're all looking forward to the "Up With People" program in Perryton in February. If you've never been to one before try to make it this time. They are really great.



Still sitting on his throne at 39! [AGAIN?]



John Adams takes one away from opposing player as Corey Ramsey looks on at the Waka Tournament game.



Why Me? asks Amy Blan as she puts the ball back into play in the Waka Girls First Place victory game. Jenny Burger is there to receive the ball.

#### Think About This

There is nothing.....no circumstance, no trouble, no testing that can ever touch me until, first of all it has gone past God and past Christ, right through to me. If it has come that far, it has come with a great purpose, which I may not understand at the moment. But I refuse to become panicky, as I lift up my eyes to Him and accept it as coming from the throne of God for some great purpose of blessing to my heart, no sorrow will ever disturb me, no trial will ever disarm me, no circumstance will cause me to fret. For I shall rest in the joy of what my Lord is! That is the rest of the victory.

### 7th and 8th Grade Lynxettes travel to Sanford-Fritch

The 7th Grade Lynxettes traveled to Sanford-Fritch Monday, Jan. 21.

The Lynxettes led the first quarter 5 to 4. At half time, the Lynxettes trailed 11 to 14. During the third quarter, each team increased their score, but the Lynxettes still trailed three points at the end of the quarter with a score of 17 to 20. Final score was Spearman 20 - Sanford-Fritch 23.

Individual scoring (F.G., F.T., F., T.P.): Tiffany Womble (4-0-0-8); Michelle Cook (2-4-0-8); Nora Garcia (1-0-0-2); Mitzi Pearson (1-0-1-2); Laci Lasater (0-0-2-0); April Graham (0-0-1-0); Tricia Shedeck (0-0-0-0); Sunshine Smith (0-0-0-0); Nancy Ivey (0-0-0-0); Cacy McGill (0-0-0-0); Joy Kizziar (0-0-0-0); Melissa Schumann (0-0-0-0); Robin Ford (0-0-0-0); Rhonda Stevens (0-0-0-0); and Melissa Bullard (0-0-0-0).

\*\*\*\*\*  
The 8th Grade Lynxettes played

Sanford-Fritch there Monday, Jan. 21.

The Lynxettes took an early lead and at the end of the first quarter the score was Spearman 11 - S.F. 2. By half time, the Lynxettes led 16 to 5. The Lynxettes continued to increase their lead during the third quarter and led 24 to 9. Final score was Spearman 34 - Sanford-Fritch 13.

Individual scoring (F.G., F.T., F., T.P.): Melissa Beck (4-2-0-10); Patty Younger (3-0-1-6); Heather Murrell (3-0-0-6); Ginger Pearson (2-0-0-4); Margie Evans (2-0-3-4); Jennifer Turner (2-0-3-4); Jan Crawford (0-0-1-0); Carly Shieldknight (0-0-0-0); Meli Floyd (0-0-1-0); Michelle Graham (0-0-2-0); Kathy Vanlandingham (0-0-0-0); Kristin Dunninghoo (0-0-1-0); Sherry Moyer (0-0-0-0); Maria Vela (0-0-0-0); and Mendy Patterson.

The 7th and 8th Grade Lynxettes are coached by Karla Flowers.



Lions Oscar Donnell and Albert Graves served up delicious pancakes and sausages during the Lion's Club Pancake Supper held during the Spearman-Stinnett basketball games.

The Lions Club would like to thank everyone who attended the Pancake Supper. The Supper brought in a record \$1,000 plus to be used for local 'benefit'.

The custom of dating events B.C. (before Christ) and A.D. (anno Domini, in the year of our Lord) was introduced about 525 by Dionysius Exiguus, a Roman abbot and astronomer who set Christ's birth 753 years after the founding of Rome.

Concert and church organs may weigh as much as 150 tons and have anywhere from 10,000 to more than 27,000 pipes, ranging from only three-eighths of an inch up to 64 feet in length.

### Our Heritage of Faith...

Baptism as a gracious gift of God: The infant who is baptized receives all that Jesus' death and resurrection gained for mankind. The child does not contribute anything to his or her salvation; the infant is not in a position to contribute anything. But, then, neither are adults!

Salvation is purely a gracious gift of God. Therefore, as with any good gift, the appropriate thing to do is to respond with love and faith to so generous a giver.

NEXT TOPIC: God Initiates  
Bill Schardin, Pastor  
Faith Lutheran Church  
Spearman, Texas

### Snippets

On Indonesia's island of Java, the mythical goddess of the South Seas - Njai Loro Kidul - is so important that a room with a bath is always kept reserved for her in one of the island's best hotels.

# STRATEGIES

A financial game plan for retirement.

## DEVELOPING A PLAN

There is an important way you can help your financial strategy now and at retirement time.

It's with an IRA. Individual Retirement Account from First National Bank in Perryton.

You can help now because it's the biggest tax break ever. Every wage earner can subtract up to \$2,000 yearly from your gross annual income with an IRA. Married couples with a non-working spouse may deduct up to \$2,250 or when both work up to \$4,000.

## PROTECT YOUR INVESTMENT

Of course, at the First National Bank in Perryton your IRA is protected up to \$100,000 by the FDIC. And, we charge no maintenance fee.

## REACH YOUR GOAL

Then an IRA helps you later because your money draws interest at the highest rates available until you start making withdrawals at retirement. It is remarkable how much momentum an IRA can gather as you head towards retirement. If you start before 30 it can accumulate more than a million dollars.



First National Bank  
Perryton, Texas  
201 S. Main  
P.O. Box 925  
Perryton, Texas 79070  
806 / 435-3676

If you have a business, ask us about Keogh and SEP.



### Seven Students Make Honor Roll

Frank Phillips College students on the President's Honor Roll for the Fall 1984 semester have been announced.

In order for a student to be placed on the President's Honor Roll he/she must complete at least 12 semester hours and achieve a grade point average of 4.00.

Bambi Burger of Spearman made the President's Honor Roll for the Fall 1984 semester.

The Dean's Honor Roll for the Fall 1984 semester has also been released. Students being placed on this honor roll must complete at least 12 semester hours and achieve a grade point average of 3.00. Spearman students placing on the Dean's Honor Roll are Bambi D. Burger, Cindy A. Hendrick, Charla L. Roberts, Reynaldo Ortega, Teresa Miesner, Dean Schaffer and Jeff Burress.

## Chemical People Hold Meeting

The Chemical People of Hansford County met Wednesday, January 23rd, with the following members present: President-Betty Womble, Tamara Boyd, Sue Wolley, Judith Schaefer, Jo Linda Hutchison, James Cunningham, D.J. Alberts, Karen Haruff, Linda Butts, Ginger McClellan and William Schardin.

The members evaluated the 1984 goals and projects and concluded that it had been a successful year. The goals have been to prevent drug and alcohol abuse projects and providing information for the public on this problem.

The 1984 projects which were completed included:

1. Youth panel in Junior High on peer pressure.
  2. Student survey to determine the extent of the chemical abuse problem in our community.
  3. Public School Week Display.
  4. Pamphlets and literature distribution in waiting rooms.
- Drug Paraphernalia display at the Library.

6. Attending Substance Abuse Conference in Canyon.

7. County Fair Display with literature distribution.

8. 4th of July Street Dance.

9. Substance Abuse Rally Day (speakers at schools).

10. TWOD Conference in Austin Two members attended.

11. Formation of Speakers Bureau to present programs at local organizations to inform the community.

Possible projects for the coming year were discussed and are currently in the planning stages.

By-Laws for The Chemical People were discussed and will be voted on at the next meeting.

The next meeting for The Chemical People will be on Wednesday, 5:00 p.m., February 6th, at the Hansford County Library in Spearman (upstairs room). If you are not currently a member but are interested in the Chemical Abuse problem in our community, please come to our next meeting. We Need Your Help!

## 4-H ag program offers new insight

Through the 4-H agricultural program, young people can get a better insight into what farming and ranching is all about.

4-H'ers in this project get a better understanding of our agricultural industry and how it has made this nation great, points out Karen Haruff county 4-H program coordinator with the Texas Agricultural Extension Service, Texas A&M University System.

Specific objectives of the 4-H agricultural program are these:

1. To develop in self and others a knowledge and respect for agriculture and its importance to the community and to international economy.
2. To develop skills that contribute to profitable, efficient farming and ranching and a satisfying way of life.
3. To adapt and apply the best management practices and bene-

fitical results of research to farming and ranching.

4. To help others improve their farming and ranching skills and standards of living.

5. To help the family achieve progress in farming and ranching, family life and community involvement.

The agricultural project can offer new vistas of learning and living experiences for 4-H members, says Haruff. In addition, those who excel in the project can reap a number of awards, including an expense-paid trip to the National 4-H Congress in Chicago each fall to one member per state and six \$1,000 scholarships at the national level. These awards are provided by International Harvester Co. and Dalston Purina.

Further details about the 4-H agricultural project are available at the county Extension office.

Nostalgia is what makes one recall picnic lunches in the grass and forget the ant hills that were sat on.

A clip joint is any establishment where you have to present coupon cutouts to effect a savings on a purchase, says our resident shopper.

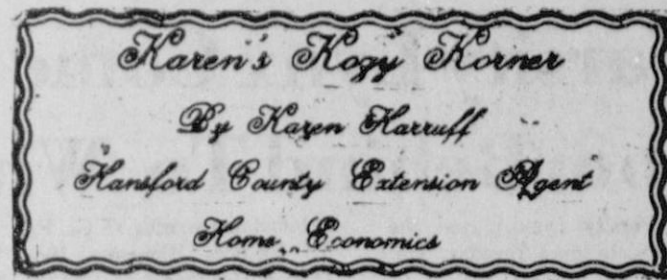
### H & R BLOCK SIMPLIFIES FARM & RANCH TAX RETURNS

H & R Block Tax Preparers are specially trained to help Farmers and Ranchers with the new tax laws and regulations. The Block personal interview assures quality and accuracy backed by the Worldwide Block name.

Block stresses early filing for Farmers and Ranchers with depreciable items listed. Block also prepares returns for farm employees. No tax return is too large or too small and you will receive every deduction to which you are entitled.

If you have questions on investment credit, oil and gas leases, unearned income, crops or livestock, or other farm related tax items, see or call H & R Block today. For one low fee, H & R Block offers accurate tax preparation assistance year round, with or without an appointment. H & R Block offices are located throughout Texas.

307 W. DAVIS  
SPEARMAN, TEXAS 79081.  
PHONE 806-659-2310.



For years mothers have been telling their children to eat their vegetables so their hair will be shiny and their eyes will be bright. Perhaps that's one reason why so many consumers believe the claims made for nutritional hair analysis.

Some relationship may exist between the state of one's health and the state of one's hair. But there is no scientific data which would enable someone to diagnose the mineral level in the body based on a sample of hair.

Yet, according to Federal Trade Commission (FTC) estimates, consumers now pay more than \$25 million to companies selling hair analysis services nationwide. The FTC has charged at least one of these firms with deception and asked the courts to freeze the assets of the company for use in possible redress.

The companies use hair analysis services primarily to sell minerals, vitamins and other dietary supplements.

The mail-order services are often advertised in health-oriented magazines and at holistic health fairs. Consumers send in a hair sample along with a fee for the "analysis." In return, they receive

### POLICE REPORT

On January 18, 1985 the Spearman Police Department investigated one (1) report of damage to warning devices.

On January 19, 1985 the Spearman Police Department arrested one (1) subject.

On January 20, 1985 the Spearman Police Department investigated one (1) accident with no reported injuries.

The Spearman Police Department received 245 calls for assistance.

D.J. Alberts  
Chief of Police

a computer printout and a recommendation to purchase vitamin and mineral supplements.

But there is no legitimate test that can be done on hair to determine the mineral level in the body. And since there are no vitamins in hair, a recommendation to purchase vitamin supplements because of a hair analysis is equally misleading.

The fact that consumers are willing to pay for these services shows a concern for their nutritional health and may reflect the mistaken belief that our food supply is deficient in vitamins and minerals.

Eating a balanced diet will normally provide all the mineral and vitamins a person needs. People who are concerned about their nutritional status would be better off consulting a physician for legitimate medical advice than spending their money on needless vitamins and minerals.

EDUCATIONS PROGRAMS CONDUCTED BY THE TEXAS AGRICULTURAL EXTENSION SERVICE SERVE PEOPLE OF ALL AGES REGARDLESS OF SOCIO-ECONOMIC LEVEL, RACE, COLOR, SEX, RELIGION, HANDICAP, OR NATIONAL ORIGIN.

### Gary Gilbreath receives bachelor's degree

Gary Z. Gilbreath from Gruver received a bachelor degree in agricultural engineering at Texas A & M University's fall commencement exercises.

A total of 2,731 degrees were awarded, including 2,245 bachelor's, 387 master's and 99 doctorates.

SPEARMAN CHAMBER OF COMMERCE CITIZEN OF THE YEAR award

NOMINATION BLANK:

1. Name \_\_\_\_\_
2. Address \_\_\_\_\_
3. Individuals nominated for Citizen of the Year should be cited for activities OUTSIDE THOSE DUTIES CONNECTED with HIS OR HER EMPLOYMENT.
4. Friend of those in need.
5. Citizen of the Spearman School District.
6. Above all must be of outstanding character, dependability and reliability.
7. Achievements and nature of service: (LIST and EXPLAIN in detail the achievements, nature of service, nature of participation and leadership; bearing in mind the following basis for judging.)
  - A. Contribution to community welfare
  - B. Participation in community affairs
  - C. Evidence of lasting contribution
  - D. Exhibition of leadership ability
  - E. Evidence of personal and business progress

Nominations must be submitted by letter or form only- No petition or phone calls will be accepted. Use the form from the newspaper or stop by the Chamber of Commerce 211 Main, and pick one up.

Please return your entry to the Chamber of Commerce office by February 1, 1985. The decision of the judges will be final. The award will be presented at the Annual Banquet, Saturday, February 23, 1985.

SPEARMAN CHAMBER OF COMMERCE CITIZEN OVER THE YEARS AWARD

NOMINATION BLANK:

1. Name \_\_\_\_\_
2. Address \_\_\_\_\_
3. Individuals nominated for Citizen over the Years should be cited for activities OUTSIDE THOSE DUTIES CONNECTED with HIS OR HER EMPLOYMENT.
4. Friend of those in need.
5. Citizen of the Spearman School District.
6. Above all must be of outstanding character, dependability and reliability.
7. Achievements and nature of service: (LIST and EXPLAIN in detail the achievements, nature of service, nature of participation and leadership; bearing in mind the following basis for judging.)
  - A. Contribution to community welfare
  - B. Participation in community affairs
  - C. Evidence of lasting contribution
  - D. Exhibition of leadership ability
  - E. Evidence of personal and business progress

Nominations must be submitted by letter or form only- No petition or phone calls will be accepted. Use the form from the newspaper or stop by the Chamber of Commerce 211 Main, and pick one up.

Please return your entry to the Chamber of Commerce office by February 1, 1985. The decision of the judges will be final. The award will be presented at the Annual Banquet, Saturday, February 23, 1985.

UNITED METHODIST WOMEN'S

ANNUAL GROUND HOG DINNER

Saturday, February 2nd  
11:30-2:00 P.M.  
METHODIST CHURCH FELLOWSHIP HALL

Prices:

Adults	\$5.00
Children 6-12	\$3.00
Children under 6	FREE

Tickets available in advance or at the door

Regional Chiropractic Center

Dr. Darrell B. Duke

Complete Chiropractic and nutritional services.

Open Mon.-Fr. 9:00-4:30  
221 Sanders 650-5585

EDWARDS HD 912 HOE DRILL

Edwards Drills are engineered with extra STRENGTH and CLEARANCE for the toughest conditions. They are manufactured in 7 ft. (2.134 m) widths providing MAXIMUM FLEXIBILITY over the roughest terrain. HITCHES for 2-7 Drills are available. They are also DESIGNED TO hitch with NOBLE DK5 DRILLS to enlarge your present units.

Morse Implement and Auto Supply  
Morse, Texas  
Tom Dortch (806) 733-2668

## NUTRITION CONSULTATIONS

Registered, licensed dietitians, are the nutrition experts. Check with us about behavior modification and motivation for permanent weight loss. Stucky point system is a proven way to lose weight and maintain the loss while practicing good nutrition. Call for an appointment.

715 N. Main  
Borger, Texas  
806-274-5515

GUYMON LIVESTOCK AUCTION

WE SELL BOTH CATTLE & HOGS

"A FAST GROWING MARKET"

PRIVATE TREATY EVERY DAY

FRESH CALVES OFFERED

SALE WEDNESDAY AT 10:00 a.m.

SALE THURSDAY AT 1:00 p.m.

Phone us about your consignments

Office 1-405-338-3378

Out of State 1-800-338-5871

Gary Cobb - General Manager  
Res. Phone 1-405-545-3470

Bill Blackmore - Field Representative  
Res. Phone 1-405-349-2254



## Varsity Lynx Come From Behind To Win

The Varsity Lynx played the Sunray Bobcats there Tuesday, Jan. 22.

The Lynx led one point, 12 to 11, at the end of the first quarter and 28 to 27 at half time. Sunray took the lead during the third quarter with a score of 43 to 37. The Lynx came back to win with a final score of Spearman 60 - Sunray 50.

Individual scoring (F.G., F.T., F., T.P.): Ross Donahue (9-9-2-27); Damon Goodheart (4-4-3-12); Mark Pearson (4-0-0-8); Thad Reid (2-2-2-6); Steve Burke (2-0-4-4); Bob Cook (1-1-1-3); Mack McLain (0-0-0-0); Tim Willis (0-0-0-0); Jeff Graves (0-0-0-0); Jerry Garcia (0-0-0-0); and Allen Mires (0-0-0-0).

Coach for the Lynx is F.G. Crofford.

## Varsity Lynxettes Roll Past Sunray

The Varsity Lynxettes played at Sunray Tuesday, Jan. 22.

The Lynxettes, coached by Deryll Friday, led 10 to 3 at the end of the first quarter and 20 to 13 by half time. The Lynxettes increased their lead with a 32-21 score at the end of the third quarter. Final score was Spear-

man 45 - Sunray 33.

Individual scoring (F.G., F.T., F., T.P.): Shannon Jenkins (5-6-2-16); Carrie Guthrie (4-2-3-10); Tiki Jackson (2-6-5-10); Jill McLain (2-0-3-4); Michelle Savage (2-0-0-4); Julie Jones (0-1-2-1); Cayla Easton (0-1-3-1); and Ceria Vela (0-0-0-0).

In the late 1800s every able-bodied male was required to work on Texas roads a specified number of days each year. Today, highway construction and maintenance are the responsibility of the State Department of Highways and Public Transportation.



Junior Varsity Lynxette, Donda Pool, 21, makes a lay-up for two points during the recent Spearman-Stinnett games.

### Services Held For Father of Local Man

Pat Murphy, 60, died Wednesday, January 22, 1985.

Services were held at 2:00 p.m. Friday, January 24, at the Bible Baptist Church of Childress. The Reverend Luther Bradley, pastor of the Bible Baptist Church was the officiating minister. Burial will be in the Childress Cemetery by Schooler-Gordon Funeral Directors.

Mr. Murphy was a lifetime resident of Childress. He was retired from the railroad and a member of the Bible Baptist Church.

Survivors include his wife, Willie Bob; a son, Larry of Spearman; a daughter, Nikki Cauley of Lubbock; and three grandchildren.

### History book may be republished

Volume I of Hansford County History, published under the auspices of the Hansford County Historical Commission in 1979-80, is being considered for reprint in a small number, if there is enough response. Cost per book will be \$60.00, and must be ordered and paid in advance by Feb. 15, 1985, no later. Date of delivery will be about 60 days following that deadline, probably in May.

Those reading this who may know of anyone interested in Hansford County History are urged to relay the message of the reprint of Volume I Hansford History.

Books may be ordered by sending checks/money orders to: Hansford County Historical Commission 30 S. Townsend, Spearman, TX 79081. (If there is not enough response, money will be returned to those ordering.)



Lions Doug Steger and Rev. Schardin proved to be excellent cooks during the recent Lions Club Pancake Supper.



Freshman Lynx Brett Davis, 10, dribbles in while Tim Woolley runs interference against Stratford last week.

## Conference Championships Begin

On the other hand, the Lynx team will be one of the strongest boy's contenders in the State, bowing only to Sanford-Fritch thus far in District play.

The Lynx first Bi-District game will be played February 23rd. The Lynx will play the winner of District 2 which will be Clarendon, Memphis, Quanah, Shamrock, Wellington, or White Deer.

There is a good possibility that the Lynx will meet the Sanford-Fritch Eagles in the Regional finals which will be played in Lubbock on March 1st and 2nd.

Members of District 1-AA include Fritch, Panhandle, Stinnett, Stratford, Sunray, and Spearman.

Once again we remind sports fans that the Bi-District Girl's game will be played February 16th, the Area Girl's game will be on February 19th, and the Girl's Regional Tournament will be at Lubbock on February 22nd and 23rd.

The Bi-District Boy's game will be on February 23rd, with Boy's

Area game on February 26th, and the Regional Tournament at Lub-

bock on March 1st and 2nd. By a strange "Quirk of Fate" Sanford-Fritch and Abernathy, two of the top AA teams in the State might play each other Feb. 26th in an area game.

Once again sports fans feel that the Lynx have a good chance of getting into the Regional contest if their playing continues as it has so far.

# Up With People

"Energetic!"  
"Powerful!"  
"Alive!"

A World of Entertainment for the Entire Family

Two unforgettable hours of non-stop entertainment performed by an international cast of 100 young people. Featuring dazzling choreography, spectacular costumes, and a contagious energy that will leave you feeling great. Find yourself on a musical journey around the world, back in time and into the future. From Bach to Rock, there's something for everyone. Up With People! A world of entertainment for the entire family.

ENJOY THE UP WITH PEOPLE SHOW  
SATURDAY, FEBRUARY 9 AT 7 P.M.  
PERRYTON HIGH SCHOOL AUDITORIUM

TICKETS ON SALE AT FIRST NATIONAL BANK IN PERRYTON  
RESERVED SEATS FOR \$5.50  
GENERAL ADMISSION SEATS FOR \$5.00  
DISCOUNTS TO STUDENTS AND SENIOR CITIZENS

Sponsored by



**First National Bank**

Member FDIC

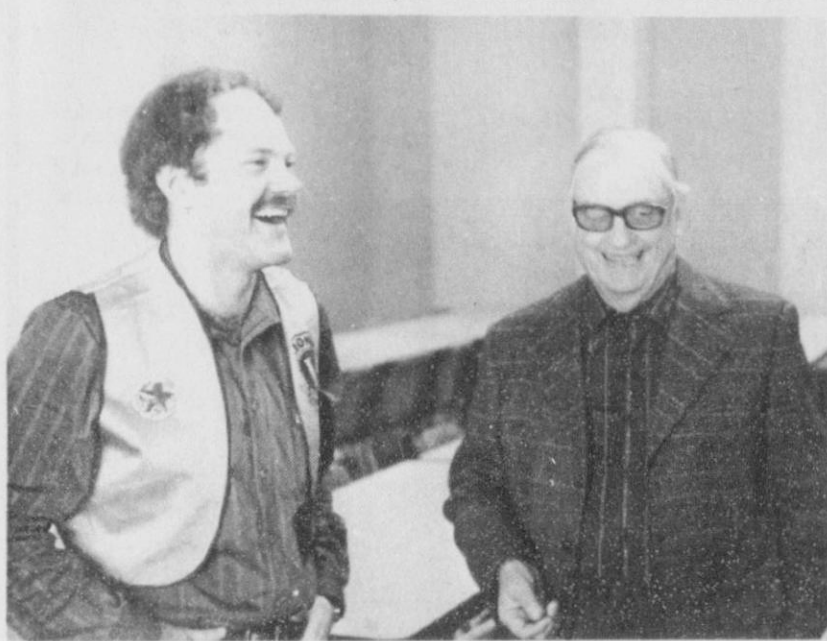




Freshman Lynxettes [L to R] Front Row: Lisa Cazarez, Kim Jenkins and Stacy Nitschke. Back Row: Kathy Poole, Carol Poole, Sandy Hill, Kari Schneider and Coach North.



Lisa Cazarez takes a shot, while Sandy Hill - 24, Stacy Nitschke - 40 and Kari Schneider - 50 clear the way against the Stratford Freshmen Team.



Pictured above are Lions 'Frostie' Hickerson and Clay Gibner during the recent Lions Club Pancake Supper.



Jill McLain, Varsity Lynxette, shoots for two against the Stinnett Rattlers last week.



Freshmen Lynx [L to R] Front Row: Justin Ooley, Carl Urban, Alan Beeson, Larry Dunn, and Will Black. Back Row: Chris Lopez, Tim Woolley, Charles Roper, Kevin Nelson, Brett Davis, Norman Scroggs, Bryan Caison and Coach Jones.

# Nash Brothers Motor Co., Inc.



**Jim Miller**  
Service Writer  
15 Yrs Exp



**Arnet VanDyke**  
Parts Manager  
39 Yrs Exp



**Wayne Booth**  
Parts Counterman  
4 Yrs Exp



**Eddie Countryman**  
Quality Control  
38 Yrs Exp



**Joe Mrofcza**



**Duke Cornelson**



**Doug Pritchard**



**James Riley**

## TREMENDOUS SAVINGS ON NEW 1984 MODELS All Are Priced Below Dealer Cost

1984 Cadillac Fleetwood Brougham 4dr	\$22,371.00
1984 Buick LeSabre Limited 4dr	\$12,937.00
1984 Buick Regal Limited 2dr	\$11,649.00
1984 Olds. Omega Brougham 4dr	\$9,852.00
1984 Pontiac Parisienne Brougham 4dr	\$12,266.00

CLOSE OUT ON ALL 1984 DEMOS & FACTORY CARS  
2 1984 Buick Rivieras; 3 1984 Cadillac Eldorados; Cadillac Seville; Cadillac Fleetwood Brougham 4dr; 3 Cadillac Sedan Devilles; Cadillac Cimmaron; Oldsmobile Omega Brougham 4dr; 2 Oldsmobile Cutlass Supreme; 2 Oldsmobile Toronados; Pontiac GrandPrix; GMC Suburban; 3 GMC Pickups

### THE JANUARY PRICE THAW

Model	Price	Price
605 1983 Cadillac Sedan Deville	\$13,500.00	\$12,500.00
355 1982 Cadillac Fleetwood Brougham 4dr	13,500.00	12,500.00
312A 1981 Olds. Delta Royale 2dr	7,450.00	12,500.00
396A 1982 Olds. Cutlass Supreme 2dr	7,450.00	6,450.00
336A 1980 Buick Electra 225 Limited 4dr	6,950.00	5,950.00
CA12A 1980 Chev. Corvette	12,750.00	11,750.00
321A 1980 Buick Electra 225 Limited 2dr	6,995.00	5,950.00
B16A 1980 Buick LeSabre 2dr	5,450.00	4,450.00
G31B1 1982 Pontiac Firebird	8,950.00	7,950.00
747 1984 GMC Jimmy	13,500.00	12,500.00
CA6B 1984 Chev. Custom Van	18,500.00	17,500.00
607 1984 Jeep Grand Waggoner	20,562.00	17,985.00
608 1976 Dodge Station Wagon	\$1,795.00	\$1,245.00
610A 1975 Ford Mustang	1,495.00	1,095.00
308C 1979 Chrysler Cordoba	3,750.00	3,000.00
375B 1980 Datsun Station Wagon	1,495.00	950.00
377C 1971 Toyota	650.00	350.00
389A 1980 Ford Pinto	1,495.00	750.00
393B 1974 Cadillac 2dr	1,995.00	1,250.00
404A 1978 Ford T-Bird	2,750.00	2,250.00
B11B 1977 Chev. Impala 4dr	3,250.00	2,500.00
O25A 1979 Ford LTD 4dr	4,250.00	3,450.00
OA5A 1978 Buick Regal 2dr	3,950.00	2,895.00
394C 1979 Dodge Pickup	3,750.00	3,250.00

Do Us Both A Favor — Shop  
**NASH BROTHERS MOTOR CO. INC.**  
We Retail The Best  
And Wholesale The Rest



**Jim Ortiz**  
Technician  
16 Yrs Exp

**MIDWINTER TUNEUP SPECIAL**  
Includes labor and parts (plugs & fuel filter)  
4 cylinder GM cars \$32.60  
6 cylinder GM cars \$44.60  
8 cylinder GM cars \$50.60  
Service specials good Jan. 28 to Feb. 28, 1985



**Jim Osborne**  
Service Manager  
26 Yrs Exp

**MIDWINTER SERVICE SPECIAL**  
Lube, oil, & filter V-8 Engines \$21.50  
Lube, oil, & filter 4 & 6 Engines \$20.00  
Includes Mr. Goodwrench oil (or other high grade) and Gm filter. Service includes checking all fluid levels, belts, and hoses.



**Roger Koehn**  
Technician  
11 Yrs Exp

**GM QUALITY SERVICE PARTS**  
GENERAL MOTORS CORPORATION  
**Keep That Great GM Feeling With Genuine GM Parts.**



**Kip Thoreson**  
Technician  
2 Yrs Exp



**Allen Ewing**  
Technician  
8 Yrs Exp



**Jim Lear**  
Technician  
6 Yrs Exp



**Tom Carden**  
Technician  
2 Yrs Exp



**Greg Ming**  
Technician  
5 Yrs Exp

**524 N. Main 405-338-3301**

Guymon, Oklahoma





## J.V. Lynx Win Again

The Junior Varsity Lynx traveled to Sunray Tuesday, Jan. 22. The Lynx won with a score of 49 to 33. Trevor Pool scored 19 pts. Michael

Lopez - 8 pts.; Monte Beck - 7 pts.; Mark Garnett - 5 pts; Monte Morris - 1 pt.; Dean Greene - 4 pts; and Jeff Vanlandingham - 5 pts. Coach for the J.V. Lynx is Kenny Rutherford.



Varsity Lynx Mark Pearson puts one up for two points during the recent Spearman - Stinnett basketball game.



"Your horse likes what?" says Bobby Hicks at the Oro Tack display.

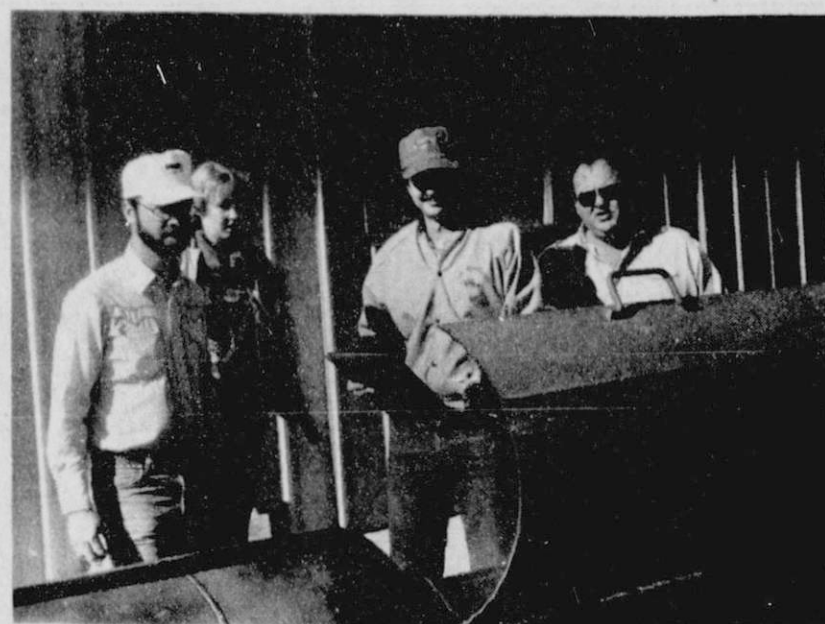
## Freshmen Lynxettes lose to Sanford-Fritch

The Freshmen Lynxettes hosted Sanford-Fritch here Thursday, Jan. 24.

The Lynxettes trailed with a score of 8 to 10 at the end of the first quarter, but led 21 to 19 at half time. During the 3rd quarter Sanford-Fritch held the Lynxettes with no scoring to lead 21 to 31. The final score of the game was Spearman 32 - Sanford-Fritch 48.

Individual scoring (F.G., F.T., F., T.P.): Carol Poole (4-1-0-9); Sandy Hill (3-2-3-8); Mary Lou Baker (1-0-2-2); Stacy Nitschke (1-1-1-3); Cathy Poole (1-0-5-2); Kari Schneider (1-0-5-2); Kim Jenkins (0-2-3-2); and Lisa Cazarez (0-0-1-0).

Coach for the Freshmen Lynxettes is Richard North.



Checking out the barbeque was manager, Ann Turner, Jim Turner and Bobby Cook.



# SPEARMAN CHURCH DIRECTORY

### APOSTOLIC FAITH CHURCH:

Leland Grimmer, Pastor  
824 South Dressen  
Sunday School: 10:00  
Morning Worship 11:00  
Evening Worship 7:00  
Wednesday Service 7:30  
659-2870

### FIRST CHRISTIAN CHURCH:

[DISCIPLES OF CHRIST]:  
Martin Foster, Pastor  
29 South Bernice  
Sunday School 9:30  
Morning Worship 10:50  
Evening Worship 6:30  
659-2036

### CHURCH OF THE BRETHREN:

Milton Robinson, Pastor  
Waka, Texas  
Sunday School 10:00  
Morning Worship 11:00  
No Evening Services  
435-4598

### SACRED HEART CATHOLIC CHURCH:

Father Raymond Crosier, Priest  
Saturday Evening Mass 7:00  
Friday Mass 8:30 AM  
Sunday Mass 8:00 AM  
Thursday Mass 6:30 PM  
659-2166

### CHURCH OF CHRIST:

Gaylord Cook & David Fultz, Co-ministers  
121 South Haney  
Sunday School: 9:45  
Morning Worship 10:35  
Evening Worship 6:00  
Wednesday Service 7:30  
659-3244

### FIRST UNITED PRESBYTERIAN CHURCH:

Leland McCullough, Pastor  
1021 Cotter  
Sunday School 9:45  
Morning Worship 11:00  
No Evening Services  
659-2033

### FAITH LUTHERAN CHURCH:

William Schardin, Pastor  
1101 South Bernice  
Sunday School 9:45  
Morning Worship 10:45  
No Evening Worship  
659-2252

### FIRST UNITED METHODIST CHURCH:

Lane Boyd, Pastor  
407 South Haney  
Sunday School 9:45  
Morning Worship 11:00  
Evening Worship 7:00  
659-3220

### FELLOWSHIP BAPTIST CHURCH

Jim Jones, Pastor  
1102 South Archer  
Sunday School 10:00  
Morning Worship 11:00  
Evening Worship 7:00  
Wednesday Service 7:30  
659-2782

### SPEARMAN UNION CHURCH:

(Inter-Denominational):  
Steve Rogers, Pastor  
31 South Endicott  
Sunday School 9:45  
Morning Worship 10:45  
Evening Service 6:30  
Wednesday Service 7:30  
659-2644

### FIRST ASSEMBLY OF GOD:

David Nuckels, Pastor  
401 North Bernice  
Sunday School 9:45  
Morning Worship 11:00  
Evening Worship 7:00  
Wednesday Service 7:00  
659-2295

### SPEARMAN-GRUBER SPANISH BAPTIST MISSION:

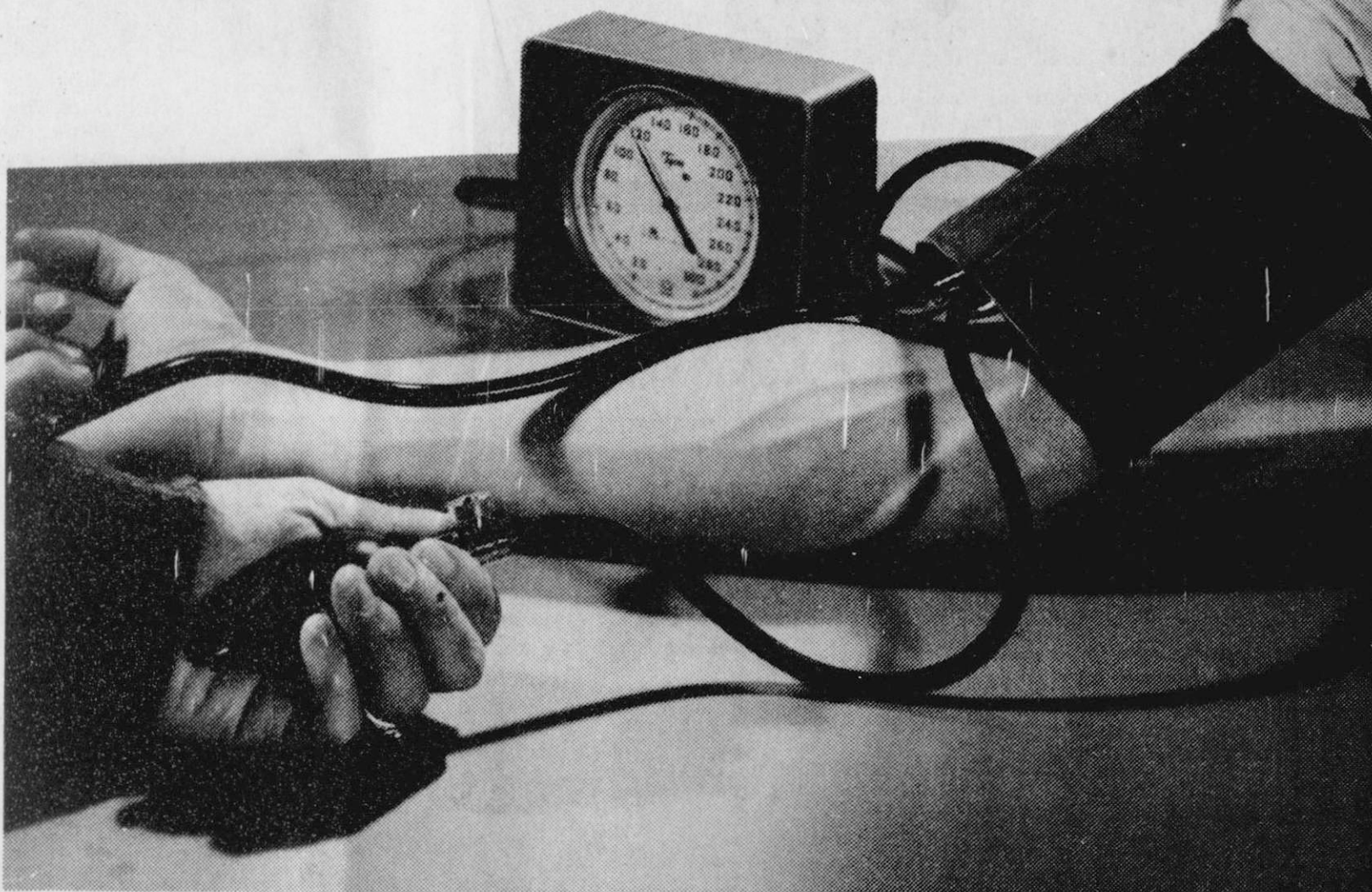
Romeo Reyes, Pastor  
502 E. 7th  
Sunday School 9:45  
Morning Worship 11:00  
Church Training 6:00  
Evening Worship 7:00  
Wednesday Service 7:00  
659-3948

### FIRST BAPTIST CHURCH [SOUTHERN BAPTIST]:

Russ Gibbs, Pastor  
Jerry Don Davis,  
Minister of Youth  
123 South Bernice  
Sunday School 9:45

Morning Worship 11:00  
Church Training 6:00  
Evening Worship 7:00  
Wednesday Service 7:00  
659-5557  
Intercessory Prayer Line 659-2911

# UPTIGHT



The doctor tells you your blood pressure is up. Slow down, he says. Relax. Let's face it. If you're "uptight" there ARE things to do about it. Follow your doctor's orders, yes. Take a deep breath, and look at the beauty of the world around you. Help other people with their problems. But add one extra little prescription. Go to church. Just sit there and let God's peace engulf your anxiety. Chances are that when you walk out the door something new will have been added to your dimension in living.

Scriptures selected by the American Bible Society

Copyright 1972 Keister Advertising Service, Inc., Strasburg, Virginia

**Church page compliments of:**

**INTERSTATE SAVINGS & LOAN**

322 Main Spearman 659-2559

**1st NATIONAL BANK**

201 S. Main Perryton 435-3676

**BOXWELL BROTHERS**

519 Evans Spearman 659-2212

**THE HANSFORD PLAINSMAN**

**BAKER & TAYLOR**

Gruver Hwy. Spearman 659-2503