

Site of future Palo Duro Dam sees big changes

Persons familiar with the area that is to be the site of the Palo Duro Dam, would be impressed to go out to the site now and see how much work has already been done toward the project.

Pipelines have already been moved, trees have been cleared, and the ground has been marked to designate the center line of the dam and even the emergency spillway of the dam. Thursday afternoon the construction crews were working on a new road being built around the dam. One of the

Construction in progress; to benefit area

The Spearman area is enjoying the benefits of three major construction projects right now. The Spearman Elementary and Junior High Construction that has been in progress for several months, the Palo Duro Dam project that has recently begun to get underway, and the construction additions at the airport.

DePaul Construction out of Amarillo has begun bringing in the equipment they need to make additions to the airport.

They have begun moving fences out of the way and working on culverts in the area. Further construction on the airport project will be in full swing next week.

main purposes of the road will be to allow people to view the actual construction of the dam when it gets underway.

There are many things involved in the multi-million dollar project. Among the details that must be attended to is that of dealing with the archeologists that have chosen several sites at the dam to further study. Johnnie Lee, Palo Duro River Authority general manager, flew to Fort Worth Friday morning to discuss the matter with some of the archeologists.

The cost of the archeologists work here, roughly \$800,000, has already been included into the dam project, and this work must be

Texas Dept. of Health offers vaccines Oct 3

The Texas Department of Health is offering vaccines that give protection against diseases in Spearman this Monday, Oct. 3. They will be administered at the Spearman Elementary School between 11 a.m. and 1 p.m.

These vaccines protect children against polio, diphtheria, lock jaw (tetanus), whooping cough (pertussis), measles, rubella and mumps.

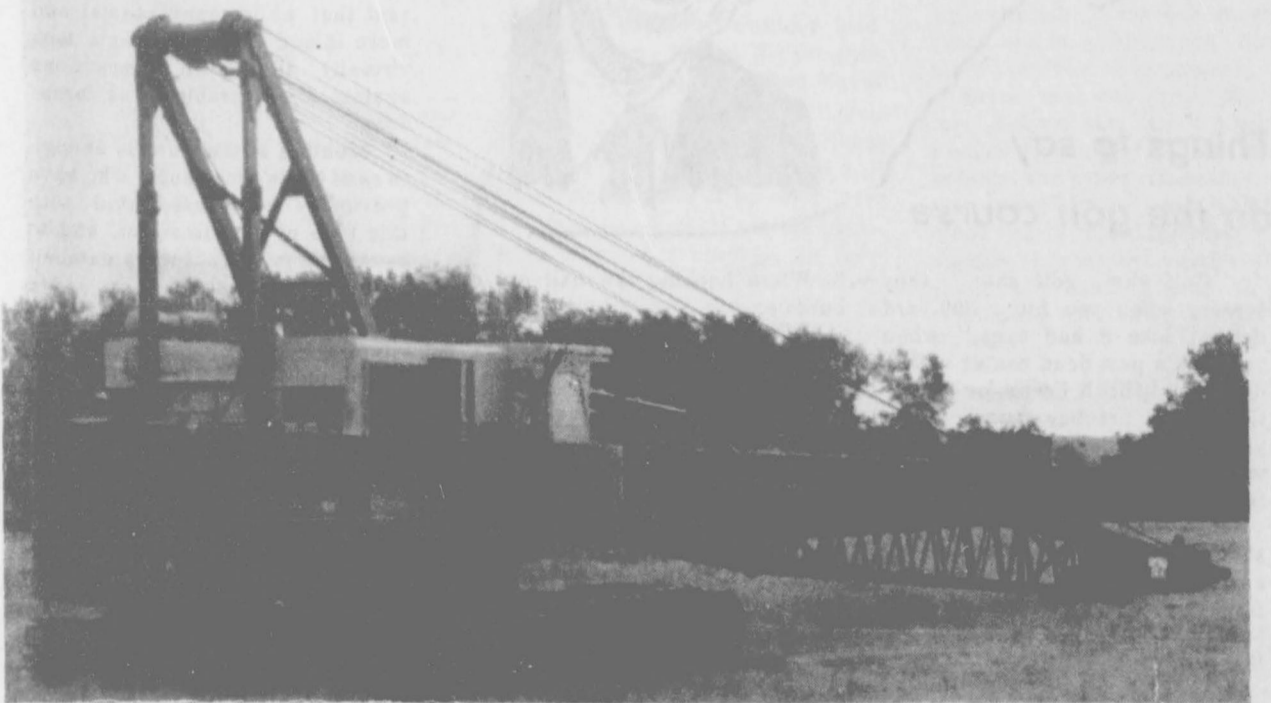
The Texas Department of Health is charging money to help with the cost of keeping the clinic open. The amount of money charged will be based on family income and size, and the ability to pay.

done in order for the dam project to be completed. This is required to be done for the PDRA to keep the building permit from the state. Lee hopes that full cooperation with the archeologists will allow them to be done with their work as soon as possible to allow the dam construction to progress with few delays.

One of Lee's next undertakings is to study recreation parks in the state and gain ideas for the three parks that have been planned to be a part of the Palo Duro Dam recreation area.

The pumping house designed for the dam project should be able to easily pump water to the five surrounding areas, based on their expected needs and useage.

The dam construction project is expected to employ about 30 people through this winter, and employ about 150 next spring when the project is in full swing.



This drag line crane will be doing some digging for a trench that will be the beginning of bigger things at the Palo Duro Dam site. The equipment is already on the site of the future dam.

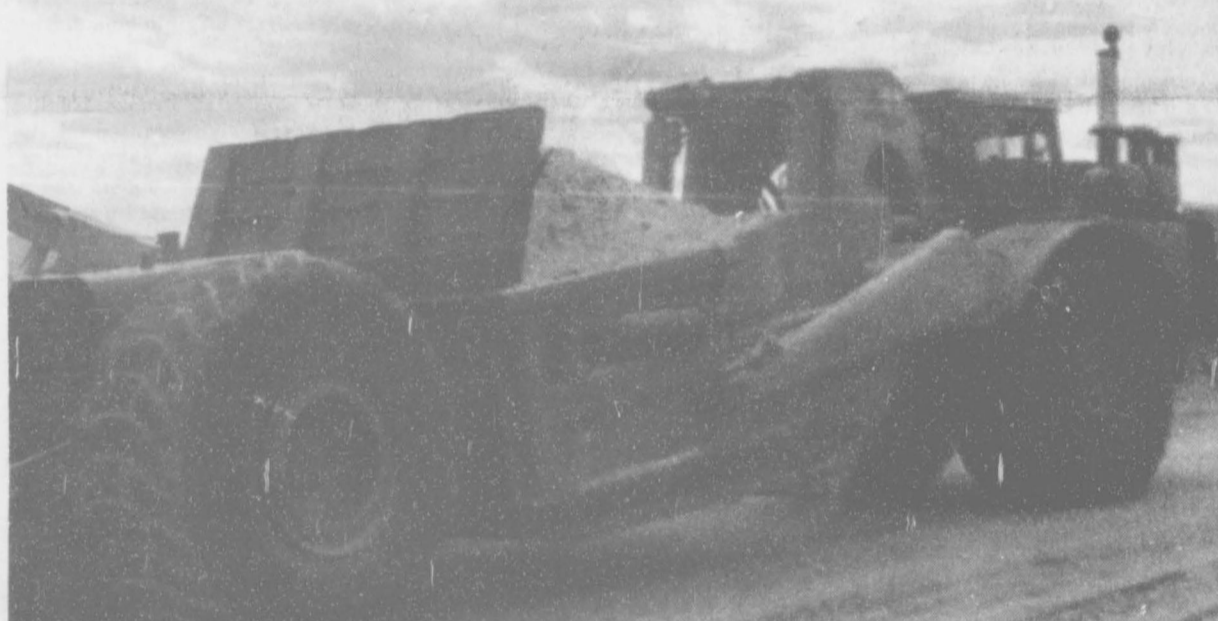


The Hansford Plainsman

25¢
Per Copy

6 Pages

Volume 19, No. 48 YOUR HOMETOWN NEWSPAPER Sunday, October 2, 1988



This truck has tires on it taller than some pick up trucks. Central Plains Contracting will be using it to haul mud and dirt for the Palo Duro Dam project since it can haul many yards of dirt at once.

KRDF station returns to local ownership

In a news release issued Friday, KRDF-FM Radio Station General Manager George Young said he was pleased to announce that the ownership of the Spearman station had returned to local people. The new owners are stock holders in a newly formed company, Spearhead Broadcasting, Inc. Stockholders include George Young, Friday Wise and Dwyane Smith, all of whom are employed by KRDF-FM.

Young, who has been managing the station for Cardiff Broadcasting Company said he had been negotiating for the purchase since 1985. He said the final papers were signed last Monday and his Company would take over the station on Oct. 1.

When asked if any changes would be made in station programming, Young said most of what the station has been doing would continue since many of them were begun when the Station first started broadcasting in Spearman almost 25 years ago. He said he hoped to make changes that would mean even greater service to the listeners and advertisers in Hansford County and surrounding area.

KRDF-FM had its first broadcast in Spearman on Dec. 16, 1963. The station was then owned by Coy Palmer who sold out to Cardiff ten years ago. KRDF-FM is a three thousand watt station operating on a frequency of 98.3Mhz and is a complete music, news and information station. It is affiliated with the

Texas State Network and A.B.C. network. The format is Country/Western.

Young said he and the staff were very happy about owning the station and they are looking forward to continued service to the people of Hansford County. He said, 'It's great to have KRDF-FM back home.'

Social Security representative to be in area Oct 13

A representative of the Pampa Social Security office will be in Spearman on Thursday, Oct. 13 to assist anyone needing to file for Social Security, Medicare, or Supplemental Security income, or assist in other business involving social security.

The representative will be at the Hansford County Courthouse between 10 a.m. and 11:30 a.m. The Social Security Administration would like to remind the public that many Social Security matters can be handled by telephone. To save time and travel you may call (806) 669-1018 and discuss Social Security matters or make an appointment. SSA's hours are Monday through Friday from 9 a.m. to 4:30 p.m. except national holidays. For information on filed Medicare claims call 1-800-442-2620.

Historical marker expected for area in one year

The historical marker that the Hansford County Historical Commission is trying to obtain to commemorate the 1934 landing of Charles Lindbergh near Spearman is almost a reality. The commission has asked for donations for the \$650 necessary to obtain the marker that will be located about a mile south of Spearman on Hwy. 207 South.

Sylvia Robertson of the Hansford County Historical Commission put together the necessary documents needed by the State Commission and mailed them on Friday, Sept. 30. Besides the money, the State Commission needed a three page narrative story about the Lindbergh landing, documentation of the landing (which included stories from the *Spearman Reporter* and the *Amarillo Daily News*), an interview of one person that witnessed the landing, and a black and white photo of the area where the marker would be located.

After receiving the necessary documents the State Historical Commission representative told the Hansford County Historical Commission to allow up to one year to receive the marker.

The Hansford County Historical Commission is still accepting donations to cover expenses. Donations may be sent to Secretary/Treasurer of the Hansford County Historical Commission, Clementine Renner, 822 S. Evans, Spearman, Tx. 79081.

In strong second half showing . . . Lynx ground Eagles

by CONTRIBUTING SPORTSWRITER J.T.

The Spearman Lynx traveled to Sanford-Fritch Friday night to take on the Eagles in their Homecoming game. It would be the last chance for a tune-up for both teams, as they enter into District action next week.

On the Lynx initial possession they struck for three successive first downs behind the power running of Shawn Cook and Haskell Garrett, and appeared to be threatening early as they drove the ball to the 23-yard line of the Eagles before they were stopped. The Eagles were unable to muster a first down on their first try and the Lynx took control of the ball for the second time, but found little running room either and punted the ball back to Sanford-Fritch.

Taking control for the second time, the Eagles moved swiftly up the field, covering 55-yards in just four plays. With 4:16 showing on the first quarter clock, the Eagles 185-pound junior wingback, Greg Harms motored in from 8 yards out for a score. The point after kick was true from senior quarterback and placekicker Jeff Snider and the Eagles owned the early advantage

7 to 0, much to the delight of the partisan blue and white Homecoming crowd.

Early in the second quarter with the Eagles on the move again, the Lynx senior running back Shawn Cook picked off a Jeff Snider pass at the 47-yard line and returned it to the S-F 44-yard line. Seven plays later the Lynx evened the score when J. Garnett bulled over from the one. The Matt Tucker kick was good and with 8:18 remaining in the first half, the score was knotted at 7-7.

Sanford-Fritch then took the Lynx Lance Swan kick-off on the 5-yard line and returned it out to their own 20. On the first play from scrimmage, S-F senior Matt King exploited a hole in the Lynx line and outraced the purple pursuit 80-yards for a score. The point-after try was no good, and with 7:55 left in the first half, the Eagles led 13 to 7.

The Lynx narrowly escaped disaster on their next possession. On a second and nine call from the Spearman 32, Eagle defenders hit the Lynx ball carrier and the ball fell to the turf and was recovered

by the Eagles on the Lynx 26-yard line.

Four plays later a third Eagle touchdown was nullified when they were flagged on a second down and goal play from the four yard line.

On a second and 12 play from the Lynx 13-yard line, an alert J. Garnett broke up a pass play near the end zone. On the third down play selection for the Eagles, Lynx senior running back Mark Garcia alertly leaped in front of the intended Eagle receiver, and intercepted the ball on the 13-yard line and brought it out to the 18, ending the Eagle scoring threat with 6:20 remaining in the second quarter.

The Lynx then consumed the next five minutes on the clock on a 10 play drive that took the ball down to the S-F 13. The fourth and eight try was stopped by Eagle defenders and they took over with 1:10 to go in the half. Time was too short, however, to cover the 89-yards needed and the first half ended with the Eagles owning the 13 to 7 lead.

see LYNX, p.3



Shawn Cook [no.20] is apparently laying himself on the line for [no. 12] J. Garnett, for a block.

Doc Blakely's

Pokin' Fun



Things to say on the golf course

"Golf shot, golf shot," they scream when you hit a 300-yard drive; "Like it had eyes," when you sink a putt dead center with a downhill difficult break; or "Practice swing, practice swing" when you miss a ball completely and wind up looking like a "before" ad for a chiropractor.

It occurs to me that golfers should have a list of things to say and choose something different from hole to hole in order to give a little audible variety. Here are a few suggestions:

1. After a high pop-up drive shot:
 - a) That might get you an eagle, two earthworms, and a squirrel.
 - b) Who does he think he is ... Werner Von Braun?
 - c) At least it's straight down the middle, too bad it landed behind you.
 - d) Is that the brand that has the heat shield for re-entry?
2. When slicing the ball into the woods:
 - a) Next time, why don't you try your trick shot; the one where you hit it straight?
 - b) Put two dozen of those together and you'd have a perfect loaf.
 - c) Can't blame that damage on Dutch Elm disease.
 - d) That'll teach those pine park beetles.

3. When hooking the ball out of bounds:

- a) With a hook that size, you could use Moby Dick for bait.
- b) That's what I get for taking lessons from an Aboriginal pro.
- c) Go west young ball, no west.
- d) That's my Davy Crockett shot, searching for new frontiers.

4. When chipping around the green:

- a) At least you can easily repair that ball mark. Where's the sand rake?
- b) That would be a championship quality shot . . . in volleyball.
- c) Did anyone ever explain the difference between a soft touch and slam dunk?
- d) Well, at least we've got a good start on that mining project.

5. When lining up for a critical six-foot putt:

- a) No pressure but if you miss you win a visit from a Chicago pro named Guido.
 - b) Relax and just try to keep the ball low.
 - c) It breaks a little to the left and if you miss, we'll do the same thing to your right leg.
 - d) Don't worry. If you miss it, we'll still be friends . . . Of course, you'll become a spectator.
- Ah, what a game. As my friend, Lynn, says, "Golf is a good game for people who think they have their life all organized."

Tornadoes . . . the smallest and most destructive of storms

Tommy Valco, agricultural engineer-safety, with the Texas Agricultural Extension Service, said that while many coastal and more inland Texas residents took virtually all known precautions against direct problems as tornadoes

Mention of the word is enough to send chills over people who have previously been associated with this type of vicious storm, and to cause others to want more detailed information quickly.

Tommy Valco, agricultural engineer-safety, with the Texas Agricultural Extension Service, said that while many coastal and more inland Texas residents took virtually all known precautions against direct damages from Hurricane Gilbert, few considered such associated problems as tornadoes.

"One reason probably is that it is difficult to determine in advance where tornadoes may be spawned until the exact path of a hurricane is known and where the eye of the storm is located as it moves inland," Valco said.

Thus, little advance warning can be provided, he said.

This is a sharp contrast to emergency storm preparations by officials of coastal cities and towns, who made plans for the "worst possible scenario" in regard to the hurricane. Most plans called for evacuation of low and island areas and in a number of instances, evacuation of entire cities, Valco said.

But tornadoes are another matter, he said.

He said a tornado, also called a twister or cyclone, is the smallest and most destructive of all serious storms, with winds ranging up to 200 or greater miles per hour.

"Commonly not more than

1,000 feet in diameter, devastation from a tornado generally is confined to a small area," Valco said. He said that like the true cyclone, a tornado's rotation is counterclockwise in the Northern Hemisphere and clockwise in the Southern Hemisphere.

Tornadoes triggered by storm cells fanning out from Hurricane Gilbert beat a path of destruction across portions of Texas on Sept. 17, 18, and 19 as remnants of the hurricane generated thunderstorms and vicious winds.

Fourteen tornadoes skipped across San Antonio Sept. 17 in a two-hour early morning period, and others struck communities near Del Rio and elsewhere in southwest and central Texas, leaving property damage of millions of dollars in their wake.

In San Antonio, the tornadoes began around 5 a.m. just south of the city and created heavy destruction across residential and industrial areas, damaging more than 40 homes, striking Kelly Air Base and continuing to the city's north side where the twisting winds severely damaged the South Texas Medical Center complex.

The giant cooling tower that served two of the hospitals had a number of fans knocked out, creating an emergency for patient care.

San Antonio Mayor Henry Cisneros, after quickly surveying the damage to the medical center area by helicopter, declared the situation there an emergency. As a result, Air Force planes were dispatched to St. Louis, Mo., and other locations to find and expedite return of fans and equipment needed for the cooling tower. This prompt action meant that patients at the two hospitals did not have to be moved to other facilities, Cisneros said.

Meteorologist Mike Lozano with ABC's Channel 12 (KSAT) in San Antonio, who had his home demolished around him during a previous tornado, said these vicious storms are so fast-moving that often people may have only a few seconds of advance warning.

He said the San Antonio tornadoes last weekend came when many people were still asleep, or were having their morning coffee. Not many were tuned to weather channels for advisories or alerts, he said.

Lozano said if one is listening to radio, be alert for a tone of warning that indicates an emergency weather message will follow. For those listening to television, a weather warning symbol will appear in the corner of the screen. If unsure of the message, call local law enforcement officials for details.

Lozano said that tornadoes, like hurricanes, are designated by their strength levels or categories.

"If you should spot a funnel-shaped cloud while driving, call your nearest law enforcement officials and report it. Study tornado survival rules, learn the difference between a tornado watch and warning. Then train yourself to act quickly and take shelter immediately if a tornado warning is given," Valco said.

Students get ready for Globe-News spelling bee

For the 41st year West Texas State University in Canyon and the Amarillo Globe-News will again sponsor the National Spelling Bee for young students in the area.

Named as director for Hansford County is Eddie Gage, principal, Spearman Elementary School.

The director will coordinate the Bee program with the private and public schools and select a date for the county competition.

The Amarillo Globe-News requests that each county finalist be named by Mar. 18, 1989.

The Scripps Howard National Spelling Bee rules allow any student who will not be in a grade higher than the eighth or older than 16 by the end of the current school term to enter the contest.

Additional information is available from the county bee director.

There are two levels of competition.

A Junior Bee is for students in the fifth and lower grades.

In previous years the Junior Bee included the sixth grade students, but with the middle school concept, the sixth graders are now to be included in the Senior level, which also includes grades seven and eight.

The Junior Bee primarily serves as an introduction to the program.

Junior county winners do not compete in regional unless they win the Senior county title.

In some cases directors combine the two levels of competition and choose only one county champion.

Each Senior winner will compete in the AGN-WTSU area contest on the university's campus on Apr. 15. And, the top winner in that event will be given an all-expense paid trip to Washington, D.C. for the speller to represent the district in the 1989 national contest. The trip is for two, courtesy of the Amarillo newspaper.

The Junior winner and Senior winner from each county will be guests of the sponsors at a Bee luncheon in Canyon preceding the afternoon competition. There will be special awards for all finalists.

Gene Parker, director of placement at WTSU, serves as bee coordinator.

"This is a tremendous program," Parker said, "and I encourage all schools in our area to make the program available to our

students. We are pleased to be a part of this educational program."

Copies of the study book, "Words of the Champions", are available from Jeane Bartlett, bee editor of the Amarillo Globe-News, at 50-cents each. This word list is used in most school eliminations and contains more than 3,000 words.

Parts of the Texas Panhandle, New Mexico, Oklahoma and Kansas are included in the AGN-WTSU district. Forty-six counties will be represented in the 1989 regional bee in April.

Storytime set to begin Oct 5

Storytime for four and five year olds will begin at the Hansford County Library on Wednesday, October 5.

The half-hour sessions will meet from 10:45 - 11:15 each Wednesday morning through November 16.

Children must be preregistered to attend Storytime.

Smith and Lopez win library contest

Lindsey Smith, eight year old daughter of Mr. and Mrs. Bobby Smith, and Felix Lopez, 9 year old son of Mr. and Mrs. Felix Lopez were the winners of the 1988 Bookmark Contest at the Hansford County Library.

The Bookmark Contest was a very successful part of the library's Summer Reading Program, "Trailblazers, Stargazers". All children participating in the program were eligible to draw original bookmarks for the contest.

Nell Patterson, a local artist who creates wonderful bronze sculptures, graciously volunteered to judge the bookmark contest this year. The winning bookmarkers she selected were created by Smith and Lopez.

The two winning bookmarkers were professionally printed up by funding through the Texas Panhandle Library System. They are now available at the library where they are distributed free.

KDRF-FM has come home!



Brett Whitford Gary Ellsworth Dwayne Smith George Young
Juan & Maria Avila Friday Wise Virginia Young

KRDF - FM 98.3 Mhz

Features:

- Country/Western Music
- Local Programming
- Local Sports
- Dallas Cowboys

Saturday Night Wipe-Out With Gary

Sunday Night Spanish Show With Juan & Maria

KRDF-FM
98.3 STEREO

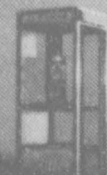
605 E. Kenneth
P.O. Box 307
Spearman, Texas 79081

ABC-TSN NETWORK

Spearhead Broadcasting, Inc.

806-659-2529

If you're worried about cancer, remember this. Wherever you are, if you want to talk to us about cancer, call us. We're here to help you.



2,500,000 people fighting cancer.

This space contributed as a public service.

It's that time of year again!

With winter coming soon, it's time to insure your cattle on pasture against the



winter weather and

'Jack Frost'!

Come by to choose from our new choice of deductibles.

Beginning October 1, 1988

BROCK
BROCK

BROCK INSURANCE AGENCY

121 MAIN • SPEARMAN, TEXAS 79081 • 806-659-2514



Judy Nelson, a member of the Spearman Chamber of Commerce, is shown presenting the first dollar of profit to new T.G. & Y. manager, Jesse Castillo.

Employees got together for a ribbon cutting to honor their re-grand opening after completing remodeling, redecorating, and restocking of the store.

LYNX, from p.1

The Lynx took the ball at the beginning of the second half and moved to mid-field before a hit by Eagle defenders forced a fumble, and it was recovered by Sanford-Fritch's senior tackle Alan Mesneak.

The Eagles didn't take long to score, as they covered the 50-yards in seven plays. The key plays in the drive were a 17-yard quarterback keeper by the Eagles, and the nine yard scoring strike from QB Snider to Matt King. Snider also pushed the ball across for the two point conversion, making the score SF 21, Lynx 7 with 5:58 to go in the third quarter.

After each team traded possessions once, the Lynx went back on offense with 2:03 remaining in the third at the Lynx 25-yard line. It would take the Lynx just nine plays to ramble 75-yards and their second score, with the prize coming on Haskell Garrett's dazzling 27-yard TD run. The try for two was no good and the score was the Eagles 21, Lynx 13 with 11:14 left to go in the game.

With the Lynx score, the momentum shifted dramatically. The offense had some renewed confidence that it could score, and the defense was determined they would get the ball back so the Lynx could do exactly that.

On the Eagles next possession the Lynx defense held them in check on their own 32 and forced them to punt. A clipping call against Sanford-Fritch on the Lynx punt return gave the Lynx the ball on the Eagle 37 with 9:20 left in the

game.

With renewed determination, it took the Lynx only three plays to score, with Garrett covering the final 31-yards on a picture-perfect run that was beautiful to watch. Shawn Cook steam-rolled in for the two-point conversion and with 8:00 still showing the score was tied again at 21-21.

Lance Swan nailed the kick-off, preventing any chance of a return and the Eagles took over once more. But, the first and 10 pass attempt from the 20-yard line was stolen by Mark Garcia at the 38-yard line and returned to the Eagle 35.

The interception was the second important one of the night for Garcia, and Shawn Cook also added an important one to the cause on a crucial drive in the second quarter that led to the Lynx tying the score in the first half.

The Lynx offense came back on the field with 7:50 left to play. Seven plays later Garrett blasted in from the 10 for another Lynx score, his third of the night. Another perfect Tucker kick made it Lynx 28-Eagles 21 with 5:26 to play.

With time running out the Eagles took over again on offense hoping to score quickly, to have a chance of pulling out a victory with a score and a two point conversion.

But the plan would not work, as a fired-up Lynx defense made sure of it. On a 2nd and three pass attempt, Lynx junior DB Scott Wilkerson had the receiver well covered. Then, on the third down attempt senior guard Keith Clark

exploded through the Eagle offensive line and dropped the quarterback for a seven-yard loss which forced Sanford-Fritch to punt.

The Lynx took over for their final possession with 3:55 to play on the Eagle 43-yard line. Garnett, Cook, and Garrett would punch the ball 57-yards in seven plays for their final score of the evening. The capper was a five yard sprint by Cook. Tucker would then add his third point after the evening to the board and with just :47 left to play the Lynx led 35 to 21.

The Lynx defense then held the Eagles at bay until the game time clock expired and the win was in the books. The final score was Spearman 35, Sanford-Fritch 21.

With the win the Lynx now improve their record to three and two on the season, and must begin preparations for district competition beginning next Friday night. The Lynx return to the hometown stadium next Friday to host the Stratford Elks in the opening contest of District play.

Please make plans to be at Lynx Stadium next Friday to support the Lynx, the coaching staff, the band, mascot, and cheerleaders, and don't forget that kick-off is at 7:30 p.m. for District games.

Governor proclaims principals week

Governor Clements has proclaimed the week of Oct. 10-16 as secondary school principals week.

The school principal is a vital element in the educational process. These men and women serve as the instructional leaders on the school campus and act as a liaison between teachers, students and parents in the community.

The skills of the principal affect the performance of teachers and the degree of concern for what students learn and become. These important individuals play a major role in establishing educational excellence in our state by successfully implementing the elements of education reform.

The state of Texas appreciates the skill, dedication and commitment typical of its school principals and it is most fitting that these men and women be recognized and honored.

4-H program provides role in training for youth

No one can question the fact that young people are the future of America, and the 4-H program is continuing to play a vital role in preparing youth for the future by providing training in leadership, citizenship and coping skills.

Thus the theme of the upcoming National 4-H Week Oct. 2-8, "4-H for Youth for America," points to this country's richest resource, its young people.

The number of 4-H clubs and special interest groups in the state totals more than 3,300.

"Through 4-H we try to provide youth with opportunities to learn and experience what life has to offer," said H.T. "Tom" Davison, assistant director of 4-H and youth programs with the Texas Agri-

cultural Extension Service. The Extension Service is the parent organization of the 4-H program, an informal, out-of-school educational program for youth from the third grade to 19 years of age.

Vital to the 4-H program are volunteer leaders.

Almost 620,000 volunteer leaders support the 4-H program nationwide, with more than 30,000 of those in Texas. The time, travel and support contributed by these volunteer leaders across the U.S. is estimated to have a value of more

"Volunteer leaders are the backbone of the 4-H program as they provide the organizational leadership for local 4-H clubs as well as training and resources in a host of

subject-matter areas," said the 4-H official.

"We also lay the groundwork to help 4-H members explore opportunities for personal growth and to gain skills that will be useful in later life," Davison said. "In addition, 4-H helps youth to deal with stress and self-esteem and to learn to help others. We like to say that 4-H takes up where school leaves off. We offer experiential education."

Texas boasts some 388,000 4-H members; nationwide, 4-H is more than 4.5 million members strong and is the nation's largest youth organization. More 4-H members today live in suburbs and cities of more than 50,000 population.

Recent research shows that former 4-H'ers are more likely to assume community leadership, political and other citizenship roles than people who participated in other youth organizations. "4-H membership teaches youth that the community and giving to the community are important," said Davison.



These are pictures that Hansford County elementary children drew and colored to represent what they might see at the Hansford County Fair. They were displayed at the fair this weekend.

FIRST STATE BANK

ANNOUNCES

HARVEST CD'S

★ 8.00% APR SIMPLE INTEREST ON

★ \$100,000 CD MATURING IN JANUARY 1989

- ★ Rates will vary for differing amounts and maturities
- ★ Rates subject to change without notice
- ★ Substantial penalty for early withdrawal

THERE ARE TIMES WHEN A BANK CAN AFFORD TO PAY PREMIUM RATES ON C.D. 'S, AND NOW WITH HARVEST BEGINNING IT IS ONE OF THOSE TIMES

AT
**FIRST STATE BANK
SPEARMAN**



One NE Court
Phone: 806-868-5565
Spearman, TX 79081



Free Hearing Test

HIGH PLAINS HEARING ASSOCIATION in conjunction with GOLDEN SPREAD CITIZEN CENTER located at 14 S. HANEY will offer free hearing tests this Tuesday, October 4, from 1:30 to 4:00 p.m.

All walk-ins welcome or phone for appointment by calling 859-3521. Test will be conducted by Lyle Wassell H.A.S.

AMARILLO LIVESTOCK AUCTION

SALES EVERY TUESDAY

SPECIAL CALF SALES 1:00 P.M. TUES.

we want to be YOUR MARKET for those cattle this fall.

CALL 806-373-7464

NO SHRINK at AMARILLO LIVESTOCK AUCTION

THE MARKET for STOCKER and FEEDER cattle

Terry Jones - mgr.

Among the Neighbors

Helen Fisher

Mrs. Hazle Jackson and Evelyn and Charles Brillhart are so appreciative of all the encouragement and kindnesses shown to them since Hazle has been in the Hospice.

She is doing as well as can be expected and enjoys the cards and letters and visits. Her address is Room 104, St. Anthony's Hospice, 200 N.W. 7th, Amarillo, Tx. 79107.

Her other daughter, Merrilene Crawford, has been with her part of the time. She is expected to return from Denver this weekend.

Mr. and Mrs. Kelly Fuller, with Brant and Kaysha, enjoyed a long weekend with relatives. They went to Big Springs where his parents joined them for a visit with other relatives in Carlsbad.

Mr. and Mrs. Allen Tackitt of Minot, N. Dako. visited in Spearman a couple of days early in the week. They were guests of Mrs. Dorothy Tackitt and the Paul Jones. Allen is the youngest member of the Tackitt family that lived in Spearman a number of years, leaving here in the 1930s.

Mr. and Mrs. Dee Allen returned Wednesday from a week at their cabin at Red River. Crista Urban of Amarillo spent the week with them. Winnie spent a few days in Amarillo with Crista assisting her in moving.

Mr. and Mrs. Bert Sheppard on Wednesday attended the funeral of her sister's husband, Jack Martin, 66, in Cimmaron, N. Mex.

They were accompanied by another sister and husband, Mr. and Mrs. A.W. Kennemer of Longview. The Kennemers spent the night before the funeral with the Sheppards and also a night on the return trip.

Mr. Martin died on Sunday evening at Albuquerque as a result of an unusual accident on Satur-

day. He was assisting with a race horse at his brother's stable and some how was knocked to the floor and his spinal cord severed. He was not found for an hour.

Relatives are at a loss to understand how an accident of such severity could have occurred. Mr. Martin had worked with horses for many years, and since his retirement from coaching the previous year, was involved full time with the training of race horses.

Enjoying the spectacular foliage in N. Mex. Monday and Tuesday were Mrs. Dorothy Tackitt and Mrs. Viola Boyd. They were guests of Mrs. Winnie Vernon on a tour conducted by the Senior Group of the First Baptist Church, Gruver. They toured the area around Red River and Taos.

First there were 6 girls-roommates at Panhandle University in 1933 when they made a pact to be reunited every year. Then there were 6 couples-then the group increased with all the children. Now the group is back to the couples, less two of the husbands.

They met on Tuesday in the rural home of Mr. and Mrs. Clyde Kyle in Beaver. They enjoyed a bountiful dinner and warm fellowship. Mr. and Mrs. Owen Pendergraft are the Spearman participants.

Latest information regarding the illness of Mrs. Evelyn Kingsley is to the effect that her condition has been diagnosed as very serious, and the type of treatment planned has not been determined as of this writing. In addition, she has other complications.

She tells friends that she is strengthened by the caring and regard of her friends as shown by their contacts, and expresses her gratefulness.

She is in room 813 at High Plains Baptist Hospital, 1600 Wallace Blvd, Amarillo, Tx. 79106.

'Masquerade Dance' to be held by student council

The student council plans several fund raising projects each year to earn money to send a selected student to Boys' or Girls' State.

This year at the Halloween Carnival on Oct. 29 the student council has planned a 'Masquerade Dance' to help raise money. Other projects the council will be involved in this year include a community blood drive and organizing school parking.

From the senior class, Ginger Pearson was elected as president for the council. She is the daughter of Bob and Jackie Pearson. She is head cheerleader this year. She also participates in basketball, debate, tennis, and is secretary for the National Honor Society. She has also been a member of the Fellowship of Christian Athletes and the one-act play.

Krista Kirkland, also a senior, was chosen vice president of the council. Her parents are Jim and Phyllis Kirkland. Kirkland is president of the National Honor Society this year. She participates in basketball, cross country, track, and FCA. She is a member of the United Methodist Church.

Other seniors on the council are Jan Crawford and Jerold Blan. Crawford is the daughter of Hester Sue and John Crawford. She is the class president of the senior class, vice president of the National Honor Society, and vice president of the high school choir. She is also a cheerleader and plays on the tennis team.

Blan is the son of Jimmy and Helen Blan. He participates in cross country, basketball, and track. He is a member of the Future Farmers of America and Fellowship of Christian Athletes.

Among the juniors on the council Michelle Cook was elected secretary for the group. She is the daughter of Mr. and Mrs. Ron Cook. She serves as 4-H Club president, 4-H County Council chairman too. She participates in basketball, cross country and the

Spanish Club. She is also a member of Future Homemakers of America, NHS and FCA.

John Hughes, a junior on the council, is the son of Marilyn Hughes. He is in football and track and serves as the president of the junior class.

Laci Lasater is the daughter of Mr. and Mrs. Jack Lasater. She serves as president of the junior class. She is a member of FHA, NHS, and UMY. She also participates in basketball, cross country, track and Fellowship of Christian Athletes.

Cacy McGill of the junior class is the daughter of Ed and Debbie Pearson. She is a cheerleader and an ambassador for Hugh O'Brian Youth Foundation. She is a member of NHS, and FCA and participates in track events.

Among the sophomores making up the student council is Haley Shieldknight. She is the daughter of Mr. and Mrs. Charles Shieldknight. She is a member of FHA, and FCA. She participates in basketball and track and cross country.

Cam Butts, is also a sophomore chosen to be on the student council. She is the daughter of Robbie and Larry Butts. She participates in basketball and tennis. She is also a member of the FHA and FCA.

Kyla Nelson is the daughter of Dennis and Judy Nelson. She is involved in basketball, 4-H, FHA, UMY, FCA and choir. She is a cheerleader and has participated in UIL events.

10th grader, Ron McCown is the son of Sid and Kathy McCown. Besides being on the student council, he participates in football, basketball, track and is the sophomore class president.

One of the four freshmen on the student council is the son of Ruth Kizziar, Tim Kizziar. He participates in football, basketball, track and Future Farmers of America. He is also the freshman class vice president.

Another freshman on the council is Melodie Schumann. She is the daughter of Craig and Denise Schumann and Kari Schumann. She plays basketball, runs cross country, sings in the choir and is a cheerleader.

Freshman class president, Chad Riggins, is another freshman on the council. His parents are Ricky and Carla Riggins. He plays football, basketball, runs in track and is a member of the FFA.

9th grader, Mendy Lasater is the daughter of Mr. and Mrs. Jack Lasater. She is on the basketball and cross country teams. She is also a member of FHA and United Methodist Youth, and she is a cheerleader.

These students make up the governing unit of the student body of Spearman High School.

Harrington String Quartet schedules concert debut

The Harrington String Quartet will make its New York debut Wednesday, Oct. 12 at the Kaufman Auditorium on 92nd Street. The concert is scheduled to begin at 8 p.m.

"We are very excited," Dawn Harms, first violin, said. "It is what every musician dreams of. Although we have performed in New York, this is the first opportunity that we, as a quartet, have to play in New York before critics."

The quartet will perform "Opus 54 No. 1" by Haydn, "Quartet No. 2" by Ives and "Opus 44 in D Major" by Mendelssohn. In addition, they will introduce the New York audience to two premier compositions, "Princess in the Garden" by Applebaum and "Streams" by Sussman.

The New York debut is one more accolade that can be added to an already impressive list of accomplishments since the Harrington String Quartet was established in 1981. The quartet has toured the United States and England, was the grand prize winner of the 1987

Fischhoff National Chamber Music Competition and performed a live national concert on Chicago's public radio station, WFMT. The quartet has collaborated in chamber music performances with many renowned artists including Kazuhide Isomura, violist of the Tokyo Quartet, and Lee Luvisi, pianist with the Chamber Music Society of New York's Lincoln Center.

In addition to chamber music competitions, recitals and concerts, members of the quartet are principal chairs in the Amarillo Symphony and studio teachers in the West Texas State department of music.

Members of the Harrington String Quartet are Dawn Harms, first violin; Jim Lyon, second violin; Amy Brandfonbrener, viola; and Brian Manker, cello.

The quartet will return from New York for an encore performance at 8 p.m. Sunday, Oct. 16 at the Amarillo Theatre Centre.

For more information, contact the WTSU department of music and dance at 656-2840.

Fatalities led by heart disease and & cancer

Heart disease and cancer persisted as the most frequent causes of death in Texas in 1987, killing more than 65,000 Texans, according to the Bureau of Vital Statistics of the Texas Department of Health.

Heart disease once again was the leading killer, claiming 40,037 lives, while cancer led to 25,327 deaths. Cerebrovascular disease ranked third, claiming 8,181 victims, and accidents caused 6,402 fatalities. These four killers were responsible for 66.7 percent of the 119,734 deaths last year.

Completing the top 10 list of death causes were (5.) chronic bronchitis, emphysema, asthma, and allied condition--3,874; (6.) pneumonia and influenza-- 3,484; (7.) suicide-- 2,180; (8.) diabetes-- 2,127 (9.) homicide-- 1,948; and, (10.) the kidney disorders nephritis, nephrotic syndrome, and nephrosis-- 1,435.

Other causes were reported for the remaining 24,739 deaths.

The death rate last year was slightly less than 7.1 per 1,000 population, based on an estimated population at mid-year of 17,027,166.

According to Dr. Robert Bernstein, Texas Commissioner of Health, the risks of death, especially from heart disease and cancer,

could be dramatically reduced through good health habits.

He said that people at any age can benefit from lifestyle changes. Young people, Dr. Bernstein said, should be aware that most heart disease in older people is the result of many years of bad habits.

He stressed that smoking is the single most preventable cause of heart disease and cancer.

Signs of developing heart problems--diabetes, high blood pressure, and tendencies toward obesity--usually can be controlled with the help of a physician, Dr. Bernstein said. In addition, high blood cholesterol levels and lack of exercise can be corrected by individuals, he said.

Dr. Bernstein said that ways to prevent cancer include: having regular checkups, since early detection is a key to curing cancer; maintaining a proper diet, by avoiding high fat foods and eating more fruits, vegetables, and cereals; using a sunscreen and protective clothing in the sun, since skin cancer is directly related to the amount of exposure to the sun's rays; and avoiding exposure to chemicals and other cancer-causing substances such as tobacco, asbestos, vinyl chlorides, and polychlorinated biphenyls (PCBs).



CLAY SCHNELL

The First State Bank is welcoming the addition of Clay Schnell to their staff. Clay has been added as a loan officer for the bank.

Clay is not new to Spearman, he was born and raised here. After he graduated from high school here, he went to the University of Colorado to obtain a degree in Finance.

After college graduation, Clay spent time working at United Banks of Colorado and then went into business with a consulting firm at Grand Junction, Colorado. He has spent eight years in the banking industry and two years as a CPA business consultant.

Clay returns to Spearman with his wife, Pam, and a son, Rob, who is a freshman at Spearman High School.

The directors and employees at the First State Bank are pleased to have Clay working with them and are certain that their customers will also find Clay pleasant.

Clay's intelligence and integrity will prove invaluable in First State Bank's endeavors to fully serve its customers.

FSB
First State Bank

One NE Court
Phone: 806-659-5565
Spearman, TX 79081
MEMBER FDIC



North Texas Meter Service

All types of meter measurements and repair work. Will pick-up and deliver. Call 806-249-5852 or 249-4915

NEW-TOCK LIVESTOCK MARKET

LOCATED

3 MILES EAST OF GUYMON, OKLAHOMA ON HWY 54

Starting October 1st, 1988 GARY COBB will be working with New-Tock Livestock Market. He will be starting the cattle for the auction on Monday's and taking consignments during the week.

We have hired Terry Elston from North Platte, Nebraska as our auctioneer. He is one of the best cattle auctioneers in the western United States.

OCTOBER 10, 1988 a SPECIAL STOCKER AND FEEDER SALE WILL BE HELD AT NEW-TOCK LIVESTOCK MARKET IN GUYMON, OKLAHOMA. STARTING WITH NATIVE CALVES AT 1:30, FOLLOWING WITH FEEDER CATTLE SELLING IN THE ORDER OF CONSIGNMENT. COWS AND JACKPOT CATTLE WILL SKEL STARTING AT 12:00 A.M.

We have several bunches of native calves and yearlings already consigned for the October 3rd sale as well as for the SPECIAL SALE OCTOBER 10TH. We extend a special invitation to all Livestock Producers as well as the ladies of the five states area to NEW-TOCK LIVESTOCK MARKET.

Gary Cobb--405-545-3470

GARY ROSENTHAL - General Manager

Doyle Cates--806-658-2241

Office phone - 405-338-3378

Tom Davis--405-652-2328

The Classifieds

For Rent

FOR RENT IN GRUVER: Mobile Home. 3 Bedrooms, 2 baths. Call after 6 p.m. 405-338-6811. S48 3tp

FOR RENT: trailer space in Spearman, fenced yard, underground utilities, close to High School and swimming pool. Call 435-5080. S48 rtn

FOR RENT: One bedroom house, call Gus McClain at 659-2744. S48-rtn

FOR RENT: 3 Bedroom house in Farnsworth. Call 435-4594. S48 4tp

FOR RENT: 2 Bedroom House with stove and ice box. Recently refurbished. Call before 8 a.m. 659-3185. S48S 1tp

FREE RENT: First Month and reduced rates in Perryton's best mobile home park. Call Leo Meyers 435-2276 or 435-7676. S46S rtn

For Sale

FOR SALE: Small business for sale. Family operated. Great future. Send replies to Box 458, Spearman, Tx 79081. S48S 4tp

Services

HAYMAKING WANTED: I will swath, bale, and hand-stack small square bales for \$1 bale, or will consider shares. Mike Skinner, 659-2129, anytime. S48 - 6tp

NOTICE TO BIDDERS

Sealed bids for the purchase of the following equipment will be received by the Hansford County Hospital District of Spearman, Texas, at the office of the Hospital administrator up until 2:00 P.M., October 10, 1988, then publicly opened and read at the board meeting on October 13, 1988.

1. One (1) pickup truck with standard cab and bed.

The District reserves the right to reject any or all bids, to waive informalities and accept the bid deemed to be the most advantageous to the District. All bids received after the above closing hour will be returned unopened.

Specifications and bidding documents may be secured from the office of Hospital Administrator, 707 S. Roland, Spearman, Texas 79081. S48s 2tp

ALCOHOLICS

ANONYMOUS MEETING

Hansford County Library
122 Main - Spearman
Open Meeting 2nd Tuesday
ALANON
TUESDAY
8:00 P.M.

CLASSIFIED RATES

Regular . . . Per Word-\$0.13
Display . . . Per col. Inch-\$4.20
Double rate for blind ads
Minimum charges
Cash \$4.00
Charge \$4.50

CASH IN ADVANCE ADS

•Work wanted •Trailers for Sale •Business Opportunities •No long Responsible •Political Advertising •Child Care •Baby sitting •Garage Sales •Out-of-county Ads unless advertiser has established credit with •The Spearman Reporter

DEADLINES

To place or cancel ads
Friday - 12:00 p.m. Sunday edition.
Tuesday - 12:00 p.m. Thursday edition

The Spearman Reporter reserves the right to reject, edit, revise and properly classify all advertising submitted for publication. The Spearman Reporter also reserves the right to cancel any advertisement at any time.
THE SPEARMAN REPORTER

New industry is emerging in Amarillo

A new industry is emerging in Amarillo, the film industry. In the past two months, the Chamber of Commerce/Convention and Visitor Council has received six requests for information and photos from film companies, both domestic and international. The most recent include Austria, Germany and California.

In an effort to develop a photo file and portfolio to answer these requests, the Convention and Visitor Council is sponsoring "F-STOP AMARILLO", a how-to seminar on Oct. 21 and a photo scavenger hunt on Oct. 22.

Tom Copeland, Assistant Director of the Texas Film and Music Office at the Department of Commerce in Austin, is the keynote speaker for the session on "Film as an Economic Development Possibility for Amarillo" on Thursday, Oct. 21, from 9 to 10:30 a.m. at the Fifth Season West.

Copeland plans to cover the economic impact on an area, how the film industry works, local promotion and why Amarillo has great potential.

A breakfast, sponsored by the Big Texan Steak Ranch, will kick-off the photo scavenger hunt at 8 a.m. on Friday, Oct. 22.

Photographers will spend the day capturing area sites (within a 50-mile radius) that might appeal to film companies.

The day will end at 4 p.m. with a "thank you" reception sponsored by Sutphen's at their downtown location.

Copeland sees Amarillo as a great film location. Dollars spent in the area often reach the millions and locals are used as "extras" in the shooting.

"Palo Duro Canyon is a natural," Copeland says. He also gets calls for vacated buildings, period architecture, old churches and schools, huge wheat fields and flat vast ranch land.

Copeland is a theatre arts graduate of Southwest Texas University. His experience includes three years with Public Broadcast System, several years in freelance work in motion pictures and commercial production, and five years with the Department of Commerce.

Sponsors for "F-STOP AMARILLO" include: Fifth Season West of Amarillo, Big Texan Steak Ranch and Sutphen's Barbecue.

For information on the seminar or photo scavenger hunt, call the Amarillo Chamber of Commerce at 374-1497.

HIGH SCHOOL MENU OCT. 3 - OCT. 7

MONDAY
CORNDOGS
RANCH STYLE BEANS
SALAD BAR
COOKIE
MILK
TUESDAY
SLOPPY JOE
TATOR TOTS
SALAD BAR
JELLO/TOPPING
MILK
WEDNESDAY
SALISBURY STEAK
BUTTERED POTATOES
SALAD BAR
HOT ROLLS
BANANA PUDDING
MILK
THURSDAY
ENCHILADAS
PINTO BEANS
SALAD BAR
SOPAPILLA/HONEY
MILK
FRIDAY
HAMBURGER
FRIES
SALAD BAR
BIRTHDAY CAKE
MILK

OSGOOD MONUMENT CO.

Amarillo, Texas
Dealers of Rock of Ages Granite, as well as all colored granites, marble and bronze memorials.

represented by
BOXWELL BROS. FUNERAL HOME

519 S. Evans
659-3802

Feeling good means being "health-wise"

Feeling good physically and emotionally is an important part of a productive and enjoyable life. But people do not always do what they should to achieve good overall health.

Unfortunately, it often takes an illness or other health problem to motivate a person to become a "health-wise," according to the Texas Medical Association.

This term means learning how to prevent disease as well as to promote health. The key is maintaining a healthy lifestyle by focusing on areas such as exercise, stress, smoking, alcohol, nutrition, medication, and accident prevention.

"Once you identify the risks you are taking, you can work to reduce or eliminate them," says a TMA pamphlet titled "Feeling Good-Enjoying a Health-Wise Lifestyle." It offers these suggestions among others on reducing health risks:

Alcohol: Frequent excessive drinking can lead to alcoholism, heart disease, cirrhosis of the liver, and accidents. When drinking alcohol, sip it slowly, and eat something before you drink.
Eating: Being overweight can

lead to such problems as heart attacks, high blood pressure, and diabetes. To help avoid overeating, eat slowly, and eat less at meals. Avoid crash diets, and cut back on junk foods.

Smoking: Don't.
Stress: Prolonged stress can lead to both mental and physical ills. Stress can come from job pressures, responsibilities at home, or troubles with friends and family. To relieve stress, find time to relax, whether it's reading a book, exercising, or doing nothing.

Medication: Avoid mixing drugs --prescription or over-the-counter --unless your doctor says it is safe. Never mix drugs with alcohol.

To obtain a copy of this pamphlet and nine others in the TMA Health-Wise Series, call 512/477-6704 or write to the Texas Medical Association, Department of Public Relations, 1801 N. Lamar Blvd., Austin, Tx. 78701.

The Texas Medical Association is a professional organization with more than 28,000 physician and medical student members. It is located in Austin and has 116 component county medical societies around the state.

Free shade trees to those who join foundation

Ten free shade trees will be given to each person who joins The National Arbor Day Foundation during October.

The free trees are part of the nonprofit Foundation's efforts to encourage tree planting throughout America.

The ten shade trees are Red Oak, Weeping Willow, Sugar Maple, Green Ash, Thornless Honeylocust, Pin Oak, River Birch, Tuliptree, Silver Maple, and Red Maple.

"These trees were selected to provide shade and beauty, and a variety of forms, leaf shapes, and

fall colors." John Rosenow, the Foundation's executive director, said.

The trees will be shipped post-paid at the right time for planting between October 15 and December 10 with enclosed planting instructions. The six to twelve inch trees are guaranteed to grow or they will be replaced free of charge.

To become a member of the Foundation and to receive the free trees, send a \$10 membership contribution to SHADE TREES, National Arbor Day Foundation, 100 Arbor Avenue, Nebraska City, NE 68410, by Oct. 31.

JR. HIGH-ELEMENTARY MENU OCT. 3 - OCT. 7

MONDAY
JUMBO CORNDOG
RANCH STYLE BEANS
COLE SLAW
COOKIE
MILK
TUESDAY
SLOPPY JOE
TATOR TOTS
BUTTERED CORN
JELLO/TOPPING
MILK
WEDNESDAY
SALISBURY STEAK
BUTTERED POTATOES
MIXED VEGETABLES
HOT ROLLS
BANANA PUDDING
MILK
THURSDAY
ENCHILADA CASSEROLE
PINTO BEANS
SALAD
SOPAPILLA/HONEY
MILK
FRIDAY
HAMBURGER
FRIES
LETTUCE/TOMATO
PICKLE/ONION
BIRTHDAY CAKE
MILK

NOTICE

Wallace Monument Co.
Monuments, Curbing,
Grave Covers
Local Representative
LEONARD JAMESON
Spearman, Texas

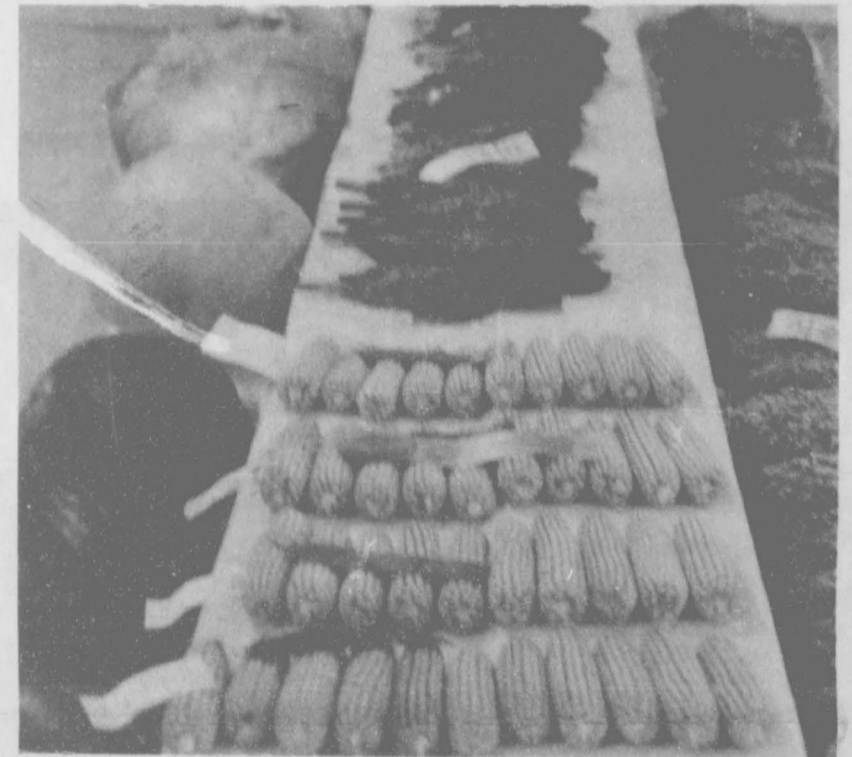
A gift in loving memory to the American Heart Association is a gift that lives on--giving us hope for a healthy future. Please give generously. We're fighting for your life. Give through your local bank of call 659-3493. rtn

L & M Body Works

1501 Hwy. 15
659-2775
Tailpipes - \$29.95
Mufflers - \$39.95
Most Duals - \$160.00 complete



Above and below are pictures of some of the agriculture exhibits at the Hansford County Fair this weekend. Results of placings in the fair will be in the next edition of the Spearman Reporter.



Local Happening?

Special Event?

Club Meeting?

If it's important to you,
it's important to us.

Let us know about your event
and we'll do our best to get you
the publicity it deserves both before and after.

Call 659-3434 Today!

The Spearman Reporter
The Gruver Statesman
The Hansford Plainsman

Lynx take it one game at a time



Boys Ranch

Photo courtesy of SCOTT TAYLOR



Photo courtesy of SCOTT TAYLOR

West Texas

Highland Park

Panhandle

Stratford



Photo courtesy of SCOTT TAYLOR



. . . all the way to district !

Proud supporters of the pride of Hansford County -- the Spearman LYNX

First National Bank

729 W. 7th 659-5544
Spearman, TX 79081

Hansford Implement

Hwy 207 S. 659-2568
Spearman, TX 79081

Gruver Farm Supply

515 Main 733-2427
Gruver, TX 79040

Charolette Ford Trunks

313 Main 659-3027
Spearman, TX 79081

Gordon's Drug

314 Main 659-2141
Spearman, TX 79081

Jack & Jill

123 W. Kenneth 659-3190
Spearman, TX 79081

Thriftway

505 Plains Shopping Center
659-2522

AGCO

Box 566 Spearman, TX 79081
659-3751

Five Star Equipment

Hwy 15 West 659-3743
Spearman, TX 79081

Cates Men & Boys Wear

221 Main 659-3426
Spearman, TX 79081

Sacks

203 Main 659-3350
Spearman, TX 79081

Bort Agency

510 N. Main 733-2456
Gruver, TX 79040

First State Bank

1 NE Court 659-5565
Spearman, TX 79081

Caprock Industries

433 Main 733-2483
Gruver, TX 79040

Gillaspie Chevrolet-Olds

Hwy 207 S. 659-2541
Spearman, TX 79081

Hansford Co. Farm Bureau

307 W. Davis 659-3133
Spearman, TX 79081

Golden Spread Sales Co.

412 Collard 659-3776
Spearman, TX 79081

Main Street

506 Main 733-5040
Gruver, TX 79040