



HANSFORD COUNTY'S LEADING NEWSPAPER

# SUNDAY The Hansford Plainsman

VOLUME VII., NUMBER 37

SPEARMAN, HANSFORD COUNTY, TEXAS 79081

SUNDAY, FEBRUARY 27, 1966

It was a pleasure to meet Crawford Martin, candidate for Attorney General and he was very pointed in his reason for wanting the job--it is bigger than Secretary of State.

The candidate would not go wrong in letting his traveling campaign manager, Olin Underwood, say a few words in his behalf. The big professional football player is sold on his candidate.

Underwood is going to law school at the University of Texas around professional football seasons. He said Senator Martin sure knew his law.

Underwood said he was more impressed with Martin's knowledge of the law every day they travel.

"I will just bring up a case that interests me, and the Senator can go into details about it," Underwood comments.

Last fall was Underwood's first season as a professional football player. He is a line-backer with the New York Giants. He played the first half of the season, then got a knee hurt. "I was never injured in high school or at the University of Texas."

"The doctors tell me it will be just as good as ever. I'll know next July," he commented.

Underwood said professional football was the finest football he had ever played. When asked if it was as tough as it is reputed to be, he grinned and said it was plenty tough.

Yes sir, Crawford Martin is a rather smart campaigner to get a popular, well known football player to help him campaign in football crazy Texas. He would not have gotten this much space without him.

## Revival Set At Assembly of God

The Rev. Charles McKnight of Houston, an Assembly of God evangelist, will begin a revival meeting here today in the local Assembly of God Church.

Services will begin each (Con't. on page 5.)



INSTRUCTIONS GIVEN - Secretary of State Crawford Martin (left) presents Judge Johnnie Lee with instructions for handling the registration of voters who did not pay poll taxes this year. The registration begins March 3. Plainsman photo

## Don Floyd Resigns As Chamber Mgr.

After two years of growth and improvement, the Chamber of Commerce is again looking for a Chamber of Commerce Manager.

Manager Don Floyd submitted his resignation to the board at a special meeting Friday.

He is resigning to accept employment with Dallan Company.

Floyd said his new job will be field engineer for demonstrating and installing electrical medical monitoring equipment in clinics and hospitals. He will travel over a large part of West Texas, New Mexico and Western Oklahoma.

He said he is not moving from Spearman. He will travel from Spearman.

Floyd said he would continue to work with the chamber until they can find a replacement for him.

"I still believe in the future growth of Spearman and I enjoy working with the business firms and agriculture in planning this growth," Floyd said.

Floyd has served as the Manager of the Chamber for two years and during that time has been successful in leading the organization in securing new industry, increasing the membership and budget of the organization and in bringing the Chamber back into a place of leadership in Spearman.

The manager said he would continue to give all the assistance he could to the completion of several projects the chamber now has in operation. These include some civic improvement planning and the attraction of some new industrial prospects.

Floyd is a native of Spearman and a graduate of Spearman High School. He served as manager of the chamber in the mid-fifties before moving to Colorado.

He returned to Spearman to go into private business, then returned to the manager's job two years ago.

## Deadline For Filing Is Approaching

The deadline for filing as a candidate for either a city or school board office is approaching this week.

All candidates for the school board must file by Wednesday, March 2, 30 days before the election on April 2.

Only two candidates have filed for the school board. They are incumbents Roy McClellan and Ira Harbour. Both men are seeking second terms.

Candidates for city mayor or councilman must file by Saturday, March 5. The election is Tuesday, April 5.

There are contests in the city elections. Incumbent Bob Vaughn and Clarence Pettitt are seeking the Mayor's job. Two incumbents, Richard Holtton and E.J. Copeland are seeking re-election and Joel Lee Lackey is seeing his first term on the board. There are two vacancies on the council.

The school trustee election will be held at the junior high school. The city election will be at the city hall.

## Science Fair Begins Thursday

The Hansford County Science Fair will be held in the Community building in Spearman Thursday, Friday and Saturday of this week.

Science students from high school and the grades of the Spearman, Gruver and Morse

schools have been invited to enter exhibits.

Members of the science department at Panhandle A&M College in Goodwell, Okla. will judge the entries.

Students will put the exhibits up Thursday, the judges will judge them Friday. The fair will be open to the public late Friday afternoon, then again Saturday.

Fair director, Bob Barker of Spearman High School said the number of exhibits here is not as large as in past years, but the exhibits are much better as scientific research.

## Crippled Team Tops Tulia; Ready for Electra Monday

A new model of Spearman Lynxettes will meet Electra at 7:30 p. m. in Shamrock for the bi-district game between the 1-AA and 2-AA champions.

The Lynxettes will go into the game fresh from a 55-54 upset victory over the powerful Tulia Hornettes Friday night in Tulia.

Spearman will be the favorite in the contest on the basis of their season record. At the end of the district race, Electra had a 12-6 record and the Lynxettes had a 28-3 record.

Spearman upset Tulia 55-54 Friday night in a great come-from-behind effort by the reserves of the team.

Spearman had three girls injured when the game started. Karen Gibson with a sprained ankle had joined Bethany Donnell and Kathi Pattison on the injured bench.

It was a great victory for the Lynxettes. Barbara Wilde went (Con't. on page 5.)



FLAG CEREMONY - Members of Cub Pack 78 led some 200 persons in the Pledge of Allegiance at the annual Blue and Gold banquet Thursday night in the junior high cafeteria. Plainsman photo

## Gilstrap Will Speak at Banquet

Chena Gilstrap, athletic director of Arlington State College, will be the speaker at the annual high school all-sports banquet here March 26, 7 p.m. in the high school cafeteria.

Gilstrap was a successful coach at Arlington State before moving up to athletic director this year. He is a well known speaker and sports personality.

He was the speaker at the (Con't. on page 5.)



FUEL EXPERIMENT - Susan Holt is conducting an experiment on micro-organisms in fuels. The micro-organisms live on carbohydrates from the fuel and inorganic salts from the metals. They damage fuel tanks in aircraft and are a major problem. Plainsman photo



INDIAN DANCERS- Indian dancer D. D. Stalder teaches Cub Scouts some Indian dance steps at the Blue and Gold banquet. Ed Mundy presented the Pack Charter to the Methodist Church.

Plainsman photo

### Baptist Circles Meet

The Betty Morris Circle met Wednesday morning in the home of Verna Jarvis with Mrs. Herb Howe presiding at the business session and reading the prayer calendar.

The Bible study was given by Gowonda Golightley with each member present taking part.

Attending were Magda Garnett, Peggy Archer, Alma Kizzlar, Eva Adkison, Barbara Howe, Abbye Ownbey, Gowonda Golightley and the hostess.

Mrs. Luther Berry was hostess for the Alma Reed Circle. Wren Holt taught the study.

Mrs. R.H. Gray read the prayer calendar and Wanda Brown led the prayer.

Edrie Jones presided at the business.

Others present were Pat Denham and Mrs. A.F. Loftin.

The Kezzia Mae Seawright Circle met at the church Wednesday morning with Mrs. Dick Kilgore presiding at the business.

Wanda McIver read the prayer calendar and the Bible study was given by Betty Uptergrove.

Members present were Lena Stephensn, Wanda McIver, Marguerite Nelson, Viola Hutton, Dana Hazelwood, Frances Kilgore, Betty Uptergrove, two new members, Mrs. Johnson and Mrs. Lawrence Anthony, and a visitor, Mrs. Wesley Brown.

Middle age is when it doesn't take much of an overload to bring a power blackout.

### Miss Collard In Band Fraternity

Helen Collard of Spearman was recently initiated into Tau Beta Sigma, national honorary fraternity for bandwomen, at West Texas State University.

Miss Collard, daughter of Mr. and Mrs. John Collard, Jr., is a freshman music major.

Slice pimento-stuffed green olives and add to creamed dried beef.

**Want To Build a New Home, Remodel or Repair Your Home ?**

CALL

**R. L. UPTERGROVE**

659-2677

Out of Town, Call Collect

Spearman

**For Sale :**

3 Bedroom House-Several Lots - 2 Commercial Buildings

### Washing Ruins Film

Washing eggs before storing destroys their protective film that keeps out odor and air.

### Letter To The Editor

Dear Sir:

You were most thoughtful indeed to send us the Thursday, February 3, 1966 issue of THE HANSFORD PLAINSMAN which so prominently displayed the Heart Fund Campaign on its front page. We are indeed indebted to you and we are, of course, looking for great things in Spearman this year.

Thanks again for your thoughtful consideration of the Heart Association and the tremendous amount of publicity that you have given our organization. We are indebted to you.

Sincerely,  
Ernest T. Guy  
Executive Director  
Texas Heart Association

### NEW 1966 GMC 1/2 Ton PICKUP

With Heater and Defroster, Seat Belts, Back up lights, Two speed wipers, Windshield Washer, Rear Bumper.

**\$1,888**

**A.&B. GMC**  
801 FLORIDA-EAST BY-PASS  
PHONE BR 3-3771  
BORGER TEXAS

Get ready for



Hear the best on radio

**Top 40 Country-Western Easy Listening**

FOR YOU

EVERY DAY!

**KBMF-FM**

**98.3 on your dial**



PRICES EFFECTIVE  
Tues. & Wed.  
March 1+2.  
LIMIT RIGHTS  
RESERVED

Shop Away!... For Top-Dollar Savings On Famous Del Monte Brand Foods. Stock Up Now at Ideal!

DEL MONTE VACUUM PACKED

**Golden Corn**

MADE WITH PINEAPPLE VINEGAR

**Del Monte Catsup**

LIGHT MEAT CHUNK STYLE

**Del Monte Tuna**

Swift's Premium Tender Grown

**FRYERS**

WHOLE LB. **33¢**

CUT-UP FRYERS LB. **37¢**

Fresh, Plump, Tender

**FRYER PARTS**

Choose the parts your family likes most and Save

Breast, Legs & Thighs **PICK OF THE CHICK** LB. **59¢**

All White Meat **FRYER BREAST** LB. **59¢**

Plump, Tender **FRYER THIGHS** LB. **55¢**

Tender, Meaty **FRYER LEGS** LB. **49¢**

SWIFT'S PREMIUM **Sliced Bacon**

1-LB. PKG. **89¢**

IDEAL'S COUNTRY KITCHEN **Baked Beans**

PINT CTN. **39¢**

TRADEWINDS **Shrimp Chunkees**

2-LB. PKG. **\$1.49**

SPECIAL LABEL **MARYLAND CLUB COFFEE**

1-LB. CAN **69¢** SPECIAL LABEL 2-LB. CAN **\$1.38**

Better Food For Less  
**IDEAL FOOD STORES**

PINEAPPLE-GRAPEFRUIT

**Del Monte Drink**

2 46-oz. CANS **69¢**

DEL MONTE EARLY GARDEN

**SUGAR PEAS**

5 303 CANS **\$1.00**

DEL MONTE

**PRUNE JUICE**

2 QT. BTL. **89¢**

DEL MONTE

**Pineapple Juice**

8 211 CANS **\$1.**

DEL MONTE FANCY

**Fruit Cocktail**

4 303 CANS **\$1.**

DEL MONTE SLICED OR CHUNK

**Pineapple**

No. 2 CAN **39¢**

**KARO SYRUP**

BLUE, RED OR GREEN LABEL

PINT BOTTLE **29¢**

BLUE, RED OR GREEN LABEL

QUART BOTTLE **59¢**

BLUE, RED OR GREEN LABEL

5-LB. CAN **79¢**

BLUE OR RED LABEL

10-LB. CAN **\$1.49**

**OVEN FRESH FROM IDEAL**

IDEAL FOIL OR CELLO WRAPPED

**French Bread**

1-LB. LOAF **21¢**

IDEAL WHITE OR CARAMEL ICED

**Cinnamon Rolls**

PKG. OF 6 **31¢**

SKINNER'S CUT OR LARGE

**Elbo Macaroni**

2 7-oz. PKGS. **25¢**

POWDERED

**Snowy Bleach**

LARGE PKG. **49¢**

SPECIAL LABEL FAULTLESS

**Fabric Finish**

20-oz. BOTTLE **69¢**

DELICIOUS PIZZA MIX... SPECIAL LABEL

**APPIAN WAY PIZZA**

PLAIN WITH CHEESE

14 oz. PKG. **45¢** 14 oz. PKG. **49¢**



GOLDEN RIPE **BANANAS**

U.S. NO. 1 COLORADO MED. SIZE **ONIONS**

3 lb. **17¢** lb. **10¢**

WASHINGTON **RHUBARB**

LB. **39¢**

CARNATION **INSTANT BREAKFAST**

BANANA, ORANGE, CHOC. MINI, PLAIN, COFFEE, CHOCOLATE OR CHOC. MAIT PACKAGE OF 6 ENVELOPES **69¢**

MAZOLA **MARGARINE**

1-LB. CTN. **39¢**

PILLSBURY OR **BALLARD BISCUITS**

3 8-oz. CANS **29¢**



### Central Texas Beauty Is Miss Rural Electric

An 18-year old Central Texas ranch girl was named Miss National Rural Electrification last week (February 16) in Las Vegas at the annual convention of rural electric systems in America.

Jan Brown, daughter of Mr. and Mrs. Clint Brown of Harper, Gillespie County, won the title over contestants from eight other states during the beauty pageant before some 8000 delegates. She won the right to represent Texas in the competition when she was selected Miss Texas Rural Electrification last summer in Dallas.

Jan is a freshman speech major at Angelo State College, San Angelo. With the national crown goes a \$2,500 scholarship sponsored jointly by the National Rural Electric Cooperative Association and General Electric.

### GA's Have Regular Meeting

Mrs. R.E. Bradford's group of GA girls met Wednesday at the church for their regular meeting.

Merilee Ooley, president, presided at the business, Lela Golightley read the prayer calendar followed with prayer by Susan Gates.

Get well cards were sent to Mrs. Eddie Gates and Willie Mathis, who are patients in Hansford Hospital.

Forward steps were studied by the group and Lela Golightley gave parts for the week of prayer to be held next week.

Attending were Sabrina McIver, Marilee Ooley, Nedra Black, Debbie McCloy, Darlene Wilkerson, Susan Gates, LeAnn Smith and Mrs. Bradford.

### FB Queen Contest Set

Plans for the Farm Bureau Queen's contest were made at the Feb. 22 meeting of the women's committee of the Farm Bureau. The contest will be held April 1. at 7:30 p.m. in the Gruver High School Auditorium.

Entrants have to be between the ages of 16-22, single, daughter of sister of a Farm Bureau member.

The memorial fund for the heart monitoring equipment has increased \$143 in the month of January, according to Mrs. Donnie Thoreson of Gruver, Publicity Chairman.

### GA's Make Mission Study

Three groups of GA's whose advisors are Pat Denham, Alma Bradford and Wanda Widener met at the First Baptist Church Saturday Feb. 19 for mission study.

Mrs. J.D. Helms taught the Mission Study Book "Guaymi Boy".

Each girl brought a sack lunch, cokes and cookies.

Attending were Carmel Bryan, Jan Gates, Ruth McMahan, Barbara Golightley, Brenda Thomas, Cindy Barnes, Ann Lackey, Nancy Anderson, Kathy Brown, Cheryl Craig, Mary Sue Hazelwood, Debra Smith, Tina Boyer, Pat Walls, Donna Walls, Susan Gates, Lela Golightley, Debbie McCoy, Sabrina McIver, Marilee Ooley, LeAnn Smith, Valorie Uptergrove, Janice Whitefield, Sue Duryee, and Becky Farris.

### CARD OF THANKS

I wish to thank everyone for your cards, letters, visits and prayers during my illness. They all meant very much to me.

Mrs. Robert Janzen



### Party Honors Kathy Brown

Mrs. Gayle I. Brown honored her daughter Kathy with a party to help her celebrate her 10th birthday Saturday, Feb. 19 at the HD Clubroom.

Various games were played and all enjoyed watching Kathy open her gifts. Bette Brown and Sue Stubblefield assisted with the games and the door prize was won by Peggy Floyd. Game prizes were won by Karen Stafford, Debbie Simmons, Rene Asbill, Brad Stalder and Peggy Stidham.

From a beautifully decorated serving table refreshments of pink and white birthday cake, cokes and ice cream were served to Karen Stafford, Debra Davis, Debbie Simmons, Rene Asbill, Terry Morris, Peggy Floyd, Gaye Daniel, Linda Sutton, Bobby Bulls, Randy Davis, Peggy Stidham, Nancy Lair, Brad Stalder, Brad Healer, DeAnn Reed, Becky Reynolds, Sharon Craig and Paula Hagerman.

Judy Hollingsworth, former resident of Spearman, and now living in Guymon was chosen "Miss Congeniality" in the Miss Guymon Pageant, and the 18 year old senior was also in the top ten contestants of the pageant.

### Miss Cudd Named To Dean's List

Genette Cudd, daughter of Mr. and Mrs. Gene Cudd has been selected to be on the Dean's List at McMurry College for the fall semester of 1965.

Academic excellence required for students named to McMurry's Dean's List includes the students having a grade average of at least 3.5 or B plus and being in the top 10 percent of the student body.

Miss Cudd, a freshman student, had a grade point average of 4.00, a straight A average. She is a 1965 graduate of Perryton High School and was active in the National Honor Society, FTA, band and Student Council while in high school.

### Bowling Beat

#### SCATTER PINS LEAGUE 2-17-66

TEAM	WON	LOST
Equity	57	23
Anthony Elec.	54	26
Taylor-Evans	51	29
Pioneer Res.	41	39
Grunewalds	39	41
Gruver Motor	36	44
G&G Foodliner	31	49
Ideal	11	69

#### HIGH TEAM GAME

Equity	680
Pioneer	630
Grunewalds	602

#### HIGH TEAM SERIES

Equity	1805
Taylor-Evans	1774
Pioneer Res.	1729

#### HIGH INDIVIDUAL GAME

Tubby Hays	213
Tommie Arbsland	199
Peggy Robinson & Helen Dry	194

#### HIGH INDIVIDUAL SERIES

Tubby Hays	548
Jane Meek	509
Peggy Robinson	495
Mary Cornelius(S)	495

#### PIN BENDERS 2-18-66

TEAM	WON	LOST
Nancy's Cafe	55	29
McClellan Grain	52	32
Bowl-Mor	46	38
Lee Oil	46	38
Brock Ins.	45	39
Independents	38	46
Crawford Imp.	281/2	551/2
Hansford Grain	251/2	581/2

#### HIGH TEAM GAME

Lee Oil	484
Lee Oil	476
Crawford Imp.	469

#### HIGH INDIVIDUAL GAME

Kate Farris	187
Gwen Reed	178
Tommy Arbsland(sub)	174

#### HIGH INDIVIDUAL SERIES

Kate Farris	514
Gwen Reed	490
Tommy Arbsland (sub)	470
Barbara Cook	459

Bi-District Game  
Mon., Feb. 28  
In Shamrock  
SPEARMAN  
vs. ELECTRA

HANSFORD  
HOSPITAL NEWS

Patients in Hansford Hospital are Sarah Townsend, Marie Nabejar, Connie Moreau, Patsy Gates, Ann Bowen, Wynona Stewart, J.W. Lowrey, Roscoe Crawford, June Potts, Wm. J. Leonard, Judy Wilmeth, Willie Mathis Joyce Ellis, Dortha Conner, Betty Howell, Robert Greene, Joan Weaver, Lola Stuck, Ricky Dale Ellsworth, Lester Aylor, Linda Webb, and Viola Fite.

Dismissed were Nina Hendricks, Mary Jane DeArmond, Betty Mitchell, Joe Day, James Walker, W.E. Dillow, Jane Quinn.

### Cummings

Refrigeration

HEATING

AIR CONDITIONING

SALES & SERVICE

SPECIALIST

659-2721

### KNAPP SHOES

KENNETH BAILEY

212 N. James  
Phone 659-2458  
Spearman, Texas

### For Cushioned Comfort

### Southwestern Life Insurance Co.

LIFE INSURANCE  
IS MY  
ONLY  
BUSINESS...

LET ME HELP YOU

PLAN YOUR NEEDS

### DON KNOX

Phone 659-3294  
Spearman

### For Quick Courteous Service

Chevron Gasolines

Atlas Tires & Accessories

Washing-Greasing

Loren Simmons

### SIMMONS CHEVRON SERVICE

Phone 659-9985  
Plains Shopping Center

Jan Brown

Hansford Plainsman  
Publishers Inc.

Jim O. Davis  
Burl G. McClellan



County-wide independent newspaper published every Thursday and Sunday at 209 Main St., Box 668, Spearman, Texas 79081. Second Class postage paid in Spearman, Texas 79081. Editor . . . Burl McClellan

### GIFT BOX MEMO:

We have just returned from the Dallas market where we purchased a large number of new books for our book corner.

One of the most popular ones we purchased is Truman Capote's "In Cold Blood". This is the true account of the triple murder of the Clutter family in Holcomb, Kan.

There are many other books for all ages. You will find the good reading material that you are looking for in the book corner.

All of our picture frames have been reduced 25 percent. We want to sell the frames to make room for new merchandise.

The shipments of new merchandise will begin arriving soon, so come by and see the new things we have purchased.



CANCER EXPERIMENT- Advance biology student Bethany Donnell works on an experiment on malignant tissue. She is testing the optical density of mice's blood serum on the Spectronic machine. This is a Science Fair exhibit. The fair is this weekend. Plainsman photo

I want to take this opportunity to thank the many people for their cards, flowers, letters and especially their prayers during my stay in the hospital. They made my stay so much easier and time passed faster. Angie Sheets

### THE GIFT BOX

A new name at Chambers Dept. Store

A new name at CHAMBERS Dept. Store

A new name at CHAMBERS Dept. Store

A new name at CHAMBERS Dept. Store

A new name at CHAMBERS Dept. Store

Buy, Sell, Trade  
Hire, Rent, Find  
THROUGH THE

# WANT ADS

**FOR SALE —**

FOR SALE: General Electric refrigerator, yellow, excellent condition, \$85.00. Call 2466 weekdays 9 to 5. 29-tfc

FOR SALE—Two bedroom house, corner lot, excellent location. Phone Mrs. Wilburn Guire 2359 after 5:30 p. 29-tfc

FOR SALE—3 bedroom, 2 bath brick home, large rooms, 306 Chase St., Gruver, Texas, Phone F17-2329. 32-tfc

FOR SALE—2 bedroom house with basement and 1 1/2 acres land, 607 E. 10th. Gruver, Texas. Call F17-2732. 37-8c

FOR SALE—Male 5 month old German Shepherd puppy. \$25. Call 3229. 36-3c

FOR SALE—3 bedroom house, redwood fenced backyard. 1010 S. Haney. Call 659-3103 or 659-2754. 25-tfc

FOR SALE—4 Wheel drive jeep pickup, 1954 Chevrolet 2-door hardtop. Phone 659-3181. 32-tfc

FOR SALE—14 Volume set of Junior Classics and 20 Volume set of Collier's Encyclopedias. Phone 659-3067. 36-tfc

FOR SALE—1963 American-Westwood 2 bedroom mobile home. Excellent condition. 119 N. Brandt. Phone 659-2454 after 6 p.m. 24-tfc

FOR SALE—Ironrite Ironer, Trombone, Accordion, two bicycles, also antiques. 306 Chase St., Gruver, Texas, phone F17-2329. 32-tfc

FOR SALE—Two bedroom brick thodist parsonage to spend the vener house. Will sell or weekend with Rev. and Mrs. trade on good terms for smaller Wesley Daniel and girls are house. Phone 659-2464. L.S. Mr. and Mrs. Don Ward, Jimmie, Max, Ted and Pam of Seagraves. 36-tfc

FOR SALE—2 bedroom home, attached garage. Room with bath at back of lot. Back yard fenced. South part of town. Collard Real Estate. 35-2c

FOR SALE: 1957 GMC pick-up V-8, 4-speed, long bed. Call 659-2677. 33-tfc

FOR SALE—Beautiful tiny toy poodle puppies. Colors cream or apricot. AKC Registered. Papers furnished. Will hold for Easter. Phone 659-2082. 428 S. Bernice. 32-tfc

**Gilstrap . . .**

(Con't. from page 1.)

Caprock Football banquet in Amarillo Thursday night.

The long-time coach has a wealth of experience from which to pick stories.

The outstanding player awards in the different sports will be presented at the banquet.

Guests expected at the Me-FOR SALE—Two bedroom brick thodist parsonage to spend the vener house. Will sell or weekend with Rev. and Mrs. trade on good terms for smaller Wesley Daniel and girls are house. Phone 659-2464. L.S. Mr. and Mrs. Don Ward, Jimmie, Max, Ted and Pam of Seagraves. 36-tfc

**— SERVICES —**

Amarillo Daily News & Globe Times home delivery. Call 2685. 14-tfc

SERVICE—Ditches from 3-12 inches, any desired depth. S. D. Jones 659-2809. Harold Shaver 659-3474. 17-tfc

Plainsman classifieds will do the job!

**— LOST —**

LOST: Beagle Hound, two years old. Collar and tags; Call Wilbur Hull. 659-2397.

**-FOR RENT-**

FOR RENT—Furnished apt. 3 rooms and bath. 821 S. Haney. Call 2084. 35-tfc

**POLITICAL ANNOUNCEMENTS**

The following persons have authorized this newspaper to announce their candidacy for the following offices in the Democratic Primaries, May 7, 1966.

STATE REPRESENTATIVE 83RD DISTRICT  
A.C. Hallmark  
U.S. REPRESENTATIVE 18TH CONGRESSIONAL DIST.  
Walter Rogers  
STATE SENATOR 31ST SENATORIAL DIST.  
Grady Hazlewood  
COUNTY CLERK Mrs. Keeese Richardson  
Donald Heath  
COUNTY TREASURER Mrs. Janita Kemper  
Mrs. Selma Dahl Reneau

REPUBLICAN CANDIDATE STATE REPRESENTATIVE 83 DISTRICT  
Jack H. Hart

Ex-Texas Longhorn football player Olin Underwood, now a linebacker for the New York Giants, is Martin's traveling companion. J.W. Buchanan of Dumas is accompanying the men in the Panhandle.

## Secretary of State Martin Visits in Spearman Friday

Texas Secretary of State Crawford Martin and a candidate for Attorney General of Texas was in Spearman briefly Friday afternoon and spoke to a few at Grunewald's Cafe in the shopping center.

Martin presented Judge Johnnie Lee with instruction for the voter registration which begins next week. Martin said persons who have paid the poll tax do not have to register.

Martin told the group he was seeking the Attorney General's

job because he was seeking a bigger job than Secretary of State.

He said the Secretary's job is a nice position, but it is appointive and it is over the day the Governor leaves office.

Martin was appointed three years ago after service as State Senator from Hill County for 14 years.

Martin said he was not as young, nor as handsome as his two opponents, but he has more experience in law and the state government than both of them put together. He is opposed by Galloway Calhoun and Franklin Spears.

He has been campaigning since December, except for 10 days while the legislature was in special session on the voter registration law.

Martin said he hoped to be back in the Panhandle one more time before the election.

Coach Weese said he had been searching for a seventh girl, now it looked like he had found several reserves who can be tough under pressure. They have beaten one of the best teams in the state.

Gibson's ankle is responding to treatment and she is expected to be ready to play Monday.

**Revival . . .**

(Con't. from page 1.)



Rev. Chas. McKnight

evening at 7:30 in the church on North Bernice street.

The Rev. T.J. Taylor Jr., pastor, extends an invitation to everyone to attend the services.

**Crippled . . .**

(Con't. from page 1.)

on a rampage and battled her way through a rough defense for 33 points on 12 field goals and nine free shots.

Marcia Shieldknight and Linn Robinson each hit 11 points. Robinson had seven free shots and two field goals. Her free shots came when needed.

With the score tied and a minute left, Shieldknight got two free shots. She hit the first one to make the score 55-54, then Tulia got the rebound when she missed the second one.

Under pressure, Tulia then threw the ball out of bounds and Spearman stalled for 54 seconds to win the game.

Coach Dean Weese had to go to his bench early and found the help he needed so badly. Nancy McCullough got four fouls in the first quarter and Weese sent in Catherine Lyon. The sophomore performed brilliantly for two quarters against the Tulia offense.

In the fourth quarter both Susan Hutchison and Robbie Ownbey fouled out. Cynthia Cochran and Jeanette McAdams joined McCullough on defense. They held the high scoring Hornettes.

Spearman trailed all the way until the end. The quarter scores were 12-6, 32-24 and 44-37.

**Future Readers of The Plainsman**

Mr. and Mrs. Robert Stewart the parents of a daughter born Feb. 25 in Hansford Hospital. She weighed 7 lbs. 8 oz.



**We Do Anything to Hold onto Our Customers**

WE EVEN GIVE YOU TWO PAPERS A WEEK FOR THE PRICE OF ONE. JUST OUR WAY OF SAYING THANK YOU FOR YOUR SUPPORT.

The Hansford Plainsman

**Opening March 1**



**THE LYNX DEN**

(Formerly Cates Dairy Kream)

New Owners:

**Mr. & Mrs. Leon Wilson**

Mrs. Jerry Brack, Manager

Hours:

**10 A.M. - 9 P.M.**

— Your Business Will Be Appreciated —

**Decorate this MORNING**



**Entertain TONIGHT**

use **Super MASQUE** a new ACRYLIC INTERIOR FINISH



LASTS THROUGH 20 WASHINGS  
SCOURABLE  
16 COLORS  
12 SHEDDINGS  
A STAINING 12 STAIN PROOF

**STERLING PAINT**

**White House Lumber Co.**

## Mrs. Wilson Is President Of Waka Parent-Teachers

The Waka Parent-Teacher Association met Feb. 21 at the school cafeteria, with Bob Mosier presiding. The following officers were

elected for next year: Mrs. David Wilson, President; Mrs. David Burger, vice-president; Mrs. Rafoord Clark, secretary, and Mrs. B.J. Turner, treasurer.

Mrs. Wilson and Mrs. Clark were selected as delegates to the District Convention.

Mrs. Clyde Yeary awarded the prizes in the program coloring contest. Bobby Mosier won first, Trine Martinez, second, and Steven Boese, third.

Mrs. J.R. Stump, program leader, introduced Mrs. Herman Wiebe who spoke on

"Together We Help A Child By Strengthening our Heritage."

The four upper grades ended the program with a pantomime and recitation by Douglas Reeves.

The social committee for the evening was Mr. and Mrs. Paul Shipman and Mr. and Mrs. Carl Scroggs.

Hallmark cards at Plainsman Office Supply.

## Rites Held Here Friday For Ruben C. Birdwell

Funeral services for Ruben Cooper Birdwell, 75, a resident of Hansford County for the past 40 years, were held at 2:30 p.m. Friday in the First

Christian Church with the Rev. W. Graham Pugh officiating. Mr. Birdwell died Feb. 22 in Veterans Hospital in Amarillo.

Mr. Birdwell was born Dec. 18, 1890 in Coleman County. He was a retired carpenter.

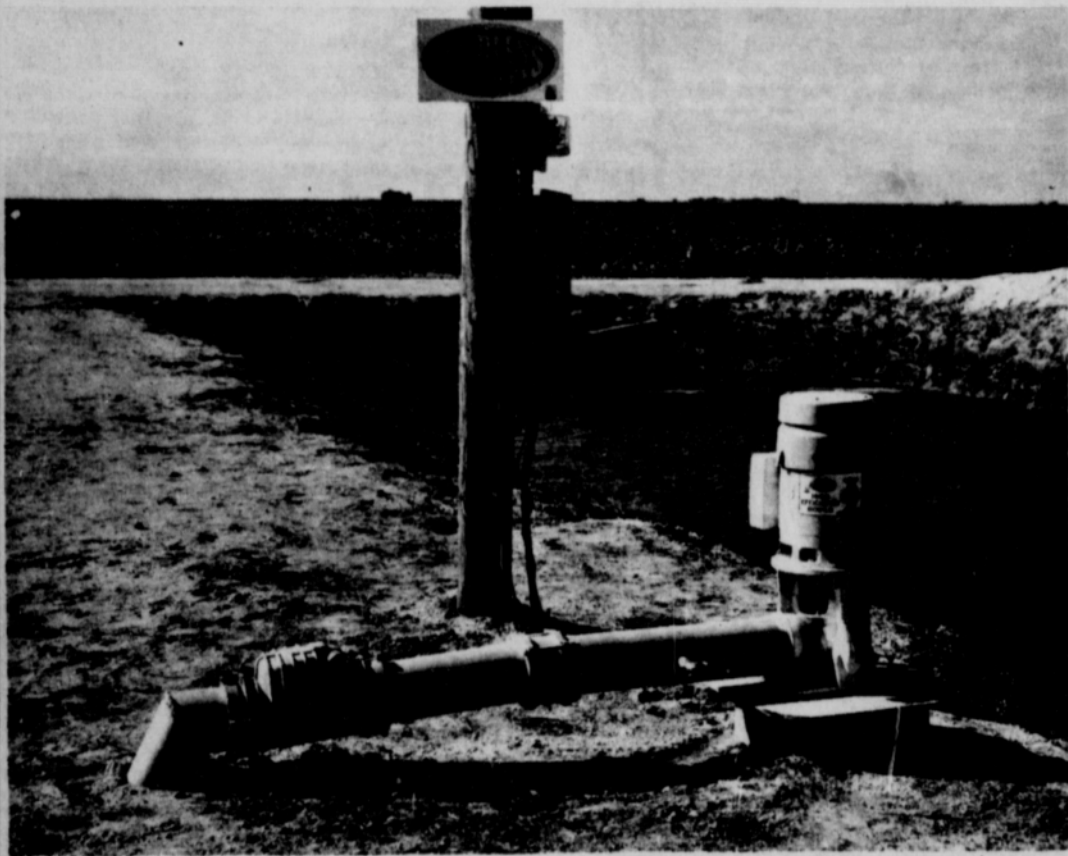
Pallbearers were Don Maize, Barton Riley, Billy Close, Tommy Ferguson, Willis Randall, Neal Jameson and Don DeArmond. Honorary pallbearers were Roy Jones, E.D. Clement, Holland Sloan, Grace Patton, Bert Briley and Bert Keith.

Survivors include his wife, Reba of the home; six daughters, Claudio Georgis of Mt. Shasta, Calif., Sophia Fuller of Garden, Calif.; Sibyl Miller of Plympton, Mass., Doris McKay of Norwalk, Calif., Jackie Fickling of Mesquite and Arnolee Icardo; a step-daughter, Verdalee Coker of Amarillo; a step-son, Leon Craft of Kuwait, Arabia; 13 grandchildren and one great-grandchild.

Burial was in Hansford Cemetery under the direction of Boxwell Bros. Funeral Home.

# SALVAGE WASTE WATER!

## ... SAVE YOUR MONEY!



**CLARENCE R. BYRD**  
WHO FARMS  
SOUTH OF KRESS

Irrigated 20 acres of grain sorghum and 60 acres of cotton - - each three times from this tailwater installation

## Grain Yielded 5,200 Lbs. Per Acre And Cotton Made 102 Bales - All Without Fertilizer!

### MR. BYRD STATES

"In 1964, without using my tailwater, I made only 3500 lbs. of grain per acre and 57 bales of cotton on the same ground. The system paid for itself in one year and I plan to install another Peerless Tailwater Pump in 1966."

## "My Cost To Irrigate With My Peerless Tailwater Pump Was 10¢ Per Acre."

Only Peerless Builds A Pump Especially Designed To Reclaim Irrigation Tailwater

\*100 to 1200 GPM

\*Never needs priming

\*Cannot freeze

\*Available in electric or engine drive

\*ADJUSTABLE FLOW impellers are set for amount of water entering pit or lake

See Your Underground Pipe Distributor Or

# PEERLESS PUMP

AMARILLO HWY. - PLAINVIEW



## Mrs. McLain Reviews Book For W. S. C. S.

The general meeting of the WSCS was held at the First Methodist Church on Wednesday, Feb. 23 at 9:30 a.m. Hostesses for the meeting were Mmes. Garland Head, Bill Reeves and Wesley Daniel.

Mrs. Jim McLain reviewed the book "In My Fathers House" for the lesson.

Mrs. Doug Grimes presided at the business session at which time the group decided to clean the church kitchen March 12 and asked each member to keep this date open.

Attending were Mmes. G.I. Brown, Kenneth Williams, Ray Messer, John Sell, Richard Baxter, James Ed Umphress, Bill Strawn, T.D. Sansing, P. A. Lyon, George Collard, John Trindle, Winfred Lewis, Jim McLain, Roy Jones, Andy Rhodes, Doug Grimes, Bert Sheppard, Sid Beck, Tom Reed and Don Reed.

## Scout News

Girl Scout Cadette Troop No. 180 met Feb. 22 at the Girl Scout House at 4 p.m.

Refreshments were served by Ann Lackey and Toni Delozier to Cindy Dear, Bonnie Seymour, Diane Gregg, Cheryl Craig, Melinda Crooks, Deon Dortch, Karen Waggoner, and Rita Simmons.

Melinda Crooks sold the most cookies for the troop, selling 48 boxes.

## NEW SHIPMENT Of Knitting Supplies

A new shipment of Bucilla Paradise has arrived--great for dresses, sweaters, and skirts. In White, Blue, Lemon, Beige and Red.

New Spring colors of Fleisher's Souffle have also arrived--nice for a spring knit suit, dress or sweater. Many are co-ordinated colors. New books have also come in featuring Paradise and Souffle yarns.

Also have grosgrain ribbon in sweater lengths in 30 shades; sweater buttons; jumper and circular needles.

## Needlework Nook

1 1/2 Blocks South of Equity in Waka.



Rayette "Aqua Net" Large Size  
**Hair Spray 2 for \$1.**

Facial Tissue 400 Count All Colors  
**Scotties 5 for \$1.**

Shurfine 303 Can  
**Apple Sauce 6 for \$1.**

**SUPER SALE**

Texas Baby Beef 1b.  
**LIVER 39¢**

USDA Grade A 1b.  
**FRYERS 39¢**

Top O Texas All Meat Sliced 1b.  
**BOLOGNA 53¢**

Shurfine Hlvs-Unpeeled 303 Can  
**Apricots 5 for \$1.**

Shurfine RSP 303 Can  
**Cherries 6 for \$1.**

Elmdale Chum 16 oz.  
**SALMON 2 FOR \$1.**

Borden's Mellorine  
**CHARLOTTE FREEZE**  
 Half Gal. **3 for \$1.00**

Shurfine Purple  
**Plums 2 1/2 Can 4 for \$1.**

Shurfine Chunk  
**Tuna 6 1/2 oz. Can 4 for \$1.**

Ahfingers "Triple A" Gallon Plastic  
**DISTILLED WATER 39¢**

Sunshine Krispy  
**Crackers Lb. box 35¢**

Shurfine Plain 15 oz.  
**Chili 3 for \$1.**

Shurfine Reg.-Drip Lb.  
**COFFEE 69¢**

FREE BUCCANEER STAMPS  
 With Every Sale  
 DOUBLE STAMPS EVERY WEDNESDAY



Shurfine 4 Sv. Cut B.L. 303.  
**Green Beans 5 for \$1.**

Fancy Golden Ripe 1b.  
**BANANAS 13¢**

Fresh Green  
**ONIONS Bunch 5¢**

Virginia Red York  
**APPLES 4 LB. BAG 39¢**

11 glass pak  
**for \$1.00**

**FRUITS & VEGETABLES**

Hey Mom! It's Super Fun!

Shurfine's **SUPER BALL**

MOST FANTASTIC BOUNCING BALL EVER MADE!  
 Super fun for all the young—Super Ball! Get the incredible bouncing ball that's caught the nation's fancy. You've seen it on TV. Has 50,000 pounds of compressed energy. Bounces higher, faster, farther than any ball ever made... for children six to sixty.

GET YOURS TODAY... **49¢**  
 WITH FIVE DOLLAR FOOD PURCHASE

**SHOPPING LIST**

- Shurfine Peanut Butter 12 oz. ....3/\$1.00
- Shurfine Early Harvest Sweet Peas 303 Can. 5/\$1.00
- Shurfine Pickles Wh. Sour 22 oz. ....4/\$1.00
- Shurfine Pineapple Sliced No. 2 Can .....3/\$1.00
- Shurfine Strawberry Preserves 18 oz. ....2/\$.89
- Shurfine Salad Dressing Qt. ....\$ .39
- Shurfine Sauer Kraut 303 Can .....6/\$1.00
- Shurfine Shortening 3 Lb. Can .....\$ .69
- Shurfine Spaghetti Elbo 12 oz. ....2/\$.29
- Shurfine Spinach 303 Can .....7/\$1.00
- Soflin Toilet Tissue 2 Ply Asst'd-Col. ....10/\$.69
- Shurfine Tomatoes Solid Pak 303 Can .....5/\$1.00
- Shurfine Waffle Syrup Qt. ....2/\$.79
- Shurfresh Margarine 1 Lb. ....5/\$1.00
- Shurfine Milk Tall Can .....8/\$1.00
- Shurfine Apple Butter 28 oz. ....4/\$1.00
- Shurfine Asparagus Spears All Gr-Cut 300. ....4/\$1.00
- Shurfresh Biscuits Butter-Sweetmilk 8 oz. ....13/\$1.00
- Shurfine Cake Mixes Asst'd. Flavors 19 oz. ....4/\$1.00
- Shurfine Catsup 14 oz. ....5/\$1.00
- Shurfresh Cheese Spread 2 Lbs. ....\$ .79
- Energy Liquid Detergent 22 oz. ....4/\$1.00
- Shurfine Flour 10 Lb. Paper Bag .....\$ .79
- Shurfine Flour 25 Lb. Print Bag .....\$1.89
- Shurfine Frosting Mix Choco-Whit 13 1/2 oz. ....4/\$1.00
- Shurfine Fruit Cocktail 303 Can .....4/\$1.00
- Shurfine Grape Juice 24 oz. ....3/\$1.00
- Shurfine Grape Jelly 18 oz. ....3/\$1.00
- Shurfine Macaroni Elbo 12 oz. ....2/\$.29



Shurfine Pickles Wh. Kosh-Dill, Dill 22 oz.  
**Pickles 4 for \$1.**

Shurfine Unswtd 46 oz.  
**Orange Juice 3 for \$1.**

Roxy Tail Can  
**DOG FOOD 13 for \$1.**

Shurfine 300 Can  
**PORK & BEANS 11 for \$1.**



Midweek values for Monday,  
 Feb. 28 through Wednesday, March 2

**Cut Rate GROCERY**

**Historical Committee Invited to Meet**

Officers and members of the Hansford County Historical Survey Committee have been invited to attend a Regional Meeting Saturday, March 5 at 10 a.m. at the Student Union Building on the West Texas State University campus, Canyon.

Tom Jones of Gruver is chairman of the Hansford committee. Following the meeting, a 12:30 Luncheon will be held in the East Cafeteria on the campus, Woodburn stated.

Officials of the Texas State Historical Survey Committee who will participate in this meeting include: John Ben Shepperd of Odessa, President; Mrs. L.E. Dudley, Abilene, Regional Director of Region 18; Truett Latimer, Executive Director and Robert Risher, Field Director, both of Austin.

**Researcher Says Soybeans Will Be Planted More**

Dr. Earl Collister, Director of the High Plains Research Foundation, predicted today that soybean production in the High Plains of Texas will be increased substantially this year due to the recent ruling by the U.S.D.A. permitting the substitution of soybeans for feed grains. This change was made as a major factor in the food and peace program.

Farmers can plant soybeans on allowable grain sorghum acres this year and receive price support payments, just as if feed had been planted. In the 1966 feed grain program, producers who divert at least 20% of their base feed grain acreage will receive price support payments of 53¢ per hundred weight. The same price support payment will be received when soybeans are substituted for grain sorghum.

For instance, on 100 acres, a farmer can divert the minimum of 20 acres, plant 30 acres to soybeans and 35 acres to feed. He can divert 30 acres, plant 35 acres to soybeans and 35 acres to feed. He can divert 50 acres and plant 50 acres to soybeans or divert 20 acres and plant 80 acres to soybeans.

The major soybean varieties planted in the area are the LEE, HILL, and HINN. The new short-season PATTERSON soybean, just released by the High Plains Research Foundation, will be especially attractive to those who produce certified seed. The HINN, released last year is also in demand by some certified seed growers.

**SO THEY SAY**



THEY WERE BOWLED OVER

when they found such a varied stock of TV and Hi-Fi units at Burton's; especially since they were reasonably priced, backed up with reliable professional service.



106 E. Kenneth  
 Spearman, Texas