

HANSFORD COUNTY'S LEADING NEWSPAPER



The

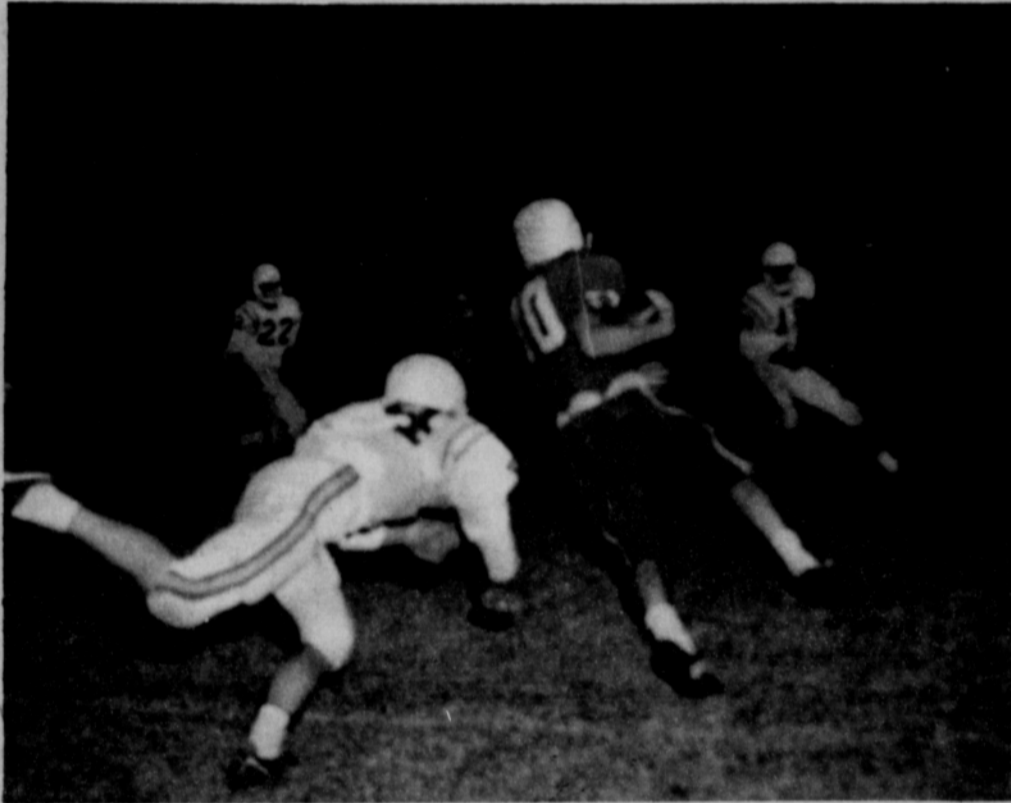
SUNDAY Hansford Plainsman



VOLUME VII, NO. 1

SPEARMAN, HANSFORD COUNTY, TEXAS 79081

SUNDAY, OCTOBER 24, 1965



PARDON MY HEELS -- Wingback Dave Clements shows a heel to a Boys Ranch tackler as he scoots 21 yards on a fake punt and picked up a first down. Spearman upset the Ranchers 35-0 in a slam-bang game at Boys Ranch Friday night.

Plainsman Photo

Chamber Drive Opens Friday With 26 New Members Added

An announcement that 26 firms and individuals had joined the Spearman Chamber of Commerce set the membership drive off at a fast pace Friday morning.

The board of directors of the Chamber, assisted by Mrs. Carl Galbreath, officially opened the drive Friday morning at a directors meeting.

October has been drive month, but the final week was designated as drive week.

Seven business firms and 19 individuals had been added to the membership rolls during the month.

Businesses joining this month include C&B Studio, Strawn Farm and Ranch Supply, Pioneer Cafe, Spearman Animal Hospital, Yancy Machine and

Welding Shop, Dimmitt Ditching Service and Simmons Chevrolet Service.

Individuals are: Ned Turner, Charles West, Marvin Kunkle, Faye Lynch, June Galbreath, Jack McWhirter, Helen Dry, R.E. Sanders, Jr., Georgia McLeod, Mrs. G.L. Morrow, Otis L. Burkhardt, Charlene Bulls, Leon Underwood, Arlie West, Frank Kirk, Bruce Sheets, Juanita Kemper, Max Taylor and Judith Creacy.

Chamber Manager Don Floyd told the board he had learned this week that a second concrete pipe firm was again looking at possible sites here.

The annual chamber membership banquet was tentatively scheduled for Jan. 15.

A three-member committee

of J.L. Brock, Ellzey Vandenburg and Kenneth Evans was appointed to nominate a slate of candidates for directors. The election will be in December.

Medicare Law Explained in Ad

Do you have questions about Medicare? If you do, then see the ad in this week's edition of the Plainsman.

There is a long explanation of the program as to when you are eligible and what must be done to receive benefits.

Be sure you read this ad so you will have a better idea of the benefits available under the program.

Battered Lynx Upset Riders With Strong Ground Game

A patched-up, but fired-up band of Spearman Lynx racked up a 35-0 win over Boys Ranch Friday night before a handful of fans.

Spearman started the game with center Skipper Robinson and wingback Larry Butts sidelined with painful hip and back bruises. Quarterback Dave Clement who became a wingback for the night was slowed with a back bruise which got worse as the night wore on.

The victory was an expensive one to the thinning ranks of the Lynx varsity. Tackle Randy Moore was injured in the fourth quarter.

Saturday morning Dr. Damon Gregg, team doctor, said Moore's right ankle was broken and he was out for the rest of the season.

Two Boys Ranchers were injured.

Spearman dominated the game with 418 yards rushing and 21 in the air. Boys Ranch had only 70 rushing and 40 in the air.

Fullback Clayton Cochran was the big ground gainer. He rolled up 193 yards in six carries, two of them being 81 and 83 yard touchdown gallops.

Spearman played a strong defensive game, keeping the Ranchers bottled up most of the night as the big Rancher linemen were unable to move the Lynx defenders.

Gary Cates got the Lynx off to a running start when he took the kick-off on the Lynx 20 and raced it back to the Boys Ranch 40.

Two plays later Ken Shufeldt raced around left end for 35 yards and bowled over three tacklers before being stopped on the six.

Shufeldt lost yards on two successive plays, but Boys Ranch was penalized on both plays and Spearman went to the two. Cochran hit into right tackle for one, then skirted left end for the touchdown.

Charles Shieldknight pitched to Clement and he passed to Rennie Berry for the extra points. Spearman got the ball four

plays later on their own 10 and punched it out to the 29. Clement got the last 10 in one jump, but Spearman was penalized back to the 15 for unsportsmanlike conduct.

Hal Shufeldt picked up four

and set up the big play. Coach Seymour set in the play and it was right. Ken Shufeldt hit over right guard. Center Glen Blodgett and Lynn Buzzard opened the door and Shufeldt ripped straight up the middle for 81 yards and the touchdown.

Clement missed his extra point try and Spearman led 14-0.

After Boys Ranch quick-kicked 69 yards Shufeldt repeated the middle dash on the first play. It was just a repeat of his first gallop, except this time it was for 83 yards. Brother Hal Shufeldt went in and ran the extra points to make the score 22-0.

As the first quarter ended, Spearman was threatening again, but the drive bogged down in penalties.

Both teams failed to generate any scoring punch. Spearman had trouble following the rules and had several good gainers rubbed out.

Boys Ranch generated one drive in the second quarter, driving from their own 11 to the Spearman 26 before Spearman could stop them.

Efrain Hernandez, Dan Thomas and Tommy Alvarez punched the ball down field for the Ranchers. A pass from Alvarez to Danny Stout covered 20 yards of the drive.

Monte Lusby broke up the drive when on third down he dropped Hernandez for a two yard loss to force the Ranchers into a fourth and seven situation.

Spearman opened the second half by marching to the Boys Ranch three. Hal Shufeldt and Cochran got the yards on the ground. Shufeldt went to the outside for long gainers and Cochran tore chunks out of the middle.

At the three trouble developed, Cochran lost three, then

(Con't on page 2.)

Panhandle Is Now in 1-AA

Several new teams will be in district competition in 1-AA and 1-A next fall, according to the re-alignment announced Sunday by the Texas Interscholastic League in Austin.

One new team has been added to the ranks of 1-AA and none were changed. Panhandle has been added to 1-AA. It was omitted in the release last Sunday.

No teams dropped from the district. Next year the district will be Spearman, Phillips, Dalhart, Panhandle, Stinnett, Sanford-Fritch, Shamrock and Boys Ranch.

District 1-A will have several changes. Two teams have been added, Canadian and White Deer have been added to the district and Claude has been moved to another district.

The district next year will have Gruver, Canadian, White Deer, Stratford and Sunray.

Morse will remain in the far-flung eight-man district of Morse, Patton Springs, Guthrie, Roaring Springs and Estelline. It is 234 miles from Morse to Guthrie and over 200 to Roaring Springs.

The changes will not effect Winter or Spring athletic and literary events, but will become effective with the beginning of football season.

Weese Welcomes 35 Lynxettes For Opening Basketball Drills; 7 of Varsity Back

Coach Dean Weese began basketball workouts for his Spearman Lynxette basketball team Monday and 35 girls reported for practice.

Eighteen girls are battling for the positions on the varsity and 17 girls are working with Miss Kay Buzzard on the freshman team.

Five girls from last year's bi-district championship team are gone, four by graduation and one decided not to play this year. Forwards who graduated were Phyllis Patterson, Vickie Wilde and Johnie Jo Vernon. Guards Linda Leslie and Sharon Archer are the other two. Leslie graduated and Archer gave up the game.

Two seniors and a junior are expected to take up the scoring attack. Karen Gibson and Susan Hutchison will team with

junior Barbara Wilde as the first line forwards.

Behind them will be freshman Marcia Shieldknight, senior Cecilia Wilson and junior Nancy McCullough. McCullough did not play last year, but Weese said she was coming along fast and going to be a big help this year.

Hutchison who started as a forward, then became an outstanding guard last season is back at forward.

The shooting of his forwards is still not as good as Weese would like, but they are improving fast.

"Our rebounding and ball handling is good and improving," the coach commented.

Catherine Lyon, Lynn Ann Robinson and Cathy Mackie are three sophomore forwards Weese is working into the at-

tack. The defensive corps of guards will be built around returning letter winners Kathy Pattison, Robbie Ownbey, Bethany Donnell and Linda Smith.

Three sophomores and two juniors, Jeanette McAdams, Kathie Haworth, Cindy Cochran, Kay Schroder and Judy Jones, are also scrambling for defender's jobs.

In looking at the district, Coach Weese sees three tough opponents: Sanford-Fritch, Stinnett and Shamrock. All have most of last year's teams returning.

Fritch has a 6'1" post girl, and some big tough guards. Stinnett battled the Lynxettes hard last year and Shamrock has height and experience returning.

Miss Buzzard has two soph-

omores and 15 freshmen reporting for practice.

They include sophomores Darlene Waggner and Bonnie Pracher and freshmen Sue Sloan, Lisa Curry, Della Read, Marilyn Jones, Pennye Sanders, Myrna Crum, Judy Craig, Marilyn Blodgett, Bonnie Vernon, Debra Largent, Betty Mathis, Tommie Buchanan, Carol Gray, Virginia Day and Cecilia Graham.

Spearman opens the season Tuesday, Nov. 16 at White Deer. The team will not be going to the Wayland College Clinic at Plainview this year. Abernathy was the only AA school invited. All the other schools invited were A and B schools near Plainview.

The team will play in the Shamrock, Gruver and Duncanville tournaments this season.



QUEEN CROWNED -- Morse Mustang Gerald Scribner crowns Miss Patricia Henderson 1965 Football Queen in homecoming activities at Morse Friday night. Morse beat Roaring Springs 28-18. C & B Photo

Luncheon Honors John McAlisters

Friends and co-workers of the John McAlister family held a get-together farewell and covered dish luncheon at the H. D. Club room at the noon hour on Thursday Oct. 21.

The McAlisters will be leaving soon for Wheeler, Texas to make their home.

Enjoying the luncheon and wishing the McAlisters good luck in their new home were Messrs. and Mmes. Robert Adamson and sons, Lawton Guthrie and son, Ben Upchurch, Bob Crawford and children, Miss Linda Webb, Miss Dallasene Reynolds, Darrell Renfro, Mrs. Gladys Richardson and Mrs. Edan Hays of Gruver, mother of Mrs. Guthrie.

Mrs. Ruby Sims of Opelika, Alabama is visiting in the home of her son and family, Mr. and Mrs. Willie Mathis of Spearman.

Coach and Mrs. Dean Weese and children are spending the weekend in Canyon visiting his sister.

Mrs. Jones Is Circle Chairman

Mrs. Luther Berry was hostess for the Alma Reed Circle Wednesday morning in her home.

Mrs. Don Jones presided at the business session and also read the prayer calendar. Mrs. Eddie Gates led in prayer.

New officers for 1965-66 were elected: circle chairman-Mrs. Don Jones, prayer chairman-Mrs. Herman Boone, study and Bible leader-Mrs. Fred Holt, stewardship chairman-Mrs. Major Lackey, community missions chairman-Mrs. A.F. Loftin; soul winning chairman-Mrs. Luther Berry, program chairman-Mrs. Don Denham.

The program of Bible study was given by Mrs. Fred Holt. Present were Mmes. R.H. Gray, Lackey, Loftin, Holt, Gates, Denham, Jones and Berry.

Halloween is almost here! Choose those decorations and entertaining supplies now. We have a wide selection of Hallmark party goods. Plainsman Office Supply.

Mrs. Bradford Gives Program

The Aletha Circle of the WMU met at the church Monday evening for their regular monthly meeting with Mrs. R. E. Bradford as hostess.

Mrs. Granville Boyd presided at the business and the prayer calendar was read by Mrs. F. J. Hoskins.

The program "Proclaiming Through Women's Missionary Society" was given by Mrs. Bradford.

Refreshments were served to members, Mmes. Hoskins, W. E. Hacker, Glen Day, Walter Woolley, Granville Boyd, Miss Vera Campbell and a visitor, Mrs. Ray Devers by the hostess.

Alcohol does not cause dehydration. It causes water in the body's cells to move outside the cells into the area around them. This loss of water in the cells causes thirst.

Having company?-- A party? The Plainsman would like to know about it and so would its readers.

Plant Early Spring Beauty Now!



Bulbs, shrubs, trees, perennials, Roses, plant them this fall for spring beauty. Consult with your nurseryman for sound plant information—what, where, when and how to plant in the fall.

THIRD

ANNIVERSARY

SALE

Queen Size Foam Rubber Mattress & Spring by U.S. Rubber

Reg. \$229.50

Sale Price **\$159.95**

MODERN HIDE-A-BED

By Simmons Reg. \$259.50

SPECIAL **\$198.50**

2 Pc. Solid Rock Maple Bedroom Suite by Tell City

Reg. \$339.50

\$249.50

3 Pc. Walnut Bedroom Suite by Bassett
Triple Dresser, Double Bed & One Night Stand

Reg. \$269.50

Special

\$189.95

All Nettle Creek Quilted Bedspreads

On Special

Double size
Reg. \$59.95 Now **\$39.95**

King Size
Reg. \$69.95 Now **\$49.95**

All Famous Brand La-Z-Boy Reclina-Rockers Reduced 20%

BUY NOW FOR CHRISTMAS
We will hold for Christmas delivery.

Terms-

Nothing Down

36 Months To Pay

7 Pc. Dinettes

Reg. \$139.50 SPECIAL **\$89.95**

Reg. \$119.50 SPECIAL **\$79.95**

Early American SWIVEL ROCKERS by Broyhill Reg. \$89.95

SPECIAL

\$69.95

Boody FURNITURE CO.

PLAINS SHOPPING CENTER
659-3044
Spearman, Texas

Battered . . .

(Con't from page 1.)

Spearman was penalized 15 yards for tripping at the 10. This put Spearman back to the 25 on second down.

Shieldknight pulled away from a tackler while trying to pass and gained 10. Hal Shufeldt picked up another 10 to get to the five. On fourth down Cochran got to the two, but the drive died there.

After three plays Boys Ranch punted to their own 40 and it took Hal Shufeldt and Cochran only five plays to score. Shufeldt swept left for 20 yards, then Cochran punched out 15 in two tries. Shufeldt hit for four and Cochran scored from the one. Clement missed the point try and the score was 28-0.

Cates killed Boys Ranch next effort with an interception on the Spearman 10.

Spearman got in trouble after the interception.

They were penalized to the 6, then Hal Shufeldt lost to the one. He was thrown into the end zone, but his forward progress was at the one.

Moore punted out to the Lynx 45, but Alvarez ran it back to the Spearman 16. The defense went to work and Thomas was stopped at the line of scrimmage, then Mike Babbs dropped Alvarez for a seven yard loss. Alvarez then made a bad pitch-out and when players got through kicking the ball and trying to fall on it, Lynn Buzzard had it for Spearman on the Lynx 36.

Clement and Shieldknight each tried a pass, then Shieldknight picked up seven when he could not find a receiver.

On a fake punt Clement scooted 2- yards for a first at the Ranchers 35.

Shieldknight hit Berry for nine, then Cochran got 18 on three smashes. At the seven Shieldknight went back to the air and hit Berry at the goal for a touchdown.

Clement split the upright, but Spearman was penalized five yards. Clement did it again from the eight and Spearman led 35-0.

Spearman got two more chances at the ball. Ronnie Gilbert recovered a Rancher fumble on the 44, but Spearman gave up the ball on a pass interception at the 17. Two plays later Steve Jordan intercepted for Spearman at the Lynx 35.

The clock ran out two plays later.



MUSTANGS OF 1939 -- These men were members and coach of the 1939 Morse team. They are: (left) Earl Henderson, Thane McCloy, Truman Tompkins, H.B. Parks, Daryl Lanners, Jack Gillispie and R. H. Mosier, coach. They were honored at the homecoming Friday night.
C & B Studio Photo

Mustangs Rip Roaring Springs In Homecoming Game Friday

Morse Mustangs won their homecoming game with Roaring Springs by a score of 28-18 before an estimated crowd of 250 cheering fans. In this district game the Mustangs held the Yellow jackets scoreless the first half while tallying 12 points for themselves. The second half saw the Mustangs score two more touchdowns and Roaring Springs, three. Morse converted for extra points on both of these last two touchdowns.

In the first quarter Mike Johnson scored on an 11 yard run over the right guard. Alva Henderson passed to Eddie Papay in the second quarter for 56 yards and the second touchdown for the Mustangs.

Mike Johnson scored both touchdowns in the second half on an 11 yard and one yard plunge through the Yellow jacket line. Johnson and Gerald Scribner converted two extra points each.

Scoring for the Yellow jackets, John Thacker completed one pass in the third quarter and two in the fourth to give the Yellow jackets 18 points.

First downs gained were Morse, 14; and Roaring Springs, nine. Morse had five penetrations and Roaring Springs, four. Total yardage gained was the Mustangs, 366, and the Yellow jackets, 254.

Homecoming activities got underway Thursday night with a huge bonfire on the school track

field. Friday's activities began with a pep rally at 3 p.m. and then the crowning of the football queen was held at 7 p.m. Members of the Pep Club and football squad formed a heart on the field. The candidates, Patricia Henderson, Suzanne Dixon, Peggy Giblin and the reigning queen, Elaine Schick, rode onto the field in a Ford Mustang convertible furnished by Jack Conner of Spearman. They were escorted onto the field by Mike Johnson, Gerald Scribner, David Johnson and Mickey Cook. Patricia Henderson was crowned queen.

At halftime the 1939 championship Mustang football team

and coach were recognized. Team member coming the greatest distance was Truman Tompkins from Lakeport, Calif. He was the quarterback of the team. Others present were Jack Gillispie, Thane McCloy, H.B. Parks, Daryl Lanners, Earl Henderson and coach R.H. Mosier. The ex-students held a reception and business meeting in the cafeteria at the conclusion of the football game. New officers elected were Mrs. Earl Henderson, president; Mrs. David Reid, vice-president; Mrs. Jack Johnson, Jr., secretary.

a dance at the community building, sponsored by Teen Town, wound up the days activities.

Waka Presents Prizes For Fire Posters

The Waka Parent-Teacher Association met Monday, Oct. 18 in the school cafeteria. Bob Mosier, president, called the meeting to order and Rev. Lawrence Lehman gave the invocation.

The minutes were read and approved and the treasurer's report given.

Mrs. J.R. Stump gave the awards for the winners of the fire prevention posters... Grades 3 and 4, Eddie Boese; grades 1 and 2, Steven Boese; grades 5 to 8, Twila Wiebe. Winners of this month's program cover contest were announced; Vonda Shipman, 2nd grade, was first but being absent Greg Wilson, 2nd place winner received the prize. Larry Turner was third.

The finance committee reported that everything had arrived for the carnival planned for Saturday, Oct. 30. Room mothers for the October parties were announced, and the social committee for the November P.T.A. meeting was named.

Delegates to the state convention have been invited to go with the Berger unit in their chartered bus. A procedure course will be given in the near future and as many as can are urged to take it.

Rev. Lawrence Lehman, program leader, introduced Douglas Smith, Mrs. Nowlin and Miss Kees as a panel to discuss the topic "Together We Help A Child by Cooperating with Youth Serving Groups."

Pon Ludas Club Meets

Pon Ludas Bridge Club met in the Farm Bureau Building Oct. 19. Mrs. Gilbert and Mrs. Warren were hostesses. Mr. and Mrs. Cecil Reynolds won high prize. Mr. and Mrs. R. T. Ferris won low prize.

Mike Morris, a student at Texas Tech visited over the weekend in Spearman with friends.

Mr. and Mrs. Johnny Crawford of Lubbock spent the weekend in Spearman with their families.

Hansford Plainsman Publishers Inc.

Jim O. Davis
Burl G. McClellan



County-wide independent newspaper published every Thursday and Sunday at 209 Main St., Box 668, Spearman, Texas 79081. Second Class postage paid in Spearman, Texas 79081. Editor . . . Burl McClellan

Coffee Honors Mrs. Owens

Mrs. Claude Owens was honored Tuesday morning, Oct. 19 with a surprise coffee on her birthday in her home.

The group visited and enjoyed the opening of gifts by Mrs. Owens.

Hostesses for the courtesy were Mmes. Larry Hays and George Rook who served coffee and birthday cake to Mmes. Carl Owens, Bus Smith of Beaver, Okla., Don DeArmond, Bud Beeson, Slim Cates, Bill Partridge, and J.C. Cates.

Waka Plans Carnival

A Halloween Carnival will be held at the Waka School on Oct. 30. Many booths are planned for different games, a cake walk will be held, bingo and other entertainment will be provided for the evening of fun. Make plans now to attend.

KNAPP SHOES

KENNETH BAILEY
212 N. James
Phone 659-2458
Spearman, Texas

For Cushioned Comfort

STATISTICS

Spearman	Boys Ranch
14 First Downs	7
4-8 Yards Rushing	70
21 Yards Passing	41
8-94 Penalties	5-42
15-3 Passes	6-2
2 Passes Int.	1
1 Opp. Fumbles Rec.	0
3-38 Punts	5-43

BOWLING BEAT

STRIKE OUT LEAGUE

TEAM	WON	LOST
Corner Service	20	4
Super Service	14	10
Behne Electric	13	11
B&B Sales	11 1/2	12 1/2
Ideal	10 1/2	13 1/2
Berry's Cleaners	3	21
HIGH TEAM GAME		
Corner Service	912	
B&B Sales	857	
Super Service	851	
HIGH TEAM SERIES		
Corner Service	2576	
Super Service	2419	
B&B Sales	2367	
HIGH INDIVIDUAL GAME		
Richard Burke	234	
Butch Butler	225	
Chad Boxford	224	
HIGH INDIVIDUAL SERIES		
Chad Boxford	590	
Richard Burke	582	
Jerry Frye	565	

Annual Carnival Planned by Morse P-TA

The annual Halloween carnival will be held at the Morse School this Saturday night.

Morse PTA will serve supper in the school cafeteria beginning at 5:30 p.m. Classes will have booths located in the school gym and each class will have a king and queen candidate.

Crowning of the Harvest king and queen and the king and queen of the carnival will climax the night's activities.

Nelda Vanderburg, a Texas Tech student is spending the weekend with her parents, Mr. and Mrs. Everett Vanderburg.

Donna Boyd, a West Texas student is visiting her parents, Mr. and Mrs. Granville Boyd.

T.G.&Y.

5¢ TO 10¢ STORES

Coupon Specials Good Mon., Tues. & Wed., Oct. 25-26-27

Hershey -Giant Size Reg. 49¢

Candy Bars

Plain-Almond-Krackel-Butter Chip

Limit 2 **28¢** With Coupon

Hair Styling Gel

Suave Set

By Helene Curtis 12 oz.

Reg. \$1.25

Limit 1 **88¢** With Coupon

NEW OLIVE TEMPO by LIBBEY (reg. 29¢) **15 Oz. Glass Tumbler 5/99¢**

Daffodil Bulbs (15 per pkg.)

Or Tulip Bulbs (18 per pkg.)

Reg. 99¢

83¢

Limit 1 With Coupon

This Coupon Worth \$1.

toward the purchase of any price LADIES BLOUSE & CAPRI PANTS SET

LED RAMADA INN WEEK END

CONTEST RULES

Winner to receive a free week-end at participating Ramada Inns.

Week-end includes two nights lodging and food for an individual Family of up to five members. Meals include two Breakfasts, Saturday Lunch, Saturday Evening Dinner, and Sunday Dinner For each member of the party.

Winning family will provide own transportation to and from.

You may enter in as many stores as you wish each week. No purchase necessary.

Winner must be married or of legal age, and reside in trade area.

One preliminary winner will be drawn each week at each participating store. These winners from each store will then be placed in the final prize drawing that week. New contest each week.

NEW TRIP EACH WEEK

W Winner in our Store ^{ever}

Mrs. Andy Boehm

Cates Men & Boys Wear

Shop Now For Those School
Clothes, Cool Weather Is Just

Around the Corner.

Everything For Men & Boys

our Store
Alford
Hardware
On
RF BUILDER
AGS
ER 5,000 SQ. FT.)
E PRICE \$11.80

HERE

Winner in our Store

L.R. Collins

Simmons Chevron Service Station

Quick, Courteous Service

& Top Quality Products

Winner in our Store

Albert Clark

BUICK - PONTIAC

INTERNATIONAL TRUCKS,
TRACTORS & IMPLEMENTS.

Let Us Put You In A New Car.

North Plains Truck & Implt. Co.

Winner in our Store

Ray Phelps

B & B Sales Co.

Combine Parts-Belts-Feeder Chains-

Sickle Sections-Guards-Bearings-

Cylinder Bars-Roller Chains-Cabs

FOR ALL MAKES AT
DISCOUNT PRICES

Winner in our Store Mrs. Joyce Johnson

Brilliant True-to-Life RCA VICTOR Color Television

NOW IN YOUR CHOICE OF TWO PICTURE SIZES

Bob's Sales & Service

Come In And Compare

Winner in our Store Mrs. Max Clawson

Case Farm Machinery Gleaner Combines

"Your Complete Farm Store"

R. L. McClellan & Sons, Inc.

Our Winner
Mrs. George Buschman

First State Bank

-Your Full Service Bank-

*Loans

* Savings Accounts

*Checking Accounts

*Safety Deposit Boxes

*Drive-In Banking

*Night Depository

Member F. D. I. C.

Winner in our Store

J.L. Johnson

You'll Enjoy Delicious Food Everytime

You Visit

Grunewald's Restaurant

Plains Shopping Center

Winner in our Store E.D. Mundy

Coleman FURNACE

The only furnace
backed by a \$500
Warranty Bond



White House Lumber Co.

WIN A FREE FUN-FILM



THIS WEEK'S WINNER: NAN NICHOLSON

WAS THE EIGHTH WINNER OF A RAMADA WEEKEND,
HAVING REGISTERED AT ANTHONY ELECTRIC. RE-
MEMBER TO REGISTER. YOU MAY BE A WINNER !!!

Winner in our Store
Rosa Lee Butt

Chambers Dept. Store

Play Pet Children's Sportswear &
Car Coats
Toddlers to Age 14

Youngland dresses for Toddlers to
Age 14

Winner in Our Store
Ed Rafferty, Jr.

Excel Chevrolet Co.

CHEVROLET - OLDSMOBILE

Let's Talk Trade

You'll Be Surprised At How Easy
It Is To Buy A New
Chevy or Olds.

Winner in our Store
Nan Nicholson

Anthony Electric

Industrial, Commercial
and House Wiring

GENERAL ELECTRIC
Appliances Of All Kinds

Winner in
Allen

Spearman

SCOTT'S T...
REG. \$14.85 SA...

REGISTER

Winner in our store
Ray Woods

You'll Enjoy The Friendly Atmosphere

and Low Everyday Prices At

Cates Grocery

Winner in our Store Harold Groves



318 DAVIS - SPEARMAN, TEX.

PHILCO COLOR T. V.

Immediate Delivery

Winner in our Store
W.H. Forrest

Spearman Drug

HEY
KIDS..

WIN

BIG PRIZES !
Enter Our Boys' & Girls' Contest
ANY DAY !
See all the prizes and Enter To-
day in our store.

Winner in our Store Willie Wilkerson
Three Great Gasolines



**ALTON'S
GULF
SERVICE**

Phone 659-2422
Retail





**ELLSWORTH
OIL
COMPANY**

Phone 659-3033
Wholesale



Winner in our Store
Orville Fullbright

Spearman
FLORAL
GIFTS



twice as much for the money:
SERVICE AND QUALITY!

Bill & Lil Turner

PLAINS SHOPPING CENTER CALL 659-2593

Winner in our Store
Mrs. Roy Gene Boyd

Edwards Fabric Shop

WE HAVE A NEW SHIPMENT
OF FINE WOOLENS

A Wide Selection of Pretty Buttons

SIMPLICITY & McCALLS
PATTERNS

(Continued from previous page)

insurance card by mail. If you enroll in the medical insurance program, your card will show that you have medical insurance coverage in addition to the hospital insurance protection.

After June 1966, whenever you use any of the services which are covered, show your health insurance card to the hospital, extended care facility, home health agency, doctor, or other person providing the services. The part of the bills for which payment can be made will then be taken care of by the program.

Some Services Are Not Covered By Health Insurance

The hospital insurance plan gives you basic protection against the high cost of illness in old age, but it will not pay all of your health care bills. For example, physicians' and surgeons' services, including the services of pathologists, radiologists, and anesthesiologists in the hospital, are not covered by the hospital insurance plan. (If you enroll under the voluntary medical insurance plan, that plan will help toward paying your doctor bills.)

Some items and services are not covered under either plan: e.g., routine physical checkups, eyeglasses, hearing aids, private duty nurses, custodial care, and personal services such as a telephone or television in your hospital room.

Under the hospital insurance program, drugs are covered only when they are furnished to a patient in a hospital or extended care facility. Under the medical insurance program, drugs are covered only when they are administered by a physician as part of his services and cannot be self-administered.

Payments will ordinarily be made under the program only in the 50 States, the Commonwealth of Puerto Rico, the Virgin Islands, Guam, and American Samoa. Hospital services under the basic hospital insurance plan may be provided in border areas immediately outside the United States if comparable services are not accessible in the United States for a beneficiary who becomes ill or is injured in this country.

HOW THE HOSPITAL AND MEDICAL INSURANCE PLANS WILL BE FINANCED

The financing provisions for hospital insurance and medical insurance are separated completely from the financing provisions of the regular social security program.

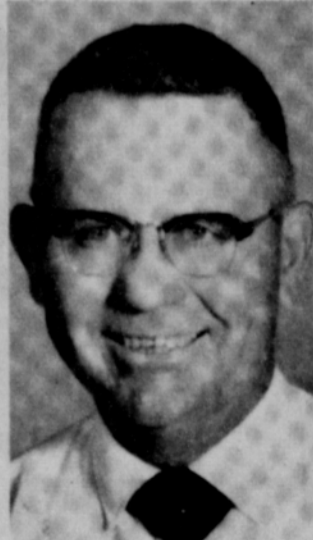
The hospital insurance program will be financed by special contributions from employees and self-employed people. Employers will pay a like amount. For each, the hospital insurance contribution rate will be 0.35 percent in 1966 on the first \$6,600 of earnings. Thus, a worker who earns \$4,000 yearly will pay \$14 in 1966. In 1967, the rate will be 0.5 percent. Thus the worker with \$4,000 earnings will pay \$20 in 1967. The contribution rate is scheduled to increase periodically until 1987, so that in 1987 a worker will pay \$32 yearly on \$4,000 earnings. On the maximum earnings of \$6,600 yearly, a worker will pay \$23.10 in 1966, \$33.00 in 1967, and \$52.80 in 1987 and thereafter.

The hospital insurance contributions will be in addition to, and collected at the same time and in the same manner as the regular social security contributions. Income from the hospital insurance contributions will be put into the Hospital Insurance Trust Fund from which the program's benefits and administrative costs will be paid. (A special provision was included in the law to reimburse the Hospital Insurance Trust Fund from general tax revenues for the costs of providing hospital insurance coverage for the 2 million people who are not entitled to monthly social security or railroad retirement benefits.)

The medical insurance program will be financed through monthly premiums paid by people over 65 who enroll in the

Hobby of Square Dance Calling Is Now Part-Time Occupation

Eighteen years ago J.D. Wilbanks thought square dancing might be fun, so he and his wife learned. Today it is a hobby that has turned into a



J. D. Wilbanks

part-time occupation.

Wilbanks, a flying farmer, is now a professional square-dance caller, calling for dances an average of two nights a week.

This weekend he is in Santa Fe, N.M., calling at the Santa Fe Jamboree and next weekend he will be a caller at the Bernie Coffie Square Dance College in the Baker Hotel in Mineral Wells.

Wilbanks was a charter member of the Do-Si-Do club in Spearman and later became a caller and teacher for the Calico Capers Square Dance Club in Pampa. He also calls each week for the Gay Guys and Gals Club in Borger.

He has called for dances in Pampa, Dalhart, Guymon, Liberal and Canadian many times and has traveled to points farther away occasionally.

The Jamboree this weekend and the Square Dance College next week are the two largest events he has called for.

He is immediate Past-President of the Panhandle Square Dance Teachers and Callers

Association.

"It started out as a hobby and I still consider it as such, but it is keeping me on the go, now," Wilbanks commented.



Rudie Tate

Bill Turner Presents Program 'Fun with Flowers' for Xi Zeta

The Xi Zeta Upsilon Sorority met Thurs. afternoon in the home of Barbara McClellan.

Mona Beth Windom was in charge of the business session and Helen Watson was program leader.

For the lesson "Fun with Flowers" the group went to the Spearman Floral and Gift Shop where Bill Turner gave the lesson.

They then came back to the McClellan home where refreshments were enjoyed by Elvonna Davis, Elaine Floyd, Joyce Lackey, Helen Watson, Mona Beth Windom, honorary member Mary Lee and the hostess.

The next meeting on Nov. 3 will be in the home of Mrs. R. E. Lee.

Jaycees Having Chess Tourney

Spearman's Junior Chamber of Commerce is sponsoring a chess tournament at the First State Bank Hospitality Room at 7:30 p.m., Monday, Nov. 8. Jaycee Lloyd Gilley announced this week.

The deadline for entering the tournament is midnight, Nov. 4. Entry fee is \$1.50.

There will be plaques awarded to the winners.

The tournament is open to all county residents. To enter contact Lloyd Gilley. Phone 3279 or 2930 in Spearman.

program and by matching payments from the Federal Government from general revenues. Income from the medical insurance premiums and the matching Federal payments will be put into the Supplementary Medical Insurance Trust Fund, and the benefits and administrative expenses of medical insurance will be paid from this fund.

At least until 1968, the monthly premium (and the matching Federal payment) will be \$3 for each person who chooses coverage under the medical insurance program. The law requires that the premium rates be examined every 2 years starting in 1967. The rates for the succeeding 2 years may be adjusted if a higher premium is required to pay the program's expenses.

You may, of course, drop out of the program. However, you may re-enroll only once and then only during one of certain specified enrollment periods.

If You Already Have Health Insurance Coverage

Do not, because of this new law, cancel any hospital or medical insurance you may now have. The health insurance provisions of the new law give no protection whatsoever until July 1966.

Sponsored By

Hansford County Democrats

Tate Is New Grain Sorghum Representative

In a major expansion of its membership service program, the Grain Sorghum Producers Association today announced the addition of two Field Service Representatives.

In recognition of the increased problems being brought about by the rapid changing of production and marketing patterns in both the North Plains and South Plains, the new representatives are being established in each area rather than in the headquarters office according to Elbert Harp of Abernathy, President of the organization.

Rudie Tate is being named as the North Plains Representative and will be headquartered in Dumas and Y. F. Snodgrass is being named the South Plains Representative to be headquartered at Abernathy according to Bill Nelson, Executive Vice President of the farmer supported commodity group. Nelson said that each of these individuals are highly qualified with experience and education for their respective assignments.

Tate until recently was County Agricultural Agent with the Texas A&M Extension Service in Dallam County in Dalhart and previous to that was Assistant Agricultural Agent for Moore County in Dumas after graduating in Animal Husbandry from Texas Tech.

Nelson pointed out that the Association is pleased to be able to announce this expanded membership program in order to be of assistance to local groups such as County GSPAs, Young Farmers Associations, Chambers of Commerce, Agricultural Committees, and others conducting activities effecting the future of grain sorghum in the respective areas.

He said that the need for such service is exemplified on the North Plains as shown in Sherman County where the acres of grain sorghum expanded from 51,000 in 1960 to 70,000 acres in 1965.

Research, market development and service programs supported by farmers through a voluntary 2 lbs. per thousand deduction from their grain deliveries at country elevators is credited with helping push the value of grain sorghum from 204 million dollars when such work was started in 1956 to a current 739 million dollar level.

Choose those Christmas Cards now from our Masterpiece and Hallmark albums. This year's designs are simply beautiful! Plainsman Office Supply, 209 Main.

4-H'ers Study Sweater Care

The 4-H pals met in the home of their leader, Mrs. Dwight E. Hutchison on Oct. 12 for their regular meeting.

The meeting was called to order and Cathy Mackie gave the pledge of allegiance and 4-H pledge. The 4-H prayer was given by Catherine Lyon. Individual project work was discussed and programs for future meetings. Rebecca Hutchison gave a demonstration on "Washing a sweater and the types of soaps to use."

Jr. MYF Selling Christmas Candy

The Methodist Jr. MYF is selling candy (butter bits and Christmas candy in pretty canisters) to benefit the Crusade to be held in November.

The candy is on display in several stores and may be bought there or you may contact the Crusade office.

The candy sells for \$1.

LOCAL REPRESENTATIVE WANTED
MAN or WOMAN - FULL or PART TIME
No Investment Required

Protected Territory - Complete Company Financing - Exceptional Earnings - Incentive Plan - Full Training Provided - National Advertising Program

Representative will handle our complete line; The Book of Knowledge - "America's Favorite Since 1911", The New Min-Max Teaching Machine - "Program Learning at its Best" and other educational products.

All replies kept confidential; write: C. V. Foster 4125 E. Hill Denver, Colorado 80222

Charlene Bulls

INTERIOR DECORATOR

Draperies Furniture Carpet 659-3202

1105 Townsend

Spearman, Texas

Ross' Catering Service

featuring **TEXICAN FOOD**

Large & Small Parties & Banquets
Locally Owned, Operated & Licensed
659-3227 - 729 Wilbanks Dr.

SO THEY SAY



The only way he got rid of it was by getting her a Stereo set from Burtons. Now she knows their reliable service assures her of constant enjoyment.



318 DAVIS - SPEARMAN, TEX.

A BRIEF EXPLANATION OF "MEDICARE"

HEALTH INSURANCE

FOR THE AGED

HEALTH INSURANCE FOR THE AGED

The 1965 social security amendments established a broad program of health insurance, known popularly as "medicare," for people 65 or older. This program is important for persons now working, for they will have this protection in later years. But if you are already 65, or will reach that age soon, you especially will want to have the information this leaflet provides on how these health insurance programs will protect you when they start in July 1966.

TWO KINDS OF HEALTH INSURANCE

- **Hospital Insurance**—to help pay the bills when you are hospitalized. The program also provides payments for skilled nursing care and other services in an extended care facility after hospitalization, outpatient hospital diagnostic services, and home health services.

This insurance is financed out of special contributions paid by people while they work, with matching contributions from employers, so that people will not have to pay for this protection when they are old and not working.

- **Medical Insurance**—to help you pay the bills for doctors' services and for a number of other medical items and services not covered under the hospital insurance program.

The medical insurance program is voluntary. You decide whether to enroll for protection under the medical insurance program. You can have this important added protection at a low cost (\$3 monthly) because the Federal Government will pay an equal amount toward the cost.

HOW PEOPLE 65 AND OVER QUALIFY

Most people will not have to go to the social security office to qualify for protection under the hospital and medical insurance programs.

You will not need to go to your social security office if—

- you are getting social security or railroad retirement benefits. You qualify automatically for hospital insurance, and an application card for medical insurance benefits will be mailed to you in September or October with a leaflet explaining both of these programs.
- you are receiving a Federal civil service retirement annuity. You will get information and the necessary applications by mail. You will be told if it is necessary to go to the social security office later.
- you are receiving public assistance payments. In most cases, the public assistance agency will assist you in applying for hospital insurance and will advise you about enrolling for medical insurance.

You should go to your social security office if you are not receiving any of the above payments and if—

- you have worked under social security but have never applied for benefits. The people in your social security office will help you apply for hospital insurance. They will also advise you on how you can enroll in the medical insurance program.
- you have never worked under social security. Get in touch with your social security office between September 1, 1965, and March 31, 1966.

HOSPITAL INSURANCE

Nearly every¹ American 65 or over will be protected under the hospital insurance program when it starts in July 1966. If you qualify, these are the benefits for which you will be eligible:

Hospitalization for up to 90 days in a "spell of illness"²—the program pays for covered services during 60 days of care in a participating hospital, except for the first \$40, during a spell of illness. If you are hospitalized for more than 60 days during your spell of illness, the program will pay all but \$10 daily for covered services during an additional 30 days of care.

There is a lifetime limitation of 190 days on payments for treatment in mental hospitals.

Outpatient Hospital Diagnostic Services—the program will pay 80 percent of the cost for diagnostic services you receive as an outpatient of a participating hospital during a 20-day period, except for the first \$20 for each 20-day period.

¹ Some Federal employees and former Federal employees who are not eligible for social security benefits are not eligible for hospital insurance. They may, however, enroll in the medical insurance program.

Aliens who are not eligible for social security cash benefits will be eligible for the hospital and medical insurance programs only if they were admitted to the United States for permanent residence and have actually resided in the United States for 5 years.

² A "spell of illness" begins on the first day you receive covered services as a patient in a hospital or extended care facility. It ends after you have been out of a hospital or extended care facility for 60 consecutive days. You may be discharged and readmitted several times during a spell of illness, but a new spell of illness cannot begin until you have been out of a hospital or extended care facility for 60 consecutive days.

Posthospital Extended Care in the kind of skilled nursing home or part of a hospital which qualifies as an extended care facility—after a hospital stay of at least 3 days, the program pays for 20 days of extended care during a spell of illness. If you need this care for more than 20 days during a spell of illness, the program will pay all but \$5 daily for an additional 80 days.

Posthospital Home Health Care Services

—the program will pay the costs for up to 100 visits during the 365 days following your discharge after a stay of 3 days or more in a hospital or extended care facility, if these services are furnished under an approved plan. Services of visiting nurses, physical therapists, and other health workers (but not doctors) who come to your home to furnish health care services are covered. Doctors' visits are covered only under the voluntary medical insurance plan.

Effective Dates—the benefits described above will become payable beginning July 1, 1966, except for posthospital extended care benefits which start on January 1, 1967. After the \$40 deductible, benefit payments will cover the cost of your room and board in semiprivate accommodations, ordinary nursing services, and the costs of drugs, supplies, and most other items of service you receive which are customarily furnished for the care of patients by the hospital or extended care facility.

SUPPLEMENTARY MEDICAL INSURANCE

The hospital insurance program will help you pay your hospital bills, but it does not pay doctor bills. You can provide in advance toward paying your doctor bills, though—and other medical bills, too—by signing up for the medical insurance program.

When you enroll for medical insurance, you agree to pay a small premium (\$3 monthly) with the Federal Government matching this amount.

The medical insurance program pays 80 percent of the reasonable costs or charges for covered services, except for the first \$50 in a calendar year.

Since the program does not begin until July 1, 1966, no expenses you have before that time can count toward the \$50 for 1966.

The services covered under medical insurance include:

- **Physicians' and Surgeons' Services:** no matter where you receive the services—at home, in the doctor's office, in a clinic,

or in a hospital.

- **Home Health Visits:** up to 100 home health visits under an approved plan each year with no need for prior hospitalization. This is in addition to the 100 visits provided under the hospital insurance program.

- **Other Medical and Health Services** regardless of where rendered: including such things as diagnostic tests (X-rays, etc.; laboratory services); X-ray or radium treatments; surgical dressings, splints, casts; certain ambulance services; braces, artificial legs, arms, and eyes; rental of medical equipment such as iron lungs; and many other medical items and services.

The voluntary medical insurance plan becomes effective starting July 1, 1966. If you enroll in time, your medical insurance coverage will start on that day. The medical insurance program will not, of course, pay for any goods or services you receive before July 1966.

When You Can Enroll In The Medical Insurance Program

The law provides specific periods of time, called enrollment periods, during which you can sign up for medical insurance benefits. The first enrollment period begins on September 1, 1965, and ends on March 31, 1966. As noted previously, people who are entitled to social security, railroad retirement, or civil service benefits will get their application cards by mail.

If you are 65 or older on January 1, 1966, you must sign up during the first enrollment period in order to be covered under the medical insurance program when it starts in July 1966. Remember, the first enrollment period ends on March 31, 1966.

If your 65th birthday occurs after January 1, 1966, your first enrollment period runs for 7 months beginning with the third month immediately before the month you reach 65, and ending 3 months after you are 65. For example, if you reach 65 in February, you may sign up any time between the preceding November 1 and the following May 30.

You will have protection as soon as you reach 65 only if you apply during the 3-month period just before you reach 65. In no case, however, will your medical insurance take effect before July 1, 1966.

What You Will Lose If You Enroll Late

There are several good reasons for signing up for the medical insurance program during your first enrollment period. If you pass up your first opportunity, you will not have another chance to sign up until the next general enrollment period (October 1, 1967, to December 31, 1967). Furthermore, if you wait to enroll, you will have to pay a higher premium for the same protection, and your coverage will not begin until 6 to 9 months after you enroll.

Paying The Monthly Premium

If you join the voluntary plan and you are receiving monthly social security benefits or a railroad or civil service retirement annuity, \$3 a month for medical insurance benefits will be deducted from your check each month. No deductions will be made before July 1966, the first month coverage can begin.

If you are not eligible for social security checks for one or more months, arrangements will be made for you to take care of the \$3 payments in a convenient manner.

If you are not receiving any of these benefits, you will get information when you enroll about how to pay the monthly premiums.

YOUR HEALTH INSURANCE CARD

After you qualify for the hospital insurance program you will receive a health insurance card.
(Continued on next page)

yourself-to-Savings' CARNIVAL of '65

SHURFINE 12 oz.
3 FOR \$1.00 Luncheon Meat 39¢

4 for \$1.

ALL

4 FOR \$1.

MILK

SHURFINE EVAPORATED TALL CAN

8 FOR \$1.

PEACHES SHURFINE Y.C. 2 1/2 CAN SLICED OR HALVES 4 FOR \$1.

TUNA SHURFINE CHUNK STYLE 6 1/2 OZ. CAN 4 FOR \$1.

PEARS SHURFINE HALVES BARTLETT 303 CAN 4 FOR \$1.

COLI SHURFINE FROZEN SPEARS 10 OZ. 4 FOR \$1.

BERRY SAUCE SHURFINE STRAINED 300 CAN 4 FOR \$1.

NGE JUICE SHURFINE FROZEN 6 OZ. 6 FOR \$1.

TATOES SHURFINE FROZEN WASH BROWN 2 LBS. 3 FOR \$1.

SUP BISCUITS SHURFRESH 8 OZ. BUTTERMILK OR SWEETMILK 13 FOR \$1.

14 OZ. FLOUR SHURFINE 25 LB PRINT BAG \$1.79

OLIVES SHURFINE STUFF THR. MANZ 7 OZ. 2 FOR \$1.

OLEO SHURFRESH 1 LB. 5 FOR \$1.

LOADED WITH SHURFINE CARNIVAL SPECIALS!
(COUNTRY STYLE)

SHURFRESH ASSORTED 24 CT. SUCKERS 19¢

SHURFINE 24 OZ. GRAPE JUICE 3 FOR \$1.

SHURFINE REGULAR OR DRIP 1 LB.

COFFEE

69¢

SHURFINE FRESH PAK 16 OZ.

CUCUMBER CHIPS 4 FOR \$1.

SHURFINE FRESH SHELLLED 300 CAN

BLACKEYES 7 FOR \$1.

SHURFINE 303 CAN

TOMATOES 5 FOR \$1.

SHURFINE 303 CAN

APPLE SAUCE 6 FOR \$1.

SHURFINE 12 OZ.

PEANUT BUTTER 3 FOR \$1.

SHURFINE 18 OZ.

GRAPE JELLY 3 FOR \$1.

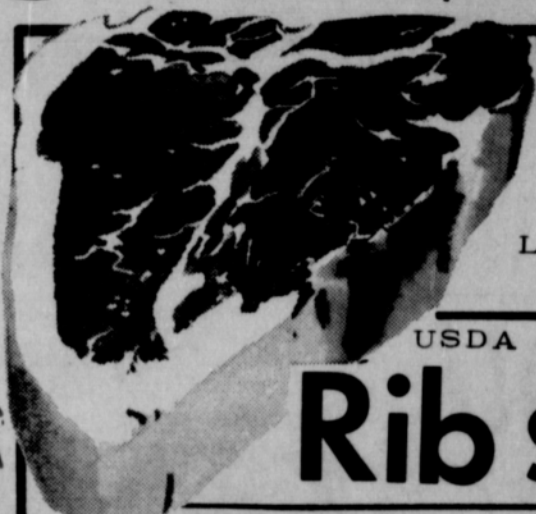
SHURFINE WHITE OR CHOCOLATE 13 1/2 OZ.

FROSTING MIXES 4 FOR \$1.

SHURFINE ASST'D. FLAVORS 19 OZ.

CAKE MIXES 4 FOR \$1.

Shurfine Specials Good Oct. 25 thru Nov. 6 11



T-Bone Steak

USDA CHOICE BEEF

LB. 98¢

USDA CHOICE BEEF LB.

Rib Steak 79¢

BLUE MORROW WHOLE HOG

SAUSAGE -HOT or MILD- LB. 55¢

ARMOUR'S HICKORY SMOKED -SLAB-

BACON LB. 69¢

SHURFINE 48 CT.

TEA BAGS 33¢

SHURFINE EARLY HARVEST 303 CAN

PEAS 5 FOR \$1.

SHURFINE C.S. OR W.K. GOLDEN 303 CAN

CORN 6 FOR \$1.



Cut Rate GROCERY

the year's
greatest
food sale...

**COUNTRY
STYLE!**



Shurfine Help you

CAR

SHURFINE 46 oz.

Pineapple Juice 3

SHURFINE NO. 303 CAN

FRUIT COCKTAIL

SHURFINE 46 OZ. CAN

TOMATO JUICE 4 for \$1.

SHURFINE 4 SV. CUT BLUE LAKE NO. 303 CAN

GREEN BEANS 5 for \$1.

SHURFINE 3 LB. CAN

SHORTENING 69¢

SHURFINE CRUSHED NO. 2 CAN

PINEAPPLE

SHURFINE ALL GREEN CUT 300 CAN

ASPARAGUS

SHURFINE 28 OZ.

APPLE BUTTER

CHERRIES SHURFINE RSP 303 CAN 5¢ \$1.

SHURFINE SLICED 303 CANS

BEETS 7¢ \$1.

SHURFINE QUART

SALAD DRESSING 39¢

SHURFRESH 2 LBS.

CHEESE SPREAD 69¢

SHURFINE APRICOT - CHERRY - PEACH 18 OZ.

PRESERVES 3 for \$1.

FARM FRESH
Produce

EXTRA FANCY RED DELICIOUS 4 lb. bag

Apples 49¢

MARYLAND SWEET

Yams LB. 13¢

NEW CROP NAVEL

Oranges LB. 17¢

SHURFINE 300 CAN

PORK & BEANS 9¢ \$1.

SHURFINE RED ALASKA 16 OZ.

SALMON 89¢

SHURFINE 303 CAN

SAUER KRAUT 6¢ \$1.

SHURFINE WHOLE NO 3 SQUAT CAN

SWEET POTATOES 3¢ \$1.

SHURFINE WHOLE 303 CAN

IRISH POTATOES 7¢ \$1.

SHURFINE 10 LB. PAPER BAG

FLOUR 79¢

SHURFINE 300 CAN

PUMPKIN 8¢ \$1.

SHURFINE QUART
WAFFLE SYR

The Plainswoman

Mrs. Gandy Posts Club

Hi-Lo Bridge Club Thursday, Oct. 21 in the home of Mrs. W.H. Gandy. R.E. Lee had high and Mrs. Major Lackey were members, Mrs. Lee, John Berry, Mrs. Jameson, Faye Lynch, Major Lackey, Gwen Lackey, Pope Gibner and hostess.

Women Meet

Ladies Missionary Group Spearman Union Church Oct. 19 at 2 p.m. B.J. Garnett gave the lesson from the book of Matthew. Those attending were Mmes. J.W. Sluder, George J.H. Martin, B.J. Bowen, and Floyd.

Bridal Shower Thursday Honors Miss Sharion Close

A bridal shower honoring Miss Sharion Close, bride-elect of Robert Lynn Cook was held Thursday evening at the Hospitality Room of the First State Bank.

Hostesses for the courtesy were Ruby Barkley, Lois Gibner, Pat Donnell, Effie Hackley, Gwen Reed, Beth Phelps, Sue Lamb, Marie Sparks, Carrie Clements and Rosa Lee Butt. The honoree was presented a corsage of white rosebuds and her mother, Mrs. Floyd Close, grandmother, Mrs. E.E. Gipson of Amarillo, and Mrs. A. F. Cook, mother of the prospective groom and his grandmother, Mrs. Clarence Clement were presented corsages of white carnations.

The serving table which was laid with a white cut-work cloth centered with an arrange-

ment of white and blue pom-poms highlighted with white wedding bells and flanked on either side with white tapered candles in crystal holders. Crystal and silver completed the setting.

Presiding at the serving table were Miss Carole Close and Mrs. Loyall Turner who served the dainty white cake squares decorated with miniature blue wedding bells, coffee, nuts and mints.

Miss Bethany Donnell registered the guests in a white bride's book and Miss Kay Bassard assisted Sharion in opening her gifts.

Out of town guests were Mrs. E.E. Gipson and Mrs. Doris Price of Amarillo, Mrs. Marie Sons, an aunt from Borger and Mrs. D.A. Cator from Gruver.

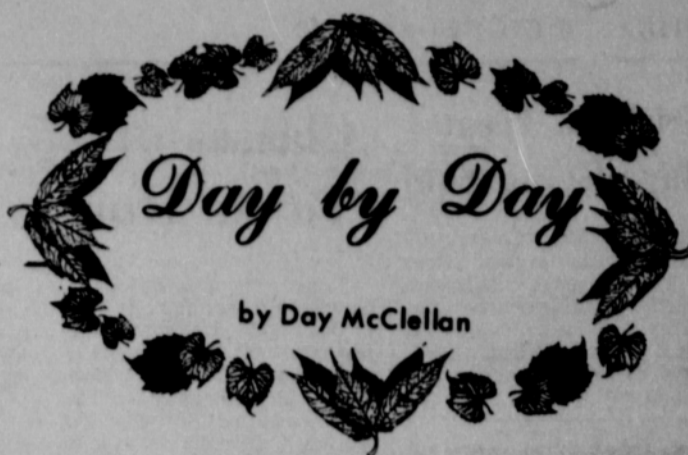
Club Meets In Country Home Of Mrs. Lee

The Home Science Department of the Twentieth Century Club met Thursday afternoon in the country home of Mrs. Johnnie Lee.

Mrs. Wayne Hutchison, president, presided at the business session. Several thank you notes were read, among them one from the District President, Mrs. Lindsey of Canyon.

The program "Texas Highways" was given by Mrs. Frank Davis who gave statistics on the building, improving and maintenance of state highways.

Roll call was answered by "Old Highways I Remember." Lovely refreshments were served by Mrs. Lee to members, Mmes. J.R. Stump, O. C. Holt, Fred Holt, Dick Kilgore, J.R. Keim, Wayne Hutchison, Lloyd Buzzard, Frank Davis, Dwight Hutchison and Raymond Kirk.



Another milestone... with this issue we are officially six years old and proud indeed of the progress we've been able to make since our first issue back on October 15, 1959.

Six years may not seem very old, as newspapers go, but when you start a business from scratch and grow a little every week, six years and over 400 issues seem like a lot of papers.

So, while I'll probably never live to see the day I'm proud of one of my own birthdays again, this is one occasion I note with pride mingled with appreciation for friendships, business associates, the opportunity to serve this community, and all the other things we like about Spearman.

In the six years we've been covering the news happenings in Spearman and Hansford County, there have been phenomenal growth and changes too numerous to mention.

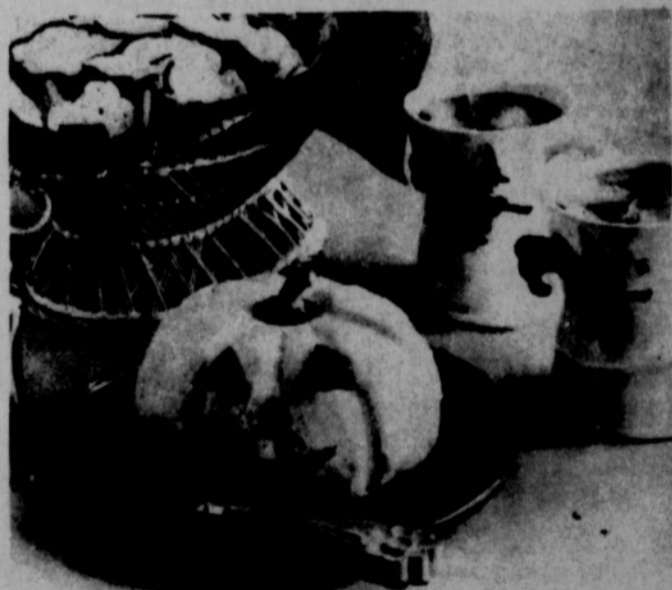
A few of the things I think have been among the most important are:

1. Seeing the new million dollar high school become a reality and the old high school remodeled to become a nice building again.
 2. Seeing the new half million dollar hospital replace the very inadequate old one.
 3. Seeing a new and modern Pioneer Manor provide a happy, secure environment for senior citizens.
 4. Seeing "Time For Fun" parties provide monthly entertainment for these older citizens.
 5. Seeing the library move to larger quarters, outgrow these and now be in the process of raising funds for a new building.
 6. Seeing the Twentieth Century Club spread the opportunities of growth and enlightenment of belonging to a federated club to more local women by organizing two junior clubs here.
 7. Seeing numerous new churches of different faiths being organized and beautiful houses of worship being built.
 8. Seeing several little parks around town sponsored by local clubs, develop into spots of beauty through hours of work and attention.
 9. Seeing a foreign exchange student come to Spearman this year, to broaden our concepts of what people are like on the other side of the world.
- Perhaps you would have a completely different list of what have been the most important happenings in the past six years but these are mine.

Halloween is just a week away. The student Council is planning a carnival for Saturday night which will be highlighted with the crowning of a Halloween Queen. Contestants are "Clara" (Clayton) Cochran representing the seniors, "Samantha" (Steve) Drake representing the junior class, "Maude" (Mike) Stewart, representing the sophomores and "Mirdle" (Marty) Jones, representing the freshmen.

There are plans for a sponge throw, cake walk, pie throwing, and a country store where you can buy "almost anything" to mention just a little bit of the fun.

If you're a cheese lover and also the type who likes to go all-out for just about every holiday, I have just the recipe for you. It's a Halloween jack-o-lantern you can eat because it is shaped from a variety of cheeses. Roquefort, the gourmet's favorite French import adds the special flavor. Blended with cheddar and cream cheeses and tangy seasonings, it makes a combination which leads to rapidly disappearing refreshments.



HALLOWEEN JACK-O-LANTERN

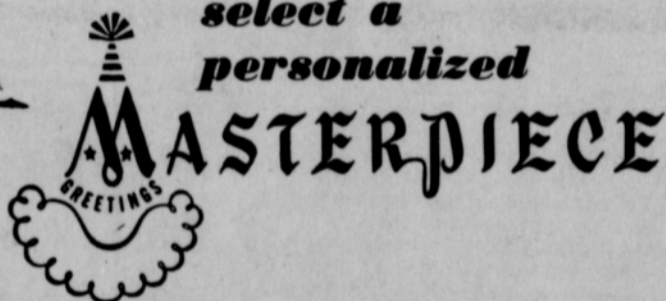
- 1 1/3 cups crumpled Roquefort cheese
- 2 pkgs. (11 oz each) sharp cheddar cheese
- 1 pkg. (8 oz.) cream cheese
- 1 tsp. prepared mustard
- 1 4 tsp. tabasco
- 3 tbsps. instant minced onion
- 1 green pepper

Let Cheese stand at room temperature until soft. Add mustard, tabasco and minced onion to cheese. Mix thoroughly. Cover and chill for several hours or until the cheese mixture is stiff enough to be shaped. (The instant minced onion is not pre-moistened in this recipe. It absorbs moisture from the cheese mixture.)

Mold cheese mixture into the shape of a pumpkin. Use a spoon to form the vertical indentations. Chill until firm. Just before serving, cut two triangular pieces from the green pepper for eyes and two smaller pieces for the mouth. If you like, the stem from the pepper can be used as the pumpkin stem. Serve with crackers.

Looking for just the right Christmas card?

Here's why you'll want to select a personalized



On display right now at our shop is this year's new collection of fine, name-imprinted Christmas greetings by Masterpiece Studios.

The Masterpiece Albums cover the broadest range of Christmas card subjects, treatments and prices. You'll find religious cards, whimsical cards, modern, traditional, elaborate, simple.

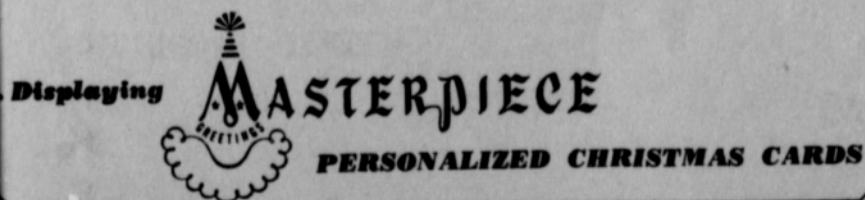
That's why you're sure to find just the greeting you like—in the Masterpiece Albums. And that's why you'll save time and effort by leafing through the Masterpiece Albums first.

Service from Masterpiece is tops, too, based on a 44-year tradition of service. You'll have your personalized cards at anytime you specify, for addressing and mailing at your convenience.

MAKE YOUR SELECTION TODAY!

Avoid being rushed later. Stop in today, and select your Masterpiece personalized Christmas cards.

Plainsman Office Supply



Mrs. Sheets Is Hostess For Club Meeting

The Fine Arts Department of the Twentieth Century Club met Thursday afternoon in the home of Mrs. Olin Sheets.

Mrs. John Allen, president, presided at the business session.

Mrs. C.U. Pope gave the program "Texas Highways" telling of the progress in our state and farm-to-market roads over the years.

Roll call was answered with "Old Highways I Remember." Three members remembered the D.C.D. (Denver-Canadian-Dallas) the first marked highway in this part of the state.

Present were Mmes. John Allen, George Buzzard, J.W. Davis, Woodville Jarvis, P.A. Lyon, Sr., W.J. Massie, E. D. Mundy, C.U. Pope and the hostess.

The next meeting will be Nov. 4 in the home of Mrs. Wesley Garnett.

Guests Here For Wedding

Weekend guests here for the Ainsworth-Collins wedding and visiting in the Cy Ainsworth and Roy Collins homes were Misses Judy Burton, Darlene Robinson, Sherry Thomas and Connie Williams, Cliff Miller and Jerry Coulter, all of Amarillo; Mr. and Mrs. M. V. Johnson of Guymon; Mr. and Mrs. J. L. McAnarney, Sunray; Mr. and Mrs. C.L. Storey of Borger; Mrs. Roy Rogers of Canyon; Miss Donna Reed of Dallas; Mrs. Nancy Simmons, Pampa; Mr. and Mrs. L.C. Black, Satana, Kan.; Mrs. Terry Schonlaw, Coffeyville, Kan.; Bud Ainsworth of Dallas and Mr. and Mrs. Don Foster of Irving.

Mrs. Kilgore Is Study Chairman

The Kezzia Mae Seawright Circle met Wednesday, Oct. 20 at the First Baptist Church with Frances Kilgore presiding at the business session.

Plans for the year were discussed and election of officers was held. Elected were circle chairman-Frances Kilgore, missionary study chairman-Joan Eaton, Bible study chairman-Betty Uptergrove, community missions chairman-Viola Hutton, stewardship chairman-Addie Novak, co-chairman-Wanda McIver.

The program "My Church-Seeing and Doing" was presented by Frances Kilgore.

Present were Mmes. Dana Hazelwood, Kilgore, Eaton, Uptergrove, Hutton, Novak and McIver.

BUY WANT ADS SELL

FOR SALE

FOR SALE-7 room, 2 bath, good sturdy built house, 301 N. Hoskins, Sam Condo. Call 659-2368. 1-tfc

LOSE WEIGHT safely with Dex-A-Diet Tablets. Only 98¢ at Spearman Drug. 100-6c

Silvertone Console Television, our most popular 23" sets reduced \$20, now only \$179.95 -Buy now make your first payment February, 1966. Sears, Spearman, Texas, Phone 659-2573.

Save \$30 on a Coldspot 17-ft chest Freezer-holds 600 lbs. food, now only \$189.00 Buy now make your first payment February, 1966. Sears, Spearman, Texas, Phone 659-2573.

FOR SALE-95 acres southeast of Spearman, irrigation water, 1/2 minerals. Industrial lots and acreage. Financing available. Cecil Crawford. Phone 659-2409. 49-tfc

FOR SALE-8 ft. Frigidaire deep freeze. Call 659-2350. 95-tfc

Central Heating and Air Conditioner System-Includes everything needed for a complete system. -Save \$165.00, now only \$764.00-Installation Extra up to 5 years to pay. Sears, Spearman, Texas. Call for free estimates, Phone 659-2573.

FOR SALE-7 year old Jersey milk cow. Will be fresh in approximately 45 days. \$250. Ray Moore, 659-2886. 94-tfc

Silvertone console stereo that has six speakers, FM-AM Radio included Now only \$189.95, nothing down, first payment February, 1966. Sears, Spearman, Texas, Phone 659-2573.

FOR SALE-3 bedroom home, excellent location, carpeted and fenced., 904 S. Dressen. Call 659-2178. 56-tfc

FOR SALE--One bedroom house and two bedroom house Reasonable-Choice Location. No down Payment. Pay like rent. Contact Raymond Sparks at Sparks Laundry. 77-tfc

FOR SALE -- 1963 Cushman Eagle motor scooter low mileage, excellent condition fully equipped. Phone 2458. Kenneth Bailey. 77-tfc.

Hallmark cards . . . when you care enough to send the very best! Plainsman Office Supply, 209 Main.

Save \$70-Coldspot all frostless, 16-ft icemaker, Freezer-Refrigerator Combination-white or coppertone-nothing down-First payment February, 1966. Now only \$379.88. Delivered and Installed. Sears, Spearman, Texas, Phone 659-2573.

Dupont Nylon Carpet-completely installed-over 48 oz. sponge rubber pad-only \$7.44 per sq. yd. -Free measuring and estimating-up to 5 years to pay. Sears, Spearman, Texas, Phone 659-2573.

FOR SALE-3 bedroom house, carpeted, fenced, landscaped, G.E. built-in oven and range top, ceramic tile bath with glass enclosure shower, tub. 1010 S. Hancy. Call 3103 daytime or 2754 at night. 91-tfc

Save \$29 on a Kenmore 30" Gas Range with a visi-bake oven and automatic oven-only \$155-nothing down-first payment February, 1966. Sears, Spearman, Texas, Phone 659-2573.

Hallmark cards . . . when you care enough to send the very best! Plainsman Office Supply, 209 Main.

Lady Kenmore Automatic Washer-8 cycles-2 speeds-automatic lint filter and many other famous features-nothing down-First payment February, 1966. Sears, Spearman, Texas, Phone 659-2573.

FOR SALE-1959 Gleaner Baldwin combine on butane with maize attachment. 1955 2 ton Chevrolet truck on butane, 9.00 x 20 rear tires, 8.25-20 front, 16 ft. steel bed and hoist. Clinton Nesmith, Phone-CH3-2048, Rte. 3, Mangum, Okla. 96-6p

FOR SALE-3 bedroom brick, 2 baths, large built-in kitchen and dining area, utility room and storage room, double garage, double lot, fenced, 301 W. 12th. Phone 659-2725 92-tfc

FOR SALE-3 bedroom brick, attached garage, low equity. 401 S.W. 12th. 96-tfc

Kenmore Electric Clothes Dryer: Normal cycle for all fabrics-two temperatures. Nothing down. First payment, February, 1966. \$99.95 Delivered & Installed. Sears, Spearman, Texas, Phone 659-2573.

Silvertone Console Color T.V. with colorguard-The electronic brain that purifies color automatically \$429.88-Nothing down-First payment, February, 1966. Sears, Spearman, Texas, Phone 659-2573.

FOR SALE-2 pairs of practically new bedroom curtains and also twin bedspreads. Mrs. R. E. Lee, 659-2086. 104-2c

FOR SALE-Spartan trailer house 8 x 35, with air conditioner, '57 Pontiac Chieftan. Contact Jerry Skinner, 1 block south of Shamrock Service Station. 104-4p

Save \$25-Kenmore Automat-

ic Washer-1 speed, 1 cycle-Three water temperatures-lint filter-nothing down-First payment February, 1966-now \$149.85 delivered and installed. Sears, Spearman, Texas, Phone 659-2573.

FARM FOR SALE-located in Wheeler County, 200 acres. If interested call Shamrock BL6-1929. 104-4p

SERVICES

WANTED-Custom combing Call 659-3271, Spearman. 104-2p

Complete land leveling with Hancock Carryalls, Chisels and Land Plane. Land Plane for rent. Willis Sheets, 659-2256. 93-tfc

SERVICE-Ditches from 3-12 inches, any desired depth. S. D. Jones 659-2809. Harold Shaver 659-3474. T17-tfc

Will do baby sitting and ironing in my home, 705 E. Sec. or call 659-2498. 102-6p

Amarillo Daily News & Globe Times home delivery. Call 2685. T14-tfc

FOR LIFETIME MUFFLERS-Clarence Pettitt Garage. No premium prices.

FOR RENT

FOR RENT-New furnished brick apartment. Phone 2274. 46-tfc.

FOR RENT One bedroom furnished apartment. Phone 2274. 102-6c

FOR RENT-2 bedroom house, unfurnished 201 1/2 N. Hazelwood. Call 2764. 100-tfc

"Better Food For Less" EASIEST WAY TO SAVE ON FOODS

IDEAL SHOP IDEAL!

JOIN THE THOUSANDS OF THRIFTY SHOPPERS WHO HAVE DISCOVERED THAT QUALITY AND ECONOMY GO HAND IN HAND WHEN THEY SHOP THEIR FRIENDLY IDEAL STORE.

IDEAL FOOD STORES

IDEAL GLAZED DONUTS BOX OF 12 **45¢**

IDEAL JUMBO WHITE BREAD 2 LOAVES **45¢**

ENRICHED GOLD MEDAL FLOUR 5-16 BAG **39¢**

SPECIAL LABEL PUREX BLEACH 1/2-GAL CTN. **29¢**

LIMIT RIGHTS RESERVED. Prices Good Tues. & Wed.

PILLSBURY OR BALLARDS BISCUITS 3 8-OZ CANS **29¢**

SPECIAL LABEL GIANT TIDE BOX **59¢**

FRESH LEAN GROUND BEEF **49¢**

KRAFT PARKAY MARGARINE 1-16 CTN. **29¢**

LYSOL SPRAY DISINFECTANT 14-OZ. CAN **1.39**

EXTRA LEAN GROUND CHUCK 16 **65¢**

SWIFT'S PREMIUM SKINLESS FRANKS 1-16 PKG. **59¢**

IDEAL COUNTRY KITCHEN BAKED BEANS PT. CTN. **29¢**

WOLF BRAND ALL MEAT CHILI NO 2 CAN **69¢**

BLACKBURN'S CRYSTAL WHITE SYRUP QUART BTL. **39¢**

VAN CAMP'S VIENNA SAUSAGE 4-OZ. CAN **29¢**

TOPCO LIQUID DETERGENT 32-OZ. PLASTIC **59¢**

COLORADO RED POTATOES 20 16 BAG **69¢**

KRAUT CABBAGE 16 50 16 BAG **3¢**

COUPON SAVINGS: THIS COUPON WORTH **6¢** TOWARD THE PURCHASE OF A PACKAGE OF 12 Modess Sanitary Napkins AT Ideal food Store. COUPON EXPIRES Oct. 27, 1965. LIMIT ONE COUPON PER FAMILY.

HAVE YOU LISTENED TO LIFE-LINE YET?

IF you haven't... YOU OWE IT TO YOURSELF To hear this timely program of provocative current commentary from Washington!

ON THE **98.3 kbmf-fm** HOTSPOT AT 7:15 EVERY MORNING

Trick or Treat Bags Being Sold

The Town and Country HD Club is selling bags of "Trick or Treat" candy, bubble gum etc. consisting of over 100 pieces. These sell for \$1 per bag. Anyone desiring to buy may call any member of the club or call 2189.

Mr. and Mrs. Doug Moore and son of Lubbock were at Boys Ranch Friday night for the football game.

TOMMY BOOCH
AGENCY
FARM BUREAU
INSURANCE
SPEARMAN, TEXAS

GIFT BOX

MEMO:

Make your coffee drinking time a colorful event by using a set of our decorated coffee mugs. They are different and colorful. Hold a good cupful, too.

Make the Christmas season more beautiful with candles in our new brass candlesticks. These are some of our newest items and we believe you will find them a beautiful addition to your home.

There is no need for your bathroom to be just a necessary room in your home. Make it pretty with some of our new bathroom accessories. We have new towel rings, soap dishes, and something to unload the edge of your tub. A two-tier table that is just right to go beside the tub to hold your shampoo, soap, and other bath accessories. It would even be nice beside your favorite chair.

There is no end to the gift ideas you find in the

Gift Box

Classes of '35, '45, '55 To Be Honored at Gruver

Time is nearing for the Gruver Homecoming, October 29 is the date set for the festivities as the Gruver Greyhounds meet the Claude Mustangs in District play. The final meeting for the Gruver Alumni Officers was held Wednesday.

Queen nominees for the Gruver Alumni Homecoming are Opal Wallin of Gruver, Evalyn Dahl of Gruver, Bernice Garrett of Calgary, Canada and Comfort Winders of Gruver. The queen will be crowned during the halftime ceremony of the game, by the Alumni officer, J.C. Harris.

The Barbecue for the Alumni will be held at 5 p.m. in the Old Gymnasium of the Junior High Building. Those planning to attend the Barbecue should contact either Mrs. Jerry Williams or Dotty Jones in Gruver by mail or by phone. It is necessary that reservations are made so there will be ample food. Charges for the plates are \$1.50 for adult plates and \$1.00 for children's plates.

Entertainment during the dinner has been arranged by the Alumni vice-president, Rod Barkley, and will be under the direction of Mrs. Kenneth Irwin and provided by the Gruver High School Music Department.

The class of 1935, 1945 and 1955 will be honored during the festivities. Those included in the class of 1935 are: Harry Barkley, Joel Stavlo, Jewel Ward, Eddy Stavlo, Ralph Reynolds, Ward Spivey, all of Gruver; Ernest Davidson, California; Reba Dillow Benson of La Junta, Colo.; Joseph Riox; Ralph McClellan of Dumas; Bernice Shapley Garrett of Calgary, Canada; Stan-cil Greenwood; James (Sleepy) Smith; Goldie Moore and Nick Fleck.

In the class of 1945 were Comfort Holt Winders, Ila Jo Ogle Hart, Opal Wallin, Arnold L. Bayless, Doyle Barkley, Nick Holt, Ora Mae Chesser all of Gruver; Dorothy McClellan Mann of Tallahassee, Florida; Duse Ingram Fields of Beaver, Oklahoma;

Marguerite McClellan Milligan of San Antonio; Doris Greene Dowdy of Sunray and Alma Dahl Walker of Guymon, Okla.

Those honored in the class of 1955 include Larry Lee Cline, Evalyn Edwards Dahl, Christine Williams Brandvik, Glen Ward, Betty Jean Heath Cotter, Shirley Crane, Donald Murrah, Warney Davis, Bud Hintergardt, Don Roper, all of Gruver; Louise Knudson, Norway, Kansas; Albert Sanders, Amarillo; Gail Lee McMillan of Abilene; Wanda Renner, of the country of Turkey; Jo Ann Gordon Lamendola of Marksville, La.; Winnell Vernon Oakes of Spearman, Bill Shrader of North Charleston, S.C.; Ernestine Wilson of Santa Anna, Calif.; Bobby McFadin of Calif.; Peggy Prater Bozarth of Amarillo, Dorothy Sogn Thompson of Dunmar, Ky.; Shirley Ford McNew of Pasadena, Texas; Ella Mae Clawson Gatten, Amarillo; Joan Brooks Compton of Springfield, Colo.; Cecille Van Buren and Betty Wilburn.

The members of the above mentioned classes are encouraged to be present for the evening of visitation as well as to enjoy the football game. The Gruver High School will also crown their Homecoming Queen during the halftime.

4-H Council Has Meeting In Club Room

The Hansford County 4-H Council met Oct. 9 at 10 in the clubroom. Bill McCloy, president, called the meeting to order. The 4-H pledge was given by Sylvia Parks. The minutes of the previous meeting were read by the secretary, Rebecca Hutchison and approved. The term of office for the council delegates were set from Feb. 1 to Jan. 31.

Linda Webb, Agent, stated that the Home Demonstration Clubs of Hansford County would give a banquet for the 4-H Achievement Program. The Council voted to allow all 4-H members in the country and the families of the award winners to attend this banquet to be held in the Spearman School Cafeteria Nov. 6 at 6:30.

The council voted to pay the expenses of Janice Trindle to the State Dress Revue. A financial report was given by the treasurer, Janice Trindle.



B-TEAMER SMOTHERED---A Spearman runner is buried under a waver of Boys Ranch B-teamers here Thursday night. Boys Ranch beat Spearman 38-8. Spearman's B-team is now mostly composed of freshmen.

Army Offers College Grads Officers Candidate School

Guaranteed assignment to an officer candidate school is the Army's enlistment incentive offered to college graduates with no prior military experience states Staff Sergeant James Parish, Army recruiter.

This program has been in effect for several years, however, the recent authorized increase in the Army has increased the requirement for junior officers. College seniors and men already graduated from accredited colleges may apply for active duty with assignment to officer candidate school if they are U.S. citizens and at least eighteen and a half but not over 27 years old.

The special OCS option goes into effect upon the successful completion of basic combat and advanced individual training. Applicants may indicate a preference for one of the three combat arms or the technical and specialist services.

Successful candidates will be commissioned Second Lieutenants and go on to respective branch officer basic courses. They will serve an obligated tour of at least two years after commissioning; men who do not successfully complete the program will serve the remainder of their obligated two year

tour in enlisted status.

This officer candidate school program affords an opportunity for qualifying college graduates to fulfill their military obligation in a more rewarding and challenging manner than is customary if they wait to be drafted into the service. Past experience has shown that many OCS graduates decide during their military service to make their Army their lifetime career.

Additional details of this program can be obtained from S/Sgt. Parish, Army Recruiters for this area at the US Army Recruiting Station, 411 Main Street, Guymon, Okla. Phone 338-7600.

FOR SALE

Salvaging-58 Pontiac Station Wagon, Loaded, 4000 miles on overhaul, good trans. & differential, front end, factory air.

55 Buick-All or Part-Motor, Trans. & Differential good.

54 Pontiac, Standard Trans. 14" wheels and tires, good car.

54 Cadillac Fleetwood 4 Dr. Loaded, needs motor work. Good transportation.

Misc. Straight "8" Pontiac Body & Engine Parts.

See at 124 N. Hopkins 659-3163

94-2c

The Needlework Nook

Crewel Needlepoint Knitting Yarns, Needles & Books

1 1/2 BLOCKS SOUTH OF EQUITY IN WAKA

Open 10-5 Closed Mondays

BOWLING

PIN BENDERS LEAGUE

TEAM	WON	LOST
Nancy's Cafe	17	7
Brock Ins.	16	8
Bowl Mor	14	10
McClellan Grain	14	10
Independents	12	12
Lee Oil	10	14
Crawford Imp.	9 1/2	14 1/2
Hans. Co. Parts	3 1/2	20 1/2

HIGH TEAM GAME

Lee Oil	449
Lee Oil	440
Lee Oil	436

HIGH TEAM SERIES

Lee Oil	1325
Bowl Mor	1265
Nancy's Cafe	1256

HIGH INDIVIDUAL SERIES

Gwen Reed	453
Mary Cornelius	451
Jodie McCreary	446

HIGH INDIVIDUAL GAME

Dorothy Baggerly	171
Mary Cornelius	165
Patty Spoonmore	163

Cummings Refrigeration

HEATING

AIR CONDITIONING

SALES & SERVICE

SPECIALIST

659-2721

SPEARMAN

CUSTOM FARMING MOLDBOARDING CUSTOM COMBINING BILL EVANS

BOX 422

GRUVER, TEXAS

IRRIGATION MUNICIPAL CHLOR-O-CLEAN INDUSTRIAL PAT PENDING DOMESTIC

NORTH PLAINS WATER WELL CHLORINATION SERVICE WATER WELL CLEANING STERILIZATION

We Can Rid Your Well of All Organic Growths such as Algae to

INCREASE PRODUCTION

412 N. DUMAS AVE P. O. BOX 986 PHONE 935-2929 DUMAS TEXAS 79029

NELSON LEWIS N. MACARTY MANAGER RES. PHONE 935-2055

FOR A LIMITED TIME

FORT WORTH STAR-TELEGRAM TOPS IN TEXAS



Morning With Sunday Reg. \$21.00

you save \$5.05

\$15.95 7 Days A Week One Year By Mail

Morning Except Sunday Reg. \$15.00

you save \$1.50

\$13.50 6 Days A Week One Year By Mail

BY MAIL IN TEXAS, OKLA., ARK., N. MEX. & LA. ONLY

More state news... more regional news... more national news than any other Texas newspaper. Reading enjoyment for every member of the family. The Star-Telegram is a great STATE newspaper. Subscribe now and save.

(Evening Addition Available at Full Rate)

Fill out and mail to the Star-Telegram today, or See Your Hometown Agent.

FORT WORTH STAR-TELEGRAM 400 W. 7th, Fort Worth, Texas 76102

Send Attached in check or money order for \$

Morning With Sunday Morning Without Sunday

NAME _____

ADDRESS _____

CITY _____

STATE _____ ZIP NO. _____