

# State prisoners holding County financial hostage

By SAMUEL VILLARREAL  
Journal Staff Writer

## COUNTY COMMISSION

Bailey County wants the right to "just say no" to housing state prisoners at County expense.

Bailey County officials believe the county is unfairly being forced to absorb the cost of housing state prisoners until they can be processed and returned to state penitentiaries.

The Bailey County Commissioners Tuesday signed a resolution asking the 75th Texas Legislature to allow counties to deliver prisoners with state warrants directly to state penitentiaries, or be reimbursed for the cost of holding the prisoners.

"We want the state to hurry up or foot the bill," Cox said. "Both would be better."

The resolution was made in response to blue warrants, which are issued by the state when the state revokes the parole of former state inmates.

Sheriff Jerry Hicks said it often takes up to 90 days before the inmates are transferred from a county jail to a state penitentiary, during which time the county pays the cost of holding the inmates.

The state does not reimburse county governments for expenses incurred while housing state inmates. Hicks said the county's cost for housing a state inmate is about \$10 per day.

Hicks emphasized the matter in a letter to Judge Cox, citing a recent prisoner whose 15-day stay in the County jail was extended by 92 days when Hicks received a blue warrant to hold the prisoner.

The county was also required to pay \$146 to cover medical expenses for the prisoner.

In other business, the Bailey County Commissioner's Court

discussed options for purchasing a new van for the County's aging service.

"The van bit the dust again," Cox told the commissioners.

Cox informed the commissioners that the van used by the aging service had broken down for the third time in recent months.

The aging services program uses the van to provide free transportation for senior citizens 60 and over.

According to Berta Combs, director of Bailey County Services for the Aging, senior citizens use the van for everything from visiting the doctor to grocery shopping.

The van is also used by the Muleshoe Area Healthcare Center to take residents on field trips.

Commissioners discussed options for purchasing a new van. The County had once explored the possibility of applying for a grant, but was misinformed that state grant funds were empty.

By the time the miscommunication was discovered, the deadline for grant applications had passed.

The next possible grant will not be available until 1998. Judge Cox told the commissioners that she does not believe the van will last that long. She estimated a cost of \$18,000-\$20,000 and suggested a budget amendment as a possible solution.

Commissioners decided to hold off any decisions until they can further study the matter.

Cox also administered the oath of office to newly elected

Continued on page 3



### Picketing

Randy Dunn was one of several Muleshoe Independent School District workers installing a redwood picket fence Friday morning around the new DeShazo Elementary School parking lot.

## Federal Land Bank merges

Federal Land Bank Association of Muleshoe, which has been lending money to area farmers and ranchers since 1939, recently merged with eight other West Texas banks.

Effective Jan. 1, the Muleshoe agriculture lending institution will be known as the First Texas Federal Land Bank Association - Muleshoe.

"Lending money has become a very competitive business," said Bill Liles, who will remain president of the Muleshoe office. He has been president of the Land Bank in Muleshoe since 1980. "We had to do something to



Bill Liles

remain competitive."

"For our customers, it will mean lower costs for borrowing money," Liles said. "It might not show up for 60 or 90 days, but in the long run, they will see it through dividends and patronage refunds."

Liles said the Muleshoe office lends between \$3-4 million a year to about 300 borrowers.

The Federal Land Bank Association, created by an act of Congress in 1917 to provide money for farmers to buy land, is a co-op in which all borrowers are

Continued on page 2

# Weevil remains Plains pest

By RICK WHITE  
Managing Editor

Farmers in Lea County (N.M.) have received state approval for a massive chemical crop dusting of every cotton plant in the county hoping to get rid of the boll weevil.

The New Mexico Department of Agriculture has approved the spraying, subject to the approval of two-thirds of the Lea County cotton growers, in a referendum next month. Approximately 300 cotton growers will decide whether they want to pay \$10 an acre to spray the insecticide malathion next fall and the following spring.

Traps set in Lea County turned up 43,482 weevils. Lea County agricultural extension agent Wallace Cox told the *Albuquerque Journal* that he estimates there are hundreds of thousands more weevils in the fields that have evaded the traps.

He said that between 10 and 25 percent of the 10,000 acres of cotton in Lea County was chewed away before harvest.

Meanwhile, just across the state line, Gaines and Yoakum counties are seeing similar numbers of the long-snouted pests that have infested southeastern New Mexico fields.

Bailey County extension agent Curtis Preston said he's heard reports of the same number of bugs in Gaines and Yoakum county fields.

In September and October, traps in Bailey County fields were catching hundreds of weevils after recording only a handful in earlier months.

"Those are alarming numbers to me," Preston said.

Continued on page 2

# City endures trying times

By SAMUEL VILLARREAL  
Journal Staff Writer

The last four months of 1996 were a time of "trial" and "error" for a large number of people in the Muleshoe area.

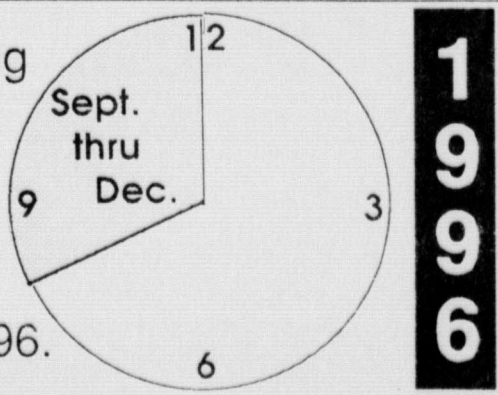
The City of Muleshoe seemed to be facing litigation at every step, while area cotton farmers began harvesting one of their largest crops ever, despite erroneous predictions that this year's crop would suffer due to the weather.

The City faced three major lawsuits during the last four months of the year. The first was filed by Lamb County and the Sudan Independent School District in connection to a parcel of land purchased by the city.

The parcel of land, which

## Year in review

The following were the stories in the Journal for the last four months of 1996.



measures 4,800 acres, straddles the border between Lamb and Bailey counties. The City purchased the land as a possible source for water in the future. The land was leased back to its original owners, who are currently collecting \$150,000 a year through the federal Con-

servation Reserve Program. Lamb County and Sudan Independent School District contend that the City of Muleshoe owes them a total of \$23,000 in back-taxes for the years 1994 and 1995. Municipality-owned property is normally exempt from taxes.

but because private citizens are using the property to make a profit, the Lamb County Appraisal District felt the land within its borders should be included on its tax role.

City officials originally responded by stating that the persons leasing the land should be responsible for paying the taxes. An agreement was later reached in which the taxes were split between the City and the citizens leasing the land.

Another of the City's problems grew by leaks and bounds.

A leaking water tank had city officials at odds with a lining company over payment for services rendered.

Continued on page 3

# New Mexico Ag Expo features antique tractors

PORTALES — The fifth annual New Mexico Ag Expo will be held Feb. 26-27 at the Roosevelt County Fairgrounds.

The state's largest Ag show is hosted by the Roosevelt County Chamber of Commerce.

Mike Archibeque, owner of Bill Johnston Auctioneers in Portales, will once again coordinate an antique tractor show, auction, and an antique tractor parade. The parade will be held on the main grounds of the Roosevelt County Fairgrounds, and the show and auction will be in the Special Events arena at the fairgrounds.

Last year, Archibeque's antique tractor auction exhibited 75 tractors for sale. Buyers came from all across the U.S.

and Mexico. Some 80 antique tractors, which were not for sale, were also displayed.

"Some find old tractors and get them to exhibit their tractors," Archibeque said. "It's very seldom there are people who both exhibit and sell."

Registration for the auction is held up until the morning of the show.

There will also be a country and western memorabilia auction which includes items like wagons, cream separators, wood cookstoves, and many samples of western art.

Some 7,000 plus potential buyers are expected, according to Expo organizers.

Only 300 booths are available.

Continued on page 2



AROUND MULESHOE

**Last sign-up for Little Dribblers Jan. 8**

The final sign-up date for Little Dribblers will be held Jan. 8 from 6 - 7:30 p.m. at Muleshoe State Bank Community Room. Registration fee is \$20.

Little Dribblers is open to all children in grades 3 through 6. Parents must accompany child and need to bring a photocopy of the child's birth certificate. No sign-ups will be accepted after Jan. 8.

A board meeting will be held immediately following sign-ups to elect officers and pick teams.

**Soup & Sandwich luncheon Jan. 9**

The January Soup & Sandwich Luncheon meeting will be held Jan. 9 from 12 - 1 p.m. at the fellowship hall of the 16th & D Church of Christ, 1600 W. Ave. D.

Gene Shelburne will present a chapter from his recent book, *The God Who Puts Us Back Together Again*. This presentation is entitled, "Miz Murphy: Tougher Than Death."

Community members, business people, and anyone else interested, are invited to attend. The meal, as always, is offered on a free-will donation basis. A new flyer listing programs for the 1997 Soup & Sandwich series, which will be held on the second Thursdays of each month in 1997, will be available at Thursday's luncheon. The flyer is also available to anyone on request by calling 272-4619.

**Weigh Down workshop to begin Jan. 8**

A new Weigh Down Workshop will begin Jan. 8 at 5 p.m. at the 16th & D Church of Christ.

The Weigh Down program is a 12 week Biblically-based weight course. The course shifts the emphasis away from special foods and "yo-yo" dieting, while teaching participants how to control their weight.

For more information, call 272-4664 or 272-4090.

**Adult learning center offering courses**

The Muleshoe Adult Learning Center is offering courses for adults who wish to earn their GED. ESL (English as a second language) courses will also be offered.

**Bank**

Continued from page 1

stockholders and voting board members.

The non-profit association is regulated by the Farm Credit System, but operates independently.

According to documentation given to the Farm Credit Administration, the regulatory arm of the Farm Credit System, First Texas will have capital of approximately \$50 million and a projected gross income in the range of \$7-9 million a year.

As a result of the merger, \$1.2 million in stock has refunded since December, as the required stock purchase to borrow money was dropped from

5 to 2 percent.

Jimmie Pitcock of Muleshoe was one of the 18 members of the steering committee that guided the merger of the associations and also became a permanent member of the association's board following the merger.

Other members of the merger were the Federal Land Bank Associations in Childress, Dalhart, Lamesa, Levelland, Littlefield, Lubbock and Spur and Westex Federal Land Bank Association of Dimmitt.

Corporate headquarters will be in Lubbock.

**Boll weevil**

Continued from page 1

"Compared to other counties, no. But for this county, where we haven't really seen them before, it's alarming." Preston said it's particularly disturbing because the huge number Shinoak scrubs that grow in the sand hills south of Muleshoe provide a perfect winter habitat for the weevils.

Approximately 70,000 acres of cotton were planted in Bailey County this growing season, worth an estimated \$20 million.

Members of a 30-county West Texas cotton growers association that surrounds Lubbock overwhelmingly approved a similar spraying plan

in the spring of 1995.

But the plan to eradicate the boll weevil from the High Plains through the systematic spraying of malathion during the fall and the growing season is stalled in the courts.

The Texas Supreme Court is expected issue a ruling sometime this month on the constitutionality of the assessments levied by the Texas Boll Weevil Eradication Foundation.

Ten Hale County farmers sued the foundation in June 95, claiming they were forced to pay more than their share for the program because of the area's higher production.

The foundation sprayed nearly 5 million acres at a cost of \$12.3 million last year as part of its initial fall diapause program, and another 3 million acres this year before running out of funds.

Assessments on a 500-pound per acre yield ranged from \$1.25 per acre in the northern region to \$7.50 in more heavily infested southern region. The cost for Hale County farmers is \$5 per acre.

High Plains cotton growers have been voluntarily paying a fee of between 10 and 50¢ per bale for a smaller version of the fall diapause program since 1963.

**Expo**

Continued from page 1

Booth applications for exhibitors can be obtained from the Roosevelt County Chamber of Commerce located at 200 E. 7th St. or by calling the Chamber office at (505) 356-8541 or 1-800-635-8036 for more information.



Hippocrates, the father of modern medicine, was born on the Greek island of Kos about 460 B.C.

**Escape The Carpet Jungle... Shop**  
*McDaniel's* Floor Covering



**SAVE 20 TO 50% ON EVERYTHING IN-STOCK & SPECIAL-ORDER DURING OUR FLOOR COVERING EXTRAVAGANZA!**

If you're tired of being stalked by cagey carpet salespeople through aisles of beauty berbers, have courage. Help is here! Our selection of resilient, quality milled, lush carpets makes selecting the right pattern and fiber for any room in you home a walk in the park. And, because they're on sale and ready for immediate installation, you'll appreciate every beautiful plush, berber, pile and saxony even more this week!

- 50% Off (Reg. Price) on all in stock area rugs**
- 40% Off (Reg. Price) on all special order area rugs**
- 50% Off (Reg. Price) carpet remnants**
- 20-50% Off on all in stock carpet**
- 20% Off on all special order carpet**
- 20-50% Off on all in stock vinyl**
- 20% Off on anything special ordered**

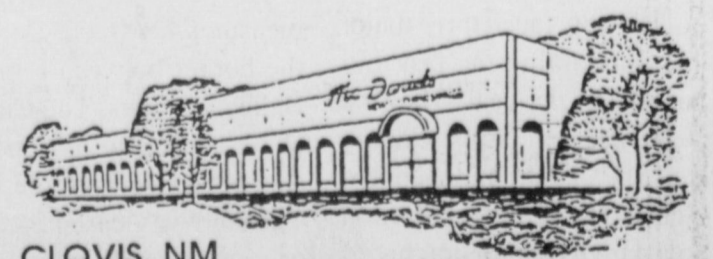
**5 days only!!**

*McDaniel's*

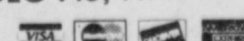
Floor Covering

1013 Mitchell

Terms Available



CLOVIS, NM



762-4481

*The Fig Tree's*

**January Clearance Sale**

**50% OFF**

**Fall & Winter Merchandise**

*Hurry in while selections are good!*

Starting Friday, Jan. 10

220 Main Muleshoe, TX

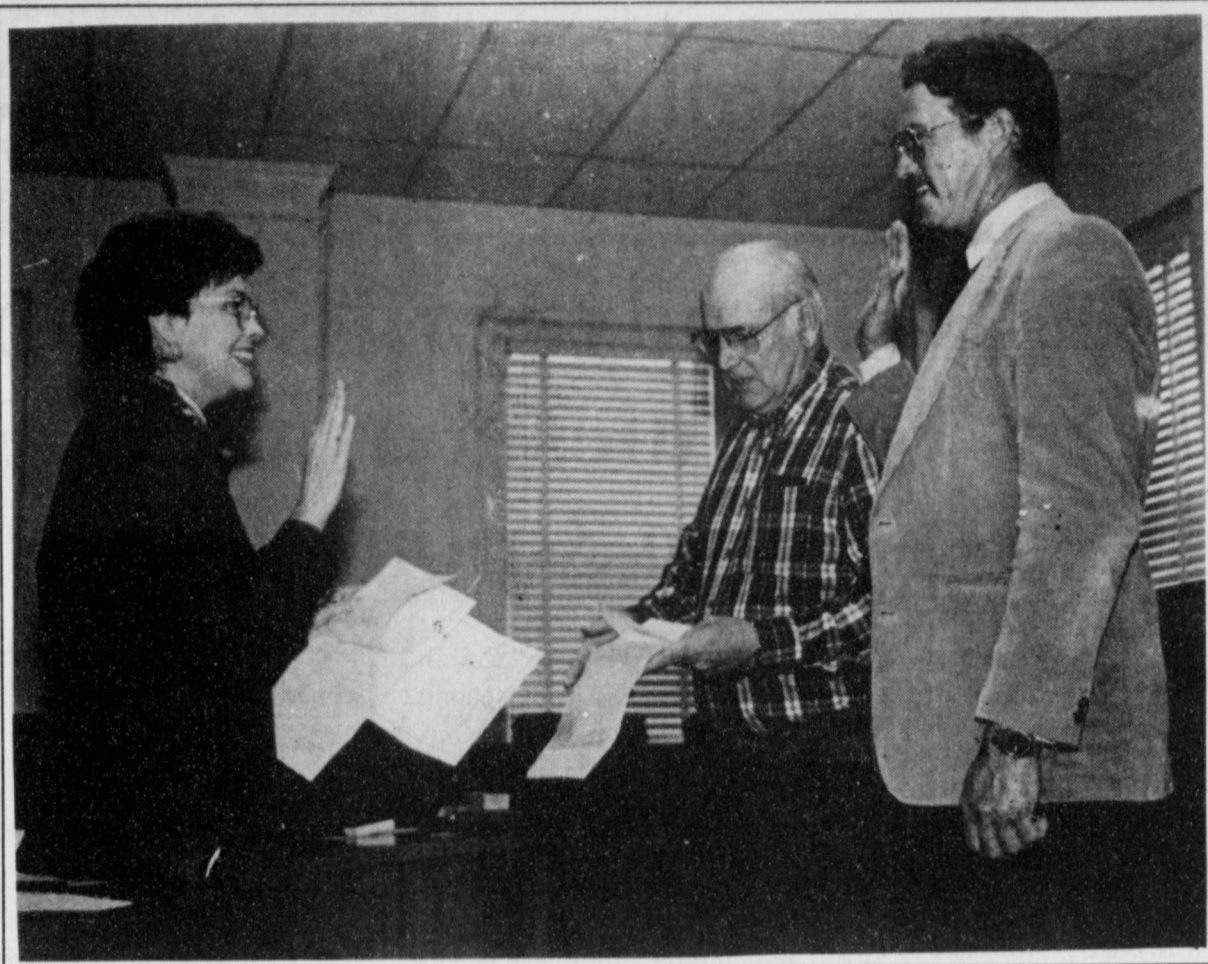
272-7561

OPEN 10 A.M.-5:30 P.M. MONDAY-SATURDAY

**Subscribe today!**

**Call 272-4536**





**Swearing in**  
Bailey County Commissioners Butch Vandiver (left) and Joey Kindle were two of 12 county officials sworn into office Tuesday by County Judge Marilyn Cox during a ceremony at county courthouse.

**Review**

Continued from page 1

Big D Lining Systems, based in Midland, is seeking a \$48,000 balance owed by the city for a liner the company installed into a leaking water tank south of town.

The installment of the liner turned out to be a failed effort to seal the tank, which is leaking more than 4,000 gallons of water per day.

The leak is not considered by City officials to be an immediate threat to the city's water supply. City officials say problems are bound to become larger if the leak is not fixed soon.

City public works officials contend that the leaking water could lead to damage of the cement structure, which is built on a sand hill. City officials fear the structure may be compromised if the leaking water becomes trapped between the sand and underlying caliche layers.

City Manager James Fisher feels that Big D should not be paid until it successfully contain the leak. Big D contends that there is no more that it can do to fix the problem.

Litigation was still in progress at the end of the year.

The third major lawsuit faced by the City involved three former City employees.

Former Muleshoe Police officer Chris Lopez was fired in April of 1995, four days after he made a traffic stop of a vehicle being driven by then-city manager Dave Marr.

Lopez contends that he was actually fired for the numerous allegations of improprieties he made against former police chief Julian Dominguez.

Dominguez resigned in November 1995. He is now an investigator for the District Attorney's office.

Randall Pyles, the lawyer presenting the case on Lopez's behalf, did not specify the amount of damages he is seeking. He did however point to a similar whistleblower suit in which a Lubbock woman was awarded \$2.7 million.

The Lopez suit also remained in progress by year's end.

The early predictions for a disas-

trous cotton crop for the 1996 growing season turned out to be overblown.

An abundance of summer showers turned an ill-fated cotton crop into what may become a record-breaking season.

As December came to a close, area cotton gins were still processing the year's crop. Area gins expect to work until mid to late January.

Many farmers see the results of the 1996 crop as nothing short of a miracle. Dry soil conditions through the first third of the year caused many acres normally reserved for cotton to be given alternate crops. It is estimated that as many as 800,000 acres of South Plains farmland originally reserved for cotton never made it to harvest.

**September**

■ The Muleshoe Area Hospital District board approves a \$5.45 budget for fiscal year 1997. The budget is down \$400,000 from the previous year.

■ Three men are hospitalized after being stabbed in a hotel room brawl.

■ Local farmers are given exemptions by the Environmental Protection Agency to use a special fungicide to control blight attacking sorghum crops.

■ Muleshoe Police Department officers engage in a city-wide search for an escapee who snuck out of an unbarred window at the police sta-

tion. The man is captured almost 20 blocks away.

■ Classic Cable's plans to remove local television station Channel 6 from the local cable line-up is rethought after public outcry. Channel 6 is moved to Channel 7.

■ The City of Muleshoe approves a \$2.9 million budget for fiscal year 1997. Included in the budget is a raise for 35 city employees.

**October**

■ Grupo Minsa of Mexico purchases the corn flour mill located on the east edge of town for \$10 million.

■ Former city attorney Linda Elder agrees to release the files of her former clients to a ward of the State Bar.

■ An automobile accident sends eight to the hospital, including a 2-year-old boy and a pregnant woman.

■ The Muleshoe High School football team snaps an 18-game losing streak with their sole win of the season, a 25-14 victory over Sanford-Fritch.

■ The MHS girls cross country team advances to the state meet. The team places 9th after their top runner is injured early in the race.

**November**

■ Muleshoe city lawyer Mike Caldwell resigns at a time when the city is amidst three separate legal battles, stating that he feels the city would be better served by an attorney

**Commission**

Continued from page 1

and appointed officials. Those that were sworn in were: Floyd "Butch" Vandiver, county commissioner, Precinct 1; Joey Kindle, county commissioner, Precinct 3; Jerry Hicks, sheriff; Kathleen Hays, tax assessor/collector; Gary Don Gartin, constable, Precinct 1; Curtis Hunt, constable, Precinct 2; Gerry Pierce, constable, Precinct 3; Nelda Clark, deputy tax assessor/collector; Cris Cleavenger, county attorney; Benny Clifton, deputy; Don Carter, deputy; Joe Orozco, deputy; Sharon Plott, deputy; and Tony Scolly, deputy.

**Local News About Local Folks**  
**THE MULESHOE JOURNAL**

*A 50's Diner*

**OPEN MONDAY-SATURDAY 6 a.m. - 8 p.m.**  
*Daily Specials & Homemade Desserts*

**112 Main Street, Sudan, TX**  
**227-2404**

**Bailey County Journal** USPS 040-200  
Established March 31, 1963. Published by Triple S Publishing, Inc. Every Sunday at 304 W. Second. Box 449, Muleshoe, TX 79347.  
Second Class Postage paid at Muleshoe, TX.  
POSTMASTER: Send address changes to the Bailey County Journal, P.O. Box 449, Muleshoe, TX 79347.  
We are qualified members of:  
Panhandle Press Association, National Newspaper Association, West Texas Press Association and Texas Press Association

WEST TEXAS PRESS ASSOCIATION

PPA  
Panhandle Press Association

MEMBER 1996

**TA**  
**TEXAS PRESS ASSOCIATION**

Scot Stinnett, Publisher  
Lisa Stinnett, Vice-President/Comptroller  
Rick White, Editor  
Jessica Orozco, Classifieds  
Pat Durben, Advertising

© 1990

SUBSCRIPTIONS: Muleshoe Journal and Bailey County Journal  
By Carrier Yearly - \$22.00  
Bailey and surrounding counties: by mail - \$24.00  
Elsewhere - \$26.00  
Advertising Rate Cards on Application

\*Advertisers should check their ad the first day of insertion. The Journals will not be liable for failure to publish an ad or for a typographical error or errors in publications except to the extent of the cost of the ad for the first day of insertion. Adjustment for errors will be limited to the cost of that portion of the ad where the error occurred.\*

Thank you for the prayers, food, cards and calls during Melba's illness.

Frank and Melba McCamish

**Muleshoe Feed Barn**

311 W. American Blvd. 272-5626

*Wish All Of Their Patrons*  
**Good Luck**  
*In All The Upcoming Livestock Shows*

**HI-PRO**

FEEDS

**Get Your Stock Show Supplies Today**

Thanks For Your Support  
**WE APPRECIATE YOU**



**Blowout Sale On Selected Shoes**

**30% & 40% OFF**

Nike Coat's **30% OFF** One Rack Tee-Shirts **\$10 EACH**

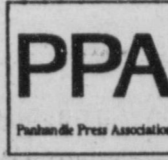
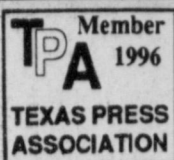
Nike Windsuites **20% OFF** (Includes Space Jam, Mule-Tee, Taz)

Come See Other Store Specials ..... **20% - 50% OFF**

Sale Starts Monday, Jan. 6th

**Williams Athletics**  
322 Main, Muleshoe 806-272-MULE (6853)





## LHS reaches semis at Sundown Tourney

### No. 2 Whiteface clips Laz girls in first round

**SUNDOWN** — Israel Lopez continued his strong play, scoring a game-high 25 points to lead Lazbuddie to a 64-47 win over Lubbock Christian High School Thursday in the first round of the Sundown Tournament.

Justin St. Clair added 15 points and Jason Thomas added 13 as the Longhorns beat LCHS for the second time this season.

"We did a good job of getting the ball inside and we knocked down some outside shots," Lazbuddie coach Gary Grahn said.

Josh Morris had three 3-pointers and 9 points for Lazbuddie.

The Longhorns (13-3) advanced to the championship semifinals by beating Whiteface 72-62 late Thursday.

Lazbuddie played Sundown in the semifinals Friday. Sundown overwhelmed Wellman 90-48 in the first round.

Thomas scored 20 points against Whiteface. Morris and Chris Smith added 13 each.

In another first-round contest, Smyer beat Three Way 70-56.

Jesus Perez scored 24 points for Three Way and Kyle Kindle chipped in 10.

Three Way played Ropes Friday in the consolation quarterfinals.

### GIRLS

Whiteface gets Lazbuddie coach Carey Sudduth's vote as one of the top Class 1A teams in the state.

Sudduth came impressed after the second-ranked and unbeaten Lady Lopes soundly defeated Lazbuddie 58-34 in the first round of the Sundown Tournament.

Amy Foote (14 points) and Janan Bankhead (12 points) led a balanced Whiteface attack.

Mandy Magby and Roxann Warren had 8 points each for Lazbuddie (12-5).

"I'm pretty proud of the kids," Sudduth said. "(Whiteface) is just relentless, they get in your face from the time they throw up the ball until the game's over."

Lazbuddie played the winner of a quarterfinal game between Midland Christian and the Sundown JV Blue Friday in the consolation semifinals.

### BASKETBALL

#### Sundown Tournament

at Sundown HS

#### GIRLS

Thursday

First round

Whiteface 58, Lazbuddie 34

LHS 9 9 7 9 34

Whiteface 22 11 18 7 58

Leading scorers — Lazbuddie:

Magby 8, Warren 8, Whiteface: A.

Foote 14, Bankhead 12.

Smyer 74, Sundown JV Blue 36

Sundown vs Ropes 33

Seagraves 67, Midland Christian 27

LCHS 63, Wellman 33

Lockney 80, Sundown JV Red 22

Friday's games

Consolation quarterfinals

Sundown JV Red vs Wellman

Midland Christian vs Sundown JV Blue

Consolation semifinals

Sundown JV Red-Wellman winner

vs Ropes

Midland Christian-Sundown JV Blue

winner vs Lazbuddie

Championship quarterfinals

Lockney vs LCHS

Seagraves vs Smyer

Championship semifinals

Lockney-LCHS winner vs Sundown

Seagraves-Smyer vs Whiteface

BOYS

Thursday

First round

Lazbuddie 64, LCHS 47

Lazbuddie 15 15 18 16 64

LCHS 13 9 12 13 47

Leading scorers — Lazbuddie:

Lopez 25, St. Clair 13, Thomas 13.

LCHS: Paden 16, Epperson 9.

Smyer 70 Three Way 56

Smyer 18 17 20 15 70

Three Way 14 17 13 12 56

Leading scorers — Smyer: Jmincz

26, Smith 20. Three Way: J. Perez

24, K. Kindle 10.

Whiteface 70, New Deal 61

Seagraves 64, Ropes 40

Lockney 80, Midland Christ. 76

OT

Sundown 90, Wellman 48

Championship quarterfinals

Lazbuddie 72, Whiteface 63

Lazbuddie 22 19 15 16 72

Whiteface 14 14 18 17 63

Leading scorers — Lazbuddie:

Thomas 20, Morris 13, Smith 13.

Whiteface: Allison 21, Igo 18.

Smyer 99, Seagraves 75

Friday's games

Consolation quarterfinals

New Deal vs LCHS

Three Way vs Ropes

Consolation semifinals

New Deal-LCHS vs winner vs

Wellman

Three Way-Ropes winner vs Mid-

land Christ.

Championship semifinals

Smyer vs Lockney

Lazbuddie vs Sundown

## Lady Swifts bomb Muleshoe behind five 3-pointers

**NAZARETH** — Nazareth beat Muleshoe for the second time this season 44-35 Monday behind a long-range attack that included five 3-pointers.

The Lady Swifts (12-7) made 5 of 11 3-pointers. Post K'lynn Gerber stepped outside and hit three 3-pointers as part of her game-high 20 points. Amy Pohlmeier (9 points) and Mandy Birkenfield (7 points) each added 3-pointers.

Brandi Harrison led Muleshoe with 22 points and Erin Wilhite added 7.

Muleshoe (5-14) was playing its third-straight game without senior post Kristen Nichols. Nichols, who severely sprained an ankle against Dalhart, could play a little in Friday's District 1-3A game at Amarillo River Road.

Slayden finished with 7 points and Rhonda Copley added 6.

Wood scored six points, helping Muleshoe to a 22-19 halftime lead.

MHS (39) — Whit 0 4 4 4, Copley 1 4-6 6, Schuster 1 0-0 2, Hooten 0 0-0 0, Morris 1 0-2 2.

### Next home game

District 1-3A  
**DOUBLEHEADER**  
Dimmitt at Muleshoe  
Tuesday, Jan. 7  
6:30 & 8 p.m.

"We just didn't execute well in the second and third quarters," Muleshoe coach Jim Gruhlkey said. "And without Kristen, we really had a hard time matching up with their posts."

Muleshoe (35) — Harrison 66-8 22, Wilhite 3 1-2 7, Field 2 0-0 4, Hutton 1 0-0 2, Aguirre 0 0-2 0, A. Locker 0 0-2 0. Totals 14 7-14 35.

Nazareth (44) — Gerber 3 (3) 5-520, Pohlmeier 2 (1) 2-29, Birkenfield 2 (1) 0-0 7, Ball 1 2-2 4, Ramaekers 10-0-2, Schmucker 1 0-0 2. Totals 19 (5) 9-12 44.

Muleshoe 5 7 7 16 35  
Nazareth 11 13 12 8 44

Cowart 0 0-0 0, Benham 1 0-0 2, Williams 4 0-1 8, Wood 2 4-4 8, Slayden 2 3-6 7. Totals 12 15-23 39.

Nazareth (34) — Ethridge 1 2-2 4, Schulte 0 0-0 0, Braddock 1 0-0 2, Birkenfield 4 1-2 9, Mauser 1 0-0 2, Ball 1 0-0 2, Book 1 0-12, Schmucker 1 0-0 2, Kern 0 0-0 0, Wilhelm 5 1-2 11. Totals 15 4-7 34.

MHS 10 12 4 11 39  
Nazareth 8 11 11 4 34

## Lady Mules JV improve to 12-3

**NAZARETH** — Melissa Williams and Ellen Wood each scored 8 points and Muleshoe rallied from a four-point deficit in the fourth quarter to beat Nazareth 39-34 in a junior var-

sity game Tuesday.

Julie Slayden scored five points in the fourth quarter as Lady Mules (12-3) overcame a 30-26 deficit. MHS made 9 of 16 free throws in the quarter.

## Silverton sweeps Lazbuddie

### Shorthanded effort falls short

**SILVERTON** — Dara Ramsey's late 3-point rampage Tuesday broke open a tight game, lifting Silverton to a 44-34 non-district win.

Two Lazbuddie starters missed the contest to take part in the halftime show at the Citrus Bowl in Orlando, Fla. New Year's Day and a third starter was weakened by the flu.

"I'm proud of the kids, being that we were shorthanded," Lazbuddie coach Carey Sudduth said. "I was real concerned we might get hammered."

Lazbuddie stayed close until midway the fourth quarter when Ramsey hit three-straight 3-pointers. Silverton also made 8 of 10 free throws in the fourth quarter to seal the win.

The Lady Longhorns beat Silverton 52-49 earlier this season.

Mandy Magby led Lazbuddie (12-4) with 10 points. Rachel Rodriguez and flu-stricken Holly Engelking added 7. Leading scorer Roxann Warren and Kia Morris missed the game.

Ramsey led Silverton (9-6) with 16 points and 6-1 post Lacy Brunson added 14. Silverton hit a total of five 3-pointers in the game.

### 'Horns struggle to find consistency in 73-58 loss

**SILVERTON** — Lazbuddie has trouble getting up for certain games and it's driving coach Gary Grahn crazy.

"We came out flat once again," Grahn said after Silverton breezed by Lazbuddie 73-58 Tuesday in non-district game. "We were playing catchup all night and we just didn't get it done. There are no excuses."

Silverton (9-6) outscored Lazbuddie 16-10 in the second quarter and took a 39-29 halftime lead.

Lazbuddie (11-3) scored a total of 18 points in the second and third quarters.

Israel Lopez led Lazbuddie with 16 points and Justin St. Clair added 12.

LHS 19 10 8 21 58

Silverton 23 16 11 23 73

Leading scorers — Lazbuddie: Lopez 16, St. Clair 12.

Silverton: Cherry 25, Wyatt 18, Sarchet 11.

### Journal sports

Locals scores and more

Home Folks Caring For Folks At Home.



## MULESHOE AREA HOME HEALTH

Agency

### Featured Patient

Gabriel Hernandez has lived in Muleshoe since 1954. He is married to Mary and they have one daughter - Rose Mary Rangel. They have three grandchildren and two great-grandchildren. He has worked as a farmer in his past.

The girls at the Muleshoe Area Home Health Agency are all very nice and have been very good to him.



Gabriel Hernandez

To receive Home Health Services, talk with your physician or talk with hospital personnel when you are hospitalized.

24 Hour # 272-3346

Local Nurse on call 24 hours a day to offer prompt service.

We accept Medicare, Medicaid and Private Insurance

It Is Your Right To Choose The Home Health Agency You Prefer.

Affiliated with LUBBOCK METHODIST HOSPITAL SYSTEM

FREE Information On Advance Directives

Also known as Living Wills or Right To Die Directives.

You may call our agency 272-3346 for these directives. You may also obtain these forms and assistance at 623 West 2nd Street.



# Think Quick!

GM Goodwrench Quick Lube Plus oil change. It's fast — or it's free!

Bring your car or light truck to us for a GM Goodwrench Quick Lube Plus oil change. We'll complete all of these services in 29 minutes or less or your next oil change is free:

- Refill your engine with up to 5 quarts of GM Goodwrench<sup>®</sup> Motor Oil
- Install a new ACDelco Oil Filter
- Perform a complete chassis lube
- Check fluid levels: brake fluid, differential fluid, power steering fluid, transmission fluid, windshield washer fluid, transfer case fluid (4wd vehicles)
- Inspect: drive belts, hoses, air filter, tire pressure

SPECIAL \$17.00

GM Goodwrench QUICK LUBE plus

DOC STEWART  
CHEVROLET • GEO • BUICK

2500 Mabry Drive  
Clovis, NM  
505-763-4465  
1-800-530-8842



**PUBLIC RECORD**

**OBITUARIES**

**Viola M. Vestal**  
 MORTON — Funeral services for Viola M. Vestal, 99, of Morton were held Jan. 3 at Taylor Street Church of Christ with Bill Schlabach, minister, and Albert McSpadden of Lubbock officiating.  
 Burial followed in the Littlefield Memorial Park.  
 Mrs. Vestal died Jan. 1 at Cochran Memorial Hospital after an illness. She was born Aug. 1, 1897.  
 She married Robert Allen in 1929 in Bula, Texas. He died in 1971.  
 Mrs. Vestal had been a resident of Morton since 1961 moving here from Bula. She was a homemaker and a member of Taylor Street Church of Christ. She was preceded in death by two sons, Gurnie Vestal 1978, Kenneth Vestal in 1993; and one daughter, Beatrice Ketterman in 1974.  
 Survivors include two sons; B.B. Vestal of O'Donnell, Texas, R.A. Vestal, Jr. of Morton; five daughters, Valera Young of Olton, Florence Hancock of Roswell, N.M., Vivian Nebhut of Morton, Janet Sikes of Valley Center, Calif., and Dolores Drake of Littlefield; 20 grandchildren, 67 great-grandchildren, 23 great-great-grandchildren.  
 Family wishes memorials to Morton Senior Citizens or a favorite charity.

Burial followed in the Muleshoe Memorial Park Cemetery.  
 Mr. Benedict died Dec. 30 at his residence. He was born March 27, 1921 in Glenrock, Wyo. He married ECE Marshall Aug. 20, 1939 in Tyler, Texas.  
 Mr. Benedict moved to Muleshoe from Plainview in 1962. He was an insurance underwriter for Southwestern Life Insurance Company. He was a member of the Muleshoe Masonic Lodge #1237. He has received his 50-year pin from this Lodge. He was a 32nd degree Mason and was past Master of the Scottish Rite of Lubbock.  
 He was a veteran of WWII serving in the U.S. Army. He was a member of the VFW, American legion and the Disabled American Veterans. He was a member of the First Baptist Church of Muleshoe.  
 Survivors include his wife, ECE Benedict; one son, Mark Kevin Benedict of Vernon, Texas; one brother, Buddy J. Benedict of Tulsa, Okla.; two granddaughters, Kendra and April Benedict of Vernon.  
 The family suggests memorials to Muleshoe Meals on Wheels, 300 S. First, Muleshoe, Texas 79347, and Crown of Texas Hospice 1000 S. Jefferson, Amarillo, Texas 79101.

**HOSPITAL ADMISSIONS**

The Muleshoe Area Medical Center reported the following admissions.  
**Dec. 27** — Jimmy Gilliam, Maria Salinas, Diana Ramirez, Steve Griswold, Rita Locker, Lucia Aguirre, Margie Martinez, Dale Griswold, Nancy Solis, Lillie Wuerflein, William Meyers, Velma Gwyn, Irvin Ott, Salvador Cabrera, Vera Neer  
**Dec. 28** — David Andugo, Maria Salinas, Diana Ramirez, Thurman White, Steve Griswold, Lucia Aguirre, Jasper Woodson, Dale Griswold, Nancy Solis, Lillie Wuerflein, Virginia Ortiz, Velma Gwyn, Irvin Ott, Salvador Cabrera, Vera Neer  
**Dec. 29** — Maria Salinas, Diana Ramirez, Angelica Rosas, Julie Sisneros, Thurman White, Lucia Aguirre, Jasper Woodson, Ambrosio Pesina, Lillie Wuerflein, Virginia Ortiz, Velma Gwyn, Irvin Ott, Salvador Cabrera, Vera Neer  
**Dec. 30** — Marie Salinas, Diana Ramirez, Melissa Madrid, Angelica Rosas, Baby girl Rosas, Julie Sisneros, Thurman White, Lucia Aguirre, Jasper Woodson, Ambrosio Pesina, Lillie Wuerflein, Virginia Ortiz, Velma Gwyn, Bobby Gover, Vera Neer

**Dec. 31** — Martha Young, Melissa Madrid, Angelica Rosas, Baby girl Rosas, Julie Sisneros, Virginia Wyer, Ambrosio Pesina, Lillie Wuerflein, Virginia Ortiz, Hettie Keller, Jean Kemp  
**Jan. 1** — Martha Young, Angelica Rosas, Baby girl Rosas, Marie Wooley, Altha Turner, Virginia Wyer, Ambrosio Pesina, Lillie Wuerflein, Virginia Ortiz, Hettie Keller, Jean Kemp  
**Jan. 2** — Martha Young, Angelica Rosas, Baby girl Rosas, Avanelle Lenderson, Marie Wooley, Altha Turner, Virginia Wyer, Ambrosio Pesina, Lillie Wuerflein, Virginia Ortiz, Hettie Keller, Jean Kemp



Use a solution of one part vinegar and one part linseed oil to rub off ink stains on varnished wood. Use a soft cloth.

**1040ASAP.**

The faster way of getting your income tax refund...  
 Rapid Refund electronic filing from H&R Block.



You worked for it, why wait longer than you need to?  
 You owe it to yourself to get the highest refund possible, as quickly as possible. So ask about Rapid Refund at a convenient location near you.

**H&R BLOCK**

Kay Wiseman, Owner  
 224 West 2nd Street  
 Muleshoe, TX 79347  
 Telephone (806) 272-3332

**H&R BLOCK®**

THE INCOME TAX PEOPLE

If no answer  
 Call: (806) 946-3696

**MULESHOE AREA RETIRED TEACHERS**

The Muleshoe Area Retired Teachers met Dec. 20 at the 16th & D Church of Christ for a Christmas lunch and party. Hostesses were Ann Oyler, Nan Johnson, and Norma Prather.  
 Margie Moore led the group in games and the exchange of white elephant gifts.  
 Members who attended were Joyelene Costen, Elizabeth Watson, Letha Patterson, Ann Oyler, Alene Bryant, Betty

Jo Davis, Norma Prather, Wilma Smith, Nan Johnson, Maude Blaylock, and Margie Moore.

**Complete Line Monuments - Markers Memorials Granites - Bronze**  
**Muleshoe Memorial Park Cemetery, Inc.**  
 1631 W. American Blvd.  
 P.O. Box 373 Muleshoe, TX  
 272-5727 or 272-4670

**V.L. "Vic" Benedict**  
 Funeral services for V.L. "Vic" Benedict, 75, of Muleshoe was scheduled Jan. 2 at First Baptist Church with Rev. Stacy Conner, pastor, officiating.

**BIRTH**  
**Emily Ashton Stancell**  
 Kyle and Molly Stancell wish to announce the birth of their daughter, Emily Ashton. Emily Ashton was born Dec. 19 at Lubbock Methodist. She weighed 7 lbs., 13 oz. She has a two-year-old sister, Caitlyn Shea.  
 Grandparents include Richard and Nancy Miller of Farwell; Bennie and Carolyn Stancell of West Camp. Great-grandparents are J.V. and Lois Stancell of Westcamp; Bill Herd of Iowa, and Oliver Miller also of Iowa.

**Ready or Not, Here Comes 1997!**

Ready or not, here comes 1997! I heard the clock strike twelve on New Year's Eve and noticed immediately that 12:00 a.m., January 1, 1997 seemed remarkably similar to 11:59 p.m., December 31, 1996.  
 Hmm. That same sort of uncommonly common sameness will probably be on hand a good while from now when, in the space sep-

most of us expect to be wrought at the instant we turn the page and hang up a new calendar, but we expect something new, something at least a bit different, don't we? Is that irrational? Maybe.  
 But 1997 is, if just because of a human calendar, at least something of a new page for all of us, and I for one would never throw rocks of cynicism at anyone who sees a new year as an opportunity to dream new dreams, to draw a deep fresh breath of hope, and to resolve to squeeze every bit of potential out of the new year God has just placed in our hands.  
 The Apostle Paul had something of this sort in mind when he wrote these words: "Forgetting what is behind and straining toward what is ahead, I press on toward the goal for which God has called me heavenward in Christ Jesus."  
 You'll notice that he had a goal in mind, that he was looking joyfully ahead, and that though he fully expected running the race, completing the journey, to take all of his strength, he knew the prize would be worth the price, that he would never run alone, and that the One who set him on the course would be absolutely faithful to help him complete it.  
 If you know that, too, then I'm convinced that you can look forward to 1997 with a genuine hope which is as different from blind optimism as real diamonds are from polished glass.



**Focus On Faith**  
 Curtis Shelburne

arating two heartbeats, I turn from a 39-year-old into a 40-year-old.  
 I suspect it'll probably be pretty much the same thing for all of us, but with lots of hoopla and some outright craziness attached, when December 31, 1999 rolls right on into January 1, 2000. (Yes, I know the millennium doesn't change until January 1, 2001, but, trust me, most folks are gonna get more thrills out of the four-digit odometer roll! Speaking of "craziness," this "prophecy" is free, but I expect any number of cut-rate Hal Lindsey-style non-prophecs to come out of the woodwork making huge profits selling "end-time" books to eager but gullible fans. Beware!)  
 I don't know exactly what kind of momentous life-changing magic

Curtis Shelburne is minister of the 16th & D Church of Christ in Muleshoe.

**Federal Land Bank Association**  
 316 Main St., Muleshoe  
 806-272-3010  
 Long Term Financing for Farms, Ranches, Rural Housing, Operating and Improvements.  
**Current Variable Rate 7.95%.**  
 Fixed rates are available.  
 Call for quote.  
 A Property Rights Advocate and Equal Opportunity Lender.

Horseback riding uses up 345 calories a hour—for the rider that is.

**Your SUPERBOWL Headquarters** Here's to a Great 1997!

**ALLSUP'S Chuck Wagon** Combo Meals

**COMBO OF THE MONTH** 2 Hot Diggidy Corn Dogs & Tallsup **\$1.89**

|  |   |   |
|--|---|---|
| <b>COMBO OF THE QUARTER</b><br>Sausage or Canadian Bacon, Egg & Biscuit, Hashbrowns, & 22 oz. Soft Drink or 16 oz. Coffee<br><b>\$2.09</b><br>WITHOUT EGG \$1.79 | <b>COMBO OF THE QUARTER</b><br>Sauteeya, Western Style Potato Wedges & Tallsup<br><b>\$2.29</b> | <b>COMBO OF THE QUARTER</b><br>BBQ Beef Sandwich Western Style Potato Wedges & Tallsup<br><b>\$2.29</b> |
|--|---|---|

|   |  |   |
|---|--|---|
| SAVE ON <b>Coca-Cola</b> 12 oz. cans 6 pack <b>\$2.34</b> | VALLEY FARE <b>Dog Food</b> 20 LB. BAG <b>\$3.99</b> | DECKER <b>Chopped Ham</b> 10 OZ. PKG. <b>\$1.39</b> |
|---|--|---|

|  |   |   |
|--|---|---|
| <b>Doritos</b> ALL VARIETIES \$2.19 SIZE <b>\$1.79</b> | <b>Gold Medal Flour</b> 5 LB. BAG <b>\$1.19</b> | <b>Cuddles Diapers</b> ASSORTED 26 CT. MED./20 CT. LRG. <b>\$4.59</b> |
|--|---|---|

**You'll Find All This and More at Your Allsup's Store**  
 Store #34 318 W. American Blvd. 272-4862 MULESHOE

|  |                                       |
|--|---------------------------------------|
| <b>BAR-B-QUE WHOLE CHICKEN</b> <b>\$4.99</b> | <b>JOHNNY RIB SANDWICH</b> <b>99¢</b> |
|--|---------------------------------------|

**ALLSUP'S Always** **LOW PRICES, GREAT PRODUCTS 24 HOURS A DAY**  
 PRICES EFFECTIVE JANUARY 5-18, 1997 OFFER GOOD WHILE SUPPLIES LAST



# NURSING HOME NEWS

By Joy Stancell

Our prayers and best wishes go to each of you for a wonderful and blessed 1997!

Wednesday, Christmas Day, Glenda Jennings came to Sing with the residents. Holly Ann Millsap also came for the event.

Sunday afternoon Billie Downing came for gospel music time. Richard Cunningham lead us in singing Rock of Ages. The "ol" favorite of many of our residents.

Gary and Glenda Dale visited the Healthcare Center Sunday afternoon.

Tuesday afternoon Nancy Kidd, Mary Jo Burge and the Activity Dept. shampooed and set the ladies hair.

We wish to express our heartfelt sympathy to the family and friends of Hazel Price.

We had a very nice Christmas at the Healthcare Center. We know this was made possible by so many thoughtful and concerned folks of our community. To those who came by for a visit, came caroling, brought gifts of food

or flowers, presented a special program helped with a party, sent cards, we are grateful.

Wednesday morning we started the new year with donuts and gospel music and song with Scott Pace and Bobbie Johnson.

Wednesday after our new years' refreshments of punch and cookies Billie Downing played our favorite Waltz on the piano. Soon afterwards Glenda Jennings and Jonessa Brockman treated us to music, singing and puppet show.

Robbie Sneed and family gave Rosie Sneed a surprise visit Wednesday.

Happy January Birthdays to Janetta Huckill 1/23; Mr. Romero 1/11; Lucille Tuggle 1/22. The January Birthday party is scheduled for Thursday Jan. 23 at 3 p.m. You are invited.

Mr. and Mrs. R.A. Bradley visited the Care Center Wednesday among those he visited were Bill Darnell.

Nettie Quesenberry's nieces visited her Wednesday afternoon.

# HI-TEK

# AUTOMOTIVE

has moved to its new location

**322 North First Muleshoe**

(Old James Crane Tire Building)

**272-3480**

# BAILEY COUNTY DEVOTIONAL PAGE

**Scoggin Ag Center, Inc.**  
*"Where Fertilizer Is Our Business"*  
 1532 W. American Blvd.  
 272-4613

---

**IRRIGATION PUMPS & POWER**  
**ZIMMATIC CENTER-PIVOTS**  
 W. Hwy. 84 272-4483

---

**MAPLE COOP GIN**  
 927-5501  
 Maple, Texas

---

**Leal's Tortilla Factory, Inc.**  
*"Serving West Texas since 1957"*  
 107 E. Ash 272-5772 Muleshoe, TX

---

**Muleshoe Country Club & Golf Shop**  
 900 Country Club Dr. 272-4250  
 Swimming, Dining, Golf Lessons Available Golf Accessories & Clothing

---

**Discount Computer & Repair Service**  
**Computek**  
 1-800-687-3816  
 272-5404

---

**BOBO INSURANCE AGENCY**  
 108 E. Ave. C 272-4264

---

**Shipman's Body Shop**  
 Auto Painting • Wrecker Service • Free Estimates  
 Tractor Glass & Windshields  
 410 N. 1st Muleshoe, TX  
 272-4408 FAX 272-3366

---

**SAIN IRRIGATION & MACHINES**  
**Complete Pump Service**  
 W. American Blvd. 272-4397  
 Walt Sain Muleshoe, TX 272-4148

---

**Bob STOVALL Printing**  
 Quality -- Service  
**221 E. AVE. B 272-3373**  
 C.R. & EVA NELL DALE MULESHOE

---

**Ellis Funeral Homes**  
 Muleshoe - Morton - Earth - Sudan Texas

---

**RONNIE HOLT INSURANCE AGENCY**  
 Specializing in Crop, Life & Health Insurance  
 Western 66 Office Bldg.  
 272-4271 Muleshoe, TX

---

**PACO FEED YARD, INC.**  
*Commercial Cattle Feeders*  
 P.O. Box 956 265-3281  
 Friona, TX  
 Feller Hughs-Mgr.

---

**WEST CAMP GIN, INC.**  
*Better Ginning & Courteous Service*  
 Rt 2, Box 1000  
 925-6681 Muleshoe, TX  
 James Shepard • Phyllis Shepard

---

**JAMES CRANE TIRE CO., INC.**  
 322 N. First 272-4594  
 Mike Hahn Muleshoe, TX

## Facts About The BIBLE BY JOHN LEHTI

Copyright © John A. Lehti, Dallas-Lubbock, Texas. Member, N.Y. NATIONAL SALES REPRESENTATIVE, The Advertising Service, 270 E. 4th St., Saskatoon, S. 27030

**HER NAME HAS BECOME PART OF OUR LANGUAGE—JEZEBEL!**



...SHE INSTALLED, IN THE PALACE, AND SUPPORTED, NINE HUNDRED PRIESTS OF THIS HEATHEN RELIGION AND, IN TURN, HUNTED DOWN THE PRIESTS OF ISRAEL AND SLAUGHTERED THEM WHERE EVER SHE COULD! LOUNGING IN ORIENTAL LUXURY IN THE PALACE, SHE DIRECTED THE POLICIES OF THE KINGDOM, WHILE AHAB SAT MEEKLY BY HER SIDE, NEVER DARING TO DISPUTE HER. HER SCHEMINGS, HER CRUELITIES, AND HER PASSION FOR BLOOD-SPILLING ARE RECORDED IN THE BOOK OF I KINGS. ONLY ELIJAH, THE GREAT PROPHET, STOOD UP AGAINST THIS WICKED QUEEN AND FOUGHT HER EVIL INFLUENCE AT EVERY TURN. HER OWN DEATH AND DESTRUCTION WAS PREDICTED BY THE PROPHET AND TOOK PLACE EXACTLY AS HE PROPHESIED IT WOULD! (I KINGS 9:30-37)

IT HAS BEEN A CUSTOM, IN MODERN TIMES, WHEN A WOMAN ATTRACTS AND SEEMS TO EXERT UNDUE INFLUENCE OVER A MAN, OR MANY MEN, FOR PEOPLE TO CALL HER A JEZEBEL. HOWEVER, NO MODERN COUNTERPART COULD EVER COMPETE WITH THE ORIGINAL JEZEBEL FOR DOWNRIGHT EVIL AND MURDEROUS ACTS! BORN A PHOENICIAN PRINCESS, DAUGHTER OF KING ETHBAAL, SHE MARRIED KING AHAB OF ISRAEL (CIRCA 865 B.C.). AND, IN SHORT ORDER, COMPLETELY DOMINATED THIS WEAK-WILLED RULER. ONCE AHAB WAS UNDER HER CONTROL, JEZEBEL IMMEDIATELY SET ABOUT DESTROYING ISRAEL'S RELIGION AND REPLACING IT WITH THE WORSHIP OF BAAL AND ASTARTE, PHOENICIAN DIETIES OF HER HOMETLAND....



**NEXT WEEK: HE HAD TO REBUILD THE WALLS TO REBUILD A NATION!**

SAVE THIS FOR YOUR SUNDAY SCHOOL SCRAP-BOOK

**This devotional & directory is made possible by these businesses who encourage all of us to attend worship services.**

- |   |   |   |
|---|---|---|
| <p><b>ASSEMBLY OF GOD</b><br/> <b>FIRST ASSEMBLY OF GOD</b><br/>                 521 South First Street • 272-3017<br/>                 Jack Stone, Min. • 272-3984<br/>                 S.S. 9:45 a.m., W.S. 11 a.m. &amp; 6:30 p.m., Wed. 7:30 p.m.</p> | <p><b>TRINITY BAPTIST</b><br/>                 314 E. Ave. B<br/>                 Robert Brown, Min.</p> <p><b>CATHOLIC</b><br/> <b>IMMACULATE CONCEPTION CATHOLIC</b><br/>                 805 E. Hickory<br/>                 Joseph Augustine, Min.</p> <p><b>CHRISTIAN</b><br/> <b>THE CHRISTIAN CENTER</b><br/>                 Morton Hwy. • 272-5105<br/>                 Reydon Stanford, Min.</p> <p><b>CHURCH OF CHRIST</b><br/> <b>LARIAT CHURCH OF CHRIST</b><br/>                 Sam Billingsley, Min.<br/>                 S.S. 10 a.m.; W.S. 11 a.m. &amp; 6 p.m., Wed. 7 p.m.</p> <p><b>LAZBUDDIE CHURCH OF CHRIST</b><br/>                 Nathan Crawford, Min.<br/>                 S.S. 9:30 a.m.; W.S. 10:20 a.m. &amp; 5 p.m.; Wed. 7 p.m.</p> <p><b>MULESHOE CHURCH OF CHRIST</b><br/>                 22nd &amp; W. American Blvd.<br/>                 John Knox, Min.<br/>                 S.S. 9:30 a.m.; W.S. 10:20 a.m. &amp; 6 p.m.; Wed. 7:30 p.m.</p> <p><b>SIXTEENTH &amp; AVE. D CHURCH OF CHRIST</b><br/>                 Curt Shelburne, Min. • 272-4619<br/>                 W.S. 10:30 a.m. &amp; 6 p.m.; Wed. 7:30 p.m.</p> | <p><b>LUTHERAN</b><br/> <b>ST. JOHN LUTHERAN</b><br/>                 Lariat, TX<br/>                 Richard Greenthaler, Min.<br/>                 S.S. 10:30 a.m.; W.S. 9:30 a.m.</p> <p><b>METHODIST</b><br/> <b>FIRST UNITED METHODIST HISPANIC MINISTRIES</b><br/>                 E. 5th and E. Ave. D<br/>                 Pastor Benito Cavazos</p> <p><b>FIRST UNITED METHODIST</b><br/>                 507 W. 2nd St.<br/>                 Pastor John Wagoner</p> <p><b>LAZBUDDIE METHODIST</b><br/>                 965-2121</p> <p><b>EL DEVINO SALVADOR</b><br/>                 814 W. Ave. C, Muleshoe, TX<br/>                 Guadalupe Ballinas, Min.</p> <p><b>NAZARENE</b><br/> <b>NEW VISION CHURCH OF THE NAZARENE</b><br/>                 814 W. Ave. C • 272-3622<br/>                 David R. McIntire</p> <p><b>PENTECOSTAL</b><br/> <b>IGLESIA PENTECOSTAL UNDA</b><br/>                 207 East Ave. G • 272-3636<br/>                 Wencelado Trevino, Min.</p> <p><b>INTER DENOMINATIONAL</b><br/> <b>NEW COVENANT</b><br/>                 Plainview Hwy.<br/>                 Jimmy Low, Min.<br/>                 S.S. 9:30 a.m.; W.S. 10:15 a.m.; Wed. 7 p.m.</p> |
|---|---|---|

**1st BANK** MEMBER FDIC  
 202 South First 272-4515

---

**WES-TEX FEED YARDS, INC.**  
 Custom Cattle Feeding  
 272-7555 Muleshoe, TX

---

**AMERICAN AVIATION INC.** West Hiway 84 272-4266 Muleshoe

---

**BAILEY GIN COMPANY, INC.**  
 946-3397  
 Sudan, TX  
 Peanut Hawkins, MGR

---

**WESTERN DRUG**  
 114 Main 272-3106 Muleshoe

---

**Church's CHICKEN** 272-5581  
 1411 W. American Blvd., Muleshoe

---

**HERITAGE HOUSE INN**  
 2301 W. American Blvd. 272-7575  
 Muleshoe, Texas  
 Clint & Evelyn Peat - Resident Owners  
 Reservations 1-800-253-5896

---

**BRUCE, INC.**  
 AIR CONDITIONING  
 Hwy. 214 North 272-5114  
 Muleshoe, TX  
 TAOL-B003360C, LP08638

---

**MULESHOE COOPERATIVE GINS**  
 P.O. Box 569  
 272-4794 Muleshoe, TX

---

**MULESHOE AREA HEALTHCARE Center**  
*"Committed to Caring"*  
 106 W. Ave. H Muleshoe 272-7578

---

**MULESHOE MOTOR CO.**  
 1225 W. American Blvd. 272-4251

---

**"THE FIVE AREA TELEPHONE COOPERATIVE ORGANIZATION"**  
 West Plains Telecommunications Co.  
 Five Area Systems, Inc., Plateau-Cellular Network  
 Five Area Long Distance - Five Area Internet  
 302 Uvalde Muleshoe, USA (806)373-5533

---

**WANDA BROWND INSURANCE AGENCY**  
 104 W. 12th Muleshoe 272-7548  
 Since 1957 - The Original

---

**Leal's Mexican Restaurant**  
 1010 W. American Blvd. 272-3294  
 Muleshoe, TX Victor & Debbie Leal

---

**Risinger Plumbing**  
 Serving Muleshoe Area  
 All Plumbing Repairs  
**272-6772**



# Journal Classifieds

Call 272-4536 Deadlines: For Thursday, 5 p.m. Monday; For Sunday, 5 p.m. Thursday Call 272-4536

**AUTOMOBILE**  
 '94 Chevy Extended Cab, Silverado 6.5 Turbo diesel, Automatic, bucket seats, loaded, extra, extra clean, 49,000 miles, \$19,995, (505)359-1775, Portales, N.M.  
 '91 Ford Explorer, 2 wheel drive, sports package, 55,000 miles, gold, \$9,700, (505)359-0947, Portales, N.M.  
 '90 Cadillac Sedan DeVille, loaded, white, \$9,995, (505)359-1775, Portales, N.M.  
 '94 GMC Suburban, 350, Automatic, Front and Rear air conditioning and heat, White, \$18,995, (505)359-0947, Portales, N.M.  
 '91 Ford Regular Cab, Diesel, 1 ton flat bed, extranice, \$9,995, (505)359-1775, Portales, N.M.

**MISCELLANEOUS**  
 Start Dating Tonight! Have fun playing the Texas Dating Game 1-800-ROMANCE ext. 4743  
 49s-13tc  
 I would like to locate Kenneth Maxwell formally of Muleshoe. Contact Leon Watson (806)792-8579.  
 1s-2tc  
 Concealed Handgun Course  
 Jan. 11  
 8 a.m. to 6 p.m.  
 For details contact  
 Toby Turpen  
 806-364-6362  
 2s-2tc  
 FOR YOUR W-2 AND 1099 NEEDS SEE KAY WISEMAN AT 224 W. 2ND MULESHOE, TX PHONE 272-3332  
 2s-1tc

**WANTED**  
 \$\$\$WANTED\$\$\$  
 We buy used mobile homes. We pay top dollar, any year, any condition. We need your used mobile home. Please call 1-800-404-1321.  
 7t-1tc  
 House cleaning done by the week, bi-weekly, monthly. Whether it is rentals, houses or offices. Call Renee at 272-5957  
 1s-10tpd  
**HANDYMAN** no job too small. Repairs or improvement of all types (carpentry, electrical, painting, plumbing, etc.) Free estimates. Ask for Mick at 272-6791.  
 2s-8tc

**FOR SALE**  
 3 Piece Sectional. Multi. Blue and Gray. \$200. Call 272-3597.  
 2s-2tc  
 For Sale: 2 lots. Highland addition. CHEAP. Make offer. (210) 563-2385. Located south of Muleshoe Church of Christ.  
 2s-2tpd  
**PET GROOMING**  
 Circle E Pets & Grooming  
 Available for bathing & grooming dogs. For more information call Renee at 272-4118  
 1t-9tc

**BETTER LIVING**  
 MOBILE HOMES  
**CLEARANCE**  
 All '96 Models Must Go!  
 Come Check Us Out - Fantastic Savings On All Homes  
 1-800-404-1321 Portales, NM (505)356-5448  
 Lic. # D06681 'Se Habla Espanol'

**HAY FOR SALE**  
 German millet hay, haygrazer and large round bales.  
 Delivery available discounts on quantity.  
 Call (505) 276-7522, 477-2220, 359-0947, 276-7527  
 41t-1tc

**CRUCE AND FLETCHER AUCTIONEERS**  
 Conducting all types of sales - All inquiries confidential.  
 Farm Equipment, Real Estate, Appraisals, Shop Equipment, Estates.  
 If you would like to be on our Mailing List Please  
 Call James G. Cruce  
 806-296-5050  
 or Bobby Fletcher  
 806-866-4201  
 47s-22tc

**PRIMESTAR**  
 \$50 off installation call Gabriel for details  
 272-3072 or 1-800-815-2358 pin 9240  
 38s-tfc

**SALE OF FARM REAL ESTATE**  
 354 acres all in Bailey County. All of loblars 16 & 17. League 188, Ector County School Land, Bailey County.  
 The Farm Service Agency (FSA) will sell at a Trustee's Foreclosure Sale to the highest bidder or bidders, for cash, at the easterly courthouse door (doors facing SH 214) in Muleshoe, Bailey County, Texas at 10:00 a.m. Tuesday, January 7, 1997. FSA's minimum bid is \$88,494. For specific information contact the Ag-Credit Specialist, Johnell S. Bryant at 4412 74th St., Suite E-100, Lubbock, TX 806-792-0070 or Joyce Thompson, Ag-Credit Manager, Muleshoe, TX, 806-272-5549.  
 FSA IS AN EQUAL OPPORTUNITY LENDER

**Byrd Realty**  
 Ronald Byrd Farwell, Texas Licensed Broker  
 Office (806) 481-3846  
 Mobile (505) 760-1495  
 308 Third St., Farwell, TX  
 Crista Bas Sales Assoc.  
 Home (806) 644-6464  
 78 Acres NW of Muleshoe, Highway Frontage. Excellent development property. Owner will sell as one unit for \$40,000 or will divide into 5 or 10 acre tracts at \$750.00 per acre. If you have wanted a small acreage, this is your prime opportunity  
 320 Acres N.E. of Muleshoe. 4 wells, 2-Electric sprinklers, large 2 story stucco house, large barn, lays well

**James F. Hayes & Co.**  
**AGRICULTURAL REAL ESTATE SERVICES**  
 656 Acres of C.R.P. - Clays Corner Hub Area. Two years left on contract. 3 irrigation wells, 1 domestic well, 90% lays good with good soils. Will be productive farm when it comes out of C.R.P.  
 640 Acres Oklahoma Lane. - 2 Sprinklers, 4 irrigation wells, 115 Acres of pasture, modest home, 2 domestic wells  
 120 acres west of Muleshoe. 2 wells. Good soil. Lays good. Immediate possession available. \$250.00 per acre.  
 160 Acres Northeast of Muleshoe in Parmer County. Excellent water. Excellent soil. Electric Center Pivot Sprinkler. New set of bowls on pump. Top Notch Farm  
 317 Acres in Lamb County on Bailey County line. 3 wells, 1 sprinkler, lays good. Call for details!  
 654 Acres in southern Bailey County. Grain sorghum & wheat allotment. Signed into program.  
 320 acres - Labyrinth area, 2 wells, 1 sprinkler, 60 acres of C.R.P. Good Soil  
 640 Acres of New Mexico State Lease Land. Half mile Center Pivot Sprinkler. 2 irrigation wells, Barns, Pens.\*  
 240 Acres in Northwestern Lamb County near Bailey County line. Good Soil, Lays good, 3 wells.

**CLASSIFIEDS NEW RATES**  
 DISPLAY \$3.36 PER SQUARE INCH  
 15 WORDS & UNDER: (first run) \$3.90 (second run) \$3.30  
 16 WORDS & OVER: \$.26 A WORD (first run) \$.22 A WORD (second run)

**Vic Coker, Agent**  
 310 Main St. Suite 103 Muleshoe  
 Office 272-3100 Home 965-2468  
 WHEN LAND INVOLVES COWS AND PLOWS  
 \* in cooperation with a New Mexico Broker

**Subscribe Today!**  
**Muleshoe Journal and Bailey County Journal**  
**SUBSCRIPTION RATES**  
 Carrier \$22<sup>00</sup> Year  
 Muleshoe-By Mail \$24<sup>00</sup> Year  
 Out Of Town \$26<sup>00</sup> Year  
 Call Today 272-4536

**HELP WANTED**  
 Part-time and Full-time RN or LVN visiting nurse needed, also need certified Home Health aide. Contact MediPlex Home Health, 100 E 3rd St. Littlefield, 385-3122, or 1-800-488-8382.  
 2s-2tc  
 ATTENTION! Texas oil co. needs dependable person to work without supervision locally. Training. Write W.T. Hopkins, Texas Refinery Corp., Dept. W-79347, Box 711, Ft. Worth, TX 76101.  
 2s-1tc  
 RN - weekends  
 54-bed Medicaid approved nursing home. Competitive salary. Excellent benefits. Contact Terri Brown, D.O.N. at Muleshoe Area HealthCare Center, 106 W. Avenue H, Muleshoe, Tx 79347. 806-272-7578.  
 2s-suntfc

**Must Sell! 1996 Ford Explorer**  
 4-Door, 4 wheel drive, XLT, Luggage Rack, power windows, power door locks, tilt steering wheel, cruise control, am/fm stereo cassette and much more, no old contract to assume, no back payments to make, just need responsible party to make reasonable monthly payments.  
 Contact Doug in the Credit Dept.  
**Friena Motors 806-247-2701**

**Must Sell! 1992 Ford Explorer**  
 4-door, 4X4, XLT, Power windows, locks, tilt, cruise, am/fm stereo cassette, luggage rack, and much more, no old contract to assume, no back payments to make, just need responsible party to make reasonable monthly payments  
 Contact Doug in the Credit Dept.  
**Friena Motors 806-247-2701**

**Must Sell! 1994 Chevy Camaro**  
 2-Door, T-Tops, Automatic Transmission, Power Windows, locks, tilt, cruise control, AM/FM Stereo cassette and much more, no old contract to assume, no back payments to make, just need responsible party to make reasonable monthly payments.  
 Contact Doug in the Credit Dept.  
**Friena Motors 806-247-2701**

**Must Sell! 1995 Lincoln Town Car**  
 Town Landau Roof Pkg., Leather, Dual power seats, power windows, power door locks, tilt steering wheel, cruise control, auto headlamps, and much more, no old contract to assume, no back payments to make, just need responsible party to make reasonable monthly payments.  
 Contact Doug in the Credit Dept.  
**Friena Motors 806-247-2701**

**REAL ESTATE & FARM EQUIPMENT AUCTION**  
 Tuesday, January 7, 1997 - Sale Time: 10:00 a.m.  
 REAL ESTATE WILL SELL AT 12:00 NOON  
 LOCATED: Farwell, Texas (East Side Of Town On Hwy. 70-84).  
**KAGEES FARMS, INC. - Owners**  
 Telephone: Gene Or Mona Hargade (806)481-9088, Or Jimmy Reeves (806) 864-3362 Or Merv Evans (806) 293-8195  
 We Are Retiring From Farming And Will Sell The Following At Public Auction:

**TRACTORS, SKID LOADER -**  
 1-1988 Massey Ferguson 3680 M.F.W.D. Diesel Tractor, Cab, A/C, Hdr., Radio, Autosteer Trans. D.H., Wts., 18 4x26 Rear Hub, 14 5x28 Front Hub. (5490 Hrs.)  
 1-1985 Massey Ferguson 5545 M.F.W.D. Diesel Tractor, Cab, A/C, Hdr., Radio, D.H., Wts., 18 4x26 Rear Rubber, 14 5x28 Front Rubber  
 1-1989 Allis Chalmers 7360 Diesel Tractor, Cab, A/C, P/S Trans., D.H., 20 2x38 Rubber  
 1-1962 Massey Ferguson 203 Ind. Diesel Tractor WM.F. 102 Hyd. F.E. Loader, 5' Bucket, 13x24 Rubber  
 1-Metrol Bobcat Skid Loader, Wisconsin V4 Gas Eng. (Eng. Needs Repair)  
**COMBINES, HEADERS -**  
 1-1990 Massey Ferguson 8570 Rotary Combine, Cab, A/C, Hdr., Radio, Hydrostat, Monitor WM.F. 9030, 30' Header, M.B.R. 30.5x22 Rubber (1,700 Hrs.) Bought New July '92  
 2-1983 Massey Ferguson 860 Combines, Cab, A/C, Hdr., Radio, Monitor W300 Headers (3,500 Hrs.)  
 1-1989 Massey Ferguson 760 Comb. Cab, A/C, Hdr., Rad.  
 1-Massey Ferguson 948A, 9 Row, 30' Cornhead  
 1-Massey Ferguson 946A, 8 Row, 40' Cornhead  
 1-Massey Ferguson 1164, 6 Row, 40' Cornhead  
 1-Massey Ferguson 83, 8 Row, 30' Cornhead  
 3-M.F. 64, 8 Row, 40' Cornheads (2-For Parts)  
 1-Massey Ferguson 24' Header W/Pickup Reel  
 1-Massey Ferguson 530 Header  
 1-Massey Ferguson 12' Header W/Pickup Attachment  
 2-A.C. 440 4 Row, 40' Cornheads  
 3-Massey Ferguson Straw Chopper (For MF 760 & 860 Combines) Used 1 Season  
 1-Large Lot Massey Combines Parts (New & Used)  
 7-Heston Head Hunter Pickup Units  
**GRAIN CARTS, COMBINE TRAILERS, HEADER TRAILERS -**  
 2-Caldwell 400 Bu. Grain Carts, Fold Down Augers  
 5-A-Frame Combine Trailers, 9 0x20 Rubber  
 1-Donahue 22 Lowboy Header/Implement Trailer  
 1-Shopmade T.A. Header Trailer, Col Link Axles  
**DRY FERTILIZER SPREADER TRUCKS, GRAIN TRUCKS -**  
 1-1979 GMC 7000 Dry Fertilizer Spreader Truck, 366 Eng. W/Recent O.H. 5 Sp.-2 Sp. Trans., Tyler Fert. Box  
 1-1968 Chevrolet Dry Fertilizer Spreader Truck, 366 Eng. 4 Sp.-2 Sp. (For Parts)  
 1-1975 Chevrolet T.A. Grain Truck, 366 Eng. 5 Sp-2 Sp. 24' Grain Bed, T/C Host  
 1-1974 Chevrolet T.A. Grain Truck, 366 Eng. 5 Sp-2 Sp. 22' Grain Bed, T/C Host  
 1-1973 Chevrolet T.A. Grain Truck, 427 Eng. 5 Sp-2 Sp. 22' Grain Bed, T/C Host  
 1-1972 Chevrolet T.A. Grain Truck, 366 Eng. 5 Sp-2 Sp. 22' Grain Bed, T/C Host  
 1-1969 GMC Diesel T.A. Grain Truck, Detroit Diesel Eng. 10 Sp. Trans. 22' Grain Bed, T/C Host  
**PICKUPS, 4 WHEELER, BOAT -**  
 2-1984 Chevrolet 4 Wheel Drive 1/2 Ton Pickups, 305 Eng. AT, P/S, P.B. AC, L.W.B.  
 1-Yamaha Moto 4, 350 ATV, 4 Wh., Oil Cooled, 2,300 Mi.  
 1-1960 Crosby 17 F.G Boat W/Mercury 100 H.P. Outboard Motor W/Drive On Trailer (Engine Has Not Been Used Since Overhaul)  
**EQUIPMENT -**  
 1-John Deere 7100 Max Emage 8 Row, 30' Planter, Plateless, Double Bows, Monitor, Spray Attachment, Incorporator Tires  
 1-International 5pt. 8 Row, 30' Rolling Cultivator, G.W., 4 Tire Gangs  
 1-Crut Baster 3pt., 24-10' Spaced, 21' Grain Drill, P.W., D.D.  
 1-John Deere DR 20-8' Spaced Grain Drill, C.C.  
 1-Hamby 3pt., 9 Row Lister, D.S.B., L.T.M., G.W. W/Row Markers  
 1-Massey 3pt., 9 Row Lister W/Row Markers, Big Bar, D.G.W.  
 1-John Deere 800, 3 pt., 6 Row, 40' Cultivator  
 1-Hamby 3pt. 21' Cultivator, S.S.B.  
 1-MMW 3pt., 28' Rotary Hoe  
 1-MMW 3pt., 21' Rotary Hoe  
 1-International Cyclo 500, 6 Row Air Planter  
 1-Hamby 3pt., 21' A.A. Fertilizer Rig, D.S.B., Nitrolator, T.P. Hitch, G.W.  
 1-Hamby 3pt., 21' Chisel/Sweep Plow, T.S.B., D.G.W.  
 1-Rot-A-Cone 3pt., 13 Shank Ripper Plow, A.A. Fert. Attachment, T.S.B., T.P. Hitch, G.W.  
 4-Clark D.T. 21' A.A. Fertilizer Rigs W/500 Gal. Tanks, Fertilizer Tanks  
 1-Noble 3pt., 28' Spring Shank Field Cultivator, D.G.W., Lift Mulch Harrow Units  
 1-International 145, 4 Bottom Spinner Mouldboard (Noe)  
 1-Shopmade 4 Bottom Mouldboard Plow  
 1-International 770, 21' Offset Disc (New 24" Disc)  
 1-International 480, 21' F.W. Tandem Disc  
 1-Rhino 1400, 3pt. 10' Blade, C.C.  
 1-Winkle D.T. 20' Double Blade Land Float  
**TRACTOR & TOOLBAR MAKEUPS -**  
 2-Set 20 8x38 Duals (Snap-On)  
 1-Hamby 21' T.S.B. Tool Carrier, L.T.M.  
 1-Hamby 21' D.S.B. Tool Carrier  
 1-HC 21' 75' Tool Bar W/Gr. (Rolling Cut Bar)  
 1-Set Rot-A-Cone Hyd. Row Markers  
 1-Hamby PTO Rod Weaver  
 1-Lot 1x2' Shanks & Clamps  
 2-New Hamby Disc Beedler Units  
 1-Lot New 2" Discs  
 1-Lot Hyd. Cylinders  
 1-Lot Hamby 1'30" Fertilizer Shanks  
 1-Lot Various Size Shanks & Clamps  
 1-Lot Hamby Cultivator Wheels (Rings)  
 1-Lot A.A. Fertilizer Valves, Regulators  
 1-Lot New A.A. Hose  
 2-Set Hamby Gauge Wheels  
**IRRIGATION -**  
 2-Ford 480 Irrigation Engines (Ran Last Season)  
 1-Chevrolet 292 Irrigation Engine (Ran Last Season)  
 6-Ford 480 Irrigation Engines (Needs Repairs)  
 2-Ford 534 Irrigation Engines (1 Needs Repairs)  
 1-Bathley 6" Tallwater Pump W/Chw. 292 Eng.  
 200 Lbs. 7/20" Gated Pipe, 40' Flows  
 5-Js. 7x30' Flows  
 35-Walerman 7x12 Hydrants (Center Tension)  
 1-Lot 7' Tee's, Elbows, End Caps  
 1-Lot Cooling Jackets & Flap Valves  
 1-Lot Damaged Alum. Pipe  
**HAY & LIVESTOCK EQUIPMENT -**  
 1-New Holland 80, 3-pt. Round Bale Mover  
 1-3-M Round Bale Mover  
 1-Lot Elec. Fence Wire  
 1-Lot-T-Posts  
**SHOP EQUIPMENT -**  
 1-Agache 135 Amp Portable Welder, B&S H.P. Eng.  
 1-Forney 180 Elect. Welder  
 1-Twin Cylinder Elect. Air Compressor, 60 Gal. Tank  
 1-Portable Gas Powered Air Compressor  
 1-Cushman Drill Press  
 1-1/2 H.P. DIA Grinder  
 1-Handy 1000 Ind. Hi-Pressure Washer  
 1-Parts Washer  
 1-Lot Shop Tables  
 1-S.M. Shop Barrel Heater  
 1-New 2 Ton Chain Hoist  
 1-Lot Power Tools  
 1-Lot Hand Tools  
 1-Wards Elect. Meter Box Saw  
 1-Lot Welding Rods, Bolt Bits, Toolboxes

**NON-CLASSIFIED -**  
 1-H&L 12 V Drill Bit Auger 2-3 H.P., 2" Pumps  
 4-12 Volt, 50 Gal. Spot Sprayers  
 1-Lot Jacks  
 1-Lot Chains & Boomers  
 1-Lot Shovels & Hoes  
 1-Lot Plant  
 1-Lot Trees & Wheelies (Truck & Imp.)  
 1-Lot Items Numerous To Mention  
**OFFICE & HOUSEHOLD FURNITURE -**  
 4-Drawer File Cabinets  
 1-Yerroc 1012 Copy Machine  
 1-Keyp Sale Office Safe (Small)  
 1-Swing File Cabinet  
 2-Office Chairs  
 1-Octagon Game Table W/4 Chairs  
 1-Metal 5 Drawer Desk  
 1-Kitchen Table W/4 Chairs  
 1-Table W/6 Chairs & Hutch  
 1-Trundle Bed Set  
 1-King Size Mattress, Maple Dresser, Night Stand  
 1-4 Piece Bedroom Suite, King Size Bed  
 3-Cushion Couch  
 2-Piece Living Room Suite  
 2-Welvet Arm Chairs  
 1-Entry Table  
 1-Lot Lamps (Table & Floor)  
 1-Lot Wall Pictures & Plaques  
 1-Wooden Table W/4 Folding Legs  
 1-Schwinn Exercise Bike  
 1-Plastic Table W/4 Chairs  
 1-Lot Dishes  
 1-Bunn 2 Pot Coffee Maker  
 1-Trampoline Frame W/Springs  
 NOTE: Any Announcement Sale Day Takes Precedence

**REAL ESTATE AUCTION - JAN. 7<sup>TH</sup>**  
 152 Acres Of Irrigated Farm Land - 2 Lots Parmer Co. Sold At 12:00 Noon At Farm Sale Site In Farwell, Texas  
 Owner: H&H Trust. Telephone: 806-481-9088  
 Call Ronald Byrd Realty At 806-481-3846  
 TRACT Located 2 Miles North Of Farwell, Texas On County Road, Then 1/2 Mile East  
 Legal: N.E. 1/4 Of Section 47, Block A, Parmer Co. 162 Acres Irrigated Farm, 2 1/2 Wells On Natural Gas, Underground Line. Bases: Weight 65.8 Acres (61 Bu.), Corn 85.3 Acres (158 bu.), Grain Sorghum 4.3 Acres (132 Bu.), Cotton 2.2 Acres (475 Lbs.)  
 Terms: 10% Collected Day Of Auction Placed In Escrow Acc. Balance 30 Days Or Sooner With Signing Of Standard Real Estate Contract.  
 Taxes: 1996 Taxes Paid By Seller  
 Manner Of Sale: 152 Acres X Dollars Per Acre Plus \$50.00x2 Acres For Existing Wheel Crop  
 Owners Have 30 Minutes To Accept Or Reject Any And All Real Estate Bids  
**TRACT B:** All Of Block 8, Save And Except West 150 Feet, And All Of Block 9, Save And Except The East 200 Feet In Robinson Addition, Original Town Of Farwell, Parmer County, Texas. Sold As One Unit.  
**TRACT H:** The Subject Property Is Located West Of 1316 Avenue A In Farwell, Texas. It Consists Of A 42,200 Square Commercial Lot, 2 1/2 Wells On Natural Gas, Actually 207' Deep On The West Side And 184' Deep On The East Side. It Joins Highway 70-84 On The South Side And Has Railroad Siding On The North Side. Sold As One Unit.  
 Mervin Evans Auctioneer/Realtor (806) 293-8195  
 Ronald Byrd Realty Real Estate Broker (806) 293-2172  
 For More Information Call Byrd Realty, Ronald Byrd Broker (806) 481-3846  
 Any Announcement Sale Day Takes Precedence. Please Make Your Own Inspection.

**Nieman Realty**  
 116 E. Ave. C George Nieman, Broker 272-5285 or 272-5286

**RICHLAND HILLS**  
 NICE 3-3-1 Brick, cent. Heat, Evap. Air, built-ins, 2000' + lv. area, fenced yd., stor. bldg., MORE !! \$60K !!! RH-2  
 NICE 3-2-2 Brick, cent. A&H, built-ins, FP, approx. 2150' lv. area, fenced yd., MORE!!! \$69K!!! RH-7  
 VERY NICE 3-2-1 Brick, Cent. A&H, built-ins, fans, new paint, carpet, & drapes, fenced yd. \$60K!!! RH-1

**HIGHLAND AREA**  
 2 Bdrm, 1 bath home, fenced yard. \$16,500!!! HL-4  
 VERY NICE 3-2-2 Brick, Cent. A&H, built-ins, fenced yd., spklr. sys., MUCH MORE!!! \$60's !!! HL-1  
 VERY NICE 3-2-1 carport Home, heat pump, built-ins, nice carpet, fans, storage-workshop! MUCH MORE!!! \$40's !!! HL-6  
 NICE 3-2 Home, Heat Pump, FP, fenced yd., stor. bldg. \$30's!! HL-3  
 NICELY REMODELED 3-2-1 Brick, Cent. A&H, built-ins, FP, nice carpet & tile, fenced yard, storage building, MORE!!! \$60's!!!! HL-8

**COUNTRY CLUB**  
 2-1-1 Carport Home, wall furnace, nice carpet, storm shelter, stor. bldg., fenced yd. \$20's!!!!

**RURAL HOMES**  
 NICE 3-2-2+2 Carport Brick Home on 2.5 acres on pavement, close to town, Heat Pump, built-ins, FP, MUCH MORE. \$70K !!! HR-3  
 JUST LISTED -3-2-2 Home 1.36 ac. on pavement, Cent. A&H, built-ins, freshly painted interior & exterior, fans, fenced yd., 31' x 40' barn !!! \$40's!!!! HR-2  
 2-2-1 carport Mobile Home on .665 acres on pavement close to town, Cent. heat, evap., air, DW, large barn, stor. bldg. and MORE!! \$25K!! HR-5  
 VERY NICE 3-11/2-1 Home on 8 acres, on pavement close to town, Cent. A&H, built-ins, sun room, concrete cellar, storage bldgs., fenced yd., RV cover, mobile home hookups, stock pens, fenced acreage, & MORE !!! \$50's !!! HR-6

**LENAU ADDITION**  
 JUST LISTED-VERY NICE 2-1-1 carport Home, wall furnace heat, Cent. evap. air, stove, DW, fenced yd., gas grill, stor. bldg.!! \$20's!!! L-6  
 NICE 2-2-2 Brick, on corner lot, heat pump, fenced yard, storage bldg., MORE! \$40's !!! L-1  
 PRICE REDUCED 3-2-1 carport Home, geothermal heat pump, fenced yd., storage bldg. \$24,500!!!! L-3  
 NICELY REMODELED 3-1 1/2- 1 + 2 Carport home, Cent. A&H, DW., fenced yd., Stor.-wkspp., MORE!!! \$30's!!! L-2

**HIGH SCHOOL**  
 VERY NICE 3-2-1 Home on corner lot, Cent. A&H, built-ins, ceiling fans, fenced yd., stor. bldg.!! \$30's!!! HS-3  
 NICE 2-1-1 Home, corner lot, wall furnace, win. evap. air, stove, util., fans, workshop-storage!!! \$20's!!! HS-4  
 NICE 2-1-1 Brick, Heat Pump, nice carpets, well insulated, storm windows & doors. \$30's!!!! HS6  
 JUST LISTED -2-1-1 Home, floor & wall furnace, evap. air, siding exterior, stor. bldg., fenced yard !!! \$20's !!! HS-7

**PARKRIDGE**  
 NICE 3-2-2- Brick, Cent. A&H, built-ins, FP, cov. patio, fenced yd. \$50's!!!!

**ASK ABOUT OUR COMMERCIAL LISTINGS!!!**  
 160 acre tract, 8" well, circle spklr. w/drops, fully allotted!!!

**MERVIN W. EVANS .. (806) 293-8195 (8427)**  
**JIM SUMMERS .. (806) 864-3611 (10066)**  
**JIMMY REEVES .. (806) 864-3362 (Clerk)**  
**Five Star Auctioneers**  
 OFFICE : (806) 296-0379 - P.O. BOX 1030  
 PLAINVIEW, TEXAS 79073-1030  
 Terms of Sale : CASH - All Accounts Settled Day of Sale - Lunch Will Be Available  
 NOTE: Please Bring Your Own Check Book. If You Have Not Established Yourself With Our Company, Please Bring Bank Letter.  
 WINCH TRUCK AVAILABLE ON SALE DAY - BRING YOUR TRUCK OR TRAILER  
 \* WE ARE AGENTS AND AGENTS ONLY



# WISHING YOU CHEER IN THE COMING YEAR

## LOWE'S WELCOMES 1997

### MEAT



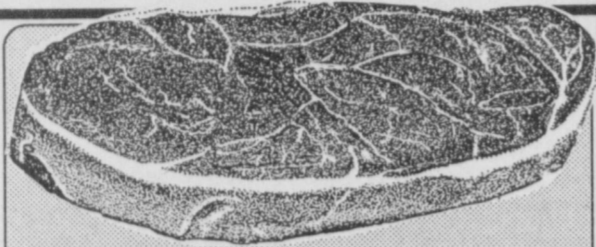
In Cry-O-Vac Bag, Whole  
**Beef Brisket**

lb. **99¢**



Value Pack, U.S.D.A. Select  
**Beef Boneless  
Chuck Steak**

lb. **69¢**



Value Pack, U.S.D.A. Select Beef  
**Charcoal Steak**

lb. **\$1 59**

- Oscar Mayer Ham & Cheese or  
**Chopped Ham** ..... 8 oz. pkg. **\$1 49**
- Wilson  
**Variety Pack** ..... 12 oz. pkg. **\$1 69**
- Farm Raised  
**Catfish Nuggets** ..... lb. **\$1 99**
- Small Raw  
**Shell-On Shrimp** ..... lb. **\$4 99**
- Stone River Cheddar, Mozzarella, or Marble  
**Shredded Cheese** ..... 24 oz. pkg. **\$4 79**

Bar S  
**Meat Franks**

12 oz. pkg. **79¢**

Bar S, 1 lb. pkgs.  
**Smoked Sausage**  
**2/\$3**

Bar S Regular, Low Salt, or Thick  
**Sliced Bacon**

1 lb. pkg. **\$2 19**

Bar S  
**Meat Bologna**  
12 oz. pkg. **\$1 19**

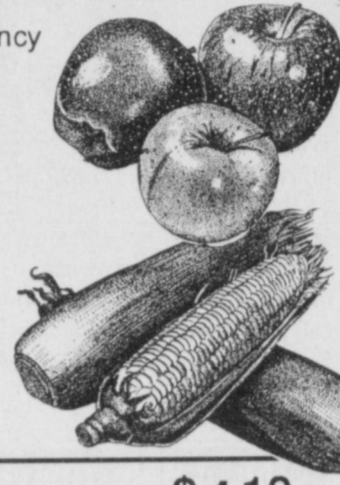
### PRODUCE

Washington Extra Fancy  
Golden Delicious  
**Apples**

lbs. **2/\$1**

Florida  
**Corn**

ears **4/\$1**



U.S. NO. 1 RUSSET  
**Potatoes**

15 lb. bag **99¢**

FRESH  
**Jalapenos**

lbs. **2/\$1**

Grapefruit ..... 5 lb. bag **\$1 19**

Fresh  
**Tomatoes** ..... lb. **69¢**

Dole, 1 lb. pkg.  
**Salad Mix** ..... **88¢**

## START THE YEAR WITH BIG FOOD SAVINGS



ASSORTED BOYS OR GIRLS  
BABY DRY 48-56 CT. SIZE 3-4 OR  
PREMIUM 36-60 CT. 1-5  
**Pampers Diapers**  
**10 99**  
YOUR CHOICE



100 OZ. WBLEACH TIDE ULTRA LIQUID,  
OR REGULAR W-BLEACH-TIDEFREE  
ULTRA 2 TIDE  
**Laundry Detergent**  
**5 99**  
92-103 oz.  
box



ALL TYPES  
Pepsi Cola  
**99¢**  
ALL TYPES  
Pepsi Cola  
**2 49**  
12 pack  
12 oz. cans



REGULAR  
Ivory Bath Soap **1 29**  
4.5 oz.

WHITE WATER FRESH OR  
REGULAR  
Zest Bath Soap **1 59**  
3 pack  
5 oz.



PUPPY CHOW BEEF, LITTLE BITES,  
PUPPY CHOW, OR DOG CHOW  
**Purina Dog Food**  
**2 99**  
4.4 lb.  
bag



LIGHTLY TANGY, REGULAR,  
OR PICANTE  
**V8 Vegetable Juice** **1 59**  
46 oz.  
can

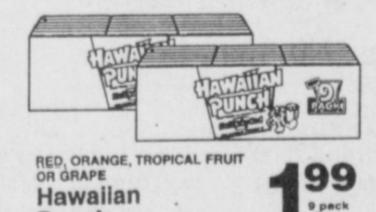
REGULAR OR BUTTER  
**Crisco Cooking Spray** **1 99**  
9 oz.  
can



SPECIAL ROAST DRIP, COLOMBIAN  
SUPREME, REGULAR PERK, DRIP, OR  
FRENCH ROAST FAC  
**Folgers Coffee**  
**1 99**  
12-13 oz.  
can



LEMON LIQUID GEL OR  
LEMON/REGULAR POWDER  
**Cascade**  
**2 39**  
50 oz.  
box/btl.



RED, ORANGE, TROPICAL FRUIT  
OR GRAPE  
**Hawaiian Punch** **1 99**  
9 pack  
8 oz.

REGULAR OR GENTLE BREEZE  
**Bounce Sheets** **3 59**  
30 ct.  
box



ASSORTED ULTRA DAWN  
**Liquid Dish Detergent**  
**2 39**  
28 oz.  
btl.



250 CT. PUFFS COLLATED, 144 CT.  
PLUS OR EXTRA STRENGTH  
**Facial Tissue**  
**1 39**  
YOUR CHOICE



Mango, Lite, California, or  
Florida Citrus Punch  
**Sunny Delight**  
**97¢**  
64 oz. ctn.



White or White Ultra  
Charmin  
**Bath Tissue**  
**97¢**  
4 roll pkg.



Lowe's Homogenized  
**Milk**  
**\$1 99**  
gallon jug

Shurline 2%, 1/2% or Skim  
**Milk**  
**\$1 99**  
gallon jug

### FROZEN & DAIRY



BLUE BUNNY ASSORTED  
Sherbet  
**1 79**  
1/2 gal.  
square ctn.



WEIGHT WATCHERS ASSORTED  
Ultimate 90 Yogurt  
**5 \$2**  
8 oz.  
ctns. For



WEIGHT WATCHERS NON-FAT  
INDIVIDUALLY WRAPPED  
American Cheese Slices **2 \$3**  
8 oz. For



### HEALTH & BEAUTY

4 OZ. FORMULA 44E COUGH  
4 OZ. FORMULA 44 COUGH SYRUP  
12 CT. 44 LIQUID CAPS COUGH & COLD,  
1 OZ. FORMULA 44M COUGH MEX.  
4 OZ. 44E COUGH STRIP  
10 CT. 44 LIQUID CAPS NO COUGH & COLD,  
4 OZ. PEDIATRIC FORMULA 44E COUGH  
4 OZ. PEDIATRIC FORMULA 44 COLD LIQUID  
**Vick's Formula 44** YOUR CHOICE **2 99**  
COUGH MEDICINE

4 OZ. MAXIMUM STRENGTH OR  
8 OZ. ORIGINAL  
**Pepto-Bismol** YOUR CHOICE **1 99**

BAKING SODA, PEPPERMINT,  
OR ORIGINAL MINT  
**Scope Mouthwash** **2 99**  
28 oz.

ASSORTED  
**Crest Toothpaste** **1 88**  
4.4 oz.

### FOR YOUR NEW YEAR'S RESOLUTION!

WEIGHT WATCHERS  
Frozen Entrees  
**2 \$5**  
For

WEIGHT WATCHERS  
Frozen Entrees  
**2 \$3**  
For

WEIGHT WATCHERS  
Frozen Entrees  
**2 \$3**  
For

WEIGHT WATCHERS  
Frozen Entrees  
**1 99**

WEIGHT WATCHERS  
Frozen Entrees  
**2 \$3**  
For

WEIGHT WATCHERS  
Frozen Entrees  
**2 \$3**  
For

WEIGHT  
NO  
MORE!

WESTERN UNION MONEY TRANSFER™  
"The fastest way to send money"

**Pay-n-Save**  
QUALITY AND SERVICE

**Lowe's MARKETPLACE**  
401 W. American Blvd.  
Muleshoe 272-4585  
PRICES EFFECTIVE JAN. 1-7, 1997  
OPEN MONDAY-SATURDAY 7:30 A.M. - 8:00 P.M., SUNDAY 8:00 A.M. - 7:00 P.M.

515 W. American Blvd.  
Muleshoe 272-4406  
WE RESERVE THE RIGHT TO LIMIT QUANTITIES IN TEXAS