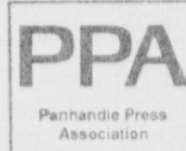




BAILEY COUNTY JOURNAL



Volume 35, No. 44

Published Every Sunday at Muleshoe, Bailey County, Texas 79347

Sunday, November 10, 1996

Raising Cain in District 85

By RICK WHITE
Managing Editor

SPRINGLAKE — Until a year ago, Hollis Cain said he was like most other voters.

"I like to complain, but I don't like to be complained at," Cain said Thursday as he sat comfortably in the living room of his aged but cozy Springlake ranch house.

So what possessed this middle-aged rancher and Baptist deacon to take on Texas Speaker of the House Pete Laney, a Hale Center Democrat who Cain calls "the most powerful man in Texas"?

After all, Laney is a 24-year veteran in the House and two-term speaker. Cain was viewed as a novelty. Little more than a nuisance.

Cain, the first opponent Laney has faced in seven elections since 1980, was approached by Republicans from outside the district.

Republican leaders felt the district was winnable because it favored GOP candidates in statewide and federal races in previous elections.

Cain became convinced he should run when shown

"I got such a good response from the people I talked to. I correlated good response with getting the vote. But I didn't see it at the polls."

— Hollis Cain

Laney's voting record. A staunch conservative, Cain was appalled at Laney's "liberal" voting pattern.

"I never thought of him in terms of a liberal," Cain said.

He also felt Laney catered to special interest groups.

Laney did the expected in the Nov. 5 election, winning by almost a 2-1 margin.

"I never thought I was going to lose," said Cain, who conducted a coffee shop campaign through all 12 of the counties that make up District 85. "I was really convinced I was going to win."

"I got such a good response from the people I talked to. I

Continued on page 2



Cain almost able

Springlake rancher Hollis Cain failed in his bid to oust Democratic incumbent Pete Laney of Hale Center in the race for State House of Representatives in District 85.

City's lawyer resigns

Longtime Muleshoe City Attorney Mike Caldwell unexpectedly resigned last week.

In an Oct. 31 letter addressed to city mayor Robert Montgomery, Caldwell said he "feels an attorney with greater experience in litigation would benefit the city at this time."

Caldwell, whose expertise is in tax law, served as the city attorney for 13 years.

The city is facing potential litigation in three cases. The most serious being a whistleblower lawsuit filed by former Muleshoe police officer Chris Lopez. The city is also involved in disputes over a leak in the city reservoir and land leased to a private citizens.

According to the city charter, the city attorney must be someone who lives and practices law in the city of Muleshoe.

The only other two practicing lawyers in Muleshoe are current Bailey County attorney Cris Cleavinger and former Bailey County Judge Corky

Continued on page 7

Three Way migrant education program excels

The Three Way Independent School District is among 161 Texas public school districts being recognized for high levels of performance by migrant students.

The district was commended for having an attendance rate of over 94 percent for migrant students, and for having at least 80 percent of migrant students graduate or be promoted to their next grade level.

"Migrant students are so successful because of the small class size and the dedication of the teachers," said Three Way Superintendent William Hood

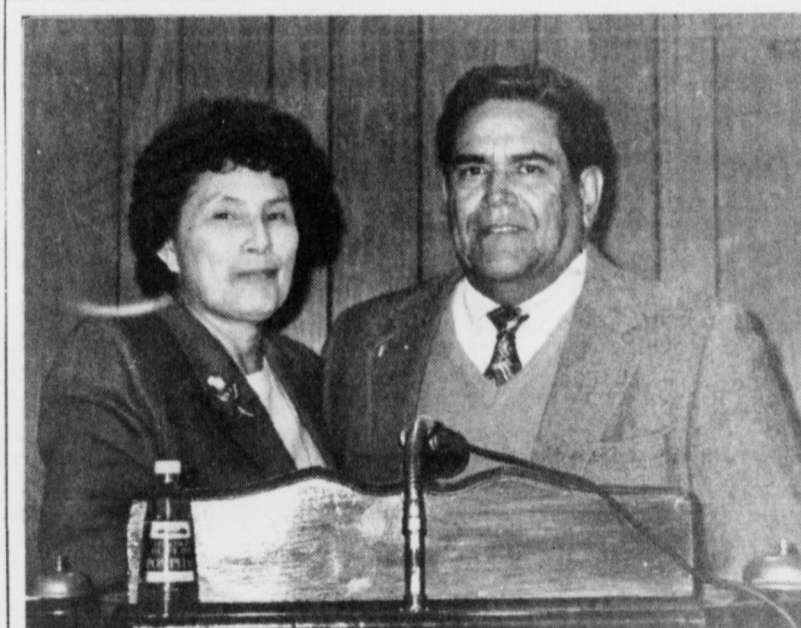
Criteria for the commendation was based on data from the Public Information Management System for the school year 1994-95. The district had 21 migrant students enrolled that year, including one senior who graduated. Three Way also runs an at-home program to prepare migrant children ages 3 and 4 for kindergarten.

Schools were also rated according to migrant performances on the TAAS test for grades 3 and 8 through 10. Three Way was rated as acceptable.

Texas has the second largest migrant

education program in the nation in number of students served. During the 1994-95 school year, more than 134,000 Texas students were educated through migrant educational programs in 390 districts and the 20 regional education service centers. About one-third of these students migrated to 42 other states where they were able to continue their education.

Migrant Education Program officials at Three Way are Hood, Beverly Turney, and Janie Soliz.



Welcome to Muleshoe

The Spanish Assembly of God in Muleshoe welcomes the arrival of their new pastor. Pictured are (from the left) Victoria and Rev. Felix Cadena.

Cadena joins ranks of Muleshoe clergy

Felix Cadena has joined the ranks of Muleshoe clergy.

Cadena recently moved to Muleshoe to fill the role of pastor at the Spanish Assembly of God Church, a protestant church that ministers to Muleshoe's Hispanic population.

Cadena, a native of McAllen, moved to Muleshoe along with his wife Victoria. His job has taken them to many points across the U.S., including Indiana, Ohio, California since he first became a pastor in 1959.

"I believe it is the Lord's will for me to help other people," Cadena said as the reason he chose to become a pastor.

Cadena hopes that the church will experience new growth under his leadership. He also hopes to see the church, which currently averages 50 people for weekly services, to work more closely with the community.

His own plans for the church include starting a counseling

Continued on page 7

Muleshoe seniors' last hurrah a quiet one in 50-0 loss

AMARILLO — Right now, they're going to want to forget it.

But in a few years, Muleshoe head coach David Wood said the seniors who toughed out a 1-9 season that ended Friday with a lopsided 50-0 loss to River Road will remember it more fondly.

"They're the best," Wood said. "They knew it was going to be a rebuilding year and that it was going to be tough. But they decided they wanted to be part of it. They're going to come back in five years and say, 'look what I started.'"

Muleshoe came into the District 1-3A contest shorthanded against playoff-bound River Road. Muleshoe played with four starters suspended for disciplinary reasons.

And to compound that, the Mules turned the ball over as River Road built a 37-0 halftime lead.

Muleshoe fumbled the ball away deep in its own territory on the third play from scrimmage.

Chris Floyd scored the first of his two touchdowns on a 1-yard run to give the Wildcats (6-4 overall, 6-1 in district) a 6-0 lead three minutes into the game.

Muleshoe responded by launching a short drive that reached the Wildcat 15. River Road forced Muleshoe to try a field goal, which they never got off

Continued on page 4



Ahead of the field

Muleshoe's Douglass Field tries to stop Bryan Mullin after the River Road lineman intercepted a screen pass late in the game. The Wildcats defeated Muleshoe, 50-0, in a District 1-3A game Friday.



Take a few minutes
Monday on Veteran's Day
to remember those who
have given us a
lifetime of freedom.

AROUND MULESHOE

No school at MISD Nov. 11

Muleshoe Independent School District will have a staff development day Nov. 11. There will be no school for students on that day. Teachers will spend the day attending workshops.

MISD holding public hearing

The Board of Trustees of Muleshoe Independent School District will receive the yearly performance report during its regular meeting Nov. 11 in the MISD administrative offices.

The report will be based on the indicators used in the Academic Excellence Indicator System, which include students' performance on the Texas Assessment of Academic Skills test, students attendance, and annual dropout rate.

The Texas Business and Education Coalition has prepared a guide to the AEIS Report to help interpret the information it contains. MISD is publishing this guide as a part of the report for the convenience of the public. Copies of the report will be available at all of the district campuses, the district administration building, and the public library.

Bailey Co. commissioners meet Nov. 11

The Bailey County Commissioners Court will meet in regular session Nov. 11 at 10 a.m. in the Bailey County Courthouse.

Departmental reports will be received at this time.

A public hearing will also be held at 1 p.m. to receive public input on setting speed limits on certain county roads.

LVNAT meeting in Lubbock Nov. 11

The Licensed Vocational Nurses' Association of Texas will meet Nov. 11 from 7-9 p.m. in the Arnett Room of St. Mary Hospital in Lubbock.

The program has been changed from previous plans. The meal will be held at the hospital and will be \$10. The



Cute baby winner

The "Cute Baby Contest" sponsored by Alco recently raised \$350 for local Meals on Wheels. Pictured are Irma Mendoza, contest winner James Adriel Medoza, Mary Nell Bleeker of Meals on Wheels, and Alco manager Mark Huddleston.

topic for the meeting will be EMS and Flight for Life.

Those planning to attend should contact Melvina Coverdell at (806) 828-4565 by Nov. 7.

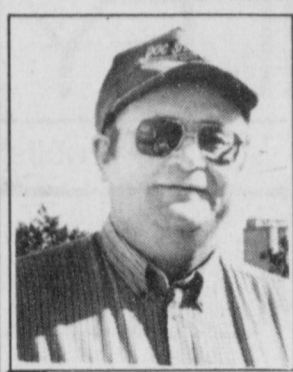
Muleshoe basketball tickets on sale

Basketball season tickets are on sale for the 1996-97 Mule Basketball season. Tickets will be \$7.50 for students and \$15.00 for adults. Season tickets are good for all home games for Muleshoe High School and Watson Junior High School games. Tickets can be purchased at the MISD business office, 514 W. Ave. G.

Santa Claus at Alco Nov. 29

Santa Claus will be at Alco Nov. 29. There will be free hot chocolate and treats will be donated. Meals on Wheels will be selling chili during lunch. Clovis radios station KKYC will also be present for the event.

DOC STEWART
CHEVROLET • GEO • BUICK



Donnie McDonald
Sales Representative
New & Used

Donnie would like to invite everyone to come over and let him show you their new and used cars!

Bus: (505) 763-4465
Res: (806) 965-2475

2500 E. MABRY DR. • (505) 763-4465 • CLOVIS, NM 88101

Ana's House of Beauty
109 E. Ave. B Muleshoe, TX

GLAMOUR PHOTO SESSION

Christmas Specials
Tuesday, November 12, 1996
A \$69.96 value for only **\$19.95**
Plus shipping & handling

Session includes:
Hair Style & Makeover, 4 to 5 Different Wardrobe Changes, 12-14 Different Poses and an 8x10 Color Portrait of Your Choice.
VIEW YOUR PORTRAITS IMMEDIATELY

Professional Makeup Artist
- Feel and Look Like A Model -

Must Be 18 Years or Older or Accompanied By An Adult.
Photographed by SPOTLIGHT GLAMOUR
BY APPOINTMENT ONLY 806-272-4152

Cain

Continued from page 1

correlated good response with getting the vote. But I didn't see it at the polls."

At first, he was disappointed. "I thought if I didn't get at least 45 percent of the vote, I failed," Cain said.

But several GOP members explained to Cain that he had accomplished quite a feat by garnering almost 36 percent. He was told by "experts" that if Laney, as reigning speaker of the House, didn't gain at least 75 percent of the vote it would be considered a major blow.

"I don't feel bad now," Cain said, who proved to be a Texas-size thorn in the side of Laney.

Even though he had no previous experience, Cain said didn't enter the campaign naive.

Still, he was not prepared

for some of the backroom political tactic she said he encountered.

Cain claims Laney's reach is so powerful and intimidating it is incredible.

"The fear factor was amazing thing to me," Cain said. "I thought in the United States we could do anything without fear of retaliation."

The word is not to cross him, Cain said.

He compared Laney to Huey Long, who dominated Louisiana politics in the 1920s and 30s through intimidation. Long, know as "the Kingfish", was said to be ruthless toward anyone who opposed him.

"Never before in my life had seen fear like that," Cain said. "Elected officials were scared

to oppose Pete Laney out of fear of retaliation."

Cain claims lobbyists spread the word that any political consultant who took Cain as a client would lose all it's money for other candidates.

Cain said at one point, he set up a secret meeting with two consultants, but they didn't show because Laney found out.

He also claims Laney sent two messengers to talk Cain out of running, including a Republican state representative from Lubbock.

"That just made me more determined," Cain said. "I was still convinced I could win the race."

Cain doesn't know if he'll run again, but judging by his grandfatherly good looks and

easy smile, don't be surprised to see him again in two years.

"If I never run again, I'm fine," Cain said. "Iran because I wanted to help people.

"Our forefathers intended for the government was to pro-

tect the people," Cain said. "But today it has become the predator and you and I have become the prey."

And what would he have done if he reached Austin?

"I just wanted to raise a little Cain."

What Is A Town?

A town is a group of people.

It is schools. It is churches. It is industry and jobs. It is retail business.

They all have to work together. All must have the support of the people. Or there is no town.

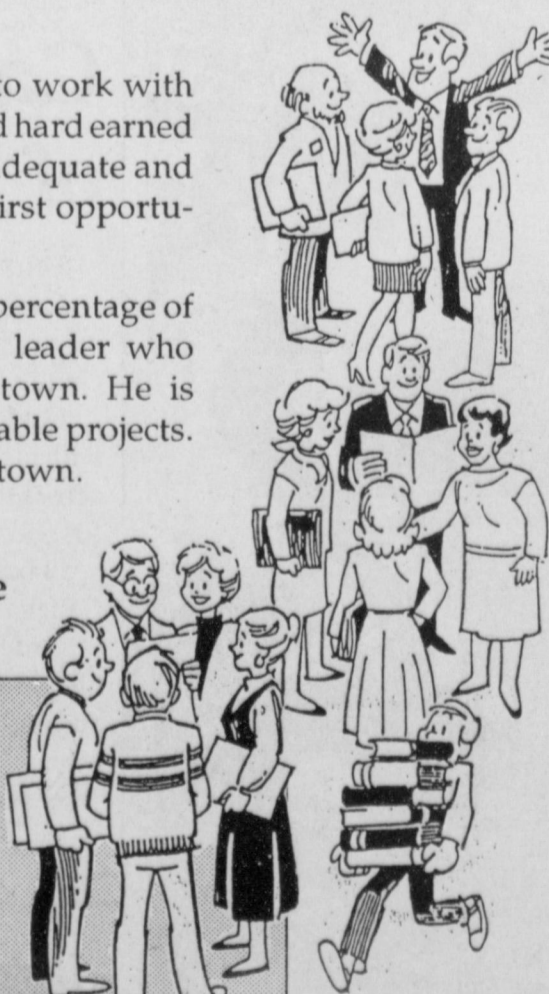
Give your local business man a chance to work with you on your business. You shouldn't spend hard earned money with him unless his selection is adequate and his price competitive. But give him the first opportunity to make the sale.

The local businessman pays the highest percentage of local taxes. He most often is the civic leader who dedicates his time and talents to his town. He is contacted first for contributions to charitable projects. Without his business firm, you have no town.

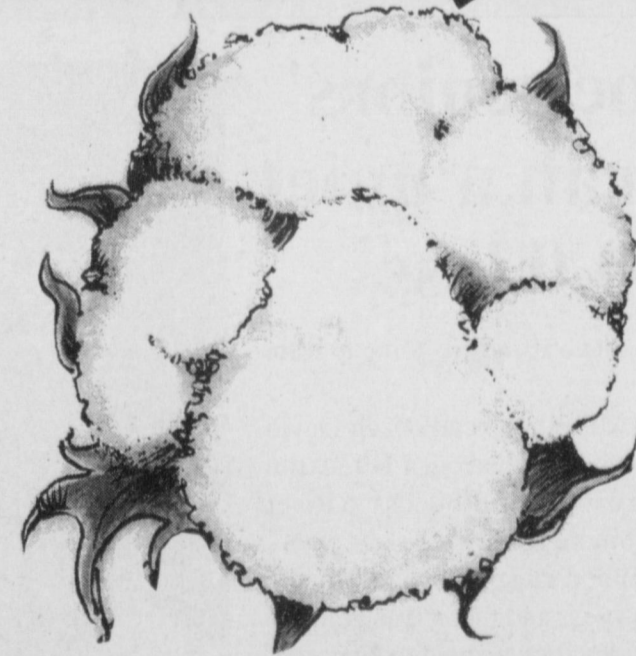
Give the local businessman a fair shake ... that's all he asks while he continues to work for our town.

"THE FIVE AREA TELEPHONE ORGANIZATION"

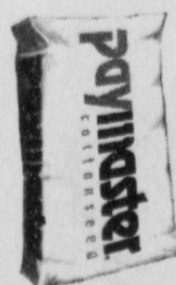
- Five Area Telephone Coop.
- West Plains Telecom. Inc.
- Plateau Cellular Network
- Five Area Systems Inc.
- Five Area Long Distance Co.
- Five Area • Com (Internet Provider)
- Five Area Community Telecommunications (Fact)
- (Inter-Active Video Education For Our Schools)



IT'S A BRAND NEW BOLL GAME.



ANNOUNCING THE PAYMASTER REPLANT PROGRAM!



Paymaster is changing the face of cotton — again. Get into our new replant program for stripper cotton varieties and pay just **\$19.90*** per 50 pound bag of Paymaster replant seed. Only Paymaster seed in our brand new bags with our new logo will qualify. Call toll-free 1-888-729-6787 to find out more about the brand new boll game at Paymaster.

paymaster
cottonseed

1-888-PAYMSTR (1-888 729-6787)
1301 E. 50th Street • Lubbock, Texas 79404

*Certain restrictions apply.

Cleansing your medicine cabinet

HOUSTON—A "brown-bag biopsy" can help senior citizens avoid problems with medications.

"People over the age of 65 consume one-third of all prescription medications sold each year in the United States," said Dr. George Taffet, an assistant professor of medicine at Baylor College of Medicine in Houston. "The more prescriptions a person takes, the greater the chances of developing adverse drug reactions."

A simple brown paper bag is one good way for patients to bring all of their medications - prescription and over-the-counter -- to the doctor's office, said Taffet.

This gives the physician a chance to sort through the medications and check for duplicates, prescriptions that have expired and drugs that may not

combine well with others. It is especially beneficial when patients see several doctors.

Maintaining a list of medications can also help avoid drug reactions, which occur in nearly one-third of the elderly and often develop from mixing prescriptions with over-the-counter drugs.

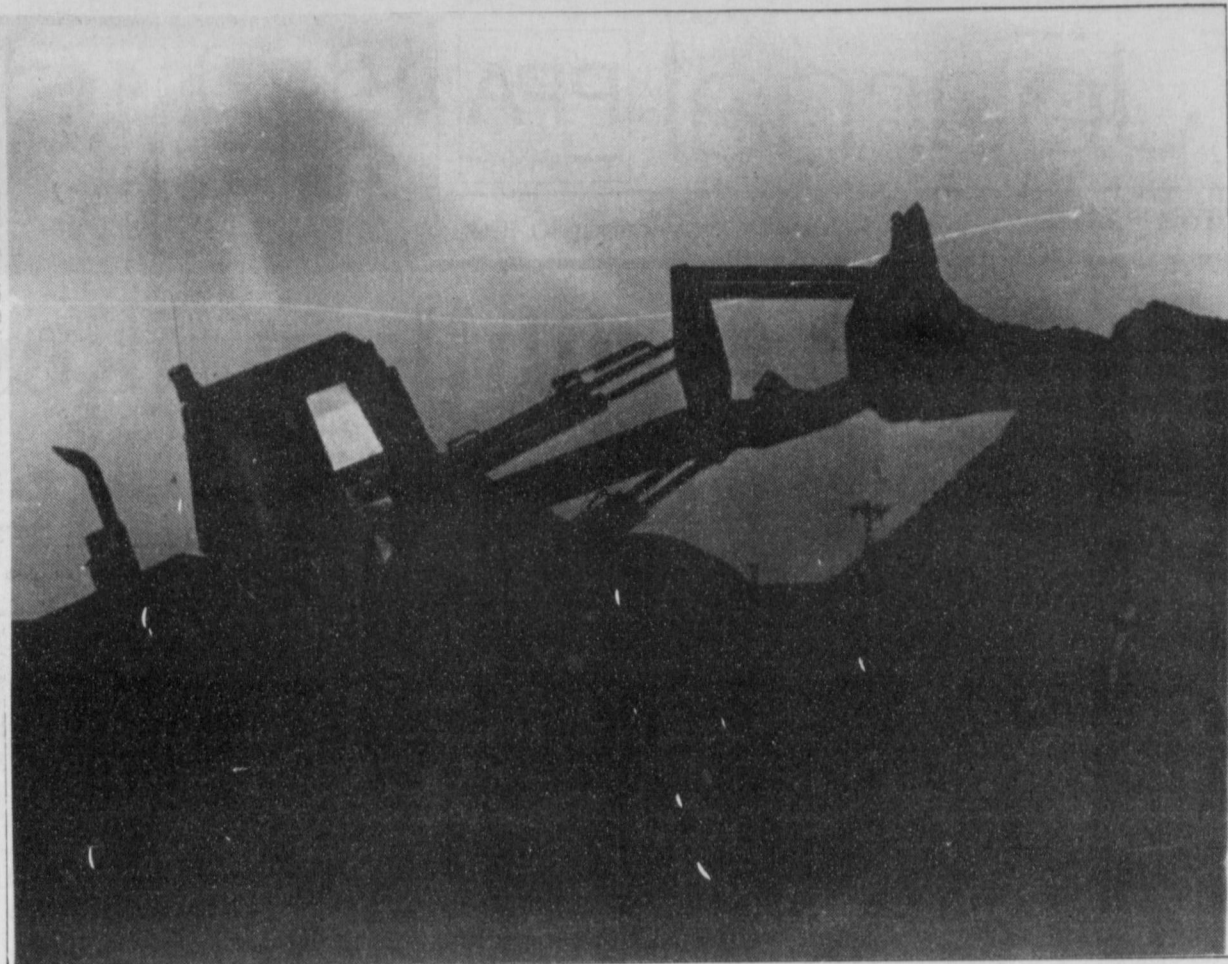
Nasal spray, for example, can produce significant side effects in people who are taking drugs for high blood pressure. Cold and flu remedies can also cause problems for people on prescription medi-

cations.

Anxiety, confusion, memory loss, fatigue, depression and blackouts can all be caused by an adverse drug reaction.

Not following directions can also lead to complications. Before taking any medicine, ask your doctor or pharmacist:

- What is the medicine for and what is it supposed to do?
- How much should be taken each time?
- Should it be taken with food or on an empty stomach?
- When should it be taken?



Piling on

A front loader works on a huge mound of gravel near the intersection of Highway 70 and the Friona Highway Thursday just before dusk. The dirt is being hauled from a Department of Transportation project near Vega.

Local farmers offer input on soil, water conservation

By SAMUEL VILLARREAL
Journal Staff Writer

The Blackwater Valley Soil and Water Conservation District Thursday received local input on what is best for future conservation programs.

More than 25 local farmers and ranchers attended the meeting at the Bailey County Coliseum, spending over two hours deciding what issues would be of top priority when new conservation programs are developed.

The 1996 Farm Bill allows for counties to develop their

own ideas for conserving natural resources, according to Blackwater Valley SWCD chairman John Furgeson.

"Local input will address the concerns of what is best for our county," Furgeson said.

Participants were asked for their input on which needs should be addressed by the new programs. Wind erosion, water quality and the Conservation Reserve Program were considered the main priorities.

Identifying local problems will be the first step to coming up with a locally developed

program, according to Furgeson. Blackwater Valley SWCD officials said that they will prioritize the concerns of area farmers as they design local programs. The plans will then be sent to the state level and on to be recommended for federal funding.

The Environmental Quality Incentive Program (EQUIP) will allocate federal funds totaling \$200 million for the years 1997-2002 for programs created at the local level. The possibility of accessing these funds

gives local conservationist the incentive to design the most efficient programs for their needs.

The 1996 Farm Bill established EQUIP to replace existing conservation programs.

According to Furgeson, this year's elections will cause the program to be slightly altered for the year 1997. With elections over and only a few months left until 1997, states will decide how to allocate fund for next year.



Friday & Saturday, November 15 & 16

Friona Community Center
(West of Highway #214 North and within sight of Highway #60 in West Friona)

Open to the Public:
Friday, November 15 10:00 a.m.-6:00 p.m.
Saturday, November 16 9:00 a.m.-4:00 p.m.

Demonstrations include:
Friday 15,
2:00 p.m. - Donna Majors: Free Motion Quilting
3:00 p.m. - Colleen Chadwick: Holiday Treasures

Saturday 16,
10:30 a.m. - Ingram's Fashion Show
2:00 p.m. - Sharon & Anna Stone: Spinning Wheel

Sponsored by the Farmer County Christmas Bazaar Committee

Educational programs conducted by the Texas Agricultural Extension Service serve people of all ages regardless of socioeconomic level, race, color, sex, religion, handicap, or national origin.

YOU KEEP THE REBATE!

Remaining 96
Chryslers, Plymouths
and Dodge Cars

***BUY AT FACTORY TO DEALER INVOICE!**

PLUS ANY DEALER INSTALLED ACCESSORIES

UP TO \$1,500!!!

87 CHEVROLET CELEBRITY
#620011 **\$2,000**

88 CHRYSLER NEW YORKER
#630672, LEATHER!
\$3,600

89 OLDSMOBILE 98
#620531 **\$5,700**

94 PONTIAC TEMPRIS
#510521, LOADED!
\$12,200

90 DODGE CARAVAN SE
#790191 **\$3,900**

96 PLYMOUTH GRAND VOYAGER SE
#4773 **\$19,500**

91 DODGE CONVERSION VAN
#695131 **\$7,500**

94 DODGE CONVERSION VAN
#694721 **\$15,200**

95 DODGE RAM 1500 X-CAB
#4760, LEATHER!
\$19,990

96 DODGE RAM 1500 X-CAB
#4793 **\$21,700**

96 DODGE RAM 1500 X-CAB 4X4
#4805 **\$23,700**

96 DODGE RAM 2500 X-CAB DIESEL
#4794 **\$23,900**

BENDER AUTOPLEX

3400 MABRY DRIVE • CLOVIS, NM 505 - 762-4511

Member
1996
TEXAS PRESS
ASSOCIATION

Bailey County Journal

PPA
Professional Press Association

SPORTS EXTRA

Volume 35, No. 44

Published every Sunday at Muleshoe, Bailey County, Texas 79347

Sunday, November 10, 1996

Turnovers plague Muleshoe

Continued from page 1

because of a bad snap.

That was the first of three costly special teams errors that helped decide the outcome quickly.

A 21-yard touchdown pass from Rowdy Lundegreen to Charlie Barney put River Road up 14-0 late in the first quarter.

River Road then scored two touchdowns in a two-minute span of the second quarter and the rout was on.

Tyler Hale returned a block punt 18 yards for a touchdown and Floyd scored from 10 yards out after a bad snap handed the ball over to River Road at the Muleshoe 5.

Derrick Bailey's 40-yard field to end the half made it 37-0.

Muleshoe recovered some in the second half.

The Mules were inside the River Road 20 twice in the second half, but both drives ended with interceptions. River Road picked off four passes and also recovered a fumble.

Chris Shelburne led Muleshoe with 32 yards on three carries, including a rumbling 28-yarder in the fourth quarter.

Matt McClanahan, under heavy pressure most of the night, completed 6 of 19 passes for 91 yards.



B.J. is a bear

Muleshoe sophomore safety B.J. Gonzales grabs a hold of River Road's Trenton Mills during the fourth quarter of the Mules' 50-0 season-ending loss at River Road.

Muleshoe finished with 155 total yards.

Trenton Mills led River Road with 117 yards on 13 carries, including a 40-yarder late in the game.

River Road, which finished second in the district behind Friona, finished with 228 yards.



Prickly preserves, anyone? The saguaro or giant cactus is the largest cactus in the U.S., with fruits that ripen in June. American Indians eat these fruits fresh or as preserve.

Gruhlkey likes underdog role

Coaches love being the underdog.

That's why Muleshoe girls basketball head coach Jim Gruhlkey is smiling.

Not much is expected from the Lady Mules this year after graduating five seniors from a team that 21-10 last year, including a pair of all-district players.

Low expectations are the best kind Gruhlkey said.

"I like that," said Gruhlkey, 70-49 in four seasons at Muleshoe, including a bi-district title in 1993-94. "I think we're going to surprise a lot of people, although it might not be early."

Senior guard Brandi Harrison will be the lone returning starter when the Lady Mules open their season Tuesday at Littlefield. Key substitutes Kristin Nichols and Carolyn Schuster also return. Both are seniors.

But injuries and the cross country team's success (they competed at state Saturday) has left Gruhlkey with a limited look at

Continued on page 5

Mules continue rebuilding process

It's on-the-job training for the Muleshoe boys basketball team.

Because the football season ate into most of preseason practice, the Mules will open the season Tuesday at Littlefield after just two days of practice.

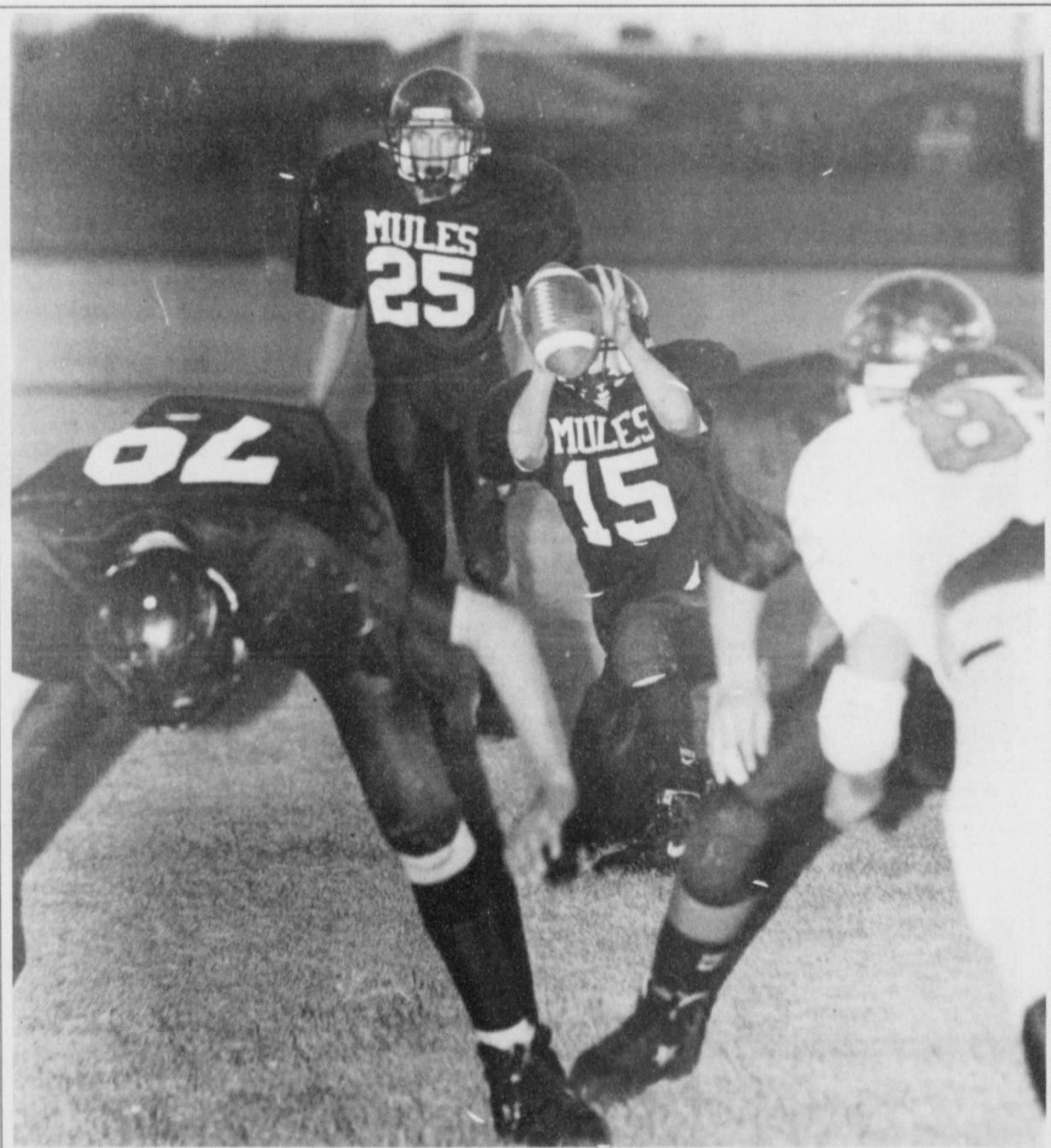
"It's just like I always have," said Muleshoe third-year head coach Ralph Mason, who has also coached at Gilmore and Morton. "There haven't been many years that I've had more than a few days."

"I'd rather have the kids play games," Mason said. "We just have to play our way into basketball shape. It's the only way I've ever known."

Muleshoe is coming off a 5-23 season, but hopefully will benefit from the experience of playing several underclassmen last year.

At times last year, Muleshoe played with three freshmen in the lineup.

Continued on page 5



Snap shot

Muleshoe freshman quarterback James Barrett catches the snap from center Brett Clements (79) while Clint Black (25) waits to kick the extra point during a 40-12 loss to River Road Thursday at Benny Douglass Stadium.

Mule frosh end season with 40-12 loss

The River Road Wildcats handed Muleshoe a 40-12 loss Thursday in a freshman game at Benny Douglass Stadium.

MHS finishes the season at

2-8.

Muleshoe's Clint Black scored on a 3-yard run late in the second quarter as River Road took a 34-6 halftime lead.

Fullback Mitch Mason finished the scoring for the Mules with a 2-yard run in the fourth quarter.

JVC Center Pivots

Certified Dealers - Ramon Mendoza, John Mendoza & Zack Yanis



We Have New Equipment In Stock
- Ready For Delivery! Come By & See!

No Down Payment
• Delayed First Payment Til Jan. 1998

MENDOZA IRRIGATION

East Hwy. 84 Muleshoe 272-5511 or 272-5512

Lady Mules

Continued from page 4

what he has.

"It's hard to tell what we're going to look like," Gruhlkey said.

He does know that the Lady Mules will be a lot quicker and a better shooting team than last year. Both were deficiencies that opponents exploited last year.

Harrison averaged 8.6 points, 4.3 rebounds and 2.1 assists while playing point guard last year. A reluctant shooter last year, Nichols (5-10) has turned her game up a notch in the preseason and is now looking for her shot, Gruhlkey said. Schuster (5-5) has the skills, but gets rattled at times.

Mules

Continued from page 4

The Mules will be young again this year with only two seniors, wings Corey Williams (6-0) and Alfonso Mendoza (5-8). Mendoza is the second-leading returning scorer and rebounder, averaging 8.1 points and 4 rebounds a game.

Sophomore post Dustin Cleavinger (6-4) will be the hub of the offense. Cleavinger averaged 14.7 points and 7.1 rebounds after being called up at midseason.

"He needs to take charge," Mason said. "And he vows he's going to."

Cleavinger figures to ben-

Muleshoe will pressed to replace two-time all-district post Mandi Cleavinger and wing Allison Field.

Gruhlkey will turn to youngsters. Sophomore Erin Whilwhite (5-10) is a strong post defender and rebounder and freshman Lindsey Field (5-9) is an excellent penetrator and passer. Though untested at the varsity level, both played on highly competitive AAU teams in the past few summers. Field was a starter on the West Texas Flyers, who finished second in the national AAU 14-and-under tournament last summer.

Gruhlkey will have to wait and see with returnees Mandy Myers and Cassidy Cleavinger.

Myers, a 5-6 junior, is probably out until the first of the year with a knee injury. Cleavinger, a 5-9 junior wing, is out indefinitely with a back injury.

Gruhlkey will also shift through several senior and juniors in hopes of going 10 deep in productive players.

"We don't have a true standout, but I think we might have some kids who can fill into that," Gruhlkey said. "But they have to come around fast. Because of that we'll have to play real well as a team."

The Lady Mules' predistrict schedule is a killer.

Besides Littlefield, which is ranked 13th in the preseason Class 3A poll, the Lady Mules

efit from playing in the national AAU tournament this summer.

The Mules also return junior point guard Matt Mason, who dished out a team-high 114 assists. Juniors Chris Shelburne (6-1) and Douglass Field (5-10) will help out up front. Shelburne is a big body with a soft touch while Field is an enforcer type who loves to bang.

Sophomore Matt McClanahan (5-10) figures to score more this year with added confidence and the experience he gained last year. Sophomore

Carlton Lewis (5-7) plays both guard spots and is a solid defender and selective 3-point shoot. Lewis shot 50 percent (12 of 24) from 3-point range last year.

Juniors Layne Kemp (6-1) and Cyrus Norris (5-8) might also help. Kemp is athletic but has yet to step up his game.

"I really looking forward to the season with a lot of wishful optimism," Mason said. "I hope it's a situation where we get better and better as the season wears on and hopefully we'll be ready by district."

Muleshoe's home opener is Friday against Plains.

West Texas A&M student assists police

Susan Poluhowich, a West Texas A&M University graduate student in chemistry, may solve the mystery of death. At least one of the mysteries anyway.

Pinpointing time of death has largely been left to guesswork for both police and forensic pathologists. Poluhowich has been studying the electrical conductivity of bone for the purpose of finding possible changes in currents after death. This research could provide a more measurable way to determining time of death, the post mortem interval. This, in turn, could lead to a successful ending to more police work.

"If she (Poluhowich) can prove her research, it would revolutionize the way police solve cases," Dr. Randall Frost, forensic pathologist for the Lubbock County medical examiner's office, said. "Right now, police investigation is more valuable than a medical examiner's guess."

Randall County Chief

Deputy Joel Richardson agrees.

"If she solves that mystery, she will be offering a quicker, more effective way to solve cases," Richardson said. "This is much better than a good guess. If police are off on time of death, it is possible that the guilty party is given an alibi."

Poluhowich credits her fa-

ther, Dr. Chip Poluhowich, as her motivational force.

"I grew up in my dad's labs," she said. "He always took us to work."

Dr. Poluhowich is a biology professor at WTAMU who, along with Susan and other students, has provided forensic assistance to Crime Stoppers.

HIGH PLAINS ANTIQUE DEALERS ASSOCIATION

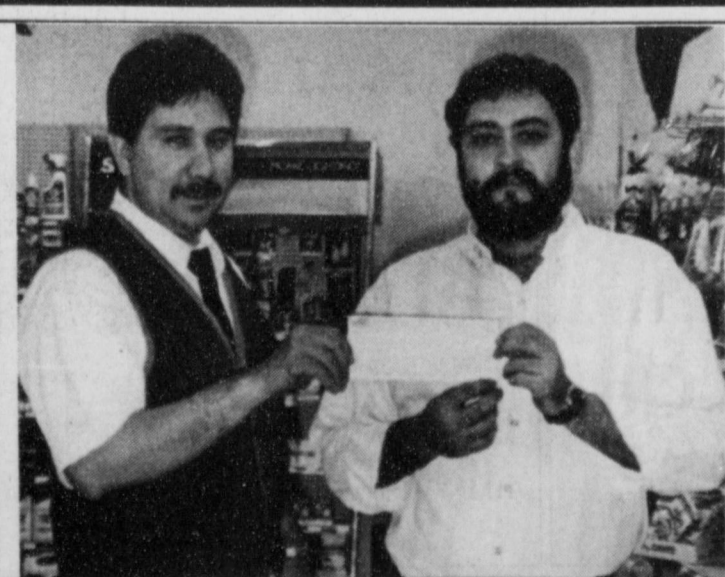
Antiques & Collectibles Show & Sale

Depression & Carnival Glass
Primitives, Furniture & Glassware
Nov. 16 10 a.m. - 6 p.m.
Nov. 17 12:00 - 5 p.m.

Roy S. Walker Community Center

316 W. Grand (where First St. & Hwy. 60 merge into W. Grand Ave.) Clovis, NM

For show information, contact Jerry Radcliff, (505) 762-2562



Fermin Miranda, manager of Lowe's Pay-N-Save congratulates Isidoro Trevino on winning \$2000 in the \$15,000 Lowe's Anniversary Giveaway.

Lowe's Pay N Save

515 W. American Blvd. 272-4406

Garth Sheetmetal

1024 W. 2nd Street
Muleshoe, TX 79347

RANDY MORRIS is now working with our company. He can be reached at 272-3337 for winterizing evaporated air-conditioners, installing metal roofs and general sheetmetal work. Call us for your small repair jobs.

Jeanne Garth

Think Quick!

GM Goodwrench Quick Lube Plus oil change.
It's fast — or it's free!

Bring your car or light truck to us for a GM Goodwrench Quick Lube Plus oil change. We'll complete all of these services in 29 minutes or less or your next oil change is free:

- Refill your engine with up to 5 quarts of GM Goodwrench[®] Motor Oil
- Install a new ACDelco Oil Filter
- Perform a complete chassis lube
- Check fluid levels: brake fluid, differential fluid, power steering fluid, transmission fluid, windshield washer fluid, transfer case fluid (4wd vehicles)
- Inspect: drive belts, hoses, air filter, tire pressure

SPECIAL \$17.00

GM Goodwrench QUICK LUBE^{plus}

DOC STEWART
CHEVROLET • GEO • BUICK



2500 Mabry Drive
Clovis, NM
505-763-4465
1-800-530-8842

You'll Find a

ALLSUP'S

HARVEST of VALUES

<p>SAVE ON Coca-Cola</p>  <p>6 pk., 12 oz. cans \$1.99</p>	<p>SAVE ON 2 Lana's Golden Egg Rolls & Tallsup</p>  <p>\$1.99 COMBO MEAL</p>
---	---

<p>SHURFINE YOUNG TENDER Shur Fine Hen Turkeys</p>  <p>\$7.99 12-14 LB. AVERAGE</p>	<p>SHURFINE Shur Fine Russet Potatoes</p>  <p>99¢ 10 LB. BAG</p>
--	---

Pilgrim Pleasin' SAVINGS

<p>HORMEL LIGHT & LEAN 97 Sliced Ham or Turkey 8 OZ. PKG.</p>  <p>\$1.79</p>	<p>ALLSUP'S Sausage, Egg & Biscuit</p>  <p>99¢</p>	<p>OCEAN SPRAY CRANBERRY, CRAN-RASBERRY OR CRANAPPLE Juice Cocktail 48 OZ.</p>  <p>\$2.49</p>
<p>ALLSUP'S Chimichanga</p>  <p>99¢</p>	<p>SHURFINE Cocoa Crunchies 13.75 OZ. BOX</p>  <p>\$2.29</p>	<p>WESTERN FAMILY W/FLASH Disposable Camera 27 EXP.</p>  <p>\$8.99</p>

You'll find all this and more at your Allsup's store
Store #34 318 W. American Blvd. 272-4862 MULESHOE

WHOLE B-B-Q CHICKEN..... **\$4.99** each

LOW PRICES, GREAT PRODUCTS **ALLSUP'S**
24 HOURS A DAY *Always*

PRICES EFFECTIVE NOVEMBER 10-NOVEMBER 16, 1996 OFFER GOOD WHILE SUPPLIES

Federal Land Bank Association

316 Main St., Muleshoe
806-272-3010

Long Term Financing for Farms, Ranches, Rural Housing, Operating and Improvements.

Current Variable Rate 7.95%

Fixed rates are available. Call for quote.

A Property Rights Advocate and Equal Opportunity Lender.

PCG concerned about CRP land selection process

Proposed regulations governing the next phase of the Conservation Reserve Program has Lubbock-based Plains Cotton Growers (PCG) concerned about the selection of land during the next CRP sign-up period.

PCG is in the process of submitting a statement to USDA outlining those concerns. The primary goal of the PCG statement is to make sure Highly Erodible Land (HEL) in the Texas High Plains is given every opportunity to remain in the CRP.

PCG notes in its statement the tremendous benefits that have accrued as a result of participation in the CRP.

The proposed regulations utilize an environmental Benefits Index (EBI) similar to the one used during the 13th CRP sign-up. PCG is recommending a reevaluation of the EBI in order to ensure bids submitted for HEL from this area are judged fairly and that no single factor is inadvertently given priority during the process.

In a related area PCG is also preparing a statement concerning 1996 Farm Bill rules for conservation compliance on HEL and areas designated as wetlands.

Weekend saddle tramp



BAXTER BLACK
ON THE EDGE OF COMMON SENSE

Yeah, he wished he was a cowboy but just at times like this
(Yup, he's glad that he's a cowboy but there's times on days like this)

When he spent the day ahorseback and had time to reminisce
(When he spends all day ahorseback thinkin', 'Wonder what I've missed?')

Never thinkin' about Monday, 'bout the real life he led
(Never knowin' if it's Monday, if he'll ever get ahead)

Just the smell of sweaty horses and the peace inside his head
(Just the smell of sweaty horses and a blanket for a bed)

How he really could'a been one if the cards had fell that way
(How he grew up punchin' cattle, had no other cards to play)

But he never had the option he had other cards to play
(So he never had the option, it was bound to be this way)

And he sees the hired on wranglers when he passes them the reins
(And he sees the weekend cowboys when they're handin' him the reins)

And he almost wants to join 'em but his common sense refrains
(And he wonders could he make it in their life of ball and chains)

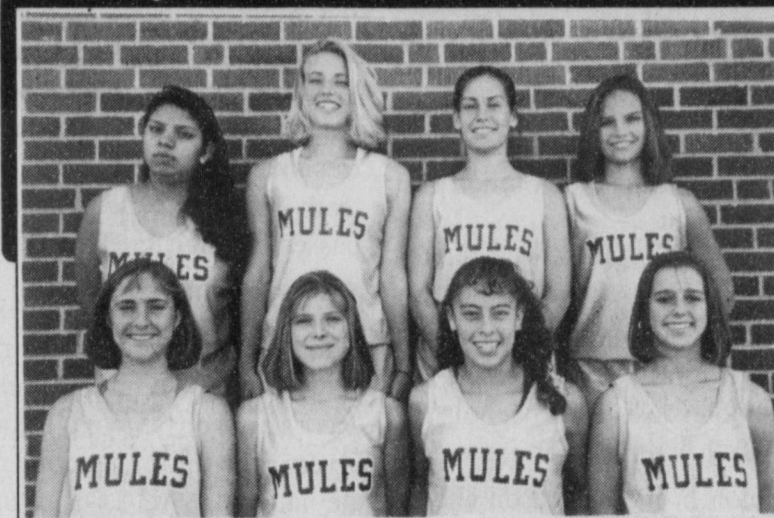
So he joins his boon companions and they toast their saddle sores
(But he joins his fellow cowboys and they do their nightly chores)

They revel in the cowboy life and forget the wrangler's chores
(then doze off while the campfire talk drifts in from distant shores)

But by Monday they're a memory as he bills another page
(But by Monday he's back ridin' and the open smell of sage)

And forgets the car he's drivin' would've paid their yearly wage
(Reminds him he would not survive in a weekend cowboy's cage)

Western 66 Congratulates the Mule & Lady Mule of the Week!



(top row) LUSILA FLORES, BRANDI HARRISON, JO BETH GILLELAND & LYSNIE BLACK. (bottom row) CARI FAVER, BOBBIE BENHAM, PRISCILLA AGUIRRE & STACY LOCKER.

Congratulations to the Muleshoe Girls Cross Country team on going to the State UIL Meet.

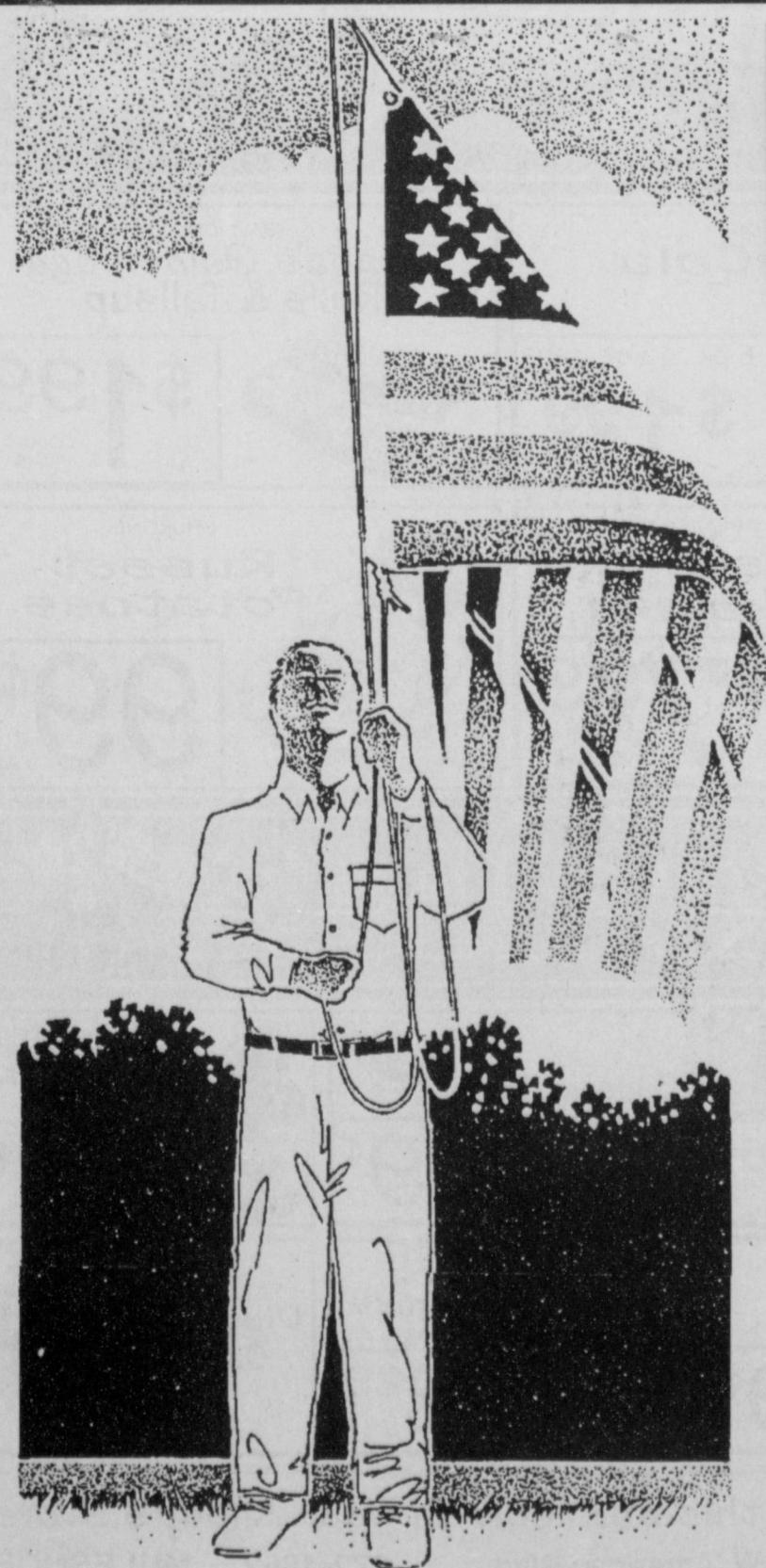


The CardStop
24 Hour Fuel Service
715 W. American Blvd., Muleshoe
To apply for a card, contact WESTERN 66
272-4556
We have diesel!

Classifieds Sell!

Call The Muleshoe Journal Today!

272-4536



Veteran's Day Monday, Nov. 11

It is a pleasure to honor veterans, past and present, especially the men and women of our community who have served in our armed forces.

Leal's Restaurant

1010 W. American Blvd.
272-3294

Alex's Tire Service

302 E. American Blvd.
272-5012

Dale Oil Co. Inc.

413 W. American Blvd.
272-5576

Family Hair Salon

213 E. Ave. B
272-5987

Terry Field Insurance

223 E. Ave. B 272-5551

Shipman & Son Body Shop

410 N. 1st 272-4408

Sudduth Field & Co.

104 W. 2nd St.
272-4291

Lowe's Pay-N-Save
515 W. American Blvd.
272-4406

Lowe's Market Place
401 W. American Blvd.
272-4585

Bailey Co. Journal

304 W. 2nd 272-4536

Wes Tex Feed Yards

Custom Cattle Feeding
272-7555

Decorators Floral & Gifts

616 S. 1st 272-4340

Ellis Funeral Home

104 E. Ave. F 272-4574

Muleshoe Livestock Auction, Inc.

E. Highway 84 272-4201

Bailey County Farm Bureau

1612 W. American Blvd. 272-4567

NURSING HOME NEWS

By Joy Stancell

Thursday afternoon, several ladies from the Muleshoe Church of Christ hosted a Halloween party that was quite exciting for the residents. The residents also judged the employee's costumes. The winners included were Chickie Henderlite in first place in a clown outfit. In second place was Ruth Kitchens as a headless person in black. Games that were played included toss the bean bag and the haunted box. Refreshments were of a large variety of cookies, cupcakes and other goodies along with soft drinks which were served to residents and staff.

Friday afternoon Harold and Avis Carpenter came to play and sing our "ol' favorite" songs and hymns and to reminisce. Benny and Jean O'Brien also sang for us.

Aline Locke let us use her fall hat pin as a pattern to use in crafting Friday morning.

Each Sunday morning the Muleshoe Church of Christ directs the Communion Service. Clara Lou Jones taught the Bible Class Sunday morning.

The Calvary Baptist Church came Sunday afternoon for Church Services. Billie Downing played the piano for the service. J.C. Shanks and Nancy Kidd assisted Pastor David McIntire in our devotional Reflection time.

Pat Watson, Beverly Wagon, Skeet Bradshaw and the activity department shampooed and set the ladies hair and gave manicure's.

The Truth Seekers and Followers Sunday School class of the First Baptist Church made a donation to the Healthcare Center.

Melvin and Wanda Griffin

directed the Bingo Bonanza Saturday afternoon.

Anna B. Lane visited her mother Nettie Quesenberry out for lunch.

Gary and Glenda Dale and Marilyn Wilson visited the Care Center Tuesday, among those they visited were Bill Darnell, Kathryn Hancock and Kathrine Rogers.

Mr. Price donated a large carton of Micro-wave popcorn for the residents enjoyment.

Wednesday morning Buster and Wanda Kittrell, Harold and Mary Jo Burge assisted during coffee and dough-nut time. Following coffee time we moved down into the Day Room around the piano for Gospel Sing-a-Long. Buster Kittrell and Jim Claunch led the singing and Loyce Killingsworth accompanied them in the piano. Tennie McCormick was the guest of Leonard McCormick.

Glenda Jennings and Jonessa Brockman enthralled us with their music and puppet show. Jean O'Brian and Marquita Adamson's freshman class joined us for the event.

Linda Trussell came by to visit with Kathryn Hancock Wednesday afternoon.

For November birthdays include Elsie Tarr Nov. 13th, and Birdie Warren Nov. 21st. Happy Birthday!

November birthday party has been scheduled for Thursday November 21st at 3:00 p.m.

Reminder: The Resident/Family Thanksgiving supper is Thurs. Nov. 14th at 5:30 p.m.

Gladys Wilson made peanut brittle for the residents Tuesday for "Christmas in November"!

and is waiting on responses.

The City Council is expected to discuss the situation during a special meeting Tuesday.

ENGAGEMENT



Leticia Jimenez and Steve Raney

Juan and Teresa Jimenez of El Paso announce the engagement of their daughter, Leticia Jimenez to Steve Raney, the son of Lee and Terri Raney of Levelland and Janie and Otis Shipp of Wolfforth. Leticia is a graduate of Park College with a degree in social psychology and is currently employed as a program coordinator for Communities in Schools in Socorro, NM. Steve is a 1983 graduate of Littlefield High School and the University of Texas at Austin with a degree in business administration, a law degree and a M.B.A. He is currently employed as Plant Manager and Vice-President for Stewart Title of El Paso. The couple plan a Jan. 25, 1997 wedding at the St. Piusx Church in El Paso. Steve is the grandson of the Late Dave Coulter, Winnie Wurst and Mary Edmiston all of Muleshoe and Ed Edmiston also of Muleshoe.

Pastor

Continued from page 1

ministry, which would provide counseling to married couples.

"I believe there is a great need for newly married couples to get counseling because they are getting married very young these days," he said.

The Spanish Assembly of God is located at 415 East Avenue F in Muleshoe. Services are held Sundays at 10 a.m. and 6 p.m. Weekday services are held Tuesdays and Wednesdays at 7 p.m.

Guess the white pants worked, Dad!

HAPPY 30TH ANNIVERSARY!!

Love, Chantel and Collin

Harmonee House

Long Term and Rehabilitative Services With A Difference

1400 Main Street
P.O. Box 320
Amherst, Texas 79312
(806) 246-2461

OPENING SOON!

- Private Pay
- 24 Hour License Nursing Care
- Therapeutic Whirlpool Baths Available
- Spacious Private & Semi Private Rooms
- Individual Heating & Cooling in the Rooms
- Private Restrooms and Showers
- In-House Chapel for Private & Group Services
- Adjacent to St. Mary Clinic and South Plains Pharmacy
- Smoke Free Environment

Advertise It In The Muleshoe Journal Classifieds!
Call 272-4536

Lawyer

Continued from page 1
Green.

City manager James Fisher said Thursday he has approached both lawyers about the possibility of taking the job

THIRTY YEARS of FESTIVE FOODS

Now is your last chance to purchase our collection of delicious, easy to prepare recipes for any meal plus tips and hints for many cooking procedures. This book is the answer for all your recipe needs for everyday or to plan special dishes for the holidays.

Almost 3,000 recipes are compiled into a 3-ring binder format. The book is boxed making it a wonderful gift for special occasions or just because.

Time is short and this collectors item **will not be printed again.** To order fill out the coupon or pick up a copy at a local SPS office.

ORDER FORM

NAME _____

ADDRESS _____

CITY _____ STATE _____ ZIP _____

NO. of COOKBOOKS _____ TOTAL _____

MAIL ORDERS:

PRICE PER COOKBOOK	\$16.00	COOKBOOKS PURCHASED	
SHIPPING/HANDLING	\$ 4.00	IN LOCAL SPS	
TOTAL	\$20.00	OFFICE: \$16.00	

Make Check or Money Order payable to Southwestern Public Service Company.

Mail to:

SPS

SOUTHWESTERN PUBLIC SERVICE COMPANY

P.O. Box 9431
Amarillo, Texas 79105-9431
Attn. Diane Bin

Local News About Local Folks
THE MULESHOE JOURNAL

Home Folks Caring For Folks At Home.

MULESHOE AREA HOME HEALTH Agency

Featured Employee

Liz Patterson is a registered nurse at the Muleshoe Area Home Health Agency. She worked for Texas Department of Health before working at MAHH.

Liz has lived in Muleshoe for 18 years and is married to Lionel Patterson. He is employed at the Muleshoe Area Medical Center as a nurse. They have two children - Jennifer and Daniel. The Pattersons attend the Trinity Baptist Church.

In Liz's spare time, she attends school to further her nursing education. She enjoys nursing and her co-workers. The patients are a pleasure to be around.

To receive Home Health Services, talk with your physician or talk with hospital personnel when you are hospitalized.

24 Hour # 272-3346
Local Nurse on call 24 hours a day to offer prompt service.

We accept Medicare, Medicaid and Private Insurance
It Is Your Right To Choose The Home Health Agency You Prefer.

Affiliated with **LUBBOCK METHODIST HOSPITAL SYSTEM**

FREE Information On Advance Directives
Also known as Living Wills or Right To Die Directives.
You may call our agency 272-3346 for these directives. You may also obtain these forms and assistance at 623 West 2nd Street.

We care for you at home

Advertise It In The Muleshoe Journal Classifieds!

PUBLIC RECORD

OBITUARIES

Gabe David Anderson III

LAZBUDDIE — Funeral services for Gabe David Anderson, III, 49, of Lazbuddie, were held Wednesday, Nov. 6 in the First Baptist Church of Lazbuddie with the pastor, Rev. Jim Watson and the Rev. Marvin James of Lake Tanglewood Church officiating.

Burial followed in the Sunset Terrace Cemetery at Farwell under the direction of the Boxwell Brothers Funeral Directors of Amarillo and Ellis Funeral Home of Muleshoe.

Mr. Anderson was a native of Bovina, where he graduated from high school in 1965. He earned his bachelor of business administration degree at Southern Methodist University in 1969. He was a member of the Sigma Alpha Epsilon Fraternity. He attended UCLA, graduating in 1972 with a masters degree in business administration.

He was Vice President of Sherley-Anderson grain Elevators in Lazbuddie and five area towns with operational headquarters in Bovina. He had farming and ranching interests in New Mexico and Parmer County, Texas. He was a member of the First Baptist Church at Lazbuddie.

Survivors include his wife, Lucy, of the home; three sons, Sargent and Benjamin, of Lazbuddie, Gabe Anderson, IV, of Amarillo; two daughters, Alexis and Wellsley of Amarillo; his parents Gabe and Anita Anderson of Bovina.

Edna Dent

SUDAN — Funeral services for Edna Dent, 90, of Littlefield, formerly of Sudan, were held Saturday, at the First Baptist Church of Sudan with the Rev. Truman Johnson, pastor of the Broadview Baptist Church of Lubbock, officiating.

Burial followed in the Sudan cemetery under the direction of the Ellis Funeral Home of

Sudan.

Mrs. Dent died Wednesday at the St. Mary's Hospital in Lubbock. She was born Oct. 22, 1906 in Haskell County Texas.

She married Jinks Dent, Nov. 19, 1933 in Clovis, N.M. He died in 1978.

She moved to the Sudan community in 1926. She had lived in the Littlefield Hospital House since May of 1993. She was a member of the First Baptist Church of Sudan and a charter member of the Sudan Senior Citizens. She was employed as a sales clerk for Salem's Dry Goods Store in Sudan for a number of years.

Survivors include two nieces, Wilma Jean Kerr of Vacaville, Calif. and Joyce Bond of Hamlin, Texas; four nephews, Wayne Kittley of Kernes, Texas, Louis May of Abilene, Texas, Wilburn May of Rule, Texas and John May of Odessa, Texas.

The family suggests memorials to the Sudan Ambulance and Fire Department.

BIRTHS

Devin Wade Carter

Don and Sherry Carter announce the birth of a son Oct. 18th at the Lubbock Methodist Hospital.

Devin Wade Carter weighed 7 lbs 8 oz at birth and was 18 3/4 inches long.

Devin has one older sister, Brittni and one brother, Hunter.

Grandparents include Don & Opal Tugwell of Levelland, and Benny & Sandy Carter also of Levelland.

Luis Jacob Briseno

Thelma Ruiz and Anastacio Briseno announce the birth of a son Nov. 6th at the Muleshoe Area Medical Center.

Luis Jacob Briseno weighed 7 lbs 3 oz at birth.

Luis has older brother, Nathan and one older sister, Leandra.

Grandparents include Rosa Ruiz of Sudan and Leandra Briseno of Mexico.

HOSPITAL ADMISSIONS

The Muleshoe Area Medical Center has reported the following admissions:

Nov. 1 — Rosalinda Galvan, Lupe Reyes, Roberto Marques, Ed Hart, Mattie Benton, Carl Hayes, Jose Martinez, Stacey Beasley, Maria Toscano

Nov. 2 — Rosalinda Galvan, Lupe Reyes, Mattie Benton, Carl Hayes, Stacey

Beasley

Nov. 3 — Rosalinda Galvan, Lupe Reyes, Frankie Daniell, Abigail Rivas, Mattie Benton, Carl Hayes

Nov. 4 — Rosalinda Galvan, Mattie Benton, Carl Hayes, Louelle Childs

Nov. 5 — Joe Jennings
Nov. 6 — Roberto Marquez, Thelma Ruiz, baby boy Briseno

Nov. 7 — Allen Clayton, Roberto Marquez, Thelma Ruiz, baby boy Briseno

ENGAGEMENT



Mark B. Retz and Robin M. Evins

Mr. and Mrs. Kenneth Evins of Muleshoe, announce the engagement of their daughter, Robin M. Evins of Tulsa, Okla. to Mark B. Retz, also of Tulsa and the son of Mr. and Mrs. Don Retz of Bakersfield, Calif. Robin is a 1987 graduate of Muleshoe High School and Oral Roberts University. She is currently employed at the Oral Roberts University as manager of tax and financial reporting. Mark is a 1985 graduate of Bakersfield High School and is currently attending Spartan School of Aeronautics. He is currently employed at Zebco as a network operator. The couple plan a Jan. 11, 1997 wedding at the First Baptist Church in Jenks, Okla.



Little League has allowed girls to play baseball and softball since 1974.

Muleshoe square dance group celebrates Halloween

Halloween was a fun night for all that attended the square dance and party for all ex-square dancers and dancers alike.

Tips were called at fun level that included dancers that had not danced in years.

Refreshments of sandwiches, chips and dip, and a variety of desserts were enjoyed throughout the evening.

The next dance will be Nov. 14 at the Civic Center. No dance will be held on Nov. 28, because of the Thanksgiving Holiday. One dance will be held in December, the 12th. Dec. 26 dance is canceled because of Christmas.

Lessons will begin in January, bring a friend or two and join the fun. For information see a club member.

Local News About Local Folks THE MULESHOE JOURNAL

We've Got The Power!

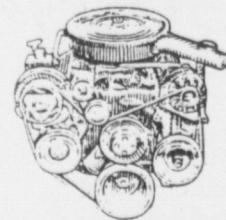
As your GM Parts supplier, we're your source for GM Goodwrench® new and remanufactured engines and new transmissions.

They're available in sizes for GM cars and light trucks, covered by limited warranties (see us for details) — and offered to you at competitive prices.

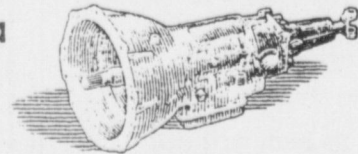
Powerful reasons, indeed, to see us for all your GM powertrain needs:

- New GM Goodwrench Engines with a 36-Month/50,000-Mile Transferable Limited Warranty
- Remanufactured GM Goodwrench Engines with a 36-Month/50,000-Mile Transferable Limited Warranty

ENGINES FROM \$1130⁰⁰



TRANSMISSIONS FROM \$1015⁰⁰



FREE DELIVERY
on all orders placed by 11/30/96

Cooling System Service \$25⁰⁰

We will drain and renew coolant - up to 1 gallon coolant. Inspect belts, hoses and pressure test system.

DOC STEWART
CHEVROLET • GEO • BUICK

2500 Mabry Drive - Clovis, NM
505-763-4465 1-800-530-8842

We want your business.

Breakfast

American Legion Post #403 & VFW Post #8570

Invites All Veterans (Men & Women), Their Spouses, Widows and Widowers To Come Have Breakfast With Them.

Monday, November 11
serving 6 a.m. to 10 a.m.
American Legion Hall
15th & Ave. B, Muleshoe

You Are Invited To
Holiday Open House
Friday & Saturday, Nov. 15-16
9 a.m. to 5 p.m.

In Conjunction With Friona's Annual Christmas Arts & Crafts Bazaar at the Community Center

Drawing & Discounts Refreshments & Free Gifts

*FALL SILKS 1/2 PRICE
*PRECIOUS MOMENTS 25% OFF

*Drawings All Day Both Days During Our Big Open House
*Register Now Thru December For A Free Silk Christmas Arrangement To Be Given In A Drawing On Christmas Eve.

Monty's
Flowers & Gifts
FRIONA - Ph. 806-247-8073
Located at Corner of Hwy. 60 & Hwy. 214 North

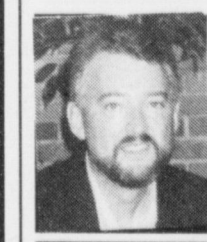
Our Own Bodies Can Teach Much About Unity

In his fine book co-authored with Philip Yancey, entitled *Fearfully and Wonderfully Made*, Dr. Paul Brand writes of the amazing diversity, yet equally amazing unity, of the cells of the human body.

He describes Lifesaver-shaped red blood cells feeding the other cells with oxygen while sleek muscle cells "full of coiled energy" stand ready to spring into

through the amazing diversity of the body's cells to create one living being, his Spirit works through the astounding diversity of the members of the church to form the living Body of Christ.

The same God who chose to people the world with a plethora of "Pygmies and Watusis, blond Scandinavians and swarthy Italians, big-boned Russians and petite Japanese," chose to compose the Body of Christ from folks as diverse as Simon Peter the fisherman and Paul the Christian-killer, Matthew the tax collector who once worked hand in glove with the Romans and Simon the Zealot who once would have been just as happy to put a knife in a Roman as look at one. That Body is composed of believers from "blacks in North Carolina who shout out their praises to God" to white Austrians "accompanied by magnificent organs and illuminated by stained glass." And you, if you love Christ. And me.



Focus On Faith
Curtis Shelburne

motion. Bone cells which when sectioned resemble tree rings, "live structures that exude strength." Nerve cells which provide the computer-like network instantly flashing messages to and from the brain.

All of these cells and others just as diverse work in union so perfectly that, as Brand writes, "When things are going well—my heart contracting rhythmically, my brain humming with knowledge, my lymph laving tired cells—I rarely give these cells a passing thought."

If, as the physician writes, we think about the myriad cells of the body for a moment, we can let them teach us a lot about the Body of Christ. Just as God works

So, the wise doctor writes, "The Body of Christ, like our own bodies, is composed of individual, unlike cells that are knit together to form one body." And we discover that "the basis for our unity within Christ's Body begins not with our similarity but with our diversity."

What an amazing Body! What an amazing God!

Curtis Shelburne is minister of the 16th & D Church of Christ in Muleshoe.

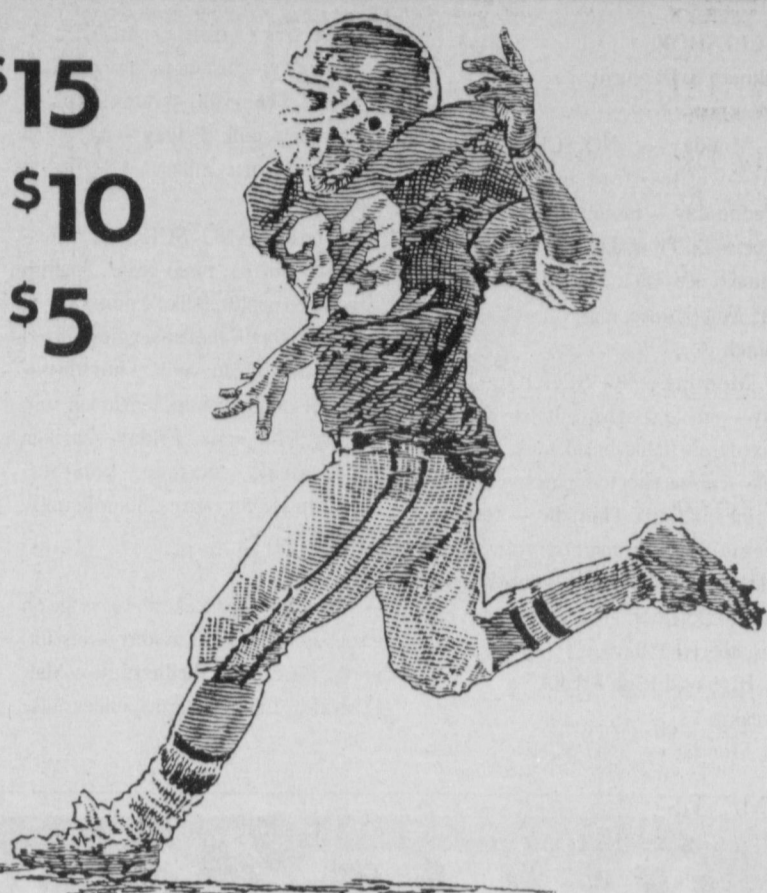
Having A Garage Sale?

Bailey County Journal's

\$30 awarded each week!

FOOTBALL CONTEST

1ST PRIZE \$15
 2ND PLACE \$10
 3RD PLACE \$5



Name _____
 Address _____
 Phone () _____

GAMES OF
 NOVEMBER 15-18, 1996

TIE BREAKER

UCLA at Arizona
 Combined total of both teams _____

— RULES —

1. Circle your choice as the winning team in each of the 18 games.
2. The entry with the most correct selections will win. In the event of a tie, the entry which picks the closest to the actual tie breaker score will win.
3. Entries may be mailed to Muleshoe Journal, P.O. Box 449, Muleshoe, TX 79347 or drop off at the office during business hours (8:30-5:00). Please mark the envelope FOOTBALL CONTEST.
4. Entries for this week's contest must be received by the Muleshoe Journal or postmarked by 5:00 p.m. Friday, Nov. 15, 1996.
5. Muleshoe Journal employees are not eligible for the contest.
6. Decision of the judges will be final.

Adrian Photography
 218 W. 2nd
 272-3487

Dallas at Green Bay
Brice Redwine

Bruce Electric
 Bill Bruce
 Muleshoe
 272-5114

Oklahoma at Texas A & M
Bobby Martha

James Crane Tire Co.
 322 N. 1st
 272-4594

Miami at Houston
Edward Terry

Wes Tex Feed Yards
 Custom Cattle Feeding
 272-7555

Washington at Philadelphia
Blas Martinez

Sudduth Field & Co.
 104 W. 2nd St.
 272-4291

SW Louisiana at Texas Tech
Deon Gallman

Bailey County Farm Bureau
Rickey Barrett, Mgr.
 Dale Vise, Agt. Allen Mount, Agt.
 1612 W. American Blvd. 272-4567

North Carolina at Virginia
Michael Carson

Muleshoe Co-Op Gin
 Manager Charles Marrow, 272-4794

New England at Denver
Josh Morris

Bob Stovall Printing
 221 E. Ave. B
 272-3373

NY Giants at Arizona
Brice Foster

Bailey Gin Co.
 Sudan
 946-3397

Kansas State at Colorado
Gabriel Juarez

West Camp Gin, Inc.
 West Camp
 925-6681

Colorado State at Wyoming
Dustin Weir

Muleshoe Feed Barn
 311 W. American Blvd.
 272-5626

Jacksonville at Pittsburgh
Cameron Turner

McCormick Seed, Inc.
 400 E. Ash Ave.
 272-3156

New Orleans at Atlanta
Don Burch

Decorators Floral & Gifts
 616 S. 1st 272-4340

Boise State at NM State
Jeffery Seaton

Wilson Drilling
 W. Hiway 84
 272-5521

Penn State at Michigan
Juan Salazar

Hi-Tek Automotive
 215 N. 1st
 272-3480

Minnesota at Oakland
Seth Black

Leals Restaurant
 1010 W. American Blvd.
 272-3294

Carolina at St. Louis
Jason Thomas

Ag Aviation, Inc.
 Friona Hwy.
 272-3534

Texas at Kansas
Jason Jesko

Western Drug Co.
 114 Main
 272-3106

Virginia Tech at Miami
Justin St. Clair

School Menus

For the week of Nov. 11-15

MULESHOE

Dillman & DeShazo

Breakfast

Monday — NO SCHOOL Tuesday—waffles, fruit or juice, milk. Wednesday — biscuit w/ gravy, fruit or juice, milk. Thursday — breakfast pizza, fruit or juice, milk. Friday — cinnamon roll, fruit or juice, milk.

Lunch

Monday—NO SCHOOL Tuesday— creole spaghetti, Italian veggies, mixed fruit, Italian bread, milk. Wednesday—pizza, tator tots, pineapple tidbits, veggie stix, milk. Thursday—corn dog, veggie soup, cinnamon roll, sliced peaches, milk. Friday—steak fingers, mashed potatoes, gravy, crinkle cut carrots, hot roll, milk.

Jr. High and High School

Breakfast

Monday — NO SCHOOL Tues-

day—waffles, fruit or juice, milk. Wednesday — biscuit w/ gravy, fruit or juice, milk. Thursday—breakfast pizza, fruit or juice, milk. Friday — cinnamon roll, fruit or juice, milk.

Lunch

Monday—NO SCHOOL Tuesday—enchiladas, pinto beans, Spanish rice, sliced apples, milk. Wednesday—creole spaghetti, Italian veggies, mixed fruit, Italian bread, milk. Thursday—corn dog, veggie soup, cinnamon roll, sliced peaches, milk. Friday—chicken fried steak, mashed potatoes, gravy, crinkle cut carrots, hot roll, milk.

THREWAY

Breakfast

Monday—pancake and sausage on a stick, juice, milk. Tuesday—biscuit, gravy, juice, milk. Wednesday—Malt O Meal or Lucky Charms, juice, milk.

Thursday — cinnamon roll, juice, milk. Friday —two waffles, juice, milk.

Lunch

Monday—ham & cheese, macaroni/cheese, Western style beans, sweetpeas, peaches, milk. Tuesday—nacho grande, salad, Spanish rice, crackers, apricots, milk. Wednesday—cheeseburger, fries, orange, milk. Thursday—steakfingers, gravy, salad, wheat rolls, pears, milk. Friday—pizza, salad, brussel sprouts, birthday cakes, milk.

LAZBUDDIE

Lunch

Monday— buffet, salisbury steak, noodles, milk. Tuesday — buffet, pork patties, mashed, milk. Wednesday—buffet, BBQ sandwich, fries, milk. Thursday — buffet, spaghetti, meatballs, English peas, milk. Friday — buffet, meat & cheese nachoes, chili beans, milk.

CREDIT MAN

Clovis, Melrose, Muleshoe & Friona Area

Experience Counts!
Call Scott or Ed For
1 Hour Response!



Scott Emeson
Credit Man



Ed Butler
General Manager

8:30-6:30

Rebuild Your Credit With A New Car!

Strebeck Auto Network

1-800-755-2260

CALL 24 HOURS A DAY

Bring this ad in for a complimentary genuine diamond necklace with credit approval.

Name: _____
Address: _____
City: _____ State: _____ Zip: _____
Birthdate: _____ Phone: _____ SS #: _____
Employer: _____ Signature: _____
I Authorize STREBECK AUTO NETWORK to run an INSTANT credit check on myself.
Mail to: STREBECK AUTOWORK, 2118 Mabry Dr., Clovis, NM 88101

BAILEY COUNTY DEVOTIONAL PAGE

Scoggin Ag Center, Inc.

"Where Fertilizer Is Our Business"
1532 W. American Blvd.
272-4613

**IRRIGATION
PUMPS & POWER
ZIMMATIC CENTER-PIVOTS**
W. Hwy. 84 272-4483

MAPLE COOP GIN

927-5501
Maple, Texas

Leal's Tortilla Factory, Inc.

"Serving West Texas since 1957"
107 E. Ash 272-5772 Muleshoe, TX

Muleshoe Country Club & Golf Shop

900 Country Club Dr. 272-4250
Swimming, Dining, Golf Golf Accessories
Lessons Available & Clothing

Discount
Computer
& Repair
Service

Computek

1-800-687-3816
272-5404

BOBO INSURANCE AGENCY

108 E. Ave. C 272-4264

Shipman's Body Shop

Auto Painting • Wrecker Service • Free Estimates
Tractor Glass & Windshields
410 N. 1st Muleshoe, TX
272-4408 FAX 272-3366

SAIN IRRIGATION & MACHINES

Complete Pump Service
W. American Blvd. 272-4397
Walt Sain Muleshoe, TX 272-4148

Bob STOVALL Printing

Quality -- Service
221 E. AVE. B 272-3373
C.R. & EVA NELL DALE MULESHOE

Ellis Funeral Homes

Muleshoe - Morton - Earth - Sudan
Texas

RONNIE HOLT INSURANCE AGENCY

Specializing in Crop, Life
& Health Insurance
Western 66 Office Bldg.
272-4271 Muleshoe, TX

PACO FEED YARD, INC.

Commercial Cattle Feeders
P.O. Box 956 265-3281
Friona, TX
Feller Hughs-Mgr.

WEST CAMP GIN, INC.

Better Ginning & Courteous Service
Rt 2, Box 1000
925-6681 Muleshoe, TX
James Shepard • Phyllis Shepard

JAMES CRANE TIRE CO., INC.

322 N. First 272-4594
Muleshoe, TX
Mike Hahn

Facts About The BIBLE BY JOHN LEHTI

Copyright © John A. Lehti, Deshazo Large Print, Middlebrook, NY. NATIONAL SALES REPRESENTATIVE: Dale Adamsburg Service, 2702 E. 4th St., Clovis, NM 88101



IN THESE MODERN TIMES, GOING TO MARKET IS A MATTER OF GETTING INTO A CAR AND DRIVING TO THE SHOPPING CENTER. WE NEVER SEE THE MAN WHO GREW OUR FOOD, THE PEOPLE WHO MADE OUR CLOTHES, OR THE OTHER ARTICLES WE BUY AND USE. EVERYTHING IS PACKAGED NEATLY AND SHIPPED TO THE STORES WHERE WE DO OUR SHOPPING. BUT...

... THE BIBLICAL MARKETPLACE WAS ANOTHER MATTER. A CITY'S GATEWAY OPENED INTO A KIND OF PLAZA—HERE WAS THE MARKET, WHERE EVERY KIND OF TRADING AND SELLING TOOK PLACE. AN ANCIENT SAYING DECLARED, "ONE CAN BUY ANYTHING IN THE MARKETS OF JERUSALEM, FROM A FINE CAMEL TO A FALSE TOOTH!" AND YOU WOULD MEET THE MAN WHO RAISED THE MEAT YOU BOUGHT, OR THE GRAIN YOU WANTED FOR A FINE FLOUR—THE SHEEP-RAISER, THE OLIVE OIL-MAKER, THE FARMER, THE POTTER, THE CLOTH-SPINNER, WERE HERE TO PERSONALLY SELL YOU THEIR OWN GOODS. PEOPLE OF MANY NATIONS THROGGED JERUSALEM'S MARKETS—A DOZEN LANGUAGES MIGHT BE HEARD WITHOUT TAKING MORE THAN A FEW STEPS—A CONSTANT DIN OF VOICES, CRYING THE VIRTUES OF THIS MELON, THAT PERFUME, AGAINST A BACKGROUND OF THE CLINK AND JINGLE OF THE MONEY CHANGERS, WITHOUT WHOM THE BUYING AND SELLING OF ALL THESE GOODS COULD HARDLY BE MANAGED. A POLYGLOT OF ACTIVITY WAS THE ANCIENT MARKETPLACE WHEN "GOING TO MARKET" WAS AN EXCITING EVENT, INDEED!



NEXT WEEK: THE MOST IMPORTANT ANIMAL OF BIBLICAL TIMES!

This devotional & directory is made possible by these businesses who encourage all of us to attend worship services.

- | | | |
|---|--|--|
| <p>ASSEMBLY OF GOD
FIRST ASSEMBLY OF GOD
521 South First Street • 272-3017
Jack Stone, Min. • 272-3984
S.S. 9:45 a.m., W.S. 11 a.m. & 6:30 p.m., Wed. 7:30 p.m.</p> | <p>ST. MATTHEWS BAPTIST
Corner of W. Boston & W. Birch
Floyd R. Monroe, Min.
TRINITY BAPTIST
314 E. Ave. B
Robert Brown, Min.</p> | <p>LUTHERAN
ST. JOHN LUTHERAN
Lariat, TX
Richard Greenhauer, Min.
S.S. 10:30 a.m.; W.S. 9:30 a.m.</p> |
| <p>BAPTIST
CALVARY BAPTIST
1733 W. Ave. C.
Ben Davis, Min.
CIRCLE BACK BAPTIST
Intersection FM 3397 & FM 298
Jessie Shaver, Min • 946-3676
EMMANUEL BAPTIST
107 East Third
Isaias Cardenas, Min.
FIRST BAPTIST
220 West Ave. E.
Stacey Conner, Min.
FIRST BAPTIST
Lazbuddie • 965-2126
PRIMERA IGLESIA BAUTISTA
223 E. Ave. B
Roy Martinez, Min.
PRIMITIVE BAPTIST
621 South First
Elder Cleveland Bass, Min.
PROGRESS BAPTIST
Progress, TX
PROGRESS SECOND BAPTIST
Arthur Hays, Min.
1st & 3rd Sundays
RICHLAND HILLS BAPTIST
17th & West Ave. D
Brad Gathright, Min.</p> | <p>CATHOLIC
IMMACULATE CONCEPTION CATHOLIC
805 E. Hickory
Joseph Augustine, Min.
CHRISTIAN
THE CHRISTIAN CENTER
Morton Hwy. • 272-5105
Reydon Stanford, Min.</p> | <p>METHODIST
EL DIVINO SALVADOR
FIRST UNITED METHODIST
HISPANIC MINISTRIES
E. 5th and E. Ave. D
Pastor Benito Cavazos
FIRST UNITED METHODIST
507 W. 2nd St.
John Wagoner, Pastor
9 a.m. Holy Communion-Chapel,
9:45 a.m. Sunday School,
11 a.m. Morning Worship
LAZBUDDIE METHODIST
965-2121</p> |
| <p>CHURCH OF CHRIST
LARIAT CHURCH OF CHRIST
Sam Billingsley, Min.
S.S. 10 a.m.; W.S. 11 a.m. & 6 p.m., Wed. 7 p.m.
LAZBUDDIE CHURCH OF CHRIST
Nathan Crawford, Min.
S.S. 9:30 a.m.; W.S. 10:20 a.m. & 5 p.m.; Wed. 7 p.m.
MULESHOE CHURCH OF CHRIST
22nd & W. American Blvd.
John Knox, Min.
S.S. 9:30 a.m.; W.S. 10:20 a.m. & 6 p.m.; Wed. 7:30 p.m.
SIXTEENTH & AVE. D CHURCH OF CHRIST
Curtis Shelburne, Min. • 272-4619
W.S. 10:30 a.m. & 6 p.m.;
Wed. 7:30 p.m.</p> | <p>NAZARENE
NEW VISION CHURCH OF THE NAZARENE
814 W. Ave. C • 272-3622
David R. McIntire</p> | <p>PENTECOSTAL
IGLESIA PENTECOSTAL UNDA
207 East Ave. G • 272-3636
Wencelado Trevino, Min.</p> |
| <p>OTHER
NEW COVENANT
Plainview Hwy.
Jimmy Low, Min.
W.S. 10 a.m.; Wed. 7 p.m.</p> | | |

1ST BANK MEMBER FDIC
202 South First 272-4515

WES-TEX FEED YARDS, INC.
Custom Cattle Feeding
272-7555 Muleshoe, TX

AVI West Hwy 84 272-4266 Muleshoe

BAILEY GIN COMPANY, INC.
946-3397 Sudan, TX
Peanut Hawkins, MGR

WESTERN DRUG
114 Main 272-3106 Muleshoe

Church's CHICKEN 272-5581
1411 W. American Blvd., Muleshoe

HERITAGE HOUSE INN
2301 W. American Blvd. 272-7575
Muleshoe, Texas
Clint & Evelyn Peat - Resident Owners
Reservations 1-800-253-5896

BRUCE, INC. AIR CONDITIONING
Hwy. 214 North 272-5114
Muleshoe, TX
TAEL-B003360C, LP08638

MULESHOE COOPERATIVE GINS
P.O. Box 569 272-4794 Muleshoe, TX

MULESHOE AREA HEALTHCARE Center
"Committed to Caring"
106 W. Ave. H Muleshoe 272-7578

MULESHOE MOTOR CO.
1225 W. American Blvd. 272-4251

"THE FIVE AREA TELEPHONE COOPERATIVE ORGANIZATION"
West Plains Telecommunications Co.
Five Area Systems, Inc., Plateau-Cellular Network
Five Area Long Distance - Five Area Internet
302 Uvalde Muleshoe, USA (806)373-5533

WANDA BROWND INSURANCE AGENCY
104 W. 12th Muleshoe 272-7548

Since 1957 - The Original
Leal's Mexican Restaurant
1010 W. American Blvd. 272-3294
Muleshoe, TX Victor & Debbie Leal

Risinger Plumbing
Serving Muleshoe Area
All Plumbing Repairs
272-6772

Journal Classifieds

Call 272-4536

Deadlines: For Thursday, 5 p.m. Monday; for Sunday, 5 p.m. Thursday

Call 272-4536

Public Notice

LAMB COUNTY ELECTRIC COOPERATIVE, INC. NOTICE OF NEW LARGE GENERAL SERVICE - PRIMARY VOLTAGE RATE

Notice is hereby given that Lamb County Electric Cooperative, Inc. (the "Cooperative") intends to offer a rate for three-phase primary (approximately 12,460 volts phase-to-phase electric service supplies at one point of delivery, and measured through one metering point, where facilities of adequate capacity and suitable voltage are available.

This rate is a new rate, and has not been previously offered by the Cooperative. This rate could increase the total revenues of the Cooperative by approximately \$300,000. However, this amount cannot be accurately estimated, because the extent of usage of this amount cannot be accurately estimated, because the extent of usage of this rate by the customers cannot be predicted.

The proposed rate will be effective on January 17, 1997, or as soon thereafter as may be permitted by law.

There are four (4) customers in the Large Commercial class and seven (7) customers in the Oil Well class that may be affected by the proposed rate. The rate will not cause an increase in the rate of any of these customers. No other class of customers is affected by the proposed rate.

Information concerning this new rate is available at the General Office of the Cooperative, located at 2415 South Phelps Avenue, Littlefield, Texas 79339. Inquiries should be directed to Mr. Delbert Smith, General manager (Phone 806-385-5191).

On or about November 15, 1996, the Cooperative will file with the Public Utility Commission of Texas a Statement of Intent to Introduce a New Rate, setting forth the details of the rate. Requests to intervene must be filed no later than 45 days after the application filing date; thus, the Cooperative anticipates the deadline for intervening and objecting to the new rate will be January 2, 1997. Persons who wish to intervene or otherwise participate in these proceedings should notify the Commission as soon as possible. A request to intervene, participate, or for further information should be mailed to the Public Utility Commission of Texas, 1701 N. Congress Ave., P.O. Box 13326, Austin, Texas 78711-3326. Further information may also be obtained by calling the Public Utility Commission Consumer Affairs Division at (512) 936-7120, or (512) 936-7147 tele-type-writer for the deaf.

Published in the Bailey County Journal, Oct. 20, Oct. 27, Nov. 3 and Nov. 10.

Public Notice

TO: ALL INTERESTED AGENCIES, GROUPS AND PERSONS:

On or about 9 days after the publication of this notice, the City of Muleshoe, Texas will request the Texas Department of Housing and Community Affairs (TDHCA) to release Federal funds under Title II of the National Affordable Housing Act of 1990 for the following Project:

HOME Program Contract Number: 535186

Description: An owner-occupied rehabilitation housing activity which shall assist approximately 8 low income and very low income households by undertaking the moderate rehabilitation of existing owner-occupied single-family homes. Location: Specific units have not been identified, but shall be in the corporate limits of the City of Muleshoe, Texas. Total Estimated Cost: Project \$200,000; and, Administrative \$8,000.

An Environmental Review Record respecting the within projects has been made by the City of Muleshoe which documents the environmental review status of the projects. The Environmental Review Record is on file at the Office of the City Secretary, 215 South First, Muleshoe, Texas 79347, and is available for public examination and copying upon request between the hours of 9:00 a.m. and 4:00 p.m., Monday through Friday. Comments will be received 7 days following the publication of this notice.

The City of Muleshoe will undertake the activities described above with HOME Investment Partnership Program funds from the Texas Department of Housing and Community Affairs under Title II of the National Affordable Housing Act of 1990. The City of Muleshoe and Robert Montgomery, in his official capacity as Mayor, consents to accept the jurisdiction of the Federal Courts if an action is brought to enforce responsibilities in relation to environmental assessments, decision-making and action; and that these responsibilities have been satisfied. The legal effect of the certification is that upon its approval the City of Muleshoe may use HOME Program funds, and the Texas Department of Housing and Community Affairs will have satisfied its responsibilities under the National Environmental Policy Act of 1969 and 24 CFR Part 58.

The Texas Department of Housing and Community Affairs will accept an objection to its approval of the release of funds and acceptance of the certification only if it is on one of the following basis:

(a) that the certification was not in fact executed by the chief executive officer or other certifying officer of the Grantee approved by the Texas Department of Housing and Community Affairs; or

(b) that the Grantee's environmental review record for the project indicates omission of a required decision, finding, or step applicable to the project in the environmental review procedures (24 CFR Part 58), and may be addressed to the Texas Department of Housing and Community Affairs, P.O. Box 13941, Capitol Station, Austin, Texas 78711-3941.

Objection to release of funds on bases other than those stated above will not be considered by the Texas Department of Housing and Community Affairs. No objection received after 25 days, from the publication of this notice, will be considered by the Texas Department of Housing and Community Affairs.

Published in the Bailey County Journal, Nov. 10, 1996.

Miscellaneous

Start Dating Tonight! Have fun playing the Texas Dating Game **1-800-ROMANCE** ext. 4743

Christmas on Parade Bazaar Lots of Gifts and Crafts Sat. Nov. 23 10:00 a.m. — 6:00 p.m. Sun. Nov. 24 1:00 p.m. — 5:00 p.m. At Farwell Community Center 207 9th Street Farwell, Tx

Attention Kirby Sales & Service 207 W. 7th Clovis N.M. Located next to the Sonic We have a new self propelled & rebuilt Kirbys. Call for Joe Ennis **505-762-4991**

45s-9tsunc

Help Wanted

\$1000's guaranteed stuffing envelopes from home. \$50 sign on bonus. Weekly checks. Call refundable, (972) 888-8863. 44t-4tpd

Mechanical Contracting firm needs to hire secretary for employment in the Muleshoe area. Required skills are letter writing, typing, computer, ability to communicate well; bookkeeping experience a plus. Send resume to P.O. Box 219, Muleshoe, TX 79347. 46s-6tpd

Automobile

For sale: '93 Ford XLT Supercab 4x4 pickup. Very clean. \$9,500 OBO. **272-3102** or **925-6766**. 31s-tfc

'94 Chevy Astro Extended Mini Van LT, Dual Air and Heat, Loaded, brown and tan, \$11,995. (505) 359-1775, Portales, NM.

'89 GMC Extended Cab, 1/2 ton, V-6, 5 speed, white, \$7,995. (505) 359-0947, Portales, NM.

'82 Ford Bronco, 4x4, excellent condition, \$5,295. (505) 359-1775, Portales, NM.

'94 Chevy Suburban, 4x4, loaded, beautiful black, 25,300. (505) 359-0947, Portales, NM.

'92 Ford Explorer, 4 door, extra clean, silver and blue, \$13,100. (505) 359-1775, Portales, NM.

NOW IS THE TIME TO START CLEANING OUT THOSE CLOSETS AND SELL THOSE UNWANTED ITEMS IN THE CLASSIFIEDS Call **272-4536**

For Sale

Singer 1996 New unsold Heavy Duty School Models. Sews silk, canvas, leather, knits & Jeans. Sews straight, zigzag, buttonholes, monograms, serge seam finish. 10 year Factory warranty, \$198 w/ad; \$498 w/out. Free UPS statewide.

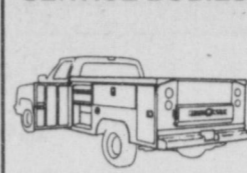
Singer Sewing Center 5418 Slide Rd. Lubbock **806-788-0608**

37t-tfc
For Sale: Handcrafted flint knives. Call 272-5915. 44t-nc

For Sale: Wheat, Straw, Bales. \$3.50 per Bale. **227-2123** or **227-2336**. 46s-4tc

PRIMESTAR \$50 off installation call Gabriel for details **272-3072** or **1-800-815-2358** pin 9240 38s-tfc

QUALITY BUILT SERVICE BODIES



AMERICAN EQUIPMENT & TRAILER 3707 M.L.K. Jr. Blvd. - Lubbock, TX **806-747-2991**

Real Estate

House For Sale in Sudan. 2000 Sq. Ft., 3 Lg. Bdrm, 2 bath, 2 living areas, double garage, Call **915-572-3690**. 45s-8tc

Help Wanted

Secretarial Position Available in fast-paced company. Computer experience a plus, but we will train. Contact Carolyn Harris, Bamert Seed Company (806) 272-5506 46s-4tc

Call The Journal Today

HAY FOR SALE

German millet hay, haygrazer and large round bales.

Delivery available discounts on quantity. Call (505) 276-7522, 477-2220, 359-0947, 276-7527 41t-tfc

Classifieds Sell!

272-4536

Wanted

\$\$WANTED\$\$

We buy used mobile homes. We pay top dollar, any year, any condition. We need your used mobile home. Please call 1-800-404-1321. 7t-tfc

Babysitter Needed: for newborn. Call 272-5835. 46s-2tpd

CLASSIFIED RATES

15 Words And Under, First Run: \$3.75
Every Run After The Initial Run: \$3.00
16 Words And Over: 1st Run .25 Per Word
16 Words And Over: 2nd Run .20 Per Word

CLASSIFIED DISPLAY RATES

\$3.20 Per Column Inch DEADLINES
For Thursday Paper, 5 p.m. Monday
For Sunday Paper, 5 p.m. Thursday

To Receive The Reduced Rate After The First Insertion, The Ad Must Run Continuously. We Reserve The Right To Classify, Revise, Or Reject Any Ad. We Are Not Responsible For Any Error After Ad Has Run Once

Nieman Realty **George Nieman, Broker** **272-5285 or 272-5286**

116 E. Ave. C RICHLAND HILLS

JUST LISTED-IMMACULATE 3-2-2 Brick Home, Geo. Heat Pump, Built-ins, FP, Nice landscaped yd., Stor. Bldg., MORE!! \$70's!!! RH3

NICE 3-3-1 Brick, cent. Heat, Evap. Air, built-ins, 2000' + Iv. area, fenced yd., stor. bldg., MORE!! \$60's!!! RH-2

NICE 3-2-2 Brick, cent. A&H, built-ins, FP, approx. 2150' Iv. area, fenced yd., MORE!!! \$69K!!! RH-7

VERY NICE 3-2-1 Brick, Cent. A&H, built-ins, fans, new paint, carpet, & drapes, fenced yd. \$60K!!! RH-1

HIGHLAND AREA

2 Bdrm, 1 bath home, fenced yard. \$16,500!!! HL-4

VERY NICE 3-2-2 Brick, Cent. A&H, built-ins, fenced yd., spklr. sys., MUCH MORE!!! \$60's!!! HL-1

VERY NICE 3-2-1 carport Home, heat pump, built-ins, nice carpet, fans, storage-workshop! MUCH MORE!!! \$40's!!! HL-6

NICE 3-2 Home, Heat Pump, FP, fenced yd., stor. bldg. \$30's!!! HL-3

NICELY REMODELED 3-2-1 Brick, Cent. A&H, built-ins, FP, nice carpet & tile, fenced yard, storage building, MORE!!! \$60's!!! HS-8

COUNTRY CLUB

2-1-1 Carport Home, wall furnace heat, nice carpet, storm shelter, stor. bldg., fenced yd. \$20's!!!

RURAL HOMES

NICE 3-2-2+2 Carport Brick Home on 2.5 acres on pavement, close to town, Heat Pump, built-ins, FP, MUCH MORE. \$70K !!! HR-3

JUST LISTED-3-2-2 Home 1.36 ac. on pavement, Cent. A&H, built-ins, freshly painted interior & exterior, fans, fenced yd., 31' x 40' barn !!! \$40's!!! HR-2

2-2-1 carport Mobile Home on .665 acres on pavement close to town, Cent. heat, evap., air, DW, large barn, stor. bldg. and MORE!!! \$25K!!! HR-5

VERY NICE 3-11/2-1 Home on 8 acres, on pavement close to town, Cent. A&H, built-ins, sun room, concrete cellar, storage bldgs., fenced yd., RV cover, mobile home hookups, stock pens, fenced acreage, & MORE!!! \$50's!!! HR-6

LENAU ADDITION

NICE 3-2-1 Brick, Heat Pump, built-ins, fans, fenced yd., stor. bldg. \$30's!!! L-4

NICE 2-2-2 Brick, on corner lot, heat pump, fenced yard, storage bldg., MORE! \$40's!!! L-1

PRICE REDUCED 3-2-1 carport Home, geothermal heat pump, fenced yd., storage bldg. \$24,500!!! L-3

NICELY REMODELED 3-1 1/2 - 1 + 2 Carport home, Cent. A&H, DW, fenced yd., Stor.-wksph., MORE!!! \$30's!!! L-2

HIGH SCHOOL

VERY NICE 3-1-1 Brick, Heat Pump, nice carpet, fenced yd., stor. bldg. \$30's!!! HS-3

NICE 2-1-1 Brick, Heat Pump, nice carpets, well insulated, storm windows & doors. \$30's!!! HS6

JUST LISTED -2-1-1 Home, floor & wall furnace, evap. air, siding exterior, stor. bldg., fenced yard !!! \$20's!!!! HS-7

JUST LISTED-NICE 2-1-1 Home, nice carpets, stove, refrig., wall furnace, covered deck, fenced yd., stor. bldg., MORE !!! \$20's!!! HS-4

PARKRIDGE

NICE 3-2-2- Brick, Cent. A&H, built-ins, FP, cov. patio, fenced yd. \$50's!!!

ASK ABOUT OUR COMMERCIAL LISTINGS!!!
160 acre tract, 8" well, circle spklr. w/drops, fully allotted!!!

Byrd Realty **Ronald Byrd** Farwell, Texas Licensed Broker

Crista Bass Sales Associate **Home (806) 925-6464**

Office (806) 481-3846 Mobile (505) 760-1495
308 Third St., Farwell, TX

78 Acres NW of Muleshoe, Highway Frontage. Excellent development property. Owner will sell as one unit for \$40,000 or will divide into 5 or 10 acre tracts at \$750.00 per acre. If you have wanted a small acreage, this is your prime opportunity

320 Acres N.E. of Muleshoe. 4 wells, 2-Electric sprinklers, large 2 story stucco house, large barn, lays well

James F. Hayes & Co.

AGRICULTURAL REAL ESTATE SERVICES

656 Acres of C.R.P. — Clays Corner Hub Area. Two years left on contract. 3 irrigation wells, 1 domestic well. 90% lays good with good soils. Will be productive farm when it comes out of C.R.P.

640 Acres Oklahoma Lane. — 2 Sprinklers, 4 irrigation wells, 115 Acres of pasture, modest home, 2 domestic wells

120 acres west of Muleshoe. 2 wells. Good soil. Lays good. Immediate possession available. \$250.00 per acre.

160 Acres Northeast of Muleshoe in Parmer County. Excellent water. Excellent soil. Electric Center Pivot Sprinkler. New set of bowls on pump. Top Notch Farm

317 Acres in Lamb County on Bailey County line. 3 wells, 1 sprinkler, lays good. Call for details!

654 Acres in southern Bailey County. Grain sorghum & wheat allotment. Signed into program.

320 Acres - Lazbuddie area - 2 wells, 1 sprinkler, 60 acres of C.R.P. Good soil

SOLD

Vic Coker, Agent
310 Main St. Suite 103 Muleshoe
Office 272-3100 Home 965-2468

WHEN LAND INVOLVES COWS AND PLOWS

BETTER LIVING

MOBILE HOMES CLEARANCE

All '96 Models Must Go!

Come Check Us Out — Fantastic Savings On All Homes

1-800-404-1321 Portales, NM (505) 356-5448

Lic. # D00681 'Se Habla Espanol'

Subscribe to the Muleshoe Journal 272-4536

Tired Of The Same Old Tune?

A GM Goodwrench Engine Tune-Up can revitalize the performance of your GM car or light truck:

- Engine diagnosis • Install AC Spark Plugs and AC PCV Valve • Check ignition system timing and belts • Set idle
- Check fuel filter and air filter • Inspect battery terminals

\$69⁹⁵ + tax

John Roley's AutoCenter **LITTLEFIELD**

GM Goodwrench Service 385-6464

GET VARIETY & SAVINGS

ALL TYPES
6 pack
20 oz. btls.
Coca-Cola,
Sprite
or Dr Pepper **2\$5** For

ALL TYPES
6 pack
12 oz. cans
Coca-Cola,
Sprite
or Dr Pepper **1\$79**

Meat

Bar S Thick Sliced, Regular, or Low Salt Bacon
1 lb. pkg. **\$1.59**

U.S.D.A. Select Beef Boneless Arm Roast
lb. **\$1.59**

Assorted Pork Chops
lb. **\$1.59**

Small Pack, Wafer Thin-Cut Bone-In Pork Chops
lb. **\$2.39**

Value Pack, Center Cut Pork Chops
lb. **\$1.99**

U.S.D.A. Select Beef Boneless Charcoal Steak
lb. **\$1.79**

Hormel Cure 81 Spiral Cut Bone-In Half Ham
lb. **\$2.99**

Hormel Cure 81 Mini Boneless Half Ham
lb. **\$3.89**

JUST HEAT & EAT! Advance Breaded Beef Fingers or Patties 12 oz. pkg. **\$1.29**

Sausage/Egg/Cheese, Ham/Egg/Cheese or Bacon/Egg/Cheese, Jimmy Dean Breakfast Biscuits 4 oz. **\$1.19**

"Great On The Grill" U.S.D.A. Select Boneless Beef Short Ribs lb. **\$1.99**

Wilson Just for Us, 2 lb. Chunk or 1.75 lb. Sliced Ham YOUR CHOICE **\$7.99**

Wilson Extra Lean Boneless Half Ham lb. **\$3.99**

Wilson Extra Lean Boneless Whole Ham lb. **\$3.89**

Bar S Meat Bologna 12 oz. pkg. **89¢**

Bar S Meat Franks 12 oz. pkg. **79¢**

Produce

YOUR CHOICE Grapefruit or Oranges
18 lb. bag **\$3.99**

Green Onions bunches **3/\$1**

Red Delicious Apples lb. **69¢**

Green Skin Avocados **2/\$1**

Green Cabbage lbs **4/\$1**

Potatoes
10 lb. bag **99¢**

Minute Maid Assorted Orange Juice
64 oz. ctn. **\$1.59**

Assorted, YOUR CHOICE Lowe's Drinks
3 liter or 6 pack-12 oz. cans **99¢**

Banquet Chicken, Beef or Turkey Pot Pies
7 oz. pkgs. **3/\$1**

Assorted Boys or Girls Diapers Pampers
22-40 ct. Sizes 1,2,3,4,5 **\$5.99**

check out lower

DEL MONTE ASSORTED Pineapple
15-15.25 oz. can **59¢**

Hormel Chili No Beans
REGULAR OR HOT
19 oz. can **99¢**

Kleenex Cottonelle Bath Tissue
KLEENEX COTTONELLE ASSORTED DOUBLE ROLL
4 roll pkg. **1.89**

ASSORTED LAY'S® OR WAVY LAY'S® Potato Chips
Reg. \$2.99 For **2\$4**

HONEY BOY Pink Salmon
15 oz. can **2\$3**

ASSORTED POURABLE CONCENTRATE (MAKES 46 OZ.) Welch's Juice Makers
11.5 oz. can **99¢**

NARISCO ASSORTED Premium Crackers
1 lb. pkg. **1.39**

Tide Laundry Detergent
TIDE ULTRA 2 REGULAR, W/BLEACH, OR TIDE FREE
82-103 oz. box **5.99**

Purina Dog Chow
22 lb. bag **6.99**

SHURFINE ECONOMY Laundry Detergent
30 lb. pail **5.99**

WESTERN FAMILY Fire Logs
5 lb. bag **99¢**

SHURFINE 30 CT. TALL KITCHEN WIDENASTRING OR 10 CT.
YOUR CHOICE **3\$5**

VEGETABLE, CORN, CANOLA, BEST BLEND, OR SUNFLOWER Wesson Oil
48 oz. bot. **1.99**

CAMPBELL'S Cream of Soups
CAMPBELL'S MUSHROOM OR CHICKEN
10.7 oz. can **79¢**

ASSORTED HOME COOKIN' OR CHUNKY Campbell's Soups
19 oz. can **1.69**

SHURFINE ASSORTED Soda Pop
2 liter bot. **59¢**

FROZEN & DAIRY

Jack's Supreme Pizza
ASSORTED Jack's Pizza
16.55-20.20 oz. For **2\$4**

Champ! Cones
BLUE BUNNY VANILLA OR COMBO
6 ct. pkg. For **2\$5**

TCBY Yogurt
FAT FREE FANTASIES ASSORTED
6 oz. ctn. For **5\$2**

Cool Whip
KRAFT GENERAL FOODS REGULAR, LIGHT, FAT FREE, OR EXTRA CREAMY
8 oz. tub **99¢**

Butterball Assorted Chicken Requests
14 oz. pkg. **3.99**

Blue Bunny Assorted Ice Cream
1/2 gal. reg. ctns. For **2\$4**

Borden American Cheese Slices
INDIVIDUALLY WRAPPED BORDEN
16 oz. 24 ct. **2.99**

Kraft Assorted Chunk Cheese
8 oz. pkg. **1.59**

Egg Noodles
AMERICAN BEAUTY WIDE, MEDIUM, OR EXTRA WIDE
8 oz. pkg. **69¢**

Tomato Sauce
REGULAR OR NO SALT ADDED
8 oz. cans **4\$1**

Chips Ahoy! Cookies
REDUCED FAT, REGULAR, STRIPED, SPRINKLED, CHEWY, OR CHUNKY
14.5-18 oz. pkg. **2.28**

Nestea Iced Tea Mix
REGULAR W/SUGAR OR LEMONADE, OR SPICY HOT
26.5 oz. cans **2.55**

V8 100% Vegetable Juice
REGULAR, LOW SODIUM, PICANTE,
8 pack 8.5-8 oz. **1.99**

Vick's Formula
YOUR CHOICE **2.79**

Tylenol Extra Strength
EXTENDED RELIEF CAPLETS, OR CAPLETS/TSIGELCAPSULETS
24 ct. **2.29**

Pert Plus Shampoo
KID'S LIGHT/NORMAL OR ASSORTED
15 oz. bot. **2.88**

Now On Sale!
4-6 oz. Cakes or Pies \$2.99

WESTERN UNION MONEY TRANSFER™
"The fastest way to send money"

Lowe's MARKETPLACE

Pay-n-Save

515 W. American Blvd.
401 W. American Blvd.
Muleshoe 272-4585
PRICES EFFECTIVE NOV. 6-12, 1996

WE RESERVE THE RIGHT TO LIMIT QUANTITIES IN TEXAS

Muleshoe 272-4406

OPEN MONDAY-SATURDAY 7:30 A.M. - 8:00 P.M., SUNDAY 8:00 A.M. - 7:00 P.M.