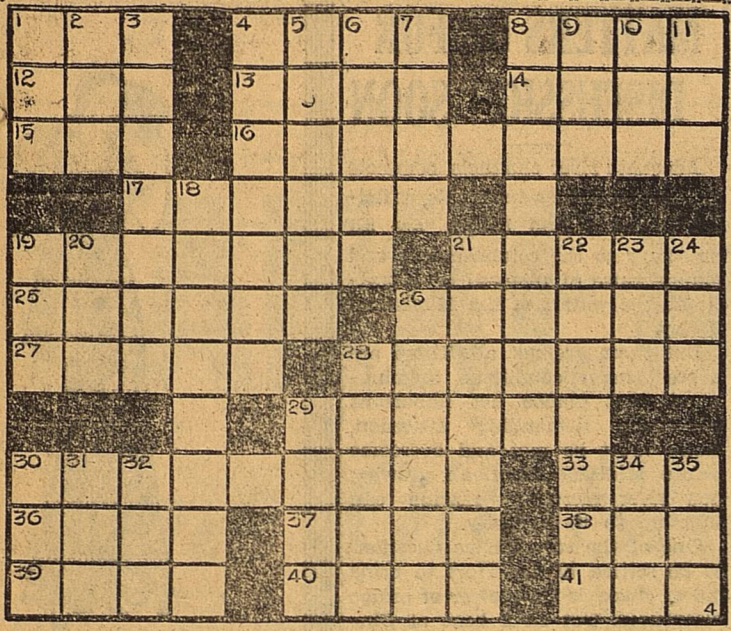


Not Hard, But Not Easy



HORIZONTAL

1 Third rate actor.
4 Soaks flax.
8 Drama.
12 Self.
13 Bad.
14 Uncommon.
15 Grown-up boys.
16 Male game fowls.
17 Exchanged.
19 Benefited.
21 Packer.
25 Watch key.
26 To retreat.
27 Guides.
28 Erased.
29 Meal.
30 Sworn statement in writing.
33 Frozen water.
36 Act of len-

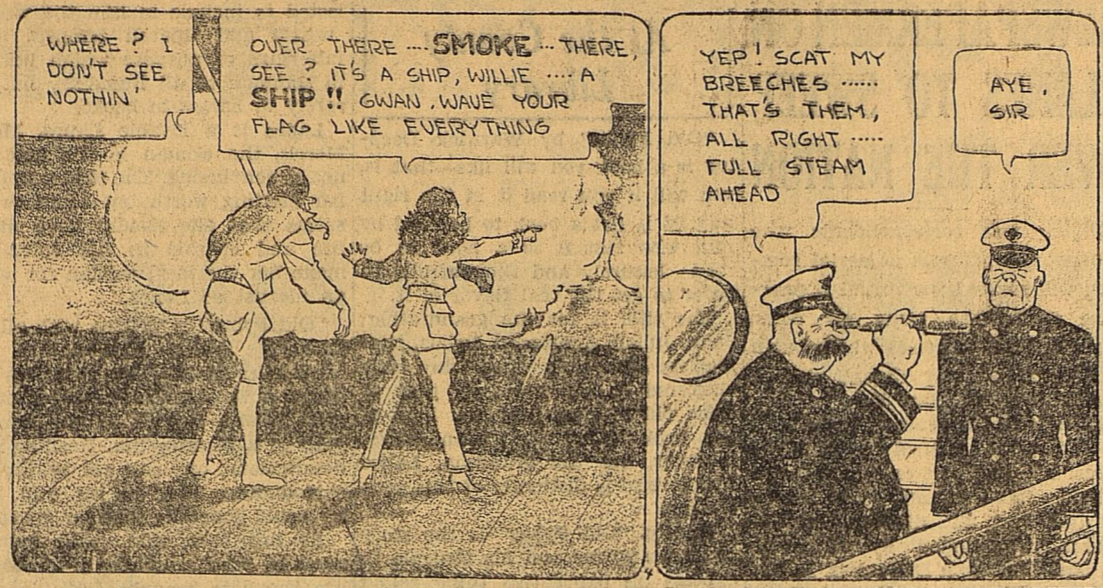
VERTICAL

1 Edge of a skirt.
2 Era.
3 Helena is capital of.
4 Gratifies.
5 Bladder.
6 Adjusted a.
7 Coaster.
8 Advances.
9 Varnish ingredient.
10 Noah's vessel.
11 Aye.
18 Enigmatis.
19 Shoemaker's tool.
20 To contend.
21 Told.
22 Introducing as an antagonist.
23 Before.
24 Carmine.
26 To murmur.
28 Satan.
29 A jumble.
30 Vestment.
31 Enemy.
32 Distant.
34 Call of a dove.
35 Epoch.

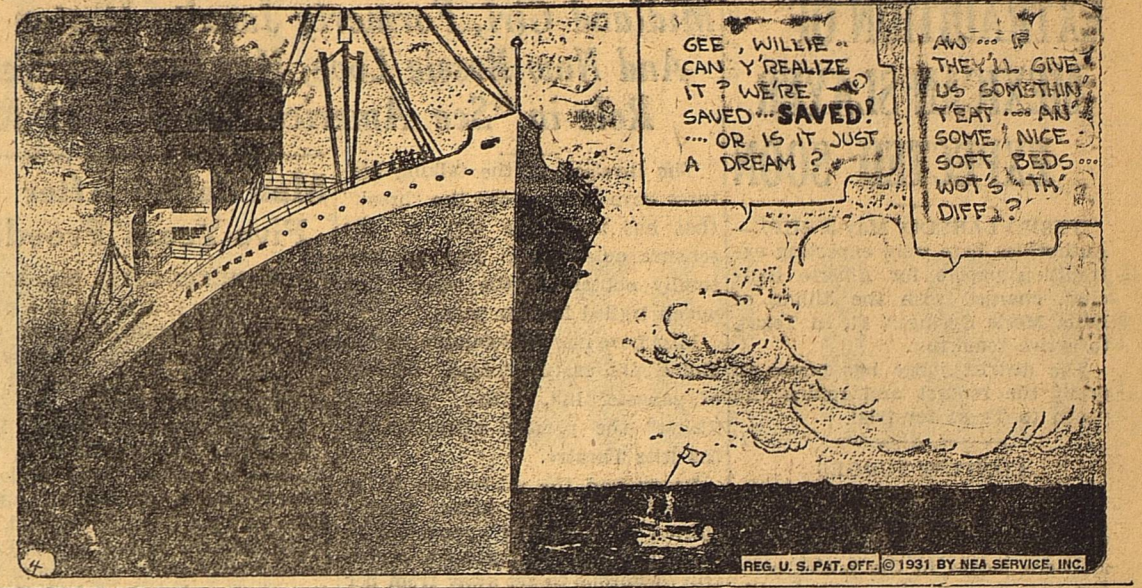
SATURDAY'S ANSWER

DAVID POLAR
TOME AGE AVID
EPOS MOA NILE
LEPK DAL DALE
ASTER LINED
REBATES
TAP SETON MAR
AGO TROUT EMU
WARN ANT ORAL
SITE TEF WISE
NOBLE DENTIS

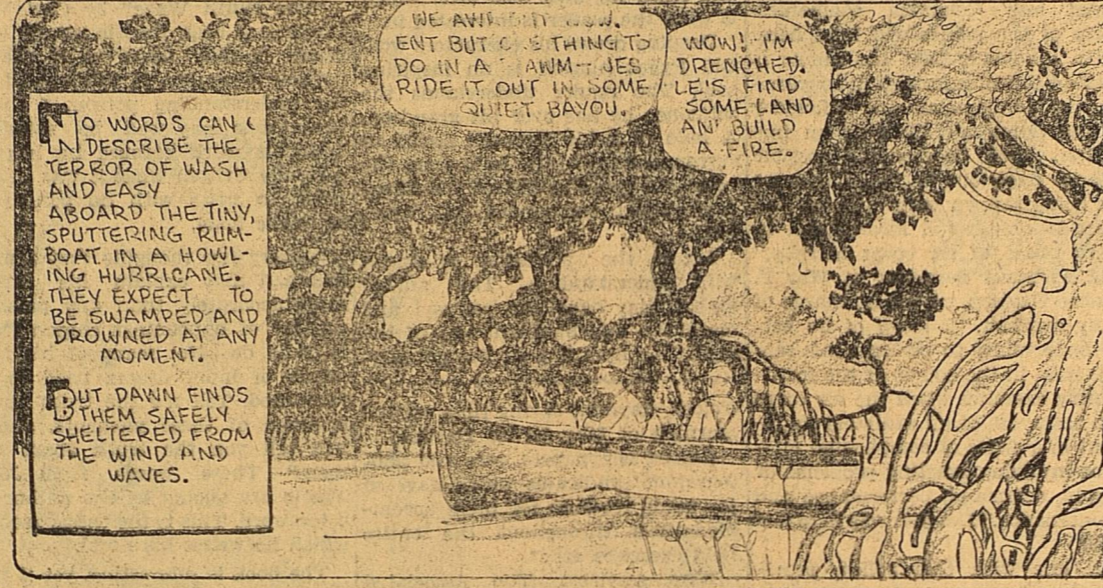
BOOTS AND HER BUDDIES



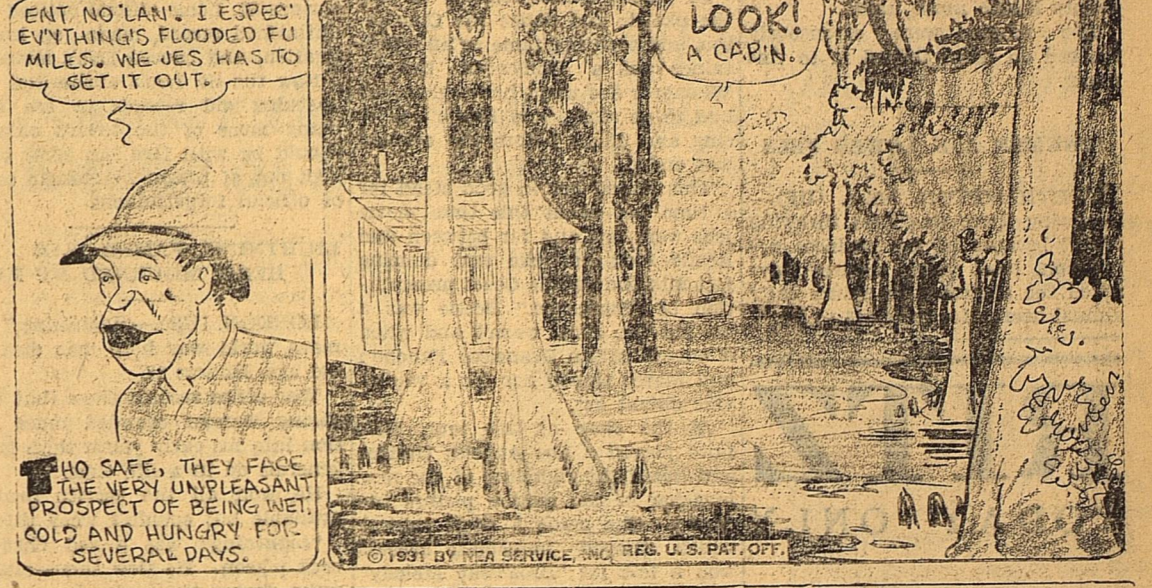
Willie Is Practical



WASH TUBBS

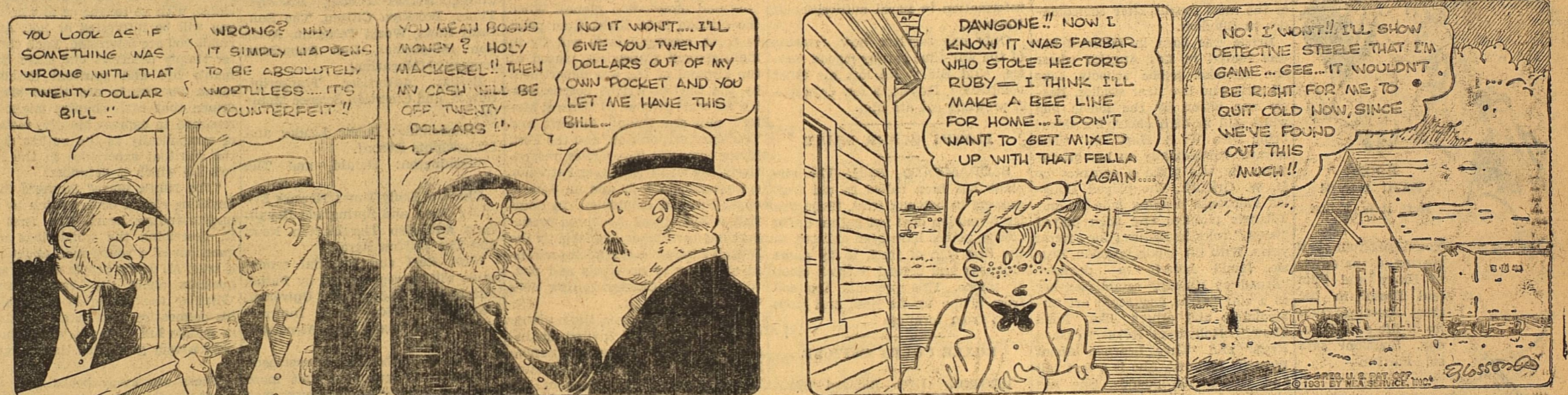


Any Old Port in a Storm



FRECKLES AND HIS FRIENDS

Brace Up, Freckles!



Want Ads

CLASSIFIED ADVERTISING RATES AND INFORMATION

Cash must accompany all orders for classified ads, with a specified number of days for each to be inserted.

CLASSIFIEDS will be accepted until 12 at noon on week days and 6 p. m. Saturday for Sunday issues.

PROPER classification of advertisements will be done in the office of The Reporter-Telegram.

ERRORS appearing in classified ads will be corrected without charge by notice given immediately after the first insertion.

RATES:
2c a word a day
4c a word two days
5c a word three days.

MINIMUM charges:
1 Day 25c
2 Days 50c
3 Days 60c.

FURTHER information will be given gladly by calling—
77

No Traffic So No Saddlehorn

TOMBSTONE, ARIZ. (UP)—Adoption of the English saddle as a part of standard equipment for up-to-date "dude" ranches has resulted in a general controversy in this region as to the origin of the year's prize "tenderfoot" story.

An eastern girl, the story goes, selected a horse to ride and when asked whether she wanted a saddle with a horn replied that one without a horn would do as she didn't intend to ride in traffic.

Now each cowpuncher claims the story originated on his home ranch while a few skeptical ranch owners insist it is wholly fictitious.

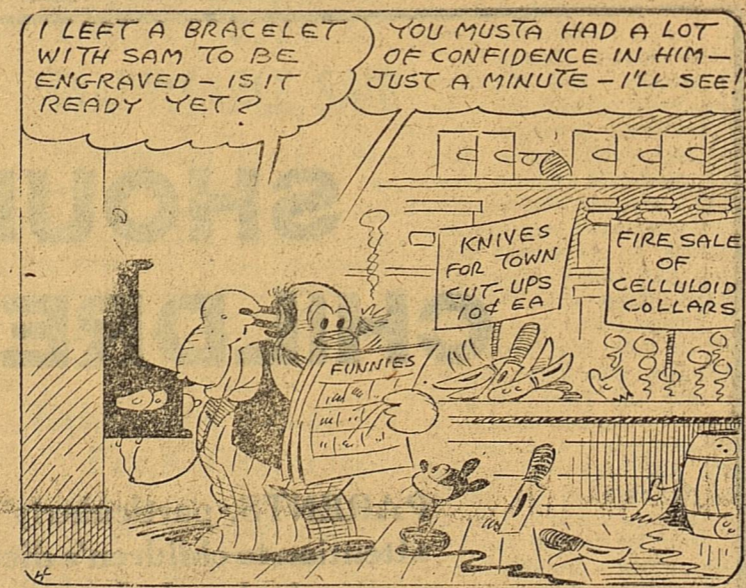
Liquor Gives Profit 9 Millions for 1930

TORONTO, Ont. (UP)—Revenue from the sale of liquor, and liquor permits, gave the Ontario Provincial government a total profit of \$9,315,967.30 last year, according to the Ontario Liquor Control Board's annual report.

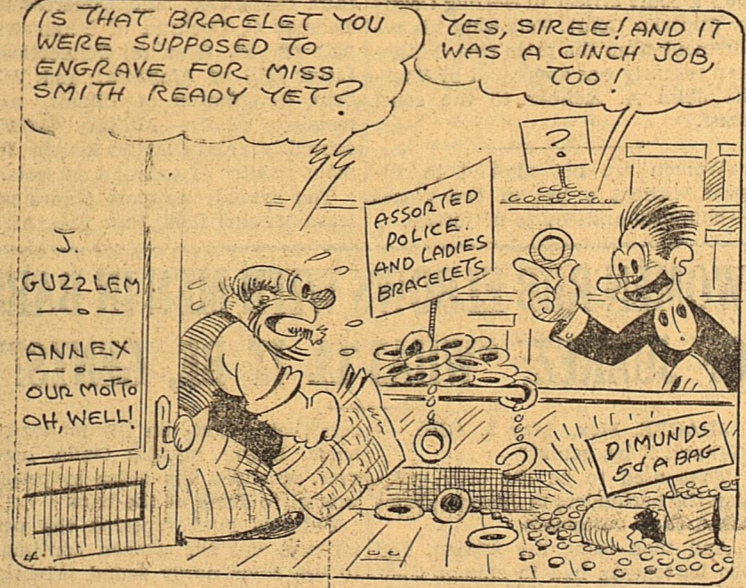
The Board paid \$15,500,000 to the Federal Government as customs duties, excise duties, malt duties, beer gallonage, and sales tax.

Of the 1,323 permit cancellations, 499 were for over-indulgence, the report stated.

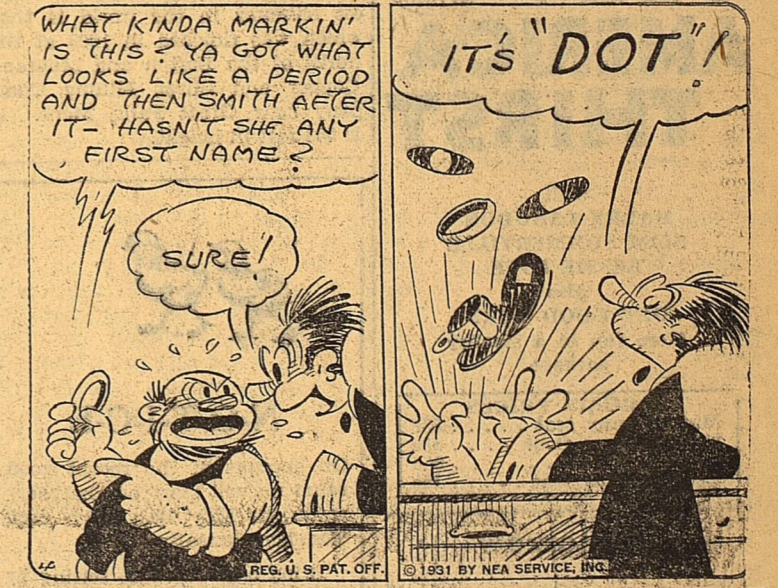
SALESMAN SAM



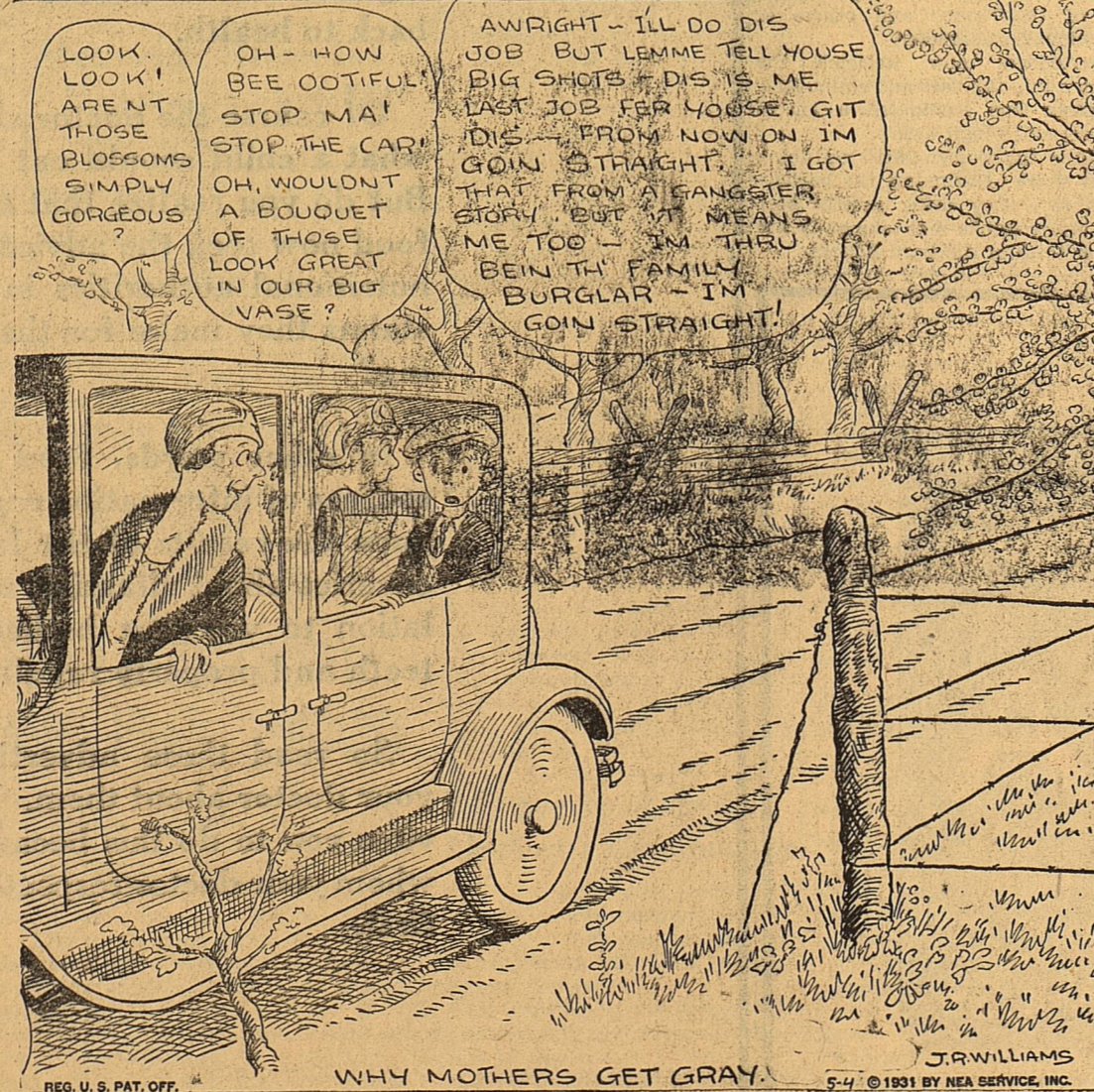
Brevity, Guzz—Brevity!



By Small



OUT OUR WAY



By Williams OUR BOARDING HOUSE



By Ahern

1. Lost and Found

KEYS black leather case, metal disc with "Kirby" one side "Arizona" on other. Lost Thursday between Dorsey boot shop and Midland National. Advise Reporter-Telegram. 49-12

2. For Sale or Trade

GOOD sixteen hand grain fed mules. Also Milch cow, J. E. Wallace, Route 1. 47-3p

3. Apartments

DUPLEX, four rooms and bath; nicely furnished. 411 North Marientfield. Phone 551. 47-3p

Rent free on garage room for taking care of lawn. Phone 400. 47-1p

OLD STONE IN NEW ADDITION

EAST LONGMEADOW, Mass. (UP)—Huge blocks of brownstone, quarried here more than 20 years ago, will be used in construction of an addition to Sage Hall at Yale University.

Stickler Solution

TATTERED TOM TATTLED TO THE TITLED TUTOR.
By inserting T 13 times among the smaller letters, the above sentence may be formed.

FLOWERS

Plants for Yard Transplanting, Pot Plants, Cut Flowers, Decorations.
MRS. L. C. WATERMAN
Phone 802 or 803
721 W. Kansas St.

SOUTHLAND GREYHOUND LINES, INC. DAILY SCHEDULES

East Bound	West Bound
1:50 A.M.	4:45 A.M.
10:45 A.M.	10:55 A.M.
2:00 P.M.	8:20 P.M.
6:30 P.M.	

The schedule to Ft. Worth and East—1:50 A.M.
The schedule to El Paso and West—4:45 A.M.

Special buses anywhere at any time.

Round trip tickets to any point on our lines for 1-3 times the regular one way fare. 180 day return limit.

