

THE REPORTER TELEGRAM

Evenings (except Saturday) and Sunday Morning
116 West Missouri, Midland, Texas
Midland Publishing Company, Publishers

PAUL BARRON, Editor
MELVERN J. TAGGART, Business Manager
Entered as second class matter at the postoffice at Midland, Texas, under the Act of March 30, 1879.
Subscription Price
Daily, by Carrier or Mail \$5.00 Per Month 50c
Per Year \$50.00
Advertising Rates
Display advertising rates on application. Classified rate, 2c per word; minimum charge 25c. Local readers, 10c per line.
Any erroneous reflection upon the character, standing or reputation of any person, firm or corporation which may occur in the columns of the Reporter-Telegram will be gladly corrected upon being brought to the attention of the firm.

Horsely Tears Up Ballinger, Town That Fought Equines During Season

BALLINGER, Aug. 31.—The horse fly bit the horses; the team ran away; two children narrowly escaped; the farmer's wife was hurt and the dog bit a man twice. Aside from that it will be a long time before folks stop talking about what a horsely did here recently.

The fly was at ease and so were Ed Heath's horses when Ed drove into Oscar Lea's farmyard, but it wasn't long before the fly got restless, and so did the horses.

"Flies" said one of the Lea boys, and he went to stop the team. But the horses had started to run as he grabbed the bridle of one. He let go after being dragged over a considerable part of the yard.

One of the younger Lea children was playing directly in the path of the animals. Lea made a dash and picked the child up. The horses made a dash, too, toward another child. Mrs. Lea sprinted to the spot in time to save the child but was herself badly trampled. Heath started after them. But he tripped on the chain holding an excited dog. The dog did his part nobly by biting Heath twice.

That was about all that could happen, and the horses stopped.

Mr. and Mrs. M. R. Hill and daughter Jan's are spending the weekend visiting relatives in Austin.

Donald Kirk, who has been visiting his sister Mrs. Melvern J. Taggart for the past month, returned to his home in Houston this morning.

Laurin Blayd is leaving Sunday for El Paso where he will spend Labor Day.

At a recent meeting of this sect, a reporter checked Legg for the following interesting information:

"The buying power of the little red penny never has amounted to very much. Its value has been shrinking away gradually, but there is still one way in which this same little copper coin does useful work and a lot of it," the manager said.

"One penny will buy enough fuel, and enough lubricating oil to generate 200 watts of electricity with an individual electric plant. This amount of electricity will do any of these tasks:

Pump 600 gallons of water on a 50 foot lift; light one 20-watt lamp for 10 hours; light five 20-watt lamps for two hours; run a 9-inch electric fan for five hours; run a washing machine continually for one hour; heat an electric iron for 33 minutes; or run a sewing machine for two hours.

"This is not all. There are over 200 other time and labor-saving electrical appliances with which the user can use this penny's worth of electricity just as satisfactorily."

WASHINGTON
"A man who can be comfortable in the presence of a grievous wrong is to a great extent guilty of that wrong."

All truths should be as clearly outlined. Practical demonstrations of professional honor help bring about an improved state of society.

BARROW FUNERAL PARLORS
Ambulance Service
Day Phone 502 Night Phone 560

The MOTOR in your car has a life of 75,000 to 200,000 miles!

Stormizing is a mechanically accurate process by which worn cylinders are restored to their original accuracy. The process is so accurate that it can be repeated several times as cylinders wear. By this process, Full Motor Power can be maintained from 75,000 to 200,000 miles. The saving in gas and oil will be sufficient to pay the small cost, and the car has a "NEW" Motor to run.

WE HAVE THE ONLY MACHINE OF THIS KIND IN MIDLAND

Stormizing is the factory method of boring cylinders with guaranteed results.

GENERAL AUTOMOTIVE REPAIRING IS OUR SPECIALTY

SIBLEY MOTOR COMPANY
201 S. Main Phone 277

Drive in and let us look over your car. This will cost you nothing. We will show you what Stormizing is and how it pays for itself.

Now You Can Eat Sunshine; Grab Off A Bit of Tan While Lazily Lunching

NEW YORK, Aug. 31.—The first widespread application of the discovery of Dr. Harry Steenbock, of the University of Wisconsin, who, after experimenting sixteen years, learned how to put Vitamin D—the "sunshine Vitamin"—into foods, will be undertaken.

The process is known as irradiation and consists of exposing foods to the ultra-violet rays of the mercury quartz lamp thereby giving them the same therapeutic powers as sunshine. It was perfected by Dr. Steenbock who in addition to being professor of agricultural chemistry at the University is a member of many scientific organizations.

Having perfected this process Dr. Steenbock had it patented and then after refusing many flattering offers, turned it over free to the Wisconsin Alumni Research Foundation, an organization composed of old students of the university but not connected with it officially. The proceeds from the granting of licenses by the Foundation will go into endowment funds to found chairs

BUILDERS

Consult Burton-Lingo when you want builders' material, or want figures on any kind of building. We are prepared to serve you.



Burton-Lingo Company
C. GEORGE
Phone 39
Dry Cleaning
"We Know How"

THAT STRONG PARENTAL ARM

An Indiana judge, before whom two small boys charged with the theft of \$18 from a filling station, waxed eloquent on the decay of parental discipline. Said he:

"What you boys need is more rigid discipline at home. If you were my boys I'd get a 15-foot elm pole and I'd wear it off clear to the handle on both of you."

This judicial dictum, doubtless, will strike a popular chord. Yet it occurs to us that the judge is a bit confused. Proper home discipline does not, by any manner of means, go hand in hand with corporal punishment.

All that any man has to go on in this connection is his own memory. And we recall many boyhood playmates who were extremely well-behaved but who were not paddled from one year's end to another; and we also remember that the worst boy in our town was a lad who was soundly whipped for the slightest infractions of the parental code.

It takes more than a strong right arm to make a good father. It is about time to stop insisting that all our ills would be solved if more children were only flogged.

WELL KNOWN SPEAKERS TO ATTEND B. Y. P. U. CONVENTION IN MIDLAND

State B. Y. P. U. Secretary T. C. Gardner and Reverend Sam Morris, field secretary for Simmons University, will be the main speakers at the first annual convention of the Big Spring Association B. Y. P. U. which meets at the Midland Baptist Church September 5 and 6.

Mr. Gardner will conduct two conferences, one for the general assembly and the other for adults and seniors; and he will also deliver the last address of the convention. Reverend Morris will deliver his address and sermon during the convention.

The convention is scheduled to open on Thursday evening and continue through Friday evening.

The following is an outline of the services:

- Thursday Evening
8:30. Registration.
8:00. Song and Devotion Service, led by E. A. Nance.
8:20. Welcome Address, T. T. McCasland.
8:25. Response, Arthur E. Travis.
8:30. Appointment of Committees.
8:35. Special Music, Courtney B. Y. P. U.
9:30. Address, Rev. Sam N. Morris, Field Secretary, Simmons University.
9:15. Watermelon Feast, given by Social Committee.

Friday Morning
9:00. Song and Devotion, led by E. A. Nance.
9:25. Address, T. C. Gardner, State B. Y. P. U. Secretary, Dallas, Texas.
10:00. Primary Program, led by Alfred Anglin.
10:20. Senior and Adult Period, Leader, M. H. Morrison.

- 10:45. Songs, Primary B. Y. P. U. Calvary Church.
10:50. General B. Y. P. U. Conference, conducted by Mr. T. C. Gardner.
11:30. Song.
11:35. Sermon, Rev. Sam N. Morris.

Noon
Friday Afternoon
1:45. Song Service, conducted by E. A. Nance.
2:00. Devotional, Mr. Clarence McMurray, Elbow Church.
2:30. Junior Memory Work Contest.
2:50. Intermediate Sword Drill Contest.

- 3:20. Awarding Bibles to Contestants winning first and second in Junior and Intermediate Contests.
3:25. Song.
3:30. Business; awarding banners, election of officers, etc.

Friday Evening
7:00. Song Service, conducted by E. A. Nance.
7:10. Devotional, Brother Music, Calvary Church.
7:20. Departmental Conferences: Adults and Seniors, conducted by T. C. Gardner.
Intermediates, conducted by A. E. Travis.
Juniors, conducted by Mrs. W. J. Sapphron.
Primaries, conducted by Alfred Anglin.

- 8:00. Song.
Special Music.
8:10. Address, Mr. T. C. Gardner.

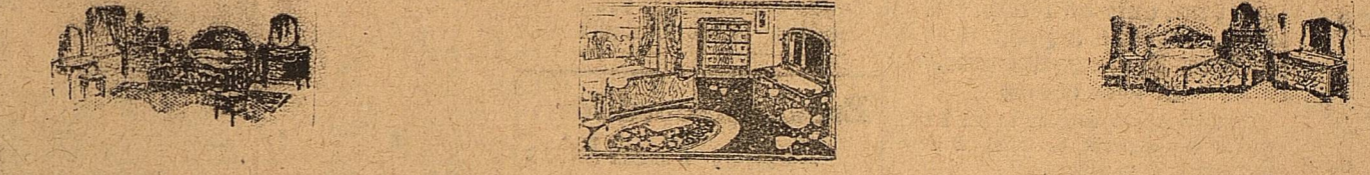
Mr. and Mrs. Howard Austin of Lubbock were in Midland Saturday visiting friends.

Mr. and Mrs. Carl Covington are spending the weekend on the Orson ranch near Stanton.

T. C. Hendrick of Odessa was a business visitor in Midland Friday afternoon.

Robert Caldwell left this morning for Roswell, New Mexico, where he will enroll as a student in the New Mexico Military Institute.

STORE CLOSED MONDAY FOR LABOR DAY AND THE BALL GAME



And Now Barrow's Three Day Sale Of Bed Room Suits

TUESDAY - WEDNESDAY - THURSDAY

Every Bed Room Suite on our floor is in this sale, including a car load that was unloaded last week. A large purchase for the "Twelve Barrow Stores" which was at an unusually low price has made possible these values.

4-PIECE BED ROOM SUITE
Consisting of vanity, upholstered bench, bed, and chest of drawers, in beige or walnut finish **\$49.50**

4-PIECE POSTER BED SUITE
In walnut. This will appeal to those who want an attractive suite at a popular price **\$98.50**

A BEAUTIFUL FOUR-PIECE SUITE
Walnut decorated, by Luce, of Grand Rapids. This is one of the best constructed suites we have **\$198.50**

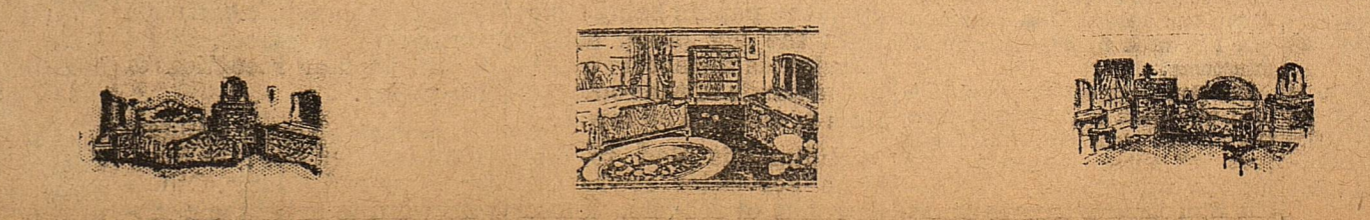
A REAL HIGH QUALITY SUITE
This one is a high quality suite with the latest style Hollywood Vanity, and serpentine front chest of drawers **\$397.50**

These are just a few representative values. There are forty-nine bed room suites in walnut, mahogany and colors that are to be sold during these 3 days at greatly reduced prices.

WE ARE NOT SATISFIED WITH A SALE UNLESS YOU ARE

Barrow Furniture Company

Night Phone 560 Funeral Directors M. M. Seymour, Mgr.
Day or Night Ambulance Service



CLUBS
MUSIC
DRAMA

WOMEN'S PAGE

CHURCHES
THEATRES
FASHIONS

Social Activities for Midland Young People Hold Sway

Announcements

Monday
Methodist Missionary Society meets at the home of Mrs. Fred Cowden for monthly meeting at 3:30 o'clock. The subject of the lesson will be "Oriental Homes" with the social period of the afternoon in the form of an "Oriental Tea."

Tuesday
Woman's Missionary Society of the Christian Church meets on the church lawn at 6:30 for a picnic supper and missionary program.

Circle 1 is the hostess for the occasion and Circle 3 is in charge of the program.

Buick Booster's Club entertained with a social meeting in the sales-room of the Buick Motor Company—7:30 p. m.

Wednesday
Girl's Auxiliary of the Baptist Church meet at the home of Mrs. Carroll Hill—4:00.

Bien Amigos Club at the home of Mrs. J. D. Chambers.

RATLIFF GIRLS HOSTESSES AT TWO AFFAIRS SATURDAY

The Ratliff home on North Marienfield was the scene of two lovely parties Saturday with the morning hours holding interest for friends of Misses Dorothy and Francis Ratliff and in the afternoon for friends of Miss Bennie Sue Ratliff.

Attractive Luncheon

Morning hours favored a bridge-luncheon affair with three tables marked for players. Appointments emphasized pastel shades throughout the table markers and luncheon service. Score favors went to Mrs. Carroll Hill, high score and Miss Helen Hodges, cut. Mrs. Hill received lingerie and Miss Hodges perfume.

At the luncheon hour three courses were served at tables covered in pretty linens.

The morning guest list included Mesdames Johnson Phillips, Carroll Hill, Dick Knox, K. E. Nutt, Jr., of Lovington, New Mexico, Francis Mclear of El Paso, Francis Macatee of Lovington New Mexico; Misses Dora Wall, Elizabeth Ebelevs, Ruth Blake-ney, Elsie Wolcott, Virginia Hale, Mabel Gamble, Jennie Elkin, Lucile Thomas, Jessie May Estes, Ruth Norwood, Helen Hodges, Margaret Francis, Emily Planigan, Pearl Wimberly and Florence Whittenburg of Odessa.

Afternoon Hours
Using the same suggestions as selected for the morning affair Miss Bennie Sue Ratliff was hostess to four tables of bridge players in the afternoon.

This list included Miss Eulalie Whitefield, Bernice and Marie Hill, Marion Wadley, Helen Margaret Ul-

GRAND
STARTING TODAY
GRETA GARBO
in
"THE SINGLE STANDARD"
with
NILS ASTHER
DOROTHY SEBASTIAN
John Mack Brown
The most stirring love story of the year. Burning, romance! Dramatic splendor!
NEWS and COMEDY
Prices: 10c, 25c, 35c

Mr. Ida Beth Cowden, Nancy Rankin, Kathlyn and Beulah May Brunson of Abilene, Mary Lou Throver, Ruby Hodges, Jean and Polly Wolcott, Frankie Fernandez of Odessa, Ella Jean Harris of Ft. Worth, Mary Caroline Simms and Jewel Hollenbeck of Pecos.

Second Week of Bible School Starts Monday

The second week of the Daily Bible School will start Monday morning at the Christian church. Plans for the new week call for several different features and these will all be climaxed by a picnic Friday evening.

Bibles will be given as awards for members in the junior and intermediate departments who have completed all the required memory work and other awards will be presented to the primary and beginners departments.

The daily average of attendance for the school for last week was thirty-eight and the directors have been unusually pleased at the good progress made by each student.

Monthly Methodist Meeting at Cowden Home Monday

A full attendance of the Methodist women at their meeting Monday afternoon is urged by the officials of the organization. Discussions will be brought up concerning the organization of circles in the near future and probably other important business matters will be discussed. The meeting is at the home of Mrs. Fred Cowden at 3:30 p. m.

This is the only meeting to be held during the month of September since the organization will not hold meetings during the city-wide evangelistic campaign which starts next Sunday.

Young Dancers Appear at Ritz Starting Today

Midland's own "Close Harmony Boys" will appear at the Ritz Theatre starting Sunday afternoon and continuing through the presentation of the vitaphone picture "Close Harmony."

Misses Mary Beth Scraggs and Frances George are the dancers to be presented in a song novelty number "The Mountaineer Quartette," accompanied at the pipe organ by Mr. J. C. Duffee. These dancers have appeared several times before Midland audiences and with their unusual interpretation they will again please the crowds.

Mrs. Ulrich Of Eastland Honored At Afternoon Bridge

As a compliment to her daughter, Mrs. B. J. Ulrich of Eastland, who has been visiting in Midland the past week, Mrs. E. N. Shodgrass entertained several friends with bridge at her home Thursday afternoon.

Throughout the entire table appointments, floral decorations and refreshment service, the hostess used pink and white as a color design.

When the games closed the hostess souvenired Mrs. Chas. L. Klapproth, high score; Mrs. A. W. Stanley, low score; and guest prize to the honoree.

Guests enjoying this affair were Mesdames M. C. Ulmer, Chas. A. Klapproth, C. A. Goldsmith, A. W. Stanley, Frank Norwood, D. E. Carter, A. E. Horst, A. P. Baker; Misses Gladys Inman, Ruth Norwood, Adella McCall, Blanche Moran and the honoree.

Dinner Given for Robert Caldwell Friday Evening

In honor of her son Robert, who left this morning for New Mexico Military Institute, Mrs. J. M. Caldwell was hostess to a number of his friends with a delightful dinner party at the Caldwell home in West End Addition Friday evening.

The dining table was attractive with a centerpiece of a huge bunch of summer flowers and dainty placecards marking each guest's place.

Guests enjoying the lovely affair were Misses Bernice and Marie Hill.

Helen Margaret Ulmer, Ida Beth Cowden, Marion Wadley, Mary Caroline Simms and Jewel Hollenbeck of Pecos, Jennie Elkin, Nancy Rankin and Jean Wolcott; Messrs Ford Schreck, Jack Wilkinson, Dick Austin, Archie Estes, Wright Cowden, Wade Stevens, Elmo Poe, Winston Elkin and Bush Elkin.

Following the dinner the party enjoyed dancing at the Country Club house.

Miss Jimilee Poole Marries California Man Early in July

Announcements are being received by Midland friends of the marriage of Miss Jimilee Poole, daughter of Mrs. Edith Poole of Los Angeles, Calif., to Mr. Maurice Fredrick Harnish of San Francisco. The marriage was held in San Francisco on July 13.

The bride has many friends in Midland, having made her home here until she was eight years of age and has numerous times since then visited her aunt Mrs. M. R. Hill of Midland. She has won much recognition as a dancer on the west coast having just filled a month's contract with the five million dollar Fox Theatre which opened recently. She appeared in Midland with the production of the Vitaphone movie, Broadway Melody, at the Ritz Theatre in June.

The couple will make their home in San Francisco where he is connected with the business management of a large theatre.

CARPENTERS PICNIC

The Carpenters Union No. 1933 will hold a picnic at Cloverdale Labor Day, Monday, Sept. 2, at 4:00 p. m. All Carpenters, Contractors, and their families and friends are cordially invited to attend. 149-3c.

DANCE AT COUNTRY CLUB HOLDS INTEREST FOR MORE THAN FIFTY

The last few weeks before school days are again opened the young folks of every social set are enjoying numbers of gala functions together. During the next few days many will be leaving for colleges and universities while others will be returning to Midland to enter public school here.

The Country Club house for two evenings this week has been the scene of gala dances. On Friday evening Misses Marion Wadley and Helen Margaret Ulmer were hostesses to their friends at the club house, with Miss Wadley's house guests, Misses Mary Caroline Sims and Jewel Hollenbeck of Pecos, as special guests.

During the eveningiced punch was served to the dancers by the hostesses. Chaperones for this affair were Messrs Addison Wadley and Charlie Bell of El Paso.

GRETA GARBO PRAISED BY CELEBRATED AUTHOR

For once an author is enthusiastic over the screen characterization of a novel heroine.

Adela Rogers St. John, who wrote "The Single Standard" in which Greta Garbo is starred by Metro-Goldwyn-Mayer, has pronounced her "100 per cent. perfect" in the glamorous role.

"I think Miss Garbo is the most capable actress in motion pictures today," Miss St. John said. "Although I have never met her personally, I have always been a great admirer of her work upon the screen and I was delighted to find that she fit so ideally into the characterization I created in the book."

The picture opens a three day engagement at the Grand today. It is Miss Garbo's latest film release.

The picture finished a week's engagement in the Palace at Dallas, last Saturday, and Midland fans have the privilege of seeing it almost by the time it closed its key city release engagements.

LABOR WELL DONE

Our store will be closed all day Monday honoring the Great Builder of Prosperity—Homes—Industrials—the Universe: Labor! We are proud of you.

Although labor's work has not quite finished with Midland's largest department store—it is safe for you to come in now and shop with ease . . . so

TUESDAY WE INVITE YOU

to visit this bright new store that is being filled daily with Crisp New Merchandise . . . things bought to particularly please Midland's people so come in Tuesday and see what Fashion has brought you in beautiful new Dresses—Millinery—Shoes—Gorgeous Silks and King Cotton's beautiful printed fabrics—and just to remind you, the back to school movement is on and a little early shopping will save you many a hurried step later.

COME TUESDAY
TO MIDLAND'S NEWEST AND LARGEST DEPARTMENT STORE
Grissom-Robertson Stores, Inc.
QUALITY — SERVICE — VALUE

EVERYBODY'S NEW HATS FOR EARLY FALL
New styles and colors in Fashion's favorite materials for the new Millinery for fall, of felt, soleils, velvets and combinations with black, browns, greens and reds predominating colors.
PRICED AT \$5
OTHERS UPWARD TO \$16.50

The Acorn Store
ALWAYS DEPENDABLE MERCHANDISE
BACK TO SCHOOL WITH GOOD SUPPLIES
Tablets, Pencils, Note-books, Pens, Ink, Paste, and everything for the schoolroom
AND MOTHERS—We have those school Dresses in now. The kind that wear well and are easy to keep clean.
BOYS' SUITS, TOO are here and they sure are snappy looking. Come in and outfit those boys with Acorn Clothes.
The Acorn Store
Always Dependable Merchandise
Owned and Operated by Chas. Broadway Rouss, Incorporated
Founded in the 60's N. Main St., Midland, Texas

Mrs. W. G. Whitehouse has as guests in her home this weekend her two sisters Miss Josephine Heavenhill of Abilene, who is connected with the Abilene Reporter-News and Mrs. Guy Sherrell and children of Houston.

Miss Florence Whittenberg of Odessa is a guest in the home of Mr. and Mrs. Geo. Ratliff.

George Coates and Jimmie Woods are spending the weekend in San Angelo.

Mr. and Mrs. J. J. Hamlett have returned from Louisville and Princeton, Ky., Memphis, Tenn., Dallas and Big Spring, where they have been spending their vacation.

Mr. and Mrs. Francis Macatee of Lovington, New Mexico, are visiting with her parents, Mr. and Mrs. J. V. Hobbs, this weekend.

Mrs. Geo. Cowden returned to her home in Ft. Worth yesterday after spending the week in Midland.

Geo. D. Foster, prominent oil man of Tulsa, Oklahoma, spent Friday night in Midland.

MISSES BLAKENEY AND MARCUS TO SAN ANGELO EXPOSITION

Young women representing Midland in social activities at the West Texas Exposition at San Angelo this month will be Miss Ruth Blakeney as "Duchess Midland" and Miss Katherine Marcus as her Maid-of-Honor.

These young women will be honored at numbers of socials, some being a breakfast dance, luncheon, tea, King's ball for the Queen, and probably other dances. They will also be attendants at the coronations ceremonies.

Miss Blakeney is the daughter of Mr. and Mrs. B. H. Blakeney, prominent Midland residents, and she is one of the popular members of Midland society. For the past year she has been in Midland, previous to that she was a student of Baylor University from which school she holds a Bachelor of Arts degree.

Miss Marcus has recently moved to Midland from Wichita Falls where she was a well known young woman in social groups.

In Midland she is associated with her sister, Miss Adele Marcus, in the Kaydelle Shop.

Escorts for these representatives will be Mr. Harvey Conger with Miss Blakeney and Mr. Lyle Brush with Miss Marcus.

Other West Texas towns are being represented by young women at this convention which is to be held about the middle of September.

Methodist church—Mr. R. T. Bucy.

Friday South side: Mesdames C. A. McClintic and M. C. Ulmer, leaders, at the home of Mr. and Mrs. J. C. Hudman, 520 South Main Street.

West side: Young Peoples' prayer meeting with Mr. Claude White leader; Mrs. M. A. Jared, chairman, at the home of Mr. and Mrs. Ira F. Lord, 1014 West Michigan Street.

North and east side: Mrs. T. C. Heard, chairman, place of meeting to be announced later.

HOW GOOD ARE YOU?

Aw, wait a minute— We don't mean anything in connection with your habits. That's your own affair. But— How good are you on grammar, history, spelling, etiquette— and how quick are you at spotting mistakes in drawing? Also, how clever are you at taking the mixed-up letters of a word, straightening them out and finding the word? Shucks! You can't tell just how

good you are until you've tested yourself.

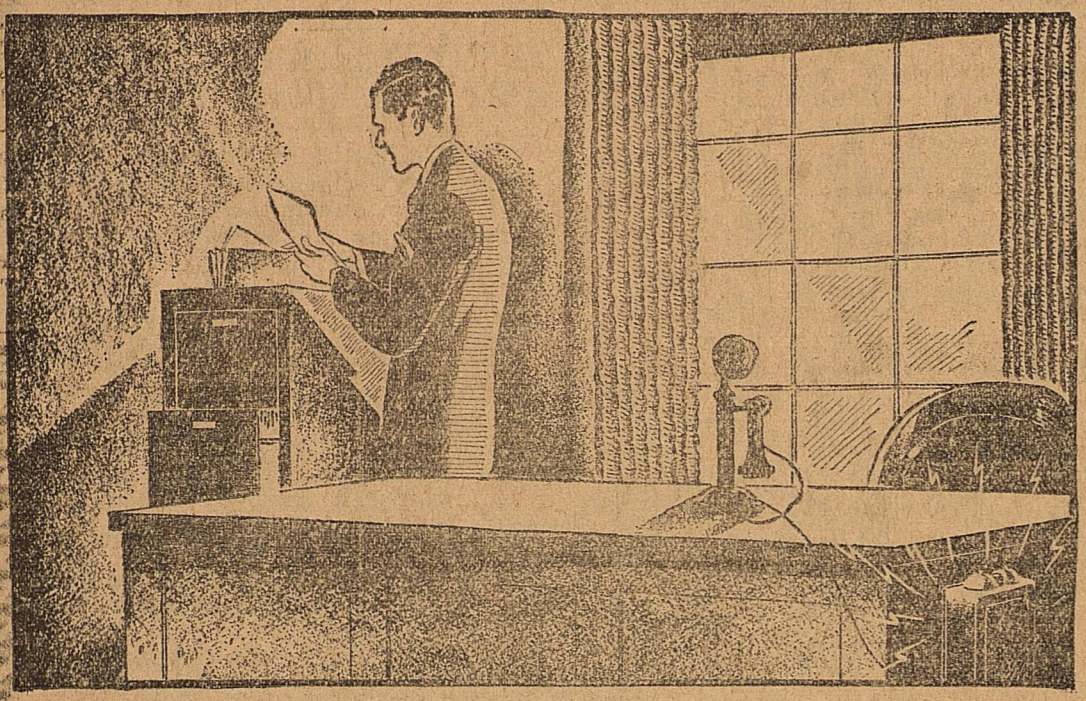
That's what we're going to give you a chance to do. Test your ability through the medium of a brand new, pip-of-a-stunt called ERRORGRAMS.

It starts in the Reporter-Telegram on Wednesday, Sept. 4. Watch for it.

W. W. Runkle of the Longhart Supply Company of Ft. Worth is transacting business in Midland.

H. E. Powell of the Pure Oil Company, is spending the weekend visiting in Lubbock.

WATCH FOR "ERRORGRAMS"



"You never can tell who is calling"

THERE are men and women who get so engrossed in what they are doing that they let their telephones ring a minute or so before they answer.

A natural thing, sometimes, but don't you agree that friends, customers, business associates who come to you by telephone should be received at least as quickly as though they came in person?

Prompt answering shows alertness. It prevents needless crowding of your telephone entrance. A prompt answer is telephone hospitality.

You never know who it is at your telephone door; open it promptly.

SOUTHWESTERN BELL TELEPHONE COMPANY



Sales climb and STUDEBAKER prices drop

Reductions as great as \$250 now in effect

World leadership in the sale of eights, coupled with Studebaker's unique One-Profit manufacturing advantage, now permit sweeping price reductions which embrace all Studebaker models.

Remember, only Studebaker can sell you a champion! Studebaker's smart motor cars hold more official stock car speed and endurance records than all other makes of American cars combined.

42 Sparkling New Models—at New Low Prices

Now you can buy a

- President Eight Sedan for 7 (135 in. wheelbase) . . . \$1995
President Eight Sedan for 5 (125 in. wheelbase) . . . 1735
Commander Eight Sedan (four door—120 in. wheelbase) 1475
Commander Six Sedan (four door—120 in. wheelbase) 1325
Dictator Eight Sedan (four door—115 in. wheelbase) . 1235
Dictator Six Sedan (four door—115 in. wheelbase) . . 1095

Prices at the factory

A COMPLETE STOCK OF USED CARS WORTH WHILE WE HAVE ALL STYLES AND ALL MAKES

ED.S. HUGHES MOTOR CO

Since 1882

Super Service Station

South of Court House

Midland, Texas

EPWORTH LEAGUE PROGRAM

Topic: "Courageous Youth." Scripture reading: Psalm 121. Silent Prayer.

Talk by juniors: "David's Visit to the Camp," Mervin Haag; "David Volunteers to Meet Goliath," Myrtle McLarty; "Faith Brings Victory," Dudley Cooksey.

Discussion. Prayer by leader: Mervelene Cole.

Song: Stand Up for Jesus.

FIRST CHRISTIAN CHURCH

Rev. J. E. Evans, pastor. Morning bible school, 9:45. Preaching, 11:00. Communion, 11:45. Evening services. Union services at 8 p. m. Dr. Otteson and Rev. Thos. D. Murphy will bring messages of the evening.

Mrs. K. E. Nutt, Jr., of Lovington, New Mexico, is spending the weekend visiting her parents, Mr. and Mrs. J. P. Collins.



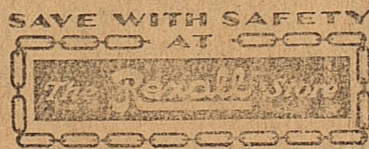
Attention to

small, uninteresting details makes a difference in the safety of a dairy product. A little carelessness may prove very aggravating. You will be pleased to learn what care we give to the small matters in our product and service.

SANITARY JERSEY DAIRY

Midland's Best Equipped Dairy

Phone 9039-F3 DELIVERY



So Lasting and Clinging



Shari—Cara Nomic—Dusha, delicate, flower-fragrant face powders that have a priceless talent for staying on. Why don't you try them? There's a tint for every type of beauty. Sold only at Rexall Stores.

The Rexall Store

City Drug Store

Rexall Store No. 1

Petroleum Pharmacy

Rexall Store No. 2

T. A. Fannin and Son, Owners

Announcing the Re-Opening of the WIMBERLY STUDIO

conducted by WALLACE WIMBERLY, Pianist

Private lessons in piano, hymn playing and wind instruments. Special work in theory and harmony for advanced students.

CLASSES BEGIN

MONDAY, SEPTEMBER 2, 1929

323 Carrizo

Phones 613 and 26

ALL-STEEL BUILT like a SAFE

BUT two months ago General Electric announced the first ALL-STEEL refrigerator ever built. Now this outstanding scientific development of the times has been made available in six popular models.

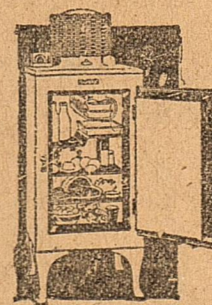
The all-steel refrigerator cannot warp. It is strong—built to last. The doors, fitted by hand at the factory, retain their close fit. The new exterior baked enamel finish, smoothly white, as hard and durable as porcelain, has the added virtue that it does not check or crack.

Coupled with these advantages is the previous perfection of the General Electric mechanism which is permanently self-oiling, hermetically sealed in a steel casing and

mounted up on top, safe from dust and difficulties. Quietly, economically, it constantly maintains the temperature in the refrigerator at several safe degrees below the danger line of 50. It freezes ice cubes rapidly.

Yet, notwithstanding these exclusive features these new models are offered at surprisingly low prices and on our plan of conveniently spaced payments. The small family model, at the factory, is priced at \$215. New all-steel models in six different sizes at our display rooms invite your inspection.

Listen in on the General Electric Hour every Saturday, 8 to 9 P.M., Eastern Standard Time, over the N. B. C. network of 42 stations.



\$215 at the factory with conveniently spaced payments

GENERAL ELECTRIC ALL-STEEL REFRIGERATOR TEXAS ELECTRIC SERVICE

"Your Electrical Servant"



"Here are the building material people who get talked about favorably by those who deal with them. There ought to be something in this to make you thoughtful."

—says Pracky Cal.

Phone 498

T. R. PRIDEAUX Lumber Company

The Place Where It Is Entirely Safe To Trade

Practical Home Frame Work and Sub-Flooring Finished

LOCATION OF HOME FEATURE

Frame work is up, the sub floor is laid, the garage is finished except for the brick work, room partitions are practically completed, electrical work up to schedule, gas line connections made, plumbing "roughed in," and other work done at the Home Practical, beautiful residence being erected on South G street, near the Broadway of America, through sponsorship of The Reporter-Telegram.

A full crew of carpenters are busy completing rough and structural work.

Co-Operative Building

A community of interest centers in the beautiful home to be. This is reflected in the uniting of builders, furnishers, decorators, and others in the construction and fitting of the home. Contract for erection of the Home Practical is held by Grafa-Garlington; roofing is to be laid by the Lydick Roofing company; Higginbotham-Bartlett Lumber company is to furnish materials; some of the most modern plumbing fixtures on the American market are to be installed by Howe and Allen; Electrical furnishings, as well as wiring, are being put in by the Black Electric company; and all furniture and decorations are being supplied by the Midland Hardware and Furnishing company.

Novel Features

One of the features of the home is the bath room. Something new in construction will be embodied in both baths, upstairs and down. Individual features will be numerous in the home, constructors point out.

Date for completion of the modern residence has not been announced. Formal opening will follow hard on the heels of the completion, after which the home is to be sold.

Grafa-Garlington company says that material in the structure is exceptionally good, and is exceptionally heavy for such a home.

The original Siamese twins were two brothers—Chang and Eng—who were born in Siam of a Chinese and father and a Siamese mother.

It is estimated that less than 20 per cent of the persons confined in penal institutions in the United States have gone to high school.

According to a U. S. government report, more than one billion lead pencils are used every year in this country.

"Nixie" is the name given by the Post Office Department to all pieces of mail which cannot be delivered because the address is defective.

FEDERAL RESERVE LOANS FOR PAST MONTH HAVE INCREASED

DALLAS, Tex., Aug. 29.—(UP)—In response to the demand from agricultural regions and from trade and industry, the past month has witnessed a rapid expansion in Federal Reserve Bank loans to members in this district, according to the Monthly Business Review for the Eleventh Federal Reserve District, issued today by the Federal Reserve Bank of Dallas.

These loans, the review stated, rose from \$15,742,529 on June 30, to \$42,669,959 on August 15 and on the latter date were \$13,022,350 greater than on that date in 1928, and continued.

The business mortality rate turned sharply upward in July, there being a substantial increase in both the number of defaults and the amount of indebtedness involved. While the liabilities of the insolvent firms were larger than in any month in more than a year, the number of failures was fewer than in any month of the current year, except June.

Crop conditions throughout the district have been affected in varying degrees by the continued drouth in some sections and persistent showers in others. In the drier sections practically all crops have deteriorated but in those areas where there has been ample moisture, most crops except cotton have improved.

The cotton crop over a very large area of the district has been adversely affected by weather conditions, plant growth has been stunted and there are many complaints of excessive shedding and premature opening of bolls.

On the other hand, persistent

showers in some areas have greatly increased insect activity and rendered poisoning operations ineffective.

The condition of livestock has been well sustained as pasturage generally has been ample. Light to heavy rains have fallen over Southwestern Arizona, most of the southern half of New Mexico and portions of Northwest, West, South and Southeast Texas.

In July receipts of cattle and calves at the Fort Worth market reflected a substantial increase over the previous month but were materially smaller than a year ago. The arrivals of hogs were smaller than in either the previous month or the corresponding month last year, while the number of sheep yarded showed a heavy decline from June. It was however considerably larger than in July, 1928.

The July receipts of cotton at the ports of Houston and Galveston were larger than in the previous month but those at Galveston were smaller than a year ago. Experts reflected a further decline as compared to the previous month and were smaller than in the corresponding month last year.

A further large increase was shown in the production of crude oil in July. With all areas showing gains except East Central Texas, the total production of oil rose to 27,405,200 barrels which was 1,983,050 in excess of output in June and 4,248,500 barrels greater than in July last year.

An increase in production and shipments of lumber and a material gain in orders was noted.

Woman Drowned as Dam Floods Camp

COLORADO SPRINGS, Colo., Aug. 31.—(UP)—A terrific cloudburst today broke a small dam on Fountain Creek near Crystola, 15 miles west of here, swept away eight mountain cabins in Colorado College colony and forced forty summer vacationists to flee for their lives.

Mrs. C. E. Emory, 55, wife of a Colorado Springs photographer was drowned while her husband was warning other residents of their danger.

IS TREATED HERE

I. A. Boyd, Stiles man, has been brought to Midland for treatment at the Thomas hospital. Boyd will be in Midland for several days.

London is now regarded as the center of the stamp collecting world.

Midland Ranchman

(Continued from Page 1)

ranch consists of more than 10,000 acres. Clark became known as a breeder of fine cattle. As a ranchman he soon learned the value of replacing the Longhorn with thoroughbreds. He specialized in the Hereford breed and at times he had more than 1,000 of the registered white-faced animals on his ranch.

Burnett Trustee

With Connell, Clark at the time of death was joint trustee of the estate of the late Capt. Burk Burnett, valued at several million dollars. Clark was a director and stockholder in both the First National Bank of Fort Worth and the Cicero Smith Lumber Company of Fort Worth.

For 43 years Connell, next door neighbor to Clark, has been associated with him in ranching, banking and other business.

Survivors are his wife, to whom he was married in December, 1896; two daughters, Mrs. Frank Mullins of Vernon and Mrs. William Short Jr. of Fort Worth; two brothers, Luther Clark of Quanah and Sidney Clark of Arlie and a sister, Mrs. D. L. Painter of Gainesville.

Officiating ministers at the funeral were Rev. J. W. Hunt of Abilene and Rev. E. B. Hawk, pastor of the First Methodist Church of Fort, of which the deceased was a member.

Active Pallbearers

Active pallbearers were Luther D. Clark, E. B. Morgan, W. H. Hoffman, J. Lee Johnson Jr. and Marshall Fuller, all of Fort Worth, and A. B. Connell of Odessa, Bailey Mul-

lins of Vernon and Horace Bryant of Guthrie, Okla.

Honorary pallbearers were W. E. Connell, J. Lee Johnson Sr., C. B. Team, Henry W. Zweifel, T. B. Ellison, Furd Halsell, William Short, Ben E. Keith, John Sparks, A. J. Long, H. R. Jones, Dr. Will Horn, I. N. McCrary, Harry E. Goodwin, John Scharbauer, M. Sanson Jr., George C. Clarke, Earle M. North, A. P. Mitchell, T. R. Colbert, Charles Daggett, R. C. Martin, Walter E. Scott, A. J. Duncan, W. C. Stone-street, Frank E. Clarity, T. B. Hoffman and Amon G. Carter, all of Fort Worth; J. W. Arnett of Guthrie, Okla.; W. V. Roy of Post, Tom L.

Burnett of Iowa Park, Jim Christel of Denton, G. W. Connell of Post, Clint Goodwin of Breckenridge, George Boles of Lubbock, R. B. Masterson Sr. of Amarillo, W. C. White of Roswell, N. M.; J. W. Driver of Midland, R. H. Hoffman of Denton, George Pemberton of Denver, E. B. Bryan of Mineral Wells, William Taylor of Dallas, Sam Elkins of Panhandle, Bud Ratliff of Odessa, B. T. Ware of Amarillo, Crit Clark of San Angelo, R. V. Colbert of Stamford, Eugene Mayfield of Aspermont, W. E. Halsell of Kansas City, W. H. Puqua of Amarillo and W. B. Stanfield, O. P. Thrane, H. C. Towle, B. A. Moore and P. L. Fuller of Snyder

We Will Handle

ALL INSURANCE

on the

REPORTER-TELEGRAM

Practical Home

Let us take care of your insurance

Sparks & Barron

First National Bank Bldg.

ALL LUMBER AND BUILDING MATERIALS

for the

"PRACTICAL HOME"

Sponsored by

THE REPORTER-TELEGRAM

will be furnished by the

Higginbotham Bartlett

LUMBER CO.

Working Fast To Complete

our 79th home in Midland. Today the frame work on

THE REPORTER-TELEGRAM

(Sponsored)

Practical Home

is being raised. Located on a lot 70 by 150 feet, east front and the entire south half of NE quarter Block 21, in the West End Addition. Just one-half block off the highway and on a street that other home and property owners have up for the new paving.

DRIVE OUT TODAY

And note the location, and progress of building. You'll find it surrounded with homes of the finest quality.


Grafa-Garlington

"Builders of Better Homes"

THE REPORTER-TELEGRAM


Practical Home

will be roofed with



JOHNS-MANVILLE

ASBESTOS ROOFING



APPLIED BY THE

Lydick Roofing Company

ALL PLUMBING and PLUMBING FIXTURES

for the

REPORTER-TELEGRAM PRACTICAL HOME

will be furnished by us.


Howe & Allen

PLUMBING CO.

"Everything In Plumbing for the Modern Home"


THE PRACTICAL HOME

will be furnished from our complete stock of beautiful home furnishings.



SPECIAL ATTENTION

will be given in the furnishing of this beautiful home. The size of the rooms and the style of the house will be closely observed.




MIDLAND HARDWARE & FURNITURE COMPANY

"Good Buildings Deserve Good Hardware—Corbin"


For The

REPORTER-TELEGRAM

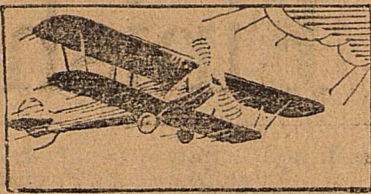
"PRACTICAL HOME"



Black Electric Co., was chosen to do all wiring, and furnish all fixtures.



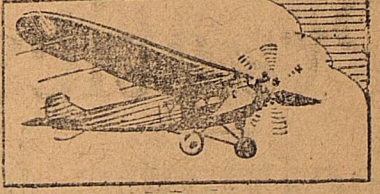
BLACK ELECTRIC CO.



AIR INFORMATION

AVIATION

AIR TRAFFIC



MIDLAND ON AIRLINE WHICH NOW IS THE GREATEST IN U. S.; EXPANSION COMING

Midland, served by T. A. T. airline, is served by the greatest airline organization in the United States. T. A. T., a part of Southern Air Transport, which, in turn, is a part of the great Aviation Corporation, is on a line which has made great progress through expansion and merging of other airlines.

With 9,128 miles of air lines, 291 airplanes, 31 flying schools and more than 2,000 employees The Aviation Corporation has, in the five months of its existence, become the largest air transport system in the United States.

Airplanes of The Aviation Corporation have daily schedules of over 20,000 miles which represent 25 percent of the total in the United States and, in the five months of 1929, flew a total of 2,473,331 miles.

The lines controlled by The Aviation Corporation include the Universal Aviation Corporation, Braniff Airlines, Inc., Interstate Airlines, Inc., Colonial Airways, Inc., Embury-Riddle Aviation Corporation, Southern Air Transport, Inc., and Fairchild Aviation Corporation. The Universal Aviation Corporation was

the first to offer a coast-to-coast train and plane service. The system comprises of a network of air routes extending from Boston and New York in the east to Garden City, Wichita, Amarillo, El Paso and San Angelo in the west; and from Montreal, Toronto, Cleveland, Chicago and Omaha in the north to Brownsville, Galveston, New Orleans, Mobile and Atlanta in the south. In addition, these lines serve Albany, Buffalo, Columbus, Cincinnati, Indianapolis, Louisville, St. Louis, Kansas City, Nashville, Chattanooga, Tulsa, Oklahoma City, Dallas, Fort Worth, Midland and a total of 62 other cities.

The corporation has not overlooked the possibilities of the manufacture of airplanes and motors. Already it owns a controlling interest in the capital stock of Fairchild Aviation Corporation, which in turn controls Fairchild Airplane Manufacturing Corporation, Kreider-Reisner Aircraft Corporation, Fairchild Aerial Camera Corporation, Fairchild Aerial Surveys, Inc., and Fairchild Aircraft, Ltd.

During the first five months of

1929, Fairchild Airplane Manufacturing Corporation manufactured 51 planes of the seven passenger cabin monoplane type, powered with 425 horsepower Pratt and Whitney "Wasp" motors suitable for air mail or passenger use, and priced at \$18,900. The Kreider-Reisner Corporation manufactured 54 planes in the first five months of 1929.

Flier Who Landed Here on "Skifleet"

One of the fliers of the "Sky Fleet" which visited President Hoover before starting a general tour which will take the group thru Texas and other states on General Tire and Rubber company's aerocade, has landed in Midland several times.

J. S. B. Harvey is the young flier's name, and he was one of the first airmen to say that Midland would some day rank nationally as an air center.

The itinerary of the southern leg of the cruise takes the fleet on a great circle through the states of Texas, Louisiana, Alabama, and Florida and back to the north thru Georgia, Tennessee, Kentucky and Ohio.

President Herbert Hoover received the pilots and members of the "Sky Fleet" party at the White House recently while the fleet was in Washington, D. C., and chatted with them for some time at the executive offices before being photographed with them on the White House lawn.

President Hoover inquired with much interest about the progress of the tour and about the new developments in commercial aviation in which the fleet hopes to aid.

"It's a great stunt," President Hoover told the "Sky Fleet" pilots. "I wish that I might be going along with you!"

The "Sky Fleet" party also was cordially greeted at the office of the Vice President by Vice President Charles Curtis and by Senator Hiram Bingham, of Connecticut, president of the National Aeronautic association, and himself a noted flier.

TULSA OFFICERS LOSE LIVES IN KILLING YEGG

TULSA, Aug. 31.—(UP)—The career of another famous outlaw was ended late yesterday when Dick Gregg, wanted by officers all over the Southwest, was killed in a pistol duel with two Tulsa officers.

It was a two-to-one affair, however, as the lives of two officers were snuffed out by the outlaw's deadly aim before he was brought down.

Officers Ross Darrow and Lincoln Bowling sought to question Gregg, but the latter objected and opened fire on the officers. He killed one of the two before the officers had a chance at their guns, but a volley of shots soon poured into Gregg's body. As he went down, he killed the second policeman, one shot proving to be enough.

Evolution of Travel to be Shown in Big Spring Celebration at Airport Opening

BIG SPRING, Texas, Aug. 31.—Built on land originally deeded to the Texas & Pacific Railroad by the State in partial payment for the building of the railroad from Dallas to El Paso, the Big Spring Airport will be turned over to the Southern Air Transport System by the City of Big Spring exactly forty seven years, eleven months later in furtherance of the more modern and infinitely faster method of transportation over the same route. The airport dedication ceremonies will take place September 11-12. When the fearful and marvelous "Iron Horse" first puffed into Big Spring from Dallas 47 years ago, it reduced the time required for the new from Dallas to El Paso from 16 to 17 days to approximately thirty hours.

Now the Southern Air Transport plane has reduced the time between the two cities to six hours and thirty minutes.

It used to take seven or eight days to drive from Big Spring to Ft. Worth with a wagon and team, and then eleven hours and seven minutes to go by train. Only three hours is required for the same trip by plane. This evolution of transportation, from the days when Indian trails crossed at the "Big Spring" through the span of oxen, the pony express, the coming of the first railroad in 1882 and the automobile down to the inauguration of the Dallas-El Paso airline last March 16, will be featured September 12 in a mammoth parade in connection with the opening of the airport.

Old Civilization Found at Abilene

ABILENE, Tex., Aug. 30.—(UP)—Evidences of an ancient civilization which may antedate the nineteenth century Indians several hundred years have been found near Abilene by Dr. J. Alden Mason, curator, American section, University of Pennsylvania museum.

Dr. Mason and four other archaeologists found, in a creek bank 75 miles northwest of Abilene, at a depth of eight feet, what apparently was a fossilized portion of a skull and a crude arrowhead. Dr. Cyrus N. Ray, president of the Texas Archeological and Paleontological Society, previously had found two skeletons near the same spot.

"The strata above undisturbed, we reached the conclusion that the bones had been laid down by natural means and had not been buried," Dr. Mason said. "It may mean considerable age, but we are not certain. It is almost certain, however, that the last bone we found is some centuries old but whether its age is to be measured in thousands of years we are not prepared to say."

Dr. Walter Hough of the United States Museum has said Dr. Ray's discoveries are "of profound importance to science."

Mr. and Mrs. J. M. White and son leave this afternoon for Crosbyton where they will visit Mrs. White's parents.

HASSEN COMPANY TAKES ANOTHER STEP FORWARD BY MOVING INTO A NEW HOME

This has been moving week for Hassen Company and they are now located in the building formerly occupied by the Idle Hour Theatre, almost directly across the street from their former location. The building has been remodeled throughout to meet the requirements of the organization. New type windows, the first of the most modern to be completed in the city, with colored tile base, together with a new sidewalk and awning add much to the attractiveness of the location.

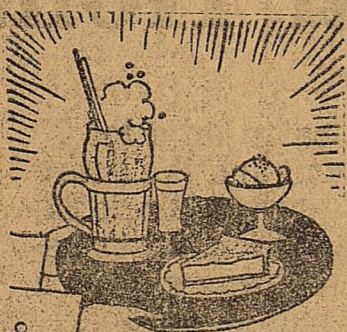
The popular leasors of the building have been in Midland just a little more than two years and have built a worth-while clientele of patrons of which they are very appreciative and are looking this change with the thought that they can thus better serve their customers and friends. This is one of eight first class stores operated in Texas by this popular firm and they are adding to this list as they find suit-

able locations. The home office is in Ranger and other stores are located in San Angelo, Breckenridge, Sweetwater, Hamlin, Alpine, Ft. Stockton. In each of the towns where located they enjoy the confidence and patronage of a large following. Although they are a chain organization, it is so only in numbers, as the stores are individually owned and are under the general supervision of John Hassen, who makes his home in Ranger. Mr. Hassen is a Syrian by birth, having risen to his present outstanding position in business circles from a pack peddler, and is a remarkable example of what a man with the right ideals and qualifications can do in this country, although he may be handicapped by a lack of the speech and customs of his adopted country.

The local store is under the management of W. I. Pratt who has been active both in business and

since coming here from his former home in Stamford, Tex. The firm encourages their employees to take part in the local civic and business activities of the towns where they are located, and this is shown by the activities of the local manager. Mr. Pratt has served as director of the chamber of commerce for two years, was one of the prime movers in the organization of the Rotary Club, being president for the first year and more. He and his family have been active in church and social circles also. Mr. Pratt at present being the general chairman of the laymens movement that is sponsoring the Rayburn Revival. The regular sales force includes J. H. Williams, formerly of Oklahoma City, and Mrs. Jack Hill and Mrs. C. E. Trammell, both of Midland. These are proud of their new home and are anxious to have their friends visit them in the new location.

John Traynor and Ivan Olsen, in 1881, were the first to cross the Atlantic Ocean in a rowboat. They left Bath, Me., and arrived at Falmouth, England.

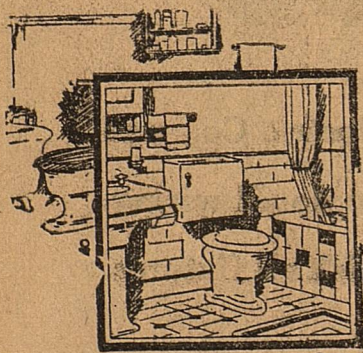


FOUNTAIN LUNCHESES

Cooling drinks, dainty sandwiches, and salads, quick service and inviting prices make this a popular place to eat luncheon every day!

Tickets for the Midland and Coleman Home Games On Sale Here!

MIDLAND DRUG COMPANY L. A. ARRINGTON, Prop.



MODERNITY and the BATHROOM

The bathroom is as much a part of the home as any other room. And so modern plumbers have devised innovations that should find their way into every house. Modern motifs in tiling; bowls, tubs, and washstands in soft pastel tones; and new elements of mechanical perfection are now available at prices that add to the appeal. Let Howe & Allen modernize your bathroom.

Howe & Allen
Licensed and Bonded Plumbers
Phone 232 Midland, Texas

Moulders of Human Destinies

As a sculptor moulds his clay, so a mother forms the habits and ideals of her little child. To Mother's sacrifice and loving sympathy we pay our tribute.

"Who ran to help me when I fell,
And would some pretty story tell,
Or kiss the place to make it well?
My Mother!"

The FIRST NATIONAL BANK

"The Bank of Personal Service" for Over 39 Years
Capital and Surplus \$200,000

Fall Clothing

Bring In All Those Fall and Winter Clothes Now. We specialize on the quality of work and service.

Draperies and Curtains

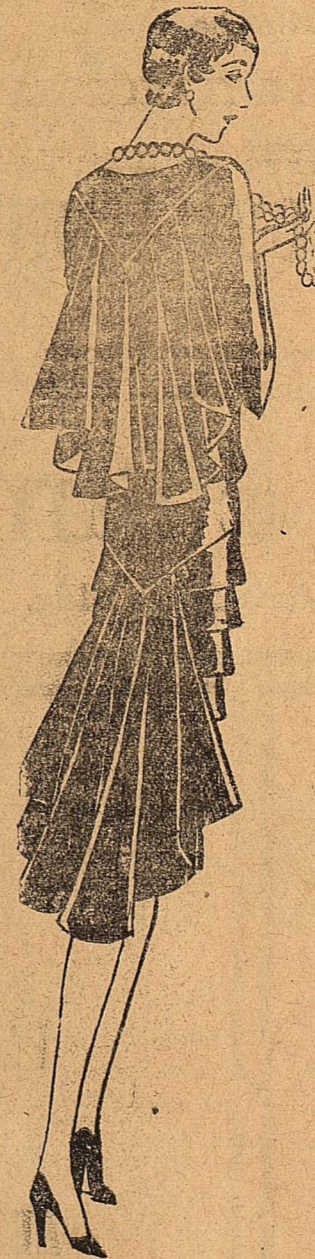
During the Fall House Cleaning, send your Laundry to us. We know that after a trial we'll do your work always.

Midland Steam Laundry

PHONE 90
Downtown Office at Sanitary Barber Shop

READY TO SERVE YOU BETTER

OUR NEW LOCATION JUST NORTH OF POST OFFICE



NEW FALL APPAREL

Fresh from the master designers of the country. Elegant... tasteful... harmonizing

- Travel Tweed Suits
- Satin Frocks
- Canton Frocks
- Velvet Suits and Dresses
- Fashion's Finest in Coats.

The World of Fashion brought to your door from the Style Centers of the World

A Pleasure to Us to Show You
A Pleasure to the Wearer

We cordially invite you to visit us in our new location.

All Summer Merchandise Marked Very Low

Hassen Company

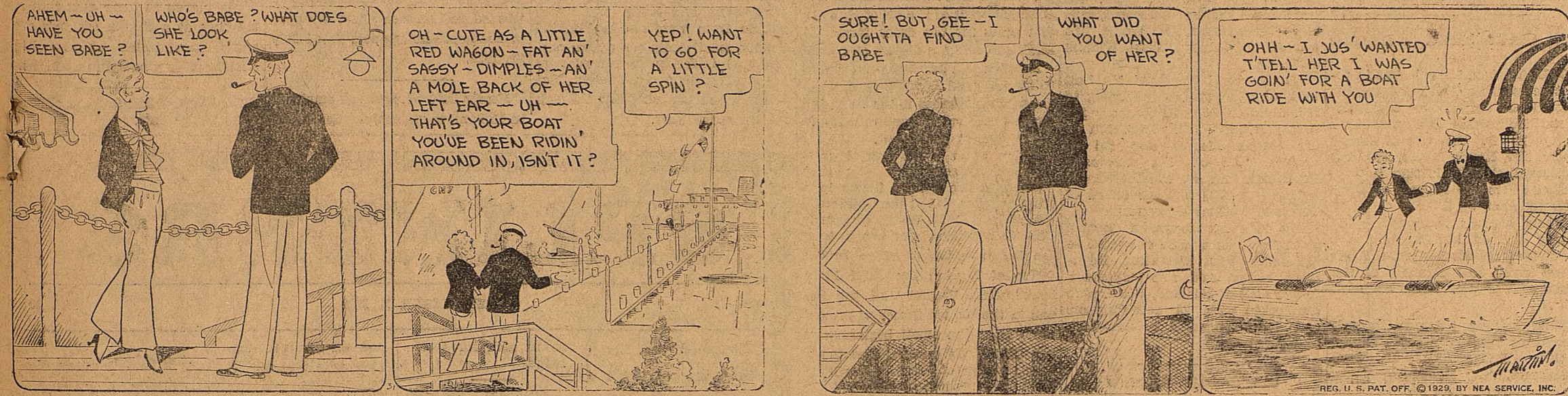
W. I. Pratt, Mgr.
Near the Post Office

REPORTER-TELEGRAM DAILY COMIC PAGE

BOOTS AND HER BUDDIES

Fast Work!

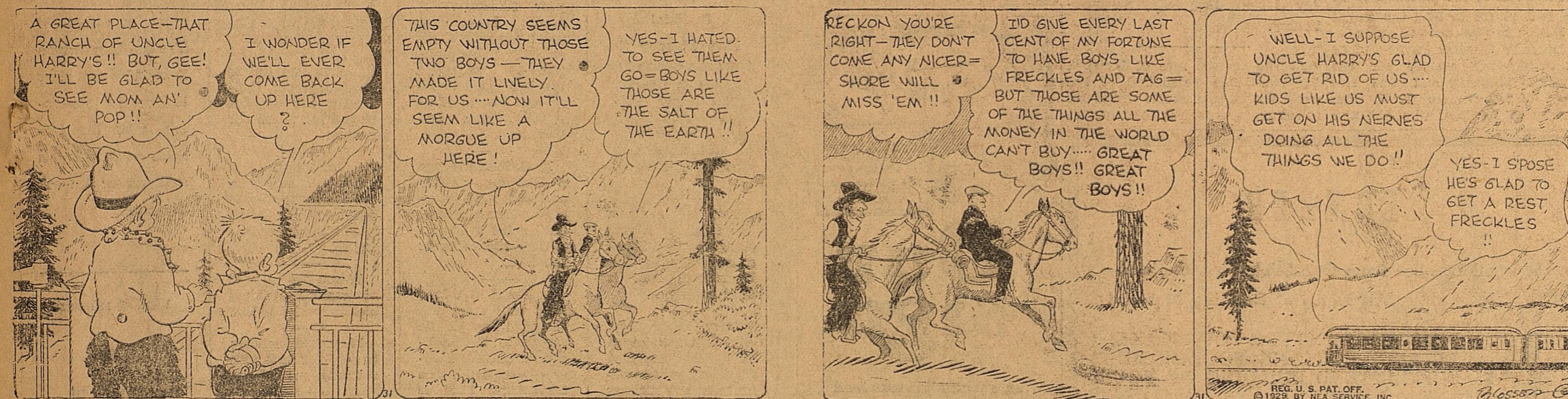
By Martin



FRECKLES AND HIS FRIENDS

Good-Bye!

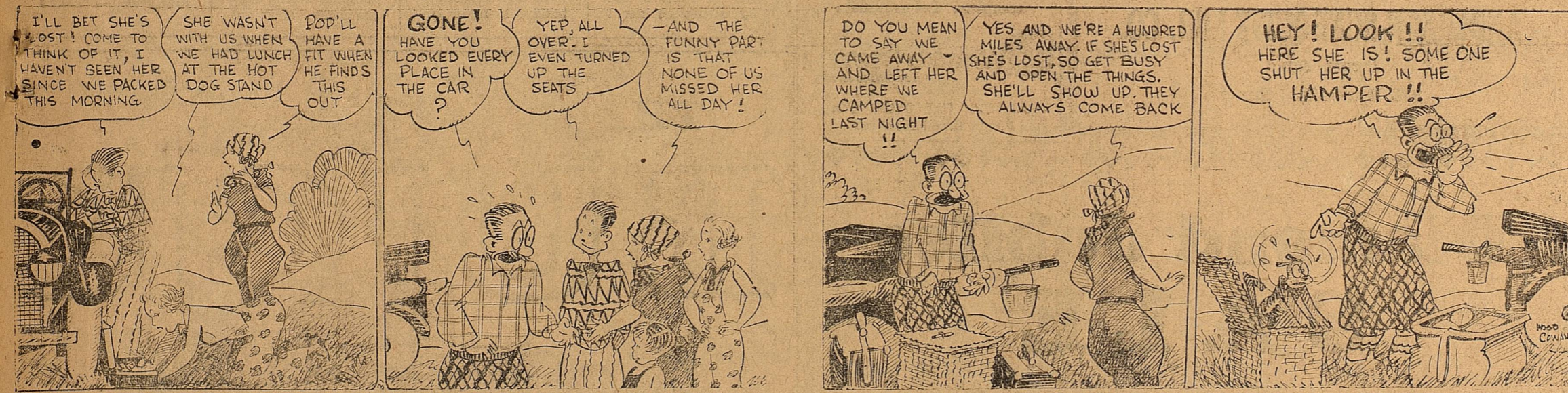
By Blosser



MOM'N POP

The Lost Is Found

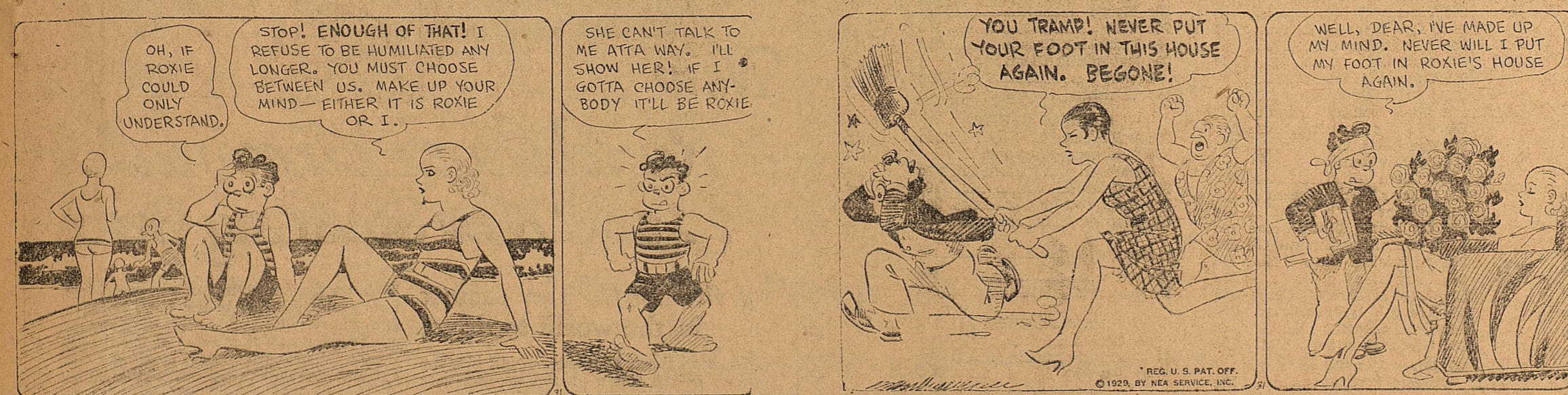
By Cowan



WASH TUBBS

Only One Choice

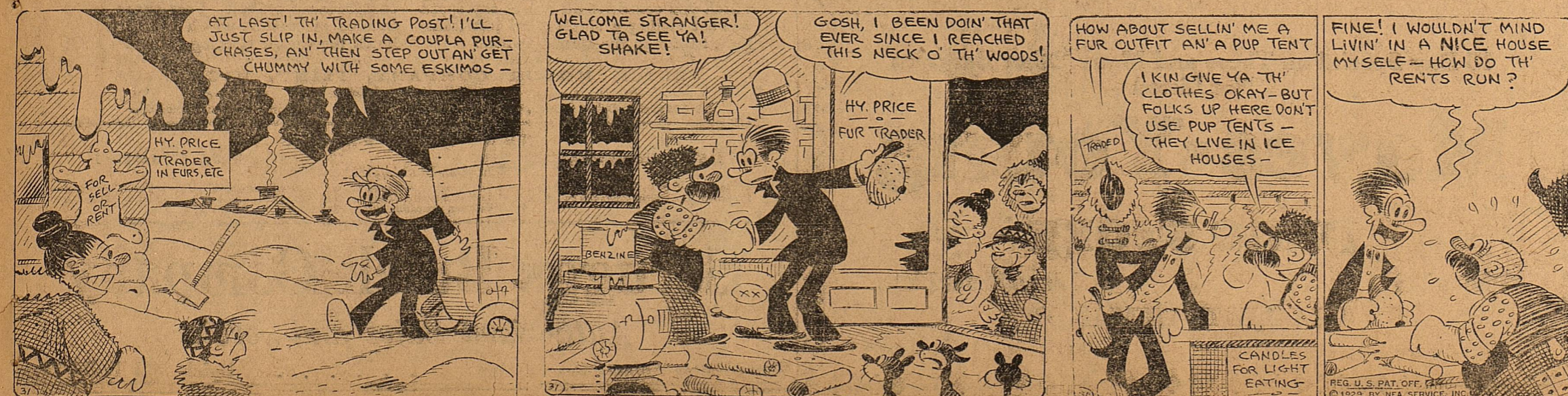
By Crane



SALESMAN SAM

High, Up There!

By Small



CLASSIFIED

TODAY'S SPECIAL BARGAINS
 We have a buyer for 640 acres of land close to Midland that controls 3 or 4 sections of grass land. For trade—1926 Hudson Coach for well located lot.
 If you have a house for rent, phone us.
WEST TEXAS LAND CO.
 206 Petroleum Building Phone 808
 Ira F. Lord J. M. White

2 For Sale or Trade
 FOR SALE—Beds, dressers, breakfast table, chairs, gas stoves. 607 N. Big Spring. Phone 297. 151-3P
 GOOD 4-WHEELER trailer for sale. Camp Co., 1.1-4 miles west of Midland. 151-2P
 FOR SALE OR TRADE—A new John Deere mower and rake. Cheap rent. Call or write W. S. Elkin. 150-6P

3 Furnished Apartments
 MODERN APARTMENTS for rent. First house west of Hogan building. 151-1P

6 Unfurnished Houses
 HOUSES FOR RENT—5 room frame \$45.00; 5 room stucco \$50; 5 rooms in duplex \$55; 3 rooms furnished in duplex \$60; 2 room house with bath \$30. Crafts-Garlington. Phone 3547. 105 Wall St. 151-9P
 FOR RENT—One small house, furnished. All bills paid. Cheap rent. 903 South Weatherford. 150-4P
 FOR RENT—A room bungalow, modern conveniences. 1 1/2 blocks north Hogan building. Also furnished 904 furnished apartments. Phone 1757. 149-5P

7 Houses for Sale
 FOR SALE—6 room new and modern rock house. \$1500 cash will handle. Balance like rent. 5-room new and modern brick house, \$1000 cash will handle. Balance like rent. 5 room stucco, new. \$900 cash. Balance like rent. 5-room frame house, \$500 cash, balance like rent. 300 Crafts-Garlington. 105 Wall Street. 151-1P
 BRICK VENEER or frame. \$5000 cash, balance easy. Priced on low extra bargain. High class lots. Can get what you want. Try me. J. N. Wells. Real Estate. 145-1P
 FOR SALE—Five room frame house with bath, garage, corner lot. 75x140. 1002 West Wall. Priced right. Phone 331 or 429. J. H. Dean. 150-6P
 FIVE ROOMS all completely furnished, desirable location, can be bought from owner at sacrifice and give immediate possession. Phone 34. 143-1P

8 Miscellaneous
 I AM PREPARED to keep children part or all of the time. Supervised play. 616 N. Carrizo Street. Phone 527W. 151-3P
 WANTED—4- or 5-room house close in. Will rent permanently at \$15.00 month. Call at Golden Rule Store.
 WANTED—Painter to do work in exchange for room rent. Call at Brown's Cozy Camp, on east highway. 151-3P
 MIDLAND MATTRESS CO. let us renovate your old mattress. Phone 537. 144-1P
 WANTED—Woman to keep house for couple. Write Mrs. D. S. McCown, Odessa, Texas, Box 72. Phone No. 266. 148-6P
 SALESMAN—Opportunity to travel. Chance to learn and advance rapidly. Experience not necessary. See Manager, Room 518 Petroleum Building, 8 to 9 a. m., and 4 to 6 p. m. 148-3P

10 Automobiles
 FOR SALE—1926 model Chevrolet coupe, good condition. Miss Guly, 102 North Maricfield. Phone 130. 143-1P
 ONE 3-ROOM furnished apartment. Phone 145. 142-1P
4 Unfurnished Apartment
 UNFURNISHED apartment for rent in duplex. Spar's & Barron. Phone 61-1P

DR. D. K. RYLIFF
 Dentist
 310 Petroleum Bldg.
 Office Phone 149
 Residence Phone 9

2427 51st Street
 Will Be Appreciated
HINES DAIRY
 T. B. Tested Cows
 W. H. Hines, Prop.
 9906-F2

BLAIR & SMITH
 Attorneys-at-Law
 General Civil Practice
 First National Bank Building
 Sloan Blair W. R. Smith

A. M. GANTT, M. D.
 General Medicine and Surgery
 Diagnosis and Consultation
 Office Phone 583
 314 - 315 Petroleum Bldg.
 Residence Phone 664
 Home Address
 1522 West Texas Avenue
 Midland, Texas

Your Patronage Appreciated
 Inquiries Solicited
 T. B. Tested Cows
Meissner's Dairy
 Gustav Meissner, Prop.
 Phone 9938-F3

YOU WILL FIND
 Experienced Workmen
 who render
 Courteous service
 at the
SANITARY BARBER SHOP

DR. A. L. CANTRELL
 Chiropractor
 announces the removal of his offices to 205 Petroleum Building. Phone 162
 Formerly in the Cowden Bldg.

Dr. L. B. PEMBERTON
 DENTIST
 Rooms 501-3
 THOMAS BUILDING

DR. MAY OBERLANDER
 Licensed
 Chiropractor
 And Scientific Massage
 12 Years' Experience
 Room 314 Scharbauer Hotel

Hatt, Mims & Crane
 "Our Service Is Better"
 General Insurance - Loans
 First Nat'l Bank Annex
 Abstracts - Title Insurance
 Phone 24

Dr. W. G. Whitehouse
 Physician and Surgeon
 308 Petroleum Building
 Off. Phone Res. Phone
 388 532

